

Historic, Archive Document

Do not assume content reflects current scientific knowledge, policies, or practices.

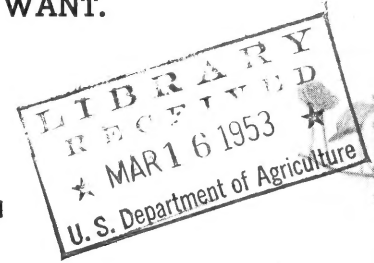


62,09

=1953=

On

FOUR GROUPS, FIVE DIFFERENT SIZES OF EACH SPECIE.
ORDER THE SIZE AND PRICE YOU WANT.



PRICE LIST

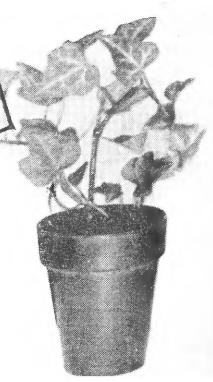
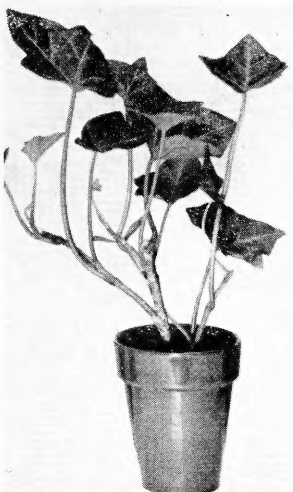
WHOLESALE ONLY

Member California Cactus Growers Assn.

These prices are for rewholesaling.

Satisfaction is assured because sizes are specified by inch measurements.

Future orders for June shipment or later is especially solicited; confirmation on these will be sent.



3

Hahn's Self-branching Ivy

Small yellow green leaves. Numerous small runners make a lacy mass of beautiful foliage.

2

English Ivy

A vigorous grower. Rich dark green leaves.

ROCKDALE NURSERIES

CACTI SUCCULENTS & FOLIAGE PLANTS

Mail Address

2483 Glendower Place
Los Angeles 27, California

Phone

Olympia 6208

Nursery

13063 Montague St.,
Pacoima, Calif.

We will not substitute on Wholesalers' orders either in specie or size. We will write by Air Mail for confirmation as to the nearest we have, before we ship.



1

Variegated Ivy

Large leafed ivy with yellow and green spotted leaves and purple stems.

You may order by list number and size letter only, in which case your order will look something like this:

1500—1A 500 of each of
200—6C }
100—30B } 1A, 30B, 32A
100—30A }
50—32AA } 34B, 41B, 63C



4

Boxwood

A tiny leafed shrub. Woody stem. Glossy foliage. Very decorative as a pot plant and a hardy grower.

URC are unrooted cuttings, C are small rooted cuttings, B, A and AA sizes are rooted plants.

FOLIAGE PLANTS

	URC	C-2" POT	B-2 1/4" POT	A-2 1/2" POT	AA-3" POT
1 Variegated Ivy	5¢ per linear foot	Rooted 3 leaves 5¢	4 leaves-6¢		5 leaves-7¢
2 English Ivy	4¢ per linear foot	3 leaves-5¢	4 leaves-6¢	1 foot-7¢	2 feet-10¢
3 Hahn's self branching Ivy	10¢ per linear foot	Rooted cuttings 5¢	6 leaves-6¢	1 foot-12¢	2 feet-20¢
4 Boxwood, Buxus japonica		Rooted cuttings 5¢	3"×6"-6¢	3"×8"-8¢	4"×10"-10¢
5 Pittosporum Tobira		2"×4"-5¢	3"×6"-6¢	4"×8"-8¢	
5 1/2 Bilbergia nutens	Young shoots 5¢				Rooted plants-8¢

Note:—3"X4"—read 3" spread 4" tall, first number is spread, second number is height.

. . . . COLORFUL SUCCULENTS



17
Mesemb.
Agninum



7
Crassula
imperialis



26
Stapilia
gigantica



8
Crassula
Tetragona



21
Sedum
Cristatum



25
Sempervivum
Calcaratum

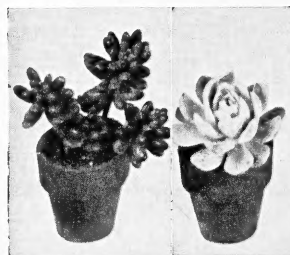
	URC	C-2" POT	B-2¼" POT	A-2½" POT	AA-3" POT
6 Crassula arborescens	2"×3"-2¢, 3"×5"-4¢	2 "×3 "- 3¢	3 "×5 "- 5¢	4 "×6 "- 6¢	6 "×8 "-10¢
7 Crassula imperialis	¼"×3 "-1¢	1 "×3 "- 3¢	2 "×3 "- 4¢	3 "×4 "- 5¢	Larger 10¢
7½ Aeonium haworthii	1½"×1 "-2¢	1½"×1½"- 3¢	2 "×2 "- 5¢	2 "×3 "- 6¢	
8 Crassula tetragona	2 "×3 "-2¢	2 "×3 "- 3¢	2½"×4 "- 4¢	3 "×6 "- 5¢	4 "×8 "-10¢
9 Crassula true arborescens	2 "×2 "-3¢	2 "×3 "- 4¢	2½"×3½"- 5¢	3 "×4 "- 6¢	Larger 10¢
10 Echeveria elegans	1½"×1 "-3¢	2 "×1 "- 4¢	3 "×2 "- 5¢	3½"×2 "- 7¢	4 "×3 "-10¢
11 Echeveria similens	1½"×1 "-3¢	2 "×1 "- 4¢	3 "×2 "- 5¢	4 "×2 "- 8¢	5 "×3 "-15¢
12 Echeveria pulvinata	1½"×1 "-4¢	2 "×2 "- 6¢		3 "×3 "- 8¢	4 "×4 "-12¢
13 Echeveria doris taylor	2 "×1 "-4¢	2 "×2 "- 5¢		3 "×3 "- 8¢	4 "×4 "-12¢
13½ Echeveria derenbergii				2 "×2 "-10¢	
14 Faucaria tigrinum	1½"×1 "-3¢	2 "×1½"- 4¢		2½"×1½"- 6¢	3 "×2 "-10¢
15 Kalanchoe tomentosa		2 "×3 "- 7¢		2½"×4 "-10¢	
16 Kleinia repens	1 "×2½"-3¢	1½"×3 "- 4¢		2 "×4 "- 6¢	3 "×6 "-10¢
17 Mesembryanthemum agninum	1 "×1 "-3¢	1½"×1½"- 4¢	2 "×2 "- 6¢		3 "×2 "-10¢
18 Portulacaria atra	1 "×3 "-3¢	1½"×4 "- 4¢	2 "×5 "- 5¢	2 "×6 "- 6¢	3 "×8 "-10¢
19 Sedum adolphi	1¼"×2 "-3¢	1½"×2½"- 4¢	2 "×3 "- 5¢	2 "×4 "- 6¢	3 "×5 "-10¢
20 Sedum guatemalense	1 "×1 "-2¢	1½"×2½"- 4¢	2 "×3 "- 5¢	2½"×4 "- 7¢	3 "×5 "-10¢
20½ Sedum lineare variegata	1 "×2 "-2¢	1½"×2 "- 4¢	2 "×3 "- 5¢	3 "×3 "- 7¢	4 "×3 "-10¢
21 Sedum crestatum	1½"×1½"-2¢	2 "×2 "- 4¢	2 "×3 "- 5¢	2½"×3 "- 6¢	3 "×4 "-10¢
22 Sedum multiceps		1½"×1½"- 4¢	1½"×2 "- 5¢	2 "×2½"- 6¢	
23 Sedum pachyphyllum	1 "×2 "-2¢	1½"×2½"- 4¢	2 "×3 "- 5¢	2½"×4 "- 6¢	3 "×5 "-10¢
24 Sedum trelesii		1½"×1½"- 4¢	2 "×2 "- 5¢	2½"×2½"- 6¢	3 "×5 "-10¢
25 Sempervivum tectorum	1 "×1 "-2¢	1¼"×1¼"- 4¢	2 "×1½"- 5¢	2½"×2 "- 6¢	4 "×2 "-10¢
25½ Sempervivum calcaratum		1 "×1 "- 4¢	1½"×1½"- 5¢	2 "×2 "- 6¢	3 "×2 "-10¢
26 Stapilia hersuta	½"×3 "-3¢	1 "×3½"- 4¢	1 "×4 "- 5¢	1 "×5 "- 6¢	2 "×6 "-10¢
27 Stapilia variegata	½"×2 "-2¢	1 "×2½"- 3¢	1 "×3 "- 4¢	2 "×3 "- 5¢	3 "×3 "-10¢



18
Portulacaria
Atra



6
Crassula
Arborescens



20
Sedum
Guatemalense

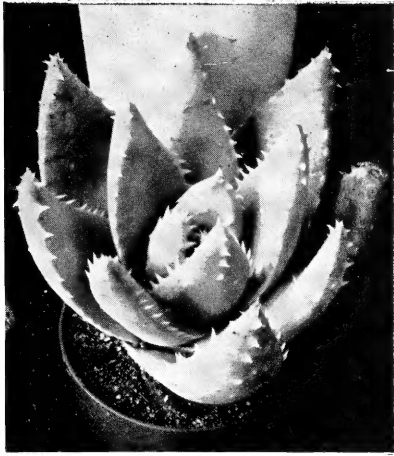
10
Echeveria
Elegans



19
Sedum
Adolphi



16
Kleinia
Repens



30 Aloe humilis

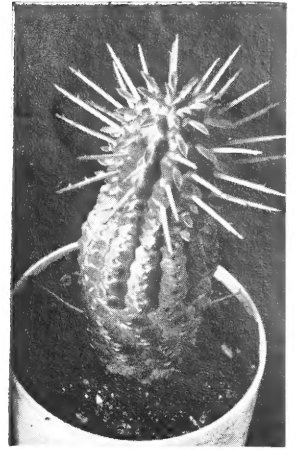
SOLID SUCCULENTS



28 Aloe Arborecens



39 Gasteria Lingua



37 Euphorbia mamillaris

	URC	C-2" POT	B-2¼" POT	A-2½" POT	AA-3" POT
28 Aloe spinosissima	1 "×2 "-3¢	2 "×2 "- 4¢	3 "×3 "- 5¢	4 "×4 "- 6¢	5 "×5 "-10¢
29 Aloe beguini		2 "×1½"- 5¢	2½"×2 "- 6¢		3 "×3 "-10¢
30 Aloe humilis	1½"×1½"-3¢	2 "×1½"- 4¢	2 "×2 "- 5¢	2½"×2 "- 6¢	3 "×3 "-10¢
21 Aloe humvir	1½"×1½"-3¢	2 "×2 "- 4¢	2" ×2½"- 5¢	2½"×3 "- 6¢	3 "×4 "-10¢
31½ Aloe striata		2 "×2 "- 4¢	2½"×2 "- 5¢	3 "×2 "- 6¢	4 "×3 "-10¢
32 Aloe nobilis	1 "×1 "-3¢	1 "×2 "- 4¢	2 "×2½"- 5¢	2 "×3 "- 6¢	4 "×4 "-10¢
33 Aloe variegata			2 "×2 "-10¢		
34 Dyckia sulphuria		2 "×1 "- 6¢	2½"×1½"- 7¢	3 "×3 "-10¢	5 "×4 "-15¢
35 Euphorbia caput medusa	½"×3 "-3¢	¾"×3 "- 4¢	1 "×4 "- 5¢	1 "× 6"- 6¢	2 "×6 "-10¢
36 Euphorbia hermentiana				1 "× 6"- 8¢	2 "×8 "-10¢
37 Euphorbia mamillaris	1 "×1½"-3¢	1 "×2 "- 4¢	1 "×2½"- 5¢	1 "×3 "- 8¢	1½"×4 "-10¢
38 Euphorbia cereformis	1 "×2 "-4¢	1 "×2 "- 5¢	1½"×3 "- 6¢	2 "×4 "- 8¢	2 "×5 "-10¢
38½ Euphorbia splendens				2 "×8 "-10¢	
39 Gasteria lingua		2 "×1¼"- 5¢	3 "×2 "- 6¢	4 "×3 "- 8¢	5 "×4 "-10¢
39½ Gasteraloe pethemensis				3 "×3 "- 6¢	
40 Haworthia cymbiformis		1 "×1 "- 4¢	1½"×1 "- 6¢	2 "×1½"- 8¢	2½"×2 "-10¢
41 Haworthia fasciata				2 "×1½"-10¢	3 "×2 "-15¢
42 Haworthia margaritifera			2 "×1½"-10¢	3 "×3 "-15¢	4 "×4 "-25¢
43 Pleiospilos bolusii, Rock cactus		1 "×1 "- 4¢	2 "×1½"- 6¢	2½"×2 "-10¢	3 "×3 "-25¢

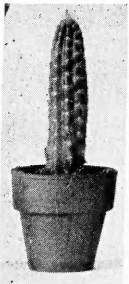
53 Opuntia cylindrica

55 Opuntia microdasys

46 Cereus peruvianus



CACTUS



51 Nyctocereus Serpentinus

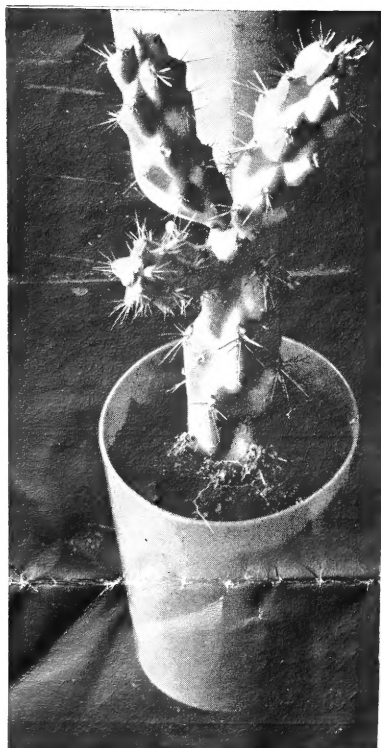


56 Opuntia Monacantha

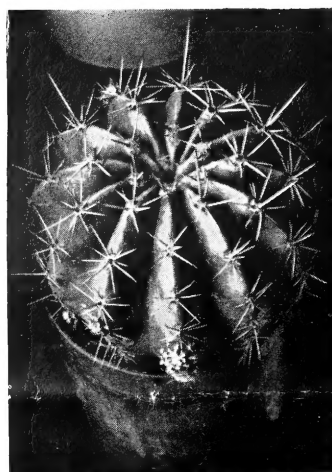
CACTUS

See next page for price on these cacti

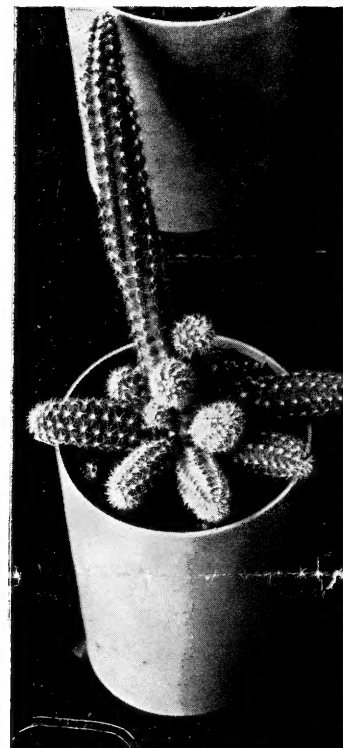
CACTUS



57 Opuntia tetracantha



47 Echinopsis Multiplex



61 Peanut Cactus

	URC	C-2" POT	B-2¼" POT	A-2½" POT	AA-3" POT
44 Boxing gloves	1 "×2 "-3¢	1 "×2½"- 4¢	1 "×3 "- 5¢	1¼"×3½"- 6¢	1½"×5 "- 7¢
45 Boxing gloves crests				2 "×2 "-10¢	2½"×3 "-15¢
46 Cereus peruvianus		½"×2 "- 4¢	¾"×3 "- 5¢	1 "×4 "- 6¢	1 "×6 "-10¢
47 Echinopsis multiplex		1 "×1 "- 4¢	1¼"×1¼"- 5¢	1½"×1½"- 6¢	2 "×2 "-10¢
49 Mammillaria dolichocentra			1½"×1½"- 6¢	2 "×2 "-10¢	
50 Mammillaria elongata		1 "×1½"- 6¢		1½"×2 "-10¢	
51 Nyctocereus serpentinus	1 "×3 "-5¢		1 "×3 "- 6¢	1 "×4 "- 8¢	1¼"×6 "-10¢
52 Opuntia basilaris	2 "×2½"-3¢	2 "×3 "- 4¢	2½"×3½"- 5¢	3 "×4 "- 6¢	3 "×6 "-10¢
53 Opuntia cylindrica	½"×2½"-3¢	¾"×3 "- 4¢	1 "×4 "- 4¢	1 "×5 "- 5¢	1½"×6 "-10¢
54 Opuntia honey mike	2 "×3 "-3¢	2½"×3 "- 4¢	2 "×3 "- 5¢	3 "×4 "- 6¢	3 "×6 "-10¢
55 Opuntia microdasys	1½"×2¼"-3¢	2 "×2½"- 4¢	2 "×3 "- 5¢	2½"×4 "- 6¢	3 "×6 "-10¢
55½ Opuntia rufida	2 "×2½"-3¢	2½"×3 "- 4¢	3 "×3½"- 5¢	3 "×4 "- 6¢	4 "×6 "-10¢
56 Opuntia monacantha	1½"×2½"-3¢	2 "×3 "- 4¢	2½"×4 "- 5¢	2½"×5 "- 6¢	3 "×7 "-10¢
57 Opuntia tetracantha	¾"×2 "-3¢	1 "×2½"- 6¢	1 "×3½"- 5¢	2 "×4 "- 6¢	3 "×6 "-10¢
58 Opuntia glomerata		1 "×1 "- 4¢	2 "×2 "- 6¢	2 "×3 "- 8¢	
59 Opuntia schickendantzii	1½"×3 "-3¢	2 "×3½"- 4¢	2 "×4 "- 5¢	2½"×5 "- 6¢	2½"×7 "- 8¢
60 Opuntia vilis	½"×2 "-2¢	½"×2½"- 4¢	1½"×2½"- 5¢	1½"×3 "- 6¢	2½"×4 "-10¢
61 Peanut cactus	½"×1 "-2¢	½"×2 "- 3¢	1 "×2½"- 4¢	1 "×3 "- 5¢	1½"×4 "- 7¢
62 Tricocereus schickendantzii		1 "×1 "- 4¢	1¼"×1¼"- 5¢	1½"×1¾"- 6¢	2 "×2½"-10¢
63 Tricocereus spachianus		1 "×2 "- 6¢	1 "×3 "- 8¢	1¼"×4 "-10¢	3 "×4 "-25¢

Minimum order \$10. Prices quoted are F.O.B. Los Angeles. Plants are shipped bare root. Our packing assures safe arrival any season of the year. No charge for packing.

Our responsibility ends when the shipment is delivered to carrier.