

Historic, Archive Document

Do not assume content reflects current scientific knowledge, policies, or practices.



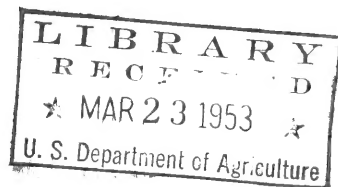
RUSSELL GARDENS · 1953

SPRING, TEXAS



Daylily "Myra Goddard"

THIS ISSUE IS ONE FOR THE BOOK ALTHOUGH NOT
IN BOOK FORM. THERE WILL BE NO CATALOGUE
THIS YEAR.



Sec 34.66 P. L. & R.

U. S. POSTAGE

PAID

SPRING, TEXAS

Permit No. 1

Return Postage
Guaranteed

Library
United States Department of Agri.
Washington 25, D.C.



No serious disease has ever been known to touch a Daylily

Daylilies will grow in sun or shade, acid or lime, wet or dry soil, and bloom beautifully with least care, but they respond to care and fertilization and will repay you many times for a little effort.

TRULY A LAZY MAN'S FLOWER

Here is the way to plant that long bed you've been trying to fill up—and to plant it for keeps. Perhaps you need lots of color among your shrubbery borders or along the bank of that lake. Try planting these in shade where "nothing" else grows or in the hottest patios. The foliage also is beautiful.

These will come in excellent blooming size plants and all sent postpaid. Plant early for next season's bloom. Water them a time or two, and they'll make it.

**OUR DAYLILIES
ARE PROVEN HARDY
FROM MAINE
TO CALIFORNIA**

**We Ship Only Vigorous
Heavy Size Plant**

NOTE

We pay transportation on all orders amounting to \$3.00 or more; otherwise please add 35c for postage and packing. We reserve the right to reject any orders or parts thereof, depending upon the condition of our stock and whether it has been sold out at the time of ordering. In such a case your money will be refunded. We acknowledge all orders promptly.

RUSSELL DAYLILIES as cut flowers
Longer Lasting—More buds to the stem.
PLANT NOW—From March thru Fall

A complete Daylily Garden for \$5.95 (12 Varieties Everyone different)

Would you like a brand new selection of daylilies—the most disease proof and easily grown perennials on earth—twelve brand new plants, and everyone a different variety, in a different color for a price lower than you would be asked to pay for an ordinary perennial? Then try one collection of these Russell Creations we are offering you here, at a price no one has been able to offer before for such varieties. We have selected some of the outstanding varieties from our field of over thirty acres, to offer you this

COMPLETE GARDEN. This collection will cover just about the entire season's bloom. The different varieties bloom at different seasons, giving you about five months bloom when established. Remember, these are hardy plants and once planted, regardless of where you live in America, will remain a permanent picture in your garden. These varieties will come to you unnamed but all labeled as to color.

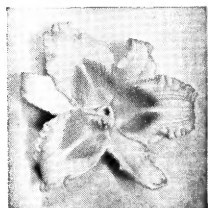
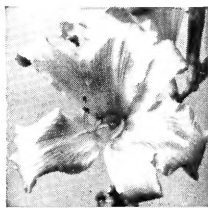
- 3 LEMONS AND GOLD—EACH A DIFFERENT VARIETY
- 3 REDS AND WINES—EACH A DIFFERENT VARIETY
- 3 PASTELS (ROSE, ETC.)—EACH A DIFFERENT VARIETY
- 3 BICOLOR COMBINATIONS—EACH A DIFFERENT VARIETY

ALL 12
POSTPAID
FOR
ONLY \$5.95

RUSSELL GARDENS • BETTER DAYLILIES • SPRING, TEXAS

Where the World Comes for the Better Varieties (Growing 30 Solid Acres)

NOTE THE WIDE FULL PETALS AND GRACEFUL FORMS ON
THE DIFFERENT TYPE RUSSELL DAYLILIES



A small part of our thirty acres of Hemerocallis, more than a million plants

Where, How and When Should You Plant Daylilies?

DAYLILIES can be used effectively in perennial borders, in groups of three to five interspersed with other plants. Their height should be kept in mind, of course, for there are those that grow only 12 inches tall and others as high as 6 feet. They can also be planted in the foreground of the shrubbery border, in a solid planting 2 to 3 feet wide or in groups of three to five between shrubs, thus solving the problem of filling unsightly gaps. Many people use them for naturalizing through partly shaded woods and along the banks of lakes and streams.

You people who have grown Daylilies need no advice as to their culture, for you know all about their performance, but to those of you who have not grown them yet, let me give this brief information. To begin with, Daylilies are not bulbs at all, but hardy herbaceous perennials. From Maine to California they have never been equaled for dependability by any other garden subject.

Simply plant your divisions in full sun or part shade in ordinary soil. I like to set them from 18 inches to 2 feet apart, with the roots spread out, of course. They should be planted with the crown just even with the ground surface. Only about 1 inch soil over. Spread out roots.

In my experience any time is the best time to plant Daylilies. The sooner you get them in the ground, the sooner they get established and give you blooms the following season. Of course, in the colder climates they cannot be planted when the ground is actually frozen.

Now by carefully selecting your varieties you can have Daylilies in bloom for four or five months in the colder climates and a much longer time in the warmer states. The flowering time that we mention is for Texas; figure about a month later for the North. If you like a particular color, you can order several different varieties in that shade that bloom at different times. Each variety will give you four to six weeks of bloom when established and will prolong the blooming season in your garden.

Leave your plants alone from year to year and they will continue to grow in larger compact clumps and give you more blooms each season. Of course, after a few years they can be taken up and divided. I have seen a clump of Daylilies growing undisturbed in the same location and blooming most profusely for fifteen years and even longer.

I have never known any disease or insect pests of any consequence to bother Daylilies in the least, and have never had to spend even five cents for insecticides in my fields.

We will positively replace any plants that fail to live and get established on account of your climate. I believe Texas-grown Daylilies are better because of the husky, vigorous root growth they start with when they are shipped from our nursery. I used 11,000 on one estate in hot, dry, windswept Oklahoma, and have sent thousands of plants to that state as the result of that planting.

You may order when you like, and we will hold your plants until you wish them delivered. Ordering early avoids the disappointment of some varieties being sold out.



The New 1953 SPOTLIGHT STRAIN

Reds, Wines, Maroons, Purples and Bicolors
6 for \$3.00 • 12 for \$5.00 • 25 for \$9.00
ALL SENT POSTPAID

This new Spotlight Series is the result of crossing and recrossing the best of the widest-petaled Hybrids. Here you will find entirely new color combinations and deeper colors—reds, wines, rose and contrasting tones of unusual richness—and not a solid yellow in the lot. If you want real beauty but care nothing about names, then by all means take advantage of this offer. These hybrids have a varied blooming season and should give you five months or more of bloom after becoming established. They grow from 2 to 3 feet high. Sold in mixture only. The photographs will give you some idea of what you will get in color and petal width.

The Brand New 1953 RUSSELL SUNSHINE SERIES

6 for \$3⁰⁰

12 for \$5⁰⁰

25 for \$9⁰⁰

**All Selected Heavy Stock
and Sent Postpaid.**

Many people prefer the paler tints of lemon and gold, and to enable our customers to have some of the better new varieties in these light colors at a moderate price we have selected this sunshine series. They include some of the finest sorts ever produced in these particular colors, to be sold unnamed and unlabeled, in mixture only. Those put in this series this time are larger blooms and finer performers than ever. They are too much like many of the lovely, more costly, named varieties already on the market for us ever to release them under name. But those who want daylilies in these tints and care nothing about names should, by all means take advantage of this wonderful offer at these low prices. These varieties, in unusual shapes and with most graceful foliage, were selected to give the longest range of bloom. Most of them are large flowered and quite unlike any you may already have because no two of them will be alike.





THE BEST OF THE PROVEN STANDBYS

NOW - From March to late fall is the best time to plant - They get established before the freeze.

While we are listing here now, one of the largest varieties of better daylilies in America, we are not attempting to list them all. Many of the older varieties have become outmoded and as the largest daylily plant breeder in America I consider it my duty to offer you only the best. Before ordering these daylilies, get out our old catalogues, yes, even those of the other nurseries too, and compare our prices and quality of stock. Do you find such full wide petaled varieties in any other listings?

While we are growing over a million and a half daylilies, not all are good, by any means. Many we are growing under observation that will never reach our catalogue, but you can bet your life if they are listed by Russell Gardens they have got to be good, and proven hardy from Maine to California.

We pay postage on all orders amounting to \$3.00 or more. Otherwise add 35 cents for packing and shipping.

all 60¢ each or any ten for \$5.50 or 3 each of any ten for \$15.00

ACRES OF GOLD. Evergreen. (Russell)
You really will have acres of gold when you plant this profuse, 5-inch bloom of the purest Jonquil yellow. Nothing surpasses this in its color class. Ht. 3 ft. May and June.

ANNETTE. Dormant. (Russell)
Mahogany-red, almost a black-red. This lovely 6-inch flower has a deep, wide chrome throat. Its height is only 20 inches, which is quite unusual for a Daylily in this color class. April, May and June.

BELLE OF GEORGIA. Dormant. (Russell)
A rounded, pale yellow bloom, overcast with the color and markings of a ripe peach, and therefore named for one of the South's best peaches. I've never seen any Daylily with such color pattern as this. Simply a "must-have." 4 to 5-inch bloom. Ht. 3 ft. April, May, June.

BOUTONNIERE. (Stout.) Dormant.
Small, overlapping petals. Sepals almost clear orange; petals light rose peach. Ht. 3 ft. July.

CAPITOLA. Dormant. (Russell)
The wide ruffled and crinkled petals are rich rose with a buff-colored midrib and a deeper rose eye zone. Sepals are a real buff-yellow and the throat sulphur-green. Slightly recurved. Keeps well in the evening. Ht. 3 ft. May, June.

CLARINADE. Dormant. (Russell)
A wonderful shade of a rich wine growing to a height of three feet it has a semi-rounded beautifully formed 4-inch flower. Extremely worthy in any planting. July and August, Semi-Dormant.

EVANGELINE. Evergreen. (Russell)
Tall, wine colored with yellow throat. 4" bloom. Ht. 4 1/2 ft. April, May.

GOLD MEADOWS. Dormant. (Russell)
Stiff petals of a leathery texture, light canary-lemmon, slightly ruffled. Unusually tall and stately. This variety could be used in place of a tall shrub, and I have counted as many as 700 buds on a three-year-old plant. 4-inch bloom. Ht. 4 1/2 ft. May, June.

HYPERTON. Dormant. (Mead)
The much-loved huge, wide, lemon-colored sort. Ht. 3 ft. May, June.

IN OUR TIME. Dormant. (Russell)
Wide 6-inch bloom. Deepest rose over pale lemon. Petals and sepals ruffled. Big wide yellow throat shades to green. One of the very best. Ht. 3 ft. May, June.

J. T. RUSSELL. Evergreen. (Russell)
This magnificent lemon color is 6 inch across of the loveliest form you will ever find in a daylily with a true deep cinnamon red eye zone that gives the contrast of color that will cause you to gasp when it's really at its best. Ht. 3 ft. May, June.

LADY FRANCES. Dormant. (Russell)
Rosy salmon, ruffled petals. Deep coral sepals, lavender overcast. 4-inch bloom. Ht. 3 ft. May, June.

LIGHTS OF PARIS. Dormant. (Russell)
True golden yellow, tips brilliant red. Keeps excellently. 4 1/2" bloom. Ht. 3 ft. May, June.

MT. VERNON. Dormant. (Russell)
This wide flower is lemon, overcast coral-rose. Multiples fast, blooms profusely. Excellent as a cut flower. If you want something different in daylilies, here it is. 5-inch bloom. Ht. 2 1/2 ft. April to June.

OUR PET. Dormant. (Russell)
Yes, this is everybody's pet too, for its height is only about 24 inches and the flowers look like little butterflies. Tiny 3 1/2-inch bloom of rich deep yellow overcast orange-red, with a fiery red eye zone. One of the most profuse bloomers. April to June.

RUSSELL'S MINUET. Dormant. (Russell)
A dwarf daylily with 4 1/2-inch blooms, ideal for rock gardens or the foreground of the border. The wide, overlapping petals are rich rose, ruffled, with a wide yellow stripe down the center. The sepals are pale canary. A fast multiplier. Stems stand erect and are simply enveloped in bloom. Ht. 20 to 24 in. May, June.

SKYLARK. Dormant. (Russell)
I could write pages about this one and not say enough. It is the most beautiful shade of lemon with thick texture and a faint green throat. This tall, erect, 4-foot variety carries a multitude of blooms 4 1/2 to 5 inches across, slightly recurved, slightly ruffled, and remains open until 10 or 11 o'clock at night. May, June.

SPITFIRE. Evergreen. (Russell)
Seems never to stop blooming here. I have actually seen this variety have four complete bloom seasons. The petals are of a fiery red, the sepals being slightly lighter and the throat yellow. 3 1/2-inch bloom. Ht. 2 ft. A very profuse bloomer. April, May and June.

TEJAS. Dormant. (Russell)
Brilliant circus-wagon red with velvety sheen. Only a 3 1/2 to 4-inch flower, but very abundant. It has a deeper red eye zone with darker veins and a deep yellow throat. Petals are slightly twisted and sepals recurved. A fast grower. Ht. 3 1/2 ft. April, May, June.

TRAIL OF GOLD. Evergreen. (Russell)
Buff, twisted petals that are slightly ruffled. In the yellow class, this variety stands in a place all its own. 6-inch bloom. Ht. 3 ft. May, June.

ZOUAVE. Dormant. (Stout)
Red bicolor with rich fulvous red petals and lighter sepals. Deeper eye zone. Ht. 3 ft. June, July, and again profusely in the Fall.

all 75¢ each or any ten for \$7.00 or 3 each of any ten for \$18.50

ALL A'GLOW. Dormant. (Russell)
This 5-inch flower of the lightest, but rich velvety red is a late bloomer and an extremely profuse bloomer and is certainly a shade of red that will bewilder you. Ht. 2 1/2 ft. July, August.

BABY TEARS. Evergreen. (Russell)
Dainty 4" bloom. Rosy red ruffled petals with yellow midrib. Yellow sepals. Ht. 3 1/2 ft. April, May and June.

BAGGETTE. Dormant. (Russell)
This is truly a dream. Wide rounded petals of palest lemon deeply shaded old-rose, with a deeper old-rose eye zone. One of the most profuse bloomers in our fields and keeps very well. The deeply ruffled petals further enhance its beauty. One of America's best Daylilies. 5-inch bloom. Ht. 2 1/2 ft. April, May, June.

BANDERA. Dormant. (Russell)
This lovely dwarf 20 inches high with brilliant red petals and chrome sepals, richly overcast a lighter shade of red has medium wide slightly recurved petals making up its lovely 4-inch bloom. June and July.

BREEZE. Evergreen. (Russell)
Old-rose overcast rich wine; the petals and sepals are colored alike, with a faint white stripe and a green throat. Fine texture. The rounded bloom is 4 inches across. One of my favorites among all old-rose colors. Semi-dwarf. Ht. 2 ft. April to June.

CHEE CHEE. Dormant. (Russell)
This small 3 1/2-inch flower with its widest, rounded, rich scarlet red petals and huge deep yellow throat is a twice bloomer and defies any weather conditions. April, May, and again in July. Ht. 2 1/2 ft.

COVER GIRL. Evergreen. (Russell)
Huge bloom of widest petals is curved and twisted and one of the richest purple reds, almost black. Its golden throat is quite a con-

trast to this shade. It draws your attention. 4-inch bloom. 3 ft. June, July.

CREAMY CRINKLES. Dormant. (Russell)
This is one of the daintiest, profusely crinkled ruffled daylilies I have ever produced. It is a solid creamy buff growing to 4-inch bloom. 3 ft. June, July.

DRESS AFFAIR. Evergreen. (Russell)
This is what might be termed a true "lipstick red" with a rich chrome throat. Quite a new and unusual combination. Its 4-inch blooms carried on a two-foot stem. May and June.

FLAMING SWORD. Dormant. (Russell)
Deep flaming red variety, with satiny finish, opening wide. Its blooms are small but profuse and come at a season when there are few real reds in bloom. Then its medium height makes it quite unusual. 3 1/2-inch bloom. Ht. 2 1/2 ft. May, June.

GREAT PLAINS. Dormant. (Russell)
This lovely, wide petaled daylily with a deeper eye zone and a golden yellow throat is something you will love always. A clean cut, erect stemmed beauty. 4 inch bloom. Ht. 3 ft. June, July.

INDIAN HILLS. Dormant. (Russell)
Another lovely 20-inch dwarf. Its 5-inch blooms are of the richest brilliant, light red, almost a deep orange red. I've seen no other dwarf in this shade and surely none that bloom so profusely. May and June.

LO THE WIND. Evergreen. (Russell)
This beautiful soft salmon, with a slight rose eye zone shading into a rich yellow throat with a decided pinkish over-all cast is a real treasure to behold. The flower is only 3 inches across but 30 to 40 blooms on a single stem more than makes up for its size and is one of the best of all the true salmon colors

called "pink" by many. 3-inch blooms, height 3 feet. April, May.

QUEEN OF DALLAS. Evergreen. (Russell)
This lovely 6-inch, extremely ruffled flower is buff-yellow with faint fulvous markings. I have yet to see a visitor in my fields who wasn't almost spellbound by its beauty. Ht. 3 1/2 ft. May, June.

RHYTHM. Dormant. (Russell)
Rose red, a color hard to describe. Some call it a true rose-pink, with a 3 1/2-inch flower of a finer form effect than all the Rosea types possess with a beautiful cool apple green throat. 2 1/2 ft. July and August.

ROSE OF TEXAS. Dormant. (Russell)
Rosy red, almost fiery red but lighter. A very fast grower. 4-inch bloom. Ht. 3 ft. April, May, June.

SPRING PARADE. Dormant. (Russell)
The 4 1/2-inch bloom has intensely ruffled petals of true raspberry color with a deeper eye zone and deep veins running through each wide twisted petal. Huge apple-green throat and rosy brown sepals. Ht. 2 ft. April, May.

SPRING SONG. Evergreen. (Russell)
This wide 4 1/2-inch deep orange-red flower has a chrome throat and a velvety overcast that puts it in a class to itself. April, May and again in July and August. Ht. 3 ft.

TIO. Evergreen. (Russell)
Deep purple red, sulphur green throat. 4-inch bloom. Ht. 3 ft. June, July.

VIGILANTE. Evergreen. (Russell)
This is a must. A large 5 inch flower of the richest velvety rosy-red, with a green throat. Recurved sepals and ruffled petals. 3 ft. May and June.

all \$1.00 ea. or any ten for \$9.00 or 3 each of any ten for \$25.00

ADAGIO. Dormant. (Russell)
An unusual, brilliant red, between a fiery red and black red, with deeper eye zone. Keeps perfectly. Has a small yellow throat. For you who are seeking an outstanding red, this is it. 4-inch bloom. Ht. 3 ft. May, June.

BETTY SLICK. Semi-Evergreen. (Russell)
This is a real bi-color size and shape of Hyperion, the sepals being the same color as Hyperion. The wide petals are a most brilliant rosy red. 3 feet. June, July.

CABALLERO. Evergreen. (Stout)
Bi-color vermillion petals, throat and sepals golden yellow. Ht. 3 1/2 ft. June, July.

GUEST STAR. Evergreen. (Russell)
Big 7-inch flower with widest petals tapering to a twisted point. Opens full and is a solid self of an indescribable shade of purest canary-gold. The most beautiful yellow sepals are slightly recurved. Ht. 2 ft. May.

LAMARQUE. Evergreen. (Russell)
This very wide-petaled, rich buttercup-yellow bloom is about 4 1/2 inches across. The petals overlap and are extremely ruffled. It keeps excellently in the evening, making it suitable for a cut flower. Ht. 3 ft. May, June.

NEODESHA. Dormant. (Russell)
Wine red petals, yellow sepals overcast red deeper wine-red eye zone. 4 1/2" bloom. Ht. 2 1/2 ft.

PALAMINO. Evergreen. (Russell)
Lovely creamy buff with pale trace of pinkish rose. Ht. 2 1/2 ft. April, May.

PARAMOUNT. Evergreen. (Russell)
This wide-petaled Daylily of rich red, ruffled and slightly recurved, is an unusually profuse bloomer. Its stiff, erect stems are something to remember on a well-established

clump. A fast multiplier and one that certainly needs no pampering. June, July.

PURPLE SAGE. Dormant. (Russell)
One of the darkest and finest wine-purples. The petals are ruffled, with a slightly yellow midrib and a large golden throat. The 4 1/2-inch bloom keeps well. Ht. 3 ft. April, May.

PURPLE WATERS. Evergreen. (Russell)
The 4 1/2-inch flowers open full and are slightly reflexed, with ruffled petals of a deep rich wine color. The throat is greenish yellow. Keeps perfectly in the evening. Ht. 3 ft. April, May, June.

RED BIRD. Dormant. (Stout) 36"
A vermillion-red with ox-blood eye and a yellow-green throat. A brilliant daylily.

RED EMBERS—Semi-Deciduous. This is an unusual shade of orange red. 3 1/2-inch flower borne on 20-inch medium dwarf stems, its sepals recurve fully and its petals are semi-upright and have a wonderful deep golden throat. May and June.

ROSE BEAUTY. Dormant. (Russell)
While not so deep a rose color as some, this is far from salmon. Visitors to our fields call it pink. Its wide petals and slightly ruffled sepals are unusually recurved. The texture is almost like leather, with a sulphur throat shading to green at the base. Probably the best in its class. Quite a late bloomer and multiplies fast. 4 1/2-inch bloom. Ht. 3 1/2 ft. June, July.

SAMMY RUSSELL. Dormant. (Russell)
This lovely dainty little 2 1/2-inch flower is really a red multicolor and a clump in full bloom is a sight to behold. This is the best late blooming dark red in our fields; is an extremely fast grower. Ht. 2 1/2 ft. August, September.

SCARLET PRINCESS. Evergreen. (Russell)
This lovely orange red flower is 4 1/2 inches

across, most profuse bloomer, with its brilliant ruffled petals fully recurved, a distinct but narrow yellow margin around the edges of each petal and sepal. A real jewel. Keeps well. Ht. 3 ft. March, April, May.

SKIPPY. Dormant. (Russell)
A new brilliant multicolor type red but much lower growing than other multicolors and surely of a more brilliant color than I know of. It has a beautiful buff throat with as many as 40 or more 2 1/2-inch flowers borne on its 2 1/2 ft. upright stem. May and June.

TARUGA. Dormant. (Stout)
Charming and delightful is this pale yellow with wide open flowers abundantly produced on tall well branched scapes. The petals are twisted at the tips. July, 40-in.

THE DIRECTOR. Dormant. (Russell)
A huge wide flower with overlapping petals, fully ruffled and crinkled like crepe paper. The color is rich wine-red, not a fiery red, with narrow veins of burgundy. The sepals are a shade lighter and the throat is chrome-colored. 5-inch blooms. These flowers are magnificent and more beautiful in the late evening after the sun has played on them all day. Ht. 2 1/2 ft. May, June.

THE MEADOWLARK. Evergreen. (Russell)
Gold with brownish eye zone. Ht. 2 1/2 ft. Mid-season.

WAX SOLDIER. Evergreen. (Russell)
A true old-rose. The flowers are 5 inches across, slightly recurved, with a slightly darker eye zone and a rich canary-yellow throat. One of the most gorgeous in this color class. Ht. 3 ft. April, May.

ZANZIBAR. Dormant. (Russell)
Wide, ruffled, wine purple petals. Green throat. 4 1/2-inch bloom. Ht. 2 1/2 ft. April, May and June.

RARE AND SCARCE STANDARD VARIETIES

BETTER DAYS. Semi-D. (Russell)
This truly lavender pink, far more pink than lavender, with its buff green throat and 4 1/2-inch bloom is truly a pastel that pleases everybody. I am listing it here for the first time in several seasons. Ht. 3 ft. June, July, \$2.00.

BLACK PRINCE. Dormant. (Russell)
Now you can have Black Prince for a limited time at this unheard-of price. Rated as one of the loveliest really black-red Daylilies, with a small yellow cup in throat. Keeps perfectly. Has widest petals and sepals of an even color. 4 1/2-inch bloom. Ht. 3 1/2 ft. April, May, \$1.50.

EMILY BROWN. Dormant. (Russell)
A deep yellow Daylily with texture like leather and a sheen that absolutely glistens in the sun. Its wide, 5-inch bloom is really breathtaking, and I am proud to be responsible for the introduction of this jewel of

jewels. Ht. 3 ft. May, June. \$3.00.

FANCY TRIMMIN'S. Dormant. (Russell)
Ruffled rosy pink petals and yellow sepals deeply overcast with rose. Deeper rose eye zone. 3 1/2" bloom. Ht. 18". June, July. \$2.00.

GEORGIA. Dormant. (Stout) 36"
Flowers are large and full of delicate buff with delicate tone of peach veining. This is in to your pink tones in daylilies. The greenish-yellow throat adds beauty to this flower. \$2.00.

HEART STEALER. Evergreen. (Russell)
This Daylily was introduced by us last season. It's truly a rose-pink and will surely steal your heart, as it has everyone's in our garden. 4-inch flower. Ht. 2 ft. May, June. \$2.00.

LAUREL. Evergreen. (Lester) 36 in.
Four and a half to five inch light rose pink with cool green throat. Well branched

and can take the sun. Semi-evergreen in the mildest winter but otherwise dies down. \$5.00.

MAID MARIAN. Dormant. (Lester) 42"
A neat nester to pink. A six inch coral rose slightly ruffled. Color is clean and clear of any fulvous tint. A throat of yellow tinted green. Dormant. \$6.00.

MELODY. Dormant. (Russell)
This beautiful rosy red 5 in. bloom with its deeper rose eye, has a green throat that sets it apart from anything in its class. Truly a wonderful flower. Ht. 2 1/2 ft. May, June. \$1.50.

MIDWEST STAR. Dormant. (Sass) 36"
This is one of the largest yellows we have bloomed, has beautiful form and good texture. \$3.00.

MONTE. Dormant. (Russell)
I could never offer this variety now at this price were it not for the fact that it is such a profuse multiplier. Its fully rounded, wide

petals are 6 to 7 inches across and extremely ruffled. Alternate petals are lemon, the other three being deep rosy brown. One of the largest bi-colors grown and in great demand. Ht. 3 ft. April, May, and again in July. \$1.50.

MRS. B. F. BONNER. Evergreen. (Russell)
This daylily, in my opinion, beats any pale lemon in existence today. It is the color of Hyperion, but much larger, with wider petals and better texture. It lasts longer in the evening, has a much longer blooming season, and is far more profuse in bloom than Hyperion. 6-inch bloom. Ht. 2 1/2 to 3 ft. May, June. \$1.50.

PAINTED LADY. Evergreen. (Russell)
We developed Painted Lady several years ago but have never been able to list it again until this year. It's listed in practically every Daylily catalog at prices from \$6.00 to \$15.00 each. So many people have tried to buy it

direct from us, that we simply could not grow stock fast enough. But this past season we secured plants from several sources that had obtained it from us in the past, and I'm able to list it again. The huge blooms are 8 to 9 inches across and the color is cinnamon over yellow, with darker veins throughout. Ht. 3 ft. May, June. \$4.00.

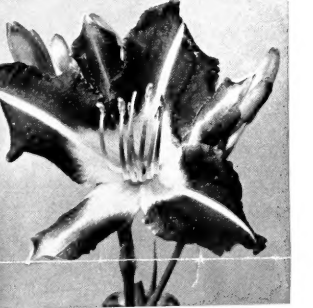
PINK ELF. Evergreen. (Russell)
This is a deep coral pink, ruffled three inch flower with a deep buff throat. I believe it is the only really dwarf, 18 inch, pink daylily in existence. June and July. \$1.50

PURPLE DRAGON. Dormant. (Russell)
This huge triangular shaped 6-inch flower is the deepest mahogany-purple. Its petals are pinched at the ends, and its medium wide, wavy petals show a deep, huge golden cup in the center. It blooms twice, in April, May and again in July. Ht. 2 1/2 ft. \$3.00.

QUEEN OF TEXAS. Dormant. (Russell)
This is a lovely rosy red. Quite different from the other reds and rose colors and one of the most profuse bloomers in our fields. Lovely shaped 4-inch bloom. Height 3 feet. May and June. \$1.50.

SANTA MARIA. Evergreen. (Russell) 34"
A light orchid and rose combination according to the weather but always pretty. Warm days it's a beautiful orchid bi-tone and cool days a rose-orchid bi-tone, this daylily repeats in the fall also, so we call it a twice-bloomer. \$1.50.

VIOLET QUEEN. Dormant. (Russell)
This is a coloring between light violet and deep orchid with a misty purple cast over the whole 4-inch flower. No other color equals this in our entire planting. Its throat is huge and truly green; ruffled petals and lemon sepals. Ht. 2 ft. May, June. \$3.00.



THE BRAND NEW 1953 INTRODUCTIONS

Indeed we are proud of these new 1953 introductions and we hope and sincerely believe that they will eventually take their place among the one hundred top best daylilies in all America.

REDS and WINES

CHERRY TIME. Evergreen. (Russell)
Rich, ripe, cherry red, ruffled with a velvet sheen that's hard to describe. Its darker red veins running to a deep golden throat. A slightly darker eye zone. Ht. 2 1/2 ft. April, May. \$3.00

MAKE BELIEVE. Evergreen. (Russell)
Bright rich red with wide 4" petals slightly pinched on the ends. A yellow midrib running to its dark golden throat. Ht. 3 ft. May, June. \$3.00

MY SOUVENIR. Dormant. (Russell)
Deepest red-purple, wide 3 1/2" bloom with a buff center slightly recurved. Truly a souvenir from us. Ht. 2 1/2 ft. April, May. \$3.00

NAVAJO. Dormant. (Russell)
Wide, rounded 3 1/2" flower of the darkest velvet mahogany red. One of the best ever produced in this color class. Ht. 3 ft. May, June. \$3.00

LEMONS, GOLDS and TWO TONES

CANARY ISLAND. Evergreen. (Russell)
This wonderful rounded 5" bloom is a beautiful true canary. A far cry from any ordinary so-called yellows. Ht. 2 1/2 ft. May, June. \$3.00

BUFF QUEEN. Evergreen. (Russell)
Truly one of the widest, petaled cantaloupe colors I have ever seen. Its 4" bloom is slightly ruffled and opened full. Fast grower and admired by everyone. Ht. 3 ft. May, June. \$4.00

BANGKOK. Dormant. (Russell)
Rich vivid scarlet red with a velvet sheen over its ruffled 3 1/2" flower, with a golden cup. Ht. 2 1/2 ft. June, July. \$3.00

ANOTHER FLING. Dormant. (Russell)
Deep mahogany with a slightly wine colored tinge, is a 4" flower with wide petals. The whole flower is a triangle shape with twisted petals, green throat. Ht. 2 1/2 ft. May, June. \$3.00

CITY OF LINCOLN. Dormant. (Russell)
Rosy red with twisted petals and canary yellow sepals slightly recurved, green throat, 4" bloom. Ht. 2 1/2 ft. June, July. \$3.00

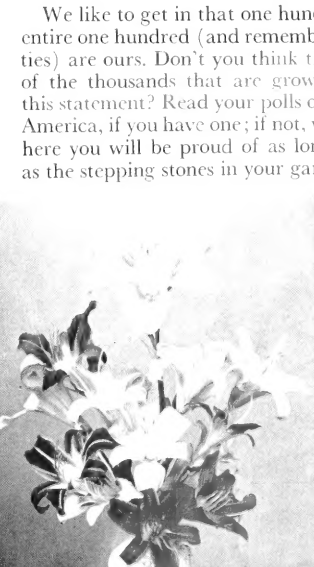
you have, you will love this one. Ht. 2 1/2 ft. June, July. \$3.00

NEW EDITION. Evergreen. (Russell)
This 4" flower has chartreuse sepals and slightly more yellow in its petals, which are tipped with lavender. Apple green throat. Ht. 3 ft. July. \$3.00

HIGHER UPS. Dormant. (Russell)
Wide 5" rosy red petals, canary gold sepals, twice bloomer. Truly a wonderful bi-color. Ht. 2 1/2 ft. April, May, July, August. \$3.00

history. Extremely profuse bloomer. Ht. 3 1/2 ft. June, July. The recent interest in this variety has led up to the conclusion that it is unwise to offer this plant until we have worked up a larger stock, so that we may stay within our price range. We are accepting orders for this now, for fall delivery of 1955. \$8.00

COURTSHIP. Evergreen. (Russell)
Wide 4" bloom of the palest gold-sprinkled lavender pink. Its sepals have slightly darker bands on outer edges. The entire flower seems as though it has been sprinkled with glistening gold. A twice bloomer. Ht. 18". May, June, again in the fall. \$3.00.



We like to get in that one hundred top best because over 1/6 of the entire one hundred (and remember there are many thousands of varieties) are ours. Don't you think that's plenty good for one nursery out of the thousands that are growing them now. To be able to make this statement? Read your polls of the Hemerocalis judges throughout America, if you have one; if not, write to us for one. The varieties listed here you will be proud of as long as you live and are just as hardy as the stepping stones in your garden.

RUSSELL DWARFS
Standard Size Daylily at Top.

HI-TIME. Dormant. (Russell)
A wide 4" open flower of pale copper with a deeper copper eye zone, overcast copper. Chrome throat, twice bloomer. Ht. 15" April, May, July, August. \$2.00

CLOUDS OF JOY. Dormant. (Russell)
This wide 4" bloom is practically the identical color of Caballero. Imagine this in a dwarf. It has a beautiful brilliant vermillion red petal with beautiful golden yellow sepals and throat. Unusually profuse bloomer. Ht. 20". May, June. \$2.00

PIRATES LAIR. Dormant. (Russell)
This wonderful 3 1/2" cinnamon brown petaled flower, with its golden sepals, is truly an unusual color break. Ht. 20". May, June. \$2.00

AT DAWN. Dormant. (Russell)
Golden 4" flower with a wine-reddish eye zone. Quite a little sensation in full bloom. Ht. 18". June, July. \$3.00

PIANO RAG. Dormant. (Russell)
A brilliant orange-red with a green cup, wide gold stripe in center. 4" flower. April, May, 18". \$2.00

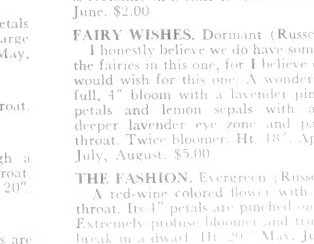
ABBREVIATION. Dormant. (Russell)
A rose and ivory color with a huge, true buff throat. 3 1/2" bloom. 15" Ht. June, July. \$3.00

LADY OF NOTE. Dormant. (Russell)
This is truly a "lady of note." Its petals are rosy red with yellow sepals and large yellow throat. 3 1/2" flower. Ht. 18". May, June. \$2.00

EVENTIDE. Dormant. (Russell)
A fire wagon red with a chrome throat. Ht. 18". May, June. \$2.00

LOVE NOOK. Evergreen. (Russell)
Wide reddish veins running through a golden yellow background and a buff throat. Its petals are ruffled. Quite unusual. Ht. 20" May, June. \$3.00

TICO TICO. Dormant. (Russell)
The petals are brilliant red, the sepals are



MY HERITAGE. Dormant. (Russell)
This wonderful wide petal, 5" palomino pink is one of the most beautiful things that grow in our garden, certainly a far cry from any of the so-called new color breaks. An extremely profuse bloomer. Ht. 2 1/2 ft. June, July. \$6.00

JERSEY BEAUTY. Dormant. (Russell)
This one is really hard to describe in that it is a color between old rose and a lighter tone. Its well-formed 4 1/2" flower will add an extreme color contrast to any garden. I'm sure I would like much of this in my own garden. Ht. 3 ft. May, June. \$3.00

LITTLE STAR. Dormant. (Russell)
While this is a smaller 3 1/2" bloom, its profusion more than makes up for its size. A shade of salmon pink that will thrill any gardener. It has a light yellow midrib and a tiny gold cup. Ht. 3 ft. June, July. \$3.00

MYRA GODDARD. Dormant. (Russell)
This wonderful wide petaled 4 1/2" flower is shown on the front of this circular. It is the whole I'd call a true baby pink with a large golden cup. The unusual part of this flower is that it is one of the very few in the pink class that is ruffled, and certainly one that we believe will go down in horticultural

golden yellow with a deeper yellow throat. A real little honey. Ht. 18". May, June. \$2.00

TIPPIN IN. Dormant. (Russell)
This is a tiny 2 1/2" circus wagon red bloom. While it is extremely brilliant, it is, nevertheless, pleasing. Chrome throat. 20" Ht. April, May. \$2.00

VALENCIANA. Dormant. (Russell)
The petals of this flower are a rich red, its sepals golden yellow. This tiny 3" flower is a blaze in bloom and a very fast grower. Ht. 18". April, May and again in the fall. \$2.00

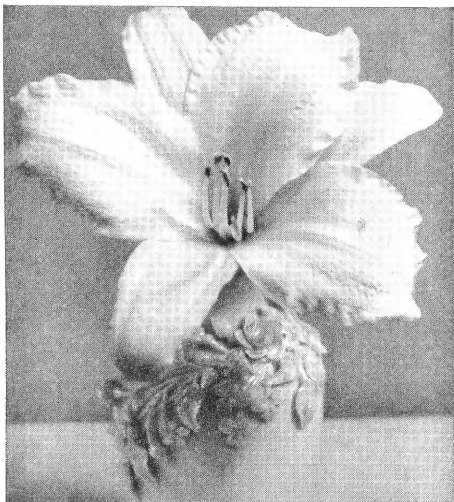
SONG OF LOVE. Dormant. (Russell)
This wonderful dwarf, pale-canary with its 4 1/2" wide bloom slightly twisted on ends, is certainly in a class to itself. Ht. 18" May, June. \$2.00

FAIRY WISHES. Dormant. (Russell)
I honestly believe we do have something on the fairies in this one, for I believe even they would wish for this one. A wonderful, wide, full, 4" bloom with a lavender pink ruffled petals and lemon sepals with a slightly deeper lavender eye zone and pale lemon throat. Twice bloomer. Ht. 18". April, May, July, August. \$5.00

THE FASHION. Evergreen. (Russell)
A red-wine colored flower with a chrome throat. Its 4" petals are pinched on the ends. Extremely profuse bloomer and truly a color break in a dwarf. Ht. 20". May, June. \$2.00



AMERICA'S LARGEST GROWER (30 solid acres)



After 1-year's growth more than a hundred buds on each clump. Should be more every year if left undisturbed.



NOTE THE WIDE FULL PETALS AND GRACEFUL FORMS ON THESE MAGNIFICENT NEW JEWELS

The Russell Gardens has, for many years, as most of you know, issued the largest all color catalogue of Daylilies in America and we expect to continue to do so, so one now being in the making, that will be delivered to you in the spring of 1954. This circular offers more new introductions than we have ever offered in a catalogue before, plus the BEST of the Russell Gardens proven standbys. When I say BEST we mean just that, for it was you, the accredited judges, throughout America, that have voted us tops. We now stand at the top of the poll, having won the highest award given for a Daylily origination. The January, 1953 issue (page 46) of The Better Homes and Gardens have a full page color display of the Daylilies showing the Russell Variety, Painted Lady. This variety has made the hit parade for the past three years and was originated by us in 1942. Oh, yes, we have been doing a lot in plant breeding since then and I do consider it an honor to know that among the thousands and thousands of plant breeders today you will find among the 100 top leading Daylilies, about 1/6 of this entire lot are our originations. The rest of the 5/6 was divided among the rest of America. I have been criticized, and at times I think, unmercifully, for pricing my daylilies so low but this came only from some of my competitors and I want to state here and now that that is one criticism I will carry gracefully the rest of my life, if need be,

because it was one of my aims at the beginning, almost thirty years ago, to give America better daylilies at a price everyone could afford. Have you ever heard of the average gardener being able to pay fifteen and more dollars apiece for daylilies? Frankly, I don't think so. (I used to do this till I learned better.) I've visited most of the growers and I have been amazed to learn that these so called famous growers were introducing their varieties when they didn't have but 10 or 15 plants each of some varieties, to begin with. I learned almost ten years ago that if a plant was that good, why not hold it a few more seasons and work up a huge stock of this variety (it takes time to test these plants for garden hardiness) so that we may price them within a range that we might all have them. Ours have got to be proven hardy, you know, from Maine to California. We never send out a plant until it has been tested. No, it is no hobby with us—no back yard affair. We are growing 30 solid acres and just for YOU, our retail customers who have made our business what it is today. Even as large as we are, growing over a million and a half daylilies of such quality varieties as we grow, we have never found it necessary to resort to the wholesale trade. I want to say THANKS and thanks again, for your wonderful patronage and we hope and sincerely believe that we will be able to serve you better this year than ever before.

Sincerely, H. M. RUSSELL, Spring, Texas