

Historic, Archive Document

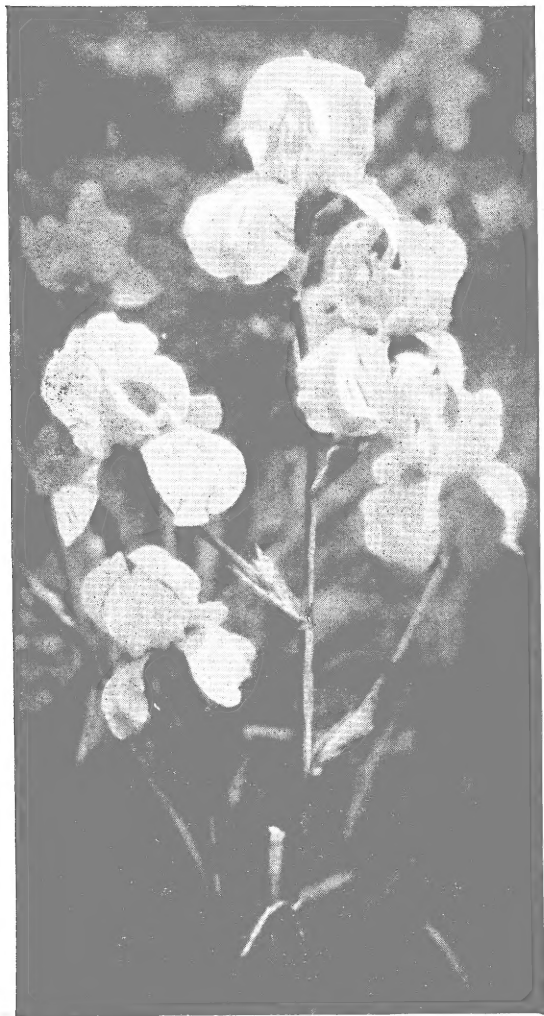
Do not assume content reflects current scientific knowledge, policies, or practices.

62.09

Dr



LIBRARY
RECEIVED
★ APR 30 1953 ★
U. S. Department of Agriculture



1953

Iris

Carl Salbach

657 WOODMONT AVENUE
BERKELEY 8, CALIFORNIA

Telephone: LAndscape 4 - 3421



OUR DISPLAY GARDEN WILL BE IN PEAK BLOOM FROM LATE APRIL TO MID - MAY

In this catalog, we have tried to describe in words the beauty of each iris in our garden. However, the best way to select the iris you desire is from living blossoms in the field. Be sure to put this garden tour on your spring calendar.

Visitors are Always Welcome



Please Read Carefully Before Ordering

OUR STOCK. We supply first class stock of Bearded Iris rhizomes which will bloom the first season. Our Daffodil, Dahlia, Dutch Iris, Ranunculus, and Tulip bulbs are all large size, top quality, carefully selected varieties from each color class.

SHIPMENTS are made as follows:

Bearded Iris — June 1st to October 1st.

Dahlias — February 15th to early May.

Daffodils, Dutch Iris, Ranunculus, and Tulips — September 15th to January 1st.

GIFTS may be selected any time throughout the year. A card will be sent for the birthday or "special occasion", and the gift will be shipped at the proper planting time.

POSTAGE will be prepaid on shipments to points west of the Rocky Mountains. Add 10% to cover extra postage for shipments to all other places.

TERMS. Remittance should accompany all orders, unless credit has been established.

SALES TAX. Add 3% California Sales Tax to all orders to be delivered in California.

ORDER EARLY. Please order early to prevent disappointment. For late orders, advise if we may make substitutions in case we are sold out.

SELECTED LIST OF BEARDED IRIS

- ALDURA.** Decorative blue and white plicata.....\$1.00; 3 for \$2.50
- ALEPPO PLAIN.** Unusual creamy yellow plicata, dotted and edged with brownish purple-pansy shades. Effective garden clump.....\$1.00; 3 for \$2.50
- AMANDINE.** Smooth lemon-cream self with dainty, ruffled form. Has amazing weather resistance. One of the best creams.....\$3.00
- AMBER GEM.** Magnificent large blooms, subdued rose with blending of golden amber, are beautifully poised on well branched 36" stems. Free bloomer and increaser. Salbach introduction.\$2.00; 3 for \$5.00
- AMIGO.** Light lavender blue standards contrast effectively with the velvety violet purple falls..... 50c; 3 for \$1.25
- ARGUS PHEASANT.** Solid golden brown self, even to the beard. Rich texture and a soft sheen. A superb new iris\$7.00
- BALLERINA.** Ruffled, light flamingo pink self, accented by a tangerine orange beard. Large blossoms have wide petals which flare gracefully. Attractive branching \$10.00
- BERKELEY BLUE.** Blooms early and freely over a long period. Immense blooms of clear asure blue with an enameled finish. Rugged grower. Salbach introduction. \$1.00; 3 for \$2.50
- BERKELEY GOLD.** Regarded by many judges as the world's best yellow iris. The perfectly formed flowers are a rich textured, pure golden yellow. Blooms profusely in severest climates. Salbach introduction..... 60c; 3 for \$1.65
- BLACK AND GOLD.** A stunning variegata. Standards, intense chrome-gold. Falls, blackish maroon.\$1.00; 3 for \$2.50
- BLUE ELEGANCE.** Very large, stately onco-hybrid in two harmonious shades of blue. Rounded standards of clear chicory blue, wide falls of deeper blue, accented by dark blue veining.\$3.50
- BLUE RHYTHM.** Flowers of beautiful composition are a near cornflower blue, with a silvery overlay, and the smooth finish of fine china. Hardy in any climate\$1.00; 3 for \$2.50
- BLUE SHIMMER.** The finest blue plicata. Ivory white background, handsomely dashed and dotted with pure blue. Hardy. Fragrant. Fourth best new variety in 1951. \$1.00; 3 for \$2.50
- BLUE VALLEY.** A superb new blue which stands out as being one of the truest blues of all. Waved petals have a lovely sheen in the sunshine. Fragrant\$3.50
- BRILLIANT AMBER.** Immense blossoms of beautifully moulded form. Deep amber standards, tinted pink. Golden brown falls etched with gold veining. Excellent branching. Strong grower. Salbach introduction\$2.00; 3 for \$5.00
- BRONZED COPPER.** The rich blending of copper, gold, and violet has a dramatic flash of bright peacock blue on the falls. Low growing50c; 3 for \$1.25
- BRONZINO.** Attractive bi-color. Golden bronze standards. Coppery brown falls. Salbach introduction 50c; 3 for \$1.25
- BROWN BOY.** Flower arrangers love this one. Long lasting when cut, and low growing. Soft brown self. Salbach introduction 50c; 3 for \$1.25
- BRUNHILDE.** Deep violet-blue with a blue beard. This iris has a depth of beauty that is fascinating. Perfumed. Salbach introduction50c; 3 for \$1.25

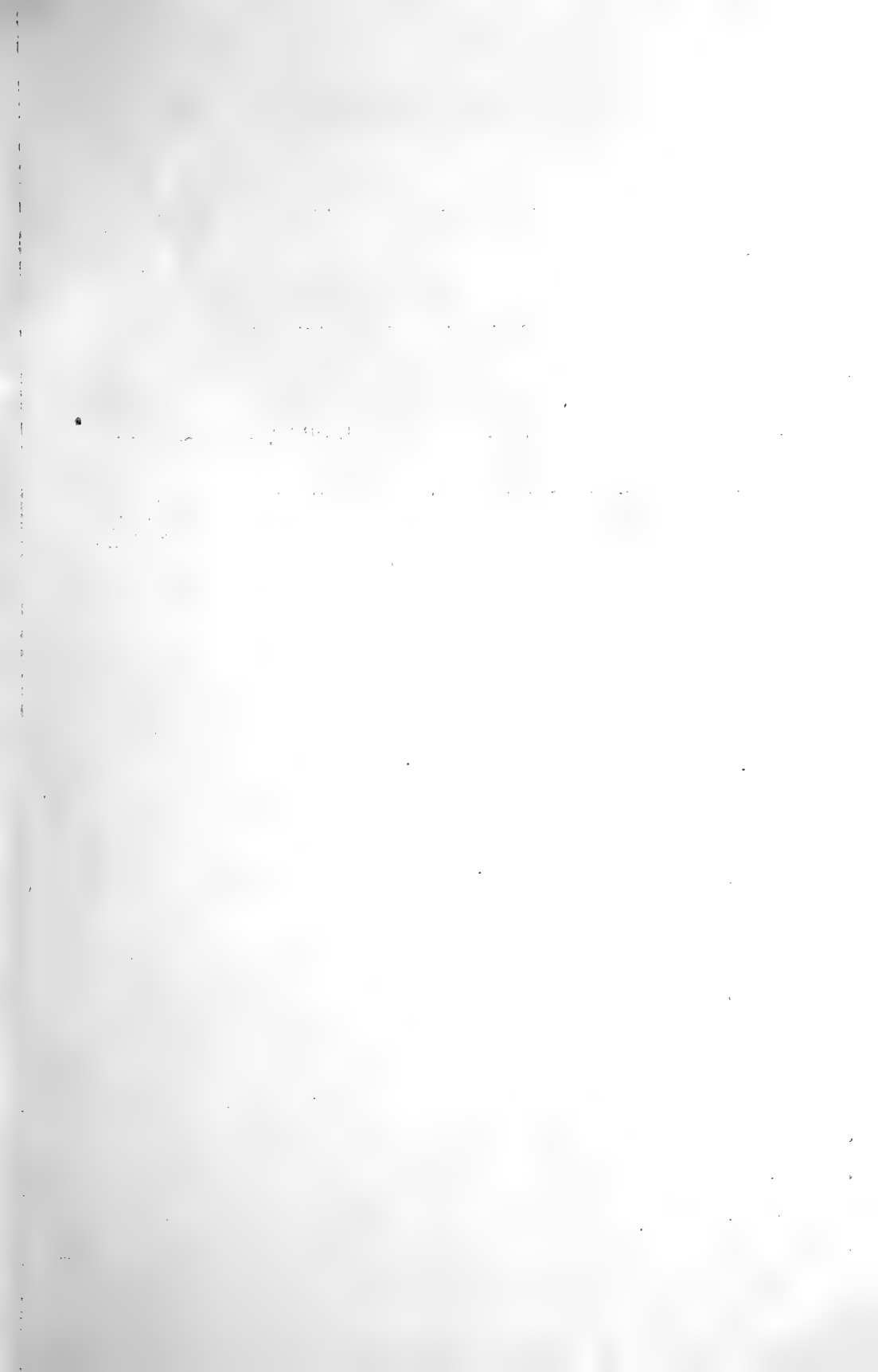
- BRYCE CANYON.** A mellow blending of "canyon" tones of reddish brown, henna, and copper form a glowing brown self. Hardy everywhere. Popular..
\$1.00; 3 for \$2.50
- BULWARK.** An admirable English variegata. Golden yellow standards. Rich brown falls. Clean cut form50c; 3 for \$1.25
- CALIFORNIA ROSE.** One of our best introductions with an enchantment all its own. The large, beautifully formed flowers have fine substance, and are artistically placed on 36 inch stems. The color is a soft rose pink, without any other markings. A free bloomer and hardy. Salbach introduction..\$2.50; 3 for \$6.50
- CAPITOLA.** Big onco-bred hybrid in a deep red violet color with striking veining. Pollen parent of many outstanding iris.\$1.00; 3 for \$2.50
- CASA MORENA.** Impressive, extra large blooms. A self in a new, warm chestnut brown with metallic highlights of copper\$1.50; 3 for \$3.75
- CHAMOIS.** A pure chamois self, without veining or other marking. Yellow beard, tipped bronze. Unusually large flowers\$2.00
- CHANTILLY.** Dainty orchid-pink, heavily ruffled and frilled, with golden haft. Good substance and growing habits.\$1.50; 3 for \$3.75
- CHERRIO.** A gay and popular bronzy red bi-color. Standards lighter than the falls. Blooms freely 50c; 3 for \$1.25
- CHERIE.** In our judgment, one of the best of the new pinks, as it is larger, more vigorous, and increases better. The gracefully ruffled blossoms are delicate flamingo pink, have substance, and hold their color in hottest weather.....\$8.00
- CHINA MAID.** A truly lovely iris. Large, finely formed blossoms of lilac pink have a subtle undertone of golden bronze, and are nicely poised on tall stems. Blooms very early and increases rapidly75c; 3 for \$2.00
- CHIPPEWA.** Bright yellow plicata. Brown markings on haft and falls. A bowl filled with this one variety was enthusiastically admired by our garden visitors.
50c; 3 for \$1.25
- CHIVALRY.** Top iris in 100 best in 1951. Dykes Metal winner 1947. Ruffled, mountain lake blue of exquisite form. Extremely hardy.\$2.00; 3 for \$5.00
- CIGARETTE.** A smoothly elegant, pure cream self. Delightful mass effect
75c; 3 for \$2.00
- CLARET VELVET.** Rich claret red. Color is deep and pure. Heavy substance.
75c; 3 for \$2.00
- CLOTH OF GOLD.** Yes, a regal yellow. Distinct because the vivid scarlet-orange beard stands out in a flaunting manner against the deep yellow petals. Fragrant75c; 3 for \$2.00
- CLOUD CAP.** Enormous blooms of perfect form and smooth finish on tall, well branched stems. A real pink. Flaming tangerine orange beard. Stock limited.
\$15.00
- CLOUD CASTLE.** Alluring, wisteria-mauve blue. Slightly waved and widely flaring form.\$1.50; 3 for \$3.75
- COPPER LUSTRE.** Unusual copper-bronze tone, softly blended with pinkish tan and lavender. Golden sheen. Hardy everywhere50c; 3 for \$1.25
- DARK KNIGHT.** Fine mahogany red. Abundant, perfectly formed blooms. Salbach introduction50c; 3 for \$1.25
- DAWN OF GOLD:** Charming, soft golden yellow. Especially to be desired, as it blooms when the other yellows have gone. Sturdy. Salbach introduction.
50c; 3 for \$1.25

- DAYBREAK.**.....Delicate sunrise pink and gold with faint coppery undertones. Fine flowers on tall stems\$1.00; 3 for \$2.50
- DEEP VELVET.** A handsome, dark iris. The rich, red violet color deepens in the center to an intense, almost black, purple. Silken sheen. Blooms profusely. Salbach introduction50c; 3 for \$1.25
- DESERT SKIES.** Delightful, near-sky blue (no violet or lavender casts). As many as seventeen blooms and buds on a single stalk. Sweet scented. Salbach introduction 50c; 3 for \$1.25
- DOLLY VARDEN.** A self of light flamingo pink, with a delicate hint of salmon. Exceptionally large flowers of great beauty, nicely displayed on sturdy, 38 inch stems. \$10.00
- DREAM CASTLE.** Deep orchid pink of casual grace, with cloud-white beard, tipped gold. Large flowers of full, rounded form. Blooms and increases generously. \$2.00; 3 for \$5.00
- DREAMLAND.** A pretty hollyhock red. Good form and growing habits \$1.00; 3 for \$2.50
- DUET.** Always popular with our garden visitors. Honey-gold standards with a suggestion of pink. Violet falls, edged with the color of the standards. 50c; 3 for \$1.25
- ELMOHR.** Spectacular, beautifully rounded, ruffled blossoms of huge size, in a delightful reddish-mulberry color. Effective veining. Won Dykes Medal in 1945. \$1.00; 3 for \$2.50
- ESQUIRE.** A tall, dark iris of arresting beauty. The solid, rich blue purple extends deep into the throat. Perfect form\$1.00; 3 for \$2.50
- FAIR ELAINE.** Appealing iris of regal form. Pale primrose to creamy white standards rise above gold-yellow falls 50c; 3 for \$1.25
- FANTASY.** The orchid tone in this exquisite rose pink distinguishes it from the other flamingo pinks. Purple buds and the luminous tangerine-red beard add exciting accents. Well branched 30 inch stems. Splendid grower.\$5.00; 3 for \$12.50
- FIRECRACKER.** Brilliant burgundy-red plicata with yellow markings. Falls have a bright dash of pure yellow. Extremely hardy\$2.00; 3 for \$5.00
- FRANK ADAMS.** Large flowers of fine form. Fawn pink standards. Strawberry-rose falls.50c; 3 for \$1.25
- FRIEDA MOHR.** One of the earliest introductions which has withstood all competition in the orchid pink class. Blossoms of classic form are properly placed on stately stalks. Very fragrant 50c; 3 for \$1.25
- GARDEN GLORY.** Near to a true ruby red, with smooth haft and enameled finish. A low growing favorite.....\$1.50; 3 for \$3.75
- GARDEN MAGIC.** Dark, velvety maroon-red. Sizeable flowers on well branched stems of medium height. Hardy in adverse weather75c; 3 for \$2.00
- GAY SENORITA.** Very bright garden effect. Rounded standards of clear honey yellow, and semi-flaring falls of deep golden yellow, with dark brown veining and overlay. Salbach introduction\$1.00; 3 for 2.50
- GIBSON GIRL.** Attractive plicata. Rosy heliotrope trimming on light yellow background. Nice form and branching. Flowers freely, sometimes out of season. \$2.00; 3 for \$5.00
- GOLD BROCADE.** We value this delightful yellow, as it is the first to bloom in our garden. An arrangement of Gold Brocade with Berkeley Blue is a very fitting start to a Berkeley iris season, as our University of California colors are blue and gold\$1.00; 3 for \$2.50

- GOLD DUST.** A really outstanding, bright yellow plicata. Both standards and falls are a rich golden yellow, flushed and dotted deep brown. Perfectly formed blooms have excellent texture, and are beautifully placed on nicely branched 36 inch stems. Vigorous grower and increaser. Our 1952 introduction.....\$10.00
- GOLDEN BEAR.** Fine, large, pure gold self. Hardy50c; 3 for \$1.25
- GOLDEN EAGLE.** Shining, light yellow self with satiny finish. Exceptionally large flowers are nicely proportioned75c; 3 for \$2.00
- GOLDEN MAJESTY.** This golden yellow is of top notch quality. The large flowers do not fade. Reliable bloomer in severest climates50c; 3 for \$1.25
- GOLDEN RUFFLES.** Stunning, ruffled yellow. Gracefully fluted blossoms in abundance\$2.00; 3 for \$5.00
- GRACE MOHR.** Seedling of William Mohr. Onco-cyclus hybrid. Big beautifully rounded petals of lavender-violet have lovely veining in a deeper shade. Popular
75c; 3 for \$2.00
- GRAND CANYON.** Subdued rock tones of violet-plum and copper-gold. Gold accents at beard and haft. Ruffled flowers75c; 3 for \$2.00
- GREAT LAKES.** Famous, clear light blue from Canada which won the Dykes Medal in 1942. Among the first ten every year since then. Four foot stems, sweet scented flowers, and rugged everywhere75c; 3 for \$2.00
- GRECIAN ROBE.** Big, soft yellow blooms. Tall stems and luxuriant foilage. Blooms early. Greatly admired in our garden\$2.00; 3 for \$5.00
- GREEN PASTURES.** Interesting, because its chartreuse (greenish yellow) color is entirely different from that of any other iris. Pleasing form....\$2.00; 3 for \$5.00
- GYPSY.** A warm and charming effect is achieved by the coppery orange-gold standards, and the finely textured chestnut brown falls. Late75c
- HAPPY BIRTHDAY.** Considered to be the top new flamingo pink. A deep pink with tangerine-red beard. Large blooms have perfection of form, with petal edges fashionably serrated. Grows and increases with vigor\$15.00
- HAPPY DAYS.** This lovely soft yellow flowers early and really seems to bring the happiness of spring. Blooms and increases generously. Immensley popular.
50c; 3 for \$1.25
- HELEN MCGREGOR.** An ethereal light blue. Large flower heads have petals which are daintily ruffled and flared. Won the Dykes Medal in 1949. Grows well everywhere\$2.50; 3 for \$6.50
- HIGH COMMAND.** Splendid new variety from England. Primrose yellow standards present a striking contrast to the handsome, full flaring falls of velvety dark mahogany. Rugged\$1.50; 3 for \$3.75
- ICE KING.** Immense, stately, and beautifully ruffled white is enhanced by a decided blue undertone. Light blue buds and a pure white beard. Fragrant. Vigorous\$1.50; 3 for \$3.75
- ICY BLUE.** Exceptionally tall, light glacier blue, frosted white. Popular.
50c; 3 for \$1.25
- INSPIRATION.** An import from New Zealand that has been received with enthusiasm. Vibrant crimson rose self with giant blooms of exquisite form
\$1.00; 3 for \$2.50
- JUNALUSKA.** Ever popular "blended red" is composed of copper gold standards and bronze maroon falls. Blooms early and over a long period.....50c; 3 for \$1.25

- LADY BOSCAWEN.** Unusually hardy, pure alabaster white of elegant ruffled form\$1.25; 3 for \$3.25
- LADY MOHR.** A queen in the iris world. Bred from the famous Mohr line, the exotic coloring of this daughter is entirely unique. Standards, luminous oyster shell white, faintly tinted mauve. Falls, pale chartreuse (greenish yellow), with decorative veining, and a dash of red-violet at the haft. Flowers of finely sculptured form. Stems tall and attractively branched. Blooms freely over a long period. Withstands extreme cold, heat, wind, and rain. A "must" for the iris fan. One of our finest introductions\$1.00; 3 for \$2.50
- LADY OF SHALOTT.** Pastel pink plicata of illusive charm. Standards, heavily flushed rose pink. Falls, creamy white, edged and brushed pink. Always hardy. 75c; 3 for \$2.00
- LIGHTHOUSE.** Radiant, glowing center. Standards, blended old rose and gold. Falls, coppery red. Salbach introduction50c; 3 for \$1.25
- LOS ANGELES.** Notable white plicata. Trimly feathered and edged blue. Style arms also blue.50c; 3 for \$1.25
- LUCERNE.** The smooth, deep blue flowers have the serene beauty of a quiet lake. A plant with perfect proportions. Blooms profusely. Salbach introduction. 50c; 3 for \$1.25
- MAGIC CARPET.** Rose and cream plicata of generous size and flaring form. The rose trim is dashed on a golden cream background.....75c; 3 for \$2.00
- MARY E. NICHOLS.** Satiny, creamy white with orange blossom fragrance. Free flowering. Hardy50c; 3 for \$1.25
- MEERSCHAUM.** Unusual meerschaum pipe color, with prominent veining in a darker shade. Salbach introduction50c; 3 for \$1.25
- MELLOWGLOW.** One of the finest iris. Ruffled blooms in rich apricot-peach, with a pink blush. Smooth finish. Prolific\$1.50
- MELODY LANE.** Introducing a delicious new color to the iris rainbow,—glistening golden apricot, with bright tangerine orange beard. Delicately ruffled flowers. \$5.00; 3 for \$12.50
- MEXICO.** Pleasing color combination. Golden buff standards. Warm red-brown falls, bordered golden buff. Form reminds one of a Mexican straw hat. Late. \$1.50; 3 for \$3.75
- MINNIE COLQUITT.** An entirely different plicata. Huge, well shaped petals are white in the center, with a rich, stitched edging of wine-purple..\$1.00; 3 for \$2.50
- MISS CALIFORNIA.** Lovely, Large rose pink blooms on elegantly tall, 48 inch stems. Grows vigorously in all parts of the country. Salbach introduction. 50c; 3 for \$1.25
- MISSOURI.** Classic medium blue. Distinct because of the artistic touch of brown on the top curve of the falls.....50c; 3 for \$1.25
- MME. LOUIS AUREAU.** Popular French variety. Silvery white, with feathered edgings of rosy heliotrope.....50c; 3 for \$1.25
- MOONLIGHT SONATA.** Enchantingly different lime-yellow with beard of the same shade. Finely notched petals add to its charm.....\$5.00
- MORNING BLUE.** An iris of distinction. Translucent lavender blue enhanced by deep blue veining. An extremely large onco-hybrid with rounded standards and broad semi-flaring falls of heavy substance. Originated by Professor Jory of Berkeley, California\$3.50
- MOUNT WASHINGTON.** Magnificent white with golden beard and haft markings. Large, tall, and hardy. Wild plum fragrance50c; 3 for \$1.25

- MULBERRY ROSE.** This delightfully different rose-mulberry color has life to it, and is particularly effective in the garden planting.....75c; 3 for \$2.00
- NARADA.** A clear light blue, with fine large blooms in profusion. We had a row 15 feet long and 3 feet wide that produced over 150 bloom stalks. Increases rapidly. Splendid for mass planting. Late.....50c; 3 for \$1.25
- NASSAK.** Very large, blue white plicata with bright blue stitching. Well branched, 40 inch stems. Hardy in severest climate50c; 3 for \$1.25
- OLA KALA.** Intensely deep yellow, almost orange. Flaring, lightly frilled and waved flowers on tall stems. Winner of Dykes Medal 1948.....\$1.00; 3 for \$2.50
- OLD PARCHMENT.** Ivory-tan overlaid with gold. Heavy substantanced blooms are long lasting50c; 3 for \$1.25
- OLD ROSE.** Pure old rose, except that falls shade to cardinal near the haft. Beautiful blooms held high above the foliage. Salbach introduction.....50c; 3 for \$1.25
- ORANGE FLAME.** A fascinating iris that brings a real thrill when it blooms. Burnished golden orange standards. Radiant coppery red falls. Salbach introduction.50c; 3 for \$1.25
- ORCHID LADY.** Tall, late flowering orchid-lilac pink of fashionable form. Especially beautiful in flower arrangements, as it lasts well when cut, and the pink shade comes alive under artificial light. Salbach introduction....50c; 3 for \$1.25
- OREGON TRAIL.** The softly blended desert tones of salmon, coffee brown, gold, and touch of violet are of lasting beauty. Fine blossoms have firm substance.75c; 3 for \$2.00
- ORIENTAL GLORY.** (Formerly listed as Oriental Splendor.) This is our finest introduction in thirty years of breeding iris. The color combination is dramatic. Standards, velvety mahogany red. Falls, very rich, deep chestnut brown, shading to gold near the haft, with brilliant blue blaze in the center of the falls. Bright orange yellow beard. Perfectly formed blooms are handsomely held on a plant of fine proportions. Growing habits are excellent. Oriental Glory has all the superior qualities of a top ranking iris.....\$10.00; 3 for \$25.00
- ORMOHR.** Exceptionally large, outstanding onco-hybrid of breath-taking beauty. Silvery lilac with violet veining. Somewhat rounded blooms nicely held on 40 inch stems. Very popular..... 50c; 3 for \$1.25
- OZONE.** This pearly mauve to lavender iris has a flower center brushed with soft coppery brown.50c; 3 for \$1.25
- PACIFIC SUNSET.** Good sized blooms in blended shades of rose, gold, and copper. Salbach introduction.50c; 3 for \$1.25
- PAINTED DESERT.** Warm sand and rock tones capture the beauty of the Arizona mesa. Buff, tan, and brown, with violet tint on the standard midribs and top of the hafts.75c; 3 for \$2.00
- PALOMINO.** Strikingly handsome flowers of large size and unusual coloring. Standards are clear pink. Falls are pale ivory, with a distinct edging of amber-copper. Related to the new pinks, and has the characteristic tangerine-orange beard. A completely intriguing iris.\$20.00
- PEACH GLOW.** A decorative peach pink, with dainty blossoms of medium size75c; 3 for \$2.00
- PERSIA.** A smoky effect is created by the iridescent steel blue standards and bluish lavender falls.50c; 3 for \$1.25



CARL SALBACH

657 Woodmont Avenue :- Berkeley 8, California

Telephone Landscape 4-3421

Date.....

Name.....

Street.....

City..... County.....

State.....

Add 10% to cover extra postage on all orders east of the Rocky Mountains.

Add 3% sales tax to all orders for California delivery.

CARL SALBACH

657 Woodmont Avenue -:- Berkeley 8, California

Telephone Landscape 4-3421

Date.....

Name.....

Street.....

City..... County.....

State.....

Add 10% to cover extra postage on all orders east of the Rocky Mountains.

Add 3% sales tax to all orders for California delivery.

The first part of the report
 deals with the general
 situation of the country
 and the progress of
 the work done during
 the year. It also
 mentions the various
 projects which are
 being carried out
 and the results
 obtained. The second
 part of the report
 deals with the
 financial statements
 and the balance sheet
 for the year. It
 also mentions the
 various items of
 expenditure and
 the results of the
 various projects.

The third part of the report
 deals with the
 various projects
 which are being
 carried out. It
 mentions the
 various items of
 expenditure and
 the results of
 the various
 projects. The
 fourth part of
 the report deals
 with the financial
 statements and
 the balance sheet
 for the year. It
 also mentions the
 various items of
 expenditure and
 the results of
 the various
 projects. The
 fifth part of the
 report deals with
 the various
 projects which
 are being carried
 out. It mentions
 the various items
 of expenditure
 and the results
 of the various
 projects. The
 sixth part of the
 report deals with
 the financial
 statements and
 the balance sheet
 for the year. It
 also mentions the
 various items of
 expenditure and
 the results of
 the various
 projects.

- PERSIAN PRINCE.** Vivid contrast of colors. Bright yellow standards, and rich chestnut brown falls. Definitely a brilliant clump.....**75c; 3 for \$2.00**
- PIERRE MENARD.** A new blue of exceptional beauty. Clear hyacinth-blue standards in harmony with campanula violet falls. Flowers superbly formed.....**\$7.50**
- PINK CAMEO.** Delicate cameo-pink self, with tangerine-orange beard for contrast. A true pale pink, no lavender cast. Exquisite blossoms.....**\$1.50**
- PINK REFLECTION.** Intriguing chamois-pink color, with hint of buff in the undertone. Late**\$1.00; 3 for \$2.50**
- PINK SENSATION.** A soft pink with captivating form. Blooms, full and rounded, lightly ruffled, with lacinated petal edges. Tangerine orange beard. Early....**\$8.00**
- PINNACLE.** This arresting creation comes from New Zealand. Entirely new color combination. Cool white standards contrast, yet harmonize, with primrose-yellow falls. Classic form. An exciting addition to any iris collection.**\$7.50**
- PRAIRIE SUNSET.** Gloriously blended apricot-peach, amber, copper, pink, and glow of gold, paint an "iris sunset". Dykes Medal winner 1943. Original price was \$100.00 each.**\$1.00; 3 for \$2.50**
- PRISCILLA.** A neatly styled, pure white iris. Even the beard is white. Medium size and height make it easy to arrange in a mixed bouquet. Very hardy.**75c; 3 for \$2.00**
- PURISSIMA.** One of the first to bloom. The old-fashioned charm and ideal form of this extremely tall iris keep it in demand, even in competition with newer whites. Needs winter protection in cold climates.**50c; 3 for \$1.25**
- RADIANT.** Brilliant colors of golden orange and coppery red. Sometimes blooms in the fall. A low growing, rapid increaser which makes a fine border. Salbach introduction.**50c; 3 for \$1.25**
- RADIANT KNIGHT.** Strong, late blooming bi-color. Bronzy orange standards, with deeper toned falls. Copper sheen. Good form. Withstands heat, wind, and rain. Salbach introduction.**75c; 3 for \$2.00**
- RADIATION.** Attracts immediate attention in the garden. Deep orchid-pink, shaded flamingo, with tangerine red-orange beard. Gorgeous blooms with very wide flaring falls. Hardy.**\$8.00**
- RANGER.** Almost true crimson red self, velvet textured, and of impressive form. Vigorous. Late.**\$1.50; 3 for \$3.75**
- RED AMBER.** Soft rosy red, with vibrant copper undertone.**\$1.00; 3 for \$2.50**
- RED TORCH.** Luminous variegata. Bronzed buff standards, with richly textured falls of real mahogany red. Petals flare gracefully. Hardy.**\$1.00; 3 for \$2.50**
- RED VALOR.** Deep garnet red. Admirable form, texture, and growing habits combine to make it a winner in the red class.**\$1.00; 3 for \$2.50**
- RED VELVET.** A favorite red. This luxuriously textured iris adds a bit of glamour to the garden.**\$1.00; 3 for \$2.50**
- ROCKET.** Well named. Shining orange-chrome self with streamlined form.**\$2.00; 3 for \$5.00**
- ROSE PEARL.** An iris with an illusive charm. Creamy pink standards, flared falls of deeper pink. Blooms over a long period. Low growing. Salbach introduction.**75c; 3 for \$2.00**
- ROSY RUFFLES.** The attractively ruffled, rosy pink blossoms are always delightful. Fragrant, too.**\$1.00; 3 for \$2.50**

- SABLE.** A dark beauty. The stunning flower head is a solid shade of deepest blue-black (almost black), with a blue beard. Silky gloss. Popular. 75c; 3 for \$2.00
- SAMOVAR.** Burnished coppery rose. Quite alluring. 50c; 3 for \$1.25
- SAN FRANCISCO.** This superb blue and white plicata maintains its popularity, although it is not new. Beautifully formed, large white flowers are effectively trimmed and dotted with blue. Vigorous grower, but needs some winter protection in extremely cold climates. 50c; 3 for \$1.25
- SEA LARK.** Periwinkle-slate blue. The unusual way in which a purple accent is brushed through the petals makes this iris distinct. Blue beard. Perfumed. \$1.50; 3 for \$3.75
- SHINING WATERS.** A perfectly lovely sight in the garden. The name suggests the clear light blue color and sparkling sheen. Blooms profusely, but needs some protection through severe winters. 50c; 3 for \$1.25
- SIERRA BLUE.** A top notch iris, and one of the tallest, — sometimes over 5 feet. The shade is the always fascinating deep blue of a distant mountain range. Dykes Medal winner in 1935. 50c; 3 for \$1.25
- SNOQUALMIE.** The creamy light yellow of an Indian maiden's moccasin, and the graceful form compose an iris of quiet charm. 50c; 3 for \$1.25
- SNOW FLURRY.** Tall, stylishly ruffled. A white with a faint blue cast of shadows on new fallen snow. Petals have a frosted sparkle. Ruffled bud tips are ice-blue. Fine seed parent. Sweet scented. \$1.00; 3 for \$2.50
- SOLID MAHOGANY.** Impressive blooms of darkest, smooth mahogany red, well placed on strong 36 inch stems. Hardy in rugged climate. \$1.00; 3 for \$2.50
- SONG OF GOLD.** A nice, clear deep yellow of excellent size and form. 50c; 3 for \$1.25
- SORREL TOP.** Winsome plicata. You see it, and you want it in your garden. Pale yellow standards, suffused brownish rose. Creamy white falls, heavily dashed with rose. Fine form. Blooms freely. \$1.00; 3 for \$2.50
- SPANISH PEAKS.** Completely snow white iris of imposing, yet graceful form. Immense, ruffle edged flowers on tall, perfectly branched stems. An exceptionally fine new creation. \$3.50
- SPINDRIFT.** One of the first flamingo pinks with orange tangerine beard, and now inexpensive. Delicate seashell-coral pink blossoms on nicely branched 30 inch stems. \$1.00; 3 for \$2.50
- SPRING CLOUD.** Large, graceful blooms on towering stems. The standards of this distinctive white plicata are heavily suffused with blue, while the falls have only a few crisp blue markings. 50c; 3 for \$1.25
- STATEN ISLAND.** Striking new variegata. A top quality iris. Glittering yellow standards contrast brightly with velvety red, gold edged, falls. Superb form. \$5.00; 3 for \$12.50
- SULTAN'S ROBE.** Dramatic combination of colors create a garden treasure of rare beauty. A rich blending of pure gold, copper, old rose, and deep Van Dyke red. Wide, flaring falls are highlighted by an intensely brilliant dash of blue in the center. One of our best introductions. Fine seed parent. \$1.00; 3 for \$2.50
- SUNSET SERENADE.** Glowing sunset colors painted on immense blooms. Apricot-orange standards are beautiful against the reddish copper falls, edged orange. \$1.00; 3 for \$2.50

- SYLVIA MURRAY.** Silvery light blue with a silken sheen. Large, ruffled flowers are charmingly poised on a plant of perfect form. Effective with the new pinks. Fragrant.75c; 3 for \$2.00
- THE ADMIRAL.** An iris of top quality. The smooth medium blue has great depth. Bluish beard. Majestic form. Vigorous bloomer, and unusually hardy.75c; 3 for \$2.00
- THE RED DOUGLAS.** Impressive blooms on a splendid plant. The deep wine-red color is enriched by a brown toned center and orange beard. Perfectly hardy. Awarded Dykes Medal in 1941.75c; 3 for \$2.00
- TIFFANJA.** A plicata of soft shades and fashionable form. Buff, tinted gold, standards curve gracefully above cream-white falls which have a feathered border of golden buff-brown.75c; 3 for \$2.00
- TOP SCORE.** Introduced by us in 1949. This brilliant variegata is in a class by itself, and receives flattering attention in our garden. Bright yellow standards present a clear contrast to broad, somewhat rounded falls of deep chestnut brown, distinctly edged yellow. Stylishly branched 32 inch stems. A strong grower that blooms abundantly.\$2.00; 3 for \$5.00
- TOWER OF JEWELS.** An iris of superior beauty and great popularity. An illusive blending of gold, pale yellow, and mauve. Unusually tall and perfectly proportioned. Salbach introduction.75c; 3 for \$2.00
- TRULY YOURS.** Exciting new iris with an old-fashioned name. The heart of the flower is bright yellow, shading to white at the edges of the petals. The unopened buds and under side of the falls are solid yellow. Blossoms of tremendous size are heavily ruffled and lace-edged. Hardy. Late.\$15.00
- VANITY FAIR.** We put this on our "must have" list when we first saw it as a numbered seedling. Flowers of fine substance and silk-smooth finish appear in a new, refreshing, medium pink shade. Gay tangerine orange beard for accent. Late.\$12.00
- VATICAN PURPLE.** Splendid royal-blue purple self of handsome form and heavy substance. Sunshine on the rich petals brings to life highlights of magical beauty. Tall and vigorous.75c; 3 for \$2.00
- WABASH.** This well-known iris received the Dykes Medal in 1940. Pure, snow white standards rise in beautiful contrast above the deep violet falls, which are trimmed with a stunning white border. The falls are velvet textured, and the haft is crowned with a beard of gold. Perfect, slightly ruffled, form.50c; 3 for \$1.25
- WHITE GODDESS.** A glistening white. Large, lightly ruffled blossoms of finely sculptured form are held on tall, perfectly branched stems. Grows well everywhere.50c; 3 for \$1.25
- WHITE PEACOCK.** A truly beautiful iris of soft blue white. The large flowers are heavily ruffled and flare widely. The stalks are tall and well branched. Luxuriant foliage.\$17.50
- WILLIAM A. SETCHELL.** One of the largest of all iris. Giant blooms have standards 7 inches tall, and enormous falls 3½ inches wide and 4 inches long. Steel blue standards, deep violet falls. Strong branching on tall, sturdy stalks. Big, vigorous plants. Really robust in severe climates.75c; 3 for \$2.00

BEGINNER'S COLLECTION

Berkeley Gold. Pure, deep yellow.
Daybreak. Soft pink.
Garden Glory. Deep Bordeaux-red.
Missouri. Clear blue.

Persian Prince. Yellow standards.
Chestnut brown falls.
Snow Flurry. Ruffled white.
Sultan's Robe. Rich gold and old rose.
Wm. A. Setchell. Immense deep violet.

ONE EACH, separately labeled, for **\$5.00** (Value \$7.00)

NOVELTY COLLECTION

Amandine. Large cream.
Amber Gem. Soft rose pink.
Blue Rhythm. Best blue.
Golden Ruffles. Ruffled yellow.
Helen McGregor. Ruffled light blue.

High Command. Primrose yellow
standards. Mahogany brown falls.
Lady Mohr. Oyster shell standards.
Chartreuse (greenish yellow) falls.
Top Score. Orange-yellow standards.
Brown falls.

EIGHT TOP RANKING IRIS, one each, labeled, for **\$10.00** (Value \$15.00)

LATE INTRODUCTIONS

Argus Pheasant. Coppery brown.
Cherie. New pink.
Gold Dust. Yellow plicata.

Melody Lane. Deep apricot.
Oriental Glory. Rich mahogany red.
Pinnacle. White standards. Primrose
yellow falls.

SIX OF THE BEST NEW INTRODUCTIONS for **\$30.00** (Value \$47.50)

IRIS SEEDLINGS

Each year we grow a number of iris seedlings. These are all different. We offer these for mass planting in lots of 50 or more for **\$20.00** per 100.

SELECTED IRIS SEEDLINGS

We have a few splendid seedlings that were selected for further observation. Each one is a different color. These will not be named, but will be identified by number. **\$2.00** each; 3 different varieties for **\$5.00**

OTHER IRIS

AUREA (Spuria family). Tall, deep yellow self. Fall delivery.**50c; 3 for \$1.25**
NEW BLUE (Siberian). Rich turquoise blue. One of the best.**\$1.00; 3 for \$2.50**
PERRY'S BLUE (Siberian). Light blue on tall, slender stems. Good for border.
50c; 3 for \$1.25
STYLOSA (Winter blooming). Clear blue. Blooms appear low among the grass-
like foliage. Will not thrive in severe cold climate.**50c; 3 for \$1.25**

DAHLIA SEED

We have grown dahlia seed for over twenty years, and each year we select the finest seed from our gardens. Plants from this seed bloom the first year, and produce tubers that can be planted the next season.

Customers write of the thrill they get out of watching these seedlings bloom. Many of these dahlias have been outstanding enough to be named and introduced commercially.

LARGE FLOWERING DAHLIA SEED. Gathered from the finest varieties and best seed parents. Pkt. (50 seeds) — \$1.50
Pkt. (100 seeds) — \$2.50

MINIATURE DAHLIA SEED. Miniature dahlias are from 2½ to 3½ inches in diameter, and are cactus, semi-cactus, and decorative in form. Especially popular for use in flower arrangements. Pkt. (100 seeds) — 25c; 3 for 65c

DWARF BEDDING DAHLIAS. Colorful, semi-double flowers in shades of pink, rose, red, yellow, and apricot. Plants 12 to 20 inches high. Ideal for bedding and mass effect. Long blooming period. Pkt. 25c; 3 for 65c

OTHER SEEDS

AUNT MARY'S SWEET CORN. Unusually fine white sweet corn that has become very popular. Generous producer of large ears. Sweet nutty flavor. Long lasting, — still edible when the husks begin to dry Pkt. 35c; 3 for \$1.00

COLUMBINE (Aquilegia). Fine strain. Pink, blue, or mixed colors. Pkt. 25c; 3 for 65c

DELPHINIUM (Pacific strain). Plants from 4 to 8 feet high. Large blooms in clear rich colors.

BLUE JAY. Bright blue.

GALAHAD. Large white.

GUINEVERE. Light lavender with white bee.

KING ARTHUR. Brilliant royal violet.

BALANCED MIXTURE, composed of the above shades.

Hand-pollinated seed. Half pkt. (200 seeds) \$1.50

Full pkt. (400 seeds) \$2.50

Self-pollinated seed. Full pkt. (400 seeds) 50c

TULIPS

BRONZE QUEEN. Bronze.

DUKE OF WELLINGTON. Pure white.

G. W. LEAK. Bright scarlet. Yellow heart.

GOLDEN HARVEST. Lemon yellow.

PRINCESS ELIZABETH. Vivid rose-pink.

SCOTCH LASSIE. Beautiful formed lavender.

PARROT TULIPS

BLUE PARROT. Large heliotrope blue.

FANTASY. Large pink, streaked green, with lacinated edges.

ORANGE FAVORITE. Orange, with green shading.

Any of these tulips — 3 of one kind for 40c; 12 of one kind for \$1.50

BULBS FOR FALL PLANTING

NEW DUTCH IRIS

ARTHUR BRIET. Purple blue with bronze falls, spotted orange	Each 25c; 12 for \$2.50
BLUE CHAMPION. Brilliant blue.	Each 25c; 12 for \$2.50
BLUE HORIZON. Big violet blue. Late.	6 for 65c; 12 for \$1.25
BRONZE BEAUTY. Brown and blue blend	3 for 50c; 12 for \$1.75
EDWARD SALBACH. Deep velvety violet. Late.	3 for 50c; 12 for \$1.75
KING MAUVE. Soft mauve with yellow tongue.	3 for 50c; 12 for \$1.75
LE MOGOL. Chocolate with yellow markings.	3 for 50c; 12 for \$1.75
LEMON QUEEN. Large, soft lemon yellow.	3 for 50c; 12 for \$1.75
NATIONAL VELVET. Very rich violet purple.	6 for 65c; 12 for \$1.25
ORANGE KING. Brilliant deep orange.	Each 50c; 3 for \$1.25
PRINCESS BEATRIX. Large, deep yellow.	Each 25c; 12 for \$2.50
PRINCESS IRENE. White standards, orange falls.	Each 25c; 12 for \$2.50
WEDGEWOOD (Not new). Very early, large light blue.	6 for 65c; 12 for \$1.25
WHITE PEARL. Big pure white with yellow spot on lip. ...	Each 25c; 12 for \$2.50

DAFFODILS

All large double nose bulbs

ALCIDA. Giant flowers. Creamy perianth opening flat and star-shaped. Short frilled citron-yellow cup, edged with red orange.	3 for 60c; 12 for \$2.00
CARLTON. Very large, deep primrose with broad frilled yellow cup.	3 for 65c; 12 for \$2.50
FORTUNE. Famous show and garden daffodil. Broad, creamy yellow perianth of solid texture. The frilled and soft glowing orange crown has perfect form.	Each 35c; 3 for \$1.00
HELIOS. Deep golden yellow perianth. Medium long orange cup.	3 for 60c; 12 for \$2.00
JOHN EVELYN. Pure white perianth opens wide. Flat lemon-yellow cup is densely fluted and shirred.	Each 35c; 3 for \$1.00
KING ALFRED. Most popular of all daffodils because of its large size, lovely golden yellow color, and attractive shape. Early.	3 for 65c; 12 for \$2.50 50 for \$8.50
SILVER STAR. Star-shaped perianth of smooth creamy white. Wide-mouthed trumpet of primrose. Free flowering and fragrant.	3 for 65c; 12 for \$2.50
TREVITHIAN (Jonquil hybrid). Golden yellow self, with several flowers on a stem. Blooms freely. Lovely, heavy perfume. Especially fine for growing in pots.	3 for 60c; 12 for \$2.00
TUNIS. Most distinct. Broad waved white perianth with beautifully frilled trumpet, flushed coppery gold at edges.	3 for 75c; 12 for \$2.75

RANUNCULUS

Top size — One inch and up
\$1.50 per doz. \$12.50 per 100

DAHLIAS

Plant February 15th to early May

LARGE FLOWERING DAHLIAS

ANNA BENEDICT (Decorative). Large, deep maroon.

BALLEGO'S GLORY (Decorative). Vivid scarlet red with golden edgings.

BERGER'S MASTERPIECE (Incurved cactus). Exquisite smoky pink.

CLARA CARDER (Decorative). Cyclamen pink. Beautiful blooms measure 12 inches, and are produced in profusion.

CLARA CLEMMENS (Ball type). Deep red, each petal tipped white.

COMMERCIAL PINK (Informal decorative). Lovely bright pink of medium size. Excellent as a cut flower and for arrangements.

D'ARCY SAINSBURY (Decorative). Pure white. Perfectly formed 10 inch flowers.

JANE COWL (Decorative). Striking apricot orange with blooms of large size.

MARGRACE (Decorative). Brilliant flame red. Petals slightly tipped gold.

MAYOR OTIS (Informal decorative). Immense blooms in tones of golden apricot and bronze. One of the largest dahlias.

PASADENA (Decorative). Large rose pink.

SALBACH'S WHITE (Decorative). Clear white of classic form. Fine for cutting and arranging.

SATAN (Semi-cactus). A stunning dahlia. Pleasing carmine red color, graceful.

YELLOW SPIRAL (Semi-cactus). Big, bright yellow. Fine cut flower.

Any of the above — \$1.25 each; 5 for \$5.00

MINIATURE DAHLIAS

ELIZABETH PAPE (Cactus). Small pink.

LITTLE DARLING (Cactus). Flesh pink. Perfect form.

SALBACH'S ORANGE (Cactus). Small and graceful, bright orange.

VERA (Semi-cactus). Unusually fine rose pink.

WHITE FAWN (Decorative). Snow white. Excellent cut flower.

Any of the above — 75c each.

PASSEPARTOUT. Brilliant red miniature. Fine cut flower. **\$1.00 each.**

POM POM DAHLIAS

AMBER QUEEN. Rich amber.

BETTY ANN. Delicate pink.

HELEN ANITA. Soft pink with creamy white center.

JOE FETTE. Pure white.

LITTLE DAVID. Golden orange.

OLIVE POPE. Deep maroon.

TAKA'S PURPLE. Rosy purple.

YELLOW GEM. Clear yellow.

Any of the above — 65c each; 8 for \$4.00

CARL SALBACH

657 Woodmont Avenue
BERKELEY 8, CALIFORNIA

Phone: LAndscape 4-3421

Sec. 34.66, P.L. & R.

U. S. POSTAGE

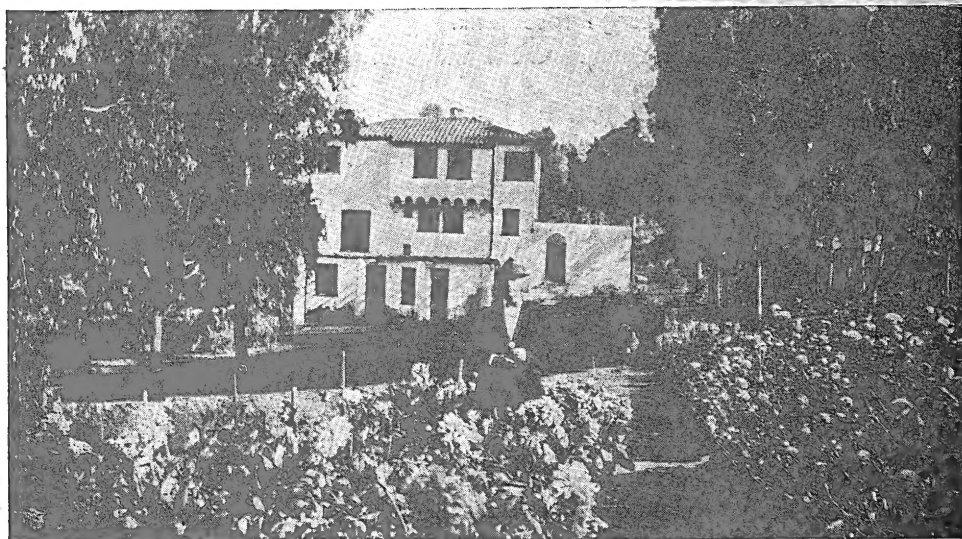
PAID

Permit No. 331

Berkeley, California

RETURN POSTAGE GUARANTEED

U S Dept of Agriculture
Librarian
Washington 25 D C



Our Iris will be in peak bloom

FROM LATE APRIL TO MID-MAY

OUR DAHLIA'S BLOOM FROM

MID - SUMMER TO LATE FALL

Visitors are welcome

657 Woodmont Avenue :- Berkeley 8, California