

Historic, Archive Document

Do not assume content reflects current scientific knowledge, policies, or practices.

62.47

Spring 1953 Catalog of

- Evergreens
- Fruits
- Shrubs
- Perennials
- Trees
- Roses

LIBRARY
 RECEIVED
 FEB 9 1953
 U. S. Department of Agriculture

OUR 79TH YEAR



Mrs. P. S. DuPont

E. G. Hill

K. A. Viktoria

Editor
McFarland

Etoile de
Hollande

Rose Special

All five everblooming Roses
illustrated. Two-year, No. 1
plants.

E. G. Hill Mrs. P. S. DuPont
K. A. Viktoria Editor McFarland
Etoile de Hollande

Prepaid
for Only \$5.25

Sarcoxie Nurseries Peony Fields

WILD BROS. NURSERY CO.

SARCOXIE, MISSOURI



PRES. H. HOOVER

CALIFORNIA GROWN

ROSES

2 YEAR NO. 1

Very Best Grade, Bloom First Year

Not to be confused with No. 1½ grade which is also a 2-year Rose but not the best grade—and usually sold for less.



POINSETTIA

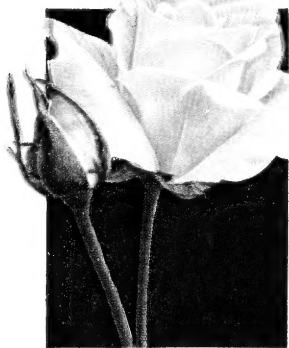
ROSE PRICES

Any 10 or more, \$1.10 each.

Any 5 to 10, \$1.15 each.

Any 3 for \$3.50; each \$1.25.

ROSES Prepaid



MRS. CHARLES BELL

AMI QUINARD. Rich velvety crimson; semi-double. Fragrant in abundance.

CALEDONIA. Pure white, large, very double, long lasting. Good for cutting.

CONDESA DE SASTAGO. Golden buds striped red; fragrant. Blooms freely.

DAINTY BESS. The most popular single; the vigorous plants bear large clusters of waxy petaled rose-pink blooms with wine-red stamens.

DUQUESA DE PENARANDA. Large, long, pointed buds of apricot-orange; tea fragrance.

EDITOR McFARLAND. Brilliant pink, shapely buds; long lasting. Vigorous; good cut flower. Fragrant.

E. G. HILL. Deep fadeless scarlet; large and fragrant. Vigorous grower; profuse bloomer.

ETOILE DE HOLLANDE. Large, fragrant, deep velvety red blooms freely produced. Very popular.

GOLDEN DAWN. Large, pointed buds of bright yellow, outside tinged red. Good double flower. Fragrant.

GOLDEN RAPTURE. Long lasting, pure yellow, pointed buds on long, strong stems. Fragrant.

GRENOBLE. Scarlet-crimson, beautifully shaped flowers on long stems.

JOANNA HILL. Large, beautiful, long, creamy yellow buds tinged orange at base. Long stems; fine cut flower.

KAISERIN AUGUSTE VIKTORIA. Soft white, slightly tinged lemon-yellow. Exquisitely formed flowers.

MRS. CHARLES BELL. Shell-pink sport of Radiance; sweetly fragrant. Strong grower; free bloomer.

MRS. PIERRE S. DuPONT. Deep golden yellow, heavy spicy fragrance. Blooms freely.

PICTURE. Very double, high centered, slightly fragrant, velvety clear rose-pink. Foliage glossy, dark. Vigorous.

PINK DAWN. Carmine-pink, long, pointed buds; old rose fragrance. Keeps well.

PINK RADIANCE. Cameo-pink, large, fragrant and prolific all season.

POINSETTIA. Flowers of bright rich scarlet. Rich in fragrance; good bloomer; semi-double.

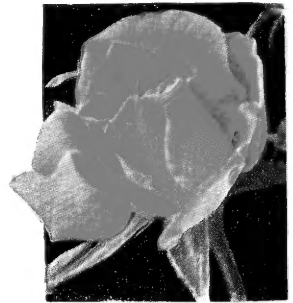
PRES. HERBERT HOOVER. Two-tone bright yellow shaded to cerise-pink and flame-scarlet.

RED RADIANCE. Fine rich red; blooms constantly and abundantly. Easy to grow.

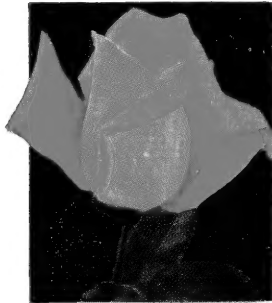
SISTER THERESE. Rich Daffodil-yellow, outer petals sometimes marked carmine. One of the most beautiful buds; fragrant.

TALISMAN. Two-tone, shading from deep yellow to bright apricot-red. Free bloomer.

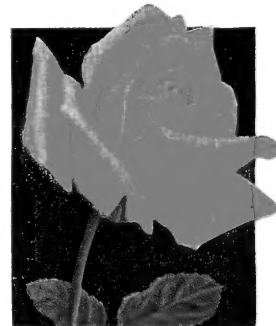
THE DOCTOR. Sparkling pink buds, pointed, very large. An excellent pink.



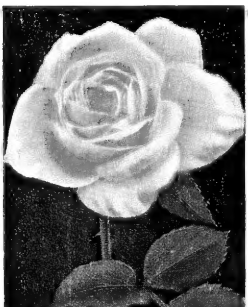
TALISMAN



CONDESA DE SASTAGO



GOLDEN RAPTURE



PINK RADIANCE



GRENOBLE



CALEDONIA



SISTER THERESE



RED RADIANCE

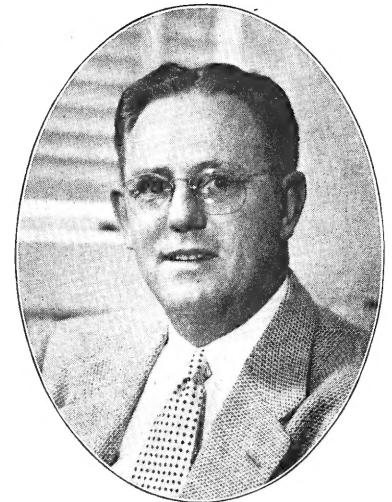
FOR ADDITIONAL ROSES TURN TO PAGE 5

SPRING GREETINGS

Sarcoxie, Mo., 1953



HENRY N. WILD
Founder



DALE E. WILD

To our Gardening Friends Everywhere:
We would like to take this opportunity to thank you for your nice orders of the past, and assure you your future shipments will have our most careful attention.

We solicit comments on your orders received; we want you to be entirely satisfied. Our business has been built on repeat orders from satisfied customers.

Sincerely yours,

W. E. Wild

Production

The most important part of the nursery business is the proper production of the plants we sell. My father, Arthur Wild, a son of Henry N. Wild, one of the founders, has grown up in the business and for years has been in charge of this most important phase of work. Propagation and culture of the plants we sell are under his careful supervision.

Sales

Selling is not difficult when a good product can be offered at a reasonable price, and supplied promptly and properly packed. Our office and packing force is ample and trained to handle your orders quickly. It is easy to order by mail, and to add to your convenience when ordering we have listed most items prepaid to eliminate tedious figuring of postage, and the necessity of frequent adjustments of mailing costs.

You may order with confidence from the SARCOXIE NURSERIES. Our 79 years of service is your additional guarantee.

Our Guarantee

We offer only first grade stock and guarantee every plant we ship to be of first quality, sturdy and free from disease and to reach you in good growing condition.

We exercise care and diligence to have our varieties true to label and sell all our stock with the express guarantee that we will, on proper proof, replace any that may prove otherwise, or refund the amount paid for the same.

In the case of loss, assuming the plants have been promptly and properly planted and watered as conditions require, we will replace at one-half the original purchase price, if reported by July 1st following purchase and your report accompanied with your remittance in the amount of one-half the original purchase price. If stock to be replaced was originally sent you prepaid your replacement will be prepaid, if by express or freight, replacements will be sent transportation charges collect.



Delivery

OUR PRICES ARE PREPAID, except evergreens, large shade trees, and other plants too large for parcel post packages. Items marked "not prepaid" are shipped transportation collect. We reserve the privilege of shipping express prepaid where parcel post is impractical. EXPRESS—TRUCK—FREIGHT. Express is generally preferred for long distance for larger orders. Truck freight leaves our plant twice daily, and has proved very satisfactory for shipments. Please tell us how to ship if you have preference.

SPECIAL MAGAZINE OFFER TO OUR CUSTOMERS

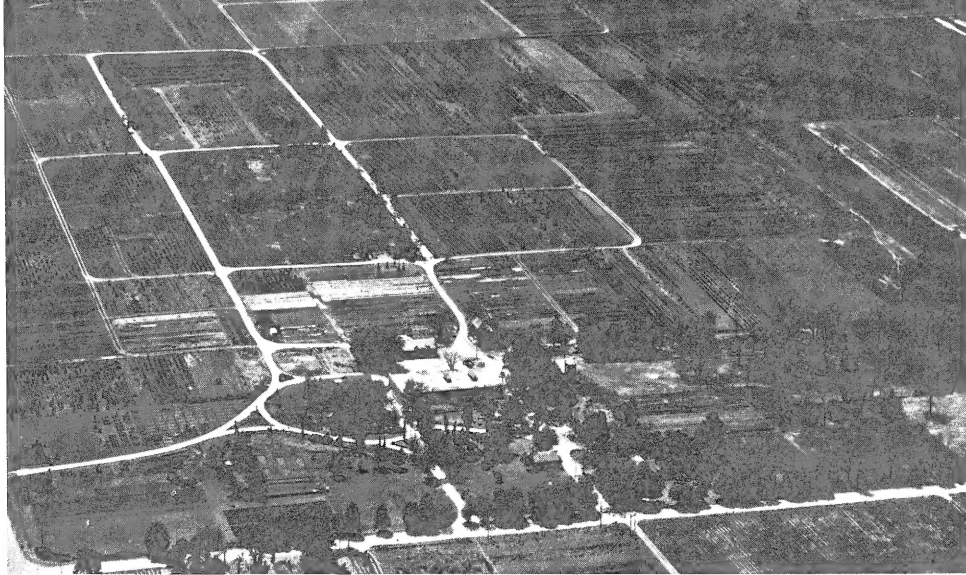
We recommend this year to our customers, POPULAR GARDENING, America's new all-garden magazine, now in its third year of publication. Edited by Paul Frese, with the assistance of a staff of gardening experts, POPULAR GARDENING gives you the "know-how" to grow top quality flowers, vegetables, fruits, and shrubs. It is well illustrated, easy to read, and authoritative. It will be your guide to greater gardening pleasure. We are inclosing a convenient order form featuring a special introductory price to customers of the SARCOXIE NURSERIES.

SARCOXIE NURSERIES
PEONY FIELDS

WILD BROS. NURSERY CO.
Sarcoxie, Missouri

OUR 79th YEAR

PRICES IN THIS CATALOG CANCEL ALL PREVIOUS PRICES PUBLISHED

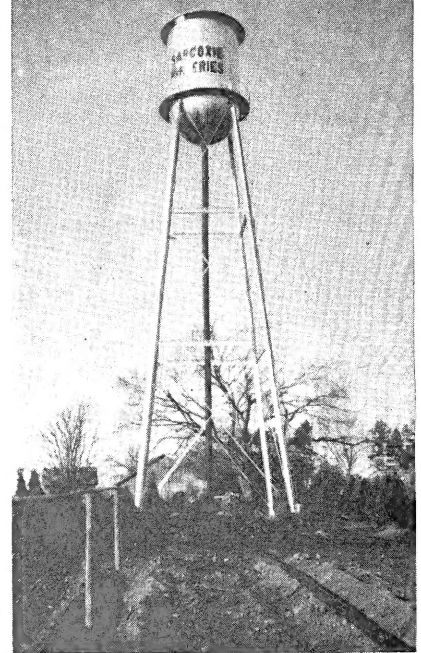


Aerial view of our main growing grounds, display gardens and packing house.

No Reason to Take the Back Alley

WITH A GOOD STRING OF FISH

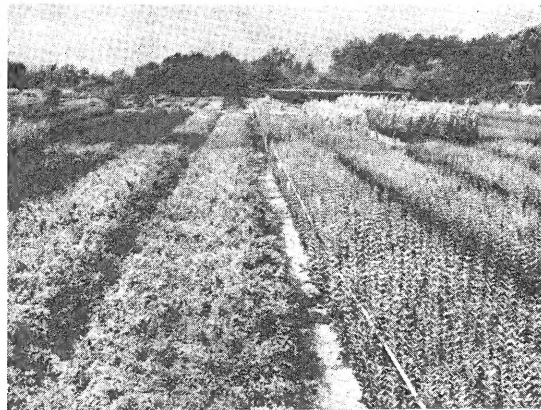
We are proud to say that we are "Keeping Up With the Times" and maintain modern equipment and facilities to grow and handle your plants to the best advantage.



30,000 GALLON WATER TOWER

Added to our irrigation facilities recently. Approximately 6½ miles of underground mains fed by water pumped by a turbine pump from our well 1065 feet deep assures you the stock you buy from us does not suffer for lack of water.

YOU ARE INVITED to visit our nursery, our large gardens, and our packing plant. Bring your family, also your camera, if you wish. We always welcome visitors.



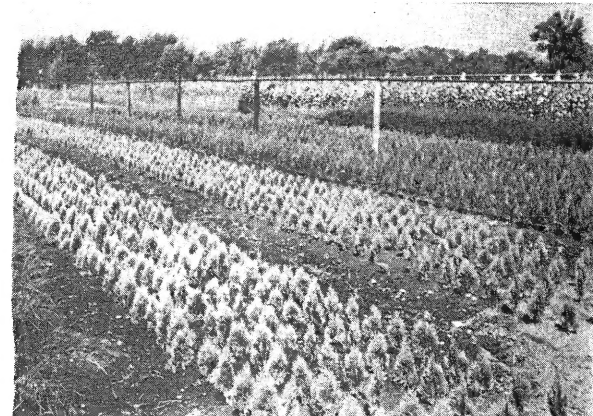
Young plants for field transplanting.

We Grow

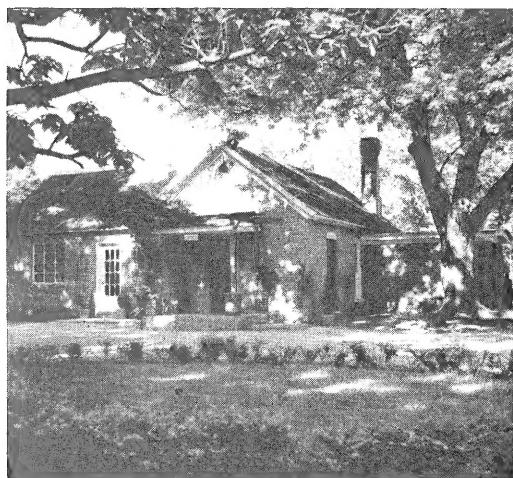
most of the plants listed in our catalog.

We Supply You

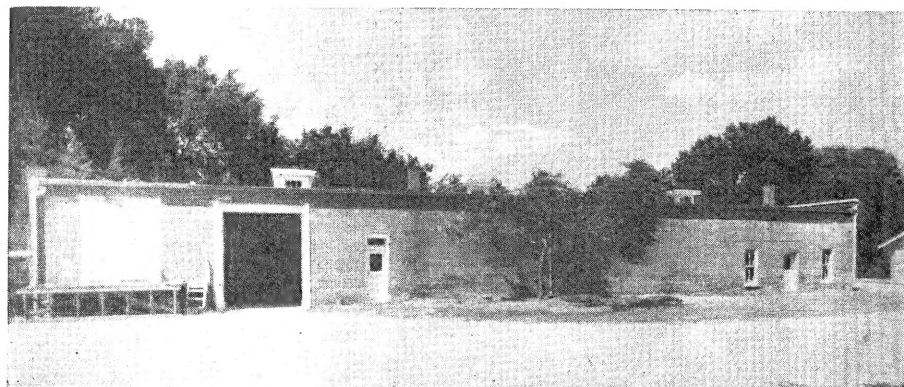
the best plants of the nursery row, freshly packed in conditioned rooms, to reach our customers in perfect condition.



Young evergreens to go to the fields.



OFFICE AT SARCOXIE NURSERIES



PACKING HOUSE AT SARCOXIE NURSERIES
One of the Midwest's most modern, containing 50,000 cu. ft. of modern cold storage rooms.

Additional Selection of Fine Roses

All 2-Year No. 1 Plants, The Very Best Grade, Prepaid.

Patented Everblooming Bush Roses

Capistrano (Pat. No. 922). Rich shade of deep glowing rose pink in the bud as well as in the open flower. A.A.R.S. award 1950. **Each \$2.25; 3 for \$6.00.**

Charlotte Armstrong (Pat. No. 455). 1941 All American Award. Long streamlined carmine buds and glorious open flowers of spectrum red. **Each \$2.00; 3 for \$5.25.**

Chrysler Imperial (Pat. applied for). 1953 Award winner. A large vivid crimson with overtones and a glowing oxblood red. Excellent plant and foliage. **Each \$3.00; 3 for \$7.95.**

Crimson Glory (Pat. No. 105). Deep crimson, glorious in its perfect form, its size, and its fragrance. One of the most popular and free blooming. **Each \$1.75; 3 for \$4.65.**

Forty-Niner (Pat. No. 792). Its contrastingly, brilliantly hued bi-colors are startling. Inside orient-red, outside chrome-yellow. A.A.R.S. 1949. **Each \$2.25; 3 for \$6.00.**

Fred Howard (Pat. No. 1006). 1952 A.A.R.S. award winner. Long rich yellow buds are tipped with delicate penciling of light pink. Strong, hardy, long stems. Excellent for cutting. **Each \$2.75; 3 for \$7.20.**

Helen Traubel (Pat. applied for). 1952 A.A.R.S. award winner. Named after concert artist. Light sparkling pink to a luminous apricot. Unusually large buds. Beautiful in bud or open flower. **Each \$2.75; 3 for \$7.20.**

Lowell Thomas (Pat. No. 595). Clear canary yellow, long pointed buds on strong stems. Vigorous, compact and bushy. **Each \$2.00; 3 for \$5.25.**

Mirandy (Pat. No. 692). A hugh red rose, very dark and richly perfumed, first place in A.A.R.S. selections for 1945. **Each \$2.00; 3 for \$5.25.**

New Yorker (Pat. No. 823). Brilliant red with long lasting color. Sturdy, upright and vigorous. Large flowers on long stems. **Each \$2.00; 3 for \$5.25.**

Peace (Pat. No. 591). Considered the best of new rose creations. Buds golden-yellow, petals edged pink, as the flower opens the gold changes to ivory or white. A.A.R.S. award 1946. **Each \$2.50; 3 for \$6.60.**

Rex Anderson (Pat. No. 335). An exhibition rose of delicate, lovely ivory white. Enormous double flowers perfectly formed. **Each \$1.75; 3 for \$4.65.**

Show Girl (Pat. No. 646). Bud long-pointed, flower large, very fragrant, deep pink, with long stems from a vigorous plant. **Each \$1.75; 3 for \$4.65.**

Sutters Gold (Pat. App. For). Beautiful long pointed yellow buds richly shaded with orange and red. Rich tea fragrance. A.A.R.S. award 1950. **Each \$2.25; 3 for \$6.00.**

Tallyho (Pat. No. 828). Inside petals a unique shade of pink, outside a rich crimson. Long stemmed blooms open slowly. A.A.R.S. award 1949. **Each \$2.00; 3 for \$5.25.**

Standard Hardy Climbing Roses

\$1.25 each; Any 3 for \$3.50.

Climbing American Beauty. Beautiful buds and large flowers on good stems. Almost the same rich color and fragrance as Bush American Beauty. Rich red to crimson.

Dr. W. Van Fleet. Delicate flesh-pink, the center deepening into rosy-flesh. Pointed buds resembling hybrid teas, open into semi-double cut flowers borne singly.

Mary Wallace. One of the best pink climbers. Pretty buds opening into charming, semi-double cut flowers, often 4 in. across, very bright, clear rose pink.

Paul's Scarlet. Vivid scarlet shaded crimson, intensified by the yellow stamens; flowers of good size, semi-double, in clusters of three to fifteen. Brilliant scarlet, well retained.

Primrose. The rosette-shaped, primrose-yellow blooms hold their color better than many roses of this class; climber, mid-season.

Silver Moon. Creamy buds; beautiful, semi-double, very large white flowers, often 3 to 4 inches across, a cluster of golden stamens in the center; midseason; foliage rich, dark green.

Spanish Beauty. Long pointed crimson buds opening into pink blooms, the outside marked ruby-carmine; fragrant; blooms early, suitable for cutting.

Patented Polyantha Roses

Also called Baby bush roses. They produce clusters of rambler-like flowers on bushes seldom over 18 to 24 inches high and produce large clusters all summer.

Fashion (Pat. No. 789). Brilliant coral flowers overlaid with gold opening with waxy graceful petals. Large clusters. A.A.R.S. award 1950. **Each \$2.00; 3 for \$5.25.**

Goldilocks (Pat. No. 672). Rich golden-yellow buds ovoid in shape. Long lasting, hardy and vigorous. **Each \$1.50; 3 for \$3.90.**

Ma Perkins (Pat. applied for). 1953 Award winner. A sparkling coral pink touched with red. Vigorous and hardy. **Each \$2.25; 3 for \$6.00.**

Pinocchio (Pat. No. 484). Very thrifty grower producing many pointed buds of salmon flushed gold, opening to miniature roses. **Each \$1.50; 3 for \$3.90.**

Red Pinocchio (Pat. No. 812). Deep satiny carmine buds—inside bright carmine, very fragrant. **Each \$1.50; 3 for \$3.90.**

Snowbank (Pat. No. 279). An excellent dwarf white with dark leathery foliage. **Each \$1.50; 3 for \$3.90.**

World's Fair (Pat. No. 362). Produces large flowers of velvety blackish-scarlet flowers with glowing yellow stamens. **Each \$1.50; 3 for \$3.90.**

Vogue (Pat. No. 926). 1952 A.A.R.S. winner. A flower of unique brilliantly glowing cherry-coral. Large flowers for a Floribunda. Very spicy fragrance. **Each \$2.25; 3 for \$6.00.**

Polyantha Roses---not patented

\$1.25 each; 3 for \$3.50; 5 or more at \$1.15 each.

Cecil Brunner (Sweetheart). Often called sweetheart rose. Tiny buds perfectly formed, and produced in loose sprays. Delicate pink, decidedly fragrant.

Chatillon. Bright pink semi-double blooms touched with orange. Enormous clusters of blossoms on vigorous plants of medium height.

Else Poulsen. A dependable large flowering Floribunda; bright rose-pink flowers 2¼ inches across in large clusters from early summer to late fall.

Ideal. All summer long its dark scarlet blooms like Ramblers are produced freely in large clusters on plants about 18 in. high.

Improved Lafayette. Very good. Produces large clusters of bright cherry-crimson flowers. A most popular baby rose which blooms all summer.

Patented Climbing Roses

EVERBLOOMING

Climbing Crimson Glory. Climbing form of the outstanding hybrid-tea bush rose of the same name. **Each, \$2.00; 3 for \$5.25.**

Climbing Peace (Pat. App.). Truly a gem for the garden. A climbing form of the new Peace rose. Everblooming, vigorous and fragrant. **Each \$2.50; 3 for \$6.60.**

Doublons (Pat. No. 152). The best hardy yellow climber. Golden-yellow semi-pointed buds, nestled in glossy green foliage. **Each \$2.00; 3 for \$5.25.**

Dr. J. H. Nicolas (Pat. No. 457). Vigorous plant, dark green foliage, double deep rose-pink flowers, 5 to 6 inches across. One of the best everblooming climbers. **Each \$2.00; 3 for \$5.25.**

Everblooming Climbers---not patented

\$1.35 each; any 3 for \$3.75.

Blaze. A hardy vigorous climbing rose similar to Paul's Scarlet. Recurrent bloomer with flowers of scarlet-crimson.

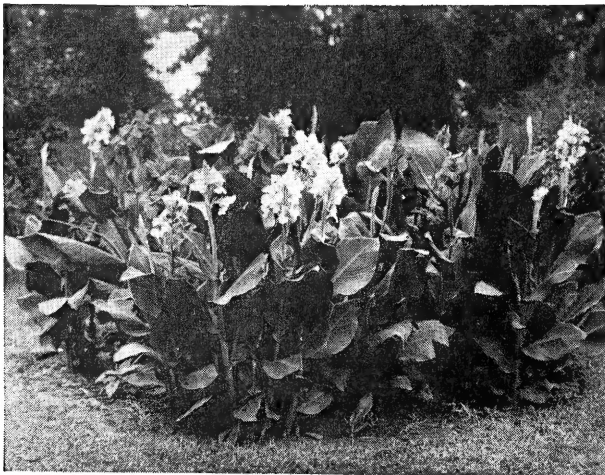
K. A. Victoria. A climbing form of the popular white K. A. Victoria rose.

Pink Radiance. A climbing form of the popular Pink Radiance rose.

Pres. Hoover. A climbing form of the two-tone bush rose.

Talisman. A climbing form of the popular bush rose.

CANNAS, bloom June till frost



Cannas

Plant Cannas 4 inches deep after ground is warm.

Austria. Large; canary-yellow dotted crimson; green foliage; grows 4 to 5 ft. high; blooms freely.

City of Portland. Deep pink; green foliage; grows 3½ ft. high.

King Humbert. Large trusses of large, bright orange-scarlet flowers; bronze foliage; blooms freely; fine; grows 4 to 5 ft.

Louisiana. Large; orange scarlet; green foliage; grows 5 ft.

President. Rich, glowing scarlet; large flowers on strong stalks; green foliage; blooms freely; grows 4 ft.; stands heat well.

Yellow King Humbert. Large; rich yellow dotted red, occasionally a scarlet or scarlet-striped flower; green foliage.

Prices of Cannas—your selection, prepaid: 3 for 60c; 6 for \$1.00; 12 for \$1.80; 25 for \$3.50.

LARGE DECORATIVE DAHLIAS, for Autumn flowers

Easily grown and give an abundance of flowers in early autumn. The decorative type have large, broad petals in rather flat heads. Special care and disbudding will increase the size of the flowers. Not hardy; must be stored over winter.

Avalon. Sparkling large yellow.

Francis Lorocco. Bright sulphur yellow.

Gallant Fox. Excellent brilliant red.

Golden Eclipse. Golden yellow, center tinted buff.

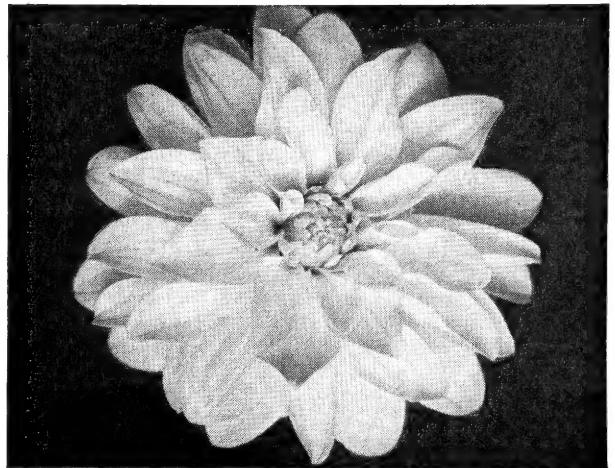
Mrs. I de Ver Warner. Bright lilac rose.

Jersey Beauty. Large luminous coral pink.

Rose Glory. Rose pink.

White King. Excellent pure white.

50c each; 3 for \$1.35; 6 for \$2.50; 12 for \$4.25; your selection; prepaid.



Dahlia

Note—I. B. C., Inside Back Cover;
B. C., Back Cover.

INDEX

Abelia	18	Crape Myrtle	12	Lilac	I.B.C.	Raspberries	24
Althea	11	Currants, Fruiting.....	26	Lilies	11	Redbud	I.B.C.
Apricot	25	Dahlia	6	Magnolias	18	Rhubarb	26
Arborvitae	17	Daisies	19	Mallow (Hibiscus).....	20	Roses	1-2-5
Asparagus	26	Daylilies	21	Maple	9	Rose of Sharon.....	11
Baby's Breath.....	19	Delphinium	20	Mimosa	9	Russian Olive.....	12
Barberry (Berberis).....	11-18	Desmodium	12	Mock Orange.....	12	Sedum	20
Balloon Flower.....	19	Deutzia	12	Multiflora Rose	10	Shade Trees.....	8-9-10
Beautybush	11	Dogwood	I.B.C.	Nandina	18	Shrubs	11-12-13-14
Begonias, Tuberous	11	Elm	8	Oak, Pin.....	9	Silver Lace Vine.....	7
Birch (Betula).....	8	Euonymus	18	Peach	25	Snowball	13
Bittersweet	7	Evergreens	16-17-18	Pear	25	Spirea	13
Blackberries	24	Forsythia	12	Peonies	22-23	Spruce	16
Blanket Flower	B. C.	Gaillardia	B. C.	Perennials	19-20-21	Stoncrop (Sedum).....	20
Bleeding Heart.....	19	Gladiolus	11	Philadelphus	12	Strawberries	24
Boysenberry	24	Gooseberries	26	Phlox	21-B. C.	Sweet William.....	19
Buckeye, Scarlet.....	10	Grapes	26	Pine (Pinus).....	16	Syringa (Lilac).....	I.B.C.
Buddleia (Butterfly Bush).....	11	Hemerocallis (Day Lily).....	21	Platycodon	19	Tamarix	14
Cannas	6	Hollyhock	21	Plum	25	Tuberose	11
Cherry	25	Honeysuckle	12	Poplar (Populus).....	9	Vines	7
Chrysanthemum	20	Hydrangea	12	Privet	10	Vitex	14
Clematis	7	Hibiscus (Mallows).....	20	Purple Fringe (Smoke Tree).....	12	Weigela	14
Columbine	19	Iris	21	Pyracantha	18	White Fringe.....	14
Cotoneaster	11	Ivy	7	Quince, Japan.....	13	Willow	10
Crab, Ornamental.....	8, I.B.C.	Kolkwitzia	11			Wisteria	7
Cranberry Bush.....	11						

Combe Printing Company . . . Horticultural Printers . . . St. Joseph, Mo.

HARDY VINES - *Natures Drapery* add charm and beauty to your home grounds

ALL VINES PREPAID

Vines can turn that unsightly fence or wall into a beauty spot—also excellent for converting an open portion of the lawn into a private outdoor room. Vines grow rapidly and are always an addition to the landscape.

Bittersweet, American. A high climbing vine; orange-yellow seed pods reveal bright red seed along the branches in autumn; thrives in sun or partial shade; twining. Two plants are needed to produce berries.

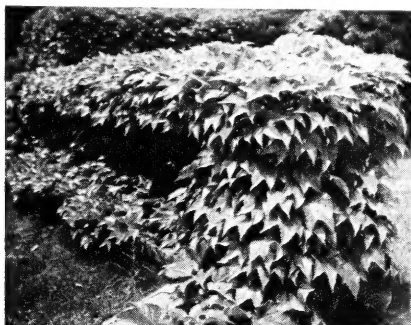
2 yr.80c each; 2 for \$1.50, prepaid.

Honeysuckle, Goldflame. A compact twining vine blooming almost all summer; flowers in clusters, deep rose outside, yellow inside; fragrant after nightfall.

2 yr.95c each; 3 for \$2.50, prepaid

Honeysuckle, Hall Japanese. Flowers very fragrant, white becoming yellow, in June and at intervals to fall; twining; growth rapid.

2 yr. No. 1.....60c each 1 yr. No. 1.....50c each



Wall covered with Boston Ivy.

Ivy, Boston. A graceful vine, excellent for smoothly and closely covering a wall of wood, brick or stone. Leaves three lobed, bright green turning orange to scarlet in the fall.

2 yr. No. 1.....\$1.00 each; 2 for \$1.90, prepaid

Large Flowering Clematis

Clematis jackmani. The most popular of the large flowering varieties. Large purple starry flowers. This vine is easily grown on a trellis or fence.

Each.....\$1.50 3 for.....\$4.00, prepaid

Clematis paniculata; Japanese Clematis. Thousands of fragrant pure white four-petaled starry flowers 1-1½ in. across in September; twining by leaf stems.

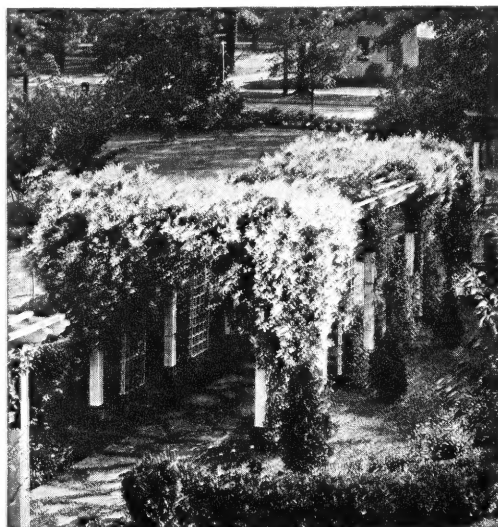
2 yr. No. 1.....75c each; 2 for \$1.40, prepaid



Clematis

Ivy, English. Evergreen waxy leaves; excellent where persistent foliage is desired. Plant on north of building or in shaded areas. Does not do well in full sun.

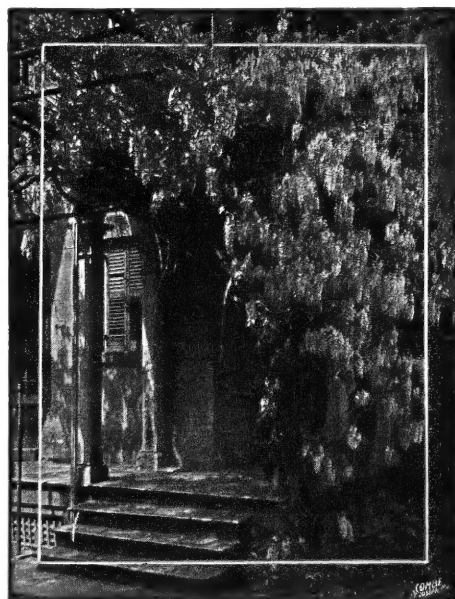
2 yr. No. 1.....85c each; 2 for \$1.80, prepaid



Silver Lace Vine

Silver Lace Vine. Easy to grow, this rapid growing vine is ideal for covering porch, pergola, fence or soil banks. Foliage glossy green. Thousands of lacy white flowers from mid-summer to fall. Grows 10 to 12 feet a year.

2 yr. plants.....\$1.00 each; 2 for \$1.90, prepaid



Wisteria, Chinese

Wisteria, Chinese Blue. Clusters of violet-blue flowers, longer than those of the American and not quite so thick on the cluster.

Grafted plants, heavy 3 yr.....\$1.75, prepaid

Wisteria, Chinese white.

Grafted plants, 3 yr..... 1.75, prepaid

SARCOXIE NURSERIES

Shade Trees Beautify the Lawn

SHADE TREES NOT PREPAID UNLESS OTHERWISE NOTED

A broad open space of well kept lawn is the first essential of good landscape design, the base against which all else is viewed. Yet it is incomplete without trees to shield the house from the direct heat of the sun, and for ornament. Without trees as a background so the topmost branches extend above and break the roof lines, and a few toward the ends to frame the view, the house appears lost in space. Once established, nothing will increase in value and give such good results with so little attention as shade trees.

When planting remove any unnecessary weak limbs and shorten some others. The central shoot or leader is not pruned unless necessary to make the head more dense. As limbs develop higher remove the lower ones to the height desired. Plant firmly, and water as needed, especially first year.



European White Birch grown as a cluster.

Birch, European White, *Betula alba*

A beautiful, graceful tree of peculiar charm; slender branches, the ends drooping with age, bark chalky white; leaves rather small, triangular, bright light green, yellow in autumn.

3 to 4 ft., prepaid.....	\$1.75 each
4 to 5 ft., prepaid.....	2.50 each
5 to 6 ft., prepaid.....	2.75 each
6 to 8 ft., not prepaid.....	3.95 each
Cluster type, 2 or more standards, 4 to 5 ft. in height, not prepaid.....	3.50 each

Crab, Flowering; *Malus*

One of the best groups of small trees for ease of growth, profusion and beauty of flowers. For the Midwest they are more satisfactory than the famed Japanese Flowering Cherries, give much the same effect, and are dependable.

We offer the following fine varieties:

Crab, Bechtel. Produces double pink flowers very similar to small roses in early spring. Grows 10 to 12 feet.

2 to 3 ft., prepaid.....	\$1.50 each
3 to 4 ft., prepaid.....	2.25 each

Crab, Dolgo. Large single white flowers. Brilliant crimson fruit early in August. Excellent for ornament and fruit fine for jelly.

4 to 5 ft., prepaid.....	\$1.85 each
5 to 6 ft., not prepaid.....	2.00 each

Crab, Hopa. See inside back cover.

Dogwood, White and Red. See inside back cover.

Dogwood, White Flowering. *Cornus florida.* Large white four-petaled flowers in spring, red berries and copper-red foliage in fall.

2 to 3 ft., prepaid.....	\$1.75 each
3 to 4 ft., prepaid.....	2.50 each
4 to 5 ft., prepaid.....	3.50 each

Elm, Chinese; *Ulmus pumila*

Of very rapid growth, with slender branches and leaves smaller than those of the American Elm. The leaves appear very early in the spring and remain till late fall. Especially adapted for arid regions and for quick results.

3 to 4 ft., prepaid.....	\$0.85 each; 3 for \$2.40
4 to 5 ft., prepaid.....	1.25 each; 3 for 3.00
5 to 6 ft., not prepaid.....	1.50 each
6 to 8 ft., not prepaid.....	2.00 each
8 to 10 ft., not prepaid.....	3.25 each
10 to 12 ft., not prepaid.....	4.50 each
12 to 15 ft., not prepaid.....	7.50 each

THE SENSATIONAL NEW

Elm Coolshade



Elm, Coolshade, in the Gardens at Sarcoxie.
(Inset shows ordinary Chinese Elm.)

Undoubtedly the most beautiful Elm we have ever seen. It is a most practical all-purpose shade tree. Unlike the American Elm, it does not have large lateral limbs that are dangerous when overhanging the residence. It may be planted close to the house without worry. We sincerely recommend this as the best elm we have ever known. Grows 35 to 50 feet high.

6 to 8 ft. sturdy trees, not prepaid.....	\$3.75 each
8 to 10 ft. sturdy trees, not prepaid.....	5.00 each
10 to 12 ft. sturdy trees, not prepaid.....	8.50 each
12 to 15 ft. sturdy trees, not prepaid.....	12.50 each

SARCOXIE SHADE TREES—Continued



Sugar or Hard Maple has beautiful autumn foliage.

Maple, Silver

Often called Soft Maple. Fast growing with rather small green leaves, silver underneath. Fall foliage color is golden yellow.

6 to 8 ft., not prepaid.....	\$2.50 each
8 to 10 ft., not prepaid.....	4.00 each

Maple, Sugar, Rock or Hard; *Acer saccharum*

Unquestionably one of our most beautiful long-lived trees; large, stately, with a dense, symmetrical crown; deeply rooted, allowing grass to grow about the trunk; leaves three to five pointed, deep green, in autumn yellow, orange and scarlet. Transplanting may change the autumn color as it is affected by soil and climatic conditions.

4 to 5 ft., not prepaid.....	\$ 2.75 each
5 to 6 ft., not prepaid.....	3.25 each
6 to 8 ft., not prepaid.....	4.75 each
8 to 10 ft., not prepaid.....	6.75 each

Maple, Crimson King (Patented)

Here truly is a rare thing in trees. From Europe comes this beautiful maple which leaves out in the spring with scarlet foliage and holds a purple-red color all summer. Grows 35 to 40 feet. Excellent.

5 to 6 ft. whips, not prepaid.....	\$5.25 each
------------------------------------	-------------

Mimosa Tree; Chinese Silk Tree; *Albizia julibrissin*

This unusual, rapid growing Asiatic tree produces a tropical effect. Its spreading branches form a low, flat-topped crown with tiny, fern-like or feathery foliage and fragrant showy pink Acacia-like flowers with long silky stamens at the tips of branches from mid June to September.

18 to 24 in.....	\$0.65 each	3 to 4 ft.....	\$1.50 each
2 to 3 ft.....	1.15 each	4 to 5 ft.....	2.00 each
Prepaid		Not Prepaid	

Oak, Pin; *Quercus palustris*

One of the most handsome Oaks with its spreading, decidedly horizontal to ascending branches, the lower somewhat drooping with age, sometimes almost to the ground, with a symmetrical pyramidal head, oval with age. Leaves glossy green, in autumn deep scarlet. Excellent for landscape and street.

5 to 6 ft., bare root, not prepaid.....	\$ 2.25 each
5 to 6 ft., balled in earth, not prepaid.....	5.00 each
6 to 8 ft., balled in earth, not prepaid.....	7.50 each
8 to 10 ft., balled in earth, not prepaid.....	15.00 each

Peach, Flowering

See Inside Back Cover.

Plum, Purple Leaf

The very best purple leaf plum we have yet come across. It holds its bronzy purple color well through the season. Upright, strong grower. 25 feet.

3 to 4 ft., prepaid.....	\$1.95 each
--------------------------	-------------

Poplar, Lombardy

Tall and columnar; rapid growth; useful as an accent tree and to screen objectionable views.

3 to 4 ft., prepaid.....	\$0.50 each;	\$ 4.50 per 10
4 to 5 ft., prepaid.....	.75 each;	7.00 per 10
5 to 6 ft., not prepaid.....	.75 each;	7.00 per 10
6 to 8 ft., not prepaid.....	1.00 each;	9.50 per 10
8 to 10 ft., not prepaid.....	1.50 each;	14.00 per 10
10 to 12 ft., not prepaid.....	2.00 each;	19.00 per 10

ORNAMENTAL TREE OFFER

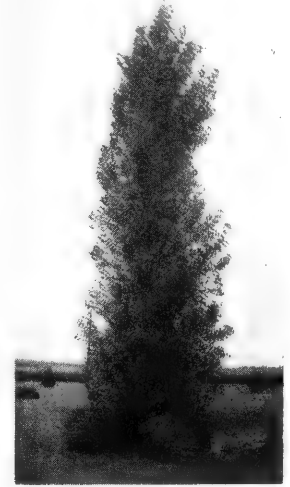
FIVE SPOT SPECIAL

- 1 Red Flowering Dogwood, 2-2½ ft.
- 1 White Flowering Dogwood, 2-3 ft.
- 1 Double Red Flowering Peach, 3-4 ft.

Above 3 plants catalog value, \$6.50.

Prepaid for ONLY..... **\$5.00**

Sent Roots Wrapped in Moss.



Lombardy Poplar

Red Bud

See Inside Back Cover.

Sweet Gum

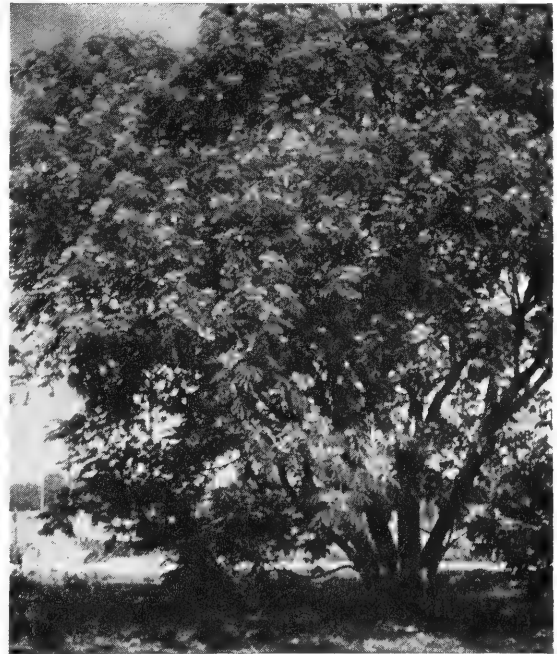
A stately tree, very symmetrical, with glossy foliage turning brilliant autumn shades in the fall. The young branches are covered with corky bark.

4 to 5 ft., balled in earth, not prepaid.....	\$4.00 each
5 to 6 ft., balled in earth, not prepaid.....	5.00 each
6 to 7 ft., balled in earth, not prepaid.....	7.50 each

Sycamore, American

A beautiful large growing tree, symmetrical and very hardy. Excellent as a shade tree and for avenue plantings.

6 to 8 ft., not prepaid.....	\$3.00 each
8 to 10 ft., not prepaid.....	4.50 each



Large Mimosa at Sarcoxie Nurseries.

SARCOXIE SHADE TREES—Continued

Weeping Willow. See illustration below. A picturesque tree especially adapted to use in the background planting or by a pool, rockery or for some seclusion in the garden, as the long, drooping branches will weep to the ground. Rapid in growth.

3 to 4 ft., prepaid.....\$0.75 each; 3 for \$2.25
 4 to 5 ft., prepaid..... 1.25 each; 3 for 3.50
 5 to 6 ft., not prepaid..... 1.50 each; 3 for 4.00

Willow, Pussy. A shrub or small tree, its furry catkins appearing before the leaves; easily grown.

3 to 4 ft., prepaid.....\$1.00 each



Weeping Willow

Nut Trees—Not Prepaid

Chinese Chestnut. Blight resistant. Remember not many years ago when sweet Chestnuts could be gathered for home use? Then came a Chestnut blight that spread all over the U. S., killing the trees in nearly every section. We now have a Chinese variety producing large sweet nuts and it is resistant to blight. Bears young, is hardy and a rapid grower. Often bears the third year. Trees furnished are two-year plants.

3 to 4 ft.....\$2.50 each
 4 to 5 ft..... 3.25 each

Pecan—Stewart Paper Shell. Hardest of all paper-shell varieties. Makes an excellent shade tree, is exceptionally tough. A profitable tree to add to your property.

3 to 4 ft.....\$2.95 each

Walnut—Thomas Black. This grafted walnut produces giant size nuts at an early age, often producing the second year. Perfectly hardy, this is a profitable tree, valuable for nut production as well as beauty.

3 to 4 ft.....\$2.75 each
 4 to 5 ft..... 3.50 each

Scarlet Buckeye

Buckeye; Scarlet

Rare and unusual. This odd plant is of exceptional value in landscape plantings and always attracts attention in early spring when its scarlet flowers in narrow candle-like spikes are in blossom. Grows 8 to 10 feet. Leaves resemble Ohio Buckeye and make a well shaped large shrub. Produces nut-like fruit, resembling chestnut. Fruit is not edible.

12 to 18 in.....\$1.50 each
 18 to 24 in., blooming size..... 2.50 each
 2 to 2½ ft., blooming size..... 5.00 each

Above Buckeye prices are prepaid.

Privet the Living Fence



Plant 10 to 12 inches apart. Prune back to within 4 to 6 inches of the ground to make them branch low and thickly. The second spring, if not sufficiently thick, again prune back, a little higher. After that prune to keep the hedge the height and width desired, usually about three times a year. Avoid severe pruning after the middle of August.

Privet, Amur River North; Ligustrum amurense. A rapid growing Privet of upright habit, taking the place of California as it is reliably hardy here. Very fragrant small white flowers like tiny lilacs in late May, followed by black berries; seldom blooms when pruned as a hedge.

	10 for	25 for	50 for	100 for
6 to 12 in., prepaid.....	\$1.75	\$3.75	\$ 7.00	\$12.00
12 to 18 in., prepaid.....	2.25	5.00	9.50	17.00
18 to 24 in., prepaid.....	3.00	6.50	12.00	24.00
2 to 3 ft., not prepaid.....	3.50	7.50	13.50	25.00

Privet, Evergreen, Chinese No. 6. This new privet, introduced by us, is practically evergreen, holding its leaves all winter, and has proved perfectly hardy in our section. Densely foliaged with small leaves, it makes an excellent sheared hedge or untrimmed screen where all-year privacy is desired. 6 to 8 feet.

	10 for	25 for	50 for	100 for
12 to 18 in., prepaid.....	\$2.50	\$4.75	\$ 9.00	\$17.50
18 to 24 in., well branched, ppd. 3.50	6.50	12.00	20.00	
2 to 3 ft., well branched, ppd. 5.00	10.00	17.50	32.50	

Multiflora Rose for Hedges

THE NEW LIVING FENCE

Rose multiflora. This thorny rose has proved itself as a worthy plant for hedging. Is a solution for high cost farm fencing—grows into a useful fence in two years, has ornamental flowers and fruits. Excellent wild-life cover; repels livestock and does not require trimming. Space 18 to 24 inches apart in row. Grows 6 to 8 feet high.

Jumbo—Estate Grade. 18-24 inch heavy plants grown especially for those wishing immediate hedging effect.

Town and Country Grade—12-18 inch plants, the size recommended for general farm and residential screens and for fencing. 300 or more take the 1000 rate.

	25 for	50 for	100 for	1000 for
Jumbo—Estate Grade	\$3.50	\$5.50	\$10.50	\$85.00
Town and Country Grade.....	2.00	3.50	6.75	58.00

Above rose prices postpaid.



Auratum or Gold Banded Lily

These large fragrant waxy white flowers are dotted with small crimson spots. Each petal has a center stripe of gold. Blooms July to September.

75c each; 3 for \$1.75; 6 for \$2.95.

Lilies

FOR SPRING PLANTING

To Bloom This Summer

Regal Lily

Inside white with yellow throat, outside pink. Very hardy. Fragrant.

Large size, 40c each.....3 for \$1.00

Rubrum Lily

The most beautiful, deliciously fragrant lily of them all. Ruby carmine with white margin, blotched deep ruby. Large blooming size bulbs.

80c each 3 for \$2.00 6 for \$3.00

Umbellatum Lily

A very free flowering lily of easy culture. Produces large orange-red flowers in clusters on 24-inch stems.

Large size, 40c each.....3 for \$1.00

Tuberosa

Produces very fragrant waxy white flowers on stems 30 to 36 inches tall. Blooms from July till frost.

3 for 35c 6 for 60c 12 for \$1.00

Tuberous Rooted

BEGONIAS

These large flowering begonias are packaged in an attractive box, the flowers pictured in full color. Just the thing for a gift to a gardening friend and a "must" for that shady spot in your own garden. They may be started indoors for early blooming or planted outside after danger of frost in the spring. Complete instructions on the package.

One each of 6 colors—no two alike:
Box of 6 bulbs, prepaid.....\$1.50

Gladiolus

Large blooming size, 1 1/4 to 2 in. across.

Blue Beauty. The blue glad.

Elizabeth the Queen. Best lavender.

Gen. Isenhower. A new large begonia pink, as popular as Ike himself.

Snow Princess. The finest large white.

Stoptight. Called the perfect red.

3 of a kind, 35c; 6 of a kind, 60c;

12 of a kind, \$1.00; 25 of a kind, \$1.75.

One each of above, not labeled, 50c.

Exhibition Mixed. A fine mixture of many colors, ready to bloom for you.

25 for \$1.50 50 for \$2.40 100 for \$3.75

Sarcoxie Nurseries Hardy Flowering Shrubs

Flowering shrubs add much to the beauty of your home grounds at a low cost

ALL SHRUBS PREPAID EXCEPT WHERE NOTED

Abelia—See Broadleaf Evergreens

Almond, Double Flowering Pink; Prunus glandulosa plena.

One of the most showy shrubs in early April, with its many double pink flowers about an inch across, clustered thickly along the slender branches before the leaves are developed; grows 2 to 4 ft. high; prune after blooming.

18 to 24 in.....\$1.00 each; 3 for \$2.75

Althea; Rose of Sharon

Hollyhock-like flowers in late summer to fall; upright habit, attaining 10-15 feet; easily grown. Colors: Double Pink, Double Red, Double Purple.

18 to 24 in.....\$0.75 each; 3 for \$1.95

2 to 3 ft......95 each; 3 for 2.75

Barberry, Japanese or Thunberg's; Green

Dwarf, dense, compact, spreading habit; graceful spiny branches; dwarf leaves coloring brilliantly in autumn; scarlet berries 3/8-inch long in October and later; excellent for foundation planting and hedges.

12 to 15 in.....\$0.50 each; 3 for \$1.25

15 to 18 in......65 each; 3 for 1.75

18 to 24 in......80 each; 3 for 2.40

Barberry, Red-Leaved Japanese or Red Thunberg's

Berberis Thunbergi atropurpurea

A very showy shrub for lending all-summer color to the border, with its rich, lustrous metallic or bronzy red foliage, if planted in full sun; becomes green in shade; scarlet berries in fall and winter; holds its leaves later in autumn than the green-leaved Japanese. Does not produce wheat rust.

12 to 15 in.....\$0.65 each; 10 for \$5.00

15 to 18 in......75 each; 3 for 2.10

18 to 24 in......90 each; 3 for 2.55

Beautybush; Kolkwitzia amabilis

Discovered in China in the 90's, it is now one of the most popular May flowering shrubs, when for a distance of 1 1/2 to 2 1/2 ft. its arching sprays are a mass of clustered, trumpet-shaped flowers like Weigelas but more dainty, 3/4 to 1 in. long, pink outside, mottled with orange within. The dark green foliage is dainty, up to 2 1/2 in. long. It attains a height of 4 to 6 ft.; succeeds with sun half the day. Prune after blooming. While it does not usually bloom for a year or two after planting, it will, when established, reward you abundantly.

12 to 18 in.....\$0.85 each

18 to 24 in......95 each

2 to 3 ft.....1.25 each

Butterfly Bush (Summer Lilac)

Covered from summer till fall with fragrant flowers resembling Lilacs; grows 4 to 6 feet high; may be kept lower by pruning. Mound in winter the same as you protect everblooming Roses.

Pink, Variety Charming. Lavender tinged pink, the pink more noticeable in the sun.

Wine Red, Variety Debonnet. Rich carmine-purple, similar to the French wine Dubonnet.

Purple, Variety Royal Red. (Patented.) A Butterfly Bush of true royal color. Its immense trusses of brilliant purple-red flowers withstand summer's heat and bloom over a long period.

PRICES OF ABOVE BUTTERFLY BUSHES

2-year plants, 85c each;
any 3 for \$2.25.



Butterfly Bush

Cotoneaster acutifolia; Peking Cotoneaster

An upright, yet somewhat spreading shrub with graceful spreading branches reaching 5 to 6 ft. Leaves 1 to 2 in. long, dark, glossy green, in autumn purplish. Small whitish-pink five-petaled flowers in nodding clusters of two to five, followed by conspicuous black berries 1/2 in. long.

18 to 24 in.....\$0.95 each; 3 for \$2.70

2 to 3 ft.....1.25 each; 3 for 3.60

↓ **Cranberry Bush; Viburnum opulus**

The parent of the Common Snowball, and like it in growth, but the white flowers are in flat clusters in May. The center flowers, which produce the berries, are small, with an outer ring of showy flowers like the individual flowers of the Snowball. The bright scarlet cranberry-like fruits, 3/8 in. long, color in early August, remaining well into winter when not eaten by the birds. Endures partial shade; attains 8 to 12 ft.; prune, if necessary, after blooming.

18 to 24 in.....\$1.00 each; 3 for \$2.75

2 to 3 ft.....1.25 each; 3 for 3.50

SARCOXIE FLOWERING SHRUBS—Contd.

All Shrubs Prepaid Except Where Noted

Crape Myrtle

Watermelon red. Crepe-like deep pink to red flowers borne in profusion early summer to fall. Plants should be cut back before planting—we do this before we ship unless you object.

18 to 24 in.....\$0.95 each; 3 for \$2.70
2 to 3 ft..... 1.10 each; 3 for 3.00

Desmodium, Purple Bush Clover

Graceful arching branches covered in late summer with rose-purple, small pea-shaped flowers.

2 yr. plants.....\$1.00 each; 3 for \$2.75

Deutzia, gracilis (slender Deutzia). 2 to 3 feet. A graceful, dwarf shrub which covers its arching branches with small racemes of white flowers in early spring. Does well in sun or shade.

15 to 18 in.....\$1.00 each

Deutzia Pride of Rochester

Covered in latter May with dainty, double, tassel-like flowers in a setting of deep green foliage in upright clusters 4 to 6 in. long, white, outer petals tinted rose; upright, vigorous, growing 6 to 8 ft. high, in any well drained garden soil; prune after blooming.

18 to 24 in.....\$0.75 each; 3 for \$2.10
2 to 3 ft..... 1.00 each; 3 for 2.75



Forsythia (Golden Bell)

Forsythia spectabilis

One of the best upright Forsythias; pure, rich yellow flowers, sometimes 1½ inches across; better color and blooms more freely than most varieties. The bell-shaped flowers bloom before the leaves develop, often in March. Frequently combined in shrub groups with crimson flowered Japanese quince, as they both bloom about the same time. 6 to 8 ft.

18 to 24 in.....\$0.75 each; 3 for \$2.10
2 to 3 ft..... 1.00 each; 3 for 2.75

Forsythia Spring Glory. New! One of the finest Forsythias ever introduced. Covered with pale yellow flowers early spring. Produces many more blossoms than other varieties.

2 to 3 ft.....\$1.25 each; 3 for \$3.25

Honeysuckle, Bush; Lonicera

Those only acquainted with climbing honeysuckle should plant some of the bush form for their beauty of foliage, profusion of flowers in pairs at the base of the leaves in latter April, and abundant, brilliant berries about the size of a currant, often even more showy than the flowers, in June, when we have few ornamental berries. An excellent specimen shrub and good for screen plantings, because compact in growth, with neat foliage retained late. Of easy culture; suitable for partial shade. Should have sufficient space to develop naturally. Prune if necessary after blooming which, however, reduces the number of berries that year. Most varieties grow 6 to 8 ft. high.

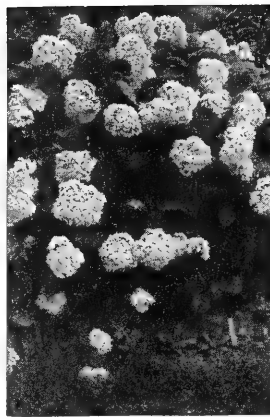
Winter Bush Honeysuckle. Foliage almost evergreen. Creamy white fragrant flowers that bloom very early in the spring, often in late February. Branches may be cut and bloomed indoors.

18 to 24 in.....\$0.80 each; 3 for \$2.25
2 to 3 ft..... .95 each; 3 for 2.70

Honeysuckle, Zabeli—NEW DEEP RED

A marvelous new improvement producing a well formed bush and an abundance of beautiful red flowers followed with brilliant red fruit. 6 to 7 ft. Excellent.

18 to 24 in.....\$0.85 each; 3 for \$2.40
2 to 3 ft..... 1.00 each; 3 for 2.85



Hydrangea Hills of Snow

Hydrangea Hills of Snow

Well named for its profusion of snow-white flowers in large, somewhat globular clusters, beginning in June; suitable for full sun and partial shade.

12-15 in.....75c each; 3 for \$2.00
2 yr., 18-24 in., 95c each;
3 for \$2.50

Hydrangea Nikko Blue. The most beautiful Blue Hydrangea. Hardy—has withstood temperatures to 20 below zero. Tops die down, but with a little mulch protection will grow 2 to 4 feet each season, producing luxuriant foliage and great masses of blue flowers. Plant in moist shaded area, acidify soil with two table-spoons aluminum sulphate to one gallon of water each spring.

Each \$1.90.....3 for \$5.00

Hypericum Sun Gold

(Patented.) Waxy golden flowers all summer on a low growing shrub of glossy foliage. Flowers 2 to 3 inches across. Grows 3 feet.

2 yr.\$1.60 each; 3 for \$4.50

Hydrangea paniculata grandiflora. Flowers in great cone-shaped clusters, white assuming rose tints, in profusion in August and September; attain 5 to 7 feet; plant in full sun.

15 to 18 in.....\$0.75 each; 3 for \$2.00
18 to 24 in..... 1.00 each; 3 for 2.75

Lilac—See inside back cover

Mock Orange, Virginal

Large semi-double delightfully fragrant white flowers 1½ to 2½ inches across; moderately tall; frequently flowers intermittently through summer and fall. Excellent for cutting, as flowers hold up well. Sun or partial shade.

18 to 24 in.....\$0.85 each; 3 for \$2.25
2 to 3 ft..... 1.10 each; 3 for 2.95



Hydrangea paniculata grandiflora (Pee Gee)

Mock Orange, Minnesota Snowflake. NEW.

A new patented variety with double pure white flowers. Very fragrant and in large snow-flake clusters. Vigorous and hardy. Plant retains their dark green leaves close to the ground, and are therefore excellent for screen, hedge or specimen. This variety, we think, is due to become very popular because of its vigor and large double blossoms. If you are interested in something new, something exceptionally nice, we suggest you try this plant.

2 to 3 ft., Plant Patent No. 538.....\$1.60 each

Olive, Russian; Eleagnus angustifolia

Usually grown as a tall shrub, its height regulated by pruning. Flowers tiny, 4-lobed, narrow bell-shaped, silvery-green outside, lemon colored within; fragrant; fruit olive-shaped ½ in. long, yellow with silvery scales; foliage 2 to 3 in. long, light grayish-green above, silvery beneath.

18 to 24 in.....\$0.85 each; 3 for \$2.40
2 to 3 ft..... 1.10 each; 3 for 3.00

Purple Fringe, Smoke Tree

Magnificent large shrub covered during the summer with flowers resembling a cloud of smoke. In the fall the foliage color is very effective bronze red. Grows 8 to 12 ft., perfectly hardy.

18 to 24 in.....\$1.25 each; 3 for \$3.50
2 to 3 ft..... 1.50 each; 3 for 4.25

SARCOXIE FLOWERING SHRUBS—Contd.

All Shrubs Prepaid Except Where Noted

Sarcoxie—NEW—Spreading Shrub "Grodense"

We have found this plant to be superior to the older and better known spreading privet, Regel. It is a sport of Amur River North, closely resembling Regel. The almost horizontal spreading branches with their small green leaves produce a beautiful foliage effecting an individual plant; group or as a foundation planting.

Used as a hedge, it develops, by shearing, into a low dense hedge with its branches close to the ground. Any width up to two or two and one-half feet and a height of three feet may be produced.

The plants priced here are finished for shrub use.

12 to 18 in., bushy.....	\$0.55 each; 3 for \$1.50
18 to 24 in., bushy.....	.65 each; 3 for 1.80
Hedging grade, 12 to 18 in., 25 for \$5.00; 50 for \$9.50; 100 for \$17.00.	

EVERGREEN PRIVET CHINESE No. 6—NEW

Practically evergreen, this new Privet holds its waxy bright green foliage until pushed off by new leaves in the spring. Excellent trimmed or left untrimmed. Used for hedges, in shrub groups or in foundation plantings. In hedges plant 3 feet apart.

2 to 3 ft. bushy plants.....	\$0.65 each; 3 for \$1.80
------------------------------	---------------------------

Quince, Japan or Flowering; Cydonia japonica

Beautiful in latter March, sometimes February, just as the leaves begin to unfold with its five-petaled flowers 1 to 1½ in. across in clusters of two to six, a fiery scarlet so brilliant it is also called Burning Bush. Its dense foliage is glossy dark green, in autumn bronzy-red. Fruit yellowish-green, 1½ to 2 in. across, not edible, its fragrance retained when dried. Usual height 3 to 6 ft.; branches thorny; young plants somewhat irregular in growth becoming attractive with age. Plant in sun. Prune after blooming. See illustration next page.

18 to 24 in.....	\$0.80 each; 3 for \$2.25
2 to 3 ft.....	.95 each; 3 for 2.70

Snowball, Common; Virburnum opulus sterile

The name brings to mind the old bush in grandmother's garden, laden with snow-white flowers in globular clusters 3 to 4 in. across in early May. Leaves maple-like, 2 to 4 in. long, bronzy-red in autumn. Grows 6 to 8 ft. high. Succeeds in sun or partial shade. Prune after blooming. See illustration below.

18 to 24 in.....	\$1.10 each
2 to 3 ft.....	1.35 each



Snowball

For Index See Page 6

THE SPIREAS

Justly popular for their hardiness, thriftiness, profusion of bloom, graceful habit, neat foliage, and general freedom from serious insects and diseases. The early blooming Spireas, after the bush attains good size, should have some old wood removed to the ground each year immediately after blooming. Prune late, blooms in early spring before growth starts. When neglected for years it may be necessary to prune almost the entire plant to the ground in early spring. They succeed in any moderately moist lawn soil of average fertility.



Spirea Van Houttei—Excellent as a shrub or hedge.

Spirea Anthony Waterer

Crimson flowers in flat clusters in late May and at intervals until fall; grows 3 feet high.

12 to 15 in.....	\$0.75 each; 3 for \$1.95
15 to 18 in.....	.95 each; 3 for 2.65

Spirea Blue Mist

Covered with powdery blue-fringed flowers. From midsummer till frost, this graceful shrub with silvery foliage is an excellent addition to any planting. Grows 2 to 3 feet high and about as broad.

2-yr. plants	\$1.10 each; 3 for \$3.00
--------------------	---------------------------

Spirea Froebeli

Similar to Anthony Waterer but with broader, darker leaves, and about 4 feet tall.

15 to 18 in.....	\$0.60 each; 3 for \$1.50
18 to 24 in.....	.80 each; 3 for 2.25
24 to 30 in.....	.95 each; 3 for 2.65

Spirea Golden; Spirea opulifolia aurea; Physocarpus aureus

Perhaps unsurpassed for golden foliage color in early spring, becoming bronze-yellow in early summer, green in latter summer, furnishing a variety of colors during the season. Flowers inconspicuous, white, five-petaled, ⅜ in. across in flat clusters 1 to 2 in. across in early May. Grows 5 to 7 ft. high. A sunny situation with pruning each spring gives better spring color.

18 to 24 in.....	\$0.75 each; 3 for \$2.10
------------------	---------------------------

Spirea Thunbergi; Thunberg's Spirea

Its graceful spreading and arching branches 3 to 5 ft. high are clothed with many small, pure white five-petaled flowers ⅜ in. across in clusters of three to six in March, before the leaves are developed; leaves very narrow, 1 to 1¾ in. long, light green. The fine feathery foliage makes Thunbergi suitable for nearby plantings where shrubs of coarse texture would be out of place. Better if pruned some each year after blooming.

18 to 24 in.....	\$0.85 each; 3 for \$2.40
2 to 3 ft.....	1.15 each; 3 for 3.25

Spirea Van Houttei; Van Houtte's Bridal Wreath

A fountain of white in late April and May, its arching branches covered with clusters of small five-petaled flowers one-third in. across; the graceful drooping habit and neat dense foliage, ¾ to 1¾ in. long, make it attractive throughout the season; excellent for grouping, as a background for lower shrubs, a foreground for taller shrubs, a screen, or as a specimen plant. Each spring, after blooming, prune some of the old canes to the ground. Grows 6 to 7 ft. high.

12 to 18 in.....	\$0.40 each; 3 for \$1.00; 10 for \$2.95
18 to 24 in.....	.60 each; 3 for 1.50; 10 for 4.50
2 to 3 ft.....	.75 each; 3 for 2.00; 10 for 6.00
3 to 4 ft., pot prepaid..	1.10 each; 3 for 3.00; 10 for 9.00

SARCOXIE FLOWERING SHRUBS—Contd.

All Shrubs Prepaid Except Where Noted

Sumac, Fragrant; Rhus aromatica. A beautiful native plant excellent in shrub groups and for naturalizing. Foliage bronze to brilliant red in fall. Clusters of berries in late summer. Sun or shade, foliage aromatic. 4 to 5 ft.
2 to 3 ft.....\$0.85 each; 3 for \$2.40

Tamarix; Tamarisk

While grown mainly for their delicate feathery foliage, in general effect like Asparagus, the tiny flowers make the bush a cloud of pink. Prune severely each spring to maintain a continuous supply of new wood and to keep the plant bushy and the height desired. It attains 4 to 15 ft. according to variety. Plant lower growing shrubs in front of the taller Tamarix.

Tamarix Hispida rubra. Grows 5 to 6 feet high with feathery green foliage and long plumes of tiny flowers of bright pink, almost red. Prune severely each year.
18 to 24 in.....\$0.75 each; 3 for \$2.15
2 to 3 ft......95 each; 3 for 2.65

Vitex; New Chaste Tree. Its long spikes of small, rather deep lavender blue flowers at the ends of the branches in July and at intervals till fall, somewhat resemble those of the Butterfly Bush. It makes a distinctive, rather large shrub of graceful, open airy habit, with five-fingered leaves, dark green above, grayish beneath, with an aromatic pungent odor. Not yet in general use, but desirable in the shrub border for contrast.
18 to 24 in.....\$0.60 each; 3 for \$1.65

Weigela; Diervilla

Very showy in May when covered with its profusion of trumpet-shaped flowers 1½ in. long in clusters along the branches. Most kinds make a bush 6 to 8 ft. high and prefer full sun. Best in groups or for corners where they may be given plenty of room. Prune after blooming.

Weigela, Bristol Ruby. NEW.

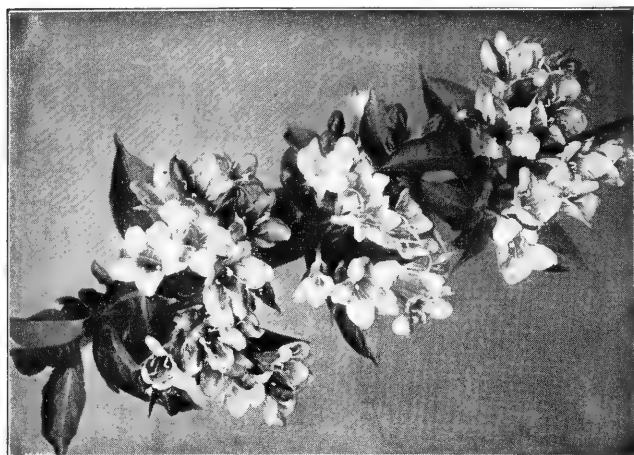
Plant patent No. 492. This new outstanding Weigela is hardier and more vigorous than any of the red Weigelas. Soft ruby red to crimson. Grows 6 to 7 feet. Sun or partial shade.

2 to 3 ft.....\$1.60 each; 2 for \$3.00

Weigela Eva Rathke. Brilliant carmine-red flowers in May and to a limited extent at intervals during summer; grows about 4 ft. high; succeeds in partial shade. Prune after blooming, otherwise the bush is inclined to become straggly.
18 to 24 in.....\$1.00 each; 2 for \$1.90

Weigela Rosea. Distinctly red buds opening rose-pink outside, lighter within; blooms freely.

18 to 24 in.....\$0.85 each; 3 for \$2.40
2 to 3 ft..... 1.00 each; 3 for 2.85
3 to 4 ft., not prepaid..... 1.35 each

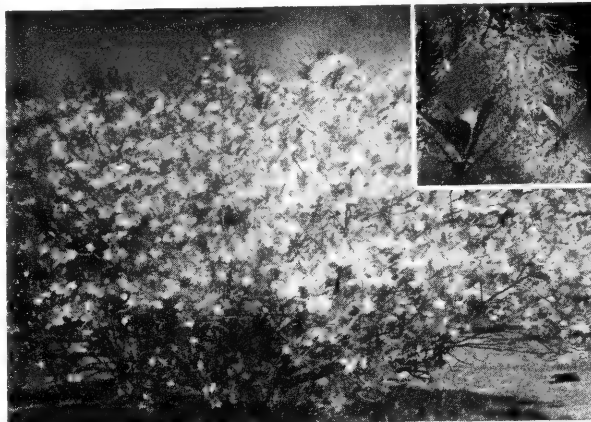


Weigela

White Fringe; Old Man's Beard

A fine shrub producing fringe-like snow white flowers in the spring. Delightfully fragrant. The flowers perfume the entire garden and are excellent when cut for bouquets. Grow 6 to 10 ft. tall.

18 to 24 in.....\$2.00 each 2 to 3 ft.....\$2.50 each



White Fringe—Old Man's Beard



SARCOXIE NURSERIES
PEONY FIELDS

SPECIAL SHRUB OFFER

For those who wish something NEW and different for their garden, we offer the following fine shrubs:

- 1 Hypericum Sungold (patented), 2 yr.
- 1 Blue Hydrangea, 2 yr.
- 1 Forsythia Spring Glory, 2 to 3 ft.

A \$4.75 Catalog Value

ONLY \$4.00 PREPAID

YOUR RADIO PROGRAM

"A QUARTER HOUR IN THE GARDEN"

Broadcast by the Sarcoxie Nurseries over Station WMBH, 1450 kilocycles, Joplin, Mo.

Those within range are invited to tune in at 1 p. m. each Sunday afternoon for a gardening talk and musical program.

SEE INDEX, PAGE 6

LET US HELP YOU WITH YOUR LANDSCAPE PROBLEMS

We maintain a COMPLETE LANDSCAPE SERVICE—

from drawing the plans to delivering and planting the plant material.

A Well Planned Home Is a Home of Distinction

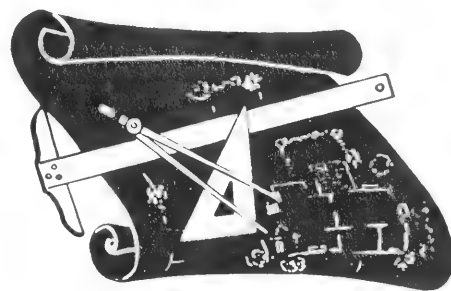


Making Measurements and Drawing Plans

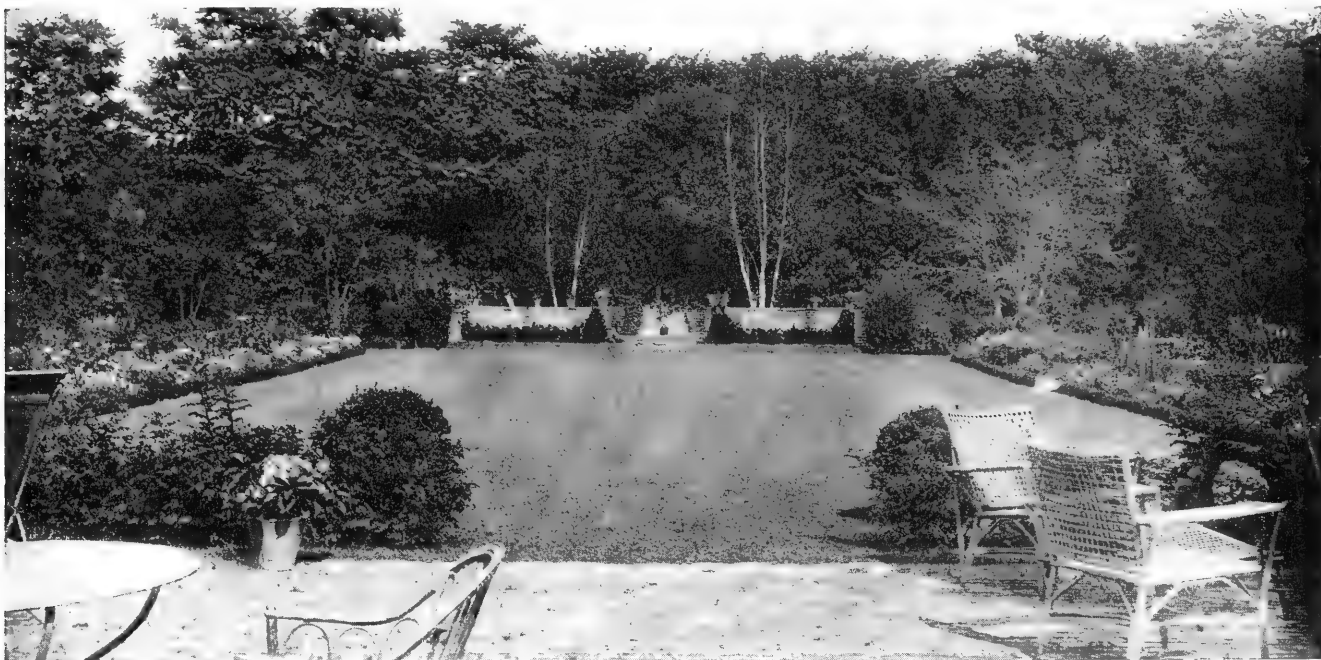
Within a radius of 75 miles we will be glad to have our Landscape representative call and go over your problems. Measurements can then be made, the plans drawn and submitted for your approval. For this service we make a charge of \$10.00 for an ordinary size lot. This amount is credited on your order at the rate of 10% of the plant material purchased. For instance, if your order amounts to \$100.00, your plan has cost you nothing.

For larger properties and special problems, costs are made accordingly.

Properties located over 75 miles distant, ask for prices.



You will be surprised at the saving that can be made and the beauty attained by having your property planned systematically.



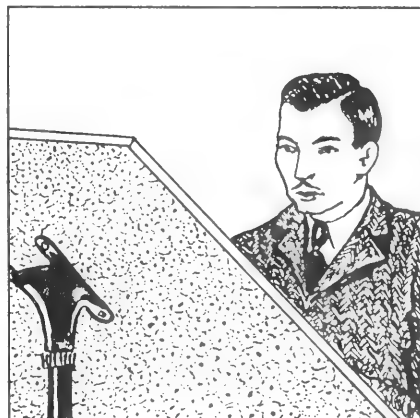
A GARDEN WELL PLANNED IS USEFUL AND BEAUTIFUL, BOTH SUMMER AND WINTER.

**LET US HELP
YOU
RELAX
in Your Own
GARDEN**

★
Gardening Is Fun.

★
It is a Profitable
Investment.

Only with good knowledge of plant material and the proper understanding of design could a picture such as above be created on the home grounds, adding much to the value of the property and to your enjoyment of your home.



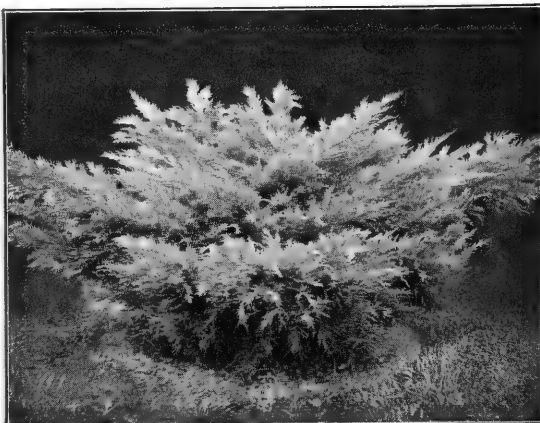
BEAUTIFUL EVERGREENS

Dug With a Ball of Earth Wrapped in Burlap



Norway Spruce

QUALITY EVERGREENS
Every Evergreen has been transplanted to increase the root system and sheared for compactness.



Pfitzer Juniper thrives in almost every location.



Juniper Silver

Juniper, Irish; *Juniperus communis hibernica*

Its finely-cut bluish-green foliage is attractive and its form in pleasing contrast with the globe and bush evergreens; a dense slender, conical tree with numerous upright branches closely surrounding the body; becomes about 8 ft. high and can be kept to a diameter of 18 to 24 in. by pruning.

12 to 15 in., roots in moss, prepaid.....	\$1.50 each
18 to 24 in. B&B.....	3.25 each
2 to 2½ ft. B&B.....	3.75 each
2½ to 3 ft. B&B.....	4.50 each

Juniper, Keteleer's; *Juniperus virginiana Keteleeri*

A comparatively new variety of the Virginia Juniper, with bright green foliage; of fairly rapid, upright growth and useful in sun or partial shade.

3 to 4 ft. B&B.....	\$ 7.50 each
4 to 5 ft. B&B.....	9.00 each

Juniper, Pfitzer; *Juniperus chinensis Pfitzeriana*

Wide spreading horizontal branches forming a broad, irregular, low tree; foliage light olive-green; fine; thrives in almost every location.

12 to 15 in., roots in moss, prepaid.....	\$1.50 each
15 to 18 in. B&B.....	\$3.75 each
18 to 24 in. B&B.....	\$4.50 each
24 to 30 in. B&B.....	5.50 each
30 to 36 in. B&B.....	6.50 each

Juniper, Pfitzer Gold Tipped

Similar in habit to the regular pfitzer juniper except the tips of the branches are a bright golden color. Excellent for color contrast.

15 to 18 in. B&B.....	\$3.75 each
18 to 24 in. B&B.....	4.50 each

Juniper, Pfitzer Silver

A pfitzer juniper with silvery blue foliage.	
15 to 18 in. B&B.....	\$3.75 each
18 to 24 in. B&B.....	4.50 each

Juniper, Savin; *Juniperus sabina*

Its numerous branches spread at an angle of about 45 degrees. Does not get tall with age as the weight of the branches keep them low. Foliage color deep green. Best in full sun.

18 to 24 in. B&B.....	\$4.50 each
24 to 30 in. B&B.....	5.50 each

Juniper, Pathfinder; *Juniperus Scopulorum Pathfinder*

A bluish-silver type of Colorado or Scopulorum Juniper; very pyramidal habit, Arborvitae-like flat foliage.

2½ to 3 ft. B&B.....	\$6.50 each
----------------------	-------------

Juniper, Spiny Greek; *Juniperus excelsa stricta*

Dense and narrowly conical, tapering gradually from the ground to a sharp point. Spiny grayish green, glaucous foliage. It reaches a height of about 10 ft. but grows slowly so may be used in plantings where a small tree is desired and changed to another location before it becomes too large.

15 to 18 in. B&B.....	\$3.25 each
18 to 24 in. B&B.....	4.00 each

Pines

Pine, White.

A systematical pyramidal tree with regular whorls of horizontal branches; needles in 5's, soft bluish-green.

2 to 3 ft. B&B.....	\$6.00 each
---------------------	-------------

Spruce

Spruce, Norway

A handsome tree of symmetrical, conical habit; branches spreading, usually drooping with age; dark green needles ½-¾ in. long; beautiful reddish-brown cones.

3 to 4 ft. B&B.....	\$7.50 each
---------------------	-------------

Taxus, Yews

A handsome evergreen that does best in the shade. Very hardy and not bothered by disease or insect pests. Foliage rich dark green.

Yew, Japanese Upright

Dark, rich green foliage. Does well in dense shade.	
18 to 24 in. B&B, not prepaid.....	\$7.50 each

Yew, Japanese Spreading

A low spreading form. Similar to Pfitzer Juniper. Best in moist shaded areas.

15 to 18 in. B&B, not prepaid.....	\$5.75 each
18 to 24 in. B&B, not prepaid.....	7.50 each

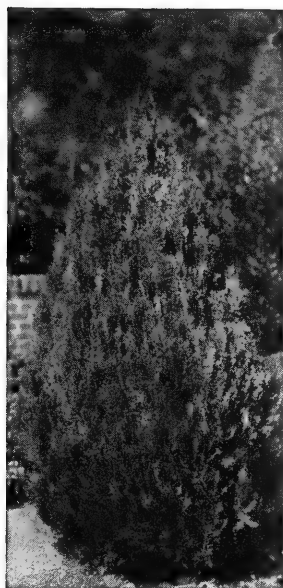
SARCOXIE NURSERIES

They Are Specimens Everyone

Evergreens Shipped by Express or Truck Line Are Not Prepaid Except Where Noted

Evergreens Are Easy to Plant

Grown with plenty of room, our evergreens are compact, well developed trees of their size and variety. They have been transplanted and root pruned to develop a good root system. They are liberally graded and, except mail sizes, are dug with a ball of earth wrapped in burlap, termed "balled and burlapped" or B&B. Planting Instructions furnished.



Berckman's
Golden Arborvitae



Globe Arborvitae is naturally globular in form.



Juniper, Irish

Arborvitae, American Pyramidal; *Thuja occidentalis* pyramidalis

Compact and narrowly pyramidal, with age almost a perfect column, its short branches densely covered with deep green foliage. Fairly rapid growth, reaching 18 to 20 ft., usually not over 2 ft. in diameter at the base. Valuable for formal plantings, for accent, corners, in front of pillars, or in the center background of groups. Naturally pyramidal; not artificially produced by shearing. Not suitable for dense shade.

15 to 18 in., roots in moss, prepaid.....\$1.50 each
18 to 24 in. B&B.....\$2.75 each 3 to 4 ft. B&B..... 5.00 each
2 1/2 to 3 ft. B&B..... 4.25 each

Arborvitae, Berckman's; *Thuja orientalis aurea nana*

A perfect gem; superb, somewhat ovate shape; compact, dwarf habit, slowly growing about 7 ft. high; new spring and early summer growth gold suffused with green, in winter. Green to bronze green; valuable for cemetery, lawn and landscape; admired by all lovers of formal evergreens.

10 to 12 in., roots in moss, prepaid.....\$1.50 each
15 to 18 in. B&B..... 3.25 each
18 to 24 in. B&B..... 4.25 each
2 to 2 1/2 ft. B&B..... 5.00 each
2 1/2 to 3 ft. B&B..... 6.25 each

Arborvitae, Bonita

Broadly conical with rounded top; compact dwarf habit growing about 4 ft. high; rich green.

10 to 12 in., roots in moss, prepaid.....\$1.00 each
15 to 18 in. B&B.....\$3.25 each 18 to 24 in. B&B..... 4.00 each

Arborvitae Brewer's Hybrid—Upright Bonita

A beautiful dark green arborvitae, more upright than Bonita and more conical. Foliage dense and uniform. Very useful where Excelsa is too large and Bonita too small. New.

2 to 2 1/2 ft. B&B.....\$4.50 each

Arborvitae, Excelsa; *Thuja orientalis excelsa*

Orientalis type; deep green foliage; flattened upright branches; somewhat oval form, attaining about 7 to 8 ft.

12 to 15 in., roots in moss, prepaid.....\$1.25 each
2 1/2 to 3 ft. B&B.....\$4.00 each 3 to 3 1/2 ft. B&B..... 5.00 each
3 1/2-4 ft., B&B..... 6.00 each

Arborvitae, Woodward Globe

A low, compact form, naturally globular in outline, growing 3-3 1/2 ft. high.

10 to 12 in., roots in moss, prepaid.....\$1.25 each
12 to 15 in. B&B..... 2.50 each

Junipers

Juniper Andorra

A very low spreading juniper with blue-green foliage. In winter the foliage has a very attractive live purplish cast.

12 to 15 in., roots in moss, prepaid.....\$1.50 each
15 to 18 in. B&B..... 4.00 each
18 to 24 in. B&B..... 5.00 each

Juniper, Blue or Silver; *Juniperus virginiana glauca*

One of the most popular bluish junipers; young growth silvery, becoming beautiful bluish-green, affording color contrast in the landscape; fairly rapid growth; broadly conical with long slender branches producing a graceful effect; grows 15 to 20 ft. high; may be kept lower and dense by pruning.

3 1/2 to 4 ft. B&B.....\$ 8.50 each
5 to 6 ft. B&B..... 12.50 each

Juniper, Cannart; *Juniperus virginiana cannarti*

Broadly pyramidal; medium sized, reaching 15 to 20 ft.; by pruning may be kept lower and dense; untrimmed, the growth is more or less open but pleasing; foliage deep green, heavily tufted; silvery-blue berries in late July or August.

2 to 3 ft. B&B.....\$ 6.50 each
3 to 4 ft. B&B..... 7.50 each
4 to 5 ft. B&B..... 10.00 each
5 to 6 ft. B&B..... 12.50 each

Juniper, Dundee; Dundee Juniper

A beautiful compact pyramidal tree with bluish green foliage, in winter turning plum color. Is excellent used in contract with bright greens.

2 to 3 ft. B&B.....\$6.00 each
3 to 4 ft. B&B..... 7.50 each

Juniper, Henry's

This form of Virginia Juniper retains its green color all winter; forms a dense, almost columnar tree; by shearing may be grown 12 to 15 ft. high with a base of 3 ft. or less.

3 to 4 ft. B&B.....\$ 7.50 each
4 to 5 ft. B&B..... 10.00 each

SARCOXIE NURSERIES *Broadleaf Evergreens*

Ideal For Combination With Evergreen Groups Or Planted As A Specimen

B&B INDICATES DUG WITH A BALL OF EARTH AND ARE NOT PRICED PREPAID

Abelia Grandiflora

White to light pink; fragrant flowers like small weigela from early summer till fall. Small glossy dark evergreen foliage. Grows 4 to 6 ft.

18 to 24 in., roots in moss \$2.25 ea. ppd.
18 to 24 in. B&B.....\$2.75 each
2 to 3 ft. B&B..... 3.50 each

Barberry Julianae

The best of evergreen barberries, holding its green leaves on golden stems all winter. Thorny.

12 to 15 in. B&B.....\$2.25 each

Euonymus Patens

Sometimes called evergreen bitter-sweet as this shrub produces numerous bittersweet-like berries adding much to its beauty. Bright glossy evergreen foliage, a compact plant which grows 4 to 5 ft.

10 to 12 in. roots in moss \$1.15 each, prepaid
15 to 18 in. B&B.....\$2.50 each
18 to 24 in. B&B..... 3.50 each

Nandina

An erect shrub with bamboo-like stems producing bright red berries in clusters which are at their best during the Christmas season. Foliage color dark green to scarlet fall and winter. Grows 3 to 4 ft.

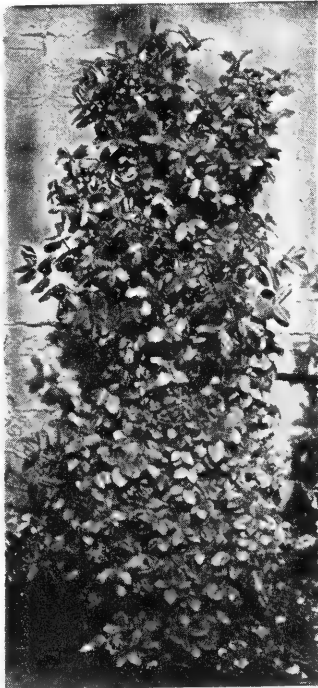
12 to 15 in. roots in moss \$1.75 each, prepaid
12 to 15 in. B&B.....\$2.25 each
15 to 18 in. B&B..... 2.75 each
18 to 24 in. B&B..... 3.50 each

Recommended for their variation in foliage color, their fruits and flowers

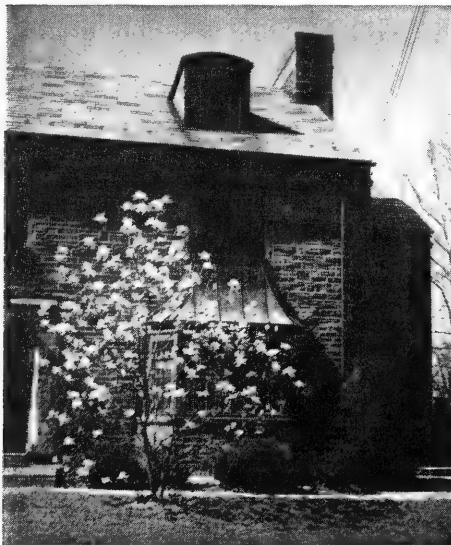
Pyracantha Lalandi (Scarlet Firethorn).

A picturesque, upright, thorny shrub with Box-like, evergreen foliage. Has white flowers followed with fiery orange-red fruits, lasting well into the winter. Used as specimen shrubs or trained against a wall.

18 to 24 in. B&B.....\$3.25 each



Evergreen Magnolia Grandiflora



Magnolia Soulangeana. Blooms before the leaves appear in the spring. This variety is not evergreen.

Euonymus, Upright Radicans. (New.)

We sincerely recommend this as one of the best dark green leaved evergreen shrubs. It holds its foliage throughout the winter and is just as happy in the shade as in the sun. Beautiful as a specimen or in foundation groupings. Perfectly hardy. Grows 3 to 3½ feet. Excellent when used as a hedge, see below.

12 to 15 in., roots in moss, \$1.95 each, prepaid.
15 to 18 in. B&B.....\$2.75 each
18 to 24 in. B&B..... 3.25 each

only 40¢ a foot

New HEDGE STAYS GREEN ALL YEAR LONG

UPRIGHT EUONYMUS RADICANS

Strong and hardy, thrives in sun or shade. Will make big growth first year. For graceful individual shrubs or fine thick hedge. 10 plants make 10 feet of hedge. Attractive!

AS SHIPPED

10 2-year plants FOR ONLY **\$4.00** POSTPAID

MAGNOLIAS

Magnolia glauca. Sweet Bay Magnolia.

A large semi-evergreen shrub, with glossy dark green foliage, is more hardy than the evergreen magnolia of the South, and produces smaller pure white fragrant flowers.

18 to 24 in. B&B.....\$3.50 each
2 to 3 ft. B&B..... 5.00 each

Magnolia Grandiflora.

The true Magnolia of the South, holding its glossy evergreen leaves throughout the winter. Large, white flowers in summer. Hardy as far North as Kansas City, Missouri.

2 to 3 ft. B&B.....\$ 5.50 each
3 to 4 ft. B&B..... 8.50 each

Magnolia Nigra

Sometimes called summer Magnolia. Very hardy, producing purple blossoms early spring to fall. Not evergreen.

18 to 24 in., roots in moss, \$3.00 each, prepaid.

2 to 3 ft. B&B.....\$6.00 each

Magnolia Soulangeana.

This beautiful plant is truly a specimen. Produces large, Tulip-like blossoms early in the spring before the leaves appear. Blossoms pink outside, white inside; hardy.

18 to 24 in., roots in moss, \$3.00 each, prepaid.

2 to 3 ft. B&B.....\$6.00 each

HARDY PHLOX

Field-grown plants, to bloom first season: .40c each; 3 for \$1.00; \$3.50 per doz., prepaid.



Phlox

Africa. Brilliant carmine red with blood red eye.

Blue Boy. Nearest blue of all Phlox. A beautiful color and free bloomer.

Daily Sketch. Light salmon-pink, faint carmine eye.

Dixie. Bright orchid pink; very hardy.

Firebrand. Brilliant cerise, vermilion and orange.

July Glow. Vivid purple-red.

Lillian. Exquisite cameo pink; large; blooms freely; early.

Mary Louise. Pure white; very large; medium height.

P. D. Williams. Bright pink, deeper eye; large.

R. P. Struthers. Cherry red, darker eye; tall.

Salmon Glow. Pink shaded salmon.

San Antonio. Vivid brilliant carmine shaded prune red.

Spitfire. Brilliant orange-scarlet.

Sarcoxie Nurseries' Perennials - - - All Sent Prepaid - - Are Strong Field-Grown Plants

Perennials are an indispensable part of any garden. They supply an abundance of color and charm through the summer months, and are a convenient source of cut flowers for indoor decorations. When planning a formal garden straight lines as followed in the garden as pictured above are preferred, in an informal garden graceful curves should predominate. Perennials give an abundance of bloom the first season and become a definite part of your permanent garden.

Alyssum saxatile compactum—Basket of Gold

One of the most showy dwarf plants for border or rock garden. Produces masses of bright yellow flowers on 10-inch stems. Blooms in May. 40c each; 3 for \$1.00; \$3.50 per doz.

Aster, Stoke's Blue Cornflower

This blue aster-like flower blooms all summer. Flowers 4 inches across on stems 12 to 18 inches. Very hardy. 40c each; 3 for \$1.00; \$3.50 per doz.

Baby's Breath, Bristol Fairy; Gypsophila Bristol Fairy

One of the best flowers for producing an airy, graceful effect in the garden or in vases of cut flowers. Dainty double white flowers 1/4 inch across arranged in large, loose clusters on stems 2 to 3 feet tall in June. If dried for winter use cut before fully open and hang tips down. Thrives in sun, preferably in a limy soil. 95c each; 2 for \$1.85.

Balloon-Flower; Chinese Bell-Flower; Platycodon grandiflora

So named from the odd balloon-like buds which open into five-pointed broad bell-shaped blue flowers 2 1/2 to 3 in. across, at the tips of the branches on stems 1 1/2 to 3 ft. tall in latter June, sometimes at intervals during summer. It should have well drained soil. 40c each; 3 for \$1.00; \$3.50 per doz.

Bleeding Heart, Dicentra

An old-time favorite, rich in sentiment and association. Heart-shaped rose-carmine flowers with protruding white inner petals, drooping on stems 1 1/2 to 2 feet high, carried well above the foliage, in latter April. 85c each; 3 for \$2.25, prepaid.



Baby's Breath, Gypsophila

Blanket Flower—See Back Cover.

35c each; 3 for 90c; \$3.00 per doz., prepaid.

Columbine, Mrs. Scott Elliott's Strain

Dainty long-spurred flowers in late April and May. 1 1/2 to 2 feet; mixed colors. 40c each; 3 for \$1.00; \$3.50 per doz., prepaid.

Canterbury Bells

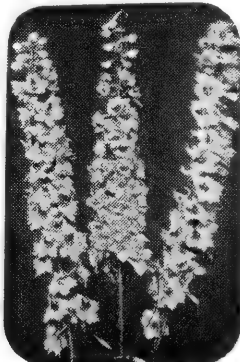
Spikes of somewhat bell-shaped flowers 2 inches long on stems 2 to 3 feet high. They give a grand display in May and June. Mulch lightly with straw during winter. Mixed colors only. 40c each; 3 for \$1.00; \$3.50 per doz.

Sweet William

Gorgeous in mid-May with flat clusters of decidedly fragrant flowers on stems 12 to 20 inches high; pure white, shades of pink, red, almost black and violet, the clusters often 4 inches across with 20 to 30 florets which do not all bloom at once so they last a long time. Mixed colors. 35c each; 3 for 90c; \$3.50 per doz., prepaid.



Balloon Flower



Delphinium (Page 20)

Hardy Garden Chrysanthemums

Nothing sur-
passes "Mums"
for a Wealth
of Color
Each Fall.

Plant for
Cut-Flowers,
also Landscape
Beauty.



CHRYSANTHEMUMS. Hardy "Mums."

Every garden needs "mums" to extend the blooming season into autumn. When frost creeps into the air Mums are the only flowers that continue blooming.

We offer the following outstanding varieties:

Betty. Lovely apple-blossom pink, very double flowers on stocky stems. Grows 2 feet. Blooms late Sept.

Charles Nye. Large fully double pompon of rich buttercup yellow. 2 feet. Mid-Sept.

Huntsman. New. Vividly brilliant scarlet orange overcast with bronze. Flowers in abundance 3 inches across; late Sept. Grows 30 inches.

Olive Longland. Pink to autumn shades. Large, early, flowers borne on strong stems.

Red Velvet. Most popular red. 3 inches. Double. Oct. 5.

September Sunshine. A September beauty in bright yellow. Large. A good producer and excellent cut flower.

White Wonder. White pompon. Supreme. Perfect ball-shaped blooms. Cream to white. Heavy sprays. Wonderful for cutting. Late Sept.

CUSHION CHRYSANTHEMUMS

Bronze Cushion. Beautiful coppery bronze.

Pink Cushion. Greatly improved pink cushion.

Red Cushion. Bright red.

White Cushion. Snowy white.

Yellow Cushion. Bright golden yellow.

Prices of above Chrysanthemums: 50c each; 3 for \$1.35;
12 for \$4.50.

Note—Chrysanthemum Deliveries Beginning March 15th.

DELPHINIUM

Delphinium Belladonna Improved. The delightful blue of the skies; unrivalled for persistent blooming. A little larger, taller and more vigorous than common Belladonna; 2 ft. spikes. 40c each; 3 for \$1.00; \$3.50 per doz.

Delphinium Bellamosum. A dark blue form of Belladonna. 40c each; 3 for \$1.00; \$3.50 per doz.

PERENNIAL SPECIAL

3 Hardy Phlox 3 Early Elder Daisies
2 Blue Delphinium 3 Hollyhocks
1 Old Fashioned Bleeding Heart

A \$4.55 Catalog Value,
Prepaid for only.....

\$3.00



Daisies in Sarcoxie Nurseries Gardens.

Daisy, Early Elder; Chrysanthemum maximum Early Elder

Daisies 2 to 2½ in. across, white with yellow center, borne profusely in May; stems 20 to 30 in. tall; vigorous; divide and replant each two years. 35c each; 3 for 90c; \$2.50 per doz.

Daisy, Shasta Alaska; Chrysanthemum maximum Alaska

One of the best Shasta Daisies; 3 to 3½ in. across on stems 15 to 24 in. tall in latter June and early July; white with yellow center; blooms freely; divide and replant every other year. 40c each; 3 for \$1.00; \$3.50 per doz.



Mallow, Giant Flowering Hibiscus

Flowers often 6 inches across and they come along continuously from July to October. The shrub like-growth reaches 4½ to 5 ft. high. Mixed colors only; 40c each; 3 for \$1.00; 6 for \$1.75.

Sedum; Stonecrop

Sedum spectabile Brilliant; Showy Stonecrop. The rosy-red starry flowers ½ in. across are produced freely in large flat-topped clusters on 18 in. stems in latter September and early October. Leaves light bluish-green, thick, broad, 3 in. long. 40c each; 3 for \$1.00; \$3.50 per doz.

Hardy Flowers, continued



Double Hollyhock

DOUBLE HOLLYHOCK

In the following gay colors:

Newport Pink
Scarlet
Yellow and White

40c each
3 for \$1.00
\$3.50 per doz.

Phlox—Also see back cover.

Phlox Sublata Alba. White flowering Moss Phlox. A mat of somewhat moss-like leaves, covered in early spring with white flowers. Grows 4 to 6 inches. **40c each; 3 for \$1.00.**

Phlox Sublata. Rose red. Same habit of growth as the above dwarf white except the flowers are bright rose-red color. **40c each; 3 for \$1.00.**

Violet, Royal Robe. Large, open out flat like a pansy; very fragrant, fragrance detectable many yards away. Deep violet to royal purple; fine. **35c each; 3 for 90c; \$3.00 per doz.**

Violets, Sweet Russian. Deep rich, violets; very hardy; easily grown. **25c each; 3 for 70c; 12 for \$2.50.**

Heemerocallis-Daylilies

DAYLILY PRICES PREPAID

August Pioneer. Chrome yellow with outer half of petals flushed red; blooms August and September. 34 inches. **50c each; 3 for \$1.00.**

Bagdad. A gay combination of several colors—orange, red, yellow and brown. 42 inches. June-July. **50c each; 3 for \$1.00.**

Baby Tears. Very dainty. Its background is gold, its petals are deeply marked toward the end a true rosy red. The whole flower is fully ruffled. Height 3 feet; blooms June and July. **50c each; 3 for \$1.00.**

Cinderella. Petals copper red, sepals lemon yellow; blooms late afternoon, remaining open all night and into the heat of the following day. Different. Blooms July. 28 inches in height. **50c each; 3 for \$1.00.**

D. D. Wyman. One of the largest and finest Daylilies. The individual flowers measure 6 inches across. The plant is a very free bloomer; flowers are deep rich golden yellow with a brick red spot on each petal. July and August. 44 inches in height. **50c each; 3 for \$1.00.**

Delightful Duet. Bicolor, red and yellow; a delightful combination of sunset colors. 28 inches. July. **50c each; 3 for \$1.00.**

Gloria. Medium size orange flowers on much branched stems. June. **50c each; 3 for \$1.00.**

Harvest Moon. Orange edged lemon; fragrant; large; tall; many buds. 3 feet. July and again in September. **50c each; 3 for \$1.00.**

Linda. Yellow tinged pink. Long blooming season. The whole flower is fully ruffled. **50c each; 3 for \$1.00.**

Middendorfi. Rich orange yellow; very fragrant. Early to midseason. **35c each; 3 for 75c.**

Mikado. Large flower on rich orange with deep mahogany red throat. 3 ft. June and July. **50c each; 3 for \$1.00.**

Minor, Dwarf Lemon Lily. Small delightfully fragrant, deep golden yellow starry flowers in May and at intervals during summer. It forms dense clumps 12 to 15 inches high. **50c each; 3 for \$1.00.**

Purple Waters. Strong wine purple, full open flowers, long season of blooms. 36 inches. **\$1.00 each; 3 for \$2.50.**

Rajah. Mahogany red, shading to orange throat; delicate fragrance; very large; blooms profusely. One of the best of this color. 48 inches. July-August. **50c each; 3 for \$1.25.**

Sovereign. Soft chrome yellow, shaded brown on outside. Early. **35c each; 3 for 90c.**

Thunbergii. Rich buttercup yellow, flowering later than Sovereign. **35c each; 3 for 90c.**

Iris - Are Prepaid

THE ORCHID OF THE GARDEN

Plant lots of Iris for their grand and royal colors, their beauty of form and texture. Mass them at the borders of the lawn or among shrubbery. Plant along walks or drives.

Autumn King. Standards violet-blue, falls deep reddish purple; large; vigorous; blooms in May and a lighter crop in the fall. **50c each; 3 for \$1.00.**

Azure Skies. A ruffled self of pale lavender-blue who firmed, domed standards and almost horizontal falls are accented by a white beard. **75c each; 3 for \$1.50.**

Blue Shimmer. Shimmering white dotted and dappled with the clearest tones of blue. **\$1.00 each; 3 for \$2.00.**

China Maid. An excellent Iris in shades of pink with a slight trace of copper and lilac smoothly blended. An Iris of large size and high quality. **75c each; 3 for \$1.50.**

Dauntless. Large; standards bronze-red, falls velvety rose-red; fragrant; tall; fine. **50c each; 3 for \$1.00.**

Elmohr. Very rich, red-violet; large flowers; free blooming on tall stems. **\$1.00 each; 3 for \$2.00.**

Frieda Mohr. Large lilac rose; standards ruffled; fragrant; tall. **50c each; 3 for \$1.00.**

Garden Magic. A rich, vivid glowing red; good form; blooms late. **75c each; 3 for \$1.50.**

Grand Canyon. A blending of deep canyon colors, plum, copper and gold, with a light form of ruffling. **75c each; 3 for \$1.50.**

Great Lakes. Pure clear blue with almost white beard. **75c each; 3 for \$1.50.**

Gudrun. A creamy white with brilliant orange beard and a slight gold dust sprinkling over the entire bloom. **50c each.**

Indian Chief. Very large; standards suntan tinged lavender and pink; falls velvety crimson; fragrant; tall; low and well branched; medium. **40c each; 3 for 90c.**

Morning Splendor. Fine, very large; standards deep lavender-violet; falls velvety reddish-purple; fragrant. **40c each.**

Morocco Rose. Pink-rose self with a soft yellow glow at the heart; bright gold beard. **50c each; 3 for \$1.00.**

Ola Kala. Very dark yellow self; medium large ruffled flowers on 36-inch well branched stem. **\$1.00 each.**

Ranger. On outstanding late blooming Iris of the red shades; large flowered self of distinctive coloring. **\$1.50 each; 3 for \$3.00.**

Sherwin Wright. Pure golden yellow; fragrant; blooms freely; 1½-2 feet. **40c each.**

Snow White. Excellent medium priced white. **40c each.**

Southland. A new deep golden yellow variety with large flowers on fine form and heavy substance on well branching stalks. **50c each; 3 for \$1.25.**

Tapestry. Smoky mulberry and purple. **40c each.**

Wabash. Clean white standards and bright purple falls; large on well branched stalks. **50c each; 3 for \$1.00.**



A field of Iris at Sarcocie Nurseries.

Peonies Are Easily Grown



A field of Peonies in bloom at Sarcoxie Nurseries.

All Peonies Prepaid

Hardy as the oak, they are easily grown. Our Pennant Brand Peonies are good strong three to five eye divisions, the finest plants from the nursery row. Planting instructions packed with each order.

Listed below are a few good standard varieties popular among gardeners. Our more complete list will be mailed on request.

Baroness Schroeder. (9.0) Large, delicate flesh, becoming white; globular, compact, rose type flowers; fragrant; mid-season; blooms freely. **\$1.00 each; 3 for \$2.50.**

Crown of Gold. (8.1) Snowy white, reflecting golden stamens and lighting up the flower; center petals flecked and edged carmine; large; semi-rose type; fragrant; late; upright, vigorous with strong stems. **75c each; 3 for \$1.50.**

Duchesse De Nemours. (8.1) Superb ivory-white, greenish markings toward center, becoming pure white; beautiful in the bud; medium to large; crown type; medium early; strong; vigorous; good stems; blooms freely. **75c each; 3 for \$1.50.**

Duchesse D'Orleans. Large carmine-pink guards, center soft pink and salmon, becoming amber-yellow; medium to large; bomb type; fragrant; midseason; strong, vigorous; very tall; blooms freely. **75c each; 3 for \$1.50.**

Duke of Wellington. (7.8) Broad white guards, center very full, sulphur-white, becoming pure white; fragrant; bomb type; late; blooms freely; vigorous; long, strong stems; very large. **75c each; 3 for \$1.50.**

Edulis Superba. Beautiful bright, deep rose-pink; very fragrant; large; good form; early, crown type; strong; vigorous; blooms freely. **\$1.00 each; 3 for \$2.50.**

Felix Crousse. (8.4) Brilliant, rich, even dazzling ruby-red; large; globular, solidly and compactly built; bomb type; fragrant; midseason; vigorous; blooms freely; fine. **\$1.00 each; 3 for \$2.50.**

Festiva Maxima. (9.3) Large; pure paper-white, some center petals flecked purplish-carmine; early; rose type; very fragrant; vigorous; very long; heavy stems. **\$1.00 each; 3 for \$2.50.**

Francois Ortegat (6.7.) A lovely semi-rose type. Large deep crimson with brilliant golden-yellow anthers. This beautiful Peony is fragrant and blooms in the midseason. **\$1.00 each; 3 for \$2.50.**

Hans P. Sass. (9.19.) Shell-pink, deep in center; late: **\$1.50 each; 3 for \$3.00.**

Karl Rosenfield. (8.8.) Rich velvety-crimson; very tall, compact grower of stately habit; late. **\$1.00 each; 3 for \$2.75.**

Lillian Wild. First certificate award winner 1950 American Peony Society Show. Lovely, delicate, flesh pink becoming white, very large, compact rose type. Late. Originated and introduced by us. **\$2.00 each; 3 for \$5.00.**

Mme. De Verneville. Fine, large compact flowers literally packed with petals; broad white guards; center slightly blush, becoming pure white, flecked carmine; delightfully fragrant; bomb type; early; vigorous; medium height; good stems. **\$1.00 each; 3 for \$2.00.**

Minuet. (9.19.) Very large; rose type; light pink; stiff stems; vigorous; late. **\$2.00 each; 3 for \$5.00.**

Modeste Guerin. Lively, bright, very deep pink with a purplish cast; very fragrant; bomb type; excellent form; mid-season; upright habit; blooms freely. **75c each; 3 for \$2.00.**

Mons. Jules Elie. (9.2) Immense, globular, very full, bomb type flowers on strong stems; glossy flesh pink shading to deeper rose at base; very fragrant; early midseason; blooms freely. **\$1.00 each; 3 for \$2.50.**

Myrtle Gentry. (9.06.) A beautiful late, light pink fading to nearly pure white with age; a perfect rose form flower; tints of flesh and salmon show throughout the petals; good grower. **\$2.00 each; 3 for \$5.00.**

Ozark Beauty. Exquisite radiant pink of compact rose type. Late free bloomer on heavy stems. Originated by us and received honorable mention as one of the best new introductions at the 1950 American Peony Society Show. **\$1.00 each; 3 for \$2.50.**

Queen Emma. A very large, very full, fragrant; bright light pink rose type flower; midseason to late; blooms freely; compact grower; the flowers keep and ship well. **\$1.00 each; 3 for \$2.50.**

Red Rocket. Bright red, very large bomb type. A free bloomer on tall stems. **\$1.00 each; 3 for \$2.50.**

Sarah Bernhardt. (9.0.) Apple-blossom-pink, the petals tipped white; compact, semi-rose type; fragrant; late mid-season. **\$1.00 each; 3 for \$2.50.**

Japanese Peonies

Of oriental origin, these Peonies are always exciting to grow, their brilliant guard petals nesting the center of stamens ranging from chamois to yellow and buff. Exquisite fragrance.

Dr. Jekyll. A late brilliant dark red with center flashed distinctly lighter. **\$1.00 each; 3 for \$2.50.**

Mikado. (8.6) One of the best with crimson guards surrounding a center of chamois. **\$1.00 each.**

Mrs. Wilder Bancroft. (9.08) Brilliant dark red with red stamens tipped yellow. We consider this one of the best early Japs. **\$2.00 each; 3 for \$5.00.**

Neon. Midseason, unusual radiating rose pink guards, bright yellow stamens. **\$2.00 each; 3 for \$5.00.**

Nippon Beauty. (9.27) Rich deep red with some yellow edges on center petals; strong growing. **\$1.00 each; 3 for \$2.50.**

Nippon Splendor. (9.06) Dark red Jap, extra fine, yellow edges on center petaloids. Midseason; tall, stiff stems. **\$1.00 each.**

Red Star. Tall, deep brilliant red with red stamens tipped gold. An exceptional value for the price. **\$1.50 each.**

The essentials for growing plants are good soil, drainage, and sufficient water.

Leaf mould or compost incorporated in the soil and an occasional mulch of course material pay dividends in better fruit and flowers.

FOR SPECIAL PEONY OFFERS SEE NEXT PAGE

Sarcoxie Nurseries Special Offers

OF PEONY, IRIS AND DAYLILY COLLECTIONS



Ozark Garden IRIS Collection "A"

12 good favorite Iris varieties:

Autumn King, purple
 Azure Skies, blue
 Dauntless, red
 China Maid, pink
 Freda Mohr, rose
 Indian Chief, tan
 Morning Splendor, violet
 Pink Satin, pink
 Red Dominion, red-violet
 Sherwin Wright, white
 Snow White, white
 Southland, yellow

This \$6.40 value
 Postpaid for Only **\$4.50**

Peony Collection "A"

Five good named varieties early to late, assorted colors individually labeled.

This \$4.25 value
 All 5 plants prepaid for only **\$3.50**

Peony Collection "B"

Ten good named varieties, early to late, assorted colors individually labeled.

This \$8.75 value
 All 10 plants prepaid for only **\$6.00**

Red, White and Pink "C"

Three of the most popular Peonies

- 1 Felix Crousse—Brilliant rich red.
- 1 Festiva Maxima—Large white, red markings.
- 1 Edulis Superba—Beautiful bright deep pink.

This \$3.00 value
 All 3 prepaid for only **\$2.50**

Prize Peony Collection "D"

- 1 Lillian Wild—One of largest whites.
 - 1 Ozark Beauty—Exquisite radiant pink.
 - 1 Red Rocket—Bright red, very large.
- All ribbon flowers 1950 National Peony Show.

This \$4.00 value
 All 3 plants prepaid for only **\$3.50**

Single Peonies

Single Red Peony 90c each, prepaid

Hemerocallis (Daylilies) Special

Eight popular varieties. A good assortment of colors and varieties selected to bloom from June through September. Labeled.

- August Pioneer.** Yellow and red. Aug. and Sept.
- Bagdad.** Orange, red and yellow. June and July.
- D. D. Wyman.** Yellow spotted red. July and Aug.
- Gloria.** Orange. June.
- Linda.** Pink. Long blooming season.
- Purple Waters.** Purple. Long blooming season.
- Rajah.** Mahogany red. July and Aug.
- Sovereign.** Chrome yellow. July.

\$4.35 value All 8 for only \$3.50 Prepaid

Red, White and Blue Iris Collection "B"

2 Red Dominion, Red—2 Snow White—2 Azure Skies, Blue

This \$3.50 value
 All 6 plants prepaid for only **\$2.75**

Siberian Iris

A fine Iris for rock gardens, border planting or mass planting. Flowers resembling Japan Iris but smaller, borne on wirey stems 12 to 18 inches. Foliage narrow and blade-like.

Siberian White 35c each; 3 for \$1.00; prepaid
 Siberian Blue 35c each; 3 for \$1.00; prepaid

Japanese Iris (Kaempferi)

Blooms after other Iris are gone, producing large flat flowers on graceful stems.

- Gold Bound.** White with golden stripes.
- Mount Hood.** A double light blue shaded darker.
- Purple and Gold.** Deep purple with golden center.

60c each 3 for \$1.40 \$5.00 per dozen; prepaid



Showy Japanese Irises for tall borders or at the Water's edge



STRAWBERRIES

EASY TO GROW—NO OTHER FRUIT GIVES SUCH QUICK RESULTS

- ✓ **Aroma.** A heavy bearer and the leading commercial variety in this section. Very large, conical, glossy deep red. Firm; ships well; begins midseason and continues late.
- ✓ **Blakemore.** Originated by the United States Department of Agriculture. Bright light red; medium size and good quality. Firm, ships and keeps well; valuable commercially. Jells easily; early. Grown from yellows-free plants.
- ✓ **Dorsett.** Early; rich bright red; large and firm. Good quality.
- ✓ **Senator Dunlap.** Dark glossy red; resembles Warfield and of the same rich, juicy flavor; medium size. Midseason; bears heavily and ships well; succeeds almost everywhere.

PREPAID PRICES OF ABOVE STRAWBERRIES:
25 for \$1.00; 50 for \$1.60; 100 for \$2.50; 250 for \$5.00.

EVERBEARING STRAWBERRIES

- ✓ **Giant Gem.** One of the largest of the everbearing strawberries. Produces bright red berries rich in flavor but slightly tart.
Same Prices as Streamliner.

- ✓ **Streamliner.** Truly a fine fruit, a heavy producer of medium to large berries, sweet, bright red and firm.

25 for \$1.25; 50 for \$2.00; 100 for \$3.50; 250 for \$7.50; prepaid.

- ✓ **Brunes Marvel.** Marvelous as a heavy producer of the sweetest berries you have tasted. This everbearing strawberry is very hardy, produces everywhere and can be recommended as a non-acid fruit that can be eaten without fear of rash frequently suffered by some who eat fruit high in acid.

25 for \$1.75; 50 for \$3.50; 100 for \$6.50; 250 for \$15.00; prepaid.

RED RICH

(Plant Patent No. 993)

A new variety of everbearing strawberry which is truly a "taste thrill." Beautiful large rich red berries with unusual sweetness and flavor. Bears midseason to frost.

12 for \$2.95; 25 for \$5.00; 50 for \$8.50;
100 for \$15.00.
Prepaid.



ARMORE (New)

ARMORE—New Aroma-Blakemore Cross

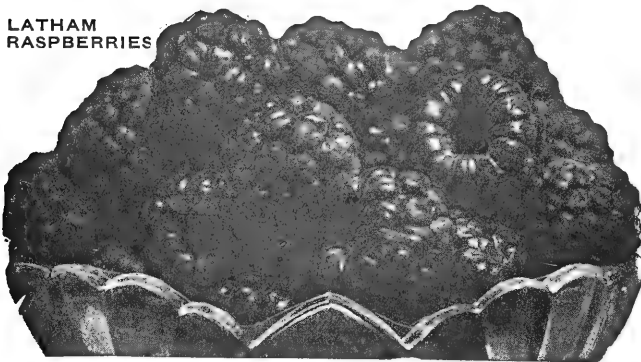
An exceptionally fine berry recently released by the University of Missouri. Commercial growers favor this variety due to its large size and high quality. It has proved to be a good shipper, heavy plant maker and does well on old ground. It produces a sweet firm fruit that ripens later than Blakemore and through the Aroma season. Not everbearing.

Armore prices....

25	50	100	250	500	1000
\$1.50	\$2.50	\$3.50	\$6.75	\$12.50	\$20.00

RASPBERRIES

LATHAM RASPBERRIES



- ✓ **Cumberland.** One of the best Blackcaps; large, firm, of excellent quality. Early to midseason; hardy, vigorous, productive. Plant 4 by 7 feet. **\$1.75 for 10; \$3.25 for 25; 50 or more at \$12.00 per 100; prepaid.**

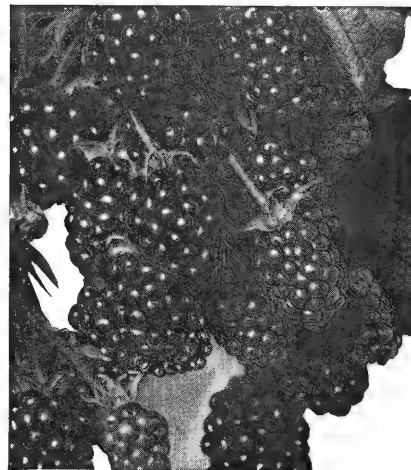
- ✓ **Indian Summer.** An Everbearing Red Raspberry. Berries large and full flovared. Produce an early summer crop—autumn crop from September until frost. **\$2.25 for 10; \$4.50 for 25; 50 or more at 13 1/2c each; prepaid.**

- ✓ **Latham.** Large; attractive brilliant red. Good quality; productive. **\$2.00 for 10; \$4.00 for 25; 50 or more at \$15.00 per 100; prepaid.**

THORNLESS BOYSENBERRIES

No new fruit has caused such a sensation. Imagine a cross combining the delicious flavors of Loganberry, Blackberry and Raspberry. You get just that in this new fruit. So large that only a few berries are required to fill a pint. Fruit 1 1/2 to 2 inches long, wine red in color. Bears good crop the second year. **5 for \$1.00; 10 for \$1.75; 25 for \$3.50 50 or more at \$12.00 per 100; prepaid.**

BLACKBERRIES



Blackberries begin bearing the second year and under suitable conditions may be depended upon for regular, profitable crops A strong, deep loam that will retain moisture, tending toward clay rather than sand, is best. If properly tended they may be planted 2x6 ft., 3,600 per acre.

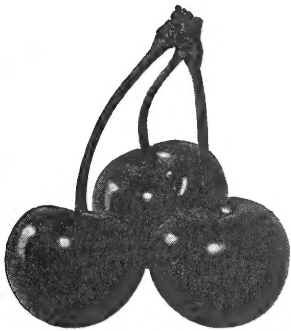
- ✓ **Early Harvest.** Medium size but juicy, sweet. Valuable for extreme earliness, hardness and productiveness; firm, ships well. **\$1.65 for 10; \$3.50 for 25; 50 or more at \$10.50 per 100; prepaid.**

- ✓ **Eldorado.** Medium to large, oblong-conical, jet black, sweet. Midseason; hardy, vigorous, productive. **\$1.65 for 10; \$3.50 per 25; 50 or more at \$10.50 per 100; prepaid.**

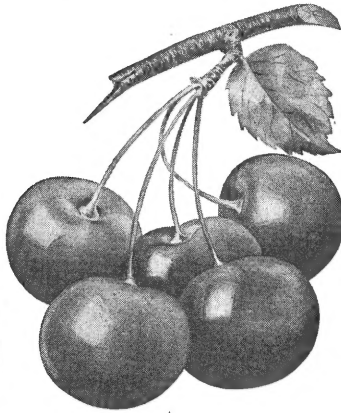
Fruit Trees for the Home Orchard

The Following Fruit Trees Are **PREPAID** To Your Door

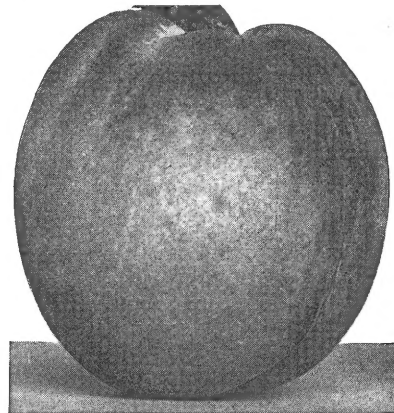
XX Grade Fruit trees are 2 year 1 1/16 in. caliper, 4 1/2 ft. and up.
Standard Grade trees are 2 year 7/16 - 9/16 in. caliper, 3 to 4 ft.



Montmorency



Early Richmond



Peach Trees

Cherries for Quick Results

Cherries give quick results, often coming into bearing the fourth year. On good, well drained soil they are successful. On wet soil they are short-lived. Plant 18 to 20 feet apart. There is always a market for Cherries if you have more than you need for home use.

Price of Cherry Trees

XX Grade\$1.95 each; any 5 or more, \$1.75 each
Standard 1.45 each; any 5 or more, 1.30 each

- ↳ **Early Richmond** (May Cherry). Medium size but very productive; round; bright red, darker when fully ripe; very juicy, sprightly acid; latter May-June; hardy; profitable.
- ↳ **Montmorency**. A week or ten days later than Early Richmond; rather large; dark rich red; juicy, pleasant acid; excellent quality; vigorous; hardy; productive; succeeds everywhere.

Plum Trees

Easily grown; bear in spite of neglect, yet respond liberally to good care. Plant 20 to 24 feet apart.

Prices of Plum Trees

XX Grade\$1.95 each; any 5 or more, \$1.75 each
Standard 1.45 each; any 5 or more, 1.30 each

- ↳ **Abundance**. Brilliant cherry red in color and has firm, sweet juicy flesh. Ripens in early August. A heavy producer.
- ↳ **Burbank**. Large purplish red fruit with very sweet amber flesh. Ripens early August.
- ↳ **Gold**. Golden yellow with red cheek, this tasty plum should not be overlooked where a firm golden fruit is desired. Late July.
- ↳ **Stanley Prune**. Beautiful purple-blue skin with sweet golden flesh. A freestone that ripens early. A good canner or table fruit.

Apricots

Prices of Apricots

XX Grade\$1.95 each; any 5 or more, \$1.75 each
Standard 1.45 each; any 5 or more, 1.30 each

- ↳ **Moorpark** (Moorpark). Large orange-yellow; good quality; ripens between fruiting season of cherries and peaches.

Nectarine

Nectarine, Surecrop, 4 to 5 ft.....\$1.75 each

Peaches come into bearing younger than any other tree fruit, under favorable conditions giving a crop the third year and yields are larger as the trees grow older. A few trees won't cost as much as you probably pay for peaches in one year, and none are so delicious as those freshly picked when ripened on the tree. To the man who has room for a commercial orchard, and will cultivate, prune and take care of the trees, peaches offer great opportunities for good profits. A sandy loam or gravelly soil is best, but the peach adapts itself to almost any well drained soil. Sometimes they are planted 18x18, but 25x25, requiring 75 trees per acre, is better.

Prices of Peach

XX Grade.....\$1.50 each; any 5 or more, \$1.35 each
Standard 1.00 each; any 5 or more, .90 each

- ↳ **Belle of Georgia**. Very large; white, red cheek; flesh white, firm, juicy, good; freestone; mid-August; productive.
- ↳ **Champion**. Large; white, red cheek; freestone; flesh white, sweet, juicy, rich; early August. One of the hardiest peaches.
- ↳ **Golden Jubilee**. A new large early peach; freestone; yellow flesh and has a distinct blush; fine quality. Highly recommended by leading authorities.
- ↳ **Elberta**. Very large; yellow, crimson cheek; flesh yellow, firm, juicy, good; freestone; mid-August; productive.
- ↳ **Hale Haven**. Large; yellow; freestone of high quality, ripening about ten days or two weeks ahead of Elberta.
- ↳ **J. H. Hale**. Large; yellow with red cheek; fine grained; a little earlier and more round than Elberta.

Pear Trees, Standard

The quality is improved if gathered when full size and beginning to color but yet firm and ripened in a cool dark room.

Prices of Pears

XX Grade.....\$1.85 each; any 5 or more, \$1.60 each
Standard 1.25 each; any 5 or more, 1.10 each

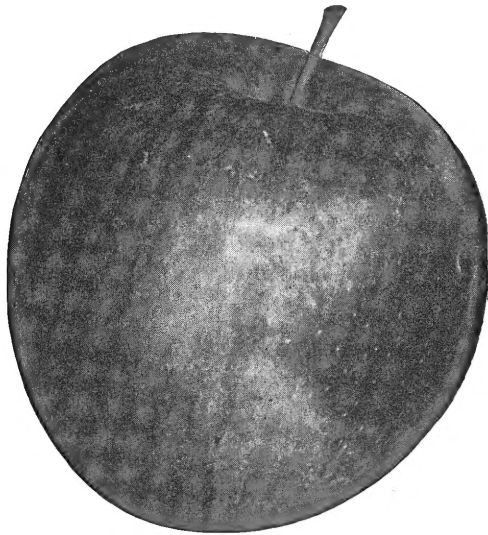
- ↳ **Bartlett**. Large, waxy yellow with red blush; juicy, fine grained, rich, good quality; latter August; bears young.
- ↳ **Douglas**. Golden yellow, flushed with pink, tender, juicy, excellent flavor; resistant to blight; bears young.
- ↳ **Lincoln**. Large, yellow, quality good; resistant to blight; bears young; very hardy.

Fruit Trees Should Be Cut Back When Planted to product a low-branched tree.

Pruning and Planting Instructions are supplied with each order.

FRUITS—continued

Apple Trees—Prepaid



Prices of Two-Year Apple:	Each	5 at	25 at
XX size, 11/16 in. caliper up, about 5 to 6 ft.....	\$1.50		\$1.35
Standard size 7/16 to 9/16 in. caliper, about 3 1/2 to 4 1/2 ft.....	1.00		.90
Any 5 or more at the 5 rate.			

- ✓ **Grimes Golden.** Beautiful yellow; fine quality; Oct.-Dec.
- ✓ **Lodi.** An early thick-skinned variety that keeps and ships well. Ripens around July first. Similar to Yellow Transparent except larger and more waxy.
- ✓ **Red Delicious.** Colors early and is red almost all over.
- ✓ **Red Jonathan.** Deep red; fine quality; Oct. and later.
- ✓ **Red Rome Beauty.** Fruit solid red, flesh firm and slightly tart. Excellent for baking, for pies or to store for later use. Bears at an early age.
- ✓ **Red Stayman Winesap.** Deeper red than the old Stayman; firm, juicy, subacid; good; keeps late; bears young.
- ✓ **Winesap.** Bright deep red; flesh yellow; very rich, firm; very juicy; sprightly subacid; very good; winter.
- ✓ **Yellow Delicious.** Large; golden yellow; late winter; excellent.
- ✓ **Yellow Transparent.** Yellowish-white; fine grained; juicy; sprightly subacid; mid-June; hardy; very young, abundant bearer.

Crab Apple

✓ **Virginia Crab Apple.** One of the best for jelly. Very juicy; of medium size and golden yellow in color. This crab apple is a sure producer and is prolific. 4 1/2 to 5 feet. **\$1.50 each.**

5-in-1 APPLE TREE

5-in-1 Apple Trees provide a whole orchard on one tree, with red and yellow fruit, early and late, on the same tree.

On Yellow Delicious tree are the following varieties:
 Red Jonathan, Red Stayman, Anoka,
 Red Delicious and Yellow Transparent.
Each \$2.95. Not Prepaid

Gooseberries—Prepaid

Easily grown and readily respond to a little care. Plant 3x5 or 4x5 ft. A northern slope or slight shade is best.

✓ **Houghton.** The best for most sections; medium size but a profuse bearer; resistant to rust; pale dull red when ripe, usually picked green. 2 year No. 1, 65c each; 3 for **\$1.50**; 6 for **\$2.40**.

Grape Vines—Prepaid

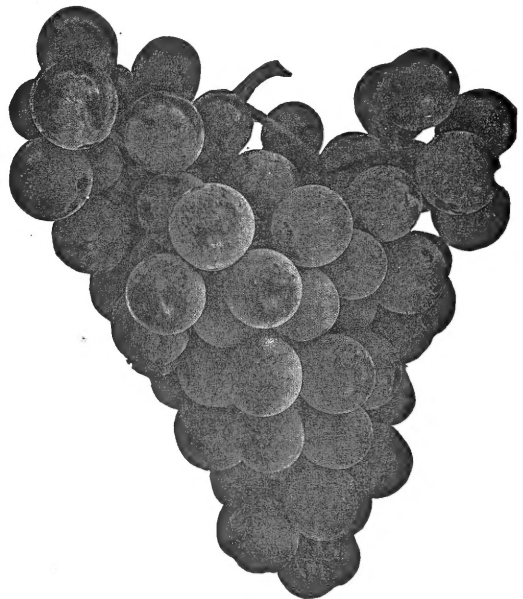
✓ **Concord.** Large; the most popular black grape; juicy; sweet; hardy; productive; vigorous; mid to late August.

✓ **Fredonia.** Black; bunch and berries large; good flavor; productive; early; has given good results in Missouri.

✓ **Moore Early.** Black; large; value for size, hardiness; productivity and season, about 2 weeks before Concord.

✓ **Niagara.** Greenish-white to pale yellow; sweet; productive.

Prices of Grapes:	Each	5 at	10 at	25 at
Concord, 2 yr. No. 1.....	\$0.35	\$0.30	\$0.25	\$0.23
Fredonia, 2 yr. No. 1.....	.45	.40	.35	.30
Moore Early, 2 yr. No. 1.....	.45	.40	.35	.30
Niagara, 2 yr. No. 1.....	.45	.40	.35	.30



Currants for Jelly—Prepaid

✓ If you like home-made jelly, plant Currants, 3x4 ft. In the Central States they should have partial shade or a northern slope. Red 2 yr. No. 1, 65c each; 3 for **\$1.50**; 6 for **\$2.40**.

Asparagus—Prepaid

✓ **Mary Washington.** Large; productive; resistant to rust; an excellent variety.

2 yr.	\$1.00 per 10;	\$2.00 per 25;	\$6.00 per 100
1 yr.75 per 10;	1.50 per 25;	4.00 per 100

Rhubarb—Prepaid

✓ **Victoria.** A giant red stalked variety with delicate flavor, mildly acid. Early and tender.

Large whole roots.....3 for 75c; 6 for **\$1.25**; 12 for **\$2.25**

✓ **MacDonald.** A new, bright red rhubarb of high quality. The best variety where soil is good and moisture can be maintained. Stays tender far into the summer. Does not seed.

Divisions75c each; 3 for **\$2.40**; 6 for **\$4.50**



RED FLOWERING PEACH

DOGWOOD, Red Flowering

(Cornus florida rubra)

Beautiful and unusual in late April. Flowers like those of the White Flowering but a deep pink. Foliage and berries like those of the white form.

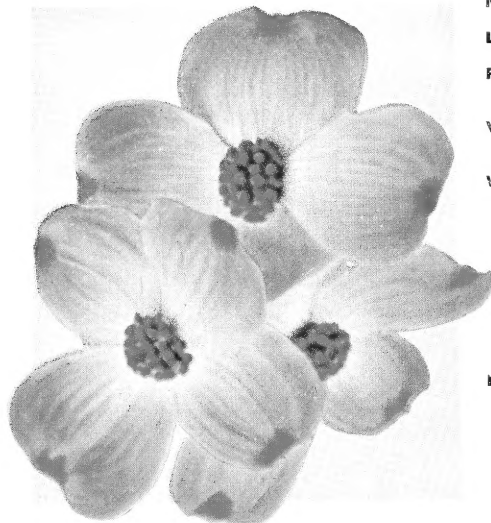
- Each**
 2 to 2½ ft., roots in moss, prepaid \$3.25
 2½ to 3 ft., roots in moss, prepaid 4.25
 3 to 4 ft., roots in moss, prepaid 6.25

DOGWOOD, White Flowering

(Cornus florida)

A large shrub or small tree, usually attaining 10 to 15 feet. Valuable for specimens or naturalistic plantings in sun or partial shade. Lovely single white flowers in early spring. Keep it watered.

- Each**
 2 to 3 ft., roots in moss, prepaid \$1.75
 3 to 4 ft., roots in moss, prepaid 2.50
 4 to 5 ft., roots in moss, prepaid 3.50



RED FLOWERING DOGWOOD
The Showiest Tree of All

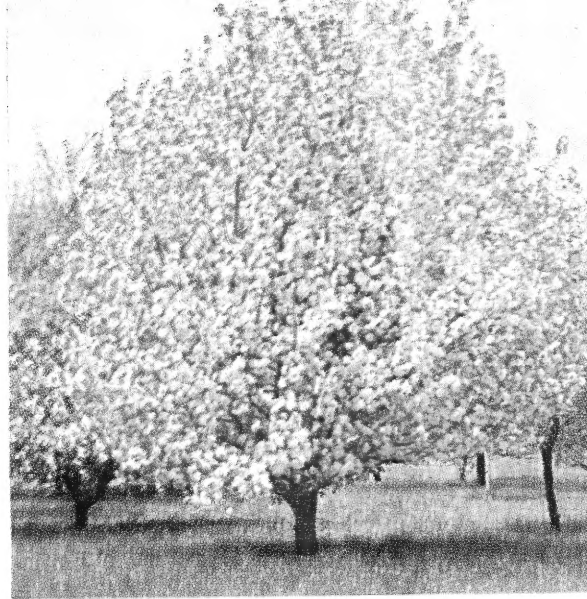
*Flowering
 Trees*

**Add So Much to the
 Joy of Spring**

**PEACH,
 Double Red
 Flowering**

No small tree is more colorful in the spring; excellent in group plantings or as an accent plant.

- Each**
 3 to 4 ft. \$1.50
 4 to 5 ft. 1.95
Prepaid



HOPA CRAB

CRAB, Hopa

Carmine-rose flowers, 1¼ to 1½ in. across. Cover the tree in latter April; twigs, new leaves and fruit are red.

- Each**
 3 to 4 ft., prepaid \$1.50
 4 to 5 ft., not prepaid 2.00

SPECIAL OFFER
For Naturalizing
ONE EACH — All 2 to 3 Feet
 Hopa Flowering Crab Redbud
 White Flowering Dogwood
PREPAID FOR \$3.50

REDBUD - Judas Tree

(Cercis canadensis)

A small tree, outstanding in April with its myriad of rose-pink, pea-shaped flowers ½ inch long, clustered thickly along and almost concealing the leafless younger branches. Contrasts beautifully with White Flowering Dogwood. Leaves heart-shaped, 3 to 5 inches long, bright yellow in autumn.

- Each**
 2 to 3 ft., prepaid \$1.15
 3 to 4 ft., prepaid 1.50

Lilac, French Hybrids

Blooms young—often the year planted

CHARLES JOLY. Bright dark purplish red to wine-red; large; fragrant; semi-double to double; midseason.

CHARLES X. Purplish red, becoming lilac as the flower ages; while not the largest it is one of the most reliable free bloomers and makes an excellent display; single.

EDMOND BOSSIER. Deep purplish red; fragrant; single; large.

ELLEN WILLMOTT. Buds seafoam yellow, turning white. Large, double florets. Medium in height.

KATHERINE HAVEMEYER. Violet-pink aging to lavender-blue; double; large; fragrant; long, compact clusters.

MADAME LEMOINE. Best double pure white.

LUDWIG SPAETH. Single, crimson-purple; one of the darkest; rather dwarf.

PASCAL. Single, dusty lavender-pink; early and showy. Rather tall; delightfully fragrant.

VOLCAN. Red tinged purple, becoming deep ruby-purple; large florets; rather long clusters; fragrant; single; excellent.

WILLIAM ROBINSON. Very double; violet-pink, large, compact flower trusses. Fragrant; blooms freely. We recommend it as one of the best. Rather dwarf.

PRICES OF ABOVE LILACS

- 12 to 18 in., prepaid \$1.25 each
 18 to 24 in., prepaid 1.60 each

PERSIAN LILAC

PERSIAN PURPLE. Single, beautiful lilac flowers literally cover the bush in latter May; moderately fragrant. Valuable because they bloom a week to ten days later than other Lilacs. They are tall growing, attaining a height of 8 to 10 feet; are excellent as specimen plants, in shrub groups, or as a hedge.

- 18-24 in., prepaid, \$0.80 each; 3 for \$2.25
 2- 3 ft., prepaid, 1.10 each; 3 for 3.15
 3- 4 ft., prepaid, 1.25 each; 3 for 3.45



FRENCH HYBRID LILAC

Everblooming Baby or Polyantha Roses

These dwarf type Roses are excellent for massing in beds or for planting in long rows. Blooming profusely from June until frost, they make a marvelous display. Many are using them in place of Petunias and other one-season annuals, thus eliminating the necessity of replanting each year.

See Roses—
Inside Front Cover

ORANGE TRIUMPH, Baby Rose

Each	\$ 1.25
3 for	3.50
10 for	11.00
25 for	25.00

Prepaid

Do Not
Forget
Perennials
for Your
Garden
for
Color
Year
After
Year



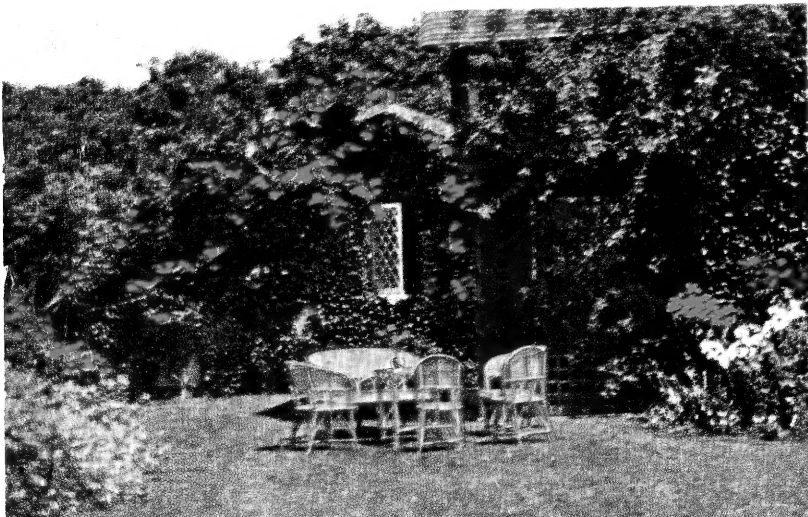
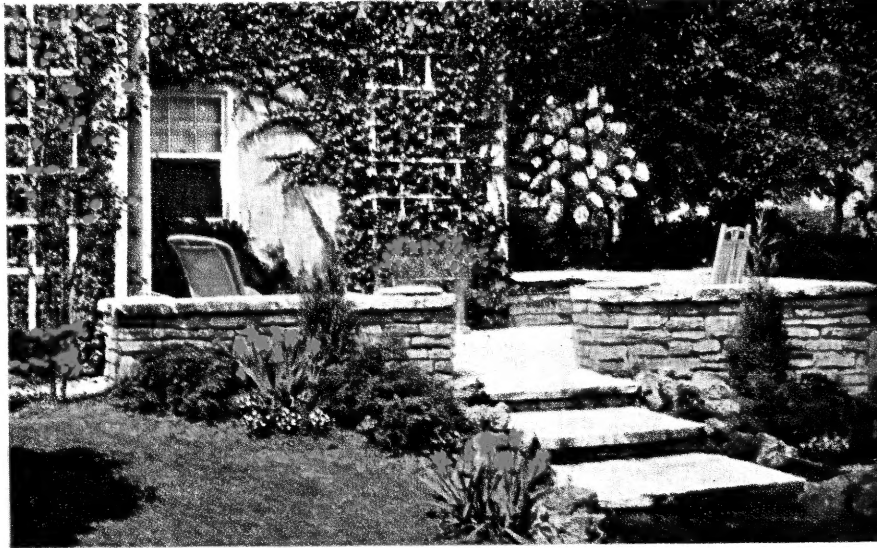
BLANKET FLOWER

Ideal for mass flower effect or for cutting. Blooms May until frost in spite of heat, cold, wet or drought. Flowers daisy-like, 2 1/2 to 3 inches across on long stems. Gaudy as a Navajo blanket.

40c ea.; 3 for \$1.00; \$3.50 per doz.



Have The Garden
**OF YOUR DREAMS
IN YOUR OWN YARD**



Gardening is Fun

AND ADDS MUCH TO THE VALUE
OF YOUR PROPERTY, AND TO YOUR
ENJOYMENT OF YOUR HOME GROUNDS

SARCOXIE NURSERIES
PEONY FIELDS

Wild Bros. Nursery Co., Sarcoxie, Mo.