

Historic, Archive Document

Do not assume content reflects current scientific knowledge, policies, or practices.



62.47

SARCOXIE NURSERIES
PEONY FIELDS
WILD BROS. NURSERY COMPANY
Sarcoxie, Missouri

Return Postage Guaranteed

Summer and Fall 1953

OUR 79th YEAR



JAPANESE PEONY

*Plant
America*

Sec. 34.66 P. L. & R.
U. S. POSTAGE
PAID
PERMIT 2

L. SARCOXIE,
RECEIVED
★ JUL 22 1953 ★
U. S. Department of Agriculture

Librarian
U. S. Dept. of Agriculture
Washington 25, D. C.

Now is the Time to Order

Your Order will be sent you at the proper time for planting.

PEONY deliveries begin late August or early September.

IRIS & HEMEROCALLIS are ready for delivery now.

IMPORTED BULBS—Deliveries beginning late September.

ALL ORDERS ARE SENT PREPAID IN U. S. A. IF FOR \$200 OR MORE.

Orders of less please add 25c for postage and packing. Missouri customers please add 2% sales tax.

PEONIES, IRIS AND HEMEROCALLIS

Grown in the Beautiful Ozarks

THE SARCOXIE NURSERIES

WILD BROS. NURSERY CO.

SARCOXIE, MISSOURI



SARCOXIE PEONIES

From the World's Peony Center

Easily Grown - Hardy as the Oak

DELIVERIES BEGINNING SEPTEMBER FIRST

Hardy as the Oak, Peonies are easily grown. We furnish good strong 3 to 5 eye divisions, the finest plants from the nursery row. Our plants listed are blooming size standard divisions. Should you want larger size, we can supply plants of 6 to 10 eyes at double the printed price. Peonies may

be planted from mid-August to April, however fall planting is preferred. **PRICES ARE PREPAID.**

DOUBLE WHITE

CANARI. Guards barely tinted flesh, center sulphur-white, becoming pure white; large, fragrant; bomb; late mid-season; tall. **90c each; 3 for \$2.00.**

CROWN OF GOLD. (8.1) Snowy white, reflecting golden stamens and lighting up the flower; center petals flecked and edge carmine; large; semi-rose type; fragrant; late; upright, vigorous with strong stems. **90c each; 3 for \$2.00.**

DUCHESS DE NEMOURS. (8.1) Superb ivory-white, greenish markings toward center, becoming pure white; beautiful in the bud; medium to large; crown type; medium early; strong; vigorous; good stems; blooms freely. **90c each; 3 for \$2.00.**

DUKE OF WELLINGTON. (7.8) Broad white guards; center very full, sulphur white, becoming pure white; fragrant; bomb type; late; blooms freely; vigorous; long, strong stems; very large. **90c each; 3 for \$2.00.**

ELSA SASS. (9.46) Full double, lovely white, veiled pink; stems stiff and strong; rose type. **\$3.00 each.**

FESTIVA MAXIMA. (9.3) Large; pure paper white, some center petals flecked purplish carmine; early; rose type; very fragrant; very long, heavy stems. **\$1.00 each; 3 for \$2.50.**

KELWAY'S GLORIOUS. (9.56) White. There is a creamy diffusion in the depth of the flower, and occasionally there will be a few crimson edges on center petals. Free flowering with strong stems. A peony that is much sought after. **\$2 each; 3 for \$4.50.**

LE CYGNE. (9.42) Large, globular, semi-rose type; pure white; delightfully fragrant; erect; medium tall; stiff stems; midseason. **\$2.00 each; 3 for \$5.00.**

MME. DE VERNEVILLE. Very fine, large compact flowers literally packed with petals; broad white guards; center slightly bluish, becoming pure white, flecked carmine; delightfully fragrant; bomb type; early; vigorous; medium height; good stems. **\$1.00 each; 3 for \$2.00.**

MARIE JACQUIN. (8.3) Semi-double white with a cluster of yellow stamens in the center. Often called the Water Lily Peony. **\$1.00 each; 3 for \$2.50.**

MRS. EDWARD HARDING. (9.3) White. Illuminated by many golden stamens hidden under the petals. Free flowering with stiff stems and excellent foliage. Has had a great deal of publicity due to the fact that it was originally introduced at \$100.00 per division. **\$1.00 each; 3 for \$2.50.**

PLYMOUTH. (9.20) White. Opening flesh. Substance extra, and one of the surest of all late doubles to open. A most valuable variety. You can always depend on its flowers lasting long and they are superb for cutting as well. **\$2.00 each.**

DELICATE LIGHT PINK—Double

BARONESS SCHROEDER. (9.0) Large, delicate flesh, becoming white; globular, compact, rose type flowers; fragrant; midseason; blooms freely. **\$1.00 each; 3 for \$2.50.**

HANS P. SASS. (9.19) Shell-pink, deep in center; late. **\$2.00 each; 3 for \$4.50.**

JEANNE D'ARC. Broad soft pink outer petals, center sulphur white and bluish, striped light crimson; midseason. **75c each; 3 for \$1.50.**

LILLIAN WILD. First certificate award winner 1950 American Peony Society Show. Lovely delicate, flesh-pink, becoming white; very large, compact rose-type. Late. Originated and introduced by us. **\$2 each; 3 for \$5.00.**

MARGUERITE GERARD. Large; light, hydrangea-pink, becoming almost white; fragrant; semi-rose type; late. **\$1.00 each; 3 for \$2.50.**

MINUET. (9.19) Very large; rose type; light pink; stiff stems; vigorous; late. **\$2.00 each; 3 for \$4.50.**

MME. DUCEL. Very large, very double; perfectly formed; globular bloom, the center petals as beautifully incurved as in a Chrysanthemum. Bright, silvery pink; fragrant; bomb type; midseason to late; vigorous; blooms freely. **90c each; 3 for \$2.00.**

MONS. JULES ELIE. (9.2) Immense, globular, very full, bomb type flowers on strong stems; glossy, flesh pink, shading to deeper rose at base; very fragrant; early mid-season; blooms freely. **\$1 each; 3 for \$2.50.**

MYRTLE GENTRY. (9.06) A beautiful, late, light pink, fading to nearly pure white with age; a perfect rose form flower; tints of flesh and salmon show throughout the petals; good grower. **\$2.00 each; 3 for \$4.50.**

QUEEN EMMA. A very large, very full, fragrant; bright light pink, rose type flower; midseason to late; blooms freely; compact grower; the flowers keep and ship well. **\$1.00 each; 3 for \$2.50.**

REINE HORTENSE. (8.7) Large, hydrangea-pink, minutely splashed on a white background, center flecked crimson; fragrant, semi-rose type; tall; midseason. **\$1.00 each; 3 for \$2.50.**

SARAH BERNHARDT. (9.0) Apple-blossom pink, the petals tipped white; compact, semi-rose type; fragrant; late mid-season. **\$1.00 each; 3 for \$2.50.**

THERESE. (9.8) Very large, rich, satiny pink, center becoming lilac-white; compact; rose type; very fragrant; midseason; medium tall. **\$1.00 each.**

VENUS. (8.3) Very large; hydrangea-pink; fragrant; crown type; midseason; tall; blooms freely. **\$1 each; 3 for \$2.50.**

MEDIUM BRIGHT TO DARK PINK—Double

DUK DE CAZES. Broad, carmine-red guards, center deep rose, crown type; midseason; medium size, but blooms freely. **90c each; 3 for \$2.00.**

DUCHESS D'ORLEANS. Large, carmine-pink guards, center soft pink and salmon, becoming amber-yellow; medium to large; bomb type; fragrant; midseason; strong; vigorous; very tall; blooms freely. **90c each; 3 for \$2.00.**

EDULIS SUPERBA. Beautiful bright, rose pink; very fragrant; large, good form; early, crown type; strong; vigorous; blooms freely. **\$1.00 each; 3 for \$2.50.**

MODESTE GUERIN. Lively, very bright, deep pink, with a purplish cast; very fragrant; bomb type; excellent form; midseason; upright habit; blooms freely. **90c each; 3 for \$2.00.**

OZARK BEAUTY. Exquisite radiant pink of compact rose type. Late, free bloomer on heavy stems. Originated by us and received honorable mention, as one of the new introductions of the 1950 American Peony Society Show. **\$1.00 each; 3 for \$2.50.**

WALTER FAXON. (9.3) Uniform, bright rose, deeping toward center; medium size; globular, semi-rose type; extra fine; midseason. **\$1.00 each; 3 for \$2.50.**

RED, BRIGHT AND DARK—Double

CHOICE RED. Correctly named, a "choice" among the reds. Very double dark red flowers on tall, straight stems. Excellent for garden or cut flower use. **\$1.00 each; 3 for \$2.50.**

FELIX CROUSSE. (8.4) Brilliant, rich, even dazzling ruby-red; large; globular; solidly and compactly built; bomb type; midseason; fragrant; vigorous; blooms freely; fine. **\$1.00 each; 3 for \$2.50.**

FONTENELLE. Medium to dark red on nice stems. Makes a fine cut flower variety. **\$1 each.**

KANSAS. Bright red held high on one of the strongest stems in the field. The foliage is clean and dark green and the plant has always been healthy. The flower is full double with a few hidden stamens. American Home Medal Winner. Won best flower of 1950, National Peony Show. **\$8 each; 3 for \$21.00.**

KARL ROSENFELD. (8.8) Rich, velvety crimson; very tall, compact grower of stately habit. Late. **\$1 each; 3 for \$2.50.**

LORD KITCHENER. Early, bright to deep red, outer petals having rather waxy sheen; very double flowers produced on heavy stems of good length. **\$1 each; 3 for \$2.50.**

MARY BRAND. M. D. Red. A large rose type bloom of dark, clear crimson showing a very brilliant sheen with very few yellow stamens buried in the collar. **\$1 each; 3 for \$2.50.**

MONS. MARTIN CAHUZAC. Dark purple garnet with black reflex. One of the darkest peonies offered. Globular, semi-rose type. Strong grower; free bloomer; dark green foliage with red stems. Fine. **\$2.00 each.**

OFFINICALIS RUBRA. (8.6) Vivid crimson; large round bloom. **\$1.00 each; 3 for \$2.50.**

PHILIPPE RIVOIRE. (9.2) Early midseason; very dark crimson with blackish sheen; double; medium height. **\$2 each; 3 for \$5.**

MASTERPIECE. Large; intense brilliant cerise; semi-rose type; fragrant; midseason. **\$1 each.**

RED ROCKET. Bright red; very large bomb type. A free bloomer on tall stems. **\$1 each; 3 for \$2.50.**

SARCOXIE. A lustrous dark, rich red; broad guards, center petals narrow; tall; thrifty; long stems. **\$2 each; 3 for \$4.50.**

THE MIGHTY MO. Fully double with a rich, lively, velvety red color. The flower grows on long stems and is a wonderful keeper. It has many yellow stamens. Winner of the American Home Achievement Medal at the 1950 National Show. **\$2 each; 3 for \$4.50.**

YELLOW OR NEAR YELLOW Double

J. C. LEGG. Large bomb type flower with a lovely yellow cast when first open. The flower reminds one of a large mum with every other petal in the bomb, yellow in color when first open. It is a heavy bloomer and has attracted considerable attention. Collar around the bomb is white. **\$2.00 each; 3 for \$4.50.**

LAURA DESSERT. The flower is round, a rose type with guard petals creamy white, enclosing a domelike center of pure canary yellow. An upright grower, holding blossoms erect for good landscape value. Like all yellows, it must be developed inside to preserve its color. **\$1 each; 3 for \$2.50.**

PRIMIVERE. (8.6) One of the best of the older yellow varieties. Guard petals are a creamy white, enclosing a central ball of sulphur yellow. Cut in the bud, and open inside to get the true color. **\$1 each; 3 for \$2.50.**

WE GROW MANY VARIETIES OF PEONIES AND IRIS NOT LISTED IN THIS FOLDER. Write us for special varieties, no doubt we can supply.



A field of Peonies in bloom at Sarcoxie Nurseries.

Japanese Peonies

Of Oriental origin, these Peonies are always exciting to grow, their brilliant guard petals nesting the center of staminodes ranging from chamois to yellow and buff. Exquisite fragrance.

BATTLE FLAG. A very deep, glowing red. Staminodes same color with golden reverse. Unusual. **\$1.00 each; 3 for \$2.50.**

DR. JEKYL. A late brilliant dark red with center flushed distinctly lighter. **\$1.00 each; 3 for \$2.50.**

GOBLIN. Bright red, center petaloids tipped and streaked. Gay and delightful garden variety. **\$1.00 each.**

IWO. An interesting pink Jap peony. Staminodes yellow suffused with pink, carpels tipped white. Excellent. **\$2.00 each; 3 for \$4.50.**

MIKADO. (8.6) One of the best with crimson guards surrounding a center of chamois. **\$1.00 each.**

MRS. WILDER BANCROFT. (9.08) Brilliant dark red with red staminodes tipped yellow. We consider this one of the best early Japs. **\$2.00 each; 3 for \$4.50.**

NEON. Midseason, unusual radiating rose pink guards, bright yellow stamens. **\$2.00 each; 3 for \$4.50.**

NIPPON BEAUTY. (9.27) Rich deep red with some yellow edges on center petals; strong growing. **\$1.00 each; 3 for \$2.50.**

NIPPON SPLENDOR. (9.06) Dark red Jap, extra fine, yellow edges on center petaloids. Midseason; tall, stiff stems. **\$1.00 each.**

RED EMPEROR. Large bright red with a full center. Truly a color sensation for the garden. **\$1.00 each.**

RED STAR. Tall, deep brilliant red with red stamens tipped gold. An exceptional value for the price. **\$1.00 each.**

Single Peonies

SINGLE RED, WHITE OF PINK. **\$1.00 each; 3 for \$2.50.**

KRINKLED WHITE. (Brand, 1928) (9.04) A large flower with great broad pure white petals like krinkle crepe paper. A continuous prize winner and good cut flower. **Each \$2.50; 3 for \$6.00.**

Peony Collection "A"

Five good named varieties early to late, assorted colors individually labeled.

This **\$4.25** value **\$3.50**
All 5 plants prepaid for only

Peony Collection "B"

Ten good named varieties, early to late, assorted colors individually labeled.

This **\$8.75** value **\$6.00**
All 10 plants prepaid for only

Red, White and Pink "C"

Three of the most popular Peonies.

- 1 Felix Crousse—Brilliant rich red.
- 1 Festiva Maxima—Large white, red markings.
- 1 Edulis Superba—Beautiful bright deep pink.

This **\$3.00** value **\$2.50**
All 3 prepaid for only

Pennant Brand Mixed Peonies

This is not a cheap lot of undesirable varieties, but a really good mixture of named Peonies, the leading commercial varieties predominating. Grown mixed. **5 for \$3.00; 10 for \$5.00 25 for \$10.00.**

AGAIN WE BRING YOU DIRECT FROM HOLLAND

"The Aristocrats of Spring"

Magnificent TULIPS, fragrant HYACINTHS

NARCISSUS and colorful CROCUS

IMPORTED BLUB DELIVERIES BEGINNING LATE SEPTEMBER



DARWIN TULIPS

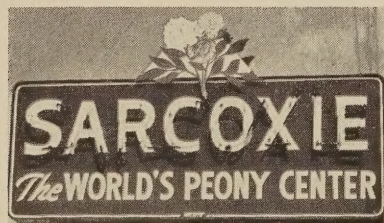
Large Size—11 to 12 Centimeter

The world's most popular tulips. Known for their strong stems and shapely flowers.

- AFTERGLOW.** Fine orange rose-orange edge.
- ALLBRIGHT.** Very deep pink.
- BARTIGON.** Brilliant fiery crimson.
- FARNCOMBE SANDERS.** Rose-scarlet.
- YELLOW GIANT.** Golden yellow.
- LA TULIPE NOIRE.** The black tulip.
- NIPHETOS.** Soft sulphur yellow.
- PHILIP SNOWDEN.** Carmine rose.
- PRIDE OF HAARLEM.** Cerise-scarlet.
- WM. COPELAND.** Lovely lilac.
- ZWANENBURG.** Snowy white.

25 Bulbs 1 variety \$2.50 10 Bulbs
50 Bulbs 1 variety \$4.50 of 1 variety \$1

For mixed bulbs, see Rainbow Tulip Mixture.



Sarcosie visitors are greeted by this neon sign which appears at the outskirts of the town.

PARROT TULIPS

Large Size—11 to 12 Centimeter

Feathered petals of brilliant colors in May.

- BLUE PARROT.** Rich bluish-heliotrope.
 - FANTASY.** Lovely soft rose, inside salmon.
 - ORANGE FAVORITE.** Bright orange with yellow base. Very fragrant.
 - THERESE.** (Improved) Fiery rose-scarlet.
- 25 Bulbs 1 variety \$2.50 10 Bulbs
50 Bulbs 1 variety \$4.50 of 1 variety \$1
Mixed Parrots 25 for \$2.25

GIANT EARLY—RED EMPEROR

Large Size—11 to 12 Centimeter

Largest and most spectacular early red.

12 Bulbs \$1.50; 25 Bulbs \$3.00

RAINBOW TULIP Mixture

A rainbow of mixed colors that bloom early to late. Excellent selection large bulbs.

25 Bulbs for \$2.25 10 Bulbs \$1
50 Bulbs for \$4.50 for only
100 Bulbs for \$8.00



NARCISSUS (Daffodils)

Large healthy imported bulbs that will produce immense flowers early next spring.

- GLORY OF SASSENHEIM.** Perianth snowy white, cup bright lemon-yellow.
- KING ALFRED.** Perianth and cup are both waxy golden yellow, large.
- MRS. E. KRELAGE.** Opening cream color, changing to white.
- ORANGE GLOW.** Sulphur-yellow perianth, dark orange cup. This excellent variety has a short cup.
3 for 40c; 10 for \$1.25; 20 for \$2.25

THE ARISTOCRATS OF SPRING

Autumn

is the time to plant
bulbs . . order now



GIANT HYACINTHS

Offer the finest combination of scent and colors.
Large size bulbs.

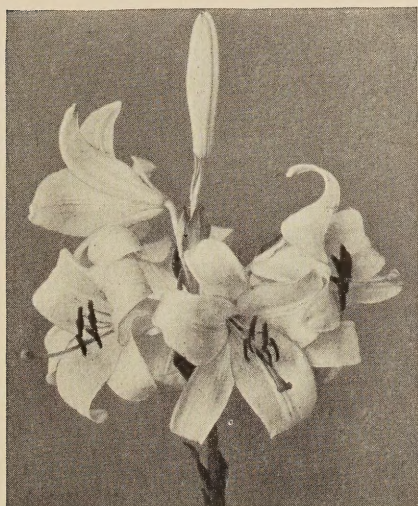
- CITY OF HAARLEM.** Golden yellow.
- GERTRUDE.** Rose-pink.
- GRAND MAITRE.** Deep blue.
- L'INNOCENCE.** Pure white.
- LA VICTOIRE.** Brilliant carmine red.

Any of above: 5 for \$1.00; 10 for \$1.75
20 for \$3.00, POSTPAID.

all of these flow-
ering beauties
will bring charm
to your home.



Crocus



Madonna Lily

CROCUS—GIANT FLOWERING

Beautiful in masses, in lawns or borders. Earliest of bulbs to bloom. First news of spring.

BLUE	}	20 Bulbs of 1 color \$1.00
PURPLE		50 Bulbs of 1 color \$2.25
STRIPED		100 Bulbs of 1 color \$4.00
WHITE		
YELLOW		

MIXED CROCUS

A mixture of all colors.

25 Bulbs \$1.00; 50 Bulbs \$1.85; 100 Bulbs \$3.50

Above Crocus are all 8 to 9 centimeter bulbs that will produce large flowers first year.

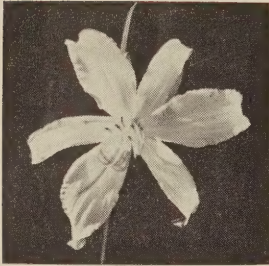
MADONNA LILIES

Large size—9 to 10 inches around.

MADONNA LILLIES. This is one of the loveliest of white lilies. Its delightful fragrance and lovely white flowers have made it a favorite everywhere. 45c each; 3 for \$1.25; 6 for \$2.00; 12 for \$3.85.

HEMEROCALLIS - Daylilies

READY FOR YOU NOW - MAILED PREPAID



Daylilies—for spring, summer, fall flowers.

Hemerocallis - Daylilies

No plant is more easily grown. It thrives most everywhere and seems equally happy in full sun or partial shade. For those "hard to grow" places and for bright color spots in the garden these plants afford a wide range of color and a long blooming season. Not bothered by disease or insect pests.

AUTUMN RED. 30 inches. Midseason, through the late season. A beautiful velvety red, resembling a bright amaryllus. Excellent for landscape purposes—giving bright color to the garden. **\$1.00 each; 3 for \$2.50.**

AUGUST PIONEER. Chrome yellow with outer half of petals flushed red; blooms August and September. 34 inches. **50c each; 3 for \$1.20.**

BAGDAD. A gay combination of several colors—orange, red, yellow and brown. 42 inches. June-July. **50c each; 3 for \$1.20.**

BABY TEARS. Very dainty. Its background is gold, its petals are deeply marked toward the end, a true rosy red. The whole flower is fully ruffled. Height 3 feet, blooms June and July. **50c each; 3 for \$1.20.**

CINDERELLA. Petals copper red, sepals lemon yellow; blooms late afternoon, remaining open all night and into the heat of the following day. Different. Blooms July. 28 inches in height. **50c each; 3 for \$1.20.**

D. D. WYMAN. One of the largest and finest Daylilies. The individual flowers measure 6 inches across. The plant is a very free bloomer; flowers are deep rich golden yellow with a brick red spot on each petal. July and August. 44 inches in height. **50c each; 3 for \$1.20.**

DELIGHTFUL DUET. Bicolor, red and yellow; a delightful combination of sunset colors. 28 inches. July. **50c each; 3 for \$1.20.**

GLORIA. Medium size orange flowers on much branched stems. June. **50c each; 3 for \$1.20.**

HARVEST MOON. Orange edged lemon; fragrant; large; tall; many buds. 3 ft. July and again in Sept. **50c each; 3 for \$1.20.**

LINDA. Pink to orange shades. Long blooming season. The whole flower is fully ruffled. **50c each; 3 for \$1.20.**

MIDDENDORFI. Rich orange yellow, very fragrant. Early to midseason. **50c each; 3 for \$1.20.**

MIKADO. Large flower on rich orange with deep mahogany-red throat. 3 ft. June and July. **50c each; 3 for \$1.20.**

MINOR, DWARF LEMON LILY. Small delightfully fragrant, deep golden yellow starry flowers in May and at intervals during summer. It forms dense clumps 12 to 15 inches high. **50c each; 3 for \$1.20.**

PINK CHARM. A deeply colored coral pink with pink stamens. 40 inches. Midseason. **Each \$1.50.**

PURPLE WATERS. Strong wine purple, full open flowers, long season of blooms. 36 inches. **\$1.00 each.**

RAJAH. Mahogany-red, shading to orange throat; delicate fragrance; very large; blooms profusely. One of the best of this color. 48 inches. July-Aug. **50c each; 3 for \$1.20.**

SOVEREIGN. Soft chrome yellow, shaded brown on outside. Early. **35c each; 3 for \$1.00.**

THUNBERGII. Rich buttercup yellow, flowering later than Sovereign. **35c each; 3 for \$1.00.**

DAYLILY SPECIAL

A good selection of color—early to late bloomer.

AUGUST PIONEER. Yellow and red. Aug. and Sept.

BAGDAD. Orange-red and yellow. June and July.

D. D. WYMAN. Yellow spotted red. July and Aug.

GLORIA. Orange. June.

LINDA. Pink to orange. Long blooming season.

PURPLE WATERS. Purple. Long blooming season.

RAJAH. Mahogany red. July and Aug.

SOVEREIGN. Chrome yellow. July.

CATALOG
VALUE \$4.35

Yours for \$3.50 ALL 8 PLANTS
LABELED

FREE WITH ALL ORDERS
OF \$5.00 OR MORE

One beautiful white Oriental Iris. Native of Asia Minor, this Iris is very prolific and excellent in naturalizing. Rather flat top similar to Japanese Iris. Grows 16 to 18 inches.

THE SARCOXIE NURSERIES

Wild Bros. Nursery Co.

SARCOXIE, MISSOURI