

## **Historic, Archive Document**

Do not assume content reflects current scientific knowledge, policies, or practices.



62,41  
A.T. EDISON'S BOOK of

*Dahlias*  
for

LIBRARY  
RECEIVED  
FEB 20 1953



1953

**Springhill  
Dahlia Farm**

R. R. No. 2

Grand Rapids, Michigan

## **COLLECTIONS**

### **Please Read Carefully**

These root collections are made up from varieties that have grown well in our own and other gardens we visited and should do well in your garden if given ordinary care. If you give them special care like spraying for insects, watering and the most important, good cultivation, you should be well rewarded for the extra care by the wonderful blooms. Of course there are some garden soils that cause failures, also improper planting and unfavorable weather, and we cannot guarantee the growth in your garden, but we do guarantee safe delivery and in good growing condition; also to be true to name, and will gladly replace any received and found otherwise, or make a satisfactory adjustment. Roots shipped anywhere in the United States.

**See Inside Back Cover for Planting Instructions**

### **NOTE**

Extras (my choice) given on orders of \$10.00 or more. This does not apply on collections offered. Your suggestions will be appreciated and given preference when possible.

### **Our Guarantee**

We guarantee all stock purchased from us to be true to name and delivered in good condition, and any stock received otherwise will be cheerfully replaced or properly adjusted. We should be promptly notified and roots returned, when complaint is made if you expect a replacement at once. Roots shipped by us and received by the purchaser with good eye showing can not be replaced. Not responsible in any case for more than the purchase price. On all replacements requested send 10 cents to cover postage and packing.

Roots cannot be replaced where loss is caused by excessive water rotting off the crown or roots in the ground.



Home of Springhill Dahlia Farm and Section of  
Dahlia Show Garden

### **VISITORS WELCOME**

Our show gardens are located on corner of Walker Ave. and 3 mile road, two and one-quarter miles north of West Leonard St. city limits. Call and get acquainted. It pays.

Our gardens and field plantings are at their best usually from September 15th on, as most of the late plantings are in bloom then. Many varieties bloom early in August even if we do not finish planting until July 1st.

### **GREETINGS FOR 1953**

The 1952 growing season was about average here. Although very dry late in the summer, my plantings produced a good crop. The show gardens and fields had thousands of blooms right up to frost.

I am presenting my 1953 book for your approval. I have added some new varieties and have omitted those from the 1952 book that were sold out. I also grow a good many of which I do not have a sufficient stock to list every year.

My thanks for your nice orders and letters during the past year. I hope to be of service to you during the coming season.

Yours respectfully,  
A. T. EDISON

### **Special Information**

All orders, large or small, will be appreciated. Have your friends write a card for our catalogue, if you do not wish to keep our book and care to pass it on to some one interested, it will be appreciated.

## State Inspected Roots

We ship roots that have been inspected and all out of the state orders will be accompanied by a certificate of inspection.

## Growers and Dealers

Ask for our Special Lists but use your business card or letterhead when request is made by mail. No special plant or cutting list in 1953.

---

### One of the Largest Growers of Minatures in the Middle West

---

ORDER EARLY—As orders are filled in rotation—field-grown roots—ordering early will insure the reservation of varieties that later may be sold out. Orders are filled with varieties called for, and unless substitution is asked, I never substitute only on late orders for collections of cheap roots.

TIME OF SHIPMENT—We ship anytime but, unless otherwise requested, tubers will be shipped between April 15th and May 1st, by express or insured mail, at my expense, any place in the United States [except States west of the Rocky Mountains] on all orders over \$2.00. Orders under \$2.00 add 15c to cover postage and packing. On all orders from western states mentioned, add 2c to price of each root to cover extra cost. In cold weather roots shipped by mail special delivery only so add 35c for special delivery and extra packing. Orders from U. S. possessions outside U. S. add 5% extra for postage and packing needed. Do not request shipment at once when you cannot plant soon.

ORDERS FROM FOREIGN COUNTRIES must be accompanied by all the necessary import blanks and permit from your Dept. of Agriculture. Also add for extra postage and special packing needed.

TERMS—Cash with order unless parties are known to me. No goods sent C. O. D. We will hold your order for you if a deposit of 25 percent is made, balance to be remitted before shipment is made.

REMITTANCES should be made by bank draft, express or postoffice money order or registered letter. Postage stamps accepted up to \$2.00. Coin should not be sent by letter unless registered. **Please send 5c, 10c, 15c and 20c stamps.**

ERRORS—While my system for handling orders is as near perfect as possible, yet in the rush of business, errors are possible to occur, and I wish to be promptly notified of such and will at once make satisfactory adjustment. Make all complaints to me, not to your friends, as we aim to please.

NAME AND ADDRESS — Remember to write your **Name, Postoffice, County and State**, also give **zone and Street Number or P. O. Box** as plainly as possible.

---

**PLANTING INSTRUCTIONS ON LAST PAGE**

---

**CLASSIFICATION OF DAHLIAS**

Formal Decorative Dahlias (F. D.). Informal Decorative Dahlias (I. D.). Incurved Cactus Dahlias (I. C.). Recurved and Straight Cactus Dahlias (R. C.). Semi-Cactus Dahlias (S. C.). Peony Dahlias (Peo.). Ball Dahlias (Ball). Show Dahlia (Show). Pom Pon Dahlias (Pom), and Miniatures [Min]. Rooted Cuttings [R. C.]

Abbreviation H. R. after Dahlia indicates an Honor Roll Dahlia.

**FOR 1953**  
**ROLL of HONOR DAHLIAS**  
**Achievement Medal Winners and**  
**Blue Ribbon Dahlias**  
**of Recent Introduction**

**ADIRONDACK SUNSET (Cackener-Parkway, 1935)**

This aptly named variety has about everything a Dahlia can offer—color, form, personality, and splendid growing habits. The color is a brilliant scarlet red with golden tips, the center being tipped in golden orange.

**Roots 60c**

**AILSA BELLE [Hulin]**

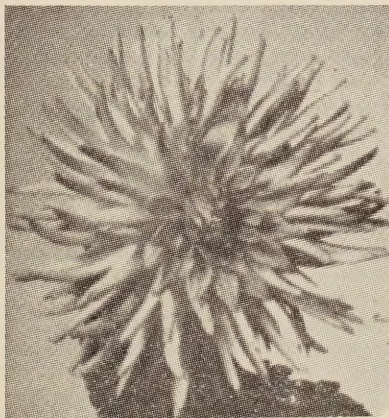
Informal of raspberry red with a shade lighter on reverse. Extra long stems, a fine keeper and great producer of both flowers and roots.

**Roots 55c**

**AGLOW [Dahl 85A]**

Bloom 10 x 6 inches. A beautiful soft apricot heavily suffused scarlet on the center area of each petal, enhanced by a golden sheen over all. Open grower with long strong stems. Needs no forcing.

**Roots \$1.25**



**AGNES E. JAMES**

**AGNES E. JAMES [Str. Cac-Bochau-Aumuller, 1951]**

A bright persimmon orange. Size 7 by 4 inches; stems 10 to 12 inches. Free bloomer. Bush 5 feet. H.R.

**Withdrawn**

**ALICIA SCHRAFFT [Swezey, 1949], S. C.**

Exquisite in both color and form. A lovely true deep pink (rose pink). The beautifully formed blooms have high centers and the petals are slightly lacinated. Size 9 to 10 inches. Foliage dark and rugged for Cactus types. Blooms facing on long, strong stems. A Blue Ribbon winner.

**Roots \$1.50**

**ALMINA [Rivel-Premier, 1944] S. C. or StC.**

Bloom 3½ x 3 inches, bush 3½ ft. A clear light lemon yellow. Has plenty of substance and good stems. Sure to be a winner.

**Roots 50c**

**ALICE MAY [Australian] I. D.**

A really great new white; sensational we would say. A tremendous flower with a beautiful artistic formation. Clean, strong, long stems and without doubt one of the greatest white Dahlias to date. Extra fine.

Roots \$1.00 Net

**ALL AMERICAN, [Salem, 1941], Semi-Cac.**

Color mulberry rose suffused salmon with wax yellow at base of petals. The petals twist somewhat and point in all directions. The bushes are six feet high and are covered with immense blooms which are held on straight stems. This is a very hardy variety. It won the American Home Achievement medal at Wisconsin State Show at Milwaukee; it was most outstanding specimen bloom at both Peekskill and Poughkeepsie. It was first Semi-cactus at the Central States Show and blue ribbon winner in several other shows.

Roots 85c



**ALLWAYS**

**ALLWAYS [Phillips Rocky River, 1952], Str. Cac.**

A large, straight cactus of Camelia rose, growing nine to ten inches in diameter. Petals are tightly rolled, and have good substance. Listed on all four Flower Grower Honor Rolls. Certificate of Merit at Maryland in 1950 with a score of 85.8. Winner of four American Home Achievement Medals in 1951 at Milwaukee, Washington, Richmond, and Williamsburg, and on Webb's Eastern Dahlia Review.

Roots \$7.50

**ANDREAS HOFER [Foreign], Str. Cac.**

Outer petals light rose, with creamy center. 4 to 5 inch blooms.

Roots 50c

**ARISTOS**

4 ft., velvety violet red, tipped white. Enormous flowers on stiff stems. Beautiful exhibition variety. Certificate Netherland Dahlia Society 1945.

Roots \$1.00

**AUTUMN BLAZE A-ID-BI [Johnson] 1948.**

This variety is fiery red early in the season; later, it is red centered with shades of gold toward the ends of the petals, a very striking color combination. The large, deep blooms are "at home" in the big bloom classes. Size 11x6.

Roots \$2.00

**AUTUMN LITES [Dixie, 1947], F. D.**

Buff with pink and yellow shadings. A large, early and constant bloomer. Deeply lacinated petals add greatly to its beauty. On both Roberts' and Eddy's Honor Rolls.

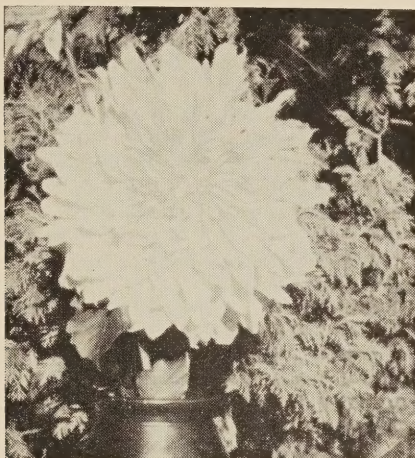
Roots 60c

**AXFORD TRIUMPH [Australian] I. D.**

Color apricot to orange. A huge Dahlia of exhibition variety. Robust plant that can carry 6 to 7 blooms at one time. Foliage insect resistant.

Roots 75c





**ARTHUR GODFREY**

**ARTHUR GODFREY [Pitt-Dahliadel, 1951], F. D.**

A beautiful orient red with orange or buff shadings. Grows very large, up to 13½ inches by 6 inches deep without disbudding. Good stiff stems hold blooms at a facing angle. Bush strong, 4 to 5 feet tall.

**Roots \$4.00**

**BARBAROSA [Ballego], F. D.**

Bloom 7 x 5, bush 4 ft. About the brightest scarlet in Dahliadom. Full centers, strong stems, and a good keeper for cutting.

**Roots \$1.10**

**B & B [Beals-Boyle-Rocky River, 1951], F. D.**

A ten inch lavender formal with good depth, a high full center and excellent substance. Stems are stiff as a rod, eight to ten inches long, holding the flower facing the side. Plants are very rugged with coarse leathery foliage. A good root maker. Size 9 by 5 inches.

**Roots \$2.00**

**BEAUTIFUL LADY [Forest View, 1945], F. D.**

Bright lemon yellow. 8-10 inch blooms, good stems, bush 5-6 feet tall. Rugged grower, insect resistant foliage, profuse and early. A good root maker and they keep well. Scored 84 at East Lansing. On Pacific Honor Roll.

**Roots 75c**

**BEAUTY QUEEN [Carlisle, 1949], S. C.**

Beautiful deep rose pink of finest color and form, and especially fine keeper, with blooms 9-10 inches in size. Bush medium height and vigorous grower. Winner of American Home Achievement Medal.

**Roots \$1.75**

**BEDFORD BEAUTY [Franks, 1946], I. C.**

Winner of the A. H. Achieve. Medal in 1943, best undis-seminated seedling, and best cactus in the show. It is an early and free-flowering cactus with a new formation, having evenly narrow petals from tip to base. Color, light amaranth pink with white around the center. Long wiry stems, excellent exhibition and cut flower novelty.

**Roots 75c**

**BEST OF ALL [S. C. To Inc. Cac, 1950] From Africa**

A beautiful red with reverse of deep lavender to purple, giving it a purple red cast. 8 to 10 inch blooms; long pointed petals.

**Roots \$1.50**

**BEN MARTIN [Steinly, 1947] F. D.**

Very dark red, attractive black velvety sheen at center, large with good foliage and stems, medium early bloomer, 5 feet. A fine introduction.

**Roots \$1.00**

**BILL JACK [Franks, 1947], S. C.**

Exhibition A-B. White and very round for semi-cactus. Profuse boomer.

**Roots \$1.50**

**BILL'S DELIGHT [Australian 1946], I. D.**

Another fine dahlia. Color, salmon and old rose faintly tipped gold giant bloom with long stems, height about 3 feet.

**Roots \$1.50**



BESS

SMITH

**BESS SMITH (Anderson) I. D., 1943**

Winner Derrill Hart Medal in 1941, scoring 85 at 3 trial grounds. This large Pure White "A" type prize winning and Honor Roll Dahlia was the big sensation at the A.D.S. Trial Grounds in 1941, scoring a Certificate of Merit at Storrs, Conn., Cincinnati, Ohio, and Fairmount, W. Va., thereby winning the much coveted Derrill Hart Medal. It is pure white, with hardly a trace of cream or other tint. Its petals are wavy and placed close, making a thick petaled, and pleasing form. Size average is about 8½ in. to 10½, depth 6 inches, with wiry 15-inch stems holding flowers on side. Bush is 5 feet tall with light green and very pest resistant foliage. It is an excellent keeper when cut and makes a superb basket Dahlia.

**Roots \$1.00**

**BLACK MONARCH SC [Pape-Rocky River]**

A very dark oxblood red, aptly described by a garden visitor as "the big misty black dahlia." A strong grower and free bloomer. Stems are long and strong holding the flower well above the plant. Blooms have a lot of substance and keep well after cutting. Size 10 by 5 inches.

**Roots \$1.00 Net**

**BLUE HORIZON [Tryon-Franklin, 1945], I. D.**

Winner of the American Home Achievement Medal and Honor Roll Dahlia. Large blooms of French Violet with a decided blue cast. Long pointed petals with absolutely tight centers. Good stiff stem holds the flower well out of the foliage. Bush tall (six feet) and low branching. This dahlia has always won the blue ribbon whenever shown. Excellent keeping qualities, on the bush and when cut.

**Roots 85c**

**BLUE RIVER, F. D.**

Color as near to a blue Dahlia as we have ever seen.

**Roots 50c**

**BLUE ROSE [Keiser, 1943], F. D.**

Color a light yellow base, overlaid bluish-rose giving it a beautiful blue effect. Blooms 9 by 3 inches and held on long stiff stems up to 30 inches in length. Free bloomer and one of the finest for beauty and cutting. A florists delight.

**Roots 90c**

**BROOKLYN CORALIE, Inc. C.**

Pink cactus, pink shading to primrose at center, this was outstanding in my garden last season.

**Roots \$1.25**

**BURCH FORAKER [1938 Slocum], I. D.**

Color sulphur yellow overcast scarlet. General color effect, bright scarlet. Good bloomer, held on good strong straight stems. Good brancher and grower 5 to 7 feet high.

**Roots \$1.00**



**B. C. or BRITISH COLUMBIA [Beals Boyle-Rocky River, 1950]  
Dec.**

A very large dahlia from 9 to 12 inches. Color mauve pink to lavender and cream. A good grower and winner of many show prizes. An H. R. dahlia.

Roots \$2.00

**CALIFORNIA IDOL (Ballay, 1935), I. D.**

Another giant yellow with a coast-to-coast show record. Has been called the "yellow Murphy's Masterpiece". Color, true, clear glistening yellow, a true pastel shade and held on the best of stems.

Roots 50c

**CALIFORNIA PAGEANT [Ballay, 1947], I. D.**

Bright gold with bronze shadings. Giant in size. One of the best 1947 introductions. 10-12 inch blooms, 6 in. deep.

Roots \$1.25

**CARL G. DAHL (Scott, 1938), I. D.**

Color amberglow with golden sheen and a sweet brier reverse. Healthy bush; height about 5½ feet; insect resistant; blooms from early summer till frost; blooms 11 to 14 inches; a Dahlia to make you proud of your garden. Selected for the Honor Roll by J. W. Johnson.

Roots 65c

**CAROLINA MAID, (Robens, 1940), I.D.**

Mr. J. W. Johnston describes this one as, outer petals deep rose with salmon suffusion; the center is lemon yellow with deep rose tipping. Very large blooms on good strong stems. Plants about five feet high. On the House Beautiful Honor Roll and winner of a Certificate of Merit scoring 86 at East Lansing, Mich. Very fine.

Roots 50c

**CAROLINE KERNOCHAN [Fioretti-Parrella, 1946], I. D.**

For those who have not seen it, let me say it is something entirely different from what you have ever seen before. The blend of the color combination is entirely new and unusually exquisite. No words can give an accurate description. Color: Center pale Lemon Yellow. Outer petals blushed deep Rose Red. A fine growing plant with insect resisting foliage. Blooms are held facing on long cane-like stems. Size of blooms 7 inches. Height 4½ feet. An Honor Roll dahlia

Roots \$1.25

**CHARLES L. MASTICK, F. D. [Mastick]**

Massive blooms of a true formal and very deep. The bushes are medium low but the deep apricot blooms are above the foliage on strong stems. Excellent keeper both on the bush and when cut.

Roots 65c

**CHEMAR'S DAHLIAMUM (Chemar, 1940), I. D.**

A striking new type of informal. Very similar to a huge Japanese Chrysanthemum. Color a bright Cadium apricot with a golden sheen. The extra long petals recurve to stem, forming a very deep flower which is held erect on long stiff stems, well above a large five-foot plant. Blooms average 10 inches by 8 inches. Even under ordinary field culture the centers are always full. Certified at the A.D.S. trial grounds with a score of 86 and notation, "We consider this a good dahlia." Also featured in Dudley's Honor Roll.

Roots 75c

## Edison's Dahlias

### CHEROKEE BRAVE, Ricks, 1939, (I. D.)

Color, dark glowing carmine. Does not burn or fade. Long stiff stems hold the large blooms perfect. Good strong grower. Blooms last season 11 inches by 6.

Roots 65c

### CHAUTAUQUA DAWN [Wallace, 1940], Cac.

A very worthy addition to the largest size exhibition cactus varieties. The blooms range from 9 to 12 inches. The ground color is light yellow overlaid mallow pink, the center being mostly yellow. The effect is orange-pink and yellow. The flowers are facing to half erect on long, stiff stems, easily disbudde<sup>d</sup>. Free bloomer until frost. A very beautiful and artistic dahlia. Certificate of Merit at East Lansing.

Roots 75c

### CHAUTAUQUA GIANT [FD] [WALLACE]

Orange color. Giant in size. Good grower.

Roots 60c

### CINDERELLA [Sarett, 1948], Cac.

The exquisite blended cactus. A blend of pure deep pink with a cream center, tipped with lavender. A thickly petaled incurved cactus in type, always symmetrical and clean in formation. Blooms 7-8 in. in depth. Stems are 8-13 in. straight and strong. The bush is 5 ft., is a dependable grower, with slightly crinkled dark foliage that is insect resistant. Winner of many awards.

Roots \$1.35

### CITY OF BUFFALO [Wallace, 1940], I. D.

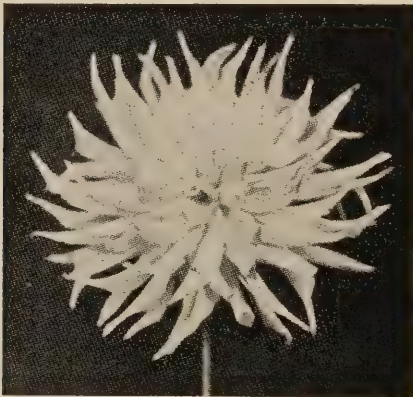
A real red dahlia. There are no adjectives to fully describe this reddest of all red dahlias. The blooms are 6-in. by 9-in. in diameter, facing on fine straight stems. The bushes are husky growers and insect resistant and produce great quantities of blooms. Some blooms come with open centers in hot weather and late in season.

Roots 50c

### CLARA CARDER (Kemp, 1936), Dec.

One of the greatest pink decorative Dahlias we have ever grown. Its formation is on the border line between formal and informal decorative, and is in a color class by itself, it being a beautiful shade of clear Cyclamen pink, the only Dahlia we know of this color. The blooms are produced in the greatest profusion from early season until cut down by frost. (H. R.)

Roots 40c



CLARA HOOK

### CLARA HOOK [Wolbert-Rocky River, 1947], St. C. to S. C.

Winner of the highest seedling honor bestowed by the American Dahlia Society, the Derrill W. Hart Medal, awarded for the highest average score at three trial grounds. Winner in the large bloom division. Also awarded three Certificates of Merit, winner of American Home Achievement Medals at Toledo and Louisville, on all three Honor Rolls. The color is golden-yellow, lightly suffused apricot on outer petals. Blooms 7 to 10 inches of excellent substance. A fine keeper when cut. Bushes tall, with glossy dark green foliage. A free bloomer.

Roots \$1.00

**CLARIAM FANCY SC-1949, [Wobert-Rocky River]**

A semi cactus with broad lacinated petals of very good substance. The color is light yellow at the centers shading deeper and suffused with rose on outer portions of the petals. Reverse has a deeper rose suffusion which shows on the twisting petals. Strong stems. Plants spreading in growth. Bloom size  $7\frac{1}{2} \times 4$ .

Roots \$1.00

**CLARIAM KELTON [Wolbert-Rocky River, 1945], I. D.**

Bloom 10 x 5. A free-blooming variety of flame red with a yellow reverse which shows on the face of the flower as the petals curl and twist. Distinctive in form as well as in color effect. Fairly tall grower, with glossy green foliage. Achievement Medal winner at Toledo, Ohio.

Roots 75c

**CLASS [Salem, 1941], F. D.**

One of the largest sulphur yellow formal decorative dahlias to date. Grown up to 15 inches, petals fall back toward stem when fully out. Strong, straight stems hold flowers directly on top. Bush rugged.

Roots 50c

**COL. A. G. RUDD [Geneva, 1943], J. D.**

Rich carmine with deeper mahogany red at center. Size of flower 11 to 12 inches, depth,  $7\frac{1}{2}$  inches and held on strong stiff stems. Winner A. D. S. show at New York and on Honor Roll.

Roots \$1.00

**COMMANDO [F. D., 1943] Golden Rule.**

A clear shade of lavender or true phlox purple and very bright. Large clean flowers from 10 to 14 inches and held on long stiff stems. An achievement medal winner.

Roots 40c

**CONSUL H. PU VOGEL [Australian], I. D.**

A large beautiful white. Free branching and good bloomer. Strong 10 to 25 inch stems, 5 foot bush, strong grower, foliage excellent. One of the finest whites.

Roots \$1.00

**CROYDON ACME, [Australian], I.D.**

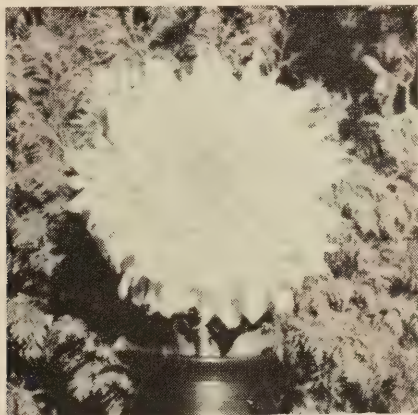
Here is another Australian "Grand Champion" that has been highly recommended to us. Most beautiful heliotrope pink. Large flowers and fine stems. A winner.

Roots \$1.00

**CROYDON GLORY [Australian, 1935], F. D.**

Beautiful formation of slightly different tone of light yellow. Blooms are a little larger than Monmouth Queen. One of the best of the newer varieties. Fine grower.

Roots 80c



**CROYDON MASTERPIECE**

**CROYDON MASTERPIECE [Australian, 1951], F. D.**

A giant, perfectly shaped bloom of Indian or burnt orange color. Not a coarse bloom and held at an angle slightly facing up. A good bloomer with long, strong stems, 12 inches to first leaf. Winner of many prizes. Has been grown up to 14 inches in diameter by 8 inches deep. Bush strong, 4 to 5 feet. I had 2 to 4 blooms 10 to 12 inches by 6 to 8 inches deep on a bush the past season.

Roots \$3.00

## Edison's Dahlias

### CROYDEN SUPERB [Australian], I. D.

One of the best yellows from Australia. 9 to 10 inch blooms on long strong stems; bush 3 to 4 feet.

Roots \$1.00

### CROYDON SUPREME, [Australian], I. D.

Grand large clear medium yellow 8 to 10 inches across and 3 to 4 inches in depth. Petals long and of good width, with cleft tips. Good straight stiff stems and free bloomer. Bushes 5 ft. high, vigorous growth.

Roots \$1.00

### DARCY SAINSBURY, F. D., (Australian)

One of the finest whites we ever grew. This Dahlia came to us from Australia. This is a champion, without exaggerating. The immense blooms are erect on cane-like stems, facing sideways. Height of plants 4½ feet.

Roots 75c

### D-DAY [Dixie, 1945], F. D.

This is a soft pink of one shade. 7 by 4 inch blooms, held on long stiff stems. Fine for cutting.

Roots 50c

### DAVE PLATT [Fioretti-Parrella, 1947], F. D. to Ball

Color, white with flush of mallow pink at center. This Dahlia we believe is one of the finest florist Dahlias. I'm sure this will replace some of the existing varieties. Received gold medal at the New York Florist Club, Hotel Pennsylvania, October 14, 1946. Also, first prize in the seedling class at Jamaica, Long Island 1945 Dahlia Show. On Mr. Dudley's Honor Roll. Height of plant 4 to 5 feet.

Roots 50c

### DEAN SHURTLEFF, [Rockley 1942], I. D.

Semi-Cactus, very large brilliant Crimson shading to an Oxblood Center. Stems are straight and stiff as steel — never droops, even in bud—9 to 13 inches to first leaf bracket. One of the finest I have in my garden. Also winner of Achievement Medal — Certificate of Merit and mentioned on three Honor Rolls.

Roots \$1.50 Net



DEEP VELVET

### DEEP VELVET [Baker-Ruschmohr, 1947], F. D.

A formal decorative of dark deep carmine with an overlay of ox-blood red. Diameter 8 to 10 inches; depth 4½ to 5½. Stems are 10 to 14 inches, straight and stiff. Bush 4½ to 5 feet. Excellent dark green leathery foliage. Winner of 2 American Home Achievement Medals, also winner of 2 certificates A. D. S. Trial Grounds.

Roots \$1.35

### DELMARVA [1944], I. D.

Fine large dahlia of orange with shadings of red. Free bloomer and good strong stems.

Roots 60c

## Prize Winning Varieties

### **DETROITER [Fleming 1935] F. D.**

A grand dark red, nearly a maroon; early and constant bloomer. Flowers six to nine inches held on fine stiff stems. Fine for basket work or cutting.

Roots 50c

### **DIRECTOR M. A. HOWE [Paralls-Hulin Blamer, 1938], F. D.**

Another very successful release of the past. Very large. Color Tyrian rose to cerise. Height 3 feet.

Roots 65c

### **DIXIE'S WINE DOT [Dixie, 1943], I. D.**

Variegated. Color white, wavy petals flecked and dotted light ampro purple and also deep rhodamine purple. Size 10 to 12 inches to 4½ and 5 inches. Do not disbud and debranch too much. Everybody liked it in my garden this season.

Roots \$1.15

### **DONNA H. JONES, [Crystal D. Gadns, 1948], S. C.**

Medium sized pink with white center. Long stiff cane-like stems. A fine color and free bloomer. Extra fine for cutting, bush 3-4 feet.

Withdrawn

### **DOROTHY TATTAM [Holland], S. C.**

A fine large pink on a good stem.

Roots \$1.25

### **EARL BALDWIN [England], S. C.**

The flowers are very large and of beautiful formation, with florets twisting, curling and propeller-shaped. The ground color is flame, but this is almost covered by lilac, rose and purplish tints.

Roots 75c

### **EAST ROW [F. D., 1942, Golden Rule]**

Size 10 x 5. Bush 5½ feet. Color soft Nopal red, on very stiff straight stems. Foliage is very heavy and insect resistant. This dahlia is one of the earliest to bloom and grows like a weed. A sure fire grower and bloomer, and can be used for either cutting or exhibition. Achievement Medal Winner at Cincinnati in 1941. Certificate of Merit in 1941 at the East Lansing Trial Grounds.

Roots \$1.50 Net

### **EDGAR GUEST [Koenig, 1944], I. D.**

Closed center petals pale lemon yellow, other petals picric yellow with outer petals Martins' yellow. Blooms 5 to 11 inches by 3 to 7 inch depth. Free Blooming and beautiful flowers on stiff stems of good length. Very fine when cut.

Roots \$1.00

### **EDITH WILLKIE [Tooker, 1942], S. C.**

The greatest white Dahlia of all time. Undefeated in three years of the toughest competition. A pure white semi-cactus Dahlia which grew 8 inches to 10 inches in the gardens this year.

Roots \$1.35



VIEW OF 3 ACRE FIELD

**EDNA D. [Diffenderffer-Loller-Rocky River, 1949], S. C.**

A huge Straight Cactus of bright rose red, which has been grown fourteen inches in diameter. A strong, tall grower with heavy dark green foliage. This variety can dominate the class for large red cactus. Stems are good. Petals broad and not too tightly rolled. Very impressive in the garden and on the show tables. Size 11 x 5.

Roots \$1.60

**EMMA CAROLINE [Swezey], F. D. 1949**

Outstanding for beauty and ruggedness, this clean white may be grown to large proportions for the field grown blooms average 10 by 7 inches. The tough heavy foliage is not molested by insects. A winner of the American Home Achievement Medal. Scored 85.5. Bushes are rugged and strong and grow 4½ feet tall.

Roots \$1.25

**ESQUIRE [Martin-Rocky River, 1951]**

Borderline between formal and informal, this large, true purple, will hold its own in either class. Slightly below medium height, the plants are rugged with heavy, glossy foliage. Size 10½ x 5 inches. Honor Roll Dahlia.

Roots \$4.00

**EXQUISITE [I. D.]**

A lovely bloom of pure waxy white with a touch of lavender at the center when first opening, fading out to pure white.

Roots 40c

**FAITHFUL [Dahliadel, 1945], S. C.**

Faithful in shape and color is like Michigan White, but is a larger flower. Blooms 10 inches by 5½. Bush medium. It should win in the semi-cactus white class. Highly recommended to us.

Roots 80c

**FANNY LEVY "A" [Etherngton-Parrella, 1951], I. D.**

A large 11 by 7 inch or better vermilion red informal with reverse of straw yellow. General color effect is light red. Stems 10 to 15 inches. Holds flowers side facing. It is a brilliant flower in garden or on show tables. Grow Fanny Levy and you will never regret it. Height 4 feet.

Roots \$4.00

**FANNY SANDT [V. & M.], S. C.**

Color rose pink. One of the most beautiful formed varieties in this class. A color that fairly dazzles in the sunlight, and shows up brilliantly under artificial light. The blooms are of large size, and of good depth. Stiff stems, well above and out of the foliage.

Roots 60c Net

**FAVORITA [Ballay, 1944], I. C. to S. C.**

Canary yellow. Best yellow cactus. The outer petals of this true type cactus fold well back to the stem. Bloom is of good size and stem is always good.

Roots 75c

**FIGARO [France], S. C.**

Bright yellow striped red. A sport of Satan with similar qualities. An excellent bi-color although a certain percentage of the blooms will come solid red.

Roots \$1.15

**FIREGLEAM [Johnson, 1951], Str. C.**

A medium size straight cactus; orange, nasturtium red and canary yellow. The flowers, of excellent form, are held facing the side on stems ten to fifteen inches long. Achievement Medal winner at Philadelphia, and listed on Flower Grower's Honor Roll.

Roots \$3.00 Net

**FIVE STAR GENERAL [Ramage, 1946], F. D.**

Blend of amaranth pink and tyrian pink, arranged in lines intermingled, petals edged maize yellow, rendering a pastel effect, which is quite attractive. Very large blooms 10 to 13 inches 5½ to 6 inches. Strong stems. Blooms facing side, petals pointed. Sturdy plant growth, about 5½ ft. tall. Excellent foliage. Free and constant bloomer from early to late in the season. Received 4 Trial Ground Certificates and on 3 Honor Rolls.

Roots \$1.00

**FLAMING SUNSET [Northbrook, 1949], I. D.**

A medium sized bloom of soft orange flame. On two honor Rolls and Certificate of Merit.

Roots 85c



## Over 50 Varieties Pom Pons

### FOREST FIRE [Dahliadel, 1935], I. D.

The most "different" and for that reason the most distinctive of all the novelties. A brilliant scarlet flame with blushes of yellow; yellow petaloids.

Roots 50c

### FRANCES H. ARCHER, F. D.

Rich lavender violet and a cut flower.

Roots 60c

### FRIEDA GAYLORD [Ballay, 1946], I. D.

Rosy pink with light golden shadings. Remarkable size and vigor. That it is one of the truly great dahlias of all time is not an idle statement. The combination of unusual qualities present in this variety is seldom seen in any dahlia. Achievement Medal Winner at San Francisco.

Roots \$1.75

### GAY KNIGHT [Australian], I. D.

Immense blooms, should be a bigger sensation than Murrey's Masterpiece as far as size, but the form of the bloom is much better. Red color, tipped orange toward ends of petals, with a scarlet reverse. Healthy grower. Stems very good. Exhibition variety in the large class. From Australia.

Roots \$1.75 Net

### GRAY BIRD [Miss Gray, 1951], F. D.

A clear yellow with edge of white on nearly every petal. Strong grower, blooms freely. Good keeper. Stems 6 to 8 inches.

Roots \$1.25

### GEN. EISENHOWER [Holland 85A], 1947

Bloom 9x5, bush 4 ft. A popular Foreign novelty of bright Turkey red. Fine for exhibition and garden. Good substance. Fine foliage and long erect stems.

Roots \$1.35

### GENERAL JOHN J. PERSHING [Ward, 1945], S. C.

This is a sport of that ever prize-winning dahlia Virginia Rute, with a new and pleasing color of a coral and jasper red with chrome flush. There appear some lines of violet on the petal. You can grow this as big as you can grow Virginia Rute. Foliage and growing habits are identical to that of Virginia Rute. Received a Certificate of Merit in East Lansing and West Virginia in 1943. Winner of The American Home Achievement Medal in St. Louis in 1943. Listed on Mid-Western Honor Roll and the Eastern Honor Roll of the Flower Grower.

Roots \$1.00

### GERRIE HOEK [DeR 85B], FD

Bloom 5x3, bush 4 ft. Rhodamine pink with slight yellow shading at base of petals. Prolific. Perfect for cutting and arrangements. A beauty.

Roots 50c

### GENE STRATTON PORTER (McIlhany, 1939), I. D.

A grand ruby red, Blooms 10 by 7 inches and a free bloomer.

Roots 40c

### GLAMOUR [Wm. Nunniviller, 1937], I. D.

An immense true purple with each petal edged Amaranth pink. Looks like a pink one in the show room. Long strong stems and has been grown to 14 inches. Winner at Cleveland and the American Home Achievement medal at Baltimore. One of the best Dahlias in our garden last year. Won many prizes since 1939.

Roots 85c Net

### GOLDEN BEAUTY (Silvernale-Oakleigh, 1938), I. D.

Golden apricot. An outstanding Dahlia which can be grown to 14 inches. As the bloom advances the petals curl backwards. Certificated at Storrs and East Lansing. A really fine Dahlia, and one which should be more widely grown.

Roots 60c

### GOLDEN TREASURE, F. D.

A fine shade of autumn or gold. Held on a good stem. A good cut flower.

Roots \$1.00

### GOULBURN, I. C.

A very large Australian cactus which fills a real need on the show table. Flowers have a deep lemon base blending to reddish apricot at the tips of the petals. Very outstanding in our garden.

Roots \$2.00

**GRAND CHAMPION [Kemp, 1948], Str. Cac.**

This great dahlia is a clear coppery bronze, no other known dahlia like it, no other of its type as large. Bush 6 to 7 feet. Plant early for best results. On two Honor Rolls.

Roots \$1.25

**GREAT LAKES [Marsh-Rocky River, 1948], I. D.**

White, with early blooms very lightly tinted lavender at tips. An easy-to-grow variety which blooms very early and profusely. Stems are long, clean and stiff, holding the flower facing side to top. Achievement Medals at Milwaukee, Southtown, (Chicago), and Birmingham. On all Honor Rolls.

Roots \$1.35

**HAWKESBURY QUEEN [Australia], I. D. to S. C.**

Very large flowers and a splendid plant. Color, wine red shaded darker. A prize winner that comes highly recommended.

Roots \$1.50

**HILL'S PINK SUPREME [Hill, 1939] I. D.**

8 inch clear deep rose pink on very good stem. Foliage is heavy and insect resistant. Fine for cutting.

Roots 75c

**HOUGHTON GEM, [Australian], I. D.**

An Australian origination. Color, rich creamy yellow shaded pink with deeper center on the best of stems. Can easily be grown 11 inches. Good exhibition variety.

Roots 40c

**HUNT'S VELVET WONDER [Hunt-Burnett Bros.], I. D.**

Has the distinction of receiving a special award of merit at the New York Show. It is an excellent keeper for so huge a flower. Color is rich, bright violet burgundy which under some lights looks royal purple.

Roots 60c

**INCADESCENT (Weyers-Parella), I. D.**

The color is rich rosy buff with a shading of yellow reverse light old rose. Scored 85 at East Lansing Trial Gardens. Large blooms on cane-like stems make this a real attraction.

Roots 50c

**IRENE DUNNE [Hall-Wells-Ruschmohr, 1943], S. C.**

Rose pink 5 to 8 inches. At Scranton it won the Achievement Medal. Won as best Straight actus Seedling in Rockville Centre. On Honor Roll.

Roots 85c

**IRENE RICH [Parrella, 1950], S. C.**

Color Rose Bengal blended Apricot, with Cadmium Orange. General effect bright Rose Red. An artistic and beautiful dahlia with lacinated petals and a distinct color. A Gold Medal Certificate winner at the A.D.S. Show, N. Y. 1949. Free and profuse bloomer early and late. Blooms large. Foliage healthy, spreading tall.

Roots \$2.50

**JANE LAUSCHE [Wolbert-Rocky River 85A, 1945], S. C.**

Bloom 10 x 5, bush 5-6 ft. An outstanding bi-color in a new color combination of soft mallow purple with white tips. Scored 86 at East Lansing in 1943. Winner of many Achievement Medals, and on all 3 Honor Rolls.

Roots \$1.15

**JENNY LIND [84], I. D.**

A magnificent, big pink flower on tall, clean foliated plants. The color is a silvery pastel mallow shade but very clear and pleasing. (Ridgway's color chart: La France Pink). Honor Roll, 1931.

Roots 50c

**JEAN TRIMBEE [Trimbee], S. C.**

New large, long petaled, thick flower of Petunia violet. Tall strong grower. Good stems. (H. R.).

Roots 60c

**JERSEY'S DAINTY [Waite]**

Straight cactus. A lovely and very satisfactory Dahlia, white with a faint over-tone of pink. At times some of the flowers were pure white. The stem is fine, and it is a profuse bloomer.

Roots 45c

**JINI MARIE [Collins, 1950], S. C.**

Medium sized dahlia in a clear Shell Pink, shading to Yellow toward the base of the petals. Semi-Cactus to Cactus, on good stems, size about 6½x4½. An early and profuse bloomer you will love.

Roots \$1.25

**JOAN FERENZ [Rindfleisch-Ruschmohr 85A, 1945], S. C.**

Bloom 11 x 7, bush 5 ft. A seedling of Jane Cowl of lemon yellow suffused rose red. Grows large with little disbudding. A good keeper, with dark and insect-resistant foliage. Won the Achievement Medal in New York in 1944.

Roots \$1.00

**JOAN CARROL F. D., [Australia]**

Color is a very rich deep lavender. Good stem, holding 8 to 10 inch blooms of good depth out of the bush at an angle on stiff stems.

Roots \$1.50

**JOSEPH A. MCGINNIES (Wallace, 1940), I. D.**

Deep, velvety, glowing, garnet red with black shadows. The blooms are of good exhibition size on long straight stems. The rich coloring is even throughout the flower and is not streaked or spotted, even in hot sun. It is unusually insect resistant and is a heavy and continuous bloomer. The flowers are facing to erect. This dahlia is a great advancement in its color class.

Roots 60c

**KATIE-K [Koenig, 1938], I. D.**

Bloom 11 x 6, bush 5½ feet. Color is a deep rose pink, with white veins in the petal that lighten the flower considerably. Scored a certificate of merit at both Storr's and East Lansing. Is on all the 1938 Honor Rolls. It is a giant.

Roots 60c



**KELVIN**

**KELVIN [Australian, 1945] I. D.**

The color of the flowers is deep peach pink with very large blooms and is a fine new introduction. Always one of the top winners, as largest bloom in show.

Roots \$1.50

**KELVIN ROSE, I. D.**

A beautiful rosy mauve on long stems. A real show flower, blooms 8 to 10 inches.

Roots 85c

**KELVIN SUNRISE S. C. [Australian]**

This is a startling introduction as regards color. It is of a rich yellow, each petal heavily tipped with burnt orange. 3 to 5 inch blooms are well formed and freely produced on good stems. A real beauty.

Roots 75c

**KENTUCKY [Wigginton], Dec.**

A wonderful new shade of creamy pink. Long stems, excellent cut flower, good keeper.

**Roots 40c**

**KENTUCKY SNOWBALL [Ball]**

Fine white ball held on good stiff stems, fine for cutting.

**Roots 40c**

**KENTUCKY SPORTSMAN (White, 1938) I. D.**

One of the finest and largest of the new bi-colors. Color, center lemon-yellow, outer 60 per cent of the petals a rich golden amber with old rose reverse and tipped white.

**Roots 60c**

**KING PETER, F. D.**

A most beautiful white delicately blended lavender at tips. Blooms average from 7 to 8 inches and are held on cane-like stem, flowers facing. Plant is a sturdy grower with good branching habits. If you grow King Peter once you'll grow it every year. Height of plant 5 ft.

**Roots \$1.00**

**LAKESIDE ANN [Koenig, 1946], S. C.**

Yellow-gold and mallow-pink blend. Profuse bloomer. Scored at Storrs and West Virginia. Bush low, four feet. Stems slender but strong, hold flower facing and slightly up.

**Roots 50c**



**KIRSTEN**

**FLAGSTEAD**

**KIRSTEN FLAGSTAD [Brown-Rocky River, 1945], F. D. or I. D.**

Bloom 10" x 5", bush 5 ft. An artistic flower of buff with gold and apricot shadings. Early and prolific, and is on all 3 Honor Rolls.

**Roots \$1.00**

**LAKESIDE BEAUTY [Koenig, 1946], F. D.**

Outstanding introduction of Light pink with cream blend. Won FLOWER GROWER Silver Bowl at New York Show 1945. Won first prizes and special at Toledo and Cleveland Shows 1945. Healthy, profuse, a real winner. The greatest commercial Dahlia since Jersey Beauty.

**Roots \$1.50**

**LAURA B. [Trauth 1950], S. C**

For those who like beauty. Golden Yellow at base blending to deep Strawberry Red. Eight inch blooms with lacinated petals of excellent texture. Flowers have exceptional depth. Achievement Medal at Cleveland.

**Roots \$3.00**

**L. C. K. [Koenig, 1945], S. C.**

A beautiful Yellow-Autumn, straight cactus, averaging 5 inches, on long stems, that will give you an average of 30 blooms per plant each season. Certificate winner at both Storrs and East Lansing, under the name of Annabelle. Winner of Flower Grower award 1944 Ads Show, and we consider it the finest medium dahlia in existence.

**Roots 65c**

**LETITIA KING [Australian], S. C.**

One of the most brilliant discoveries of the season — a dazzling orange to burmated coppery orange, suffused with radiant amber. A glittering gem in any company and a matchless beauty in every way.

Roots \$1.25

**LIDICE [Pittman-Kemp, 1943], I. D.**

Received highest award in the seedling class at the A. D. S. Show, New York. On three honor rolls. This very large beautiful Dahlia is a great grower, height about 6 ft., is a heavy producer of giant exhibition blooms. Color is delicate Ivory Cream, deepening to a lemon yellow toward the center.

Roots 65c

**LINK'S BLUE TRIUMPH [Link-Premier, 1941], F. D.**

A bigger and better seedling of Blue River that has great size and grand color. Blooms 9 to 12 inches with ordinary field culture. The center is Petunia Violet that shades to light Phlox Purple petals. Long stiff stems. Award of Honor.

Roots 65c

**LINK'S GORGEOUS, (Link-Premier, 1941), I. D.**

A most gorgeous Dahlia of an unusual blend of shades and colors. The lower part of the broad petals being pale lemon yellow, the upper portion a bright shade of scarlet pink which also extends along the entire edges of the petals giving the blooms a most striking appearance. Many of the petals are deeply cut enhancing the beauty. Ideal stems hold the blooms facing. Foliage tough and insect resistant. Sturdy bushes grow 4½ to 5 ft. tall. Awarded a Certificate of Merit, under No. E-3138 at East Lansing, Mich., A. D. S. Trial Grounds.

Roots 85c

**LUCKY [Schutte, 1945]**

A bright red cactus that won 1st in the under 8-inch class at Cleveland and the Mid-West at Louisville. Blooms are held facing on stiff wiry stems—starts blooming in July and continues until frost.

Roots \$1.00

**MAD. C. JUSSIANT, (Belgium), Inc. C.**

A highly recommended cactus. Color is unique and a lovely pure light clear lilac violet. A great exhibition variety. Erect stems. Winner of three certificates. H. R. D. S.

Roots 60c

**MADONNA [Sarett-Ruschmohr, 1950]**

Informal to semi cactus. Almost pure white. A large massive flower 11½x7, with very good substance. A.D.S. Seedling Sweepstakes Gold Medal at New York. Winner of nine Achievement Medals, more than have ever before been won by one dahlia.

Roots \$1.75

**MADAME CHIANG KAI-SHEK [Dahliadel, 1945], I. D.**

Color a blend of rose-red and ostraceous buff. Size 9 to 10 inches by 5 to 6 inches. Naturally grows large, even without much disbudding. Some blooms lean to semi-cactus form. Plants 5 feet. Foliage broad leaves, dark and resistant to pests. Very brilliant color and useful.

Roots 90c

**MAFFIE [Czechoslovakia, 1940], S. C.**

A huge intense red semi-cac., a great prize winner, has been grown up to 14 inches and 8 or 9 deep. Good strong stems.

Roots \$1.15

**MAGNIFICENT [Crystal, 1948], S. C.**

A blend of light orange-yellow and orange-chrome, the general effect being golden orange. Blooms are 11 to 12 inches by 6 to 7 inches. When cut it grows in water and keeps well. Shaded and well fed, it can be grown very big. Bush height 5½ feet, stems 10 to 12 inches. (Dudley) On all three Honor Rolls.

Roots \$1.10

**MAGIC PRINCE (Hulin-Parella, 1941), S. C.**

Rosy Magenta with a lighter reverse, under surface has bands of amaranth pink. A very lovely dahlia held on long stiff stems. Bush tall and good brancher.

Roots 85c

## *Edison's Dahlias*

### **MAJOR VIERS [Viers-Rocky River, 1947], F. D.**

Gold with peach suffusion on outer petals. Massive, ball-shaped flowers 9 to 11 inches in diameter. Strong rugged grower. Achievement Medals at Cleveland and East Liverpool. A Certificate of Merit and an Honor Roll dahlia.

Roots \$1.25

### **MARILYN DALE [Mollineaux, 1949] S. C.**

Light roseine purple. Huge in size but attractive. Winner of many awards and on all Honor Rolls. Height 5½ feet.

Roots \$1.50

### **MARY NOBLE [Australian, Foreign], F. D.**

One of the best of its color and type. Phlox pink to bright mauve. Blooms have size, depth and good quality. Plants vigorous. Size 10 x 6.

Roots \$1.10

### **MARY TAYLOR (Taylor, 1940), Str. C.**

Deep flesh pink and gold with all the points of a good Dahlia. Grows 9 by 4 inches. Held on fine stems. A good keeper. Bushes 6 feet. On Honor Roll. Achievement winner and scored at A. D. S. at East Lansing Trial Gardens.

Roots 75c

### **MASSASOTT, (Messier, 1941), I.D.**

A massive flower, blooms 8 to 10 inches, 5 to 7 inches deep, held on stiff stems that hold the flowers right out of the bush. A grand deep pink.

Roots \$1.15

### **MENTONE Str. C [Australia]**

An orange yellow blend, good form and stems. The keen exhibitor will want this. Size 8 to 10 held on long stems.

Roots \$1.10

### **MICHAEL BLACK [Phillips-Hook, 1946], I. D.**

Described as a purple of about the same shade of reddish purple as the 1946 introduction, Mrs. Hester A. Pape. Blooms 10 to 11 inches in diameter with good depth. Eastern and Western Honor Rolls.

Roots \$1.15

### **MICHIGAN WHITE (Keiser-Lakeside) S. C.**

The most prolific blooming cut flower white to date. Flowers run from 5 to 8 inches normally. As many as 18 to 25 opening at one time have been produced on one bush. Will bloom from July until frost, continuously shooting out long stems by the dozen. Certified at Storrs and East Lansing. Excellent root maker.

Roots 50c

### **MILLGROVE [1951], I. D.**

A good clear pink, 7 to 9 inches across by 2 to 4 inches deep. Held on long stiff stems mostly above the good, 3 to 4 foot bush.

Roots \$1.25

### **MILTON J. CROSS (Johnson, 1936), I. D.**

An immense flower of rich yellow-buff, the outer petals flushed with rosy amber. Winner of five firsts, including three Achievement Medals. Long stiff stems; good grower.

Roots 60c

### **MISS BAY CITY [Schiell], I. D.**

Blooms are a real red. Blooms, 8 to 10 inches on good stiff stems.

Roots \$1.00

### **MISS CONWAY [Knight-Premier, 1945], I. D.**

Sometimes formal. An 8-5 inch bloom, beautiful shade of pinkish red, edges white. Good bush and stiff stems.

Roots \$1.00

### **MISS DORIS BRAND [Australian, 1949], F. D.**

It is huge, and yet refined, the colour is unique. The base of each petal is gold, also the picotee edge; the remainder of each petal is mahogany to red. The plant is insect repellent, robust and free. Twelve inch blooms are produced freely. Very attractive.

Roots \$1.50

### **MISS LIBERTY [Comstock, 1947], I. D.**

Scarlet tipped white. The best bi-color we have ever grown. Unusually attractive. Stems long and strong.

Roots \$1.50

**MISS NEWBURYPORT [Morrill, 1947], I. D.**

Free blooming, large old gold dahlia, 8-10 inches by 4 to 5 inches in depth. Strong bush, stems straight and strong holding most blooms well above bush.

Roots 75c



MISS

SAN  
DIEGO

**MISS SAN DIEGO [Comstock, 1946], I. C.**

Incurved lacinated cactus. Lemon yellow, outer half of bloom tyrian pink. Blooms 9 x 7 on long straight stems. Honor Roll dahlia and winner of Certificates of Merit. Won A.D.S. Achievement Medal.

Roots \$1.00

**MISS WILGA [Australian], F. D.**

Mauve and pink, light center. 8 to 10 inch stem. Good bush.

Roots \$1.50

**MONARCH [Wallace, 1943], F. D.**

One of the finest red formal. Rich blood red 7 to 10 inches blooms held on good stiff stems. Free bloomer.

Roots \$1.00

**MONARCH OF THE EAST (Almy, 1938)**

Color warm gold with apricot and orange buff suffusion; slightly coppery red on reverse. Grand stem up to 4 feet; holds giant flower above bush. Size 12 to 14 inch blooms and fine for exhibition. H. R. and Certificate winner.

Roots 60c

**MOONBIA, (Foreign), S.C.**

Medium to large blooms of peach pink and gold; good stems and bush.

Roots 50c

**MONTEBELLO [Robinson, 1943], I. D.**

A rich violet or orchid crimson, classed by some as purple red. Deep and full, back petals curl backward covering stem. Free bloomer, good keeper and fine stems.

Roots 50c

**MOSCOW [Grove-Premier, 1945], I. D.**

Bloom 10 x 6, bush 5 ft. An intense carmine that stands heat and drought without burning. Long stiff stems, and thick leathery foliage. Winner of several awards, and on Col. Eddy's Honor Roll.

Roots \$1.10

**MOYUA [Australian], A-St.-C. or SC-B.**

Large, well formed blooms of excellent substance. Centers are yellow blending to a lively rose-pink toward the outer edges of petals. Stems are very good. Plant grows quite tall. A fine exhibition variety. Size 10 x 4½.

Withdrawn

**MRS. E. J., [St. C.—Rocky River, 1946]**

Clear, brilliant pink with white at centers and very lightly tipped white. Exceptionally good in our garden and field. Winner of three Certificates of Merit in 1945 as follows: Storrs with a score of 85; East Lansing, 85.3; Cincinnati, 85.8. On Eastern Honor Roll.

Roots 50c

## EDISON'S 1953 BIG BARGAIN ROOT COLLECTIONS

### COLLECTION NO. 1 FOR BEGINNERS — 6 COLLECTIONS

**R-1-A**

City of Buffalo  
Lakeside Ann  
Exquisite  
Mrs. Keene  
Sherwood's Peach

**R-1-B**

Carolina Maid  
Mrs. E. J.  
Edith Lehman  
Commando  
Mrs. Miniver

**R-1-C**

D-Day  
Gerrie Hoek  
Gene Stratton Porter  
Houghton Gem  
Pink Profusion

**R-1-D**

Ruffled Giant  
Almina  
Jersey Dainty  
Mrs. Geo. LeBoutillier  
Vin Well Crinkles

**R-1-E**

Whirlaway  
Montebello  
Chautauqua Giant  
Mrs. Thos. A. Edison  
White Wonder

**R-1-F Miniatures**

Bloodstone  
Glenda L.  
Fuzzy Wuzzy  
Little Jimmy  
Red Robin

Any One Collection at **\$1.85** — Any Two at **\$3.60** — Any Four at **\$7.20** — All Six at **\$10.75**

### SPECIAL COLLECTION R-2

**R-2-A**

Ailsa Belle  
Golden Beauty  
Favorita  
Kelvin Rose  
Sweetest

**R-2-B**

Jos. McGinnies  
Dir. M. A. Howe  
Faithful  
Carl Dahl  
Kelvin Sunrise

**R-2-C**

Axford Triumph  
Katie K.  
Miss Newburyport  
Retzers Red  
Student Prince

**R-2-D**

Autumn Lites  
Beautiful Lady  
Cherokee Brave  
Ogden Reid  
Pink Giant

SPECIAL R2 — Any One Collection at **\$2.75** — Any Two at **\$5.25** — All Four at **\$10.00**

### SPECIAL COLLECTION R-3

**R-3-A**

Ben Martin  
Blue Rose  
Clariam Fancy  
5-Star General  
Links Gorgeous

**R-3-B**

Croydon Acme  
Croydon Supreme  
Miss Bay City  
Retzers Rose  
Torero

**R-3-C**

Nations Pride  
Oakleigh Champion  
Ruffles  
Retzers Cream  
World Event

**R-3-D**

Gen. J. J. Pershing  
Madame Chiang Kai Shek  
Nellie Retzer  
Nicky K.  
Stellaette

Any One Collection at **\$3.85** — Any Two at **\$7.50** — All Four at **\$14.75**

### SUPER ROOT COLLECTION R-4

Best of All                  Madonna                  Sunburst                  The Cardinal                  Virginia Taggart

These five large No. 1 Dahlias. All good growers. Book value \$8.00 for only **\$6.50**

### SPECIAL SUPER ROOT COLLECTION R-5

Five beautiful dahlias for show garden or exhibition.

Croydon Masterpiece                  Esquire                  Fanny Levy                  The Volunteer                  Winona

One root of each — book value \$16.50 — for only **\$13.00**

**COLLECTION ROOT NOTE:** — When ordering these collections after April 10, we suggest at least one substitute, as we may be sold out of some variety ordered and have to substitute with one of equal or of more value. For any roots in the above collections planted in your garden that fail to start growth and returned for a refill, please send 25 cents for part of the postage and packing.

**ROOT NOTE:**—In the shipping of roots especially early in the season we try to send roots showing eye or spot where eye is indicated, but some eyes will not develop even then and we will gladly replace when notified, but the roots must be returned to me when the complaint is made if you expect a refund or replacement at once. All growers have the same trouble, as I get roots, paying \$10.00 to \$25.00 each, and if they fail to eye, I return them for replacement. Roots should not be planted in wet, cold ground as they will rot even if eyed. They will grow a lot faster when the soil has warmed up.





## Edison's Dahlias

### MRS. GEORGE LE BOUTILLIER (Smith-Ruschmohr, 1935), I. D.

A he man's flower everyone likes. Is a bright carmine red, shading to a rich cardinal red at the center, with full petal and deep flower. The average diameter of this Dahlia is 10 inches.

Roots 40c

### MRS. WM. S. KNUDSEN (Dixie, 1938), I. D.

A pure white that will be hard to beat as it already has a fine record as a prize winner; exhibited 4 times in the undis-seminated classes it was 4 times a winner; Detroit, Toledo, Indianapolis and Chicago. Can be grown to 12 inch blooms without forcing; sturdy bushes grow 6 to 7 feet tall. On Mr. Barron's Honor Roll; Certificate winner at East Lansing.

Roots 65c

### MRS. W. KEENE, (Australian), I.D.

Exceptionally fine Dahlia something like California Idol with the same great depth but is much superior to California Idol both in form and color. Color primrose flushed apricot-flesh. Good grower and long stiff stems.

Roots 40c

### MRS. THOS. A. EDISON [Chautauqua, 1942], I. D.

A brilliant-flashing velvety red to carmine bloom of 10 to 12 inches across and good depth. Strong straight stems and a husky grower.

Roots 40c



MRS. HESTER A. PAPE

### MRS. HESTER A. PAPE, [Pape-Rocky River, 1946]

A really big fellow. Color is reddish-purple. Has been a consistent winner in "red", and "purple" classes in open-to-all competition. American Home Achievement Medal winner at Cleveland and Baltimore and tied for this medal at East Liverpool. Plants are tall. A good grower and profuse bloomer. This is a variety that anyone can grow. On Western and Midwest Honor Rolls.

Roots \$1.50

### MRS. MINIVER — C.

A very fine pink and white cactus dahlia blended so its color is nearly apple blossom pink. Stem good, bush 3 ft.

Roots 40c

### MUSTANG, S. C.

Truly a variety of outstanding quality of the truest shade of pink imaginable, slightly paling at the tips of petals. One of the most faultless exhibition type with not a petal misplaced and carried perfectly upright on extra long, clean stems well above the tall, strong plant. Easy to grow with every bloom reliable and very free flowering. A glorious Novelty I am proud to offer.

Roots \$1.00

**NAGELS SENSATION [FD]**

A rich salmon rose and yellow. Blooms, 5 to 8 inches and held on long stiff stems.

Roots 60c

**NAGELS SUPERB [Foreign], I. D.**

A fine large light yellow, 8 to 10 inch blooms, held on long stiff stems.

Roots \$1.00

**NATION'S PRIDE [Heil, 1944], I. D.**

Color blend of peach red suffused buff and chrome yellow with apricot red at center. Long stems holding large flowers erect on side. Blooms 9 by 6 inches. Bush 4 ft., with rugged foliage. Certificate of Merit at Storrs, Conn.

Roots 90c

**NAY AUG [Webb-Lewis-Rocky River, 1951], B-SC-Pk**

This variety won many awards at shows as it produces nearly all exhibition quality flowers. A semi cactus of shades of rose blended with chrome yellow; general effect pink. Very good substance. Stems are well proportioned and rigid, holding the blooms well above the foliage at a forty-five degree angle. As a "B" size pink, it will have very little competition at shows. Size 8 by 5 inches.

Roots \$5.00

**NELLIE RETZER [1951], S. C.**

Cerise. Honor Roll 1950. A very fine dahlia. One of the Best of its color. 6 to 9 inch blooms on a good stiff stem. Strong grower.

Roots \$1.00

**NEW LOOK [Guttler, 1949], S. C.**

Color Empire yellow, very large blooms, running 12 to 14 Inches. Long stiff stems. Bushes 6 ft. tall. Winner of American Home Achievement Medal and others. Winner as largest and most perfect bloom in Long Island Show.

Roots \$1.50

**NICKY K. [Koenig, 1949], S. C.**

Brilliant Scarlet. Size 6 to 7 inches across by 4 inches deep. Stems strong, bush height 4 feet. Keeps well. A fine commercial type.

Roots 90c

**NOBBYS LIGHT [I. D.], AUSTRALIA**

A rich lemon yellow. Large blooms 8 to 10 inch. Held on good stiff stems.

Roots \$1.35

**NORTHERN LIGHTS [Right, 1947], C.**

11 x 6 white. One of the largest cactus dahlias in existence. Score 84 at East Lansing and is on Eddy's Honor Roll.

Roots \$1.50

**OAKLAND BEAUTY [1940], F. D.**

A fine new white, 5 to 8 inch blooms held on good straight stiff stems.

Roots 75c

**OAKLEIGH CHAMPION [Phillips-Oakleigh, 1948], Inc.-Cac.**

General color burnt orange and soft pink with lemon shadings at base of the long lacinated and twisted petals. Blooms 8 to 10 inches by 5 inches deep, held on long stiff stems. Bush 5 feet. On three Honor Rolls and an Achievement Medal Winner.

Roots \$1.00

**OGDEN REID [Kelly-Parella, 1945] F. D.**

Spinel pink blended with rose pink and striping of promuline yellow, center deep rose. Very large blooms. 12½ x 6¼ inches and larger. Canelike stems up to 15 inches. Vigorous grower, good bloomer.

Roots 60c

**ONE HUNDRED PERCENT [Beaver, 1944], I. D.**

The color is deep rosy pink, grows large without any extra care to 10 inches. Good strong stems and free branching. Bush 4 and one-half feet and strong open grower.

Roots \$1.00

**PATRICIA SPOLLEN [Pennypack, 1952], S. C.**

The general tone of this ten inch semi cactus is persimmon orange. An all-around good dahlia which won nine American Home Achievement Medals during the past show season. Strong stems hold flowers facing up at a forty-five degree angle. On two Honor Rolls.

Roots \$7.00

**PAOLI LOCAL [Alleva, 1950], S. C.**

Blend of Rose and Yellow, classified as Pink. Clean growth. Flower size 10 to 12 inches diameter by heavy depth on good stems. Show record—Achievement Medal at 1949 Greater Philadelphia Show. Won total of 24 first prizes in open competition at 5 shows. Quality high, but price low for an Honor Roll dahlia.

Roots \$2.50 Net

**PEPPERMINT CANDY, S. C.**

Long creamy white petals with many stripes and splashes of crimson. Good size and very unusual.

Roots 60c Net

**PERMANENT WAVE [Goetzger, 1951], I. D.**

An unusual formed informal decorative of fuschia purple. Petals are distinctly quilled from centers to tips, and beautifully ruffled. Achievement Medal winner at Washington, D. C. Size 9½ x 5.

Roots \$2.00 Net

**PINK ALICE [Franklin, 1945] S. C.**

A soft rose pink center, petals twist showing a lighter reverse in the higher center. Free bloomer and a beauty on long stems.

Roots \$1.00

**PINK GIANT, (Bruidgom-Mad River Gardens), I.D. to S.C.**

Certainly one of the most beautiful of the new Dahlias. A four Honor Roll Dahlia. Very large flowers of clear, pure pink, with the same color as Julius C. Bunge. Perfect long stems, and a splendid vigorous plant, 4½ to 5 feet. Don't miss this one.

Roots 80c

**PINK PROFUSION, (Cordes-Dahliadel, 1942),**

**F.D. to I.D.**

Salmon-pink edged deep rose-pink, with cream at center when mature. Perfect center. Size 7 by 4 inches. Bush 4½ feet. Excellent keeper. Long stems. Since Jersey Beauty, we have not had a pink like it and it differs from that favorite.

Roots 45c

**PREMIER'S "WINSOME" (1939), I. D.**

The most attractive pink I. D. since Kathleen Norris and easy to grow giving massive blooms in great abundance, will grow to 11 x 6 inches without any forcing, stems slender but very strong, heavy foliage that is resistant to insects and mildew. Certified at East Lansing with a score of 85.2.

Roots 85c

**PRIDE OF AUSTINBURG (Strassen, 1936), I. D.**

A giant informal decorative. Color, a grenadine pink suffused light yellow. Center and reverse rich rose. Strong, open plant growth, with long cane-like stems, requiring a minimum of disbudding. A profuse bloomer. Certificates of merit at both East Lansing and Storrs. Highest score 87, of all Dahlias at Storrs in 1935. (H. R.)

Roots 45c

**PURPLE TRIUMPH [Kemp, 1947], I. D.**

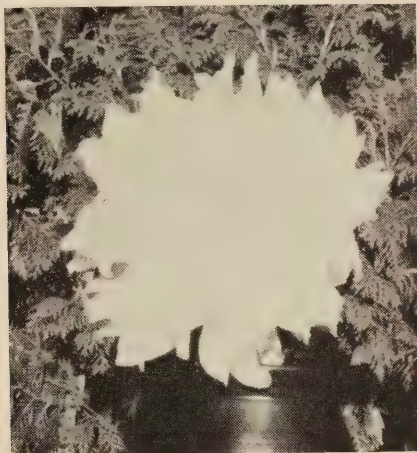
This new wonder dahlia is marvelously beautiful. Its rich violet purple is not found in any other known variety. Its 12 x 7 inch blooms are held facing high above the top foliage on very stiff stems. Height of plant, 5 feet and over, heavy leathery-like foliage. Early and prolific bloomer until frost. Good root maker.

Roots \$1.25

**PURITY, I. D.**

A fine pure white. 8 to 10 inch blooms. Good stiff stem.

Roots 50c



QUINN'S TIDAL WAVE

**QUINN'S TIDAL WAVE [Australian, 1952], F. D.**

A giant yellow decorative that grows 10 to 13 inches and sweeps all before it. Top winner at the Royal Agricultural Society Field Trials, Sydney, Australia, 1951, with 21 points out of a possible 25. Always carried on perfect stalks at the desired angle without any attention. Good stem and bush.

Roots \$7.50

**QUINN'S VARIETY GIRL [Australian, 1952], DECO.**

The most sought after medium to large bi-color decorative in the world today. It has all the qualifications of a champion which it has proven to be at three Australian trials. Color is orange gold with pure white petal tips—even formation—well finished centers; blooms carried on extra long stalks and stems 26 to 30 inches long. Bush 4 to 6 ft.; blooms 6 to 8 inches.

Roots \$5.00

**RAY SMITH [Scheffel, 1946], I. D.**

A winner named for the popular Pres. of the N. J. Society lost in a U-Boat sinking. Clear deep Tyrian pink with white tips. A very fine dahlia.

Roots \$1.00

**RETZER CREAM [Retzer, 1951], I. C.**

Incurve cactus. Color, cream. Size  $8\frac{1}{2}$  x 4. Ht. 5 feet. On Honor Roll, and free bloomer.

Roots \$1.00

**RETZER'S RED [1948], Cactus.**

Size 9 by 6 inches. Color dark red or fuchsia red. A beautiful flower on good stems.

Roots 75c

**REV. C. A. MULHERN, Str. C.**

A fine bright red. Wonderful Cactus variety. 5 ft. bush, free bloomer.

Roots \$1.00

**RETZER ROSE [Retzer, 1951], S. C. to Informal.**

Color, dusty old rose. Size 10 x 4. Height 5 feet. Achievement Medal winner. Honor Roll 1949.

Roots \$1.00

**RITA WELLS [Wells Straight, 1939]**

A very large Dahlia. Informal Decorative to semi-cactus. Grenadine-pink on buff. Achievement Medal winner. Certificate of Merit at Fairmont, W. Va.

Roots 40c

**RONNIE LEE [Dorff, 1945]**

Semi-cactus to I. D. Capucine yellow base with yellow buff effect. Blend of scarlet red and salmon orange on petals. Better than Dahliamum, height 6 to 7 feet. Blooms 10 to 14 $\frac{1}{4}$  inches. Early to late bloomer. Many as 7 to 10 blooms at one time. On J. Louis Robert's Honor Roll.

Roots \$1.25

**ROSALIE GORDON F. D. [Australia]**

Cyclamen pink deepening at center. Size 10 to 5 and one of the finest in my 1951 garden. Fine stiff stems 10 to 12 inches long. Good keeper when cut.

Roots \$2.00

**ROSE GLORY, F. D.**

Always vigorous, healthy, free-blooming, on long stems. Very long-keeping and a lovely pure deep rose-pink in color.

Roots 45c

**ROSELYN STRAIGHT [Straight-Wells, 1944], S. C.**

General appearance of color is apricot yellow, shaded and streaked with scarlet red, very tips of petals lemon yellow. 9-12 inches in diameter by 5-7 inches deep. Highest scoring dahlia in Storrs in 1942 (86). Also highest scoring dahlia in Fairmont 1942 (86 $\frac{1}{2}$ ). On Eastern and Mid-Western Honor Rolls.

Roots \$1.25

**RUDOLPH MOTZNIK [Retzer, 1949], I. D.**

Color blend of two shades of lavender-pink, general effect light lavender. At least 11 inches across and deep. Petals curl in a graceful manner.

Roots \$1.15

**RUFFLES [Wenning, 1946], I. D.**

Long stemmed dahlia, 10 inch bloom (larger when dis-budded). Beautiful shell pink with ruffles on both sides of petals. An excellent flower and it has a tight center throughout the season.

Roots \$1.00

**RUFFLED GIANT [Kemp, 1946], I. D.**

Very fine Orange buff. One of the largest dahlias in our planting. Very highly recommended, free bloomer.

Roots 50c

**SALEM SUNSHINE [Salem 85A]**

Bloom 10 to 6 inches, bush 4 feet. A fine large light lemon yellow. Early, profuse and a vigorous grower. Flowers are held facing side to upward. A good root maker. Well worth your trial to get an easy to grow large yellow.

Roots 60c

**SHELDON'S LOUISE [Shedon], I. D.**

A gigantic bloom of a lovely, rich red with a slight purplish shade. 14 inches by 7 inches, at Boston 1936, where it won First Prize and a Special Gold Medal. Plants grow 5 to 7 feet tall; blooms on giant stems, 3 to 4 feet long, center perfect.

Roots \$1.50

**SHERWOOD'S PEACH [Sherwood, 1944], I.D.**

Another giant introduction. Color, ochereous buff. Size of blooms 11-14 inches by 8-9 inches in depth. Straight stiff stems. A sure contender in the largest bloom in the show class. On Eastern Honor Roll.

Roots 40c

**SKYROCKET [Sarett-Ruschmohr, 1947], StC.**

A clear vermillion, straight cactus growing up to twelve inches in diameter. A very "neat" flower with an impressive pre-introduction winning record. On all Honor Rolls.

Roots \$1.25

**SON OF SATAN (Slocum, 1937)**

An immense incurved cactus flame red with excellent stems. This sensational four Honor Roll Dahlia is the strongest and most vigorous grower in our collection. The flowers are large and attractive.

Roots 75c Net

**SOUTHERN BELLE [LaMotte-Rocky River, 1951]**

A most distinctive novelty; white at the centers with the outer one-half to one-third deeply suffused rose-red. Experts do not agree on type, which has some characteristics of formal, informal, and semi cactus. Petals are arranged as in a formal, but are deeply cleft, giving the appearance of a semi cactus. A most beautiful flower. Plants are strong, open growers. Stems are long and slender, and nodes are widely spaced. As a cut flower, it has been an instant success among florists. Size 6 by 3 inches.

Roots \$2.00



**SARETT'S PINK FLAMINGO**

**SARETT'S PINK FLAMINGO [Sarett, 1944]**

Incurved cactus. A clear rose pink incurved cactus of exquisite color and formation. As the bloom develops, colors change: young blooms are shell pink on petal with yellow blend at the base; mature blooms are deeper pink, with gold tones at the center and slight gold tips. The blooms are beautifully formed, with excellent substance and perfect centers, pointed, tight and symmetrical. Size 8-11 inches, stem straight and strong. Vigorous grower, free flowering. A sure winner on the show table. Winner of many medals and prizes.

Roots \$1.50

**SOUTHERN ROSE [Southern, 1945], I. D.**

Bloom 10 x 6, bush 4½ ft. A deep bright rose pink with lighter shadings. Very satisfactory for the garden or exhibition. Healthy vigorous grower.

Roots \$1.15

**STARDUST [Comstock, 1950], I. D.**

8 x 5 inches. A shiny glistening pink. Shows white lines lengthwise of petals and intermingled with lavender rose. It is a light blend but because of the lines is a real novelty.

Roots \$1.50

**STELLAETTE [Rosemary, 1945], F. D. to Inf. Dec.**

This velvety deep red is what some dahlia critics call a red Calif. Idol. Cane like stems which can carry the largest blooms erect. Foliage insect proof. Blooms average 11 inches by 8 inches. An excellent keeper when cut. Listed on the Mid West and Pacific Coast Honor Rolls.

Roots \$1.00

**STEPHEN FOSTER, (Salem, 1942), I.C.**

Buff orange and tyrian rose of large size. Very hardy. Winner of four Achievement Medals, two A.D.S. Medals besides many other specials and blue ribbons

Roots 75c

**STUDENT PRINCE, [S. C.]**

Bloom 10 x 5. A long stemmed semi-cactus of clear bright gold. Perfect open habit of growth with heavy dark foliage. Flowers are very deep and have wonderful substance when cut. Very prolific and easy to grow. Bush 5 feet.

Roots 55c

**SUNBURST [Smith, 1946], I. D.**

Color greenish yellow, lightly overcast mallow-pink. Unopened center florets apricot buff, others are pale lemon yellow, but the apricot buff persists. Finished off with a glistening sheen. Size of flowers 11 in. by 8½ in. deep. Blooms facing on 10 in. to 14 in. strong cane-like stems.

Roots \$1.50

**SUNRAYS [Straight-Ruschmohr], I. D.**

Clear buff suffused apricot with a distinct peach red on reverse of petals. Its faults are hard to find. One of the best. Was certified at W. Va. and E. Lansing, and still wins.

Roots 85c

**SYDNEY, (Geer-New Zealand, 1942), I.D.**

9 to 11 inches. A beautiful rose pink with a tinge of gold at base of petals. Good stiff stem and strong bush 5 feet high.

Roots \$1.00

**SWEETEST, I. D.**

Base creamy yellow. Shading pink nearly to tips which show lavender. 7-10 inch blooms, 4 to 5 inches deep. Strong bush and good bloomer.

Roots 75c

**TARAWA [Goetzer, 1945], S. C.**

Large shaggy purplish wine red Semi-Cactus with silver reverse. Certified at Cincinnati. On Mid-West Honor Roll. Blooms freely, size 8 to 10 inches by 6 to 7 inches deep. Held on long stiff stems.

Roots \$1.15

**THE CARDINAL [Baker-Ruschmohr, 1949], S. C.**

A beautiful spectrum red, one of the outstanding varieties of the year. Achievement medal winner and many other awards. 10 to 12 inch blooms on good stems.

Roots \$1.50

**THE DRAGON [Corbett-Dahliadel, 1944], I. D.**

A large lovely apricot shaded dahlia easily grown, 11 by 5 inches. Apricot in center edged lengthwise on both sides with rose-pink. A splendid bloomer.

Roots \$1.00

**THE GOVERNOR, [Berwick-Dahliadel, 1940]**

A clear sulphur-yellow formal decorative. It has beautiful formation with wide rolled back petals. Grows easily, 11 inches by 6 inches, with long erect stems. Bush about 5 feet tall. A long season bloomer. It blooms from mid-July to frost. On the Honor Rolls.

Roots \$1.00

**THE REAL GLORY [Stephenson, F. D.]**

Bloom 10 by 5 inches. An excellent new crisp white formal. It has performed very well during the last year and is highly recommended. This one will have to be reckoned with on the show table. Excellent keeping qualities.

Roots 80c

**THE VOLUNTEER [Whittacker-Rus 85A, 1951], I. D.**

Bloom 11 x 7, bush 4 feet. Deep Tyrian or Dianthus purple with lighter tips. Vigorous grower and prolific bloomer. Won 2 American Home Achievement Medals in 1949 and 2 A.D.S. Seedling Awards in 1950. Certified at Ga., Long Island, and New Brunswick, winning the Derrill W. Hart Gold Medal. On all 4 of the Flower Grower Honor Rolls.

Roots \$3.00 Net

**TILBURY'S STARLIGHT [Australian] C. to S. C.**

A dahlia of exceptional merit. Colour, Reddish Brown tipped and flushed Gold. Extremely vigorous, each bloom having perfect formation, center and stems. The ideal exhibitor's flower.

Roots \$1.00



## Michigan Grown Roots

### THOS. A. EDISON (Dahliadel, 1931), F. D.

A wonderful Dahlia of stag horn petalled formation and a gorgeous rays purple color. Very attractive and good bloomer. Fine stiff stems.

Roots 60c

### TOKEN [Hulin, 1951], Cac.

A small bloom of clear rose-cerise held on long stiff stems. Fine for arrangements, good keeping novelty.

Roots \$1.50

### TORERO [S. C.], France

A Blood Red & Yellow edges. Novelty of 6 to 10 inch blooms. Good stem. Strong grower.

Roots 85c

### UNCLE DUDLEY [Churm-Retzer, 1949], INC.-CAC.

Naturally is bi-color, fuchsia red and white. Should win in this class. Have measured blooms 10 by 5 inches. Bush height medium tall.

Roots \$1.00

### VIN WELL CRINKLES, I. D., 1941 (Blamer-Parrella)

Color, orchid shading to shrimp pink toward the tip. Petals crinkle, hence the name "Crinkles." Size of bloom 8½ inches x 5 inches or better. Long graceful stem holds the flower facing. Blooms are beautiful and very attractive to the eye. Early and prolific bloomer with insect-resisting foliage.

Roots 40c

### VICTORY DAY [Foreign], B-St. C

One of the brightest cactus reds. The large blooms, which may be grown up to 8 inches, are perfect in shape and have a splendid deep red color. 5½ foot bush.

Roots \$1.00

### VIRGINIA RUTE (Chappaqua, 1939), I. D.

An exceptionally large flower on extra long stems. Blooms of deep rich velvety maroon with broad pointed petals, having tight centers, good form and substance, are held well out of the foliage on long erect stems. Easily grows to immense size without coddling. 10 to 12 inches by 9 inches deep. The bush growth is vigorous, the foliage insect resistant. Height 5 to 6 feet. Don't miss growing this one.

Roots \$1.00

### VIRGINIA B. TAGGERT [Pape-Rocky River, 1950], F. D.

Light blend of pastel colors, white with blush of fuchsine pink. Bloom 11 by 6 inches and rather flat on face but opens slowly and grows very large.

Roots \$1.75

### WHIRLAWAY, (Pittman-Dahliadel, 1942), I. D.

Color between lemon and sulphur-yellow. It can be put up against some of the present quality yellows and win. Large, 11 by 6 inches without much forcing. Foliage pointed like holly and very attractive. Good bush vitality. Stems fine.

Roots 50c

### WHITE CHRISTMAS [Scheffel, 1944], F. D. to I. D.

Vigorous grower with heavy insect resisting foliage. 10 inch blooms of white with grand stems are produced freely. Keeps very well when cut.

Roots \$1.00

### WHITE SUPERIOR, B-St. C.

An excellent, high class pure white cactus on extra long stems. Free-flowering. Height 5 feet.

Roots \$1.00

### WHITE WONDER [Kemp, 1933], I. D.

The largest fluffy white to date. Long graceful wavy petals and easily grown from 10 inches up. Strong plants and long stiff stems. (H. R.)

Roots 40c

### WINDLASSIE [Rocky River, 1947], I. D.

Pure glistening white. Twisting petals roll all the way back to the stem, forming a ball-shaped flower. Size 8-10 inches. Excellent for specimen bloom classes and a good keeper when cut. On all three Honor Rolls.

Roots \$1.35

**WINONA [ID-Kilgore-Ruschmohr, 1950]**

A color blend of peach and Naples yellow. Size 7 to 8 by 3½ to 4 inches. Stem 8 inches. Plant 4 feet.

**Roots \$2.50**

**WORLD EVENT [Dixie, 1944], I. D.**

11 x 8 inches, rose pink. A seedling of A. Goodacre, with the same free blooming and branching habit as its parent and grandparent, Golden Goblin, which produced the free-blooming Mrs. C. E. Wildon, Mason's Purple Beauty and many others. It is as large as the other informal pinks with added depth. "It is a knockout," were the reports of those who had it on trial. Received a Certificate of Merit at Storrs and East Lansing in 1943. On all three Flower Grower Honor Rolls.

**Roots 90c**

**YELLOW GLORY [Frey-Dahliadel, 1940]**

A magnificent semi-cactus of clear lemon yellow color. It is a large bloom 12 by 7 inches. It is beautiful in form with artistically twisted petals and a very high full center. Perfect stems, a good sturdy bush about 5 feet tall. Awarded Certificate of Merit and a place on the Honor Rolls.

**Roots \$1.00**

**CLOSE-OUT BARGAINS**  
of  
**STANDARD VARIETIES**

In order to make room for the new ones and reduce our plantings we list many fine ones in this selection. Stock limited of many, so when ordering after April 1st make a second choice. All varieties named and labeled.

**Roots**

**APRICOT GLOW, I. D.**

Beautiful color of blended pink and apricot. Blooms 5 to 8 inches and held on good stems.

**\$0.25**

**ARELDA LLOYD (1934) (I. D.)**

A soft, deep, yellow, slightly flushed with apple blossom pink with pink veining on the reverse of the petals, which sometimes fold back to the stem. Scored 87 A. D. S.

**\$0.30**

**AVALON**

Pure clear yellow, large flowers distinct and fine, held on good stems.

**\$0.30**

**CHARLOTTE CALDWELL [Ball, 1937]**

Orange shaded terra cotta.

**\$0.30**

**EDITH A. LEHMAN [Kemp, 1935]**

Bloom ten by five, bush five feet. An introduction that is very favorably talked of and worthy of your trial. Color brilliant old rose with salmon suffusion. Stems strong, holding flowers well above the foliage. Petals are rather broad and heavy, giving the flower a rich appearance. (H. R.)

**\$0.30**

**ENCHANTRESS [Stolz, 1942], I. D.**

Bright orange buff of good substance and profuse bloomer. Blooms 6 to 10 inches and good stems, bush 5 feet.

**\$0.30**

**FRAU FRANCOIS NAGELS (Foreign), I. D. to S. C.**

Medium sized flower held on good stiff stems. Color an odd shade of reddish maroon. Very good bloomer.

**\$0.30**

**GEMMA CLARA [SC]**

Pure yellow. 4 to 5 inch blooms. Fine for cutting. Free bloomer. Good stems.

**\$0.25**

## Prices Reasonable

- |  | Roots     |
|--|-----------|
| <b>GOV. HEIL (Delwood, 1940), Cac.</b><br>A beautiful combination of color of orange and burnt orange towards the center, a free bloomer and good grower. Flowers 10 by 7 inches. Buds appear to be a purple cast.   | \$0.40    |
| <b>HILLCREST SUNSET</b><br>A beautiful blending of sunset shades. A very attractive dahlia.  | \$0.25    |
| <b>H. R. S.—HUBERT ROY STOVEL [Seal] I. D.</b><br>True yellow. On Hart's Honor Roll for 1933. The golden yellow blooms are huge, held high above the foliage on long, stiff stems. Should be planted a little early.   | \$0.35    |
| <b>JANE COWL (Downs), I. D.</b><br>An immense flower of buff; produced on long stiff stems. Won several medals.  | \$0.35    |
| <b>JEAN KERR [Ball]</b><br>A florists cut flower of white color and good stiff stem good keeper.   | \$0.25    |
| <b>JERSEY'S BEAUTY (Waite), F. D.</b><br>Large true pink and old gold, blending with salmon.   | \$0.35    |
| <b>JOSEPHINE G. (Grosscross Ruschmohr, 1932, S. C.)</b><br>True rose pink petals tipped pinard yellow. Unusual bloom formation. (H. R.)  | \$0.25    |
| <b>KING ALFRED, I. D. [Seal]</b><br>Ruby red with a silver reverse. A good garden and exhibition variety. The color of this very large flower is distinctive and beautiful and the habit of growth, foliage and stem are all very good.  | \$0.50    |
| <b>LEAH PEARL [Keiser, 1940] New Globe Form</b><br>A distinctive two-toned color effect of pink and cream. One of the coming new ones, for cutting and a good keeper. Won two Certificates. High score 86-1-C.   | \$0.40    |
| <b>MARSHALL'S PINK, F. D.</b><br>A very fine pink with rose center. Fine for cutting.  | \$0.25    |
| <b>MARGARET COLE, F. D.</b><br>A medium size dahlia. A beautiful tri-color flower. Yellow at the center shading to orange with silvery white tips. A fine grower and producer. Size of blooms, 5 to 6 inches in diameter.  | \$0.25    |
| <b>NANAQUAKET (Richards), F. S.</b><br>Most beautiful shade of delicate orchid pink, each petal bordered with a hair line of deeper orchid color.  | \$0.25    |
| <b>OMAR KHAYYAM (Stout), F. D.</b><br>A Chinese red at the base of petals, shading to bright orange and tipped lighter, making a wonderful color effect. A tall healthy grower. (H. R.)  | \$0.30    |
| <b>PENN CHARTER (Hall, 1932), F. D.</b><br>A strong grower. Autumn shaded. Blooms have great depth and beauty. (H. R.)   | \$0.25    |
| <b>PURPLE OMAR KHAYYAM, (Wallace, 1940), I. D.</b><br>As the name implies this dahlia is a sport of the very popular Omar Khayyam. The color is rosy purple, shading lighter at the tips of the petals. In everything but color it is identical to Omar Khayyam. The blooms are very beautiful and the color is throughly fixed. | \$0.35    |
| <b>ROSE FALLON [Harding], F. D.</b><br>Very fine flower of pleasing shades of amber, russet and salmon.  | Roots 40c |

## Edison's Dablias

Roots

### ROYCROFT

A clear warm buff color. Flowers are produced in great abundance on dwarf bushes.

\$0.25

### SANHICAN'S MONARCH (F. & M.), I. D.

Decorative. Rich tyrian rose centers; tips lighter. Splendid stems and foliage.

\$0.25

### SHAHRAZADE (Newsome, 1932), I. D.

Another remarkable shade of bright pink. The form and size resemble Jane Cowl and the bushes are also vigorous. (H. R.)

\$0.40

### THE COMMODORE [Scott Kemp, 1932], I. D.

Very large bright lemon yellow and prolific. Can easily be grown 12 inches or more. Not a tall grower, 4 to 5 feet, but strong plants. (H. R.)

\$0.25

### VIN WELL BLUE BIRD [Blamer, 1936], F. D.

Beautiful blue purple color. Medium size and good stems. Very perfect decorative.

\$0.35

### WATCHUNG GIANT [Smith], I. D.

Deep amber yellow, suffused orange carmine, with dark green and insect resistant foliage. Listed on Honor Roll.

\$0.35

### W. H. T. (McCarroll, 1931), F. D.

Rich old rose on begonia rose with shades on the reverse of petals. It is a tall, robust grower, producing big flowers on strong stems.

\$0.35

### WHITE JERSEY BEAUTY [Waite] F. D.

A beautiful pure white of the Jersey Beauty formation. Good stems, fine for cutting.

\$0.40

### SPECIAL COLLECTIONS —

#### 9 Choice Varieties Only \$2.40

|                  |                    |
|------------------|--------------------|
| Chautauqua Giant | Omar Khayyam       |
| City of Buffalo  | Sanhican's Monarch |
| Exquisite        | Sherwood's Peach   |
| Gemma Clara      | Watchung Giant     |

W. H. T.

We get so many orders for these collections, the right is reserved to substitute roots of equal or more value if out late in the season, and you do not name any substitute.

### SPECIAL COLLECTION [Unlabeled]

I will send you 8 unlabeled varieties at \$1.50. This selection is from varieties of ones' tags lost or mixed in digging and packing.

**Replacement Note**—In filling of these special collections extra care is taken to pick roots showing eye started or good eye spot and sure to grow under normal conditions, but in case you have to ask for a refill, return the root with request, add 10c for postage and packing—5c for the first root, 4c for the 2nd and 1c for each additional root, sending the postage with the request.

## MINIATURE DAHLIAS

Very popular for small gardens and cutting.

Roots

### ALDYTH JOY [Australian], STR. C.

Delicate pink cactus. Beautiful flower held on good stiff stems, for show or cutting.

\$0.75

### ANDREAS ORANGE, (Belgium) Miniature Cactus

This was outstanding in our garden this past season, and the best we have seen of this type. Color brilliant true orange; long slender stems, holding all flowers high above foliage, with a very prolific flowering habit. Extra.

Net \$0.50

### BABY HALE, F. D.

Very fine bronze to autumn shaded flower. A good stemmed cut flower.

\$0.35

### BABY FONTENEAU [Holland], F. D.

Bloom  $4\frac{1}{2}$  by  $2\frac{1}{2}$ , bush 3 ft. Pale rose pink with yellow showing at base of petals. Blooms are uniform and artistic with full centers, but not over abundant.

\$0.35

### BISHOP OF LLANDAFF

A wonderful English bedding Dahlia. Intense red with dark bronze lacy foliage that contrasts beautifully with the flower.

\$0.40

### BLOODSTONE, F. D.

Blooms of 3 inches of blood red held on good stiff stems. 3 to 4 ft. bush. Strong grower.

\$0.40

### BO BO [Frank-Rocky River, 1948], F. D.

Bloom 2 by  $1\frac{1}{2}$  inches, bush 4 ft. Bright primrose yellow suffused rose red. Long stems and good form. Excellent for arranging and exhibiting. Winner of many prizes. On 3 Honor Rolls.

\$0.35

### \*BUCKEYE BABY (Golden Rule 85S, 1936)

This fine miniature is really small and deep and while the bushes are dwarf, the stems are fine for cutting. Color, gold buff lightly shaded red on the reverse.

\$0.25

### BUDDY [Koenig, 1944], F. D.

Our wonderful deep red miniature, prolific bloomer that will replace anything and everything in its type or color. A certificate winner and Honor Roll Dahlia that you will surely want.

\$0.50

### \*CARLA (Dahliadel 83C, 1934)

Color is buff, heavily shaded old rose and suffused violet rose, a rich contrast to the dark green foliage. Ideal in the garden and for arrangements.

\$0.25

### CORAL BLEND [Doermann, 1944], F. D.

Coral pink and citron yellow blended miniature formal. Scored 85.5 at Storrs and on both Western and Eastern Honor Rolls.

\$0.25

### CORRINA, DECO.

Small to medium, bright yellow.

\$0.35

### DEARIE F. D., 1947

Bloom 4-5x3, bush  $3\frac{1}{2}$  feet. Peach suffused and shaded rose pink. A pleasing color combination. Will grow 5 inches if disbudded. A prolific bloomer. Perfect stems.

\$0.50

### DONNIE [Lakeside]

This a pretty incurved cactus dahlia which is of scarlet color with a tan reverse, having curled petals and growing about 3 to 6 inches in diameter and 3 inches in depth.

\$0.60

**FOR MINIATURE & POM PON COLLECTIONS—PAGE 39**

## Edison's Dahlias

Roots

### DUBONNET, M.S.C.

Color a rich, deep oxblood-red that does not fade or burn.

\$0.60

### EASTER GREETING, [S. C. For'n]

A beautiful white with creamy cast at the base of petals. Form fine and flowers resemble pond lilies. Free bloomer and good stiff stems.

\$0.60 Net

### \*\*ELIZABETH PAPE [C]

Small pale pink and white cactus on dwarf bush.

\$0.40

### ESCORT I. D.

Salmon pink with full centers on long stiff stems. A seedling of Baby Royal covered with bloom all season.

\$0.40

### \*FAIRY (Bond)

The formation and color the same as the famous Jersey Beauty. Pink.

\$0.25

### FUZZY-WUZZY [Lakeside, 1947], Min. F. D.

Lacinated petals. General color effect is autumn. Extremely floriferous, and holds up well out of water.

\$0.40

### GLENDAL [Lash, 1945], I. D.

A pleasing shade of watermelon red. Good cut flower and colorful in the garden.

\$0.40

### HAZEL HARPER [1952], STR. CAC.

This is the outstanding miniature of the year. A straight cactus of true pink with white centers. A strong growing miniature, early, and very profuse bloomer.

\$1.25

### IKE [Lakeside, 1945], M. F. D. or I. D.

Bloom  $3\frac{1}{2}$ -5 x 2. A beautiful blood red Miniature that is fine for cutting. Described as having many tight, overlapping petals, each with lacinated tips. Has fine tight centers, and is a profuse bloomer.

\$0.30

### \*IRENE, F. D.

Fine old rose to coral pink; a perfect small exhibition flower held on long stems.

\$0.25

### JUBILANT [Dahliadel, 1945], I. D.

Bloom 3 x 2, Bush  $3\frac{1}{2}$  ft. We believe this is the first dahlia winning the Derrill W. Hart Memorial Gold Medal to score 85 and better in all 4 Official Trial Grounds the same year, with an average of 85.6. Makes a gay bright spot in any garden. Color is cherry red, inclined orange, with a lighter reverse. There is just no end of blooms.

\$0.60

### JUBILANT [Holland]

Light lilac purple. Fine cut flower.

\$0.35

### LEMONADE [Dixie, 1945], F. D.

3 in. Lemon yellow. A good companion for Orangeade. A seedling of Sylvia. Extremely free bloomer. On Eastern Honor Roll.

\$0.30

### LILY BELLE [Franklin, 1944], F. D.

Small formal decorative of true rose pink with white at the center, on long strong stems. 3 to 4 inches in diameter by  $2\frac{1}{2}$  to 3 inches deep. Northwest florist's favorite and fine cut flower. Healthy bush growth of  $4\frac{1}{4}$  feet with clean foliage of medium green. Fine dahlia in baskets and bouquets.

\$0.40

### LINDA FOSS [Cac.—Heaphy, 1945]

A beautiful pink with shadings of creamy yellow at base and center of bloom. Fine stems, free bloomer similar to Homeacres Sweetest but better root maker.

\$0.25

## *A Trial Order Convinces You*

---

Roots

### **LITTLE DIAMOND (S. C.) "Holland," 1939**

"Holland," 1939. Bloom  $3\frac{1}{2}$  x 2, bush  $2\frac{1}{2}$  feet. Color, violet rose with sulfur yellow at center. Certified at Haarlem, Amsterdam and Paris. The most beautiful foreign miniature we have seen. Do not miss this one.

\$0.50

### **LITTLE INNOCENCE**

A fine small new white with rounded petals nearly cupped or quilled. Good stiff stems and 3 foot bush.

\$0.35

### **LITTLE JIMMY [Lakeside, 1949], F. D.**

Here's one you can pick all fall. Pure white nearly round 3 to  $3\frac{1}{2}$  inches across and 2 inches deep, long strong stems. On Dudley's Honor Roll.

\$0.50

### **LITTLE MISS PRIM [Dahl], St. C.**

Bloom  $2\frac{1}{2}$  by  $1\frac{1}{2}$  inches, bush  $1\frac{1}{2}$  ft. Dainty rose pink lightening toward center and tips. Exquisite and appealing, with many winnings. Dwarf bush with long stems. Very profuse, although at times open centered.

\$0.50

### **LITTLE MISS MUFFET [Strasen], M. I. D.**

Merits attention as a florist or cut flower. Charming bright rose-pink margins revolute for two-thirds of the length; tip sharply pointed.

\$0.50

### **LITTLE NEMO [Chase 86S]**

A striking crimson uniformly tipped white which is uncommon in bi-colors. Very pleasing and regular form, but sometimes grows too large for the Miniature class. The blooms are very beautiful.

\$0.75 Net

### **LITTLE PEACHES [Vanderheid(Kemp, 1945), SW. Cac.**

Bloom  $3\frac{1}{2}$  x  $1\frac{1}{2}$ , Bush 3 ft. One of the best little Miniatures of a pleasing salmon pink suffused rose pink. A winner at Shows. Long wiry stems, and a prolific bloomer.

\$0.50

### **LITTLE WISTERIA, [Dixie 1943], Min. F. D.**

Color is a lavender, the same shade as a Wisteria bloom with a darker purple center, the same as Wisteria buds. Has a wide spreading, free-blooming bush. The centers never come open the latter part of the season as do most miniatures. On the Eastern and Western Honor Rolls.

\$0.30

### **MAUVEENE**

Small blooms of lavender mauve of the informal type on stems holding them nearly upright. Very attractive.

\$0.30

### **MILLIE [Lundblad, 1951], MIN. C.**

Small pure white on fine long, stiff stem. Good grower and for showing.

\$1.00

### **MISS PLUMB [Beaver-Dahliadel, 1947], M. F. D.**

$2$  x  $1\frac{1}{2}$ , bush 2 feet. Miniatures in purple are very rare, so we feel this dainty one will become very popular, as it is a bright rhodamine purple shading lighter at the base of the petals. Blooms are small, but full centered. A fine grower, with strong slender stems. Certified at W. Va. On all three Honor Rolls.

\$0.30

### **NIDA SENEFF [Foreign], Min. S. C.**

Dahlia is begonia rose with amber yellow center, outer petals deep carmine rose. Early and free bloomer, strong and straight stems.

\$0.25

### **NORMA JEAN [Shepard, 1948], StC.**

Bloom 4 by 3 inches, bush 5 ft. An outstanding coral pink with light yellow center. Narrow spiky petals that are lacinated at tips. Winner of many prizes.

\$0.90

### **\*ORCHID LADY (1935), F. D.**

Here is a little champion. The color is orchid pink. It is a wonderful little Dahlia all the way round.

\$0.35

## Edison's Dahlias

Roots

### PETER, [M. C.] [English]

Yellow suffused and lightly tipped red. In bloom early and late.

\$0.40

### PINK LADY [DeGroot 85]

Bloom  $2\frac{1}{2}$  x 2, bush  $2\frac{1}{2}$  ft. Deep rose pink with yellow shadings at base of petals. Free blooming. Attractive, uniform flowers that arrange easily.

\$0.50

### RASPBERRY [1946], I. D.

A nice tan shade to raspberry red center. A 2 to  $2\frac{1}{2}$  inch bloom of one inch depth, held on good strong stems.

\$0.35

### RED ROBIN [Dahliadel], F. D.

Bloom  $2\frac{1}{2}$  x 2, Bush 3 ft. Bright scarlet that does not fade or burn. Perfect form and stems, sturdy bushes and very profuse. Excellent for cuttingwork. Winner of many prizes and universally liked.

\$0.50

### RED SEA, I. D.

Crimson, a fine Dahlia to have in any garden.

\$0.30

### \*RHODA, I. D.

Beautiful shade of shrimp pink. Fine cut flower.

\$0.30

### RIALSIDE BABY [Rialside, 1947], F. D. to I. D.

A bright scarlet. Blooms 2 to 3 inches held on a good stem. Free bloomer and one of the finest.

\$0.30

### RITA MARIE [Menegel-Hulin], F. D.

Another extra good Miniature of past season with good reports on its performance in the East. Rather tall, bush bearing large quantities of glistening bronze flowers. A fine keeper and good root producer.

\$0.50

### ROYALTY, (Australia)

Finest new lavender I have seen. Blooms 2 to 3 inches, held on fine stems. Prolific bloomer and good brancher. Bush 2 to 3 feet high.

\$0.35

### SANEE K [Meneghel, 1946], Dec. Min.

A delightful little raspberry red miniature on long stems which makes it a perfect flower for cutting and the most prolific bloomer of all small varieties grown in our garden. Nice foliage and a good root maker.

\$0.85

### SNOW [Dahliadel, 1946]

One of our best pure whites with petals lightly edged lavender. This dainty Formal Decorative is appealing in form as the petals cup back reminding you of a gardenia. Blooms are 3 x 2 inches and it grows about  $3\frac{1}{2}$  ft. It is extremely early, and needs no pampering as it does best with just ordinary culture and plenty of sunshine.

\$0.80

### SNOW PRINCE [Australia], C.

Perfect white. Having long stiff stems.

\$0.60

### SPRINGHILL ROSE [Edison, 1942], F. D.

A beautiful rose red, 2 to 3-inch blooms held on long stiff stems and a prolific bloomer. Fine for forest work.

\$0.25

### SUSAN R. [Rev. Moyer-Ruschmohr], 1942

Semi-cactus miniature in the blend class of salmon, pink and tan, averaging 3 inches, blooming from August until frost. Bush grows about 3 feet tall. Winner in the open to all class for miniatures in the New York Show. Also Rockville Center, N. Y., on Honor Roll.

\$0.50

### \*SYLVIA, F. D.

A winner! A dahlia that grows well. The most free-flowering garnet red miniature in commerce. Ideal for cutting.

\$0.25



## Sure to Grow Roots

---

Roots

### TARGET [Heaphy, 1943], I. D.

One of the finest orange shades and blooms, average 2 to 3 inches. Strong bush, free bloomer and long straight stiff stems. Fine for cutting or baskets.

\$0.30

### THE BISHOPS SPECIAL [Edison, 1951], Peony-Dec.

A very dark red seedling of Bishop of Llandaff with 3 to 4 rows of fine petals. Center nearly black, turning to gold when fully out. Free bloomer. Good stiff stems. Fine for cutting.

\$0.50

### WHITE FAWN [Dixie, 1942], F. D.

Waxy white. 3 inch bloom. Excellent substance. An extremely abundant bloomer. One of the best cut flowers. Dark glossy foliage on low compact bush. On three honor rolls. Certificates of merit at Storrs and Ohio.

\$0.25

### WINE DROP [Kanouse] M. F. D.

A two inch bloom of deep wine red, perfectly full center at all times. Fine keeper and free bloomer.

\$0.25

---

## See Page 39 for Special Miniature and Pom Pon Collections

---

## POM PONS

The Finest Flowers for Cutting or Table Bouquets.  
Will keep from three to five days.

### AMBER QUEEN

Beautiful shade of amber.

\$0.25

### \*BETTY ANN, Pom. (Johnson, 1936)

A soft clear pink exhibition pom pon with a fine list of winnings to its credit. One of the best of new pinks.

\$0.35

### BRASS BUTTON, (Linduff), Pom.

Very fine exhibition pom in the yellow class. Certificate of Merit, Storrs, in 1939, also Fairmont, W. Va., 1940. Winner as best yellow pom, Rockville Centre.

\$0.40

### CHALLENGE

A good red and white.

\$0.25

### CLOVER, (Wilson-Ruschmohr, 1941)

Cream white with lavender blush mostly at the tips, small profuse bloomer, held on good stems. H. R.

\$0.50 Net

### DORIA

Australian variety of dark maroon. Small perfect flower, very good.

\$0.40

### EBONY, [1941]

A new color in poms, almost black, very free bloomer.

\$0.75 Net

### EDITH MUELLER

A beautiful two toned variety. Golden orange at base and salmon-red at petal tips. The flowers are perfectly round and borne on long, strong stems. Very fine.

\$0.30

### GOLD DUST, Pom [Goddard-Rocky River, 1948]

Deep gold, with early blooms showing a reddish tinge on the reverse. Petals fully quilled, rolling well back to form a ballshaped flower. Very small, and one which can produce the "smallest in the show." Very early and free blooming. On all Honor Rolls and a Certificate of Merit dahlia. Size 1/4 x 1.

\$0.50

## *Edison's Dablias*

Roots

### GOLDEN QUEEN

Deep golden yellow; a little large but long stemmed and makes it the finest for basket work or bouquets.

\$0.30

### HONEY

Light honey yellow with faint suffusions of red on edge of petals. Long stems (new).

\$0.35

### JOE FETTE

Perfect pure white; stems good; free bloomer.

\$0.30 Net

### JOHNNIE PEPPIN

The most perfect dark crimson. Very fine for exhibition or cutting.

\$0.30

### LAURIE [DuShane, 1950]

Beautiful cream white sport of Yellow Gem. Fine stems and fine cut flower. A new color.

\$0.30

### LEMON DROP (1937)

A new bright lemon yellow flower; fine stems.

\$0.40

### LITTLE DAVID

Fine russet orange, good stems.

\$0.35

### LITTLE DOROTHY

A very good pom of cream and red shades making the color a near amber. Good stems.

\$0.20

### LITTLE SNOW WHITE

Small pure white, Held on good stems.

\$0.35

### MARY MUNN

A fine pure lavender.

\$0.25

### MICKY, F. D.

Small burnt orange to red on long stems. Very good.

\$0.40

### \*MINNIE MELLS

Orchid rose with deeper eye. One of the best of the new poms.

\$0.45

### MORNING MIST, (Badetty Bros., 1936)

Profuse bloomer 1½ to 2 inches. White with rosy lavender center and petals slightly outlined with lavender, are held on stiff, wiry stems ranging up to 15 inches in length.

\$0.20

### MRS. T. TELFER [P]

Pure white of best exhibition type.

\$1.00 Net

### MRS. V. BRITAIN [Australian]

Fine pink held on good stems. A great prize winner.

\$0.75

### NERISSA

Soft rose tinted silver.

\$0.40

### PHYLLIS

Base deep yellow edged and shaded rose red. Very fine.

\$0.35

### ROSA WILMOUTH

Fine rosy La France Pink; fine for cutting.

\$0.25

### SHERRY (1939)

Royal purple. Fine for exhibition and a good root maker.

\$0.25

### SNOW CLAD

A fine pure white on good stems.

\$0.30

## *Collections a Specialty*

---

Roots

### YELLOW GEM

The finest deep yellow; good stems and best for cutting.

\$0.25

### YOULETTE

Very fine light bronzy yellow. Good cut flower.

\$0.30

---

## **MINIATURE COLLECTION 1-A**

Six Free Blooming Miniatures — Our Pick — Only **\$1.25**

10 — Your Pick.....**\$2.25**

All 14 Varieties.....**\$3.15**

Buckeye Baby

Carla

Coral Blend

Ike

Irene

Linda Foss

Royalty

Little Wisteria

Lemonade

Rial Side Baby

Target

White Fawn

Winedrop

Springhill Rose

---

## **SPECIAL MINIATURE COLLECTION No. 2**

Seven Extra-Fine Miniatures for only.....**\$3.25**

[Book Value — \$4.00]

Dearie

Little Jimmy

Rita Marie

Red Robin

Little Peaches

Susan R.

The Bishop's Special

---

## **SPECIAL POM PON COLLECTION**

Six Free Bloomers for Only.....**\$1.60**

[Book Value — \$2.20]

Gold Dust

Challenge

Mickey

Minnie Mells

Youlette

Laurie

---

## **MIXED SPECIAL UNLABELED COLLECTION**

Five Miniatures and Five Pom Pons

Our Pick

**ONLY \$2.00**

---

### **SPECIAL NOTE: ABOVE MINIATURE AND POM PON COLLECTIONS**

If any of these collections ordered shipped before April 1st or beyond 4th zone, add 15 cents on order of 6 to 9 varieties. Add 25 cents to 10 and 14 varieties.



# PLANTING INSTRUCTIONS

## Roots

Roots should be planted in trenches or holes four inches deep in heavy soil and six inches deep in sandy soil laid flat down (not on end) and covered with earth not over two inches in depth, filling in as the plant develops. Where drainage is poor, do not plant so deep and keep a furrow open between rows to facilitate drainage in wet weather.

You cannot expect a dahlia to grow in any wet soggy ground or expect replacements when planted in ground in this condition. Wait a few days for ground to dry out somewhat.

## 1953 Plant Note

Owing to the labor conditions, I am not listing plants or rooted cuttings, but will grow them as usual from the later introductions and they can be had when called for at my greenhouse.

## All Late Introductions

Below is a partial list of late introductions I am growing in 1953 and expect to list roots in 1954:

|                     |                      |
|---------------------|----------------------|
| Allways             | Patricia Spollen     |
| Anneta              | Quinn's Tidal Wave   |
| Arthur Godfrey      | Quinn's Variety Girl |
| Croydon Masterpiece | Hazel Harper         |
| Nay Aug             | Millie               |

## Grow My Roots and Be Convinced

**BUY MICHIGAN GROWN DAHLIAS**

**THEY GROW THE BEST**

## DAHLIA FRIENDS

Join your State Dahlia Society or the American Dahlia Society and get the latest Dahlia news, or Michigan Dahlia Association if a resident of Michigan.

**WE GROW THE BEST AND  
AIM TO PLEASE**

**TRY OUR  
ROOT COLLECTIONS**

**Member of**

**American Dahlia Society  
Michigan Dahlia Association  
Ohio Dahlia Society  
Virginia Dahlia Society  
Northeast Pennsylvania Dahlia Society  
Central States Dahlia Society  
Greater St. Louis Dahlia Society**

**SPRINGHILL DAHLIA FARM  
A. T. EDISON**

**R. R. No. 2**

**Phone 7-8212**

**Farm - 2778 Walker Road, N. W.**

**Grand Rapids, Michigan**