

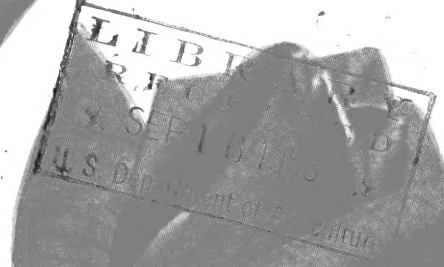
## **Historic, Archive Document**

Do not assume content reflects current scientific knowledge, policies, or practices.



# Roses of Thomasville

1953  
1954



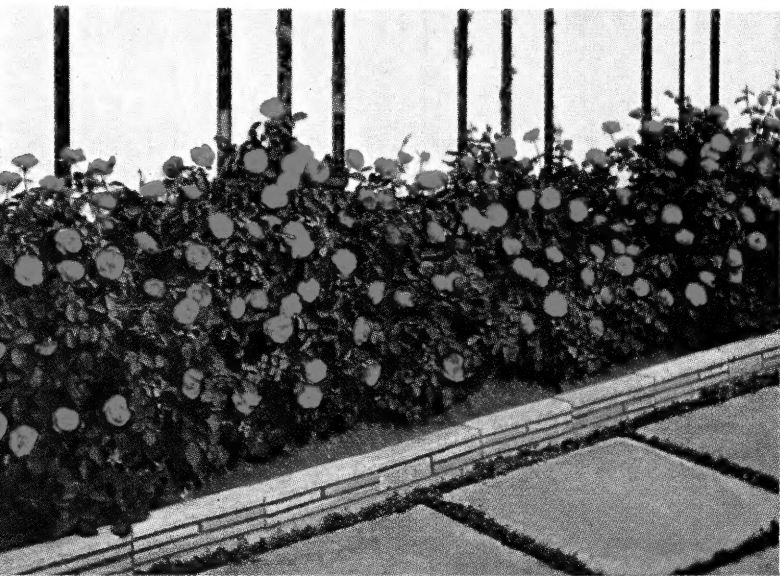
HYBRID TEA ROSE  
**MOJAVE**  
Plant Patent No. 1176  
1954 All-America Winner

*Azaleas • Camellias • Magnolias*

**THOMASVILLE NURSERIES, Inc.**

*"Home of Roses"*

THOMASVILLE, GEORGIA



*New*  
**Floribunda**  
**EMBERS**

*One of the Best  
for Borders*

## TERMS OF BUSINESS . . .

**Location.** Main Nursery office, lath-houses, and Trial-Grounds at intersection of Boston and Summerhill roads with Boulevard, 2 miles east of Thomasville. The Thomasville-Boston Road is a link of the Lone Star Trail from Los Angeles to St. Augustine, and is also known as U. S. Highway No. 84.

**Invitation to Visitors.** Visitors are welcome at our place every day in the year, and there is no obligation to purchase.

**Terms.** Cash with order or satisfactory references, except to parties of known responsibility. Georgia customers please add 3 per cent sales tax as required by law.

**Transportation at Purchaser's Risk.** All transportation expenses are to be paid by the purchaser except on Roses and Liriope; our responsibility ceases upon delivery, in good order, to forwarding companies.

**Substitution.** We do not substitute unless so authorized. It is well, however, as the season advances, to name substitute to be used in the event of shortage.

**Inspection.** Our Nurseries were inspected by a representative of C. H. Alden, State Entomologist, Atlanta, Ga., July, 1953, and a certificate to this effect, and that plants are fumigated as required by law, accompanies every shipment. We comply with the various laws of the states into which we ship.

**Claims.** If, by any possibility, errors should occur, they will be promptly rectified, if claim is made within 10 days after receipt of the goods.

**Guarantee.** We cannot control conditions after plants leave our hands, and we cannot, therefore, guarantee our plants to live. We do guarantee all stock sent out to be well rooted, true to name, properly packed and shipped according to instructions.

**Order Early.** We cannot too strongly urge the advisability of ordering early. In so doing one gets the assortment and pick of the stock and avoids disappointment of possible failure to get order filled complete. Orders may be sent early and stock reserved for later delivery.

**Address** all communications and make remittances payable to Thomasville Nurseries, Inc., Thomasville, Ga.

## *Visitors Please Note*

We wish to serve everyone in turn. At the height of the season sometimes many cars are at the nursery at one time. In order that salesmen may know who is "next" please give your name at the office upon arrival. The ladies in the office will then see that you are served in turn and as quickly as possible consistent with adequate and courteous attention to all.



### WE ARE MEMBERS OF

*All-America Camellia Selections*  
*American Association of Nurserymen*  
*Southern Nurserymen's Association*  
*Georgia Nurserymen's Association*

*All-America Rose Selections*  
*American Camellia Society*  
*American Rose Society*  
*Georgia Rose Society*



# Foreword

Providing distinctive specialties for Southern gardens continues to afford a challenge and opportunity for service that we at Thomasville are always striving to meet. In Roses we have for many years been a source of the Old-Fashioned Tea and Noisette varieties, and in recent years we have constantly grown the newer ones, too. As a member of All-America Rose Selections we are testing new varieties and offer those best adapted for Lower South gardens.

Likewise, in Camellias we have held on to the best of the older varieties but steadily tested new ones. We have introduced seven new varieties originating in the Thomasville area, selected from hundreds of seedlings under observation. Thomasville is in the ideal Camellia belt, not too cold, not too hot—the area including South Georgia and North Florida. Not all the fine Camellia blooms are produced in this area, but over a long period of years the quality of plants and blooms is superior in this section. We have long felt the best service we could render our customers is to grow the finest stock of these specialties in a range of varieties comprising all forms to be desired.

Thomasville, with its lovely gardens, its annual Rose Festival, Camellia Show, picturesque plantations, famous Glen Arven golf course and many other attractions, is always a delightful place to visit. Since 1898 the Rose and Camellia acreage of our nursery has been a special attraction, as has been Hjort's Azalea Woodland. There is always something of interest to see here, and we invite visitors. For those who buy plants, every effort will be made to give the best value.

## THOMASVILLE NURSERIES

INCORPORATED

By Sam. C. Hjort, *President*

THOMASVILLE, GEORGIA

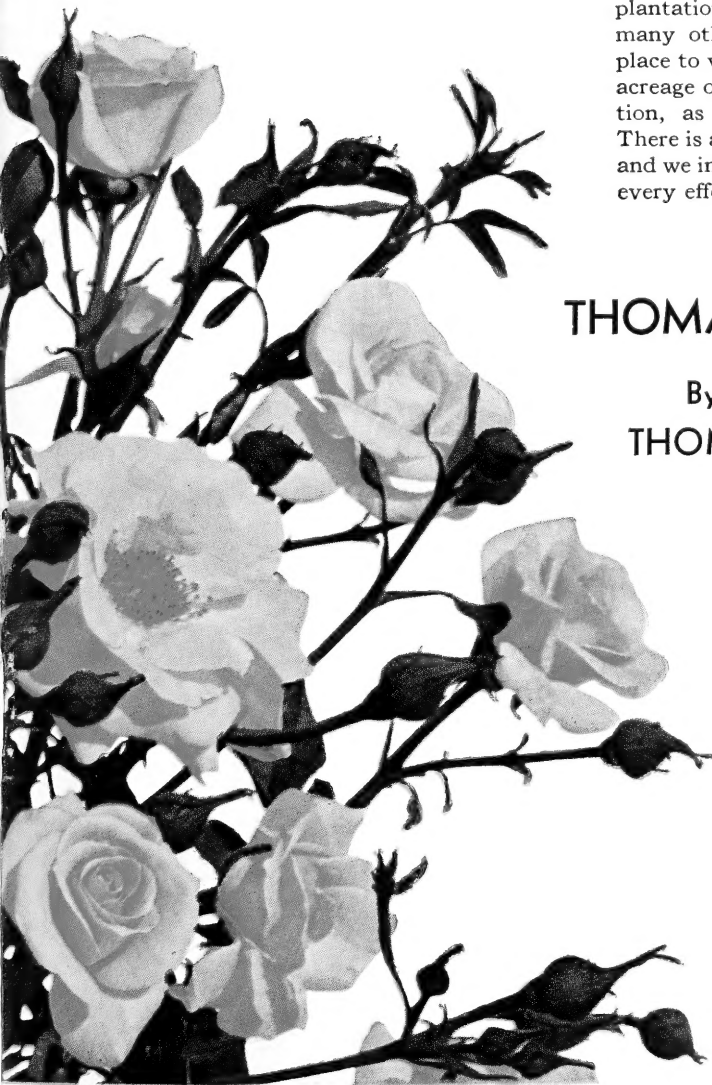
September 1, 1953

FLORIBUNDA ROSE

*Lilibet*

1954 All-America Winner

A charming new Rose in the increasingly popular Floribunda class. See page 11.





Hybrid Tea Rose  
**CHRYSLER  
IMPERIAL**

## HJORT'S *Thomasville* Roses

... 56 YEARS WITH  
ROSES

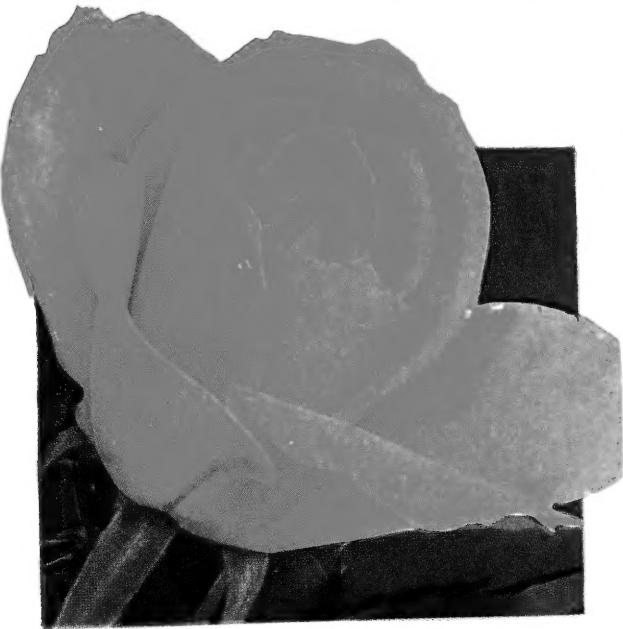


ROSES will thrive in most good garden soils that are well drained. Dig holes at least 18 inches in depth and width, and use well-rotted cow manure or peat moss. Set the plants just deep enough to leave the bud union above the ground. Pack well and water thoroughly. In the spring use a balanced fertilizer.

Roses must be dusted or sprayed to keep down fungous diseases and insects. Rose dusts should contain copper-sulphur to control fungous diseases, with 3 per cent DDT added to combat insects.

Visitors have been charmed by the great display of top quality Rose plants blooming in our fields the past season, including many of the new and patented varieties. We may not have enough 2-year Rose plants to sell the entire season, but those we ship this year are of the finest quality. The Rose shipping season begins November 1 and continues through February. Regardless of when you will plant, we urge that you order early.

# HYBRID TEA *Roses*



©

ECLIPSE

These are the Roses one chooses for the elegant bud and handsome open flower, for cutting and for exhibition. A single bud for a vase, or an armload for a basket! The range of color is widest in the Hybrid Teas, and the greatest efforts of the hybridizers to produce more perfect flowers, stems, foliage and growth have been concentrated on this group, giving such marvelous varieties as Peace, Charlotte Armstrong, Chrysler Imperial and Mojave.

Hybrid Teas will continue to be our pride and joy as Roses for vases and for the flower shows.

**Better Times.** Cerise-red; pointed buds on long, stiff stems. Fine for cutting. \$1.25.

**Blanche Mallerin.** Patent 594. Pure white; well-shaped buds open into large flowers. Perhaps the best of the new whites. \$2.00

**Bravo.** Patent 983. Brilliant, non-fading, deep red. Not as robust as some other red Roses, but for color and good form in hot weather, it is very fine. \$2.25.

**Briarcliff.** Rose-pink; large, double, fragrant. Stiff stems; good growth. \$1.25.

**Buccaneer.** Patent 1119. Brilliant new non-fading yellow, holding color through hottest weather. Vigorous bush; long stems. Pointed buds and good flowers. \$2.75.

**Capistrano.** Patent 922. Deep, glowing rose-pink; pointed bud and very large flower. A 1950 All-America Winner—a very deserving, surprisingly good Rose. For those who like their pink Roses to be really "pink," this is a fine one. \$2.25.

**Charles Mallerin.** Patent 933. Tops in the very darkest of red Hybrid Tea Roses. Very double flowers on good stems. \$2.50.

**Charlotte Armstrong.** Patent 455. A truly great Rose, second only to Peace in national popularity. Buds long-pointed, carmine-red; open flower cerise. Long stems; vigorous growth. Should be in every collection of Hybrid Tea Roses. \$2.25.

**Chief Seattle.** Patent 1030. Buff-apricot in bud, opening a little lighter; flower double. Attractive new Rose. \$2.50.

**Christopher Stone.** Vivid scarlet; large and fragrant. For color this Rose is tops; growth and flowering are good. \$1.25.

**Chrysler Imperial.** Patent 1167. All-America Winner for 1953; perhaps the finest dark red Rose to date. Vivid crimson with darker overtones; large, very double, fragrant. Compact, sturdy growth. \$2.75.

**Countess Vandal.** Coppery salmon-pink; long-pointed buds and large, high-centered flowers on stiff stems. Vigorous; outstanding. A favorite at Thomasville, where many varieties are grown. \$1.50.

**Crimson Glory.** All that the name implies. Deep crimson-red; very double; highly fragrant. Growth vigorous; bloom constant. In a popularity contest the country over, it stood with Peace and Charlotte Armstrong to comprise the top three. \$1.50.

**Dainty Bess.** Large, single, wild-rose-pink flowers in clusters. Bush vigorous; continuous bloomer. One of the loveliest of all Roses. \$1.50.

**Eclipse.** Patent 172. Long, streamlined buds of deep yellow. Vigorous and thrifty, with abundant foliage. \$1.75.

**Editor McFarland.** Deep pink; comparable to Radiance in growth and blooming. Very strong. \$1.25.

**Etoile de Hollande.** Brilliant crimson. Large, fairly double, fragrant blooms on long stems. Vigorous; continuous bloomer. The most generally successful and satisfactory of non-patented dark red Roses. \$1.25.

**First Love.** Patent 921. Exquisite, slender, long-pointed buds; good flower. The bush is strong, blooming constantly. A lovely and different Rose. \$2.25.

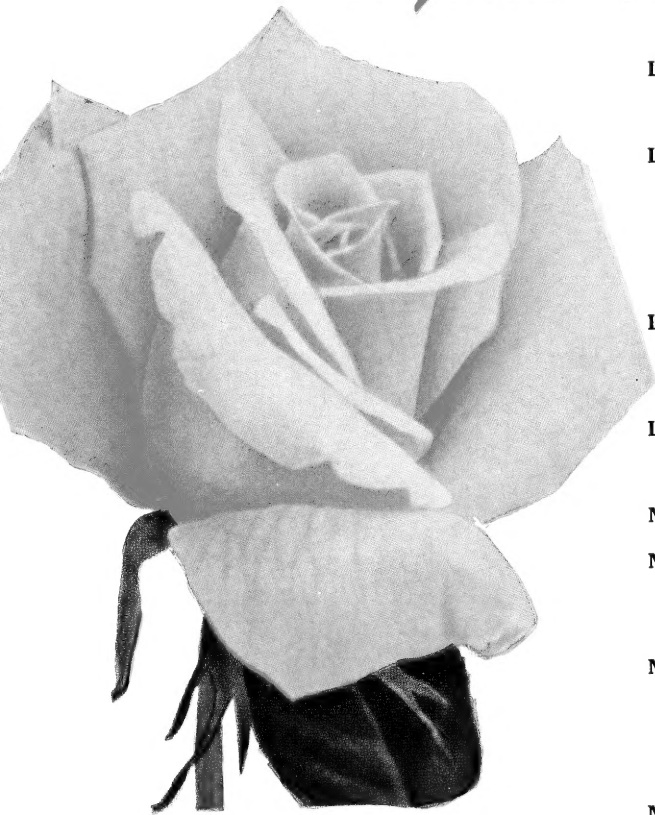
**Forty-niner.** Patent 792. One of the most brilliant and attractive of bicolor Roses. Velvety Oriental-red, with chrome-yellow reverse, the yellow being most evident in the bud. \$2.50.

**Fred Howard.** Patent 1006. All-America Winner for 1952. Long, rich yellow buds, penciled at tips with pink, most pronounced in cool weather. Large flowers on stiff stems; bush strong. \$2.50.



CHARLOTTE ARMSTRONG

# Hybrid Tea Roses



LIGHT EDITOR McFARLAND

**Golden Dawn.** Bud is sunflower-yellow, flushed with old-rose; flower very double and fragrant, borne on stiff stem. A vigorous bush with abundant foliage. Fine for the Lower South. \$1.25.

**Happiness.** Patent 911. Created as a greenhouse Rose, Happiness does well in many gardens. Brilliant, fiery red, double flowers on very long stems. \$2.50.

**Helen Traubel.** Patent 1028. All-America Winner for 1952. Beautiful new pink Rose named for the first lady of American opera, who is known all over the world for her magnificent voice and skillful performance in Wagnerian roles. Long, tapered buds; large flower. Color varies with the weather; sometimes it is a lively, light pink, often it is salmon-pink or apricot. Very vigorous growth. \$2.75.

**Hinrich Gaede.** Flame-red, pointed buds; large, fragrant, nasturtium-red flowers. A very striking Rose. \$1.50.

**Kaiserin Auguste Viktoria.** White, with slight lemon tint at center. Beautiful bud and fairly large, double flower on good stem. The most generally satisfactory of white Hybrid Tea Roses. \$1.25.

**Katherine T. Marshall.** Patent 607. Clear, glowing pink buds, slightly salmon, and large, double flowers on long, stiff stems. One of the Top Ten Roses of America, and greatly valued in the South for its superb and dependable qualities. \$1.75.

**Killarney Queen.** Finest of the Killarneys. Deep rose-pink, large, semi-double flower; very lasting. Bush is thrifty and long-lived. \$1.25.

**Korovo.** Large, double, medium pink flower on a vigorous bush. Heavy bloomer. Anyone will like this Rose. \$1.50.

**La France.** The original Hybrid Tea Rose, still treasured by many Southern gardeners for its fine qualities of repeating bloom, strong growth and beautiful, light pink flowers. \$1.50.

**Light Editor McFarland.** One of the very finest and most dependable of Roses for the South. A sport of Editor McFarland discovered in our fields by Peter W. Hjort. Exactly like the parent, except that it is a light pink color, considered by many as more beautiful than the original variety. This Rose does exceptionally well in Florida and the Lower South. \$1.25.

**Lowell Thomas.** Patent 595. Deep golden yellow in spring and fall; lighter in summer. High, cupped center and large, open flower. It is a favorite in many parts of America. Grows well at Thomasville. \$2.00.

**Luna.** Lovely light yellow. Long-pointed bud; flower large and fairly double, on long, stiff stem. Foliage dark; growth vigorous. A Rose of excellent qualities, a favorite where known. \$1.25.

**Max Krause.** Golden yellow; large, Radiance-like blooms on a vigorous bush. \$1.50.

**McGredy's Sunset.** Patent 317. Deep golden yellow, tinged orange; opens clear yellow. Large flower; strong stem. Heavy foliage on a vigorous plant. At Thomasville regarded as one of the most satisfactory yellow Roses. \$1.75.

**Mirandy.** Patent 632. Very large, double, dark garnet-red; highly fragrant. Upright and vigorous in growth. Usually produces one flower to a stem, eliminating disbudding, and always producing specimen blooms. At Thomasville, where many varieties have been tried, it is the favorite dark red. \$2.25.

**Mission Bells.** Patent 923. All-America Winner for 1950, and one of the most vigorous and rewarding of Roses. Deep shrimp-pink buds, opening to large, salmon-pink flowers. Strong, branched growth, constantly in bloom. Anyone who can grow Roses at all can grow Mission Bells. For its many good points it deserves a place in every garden. \$2.25.



EDITOR McFARLAND

THOMASVILLE NURSERIES

We Pay Postage on Rose Mail Orders



# Hybrid Tea Roses



MIRANDY

**Mojave.** Patent 1176. All-America Winner for 1954. Completely new color combination of blended salmon, apricot and orange. As always, these colors are deeper in cool weather. Plant is upright and vigorous in growth, with individually stemmed, handsome buds and open flowers. Another of Charlotte Armstrong's famous family of quality Roses. \$3.00.

**Mme. Cochet-Cochet.** Well-formed, coppery pink buds open into salmon-pink, fragrant flowers. Abundant foliage; strong growth; continuous bloom. We like this Rose better each year; it is almost a Tea Rose with us. \$1.50.

**Mme. Henri Guillot.** Patent 337. Long, flame-pink buds, changing to watermelon-pink open blooms; fragrant. It is a rather unusual Rose in color, vigorous and spreading in growth, with abundant foliage. Has many admirers in the South. \$2.00.

**Mrs. Breedlove.** Sport of Golden Dawn, with all the good qualities of its parent. Rose-pink, with a tinge of orchid at tips of petals. Very double; very good. \$1.50.

**Mrs. Charles Bell.** Sport of Radiance, and identical with parent in vigorous growth, freedom of bloom and size of flower. Always dependable, always satisfactory, and easily the best of its color, shell-pink, for the South. \$1.25.

**Nocturne.** Patent 713. Deep cardinal-red; long-pointed buds and large flowers on stiff stems, usually one perfect flower to a stem. Most vigorous of dark reds at Thomasville. In a close race with Mirandy and Crimson Glory, Nocturne is first in popularity in the Southeast. \$2.00.

**Peace.** Patent 591. World's No. 1 Rose. Winner of all top national awards in America, France, England and other countries, and blue ribbons and sweepstakes in shows everywhere. Peace is a strong grower, with large, handsome foliage and produces very large, very double and lasting flowers of soft yellow, flushed and tinged pink. An exquisite Rose. \$2.50.

**Poinsettia.** Distinctively different from other reds in color and foliage. Poinsettia-scarlet, double blooms, borne on strong stems. Large foliage; vigorous bush. \$1.50.

**President Herbert Hoover.** Flame-pink, scarlet and yellow; long-pointed buds on heavy, stiff stems. A good Rose, honoring a sound and patriotic American. \$1.25.

**Radiance.** The great, dependable favorite of the South. Carmine-pink blooms on strong stems. A vigorous, free bloomer over a long season. It may be a lazy gardener's Rose, but everyone loves it for its admirable qualities. \$1.25.

**Red Radiance.** Easily the most generally planted red Rose in the South, for like its parent Radiance it is practically perfect in size, stem, growth, freedom of bloom and persistency. \$1.25.

**Red Talisman.** Flame-red sport of Talisman, with identical long-pointed buds and moderately large flowers produced freely on fine stems over a long season. \$1.25.

**Rubaiyat.** Patent 758. Here is a large, new Rose fully as vigorous as Radiance. Large, cerise-red buds, opening to rose-red flowers. The strong bush produces many fine flowers on strong stems; large foliage. Has become a great favorite. \$1.75.

**Sœur Therese.** Long-pointed, chrome-yellow buds, opening to daffodil-like flowers. A favorite in many localities. \$1.25.

*Huntsville, Ala.:* "I want to tell you that these plants are beauties and we can readily understand why your Huntsville customers are so enthusiastic over your Georgia-grown Rose bushes."—H.B.C.

## Three Perennial Favorites

**Charlotte Armstrong.** Carmine.

**Peace.** Yellow, tinged pink.

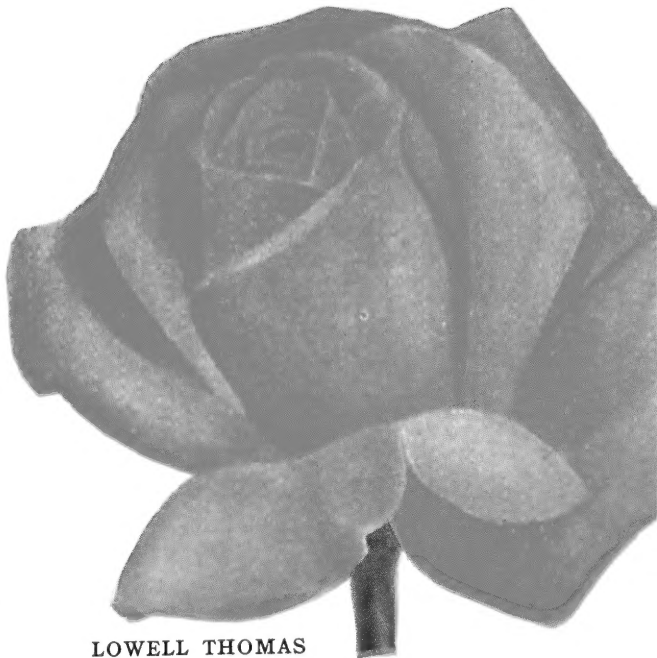
**Nocturne.** Dark red.

(Regular Value \$6.75)

**SPECIAL, one each, \$6.00**

**Three of each for \$17.85**

**ASK FOR OFFER NO. H-2**



LOWELL THOMAS

# • Hybrid Tea Roses •



MRS. CHARLES BELL

## Prices of Hybrid Tea Roses

All \$1.25 Roses are 3 for \$3.15, 6 for \$6.00, 12 for \$11.00  
 All \$1.50 Roses are 3 for \$3.90, 6 for \$7.80, 12 for \$15.60  
 All \$1.75 Roses are 3 for \$4.65, 6 for \$9.30, 12 for \$18.60  
 All \$2.00 Roses are 3 for \$5.25, 6 for \$10.50, 12 for \$21.00  
 All \$2.25 Roses are 3 for \$6.00, 6 for \$12.00, 12 for \$24.00  
 All \$2.50 Roses are 3 for \$6.60, 6 for \$13.20, 12 for \$26.40  
 All \$2.75 Roses are 3 for \$7.20, 6 for \$14.40, 12 for \$28.80  
 All \$3.00 Roses are 3 for \$7.95, 6 for \$15.90.

All Rose plants shipped postpaid.

## BIG VALUE Non-Patented Roses

Editor McFarland. Dark pink.  
 Mrs. Charles Bell. Light pink.  
 Etoile de Hollande. Dark red.  
 Radiance. Carmine-pink.  
 Red Radiance. Light red.

(Regular Value \$6.25)

**SPECIAL, one each, \$5.00**  
**Three of each for \$14.00**

ASK FOR OFFER NO. H-3

Miami, Fla.: "Perhaps you remember when I visited your Rose garden and fields in August. . . . I hope to visit them again. It was a treat to see the beautiful Roses, and I gained much inspiration and help through the visit."—Mrs. S.S.M.

While ours is a very extensive Rose listing and the plants are excellent quality, some varieties are in limited supply. In ordering, especially as the season advances, it is well to permit substitutions, to be made from similar varieties.

**Sutter's Gold.** Patent 885. Strikingly beautiful long-pointed buds richly shaded orange and red, opening into yellow flowers. Fairly vigorous in growth; free bloomer. One of the four 1950 All-America Winners. \$2.25.

**Suzon Lotthe.** Pat. 934. Almost a Pink Peace! Not quite as large, but spring blooms are fascinating. Lovely pearl-pink to peach-pink buds and large, "Peace-form" flowers. After three years we think it very good. \$2.50.

**Talisman.** Brilliant red and gold buds, opening to orange-yellow flowers, gradually changing to light yellow, tinged pink. \$1.25.

**Tawny Gold.** Patent 950. A new yellow Rose; in cool weather it is a tawny burnt-gold color. Long-lasting buds and flowers, with edges somewhat frilled. \$2.25.

**The Doctor.** Sparkling pink, pointed bud; large, rose-pink flower. Does not grow fast first year; afterward is large, thrifty and outstanding. For those who can exercise a little patience and give it a little extra care it usually becomes the most charming and appreciated pink Rose. \$1.50.

**White Wings.** Patent 850. Very large and lovely new pure white single. A worthy companion for pink Dainty Bess. \$1.50.

**Yellow Talisman.** Buds golden yellow, long-pointed; flowers somewhat lighter. Very successfully grown at Thomasville. Bush is vigorous, superior to its parent. \$1.25.



MISSION BELLS

THOMASVILLE NURSERIES

# • Hybrid Tea Roses •



World's No. 1  
Rose

PEACE

---

## Thomasville Favorite Patented Roses

**Charlotte Armstrong.** Carmine.  
**Mirandy.** Dark red.  
**Katherine T. Marshall.** Pink.  
**Eclipse.** Golden yellow.  
**Peace.** Two-tone.

(Regular Value \$10.50)

**SPECIAL, one each, \$9.35**

Three of each for \$27.50

ASK FOR OFFER NO. H-1

---

## Thomasville Favorite Non-Patented Roses

**Countess Vandal.** Salmon-pink.  
**Crimson Glory.** Dark red.  
**K. A. Viktoria.** Pure white.  
**Talisman.** Two-tone.  
**Yellow Talisman.** Golden yellow.

(Regular Value \$6.75)

**SPECIAL, one each, \$5.75**

Three of each for \$15.00

ASK FOR OFFER NO. H-4

THOMASVILLE, GEORGIA

*Erin, Tenn.:* "I do not believe one can find another nursery that will give better service and better plants to its customers than yours . . . it will be a pleasure to recommend you to others.—Mrs. H.G.B.

## See Top Quality Roses Here

FROM APRIL TO OCTOBER our Rose fields are a colorful sight. We grow the best. Come to see them.



NOCTURNE

# Floribunda ROSES

Revolution and color riot in the Rose world came a few years ago with the advent of the Floribunda. This completely delightful cross of Dwarf Polyantha and Hybrid Tea Roses brought a whole new era of ideas for landscaping to people who want Roses in profusion. When it was discovered that Floribundas are lovely and long lasting as cut flowers, their popularity rose rapidly.

There is unbounding charm in these semi-baby Roses as borders, center plantings and low fill-in groups where a dash of color is needed to start the spring in high spirit. Amazingly enough, Floribundas repeat their glorious bloom throughout the summer and fall, further endearing themselves to gardeners and Rose lovers.

A bonus feature of the Floribunda is the tiny, perfectly shaped buds that are actually gems to cut for corsages and small arrangements. Slightly open, one cluster is a whole bouquet. Floribundas are truly fascinating, and they never fail to arouse interest and comment.



**CARROUSEL**

Vigorous, Floriferous, Showy New Floribunda

**Bouquet.** Large clusters of semi-double, deep pink bloom. Long lasting as a cut flower. Large, attractive foliage. A very desirable Floribunda. \$1.50.

**Carrousel.** Patent 1066. One of the most showy and satisfactory dark reds to date. Its exceedingly free-blooming habit rightly places it with the Floribundas, but the flowers are large enough for Hybrid Teas. Very vigorous and branching in growth, and color is non-fading. Anybody will like Carrousel. \$2.00.

**Cecile Brunner.** The "Sweetheart Rose." One of the treasures of old Southern gardens, just as valued today as in the past. It is a Tea-Polyantha that develops into a large, vigorous bush, producing an abundance of very small, double, light pink blooms in clusters over a long season. \$1.50.

**Crimson Rosette.** Patent 901. Coiled, "rosette" shape; deep red, very double flowers in clusters on stiff stems. As a bedding variety it is superb, but it has much merit as a long-lasting cut flower. This variety is something new and charming in Floribundas, and worthy of a place in any garden. \$1.75.

**Dagmar Spath.** Pure white flowers. Free flowering, producing masses of bloom with golden stamens. An ideal bedding Rose. \$1.50.

**Donald Prior.** Patent 377. A perfect Crimson Glory deep red color, producing great masses of bloom over a long season, right on through the hottest summer weather. Very vigorous. A great favorite in the Lower South, and rightly so, for it is always showy and easy to grow. \$1.50.

**Else Poulsen.** One of the older Floribundas, but widely grown because it is a most satisfactory performer. The semi-double, bright rose-pink flowers are carried on erect, strong plants. Good for a hedge or as a bedding variety; also good for cutting. \$1.25.

**Embers.** Patent 1178. A brand-new Floribunda of glowing, fiery red color, aptly named Embers. Blooms adequately, although not in masses. Moderately spreading in growth habit, making an attractive bush. A different and worthy addition to the Floribunda group. \$2.25.

**Fashion.** Patent 789. Buds Oriental-red, opening to a luminous pink, overlaid with gold, becoming coral with age. The bush is very vigorous and branching in habit, and blooms all through the Rose season. All the praise continually heaped on this Rose is well deserved; its popularity increases and it is a favorite wherever grown. \$2.00.

**Floradora.** Constantly in bloom and an entirely new shade in Roses—a brilliant cinnabar-red, as arresting under artificial light as in the garden. Floradora blooms are always eye-catchers; everyone stops to admire them. As a cut flower it is exceptionally long lasting. Floradora should be in every Floribunda garden. \$1.25.

## Newest Floribundas

**ALL NEW FOR 1954**

**Lilibet.** AARS 1954. Bright pink.

**Embers.** Flame-red.

**Frolic.** Deep pink.

(Regular Value \$7.00)

**SPECIAL, one each, \$6.30**

**Three of each for \$18.60**

**ASK FOR OFFER F-1**

# • FLORIBUNDA ROSES •



BOUQUET

**Frensham.** Deep crimson-red flowers of medium size, borne in typical Floribunda clusters. Very compact and branching growth, making it an excellent border, hedge or bedding variety. Sturdy in growth and constant in bloom. \$1.25.

**Frolic.** Patent 1179. An extremely vigorous, branching, continuous-blooming Floribunda. A lively, bright rose-pink color, this brand-new Floribunda looked good in test gardens, and we are glad to offer it and recommend it. \$2.25.

**Geranium Red.** Patent 811. Here is the most unusual and most admired red Floribunda at Thomasville. In color it is all the name implies, and the flowers are somewhat larger than most varieties of this group. The camellia-like flowers are a vivid, bright, geranium-like red, and no picture does it full credit. The bush is a strong one, flowering from spring till late fall in the South. As a bedding Rose and as a cut-flower variety, this distinctively different Floribunda has been much admired by all who have seen it. \$1.75.

**Goldilocks.** Patent 672. Easily the best yellow Floribunda to date. Aptly named, this variety produces masses of perfect, small, golden blooms. The buds are miniatures of Hybrid Tea perfection, opening into fully double flowers. The bush is of strong and compact growth. Stems are strong and flowers fine for cutting. \$1.50.

## The Fashion Group

**Fashion.** Showy coral-salmon.

**Ma Perkins.** Coral-shell-pink.

**Vogue.** Salmon-red.

(Regular Value \$6.25)

**SPECIAL, one each, \$5.55**

Three of each for \$16.50

ASK FOR OFFER F-2

**Gross an Aachen.** Buds orange-red and yellow; flower large, very double, slightly fragrant, flesh-pink to creamy white. Small, compact bush; flowers excellent for cutting. \$1.25.

**Improved Lafayette.** Large; semi-double; cherry-red. Very strong grower and profuse bloomer over a long season. Ideal for borders or group plantings where Floribundas are most effective. \$1.25.

**Irene of Denmark.** Patent 889. Exquisite medium-sized buds and flowers; pure white. Another fine Floribunda from Poulsen or Copenhagen. \$1.50.

**Lilibet.** Patent App. for. 1954 All-America Winner. Lilibet is a very lovely new Floribunda, honoring Queen Elizabeth of Britain with the name she was called as a child. Lilibet is a lively shade of bright pink, bearing perfectly shaped baby buds, many on single stems to cut for small arrangements and corsages. Beautiful in bud, it is exquisite when the flower opens, showing golden stamens. A bushy plant, small in growth, free-flowering all the Rose season. \$2.50.

**Ma Perkins.** Patent 1143. 1953 All-America Winner. Most charming in color and form. Buds are coral with tinges of red and a touch of yellow at the base; open flowers are lovely coral-shell-pink. Compact and vigorous. A worthy companion of Fashion and Vogue. \$2.25.



CRIMSON ROSETTE

Perfect rosette blooms; vigorous bush

# • FLORIBUNDA ROSES •

## See Lovely Floribundas Here

From late April to October our Rose fields are a colorful sight. Not only do Floribunda Roses flower profusely in the spring and fall, but they are marvelous summer bloomers. We maintain good, all-weather drives through our Rose fields, and visitors are always welcome to come and see thousands of Floribundas and other Roses.

**Perle d'Or.** The salmon "Sweetheart Rose." A Tea-Polyantha variety, growing into large, Tea-like bush, producing many clusters of tiny, double flowers, identical in size with Cecile Brunner. \$1.50.

**Pinkie.** Patent 712. A very lovely little Rose of perfect Sweetheart size and form. Deep pink, opening lighter. A most profuse bloomer, repeating over a long season. An All-America Winner of 1948. \$1.75.

**Pink Rosette.** Patent 902. A new and lovely form in Floribundas. Beautiful rosette-shaped, small, double flowers borne in large clusters on a small, compact, healthy bush. Flowers are long lasting and very fine for corsages. \$1.75.

**Pinocchio.** Patent 484. Pink, suffused salmon; small, double flowers in clusters. Strong, compact, floriferous bush. \$1.50.

**Poulsen's Bedder.** Clear, bright pink petals, slightly ruffled. Somewhat tall for a Floribunda, constant and profuse in bloom; very effective as a hedge or bedding variety. \$1.50.

**Red Pinocchio.** Patent 812. Very double, very dark red flowers borne in large clusters on a medium-sized, compact bush. Excellent for hedge and border use. A great bloomer in hottest weather, and a very satisfactory Floribunda everywhere it is grown. \$1.50.



POULSEN'S BEDDER

**Red Ripples.** Brilliant scarlet in both bud and open flower; wavy petals; large clusters profusely borne on an upright, vigorous bush. \$1.25.

**Snowflake.** Small, semi-double, ivory-white flowers produced freely on very vigorous, bushy, Tea-Polyantha plants. Very disease resistant. \$1.50.

**Summer Snow.** Patent 416. A most prolific Floribunda giving great clusters of pure white blooms throughout the Rose season. \$1.50.

**Vogue.** Patent 926. A new and lovely Floribunda. Small, Hybrid-Tea-like buds of deep rose, flushed salmon, opening into graceful, high-centered, somewhat lighter flowers. We would call the color half-way between that of Fashion and Floradora. A 1952 All-America Winner. \$2.00.

## Prices on Floribunda Roses

All \$1.25 Roses are 3 for \$3.15, 6 for \$6.00, 12 for \$11.00.

All \$1.50 Roses are 3 for \$3.90, 6 for \$7.80, 12 for \$15.60.

All \$1.75 Roses are 3 for \$4.65, 6 for \$9.30, 12 for \$18.60

All \$2.00 Roses are 3 for \$5.25, 6 for \$10.50

All \$2.25 Roses are 3 for \$6.00, 6 for \$12.00

All \$2.50 Roses are 3 for \$6.60, 6 for \$13.20

All Roses are shipped prepaid



FRENHAM

*Bay Minette, Ala.* "My Floribunda Roses, Carrousel, Goldilocks, Geranium Red and Vogue, have been admired by everyone who sees them. My Old-Fashioned Roses have done well, too."—Mrs. V. O. M.

• FLORIBUNDA ROSES •



GOLDILOCKS IS BEAUTIFUL AND FLORIFEROUS

**Southern Favorite Floribundas**

**Six Tested, Dependable Varieties**

- Fashion.** Showy coral-salmon.
- Geranium Red.** Geranium-like red.
- Goldilocks.** Golden yellow.
- Pinocchio.** Pink.
- Red Pinocchio.** Crimson.
- Summer Snow.** White.

(Regular Value \$9.75)

**SPECIAL, one each, \$8.60**

**3 of each for \$25.50**

ASK FOR OFFER F-4

**Standard Floribunda Special**

**Non-Patented Varieties**

- Red Ripples.** Scarlet.
- Else Poulsen.** Rose-pink.
- Floradora.** Cinnabar-red.
- Improved Lafayette.** Cherry-red.
- Snowflake.** Pure white.

(Regular Value \$6.50)

**SPECIAL, one each, \$5.50**

**3 of each for \$15.00**

ASK FOR OFFER F-5

**Triple Special Floribundas**

- Crimson Rosette.** Dark red.
- Goldilocks.** Golden yellow.
- Summer Snow.** White.

(Regular Value \$4.75)

**SPECIAL, one each, \$4.20**

**3 of each for \$12.30**

ASK FOR OFFER F-3

While ours is a very extensive Rose listing and the plants are excellent quality, some varieties are in limited supply. In ordering, especially as the season advances, it is well to permit substitutions, to be made from similar varieties.



VOGUE • 1952 ALL-AMERICA WINNER

# Climbing Roses



© CLIMBING SUMMER SNOW

- Alister Stella Gray.** N. Pale yellow, orange center. Fairly double flowers borne in clusters; fragrant. Vigorous. \$1.25.
- Belle Blanca.** HG. Sport of the prized Belle of Portugal; pure white. \$1.50.
- Belle of Portugal.** HG. Long-pointed buds open into large, semi-double, light flesh-pink flowers. Glossy foliage. Very strong grower, producing an abundance of bloom in the spring. \$1.50.
- City of York.** LC. Semi-double; pure white with golden stamens. Dark, glossy foliage. Awarded Gold Medal of the American Rose Society. \$1.50.
- Cl. Cecile Brunner.** CFI. A strong climbing form of the favorite "Sweetheart Rose." Bears a great profusion of tiniest, double flowers in clusters. Abundant foliage; constant bloom. A climbing Rose of exceptional merit. \$1.50.
- Cl. Columbia.** CHT. Deep pink. Long-pointed buds and large double flowers on good stems. Very fragrant. Vigorous. \$1.50.
- Cl. Countess Vandal.** CHT. Excellent climbing form of the popular bush variety. \$1.50.
- Cl. Crimson Glory.** CHT. Patent 736. Extremely vigorous climber, blooming well throughout the entire Rose season. Rich crimson-red; very double and fragrant. The most praised of all red climbers in many grown at Thomasville. \$2.50.
- Cl. Dainty Bess.** CHT. Vigorous climbing form of the lovely single-flowered wild-Rose-colored variety. \$1.50.
- Cl. Devoniensis.** CT. White, faintly tinged pink; large, double. Abundant foliage, strong growth, recurrent bloom. A great favorite where it is known. \$1.50.
- Cl. Else Poulsen.** CFI. Showy and profuse sport of the ever-popular bush variety. This colorful Rose is one that has come into rapid popularity. \$1.25.
- Cl. Etoile de Hollande.** CHT. Dependable climbing form of the well-known bush variety. \$1.25.
- Cl. Goldilocks.** CFI. Patent 1090. Vigorous and prolific sport of the popular Floribunda, this climber with a profusion of double yellow flowers in clusters is very beautiful and effective. \$2.50.
- Cl. Kaiserin Auguste Viktoria.** CHT. Strong free-flowering sport of the bush variety. \$1.50.
- Cl. Killarney.** CHT. Sport of bush Pink Killarney. Vigorous and prolific over the entire Rose season. A great favorite in the Southeast. \$1.25.
- Cl. Louis Philippe.** CC. Sport of the fine old bush variety; deep red. Foliage small and glossy. \$1.50.
- Cl. Luxembourg.** CHT. Sport of the deep yellow bush Rose. Very rank grower; good bloomer. \$1.25.
- Cl. Maman Cochet.** CT. A fine climbing Rose, a sport of the old bush Maman Cochet, producing many double, medium pink blooms on very vigorous, long canes. \$1.50.
- Cl. Marie van Houtte.** CT. Strong Climbing Tea Rose, a sport of the bush variety, producing many creamy yellow blooms, tinged with pink; sometimes lavender tints in the fall. \$1.50.
- Cl. Mme. Jules Bouche.** CHT. Bud long-pointed; flower large, double, white with faintest pink tinge. Vigorous climber; foliage abundant. Recurrent in bloom. \$1.50.
- Cl. Mrs. Charles Bell.** CHT. A strong sport of the favorite bush variety. \$1.25.
- Cl. Peace.** CHT. Patent 932. One of the finest of all climbers. Vigorous; constant bloomer. Large, perfect flowers like bush variety; fine for cutting. \$2.50.
- Cl. Perle des Jardins.** CT. A vigorous climber, similar to Marechal Niel but grows off more quickly. \$1.50.
- Cl. Pinkie.** CFI. Patent 1076. Profuse and colorful sport of the bush Floribunda. \$2.75.
- Cl. Snowbird.** CT. Valuable climbing sport of the superb Tea Rose Snowbird; white, tinged lemon, flowers on good stems. Growth very vigorous. \$1.50.
- Cl. Souv. de la Malmaison.** CB. Charming light pink, very double flowers; fragrant. An extremely vigorous and dependable climber developed from the famous bush variety. \$1.50.
- Cl. Summer Snow.** CFI. Patent 400. This prolific Rose fills the need for a white climber with plentiful foliage and abundant and repeating bloom. \$2.00.
- Cl. Talisman.** CHT. A vigorous sport of the bush Talisman; identical in color and form with its parent. Those who may not have done well with the bush variety should try the climber; it is very strong and dependable. \$1.25.
- Cl. Red Talisman.** CHT. Just like the bush Red Talisman except that this one is a sturdy, climbing plant from which beautifully formed flowers may be cut. \$1.25.
- Dr. W. Van Fleet.** LC. Flesh-pink; double. Profuse spring bloomer with glossy foliage. One of the most beautiful of Roses. \$1.25.
- Elie Beauvillain.** CT. Two-tone, pink and yellow. One of the showiest and most profuse bloomers of all climbers; a favorite where known. \$1.50.
- Lamarque.** N. Pure white with lemon center; medium size, double and fragrant. A rank grower, producing intermittent bloom over a long season. Because of its excellent qualities, this old Rose, given us by Marechal of France in 1830, has continued to this day to be a great favorite in the South where it is extensively grown. \$1.50.
- Marechal Niel.** N. Favorite of all old climbers in the Lower South. Bud large, full, pointed; flower large, full, double, fragrant. The golden yellow flowers are borne singly, or sometimes in clusters, on fair stems. Ample foliage; good growth. \$1.50.
- Mary Wallace.** LC. Large; deep pink. A very rank grower; profuse bloom in the spring. One of the features of Thomasville gardens at Rose Show time. \$1.25.



## • Climbing Roses •

**Mermaid.** HBc. Very large, perfectly single, lemon-yellow, Cherokee-like bloom, produced in clusters on a very thrifty plant. Many places in the South do not have this Rose, but where it is grown, as at Jacksonville, Fla., and Thomasville, Ga., it is one of the most admired of all Roses in early spring. \$1.50.

**Mme. Gregoire Staechelin.** LC. A lovely and satisfactory climbing Rose developed from crossing Frau Karl Druschki and Chateau de Clos Vougeot. Delicate pink flowers in profuse clusters in spring. A favorite wherever known. \$1.25.

**Paul's Scarlet Climber.** LC. Brilliant scarlet, semi-double flowers in large, heavy clusters. A profuse bloomer, always reliable. A great favorite wherever Roses are grown. \$1.00.

**Reine Marie Henriette.** CT. Cherry-red; large; double; fragrant. Growth vigorous; profuse bloomer; repeats. An old Southern favorite we are glad to bring back. \$1.50.

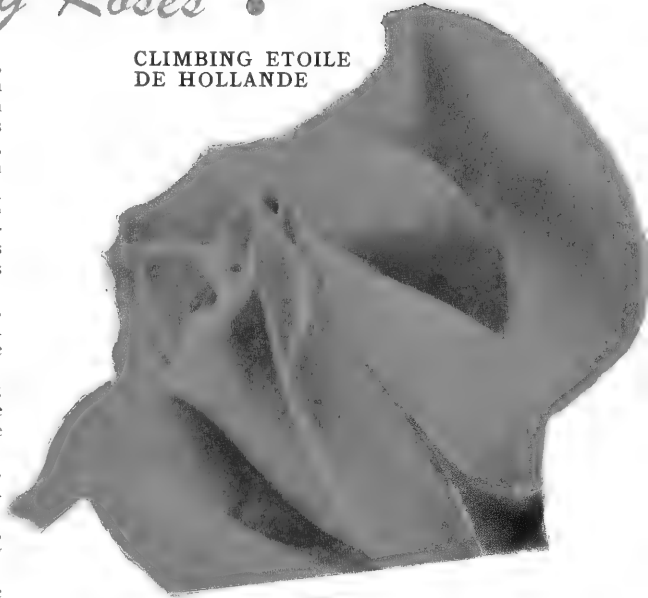
**Reve d'Or.** N. Buff-yellow; medium size; fragrant. Foliage rich green, extending to base of plant. A great favorite at Thomasville. \$1.50.

**Reveil Dijonnais.** CHT. A strikingly showy Rose, magenta and gold. Healthy, glossy foliage; very vigorous growth; repeats. \$1.50.

**Silver Moon.** LC. Very large; single; pure white with golden stamens. Very strong grower and abundant spring bloomer. A truly magnificent Rose for the South. \$1.25.

**Solfaterre.** N. Our favorite of all the fine, dependable Noisette group of climbers for the South. Lovely lemon-yellow blooms, double and fragrant, borne abundantly in repeating surges throughout a long season. Very vigorous and easy to grow, Solfaterre is tops in climbing Roses for the South. \$1.50.

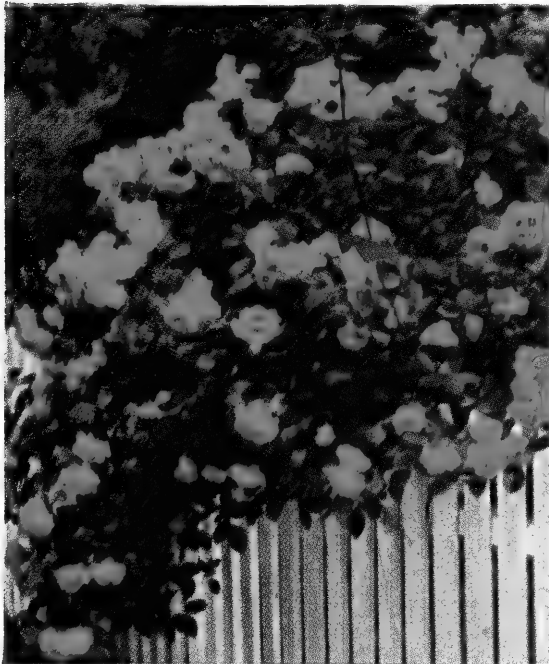
**White Banksia.** B. A unique and distinctive old Rose of the South. At Thomasville it blooms in late winter, while azaleas are still in flower; in Florida it produces its graceful and profuse sprays of bloom in winter. Small, double, pure white blooms in clusters. Extremely vigorous. In old gardens in Charleston and Thomasville, it has climbed to a height of 60 feet. \$1.50.



CLIMBING ETOILE  
DE HOLLANDE



CLIMBING  
TALISMAN



PAUL'S SCARLET CLIMBER

**Yellow Banksia.** B. A charming Rose of the Old South, exactly like the White Banksia except that this one is golden yellow. This old Rose has been prized for generations because of its extreme earliness of bloom, ease of growth, distinctive flowering and foliage, and long life. \$1.50.

### Prices of Climbing Roses

- All \$1.00 Climbing Roses are 3 for \$2.50, 6 for \$4.75, 12 for \$9.00
- All \$1.25 Climbing Roses are 3 for \$3.15, 6 for \$6.00, 12 for \$11.00
- All \$1.50 Climbing Roses are 3 for \$3.90, 6 for \$7.50, 12 for \$13.20
- All \$1.75 Climbing Roses are 3 for \$4.50. No further discount.
- All \$2.00 Climbing Roses are 3 for \$5.25. No further discount.
- All \$2.50 Climbing Roses are 3 for \$6.60. No further discount.
- All \$2.75 Climbing Roses are 3 for \$7.20. No further discount.

All Roses are shipped prepaid

Atlanta, Ga.: "You sent me splendid Banksia Roses last January, the best I have ever had. They all lived and grew more the first year than any I bought elsewhere."—C. C. E.



SAFRANO

SNOWBIRD

## Scarce Roses of Great Merit

In the back-yard garden of Misses Annie and Julia Wright is an old Tea Rose, Bon Silene, planted by the grandmother of those ladies 90 years ago! It has persisted with the minimum of care. Recently, Mrs. M. G. Nicholson told the Georgia Rose Society she has on the grounds of her residence at Athens a number of old Tea Roses ranging in age from 35 to 50 years, and that she has never sprayed or dusted these varieties one time. It is Roses such as these that show ours is a section ideally suited to growing Tea Roses, including climbing forms and the closely related Noisettes.

Most nursery catalogs do not offer Tea Roses, nor such other kinds ideally suited to Southern gardens as the Banksias, the Cherokees and Hybrid Perpetuals. Rather, most growers offer you Radiance, Paul's Scarlet and a few others, with which we have no quarrel. While admittedly some of the new Hybrid Tea Roses are outstanding, many of those shown in glowing colors will hardly justify the extravagant descriptions.

We agree that there is a fascination about the NEW. And our gardens should have new varieties. But, lest failure dampen our enthusiasm, let's plant more of the Roses that are time-tested and dependable. If today the old Tea Rose William R. Smith were a NEW variety, it would be featured in catalogs and advertisements throughout the land. Yet the flower is more double, more fragrant and more lasting than many of the Hybrid Teas we consider standard varieties. And this old Tea will be living when many other Roses have passed on.

"If a thing is old," said Capt. Eddie Rickenbacker in an address several years ago, "it is a sign it was fit to survive. The guarantee of continuity is quality. . . . Old-fashioned hospitality, old-fashioned politeness, old-fashioned honor in business had qualities of survival."

Tea and related Old Roses have survived because they were fit to survive.

After fifty-six years, we have come to believe that often there is little merit in the new, and to love Old Roses like old friends. And, speaking of "old," let us quote these lines from Mrs. Keays' "Conversation at a Garden Club.":

*"What do you call old?"  
 "Old Roses are those of type and class  
 Used in good gardens of the past."  
 "But when did the past end?"*

WILLIAM  
 R. SMITH

## Too Many Varieties?

"Are there too many varieties? Have you propagated every Old Rose you could lay your hand on?" Certainly not. We are not growing old varieties simply because they are "old." According to Richardson Wright in his "The Story of Gardening," there appeared three hundred China Roses, five hundred Bourbons, three hundred and fifty Noisettes, three hundred Hybrid Perpetuals and fifteen hundred Teas!

So the list in this catalog is relatively very short. Perhaps it does not contain *all* the best of the Old Roses, but we are listing the finest of those we have seen.



# HJORT'S *Old-Fashioned* Tea Roses

This group of Roses is perfectly adapted to the hot, moist summers of the Lower South, including Florida, and soils that are sandy, although the Teas grow all over the entire South in any good Rose soil.

Tea Roses were brought to Europe from China's gardens in the late 1700's. In northern Europe they were not well received, but in southern France they found conditions of climate and soil suitable and rapidly gained favor. Soon they were brought to America. They did not thrive in the North, but once planted in the South, especially along the Gulf and coastal areas, became immensely popular and outlived other classes of Roses.

Most Teas are not considered cut-flower varieties, but some produce large flowers on stiff stems. The best of these are Baroness Henriette Snoy, William R. Smith, Maman Cochet, Mrs. Dudley Cross and Mme. Lambard. A lot of the others are much better than generally believed. The pink varieties are the favorites in the Teas, for while the reds grow vigorously it is admitted none of them have color comparable to Crimson Glory and Etoile de Hollande, nor are there yellows like Eclipse and Soeur Therese—they are lighter. One does not plant Teas for flowers like Peace and Crimson Glory, but for profusion of bloom, ease of growth and length of life.

If you are not so sure you can grow good Roses, by all means start with the Teas. You will love them for their dependable qualities. And really, they are beautiful!

All Tea Roses are \$1.50 each, 3 for \$3.90, 6 for \$7.50, 12 for \$13.20, by Parcel Post, prepaid

**Anna Olivier.** Clear silvery pink, deeper center; medium-size flowers, double; fragrant. Profuse and constant bloomer. Strong grower with abundant foliage.

**Baroness Henriette Snoy** is a new member of the Old-Fashioned Tea group, and one of the most beautiful and satisfactory of Roses for Southern gardens. The lovely, pointed buds and large, double, well-formed flowers are peach-pink, shaded cream, and are freely produced on vigorous stems. The bush is spreading and vigorous, with abundant, heavy foliage, most resistant to blackspot. We are the first firm in America to offer this Rose, and many who have seen it in our gardens and fields agree that it is the finest of the Teas, which is saying much, for there are other choice ones.

**Bridesmaid.** Clear silvery pink; large, double flowers; fragrant. Abundant foliage; persistent bloomer.

**Cecile Brunner.** The "Sweetheart Rose." One of the treasures of Old South gardens, just as valued today as in the past. A Tea-Polyantha hybrid, also classed as a Floribunda, which develops into a large, vigorous bush producing an abundance of small, double, light pink blooms in clusters over the entire Rose season.

**Comtesse Riza du Parc.** Light salmon-rose; double. A strong grower with abundant foliage. Good bloomer, especially in fall, far into cool weather.

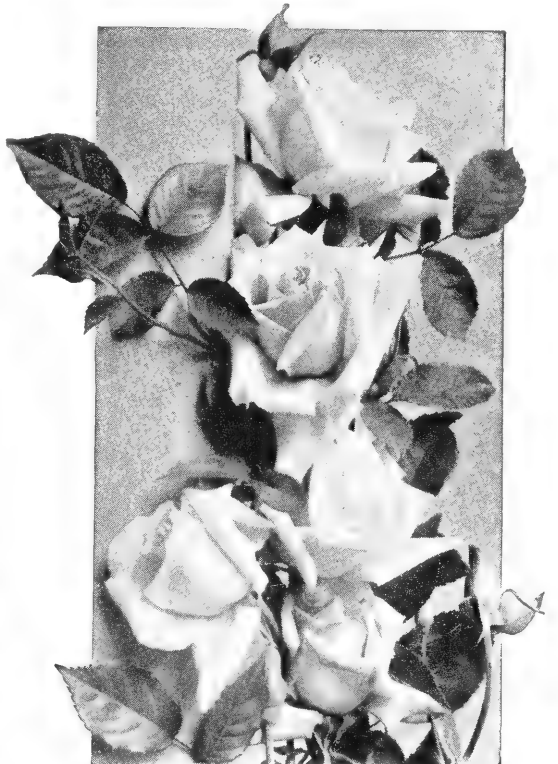
**Devoniensis.** The Magnolia Rose. A lovely Rose that was a great favorite a generation ago, and for which we have had many inquiries since we began offering more Tea varieties. Lovely white, flushed pink flowers borne freely on a vigorous bush.

**Duchesse de Brabant.** Soft shell-pink. Bud short, globular; open, cupped flower. Growth vigorous and hardy. This dependable old Tea continues to be a great favorite.

*Pensacola, Fla.:* "I want to tell you what splendid results I have had with Roses ordered from you. They seem to adapt themselves to our sandy soil. I am growing 35 varieties of Teas and Climbers."—Mrs. W. S. B.



BARONESS HENRIETTE SNOY



MAMAN COCHET

# HJORT'S *Old-Fashioned* TEA ROSES

**Etoile de Lyon.** Deep saffron-yellow; large, very double and fragrant. Considered by many to be the finest of the Teas of yellow shading. We are glad we have enough of this variety to offer it this season.

**Freiherr von Marschall.** Carmine-red; double. Vigorous and constant. A fine old Tea Rose, sometimes called the Double Papa Gontier. A wonderful grower and bloomer; especially good for fall flowering.

**Gruss an Teplitz.** This old Hybrid China Rose has some Tea blood in it, and we place it in this group. Dark, velvety scarlet; spicy fragrance. Bush very strong and prolific; flowers fairly double on rather short stems. A fine Rose for hedges.

**Hofgartner Kalb.** Carmine-rose, very double flowers. Vigorous, compact bush; recurrent bloom. This is a China Rose, having Gruss an Teplitz as one of the parents.

**Lady Hillingdon.** Deepest yellow of all Tea varieties. Bud long pointed; flower semi-double, fragrant. Bushy growth; bronze foliage. A favorite Tea Rose.

**La France.** While this is called the original Hybrid Tea Rose, it has the lasting, dependable qualities of the full-blooded Tea. Silvery pink, reverse bright pink. Vigorous; profuse; recurrent. Introduced in 1867 by Guillot of France, this old variety is world-famous and is still grown by many admirers.

**Louis Philippe.** (China.) This is a most unusual Rose of deep red color. Foliage dark and glossy. Compact and vigorous in growth, it is used extensively as a hedge Rose and blooms profusely over a long season. In fact, in mild seasons it blooms throughout the winter in Florida and Gulf Coast areas.

*Winter Park, Fla.:* "I am greatly pleased with your Tea Roses I planted last year, and will order more to replace some Hybrid Teas."—Mrs. E. R. W.



DUCHESSE DE BRABANT

MRS. B. R. CANT



**Maman Cochet.** Clear silvery pink. Long-pointed bud and large, fragrant flower. This variety does not grow off so rapidly as such Teas as Mrs. Dudley Cross and Mme. Lambard but eventually makes fully as large a bush. One of the best cut-flower Teas.

**Marie van Houtte.** Canary-yellow; petals tipped pink. In fall or during a mild winter the flowers show an enchanting lavender cast not seen in any other Rose. Foliage is dark and abundant; growth vigorous and compact. A very lovely and rewarding Tea Rose.

**Mme. Camille.** Fairly large, well-formed, aurora-pink flowers, veined with white reflections; fragrant. Not very double. Not recommended as a cut flower, but a marvelous bloomer, going well into cold weather.

**Mme. Lambard.** This Rose is one of the great favorites of those who have Tea varieties. In the spring it is carmine-pink, shaded salmon, a little lighter in summer. In fall it is almost red, when it is in its glory. A rank grower and profuse bloomer over a long season that extends into cool weather. A generation ago it was the leader of the Tea Rose group, and today there are many who still think it is the best.

**Mme. Melanie Soupert.** Salmon-yellow, shaded pink; very large and very double. Vigorous bush with stiff stems. How we wish we had a dark pink or red of the same globular form.

**Mrs. B. R. Cant.** Deep rose to light red; large, double flowers. Vigorous and profuse; bush is one of the largest of all varieties. One of the best of Tea Roses, it is a great favorite in many places in the South, such as New Orleans, Mobile, Florida and the Carolinas. Ranks right along with William R. Smith, Baroness Henriette Snoy and Mrs. Dudley Cross, and ought to be in every Tea Rose collection.

**Mrs. Dudley Cross.** Most vigorous of the yellow Tea Roses. Canary-yellow, long, Cochet-like buds, opening light yellow and gradually developing tints of pink—a fascinating combination. This rank-growing, showy and completely satisfactory Tea Rose should start any Tea collection.

*St. Petersburg, Fla.:* "I feel you would like to know the Tea Rose varieties have done very well regardless of hurricanes, and a very warm and late summer with profuse rains."—Mrs. I. T. W.

# HJORT'S *Old-Fashioned* TEA ROSES



SNOWBIRD

**Mrs. Dunlop Best.** The most satisfactory and rewarding new Tea Rose since Baroness Henriette Snoy. Saffron-yellow with apricot shadings. Bud long pointed; flower large, double, fragrant. Perhaps Mrs. Dunlop Best is best described as a glorified Safrano, being larger and deeper in color. A good cut-flower Tea, much admired by those who have seen Tea Roses in our gardens and fields the past few years.

**Mrs. Herbert Stevens.** Long-pointed, white bud slightly tinged pink opens into a pure paper-white flower, fairly large and double. Typical strong Tea growth and free bloom.

**Old Gold.** Something new and different in color for Tea Roses—orange, with yellow and pink shadings. Abundant foliage; vigorous, branched growth. A rare and attractive Tea Rose that is well named.

**Perle d'Or.** A Tea-Polyantha hybrid, called the Salmon Sweetheart Rose, having the same "baby" double flowers in clusters as does Cecile Brunner. At Thomasville it is a great favorite. Some bushes are thirty years old or more in gardens here. It grows 8 feet tall.

*Mobile, Ala.:* "The Tea Roses you sent have done well and I am much pleased. I am glad you gave me the name of one I had, Mrs. B. R. Cant."—Mrs. S. M. C.

While ours is a very extensive Rose listing and the plants are excellent quality, some varieties are in limited supply. In ordering, especially as the season advances, it is well to permit substitutions, to be made from similar varieties.

## Yesterday's Favorites

*Lovely, Vigorous, Prolific Today*

**Duchesse de Brabant.** Shell-pink.

**Marie van Houtte.** Canary, tipped pink.

**Mme. Camille.** Aurora-pink.

**Mrs. Dunlop Best.** Saffron-yellow.

**Old Gold.** Pink and gold.

**Princesse de Sagan.** Deep red.

*(Regular Value \$7.50)*

**SPECIAL, one each . \$6.00**

**Three of each for \$17.00**

**ASK FOR OFFER NO. T-2**

**Princesse de Sagan.** This Rose has all the characteristics of a China variety, one of the parents of the Tea Rose. Deep red, fairly double. Very robust in growth and constant in bloom. Not a cut-flower variety, but a very easy-to-grow kind that will bloom in hot weather and then come back with a heavy fall crop of flowers, continuing far into cool weather.

**Safrano.** Saffron-yellow. Very vigorous bush and free bloomer. A very old, dependable Tea, appreciated where known.

**Snowbird.** Bud long pointed; flower double, fragrant, white with creamy center. Foliage leathery and, like other Teas, highly resistant to blackspot. Many consider it the finest white Tea Rose.

Being an "old" variety is nothing against a plant. Rather, the old varieties that remain in favor occupy a unique position, for they stay with us strictly on merit.



WILLIAM R. SMITH

# HJORT'S *Old-Fashioned* TEA ROSES

**Snowflake** (Marie Lambert). Small, semi-double, pure white blooms borne profusely in clusters over a long season, on a vigorous bush. It can well be used with colored Floribunda Roses. Greatly prized at Thomasville.

**Souv. de la Malmaison.** (Bourbon.) Very large, double flower; creamy flesh-pink with rosy center; highly fragrant. A famous old Rose, dating back to 1843, still lovely and still satisfactory. Small wonder it has witnessed the demise of thousands and thousands of other Roses and still lives! In it are combined the qualities we expect in a Rose.

**White Maman Cochet.** Sport of Maman Cochet. Long-pointed, white buds, tinged pink, opening into large, double, fragrant flowers. Since its introduction in 1896 it has steadily maintained its position as the leading and best white Tea Rose. While some Teas are not rated as cut-flower Roses, this one is, and should be in every garden of Tea varieties.

**William R. Smith.** Here is the finest cut-flower variety of all the Teas. Large, double, long-lasting flowers of blush-pink color, on long, stiff stems. Foliage large, rich green, leathery. Always a favorite; always satisfactory.

## Cut-Flower Favorites

### Large-Flowered Teas

**Baroness Henriette Snoy.** Peach-pink.

**Mme. Lambard.** Carmine.

**Mrs. B. R. Cant.** Red.

**Mrs. Dudley Cross.** Two-tone.

**White Maman Cochet.**

**William R. Smith.** Light pink.

(Regular Value \$7.50)

**SPECIAL, one each . \$6.50**

Three of each for \$18.00

ASK FOR OFFER NO. T-1

## Hybrid Perpetual Roses

**Duchess of Sutherland.** Large, very double pointed buds of lovely peach-pink, opening into large flowers. One of the most beautiful and satisfactory of Hybrid Perpetuals.

**Frau Karl Druschki (White American Beauty).** This is the one pure paper-white Rose without a tinge of pink or lemon. Very large and double. In the Southeast repeats in blooming.

**General Jacqueminot.** Bud scarlet-crimson; flower large, clear red; very fragrant. The vigorous old "Jack Rose" deserves a place in every Southern garden.

**Georg Arends.** A very lovely Rose of soft rose-pink. Cup-like bud and large flower; very fragrant.

**Paul Neyron.** Greatest of all pink Hybrid Perpetuals. Immense, cup-like bud; perfect, well-formed flower. A grand old Hybrid Perpetual.

All Hybrid Perpetual Roses, \$1.50 each, 3 for \$3.90, 6 for \$7.50, 12 for \$13.20

## DWARF *Polyantha* Roses

These are commonly called "Baby Roses" and are excellent for borders, hedges or any place where a small and compact Rose is used.

**Chatillon Rose.** Small, double, rose-pink flowers borne profusely over a long season.

**Golden Salmon Superior.** All that the name implies, and a unique color in Roses.

**Sparkler.** Very dark red sport of Golden Salmon. Very profuse bloomer all the Rose season.

In limited supply we have other Polyanthas, and invite correspondence.

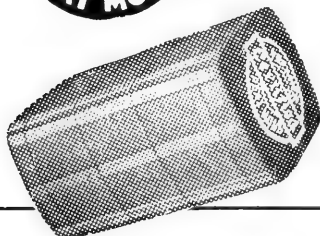
All Dwarf Polyantha Roses are \$1.25 each, 3 for \$3.15, 6 for \$6.00, 12 for \$11.00

See the Thomasville Rose Show Friday, April 30, 1954



## DRY PREMIER PEAT MOSS IN BAGS AND BALES

The great soil-building value of Peat Moss has long been recognized. Dry Peat is light in weight and transportation costs are low. The most successful gardeners everywhere use it in setting Azaleas, Camellias, Roses and other plants. Premier Peat is capable of absorbing 18 times its weight in water. We highly recommend it.



1-bus. Bag \$1.00

3-bus. Bag \$2.50

Handy Bale \$4.00

Large Bale \$5.75



PEARL MAXWELL

## HJORT'S *Fine New* CAMELLIAS

Thomasville is in perhaps the most favored locality for producing the finest Camellia blooms in America. Visitors have told us the finest quality of bloom they have seen is in the area of which Thomasville is the center—Albany, Cairo, Tallahassee, Quitman. Here we have conditions of climate and soil most favorable to growing quality plants, too.

Naturally, as an established and progressive nursery interested in the most distinctive flowering plants for this area, we have long been interested in Camellias. We are always procuring new varieties from other parts of the Camellia belt. And, we have produced, or distributed for other originators here, a goodly number of new varieties.

We gave wide distribution to the lovely Camellia, Martha Brice, developed at Quitman, and we sent to all parts of the country many plants of Camellia Vashti, generally considered the best of the smaller, formal double variegated varieties. We distributed the charming new Camellias, Pearl Maxwell from near-by Calvary, and Betty Sheffield, an outstanding seedling from Quitman. And for the third season the distinctively different novelty, Frank Gibson, is offered.

Out of the many seedlings we have raised, or that have been brought to us for examination, we have, over a period of years, selected a few of real merit and we offer them here.

---

### RELiance AZALEA AND CAMELLIA SPECIAL FERTILIZER

For maximum growth, bloom, and general well-being, it is necessary to feed your plants properly. Unfortunately for the Azalea and Camellia grower, most commercial fertilizers are made neutral by the use of limestone, and are not suitable for acid-loving plants.

To meet this need we keep in stock Reliance Azalea and Camellia Special, a commercial fertilizer which is acid, easy to apply, and has no objectionable odor. It supplies a balanced and complete food for these plants. With your purchases you will receive a little booklet giving much information on the planting and care of Azaleas and Camellias.

Prices of Reliance Azalea and Camellia Special Fertilizer: 25 lbs. \$1.50, 50 lbs. \$2.50, 100 lbs. \$4.50, f.o.b. Thomasville, Ga.

*Three  
Lovely*  
**CAMELLIAS**  
From  
**Thomasville**



*Camellia*  
**BRYAN WRIGHT**



*Camellia*  
**ECSTASY**



*Camellia*  
**BETTY SHEFFIELD**



# Lovely THOMASVILLE CAMELLIAS

**Betty Sheffield.** A charming new Camellia from Quitman, Ga., raised by Mrs. Albert Sheffield, long Chairman of the Park and Tree Commission and active in garden club and civic affairs, and named in her honor. Large, very regular, semi-double, pure paper-white with few red and pink splotches or stripes. The flower is of exquisite form, with petals slightly waved; golden stamens are mostly in the center, but somewhat interspersed in petals. The bush is a strong, vigorous grower, and the foliage is large and dark green. Betty Sheffield is superior to many other Camellias of its type. Collectors and amateurs alike are high in praise of this variety. 2-yr., grafted, well branched, 18 to 24 in., \$20.00; 12 to 18 in., \$15.00; 1-yr., well branched, \$10.00. All field-grown plants on strong stocks.

**Bryan Wright.** The popularity of this Camellia grows. Those who have it are delighted with it, and the large specimen plants in bloom in our Woodland were greatly admired by visitors last winter. Bryan Wright is a lovely, very light pink Camellia, in color half way between Lady Hume's Blush and Pink Perfection. It is a fairly early bloomer, and the first flowers are often formal; later they are almost double peony form, and at the end of the season they open and show a few very golden stamens interspersed in the petals. At all stages the flowers are lovely. Grafted, compact, 2 to 3 ft., \$17.50; 18 to 24 in., compact, \$12.50; 1-yr., grafted, well branched, 12 to 18 in., \$10.00; 8 to 12 in., \$7.50.

**Ecstasy.** A brand-new, very beautiful rose-pink, semi-double Camellia, raised by Miss Beatrix Hoyt of Thomasville, who also produced the Bryan Wright. It is a cross of an old semi-double pink, Martha Wright, with an unknown variety. The flower is large, and the showy golden stamens are in one compact ring in the center of the flower. Like the other Camellias introduced from Thomasville, Ecstasy is a strong grower, as well as a good bloomer. Grafted, 2-yr., 18 to 24 in., \$20.00; 1-yr., 12 to 18 in., \$15.00; 8 to 12 in., \$10.00. These are all field-grown plants, well branched and of the finest quality.

**Martha Brice.** Not so new, this one has been in circulation about ten years. The Martha Brice is a large, semi-double, light lavender-pink Camellia, a color not found in other varieties. The growth is compact, and foliage is large and distinctive. One of the most beautiful of pink Camellias. Own-root plants, field grown, in all sizes, and at prices of Group B Camellias, page 29.

**Pearl Maxwell.** Here is a very lovely new regularly imbricated (formal double) Camellia that we believe has come to stay a long, long time. It supplies the need for a large formal flower of light pink color; many blooms of it measured  $5\frac{1}{2}$  inches across. It has none of the defects of streaking or folding back like Otome and several others. While not as heavy as the Mathotianas, it is not far behind in size, and for exquisite, soft color it is quite superior to other varieties of its form. Pearl Maxwell is a seedling of the vigorous Enrico Bettoni and like the parent is a vigorous grower and late bloomer, fine for extending the flowering season. This outstanding Camellia was raised from a seed by Mrs. C. O. Maxwell, Cairo, Ga., and named in her honor. Several years ago she showed blooms at the Cairo and Thomasville Camellia shows which were greatly admired, and led us to seek propagating rights. See color illustration on page 21. 2-yr. grafts, 18 to 24 in., compact, \$17.50; 1-yr. grafts on heavy stocks, \$10.00.

**Vashti.** A lovely Camellia from Vashti School, Thomasville, Ga. Easily the most choice variegated Camellia in the standard, complete double, imbricated form. Medium size; light rose-pink, splashed with deep pink and red. Bush of compact, symmetrical growth. Own-root, 12 to 15 in. to 18 to 24 in., specimen, at prices of Group B Camellias, page 29.

This fall and winter we are offering only specimen sizes of Camellias.

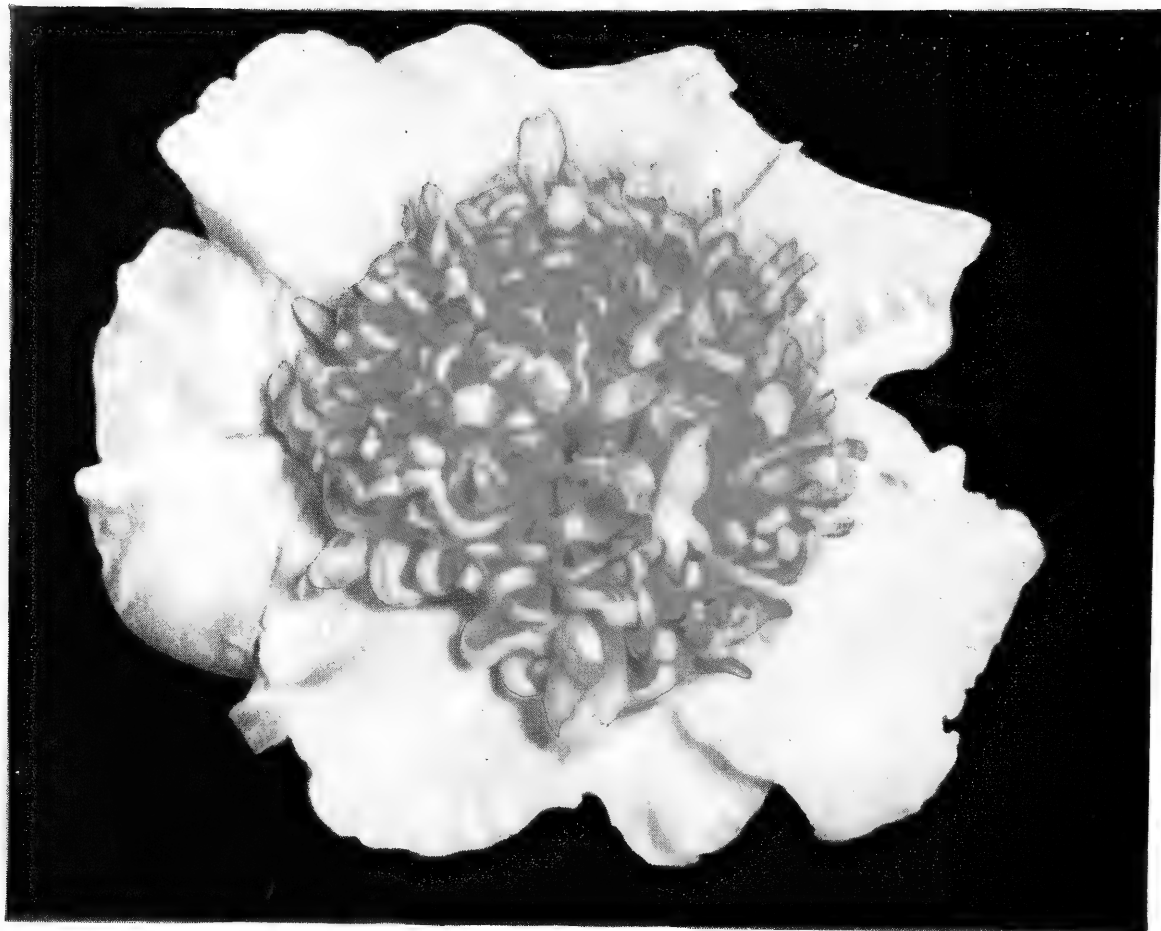
Orlando, Fla.: "We did so much enjoy our visit to your nursery; it was so kind of you to take time on a Saturday afternoon to show it to us."—Mrs. R.B.G.



MRS. F. L. GIBSON



MARTHA BRICE



FRANK GIBSON

## *New Thomasville Camellia*

### • FRANK GIBSON •

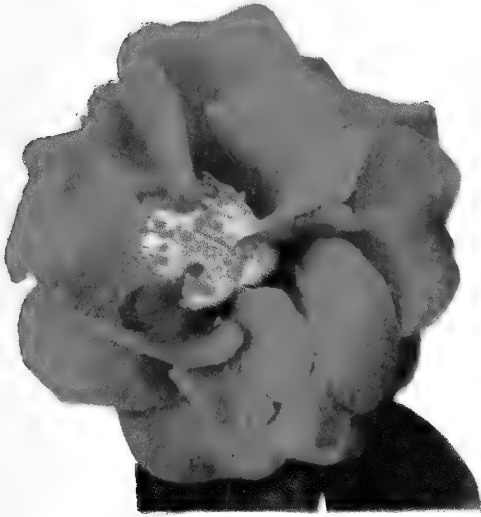
Yellow is a color long sought in Camellias, and the new Frank Gibson has more of it than any variety to date. For charm and distinctiveness, Frank Gibson is acclaimed the most outstanding new Camellia in years. There is a single row of large, pure paper-white outer petals and a striking center of petaloids, often two sizes, most of which have a gold band, giving it an almost solid yellow center. There are no stamens in the original, select Frank Gibson Camellia. It has been called the one and only "triploid" Camellia, with three sizes of petals.

Camellia Frank Gibson is vigorous and compact in growth, and the foliage is unique—dark green and rather pointed. It blooms early, beginning the last week in October, and is very hardy, having withstood the severe cold of the winter of 1950–51 along with the most resistant. The plant was raised as a seedling by Mrs. F. L. Gibson, Thomasville, Ga., and named in honor of her late husband, one of Thomasville's leading businessmen, whose hobby was gardening and for whom the Camellia was always the favorite flower. A seedling found under a Mrs. F. L. Gibson bush, it is believed to be a cross of Elegans (Chandler) X Mrs. F. L. Gibson.

2-yr., grafted, 2 to 3 ft., compact, \$25.00; 18 to 24 in., compact, \$20.00; 12 to 18 in., well branched, \$15.00; 1-yr., \$10.00. All these grafted plants are field grown, on heavy stocks, and well above the average in quality.

# GROUP A CAMELLIAS • *Grafted Plants*

## New and Rare Varieties



ADOLPHE AUDUSSON

- Adolphe Audusson.** Large, semi-double; very dark red, marbled white. Ours is a superior strain, lighter than most. Very choice. Grafted, 8 to 12 in. to 18 to 24 in.
- Adolphe Audusson, Red Sport.** Generally considered the finest of semi-double red Camellias. Very dark red with golden stamens. Heavy, dark green foliage. A "must" for every Camellia garden. Grafted, 8 to 12 in. to 18 to 24 in.
- Black Dragon.** Large; irregular double; very dark red. Has the appearance of an almost black Woodville Red. Grafted, 8 to 12 in. to 18 to 24 in.
- Black Dragon Variegated.** Sport of the solid dark red variety, this one is peppered with white dots, making it a very showy bloom. Grafted, 1 yr.
- C. M. Wilson.** Sport of Elegans (Chandler), and exactly like its parent in every particular except color of the flower, which is a very lovely, clear light pink. New Camellias may come and go, but here is one that will stay. Grafted, all sizes.
- Donckelari.** Large; semi-double; red and white. Very hardy. Ours is the old, true-to-name Donckelari. Grafted, 8 to 12 in. to 18 to 24 in.
- Dr. Tinsley.** A fine newer Camellia. Soft, light rose-pink, with distinctive lighter center, making it very different from other varieties. Grafted, all sizes.
- Edwin H. Folk.** Lustrous, bright red. A very large, loosely constructed semi-double that is one of the very finest of all. No garden claiming the best should be without it. Grafted, 1 yr.
- Emmett Pflingstl.** Sport of the newer Camellia Joseph Pflingstl, and considered by many to be superior to the parent, which is claiming much. Emmett Pflingstl is like the parent, except that the beautiful flowers are spotted and splotted with white. Grafted, all sizes.
- Fimbriata Superba (Fred Sander).** Medium size; semi-double; distinct saw-edge; deep red. Grafted, 12 to 15 in. to 18 to 24 in.

### Large Specimen Camellias

In limited supply we have field-grown plants of a few varieties in large sizes. Prices on request.

**Frizzle White.** Very large; pure white; semi-double to loose peony form. A superior Camellia deserving a better name. Grafted, 8 to 12 in. to 18 to 24 in.

**Haku-rakuten (Refugee).** Large; semi-double; pure white, with long, showy stamens. Grafted, 8 to 12 in. to 18 to 24 in.

**Hana Fuki.** Single to semi-double; soft shell-pink; golden stamens. A delightful flower. Grafted, 8 to 12 in. to 18 to 24 in.

**High Hat.** Lovely, light pink sport of Daikagura. Like parent, blooms very early. Grafted, 8 to 12 in. to 15 to 18 in.

**Joseph Pflingstl.** Large, 5 to 6 inches across, incomplete double; scarlet-red. Outer petals waved, becoming fluted toward center where some stand like rabbit ears, surrounding golden stamens. A few flowers are full, formal double. Has long season of bloom. An outstanding new Camellia. Grafted, all sizes.

**Joshua Youtz.** See White Daikagura.

**Kenny (Glen).** Very large; irregular double; deep pink and white variegated. Upright growth, heavy wood, large foliage. Has the appearance of being an extra-fine Lady Jane Grey, but a more reliable and perfect bloomer. Very choice. Grafted, 12 to 15 in. to 18 to 24 in.

**Light Gigantea.** An almost solid white form of Gigantea, with a few showy splashes of red. Our light strain of Gigantea is very lovely and superior. Grafted, 2-yr., 12 to 18 in., 18 to 24 in.; 1 yr., 8 to 12 in.

**Mathotiana Rosea.** Very large; double imbricated; sometimes shows a few stamens in center at end of season; deep pink. This Mathotiana sport is the largest of all pink double-flowering Camellias. Makes a fine bush with heavy foliage; always satisfactory. Grafted, 12 to 15 in. to 18 to 24 in., specimen.

**Mathotiana Special.** Here is an exceptionally fine new member of the Mathotiana group, of our raising. Like Mathotiana Variegated (formerly called in error C. M. Hovey), but the white spots are fewer and much larger; growth and foliage same as parent. Strikingly handsome. Grafted, 18 to 24 in., specimen.



DONCKELARI

## GROUP A CAMELLIAS, Grafted Plants, continued

### NEW AND RARE VARIETIES

**Pride of Descanso.** Very large; semi-double; pure white. One of the famous "S" varieties. Grafted, 8 to 12 in. to 15 to 18 in.

**St. Andre.** One of the finest varieties we have been able to offer. This very large, semi-double to anemoneform is a rich crimson-red. Grafted, 1 yr., on heavy stocks.

**Thelma Dale.** Very large; incomplete double with petal sizes intermixed; rose-pink, striped and spotted white. Very choice. Grafted, 12 to 15 in., \$12.00; 18 to 24 in., \$17.50.

**Victory White.** Large; sometimes semi-double, sometimes irregular double (peony form); pure white. Grafted, 8 to 12 in. to 18 to 24 in.

**Ville de Nantes.** No. 1 Camellia of America. Extra large; semi-double; most blooms red with white stripes and splotches. There is an occasional solid red flower; some flowers are mostly white. Winner of first prizes and sweepstakes awards everywhere shown. Our plants of this variety, like most of our Camellias, are compact, field grown, many with flower buds. Grafted, all sizes.

**White Daikagura (Joshua Youtz).** Finest new white Camellia. Large; irregular double pure white; like other Daikaguras blooms very early. Grafted, all sizes.

**White Empress.** Very large; pure white, golden stamens. In popularity it is the leading semi-double Camellia. Grafted, all sizes.



WHITE DAIKAGURA (Joshua Youtz)

**White Queen.** Very large; semi-double; pure white. Looks like a giant form of Snowdrift. Late bloomer. Grafted, 8 to 12 in. to 15 to 18 in.

### COMPACT, FIELD-GROWN, TOP-QUALITY CAMELLIAS

Practically all of our Group A Camellias are superior, field-grown plants.

### PRICES OF GROUP A CAMELLIAS Except as noted

GRAFTED PLANTS		Each
8 to 12 in., field grown, 1 yr. only, B&B.....		\$7 50
12 to 15 in., field grown, 1 yr. and 2 yr., B&B.....		8 50
15 to 18 in., field grown, 2 yr., B&B.....		10 00
18 to 24 in., field grown, 2 yr. and 3 yr., medium, B&B.....		12 50
18 to 24 in., field grown, 2 yr. and 3 yr., specimen, B&B.....		15 00
OWN-ROOT PLANTS		
12 to 15 in., bed grown, branched.....		\$5 00
15 to 18 in., field grown, B&B.....		7 50
18 to 24 in., field grown, medium, B&B.....		10 00
18 to 24 in., field grown, specimen, B&B.....		12 50
2 to 2½ ft., field grown, specimen, B&B.....		15 00
2½ to 3 ft., field grown, specimen, B&B.....		17 50

*In limited supply we have many other choice Camellias, including some of the very newest, and we invite correspondence.*

## Join the American Rose Society and the Georgia Rose Society

Rose lovers everywhere will find membership in the American Rose Society most helpful and interesting. For \$4.50 yearly dues one receives every spring a beautiful illustrated Annual, the monthly American Rose Magazine, each issue full of interesting material, use of the lending library and personal help on Rose problems. We also invite you, wherever you live, to join the Georgia Rose Society, which issues a bi-monthly

News Letter, several mimeographed sheets of timely Rose information.

For \$5.00 you will receive membership in both the American Rose Society and the Georgia Rose Society. Remittance should be mailed to Georgia Rose Society, Box 608, Thomasville, Ga. We receive no commissions. Only because these are non-profit organizations is it possible to give so much for \$5.00.

# GROUP B CAMELLIAS

## Mostly Grafted



ELEGANS (Chandler)

**Alba Plena.** The acme of perfection in double, imbricated whites. Pure white, wax-like. Very early flowering. Own-root, all sizes.

**Angel's Blush.** Loveliest of miniature Camellias. Very small, double; a chaste and beautiful light pink, having the appearance of a tiny Pink Perfection. Grafted, all sizes.

**Arajishi.** Earliest of Camellias; often blooms last of July and continues through fall. Irregular double, much like Prof. C. S. Sargent; cherry-red. Grafted, 12 to 15 in. to 18 to 24 in.

**Aunt Jetty.** A solid red form of Gov. Mouton. Incomplete double; large outer petals with petaloids in center; very dark red. Exceptionally hardy, and always a favorite where known. Own-root, 18 to 24 in. to 2 to 3 ft.

**Bessie McArthur.** Large; semi-double; deep pink to light red. Large foliage; compact growth. One of the most cold-resistant of all Camellias. Grafted, 12 to 15 in.

**Comte de Nesselrode.** Large; semi-double with petals intermixed; light pink, splotched and striped deep pink. Sometimes called a glorified Herme, but is superior in flower, foliage and growth. An old but superior variety; name lost for years. Has created much interest at flower shows where it appeared under various local names. At Thomasville it is always attractive. Grafted, 8 to 12 in. to 18 to 24 in.

**Daikagura.** Finest of the very early Camellias. At Thomasville it almost invariably commences blooming in September and continues through Christmas. Large; irregular double; deep pink. Always lovely, always satisfactory. Grafted, 12 to 15 in. to 18 to 24 in.

**Daikagura, Variegated.** Sport of the solid pink Daikagura, with habit of growth, size of bloom, and earliness the same. Grafted, 12 to 15 in. to 18 to 24 in.

**Debutante.** Easily the most popular of large pink Camellias. Every bloom is perfect, of incomplete double formation with petal sizes intermixed. Foliage is large and deeply serrated. Fast, symmetrical growth. Begins blooming early and continues over a long season. Own-root, all sizes.

**Duchess of Sutherland.** Large; semi-double; pure white with occasional showy pink stripe. Very fine. Large, light green foliage; compact growth. Own-root, 15 to 18 in. to 2 to 3 ft.

**Elegans (Chandler).** The standard of perfection in Camellias. An old variety but here to stay; always hardy, always satisfactory. Large; incomplete double, large outer petals, petaloids in center; deep pink with white splotches, occasionally a solid pink flower. Sets flower buds while small. Own-root all sizes.

**Elizabeth Boardman.** Medium size; semi-double; pure white with golden stamens. Compact bush. One of the really fine whites. Grafted, 8 to 12 in. to 18 to 24 in.

**Flame.** Large; semi-double, almost single; flamed-red with golden stamens. Growth upright and fast. A flower of distinctive color, always admired. Very satisfactory. Grafted, 8 to 12 in. to 18 to 24 in.

**Flame, Variegated.** Sport of the solid red Camellia, and possessing all the excellent qualities of the parent. In variegated Camellias, this one is among those of outstanding merit. Grafted, 8 to 12 in. to 15 to 18 in.

**Gigantea.** Very large; semi-double, sometimes incomplete double with petal sizes intermixed; white with red splotches. Heavy foliage. Grafted, 12 to 15 in. to 2 to 3 ft.

**Kumasaka, Variegated.** Sport of the older, solid pink Kumasaka. Large; irregular double; deep pink, with flecks and stripes of white. Bush is compact in growth, and leaves are distinctive in being almost all variegated. Own-root, 18 to 24 in. to 2 to 3 ft.

**Lady Clare (Empress).** Very large; semi-double, almost single; deep rose-pink. Large foliage; compact, rounded bush. One of the hardest of Camellias, always attractive and dependable. Own-root, all sizes.

Being an "old" variety is nothing against a plant. Rather, the old varieties that remain in favor occupy a unique position, for they stay with us strictly on merit.



DEBUTANTE

## GROUP B CAMELLIAS, continued

Mostly Grafted



GIGANTEA



MATHOTIANA RUBRA

**Lady Jane Grey (Eugene Lize).** Very large; irregular double (peony form); deep pink with white marbling. Small, compact-growing bush with foliage similar to Donckelari. Long popular in the Thomasville area. Own-root, all sizes.

**Lallarook (Il Tramonto; Laurel Leaf).** Largest of all double, imbricated Camellias. Clear, satiny pink, marbled and spotted white; sometimes solid pink flowers appear on the same bush. Occasional flowers are tiered, like *Candidissima* in form. Upright growth; long, pointed, glossy leaves. A great favorite. Own-root, 18 to 24 in. to 2 to 3 ft.

**Lindsay Neill.** A fine Camellia from Columbus, and one of the most sought-after of rare varieties. Large; semi-double; dark red, splotched white, with an occasional solid red flower. Grafted, 8 to 12 in. to 18 to 24 in.

**Magnoliæflora.** Medium size; single; delicate, light pink. Well named. One of the loveliest of Camellias; should be in every collection. Very hardy for a light-colored variety. Grafted, 8 to 12 in. to 18 to 24 in. Own-root, 15 to 18 in. to 18 to 24 in.

**Martha Brice.** Large; semi-double; light lavender-pink, a color not found in other Camellias. Compact growth; very large, light green foliage. A very lovely Camellia from Quitman, Ga. Own-root, all sizes.

**Mathotiana Rubra.** The finest of all double, dark red Camellias. Huge flowers; complete double, incomplete imbricated. Late in season the flowers usually show few short, golden stamens in center. Foliage is large; bush compact and uniform in growth. A "must" in every Camellia collection. It is impossible to have too many Mathotianas as long as one has room to grow them. Own-root, all sizes.

**Mathotiana, Variegated.** Sport of the above, formerly incorrectly called *C. M. Hovey*. Has every one of its parent's excellent qualities and should be extensively planted throughout the entire area where Camellias are grown. Own-root, all sizes.

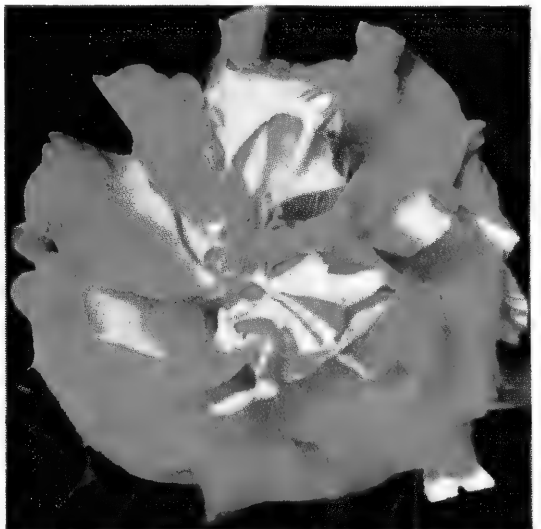
**Mrs. Charles Cobb.** Large; incomplete double with petal sizes intermixed; very dark red. Bush compact and vigorous. Own-root, 18 to 24 in.

**Rev. John Bennett.** Very large; semi-double, almost single; compact ring of long, golden stamens in center of flower. Genuinely salmon-pink in color. Long, narrow, distinct foliage. Very choice. Own-root, 18 to 24 in., specimen.

**Rose Dawn.** Large; complete, imbricated double; rose-pink. Often called the *Pink Alba Plena*. Very select. Own-root, 15 to 18 in. to 2 to 3 ft.

**September Morn.** Medium size; semi-double; white, flushed pink. Very early bloomer, usually beginning early in September. Grafted, all sizes.

**Snowdrift.** One of the most genuinely lovely of Camellias and perhaps the hardiest white. Perfectly formed, regular, semi-double; pure white flowers, with beautiful golden stamens. Bush of compact, symmetrical growth. Own-root, all sizes.



DAIKAGURA

## GROUP B CAMELLIAS, continued

### Mostly Grafted

**Triphosa.** Largest of all single Camellias. Pure paper-white without a tinge of other coloring. Very large petals, and one compact ring of long, golden stamens in center of flower. Own-root, all sizes.

**Victor Emmanuel.** Finest late-flowering red Camellia with stamens. Large; semi-double; deep red. One of the most striking of fancy Camellias. Makes a compact, shapely bush producing many large and perfectly formed flowers. Very satisfactory. Own-root, all sizes.

**Virgin's Blush.** Loveliest light pink, semi-double Camellia. Fastest grower of new, choice varieties; large exhibition blooms. Created quite a sensation at flower shows the past year. Own-root 15 to 18 in., 2 to 3 ft.

**White Giant.** Fastest growing of large white Camellias. Giant flowers; pure white with golden stamens. Large foliage; upright, compact growth. Grafted, 12 to 15 in. to 18 to 24 in.

**Woodville Red.** Very large; incomplete double; cherry-red. One of the showiest of Camellias. A great exhibition variety. Grafted, 12 to 15 in. to 18 to 24 in.

## PRICES OF GROUP B CAMELLIAS

### Except as Noted

#### GRAFTED PLANTS

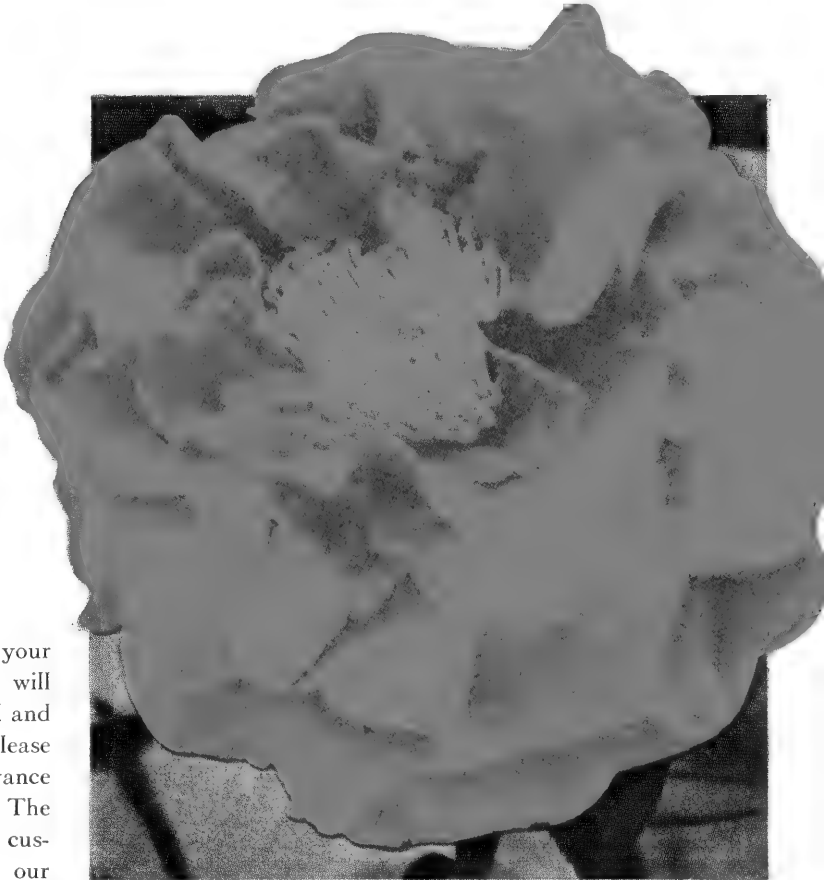
	Each
8 to 12 in., field grown, 1 yr. only, B&B.....	\$5 00
12 to 15 in., field grown, 1 yr. and 2 yr., B&B.....	7 50
15 to 18 in., field grown, 1 yr. and 2 yr., B&B.....	10 00
18 to 24 in., field grown, 2 yr., medium, B&B.....	12 50
18 to 24 in., field grown, 2 yr. and 3 yr., specimen, B&B.....	15 00
2 to 3 ft.....	17 50

#### OWN-ROOT PLANTS

12 to 15 in., bed grown, branched, B&B.....	3 00
15 to 18 in., field grown, medium B&B.....	5 00
18 to 24 in., field grown, medium, B&B.....	7 50
18 to 24 in., field grown, specimen, B&B.....	10 00
2 to 3 ft.....	15 00

## Plants as Gifts

Camellias, Azaleas, etc., make delightful gifts to send at Christmas, on birthdays or any special occasions. Such gifts are lasting and become more beautiful as time goes along. Send us your card, or authorize us to write your name on a special one, and we will place in an envelope, attach to the plant, and ship according to your instructions. If you wish, we will forward transportation prepaid and bill you with the actual cost. Please send such orders as far in advance of shipping date as possible. The supplying of gift plants for our customers has become one of our specialties.



VICTOR EMMANUEL

# GROUP C CAMELLIAS

## Own-Root Plants

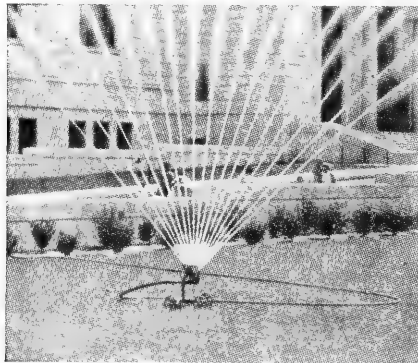


C. M. HOVEY (Col. Firey)

**Carnation (Christmas Glory).** Medium size; complete double, irregular, high-centered form; glowing bright red. Almost invariably at its height of bloom at Christmas time. Bush vigorous and compact, profuse in blooming. All sizes.

**C. M. Hovey (Col. Firey).** Large; complete double, regular imbricated; deep red. Very hardy. One of the fastest growers of large-flowered Camellias. All sizes.

**Elizabeth.** Medium size; complete double, incompletely imbricated; pure white. An occasional flower has a pink stripe. All sizes.



## RAINBOW SPRINKLER For Gardens, Lawns, etc.

*The World's Finest Automatic Sprinkler*

The Rainbow provides for small areas the most modern and scientific method of irrigation—an automatic, gentle, uniform distribution of water when and where it is needed. Because it oscillates, it waters a square (50 feet by 50 feet), throwing its seventeen streams of water high into the air, reaching every corner with a shower-like spray. The arc of oscillation can easily be adjusted for small areas.

The Rainbow is built throughout of the highest grade materials and designed to give a lifetime of service. It requires only six gallons of water per minute—and in five hours its seventeen nozzles spray the equivalent of an inch of rainfall.

Price complete, ready to attach to either  $\frac{3}{4}$  or 1-in. hose connection, \$45.00 f.o.b. Thomasville.

**Gloire de Nantes (Leeana Superba).** Medium large; incomplete double with large petals; deep watermelon-pink color. Late bloomer. Bush vigorous; foliage very large, dark green and showy. One of the best of the older varieties. All sizes.

**Gloire de Nantes, Variegated (Latifolia).** A sport of the watermelon-pink variety, with white flecks and spots, and all the good characteristics of the parent. All sizes.

**Gov. Mouton.** Medium size; incomplete double, large outer petals with petaloids in center; deep red, mottled white. Very vigorous. 18 to 24 in.

**Herme.** Here is one of the best of the older varieties. One of the hardiest, always lovely. Large; incomplete double with petal sizes intermixed, light pink with white edges and pink and red splotches. All sizes.

**Jarvis Red.** Medium large; produces flowers of both semi-double and incomplete double form with petaloids in center; very dark red. Bush very compact and vigorous in growth. All sizes.

**Kumasaka.** Medium size; semi-double; deep rose-pink. Even the smallest plants are free bloomers. Late. 15 to 18 in. to 18 to 24 in.

**Monarch (Honneur d'Amerique).** Very large; complete double, irregular with high center; deep pink to light red, usually marbled white. Slow grower but develops into an attractive, almost completely round bush, and the immense flowers are produced over a long season. 2 to 3 ft.

**Mrs. F. L. Gibson.** Small; single; white striped, pink, with many solid red or solid pink flowers on same bush. A very unusual Camellia, raised by the late Mr. Frank L. Gibson of Thomasville and named in honor of his wife. Exceptionally long flowering season. A large bush will bloom from October to March. 18 to 24 in.

**Mrs. F. L. Gibson, Herme-Colored Sport.** Like the parent bush from which it is a sport, but has the white edge and same stripes as seen in Herme. 18 to 24 in. to 2 to 3 ft.

**Pink Perfection.** All that the name implies, and the most generally loved and appreciated of all Camellias. Small; complete imbricated double; shell-pink. Very hardy for a light-colored variety and blooms profusely over a very long season. Grows into a very compact and symmetrical bush. One cannot have too many Pink Perfections as long as there is a place to plant them. All sizes.



GLOIRE DE NANTES

THOMASVILLE NURSERIES



## GROUP C CAMELLIAS, continued

**Prince Eugene Napoleon (Pope Pius IX).** Large; complete imbricated double; rose-red. When grown in full sun some petals are tipped white. Makes a very uniform and attractive bush. Very hardy, and blooms profusely. One of the best of the older varieties. All sizes.

**Prof. C. S. Sargent.** One of the greatest of all Camellias. Large; complete double, irregular, with high, pin-cushion center; very dark red. Early flowering. Bush is thrifty and symmetrical and produces blooms in great abundance over a long period. Nobody can lose in planting Prof. C. S. Sargent. A very vigorous understock on which to grow any other kind by grafting. All sizes.

**Rena Campbell (Variabilis).** Most variable of all Camellias. Medium large; mostly semi-double; generally variegated white and shades of pink, but occasional solid red, solid pink, and almost white flowers. All sizes.

**Sarah Frost.** A famous old Camellia of the South. Medium size; full, imbricated double; rose-pink to light red. Very profuse bloomer. Bush is vigorous, compact and tall in growth. Greatly valued as a free-blooming Camellia, an evergreen, and a vigorous understock on which to graft varieties of lesser vitality. All sizes.



SASANQUA ROSEA

### GRADING OF GROUP C CAMELLIAS

We can't divide our Camellias into many groups. So, in grading, we grade closely on such as Monarch but liberally on others like Carnation.

## PRICES OF GROUP C CAMELLIAS

	OWN-ROOT PLANTS	Each	12
15 to 18 in., bed grown, branched, B&B.....		\$2 50	\$25 00
18 to 24 in., bed grown, branched, B&B.....		3 50	35 00
18 to 24 in., field grown, compact, B&B.....		5 00	50 00
2 to 3 ft., field grown, compact, B&B.....		7 50	

## CAMELLIA SASANQUA

One of the newer and finest of all the broad-leaved evergreens. Similar to *Camellia japonica*, but looser and faster growing. Very profuse bloomers, the flowers commencing to open the latter part of September and continuing on through November—a time when very few flowers can be had.

They are extremely satisfactory in landscape work, as individual specimens, in foundation plantings, and for hedges, and their popularity is only just beginning.

**Beni-Kantsubaki.** Rose-red to crimson; fairly double; very profuse. Bush is strong grower, growth compact and uniform. This is an excellent Sasanqua, and the red color for which we have been waiting. 2-yr. grafts, 2 to 3 ft., \$10.00; 1-yr. grafts, 18 to 24 in., \$7.50 each.

**Cleopatra.** Large, beautiful deep pink flowers, semi-double, and having crinkled petals. Foliage thick, dark and glossy. A vigorous and compact grower. All sizes.

**Dawn.** Easily the finest of the light pink Sasanquas. Large, semi-double flower. 2 to 2½ ft. to 2½ to 3 ft.

**Rosea.** Medium, single, deep pink flowers in great profusion. Fast grower, free bloomer. This variety at Thomasville blooms September to January. All sizes.

**Setsugekka.** Very large; semi-double; white with faint pink tinge and ruffled edges. A very good new variety. 15 to 18 in. to 2½ to 3-ft. specimen.

**Showa-no-Sakae.** A very beautiful new Sasanqua. Large, soft pink blooms; almost as double as Snow-on-the-Mountain. Upright, vigorous bush with attractive foliage. Best clear pink to date. 2-yr. grafts, 2 to 3 ft., \$10.00; 1-yr. grafts, 18 to 24 in., \$7.50 each.

**Snow-on-the-Mountain.** The large, double, white flowers resemble a carnation and are borne in such profusion as to literally cover the entire plant. Compact and rounded in growth. All sizes.

In limited supply we have several other choice Sasanqua varieties, and we invite correspondence

## PRICES OF CAMELLIA SASANQUA

(Except BENI-KANTSUBAKI, and SHOWA-NO-SAKAE)

	Each
18 to 24 in., specimen.....	\$2 50
2 to 2½ ft., specimen.....	3 50
2½ to 3 ft., specimen.....	5 00

MEMBER OF



## *For Distinctive Lower South Gardens*

Azaleas and Camellias add grace, beauty and charm to gardens of the Lower South.

“Design in the garden is rightly regarded as of primary importance, and the kinds of plant material used in securing a desired effect are a secondary consideration. But if, in addition to pleasing design, the planting can be carried out with beautiful and out-of-the-ordinary plants, then gardens of unusual beauty result. To such place groups belong the azaleas and camellias, and gardens in which they are used in a large way are immediately lifted out of the commonplace. They take the places of good evergreen or deciduous shrubs, and, in addition, at certain seasons fill the garden with a glory that is unsurpassed.”

Dr. H. Harold Hume, eminent horticulturist, writer, and dean of the College of Agriculture, University of Florida, wrote the above as an introduction to his valuable little book, “Azaleas and Camellias,” and it well expresses what we would say to those who would have distinctive gardens in the Gulf and Coastal section of the Southeast.

For many years we have given particular attention to winter and early spring-flowering material, especially in Azaleas, offering a large assortment of hardy Kurume, Kaempferi and native varieties which may be grown and will succeed much farther inland than Indica Azaleas and Camellias. However, in Indica Azaleas we grow the hardier Lawsal, Dixie, Formosa, Geo. L. Taber, and Judge Solomon extensively. Our Azaleas are above the average in quality, having been spaced out properly and grown well.



INDICA AZALEAS



CRÆMINA



GEO. L. TABER



ELEGANS

## GROUP I AZALEA INDICA

The faster-growing varieties of *Azalea indica*, generally characterized by large leaves, hairy underneath, and large flowers.

PRICES OF GROUP I AZALEA INDICA	Each	12
8 to 12 in., bare root.....	\$0 75	\$7 50
12 to 15 in., bare root.....	1 00	10 00
15 to 18 in., B&B.....	1 50	15 00
18 to 24 in., B&B.....	2 50	25 00
2 to 3 ft., B&B .....	3 50	35 00

**Alba.** Large; single; white. Tall; late.

**Crœmina.** One of the finest of all Azaleas. Very large flower of light pink. Very compact in growth and profuse in blooming; early. Long a great favorite at Magnolia Gardens.

**Elegans.** Light, clear pink; makes a large, symmetrical bush. Very early bloomer. One of the loveliest and most satisfactory of Indica Azaleas, and a feature of Hjort's Azalea Woodland.

**Formosa.** Greatest of all Indica Azaleas. Large, purplish pink flowers. Bush grows tall and shapely. Darkest green foliage of all varieties. Easy to grow; late bloomer.

**Lawsal.** Bright salmon-pink. Tall, bushy grower; late flowering. We highly recommend Lawsal as one of the hardiest and most satisfactory of Indica Azaleas.

**President Clay (Flame).** Flame-red, a delightful color through a woodland or fronting a dark background. Tall, compact, fast grower. Early.

**Pride of Mobile.** Deep watermelon-pink; large flower. Late bloomer. Makes a very tall and compact bush, and everywhere in the Lower South is much admired. Very satisfactory.

**Vittata Fortunei.** Picturesque, open-growing Azalea. White with lavender stripes and splotches. Very early.

## GROUP II AZALEA INDICA

Mostly medium growers, generally more compact and of less rapid growth than Group I. Very profuse and showy. Choice, compact plants.

### PRICES OF GROUP II AZALEA INDICA

	Each	12
6 to 8 in., bare root.....	\$0 75	\$7 50
8 to 12 in., bare root.....	1 00	10 00
12 to 15 in., B&B.....	1 50	15 00
15 to 18 in., B&B.....	2 00	20 00
18 to 24 in., B&B.....	3 00	30 00
2 to 3 ft., B&B.....	5 00	50 00

**Brilliant.** Brilliant deep pink. Small, bushy grower; late. **Sold out.**

**Coccinea Major.** Similar to Prince of Orange. Flower not quite so large, but somewhat darker. Spreading growth; late bloomer. **Sold out.**

**Dixie.** This salmon-red is one of the finest Indica Azaleas. Midseason. Hardy and satisfactory.

**Duc de Rohan.** Medium size; salmon-pink; very early. A great favorite in Florida.

**Fielder's White.** Long considered the finest of all white Indica Azaleas for its large, pure white, exquisitely formed flowers and profuse blooming habit, early and midseason. We especially recommend this Azalea. We always felt more whites should be planted.

**George Franc.** Very large flower; rose-pink with deeper center. One of the earliest and most beautiful of Indica Azaleas. Very spreading in growth. 12 to 15 in., 15 to 18 in.

**Geo. L. Taber.** Finest of variegated Azaleas. Very large flower; blush-pink with marking of deeper pink and red. Bushy growth; late in blooming. Always much admired, always satisfactory.

**Iveryana.** Slow of growth, but with lovely, large blooms borne freely on a spreading bush. White striped pink and orange. 12 to 15 in., 15 to 18 in.

**Judge Solomon.** A Pink Formosa at last! A perfect Formosa bush in foliage and vitality, with deep pink blooms, which remain true to color without reverting. 8 to 12 in. to 18 to 24 in.

**Pride of Thomasville.** Here is a comparatively new, and certainly different Azalea. It is purplish red, a color half-way between Formosa and Pride of Dorking. Long flowering season; begins fairly early and continues almost to the end of the Formosa period. 15 to 18 in.

In limited supply we have many Azalea varieties not listed in this book.

# Visit HJORT'S Azalea Woodland



AZALEA AUSTRINA

March is the month of Azaleas. Then the midseason varieties are at their height, comprising the greatest range of color and form. In March we are glad to have visitors come on Sunday afternoon and enjoy with us the wonderful display of Azalea bloom at Hjort's Azalea Woodland, two miles east of Thomasville on the paved State Road No. 38. Late Azaleas, including beautiful native varieties, bloom far into April.

Ample parking facilities are provided and conveniently placed signs guide you easily through the Azalea plantings. All the main roads into Thomasville are paved, and visitors from many cities in this section have found it a delightful Sunday afternoon trip to drive over to see the Azaleas at Hjort's Azalea Woodland.

Absolutely no admission charge or collections taken and nobody is asked to buy. This is the greatest display of Azalea varieties in this section. Come and enjoy it with us.

## Native Azaleas

Some of the loveliest colors in Azaleas are found in our hardy native, deciduous varieties. For years we have diligently collected the finer types, cut them back and grown them into select, stocky plants which are far superior to those often offered as collected from woodland.

In Baker County, Georgia, we collected the clearest yellow forms of *Azalea austrina* which is rare, and in extreme Southwestern Georgia and Southeastern Alabama we secured the best types of the highly fragrant *Azalea alabamensis*. Other native varieties were collected in South and Central Georgia. Native Azaleas bloom late, thus extending the Azalea season far into April. Being native, they have withstood every extreme of temperature for generations, and for dependability and beauty should find a place in every garden where Azaleas are used.

**Azalea austrina.** This beautiful Azalea is found in Northwestern Florida to Central Georgia. All we offer this year are the best shades of yellow, the finest types of this species. At Hjort's Azalea Woodland attracts more attention than any other variety.

**A. alabamensis.** A highly fragrant and very scarce native Azalea. White, or white with yellow spot. Very choice and desirable.

**A. calendulacea.** Native in Central Georgia to the Carolinas, but fairly well adapted to Southern Georgia. Large flame-red flowers.

**A. canescens.** The most common of the native Azaleas and found throughout Southern Georgia and Northern Florida, growing on moist but well-drained soil. Light pink. Blooms a little earlier than other native Azaleas.

### PRICES OF NATIVE AZALEAS

	Each	3 for	6 for
18 to 24 in., stocky, balled and burlapped.....	\$3 00	\$8 00	\$15 00
2 to 3 ft., stocky, balled and burlapped.....	5 00	14 00	27 00

The quality of our Azaleas is well above the average. Many plants are field grown, and all are compact and shapely. Those who can visit the nursery should see these plants.

## TROPICAL HOMES and GARDENING

is an excellent gardening magazine for all Florida and the extreme lower South. We have no financial interest and receive no commissions but endorse it for its merits. Subscription, \$3.00 per year, \$5.00 for 2 years. Remit to: Tropical Gardening Publishing Co., Box 804, Coral Gables 34, Fla.





# HJORT'S KURUME AZALEAS

The Kurumes, natives of Japan, fully one thousand miles farther north than the native habitat of the Indica varieties, are by far the hardiest Azaleas, and in the Lower South have stood perfectly the freezes which damaged more tender kinds. The Kurume Azaleas, contrary to popular belief, are not all dwarf growers. There are medium and tall kinds, and the widest assortment of color. We have developed a large stock of these dependable Azaleas, and our prices are lower than these plants can usually be bought for, while the quality is the best. Our plants, from smallest to largest, are shapely and well set with buds. All varieties have evergreen foliage.

## PRICES OF KURUME AZALEAS

	Each	12	100
6 to 8 in.....	\$0 75	\$7 50	\$60 00
8 to 10 in.....	1 00	10 00	80 00
10 to 12 in.....	1 50	15 00	120 00
12 to 15 in. ....	2 00	20 00	
15 to 18 in. ....	2 50	25 00	
18 to 24 in. ....	3 50	35 00	

6 or more plants at 12 rate; 50 or more at 100 rate  
Larger specimen plants \$5.00 to \$50.00 each

\*The double varieties are marked thus\*; all other varieties are single.

**Bridesmaid.** Glowing salmon-pink; small glossy foliage. Midseason. 10 to 12 in.

\***Cherry Blossom.** A favorite of the tall growers; very light pink. Somewhat late in flowering. 8 to 10 in., 12 to 15 in.

\***Christmas Cheer.** Brilliant bright red; the small foliage is very dark green and compact. The earliest of the red Kurumes. Medium. 8 to 10 in., 10 to 12 in.

\***Coral Bells.** Beautiful shell-pink, shading somewhat deeper at center; free flowering and dainty. The dwarfest of the dwarfs; ultimate height 4 feet. Early. 8 to 10 in., 10 to 12 in.

**Gardenia Supreme.** A white Pericat Hybrid Azalea of typical Pericat form. Late flowering; fine to extend the Kurume-Pericat flowering season. All sizes.

\***Hexe.** Large, deep red flowers. Late bloomer. 8 to 10 in.

**Hinodegiri.** Brilliant scarlet; foliage rounded and deep green. A midseason bloomer, coming into flower just before Christmas Cheer has finished. Medium. 8 to 10 in., 10 to 12 in.

**Hoo.** Single white flowers with pink edges. One of the fastest growing Kurumes. 10 to 12 in.

\***Mme. Pericat.** Hose-in-hose; large, light pink flower. Late bloomer, fast grower and very showy.

**Peach Blow.** A fine Kurume with flowers of light peach-blossom-pink. One of the fastest of the Kurumes. Tall; midseason. All sizes.

\***Pink Pearl.** Light pink, produced in dense clusters. Tall; midseason. All sizes.

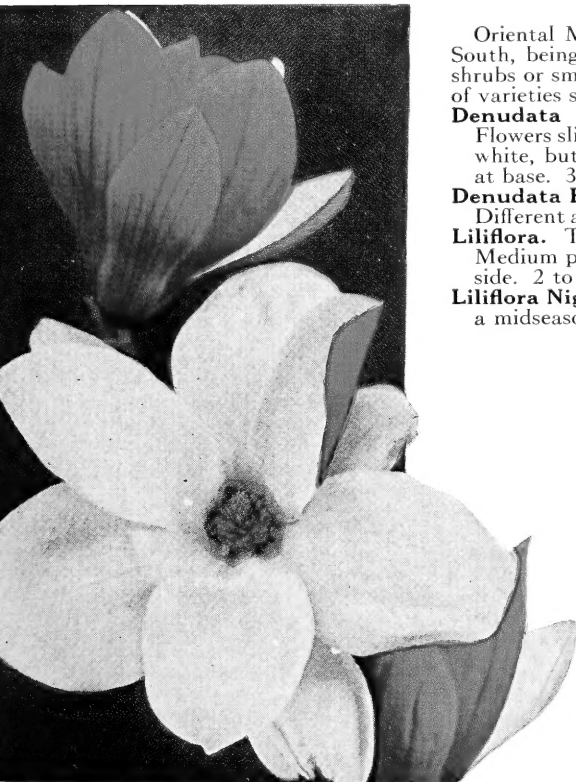
\***Salmon Beauty.** Large; salmon-pink. Free flowering. Midseason. All sizes.

**Salmon Queen.** This salmon-colored Kurume Azalea is one of the best of the single-flowering kinds. Medium; midseason. 8 to 10 in., 12 to 15 in.

\***Snow.** The best of the white Kurumes. Medium; midseason. All sizes.

\***Sweetheart Supreme.** One of the loveliest of double-flowering Azaleas; light rose-pink. All sizes.

## Oriental MAGNOLIAS



MAGNOLIA SOUL. ALEXANDRINA

Oriental Magnolias are rapidly increasing in popularity in the South, being one of the showiest and most satisfactory of large shrubs or small trees. We are glad to be able to offer a collection of varieties such as few growers have developed.

**Denudata Elongata.** Seedling of Denudata or Conspicua. Flowers slightly larger than parent; mostly pure white to lemon-white, but occasionally showing a faint tinge of purplish pink at base. 3 to 4 ft., \$10.00; 4 to 6 ft., \$15.00 each.

**Denudata Purpliana.** Translucent reddish purple. Very large. Different and distinctive. 3 to 4 ft., \$7.50; 4 to 6 ft., \$10.00 each.

**Liliflora.** The most common Oriental Magnolia in the South. Medium purple on outer petals, light purple (almost white) inside. 2 to 3 ft., \$3.50; 3 to 4 ft., \$5.00 each.

**Liliflora Nigra.** Very dark sport of the above, and like parent is a midseason bloomer. 2 to 3 ft., \$3.50; 3 to 4 ft., \$5.00 each.

**Rustica Rubra.** Very large, cup-shaped, purplish red flower. In form is one of the most beautiful of Magnolias. Late. 2 to 3 ft., \$5.00; 3 to 4 ft., \$7.50 each.

**Soulangeana.** Most popular variety in the United States, long prized for its beautiful, cup-like form, light pink color and extreme earliness of bloom. 2 to 3 ft., \$3.50; 3 to 4 ft., \$5.00 each.

**Soulangeana alba superba.** Lovely very light pink; early. A rare and very charming variety. 2 to 3 ft., \$5.00; 3 to 4 ft., \$7.50 each.

**Soulangeana Alexandrina.** A hybrid that is more vigorous than the well-known Soulangeana. Flower larger, with 9 petals; most blooms are deep purplish pink, lighter inside. 2 to 3 ft., \$5.00; 3 to 4 ft., \$7.50; 4 to 6 ft., \$10.00 each.

**Soulangeana Lennei.** Possibly largest of all Magnolias. Large, cup-shaped, deep purple flower. Late bloomer. 2 to 3 ft., \$5.00; 3 to 4 ft., \$7.50; 4 to 6 ft., \$10.00 each.

**Stellata (Star Magnolia).** Dwarf variety, seldom reaching a height of more than 10 feet. Produces numerous, waterlily-like flowers in early spring. 18 to 24 in., \$5.00; 2 to 3 ft., \$7.50 each.

# FLORIBUNDAS

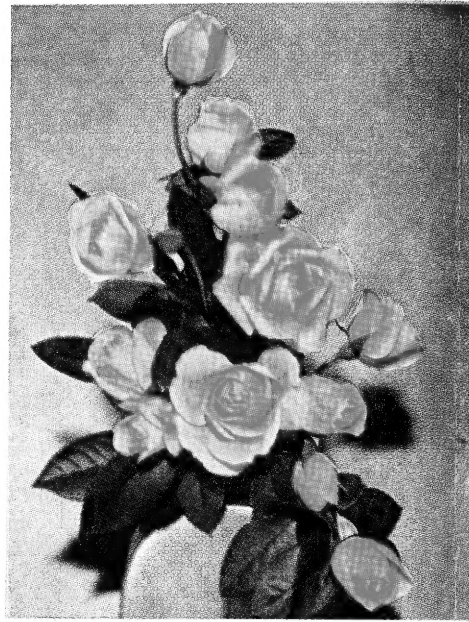
*are Fascinating*



© MA PERKINS

## A Versatile New Class of Roses

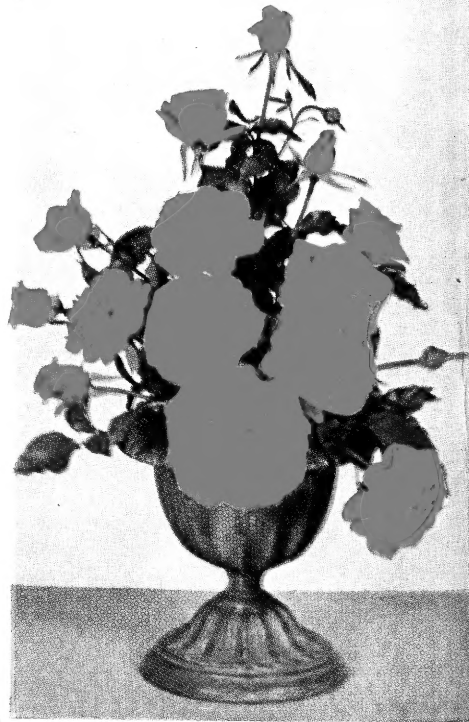
- Vigorous in Growth
- Constant in Bloom
- Showy When Used in Beds and Borders
- Lovely as Cut Flowers



© FASHION

THE popularity of Floribunda Roses is sweeping the country. Already they are extensively used as bedding varieties, for hedges and borders. Now they are coming into great favor as cut-flower varieties, for it has been discovered Floribunda blooms last longer than most large Roses. They are not only lovely in miniature arrangements but highly effective in large ones.

You are invited to refer to pages 10 to 13 of this catalogue and order early so that you may have your share of these very rewarding Roses.



© GERANIUM RED

**THOMASVILLE NURSERIES, Inc.**

*Home of Roses*

**Thomasville • Georgia**



## FLORIBUNDAS *for Borders*

For low borders, as shown in illustration at left, use such dwarf varieties as Embers, Pinkie and Lilibet. In beds or fronting tall shrubs, such tall kinds as Carrousel, Geranium Red and Else Poulsen are fine. For medium effects, and this is the largest group, Crimson Rosette, Goldilocks, Donald Prior, Red Pinocchio, Frolic and Poulsen's Bedder are wonderful.