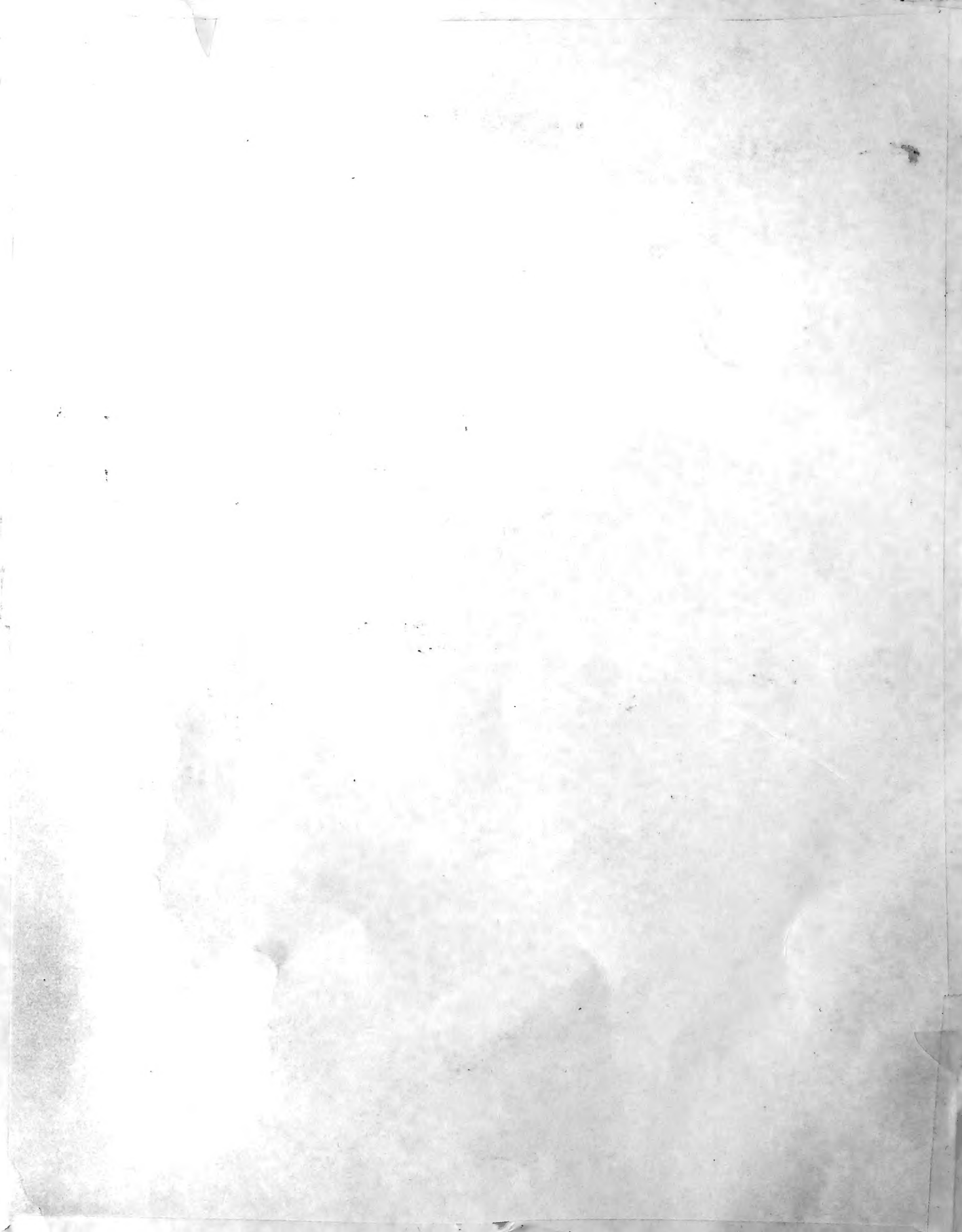


Historic, Archive Document

Do not assume content reflects current scientific knowledge, policies, or practices.



Wood's Permanent Pasture and Hay Mixtures

Richmond, Va



LIBRARY
RECEIVED
* OCT 29 1953 *
U. S. Department of Agriculture

Wood's Permanent Pasture Mixture seeded 26 years ago, now more productive than ever. Its grasses and clovers make their maximum growth at different times throughout the year for abundant year-round grazing. It is more productive, nutritious, palatable and economical than Ladino with Orchard or Tall Fescue.

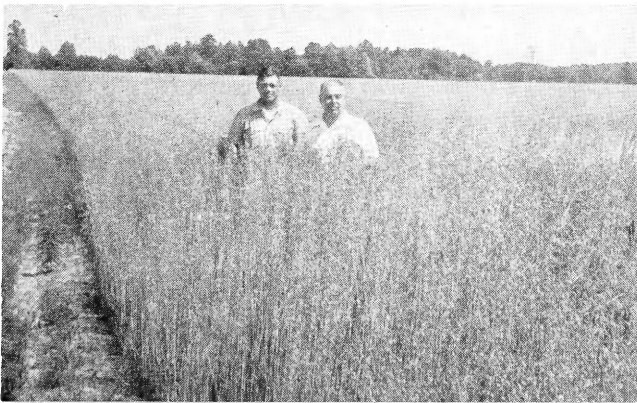
Experiment station tests show yields of pasture and hay increase as more seed per acre is sown, up to 25 lbs., and as more different compatible clovers and grasses are added. Mixtures of many grasses and clovers, including Ladino, Orchard, Alfalfa and Red Clover yielded about a third more than one clover and one grass. Ladino with Ky. 31 yielded 5,435 lbs. dry weight in 1950 but only 1,561 in 1951 as the Ladino winterkilled, leaving no legume to furnish nitrogen to the grass. The quality and feeding value was also cut. They concluded: "Using more than one legume in a mixture is a good insurance investment because species differ in adaptability to soil, climatic and biological growth factors."

Hundreds of pastures were ruined by the 1952 drought, killing Ladino, their only legume. Thousands of prize animals have died bloating when only one grass was planted and disappeared, leaving only Ladino clover to graze on. Our mixtures proved superior for 4 generations, contain 9 grasses and 9 legumes, are well balanced and cannot bloat. Nitrogen from legumes keeps grasses dark green and vigorous.

Contains Ladino, disease-resistant Red Clover, Alfalfa, Dixie White Clover, White Dutch, New Zealand Certified Permanent Pasture White Clover, Reseeding Crimson, Alsike, Birdsfoot Trefoil, Ky. Blue, Red Top, Ky. 31 Fescue, Perennial and Domestic Rye, Timothy, Orchard, Dallis Grass, etc.

They grow off faster and flourish in dry summers, crowding out weeds that retard Ladino and Orchard or Tall Fescue sown alone. They bear abundantly many years, minimizing the seeding cost. They are high in protein, minerals and vitamins, are extremely nutritious and palatable. Animals eat more and grow faster or produce more milk, saving feed bills.

LADINO CLOVER—Sow 1 to 2 lbs. with 10 lbs. of orchard grass or tall fescue. Only Cert. Cal. and Oregon is eligible for P.M.A. Cert. Southern grown is cheaper but high in volunteer White Clover. It is the most nutritious, palatable and productive year 'round pasture legume. Its peak growth is early spring and fall when native grasses are short.



50 acres of our Registered Arlington Oats making a bumper crop of bright heavy seed, free of disease and mixture. Recommended for record yields throughout the Southeast. Averaged over 100 bu. per acre in all Va. and N.C. tests 3 years, tops in grain, pasture and hay yields. It's big heavy grain with thin hull brings a premium for feed. Bred from Lee, it kept its vigor and hardiness, is 10 days earlier, has stronger straw and higher yield. Resists rust, smut, mosaic, red leaf, storms and cold. Can be planted late.

Sow 25 lbs. per acre. 100-lb. bag \$35.00; 5-bag lots \$34.50

Pasture Mixture 1, for light gravelly or sandy soil.

Pasture Mixture 2, for good loam or clay soil.

Pasture Mixture 3, for moist bottom land.

Hay Mixture 6, for light gravelly or sandy soil.

Hay Mixture 7, for good loam or clay soil.

Hay Mixture 8, for moist bottom land.

Southern Permanent Pasture and Hay Mixture 12 produces tremendous yields of the finest pasture and hay on both light and heavy soils in the Southern Coastal area.

Grasses and clovers in **Wood's Permanent Hay Mixtures** mature together, making bumper crops easily cured. They recover quickly, giving several big cuttings of the finest quality hay every year.

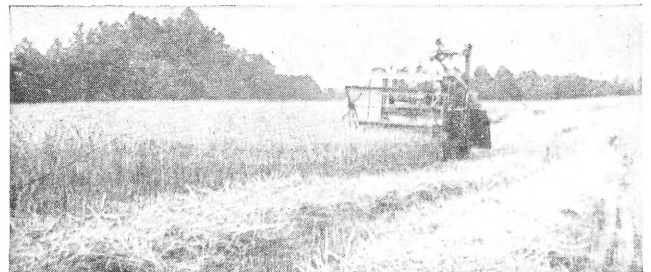
How to Fertilize and Seed a Pasture

If the field has not been limed recently plow or disc in about a ton per acre before seeding. Deep roots withstand droughts. Encourage deep root growth by plowing down ½ of the fertilizer. Harrow in the rest just before seeding. Use 2-12-12 on heavy or rich soils. Use 5-10-10 on light or poor soil. Up to 1,000 lbs. per acre pays.

The secret of good stands is **seed shallow on firm seed beds and press the seed to the soil.** Grass and clover seedlings have short roots and must catch hold quickly or die. They smother out if covered over ¼ inch on heavy soils or ½ inch on light sandy soils. Before planting, harrow and roll until seedbed is firm. Harrow the seed in very lightly then press firm with cultipacker, or roll.

Sow 25 lbs. per acre in early fall so the seedlings can grow deep roots to withstand winters freezing and thawing. In the Piedmont or Mountains sow our Mixtures 1 to 8 to suit your soil. In Coastal Plains sow our Southern Mixture 12.

Renovating Worn Out Pastures or Broom Sedge Wasteland, disc or harrow in the lime and fertilizer. Seed and roll firm. Lime gets rid of the broom sedge and encourages legumes, which enrich the soil with nitrogen, stimulate the growth of good pasture grasses and increases their protein, mineral and vitamin content. Pastures yield 3 times more after renovation. **Swamps** may make your best pasture if ditched or drained and Pasture Mixture 3 sown.



Beardless Colonial 2 Barley producing 90 bu. per acre for L. W. Weels, Bedford, Va. Our 212 acres made over 10,000 bu. of seed, 36% more per acre than our 130 acres of Wong. Completely beardless. Excellent winter pasture and nurse crop. Tops in Va. tests, averaging 64¼ bu. per acre to 55 for Wong. N. C. and S. C. recommend it. Made 62 bu. per acre, highest at Clemson. Averaged ¼ more than other barleys at all 16 Alabama experiment stations.

WOOD'S CERTIFIED FLUE-CURED TOBACCO SEED

SOLD ONLY IN SEALED PACKAGES

Pkt. 15c.; oz. \$1.50; ¼ lb. \$4.00,
postpaid

Our tobacco seed production this year is from State Experiment Station's Foundation Seed. Grown, rogued and harvested by an expert that spent a major part of his life in charge of a State Tobacco Research Experiment Station and produces and handles tobacco seed with the technical care, precaution and general know-how that only experience and study can give. All plants in field destroyed except ones used for seed. Fields isolated from other tobacco up to 20 times the distance required for certification. No tobacco harvested from these fields. They were planted, cared for and used as seed producing fields only. He secured his foundation stock seed from the following sources: Ga. Experiment Station, N.C. Experiment Station, and Va. Experiment Station.

Our packaging and handling of tobacco seed is the direct responsibility and under the direct supervision of one person, who has had years of experience in this work.

The above assures you of getting top quality seed, and at fair prices.



Purity--Quality--Economy!

ORDER EARLY AND BE SURE!

522. DIXIE BRIGHT 28 (New variety)

(Tested as 8358). High resistance to Granville wilt. Leading tobacco companies report "Decidedly more Desirable" than Dixie Bright 27. Has handling qualities farmers like in flue-cured tobacco. Susceptible to black shank, but good yielder. Cures bright and did well under extreme drought conditions. Easy to handle, as it is not brittle.

527. **DIXIE BRIGHT 101**—Most widely used of the Dixie bright tobacco. Has resistance to Granville wilt and black shank. Adapted to a wide range of soil types. Top high and do not harvest until full ripe. It proved in 1953 that it could stand more dry weather than most any other variety. Top quality, lemon color.

524. **DIXIE BRIGHT 102**.—Highly resistant to black shank and Granville wilt. It grows tall and normally produces broad, well-proportioned leaves of medium length. Adapted to a wide range of soil types.

526. **DIXIE BRIGHT 27**—Granville wilt resistant variety, about equal to that of Oxford 26. It has tall growth habit, long broad leaves that are spaced much closer on the stalk and are less brittle than Oxford 26. It is best suited to medium light sandy soils.

525. **OXFORD 26**—Has a high resistance to Granville wilt and a moderate resistance to Fusarium wilt. Performs best on medium to light sandy loam soils.

518. **VIRGINIA GOLD**—Vigorous. Grows off quickly. Big long leaves, cures to rich lemon or orange. Top high..

517. **BROADLEAF HICKS**—One of the most popular varieties. It is very easy to cure to a flashy color. Used on a wide variety of soils, but performs best on medium sandy soils. Space about 20 inches in the row and top high.

510. **VIRGINIA BRIGHT**—One of the finest of the bright leaf tobaccos, making big crops of superior quality. It cures to a good lemon color, except when planted on heavier clay soils. Grown very successfully in the eastern section of the flue-cured belt.

503. **MAMMOTH GOLD**—A heavy yielding variety which is well adapted to all except the heaviest types of soil in the flue-cured belt. It makes a large broad leaf, cures easily to a rich lemon color, of high quality cigarette tobacco.

513. **GOLDEN HARVEST**—An excellent cigarette type tobacco with a large broad leaf. It cures easily to a good yellow color.

506. **GOLD DOLLAR**—High quality cigarette type. Easy to cure and very uniform in size and shape of leaf, height of plant and time of ripening.

499. **BONANZA**—An excellent medium-leaved bright tobacco for sandy loam soils. The leaves are long, of medium width, well spaced, easy to cure.

515. **402 SPECIAL**—A variety developed at the Tobacco Experiment Station at Oxford, N. C. It is a broad leaf type tobacco, which has produced high yields of good cigarette type tobacco.

509. **YELLOW MAMMOTH**—A good bright tobacco of extra fine quality for cigarettes. Well suited to planting on medium to heavy sand loams. Ripens uniformly.

516. **BOTTOM SPECIAL**—A variety for farmers who prefer a close leaf spacing and high average yield.

500. **JAMAICA WRAPPER**—A fine cigarette type tobacco, cures bright yellow. The leaves are long, rather broad and well spaced; ripens uniformly. Best suited for light to medium heavy tobacco soils.

507. **YELLOW SPECIAL**—An easily cured bright leaf tobacco for light or medium soils. Produces high yields with good quality.

504. **IMPROVED YELLOW ORINOCO**—Cures bright or can be cured for dark filler. It has good width and fine length; best suited to light gray soil.

505. **IMPROVED WHITE STEM ORINOCO**—On light sandy soils it makes high-class bright leaf; on heavy soils it makes mahogany or medium bright. Has good length and width; cures easily.

TOBACCO PLANT BED MANAGEMENT

Choose a well-drained soil, high in organic matter, that lies to the east or south and is protected from the wind. Sow one level tablespoonful per 100 square yards.

Plant 100 square yards for each 1 to 2 acres to be planted. Beds 2 yards wide can be worked much easier than wider beds. Weeds can be controlled by correct use of chemicals.

KRILIUM has proven to be ever so valuable in keeping the soil open and porous, enabling the plants to develop greater root systems, and the roots do not break or damage as badly when pulled. This means bigger root systems and healthier plants are transplanted to give you quicker growing and less replanting.

FERTILIZER. 1 to 2 pounds of 4-9-3 plant bed fertilizer to the square yard should be thoroughly worked into the top 2 inches of soil. Mix one level tablespoonful of seed with a few pounds of cotton seed meal or fertilizer and sow uniformly over 100 square yards. Settle the soil with a light tamper. Use good tight side walls and cover with a cloth.

In Virginia sow beds by February 10th. Further south beds should be sown earlier.

Don't wait until blue mold strikes. Head it off with **FERMATE**.

Write for more complete information on varieties or chemicals

See our Spring Catalog for other types of Tobacco

WOOD'S SEED INOCULATION

GROUP 1 Specify Group f.o.b. Postpaid
 Alfalfa, Sweet Clover, Bur 1 bu. \$.55 \$.70
 Clover and Black Medic 2½ bu. 1.10 1.25

GROUP 2—CLOVERS, Crimson, Red, Alsike, Mammoth, Ladino, Dixie, 1 bu. .55 .70
 White and White Dutch 2½ bu. 1.10 1.25

LADINO CLOVER 10 lbs. .25

GROUP 7—VETCH, PEAS 1 bu. .40 .55
 Austrian, Garden, Sweet 100 lbs. .55 .75

GROUP 8—Garden Combination: Beans, Peas, Sweet Peas, Lupine 5 lbs. .15 .20

BIRDSFOOT TREFOIL 10 lbs. .25 .30
 1 bu. .75 .90

FERTILIZERS

MILORGANITE—All Organic Fertilizer.
 Nitrogen 6%; Phosphoric Acid 2%.
 Will not burn. Best for lawns. 25 lbs. \$1.50; 50 lbs. \$2.50; 100 lbs. \$4.00.

WOOD'S SPECIAL ALL CROP 5-10-5.
 25 lbs. \$1.10; 100 lbs. \$2.90.

WOOD'S HIGH GRADE SHEEP or COW MANURE—25 lbs. \$1.15; 50 lbs. \$2.00.

STEAMED BONE MEAL—25 lbs. \$1.50; 50-lb. bag, \$2.75; \$5.00 per 100 lbs.

HYDRATED LIME—Prices f.o.b. Richmond: 10 lbs. 35c.; 50 lbs. 85c.

VIGORO—For Lawns and Flowers, 6-10-4. 5 lbs. 55c.; 10 lbs. 95c.; 25 lbs. \$1.70; 50 lbs. \$2.55; 100 lbs. \$4.85.

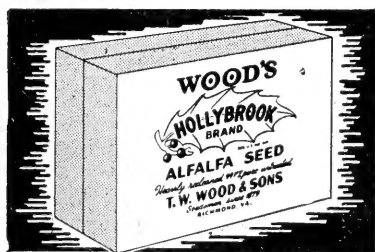
INSTANT VIGORO—8 ozs. 80c.; 1 lb. \$1.25; 3 lbs. \$3.00; 25 lbs. \$13.35.

PEAT MOSS—10-lb. bag, \$1.00 ½ bale, \$2.50; large bale, \$4.25.

FARMANURE—7½-lb. bag, 65c.; 25-lb. bag, \$1.40; 50-lb. bag, \$2.50.

FOLIUM Soluble Plant Food. Lb. \$1.39; 5 lbs. 4.95. Postpaid lb. 1.65; 5 lbs. 5.40

KRILIUM Soil Conditioner. 5 lbs. \$4.95; lb. \$1.39. Postpaid 5 lbs. \$5.40; lb. \$1.65



Wood's Hollybrook Brand Alfalfa Seed for Making Tea Used From Coast to Coast

For years we have received orders for untreated alfalfa seed to make tea. Thousands order regularly saying it gives great relief. We select the finest bright golden seed, untreated, highest quality, practically 100% pure. Double boxed to prevent contamination. Directions in each Postpaid: 1-lb. box, \$1.95; 5 boxes, \$9.00

Strawberry Plants—READY FOR OCTOBER 1st DELIVERY

Plant in Rows 3 to 3½ Feet Apart, 12 to 18 Inches Apart in Row

100 plants of 4 varieties must be ordered at the 25-plant rate
 100 plants of 2 varieties must be ordered at the 50-plant rate
 Prices of Early, Mid-Season and Late Varieties: Postpaid, 25 plants, \$1.50; 50 plants, \$2.25; 100 plants, \$3.40; 200 plants, \$5.75; 300 plants, \$7.25; 400 plants, \$8.75; 500 plants, \$10.25. Not postpaid, 25 plants, \$1.20; 50 plants, \$1.90; 100 plants, \$3.00; 200 plants, \$5.25; 300 plants, \$6.75; 400 plants, \$8.00; 500 plants, \$9.40; 1,000 plants, \$15.00; 5,000 lots, \$14.00 per 1,000.

EARLY VARIETIES—Premier and Blakemore. we can also supply HOWARD 17, DORSET, MIDLAND and FAIRFAX.

MID-SEASON VARIETIES—Catskill and Big Joe. We can also supply the following varieties: RED CROP and TEMPLE.

LATE VARIETIES—Chesapeake and Red Star. Can also supply FAIRPEAKE, ROBINSON and TENNESSEE BEAUTY.

Feeds and Baby Chick Prices

WOOD'S FEEDS—Mash and Mixed Feeds in Print Cloth Bags FOR MAKING DRESSES, CURTAINS, ETC. WORTH ABOUT 75c. EACH

Store Door Delivery 10c. per bag less on Mash and Mixed Grain Feed

CHICKEN FEEDS		F.O.B. Richmond: 10 lbs. 50 lbs. 100 lbs.		
HOLLYBROOK LAYING MASH	\$.60	\$2.60	\$4.90
HOLLYBROOK GROWING MASH60	2.60	4.95
HOLLYBROOK STARTING MASH60	2.65	5.10
PAMUNKEY SCRATCH50	2.15	4.10
Includes cracked corn, wheat, etc., but no grit.				
HOLLYBROOK CHICK GRAINS60	2.55	4.90
HOLLYBROOK DEVELOPING FOOD50	2.20	4.25
PAMUNKEY PIGEON, With Corn65	3.00	5.80
HOLLYBROOK PIGEON, No Corn75	3.60	6.95
CRACKED YELLOW CORN55	2.30	4.25
WHOLE YELLOW CORN50	2.15	3.95

MISCELLANEOUS FEEDS			
POULTRY GRIT—Coarse, Fine, Medium: 10-lb. bag, 25c.; 80-lb. bag,	\$1.10.		
OYSTER SHELLS—For Poultry20	.75 1.40
FAUST PIGEON HEALTH GRIT35	1.50 2.90
RABBIT PELLETS75	2.90 5.60

BIRD SEED	F.O.B. Richmond			Postpaid Prices			
	Lb.	5 lbs.	10 lbs.	Lb.	5 lbs.	10 lbs.	
Songster Food	\$.25	\$.95	\$1.80	\$.45	\$1.30	\$2.30
Canary Seed25	.95	1.80	.45	1.30	2.30
Love Bird, Parakeet Seed25	.95	1.80	.45	1.30	2.30
Bird Millet30	.65	1.15	.50	1.00	1.65
Sunflower for feed, dark striped25	.95	1.90	.45	1.30	2.40

WOOD'S BIRD SCATTER FOOD—2 lbs. 35c.; 5 lbs. 75c.; 10 lbs. \$1.50; 50 lbs. \$6.50; 100 lbs. \$12.00

HEAVY WHITE OATS—\$3.95 per 100-lb. bag.

POULTRY WHEAT—\$3.90 per 100-lb. bag.

DOG FOODS	F.O.B. Richmond					
	5 lbs.	10 lbs.	25 lbs.	50 lbs.	100 lbs.	
HUNT CLUB CUBES	\$.65	\$1.25	\$2.65	\$5.10	\$9.95
HUNT CLUB DOG FOOD MEAL65	1.25	2.65	5.10	9.95
PARD DOG FOOD—Swift's 1-lb. can 17c.; 1 doz. cans \$1.90; case of 48 cans, \$7.40						
SERGEANT'S SKIP BATH—16 ozs. 79c.; postpaid, \$1.00.						

WOOD'S BABY CHICKS

100% LIVE DELIVERY GUARANTEED. Hatch Days: Tuesdays and Fridays

GOOD HEALTH, STURDINESS, AND QUICKNESS IN REACHING MARKET SIZE OR BREEDING STAGE ARE FAR MORE IMPORTANT THAN FIRST COST

Our high quality Chicks are from blood-tested flocks, and the parent flocks are carefully culled to select birds for laying characteristics and for sturdy, healthy bodies. The many repeat orders we receive every year prove that our Chicks give satisfaction.

	Postpaid Prices	Per 25	Per 50	Per 100
BARRED ROCKS	\$4.75	\$9.00	\$17.00
NEW HAMPSHIRE REDS	4.75	9.00	17.00

We hope to be able to supply all the regular breeds next spring

Eggs are advancing. We urge you to place your order now to have an egg supply next spring. Chicks may be even higher in the fall. Orders booked now for fall shipment subject to change in price. The demand is heavy. Order now.

VEGETABLE PLANTS—Not Sent C.O.D.

LATE CABBAGE PLANTS—Postpaid, 95c. per 100; 500 for \$4.00; \$6.25 per 1,000.

COLLARD PLANTS—Postpaid, 95c. per 100; 500 for \$4.00; \$6.25 per 1,000.

VEGETABLE PLANTS

READY FOR IMMEDIATE DELIVERY

CABBAGE PLANTS—Late Flat Dutch, 75c. per 100; 500 for \$3.10; \$5.50 per 1,000 postpaid. Not postpaid, 50c. per 100; 500 for \$2.40; \$4.50 per 1,000.

COLLARD PLANTS—75c. per 100; 500 for \$2.95; \$5.00 per 1,000, postpaid. Not postpaid, 50c. per 100; 500 for \$2.25; \$4.00 per 1,000.

Clovers Sept. 30, 1953 Phone 3-2192 Western Union WUX


	Prices per lb. F.O.B.				Postpaid Prices			
	100 lbs.	25 to 99	3 to 24	1 to 2	25 lbs.	10 lbs.	5 lbs.	1 lb.
CRIMSON CLOVER , Imported..	.17½	.19	.21	.25	6.25	2.80	1.50	.50
Tennessee Grown (150-lb. bags)	.18½	.20	.22	.25	6.50	2.90	1.55	.50
Affidavit Talladega Reseeding..	.26	.28	.30	.35	8.50	3.70	1.95	.60
ALFALFA , Kansas Grown36	.38	.40	.45	11.00	4.70	2.45	.70
New Crop Atlantic Alfalfa (bu. bags), 99½% pure. Field inspected	.45	.47	.49	.55	13.25	5.60	2.90	.80
Cert. Williamsburg (bu. bags)—Available about October 15th.								
LADINO CLOVER —California Grown:								
Affidavit, 99½% pure62	.65	.70	17.00	7.20	3.70	.95	
Certified Blue Tag70	.72	.75	19.50	8.20	4.20	1.05	
WHITE DUTCH CLOVER65	.67	.70	18.25	7.70	3.95	1.00	
Cert. Perm. Pasture White Clover	.70	.72	.75	19.50	8.20	4.20	1.05	
New Zealand White Clover75	.78	.81	21.00	8.80	4.50	1.10	
WOOD'S DIXIE WHITE CLOVER	.83	.86	.89	23.00	9.60	4.90	1.20	
WHITE SWEET CLOVER18	.19	.21	.25	6.25	2.80	1.50	.50
ALSIKE CLOVER , 8 lbs. acre...	.35	.37	.39	.45	10.75	4.60	2.40	.70
RED CLOVER ,								
North Carolina Grown38	.40	.42	.45	11.50	4.90	2.55	.70
Cert. Kenland Red Clover60	.62	.65	.70	17.00	7.20	3.70	.95
Registered Kenland (50-lb. bags)	.61	.63	.66	.70	17.25	7.30	3.75	.95
MAMMOTH CLOVER —Sapling ..	.38	.40	.42	.45	11.50	4.90	2.55	.70
BIRDSFOOT TREFOIL —Broadleaf	.90	.92	.96	1.00	24.75	10.30	5.25	1.25
LESPEDEZA (100-lb. bags), 25 lbs. acre:								
Korean22	.23	.25	.30	7.25	3.20	1.70	.55
Kobe30	.32	.34	.40	9.50	4.10	2.15	.65
Sericea—Scarified40	.42	.44	.50	12.00	5.10	2.65	.75
BICOLOR LESPEDEZA , Scarified	1.25	1.29	1.33	1.40	33.75	14.00	7.10	1.65
BENE30	.32	.34	.40	9.50	4.10	2.15	.65
HAIRY VETCH , 25 lbs. acre....	.18½	.20	.22	.25	6.50	2.90	1.55	.50
AUSTRIAN WINTER PEAS07½	.09	.11	.15	3.75	1.80	1.00	.40
DWARF ESSEX RAPE15	.16	.18	.25	5.50	2.50	1.35	.45

	Prices per lb. F.O.B.				Postpaid Prices			
	100 lbs.	25 to 99	3 to 24	1 to 2	25 lbs.	10 lbs.	5 lbs.	1 lb.
GRASS SEEDS								
TIMOTHY , 15 lbs. acre19½	.21	.23	.25	6.75	3.00	1.60	.50
RYE GRASS , Domestic16	.17	.19	.25	5.75	2.60	1.40	.50
Perennial Rye Grass19	.20	.22	.25	6.50	2.90	1.55	.50
BROME GRASS —Lincoln Strain.	.30	.32	.34	.40	9.50	4.10	2.15	.65
ORCHARD GRASS , Onion Free.	.26	.28	.30	.35	8.50	3.70	1.95	.60
ORCHARD, VA. Trace Onion....	.22½	.24	.26	.35	7.50	3.30	1.25	.55
ORCHARD GRASS , Hulled29	.31	.33	.35	9.25	4.00	2.10	.60
KY. BLUE GRASS , 85% pure....	1.50	1.54	1.59	1.70	40.00	16.60	8.40	1.95
RED TOP or HERDS , 92% pure..	.82	.85	.88	.95	22.75	9.50	4.85	1.20
POA TRIVIALIS82	.85	.88	.95	22.75	9.50	4.85	1.20
CHEWINGS FESCUE65	.67	.70	.75	18.25	7.70	3.95	1.00
CREEPING RED FESCUE60	.62	.65	.70	17.00	7.20	3.70	.95
KY. 31 FESCUE , Certified23	.24	.26	.30	7.50	3.30	1.75	.55
KY. 31 FESCUE , 99½% pure....	.19	.20	.22	.25	6.50	2.90	1.55	.50
MEADOW FESCUE35	.37	.39	.45	10.75	4.60	2.40	.70
BENT GRASS —Cert. Astoria ...	1.05	1.08	1.12	1.15	28.50	11.90	6.05	1.45
Certified Highland Bent	1.00	1.03	1.07	1.15	27.25	11.40	5.80	1.40
Highland Bent95	.98	1.01	1.05	26.00	10.80	5.50	1.30
SUDAN GRASS , 25 lbs. acre....	.16	.17	.19	.20	5.75	2.60	1.40	.45
Sweet Sudan Grass19	.20	.22	.25	6.50	2.80	1.50	.50
BERMUDA GRASS —Unhulled ..	.53	.55	.58	.65	15.25	6.50	3.35	.90
Hulled73	.75	.78	.85	20.25	8.50	4.35	1.10
DALLIS GRASS —Australian77	.80	.83	.90	21.50	9.00	4.60	1.15
CARPET GRASS65	.67	.70	.75	18.25	7.70	3.95	1.00
WOOD'S PERMANENT PASTURE & HAY MIXTURES 1 to 8 & SOUTHERN								
PERMANENT MIXTURE 12 ..	.35	.37	.39	.45	10.75	4.60	2.40	.70
GRAIN PASTURE MIXTURE08½	.09	.11	.15	4.00	1.90	1.05	.40
GRAIN HAY MIXTURE08	.09	.11	.15	3.75	1.80	1.00	.40

	Prices per lb. F.O.B.				Postpaid Prices			
	100 lbs.	25 to 99	3 to 24	1 to 2	25 lbs.	10 lbs.	5 lbs.	1 lb.
LAWN GRASSES								
WOOD'S EVERGREEN93	.96	1.00	1.05	25.50	11.40	5.45	1.30
WOOD'S SUPER-GREEN	1.25	1.30	1.35	1.40	34.00	14.20	7.20	1.65
WOOD'S SHADY PARK	1.02	1.05	1.10	1.15	27.75	11.70	5.95	1.40
WOOD'S EMERALD PARK60	.62	.65	.70	17.00	7.20	3.70	.95
WOOD'S MAYFAIR37	.39	.42	.45	11.25	4.80	2.50	.70
WOOD'S DIXIE57	.59	.62	.65	16.25	6.90	3.55	.90
WOOD'S COASTAL60	.62	.65	.70	17.00	7.20	3.70	.95
WOOD'S WINTER-GREEN29	.31	.33	.35	9.25	4.00	2.10	.60

Postpaid Prices apply to Va., N.C., W. Va., Md., Del., N. J., Penn.
 Postage on Field Seed to Other States: To S. C., Ga., Ky., Tenn., Ohio, Ind., N. Y.,
 New England and Mich., add 5c. per pound to postpaid prices.
 To Ala., Ark., Fla., Ill., Iowa, La., Miss., Mo., and Wisc., add 7c. per pound.
 To Texas, Okla., Kansas and Neb., add 9c. per lb. to postpaid prices.
POSTAGE DOES NOT INCLUDE EXPRESS OR FREIGHT CHARGES

WOOD'S CRIMSON CLOVER



HIGHER PURITY
FREER OF WEEDS
BRIGHTER SEED
HIGH GERMINATION
BETTER STANDS

T. W. WOOD & SONS

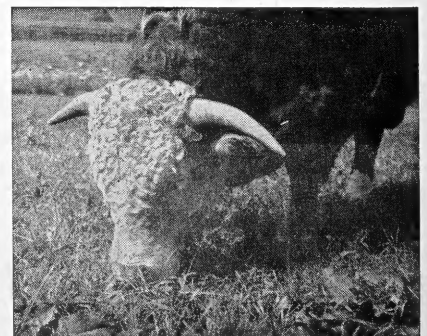
RICHMOND, VA.
 SEEDSMEN SINCE 1879

T. W. Wood & Sons warrant to the extent of the purchase price, that Seeds, Bulbs and Plants sold are as described on the container, within recognized tolerances. We give no other or further warranty, express or implied.

	Open Mesh 1-bu. Bags	½ Peck 4 lbs.	Peck 8 lbs.	Bu. 32 lbs.
Silver Skin	\$.80	\$1.20	\$4.00	
Yellow Ebenezer..	.75	1.15	3.90	
30c. per lb. Postpaid		50c. per lb.		
White Multiplier..	1.75	3.25	
Yellow Potato....	1.75	3.25	
45c. per lb. Postpaid		65c. per lb.		

Wood's Grain Pasture Mixture

Furnishes more grazing in less time and at less cost than any other crop. It keeps more animals per acre in good healthy condition in winter, when feed costs are high, and permanent pastures dormant. Small grains make more growth in cold weather than pasture grass or legumes. Saves expensive labor in feeding. Highly nutritious. Dwarf Essex Rape stays green and palatable in the coldest weather, high in vitamins and relished by all livestock, hogs and poultry. Grains balanced with legumes furnish protein for growth and warmth. Cannot cause bloat. For continuous fall, winter and spring grazing it has ideal proportions of Rye Grass, Crimson Clover, Rape, Hairy Vetch, Abruzzi Rye, Beardless Barley, Winter Oats and Smooth Wheat. Sow early, 100 lbs. acre. Fertilize well. Top dress. Do not graze under 3 inches. The ideal nurse crop for seeding permanent pasture mixtures.
100-lb. bags, \$8.50; in 5-bag lots, \$8.25



Wood's Grain Pasture Mixture, the most economical feed relished by all livestock. Tests show 100% more profit from steers on a good winter pasture than feeding grain with protein supplement.



Dr. Stanton says **Wood's Fulgrain 3** is more vigorous, winter hardy, storm proof, and resists Victoria blight that can destroy other Fulgrains. 10 days earlier, escapes heat and rust. Made 121 bu. per acre to 76 for Fulgrain 1952, and 101 for Victorgrain, 48-93 in a N.C. test with 12 and 9% more winter survival. It was as cold proof as Lee, had higher yield, much stiffer straw, 11 inches shorter.

OATS, Treated Sow 2 bu. acre.
3-bu. bags, bu. 32 lbs. 30-bu. lots Bu.
FULWOOD\$2.10 \$2.15
Averaged 10 bu. per acre more than Arlington in the 4 N.C. tests, is 10 days earlier, has much stronger straw, a foot shorter. Resists storms, rust, heat and drought. Vigorous dark green growth. Ideal for heavy fertilization or rich black soil, where other oats lodge.

ARLINGTON\$1.65 \$1.70
CERTIFIED ARLINGTON, 1.80 1.85
REGISTERED ARLINGTON 190 2.00
Registered LEE Cold Proof 2.35 2.40
Wood's Improved Pure Line Strain. Tops in 1952 Eastern Va. test. "The most uniform strain of Lee."—Dr. Stanton.

SOUTHLAND 1.70 1.75
FULGRAIN 1.70 1.75
WOOD'S FULGRAIN 3 ... 1.75 1.80

Earliest oat. Tops 3 years at Pee Dee S. C., 10.5 bu. more than Fulgrain B.F.S.

FORKEDEER. Cold Proof. 1.90 1.95
CERTIFIED FORKEDEER. 2.05 2.10

Recommended in Va., N.C., Md. and Tenn. Averaged 106.4 bu. per acre 2 years, 10 bu. above any other oat in Piedmont Va. tests. Our most winter hardy oat, bred from Winter Turf, similar to Lee. Highest yield 3 years in Md., and in N.C. Mountain tests, averaging 113 bu. per acre with high test weight, disease resistance, medium straw and maturity.



Dr. T. R. Stanton, oat authority, U.S.D.A., congratulates Bill Wood on the superiority of **FULWOOD Oats**: "High in yield and quality, shorter, stiffer straw, better standing ability." N.C., Va. and Ala. recommend it. In 1953 experiment station tests it made 126 bu. per acre, highest in Piedmont, N. C.; averaged 111 bu., best in Coastal N.C. tests; 125 bu. tops in S.C. tests; and 109 bu. at V.P.I.

Seed Grains

Double Cleaned. New Bags
High Germination. 99% Pure

We **Ceresan Treat** all Rye, Wheat, Oats and Barley to insure better stands and disease free crops. We **Hot Water Treat** Wheat and Barley to prevent loose smut.

We are the largest Southern breeders and growers of small grain seed, growing many thousand acres from the finest Registered or Certified stock. To avoid mixing in the drill or combine, only one variety of a crop is grown on any one farm. No crop is planted in a field where other small grain grew last season. All fields are carefully rogued and fields inspected for certification.

We breed small grains in Va., N.C. and S. C. for high yields and resistance to disease, cold and lodging. Our new strains are tested by experiment stations thru the South, who report most favorably.

RYE, Sow 1½ bushels per acre

2-bu. bags, bu. 56 lbs. 20-bu. lots Bu.
BALBO WINTER RYE ... 2.80 2.90
ROSEN WINTER RYE ... 2.60 2.70
ABRUZZI RYE—Sold Out

BARLEY Treated. Sow 2 bu. acre.

2-bu. bags, bu. 48 lbs. 20-bu. lots, Bu.
WONG, grown from Registered Hot Water Treated Seed\$2.40 \$2.50
CERTIFIED WONG 2.65 2.75

BEARDLESS COLONIAL 2 2.85 2.95

Far outyielded all other barleys at N. C. experiment stations, averaging 83 bu. per acre for 2 years in 6 Coast and Piedmont tests; was the most winter hardy, 90% surviving to 78% for Wong, and has higher test weight per bu. It is tolerant to rust, resists mildew, has short stiff straw, ideal to combine.

Wood's Grain Hay Mixture

For bumper crops of nutritious hay, easy to cure, relished by all livestock. More productive and palatable than oats or any other crop sown alone. Good nurse crop, seeding permanent grass and clover as it comes off early. Contains Crimson Clover Smooth Wheat, Beardless Barley, Winter Oats, Hairy Vetch. A balanced ration of protein and vitamins. Sow 100 lbs. acre. Fertilize well. Top dress

100-lb. bag, \$8.00; in 5-bag lots, \$7.75



Thorne, most popular wheat in the Upper South, is smut, mosaic, mildew and winter resistant. Stands up better. Combines easier. Large heads. Big, plump grain, good milling quality. Only wheat recommended in N. C. mountains, where it outyielded other wheats 7 years, was the most winter hardy and had the strongest straw.

BEARDLESS WHEAT

Plant 1½ bu. acre.	20-bu. Per bu.,
2-bu. bags. Treated.	lots 60 lbs.
THORNE	\$3.10 \$3.20
CERTIFIED THORNE	3.35 3.45
SENECA, Improved Thorne 3.25	3.35
CERTIFIED SENECA	3.50 3.60
ATLAS 66	3.10 3.20
CERTIFIED ATLAS 66 ...	3.35 3.45
VAHART	3.10 3.20
CERTIFIED VAHART	3.35 3.45

Va. recommends it for high yields and milling quality, stiff straw and resistance to mildew, cold and smut.

REDHART

CERTIFIED REDHART .. 3.35 3.45

Earliest wheat, short, stiff straw. Top milling quality. Resists rust.

HARDIRED

CERTIFIED HARDIRED.. 3.35 3.45

FORWARD

LEAP'S PROLIFIC

CERTIFIED LEAP'S .. 3.35 3.45

REGISTERED LEAP'S .. 3.50 3.60

Top milling quality. Most cold and smut resistant. Stiff straw. Big, heavy head and grain. Top yields in Va. tests west of Blue Ridge, in N. C. Piedmont tests and made 49.8 bu. per acre, the record in 19 U.S.D.A. Wheat tests.

BEARDED WHEAT

V.P.I. 131

CERTIFIED V.P.I. 131.... 3.35 3.45

FULCASTER

STONER

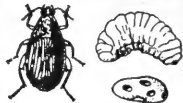
NITTANY (Penn.44)

NUDEL Va. recommends it as the best bearded and most mosaic resistant wheat, making 47 bu per acre where others made 10 to 16 bu. 3.10 3.20

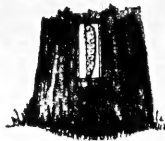


Our **SENECA** Wheat made 41 bu. per acre, highest in 1953 Clemson, S.C. test. Va. recommends it as it made 46 bu. per acre, tops in yield and lowest in lodging in the 8 Va. tests. A twin sister of Thorne, identical except it yields more, has higher test weight per bu., best grain quality, brings a better price, has less mixture and disease, and is replacing it. It looks like Thorne, big long solid heads, copper color, medium tall, very stiff straw, resists storms, winter, mosaic and loose smut; stools well.

INSECTICIDES AND FUNGICIDES



WEEVILS
(Typical)



PEACH TREE
BORER



Arsenate of Lead For all Leaf-Eating Insects. Sticks to the leaf. Use 1 to 2 pounds to 50 gallons of water (one level tablespoon to gallon), for general spraying. Postpaid, 1-lb. bag 90c.; 4-lb. bag \$2.25. Not postpaid, 1-lb. 70c.; 4 lbs. \$1.80.

Black Leaf 40 For Sucking Insects and Poultry Lice. Kills plant lice on roses, shrubbery, fruits and vegetables. A concentrated solution of nicotine sulphate. Dilute 1 to 2 teaspoonfuls to a gallon of water, as directed. Postpaid, 1 lb. 50c.; 5 ozs. \$1.25; 1 lb. \$2.75; 2 lbs. \$4.50; 5 lbs. \$8.10; 10 lbs. \$13.50. Not postpaid, 1 oz. 36c.; 5 ozs. \$1.05; 1 lb. \$2.42; 2 lbs. \$4.15; 5 lbs. \$7.60; 10 lbs. \$12.65; 50-lb. drum, \$53.90.

Blue Stone Copper Sulphate or Blue Vitriol (Pulverized Snow). For early spraying, for making Bordeaux mixture and copper solution. Postpaid, 1 lb. 50c.; 5 lbs. \$1.85; 10 lbs. \$3.40. Not postpaid, 1 lb. 30c.; 5 lbs. \$1.40; 10 lbs. \$2.70; 25 lbs. \$6.50; 50 lbs. \$12.00; 100 lbs. \$23.00.

Cyanogas A Dust Kills field mice, moles, rats, cray fish, ground hogs, bed bugs, clothes moths, ants, wasps, yellow jackets, grape leaf hopper, grasshopper, locusts, etc. Postpaid, 1-lb. can \$1.30; 5-lb. can \$4.35. Not postpaid, 1 lb. \$1.00; 5 lbs. \$3.85; 25-lb. pail, \$12.90; 100-lb. drum, \$31.00.

Cyanogas Ant Killer For ants in the garden and lawn. Kills millions. By mail postpaid, 4-oz. puffer can, 55c.. Not postpaid, 4-oz. can 40c.

Chlordane 6% Dust For control of lawn ants and all other insects. Dust lightly and water well to get material down into the nests. In the garden it kills cutworms, sowbugs, slugs and snails. Remains effective at least 10 days. By mail postpaid, 1-lb. sifter top can, 85c.; 4-lb. bag \$1.95. Not postpaid, 1-lb. size 60c.; 4-lb. size \$1.50.

Chlordane 50% Dust A dry wettable powder. Controls ants, army worm, chinch bug, crickets, earwigs, grasshoppers, Japanese beetles and grubs, leaf miners, roaches, silver fish, strawberry weevils, thrips and wireworm. By mail postpaid, 1-lb. size \$2.50; 5-lb. size \$5.45; 10-lb. size \$10.45. Not postpaid, 1-lb. size \$2.25; 5-lb. size \$5.00; 10-lb. size \$9.75.

Marlate—50% Tech-Methoxychlor Kills horn flies, stable flies, house flies, mosquitoes, lice. Yet tests show "Marlate" has unusually low toxicity to warm blooded animals. "Marlate" controls many crop insects but is so mild on plants that it doesn't burn even on cucumbers, melons or other sensitive crops. Also for use in barns and other farm buildings. Postpaid, 8-oz. can \$1.00; 4-lb. pkg. \$4.20. Not postpaid, 8 ozs. 75c.; 4 lbs. \$3.75.

50% Malathion Spray A new spray for mites. Controls European red mites, two-spotted mites, Pacific mites, clover mites, aphids, and white flies on apples, pears, peaches, plums and other fruits, vegetables and ornamentals. Postpaid, 1-oz. size 60c.; 5-oz. size \$1.60; pint size \$3.30; quart \$5.65. Not postpaid, 1 oz. 49c.; 5 ozs. \$1.39; pint, \$2.98; quart \$5.29.

Para-Scalecide For controlling peach tree borers. Para-Scalecide is applied in the early fall or in the spring when the ground temperatures are not colder than 60 degrees F. Dilute one gallon Para-Scalecide with 7 gallons of water. One gallon treats approximately 125 one to two-year-old trees; 64 three or four-year-old trees. Postpaid, 1/2 pint can 95c.; quart can \$1.75; gallon can \$3.95. Not postpaid, 1/2 pint 75c.; quart \$1.45; gallon \$3.25; 5 gallons \$10.40; 15-gallon drum, \$24.50.

.75 Rotenone Dust Kills insects on vegetation, but leaves no poisonous residue. Controls bean beetle, cabbage worm, asparagus, cucumber and flea beetles, potato bug, tomato worm, rose slug, leaf hopper, thrips, red spider, plant lice and other garden pests. Apply 15 to 20 pounds per acre. May be applied either as a dust or spray. Postpaid, 1-lb. sifter top can 75c.; 4-lb. bag \$1.35. Not postpaid, 1 lb. 50c.; 4 lbs. 90c.; 50-lb. bag \$7.50.

Spray Spreader It spreads the spray; makes it stick to the leaf. Use 2 lbs. to 100 gallons of spray. Postpaid, 2-lb. bag \$1.25. Not postpaid, 2 lbs. 90c.

Dry Lime-Sulphur For San Jose Scale. The most generally used and very effective remedy for San Jose Scale. Exactly like lime-sulphur solution, except that the water has been taken out. For fall and spring spraying use 12 to 15 lbs. to 50 gallons water. Summer spraying, 2 1/2 to 3 lbs. to 50 gallons water. Postpaid, 1 lb. size 85c.; 5-lb. size \$3.00; 12 1/2-lb. bag \$4.15. Not postpaid, 1 lb. 60c.; 5 lbs. \$2.50; 12 1/2-lb. bag \$3.25; 100-lb. drum, \$25.00.

Scalecide For San Jose Scale. It is especially recommended for spraying trees, shrubs, etc., while in the dormant state. Kills aphid and red mites and destroys the eggs and larvae wintering in inaccessible places on the bark of trees. It spreads rapidly into cracks and crevices and covers rough bark thoroughly. Mix one part Scalecide with 15 parts water. Postpaid, 1 pint 95c.; 1 quart \$1.50; 1 gallon \$3.45. Not postpaid, 1 pint 75c.; 1 quart \$1.15; 1 gallon \$2.75; 5 gallons \$9.30; 15-gallon drum \$22.00.

Dusting Sulphur 325 MESH. Apply it for red spider, brown rot, scab, mildew, leaf-spot, rust and other fungus diseases. Use it on potatoes when cut for planting to prevent scab and bleeding. Postpaid, 5 lbs. 90c.; 10 lbs. \$1.45; 25 lbs. \$3.15. Not postpaid, 5 lbs. 45c.; 10 lbs. 75c.; 25 lbs. \$1.65; 50 lbs. \$3.20; 100 lbs. \$6.30.

Triogen Destroys leaf-eating insects like rose slugs, caterpillars, webworm, red spider, plant lice, aster beetles, etc., controls mildew, black spot, canker, and rust on roses and other plants; yellows and fungus diseases on many flowering plants.

	By mail postpaid	Not postpaid
Economy Kit, makes 8 quarts	\$1.30	\$1.50
A—Small Kit, makes 16 quarts	2.70	2.35
B—Medium Kit, makes 64 quarts	6.60	6.00
C—Large Kit, makes 32 gallons	9.85	9.00

Volck Oil Spray For scale insects, mealy bugs, white flies, red spiders, rust mites and similar insects. May be used on tender plants in leaf with perfect safety; a suitable spray for all plants, flowers, vegetables, berries and shrubs. Postpaid, 4-oz. size 45c.; pint size \$1.00; 1-quart size \$1.60; 1 gallon size \$3.55. Not postpaid, 4-oz. size 35c.; 1-pint size 70c.; 1-quart size \$1.25; 1-gallon size \$2.85; 5-gallon drum, \$9.95.

Zinc Sulphate For control of peach bacterial spot and possibly brown-rot and scab. The recommended formula is 4 pounds each of zinc sulphate and fresh hydrated or slaked lime to 50 gallons water. The addition of 1 pound zinc sulphate to 100 gallons lead arsenate spray corrects the spray injury. Postpaid, 1 lb. 50c.; 5 lbs. \$1.70; 10 lbs. \$2.70; 25 lbs. \$5.97. Not postpaid, 1 lb. 30c.; 5 lbs. \$1.25; 10 lbs. \$2.00; 25 lbs. \$4.50.

SEED TREATMENTS

Ceresan-M For Oats, Barley, Wheat and Cotton. Used for all purposes for which 2% Ceresan and New Improved Ceresan have been used. When properly used greatly reduces the hazard of skin irritation and it is odorless. Effective in controlling smut and stripe of barley, oat smuts bunt or stinking smut of wheat. 1 lb. will treat 32 bushels. Postpaid, 14-oz. size \$1.50; 3-lb. size \$3.95. Not postpaid, 14-oz. size \$1.25; 3-lb. size \$3.55; 40-lb. pail \$35.85; 100-lb. drum \$85.00.

Carbon Bisulphide Kills weevil, bugs and insects generally on beans, peas and grains while in storage. When placed on top of either bulk or sacked grains the fumes permeate the entire bulk. 1-lb. can 55c.; 2 1/2-lb. can \$1.15; 5-lb. can \$2.00. Cannot be mailed—express or freight only.

Copper Carbonate For Treating Wheat. 2 to 3 ounces will treat one bushel. By mail, postpaid, 1-lb. pkg. 70c.; 5-lb. pkg. \$2.35. Not postpaid, 1-lb. pkg. 50c.; 5-lb. pkg. \$1.85.

Pyrenone*
GRAIN PROTECTANT
*Reg. U. S. Pat. Off.

Wicked Willie
Weevil



Pyrenone Grain Protectant For the prevention and control of insect infestation of Southern corn in storage; also other types of grains and seeds. Postpaid, 10-lb. bag \$3.60; 25-lb. bag \$3.25; 50-lb. bag \$15.25. Not postpaid, 10-lb. bag \$2.90; 25-lb. bag \$6.60; 50-lb. bag \$12.50.

Pyrenone Wheat Protectant For Wheat only. Grains can be used for the preparation of flour and other cereal products without resorting to other than normal production procedures, and can be fed directly to livestock or used in the preparation of animal feeds without hazard. Postpaid, 50-lb. bag \$17.75. Not postpaid, 50-lb. bag \$15.00.

Write for Pamphlet describing PYRENONE PROTECTANTS

PLANT HORMONES

FULTON'S Plantabbs

ODORLESS PLANT FOOD TABLETS
plete plant food in odorless, ready to use tablet form. **30 tablets 30c.; 75 tablets 55c.; 200 tablets \$1.20; 1,000 tablets \$3.75. Not postpaid, 30 tablets 25c.; 75 tablets 50c.; 200 tablets \$1.00; 1,000 tablets \$3.50.**

Contains Vitamin B1 and analyzes 11% nitrogen, 15% phosphoric acid and 20% potash, just the proper plant food to encourage a vigorous healthy growth. A complete plant food in tablet form. **30 tablets 30c.; 75 tablets 55c.; 200 tablets \$1.20; 1,000 tablets \$3.75. Not postpaid, 30 tablets 25c.; 75 tablets 50c.; 200 tablets \$1.00; 1,000 tablets \$3.50.**

FRUITONE

Prevents dropping of apples, pears, peaches and cherries. Recommended to increase the crops of beans, peas, tomatoes and other crops. Mix $\frac{1}{2}$ lb. Fruitone with each 100 gallons of water, one level teaspoon to a gallon of water. **By mail postpaid, trial pkg. 30c.; 2-oz. size \$1.05; 12-oz. size \$5.25. Not postpaid, trial pkg. 25c.; 2-oz. size \$1.00; 12-oz. size \$5.00.**

ROOTONE

Reg. U. S. Pat. Off.

reduces damping off and wards off fungus attack. **Postpaid, 1-oz. pkg. (treats 400 cuttings), 30c.; 2-oz. size \$1.05; 1-lb. size \$5.25. Not postpaid, 1-oz. pkg. 25c.; 2-oz. size \$1.00; 1 lb. size \$5.00.**

Makes Cuttings Easy to Root. Dip cuttings in Rootone before planting to give faster and better rooting. Stimulates root growth on cuttings; quickens germination of seed and bulbs;

TRANSPLANTONE

Reg. U. S. Pat. Off.

moved or transplanted; also beneficial to established plants and shrubs; multiplies roots and makes stronger plants. Sickly plants take on new life when watered with transplantone every ten days. $\frac{1}{2}$ oz. makes 50 gallons. **Postpaid, 1-oz. size, 30c.; 3-oz. size \$1.05; 1-lb. size \$4.25. Not postpaid, 1-oz. size 25c.; 3-oz. size \$1.00; 1-lb. size \$4.00.**

A water soluble powder containing Vitamin B1 to repair root growth when seedlings, flowering plants, shrubs or trees are

Hyponex With Hyponex and water, plants grow luxuriantly, flower abundantly and develop sturdy growth, regardless of the poorness or sterility of the soil. With Hyponex they will grow and flourish in clean sand, cinders or barren earth. Hyponex is ideal for hydroponics. **Postpaid, 3-oz. pkg. 30c.; 1-lb. can \$1.25; 10-lb. can \$8.70. Not postpaid, 3-oz. pkg. 25c.; 1-lb. can \$1.00; 10-lb. can \$8.00.**

WEED KILLERS

Ammate Weed Killer Kills Poison Ivy. Exterminates weeds in walks, driveways, tennis courts, etc. Deadly to vegetation but harmless to humans, animals and birds. Entirely free from fire and explosion hazards, and exerts only temporary soil sterilization. 1 lb. to a gallon of water kills poison ivy; 1 to 3 lbs. to a gallon kills deep rooted perennials and is enough for 100 square feet of heavy growth. **By mail postpaid, 2-lb. size, \$1.35; 6-lb. size \$3.20. Not postpaid, 2-lb. size \$1.00; 6-lb. size \$2.70; 50-lb. drum \$13.75; 75-lb. bag \$20.00.**

New Improved Weedone—2-4-D Weed Killer Plus 2, 4, 5-T Kills weeds under ground as well as above ground, right down to the root tips. Kills poison oak, poison ivy, wild morning glory, Japanese honeysuckle, saffras, black locust, choke cherry and many other weeds. **Postpaid, 8-oz. size \$1.25; 1-qt. can \$3.15; 1-gal. can \$7.60. Not postpaid, 8-oz. size \$1.00; 1-qt. can \$2.75; 1-gal. can \$6.95; 5-gal. drum \$25.00; 30-gal. drum \$142.50.**

DDT SPRAYS and DUSTS

25% DDT Spray Kills caterpillars, thrips, leaf roller, potato beetle, flea beetle, Japanese beetle and oriental peach moth. Pratt's 25% DDT dilutes with 4 parts of water for spraying barns, dairies, kennels, making a powerful and long lasting 5% residual fly spray. **By mail postpaid, 1/2 pt. \$1.10; 1 qt. \$2.35; 1 gal. \$6.30. Not postpaid, 1/2 pt. 85c.; 1 qt. \$2.00; 1 gal. \$5.60.**

50% DDT Dry Wettable Dust A dry wettable 50% DDT powder that mixes readily. 2 lbs. of Pratt's 50% DDT in 100 gallons of water is generally used to control codling moth, Japanese beetles, oriental peach moth and other insects. **Postpaid, 1-lb. size \$1.15; 4-lb. bag \$2.95. Not postpaid, 1 lb. 90c.; 4 lbs. \$2.50.**

WOOD PRESERVATIVE

Is becoming increasingly important to the farmer as a chemical preservative of wooden fence posts and farm buildings against rot, decay and destruction due to wood-eating insects. One gallon added to ten gallons of light fuel oil or kerosene solvent makes eleven gallons of a 5% solution, ready to use. **By mail postpaid, 1-gal. can \$3.90. Not postpaid, 1-gal. can \$3.20; 5-gal. drum \$15.00; 54-gal. drum \$145.30.**



Dogs are creatures of habits. Correct the habits of the dog and you will have no further trouble. "DOGZOFF" makes this training possible. If you wish to keep the dogs away from trees or flower beds, off porches or furniture, simply spray DOGZOFF. One application lasts several weeks, long enough usually to break even the most stubborn dog of his bad habits. Repels dogs, cats, moles, mice and rabbits. Protects shrubs, garden plants, porch furniture and trees. **By mail postpaid, 3-oz. bottle 85c.; 1 pint size, \$2.75. Not postpaid, 3 ozs. 75c.; 1 pint, \$2.50.**



Black Leaf Warfarin— Ready Mixed Bait

Is the convenient form of warfarin rat and mouse killer. There's nothing to add. It's ready to use. With specially selected and processed grain that never becomes rancid or sour. Rats and mice like it and continue to eat it until they die. Quickly destroys entire colonies. **Postpaid, 1-lb. pkg. \$1.00; 5-lb. pkg. \$3.45. Not postpaid, 1-lb. pkg. 80c.; 5 lbs. \$2.98.**

Black Leaf Warfarin—Concentrate

Is the economical form of warfarin rat and mouse killer. It makes 20 times its weight in rat or mouse killing bait. Save money by mixing your own bait—one part with 19 parts of corn meal, cereal, meat, fish or other acceptable bait material available locally. Tasteless, odorless. **Postpaid, 4/5 oz. pkg. 55c.; 1-lb. pkg. \$1.90; 1-lb. pkg. \$3.15; 1-lb. pkg. \$5.25. Not postpaid, 4/5 oz. 49c.; 1 lb. \$1.69; 1 lb. \$2.98; 1-lb. \$4.98.**

Rat-Killer

Contains ANTU, the new deadly and safer-to-use killer of rats. Small doses required for easy, quick and economical results. **Postpaid, 1 1/2-oz. size 70c.; 4-oz. size \$1.65; 8-oz. size \$2.75.**

Rat and Mouse Bait

(Contains Red Squill). Not poisonous, but deadly to rats and mice; they go into the open air to die. **By mail postpaid, 30c. per pkg. of 10 baits. Not postpaid, 25c. per pkg.**

Mouse Seed

Kills mice. Clean, ready to use; no bait, no muss; a saucer and Mouse Seed is all you need. **By mail postpaid, 30c. Not postpaid, 25c.**

TERRA-LITE

Aids in creating a dependable reservoir of plant root moisture; air-conditions the ground; fluffs stiff soil to prevent cooking, packing and hardening; tends to reduce need for watering and cultivation; provides a satisfactory medium for cuttings, seedlings and transplantings. Ideal for storing bulbs, particularly dahlias and for vegetable winter storage. **Postpaid, 4-qt. pkg., 70c.; 1-bus. bag \$1.30. Not postpaid, 4-qt. pkg. 40c.; 1/2 bus. bag 85c.; 2 bus. bag \$1.75; 3 bus. bag \$2.25.**

SoiLoam "GIVES BREATH TO SOIL" LIQUID SOIL CONDITIONER

SOILOAM TREATMENT

- Prevents soil compaction
- Converts clay or poor soil into permanently loose, porous material.
- Improves soil structure by transforming it into pulverized soil aggregates.
- Increases and maintains desirable aeration in the soil.
- Checks erosion in new seedings
- Gives better drainage. Soils stay moist as water-carrying capacity is greatly increased.
- Convenient liquid form. NOT A POWDER. Easy to use.
- Dilute with water and spray when soil is dry.

RECOMMENDATIONS FOR USE

For Soil, Lawns, Greens or Fairways: Dilute 1 gallon of SOILOAM with approximately 20 gallons of water and apply by spraying to 250, 500, or 1,000 square feet, depending on the present tightness of the soil. Following application with additional watering, if necessary, to give thorough penetration to a depth of approximately 2 to 3 inches. Treat soil preferably before seeding or planting; however, SOILOAM is effective any time of year.

For Indoor Plants, Nurseries and Small Garden Plots: Dilute 1 pint of SOILOAM in a two-gallon watering can and apply until soil is thoroughly penetrated.

SOILOAM is a watering solution of a resin which chemically combines with clay permanently converting it to a fine porous, granular texture. Changing clay and sandy soil into good tilth, thereby preventing slaking and subsequent compaction of the soil.

Postpaid, 1 gallon, \$6.00. Not postpaid, 1 gallon, \$5.25

Pratt's Poultry Regulator Famous old reliable product whose "Trace Elements" help make more eggs when feed is deficient. Contains vitamins. Also an excellent tonic for birds convalescing from disease. **Postpaid, 18-oz. size 70c.; 2½-lb. size \$1.10; 6-lb. size \$2.15; 12½-lb. size \$3.70. Not postpaid, 18 ozs. 40c.; 2½ lbs. 80c.; 6 lbs. \$1.60; 12½ lbs. \$2.85; 35 lbs. \$7.50; 100 lbs. \$17.00.**

Pratt's "Split-Action" Worm Capsules Pennies for worming bring back dollars. Wormy birds seldom lay well. Get rid of worms with Pratt's "Split-Action" Worm Capsules that do the work of two ordinary worm treatments at one low cost. They contain Phenothiazine and Shockless Nicotine. **Postpaid, for adult, 50 caps, 85c.; 100 caps, \$1.50; 500 caps, \$6.00; 1,000 caps, \$11.25. For chicks and small pullets, 50 caps, 55c.; 100 caps, \$1.00; 500 caps, \$4.35; 1,000 caps, \$7.35.**

Pratt's Zene-A-Trol is the kind of Phenothiazine powder discovered miraculously effective for worming hogs, sheep, cows, turkeys and chickens by the U. S. Department of Agriculture. **Postpaid, ¼ lb. 90c.; ½ lb. \$1.45; 1 lb. \$2.55; 5 lbs. \$9.50. Not postpaid, ¼ lb. 75c.; ½ lb. \$1.25; 1 lb. \$2.25; 5 lbs. \$9.00.**

Pratt's Poultry Worm Powder **New Improved.** Controls both large round and cecum worms. Contains Phenothiazine. Just add it to the mash feed. **Postpaid, 4-oz. size, 60c.; 8-oz. size, \$1.20; 1-lb. size, \$2.15; 5-lb. size, \$8.75. Not postpaid, 4-oz. size, 50c.; 8-ozs. \$1.00; 1 lb. \$1.85; 5 lbs. \$8.25.**

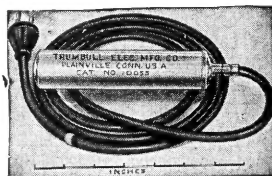
Walko Tablets Especially valuable for diarrhea and loose bowels trouble among incubator chicks. They tend to prevent digestive disturbances and should be given in all drinking water from the time the chicks are out of the shell. Also recommended for swelling of roup in the head and simple catarrh among older birds. **Postpaid, 100 tablet size, 65c.; 250-tablet size \$1.39; 1,000-tablet size, \$2.70; 2,000-tablet size, \$4.25. Not postpaid, 100-tablet size, 60c.; 250-tablet size, \$1.20; 1,000-tablet size, \$2.50; 2,000-tablet size, \$4.00.**

Champion Leg Bands (Aluminum) Give perfect satisfaction. They are neat, light, strong and durable, easily and quickly put on and guaranteed to stay on. This band is made in one piece, adjustable to fit any fowl and numbered 1 to 100. It is made of aluminum for Asiatics class, turkeys, Plymouth Rocks and smaller breeds. **By mail postpaid, package of 100 for \$1.00.**



Electric Poultry Fountain Water Warmer

Automatic electric positive action thermostat control, no radio interference, cost little to operate, safe to use and no fire hazard. More eggs in zero weather. Hens lay a lot more eggs with a good supply of warm water. Operates on 120 volts; will not let water get below 50 degrees F. **By mail postpaid, \$5.00.**

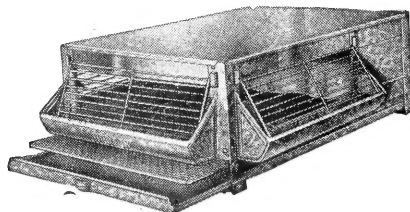


"Best of All" Wafer Thermostat



Made of special tempered brass, sensitive, accurate and dependable. The double unit style is specially recommended, as it has a solid post between making each unit independent of the other, so if one wafer should become injured the other would continue to function. **By mail postpaid, 3-inch wafer, 50c. each; 4-inch wafer, 65c. each. Not postpaid, 3-inch wafer, 45c. each; 4-inch wafer, 60c. each.**

No. 50 Hudson-Lektrik-Chick-Brooder



A brooder made especially for back-yard poultry raisers and smaller operators. It is a full size brooder, 24x36 inches inside with standard 9½ inch head room, has radiant heat from a 150-watt Richrome element incased in heavy box type radiator placed in compartment in rear of brooder, regulator thermostat holds temperature within narrow limits, dropping pan easily removable, capacity 100 day-old chicks. **Price, \$19.00. Cannot be mailed—express or freight only.**

Ken-Sprayall Bucket Spray Pump



The all-purpose double action continuous sprayer so easy to operate that even a child can use it. No tank to clean, no tank to leak. Rotate nozzle cap to vary spray from fog mist to full stream. **By mail postpaid, \$9.50. Not postpaid, \$8.95.**



No. 291-B Booster Sprayer

For those who prefer a sprayer of somewhat greater capacity and a long pump, the booster is the sprayer we recommend. Sprays insecticide, whitewash, cold water paint, etc. Has 3½-gallon galvanized funnel top tank, 18-inch curved brass extension rod. **By mail postpaid, \$8.25. Not postpaid, \$7.60.**

No. 220-B Bugwiser Sprayer

An economical, efficient sprayer for all small home and garden spraying. 2½ gallon capacity, seam welded tank with funnel top and comfortable carrying strap. **By mail postpaid, \$7.55. Not postpaid, \$6.96.**

No. 4-B King Barrel Spray Pump

A heavy duty unit maintains working pressure of 200 lbs. successfully. Handles heaviest spray solutions. Positive agitation, clog-proof, steel dasher cleans intake screen at each stroke. Equipped with 10 ft. ¾-inch hose and 3-ft. extension rod. Can be mounted in a fifty gallon or similar barrel. **By mail postpaid, \$25.30. Not postpaid, \$24.00.**

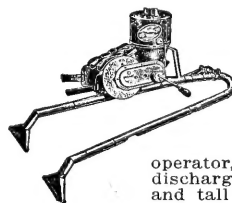


No. 433 Mercury Continuous Sprayer



A popular all purpose quart-size continuous sprayer equipped with the new two-way spray nozzle. Highly efficient for pest control jobs in home and garden. **By mail postpaid, \$1.95. Not postpaid, \$1.69.**

No. 200 Crank Duster



The ideal duster for large areas of vegetables, tobacco, cotton and fruit trees. It develops powerful air blast, delivering enough air at the nozzle to prevent clogging and breaks the powder into a fine floating dust. It can be adjusted to feed exactly the amount of insecticide required. Will handle any powder, light or heavy. **Dusts either in front or behind the operator, either under or above the foliage. The discharge tubes are adjustable for low growing and tall plants. The gears are steel, run in oil and are dustproof; the bearings are bronze. The indicator can be quickly and accurately adjusted for either large or small quantities of insecticide. The tubes are long enough to reach into fairly large trees. By mail postpaid, \$26.95. Not postpaid, \$26.00.**

Seymour Seedkaster

The Seymour Seedkaster is built of pressed Zingrip Steel; the body is one piece of deep drawn steel without a seam or weld; the gears are sealed within a dust-proof chamber; lubricated so they will operate indefinitely without oiling. The Seedkaster is capable of distributing fertilizer as well as all seeds; capacity 18 quarts. **By mail postpaid, \$6.15. Not postpaid, \$5.70.**



Cyclone Seed Sower



The Cyclone is a splendid seed sower that will pay for itself in a few days in the time it will save, besides sowing grass and clover seeds and grain of all kinds faster and more evenly and uniformly than is possible by hand. It will sow as fast as you can walk, and the quantity can be regulated to any amount to the acre. **By mail postpaid, \$4.60. Not postpaid, \$4.20.**