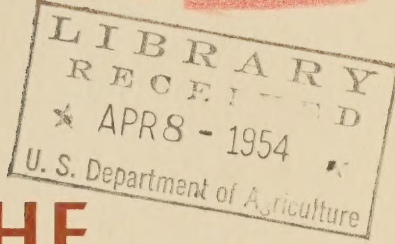


62.67

Tru



Spring 1954



**THE
BERRYHILL
NURSERY CO.**

MAIL ADDRESS: P. O. BOX 696

SPRINGFIELD, OHIO

Four Miles Northeast of City on State Route Four

Member A.A.N. - Ohio - Indiana - Michigan Nurserymen's Associations

OFFICE PHONE

8 A.M. to 5 P.M.

SPRINGFIELD 2-4421

RESIDENCE PHONES

After Business Hours

LEWIS BOOKWALTER 2-4524

FRANK TURNER 3-2958

CLARE LYTLER 5-3654

EVERGREENS

SPECIAL
SHRUBS

LINING-OUT
STOCK

KNIVES
AND SHEARS

**WHOLESALE
ONLY**

SPRING 1954

Terms and Conditions of Sale

TERMS:

Cash with order. C.O.D. orders must be accompanied by at least 25%.

Accounts due 30 days from date of invoice.

To establish credit for open account it is necessary to give satisfactory references and allow sufficient time for investigation. To those whose credit has been established we allow 2% discount for cash 10 days from date of invoice, net 30 days. Cash discount applies only when prior balance is paid in full. Interest at 6% charged on past due accounts.

PRICES:

This list cancels all previous lists and quotations.

Boxing and Packing extra at near cost. Because of the cost of boxing materials and labor, we cannot box large bulky shrubs, trees, or B & B evergreens.

GUARANTEE AND CLAIMS:

Plants warranted to be true to name.

Plants warranted to be in good healthy condition.

We sell under the standard form Nurserymen's Non-Warranty Clause, which reads: "We give no warranty, expressed or implied as to description, quality, productiveness, or any other matter, of any nursery stock we sell." We accept no responsibility for the guarantee our customers give their customers or any governmental department or agency. All shipments are at the risk of the purchaser after being delivered to carrier in good condition. All claims must be made within 5 days after receipt of stock. All quotations are for immediate acceptance and subject to stock being unsold on receipt of order.

SPECIAL NOTICE:

Correspondents are requested to use their printed business letterheads.

This list is intended for the trade only. We sell only to those who expect to resell at a profit. We do not employ agents. We do not pack dealers' orders, nor do we authorize dealers to use our name in any way whatsoever.

LINING OUT STOCK

MINIMUM ORDER NOT LESS THAN 50 PLANTS

of One Variety

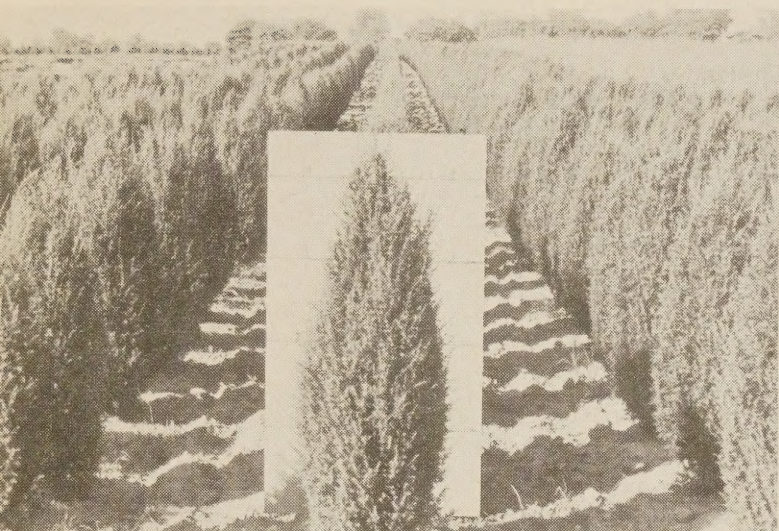
300 Plants at the 1000 rate

LINING OUT SHRUBS

	50 to 300 each	300 & up each
BUXUS koreana		
Heavy 6-8" from field65	
COTONEASTER adpressa		
(Creeping Cotoneaster)		
2 yr. 2" pots25	.20
Heavy T. 8" up40	.35
C. apiculata		
(Cranberry Cotoneaster)		
2" pots25	.22
EUONYMUS alatus		
2 yr. pots22	.20
E. alatus compacta		
2 yr. 2" pots22	.20
E. radicans erecta		
2" pots17	.15
3 yr. field 9-12" BR40	.35
E. vegetus		
2 yr. T. 8-12" 1 & 2 leads30	.25
ILEX crenata convexa		
T. 6-8" up—lightly branched30	.25
I. crenata rotundifolia		
T. 6-8" lightly branched30	.25
LONICERA zabeliana		
12-18" 1 yr. from HWC16	.14
MAGNOLIA soulangeana		
T. 18-24"75	
MYRICA carolinensis		
2" pots18	.15

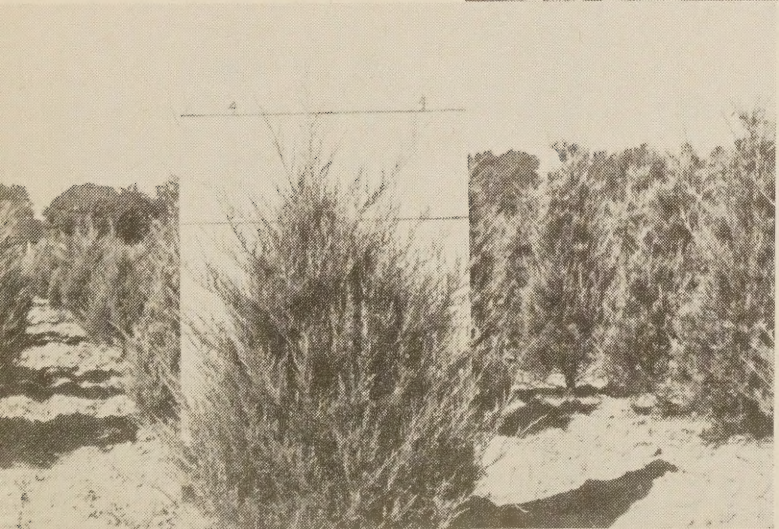
LINING OUT STOCK — Continued

	50 to 300 each	300 & up each
PRUNUS cistena (Purple Plum) 2-3' whips and lightly branched65	
VIBURNUM dilatatum 8-10"17	.15
V. sieboldi 8-10"17	.15
V. tomentosum 6-8"17	.15
V. wrighti 8-10" seedlings20	.17
LINING OUT EVERGREENS		
JUNIPER pfitzer Armstrong 3" pots60	
J. sabina T. 3 yr.60	.45
PICEA excelsa nidiformis (Dwarf Nest Spruce) 2 yr. 2" pots27	.25
P. excelsa (Norway Spruce) TT. 12-18"30	
THUJA occidentalis elegantissima (Goldtip Arborvitae) T. 3 yr.40	.35
T. occid. nigra (Dark Green American Arborvitae) T. 3 yr.45	.40
T. occid. spiralis (Green Douglas Arborvitae) T. 3 yr.45	.40
T. occid. wareana (Siberian Arborvitae) T. 3 yr.45	.40



Block of sheared Swedish Juniper. All 4 ft. plants go into the 3 to 4 ft. grade.

Juniper Glauca Hetzi.
Mostly 18 to 24 in. size.



Juniper Burki. 3 to 4 ft.
Sheared heavily.

EVERGREEN TREES

	5-24 each	25 & up each
CHAMAECYPARIS filifera (Thread Branch Falsecypress)		
2 to 3 ft.	2.65	
JUNIPERUS chin. glauca hetzi (Hetz' Blue Juniper)		
18 to 24 in.	3.25	3.00
J. chin. pfitzeriana — blue (Grafted Blue Pfitzer)		
30 to 36 in.	4.75	
J. chin. pfitzeriana compacta (Nick's Compact Pfitzer)		
24 to 30 in.	4.65	4.25
J. communis suecica (Swedish Juniper)		
3 to 4 ft. sheared	3.00	2.75
J. excelsa stricta (Greek Juniper)		
15 to 18 in.	2.25	2.10
24 to 30 in.	3.00	
J. chinensis columnaris glauca (Blue Columnar Chinese Juniper)		
3 to 3½ ft.	4.50	4.25
3½ to 4 ft.	5.00	4.75
J. virginiana burki (Burk's Juniper)		
3 ft. full	4.10	3.90
3 to 4 ft.	4.50	4.25
J. virginiana glauca (Silver Red Cedar)		
3 to 4 ft.	5.00	4.75
J. virginiana keteleeri (Keteleer's Juniper)		
3 to 4 ft.	4.75	4.50
J. virginiana pyramidiformia (Dundee Juniper)		
3 to 4 ft.	4.50	4.25
4 ft. full	5.00	4.75
J. virginiana smithi (Smith's Juniper)		
2½ to 3 ft.	4.00	3.75
TAXUS cuspidata (Spreading Japanese Yew)		
15 to 18 in.	4.00	3.75
18 to 24 in.	4.50	4.25



One of many blocks of *Taxus Cuspidata*. Mostly 15 to 18 in. and 18 to 24 in. All are well sheared.

Taxus Intermedia Berryhilli. Compact growing, dense, dark green foliage. We think it is the best selection or type of its class.



Taxus Hicksi. Sheared many times. These rows are long. There will be plenty of 18 to 24 in. and 24 to 30 in. plants in this block.

EVERGREEN TREES — Continued

	5-24 each	25 & up each
TAXUS media brownii (Brown's Yew) 12 to 15 in.	3.90	
T. media hicksii (Hick's Yew) 18 to 24 in.	4.25	4.00
T. media wardii (Ward Yew) 15 to 18 in.	4.75	4.50
T. intermedia Berryhillii (Berryhill's Compact Intermediate Yew) 15 to 18 in.	4.25	4.00
THUJA occidentalis (American Arborvitae) 2½ to 3 ft.	2.75	2.50
3 to 4 ft.	3.10	2.90
T. occ. elegantissima (Golden Tip Arborvitae) 2½ to 3 ft.	3.00	2.75
3 to 3½ ft.	3.50	3.25
T. occ. hoveyi (Hovey Globe Arborvitae) 18 to 24 in.	2.00	1.85
T. occ. nigra (Dark Green American Arborvitae) 3 to 4 ft.	3.50	3.25
T. occ. pyramidalis (Pyramid Arborvitae) 3 to 3½ ft.	3.10	2.90
3½ to 4 ft.	3.50	3.25
T. occ. spiralis (Spiral Arborvitae) 2½ to 3 ft.	3.00	2.75
3 to 4 ft.	3.50	3.25
T. occ. woodwardii (Globe Arborvitae) 15 to 18 in.	2.00	1.85
T. orientalis compacta (Compact Biota) 24 to 30 in.	2.75	2.65
TSUGA canadensis (Hemlock) 2½ to 3 ft.	4.25	
3 to 4 ft.	5.50	



Dark Green American Arborvitae. This block is mostly 3 to 4 ft. There are seven blocks of saleable sizes, mostly 3 to 4 ft. and 4 to 5 ft.

Woodward Globe Arborvitae, mostly 15 to 18 in. Also one of many blocks of Pyramid Arborvitae, mostly 3 to 3½ ft. and 3½ to 4 ft. These rows are long. This is the first block to come out of our new farm.



Part of our new farm planted in Taxus and Arborvitae. These Taxus shown will grow for two more seasons before they are heavy enough to meet our grading standards.

DECIDUOUS SHADE AND ORNAMENTAL TREES

	5-24 each	25 & up each
ACER dasycarpum (Silver Maple)		
6 to 8 ft.	1.65	1.50
CORNUS florida (White Flowering Dogwood)		
3 to 4 ft. B & B	3.25	
MALUS eleyi (Purple-leaved Eleyi Flowering Crab)		
4 to 5 ft.	1.50	
5 to 6 ft.	2.00	
M. floribunda atrosanguinea (Carmine Crab)		
4 to 5 ft.	1.50	
5 to 6 ft.	2.00	
PRUNUS cistena (Purple leaved Sand Cherry)		
3 to 4 ft.	1.00	.90
4 to 5 ft.	1.85	1.75
5 to 6 ft.	2.00	

SHRUBS

	10-30 each	30 & up each
BERBERIS thunbergi (Barberry)		
15 to 18 in.40	.35
18 to 24 in.50	.45
COTONEASTER divaricata (Spreading Cotoneaster)		
24 in. B & B	1.90	1.75
C. dielsiana (Diel's Cotoneaster)		
2½ to 3 ft. B & B	1.90	1.75
EUONYMUS alatus compacta (Compact Winged Euonymus)		
2 to 2½ ft. full B & B	2.75	
E. radicans erecta		
15 to 18 in.70	.65

SHRUBS — Continued

	10-30 each	30 & up each
ILEX crenata hetzi (Convexleaf Holly Hetz Variety) 15 to 18 in.	3.50	
I. crenata rotundifolia (Spreading Japanese Holly) 18 in. full	3.50	
I. glabra improved (Compact Inkberry) 18 to 24 in.	3.50	
KOLKWITZIA amabilis (Beauty Bush) 3 to 3½ ft.60	.55
L. regelianum (Regel's Privet) 18 to 24 in.45	.40
PIERIS japonica (Japanese Pieris) 15 to 18" B & B	2.75	
PHILADELPHUS virginal (Double Flowering Mock Orange) 2½ to 3 ft.60	.55
SPIREA froebeli (Pink Froebel's Spirea) 18 to 24 in.50	.45
SYRINGA persica (Persian Lilac) 2 to 3 ft.50	.45

SUPPLIES

SPADES — Heavy Duty

No. B-1 — Diamond Point — full strap \$6.80 ea.

TREE WRAP — 4 in. Crinkled Duplex

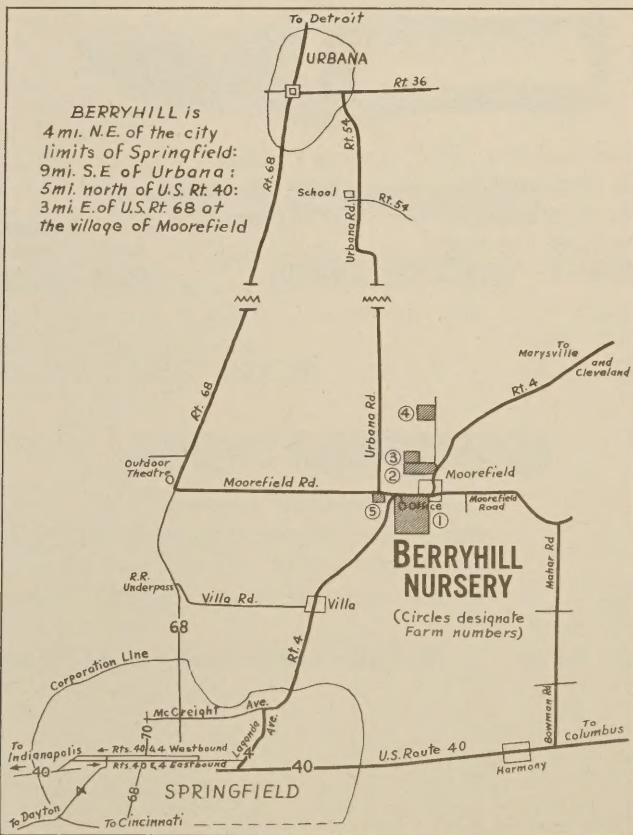
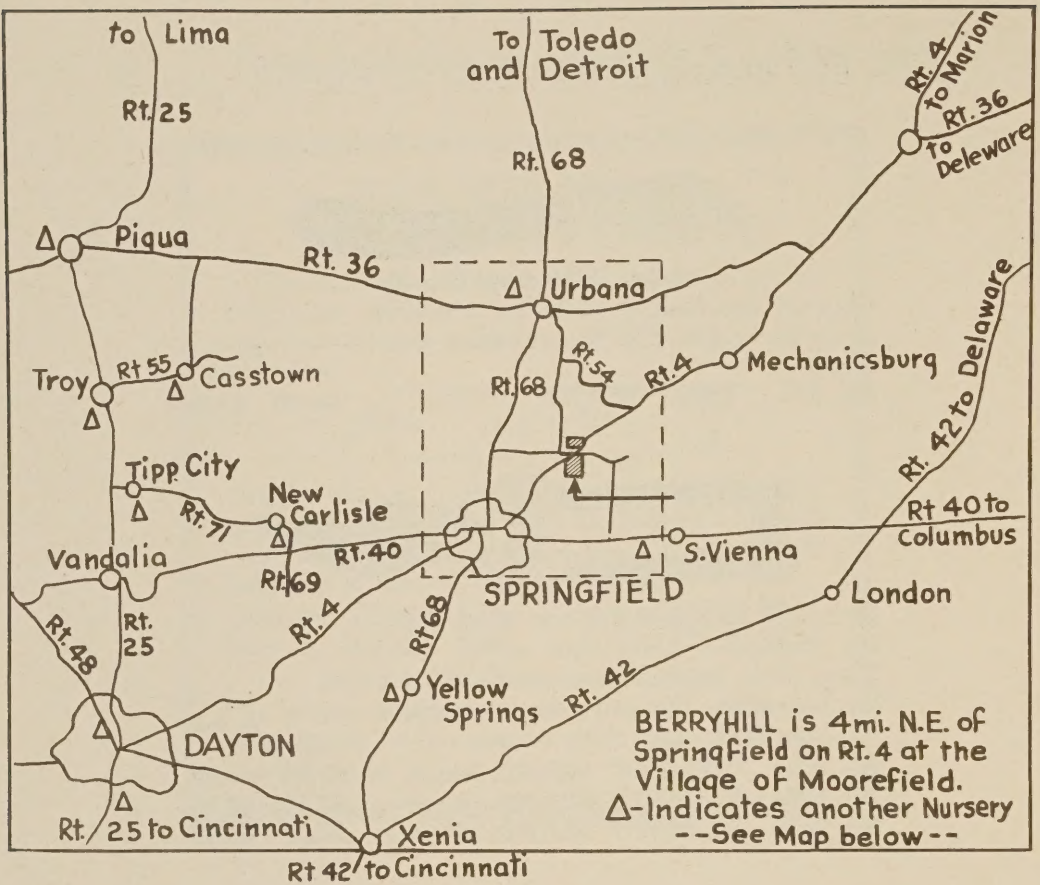
8-in. diam. rolls \$.90 ea.

SWIFT'S BRIMM

We recommend this brand as the BEST standard analysis of fertilizer for regular nursery use.

5-10-10 \$55.00 per ton

80 lb. bags \$2.20 per bag



TRUCKING CHARGES

BY CONTRACT HAULER from Berryhill to points listed. These are current prices and may be subject to slight revision. Deliveries to points of like distance will be at similar prices.

Bed Size — Stake Rack — 7 x 14 ft.

Chicago	\$110.00
Chillicothe	28.00
Cincinnati	35.00
Cleveland—Near Side	55.00
Cleveland	65.00
Columbus—West Side	18.00
Columbus	22.00
Dayton	18.00
Detroit { 12,000# load: plus	70.00
{ .50 per 100# over 12,000#	
Ft. Wayne	42.00
Flint	80.00
Indianapolis	50.00
Indianapolis—West and North Sides	55.00
Lima	22.00
Muncie	42.00
South Bend, Ind.	80.00
Toledo	38.00
Lafayette	65.00

BY MOTOR FREIGHT — Full loads, minimum 16,000 to 20,000 lbs. subject to change.

Trailer Trucks — Standard Bed Sizes — 7½ x 26 to 30 ft.

Chicago, Ill.	74c per 100 lbs.
Cincinnati	42c per 100 lbs.
Detroit, Mich.	65c per 100 lbs.
Flint, Mich.	72c per 100 lbs.
Ft. Wayne, Ind.	57c per 100 lbs.
Grand Rapids, Mich.	74c per 100 lbs.
Indianapolis, Ind.	58c per 100 lbs.
Kansas City, Mo.	\$1.30 per 100 lbs.
Milwaukee, Wisc.	85c per 100 lbs.
Minneapolis, Minn.	\$1.55 per 100 lbs.
St. Louis, Mo.	87c per 100 lbs.
Toledo, Ohio	49c per 100 lbs.

The **Berryhill Nursery Co.**



EVERGREENS ORNAMENTALS

FOUR MILES NORTHEAST OF SPRINGFIELD, OHIO
STATE ROUTE FOUR P.O. BOX 696

Librarian
U. S. Dept. of Agriculture
Washington 25, D. C.

Return Postage Guaranteed



Sec. 34.66 P. L. & R.