

62.41

ll

North American Glads

for

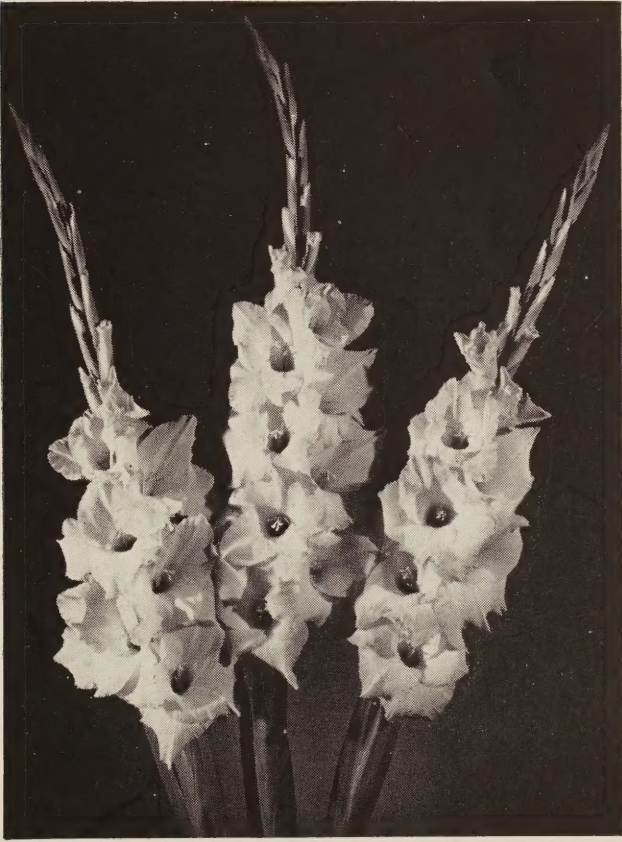
NORTH AMERICAN GARDENS

The Finest in the World

LIBRARY
RECEIVED
JUN 27 1954
U. S. Department of Agriculture

GLADS and DAHLIAS

1954

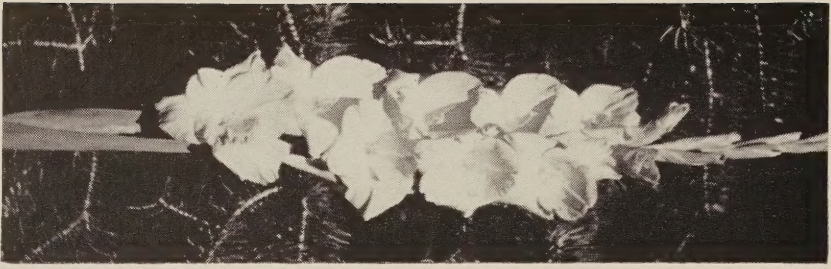


EDITH WARR

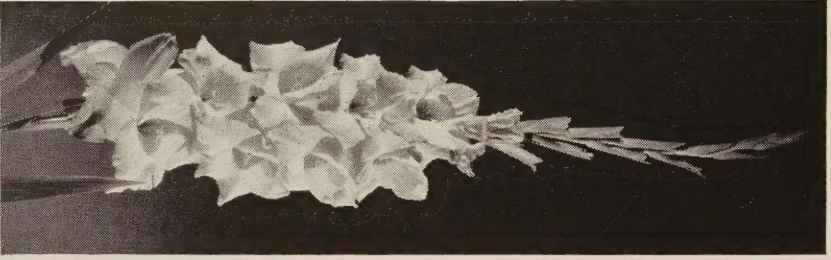
BRUCE COLLINS

8844 River Road

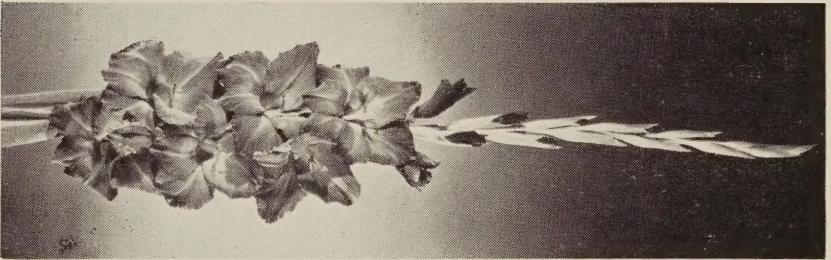
Utica, Michigan



ANNIVERSARY



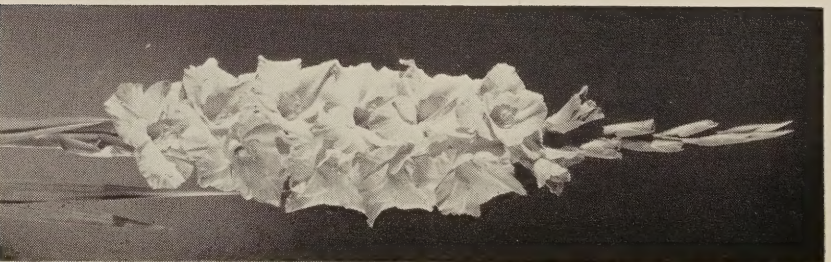
PRINCESS AURORA



ROYAL VELVET



GOLD BANK



SENECA

FOREWORD

If we thought we had a wet spring in 1952, we just did not know what we were talking about, for the spring of 1953 caused us to scout around and see if anyone had plans for an ARK. It rained and rained, and rained, and even our high light land, just would not dry out. So, come May 3rd, we started to plant anyway, sort of muddled them in. I think that from about May 15th, until August 20th, we enjoyed the finest growing weather I have ever experienced. We enjoyed just the right amount of rainfall, and the glads grew like mad, and we had more 6 ft. spikes than I have ever had before. So, while we have heard from many of our friends in New York and Pennsylvania, that they were experiencing their worst drought in history, and felt so sorry for them, we saw the glads at their best, for which we thank the good Lord.

First spikes of course showed up on the miniatures, as always. Those cute little devils, Bo-Peep, Twinkles, came into color in just 50 days from planting, and we sold them for as much money as we normally get for the big fellows. Of course the first commercials, as always, coming into flower in 60 days, were **DARLA, RHETT BUTLER**. Other swell commercials, coming into flower this season in 65 to 70 days, were **BARRETT'S BEAUTY, GOLD BANK, WINONA, CLAIRE WALLACE, MELLOW MOON, LILA WALLACE, HENRIETTA, and CROWN JEWEL**.

As is my custom, the best commercials, from my records, seem to me to rate about as follows, and starting with **WHITES, SNOWCLAD TOPS THE LIST**, and you will see it on most symposiums I think. This is followed closely by **SIERRA SNOW, MOTHER FISCHER, BARBARA WARR, WHITECLIFFE, CRYSTAL BEAUTY, ANGELA LYNN, EASTER MORN**, and don't ever under-estimate dependable **FLORENCE NIGHTINGALE**, which while somewhat older, is still the greatest commercial white glad in the low priced field.

CREAMS are coming up, and we bloomed some extra fine things. If I were a commercial cut flower grower, I would grow **DAYBREAK** by the thousands. It is most dependable, makes fine long straight spikes, that open well, and keep well when cut. **CHARLOTTE RUSSE, CONNIE G**, are excellent performers, and you will find a couple of 1954 introductions that are topnotchers too.

YELLOWS, which were such a weak class not more than 5 years ago, are now not only plentiful, but clean, clear, ruffled, heavily textured, and as wonderful as any color we have. I think **FORSYTHIA** has won more Grand Championships, under tougher conditions, than any yellow we grow, partly because it has had rather wide distribution, but this past season, **GOLD BOND, GOLDEN DIANA, GOLD BANK**, all won their share of Championships, and all are excellent commercials. The older **SUNDANCE, CATHERINE BEATH, GOLD** and **YELLOW FLARE**, are still darn good yellows too. Keep your eye open for two new ones, **SCEPTRE** and **MING YELLOW**.

REDS are coming up a bit, but believe it or not, it is still not too strong a class. I shall not separate reds from scarlets, in this diary, because to the average glad fan, scarlets are red. **DAVID WARR** and **RED MILL** are certainly the two most brilliant reds I grew. (The experts will say, they are scarlets of course) **LORD ELGIN** showed its class this season, **RED FEATHER** excellent, **GARNET RUFFLES, RED TOWER, TRULY FAIR, RED VELVET**, and of course the two older dependables **RED CHARM**, and **DIEPPE**. Watch for some of the 1954 introductions, which increased the number of superb reds, and will be heard from later.

PINKS, well, I could write a book about fine pinks, but as usual, I will start with Rose Pinks. Perhaps we shall see better ones, but if we never see a better lot of rose pinks, I could settle for **ROSANNAH, ROSITA, ROSIE O'GRADY, ROSELYN, ELMER'S ROSE, LYNNE HILL, POWDER PUFF, GREAT DAY, WHISTLE STOP, AYLNER GLORY**, and **ORCHID MIST**. More are coming, so you pays your money and takes your choice. Now, the others, I am not going to attempt to classify, and get you all mixed up in your mind, and of course this includes the salmon pinks, deep pinks, blush pinks, etc. What a galaxy of gorgeous gals we have here. **EDITH WARR, ANNIVERSARY, LOOK, SUMMER CHARM, BARRETT'S HONEY DEW, GRACE DARLING, DOLLY VARDEN, FRASER, BONNIE BRAE, ANN SHERMAN, PENNANT, HEARTS DESIRE, DOROTHY MARGARET**, were all marvellous and you should consider them carefully, in making your selection.

LAVENDERS, another class which used to be weak, has been greatly strengthened and today, we have some great lavender glads. **DESERT SONG** sent up 66" spikes this year, **BRIDAL ORCHID, MARTHA WASHINGTON, HENRIETTA**, and last, but by no means least, **LAVENDER LADY** will thrill you to no end, and is the finest lavender in the 300 class.

BLACK REDS: Not too much improvement here over existing varieties. **ACE OF SPADES** still tops the list, followed closely by **BLACK CHERRY**, **THUNDERBOLT**, **VELVET MARVEL**.

ORANGE GLADS are coming up. As predicted last season, **PRINCESS AURORA** tops the list, grows 72", holds 12 open in the field. **MARGARET JEAN**, and **SUNSET GOLD** look like the best in this class from where I sit.

BUFFS: **PEACH GLOW TOPS THE LIST BY ALL MEANS.** **MARATHON** was grand this season, **SUNSPOT** still good when well grown, and the new **WAX CANARY** coming up, looks like a winner.

PURPLES: This class coming up fast, is presently dominated by **WONDER BOY.** This marvellous purple has won more blues and specials and grand champions this season than any purple glad we know about, and your collection is not complete without it. Dependable **KING DAVID**, **KASHMIR**, **ROYAL VELVET**, **DIXIE ROSE**, **CREOLE BELLE**, **WHISTLE STOP**, are all topnotchers.

BLUES: Still a weak class, but looking into my crystal ball, and having had a sneak preview of some seedlings, this weakness will soon be corrected. **BLUEBERRY** and **SALMAN'S SENSATION** topped the field for me this year. **GREAT LAKES** is wonderful but its health is questionable. We have dropped **FIRMAMENT** and **BLUE BEAUTY.** Look for at least one fine new one in the 1954 introductions. I grew the much touted **PFITZERS SENSATION**, which is almost a black violet, but did not "Send me" as the kids say.

SMOKIES: We are getting some nice new things here too. **ALLAH** easily tops the list followed closely by **STORMY WEATHER**, **SANDMAN**, **CHEROKEE**, and **POWDER PUFF.** More on the way, as I grew some fine smokey seedlings on trial this season.

Last season I had many inquiries as to what I could furnish in the so-called "**CORONA**" color. Certainly **SHIRLEY IRENE** leads the pack, followed by **COLUMBIA**, **MARDI GRAS.** Had some good ones on trial, but at this writing, do not know if any will be introduced.

MINIATURES: The little fellows are coming up very rapidly now. **GAILY CLAD**, **STATUETTE**, **BO-PEEP**, **TWINKLES**, **ARIA**, **LITTLE SWEETHEART**, **ROSE GIRL**, **STARLET**, **YELLOW SEA**, **TRI-COLOR**, are all fine, and you will love them. For the tiniest little sweetheart of them all, you must see and grow **EXQUISITE MIDGET.**

The Lucian Gosling novelties created a lot of interest in my trials this season and they are as different as day is from night. My good friend Hazel Dunlop, America's premier flower arranger, made up some delightful arrangements with these novelties this season, which were the talk of the local flower shows.



ROSITA



PERCY BARRETT

*Rambling Remarks as Taken From My Field Note Book
on the New, Recent and Seedling Glads,
as Grown in My Trials in 1953:*

EARLIEST and **BEST** of miniatures, came into flower in 50 to 55 days, and in sequence, **ELLA MAY**, **TWINKLES**, **STATUETTE**, **SMILETTE**, **FADIST**, etc.

FIRST of all standard size glads, was my own **RHETT BUTLER**. It has been first for many years. Followed closely, believe it or not by **BARRETT'S BEAUTY**, **GOLD BANK**, **RED TOWER**, **CLAIRE WALLACE**. Next came **CROWN JEWELL**, very fine this season. Tyndall's seedling 21-S508, (now **PINK HARMONY**) was next, and a beautiful shell pink it is. **PINK CHIFFON**, followed these and a mighty sweet glad. **DAVID WARR** was next, and what a scarlet this turned out to be. **MARGERY** was next, and Melk Bros. can be proud of this beautiful rose glad. **ANNIVERSARY** was next, and here is a wonder glad in my book, and you should have it by all means. **WHITE TOWER** performed to perfection this year, with towering spikes of white, with that prominent red blotch. Bill Warr's seedling **G-7** was next, now named **MALABAR**, and a finer dark red, with black red throat, in the 400 class, does not exist.

EARLY RED was next, very fine from Doc. Knight, then **MISS DAINTY**, which was superb as usual. This was followed by Tyndall's seedling 331-S-487, (now named **REVELATION**) a fine medium scarlet, and next was **ROYAL VISIT**, which is a fine purple. **CRATER LAKE**, easily the best violet (blue to you), in the entire trials this season. **ROSANNAH** was next, and this one will thrill you no end. A big tall ruffled medium rose, that grew 72", and won many prizes. **PROSPECTOR** proved up to expectation and is a grand glad. **SENECA** next, really opens the florets, and a fine addition.

BLUEBERRY was next, and it is easily the best blue of recent or previous introduction. **HARRISBURGER** followed this, and this one was perhaps the best medium red among the 1953 introductions. Simply huge and excellent in every way. **WHITE FRILLS** from Goddard, an improved **WHITECLIFFE**, a wonderful exhibition glad. **KAREN**, a beautiful glad in purple, with creamy throat, a standout. Next was Charlie Robinson's No. 64-47, now named (**SUNDOWN**), a knockout of a huge salmon, with a 3" scarlet throat blotch. **MARDI GRAS** was next, and is quite a thriller, if you like the "Freckle-face Hazel" type of glad. Tyndall's 318-F (now named **FRONTIER**) was next, a grand salmon with white throat. **WHITECLIFFE** next, one of the finest whites.

PINK PRIDE was next and this beauty can open 12 right in the field. You will love it. **POWDER PUFF**, a smokey rose, and **BROADWAY MELODY**, a fine salmon followed these. **PRINCESS AURORA** performed superbly, throwing up 6 ft. spikes, with perfect placement, and **PEACH GLOW**, as always, was marvellous this year. Certainly our finest buff to date. Percy Barrett's 47-30, a swell huge ruffled and needle pointed medium rose was next, (and Allen's W-47), were next. Both marvellous glads. Barrett's 45-53 was next, a huge, tall medium salmon, with white throat and midribs, surely thrilled us. Then came Charles Robinson's 9047, now named **BALMORAL**, a huge lavender, with cream throat. Then Jack Harris' 9-0-2, a (now **LORI DEE**), and this is the prettiest shade of blush rose you will ever see.

Then came **FOREST FIRE** and **ORANGE FLAME**, also from Harris, and if you think you have seen bright oranges, you haven't seen anything until you see these two. Then Harris' **MING YELLOW**. Just the color of the Iris **MING YELLOW**, and a tremendous glad. **ROYAL TREAT** was tremendous this year. Then Ted Woods' **WAX CANARY**, a beautiful buffy and yellowish creation, that will thrill you. Two very fine seedlings from Rev. Edmison came next, and they were both out of this world. Do not know at this writing about their introduction. **DESERT SONG** and **GOOD NEWS** came through perfectly, and two more beautiful glads do not grow. **PEACHERINO**, one of Goddard's finest buffs, was superb. Two fine new fragrant glads from Rev. Spencer, **YELLOW ROSE** and **SACHET**, were grand, and very fragrant. **WHISTLE STOP** and **TRULY FAIR** out-performed themselves, and they are two wonderful glads from Ted Woods, and next came Myrtle Teeple's **LILLIBET**, which is a grand addition to the cream class.

You must all have read the advertising in the garden magazines this spring about those 6 foot, "**EYE LEVEL**" glads. I don't know which varieties they were talking about, for those which I purchased to test, only grew about 48 to 54" tall. However, if you are still interested in "**EYE LEVEL**" glads, may I refer you to **SNOW CLAD**, **GOLD BOND**, **ROSANNAH**, **CANUCK**, **PRINCESS AURORA**, all of which grew 6 ft., for me, from large bulbs.

ALLAH looks like our finest A. O. C., with colors of a Persian Rug. **ROSITA** really out-performed herself for me this year, with 66" spikes, that were simply out of this world.

To get back to some previous originations, which are still **TOPS** in their field, **SIERRA SNOW** leads the pack in whites, superceded only by **SNOW CLAD**. **DOLLY VARDEN**, still a tremendous glad, in salmon with white throat, one you can grow easily to perfection. **STERLING**, giving its good account of itself, in a phlox purple, was superb this year. **EDITH WARR** is our largest pure pink, and one spike makes a whole show. A simply tremendous spike of pink, that over-shadows everything, and still makes a good commercial. **FORSYTHIA**, a huge medium yellow, sometimes shows a little rose at the edges in cool weather, is easily our finest commercial yellow. **LYNNE HILL** and **AYLMER GLORY** grew to tremendous heights this season, and in their respective color classes are simply **TOPS**. **LORD ELGIN** went up this year too, and a more beautiful medium ruffled red glad does not exist. **ROYAL FLUSH**, a little late, but still **THE RUFFLED RED GLAD**. **SHIRLY IRENE** still leads the pack in the so-called **CORONA** color and is perfectly healthy.

Of all the smokies I grow, I still love **STORMY WEATHER** and **SANDMAN**. **KING DAVID** and **WONDER BOY** top the purples. **WONDER BOY** has won scads of Grand Champions this season, and is a **WONDER GLAD**.

Each Trial Garden has its share of seedlings, which will not be ready for the market for another year or two, but which are years ahead of the parade. This season it was my pleasure to grow some Harris seedlings, which were simply superb. They will be introduced under a heading of "**EXQUISITE SERIES**." They are heavy textured, heavily ruffled, and needle pointed, and tremendous. We shall also introduce what will be called a "**RAGGEDY ANN**" series, which are new, and different.

I could write pages and pages about the performance of these new and recent introductions, but enough for this time.

THE ALL AMERICAN GLADIOLUS SELECTIONS

Look for Them in 1955

Like the rose people, who select the finest new roses for special honors each year, a group of twenty-six leading glad growers and judges organized in 1953, The All-America Gladiolus Selections, to choose and publicize the outstanding glad among each season's prospective introductions.

TWENTY-NINE seedlings were submitted for test in 1953 by hybridizers from all over the United States and Canada. These seedlings were all grown this past summer, under code numbers, in 25 trial grounds, with a wide geographical distribution.

The winning seedlings will be selected in January 1954, but because of propagation requirements, their names will not be made public until January, 1955. Watch for the announcement, of the first **ALL-AMERICA WINNERS** at that time. They will be listed and pictured in this catalogue. This garden is an Official Trial Ground for these All-America Selections.

PRELUDE TO THE 1954 INTRODUCTIONS:

YES, THERE ARE COUNTLESS THRILLS, growing and evaluating 453 seedlings, from perhaps 125 hybridizers, but it is also a tremendous job, both physically and mentally. Every single morning, from about July 15th, to September 15th, I am up at 6:00 A. M., note-book in hand, measuring tape, pencils, etc., catching the new things as they open. Writing them down, rechecking them, cutting some of the spikes, testing them for opening qualities, for handling, and then reporting to their owners as to their performance.

We do not accept our own check, but also compare notes on the same seedlings, with such fine judges as Mike Sherman (He writes the glad story for Flower Grower), Beulah Fortnam, Sydney Mode, and others well known to glad fans. If the performance of that seedling compares favorably with ours, then we see about introduction. This list may look big to **YOU**, but it looks very **SMALL** to **ME**. After going over so many hundreds of them, and finally sifting them down to this small number, all of which are **NEW, DIFFERENT, and MARVELLOUS** glads. Sooooooh? Here they are:

1954 INTRODUCTIONS

From J. W. HARRIS, Sarnia, Ontario:

MING YELLOW (412) Another grand medium clear yellow, from smiling Jack, who has now given us 3 fine yellows. This is a fine medium deep ruffled yellow, lightly ruffled, heavy textured, grows 54", with 19 buds, 8 open, 6 in color, grand exhibition or commercial, but for our cut-flower trade, this one is tough, and can really stand a beating.

ORANGE FLAME (420) A brilliant flame orange, with creamy yellow throat, that hits you right in the eye. Grows 52", with a 20" flowerhead, ruffled, extra heavy texture, opens 7 in field, and can also stand handling, heat and drought, an all-around marvellous exhibition and commercial.

FOREST FIRE (420) A sister seedling to ORANGE FLAME, but a scarlet orange, with medium yellow throat, which also has proven to be an eye-stopper. Grows 60", with 19 buds, opens 8 in the field, ruffled and heavy textured. This one can also stand heat, drought, and rough handling and so far this season, these two oranges are the finest in their color I have seen to date.

LORI DEE (462) A perfectly beautiful pale rose, with slightly deeper rose feather general effect blush rose, ruffled, heavy textured, 20 buds, with 8 open in field, grows 60" easily, very strong grower, and the florists loved every spike we sent them. Named for my youngest grand-daughter who is just about the sweetest little gal we know about, and this glad will win your heart.

ABOVE 4 INTRODUCTIONS PRICED AS FOLLOWS: Large \$3.00, Medium \$2.00, Small \$1.00, with bulblets at 35c each or 3 for \$1.00.



LORI DEE



J. W. HARRIS



ORANGE FLAME

From CHARLES ROBINSON, Cooksville, Ontario, formerly horticulturist at Kew Gardens England, and a hybridizer of note in England:

SUNDOWN (532) A huge, orange toned salmon, with sparkling salmon scarlet blotches that make it stand out like a light-house. Grows 60", with 20 buds, 6" to 6½" florets, 8 open, 6 in color, excellent facing and spacing, ruffled, fluted and heavy textured. A topnotcher in every way, for either exhibition or commercial.

BALMORAL (466) A beautiful soft rosy lavender, ruffled and fluted, and highlighted by a lovely creamy white throat. Grows 58" to 60", with 21 buds 8 open, 8 in color, a very easy grower, exhibition or commercial. Propagation and germination excellent. Above 2 introductions, each: **L \$3.00; M \$2.00; S \$1.00; Blbts. .30 each, or 4 for \$1.00**

I grew several seedlings for Charlie Robinson this season, all were excellent, but these two were particularly outstanding, and I can vouch for them personally.

From WALTER WHITE: (Originator of ELIZABETH THE QUEEN)

SCEPTRE: A soft tone of medium yellow, without any markings. Class 410, 8 to 9 ruffled florets open on flowerhead of 34", and 23 to 25 buds, grows 66" foliage heavy, but short, bulblet production and germination excellent. Wonderful for either exhibition or commercial, and one you will eventually own. 1953 winnings include American Home Achievement Medal and Best Seedling in show, at the Province of Quebec Show, also first in open 3-spike yellow class.

Any Size Corm \$5.00; One Bulb and 10 Blbts. \$10.00
Growers Unit: 2 Large, 4 Medium, 8 Small and 50 Blbts. for \$50.00

From BILL WARR, Verdun, Quebec: Remember his **EDITH WARR, DAVID WARR,** and **BARBARA WARR**, all of which were marvellous glads. Bill names them for his family, and they are a part of his family:

MALABAR (452) A dark scarlet ruffled red, with very deep red throat, extra heavy textured, a standout in every way, grows 56", with a 22" flowerhead, 20 buds, 8 open, 6 in color, excellent commercial or exhibition, nothing quite like it in the entire classification, and one you will love to grow and show.

Large \$3.00, Medium \$2.00, Small \$1.00, Blbts. 35c or 3 for \$1.00



SUNDOWN



SCEPTRE



BALMORAL

Your Handy Gladiolus Order Form

ORDERED FROM
BRUCE COLLINS
 UTICA, MICHIGAN

Date

Name — Mr., Mrs., or Miss

Street or R. F. D. No.

Post Office State

Express Office When?

(If different from Post Office)

Note: Order accepted by Bruce Collins subject to stock,
 and subject to being filled in numerical sequence.

Check

M. O. \$

Quantity	Size	Variety Name	Rate	Amount
1.				
2.				
3.				
4.				
5.				
6.				
7.				
8.				
9.				
10.				
11.				
12.				
13.				
14.				
15.				
16.				
17.				
18.				

Quantity	Size	Variety Name	Rate	Amount
19.				
20.				
21.				
22.				
23.				
24.				
25.				
26.				
27.				
28.				
29.				
30.				
31.				
32.				
33.				
34.				
35.				
36.				
37.				
38.				
39.				
40.				
41.				
42.				
43.				
44.				
45.				
46.				
47.				
48.				
49.				
50.				

NOTE: Bruce Collins will refund the purchase price on any order found unsatisfactory upon receipt, and promptly returned; but no guarantee of growth or satisfaction is given; responsibility for crop is denied.

TOTAL.....

From MURRAY TYNDALL, Brucefield, Ontario (O'd Wonder Boy Himself)

FRONTIER (560) A seedling from George Clark, purchased by Murray, and has been rated TOPS by many glad judges. A clean clear salmon pink, with cream throat, ruffled, heavily textured, grows 56", with 22" flowerhead, 20 buds, 8 open, 6 in color, a very excellent glad.

PINK HARMONY (540) A grand pure pink, with cream lips on lower petals, grows 56" with 23" flowerheads, 20 buds, 8 open, 6 in color, fine propagator, and one of the purest pinks I have ever seen.

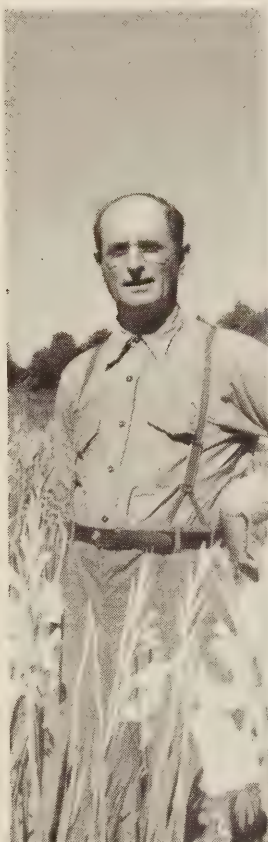
PURPLE JEWEL (470) When it comes to purples, Old Wonder Boy can turn them out for sure, so here is another fine purple from Murray. A fine clean clear medium purple, ruffled and heavy textured, grows 54", with 22" flowerhead, 8 open, 6 in color, excellent facing and spacing, and a fine addition to the purple class.

REVELATION (436) A large scarlet with deeper marking on the lower lip petal. 21 buds on a 25" flowerhead, grows 54" easily, a grand new addition to the scarlet class.

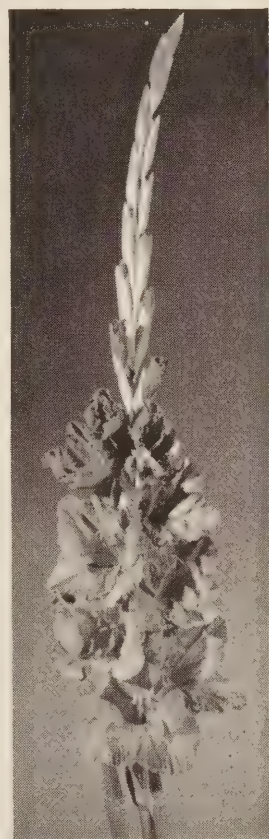
Above 4 Introductions, Each: Large \$3.00, Medium \$2.00, Small \$1.00, Bulblets sold only with the purchase of a bulb at 35c or 3 for \$1.00.



PINK HARMONY



MURRAY TYNDALL
Brucefield, Ont.



ROSELYN

From W. A. BEATON, Detroit, Michigan:

PALOMAR: A medium deep salmon pink, or spinel pink, with a creamy unmarked throat. Grows 60" tall, with a 26" flowerhead, 20 buds, opens 8 to 10, with 6 in color. Perfect facing and spacing, a vigorous grower, making it a topnotcher for either exhibition or commercial.

L \$2.00; M \$1.50; S \$1.00; Selected Blbts. at 5 for \$1.00

From S. MacPHAIL, Farnham, Quebec:

ALECIA: Our first and finest dead white miniature, even the stamens are pure white. Florets are wide open, and free from hooding, 5 to 6 open, on a 16-bud spike. Florets never over 2½", informal type, a real beautiful white miniature. It has won numerous blue ribbons, including first in white miniature class at Prov. of Quebec Show in 1953. An outstanding bargain at these prices:

Any size Corm \$1.00; 1 Corm and 10 Blbts. \$2.00

From LAWRENCE ALLEN, Akron, Ohio:

LORETTA: A grand clear fresh shade of pink, with a light throat, on a fine stem, grows 60", with 20 buds, 8 open, 8 in color, ruffled and good textured, formal type that will appear on several symposiums, and every glad grower will love this glad.

L \$3.00; M \$2.00; S \$1.00; Blbts. at .35 each or 3 for \$1.00

From JOHN BASTIAN, (A Williams Seedling)

CRATER LAKE: The largest violet blue we have seen, with slight cream feather in throat. Will open wide, eight 5" florets, six showing color, on a good straight 56" spike, carrying 20 buds. Healthy as a horse, and good propagator. Named for the beautiful blue lake in Oregon, which is about the same color.

L \$2.00; M \$1.50; S \$1.00; Blbts. .25 ea. or 10 for \$2.00

From TED WOODS, Madison, Wisconsin:

WAX CANARY: From this fine hybridizer, who has given us ROSITA, ANNE SHERMAN, FALCON, etc., comes this fine light salmon, or what I would term almost buff by virtue of being deeper salmon toward the edges, and with a bright yellow lip petal. General appearance is bright buff. Grows 60", with a 30" flowerhead, 20 to 22 buds, with 8 open, 6 in color, ruffled and needle pointed, extra heavy texture, does not crook or burn. A fine exhibition or commercial.

**L \$3.00; M \$2.00; S \$1.00; Blbts. .75 — Per 10: L \$22.50; M \$15.00; S \$7.50; Blbts. \$5.00
3 Large, 3 Medium, 3 Small and 25 Blbts. for \$21.50**

From PERCY BARRETT, Verdun, Quebec:

ROSE QUEEN: A clean, clear, medium rose, almost a self, heavily ruffled and textured, grows 56", with 18 to 20 buds, excellent facing and spacing, a perfectly beautiful glad for either exhibition or commercial, in a fine new color.

MANDALAY: A medium orangy salmon, with clear light throat, grows 60", with 20 to 22 buds, ruffled and heavy textured, with excellent facing and spacing and a real stand-out. General effect is light orange, and it stands out like a lighthouse.

Both above, each: **L \$3.00; M \$2.00; S \$1.00; Blbts. .35 ea. or 3 for \$1.00**

From LAWRENCE ALLEN, Akron, Ohio:

LORETTA: A grand clear, fresh shade of pink, with a light throat, on a fine stem, grows 60", with 20 buds, 8 open and 8 in color, ruffled, and good textured, formal type, that will appear on several symposiums, and every glad grower will love this glad.

L \$3.00; M \$2.00; S \$1.00; Blbts. at .35 ea. or 3 for \$1.00

From LINS, GLADIOLUS, Cologne, Minn.:

GREGG: A deep rosy red, with slight brownish salmon cast, with a deeper throat mark. Very outstanding, and unusual. From King Lear, Burma, Melrose Cross, it is another fine glad from this excellent hybridizer. Grows 54", with 20 buds, 8 open, 6 in color, a mighty fine addition to the 300 class

L \$2.00; M \$1.50; S .50; Blbts. .20 or 10 for \$1.50



LILLIBET

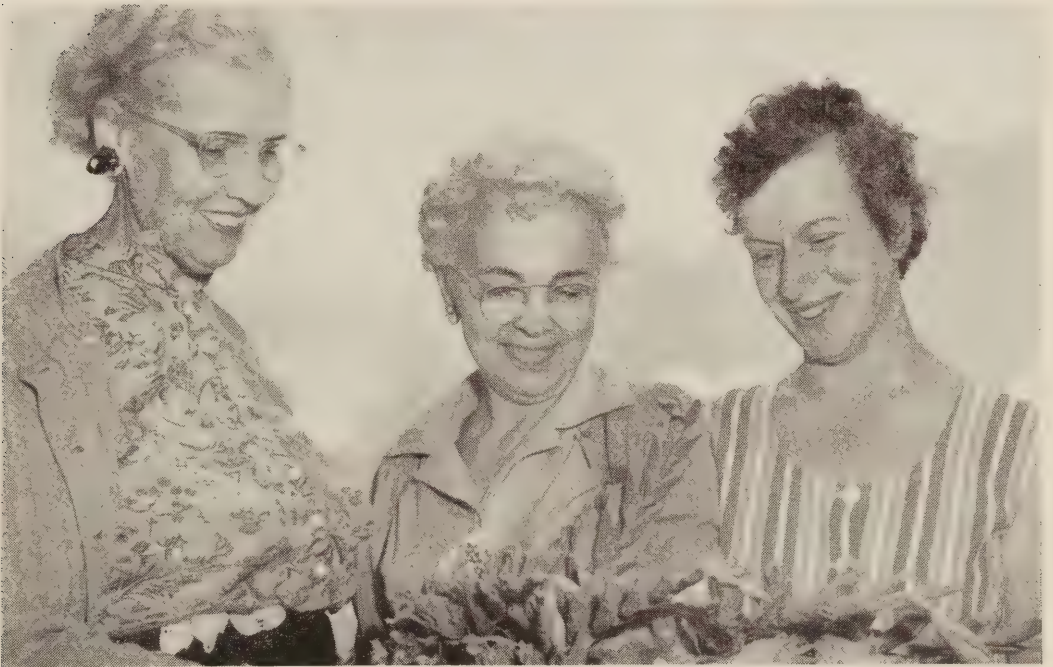


HER MAJESTY QUEEN ELIZABETH II,
for whom the glad **LILLIBET** was named

From **MYRTLE TEEPLE**, Aylmer, Ont.

LILLIBET: A perfectly beautiful cream, with a yellow feather in throat, on which are some light rose lines, giving it the general effect of primrose color. Grows 56", 20 buds, 8 open 6 in color, a grand glad in every way.

L. \$3.00, M. \$2.00, S. \$1.00, Blbts. 3 for \$1.00



The three hybridizers of the famous **TEEPLE** glads. Left to right, Miss Ruby Haight, Miss Myrtle Teeple, and Miss Etoile Haight. **AYLMER GLORY, ORCHID MIST, LYNNE HILL, LORD ELGIN,** and last and finest, **LILLIBET.**

Co-Introducing with CHAMPLAIN VIEW GARDENS:

MOUNTAINEER (530) (Hatch) Light salmon, shading to cream toward center. A fine clean color. Huge nicely ruffled blooms, opens 8-10 with 8 in color. Facing and spacing excellent. **Large bulbs only \$2.00; 1 Bulb and 10 Blbts. \$4.00**

COCKADE (371) (Cline) Deep rosy purple, with large creamy yellow blotch, extending out to midribs, small crimson blotch on lower petals. Grows 44", with 24" flowerhead. Opens 8-10, with 5 in color. Excellent facing and spacing. No burn.

\$2.00 each for any size. 1 Bulb and 10 Blbts. for \$4.00

PINNACLE (576) (Jack) Pale lavender, resembling blue from distance, with large purple blotch, which is very conspicuous, and bizarre. 21 buds with 11 open, grows 60", with 6 to 6½" florets.

GOLDEN BOY (Secret-Gove) A beautiful primrose yellow, with bright metallic sheen. Grows 48", with 20-22 buds, opens eight 4" florets, in double row formation. Has won several Grand Championships. Elmer thinks this one is destined to go places, and you know Elmer. **L \$3.00; M \$2.00; S \$1.00; Blbts. .50 each**

FLORIBUNDA (Pruitt & Gove) Resembles pink cotton candy in color, a venetian pink so says Tom Manley, blending to a deeper French rose, at midribs. Faint white dart on midrib of lip petal. 22-24 buds, opens ten 6¼" florets, substance excellent.

\$2.00 each for any size bulb. 1 Large and 10 Blbts. for \$4.00

QUEEN ANNE (Johnson-Gove) A fine blotched white to replace Margaret Beaton. Tall growing, with 20-22 buds, 8 open, 8 in color, facing and spacing excellent, a fine pure white, with a bright cherry red blotch.

Any size Corm \$3.00; 1 bulb and 10 blbts. \$5.00

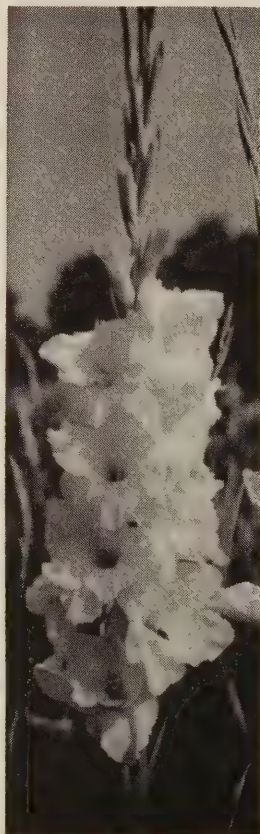
TONY BOY: From the old master himself, A. E. Kunderd, a snappy little glad of medium rich rose, with lower petals creamy white bordered with a rose band. Opens 4-5 on a 16-bud spike. A dream in the miniatures. **L \$2.00; M \$1.50; S \$1.00**



CRATER LAKE



BLUEBERRY



ROSE QUEEN

RECENT INTRODUCTIONS

TERMS AND PRICES

Please Read Carefully

Retail orders of \$2.00 and upwards prepaid in U. S. \$5.00 or over in Canada and foreign countries. Canadian customers please secure mail permits on small orders, large ones by express. 10 bulbs will be sold at 8 times single rate; where priced as for instance, 2 for 15 cents, 10 rate would be 60 cents. Please do not order less than quantity quoted.

Grower's units of 1952 and 1953 releases can be supplied, if desired. Just send list of your wants for quotation, stating number and sizes. Wholesale orders, including bulblets by pints and quarts, also a matter of correspondence.

I usually can begin to ship by December 1, but will be glad to hold bulbs until Spring if desired. **ALL ORDERS FOR DEFERRED DELIVERY MUST BE ACCOMPANIED BY 20% OF PURCHASE PRICE.** No bulblet orders filled after April 1, as I begin to treat



"WE JUST DON'T FOOL WITH THRIP!"

Seriously, this is my youngest grandson,

MIKE BENNETT

and plant bulblets shortly after this date. Small orders sent by mail at my risk, larger orders delivered to Express Co. in good condition, fully insured, thereafter my responsibility ceases. Purchasers should examine package carefully, so as to file claim if received in damaged condition. The difficulties encountered in getting out an early catalog are many, not the least being the securing of new fall prices. I endeavor to cooperate with originators and follow their prices where furnished. However, I do not wish to be undersold, and when prices are out of line with those of the originator or any reputable cataloger, I will be glad to furnish at their prices, as long as stocks last. This does not apply to cut-rate prices. I endeavor to send out healthy true to name bulbs, but owing to the conditions beyond my control, I cannot be responsible for the crop. All orders are accepted subject to stock and prior sale.

- ACE OF SPADES** (454) The blackest of the black reds that we have seen. Opens 6 nicely ruffled 5-inch florets on a 20-bud spike. Very outstanding. A strong vigorous grower.
L .50; M .35; S .25; Blbts. 20 for \$1.00
- ALLAH:** For you fans who want smokeys, or A.O.C.'s, here is a beaut. A huge, richer, much improved Vagabond Prince without the Scarlet feather. Ruffled, needle pointed, and 56" tall, with a 20" flowerhead, 19 buds, 8 opens, 6 in color.
L \$1.50; M \$1.00; S .50; Blbts. .15 ea., 10 for \$1.00
- ANGELA LYNN** (400 Barrett 50) One of the prettiest of the whites. The florets are ruffled with a cream throat. A strong propagator and easy grower. Spikes are 50 inches tall, with 20 buds on 26-inch flowerhead and 7 4½-inch florets open in excellent placement.
L .50; M .35; S .25; Blbts. 20 for \$1.00
- ANNE SHERMAN** (540) A giant pure shell pink, heavily fluted and ruffled. Very tall with good facing and placement. A vigorous grower with up to 22 buds.
L .75; M .50; S .25; Blbts. 10 for .50
- ANNIVERSARY:** A grand ruffled medium salmon, with cream throat. Grows tall, 65" with almost perfect facing and spacing. 26" flowerhead, opens 10 with 8 in color, on a 21 bud spike. A masterpiece in salmon. L \$1.50; M \$1.00; S .50; Blbts. 10 for \$1.00
- AUTUMN MOON** (510) Immense light yellow with saucer like florets. As tall as Picardy and a very free bloomer even from small bulbs. Good commercial prospects.
L .35; M .25; S .15; Blbts. 20 for \$1.00
- AYLMER GLORY** (566) A fine lavender with some slight rose in it, height 52", flowerhead 20 to 22", 5" florets, 18 to 20 buds, 8 open, 10 in color, stem straight and ruffled and waved florets. One of the finest for commercial or exhibition in a beautiful color.
L .50; M .25; S .15; Blbts. 20 for \$1.00
- BARBARA WARR:** A huge ruffled creamy white, with chartreuse throat. Grows 60", with a 24" flowerhead, 22 buds, 8 to 10 open, 8 in color, strong grower. A perfectly beautiful and outstanding glad, you will thrill to. L \$1.00; M .75; S .50; Blbts. 10 for \$1.00
- BARRETT'S BEAUTY** (401) A glorified Violet Dickinson with a purple lined throat. A wonderful basket glad. It grows tall with long flowerheads. Florets are ruffled and fluted and have perfect facing and placement. L .75; M .50; S .25; Blbts. 20 for \$1.00
- BARRETT'S HONEY DEW** (540) An unusual flesh pink with greenish cream throat. It grows tall with great vigor and lasting qualities. Florets are ruffled and needle pointed. It carries 7 open with a total of 22 buds.
L .50; M .35; S .25; Blbts. 20 for \$1.00
- BETTY JEAN:** White, with two creamy lower lip petals. Grows 66", with a 24" flowerhead, opens 8 easily, with 6 in color. Won American Home Achievement Medal at Michigan State Show, 1952. Many special awards.
L \$1.50; M \$1.00; S .50; Blbts. .15 ea., 10 for \$1.00
- BLUEBERRY:** A fine addition to the medium blue class, that grows 56", with 19 buds, 8 open, 6 in color, slightly ruffled, very slight throat, almost a self color. Should make a very valuable addition to this weak color class.
L \$1.50; M \$1.00; S .50; Blbts. .15 ea., 10 for \$1.00
- BLUE DEVIL** (479) Clear deep violet with conspicuous rose blotch on white throat. Tall healthy grower and a good propagator. A grand exhibition glad.
L \$2.00; M \$1.50; S \$1.00; Blbts. .30 ea.
- BONNIE BRAE** (Mode) (430) A blush salmon pink of the most beautiful coloring you ever saw. Has won scads of prizes in Canadian shows. Grows 56", with 26" flowerhead, 4½" floret; opens 8 that will keep in any kind of weather. A grand commercial.
L .50; M .35; S .25; Blbts. 20 for \$1.00
- BRIDAL ORCHID** (566) This new giant light lavender is a sensation at the shows. Opens up to ten 6" florets on a flowerhead with up to 24 buds.
L .35; M .25; S .15; Blbts. 20 for .75; 100 for \$4.00
- CANUCK:** A huge soft salmon, with lighter throat, on which are reddish throat lines. Florets will run over 8" wide, simply tremendous in size. Grows 66", with a 30" flowerhead, 22 buds, with 8 open, 8 in color, strictly exhibition.
L \$1.50; M \$1.00; S .50; Blbts 2 for .25; 10 for \$1.00
- CAPRICE:** A medium deep salmon, with ivory midribs, grows 60" tall, with a 26" flowerhead, 21 buds, 10 open, 6 in color. A great commercial as well as exhibition.
L \$1.50; M \$1.00; S .75; Blbts. 10 for \$1.50

- CAPTIVATION** (566) A delicate light lavender shading, lighter toward the throat. Grows 60" with 28" flowerhead, 20 buds, 8 open, 6 in color, triangular, ruffled and fluted flowers. This looks like one of the prettiest light lavenders in commerce, 5½" florets.
L \$1.50; M \$1.00; S .75; Blbts 10 for \$1.50
- CATHERINE BEATH** (412) Clear deep yellow of very high color value and exhibition rating. Its purity of color, size, height and structure will make it a good commercial prospect.
L .35; M .20; S .15; Blbts. 10 for .75; 100 for \$5.00
- CHEROKEE** (590) Bronzy red, ruffled, and fluted. One for you smokey collectors. Grows 54", with a 22" flowerhead, 20 buds, 7 open, 6 in color. Winner of several Awards of Merit, and one American Home Achievement Medal. New and distinct color.
L \$2.00; M \$1.50; S \$1.00; Blbts. .25 ea., 10 for \$2.00
- CLAIRE WALLACE** (532) Beautiful deep salmon with clear throat. A standout in this year's planting. Grows up to 54 inches, with 19 buds and 7-8 wide open bloom. Straight medium heavy stem and good placement. Grand for commercial and exhibition use.
L .35; M .25; S .15; Blbts. pkg. .25
- CLARENCE D. FORTNAM** (440) A very beautiful, heavy ruffled bl'ush pink variety that opens up to 10 needlepoint 5" florets on a 21-bud spike. One of the best.
L .50; M .35; S .25; Blbts. 10 for .30
- CO-ED** (542) A gorgeous rich pure pink about the shade of Tivoli. The large luscious florets are slightly ruffled and waved. The plants are tall with long stretchy flowerheads of 20 or more buds.
L .25; M .20; S .15; Blbts. 10 for .40
- COLUMBIA** (407) Somewhat similar to Corona but it appears to be better in several ways. From testing it appears to be healthy with no crooking and a strong propagator.
L .50; M .35; S .25; Blbts. 10 for \$1.00
- CROWN JEWEL** (460) A very attractive rose pink, quite heavily frilled and ruffled. 8-9 blooms open. This looks like a glorified Mrs. F. C. Peters.
L .35; M .25; S .15; Blbts. 10 for \$1.00
- CRYSTAL BEAUTY** (400) A beautiful ruffled and frilled white with cream throat; 5" florets. A 22 bud spike which grows 60" tall and as straight as a ramrod. A marvellous glad for either commercial or exhibition that can take the heat, drouth and wind and will open from green buds.
L \$1.00; M .75; S .50; Blbts. 10 for \$1.00
- DAVID WARR:** A very tall, rich scarlet ruffled and needle pointed petals. Grows 66", with a 28" flowerhead, 10 open, 8 in color. A standout in the scarlet class, and one you will hear about in years to come. L \$1.00; M .75; S .50; Blbts. .15 ea., 10 for \$1.00
- DAYBREAK** (Harris) (516) A beautiful cream and buff combination. Very delicate pastel, general effect is buff. It grows 56" tall, spike has 22" flowerhead, opens 8 with 6 in color, a grand commercial or exhibition glad.
L .35; M .20; S .15; Blbts. 25 for \$1.00
- DESERT SONG:** A grand medium lavender with a slightly lighter throat. Ruffled and needle pointed extra heavy texture. Grows 60", with a 24" flowerhead. Perhaps the best lavender in the test garden this season.
L \$1.00; M .75; S .50; Blbts. .15 ea., 10 for \$1.00
- DINAH:** A smokey grey glad, with just enough rose in it to light it up. Sort of a glorified STORMY WEATHER, without the rose in it. Grows 54", with a 22" flowerhead, 20 buds, 8 to 10 open, 7 in color. Here is another knockout for you smokey fans.
L \$1.50; M \$1.00; S .50; Blbts. .15 ea., 10 for \$1.00
- DIXIE ROSE:** A purplish red, very velvety sheen to petals with slightly lighter throat. Grows 54", with a 24" flowerhead, 7 open, 6 in color. Early and a strong color, which everyone liked.
L \$1.50; M \$1.00; S .50; Blbts. 10 for \$1.00
- DOLLY VARDEN** (Harris '50) (532) (LM) Deep salmon-pink with an attractive cream throat. Opens 9, huge 6½" florets with 7 in color on husky spikes. A fine variety for either exhibition or commercial use.
L .35; M .25; S .15; Blbts. 30 for \$1.00
- DOROTHY MARGARET** (542) Heavily ruffled and pointed petalled clear pink, with cream throat. 5½" florets, grows 60" tall with 28" flowerhead, open 8 with 8 in color 20 buds and one of the brightest pinks in the garden.
L .50; M .35; S .25; Blbts. 20 for \$1.00
- EARLY RED:** Glowing pure red. Grows 56", with a 29" flowerhead, with 21 buds, 7 open, and 6 in color. An ideal florist glad. A fine early clear red, which blooms right after Rhett Butler.
L \$1.00; M .50; S .40; Blbts. 2 for .25

EASTER MORN (400) An early heavily ruffled white growing 56 inches tall, 22 buds and 8 open. Blooms in 70 days. It cuts 100 percent and has great commercial possibilities.

L .25; M .20; S .10; Blbts. pkg. .50

EDITH WARR (542) This medium pink glad is very close to perfection as an exhibition and commercial variety, 6" florets with 6-7 open and 6 in color is usual on a 19 bud, sturdy spike of 54". The color is almost light enough to be termed light pink and the tremendous flowerhead, deep green foliage and strong stems are a sight to behold.

L \$1.50; M \$1.00; S .50; Blbts. 10 for \$1.00

ELMER'S ROSE (460) Medium deep rose, deeper than Noweta Rose and is heavily ruffled. It opens 7-8 well spaced blooms on a tall plant of 20-22 buds. A good propagator.

L .40; M .30; S .20; Blbts. 10 for \$1.00

EVENING STAR (500) This is without a doubt the most heavily ruffled white glad, pure white, texture like leather, grows 60" with 28" flowerhead, 6½" florets, opens 8, with 8 in color.

L \$1.00; M .75; S .50; Blbts. 10 for \$1.00

EXOTIC: Soft salmon pink, with white midribs, and a delicate soft pink throat. One of those real charmers as exotic as the name implies. Grows 56", with a 24" flowerhead, 20 buds, 8 open, 6 in color and healthy.

L \$1.50; M \$1.00; S .50; Blbts. 2 for .35; 10 for \$1.50

FORSYTHIA (512) This has proven one of the finest yellows in commerce. 55" tall with a 26" flowerhead, 5½" florets, 20 buds, 8 open and 8 in color. Ruffled fluted, stands heat and drought well and rated highly by all who have seen it.

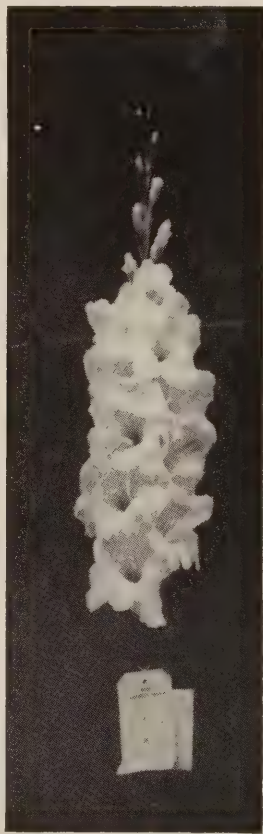
L .75; M .50; S .25; Blbts. 20 for \$1.00

FRANCESCA (466) Lightly ruffled lavender pink with cream throat. Tall straight plants with about 6 blooms open. 18 buds. Placements, attachment and propagation good.

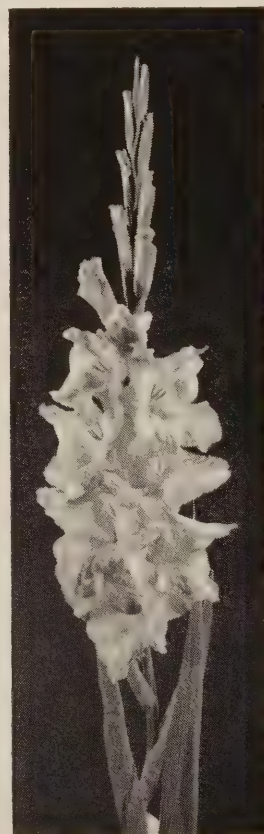
L \$1.00; M .60; S .40; Blbts. 10 for .60



WONDER BOY



SIERRA SNOW



AYLMER GLORY

- FRASER** (Harris) (432) Deep heavily ruffled salmon with deeper throat. Grows 56" tall, opening 8 florets on a 22" flowerhead with 6 more in color, a grand commercial or exhibition. **L .50; M .35; S .25; Blbts. 20 for \$1.00**
- GARNET RUFFLES:** A clean, clear deep rich velvety red, ruffled and fluted, with a silvery edge on each petal, almost a self color. Grows 54" with a 24" flowerhead, 19 to 20 buds, with 8 open, 8 in color, a good commercial or exhibition glad. Has won Best Seedling award at several shows. **L \$2.00; M \$1.50; S \$1.00; Blbts. 5 for \$1.00**
- GLORY** (Allen) (401) A grand ruffled white, with small strawberry blotch. Grows 52" with 26" flowerhead, 7 open, with 6 in color, heavy texture and ruffling. Excellent for commercial or exhibition. **L .35; M .25; S .20; Blbts. 10 for \$1.00**
- GOLD** (412) Rich clear golden yellow of fine form. Blooms are nicely ruffled well attached and placed. Tall strong rugged plant with a long head when well grown. Opens 6-8 beautiful blooms. A fine commercial. The most gorgeously beautiful and grand deep yellow. **L .50; M .35; S .20; Blbts. 20 for \$1.00; 100 for \$4.00**
- GOLD BANK:** A beautiful chartreuse yellow, heavily ruffled and needle pointed (see cut) stretchy, 21 buds, 8 open, 8 in color, grows 60", with a 24" flowerhead. Stands heat and bad weather. Exhibition and commercial and perfectly beautiful in every way. **L \$1.50; M \$1.00; S .75; Blbts. .25 ea.**
- GOLD BOND:** The best medium yellow I have ever seen. 66" tall, with a 26" flowerhead. 20 to 21 buds, 8 open, 6 in color, strong grower. A rich canary yellow ruffled, heavy textured. No throat marks, just clean clear yellow throughout. **L \$1.50; M \$1.00; S .50; Blbts. .15 ea., 10 for \$1.00**
- GOLDEN CROWN** (412) Pure medium deep yellow, above the average in height with about 20 buds, 6 of which are open on a 24" flowerhead. This should make a real good commercial as the color blends with other flowers. **L .35; M .25; S .15; Blbts. 10 for .60**
- GOLDEN DIANA:** Another clean clear deep yellow, no throat marks, ruffled, extra heavy, texture, grows 60", with a 24" flowerhead, 20 buds, 9 open, 7 in color. We tested around 30 new yellows this season, and for a rich deep yellow, this one outclassed them all. **L \$1.50; M \$1.00; S .50; Blbts. .15 ea., 10 for \$1.00**
- GOOD NEWS:** A large clean white, with a blush pink overcast, which does not fade out even in hot weather. Grows 50", with a 24" flowerhead. 22 buds, 8 open, 6 in color, tall, straight, a glamorous, glorified Beauty's Blush. **L \$1.00; M .75; S .50; Blbts. .15 ea., 10 for \$1.00**
- GREAT DAY:** A very much glorified ELMER'S ROSE slightly deeper rose, heavy ruffled and needle pointed, grows 56" with a 24" flowerhead, 21 buds 8 open, 7 in color. **L \$1.50; M \$1.00; S .50; Blbts. .15 ea., 10 for \$1.00**
- HARRIET:** Lively, deep clear purple, ruffled and waved, in the 300 class, grows 54", with a 27" flowerhead, opens 7-8 4" blooms and is without a doubt the best in its size and color. Has won numerous awards, and has scored all the way from 85 to 89½. **L .75; M .50; S .25; Blbts. 5 for .25; 100 for \$4.00**
- HARRISBURGER:** Wavy clear, thrilling cherry red. Deeper in color than Mid-America and not quite so large, but it has much better substance and attachment. With 20 buds and 8 open on a 60" plant this was marvellous in our garden. Don't miss this one. **L \$1.00; M .75; S .50; Blbts. 10 for .50**
- HEIRLOOM** (566) A magnificent rose lavender making wonderful spikes from any size bulb. It has great vigor and good texture with no flecking and opens to 8 florets and many buds in color. This variety is somewhat similar to VALDA in color, but the florets are lightly ruffled whereas VALDA is deeply needle pointed. **L \$3.00; M \$2.00; S \$1.00; Blbts. 2 for .50**
- HENRIETTA** (466) An improved COLONIAL DAME, taller, somewhat lighter lavender, but deeper throat and much earlier. In fact, it comes into flower in 65 days which makes it valuable as a commercial as well as being a topnotch exhibition. Grows 54" with a 27" flowerhead, 20 to 22 buds 8 open, 6 in color, ruffled and fluted with 4½" floret. **L .75; M .50; S .25; Blbts. 20 for \$1.00**
- HONEY** (340) Nicely ruffled clean pink blending to a white throat. A florists glad about 48" tall with 16 buds on a 20" flowerhead. **L .35; M .25; S .20; Blbts. 10 for .50**
- INDELIBLE** (370) Bright purple, 50" tall in field, 25" flowerhead, 18 buds, 8 open, 6 in color, 4" floret, excellent facing and spacing straight, excellent substance and a welcome addition to the purple class for either exhibition or commercial. **L .75; M .50; S .25; Blbts. 20 for \$1.00**

JESSIE MAE (443) A rich deep pink with scarlet feather in throat which adds charm and appeal. Grows 58" with 28" flowerhead, 20-22 buds, wonderful attachment, will hold 9 open, 10 in color. Extra heavy textured and heavily ruffled.

L \$1.00; M .60; S .40; Blbts. 2 for .25

JITTERBUG: As lively as the name implies. A brilliant heavily ruffled scarlet needle pointed petals. Has slightly deeper throat. Grows 54", with 24" flowerhead, 20 buds, 8 open, 6 in color.

L \$1.50; M \$1.00; S .50; Blbts. .15ea., 10 for \$1.00

KAREN: Smooth deep violet red or magenta with large cream center and white midribs. 6 to 8 open with 6 showing color. Excellent strong straight stem with good attachment of florets. A very unusual colored glad you will enjoy growing.

L \$2.00; M \$1.50; S \$1.00; Blbts. 10 for \$2.00

KASHMIR (Allen) (470) A beautiful shade of solid purple with extremely heavy texture ruffling, and velvety sheen. 56" tall, 20 buds, 5 to 5½" florets, attachment and facing perfect. One of the finest.

L .25; M .20; S .10; Blbts. pkg. .50

KING DAVID (570) Deep purple with velvet red throat with a picotee edge around the petals. Heavily winged ruffled and fluted. 5½" florets. Tall straight spikes having 22-24 buds with 10 open and 10 showing. The attachment is good.

L .50; M .35; S .25; Blbts. 10 for .50

KING SIZE: The deluxe exhibition glad in the salmon class. Opens to 10 or more giant florets on a 30" or better flowerhead. This easily grows 72" tall. It has been Grand Champ and Seedling Champ many times. Possibly too large for commercial use except from young bulbs.

L \$3.00; M \$2.00; S \$1.00; Blbts. 2 for .50

KOKOMO GIANT (542) A huge pink, similar to Tivoli in color, but with a 7½" floret, growing 72" easily, with 22 to 26 buds, opens 7 with 7 in color. One of those easy growers, that will make a hit with the amateur, as well as the commercial man.

L \$1.00; M .75; S .35; Blbts. 10 for \$1.00

LA VALLE (507) A beautiful rich, heavily ruffled light cream, with small orange throat marks. 60" tall, with 25" flowerhead, 22 buds, with 8 or more open, 6 in color, 5½" florets.

L .50; M .35; S .25; Blbts. pkg. .25

LAVENDER LADY: Beautiful deep lavender, with a touch of purple in it. Each petal edged in purple. The cream throat is large, making a very striking appearance. In the 300 size, grows 54" tall, with 19 buds, holds 8 open, with 8 in color, perfect facing and spacing.

L \$1.00; M .75; S .50; Blbts. 5 for \$1.00

LEAH GORHAM (450) A very striking and attractive light red with clean white throat. Tall, strong straight plant with long flowerhead and 6 or more lightly ruffled bloom open. A good commercial and exhibition prospect.

L .30; M .20; S .15; Blbts. 10 for .25; 100 for \$2.00

LOOK: A glistening light pink, a real glorified RIMA, which we all love. Grows 60 to 65" tall, with a 28" flowerhead, 20 buds, 6 open, 6 in color, almost perfect facing and spacing, takes extreme heat and drought. A real pink.

L \$2.00; M \$1.50; S \$1.00; Blbts. 10 for \$1.60; 100 for \$12.00

LORD ELGIN (436) A gorgeous dark red, perhaps the heaviest ruffling on any glad and the toughest texture. Not tall, grows from 40 to 48", perhaps averaging not more than 40", 5" florets with 16 buds, 6 open and 6 in color, perfect facing and spacing and one that was loved by all who tested it.

L .50; M .25; S .15; Blbts. 20 for \$1.00

LYNNE HILL (470) A wonderful new color in a rose purple with deeper throat and each petal edged with silver, ruffled 5¾" florets which opens 7 with 9 in color and has won its share of ribbons and awards of merit this past season. Height 46" with a 20" flowerhead, and one of the most unusual glads I have ever grown.

L .50; M .25; S .15; Blbts. 20 for \$1.00

MADLINE HEFTY (462) Medium lavender rose with deeper veined blotch on a light buffish throat. A good grower.

L .25; M .20; S .15; Blbts. 15 for .25; 100 for \$1.00

MARATHON (410) Butterscotch yellow with an attractive red spot on the throat. Opens 7, 5¼" ruffled, recurved blooms on tall 6" spikes. A top-notch commercial as it opens right to the tip.

L .25; M .20; S .15; Blbts. 15 for .25; 100 for \$1.00

MARDI GRAS: Just what the name implies. Basic color is white, with rose edging, and rose flecking toward outside of petals. Rose blotch on two lower petals, and will remind you of a masked ball, with lights playing on the dancers.

L \$1.50; M \$1.00; S .50; Blbts. .15 ea., 100 for \$1.00

MARGERY: Beautiful sparkling cerise rose with somewhat deeper throat. Excellent placement and attachment. 5" florets with 8 or more open on a 20 bud spike. A lovely color with excellent commercial qualities. Tall with excellent placement and attachment. **L \$3.00; M \$2.00; S \$1.25; Blbts. 10 for \$3.00**

MARTHA WASHINGTON (466) A heavily ruffled lavender with cream throat, very colonial lavender, grows 55" tall, 30" flowerheads, 22 buds, 5½" floret, 8 open, 8 in color. A real exhibition, or commercial. **L .35; M .25; S .15; Blbts. 10 for .50**

MELLOW MOON (420) Light orange, almost a self color. It will open up to 8 nicely placed and well attached florets on a slender spike. Excellent propagator and bulblets produce salable spikes. **L .50; M .35; S .20; Blbts. 10 for .50; 100 for \$4.00**

MISS JOAN (440) A distinctive blush pink without marking. Opens to 10 4¾" florets on a 19 bud spike 54" tall with 26" flowerhead. The color is lively and glistening. Save for an occasional misplaced floret I see no faults. A glad to watch. **L \$2.00; M \$1.50; S \$1.00; Blbts. 10 for \$1.50**

MISS MADISON (540) A large formal type, pale pink, shading to stronger pink at the edges, with a raised white midrib. Grows 60" in the field, with a 30" flowerhead, 5½" floret with 22 buds. **L \$1.50; M \$1.00; S .50; Blbts. 10 for \$1.25**

MODERN MISS (467) Lavender purple with darker spot on lower lip petal. Height 52" with 25" flowerhead, 21 buds 9 open, and 9 in color, 5" florets, facing and spacing perfect. A marvellous flower for either exhibition or commercial. **L \$1.00; M .60; S .40; Blbts. 10 for .50**

MOTHER FISCHER (400) Lavishly ruffled white velvet. Grows tall and rugged with 7 open on a long flowerhead of 20 or more buds. Already a show champion. **L .40; M .30; S .20; Blbts. 10 for \$1.60**

MOUNT BAKER (506) Though classed as a cream, this to me is a flesh white shading deeper in the throat. 7-8 very large well placed florets of heavy substance on a 54" plant. A promising show glad. **L .40; M .30; S .20; Blbts. 10 for .25**



GOLD BOND



ROSY WINGS



BARRETT'S BEAUTY

- NORDIC QUEEN:** Smooth flesh pink blending into a creamy yellow throat. With 8 open and 16 to 18 buds I know of no pastel glad more ravishingly beautiful. If it had a couple more buds it would be just about unbeatable. A wonderful commercial prospect.
L .75; M .50; S .35; Blbts. 10 for .75
- NOVELTY QUEEN (430)** Our first really fine glad in the double dragon type. Spurred like a columbine, with flounces, like a lady of the gay nineties, a most beautiful and useful glad, that will interest hybridizers, and amateurs alike. You will thrill to its opening.
L \$1.00; M .75; S .50
- NOWETA ROSE (560)** A clean lavender-rose that can produce sensational spikes. It will open up to 12 florets with most of the remaining buds in color. It's a tremendous propagator and good germinator.
L .40; M .30; S .20; Blbts. 10 for \$1.60
- ORCHID MIST (467)** A beautiful ruffled light rose lavender, shading deeper toward the edges and with a very distinct lavender blotch. Height about 44" with a 22" flowerhead, heavily ruffled and needle pointed with a 4½" floret, opens wide and flat. Ladies who visited my garden this season selected this as the most beautiful glad in the patch.
L .50; M .25; S .15; Blbts. 20 for \$1.00
- ORCHID SKIES:** A simply huge lavender, with 6½ to 8" florets, grows 65", with a 30" flowerhead, 22 buds, 10 open, 8 in color, tall strong foliage, has won numerous Championships, as a seedling. Sometimes flecks slightly in cool weather, but the flecking does not detract from its beauty. For you birds who want to win Championship Spike, get this big fellow.
L .50; M .35; S .25; Blbts. .10 ea., 12 for \$1.00
- ORCHIS (466)** Deep sparkling lavender with a silvery caste over the entire floret. Will grow 54" tall and 22" flowerhead and 6 or more open florets. Texture, placement and attachments are good and the stem is straight.
L .40; M .30; S .20; Blbts. 15 for .25
- PEACH GLOW (416)** A large buffy orange, with wide open well rounded florets, ruffled, very heavy texture, 19 to 21 buds, 62" tall with 28" flowerhead, opens 8, with 8 in color. Winner of many special awards in Canada and U.S.A., and a most unusual, useful, and beautiful glad.
L .30; M .25; S .15; Blbts. 20 for \$1.00
- PENNANT (440)** A wonderful light, soft pink absolutely unmarked. Very attractive under artificial light. Plants are strong, stiff and straight. A sister seedling of Evangeline but with perfect placement. 5" florets with 10 open, 20 buds on a 54" plant.
L .75; M .50; S .35; Blbts. 10 for .75
- PHAROAH (530)** Rich pink salmon, with cream yellow throat, yellow midribs, field height 63", opens 7 on a 19-bud spike with a 30" flowerhead. Floret size 5¾". Well recommended.
L 2 for .25; M 2 for .15; S 5 for .25; Blbts. pkg. .50
- PINK CHIFFON:** Lightly ruffled, lovely light clear orchid toned pink. This glad duplicates the color of Rima which was well nigh unbeatable in its day. 5¼" bloom, 16 to 18 buds, on a 48 to 54" plant. Grand texture and attachment.
L \$1.50; M \$1.25; S .75; Blbts. 10 for \$1.00
- PINK CLASSIC (540)** Heavily ruffled and fluted pink overlaid deeper pink and blending to a lighter throat. 5½" blooms of good substance, 7 to 8 open and 8 buds in color on a spike of 20 or more buds.
L .75; M .50; S .35; Blbts. 10 for .75
- PINK PRIDE:** Giant rosy toned salmon pink. 8 or more huge, nicely frilled florets open of good substance on fine tall spikes. This makes a husky spike with long flowerheads.
L \$1.50; M \$1.00; S .50; Blbts. 2 for .25; 10 for \$1.00
- PINK SATIN (542)** A Glorified Lovely Lady. An exhibition pink, with white throat, heavily ruffled, with 8 open, and 8 in color. Grows 56" in field, with a 30" flowerhead, 6" florets, and certainly one of the most luscious pinks you ever saw.
L .35; M .25; S .15; Blbts. 20 for \$1.00
- POINSETTA (450)** Pure, lightly ruffled light spectrum red. 5" florets with 5-7 open, 20 buds on a 50" plant and a 24" head. This comes highly rated as a future commercial variety.
L .50; M .35; S .20; Blbts. pkg. .25
- POLYNESIE (530)** Deep salmon blending slightly lighter in the throat with a small deeper throat mark. Grows tall and straight and opens 8 to 10 perfectly placed slightly ruffled 5½" round blooms at once. Fine propagator.
L .15; M .10; S .05; Blbts. pkg. .50
- POWDER PUFF:** A smokey old rose, ruffled and needle pointed, the most unusual rose color I have ever seen. You smokey fans will really go nuts over this one. Imagine ROSITA with a smoke screen over it, and you have the color. Grows 54", with a 22" flowerhead.
L \$1.50; M \$1.00; S .50; Blbts. 10 for \$1.00

PRAIRIE SUNSET (530) A huge salmon with deeper throat that makes a marvelous spike, with 5½" florets of excellent texture and ruffling. Grows 60", with 30" flowerhead, 22 buds, opens 8. A candidate for Champion Spike in any show.

L .20; M .15; S .05; Blbts. 30 for \$1.00

PRINCESS: Clear medium rosy lavender with lavender lines in the throat. Deeper in color and taller than Eliz. the Queen. This makes stunning exhibition spikes with 9 to 11 open florets. Looks like an outstanding commercial glad also.

L \$2.00; M \$1.50; S \$1.00; Blbts. .30 ea.

PRINCESS AURORA: One of the finest, tallest orange colored glads I have grown this season. Grows 60", with a 24" flowerhead, medium to deep orange with yellow throat, ruffled, 22 buds, 9 open, 7 in color, perfect facing and spacing.

L \$1.00; M .75; S .50; Blbts. .15 ea., 10 for \$1.00

RED FEATHER (552) Rich deep red. Grows about 4½' tall with 22-23 buds of which 10 are open. The 5½" blooms are perfectly placed. The tall straight spikes should make it a great show flower. It's a fine grower and propagates well.

L \$1.50; M \$1.00; S .50; Blbts. 10 for \$1.50

RED GLEAM (433) A heavily ruffled, scarlet with yellow throat. This one is tough, in fact the thrip will not touch it for some reason. Grows 56", with 28" flowerhead, 5½" floret, opens 8, with 8 in color.

L .20; M .15; S .05; Blbts. 30 for \$1.00

RED MILL: A brilliant glowing scarlet, ruffled and needle pointed, with a slightly lighter throat, grows 56", with a 24" flowerhead, 21 buds, 8 open 8 in color, excellent facing and spacing, the brightest thing in the garden.

L \$1.00; M .75; S .50; Blbts. .15 ea., 10 for \$1.00

RED TOWER (436) Orange red or scarlet with lighter midrib. A very striking color. 5" ruffled and fluted florets with about 8 open, 21 buds on a 60" plant. Excellent placement.

L \$1.00; M .60; S .40; Blbts. 10 for .50

RED VELVET (452) A beautiful medium dark red with a plush finish, like velour. A perfectly beautiful glad, grows about 48" with a 24" flowerhead, 20 buds, 8 open, 6 in color. A grand commercial or exhibition. Very rich in color, and lasts a long time in water.

L .50; M .35; S .25; Blbts. 10 for .50

ROSANNAH: A medium rose, with rose lines in throat, a little smokey appearance lends to its softness. Grows 66" easily, with a 28" flowerhead, 23 buds, 10 open, 7 in color takes heat, and holds up well when cut. Nicely ruffled, a new and unusual color.

L \$1.00; M .75; S .50; Blbts. .15 ea., 10 for \$1.00

ROSARIO: Beautiful medium deep rose with bold deeper rose throat marking. 8 or more open on a tall splendid plant with 5" bloom and 19 buds. Excellent placement and facing. Good attachment.

L \$1.50; M \$1.25; S .75; Blbts. 10 for \$1.50

ROSE GIRL (360) Light rose with deeper rose blotch on lower petals. Tall, straight 48" field height with 18" flowerhead, 15 buds, 3½" florets. A much improved Rosette with more life to it.

L .20; M .15; S .05; Blbts. 30 for \$1.00

ROSELYN: A deep rose with darker lower lip petal. A rich, beautiful rose, ruffled heavy textured, grows 60", with a 24" flowerhead, 8 open, 6 in color, early, vigorous, an eye-stopper.

L \$1.50; M \$1.00; S .50; Blbts. 2 for .25; 10 for \$1.00

ROSIE O'GRADY: Here is the swellest medium rose with slightly deeper throat I have seen. Large 5½" florets, ruffled and heavy textured, grows 56", with 19 to 21 buds, opens 8 easily, with 6 in color, and considered a knockout in the rose class.

L \$1.50; M \$1.00; S .50; Blbts. .15 ea., 10 for \$1.00

ROSITA (563) A vibrant and vivacious rose with lighter picotee edges and deeper rose throat. It grows tall with 8 or more fluted and frilled large florets open with about 20 buds. An exceptionally fine glad.

L \$1.00; M .75; S .50; Blbts. 10 for .50

ROSY FUTURE (462) A new color in glads — the color of Revlon nail polish but with a slight fuchsia tint. It opens six 4-5" blooms with 6 showing. Has 17-20 buds. Grows 52" tall with tall straight spikes. A fine propagator. Good substance.

L .25; M .20; S .15; Blbts. 10 for .50

ROSY WINGS (466) A perfectly beautiful light rose lavender, ruffled, heavy textured, grows 56" with 27" flowerhead, wide open florets with as many as ten open and 8 in color, lying flat against the stem. 22 buds, one of which every commercial grower will eventually buy.

L \$1.00; M .75; S .50; Blbts. 10 for \$1.00

ROYAL FLUSH (552) Medium, clear red, heavily ruffled, grows 66" with a 30" flower-head, carrying 22 to 24 buds. Florets are 6¼ to 6½". One of those real breaks a hybridizer gets once in a life-time. Perhaps Barrett's finest introduction to date. Opens 10 with at least 8 in color. **L \$1.00; M .75; S .50; Blbts. 15 for \$1.00**

ROYAL TREAT (452) A deep blood red Burma seedling. Very heavy ruffling, extra heavy textured, like leather, with a beautiful velvety sheen. Height 54", 27" flower-head with 22 buds, 8 open, 8 in color, strong grower. Midseason. **L .75; M .50; S .25; Blbts. 10 for .75**

ROYAL VELVET: A soft pleasing shade of medium purple, extra heavy texture, grows 56", with a 25" flowerhead, 6 open, 6 in color. A very pleasing and unusual shade of purple, which the ladies loved. **L \$1.50; M \$1.00; S .50; Blbts. 2 for .25; 10 for \$1.00**

RUFFLED EBONY: Tall, nicely ruffled black red or maroon. 16 to 18 strongly attached 4¼" florets airily placed on strong, wiry stems 50" tall. The florets well rounded on a tall stiffly erect plant. Excellent texture and health. **L \$1.50; M \$1.25; S .75; Blbts. 10 for \$1.50**

SALMON'S SENSATION: Sensational medium deep blue with heavy deep green foliage. This is an exceedingly rugged glad, up to 72" tall with 6" florets and 20 or more buds. Good attachment, 6 or more open. Placement is fine. **L \$1.50; M \$1.25; S \$1.00; Blbts. 3 for .50; 10 for \$1.50**

SENECA 362 (Palmer) M A new shade of rose that is very beautiful. Opens 8-9 or more on a very tall plant. Can make wonderful spikes even from small bulbs. Very occasionally it crooks a little. **L .50; M .35; S .25; Blbts. 10 for .50**



COLONIAL DAME



KING DAVID



ANNE SHERMAN

- SHIRLEY IRENE** (460) Soft rose with deeper throat and a picotee edge of rose. 5" florets with 8 open. 18 or more buds on a 54" plant. This looks like a worthwhile addition to the rose class. L \$1.00; M .75; S .50; Blbts. 10 for \$1.00
- SIERRA SNOW** (400) A billowing white, of marvelous texture, grows 66" easily, with 30" flowerhead, opens 12, with 10 in color, 22 to 24 buds, heavy ruffling and placement. Best seedling at Niagara Peninsula Show, and many other Special Awards. Tops Florence Nightingale by the same hybridizer, and that is something. L .35; M .20; S .15; Blbts. 30 for \$1.00
- SKIPPY** 401 (Melk) M Heavily ruffled white with small pink feather. A distinctively beautiful variety that I like very much. Opens 6 4½" blooms on an 18 bud spike. L .35; M .25; S .15; Blbts. 10 for .75; 100 for \$6.00
- SNOWCLAD:** A taller and better finished SIERRA SNOW. This one will grow 72" with a 30" flowerhead. Will open 12 in the field, with 10 in color. Ruffled and fluted. American Home Achievement winner at S.E.M.G.S. in 1952. L \$1.50; M \$1.00; S .50; Blbts. 15 ea., 10 for \$1.00
- SONOMA (GANNET SPORT)** (537) Height 66", 32" flowerhead, 25 to 26 buds, 5½ to 6" florets, 10 open, 8 in color, brilliant scarlet, with soft cream throat. A giant in the field with perfect spacing and facing. A healthy robust grower, that can stand heat and drought and come up smiling. L \$1.00; M .75; S .50; Blbts. 10 for \$1.00
- SOUTHERN BELLE:** Tall, vivid medium deep pink with a snowy throat. A touch of "smoke" to the pink makes it that much more attractive and unusual. It makes a grand ribbon of open florets and buds in color. Very outstanding. L .75; M .50; S .35; Blbts. 10 for .75
- STERLING** (470) A new color break in glads. A phlox purple, with a rose feather in the throat. Ruffled, tall, blends well with yellows or whites, and a fine exhibition or commercial. L .35; M .20; S .15; Blbts. 30 for \$1.00; 100 for \$3.00
- STYLISH** (440) This lovely medium pink with a creamy pink throat and a small deep pink dotted blotch at the back opens 6-7 heavily ruffled 5¼" florets on spikes 52-55" tall with 20-23 buds on a 24-28" head. A strong easy grower with excellent habits that make it a promising commercial. L .30; M .20; S .15; Blbts. 10 for .25
- SUMMER CHARM:** Blush Pink, with cream throat. On the order of Corona, but much prettier. Edges of petals are a rich pink, shading out to a cream throat. Grows 56", with a 22" flowerhead, 22 buds, 7 open, 6 in color, stands heat and drought, an excellent exhibition and commercial. L \$1.00; M .75; S .30; Blbts. 10 for \$1.00
- SUNSET GOLD** (421) Something marvelous from the Antipodes that has been generally overlooked. A grand buff toned yellow classed as an orange possibly because of the brilliant orange center. A really good one with 5¼" florets, 20 buds on a 54" straight plant. L \$1.00; M .75; S .50; Blbts. 10 for \$1.00
- SWEET SIXTEEN** (440) A true pure pink reminiscent of that exquisite old timer — Coryphee. This is a color sport of Beauty's Blush, and is identical in form and vigorous growth to that variety. L .25; M .20; S .15; Blbts. 10 for .50; 100 for \$4.00
- TAHOE** (406) Here is a sure fire commercial which will win its share of prizes also. Clear cream with a faint tinting of baby pink at the edges. Plants are sturdy, straight and tall. About 8 of 18 buds will open in perfect placement. L .35; M .25; S .15; Blbts. pkg. .25
- THE RAJAH:** Ruffled rich reddish purple. Opens 6 wide open large blooms of heavy texture with 8-10 in color. Tall strong grower. Fine for exhibition or for any other purpose. It is becoming extremely popular. One of the finest purples. L .25; M 2 for .35; S 2 for .20; Blbts. 10 for .20
- TRULY FAIR** (452) A glorified American Beauty red. A perfectly beautiful color which the florists really wanted, grows 58", with a 30" flowerhead, 22 buds, 8 open, 8 in color, and best of all, it blooms in 65 days. Beautifully ruffled, wide open, and will make a great commercial. L \$2.00; M \$1.50; S .75; Blbts. 10 for \$2.00
- VALDA** (566) Huge, deeper lavender Elizabeth The Queen, with better stretch, longer flowerhead, 22 buds, opens 8, grows 50" without irrigation, heavily ruffled and needle pointed petals. One of Barrett's best. L \$1.00; M .75; S .50; Blbts. 10 for \$1.00
- VANITY FAIR** (517) A blush pink, with buff overlay, and with small cerise throat lines. Leather texture, heavily ruffled, and needle pointed petals, grows 60" easily, with 30" flowerhead, open 8 with 8 in color, American Home Achievement Medal winner at Detroit, and several seedling awards during 1950. One of the most beautiful glads you ever saw. L .35; M .25; S .15; Blbts. 20 for \$1.00; 100 for \$4.00

VENDOME: A deeper and richer rose colored Miss Wisconsin. Slightly deeper rose, much taller, and better textured, and grows 60" tall, with a 24" flowerhead, 8 open, 6 in color and will make one of the finest commercials ever. An eye-stopper in your field.

L \$1.50; M \$1.00; S .50; Blbts. 10 for \$1.50

VIOLET CHARM: A grand light violet with cream throat and broad deep violet arrow. Strong straight spikes with up to 8 open and 22 buds on a 26" flowerhead. Fine attachment. Excellent exhibition and cut flower qualities.

L \$1.25; M .90; S .50; Blbts. 2 for .25

WHISTLE STOP (462) A grand Rose purple, grows 66" tall, 34" flowerhead, with 24 buds, 10 open, 8 in color, ruffled, and extra heavy substance. Blooms in 80 days, and in the rose purple class, it will be hard to beat.

L \$2.00; M \$1.50; S .75; Blbts. 10 for \$2.00

WHITE TOWER (501) Sensational, tall, stately White Tower is a welcome addition to the list of blotched whites. Few glads equal its height and vigor. The florets are PURE WHITE with a deep pink blotch. Attachments, placement, substance and texture are perfect and best of all it is an early bloomer.

L .80; M .60; S .25; Blbts. 10 for .80

WILD FIRE (436) A grand heavily ruffled scarlet of extra heavy texture and heavy ruffling. Height 52" with 25" flowerhead, 6-8 open, 8 in color. A grand exhibition or commercial. Easy grower and very early.

L .75; M .50; S .25; Blbts. 10 for .75

WINONA (406) A former Barrett seedling which Sydney grew out and is so nice he is introducing it at a very modest price. A light cream, slightly deeper cream throat on which is placed some small cerise throat darts, ruffled and frilled, height 55", flowerhead 30", 20-22 buds, with 8 open, 7 in color, 5" florets, good spacing and facing. One you will love to grow.

L .50; M .35; S .25; Blbts. 10 for \$1.00

WONDER BOY: One of the finest additions to the purple class ever seen. Rich dark purple, ruffled and fluted, class 470, field height 55", flowerhead 27", 20 to 25 buds, with 8 open and 7 in color, 5" florets, perfect spacing and facing, healthy dark green foliage and one of the most brilliant purples I have ever seen. Don't miss this one.

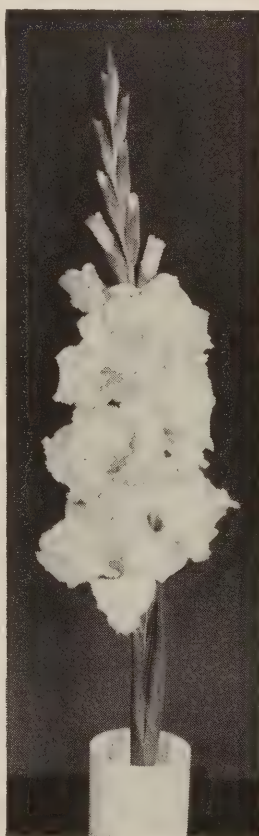
L \$1.50; M \$1.00; S .50; Blbts. 10 for \$1.00

YELLOW FLARE (410) A beautiful light yellow in a clear color that catches the eye. It looks very promising as a florist variety and already has won a few ribbons at the shows.

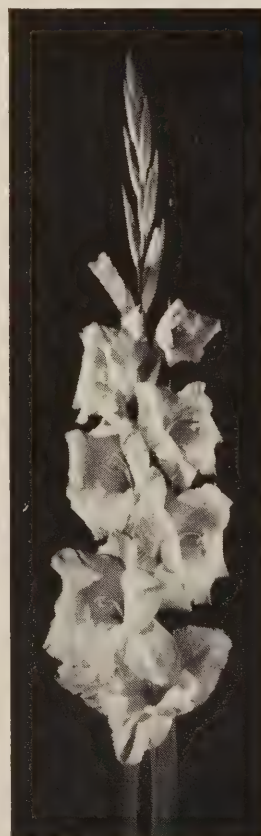
L .40; M .30; S .20; Blbts. 15 for .25



MODERN MISS



BETTY JEAN



FORSYTHIA

GENERAL BULB LIST

ADORABLE (541) Very pretty pale pink with a light rosy red blotch on a lighter background. Spikes grow up to 50 inches tall with 17-18 buds on a 24-inch head and 5-6 5" florets open.
L .60; M .40; S .25; Blbts. 10 for .50; 100 for \$4.00

ARCTIC SNOW (300) A tall strong glad of medium size. A very good commercial where medium sized florets can be used in arrangements.
L & M .25; S .15; Blbts. pkg. .25



SNOWCLAD

ARISTOCRAT (462) A very large deep rose with smooth round florets of very heavy texture. Excellent commercial and cut-flower habits. Tall with fine placement.
L .50; M .35; S .25; Blbts. 20 for \$1.00

BETTY'S CHOICE (362) Resembles Coutts Orchid but much superior cut-flower traits. A ruffled rosy mauve with high color value.
L .15; M .10; S .05; Blbts. pkg. .25

BLACK CHERRY (554) A giant black red opening nine 6" florets on a 19 bud spike. A great show-winner. Does not burn in hottest sun. Healthy and good bulb maker.
L .40; M .30; S .20; Blbts. pkg. .25

BLUE LAGOON (478) Medium blue, nearly self with somewhat lighter throat. A tall straight grower opening to 6 or 7 florets.
L .20; M 2 for .30; S 2 for .20; Blbts. pkg. .25

BOISE BELLE (343) Unusual combination of pink and yellow. The yellow lip petals are bordered in pink. Opens ten 4" florets on a tall spike.
L .25; M .15; S .08; Blbts. 15 for .25; 100 for \$1.50

- BURMA (562)** Beautiful ruffled deep rose. Up to 8 huge, wide open florets, and balance of spike in color. One of Palmer's best.
L 2 for .25; M 2 for .15; S 10 for .50; Blbts. pkg. .25
- CHARLOTTE RUSSE (560)** A perfectly gorgeous ruffled cream with small throat mark of scarlet on faint chartreuse. Looks good enough to eat and makes fine straight spikes.
L .25; M .20; S .15; Blbts. 25 for \$1.00
- CHIEF PONTIAC (524)** Giant orange scarlet opening 6 or more on a strong tall spike. Almost a self color. One of the best for us. Mid-season.
L .20; M .15; S .10; Blbts. pkg. .25
- CITATION (542)** A fine clean pink with cream throat. Outstanding in its tall robust growth and opening quality. Although it grows tall it will stand up without staking in adverse weather. Opens 7 well placed blooms. Excellent propagation.
L .20; M .15; S 2 for .20; Blbts. 10 for \$1.50
- CONNIE G (506)** Entrancingly beautiful. Exquisitely ruffled deep clear cream. Heavy textured. Fine straight spikes with 10 open blooms.
L .25; M .20; S 2 for .25; Blbts. pkg. .30
- CUPID (300)** Cupid is a glad for the lover of arrangements. 4 or 5 waxy, ruffled white florets precisely arranged on a wiry stem of about 14 buds. The 3½" florets are as if carved of white wax.
L .15; M .10; S .05; Blbts. 20 for .30
- DAISY MAE (521)** Husky orange salmon with deeper blotch. Opens 8 on a tall 20-bud spike. Vigorous and a good propagator.
L 2 for .25; M 2 for .15; S 6 for .30; Blbts. pkg. .25
- DARLA (461)** A 65 day rose and a real money maker for us as an early cutter. The plants are as straight as gun barrels, and will cut 100% saleable spikes. An enormous propagator and perfectly healthy.
L .25; M .20; S .15; Blbts. pkg. .25
- DIEPPE (436)** Deep salmon red with deeper blotch. A deluxe cut-flower variety and a four-star glad in any garden. A real top notch glad for the future.
L 2 for .25; M 2 for .15; S 10 for .50; Blbts. pkg. .25
- ELIZABETH THE QUEEN (566)** The finest and loveliest low priced lavender grown, either for exhibition or florist use. Superb ruffling and high color value.
L 2 for .25; M 2 for .15; S 10 for .50; Blbts. pkg. .25
- EVANGELINE (560)** Very beautiful light rose, with a creamy yellow throat, 8 to 9 huge beautifully ruffled blooms on a flowerhead of 20 to 22 buds. Foliage grows tall and broad and is very disease resistant.
L .20; M .10; S .05; Blbts. pkg. .30
- FALCON (566)** A most beautiful lavender, one that will become very popular. Its ruffled, recurved, and needlepoint florets make it a standout from other lavenders. It will open up to 6 very large blooms on an average spike.
L .25; M .20; S .12; Blbts. 10 for .25
- FIREBRAND (452)** Medium red with darker throat. Opens 8-10 well placed blooms on a stretchy flowerhead. Exchange or commercial type.
L only, 10 for .75
- FLORENCE NIGHTINGALE (400)** Possibly the finest all around white glad extant. It has already established itself as a top ranking exhibition and commercial variety. Many times a Show Winner. You can make no mistake on this one.
L 2 for .25; M 3 for .15; S 6 for .30; Blbts. pkg. .25
- FRIENDSHIP (440)** This beautiful soft pure pink shading to cream throat is a dream for color and beauty. The round blooms are exquisitely ruffled and open 6 to 8 on a straight medium height plant. Excellent propagator.
L 2 for .25; M 2 for .15; S 4 for .20; Blbts. pkg. .25
- GAYLORE (432)** Deep salmon pink with cream blotch. Tall, strong uniform grower. A wonderful cut-flower variety. Try it.
L and M, 10 for .60
- GRACE DARLING (Harris) (Mid-season) (60)** Very lovely light rose shading to a cream throat. Makes fine spikes in a color that you will thrill to.
L 2 for .25; M 2 for .15; S 2 for .10; Blbts. pkg. .50
- HEART'S DESIRE (540)** Heavily ruffled light pink shading to a light creamy throat. It opens 8 wide open, well attached, perfectly placed blooms on fine tall spikes.
L 2 for .30; M 2 for .20; S 2 for .10; Blbts. 10 for .25; 100 for \$1.00
- IVY ROBERTSON (440)** Very tall growing cream with rose overcast and cerise throat marks. Has won as the tallest show spike.
L and M, 10 for .60; Blbts. pkg. .25

- JINNI MARIE** (432) (Barrett '49) (80) A heavily ruffled salmon pink with a deeper throat. It opens up to 10 florets of double row placement on a long spike. Good propagator and makes fine growth from bulbets.
L .25; M .20; S .15; Blbts. 25 for \$1.00; 100 for \$3.00
- LAVENDER AND GOLD** (366) Fine, early, medium sized yellow throated lavender. Tall, wiry stems with 6-7 frilled florets open. A "must have" for arrangements.
L 2 for .25; M 2 for .15; S 10 for .50; Blbts. pkg. .25
- LILA WALLACE:** The Cinderella Glad. A perfectly gorgeous color in a velvety cerise. Open 8 on an 18-bud spike, in a 300 size, that has beaten many in the 500 class.
L .35; M .20; S .10; Blbts. 10 for .35; 100 for \$3.00
- MID-AMERICA** (550) Tall, strong growing brilliant light red that has an enviable show record. Somewhat too soft for commercial use.
L 2 for .30; M 2 for .20; S 4 for .20; Blbts. pkg. .25
- MIGHTY MONARCH** (552) Very tall, sturdy deep red that can be used either as an exhibition or commercial variety. Recommended.
L .15; M 2 for .20; S 2 for .10; Blbts. pkg. .25
- MISS WISCONSIN** (460) The outstanding merits of this great variety make it in great commercial demand. A mighty good glad. The color is really rose pink rather than light rose.
L 2 for .25; M 2 for .15; Blbts. pkg. .25
- PEGGY FARRELL** (501) A wonderful clean white with cherry throat mark. Makes fine spikes with 6 to 8 large blooms open. Extra for show or commercial.
L .25; M .20; S .15; Blbts. 25 for \$1.00
- PHANTOM BEAUTY** (440) Clear light pink that will open to 12. Perhaps the finest low priced blush pink. Wonderful for exhibition.
L 2 for .25; M 2 for .15; S 4 for .20; Blbts. pkg. .25
- QUIBERON** (416) A very lovely peach buff slightly deeper at the edges and blending to a light yellow throat. Opens 9 to 11 nicely ruffled 5" florets on long flowerheads with 23 to 25 buds. Very tall and husky. Fine propagator. Don't miss this.
L .20; M .15; S .10; Blbts. pkg. .50
- RED CHARM** (452) The standard red for show or for cut-flower use. This glad is really "tops" in its color. A four star variety.
L 2 for .25; M 2 for .15; 5 for .25; Blbts. pkg. .25
- RHETT BUTLER** (336) Bright flaming orange scarlet. Positively the earliest red on the market. 65 days. A very valuable cut-flower.
L 2 for .25; M 2 for .15; S 10 for .50; Blbts. pkg. .25
- ROYAL WINDSOR** (550) Huge, bright spectrum red. Will open to 10 in double row placement. The color of the red in the solar spectrum or rainbow. Nothing else like it. Exhibition and commercial. L 10 for \$1.00; M 10 for .75; S 10 for .50; Blbts. pkg. .25
- SPIC & SPAN** (442) Wonderful spikes in a tall ruffled deep pink. Many open. The perfect commercial and one of the heaviest show winners. Grow it and show it.
L 2 for .25; M 2 for .15; S 10 for .50; Blbts. pkg. .25
- SPOTLIGHT** (412) Deep, golden yellow with a small scarlet blotch. Opens 5-7 lightly waved blooms on slender, willowy spikes. Most popular yellow and in great demand.
L 2 for .25; M 2 for .15; S 10 for .50
- STORMY WEATHER** (480) A lavender rose and grey smokey. One of the best smokies, in appealing color. Tall. A blue ribbon winner. L .25; M .20; S .15; Blbts. 25 for \$1.00
- STRAUSSENFEDER** (540) One of my favorites from Holland. A little known huge light pink with ruffled and pointed petals. A real show glad and a fine commercial.
L .20; M .15; S 2 for .20; Blbts. pkg. .25
- STRAWBERRY PEACH** (533) Huge, ruffled bright orange toned peach, with scarlet blotch. Unusual and very striking. A favorite. L 2 for .30; M 2 for .20; Blbts. pkg. .25
- SUNDANCE** (412) Clear, ruffled medium yellow. Opens up to 8 or more 5" blooms on a long head with up to 26 buds. Tall, vigorous grower. Considered by many to be the best recent yellow. A promising commercial prospect.
L .25; M .20; S 2 for .25; Blbts. 10 for .25
- THISISIT** (432) Nice clean deep salmon with about six 4½" florets open. Its main forte is the fragrance which is noticeable in newly opened florets; and when cut and opened inside the fragrance is pronounced.
L .25; M 2 for .30; S 3 for .25; Blbts. pkg. .25

TRAIL'S END (562) Fairly deep rose with a light yellow throat. Attractive and a very strong grower. Spikes over 60" with 19-20 buds on a 28" head and 7 large florets open. Should make a fine show record.

L .40; M .30; S .20; Blbts. 10 for .25; 100 for \$2.00

TROCADERO (422) Mammoth spikes in a distinctive carrot-orange color. Grows tall and will open 6-8 florets on long flowerheads.

L 2 for .25; M 2 for .15; S 4 for .20; Blbts. pkg. .25

VELVET MANTLE (454) (Fischer '49) (85) A velvety dark red that opens up to 8 florets on long flowerheads. Strong healthy grower and the color does not burn in the field. Excellent propagator of easily germinating bulblets.

L 2 for .25; M 10 for .70; S 10 for .40; Blbts. pkg. .25

VIOLET DICKINSON (501) The perfect basket glad. Lovely ruffled white with purple throat darts. A strikingly beautiful glad.

L .15; M .10; S .05; Blbts. pkg. .25

VOGUE (466) Large, wide open heavily ruffled deep lavender. 18 buds with 8 5" florets open on a 54" plant with 26" flowerhead. Nice things have been said of this one.

L .20; M .15; S .10; Blbts. 10 for .20; 100 for \$1.50

WEDGEWOOD (366) This is really "tops" for small arrangements. Waxy ruffled light lavender with cream throat. An artistic glad for your garden or for the up-to-date florist. Really breath-taking.

L .15; M .10; S 2 for .10; Blbts. pkg. .25

WHITE GODDESS (500) Ruffled, creamy-white, opening up to 9, heavily-textured blooms on long flowerheads. Grows 6' tall in the fields. Grand champion at many shows.

L 2 for .30; M 3 for .25; S 10 for .25; Blbts. 100 for \$2.00

WHITECLIFFE: Here is a grand white from the Antipodes. A faint pink feather adds to the beauty. 5½" florets with 8 or more open. About 20 buds on a 54 to 60" plant. Try it for sure.

L \$1.00; M .75; S .50; Blbts. 10 for \$1.00



PEACH GLOW



FALCON



EVENING STAR

SMALL VARIETIES

- ARIA** (248) Charming deep pink with a light cream throat. A miniature with a grand champion's characteristics. Opens 8, beautiful 3" florets with 6-7 in color on tall, 20-bud spikes. **L .25; M .20; S .15; Blbts. 10 for .25**
- BABY BETTY** (240) Something like the older Little Sweetheart, but more refined, somewhat taller and a good propagator. One you will love and enjoy. **L and M, 10 for \$1.00; S 20 for \$1.50; Blbts. pkg. .25**
- BO-PEEP** (249) Beautiful buff-pink, shading to a yellow throat, faintly dusted red. Opens 5-6, heavily textured and ruffled blooms on a 17-bud spike. The 3" florets have good placement and attachment. **L and M, 10 for \$1.00; S 20 for \$1.50; Blbts. pkg. .25**
- CHARMETTE:** A grand little miniature, deep red, with a silvery edge on all petals. The brightest miniature in commerce. Grows 36", 14" flowerhead, 14 buds 5 open, 4 in color. A fine addition to the miniature class. **L \$1.50; M \$1.00; S .50; Blbts. 2 for .25; 10 for \$1.00**
- CRINKLETTE** (244) The forerunner of most of Mr. Butt's popular miniature strain. Orange-pink of unusual form and style. Very heavy texture and dainty ruffling. Opens 6-7 well-arranged and attached florets on sturdy spikes. **L and M, 10 for \$1.00; S 20 for \$1.50; Blbts. pkg. .25**
- EXQUISITE MIDGET:** For you miniature collectors, and anyone who wants to grow and show the tiniest pink glad I have ever seen. A clean apple blossom pink, grows 16", with not to exceed 9 buds, will open 4 nicely, with $\frac{3}{4}$ to 1" slightly ruffled, wide-open florets, that make the cutest corsages you can imagine. If you want to see something really small, cute, and exquisitely beautiful, you will need this glad. **L .50; M .35; S .25; Blbts. .20 ea.**
- ELLA MAY** (240) One of the older really good ones. Lovely light pink with rich cream throat. Don't miss this one. **L and M, 10 for \$1.00; S 20 for \$1.50; Blbts. pkg. .25**
- FADDIST** (243) Another of the older good ones. Medium pink with brilliant red throat markings. Wonderful for corsages. **L and M, 10 for \$1.00; S 20 for \$1.50; Blbts. pkg. .25**
- GAILY CLAD** (291) A 1952 introduction that should not be confused with the deep salmon Gaily Clad introduced in 1945. This variety is greenish yellow with a conspicuous orange red blotch on the lower petals. It has heavy textured, tightly tied, heavily ruffled florets on a heavy straight stem with 5 wide open showy bloom of 13-14 buds on a 20" flowerhead. Existing stocks are small although propagation is satisfactory. **L \$1.50; M \$1.00; S .75**
- GOLD CHEVRON:** On the unusual side, in that its florets are lacinated and needle pointed. Florets are light yellow without any noticeable trace of another shade. Up to 6-7 open. Florets are well placed on tall straight spikes. **L .15; M .10; S 2 for .10; Blbts. 20 for .25**
- LITTLE GOLD** (212) Shining gold. Sensational deep golden yellow opening 5 frilled florets of 15 buds. Many show honors. **L and M, 10 for \$1.00; S 10 for .50; Blbts. pkg. .25**
- LITTLE SWEETHEART** (240) Delicate shade of pink, blending to a snow white throat. Opens six 3 $\frac{1}{4}$ " lightly ruffled florets on a 36" stem. Moderate propagator. **L and M, 10 for \$2.00; S 10 for \$1.00; Blbts. pkg. .25**
- NADIA** (231) An unusual blending of colors. Upper petals bright salmon; lower petals yellow. Opens 6-8 airily spaced florets on straight, wiry stems of 15-16 buds. **L and M, 10 for \$1.00; S 20 for \$1.50; Blbts. pkg. .25**
- ORANGE BUTTERFLY** (222) Glowing bronze orange, one of these small decorative types that fits so well in arrangements. Spikes are tall and wiry. Holds up to 8 or 10 open. Will crook but for arrangements that does not hurt. **L and M, 10 for \$1.00; S 20 for \$1.50; Blbts. pkg. .25**
- PINOCCHIO** (390) A novelty blend of green-orange, pink and yellow. Opens up to 6, heavily ruffled, airily spaced blooms on a 15-17 bud spike. Very choice. **L and M, 10 for \$1.00; S 20 for \$1.50; Blbts. pkg. .25**
- QUEEN OF BREMEN** (266) Delightful lavender-pink with a white throat. A beautiful, small, prim-type decorative that is fine for arrangements. **L and M, 10 for \$1.00; S 20 for \$1.50; Blbts. pkg. .25**

- ROSETTE** (260) Ruffled light rose pink with dark rose feather. Perfect double-row arrangement. Opens up to eight 3¼" florets with 6-8 in color. Best results from large bulbs. Many show honors.
L 10 for \$1.60; M 10 for .80; S 10 for .50; Blbts. 15 for .25
- RUBY** (252) Medium dark red, slightly darker in the throat. A diminutive Red Charm. Free bloomer from all sizes. Opens 5-6, 3" florets on straight 18-bud spikes. Wonderful in arrangements with Starlet.
L 2 for .30; M 3 for .30; S 10 for .25
- SILVERSIDES** (262) Small, bright, deep-rose with silvery reflexes and dusty sheen. Slender graceful spikes and unique color. Opens 5-6 florets on tall, 18-bud spikes. Winner of many awards.
L 10 for \$1.00; 15 for \$1.00; S 20 for \$1.00; Blbts. pkg. .25
- SMILETTE** (260) Lavender-rose shading lighter in the throat with a deeper rose brush. Opens 6, wide-open, intensely ruffled, 3" florets on a straight, hard stem. An outstanding dainty decorative.
L .50; M .35; S .25; Blbts. 5 for .25
- SPOT O ROSE** (201) One of Mrs. Kinyon's many good ones. A lovely miniature in a pure white with rose spot. Well named. Of good height and florescence. One of my favorite small ones.
L and M, 10 for \$1.00; S 20 for \$1.50; Blbts. pkg. .25
- STARLET** (200) Opens 5-6, crisp, airy, white 3" blooms on tall wiry stems. Very nice in arrangements and one of our favorites.
L and M, 10 for \$1.00; S 20 for \$1.50; Blbts. pkg. .25
- TRI-COLOR:** Almost a Red, White and Blue glad. Outer petals deep pansy violet, shading to ivory center, with ruby throat marks. Very unusual. Carries 16 buds, opens 7 florets with 6 in color, on a 20" flowerhead.
L .15; M .10; S 2 for .10; Blbts. 20 for .25
- TWINKLES** (232) Ruffled deep orange red with a yellow throat. Will open 6 on a 45" spike. One of the most beautiful.
L .25; M .15; S .10; Blbts. pkg. .25
- WHITE BUTTERFLY** (200) White with soft cream throat. Very beautiful cut flower. Early and one of the best for its class.
L and M, 10 for \$1.00; S 20 for \$1.50; Blbts. pkg. .25
- WHITE LACE** (200) An immaculate snowy white with an ivory throat. Waxy and heavily frilled and of excellent heavy texture.
L .25; M .15; S .10; Blbts. pkg. .25
- WILL SCARLET** (236) One of the old timers but still with us and destined to stay. A small clear scarlet that comes consistently good. Typical miniature in every way.
L 10 for \$1.00; M 12 for .65; S 12 for .40; Blbts. 25 for .25
- YELLOW BIRD** (210) A medium shade of yellow. Will hold up to 8 open. Medium tall flowerhead on wiry spikes. Florets are round, slightly recurved. Spacing, facing and attachment good.
L and M, 10 for \$1.00; S 15 for \$1.00; Blbts. pkg. .25
- YELLOW SEA:** Easily the finest yellow miniature in commerce. Wins everywhere.
L .50; M .35; S .25; Blbts. 100 for \$4.00

LUCIAN GOSLING DRAGONS & DOUBLE DRAGONS

Many of you folks have heard of Lucian Gosling, of Ludington, Michigan. A quiet, mild Mannered, God-fearing man, who is interested only in Nature's peculiar traits, in creating oddities in the glad world. This season, I was privileged to grow them, and they were certainly interesting and intriguing. Stocks are small and the year only for the grower who is looking for novelties and are not for the commercial grower. If you want some surprises, something completely new and different in glads, be sure to try some of these Gosling treasures. Here they are:

1954 INTRODUCTIONS

GLORY DRAGON (Bill Dale) A sport of Salman's Glory, with all the color and beauty of the original, but has spurs all over the petals, making it almost the KING of the dragons. Hybridizers will find this one to be a splendid seed setter. A fairly good stock permits a low introductory price.

L \$2.00; M \$1.50; S \$1.00; or you may have 1 Medium, 3 Small and 20 Blbts. for \$5.00

ROSE ORCHID: Technically a gladiolus, but actually more like an orchid. The short stem carries 8 to 10 florets, heavily lacinated and spurred and interlocking and merging into each other. Splendid substance and makes up into the most beautiful corsages you have ever seen. Nothing like this has ever been seen before. Definitely a novelty. Any size Corm \$3.00; 5 Blbts. for \$1.00, or 2 Small and 5 Blbts. for \$5.00

RECENT INTRODUCTIONS

WHITE DRAGON: Globular creased and crinkled florets of heavy texture, in ivory white, with a pink dot in throat. Complex spurs on this clustered bloom, make it appear double, and a rare delight for arrangers.

Any size Corm \$3.00, with limited number of bulblets .50 each

CARNIOLA: A miniature, resembling a carnation, with a sheaf of tiny petals in yellow flecked with red. Bulbs are tiny, fully developed corms are 1" in diameter.

Any size corm \$5.00. First come, first served.

RELUCTANT DRAGON: Next to WHITE DRAGON, this one is the most beautiful of the dragons. A beautifully ruffled and spurred "face-up," in salmon, with a yellow throat. Nice long flowerhead, 15 to 18 buds, holding 5 to 7 open. Another real gem in a novelty. Hybridizers please note. Limited stock.

Any size corm \$3.00; Blbts. .35 ea. or 3 for \$1.00

MOTHER DRAGON: A lightly spurred, long headed salmon pink "face-up," with ability to produce good seed. This, and Fairy Dragon, are the most satisfactory seed producers. Extremely limited stock.

Any size corm \$3.00; Blbts. .35 ea. or 3 for \$1.00

TRUE PURPLE: A blue purple breeder of great value to the hybridizer looking for good blues. Makes good seeds, which grow to large seedlings in one season, giving a high percentage of healthy near blues. Another Gem for you hybridizers.

Any size corm \$1.50; Blbts. .15 ea. or 8 for \$1.00

FAIRY DRAGON: This dragon is the key to the fairyland of new shapes, forms and types of dragons. Usually it bears fine needle spurred cupped florets in lavender pink, but occasionally it produces creased and fluted petals.

L .50; M .35; S .25; Blbts. at 10 for \$1.00

GREY DRAGON: An orchid type, which makes sprawling florets, folded and spurred, in lavender grey smoke. The oddest floret you ever saw, especially interesting in floral work.

L .50; M .35; S .25; Blbts. 10 for \$1.00

SHAGGY DRAGON: A large bright salmon double. Not as double as CARNIOLA or MULTIPETAL, having 12 to 15 petals in cupped "face-ups."

L .50; M .35; S .20; Blbts. at 10 for .75

PINK SPURS: An odd taller Dragon, with mottled spurred buds, which open to coral pink cups, facing up. A weird and haunting beauty.

L .50; M .35; S .20; Blbts. at 10 for .75

DINOSAUR: This is variable, ranging from sprawling blossoms like GREY DRAGON, to spurred double florets, color always in a bright orangy pink.

L .50; M .35; S .25; Blbts. at 10 for .75

PETALS OF EIGHT: A short-headed yellow, usually having two extra petals per floret, giving it a peculiar density. Not a dragon

L .50; M .35; S .20; Blbts. at 10 for .75

VIOLBLUE: This is the only violet in the giant violet class. Large well grown bulbs, will make 7" florets.

L .50; M .35; S .25; Blbts. at 10 for \$1.00

CRYSTRAUM: An ethereal lavender, tinted white of double parentage, useful in breeding for doubles. On occasion it doubles its florets.

L .50; M .35; S .25; Blbts. at 10 for .75

MULTIPETAL: From Arthur Koerner's original stock. A many petalled double of dragon parentage, it produces a high percentage of doubles, when bred on to seed bearing dragons.

L .50; M .35; S .25; Blbts. at 10 for \$1.00

UNBLOOMED SEEDLINGS FROM BLUE CROSSES: These are large healthy bulbs, grown this season, from the seed of many blue crosses, mostly of TRUE PURPLE in the parentage. Is the first true blue somewhere in this batch of seedlings?

L .50; M .35; S .25

TREASURE CHEST OF GLADIOLUS SEED

Be a hybridizer the easy way. Purchase of seed makes you the originator and owner of any valuable seedling you may grow from it. Order by **CROSS NUMBER**. Seed will be mailed in early spring, unless you desire it sooner. The numeral before each cross, indicates the number of seeds per packet.

ONCE AGAIN WE OFFER MR. GOSLING'S FAMOUS SEED CROSSES

101 De Grysaard X Rose Orchid	113 Multipetal X Multipetal
102 Black Seedling (Deep Purple) X Black Seedling (Dark Red)	114 Perfume X Multipetal
103 Fairy Dragon Seedling X Fairy Dragon	115 Phantom Beauty X Giant Columbine (Dragon)
104 Fragrant Pink Seedling — Inbred	116 Phantom Beauty X Rose Orchid
105 Gold X Multipetal	117 The Champ X Multipetal
106 Gold X Pink Spurs	118 The Champ X Pink Spurs
107 Halloween (Marbled Tan) X Multi- petal	119 Seedling (White Magic X Multipetal) Inbred
108 Igloo Seedling X Eliz. the Orchid	120 Smyrna X Multipetal
109 Igloo Seedling X Multipetal	121 Summer Fragrance X Multipetal
110 Igloo Seedling X Rose Orchid	122 Tall Blue Seedling Inbred
112 M. J. White X Multipetal	123 Tunias Wizard X Multipetal
	124 White Magic X Multipetal
	125 White Magic & Rose Orchid

MIXED CROSSES OF VARIOUS TYPES — 50 OR MORE SEEDS FOR \$1.00

126 Blue Mix	127 Dragon Mix	128 Fragrant Mix	129 Multipetal Mix
130 General Mix of plain petalled crosses or inbreds, 100 or more \$1.00			

ALL SPECIFIED SEED CROSSES under numbers as shown above 10 or more seeds per pkt. for \$1.00. **ORDER BY NUMBER** to save time for us.

THESE SEEDS ARE A STEAL, CONSIDERING THE WORK INVOLVED, AND THE FACT THAT ANYTHING YOU GROW FROM THEM, IS YOUR VERY OWN ORIGINATION.

*Here is a List of Fragrant Glads from My Friend, Rev. O. E. Spencer,
Which You are Sure to Like:*

SWEETIE: Bright red, with large white throat, very brilliant, and showy. 3" florets, lightly ruffled, opens 6 on a 14-16 bud spike, in double row placement, plant rather short, but nicely balanced spikes, and very fragrant. **Any size Corm \$3.00**

PINK FRAGRANCE: A clear, clean light pink, shading lighter in the throat, 6-8 open, 4½" heavily ruffled florets, of good substance, on a 19-bud spike always straight, facing and spacing excellent and very fragrant. **L \$3.00; M \$2.50; S \$2.00**

YELLOW ROSE: Spencer's most fragrant to date. 16-18 5" buds, opens six 5" florets with 6 in color. A clear medium yellow, with two small red brush marks in throat. Easy grower and excellent propagator. **Medium only at \$2.00**

SACHET: A heavily ruffled pure white of good substance, very good fragrance, which is persistent, and lasting. Opens 6 on a 15-bud spike, medium height and a fine easy grower. **Medium only .75**

THISISIT: A nice clean deep salmon, with six 4½" florets open, very fragrant, strong grower, makes a fine cut flower, on good spikes. A half dozen spikes opened in the house, will perfume the entire room. **L 2 for .25; M 3 for .25; S 5 for .25**

GLADIOLUS SEED

IT IS NOT OFTEN THAT WE ARE ABLE TO GET A MASTER HYBRIDIZER, LIKE JACK HARRIS, TO PART WITH SEED, WHICH HE HAS HYBRIDIZED FOR HIS OWN PERSONAL PLANTING, BUT HERE WE ARE. The supply is obviously limited, and the results from seed sold 2 and 3 years ago, are indeed gratifying, and reports indicate that it has produced some extra fine seedlings, which may be eventually introduced.

- 7 - V **ROSITA X KING DAVID**
- 9 - V **PEACH GLOW X ORANGE SEEDLING**
- 5 - V **ACE OF SPADES X LYNNE HILL**
- 19 - V **BLUEBERRY X BLUE SEEDLING**
- 21 - V **ROSELYN X KING DAVID**
- 23 - V **VIOLET CHARM X ROYAL VISIT**

Please order by number only, as the seed is packaged that way. These seeds are all plump, hand-rubbed seeds, and are priced at 10c each or 12 for \$1.00. Don't compare them with ordinary glad seed. First come, first served.

I am not a tremendously large grower. I specialize in the newest and finest gladiolus. I have sizeable quantities of several excellent varieties, which I will be glad to quote you on corms by the 1,000 or 5,000 lots. Drop me a line, on these, if interested. Large commercial growers, cataloguers, etc., will be treated in line with the usual discount terms, as established with the trade. Write me on your letterhead, and I will reply promptly on all inquiries.

BARGAINS FOR THE AMATEUR GROWER

Tall, Eye-Level Glads

(400)	3 SNOW CLAD	2.50
(512)	3 GOLD BOND	2.50
(416)	6 PEACH GLOW	1.50
(420)	4 PRINCESS AURORA	2.50
(436)	4 RED TOWER	2.00
(440)	4 LOOK	5.00
(452)	4 ROYAL FLUSH	2.50
(461)	8 SHIRLEY IRENE	5.00
(566)	4 VALDA	2.00
(580)	4 ROSANNAH	2.50

Ruffled Glads

(500)	4 EVENING STAR	2.00
(433)	8 RED GLEAM75
(542)	8 PINK SATIN	1.50
(452)	6 LORD ELGIN	1.00
(462)	3 ROSELYN	2.50
(570)	8 KING DAVID	2.00

Miniature Glads

3	CHARMETTE	2.50
3	GAILY CLAD	2.50
6	TWINKLES	1.50
3	SMILETTE	1.00
15	STARLET	1.00
3	YELLOW SEA	1.00

Now, you select any Unit you desire, priced as follows:

- Any Unit totalling \$4.50 you may have for \$3.75 2 Different Units for \$7.00
- Any Unit totalling \$4.00 you may have for \$3.50 2 Different Units for \$6.50

MAKE UP YOUR OWN SELECTIONS FROM THIS LIST, or you may use the same basis of figuring, taking any variety listed, excluding the 1954 introductions, and use the same basis of discount, and make up your order from that. No fewer than 3 of a kind of course on this basis.

Now, If You Want Some Surprises, Here is What You Do:

SEND ME WHAT YOU FEEL YOU CAN AFFORD TO SPEND FOR GLADS. TELL ME THE COLORS YOU DESIRE, WHETHER YOU LIKE THEM TALL, RUFFLED, MINIATURES, etc., and leave the order to me. I will guarantee you will be pleased as PUNCH with what I will send you.

Or, If You Don't Want to do Any Figuring at All, Look Here:

AYLMER GLORY	1 Large, 1 Medium,	20 Blbts. for \$1.25
BARRETT'S HONEY DEW	1 Large, 1 Medium,	20 Blbts. for \$1.25
DAYBREAK	1 Large, 1 Medium, 2 Small,	20 Blbts. for \$1.25
DOLLEY VARDEN	1 Large, 1 Medium, 2 Small,	20 Blbts. for \$1.25
FORSYTHIA	1 Large, 1 Medium, 2 Small,	20 Blbts. for \$2.00
GOLD BOND	1 Large, 1 Medium,	10 Blbts. for \$2.75
GOOD NEWS	1 Large, 1 Medium,	10 Blbts. for \$2.75
JITTERBUG	1 Large, 1 Medium,	10 Blbts. for \$2.75
KING DAVID	1 Large, 2 Medium, 5 Small,	25 Blbts. for \$2.00
LYNNE HILL	1 Large, 1 Medium,	20 Blbts. for \$1.25
ORCHID MIST	1 Large, 2 Medium, 3 Small,	20 Blbts. for \$2.00
ROSIE O'GRADY	1 Large, 1 Medium,	10 Blbts. for \$2.75
ROYAL FLUSH	1 Large, 1 Medium,	15 Blbts. for \$2.25
VALDA	1 Large, 1 Medium, 3 Small,	10 Blbts. for \$3.50



Hazel Dunlop, Premier flower arranger and author of book, "Let's Arrange Flowers."

**"GRAMPS"
Just "Bruce" to You**



VANITY FAIR



ROYAL FLUSH



STORMY WEATHER

DAHLIA SECTION

DAHLIAS ARE FAST COMING INTO THEIR OWN AS CUT-FLOWERS. They come into flower in late August, bloom through September, and our florists use them in quantity. Here is a list of tried and proven varieties, which we have segregated for their fine performance under any and all weather conditions.



SAINT NICK



JINI MARIE



MICHIGAN ORCHID

INTRODUCTIONS FOR 1954, Courtesy Lakeside Dahlia Gardens

MALCOLM BINGAY: A grand new SC Dahlia, in a blend of autumn and red, grows 10x6, on excellent stems. Named and selected by the great newspaper editor of the Detroit Free Press, **IFFY THE DOPESTER**, who passed away in 1953.

Roots \$15.00 net; Plants \$5.00

BITTERSWEET: Our finest orange autumn miniature, on 4 Honor Rolls, and a grand little dahlia in every way. Just the color of Bittersweet. **Roots \$5.00; Plants \$2.50**

LITTLE PETER: Named for Nick Koenig's Grandson, a grand little red cactus miniature, splendid in every way. **Roots \$5.00; Plants \$2.50**

From **STANLEY JOHNSON**, Pennypack Gardens, Cheltenham, Penna.:

STARBRIGHT: A grand addition to the SC class, in a deep maroon, with white tips. Grows 10" x 6" easily, profuse bloomer, on extra fine foliage, almost 100% bi-color, and a grand dahlia in every way. **Roots \$7.50 net; Plants \$3.50**

Here are Some Grand Australian Originations You Will Love:

NEW FOR 1954 INTRODUCTION:

ROBERTSON'S SPECIAL: A perfectly beautiful incurved cactus in yellow, size 8-6, splendid keeper. **Roots \$5.00; Plants \$2.50**

SPIDER GOLD: A fine petalled incurved cactus in a gold color, size about 6x5, very fine show flower, on good stems. **Roots \$5.00; Plants \$2.50**

General List of Australians:

- CHASAMY:** A grand little lavender and yellow St. Cact, on good stems, size about 4x3, one of the finest to come out from "down under." **Roots \$3.00; Plants \$1.50**
- CROYDON'S MASTERPIECE:** Well known huge autumn FD, grows 12" easily. **Roots \$3.00; Plants \$1.50**
- BESSIE HARDRESS:** Medium Yellow FD, yellow with lavender shading. **Roots \$2.00; Plants \$1.00**
- BURNBRAES MEMORIES:** A huge light yellow FD that grows 12" easily. **Roots \$3.00; Plants \$1.50**
- DOROTHY JEAN:** A lovely pink cactus of medium size on excellent stem. **Roots \$3.00; Plants \$1.50**
- HAROLD:** A fine light autumn FD that recurves back to stem, size 9x6. **Roots \$3.00; Plants \$1.50**
- GLAMOUR:** A huge purple ID that you will love. **Roots \$2.00; Plants \$1.00**
- MRS. F. HARRIS:** A fine straight cactus, in scarlet with yellow toward center. **Roots \$3.00; Plants \$1.50**
- MISS ROSE FLETCHER:** Beautiful soft shell pink cactus, one of the finest. **Roots \$1.50; Plants .75**
- MURIEL STUART:** Large orange scarlet FD. **Roots \$3.00; Plants \$1.50**
- SYD PACT:** A perfectly beautiful miniature incurved cactus in oxblood red. **Roots \$3.00; Plants \$1.50**
- QUINN'S TIDAL WAVE:** Our largest FD yellow to date **Roots \$4.00; Plants \$2.00**
- VERNA MARTIN:** FD lavender pink, grows 11x7 in an unusual shade. **Roots \$3.00; Plants \$1.50**
- WATER LILY:** The best of the Nymphia Types to come out. **Roots \$2.00; Plants \$1.00**

GENERAL LIST OF GOOD PERFORMERS

- AMY BALLEGO:** A FD blend of pink and autumn. **Roots \$1.00; Plants .50**
- AMB. VAN KLEFFENS:** A fine autumn formal cut flower. **Roots \$1.00**
- ARISTOCRAT:** A grand scarlet st. cact. you will love. **Roots \$1.00**
- ARTHUR GODFREY:** A grand big autumn overlaid scarlet. **Roots \$3.00; Plants \$1.50**
- BARWAL QUEEN:** A huge ID white, grows to 12" easily. **Roots \$2.00; Plants \$1.00**
- BRANDARIS:** A grand autumn, with scarlet center, cut flower. **Roots \$1.00**
- CHUCKIE - D:** A grand formal autumn, grows 6x5. **Roots .50**
- CONSTELLATION:** IC Hydrangea pink with yellow center. **Roots \$1.00**
- COPPERHEAD:** IC Brownish red and copper, free bloomer. **Roots \$1.00**
- CYGNUS:** IC Pure white, extra fine. **Roots \$2.00**
- DAHLIAMUM:** A huge ID autumn, well known. **Roots \$1.00**
- D-DAY:** A beautiful FD in pure pink, excellent cutter. **Roots .75**
- DESIREE DRAPS:** The finest petalled dahlia in pink. **Roots \$1.00**
- DETROIT TIMES:** A grand ID Begonia pink (1953 Introduction) **Roots \$7.50; Plants \$3.00**
- DETROIT - 250:** A huge SC blood red, one of the giants. **Roots \$3.00; Plants \$1.50**

DIVA: A grand lavender SC that grows 11x6.	Roots \$1.00
DOGE: A new orchid purple SC from Holland.	Roots \$3.00; Plants \$1.50
EXQUISITE: A huge white ID with orchid center.	Roots .50
FIREGLEAM: SC light autumn, grand cutter.	Roots \$2.00; Plants \$1.00
GIANT OF BAARN: A huge SC in autumn overcast red. New.	Roots \$3.50; Plants \$1.75
GRANDESSA: IC Orchid reddish purple, a knockout.	Roots \$1.50; Plants .75
ILSEMEER: A beautiful light lavender SC.	Roots \$1.00
JINI MARIE: St. Cact. in a beautiful shade of pink.	Roots \$1.00
KING SIZE: A St. Cact., fiery red, grows 10x6.	Roots \$1.50; Plants .75
LAKESIDE BEAUTY: The finest FD pink dahlia in commerce.	Roots .75
MAESTOSO: A knockout in a blood red IC. New in 1953.	Roots \$3.50; Plants \$1.75
MAJESTAT: ID blend of pink and autumn. Simply huge.	Roots \$1.75; Plants \$1.00
MIRABELLA: A grand IC blood red, with long stems.	Roots \$1.00
NEAREST BLUE: The closest to blue we have seen. Huge FD.	Roots \$2.00; Plants \$1.00
NICKY - K: A SC with lacinated petals, in blood red.	Roots \$1.00
OAKLEIGH CHAMPION: IC autumn, 10x6, perfectly beautiful.	Roots \$1.00
OREEO: A grand purple, ID size about 5x4, very fine.	Roots \$1.00
PEGGY J: St. Cact. pink and white blend.	Roots \$3.00; Plants \$1.50
PERMANENT WAVE: ID light purple, extra fine and very early.	Roots \$1.50
PFARRER ROJEK: ID unusual blend of white, splashed with red	Roots \$2.00
PIRATES TREASURE: Huge ID autumn, exhibition.	Roots \$5.00; Plants \$2.00
PATRICIA SPOLLEN: Medium autumn, SC extra fine.	Roots \$4.50; Plants \$2.25
PINK FLAMINGO: Grand IC in a flamingo pink.	Roots \$1.50
PREMIE: A beautiful shade of purple, edged in white.	Roots \$1.50
PRIDE OF HOLLAND: Finest IC medium dahlia in commerce.	Roots \$1.50; Plants .75
RED & WHITE: Grand medium SC in white with red tips.	Roots \$1.00
ROSY DAWN: Our finest autumn ball.	Roots .50
RUBELLITE: Grand ID reddish purple, 1952 introduction.	Roots \$3.00; Plants \$1.50
RYTHM: Beautiful shade of light pink, SC.	Roots \$1.00
SAINT NICK: Grand FD red with white tips.	Roots \$1.00
SILVER GLAMOUR: Huge light purple, with silvery edges.	Roots \$1.50; Plants .75
SILVER TIPS: SC rosy red, grows 11x7, very fine.	Roots \$1.00
SULTAN: A deep blood red SC, 8x6, very fine.	Roots \$1.00
SUSAN K: St. Cact., white and pink blend.	Roots \$4.00; Plants \$2.00
SPECIAL AWARD: A huge autumn ID, grows 12x8 easily.	Roots \$3.00; Plants \$1.50

Here are Some Extra Fine Miniatures:

BISHOP OF LLANDAFF: Most unusual dahlia, with dark foliage.	Roots .75
JIMMY G: Best FD white miniature in commerce.	Roots \$1.00
ANTIENJE: A fine autumn blend, with good stems.	Roots \$1.00
IKE: Best blood red miniature.	Roots .50

Here are the Best of the Pom-Poms:

BROWNS LEO: Fine scarlet with yellow base.	Roots .50
EFFECT: A grand cherry red.	Roots .75
FRITZ: Best bi-color, red tipped white.	Roots .75
HELOISE: Deepest maroon, nearly black.	Roots .50
KOBOLD: The smallest Pom, cherry red.	Roots .50
LITTLE BUDDY: Our finest deep yellow Pom.	Roots .50
TOMMY LAING: Fine light purple, with silver edge.	Roots .75
POM POM JAUNES: A grand medium yellow Pom.	Roots .50
MORNING MIST: Best white tipped purple in commerce.	Roots .50
SHERRY: Still our finest purple Pom.	Roots .50



MRS. F. HARRIS



ARISTOCRAT



QUINNS TIDAL WAVE

North American Glads

"LET'S GROW MORE IN '54"

Our Garden Gate is Always Open



A Candid Shot of the Old Boy, Himself. So when he talks about 40 years of growing glads, you will know he isn't kidding —

BRUCE COLLINS

8844 River Road

Utica, Michigan