

CORLISS GARDEN CENTER

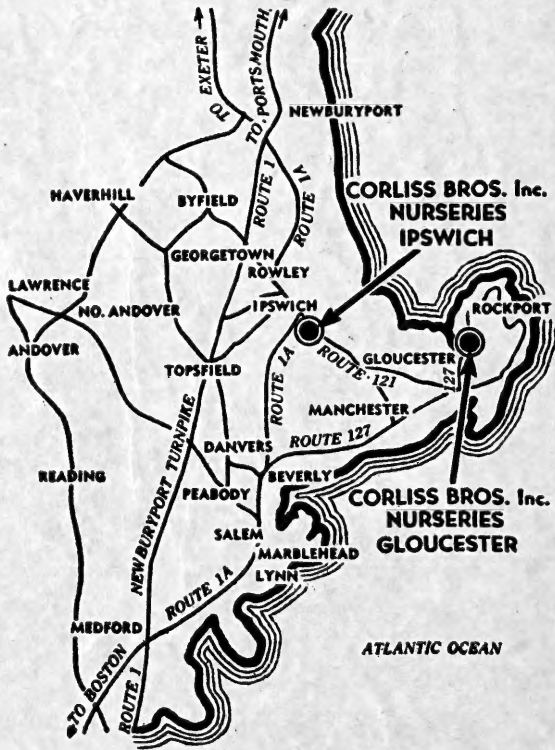
CORLISS BROS INC. NURSERIES

1954 *Guide for* NEW ENGLAND GARDENS

# How to Locate Our Nurseries

Our Gloucester Nurseries are located on Route 127 in the Riverdale section of Gloucester.

Our Ipswich Nurseries are located off Route 1A, Ipswich, on Route 121, which is the main road between Ipswich and Gloucester.



SEE US AT EITHER ADDRESS

Reynard Street  
GLOUCESTER, MASS.  
Telephone 513

Essex Road  
IPSWICH, MASS.  
Telephone 319



### MAIN OFFICE

Located at the Nursery, Reynard St., Gloucester, just off Route 127, in the Riverdale section, about a mile from the new Route 128 traffic circle. Telephone Gloucester 513.

Our GLOUCESTER NURSERY is the MAIN OFFICE for the Company's Bookkeeping and Credit Department  
Landscape Department, with drafting room, soil testing laboratory and operating equipment  
Advertising, catalog, and publicity department  
Retail and Wholesale Perennial Department  
Growing and Propagating Greenhouses and heated frames  
Two hundred ton warehouses stocked with fertilizers, insecticides, weed killers and other garden needs  
Bluestone Flagging Warehouse

Here also is

"MUMLAND", one of New England's most colorful scenes in early fall (see page 42).

The HOME of our famous hardy strain of LYONDEL HYBRID DELPHINIUM.

For LANDSCAPE and GARDENING advice,  
Call Gloucester 513

### OUR COVER

We're proud of our beautiful Ipswich Nursery and Garden Center, illustrated on our cover.

Plenty of parking space — Visitors always welcome

Personal selection of your needs is easy and convenient . . . assistance cheerfully given.

For complete information, see page 6

Stop in and shop at either of our Nurseries — on Reynard St., in Riverdale, Gloucester, or Essex Road, Route 121 just off Route 1A, in Ipswich

Make Shopping at Corliss's a "GROWING" Habit!

# OUR LANDSCAPE

*Includes Planning -*

## **PLANNING – WITHOUT CHARGE**

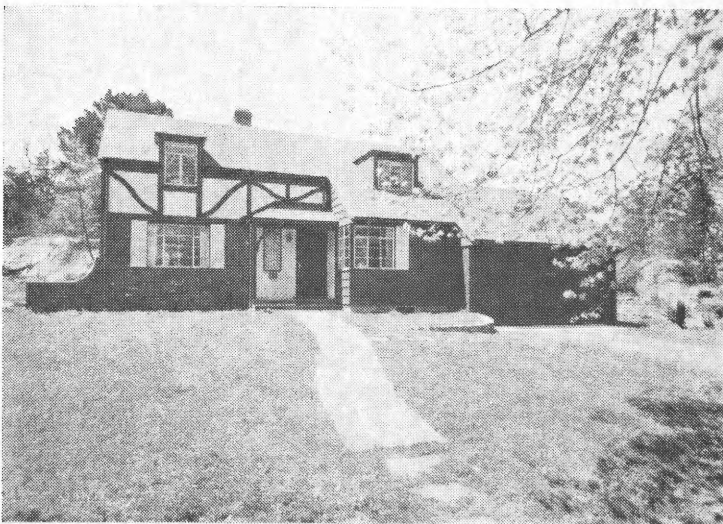
Our sales representative will gladly call at your request to look over your property. He will offer helpful suggestions, present you with progressive ideas, fully describe the suitable varieties of Evergreens, Trees, Shrubs, Vines, Roses, etc. that would be in harmony with your home.

If you are interested in doing your own planting, we can help you with a simple sketch to make your planting easy.

## **PLANTING**

is easy when you know how, but it is the KNOW-HOW that makes a Landscape Planting successful.

Years of experience qualify us to cope with any landscape planting problems, big or small, that your yard or estate may present. Years of careful study of soil and climatic conditions make our services more valuable.



**Proper Landscaping is one**

# **APE SERVICE**

## **Planting - Construction**

### **LANDSCAPE CONSTRUCTION**

with us, embraces many features so important to the usefulness and beauty of the home grounds.

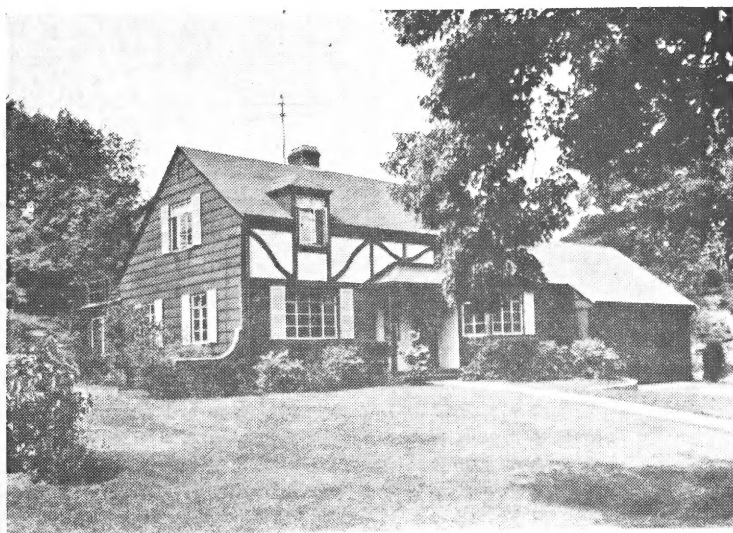
Good construction is most essential if lasting results are to be obtained. This applies to the preparation of lawns, flower beds, rose gardens or any area where planting is to take place.

Also, good base construction is very important where flagstone patios, hot top roads and walks, pasture stone walls or out-of-doors living areas are to be built.

OUR men are covered by insurance.

### **FOR FREE ESTIMATES**

on any type of landscape development, cheerfully given on the home grounds, CALL OUR LANDSCAPE DEPARTMENT, GLOUCESTER 513.



Landscaped by Corliss Bros. Inc.

## **of your Best Investments.**

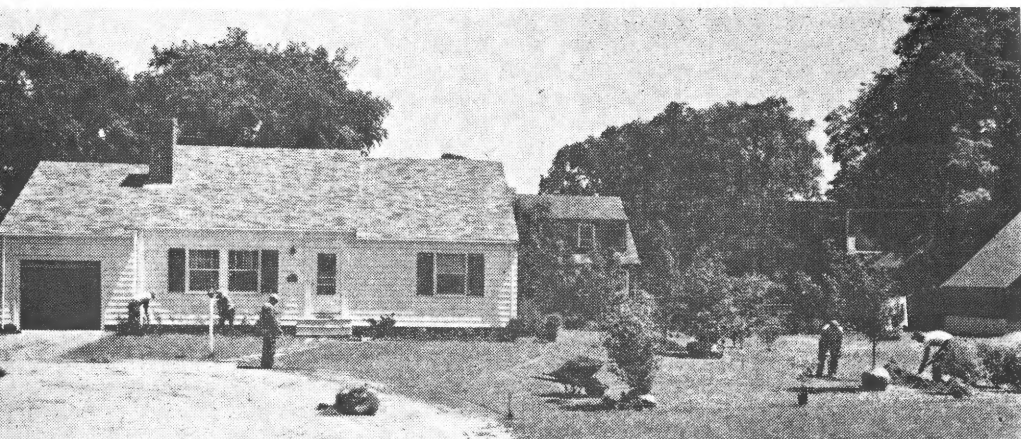
# Now!

## SUCCESSFUL SUMMER PLANTING

Of EVERGREENS, TREES and SHRUBS with the

New plastic spray, PLANTCOTE

By digging the plants with a ball of earth and Plantcoting, it is possible to safely transplant trees and shrubs in full leaf, with complete success, thus extending the planting season into June, July and August.



Landscaping by Corliss Bros. Inc.

**ACTUAL PLANTING July 7, 1953, in 90 degree heat!**

**Sure! You can plant in July when it's hot and dry! This photo shows our men planting trees and shrubs conditioned for summer planting with the new plastic coating.**

**The owners are having their property transformed into a beautiful home now, instead of waiting until fall or next spring.**

**Now this home will have the appearance of being established for several years, and bring enjoyment to the owners and their community.**

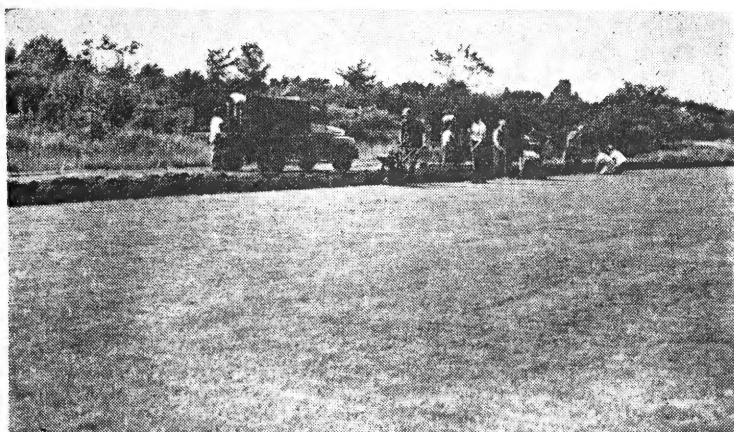
**You, too, can add color, charm and value to your property. Let us help you give your home a radiant new individuality.**

**Estimates Willingly Given — No Charge**

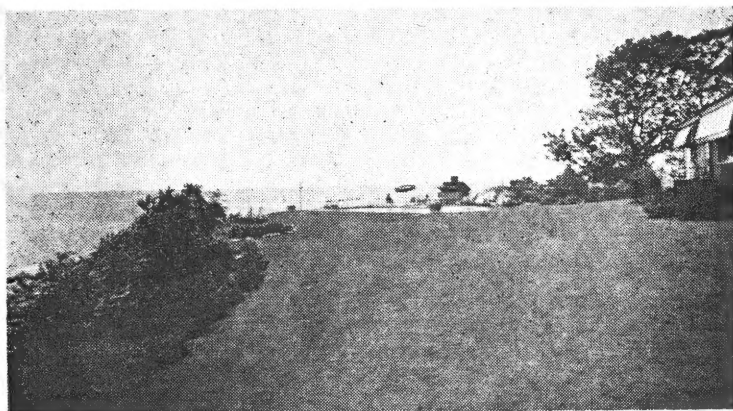
**Call Gloucester 513**

# A MAGIC **SOD** CARPET . . .

**From our Nursery . . .**  
**to a Private Home**



The above picture shows the sod cutting operation in our nursery using the latest in equipment. Our weed-free sod is grown from high quality **SCOTT SEED**, on tested, fertilized soil.



This picture, taken a few days later, shows the very same sod completely laid at a home in Marblehead.

**LAWNS** constructed of our **NURSERY GROWN SOD** give these decided advantages . . .

Saves **SEVERAL YEARS** over Seeded Lawns

Ready for **IMMEDIATE USE** — to walk on, play on, and enjoy

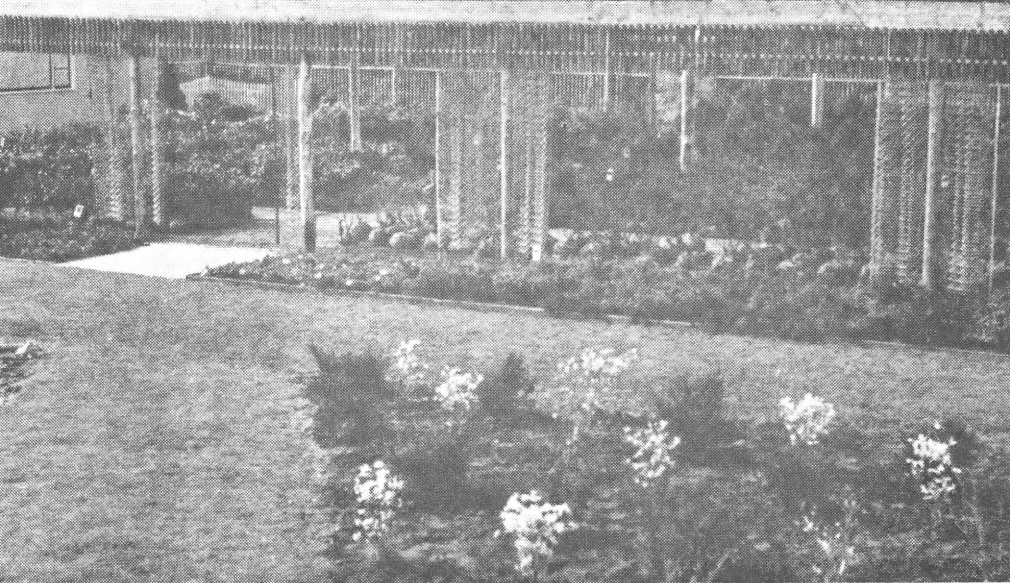
Enhances the **BEAUTY** of **YOUR PROPERTY** at once.

Lengths, 1 ft. by 4 ft.:

Up to 100 sq. ft. at 25¢ per square foot  
100 to 500 sq. ft. at 23¢ per square foot  
500 to 5000 sq. ft. at 22¢ per square foot  
5000 sq. ft. and up at 20¢ per square foot

f.o.b. Ipswich

# CORLISS GARDEN CENTER



## *Our New* **GARDEN CENTER**

at our IPSWICH NURSERIES

An easy and convenient way for you to shop!

Quality Stock at Attractive Prices!

### *Featuring*

Evergreens . . . Rhododendrons . . . Mountain Laurel . . . Evergreen Euonymus . . . those sensational Hybrid Blueberries . . . Azaleas . . . and other Nursery Stock . . . freshly dug from our fields.

A Complete Nursery Service with Fertilizers . . . Grass Seeds Insecticides . . . Garden Hose . . . Fertilizer Spreaders . . . Power Mowers . . . other Garden needs.

Potted Roses . . . Potted Rose Daphne . . . Potted Vines . . . Potted Perennials . . . Annual Seedlings.

#### FOR SUMMER PLANTING

All the nursery stock in our Garden Center will be conditioned with the new plant plastic coating for **SAFE, EASY** and **ECONOMICAL** planting during hot weather.

#### GARDEN CENTER HOURS

From April 3 through October 3 — 7 days a week

Weekdays — 8 a.m. to 6 p.m.

Sundays — 10 a.m. to 6 p.m.

From October 3 to November 1 — 7 days a week

Weekdays — 8 a.m. to 5 p.m.

Sundays — 10 a.m. to 5 p.m.

Our nurseries are open from 7 a.m. to 5 p.m.  
every weekday



# Evergreens

Only the Evergreens are Left After the Autumn Leaves Flare and Fall

There are no more beautiful things in nature than well-grown, well-cared-for evergreens. They are cool-looking in summer and cozy-looking in winter. There is no end to their uses. Well-grown specimen plants increase in beauty with the years.

EVERGREENS ARE DUG, BALLED AND BURLAPPED (B&B) at prices quoted.

\*Suitable for foundation plantings

†Adapted to partial shade

§Berried shrubs

Note.—Figures after the names give approximate heights reached under favorable conditions.

ARBOR-VITAE. See Thuya. Each Ten

## CHAMAECYPARIS, False Cypress

\**Pisifera plumosa* (Plume Cypress). 30 ft. Beautiful; dense conical habit; feathery branches that respond to shearing.

18-24 in. .... 4.00

2-2½ ft. .... 4.50

Other sizes. Prices on request.

HEMLOCK. See Tsuga.

## JUNIPERUS, Juniper

\**Chinensis Pfitzeriana* (Pfitzer Juniper). 8 ft. A dwarf, fan-shaped evergreen with grayish green foliage.

18-24 in. .... 6.50 60.00

2-2½ ft. .... 7.50 70.00

2½-3 ft. .... 9.50 90.00

3-3½ ft. .... 11.50 105.00

3½-4 ft. .... 13.50

Other sizes. Prices on application.

\**Communis depressa plumosa* (Andorra Plumed Spreading Juniper). 5 ft. This new addition to the ground-covering evergreens is valuable for its compact growth and handsome green foliage, changing to an attractive purple during the winter.

15-18 in. .... 4.00

18-24 in. .... 5.00

2-2½ ft. .... 6.00

2½-3 ft. .... 7.00

\**Excelsa stricta* (Greek Juniper) 8 ft. Narrow, dense tree of erect growth having silvery foliage. Very ornamental.

18-24 in. heavy .... 5.50

2-2½ ft. .... 5.50

## PICEA, Spruce

*Glauca canadensis* (American White Spruce). 85 ft. A very hardy and shapely evergreen with dense silvery foliage. Slow growing. Valuable for windbreaks or as individuals.

2-2½ ft. .... 4.50 40.00

2½-3 ft. .... 5.50

3-4 ft. .... 7.00

Larger sizes, prices on request.

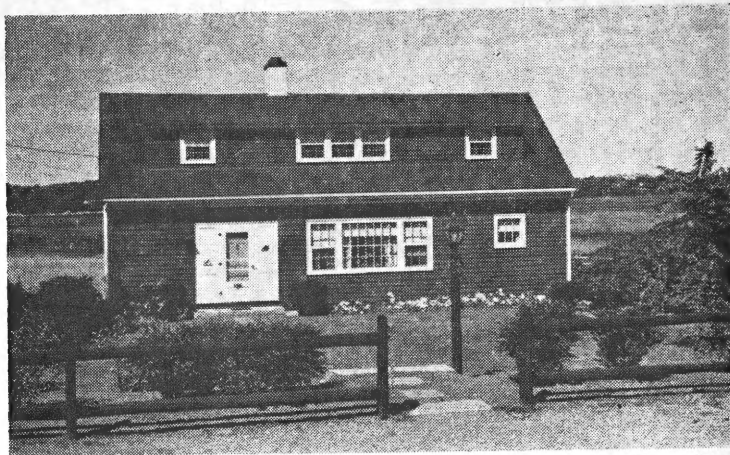
\**Glauca conica* (Dwarf Alberta Spruce). 6 ft. Rare, dwarf, dense, symmetrical. Exceedingly slow-growing; narrow and conical in form.

12-15 in. .... 5.00

15-18 in. .... 7.00

18-24 in. .... 9.00

Five or more plants of the same variety and size at ten rate; 25 or more at 100 rate.



Landscaped by Corliss Bros. Inc.

*This is a GOOD EXAMPLE of what Landscaping can do for YOUR HOME.*

**PICEA, Spruce** — Continued

**Each Ten**

**Pungens glauca** (Colorado Blue Spruce). 60 ft. These trees, with their beautiful steel-blue foliage, prove attractive.

2-2½ ft. .... 7.00

Other sizes and specimens. Prices on application.

**Pungens Moerheimi** (Moerheim Blue Spruce). 40 ft. Similar in color to glauca but more dense and narrow growth; somewhat slower growing.

4-5 ft. .... 20.00

5-6 ft. .... 25.00

**PINUS, Pine**

**\*Mugo compacta** (Dwarf Mountain Pine). 6 ft. spread. A lower and more compact form of the Mugho Pine.

15-18 in. .... 5.00 45.00

18-24 in. .... 6.00 55.00

2-2½ ft. .... 7.50

4-5 ft. .... 17.50 165.00

5-6 ft. .... 23.50 225.00

6-7 ft. .... 28.50 270.00

Other sizes. Prices on request.

**Nigra (austriaca)** (Austrian Pine). 60 ft. A rapid growing, very hardy pine of broad, spreading habit. Fine for seashore planting.

2-3 ft. .... 6.50

3-4 ft. .... 9.50

**Resinosa** (Red Pine). 70 ft. A very hardy, ornamental, broad, open pyramidal pine of vigorous, rapid growth with stout spreading branches. Long, glossy dark green foliage.

2-3 ft. .... 5.00

3-4 ft. .... 6.50

Many fine specimens — prices on application.

**Strobus** (White Pine). 100 ft. One of the most picturesque of our native evergreens. Long, flexible, light green, pendulous needles.

Many fine specimens — prices on application.

**OVERSIZED EVERGREENS**

Catalog space does not permit us to list the many large, oversized, beautiful evergreens in which we specialize. When you need material of this kind for immediate effect, ask us for quotations.

Five or more plants of the same variety and size at ten rate: 25 or more at 100 rate.



# CORLISS BROS.

INCORPORATED

## PINUS, Pine—Continued

Each Ten

**Thunbergi** (Japanese Black Pine). 40-50 ft. An outstanding tree for planting near salt water and bleak situations. Graceful, wide-spreading with broad, irregular head; bright green needles. Faster growing than Austrian Pine, but somewhat shorter.

2-3 ft. .... 6.50

**RETINOSPORA.** See *Chamaecyparis*.

**SPRUCE.** See *Picea*.

## TAXUS, Yew

\*†§**Cuspidata** (Spreading Japanese Yew). 10 ft. A compact, spreading variety. Dark green foliage. Bright red berries in fall. Very attractive.

15-18 in. ....	4.75	42.50
18-24 in. ....	6.50	60.00
2-2½ ft. ....	8.50	80.00
2½-3 ft. ....	12.00	110.00
3-3½ ft. ....	16.50	

Larger sizes. Prices on application.

\*†§**Cuspidata capitata** (Upright Japanese Yew). 25 ft. This upright, pyramidal form is considered one of the best and most beautiful of the yews. It will grow in shade and holds its rich, dark green color well all through the winter. Valuable for hedges; stands shearing well. Red berries in fall.

18-24 in. ....	7.00
2-2½ ft. ....	9.00
2½-3 ft. ....	12.00
3-3½ ft. ....	16.50
3½-4 ft. ....	21.50
4-5 ft. ....	28.50

Larger sizes. Prices on application.

\*†§**Cuspidata nana** (Spreading Form) (Dwarf Japanese Yew). 4 ft. Valuable on account of its deep green foliage and extreme hardiness. Red berries in fall.

15-18 in. ....	6.00
18-24 in. ....	9.00
2-2½ ft. ....	13.50

Larger sizes. Prices on application.

\*†§**Media Halloran** (Halloran Anglojap Yew). 10-12 ft. Another splendid *Taxus*, with dark green foliage; very dense habit; and slightly spready growth.

15-18 in. .... 5.50

\*†§**Media Hatfieldi** (Hatfield's Yew). 8 ft. Especially compact vase-shaped evergreen with dark green foliage. Considered one of the best of the *Taxus* hybrids. Excellent for hedges. Red berries in the fall.

15-18 in. ....	5.50	50.00
18-24 in. ....	7.00	65.00
2-2½ ft. ....	9.00	85.00
2½-3 ft. ....	12.50	

Larger sizes. Prices on application.

†§**Media Hicksi** (Hicks' Yew). 10 ft. Erect, columnar growth similar to Irish Yew, but quite hardy. Red berries in fall.

15-18 in. ....	4.50	40.00
18-24 in. ....	6.00	55.00
2-2½ ft. ....	7.50	
2½-3 ft. ....	9.50	

Five or more plants of the same variety and size at ten rate; 25 or more at 100 rate.



# CORLISS BROS.

INCORPORATED

## THUYA, Arbor-Vitae

Each Ten

\***Occidentalis Boothii** (Booth Globe Arbor-Vitae). 3 ft. Dense, dark green foliage. One of the best globe types.

15-18 in. ....	3.25	30.00
18-24 in. ....	4.25	38.75

\***Occidentalis nigra** (American Arbor-Vitae). 40 ft. A useful, upright, flat-leaved dark green evergreen.

2-2½ ft. ....	4.00	37.50
2½-3 ft. ....	5.00	45.00
3-4 ft. ....	6.00	55.00
4-5 ft. ....	8.00	

Larger sizes. Prices on application.

\***Occidentalis pyramidalis** (Pyramidal Arbor-Vitae). 25 ft. Very columnar type. Glossy dark green foliage. One of the finest.

18-24 in. ....	3.75	35.00
2-2½ ft. ....	4.50	40.00
2½-3 ft. ....	5.50	50.00
3-4 ft. ....	6.50	60.00
4-5 ft. ....	8.50	
5-6 ft. ....	10.50	
6-7 ft. ....	13.50	

Larger sizes. Prices on application.

\***Occidentalis wareana** (Siberian Arbor-Vitae). 15 ft. A hardy, dense bush having gray-green foliage.

18-24 in. ....	3.75	
3-4 ft. ....	7.00	
4-5 ft. ....	9.50	

## TSUGA, Hemlock

†**Canadensis** (Canadian Hemlock). 75 ft. Finest of North American evergreens. A medium-sized, broadly pyramidal tree of dense growth and rich green foliage.

2-2½ ft. ....	5.50	
2½-3 ft. ....	6.50	
3-4 ft. ....	8.50	
4-5 ft. ....	12.00	
5-6 ft. ....	16.50	

Larger specimens. Prices on application.

YEW. See Taxus.

# Now!

## Successful Summer Planting

OF EVERGREENS, TREES and SHRUBS with the  
New plastic spray, PLANTCOTE

By digging the plants with a ball of earth and Plantcoting, it is possible to safely transplant trees and shrubs in full leaf, with complete success, thus extending the planting season into June, July and August.

See Pages 4 and 6

Five or more plants of the same variety and size at ten rate; 25 or more at 100 rate.

# Evergreen Shrubs

These are a group of both small and large shrubs, with firm, hard leaves which are retained over winter. Most of them bloom beautifully, and some of them are most showy, while others are very fragrant.

## EVERGREENS ARE DUG, BALLED, AND BURLAPPED (B&B) at prices quoted.

\*Suitable for foundation plantings.

†Adapted to partial shade.

§Berried shrubs.

### BUXUS, Boxwood

Each Ten

\***Sempervirens** (Common Boxwood). To 25 ft. A useful broadleaf evergreen of fairly rapid growth, that lends itself to all kinds of uses. Foliage remains deep green throughout the entire year. Does well in poor soils, grows luxuriantly in sun or shade, can be clipped and kept low.

15-18 in. ....	4.50
18-24 in. ....	6.00

\***Sempervirens Welleri** (Weller's Hardy Northern Box). A splendid new dwarf Boxwood with shiny oval foliage. Excellent for quick hedges that may be trimmed and kept low and dense to any size of dwarf hedge form or edging. Does well in poor soils, sun or shade.

9-12 in. potted .....	2.50	22.50
12-15 in. potted .....	3.00	27.50

### DAPHNE

\***Cneorum** (Rose Daphne). 1 ft. Dwarf evergreen shrub having delightfully fragrant rose-pink flowers in May.

7-9 in. potted .....	2.00	18.00
9-12 in. potted .....	2.50	22.50

### EUONYMUS, Euonymus

\*†**Fortunei colorata** (Purple-leaf Euonymus) 10 ft. A vine of rapid growth, with leaves of deep green above and dull red underneath, that turn bronze-red in fall.

2-2½ ft. ....	2.50
2½-3 ft. ....	3.00
3-3½ ft. ....	3.50
3½-4 ft. ....	4.00

\*†**Fortunei radicans** (Winter Creeper). 15 ft. A creeping vine having small, dull green leaves with whitish veins. Under foliage bronze.

12-15 in. ....	1.50
15-18 in. ....	1.90

\*†§**Fortunei vegetus** (Big-leaf Winter Creeper) 5 ft. Trailing evergreen shrub with large veined leaves. Abundance of orange-scarlet berries in the fall.

15-18 in. ....	2.00	18.00
18-24 in. ....	2.50	22.50
2-2½ ft. ....	3.25	

**FIRETHORN.** See *Pyracantha*.

### HEDERA

\*†**Helix baltica** (Hardy English Ivy). 15 ft. This graceful shiny-leaved evergreen plant is excellent as a self-clinging vine as well as a splendid ground cover that will take dense shade. Perfectly hardy.

	<b>Ea.</b>	<b>per 10</b>	<b>per 100</b>
3-in. pot plants .....	.75	7.00	60.00

**HOLLY.** See *Ilex*.

Five or more plants of the same variety and size at ten rate; 25 or more at 100 rate.



It's NEW! It's WONDERFUL!

## \*EUONYMUS SEEDLING No. 706

A GREAT NEW BROADLEAF EVERGREEN

Priced for everyone's Pocketbook . . .

Production on a large scale makes this possible.

This new plant has everything . . .

- ★ Grows well in sun or shade
- ★ Beautiful, compact, ornamental shrub
  - ★ Excellent for hedges — lends itself to shearing
  - ★ Withstands exceptionally low temperatures
  - ★ Endures droughty conditions
  - ★ Adaptable to most soils

This beautiful broadleaf Evergreen shrub is a cross between radicans and vegetus, selected from an excellent strain of seedlings. Although the leaves are not shaped like vegetus, they are large, more pointed and very shiny.

	Each	Ten
15-18 in. ....	2.75	25.00
18-24 in. ....	3.25	
2-2½ ft. ....	3.90	
2½-3 ft. ....	5.50	

These plants are 2½-3 years old and show the wonderful root system that predominates in all the Corliss Euonymus.



Five or more plants of the same variety and size at ten rate; 25 or more at 100 rate.



# CORLISS BROS.

INCORPORATED

## ILEX, Holly

Each      Ten

\*†**Crenata convexa** (bullata) (Convex Box Holly). 4 ft. The best evergreen substitute for Boxwood in the North. Small, shiny, dark green boxwood-like leaves densely covering the twigs; good for rock gardens and other low plantings. Grows well in sun and shade; hardy.

15-18 in. ....	5.50	50.00
18-24 in. ....	7.50	70.00
2-2½ ft. ....	10.50	

\*§**Glabra** (Inkberry). 2-5 ft. One of the best lesser known native shrubs, with handsome, shiny, evergreen leaves. The shining black berries ripen in Sept. and remain until late spring.

15-18 in. ....	3.50
18-24 in. ....	4.50

## KALMIA, Kalmia

\*†**Latifolia** (Mountain Laurel). 10 ft. Leaves rich glossy green. An abundance of pinkish white blooms in June

15-18 in. ....	4.75	42.50
18-24 in. ....	6.00	55.00
2-2½ ft. ....	7.50	70.00

## LEUCOTHOE

\*†**Catesbaei** (Drooping Leucothoe). 4 ft. A rather open-growing plant with fine white flowers borne on long, pendulous racemes. The leaves are glossy green in summer and assume a purplish red tint in late fall.

15-18 in. ....	4.50
18-24 in. ....	5.50
2-2½ ft. ....	7.00

## MOUNTAIN LAUREL. See Kalmia.

## PACHYSANDRA, Pachysandra

\*†**Terminalis** (Japanese Spurge). 1 ft. A valuable evergreen ground cover, with white flowers in May.

	10	100	1000
3-in. pot plants .....	3.50	32.50	300.00

## PIERIS, Andromeda

Each      Ten

\*†**Floribunda** (Mountain Andromeda). 6 ft. A compact shrub with dark masses of evergreen foliage, overhung with large panicles of Lily-of-the-Valley-like flowers in May.

15-18 in. ....	5.50
18-24 in. ....	7.00
2-2½ ft. ....	9.00

\*†**Japonica** (Japanese Andromeda). 10 ft. Ornamental evergreen with shiny, green leaves and white flowers in May.

15-18 in. ....	5.00
18-24 in. ....	6.50
2-2½ ft. ....	8.50

## PYRACANTHA, Firethorn

\*†§**Coccinea Lalandi** (Laland Firethorn). A most remarkable fruiting evergreen shrub with small dark green leaves. Bears attractive large trusses of white flowers during the late spring followed by an abundance of brilliant orange-scarlet berries which remain late into the winter. An excellent plant for foundation planting where soil is dry. The plants can be trimmed to fit any position. Prefers a warm, well-drained location.

15-18 in. potted .....	4.50
------------------------	------

Five or more plants of the same variety and size  
at ten rate; 25 or more at 100 rate.



# CORLISS BROS.

INCORPORATED

## RHODODENDRON

Each Ten

- \*†**Carolinianum** (Carolina Rhododendron). 6 ft. A very hardy plant with narrow, dark green leaves covered with pale rose-purple, bell-shaped flowers in May.
 

15-18 in. ....	5.75
18-24 in. ....	7.00
- \*†**Catawbiense** (Catawba Rhododendron). 8 ft. Compact-growing bush with broad, roundish leaves. Bell-shaped flowers of pale pink to a rich lavender in June.
 

15-18 in. ....	5.50	50.00
18-24 in. ....	7.00	65.00
2-2½ ft. ....	9.00	
- \*†**Catawbiense alba**. This is a clear white selection from the native Rhododendron catawbiense with excellent dwarf and compact habit of growth.
 

18-24 in. ....	10.00
2-2½ ft. ....	14.50
- \*†**Catawbiense compactum** (Compact Catawba Rhododendron). 6 ft. Dense, compact, dwarf variety with same foliage and flowering characteristics as Catawbiense. Excellent in front of taller varieties.
 

15-18 in. ....	6.50
18-24 in. ....	8.00
2-2½ ft. ....	10.00

## HYBRID RHODODENDRONS

These are one of the finest broad-leaved Evergreens. They create unforgettable spots of color in late spring, and are very useful in partial shade. Average height 8-12 ft.

- \*†**Caractacus**. A later blooming variety with fine rich purple-crimson flowers accented by handsome dark green foliage.
 

18-24 in. ....	12.00
2-2½ ft. ....	17.50
- \*†**Dr. Dresselhuys**. Huge, rich, deep red flowers which make an unusually attractive setting against the rich glossy green foliage. Robust. May.
 

18-24 in. ....	12.00
----------------	-------
- \*†**Ignatius Sargent**. Enormous flowers of a very bright rosy crimson which creates a spectacular sight against the heavy rich foliage. This variety grows rapidly and is the spreading type. May.
 

18-24 in. ....	10.00
----------------	-------
- \*†**Lee's Dark Purple**. A slower growing variety than most, with deep rich purple flowers in late season.
 

18-24 in. ....	10.00
2-2½ ft. ....	14.50
- \*†**Roseum elegans**. A compact, bushy shrub with a wealth of rose-pink flowers. One of the best for foliage. May.
 

18-24 in. ....	10.00
2-2½ ft. ....	14.50
2½-3 ft. ....	18.50

## VINCA, Hardy Myrtle

**Minor Bowles' Variety**. 6 in. A trailing evergreen plant with broad and rich glossy green foliage and rich blue flowers in spring. Used extensively for carpeting the ground under shrubs, trees, etc.

	Each	10	100	1000
Field-grown plants .....	\$ .45	\$4.00	\$35.00	\$300.00

Five or more plants of the same variety and size at ten rate; 25 or more at 100 rate.



# Deciduous Trees

## FOR SHADE, FLOWERS, FOLIAGE, BERRIES

Among the vast number of beautiful Deciduous Trees that shed their foliage in the fall are those suitable for planting along roadsides, as screens, for shade, etc. Many of these bear beautiful flowers and colorful fruits.

### SPECIAL PRICES ON QUANTITY

†Adapted to partial shade.

§Berried trees.

**Note:**—Figures after the names give approximate heights reached by the trees and shrubs under favorable conditions.

### TREES B&B (Balled and Burlapped)

Unless otherwise marked "B&B" (Balled and Burlapped), trees are dug bare rooted when dormant. Should balling and burlapping be desired on trees not marked "B&B," an extra charge will be made.

Heights given with caliper measurements are general average and are approximate only. Where no caliper is given, the height is the governing measurement.

After the regular bare-root digging season is passed, this material must be dug with a ball and, since considerable time, labor, and soil are involved, balling and burlapping will be charged. Prices quoted on request.

### ACER, Maple

Each Ten

#### **Palmatum atropurpureum** (Japanese Red-leaved Maple)

25 ft. Small, ornamental tree with magnificent purple-red foliage, gracefully lacinated. A handsome specimen on the lawn.

2-3 ft. B&B .....	8.50
3-4 ft. B&B .....	12.00
4-5 ft. B&B .....	17.50

#### **Platanoides** (Norway Maple). 50 ft. Large, handsome, spreading tree with heavy, green foliage of great substance. Yellow autumn foliage.

8-10 ft., 1¼-1½ in. caliper .....	8.00
10-12 ft., 1¾-2 in. caliper .....	11.00
12-14 ft., 2-2½ in. caliper .....	15.00
14-16 ft., 2½-3 in. caliper .....	20.00

Larger specimens. Prices on application.

#### **Saccharum** (Sugar Maple). 75 ft. One of the finest shade trees for lawn or street planting. Clear, straight growth and well-developed heads. Red and yellow autumn foliage.

8-10 ft., 1-1¼ in. caliper .....	7.50
10-12 ft., 1-1¼ in. caliper .....	8.50

### NEW CRIMSON KING MAPLE

Plant Pat. No. 735

(*Acer schwedleri nigra*. 50-60 ft.)

This beautiful new Maple is of the Norway Maple family and has all of its fine characteristics PLUS very attractive deep crimson-purple foliage continuously from spring right up until the leaves fall in Autumn. You'll want to be ONE OF THE FIRST to own a new CRIMSON KING MAPLE.

8-10 ft., 1½-1¾ in. caliper .....	18.00
10-12 ft., 1½-1¾ in. caliper .....	21.00

Five or more plants of the same variety and size at ten rate; 25 or more at 100 rate.



# CORLISS BROS.

INCORPORATED

## CERCIDIPHYLLUM, Katsura Tree Each Ten

**Japonicum.** 30 ft. Very desirable ornamental tree with rather dense pyramidal habit. Heart-shaped pink leaves when unfolding, rich medium green in summer, and brilliant orange-scarlet in autumn.

6-8 ft. B&B .....	10.00
8-10 ft. B&B .....	15.00
12-14 ft. B&B .....	30.00

**CRAB, FLOWERING.** See Malus.

## CORNUS, Dogwood

†§**Florida** (White-flowering Dogwood). 25 ft. A tree type producing showy white flowers in May and brilliant red foliage and red berries in the fall.

**Spring Planting Only**

4-5 ft., B&B .....	7.00
--------------------	------

†§**Florida rubra** (Pink-flowering Dogwood). 20 ft. One of the finest flowering trees. Massed with rose-colored flowers in early spring, followed by red berries.

**Spring Planting Only**

3-4 ft. B&B .....	8.50
4-5 ft. B&B .....	11.50

†§**Kousa** (Korean Dogwood). 15-20 ft. The Oriental sister of our native Flowering Dogwood. A small tree with big white flowers in June, followed by large attractive red fruit. Handsome purplish foliage in autumn.

**Spring Planting Only**

4-5 ft., B&B .....	7.50
5-6 ft., B&B .....	9.00
6-8 ft., B&B .....	13.50

## CRATAEGUS, Hawthorn

§**Oxyacantha albo** (White Hawthorn). 15 ft. A native variety bearing white blossoms in May, succeeded by clusters of bright scarlet fruit.

6-8 ft., B&B .....	10.00
8-10 ft., 1 3/4-2 in. caliper B&B .....	17.50
10-12 ft., 1 3/4-2 in. caliper B&B .....	20.00

**DOGWOOD.** See Cornus.

**ELM.** See Ulmus.

## GINKGO

**Biloba** (Maidenhair Tree). 60 ft. Picturesque, pyramidal tree with a clean, straight trunk and fan-shaped leaves practically free from insects.

6-8 ft. ....	6.50
8-10 ft., 1 1/2-1 3/4 in. caliper .....	9.50

### WINTER MOVING OF BIG TREES

We strongly recommend the winter moving of large trees which can be done very economically at this time of year.

We are fully equipped to do this job complete.

**CALL US FOR FREE ESTIMATES.**

Five or more plants of the same variety and size  
at ten rate; 25 or more at 100 rate.



**A CORLISS SPECIMEN TREE**

Our trees are COMPRESSOR ROOT PRUNED and FED to give them strong powerful root systems.

The planting of large trees gives immediate beauty and shade.

Catalog space does not permit us to list the hundreds of oversized, beautiful trees in which we specialize. If you are interested in large trees, ask us for our list.

**GLEDITSIA, Locust**

**Each Ten**

**Triacanthos var. Moraine.** (Moraine Locust, Pat. #836).

The new, fast-growing, shade tree which experts predict will replace the American Elm as the most graceful shade tree. It is vase-shaped like the Elm, and adaptable to a wide variety of soils. This Honeylocust, with lacy, luxuriant, dark green foliage, is hardy, clean and tidy without seeds or pods, and thornless.

8-10 ft. ....	13 50
---------------	-------

**HAWTHORN.** See *Crataegus*.

**LINDEN.** See *Tilia*.

**LOCUST.** See *Gleditsia*.

**MAGNOLIA**

§**Glauca** (Sweetbay). 15 ft. Sweetly scented creamy-white flowers of globe form appear in May and June. The glossy rubber-like foliage is silvery underneath  
**Spring Planting Only**

3-4 ft. B&B	6.50
4-5 ft., B&B	9.00
5-6 ft., B&B	12.00

Five or more plants of the same variety and size at ten rate; 25 or more at 100 rate.



**MAGNOLIA** — Continued

Each Ten

**Soulangeana** (Saucer Magnolia). 20 ft. One of our showiest and most picturesque trees with lustrous foliage and slightly fragrant, cup-shaped flowers, purple-pink outside and creamy white within, in April and May.

**Spring Planting Only**

3-4 ft., B&B .....	9.00
4-5 ft., B&B .....	12.00

**MALUS, The Flowering Crab-Apples**

➤ **§Almey.** (Almey Crabapple). From a distance, the tree looks like a "mass of flames" for the large, glistening, fiery crimson blooms crowd the branches to the tips. The fruits are small, oval, maroon, and hang on into the winter season. Almey can be the sensation of your neighborhood.

4-5 ft. ....	7.50
5-6 ft. ....	10.00

§**Arnoldiana** (Arnold Crabapple). 12 ft. One of the best crabs, dark green foliage and low pendulous soft pink flowers opening to almost pure white. Conspicuous yellow fruit.

4-5 ft. ....	4.50
5-6 ft. ....	5.50

↘ **§Eleyi** (Eley Crab). 18 ft. One of the best red-foliaged Crabs. Large clusters of purplish red flowers in June, followed by showy purple-red fruit.

5-6 ft. ....	5.50
6-8 ft. ....	8.00

Larger specimens. Prices on application.

↘ **§Floribunda** (Japanese Flowering Crab). 15 ft. A glorious display of rosy pink buds opening to white flowers in abundance, appearing with the leaves in May. In autumn, this tree produces yellow fruit which turns a very showy rosy red. Attractive foliage.

4-5 ft. ....	4.50
5-6 ft. ....	5.50

§**Purpurea aldenhamensis** (Aldenham Crabapple) 8-10 ft. A striking variety with single and semi-double deep purple flowers and good sized brownish-purple fruit. The lovely foliage is purple at first, later turning bronze.

5-6 ft. ....	8.00
6-8 ft. ....	12.00

§**Sargenti** (Sargent Crab). 8 ft. A handsome specimen covered with clear white flowers in May. Small dark red fruit and brilliant orange-yellow foliage in the fall. Large specimens. Prices on application.

**MAPLE.** See Acer.

**MT. ASH.** See Sorbus.

**OAK.** See Quercus.

---

**REMEMBER—Nursery stock without landscape advice is often like medicine without a doctor.**

---

Five or more plants of the same variety and size at ten rate; 25 or more at 100 rate.



# CORLISS BROS.

INCORPORATED

## QUERCUS, Oak Each    Ten

**Palustris** (Pin Oak). 60-80 ft. A rapid grower. A majestic tree of broad pyramidal form with slightly drooping branches and finely divided dark green leaves, which turn brilliant red and yellow in the fall.

6-8 ft. ....	8.00
8-10 ft. ....	10.00

Larger specimens. Prices on application.

## SALIX, Willow

**Niobe** (Golden Weeping Willow). 40 ft. This beautiful tree is attractive at all seasons with its golden branches weeping to the ground.

6-8 ft. ....	4.50
8-10 ft., 1-1¼ in. caliper .....	6.50

## SORBUS, Mountain Ash

**§Aucuparia** (European Mt. Ash). 50 ft. This tree has fernlike foliage and from mid-summer through to fall bears large clusters of scarlet berries.

6-8 ft. ....	6.00
8-10 ft., 1-1¼ in. caliper .....	7.50

## TILIA, Linden

**Cordata** (Little Leaf European Linden). 70 ft. A stately tree, and one of the most attractive and fast growing shade trees for lawn, park, or avenue planting.

Large sizes and Specimens. Prices on application.

**Platyphyllos pyramidalis** (Pyramidal Linden). 40 to 50 ft. A very desirable compact form, decidedly pyramidal in growth, reminding one of a Lombardy Poplar, with ascending branches. May be used effectively in a very narrow space, or as a screen or sentinel tree.

6-8 ft. ....	7.00
8-10 ft., 2-2½ in. caliper .....	15.00
10-12 ft., 2½-3 in. caliper .....	21.00

## ULMUS, Elm

**Americana** (American Elm). 80 ft. Large, stately tree, fan-shaped, very distinct. Bright yellow foliage in fall.

8-10 ft., 1¾-2 in. caliper .....	6.00
10-12 ft., 2½-3 in. caliper .....	10.50
12-14 ft., 2½-3 in. caliper .....	13.00

Larger trees and specimens. Prices on request.

**WILLOW.** See Salix.

## Ground Covering Plants

Just as their name implies, the following plants are suitable for covering the ground under trees and other places where grass won't grow. Although primarily foliage plants, some have blooms. Some have roots that spread and send up new top growth, some spread by sending out trailers that take root, and others merely grow more or less prostrate, spreading out as they enlarge to cover a greater area of ground each year.

- Convallaria majalis** (Lily-of-the-Valley). See page 41.
- Euonymus** (Evergreen Euonymus). See page 11, 12.
- Hedera helix baltica** (English Ivy). See page 11.
- Lonicera halliana** (Honeysuckle). See page 29.
- Pachysandra terminalis** (Spurge). See page 13.
- Vinca minor** (Hardy Myrtle). See page 14.

Five or more plants of the same variety and size  
at ten rate; 25 or more at 100 rate.

# Deciduous Shrubs

## FOR FLOWERS, FOLIAGE, BERRIES

Any true lover of nature will find a world of joy and happiness watching the striking and fascinating changes in flowering shrubs throughout the season. They are a delight from the first mild spring day, when the buds begin to swell, until late in autumn, when the leaves are resplendent in their festive colors and brilliant berries.

We are only able here to acquaint the reader with a very small portion of this wealth of beauty. Generous planting of shrubs around the home will repay in beauty and pleasure many times over the small investment required.

### SHRUBS B&B (Balled and Burlapped)

Unless otherwise marked "B&B" (Balled and Burlapped), shrubs are dug bare rooted when dormant. Should bailing and burlapping be desired on shrubs not marked "B&B," an extra charge will be made at the following rates.

After the regular bare-root digging season is passed, this material must be dug with a ball, and since considerable time, labor and soil are involved, bailing and burlapping will be charged at these rates.

18-24 in. ....	\$ .35
2-3 ft. ....	.45
3-4 ft. ....	.70
4-5 ft. ....	.90
5-6 ft. ....	1.25

Larger sizes — prices quoted on request.

### EXPLANATION SYMBOLS

\*Suitable for foundation plantings.

†Adapted to partial shade.

§Berried shrubs.

**Note:**—Figures after the names give approximate heights reached by the trees and shrubs under favorable conditions.

### ACANTHOPANAX, Aralia

Each Ten

\*†Pentaphylla (Five-leaf Aralia). 10 ft. A tall-growing shrub with stout, prickly stems and bright green, glossy foliage that turns yellow in fall.

3-4 ft. ....	1.60
4-5 ft. ....	1.90

### ARONIA, Chokeberry

\*§Arbutifolia Brilliantissima. (Brilliant Chokeberry). 6 ft. White or flushed pink flowers in May; clusters of bright orange-scarlet berries that persist into winter. Brilliant crimson foliage in Autumn.

2-3 ft. ....	1.35
--------------	------

### AZALEA. They breathe of distant lands

\*†Arborescens (Sweet Azalea). 5 ft. The very fragrant flowers, which are white tinged with pink, appear in June and July.

15-18 in., B&B .....	4.00
18-24 in., B&B .....	5.00

\*†Calendulacea (Flame Azalea). 6 ft. A most beautiful shrub, bearing profusion of pale yellow to fiery red flowers in May and June. Very showy.

18-24 in., B&B .....	5.50
2-2½ ft., B&B .....	6.50
2½-3 ft., B&B .....	7.50

Five or more plants of the same variety and size at ten rate; 25 or more at 100 rate.



# CORLISS BROS.

INCORPORATED

## AZALEA—Continued

Each Ten

\*†**Gandavensis** (Ghent Hybrids). 10 ft. Large, double flowers in colors that vary between pure yellow and pure white, to combinations of pink and scarlet, in early June.

18-24 in. B&B .....	6.00	55.00
2-2½ ft., B&B .....	7.50	70.00
2½-3 ft., B&B .....	9.00	

\*†**Kaempferi** (Torch Azalea) 5 ft. A very desirable shrub with glorious sprays of brilliant orange-red to coral-pink flowers in April and May.

15-18 in., B&B .....	5.00	
18-24 in., B&B .....	7.00	
2-2½ ft., B&B .....	8.50	
2½-3 ft., B&B .....	10.00	

\*†**Mollis** (Chinese Azalea) 5 ft. Large flowers of yellow and orange tints in May and June.

18-24 in., B&B .....	6.00	55.00
2-2½ ft., B&B .....	7.50	

\*†**Mucronulata** (Mongolian Azalea) 6-8 ft. First to flower, in mid-April; bearing delicate rose-lavender flowers that make an attractive display.

2-2½ ft., B&B .....	7.00	
---------------------	------	--

\*†**Poukhanensis** (Korean Azalea). 4 ft. Fragrant and beautiful orchid flowers appear before leaves in April or early May.

15-18 in., B&B .....	5.50	
----------------------	------	--

\*†**Vaseyi** (Pinkshell Azalea) 6 ft. One of the very best ornamentals. Delicate white, pink or deep rose flowers appear in April or May before the foliage.

18-24 in., B&B .....	5.50	
2-2½ ft., B&B .....	6.50	

**BARBERRY.** See Berberis.

**BEAUTY BUSH.** See Kolkwitzia.

## BERBERIS, Barberry

\*§**Thunbergi** (Japanese Barberry). 5 ft. A slow-growing green-leaved shrub followed by bright red foliage and red fruit in the fall.

15-18 in. ....	.60	5.50
18-24 in. ....	.75	7.00
2-2½ ft. ....	1.00	

\*§**Thunbergi atropurpurea** (Red-leaved Japanese Barberry). 5 ft. Of the same habit as the preceding except that the foliage is bronze-red throughout the summer.

18-24 in. ....	1.35	
2-2½ ft. ....	1.60	14.00
2½-3 ft. ....	1.85	16.50
3-4 ft. ....	2.40	21.50

\*§**Thunbergi nana** (Plant Patent No. 189) (Globe Barberry). 4 ft. A low, slow growing and compact type of well-known hardy Barberry, having the same kind and color fruits, but better foliage. Its dwarf tight growth makes a trim appearance without shearing.

2-2½ ft. ....	2.70	24.50
2½-3 ft. ....	3.25	30.00

**BLUEBERRY.** See Vaccinium; also Fruits.

Five or more plants of the same variety and size at ten rate; 25 or more at 100 rate.



Looking for something different?  
Try this wonderful  
**SUMMER FLOWERING BLUE SHRUB!**  
**CARYOPTERIS BLUE MIST**

Commonly called Bluebeard or Blue Spirea, this charming low-growing shrub is covered with clusters of plummy powdery-blue fringed flowers from Aug. until fall frosts, and is perfectly hardy. Suitable as a low shrub or at home in a perennial garden. Height 3 ft.

	Each	Ten
3 yr. potted .....	2.00	18.00

**CHOKEBERRY.** See Aronia. Each    Ten

**CLETHRA**

\*†**Alnifolia** (Sweet Pepper). 7 ft. A dainty native shrub, bearing spikes of creamy white, fragrant flowers. July to September and golden leaves in autumn.

2-3 ft. ....	1.50
3-4 ft. ....	1.90

**CORNUS. Dogwood**

\*†**Alba sibirica** (Red-branched Dogwood) 8-10 ft. Branches are bright red, stout and erect. Clusters of yellow-white flowers in late June, followed by blue-white berries.

2-3 ft. ....	1.25	11.50
3-4 ft. ....	1.60	

†**Florida** (Shrub type). (White-flowering Dogwood). 25 ft. A shrub type, producing showy white flowers in May and brilliant red berries and dark red leaves in the fall.

3-4 ft., B&B .....	4.50
--------------------	------

Larger specimens. Prices on request.

†**Mas** (Cornelian Cherry). 15 ft. A handsome shrub-like tree which bears yellow flowers in late March or early April before the leaves. Immense quantities of scarlet fruit make a stunning display in autumn.

4-5 ft., B&B .....	4.50
5-6 ft., B&B .....	6.50
6-8 ft. B&B .....	9.00

\*†**Paniculata** (Gray Dogwood). 15 ft. Clusters of white flowers in May and June are followed in autumn by white berries.

2-3 ft. ....	1.35	12.00
--------------	------	-------

**COTONEASTER, Cotoneaster**

§**Apiculata** (Cranberry Cotoneaster). 5 ft. A very desirable, medium sized shrub with pink blooms in June, followed by showy red fruit.

9-12 in. potted .....	2.25	20.00
-----------------------	------	-------

§**Horizontalis** (Rock Cotoneaster). 3 ft. Low, horizontal branched shrub. Glossy foliage. Pinkish white blooms in spring, followed by bright red fruit. Semi-evergreen.

9-12 in. potted .....	2.00
12-15 in. potted .....	2.50
15-18 in. potted .....	3.50

**CYDONIA, Quince**

\***Japonica** (Japanese Quince). 5 ft. Early bloomer. Orange-scarlet flowers in May, followed by yellow fruit. Glossy green foliage.

18-24 in. ....	1.25
----------------	------

Five or more plants of the same variety and size  
at ten rate; 25 or more at 100 rate.





# CORLISS BROS.

INCORPORATED

**CYDONIA. Quince — Continued**

	Each	Ten
* <b>Japonica rubra</b> (Red-flowering Quince). 5 ft. Early bloomer. Deep red flowers in May, followed by yellow fruit. Glossy green foliage. A specimen shrub.		
2-2½ ft. ....	1.65	14.50
2½-3 ft. ....	1.90	

**DEUTZIA**

* <b>Gracilis</b> (Slender Deutzia). 3 ft. White flowers and green foliage on arched branches. May, June.		
15-18 in. ....	1.35	
18-24 in. ....	1.75	
2-2½ ft. ....	2.25	
* <b>Lemoinei</b> (Lemoine's Deutzia). 5 ft. Early blooming, vigorous shrub with sprays of pure white flowers in May.		
2-2½ ft. ....	1.85	
2½-3 ft. ....	2.40	

**DOGWOOD.** See Cornus.

**ELAEAGNUS**

**Angustifolia** (Russian Olive) 20 ft. Fragrant, yellow flowers followed by orange-yellow berries enhance its silvery-gray leaves and branches. Excellent for mass planting and seashore planting.

4-5 ft. ....	2.50
--------------	------

**EUONYMUS, Euonymus**

\*†§**Alatus** (Winged Euonymus, Burning Bush). 8-10 ft. Shrub of compact habit. Small leaves on cork-barked branches, yellowish flowers in May and June. Brilliant red fruit and foliage in autumn.

2-3 ft. ....	3.00
3-4 ft. ....	4.00

\*†§**Alatus compactus** (Dwarf Winged Euonymus or Burning Bush). 6 ft. A very choice, dwarf, compact variety which is unquestionably one of the best deciduous shrubs for growing in the shade. For a low, wide hedge, this variety has no equal. Brilliant red foliage in autumn. Bears red berries.

18-24 in. ....	2.50
----------------	------

†§**Europaeus** (European Euonymus). 10-15 ft. A tall, slender variety with deep green foliage which colors to a bronze-red in autumn; pink berries in fall.

3-4 ft. ....	1.75
5-6 ft. ....	3.75

**FORSYTHIA, Golden Bell**

\***Intermedia spectabilis** (Showy Border Forsythia). 8 ft. Rich yellow flowers in April and May before the leaves appear.

3-4 ft. ....	1.50	13.00
4-5 ft. ....	1.90	17.00

\***Spring Glory.** The loveliest of the Golden Bells. Large, pale yellow flowers completely cover the branches in far great masses than the common forsythia.

3-4 ft. ....	1.90
4-5 ft. ....	2.50

\***Suspensa fortunei** (Fortune Golden Bell). 8 ft. More erect habit with arching branches covered with a profusion of rich yellow flowers in April followed by broad deep leaves which are often three-parted.

3-4 ft. ....	1.50	13.00
4-5 ft. ....	1.90	

Five or more plants of the same variety and size at ten rate; 25 or more at 100 rate.



# CORLISS BROS. INCORPORATED

Each Ten

## ★ NEW DWARF FORSYTHIA

A new shrub that develops into a broad, low, compact shrub, maturing at about 6 ft. Excellent for low hedge.

18-24 in. ....	1.50
2-2½ ft. ....	1.75
2½-3 ft. ....	2.25
3-3½ ft. ....	2.85
3½-4 ft. ....	3.50

**HONEYSUCKLE.** See Lonicera.

## HYDRANGEA, Hydrangea

\**Paniculata grandiflora* (Pee Gee Hydrangea). 10 ft. Large conical heads of white flowers in July and August, becoming pink and red with age.

2-3 ft. ....	1.35
3-4 ft. ....	1.75

## HYPERICUM, St. John's Wort

**Hidcote.** 1½-2 ft. A hardy, shapely, dwarf shrub that bears large golden flowers at the end of every new shoot. Dense foliage; flowers freely from early summer till frost.

2 yr. potted .....	2.50
--------------------	------

## ILEX

\*†§*Verticillata* (Common Winterberry). 6 ft. Ornamental shrub with decorative scarlet berries and attractive green foliage. One male shrub should be planted to two female plants for berry-bearing.

3-4 ft. ....	1.75	15.00
4-5 ft. ....	2.25	20.00
5-6 ft. ....	3.00	27.50
6-8 ft. ....	4.50	

**Berry-bearing plants, 25c extra.**

Larger specimens. Prices on application.

## KOLKWITZIA, Beauty Bush from Korea.

\**Amabilis*. 8 ft. Sprays of graceful green foliage completely covered with delicate pink flowers in May, June.

2-3 ft. ....	1.65	14.50
3-4 ft. ....	2.25	

## LIGUSTRUM, Privet

†*Ibolium* (Ibolium Privet). 8 ft. A new hardy variety. Foliage rich glossy green. Semi-evergreen.

	Each	10	100
2-3 ft. ....	\$ .45	3.70	32.00
3-4 ft. ....	.55	4.80	40.00
4-5 ft. ....	.75	6.50	55.00

**LILAC.** See Syringa.

## NATIVE SHRUBS AND PLANTS

We can furnish any of the native trees, shrubs, plants or ferns that grow in this vicinity. Large tracts of wood and pasture land are at our disposal, from which we can obtain any of these native plants.

Five or more plants of the same variety and size at ten rate; 25 or more at 100 rate.



# CORLISS BROS.

INCORPORATED

## LONICERA, Honeysuckle

†§*Tatarica rosea* (Pink Honeysuckle). 10 ft. A graceful bush which bears a profusion of pink flowers in June, followed by red berries.

2-3 ft. .... 1.25

†§*Tatarica Zabeli* (True Red Honeysuckle). 8-10 ft. Considered the best of the red-flowered bush honeysuckles. Vivid red flowers in May, followed by bright red berries in early fall.

2-3 ft. .... 1.50 13.00

3-4 ft. .... 1.85 16.50

4-5 ft. .... 2.25

**MOCK ORANGE.** See *Philadelphus*.

## NEMOPANTHUS, Mountain Holly

\*†§*Mucronatus*. 10 ft. A rather rare shrub producing white flowers from May to Aug. Light crimson red berries in August.

3-4 ft. .... 2.00

## PHILADELPHUS, Mock Orange

\**Coronarius* (Sweet Mock Orange). 10 ft. An upright shrub bearing a profusion of white flowers in May and June. Very popular. Fragrant.

3-4 ft. .... 1.50 13.00

4-5 ft. .... 1.85 16.50

5-6 ft. .... 2.50

\**Virginalis* (Hybrid). 8 ft. A handsome new shrub which covers itself with large, creamy white, semi-double flowers in June.

3-4 ft. .... 2.00

4-5 ft. .... 2.50

**PRIVET.** See *Ligustrum*.

**QUINCE.** See *Cydonia*.

## RHAMNUS, Buckthorn

†§*Carthartica* (Common Buckthorn). 12 ft. Heavy shrub with spiny branches, lustrous green leaves, and small black fruit.

3-4 ft. .... 1.45 12.50

4-5 ft. .... 1.85 16.50

5-6 ft. .... 2.25 20.00

6-8 ft. .... 3.00 27.50

8-10 ft. .... 4.50 40.00

**ROSE.** See pages 36-40.

## ROSA

\*§*Hugonius* (Golden Rose of China). 6 ft. Delicate, single yellow flowers in long, arching sprays in May. The best single yellow rose for shrub use. The plant is perfectly hardy.

2-3 ft. .... 1.75

3-4 ft. .... 2.25

\*§*Rugosa* (common pink). 6 ft. Large single flowers of pink or rose. Blooms early. Excellent seashore variety. Beautiful red berries in the fall.

18-24 in. .... 1.35 12.00

2-3 ft. .... 1.65 14.50

\*§*Rugosa alba* (common white). 6 ft. Large, single, white flowers, early blooming. Fine for seashore planting. Red berries in the fall.

18-24 in. .... 1.50

2-3 ft. .... 1.75

Five or more plants of the same variety and size at ten rate; 25 or more at 100 rate.



**SNOWBALL.** See Viburnum. Each Ten

**SORBUS, Mountain Ash**

**§Tianshanica** (Turkestan Mt. Ash). 12-15 ft. A very rare, small shrubby tree with handsome dark green lustrous leaves and brilliant red fruit in large clusters from mid-summer to fall.

3-4 ft. ....	6.00
4-5 ft. ....	7.50
5-6 ft. ....	9.50

**SPIRAEA, Spirea**

**\*Bumalda (Anthony Waterer).** 3 ft. Semi-dwarf type, free blooming, compact shrub, flowers bright crimson in June and July.

18-24 in. ....	1.40
----------------	------

**\*Japonica callosa alba** (White Japanese Spirea). 3 ft. Similar to Anthony Waterer, except flowers are white.

18-24 in. ....	1.35	12.00
----------------	------	-------

**\*Thunbergi** (Thunberg Spirea). 5 ft. Graceful shrub with an abundance of small, white flowers in May. Foliage feathery.

2-3 ft. ....	1.35
3-4 ft. ....	1.75

**\*Van Houttei** (Van Houtte Spirea). 8 ft. The finest of all the Spireas. Bunches of white flowers in May and June

2-3 ft. ....	1.25	11.50
3-4 ft. ....	1.65	14.50
4-5 ft. ....	2.00	

## Syringa - Lilacs

### The CHOICEST of the new FRENCH HYBRIDS

They are very much superior to the common Lilacs because of their fragrance, large flowers, and range of color, from white to richest purple in single and double forms. We have made a careful selection of those considered the finest of the best older varieties and the newest introductions to date. May and June. 12-15 ft.

	Each	Ten
<b>Belle de Nancy.</b> Double, satiny, lilac-pink.		
3-4 ft. B&B .....	4.50	
4-5 ft. B&B .....	6.00	
<b>Charles Joly.</b> Double, dark purple-red.		
3-4 ft. B&B .....	4.50	
4-5 ft. B&B .....	6.00	
<b>Ludwig Spaeth.</b> Single, dark reddish-purple.		
3-4 ft. B&B .....	4.50	
4-5 ft. B&B .....	6.00	
<b>Michel Buckner.</b> Double, pale lilac.		
3-4 ft. B&B .....	4.50	40.00
4-5 ft. B&B .....	6.00	
5-6 ft. B&B .....	7.50	

**It is ESSENTIAL to use PEAT and HUMUS, as well as FERTILIZER, when planting; see pages 62, 63, 64.**

Five or more plants of the same variety and size at ten rate; 25 or more at 100 rate.



# CORLISS BROS.

INCORPORATED

SYRINGA-LILACS—Continued		Each	Ten
<b>Miss Ellen Willmott.</b> Double, pure white.			
3-4 ft. B&B .....		4.50	
<b>Mme. Antoine Buckner.</b> Double, mauve-pink.			
3-4 ft. B&B .....		4.50	40.00
4-5 ft. B&B .....		6.00	
<b>Mme. F. Morel.</b> New, large, single deep purple flushed mauve-pink.			
3-4 ft. B&B .....		4.50	
4-5 ft. B&B .....		6.00	
<b>Pres. Grevy.</b> Double, light lavender-blue.			
3-4 ft. B&B .....		4.50	
4-5 ft. B&B .....		6.00	
5-6 ft. B&B .....		7.50	
6-8 ft. B&B .....		10.00	
<b>Pres. Lincoln.</b> Single, deep Wedgewood-blue.			
3-4 ft. B&B .....		4.50	40.00
4-5 ft. B&B .....		6.00	55.00
5-6 ft. B&B .....		7.50	70.00
6-8 ft. B&B .....		10.00	

We have many large sizes and specimen plants of the various Hybrid Lilacs. We will gladly quote on request.

**\*Vulgaris** (Common Purple Lilac). 15 ft. The best known and most extensively used Lilac. Fragrant flowers in May and June.

2-3 ft. ....	1.65	14.50
3-4 ft. ....	2.15	19.50
4-5 ft. ....	3.00	27.50

Larger specimens. Prices on request.

**\*Vulgaris alba** (Common White Lilac). 15 ft.

Same as above with white flowers.

2-3 ft. ....	1.75	15.00
3-4 ft. ....	2.35	20.50
5-6 ft. ....	3.85	
6-8 ft. ....	6.75	

Larger specimens. Prices on request.

## VACCINIUM. Blueberry

✓ †§**Corymbosum** (Highbush Blueberry). 15 ft. A handsome shrub bearing pinkish white flowers in May followed by blue-black berries of excellent flavor. Brilliant colored foliage in fall.

3-4 ft. ....	3.50
4-5 ft. ....	4.50
5-6 ft. ....	5.50

**VACCINIUM HYBRIDS.** See Blueberries, page 32.

## VIBURNUM

➤\*†§**Americanum** (American Cranberry). 10 ft. A handsome decorative and ornamental red-berried shrub of open growth. White flowers in May and June. Red and yellow fall foliage.

3-4 ft. ....	1.75	15.00
4-5 ft. ....	2.10	

\***Carlesi** (Fragrant Viburnum). 5 ft. Compact shrub of medium height, with pretty pink and white flowers in May, resembling the arbutus in form and fragrance.

18-24 in., B&B Own roots .....	4.50
2-2½ ft., B&B Own roots .....	5.50
2½-3 ft. B&B, Own roots .....	6.50

Five or more plants of the same variety and size at ten rate; 25 or more at 100 rate.



# CORLISS BROS.

INCORPORATED

## VIBURNUM—Continued

Each Ten

\*†**Dentatum** (Arrow-wood). 10 ft. Native shrub with glossy green foliage. White flowers in May and June. Berries crimson turning to blue.

3-4 ft. ....	1.50
4-5 ft. ....	1.90
5-6 ft. ....	2.50

Larger specimens. Prices on request.

\***Opulus sterile** (Common Snowball). 10 ft. Well-known shrub, producing large snow-ball-like flowers in May. Reddish autumn foliage.

2-3 ft. ....	1.40
3-4 ft. ....	1.85
4-5 ft. ....	2.35

## WEIGELA

\***Rosea** (Pink Weigela). 8 ft. A symmetrical bush of medium size. Rose flowers in June.

2-3 ft. ....	1.35
3-4 ft. ....	1.75

Larger specimens. Prices on request.

### THAT GREAT NEW EVERBLOOMING RED WEIGELA

**Vaniceki** (Improved Eva Rathke) 6 ft. Hardy and vigorous with a profusion of garnet-crimson flowers in June, and then sparingly throughout the summer. Reddish yellow autumn foliage.

2-3 ft. ....	1.50	13.00
3-4 ft. ....	2.00	18.00
4-5 ft. ....	2.75	

**WINTERBERRY.** See *Ilex*.

## Hedge Plants

A living fence, made from growing plants, attractive with their green leaves and formally trained or arched branches, is a part of the grounds and garden, and is surely more ornamental than an artificial fence. A hedge is permanent. Once planted, only occasional trimming or shearing is required.

**Acanthopanax** (*Aralia*). See page 20.

**Berberis** (*Japanese*). See page 21.

**Buxus** (*Boxwood*). See page 11.

**Clethra** (*Sweet Pepper*). See page 22.

**Dwarf Forsythia.** See page 24

**EUONYMUS** No. 706 — See page 12.

**Euonymus alatus Compactus** (*Dwarf Winged Euonymus*). See page 23.

**Forsythia intermedia spectabilis.** See page 23.

**Ilex** (*Holly*). See pages 13 and 24.

**Ligustrum ibolium** (*Hardy Privet*). See page 24.

**Rosa rugosa** (*common*). See page 25.

**Spiraea Van Houttei** — See page 26.

**Syringa** (*white and purple lilacs*). See page 27.

**Taxus Hicksi, Hatfield and capitata.** See page 9.

**Thuja occidentalis nigra** (*American Arbor-Vitae*). See page 10.

**Tsuga canadensis** (*Canadian Hemlock*). See page 10.

Five or more plants of the same variety and size at ten rate; 25 or more at 100 rate.

# Vines

## FOR COMFORTING SHADE and GORGEOUS BEAUTY

†Adapted to partial shade.

§Berried vines.

**NOTE.**—Figures after the names give approximate heights reached under favorable conditions.

### AMPELOPSIS

Each Ten

†§**Heterophylla** (Porcelain Ampelopsis). 30 ft. A vigorous vine with deeply lobed green leaves striped with white. Clusters of very attractive blue, lilac, and white berries in late summer and fall.

2 yr. No. 1 potted ..... 1.75 15.00

§**Quinquefolia** (Virginia Creeper). 35 ft. High-climbing vine of rapid growth. Foliage rich crimson in autumn. Blue berries.

2 yr. No. 1 dormant ..... 1.00

2 yr. No. 1 potted ..... 1.40

†§**Tricuspidata Veitchi** (Boston Ivy). 40 ft. A clinging vine densely covered with glossy green foliage. Blue berries in the fall.

2 yr. No. 1 potted ..... 1.50 13.00

### ARISTOLOCHIA

**Sipho** (Dutchman's Pipe). 25-30 ft. Rapid growing vine with dark heart shaped leaves and yellowish green pipe-shaped flowers in May and June.

4 yr. potted ..... 2.50

### CLEMATIS

**Paniculata** (Sweet Autumn Clematis). 25 ft. Very fragrant pure white flowers in profusion in August and September. Yellow foliage in autumn.

2 yr. No. 1 potted ..... 1.50 13.50

**EUONYMUS.** See pages 11 and 12.

**IVY.** See Ampelopsis and Hedera helix baltica, page 11.

### LONICERA, Honeysuckle

†§**Halliana** (Hall's Honeysuckle). 20 ft. Semi-evergreen vine. Fragrant pure white changing to yellow flowers from June to August.

Each Ten Hundred

2 yr. No. 1 ..... .75 6.50 55.00

2 yr. No. 1 potted ..... 1.25 11.50

**Heckrotti** (Goldflame). 15-20 ft. A marvelous new Honeysuckle. Fragrant and lovely two-toned flowers, bright flame-pink outside and creamy gold within, are produced in abundance from June until freezing weather. Glossy dark foliage adds to its charm. May be trimmed to make an excellent shrub.

Each Ten

2 yr. No. 1 potted ..... 1.35

3 yr. No. 1 potted ..... 2.00

### POLYGONUM

†**Auberti** (Silver Lace Vine). 25-30 ft. Very rapid grower with small light green leaves and large feathery sprays of fragrant white flowers. August to October.

2 yr. No. 1 potted ..... 1.50 13.50

### WISTERIA

**Sinensis** (Chinese Wisteria). 40 ft. Hardy, fast-growing climber. Long racemes of pea-shaped lavender flowers in May and June.

2 yr. No. 1 potted ..... 2.25

3 yr. No. 1 potted ..... 3.50

Five or more plants of the same variety and size at ten rate; 25 or more at 100 rate.

# Standard Fruit Trees

OUR FRUIT TREES AND VINES ARE CAREFULLY PRUNED, SHAPED, AND SPRAYED IN OUR NURSERIES.

Catalog space does not allow us to list the sizes and prices of each of these trees, but we'd be very glad to quote on size and variety you desire on standard fruit trees.

## APPLES

We can supply various size trees from

5-6 ft. at \$4.50; 6-8 ft. at \$8.00 each

8 ft. to 20 ft. trees with large calipers, prices on request.

- ↘ Anoka — Baldwin — Cortland — Gravenstein — Kendall
- ↘ McIntosh — Red Astrachan — Red Delicious
- ↘ Yellow Delicious — Yellow Transparent

## PEACHES

4-5 ft., \$1.50 each

- ↘ **Champion.** Handsome, creamy white Peach with red cheeks. Superior flavor. Mid-August.
- ↘ **Early Elberta.** Very large, juicy, yellow fruit.
- ↘ **Golden Jubilee.** Best early free stone Peach. Sweet; golden yellow skin; early August.

## PEARS

These trees all bore last year.

4 yr., 5-6 ft., \$4.50

5 yr., 6-8 ft., \$6.50

- ↘ **Bartlett.** An old favorite, noted for its large juicy fruit. Mid-season.
- ↘ **Clapp's Favorite.** One of the very best of the early Pears. Very good eating. Early.
- ↘ **Max Red Bartlett, Pat. No. 741.** A new red sport of Bartlett with same desirable qualities plus an attractive red color and 10% more sugar. As hardy as Bartlett — proven outstanding merit.

3-4 ft. ....	\$3.50
4-5 ft. ....	4.50

### Suggested Planting Distances of Fruits:

	Feet Apart
Apple Trees .....	30
Dwarf Apple and Pear Trees .....	12
Peach Trees .....	15
Pear Trees .....	15
Grape Vines .....	8
Hybrid Blueberry Bushes .....	5
Bush Cherries .....	6

**QUALITY** as well as **PRICE** should be considered when buying Nursery Stock. Our stock is acclimated and freshly dug.



# *New* **DWARF FRUIT TREES**

## **THAT BEAR FULL SIZE FRUIT**

Dwarf Fruit Trees are the Delight of the Small Home Owner because:

1. Delicious for eating, canning and freezing.
2. Start producing fruit within a couple years.
3. Fruit as large as standard.
4. Small investment that increases each year.
5. Easy to pick on the trees.
6. Easy to prune and spray.
7. Extremely attractive during early spring with gorgeous flowers.
8. Matured height about 8 ft.
9. Can be planted 10-15 ft. apart.
10. Ideal for planting in limited space.

For best results, plant 2 or more varieties for pollination.

REMEMBER — foliage and flowers are attractive for landscape plantings and fruit is top quality for eating.

## ↘ **NEW DWARF APPLES**

Our trees are grown on Malling No. 9 root stock which assures you the most dwarf and the hardiest plants.

	Each
3-4 ft. ....	\$3.00
4-5 ft. ....	6.00
Larger trees, prices on request.	

**Varieties: Baldwin, Cortland, Double Red Delicious, Early McIntosh, Gravenstein, Yellow Delicious**

## ↘ **NEW DWARF PEARS**

	Each
3-4 ft. ....	3.50

Varieties: Dwarf Bartlett, Clapps Favorite — see description of standard varieties.

# *Now!*

## **Successful Summer Planting**

Of EVERGREENS, TREES and SHRUBS with the  
New plastic spray, PLANTCOTE

By digging the plants with a ball of earth and Plantcoting, it is possible to safely transplant trees and shrubs in full leaf, with complete success, thus extending the planting season into June, July and August.

See Pages 4 and 6

# Giant Hybrid BLUEBERRIES THAT ANYONE CAN GROW!

- ★ DELICIOUS BERRIES!
- ★ BEAUTIFUL SHRUBS IN BLOOM!
- ★ RICH GREEN FOLIAGE IN SUMMER!
- ★ BRILLIANT RED LEAVES IN AUTUMN!



## NEWEST VARIETIES

- ↘ **DIXIE**, 7 ft. Largest berries. Mid-July.
- ↘ **PEMBERTON**, 7 ft. Large dark blue. Late July.
- ↘ **WEYMOUTH**, 7 ft. Earliest bearer — July.
 

15-18 in. B&B .....	1.75
18-24 in. B&B .....	2.00
2-2½ ft. B&B .....	2.50
2½-3 ft. B&B .....	3.25
- ↘ **JERSEY**, 7 ft. Superb quality. Late July.
- ↘ **JUNE**, 5-6 ft. Bears after Weymouth. July.
- ↘ **STANLEY**, 7 ft. Delicious, light blue. Mid-July.
 

15-18 in. B&B .....	1.65
18-24 in. B&B .....	1.90
2-2½ ft. B&B .....	2.40
2½-3 ft. B&B .....	3.00

Every one of our bushes offered for sale, bore heavily last year.

All our plants are freshly dug with a ball of earth (B&B) which insures safe transplanting.

Balled and Burlapped plants, such as we offer, give you TWICE the VALUE of bare root plants.

## Cultural Directions for Blueberries *Easy to Plant*

Plant 3 or more varieties for perfect pollinization. Set 5x5 ft. apart. Mix in liberal quantities of Corliss #2 mixture especially prepared for Blueberries (2 lbs. per 1 ft. of height) when planting.

Keep well watered at all times unless you have them planted in a spot where natural moisture abounds.

# Small Fruits

## ASPARAGUS

**Mary Washington.** The best popular variety; heavy yielding; rust-resistant; hardy; rich flavored and tender.

\$7.50 per 100; \$4.25 per 50; \$2.25 per 25

## BLUEBERRY HYBRIDS See page 32

---

## GRAPE VINES

- ✓ **Caco.** Large, sweet wine-red fruit in compact bunches  
**Strong, 2 yr., No. 1 dormant, 75c each; potted \$1.35**
- ✓ **Concord.** Most widely known. Large clusters of glossy black fruit. **Strong, 2 yr., No. 1 dormant, 75c each; potted \$1.35.**
- ✓ **Seneca.** New and outstanding, large white berries, sweet and juicy, in abundance. **Strong, 2 yr., No. 1 dormant 90c each; potted \$1.50.**
- ✓ **Stuben.** A very hardy, new creation of N. Y. Experiment Station. Huge, long, slender clusters of blue-black fruit with delicious, sweet flavor and outstanding quality. Ripens a few days before Concord, but keeps well until Christmas. **Strong, 3 yr. potted, \$2.00 each.**

---

## RASPBERRIES

- ✓ **Latham.** Most popular, all-purpose Raspberry with large, juicy rich red fruit that clings to stem several days after fully ripe in early July.  
**Strong transplants — \$18 per 100; \$10 per 50; \$5.50 per 25; \$2.45 per 10**

## STRAWBERRIES

- ✓ **Catskill (Midseason).** Yields very heavy crops of large, firm, glossy dark red fruit. Field grown plants, **\$5.50 per 100; \$3.25 per 50; \$1.75 per 25**
- ✓ **Premier (Howard 17) (Early).** Bears over long season a tremendous crop of bright scarlet-red berries of excellent flavor.  
**Field grown plants, \$5.50 per 100; \$3.25 per 50; \$1.75 per 25**
- ✓ **Streamliner — Everbearing.** Truly sensational, "Sweet as honey" jumbo sized berries borne in profusion from July until Nov.  
**Field grown plants, \$6.50 per 100; \$3.65 per 50; \$2.00 per 25**

## BEST FERTILIZERS for Plant Nourishment

Let us provide you with the proper planting materials. See pages 61, 62, 63, 64.



Landscaped by Corliss Bros. Inc.

HERE'S WHAT INDUSTRIAL LANDSCAPING MEANS TO THIS  
MODERN COMPANY . . .

Quotation from letter to American Association of Nurserymen:—

"We should like to take this opportunity to express our appreciation at the honor you have bestowed upon the plant in recognizing the work that has been done toward beautification of our grounds.

"We feel that this sort of work and the recognition thereof will lead to greater use of such embellishment by other firms. It is our belief that with the right kind of public relations and publicity so called factory buildings and factory areas can be made to look as good or better than the average expensive house.

"We believe further that industry owes it to itself and its neighbors to make itself attractive in the city or town in which it builds just as much as it is the responsibility of the city or town to recognize industry for the contributions it makes toward the general welfare of the city as a whole.

"Your selection of our plant gives us great pleasure since it means that our efforts have not gone unrecognized.

Very truly yours,  
BOMAC LABORATORIES, INC.  
Henry J. McCarthy, President"



Industrial landscaping and planting is an important segment of the overall program of conservation and beautification to make America a better place to live and to work.

Every Landscape Planting is a Contribution to "PLANT AMERICA"

For appointments, call Gloucester 513

**CORLISS BROS. INC.**

Nurserymen and Landscape Contractors

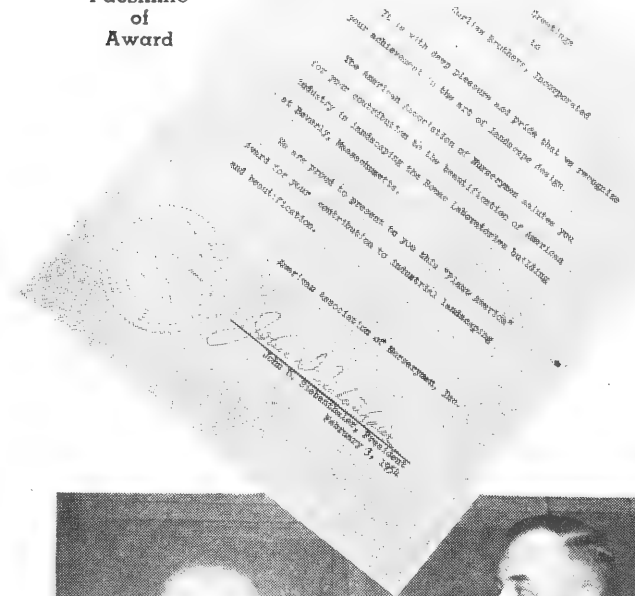
*Industrial*  
**BEAUTIFICATION**  
*is*  
**GOOD BUSINESS**



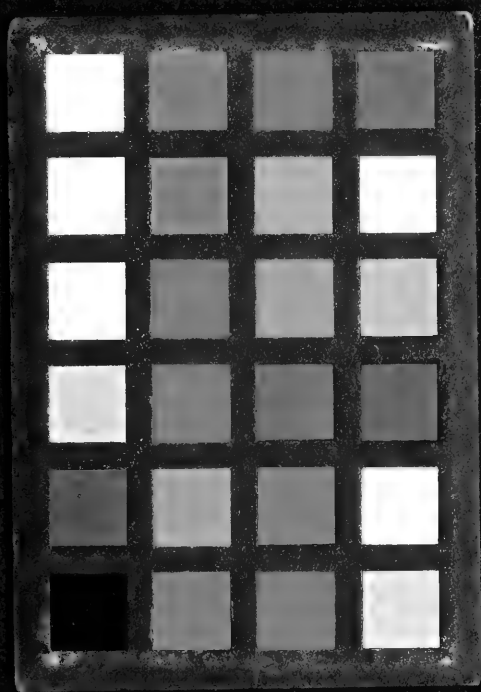
BOMAC LABORATORIES, INC.

A winner in the first national "PLANT AMERICA"  
Industrial Landscaping Contest.

Facsimile  
of  
Award



Presentation of Award to Mr. Cliff Corliss, Pres. and Gen. Mgr. of Corliss Bros. Inc. by Pres. John D. Siebenthaler of the American Association of Nurserymen



# Selected Roses

## Suited to this Climate

### WE RECOMMEND POTTED ROSES

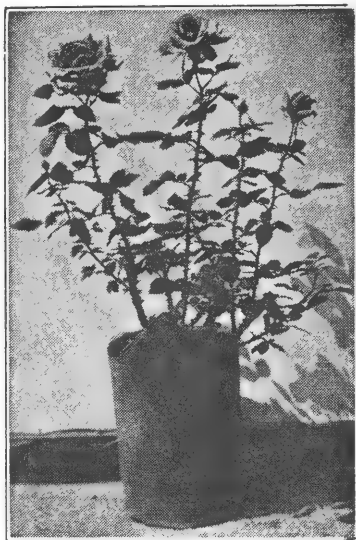
**Already Planted and in Good Growing Condition  
Ready for Transplanting from June 1st on**

As our Potted Roses are not ready to be set into your garden until June 1st, we advise that you **place your order early** so we may reserve for you the varieties you wish.

**\$1.75 each; \$19.80 per doz. unless otherwise noted.**

This modern way of selling roses eliminates all danger of their not starting or dying after being planted in your garden, due to improper handling and planting. When you purchase **POTTED ROSES**, they are already planted properly in specially prepared, fertilized soil to insure rapid, permanent growth and bloom.

Our **POTTED ROSES** may be transplanted successfully in your garden any time during the growing season by simply setting the plant, **pot and all**, into a properly fertilized bed or location without disturbing the soil or root system.



## Everblooming Hybrid Teas

**Charlotte Armstrong.** (Pat. No. 455) One of the top 10 varieties. Magnificent open blooms of vivid cerise on long stems, semi-glossy deep green leaves, slightly fragrant. **\$2.75 each; \$31.20 per dozen.**

**Christopher Stone.** 2½ ft. This rose of dazzling scarlet-crimson is noted for its alluring Damask fragrance and almost continuous bloom.

**Countess Vandal** 2 ft. Extra long, pointed buds open to reveal lovely coppery-pink and gold flowers of artistic beauty. Rich fragrance.

**Crimson Glory.** 2 ft. A tremendous, fascinating rose. Vigorous, free-flowering, compact bushes, well-formed, deep velvety crimson flowers. Rich fragrance.

### OUR ROSES ARE SELECTED

varieties, SAFEST and BEST for NORTH SHORE GARDENS! When you order from a glorified color catalog, do you know whether those roses are suited to our climatic conditions?

**\$1.75 each; \$19.80 per doz., unless otherwise noted.  
Any six Roses at dozen rate.**



## CORLISS BROS. INCORPORATED

### ROSES—Continued

**Eclipse** (Patent No. 172). 2½ ft. The "streamlined" buds are ornamented with narrow branching sepals which contrast harmoniously with the golden yellow of the petals. Spicy fragrance. **\$2.25 each; \$25.20 per doz.**

**Edith Nellie Perkins**. 2-2½ ft. An indispensable rose. Long-pointed buds opening to fragrant, double, Oriental red blooms shaded cerise, inside of petals salmon-pink.

**Golden Dawn**. 2 ft. A splendid, large, double lemon-yellow rose, splashed with crimson. The well-formed blooms are sweetly scented. Vigorous and free flowering.

**Grenoble**. 2½ ft. Crimson buds open to glowing scarlet-crimson blooms. The flowers are fully double of large size, on unusually long stems. Good for cutting.

**Helen Traubel**, Pat. No. 1028. 3-5 ft. This All-America Rose Selection displays superior qualities with pleasing fragrance. Color varies with the weather — sometimes a light, sparkling pink, more often a luminous apricot. Very vigorous grower; **\$3.25 each; \$37.20 per doz.**

**McGredy's Ivory**. Lovely large flowers of soft, delicate, creamy white merging into yellow at the base. Moderately fragrant, and disease resistant.

**McGredy's Sunset** (Pat. No. 317). A world favorite. Medium sized flowers with outside petals of buttercup-yellow, tipped orange; inside chrome-yellow flushed with scarlet as they expand; freely borne on strong stems, fragrant. **\$2.25 each; \$25.20 per doz.**

**Mme. Joseph Perraud**. 2½ ft. A Gold Medal Winner and popular all over the country. Long-pointed, sunset yellow buds opening to pastel buff flowers; very fragrant.

**Mrs. E. P. Thom**. 2 ft. An outstanding favorite. The good-sized buds are long and develop into full, double, very shapely flowers of a rich deep lemon yellow. Fragrant.

**Mrs. Pierre S. duPont**. An outstanding yellow rose. Long-pointed buds of reddish gold opening to a semi-double, fragrant flower of deep golden yellow.

**Mrs. Sam McGredy**. 2½ ft. One of the most beautiful roses. Long-pointed buds and large attractive blooms of copper orange-scarlet, with deep red shadings on outside of petals. Moderately fragrant.

### THE ALL-AMERICAN WINNER

**PEACE** (Pat. No. 591). A Peace Rose in your garden will be the center of interest all summer. Enormous open flowers of softest yellow edged and suffused with pink are freshly sweet. Stems and foliage are unusually good. **\$3.00 each; \$34.20 per doz.**

**Picture**. Heavily petaled, long lasting, mildly fragrant flowers of lovely pink with rich salmon undertones on strong vigorous plants that produce continuously.

**Pink Dawn**. 3 ft. Entrancing deep pink buds opening to fully double, lovely clear pink blooms tinted with orange at the base of the petals. Sweetly fragrant.

---

**\$1.75 each; \$19.80 per doz., unless otherwise noted.**  
**Any six Roses at dozen rate.**



**CORLISS BROS.**  
INCORPORATED

**ROSES, Everblooming Hybrid Teas—Continued**

**Poinsettia.** 3 ft. The name is descriptive of the rose. Brilliant scarlet blooms closely resemble the color and form of a Poinsettia flower. Rich fragrance.

**President Herbert Hoover.** 3 ft. A rose of world prominence. Flaming scarlet and yellow buds opening to large, soft, creamy yellow flowers with scarlet markings; rich fragrance. One of the most satisfactory garden roses.

**Snowbird.** Large, fragrant flowers of pure white produced freely on a vigorous bushy plant.

**Sutter's Gold.** (Pat. No. 885) Quantities of fragrant flowers of beautiful yellow, richly shaded with orange and red on free branching, strong vigorous plant. One of the top 10 AARS. **\$2.75** each; **\$31.20** per doz.

**SUZON LOTTHE, Pat. No. 934**

This rose certainly has appeal. Peach colored buds open to pearly pink-and-white blooms of camellia-like form, richly, gloriously fragrant. **\$3.00** each; **\$34.20** per doz.

**Talisman.** 2 ft. The universal favorite. Variable flowers ranging from rich scarlet and gold to deep rose and pale yellow; very fragrant. Excellent flowers for cutting.

## Floribunda Roses

Unlike all other roses, Floribundas are vigorous, growing 2 to 3 ft. high with masses of attractive flowers throughout the season. They bear perfect blossoms of Hybrid Tea size, carried in thick clusters reminiscent of the old-time Polyanthas. Being perfectly hardy, they need not be replaced each season.

**Betty Prior** (Plant Patent No. 340). A rose that "steals the show." Blooms of lively red, turning delicate shell-pink, resembling the delicate red dogwood blossoms in shape and size. Spicy fragrance. **\$2.00** each; **\$22.20** per doz.

**CARROUSEL, Pat. No. 1066**

New, unfading garnet, red buds and blooms of Hybrid Tea form, frequently singly on long stems, on a vigorous, upright plant. Fragrant. **\$2.50** each; **\$28.20** per doz.

**Donald Prior** (Plant Patent No. 377). One of the brightest Floribundas. Clusters of bright, deep scarlet-red flowers with damask fragrance are borne continually from spring until frost. **\$2.00** each; **\$22.20** per doz.

### THEY'RE WORTH IT

Systematic spraying of roses every two weeks after they come into full leaf, will prevent disease, black-spot, mildew and plant lice. Your reward is in clean foliage and beautiful blooms. We recommend TRIOGEN, see page 60.

**\$1.75** each; **\$19.80** per doz., unless otherwise noted.  
Any six Roses at dozen rate.





**CORLISS BROS.**  
INCORPORATED

**ROSES, Floribunda—Continued**

**FASHION, Pat No. 789**

All America winner with lovely bright coral-pink flowers suffused with gold and delightful fragrance. **\$2.50 each; \$28.20 per doz.**

**Floradora.** Enticing orange-scarlet blooms are carried in sprays on tall, slender vigorous plants. The fully opened double flower resembles a perfect little camellia.

**Goldilocks** (Plant Pat. No. 672). 2½ ft. Best yellow Floribunda; abundant bloomer. Buds shaped like Hybrid Teas open to very double rich golden yellow blooms with wild rose fragrance. **\$2.00 each; \$22.20 per doz.**

**TWO WONDERFUL FLORIBUNDAS  
IRENE OF DENMARK, Pat. No. 889**

New. The best white floribunda. 2-2½ ft. Buds and opening blooms have exquisite, true "sweetheart" form. The large, full blooms of clean frosty-white are produced early in the season on vigorous bushy plants with an abundance of small, neat foliage.

**\$2.50 each; \$28.20 per doz.**

**MA PERKINS, Pat. No. 1143**

New All American Rose Winner. 2 ft. Buds of bright coral slowly open to glowing coral-shell-pink lighted with gold at the base of each bloom. MA PERKINS is one of the most fragrant Floribundas created and will be a joy from late spring to freezing weather in fall.

**\$2.75 each; \$31.20 per doz.**

**Marionette.** (Pat. No. 569) Dainty creamy yellow fragrant "sweetheart" buds change gracefully to white beautifully formed blooms. **\$2.00 each; \$22.20 per doz.**

**Orange Triumph.** Enormous clusters of lovely double salmon-red flowers, combined with rich glossy foliage make this one of the most outstanding roses in our Ipswich Rose Garden.

**Pinocchio** (Pat. No. 484). 20-24 in. Exquisite pointed buds develop into long lasting 2-inch flowers of salmon flushed gold at the base; exotic fragrance. Disease-resistant and extremely hardy. **\$2.00 each; \$22.20 per doz.**

**Red Pinocchio.** (Plant Pat. 812). Full clusters of rich fragrant velvety scarlet unfading fragrant blooms. **\$2.00 each; \$22.20 per doz.**

**Summer Snow.** (Plant Pat. 416). Large clusters of clear white flowers like mounds of snow, all summer are sweetly fragrant and prolific. **\$2.00 each; \$22.20 per doz.**

**Vogue.** (Pat. No. 926). All-America Rose Selection. 2½-3 ft. Delightfully fragrant, brilliant, cherry-coral blooms in immense clusters produced all summer. **\$2.50 each; \$28.20 per doz.**

**World's Fair** (Plant Patent No. 362). An All America Rose Selection. Prolific bloomer. Large clusters of perfumed velvety blackish scarlet flowers. A continuous display of color from spring to frost. **\$2.00 each; \$22.20 per doz.**



**CORLISS BROS.**  
INCORPORATED

## Hardy Climbing Roses

Perhaps there is no one group of plants that is so useful and beautiful in so many different ways as the Climbing Roses.

### ALOHA. Pat. No. 948

An Everblooming climber with very large fragrant flowers of strong, rich rose-pink with soft silvery pink inside of petals in long stemmed clusters. After first peak of June glory, Aloha continues to bloom frequently during entire season. **\$3.00 each; \$34.20 per doz.**

**American Pillar.** A rampant grower with glossy foliage. Bears huge trusses of 2-inch, single, dazzling scarlet rose flowers with large white centers and golden yellow stamens, sweetly fragrant. Blooms in mid-June.

**Chevy Chase** (Pat. No. 443). The finest of Rambler Roses. Clusters of mildly fragrant, rich crimson blooms and beautiful mildew-resistant foliage. The numerous canes will cover a large area. **\$2.25 each; \$25.20 per doz.**

**Climbing Crimson Glory.** The magnificent Crimson Glory in the form of a Climber. The same rich crimson, huge perfectly formed blooms of fascinating fragrance and vigorous producer. **Winter protection must be given these plants. \$3.00 each; \$34.20 per doz.**

**Climbing Peace.** Pat. No. 932. A glorious climber bearing the same lovely blooms as the Hybrid Tea "Peace." Because of its "Hybrid Tea" parentage, it **requires Winter protection**, but will generously repay for the extra care. **\$3.00 each; \$34.20 per doz.**

**Elegance.** A magnificent display of fragrant yellow flowers which are large and perfect form. The inner petals are spectrum-yellow and the outer ones shade to creamy white. Disease-resistant, lustrous dark green foliage. **\$2.25 each; \$25.20 per doz.**

**Mary Wallace.** A Pillar Rose with large, glossy foliage, blooming with great freedom about the middle of June. Flowers very large, semi-double, of bright, clear rose-pink with salmon base.

**New Dawn** (Everblooming Dr. W. Van Fleet) The first everblooming hardy Climber. Light pink flowers continually from early summer until frost. Shiny foliage.

**Paul's Scarlet Climber.** A popular Climbing Rose of moderate vigor, highly prized for its clusters of medium-sized, vivid scarlet flowers in June and early July, remaining in good condition for a long period.

**White Dawn.** This new, hardy, everblooming climbing Rose produces hundreds of pure white, double blooms resembling gardenias. **\$2.25 each; \$25.20 per doz.**

Pay us a visit and see HOW the Finest Nurseries  
Grow the **FINEST PLANTS**

\$1.75 each; \$19.80 per doz., unless otherwise noted.  
Any six Roses at dozen rate.

# Hardy Perennials

We offer here a selection of leading new and outstanding perennial novelties, grown and propagated at our own nurseries, where the climate is humid in the summer, cold, with bitter winds, in the winter.

The material we offer is strong, field-grown stock with the exception of some varieties which transplant better from pots.

**Note.**—Figures after the description and blooming dates represent the approximate height reached by the perennials under favorable conditions.

**\*SUITABLE AS ROCK GARDEN PLANTS, ALSO**

## PRICES OF PERENNIALS

Unless otherwise noted, the price of Perennials is 50¢ each; \$1.40 per 3 of one variety; \$5.00 per dozen.

Six or more plants of one variety will be sold at the dozen rate. Twelve plants of different kinds, such as twelve different varieties of Phlox, will not be sold at the dozen rate, but at the each rate. The dozen rate applies only when six or more plants of ONE VARIETY or COLOR are ordered.

## HARDY FALL-FLOWERING HYBRID ASTERS

**Beechwood Challenger** (New). Nearest approach to red. Freely produced flowers of brilliant crimson-red with yellow centers. Sept., Oct. 3-4 ft. Pot plants.

**Winston Churchill** (New). Outstanding freely produced, rich ruby-crimson flowers from early Sept. into Oct. 2½-3 ft. Pot plants, 75c each; \$2.00 per 3; \$7.50 per doz.

## ASTILBE, Garden Spirea

**Fanal**. Exquisite, feathery sprays of lively red plumes in May and June. Likes plenty of moisture, good rich soil, semi-shade or sun, but prefers shady, damp position. 2 ft. Pot plants, 60c each; \$1.60 per 3; \$6.00 per doz.

## CAMPANULA, BELL FLOWER

**Persicifolia, Blue Spire**. Exceptionally large, double, bright blue flowers, borne on spike-like stems. June, July. 2 ft. Pot plants, 55c each; \$1.50 per 3; \$5.50 per doz.

## CONVALLARIA, Lily-of-the-Valley

**\*Majalis**. Sprays of small fragrant, bell-shaped flowers of waxy texture. May, June. 8 in.



Landscaped by Corliss Bros. Inc.

*YOUR Home's "PERSONALITY" Depends on its*  
**LANDSCAPING.**

**VISIT**

# **CORLISS'S MUM-LAND**

**THIS FALL!**



**An awe-inspiring RIOT OF COLOR at our Gloucester Nursery in Riverdale last fall.**

YOU'LL FIND, in our nearly 2½ acres of Chrysanthemums at the **Gloucester Nursery . . .**

Our new "MILITARY" originations that are sweeping the country

UNIVERSITY OF NEW HAMPSHIRE varieties

UNIVERSITY OF MINNESOTA introductions

UNIVERSITY OF NEBRASKA originations

UNIVERSITY OF CHICAGO presentations

UNITED STATES DEPT. OF AGRICULTURE selections

The Popular Cushion Mums

Many, many other fine mums.

In a normal season — and we haven't had one for three years — some of these varieties start to bloom in early August; others later in the month; followed by September blooming species.

It is our constant endeavor to keep abreast with the best and earliest blooming chrysanthemums because of early frosts affecting the Korean and late blooming kinds. Continued test work on new varieties enables us to offer our customers what we want most in a Mum . . . Hardiness . . . Early and continued flowering . . . Ruggedness of plant growth . . . Attractiveness and abundance of bloom.



**CORLISS BROS.**  
INCORPORATED

## Sensational --- New

### SUMMER FLOWERING CHRYSANTHEMUMS

No other Chrysanthemums compare with these new ones, offered here, for earliness of bloom, starting in early August, continuing until the very heavy frost in late fall takes their blooms! They are abundant producers and perfectly hardy as far north as Maine.

#### THE ORIGINAL SUMMER FLOWERING MUMS:

**Dean Kay Improved.** Large double rose-pink blooms, also good for cutting. 2-2½ ft. Pot plants.

**Dean Ladd.** Large double reddish bronze flowers which might be called a "bronze." 2-2½ ft. Pot plants.

**My Lady.** Wonderful delicate orange-yellow flowers, large and fully double, fine for cutting. 2-2½ ft. Pot plants.

#### UNIVERSITY OF MINNESOTA VARIETIES:

**Aurora.** Masses of large, bright red, semi-double flowers becoming lighter with age, on low compact plants. Mid-Aug. 18 in. Pot plants.

**Butterball.** Double, dark lemon-chrome ball-like flowers in Mid-Aug. at its best in mid-Sept. 2 ft. Pot plants.

**Chippewa.** Magnificent flowers with incurved petals of rich aster-purple in large clusters. Early Sept. 2-2½ ft. Pot plants.

**Dee Dee Ahrens.** This plant produces a multiple of double pure white flowers on long stiff slender stems. Aug. 2-2½ ft. Pot plants.

**Dr. Longley.** Non-fading, bright pink flowers fully double and very large, wonderful for cutting, are freely produced from late Aug. till heavy frost. 2 ft. Pot plants.

**Glacier.** Extra large, pure white flowers of lovely shape are produced in loose clusters sparingly in Aug., by early Sept. the whole top of the plant becomes a mass of white. 2 ft. Pot plants.

**Maroon 'n Gold.** Blooms are large, full, maroon-red above and golden on the under side. Aug. through fall. 18-24 in. Pot plants.

**Moonlight.** Large, double white flowers with centers of pale yellow to ivory produced in large sprays. Early Sept. 15-18 in. Pot Plants.

**Redgold.** Double bright scarlet and gold flowers resemble pompom dahlias, Mid-Aug. 2-2½ ft. Pot plants.

**Violet.** Very full, double deep pansy-purple flowers. Aug. 20-24 in. Pot plants.

---

Unless otherwise noted, all plants on this page are 50c each; \$1.40 per 3 of one variety; \$5.00 per doz. of one variety. (Six or more plants of one variety at dozen rate.)

# OUR NEW "MILITARY"

## *Legionnaire and Amvet*

Honoring Our Veteran Men and Women



- ★ FLOWERS from August to Heavy Freezes
- ★ EXCELLENT FOR CUTTING
- ★ LARGE DOUBLE BLOOMS
- ★ NICE LONG STEMS
- ★ HEIGHT 2½-3 FT.
- ★ FROST RESISTANT

*These mums withstood very droughty summers, torrential*

You'll love **LEGIONNAIRE** (top) for its generous display of gay, sparkling yellow flowers with a golden heart, and beautiful dark green foliage, borne on vigorous plants.

**AMVET** (bottom) will enchant everyone for its superb pure white double flowers with delicate yellow inner rays and gold center, and healthy dark green foliage on well shaped plants.

\* \* \*

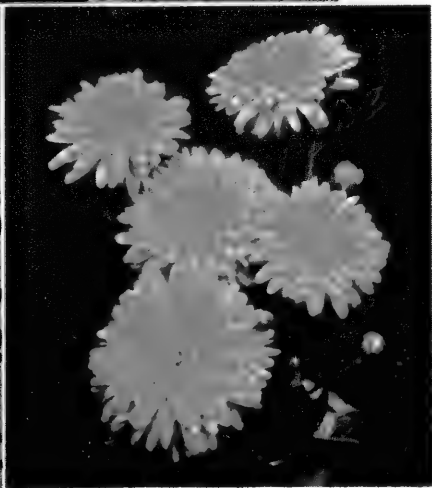
Prices: Legionnaire and Amvet

\$ .75 each; \$2.00 per 3; \$7.50 per 12

Special — 1 Ea

# INTRODUCTIONS

## OUR "GENERALS"



- ★ DISEASE RESISTANT
- ★ LAVISH PRODUCERS
- ★ EXTREMELY HARDY
- ★ COMPACT BUSHY PLANTS
- ★ RICH DARK FOLIAGE
- ★ VIGOROUS & STURDY

*ns and severe winters on the rugged coast of Massachusetts.*

**GENERAL MARSHALL'S** ray florets, as shown at the top, are a rich harmony of deep old rose, purple and gold with light buff reverse, making the petals appear edged with gold.

**GENERAL MACARTHUR** (lower left) produces a deluge of glowing coppery-red flowers.

**GENERAL BRADLEY** (lower right) displays an exquisite blending of apricot, seashell-pink and buff.

Prices: The Generals

65c each; \$1.70 per 3; \$6.50 per dozen

(five mums) \$2.95



Landscaped by Corliss Bros. Inc.

*Create additional beauty for YOUR HOME with Effective Landscaping.*

---

#### UNIVERSITY OF CHICAGO MUMS:

**Calendula.** Large, deep chrome yellow double flowers are freely produced from early Sept. on. 2 ft. Pot plants.

**Candlelight.** Very lovely and graceful, double, creamy-white flowers, freely produced from late Sept. on. 1½-2 ft. Pot plants. **55c** each; **\$1.50** per 3; **\$5.50** per doz.

**Charles Nye.** Multitudes of double dome-shaped shining, rich, buttercup-yellow flowers in long stemmed clusters. Late Sept. on. 2-2½ ft. Pot plants.

**Courageous.** Large, very double, dark-ruby-red blooms on stocky upright plants produced freely from late Sept. on. 2 ft. Pot plants.

**Defiance.** Fully double, twilled petals of bright golden-yellow. Plant of outstanding strong, upright growth. Flowers from mid-Sept. on. 2 ft. Pot plants.

**Harbinger.** The glorious color of fall maples is in these fully double incurved flowers of bronze, tipped light red. Aug. 20-24 in. Pot plants.

**Heatherbloom.** A delightful, double heather-pink, center shaded rose-red with gold topping. Early Sept. 18-24 in. Pot plants.

**Lee Powell.** An unusual blend of Chinese-yellow and old-gold. Very large, showy, rather flat, but fully double flowers from late Sept. on. 2½ ft. Pot plants. **60c** each; **\$1.60** per 3; **\$6.00** per doz.

**Magnificent.** Exceptionally large, double flowers of rosy-red, overcast with a bright copper, on long stems, ideal for cutting. Late Sept. 2 ft. Pot plants.

**Olive Longland.** Large, double flowers of exquisite soft apricot-gold and salmon tones. Sept. 2 ft. Pot plants

**Robert Brydon.** Fully double, deep garnet-red flowers on dense, bushy cushion-type plants. Late Aug. on 18 in. Pot plants.

**Tribute.** Highly recommended, large, fully double flowers of bright daphne-red, maturing to daphne-pink. Late Sept. 2 ft. Pot plants.

---

Unless otherwise noted, all plants on this page are 50c each; \$1.40 per 3 of one variety; \$5 00 per doz. of one variety. (Six or more plants of one variety at dozen rate.)





**CORLISS BROS.**  
INCORPORATED

### UNIVERSITY OF NEBRASKA MUMS:

**Araphoe.** Huge, rich, red flowers, petals long and strap-like, produced in 3-5 bloom clusters. Extremely frost-resistant and hardy. Mid-Sept. on. 3 ft. Pot plants, 60¢ each; \$1.60 per 3; \$6.00 per doz.

**Cody.** The flowers are semi-double, orchid with white center Compact plants, "Cushion" type. July to heavy frosts. 12-15 in. Pot plants.

**Leshara.** Very frost tolerant, double flowers of rich mulberry-red, shading to a softer red with lovely old-rose overtones, on heavily branched husky plants. Early Sept. on. 2½ ft. Pot plants, 60¢ each; \$1.60 per 3; \$6.00 per doz.

**Osceola.** Large, fully double flowers of brilliant yellow that show coppery tints. Early Aug. to sharp freezes. 2½-3 ft. Pot plants.

### ENTIRELY NEW—CARNATION-FLOWERED MUMS

#### 1953 — University of Nebraska Introductions

These new mums represent a major "break" in flower form of hardy mums—such as you have never seen before. The flowers are very double, each petal notched and lacinated at the tip, resembling the florist's carnations, and wonderful for cutting. They start blooming in August and continue until severe frosts.

**Pathfinder.** The clear, bright, yellow, non-fading flowers are long-lasting on the plant. 2 ft.

**Plainsman.** The very double blooms are deep rusty-bronze, fading to lighter yellow-bronze at high temperatures. 2 ft.

Pot plants, 75c each; \$2.00 per 3; \$7.50 per doz.

**Pearl Parkinson.** Large flowers with loosely twisted petals are golden yellow flushed red during high temperatures, but brilliant red with shadings of yellow in lower fall temperatures. Plant of upright, compact growth with dense deep green foliage. Early Aug. flowering until frost. 20-25 in. Pot plants.

**W. P. Snyder.** Excellent cut flowers of fully double apricot-bronze in clusters on very compact plants from early Aug. to hard freezes. 2-2½ ft. Pot plants.

**White Cloud.** Three to six clusters of double, pure white flowers that show lemon toward center of flower on strong stems. Mid-Aug. until hard freezes. 2½-3 ft. Pot plants.

Unless otherwise noted, all plants on this page are 50c each; \$1.40 per 3 of one variety; \$5.00 per doz. of one variety. (Six or more plants of one variety at dozen rate.)



**CORLISS BROS.**  
INCORPORATED



Landscaped by Corliss Bros. Inc.

*YOU always notice a lovely home surrounded by beautiful trees, shrubs, evergreens and flowers. Do other folks notice YOURS for the same reason?*

#### **UNIVERSITY OF NEW HAMPSHIRE MUMS:**

These new Chrysanthemums uphold our New England tradition for their rugged and sturdy characters. They are good growers and fine producers.

**Nashua.** Fine sprays of fully double reddish-bronze pompon flowers. Low bushy plant. Mid-Sept. 18-24 in. Pot plants.

**Sunapee.** Fully double, rich, golden, ball-shaped pompon flowers from mid to late September on. 2-2½ ft. Pot plants.

#### **U. S. DEPT. OF AGRICULTURE ORIGINATIONS:**

Developed primarily for use in the Northern & Northwestern States. They are later blooming than the preceding varieties, but the flowers are of good substance and make excellent cut flowers.

**Dainty Lady.** Very large, double flowers with outer petals of pure white, inner petals clear yellow, produced in good clusters from Sept. on. 18-24 in. Pot plants.

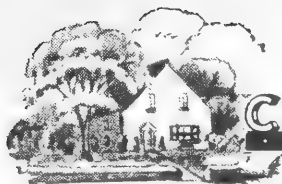
**Golden Cheer.** Real double, golden yellow flowers on unusually long strong stems with large flower clusters. The exciting thing about this variety is that the blooms seem frost proof. Even after a severe freeze when all the other mums are gone, these flowers are still unblemished. Late Sept. to heavy frosts. 2½-3 ft. Pot plants.

**Grandeur.** Large, double white flowers with edges of petals very delightfully tinged with pink are produced from late Sept. to heavy frosts. 18-24 in. Pot plants.

**Royal Gem.** Very full, large double flowers of unusually deep garnet-red, incurved cupped petals. Heavy, clean foliage; compact bushy plants. Sept. to heavy freeze. 18 in. Pot plants.

---

Unless otherwise noted, all plants on this page are 50¢ each; \$1.40 per 3 of one variety; \$5.00 per doz. of one variety. (Six or more plants of one variety at dozen rate.)



**CORLISS BROS.**  
INCORPORATED

#### OTHER VARIETIES OF CHRYSANTHEMUMS

**Avalanche.** Beautifully formed, large, double, fluffy-white blooms, lightly creamed in the center in massive sprays from Sept. 20 on. 1½-2 ft. Pot plants.

**Cecil Beed.** One of the best early pink varieties. Large, double flowers of deep pink with tips of petals trimmed gold, produced abundantly from early Sept. on. 2-2½ ft. Pot plants, 55¢ each; \$1.50 per 3; \$5.50 per doz.

**Orchid Helen.** Sturdy, double, orchid-pink flowers of unusual beauty on dwarf plants from early Sept. on. 18 in. Pot plants.

**Pomponette.** New and outstanding. Pompons in masses of bright Tyrolean yellow overcast gently with golden bronze. This mum has great eye appeal, good cutting qualities and sturdy growth. Mid-Sept. to frost. 1½ ft. Pot plants.

#### The CUSHION MUMS

An extremely popular type of Hardy Chrysanthemums that form a dense compact mound with most varieties about 15-18 inches high and more in width. A normal plant will produce hundreds or more blooms during the fall.

**Champion Cushion.** Flowers open to deep reddish-bronze, changing to lighter bronze as they mature.

**Major Cushion.** A trim, neat plant with choice salmon-pink flowers.

**Red Cushion.** This choice variety is a mass of really bright red.

**White Cushion.** Masses of delicate blush buds open to lovely white flowers.

**Yellow Supreme Cushion.** New. A soft but most appealing shade of yellow.

*Now!*

### Successful Summer Planting

Of EVERGREENS, TREES and SHRUBS with the  
New plastic spray, PLANTCOTE

By digging the plants with a ball of earth and Plantcoting, it is possible to safely transplant trees and shrubs in full leaf, with complete success, thus extending the planting season into June, July and August.

See Pages 4 and 6

Unless otherwise noted, all plants on this page are 50¢ each; \$1.40 per 3 of one variety; \$5.00 per doz. of one variety. (Six or more plants of one variety at dozen rate.)



**CORLISS BROS.**  
INCORPORATED

# **THE DELPHINIUM** *of* **TOMORROW** **LYONDEL GIANT HYBRIDS**



**STATELY**  
**MAJESTIC**  
**COLORFUL**  
**MASSIVE SPIKES**

A new strain especially selected for their large size, double, semi-double and single flowers and beautiful colors, ranging from pale blues to deep purple. June to September. 4-5 ft. Mixed colors only.  
**75c each; \$2.00 per 3;**  
**\$7.50 per doz.**

We should SHOUT about these LYONDEL HYBRID DELPHINIUM! They withstand very droughty seasons and survive severe winters immeasurably. ENJOY THE BEST — BY TEST!

## **Best Fertilizers** **for Plant Nourishment**

Let us provide you with the proper planting materials. See pages 61, 62, 63, 64.

Unless otherwise noted, all plants on this page are 50¢ each; \$1.40 per 3 of one variety; \$5.00 per doz. of one variety. (Six or more plants of one variety at dozen rate.)



**CORLISS BROS.**  
INCORPORATED

**DIANTHUS, Pink, Carnation**

\***Salmon Unique (New)**. Clusters of very spicy fragrant flowers of lovely salmon-pink. June to Sept. 12 in. Pot plants, 55c each; \$1.50 per 3; \$5.50 per doz.

**DIANTHUS JUNE CARMINE**

Originated by the Univ. of New Hampshire

\*This new Carnation, as its name implies, is a beautiful shade of carmine that blooms from June on throughout the summer. The flowers are fully double on 12-15 inch stems with the spicy fragrance of old fashioned clove pinks. It is a neat compact plant, extremely hardy, and withstands summer droughts well. Pot plants. 55c each; \$1.50 per 3; \$5.00 per doz.



**GYPSOPHILA, Baby's Breath**

**Bristol Fairy**. Tiny double flowers of purest white, on airy sprays that are wonderful mixed with other cut flowers. June and July. 3 ft. Pot plants, 60c each; \$1.60 per 3; \$6.00 per doz.

**HEMEROCALLIS HYBRIDS, Day Lily**

**Hyperion**. One of the very finest. Flowers are citron-yellow and exceptionally large. July, August. 3-4 ft 65c each; \$1.70 per 3; \$6.50 per doz.

---

Unless otherwise noted, all plants on this page are 50¢ each; \$1.40 per 3 of one variety; \$5.00 per doz. of one variety. (Six or more plants of one variety at dozen rate.)



**HEMEROCALLIS HYBRIDS, Day Lily — Continued**

**Leonian Hybrids.** Shades from soft yellow through fiery red to deep maroon. Mixed colors only. July, August. 3-5 ft. 75c each; **\$2.00** per 3; **\$7.50** per doz.

**Ophir.** Considered one of the best two yet produced. Beautiful golden yellow flowers on strong stems. July. 3-4 ft. 55c each; **\$1.50** per 3; **\$5.50** per doz.

**Persian Princess.** An impressive day lily of deep velvety-red with a purple cast. July, Aug. **\$1.00** each; **\$2.75** per 3; **\$10.00** per doz.

**Pink Charm.** Large blooms of dusky rose-pink shading to rose-red in June, and sometimes again in the Fall. 3-3½ ft. **\$1.00** each; **\$2.75** per 3; **\$10.00** per doz.

**HEUCHERA — Coralbell**

\***Pink Delight.** The bells are dainty old rose lightened by a touch of white at the base of each individual bloom. June to Aug. 1½-2 ft. Pot plants.

**New GIANT HYBRID HIBISCUS**



A beautiful new strain of hardy giant mallows. The heavy petaled flowers measure 8-10 inches in diameter. A far cry from the old seedling types. July, Aug. 3-4 ft.

**Poinsettia.** A deep red self.  
**Pure White.** Large pure white with crimson throat.

**Radiation.** Clear pink with darker center.  
Strong field grown potted plants — **\$2.50** each.

**IBERIS — Perennial Candytuft.**

\***Snowflake.** Large cushions with an abundance of wonderful, pure white flowerheads. Evergreen foliage. May. 8-10 in. Pot plants.

**IRIS**

**Eleanor Roosevelt.** Rich, deep, red-purple bearded flowers in May and Sept. 24-28 in.

**Elizabeth Huntington.** Lovely, large flowered, transparent solid blue with ruffled edges. June. 18 in. 75c each; **\$2.00** per 3; **\$7.50** per doz.

---

Unless otherwise noted, all plants on this page are 50¢ each; \$1.40 per 3 of one variety; \$5.00 per doz. of one variety. (Six or more plants of one variety at dozen rate.)



### POTTED GARDEN LILIES

We offer Potted Lilies, because they are easier to handle, with less chance of loss. They may be planted at any time during the season without injury to the plant.

**Regale.** (Royal Lily). Enormous white flowers, shaded pink or purple with a canary-yellow center. July 2-3 ft. 75c each; \$2.00 per 3; \$7.50 per doz.

**Speciosum Rubrum** (Pink Speciosum) Large, recurving rich carmine-pink, dotted with crimson, margined white. Aug., Sept. 2½-3 ft. \$1.00 each; \$2.75 per 3; \$10.00 per doz.

### OENOTHERA, Evening Primrose

**Illumination.** Compact healthy plants burst into masses of brilliant yellow flowers which harmonize with its reddish brown leathery foliage from June to frost. 2 ft. Pot plants, 60c each; \$1.60 per 3; \$6.00 per doz.

### PENSTEMON, Beard-Tongue

**Rose Elfe** (New). A hardy low growing plant, neat, with large, clear coral-pink colored flowers in masses. June, July. 2-2½ ft. Pot plants. 60c each; \$1.60 per 3; \$6.00 per doz.

### PHLOX

**Charles Curtis.** The brightest red. Profusion of scarlet heads on strong 2½ ft. stems in July and Aug. Robust and sturdy. 55c each; \$1.50 per 3; \$5.50 per doz.

**Mary Louise.** Large heads of pure, waxy white flowers. The largest and best white Phlox we have seen. Aug. Sept. 2½-3 ft.

**Miss Lingard.** White flowers; glossy green foliage. June to October. 2½-3 ft.

**Salmon Beauty.** Very attractive, immense trusses of large bright salmon-rose florets with large white centers. Dwarf, compact plants. Aug. 18 in.

**Spitfire** (Frau Anton Von Mathner). Large florets of brilliant salmon-orange with crimson eye. July, Aug. 2-2½ ft. 55c each; \$1.50 per 3; \$5.50 per doz.

### PLATYCODON, Balloon Flower.

**Double Blue.** Exquisite double blooms of rich blue on strong but willowy stems. Blooms most of summer if seed pods are removed. 2-3 ft. 75c each; \$2.00 per 3; \$7.50 per doz.

**Double White.** Identical to above except pure white in color. 75c each; \$2.00 per 3; \$7.50 per doz.

Unless otherwise noted, all plants on this page are 50¢ each; \$1.40 per 3 of one variety; \$5.00 per doz. of one variety. (Six or more plants of one variety at dozen rate.)



**CORLISS BROS.**  
INCORPORATED

**POLYANTHUS, Primrose**

\***Colossal Strain Mixed** (Rainbow Primroses). This extraordinary strain produces flowers of unusual shades and wide range of colors, from almost black, dark velvety red, flame red, copper, gold, cream, to white; from apple-blossom pink through clear pink to rose burgundy and violet, apricot, lavender and two-toned pastels in large tall clusters. Very hardy. May and June. 6-10 in. Pot plants, **55c** each; **\$1.50** per 3; **\$5.50** per doz.

\***Blue Shades.** Luxuriant plants producing large florets from forget-me-not through medium and sapphire to darkest blue. To obtain richest blue colors, grow these plants in acid soil, or use an acid fertilizer, and provide partial shade. Pot plants, **\$1.00** each; **\$2.75** per 3; **\$10.00** per doz.

**TROLLIUS, Globeflower**

**Ledebouri Golden Queen.** Large buttercups of gold with orange stamens. June, July. 3 ft. Pot plants, **60c** each; **\$1.60** per 3; **\$6.00** per doz.

**VERONICA, Speedwell**

**Blue Peter.** Deep navy blue flowers closely arranged up and down the stiff stems. July, August. 15-18 in. Pot plants.

**VIOLA**

\***Giant Jersey Gem.** A plant of dwarf, compact habit. The flowers are of a pure rich purple. May to Nov. 6-8 in.

Unless otherwise noted, all plants on this page are 50c each; \$1.40 per 3 of one variety; \$5.00 per doz. of one variety. (Six or more plants of one variety at dozen rate.)

*Imported*

**Genuine**  
**HOLLAND**  
**BULBS**

**TULIPS**  
**HYACINTHS**  
**DAFFODILS**  
**CROCUS**  
**ETC.**



**FOR PLANTING THIS FALL**

We will have a full line of these lovely flowering Bulbs from the first of September on.

OUR BULBS are TOP SIZE and will bloom next spring! We have made CHOICE SELECTIONS from the best standard and new varieties.

Circular with prices will be sent you on request in early September. If you wish to plan your garden earlier, stop in and we'd be glad to tell you what we will have to offer in varieties.



# Annual Seedlings

## GREENHOUSE GROWN

These **BEAUTIFUL FLOWERING PLANTS** will keep the garden gay throughout the summer and fall and give an abundance of blooms for house and table decorations. We raise many thousands of **ANNUAL SEEDLINGS** of the popular varieties, all of which are transplanted stock, **GREENHOUSE GROWN.**

---

### PRICES

Most of these plants will be ready any time after May 20th. All Annual Seedlings, **75c per doz. box; \$2.75 per box of 50**, except as otherwise noted.

**50c deposit on large box, which is returnable**

---

**\*Suggested cut flower varieties.**

#### AGERATUM

**Blue Boy.** Compact, deep blue, 4-6 in.  
**Blue Perfection.** Dark blue. 15-18 in.

#### ALYSSUM

**Carpet of Snow.** Extra-fine, uniform white. 4-6 in.  
**Royal Carpet.** Very dwarf, violet-purple. 3 in. **85c** per doz. box, **\$3.15** per box of 50.  
**Violet Queen.** Very compact bright violet. 4-6 in.

#### \*ASTER. 2-3 ft.

**American Beauty.** Shell-pink  
**Ball's Early White.**  
**Heart of France.** Deep ruby.  
**Royal Purple.**  
**Semple's Azure-Blue.**  
**Mixed Colors.**

#### "PRINCESS" ASTERS

Large double flowers with golden crested and quilled centers. August on. 2 ft.  
**Princess Bonnie.** Soft salmon and gold.  
**Princess Marsha.** Scarlet and gold.  
Above are **85c** per doz. box; **\$3.15** per 50 box.

#### \*BACHELOR'S BUTTON, 2-3 ft.

Blue

#### \*CALENDULA, 1½-2 ft.

**Lemon King.** Lemon-yellow.  
**Orange King.** Orange.

#### \*CARNATIONS. 18-24 in. (New).

Mixed Colors Only.

#### CELOSIA. 12-15 in. (New)

**Pampas Plume.** (Feathered Cockscomb). Feathery plumes of gold, copper and sunset colors. Useful for bedding and cut. **\$1.00** per doz. box; **\$3.50** per 50 box.

#### \*CHRYSANTHEMUMS, 1½-2 ft.

Mixed Colors Only. White, Yellow, Copper.

---

We do not pack Annuals for shipment  
Truck delivery in Essex County only



**CORLISS BROS.**  
INCORPORATED

**CLEOME (Spider Plant). 4 ft.**

**Helen Campbell.** (New). Pure white flowers. \$1.00 per doz. box; \$3.50 per 50 box.

**Pink Queen.** Bright salmon-pink flowers.

**\*COSMOS, Giant flowering. 4-6 ft.**

**Pink. Mixed.**

**White.**

**\*DIANTHUS. 15-18 in.**

**Geisha Girl.** Mixed colors only.

**\*GAILLARDIA. 1½-2 ft.**

**Indian Chief.** Bronze-red.

**Double, Mixed.**

**LOBELIA. 4-6 in.**

**Cambridge Blue.** Light blue.

**Crystal Palace.** Deep blue.

**\*MARIGOLD, African**

**Guinea Gold.** Orange-yellow. 2-3 ft.

**Lemon Queen.** Lemon-yellow, 2-3 ft.

**Mammoth Mum.** Light sulphur-yellow. 2-3 ft.

**Orange Prince.** Orange. 2-3 ft.

**Yellow Supreme.** Yellow Guinea Gold. 2-3 ft.

**\*MARIGOLD, French**

**Melody.** Bright orange crested. 12-15 in.

**Rusty Red.** (New). Striking rust-red, double. 1½-2 ft.

**Spry.** Orange crested center, maroon outer petals. 9 in.

**Yellow Pygmy.** Canary yellow. 6 in.

**NICOTIANA**

**Red.** 1½-2 ft.

**White.** 2-3 ft.

**PETUNIA**

**Balcony Blue.** Dark blue-purple. 1½ ft.

**Bluebird.** Rich blue-violet. 12-15 in.

**Celestial Rose** Bright rose. 8 in.

**Comanche.** Improved Fire Chief. Deep scarlet-crimson, 10-12 in. \$1.00 per doz. box; \$3.50 per 50 box.

**Elk's Pride.** Dwarf; deep velvety purple. 10-12 in. 85c per doz; \$3.15 per box of 50.

**Fire Chief.** Brilliant glowing scarlet-red. 1 ft. 85c per doz; \$3.15 per box of 50.

**Glow.** Carmine-rose, white throat. 8-10 in.

**Popcorn.** (New). Really dwarf; large pure white. 6-10 in. \$1.00 per doz. box; \$3.50 per 50 box.

**Rosy Morn.** Soft light pink with white throat. 12-15 in.

**Silver Medal.** Rich salmon-pink. 12 in. 85c per doz; \$3.15 per box of 50.

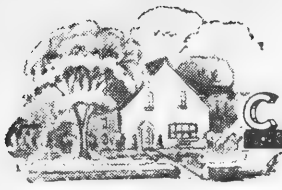
**Snowball.** Pure white. 15-18 in.

**Velvet Ball.** Velvety blood-red. 8 in.

**White Queen.** Dwarf, compact white. 10-12 in. 85c per dozen; \$3.15 per box of 50.

All Annual Seedlings, 75c per doz. box; \$2.75 per box of 50, except as otherwise noted. 50c deposit on large box, which is returnable

We do not pack Annuals for shipment  
Truck delivery in Essex County only



# CORLISS BROS. INCORPORATED.

**PHLOX Drummondii, Dwarf.** 8-10 in.

**Cecily Strain.** Mixed colors.

**PORTULACA.** 6 in.

**Single and Double, Mixed.** 85c per dozen; \$3.15 per box of 50.

**\*SALPIGLOSSIS**

**Mixed Colors** 2-2½ ft.

**SALVIA**

**Blue Royal (faranacia).** Bright blue. 2-2½ ft.

**Bonfire, Scarlet.** 2-2½ ft.

**Skyrocket.** Early, dwarf scarlet. 10-12 in.

**\*SCABIOSA.** 2-3 ft.

**Blue Cockade.** Deep azure-blue.

**Mixed colors.**

**\*SNAPDRAGON, Semi-dwarf.** 15-18 in.

**Gloria.** Rich, deep pink.

**Golden Queen.** Bright golden yellow.

**Kirkwood Beauty.** Glowing bronze and pink

**Velvet Beauty.** Deep crimson-red.

**Mixed Colors.**

**\*SNAPDRAGON, Tall.** 2-3 ft.

**Crimson King.** Rich, dazzling crimson.

**Golden King.** Golden yellow.

**Harmony.** Orange, shaded pink.

**Queen Victoria.** Pure white.

**Mixed Colors.**

**\*STOCK (Imperial Giant Double).** 1½-2 ft.

**Lavender.**

**Pink.**

**White.**

**Mixed.**

**VERBENA.** 8-12 in.

**Mixed colors.**

**ZINNIAS**

**Peppermint Stick.** 2 ft. Very pleasing combinations such as red, white, yellow, pink, orange, and purple shades. 60-70% striped.

**Persian Carpet.** 15-18 in. The flowers, like small dahlias, in rich wide range of oriental colors are tipped with a contrasting color.

All annual Seedlings, 75c per doz. box: \$2.75 per box of 50, except as otherwise noted. 50c deposit on large box, which is returnable

**We do not pack Annuals for shipment  
Truck delivery in Essex County only**



**CORLISS BROS.**  
INCORPORATED

**\*ZINNIA, Dahlia-flowered. 2-3 ft.**

**Crimson Giant.** Crimson.

**Exquisite.** Pink.

**Golden Dawn.** Bright golden yellow.

**Oriole.** Orange and gold.

**Polar Bear.** Pure white.

**Scarlet Flame.** Bright scarlet and orange.

**Mixed Colors.**

**Mixed Pastel Colors.**

**\*ZINNIA, California Giant.**

**Cherry Queen.** Mammoth, vivid cherry-rose. \$1.00 per doz. box; \$3.50 per 50 box.

**\*ZINNIA, Lilliput. 1½-2 ft.**

**Canary.** Yellow.

**Salmon-Rose.** Pink.

**Scarlet Gem.** Scarlet.

**Mixed Colors.**

All annual Seedlings, 75c per doz. box; \$2.75 per box of 50, except as otherwise noted. 50c deposit on large box, which is returnable

## **TOMATO PLANTS**

65c per doz. box

**Bonny Best.** Very early. A Tomato of excellent quality.

**Master Marglobe.** Certified for rust, blight, and disease. Delicious fine red.

**Sunray.** Firm, smooth, best large yellow of mild delicious flavor.

## **GIANT PANSIES**

The finest and largest Pansy in existence. The plants are of a compact habit and their flowers are borne on stiff stems. The colors are rich and all that can be desired. 60c per basket of 6 plants; \$1.00 per doz; \$7.50 per 100.

## **Plants for Window Boxes and Borders**

### **BEDDING PLANT SECTION**

We specialize in a fine variety of popular and practical plants suitable for window boxes, borders, and gardens, a finishing touch to any floral planting, with continual bloom all through the season.

**AGERATUM, 8-10 in.**

**Irvington Beauty.** Compact plants. An excellent shade of deep blue. 2½-in pot plants, 25c each; \$2.50 per doz.

**BEGONIAS, TUBEROUS-ROOTED. 12-15 in.**

**Camellia, Double.** Crimson, pink, yellow, orange, white, salmon. For moist, shady places. Large pot plants, \$1.00 each; \$10.00 per doz.



**DAHLIA, 1½-2 ft.**

**Unwin's Dwarf Hybrids (New).** Early-flowering, miniature, semi-double blooms in a wide range of colors 3½-in pot plants, 50c each; \$5.00 per dozen.

**GERANIUMS, 1½ ft.**

**Mme. Lawrence.** Light pink.

**Poitevine Improved.** Salmon-pink.

**Ricard Improved.** Bright vermillion.

**Springfield White.** Fine pure white.

All Geraniums, 3½-in. pot plants, 60c each; \$7.00 per dozen.

**HELIOTROPE**

**Sweet-scented.** Old-fashioned blue. 15-18 in. 3-in. pot plants, 40c each; \$4.00 per dozen.

**LANTANA, 9-12 in.**

**Sensation. Orchid.** One of the best.

**Golden King.** Orange-yellow. An excellent plant.

**Radiation.** Red. Very showy.

**Tethys.** Light yellow.

All Lantanas, 3-in. pot plants, 40c each; \$4.00 per doz.

**LOBELIA, 4-6 in.**

**Cambridge Blue.** Large light blue flowers. 2½-in pot plants, 20c each; \$2.00 per doz.

**Crystal Palace.** Compact, bushy plants with deep blue flowers, 2½-in. pot plants, 20c each; \$2.00 per dozen.

**MESEMBRYANTHEMUM, Rock Pink**

Bright pink flowers. Does well in dry, sunny locations. Grows 6 to 9 inches high. \$1.25 per doz. box; \$4.50 per 50.

**PETUNIAS**

**Glamour Girl.** Magnificent flowers of beautiful Victoria-violet. Habit of growth is neat, compact, and uniform. A prolific bloomer and a valuable addition to the annual garden. 10-12 in. 3-in. pot plants, 35c each; \$3.50 per dozen.

**VERBENA, 1 ft.**

**Mayflower.** Prostrate plant covered with a profusion of rose-pink flowers throughout the season. 3 in. pot plants, 40c, each; \$4.00 per doz.

---

## Annual Vines

Annual Vines are a necessary addition to any window box or urn. The trailing effect produces a finishing touch that can be obtained in no other way.

**IPOMOEA, Morning Glory**

**Heavenly Blue.** Immense clear azure-blue blooms. One of the best and most striking annual climbers. 6-8 ft. 2½-in. pot plants, 20c each; \$2.00 per dozen.

**VINCA**

Variegated foliage. Popular in window boxes, urns, and baskets. 3 ft. 3½-in. pot plants, 50c each; \$5.50 per doz.

# Insecticides, Fungicides,

PRICES SUBJECT TO CHANGE WITHOUT NOTICE

**APHID & MITE SPRAY** (Contains 50% Malathion). For control of Aphid, Red Spiders, Thrips, Mealybugs, Japanese Beetle, etc. on Roses, Evergreens, Fruits, Flowers, Vegetables, etc. 1 oz. **49c**; 4 oz. **\$1.25**.

**"BLACK LEAF 40"**. A concentrated solution of Nicotine Sulphate for sucking insects. 1 oz. bottle, **39c**; 5 oz. bottle **\$1.19**; 1 lb. bottle, **\$2.69**.

**CHLORDANE DUST**. 5%. Very powerful, best known insecticide to date, for ants, wire worms, chinch bugs, Japanese beetles and sour bugs. 4-lb. shaker top Canister, **\$1.50**.

**D.D.T. DUST 10%**. For dusting plants. A powerful contact and stomach poison useful against many pests, Thrips, Midge, Ants, etc. 4-lb. bags, **\$1.25**, 1-lb. bags, **50c**.

**END O' PEST**. A dry powder for chewing insects, sucking insects and fungus diseases. Applicator Gun (Complete) **85c**; cartridge refills **65c**.

**FRUIT TREE SPRAY** (DuPont). For control of many fruit diseases and insects. 1 lb. can **\$1.15**.

**HEXATE**. A new liquid spray for outside use. This is one of the most effective sprays, which produces a gas, for killing red spider on Arborvitae, Spruces, etc. Must be used with caution. 6-oz. bottles, **\$2.00**.

**TRIOGEN**. The outstanding Rose spray. Controls every insect pest and disease that attacks Roses, if regularly and carefully used.

Kit A for 12-20 roses .....	\$ 2.35
Kit B for 50-80 roses .....	6.00
Kit C for 100-160 roses .....	9.00
Kit D for 400-600 roses .....	30.00

## IN WINTER

The use of **PLANTCOTE** does away with unsightly, and costly burlap or wooden protectors. Being colorless, it brings out the natural beauty of the evergreens and leaves them clean! fresh! and bright!



**PLANTCOTE** } CONCENTRATE — \$6.75 per gallon  
READY-TO-USE — \$2.00 per gallon

Ask For Free Literature



Landscaped by Corliss Bros. Inc.

## For a Lovely Lawn Select SCOTTS

**Scotts LAWN SEED.** Top quality blend of all perennial grasses that makes the deluxe lawn in full sun or moderate shade. Painstaking selections, triple cleaning and rigid laboratory control assure 99.91% weed-free quality.

1 lb. **\$2.45**; 5 lbs. **\$11.75**; 25 lbs. **\$57.50**

**Scotts "SPECIAL" SEED.** Selected blend of quick growing grasses. Recommended for the poorer and drier soils or wherever more rugged turf is required. Thrives in shade as well as in full sun with ordinary care.

1 lb. **\$1.45**; 5 lbs. **\$6.95**; 25 lbs. **\$34.50**; 100 lbs. **\$135.00**

**Scotts CLOVER.** Available separately since clover is not included in Scott blends. This is finest quality high germinating seed.

Small box, 2000 sq. ft. **\$.95**; Large box, 5000 sq. ft. **\$1.95**

**HAVEN GRASS SEED** contains good proportion of hardy grasses. Gives a pleasing stand of grass in a short time and at moderate cost.

1 lb. **\$.85**; 5 lbs. **\$3.95**; 25 lbs. **\$18.85**

**Scotts SPREADERS.** These practical carts make possible quick, accurate feeding, seeding, weeding and SCUTLING so important to lawn beauty. They'll pay for themselves in savings in material. All of sturdy steel construction, rubber tired.

Junior Spreader **\$7.95**; No. 25 Medium size **\$12.85**;  
No. 65 Suburban lawn **\$19.50**; No. 100 Professional **\$44.50**

**TURF BUILDER.** The complete grass food formulated by Scotts especially to keep lawns healthy, vigorous and sparkling green. No offensive odor before or after use. You can feed 100 sq. ft. for less than a dime. Turf Builder is the most effective and most economical since you need less than half as much.

10 lbs. **\$1.35**; 25 lbs. **\$2.50**; 50 lbs. **\$3.95**; 100 lbs. **\$7.85**

**4-XD WEED CONTROL.** Clean, granular compound of 2, 4-D easily broadcast by hand or spreader. Quickly cleans out Dandelions, Plantain, Buckhorn, and other broadleaved weeds without harm to lawn grasses.

Box 500 sq. ft. **\$.49**; Box 2500 sq. ft. **\$1.75**;  
Bag 11,000 sq. ft. **\$4.85**; 10 bags 2½ acres **\$39.50**

**WEED & FEED.** Unique combination of chemicals that simultaneously (1) kills broadleaved weeds via the action of 2, 4-D and (2) feeds grass to greater health and beauty. Excellent for restoring run down lawns. Helps grass fill in as weeds wither away.

Box 500 sq. ft. **\$1.00**; Box 2500 sq. ft. **\$2.95**;  
Bag 11,000 sq. ft. **\$11.75**; 10 Bags 2½ acres **\$99.50**

**SCUTL** has three important control actions for lawns. (1) Destroys crabgrass. (2) Controls fungus diseases. (3) Controls seedling sprouts of most weeds.

Box 125 sq. ft. **\$.79**; Box 500 sq. ft. **\$2.75**;  
Bag 1250 sq. ft. **\$5.45**; Bag 2500 sq. ft. **\$9.95**

# AGRICO



**4 SPECIAL FERTILIZERS**  
for  
*Beautiful Results!*

For thicker, greener Lawns, use AGRICO FOR LAWNS, TREES and SHRUBS. For utmost bloom and color in Flowers and for luscious Vegetables, use AGRICO FOR GARDENS. For Rhododendrons and Azaleas, use AGRICO FOR BROADLEAF EVERGREENS. For Roses of perfect beauty, use AGRICO ROSE FOOD. Today's best plant-food values!

**Get AGRICO Now!**

## THE COMPLETE PLANT FOOD

	100 lbs.	50 lbs.	25 lbs.	10 lbs.
For Gardens	\$4.75	\$2.45	\$1.80	\$.95
For Lawns, Trees & Shrubs	5.25	2.70	1.85	.95
For Broadleaf Evergreens	6.00	3.15	2.25	1.20
Rose Food	10.00	5.15	2.85	1.30

Special prices on large quantities

## AGRINITE

ALL — ORGANIC PLANT FOOD

80 lbs.	50 lbs.	25 lbs.
\$5.20	\$3.45	\$1.95



Special prices on large quantities.

We are Eastern Essex County Distributors for Agrico and Agrinite

**BONEMEAL** (with 2% Nitrogen) Fine ground for lawns, gardens, shrubs, trees. Provides excellent nourishment over a long period. 25 lbs. \$2.70, 50 lbs. \$4.35; 100 lbs. \$6.90.

**LIME** (Agricultural). Corrects soil acidity. Most plants, with the exception of broad-leaved evergreens, thrive best in a neutral soil. 100-lb. bags, \$1.15; ton \$20.00.

**SUPERPHOSPHATE**. Increases root system and production. Our Essex County soils lack phosphate. 100-lb. bags, \$2.50.

**TURF BUILDER**. See page 61.

**VIGORO**. Complete plant food for lawns and gardens 10 lbs., 95c; 25 lbs., \$1.80; 50 lbs., \$2.75; 100 lbs., \$5.10.



FOR  
LUXURIOUS  
LAWNS,  
FLOWERS,  
TREES, AND  
SHRUBS



- \*Plain, dried cow manure from high protein fed cows.
- \*Contains all the organic values of the best manure.
- \*Supplies plant food that becomes available as the plants need it.
- \*Clean and convenient to handle.
- \*The natural plant food for lawns, flowers, house plants, shrubs, trees and vegetables.
- \*Absolutely free of live weed seeds.



5 lbs. ....	\$ .60
10 lbs. ....	1.05
25 lbs. ....	1.65
50 lbs. ....	2.95
100 lbs. ....	5.70
1/2 ton ....	51.00
1 ton ....	97.00

We are North Shore Distributors  
for this fine product

## ENERGIZED *Hyper-Humus* NATURE'S SOIL BUILDER



HYPER-HUMUS is now ENERGIZED for greater efficiency. Depend on it for healthy plant growth and more production. Remember, this is real humus, not peat moss.

HYPER-HUMUS comes to you in moisture-sealed, easy-to-handle bags to preserve all the life-giving vitality of HYPER-HUMUS for long periods.

25-lb bag .....	\$ 1.55
50-lb bag .....	2.50
100-lb bag .....	4.25
1000 lbs .....	35.00
2000 lbs .....	65.00

Price in bulk, in tons, and in carload lots on application.  
We are Eastern Essex County Distributors for Hyper-Humus.

NOW—BEAUTIFUL GARDENS AND LAWNS AT LESS COST

# MICHIGAN PEAT

Nature's Finest Soil Builder

*It's Bacti-vated!*

Improves all soils. Binds sandy, loosens clay soils, vitalizes, gives your soil **NEW LIFE!** Only MICHIGAN PEAT is so highly bacti-vated! Your **LAWNS, ROSES, shrubs, vegetables, azaleas, pot plants** need MICHIGAN PEAT for maximum growth and beauty. Rich in natural nitrogen and plant food! **HOLDS MOISTURE — SAVES WATERING BILLS—A LONG-TIME INVESTMENT!**

**ORDER TODAY!**

5 cu. ft. 100 lbs.	2 bu. 50 lbs.	1 bu. 25 lbs.	Peck
<u>\$4.49</u>	<u>\$2.49</u>	<u>\$1.65</u>	<u>\$ .98</u>



We are exclusive Eastern Essex County Distributors for Michigan Peat

## Best Obtainable Baled Garden Peat Moss

Fine-Ground for Garden Use.  
Excellent for Mulching.

1/2 bale .....	\$ 3.00
Large Bale .....	5.50
10 bales .....	52.50
25 bales .....	125.00



**One bale covers:** 250 square feet 1 inch deep.  
125 square feet 2 inches deep.  
80 square feet 3 inches deep.

## WARNING!

Our Essex County SOILS are so badly DEPLETED of FOOD VALUES that CONDITIONS are really serious.

The Government will help the farmer. The INDIVIDUAL must HELP himself.

If each HOME OWNER will have the SOIL TESTED and ACT before planting a lawn, garden, flowers, trees, or shrubs, GREAT PROGRESS can be made toward bringing SOILS back to GOOD FERTILITY.

EACH will be contributing his or her part in building up the BASIC WEALTH of our country and assure BETTER PROSPECTS for future growth. CORLISS BROS. INC. maintain a testing laboratory for your convenience. A nominal fee of \$2.50 per test brings you a complete report with recommendations suited to your INDIVIDUAL PROBLEM.

**DON'T GUESS — KNOW WHAT TO BUY  
SAVE MONEY — GET RESULTS**

Phone us — write us — visit us.

# *Landscape* **MATERIALS** **PENNSYLVANIA BLUE STONE**

CUT RANDOM RECTANGULAR

Best for

**TERRACES — PATHS — WALKS**

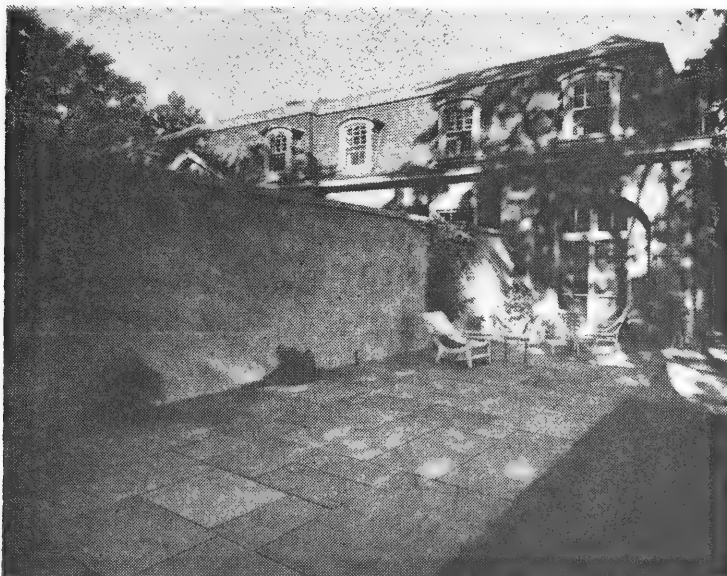
**STEPPING STONES**

Not slippery when wet

1 inch thick .....	\$ .65 per sq. ft.
1½ inch thick .....	.90 per sq. ft.
2 inch thick .....	1.15 per sq. ft.
2½ inch thick .....	1.35 per sq. ft.

F. O. B. the Gloucester Nursery

We always carry, in our stone sheds at Gloucester, between **75 and 100 tons** of beautiful Pennsylvania Blue Stone Flagging.



*A splendid example of what can be done with our  
Blue Stone Flagging.*

**LOAM — SUB-SOIL — SAND**

**FILL — ROAD GRAVEL**

**WALL AND DRAIN STONE**

**CRUSHED STONE (various sizes)**

**CRUSHED STONE DUST**

Ask for prices

# Big Tree

## CARE — MOVING

has been an important part of our  
business for nearly 50 years



*This photograph shows one of our COMPRESSOR  
ROOT-PRUNED TREES being unloaded from the mover  
in mid-summer (note the foliage).*

### **MOVING — PLANTING . . .**

Whether big or small, you want that tree properly planted. Trust this difficult job to us — we grow them ourselves!

### **CABLING — BRACING . . .**

Injury to a tree should be attended to immediately. At those times when service must be prompt to save a valuable tree, rely on us.

### **FEEDING . . .**

Aid your trees to combat insects and diseases by having our men feed them, using scientific fertilizing methods.

### **PRUNING . . .**

A necessity for better health . . . for appearance . . . to protect your landscape investment.

### **REMOVING . . .**

Trees in bad condition are hazardous to people, and to remove as well. Our technicians have had years of experience in this difficult work.

We use **MOTORIZED EQUIPMENT** for efficiency —

Chain saws — power winches — compressors  
tree movers and tractors

**ESTIMATES WILLINGLY GIVEN**

Phone Gloucester 513 today



**CORLISS BROS.**  
INCORPORATED

## Planting Directions

### BALLED and BURLAPPED MATERIAL:

Dig holes 18" larger than diameter of ball and 6" deeper than the depth of the ball. Save top-soil, discard sub-soil. Mix, at least 3 times, prescribed amounts of assembled fertilizer with saved top-soil or new loam for proper blending. Spade enough of soil-fertilizer mixture into bottom of hole to insure ball being set at original plant depth as indicated by different bark color. Fill in hole around ball half full. Tamp well. Cut strings and burlap flush with filled-in soil. Fill hole with water and allow to soak in. Complete filling hole with mixture, leaving top saucer-shaped to catch moisture. Water weekly.

### BARE ROOT MATERIAL:

The diameter of the hole should be dug at least 2 feet larger than root spread, and 12" deeper than depth of roots. Save top-soil, discard sub-soil. Spade enough of soil-fertilizer mixture into bottom of hole to insure plant being set at original depth as indicated by different bark color. Trim broken root ends. Set plant in hole and fill hole half full of mixture, shaking plant up and down several times to work soil around roots. Tamp well. Fill hole with water. After water has soaked in, complete filling in, leaving surface saucer-shaped to catch water. Stake all trees over 2" caliper, using wires run through rubber hose to avoid chafing. Water weekly.

### Suggested Amounts of Organic Mixtures:

- EVERGREENS**—5 lbs. Corliss #1 mixture per ft. of height or spread.  
**EVERGREEN HEDGES**—2 lbs. Corliss #1 mixture per foot of height per plant.  
**EVERGREEN SHRUBS**—3 lbs. Corliss #2 mixture per foot of height. (Euonymus—3 lbs. #3 Mix per ft.)  
**DECIDUOUS TREES**—5 lbs. Corliss #1 mixture per foot of height.  
**DECIDUOUS SHRUBS**—2 lbs. Corliss #1 mixture per foot of height (Azaleas, Ilex, Blueberry—2 lbs. Corliss #2 mixture per ft. of height).  
**DECIDUOUS HEDGES**—1 lb. Corliss #1 mixture per foot of height per plant.  
**VINES**—3 lbs. Corliss #1 mixture per plant.  
**FRUIT TREES**—see Deciduous trees.  
**ROSES**—5 lbs. Corliss #3 mixture per plant.  
**PERENNIALS and ANNUALS**—100 lbs. Corliss #3 mixture spaded into each 100 square feet.  
**BULBS**—10 lbs. Corliss #4 mixture per 100 bulbs.

	#1 and #3 mixture	#2 mixture	#4 mixture
5 lbs. ....	\$ .80	\$ .70	\$ .85
10 lbs. ....	1.30	1.25	1.40
25 lbs. ....	2.45	2.35	2.70
50 lbs. ....	3.85	3.60	4.35
100 lbs. ....	6.25	5.75	6.90
1000 lbs. ....	59.50	55.00	65.00
2000 lbs. ....	113.00	105.00	125.00

### IT PAYS!

For best garden results, have your soil tested. We are equipped to do your soil testing quickly at a small fee. See page 60.

## TERMS AND CONDITIONS OF SALE

We accept all orders upon condition that they shall be void should injury befall the stock from frost, fire, hail-storms, or other causes over which we have no control.

We endeavor to keep varieties true to name, and will replace any stock not true, but we do not, in any way, guarantee the success of the grower, inasmuch as we cannot control Nature and the conditions affecting the successful growing of Plants and Nursery Stock, such as unfavorable weather, soil, moisture, planting, cultivation, insects, improper planting and the like, we cannot and will not give any warranty, express or implied, as to description, quality, productiveness, or any other variation of any Nursery Stock or Plants we sell, and we will not be in any way responsible for the crop. Every order for such goods will be executed on these conditions only. Employees are forbidden to give warranties or guarantees.

In event of untrue stock, our liability must be limited to invoice value at time of shipment.

**PRICES AND RATES SUBJECT TO CHANGE  
WITHOUT NOTICE.**

### TERMS OF PAYMENT

Cash or satisfactory references must accompany all orders from purchasers unknown to us. To customers whose responsibility is known to us, all bills are due net 30 days from date of shipment. All stock is priced F.O.B. Gloucester and Ipswich, Mass.

### SHIPPING DIRECTIONS

Please state clearly how you want your shipment made, whether by freight, express, or truck. We reserve the right to change shipping instructions when we consider it best, without assuming responsibility. Boxing and packing will be charged at actual cost on all tree and shrub orders shipped by freight or express.

Our responsibility ends on delivery of stock in good order to the forwarding company. When losses occur, claims should at once be made on the transportation company by the consignee. Complaints must be made in writing to our office within ten days after receipt of the goods.

**WE DO NOT MAKE C.O.D. SHIPMENTS**

### LOCAL FREE DELIVERY ZONE

Beverly Farms, Essex, Gloucester, Hamilton, Ipswich, Manchester, Prides, Rockport, and Wenham.

— — — — —

We are equipped to make truck delivery beyond this FREE DELIVERY ZONE, within a 50-mile radius, at cost, based on size or order and distance, which in most cases is not greater than the combined cost of packing, freight or express. This is a very satisfactory method, as plants are delivered fresh to you.

• • •

### MEMBERS:

Massachusetts Nurserymen's Association  
New England Nurserymen's Association  
American Association of Nurserymen



# I N D E X

Acanthopanax .....	20	Gaillardia .....	56	Pieris .....	13
Acer .....	15	Geraniums .....	59	Pine .....	8, 9
Ageratum .....	55, 58	Ginkgo .....	16	Pinks .....	51, 55
Agrico .....	62	Gleditsia .....	17	Pinus .....	8, 9
Aggrinite .....	62	Globe Flower .....	54	Plantcote .....	60
Alyssum .....	55	Golden Bell .....	23	Platycodon .....	53
Ampelopsis .....	29	Grape Vines .....	33	Polyanthus .....	54
Andromeda .....	13	Ground Covers .....	19	Polygonum .....	29
Annual Seedlings ..	55	Gypsophila .....	51	Portulaca .....	57
Annual Vines .....	59			Primrose .....	54
Apples .....	30, 31	Hawthorn .....	16	Privet .....	24
Aralia .....	20	Hedera .....	11	Pyracantha .....	13
Arbor-Vitae .....	10	Hedge Plants .....	28		
Aristolochia .....	29	Heliotrope .....	59	Quercus .....	19
Aronia .....	20	Hemerocallis ..	51, 52	Quince,	
Arrow-wood .....	28	Hemlock .....	10	Flowering ..	22, 23
Asparagus .....	33	Heuchera .....	52		
Asters .....	41, 55	Hibiscus .....	52	Raspberries .....	33
Astilbe .....	41	Holly .....	18, 25	Rhamnus .....	25
Azalea .....	20, 21	Honeysuckle ..	25, 29	Rhododendrons ..	14
		Hydrangea .....	24	Rock Pink .....	59
Baby's Breath .....	51	Hyper-Humus ..	63	Rock Plants ..	41, 55
Bachelor's Button..	55	Hypericum .....	24	Rosa .....	25
Balloon Flower .....	53			Roses .....	36 to 41
Barberry .....	21	Iberis .....	52	Russian Olive ..	23
Beard-Tongue .....	53	Ilex .....	13, 24		
Beauty Bush .....	24	Inkberry .....	13	Salix .....	19
Bedding Plants ..	58, 59	Insecticides ..	60, 61	Salpiglossis .....	57
Begonias .....	58	Ipomoea .....	59	Salvia .....	57
Bellflower .....	41	Iris .....	52	Scabiosa .....	57
Berberis .....	21	Ivy .....	11, 29	Shrubs,	
Blueberries .....	27, 32			Deciduous .....	20
Bone-Meal .....	62	Juniper .....	7	Evergreen .....	11
Bovung .....	63	Juniperus .....	7	Silver Lace Vine..	29
Boxwood .....	11			Snapdragon .....	57
Buckthorn .....	25	Kalmia .....	13	Snowball .....	28
Bulbs .....	54	Katsura Tree ..	16	Sod .....	5
Burning Bush .....	23	Kolkwitzia .....	24	Sorbus .....	19, 26
Buxus .....	11			Speedwell .....	54
		Lantana .....	59	Spiraea .....	26, 41
Calendula .....	55	Lawn Seed .....	61	Spreaders .....	61
Campanula .....	41	Leucothoe .....	13	Spruce .....	7, 8
Candytuft .....	52	Ligustrum .....	24	Spurge, Japanese..	13
Carnation .....	51, 55	Lilac .....	26, 27	Stock .....	57
Caryopteris .....	22	Lilium .....	53	Strawberries .....	33
Celosia .....	55	Lily-of-the-Valley..	41	Superphosphate ..	62
Cercidiphyllum .....	16	Lime .....	62	Sweet Pepper .....	22
Chamaecyparis .....	7	Linden .....	19	Syringa .....	26, 27
Cherry Flowering..	22	Lobelia .....	56, 59		
Chokeberry .....	20	Locust, Honey ..	17	Taxus .....	9
Chrysanthemums		Lonicera .....	25, 29	Thuya .....	10
42 to 50, 55				Tilia .....	19
Clematis .....	29	Magnolia .....	17, 18	Tomato Plants ..	58
Clethra .....	22	Maidenhair Tree ..	16	Tree Care .....	66
Cleome .....	56	Mallow .....	52	Trees, Deciduous..	15
Convallaria .....	41	Malus .....	18	Trees, Evergreen..	7
Coral Bell .....	52	Maple .....	15	Trolius .....	54
Cornus .....	16, 22	Marigold .....	56	Tsuga .....	20
Cosmos .....	56	Mesembryan-		Turf Bulder .....	61
Cotoneaster .....	22	themum .....	59		
Crab, Flowering ..	18	Mock Orange .....	25	Ulmus .....	19
Cranberry Amer'n	27	Morning Glory ..	59		
Crataegus .....	16	Mt. Ash .....	19	Vaccinium .....	27, 32
Cydonia .....	22, 23	Mountain Laurel ..	13	Verbena .....	57, 59
Cypress .....	7	Myrtle .....	14	Veronica .....	54
		Nemopanthus .....	25	Viburnum .....	27, 28
Dahlia .....	59	Nicotiana .....	56	Vigoro .....	62
Daphne .....	11			Vinca .....	14, 59
Day Lily .....	51, 52	Oak .....	19	Vines .....	29, 59
Delphinium .....	50	Oenothera .....	53	Viola .....	54
Deutzia .....	23			Virginia Creeper ..	29
Dianthus .....	51, 56	Pachysandra .....	13	Weed-Killers .....	61
Dogwood .....	16, 22	Pansies .....	58	Weigela .....	28
Dutchman's Pipe..	29	Peaches .....	30	Willow .....	19
		Pears .....	30, 31	Winterberry .....	24
Elaeagnus .....	23	Peat Moss .....	64	Winter Creeper ..	11
Elm .....	19	Perennials .....	41 to 55	Wisteria .....	29
Euonymus .....	11, 12, 23	Penstemon .....	53		
Evergreens .....	7, 11	Petunias .....	56, 59	Yew .....	9
		Philadelphus .....	25		
Fertilizers		Phlox .....	53, 57	Zinnia .....	57, 58
61, 62, 63, 64		Picea .....	7, 8		
Firethorn .....	13				
Forsythia .....	23, 24				
Fruits .....	30, 31, 32, 33				
Fungicides .....	60, 61				



**CORLISS BROS.**  
INCORPORATED

RETURN POSTAGE GUARANTEED BY  
REYNARD ST., GLOUCESTER, MASS.



*Plant America!*

RETURN POSTAGE GUARANTEED

POSTMASTER: If undeliverable for any reason, notify sender, stating reason, on Form 3547, postage for which is guaranteed.

1954

U. S. DEPARTMENT OF AGRICULTURE

LIBRARY  
WASHINGTON 25, D. C.

OFFICIAL BUSINESS

PRINTED MATTER

LIBRARY  
MAR 10 1954  
U. S. Department of Agriculture

PENALTY FOR PRIVATE USE TO AVOID  
PAYMENT OF POSTAGE, \$300  
(GPO)

U. S. POSTAGE  
PAID  
Gloucester, Mass.  
Permit No. 27  
Sec. 34.66, P.L.&R.

Library, U. S. Dept. of Agriculture,  
WASHINGTON 25, D. C.