

62.67 Index *

1954

LIBRARY
REC
★ JAN 21 1954 ★
U. S. Department of Agriculture



GIRARD BROTHERS
NURSERY



Geneva, Ohio

Spring and Fall 1954

Dear Garden Friends:

As we prepare this new issue we can not go on without first thanking all our good customers and garden friends for their interest shown.

The demand for baby evergreens and shrubs is increasing each year. We are trying our best to meet this great demand by adding on more propagation facilities.

Many of our customers are finding great pleasure in growing our trees and shrubs. Some of you are planning on building soon; plant now and your trees will be ready when you want them.

Cash in on your idle land. If you have half an acre or more, plant it in trees and in a few years you will start to enjoy the profits from these trees.

Institutions such as Schools, Colleges, City playgrounds, Parks and large estates are in need of plantings but seldom are allowed enough money to carry such programs. Many of these places are now buying our stock—the cost of which is so low that it makes it much easier to carry on their programs. It takes a few years longer to raise plants from small seedlings and transplants, but if this planting is never started you will never have it.

We have listed on the inside back cover trees best suited for landscaping purposes and most popular for lot sales. There is a fine selection of Evergreens, Shrubs, Rhododendrons and Azaleas to choose from. If you are planning to grow trees in large quantities, we suggest you use this list.

Sincerely,

LET'S PLANT AMERICA — PLANT NOW!

GIRARD BROTHERS NURSERY



Location of Our Nursery—Visitors welcome. We are located on U.S. Route 20, in Saybrook, approximately three miles east of Geneva and seven miles west of Ashtabula, Ohio, on north side of road.

If you wish to pick up your order at our Nursery, drop us a line and give us the date you wish to pick up your order and we will have it ready for you.

Our Guarantee—We guarantee our plants to reach you in good, healthy condition and free from injurious pests and diseases.

After stock is planted we cannot assume responsibility. Success and continued growth depend largely on soil and weather conditions, which we have no control over.

Seasons — Our Spring shipping season begins as soon as the frost is out of the ground and trees can be dug. It continues until June, weather permitting. Fall shipping begins about the first part of September and ends when ground is frozen.

Packing and Shipping—All our young trees and shrubs are packed free of charge. We assure you good, clean stock, free from disease and insects, and hardy Northern grown. All bare root plants will be packed with damp sphagnum moss, then wrapped in

waterproof kraft paper and carefully tied. Larger orders will be packed in wire-bound crates or large wooden boxes. Every shipment will bear an inspection certificate.

Unless noted, orders will be shipped express, charges collect. It is best we send larger orders by express, smaller by parcel post. We do not ship plants by freight. When shipment of plants is received, check carefully and report any damage or delay to your agent at once, also notify us.

Making Out Orders—Make sure name is plainly printed or written. P.O. means the City or Town in which your mail is received. A few shipments were lost last season due to the shipment being addressed to the County rather than the City. If the shipping point is other than your city, please state. Some towns do not have an express station; if so, please specify the nearest one.

When to Order—Please order early if it is possible. Unlike other things that you buy, trees should be ordered in advance; long before the shipping time is best. There is always some variety we may run short on.

We will not substitute unless we have your permission. However, we do prefer a second choice.

NOTE — This catalog can be used for fall orders

Illustration on front cover, Hybrid Rhododendrons—Artist Laura Frenell

THE HOME NURSERY

It is always a wise gardener who will have a few rows of young trees and shrubs growing for future plantings. They know that this is the most reasonable method of keeping on hand some very fine specimens for later use. Do not wait until you need trees (large ones), save yourself from \$2.00—\$5.00 a tree by growing them yourself. You can also get the pleasure of watching these trees grow.

It does not require much space to grow 100 or more trees and shrubs. Look over your grounds. Most of you will find a 12 x 12 ft. space that can be used for this purpose. A home nursery is easily planned.

If you are planning on building a home within the next few years—plant now. If your present planting is getting too large and straggly—plant now, for replacements later.

GROW CHRISTMAS TREES FOR PROFIT

In many sections, one of the most profitable ways to utilize unprofitable ground is to establish a plantation of cultivated Christmas trees. You can start by three methods: (1) growing trees from seed, (2) from seedlings, and (3) from transplants. The transplanted trees will advance your tree growths from 2 to 5 years. Cultivated trees command a better price than wild grown stock. There is a big demand in practically every city and town for nursery grown or cultivated Christmas trees. The trade is asking for them. Wild stock is brought in from such long distances that the trees shed needles before they are set up. In the last few years there has been a great demand for live trees as these trees can serve two purposes: (1) for decorating during the holiday season and (2) later used for decorating lawns. Selling of Christmas trees can begin when trees are 12 to 15 inches in height. If trees are cultivated the first two years, returns begin within two or three years after the plantations are established. A spacing of 3 feet by 3 feet allows for 5600 trees per acre. A planting of 4 feet by 4 feet allows 2720 trees per acre.

The land should be plowed and prepared the same as for a field crop. Almost any soil of good texture will grow Conifers. Trees most suitable for this purpose are: Norway Spruce, White Spruce, Black Hill Spruce, Colorado Blue Spruce, Scotch Pine, Austrian Pine, American Red Pine, Balsam Fir and Douglas Fir.



SEEDLINGS are those propagated by the method of sowing the seed. This method is done at a reasonable cost. Therefore prices of seedlings are lower than others mentioned. Most Pines, Firs, Spruce and Deciduous trees are only propagated by sowing of seed. Seedlings can be bedded 4 by 4 inch and shaded the first year. They can be set out in field rows the following year.

CUTTINGS are tips of branches cut from the mother tree. Tips are usually 4-8 in. long, these are carefully placed in sand or a mixture of sand and peat. Cuttings are started either outdoors in hotbeds or in greenhouse. In greenhouse, benches contain about 4-5 in. depth loam sand, heated with pipes of steam or hot water. It may take as long as 10 months for these cuttings to root.

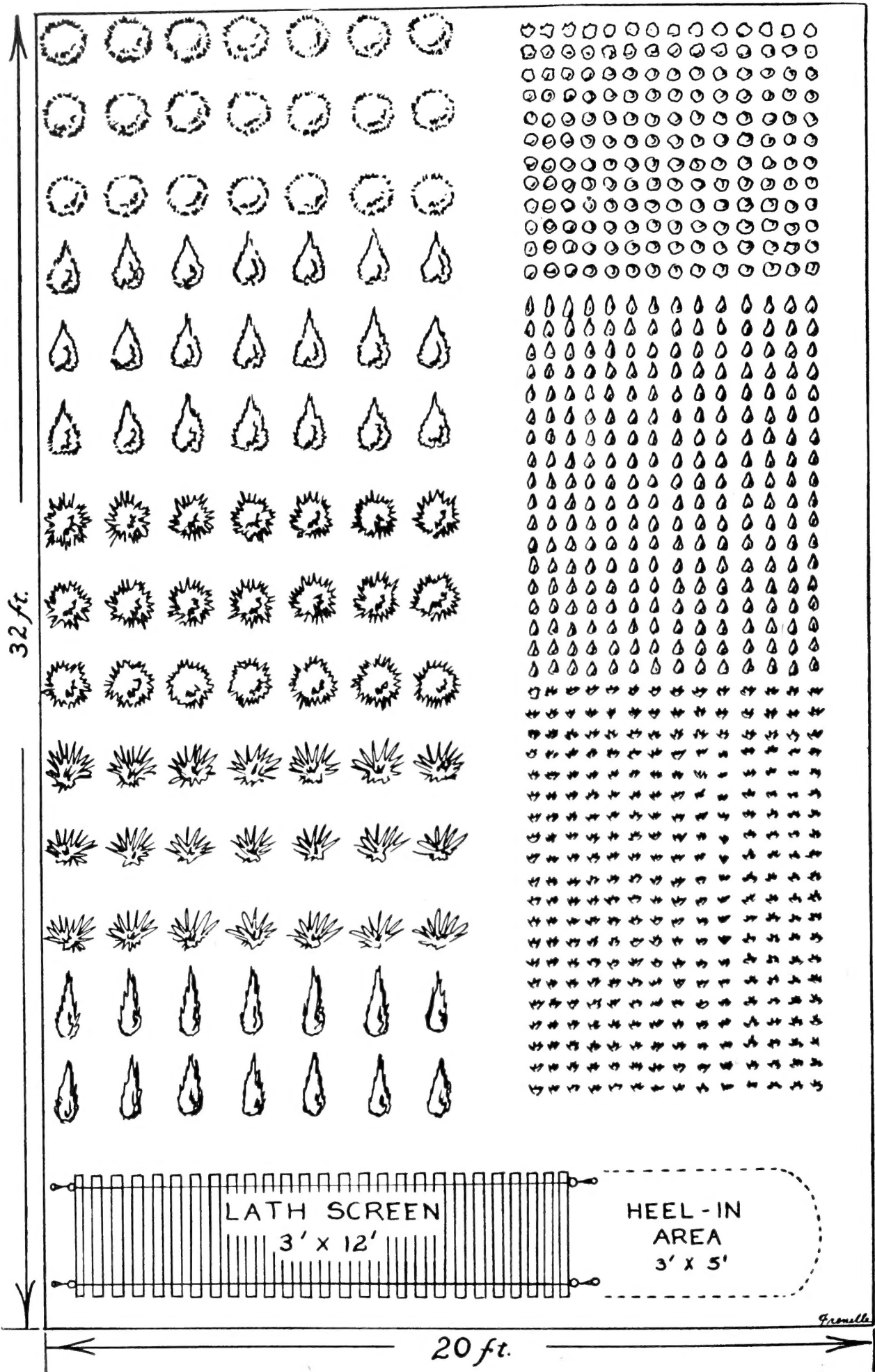
Rooted cuttings may be planted in beds 4 by 4 inch and shaded for one year. (Do not allow rooted cuttings to dry out.)

GRAFTING—This method is one of the most complicated and expensive problems. Practically all grafting is done in the greenhouse. Grafting is done mostly in cases where it is impossible to sow the seed and hold true to its parent and not possible to root by cuttings. Potted grafts can be planted in permanent locations or field rows.

LAYERING—This is a method used by many Nurserymen. Many of the low growing evergreens are easily rooted by this method. A branch is bent down, buried in the soil, leaving the tips of the branches out. In some cases it is necessary to take a small fork of a tree or a U bent wire to hold these branches in the ground.

TRANSPLANTS are trees which have been taken from seed beds and replanted in field rows or other beds. These can be planted in permanent places.

B. B. . . Indicates balled and burlaped.



HOME NURSERY

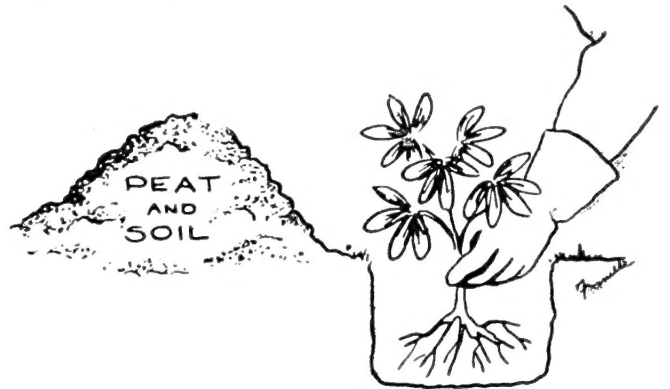
It does not require much space to grow 100 or more trees or shrubs. Look over your grounds. Most of you will find a 12 x 12 ft. space that can be used for this purpose. A home nursery is easily planned.

If you are planning on building a home within the next few years — plant now. If your present planting is getting too large and straggly — plant now, for replacements later.

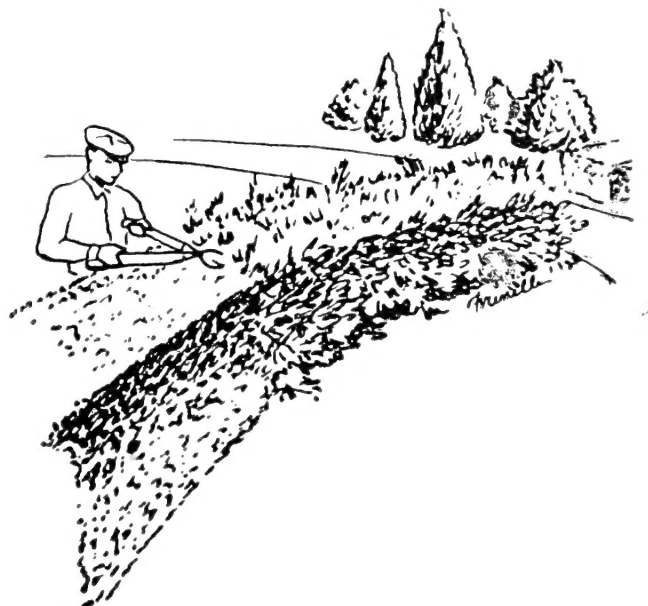
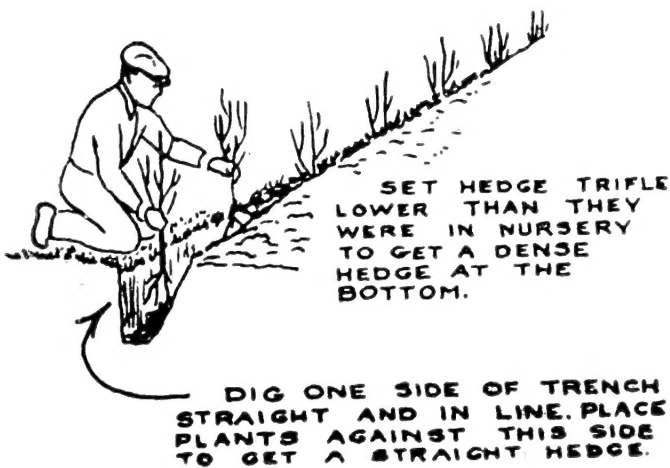
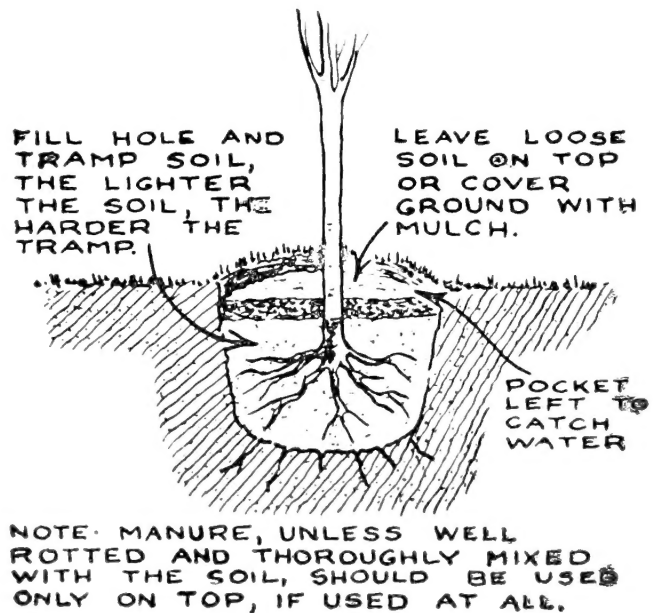
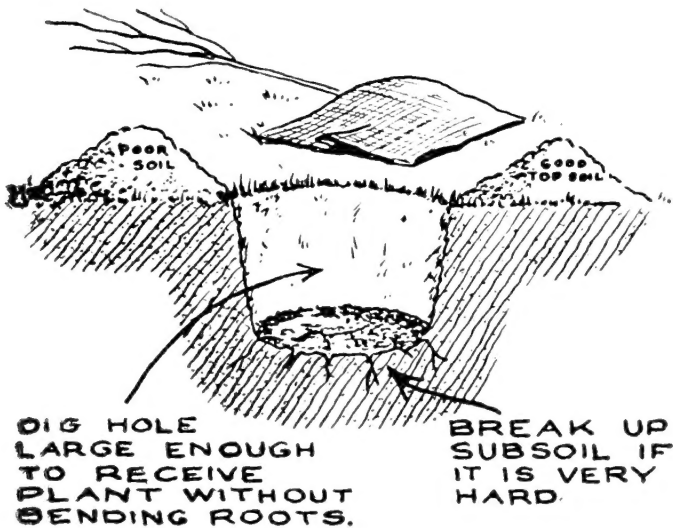
Planting Methods



Heeling in—If for any reason plants cannot be planted immediately, dig a trench and plant as above sketch.



Acid Loving Plants—Such as Azaleas, Rhododendrons, Ilex, and evergreens will do better if peat or leaf mold is mixed with soil.

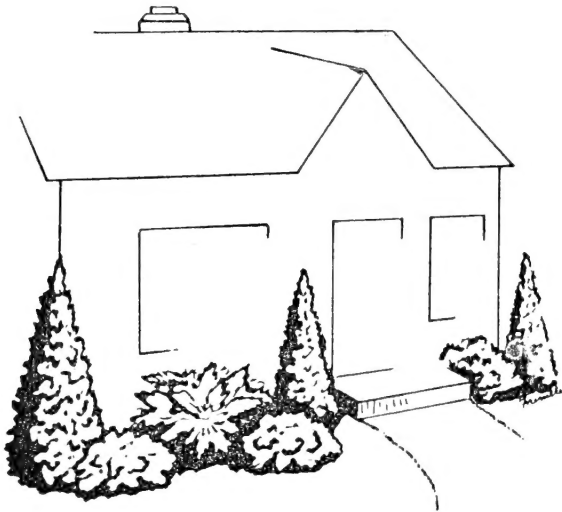




WINDBREAKS



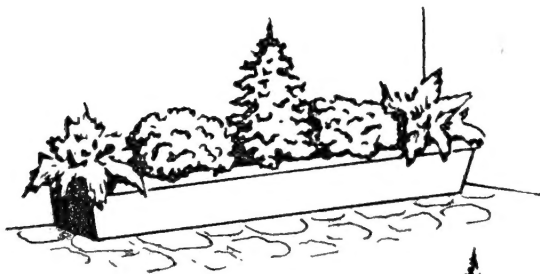
BORDERS



ORNAMENTAL USES



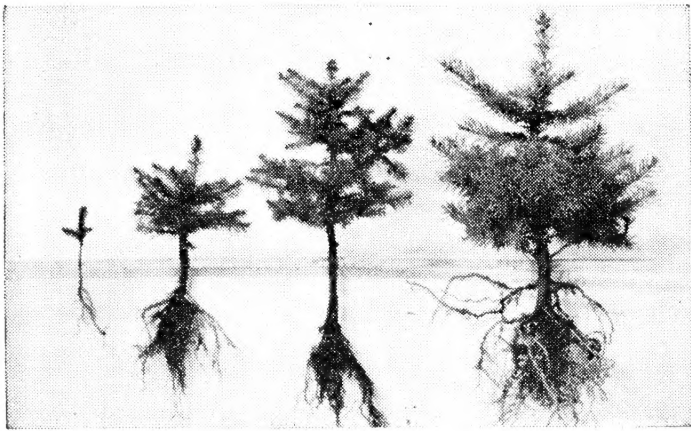
CHRISTMAS TREES



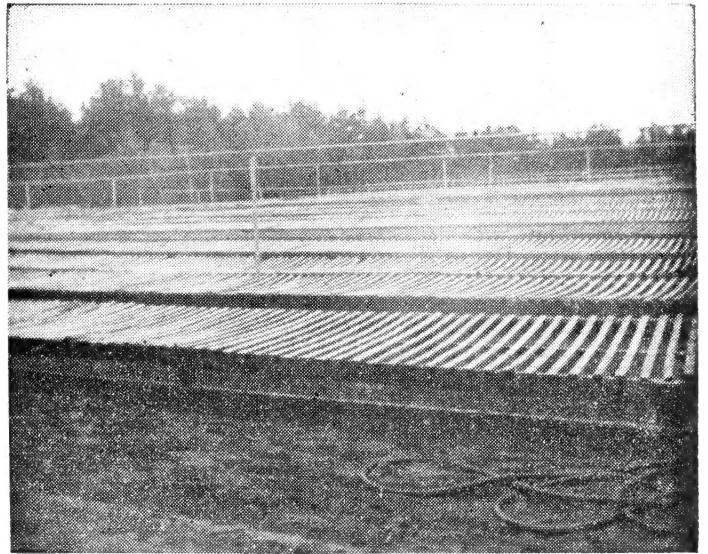
PREVENTING EROSION

USES FOR EVERGREENS

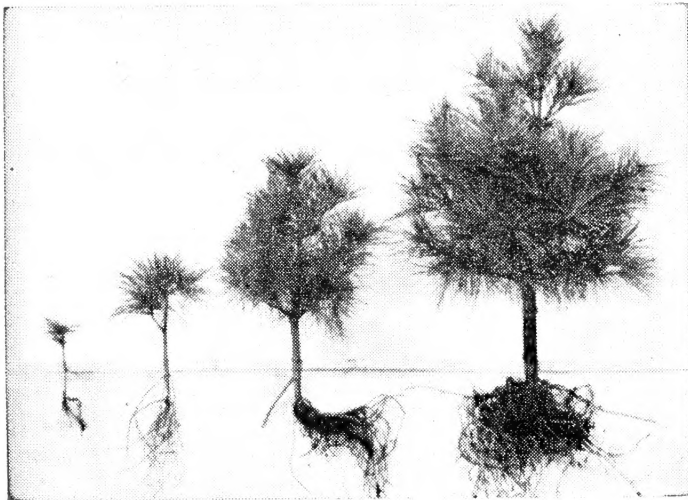
There are many uses for evergreens, they can be used for windbreaks, screening, borders, hedges, landscaping home grounds, preventing soil erosion, lumber and Christmas tree uses.



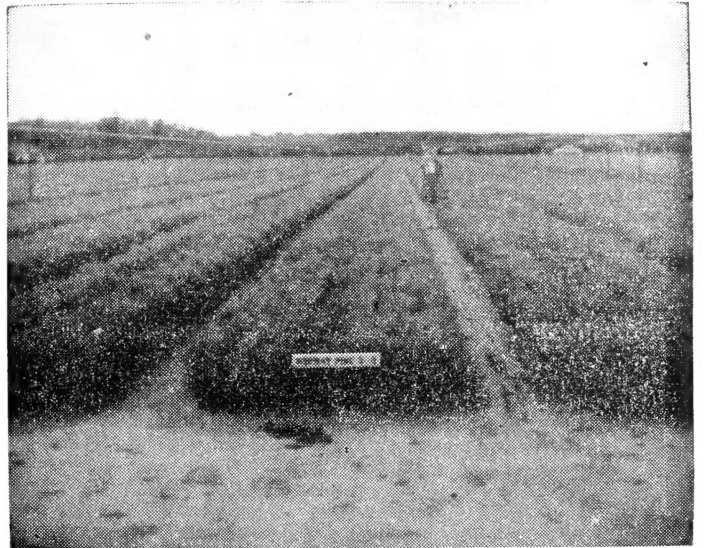
2 Yr., 4 Yr., 5 Yr., 6 Yr.
Colorado Blue Spruce



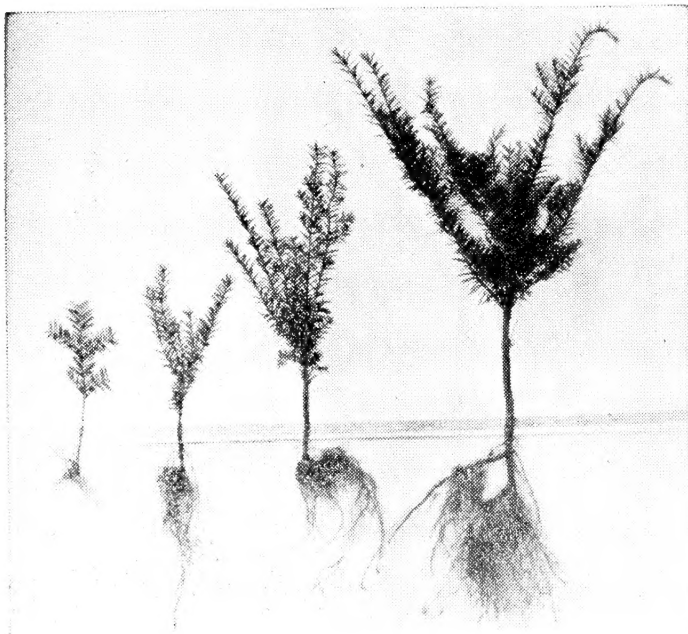
Seed Beds



2 Yr., 3 Yr., 5 Yr., 6 Yr.
White Pine



3 Yr. Seedling Beds



R. C. 1 Yr., 2 Yr., 3 Yr.
Taxus Cuspidata



11 Yr. old Forest
Norway Spruce

GROW EVERGREENS FROM SEED

SOWING EVERGREEN SEEDS

Evergreen seeds should never be sown in greenhouses, hot beds, or cold frames, for they need more ventilation. Seed bed soil should be of sandy nature. If the soil is hard dig it up, and mix sand and peat with it so it will be loose and friable. Select a level spot outdoors for a seed bed, where washing will not occur from rains. We give several methods of sowing. Two things cause loss of seedlings, dampening off which is caused by fungi in the soil, and weeds. In a small way seeds are best sown in flats, the flats placed under lath shade in the seed bed outdoors. One packet of the finer seeds like Spruce will sow a flat.

DIFFERENT METHODS OF SOWING

To avoid dampening off trouble sterilize the soil for the flats by cooking moist soil in an oven for 20 minutes. After flats are filled sow seed thinly, broadcast and just cover the depth of the seed with sterilized sand or peat. Larger seeds press down. If one is not fixed to sterilize so much soil, fill flat first 3-4 of depth with soil. Sterilize enough soil for the other 1-4 needed to fill the flat. Cover seeds as shown above. There may be a little dampening off with this latter method; to help avoid this on cloudy days remove shade and sprinkle a little sterilized sand over the seedlings every few days. Don't water every day, water thoroughly and let flats dry out a little. Dampening off occurs more in moist sultry weather.

We think most beginners will have better success with this method. Fill flats with clean sand such as is used for concrete work.

WINTER CARE—After ground freezes mulch with sawdust, leaves, lawn clippings, marsh hay or peat. Evergreen boughs make nice cover.

Orders: All seed orders are subject to previous sale. Delivery cannot be guaranteed unless orders are placed promptly.

Price: 25c per packet; 5 packets your choice \$1.00. Each packet contains sufficient seed to produce 100 to 400 seedlings. Trade packets 75c each; 3 for \$2. Trade packets contain sufficient seed to produce 500 to 1000 seedlings or more depending upon variety. All postpaid.

Mixed Evergreen Seeds, made up from varieties listed, extra large packets 25c; 3 packets 50c postpaid.

EVERGREEN SEED LIST

Abies (Fir)

- Abies Amabilis—White Fir
- Abies Balsamea—Balsam Fir
- Abies Concolor—Concolor Fir or Colorado Silver Fir
- Abies Grandis—Grand Fir
- Abies Fraseri—Fraser Fir
- Pseudotsuga Taxifolia Glauca—Hardy Douglas Fir
- Abies Homolepsia—Nikko Fir
- Abies Pinsepo Glauca—Blue Fir
- Abies Veichi—Veich Fir

Juniperus (Juniper)

- Juniperus Platte—Platte River Juniper
- Juniperus Scopulorum—Silver Juniper
- Juniperus Virginiana—American Red Cedar
- Juniperus Horizontalis—Creeping Juniper
- Juniperus Chinensis—Chinese Pyramidal Juniper
- Juniperus Chinensis Japonica—Japanese Juniper

Picea (Spruce)

- Picea Densata Glauca—Black Hill Spruce
- Picea Engelmanni Glauca—Englemann Spruce
- Picea Pungens—Colorado Blue Spruce
- Picea Mariana—Black Spruce
- Picea Sitchensis—Sitka Spruce
- Picea Glauca—White Spruce
- Picea Excelsa—Norway Spruce

Pinus (Pines)

- Pinus Banksiana—Jack Pine
- Pinus Cembre—Swiss Stone Pine
- Pinus Densiflora—Jap Red Pine
- Pinus Jeffreyi—Jeffrey Pine
- Pinus Nigra—Austrian Pine
- Pinus Pinea—Italian Stone Pine
- Pinus Ponderosa—Western Yellow Pine
- Pinus Mugho—Mugho Pine
- Pinus Strobus—White Pine
- Pinus Sylvestrus—Scotch Pine

Thuja (Arborvitae)

- Thuja Occidentalis—American Arborvitae
- Thuja Occidentalis Wareana—Ware Arborvitae
- Thuja Orientalis—Chinese Arborvitae
- Thuja Orientalis Aurea—Gold Chinese Arborvitae
- Thuja Orientalis Pyramidal—Pyramidal Arborvitae
- Thuja Orientalis Compacta—Compact Oriental Arborvitae
- Thuja Orientalis Nana—Dwarf Oriental Arborvitae

Tsuga (Hemlock)

- Tsuga Canadensis—Canadian Hemlock
- Larix Europea—European Larch



MUGHO PINE

MUGHO COMPACTA PINE

Girard Brothers' Mugho Pine is grown from a selected strain of seed which produces the true, many stemmed, low branched, dwarf type. The color is a deep green, summer and winter. Mugho seldom grows over 4 to 5 feet tall even if never pruned, but spreads out. If sheared annually it can be kept as small as desired. SEEDLINGS—2-4 in., 25 for \$2.20; 100 for \$8.00; 500 for \$36.00.

TRANSPLANTS—4-6 in., 10 for \$3.75, 100 for \$16.50.



CANADIAN HEMLOCK

Most graceful of all evergreens is the title often bestowed on the Hemlock. Its long branches droop gracefully to the ground. Needles are soft and delicate. Does well in full sun or half shade, but prefers a rather moist place, a little sheltered from sweeping winds and partial shade. We secure our Hemlock seed from the far North SEEDLINGS—3-6 in., 10 for \$1.30; 25 for \$2.50; 100 for \$8.50.

TRANSPLANTS—4-8 in., 10 for \$2.00, 25 for \$3.75, 100 for \$14.00, 1000 for \$120.00. TRANSPLANTS—10-12 in., 3 for \$1.95, 10 for \$6.00; 50 for \$25.00

FIRS - (Abies)

DOUGLAS FIR (Abies Douglasi)

Unexcelled for all purposes, well adapted for trimming, suitable for Christmas tree or specimen plantings. Needles not heavy and coarse as most firs. Branches are graceful and quite uniform.

SEEDLINGS—5-7 in., 25 for \$2.25; 100 for \$6.50; 500 for \$25.00; 1000 for \$42.00.

TRANSPLANTS—6-8 in., 25 for \$5.00; 100 for \$16.00

BALSAM FIR (Abies Balsamea)

Rich, dark green needles, best for shade, Christmas tree, and forestry planting. Can be sheared into fine specimens

SEEDLINGS—3-5 in., 25 for \$2.25; 100 for \$6.50; 500 for \$25.00; 1000 for \$42.00.

TRANSPLANTS—4-7 in., 25 for \$4.00, 100 for \$15.00, 500 for \$65.00.

CONCOLOR FIR (Colorado Silver Fir)

A beautiful pyramidal upright growing tree. Colors vary from silver, blue to green. Attractive for lawn specimen, windbreak or screen.

SEEDLINGS—4-7 in., 10 for \$1.30; 100 for \$10.00.

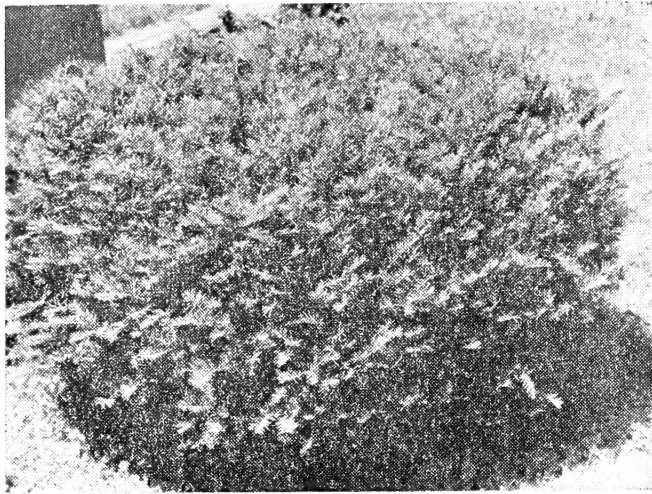
TRANSPLANTS—5-8 in., 10 for \$2.00; 100 for \$18.00.

EUROPEAN LARCH

This tree is peculiar among evergreens in that its needle-like leaves are shed each year. The lone species of the north-eastern United States is the Tamarack. Unlike this variety the European Larch is a rapid growing pyramidal tree of wonderful beauty. In the spring the needles are soft light green, which turn golden yellow when they mature and drop off in the fall.

TRANSPLANTS—18-24 in., 10 for \$4.00; 2-3 ft., 3 for \$1.80; 10 for \$5.00.

SEEDLINGS—6-8 in., 10 for \$1.20; 100 for \$3.00.



Spreading Japanese Yew
(*TAXUS CUSPIDATA*)



INTERMEDIA YEW (*Taxus Intermedia*)

TAXUS - YEWS

Yews are strictly ornamental and have a wide range of uses. Best for shady spots. Foliage is rich and attractive. The coldest winters or the bitterest of winds never injure their foliage. Best subject for hedges. If not allowed to suffer from dry weather, development is rapid. Most varieties of Yews produce a quantity of red berries in late fall. Trees shear easily and can be trimmed in many forms without injury to plant. Yews are important in landscape purposes.

There are from 150 to 200 varieties of yews known to be in existence. We are listing 9 of the very best type for landscape purpose.



UPRIGHT YEW
(*Taxus Capitata*)

Transplanted Trees	Size	5	10	25
Brown—broad upright	6-9 in.	\$2.50	\$4.50	\$10.00
Cuspidata—bushy low spreading	6-9 in.	2.25	4.00	9.00
*Capitata—pyramid type	6-9 in.	2.50	4.50	10.00
Intermedia—medium spreader	5-8 in.	2.50	4.50	10.00
*Hicksi—narrow upright	7-10 in.	2.50	4.50	10.00
Andersoni—graceful spreading	6-9 in.	2.50	4.50	10.00
Kelseyi—dense upright—berries	6-9 in.	2.50	4.50	10.00
Brevifolia—dwarf bushy	4-7 in.	2.50	4.50	10.00
*Best for hedge purposes				

SPECIAL COLLECTION—10 each of the above 8 varieties (80 trees) for \$30.00.
Rooted cuttings of the above \$15.00 per 100, Ready May 15.

**THREAD CYPRESS**

Cypress Chamaecyparis

Strictly ornamental species, graceful branches, all easily trimmed, all hardy and good landscape varieties.

THREAD CYPRESS

(Filifera, green). Slender olive green foliage, makes a broad low bush. Especially useful around corners of low houses.
TRANSPLANTS—6-10 in., 10 for \$4.50.

THREAD CYPRESS

(Filifera golden). Same as Filifera green, only a beautiful golden yellow, a valuable ornamental.
TRANSPLANTS—6-9 in., 10 for \$4.50.

GOLDEN PLUME CYPRESS

Same type of foliage as Green Plume, except it is a bright golden yellow. Unexcelled for low, dense hedges, individual specimens, or foundation planting in full sun.

TRANSPLANTS—5-8 in., 10 for \$3.50, 25 for \$7.50.

GREEN PLUME CYPRESS

Feathery, fern-like, deep green foliage. The more it is pruned, the more beautiful it becomes. We trim it mostly into dense round balls.

TRANSPLANTS—9-12 in., 10 for \$4.50, 25 for \$10.00.

DWARF GOLD PLUME Cypress

(Ret. Sulphuriana) Slow growing. Makes a very dense cone shaped growth. Needs no trimming. Ideal for rock-gardens and foundation plantings.

TRANSPLANTS—4-6 in., 10 for \$3.50.

**DOUGLAS FIR****CONCOLOR FIR****BALSAM FIR**



WHITE PINE



AUSTRIAN PINE

THE PINE FAMILY (Pinus)

Pines are widely wanted everywhere. All pines are hardy. Many of the species are valuable for wood, fuel, reforestation, windbreaks, soil erosion prevention, Mugho is the main dwarf ornamental species.

Banksiana (Jack)—Makes quick, dense windbreaks. Grows on poor soil. Picturesque tree. Native of the West.

Austrian (Nigra) —Sturdy, upright tree of compact symmetrical growth. Ornamental and good Christmas tree.

White Pine (Strobus)—Soft bluish-green needles. Fine timber species. Makes fine lawn specimens.

American Red or Norway—Deep green all year. Best of all Pines for timber and Christmas tree planting. Produces valuable wood for fuel. Grows fast.

Western Yellow Pine (Pinus Ponderosa) —Symmetrical variety with long bluish-green needles. Best for ornamental and windbreak planting. Also, good timber variety. Very hardy.

Scotch Pine (Sylvestris)—Stately upright tree. Needles green to blue-green in color, a good Christmas tree variety. Grows dense, can be sheared easily, grows well in poor soil, easily adapts itself to most any type soil. Also valuable for windbreaks and timber purposes. Very hardy.

Variety	Age	Size	25	100	500	1000
American Red Pine	2 yr. S	4-6"	2.00	5.00	20.00	36.00
American Red Pine	4 yr. T	6-10"	4.50	12.00	40.00	80.00
American Red Pine ..	4 yr. T	12-16"	5.00	18.00	80.00	140.00
Austrian Pine	4 yr. T	8-10"	5.00	17.00	65.00	120.00
Austrian Pine	2 yr. S	4-6"	2.50	6.50	26.00	45.00
Austrian Pine	5 yr. T	12-16"	6.00	20.00	90.00	
Scotch Pine	4 yr. T	12-16"	5.00	17.00	65.00	120.00
Scotch Pine	2 yr. S	5-8"	2.50	6.50	26.00	45.00
Western Yellow Pine	2 yr. S	4-6"	2.50	6.50	26.00	45.00
Western Yellow Pine	4 yr. T	8-12"	5.00	17.00	65.00	120.00
White Pine	2 yr. S	3-5"	2.00	5.00	22.00	35.00
White Pine	3 yr. T	5-8"	4.00	14.00	60.00	
White Pine	5 yr. T	12-16"	5.00	17.00	65.00	120.00
Jack Pine	2 yr. S	8-10"	2.50	6.50	26.00	40.00

T—Indicates Transplants

S—Indicates Seedlings



WHITE SPRUCE
(*Picea Glauca*)



NORWAY SPRUCE
(*Picea Excelsa*)



COLO. BLUE SPRUCE

SPRUCE (*Picea*)

Spruce are unsurpassed for their ornamental qualities. They are conical or pyramidal evergreens of great hardiness. Widely used for ornamental, forestry, windbreak and Xmas tree planting.

Norway Spruce—Norway has been more widely used for Christmas tree planting and for windbreaks than any other species. Norway in seedlings will be limited in supply for some time.

Colorado Blue Spruce—One of the handsomest native trees growing in the Rocky Mountains. Use this tree for background and individual specimen planting. Trees grow quite slowly when young, but when six or seven years old, after becoming established in a new planting, grow surprisingly fast. The fine blue color comes as the trees get older. Prefer heavy soil.

Black Spruce—A rapid growing tree, suitable for Christmas trees and dense forestry.

White Spruce—Makes a more dense Christmas tree than Norway and grows

just as fast. Closely related to Black Hills. Fine also for windbreak and forestry planting.

Black Hills Spruce—Very compact, deep bluish-green foliage. Best Spruce for dry country planting. Also the best Spruce for planting in yards, as it stays small for many years and is highly ornamental. Often used in window boxes when young because of its dense, shapely habit. We know of no better table Christmas tree.

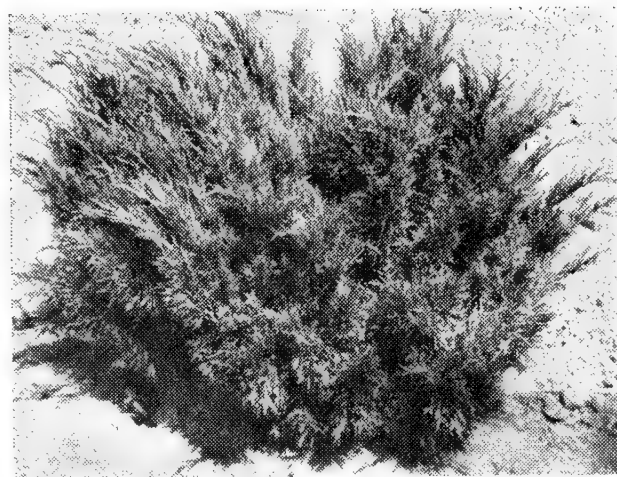
Engelmann Spruce—Steel blue foliage. Has slender pyramidal branches which form a dense, narrow pyramid. Rapid growing. Most valuable tree for forestry planting, background use, ornamental purposes. Its blue color comes in the winter and makes this tree command a premium price among Christmas buyers.

SPRUCE SEEDLINGS and TRANSPLANTS

Variety	Age	Size	25	100	500	1000
Black Spruce	4 yr. T	3-12"	5.00	17.00	80.00	125.00
Black Hill Spruce	2 yr. S	3-6"	2.50	6.50	27.00	45.00
Black Hill Spruce	6 yr. T	8-10"	7.00	25.00	80.00	
Black Hill Spruce	4 yr. T	4-6"	4.50	16.00	65.00	110.00
Colorado Blue Spruce	2 yr. S	3-6"	2.50	6.50	27.00	45.00
Colorado Blue Spruce	4 yr. T	5-6"	4.50	16.00	65.00	125.00
Colorado Blue Spruce	5 yr. T	6-8"	6.25	22.00		
Engelman Spruce	4 yr. T	4-6"	6.00	18.00		
Norway Spruce	2 yr. S	4-6"	2.50	6.50	26.00	40.00
Norway Spruce	4 yr. T	6-10"	4.50	16.00	70.00	130.00
Norway Spruce	5 yr. T	10-12"	6.25	22.00		
White Spruce	2 yr. S	3-6"	2.50	6.50	26.00	40.00
White Spruce	4 yr. T	5-7"	5.00	16.00	65.00	120.00
White Spruce	5 yr. T	3-12"	5.50	19.00	80.00	130.00
White Spruce	5 yr. T	12-14"	12.50	40.00		

S Indicates Seedlings

T Indicates Transplants

**PFITZER JUNIPER****SAVIN JUNIPER**

THE JUNIPER FAMILY

The Juniper family is ornamental. The upright forms make beautiful specimens, and the lower growing varieties are used for ground covers. Junipers are mostly propagated from cuttings and some of the rare forms by grafting. These young trees will make fine specimens in two or three years.

SAVIN JUNIPER (Vase shape)

Spreading Vase shaped evergreen. Grows to height of 2½ to 3 ft., makes fine specimens, good subject for foundation planting, prefers full sun.

TRANSPLANTS—8-12 in., 10 for \$5.00, 25 for \$11.25; 6-8 in. T., 10 for \$4.00.

SAVIN JUNIPER (Low Spreading type)

This is a low spreading form which grows close to the ground. The colors run from steel blue to deep green. Ideal for Rock gardens. Transplants, 4 yrs., 6-10 in., 10 for \$6.00.

ANDORRA—Low spreading habit summer foliage, silvery cast; after frost, purple. **TRANSPLANTS**—6-10 in., 10 for \$5.00; 50 for \$20.00; 5-7 in., 10 for \$3.50; 25 for \$7.50.

PFITZER—An ornamental-low growing and spreading tree. One that is extensively used by landscapers and gardeners. This variety has been used for many many years. It is just as popular today.

TRANSPLANTS—6-10 in., 10 for \$5.00; 25 for \$12.25.
10-12 in., 10 for \$6.50; 25 for \$15.50.

PFITZER AUREA—A golden Pfitzer. Similar to the above. Medium grower. It possesses a bright golden color during spring and summer. Will color brightest in full sun. It is very effective in plantings with the above.

POT PLANTS—5-7 in., 10 for \$4.00.

JUNIPERUS-GLAUCA HETZI

A beautiful fast growing spreading type juniper. Color silvery blue. Grows same as Pfitzer. A new addition to the family.

TRANSPLANTS—10-15 in., 10 for \$5.50, 5-7 in., 10 for \$4.00, 25 for \$12.50.

JUNIPERUS HORIZONTALIS DOUGLASI

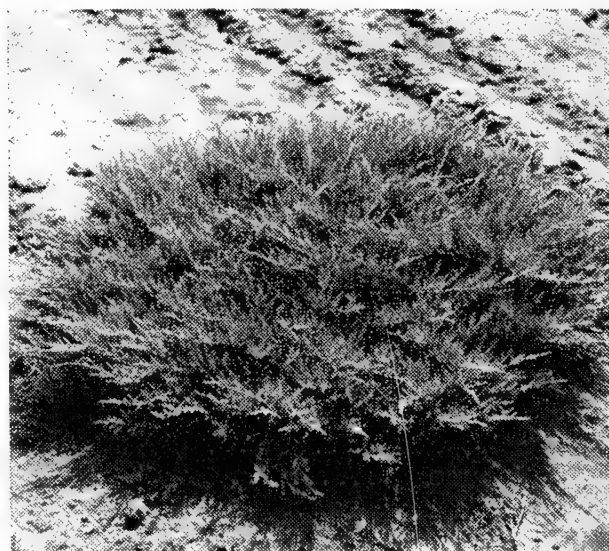
(Creeping Waukeegan Juniper). Ideal for terraces, borders and rock gardens.

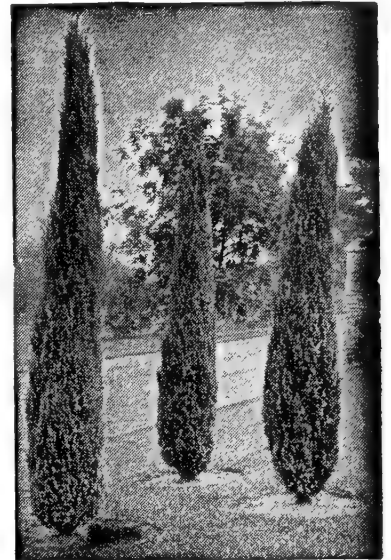
TRANSPLANTS—5-9 in., 10 for \$4.00.

JUNIPERUS HORIZONTALIS GLAUCA

(Blue Creeping Juniper). Very attractive on sloping lawns, terraces, overhanging walls and the like, where they can be used.

TRANSPLANTS—8-10 in., 10 for \$5.00.

**ANDORRA JUNIPER**

**BURKI JUNIPER****REDCEDAR**
(*Juniperus virginiana*)**IRISH JUNIPER**
(*Juniperus communis hibernica*)**JUNIPERUS VIRGINIANA**

(Redcedar). This is the mother plant from which numerous horticultural varieties have been developed over many years. Several varieties offered in this catalog are horticultural forms of Redcedar. TRANSPLANTS—6-10 in., 25 for \$5.00.

JUNIPERUS COMMUNIS HIBERNICA FASTIGATA

(Narrow Irish Juniper). A form very superior to the common Irish Juniper. Grows into a dense, narrow column. A healthy, vigorous grower.

TRANSPLANTS—8-12 in., 10 for \$5.00, 25 for \$11.50.

JUNIPERUS EXCELSA STRICTA

(Spiny Greek Juniper). Grows very dense, symmetrical, especially adapted to urns, tubs, rock gardens. Dwarf, cone shaped, grayish green foliage all year.

TRANSPLANTS—6-10 in., 10 for \$5.00, 25 for \$11.50.

JUNIPERUS COMMUNIS DEPRESSA AUREA

This is a well branched vase shaped tree, with fine golden colored foliage. Grows more upright than the Pfitzer Juniper. Very attractive in color when grown in full sun.

TRANSPLANTS—8-10 in., 10 for \$5.50, 25 for \$12.50.

JUNIPERUS VIRGINIANA GLAUCA

(Silver Cedar). This is a favorite with many customers. It is a shapely, pyramidal tree of moderate size. Outstanding silvery-blue. Brightest in early spring, darkening to a deep blue as season progresses. Trims well.

GRAFTS—8-10 in., 75c each; 10 for \$7.00.

GRAFTED JUNIPERS

The fine Junipers listed below are all grafted Junipers. Stock was carefully selected for color and growth. These will grow as easily as *Juniperus virginiana*. Suggest staking the first year.

JUNIPERUS CHINENSIS KETELEERI

(Keteleer Juniper). This tree has a good rich green color, is a good grower, and has an abundance of berries.

GRAFTS—8-10 in., 75c each, 10 for \$7.00.

JUNIPERUS CHINENSIS COLUMNARIS

(Blue Columnar Chinese Juniper). One of the best known of the horticultural varieties of the Chinese Junipers can be grown into a pyramid or narrow column shape, attractive Glauca, blue color.

GRAFTS—8-10 in., 75c each; 10 for \$7.00.

JUNIPERUS VIRGINIANA CANAERTI

(Canaert Juniper). This horticultural variety of Redcedar has long been one of the leading favorites. It grows in a symmetrical, pyramidal shape, well covered with heavy green foliage.

GRAFTS—8-10 in., 80c each; 10 for \$7.50.

JUNIPERUS VIRGINIANA BURKI

(Burk Juniper). A horticultural variety of the Redcedar resembling the *Juniperus virginiana glauca*. The color is somewhat deeper blue. The tree seems to take on a more compact habit than the Glauca.

GRAFTS—8-10 in., 80c each; 10 for \$7.50.



AMERICAN ARBORVITAE WOODWARD ARBORVITAE PYRAMIDAL ARBORVITAE
 (*Thuja occidentalis*) (*Thuja occidentalis woodwardi*) (*Thuja occidentalis pyramidalis*)

ARBORVITAE

THUJA OCCIDENTALIS

(**American Arborvitae**). We grow only from seed, the Northern form from Canada. Grows in compact form, pyramidal in shape. Thrives on vigorous pruning, makes fine low hedges or taller windbreaks.

TRANSPLANTS—8-10 in., 10 for \$2.50, 25 for \$5.25.

SEEDLINGS—4-6 in., 25 for \$2.00.

THUJA OCCIDENTALIS PYRAMIDALS

(**Pyramidal Arborvitae**). Tall, slender form of American Arborvitae. Always prune trees while young to build the slender form.

TRANSPLANTS—6-8 in., 10 for \$4.00; 25 for \$8.50.

THUJA OCCIDENTALIS WOODWARDI

(**Woodward Globe Arborvitae**). Grows naturally round like a ball and forms a bushy, natural globe shaped tree of very compact form and good color. The best globe shaped evergreen. Small trees show up well in window boxes.

TRANSPLANTS—4-7 in., 10 for \$4.00, 25 for \$9.50.

TRANSPLANTS—Strong 2 yr., field grown, 10 for \$7.00, 25 for \$15.00.

THUJA LUTEA

(**George Peabody**). A beautiful golden type color very pronounced, makes a very good ornamental. This variety is always scarce.

3 Yr. from field—8-12 in., 3 for \$2.95.

TRANSPLANTS—4-7 in., 10 for \$4.00; 25 for \$8.75.

THUJA (*Elligantissima*)

Upright pyramidal form. Heavy foliage tipped golden. Very hardy. Shapes well.

10 for \$4.50; 25 for \$10.00.

THUJA GLOBOSA VERIDIS. A deep green form of the woodwardi globe. Maintains its good color the year round. Keeps its nice form, needs no trimming.

TRANSPLANTS—5-7 in., 10 for \$4.50, 25 for \$10.00.

THUJA ORIENTALIS COMPACTA

(**Compact Chinese Arborvitae**) Very compact upright form. Suitable for foundation plantings.

SEEDLINGS—2 yr., 6-9 in., 10 for \$1.25; 25 for \$2.50.

THUJA OCCIDENTALIS

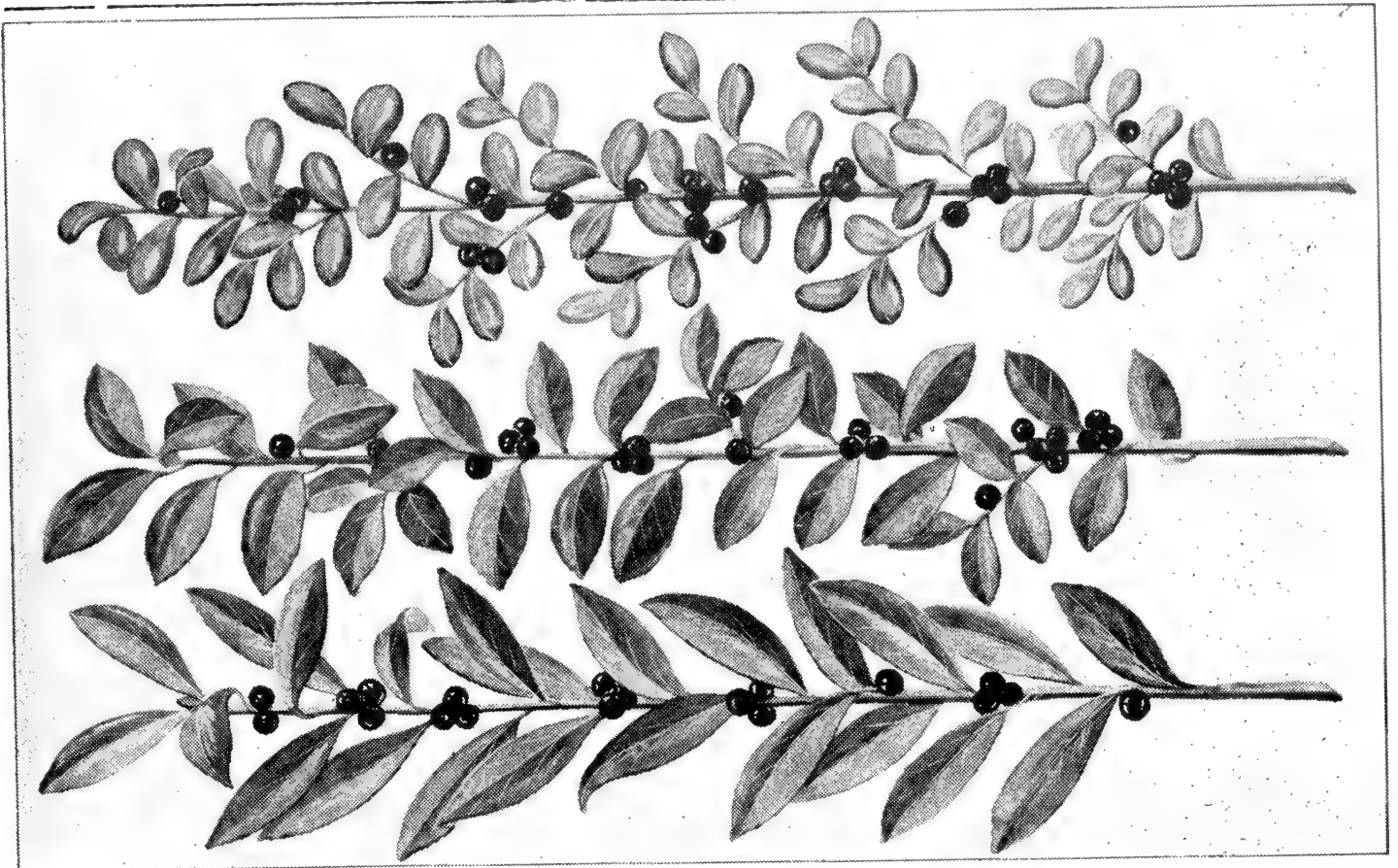
(**Deep Green**) Similar to American Arborvitae, but much greener. Has a good winter color.

TRANSPLANTS—10 for \$4.50; 25 for \$10.00.

THUJA-HETZS MIDGET

A very slow grower. Compact globe form suitable for rock gardens. A new dwarf form—very rare.

TRANSPLANTS—10 for \$5.00.



BROADLEAF EVERGREENS

Broadleaf Evergreens are valuable for their use in landscape work. Some are valuable for their beautiful glossy foliage, others for their fruit such as *Ilex Opaca* and others for their blooms which are quite attractive amongst its deep green foliage. Most will do well in shade as well as sun.

ILEX CONVEXA

A slow growing evergreen with small, glossy, cup-shaped foliage. Useful where small shrubs are necessary. Can be sheared into dense globe or will do well without shearing. Very hardy.

TRANSPLANTS—5-7 in., 3 for \$1.25, 10 for \$3.50.

ILEX CRENATA HETZI

This is a new form of Japanese Holly. Developed by the Hetz Nurseries. Grows into a compact bush. Foliage is similar to *Ilex Convexa* but much larger. Like the rest of the Japanese Holly it bears dark blue black berries.

TRANSPLANTS—6-10 in., 3 for \$1.80; 10 for \$5.50.

MAHONIA AQUIFOLIA (Oregon Holly Grape)

The leaves are holly-like and bright green. Has long clusters of bright golden yellow flowers in the spring, followed by bunches of bright blue grape-like berries. Most attractive in foliage, flower and fruit. The sprays are fine for interior decoration. In the north the leaves lose their color in late winter but do not fall off. In the spring new life comes back into these leaves. Never winter kills. At its best in group plantings. We grow it in full sun, but it is at its best in half shade. Prefers a rather heavy soil.

TRANSPLANTS—Field grown 8-10 in., 65c each, 3 for \$1.50.

ILEX ROTUNDIFOLIA

A dense, low growing shrub. Waxy deep green foliage. Fine for landscaping. Grows well in sun or shade. Shears easy.

TRANSPLANTS—6-10 in., 55c each; 10 for \$5.00.

ILEX OPACA (American Holly)

These plants listed are from fine berried varieties, as—Merry Christmas, Old Heavy Berry and American Bittersweet. Plants are sold in groups of three. Two female and one male.

PLANTS, B .B.—3 yr. B. B., 3 for \$5.50.

KAL LATIFOLIA (Mountain Laurel)

Grows into a compact symmetrical shrub, covered with foliage. Leaves medium sized, glossy throughout the year. When in bloom the plants are literally bouquets of lovely cup-shaped flowers ranging from almost white to deep pink. Effective singly or in mass plantings. Very hardy and desirable. Requires damp, loose, acid soil, humus, considerable shade. Easily the finest flowering evergreen grown.

TRANSPLANTS—8-10 in., 50c each; 10 for \$4.00.

PIERIS JAPONICA—Is a good grower and very handsome in form. The leaves are very delicately tinted when young. Does well in the shade or sun. An aristocrat of the broadleaf evergreen group.

BEDDED TRANSPLANTS—5-8 in., 40c each; 5 for \$1.55.



DEUTZIA GRACILIS
EUONYMUS

Coloratus (Purple Leaf Creeping Euonymus). A purple leaf form of *E. Radicans*. This plant carries a rich green color throughout the summer and in the autumn turns to a purplish-red color which remains with it until spring. A wonderful plant for mass planting on banks and on stone work. **TRANSPLANTS**—6-10 in., 40c each, 10 for \$3.50.

Vegetus (Big Leaf Wintercreeper). Bushy, with round dull green leaves. This plant is a beautiful sight in winter when it is covered with its bright scarlet fruit. **TRANSPLANTS**—6-10 in., 40c each; 10 for \$3.50.

Radicans Erecta—A beautiful little upright growing shrub, suitable for borders or foundation planting. Foliage glossy dark green. Can easily be kept under control.

TRANSPLANTS—8-10 in., 60c each; 3 for \$1.50.

ALATUS COMPACT—One of the best decorative varieties I know. Makes a dense compact bush. Its beautiful green leaves change to a brilliant red in the fall and early winter. Very hardy.

TRANSPLANTS—6-10 in., 50c each; 10 for \$4.00.

BUXUS SUFFRUTICOSA
(Dwarf English Boxwood)

Dwarf and slow growing. Best known evergreen edging plant. Foliage deep green and dense. Large specimens often used in urns and porch boxes.

TRANSPLANTS—Field Grown, 6-8 in., 60c each, 4 for \$2.00. 4-6 in., 10 for \$3.00.



BLUEBERRIES

Blueberry plants are very showy and attractive. The foliage is glossy green in spring, and blazing crimson in autumn. They can be planted in a group in practically any corner of a lot or a field.

The plants like acid soil. Soil can easily be made acid by adding rotted leaves, peat humus, or sawdust. Set the bushes 5 to 7 feet apart. A bush grown by itself will not bear fruit. Where 4 or more plants of different varieties are grown in close proximity perfect fertilization of the blossoms will take place, and the result will be abundant crops. Consequently, our blueberries are sold in units of 4 plants (mixed varieties) or in blocks of 8 plants or more (mixed). Orders for single plants will not be accepted.

CONCORD — JERSEY — JUNE —

RANCOCAS — PIONEER — BURLINGTON

All varieties are 3 years old. Most will bear the first season.

Prices: 12-15 in., 4 for \$4.50; 8 for \$8.00; 12 for \$10.50.

DROOPING LEUCOTHOE
(*Leucothoe Catesbaei*)

A very ornamental broad leaved evergreen with large, glossy foliage. Foliage turns to beautiful shades of red and bronze in the fall and winter. It produces clusters of white flowers in the spring. Drooping branches make it a good facer or under-cover plant for taller shrubs. Semi-dwarf and hardy.

TRANSPLANTS—12-15 in., B.B.—\$2.00.
TRANSPLANTS—4-7 in., 10 for \$3.00.

QUANTITY	VARIETY AND SIZE	DOLLARS	CENTS
	AMOUNT BROUGHT FORWARD		
	TOTAL		

IF YOU HAVE FRIENDS WE WILL BE GLAD TO MAIL THEM CATALOGUES

NAME

ADDRESS

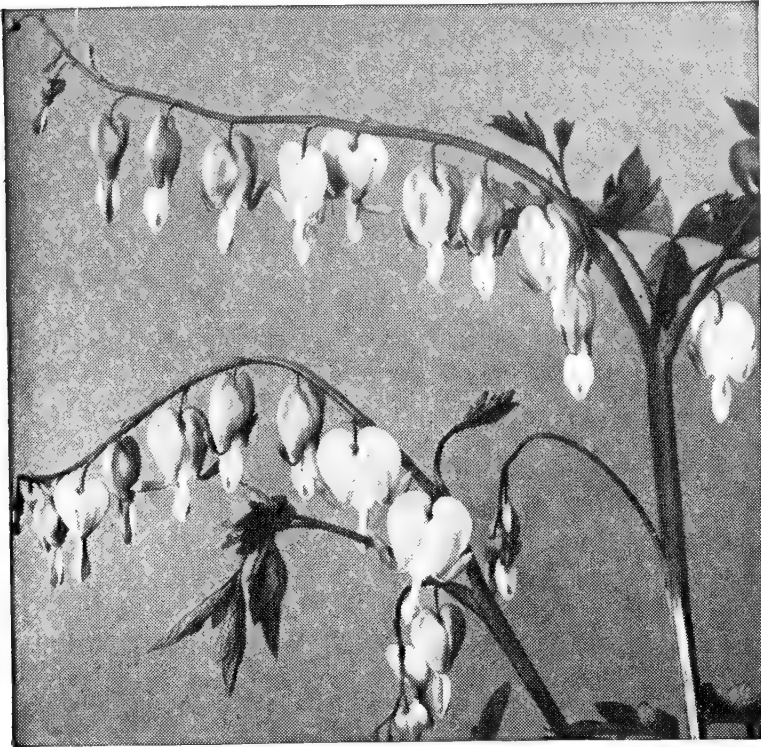
NAME

ADDRESS

NAME

ADDRESS

NO ORDERS ACCEPTED FOR LESS THAN \$ 3.00
THIS DOES NOT APPLY TO SEED ORDERS

**BLEEDING HEART (Dicentra)**

Bleeding Heart (Dicentra)—We are listing this 'Old Favorite' by request, from many of our customers. This flower came to be known many years ago. Is a favorite among'st flower lovers. Unlike many varieties that came in the picture and faded away. This flower becomes more popular as years go by.

The heart-shaped flowers are pink with white centers, branches graceful and drooping. Foliage is fern-like. Very hardy and grows the height of 18-24 inches. Price, 60c each, 3 for \$1.65.

BERBERIS (Barberry)

Atropurpurea (Red-leaf Barberry). Red-purple form. Color not perfect, but fairly steady. Properly pollinated, it comes true from seed.

12-15 in., 25 for \$8.75; 100 for \$30.00.

CHRISTMAS ROSE

HELIBOROS Hybrid ATRORUBENS—Purplish red flowers. Vigorous grower. Rare variety.

3-5 eye clump, \$2.00 each, 3 for \$5.75.

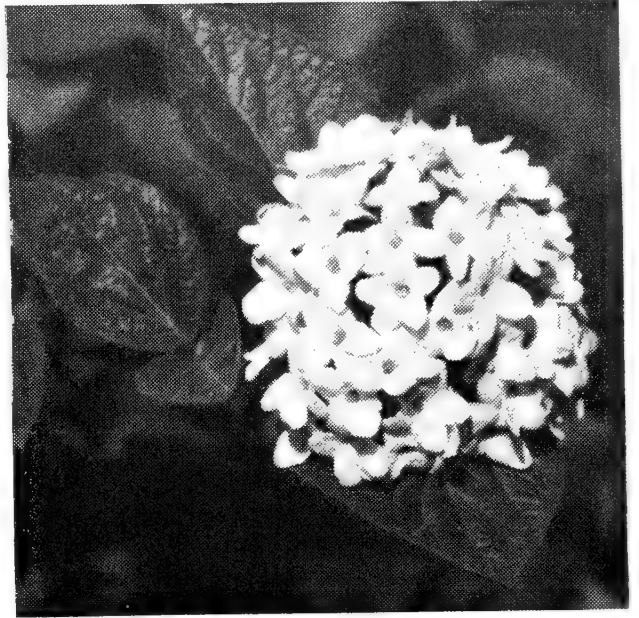
HEDIRA BALTICA (Hardy Baltic Ivy)

A fine ground cover. Will do well in shade or sun.

2 in. pot plants—10 for \$3.00.

PYRACANTHA (Coccinea)—is a thorny bush plant noted for its cluster of bright orange red berries. The berries come in the fall and sometimes remain all winter. Growth is vigorous and attain a height of about 12 ft.

PLANTS from 3½ in. pots, 65c each, 3 for \$1.65.

**VIBURNUM BURKWOODI****JAPANESE PACHYSANDRA (Pachysandra terminalis)**

For ground cover or for grass under trees.

If you have a sandy bank, a terrace, places under trees where grass will not grow, a low border to fill in, plant Spurge. This is the ideal evergreen ground cover. Hardy everywhere in sun or shade. Same attractive green color all winter. Splendid plant for window boxes.

TRANSPLANT—from field rows, 10 for \$2.00, 100 for \$18.00.

VINCA MINOR

(Periwinkle or Trailing Myrtle)

Hardy evergreen trailing herb. Makes a dense, attractive ground cover, and thrives with practically no care. Even does well on dry sand banks. A most suitable plant to grow as edgings to shrubbery borders, carpet the ground under the shade of trees or in shady borders. Hugs the ground.

Strong 1 year old, field grown clumps, 8 to 15 runners, 10 for \$1.80, 100 for \$16.00.

DAPHNE CNEORUM (Garland Flower)

One of the very choicest of all rock garden evergreens. Produces delicate rose-pink clusters of flowers completely covering the plant in early spring and more sparsely at intervals all summer until freezing weather. Flowers rival the carnation for fragrance. Growth not exceeding 8-10 inches in height but spreading out making a mat of grey green. Requires sunny location. Young rooted, field grown plants often in bloom.

TRANSPLANTS—4-6 in., 40c each, 10 for \$3.50.

**RHODODENDRON HYBRIDS**

The Rhododendrons are acid soil loving plants. As in the case with most broad leaf evergreens the plant grows best in protected areas. Windswept locations should be avoided. Rhododendrons like rich, well drained soil that is rich in organic matter. Neutral or sub-acid soil can be improved by use of Aluminum Sulphate. An acid peat, pine needles and oak leaves are all recommended as mulching material. Many varieties of Rhododendrons are found in the United States. Many of the hybrids are from crosses of our well known R. Catawbiense and a large flowering Oriental species R. Arboreum.

SELECTED RHODODENDRON HYBRIDS

This list contains some of the finest in the hybrid family. Selected from good color, sturdy growing habits and hardiness.

ABRAHAM LINCOLN—Bright rosy magenta, grows into a low compact bush. Very hardy. Size, 12-15 in.

AMERICA—Brilliant clear red. Very floriferous. Grows into a broad bush form. One of the best in this color. Sizes 8-12 in. and 12-15 in.

CAUTABIENCE ALBA—Buds pink then open to pure white, one of the hardiest, a very vigorous grower. Size 12-15 in.

CAUTABIENCE BOURSAULT—Beautiful light purple or lilac shade. Low compact grower, very showy. Size 12-15 in.

CHARLES DICKENS—Clear red blooms, stand well above the deep green foliage. Rugged grower. Size 8-12 in.

DR. DRESSELHUYS—Crimson red, vigorous upright grower. Very hardy. Size 8-12 in. and 12-15 in.

DR. LOVINK—Bright crimson red. Attractive dark green foliage. Growing habits the same as America, but later blooming period. Size 12-15 in.

ENGLISH ROSEUM—Light rose, vigorous upright grower, large foliage. Good growing habits. Size 8-12 in.

**RHODODENDRON HYBRID**

F. D. GODMAN—Dark red blooms. Deep green foliage, vigorous grower. Not as hardy as America. Size 12-15 in.

IGNATIUS SARGENTI—Bright purplish red. A soft and pleasing red. A good grower. Size 12-15 in.

LEES DARK PURPLE—One of the finest deep purple in cultivation. Buds are very deep purple. Opening to large trusses of medium purple. Grows into a broad compact bush, vigorous grower. Sizes 8-12 in. and 12-15 in.

MADAM MASSON—White with greenish white blotches. Very large trusses. Broad compact grower. Not as hardy as the white Catawbiense Alba. Size 8-12 in.

ROSEUM ELEGANS—Rosy magenta. Compact bush with good foliage. Vigorous grower. Size 8-12 in.

PARSONS GRANDIFLORUM—Very large purplish rose trusses. A vigorous upright grower. Size 12-15 in.

VAN WEERDEN POELMAN—Bright crimson red. Growing habits are excellent. Late blooming. Sizes 8-12 in. and 12-15 in.
 SIZE—8-12 in. B.B. plants \$2.25 each, 10 for \$20.00.
 SIZE—12-15 in. B.B. plants \$3.25 each, 10 for \$30.00.

All above varieties are grafted.

HYBRID SEEDLINGS

These are seedlings from named varieties and others. In selecting our seed we have obtained some very fine varieties from our crosses. These run in shades of white, pink and reds. We do not guarantee the colors.
TRANSPLANTS—5-8 in. 3 for \$1.80; 25 for \$13.75.

**HARDY GHENT**

AZALEA GHENT HYBRID SEEDLINGS—These are seedlings of many named varieties. Colors vary from yellow to scarlet.

TRANSPLANTS—4-7 in., 45c each, 10 for \$4.00.

15-18 in. B. B. with buds, \$3.00 each, 3 for \$7.00.

AZALEA NARCISSAFLORA—A double pure golden yellow ghent hybrid. Blooms in profusion. Makes an attractive bushy plant. Dutch Hybrid.

12-18 in. B. B. Plants, \$3.25 each.

AZALEA DAVIESI—A rugged upright growing form. Its white flowers are very fragrant. Foliage deep green of heavy substance. If you like a fragrant azalea try this one.

18-24 in. B. B. Plants, \$4.00 each, 3 for \$11.50.

GLORIA MUNDI—Will attract much attention with flowers of rich fiery orange color. A low compact grower. Good for foundation planting. Very good variety.

18-24 in. B. B. Plants, \$3.50 each.

SANG de GENTBRUGGE—Flowers brilliant red. All other habits same as Gloria Mundi. Ideal for border and foundation planting.

15-18 in. B. B. Plants, \$3.50 each.

RAPHAEL D. SMET—Fragrant double white flushed rosy pink. Glossy deep green foliage. Compact and very attractive.

15-18 in., B. B., \$4.00 ea., 3 for \$11.00.

8-10 in. B. B., \$2.50 each, 3 for \$6.75.

**AZALEA POUKANENSIS**

AZALEA POUKANENSIS—A compact low growing shrub. Produces a profusion of deep rosy lavender flowers, deep green glossy foliage. Ideal landscaping shrub. Very hardy.

TRANSPLANTS—6-8 in., 70c each, 3 for \$1.90.

AZALEA MUCRONULATUM—One of the earliest azaleas to bloom. Blooms the same time as forsythia. A light lavender to medium purple in color.

TRANSPLANTS—3-5 in., 10 for \$3.00; 6-10 in., 60c each, 10 for \$5.50.

NORMA—A Rustica Type. Growing habits same as Ghent. Has large quantities of fragrant double flowers, red tinted lilac. An unusual type.

PLANTS—B. B. 10-12 in., \$3.50 each, 3 for \$10.50.

PHIDIAS—Another Rustica type. Growing habits same as Norma. Color of blooms, light pink shaded yellow.

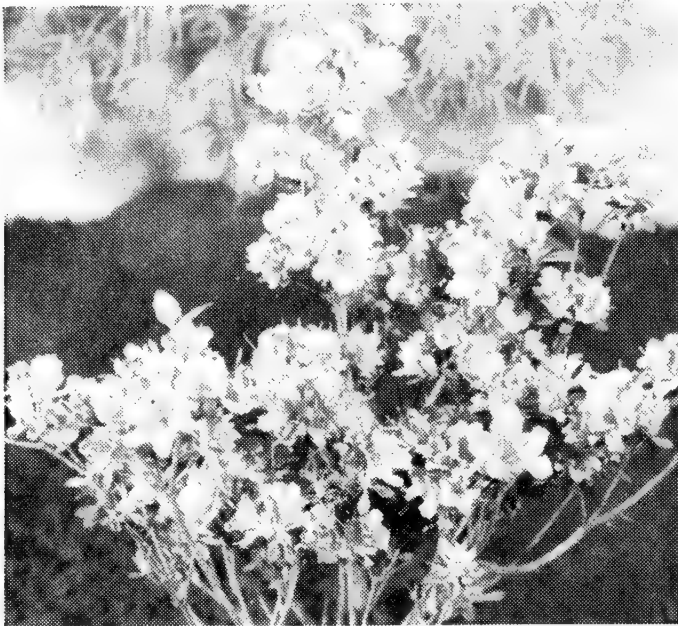
PLANTS—B. B. 12-15 in., \$4.00 each, 3 for \$11.75.

NANCY WATERER—One of the best yellow flowering Ghents. Blooms are rich golden yellow, born freely on sturdy upright plants.

PLANTS—B. B. 15-18 in., \$4.00 each, 3 for \$11.25.

UNIQUE—Bright orange yellow. Very floriferous. Flowers bloom before leaves appear.

PLANTS—B. B. 12-15 in., \$4.00 each, 3 for \$11.25.

**LITTLE BEAUTY**

Azaleas are becoming more popular each year. No planting should be without azaleas, if the climate will permit. Most varieties listed in our catalog have been grown in our nursery for at least two years or more. Our temperatures here have dropped to 10° below zero, and sometimes lower. All varieties that do not take our climate are eliminated.

AZALEA MOLLIS

AZALEA MOLLIS — (Hybrid seedlings)
Plants are from seeds, collected from named hybrid sorts. Colors vary from cream to scarlet.

TRANSPLANTS—3-5 in., 10 for \$3.00, 100 for \$25.00; 6-8 in., 10 for \$4.00, 100 for \$35.00.

DIRECTOR MOORELAND (Mollis Hybrid)

—Large bright yellow flowers are born in large numbers on sturdy upright plants. An outstanding variety, very hardy.

PLANTS—B.B. 8-10 in., \$2.50 each, 3 for \$7.20.

KOSTERS BRILLIANT RED — Glowing orange red. An outstanding mollis hybrid. Grows to a height of 4-5 ft. Ideal for foundation planting.

PLANTS—B.B. 8-10 in., \$2.50 each, 3 for \$7.20.

QUEEN EMMA — A fine salmon tinted orange. Large flowers are born freely on upright growing plants. Flowers come before leaves appear.

PLANTS—B.B. 8-10 in., \$2.50 each, 3 for \$7.20.

**MRS. WILHELMINA VUYK****KAEMPFERI HYBRID AZALEAS**

These new hybrids have been achieved by crossing Kaempferi with Azalea Malvatica. There has been obtained some very hardy evergreen type azaleas with a long range of colors. Most of these have upright habits and are fast growers.

AZALEA KAEMPFERI (Hybrid Seedling)

—In these seedlings will be found many shades of white, pink, lavender and reds. For years we have been crossing this strain with many of the dutch varieties and have developed many beautiful colors. Hardy.
TRANSPLANTS—4-7 in., 10 for \$4.00, 100 for \$35.00.

FEDORA—Phlox Pink flowers. Very attractive. Outstanding variety of proven merit. Very hardy, large flowers and vigorous grower.

10-12 in., B.B. \$3.00 each.

KATHLEEN—Large beautiful rose colored flowers. One of the best of the Kaempferi. Through many tests this variety has proven to be almost faultless. A good one.

10-12 in. B.B. plants \$3.00 each.

ETNA—Beautiful shade of rosy red. Deep green foliage. Good compact grower. Ideal for foundation plantings.

TRANSPLANTS—4-7 in., 3 for \$1.50, 10 for \$4.00.

ALADDIN — A bright scarlet with shiny green foliage. Compact grower. One mass of flowers completely cover the plant. A good one. Introduced from Holland in 1949.
TRANSPLANTS—4-7 in., 3 for \$1.75.



Azaleas in foreground, Concolor Fir in background

GABLE-HARDY AZALEAS

We have been growing this strain of Azaleas for many years. The following selections have been found satisfactory for hardiness and growing habits.

BOUDOIR—Large watermelon pink. Flowers freely. Attractive foliage. Vigorous in growth. Very hardy, you will like this one.
TRANSPLANTS—65c each, 3 for \$1.75. 2 in. pot plants 3 for \$1.50, 10 for \$4.50.

CORSAGE—A beautiful shade of lavender or orchid. Blooms large flowers freely on compact plants.

TRANSPLANTS—6-8 in., 65c each, 3 for \$1.75; 2 in., pot plants 3 for \$1.50; 10 for \$4.50.

ELIZABETH GABLE—This one attracts a lot of attention wherever shown. Height about 5 ft. Blooms double clear pink. Foliage deep glossy green. One of my favorites.

TRANSPLANTS—5-8 in., 65c each, 3 for \$1.75. 2 in. pot plants 3 for \$1.50, 10 for \$4.50.

HERBERT—Deep purple, flowers hose on hose type, large frilled and ruffled. A good grower. You will like this one. Always in demand.

TRANSPLANTS—5-8 in., 65c each, 3 for \$1.75. 2 in. pot plants 3 for \$1.50, 10 for \$4.50.

AZALEA SHERWOOD ORCHID—A hybrid hinodegiri with flowers of a clear lavender with speckled throat. Flowers are large and completely cover the plant. Good to plant in masses as they harmonize with other colors in gardens. This is a new azalea introduced recently from the pacific coast. Hardier than Hinodegiri.

TRANSPLANTS—5-7 in., 65c each, 10 for \$6.00.

SHERWOOD RED AZALEA—A magnificent azalea. Compact, dwarf and evergreen. Foliage so glossy it shines, bright green turning in cold weather to a fiery red. Better foliage than Azalea hinodegiri from which it was hybridized. Flowers in such abundance that the foliage is almost entirely hidden and of the most brilliant red imaginable. Words utterly fail to describe the Sherwood Red Azalea.

TRANSPLANTS—8-10 in. B.B. \$2.10 each, 3 for \$6.00. 2 in. pot plants, 3 for \$1.50, 10 for \$4.00.

AMOENA—Early flowering rosy purple, flowers are hose in hose. The foliage is a glossy deep green. A hardy dwarf variety. 2¼ in. Pot Plants—50c each, 3 for \$1.30.

TRANSPLANTS—2 yr. 5-8 in., 75c each, 3 for \$2.10. 2 in. pot plants, 3 for \$1.50, 10 for \$4.00.

AZALEA VUYKEANA**AZALEA VUYKIANA (Dutch hybrid)**

This is a new race of Azalea. Developed by the Vuyk Van Ness Nurseries of Holland. We have grown this strain for four years, as yet we can not find any fault with them. These are a cross of the Azalea Mollis and much hardier than the Kurume strains. Try some and you will enjoy them as we do.

AZALEA MRS. VUYK VAN NESS — A

1950 introduction from Holland. This is one of the best Azaleas introduced in many years. The flowers are large ruffled bengal red of a heavy texture. Foliage is a glossy deep green. Sturdy compact grower. One that will attract much attention.

TRANSPLANTS—5-7 in., 70c each, 3 for \$1.95; 2 in pot plants, 3 for \$1.80; 10 for \$5.50.

AZALEA LITTLE BEAUTY — Another 1951 introduction. The beauty of this Azalea is unsurpassed. The flowers are double and fringed which completely cover the plant. The color is a satin deep rose. Branches are upright with deep glossy green foliage.

TRANSPLANTS—5-7 in., 70c each, 3 for \$1.95; 2 in. pot plants, 3 for \$1.80; 10 for \$5.50.

AZALEA BEETHOVEN (Dutch Hybrid).

Another import from Europe. Attractive lilac shade. Grows dense, upright and blooms freely. This is another good one.

10-12 in. B.B. \$2.50 each. TRANSPLANTS—5-8 in., 65c each. 3 for \$1.75. 2 in. pot plants 3 for \$1.50; 10 for \$4.50.

AZALEA HELENA VUYK (Dutch Hybrid)

Very large deep rose flowers. Foliage attractive deep green. Grows dense.

10-12 in. B.B. \$2.50 each.

TRANSPLANTS—5-8 in., 3 for \$1.75. 2 in. pot plants 3 for \$1.50, 10 for \$4.50.

AZALEA SIBELIUS (Dutch Hybrid)

A Vuyk azalea, like Beethoven, plants grow dense and bloom freely. Flowers are showy orange red.

10-12 in. B.B. \$3.00 each. 2 in. pot plants 3 for \$1.80, 10 for \$5.50.

AZALEA WILHELMINA VUYK (Dutch Hybrid). New from Europe. Large clear white blooms. When in bloom plants resemble a mound of snow. Compact rapid grower.

12-15 in. plants B.B. \$2.50 each.

TRANSPLANTS—5-8 in., 65c each, 3 for \$1.75. 3 in pot plants 3 for \$1.50, 10 for \$4.50.

**AZALEA MAXWELLI****AZALEA GERARDINI VUYK (Dutch**

Hybrid). A beautiful rose pink azalea. We imported the first of this variety 4 years ago and like it very well. Grows dense, upright and blooms freely. One that will gain great popularity.

10-12 in., B.B. \$2.50 each.

TRANSPLANTS—5-7 in., 3 for \$1.75, 10 for \$5.00.

EVERGREEN AZALEAS — Many varieties are found in this group. These are all very hardy. These include some nice shades of red, white, orchid, pink and purple. We do not know what the colors will be, but we assure you that these will meet with your approval. All 3 and 4 year olds.

PLANTS—B.B. 10-12 in., \$2.00 each, 3 for \$5.50; 10 for \$15.00.

AZALEA CALENDULACIA—Light salmon to deep golden yellow. This one does best in part shade; needs acid soil, best obtained by peat humus or oak leaves.

TRANSPLANTS—3-5 in., 35c each, 10 for \$3.00.

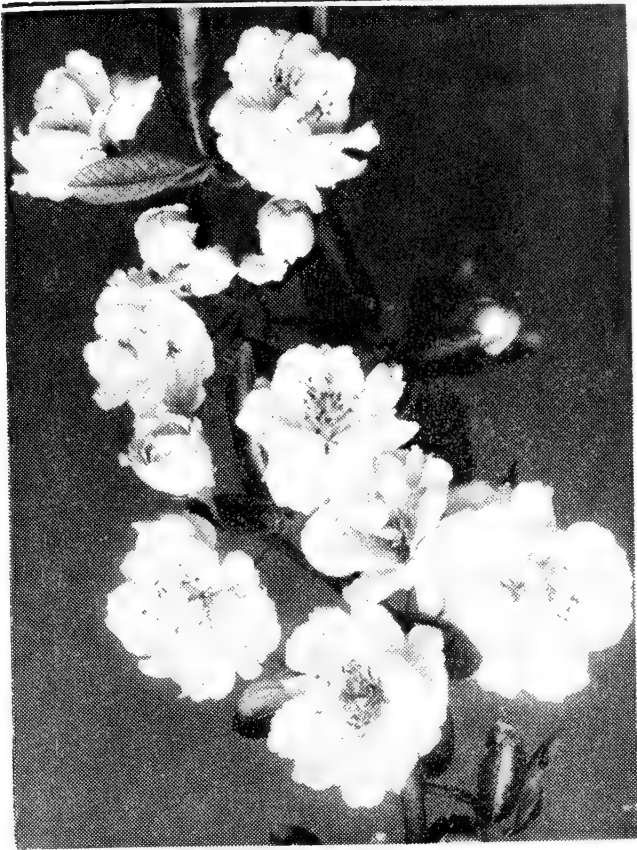
12-15 in., B. B. \$2.25 each, 3 for \$6.00.

GUMPO—Very dwarf. We have some 5 year old plants that are only 6 inches high and 10 inches wide. The ruffled pure white blooms sometimes measure 3-3½ inches across. An outstanding variety for rock gardens and low borders. Its' glistening dark green foliage add much beauty to this plant. We recommend covering these plants with leaves or pine boughs, where winter is severe.

TRANSPLANTS—3-4 in., 3 for \$1.60, 10 for \$5.00.

AZALEA YODIGOWA—A malvatica hybrid. Flowers a pretty double pink on compact upright growing plants. A deciduous variety. Very Hardy.

TRANSPLANTS—10-12 in., \$2.00 each, 3 for \$5.50.

**FLOWERING CRAB****MAGNOLIA SOULANGEANA**

ORNAMENTAL AND SHADE TREES

DOUBLE FLOWERING PEACHES

These beautiful, double Flowering Peaches are far more hardy and showy than Japanese Flowering Cherries.

Double White Flowering — Large petals, fully doubled.

Double Flowering Pink — Blooms fully doubled, of clean, pure pink.

Double Flowering Red — Blooms early, good bright red.

2-3 ft., \$1.00 each 3 for \$2.90

FLOWERING PLUM

↓ **Prunus Newport** — Bright red leaves. Very attractive.

3-4 ft., \$1.00 each.

CRATAEGUS OXYACANTHA—Pauls double scarlet, English Hawthorne, this is the showiest and most popular variety. A good ornamental tree, for lawn planting. Clusters of scarlet flowers, resemble small roses.

3-4 ft. \$2.00 each, 3 for \$5.75.

FAGUS (BEECH)

RIVERS PURPLE BEECH—Grows into a broad dense tree. Leaves are shiny deep purple. Highly recommended as a shade tree.

GRAFTS—18-24 in., \$2.10 each 3 for \$6.00.

FAGUS TICOLOR BEECH — Similar to Rivers purple beech, but color of foliage is rose bordered deep purple, very attractive.

GRAFTS—18-24 in., \$3.00 each; 3 for \$8.50.

CORNUS FLORIDUS

(White Flowering Dogwood)

Flowers 3 to 3½ in. in diameter, produced in Spring before the leaves appear. Spreading and irregular. Makes a beautiful lawn specimen or background tree. 12-18 in. seedlings, 10 for \$2.00, 25 for \$4.00, 100 for \$12.00, 2-3 ft., 10 for \$4.00, 6-10 in., \$5.00 per 100.

CORNUS FLORIDA RUBRA

(Pink Flowering Dogwood)

This is a grafted tree. The flowers are a beautiful shade of pink. Does well in shade. The tree blossoms profusely when 3 feet tall. This is a richly colored and very beautiful tree for any yard.

18-24 in. size, \$3.00 each, 3 for \$7.50.

CORNUS WELCHI

(Variegated Flowering Dogwood)

This is a rare novelty seldom listed in catalogs. Slow growing type. Grows into a very dense globe head tree. Its green and cream variegated leaves are attractive throughout the summer, becoming even more showy in the fall when red and coppery shades are added to its rich colored foliage. Flowers quite like Cornus Floridus - white.

18-24 in., 3 yr. tree, well branched \$5.00 ea.

HAMAMELIS VIRGINIA

(Witchazel or Winterbloom)

Called Winterbloom because of their blooming from October to April, while twigs are bare. Ribbon-like flowers, does well in shady places.

18-24 in., 40c each, 10 for \$3.60.

**DOGWOOD**

RHUS COTINUS RUBRIFOLIA—Red leaf Smoke Tree. A rare and very interesting smoke tree. The glossy purplish red foliage stays attractive all summer. Makes a bronze plume like blossoms in late summer that last for many weeks. This is quite new and is not seen in many gardens. If you like colored foliage, then by all means try one of these.

18-24 in., plants \$1.95 each, 3 for \$5.40.

RED-BUD (Judas Tree)

A very ornamental tree of medium size with perfect heart-shaped leaves. Blooms early in spring, before leaves appear, covering the branches with small rosy-pink, pea-shaped flowers.

18 to 24 in. seedlings, 3 for \$1.00, 10 for \$3.00.

HALESIA

TEPTRAPTERA—(Carolina Silver Bell) sometimes called Snow-drop or Lily-of-the-Valley tree. Grows into a small round headed tree. Its beauty consists of its many small bells that dangle from the lower side of the small branchlets.

2-3 ft. plants, \$2.25 each.

CYDONIA

PYGMEA—(Dwarf Japanese Quince)—Dwarf spreading shrub to 3 feet. Flowers more salmon in color than Japonica. Excellent for heavy hedges.

12-18 in. plants, 65c each.

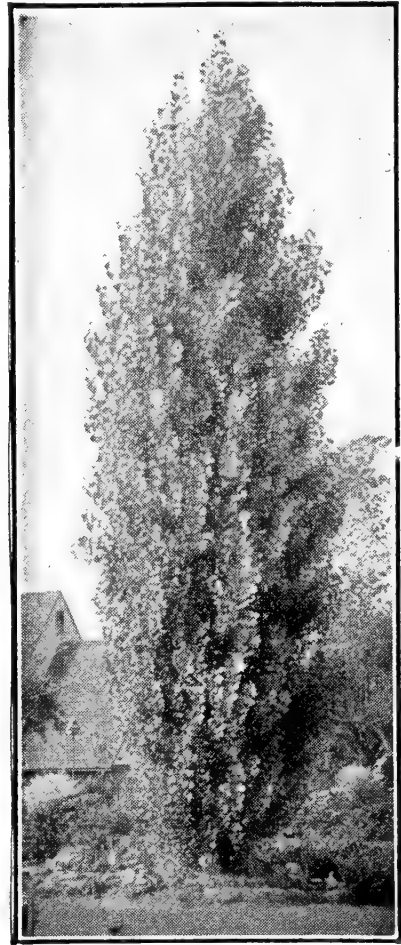
WILLOW

SALIX Dwarf blue Artic willow found north of Artic Circle. Excellent for hedges and borders. Will grow in most type soils. Withstands very low temperatures. For dense hedge plant 8-10" apart. Fine for Rock gardens.

Plants—18-24", 10 for \$6.00.

HONEYSUCKLE

LONICERA TATARICA—Grows into a large upright bush. Rose pink flowers bloom freely in mid summer. Ideal for borders. 18-24 in., plants 65c each, 3 for \$1.80.

**LOMBARDY POPLAR**

Slim, formal, quick growing columns that branch to the ground. Fine for screens and backgrounds.

3-4 ft., 4 for \$1.50, 10 for \$3.00.

WILLOW

Salamon's Weeping — We consider this variety the best of the weeping willows. It is of rapid growth and makes height quickly.

2-4 ft., 40c each; 4 for \$1.50.

**TULIP TREE
(Yellow Poplar)**

A beautiful shade tree. Leaves sometime measure eight in. across. Grows upright and well formed. Seed pods hold on till early winter, look like individual florets. You will look far before finding any lumber better than tulip poplar.

2-3 ft. 10 for \$2.00; 25 for \$4.50; 100 for \$16.00. 3-4 ft., 10 for \$5.00.

ORIENTAL MAGNOLIA

There is nothing as gorgeous as the Oriental Magnolias when in full bloom in early Spring. It is most highly esteemed in England, and it is gaining more popularity in the United States every year.

Soulangeana—Small tree with large 9-petal, pinkish flowers before the leaves in the spring. One of the most beautiful flowering trees. 12-15 in., 1-yr. plants \$1.50 ea., 3 for \$4.25.

Soulangeana Nigra — Blooms later than Soulangeana and is darker in color. 12-15 in. 1-yr. plants \$1.50 each, 3 for \$4.25.

DECIDUOUS TREES For Shade And Reforestation

\$3.75			
Variety	10	25	100
Red Maple 18-24".....	\$1.50	\$3.50	\$15.00
Silver Maple 18-24".....	1.50	3.50	15.00
Sugar Maple 18-24".....	1.50	3.50	15.00
American Beech 18-24".....	1.75	4.00	15.00
Honey Locust 18-24".....	1.25	2.50	10.00
American Elm 18-24".....	1.50	3.50	15.00
Chinese Elm 18-24".....	1.50	3.50	15.00
American Linden 18-24".....	2.50	5.75	20.00
Pin Oak 18-24".....	2.50	5.75	20.00
Pin Oak 10-12".....	1.25	2.25	8.00
Red Oak 10-12".....	1.25	2.25	8.00
Red Oak 15-18".....	2.50	5.75	20.00

GINKGO BILOBA (Maidenhair Tree)

This tree was recently classed by a noted authority as one of the finest of shade trees. Another striking advantage, the tree is absolutely disease free, hardy and fast growing. It is immune to all kinds of bugs and scales. It is also known as the living fossil. A specimen planted 53 years ago in Illinois is thriving perfectly 12-18 inch seedlings, 3 for \$1.50 and 10 for \$4.50.

JAP RED MAPLE

Acer-Palmatum Atropurpurea. Beautiful deep red foliage, holds its color well all season. One of the best of the maples. Makes a handsome specimen on lawns. 18-24 in. plants \$4.50 each, 3 for \$12.50.

CHINESE CHESTNUT

A very good quality nut. One of the best substitutes for the native American Chestnut which can be grown in the blight area. Trees bear early. 12-18 in., 65c ea. or 3 for \$1.80; 18-24 in., \$1.25 ea., 3 for \$3.60.

BLACK WALNUT

Black Walnut is one of the most valuable timbers grown in the United States. Grow a black walnut orchard on your farm. 18-24 inch seedlings, 10 for \$2.00; 25 for \$4.00.

HICKORY NUT

Our seedlings are from selected large fruiting varieties. Trees are valuable for fruit and lumber. 8-12 in., 10 for \$2.00; 25 for \$4.00.

MAPLE-CRIMSON KING (Plant Pat. No. 735)

One of the finest creations in many years. This tree was sent to America from Europe, about 10 years ago and created a sensation where ever seen. Its dark purplish red foliage, which glistens in the sun, retains its color all through the summer. It is suitable for shade and street planting. 3-4 ft. whips, \$3.00 ea., 6 ft. lightly branched at \$6.00 each.

MALUS (Flowering Crabs)

ALMEY—Has large blossoms of glistening red pedals with white markings at the base of each, giving effects of a five point star. Blooms same year. The scarlet fruit are retained all winter, providing food for our feathered friends.

5-6 ft. size, \$3.00 each.
3 for \$8.75.

MORDEN No. 454—Has an abundance of large flowers, a live radiant red, lasting color, pedals of medium width. A broad spreading tree, vigorous, valuable for shade.

5-6 ft. size, \$3.00 each.
3 for \$8.25.

HOPA CRAB—Beautiful rose red flowers followed by clusters of crimson fruit, which can be used for jelly.
3-4 ft., 2.00 each.

RED SILVER—Fruit of rich maroon red, foliage somewhat cut leaved with silver and red color. Flowers crimson. Tree bark attractive brown color.

3-4 ft., \$2.75 each, 3 for \$7.95.

BETCHELS KLEHMS Improved—A beautiful growing tree with attractive double pink fragrant flowers. 3-4 ft. well branched \$2.75 each, 3 for \$7.95.

MORAINÉ LOCUST Plant Pat. No. 836

We bring another fine shade tree, the Moraine Locust. A much improved variety of the Honey Locust, has a round head when young, but tall and vase shaped when older, attaining a height of 80 ft. A tidy statley specimen. A fast growing disease resistant shade tree that will be enjoyed where ever planted.

5-6 ft., \$4.25 each, 3 for \$12.00.

FRANKLINIA ALATAMAHA

An exquisite fall flowering tree for small or large gardens. Flowers are of pure white, foliage is rich colored, is unsurpassed as a garden specimen. This tree was brought from the banks of the Alatamaha River in Georgia, to the Bartram garden in the year of 1777. Was named in honor of his good friend Benjamin Franklin. Tree prefers full sun. Has proven hardy in N. Y. City and Cleveland areas, but should be given more tests for areas further north.

12-18 in., transplants \$1.65 each, 3 for \$4.70.

EUROPEAN MOUNTAIN ASH

A stately, upright growing tree, also ornamental. Bears quantities of large clusters of red berries which are very attractive and cling 'till early winter months. Berries are frequently used for floral designs.

12-15 in., 3 for \$1.00, 10 for \$3.00.
3-4 ft., 75c each, 3 for \$2.10.

FLOWERING SHRUBS

ALTHEA HIBISCUS (Rose of Sharon)

These are beautiful, upright growing shrubs that sometimes attain the height of 20 feet. Generally bloom in August and September. Very attractive with flowers from white to red. All listed are double varieties.

Ardens—Double Violet.

Boule de Feu;—Double Red.

Jeanne d'Arc—Double Pure White.

Pulcherimus—Double Pink.

2-3 ft., 75c each; 10 for \$6.00.

KOLKWITZIA AMABILIS (Beauty Bush)

A handsome shrub, with graceful habits. Trumpet shaped pink flowers in June. Nice. 15-18, 75c each, 3 for \$2.40.

ALMOND, PRUNUS GLANDULOSA Double Pink Flowering Almond

A very beautiful, early spring-flowering shrub, completely covered from the ground to top of the branches by a mass of pink blossoms. 18-24 in. size, 75c each; 3 for \$2.10.

PARROTIA

PARROTIA PERSICA—A shrub belongs to the Witchhazel family. The flowers are more curious than beautiful. No pedals conspicuous purple stamens appear before leaves. Brilliant coloring in the fall. Can be made into a tree.

PLANTS—18-24 in., \$1.60 each; 3 for \$4.50.

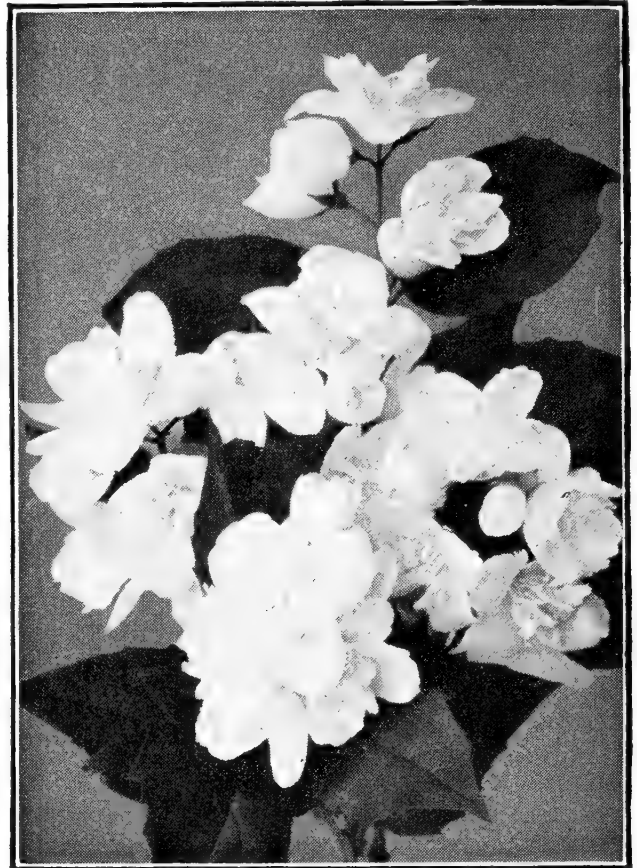
KERRIA (*Japonica Flora Plena*)

Often heard called the Globe Flower. Ball-shaped golden flowers. Plants grow vigorously and attain a height of 4-5 ft. Bushy and branches bright green. Prefers a sunny location. Attractive yellow blooms all summer.

PLANTS—3 Yr., \$1.00 each; 3 for \$2.80.

SYMPHORICARPOS

Alba (Snowberry White)—An excellent shrub for shady places or on a hillside, bearing clusters of large snowy white berries which remain late in fall and winter. 18-24 in., 75c each; 3 for \$2.10.



MOCK ORANGE (*Philadelphus Virginalis*)

SWEET MOCK ORANGE

PHILADELPHUS CORONARIUS—Vigorous grower and very fragrant. It is hardy and a very popular shrub.

18-24 in., branched, 65c each, 3 for \$1.80.

VIRGINALIS—The most showy variety with double white flowers which are sweetly fragrant and have a long blooming season. Good foliage and compact upright growth. 18-24 in., 65c each, 3 for \$1.80.

PHILADELPHUS AUREA—Golden Mock Orange Valuable for its golden color leaves. Flowers white. Growth similar to *Virginalis*. Very much sought by landscapers. Very showy when planted with other shrub. 12-15 in., 75c each, 3 for \$2.10.

PHILADELPHUS BELLE ETOILE—New fragrant mock orange. Its growth is uniform and bushy. It is considered one of the best of the new hybrid mock orange. Flowers are white and tinted purple. Grows to 5 ft. tall.

12-15 in., plants 75c each, 3 for \$2.10.

✓ CORYLUS (*Filbert*)

MAXIMA ATROPURPUREA—(purple leaved *Filbert*.) A fine plant for the lawn used as single specimens. Foliage of a bright red-purple, very rich. It is a heavily branched shrub. Grows to 10 ft. but can be kept to 5 ft. if sheared. Hardy anywhere. For best color it should be planted in open sun.

18-24 in., plants \$1.50 each, 3 for \$4.20.



BUDDLEA (BUTTERFLY BUSH)

SYRINGA PRESTONIAE—New Preston Lilacs, developed by crossing *S. Velloso* with reflexa hybrids. They bear unusually large flowers in June.

HIAWATHA—Flowers are broad and dense lilac rose.

CORAL—Large 8 inch open spikes of beautiful clear pink. The above two varieties, 18-24 in., \$2.75 each, 3 for \$7.90.

MICROPHYLIA SUPERBA—Daphne Lilac—A deliciously fragrant lilac. Blooms spring and fall. Introduced from China a number of years ago and is making a grand showing where ever grown. Buds are a pinkish red opening to lilac pink. The entire plant when in bloom resembles one large bouquet. Plants grow into a neat compact bush not exceeding 5 ft. 18-24 in., \$1.50 each, 3 for \$4.20.

SWEGIFLEXA—A giant flowering variety. Pure pink blooms, sometimes 12 inch long. One blooms makes a bouquet in its self. A new variety.

2 yr. plants, \$2.00 each, 3 for \$6.00.

LILAC-PERSIAN

A dense low growing variety with slender branches and narrow leaves. A very dainty plant. Bears an abundance of purplish pink flowers, in early spring.

2-3 ft. plants. 75c each; 3 for \$2.10.

BUDDLEA (Beauty Bush)

Buddleia—Butterfly bush. Few shrubs can compare with Buddleia for freedom of blooms, vigorous grower, makes compact bush. 5 ft. tall. Suitable for bouquets.

Charming—Clear pink

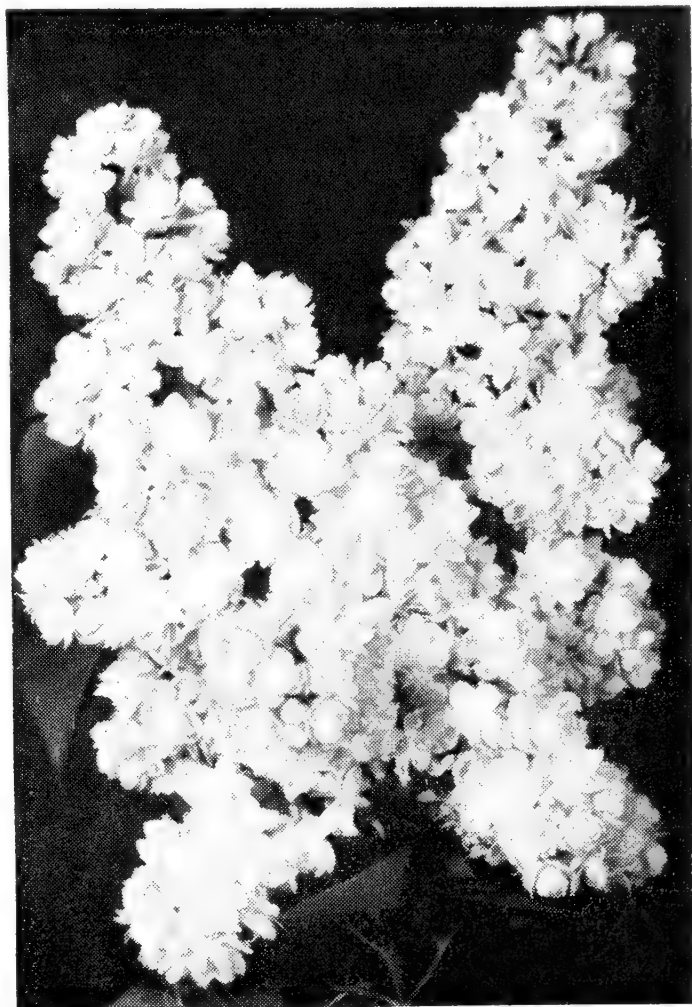
Dubonnet—Wine Red

Orchid Beauty—Orchid Pink

Ile De France—Red with purple

White Cloud—A true white

65c each, 3 for \$1.80.



LILAC (SYRINGA)

LILAC FRENCH HYBRID

CULTURE—is simple. These will grow in most type soil. Does good in full sun. **GRAFTED** on privet stock which supplies a good root system. Do not allow suckers to grow from bottom, cut all lower shoots off.

Alphonse Lavell—Double light blue, one of the best in this color.

Belle DeNancy—Double satin pink, a good one.

Charles Jolly—Double dark purplish red, real nice.

Charles X—Single, profuse blooms. Attractive deep red, one of the best single red.

Congo—Single, deep red. Dark green foliage, favorite in many flower beds.

Ludwig Spaeth—Single reddish purple. Large flower heads.

Madam A. Chatney—A double white, good sturdy grower.

President Grevy—Double, bluish lilac. Large flower heads in profusion.

Paul Theirron—Double large clusters of beautiful deep red flowers. When in bloom flowers stand out well above the thick green foliage. One you will like.

PRICES of above varieties—\$1.00 each, 3 for \$2.70.

SPIREA

SPIREA BILLARDI ROSEA—(Plume Spirea) Large deep pink plumes are born at the tips of each branch. Blooms from June until frost. Useful in floral arrangements. Matures at 5-6 ft.
PLANTS—18-24 in., 75c each; 3 for \$2.10.

Prunifolia (Old-fashion Bridal Wreath). Flowers pure white, double, very numerous. 15-18 in. branched 50c each; 3 for \$1.30.

Thunbergi Spirea—One of the first of all Spireas to bloom in early spring; small white flowers, feathery foliage. 18-24 in., 60c each; 3 for \$1.65.

Van Houttei Spirea—One of the most popular of all shrubs, with its beautiful arching branches loaded with clusters of snow-white flowers in April and May. 15-8 in., 50c each; 3 for \$1.25.

WEIGELIA

HERE IS A NICE SELECTION OF WEIGELIA A VERY NICE MEDIUM SIZED SHRUB. BLOOMS PROFUSELY IN JUNE AND SOMETIMES AT INTERVALS DURING SUMMER. GOOD IN MASS PLANTINGS.

EVA RATHKE—A pleasing deep red shade of flowers. Foliage deep green during summer, turning to autumn shades of bronze and copper in the fall. 18-24 in. plants, 75c each, 3 for \$2.10.

ROSEA—Similar to the above variety but deep rosy flowers, and lighter color foliage. 18-24 in. plants, 60c each, 3 for \$1.65.

VARIEGATED ROSEA—Grows more compact than other above two varieties. Foliage beautifully variegated green with deep golden edging. Flowers are light pink. A good border shrub. 18-24 in. 75c each, 3 for \$2.10.

NEW PORT RED—A new variety. Better habits than most weigelia. Flowers are ruby red with white stamens. The foliage is a good green color that holds well until frost. 18-24 in. bushy plants 90c each, 3 for \$2.65. 12-15 in., 1 yr. plants 3 for \$1.20.

BOSKOOP GLORY—A new color in weigelia. Large flowering salmon pink. Growing habits are similar to Newport Red. First time introduced in this country. 2 yr. plants, 90c each; 3 for \$2.40.

DEUTZIA SCABRA

Crenata—Vigorous grower; free blooming, produces an abundance of double pink flowers.

Pride of Rochester—Strong growers, free bloomer, double white flowers tinged with pink. 18-24 in., well branched, 60c each; 3 for \$1.60.

DEUTZIA GRACILIS—Profusion of white flowers bloom in May. The most graceful of the Deutzia. Seldom grows over 3 ft. high. You will like this one. Ideal for edging and borders. 15-18 in. plants 75c each, 3 for \$2.10.

CORNUS ELEGANTISSIMA (Variegated leaf Dogwood)—Bush form, highly variegated foliage. Attracts the eye. Rich red twigs make this bush very valuable for landscape work. One of the richest colored shrub. Always scarce. 18-24 in. branched plants \$1.25 each, 3 for \$3.50.

TAMARIX ODESSANA—A charming shrub with lace like silvery blue foliage. Flowers are borne in clusters of deep rose. Foliage and flowers make up very well in floral designs. Plants grow to 6 ft. but can be kept smaller by pruning. This is an outstanding shrub. 2 ft. plants \$1.00 each, 3 for \$2.75.

HYDRANGEA BLUEBOY—This beautiful variety is very hardy and produces masses of large, round clusters of flowers 8 to 10 inches in diameter. If soil conditions are right, these plants will produce beautiful blue flowers. In order to achieve this color they must be in acid soil. Grows into a bush form, and will reach a height of 3 or 4 feet. Foliage is thick and a very nice green. The blooms sometimes show pink and blue at the same time. 2¼ in. pot plants, 3 for \$1.00, 10 for \$3.00.

HYDRANGEA P. G.

PANICULATA GRANDIFLORA—Can be trained to tree form. Flowers massive and white, turning to pink, bronze and green. Flowers hang on most all winter. Conspicuous and effective. Bush form. 18-24 in. 70c each; 3 for \$2.10.



FLOWER ALMOND

VIBURNUM—An interesting and showy group diversified greatly in character and common names, ranging in size from 2 to 12 feet and blooming profusely in the spring. In the summer their leaves are rich and heavy and aided by bright fruits lividly brighten up the autumn with vivid splashes of color.

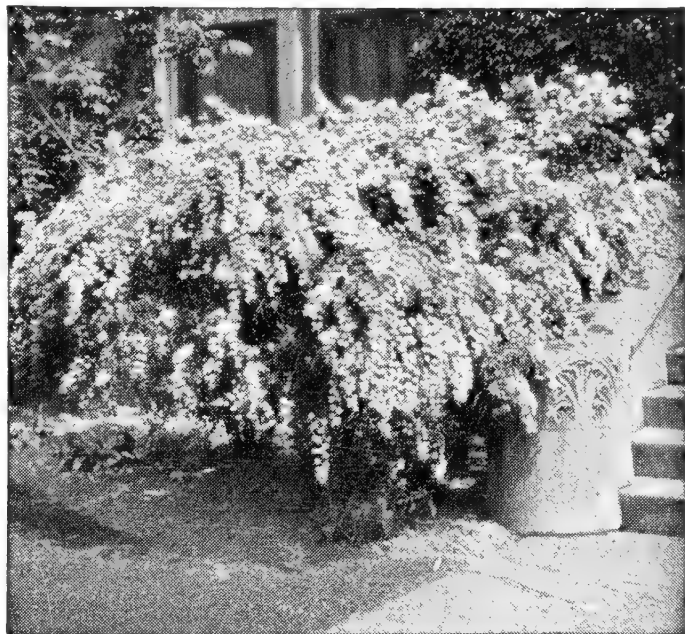
✓ **American (American Cranberry)**—Similar to *Opulus* but more open growth. Berries brighter and more persistent. 15-18 in., 60c each; 3 for \$1.50.

✓ **Lentago (Sheepberry)** — Grows to be a tree about 25 or 30 feet tall. Glossy dark leaves, green and white cymes of flowers in June followed by large blue-black fruit. 45c each; 3 for \$1.20.

✓ **Opulus (High Bush Cranberry)** — Dense green foliage, studded with large bunches of crimson berries which last well into the Winter. Matures at 8 to 10 feet into a compact rounded mass. 15-18 in., 60c each; 3 for \$1.50.

Opulus Nanum—A dwarf compact plant, seldom reaches 2 ft. high. Suitable for low hedges and borders. Need little or no trimming. Does well in most type soils. 3 yr. plants 75c each, 3 for \$2.10.

Opulus Sterilis (Common Snowball) — Medium sized shrub. Blooms in June with mass of pure white flowers which resemble snowballs. 15-18 in., 70c each; 3 for \$1.80.



Spirea Van Houttei

VIBURNUM BURKWOODI—Flowers of waxy blush white fragrance. Produced in early spring when leaves are unfolding. Foliage is deep glossy green. Grows into a bush of about 5 ft. high and 4 ft. wide. A garden aristocrat you can not afford to miss.

10-12 in., 75c each, 3 for \$2.10.

VIBURNUM RHYTIDOPHYLLUM—Leather leaf viburnum. This is an evergreen variety. Foliage large, 6-8 inches long. Big clusters of cream colored flowers, open in late May, followed by red fruit that later becomes black. Bush grows to 10 ft. Prefer sheltered locations.

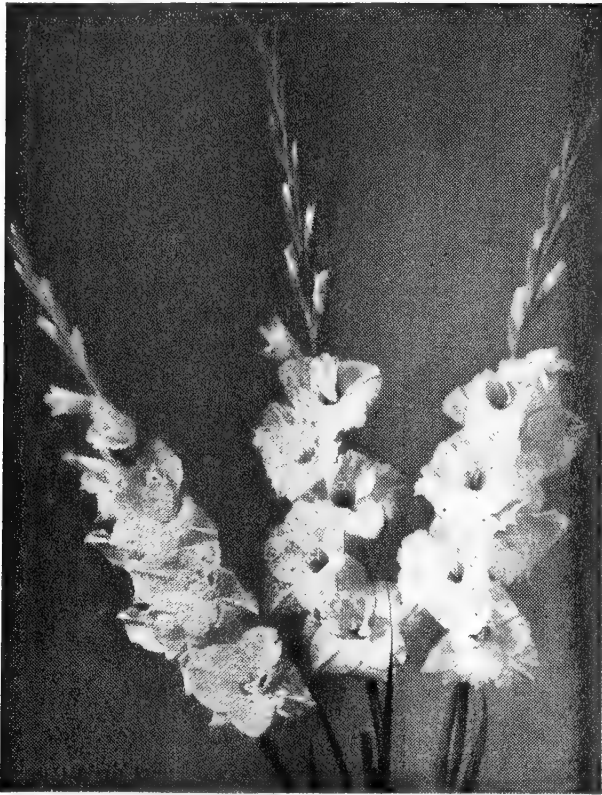
10-12 in., 75c each, 3 for \$2.10.

FORSYTHIA (GOLDEN BELL)

Intermedia — Bright yellow flowers; a vigorous grower, with slender, arching branches, narrow leaves.

Fortunei—Upright and often planted as single specimen. Handsome dark green foliage, golden yellow flowers.

LYNWOOD GOLD—A splendid new forsythia originated in Ireland. We believe this new variety will replace most of the old sorts, soon as available in larger quantities. Growing habits are erect. All branches are liberally covered with beautiful golden yellow blooms in abundance. Withstands dry weather makes well in floral arrangements. PLANTS—1 yr. old, 75c each; 3 for \$2.10.



GLADIOLUS

We believe that gladiolus are among the best for cut flower purposes. They make up easily into bouquets which last for many days. They require very little room—the smallest of gardens can hold 100 bulbs. Gladiolus do best in full sun and plenty of moisture with good drainage. Spray if there is any possibility of trips. They require some fertility, but will do well without it, providing there is plenty of moisture.

GIRARD SPECIAL MIXTURE

This collection is made up of the finest mixture of Holland and domestic varieties, including early, medium and late flowers. Giving a long blooming season. We guarantee this mixture to be one of the finest ever marketed. All large bulbs.

100 for \$4.00, 1000 for \$30.00.

POLYGONUM

AUBERTI (Silver Lace)—A mass of foamy white flowers, summer and fall. A faithful climber, will attain height of 25 ft. Hardy and vigorous in growth.

PLANTS—\$1.00 each; 3 for \$2.80.

REYNOWTRIA (Dwarf Polygonum)—A fine ground cover. Likes sun. Flowers sprays of pink. Foliage turns a brilliant red for fall. Easy to grow. Very hardy.

PLANTS—85c each; 3 for \$2.40.



HARDY PERENNIAL PHLOX

No garden is complete without perennial Phlox. The color range is so large, the colors so bright, blooming period so long, every flower garden should find a place for some. Plants begin to bloom in late June. With proper treatment, continuous blooms may be expected until frost. Our list of Phlox is made up of the very best of standard sorts and includes some of the new varieties. These are all heavy one year field grown clumps guaranteed to bloom this year.

PHLOX COLLECTION—J

BRIGHT EYES—Bright Rose Pink.

DAILY SKETCH—Brilliant Salmon Pink, Crimson eye.

FLASH—Dazzling Scarlet Red.

MARY LOUISE—Large glistening snow white.

ROYAL PURPLE—Rich Violet with deeper eye.

SALMON GLOW—Flame Pink and Salmon.

All 6 varieties for \$1.95 Postpaid

NEW VARIETIES

AMERICAN BEAUTY—Clear rose pink.

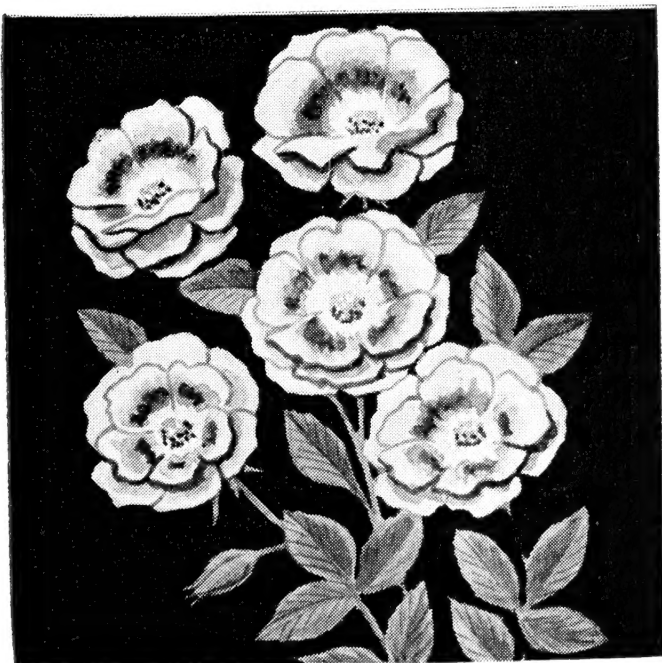
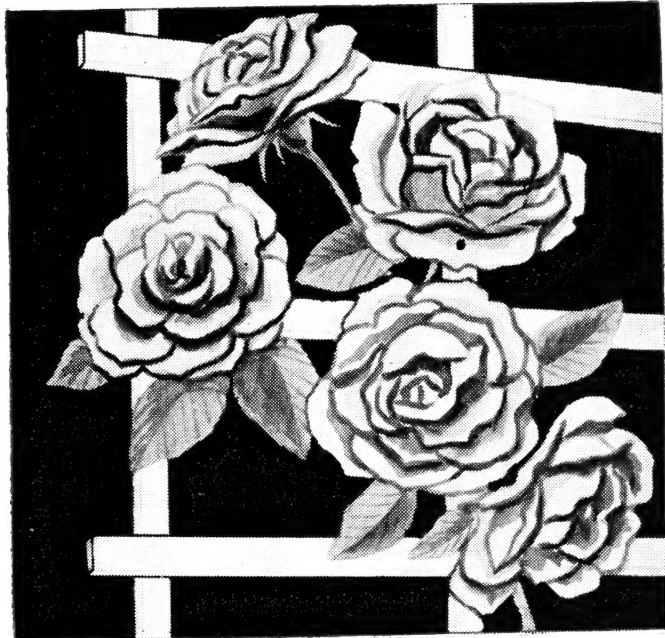
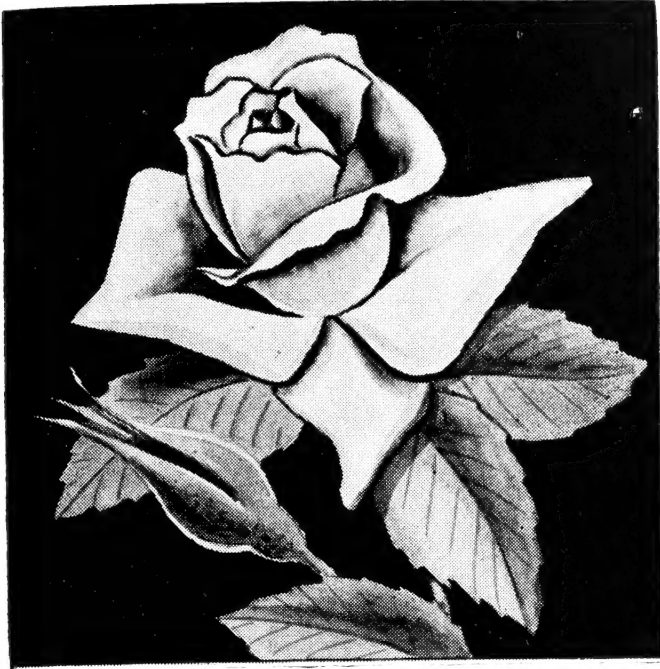
PURPLEKROME—Deep purple, outstanding.

CHIEFTAIN—Deep Crimson.

ADONIS—Bright scarlet crimson.

FIDELIO—White, red eye, gorgeous, has a pink tint.

Above 5 new varieties for \$2.25 Postpaid

Everblooming Tea Rose**Floribunda Rose****EVERBLOOMING ROSES**

We are listing some of the very best standard varieties. These will give you an abundance of blooms from early summer until frost. All northern grown and hardy.

EVERBLOOMING TEA ROSES

BETTY UPRICHARD — Coppery carmine, strong grower.

CHRISTOPHER STONE — Always popular. Scarlet crimson velvet sheen.

ETOILE DeHOLLAND — Deep red. Long stems, fragrant.

CONDESSA DeSASTAGO — Vivid orange scarlet and yellow bicolor. Ranks with the best.

GOLDEN SASTAGO — Buttercup yellow, sport of Condessa. Same habits.

JOANNA HILL — Attractive golden yellow with apricot finish. Good grower.

K.A. VICTORIA — Blooms of pure white all summer. Truly nice with other colors.

MARGARET McGRADY — Large double orange scarlet. Good.

PINK DAWN — Large fragrant lively pink. A great favorite with many growers.

POINSETTIA — Pointed buds of warm fire red. Healthy grower.

PRESIDENT HOOVER — Cerise and gold, pleasing. Long stems. Richly perfumed.

SISTER THERESE — One of the best yellows, pedals edged crimson. Good grower.

\$1.00 each; 10 for \$9.00

FLORABUNDA AND POLYANTHAS

The Florabunda and Polyanthas will give everlasting blooms throughout the summer. Bloom from June to frost. Makes a most attractive hedge. Used in corner plantings, landscaping, beds and borders.

DAGMAR — Large clusters of white flowers. Ideal for border plantings.

GOLDEN SALMON — Name describes. Nice.

IDEAL — Deep red. Old and good.

IMPROVED LAYFAYETTE — Cherry crimson, flowers in abundance. Good foliage, dwarf grower.

MARGO KOSTER — Clusters of orange flowers, globe shaped. Holds up well.

ORANGE TRIUMP — A bright deep salmon red. Sturdy grower.

ROSE ELFE — Low compact bush. A glory of pink blooms. Pleasing.

\$1.00 each; 10 for \$9.00

CLIMBERS

BLAZE — Blazing red. A good vigorous climber.

PAULS SCARLET — Scarlet. Old variety but still tops.

AMERICAN BEAUTY — Deep rose. Good climber.

F.K. DRUSKI — Pure white large blooms.

\$1.00 each; 10 for \$9.00



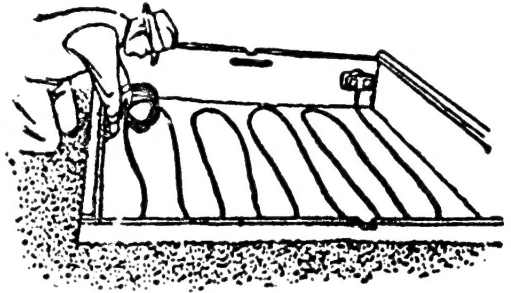
JUNIPERIS CANAERTI

HORMONE POWDER FOR BETTER CROPS

Clean the seed before planting. About 200 diseases affecting plants can be spread by spores present on seeds. Seed disinfection helps to prevent seed-bourne diseases. Ramex Hormone is a scientific root stimulant and seed disinfectant.

Cuttings. Ornamental, deciduous and evergreen cuttings are dipped into the powder about one-half inch and then placed in rooting medium. Yew cuttings made in June hormone-treated, rooted 93 per cent.

Prices: ¼ oz. pkt. 25c, 1 oz. pkt. 50c, 3 oz. tin \$1.00, 1 lb. tin \$4.00, postpaid. The cost is small, the benefits large.



HOTBED KITS

Many of our customers do not know we have one of the finest hotbed kits made.

NO. 10—Home gardener's kit, for 3x6 hotbed. Contains 40 feet of 200 watt insulated cable, 500 watt 115 volt AC thermostat with a connector plug for attaching to outlet, pilot light and control knob for setting temperature. Set of instructions. Protects 3x6 sashes against frost. Postpaid \$6.75.

NO. 20—For 6x6 hotbed. Contains 80 feet of 400 watt insulated electric cable, one 500 watt thermostat as outlined above, set of instructions. Protects six 3x6 sashes against frost. Easy to install. Postpaid. \$9.00.

Cables Only—40 ft. \$2.25; 80 ft. \$4.50.

For EVERGREENS, LAWNS, GARDENS and SEED BEDS
BEAVER PEAT HUMUS

Beaver Peat is a rich dark brown color. Centuries of time were required to make it. Years of growth of ferns, mosses, grasses and fibrous plants, falling and decaying, aided by nature, completed the task of forming it. In Beaver Peat you get America's finest garden soil organic; a humus source that gives life-giving properties to soils the moment you dig it in — that retains its identity in the soil for many years. It is not to be compared with or confused with muck.

Domestic Peat shipped direct from the pits in Ohio.

1—100 lb. bag	\$ 1.90
2—100 lb. bags	3.50
5—100 lb. bags	8.50
10—100 lb. bags	15.00
20—100 lb. bags	27.00

Order early, then you will have it when needed. Should be shipped by freight. Bags weigh about 100 pounds each.

Special Prices for 1954

GROWER'S EVERGREEN SPECIAL

● This collection is made up to encourage beginners in the nursery trade. All trees listed here are the best selling varieties. Prices listed on wholesale basis.

ALL TRANSPLANTS

	Per 100
Globe Arborvitae 4- 7"	\$25.00
Pyramidal Arborvitae 5- 8"	28.00
Thuja Elegentissima 5- 8"	28.00
Deep Green America A. V. 5- 8"	28.00
Geo. Peabody Arborvitae 4- 7"	28.00
Chinese Arborvitae 5- 8"	20.00
Gold Plume Cypress 5- 8"	28.00
Green Plume Cypress 5- 8"	28.00
Dwarf Golden Cypress 4- 6"	28.00
Andorra Juniper 5- 8"	28.00
Irish Juniper 8-12"	30.00
Pfitzer Juniper 6-10"	30.00
Savin Juniper 6-10"	25.00
Spiny Greek Juniper 6-10"	30.00
Concolor Fir 5- 8"	20.00
Colorado Blue Spruce 5- 8"	15.00
Canadian Hemlock 7-12"	25.00

AZALEA AND RHODODENDRON SPECIAL

● This collection is made up of hardiest Azalea and Rhododendrons. Will give you a good selection of colors. All are transplants.

	Per 100
Azalea Mollis 3- 6"	\$20.00
Azalea Kaempferi 3- 3"	20.00
Azalea Little Beauty 5- 8"	60.00
Azalea Mrs. Vuyk Van Nes 5- 8"	60.00
Azalea Wilhelmina Vuyk 5- 7"	35.00
Azalea Helena Vuyk 6- 8"	35.00
Azalea Bethoven 5- 7"	35.00
Azalea Johan Straus 5- 7"	35.00
Azalea Aladdin 4- 7"	35.00
Azalea Vuyk Mixed 3- 6"	25.00
Azalea Hino Crimson 4- 6"	25.00
Azaleas Girard's Special Seedlings 4- 6"	25.00
Rhododendrons Hybrids Mixed 3- 5"	25.00
Rhododendrons Named Varieties 10-12" B. B., 10 for	18.50

50 OF A KIND AT 100 RATE

Quantities of 50 also available at 100-lot rate.

BROAD LEAF EVERGREENS SPECIAL

	Per 100
Ilex Convexa 5- 7"	\$25.00
Ilex Rotundifolia 5- 8"	25.00
Pieris Japonica 3- 6"	25.00
Leucothoe 3- 6"	25.00
English Boxwood 5- 7"	25.00
Euonymus Vegetus 5- 7"	25.00
Euonymus Erecta 6- 8"	25.00

FLOWERING SHRUB SPECIAL

	Per 100
Cornus Elegantissima 18-24"	\$45.00
Weigelia Variegated Rosea 18-24"	60.00
Weigelia Newport Red 18-24"	50.00
Philadelphus Virginalis 18-24"	45.00
Philadelphus Belle Etoile 18-24"	50.00
Viburnum Sterilus 18-24"	50.00
Virburnum Burkwoodi 8-12"	90.00
Virburnum Rhytidophyllum 8-12"	90.00
Symphocarpus Chenaulti 18-24"	50.00
Flowering Almond 18-24"	50.00
Hydrangea Blue Boy 3" pot	45.00

GROWER'S SHADE TREE SPECIAL

	Per 100
Pin Oak 15-18"	\$15.00
Red Oak 15-18"	15.00
Chestnut Oak 15-18"	15.00
Sugar Maple 18-24"	15.00
Sugar Maple 3- 4'	50.00
Red Maple 18-24"	15.00
Red Maple 3- 4'	50.00
Tulip Poplar 18-24"	15.00
Tulip Poplar 3- 4'	40.00
Sweet Gum 18-24"	20.00
White Dogwood 12-18"	20.00
White Dogwood 6-12"	8.00
Red Bud 18-24"	20.00
White Birch 18-24"	20.00

SHIPPED BY EXPRESS F.O.B. GENEVA, OHIO



**EVERGREENS
and SHRUBS**

★ \$1.00 SPECIAL ★

YOU have made such fine use of our specials in the past that we are listing them again. This collection includes some very fine evergreens. Each collection is a bargain. Your choice—Any 10 collections for \$9.00. You may order as many of one collection as you wish. Besides saving \$3.00 on 30 collections, we will give 5 Geo. Peabody transplants free if all 35 collections are ordered.

5 American Arborvitae T	height 6-10 inches	\$1.00
3 Pyramidal Arborvitae T	height 6- 8 inches	1.00
3 Globe Arborvitae T	height 5- 7 inches	1.00
6 Colorada Blue Spruce T	height 4- 7 inches	1.00
6 Black Hill Spruce T	height 5- 8 inches	1.00
5 White Spruce T	height 6-10 inches	1.00
6 Norway Spruce T	height 6-10 inches	1.00
6 Mugho Pine T	height 4- 6 inches	1.00
6 Scotch Pine T	height 8-12 inches	1.00
6 Austrian Pine T	height 8-12 inches	1.00
10 American Red Pine S	height 4- 6 inches	1.00
6 Colorado Silver Fir T	height 5- 8 inches	1.00
5 Balsam Fir T	height 4- 7 inches	1.00
5 Douglas Fir T	height 6- 8 inches	1.00
3 Hetz Juniper T	height 5- 8 inches	1.00
3 Pfitzer Juniper T	height 5- 8 inches	1.00
2 Spiny Greek Juniper T	height 6- 8 inches	1.00
3 Irish Juniper T	height 8-10 inches	1.00
3 Andorra Juniper T	height 5- 8 inches	1.00
3 Taxus Intermedia T	height 5- 7 inches	1.00
3 Taxus Capitata (Upright) T	height 5- 7 inches	1.00
3 Taxus Hicksi T	height 5- 7 inches	1.00
3 Taxus Cuspidata (Spreading) T	height 5- 7 inches	1.00
3 Ilex Convexa T	height 5- 7 inches	1.00
3 Rhododendron Hybrid T	height 4- 7 inches	1.00
3 Azalea Mollis T	height 4- 7 inches	1.00
3 Azalea Kaempferi T	height 3- 5 inches	1.00
3 Boxwood T	height 4- 7 inches	1.00
3 Pieris Japonica T	height 4- 7 inches	1.00
2 Daphne Cneorum T	height 5- 7 inches	1.00
3 Euonymus Coloratus T	height 4- 7 inches	1.00
3 Euonymus Vegetus	height 5- 8 inches	1.00
3 Hydrangea Blue Boy	height 5- 8 inches	1.00
6 Chinese Arborvitae T	height 6- 8 inches	1.00
4 Luciothoe T	height 4- 6 inches	1.00

S—indicates seedling

T—indicates transplants