

62.25

=1954=

LIBRARY
RECEIVED
★ JAN 29 1954 ★
U.S. Department of Agriculture

GRASSYFORK WATER GARDENS

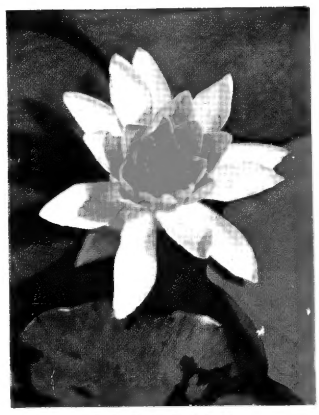
Martinsville
Indi



GRAZIELLA



LUCIDA



ROSE AREY



NOTE REVISED PRICES
AND STOCKS LISTED ON
SPECIAL BULLETIN

**TROPICAL AND HARDY WATER LILIES
AQUATIC PLANTS
GOLDFISH • AQUARIUMS • SUPPLIES**

Ideal Trio

Three marvelous, hardy water lilies illustrated above, combining wonderful beauty of colors, shapes and foliage. All three of these popular lilies at only—\$4.50

—OR—

The Ideal Collection, including any TWO of these lilies with the marvelous, blue, Tropical COLONEL LINDBERGH shown (A) on next page at this special price of—\$4.50

GRASSYFORK TROPICAL WATER LILIES



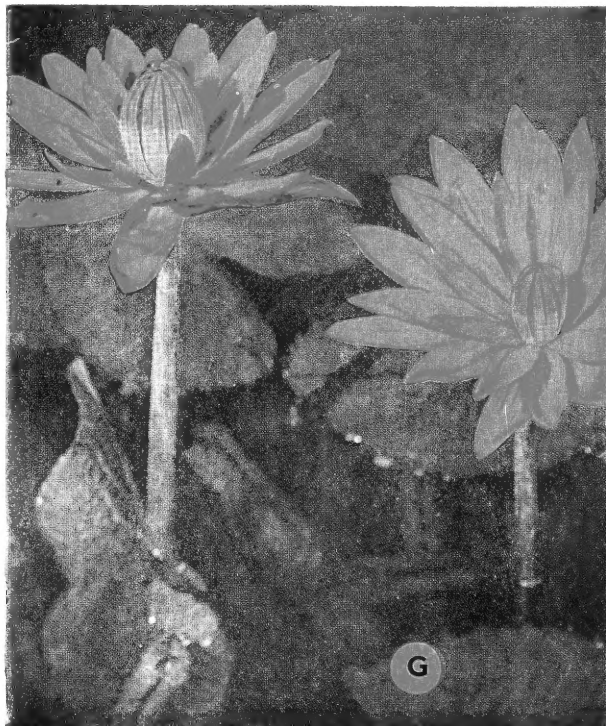
COLONEL LINDBERGH—As outstanding in achievement in water lily culture as that of the man whose name it bears. Its striking colors and rare beauty merit a place in every Water Garden. \$2.25



ZANZIBAR ROSEA—Because of its marvelous qualities of color and shape this lily remains a choice variety among old-time water gardeners. We present it in natural color attractively priced, for the special benefit of those who are planning their first pool. \$1.25



PANAMA PACIFIC—Unequalled for sturdiness of growth, unique coloration of bloom, and general satisfactory performance in pool, pond or tub garden. \$2.00



DEVONSHIRE—Brilliant, striking, exotic.—Words fail to describe the charm of this superb night-flowering lily. One must grow it to appreciate fully its outstanding quality and magnificent coloration. Offered at this special value. \$1.25

HOW TO PLAN AND PERFECT YOUR GARDEN POOL

• This year will your garden be different? Will you share the thrills and pleasure of the brilliant, beautiful colors and shapes of exotic water lilies and graceful water plants, of rare Egyptian Lotus, fragrant Star Lilies and the many other wonders of a water garden?

It's so easy to start with a simple, inexpensive tub garden, or with three tubs buried in some corner with a few rocks and background planting. It takes so little time or investment to make you the possessor of these jewels of all Nature's creations. So many hours of enjoyment await you in the ever-changing beauties of your garden pool.

On the following pages you will find the simple, easy plans and descriptions for almost any size or form of water garden. With these are Special Offers covering gorgeous day and night blooming Tropical Water Lilies and Hardy Water Lilies that change from amber-yellow to red-orange after the buds unfold into luscious symphonies of color. Here are specially priced, odd water plants and varieties of flashing fish to make your pool a growing source of pride and pleasure for your family and friends.

If you already have a water garden, you might perfect it this season with a collection of distinctive, new and different water lilies. You will receive new pleasure by the mere addition of a lotus, another Tropical or Hardy Water Lily, a pair of flashing Orfe or Golden Trout. In these pages are many suggestions for making your pool really perfect.

As you read we ask that you visualize the hours of beauty and enjoyment that may be so easily added to your garden. Picture the thrills of prismatic color from the depths of a cool pool with these touches of oriental splendor and romance mirrored in its placid surface.

No true gardener has ever regretted the small investment of time or money needed to create a water garden. It is our hope that after reading through these pages you will find just the suggestion you need to plan or perfect your garden pool. Our service for many years has included every help in saving time and money in developing the water gardener's dreams into beautiful realities. If you should not find all the information you need from reading this booklet, write and ask our experts for practical help in solving your problems. We are always at your service.

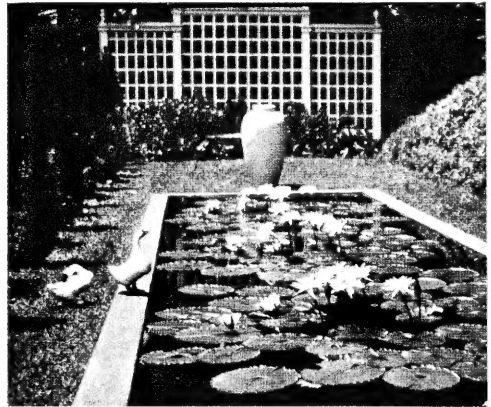
S. N. Byram

GRASSYFORK, Inc.

• We have tried to make this a permanent reference book of valuable ideas for every water gardener rather than merely a catalog or price list. For this reason we hope you will keep this copy for future use or give it to someone who will also be interested in its many suggestions of value.



You can easily build and stock a gorgeous garden pool such as this by following the ideas in this book.



This formal pool with its exotic Tropical Water Lily blossoms makes a thrilling center for any garden.



A rock-bound pool with background planting, oriental lily blooms and darting goldfish in its cool depths offers new adventures in any true gardener's life.

GRASSYFORK TROPICAL WATER LILIES

(See Color Illustrations Inside Front Cover)

TROPICAL LILIES provide twenty-four hours of continuous bloom each day from settled weather in spring until fall. They adapt themselves to the largest Pools or the smallest Tub-Gardens, the size of flowers alone being affected depending on the amount of soil and water surface provided. We ship only mature, potted plants, many already in flower, which produce fully developed plants giving a wealth of bloom in a surprisingly short time after setting out.

Tropical Lilies are of two distinct types: the Dayblooming Lilies, whose flowers open with the sun and close at evening, and the Nightblooming Lilies, whose flowers open in the afternoon and remain open until late the following morning. For constant succession of bloom the Tropical Lilies are unexcelled. Tropical Lily blossoms stand above the water in contrast to Hardy Lily flowers, which float. Set Tropical Lilies out in boxes 18 inches to 2 feet square and a foot deep, submerge 8 to 10 inches, and allow from 8 to 20 square feet of water-surface, for best results. They may be set out when settled weather is assured, which, in the latitude of New York, Chicago, Philadelphia, Cleveland, and St. Louis, is about the end of May.



BLUE LILIES

BLUE BEAUTY (PENNSYLVANIA)—(Illustration above) Flowers a deep rich blue; many petaled; stamens golden-yellow, tipped blue. Buds and leaves green beautifully spotted maroon. \$2.

MRS. ED. WHITAKER—Light lavender-blue flowers; long pointed petals; exceptionally free flowering. Very adaptable. Can be flowered in a small pot. Size of flower and foliage increased with additional allowance of water surface and soil. \$2.25.

CAERULEA—The original "Blue Lotus" of the Nile. Produces an endless succession of fragrant blooms until heavy frost. \$1.25.

DAUBEN—Flowers a light blue and very fragrant. Plant compact, suitable for Tub, Pool, or Aquarium culture. \$1.25.

COL. LINDBERGH—(Illustration A inside front cover) Enormous deep caerulean blue flowers carried high above the water on good stems. Plant of strong growth. \$2.25.

MRS. WOODROW WILSON—Plant of compact habit, producing young plants on the leaves. Flowers a light lavender blue, cup-shaped, of medium size, and very freely produced. \$2.

GOVERNOR EMERSON—Exceptionally large flowers of medium blue. Foliage attractively marked with brown, \$2.00.

RED LILIES

PATRICIA—\$2. • **GRACILIS RUBRA**—\$2.

• "I must tell you the Lilies I ordered from you have been beautiful. We could not have been more pleased." . . . 30-9 LMC.

PURPLE LILIES

ZANZIBARIENSIS—The native African purple lily. Flowers 6-8 inches, very fragrant, showy, and freely produced. \$1.50.

AUGUST KOCH—Flowers very fragrant and freely produced. 7-8 inches. Of a pale wisteria-violet; sepals lilac. Plant of stocky, compact habit adaptable to varying conditions. Foliage a dark green. \$2.

PANAMA-PACIFIC—(Illustration R inside front cover) Flowers a wine-purple with golden stamens. This variety is practically ever-blooming; of compact habit producing young plants on leaves. Leaves beautifully spotted and marked as are the bronze-green buds. \$2.



CHICAGO—(Illustrated above) A strong compact growing variety, producing an abundance of pink, medium sized blooms throughout the season. Mottled foliage, \$2.00.

GRASSYFORK TROPICAL WATER LILIES

NIGHT-FLOWERING VARIETIES

GORGEOUS DISPLAY of brilliant color is the claim of the Night-blooming Lilies for recognition and a place in every pool. The designation "Nightbloomer" is a trifle misleading; specifically, the flowers close at midday, or when the sunlight becomes strongest, and open again in the afternoon. On cloudy days or in late summer, when the weather becomes cooler, they sometimes remain open through the twenty-four hours.

The magnificently large, exquisitely colored flowers are deserving of greater popularity than they at present enjoy. These Lilies can be grown in the smallest of pools, in which case the leaves and flowers will be dwarfed, though the blooms lose none of their rich coloring; or in a large Pool, where with ample space they will produce continuous blooms surpassing in size any of the other types of Lilies.

RED LILIES

DEVONSHIRE—(Illustration G—inside front cover) Very free blooming. Bright rosy red flowers 8-10 inches. Bronze-green foliage. \$1.25.

BISSET—\$1.50.

GEORGE HUSTER—\$2.

FRANK TRELEASE—Exquisite dark crimson flowers of good size; petals long, pointed, giving a starry effect. Stamens deep reddish brown. Leaves dark red. \$1.65.

H. C. HAARSTICK—A new red variety. It is a striking addition to the Night Flowering group of Water Lilies. Flowers are a clear rich red surrounded by large bronze foliage. Each \$2.

WHITE LILIES

JUNO—The largest flowered Night Bloomer. Broad snow-white petals around a center of yellow stamens. Large, glossy-green, dentate foliage. \$1.75.

DENTATA—\$1.25.

MISSOURI—New White Night-Blooming

Lily, a cross between Mrs. George C. Hitchcock and Sturtevantii. Pure white with large semi-double flowers. Unequaled for form and beauty. Will bloom much earlier than Juno. The leaves are first a light bronze, but later develop into a dark green. The leaves have fluted margins. \$3.00.

PINK LILIES

RUBRA ROSEA—One of the best. Large flowers of brilliant rose-carmine held well above the mottled foliage. \$1.50.

OMARA—A vigorous grower. Produces large flowers of deep rose lighted by a white stripe through each petal; stamens deep orange-red. \$1.50.

MRS. GEORGE C. HITCHCOCK—A new pink. The Mrs. Hitchcock has large deep rose-pink flowers borne above the water. A beautiful night-flowering hybrid. Each \$2.

EMILY GRANT HUTCHINGS—A new pink with large cup shaped blooms of a delightful clear pink. No collection is complete without this attractive new hybrid. Each \$2.

AQUATIC PLANT COLLECTIONS

(See description Page 14)

SMALL POOL COLLECTION—26 Choice Aquatic Plants, to include (our selection) 6 plants for centerpiece or background; 14 plants for corners or margins; 3 floating plants; 3 submerged plants. \$3

POPULAR POOL COLLECTION—30 Choice Aquatic Plants, to include (our selection) 8 plants for centerpiece or background; 16 plants for corners or margins; 3 floating plants; 3 submerged plants. \$4

MEDIUM POOL COLLECTION—38 Choice Aquatic Plants, to include (our selection) 10 plants for centerpiece or background; 16 plants for corners or margins; 6 submerged plants; 6 floating plants. \$5

LARGE POOL COLLECTION—80 Choice Aquatic Plants to include (our selection) 32 plants suitable for corners or ledges, such as Taro, Arrowhead, Primrose Willow, Umbrella Palm, Parrot's Feather, Forget-me-not, etc.; 36 submerged plants; 12 floating plants, such as Water Hyacinth, Water Fern, Shellflower, etc. \$7.50

SPECIAL LARGE COLLECTION—92 Choice Aquatic Plants to include (our selection) 12 plants suitable for centerpiece or background; 32 plants suitable for corners or ledges; 36 submerged (oxygenating) plants; 12 floating plants. \$10.00

• *I have been through the hatcheries, the greenhouse, and factory, and every man seems to know his business. They do not try to wait on two or three people at one time. All questions are answered without hesitation. In fact, every man seems to be an expert in his line.*

• *I can tell you honestly that not one of your men have acted as if they were wasting their time in waiting on me. In other words, it seems to me as if I were going to visit a friend when I come to your establishment."*

• *"My Tropical Lilies and Plants arrived in excellent condition. I am very much pleased with them and they have created a lot of interest among our friends." . . . 28-3 WMW.*



Like some Pharaoh's garden of ancient Egypt this beautiful pool mirrors its crown jewels of Lotus with a prismatic setting of Blue Beauty and delicate Rubra Rosea Tropical Water Lilies. It's so easy and inexpensive to have such a colorful, exotic center to your garden.

OUR 15 BEST SELLERS

For your help in choosing the best lilies for Your Water Garden, we list below the lilies leading in sales during recent years—

- | | | |
|-------------------|---|----------------|
| DEVONSHIRE | • | CHROMATELLA |
| PANAMA PACIFIC | • | GLORIOSA |
| BLUE BEAUTY | • | ZANZIBAR ROSEA |
| COLONEL LINDBERGH | • | SUNRISE |
| ATTRACTION | • | PINK OPAL |
| MISSOURI | • | JUNO |
| CONQUEROR | • | CAERULEA |
- EMILY GRANT HUTCHINGS

GRASSYFORK HARDY WATER LILIES

(See Color Illustrations Back Cover)

HARDY LILIES are unexcelled for planting in natural ponds, lakes or in still pools along a river or stream-bank, and will beautify the most unattractive bit of water provided they are not planted in too deep water or near a cold inlet. They are easy to grow and bloom best with full sunlight at least half the day.

The hybridist has obtained excellent results with Hardy Lilies in developing color, quality, size, symmetry, fragrance of flowers, and growing qualities of the plants. The flowers embrace all the colors from purest white, delicate shell-pink, deep rose-pink to richest reds, yellows, and combinations of red and yellow. There is, however, no blue Hardy Lily. For this color one must go to the Tropical Lilies. Another contrast between Tropical and Hardy Lilies is that the blooms of the former are borne on stems well above the water, whereas those of the hardy lilies float or are raised only slightly.

Hardy Lilies may be planted any time from the start of growth in the spring (about April 1st) until the last week of August. It is inadvisable to attempt a planting before or after these dates.

Plant Hardy Lily roots at a slight angle, pressing the butt end deeply into the soil with the growing tip covered about an inch. The following varieties, both recent introductions and old standard sorts, we consider the best for results. We list these varieties by color, rather than by alphabetical arrangement. Our Lilies are Northern grown and therefore exceptionally hardy.

WHITE LILIES

MARLIAC WHITE—(*Albida*) (Illustration F—Back Cover and J—Back Cover)—Richly fragrant broad-petaled flowers of a pure, waxy white with bright yellow stamens; continuous bloom. \$1.00.

LOOSE—\$0.85.

GLADSTONE—Large, pure-white, globular flowers. A strong, vigorous grower inclined to hold both leaves and flowers above water when crowded. \$1.50.

PYGMY ALBA—\$1.50.

ODORATA GIGANTEA (*Hopalcong*)—Flowers larger than Odorata. Unexcelled for naturalizing in ponds and lakes. \$0.50 each; \$5 a dozen.

ALBA CANDIDISSIMA—\$1.

ODORATA MINOR—Excellent for planting along the edge of pools or in tubs. Tiny, fragrant, white lilies, 2 to 3 inches across. \$0.75.

LACTEA—\$2.

GONNERE—Very large double flowers of pure white. Stamens canary yellow. \$2.25.

PINK LILIES

ROSE AREY—(Illustration Front Cover) Very free flowering and a strong grower. The flowers are very large, being eight or more inches across, fragrant, with long-pointed petals. A word picture falls short in describing the deep uniform pink color of this most satisfactory variety. One must see it growing and flowering to appreciate fully its merit. \$1.75.

AMABILIS—Tulip-shape with gigantic flesh pink white tinged flowers. Opening wide—up to 10 inches in diameter—and borne above the water. Truly a wonderful Lily. \$2.50.

MARLIAC FLESH (*M. Carnea*)—\$1.25.

EUGENIA DE LAND—(Illustration I—Back Cover) A vigorous and free-flowering variety of Odorata type. Flowers large, floating, of a deep rose-pink; petals long, pointed. \$1.50.

MARLIAC ROSEA (*M. Rosea*)—Illustration. E—Back Cover) Fragrant, cup-shaped flowers of deep rose. Free flowering and of good size. \$1.50.

HELEN FOWLER—(Illustration P—Back Cover) Very adaptable to Tub-Gardens. Deep pink flowers of medium size borne above the water. \$1.25.

PINK OPAL—(Illustration M—Back Cover) Full-petaled cup-shaped flowers of a deep, rich pink. Foliage, reddish-green. \$1.00.

W. B. SHAW—\$1.

SOMPTUOSA—Enormous, very full-petaled, fragrant flowers; petals rose-pink; stamens deep orange. Strong growing and free flowering. \$2.25.

NEPTUNE—Exceptionally free flowering. Broad, pink petals flushed with red at the base. A very attractive variety. \$3.50.

MASANIELLO—Large, fragrant flowers borne above the water. Petals rounded, pink dotted carmine. \$1.75.

ODORATA ROSEA—\$1.

WILLIAM DOOGUE—\$2.50.

ROSE MAGNOLIA—Ideal for naturalizing. Light, flesh-pink flowers, borne slightly above the water. \$1.00.

VENUSTA—\$2.

PINK LAYDEKER—(Laydekeri lilacea) \$1.75.

ODALISQUE—\$2.

GOLIATH—\$2.

GALATEE—\$1.50.

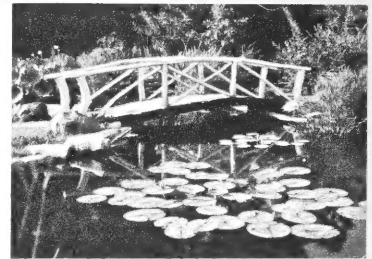
SPLENDIDA—Exceptionally free blooming. Large broad-petaled flowers of a rich pink deepening to red at base of petals. \$1.50.

FORMOSA—Large flowers of delicate lilac pink. Fragrant. \$2.50.

YELLOW LILIES

CHROMATELLA—(*Marliac Yellow*)—(Illustration D—Back Cover) Bright, chrome-yellow flowers. Leaves rich green, spotted bronze-red. Of compact habit, vigorous, and very free flowering. Ideal for Pool or Tub-Garden. \$1.25.

PYGMY YELLOW (*Helvola*)—Tiny, floating, light canary-yellow flowers in abundance. Adaptable to Tub-Gardens or the shallow water along the edge of Pools. \$1.00.



An Informal Pool in Grassyfork Gardens

ODORATA SULPHUREA GRANDIFLORA—\$1.50.

SUNRISE—(Illustration B—Back Cover)—Beautiful sulphur yellow flowers of large size borne slightly above the water; produced freely from early season until frost. \$2.25.

RED LILIES

GLORIOSA—(Illustration L—Outside Back Cover) One of the best. Flowers a beautiful clear red, deepening to dark red; full-petaled; very symmetrical and fragrant. For Pool or Tub-Gardens. Blooms continuously. \$2.25.

ATTRACTION—An immense flower, remarkably bright red in color and very free in bloom. We have counted fifty blossoms on a single box of them. \$2.50.

CONQUEROR—(Illustration C—Back Cover)—An immense flower; the bright red petals shaded with white on the inside change to deep red as the flower ages. Strong plants producing a wealth of bloom. \$2.

ESCARBOUCLE—Flowers an intense vermilion-red deepening on succeeding days; stamens garnet. Strong growing; should be included in every collection. \$2.50.

METEOR—The slender, flaring petals fold about garnet-colored stamens—a very pleasing flower that blooms abundantly. Each \$1.50.

ATROPURPUREA—\$3.50.

JAMES BRYDON—Handsome bronze-red foliage and large, cup-shaped flowers whose broad petals are an unique rose-crimson. An exceptional variety. \$2.50.

LUCIDA—(Illustration L—Front Cover)—Large flowers of a rich, warm red; petals long, pointed; stamens red-orange. Foliage green spotted maroon. \$2.50.

ROBINSONI—\$2.50.

SULTAN—Large flowers of a striking shade of red. Petals shade from light to deep red at base. Blooms continuously. \$3.00.

RENE GERARD—Flowers very large, many petaled of a deep old rose shading to rose crimson. A distinctive variety. \$2.

PICCIOLA—Rich green foliage spotted with red. Large dark crimson flowers borne above the water. \$3.

MARLIAC FIRE—\$3.

LAYDEKER PURPLE—\$2.

RED LAYDEKER—\$1.50.

VESUVE—\$3.

HARDY LILIES AND PLANT COLLECTIONS

RED AND YELLOW LILIES

COMANCHE—(Illustration O—Outside Back Cover) The hardest of all cultivated lilies. Large flowers of rich apricot with glowing red markings deepening to copper orange; olive green foliage flaked brown. Vigorous and free blooming. \$2.00.

AURORA—Very free flowering, of semi-dwarf habit suitable for small Pools or Tub-Gardens. Flowers amber-yellow, shading to red-orange on the second day and then deep red. \$1.25.

SIOUX—(Illustration K—Outside Back Cover)—Flowers a rich copper-yellow of good size; petals long, pointed, and tinged red along the sides. Flowers and central foliage raised slightly above the water. \$1.75.

FULVA—A new red and yellow flower of great beauty and abundant blooms. Each \$1.25.

PAUL HARIOT—(Illustration N—Back Cover)—Cup-shaped blooms of a delicate light yellow suffused with pink. Colors deepen on succeeding days to yellow and copper-red. Mottled foliage. \$2.00.

CHRYSANTHA—\$1.50.

GRAZIELLA—(Illustration—Front Cover)—Charming orange pink flowers shading to a fine orange red with age. A splendid variety for the Tub Garden and one you will enjoy for its unique color and pretty cupped form. \$1.50.

SOLFATARE—\$1.50.

MOOREI—\$2.25.

BLUE RIBBON COLLECTION

This Collection will delight you. In color, number of flowers, sturdiness of varieties, and in price, it cannot be surpassed.

Capensis. (Dayflowering) Blue. Chromatella. Yellow; hardy. Eugenia de Land. Pink; hardy. Frank Trelease. (Nightflowering) Red.

One of each, in Collection.....\$4.50

QUALITY FOUR

Chromatella. Paul Hariot. James Brydon. Eugenia de Land.

Four Excellent Varieties, in Collection. .\$.575

OUR SPECIAL COLLECTION

Consisting of seven Lilies: Conqueror, Chromatella, Pink Opal, Sultan, W. B. Shaw, Albida and Attraction.

All Only.....\$9.50

FOUR CHOICE DAYBLOOMING LILIES

Zanzibar Purple, Mrs. George H. Pring—White, General Pershing—Pink, Blue Beauty—Blue.

One of each, in Collection.....\$5.75

BEAUTY TRIO

Mrs. Edwards-Whitaker—Light blue. Blue Beauty (Dayflowering)—Blue. Panama-Pacific—Wine-Purple.....\$5.00

ZANZIBAR TRIO

Zanzibar Purple, Zanzibar Blue, Zanzibar Rose.....\$3.40

ELITE TRIO

Graziella, W. B. Shaw, Pink Opal.

One of each, in Collection.....\$2.75

A splendid, big value collection of Hardy Lilies for the moderate-sized pool and a refreshingly new grouping for those wishing additions to their present assortment.

EUGENIA DE LAND—(Illustration I Outside Back Cover)—Long, pointed petals of a delicate pink, giving a starry effect to the richly fragrant blooms.

SUNRISE—(Illustration B—Outside Back Cover)—A burst of clear, glistening, sulphur-yellow radiating from the long, slightly quilled petals, like rays of the morning sun.

METEOR—A flash of brilliant red against the pastel shades of De Land and Sunrise.

Collection No. 103.....\$4.00

TRIO COLLECTIONS

Selected First Quality Lilies Outstanding Bargains

TRIO 1—Lucida, Albida, Rose Arey...\$4.20

TRIO 2—Gloriosa, Comanche, W. B. Shaw.....\$4.20

TRIO 3—Sunrise, Attraction, Marliac Rosea.....\$5.00

TRIO 4—Conqueror, Chromatella, Pink Opal.....\$3.40

TRIO 5—Sultan, Albida, James Brydon \$5.20

ROYAL TRIO

Odo-Rosea—Pink, hardy. Caerulea—Blue. Chrysantha—Amber-yellow.....\$3.00

FIVE SUPERB HARDY WATER LILIES

Aurora—Red-orange, William Doogue—Soft pink, Chromatella—Yellow, Attraction—Rich red, Gladstone—White.

One of each, in Collection.....\$7.25

TRIO OF FAVORED HARDY LILIES

Aurora—(Hardy) Amber-yellow, Alba candidissima—(Hardy) White, James Brydon—(Hardy) Red.

One of each, in Collection.....\$3.75

TRIO OF TROPICAL LILIES

Zanzibar Rose—(Dayflowering), Juno—(Nightflowering) White, Capensis—(Dayflowering) Blue.

One of each, in Collection.....\$3.50

BOUQUET COLLECTION

Mrs. Edwards-Whitaker—Light blue, Penn sylvanica—Blue, Zanzibariensis—Purple, Stella Gurney—Pink, Gracilis—White.

In Collection five excellent varieties...\$7.25

MARLIAC TRIO

(See Natural Color Photograph, Back Cover)

—Marliac Pink, Marliac Yellow, Marliac White

In Collection.....\$3.00

FOUR POPULAR TROPICAL LILIES

Mrs. Edwards-Whitaker—Light blue, August Koch—Violet, Juno—(Nightflowering) White, Zanzibariensis Rosea—Pink.

In Collection.....\$5.75

You, too, may have large blooms and a riot of color in the water garden throughout the season by planting all or part of this choice selection of excellent varieties.

CHROMATELLA—(Illustration D, Back Cover)—Glistening, chrome yellow blooms in profusion throughout the season.

GALATEE—A recent introduction. Petals a distinct shade of pink obtained by myriad tiny splashes of red flecked against a background of white.

PAUL HARIOT—Blooms of a delicate light yellow suffused with pink, color changing to a rich apricot on succeeding days.

CONQUEROR—(Illustration C, Back Cover)—A strong growing and free flowering variety. Bright red petals deepening to a richer tone on succeeding days.

Collection 104-A—The Four...\$5.25
Collection 104-B—Any Three...\$3.75
Collection 104-C—Any Two...\$2.50

• "During my 44 years of existence I have never met a more eager group of men with the willingness to serve and to be of service to a customer than you have in your organization." . . . 19-1-AF.

FOUR POPULAR HARDY LILIES

Marliacea albida—White, Sioux—Yellow-orange, Pink Opal—Pink, James Brydon—Red. In Collection.....\$5.00

HOOSIER GARDEN COLLECTION

Panama-Pacific, Frank Trelease, Mrs. Edwards-Whitaker, Rose Arey, Comanche.

One of each, in Collection.....\$7.75

UNEXCELLED COLLECTION

Four beautiful varieties—a Water Garden Bouquet. Purple Star, Marliac Rose, Paul Hariot, George Huster. In Collection. \$.550

FIVE DAYBLOOMING LILIES

Five varieties which will provide a gorgeous display of color in the Water Garden. Ernst Ludwig—(Dayflowering) Blue, Gladstone—(Hardy) White, Masaniello—(Hardy) Shell-pink, Gloriosa—(Hardy) Red, Gracilis Rosea—(Dayflowering) Pink.

One of each, in Collection.....\$8.00

FREE OFFER

With every \$3.00 (or more) Water Lily purchase we will include either a Cattail, Hyacinth, Floating Heart, Sweet Flag, or Water Clover, for each \$1.00 value of the order. . . .

GRASSYFORK LOTUS FOR A NILE GARDEN

One of the most fascinating adventures in water gardening is the cultivation of Lotus, famed from time immemorial for their association with ancient Egyptian civilization—a type of Water Garden often called a Nile Garden. Not only were the roots and seeds of these plants used for food by early Nile river populations, but the flowers and leaves inspired their art and are to be found as decorations on their architecture. The modern Water Gardener will find their beautiful and fragrant blossoms, their luxuriant and attractive growths, equally as inspiring.

The Lotus is found in many parts of the world. *Nelumbium nucifera*, that was grown for centuries along the Nile, was worshipped by the early Egyptians, so that it was popularly known as the Sacred or Egyptian Lotus. All varieties of Lotus bear leaves and flowers well above the water and may be used with almost any water garden plan, especially as a centerpiece and corner plantings. They will grow and flower equally well in urns or other containers if moisture is abundantly supplied. Seed pods of the Lotus are almost as attractive as the flowers which precede them. Leaves and seed pods of Lotus plants are often gilded or otherwise painted and made into unique interior decorative pieces.

Lotus tubers, resembling large bananas, can only be shipped from May 1st to June 1st.

After June 1st the plants are so large that they cannot be removed safely without their soil. However, we can furnish them as potted plants, which, of course, makes them more expensive, but more sure to grow when planted. The potted plants are furnished at \$1.00 extra added to the prices shown on this page. Be very careful not to break the tip off of Lotus.

Soil for Lotus should be the same as for Hardy Lilies, although they should be planted in only 6 in. to 10 in. of water. Set Tubers at an angle so that the growing tip is barely covered. Firm soil about tuber. Care should be exercised in handling and planting Lotus tubers so that the growing tip is not injured or broken. It is advisable to plant Lotus in large individual containers.



This diagrammatic illustration may serve as a plan for planting a typical Nile Garden, or merely as a suggestion to the inventive gardener for a general plan. Suggested planting arrangement illustrated: 1 and 2—Water Lilies, L—Lotus, A—Paper Plant and Cattails, B—Pontederia and Bulrush, C—Arrowhead and Sweet Flag, D—Floating Heart and Parrot's Feather, F—Water Hyacinth and Water Lettuce.

VICTORIA LILIES

Produce leaves up to six feet in diameter with edges turning up three inches or more. Upon opening, the huge, fragrant flowers are a cream-white with faint tracings of red which deepen and suffuse the petals so that on the third opening, the flower has changed almost completely to red. We supply them as low as \$7.50 each.

STAR LILIES

Star Lilies are very sturdy, easy to grow, and give a wealth of medium-sized flowers in a season. The long, pointed petals give the bloom a starry appearance; and their delightful fragrance, brilliant colors, and exceptional qualities as a cut flower make them a valuable addition to the Water Garden.

Star Lilies, \$1.25 each. Blue Star, Rose Star, Purple Star, Red Star, Pink Star—Any three, your choice, collection, \$3.25.

CONCRETE PAINT

A splendid Robin's-Egg Blue. We supply in quarts, half-gallons and gallons a specially prepared paint which not only preserves but beautifies a concrete pool. This paint will preserve the concrete, prevent small leaks, and is non-injurious for plants or fish. The color is especially prepared to enhance the appearance of clear water. A quart will cover 110 to 160 square feet of concrete with one coat—a gallon 450 to 550 square feet. Three or more coats should be applied to insure a permanent and wholly satisfactory finish. F. O. B. Martinsville or Saddle River. Per quart, \$1.25; per half-gallon, \$2.35; per gallon, \$4.50.

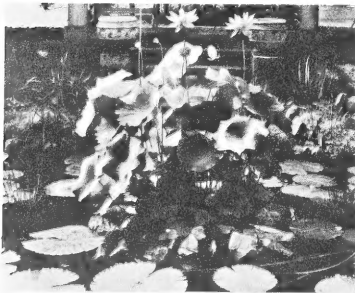
AMERICAN LOTUS (*N. lutea*). A native variety, popularly known as Water Chinquapin, having large cream-yellow flowers of a delightful fragrance. *Each, \$2.00.

SACRED OR EGYPTIAN LOTUS (*N. nucifera*). A hardy, vigorous, fragrant type having rose-tipped petals, shading to cream at the base. *Each, \$2.00.

SHIROMAN LOTUS (*N. shiroman*). An outstanding variety having large globular, many petaled or double flowers of purest white rising amongst the immense blue-green foliage. *Each, \$2.50.

CHINESE LOTUS (*N. pekinensis rubrum plenum*). An exceptional type. This variety is the only Lotus having fully double flowers of a rich rose red. *Each, \$2.50.

*Add \$1.00 to above prices for potted plants after June 1st.



Egyptian Lotus

SPECIAL LOTUS COLLECTION

Lotus make striking center piece and background plantings in the pool. They may also be grown in tubs or other such containers arranged in the manner of the tub garden, and set anywhere about the garden or lawn, preferably in full sun.

A choice collection of delightfully contrasting and fragrant plants which we can ship together are: One American Lotus, One Sacred Lotus, One Chinese or Shiroman Lotus (your choice). Three strong tubers, one of each variety, \$5.25.

SPECIAL NILE GARDEN COLLECTION

- | | |
|------------------|--------------------------|
| 2 Papyrus Plants | 2 Water Lettuce |
| 2 Water Rushes | 2 Floating Heart |
| 2 Arrowhead | 2 Parrot's Feather |
| 2 Pontederia | 2 Bulrush |
| 1 Sacred Lotus | 2 Sweet Flag |
| 2 Water Hyacinth | 1 White Lotus Water Lily |
| | 1 Blue Lotus Water Lily |

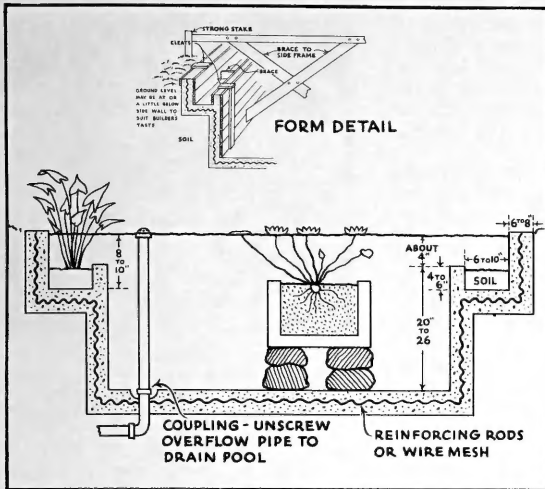
Twenty-three plants, including two Water Lilies and a Sacred Lotus, in collection, \$6.75.

FISH AND SCAVENGERS FOR NILE GARDEN

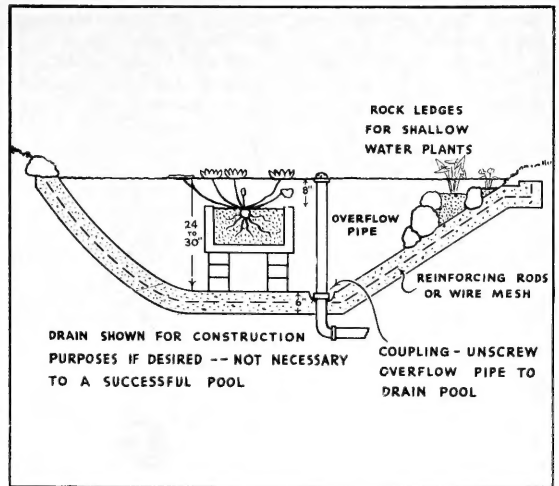
- 12 Comet Goldfish, 4-5 inch.
 6 Shubunkins, 3-4 inch. 6 Fantails, 2½ inch.
 1 Small Pool Collection of Scavengers (6 Japanese Snails, 6 Black Ramshorn Snails, 6 Tadpoles, 2 Clams, 2 Salamanders).
 This collection, \$4.50.

• "To me the name "Grassyfork" is synonymous to "Quality." The products which I purchase from you are "ultra-select" and the finest obtainable." . . . 27-1 WRB.

INSTRUCTIONS FOR BUILDING POOLS



The **FORMAL POOL**, with symmetrical outlines and straight sides instead of sloping is diagrammed above. The illustration shows ledges for shallow water plants which may be modified for convenience or economy.



The **INFORMAL POOL** is shown in cross section drawing above, which illustrates sound construction methods. Inlet and overflow connections are not necessary unless you want a fountain or running water, but are always convenient.

Pools may take many forms and sizes, but all should be located where they receive plenty of sunshine. Usually lawn and garden conditions require the construction of a concrete basin, which, according to preference may take an informal arrangement resembling the natural pond as to shape, or a formal arrangement in round, rectangular or square shape with straight walls.

Larger Pools should be 24 to 30 inches in depth to allow 8 to 12 inches of good soil and a sufficient depth of water for growing purposes and adequate winter protection. Large pots, boxes or tubs may be used as containers for soil which helps keep the pool water clear, and has the further advantage of containing individual plants and preventing overcrowding. Also soil in containers is easily fertilized, which is important for vigorous growth.

THE FORMAL POOLS

Rectangular, square or round Pools with vertical sides are used for formal arrangements of the Water Garden. These may be built in any soil by excavating the desired space and building forms for the side walls. These forms may be of wood, steel or of galvanized iron sheeting, reinforced with wood. Wood forms should be wetted before pouring concrete; metal forms wiped with oil or grease. For construction of ledges, pockets, etc., see sketch.

Make inside form six inches short at the bottom of the outside form so that, when pouring the concrete for the walls, it will flow inside and form a lip with which the bottom concrete can bind, sealing the joints. The bottom must be poured before the out-flowing concrete from the wall forms has set. Smooth finished walls as described above and paint with cement paste. Reinforce concrete in walls and bottom with wire mesh as described above, or with light reinforcing steel to avoid winter cracking.

SIDE WALLS should be at least six inches thick and bottoms may be 4 to 6 inches thick.

Copings of brick, slate, limestone, etc., should be placed before concrete wall has set. If drains are desired, see sketch for details.

THE INFORMAL POOLS

The most popular and inexpensive Pool, and the one affording opportunities for the builder to exercise his own tastes in design, is the informal, or irregularly shaped Pool. **FIRST**, stake out and mark with twine the **OUTSIDE** limits of your Pool. In the approximate center of the area outlined by the stakes and twine, excavate to a depth of 30 inches, making the excavation as big around as necessary to get the soil shoveled out. Then slope the sides at about a 45 degree angle towards this center excavation, working outward from this center excavation to the outline of twine, letting the bottoms be perfectly flat and as large as the area of the outline of twine naturally makes it with the walls sloping at the given angle. Tamp sides and bottom well. Mix a stiff concrete with 1 part good cement, 2 parts clean sharp sand and 3 parts $\frac{1}{2}$ " to $\frac{3}{4}$ " gravel or cracked stone. Mix thoroughly while dry and add water just sufficient to make a

thick mixture that will lie on the sloping walls. Plaster the bottom and the walls of the excavation from the bottom to the top with 2 to 3 inches of this concrete. Immediately place wire mesh over the concrete, taking care to overlap the mesh on bottom and sides by 4 to 6 inches. Be sure the mesh is large enough to permit all gravel or stone pieces to pass through freely. Cover the mesh with another 2 to 3 inches of concrete, tamping smooth and then smoothing surface with trowel or block of wood. Cover with building paper or damp hay or straw for 12 hours. Apply a thick paste of cement and water, painting it on with broom or whitewash brush. Recover the work and let it stand for 48 hours. Remove covering, fill with water and soak for 2 or 3 days. Empty, stirring constantly to wash out all sediment. The Pool is then ready for use.

In informal pool arrangements stones or bricks may be set in the fresh concrete along the sides near the top to form pockets or ledges for planting shallow water and bog plants. Arrange these pockets or ledges so that depths of from 2 to 10 inches are provided for these various types of plants.

PLANTINGS FOR WATER GARDENS

SMALL POOL



Small Pools of informal design can be easily adapted to all manner of garden and lawn plans. This diagram shows a very satisfactory way of planting such pools, and collections much larger may well be planted after this fashion.

1, 2 and 3—Water Lilies. A—Cattail, Arrowhead, Water Poppy. B—Umbrella Palm, Pontederia, Forget-me-not. C—Water Iris, Parrot's Feather, Umbrella Palm. D—Variegated Sweet Flag, Water Taro, Floating Heart. E—Paper Plant, Water Cannas, Parrot's Feather. F—Water Hyacinth, Water Lettuce or Shellflower, Water Fern.

FOR SMALL POOLS

(A Pool 6 to 7 feet in diameter, or 4 x 6 feet, or 5 x 7 feet)

- 3 WATER LILIES to include: 1 Chromatella (best yellow, hardy); 1 Blue Beauty (ever blooming blue, tropical); 1 Pink Opal (deep pink, hardy).
- 23 AQUATIC PLANTS to include: 5 plants for centerpiece or background; 12 plants for corners or margins; 3 Floating Plants; 3 Submerged Plants.
- 16 ORNAMENTAL FISH to include: 12 Large 5-6-inch Common Goldfish; 2 (4-inch) Fantails; 2 (4-inch) Shubunkins or Calico Fish.
- 22 OF THE BEST SCAVENGERS to include: 6 Japanese Snails; 6 Tadpoles; 6 Black Ramshorn Snails; 2 Green Frogs; 2 Salamanders.
- 1 lb. carton Grassyfork Goldfish Food; 1 Fish Bucket.

Complete Collection, \$8.75.

POPULAR POOL



A handsome planting plan for popular and medium Pools is shown in this diagram. Our Pool Collections are chosen so that you can provide from 8 to 12 square feet of water surface for each Hardy or Tropical Lily. The larger-growing varieties will do better, producing larger and more abundant blossoms, if from 12 to 20 square feet of water surface are provided for each plant.

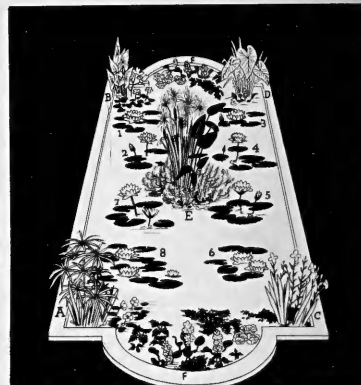
1 to 4 Water Lilies. A—Water Taro, Arrowhead, Water Poppy. B—Water Iris, Hedy-chium, Water Clover. C—Sweet Flag, Water Willow, Parrot's Feather. D—Umbrella Palm, Water Plantain, Wild Calla. E—Cattail, Paper Plant, Marsh Marigold. F—Water Hyacinth, Water Lettuce or Shellflower, Water Fern.

FOR POPULAR SIZED POOLS

(A Pool 6 by 7 feet, or 8 feet in diameter)

- A Pool of the approximate dimensions given above is gaining favor with an increasing number of our customers each season.
- WATER LILIES—Four Lilies, any one of the following Collections: Four Popular Hardy Lilies, or Unexcelled Collection, or Four Popular Tropical Lilies.
- 30 CHOICE AQUATIC PLANTS. To include: 8 plants for corners or backgrounds; 16 plants for corners or margins, 3 floating plants, 3 submerged plants.
- 16 BEAUTIFUL LARGE BREEDING FISH to include 2 pair 8 inch to 9 inch Young Giant Goldfish, 6 Large 5 inch to 6 inch Comets, and 6 large 5 inch to 6 inch Calico Fish or Shubunkins.
- 22 of the best Scavengers.
- 1 lb. carton Grassyfork Goldfish Food.
- Collection Complete for Popular Sized Pool, \$12.

LARGE POOL



This diagram illustrates a very suitable plan for planting large Pools, showing how the taller growing plants serve as corner and center pieces. Large Pools will provide considerable latitude in the arrangement of plants. The Goldfish and Scavengers offered in our collections are correct for balanced aquatic life, which is essential to keep the water clear and to promote suitable soil conditions for the plants.

1 to 8—Water Lilies. A—Umbrella Palm, Sweet Flag, Water Poppy. B—Arrowhead, Water Anaryllis, Floating Heart. C—Sweet Flag, Water Willow, Water Clover. D—Water Taro, Spider Lily, Trailing Hyacinth. E—Paper Plant, Bulrush, Cattail, Water Cannas, Parrot's Feather. F—(Two identical groups)—Water Hyacinth, Water Lettuce, Water Fern, Salvinia.

FOR LARGE POOLS

WATER LILIES: Your choice of any one of the following:

1. Five Superb Hardy Lilies and the Zanzibar Trio.
2. Four Choice Day-Blooming Lilies and the Blue Ribbon Collection.
3. Five Hardy Lilies (our Show Collection) and the Marliac Trio.

AQUATIC PLANTS: 80 plants as follows: 32 plants suitable for corners, or ledges along the sides of the Pool, such as Taro, Arrowhead, Primrose Willow, Umbrella Palm, Parrot's Feather, Forget-me-not, etc., our selection; 36 submerged or oxygenating plants; 12 floating plants, such as Water Hyacinth, Water Fern, Shellflower, etc.

FISH AND SCAVENGERS: 30 Goldfish as follows: 6 (7-9-inch) Young Giants, 12 (4-inch) Large Comets, 6 Extra-large 5-6-inch Comets, 6 Extra-large 5-6-inch Shubunkins, 1 Large Pool Scavenger Collection, 1 lb. Grassyfork Goldfish Food.

A Complete Assortment for Large Pools, \$27.

FOR MEDIUM POOLS, A Pool 6 by 9 feet, or 7 by 9, or 10 feet in diameter

- 5 Water Lilies: Your choice of any one of the following three collections:
 1. Hoosier Garden. (Page 5.)
 2. Five Superb Hardy Lilies. (Page 5.)
 3. Show Collection—Five Hardy Lilies illustrated on outside back cover.

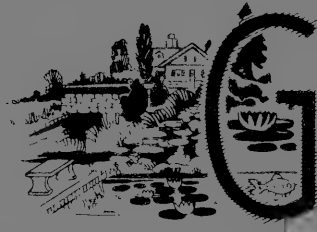
- 38 Aquatic Plants, to include: 10 plants suitable for centerpiece or background; 16 plants for corners or margins; 6 submerged plants; 6 floating plants.
- 18 Fancy Fish, to include: 2 pairs 7-9-inch Young Giants; 6 Extra-large 6-inch

- Comets; 6 Extra-large 5-6-inch Shubunkins; 1 pair Large 5-6-inch Fantails.
- 40 of the best Scavengers, to include: 12 Tadpoles; 6 Japanese Snails; 12 Black Ramshorn Snails; 2 Salamanders; 4 Green Frogs; 4 Clams.
- 1 lb. carton Grassyfork Goldfish Food.

This Complete Assortment for Medium Pools, \$18.

ORDER BLANK

PLEASE USE THIS ORDER BLANK TO ORDER FROM US



World's Largest Fisheries and Water Gardens

GRASSYFORK

(Established 1899) INC.

1500 ACRES - CARED FOR BY EXPERTS

WATER LILIES - AQUATIC PLANTS - GOLDFISH
TROPICAL FISH AND SUPPLIES
ROCK GARDEN PLANTS - PERENNIALS

MARTINSVILLE, IND., AND
SADDLE RIVER, N. J.

TEAR OFF AND MAIL - READ OTHER SIDE

DATE	SHIP BY	PLEASE SELECT WRITE HERE
NAME	STATE BY EXPRESS (PAID HERE)	ORDER NO.
ADDRESS		AMOUNT ENCLOSED
CITY		CASH
EXPRESS OFFICE		CHECK
COUNTY	STATE	M.O.
		AMOUNT OF ORDER
		AMOUNT OF POSTAGE

TERMS CASH WITH ORDER - NO C.O.D.
WATER LILIES PLANTS ETC. ARE SHIPPED WITH ALL CHARGES PREPAID

QUANTITY NAMES OF ITEMS ORDERED HERE DOLLARS CENTS

For FREE offers see opposite page.

AMOUNT OF ORDER

FOR HANDLING, PACKING AND FULLY PREPAID TRANSPORTATION CHARGE
25% MORE HERE

TOTAL AMOUNT ENCLOSED

FOR FOREIGN ORDERS SEE SALES AND SHIPPING INSTRUCTIONS SEE OTHER SIDE

WE GUARANTEE ALL PLANTS TO GROW!

IMPORTANT Read Notice on Opposite Page

Conditions of Sale—Shipping Instructions

We guarantee our plants and fish to be of the highest quality obtainable anywhere, and we are glad to be the judge in making an unsparing comparison in any way you wish.

Terms: Please send funds sufficient to cover price of goods ordered including 50 cents for shipping and when fish are included with the order. Include a ten percent (10%) extra to the value of your order for handling, packing and fully insured express or air charges. When not included orders will be sent express collect.

Orders of \$2.50 or less require 25c for packing, handling and postage. This amount must be added to the value of the items ordered. Orders for 25c or more must be for packing, handling and transportation charges included the shipping charges will be made by express or insured air mail unless subject to the usual practice.

Payment may be made by check or draft to this Office money order or Express money order. When necessary the letter should be registered. We do not ship C. O. D.

Order Early: Our plants are shipped in the spring and the demand is heavy. In order to get to you as soon as possible, orders should be placed early.

Canadian Shipments: Canadian customers are advised to send payment in U. S. dollars. Please send your order to: A. J. Adams, Inc., 1010 N. 1st St., York, Pa. 17403 as being for U. S. delivery.

Number only for such shipments. The amount to be retained by purchaser.

Forwarding: All F. I. D. mail orders will be shipped by Express collect. If a special rate is desired, check, State, Agency, or Government, please include appropriate address. For Post Office Boxes, Cable, Telegram and Air Mail, please include address and name of the post office.

Claims: Immediately upon receipt of your plants, if they are not satisfactory, you should have them made suitable for use. If you do not return it to us as a claim. A return of your plants must be made within 10 days of receipt in all cases. We reserve the right to reject all merchandise considered unsatisfactory. Liability in any case shall be limited to the replacement of such items as they need to be.

Errors: Experienced printers have made errors. In the press of this age, errors of this kind may occur. In such case we wish to be immediately informed of the nature of the error so that our corrections as will be satisfactory. Please send copies of all your orders to our printer.

Name and Address: Please send us your Name, Plant Order, and your address. Send P. O. Box No. 1010, York, Pa. 17403, Express Office.

...of our big growers and growers still work of their own...
...and do not knowingly and will they sell plants that are not...

Have Your Gardening Friends Who Would Like a Copy of Our Catalog?
We Shall Appreciate Their Names and Addresses.

Name _____
Address _____
City _____
State _____
Zip _____

Thank you

Buy your plants from the most reliable supplier

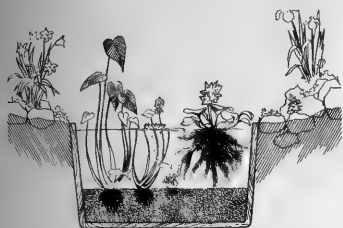
GRASSYFORK, INC.

MARTINSVILLE, VIRGINIA SADDLE RIVER, NEW JERSEY
NEW BRUNSWICK, NEW JERSEY

TUB AND MULTI-TUB GARDENS

Enjoy gorgeous Water Lilies in your garden with simple construction and planting plan

THE TUB GARDEN



A sunken tub will support a Water Lily and two or three other plants, and with a rock garden at its borders becomes a beauty spot.

It is easy, economical and highly satisfactory to build a beautiful little Water Garden in and around a wooden tub. We can supply a rot-resisting White Cedar tub with our Tub-Garden Collection of plants. Any nook or corner of the grounds—or even an apartment house roof—is suitable for a Tub-Garden provided only that it gets a little sunshine. A Tub-Garden can be made a most interesting little fish pond, not only for the commoner kinds but also for the most fancy varieties of Goldfish and all types of Toy Tropical Fishes.

Add a few Goldfish to your Tub-Garden, for their attractiveness, also for their practical value in destroying insect life.

The arrangement of the Tub-Garden is largely a matter of one's own taste. The tub may even be left exposed on the lawn or in the garden, but we recommend that an excavation be made large enough to contain the tub and sink it about six inches below ground level (see sketch above). Stones placed about the edges provide for planting hardy border perennials. When the tub is set fill about half full of good garden soil firm well down, cover over with a one-inch layer of clean sand, and fill with water.

TUB-GARDEN COLLECTION \$4.50 COMPLETE (Without Cedar Tub, \$3.00)

- 1 Water Lily—Choice of Light Pink, Dark Pink, Red, Yellow, Blue or White, or Red and Yellow Changeable.
- 1 White Cedar Tub—2 ft. in diameter, 1 ft. deep, White Cedar staves, electrically welded hoops.
- 6 Water Plants—An assortment of Floating, Submerged and Shallow Water or Bog Plants for planting in the Tub.
- 6 Perennial Plants—Your choice of Perennials or Dwarf Rock Garden varieties.
- 1 Pair Japanese Livebearing Snails—To keep the water clear.
- 1 Pair Goldfish—Four to five inches.
- 1 Fish Bucket.

MINIATURE COLLECTIONS OF FISH AND SCAVENGERS

- 2 pair Goldfish (2½-inch); 1 pair Comets (2½-inch); 1 pair Japanese Snails; 6 Black Ramshorn Snails; 6 Tadpoles; 1 pair Green Frogs; 1 Fish Bucket. In Collection, \$1.75.

MULTI-TUB GARDENS



Practically endless in combinations of ornamental shapes and beautiful blossoms and foliage are these MULTI-TUB GARDEN POOLS arranged from two, three or four tubs sunk in any garden center or corner and surrounded by rimming rocks and rock garden planting.

Surely there is a corner of your garden in which one of these pools may nestle and reward you with the beauty and oriental touch of rare water lilies and plants. Picture a lovely, triple pool such as shown in the sketch above, at the foot of a rock garden slope—what charm it adds to your garden—how visitors will exclaim at its rare planting.

Such a water garden is as easy to create as anything of equal beauty could be. Select your spot—lay out the arrangement of your tubs. The dirt you dig can be used to bank the background. Sink your tubs and fill each of them half full of good garden soil. You might add a little Grassfork "Big Bloom" fertilizer described on the first page of the order blank to insure the best results. Then add a half inch of sand and you are ready for planting. Just follow instructions in this booklet. You will want to line the rims of the tubs with weathered rocks and plant your rock garden as you desire with a dainty umbrella palm and gay clusters of marsh iris, fountain grass, forget-me-not or marsh marigold.

For your background planting follow your own ideas. Rock plants listed on Page 15 will fill between the rocks nicely. You'll find suggestions for many different plantings in your MULTI-TUB Garden Pools in the collections of water lilies on Page 5, in the pool assortments on Page 8 and in the water plants, rock garden plants and perennials on Pages 14 and 15.

• "I have bought several Water Lilies from you that have been wonderful, and I am very pleased with them." . . . 21-8 MM.

• "I am just writing to advise that the Lilies came through in fine shape. The leaves were as pretty as if they had just been taken out of the water." . . . 24-3 MHC.

DOUBLE-TUB POOL COLLECTION

- 2 White Cedar Tubs—2 feet diameter, 1 foot deep, with White Cedar staves and electrically welded hoops.
- 2 Hardy Water Lilies—Your choice of any hardy lilies in this booklet.
- 12 Water Plants—An assortment of Floating, Submerged and Shallow Water or Bog Plants for the tubs.
- 12 Perennial Plants—Your choice of Dwarf Rock Garden Plants or other Perennials.
- 4 Goldfish (4- to 5-inch)—a pair for each tub.
- 4 Japanese Livebearing Snails—to keep the water clear.
- 1 Fish Bucket.

Double-Tub Collection, complete. . . . \$8.75

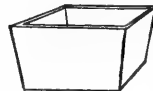
TRIPLE-TUB POOL COLLECTION

Your choice of One Tropical Water Lily and Two Hardy Water Lilies; 3 White Cedar Tubs; 18 Water Plants and 18 Perennial Plants with 6 Goldfish (4- to 5-inch), 6 Snails and Fish Bucket. . . . \$12.75

FOUR-TUB POOL COLLECTION

Your choice of any two Tropical Water Lilies and any two Hardy Water Lilies; 4 White Cedar Tubs; 24 Water Plants; 24 Perennials; 8 Goldfish (4- to 5-inch); 8 Snails with Fish Bucket for . . . \$17.25

TUBS AND PLANTING BOXES



TUBS

We can supply those offered in our complete Tub-Garden Collection—White Cedar, galvanized hoops electrically welded. Ideal for a small Water Garden or Fish Pond; or as containers for Lilies, Lotus or Victorias in the large pool. (F.O.B. Martinsville or Saddle River.)

24" Diameter, 12" deep. . . . Each, \$2.00
20" Diameter, 9" deep. . . . Each, 1.50

PLANTING BOXES

A planting container for lilies and aquatics of durable cypress for long life and service. The larger size is for lilies from pools of medium and large size, the smaller is for moderate growing lilies, shallow water and bog plants. (F.O.B. Martinsville or Saddle River.)

Top 18½", bottom 15", 10" deep. Each, \$1.50
Top 12", bottom 9", 8" deep. Each. . . . 95c

• "My order was received in exceptionally fine shape and I feel entirely satisfied with it. I wish to thank you also for the promptness with which you filled my order." . . . 11-1 GG.

SHALLOW WATER PLANTS • BOG AND MARSH PLANTS

FLOATING AND OXYGENATING PLANTS

SHALLOW WATER PLANTS

Formal Pools have their centerpieces and corner designs of shallow water plants, and in natural Pools the plantings are carried down the bank and into the water. The Shallow-Water Plants serve ideally for either purpose.

ARROWHEAD, Common (*S. latifolia*). Hardy. 25 cts. each, \$1 for 5.

CATTAILS (*Typha latifolia*). A graceful, attractive plant when grown in clumps, bearing the dark brown flower-spike well above the foliage. \$1 per doz.

FLOATING-HEART (*Nymphoides peltatum*). An European species with yellow flowers. \$1 per doz.

FLOWERING RUSH (*Butomus umbellatus*). A hardy plant with peculiar three-sided leaves. Flowers pink. \$1 for 3, \$2.50 per doz.

FORGET-ME-NOT (*Myosotis palustris*). Flowers light blue, with yellow eye. \$1 for 5, \$2 per doz.

WATER SNOWFLAKE—The resemblance to a giant snowflake is striking. 50 cts. for 3.

MARSH MARIGOLD (*Caltha palustris*). Large, yellow, goblet-shaped flowers in early spring. 75 cts. for 4, \$2 per doz.

PARROT FEATHER (*Myriophyllum proserpinacoides*). Long, trailing stems of beautiful green foliage. 50 cts. for 6, \$1.00 per doz.

PICKEREL RUSH. A sub-aquatic common to borders of brooks and Ponds. 2 ft. 50 cts. for 2, \$2.50 per doz.

PURPLE WATER HYACINTH (*Eichhornia azurea*). Plants of creeping habit, the runners floating out upon the water. Flowers of rich purple with delicately fringed petals. 35 cts. each, \$1.00 for 3.

SWEET FLAG, Variegated (*Acorus calamus variegata*). Iris-like leaves, striped green and creamy white. Hardy, 2 to 3 ft. \$1 for 4, \$2.50 per doz.

WATER POPPY (*Hydrocleis nymphoides*). A pretty Water Lily-like plant having yellow Challice-shaped flowers with black centers. 25c for 3, per doz. 75c.

WILD CALLA (*Calla palustris*). Small white Calla Lily. A splendid edging plant. 75 cts. for 4, \$2 per doz.

VELVET LEAF (*Limncharis flava*), 35c ea., 3 for \$1.00.

THALIA DIVARICATA. \$1.00 ea. Collection of 7 Shallow-Water Plants, \$1.

Collection of 15 Shallow-Water Plants, \$2.

BOG AND MARSH PLANTS

Flowering and foliage plants which give a luxuriant, tropical effect to the pool. Plant on wet banks or in ledges or pockets made about the sides of the pool, which are kept wet but not flooded. Some do well as house plants in the winter if kept well watered.

CRINUM C. (*americanum*)—Bears its large, fragrant white flowers in umbels of six to eight. 35c each, \$1 for three.

GINGER or BUTTERFLY LILY (*Hedychium coronarium*)—Sweet-scented, snow-white flowers. 35c each, \$1 for three.

YELLOW FLAG (*Iris pseudacorus*)—for the edge of the pool or in natural plantings. Hardy. 75 cts. for three, \$2.50 per doz.

MARSH IRIS (*I. versicolor*)—Bears light purple flowers very freely in spring and early summer. \$1 for five, \$2 per doz.

JAPANESE or WATER TARO (*C. antiquorum illustris*)—Green foliage spotted with purplish black. 50c each, \$1.25 for three.

JAPANESE or WATER TARO (*Colocasia multiflora*)—Grows 2 to 4 feet high, with large, rich green leaves on purple stems. 75c each, \$2 for three.

PAPER PLANT, EGYPTIAN (*Cyperus papyrus antiquorum*)—35c each, \$1.00 for three.

PRIMROSE WILLOW (*Jussiaea longifolia*)—A desirable edging plant, 2 to 3 feet high. Flowers golden yellow. 35c each, three, \$1.

THALIA (*T. dealbata*)—Its powdery, cannalike foliage and elegant panicles of purple flowers make it a most desirable plant for the border. 50c each, \$1.25 for three.

UMBRELLA PALM (*Cyperus alternifolius*)—Does very well in wet soil but will grow in a dry location. \$1 for three, \$3 per doz.

WATER CLOVER—A four-leaf clover, which forms a pleasing pattern on the surface and in crowded spots. 6 for 50c, \$1 per doz.

HEDYCHIUM CHRYSOLEUCUM—Like Coronarium, but having light yellow flowers. \$1 for 3, \$3 per doz.

SPIDER LILY—A beautiful plant that produces clusters of spider-like, fragrant white flowers. \$1 for 3, \$3 per doz.

GREAT BULRUSH (*Scirpus lacustris*)—\$1 for three; \$2.50 per doz.

SWEET FLAG (*Acorus calamus*)—The well known Sweet Flag. \$1 for five; \$2 per doz.

CANNA FLACIDDA—Yellow flowers. Does well in shallow water. Three, \$1; doz., \$2.50.

Collection of 7 Bog and Marsh Plants, \$1.50.

Collection of 15 Bog and Marsh Plants, \$2.50.

FLOATING AND OXYGENATING PLANTS

Wherever fish are kept, in Pool or Aquarium, the Floating and Oxygenating plants take on especial importance. Oxygenating plants produce free oxygen in the water in the processes of growth and are very valuable in supporting vigorous and active fish life for this reason. Floating Plants provide natural places for the fish spawn, their dense masses of roots being ideal for holding the spawn close to the surface of the water where the eggs will be sure of sufficient warmth from sunshine to hatch.

FLOATING PLANTS

Floating Plants may be placed anywhere in the pool and are unexcelled for planting corners, or at the base of taller growing plants.

AZOLLA—Excellent as a cover for young fish. 25c per portion.

WATER FERN—A good cover and very useful in raising Red Snails. 50c for four; \$1.25 per dozen; small plants, 50c per portion.

DUCK WEED—A good fish food. Tiny, round leaves like polka dots on the water. 25c per portion.

SALVINIA—Very odd and a good cover. Forms a chain of tiny, round, green leaves. 25c per portion.

WATER LETTUCE OR SHELLFLOWER—Blue-green fluted leaves and long, wavy roots. 25c for two; \$1.00 per doz.

WATER HYACINTH—Spikes of orchid-lavender flowers and young plants produced very freely. Excellent for the spawn of gold or tropical fishes and as a cover for the young. 50c for six; \$1.00 per doz.

FLOATING PLANT COLLECTIONS

1. Five assorted Floating Plants, 75c.
2. Twelve assorted Floating Plants, \$1.50.

OXYGENATING PLANTS

If soil has been placed in the bottom of the Pool these plants may be weighted and dropped in anywhere desired, taking root in a very short time; or they may be planted in pots or pockets along the side or in a shallow box placed directly on the bottom.

ANACHARIS—A rapid growing plant and one of the best oxygenators. 50c for six bunches; \$1.00 per doz.

SAGITTARIA SINENSIS—Excellent for bottom cover in the pool; a very desirable aquarium plant. Six plants, 50c; doz., \$1.

VALLISNERIA—A good oxygenator with long, narrow, wavy leaves. 50c per doz.; \$1.00 for twenty-five plants.

CABOMBA—Broad, fan-shaped, finely cut leaves. 50c for six bunches; \$1.00 per doz.

MILFOIL; MYRIOPHYLLUM—Excellent for fish spawn. Delicate green leaves having a lacy appearance under water. 50c for six bunches; \$1 per doz.

LUDWIGIA—Round, glossy green leaves; under side and stems red. Very decorative in the aquarium. Should be planted in shallow water, in pools. Six bunches, 50c; doz., \$1.

JUSSEA—(*Needle leaf Ludwigia*)—Narrow rich green leaves on red stems. Under side of leaf red. For aquariums and borders of pools. 50c for six bunches. \$1 per doz.

CRYPTOCORYNE—(*Cordata and Willisi*)—Grows well in deep shade, is particularly useful for indoor aquariums. A rare plant. 50c each. 6 for \$2.00.

SAGITTARA GUAYANENSIS—Beautiful rich green leaves and rare red flowers. 50c.

HERPESTIS—(*Bacopa*)—for all aquariums. Has bright green leaves in alternate pairs on the stem. Slow grower. Bunch, 15c; doz., \$1.50.

OXYGENATING PLANT COLLECTIONS FOR POOLS AND AQUARIUMS

- 10 (Plants and bunches) your choice, \$0.75
 18 (Plants and bunches) your choice, 1.25
 30 (Plants and bunches) your choice, 2.00

HARDY ORNAMENTAL GRASSES COLLECTION

Hardy Grasses, three each of three varieties of Miscanthus, nine strong clumps, \$2.50.

ROCK GARDEN PLANTS AND PERENNIALS

ROCK PLANTS

HARDY PHLOX

BETTY LOU. Bright orange scarlet.
 COUNT ZEPPELIN. Pure white, red eye.
 ENCHANTRESS. Salmon pink.
 FUERBRAND. Brilliant crimson scarlet.
 MRS. HARDING. Clear deep salmon pink, large florets.
 RHEINLANDER. Light salmon pink.
 R. P. STRUTHERS. Large, cherry red.
 SUNRISE. Bright salmon pink, strong grower.
 STARLIGHT. Violet red, white eye.
 SALADIN. Orange, shaded red.
 INNOCENCE.
 SPECIAL FRENCH. Blush pink, enormous blooms. 3 for \$1, \$3.50 per doz.
 BEACON. Brilliant cherry-red. 3 for 80c.
 BORDER QUEEN. Dwarf, rose-pink. 3 for 80c.
 DAILY SKETCH. Salmon-pink. 3 for \$1.00.
 ETHEL PRITCHARD. Delightful blue. 3 for 80c.
 AFRICA. Brilliant carmine-red.

PHLOX SUBULATA (Moss Phlox)

ATROPURPUREA. Deep carmine red. 3 for 80c.
 LILACENA. Strong grower, blue flowers.
 ROSEA. Rose pink, strong grower.
 VIVID. Bright pink. 3 for \$1.00; \$3.50 doz.

DWARF AND TRAILING PHLOX

MOERHEMIL, BLUE HILL, AUTUMN ROSE, SUBLATA, LANFANAVARIA, SUB-LATA REED, BRISTOLFIRA, OVATA.

DIANTHUS PLUMARIUS

ARENARIUS. Does well in sandy soil. Flowers are white with carmine ring.
 CAESINE GRANDIFLORA. Sweet smelling rose-colored flowers.
 SEMPERFLORENS. Double and single blooms. Many colors; blooms all summer.

HARDY DWARF CHRYSANTHEMUMS

RODA (Pink with touch Lavender). LITTLE BOB (Red Button Type). LITTLE DOT (Yellow). PADOKA (Lavender). BARBARA CUMMINGS (Yellow). IRENE (White). JEAN CUMMINGS (White). MARION HATTON (Yellow). RUTH HATTON (White). RODELL (Bronze). YELLOW GEM. ALLADIN (Red). QURAY (Red). OCTOBERDAWN (Pink). DAPHNE (Lavender). Your choice, 3 for 85c, \$3.00 doz.

VERONICA (Speedwell)

INCANA. 12-inch. White woolly plant, dark blue spikes. Very attractive in rocky or borders.

THYMUS (Mountain Thyme)

THYME VULGARIS. Purple.
 CITRIODORUS (Lemon Thyme).

DICENTRA

SPECTABILIS (Bleeding Heart). Graceful heart-shaped with pink flowers.

FISTUNA GRASS

In Clumps.

PRIMULA

(Primrose.) Munstead Strain, mixed yellow, cream, dark orange, pink and dark rose. 3 for 95c.

ALL ROCK PLANTS AND PERENNIALS

(Unless Otherwise Priced.)

Single Variety, 5 for \$1.00, \$2.00 doz.

2 each of 5 varieties (10 plants) \$2.00
 4 each of 5 varieties (20 plants) 3.75
 5 each of 7 varieties (35 plants) 6.00
 5 each of 10 varieties (50 plants) 7.50

SANTOLINA OR GROUND CYPRESS

Delicate white foliage.

HARDY VERBENA

PURPUREA. Strong grower. Purple flowers.

CHIVES

Flowers are lavender, very attractive.

HEUCHERA (Coralbella) ROSMUNDII

DOUBLE RUSSIAN VIOLETS

Dark Purple flowers, fragrant. 3 for 85c.

CATANANCHE COERULEA (Love Plant)

Deep blue. Profuse during July, August, and September. 3 for 80c.

VIOLA CORNUTA (Tufted Pansies)

Golden yellow. Flowers all summer.

VERBENA CANADENSIS

Creeping, purplish-blue. 3 for 80c.

LINARIA

(Varigata) and (Green).

EUPHORBIA (Myrsinites)

Bluish foliage and yellow flowers. 3 for 85c.

GLOBULARIA (Globe Daisy)

10-12 inches, globe-shaped blue flowers.

SEDUM

Elegance, Middendorffianum, Forsterianum, Acre Major, Altissimum, Acre Minor, Album, Kanschatium, and Spectabile. In clumps. 3 for 95c.

DWARF IRIS PUMILLA

CYNEA. Rich royal purple.

GERMAN IRIS (Dwarf)

DARK BLUE. Special. IRIS CRISTATA. Blue. IRIS VERNA. Blue.

SEMPERVIVUM

(Hen and Chickens). Flattened rosettes; 2 to 3 inches diameter.

MATRICARIA (Fiverfew)

Little Gem. Double white. Golden Ball. Dwarf yellow.

ROSA ROULETTI

(Tinst Rose in the World.) 3 for \$1.00.

SHASTA DAISY

Very large white flowers; blooms all summer.

ENGLISH IVY

(2 1/2-inch Pots.) 3 for 35 cts.; \$1.25 per doz.

PANSY

Giant Mixed (In season). 50 cts. doz.

OTHER ROCK PLANTS

ALYSSUM ROSTRATUM. Yellow.
 ARABIS (Rock Cress). White.
 CERASTIUM (Snow-in-Summer). White.
 DIANTHUS (Maiden Pink). Red.
 HEUCHERA SANGUINEA. Pink.
 IBERIS SEMPERVIVENS. White.
 LYSIMACHIA NUMMULARIA. Yellow.
 MENTHA (Mint). Purple.
 MYOSOTIS (Forget-me-not). Blue.
 PRIMULA VERIS (Cowslip). Yellow.
 SAXIFRAGA VIRGINIENSIS. White.
 SILENE SCHAFTA. Rose-pink.
 VINCA MINOR (Periwinkle). Blue.
 VIOLAS. Blue and white.

HARDY PERENNIALS

PYRETHRUM OR FIVERFEW

KELWAY STRAINS. Strong grower. Flowers, very dark red. Fine for cutting.

HARDY SALVIA

PITCHERII. Rich gentian blue. Grows 3 to 4 feet. Very attractive, best of all Salvia.

HEUCHERA OR CORALBELLS

BRIZOIDES. Strong grower. Wonderful foliage and pink flowers. 3 for 85c; \$3 doz.

CHRYSANTHEMUM MAXIMUM

(3 for 85c; \$3 doz.)

ETOILE D'OR. Large flowers, English type. Blooms July to October.

MAYFIELD GIANT. Blooms all summer.

MRS. C. LOTHIAN BELL. Very large continuous bloomer.

HARDY CHRYSANTHEMUMS

(3 for 85c; \$3 doz.)

MARS RED; APOLLO YELLOW; DIANA PINK; CERISE YELLOW. See "Rock Plants" for Hardy Dwarf Chrysanthemums. C. LYONI (Pink Turtlehead). Purplish pink.

PEONIES

FASTIVA MAXIMA (White.) FELIX CROUSSE (Deep Red.) MAD. DE VERNEVILLE (White, Crimson edge; very fragrant.) EDULIS SUPERBA. (Good Rose, Pink, Early.) KARL ROSEFIELD. (Rich Velvety, Dark Crimson, Mammoth blooms, semi-double.) Early mid-season. 3 for \$1.00.

DELPHINIUM

BELLADONNA. Flowers beautiful turquoise blue. Strong grower.

BELLAMOSA. Dark indigo blue flowers. One of the best.

PARDANTHUS (Blackberry Lily)

CHINENSIS. Flowers orange colored spotted black, 24-inch stems.

DAY LILIES (Hemerocallis)

Dr. Regel, Fulva, Thunbergi, and Middendorfi. Bulbs. 3 for 85c.

HARDY ASTERS

NOVAE-ANGLIAE (New England Aster). Clusters of bright violet-purple flowers.

NOVAE-ANGLIAE ROSEA. Purplish mauve flowers.

NOVI-BELGI, CLIMAX. Large spikes of light lavender-blue flowers. Very showy.

NOVI-BELGI, WHITE CLIMAX. A variety of Climax with white flowers.

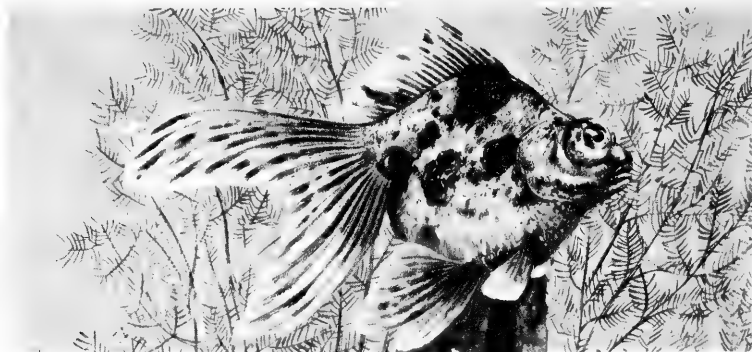
NOVI-BELGI, ST. EGWIN. Flowers a soft rosy pink. Plant of bushy habit.

EXTRA SPECIAL

Your Choice of Any 25 Plants
 On This Page. Either assorted
 or of One Kind, \$5.00.

GOLDFISH FOR WATER GARDENS

(See Color Illustrations Inside Back Cover)



WATER GARDENING can hardly reach its best development without Goldfish in the Pool, so much do they contribute to its beauty and interest, and to easy success of its maintenance as well. Almost any outdoor Pool gives suitable conditions for the fish to increase in size and also to reproduce. Goldfish fed occasionally at the edge of the Pool will soon be inclined to school and approach the visitor at the Pool border, bringing life and color to the whole scene that could be had in no other way. Goldfish in the Pool will destroy insects and their larvae, and are especially effective in destroying mosquito larvae.

With the tremendous resources of the world's largest commercial Goldfish Hatcheries at our command, we are able to offer you the utmost economy in Collections of Goldfish for the Pool, and to supply any special orders. We invite special inquiries.

Be careful not to overfeed Goldfish. We supply a variety of special fish foods suitable for all feeding requirements. (See page 19.)

Goldfish may well be left in the Pool over winter if the water is deep enough not to freeze solidly to the bottom. Break a hole or two in the ice occasionally to increase air in the water. If you keep an indoor Aquarium, take the best specimens from the Pool for your enjoyment throughout the winter.

If the Pool must be drained for the winter, fish not to be kept in an Aquarium can be stored in tubs or other containers in the basement. Here the water must be changed occasionally, or a trickle of running water provided, unless you can transfer some sagittaria, myriophyllum or other oxygenating plants with the fish and establish balanced Aquarium conditions in the storage tubs.

If you are interested in raising Goldfish in the Pool, get them in before the spawning season in early May. Provide root clumps of floating plants (Water Hyacinths, etc., page 14) or bunches of submerged grasses tied together and allowed to float (see Milfoil, page 14) in which the eggs will be deposited. It is difficult to determine the sex of Goldfish, and a dozen or more should be placed in the Pool if breeding is desired.

GOLDFISH LIST

SELECT COMMON GOLDFISH

A first-class strain, exceptionally active and brilliantly colored. Unequaled for Pools or large ponds. 4-inch, \$1.25 per doz.; \$8 per 100. 5-inch, \$1.75 per doz.; \$12 per 100. 6-inch, 50c per pr.; \$2.50 per doz.

SHUBUNKINS

A single tail variety of recent introduction. Beautifully colored in red, blue and black against a pearl background. Unusual and very striking. Excellent for Pool or Aquarium. 2½-inch, 75c per doz. 3-inch, \$1.00 per doz. 4-inch, \$1.50 per doz. 5-inch, 50c per pr.; \$2.50 per doz.

YOUNG GIANTS

(Special)

Strong, hardy, well-colored Giant Goldfish of medium development, ranging in size from 7 to 9 inches. Excellent for spawning. Price \$1.00 per pair; \$5.00 per dozen.

NYPHYS

Gold, black and white coloring. Very short egg-shaped bodies with large fins and broad tails. Active. 3-inch, \$1.25 per doz. 4-inch, \$2.50 per doz. 5-inch, 75c per pr.

SELECTED COMETS

(Illustrations D, E and F—Inside Back Cover)
Similar to Common Goldfish, but with more slender bodies, longer tail and fin development, and much greater rapidity of movement. 3½-inch, \$1.25 per doz. 5-inch, 50c per pr.; \$2.50 per doz. 6-inch, \$1.00 per pr.; \$5 per doz.

CHINESE RED TELESCOPES

(Illustrations A and B—Inside Back Cover)

Like the "Chinese Moors," except that these fish are red in color. 2½-inch, \$2.00 per doz. 3-4-inch, \$1.00 per pr.; \$5.00 per doz. 4-5-inch, \$1.50 per pr.

FANTAILS

(Illustrations G, H and I—Inside Back Cover)

A beautiful variety, with red-gold body, marked with black or white. The tail is double and spread fanlike, hence the name. 2½-inch, \$1.00 per doz. 3-inch, \$1.50 per doz. 4-inch, 75c per pr.; \$3.50 per doz. 5-inch, \$1.00 per pr.; \$5 per doz.

CHINESE MOORS

(Illustration C—Inside Back Cover)

A unique and exotic fish with large, protruding "telescopic" eyes, short, plump bodies and fan-like tails. Color, a dense, velvety black. 2½-inch, \$2.00 per doz. 3-4 inch, \$1.00 per pr.; \$5 per doz. 4-5-inch, \$1.50 per pr.

GIANT SHUBUNKINS

For a unique display in the larger Pool, Giant Shubunkins. 8 inches. \$5 per pair, \$25 per dozen.

LARGE FANTAILS

(Illustration G—Inside Back Cover)

Something different and just a little better. 6 inches. \$3 per pair; \$15 per dozen.

GIANT FANTAILS

For an exceptional display of Goldfish, there is nothing finer. 8 inches. \$5 per pair; \$25 per dozen.

EXTRA LARGE COMETS

(Illustration D—Inside Back Cover)

These Comets are 6-7 inches in length. \$1.50 per pair; \$7 per dozen.

EXTRA LARGE SHUBUNKINS

All the colors of the rainbow. Be sure to include a few of these 6-inch Shubunkins in your Pool Collection of fishes. \$2 per pair.

GIANT GOLDFISH

These fish are selected breeding stock. Just the thing for the larger Pool. Exceptionally hardy and beautifully colored. 10-12-inch, \$3 per pr.; \$15 per doz.

CALICO FANTAILS

(Illustration J—Inside Back Cover)

Beautifully colored like the Shubunkins, but having the divided or "fan" tail. 2½-inch, \$2.00 per doz. 4-inch, \$1.50 per pr. 5-inch, \$2.50 per pr.

CALICO TELESCOPES

(Illustration K—Inside Back Cover)

Like the Calico Fantails; having in addition the large, protruding "telescope" eyes. 2½-inch, \$2.00 per doz. 4-inch, \$1.50 per pr. 5-inch, \$2.50 per pr.

GIANT COMETS

Long, slender bodies, very active. 10-inch, \$3 per pr.; \$15 per doz. 12-inch, \$4 per pr.; \$20 per doz.

GRASSYFORK GOLDFISH COLLECTIONS

ANNIVERSARY SPECIAL

6 Pair Fantails (5-inch), 1 pair Giant Goldfish (10-12-inch), 3 pair Shubunkins (5-inch), 1 pair Young Giants (7-9-inch), 1 pair Fantails (6-inch), 6 pair select Comets (6-inch).

A \$22 Value for\$15

POOL ASSORTMENT No. 1

2 Pair Shubunkins..... (4-5-inch) \$2.00
2 Pair Fantails..... (4-inch) 1.50
1 Pair Red Telescopes..... (4-inch) 1.25
1 Pair Moors..... (4-inch) 1.50
A dozen fancy fish that will add to the attractiveness of the most complete Pool.
Collection Price, only.....\$4.75

POOL ASSORTMENT No. 2

3 Pair Fantails (4-5-inch)
3 Pair Select Comets (5-6-inch)
1 Pair Young Giant Goldfish (7-9-inch)
1 Pair Shubunkins (4-5-inch)
16 Large Selected Goldfish.....\$4.50

POOL ASSORTMENT No. 3

6 Pair Selected Comets (3½-inch)
6 Pair Fantails (3-inch)
6 Pair Shubunkins (3-4-inch)
36 Beautiful Goldfish.....\$5.50

FISH ASSORTMENT No. 2

3 Pair Fantails (4-5-inch)
3 Pair Shubunkins (3-4-inch)
3 Pair Comets (4-5-inch)
3 Pair Chinese Telescopes (2½-inch)
24 Goldfish, only.....\$5.75

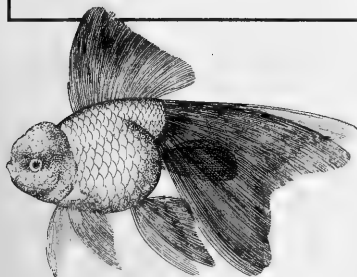
FISH ASSORTMENT No. 4

1 Pair Giant Goldfish (10-12-inch)
2 Pair Giant Fantails (7-8-inch)
1 Pair Black Chinese Moors (4-5-inch)
1 Pair Giant Comets (9-10-inch)
10 Giant Wonders for.....\$14.50

FISH ASSORTMENT No. 5

25 3-inch Fantails
25 3-inch Shubunkins
25 3-inch Select Comets
25 3-inch Moors, Telescopes, Calico Fantails
100 Goldfish, only.....\$10.00

THE NEW ORANDA



Family, Cyprinidae; Genus, Carassius auratus; Species, Oranda

The Oranda is recognized as one of the finest varieties of all fish. It was perhaps originally a Lionhead with a dorsal fin. However, the fins and body are smaller than the Lionhead. Most unusual and a fish owned by but few. Such fish must be from 4-5 years old before fully developed such as these we offer 4-5", \$4.00 pair; 5-6", \$5.00 pair; 6-7", \$7.50 pair.

EXTRA SPECIAL

Any 8: 4-5" Calico Fantails, Moors, or Fantails. Your choice, \$4.00.

Any 6: 5-6" Calico Fantails, Moors, or Fantails. Your choice, \$6.00.

Any 4: 6-7" Calico Fantails, Moors, or Fantails. Your choice, \$8.00.

COLLECTION OF YOUNG GIANTS

2 Pair (7-9-inch) Young Giant Goldfish \$3.00
2 Pair (6-7-inch) Extra Large Comets... 3.00
2 Pair (6-6") Extra Large Shubunkins. 4.00
Develop the big ones yourself.
Collection Price, only.....\$7.50

UNIQUE COLLECTION

2 Pair (7-9-inch) Young Giants..... \$3.00
1 Pair (10-12-inch) Giants..... 3.00
2 Pair (6-7-inch) Extra Large Comets... 3.00
2 Pair (6-inch) Extra Large Shubunkins. 4.00
Fourteen beautiful, active fish for the medium large Pool or fountain basin.
Collection Price, only.....\$10.50

HARDY COLLECTION

3 Pair Comets (5-inch).....\$2.25
6 Pair Common (5-inch)..... 2.00
2 Pair Shubunkins (5-inch)..... 2.00
A good collection of hardy, active fish for the smaller pool.
Collection Price, only.....\$5.25

COLLECTION OF GIANTS FOR FOUNTAIN BASIN OR LARGE POOL

2 Pair (10-12-inch) Giant Goldfish....\$6.00
1 Pair (8-10-inch) Giant Orioles..... 4.00
1 Pair (10-12-inch) Giant Pearls..... 4.00
1 Pair (10-12-inch) Giant Comets..... 4.00
These ten fish will make an impressive display. You will be proud to own them.
Collection Price, only.....\$12.50

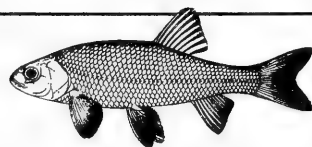
FOR THE SMALL POOL

2 Pair Fantails (4-inch).....\$1.50
2 Pair Jap Nymphs (4-inch)..... 1.00
4 Pair Comets (3½-inch)..... 1.20
Sixteen fancy fish suitable for the Small Pool or Aquarium.
Collection Price, only.....\$3.00

Goldfish must be shipped in cans. All fish prices are f.o.b. Martinsville or Saddle River. On small orders a charge of 50 cents is made for each can. Large cans are returnable by prepaid express at a cost of 20 cents a can. We ship Goldfish every day of the year. See instructions for receiving express shipments on order blank.

Upon receipt from shipping company, fishes should be given a salt bath; or better, use our Health Dip before placing them in the Pool or Aquarium.

THE GOLDEN TROUT OR ORFE



The Golden Trout or Orfe (*Idus Melanotus*) should be in every pool. Oftentimes it will be seen leaping out of the water to catch insects. This fish is a native of Europe. The outstanding feature of this very attractive orange colored fish is the fact that it is a surface swimmer. The fish is, therefore, constantly in view and adds life and color to the pool at all times. The Golden Trout or Orfe is more cylindrical than the goldfish and grows to greater lengths. The Golden Orfe is perfectly at home in either a still water pool or a pool with running water, as it is extremely hardy. Shipments are made until July 1st.

3-5", \$1.00 per pair; 5-6", \$3.00 per pair; 6-8", \$2.00 each; 8-10", \$3.00 each; 10-12", \$4.00 each; 12-14", \$5.00 each.

GRASSYFORK GAME FISH

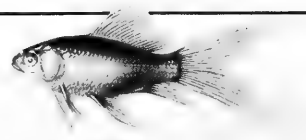
Each year we produce a limited supply of Large Mouth Bass and other game fish at Martinsville. We will be glad to supply lists of stock on hand and prices if you make inquiry at any time.

• "The Bass and Bluegills arrived in excellent condition and were planted without the loss of a single one." ... 22-11 M&M.

• "The shipment of Bass received in perfect condition." ... 24-11 JLG.

• "The Fish arrived in excellent condition and are very fine specimens, as are the Water Lilies and Scavengers. I certainly appreciate such quality and want you to know so. I will certainly be glad to tell others of you." ... 25-6 HBR.

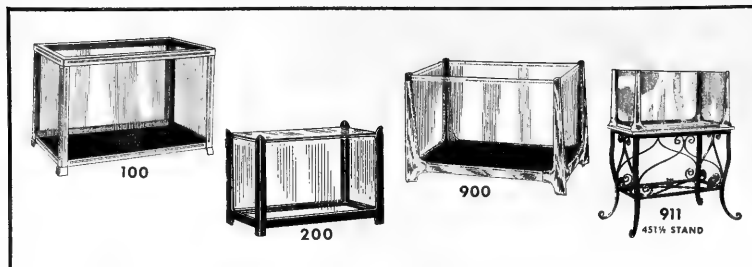
GOLDFISH FOR BAIT



As bait fish, Goldfish have ten times the vitality of ordinary minnows and will live for hours when correctly hooked. Big fish strike them when they will touch no other bait because of their bright color and motion. Experts make them their favorite live bait. They can be transported long distances without difficulty and live for days in minnow buckets. We supply both uncolored (mostly black) and fully colored (mostly red) bait fish at very low prices. Write for details.

AQUARIUMS AND SUPPLIES

AMPHIBIA AND SNAILS



An aquarium soon becomes indispensable to the Water Gardener, for he will wish to preserve some of the beauties of his garden indoors throughout the winter in a suitable Aquarium.

We carry the largest stock of Aquariums and Aquarium Supplies in the country and will be pleased to answer any inquiries.

STYLE 600—See illustration at bottom of page—No. 601—10x6x8, 2-gal., \$1.50; No. 602—12x7x9, 3-gal., \$2.00; No. 603—14x8x11, 5-gal., \$2.75; No. 604—16x9½x11½, 7-gal., \$3.50; No. 605—17½x10½x13, 10-gal., \$4.25; No. 606—18x11x13, 11-gal., \$4.75; No. 607—22x14x15, 15-gal., \$6.50; No. 642—15x6x12, 4-gal., \$3.00.

STYLE 100—Steel Frame Aquarium is the economical welded steel-frame type, the frame finished in green, the crystal glass sides set in a special leak-proof cement. With or without footings. Specify choice on orders.

No. 101—10x6x8, 2-gal., \$1.25; No. 102—12x7x9, 3-gal., \$1.75; No. 103—14x8x11, 5-gal., \$2.50; No. 104—16x9½x11½, 7-gal., \$2.75; No. 105—17½x10½x13, 10-gal., \$3.25; No. 106—18x11x13, 11-gal., \$3.50; No. 107—22x14x15, 15-gal., \$5.50; No. 142—16x6x12, 4-gal., \$2.00.

STYLE 150-A—Window Ledge Aquariums are especially suitable for many interiors and will fit nicely in almost any window. Slate Base. 26x8x10; 8-gal. Green finish....\$5.50 Chromium No. 650-A.....\$7.50

STYLE 200—This popular-priced Aquarium has a steel frame, the corner posts clamping the bulb-edge glass sides in place. Frame finish blue-black and green. (Additional sizes made to order.) No. 201—10x6x8, 2-gal., \$1.50; Chromium No. 701, \$1.75; No. 202—12x7x9, 3-gal., \$2.00; Chromium No. 702, \$2.25; No. 203—14x8x11, 5-gal., \$2.75; Chromium No. 703, \$3.00; No. 204—16x9½x11½, 7-gal., \$3.00; Chromium No. 704, \$3.75.

STYLE 313-A—Covered Aquarium. With chromium frame and sliding glass cover for Tropical Fish. 14x8x10; 5-gal.\$4.50

STYLE 420—Steel Angle Frame. Green Lacquer Finish. 22½x14x15½; 17-gal.\$7.50

STYLE 420-A—Chromium-plated. 22½x14x15½; 17-gal.\$12.00

STYLE 850 and 801-E—All-Glass Aquariums.

No. 801-E—9¼x7x6½; 2 gal.\$1.25

No. 852—8¼x6x7¼; 1½-gal.95

STYLE 900—Polished cast aluminum frame, extra heavy bulb-edge glass. 12x7x8, 3-gal. Aquarium only, \$2.75; With S-19 stand, \$8.00.

No. 911—34x18x16; 30-gal. Polished cast aluminum Aquarium only, \$30.00; with special 45½-E Ornamental Heavy Steel Stand illustrated above, \$50.00.

STYLE 940—Polished Aluminum Frame No. 947—22½x14x15½; 17-gal.\$8.75

All Aquarium prices are f.o.b. Martinsville or Saddle River.

Perform diligently the task of keeping the pool or aquarium free from decaying or other foreign matter, algae, and green scum, keeping the water at that crystal clearness so much desired.

NOTE: Shipping cans are required for Tadpoles and are shipped f.o.b. Martinsville or Saddle River. All other scavengers may be shipped in damp moss. When fish and scavengers are both included in the order, scavengers will be shipped in container with the fish whenever possible. On order of \$2 or less, INCLUDE 25 cents for postage and packing.

JAPANESE LIVE-BEARING SNAILS—One of the best scavengers. 3 for 25c; per dozen 75c; per hundred \$5.00.

BLACK RAMSHORN SNAILS—25c for three; 75c per dozen; \$5 per 100.

RED OR CORAL SNAILS—50c for three; \$1.75 per dozen.

GEOGRAPHIC TURTLES—50c for four; \$1.25 per dozen.

TADPOLES—Excellent for devouring decaying plant and other foreign matter, green scum, etc. (f.o.b. Martinsville or Saddle River), 50c per dozen; \$3.00 per 100. Shipping cans, 50c each.

GREEN FROGS—Where there are lily pads, one expects to find green frogs. Interesting, and a good insect trap, too. 75c per pair; \$3 per dozen.

JAPANESE SALAMANDERS—black backs and fiery-red vests. 50c for two; \$2.50 per doz.

CLAMS OR FRESH WATER MUSSELS—They act as a filter, taking in large quantities of green water and ejecting it crystal clear. 25c for two; \$1.25 per dozen.

SMALL POOL COLLECTION . . . \$2.00

6 Japanese Snails, 6 Tadpoles, 2 Salamanders, 6 Black Ramshorn Snails, 2 Clams. Collection, with shipping can, \$2.

POPULAR SIZE POOL COLLECTION . \$3.50

12 Tadpoles, 12 Black Ramshorn Snails, 6 Japanese Snails, 4 Clams, 4 Green Frogs, 2 Salamanders. Collection, with shipping can.

LARGE POOL COLLECTION . . . \$5.00

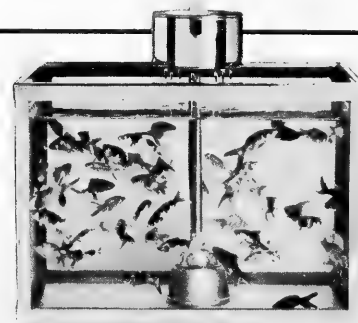
24 Tadpoles, 24 Black Ramshorn Snails, 6 Clams, 6 Salamanders, 12 Japanese Snails, 6 Green Frogs. Collection, with shipping can.

STYLE No. 600 (with Model "A" Airflo)

Chromium, with non-ferrous base, Guaranteed rust-proof.

These aquariums will not scratch or mar, due to the fact that the base has rubber feet or bumpers.

This complete Aquarium Outfit with size No. 604 Aquarium, Model A-Airflo, and 65 assorted Fish (consisting of 20 Fantails, 15 Shubunkins, 15 Comets, 5 Moors, 5 Teleoscopes, 5 Calicoes) only.....\$19.95



AQUARIUM AIRFLOS

Increase capacity of aquarium 8 times. These rotary Airflos (patent 2004866) for goldfish aquariums are simply placed in the aquarium and attached to electric socket. It circulates air through the water and filters it, thus making a fresh, invigorating, oxygenated water supply.

For Aquariums up to 20 gal. Model A \$9.95.

For Aquariums 20 to 50 gal. Model B \$23.45.

GRASSYFORK AQUARIUM SUPPLIES

POOL ACCESSORIES

ILLUMINATED LILY PAD—Floats—lighting the garden pool. A 25 or 40W bulb is sufficient for the average pool. Furnished complete. . . . Wired and watertite socket that can be submerged in water and lighted, ready for installation. . . . \$4.00

POOL PAINT (See page 6).

FERTILIZER (See page 9).

PLANTING TUBS (See page 13).

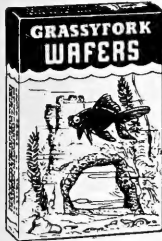
PLANTING BOXES (See page 13).

• "I have several of your Goldfish and will say they certainly are healthy and lively. They have outlived any other fish I have ever had." . . . 18-4 WHK.

FISH FOODS AND REMEDIES

FISH FOODS

GRASSYFORK WAFERS—Perfected after 40 years of experience, study, and experimenting, this new Natural Fish Food in Wafer form is offered to you at no more cost than the cheap, unenriching plain white



FINER FISH FOODS



wafer (so-called) fish food. Our biologists and chemists have combined their efforts to perfect this Food that can be fed to all aquarium fish, including Goldfish, Tropical Fish, and all Pool, Pond, or Indoor Aquarium fish.

These Wafers give your fish a Balanced Ration heretofore not available. They contain Egg, Meat, and Cereal. They will absolutely make your fish grow and the necessary ingredients are contained to keep fish HEALTHY. You will also notice improved COLORATION of your fish from their use. They float and will not pollute the water. These wafers are pure enough for human consumption and are sanitariously packed, thus insuring fitness, liveliness, and longevity of your fish. 16 Large Sheets per box 10c, per doz. . . . 75c
1/2 lb. Packages (Ground) Each. . . . 25c

GRASSYFORK NATURAL FOOD—Large Size Package 10c, per doz. . . . 75c
1/2 lb. Packages. Each. . . . 25c

CONCENTRATED BABY GOLDFISH FOOD—40c per package; 3 packages for \$1.

GRASSYFORK

TROPICAL FISH

FOOD—This superior Flake Food provides a balanced diet for Tropical Fish. 15c per box, 2 boxes for 25c.



DRIED DAPHNIAE—Specially dried carcasses of the water flea, Daphniae, an excellent food for young and adult fishes, and the best substitute for living Daphniae, often difficult to obtain. 20c per box, \$1 a pint.

REMEDIES

HEALTH DIP—Keep your fish in first class condition. Use Health Dip in the aquarium occasionally as a preventative against fungus, tail rot, etc. 15c per box.

FUNGUS CURE—For definite cases of fungus, frayed fins, and general run-down condition. 15c per box.

AQUARIUM SUPPLIES

Grassyfork Water Gardens specialize in supplying to our customers all equipment for the feeding of fish, maintenance of aquariums, and care of aquatic plants, and believe we have developed the most complete and economical service for our customers. Special inquiries are solicited and we will be pleased to assist you in any way possible.



TROPICAL FISH NET—A wire handled net with gauze bag especially made for handling the little Toy Tropical Fish: 3-inch net, 10c each; 4-inch, 15c; 5-inch, 20c.

6-INCH SQUARE NET, with 1/4-inch steel frame, pocket 5 inches deep, handle 16 inches long. Each 75c.

POOL NET—The net you have been looking for with handles from 2 ft. to 5 ft. long, light weight, varnished handle, heavy galvanized wire frame for net, 8 inches square, fastened to handle so it can't come loose. Heavy regular fishing netting of 1/4-inch mesh with six-inch sag, ample for even the largest fishes. A practical and inexpensive large net for working about the pool; to remove dead leaves that may blow in from surrounding shrubbery; also, for handling fish for breeding purposes or when removing them in the fall. Suitable mesh for all Goldfish and the larger Tropicals, each \$1.00.

GOLDFISH NETS—Fish should never be handled. Use a net when transferring them. 3 1/2-inch, wood handle, 10c each; 6-inch, wood handle, a strong net for large goldfish. 25c each.



REFLEX PLANT SNIPS for trimming and handling aquarium plants rapidly and easily, 19 inches long. Each \$1.50.



SIMPLEX TONGS—19 inches long—will handle anything in the aquarium from a grain of sand to pieces an inch or more wide. Each \$1.



GLASS SCRAPER—19 inches long—with renewable razor blade scraper and felt pad wiper combined will clean glass of aquariums rapidly and perfectly. Each \$1.50.

HANDY AQUARIUM TOOLS as illustrated above make aquarium work clean and easy. Complete set, three pieces, \$3.50.

FLOATING FEEDER of glass tubing which will confine food and prevent scattering and pollution of aquarium. Large size, 3 1/2 inches square, each 15c; small size, 2 1/2 inches square, each 10c.

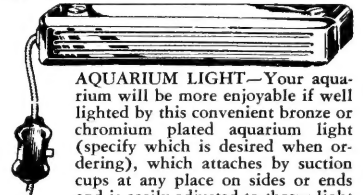
AUTOMATIC GLASS SYPHONS—Self-starting; will drain bowl or aquarium completely. Indispensable for removing sediment. 50c each.

"CHILL-BREAKER" HEATERS—Keep the temperature right and avoid trouble. 25 watt for 10 gallons or less, 40 watt for 15 to 35 gallons; all capacities \$1.50 each.

CHROMIUM AQUARIUM HEATER—Automatic, Thermostatic—Simple, durable and effective; will maintain a mean temperature of 80 degrees in most any aquarium. All capacities: 25 watt up to 5 gallons, 40 watt up to 10 gallons, 75 watt up to 20 gallons; each \$2.25.

CHEMICAL SHELLS—Molded like sea shells. Act as water purifiers; neutralizing excess acids or alkalis and as an aid in destroying fish disease germs and green scum. Each 10c.

THERMOMETERS—Five-inch wine-spirit floating Fahrenheit thermometers; each 25c, three for 60c.



AQUARIUM LIGHT—Your aquarium will be more enjoyable if well lighted by this convenient bronze or chromium plated aquarium light (specify which is desired when ordering), which attaches by suction cups at any place on sides or ends and is easily adjusted to throw light

to the best advantage through aquarium plants and ornaments. Each only \$3.00.

GRASSYFORK PEARL CHIPS—Large 1-lb. package, plain or colored chips, only 10c. 25 lb. Bags, \$1.75; 50 lb. Bags, \$3.00; 100 lb. Bags \$5.00.

GRASSYFORK COLORED SEA SHELLS—Big package 10c. 25 lb. Bags, \$2.75; 50 lb. Bags, \$5.00; 100 lb. Bags, \$9.00.

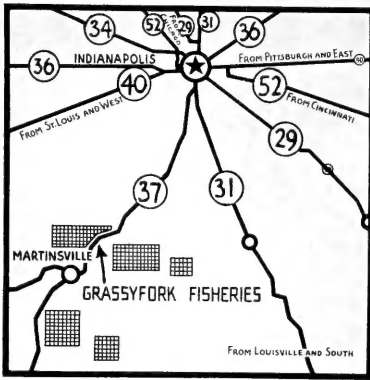
DIPTUBES—These tubes make it easy to remove sediment from aquariums without emptying them. 14 inches long, each 35c.

AQUARIUM GRIT—A coarse two-color gravel, selected for aquarium use. Especially useful for rooting aquatic plants. 5-lb. bag, 20c; 25-lb. bag, 85c; 50 lb. bag, \$1.50; 100 lb. bag, \$2.50.

SILVER SAND—A fine pure white sand which beautifies any aquarium floor and forms a fine covering for rootbeds for aquatic plants. 5 lb. bag, 20c; 25 lb. bag, 85c; 50 lb. bag, \$1.50; 100 lb. bag, \$2.50.

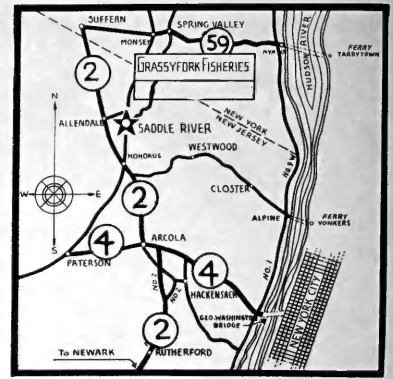
AQUARIUM CEMENT—For best results, Aquarium cement should be mixed with the proper grade of oil in the right proportion. The proper amount of especially prepared oil is included with each package. One pound carton, each 50c.

• "I have received the goldfish which you shipped me and they were received here in mighty fine condition. I am more than pleased with them. In fact, they are finer than I expected. I will heartily endorse your service and quality. When I am in the market for more fish or plants you will certainly get the order and I will recommend you to my friends or anyone interested." . . . 4-6 MCF.



An Invitation TO YOU

Every day in the year (including Sundays and Holidays), Grassyfork, at Martinsville and Saddle River, awaits a visit from you and your friends. Here you will see hundreds of Goldfish and Water Lily pools—covering over 1500 acres. The maps shown at right and left show the way. You will find this an interesting objective for a trip at any season of the year and we will be glad to see you at any time.



OVER FORTY YEARS OF SERVICE

Since the founding of this institution in 1899, Grassyfork has grown to be the world's largest producers of Goldfish and Water Lilies. A hundred million goldfish have been produced from the 645 ponds on its 1500 acres together with the finest water lilies and rare plants for garden pools. But our most precious possession is the great and growing list of friends we have been privileged to serve over these many years.

The combined years of experience of the men and women who make this service totals well over 500 years. Grassyfork products are shipped all over the world—to Mexico, France, Egypt, India, Philippines, The East and West Indies, South America—but no matter where it goes or what the size, every order is a challenge to us to give our best in service and value.

Our best method of showing our appreciation to our customers is to be of help to you in every way, at any time, in solving every problem in connection with your water garden.



The display building at Martinsville includes conservatories and shows many Grassyfork products.

"Acres of Gold" and "Pools of Color"

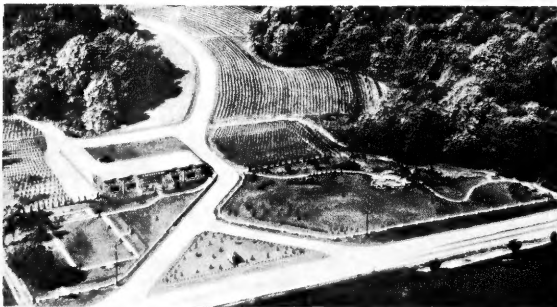
This has been called the most interesting and beautiful nature study ever filmed in technicolor, showing how rare fish are bred and raised. With "Pools of Color," covering the culture of gorgeous water lilies, lotus and water plants this 16 mm. film will be furnished FREE for the use of garden clubs, schools and other gatherings. To make arrangements for showings write Grassyfork, Inc. Martinsville, Ind.

GRASSYFORK, Inc.

(Established 1899)
MARTINSVILLE, IND.
SADDLE RIVER, N. J.

The World's Largest Goldfish Hatcheries and Water Lily Growers

BRANCHES . . . TORONTO, CANADA . . . ATLANTA, GEORGIA . . . SOUTHAMPTON, ENGLAND

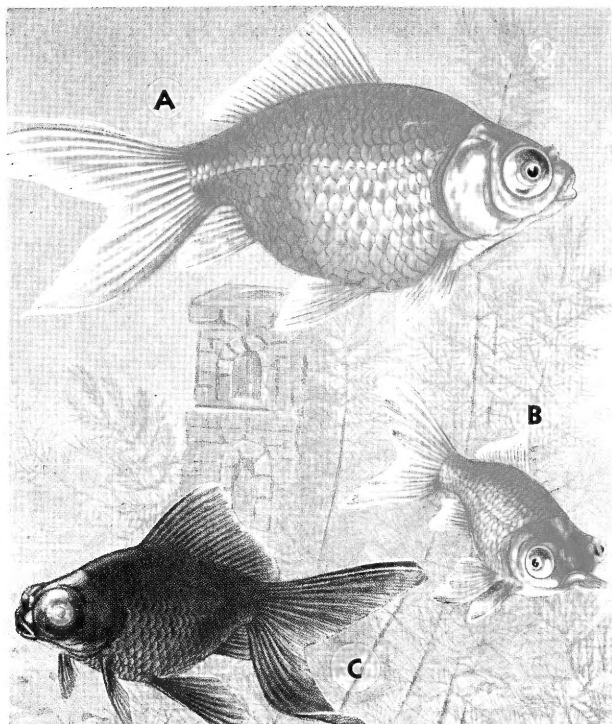


This airplane view shows the entrance to the Martinsville plant on Indiana Road No. 37 with Display Building and Gardens.

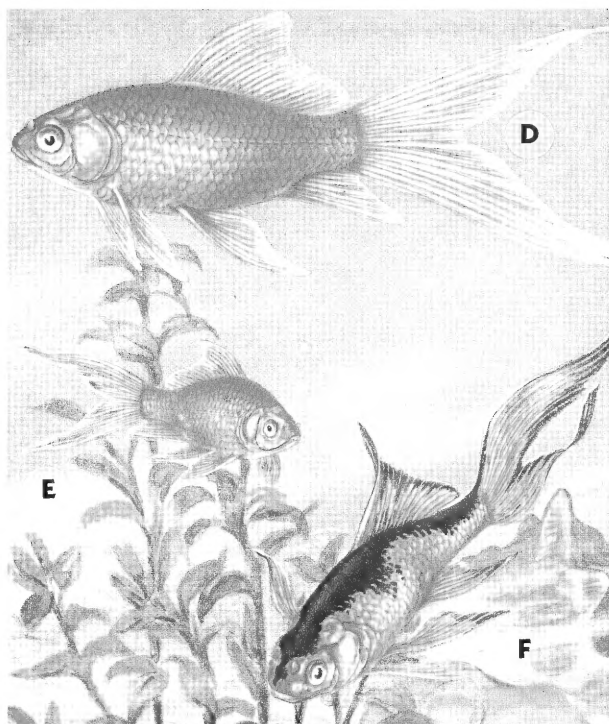


An airplane view of some of the fish and lily ponds on the 1500 acres of the world's largest gold fish hatcheries and water lily growers.

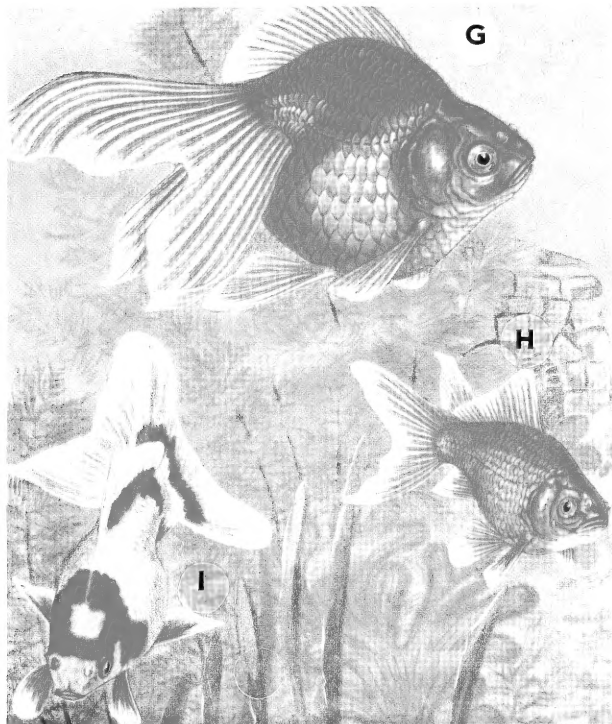
GRASSYFORK GOLDFISH



A & B—CHINESE TELESCOPES and C—CHINESE MOORS lend variety and interest to any Goldfish group. The Telescopes are so-called because of their oddly protruding eyes. Body and fin developments range between the Fantails and the Nymphs. Moors are as striking as finest Fantails. Their dense, velvety black color is a striking contrast to other fish.



COMETS are the speedsters of the Goldfish, their slender bodies and long, powerful fins making them extremely rapid swimmers. Fin developments vary considerably, and the so-called Ribbontails are Comet Goldfish with unusually deep cleft tail fins.



FANTAILS are among the most attractive of Goldfish for the Water Garden, their slow, graceful swimming motions displaying the beauty of their elaborate fin developments. Fantails are those of short, plump bodies. Nymphs resemble the Fantails in body shape, with less fin development.



The K—CALICO TELESCOPE and J—CALICO FANTAILS both have the typical Fantail-type body and the brilliant, variegated coloring resembles the Shubunkins. Tail and fin developments are like those found in Grassyfork Fantails and Telescopes. Interesting red, black, blue and pearl colorations. No two fish are colored alike.

GRASSYFORK HARDY WATER LILIES



B—SUPER DUET—SUNRISE (B—illustrated right) and CONQUEROR (C—shown lower left) two Hardy Lilies of immense size and gorgeous color contrast, \$3.50. With the marvelous Tropical COLONEL LINDBERGH, shown inside front cover, extra value, the complete SUPERB TRIO \$5.25



I—EUGENIA DE LAND **J**—MARLIAC ALBIDA **K**—SIOUX
L—GLORIOSA **M**—PINK OPAL

OUR SHOW COLLECTION—These five Hardy Lilies are an assortment making a blue ribbon display in any pool. Very reasonably priced, in Collection, only \$6.00



O—COMANCHE **N**—PAUL HARIOT **P**—HELEN FOWLER

SUNBURST COLLECTION—Comanche supplies the strong red-orange and coppery tones seen close to the rising sun, Paul Harriot the soft yellow and pink shadings of sunrise light shafts, and Helen Fowler the delicate pink suffusion with which these shafts pierce distant clouds. These three, in Collection \$4.25



D—CHROMATELLA **E**—ROSEA **F**—ALBIDA

MARLIAC TRIO—In this natural-color photograph we show late September blooms of our plants, from which you may gain some idea of the splendid flowering to be expected in your Water Garden. These Hardy Water Lilies are the widely known and deservedly popular Marliac Trio—the yellow, white and pink Marliacs. Our price, in Collection, only \$3.00