

62.23

LIBRARY
REC
MAR 1
U. S. Department

D HILL NURSERIES CO.

Evergreen Specialists - Largest Grower in America

DUNDEE, ILLINOIS

Dunbar 17

D. HILL NURSERY CO.

Evergreen Specialists - Largest Growers in America

DUNDEE, ILLINOIS

This list cancels all previous Editions.

Terms and Information

TERMS OF PAYMENT

Discount Plan Where cash is required in full payment of Fall orders by September 15th, and on Spring orders by March 15th, a 2% discount will be allowed.

Open Account Goods will be supplied open account to customers of approved credit who supply satisfactory trade and bank references. Time must be allowed for investigation.

TERMS NET 30 DAYS.

C.O.D. Orders All C.O.D. orders must be accompanied with a one-third down payment.

Note When retail customers are sent to the sales yard to buy on a wholesale account, they must have either a letter or purchase order from the firm sending them. The discount on sales of this kind is 25% off the retail, in credit only.

SHIPPING & NON-WARRANTY

Please give definite shipping instructions. In no case can we assume responsibility for the shipment of stock after it has been accepted by a carrier. Liability for claims arising from delays or damage in transit rest solely with the carrier, but we will be pleased to assist with claims of this nature.

All orders are accepted on the condition that they shall be void should any injury befall the stock from causes over which we have no control. Requests for adjustment and complaints must be made within 20 days after receipt of goods. **NO COMPLAINTS ENTERTAINED AFTER THIS 20 DAY PERIOD.**

PRICES

The prices in this catalog are limited to the Spring of '54. This printing supersedes all previous lists and all PRICES ARE SUBJECT TO CHANGE WITHOUT NOTICE.

RATES

B & B Stock

5 of the same variety and size at the 10 rate
25 of the same variety and size at the 100 rate
250 of the same variety and size at the 1000 rate

Clean Root Stock

Transplants sold in multiples of 25 only

25 of the same variety and size at the 100 rate
250 of the same variety and size at the 1000 rate
2500 of the same variety and size at the 5000 rate
Lilac and Flowering Crabs sold in multiples of 10 only.

LOCATION

We are situated 45 miles northwest of Chicago, on Highway No. 31, just north of the intersection with No. 72. Visitors are always welcome.

PERSONAL SELECTION

Prices in this catalog are for first quality stock, fully up to size, and as represented. Customers who wish to make personal selection and tag trees in the nursery may do so at 25% extra charge.

SPECIAL NOTICE

Correspondents are requested to use their printed letterheads. This catalog is for the trade only and in justice to our trade customers, we will make every effort to limit the distribution of trade prices to those we know are entitled to receive them.

THESE PRICES DO NOT INCLUDE ANY GUARANTEE WHATSOEVER AS TO GROWTH.

ABIES CONCOLOR PYRAMIDALIS
(Pyramidal Concolor Fir)

A very unusual narrow, close-growing type of Concolor Fir, with short needles. The original plant has been growing on our grounds for many years, and is now 40 feet tall. This tree always attracts a great deal of comment from visitors to our nursery.

	Each per 10	Each per 100	Each per 1000	Each per 5000
Grafts (LIMIT, 25 per customer)		1.00		

JUNIPERUS CHINENSIS COLUMNARIS
(Column Chinese Juniper)

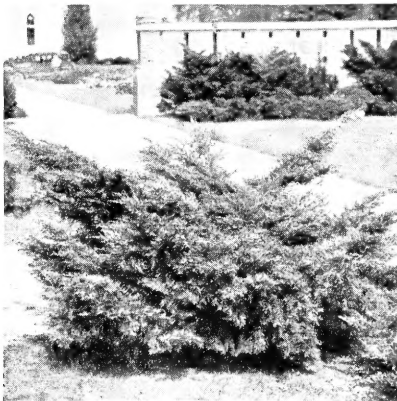
Introduced from China by the U. S. Dept. of Agriculture through the late F. N. Meyer. This tree offers to planters in colder climates the extreme narrow-growing form of Evergreen heretofore so much desired but unfortunately not obtainable in a dependable tree. The ultimate growth is 20 feet or more. Trimming when small helps to develop its narrow habit.

Grafts75	.65	
15-18 Inch xx Field		1.30		
18-24 Inch xx B&B	2.25	2.00		

JUNIPERUS CHINENSIS KETELEERI
(Keteleer Juniper)

A true upright form of Chinese Juniper, free from cedar apple blight. It has a good color, is rapid growing, and has very attractive berries.

Grafts75	.65	
5-6 Feet xxx B&B	8.00	7.50		



Juniperus Chinensis Pfitzeriana
(Pfitzer Juniper)



Juniperus Chinensis Keteleeri
(Keteleer Juniper)

5 of same variety and size at 10 rate; 25 at 100 rate; 250 at 1000 rate; 2500 at 5000 rate.
Each x indicates one transplanting. B&B signifies balled and burlapped.

THESE PRICES DO NOT INCLUDE ANY GUARANTEE WHATSOEVER AS TO GROWTH.



Juniperus Chinensis Pfitzeriana
(Pfitzer Juniper)

	Each per 10	Each per 100	Each per 1000	Each per 5000
JUNIPER CHINENSIS PFITZERIANA (Pfitzer Juniper)				

This tree ranks as one of our most important Evergreens of the spreading forms. It was originated in Pfitzer's Nursery in Germany. It succeeds and thrives under many conditions, full sun or exposed locations, and also does well in shady, protected places.

6-8 Inch xx Flats28	.25	.22
6-8 Inch 2 yr. pots35	.30	
10-12 Inch xx Frame65	.60	.55
10-12 Inch xx Field90		
1½-2 Feet xxx B&B	5.00	4.50	4.25	

JUNIPERUS CHINENSIS PFITZERIANA AUREA
(Golden Pfitzer Juniper)

A Hill Introduction

This valuable novelty was propagated and introduced by the D. Hill Nursery Co. The new growth foliage comes out a clear yellow interspersed with green. It loses some of its bright color during the late summer. It has been widely acclaimed throughout the entire country.

8-10 Inch xx Frame55	.50	
10-12 Inch xx Frame65	.60	
15-18 Inch xx B&B	2.50	2.25	2.00	

JUNIPERUS CHINENSIS PFITZERIANA GLAUCA
(Blue Pfitzer Juniper)

An exquisite new blue form of the widely known Pfitzer Juniper. Not to be confused with the Hetzi Juniper. Foliage is distinctly bluish throughout the entire plant.

15-18 Inch xxx B&B	3.75	3.25		
--------------------------	------	------	--	--

5 of same variety and size at 10 rate; 25 at 100 rate; 250 at 1000 rate; 2500 at 5000 rate. Each x indicates one transplanting. B&B signifies balled and burlapped.

THESE PRICES DO NOT INCLUDE ANY GUARANTEE WHATSOEVER AS TO GROWTH.

	Each per 10	Each per 100	Each per 1000	Each per 5000
--	-------------------	--------------------	---------------------	---------------------

JUNIPERUS CHINENSIS SARGENTI VIRIDIS
(Green Sargent Juniper)

A creeping form of Juniper found in Japan by the late Professor Chas. F. Sargent of the Arnold Arboretum. It makes a free thrifty growth, with stems being well covered with masses of heavy, luxuriant foliage. One of the hardiest of the creeping Junipers.

12-15 Inch xx B&B 2.00 1.75

JUNIPERUS CHINENSIS SARGENTI—AMES
(Ames Juniper)

Introduced by the late Professor T. J. Maney of Iowa State College. A compact, upright, semi-formal Juniper, with blue-green juvenile foliage, the older foliage changing to bright green. Proven for hardiness.

Grafts75 .65

JUNIPERUS CHINENSIS SARGENTI—MANEY
(Maney Juniper)

Also introduced by the late Professor T. J. Maney and named for him. This plant is a spreading bush type, compact, with bluish foliage. Develops about as broad as its height. Ideal for group plantings.

Grafts75 .65



Juniperus Chinensis Sargentii—Ames
(Ames Juniper)



Juniperus Chinensis Sargentii—Maney
(Maney Juniper)



Juniperus Chinensis Sargentii—Iowa
(Iowa Juniper)

JUNIPERUS CHINENSIS SARGENTI—IOWA
(Iowa Juniper)

Another of Professor Maney's introductions. A semi-dwarf, upright form, somewhat irregular. Has bluish foliage, and develops quite broad at the base.

Grafts75 .65

JUNIPERUS COMMUNIS DEPRESSA AUREA
(Golden Prostrate Juniper)

One of the older horticultural varieties. The new growth develops with a bright yellow foliage, gradually darkening to a deep golden color. For best results, it should be planted in an open, sunny, well drained location.

Grafts75 .65

5 of same variety and size at 10 rate; 25 at 100 rate; 250 at 1000 rate; 2500 at 5000 rate.
Each x indicates one transplanting. B&B signifies balled and burlapped.

THESE PRICES DO NOT INCLUDE ANY GUARANTEE WHATSOEVER AS TO GROWTH.

	Each per 10	Each per 100	Each per 1000	Each per 5000
JUNIPERUS COMMUNIS DEPRESSA VASE SHAPE (Vase-shaped Prostrate Juniper)				

A Hill Introduction

The color is grayish green. It has a semi-erect form. The branches are quite stiff, but still easily trimmed.

Grafts75	.65	-----
15-18 Inch xx B&B	2.50	2.25	-----	-----

JUNIPERUS PROCUMBENS (Japanese Juniper)

A hardy, rapid growing, prostrate Juniper with foliage of a distinct blue-green color. Has sharply pointed leaves, marked on the upper surface by two white lines.

Grafts75	.65	-----
10-12 Inch xx B&B	1.75	1.50	-----	-----
15-18 Inch xxx B&B	3.75	3.25	-----	-----

JUNIPERUS PROCUMBENS NANA (Dwarf Japanese Juniper)

A Hill Introduction

A selected, extremely dwarf form of the Japanese Juniper. The selection and development was made by the D. Hill Nursery Company. Of extremely compact growth, with very fine foliage, forming an impenetrable mat.

10-12 Inch xx B&B	2.25	2.00	-----	-----
12-15 Inch xx B&B	2.50	2.25	-----	-----

JUNIPERUS SABINA HORIZONTALIS NO. 2 (Russian Variety)

We received a shipment of Juniper Sabina seed from Russia 35 years ago, which produced a wide assortment of forms. From these, we have selected three and can offer Grafts of two forms. No. 2 has a growing habit like Andorra Juniper, with a bright green color.

Grafts75	.65	-----
--------------	--	-----	-----	-------

JUNIPERUS VIRGINALIS (Hillbush Juniper)

The original specimens of this variety were obtained from Japan. The foliage is very robust, with a deep rich green color.

Grafts75	.65	-----
10-12 Inch xx Field		1.30	-----	-----

5 of same variety and size at 10 rate; 25 at 100 rate; 250 at 1000 rate; 2500 at 5000 rate. Each x indicates one transplanting. B&B signifies balled and burlapped.

THESE PRICES DO NOT INCLUDE ANY GUARANTEE WHATSOEVER AS TO GROWTH.

JUNIPERUS VIRGINALIS GLOBOSA
(Globe Hillbush Juniper)

This plant has a slightly different growing habit in that it is more of a natural globe. Foliage is extremely dark green.

	Each per 10	Each per 100	Each per 1000	Each per 5000
15-18 Inch xxx B&B	3.75	3.25	3.00	-----
1½-2 Feet xxx B&B	5.00	4.50	-----	-----

JUNIPERUS VIRGINIANA
(Red Cedar)

This is the parent plant from which many horticultural varieties have been developed. There is some variation in habit, foliage, and color, which makes it possible to obtain an interesting assortment of this plant.

	Each per 10	Each per 100	Each per 1000	Each per 5000
3-4 Feet xxx B&B	4.00	3.50	-----	-----
4-5 Feet xxx B&B	5.00	4.50	-----	-----
5-6 Feet xxx B&B	6.00	5.50	5.00	-----
6-7 Feet xxx B&B	7.00	6.50	-----	-----



Juniperus Virginiana Cupressifolia
(Hillspire Juniper)

5 of same variety and size at 10 rate; 25 at 100 rate; 250 at 1000 rate; 2500 at 5000 rate. Each x indicates one transplanting. B&B signifies balled and burlapped.

THESE PRICES DO NOT INCLUDE ANY GUARANTEE WHATSOEVER AS TO GROWTH.

	Each per 10	Each per 100	Each per 1000	Each per 5000
JUNIPERUS VIRGINIANA CANAERTI (Canaert Juniper)				

A horticultural variety of the Red Cedar which has long been one of the leading favorites. Its foliage is a heavy, green, whip-cord type. Frequent trimming is necessary to produce compact, shapely specimens. It frequently has blue, powdery berries, which occur in large clusters.

Grafts75	.65	-----
18-24 Inches xx B&B	2.25	2.00	1.75	-----
2-2½ Feet xxx B&B	4.00	3.50	-----	-----

JUNIPERUS VIRGINIANA CUPRESSIFOLIA
(Hillspire Juniper)

A Hill Introduction

A very shapely pyramid with attractive whip-cord type foliage. Rapid grower and develops into compact specimen with little trimming.

Grafts75	.65	-----
15-18 Inch xx B&B	2.00	1.75	1.50	-----
18-24 Inch xx B&B	2.25	2.00	1.75	-----
2-2½ Feet xx B&B	2.50	2.25	-----	-----

JUNIPERUS VIRGINIANA GLAUCA
(Blue Juniper)

A favorite of many years, because of its outstanding color of silver-blue. Frequent trimming is necessary, but it stands trimming well.

Grafts75	.65	-----
--------------	--	-----	-----	-------

JUNIPERUS VIRGINIANA HILLI
(Hill Dundee Juniper)

A Hill Introduction

The most valuable Juniper introduced in years, originating from a specimen found in the D. Hill Nursery. A compact, symmetrical pyramid, with foliage of a grayish-green color in summer, turning to a plum shade in winter.

Grafts75	.65	-----
18-24 Inch xx B&B	2.25	2.00	-----	-----
3-3½ Feet xx B&B (Light)	-----	3.50	3.25	-----
2½-3 Feet xxx B&B	4.50	4.00	-----	-----
3-3½ Feet xxx B&B	5.50	5.00	-----	-----
3½-4 Feet xxx B&B	6.50	6.00	-----	-----



Juniperus Virginiana Hilli
(Dundee Juniper)

5 of same variety and size at 10 rate; 25 at 100 rate; 250 at 1000 rate; 2500 at 5000 rate. Each x indicates one transplanting. B&B signifies balled and burlapped.

THESE PRICES DO NOT INCLUDE ANY GUARANTEE WHATSOEVER AS TO GROWTH.

PACHYSANDRA TERMINALIS
(Japanese Spurge)

Each per 10	Each per 100	Each per 1000	Each per 5000
-------------------	--------------------	---------------------	---------------------

A splendid Evergreen ground cover with thick, glossy foliage, forming a dense mat. Grows in full sun or dense shade. Does well under large trees, where shade prevents successfully growing grass. Will thrive under varied conditions.

8-10 Inch xx Frame15



Pachysandra Terminalis
(Japanese Spurge)

PICEA EXCELSA
(Norway Spruce)

A symmetrical, well formed pyramid, highly appreciated because of its rapid growth, its thriftiness and its heavy masses of deep green foliage. One of the better trees for windbreaks.

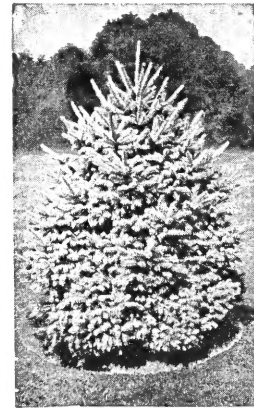
8-10 Inch xx Frame30	.25	.20
10-12 Inch xx Frame35	.30	.25
12-15 Inch xx Frame40	.35



Picea Excelsa
(Norway Spruce)



Picea Glauca Conica
(Dwarf Alberta Spruce)



Picea Glauca Densata
(Black Hill Spruce)

PICEA GLAUCA CONICA
(Dwarf Alberta Spruce)

A perfectly shaped tree in miniature. Grows with an extremely close, pyramidal growth, thickly covered with short, close-set, twiggy branches and clothed in grass green leaves. One of the most interesting oddities among Evergreens.

4-6 Inch xx Flats30	.27	.24
6-8 Inch xx Frames55	.50
12-15 Inch xxx B&B	3.50	3.00
15-18 Inch xxx B&B	4.00	3.50

5 of same variety and size at 10 rate; 25 at 100 rate; 250 at 1000 rate; 2500 at 5000 rate. Each x indicates one transplanting. B&B signifies balled and burlapped.

THESE PRICES DO NOT INCLUDE ANY GUARANTEE WHATSOEVER AS TO GROWTH.

PICEA GLAUCA DENSATA
(Black Hill Spruce)

This is one of the finest Spruces, having developed its distinct characteristics through centuries of living in the Black Hills of South Dakota. It grows compact, bushy, and symmetrical, and the foliage varies from green to bluish tint.

	Each per 10	Each per 100	Each per 1000	Each per 5000
6-8 Inch xx Frame25	.20	-----
12-15 Inch xx B&B	1.75	1.50	-----	-----

PICEA PUNGENS
(Colorado Spruce)

This Spruce has long been a very important item in the Evergreen line. While our seed is collected in localities where blue trees predominate, there is still a mixture of green and blue trees produced from this seed.

6-8 Inch xx Frame30	.25	-----
-------------------------	--	-----	-----	-------

PINUS NIGRA
(Austrian Pine)

The one Pine which unquestionably stands in greatest favor. It has a rich, deep green color, with needles straight and slender, four to five inches long. Thrives well under a variety of planting conditions.

8-10 Inch xx Frame40	.35	-----
10-12 Inch xx Frame45	.40	-----
10-12 Inch xx Field55	-----	-----
12-15 Inch xx Field60	-----	-----



Field-grown Pinus Nigra
(Austrian Pine)

5 of same variety and size at 10 rate; 25 at 100 rate; 250 at 1000 rate; 2500 at 5000 rate. Each x indicates one transplanting. B&B signifies balled and burlapped.

THESE PRICES DO NOT INCLUDE ANY GUARANTEE WHATSOEVER AS TO GROWTH.

PINUS RESINOSA (Red Pine)	Each per 10	Each per 100	Each per 1000	Each per 5000
-------------------------------------	----------------------------	-----------------------------	------------------------------	------------------------------

A very thrifty, rapid grower with long dark green needles, similar to the Austrian Pine. Adaptable to light, sandy soils.

12-15 Inch xx Frame45	.40
15-18 Inch xx Field60



Beds of frame grown Pine

PINUS STROBUS
(White Pine)

The White Pine is the largest of all conifers native to the Eastern part of the United States. It has soft, bluish-green needles, borne in clusters of five. Quarantine restrictions prevent our shipping this variety into the following states: Arizona, California, Colorado, Georgia, Kentucky, Nevada, New Mexico, North Carolina, South Carolina, Tennessee, Utah and Wyoming.

18-24 Inch xx Field70
----------------------------------	-----	-------

PINUS SYLVESTRIS
(Scotch Pine)

Known as the common Pine of Europe, and used for hundreds of years. A rapid grower with light green foliage, but must be trimmed to mature as a shapely, symmetrical specimen.

12-15 Inch xx Field50	
18-24 Inch xx B&B	1.75	1.50

5 of same variety and size at 10 rate; 25 at 100 rate; 250 at 1000 rate; 2500 at 5000 rate. Each x indicates one transplanting. B&B signifies balled and burlapped.

THESE PRICES DO NOT INCLUDE ANY GUARANTEE WHATSOEVER AS TO GROWTH.



Most of our acreage is now planted on
the no-till and crop rotation program.



PSEUDOTSUGA DOUGLASI
(Douglas Fir)

Each per 10	Each per 100	Each per 1000	Each per 5000
-------------------	--------------------	---------------------	---------------------

This stately tall growing plant is the most important of the Fir family. It grows rapidly, with a graceful form, and soft dark green foliage. Plant with plenty of room for future development.

8-10 Inch xx Field40		
4-5 Feet xxx B&B	9.00	8.50		
5-6 Feet xxx B&B	12.00	11.50	11.00	
6-7 Feet xxx B&B	16.00	15.00	14.00	
7-8 Feet xxx B&B	20.00	18.00		



Pseudotsuga Douglasi
(Douglas Fir)

TAXUS CUSPIDATA
(Spreading Japanese Yew)

A wide, heavy branched form developing into a low bushy formation. A great variation exists in the different strains sold under this name. This accounts for the various formations and foliage differences. Stands trimming well.

6-8 Inch xx Flat28	.25	.22
12-15 Inch xx B&B	3.00	2.75		
15-18 Inch xxx B&B	5.50	5.00		
1 ½-2 Feet xxx B&B	7.00	6.50	6.25	
2-2 ½ Feet xxx B&B	8.50	8.00		



Taxus Cuspidata
(Spreading Yew)

5 of same variety and size at 10 rate; 25 at 100 rate; 250 at 1000 rate; 2500 at 5000 rate. Each x indicates one transplanting. B&B signifies balled and burlapped.

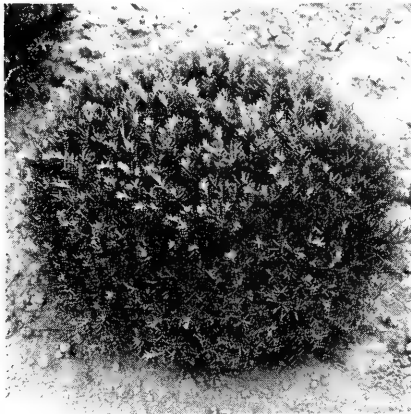
THESE PRICES DO NOT INCLUDE ANY GUARANTEE WHATSOEVER AS TO GROWTH.

	Each per 10	Each per 100	Each per 1000	Each per 5000
TAXUS CUSPIDATA CAPITATA (Japanese Yew)				
This is the upright, pyramidal form of this variety. Having originated in the cold, high altitudes of Northern Japan, it thrives well under various growing conditions. Foliage is dark green, and the fruit bright red.				
2½-3 Feet xxx B&B	10.50	10.00	-----	-----
3-3½ Feet xxx B&B	12.50	12.00	-----	-----
3½-4 Feet xxx B&B	14.50	14.00	-----	-----

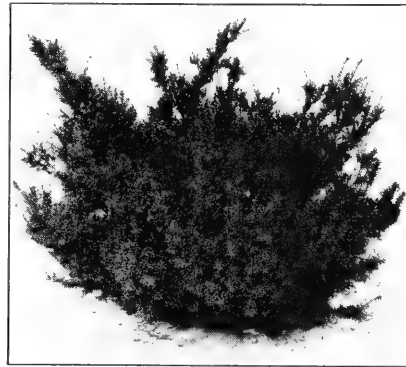
TAXUS CUSPIDATA DENSIFORMIS
(Compact Spreading Yew)

An exceptionally compact form that does not get as broad as the Cuspidata. Light shearing keeps this plant in an excellent compact shape.

1½-2 Feet xxx B&B	7.50	7.00	6.75	-----
-------------------------	------	------	------	-------



Taxus Cuspidata Densiformis
(Compact Spreading Yew)
trimmed globe form



Taxus Cuspidata Nana
(Dwarf Japanese Yew)

TAXUS CUSPIDATA NANA
(Dwarf Japanese Yew)

An extremely slow grower, with black-green foliage. One of the oldest horticultural forms of the Japanese Yew.

10-12 Inch xx Field	-----	.95	-----	-----
15-18 Inch xxx B&B (Heavy)	7.50	7.00	6.75	-----

TAXUS MEDIA BROWNI
(Brown's Yew)

One of the very popular spreading forms. Its normal development is quite compact, and has dark, heavy green foliage. Can be trimmed into globe form.

15-18 Inch xxx B&B	5.50	5.00	4.75	-----
1½-2 Feet xxx B&B	6.50	6.00	5.75	-----

TAXUS MEDIA HATFIELDI
(Hatfield Yew)

The habit of this plant is somewhat like the Hick's Yew, with several upright perpendicular stems, it develops the top slightly broader than the bottom. The foliage is very heavy, and extremely dark green.

1½-2 Feet xxx B&B	5.75	5.25	-----	-----
2-2½ Feet xxx B&B (Heavy)	8.50	8.00	-----	-----

5 of same variety and size at 10 rate; 25 at 100 rate; 250 at 1000 rate; 2500 at 5000 rate. Each x indicates one transplanting. B&B signifies balled and burlapped.

THESE PRICES DO NOT INCLUDE ANY GUARANTEE WHATSOEVER AS TO GROWTH.

	Each per 10	Each per 100	Each per 1000	Each per 5000
TAXUS MEDIA HICKSI (Hick's Yew)				

A columnar form with branches ascending almost vertically. The growing habit varies with the method of trimming. It can be trimmed into an extremely narrow shape, or allowed to develop into broader specimens.

8-10 Inch xx Frame45	.40	-----
10-12 Inch xx Frame55	.50	.45
12-15 Inch xx Frame65	.60	-----
10-12 Inch xx Field80	-----	-----

THUJA OCCIDENTALIS
(American Arborvitae)

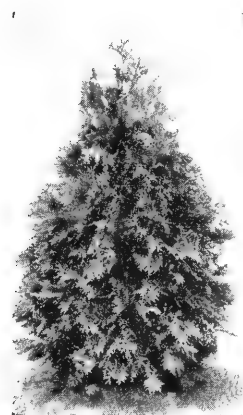
A native of the northern states of the United States. Its growth is bushy at the bottom and tapering toward the top. Foliage is very soft and flexible and a good green color.

12-15 Inch xx Frame40	.35	-----
15-18 Inch xx Frame45	.40	-----
2 1/2-3 Feet xxx B&B	3.75	3.25	-----	-----
3-3 1/2 Feet xxx B&B	4.25	3.75	-----	-----
3 1/2-4 Feet xxx B&B	4.75	4.50	-----	-----

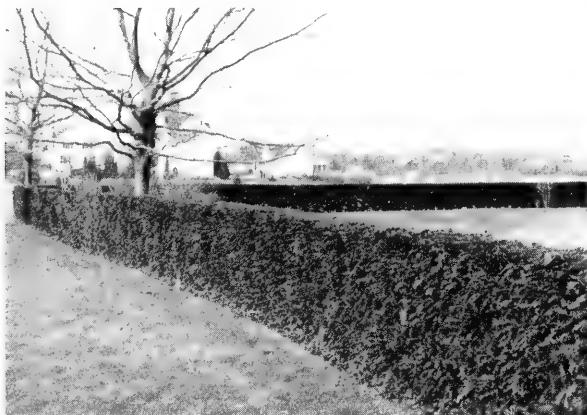
THUJA OCCIDENTALIS NIGRA
(Dark Green American Arborvitae)

A horticultural form of the American Arborvitae. Foliage is much darker, and richer green, and the plant develops into a much more compact form.

3 1/2-4 Feet xxx B&B	4.50	4.00	-----	-----
4-4 1/2 Feet xxx B&B	5.00	4.50	-----	-----



Thuja Occidentalis
(American Arborvitae)



Arborvitae Hedge



Thuja Occidentalis Pyramidalis
(Pyramidal Arborvitae)

THUJA OCCIDENTALIS PYRAMIDALIS
(Hill Pyramidal Arborvitae)

A dense, compact type of good green color, narrow and pyramidal in habit.

8-10 Inch xx Frame40	.35	-----
10-12 Inch xx Frame45	.40	-----
2-2 1/2 Feet xx B&B	2.50	2.25	2.00	-----
2 1/2-3 Feet xx B&B	2.75	2.50	-----	-----
4-4 1/2 Feet xxx B&B	5.50	5.00	4.50	-----
4 1/2-5 Feet xxx B&B	6.00	5.50	-----	-----

5 of same variety and size at 10 rate; 25 at 100 rate; 250 at 1000 rate; 2500 at 5000 rate. Each x indicates one transplanting. B&B signifies balled and burlapped.

THESE PRICES DO NOT INCLUDE ANY GUARANTEE WHATSOEVER AS TO GROWTH.

	Each per 10	Each per 100	Each per 1000	Each per 5000
THUJA OCCIDENTALIS WOODWARDI (Woodward Arborvitae)				

One of the very well-known globe forms. Compact, bushy tree with good color.

8-10 Inch xx Frame40	.35
10x10 Inch xx B&B	1.75	1.50	1.25
12x12 Inch xx B&B	2.25	2.00	

TSUGA CANADENSIS
(Hemlock)

Makes a regular conical form, tapering evenly from a broad base to a long thrifty shoot. Our seed is obtained from a Northern source, assuring a hardy plant for all localities.

8-10 Inch xx Frame35	.30	.25
2-2½ Feet xx B&B	2.00	1.75	1.50
2-2½ Feet xxx B&B	4.25	3.75	
2½-3 Feet xxx B&B	4.50	4.00	

ORNAMENTAL SHRUBS

EUONYMUS RADICANS COLORATUS
(Purple-leaf Wintercreeper)

8-10 Inch xx Flat15	
-------------------------	--	-----	--	-------

MAHONIA AQUIFOLIUM
(Oregon Hollygrape)

A very decorative shrub, native to the more temperate regions. Has very attractive blue berries in the fall. Shiny leaves resembling Holly.

4-6 Inch 2 yr. seedlings08	.07
--------------------------------	--	-----	-----	-------

(Available in multiples of 50 only)

5 of same variety and size at 10 rate; 25 at 100 rate; 250 at 1000 rate; 2500 at 5000 rate.
Each x indicates one transplanting. B&B signifies balled and burlapped.

THESE PRICES DO NOT INCLUDE ANY GUARANTEE WHATSOEVER AS TO GROWTH.

FLOWERING CRAB APPLES

8-10 Inch	.30
10-12 Inch	.40
12-18 Inch	.50
18-24 Inch	.60
2-3 Feet	.70
3-4 Feet	.80

(Sold in multiples of 10)
2 Year Field Grafts

MALUS ADSTRINGENS

A wide spreading tree of shapely growth that will attain a height of from 15 to 20 feet. An early bloomer whose flowers are deep rose in bud, opening to a lighter shade of rose pink. The foliage is a light purple and the fruit various shades of red, yellow, and green.

12-18 Inch
18-24 Inch
2-3 Feet
3-4 Feet

MALUS DOLGO

Often called Hansen Red Crab, this is an introduction of Dr. N. E. Hansen from Russian seed. The tree is of medium height and bears pure white flowers. The foliage is light green and the fruit is bright red—borne in great profusion. This very early bloomer is quite popular as the fruit is one of the best varieties for making jelly.

8-10 Inch
10-12 Inch
12-18 Inch

MALUS FLORIBUNDA ATROSANGUINEA

This wide spreading tree of medium height (often called Carmine Crab) is another very early bloomer. The carmine buds change to a dull pink when open. The foliage is a very dark green and the fruit is small, red, and very showy.

12-18 Inch
18-24 Inch
2-3 Feet

MALUS FLORIBUNDA PURPUREA

Called the Purple Flowering Crab, this very early bloomer is one of the showiest of all Crab Apples. It bears large, red flowers with purplish green foliage and the fruit is very large and purplish red in color.

18-24 Inch

MALUS PURPUREA ELEYI

This tree of medium height is a rather erect grower and a very early bloomer. It bears large purplish red flowers and purple colored foliage throughout the summer. It is a heavy bearer of purplish red fruit one inch in diameter.

12-18 Inch

MALUS RINGO

Of medium size and upright growth, this tree bears pink flowers. The large, dark green, very shiny foliage is particularly handsome. This is the only variety of Malus with a shiny leaf. The fruit is one inch in diameter and a bright orange in color.

12-18 Inch

18-24 Inch

MALUS ROBUSTO PERSICIFOLIA

The variety is known as the Peach Leafed Crab because of the similarity of the foliage to that of the Peach. It bears pure white flowers with an occasional green petal. The fruiting habit of this variety is outstanding. Great quantities of the bright red fruit are borne so heavily as to produce the effect of attractive fall bloom. It is upright in growth and reaches a height of 10 to 12 feet.

12-18 Inch

18-24 Inch

MALUS ZUMI CALOCARPA

This wide growing, well formed tree is the finest of all crabs. It is a very heavy bloomer with pink buds that open into pure white flowers. The one-quarter inch fruit is bright red to orange in color and persists into February. This is one of the best ornamental crabs for both bloom and fruit.

10-12 Inch

12-18 Inch

18-24 Inch



Our Stock Blocks of Flowering Crabs are checked each Spring to assure all plants being true to name.

FRENCH LILACS

These lilacs were grafted in February 1952, and planted in field rows the same Spring. After the first year in the field, they were cut back so as to induce branching the second growing season. Most of these lilacs have 2 to 5 branches and are on their roots.

YOU CAN'T BUY MORE CAREFULLY GROWN LILACS.

8-10 Inch	.40	18-24 Inch	.70
10-12 Inch	.50	2-2½ Feet	.80
12-18 Inch	.60	2½-3 Feet	.90

(Sold in multiples of 10)
2 Year Field Grafts

SYRINGA PERSICA LACINIATA

Cut leaf form of Persian Lilac. Very attractive shrub of rather drooping habit. Flowers are light pink and very graceful. Late bloomer.

12-18 Inch
18-24 Inch
2-2½ Feet

SYRINGA VULGARIS BERRYER

This exceptional variety of Lilac is a prolific bloomer. Its double blossoms are a clear mauve in color and appear quite early in the season.

12-18 Inch
18-24 Inch
2-2½ Feet

SYRINGA VULGARIS CHAS. JOLY

This is a middle season bloomer. Though the trusses are very small they bloom very heavily. The buds are a rich dark color that open to a bright crimson.

10-12 Inch
12-18 Inch
18-24 Inch

SYRINGA VULGARIS CONGO

This Lilac produces a deep, wine red, single blossom that is distinctive for its large size. The Congo consistently grows and blooms better than most others.

10-12 Inch
12-18 Inch

SYRINGA VULGARIS DECAISNE

This variety produces very distinct and large, clear azure blue trusses. The individual florets are single, and bloom the heaviest in midseason.

10-12 Inch
12-18 Inch
18-24 Inch

SYRINGA VULGARIS GEN. SHERIDAN

This is an exceptional double white Lilac with extremely large trusses composed of many small florets. Its blooming period tends to be later than most of the other French Lilacs which makes it an ideal variety for combined plantings.

18-24 Inch
2-2½ Feet
2½-3 Feet

SYRINGA VULGARIS KATE HARLIN

Kate Harlin is the latest blooming of all of the white Lilacs. It bears rather loosely formed panicles of immense, distinct florets. This variety is a prolific bloomer and has been a consistently good grower under widely varied conditions.

18-24 Inch
2-2½ Feet

SYRINGA VULGARIS MME. FLORENT STEPMAN

This single white Lilac is distinctive for the manner in which it carries its bloom well above the green foliage. It is a heavy bloomer and bears large trusses about the middle of the Lilac season.

12-18 Inch
18-24 Inch
2-2½ Feet

SYRINGA VULGARIS MARECHAL LANNES

This variety is double, violet blue, and late blooming. The individual florets are extremely large and the trusses unusually long and spectacular.

12-18 Inch
18-24 Inch

SYRINGA VULGARIS PRES. GREVY

The President Grevy is probably the best known of all the French Hybrid Lilacs. It is a very shapely growing variety that produces a well formed outline rather quickly. It is also an exceptionally heavy bloomer of soft blue, double blossoms in midseason.

10-12 Inch
12-18 Inch
18-24 Inch
2-2½ Feet
2½-3 Feet

SYRINGA VULGARIS PRES. LINCOLN

This distinctive single Lilac comes as close to a true, blue color as any other variety known. It produces a heavy blossom in midseason and is best known for its unusual color.

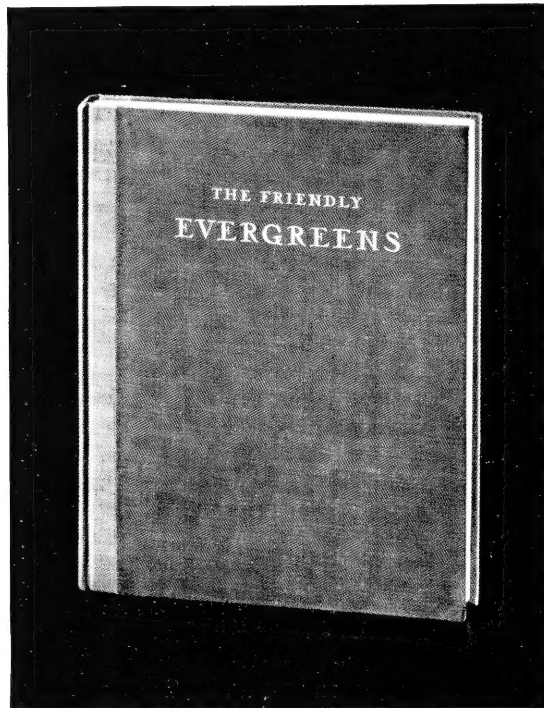
12-18 Inch
18-24 Inch
2-2½ Feet

SYRINGA VULGARIS SOUV. DE LUDWIG SPAETH

The extremely long panicles and trusses identify this deep red, single Lilac. Its heavy bloom is produced late in the season.

10-12 Inch
12-18 Inch
18-24 Inch

The Friendly Evergreens



A reprint of this highly valuable publication is now available. The book contains 240 pages, more than 80 color plates and a total of more than 500 illustrations.

Various phases of Evergreen culture are illustrated with over 200 drawings. It has been termed as the most complete book ever published on the subject.

PRICE \$10.00

FERTILIZERS

are important to our Production of

QUALITY EVERGREENS



250 head of cattle in one of our feed lots.

**An extensive cattle-feeding program provides
over 1,500 tons of manure annually.**

INDEX

ARBORVITAE

American	12
American, dark green	12
Hill Pyramidal	12
Woodward	13

FIR

Douglas	10
Pyramidal Concolor	1

HEMLOCK

Canadian	13
----------------	----

JUNIPERS

Ames	3
Blue	6
Canaert	6
Chinese Column	1
Globe Hillbush	5
Hillbush	4
Hill Dundee	6
Hillspire	6
Iowa	3
Japanese	4
Japanese, Dwarf	4
Keteleer	1
Maney	3
Pfitzer	2
Pfitzer, blue	2
Pfitzer, golden	2
Prostrate, golden	3
Prostrate, vase-shaped	4
Red Cedar	5
Russian No. 2	4
Sargent, green	3

PINES

Austrian	8
Red	9
Scotch	9
White	9

SPRUCE

Black Hill	8
Colorado	8
Dwarf Alberta	7
Norway	7

SPURGE

Japanese	7
----------------	---

YEW

Brown's	11
Compact Spreading	11
Hatfield	11
Hick's	12
Japanese, dwarf	11
Japanese, spreading	10
Japanese	11

ORNAMENTAL SHRUBS

Oregon Hollygrape	13
Purple-leaf Wintercreeper	13

FLOWERING CRABAPPLES

Adstringens	14
Dolgo	14
Floribunda Atrosanguinea	14
Floribunda Purpurea	14
Purpurea Eleyi	14
Ringo	15
Robusto Persicifolia	15
Zumi Calocarpa	15

LILACS

Persica Laciniata	16
Vulgaris Berryer	16
Vulgaris Chas. Joly	16
Vulgaris Congo	16
Vulgaris Decaisne	16
Vulgaris Gen. Sheridan	17
Vulgaris Kate Harlin	17
Vulgaris Mme. Florent Stepman	17
Vulgaris Marechal Lannes	17
Vulgaris Pres. Grevy	17
Vulgaris Pres. Lincoln	17
Vulgaris Souv. de Ludwig Spaeth	17

BOOKS

The Friendly Evergreens	18
-------------------------------	----
