

62.13  
LIBRARY

REC'D

★ JAN 20 1954

U. S. Department of Agriculture

**BEGONIAS**  
**RARE PLANTS**  
*and*  
**GERANIUMS**



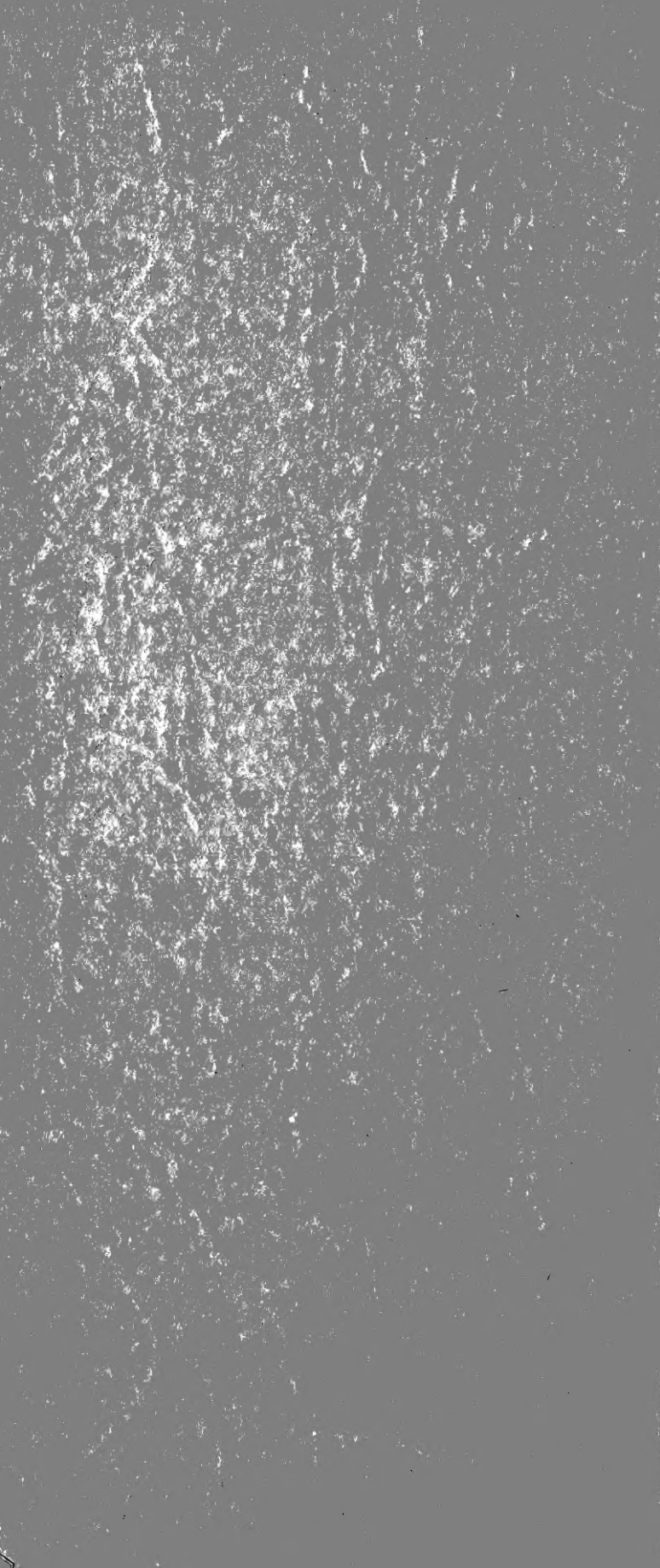
**1954**

**LOGEE'S GREENHOUSES**

Established 1892

55 NORTH STREET

Danielson, Connecticut



## FOREWORD

We wish to thank our many customers throughout the country who have favored us with orders in the past and to welcome those who will be receiving plants from us for the first time this season.

It is our aim to supply you with healthy stock, packed with great care and with proper culture will grow to give you much pleasure.

Thank you for the complimentary letters we have received from so many about our plants and the excellent condition in which they arrived. It makes us very happy indeed.

We want to tell you something about the Logee Greenhouses. They were founded by our Father, William D. Logee, fifty-eight years ago and that is what makes it such a unique business. The original woodframe greenhouse still stands. In this old structure grows our famous Ponderosa Lemon Tree, over half a century old, always laden with fruit, weighing three pounds each, which is a great attraction. A sprawling Acacia at one end of the house appears to be supporting the glass, offering shade to the Begonias below. There is a fine specimen of the Bird of Paradise, tropical vines such as Bouganvillea, Passion Flower, Star Jasmine, and Allamanda.

Our main Begonia house is arranged with center beds and benches where grow our specimen plants. During late winter and early spring this house is a sea of color when the towering airy blooms of the rhizomatous and cane types in shades of pink and white are at their best.

In Autumn comes a riot of color when the Hiemalis Begonias are in bloom. These are the winter flowering tuberous, blooming when the summer tuberous varieties are but a memory. Beneath the benches grow Rex in endless variety, where the subdued light brings out the satiny brilliance their leaves possess.

From this brief description it is evident that we are in horticulture for more than a business venture. We enjoy working with rare plants, maintaining an increasing variety so that those interested in Begonias and exotics will have access to the countless species and hybrids.

Visitors are welcome. Our greenhouses are open every day, including Sundays and holidays. We are located one mile from the center of Danielson just off Connecticut Rte. 12, in the north end of town.

*Richard M. Logee Ernest E. Martin*

*Joy Logee Martin*

**LOGEE'S GREENHOUSES**

---

### TERMS OF SALE

Please make all remittances payable to "Logees." No C.O.D. orders. All orders shipped postpaid. Connecticut residents add 2% Sales Tax to all orders.

**Minimum order \$5.00.** West of the Mississippi minimum order \$5.50 to help defray the added cost of long distance shipping.

All orders going outside the local zone are sent via parcel post prepaid, **SPECIAL HANDLING.**

Shipping continues throughout the year except at Christmas season and colder periods during the winter. Orders to nearby states and the South are generally shipped throughout the winter. The plants you receive will be in 2¼ and 2½" paper pots.

Larger sized plants are available, write for prices.

### PLEASE NOTE

**ALL BEGONIAS LISTED IN THIS CATALOG ARE PRICED AT 75 CENTS EACH UNLESS OTHERWISE STATED.**

**THIS CATALOG CANCELS ALL PREVIOUS LISTS.**

# REX BEGONIAS

## TIPS ON CULTURE

Good drainage is the first consideration in growing Rex begonias. Its best not to overpot them. Aeration and drainage are desirable at the sides as well as the top. Therefore, glazed or painted pots must not be used.

Rex begonias suffer from overwatering, especially if the soil is heavy or poorly drained. A plant kept somewhat potbound does much better.

Many begonias including Rex, do marvelously well growing entirely in shredded leaf mold or compost. We advise using leaf mold entirely where only heavy clay soils are to be found.

Our potting soil for Rex is made up of two thirds compost, one third old sod soil to which we add a liberal amount of bone meal. A sprinkling of wood ashes, if it's on hand, is used. Complete plant food is added as the plant grows and requires it. Charcoal is worked into this mixture, too. Note we use no sand, finding it unnecessary.

The Rex is strictly a shade plant. North windows will do. Set back from any window away from direct sunlight is ideal. Shady sheltered spots outdoors during summer months are best.

Color with some varieties is variable - effected by light, season, and soil.

Those who find it difficult to grow Rex throughout the year; especially where the atmosphere in the home is too dry for some varieties, can treat them as a seasonal plant for summer growth by keeping the rhizome or root-stock on the dry side during winter. Then bring them into life in spring by adding water and food. Dont discard a plant because it has dropped its leaves. It can become a beautiful plant in a short time in season.

## NEW INTRODUCTIONS

AUTUMN GLOW. Pointed leaf mottled rose and silver. Green at the margin. Outstanding color and strong grower \$2.00.

AVILA. Well-rounded leaf with overlapping lobe. Zones of rose and silver. Dark center. Color variable. \$2.00

DEW DROP. Leaf with pearly surface delicately tinted pink. A face-up type. Lobed leaves suggestive of the ivy. Small plant. \$2.00.

CURLY SILVER LAKE. Much like Purple Curly Stardust. Lighter undertones. Crimson edge. \$1.50.

CURLY THUNDERCLOUD. Like Thundercloud described in this group, but having spiral leaf. \$2.00.

DUARTEI. Brown and green predominates in this variety. Spiral leaf, densely coarse red hair. Different. \$2.00.

FRAU HOFFMAN. Metallic rose covers center of leaf shading to silvergray. Branching habit. Supply limited. \$3.00.

LIBELLIE. Heavily silvered, narrow leaf of medium size, base branching. Form like Salamander. \$1.00.

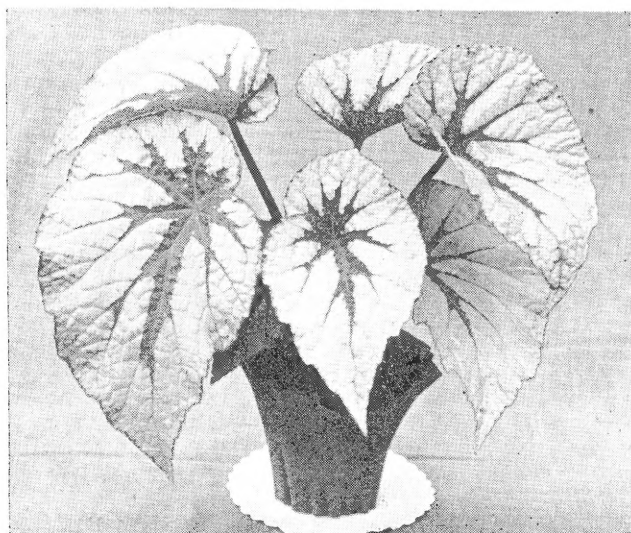
MOHEGAN. Small leaved typical rex. Brilliant crimson rose, edged with maroon. Strong grower and gorgeous coloring. \$2.00.

POINCARE. Large spotted silver and green leaf with solid silver dripping from lobed margin. \$1.00.

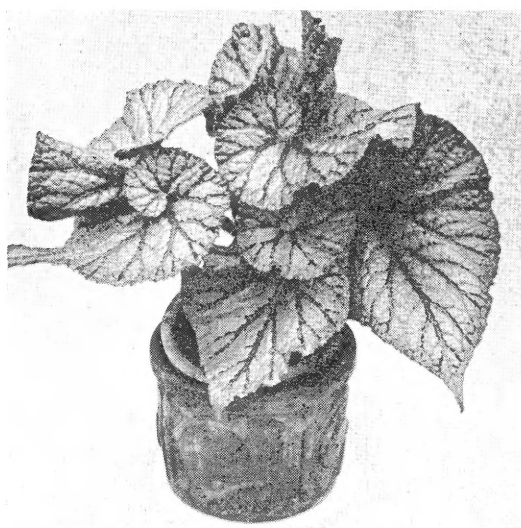
THUNDER CLOUD. Ruffled leaf of silver green, with distinct dark green center, very attractive. Medium grower. \$1.50.

SILVER GREEN HEART. Very beautiful. Nearly entirely silvery green leaf. Solid green at center. \$2.00.

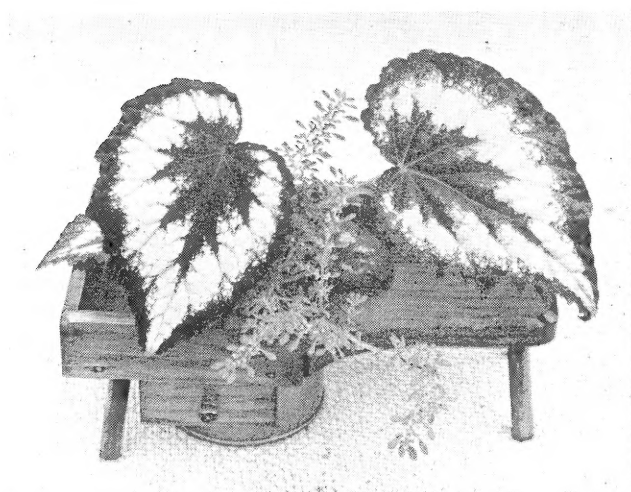
RAMONA. New. Beautiful pointed leaves, outer edge silver, center zone maroon, overall flushed with crimson. \$2.00.



SILVER GREENHEART



COMTESSE LOUISE ERDODY



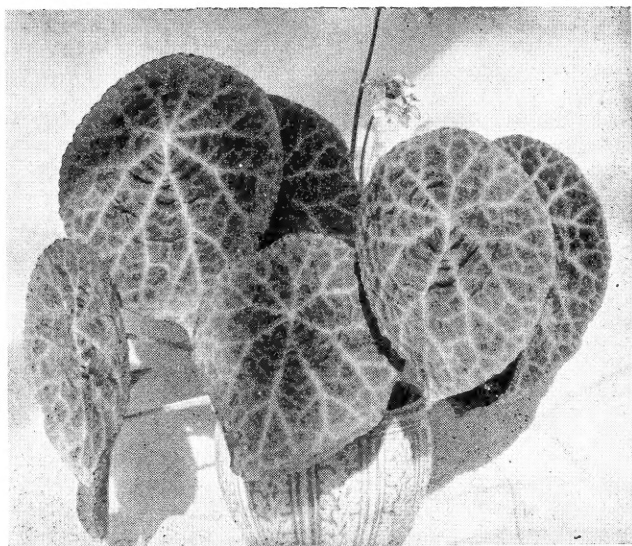
HELEN LEWIS

## VARIETIES WITH SILVER THE PREDOMINATING COLOR

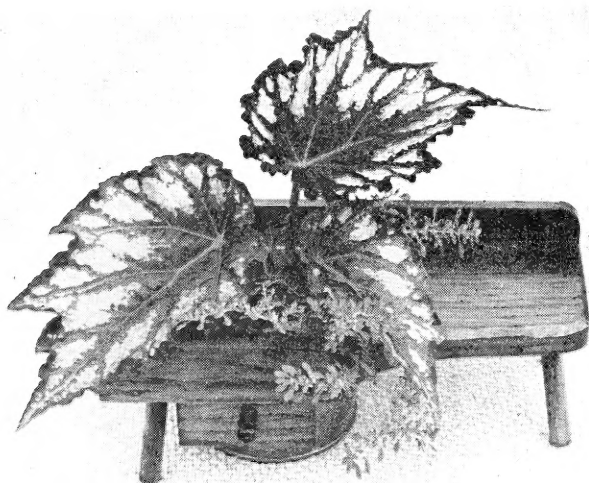
- A.D. DAVIS. Medium leaves of silver gray. Brownish gray at the margin in striking contrast. A choice of many.
- COONS EYE. Silver with undulating edge. Pearl green center. Upright. \$1.00.
- MRS. DREW. Silver green with bright green. Zones clearly marked. An illusion of a leaf within a leaf. Fine green variety.
- ELLA MARGUERITE. The silver in this variety is outstanding. Mottled green border, toothed, and lobed margin.
- HUSBANDS FAVORITE. Medium plant with round leaves heavily silvered. Flushed pink at times. \$1.00.
- INIMITABLE. Silver green leaf with many erect pink hairs.
- MARLBOROUGH BEAUTY. Large leaf almost entirely silver. Green breaking through at the margin. An old favorite.
- MONTALVO. Large silver leaf with green at the center and at the margin.
- MRS. FREVERT. Leaf outline similar to the maple. Silver-green darker at the edge.
- MRS. JOHN BURNHAM. Large silver leaf lightly covered with pink erect hairs.
- MRS. MOON. Shallowly lobed leaf with a different shade of silver-green. Distinct palmate center. Upright.
- PEACE. Wide tapering leaf entirely silver tinted pink, deepening to rose with increased light. \$1.00.
- PERLE DE PARIS. Beautiful large leaves of silver metallic green. Flowers striking lemon color. True elephant ear begonia. \$1.00.
- QUEEN WILHEMENA. Almost entire silver. Leaves large with blistered surface.
- ROBERT GEORGE. Leaves on long petioles. Another maple leaf type, silvered heavily to be near solid. Green palmate center and edging.
- SILVER CORD. Round leaf of silver and green. Silver confined to the areas between veins.
- SILVER KING. King of the silvers--well named--large steel grey leaf with glistening surface.
- SOLID SILVER. Small plant in monochrome. Narrow pointed leaves somewhat erect. \$1.00.
- SPIDER WEB. Leaves deeply lobed silver gray and sparsely hairy.
- CHARLES SCHMIDT. Large green lobed leaf sparsely silvered.
- CARNOT. Large leaf of darkest green. Raised silver spots evenly distributed.
- DARK CARNOT. Deeper colors than the above. In this variety silver spots are subdued. Very attractive. \$1.00.
- EMERALD GIANT. A beautiful begonia with rich colors of green and brown. Stands out among the others in the green class. Specimens of this are gorgeous. \$1.00.
- FIESTA. Round leaf with even margin. Splashes of silver that turn pink lustre. More colorful than Carnot or Rubena. \$1.00.
- IMPROVED MODESTY. Strong grower. Background of daphne pink on solid and peppered zones of silver. Choice.
- KATHLYANA. Long pointed lobed leaf heavily speckled silver. Bright unbroken lines of green to the margin. Very attractive. \$1.00.
- LESOUDESI. An old timer. Lobed leaf, dark green, spotted pea green and silver.
- LORD PALMERSTON. Markings much like Improved Modesty, whereas in Lord Palmerston the base is green.
- MODESTY. Long leaf, blunt with dots and splashes of silver green.



SILVER SWEET



GOEGOENSIS



HELEN TUPPEL

Photos by Ernest E. Martin

PEARL HUME. Large silver spots on grass green background. Richly contrasted as in no other variety. On long stems (petioles) and lobed leaves.

PETER PAN. Beautiful green variety. Center band of silver green. Dark green background.

RUBENA. Resembles Fiesta in many ways. Flushes pink in the sunlight.

SALAMANDER. Much like Fairy, only the base color here is green. Compact grower with erect pointed leaves.

### **REX ALL GREEN OR SLATE GREEN IN COLOR**

BEARDED. Outstanding hairy rex. Shades of green. Coarse light hairs standing erect over the entire leaf. \$1.00.

JECOCK MIDNIGHT. Large leaf similar to Rubena. Over-all green cast.

CHILDS SPOTTED. Entirely green except for small dots at the base of fine hairs. Leaf of heavy texture.

EVERGREEN. Solid fern green leaves, broad and tapering. An all green variety. \$1.00.

MIDNIGHT. Smoky leaf, evenly peppered with white dots.

QUEEN OF HANOVER. An old well-known variety, easy growing. Bands of green and lighter green. Many fine pink hairs.

STARDUST. Large dark olive green, entirely dusted with silver.

TIOGA. Center of olive green. Margin brighter green. Blistered surface.

### **BRILLIANT LEAVED GROUP**

BLACK DIAMOND. Erect habit of growth. Leaves dark maroon with center zone of burnished silver, faintly speckled. Leaves face up. \$1.00.

BLACK KNIGHT. Broad leaf of almost black. Stipled band of pink dots. One of the darkest varieties. \$1.00.

CARDOZA GARDENS. A plant of rainbow hues. Possessing most of the colors of the spectrum. Patterned after Helen Lewis though more colorful. \$1.50.

CHRETIEN. Bright metallic rose on black. Low-growing with broad leaves. Very showy number. \$1.00.

CRIMSON GLOW. Leaves pointed and slightly cupped. Rose-pink dusted silver. Longer leaf than the usual.

DUSKY ROSE. Deep sombre tones of maroon and black. Compact plant with wide leaves. \$1.00.

EMPEROR. Leaf has a sanded appearance. Flushed crimson at the center.

FAIRY. This plant and Salamander are similar. Fairy has the rose background and silver spotted. \$1.00.

FIREFLUSH. Authentically it's Bettina Rothschild, but the name Fireflush is so fitting. Plant entirely covered with red hairs. New leaves like velvet. Flowers are fragrant. The best seller in the collection. \$1.50.

GLORY OF ST. ALBANS. The most brilliant colored rex in the group. Small plant with leaves of glistening bright rose. Margin of leaf grass green speckled rose. Outstanding. \$2.00.

HELEN TUPPEL. Of Dutch origin. Leaves long, pointed, sharply lobed. Garnet brushed with silver. Different. \$1.00.

HERMAN TUPPEL. Like its sister in color. Broader leaf without lobes. \$1.00.

HUNTINGTON LAKE. Somewhat hairy leaves of deepest color. Faintly marked silver. \$1.00.

HELEN LEWIS. Bands of color are distinct in this variety being deep wine and contrasting band of silver. Very popular. \$1.50.



- HER MAJESTY. Distinctly different leaf than most. Black center and edge, with a frosty zone of metallic rose. \$1.50.
- KING EDWARD. Another very dark variety with satin black leaves spotted red. Of easy culture. \$1.00.
- KING HENRY VII. Medium plant with dark maroon leaves, irregular spots of silver. \$1.00.
- MARION LOUISE. Pointed and sharply lobed leaves of silver green. Grass green center and margin. Greatly admired. \$1.50.
- METEOR. Compact plant with well-rounded leaves. Deep rose entirely speckled with silver. None like it in the collection except perhaps Avila. \$1.00.
- MIKADO. Leaf colored plum rose at center and margin. Plum color spilling into a silver center. Another of the really bright ones. \$1.00
- MT. HAZE (Wadsworth) A true smoky rex. Dusky rose dusted with silver. \$2.00.
- OUR INDIAN. Leaf with glossy surface. Indian red, dullest green at the margin. \$1.50
- PACIFIC SUNSET. Medium silver leaf flushed rose at the margin.
- PAINTED LADY. Daubed like an artist's pallet. Splashes of red and green most conspicuous. \$1.50
- PATSY. Low growing with shallow lobed leaves. Silver and rose. Grows well with us. \$1.50.
- PEACOCK. Darkest tones of black and red. Large leaves hugging the pot. \$2.00.
- SEA NYMPH. Leaf with colorful spots like bubbles rising in emerald sea waters. Beautiful when well grown. \$1.00
- SILVER QUEEN. Taken out of the silver group because the rose and gray tones appear on the mature leaves. Grows well.
- MADAME RAMPKE. Plant with broad colorful leaf of silver brushed a lively pink. Somewhat like Herman Tuppel. Very beautiful. \$1.50

#### **SPIRALLED LEAVED GROUP**

- BALLET GIRL. The pearly gray shade of this variety makes it distinctive. Leaves small facing upward. \$1.50
- BRONZE KING. Olive green leaves. Spiralling very pronounced. Pink hairs rise from silvery dots. \$1.50.
- CAPTAIN NEMO. Green and silver green color bands distinctly marked. Much admired by everyone. \$1.50.
- CARMELITA. Leaf dark green with brown markings and silver bands. \$1.50.
- COMTESSE LOUISE ERDODY. An old variety toned gray-green, flushed rose. Overall pink hairy. \$2.00.
- CURLY CARNOT. Very heavy textured leaf almost entirely silver. Green confined only to the veins. \$1.00.
- CURLY FIREFLUSH. A well-grown plant of this is a sight to behold. Same as Fireflush, perhaps a little more bushier. Very beautiful. \$2.00.
- CURLY STARDUST. Gray-green leaf facing up. Sprinkled with silver. \$1.00.
- NEW ERDODY. A curly form of Queen Wilhelmina. \$2.00.
- OREGON SUNSET. Colors of the hardwood trees in autumn. Browns, greens, and russett. Leaves appear rolled and crumpled. Really different. \$2.00.
- PRINCESS OF HANOVER. Green the predominating color of this beautiful spiral form. Covered with tiny light pink hairs. Splitting of the stem is characteristic with this variety. Very beautiful. \$1.50.

- PURPLE CURLY STARDUST. Leaves of purplish cast heavily stippled silver. Nothing similar. \$2.00.
- SILVER GLOW. No variety in our collection has the form of Silver Glow. Hard-textured leaf that is ruffled and spiralling. Likes to drape itself over the pot. \$2.00.
- TWISTY SPOT. Coarsely toothed leaf of wine. Silver dots evenly distributed. Really different. \$2.00.

#### UPRIGHT AND BRANCHING TYPES

- ANNIE ROBINSON. Plant with a striking metallic zone in center Remainder black, dark red beneath. \$1.00.
- ABEL CARRIERE. Small smooth leaf of silver and green flushing pink in sunlight. An old favorite. Branches well.
- ALFREANA. Satiny silver gray leaves that are pointed with dark slate palmate center. \$1.00.
- BERTHA MACGREGOR. Spots and splashes of silver on olive green. Deeply lobed like the maple. Much admired.
- IRISH COLLEEN. Small satin green leaves, black-veined. Changeable.
- MRS. A. G. SHEPARD. Silver covers most of the leaf with a distinct green margin.
- NIGGER TREE. Smoky black leaf with a faintly peppered zone showing at times an area of brightest green. Stands out in the dark leaf sorts. \$1.00.
- PINKIE. Solid silvery pink except for delicate markings of purple where the stem joins leaf. \$1.00.
- SILVER FLEECE. Branching spreading habit. Light green background stippled with silver.
- SILVER SWEET. Makes shapely plants. Silver gray leaves that are of good texture. Dark lines follow the veins to the margin. \$1.00.
- VAN EX. Branching type with silver on green. Quite different.

#### MINIATURE GROUP

- BABY RAINBOW. Most colorful miniature in our collection. Brightest rainbow hues. Grows best during the summer months. \$2.00.
- CALICO. Round leaves evenly dotted silver. Flushed crimson at times. \$1.00.
- GRIFFITHI. Species from Bhotan that is a beautiful miniature. Leaf surface fine pink hairy. Zones of green and lighter green, flushed crimson beneath. Flowers white. Does best in warm humid conditions. A real gem. \$2.00.
- IT. This plant is often given preference over Marjorie Gibbs at Christmas. Leaves of silver and green with many single pink flowers in season. \$1.00.
- LOUISE CLOSSON. Dark red leaf with metallic sheen. \$1.00.
- LUCILLE CLOSSON. Dark leaf with large purple-pink blotches. Very choice and nothing like it. \$1.50.
- LUCY CLOSSON. Dwarf leaf with tiny flecks of purple. \$1.50.

#### NEW AND RARE INTRODUCTIONS

- AFRICAN SPECIES. Beautiful plant with dark smooth green foliage like the peach leaf. Smooth stems with brown tomentose. Flowers white. \$2.00.
- ARIDICAULIS. A worthwhile miniature in any begonia collection. Ideal for terrariums. Small, bright green leaves lighter along the veins. Flower white in late winter. Curiously, the stems appear to be withered. \$2.00.
- BOWERI MAJOR. Larger than its petite cousin, Boweri. Blotches on leaves not as pronounced as the former, but possess a vibrant green, clumpy habit. \$1.50.



ARIDICAULIS



HEMSLEYANA



SPAULDING

Photos by Ernest E. Martin

- CUBAN SPECIES. "Holly-leaved Begonia" Small glossy dark green leaves, sickle-shaped. Flowers white which appear in pairs and cover the plant in winter. Bushy habit. \$1.50.
- DAYI. Interesting rhizomatous. Glossy, light green leaves with dark maroon veins. Ivory-colored flowers on graceful long sprays above the foliage. \$2.00.
- DUSCHARF. More beautiful than Scharffi, which it resembles. Leaves broader, darker green, with white hairs. Blooms in huge clusters, white, covered with pink hairs, lasting over a long period. \$3.00.
- ELLA KEYES. Similar to Feasti, the "Pond Lily Begonia" Leaves much larger, lighter green. Fragrant blooms of light pink. \$2.00.
- E. O. ORPET. Limminghei X Mazae, introduced by Rudolph Ziesenhenné. Hanging type hybrid with beautiful bronzy leaves, shaped like Limminghei. Flowers coral in winter. Strong grower. \$1.50.
- FERNANDO COSTAE. Large round leaves, similar to Acetosa. Very hairy, bright green above, rose pink beneath. Flowers white in large clusters above the foliage. Each floweret forms a perfect cross. New species from Brazil. \$2.00.
- FLORENCE CARRELL. A fine new hybrid of Limminghei, produced by Mrs. Elsie Frey of California. An ever-blooming trailer, with beautiful coral red pendulous flowers. New. \$2.00.
- FRANCISII. The "Nasturtium-leaved Begonia", low growing, creeping habit. Stems brown, turning to red where the new leaves appear. Hairy. New leaves strawberry color. Flowers in white. An excellent new species from Mexico. \$1.50.
- GLOIRE DE JOUY. Resembles varieties in the Mallet group except the leaves are rounder, green, peppered with silvery spots, red beneath. Flowers large soft pink. \$2.00.
- HANDELI. Rare species from China. Rhizomatous, leaves light green sparsely covered with bright red hairs. Flowers cream color, fragrance of sandalwood. \$3.50.
- HEMSLEYANA. Palmate leaves of shining green above and red beneath; bushy habit of growth makes this species from China a distinctive variety. Flowers pink in summer. Of easy culture. \$2.00.
- HISPIDIVILLOSA. Rhizomatous. Light green round leaves, course hairy, veins prominent. A medium grower, stems covered with maroon hairs. Flowers light red in winter. Rare species from Mexico. \$2.00.
- ISOPTERA. Java species. Low growing with small, light green leaves, margins red. Tiny flowers greenish white edges red. Bushy grower and distinctive. \$1.50.
- JOHNSTONI. Rapid growing, erect habit. Ovate-scalloped leaves with faint gray bloom, cherry red at the sinus. Stems spotted red. Light pink flowers in winter. \$1.00.
- KENWORTHYI. Rhizomatous Mexican species, with leaves resembling ivy in form, smooth, with grayish bloom. Flowers faintly pink in mid-winter. One of the finest distinctly different new Begonias. \$2.50.
- LIMMINGHEI X. DICHROA. Hybrid of great vigor. Large triangular grass green leaves. Drooping habit. Showy coral pink flowers, in large clusters. Gains attention here. \$2.50.
- LUWALTER. Another Mazae hybrid. Upright growth, leaves smaller and lighter than Mazae. Flowers pink in winter. Graceful plant. \$1.50.
- PICTA. A beautiful, summer growing tuberous species from the Himalayas. Leaves of velvet green, veined dark green, maroon under. Large single pink flowers. \$2.00.



SILVER PUSTULATA



DI-ERNA



RICKY MINTER

Photos by Ernest E. Martin

- PINK PARADE. Gorgeous *Dichroa* hybrid of Mrs. William D. Nisbet. Flowers are actually salmon pink. Prime leaves heavily silver-spotted, wavy margins. \$3.00.
- PINK SPOT LUCERNE. Outstanding hybrid of Coralline Lucerne, having dark green leaves with metallic-pink spots. Bright red blooms are striking. Greatly admired by everyone. \$3.50.
- QUADRELOCULARIS. Lanceolate leaves, somewhat cupped, brittle, pebbly texture. Unusual white flowers bearing four winged seed pods. New species. \$2.00.
- RICHY MINTER. *Cristata* X *Mazae*. Leaves dark bronze, ruffled edge with prominent veins. Rose pink flowers in winter. A robust grower. \$2.50.
- ROTUNDIFOLIA. A miniature with round crenate light green leaves on red petioles. Flowers white blooming over a long period. Native to Haiti. \$2.00.
- RUBIYAT. A beautiful hybrid of *Dichroa*, with smooth green leaves and large clusters of luscious salmon pink flowers, which continue blooming over a long period of time. \$2.50.
- SILVER PUSTULATA. Greatly admired by everyone, with its silvery-white markings on Nile green leaves. Low-growing, outstanding new *Begonia* of merit. \$2.50.
- SPAULDING. New miniature by Louise Schwerdtfeger of Santa Barbara (*Boweri* X *Hydrocotylifolia*) Round leaves with slightly hairy margin. Brownish green to green above. Underside beet-red adjacent to the veins. Flowers light pink to near white depending on the light. \$2.00.
- STITCH-LEAF. Resembles *Mazae*, with dark green markings like stitches at the margin. \$1.50.
- TAMO. Strong hybrid of *Incana* X *Mazae*. Upright rhizomatous of unusual beauty, leaves covered with tomentum, green-brown above, red beneath. Flowers white in winter. New. \$2.50.
- TINGLEY MALLET. (MME. LIONNET) One of the most beautifully colored, brilliant red bronze leaves, overlaid with silver pink dots and red hairs. Large clear rose pink flowers. Of easy culture. \$2.00.
- THE PRESIDENT. Double red flowers, three inches across. One of the most brilliant so-called "Winter-flowering *Begonias*." Excellent house plant. New. \$3.00.
- VERSICOLOR. Probably the most colorful *begonia*. Native of China. Low growing, round leaves covered with red hairs. Markings of brown silver and green. Nothing like it, very rare. \$3.50.
- ZEEBOWMAN. A fine silver-leaved hybrid of *Liebmanni* and *Boweri*. Rhizomatous and compact. \$2.00.

#### GRAPE LEAF GROUP

- ACIDA. Low growing habit with netted light green leaves. Distinctive and different. \$1.50.
- ILLUSTRATA. Compact plant with small round leaves gray-green, faint mottling. Flowers in winter. Illustrated in *Begonian*, March, 1953.
- PEARLI. Leaves of pearly gray with narrow green margin.
- SPECULATA. Light green shallow lobed leaves. Surface blistered. Rhizomatous growing well proportioned plants. Flowers lovely light pink, in winter. Popular. \$1.00.

#### MISCELLANEOUS FIBEROUS BEGONIAS

- SCEPTRUM. Syn. *ACONITIFOLIA*. Tall growing type with deeply lobed silver blotched leaves. \$2.00.
- ALMA MILLIKEN. Rather tall growing smooth lucerna type. Splashes of silver and green, with red margin. \$1.00.
- ALNIFOLIA. "Alder Leaf". Plant entirely smooth with narrow light green leaves. \$1.00.
- ALPHA GERE. Leaf like *begonia* *Dichotoma*, light green, toothed. Named for Mrs. Albert Gere. \$1.00.

- ARTHUR MALLET. One of the most richly colored; dark red-bronze leaves overlaid with silver-pink dots; large clear rose-pink flowers. \$2.00.
- ASCETOSA. Grows much like Feasti but more beautiful. Leaf surface hairy, bright green, underside red velvet. White flowered, Brazilian species, summer flowering. \$2.00.
- BOWERI. The miniature Mexican variety that has become popular. Leaves light green chocolate markings, erect hairs at the leaf margin. Pale pink flowers during late winter. \$2.00.
- CATHAYANA. Native to China. The beauty of the leaf is unsurpassed. Exquisite green shades with smooth bright red veins further adding to its beauty. Light orange flowers. \$2.00.
- CRESTABRUCKI. A robust crinkly edged begonia called the "lettuce leaf". Turns red at the edges in sunlight. \$2.50.
- DANCING GIRL. Outstanding, because no leaves on the plant are alike in cut and size. Leaves green, streaked and spotted silver. Bushy habit. \$1.50.
- DAWN. Low growing with lance shaped leaves, green heavily silvered. Red edged. \$1.00.
- DELICIOSA. Borneo species. Smooth plant, quite tall, red stems, dark green leaves deeply lobed. Light pink flowers in late summer. \$1.00.
- DIADEMA. Leaves more deeply cut than the above and light green, streaked silver. White flowered. \$1.00.
- DICHROA. Beautiful low growing rather woody plant from Brazil. Bright glossy green leaves. Outstanding because of its brilliant orange flowers. \$3.00.
- ELSIE FREY. Plant hugs the pot with glossy dark cordate-like leaves. Flowers pink in the late winter. Beautiful in hanging container. \$1.00.
- ENGLERI. Stems covered with shaggy red hairs, upright habit of growth. Leaves dark green, toothed, veins red. African species. \$1.00
- EPIPSILA. Low growing Brazilian species with fleshy leaves glossy green above, brown wooly beneath. Flowers white, showy seed pods. \$2.00.
- GOEGOENSIS. Rhizomatous species from Sumatra with puckered peltate leaves that are bronzy green, veins lighter green. Leaf stems (or petioles) are square. Winter bloomer. Requires heat and rather humid conditions. \$3.00.
- IMPERIALIS. Choice miniature with cordate leaves. Indigenous to Mexico. Velvety leaves are two-toned olive brown and brighter green. Suitable for the Wardian case in the home. \$2.50.
- IMPERIALIS SMARAGDINA. Like the above, but with the leaves solid emerald green. \$2.50.
- JOE HAYDEN. One of the finest hybrids of Mazae. Leaves are satiny dark bronzy green, red beneath. New leaves rather deeply lobed. Flowers in late winter with reddish blossoms. Vigorous and easy grower. \$1.50.
- LIEBMANNI. Low growing clumpy plant with silver and green leaves that are pointed or sharply lobed). Flowers white. \$1.50.
- LUXURIANS. Beautiful and different begonia having palmate leaves. Up to a dozen or more narrow green leaves radiating from center. Rather difficult to flower Tall grower. \$1.50.
- MALABARICA. Very old begonia from Malabar. Leaf possesses a rich green shade that sets it apart. Large light pink flowers on short stems. \$1.00.
- MANICATA AUREO CRISPA. Choicest of the manicata group. Leaves light green mottled yellow, crinkly margin that becomes pink in the sun. \$3.00.



MANICATA AUREO CRISPA



MARGUERITACAE



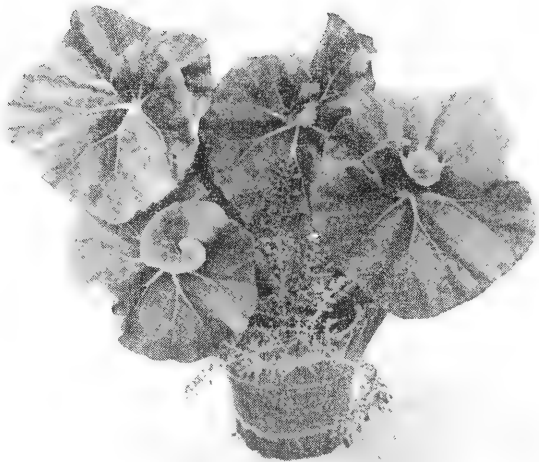
JOE HAYDEN



- MARGARITACEA. The color of leaves in this variety hard to describe. Like the metallic-purple leaves of Arthur Mallet. Lower growing than the latter. Blooming freely with pink flowers. \$1.50.
- MME. FANNY GIRON. A variety that does well in hanging containers. Bright crimson flowers are distinctive. leaves green, toothed, and pointed. \$1.00.
- MAZAE. Becoming quite popular with hybridists. Upright plant with round bronzy green leaves, satiny surface. Late winter bloomer. Flowers small deep pink. Smoothness to stems and leaves. \$1.00.
- DIPETALA Syn. (MRS. KIMBALL) Erect grower, with green finely toothed leaves close to the stalk. Large light pink flowers on short stems. \$1.00.
- NITIDA ODORATA ALBA. An erect plant with smooth bright green leaves. Rose scented clusters of large white flowers. \$1.00.
- NITIDA. Thick, glossy green leaves, with rose colored flowers. Fragrant. \$1.00.
- ODORATA ALBA. Dwarf unidentified. Bushy plant with light smooth green leaves and white flowers. Has pronounced fragrance in warmth and light. \$1.00.
- OADI. Seedling of Odorata Alba. Free flowering type with pointed glossy green leaves. Blossoms light pink.
- OLBIA. Smooth plant with bronzy green leaves lobed like the maple. Drooping large white flowers. Beautiful when well grown. \$1.00.
- ORANGE RUBRA. Like Dichroa though more erect. Showy orange flowers. \$3.00.
- PLEBIA. Rhizomatous growth with light green leaves and conspicuous brown spots. Blossoms against the pot. Small white flowers. Completely dormant in winter. \$1.50.
- RED KIMBALL. Much like Evansiana. Leaves have a red cast.
- RED-VEINED NELUMBIFOLIA. Plant with medium to large peltate leaves with conspicuous red veins on the newer leaves. \$1.50.
- RICHARD ROBINSON. Semi-tuberous plant with leaves resembling the cut-leaf maple. Silver and green surface. Bushy growth. \$1.50.
- ROEZLI. Erect plant of round smooth green leaves. Light pink flowers in winter. \$1.00.
- RUBRO-VENIA. Long tapering leaves dark green above, red beneath. Flowers white. A distinctive species from India.
- RUBRO-VENIA SILVER. Like the above, except the leaves are entirely silver green.
- RUBRO-VENIA SPOTTED. Like the type with white spotted leaves.
- SCHULZIANA. Miniature species from Haiti. Leaves sharply lobed. Interesting Rhizomatous variety. \$1.00.
- SUBVILLOSA. Of easy culture. Fast growing species. Leaves soft green, ovate. Flowers white.
- TEA ROSE. Variety derived from Odorata Alba. Free flowering and fragrant.
- TENUIFOLIA. One of the oldest known; leaves thick, deep green above, lighter beneath with light red veins; flowers profusely, delicate pink. \$1.00.
- ULMIFOLIA. Erect plant with leaves of light green resembling the elm tree.
- UNDINE. Bushy variety of Odorata Alba. Leaves crinkled. Large white flowers.

## RHIZOMATOUS AND PROCUMBENT GROUP

- BESSIE BUXTON. The upright Pond Lily or Beefsteak Begonia. Very free blooming having light pink flowers in winter. \$1.00.
- BUNCHI. Ruffled type erythrophylla. Leaves light green, crested margins. \$1.50.
- CAROL STAR. Strong grower with large rhizomes. Leaves deeply slashed, star-shaped. Light pink flowers in winter. \$1.50.
- CHIMBORAZO. Clumpy grower. Leaves smooth light green, peltate. Easy culture. \$1.00.
- CONCHAEFOLIA. Small Rhizomatous type with slightly concave peltate leaf. \$1.00.
- ERYTHROPHYLLA. Better known as Feasti or Pond Lily type. Probably has been grown more than any other begonia. Leaves thick, smooth green above, red under. Light pink flowers borne well above the foliage. \$1.00
- ERYTHROPHYLLA HELIX. Spiraling form of the above. \$1.50.
- FUSCOMACULATA. Creeping root-stocks lying close to the pot. Smooth chocolate spotted leaves, shallowly lobed. Profusion of light pink flowers in late winter and spring. \$1.00.
- GILSONI. Erect habit of growth. Pointed leaves, toothed, smooth green. Pink blooms, appearing double.
- HERACLEICOTYLE. (syn. for Mrs. Townsend) Bronzy green leaves, shallow lobes. Showy deep pink blooms. \$1.00.
- HERACLEIFOLIA. The all-green star-leaved begonia. Large white blooms. \$1.50.
- HYDROCOTYLIFOLIA. Pennywort or miniature Pond Lily-type. A plant for the terrarium. Dark green glossy leaves on short petioles. Flowers light pink. \$1.00.
- INVOLUCRATA. Upright growing. Leaves, very fine, hairy light green, lobed. Fragrant flowers bursting from papery envelope. A beautiful white flowered species from Costa Rica. \$1.50.
- MARIAN. Much like Ricinifolia in leaf and form. Flowers are of the deepest pink we know of in these types. \$1.50.
- MANICATA. Light green leaves, smooth, toothed. Collar of fleshy hairs under the leaf sinus. Delicate pink flowers above the foliage. \$1.00.
- MANICATA AUREO MACULATA. Like the above variety but having yellow leaf markings. \$1.50.
- MRS. MARY PEACE. A star begonia with deeply-slashed leaves. Flowers light pink. \$1.50.
- PAUL BRUANT. Of easy culture. Free flowering variety blooming in winter. Leaves fine lobed and pointed, smooth green. \$1.00.
- PERLE LORRAINE. Upright growth. Leaves sprinkled with chocolate markings. Pink flowered. \$1.00.
- PHYLLOMANIACA. Like Templini all-green leaves. Has the characteristic of producing tiny plantlets on the older leaves. (syn. Jessie) \$1.00.
- RICINIFOLIA. Robust rhizomatous variety so named because its leaves are like the caster plant. New leaves rusty red. Large deep pink flowers during winter months. \$1.50.
- SILVER STAR. Sharply lobed leaves heavily blotched with silver. Leaves face-up on erect stems. Different than many in this class. \$1.00.
- SKEEZAR. Leaves of bright green and silver, smooth surface. Not as large a plant as the above. \$1.50.
- STRIGILLOSA. Mexican species with light green leaves chocolate spotted. Choice. \$1.00.



ERYTHROPHYLLA HELIX



BUNCHI



BOWERI

Photos by Ernest E. Martin

- SUNDBRUCKI VAR. HERACALEFOLIA. Known to many as the "star begonia". Deeply slashed leaves of dark green, toothed. Pink flowered in late winter. \$1.00.
- TEMPLINI. The variegated phyllomaniaca or Jesse. Erect habit, branching. Leaves blotched yellow, margins become tinted in sunlight making the plant more color-beneath. Flowers pink in winter. \$1.00.
- VERCHAEFELTI. Erect plant with shallow lobed leaves. Beautiful clusters of bright pink bloom during winter months. \$1.00.

#### FELTED LEAVED TYPE

- BARKERI (OLD). The variety we list here is possibly the old form of Barkeri with fleshy leaves, fine hairy beneath. Flowers pink in Winter. \$1.00.
- INCANA. Gray-green felted peltate leaves. Never cupped as in Kellermani. Erect habit of growth. Flowers creamy white, tinged pink. \$1.00.
- KELLERMANI. Resembles Incana with the leaves cupped. Lower growing. Flowers light pink.
- SOCIETY. Better known as Coriacea. Fleshy leaves appear stemless with large papery stipules. Clumpy growth.
- VENOSA. Leaves thickly covered with silvery hairs. New leaves produced from paper-like sheaf, pleated, gradually unfolding to a flat rounded leaf. Will take much sun in winter. Very free flowering, ivory white and spice scented. \$1.00.

#### HANGING BEGONIAS

- IVY-EVER. Well suited for baskets. Small heart-shaped leaves of dark green. Large female blooms of showy pink. Winter blooming. \$1.00.
- LIMMINGHEI. (syn. GLAUCOPHYLLA SCANDENS). Very popular hanging type with spear-like smooth green leaves. Brilliant coral blossoms at their best in late winter. \$1.00.
- MANNI. African species. More ascending than hanging. Stems somewhat woody. Interesting different blooms. Dioecious like Handeli. \$1.50.
- MARJORIE DAW. Large leaf with pendant growth. Bright green leaves. Flowers deep pink.
- SCANDENS. Compact grower with small shining crinkled leaves. Tiny white flowers having an airy effect.
- SCANDENS CORDIFOLIA. (syn. B. GLABRA) Larger and stronger grower than the above. Leaves are heart-shaped and light green. \$1.00.

#### ANGEL WING OR CANE TYPE GROUP

- ACUTANGULARIS. Stems deeply grooved. Leaves similar to Angularis. More compact.
- ANGULARIS. Green leaves with gray veins. Stems dark red. Flowers white, small.
- ANNABELLE. Typical angel wing with light green leaves, silver-spotted, green beneath. Large drooping flower clusters of rose pink. \$1.00.
- ALZASCO. Erect grower with very dark green leaves, faintly spotted. Deep red under. Dark red flowers. \$1.00.
- ARGENTEA-GUTTATA. Well-known trout-leaf begonia. Flat leaves, pointed, heavily silver spotted. Flowers white tinged pink.
- COCCINEA. Cane type with smooth green leaves, margins red. Flower clusters coral red. \$1.00.
- CORALLINA DE LUCERNA. A variety hardly ever out of bloom if grown in an abundance of light. Large, smooth, dark green leaves, spotted. Salmon rose blooms. \$1.00.
- COMPTA. Rather tall grower. Green-gray veined leaves. Flowers white, scarce bloomer.

- DI-ANNA. Free flowering heavily-spotted cane type plant with salmon-orange blossoms. A popular variety. \$1.50.
- DI-ERNA. This Dichroa Hybrid lacks the silver spots so pronounced in Di-Anna. Flowers more freely and shows greater vigor. Flowers are a deeper color than the above. An outstanding variety. \$1.50.
- ELAINE. Low-growing with narrow, slightly rolled leaves of dark green, dark red beneath. Showy rose-pink blossoms in drooping clusters. \$2.00.
- GREYFEATHER. Erect growing habit with leaves pointed, lobed, and undulating edge. Gray along the veins like Compta. Flowers creamy white. \$1.00.
- HELEN. Graceful plant with leaves of green and bronze tones. Pure white flowering Lucerna.
- HELEN W. KING. Of medium growth with bronzy leaves faintly silver-spotted. Flowers pink close to the stems. \$1.00.
- INTERLAKEN. Strong grower with dark wavy green leaves. Huge clusters of dark red flowers. Winter bloomer. \$1.50.
- LOBATA VARIEGATA. Low branching plant having serrated leaves silver-spotted. Grows best in heat.
- LOBULATA. Grape leaf, large cluster of small whitish-pink flowers, handsome winter bloomer. \$1.00.
- LUGANO. Dark green pointed leaves with toothed margins. Flowers deep pink in great profusion.
- MME. DE LESSEPS. Easy growing hybrid with pointed lobed leaves. Out-standing are the large creamy white blossoms, pink tinged with increased light. \$1.00.
- ORRELL. Everyone likes Orrell. Has about everything one desires in an angelwing. Long pointed light green leaves that are silver-spotted. Flowers profusely with blossoms salmon-rose. \$1.00.
- PRES. CARNOT. Light green leaves with faint silver spots. Flowers bright red. \$1.00.
- RED ARGENTA. Tall growing seedling of Argenta-Guttata with deep pink flowers. \$1.50.
- ROSIE MURPHYSKI. Dwarf, bushy growth. Leaves silver-spotted. Margins toothed and crinkled. Flowers pink on short stems.
- SARABELLE. Smaller plant than Annabelle. Leaves have a red cast beneath, Female flowers white and pink.
- SHASTA. Tall growing all-green angelwing variety. A fine white flowering Coccinea hybrid.

#### HAIRY LEAF GROUP

- ALLERYI. A favorite in this group with leaves dark green, deeper veins. Compact grower. Plant not lax as with many in this class. Flowers pale pink, bright pink bearded.
- ALTO-SCHARFF. Beautiful hybrid of Scharffina. Grows more erect with longer narrower leaves, than its parent. Hairy overall. \$1.50.
- CLEMENTA. Has smoother leaves than most listed here. Bright green and pointed. Haageana hybrid. \$1.00.
- CYPRAEA. Medium grower with nearly square like leaves being so broad. Mottled green to olive green. Flowers pale pink.
- DUCHARTREI. Much like Scharffi except leaves are greener green beneath.
- DROSTI. Distinctive plant with the darkest hairy leaves in the group. Deep red beneath. Whole plant white hairy. \$1.00.
- DWARF HOUGHTONI. Practically a stemless plant. Leaves hairy olive green, red beneath. Few Flowered.



DUSCHARFF



LIMMINGHEI



VIAUDE

- LAETIVIRIDES. Almost a duplicate of the variety *Macrocarpa* except this plant is completely hairy. Grows more erect. \$1.00.
- LOMA ALTA. Introduced in 1935 by Mrs. E. M. Fewkes. A beautiful plant with large dark red leaves, and huge sprays of white flowers. \$1.50.
- MARGUERITE. Bushy plant having smallest leaves of the group. Narrow ovate green leaves with darker veins.
- METALLICA. A Brazilian species with leaves light green and conspicuous purple veining. Very striking foliage with light passing through. Of medium height.
- MRS. FRED T. SCRIPPS. Vigorous plant with deeply-lobed leaves. Tiny leaflets form at the basal lobe. Whole plant coarsely hairy. Different. \$1.50.
- NELLIE BLY. Bushy plant with toothed dark green leaves. Larger leaf than Marguerite. Flowers pink, pink bearded.
- PRUNIFOLIA. Erect grower. Leaves smoky green, deep red beneath. Flowers white.
- SCHMIDTIANA. Can be classed as a miniature. Small hairy toothed leaves. Green above, red beneath with distinct band of light color at the margin. Many small white flowers.
- SCHARFFI. Known to many as *B. Haageana*. Medium plant base branching. Leaves olive green, red beneath. Large clusters of pale pink flowers blooming over a long period. \$1.00
- SCHARFFIANA. Compact plant rather lax with broad hairy leaves. Flowers are pink borne on long arching inflorescences. Truly a distinctive variety. \$2.50.
- VESPERIA. Fine variety in this class. Leaves larger than Marguerite or Nellie Bly and lighter green. White flowered, pink bearded.
- VIAUDE. Long, slightly cupped gray-green leaves on rather low-branching plant. Beautiful large pure white flowers in clusters contrasted with golden stamens. Outstanding. \$1.50.

#### SMOOTH RED-LEAVED GROUPS

- BRAEMAR. Strong growing plant with well-rounded dark green leaves. Beef steak red beneath. Peduncles long and arching. Flowers white. \$2.00.
- CHIALA. Nearly smooth lance-shaped leaves with wavy margin. Much like Mrs. Wallow.
- DOROTHY GRANT. Larger than *Thurstoni*, leaves cupped of darker green. Dark red beneath. \$1.00.
- FRUTESCANS. A fine variety that has been overlooked. Red beneath, flowers white.
- FRUTICOSA. Dwarf thick leaf plant, dark green leaves Small white flowers.
- DWARF FRUITICOSA. Miniature form of the above.
- FRUTESCARIA. Bushy plant, leaves slightly waved, cupped. Plant has long lighter green leaves and white flowered. Grows erect. \$1.00.
- MRS. W. A. WALLOW. Tall variety with lance-shaped coarsely-toothed dark green leaves red beneath. \$1.00.
- RED COMPTA. Low-growing smooth plant with red stems and petioles. Leaves small of the darkest green. Quite different. Red flowered.
- ROGERI. Like *Thurstoni* other than having an occasional lobed leaf. Leaves as a rule are smaller.
- SANGUINEA. Brazilian variety used much in hybridizing. Plant entirely smooth with fleshy light green leaves bright red beneath. Flowers small white on rather long stems. \$1.00.
- THURSTONI. An old favorite with smooth round glossy leaves, red veined and flushed beneath.

## SMALL-LEAVED GROUP

- CARPINIFOLIA. Leaves resemble the foliage of the beech tree. Plant woody and branching. Flowers white.
- CATALINA. (syn. LADY WATERLOW). Graceful plant with slightly hairy leaves, margins toothed. Flowers tinged pink.
- CORBEILLE DE FEU. Upright growth, glossy light green leaves. Flowers bright coral-red.
- DECKERS SELECT. Like Fuchsioides with larger leaves and heart shaped red buds, turning to pink as they open.
- DIGSWELLIANA. Low, bushy habit with small, light green, finely toothed leaf. Flowers in drooping clusters bright red.
- FOLIOSA. Has the smallest leaf of all the begonia varieties. Often mistaken for a fern from a distance. Tiny white flowers at the ends of the weeping leaf stalks.
- FUCHSOIDES. Small green foliage, toothed. Erect and arching. Flowers bright red, pendulous.
- FUCHSOIDES ROSEA. Leaves green glossy like the above but smaller and blunter. Rose pink blossoms in winter.
- INCARNATA VAR. SANDERSI. Profuse flowering plant in early winter. Blossoms light pink. Bushy, with light green leaves. Toothed margin. \$1.00.
- INGRAMI. Erect bushy, with bronze green leaves, toothed. Flowers deep pink.
- JINNIE MAY. Medium plant erect and spreading. Leaves dark green, narrow. Deep rose flowers, drooping.
- LULANDI. Hybrid of Sutherlandi. Thickly branched with broader leaf than its parent. Does not go dormant. Large pink flowers. \$1.00.
- MAY QUEEN. Narrow light green leaves silver-spotted. Flowers white faint tinge of green.
- MEDORA. Miniature trout leaf begonia. Bushy habit branching. Flowers light pink.
- PERFECTIFLORA. Resembles Undulata except that the leaf is smaller. Large white flowers.
- ALBO-PICTA. A species begonia with narrow spotted leaves. Flowers creamy white.
- ALBO-PICTA ROSEA. Like the above with pink blossoms. Leaves wider.
- SACHSEN. Low-growing plant with pointed toothed leaves. Flowers deep pink to red depending on light.
- UNDULATA. Bushy plant with smooth green leaves, interesting wavy margins. Flowers white.
- VEITCH'S CARMINE. Medium plant with smooth pointed leaves, light green tinged at the margins. Beautiful large carmine blossoms. \$1.00.
- WASHINGTON STREET. Commonly called the peachleaf begonia. Erect plant, showers of white blooms.
- WINTER JEWEL. Low bushy plant with frosty green leaves, toothed. Minute pink flowers covering the plant during winter months. \$1.00.



## NOTES ON WAX OR ROSE BEGONIA CULTURE

The merits of the wax or rose begonias are in the abundance of flowers they produce. Therefore to encourage this characteristic they need ample light. A south window or where they will receive a few hours of sunlight a day is beneficial.

Pinch out the growing end when the shoot or stem has reached a desired height to force (side breaks) to come on thus helping to develop a more shapely plant.

Wax Begonias grow best in a well drained soil. Do not over water them. They require, and will tolerate, more plant food than other begonia types if we are to expect an abundance of blooms, along with plenty of light.

Mite occasionally damage certain varieties of begonias and other house plants, particularly the wax begonia.

This insect, nearly microscopic, infests the ends of tender shoots and crowns of plants where a stunted growth appears in the form of a curling or knuckling of the new leaves.

A very effective control for this pest is the use of (Lysol) obtained at any drug counter.

Use it at the rate of (one teaspoon to one quart of water). With hand sprayer force the mist into the area where the insect is working. This Lysol spray seems most effective on smooth leaf plants.

### CALLA LILY BEGONIAS

CALLA LILY. Old fashioned variety with single red flowers. Green and white leaves. \$2.00.

CALLA QUEEN. Stronger grower than the above. Same white and green leaves that tinge red in sunlight. Flowers rose pink. Young plants all green. \$2.00.

### GREEN-LEAVED DOUBLE SEMPERFLORENS WAX BEGONIAS

DAINTY MAID. Leaves of light green and compact grower. Flowers two-toned pink to lighter pink, and fully double. \$1.00.

GREEN LEAF THIMBLEBERRY. A special hybrid originated by Mr. Logee, having plain green leaves with the usual type thimbleberry flower. \$2.00.

NEW HAMPSHIRE HYBRIDS. Originated by Prof. W. D. Holley. All double semi-dwarf free flowering. Colors of red and pink. \$1.00.

PINK WONDER. Flowers produced on this variety of immense size. Color pink. Bushy habit of growth. Choice. \$2.00.

SNOW WHITE. Dwarf, double white flowers with green foliage. \$1.00.

### DARK-LEAF DOUBLE BEGONIAS ORIGINATED BY ERNEST K. LOGEE

BALLET. Finest double white. Beautiful contrast to the bronze foliage. Plants are neat and compact. Extra strong grower and very free flowering. \$2.00.

BO PEEP. A gem in this class. Dark bronze leaves with dark pink, extra double flowers. Very free flowering. \$2.00.

ERNEST K. In this variety is found the darkest foliage of all the Logee introductions along with the deepest color of the flowers. Leaves very dark bronzy green. Flowers real rose red. Much admired. \$2.00.



CALLA LILY



BALLET



FLOWERS OF LUCY LOCKET

Photos by Ernest E. Martin

- LUCY LOCKET. Improved Joan Strong. Super double bright pink blooms. Leaves light bronzy green. Plant of great vigor. \$2.00.
- OLD LACE. Large rose pink blooms, with many lacey petals. Profuse winter flowering. \$2.00.
- LUSCIOUS. Graceful plant with airy light pink flowers, shading to white in center. Foliage has a slightly green overcast, lending a striking contrast. \$2.00.
- WINKIE. Most compact of the group. Leaves smaller than the type. Flowers very double of deep rose color. Same shade as Jack Horner. \$1.50.
- JACK HORNER. Extra strong free flowering variety with rose pink flowers resembling a miniature camellia Jack Horner makes an excellent basket plant. \$2.00.

### RED-LEAVED THIMBLE HYBRIDS

- CINDERELLA. Sport of Firefly. Blossoms bright pink, crested. The only variety in group that alters in color during the longer days of the year. Summer dress pink with yellow breaking through. \$1.50.
- CURLY LOCKS. Large flowers of rose-pink and yellow. Robust grower. Must be pinched for it to branch well. \$2.00.
- FIREFLY. Blossoms similar to Cinderella. Color, coral-red. Bronzy red foliage. \$2.00.
- PERRYANN. Blossoms an exquisite pink shade, crested creamy yellow center. Foliage the usual bronzy green. \$2.00.
- PIED PIPER. Very dwarf bushy plant. Small rather loose clusters of light pink flowers. \$1.00.
- PISTACHIO. Dwarf habit of growth. Flowers a novelty. Green and yellow zones in a very compact head. \$2.00.
- ROBIN HOOD. Well branching with leaves having more of the green breaking through than other varieties mentioned. Flowers soft pink, touch of yellow and a red tip. \$1.50.
- THIMBLEBERRY. The usual dark foliage. Flowers crested red and yellow in contrast. \$2.00.

### TUBEROUS VARIETIES

- EVANSIANA. An Asiatic species with broad green leaves True pink blossoms in summer. Excellent for effect in the shade garden. Hardy in the sense that bulbels dropping from the leaf axils winter over outdoors where the climate is not too severe.
- FROEBELI. A beautiful species from Ecuador with broad velvety gray-green leaves. Winter flowering. Blossoms scarlet and very showy. Froebeli has a charm of its own. Supply limited. \$3.00.
- MARTIANA. The Hollyhock begonia. Large showy pink flowers close to the stem. Dormant in winter. Limited supply. \$2.00.
- SOCOTRANA. One of the parents of the well-known Christmas begonias. Comes out of dormancy in September to flower at Xmas season. Leaves shining peltate. Flowers many, single light pink. Plants shipped in early autumn. \$1.00.
- SUTHERLANDI. Good for suspended containers. Leaves small, narrow, toothed. Flowers light orange. Dormant in winter. \$1.00.

### SEMITUBEROUS VARIETIES

- DREGEI. Small maple-like leaves of bronzy hue shallow lobed. White flowers, blooming freely. Potato-like tuber forms at the soil surface. \$1.00.

WELTONIENSIS. Semi-tuberous similar to Dregei, one of its parents. Bushy habit, leaves small, toothed. Flowers pink.

WELTONIENSIS ALBA. Semi-tuberous with leaves rounder and shallowly lobed. Grows erect. \$1.00

MARJORIE GIBBS. Commonly called the Christmas begonia. Semi-dormant during spring months. Masses of single pink flowers at their best from Thanksgiving on through the holiday season. Leaves of glossy green like those of Socotrana. \$2.00.

RICHARDSIANA. Leaves deeply cut and free branching. Smallest leaves in this group. Stems and petioles smooth. Flowers white.

MACBETHI. OBTUSA. Similar to Dregei in habit. Leaves are green on this plant. Same white flowers.

### **PLEASE READ BEFORE ORDERING GERANIUMS**

All plants moving outside the Japanese beetle area are inspected before shipment. Our experience has been that geraniums suffer to some degree inspection treatment. We wish to state that customers living outside the quarantine area must assume the risk.

If you are not certain about the Japanese beetle in your locality consult the local postoffice or other qualified agency.

**All geraniums 50c each except where noted.**

### **SCENTED-LEAVED GERANIUMS**

#### **Rose Scented Group**

Price

GREY LADY PLYMOUTH, *P. graveolens*. Regular rose leaf with silver gray cast.

LADY PLYMOUTH, *P. graveolens*. Variegated, irregular shaped leaf.

LARGE-LEAVED ROSE, *P. capitatum*. Large coarse deeply lobed leaf with rose scent.

MINT-SCENTED ROSE, *P. graveolens* var. *variegatum*, The variegated rose geranium \$1.00

ROBER'S LEMON ROSE, *P. graveolens*. Strong rose scent. Irregularly lobed leaf.

SNOWFLAKE. Similar to above but with white flecks in leaf

TRUE CAPITATUM, *P. capitatum*. A New variety from South Africa. Round tomentose, dentate leaf with strong rose scent. \$1.00.

TRUE ROSE, *P. graveolens*, Old fashioned rose. Lavender blooms.

#### **Lemon Scented Group**

DR. LIVINGSTON (Skeleton Rose), *P. graveolens*. Deeply cut rose leaf with strong lemon scent.

GOOSEBERRY-LEAVED, *P. grossularioides*. Crispum leaves mottled yellow. Strong fragrance.

LEMON CRISPUM, *P. crispum*. Tiny crinkled leaves, pyramidal shaped. Strong lemon scent. The finger bowl geranium.

*P. crispum* minor. Smaller leaves than above. 75c.

LEMON. *P. limoneum*. Extra strong lemon scent. Attractive rose pink blooms.

PRINCE RUPERT, *P. crispum*. The largest leaved in Crispum group. Strong lemon scent.

VARIEGATED PRINCE RUPERT, *P. crispum* var. *variegatum*. Beautiful cream and white leaf. 75c.

#### **Fruit and Spice Scented Group**

APPLE, *P. odoratissimum*. Round leaf trailing variety. Delightful fragrance, tiny white blooms. 75c.

APRICOT, *P. scabrum*. Deeply cut glossy leaf. Strongly scented. Lovely dark rose blooms. 75c.

- COCOANUT, *P. parviflorum*. Small round leaves. Trailing habit. Tiny magenta flowers.
- FILBERT, *P. Concolor*. Small deeply lobed tomentose leaf. Crimson blooms in profusion in Spring. Strong filbert scent.
- GINGER, *P. torento*. Small round dentate leaf with grey cast. Beautiful large lavender blooms. Very pleasing fragrance.
- LIME, *P. nervosum*. Similar to the above. Leaves smaller and more dentate.
- LOGEEI, *P. fragrans x odoratissimum* hybrid. Compact upright growth. Deeply lobed grayish leaf with old-spice fragrance. 75c.
- NUTMEG, *P. Fragrans*. Small grayish strongly scented leaf. Small white blooms. A very popular variety.
- ORANGE, *P. citriodorum*. Medium crenate leaves. Marvelous scent and beautiful blooms of white, lavender, and maroon.
- SOUTHERNWOOD LEAVED, *P. abrotanifolium*. Feathery — like leaves on tall stems. Fragrance and growth like old fashioned Southernwood. Small white and red blooms. \$1.00.
- STRAWBERRY (Countess of Scarborough) *P. scarboroviæ*. Small glossy deeply cut leaf. Bright rose blooms. Choice. 75c.
- UPRIGHT COCOANUT, *P. patulum*. New specie from South Africa. Small deeply lobed leaves with dark zone. Yellow flowers freely produced on long stems. Pleasant cocoanut fragrance.

#### Peppermint Scented Group

- JOY LUCILLE, *P. tomentosum x graveolens*. Large deeply lobed leaf with same velvety texture as peppermint with strong mint scent and pink flowers. A tall vigorous grower. One of our own hybrids. 75c.
- PEPPERMINT, *P. tomentosum*. Old fashioned peppermint geranium. Large, lobed velvety leaf with strong peppermint odor. Feathery white blooms.
- PUNGENT PEPPERMINT, *P. denticulatum*. Deeply cut skeleton-like leaf with grey velvety appearance. Taller grower. Flowers white, like peppermint. Mint scent. A very lovely variety.

#### Pine Scented Group

- FERN-LEAF, *P. filicifolium*. Leaf finer cut and fragrance stronger. 75c
- PHEASANTS FOOT, *P. viscosum*. Cut-leaf with toothed edge. Bright attractive rose blooms, pine fragrance. 75c.
- PINE SCENTED, *P. denticulatum*. Finely-cut and dentate leaf. Lavender blooms and strong odor. An attractive variety.

#### Pungent Scented Group

- BEAUTY, *P. quercifolium*. Pretty deeply lobed leaf with dark center. Lavender rose flowers freely produced.
- BLANDFORDIANUM, *P. graveolens x echinatum*. Deeply cut grey leaf. Wiry growth. Attractive white blooms with dark markings. An interesting variety.
- BRILLIANT. Another beautiful flowering variety with large toothed leaves and crimson blooms. Compact growth.
- CLORINDA. Lady Washington type. Large rose pink-blooms with carmine dark markings. Leaves large slightly lobed, pleasant pungent.
- CROWFOOT, *P. radula*, cut leaf variety with greyish cast. Blooms freely, attractive lavender pink
- FAIR ELLEN, *P. quercifolium*. The best of the oak-leaf varieties. Medium sized oakleaf with dark zone. Shrubby growth. Attractive rose blooms.

- GIANT OAK, *P. quercifolium giganteum*. Large, lobed, coarse leaf. Tall growth. Bright rose blooms.
- GODFREY'S PRIDE. Fairly large lobed light green leaf. Coarse texture. Sweet apple-mint fragrance. Lavender rose blooms.
- GRAPE-LEAF, *P. vitifolium*. An interesting variety with large grape-leaf foliage. Lavender flowers.
- MRS. KINGSLEY, *P. rapaceum*. Similar to the above. Leaves more curled. A choice variety. \$1.00.
- MRS. TAYLOR, *P. ignescens*. Deeply lobed cut leaf. Free blooming scarlet. One of the best.
- OLD SCARLET UNIQUE, *P. fulgidum*. Beautiful deeply cut grayish leaf, oblong shape. Brilliant red blooms on long stems. 75c.
- PRETTY POLLY (Almond-scented), *P. quercifolium*. Attractive deeply lobed green leaves, with dark center. Lovely pink blooms.
- ROLLINSON'S UNIQUE. A beautiful variety with slightly curled and ruffled leaves. Showy magenta blooms. Balm fragrance. 75c.
- SKELTON'S UNIQUE, *P. quercifolium*. Leaf wavy and slightly lobed with dark center. Prostrate growth. Lavender blooms.
- STAGHORN OAK, *P. quercifolium*. Deeply lobed medium leaf with purple veining. Pink blooms. A fine variety.
- VILLAGE HILL OAK, *P. quercifolium*. Deeply lobed crenate leaf with pleasant scent. Blooms small lavender.

#### **FANCY-LEAVED GERANIUMS**

- ALPHA. Golden dentate leaf with narrow brown ring. Dwarf compact growth. Free blooming single red. Extra fine for the house. 75c.
- BECKWITH PRIDE. Mottled green and white foliage. Flowers large semi-double salmon red. Unique. 75c.
- CLOTH OF GOLD. Pure gold leaf. Single dark pink blooms. Choice. 75c.
- CRYSTAL PALACE GEM. Gold leaf with light green center. Blooms same as above. Very pretty. 75c.
- DISTINCTION. Dark green leaf with crinkled and dentate edge with a very distinct brown ring. Umbels of bright red blooms. A truly distinctive variety. 75c.
- FLOWERS OF SPRING. The variegated green and white geranium. Blooms single red.
- FRUTETORUM. A pretty dark zoned variety with beautiful single salmon pink flowers in abundance.
- HAPPY THOUGHT RED. Ruffled leaf with yellow center and white-green margins. Single red blooms. An old favorite.
- HAPPY THOUGHT PINK. Pink flowered variety of the above. Rare. \$3.00.
- HILLS OF SNOW. Silver grey leaf with narrow white margin. Blooms double light pink. A free bloomer.
- JUBILEE. Yellow green leaf with wide chocolate zone. Single salmon pink blooms. A very beautiful variety. 75c.
- LADY POLLOCK. Beautifully colored tricolor leaf of green, red, orange, and yellow. An old popular variety. \$1.50.
- MARECHAL MacMAHON. Blooms single red, yellow-green leaf with narrow chocolate zone.
- MARECHAL MacMAHON. Leaf a lighter yellow, with narrow zone darker than above. Blooms single pink.
- MARY ANN. Pretty green and white variegated leaf. Blooms single red.
- MISS BURDETT COUTTS. The most beautiful of the tricolors. Leaf with cream edge and green center, purple zone splashed with pink. Very choice. \$2.00.

- MOUNTAINS OF SNOW.** Similar to the above. Leaves smaller, crinkled and cupped.
- Mme. SALLEROI DWARF.** Another variegated leaf dwarf variety much used for edging.
- Mme. SALLEROI UPRIGHT.** A taller growing variety of the above. Small single pink blooms. Very pretty. 75c.
- MRS. COX.** New. Brilliant zones of yellow, red and pink. \$3.00.
- MRS CULLUM.** Leaf similar to the above. \$1.00.
- MRS. LANGUTH.** A fine variegated cream and white variety with double cherry red blooms. 75c.
- MRS. PARKER.** Blooms double light pink. A beautiful choice variety. 75c.
- SKIES OF ITALY.** Most brilliantly colored of the tricolors. Distinguished from Mrs. Pollock by its irregularly lobed leaf. Single orange red blooms. \$1.50.
- VARIEGATED S. A. NUTT.** The variegated form of the double dark red flowered commercial variety. Green leaf splashed with white.

### **DWARF GERANIUMS**

- BLACK VESUVIUS.** Small leaves of dark olive color. Medium single vermilion blooms. \$2.00.
- LITTLE DARLING.** Small green leaves. Tiny single pink flowers in profusion. 75c.
- Mme. FOURNIER.** Similar to the above. Leaf olive green. \$1.50.
- PIGMY.** The tiniest of all geraniums. Small green leaves. Small double scarlet blooms. \$1.00.

### **Other Interesting Types**

- APPLE BLOSSOM.** A pink and white rosebud. Very beautiful. \$1.00.
- BIRDS EGG.** Lavender pink with dark pink dots. \$2.00.
- DOUBLE NEW LIFE.** Semi-double blooms striped red and white. Also called Stars and Stripes and Flag of Denmark. \$1.00.
- JEANNE.** Similar to the above. Flowers white with pink-blush. 75c
- NEW LIFE.** Three different types of blooms often seen on the same plant. Blooms usually red with white flecks sometimes white with red or white with pink center. \$1.00.
- NOEL.** A new fine white in the poinsettia group. Wonderful winter bloomer. \$1.00.
- PINK ROSEBUD.** As above, blooms pink. \$1.00.
- POINSETTIA.** Scarlet, shaggy blooms like a miniature poinsettia. 75c.
- POINSETTIA PINK.** Like the above with shell pink flowers. 75c
- RED ROSEBUD.** Clusters of tiny double blooms, like miniature roses. \$1.00.
- ROSETTE.** Blooms as above but of a magenta color. \$1.00.
- SWEET WILLIAM OR JEANNE.** Single pink blooms with picotee edge. Leaves ivy-green. Dwarf compact growth. 75c.

### **Ivy Geraniums**

- SUNSET IVY (L'Elegante).** Variegated ivy leaf with tints of pink when grown in the sun. Very choice. Lavender pink blooms. \$1.00.
- VARIEGATED IVY.** A lovely variegated ivy geranium with single pink blooms. 75c.

## CACTUS, TUBEROUS ROOTED AND RARE

Very interesting group. Most of the species grow from so called tubers, or fleshy roots. Dormant during the summer months for us, and through this period they should be kept dry. Growth starts in the early Fall. Water sparingly, gradually increasing the amount until full growth. Requires copious watering in flowering period, which for us is from January to June on most varieties. The tubers can be reotted as required in sandy soil, adding bone meal for fertilizer.

**ECHINATUM.** The Sweetheart Geranium. The most popular in this class. Leaves grey green, tomentose under, short fleshy stems with spine like stipules. Flowers on slender stems, single white, each petal marked with red. Splendid for house culture. \$1.00.

**GIBBOSUM.** The Knotted Storksbill. Lovely grey green foliage, stems fleshy and knotted at the joints. Greenish-yellow flowers. Evening scented. Choice. \$1.00.

**GLAUCIFOLIUM.** The Black Flowered Geranium. Leaves large and ruffled, pinnately divided. Flowers on long stems above the foliage, striking maroon color, edged with gold, sweetly scented in the evening. Rare. \$2.50.

---

## CHOICE PLANTS FOR THE HOME AND CONSERVATORY

**ABUTILON.** Flowering Maple. We offer our own special selection of large flowered hybrids. Maple leaf foliage, bell shaped flowers. Red, yellow, orange, copper, salmon, pink, old rose and white. \$1.00.

**ACHIMENES.** Upright or drooping bulbous plants allied to gloxinias. Flowers in summer. Tubers resemble alder catkins. Pansy-like flowers, small hairy leaves. Mixed colors. 6 bulbs for \$1.00. Shipped while dormant.

**AECHMEA HYBRID.** "Forsters Favorite". One of the finest of the "living vase plants". Wine-red, shiny leaves; Drooping flowers of amazing color, brilliant red berry with deep blue flowers, in winter. \$2.00.

**ALLAMANDA WILLIAMSII.** One of the finest climbing plants in cultivation and deserves a place in every greenhouse or sun room. Leaves are a rich dark green, flowers golden yellow, cup shaped about four inches across. Flowering period in spring and summer. \$3.00.

**ALSTROMERIA PULCHELLA.** Brazilian Lily. Small lily like flowers of amazing color; green and red in upright umbells. Soft bright green foliage. Flowers in the Spring and early summer. Hardy out of doors with protection. Generous clump of fleshy bulbs. \$1.00.

**ANTHERICUM VARIEGATUM.** Spider plant, St. Bernard lily, hardy decorative house plant. 75c.

**ANTHURIUM SCHERZERIANUM.** "Tail Flower". The finest variety for house culture, dwarf habit, evergreen leaves, with showy spathe like flowers of scarlet sometimes covered with white dots. A continuous bloomer, the flowers lasting for many weeks. Flowering sized divisions. \$5.00.

**ARDISIA CRENULATA.** Evergreen shrub suitable for pot culture. Narrow shining leaves with holly-like berries that remain for a long time. \$2.00.

**BELOPERONE.** Shrimp Plant. Everblooming, golden bronze sheaf, protruding tiny shrimp flowers. 75c.

**BILLBERGIA NUTANS.** The friendship plant. Flowers emerge from the crown of spathe like leaves, sheath bright rose, flowers green and yellow striped. One of the most interesting early spring flowers. 75c.



- BLACK CALLA. We offer fine flowering sized bulbs of this exquisite plant. Leaves and flowers are often used in flower arrangements. Foliage a rich dark green, typical calla lily flower of a rich black velvet color. \$3.00.
- BORONIA MEGASTIGMA: Scented Boronia. This rare gem from Australia has sweetly scented blossoms of purple-brown externally, inside petals, old-gold. Fern-like foliage. Must have cool growing conditions, sun and acid soil. Strong plants. \$5.00.
- BOUGAINVILLEA. We offer three beautiful colors in this bright free flowering plant. Adapted for the conservatory or window garden. Requires full sun and ample water during the flowering period from late winter to summer. Strong plants in salmon, crimson and lilac. \$3.00.
- BOUSSINGGAULTIA BASELLOIDES. Mignonette Vine. A tuberous rooted vine with thick, glossy leaves, producing in late summer and fall sprays of fine white, delightfully fragrant flowers. Excellent for the conservatory or window garden. The roots are stored in winter, and started again in fresh soil in the spring. \$2.00.
- BOWEIA VOLUBILIS. The Climbing Onion. Succulent bulbs, producing during winter feathery green tendrils. Rare. \$2.00.
- CHAMAELAUCIUM Ciliatum, Cameo Pink, Geraldton Wax Flower, shrubby fragrant foliage, showy pink and white flowers. Rare. \$2.00.
- CAMPANULA ISOPHYLLA. Star of Bethlehem. Trailing plant with star shaped blue flowers. 75c.
- CAMPANULA ISOPHYLLA ALBA. Same as above with white flowers. 75c.
- CAREX VARIEGATA. A pleasing little dwarf plant, with striped green and white grass like foliage. 75c.
- CEROPEGIA WOODI. The Rosary Vine, small succulent, heart shaped, grey leaves of trailing habit. Interesting flowers of maroon. Fine for the window garden. \$1.00.
- CHORIZEMA CORDATUM. Australian Flame Pea or Flowering Oak. Small holly-like leaves. Flowers orange-red with purplish keel in open loose racemes. Very choice. \$2.00.
- CLERODENDRON UGANDENSE. A shrublike plant, bearing panicles of bright blue flowers during winter and early spring. Likes sun and ample water during growing season. Ideal for the small greenhouse or sunroom. \$3.00.
- COLUMNEA SCHEIDEANA. Trailing plant of the Gesneria family resembling Trichosporum. Flowers tubular scarlet. Leaves fleshy and small. \$2.00.
- CUPHEA HYSSOPIFOLIA. "Elfin Herb". Shrubby plant having fine needle like foliage, tiny light lavender flowers blooming over a long period. \$1.50.
- CYANOTIS KEWENSIS. Small trailing variety with dark green leaves, densely brown-hairy. Very choice \$1.50.
- CYANOTIS SOMALIENSIS (Pussy Ears). Miniature trailing plant resembling the inch plant. Hairy wedge-shape leaves. Flowers blue or light purple. Likes sun and heat. \$1.50.
- CYCLAMEN NEOPOLITANUM. Baby Cyclamen—tiny rose pink flowers, often sweetly scented. Leaves mottled. Rare. \$1.00.
- CYPRIPEDIUM INSIGNE. Brown orchid or lady slipper orchid. \$3.00.
- DIPLACUS GLUTINOSUS. Shrub with sticky narrow toothed leaves. Flowers a pastel shade light orange or buff. \$1.00.

- ERANTHEMUM NERVOSUM. One of the most beautiful, brilliant blue flowers in terminal spikes, much like salvia. Flowers during winter over a long period. Foliage blue green. \$2.00.
- EPIPHYLLUM. Orchid cactus, pink, and red varieties. \$1.00.
- FATSHEDERA. "Tree-Ivy". A splendid plant for shade. Beautiful glossy leaves, perfect ivy-shape, on upright stems. Of easiest culture. \$1.50.
- FICUS REPENS. Trailing fig, miniature like ivy leaves, fast grower, clings to walls. 75c.
- FITTONIA ARGYRONEURA. Very choice foliage plant. Light green leaves with fine silver netting. Loves shade. \$1.50.
- FUSCHIA CASCADE. Hanging type variety. Very free flowering. Lavender-rose and white. \$1.00.
- FUCHSIA. Little Jewel. Finest of all the small flowered fuchsias.
- FUCHSIA. Sun Ray. Foliage in sunset colors, flowers red and maroon \$1.00.
- FUCHSIA "HONEYSUCKLE". The old fashioned red-leaved fuchsia, with elongated orange-red bells. Profuse flowering throughout the winter. \$1.50.
- FUCHSIA ROLLO. A near white double flower having faint pink overcast. Free and long flowering. \$1.50.
- GAZANIA RIGENS. (Compositae) Low growing perennial from the Cape of Good Hope. Large daisy like flowers of brilliant orange with distinctive black disc at base of petals. Leaves narrow light green white beneath. Suitable for cool house, sunny location. \$1.50.
- GREVILLEA WILSONI. Fire Wheel. A west Australian plant with fern like foliage. Flowers red and yellow. Rare. \$2.00.
- GYNURA AURANTIACA. Royal Velvet Plant. Beautiful royal velvet purple foliage plant. Choice. \$1.00.
- HETEROCENTRON SUBTRIPLINERVA. A lovely winter blooming small shrub, light green foliage, stem sharply four angled. The pure white star like flowers completely cover the plant. \$1.00.
- HOYA CARNOSA. The old fashioned Wax Plant. Flowers in umbels, light pink with star shaped center of rose. \$1.50.
- HOYA CARNOSA VAR. VARIEGATA. Like the above, with creamy edged leaves, turning pink in sunlight. Very rare. \$3.00.
- HOYA BELLA. Miniature Wax Plant. Flowers white, center blush pink. Very fragrant. \$2.00.
- HYPOESTIS FOETIDA. "Pink Dot". A fast growing foliage plant with bright green leaves sprinkled with rose colored dots. \$1.00.
- INCH PLANT. Red, variegated, green. 75c.
- ISOLOMA ERIANTHUM. Rare. Soft velvet green leaves. Flowers tubular, like foxglove, orange-red, the lower lobes spotted. Excellent winter flowering for partial shade. \$2.00.
- JASMINUM GRANDIFLORUM. "Royal Jasmine". A fine jasmine for the window garden, growth is bushy with glossy green leaves, covered with pure white star like flowers, very fragrant. \$2.00.
- JUSTICIA. Plume plant, pink and red. \$1.50.
- KITCHINGIA UNIFLORA. Interesting trailing plant, with fleshy small leaves, flowers bright red at ends of stems. Likes ample sun. \$2.00.
- LEMON VERBENA. Fragrant lemon scented foliage. 75c.
- LIGULARIA KAEMPFERI var. aureo-maculatus. LEOPARD PLANT. Very old, extra fine house plant. Rounded glossy green leaves, mottled yellow. \$2.00.



PILEA CADIEREI



FITTONIA ARGYRONEURA



MARANTA OPPENHEIMIANA TRICOLOR

Photos by Ernest E. Martin

- MACLEANIA INSIGNIS. A very rare plant of trailing habit. Leaves glossy green, flowers are bright scarlet in tubular clusters, they appear to look like wax. A handsome plant both in foliage and flower. It was first discovered in the province of Vera Cruz at an elevation of 4000 feet. \$2.00.
- MARANTA ARUNDINACEA AUREA. Bermuda Arrow Root. Decorative foliage plant, yellow and green variegated leaves. Excellent for shady windows. Moisture loving plant. \$1.00.
- MARANTA KERCHOVEANA. syn. Bicolor. The prayer plant, so called because it closes the leaves at eventide. Fine for table plant in shade. Leaves bright green with maroon spots. 75c.
- MARANTA OPPENHEIMIANA TRI-COLOR. The most brilliant of dwarf marantas. Rare. Leaves of rainbow hue, under side bright rose. \$3.00.
- MARICA GRACILIS. Twelve Apostles, iris like foliage, white and blue flowers.
- MYRTUS COMMUNIS. The legendary myrtle of the old world. Fine for the cool and shady room. Leaves glossy green, fragrant when crushed. \$1.00.
- MYRTUS COMMUNIS VAR. ROMANA. Same as above with lovely white edged leaves. \$2.00.
- NERINE FOTHERGILLI. Guernsey Lily. Flowering bulbs from Africa. Large umbels of scarlet flowers in Autumn. \$1.00.
- NIGHT BLOOMING CEREUS. Epiphyllum, large white flowers opening at night, very fragrant. \$1.00.
- OSMANTHUS FRAGRANS. The rare "Sweet Olive". An evergreen plant, having clusters of cream colored miniature flowers with the fragrance of orange blossoms, during Fall and Winter. Best growth in partial shade and cool. \$3.00.
- OSMANTHUS ILLICIFOLIUM. The Chinese Holly; Variegated holly, small cream colored edged leaves. Excellent house plant. \$2.00.
- OXALIS BOWIEI. Giant pink flowers, large leaves, fall flowering, bulbs, three for 75c.
- OXALIS CARNOSA. Rhizomatous root stock, leaves small lettuce green, flower yellow in spring. 75c.
- OXALIS ORTGIESII. Tree Oxalis—bushy upright growth, dark maroon purple under, flowers yellow. Rare. \$1.00.
- OXALIS PEDUNCULARIS. Upright habit, small fleshy leaves, showy, orange-yellow flower. \$1.00.
- PENTAS LANCEOLATA. One of the finest everblooming plants with flowers very like bouvardia, in umbels of pink, white or rose. Often used for flower arrangements and when cut last a long time. Culture is like that of heliotrope, ample sun, water and rich soil. \$1.00.
- PERISTROPHE ANGUSTIFOLIA VAR. AUREA VARIEGATA. A low growing plant with small green and yellow leaves, of spreading habit, useful for window boxes in sun. Flowers rose colored in terminal cymes. \$1.00.
- PILEA CADIEREI. "Watermelon Pilea". A most attractive foliage plant with light green leaves, heavily brushed with silver on the raised areas between veins. Collected by missionary Cadier in Annam (near Indochina). Pinching encourages bushiness. Recently introduced from England by Mr. T. H. Everett under the auspices of the Garden Club of America. \$1.00.**
- PITTIOSPORUM. Australian Laurel, glossy, green shrubby growth, very fragrant white flowers. \$1.00.
- PITTIOSPORUM. Var. Variegata. \$2.00.

- PLECTRANTHUS. "Prostrate Coleus". Succulent green leaves with lavender tinted edges. Of easiest culture. 75c.
- PLUMBAGO CAPENSIS. Shrubby plant with true blue Phlox flowers. \$1.00.
- RHOEO VITTATA. "Moses in the Bulrushes". Of easiest culture, leaves about eight inches long, dark purple beneath, striped yellow above, often used for flower arrangements. Habit of growth is like a small pandanus. \$2.00.
- RONDELETIA. Attractive bushy growth, showy red flowers, fall and winter bloomer, choice. \$1.50.
- RUBUS REFLEXUS VAR. PICTUS. A fine trailing house plant with velvety green leaves, gray variegated above, cinnamon beneath. Grows best in partial shade and heat. \$2.50.
- RUPELLIA-MAKOYANA. Flowers deep rich pink and tubular interesting decorative foliage, underside purple. 75c.
- SALVIA DORISIANUM. An outstanding plant for foliage and flower, with large velvety green fragrant leaves, and rose pink flowers in large clusters above the foliage. Fine for garden or conservatory. \$3.00.
- SAXIGRAGA LIGULATA. One of our finest new house plants, grown from seed received from the Kingdon-Ward expedition. Leaves are a beautiful shiny green, with metallic lustre. The plant is stemless and is an ideal subject for partial shade. Flowers are interesting, on eight inch stems in large umbels, ivory white and lasting over a long period. \$3.00.
- SAXIFRAGA SARMENTOSA. Strawberry begonia, beautiful hanging basket plant, small plants born on runners, flowers fluffy white. 75c.
- SETCREASIA. Striped inch plant, new. 75c.
- SPATHIPHYLLUM CLEVELANDII. Shiny lance shaped green leaves. Beautiful pure white lily-like flowers which last for weeks. Very choice. \$3.00.
- STENOTAPHRUM. St. Augustine Grass. Beautiful hanging basket plant. 75c.
- STROBILANTHES DYERIANUS. Beautiful foliage plant, with leaves variegated with iridescent tints of blue and lilac, purple beneath. Requires warmth, abundance of moisture on plant and foliage. \$2.00.
- STROBILANTHES ISOPHYLLUS. Bushy habit, willowy leaves. Funnel shape blue and white flowers. \$1.50.
- SWAINSONIA GALEGIFOLIA VAR ALBIFLORA. "Winter sweet pea". Delicate, lacy light green foliage, pure white pea like flowers. Likes abundant sunlight and rich soil. A fine small shrub for the cool greenhouse. \$2.00.
- SWAINSONIA GALEGIFOLIA VAR VIOLACEA. Has violet rose flowers like the above, more dwarf growing. Both are excellent winter bloomers. \$2.00.
- TIBOUCHINA. Princess Flower. Wonderful royal purple flower. Interesting shrub. \$1.00.
- TOLMIEA MENZIESII. Pick-a-back, or Mother of thousands. Excellent as a table plant in partial shade. Requires copious water. 75c.
- TRADESCANTIA FUSCATA. A stemless plant. Leaves brown and hairy. Bright blue flowers, an inch across, borne in the midst of the brown hairy leaves. A collectors item. \$3.00.
- TRICHOSPORUM PULCHRUM. Choice basket or hanging plant. Leaves broad, small, smooth. Scarlet tubular flowers with yellow throat. Greenish calyx. Pot in very porous medium for drainage. \$2.00.
- ZINGERBER OFFICINALIS. True Ginger. Excellent house plant for shade. Foliage fragrant and spicy. \$1.00.

## CHOICE VINES

- CISSUS ADENOPODUS. Of easiest culture. Three foliate leaves, red and hairy. The new leaves look like crimson velvet. A fast growing tendril climber. \$1.00.
- CISSUS DISCOLOR. A lovely tendril climber. Leaves oval, tapering, rich green with mottled silvery metallic lustre; red beneath. A sprinkling of crimson dispersed over prime leaves. Shade. \$2.00.
- CISSUS RHOMBIFOLIA. The Grape-Ivy. Strong growing ivy with glossy three leaflets. 75c.
- CISSUS STRIATA. A miniature grape ivy, with lacy small five lobed leaves. Choice. \$2.00.
- CONVOLVULUS. Mauritanicus. Prostrate growth, leaves round-ovate, small heavenly blue morning glory flowers. Rare. \$1.00.
- ENGLISH IVY, SILVER KING. Fast growing small leaved variegated ivy, beautiful hanging plant. Choice. \$1.00.
- HETEROCENTRON ROSEUM. Spanish Shawl. Fine for the sunny location. Creeping plant with small pointed leaves, red stemmed. Flowers bright rose in early winter. 75c.
- LOTUS BERTHELOTII. Winged Pea. Beautiful pea like dark red flowers, lacy silver foliage, choice. \$1.00.
- MAHRNIA VERTICILLATA. Honey Bells. Trailing plant with fine lacy foliage, flowers tiny bells, honey yellow and sweetly scented. \$1.00.
- MANETTIA. BI-COLOR. Twining Fire-cracker. Plant, scarlet flowers, with yellow tips. \$1.00.
- MUEHLENBECKIA COMPLEXA. Wire Plant. Vining plant with tiny glossy green leaves, stems almost black, Fruit which follow the tiny green flowers look like white pearls. Enjoys sun and dryness. \$1.00.
- PASSIFLORA. Grandiflora. Passion Flower Vine. Purple flowers. More exotic than Clematis; excellent house plant. \$2.00.
- PELLIONIA. Known by some as Trailing Watermelon begonia, narrow pointed green centered dark edge leaf, very attractive. \$1.00.
- STAR JASMINE. Lovely variety with sweetly scented double white flowers. \$1.00
- TRADESCANTIA BLOSFELDIANA. Velvet purple leaves, flowers delicate rose-lavender in close racemes. Choice. \$1.00.
- VARIEGATED IVY, GLACIER. New, Miniature. \$1.00.

## FERNS

- ADIANTUM BELLUM. "Bermuda Maidenhair". A striking little miniature maidenhair fern, growing about six inches above the pot. Requires very lime soil, shade and ample water during the growing period, the winter months. Rests in summer. \$2.00.
- ASPARAGUS SPRENGERI. One of the few ferns with blooms fragrant, nearly white flowers, red berries at Christmas time. 75c.
- ASPARAGUS CRISPUS. The Bride's Bouquet Fern, tiny white flowers, red berries. \$1.00.
- ASPLENIUM BULBIFERUM (King and Queen fern). Parsley fern, little fern balls growing on lacy fronds. \$1.00.
- DAVALLIA CANARIENSIS. Deer Foot fern, soft silvery grey rhizomes, glossy fronds. Very choice. \$1.00.
- DAVALLIA MARIESII. Squirrels-foot fern, same as above with brown rhizomes and slightly longer fronds. \$1.00.
- DAVALLIA TENUIFOLIA. Carrot-fern, leathery fronds, short creeping rhizomes. \$1.00.
- HOLLY FERN. A strong upright holly-like leaves. 50c.

NEPHROLEPIS SMITHI. "Lace fern". Plume-like fronds very finely cut. Light green and very choice. \$1.50.

POLYSTICHUM ACULEATUM. "English Hedge Fern". Interesting heavy fronds of graceful habit, one of the hardiest house ferns. \$1.00.

POLYSTICHUM ACULEATUM PROLIFERUM. "Plume fern". A double form of English hedge fern. One of the finest of pot ferns. Native to Australia. Produces fernlets along the fronds in season. \$1.00.

#### HERBS

CAMPHOR OFFICINALIS. Semi-hardy shrub, the leaves when pinched smell of cinnamon or camphor. Choice. \$1.00.

DITTANY OF CRETE. The true Dittany of herb lore and legend. Excellent cool house plant. \$1.00.

PINEAPPLE SAGE. A Salvia with fragrant foliage, refreshing pineapple scent. Flowers scarlet in the Autumn, and throughout the winter. Fine for the garden and window-box. 50c.

ROSEMARY OFFICINALIS. Strong plants, excellent for garden and house culture. This is the heavenly blue flowered type. \$1.00.

SWEET BAY. Fresh bay leaves used in soups. \$1.00.

TUNISIAN THYME. Another new Herb, collected during the North African Campaign. Unusual lavender fragrance, fine gray foliage. \$1.00.

---

#### BEGONIA REFERENCES

"Begonias and how to Grow Them", by Bessie R. Buxton, the Oxford University Press, New York City.

"Begonias for American Homes and Gardens", by Helen K. Krauss, the MacMillan Company, New York City.

"The Begonian", published monthly by the American Begonia Society, Box 2544, Los Angeles 54, California. Annual membership dues \$2.50. Ask for information on the branch society nearest you.

**U. S. DEPARTMENT OF AGRICULTURE**

**LIBRARY**

**WASHINGTON 25, D. C.**

**OFFICIAL BUSINESS**

**PRINTED MATTER**

**PENALTY FOR PRIVATE USE TO AVOID  
PAYMENT OF POSTAGE, \$300  
(GPO)**



**Library, U. S. Dept. of Agriculture,  
WASHINGTON 25, D. C.**