

Historic, Archive Document

Do not assume content reflects current scientific knowledge, policies, or practices.



62.71



FALL
1953

SPRING
1954

LIBRARY
RECEIVED
* JUN 10 1953 *
U. S. Department of Agriculture

LILIUM RUBELLUM
Page 17

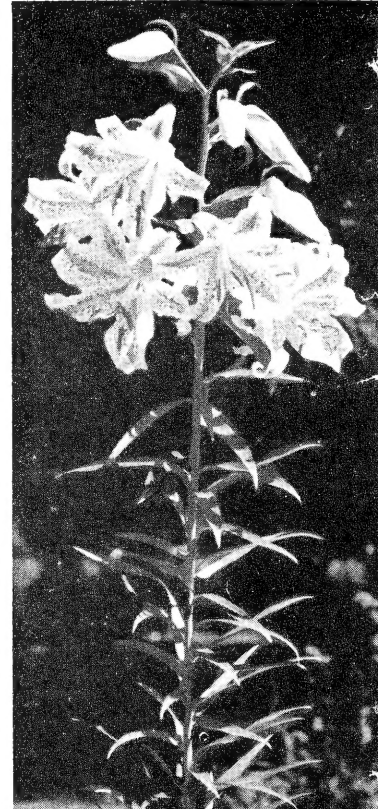
Garden Lilies

Walter Marx Gardens

BORING : : : : : OREGON

HARDY

Cultural Notes, Time of Shipment, Terms of Sale, etc., on Page 22.



AURATUM LILY

In this catalog we offer you a most outstanding collection of choice lilies including many of the best new hybrids as well as most species adapted to ordinary garden culture. No flower garden is complete without lilies. Their stately habit, enchanting beauty in the garden and in floral arrangements will provide every flower lover with maximum pleasure for many years. Also by proper selection a succession of colorful display is available from early summer to late autumn.



GARDEN LILIES

AMABILE

Waxy grenadine red flowers brightly speckled black are borne on slender, strong 3 foot stems. Very early and does well in full sun. Strong growers and a fair increaser. June.

Each .60c; 12 for 6.00

AMABILE LUTEUM

Truly one of the loveliest of all yellow lilies. Identical to the type except for color which is glistening chrome yellow with black dots. Illustrated with Amabile on page 12.

Each .85; 12 for 8.50

AURATUM Strong flowering bulbs:

Each .60; 12 for 6.00

Top size: Each 1.00; 12 for 10.00

The exotic Gold Banded Lily from Japan. Immense fragrant flowers of white with yellow band on each petal speckled crimson. 5 to 7 feet high. August flowering.

AURATUM. ESPERANZA STRAIN

Each 1.75; 12 for 17.50

This famous strain which originated in Canada offers tremendous variations in color and form. Some are almost pure white with practically no red spots. And others display a wide red band on each petal. Both size and form vary considerably. Our stock is all seedling grown and free of disease.

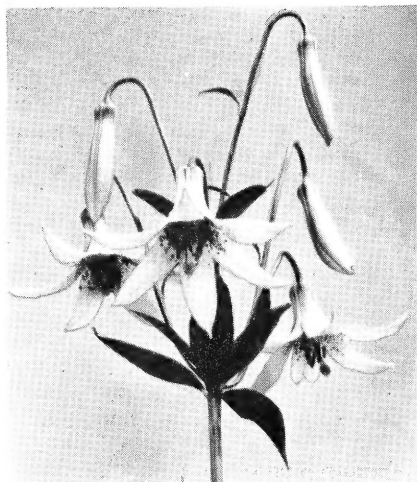
AURATUM PLATYPHYLLUM

Each 1.25; 3 for 3.50

The giant of all Gold Banded Lilies. The illustration gives some idea of the colossal proportions that can be attained. The picture was taken of a specimen in our display garden and measured 10 feet in height and produced over 80 flowers. Such performance is perhaps phenomenal but 7 to 9 foot stems bearing 15 to 30 huge 10 inch flowers is not unusual. Color is clear white with a pale yellow midrib. The spots are fewer and much lighter than in other varieties. Our entire stock is propagated from annual seedling crops grown here and is guaranteed absolutely disease free. You are thereby assured of the first requisite necessary for the successful growing of this most spectacular of all lilies. August-September blooming. Illustrated inside front cover.



AURATUM PLATYPHYLLUM



CANADENSE—Page 5



LILLIAN CUMMINGS—Page 7

AURELIAN HYBRIDS

Considered by many lily specialists as the most important of all new hybrid races. By successfully crossing Henryi with the trumpet lilies including centifolium, sargentiae and sulphureum an exciting new group of seedlings is now available to American gardens. The variation is complete in both form and color since the seedlings vary from straight Henryi types to almost straight trumpet lilies. The true intermediate group varies from huge bowl shaped white or cream flowers with yellow or apricot centers to widely flaring or slightly reflexed flowers usually yellow, orange or light apricot. The general habit and flower placement more closely resemble Henryi but all the seedlings bear much larger flowers than the species. These hybrids possess great vigor and are very hardy. As flowers fade a little in full sunshine we recommend planting where plants will receive light afternoon shade.

SUNBURST

Each 2.50

This group is made up of the flowers which most closely resemble L. Henryi in shape. They are much larger and more reflexed and possess unusually fine texture and substance. Color varies from cream to soft buffs, straw yellows to waxy orange and some are bicolors. When established plants will grow from 5 to 8 feet and bear 5 to 25 flowers during late July and early August.

HEART'S DESIRE

Each 2.50

The typical intermediate strain as the genetic similarity is about equally divided. Flowers are essentially shallow, bowl formed and wide flaring. Most are more or less bicolored with orange throats that shade to cream or white at the tips. Height 4 to 5 feet.

GOLDEN TRUMPET

Each 3.75

True trumpet lilies in soft shades of yellow from cream to warm golden orange. Stock is very scarce.

BACKHOUSE HYBRIDS

Each 3.00; 12 for 30.00

One of the loveliest groups of hybrid lilies that will surely delight the most discriminating gardeners. The dainty Martagon shaped flowers are generously produced on 5 to 6 foot stems in June. The colors are extremely varied including ivory, gold, pink, rose and purple shades.

MRS. R. O. BACKHOUSE

Each 3.00

One of the most famous hybrid lilies. The Martagon type flowers are soft ivory yellow flushed gold and lightly flecked purple. The exteriors are deeper yellow stained green. A most charming variety that blooms in late June on 5 foot stems.

SUTTON COURT

Each 3.00

Similar to Mrs. R. O. Backhouse but of deeper tone. Color is straw yellow spotted purple.

BELLINGHAM HYBRIDS

Strong flowering bulbs: **Each .50; 12 for 5.00**

Top size bulbs: **Each .75; 12 or 7.50**

Originated by and named in honor of the late Dr. David Griffiths whose work with lilies at the U.S.D.A experiment station at Bellingham, Washington, is well known to lily fanciers. Ideally spaced on tall slender stems the jaunty flowers are long lasting and unsurpassed for cut flower purposes. The pyramidal flower heads bearing from 10 to 20 flowers may be cut as the first buds open and will remain fresh until the entire spike is in bloom. The color range is wide from light clear yellows through oranges to bright reds. Most are spotted deep brown or maroon. For the woodland garden in dappled shade these lilies are ideal but they will also thrive in the ordinary garden. June-July. Height 5 to 6 feet. Mixed colors only. Color picture on center spread.

BELLINGHAM HYBRID "SHUKSAN"

Strong flowering bulbs: **Each .75; 12 for 7.50**

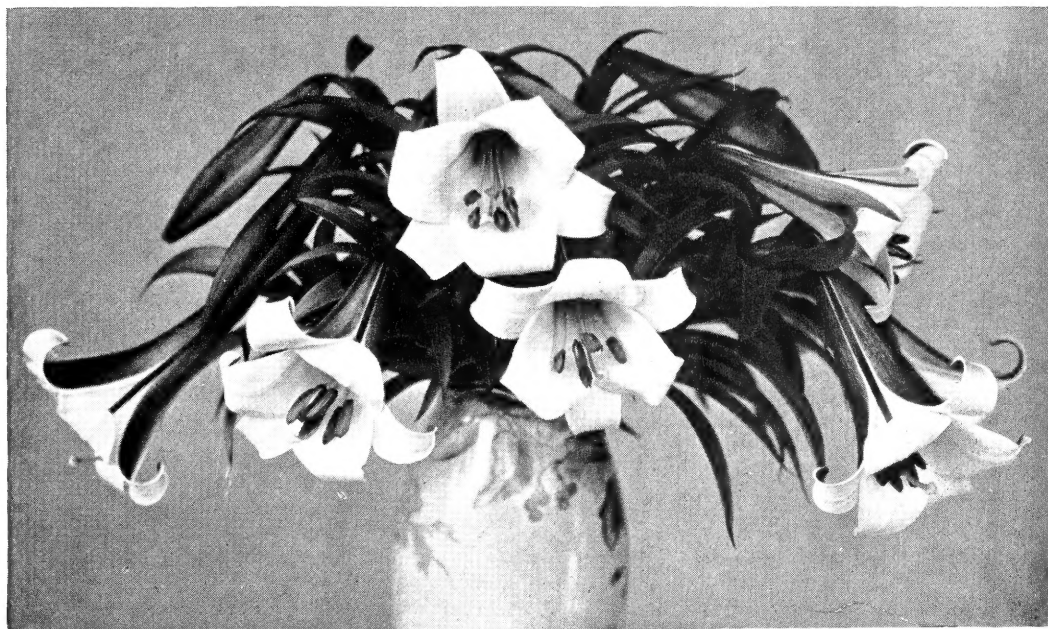
Top size bulbs: **Each 1.00; 12 for 9.50**

A beautiful selected hybrid that is one of the most striking of all lilies. Color is yellow speckled with widely spaced brown spots. Vigorous and absolutely disease free. July. 6 ft. Illustrated inside back cover.

SUNSET (Pardalimum Giganteum)

Each .60; 12 for 6.00

This lovely and colorful lily is practically fool proof. A strong vigorous plant growing up to 8 feet, bearing as many as 15 to 20 recurving flowers of glowing sunset red with a yellow base and speckled amber brown. July. Color picture on page 14.



BROWNII

BROWNII

Each 3.00

Regarded by many enthusiasts as the most beautiful trumpet lily. From 2 to 4 waxy white flowers with chocolate brown anthers are borne on handsome 3 foot plants. Does best in part shade and blooms in June.

CALLOSUM

Each .60

Tightly reflexed, small red to orange red nodding flowers, excellent for cutting, best if planted in a group. 3-5 feet. July.

CANADENSE FLAVUM

Each .75

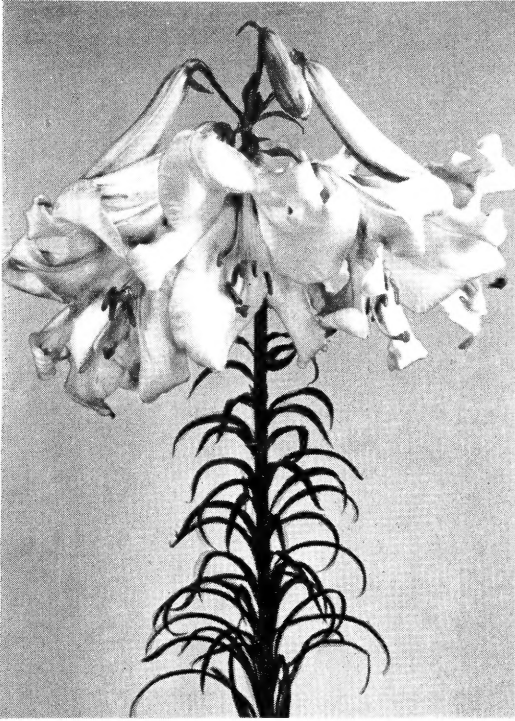
The eastern Meadow Lily and beloved by all who know it. We offer the lovely yellow form with brown spots. Blooms in late June on 4 to 5 foot stems, picture on page 2.

CANDIDUM "CASCADE STRAIN"

Strong flowering bulbs: **Each .60; 12 for 6.00**

Top size bulbs: **Each .85; 12 for 8.50**

A superior strain of the lovely white Madonna Lily developed at Oregon Bulb Farms. This is the only strain known to be absolutely disease free and is guaranteed to give utmost satisfaction. Madonna lilies require full sun and must be planted shallow. The first white lily to bloom and most effective in the company of blue delphiniums. Blooms in June on 3 to 5 foot stems. See color picture on page 11.



CENTIFOLIUM OLYMPIC HYBRIDS



CONCOLOR

CENTIFOLIUM HYBRIDS (Olympic Hybrids)

Strong flowering bulbs: **Each .50; 12 for 5.00**

Top size bulbs: **Each .60; 12 for 6.00**

For sheer beauty, massive size, and stately grandeur we offer these magnificent trumpet lilies to American gardens as the supreme strain of hardy garden lilies. Again as with other hybrids astounding variation in form and color is evident. Many are wide petaled open bowls, others recurve sharply with considerable twist to create the informal ruffled flower so appealing to many. In addition to white the color now may be yellow, light to deep pink or pale green. Exteriors also vary greatly and are usually shaded wine, brown or green. These hybrids are strong growers and will do well wherever the Regal lily is grown. All come into flower 10 days to 3 weeks later than regale and will range from 5 to 8 feet in height. Picture on page 6.

OLYMPIC HYBRIDS PINK SELECTIONS

Each 3.50

New and startling in their glorious shades of pink ranging from light raspberry red to soft fuchsia pink. The color extends through the entire flower and is simply exquisite. Just as hardy and vigorous as the other OLYMPIC HYBRIDS. Illustrated in color on page 11.

CERNUUM

Each 1.00

This fairy-like Korean lily is one of the loveliest of all and might be called the pink pumilum. Color varies from pale pink to rosy lilac usually spotted with purple. The airy, sharply recurved flowers are borne on 3 foot wiry stems in late June. Does well anywhere and is easily grown from seeds. Very scarce.

CHALCEDONICUM

Each 2.00

The brilliant scarlet Turk's cap and one of the most ancient lilies. Dainty waxy red flowers with scarlet anthers on 4 foot stems. Blooms in July and prefers a well drained sunny location. Rare and beautiful.

CONCOLOR

Top size bulbs: **Each .60; 12 for 6.00**

With its unique star shape and bright color this dainty lily is most desirable for the rock garden or foreground planting. The color is vivid scarlet with no markings. Flowers are borne on 2 foot stems and the plant likes a sunny spot where it will bloom in June. Best planted in groups and grows rapidly from seeds. Picture on page 6.

DAURICUM, VARIETY WILSONII

Each .75; 12 for 7.50

A very attractive lily of soft apricot flushed orange and spotted brown. The cup shaped flowers on 3 foot stems appear in June.

DAVIDI, VARIETY WILLMOTTIAE

Each .50; 12 for 5.00

One of our most graceful lilies, producing numerous dainty tiger lily like flowers in pyramidal formation on arching stems 4 to 5 feet. Color is bright deep orange with many shiny black dots. Does well in both sun and shade. Late July.

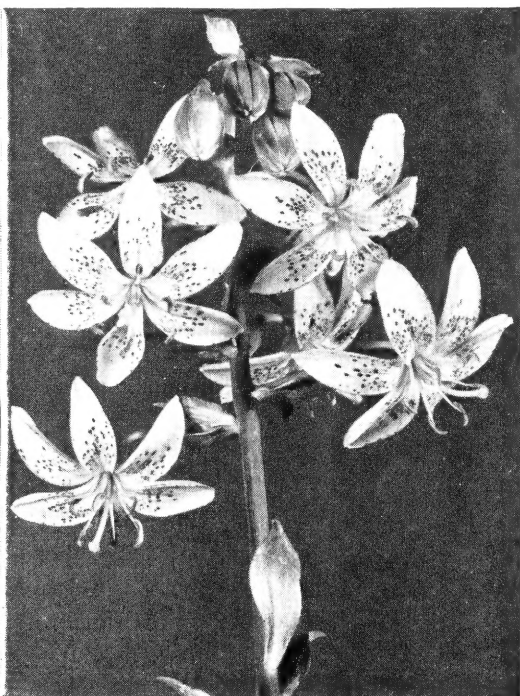
ELEGANS, VARIETY PEACH

Each 1.00; 12 for 10.00

A selection of elegans and one of the most sumptuous lilies we have seen. The color is a luscious salmon orange. The immense flowers measure up to 8 inches in diameter and the wide overlapping petals leave nothing to be desired. Like other lilies of this type Peach is of easiest culture and will do well anywhere.



FIESTA HYBRIDS



HANSONII—Page 8

FIESTA HYBRIDS

MIXED COLORS

Each .75; 12 for 7.50

Another distinct and gaily colored race derived from *L. Willmottiae* combined with related types. Extremely uniform as to flowering time and habit the exciting variations in color and form present a new group of most brilliant and multi-colored hybrids. The marvelous color range includes yellow, oranges, coppers, golds, reds and near purples. Flowers are dainty, of typical Turk's cap form and are gracefully arranged on 4 to 6 foot stems. All flower in July and are indeed a wonderful addition to the garden. Absolutely hardy. Mixed colors only.

FIRE KING

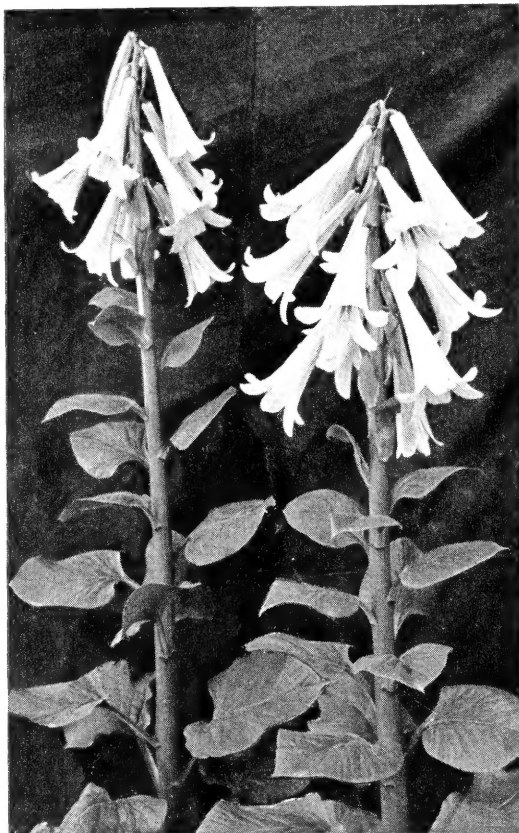
Each 3.00

For sheer brilliance this lily has no equal. Color is vermilion scarlet and established plants bear up to 40 blooms on 4 foot plants. One of the finest garden plants in cultivation. June-July.

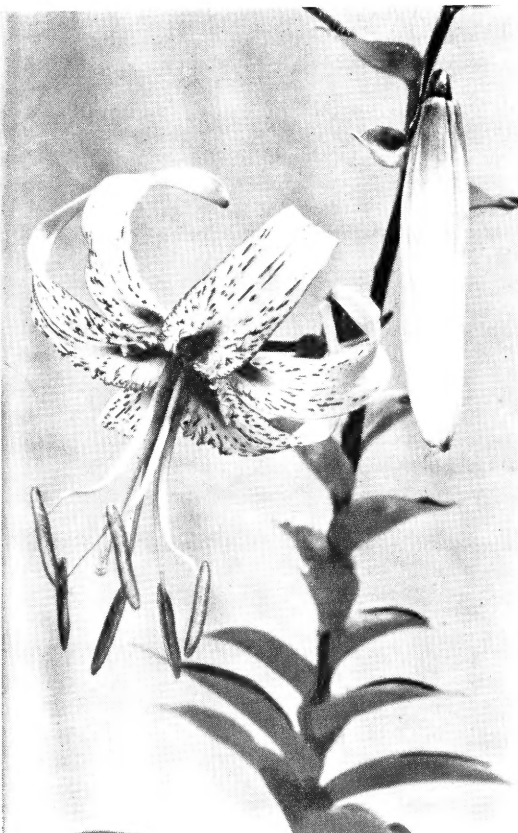
FORMOSANUM

Each .40; Dozen 3.50

Early flowering form. One of the easiest of all lilies but quite susceptible to mosaic. The bulbs we supply are grown entirely from young seedling stock and absolutely disease free. The beautiful long trumpet flowers are purest white with pale green throats that are deliciously scented. The early dwarf form comes into bloom in July on 2 to 3 foot stems.



GIGANTEUM HIMALAICUM



HENRYI

GIGANTEUM HIMALAICUM

Each 2.75

The tallest and considered by many as the noblest of all lilies. Stems grow 10 to 12 feet in height and bear large white flowers stained purple on the exterior. Definitely a lily for the woodland garden in a shaded moist location. Acid soil is necessary for best results. Not an easy lily but well worth the utmost efforts of anyone who wants one of the most magnificent of all lilies in his garden. June.

GRAYI

Each .75

Dainty species native to the southeastern part of the United States. Small bell flowers of bright scarlet spotted maroon. Prefers a semi-shaded location with moisture. 3 to 4 feet. July.

GUINEA GOLD

Each 3.00

Recurved buttercup yellow dotted brown. One of the most charming Skinner hybrids blooming in late June on 4 foot stems.

HANSONI

Each .85; 12 for 8.50

Beautiful Japanese lily of exceptional substance and extreme hardiness. The reflexed pendant flowers are clear orange yellow with brown speckles. The stems appear early in spring and come into bloom in late June and July. Very resistant to mosaic and a splendid garden lily in sun and light shade. A parent of many new hybrids. Picture on page 7.

HENRYI

Strong flowering bulbs: Each .60; 12 for 6.00

Top size bulbs: Each .85; 12 for 8.50

A splendid robust growing lily attaining 8 feet or more in height when established and bearing 15 to 20 lovely reflexed flowers of soft orange yellow. August.

HOLLYWOOD HYBRIDS

Mr. De Graaff's entirely new strain of hybrid lilies. By introducing *L. davidii* into the MID-CENTURY hybrids a new race of star shaped lilies like a giant *L. concolor* produced on tall wiry stems is now available to those seeking magnificent garden lilies. Growing habits are similar to the MID-CENTURY group but the HOLLYWOOD HYBRIDS are considerably taller, averaging 4 to 5 feet, and bloom later.

JOAN EVANS

Each 1.20; 3 for 3.50

Named after the popular young Hollywood star. Large chalice shaped flowers of brightest chrome yellow. Wide overlapping petals combine to form most handsome flowers in large heads that top 4 to 5 foot stems. Most striking of all the yellow uprights. July.

MIXED HOLLWOOD HYBRIDS

Each 1.10; 12 for 10.00

Many shades of yellow, orange and red are present in these new lilies. Color picture on page 11.

HUMBOLDTI MAGNIFICUM

Each 1.50

Most spectacular of all our native lilies. Well grown specimens attain 8 to 10 feet. The orange red flowers are spotted maroon and are very showy. This species requires sharp drainage but plenty of surface moisture during its growing season. July.

JAPONICUM

Each 1.00

The most beautiful of all pink lilies in our opinion. The large open trumpet flowers are usually apple blossom pink but may be deeper or much lighter. Plants bear 2 to 5 blooms on 2 foot stems in June. Prefers a woodland location and acid soil. Not an easy lily.

JAPONICUM ALBUM

Each 2.50

This pure white variety is exceedingly rare and very choice. Same as the type in all other respects. Very limited supply.

JAPONICUM PLATYFOLIUM

Each 2.00

Same as Japonicum except that the blooms come earlier with broader leaves. All 3 forms of Japonicum are among the most desirable lilies in our list.

JILLIAN WALLACE

Each 10.00

An *Auratum* x *speciosum* hybrid and the most beautiful large red lily in existence. Of Australian origin the large 10 inch flowers are brilliant crimson of slightly reflexed form. Very few bulbs.

MARGARET JOHNSON

Each 1.50

A splendid hybrid developed by F. L. Skinner. Large flame red flowers spotted deep purple on 4 foot stems in July. Strong grower and a rapid increaser.

MARHAN

Each 2.25

A beautiful hybrid between *L. Martagon Album* and *L. Hansonii*. Buttercup yellow spotted oxblood red. Vigorous and a striking garden subject.

MARTAGON

Each 1.00; 12 for 9.50

The purple Turk's Cap and widely grown in England and Western Europe. Established plants attain 5 feet and bear many flowers in June or July. The color is somewhat variable but is usually pinkish purple with darker spots. A very attractive lily.

MARTAGON ALBUM

Each 1.00

Perhaps the most charming white lily in existence. The enchanting waxed flowers of elfin grace arranged on perfectly branched stems are irresistible. Delightful in floral work and winsome in the garden the white *Martagon* lily will be cherished forever. Blooms in June on 4 foot stems. Easily grown in well drained sunny location and increases rapidly when established. See color illustration on page 13.

MID-CENTURY HYBRIDS



PAGODA

These are the interesting TIGRINUM X UMBELLATUM hybrids and perhaps Mr. de Graaff's outstanding achievement to date. Variation of plants, flowers and colors in this group is quite amazing. All are absolutely hardy anywhere and will thrive wherever the common Tiger lily is grown. Stocks of all the named varieties listed below are very small so order early to avoid disappointment.

BOLERO Each 3.00 3 for 8.50

The giant in this group with the largest flowers of all measuring up to 9 inches in diameter. Color is deepest orange with bright reddish cinnamon spots. Flowers are upright with wide overlapping petals. Among the last to bloom. 2½ feet. Mid-July.

BONANZA Each 1.50; 3 for 3.50

Large upright flowers of clean orange yellow coloring contrasted by black spots. Blooms later than the other varieties thus extending the season. Open flower heads on strong stems about 3 feet high. Late July.

CAMPFIRE (1949) Each 1.75; 3 for 5.00

Deepest fiery red and rated as the finest of the red uprights. Distinguished by narrow pointed petals of practically solid color. One of the taller hybrids that sold out last year. 3½ feet.

ENCHANTMENT (Plant Patent 862) Each .75; 3 for 2.00

Patented because Mr. de Graaff considered this his most outstanding 1949 introduction. Upright nasturtium red flowers in big heads atop tall strong stems. A lily of tremendous vigor, blazing color and phenomenal propensity for increase. Like the Tiger lily this hybrid also bears bulbils in the axils of the leaves. Early July. 3½ feet. Color picture on page 13.

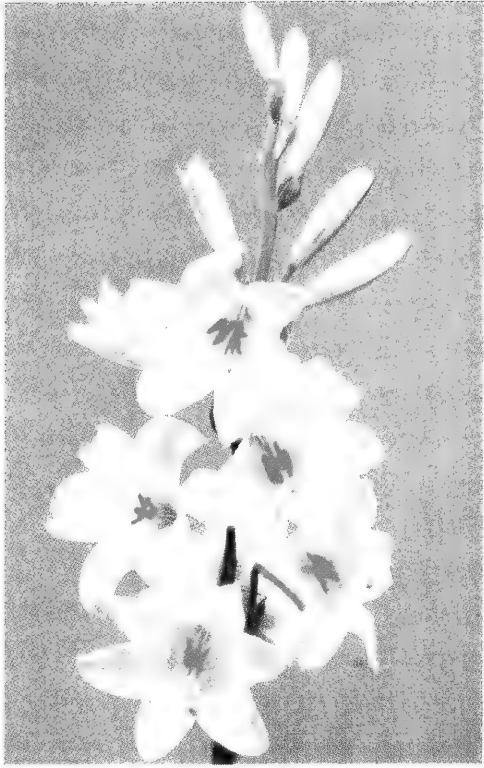


ENCHANTMENT

De Graaff LILIES



L. CENTIFOLIUM OLYMPIC HYBRID
Pink Selection — Page 6



L. CANDIDUM, CASCADE STRAIN
Page 6

HOLLYWOOD HYBRIDS Page 9



Order Your LILIES Now---

SAVE MONEY!

Special Cash Discount

We will allow 10% cash discount on all lily orders received before August 1st except the Color Plate Collection on page 14. Remember this special offer applies to lilies only and definitely ends

August 1st

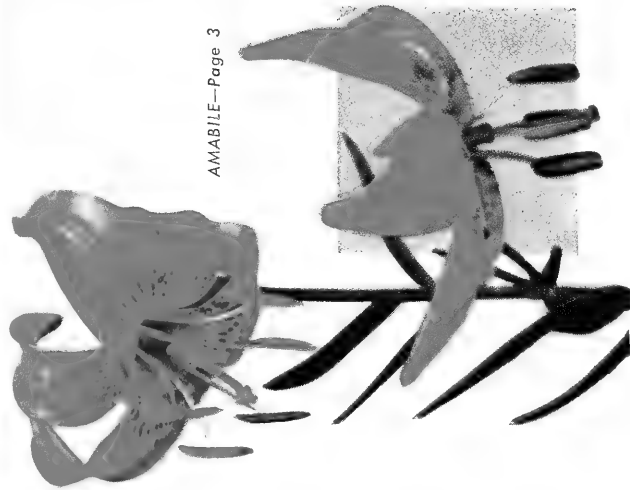


BELLINGHAM HYBRIDS—Page 5

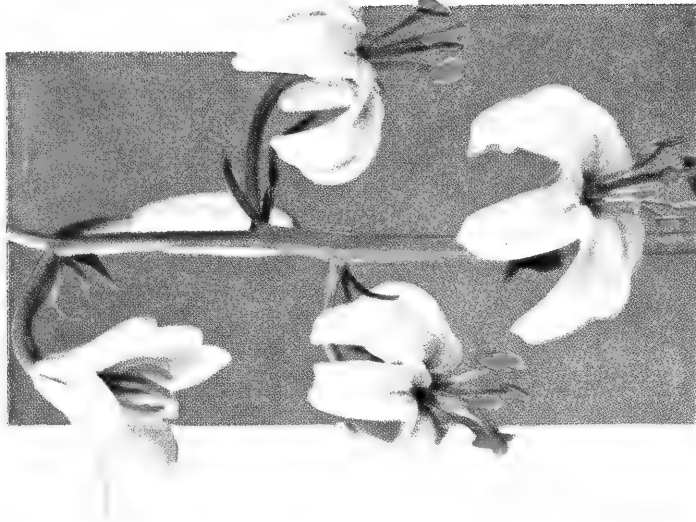
The stately, graceful Lilies with their fascinatingly varied forms, glorious colors and rich fragrance are among the choices of all garden subjects. Walter Marx Gardens offer you a superb selection embracing the finest of these truly magnificent flowers.

12

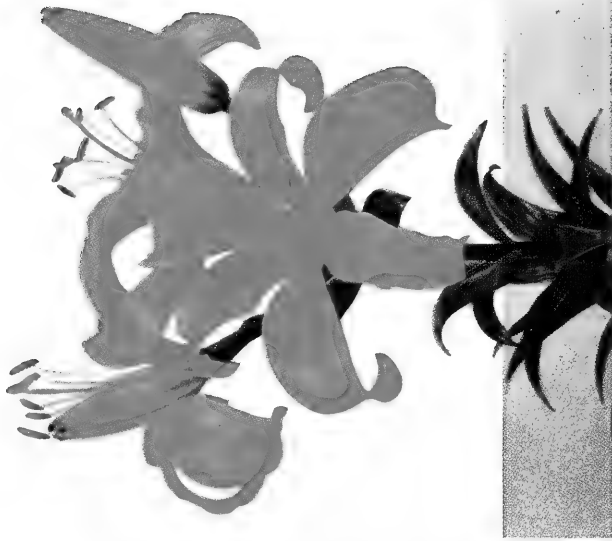
AMABILE LUTEUM—Page 3



AMABILE—Page 3



MARTAGON ALBUM
Page 9



ENCHANTMENT—Page 10

13

COLOR PLATE
Collection

(See below)



FLAMINGO—Page 20

ALL 14 LILIES

Illustrated in Color on
Page 1 (Front Cover),
Pages 2, 11, 12, 13, 14 and
24 (Back Cover)

Plus

DAYLILY ROYAL RUBY
Illustrated on Page 23

(Catalog Value \$19.15)

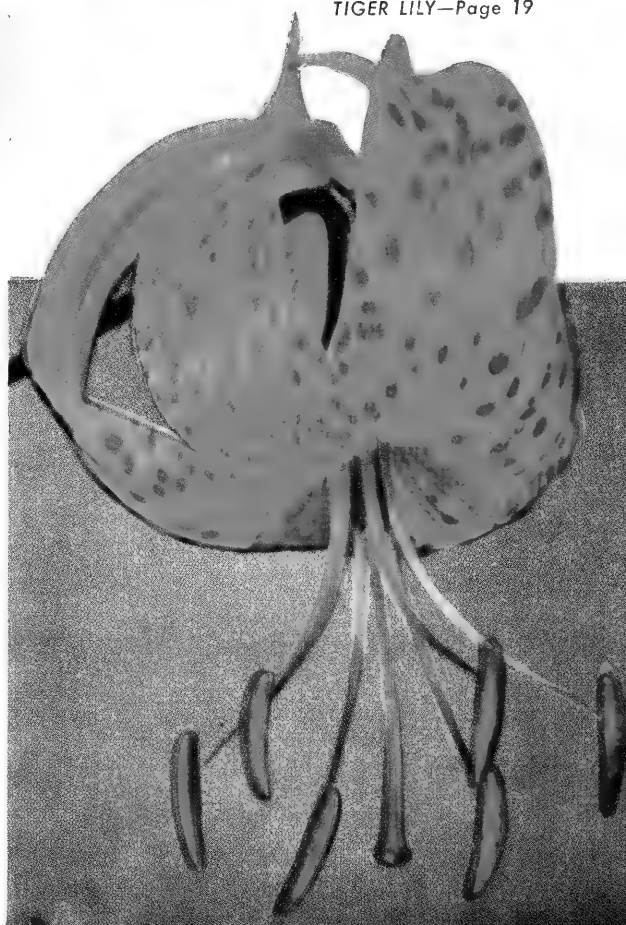
for **ONLY**

\$15.00



SUNSET
LILY
Page 5

TIGER LILY—Page 19





HYBRID LILY FIREFLAME



VAGABOND

FIREFLAME

Each 1.50; 3 for 4.00

One of the truly intermediate hybrids. Outward facing flowers of solid mahogany red with black spots. A wonderful red lily that produces 6 to 8 wide petaled flowers on 2½ foot stems. July.

HARLEQUIN

Each 2.00; 3 for 5.00

For those who like warm soft colors this entrancing blend will find highest favor. A delicious combination of pink and yellow that is near flesh pink. Well formed flowers are side facing on 2½ foot stems and come into bloom in early July. This variety also bears stem bulbils.

HARMONY

Each 1.20; 3 for 3.50

Tall early upright type with large wide petaled flowers of clear orange. Speckling is inconspicuous. Brilliant and a splendid garden lily. 3½ feet. Late June.

PAGODA

Each 1.00; 3 for 2.75

One of the most refined of this group and a "natural" for flower arrangements. A tall upright type bearing pink toned orange flowers gracefully arranged on good pedicels. 4 feet. July

PARADE

Each 2.50; 3 for 7.00

Richly colored horizontal flowers that win instant admiration. Color is sparkling golden yellow that is distinct and appealing. A real show flower. 2½ feet.

TANGELO

Each 1.75; 3 for 5.00

Luminous orange flowers that simply blaze in the garden. Most brilliant of all the Mid-Century Hybrids as their glowing flower heads appear to enclose lighted torches. Large side facing flowers on 2½ foot stems. Very early and blooms with GOLDFINCH.

VAGABOND

Each 1.75; 3 for 5.00

We consider this variety among the most beautiful of all lilies. The enormous outward facing flowers possess elegant form. The color, a luscious blend of apricot pink, lights up the entire garden. A lily of highest quality. 2½ feet. July.

VALENCIA

Each 1.00; 3 for 2.75

Lovely orange yellow of clear color. The horizontal large flowers have light midribs of coppery gold and are speckled maroon. 3 feet. July.

MID-CENTURY MIXTURE

Each .75; 3 for 2.00

A delightful mixture of these hybrids all of which obviously could not be named no matter how worthwhile they might be. All are attractive and include some unusual types that should prove valuable to the lily breeder.

NEPALENSE

Each 3.75

One of the rarest and most exotic lilies in our entire list. There is nothing else like it. The large green white tinted flower is funnel shaped with a wide flaring mouth and reflexed petal tips. The throat is vivid red purple. The plant grows about 2½ feet high and blooms in late June. Contrary to former belief this lily is hardy as it endures zero temperatures without protection. A gorgeous novelty for those who want a lily that is strikingly beautiful and different.

PALMER HYBRIDS

A new hybrid strain of handsome lilies that are easily grown and sure to become most popular as stocks become more plentiful.

CHEROKEE

Each 2.50

Large brick red speckled maroon. Outward facing flowers on 4 to 5 foot stems. Late July.

GALAHAD

Each 3.00

New trumpet type of light sulphur yellow. Large flowers of great beauty. 5 feet. July.

VALIANT

Each 2.50

Big cardinal red spotted black. Very showy in the garden.

PALMER HYBRID SEEDLINGS

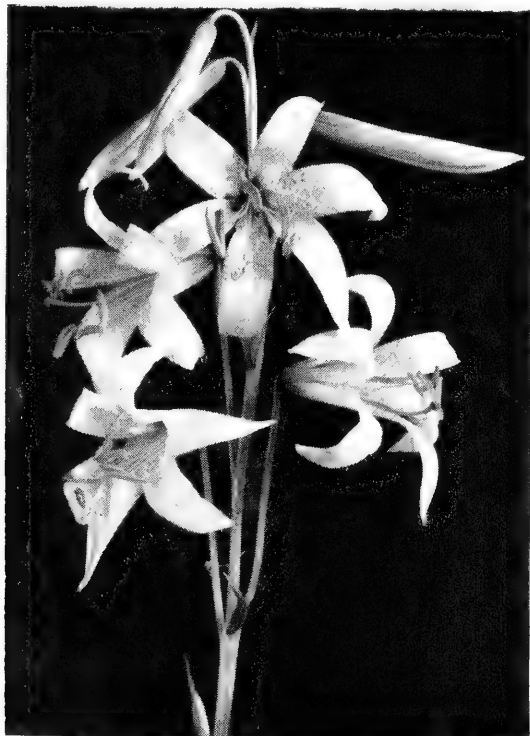
Each 1.25

A remarkable group of colorful hybrid lilies in many shades of yellow, orange, and red. Mostly outward facing recurved flowers of large size. Height averages 3 to 5 feet. July flowering.

PARRYI

Each 1.75

One of our loveliest native lilies. The delightfully scented flowers are clear canary yellow with small brown dots. Plants grow 4 to 6 feet and bloom in July. Ideal for the woodland garden in moist soil rich in humus and decidedly acid.



PARRYI



PUMILUM (*Tenuifolium*)

PRESTON HYBRIDS

A group of splendid hybrid lilies adapted to gardens throughout the country. All are easily grown in average garden soil with sunny exposure.

BRENDA WATTS

Each 1.00; 12 for 10.00

One of the finest Preston Hybrids and a magnificent garden plant. Large fire red blooms on strong 5 foot plants in July. Unquestionably one of the most striking garden lilies.

CORSAIR (1951)

Each 2.50

Tangerine orange flushed red at tips. 2 to 3 feet. June-July.

EDNA KEAN

Each 1.00; 12 for 10.00

Similar to Brenda Watts except for color which is deep cherry red. 4 feet. July.

LILLIAN CUMMINGS

Each 1.00; 12 for 10.00

A most worthwhile garden lily bearing grenadine red flowers on 3 to 5 foot stems in early July. Hybrid vigor and disease resistance characterize this seedling of Willmottiae and Dauricum.

SOVEREIGN

Each 4.50

A new introduction of saffron yellow with mahogany spots. Large recurved flowers of striking beauty. July. 3 to 4 ft.

PRESTON HYBRID MIXTURE

Each 1.00; 12 for 10.00

Attractive recurved lilies or semi-recurved in many shades of yellow, orange and red. 3 to 5 feet. Late June and July.

PUMILUM (Tenuifolium)

Each .30; 12 for 3.00

The ever popular little Coral Lily that inaugurates the blooming season wherever garden lilies are grown. The glowing scarlet Turk's caps are fragrant and are borne on slender stems 1½ to 2 feet. One of the easiest in ordinary garden soil and full sun. Come most readily from seed. Early June.

PUMILUM, GOLDEN GLEAM

Each .40; 12 for 4.00

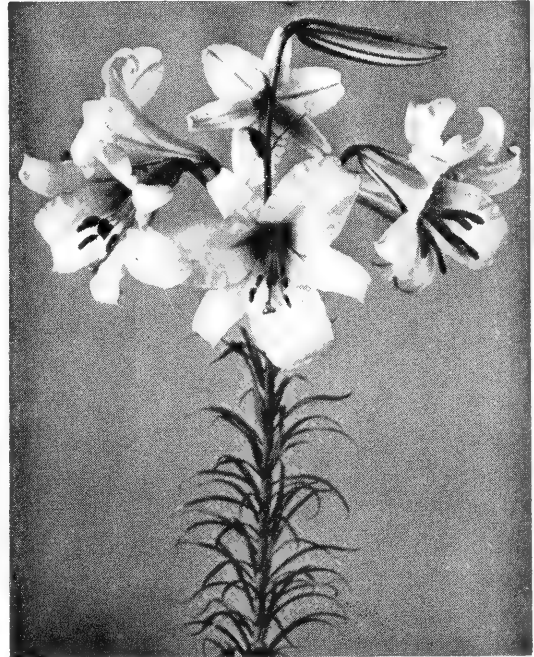
Bright golden orange pumilum and a splendid garden subject. Same habits as the type.

REGALE

Strong flowering bulbs: **Each .30; 12 for 3.00**

Top size bulbs: **Each. 50; 12 for 5.00**

No flower garden should be without this extremely hardy lily which is of easiest culture. Large, beautiful white with yellow center and exterior tinted purple or brown. Ours is a selected strain producing extra large flowers with wide petals. Largest bulbs produce 30 to 40 flowers on stems 6 to 8 feet high. Splendid planted with blue delphiniums.



REGALE

RUBELLUM

Each 1.25; 12 for 12.50

Exquisite dwarf lily of delicate pink quite similar to the larger L. japonicum. Blooms in May or June on 12 inch stems. Prefer woodland soil in semi-shade. Color illustration on front cover.

SARGENTIAE

Each .75

A rare and beautiful species something like the Regale but comes into bloom at least 2 weeks later. Also green throated instead of yellow with striking brown anthers and brown markings on outside of petals. The only white trumpet species which bears stem bulbils. 6 to 9 feet. August.



A TYPICAL SPECIOSUM RUBRUM

SPECIOSUM

Among the most beautiful of all lilies, this species ranks high in popularity in American gardens. Artistically fashioned, the recurved frilly flowers bring glory to the late summer garden as well as ecstatic delight to the flower arrangement devotee. This lily is vigorous, quite disease resistant and very hardy. Slightly acid soil is preferred but it will tolerate many varieties of soil with no ill effects. Average height is about 4 feet and blooms from late August through September.

SPECIOSUM ALBUM

Each 1.50; 12 for 15.00

The refreshing and cool snow white Speciosum that is a classic among lilies. Blooms a little later than the pink varieties and is most impressive when planted against a background of evergreen foliage.

SPECIOSUM ALBUM KRAETZERI

Each 1.75; 12 for 17.50

Extra large white variety with brown anthers and greenish midribs. A beautiful lily and rather late. 4 to 5 feet. September.

SPECIOSUM RUBRUM

Each .60; 3 for 1.75; 12 for 6.00

Deep carmine pink and among the most beautiful of all lilies. Artistically fashioned the recurved frilly flowers bring glory to the late summer garden. Vigorous, quite disease resistant and hardy. Height 4 to 5 feet. August-September.

SPECIOSUM RUBRUM "Red Champion"**Each 1.10; 3 for 3.00; 12 for 11.00**

Deepest colored of the pink varieties. The foundation stock was discovered locally on the slopes of Mount Hood where it had grown undisturbed for some 40 years. Very vigorous and the stock is absolutely disease free. Illustrated on back cover.

T. A. HAVEMEYER SEEDLINGS**Each 2.50; 12 for 25.00**

Just about the loveliest of all August flowering lilies. Most are as good as Havemeyer and some are better. Colors range from pale ivory through lemon yellows into deepest warm yellows. Most have green throats and some brown speckles. Form varies considerably and all are splendid corsage material. Height averages 5 to 6 feet. Stock is always scarce.

TALISMAN**Each .75; 12 for 7.50**

A handsome hybrid out of Tigrinum, Willmottiae and Umbellatum that is absolutely fool proof. One bulb will increase to hundreds in a few years as bulbils are produced on the entire length of the stem. The pendant flowers are sparkling deep orange and are borne on 5 foot stems. Blooms late.

TESTACEUM**Each 2.25 12 for 22.50**

Often called the Nankeen Lily and still one of the choicest of all garden lilies. There has never been sufficient stock to supply the demand. Plant habit is similar to L. Candidum except that the flowers are pendant and recurved. The color is Nankeen yellow delicately flushed pink with red anthers. A beautiful garden subject and a wonderful cut flower always in demand by florists. Blooms in early July and prefers a sunny location in well drained sweet soil. Like L. Candidum this lily must be planted shallow. 5 feet.

TIGRINUM SPLENDENS**Each .50; 12 for 4.00**

Very handsome and the largest flowering variety of the well known Tiger Lily. Deep salmon orange flowers speckled black. Hardy and easy to grow anywhere. Blooms on 6 foot stems in late August and September.

TIGRINUM FLORE-PLENO**Each .50; 12 for 4.00**

The double form of Splendens and the most attractive of all double lilies. Also blooms a little later than the single variety.

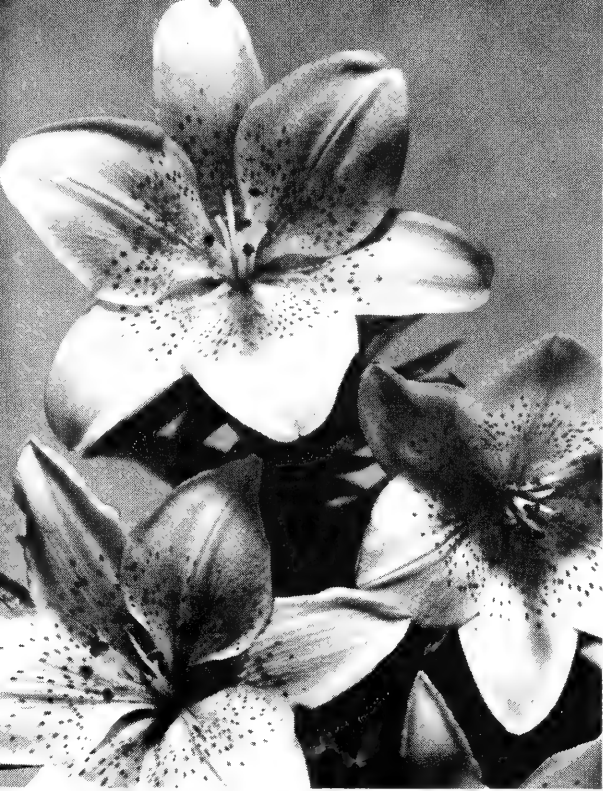
TSINGTAUENSE**Each 1.50**

Larger and even more striking than Concolor which this new species resembles in form and color. A splendid garden lily that has proven adaptable everywhere. July. 3 feet.

UMBELLATUM GRANDIFLORUM**Each .50**

Rather dwarf lily producing large clusters of upright flowers on sturdy 21 inch to 30 inch stems. The color is orange red with some variations. Of easiest culture everywhere and a fast increaser. June.

**TESTACEUM**



GOLDEN CHALICE

RADIANCE

Each 1.75; 12 for 17.50

The finest red of the new Umbellatum hybrids. Sparkling Chinese red flowers on 2½ foot stems stand out like beacons in the garden in early June.

RAINBOW MIXTURE

Each .60; 12 for 6.00

Complete mixture of widest color range from pale yellow through orange, gold, apricot, to maroon and crimson shades. Vastly superior to the older varieties of umbellatum and elegans and sure to give utmost satisfaction anywhere. All bloom in May and June. Height varies from 2 to 4 feet.

WALLICHIANUM Each 3.00

One of the finest lilies from the Himalayas and among the very last to bloom in the garden. The long 7 to 9 inch blooms are cream within and green without. September. 4 to 5 feet.

NEW UMBELLATUM HYBRIDS

A new race of Umbellatum hybrids embracing the finest range found in this type. Lemon, orange, peach, gold, maroon and all the intermediate shades are evident here. If you have become a little tired of growing the old umbellatum and elegans varieties then by all means renew your interest by investing in some of these new colorful hybrids.

FLAMINGO Each 1.20; 12 for 12.00

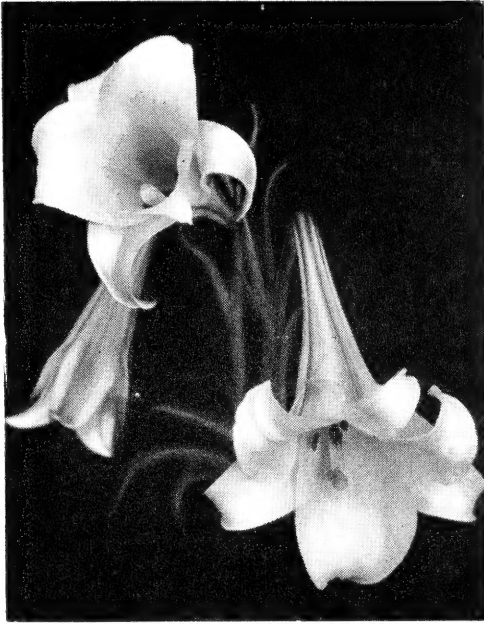
This variety produces enormous pinkish orange flowers of great beauty. Strong grower and sturdy stems. An excellent forcing variety that will bloom in late February under glass. 2½ feet. June.

GOLDEN CHALICE Each .75; 12 for 7.50

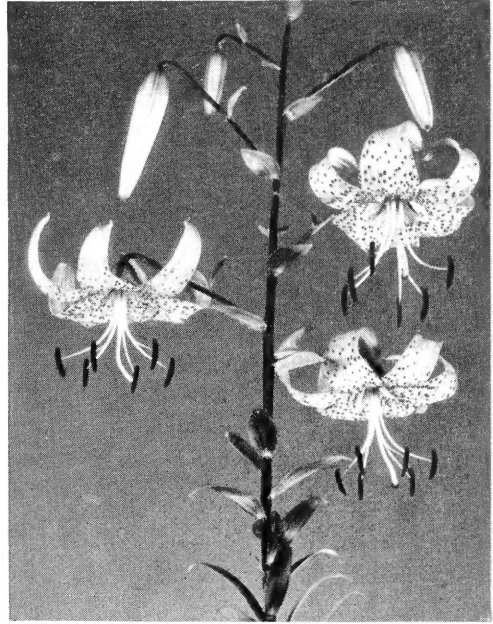
A new strain of de Graaff hybrids in which all the harsh oranges and glaring red shades have been eliminated. The soft enchanting color range varies from palest yellows to warm shades of golden yellow and apricot orange. In addition to these lovely colors, improvement of shape, another objective was achieved in flowers that are full with wide overlapping petals. The strain is vigorous, drought resistant and suitable for dry warm parts of your garden where other lilies would prove unsatisfactory. All are May flowering and among the first of all lilies to bloom. 2½ to 3½ feet.



RAINBOW HYBRIDS



FORMOSANUM—Page 8



TIGRINUM SPLENDENS—Page 19

LILY SEED

A selection of lily seeds that are not difficult to grow. Those starred are slow germinating and will usually require 1 or 2 years longer to reach the flowering stage.

L. Amabile	.50
L. Amabile Luteum	1.00
*L. Auratum (Type)	.50
*L. Auratum Platyphyllum	1.00
L. Aurelian Hybrids	2.00
*L. Backhouse Hybrids	2.00
*L. Bellingham Hybrids	1.00
L. Callosum	1.00
*L. Canadense Flavum	.50
L. Centifolium "Olympic Hybrids"	.50
L. Davidii, Variety Willmottiae	.50
L. Formosanum, Early	.50
L. Formosanum, Late (Wilson's)	.50
L. Golden Chalice	1.00
*L. Grayi	1.00
L. Havemeyer Hybrids, Select	2.00
L. Henryi	.50
*L. Humboldtii Magnificum	1.00
*L. Japonicum	1.00
*L. Marhan Hybrids	2.00
*L. Martagon	1.00
*L. Martagon Album	1.00
L. Mid-Century Hybrids	2.00
*L. Nepalense	2.00
L. Palmer's Hybrids (Named Varieties, mixed)	1.00

*L. Parryi	1.00
*L. Preston's Hybrids (Named Varieties, mixed)	1.00
L. Pumilum	1.00
L. Rainbow Hybrid	1.00
L. Regale	.50
*L. Rubellum	1.00
L. Sargentiae	1.00
*L. Speciosum Album (New Form), white seed	2.00
*L. Speciosum Magnificum	1.00
*L. Speciosum Rubrum	1.00

*Slow germinating but may be sown in the spring for best results.

DAYLILIES

All from hand pollinated crosses of the finest varieties to give you many of the pink and red shades. New hybrid Daylilies are extremely shy seed producers so the price is necessarily high. Sound seeds and every one should grow.

40 seeds	1.00
100 seeds	2.00

The BULBS arrived in fine shape and are excellent. Thank you for the fine handling. I have taken every care in planting them and am looking forward to spring and summer.

Mrs. E. M., Bethesda, Md.

Lilies for Every Garden

Culture: Detailed Cultural Instructions Will Be Included with Every Lily Order

Lilies, unlike most other bulbs, resent disturbance at any time and deteriorate steadily when kept out of the ground. Also, lilies possess, in addition to the cluster of fleshy scales which comprise the bulb, a system of live roots attached to the bulb base just like any other perennial. No gardener would be foolish enough to remove all the roots from a perennial phlox or delphinium before planting it in the garden. Likewise the live roots attached to a lily bulb should never be removed or allowed to die before planting if maximum results are desired. With exception of some imported stocks all lily bulbs we use for filling orders will arrive with attached live roots. This advantage guarantees our customers maximum vitality at planting time so necessary to get any plant or bulb off to a good start in a new garden.

Time of Shipment: Late October to Early April (Unless Noted Otherwise)

Most lilies may be planted in fall or early spring with equally good results. The only requirement is that the bulbs are properly cared for during the winter months. We have ideal facilities for winter storage and can supply vigorous fresh bulbs any time from October to early April. Please indicate when you would prefer shipment and we'll ship as near that date as possible.

Our Guarantee

All our plants and bulbs are guaranteed to be true to name and we try at all times to send out stock of highest quality. We guarantee each shipment to reach you in first class condition. If you are not completely satisfied with your order upon arrival please notify us at once. We guarantee to replace any of our plants or bulbs that do not reach you in good condition or refund your money. We cannot accept responsibility for growth in your garden because of conditions beyond our control.

Minimum Order \$3.00

Because we assume all shipping expenses, which often amounts to 25% or more of the entire value of small orders, we cannot accept orders for less than \$3.00. Remittance must accompany all orders either by check, draft or money order. Currency is acceptable but should be registered for your own protection. No C.O.D. orders.

NORTH AMERICAN LILY SOCIETY

Lily enthusiasts desiring to join the North American Lily Society should forward their remittance of \$3.00 to Mr. W. L. Fulmer, Chairman Membership Committee, 505 Boylston Avenue, North, Seattle, Washington. Or just include the \$3.00 with your order designating it for the Lily Society membership and we will gladly take care of the rest.

DAY LILIES

America's Most Promising Perennial

Daylilies thrive in every soil and climate and give a continuous display of lovely graceful blooms from June until early fall. We can earnestly recommend these supremely satisfactory perennials to all flower lovers.



ROYAL RUBY

DAYLILY COLLECTIONS

COLLECTION No. 1

- EMILY HUME.** Fine bright yellow.
- ANNA BETSCHER.** Big orange and bronze red.
- AUGUST PIONEER.** Chrome orange.
- BAGDAD.** Bright red and brown.
- BRUNETTE.** Deep reddish brown.
- BURBANK.** Large lemon yellow.
- CINNABAR.** Light yellow sanded rosy brown.
- CRESSIDA.** Big light yellow.
- D. D. WYMAN.** Huge yellow flushed red.
- DOVER.** Good orange yellow.

- E. A. BOWLES.** Reddish orange.
- FLAMULA.** Bright scarlet.
- GOLDEN].** Golden orange.
- GRANADA.** Striking light brown.
- J. A. CRAWFORD.** Early canary yellow.
- MIKADO.** Orange and mahogany red.
- MODESTY.** Large light yellow.
- MARGARET PERRY.** Coppery red.
- MANDARIN.** Big spidery yellow.
- ESTMERE.** Dwarf apricot yellow.

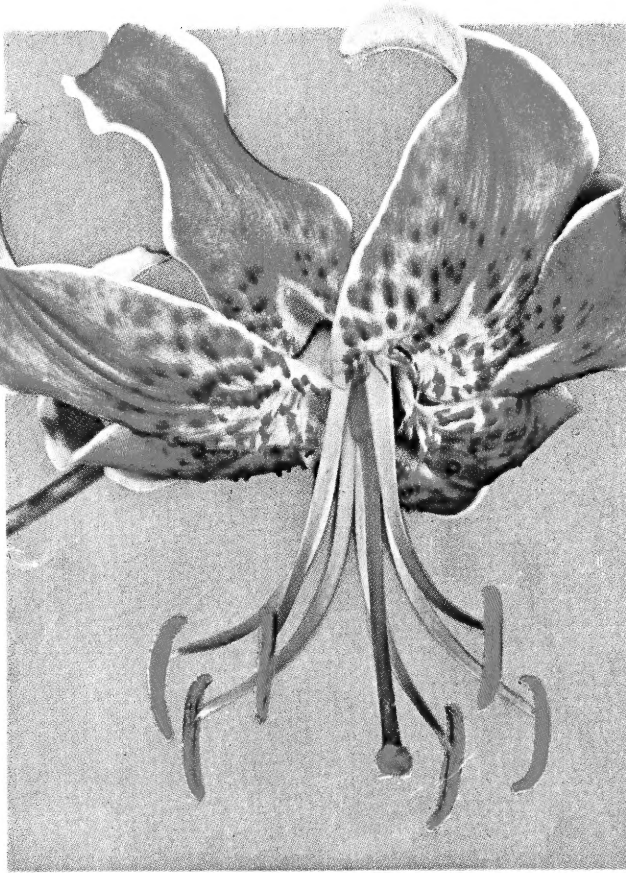
COLLECTION No. 2

- ROYAL RUBY.** One of the finest reds.
- B. H. FARR.** Lovely peach and yellow blend.
- BURMAH.** Bright orange.
- HONEY REDHEAD.** Copper red with dark center.
- PERSIAN PRINCESS.** Deep mahogany flushed purple.
- PICARDY.** Fine wine purple.
- VULCAN.** Deep maroon with yellow center.
- ROSITA.** Rosy crimson.
- PRISCILLA.** Brownish rose.
- MOONBEAM.** Large light yellow.

Select ANY 10 of this group but only
ONE OF A KIND for \$4.50, postpaid, or **ALL 20** for \$8.50,
labeled and postpaid

ANY 6 for \$5.95, or
ALL 10 for \$8.95

ANYONE can grow Daylilies ANYWHERE



LILIAM SPECIOSUM RUBRUM
Page 18

May we ask you a favor?

Our annual catalog is designed to serve you throughout the entire gardening year. However, if you can not send us an order, please do not throw your copy away. Give it to a fellow gardener interested in the kinds of plants we have to offer. Thank you.

Walter Marx Gardens

BORING : : : : : OREGON