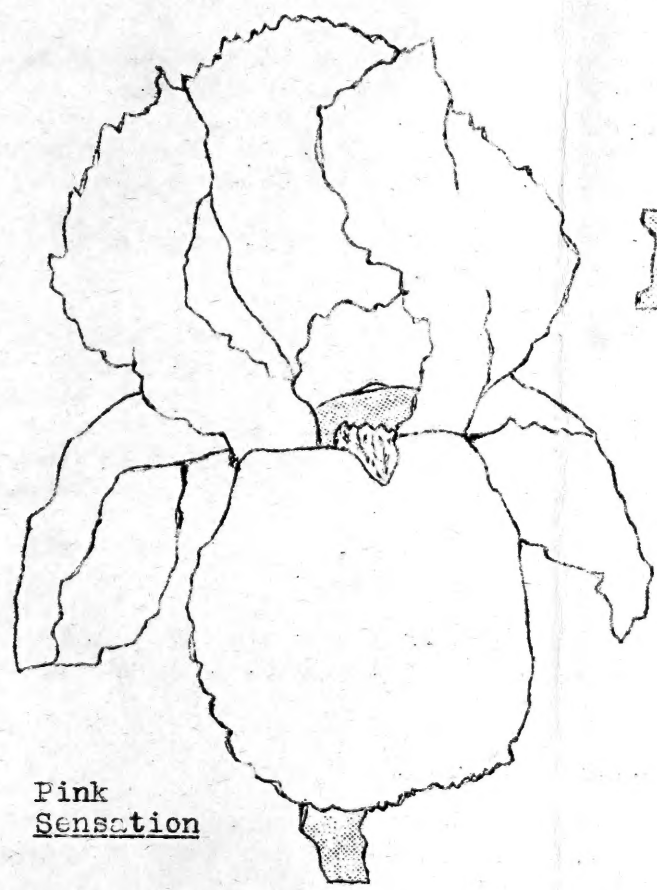


62.47

2

LIBRARY  
RECEIVED  
★ JUN 7 - 1954 ★  
U. S. Department of Agriculture

# MAGNOLIA



Pink  
Sensation

# FAIRM

# IRIS

# GARDIENS

1954

FREELAND,  
MARYLAND



SELECT LIST OF IRIS FOR 1954

ACTION FRONT (Cook 1942) M 36"  
Huge copper red. Strong grower  
& big flower. 75c; 3 for \$2.00

ADVENTURE (Grant 1941) E 36" H.  
M. Large brown & creamy white  
plicata. 50c; 3 for \$1.25

ALADDIN'S WISH (Mur. 1945) M  
36" Unusual cream ground heav-  
ily brushed blue. Huge. 75c

ALASTOR (Spen. 1940) EM 36" A.  
M. Deep cyclamen pink. Brown &  
gold haft. 50c; 3 for \$1.25

ALDURA (Larsen 1943) M 36" H.M.  
Huge white plicata marked with  
soft light blue. Lovely. \$1.00

AMANDINE (Doug. 1946) L 36" A.  
M. Luscious creamy lemon self.  
Huge, heavily waved & ruffled.  
President's Cup, 1948. \$2.00

AMIGO (Wmsn. 1934) EM 34" A.M.  
Glorious contrast of sky blue  
& purple. 50c; 3 for \$1.25

AMITY (Corey 1944) M 36" H.M.  
Over all patterned deep blue &  
white plicata. Unusual. \$1.00

ANGELUS (Egel. 1937) L 36" A.M.  
Pearly orchid pink blend. Late  
blooming. 50c; 3 for \$1.25

ANITRA (Sass 1935) EM 35" H.M.  
Palest silvery light blue. Big  
& tailored. 50c; 3 for \$1.25

ANNA WILLIAMSON (Cook 1946) EM  
36" H.M. Very large, deep pink  
bicolor. Strong stems. \$1.00

ARAB CHIEF (Whit. 1944) L 36"  
H.M. Fine coppery burnt orange  
self. Late & brilliant. \$1.00

ARCTIC (Klein. 1940) EM 36" A.  
M. Enchanting large white with  
gold throat. 50c; 3 for \$1.25

ARGUS PHEASANT (DeFor. 1948) M  
38" Dykes Medal 1952. Big rich  
golden brown. Superb. \$5.00

AT DAWNING (Kirk. 1935) E 36"  
A.M. Huge pink bicolor. Golden  
haft & beard. 35c; 3 for 90c

AUBANEL (Cay. 1935) M 36" A.M.  
Shrimp pink blend from France.  
Very popular. 50c; 3 for \$1.25

AUBURN (Klein. 1945) EM 36" H.  
M. Deep henna-brown with blue  
highlight on the falls. \$1.50

AZTEC COPPER (Klein. 1939) ML  
36" H.M. Metallic blend of cop-  
per & violet. 50c; 3 for \$1.25

AZURE SKIES (Patt. 1943) M 34"  
Midsummer-sky blue. Ruffled &  
flaring form. 60c; 3 for \$1.50

BALLERINA (Hall 1951) M 36" A.  
M. Large & tall light flamingo  
pink. An ideal pink. \$7.50

BALLET DANCER (Klein. 1949) ML  
38" A.M. A golden apricot tan.  
Big wide flaring blooms. \$2.50

BALMUNG (Sass 1939) M 36" A.M.  
Exotic yellow & cinnamon brown  
plicata. 50c; 3 for \$1.25

BANDMASTER (Hall 1944) ML 38"  
H.M. A very large light powder  
blue self. 75c; 3 for \$2.00

BEOWULF (Schr. 1936) M 34" Red  
& brown bicolor. 35c; 3 for 90c

BERKELEY GOLD (Sal. 1942) ML  
36" A.M. Deep glittering gold  
self. Sturdy. 60c; 3 for \$1.50

BLACK & GOLD (Klein. 1943) ML  
36" Brilliant gold and maroon  
variegata. Oriental-like. \$1.00

BLACK BANNER (Nich. 1947) L 36"  
H.M. Darkest purple, nearly a  
black iris. Very rich. \$1.00

- BLACK FOREST (Schr. 1945) M 24"  
A.M. As nearly black an iris  
as we have seen. Choice. \$1.00
- BLACK RUBY (Dolman 1949) E 34"  
H.M. Dark blackish red. Glossy  
finish. Very early. \$1.50
- BLACK WINGS (Kirk. 1930) M 34"  
A.M. Blue-black. 35c; 3 for 90c
- BLUE GLOW (Nich. 1945) L 36"  
H.M. Deep military blue self.  
Handsome. \$1.00; 3 for \$2.50
- BLUE RHYTHM (Whit. 1945) ML 38"  
Dykes Medal 1950. Cornflower-  
blue beauty. \$1.00; 3 for \$2.50
- BLUE SHIMMER (Sass 1942) M 36"  
A.M. Beautiful blue and white  
plicata. Very large. \$1.00
- BLUE VALLEY (Smith 1947) M 36"  
A.M. Superb medium light blue.  
Very big & really blue. \$2.00
- BLUE ZENITH (Whit. 1942) M 40"  
Fragrant light blue with every  
good quality. 50c; 3 for \$1.25
- BRIDAL VEIL (Mit. 1936) EM 36"  
Stately white. 35c; 3 for 90c
- BRIGHT LIGHTS (Schr. 1946) ML  
36" Yellow plicata with white  
centered falls. A strong vig-  
orous iris. \$1.00; 3 for \$2.50
- BROWN THRASHER (Kirk. 1941) M  
34" A.M. Silky, golden brown.  
A free blooming, vigorous and  
hardy iris. \$1.00; 3 for \$2.50
- BRYCE CANYON (Klein. 1944) ML  
36" A.M. Coppery brown with a  
red glow. Very popular. \$1.00
- BUCKSKIN (Klein. 1939) EM 40"  
One of the very best tan iris.  
Huge, flaring blooms on tall &  
strong stems. 50c; 3 for \$1.25
- BUFFAWN (And. 1940) E 34" Apr-  
icot buff with a bright orange  
beard. Unique. 50c; 3 for \$1.25
- BURGUNDY ROSE (Hall 1946) M 36"  
Bright rosy violet, a rich and  
pleasing color. Large. \$1.50
- BUTTERCUP LANE (Hall 1941) M  
32" H.M. Bright, heavily ruf-  
fled yellow. 50c; 3 for \$1.25
- CAMELION (Cay. 1938) ML 36" A.  
M. A dark blackish purple, the  
standards silken and the falls  
velvety. 75c; 3 for \$2.00
- CAPTAIN WELLS (Cook 1941) L 36"  
A.M. Deep velvety maroon. Late  
blooming. 50c; 3 for \$1.25
- CAROLINE BURR (Sm. 1940) M 40"  
A.M. Cool creamy ivory with a  
green glow. 50c; 3 for \$1.25
- CASA MORENA (DeFor. 1943) M 36"  
A.M. Huge solid reddish-brown,  
incredibly rich & fine. \$1.50
- CASCADE SPLENDOR (Klein. 1945)  
L 36" A.M. A luscious blend of  
apricot, pink & tan. Ruffled &  
waved. Large & flaring. \$2.00
- CHAMOIS (Klein. 1944) M 34" A.  
M. Smoothest chamois tan self,  
bright and glistening. \$1.50
- CHANTILLY (Hall 1945) M 36" A.  
M. A lovely orchid pink, the  
petals edged with lace. \$1.50
- CHERIE (Hall 1947) M 34" Dykes  
Medal 1951. Most famous of all  
the flamingo pinks. A-1. \$5.00
- CHINA MAID (Mill. 1936) EM 36"  
A.M. Huge mallow pink, edged &  
blended golden buff on strong,  
tall stems. 60c; 3 for \$1.50
- CHINOOK PASS (Nor. 1949) M 36"  
Huge, flaring pale blue. \$2.00



CHIVALRY (Wills 1944) M 36"  
Dykes Medal 1947. Medium blue  
self of superior quality. The  
color is clear & smooth. \$1.50

CHRISTABEL (Lap. 1936) M 36"  
A.M. Deep rich crimson red; an  
iris classic. 50c; 3 for \$1.25

CITY OF LINCOLN (Sass 1937) ML  
38" A.M. A very popular bright  
red & yellow variegata. Hardy  
& dependable. 50c; 3 for \$1.25

CLARET VELVET (Nat. 1940) M 32"  
Claret self of dark, velvety  
wine red. 50c; 3 for \$1.25

CLOTH OF GOLD (Whit. 1945) M  
38" A.M. Superb pure yellow. A  
glorified version of the older  
Golden Hind. 75c; 3 for \$2.00

CLOUD CASTLE (Graves 1944) EM  
38" A.M. Pale wisteria blue, a  
lovely, ruffled giant. \$1.00

COPPER GLOW (Doug. 1944) ML 36"  
H.M. Brilliant and sparkling  
pure copper. 75c; 3 for \$2.00

COPPER ROSE (Cook 1941) M 38"  
A.M. Silken coppery-rose. 75c

CORDOVAN (Klein. 1946) M 34"  
A.M. Deep, rich reddish brown.  
Leathery substance. \$1.00

CORITICA (Sass 1942) L 34" Be-  
jewelled plicata of yellow and  
rose-brown. 50c; 3 for \$1.25

COURTIER (Hall 1947) M 30" The  
deepest colored flamingo pink.  
Exquisite color effect. \$2.00

DAYBREAK (Klein. 1941) M 36"  
A.M. Pastel blend of sunrise  
colors; pink, copper and gold.  
Very large flowers. \$1.00

DEEP VELVET (Sal. 1939) ML 36"  
A.M. Rich, satiny violet self.  
Brown haft. 50c; 3 for \$1.25

DESERT SONG (Fay 1946) EM 38"  
A.M. Smooth clear cream self.  
Large flaring blooms. \$1.50

DISTANCE (Cook 1946) M 36" A.M.  
Silvery light blue. Tailored &  
flaring flowers. Lovely. \$1.50

DREAMCASTLE (Cook 1943) M 38"  
A.M. Deep orchid pink. Makes a  
lively pink clump. \$1.50

DREAMLAND (Sny. 1945) M 38" An  
excellent, dark hollyhock red.  
A fine dark red iris. \$1.00

EASTER BONNET (Max. 1946) M 38"  
H.M. A large light pink with a  
band of gold around the petal  
edges and on the haft. \$1.00

E. B. WILLIAMSON (Cook 1937) M  
36" A.M. Red. 35c; 3 for 90c

ELMOHR (Loomis 1942) ML 36"  
Dykes Medal 1945. A fabulous,  
gigantic, glossy, red-violet,  
very ruffled. 75c; 3 for \$2.00

ELSA SASS (Sass 1939) M 36" A.  
M. Enticing lemon-ice yellow.  
Very bright. 50c; 3 for \$1.25

ETHIOP QUEEN (Schr. 1938) ML  
34" An extremely dark violet,  
almost black. Velvety falls.  
Dependable. 50c; 3 for \$1.25

EXCLUSIVE (Grant 1935) ML 36"  
A.M. Pale blue. 35c; 3 for 90c

EXTRAVAGANZA (Doug. 1944) L 36"  
A.M. A colorful bicolor with a  
unique contrast of cream stan-  
dards and maroon falls. \$1.50

FAIR ELAINE (Mit. 1938) EM 36"  
A.M. Lovely bicolor with cream  
white standards and bright yel-  
low falls. 50c; 3 for \$1.25

FALL DAYS (Smith 1947) E 36"  
H.M. Rich autumn blend of red,  
copper, rose and brown. \$3.00

FANTASY (Hall 1947) EM 30" A.M.  
A lovely orchid-toned flamingo  
pink. Tangerine beard. \$5.00

FIRECRACKER (Hall 1943) M 33"  
H.M. Bright red and yellow pli-  
cata. A very showy iris. \$1.50

FIRE DANCE (Fay 1947) ML 36" H.  
M. A rich, deeply marked dark  
red & yellow plicata. \$3.00

FLORA ZENOR (Sass 1942) ML 40"  
A.M. Very tall light flamingo  
pink. Jaunty. 50c; 3 for \$1.25

FLORENTINE (Cay. 1937) M 37"  
A.M. Lovely white plicata with  
overall pattern of flaky blue  
dusting. 50c; 3 for \$1.25

FORTUNE (Klein. 1941) M 32" An  
immense flower of solid bronzy  
gold. 50c; 3 for \$1.25

FRANK ADAMS (Lap. 1937) M 48"  
A.M. Light yellow & red varie-  
gata. Robust. 35c; 3 for 90c

FRIEDA MOHR (Mohr. 1936) ML 48"  
Lavender pink. 35c; 3 for 90c

GARDEN FLAME (Sass 1941) ML 34"  
A.M. Deep and smooth rose-red  
self with brownish haft. \$1.00

GARDEN GLORY (Whit. 1943) L 36"  
A.M. A lovely flaring flower  
of purest deep wine red; an ab-  
solute self. Choice. \$1.50

GARDEN MAGIC (Grin. 1936) L 38"  
H.M. A lustrous dark red iris  
with silken standards and vel-  
vety falls. 60c; 3 for \$1.50

GENERAL PATTON (Klein. 1947) M  
38" H.M. Splendid solidly col-  
ored rich, deep brown. \$2.00

GILT EDGE (Whit. 1941) M 38"  
Lemon standards; falls silvery  
white, edged gold. 60c

GLORIOLE (Gage 1933) E 38" A.M.  
The ruffled, frosty light blue  
iris classic. 50c; 3 for \$1.25

GOLDBEATER (Klein. 1944) M 36"  
A.M. Deep butter yellow. Fine,  
clear color. \$1.00; 3 for \$2.50

GOLDEN EAGLE (Hall 1942) EM 36"  
H.M. Light yellow with a satin  
sheen and absolute purity of  
color. Huge. 75c; 3 for \$2.00

GOLDEN FLEECE (Sass 1940) M 38"  
A.M. Lemon yellow with silvery  
flush on falls. Big, ruffled &  
waved blooms. 75c; 3 for \$2.00

GOLDEN GLEAM (Miess 1951) M 36"  
H.M. Mustard yellow blend, big  
flowers. Odd & lovely. \$6.00

GOLDEN HIND (Chad. 1934) E 34"  
Dykes Medal England 1934. But-  
ter yellow self. 35c; 3 for 90c

GOLDEN MADONNA (Essig 1940) EM  
40" Creamy yellow & white, the  
falls banded with gold. Large  
and fragrant. 50c; 3 for \$1.25

GOLDEN MAJESTY (Sal. 1938) ML  
36" A.M. Gold. 35c; 3 for 90c

GOLDEN RUSSET (Hall 1946) M 34"  
H.M. An immense russet tan and  
gold blend. A real giant. \$2.00

GOLDEN SPIKE (Whit. 1940) E 36"  
A.M. A big bright yellow iris.  
Orange beard. 50c; 3 for \$1.25

GOLDEN SYMPHONY (Hor. 1944) L  
36" Golden yellow standards &  
blue falls, widely edged gold.  
Really unique contrast. \$4.00

GOLDEN TREASURE (Schr. 1936) M  
38" A.M. Creamy white with gol-  
den throat. 50c; 3 for \$1.25

GOLD SOVEREIGN (Whit. 1950) M  
34" A.M. Deep, intense orange-  
yellow. Highly acclaimed. \$3.50

GOOD NEWS (Klein. 1946) M 33"  
H.M. Unique golden mustard tan  
self. Really brilliant. \$1.50

GRAND CANYON (Klein. 1941) ML  
38" A.M. Deep plum purple with  
blue & gold. 60c; 3 for \$1.50

GREAT LAKES (Cous. 1938) M 40"  
Dykes Medal 1942. Tall, superb  
flaring blue. 75c; 3 for \$2.00

GU DRUN (Lykes 1930) E 32" A.M.  
Dykes Medal, England, 1931. An  
enormous white with gold beard.  
Vigorous. 50c; 3 for \$1.25

GULF STREAM (Fay. 1946) EM 38"  
H.M. Very best pure, dark blue  
iris, solidly colored. \$1.00

GYPSY (Klein. 1944) L 38" H.M.  
Deep gold standards & reddish  
brown falls. 75c; 3 for \$2.00

GYPSY ROSE (Whit. 1946) ML 38"  
H.M. A rich deep tapestry red;  
blue blaze on the falls. \$1.50

HARRIET THOREAU (Cook 1944) M  
36" H.M. Broad petaled, orchid  
pink self. 75c; 3 for \$2.00

HELEN MCGREGOR (Graves 1946) M  
36" Dykes Medal 1949. Ruffled,  
very large, light blue. \$2.00

HIGH COMMAND (Long 1945) M 36"  
Tall, brilliant variegata from  
England. Gold and red. \$1.50

HIT PARADE (Hall 1947) E 34"  
Fine large flamingo pink with  
tangerine beard. Early. \$1.50

INDIANA NIGHT (Cook 1942) ML  
38" A.M. Dark blackish purple.  
Larger edition of Sable. \$1.00

INSPIRATION (Stev. 1937) M 38"  
Rosy purple of enormous size.  
Always sells out early. \$1.00

ITALIAN JOY (Stev. 1947) ML 36"  
Distinct and vivid, a fuschia  
purple self. Colorful. \$1.50

JAKE (Sass-Long 1943) M 36" An  
excellent pure white very much  
in demand. 60c; 3 for \$1.50

JULIET (Klein. 1946) M 36" H.M.  
Flame salmon, or orange-brown;  
very bright and rich. \$1.00

KATHERINE FAY (Fay 1945) M 36"  
A.M. Cool, starched white with  
the faintest blue undertone. A  
superb white. 75c; 3 for \$2.00

KING'S JESTER (Stev. 1948) M  
38" Absolutely unique. White  
ground bordered and striped a  
vivid purple. Onco-like. \$2.00

KLONDYKE GOLD (Kirk. 1941) M  
34" Very large golden yellow;  
fine form. 50c; 3 for \$1.25

LADY BOSCAWEN (Graves 1946) M  
40" A.M. A huge, ruffled snowy  
white with lemon beard. \$1.00

LADY MOHR (Sal. 1944) E 36" A.  
M. Pale lavender standards and  
greenish bronze falls. An exo-  
tic giant. \$1.00; 3 for \$2.50

LADY OF SHALOTT (Schr. 1942) M  
34" A delicate white and deep  
pink plicata. 75c; 3 for \$2.00

LAKE GEORGE (Smith 1945) M 36"  
H.M. Medium blue, tailored and  
very flaring. 75c; 3 for \$2.00

LA MADRE (Bush 1950) M 36"  
Golden brown standards; maroon  
falls. Big. 75c; 3 for \$2.00

LATE SUN (DeFor. 1940) M 36"  
H.M. Deepest gold self on tall  
strong stems. 50c; 3 for \$1.25

LIGHTHOUSE (Sal. 1936) E 36"  
A.M. Rose-red bicolor with a  
golden glow. 50c; 3 for \$1.25

LIGHTS ON (Lap. 1946) EM 33"  
H.M. A brilliant, gleaming red,  
one of the brightest. \$1.50

LILAC LANE (Whit. 1947) M 36"  
A.M. Clear light lavender self.  
An unusually fine color. \$3.50

LORD DONGAN (Smith 1940) M 36"  
H.M. Smoothly colored violet,  
the falls a shade deeper. No  
veining. 75c; 3 for \$2.00

LOS ANGELES (Mohr-Mitch. 1927)  
M 38" A.M. Famous blue & white  
plicata classic. Snow white &  
marine blue. 50c; 3 for \$1.25

LOTHARIO (Schr. 1942) ML 38"  
H.M. Large & tall amoena with  
light blue standards and deep  
purple falls. Stunning. \$1.00

LOUISE BLAKE (Smith 1943) M 32"  
A.M. Glorified Amigo with more  
contrast of colors. \$1.00

LOUVOIS (Cay. 1936) M 35" A.M.  
Tan standards; velvety choco-  
late falls. 50c; 3 for \$1.25

LYNN LANGFORD (Hall 1946) M 36"  
A.M. Orchid pink with a yellow  
beard & haft. Very fine. \$2.00

MAJENICA (Cock 1941) M 36" H.M.  
immense salmon pink. Vigorous  
and hardy. 50c; 3 for \$1.25

MANYUSY. (Sass 1944) M 36" An  
exquisite orchid, all ruffled  
and waved. 50c; 3 for \$1.25

MARQUITA (Cay. 1931) ML 34" A.  
H. Creamy white standards and  
watermelon rose falls. 50c

MARY E. NICHOLLS (Nich. 1939)  
M 34" A.M. Tailored white with  
gold haft. 50c; 3 for \$1.25

MARY GEDDES (S.-W. 1931) M 36"  
D.M. 1935. Coppery orange and  
red blend. 35c; 3 for 90c

MARY VERNON (McKee 1942) M 36"  
A.M. Standards old gold; falls  
antique ruby-red edged gold. A  
rich, bright bicolor. \$1.00

MASTER CHARLES (Wmsn. 1943) ML  
38" A.M. Rich red-purple with  
brown haft. 75c; 3 for \$2.00

MATTERHORN (Sass 1938) EM 40"  
A.M. One of the cleanest, pur-  
est whites. 50c; 3 for \$1.25

MATTIE GILES (Sass 1946) M 36"  
A.M. Deep waxy lemon-gold with  
white centered falls. \$3.50

MAY DAY (Hall 1939) M 38" H.M.  
Apricot orange. 35c; 3 for 90c

MELANIE (Hill 1941) M 40" H.M.  
Mr. Hill's stunning big orchid  
pink self. 50c; 3 for \$1.25

MELITZA (Kes. 1940) M 38" A.M.  
Pale ivory flesh pink lit by a  
tangerine beard. Makes a beau-  
tiful clump. 50c; 3 for \$1.25

MELLOWGLOW (Whit. 1942) M 36"  
H.M. Luscious apricot-peach &  
gold blend. Very bright. \$1.50

MELODIST (DeFor. 1946) M 38"  
H.M. A very fine tailored iris  
in bright golden brown. \$2.00

MEXICO (Klein. 1943) L 36" A.M.  
Very large, very late blooming  
bicolor with gold standards &  
red-brown falls. \$1.00

MING YELLOW (Glutz. 1938) ML  
36" A.M. Clear medium yellow.  
Very large. 60c; 3 for \$1.50

MINNIE COLQUITT (Sass 1942) EM  
35" A.M. Huge purple and white  
plicata. One of our most pop-  
ular iris. Outstanding. \$1.00

MISS CALIFORNIA (Sal. 1936) M  
40" H.M. A giant iris in deep  
lilac pink. 50c; 3 for \$1.25



MISSOURI (Grinter 1933) M 36"  
Dykes Medal 1937. Huge medium  
blue of faultless form; heavy  
substance. 50c; 3 for \$1.25

MISTY GOLD (Schr. 1943) ML 33"  
H.M. Glittering lemon-ice yel-  
low, a ruffled beauty. \$1.00

MME. LOUIS AUREAU (Cay. 1934)  
34" D.M. France 1934. Purple &  
white plicata. 50c; 3 for \$1.25

MME. MAURICE LASSAILLY (Cay.-  
1935) M 34" A.M. Dykes Medal,  
France, 1935. A beautiful blue  
and purple bicolor. 50c

MOONLIGHT MADONNA (Sass 1943)  
M 36" A.M. Faultless lemon-ice  
yellow self. 75c; 3 for \$2.00

MOONLIT SEA (Sass 1943) M 36"  
Bizarre indigo blue with lemon  
throat and white variegations  
throughout. 50c; 3 for \$1.25

MOHOCO ROSE (Loomis 1937) ML  
36" H.M. Very large light rose  
pink blend. 50c; 3 for \$1.25

MOUNT CLOUD (Mill. 1936) M 42"  
A.M. Tall white. 35c; 3 for 90c

MRS. J. L. GIBSON (Gib. 1930)  
M 36" D.M. England 1948. Roayl  
blue of quality. 35c; 3 for 90c

MULBERRY ROSE (Schr. 1941) M  
40" A.M. A deep rosy mulberry;  
brown haft. 75c; 3 for \$2.00

NEW HORIZON (Fay 1946) L 40"  
H.M. Delicate peach pink with  
bright tangerine beard. \$1.50

NEW SNOW (Fay 1946) EM 40" A.M.  
Very large snow white, beauti-  
fully ruffled. Superb. \$2.00

NIGHTFALL (Hall 1942) M 36" A.  
M. A superb robust blue-purple  
bicolor. Big. 50c; 3 for \$1.25

NIGHTINGALE (Hall 1942) ML 36"  
H.M. Smooth silken golden br-  
own self. 75c; 3 for \$2.00

OKLAHOMA (Mit. 1945) L 36" Tan  
& olive blend with light blue  
on the falls. 75c; 3 for \$2.00

OLA KALA (Sass 1943) M 38"  
Dykes Medal 1948. Glorious gol-  
den yellow. \$1.00; 3 for \$2.50

OLD PARCHMENT (Klein. 1939) M  
38" A.M. Heavy textured creamy  
tan. Choice. 50c; 3 for \$1.25

ORANGE FLAME (Sal. 1940) M 36"  
Orange & red. 50c; 3 for \$1.25

OREGON TRAIL (Klein. 1943) L  
36" Warm deep brown blend with  
dark hafts. 75c; 3 for \$2.00

ORLOFF (Sass 1937) M 33" H.M.  
Brown plicata. 35c; 3 for 90c

ORLACO (Klein. 1942) ML 30" An  
odd & lovely hybrid blend. Lav-  
ender & brown. 50c; 3 for \$1.25

ORION (Klein. 1937) M 40" A.M.  
Huge lavender blue. An exotic  
onco-hybrid. 50c; 3 for \$1.25

OZONE (Sass 1935) ML 36" A.M.  
Unusual pearly mauve self with  
brown hafts. 50c; 3 for \$1.25

PALE DAWN (Fay 1947) EM 36" H.  
M. Pale light blue of tailored  
form & smooth texture. \$1.50

PATRICE (DeFor. 1945) M 38" H.  
M. Popular rosy lavender & whi-  
te plicata. 75c; 3 for \$2.00

PEACHBLOW (Sass 1943) M 34" A  
softly marked peach pink & yel-  
low plicata. 75c; 3 for \$2.00

PEG DABAGH (Craig 1948) E 40"  
H.M. A clear violet blue onco-  
hybrid. Huge, globular blooms.  
A fine, exotic beauty. \$3.00

PERSIAN PRINCE (Sass 1941) HL  
34" Bright yellow & red varie-  
gata. Fine. 50c; 3 for \$1.25

PIERRE BERNARD (Faught 1948) M  
38" A.M. The very finest deep  
blue. Huge and flaring. \$5.00

PINK CAMEO (Fay 1946) EM 36"  
A.M. Lovely, tailored flamingo  
pink self. Good grower. \$1.50

PINK FORMAL (Muhl. 1949) H 38"  
A.M. Just about the ultimate  
in a pink iris. Huge, ruffled  
blooms on tall, strong stems.  
A deep flamingo pink. \$6.00

PINK LACE (Sass 1947) H 36" An  
excellent light flamingo pink  
with a salmon underglow. \$1.00

PINK REFLECTION (Cook 1942) HL  
36" A.M. A creamy buff pink of  
flaring form. 75c; 3 for \$2.00

PINK RUFFLES (Smith 1940) H 30"  
A.M. Very vigorous, very free-  
blooming ruffled orchid pink.  
delightful. 75c; 3 for \$2.00

PINK SENSATION (Hall 1948) EM  
33" A.M. A choice, well formed  
bright flamingo pink. \$7.50

PINNACLE (Stev. 1949) H 36" A.  
M. Snow white standards; light  
yellow falls. Beautiful. \$4.00

PRAIRIE SUNSET (Sass 1939) H  
36" Dykes Medal-1943. Gorgeous  
blend of light brown and gold.  
Big & fine. 75c; 3 for \$2.00

PREMIER PEACH (Hall 1946) H 32"  
H.M. Luscious peach pink self.  
Bright tangerine beard. \$1.50

PRETTY GULDBROON-(Klein. 1948)  
HL 35" A.M. A very fine medium  
brown iris of broadly flaring  
form. Large & distinct. \$6.00

PRINCE OF ORANGE (Klein. 1940)  
EM 36" A.M. Flaring pure gold-  
en orange. 50c; 3 for \$1.25

PRISCILLA (Whit. 1942) H 30"  
A.M. Cool, blue-white with no  
yellow influence. Chaste. 75c

PROSPECTOR (Klein. 1950) H 36"  
A.M. Deepest golden yellow, a  
white blaze on the falls. Big,  
widely flaring blooms. \$4.00

RADIANT (Sal. 1936) EM 30" H.M.  
Copper orange and red bicolor.  
A very bright iris. 50c

RADIATION (Hall 1948) EM 32" A.  
M. A brilliant raspberry pink.  
Bright tangerine beard. \$7.50

RAINBOW ROOM (Sass 1946) L 34"  
A.M. Unique bicolor blend with  
buff gold standards & lavender  
blue falls edged gold. \$2.50

RAJAH BROOKE (Nor. 1945) L 36"  
H.M. Rich smooth bicolor: red  
falls & brown standards. \$1.00

RANGER (Klein. 1943) HL 36" A.  
M. A marvelous new crimson red  
of deep lustrous color. \$1.50

RED GLEAN (Lap. 1939) H 34" A.  
M. A brilliant velvety copper-  
red beauty. 60c; 3 for \$1.50

RED TORCH (Sass 1947) L 34" H.  
M. Light brown standards; true  
red falls. 75c; 3 for \$2.00

RED VALOR (Nich. 1939) H 38" A.  
M. Select maroon-red self. Big  
flaring blooms on tall, strong  
stems. 75c; 3 for \$2.00

REDWARD (Cook 1942) L 34" H.M.  
Large flaring blooms of dark  
crimson red. Very velvety tex-  
tured falls. 75c; 3 for \$2.00

REDMYNE (McKee 1945) H 36" H.M.  
Superb bright deep red of per-  
fect form. Velvety falls. \$2.50

RELIENTLESS (Cook 1948) HL 36"  
H.M. Evenly colored, deep dark  
red. Marvelous color. \$2.00

REMEMBRANCE (Hall 1942) HL 38"  
A.M. Creamy pink blend of high-  
est quality. 75c; 3 for \$2.00

ROCKET (Whit. 1945) E 36" A.M.  
Scintillating orange-yellow of  
unparalleled brilliance. \$1.50

RODEO (DeFor. 1947) H 36" H.M.  
Huge & flaring plicata of gold  
& white speckled brown. \$2.00

ROSE SPLENDOR (Klein. 1947) H  
36" H.M. A luscious watermelon  
pink & copper blend. \$2.50

ROSE TOP (Sass 1941) L 36" H.M.  
Large, ruffled rose toned pli-  
cata on silvery white. \$1.00

ROYAL SCOT (Hall 1944) H 36" H.  
H. Rich, burgundy red plicata.  
Tall & fine. 75c; 3 for \$2.00

RUBIANT (Whit. 1942) H 38" Red  
toned purple bicolor in Amigo  
pattern. Tall. 75c; 3 for \$2.00

RUSSET WINGS (Wills 1946) H 36"  
A.M. Bright golden brown, the  
petal edges laced and waved.  
Very large & lovely. \$1.50

RUTH POLLOCK (Sass 1939) H 34"  
A.M. Lovely rose toned plicata  
on yellow. 50c; 3 for \$1.25

SABLE (Cook 1938) EH 38" A.M.  
Velvety blackish purple with a  
dark beard. 75c; 3 for \$2.00

SALAMONIE (Cook 1946) H 36" H.  
H. Very large salmon pink self  
of flaring form. Fine. \$1.50

SALUTATION (Hall 1938) E 36"  
Ruffled yellow. 35c; 3 for 90c

SAN ANTONIO (Klein. 1947) H 36"  
H.M. A huge deep tan, or sand-  
brown self. Gold beard. \$1.50

SANDIA (Wmsn. 1934) E 38" Deep  
pink blend. 35c; 3 for 90c

SAN FRANCISCO (H.-H. 1927) H  
36" Dykes Medal 1927. Blue and  
white plicata. 35c; 3 for 90c

SHANNOPIN (Pil. 1940) H 40" An-  
unusual bicolor with light yel-  
low standards and pink falls.  
Very pretty. 75c; 3 for \$2.00

SHARKSKIN (Doug. 1942) H 38" A.  
H. Huge, heavy textured white.  
Gold beard. 75c; 3 for \$2.00

SIEGFRIED (Sass 1936) L 40" A.  
H. Gold plicata. 35c; 3 for 90c

SNOQUALMIE (Brehm 1938) H 36"  
Quality cream. 35c; 3 for 90c

SNOW CARNIVAL (Graves 1942) H  
36" A.M. Huge, ruffled flaring  
cool icy blue-white. \$1.00

SNOW FLURRY (Rees 1939) EH 40"  
A.M. The pale blue buds unfurl  
into big ruffled and flaring  
blooms of cool white. \$1.00

SNOW VELVET (Sass 1942) H 38"  
H.M. Snow white with hafts of  
gold. Big, heavy textured vel-  
vety flowers. 75c; 3 for \$2.00

SOLID MAHOGANY (Sass 1944) H  
38" A.M. A large solidly col-  
ored mahogany red self. \$1.00

SOLLENTE (Cay. 1937) H 36" C.H.  
Bronze standards & blue falls  
edged bronze. 75c; 3 for \$2.00

SPANISH PEAKS (Loomis 1947) HL  
38" A.M. Magnificent new pure,  
flawless snowy white. \$2.00

SPINDRIET (Loomis 1944) H 36"  
H.M. Deep coral pink with tan-  
gerine beard. Lovely. \$1.00

SPUN GOLD (Glutz. 1940) HL 38"  
Dykes Medal 1944. Shining gol-  
den yellow with velvety falls.  
Quality plus. 75c; 3 for \$2.00

STAINED GLASS (Wil. 1939) H 36"  
H.M. Copper red. 35c; 3 for 90c

STANDON (Hall 1941) M 36" A.M.  
Lovely salmon. 50c; 3 for \$1.25

STATEN ISLAND (Smith 1947) L  
38" A.M. Bright new variegata.  
Golden yellow standards & deep  
red falls. Very fine. \$4.00

STELLA POLARIS (Smith 1939) M  
36" Blue-white. 35c; 3 for 90c

STORM KING (Nich. 1940) L 40"  
H.M. A giant nearly black iris  
of darkest violet purple. \$1.00

SUNSET BLAZE (Klein. 1948) EM  
40" A.M. Gorgeous reddish cop-  
per & gold. Simply huge. \$2.50

SUNSET SEASIDE (Sass 1943) L  
38" A.M. Bright golden apricot  
or light orange-copper. A fine  
late iris. 75c; 3 for \$2.00

SUZETTE (Know. 1945) H 38" H.M.  
Delicate cinnamon-rose & cream  
plicata. \$1.00; 3 for \$2.50

SYLVIA MURRAY (Nor. 1944) H 38"  
A.M. Exquisite pale blue. Tall  
& large. A grand plant. \$1.00

TEA ROSE (Whit. 1944) H 36" H.  
H. Very fine light rose pink  
blended gold. 75c; 3 for \$2.00

THE ADMIRAL (Hall 1941) ML 36"  
A.M. Deep blue. Flaring form &  
smooth color. 60c; 3 for \$1.50

THE CAPITOL (Max.-Nor. 1945) H  
38" A.M. Superb new huge white  
with gold beard & haft. \$1.00

THELLA JEAN (peck 1939) E 34"  
H.M. Big purple. 35c; 3 for 90c

THE RED DOUGLAS (Sass 1937) ML  
40" Dykes Medal 1941. A rich  
maroon red of solid color and  
great size. 60c; 3 for \$1.50

THREE CHEERS (Cook 1945) L 36"  
H.M. Pale blue-white standards  
& velvety purple falls. 75c

THREE OAKS (Whit. 1943) M 38"  
A.M. Huge coppery rose with a  
blue blaze on the falls. \$1.00

TIFFANY (DeFor. 1942) H 38" A.  
M. Superb, gold, white & brown  
plicata of huge size & excel-  
lent form. 75c; 3 for \$2.00

TIFFANY (Sass 1938) H 34" A.M.  
Rosy purple and creamy yellow  
plicata. Large, ruffled blooms.  
Fragrant. 50c; 3 for \$1.25

TOBACCO ROAD (Klein. 1942) ML  
34" A.M. A sensational golden  
tobacco brown. Wide & flaring,  
a breathtaking beauty. \$2.00

TREASURE ISLAND (Klein. 1937)  
ML 36" A.M. Huge, broad petal-  
ed yellow. 50c; 3 for \$1.25

TREVA (DeFor. 1945) M 36" H.M.  
Golden apricot tan. Large size  
and sparkling color. \$1.50

TWILIGHT SKY (Fay 1949) H 34"  
H.M. Tailored flamingo pink of  
deep color & good form. \$2.00

VATICAN PURPLE (Whit. 1943) ML  
38" H.M. A solid deep violet-  
blue. Huge and flaring. \$1.00

VEISIEA (Whit. 1943) H 36" H.M.  
Rosy-copper with metallic blue  
on the falls. 50c; 3 for \$1.25

VIOLET CROWN (Kirk. 1931) EM  
40" H.M. Very fine deep lilac,  
large & waved. 35c; 3 for 90c

VIOLET SYMPHONY (Smith 1940) H  
40" A.M. A huge, near-perfect  
flower of glowing lilac blue.  
A classic. 75c; 3 for \$2.00

VOODOO (Klein. 1948) H 34" Tan  
brown standards and rich, dark  
red-brown falls. \$1.50



W.BASH (Wmsn. 1937) ML 36" The Dykes Medal 1940. Silken white standards & violet blue falls edged white. 50c; 3 for \$1.25

W.KAUS (Lap. 1941) EM 34" H. M. Dazzling bicolor of orange-copper and velvety bright red. A beacon. 60c; 3 for \$1.50

WASATCH (Thor. 1935) E 36" H.M. Enormous white plicata stitched blue. 50c; 3 for \$1.25

WEST POINT (Nich. 1938) L 38" H.M. Late blue. 35c; 3 for 90c

WHITE CITY (Murr. 1939) M 40" Dykes Medal, England 1940. Big tailored blue-white. Faultless plant habits. 50c; 3 for \$1.25

WHITE WEDGEWOOD (Grant 1943) M 36" A.M. Lovely blue-white. An iris of quality with the haft & beard flushed blue. 75c

WM. A. SETCHELL (Brehm 1938) M 36" Simply enormous dark blue-violet self. 75c; 3 for \$2.00

WINTER CARNIVAL (Schr. 1941) M 38" H.M. Excellent pure white with gold beard. Huge flower & strong, vigorous plant. \$1.00

ZANTHA (Fay 1947) EM 36" A.M. Gorgeous bright golden yellow, huge & flaring. Winner of the President's Cup in 1947. \$2.50

/ / / / / / / / / / /

IRIS CLASSICS COLLECTION: (Our most popular collection)

Select 10 iris from the lists below, as indicated, not more than one of a variety. Correctly labeled and postpaid for \$5.00.

Choose  
3 from this group-

BLUE GLOW  
BLUE RHYTHM  
BROWN THRASHER  
DAYBREAK  
GOLDBEATER  
LADY MOHR  
OLA KALA  
PINK LACE  
SNOW FLURRY  
SYLVIA MURRAY  
VALENTINE PURPLE  
WINTER CARNIVAL

Remember to select  
only the number  
indicated.

Choose  
4 from this group-

AZURE SKIES  
ELMOHR  
GARDEN MAGIC  
GRAND CANYON  
LAKE GEORGE  
LA MADRE  
OREGON TRAIL  
PEACHBLOW  
PRAIRIE SUNSET  
RED GLEAM  
RED VALOR  
SNOW VELVET  
SPUN GOLD  
THE ADMIRAL  
THE RED DOUGLAS  
TIFFANJA

Choose  
3 from this group-

ANGELUS  
AUBANEL  
BLUE ZENITH  
BUCKSKIN  
CAROLINE BURK  
CHINA MAID  
CHRISTABEL  
DEEP VELVET  
ELSA SASS  
FAIR ELAINE  
LIGHTHOUSE  
LOUVOIS  
MELANIE  
NIGHTFALL  
TIFFANY  
WHITE CITY

/ / / / / / / / / / /

BUDGET COLLECTIONS: Select any ten 35c varieties in the catalog for \$2.50. Or select any ten 50c varieties for \$3.50. Or select any ten 60c and 75c varieties for \$5.00. All varieties will be correctly labeled and sent postpaid.

INTERMEDIATE BEARDED IRIS bloom in early May, at Tulip time, after the Dwarf Bearded Iris and before the Tall Bearded Iris. They are all vigorous and very free blooming plants, producing masses of color. Varieties marked x also rebloom occasionally during the fall months if kept growing vigorously.

- ABELARD - Brown standards, carmine red falls....35c; 3 for 75c
- ALASKA - Lovely tall and flaring snow white...50c; 3 for \$1.25
- ANDALUSIAN BLUE - Tall flaring lavender blue..50c; 3 for \$1.25
- x AUTUMN ELF - Cream & lavender bicolor. Small....35c; 3 for 75c
- x BLACK HAWK - Dark, velvety blue-black bicolor.50c; 3 for \$1.25
- x BLACK MAGIC - Large velvety deep true purple....35c; 3 for 75c
- x ELEANOR ROOSEVELT - Silken bright purple self...35c; 3 for 75c
- x FROST QUEEN - Very vigorous pure white self.....35c; 3 for 75c
- GOLDEN BOW - Tall golden yellow of fine form..50c; 3 for \$1.25
- x GOLDEN CATARACT - Wide petaled clear yellow...50c; 3 for \$1.25
- x GOLDEN WEST - Extremely vigorous golden yellow..35c; 3 for 75c
- KING MIDAS - Large bronze & rose bicolor.....35c; 3 for 75c
- LAINE WAVE - Rich, bright violet-blue self...50c; 3 for \$1.25
- x OLIVE WHITE - A vigorous, rich cream self.....35c; 3 for 75c
- PESHAWAR - Exotic velvety mahogany purple.....50c; 3 for \$1.25
- RED ORCHID - Superb dark red self; gold beard...35c; 3 for 75c
- RUBY GLOW - Fine flaring dark ruby red self...50c; 3 for \$1.25
- x SANGREAL - Well formed, creamy light yellow...50c; 3 for \$1.25
- SNOW MAIDEN - Excellent cool blue-white self....35c; 3 for 75c
- x SOUTHLAND - The deepest golden yellow of all...35c; 3 for 75c
- SPRING GLOW - Large rich red & brown blend....50c; 3 for \$1.25

/ / / / / / / / / / / /

DWARF BEARDED IRIS bloom in late April and early May, at Daffodil time and with their free blooming habit, they cover the ground with their bright blossoms. Real harbingers of spring.

- ATROVIOLETTA - Very low growing royal purple....35c; 3 for 75c
- BRIDE - Lovely pure white, free blooming.....35c; 3 for 75c
- DIXIE - Very fine deep royal blue, a self.....35c; 3 for 75c
- FAIRY - Cream & olive ground oddly flaked blue.35c; 3 for 75c
- JEAN SILET - Reblooming yellow flecked purple...35c; 3 for 75c
- NEGUS - Blue-purple standards; blackish falls...35c; 3 for 75c
- REFLECTION - A very lovely sky blue, a self...50c; 3 for \$1.25
- ROSELIST - Vigorous, free blooming, mauve rose..35c; 3 for 75c
- SOUND MONEY - Very bright flaring golden yellow self..each 50c
- TONY - Rich, dark red-purple self. Fine form..50c; 3 for \$1.25
- YELLOW PHILLS - Superb flaring bright yellow.....each 50c

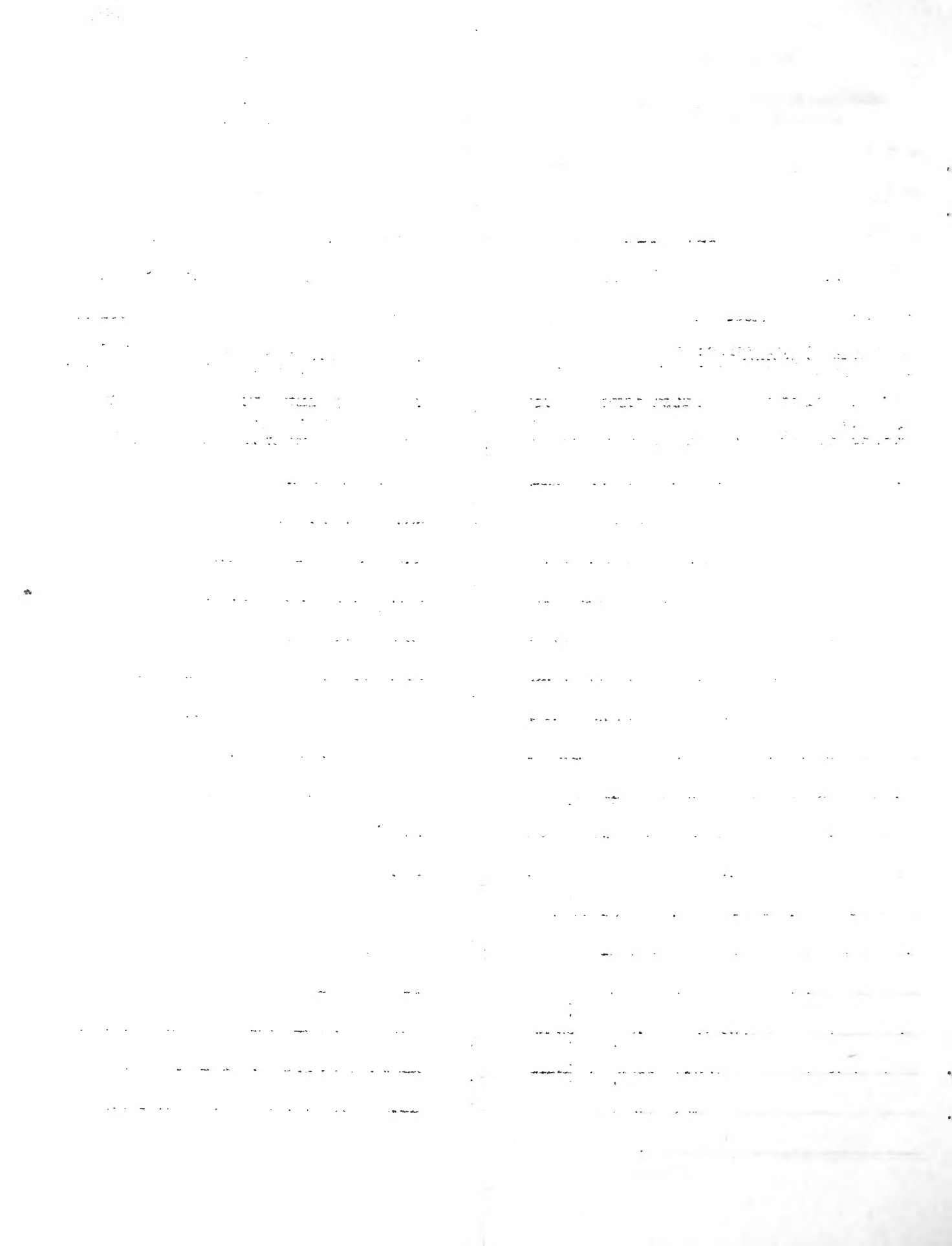
/ / / / / / / / / / / /

IRIS TECTORUM - The far famed roof iris of the Orient. Large, mottled lavender flowers. Gold & white crest on the falls..50c

P.L.-TEC - A hybrid roof iris. Masses of flat blue flowers..35c

NOTE: We will issue a list of iris for fall planting including the Siberian, Japanese, Louisiana and species, later in the season. This will be sent to everyone on our mailing list.

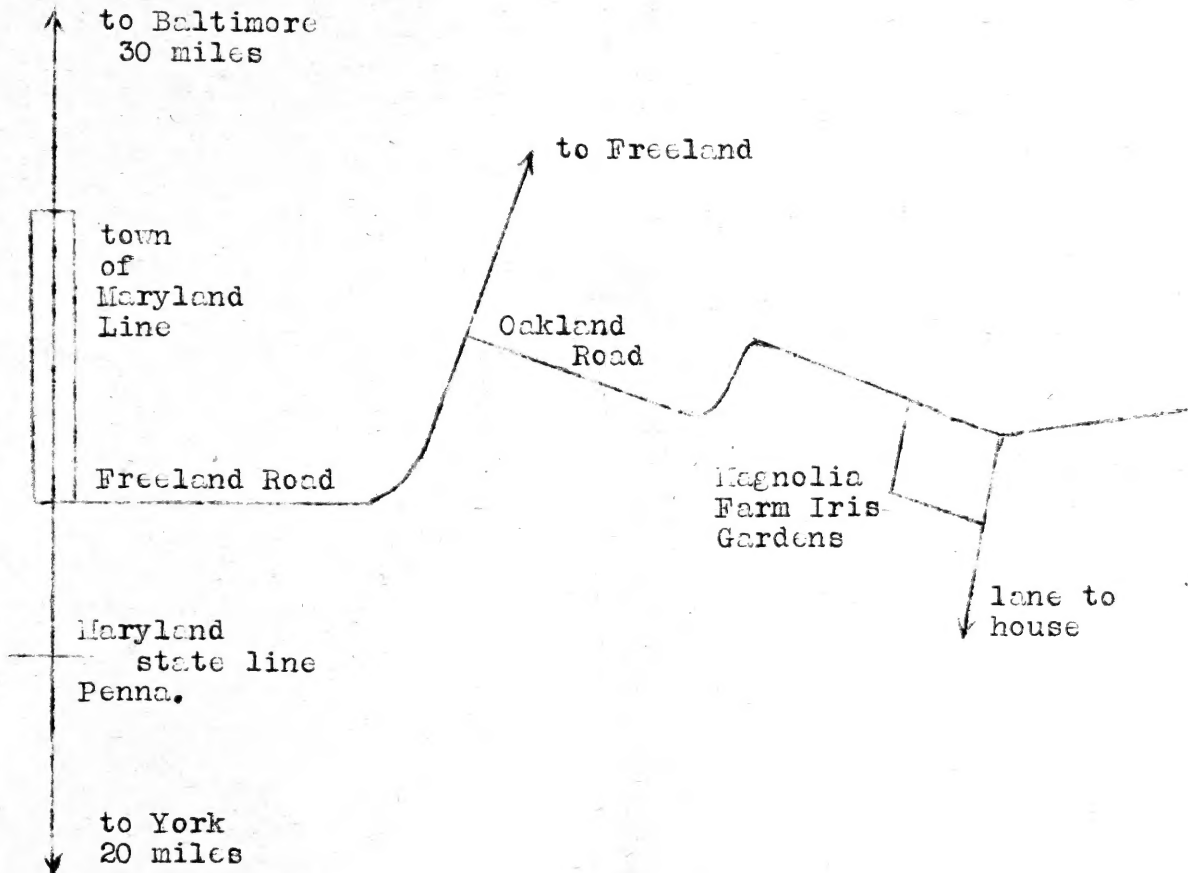






## LOCATION OF OUR GARDENS

We are located midway on Oakland Road, about a mile and a half west of the town of Maryland Line, which is situated on the Susquehanna Trail, Route 111, 30 miles north of Baltimore and 20 miles south of York, Pa. See drawing below. Visitors are welcome at all times. Our telephone number is Parkton 3771.



### TERMS OF SALE - PLEASE READ BEFORE ORDERING.

Remittance in full must accompany all orders - check, draft or money order. If cash is sent, be sure to register your letter. No. C.O.D. orders accepted. Order as early as possible, some varieties sell out early. We ship strong, healthy divisions of plants which we guarantee to arrive in good condition, if not entirely satisfied with stock upon arrival, please notify us at once and we will make every effort to satisfy you. We cannot assume responsibility after safe delivery. Cultural instructions will accompany all orders. All plants will be correctly labeled. We will not substitute without your permission.

We pay the postage on all orders for \$2.50 or more. On smaller orders, include 50c to cover cost of packing and mailing.

Magnolia Farm  
Iris Gardens  
Freeland, Md.

U. S. DEPARTMENT OF AGRICULTURE

LIBRARY  
WASHINGTON 25, D. C.

OFFICIAL BUSINESS  
PRINTED MATTER

PENALTY FOR PRIVATE USE TO AVOID  
PAYMENT OF POSTAGE, \$300

GPO

Library, U. S. Dept. of Agriculture,  
WASHINGTON 25, D. C.

EW FREE

