

Historic, archived document

Do not assume content reflects current scientific knowledge, policies, or practices.

62.63

Seed catalogues files
New Jersey

Buxton White Seed Co.

WHOLESALE AND RETAIL

SEEDS, BULBS, PLANTS, POULTRY SUPPLIES AND SUNDRIES

OFFICE, STORE AND HATCHERY,
16 S. WATER STREET
PHONE 684



WAREHOUSE AND PRODUCE DEPT.
BURGESS ST. AND N. S. R. R.
PHONE 904

ELIZABETH CITY, N. C.

August 9, 1937

U. S. Department of Agriculture

BUY FIELD SEEDS EARLY -- SAVE MONEY!

BUXTON WHITE SEED COMPANY GIVES NO WARRANTY, EXPRESS OR IMPLIED, AS TO DESCRIPTION, QUALITY, PRODUCTIVENESS OR ANY OTHER MATTER OF ANY SEEDS, BULBS, OR PLANTS IT SELLS AND WILL NOT BE RESPONSIBLE FOR THE CROP. WE QUOTE SUBJECT TO MARKET FLUCTUATIONS. STOCK UNSOLD. F.O.B. ELIZABETH CITY, N. C., UNLESS OTHERWISE SPECIFIED

All of us are aware of the fact that the Crimson Clover crop as well as Hairy Vetch and Rye Grass turned out very poor, which is causing a steadily increasing market. The selling prices at present are actually below replacement values and with a heavy demand in sight, we expect to see much higher prices existing very soon.

Oat crops likewise are very disappointing due to unfavorable weather conditions. We therefore advise early purchases.

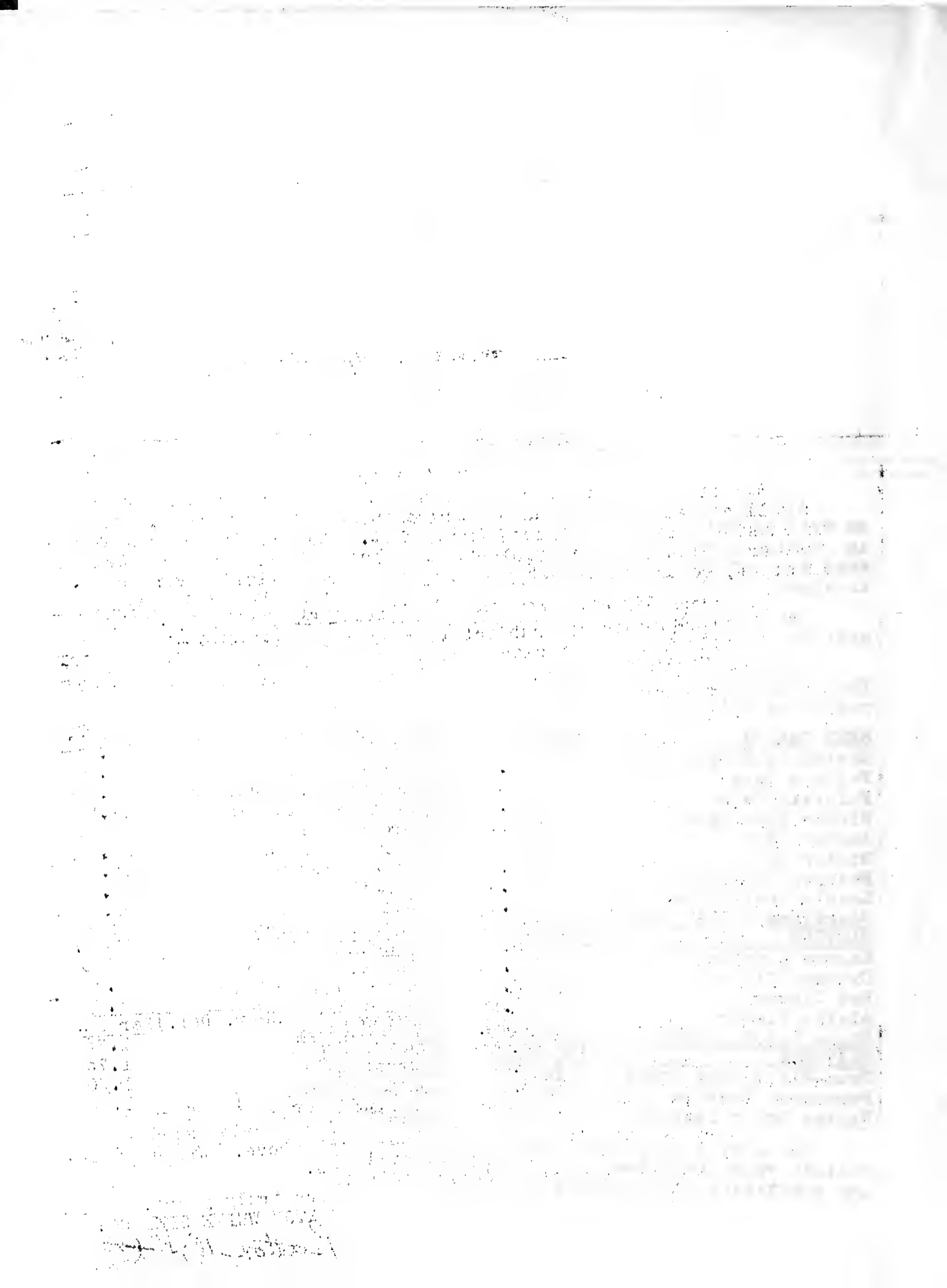
On present market, subject to change and being unsold, we offer strictly new crop recleaned seed stocks of high germination and purity as follows:

SEED GRAINS	Per Bu.	GRASS SEED	100 Lbs.
Norton Cold Proof Oats	\$.70	Italian Rye Grass	\$8.00
Fulghum Oats	.70	Perennial Rye Grass	13.00
Fulgrain Oats	.80	Red Top or Herds Grass	13.50
Winter Turf Oats	.95	Kentucky Blue Grass	11.50
Abruzzi Rye	1.55	Orchard Grass	16.00
Winter Rye	1.35	Bermuda Grass	27.50
Redhard Beardless Wheat	1.65	Meadow Fescue	12.00
Leap's Prolific Wheat	1.60	Timothy	5.00
Beardless Winter Barley	1.45	Dallis Grass	31.00
CLOVERS	100 Lbs.	Chewings Fescue	30.50
Kansas Alfalfa	35.00	MISCELLANEOUS	100 Lbs.
Crimson Clover	8.50	Austrian Winter Peas	5.50
Red Clover	20.00	Hairy Winter Vetch	9.75
Alsike Clover	26.00	Dwarf Essex Rape	6.00
White Dutch Clover	26.00	ONION SETS (Sept. Del.)	Per Bu.
MIXTURES	100 Lbs.	White Pearl	1.75
True-Blend Lawn Grass	24.00	Crystal Wax	1.75
Permanent Pasture Mixture	19.00	Red Weathersfield	1.50
Winter Grain Pasture	3.00	Japanese or Ebenezer	1.55

We carry a complete line of highest quality garden seed and solicit your inquiries on any items not listed above. Write, stating quantities, for favorable delivered prices.

Very truly yours,
BUXTON WHITE SEED CO.

Buxton White



SEASONABLE ITEMS OF NEW CROP

TRUE-BRED VEGETABLE SEED

SEEDSAN TREATED

Wholesale Prices to Merchants Only

Aug. 9, 1937.

BEANS		10 Lbs.	100 Lbs.	MUSTARD (Treated)		1 Lb.	10 Lbs.
Stringless Black Val.	10¢		\$9.00	Southern Giant Curled	14¢		13¢
Burpee Stringless Greenpod	10¢		9.00	Chinese Broad Leaved	14¢		13¢
Giant Stringless Greenpod	10¢		9.00	Tendergreen, Mustard Spinach	15¢		14¢
Bountiful Bush	10¢		9.00	ONION SEED (Treated)	1 Lb.		10 Lbs.
Early Red Valentine	11¢		10.00	Large Red Weathersfield	90¢		85¢
Improved Golden Wax	12¢		11.00	Yellow Globe Denver	90¢		85¢
BEETS (Treated)	1 Lb.		10 Lbs.	White Silverskin	1.00		90¢
Early Wonder	30¢		28¢	Riverside Sweet Spanish	1.00		90¢
Crimson Globe	32¢		30¢	Ebenezer or Japanese	1.00		90¢
Detroit Dark Red	30¢		28¢	Yellow Prizetaker	90¢		85¢
Crosby's Egyptian	30¢		28¢	PARSLEY (Treated)	1 Lb.		10 Lbs.
Imp. Early Blood Turnip	30¢		28¢	Champion Moss Curled	22¢		20¢
CABBAGE (Treated)	1 Lb.		10 Lbs.	PARSNIP (Treated)	1 Lb.		10 Lbs.
Copenhagen Market Spec.	\$1.25		\$1.15	Hollow Crown	22¢		20¢
Copenhagen Market	1.10		1.00	RADISH (Treated)	1 Lb.		10 Lbs.
Golden Acre	1.10		1.00	French Breakfast	25¢		23¢
Early Jersey Wakefield	1.00		90¢	Early Scarlet Turnip	23¢		21¢
Charleston Wakefield	1.25		1.15	Early Scarlet Globe	23¢		21¢
Early Flat Dutch	75¢		70¢	White Tipped Scar. Tur.	25¢		23¢
All Head Early	80¢		75¢	Early Long Scarlet	30¢		27¢
All Season	75¢		70¢	Long White Icicle	25¢		23¢
Early Drumhead	75¢		70¢	Rose China Winter	30¢		27¢
Hendersons Succession	75¢		70¢	White Chinese Celestial	30¢		27¢
Late Drumhead	75¢		70¢	SPINACH (Treated)	1 Lb.		10 Lbs.
Late Flat Dutch	75¢		70¢	Norf. Savoy, Bloomsdale	12¢		11¢
Perfection Drumhead Savoy	75¢		70¢	TURNIPS (Treated)	1 Lb.		10 Lbs.
CARROTS (Treated)	1 Lb.		10 Lbs.	Extra Early White Milan	24¢		22¢
Imperator	30¢		27¢	Early White Flat Dutch	19¢		17¢
Danvers Half Long	30¢		27¢	Early P. T. Strap Leaf	19¢		17¢
Coreless Chantenay	30¢		27¢	Purple Top White Globe	21¢		19¢
Improved Long Orange	30¢		27¢	Norfolk White Globe	22¢		20¢
COLLARDS (Treated)	1 Lb.		10 Lbs.	Long White Cowhorn	19¢		17¢
True-Bred Cabbage Head	45¢		40¢	Golden Ball or Orange Jelly	21¢		19¢
White or Cabbage	21¢		19¢	Yellow Aberdeen	20¢		18¢
N. C. Short Stem	25¢		23¢	Shogoin or Japanese	18¢		16¢
ENDIVE (Treated)	1 Lb.		10 Lbs.	Seven Top	19¢		17¢
Green Curled	40¢		35¢	Southern Prize	20¢		18¢
KALE (Treated)	1 Lb.		10 Lbs.	Mixed Seed	20¢		18¢
True-Bred Hanover Salad	35¢		30¢	RUTA BAGA	1 Lb.		10 Lbs.
Early Curled Siberian	27¢		25¢	True-Bred Neckless P. T.	21¢		19¢
Blue Curled Scotch, Norf.	35¢		32¢	Imp. Amer. Purple Top	19¢		17¢
Smooth Kale	10¢		9¢	White French or Breadstone	20¢		18¢

WE CAN FURNISH TURNIPS, RUTA BAGA, MUSTARD, KALE, COLLARDS AND SPINACH IN 1 oz., ¼ lb., ½ lb. or 1 lb. paper bags at ¼¢ per package EXTRA.

BUXTON WHITE SEED CO.
 THE LIVE SEEDHOUSE -°°°- ELIZABETH CITY, N. C.

TRIFOLIUM VULGARE SEEDS

TRIFOLIUM VULGARE

Wholesale prices as shown below

Aug 8 1937

Quantity	Price per unit	Item Description
100 lbs	3.75	Trifolium Vulgare
50 lbs	7.50	Trifolium Vulgare
25 lbs	15.00	Trifolium Vulgare
10 lbs	37.50	Trifolium Vulgare
5 lbs	75.00	Trifolium Vulgare
1 lb	375.00	Trifolium Vulgare
100 lbs	3.75	Trifolium Vulgare
50 lbs	7.50	Trifolium Vulgare
25 lbs	15.00	Trifolium Vulgare
10 lbs	37.50	Trifolium Vulgare
5 lbs	75.00	Trifolium Vulgare
1 lb	375.00	Trifolium Vulgare
100 lbs	3.75	Trifolium Vulgare
50 lbs	7.50	Trifolium Vulgare
25 lbs	15.00	Trifolium Vulgare
10 lbs	37.50	Trifolium Vulgare
5 lbs	75.00	Trifolium Vulgare
1 lb	375.00	Trifolium Vulgare

BUXTON WHITE SEEDS

THE LIVE SEEDHOUSE

DOUBLE AND TRIPLE YOUR YIELD PER ACRE NEXT YEAR

** BY SOWING FERTILIZER CROPS NOW---

The most important problem of any farmer is to obtain the largest possible net return from his farm operations. Greater net returns may be obtained by increasing your crop yields at the lowest cost. Winter cover crops solve this problem for you.



CRIMSON CLOVER - A great winter soil-building and quick grazing crop. Yields 8 to 10 tons of green feed per acre; $1\frac{1}{2}$ to 2 tons of hay. Can be planted in corn and cotton fields from August to December, or combined with Oats or other fall crops for spring pasture. Makes excellent quality hay if cut before maturity. Can be grazed in the winter and plowed under in the spring as a green manure crop. When sown by itself use 15 to 20 lbs. of seed to the acre. Inoculate with Nitragin.

AUSTRIAN WINTER PEAS - The leading soil-building and winter cover crop for the South, because of its large, heavy growth on practically all soils and its ability to resist winter freezes. Makes a splendid temporary pasture during late winter. May be planted by itself, but does fine with a light seeding of Oats, Rye or Barley to hold vines off the ground; Makes a heavy tonnage of splendid hay. Holds and increases fertility in your soil, furnishes grazing for your livestock or makes a valuable green manure, decaying rapidly when plowed under. Sow during September and October at the rate of 30 lbs. per acre covering 2 inches deep. Inoculate with Nitragin.

HAIRY WINTER VETCH - Another champion soil-building crop. Turned under at the proper time it will double and triple per acre yield of the following crop frequently. Cut or grazed, combined with small grains, or seeded alone, it furnishes splendid winter and spring pasture. Makes wonderful hay which all stock relish; very rich in protein. Stands drought and severe winters without injury. Does surprisingly well on all types of soils. Sow during August through October at the rate of 20 lbs. per acre in drills or 30 lbs. broadcast. Inoculate with Nitragin.

DWARF ESSEX RAPE - Although it is not a soil-builder, it is something every hog and poultry raiser should plant. Pork can be produced at a lower cost if pastured on Rape. Makes fine "greens" for table use as a substitute for turnip, spinach and the like. Grows on any soil and makes a splendid forage crop in 6 to 8 weeks. Broadcast at the rate of 8 to 12 lbs. per acre any time during the fall, winter or spring.

WE OFFER STRICTLY NEW CROP SEED OF HIGH GERMINATION AND PURITY

BUXTON WHITE SEED CO.

THE LIVE SEED HOUSE

ELIZABETH CITY, N. C.

The most important reason for... to obtain the latest... from his farm operations... may be obtained by... at the lowest cost... this problem for you.

GRIMMOND GROUND

Grass... 10... can be planted... with... in the... and... with...

AUTUMN WINTER

cover crop for the... slightly all... a... field, but... hold... your... when... 30...

WINTER WINTER

to the... of the... or... the... the... the...

WINTER WINTER

that... of... on... cost... winter...

BUXTON WHITE SEED CO

THE LIVE SEED HOUSE

A. EARL CITY W.C.