

Historic, archived document

Do not assume content reflects current scientific knowledge, policies, or practices.

62,39

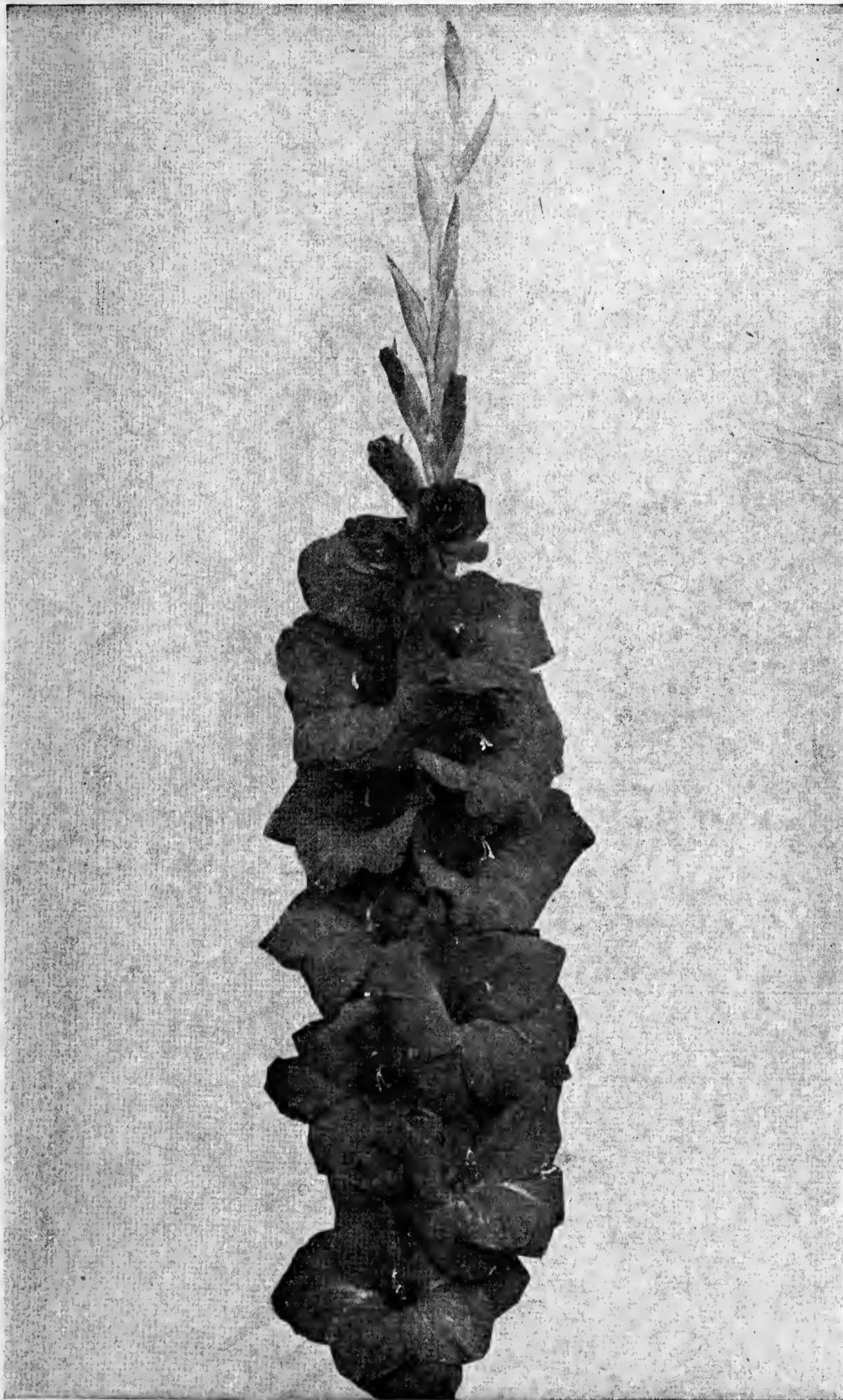
Flying Cloud Farms

FEB 8 1937

Department of Agricult

1937

C
I
L
A
D
I
O
I
L
U
S



Black Opal (Errey)

Baneroft Winsor

ACUSHNET STATION

NEW BEDFORD, MASS. U.S.A



Wedding Bouquets of Gladiolus

This new and distinctive type of arrangement for members of a wedding party was made largely of individual blooms of gladiolus, the varieties used being White Orchid and Buffette. The idea originated in the shop of Frank Buffinton, Fall River, Mass.

Thank You!

To those of you who have made possible, by your orders and suggestions, the present gladiolus business here at Flying Cloud Farms we wish to extend our thanks. You have been extremely generous in your orders as well as in the nice things that you write us and we certainly appreciate them. These compliments are a great help to keep us on the jump trying to improve in any way we can the growing and handling of our stocks.

The past season we have added, due to your confidence in us, a new brick storage house, cork insulated against sudden changes of weather, and we can maintain at all times the temperature best fitted for the bulbs at that particular time of year. There is a refrigerated cold storage room so that bulbs can be held for late planting at 35° - 40° when warm weather comes.

We had a fine growing season and being near the waters of Cape Cod have the advantage of the cool nights, for which Cape Cod is famous during the heat of midsummer. Water is available for irrigation when there is a drouth so the stock can be kept growing without any set-back and being able to start planting in March we get a long growing season.

Last summer we had many visitors to the field, some that came a long way just to see it, others that were touring to the Cape, (we are only a couple of miles from the main highway) and stopped to see us. All are most welcome and we hope if any of you are in this locality you will do the same.

Usually from early July until the first of October you will find something of interest either in the new varieties or among the many seedlings we are growing.

I hope 1937 will be a truly "GLAD" year for you in every way.

BANCROFT WINSOR.

Our Exhibits of the 1936 Season

The past season we had blooms at New York, Boston and the Empire State show in Ithaca, New York.

At the New York show we had a number of the newer varieties with some of the older ones and several seedlings which attracted much favorable comment and won the Louis B. Tim trophy for sweepstakes in the open color classes; best seedling, named at the show, "Garden of the Nations;" largest bloom (7½ inches) with a seedling "Miss New England" which was also given an award later by the New England Gladiolus Society seedling committee. It is a pleasing pink in color and holds its substance to the edges of the petals and in both of these ways a step ahead of the other so-called Giants; most beautiful spike was also won by a seedling "Robert Shippee" which was given the same award a year ago; in the class for nearest to blue with a seedling, and the longest flower head was won with Frank J. McCoy. Among the other varieties shown were:

Blue Beauty	Glen	Ninth Symphony
Bad Homburg	Green Light	Okarina
Blue Delight	Ideal	Pimpernel
Chasseur	John Ramsay	Polar Ice
Copperfield	Laidley	Ramsay MacDonald
Da Capo	Lausanne	St. Albans
Daffodil	Mary Rose	Star of Bethlehem
Dr. A. C. McKillop	Maunga	Tangerine
Evelyn Stinton	Minnock	Tasman
General Balboa	Mrs. Finnie	White Triumphator
Gladys Clegg	Nerissa	Zauberflote

At the New England Gladiolus Society show at Boston we showed a collection of over two hundred varieties and only one entry in the open color classes, Frank J. McCoy which won for the second year in succession the championship. We also put up two seedlings for awards, having received Commendations in 1935, they both were given Awards of Merit, one being BUFFETTE and the other SURFSIDE, our two first introductions. Among those in our collection that attracted much attention were:

Alkemade's Triumph	Mrs. C. P. Worley	Tasman
Brightling	Miss New Zealand	Waratah
Centenary Triumph	Takina	Daily Record
David Prior	Gertrude Swenson	Honor
Euides	Royal Gold	Lisbeth
Falcon	Rudolf Serkin	King Coyle
Mrs. G. Wade	Traumerei	Lausanne
Gladys Clegg		Makenu

As no one was able to go from here to the Empire State show at Ithaca, New York, which was truly an enormous exhibit, we shipped some blooms of the newer named varieties and some seedlings. Out of over thirty competitors we were fourth in total points for the President's Cup; runnerup for the sweepstakes in the decorative division; secured a seedling award on SURFSIDE, only seven awards being given out of two hundred thirty-two seedlings put up. Among the varieties that were of much interest were several

very new ones not yet released and a few of the more recent ones; we sent only the new things omitting the old standbys as we were short of both boxes and time. These varieties attracted much comment:

Revaluation	Favorite	Takina
Full Value	Ben	Miss New Zealand
Brightling	Coimba	Rita Phillips
Iolanthe	Wittelsbach	Allegro
Autumn Glory	Eosine	Okarina
Allbright	Ramsay MacDonald	Royal Gold
Tasman	Advance	Copperfield
Glowing Embers	Freya	Arethusa
Saarland	Traumerei	Euides

Random Notes of the Past Season

The season just passed we had many more visitors to our field than in any previous season; we were glad of this for, while we keep our field well cut (except for seedlings) we always have some of the newer ones in bloom. Customers can tell much more of the habits and colors of a variety than in the shows as well as the quality of our stock if they see it growing in the field. We also like to note the seedlings that appeal to our visitors; oftentimes we are pretty busy but usually someone can give you any information you desire and you can make your own notes.

Last season most of our visitors found Joe Coleman at our field and I am sure enjoyed their visit with the originator of such good ones as: Minuet, Mrs. Sisson and Giant Nymph. He came up from Georgia to help us with our seedling work and get a rest on Cape Cod but I guess we kept him on the jump so he didn't have much rest; anyway, we had a good time and learned a good deal from him. He thought well of our seedlings — in fact, some he felt were very outstanding. I well remember one day going to the seedling patch and as I stopped he ran up to the car with a lavender seedling in his hand and said, "the finest thing I have ever seen, as far ahead of the present lavenders as Minuet was when I just found it in my own patch." I wanted to name it "Joe Coleman" but Mr. Kundred had given one of his originations that name years ago so we named it something else — someday I'll tell you what one it was if all goes well with it. Joe wrote me a letter when he got home; part of it I am printing elsewhere because I think he honestly meant it and as I have valued his opinion for so many years, it gave me a lot of pleasure.

Many visitors were surprised to see Frank J. McCoy growing in a long row full of spikes of championship quality as they thought those seen at the shows had special treatment. Years ago, when we were amateurs growing and showing for fun, we did give certain varieties extra care to try to overcome a certain weakness but today all our show spikes are picked in the open field where all receive the same culture. Some had said Frank J. McCoy did not do well for them coming too short, some have shown me the spikes. The originator, Mr. Briggs, sent out two very similar varieties about the same time — possibly from the same cross — the other being Encinatus which grows shorter and no where near the equal of McCoy. It is so much like it that, unknowingly, I showed two McCoy's and an Encinatus in a three spike class at Boston some years ago and it would have passed all notice except that Mr. Briggs was one of the judges. We then checked

our stock and found considerable Encinatus; all from one grower proved to be that variety and I have seen lots of it since in other gardens. There is a slightly different throat on it than on McCoy so if your McCoy is not acting as it should you better check it up for it sure is a great exhibition variety.

If you want long exhibition spikes be sure they have plenty of water and cultivated after each rain; however, I do feel that possibly we cultivate too much as it has been well established that cultivation burns the humus out of the soil which is one of the hardest things to put back into it. For fertilizer we use 6-8-6 early in the season and 4-8-8 later and in our light soil prefer a small amount of fertilizer put on several times rather than to put it all on in two applications, believing that the extra benefit is worth the extra work. Of course, in a small patch the generous use of dry cow or sheep manure will help produce better exhibition spikes; you can use all you want of it and if you use more than really needed, the only damage will be to your pocket-book. Remember when cultivating that while your first set of roots, those from the old bulb, go down but the second and third sets go out so do not cultivate too deeply close to the spikes late in the season.

Thrip now are easily handled by anyone willing to put just a bit of effort into it; the naphthaline flakes treatment seems the easiest and best but I should also disinfect at planting time with Bichloride of Mercury, one ounce to seven gallons of water, and soak for eight to ten hours. If the bulbs are free of thrip and thrip eggs at planting time there is only the chance of infestation from the fellow who is growing nearby and then it is wise to use the usual sugar and arsenate (or paris green) formula for spraying which is: 1 tablespoon paris green or 2 tablespoons arsenate of lead and 2 pounds brown sugar to 3 gallons of water. The safest way, probably, is to spray them once when about six inches high as a good insurance measure although one sees no signs of thrip. Just a few present at this time will make enough later on to do serious damage. I think if one keeps all open spikes cut close there will be little damage—the thrip go to blooming spikes—if these are cut and removed from the field any thrip present on the spikes, where most of them will be, would go out on these spikes. Any tops broken off or worthless spikes should also be kept cleaned up and removed from the field and destroyed as you then remove any thrip that may be present on these spikes.

GLAD PEOPLE

I received this letter from a customer in Michigan just as our catalog was going to press. Dear Mr. Winsor:

I'm glad the frost didn't kill my glads like it did the sunflowers in Kansas so "Queen Mary", with "Happiness", stepped out with "Frank J. McCoy". "Rosemarie Pfitzer," with a "Bleeding Heart", consulted "Dr. A. C. McKillop" about it while "Betty Ronaldson", a "Brunette", scrubbed "Black Opal" with "Gold Dust" to a "Perle Brilliant."

"Kingsford Smith" and "Miss J. Nathan", his "Sweetheart", with "Commander Koehl" aboard the "Graf Zeppelin" and a "Maid of Orleans", flew to "Bagdad" to visit "King Coyle", later returning with their "Danny Boy." That "Eve", "John Ramsay" went up to the "Lighthouse" to view the "Graf Zeppelin" at "Daylight", turning on the "Green Light" and keeping a "Daily Record."

"Evelyn Stinton" with "Mr. Wm. Cuthbertson" chartered the "Mayflower" on the "Blue Danube" as there was no longer a "Titanic", while "Bill Sowden" saw the "Star of Bethlehem" when "Lucifer" went after him because he was a "Crusader" for "Louis Boumeister". "Margaret Peter", dressed in "Royal Gold", with "Gabriel" stood at the "Gate of Heaven" before "St. Bruno" seeing "St. Cuthbert" in the "Ninth Symphony".

When "Gertrude Swenson" saw "Prof. Von Slogtern" give "Nelly" a "Salbach's Orchid" and "Miss New Zealand" eat a "Tangerine" and an "Orange" she said to herself, "I prefer to return to the "Sunnyside" of the Flying Cloud Farms."

Outstanding Foreign Varieties of the Past Season

The past season being one of rather even temperature and with the rain well distributed throughout the season, spikes typical of the varieties were plentiful giving a good opportunity to judge the merits of the new originations.

There is a decided demand for the extra early varieties; the first of the new ones to bloom here being Gladys Clegg, from Symons in Australia, a light apricot with a strong garnet blotch. The blooms are wide open and well placed against the willowy spikes, about eight will open at once and it is a good propagator. Zauberflote, (Pfitzer) was another extra early variety and made fine straight spikes, eight large flowers of heavy substance. The color is peach rose with a contrasting red blotch and was a winner at the last two New York shows, a fine addition to the extra early class.

Among the whites, the older Star of Bethlehem was outstandingly good from all sizes of bulbs. Pfitzer has added a couple of new whites that seem interesting; Heiligtum has a cream throat similar to Maid of Orleans and the flowers are a bit winged. Last season Matterhorn was introduced, which is a pure white and will open about seven fine blooms at once. White Triumphant, originated by Salman in Holland, proved to be as good and as early as one would expect from the awards it had received at Haarlem; the spikes were tall and straight and in spite of the many good whites today, this variety stood out. Maunga, the new white from New Zealand, is probably the largest white of them all. It would seem that with so many good white varieties there must be much similarity but each has its individual type.

King Coyle (Mair) seems the best of the rose reds; the spikes carry twenty-two buds with ten open. Daily Record, also from Scotland, proved a velvety crimson with a white blotch. The plant is a strong tall grower and produced many fine exhibition spikes during the season. Mair's Medalist seemed one of his best recent ones. The spikes were of fine type and the cerise color with darker edges and a white blotch made them most impressive and would seem to well deserve the high award given it by the British Gladiolus Society.

In the red shades easily the finest glad we bloomed last season was Errey Brothers' Black Opal it is a dark crimson red, the flowers are perfectly placed on fine symmetrical exhibition spikes and with ten leathery textured blooms open at once makes it a most outstanding addition to the present day gladiolus. Falcon and the even newer Glowing Embers are two fine oranges that do not burn in the sun as did their Mrs. S. A. Errey and should be very popular in this rather weak color class. A new coppery salmon that makes huge flowers is Errey's Narbethong; eight will open on a big spike and will prove of much interest to those interested in the big ones. Mrs. Julyan, the originator of Miss New Zealand, the first giant variety which is now widely known in this country having been exhibited at most of the large shows during the past two years, has introduced a fine variety named Tasman. The color is begonia pink with a reddish feather in the throat offset by a yellow dart; about eight large flat blooms are open at once and are well placed against the tall straight spikes. This variety seems assured a place with New Zealand's very best.

In Australia the past season the champion seedling at two of the largest shows was Dossie Clegg, originated by J. W. Clegg, and a vase of it was one of the outstanding exhibits of the past season in Ballarat. It is a pure pink and spikes of it gave twelve or more open blooms perfectly placed on

long flower heads. From the experience of the past year, it would seem that this variety was going to be a most outstanding asset to the exhibitor and a valuable sort for the decorative class.

Da Capo, a pure pink with a white throat, gave extremely large flowers on fine spikes and seemed a most outstanding variety. Traumerei, a big light lavender, was very impressive. The flowers were very large and well placed on good spikes. These two were introduced directly by Pfitzer and were not offered through their Holland agents as is usually the case with his originations. They are surely two good ones and the gladiolus enthusiasts that saw these two varieties exhibited at the New England Gladiolus Society's pre-show and regular show by Mr. Wyman made many favorable comments about them. Blue Beauty (Pfitzer) seemed the best new one in this color class last season although Tunia's Blue, (Australia) which comes well recommended may prove valuable as more stock is available from which to judge it.

Among the yellow class, Pfitzer's Royal Gold proved again to be an outstanding medium yellow. The spikes are well formed and about eight blooms of nice type open at once. Mrs. G. Wade, originated by Miss Whiteley, in New Zealand, was another fine ruffled yellow of extra good substance; the spikes were long and with many open blooms would look to have a future.

Euides, one of Errey's introductions of a few years ago, would seem to be a great show variety as well as one of the very best of the new commercial varieties. The color is an ivory white with a cream throat and the edges of the petals are flushed with a lavender pink. It consistently produces spikes with ten open blooms that are perfectly placed and should be extremely popular.

While there were many other varieties that have seemed, from the short trial and small stocks being grown, to be valuable, another year probably will determine their true worth. In some cases it will take several seasons before varieties from countries where their seasons are the opposite of our own give spikes that are typical of the variety so one must not be too quick in passing judgment, be it good or bad, on any new variety.

The following is from a letter received from Joe Coleman after he spent the past summer in our fields. The world is a big place and most of us have not seen much of it but I think Joe says it with good intentions; possibly as a goal for us to strive to attain in years to come:

Savannah, Georgia

Dear Mr. Winsor:—

.....

Without question, I believe you have not only a few seedlings but at least fifty that will go far when placed on the market. Believe me, I cannot see how your seedlings can be much improved. Would not surprise me in the least to have them considered as a whole by competent judges the World's Best.

Cordially,

Joe Coleman

Jumbo Bulbs for Exhibitors

Many enthusiastic exhibitors have a very decided preference for a Jumbo bulb, that is, a bulb that is larger than just a number one. They feel that the larger the bulb the better chance for a big spike exhibition if properly handled. The large bulbs usually do not look quite so nice as the smaller sizes; however, we have Jumbo bulbs at this time in most of the medium priced show varieties and will send them at no extra charge over large bulbs **IF THE CUSTOMER WILL PAY THE CARRYING CHARGES.** Should there be small sizes in the same order, we will add extra count on these ordered varieties or put in some extra varieties to offset their proportion of the shipping charges.

Bulblets

While we guarantee to satisfy our customers if it is possible, it must be understood that **WE DO NOT GUARANTEE BULBLETS TO GROW.** The bulblets of some varieties are hard to germinate and they need good care to get the best results. Bulblets are cheaper than bulbs because they are not so sure to grow. It is a cheap way to get a start especially in the new introductions but we want our customers to be sure they understand clearly that they must not expect us to replace them if they do not germinate. Of course, a big percent will grow anyway but if they are valuable ones and are cracked before planting and then kept well watered, the percent that grow will be much increased.

Collections

We have decided this year not to offer any collections of various varieties either bulblets or bulbs. The only collections are the unlabeled ones and these are wonderful value for they are made up of varieties where we have our larger stocks and, therefore, can give far greater value than if they were of certain varieties and then also the cost of putting them up is much less as they do not have to be labeled.

The reasons for giving up the collections are that one can order from the regular list exactly what they want and not get even one variety they now grow and you will get just as much for your money when you figure the discounts and consider the overcount and extras that are added to each order as was formerly the case when collections were offered.

Terms

Several Customers Lost Cash sent in the mails unregistered last year, so be sure to register any letters containing cash. Customers sending cash do so at their own risk of loss. The day an order is received we mail to you a card or letter of acknowledgment; if this does not arrive promptly please let us know, we may be able to trace it then but if we do not know about it for a couple of months it is hopeless.

It is our custom to add Extras to each order; the amount and varieties vary with the size of the order; as some customers already have a wide

selection of varieties they prefer the extras in overcount of the ordered varieties or have some varieties that they might like to try and while, of course, we can not always send all the varieties that are mentioned, it will help us to have a list to select from so we may send something you really want. Just put on the order what you would prefer to have us do; increase the count, take it from your list or select it ourselves.

If a Customer is willing to pay the Transportation Charges on an order, we will see that there is much greater value in bulbs added to the order to offset these charges. Here again just give us an idea of what you would like and we will do our best.

No Order Accepted for Less than \$1.00 which must be accompanied by cash in full and no single item for less than ten cents. On orders of \$5.00 and up we will accept 25% (twenty-five percent) with the order balance before shipment. We will prepay all orders to any point in the United States or Canada except orders from the wholesale list and Jumbo bulbs as noted above. Orders from foreign customers, except Canada and Mexico, must be accompanied by money order or draft and shipping charges.

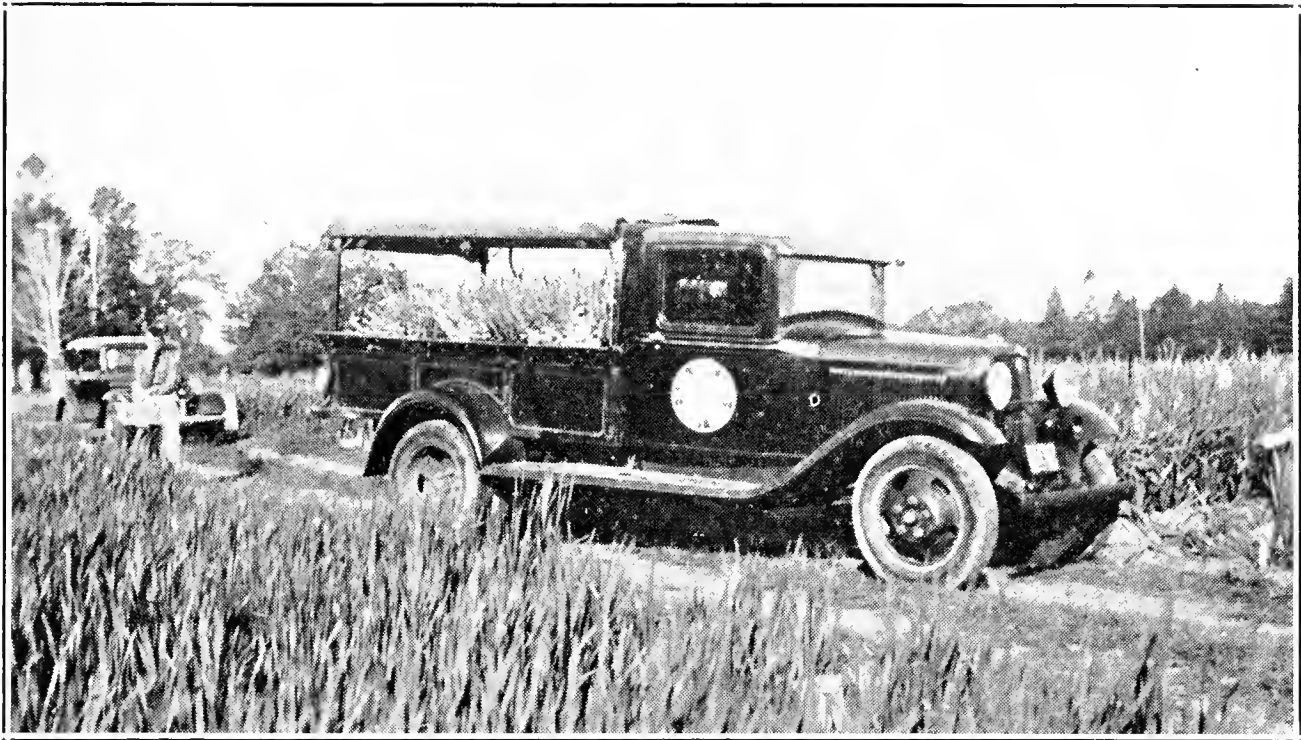
Extras on Cash Orders from the Retail List of \$2.00 to \$5.00 you can select 10% extra in stock; from \$5.00 to \$25.00 select 15% extra in stock; from \$25.00 to \$50.00 select 20% extra in stock and over \$50.00 select 25% extra in stock. **These discounts do not apply to our new introductions, the graded lots, or collections. These Extras to be Selected from the Retail List.** Where bulbs (not bulblets) are priced each, **Ten Bulbs of a Variety will be sold at eight times the single price; Five Bulbs or more at the ten rate** except where the large bulbs are listed at \$1.50 each or more. Large bulbs will be 1¼" up, medium will be ¾" up, small will be ⅜" up. As long as available the larger bulbs of each grade will be used.

I Shall Personally See that full value is given to every customer. If you are not pleased with the stock when received, or if after you have grown it you are not satisfied with the results, please let me know and I will make every effort possible to please you. All stock is guaranteed true to name and free from disease.

Shipment

Orders Will be Shipped as early as weather permits; many factors govern how early we can ship. Sometimes we can catch a mild spell in February when it is perfectly safe to ship short distances and stock going south. Any orders over \$10.00 we will be glad to ship by express at any time the customer desires although we prefer to hold them a day or two if extremely low temperatures are forecast. Please state on the order the approximate date you prefer to receive the shipment. If you order the more expensive bulblets and desire them earlier than March 15, we will find some way to get them to you safely.

All orders should be at hand before May 15 although large bulbs of many medium priced varieties will be available until about June 15. However, if you order late please give us some varieties for second choice or, if we are out of some varieties, to send more of those available to make up the value. All orders are put up and put aside when received regardless of the shipping date.



Early morning load of blooms for our local markets

Substitution

In No Case will any Variety be Substituted for the variety ordered except with your permission. However, as many of the varieties listed are in small supply, I would appreciate the privilege of substituting larger or smaller bulbs of the same variety when necessary.

Prices

Prices in this List Supersede Prices in all Previous Lists. I am not knowingly undersold by any reputable grower but if lower prices are quoted to you by any reliable grower we will meet those prices as long as our stocks are available. When there is a figure before the price of a variety as 2-20c or 5-25c, etc., it means two bulbs or bulblets for twenty cents or five bulbs or bulblets for twenty-five cents as the case may be.

Graded Lots

The "Graded Lots" have been so popular that we will offer them again. This year we will make them up from any variety in the catalogue. We will put up 50c **Lots of any Variety that does not list for over 25c for a Single Large Bulb** and \$1.00 **lots of any Variety that does not list for over 50c for a Single Large Bulb.** I realize that there may be some cases where the stocks will be so reduced we cannot supply all varieties in "Graded Lots" throughout the season and I do hope you will be good enough to send a few second choices in case any you select are not available. We plan, where these "Graded Lots" are ordered, to put any extras we may be giving into additional bulbs in the ordered lots rather than add bulbs of other varieties so that is where you will find your extras unless specially requested to do otherwise. Of course, if the order is not all "Graded Lots" the usual extras will be included. The customers that have had these lots know the value they received; to others we will just say that they will be much in excess of the catalogue prices and contain a good assortment of sizes. If you wish part

in bulblets please mention it as otherwise they will be made up entirely of bulbs. On the 50c lots you can order five for \$2.25, ten for \$4.00 or fifteen for \$5.75. On the \$1.00 lots you can order five for \$4.60, ten for \$8.50 or fifteen for \$12.00.

Our Introductions for 1937

SURFSIDE (Winsor)

This seedling (No. 32-298C) is of exhibition type, makes tall straight spikes with twenty to twenty-two well placed buds, eight to ten large florets open at once. The color is white with a cream throat and very slight penciling deep in the throat. The ruffled florets are of fine substance and lay well against the spike. Extremely good propagator. Midseason.

Commendation Award. New England Gladiolus Society—1935.

Award of Merit. New England Gladiolus Society Boston Show—1936.

Honorable Mention. Empire State Gladiolus Society—1936.

Price: \$10.00 each for any size bulb.

BUFFETTE (Winsor)

A very tall exhibition type seedling; (No. 30-238A) the foliage is very green and it propagates easily. Shown at the New England Gladiolus Society seedling meeting it had twenty-two buds with eleven fully open blooms which are large and of good substance; a slight ruffle and strong midrib; ends of petals have a bit of the needle point type. Early bloomer. Color by Ridgway is between light ochraceous salmon and ochraceous salmon which to most of us is a light buff with a touch of apricot.

Commendation Award. New England Gladiolus Society—1935.

Award of Merit. New England Gladiolus Society Boston Show—1936.

First prize in the open class at New York—1936.

Price: \$10.00 each for any size bulb.

In offering **Surfside** and **Buffette** our first two seedlings, we have every confidence that they are worthy additions to the many outstanding originations now on the market.

A customer in Providence, Rhode Island writes:—"I thought you would be interested to know how the stock I got from you last year turned out. The small bulb (No. 5) of Gertrude Swenson had a flower stalk 4½ feet high a 19" flower head and had a maximum of 12 perfectly placed flowers out at one time. It looked exactly like the picture in your catalogue. I planted four bulblets which germinated 100% and 30 bulblets of Queen Mary germinated 80%. Every bulb produced spikes equal and many beyond my expectations and I am sending you a much larger order this year."

Descriptive Price List 1937

ALCHEMIST (*Pfizer, Germany*) — Another yellow from Pfizer which, like so many of his yellows, is early. The large rich yellow florets open quite flat and give a most pleasing appearance. L 50c, M 30c, S 20c, Blts. 3-15c.

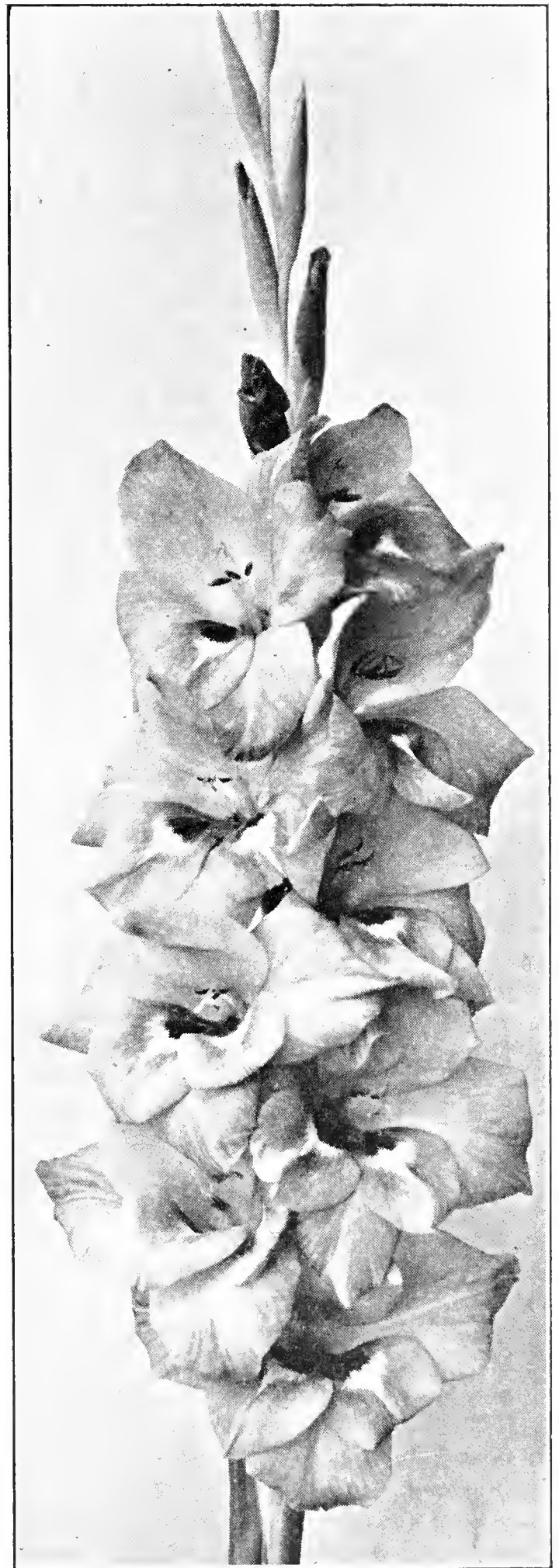
ALEC (*Miss Douglas, Australia*) — A strong growing dark blue with a cream throat overlaid with a dark garnet feather. A good dark blue for exhibition as well as cut flowers; medium sized florets on tall straight spikes. A good one for crossing on the Pfizer "blues." L 25c, M 15c, S 2-15c, Blts. 10-20c.

ALEXANDRIA (*Mair*)—This new variety from Mair is one of his very best. It makes nice long clean spikes and is a pleasing straw color with the edges of the petals slightly rose pink; surely a pretty one. L \$1.50, M \$1.00, S 60c, Blts. 15c each.

ALKEMADE'S TRIUMPH (*Alkemade, Holland*) — Large round florets of clear orange color with a darker feather in the throat; round florets are a little ruffled and open quite flat against the spike. Stands up well in the field. L 40c, M 25c, S 15c, Blts. 8-20c.

ALLBRIGHT (*Mair*) — A light salmon, heavily flecked scarlet with a white throat; certainly a bright colored one and makes good spikes. L \$1.00, M 60c, S 35c, Blts. 2-20c.

ALLEGRO (*Pfizer, Germany*) — One of Pfizer's best so-called blues. It has good clear color and opens many florets at one time. The light "blue" becomes quite dark in the throat but is lighted up by white darts on the two lower petals and we believe the best light "blue" to date. L \$1.25, M \$1.00, S 60c, Blts. 2-25c.



Allegro (Pfizer)

ALLEMANIA (*Pfizer, Germany*) — A fairly dark scarlet which should fall in the exhibition class. The florets are as large as many of

the so-called Giant Glads. This is as large flowering as any variety I have seen from Pfitzer. L \$1.00, M 75c, Blts. 3-20c.

ALMOND BLOSSOM (*Gilrey, Australia*) — This variety has a rather unusual color, it is a buff-white — a white blushed buff in other words. The soft color and good habits make it very desirable; good increaser and should be more widely known. L 25c, M 15c, S 2-15c, Blts. 5-10c.

ALPHEUS (*Errey, Australia*) — A beautiful salmon pink that has a delicate scarlet marking in the throat. Particularly desirable for home decoration and one we grow extensively for the florists. L 3-20c, M 6-20c, S 10-20, Blts. 50-15c.

ALT. WEIN (*Pfitzer, Germany*) — This good blue has a darker throat blotch and is so very early that it should be more widely known; certainly well worthwhile growing. L 2-20c, M 4-20c, S 6-20c, Blts. 30-15c.

AMADOR (*Kingsley, U. S.*) — This bright red stands hot weather well and is a welcome addition for those seeking an improvement on Dr. Bennett. L 5-30c, M 5-20c, S 10-20c, Blts. 50-15c.

AMETHYST (*Symons, Australia*) — This beautiful glad is the color the name signifies and is known too well here to need further description, having been a consistent prize winner. L 10c.

ANGKOR (*Lemoine, France*) — Another showy variety from abroad that is easily the best in its color class. A beautiful lemon yellow with a nice blood red marking in throat. Winner of 1st at Boston 1935 and 1st at New York 1935 as an exhibition variety. L \$1.00, M 60c, S 40c, Blts. 10c each.

ANNA MAY WONG (*Pfitzer, Germany*) — This nice colored yellow self has been grown here for two seasons and attracted much attention; a clean grower and should be a good addition to this color class. Only a few large bulbs this year—\$1.00 each.

APHRODITE (*Barth, Germany*) — Glowing salmon red, large blooms, tall and vigorous and a sensation in Germany. F. C. C. at Haarlem, Holland. L 30c, M 20c, S 15c, Blts. 5-20c.

ARABELLA (*Pfitzer, Germany*) — A glossy dark red, almost black, that makes a nice spike. Probably best described as a much improved Moorish King, especially since it does not have the tendency of Moorish King to produce short flower heads. Truly a fine glad and very popular with all our garden visitors. L \$2.00, M \$1.25, Blts. 2-30c.

ARMAGNA II (*Mair, Scotland*) — A rich deep scarlet with white throat and lines on the lower petals. Many blooms open and well placed. An exhibition variety that deserves a place in all glad fanciers' gardens. L 15c, M 2-20c, S 4-20c, Blts. 20-15c.

ARTEMIS (*Barth, Germany*) — A very beautiful variety; light pink with a cream colored throat, strongly reminiscent of the color of old Jenny Lind but a big improvement over that variety. Splendid spike with ten blooms opening at once. Attracts every visitor to my garden. L 20c, M 15c, S 10c, Blts. 8-20c.

AUAHI (*Burns, Australia*) — A new novelty of excellent quality. A smokey mauve with a touch of old rose and a white throat; about ten open at once on a strong spike. L \$2.00, M \$1.50, S \$1.00, Blts. 15c each.

AUREATE (*Whiteley, New Zealand*) —

A good colored yellow with a slight crimson stripe in the throat and heavily ruffled, as are most of Miss Whiteley's varieties, which gives it plenty of substance. Those that like ruffled yellows will want Aureate and Mrs. G. Wade. L 35c, M 20c, S 2-20c, Blts. 4-15c.

AUTUMN GLORY (*Errey, Australia, 1934*)

— The name suggests the color one would expect in this gladiolus and it is made up of many autumn shades which are most difficult to describe in any other way. The flowers are of good size and ten or more open in perfect placement on a good spike. L 80c, M 40c, S 25c, Blts. 2-20c.

AVE MARIA (*Pfitzer, Germany*) —

One of the older blues that makes this an outstanding variety and still holds its place as one of the best. L 4-20c, M 7-20c, S 10-15c, Blts. 50-10c.

AVIGNON (*Errey, Australia, 1933*) —

A sport of the famous Mrs. S. A. Errey and is identical in spike construction, but the color is a very unusual silvery pink with a large plum blotch which makes a pleasing color combination. It does not burn in the sun as does Mrs. Errey and being a good propagator, we believe it will become popular. Would fall in the A. O. C. class in the shows. L 20c, M 2-20c, S 3-20c, Blts. 5-15c.

AWATEA (*Burns, Australia*) —

Peach blossom darker pink toward the edges of the petals and a light yellow throat. Pretty coloring, makes a nice straight spike with about ten open; another fine variety from this originator. L \$7.50, M \$5.00, S \$2.50, Blts. 75c each.

AYRSHIRE (*Mair, Scotland*)—

A strong, rose lilac with decided white blotch. Typical Mair spike with over twenty buds perfectly placed; ten or more

opening at once and this one should replace many novelties such as: Duchess of York, Roi Albert and Hinemoa. L 2-15c, M 4-15c, S 6-15c, Blts. 40-15c.

AZALEA (*Pfitzer, Germany*) —

A pretty lively red going deeper in the throat with a raspberry feather and white dart; eight very large flowers open at once. Large only—50c each.

BAD HOMBURG (*Barth, Germany 1933*)

— The outstanding centifolia pink color of this new variety is very fine. Some have said it is the nicest in color of any similar shade. It is a strong healthy grower; makes tall spikes with the blooms well arranged. Early midseason; the best of Barth's new ones. L \$1.50, M \$1.00, S 50c, Blts. 15c each.

BAGDAD (*Palmer, Canada*) —

This huge well known dark smoky rose needs no description; wins at most every show. L 3-15c, M 6-15c, S 15-15c, Blts. 100-15c.

BARON VON WYNBERGEN (*Alkemade, Holland*) —

Large salmon rose glad with a large carmine blotch; a strong grower; flowers are very large and of good texture. Large only—20c each.

BEN (*Mair, Scotland*) —

A large red scarlet slatey at the edges and with a rich white throat. Flowers are large and are well placed on tall spikes of twenty buds; one of Mair's best new ones. L 40c, M 25c, S 2-25c, Blts. 5-15c.

BENTLEIGH (*Gilrey, Australia*) —

A warm cream color with a very small feather of violet. Opens many florets at a time perfectly placed on a long spike. One of the best exhibition varieties in the light colored section and being a good propagator will go far as a commercial. L 5-30c, M 6-20c, S 10-20c, Blts. 30-15c.

BERICE (*Whiteley, New Zealand*) — A rose pink with an ivory white throat and large crimson blotch. It makes a huge showy spike and is of pleasing color. L 75c, M 50c, S 25c, Blts. 2-15c.

BETSY BOB-UP (*Canine, U. S.*) — Sport of Betty Nuthall so identical characteristics except it is very much lighter in color. L 25c each.

BETTY (*Mair, Scotland*) — A soft orange shade with somewhat of a silvery cast. It is 100% straight with us and a very showy glad; however, the bulbs are light colored and bruise easily in handling. L 2-10c, M 3-10c, S 6-10c, Blts. 50-10c.

BETTY RONALDSON (*Clegg, Australia*) — This Australian variety is similar in color to Errey's old Melissa being pale lemon splashed with pink. It will open six to eight flowers and is a strong, tall grower. Received an award of merit at Ballarat. L 35c, M 20c, S 2-20c, Blts. 10-20c.

BILL SOWDEN (*Fallu, Australia*) — A nice dark red flecked deeper at edges and which has a beautiful sheen. There is a slight ruffle to the petals. A winner at many shows this past season. L 2-10c, M 4-15c, S 10-15c, Blts. 50-10c.

BLACK OPAL (*Errey, Australia*) — One of the most outstanding varieties I have ever seen. An exceedingly dark red which opens ten well placed florets on tall straight spikes. A true exhibition variety just released this year; introduced by Errey last season. Prices are net, not subject to any discounts. L \$15.00, M \$10.00, Blts. \$1.50 each.

BLEEDING HEART (*Brown, U. S.*) — A favorite blotched variety, now widely known, that has been a consistent prize winner in the light pink

with markings class for several years. L 2-10c, M 4-15c, Blts. 50-10c.

BLUE BEAUTY (*Blaue Schonheit*), (*Pfitzer, Germany*) — This glad is well named for it surely is a Blue Beauty. It is probably the best blue on the market. It is a strong blue color becoming a little bit lighter at the edges. It is a strong grower which produces long spikes that will open eight florets at once. L \$4.00, M \$2.50, Blts. 25c each.

BLUE DANUBE (*Pfitzer, Germany*)—Very fine light blue and a decided improvement over Mrs. Van Konyenburg as the placement is better and a taller, stronger grower. L 2-10c, M 3-10c, S 8-15c, Blts. 50-10c.

BLUE DELIGHT (*Douglass, Australia*)—A deep rich blue, a bit darker than Pelegrina, more velvety texture and a stronger stem. Better all-round variety as is proven by the fact that it won first prize over Pelegrina at both New York and Boston in 1935. L 30c, M 20c, S 2-20c, Blts. 10-30c.

BONNIE SCOTLAND (*Stephens, U. S.*) —A light clear yellow which blooms about midseason. This is a good grower and its clear color makes it attractive; has proven a fine forcer, good propagator. L 25c, M 15c, S 2-15c, Blts. 10-20c.

BRIGHTLING (*Heemskerk, Holland*) — A lively and clear colored red scarlet with white markings in the throat. A very attractive variety which attracted much attention from our garden visitors this past season. L \$1.00, M 60c, S 35c, Blts. 2-20c.

BULLFINCH (*Mair, Scotland*) — Unusual and one of the best of the Scotch smokies. Orange scarlet overlaid with slate gray. Many big florets open at once on a strong spike. L 30c, M 20c, S 10c, Blts. 5-15c.

BURWOOD GEM (*Brown, Australia*) — Salmon pink with a carmine blotch; a bit of yellow in the throat also. It is a good decorative and propagates easily. L 2-10c.

CAESAR (*Roozen, Holland*) — A brilliant orange scarlet with a deeper blotch. The blooms are extra large; about six open on a tall tapering spike. The best of this originator to date. L 15c, M 10c.

CAMELOT (*Errey, Australia*) — A beautiful coral pink with a scarlet throat. Tall tapering spike with many blooms opening at a time with good placement. A real exhibition variety. L 4-20c, M 6-20c, S 8-15c, Blts. 25-15c.

CANBERRA (*Errey, Australia*) — The best yellow for exhibition and has been a consistent winner for many years and while not the perfect yellow, it still has fewer faults than other yellows. The color is clean intense yellow self; late midseason. L 2-10c, M 3-10c, S 6-10c, Blts. 50-10c.

CARMENIA (*Mair, Scotland*) — A "carmine crimson" glad with white throat markings. Tall spike with ten or more buds opening at once out of about twenty-two on the spike; blooms are large and well placed. It is the leader in the rose and rose red classes; a strong grower and good propagator. L 2-15c, M 4-15c, S 6-15c, Blts. 40-15c.

CASSANDRA (*Errey, Australia*) — This one has a white ground heavily suffused with a red-pink, the blotch is of bright crimson and is so large that it almost covers the lower petals; very striking color contrast; a strong grower. L 2-10c, M 5-15c, S 10-10c, Blts. 50-10c.

CENTENARY TRIUMPH (*Errey, Australia 1935*) — Fine exhibition variety that does especially well in hot dry weather. The color is a true salmon overlaid with lavender gray at the

throat edged with orange. The flowers are large, of good formation and perfectly placed on the spike. One of Errey's very best new ones. L \$1.75, M \$1.00, S 50c, Blts. 20c each.

CENTURION (*Errey, Australia 1934*) — Deep salmon with a bright plum blotch. Rather similar to Leander but brighter in color and makes taller and larger spikes. It is a decided improvement over that popular variety. L 60c, M 40c, S 20c, Blts. 3-20c.

CEREBERUS (*Errey, Australia 1935*) — A large very ruffled variety. Orange pink with deeper shadings on the outer edges of the petals. The center of the flower is cream with a few crimson flecks; early bloomer. L \$1.50, M \$1.00, S 75c, Blts. 20c each.

CHAMOIS (*Mair, Scotland*) — A typical Mair variety which produces long spikes with many buds. Flowers are buff yellow — true chamois color — and there are many flowers open at one time. A good exhibition variety. L \$1.50, M \$1.00 S. 60c, Blts. 15c each.

CHAMPLAIN (*Palmer, Canada*) — A beautiful light blue from the originator of Picardy; slight dark throat markings. Opens about six on a graceful spike. L 20c, S 2-15c, Blts. 8-15c.

CHASSEUR (*Errey, Australia*) — A very striking big glad; usually ten six inch flowers are open on a twenty bud spike. Round widely open florets; color salmon pink with heavy flecking of a darker shade that about covers the flower. Red throat markings on the lower petals. A variety of outstanding merit. L 75c, M 45c, S 20c, Blts. 3-15c.

CHRISTABEL (*Mitsch, U. S.*) — A large La France pink with a creamy throat. Will open about eight large

well placed florets on a strong graceful spike and every year we grow this one we think more of it. It is a rather late bloomer. L 2-20c, M 3-20c, S 8-20c, Blts. 50-20c.

COIMBA (*Errey, Australia*) — A most pleasing soft salmon pink with a small carmine feather and a few contrasting markings in yellow. Opens seven to eight large flowers at once and are perfectly placed on tall straight spikes in true Errey style. A good commercial as well as a good exhibition variety. Very dark foliage. L 30c, M 15c, S 2-20c, Blts. 8-15c.

COLOGNE GOLD (*Graetz, Holland*) — A good colored yellow from the Netherlands that will open an average of six florets on a tall spike. Deeper color in the throat gives a pleasing character touch. L 2-20c, M 4-20c, S 6-20c, Blts. 30-20c.

COMMANDER KOEHL (*Pfizer, Germany*) — This tremendously popular variety is a deep red that opens many florets on a tall strong spike. A great prize winner; best commercial pure red. L 2-10c, M 5-15c, S 12-15c, Blts. 100-15c.

CONJURER (*Mair, Scotland*) — Large flowers on a strong spike. The color is salmon pink with brown slatey flecks at the edges and a cream throat overlaid with rosy veining. The flecks are so large they are really oblong spots and it is a most unusual glad. L \$1.50, M \$1.00, S 60c, Blts. 15c each.

CONSTANCY (*Arenius, U. S.*) — This bright rosy lavender is of unusual intensity and makes tall graceful spikes. There are few good glads in this color section; good increaser; nice commercial variety. L 2-10c, M 5-15c, S 12-15c, Blts. 100-15c.

COPPERFIELD (*Australia*) — This outstanding exhibition variety is best described as coppery brick in color with a pretty red blotch. The spike is very long with about ten ruffled blooms open at once. This is sure a good one. L \$2.50, M \$1.60, S \$1.00, Blts. 25c each.

CORANGAMITE (*Errey, Australia*) — A bright salmon rose with darker flecks at edges of petals with faint buff and yellow shadings in throat. An exhibition variety which opens ten or twelve flowers at once. L 10c, M 2-10c, S 3-10c, Blts. 25-15c.

CRAIGIE (*Mair, Scotland*) — Crimson with a brownish overcast darker at the edges with white throat. A good one of the 1933 group. Opens ten at once; good exhibition type. L 45c, M 30c, S 15c, Blts. 4-20c.

CRUSADER (*Errey, Australia 1935*) — This one is very difficult to describe as it is an even mixture of grey and rose pink and I know of nothing similar in color, however, it is unusual and attractive. It makes nice exhibition spikes with ten or twelve slightly ruffled flowers open at once. A new worthwhile one. L \$1.50, M \$1.00, S 60c, Blts. 20c each.

DA CAPO (*Pfizer, Germany*) — A clear light pink with a white throat. Flowers are large and open quite round and flat. This variety received much comment at the Metropolitan Show this last season. L \$1.00, Blts. 15c each.

DAFFODIL (*Mair, Scotland*) — The color of this glad is really a buff yellow self rather than a golden yellow. It is a fine variety and I believe the best buff we have seen. The blooms are large with ten open on a very tall spike. It is a good

From Ohio, 12/28/36, came the following:—"Am sending another order for bulbs and wish to state that I had wonderful success with the ones I received from you last year. Miss New Zealand bloomed from one of the bulblets this last fall and it was wonderful. I have two No. 1 bulbs from the 2 Maunga bulblets I planted last year. In fact, I have nearly all No. 1 bulbs from the bulblets I planted last spring as I planted them about the middle of March."

propagator and while the bulb-lets are always small they germinate in this variety. L 40c, M 25c, S 15c, Blts. 10-15c.

D. A. HAY (*Whiteley, New Zealand*) —

This very popular variety has won many championships in New Zealand. Color is pink with a creamy white throat; opens ten on a tall straight spike. This variety has been very popular. L 20c, M 15c, S 10c, Blts. 10-10c.

DAILY RECORD (*Mair, Scotland*) —

A rich velvety crimson with throat markings similar to those in Pimpernel, white blotch and lines. Probably the best in this color. L \$2.00, M \$1.25, S \$1.00, Blts. 20c each.

DANNY BOY (*Julyan, New Zealand*) —

A popular variety from the originator of Miss New Zealand. The ground color is a deep plum red going to a plum purple at the edges of the petals, this is offset by a throat of orange that is heavily flecked. It is a strong grower, opening about ten or twelve blooms on a long twenty bud spike. A good novelty. L 50c, M 20c, S 10c, Blts. 10-25c.

DAVID (*Australia*) —

A very strong growing variety carrying from eight to ten well formed flowers. Warm cherry red with a cream tongue edged in deep mauve, dark feather in the throat and makes an exhibition type spike. L 75c, M 50c, S 25c, Blts. 3-20c.

DAVID PRIOR (*Mair, Scotland*) —

Here is an exhibition winner and a good commercial. Ground color is a rich rose scarlet, throat and lines are rather cream colored. This glad is slightly ruffled and has very good substance; a very showy glad. L 20c, M 15c, S 3-20c, Blts. 25-15c.

DAYLIGHT (*Mair, Scotland*) —

Rose lavender ground with a few bright-

er flecks at the edges of the petals, the creamy throat becomes more yellow at the edges and is overlaid with a peppered self-colored feather. L \$1.50, M \$1.00, S 60c, Blts. 15c. each.

DIDO (*Heemskerk, Holland*) —

Large round flat florets of a clear salmon orange with a little deeper color in the throat; strong grower. L \$1.50, Blts. 15c each.



Joe Coleman Among our Seedlings

DOMINATEUR (*Alkemade, Holland*) —

Large well shaped flowers of clear rose color with white blotch; very conspicuous. New in 1933 and popular with garden visitors the past season. One of the best recent ones from Alkemade. L 30c, M 20c, S 10c, Blts. 5-15c.

DOROTHY CLEMENCE (*Clemence, Australia*) —

A very strong grower with eight to ten flowers open at once. The color is wine red overlaid with purple. Recently received an Award of Merit as an exhibition variety at the Ballarat Test Garden. L \$1.00, M 75c, S 50c, Blts. 2-20c.

- DO X (*Pfitzer, Germany*) — Very large yellow becoming slightly deeper color in the throat. Florets are of fine substance and form. L 60c, Blts. 5-20c.
- DR. A. C. McKILLOP (*Mair, New Zealand*) — A fine lavender with a cream throat and cream lines in the petals. The florets are large and wide open and well placed on the spikes. It was very popular with the florists the past season and seems a good addition to our lavender class. L 75c, M 50c, S 25c, Blts. 5-25c.
- DR. DURR (*Pfitzer, Germany*) — A very early light cream that will open about six and makes a good spike and will be a valuable commercial as it is easily the best of this color among the early ones. L 10c, M 2-10c, S 3-10c, Blts. 30-15c.
- DR. GLADYS MONTGOMERY (*Whiteley, New Zealand*) — This one from Miss Whiteley is a bit similar to King Arthur in color and type of bloom with a large ruffled flower of rosy purple and is an interesting variety. L 30c, M 20c, S 2-20c, Blts. 5-15c.
- DUNVEGAN (*Errey, Australia*) — The outer portion of the flower is slate while the center is a large crimson blotch lighting up the flower making it unusual and attractive. L 60c, M 40c, S 25c, Blts. 5-25c.
- DURBAN (*Mair, Scotland*) — Crimson, suffused violet center; good long spike. A typical Mair variety and surely a good variety. L 25c, M 15c, S 2-15c, Blts. 8-15c.
- EDITH MILLS (*Mair, Scotland*) — This glad is an unusual color being cherry rose lighted up with a clear white center. It makes good exhibition spikes, propagates easily and is a worthwhile addition to Mair's list of good ones. L 50c, M 30c, S 15c, Blts. 4-15c.
- EDITH ROBSON (*Brown, Australia*) — Peach pink with a carmine blotch on a yellow throat. One of the very best varieties as well as a good commercial. F. C. C. in Australia and I think Brown's best origination. We have had many spikes with fourteen open on them and it was a winner at two shows the past season. Certainly anyone interested in growing the best cannot pass up this variety now that the price is so much reduced. L 3-15c, M 6-15c, S 10-15c, Blts. 50-15c.
- E. O. BOASE (*Boase, Australia*) — A fine white creamy throat, lavender flecks. This variety makes long spikes of well arranged florets; opens ten or more at one time. L \$1.00, M 75c, S 50c, Blts. 2-15c.
- ERICA MORINI (*Pfitzer, Germany*) — Brilliant scarlet color, opening about six large flat blooms at once. It is a strong grower and similar to Pfitzer's Triumph but makes much better spikes and is an early bloomer. L 2-20c, M 4-20c, Blts. 25-15c.
- ESME DESAILLY (*Errey, Australia*) — Salmon pink and cream combination with a slight dark line on the lower petals. Opens ten nice flowers at once perfectly placed on the spike and is a consistent performer. It has been a prize winner many times for us and at its present low price should be in every garden. L 2-15c, M 3-10c, S 6-15c, Blts. 35-10c.
- ETRURIA (*Errey, Australia*) — The color is a clear pale mauve with a violet blotch on the lower petals which brightens up the flower. It is a tall grower and consistently produces spikes with ten flowers open and perfectly placed. It is a big improvement on A. H. Woodfull. L 40c, M 30c, S 20c, Blts. 4-15c.
- EUIDES (*Errey, Australia*) — An ivory white going to a cream center and

very lightly flushed toward the outside edges of the petals with lilac pink. It makes fine spikes with about eight or ten open of perfect formation and I believe will be a fine commercial as well as a great exhibition variety. Was awarded F. C. C. Ballarat Trial Grounds in 1935. L \$1.00, M 60c, S 40c, Blts. 10c each.

EULALIE (*Errey, Australia*) — This is a pale pink with deeper flecks at the outer edges. The center is cream with a few slight carmine flecks but the general effect is of a pale pink self. About ten large flowers open on a typical Errey spike. L \$1.00, M 60c, S 35c, Blts. 3-25c.

EVADNE (*Errey, Australia*) — This strong growing variety produces fine spikes with many open flowers which are bright orange salmon with a throat that goes to a mixture of crimson and yellow. This variety will prove a popular one. L 60c, M 35c, S 20c, Blts. 3-20c.

EVE (*Whiteley, New Zealand*) — A delicate shade of shell pink going to a rich yellow in the throat with a yellow cast persisting through the pink. This variety has large florets and is a very tall and strong grower. L 15c, M 2-15c, S 3-15c, Blts. 20-15c.

EVELYN STINTON (*Symons, Australia*) — A new introduction from this famous originator. The color is best described as blush pink heavily overlaid with chocolate. Fine long spikes of exhibition type. Will open up to fourteen flowers of good size and texture at once. Received an Award of Merit at Ballarat Test Garden and is an outstanding variety. L \$1.00, M 60c, S 35c, Blts. 3-25c.

FAHNENJUNKER (*Graetz, Holland*) — A deep yellow self; a strong clean grower making long straight spikes and good increaser. One of our

very best commercial yellows. L 2-20c, M 4-20c, S 6-20c, Blts. 20-10c.

FALCON (*Errey, Australia*) — A very lively orange with a cream throat heavily peppered with crimson that does not burn in the heat. One of the most brilliant colored glads you can grow and it is very attractive too. The long spikes open many individual florets at one time. L \$1.25, M 80c, S 40c, Blts. 2-25c.

FIELD MARSHALL (*Mair, Scotland*) — This variety is one of the very best of Mair's that falls in the dark smoky class. Its color is garnet red overcast with light slate and makes very fine exhibition spikes consistently. At its present price anyone interested in smokies should be growing this one. L 15c, M 10c, S 3-15c, Blts. 12-15c.

FIREFLAME (*Mair, Scotland*) — A dazzling orange scarlet that will compare most favorably with all other varieties in this class. Ten or more open on a typical Mair spike. L \$1.50, M \$1.00, S 60c, Blts. 15c each.

FORTH (*Mair, Scotland*) — A bright and very taking orange salmon set off with a clear yellow blotch in throat and a few yellow flecks; good show variety. L \$1.00, M 60c, S 35c, Blts. 2-20c.

FRANK J. McCOY (*Briggs, U. S.*) — Not one of the new ones, but the public was slow in realizing that it was one of the world's greatest exhibition varieties. The past season we won the championship at the N. E. G. S. show in Boston with this variety for the second year in succession with three spikes of which carried twenty-two buds each with eleven open. Any variety that can win a championship at this show just has to be a top-notch. It was also champion at Connecticut and several other shows in 1936. The color is deep pink

with very slight throat markings and has been a very consistent producer of exhibition spikes. No exhibitor can afford to be without it. One of the few that is also a leading commercial variety. L 5-40c, M 5-25c, S 6-20c, Blts. 25-15c.

FRAU ANNY FORSTER (*Barth, Germany*) — A very delicate carmine red, throat a brighter color. The flowers are slightly ruffled and of fine type. A fine new one from this originator who has sent many outstanding varieties but still they are not widely known. L \$2.00, M \$1.50, S \$1.00, Blts. 20c each.

FRILLED CHAMPION (*DeGroot, Holland*) — This variety is best described as an improved Pfitzer's Triumph that is heavily frilled and anyone interested in the ruffled ones should try this; about all garden visitors have it on their list. L 4-25c, M 5-20c, S 10-20c, Blts. 25-15c.

FULL VALUE (*Alkemade, Holland*) — Wide open flat blooms that lie close to the spike. The color is a good shade of orange scarlet with slight red peppering on the lower petals. With seven large blooms open at once it makes a good exhibition spike and was a winner for us at Boston in 1935. L 60c, M 40c, S 20c, Blts. 3-15c.

GABRIEL (*Errey, Australia*) — The outer portion of the flower is an unusual mixture of gray and salmon and the crimson center is powdered with yellow with ten large ruffled blooms open at once on a good spike. It will be hard to beat in the smoky division. One of Errey's best. L 40c, M 20c, S 10c, Blts. 5-20c.

GATE OF HEAVEN (*Pfitzer, Germany*) — This deep colored yellow makes large blooms of very fine substance and while the spikes need a bit more length to the flower head it is still one of the best yellows. L 10c, M 2-15c, S 2-10c, Blts. 10-10c.

GENERAL BALBOA (*Pfitzer, Germany*) — A ruffled yellow which has very clear and strong color; buds show yellow rather than greenish yellow as in many other yellow varieties. L \$2.00, M \$1.00, Blts. 20c each.

GENERAL MANGIN (*Lemoine, France*) — One of the very best in its color class; pure dark red with deeper throat markings. Easily opens ten florets at once; strong growth. Winner of first at Boston in 1935. L 15c, M 10c, S 3-15c, Blts. 20-15c.

GENEVE (*van Duersen, Holland*) — A new introduction of unique color, raspberry red or carmine purple with seven to eight open on a strong spike. A good novelty. L 15c, M 2-15c, S 3-15c, Blts. 20-10c.

GERTRUDE GREY (*Mair, Scotland*) — This satin gray is a new and unusual color and is becoming very much in demand as it is getting more widely known. Not only does it have a new color but it makes very fine exhibition spikes and was one of the most popular in my garden the past season as well as a winner for us. L 20c, M 15c, Blts. 10-15c.

GERTRUDE SMITH (*Australia*) — A decidedly good addition to the pink shades being a deep shell pink with a silvery throat and a small ruby blotch. The usual well formed Australian spike with ten to twelve open flowers. A good one. L 75c, M 50c, S 25c, Blts. 3-10c.

This Canadian customer wrote us on Apr. 9, 1936: — "I received the bulbs in excellent condition and, as all your bulbs are, they were exceptionally fine looking. I want to thank you very much both for the extras of the varieties ordered and also those fine varieties which you gave me for trial. I certainly appreciate such generous treatment especially on an order as small as mine. I assure you that any glads I purchase in the future (and I have the fever) will come from Flying Cloud Farms."

GERTRUDE SWENSON (*Swenson, Australia*) — Beautiful shade of mauve with a white blotch on the lower petals and a light mauve feather. The spike is the ideal of the exhibitor, placement perfect with the medium size florets holding their size very evenly up the spike; opens fourteen at once. Has won many championships in Australia and won first at Boston in 1935. L 60c, M 40c, S 20c, Blts. 10-25c.

GLADDIE BOY (*Purple, U. S.*)—A pretty soft orange shade with light yellow throat and veining. It is slightly ruffled and has good substance. Very early, one of the most profitable commercials that we grow. L 5-25c, M 5-15c, S 5-10c, Blts. 100-20c.

GLADYS (*Mair, Scotland*) — Bright pink with wide open blooms; lower petals have strong white throat markings; very long spike with nineteen buds and ten open. A pretty glad. It makes a fine commercial variety as well as one for the exhibitor. Bulbs are white and bruise easily. L 15c, M 2-15c, S 3-15c, Blts. 10-10c.

GLADYS BROWN (*Brown, Australia*) — White with yellow in the throat overlaid violet. Good exhibition variety producing long spikes which open ten or more florets at once. L \$1.00, M 75c, S 50c, Blts. 10c each.

GLADYS CLEGG (*Symons, Australia*)—This variety, after considerable winning in Australia, was sent over to me by Mr. Symons in order that it could be determined whether it did as well here as in Australia. I have had the pleasure of growing it three seasons and consider it a topnotch variety. The first year it bloomed it was shown at the Pre Show at Boston and attracted much favorable comment. The next year it was shown in my new variety entry and last year it was given an Award of Commendation by the seedling committee which is

the highest award that can be given the first year. The color is a light apricot with a strong garnet blotch that is edged with gold. It will open up to eight blooms well placed on willowy spikes that are adapted for decorative work. It is a good propagator and one of the very first to bloom; the past season it was planted at the same time as Halley and bloomed with it which will give a good check on its earliness. Do not let the low introductory price influence you for it is a glad worth far more than this price might indicate, if you should judge equality by price. L 50c, M 30c, S 20c.

GLEN (*Mair, Scotland*) — A deep pure pink overlaid with smoke, large white throat markings and white rib lines. Opens six to eight on a sixteen bud spike; a good propagator and will be fine for either exhibition or commercial use. L 75c, M 50c, S 25c, Blts. 3-15c.

GLENBURN (*Mair, Scotland*) — Very much like Queen Mary except for color; more ruffled and seldom shows any pink at edges. One of the choicest cream colored glads. A winner the past season and in much demand by the florists. L 2-15c, Blts. 20-10c.

GLENROWAN (*Reeve, Australia*) — Silvery white heavily flecked and marked with a mauve ruby throat; good spike, eight to ten open. L 40c, M 25c, S 15c, Blts. 5-15c.

GLOWING EMBERS (*Errey, Australia*) — A very brilliant clear orange flecked darker. A seedling of Mrs. S. A. Errey and Tangerine. The florets are more resistant to burning than either parent. Six or eight florets open at one time; one of Errey's very finest varieties. L \$5.00, M \$3.50, S \$2.50, Blts. 50c each.

GOLD DUST (*Goldstaub*) (*Pfizer*) — A fine yellow that was introduced by Pfizer himself in Germany and it

has proven a very fine thing here in our two years' experience; surely an improvement on the present yellows. L \$3.00, M \$2.00, S \$1.20, Blts. 25c each.

GOLD LACK (*Pfizer*) — Golden yellow center going to orange at the edges of the petals which makes a very pleasing color combination. We believe this extra good decorative will be in much demand as soon as shown around a bit. L \$6.00, M \$4.00, S \$2.00, Blts. 75c each.

GRAF ZEPPELIN (*Pfizer*) — The best early scarlet we have seen. It has fine color and large florets and should eventually be a very widely grown commercial variety as early scarlets are not plentiful. L 2-10c, M 5-15c, S 6-10c, Blts. 30-10c.

GREEN LIGHT (*Pfizer, Germany*) — A light cream with a green gloss from which the name is derived. The large florets are slightly ruffled and of fine substance. This is an exhibition grade of high quality. L \$4.00, M \$2.50, S \$1.50, Blts. 40c.

GRIET (*Graetz, Holland*) — The color is golden yellow; it will open about six blooms on a tall spike and propagates easily. Worthwhile for anyone looking for yellows. L 2-20c, M 2-10c, S 4-15c, Blts. 25-10c.

GREY WING (*Errey, Australia*) — This addition to the smoky shades will be most welcome as it makes a big showy spike that is perfectly built up. As an exhibition variety this one will be hard to beat. The outer part of the flower is slate slightly shaded with crimson and the bright crimson blotch in the center lights up the slate and makes a new color scheme. L \$1.75, M \$1.00, S 60c, Blts. 15c each.

GOLDEN GODDESS (*Salbach, U. S.*) — Medium yellow shading to a deeper yellow in the throat; about ten well placed blooms open at once on a twenty bud spike. The first patented gladiolus and therefore the bulbs or their increase can not be sold without permission from the patentee so buy it only for your own growing. It is a great yellow and worth its cost for your own pleasure. Large bulbs only—\$1.00 each, 3-\$2.50.

HAMLET (*Mair, Scotland*)—Dark brown crimson with broad white lines and blotch. A very fine dark variety. L \$1.00, M 60c, S 35c, Blts. 2-20c.

HAMPDEN (*Errey, Australia*) — A delightful rose shade which blends perfectly with the small deep lilac markings on the lower petals which makes a great spike of ruffled flowers and while only a fair propagator is well worth the effort. L 40c, M 30c, S 20c, Blts. 4-15c.

HAPPINESS (*Alkemade, Holland*) — Bright clear scarlet self slightly deeper in the throat; large blooms and a good addition to this color class. L 60c, M 40c, S 20c, Blts. 4-15c.

HAROLD LOGAN (*Rides, New Zealand*) — Rather similar to Milford in color but has done better here than has Milford as a grower and I rate it over Milford from our experience. L \$1.00, M 75c, S 50c, Blts. 10c each.

HEALESVILLE GLORY (*Brown, Australia*) — A nice dark wine color with a deeper throat that opens many flowers on a fine tall spike and is a good propagator. It will open many blooms at once, making long

On Dec. 14, 1936, a Pennsylvania customer wrote: — "The results I had from the bulbs purchased from you last spring were very satisfactory. The extra Daffodil was magnificent; the bulblet of Miss New Zealand produced a nice bulb. The Rosemarie Pfizer and Tip Top were fine and these were grown from small bulbs; Tip Top measured over six inches across. Thanks very much for the fine extras. Star of Bethlehem was also fine."



Heiligtum (Pfitzer)

flowered heads and is a different shade than the present leaders in the dark red class. L 35c, M 20c, S 2-20c, Blts. 5-15c.

HEATHFIELD (*Errey, Australia*) — One of Errey's best; a coppery orange on the outer petals going to a bright orange crimson center; ten or more open and makes a wonderful exhibition spike. L 10c, M 2-15c, S 2-10c, Blts. 25-10c.

HEBE (*Mair, Scotland*) — Flesh white tinted at the edges of the petals; the flowers are large and of good formation, the usual Mair spike. L \$1.00, M 60c, S 35c, Blts. 2-20c.

HEILIGTUM (*Pfitzer, Germany*) — A pure white with a slightly greenish cream throat; flowers are large and of rather winged type; about seven open on a long twenty bud spike. Looks like another great white. L \$4.00, M \$2.50, S \$1.50, Blts. 40c each.

HELMSDALE (*Errey, Australia*) — This is an older variety of Errey's but has always been outstanding with us. It is scarlet with a grayish center and being a strong grower it makes uniformly good spikes. L 25c, M 15c, S 2-25c, Blts. 10-15c.

HONOR (*Mair, Scotland*) — One of the newer ones from Mair that is cream with a yellow throat going to a rose at the edges of the petals; opens about ten. L 35c, M 20c, S 2-20c, Blts. 6-20c.

HUNTSMAN (*Symons, Australia*) — A very fine exhibition scarlet with a white throat; the blooms are of good size and fine shape, perfectly placed on a long exhibition spike. Opens ten at once and is the best thing of this color we have seen. Award of Merit at Ballarat Test Garden. L 40c, M 25c, S 15c, Blts. 5-20c.

IDEAL (*Mair, Scotland*) — Well named for this glad is a massive exhibition spike of large salmon pink flowers; a dozen open and well arranged. When stocks are larger this one will be heard from in the show room. L 40c, M 30c, S 20c, Blts. 4-15c.

IOLANTHE (*Errey, Australia*) — A clear pale salmon self except for slight deep shadings in the throat and occasionally a fleck of deeper salmon on the edges of the petals. It has a good stem and carries about twelve open flowers. A worthwhile new one. L 75c, M 50c, S 25c, Blts. 3-15c.

IRENE (*Mair, Scotland*) — One of Mair's best and a most popular variety. It has been a consistent winner in this country as well as in Australia and New Zealand. The color is salmon rose with some old rose flecks going to steel gray at the edges; an outstandingly good glad. L 3-25c, M 3-15c, S 5-15c, Blts. 25-15c.

ISOLA BELLA (*Pfitzer, Germany*)—Light pink lavender; ten florets open at once on a fine tall spike; the slightly ruffled blooms are wide open. It is a strong grower and good increaser. With Blue Beauty, it seems the best of his 1935 introductions. L \$3.00, M \$2.00, S \$1.00, Blts. 30c each.

JANET (*Crow, Canada*) — Smoky gray shaded deep pink; four or five good sized slightly ruffled blooms open at a time. A pretty variety good for the smoky decorative color class at the shows. L 2-10c, M 5-15c Blts. 100-15c.

JEANETTE (*Whiteley, New Zealand*)—A heavily ruffled light yellow that grows a tall spike with the flowers

From Bridgeport, Conn., 12/14/36, a customer writes: — "All our bulbs from you did wonderfully well. Our New Zealand varieties were gorgeous. We had good increase from both Takina and Miss New Zealand."

- well placed. A good one in the light yellow class. L 2-15c, M 4-15c, S 6-15c, Blts. 25-10c.
- JESSIE** (*Mair, Scotland*) — Large rose colored blooms with a white blotch; spikes tall and blooms well placed. One of Mair's best ten. Winner in the deep pink class at Boston. L 5-25c, M 5-15c, S 5-10c, Blts. 50-10c.
- JOHANN STRAUS** (*Pfizer, Germany*)— Large pink with cream throat; about six large flowers open on a good spike; only a fair increaser. L 60c, M 40c, S 25c, Blts. 5-25c.
- JOH. S. BACH** (*Pfizer, Germany*) — Orange salmon with a lighter throat and white lines in petals. Twelve open flowers of good size that are well placed making a fine exhibition variety and may have a commercial future as it is very early. L 35c, M 25c, S 15c, Blts. 5-25c.
- JOHN RAMSAY** (*Mair, Scotland*) — A good one from Mair. Salmon pink in color with slate flecking on the outer edge of petals. Long straight spike showing twenty-two buds opening ten or twelve at once. Wonderful exhibition variety. L 2-30c, M 4-30c, S 8-30c, Blts. 25-15c.
- JONKHEER VAN TETS** (*Pfizer, Germany*) — Very large pure white that has been very popular the past few years. Unfortunately it makes rather rough looking bulbs. L 2-15c, M 4-15c, S 8-15c, Blts. 25-15c.
- JUBILEE** (*Kemp, U. S.*) — Here is a very big lavender that does extremely well in cool weather but the flowers are a bit soft for commercial use in hot weather. Fine variety for amateur growers. L 3-15c, M 6-15c, Blts. 25-10c.
- KASSEL** (*Pfizer, Germany*) — Scarlet red self; tall grower and good increaser and in spite of a few coming poorly placed is a fine scarlet. L 30c, M 20c, S 10c, Blts. 15-15c.
- KING COYLE** (*Mair, Scotland*) — A magenta purple (rose red class at the shows) with a white throat; the flowers are large and it is easily the best in this color section. L \$1.00, M 60c, S 35c, Blts. 2-20c.
- KINGSFORD SMITH** (*Whiteley, New Zealand*) — A light yellow with a small red violet blotch, heavily ruffled and the spikes are tall and straight. A fine glad to carry on the name of that sterling aviator recently lost. L 25c, M 2-25c, S 3-25c, Blts. 5-15c.
- KRIMHILDE** (*Pfizer, Germany*) — This is the very earliest lavender that we have found and for anyone growing for early flowers it will be a valuable addition. In the hottest weather it may crook occasionally but planted early it is almost 100% straight. L 2-15c, M 4-15c, S 6-15c, Blts. 25-15c.
- LAIDLEY** (*Errey, Australia*) — This is one of my favorites for it is a wonderful commercial variety and extra good for exhibition. Every spike comes tall and straight with perfectly placed blooms that are slightly ruffled. The color being cream that goes to a deep pink on the outer edges and shows a small crimson spot in the throat. Has won many awards. L 2-20c, M 4-20c, S 6-20c, Blts. 15-15c.
- LA PALOMA** (*Barth, Germany*) — Light pink, slight red line on lower petals; about eight nicely placed flowers of good type open at once making a fine exhibition spike. Was a winner at Boston in 1935 in the light pink class. L 20c, M 2-20c, S 3-20c, Blts. 10-15c.
- LAUSANNE** (*von Duersen, Holland*) — Certainly one of the best yellows to date. Medium tone yellow that becomes deeper in the throat; florets large for a yellow and of fine shape. Tall graceful spikes with seven to eight opening at once. A

most pleasing variety and we have had very fine reports of this from customers who grew it last year; propagates easily. One of Joe Coleman's favorites. L 50c, M 30c, S 20c, Blts. 4-15c.

LEANDER (*Errey, Australia*) — This variety is orange salmon with a large magenta blotch and with ten nicely placed blooms open at once. It is much admired. L 10c, M 2-15c, S 2-10c, Blts. 15-10c.

LEO SCHLAGETER (*Barth, Germany*)— This outstanding new variety of Barth's is a fine pure red with darker lines and of good substance; the blooms are large and round and the long spikes are of good proportions and perfect placement and in spite of the rather difficult name should become very popular. L \$1.50, M \$1.00, S 50c, Blts. 15c each.

LIBELLE (*Pfizer, Germany*) — Probably the purest light blue from this originator, a slight violet feather in the throat. Very early, strong grower and increaser; many will bloom from bulblets. This is our favorite light blue and I believe the best commercial one of this color as the florists pay a premium for it all season. L 2-15c, M 4-20c, S 6-15c, Blts. 50-15c.

LIGHTHOUSE (*Gilrey, Australia*) — Flame orange scarlet with a strong white throat; ten well placed florets open at once on a tall spike. Often it comes entirely flecked steel blue and is very attractive. L 2-20c, Blts. 25-10c.

LILLIAN FAWKES (*Brown, Australia*) — A cream with a lemon throat sometimes flecked a bit with pink at the edges. Florets of good size about eight open; a worthwhile variety. Large only — 20c each.

LISBETH (*Errey, Australia*) — This flesh pink glad is flecked a bit with salmon and has an orange buff throat. It is strictly an exhibition variety and as such is outstanding. Always sold out early but hope it will go the season. L 35c, M 25c, S 20c, Blts. 5-15c.

LOCHNAGAR (*Mair, Scotland*) — Really a mahogany color; Mair calls it dark slaty rose with a white blotch. Flowers are large and well placed on a very tall spike. This mostly should be in all amateur gardens at the present price. L 20c, M 15c, S 2-15c, Blts. 15-20c.

LOUIS BOUMEISTER (*van Deursen, Holland*) — A good addition to the weak purple class and it is especially valuable as a commercial because the spikes are tall; does exceptionally well from small bulbs and propagates easily. L 5-20c, S 15-20c, Blts. 100-20c.

LUCIFER (*Errey, Australia*) — This extremely popular variety, and justly so, is bright orange with an amaranth crimson shaded blotch making a striking color combination. Ten large flowers on a very tall spike give something outstanding for the exhibitors. L 4-25c, M 6-20c, S 10-20c, Blts. 25-10c.

MADOLON (*Lemoine, France*) — A great advance over the old favorite M. M. Sully from the same originator. White with dark blotch, the spikes are tall and straight; about eight large flowers open on an eighteen bud spike. The white color is clear and the dark red blotch makes a most attractive color combination. L 75c, M 50c, S 25c, Blts. 4-20c.

MAHOGANY (*Mair, Scotland*) — Rich red brown with creamy yellow veinings and throat markings on a

typical Mair spike. It is one of the very best in the dark colored section. The color is very clear for a variety as dark as this one. L 25c, M 15c, S 2-15c, Blts. 10-20c.

MAID OF ORLEANS (*Pfizer, Germany*)

— The outstanding white of the last few years. A fine show variety and generally admitted to be the coming commercial white. It has been a big winner in all the glad growing countries and surely deserves all the good things said of it. L 2-15c, M 2-10c, S 3-10c, Blts. 20-10c.

MAKENU (*Burns, Australia*) —

Large wide open ruffled florets of a rich orange shade with scarlet blotch. Opens eight to ten perfectly formed large florets, of Pfizer's Triumph type, at once. Does not burn in strong sun. Award of Merit at Canterbury, N. Z. 1934. First class exhibition variety. L \$1.50, M \$1.00, S 60c, Blts. 15c each.

MARCHEN (*Pfizer, Germany*) —

A soft light flame pink self of the purest shade. The blooms, which are about six inches, are of good substance and well placed on a good spike, making it one of Pfizer's best new ones. L 50c, M 30c, S 20c, Blts. 5-25c.

MARGARET PETER (*Errey, Australia*)—

This white with a strong crimson blotch makes a fine exhibition spike and seems to be the best all-round variety of this color. It blooms well from small stock, a good increaser and has all the qualities for a commercial variety as well as a fine exhibition glad. In 1935 it won 1st at Boston as an exhibition variety and first as a large decorative, also 1st at New York. L 10c, M 2-15c, S 3-15c, Blts. 15-10c.

MARIE (*Mair, Scotland*) —

Very light pink with a few dark flecks at edges of some petals; lower lip has yellow

throat. The formation of the florets is similar to those of Queen Mary. It will open ten of its twenty buds at once. Is a good propagator and very popular the past season. L 35c, M 25c, S 15c, Blts. 10-20c.

MARY ELIZABETH (*Dr. Stevens, U. S.*)

— A tall white light yellow throat; blooms of heavy texture. Spikes always straight with eight or more open at once. Has been a consistent winner at Boston for several years. L 10c, S 2-10c, Blts. 15-10c.

MARY ROSE (*Erray, Australia*)—

Blessed with a tall growing and exceptionally vigorous habit of growth, Mary Rose is very reliable in the production of long nicely formed spikes. The flowers have a ground color of pink which is overlaid with a shade of lively rose in the center and towards the outer edges of the flower. This variety is becoming remarkably popular and is proving a great attraction wherever shown. L 50c, M 30c, S 20c, Blts. 4-20c.

MAUNGA (*Burns, New Zealand*) —

A magnificent white variety possibly the largest to date being another big one from the originator of Takina. The color is pure and the spike well built. Has won many awards in New Zealand including the shows at Normanby, Miramar, Wanganui and Canterbury. An outstanding variety that won at New York and received much favorable comment. L \$1.25, M 75c, S 50c, Blts. 2-25c.

MAURICE BARRES (*Lemoine, France*)—

Yellow with a garnet throat marking, a striking color combination and while not as large as some is a good one for the exhibitor. It has won first at both New York and Boston. L 2-20c, M 4-20c, S 6-20c, Blts. 25-15c.

- MAVIS** (*Mair, Scotland*)—Creamy white ground with attractive cherry rose markings. Being a true Mair variety it sends forth long spikes which open many florets at one time. L \$1.50, M \$1.00, S 60c Blts. 15c each.
- MAX REGER** (*Pfitzer, Germany*) — A light lavender blue with darker throat markings that are tipped with white points which add to the attractiveness. It opens about eight large flowers on an eighteen bud spike; a strong grower and is really a leader in its color. L 50c, M 30c, S 15c, Blts. 5-15c.
- MAYFLOWER** (*Pfitzer, Germany*) — A variety just released this year. It is a beautiful soft pink with fine lines. Appears to be a strong healthy grower that propagates fairly well and the spikes the past season were of exhibition quality. L \$1.20, M 80c, S 40c, Blts. 3-25c.
- MEARNS** (*Mair, Scotland*) — Ground color is fleshy white edged with rich rose. This variety produces long spikes which open ten large flowers. L \$1.50, M \$1.00, S 60c, Blts. 15c each.
- MEDALIST** (*Mair, Scotland*) — An attractive bright cerise which seems to have a definite dark edge to the outer petals and it has a white blotch in the throat. Won as best seedling in the British Gladiolus Society. L \$2.00, M \$1.50, S \$1.00, Blts. 20c each.
- MERLE MORRIS** (*Australia*) — A fine variety in a middle shade of mauve or mauve pink. In the throat we have a light feather of maroon on a cream ground. L 30c, M 20c, S 10c, Blts. 3-15c.
- MILFORD** (*Rides, New Zealand*) — A delicate shade of blue violet slightly darker at the edges of the petals. The spikes are tall with eight to nine open and the best of this color class that we have grown. A good propagator and should go a long way. Was champion seedling at Canterbury. L 75c, Blts. 3-20c.
- MINNOCK** (*Mair, Scotland*) — I believe this variety to be one of the best from Mair in the last four years. It is a beautiful salmon apricot almost self color but sometimes having a few slight flecks at the edges of the petals of the two lower florets. It will open about a dozen at once perfectly placed. L 50c, M 35c, S 15c, Blts. 3-15c.
- MINUET** (*Coleman, U. S.*) — Old but still the measuring stick for all lavenders. L 2-20c, M 5-15c, S 10-15c, Blts. 50-10c.
- MISS HARRIET** (*Carpenter, U. S.*) — One of our earliest blooming varieties. It is a bright chrome orange being more yellow in the throat. Miss Harriet is a very strong grower and a good one for early flowers. L 2-10c, M 4-15c, S 10-15c, Blts. 40-10c.
- MISS J. NATHAN** (*Whiteley, New Zealand*) — Rose pink with a cream throat spotted crimson on a spike typical of Miss Whiteley's originations. Sure a good one! L 75c, M 50c, S 25c, Blts. 3-20c.
- MISS NEW ZEALAND** (*Julyan, New Zealand*) — The past season I believe has proven all the advance reports of this variety. It has proven to be as large as the New Zealanders said it was. It has proven an extremely good propagator and was

From Barre, Mass. came the following: — "I wish to thank you for your overcount and oversize on my last year's order and to tell you how much I again enjoyed my splendid flowers from your bulbs especially Mr. Cuthbertson and Laidley; I hadn't realized they were so similar till they bloomed last year. Ayrshire and Milkmaid, the two you sent gratis, were lovely. Ayrshire to me is quite similar in general color to Bagdad and a lovely thing, the white blotch setting it off beautifully."



A glimpse of our field in 1936

the winner at many shows all over U. S. A vase of about a dozen spikes, at the top of our commercial exhibit, was one of the outstanding factors of the entire show. If you are not growing it now you will eventually and certainly now is a good time to get a start in it. The color is shrimp pink fading into a begonia rose with a medium sized blotch of tyrian rose. Ten 7½ inch blooms open at once are not

uncommon; stock scarce. L \$1.25, Blts. 3-25c.

MOGUNTIA (*Barth, Germany*) — Here we have a strong and clear salmon pink. The spikes are long and well formed, carrying many buds of which eight open at one time. L \$1.50, M \$1.00, S 50c, Blts. 15c each.

MOONDARA (*Errey, Australia*) — Deep salmon with orange crimson blotch bordered with yellow; the blooms

are wide open and large, about ten open at once on a real exhibition spike. Winner of first in the salmon exhibition class at Boston in 1935, and a great one for exhibitors. L 20c, M 2-30c, S 3-20c, Blts. 15-20c.

MORONGO (*Errey, Australia*)—A great exhibition variety that will open twelve or fourteen blooms perfectly placed on a real exhibition spike and it is a good propagator. The color is nice bright salmon on the outer part of the petals while the center is yellow lined with scarlet. This one was his best introduction that year. L 30c, Blts. 5-15c.

MOTHER MACHREE (*Stephens, U.S.*)—A beautiful golden smoky that is very difficult to describe. It makes enormous spikes especially fine for exhibition and has won many championships. L 2-12c, M 4-15c, S 10-15c, Blts. 50-10c.

MR. FREDERICK CHRIST (*Deiner, U. S.*)—This fine pink glad is similar in color to the well known Coryphee but a straight grower and a winner at many shows. Saw some wonderful spikes of it the past season. L 20c, M 15c, S 10c, Blts. 10-10c.

MR. PASKELL (*Mair, Scotland*) — Rather a bright rose which becomes a little more ash colored at the edges of the petals and which has a white throat. This is a most attractive glad. L \$1.00, M 75c, S 50c, Blts. 10c.

MR. WM. CUTHBERTSON (*Mair, Scotland*) — White with delicate rose pink at the ruffled edges. Ten or twelve well placed florets open at a time on a long spike of twenty or more buds and a popular color

with the florists, making a good commercial as well as a real exhibition variety. One of the most popular in my garden the past season and a winner at many shows. L 2-12c, M 3-10c, S 8-15c, Blts. 100-25c.

MRS. C. P. WORLEY (*Whiteley, New Zealand*) — Salmon red with a cream throat, large blooms well set on a strong spike. A fine exhibition variety and the best of her introductions. L \$2.00, M \$1.50, S \$1.00.

MRS. FINNIE (*Mair, Scotland*) — One of the best new ones from Scotland. Pure salmon rose with many open and makes a fine spike. This will be one of Mair's most popular ones and along with Ideal should be two good commercials in this color section. L 25c, M 15c, S 10c, Blts. 12-25c.

MRS. G. WADE (*Whiteley, New Zealand*) — A yellow self that opens ten nice placed ruffled blooms on a long spike. A 1934 introduction up to Miss Whiteley's usual standard. L \$1.00, M 75c, S 50c, Blts. 3-20c.

MRS. G. T. MALTHOUSE (*Mair, Scotland*) — Light mauve on a white ground sometimes flecked a bit. The placement of this variety is perfect. It makes a long spike and will open ten blooms. My ideal for formation and it has won many championships. L 25c, M 15c, S 10c, Blts. 10-20c.

MRS. GEORGE WHITE (*Leroy, Australia*) — Beautiful long spikes of dark rose pink shade with fine red throat markings. Eight to ten blooms open at once; an exhibition variety. L 75c, M 50c, S 25c, Blts. 4-20c.

Another customer, from Detroit, Michigan, wrote on Feb. 20, 1936 — "The bulbs I received from you last year sure were fine. Margaret Peter won a blue ribbon for me at Monroe, Michigan glad show last August and Carmenia won a red ribbon so I must have a few more of these two varieties this year."

MRS. J. J. CLENDINNEN (*Symons, Australia*) — Outer part of the flower cream flushed shell pink with a large wine red blotch; exhibition type showing ten well formed flowers. One of the very finest; Award of Merit at Ballarat. L 50c, M 35c, S 20c, Blts. 5-15c.

MRS. JIM KERR (*Australia*) — This variety produces tall spikes of a vivid pink, the throat being centered with a violet maroon on a cream ground. It will produce a well faced exhibition spike with about ten open. L 75c, M 50c, S 25c, Blts. 4-20c.

MRS. RAY CHASE (*Miller, U. S.*) — A well known white with yellow throat. Blooms of good size and texture on long spikes. A good variety. L 2-15c, M 3-12c, S 6-15c, Blts. 30-10c.

MRS. S. A. ERREY (*Errey, Australia*) — This well known orange has won many championships and in spite of its burning in the sun, remains the best medium priced orange. L 2-12c, M 4-15c, S 6-12c, Blts. 75-10c.

MRS. TOM RATTRAY (*Australia*)—This grand old variety is the beginning of many of our great present day glads, extremely valuable for hybridizing work. A well grown spike of it can win today in any show in its color class. L 20c each, Blts. 15-20c.

MRS. WHITELEY, (*Whiteley, New Zealand*) — A large heavily ruffled pure white with a very light lavender pencil in the throat. Substance is fine and it is a very attractive variety and should be more widely grown. L 35c, M 20c, S 15c, Blts. 6-20c.

MRS. WHITLAW (*Mair, Scotland*) — Rosy salmon with a white blotch which makes big showy spikes. One of the best for exhibition use. L 20c, Blts. 35-15c.

NARBETHONG (*Errey, Australia*) — This will qualify for the giant class with eight big blooms open at once. Color is coppery salmon with deeper salmon in the throat that is shaded pale carmine. One of the finest varieties we have seen for some time. L \$7.50, M \$6.00, Blts. 75c each.

NELLY (*Mair, Scotland*) — Delicate rose color with a crimson blotch and one of Mair's very best. It is a good exhibition variety and will make a fine commercial as the color is pleasing and it propagates easily. L 2-20c, Blts. 10-10c.

NEREUS (*Errey, Australia*) — A cerise self, the throat silvery grey lined with crimson. Wide open flowers of good form and texture and well placed on a good spike. The pleasing color of this one should make it a favorite. L 80c, M 60c, S 40c, Blts. 10c each.

NERISSA (*Errey, Australia*) — A salmon shaded with greyish lavender. It will open twelve blooms on a fine spike and makes an outstanding exhibition variety. L 2-15c, M 3-15c, S 5-15c, Blts. 30-15c.

NEW ERA (*Ellis — Majeski, U. S.*) — A pure La France pink with a cream throat and midribs; very ruffled well placed blooms; about eight open on an eighteen bud spike. Very beautiful color. L \$7.50, M \$6.00, S \$4.00, Blts. 60c each.

NEWINGTON (*Webb, Australia*) — Exhibition creamy white sometimes slightly pink at the edges with a light yellow blotch. A good spike and blooms well placed. Award of Merit at Ballarat and Canterbury. Very fine the past season. L 10c, M 3-15c, S 4-10c, Blts. 15-10c.

NINTH SYMPHONY (*Pfitzer, Germany*) — A fine new scarlet red slightly lighter throat; very large wide open blooms of extra good substance. Surely will eventually be

widely grown; don't miss this one. L \$2.50, M \$2.00, Blts. 25c each.

NOEL REEVE (*Phillips, Australia*) — The color of this variety is somewhat changeable, in summer it comes a beautiful cerise pink slightly flecked, the inner portion of the flower being cream. In the cooler Autumn weather the cream predominates, the outer edges being a pale pink. Can make a great exhibition spike giving twelve open blooms perfectly set on a tall spike. One of our favorites. L 25c, M 15c, S 3-25c, Blts. 12-20c.

NYORA (*Errey, Australia*) — Rosy salmon deeper at the outer portion of the flower and a large bright crimson blotch makes a showy effect; about eight open on a nice spike and a strong grower. A very showy variety that was a winner in Boston as an exhibition variety. Also first prize at New York. L 10c, M 2-15c, S 2-10c, Blts. 20-10c.

OKARINA (*Pfizer, Germany 1933*) — This new one was very fine the past season. It has a smoky overcast but the lavender ground color is not that found commonly in smokies. It makes fine big spikes with many open and surely has a future. L \$1.00, M 75c, S 50c, Blts. 3-25c.

OMAKA (*Julyan, New Zealand*) — Fine orange scarlet which does not fade in the sun; a beautiful throat blotch of deeper color and an excellent variety. L \$1.50, M \$1.00, S 50c, Blts. 15c each.

OPAWA (*Julyan, New Zealand*) — Scarlet orange with smoky flecks at the edges of petals, large creamy throat and lines in petals; eight open on eighteen bud spike. L \$1.50, M \$1.00, S 50c, Blts. 15c each.

ORANGE (*Mair, Scotland*) — This variety is a pure shade of orange, a self color and this fine variety should have many admirers. L \$1.00, M 60c, S 35c, Blts. 2-20c.

ORANGE PRINCESS (*DeGroot, Holland*) — Pure salmon orange, lighter in the throat with a small crimson feather. Florets of Pfizer's Triumph type slightly ruffled. Award of Merit at Haarlem. L 10c, M 2-15c, S 2-10c, Blts. 20-10c.

ORANGE TRIUMPH (*Heemskerk, Holland*) — Round well shaped flowers of clear uniform orange; good spikes. Trial Garden award in Holland. L \$1.00, M 75c, S 50c, Blts. 10c each.

ORLANDO (*Errey, Australia*) — One of Errey's best exhibition varieties. Ten large blooms open on a strong show spike. The color is rosy salmon with a yellow throat. L 15c, M 10c, S 3-15c, Blts. 15-15c.

OUR SELECTION (*Ball, Australia*) — Salmon red heavily flecked with darker shade and often marked on the edge of the petals with slate flecking, although often times these flecks are entirely missing and the flower comes much lighter in color. Ten or twelve large ruffled flowers are not unusual. Won first prize at Boston in 1930 and 1932 and again in 1935, proving it is still the leader in its color class. L 2-10c, M 5-15c, S 12-15c, Blts. 75-10c.

PASTEUR (*Lemoine, France*) — A large extremely showy flower. The color is light ruby red with two large maroon blotches surrounded with creamy white. One of Lemoine's very best varieties. L 2-10c, M 3-10c, S 6-10c, Blts. 20-15c.

From Easton, Ill. came the following: — "Permit me to say that you have the finest collection of new and foreign originations in your new catalogue that I have ever seen under one cover. I commend you and more power to you!"

PASTORALE (*Pfitzer, Germany*) — Another light blue from the leading originator of "blue" glads. Although not evenly colored, this is a very pleasing glad which is set off by a lighter throat and should be included in your collection of "blues." L 75c, M 50c, S 25c, Blts. 2-15c.

PAUL CAMBON (*Lemoine, France*) — A deep coppery red that makes fine spikes and is usually one of the leaders in this color class. L 2-20c,

PAUL DESCHANEL (*Lemoine, France*) — Bright rose pink with showy dark blotch that makes fine spikes similar in type to the other Lemoine varieties. This variety won first at Boston as an exhibition variety. L 3-20c, M 4-20c, S 7-20c, Blts. 25-10c.

PEERLESS PINK (*DeGroot, Holland*) — A deep salmon self with very large blooms, about six open. The blooms are similar to Pfitzer's Triumph in type. L 10c, M 2-10c, S 3-10c, Blts. 25-10c.

PELEGRINA (*Pfitzer, Germany*) — A large dark blue with seven or eight blooms open and about all buds showing color. A very popular variety. L 2-15c, M 4-15c, S 6-15c, Blts. 50-10c.

PERLE BRILLIANT (*Alkemade, Holland*) — A very early light violet blue with darker blue violet shading; makes good spikes. Anyone interested in this color should try it for it is the first of the "blues" to bloom. L 25c, M 15c, S 2-15c, Blts. 15-20c.

PHILIP WHITE (*Whiteley, Australia*) — A glorious deep crimson self. The flowers are large and well shaped and it makes a good addition to this color class. L 50c each.

PICARDY (*Palmer, Canada*) — The best American seedling for sometime as proven by its popularity both

for decoration and exhibition, being a pleasing apricot color but too well known to need description. L 2-10c, M 5-15c, S 12-15c, Blts. 100-15c.

FIMPERNEL (*Mair, Scotland*) — Again a winner the past season and I still think the leader in the popular scarlet with white throat class. It is tall with many large blooms open and is now more widely known. Certainly anyone interested in the best should try this variety now that the price is much reduced. L 5-30c, M 5-20c, S 5-10c, Blts. 50-20c.

PINK DELIGHT (*DeGroot, Holland*) — A large salmon pink self except for a small bright red feather on the lower petals. Similar to Pfitzer's Triumph except in color. L 10c, Blts. 10-10c.

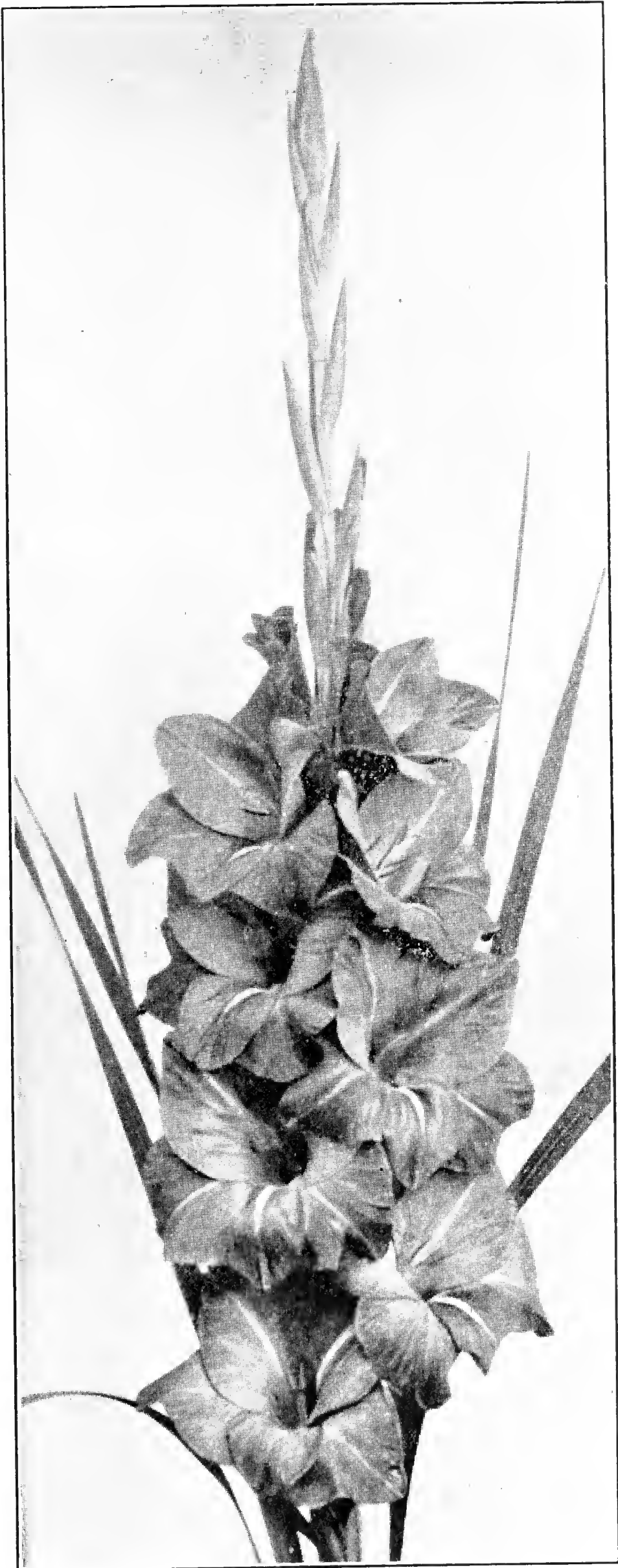
PITITI (*Hill, New Zealand*) — This new champion from New Zealand is a salmon apricot flecked darker and the throat powdered with henna. It is a very strong grower with about a dozen large blooms open at once. L \$1.00, M 60c, S 40c, Blts. 5-20c.

POLAR ICE (*Pfitzer, Germany*) — This pure dead white grows very straight; the flowers of good shape and size. A better variety than Albatross; used very extensively in Europe for forcing under glass and considered the best white for this purpose. A fine early commercial white. L 10c, M 2-12c, S 3-12c, Blts. 25-15c.

PROFESSOR VON SLOGTERN (*Alkemade, Holland*) — Beautiful soft flesh pink that is different from any other pink I have grown. The spikes are straight and flowers large and well placed. A good propagator and this one will be a leading commercial when it is better known. L 2-10c, M 5-15c, S 12-15c, Blts. 100-15c.

- QUEEN MARY (*Mair, Scotland*) — Probably the most famous of all Mair's originations having won many championships all over the world. In some sections it does not do its best and sometimes it shows pink or lavender at the edges of the petals but usually comes a cream self. A spike of Queen Mary with a dozen beautifully formed flowers open will remain in one's memory for a long time. L 15c, M 2-15c, S 3-15c, Blts. 25-15c.
- RAMSAY MacDONALD (*Pfizer, Germany*) — A fine new purple self that is the best of this color we had the past season; better than Paul Pfizer, Troubadour and Dickens. The best purple I have seen to date. L 75c, M 50c, S 25c, Blts. 3-20c.
- RANGITATA (*Julyan, New Zealand*) — A scarlet vermilion ground which becomes a bit darker at the edges of the petals and the throat is a deeper vermilion shaded carmine. It opens nearly half the buds of a long spike at one time. This variety may be classed with Mrs. S. A. Errey. L 40c, M 25c, S 15c, Blts. 10-25c.
- RANGITIKI (*Julyan, New Zealand*) — Pale delicate salmon tinted with purple mauve towards outer edges. The throat is deep salmon with clear carmine striping. Tall strong grower with extra large well placed florets. L 40c, M 25c, S 15c, Blts. 10-25c.
- RATANA (*Burns, New Zealand*) — A wonderful dark red which is slightly ruffled and the two lower petals appear to be fluted. There is a darker red throat which adds to the rich velvety appearance of this glad. Long spikes open eight or ten florets at one time. L \$1.00, M 75c, S 50c, Blts. 2-20c.
- RECORDER (*Whiteley, New Zealand*)— This rather new (1933) variety is of the usual Miss Whiteley type. The color is purplish violet, brighter than Gertrude Swenson, with a deeper throat. L 75c, M 50c, S 25c, Blts. 3-20c.
- RED GIANT (*Phillips, Australia*) — One of the three placed in the mammoth class at Ballarat. The flower spike is about thirty inches in length, strong and straight with up to eight perfectly placed blooms open at once. Color is a bright cerise rather than red, darker in the throat and a white line in petals. Many visitors to my garden remarked it was the color of an American Beauty rose. I like it better than any of the other so-called Giants. Stocks of it are very scarce. L \$4.00, M \$2.50, S \$1.50, Blts. 40c each.
- RED KNIGHT (*Mair, Scotland*) — A bright peach red shading darker with a white throat and lighter mid-ribs in lower petals. A very colorful glad. L \$1.50, M \$1.00, S 60c, Blts. 15c. each.
- RED LORY (*Errey, Australia*) — A real wonder for exhibition and spikes with twelve to fourteen open are common. Many times it has been champion of shows in Australia, New Zealand and U. S. The large flowers are carmine rose with a deeper red blotch and come well placed on an extra tall spike. Now that it is so low in price it should be in every garden. L 2-12c, M 4-15c, S 10-15c, Blts. 75-15c.
- REVALUATION (*Heemskerk, Holland*) — A clear orange red with a bright carmine throat. One of Heemskerk's best and much admired in my garden last season. L 35c, M 25c, S 15c, Blts. 5-15c.

A Wisconsin customer writes: — "From Bagdad bulbs I received from you last year I had champion spike at our state fair at Milwaukee; nine, seven inch bottom blooms open."



Red Giant

REX (*Mair, Scotland*) — This variety gives long spikes of twenty buds. It is a light scarlet with lighter throat which is overlaid by a velvety rose red feather. L \$1.00, M 60c, S 35c, Blts. 10c each.

RITA PHILLIPS (*Phillips, Australia*) — Color apricot salmon, deep orange flame feathering on lower petals edged with white. Makes finely formed spikes with about ten open. A very dainty color. L 75c, M 50c, S 25c, Blts. 3-20c.

ROI SOLEIL (*Velthuys, Holland*) — A light yellow which is very early. This is a very pleasing glad and the small red peppered feather in the throat sets it off most pleasingly. L 2-15c, M 4-15c, S 6-15c, Blts. 30-10c.

RONGA (*Burns, New Zealand*) — A rose scarlet with a plum feather in the throat. The tall spikes open about ten very large round florets of good size at one time. L \$1.00, M 75c, S 35c, Blts. 10c each.

ROSABELLA (*Pfizer, Germany*) — Pure pink with a white throat and the most beautiful color you can imagine and now that it propagates more easily than when first brought to this country should be widely grown. L 20c, M 2-20c, S 3-20c, Blts. 6-10c.

ROSALIND (*Julyan, New Zealand*) — A nice rose shade with cream throat pencilled deep rose; large florets well placed on a good spike and a strong grower. M \$1.00, S 50c, Blts. 15c each.

ROSE CARON (*Lemoine, France*) — A creamy white with large blotches of purple edged with straw. Florets are very round and well placed on the spike. Opens seven in good condition; a good one in its color

class. L 35c, M 25c, S 15c, Blts. 6-20c.

ROSEMARIE PFITZER (*Pfizer, Germany*) — One of the very best of recent years; a cream ground color with pink edges. This variety varies a good deal in color as does Queen Mary, sometimes a pure cream and again decidedly pink but always that great long exhibition spike and the blooms large and beautifully placed; always has been sold out before the end of the season. First at N. E. G. S. show in 1935. L 20c, M 12c, S 2-15c, Blts. 10-15c.

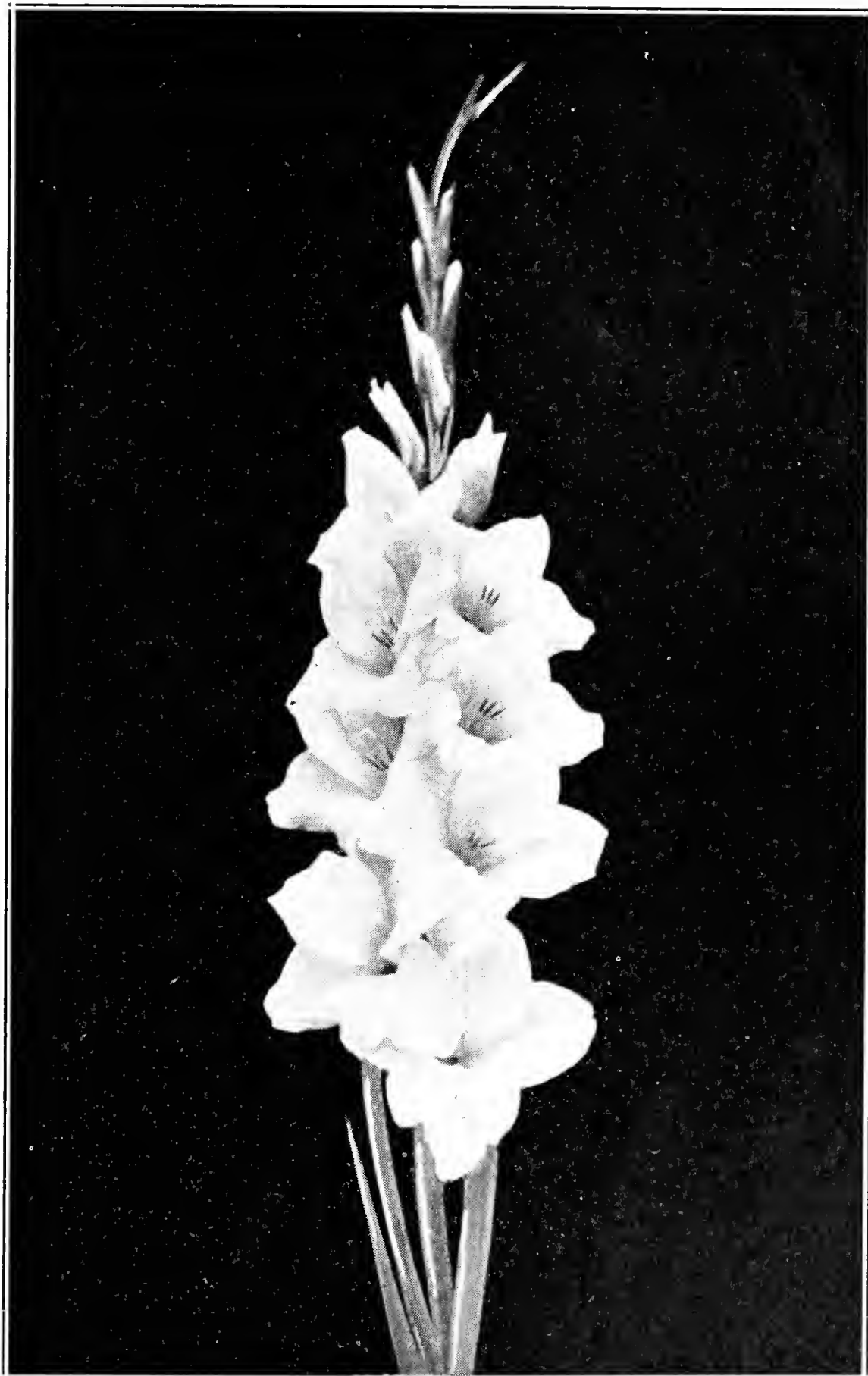
ROTENBERG (*Pfizer, Germany*) — A dark crimson red which has a darker feather in the throat and which is slightly ruffled. There is a most pleasing sheen to this variety and the large florets are very decorative. L \$1.00, M 60c, S 30c, Blts. 3-25c.

ROUGET de LISLE (*Lemoine, France*) — A dark red orange that has a typical purple blotch edged with chocolate. Have seen many wonderful spikes of this variety, some with twelve open blooms perfectly placed on a grand exhibition spike. L 2-20c, M 4-20c.

ROYAL GOLD (*Pfizer, Germany*) — Another early yellow with round florets of heavy substance. The clear ground color of yellow is deeper in the throat to give a very rich golden color. Opening eight florets it makes a fine exhibition as well as a decorative variety; strong healthy grower. Winner in its color class at New York and Boston in 1935. L \$7.00, M \$5.00, S \$3.00, Blts. \$1.00 each.

RUDOLF SERKIN (*Pfizer, Germany*) — Dark pansy blue which holds its color in the field perfectly. The

From New York came the following: — "I test out about all the new glads to find the best varieties to grow for the commercial florists' market. I thought this dry summer that Lausanne was about the best yellow that I have found and that Margaret Peter the best blotched variety."



Snowden

flowers are of good texture, fine form and good size. Two spikes of this variety shown at New York caused as wide and favorable comment as any variety in the show. This one surely has a future. L \$1.00, M 75c, S 40c, Blts. 2-20c.

R. Y. MAIR (*Mair, Scotland*) — Here we have a solid red ground with a slightly darker feather in the throat.

Long spikes open many large florets at one time. L 75c, M 50c, S 25c, Blts. 3-20c.

SALBACH'S ORCHID (*Salbach, U. S.*)—

A bit more pink than Minuet and the blooms are ruffled. A very beautiful variety that is becoming very popular especially as a commercial. L 2-12c, M 3-10c, S 6-10c, Blts. 25-15c.

SALMON EMPEROR (*DeGroot, Holland*) — Salmon orange, lighter than Orange Princess. About seven ruffled flowers open at once, of Pfitzer's Triumph type. L 15c, M 10c, Blts. 30-20c.

SENATOR (*Mair, Scotland*) — One of Mair's highest priced introductions and one of his best. It is a dark salmon heavily striped scarlet; spike the usual Mair type, opening ten or more well shaped blooms. If you want the very best varieties don't miss this one. L 20c, M 15c, S 3-20c, Blts. 10-15c.

SHEEN (*Mair, Scotland*) — A recent introduction of light yellow flecked rose that makes a fine tall spike with ten or more open on a typical Mair spike. There is a sheen to the blooms whence comes the name. L 20c, M 2-20c, S 3-20c, Blts. 10-15c.

SILVERSHEEN (*Symons, Australia*) — A magnificent spike of large flowers of a glowing salmon pink. A white tongue on lower petals feathered white red. The whole flower is overlaid with a silvery sheen; ten open flowers on a strong spike make Silversheen a magnificent specimen. F. C. C. Ballarat exhibition type. L 20c, S 3-20c, Blts. 10-20c.

SINBAD (*Whiteley, New Zealand*) — Another orange pink from Miss Whiteley, the originator of Mrs. C. P. Worley and D. A. Hay. This orange pink is identified by a crimson spotted blotch in the throat. L 75c, M 50c, S 25c, Blts. 2-15c.

SIR HUBERT WILKINS (*Pfitzer, Germany*) — A dark velvety rose purple which has no evident marks in the throat. A very attractive glad which falls in a weak color class and it's a good glad, too. L 75c, M 50c, S 25c, Blts. 2-15c.

SNOWDEN (*Ball, Australia*) — A great exhibition white with a slight feather; about the color of Joerg's White but a better show variety having the long spike with well placed flowers so much desired by exhibitors. Don't let the low price mislead you as to its quality. Champion bloom in Australia and a winner at Boston. We believe this to be a fine commercial as it is a rapid propagator and gives extremely fine spikes, every one straight even from small sized bulbs; anyone wishing a white for florists should give this one a trial. L 2-15c, M 5-20c, S 6-15c, Blts. 25-10c.

SOMMERKLEID (*Pfitzer, Germany*) — A most delightful and pleasing salmon pink with lighter lines in petals and a creamy white throat; about six large flat florets open at once on a fine well formed spike. L \$4.00, M \$2.50, S \$1.50, Blts. 40c each.

SONATINE (*Pfitzer, Germany*) — A tall light pink sometimes flecked that seems to have as good a commercial future as any of Pfitzer's recent ones. It propagates easily, the flowers being large and of good substance. L 20c, M 15c, S 2-15c, Blts. 10-15c.

SOUTHERN CROSS (*Whiteley, New Zealand*) — A fine deep red self that is a very strong grower and rapid increaser. The large round florets do not burn even in the worst weather. Opens seven to eight on a straight twenty bud spike. Should become popular especially where there is much hot weather. L 10c, M 2-15c, S 3-10c, Blts. 50-20c.

SOUTHPORT (*Mair, Scotland*) — A beautiful shade of rose pink with a lavender tongue and white lines;

A Falmouth, Mass. customer wrote on Feb. 29, 1936: — "I received the last order in good shape and thank you ever so much for the extra bulbs. They were all so clean and free from disease."

good sized flowers on a fine spike and has been outstanding with us. Its color is extremely fine. L \$1.50, M \$1.00, S 50c, Blts. 2-20c.

ST. ALBANS (*Swenson, Australia*) — A typical Australian exhibition variety from the originator of Gertrude Swenson and a very strong grower. The color is ivory white heavily overlaid with rose pink. It has a slight blotch of brilliant wine red which extends up the center of the petals. Will open about ten perfectly placed flowers at once. L \$1.00, M 65c, S 40c, Blts. 5-20c.

ST. BRUNO (*Mair, Scotland*) — A peculiar salmon brown color with the edges of the petals a slaty blue and therefore would be in the smoky class. It is a great variety but a bit slow as a propagator. L 15c, Blts. 12-15c.

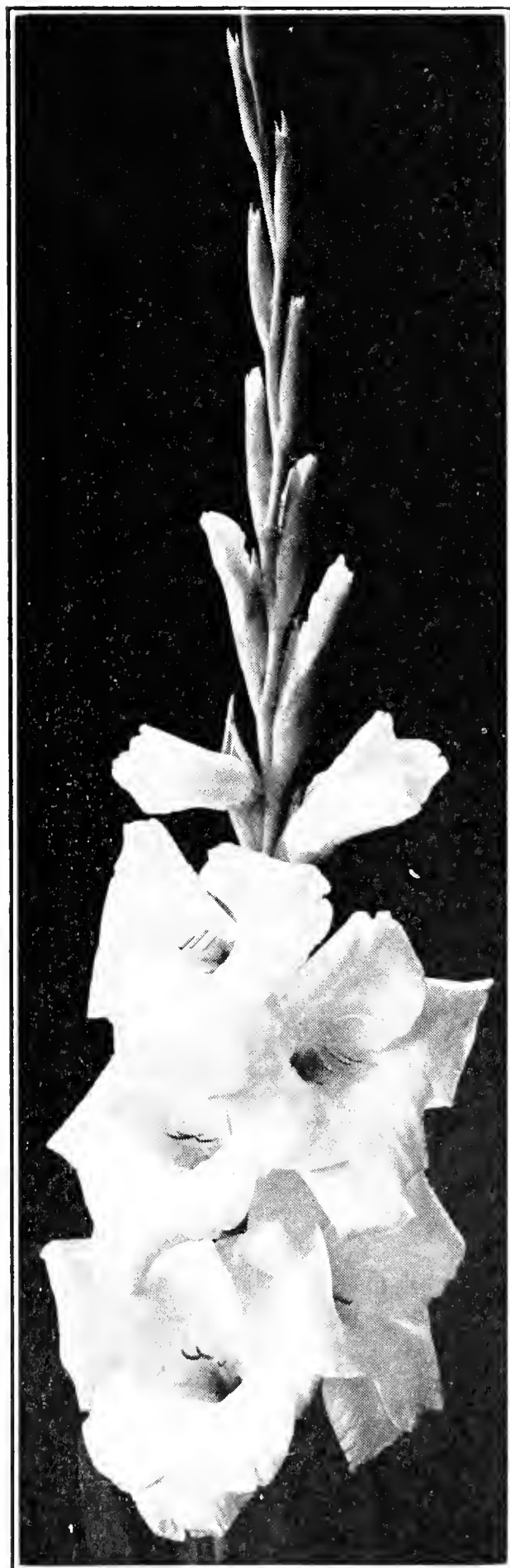
ST. CUTHBERT (*Mair, Scotland*) — Dark red with a white center. A bit along the color lines of the better known David Prior but more ruffled. Many well placed blooms open on a very tall spike. L 2-20c, M 3-20c, S 5-15c, Blts. 25-10c.

ST. NICHOLAS (*Mair, Scotland*) — Deep mauve lilac with a white center and white lines in the petals. A good propagator and should be more widely known. L 2-20c, M 3-20c, Blts. 25-10c.

STAR OF BETHLEHEM (*Pfitzer, Germany*) — A wonderful new mid-season white with a bit of cream on the lower petals, the blooms of which are immense and will open from eight to ten at once. I consider this variety the finest white we grow and is surely deserving of all the good reports of it, it having won championships in Australia and New Zealand as well as many times a winner the past season in U. S., England and Holland. L 25c, M 15c, S 10c, Blts. 4-10c.

SULPHUR LADY (*Swenson, Australia*)— As the name implies, it is sulphur in

color and makes a typical Australian spike. This new one of Swenson's is worth a trial. L 50c, M 30c, S 20c, Blts. 5-15c.



Star of Bethlehem (Pfitzer)

SULTAN (*Crow, Canada*) — Deep rose red, six to eight large ruffled blooms open at once on a strong spike that does its best from large bulbs.

Have seen some fine spikes of it.
L 10c, M 2-10c, S 3-10c, Blts. 20-10c.

SUMMERWEALTH (*Alkemade, Holland*)

— Very large and healthy growing. Pure white; the best white from Alkemade. Looks like a good commercial. L 40c.

SUSSEX (*Errey, Australia*)

— Large salmon pink flowers with a chrome yellow center; makes a nice color combination. About ten will open well placed on a spike. It is a very beautiful variety but unfortunately a bit slow as a propagator. L 2-25c, M 3-25c, S 5-20c, Blts. 15-15c.

TAIAROA (*Miller, New Zealand*)

— This is a large salmon pink with a purple blotch in the throat a bit flecked with slate. It will open about eight good blooms on a nice spike. It is a good increaser and it seems to be Miller's best introduction to date. L 30c, M 20c, S 10c, Blts. 10-15c.

TAINUI (*Julyan, New Zealand*)

— A tall strong growing variety that will open about ten well placed blooms at once. The ground color is yellow overlaid with orange scarlet and has a conspicuous blotch of red. This variety was very fine the past season and was a winner at Boston. L 75c, M 35c, S 25c, Blts. 2-15c.

TAKINA (*Burns, New Zealand*)

— This variety has the largest florets of any variety we have ever seen. It will open about seven florets up to eight inches in size, in fact, has been shown in New Zealand with nine open. The placement is good, it is a strong grower and propagates easily. The color, a bit hard to describe, is Ridway's rosaline purple, almost a pure vio-

let red, lightly flecked a darker shade. It is truly a wonderful variety. Received an Award of Merit in the Mammoth Class at the Ballarat Test Garden and is considered, with Miss New Zealand, to have put New Zealand on the gladiolus map. L \$1.50, M \$1.00, S 50c, Blts. 3-25c.

TAMAKI (*Whiteley, New Zealand*)

— A slatey purple going darker at the edges, few brighter lines in throat and flower fades to rose shades in the center. L 25c, M 15c, S 3-25c, Blts. 6-10c.

TANGERINE (*Morrison, Australia*)

— An exquisite variety producing tall graceful spikes of large glowing orange flowers. A decided improvement on La Paloma. This variety is outstanding as a decorative and should be a valuable commercial because of its strong growth. It bloomed freely from bulblets in ordinary field culture from August 1 on and now the price will permit the commercial grower to give it a trial. The foliage is an especially dark green in color. L 15c, M 10c, S 3-15c, Blts. 20-10c.

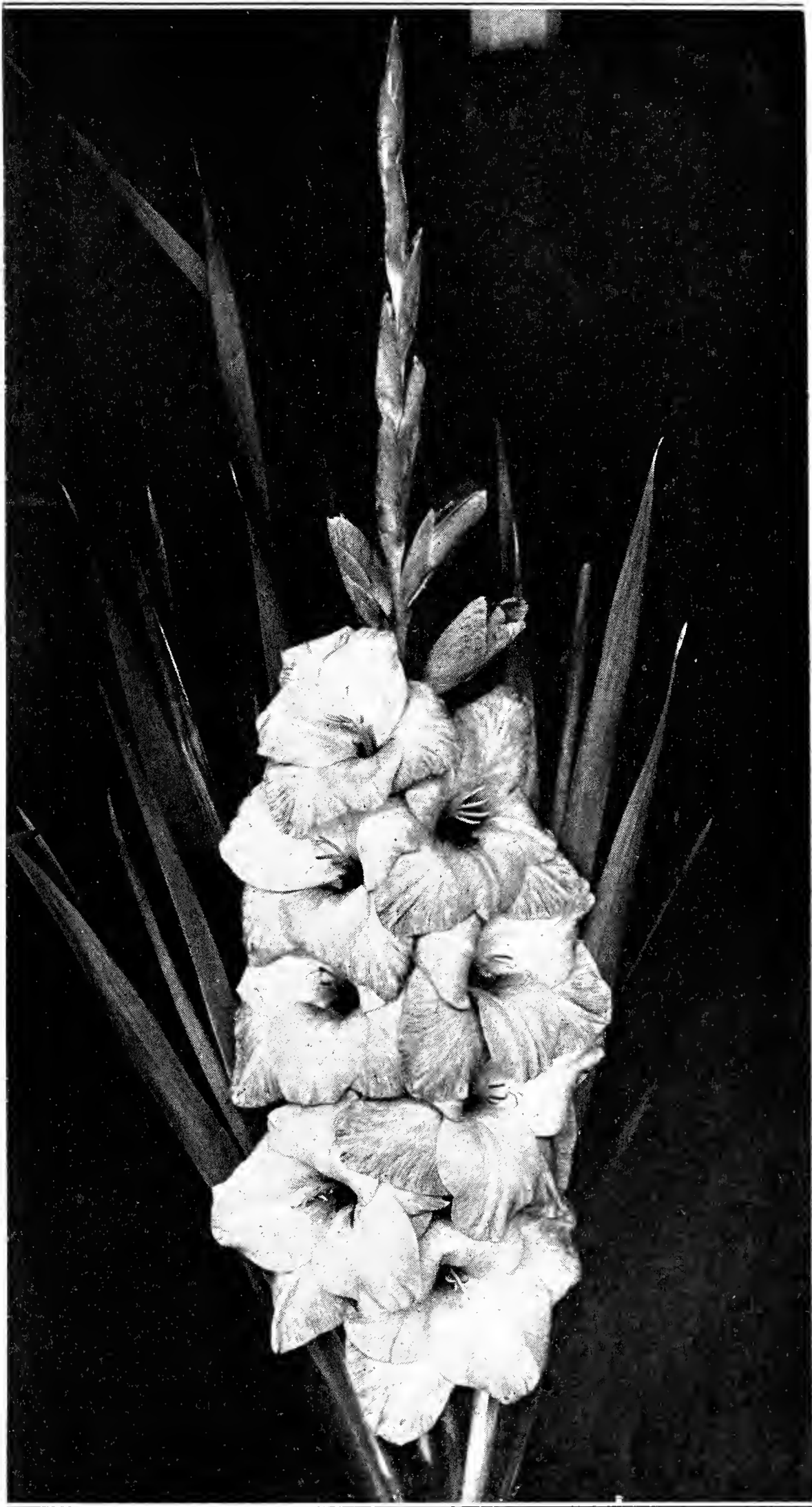
TASMAN (*Julyan, New Zealand*)

— Rich geranium pink with more creamy lips pencilled with crimson. The very large round florets of extra good substance and are slightly ruffled. A wonderful exhibition glad that opens up to ten florets at one time. Truly a wonderful glad. L \$2.50, M \$1.75, S \$1.00, Blts. 25c each.

THREE LO (*Burgess, Australia*)

— A long spike with about twelve large flowers well placed on a strong stem and very reliable in producing exhibition spikes as it is a healthy vigorous grower. The color is rose

A customer from Brattleboro, Vermont writes: — "I would like to tell you that I had fine results from your bulbs this year. Pimpernel was perhaps the most flaming, with a bloom of over six inches from a small bulb. Star of Bethlehem, Alec and Perle Brilliant followed it closely. These did so well I'm ordering them again."



Takina (Burns)

A lavender pink seedling not yet introduced.

slightly flecked a deep shade with a carmine blotch on a creamy throat. A good propagator although the bulblets are small. F. C. C. at Australian Trial Grounds. S 2-15c, Blts. 10-10c.

TIP TOP (*Pfizer, Germany*) — This new clear red scarlet, which is a tall grower, produces very large flowers with about seven open at once. It is one of Pfizer's very best and with R. Y. Mair make a pair hard to beat — which is the best is hard to say, so you better grow them both and decide for yourself. L 30c, Blts. 5-15c.

TITANIC (*Reeve, Australia*) — Rose pink with a white throat and raspberry feather. A tall strong twenty bud spike about eight to ten open at once. An interesting new one. L \$1.00, M 65c, S 35c, Blts. 2-20c.

TOA (*Miller*) — Light orange salmon, but on the color lines of Pfizer's Triumph and the same wide open type of bloom. L 50c, M 35c, S 20c, Blts. 2-10c.

TRAUMEREI (*Pfizer, Germany*) — Enormous light lavender florets make this variety a delegate for the "giant" class. Although it only opens about six or seven blooms, it makes a tremendous spike due to the large florets and long flower head. L \$1.00, M 60c, Blts. 2-15c.

UPPER TEN (*Alkemade, Holland*) — A new orange scarlet with a white line in the throat. The color is extremely good, makes a nice clean spike and is a good propagator. L 35c, M 25c, S 15c, Blts. 5-15c.

VERONICA (*Errey, Australia*) — This good purple self, typically Australian, will prove a valuable addition to this rather weak color section. L 35c, M 25c, S 15c, Blts. 5-15c.

WAIRAU (*Julyan, New Zealand*) — A large slightly ruffled variety. Ground color of pale salmon brightening to an orange tint with a distinct border of lavender grey; throat markings are cream with crimson effects. A good strong grower which easily opens eight or more to make it a good exhibition variety. L \$1.00, M 65c, S 35c, Blts. 2-20c.

WALKURE (*Pfizer, Germany*) — An early lavender pink with white in the throat. Color is extremely nice and it makes a most pleasing spike. L 75c, M 40c, S 25c, Blts. 2-15c.

WANITA (*Martin*) — A grand exhibition variety not widely known as it should be; very similar in type and color to Phipps but has a smoky edge to the petals and it is an earlier and stronger grower; will open twelve blooms and a very popular variety with garden visitors the past season. L 2-15c, M 4-15c, S 6-15c, Blts. 50-10c.

WARATAH (*Errey, Australia*) — This red glad, some years newer than Lucifer, should supersede that very popular variety. It is a bright orange scarlet, the center is crimson touched with cream; ten or more open flowers on a fine spike. It is a strong grower and the bulblets germinate easily. Probably one of Errey's five best ones. L 2-25c, M 2-15c, S 4-15c, Blts. 20-15c.

WASAGA (*Palmer, Canada*) — A most pleasing buff decorative, slightly ruffled with no noticeable throat markings. Flowers are of good size and are well placed on tall graceful spikes. A good commercial as well as a good decorative. L 2-15c, M 4-15c, S 10-20c, Blts. 40-10c.

Another Vermont customer wrote: — "Something happened last fall that never occurred to me before. I bought twelve bulbs of Gertrude Swenson from you last year and had a fine bloom ready for one of our shows; it won special and best glad in the show."

WENDOUREE (*Symons, Australia*) —

A red with a darker throat and overcast with a silvery sheen. This variety was introduced several years ago but will rank right up with the leaders. The silvery overcast makes a real sheen all over the flower and is particularly attractive. L 40c, M 20c, S 2-20c, Blts. 6-15c.

WHERO (*Burns, Australia*) — A great

new red from the originator of Takina. The color is a very brilliant scarlet red with darker flecks at the outer edges of the petals. The blooms are large and of good substance. With ten of these big flowers open at once on a good spike, this variety will go far in any show. L \$2.00, M \$1.25, S 75c, Blts. 20c each.

WHITE ORCHID (*Purple, U. S.*) — The

earliest white we grow. A creamy white with strong substance and heavily ruffled, a few creamy lavender darts in the throat add character to the graceful spikes which are typical of this variety. Florists prefer this to any other white for individual floret work as corsages, bridal bouquets and wreaths. L 10c, M 2-10c, S 3-10c, Blts. 20-10c.

WHITE TRIUMPHATOR (*Salman, Hol-*

land) — Very large flowers, pure white, tall straight spikes and an extra fine early variety. Most votes for the best gladiolus at the first Harlem Show. Also received Trial Garden award and First Class Cer-

tificate in Holland. L \$1.50, M \$1.00, S 60c, Blts. 2-25c.

WINDEMERE (*Errey, Australia*) — This

variety is most attractive in color; flesh pink overlaid with salmon. Extra fine for interior decoration. L 25c, M 2-25c, S 3-25c, Blts. 10-20c.

WURTEMBERGIA (*Pfizer, Germany*) —

This very popular glad, that is red with a white throat, is extra large. The spikes are tall and it is a strong grower. Really a wonderful glad and one of the best recent ones from Pfizer. It certainly should be in every garden today. L 5-25c, M 5-15c, S 10-15c, Blts. 50-10c.

YELLOW PERFECTION (*Pfizer, Ger-*

many) — A medium colored yellow. Every spike straight and well placed. Dark green foliage and this variety should be much better known by the commercial growers as well as the exhibitor; in fact, it may be the best commercial yellow to date. L 2-12c, M 4-15c, S 10-15c, Blts. 25-10c.

ZAUBERFLOTE (*Pfizer, Germany*) —

Peach rose with a vivid red blotch which makes a nice color combination. The spikes are straight and slender carrying the seven or eight large open flowers extremely well. From our short experience, we would say this variety certainly had a future. It was a winner for us at New York and received very favorable comment. L \$1.00, M 65c, S 30c, Blts. 3-20c.

Another Pennsylvania customer wrote: — "The January consignment from you was quite up to the Flying Cloud standard of excellence."

A customer in Oregon wrote: — "Received the bulbs in apparently perfect condition; and such splendid bulbs! We feel you have done your part in getting us started right."

Another customer, from Miami, Florida, writes: — "The bulbs came yesterday and they are as nice as one could ask for. They are starting to grow as we planted them today. Thank you for the extras."

Additional Varieties

In addition to the varieties described in the foregoing pages we have limited stocks of these listed below but not sufficient to justify offering in the regular list. Some are varieties still under test, others that are not in sufficient supply as yet and some that we have previously listed but sold down so close on that we need another year to increase them.

If you are especially interested in securing up to a few bulbs of any of these we may be able to supply them if you write us.

A. H. Woodfull	Gladiator	Odessa
Abyssaninee	Gutenberg	Oddity
A. Horst Wessel	Helen Duncan	Ottawa
Arethusa	King Of The Reds	Prince Charming
Blue Amiable	Kochbrunnengeist	Praludium
Blue Herald	Leischen Schmoll	Red Amethyst
Brightness	Lialia	Ramona
Caledonia	Martha	Royal
Chastity	Media	Saarland
Clivia	Miranda	Taniwha
Desert Gold	Monica Magee	Tom Small
D'Artagnan	Mrs. E. A. Rides	Vater Rheim
Doon	Mrs. Wiltshire	Waikawa
Emerald	Naomi	Wallflower
Ernest Charbonnier	Narcissus	White House
Favorite	Noel	Wyuna
Felicitas	Odalisque	Yellow Mask
Fralance		Zauberin

Unlabeled Collections

THE BIGGEST BARGAIN IN THE CATALOGUE

If you do not care to know the name of each variety as it blooms these collections are the value supreme. In each collection there will be at least forty varieties and special care will be used to see that all colors from white to the dark reds and purples are included. There will be no difference in the three collections as regards the range of color and number of varieties but the better collections will contain the higher priced more recent varieties; when a smaller number than one hundred are ordered we will put in the same proportion of our past season show varieties. All prices are prepaid.

No. 2 — Unlabeled Collection. This collection will contain at least fifteen of the varieties used in our exhibits at New York and Boston the past season. 100 assorted large (1 inch up) bulbs all foreign varieties from \$3.00; 50 for \$1.75.

No. 2 — Same collection but medium bulbs; 100 for \$2.00; 50 for \$1.25.

No. 3 — Unlabeled Collection. In selecting the forty or more varieties for this collection at least one half of them will be from those we showed at New York and Boston so you can realize the quality in this collection. 100 large bulbs (1 inch up) but of more recent introduction and therefore higher in price, \$5.00; 25 or more at the same rate.

No. 3A—Same collection of medium bulbs; 100 for \$3.50; 50 for \$2.00.

No. 4 — Unlabeled Collection. 100 large bulbs (1 inch up) and will be made up from the most recent introductions and will include many of the very finest present day prize winners as well as some that have not yet been shown in this country. We will use at least thirty varieties from our show exhibits in this collection and the other varieties probably would have been used if they had been in bloom at show time. Certainly a collection of real aristocrats. \$10.00 for 100; 25 or more at the same rate.

No. 4A — Same collection of medium bulbs; 100 for \$7.00, 25 or more at the same rate.

Wholesale Prices — F. O. B. New Bedford, Mass.

1000 or more at 8 times the 100 price; 250 or more at the 1000 rate

25 or more at the 100 rate; 500 Bulblets at the 1000 rate; 1 Pint at Quart rate

DISCOUNTS AND SPECIALS DO NOT APPLY TO WHOLESALE PRICES

If out of size ordered will send next smaller size and add enough extra to offset the difference in price unless otherwise requested. Prices of bulbs per 100.

ALL STOCK SUBJECT TO PRIOR SALE

	No. 1	No. 2	No. 3	No. 4	No. 5	No. 6	Bulblets	
							1000	Quart
ALPHEUS	5.00	4.00	3.00	2.40			3.50	10.00
AMETHYST	5.00	4.00	3.00				3.00	
AYRSHIRE	5.00	4.00	3.00	2.40	2.00		3.50	10.00
BAGDAD	2.50	2.00	1.50	1.20	.80	.50	.75	1.75
BENTLEIGH	5.00	4.00	3.00	2.40	2.00		3.50	10.00
BETTY	6.00	5.00	4.00	3.20	2.40	2.00	3.00	
BLEEDING HEART	3.00	2.40	2.00				1.00	
CAMELOT	3.00	2.40	2.00	1.50	1.20	1.00	3.00	8.00
CANBERRA		2.40	2.00				1.00	3.00
CARMENIA	5.00	4.00	3.00	2.50	2.00	1.50	2.00	6.00
CASSANDRA	3.00	2.40	1.80	1.40	1.20	.90	1.00	2.50
CHRISTABEL	7.00	6.00	5.00	4.00	3.50	3.00	3.00	8.00
COIMBA	18.00	14.00	10.00	8.00			12.00	30.00
COMMANDER KOEHL	3.20	2.40	1.80				1.50	
CONSTANCY	3.00	2.40	1.80	1.20	.80	.60	1.50	3.00
DAFFODIL	25.00	20.00	15.00	10.00			10.00	30.00
DAVID PRIOR	10.00	8.00	6.00	5.00	4.00	3.00	4.00	12.00
DR. A. C. McKILLOP	40.00	32.00	24.00	19.00	14.00	10.00	25.00	
EDITH ROBSON	4.80	3.75	3.00	2.20	1.50	1.20	1.75	5.00

	No. 1	No. 2	No. 3	No. 4	No. 5	No. 6	<i>Bulblets</i>	
							1000	Quart
ESME DESAILLY	4.00	3.20	2.40	1.60	1.00	.80	2.50	5.00
FAHNENJUNKER	6.00	5.00	4.00	3.50	2.50	2.00	3.00	10.00
FRANK J. McCOY		5.50	4.00	3.50			1.75	
GENERAL MANGIN	10.00	8.00	6.00	5.00	4.00	3.00	4.00	14.00
GLADYS CLEGG	40.00	35.00	28.00					
GLEN	40.00	32.00	24.00	19.00			25.00	
GRAF ZEPPELIN	2.80	2.40	1.80	1.20			1.00	3.00
JANET	2.40	2.20	1.60				.75	2.00
JESSIE	4.00	3.00	2.00				1.50	
LA PALOMA (Barth)	12.00	10.00	8.00	7.00			10.00	
LAUSANNE	30.00	25.00	20.00	16.00	12.00		15.00	
LIBELLE	4.00	3.20					1.75	
LUCIFER	5.00	4.00	3.00	2.00	1.50	1.00	2.00	6.00
MAID OF ORLEANS	4.00	3.20					2.50	
MARGARET PETER	6.00	5.50	4.50				3.00	
MOONDARA	14.00	12.00	10.00	8.00			8.00	
MOTHER MACHREE	2.60	2.20	1.80				1.00	
MR. FREDERIC CHRIST	14.00	12.00	10.00	8.00	6.00	4.00	7.00	
MR. WILLIAM CUTHBERTSON	5.00	4.00	3.00	2.40	1.60	1.20	12.00	5.00
MRS. S. A. ERREY	4.00	3.20	2.40	2.00	1.60	1.20	1.00	3.00
NERISSA	7.00	5.00	4.20	3.60			3.00	
NYORA	6.00	5.00	4.00	3.00	2.00	1.25	4.00	10.00
ORLANDO	10.00	8.00	6.50	5.50	4.50	3.00	5.00	12.00
OUR SELECTION	2.40	1.80	1.40				.80	2.50
PAUL CAMBON	6.00	5.00						
PAUL DESCHANEL	4.50	3.80	3.00	2.40	1.60	1.00	2.00	6.00
PELEGRINA	4.50	3.80	3.00				1.50	
PICARDY	2.00	1.75	1.50	1.00	.75	.50	.40	1.00
PIMPERNEL	5.00	4.00	3.00	2.40	2.00	1.50	3.50	10.00
POLAR ICE	8.00	6.00	4.80	4.00			4.50	
PROF. VON SLOGTERN	3.40	2.80	2.20	1.80	1.40	1.00	1.50	4.00
RED LORY	5.00	4.00	3.00	2.75	2.00	1.50	1.40	4.00
ROUGET de LISLE	6.00	5.00					2.00	
SALBACH'S ORCHID	2.40	2.00	1.80				1.50	
SNOWDEN	6.00	5.00	4.00	3.50	2.25	1.75	4.00	10.00
SOUTHERN CROSS	7.00	6.00	5.00	4.00	3.00	2.25	3.00	7.50
STAR OF BETHLEHEM	15.00	12.00	10.00	8.00			15.00	
SULTAN (Crow)	6.00	5.00	4.00	3.00	2.00	1.50	3.50	7.00
TANGERINE	10.00	8.00	6.00	5.00	4.00	3.00	4.00	15.00
WARATAH	10.00	8.00	7.00	5.00	4.50	3.25	6.00	
WHITE ORCHID	6.00	5.00	4.00	3.20	2.80		4.00	
WUERTEMBERGIA	4.40	3.60	2.80	2.40	2.00	1.60	1.50	5.00
YELLOW PERFECTION	5.00	4.00	3.00	2.75	2.00	1.50	2.00	6.00

Gladiolus Societies

Anyone interested in growing gladiolus should join some society and receive the information they are constantly sending out. The New England Gladiolus Society is probably the largest in the world and their year book is full of valuable information and worth much more than the dues. This year they are going to publish the quarterly bulletins which will keep one posted throughout the year. All you need to do to join is fill out the coupon and send it to the secretary.

There are also many fine state societies that issue bulletins, some each month and others less often. If you live in the northeast section of the country I believe you will find much of interest in the bulletins of the Empire State Society; the membership is \$1.00 a year which includes the monthly bulletins and should be sent to the secretary, Mr. A. N. Fisher, 113 Tompkins Street, Cortland, New York.

Please enroll me as a member of the
NEW ENGLAND GLADIOLUS SOCIETY

Mail the coupon and necessary amount to
ALBIN K. PARKER, Secretary
Norwood, Mass.

Annual Membership, \$1.00, which includes a copy of the regular cloth bound edition of "The Gladiolus."

Participating Membership, \$2.00, which includes a specially cloth bound copy of "The Gladiolus" and Quarterly Bulletins published by the society during the year.

Sustaining Membership, \$5.00, which includes a copy of the regular edition and one copy of the specially bound edition and the Quarterly Bulletins.

Life Membership, \$25.00, which includes a specially bound copy of "The Gladiolus" and all publications of the society during the life of the membership.

Reserve Fund for the accumulation of donations and bequests, both large and small, either with or without restrictions; the interest only to be used in case of necessity for the maintaining of the high quality of the society publications.

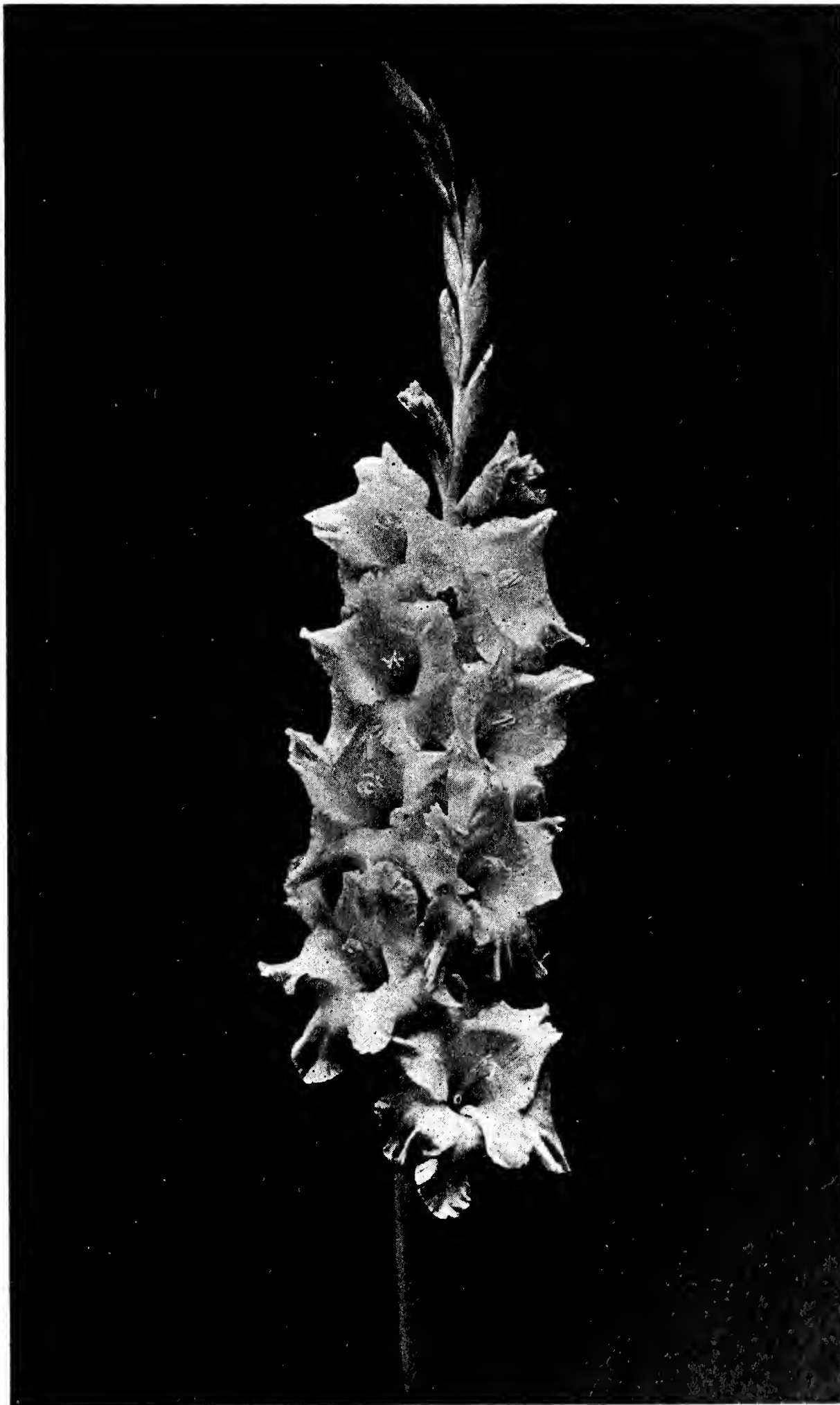
Amount Enclosed

.....
.....
.....

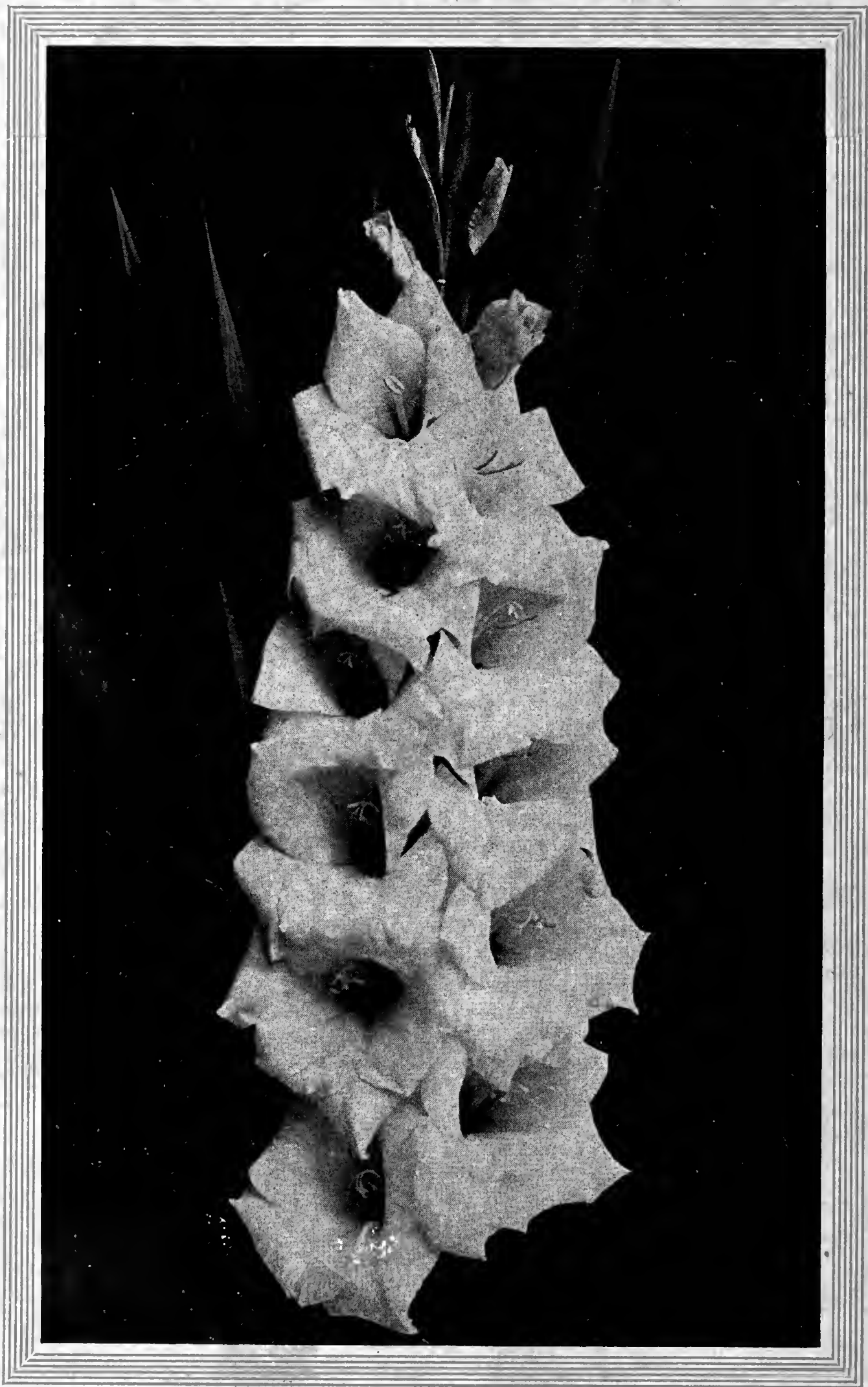
Recommended by Flying Cloud Farms



Evelyn Stinton



Cape Cod (Winsor)
A lavender pink seedling not yet introduced



Euides (Errey)