

62.27

=1954= (12th ed.)

DESCRIPTIVE CATALOG

of *Vegetables*

FEB 2 - 1954
U. S. D. DEPT.



MICHAEL-LEONARD CO.

Creators of Famous Sweet Corns

SIOUX CITY 6, IOWA

BILLINGS, MONT.

CHICAGO 16, ILL.

One of the most healthful and profitable recreations is home gardening, an inexpensive hobby which will produce an abundant supply of fresh vegetables for the table and home freezer.

Food costs have reached an all time high and with a little effort your cost of living can be reduced and enjoyment of good living increased.

This reference book will help you in selecting the proper varieties of seeds which is the first step in planning a successful garden.

Since the printing of our last Seed Manual a great number of new and important varieties of vegetables have come into general use. Seed breeders have been working on many kinds of vegetables, and many new and better varieties have been developed. In recent years there has been a greater advance in the development of Sweet Corn than any other kind of vegetable, and we are proud of our share in this accomplishment as we have taken a leading part in the development of new and better hybrids, having a complete range of maturities of outstanding varieties for Canner, Freezer, Market and Home Gardener. We sincerely believe you will do better with our Sweet Corns than with any other brand and have a definite program to make this continue to be so.

We hope you will find the information helpful in selling more vegetable seed, and we want you to feel that our research department, sales personnel and the whole backlog of experience of more than sixty years in the seed business are at your service.

Michael-Leonard Company

General offices at Sioux City, Iowa, and Chicago, Ill.,
with branches in the following States:

Idaho

Montana

Illinois

Oregon

Iowa

Wyoming

ARTICHOKE

LARGE GREEN GLOBE

Used for home garden planting and shipping; heads large, slightly elongated; scales thick at base. Quite different from Jerusalem Artichoke, which is grown for its tuberous root.

ASPARAGUS SEED

MARY WASHINGTON

The latest development of rust resistant asparagus; larger than the original Washington, with very tight tips of fine quality.

BEANS — BUSH GREEN PODDED VARIETIES

CULTURE. Beans are easily frost killed, so plant them at Corn planting time, on light, dry land. Cold, wet weather will rot the seed in the ground and fresh manure causes a rank growth of vine with a lack of pods. Hand cultivated beans can be drilled in poor soil as close as 18 inches, but in rich soil with machine cultivation, 30 inches is required. Drill 6 beans to the foot and cover one inch deep, or plant 4 beans to the hill, 18 by 24 inches apart. Two pounds of seed should plant 200 feet and 60 pounds an acre. Plant every other week for a succession up until August first in the latitude of Chicago. Frequently your later plantings will turn out the best. Shallow cultivation only should be given at all times and do not cultivate when the plant is in bloom as the plant will drop its blossoms; never cultivate when wet, as it causes rust. Pick beans before the bulge of seed appears and pick them clean to continue the plants bearing. Number of days is from planting to first picking. Beans respond well to complete commercial fertilizer. Apply at planting time and again when they bloom.

BOUNTIFUL

50 Days

Vine light green, 18 inch upright, strong growing bush. Stringless at all stages, somewhat inclined to be fibrous as pod ages. Exceptional cropper. Pod light green, average 7 inches long by $\frac{1}{2}$ inch wide, thin and flat. Very meaty. Excellent market garden and shipping variety; also good for home garden when picked early. Seed pale yellow, medium large, kidney shape.

BROAD WINDSOR, FAVA OR HORSE BEAN

70 Days

Plants dark green, 20 to 24 inches, tree type of growth with scant foliage. Pod shiny dark green, 4 inches long, thick and broad. Used as a green shell. Seed large, flat, odd shaped, dark yellowish color with a black eye.

BURPEE'S STRINGLESS GREEN POD

50 Days

Plants large, very productive. Pods curved, round, $5\frac{1}{2}$ to 6 inches long; medium green, meaty, stringless and of excellent quality. One of the best varieties for canning cut beans and very popular with home gardeners. Seeds dark brown.

COMMODORE (DWARF KENTUCKY WONDER)

63 Days

Bush is 16 to 18 inches tall, very prolific. Pods are round, slightly curved and twisted; refined round podded Kentucky Wonder type; tender, brittle, almost stringless and fiberless. Seed is mahogany red, slender kidney shape.

CONTENDER

49 Days

Pod— $5\frac{1}{2}$ " x $\frac{7}{16}$ ", semi-round. Flesh thick, fiberless and stringless, medium dark green. Plant—14" to 16", vigorous, mosaic resistant, very prolific, pods borne low. Seed—Medium large, long oval, excellent for green shelled as well as snap beans.

DIXIE WHITE

52 Days

Vines light green, 18 inches high. Pods light green, 4 inches long, round and straight; stringless when young. A most wonderful yielder. Excellent as a dry shell bean; flavor equal or better than Navy.

FULL MEASURE

54 Days

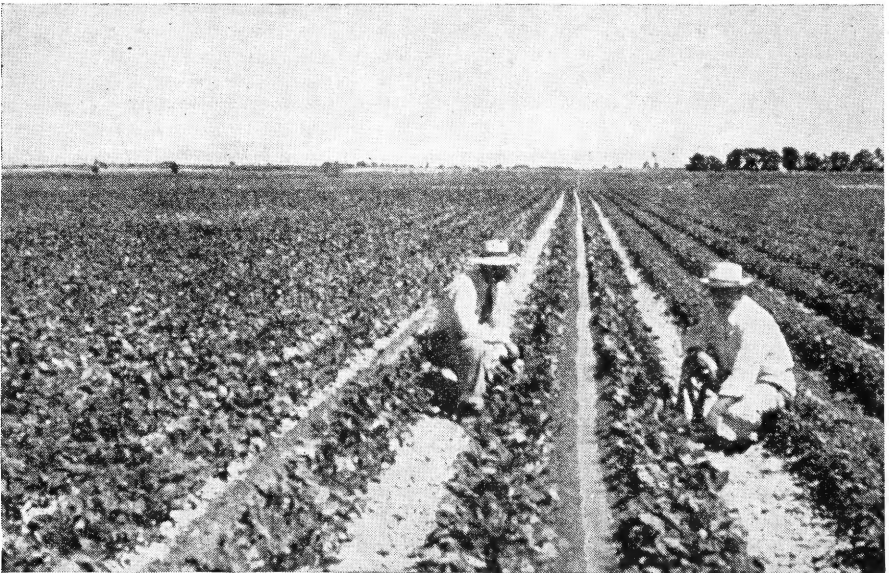
An excellent market gardeners' and canners' bean. Plants hardy, branching freely and bearing a good crop of pods. Pods 6 to $6\frac{1}{2}$ inches; round, straight, deep green and strictly stringless. Seeds brown mottled with yellow.

BEANS — Bush Green Podded Varieties — Continued

- GIANT STRINGLESS GREEN POD** 53 Days
An excellent bean for the market gardener and shipper; and widely used for canning. Very heavy, stocky vine. Pods round, 6 to 6½ inches long, of exceptionally fine quality, stringless throughout entire growth. Seed deep yellow.
- HORTICULTURAL, DWARF** 54 Days
Vine very productive, compact, upright, with large leaves. Pods 4 to 5 inches long, wide, thick, stringless with splashes of bright red on a yellowish ground. Seed large, oval, plump and nearly covered with splashes of bright red.
- HORTICULTURAL, TAYLOR** 55 Days
A productive strain with strings, used mostly for green shelled beans which are ready in 62 to 65 days. Vine—medium height and vigorous. Pods—5½ to 6½ inches long, semi-round, stringy, light green in snap stage; turning white with splashes of crimson as it matures. Seed—color, buff with irregular spots of maroon, brown eye-ring, full oval shape, 1,090 per pound.
- LANDRETH'S STRINGLESS GREEN POD** 52 Days
An individual plant selection out of Burpee's Stringless Green Pod. Vine is more erect with darker foliage and larger, slimmer pods which stay greener than the original type. Pods 6 to 8 inches long, round, slightly curved and absolutely stringless.
- PLENTIFUL** 52 Days
Classified as a black seeded Bountiful but matures about three days later than Bountiful. Pods flat, light green, quite straight, stringless. Seeds black.
- RANGER** 56 Days
A new type distinguished by its disease resistance, high yield and excellent quality, whether used fresh, canned, frozen or for dry beans. Plant spreading and with half runners, vigorous and very prolific; resistant to common bean mosaic and powdery mildew. Leaves of refugee form. Pods round, mostly straight, stringless, silvery green, the set largely concentrated in the crown.
- STRINGLESS REFUGEE, MOSAIC RESISTANT** 64 Days
Resistant to common bean mosaic. Plant of Refugee type and strongly prolific. Pods 5½ inches long, straight, round, silver green, stringless, without fiber; seed purple-blue splashed with buff. Excellent canners' bean.
- STREAMLINER** 50 Days
Pods flat to thick flat, straight to very slightly curved, stringless and fiberless, tender until full maturity, medium green. Bush of medium size and prolific. Seeds medium size, oval and white.
- SULPHUR OR BRIMSTONE** 54 Days
Vines are similar in type to Burpee's Stringless Green Pod. Pods are semi-round to round, straight to slightly curved, stringy, fairly free from fiber, light green, beans prominent in pods. Seeds are small, thick, short oval, bright sulphury yellow with faint greenish or brownish eyespot.
- TENDERGREEN** 53 Days
Michael-Leonard's new strain of this variety developed by hybridizing and selection is mosaic resistant. Vine medium light, 18-inch bush, upright with good leaf growth. Pods light green, 6 inch average, straight, round, crisp, meaty, stringless and without fiber. Very fine flavor. One of the best all around varieties. Seed brown mottled, splashed with buff.
- TENNESSEE GREEN POD OR BROWN BUNCH** 52 Days
Vine dark, 12 inches, lazy sprawling growth, large leaves. Pods medium light, 6 to 8 inches, curved, wide, flat, very thin when fit, become knobby with deep indentures between seeds as pod ages; crisp, tender, stringless when young, developing string later. Seed dark brown, medium large, wide, flat.

BEANS — Bush Green Podded Varieties — Continued

- TOPCROP — ALL AMERICA, 1950** 52 Days
 Plant medium large with leaf similar to refugeee 15-16 inches tall bush habit. Pods medium light green, 5½ to 6 inches long, round, meaty, crisp and slightly curved. Strictly stringless and fiberless up to advanced stages. Seed mottled brown and white. Resistant to greasy pod and common bean mosaic.
- BLACK VALENTINE, STRINGLESS** 50 Days
 Plant large, erect, prolific. Pods long, practically straight, oval of good color and texture and is completely stringless. Seed oval, black. Popular with shippers and market gardeners.
- RED VALENTINE, STRINGLESS** 54 Days
 Plant medium size, erect, very productive. Pods 4 to 4½ inches long, medium green, round, curved, slim with crease in back; stringless; very fleshy, crisp and tender. Seed purplish red, splashed with pale buff.
- VERMONT CRANBERRY** 60 Days
 Pods 4 to 5½ inches long, yellow green splashed with scarlet.
- WADE — ALL-AMERICA, 1952** 55 Days
 New stringless green pod bean. It grows upright and keeps its pods well off the ground. Pods are round, long, straight, slender, stringless, comparatively free from fibre and of a dark green color. Is ideally suited for shipping, canning or freezing.
- WHITE HALF RUNNER** 60 Days
 A popular variety in the mountain areas of the mid-south and southeast; used mainly for home gardens for snap and shelled beans. Vine—bushy, vigorous and productive with short runners. Pods—4 inches long, ¾ inches wide, round, medium light green, stringy and fibrous at full size, but has a distinctively good flavor. Seed—pure white, oblong, round cross section, medium size, 2,500 per pound.



Bean Seed Field in Idaho

BEANS — FIELD OR SHELL

GREAT NORTHERN OR LARGE WHITE NAVY 100 Days

Vine a medium dark color, 14 to 18 inches, rank, heavy growth with short tendrils. Pods medium dark, 3 inches long, flat and straight. Very heavy cropper. Grown mostly in the northwestern states as a commercial white dry bean. Larger, heavier growth and a heavier producer than the old Michigan Navy, but is not equal in quality. Seed white, medium small.

KIDNEY, DARK RED MAHOGANY 96 Days

Vine dark colored, strong growing, upright 18-inch bush with a rather scant growth of large leaves. Pods dark, 5 inches long, wide, flat, straight, stringy, fibrous and unfit for snap use. Used as a dry shell bean in the commercial market. Seed dark red, medium large, flat, kidney shaped.

KIDNEY, IMPROVED WHITE 100 Days

Vine dark, 18 inches, strong growing bush with a rather scant growth of large leaves. Pods dark, 4 inches, wide, flat, straight, stringy and fibrous at all stages. Is not a snap bean type. Used as a dry shell bean. Seed pure white, medium large, kidney shaped.

MARROW, LARGE WHITE 100 Days

Vine medium dark, 16 to 18 inches, heavy, strong growing, short runner type. Pods medium dark, 4 to 5 inches long, wide, flat, straight, stringy and fibrous. Used as a dry shell commercial bean. Seed pure white, medium large, rounded oval.

NAVY 100 Days

Vine medium dark, 16 to 18 inches, strong growing, short runner type. Pods light green, 3 inches long, flat, straight, medium broad. Dry shell commercial bean. Above is description of the original Michigan Pea bean. Seed pure white, small, oval.

BEANS — BUSH WAX PODDED VARIETIES

BLACK WAX, PENCIL POD 53 Days

Plant large, vigorous, upright. Very dependable producer. Pods golden yellow, 5 to 6 inches long, round, curved; very meaty, stringless and of excellent flavor. Some fiber in older beans. Seed black.

CHEROKEE WAX (VALENTINE WAX) 50 Days

Resembles Stringless Black Valentine except for color of pod. Plant large and erect, pods golden wax, oval, nearly straight, stringless, tender and of good quality, seed black.

DAVIS WHITE WAX 52 Days

Plant medium large. Pods 6 to 6½ inches, thick-flat, light yellow, straight, uniform and attractive; stringless, fibrous, of fair quality. Seed white, kidney shaped.

GOLDEN WAX, IMPROVED 50 Days

Vine medium light, 14-inch, strong, sturdy bush with a medium heavy leaf growth. Pods a fine deep waxy yellow color, four inches, straight, wide, thick, flat, stringless, considerable fiber as pod ages, very well flavored. Seed white splashed with mottled red around eye and end of seed.

GOLDEN WAX, TOP NOTCH 51 Days

Pods are an inch longer than old type Improved Golden Wax. Seed is similar in size, but more white and smaller eye.

BEANS — Wax Podded Varieties — Continued

- IMPROVED STRINGLESS KIDNEY WAX** 53 Days
 Resembling Wardwell's Kidney Wax but pod is longer and thicker, not so broad; fairly productive and of high quality; stringless, fiberless, very fleshy and brittle. Pods about 6 inches long and of an attractive, clear yellow color. Seed white with black eye, kidney shaped.
- KINGHORN WAX (WHITE SEEDED BRITTLE WAX)** 54 Days
 Similar to Brittle Wax from which it was selected. The pure white seed color is favored by some canners. Vine large, bushy, with medium large leaves, medium dark color, erect, upright growing. Pods 6 inches long, round, slightly curved, deep yellow, stringless.
- ROUND PODDED KIDNEY WAX OR BRITTLE WAX** 52 Days
 Plants are of strong growth, spreading and very productive. The leaves are large, broad and roughened. Pods are round, 5½ inches long, slightly curved, light yellow, waxlike, stringless and of the very best quality. Seed white with black eye, kidney shaped.
- ROYAL PURPLE WAX** 48 Days
 Vine medium dark, 16-inch thick, heavy bush. Pods bright wax, 4½ inches long, round, curved, stringless at all stages without fiber. Seed light purple, speckled with buff.
- SURE CROP OR BOUNTIFUL WAX** 53 Days
 A vigorous growing, very productive variety. Pods about 6 inches long, stringless nearly round, attractive in color and remain a long time in condition for snaps. Seed jet black.
- UNRIVALLED WAX** 52 Days
 Pods 5 to 5½ inches long, rather narrow, either perfectly straight or slightly curved, somewhat flattened but fleshy. The pods show their clear yellow color at an early stage and while having a trace of strings are quite fiberless. Plant large, vigorous and nearly disease resistant. Seed distinctly small, flat, kidney shaped, ochre-brown in color.
- WARDWELL'S KIDNEY WAX** 50 Days
 Hardy and productive. Pods 5½ to 6 inches long, broad, thick, flat and of a delicate waxy yellow. Of excellent quality and with no string in the early growth. Seed white with dark red eye and splashing at end.
- WEBBER WAX OR CRACKER JACK WAX** 50 Days
 Vine medium dark, 16 inch, strong growing bush with a fair leaf development. Pod good rich wax color, 5 to 6 inches long, flat, slightly curved, medium broad, meaty and well flavored; stringless and without fiber when small but develops fiber and becomes coarse with a slight string as it ages. Seed cream-yellow, medium small.

BEANS — BUSH LIMA VARIETIES

CULTURE. Lima Beans require even more heat than other Beans. They should not be planted until the ground is thoroughly warmed. Bush Limas should be sown on good garden soil in 2 to 3 ft. rows, 3 to 6 inches apart, eye down, cover 1 inch if planted in light soils, less in heavy soil. One pound will plant 50 to 60 feet. Pole Limas are more tender than the Bush Limas. Set 6 ft. poles, 4 feet each way and drop 4 to 6 beans, eye downward around each pole, thinning to 3 plants when up.

- BURPEE'S BUSH** 78 Days
 Plants 18 to 20 inches high, very productive. Pods 4 to 4½ inches long, containing three to four beans, which are flat and wide and of excellent quality.

BEANS — BUSH LIMA VARIETIES — Continued**BURPEE'S IMPROVED BUSH**

75 Days

Similar to Burpee's Bush Lima, but slightly earlier and longer podded. Plant large, erect, vigorous, very productive; pods contain four to five seeds. Dry beans, large, plump, flat-oval, surface somewhat wrinkled, color white with greenish tinge.

FORDHOOK BUSH

75 Days

Vines strong, erect and true bush lima growth. Foliage heavy and very dark green in color. The stalks that produce the blossom are thrown out from the lateral and main stalks. Pods are large, thick, containing three to five beans. The most popular market gardeners' lima bean.

FORDHOOK No. 242

75 Days

Plants similar to Fordhook but with greater spreading habit and somewhat earlier. Pods $3\frac{1}{2}$ to 4 inches with 3 to 4 beans per pod. Yields well under adverse conditions.

CANGREEN — GREEN SEEDED HENDERSON

68 Days

Pods and bush are identical with Henderson Bush Lima. Seed has the same appearance as Henderson, but fleshy part of seed or cotyledons are green instead of yellow as in all other limas in dry seed stages.

HENDERSON'S BUSH OR DWARF SIEVA

66 Days

Our stock is the true Henderson's Bush Lima and not the common Baby Lima. Plants bushy, very productive. Pods flat, 3 inches long, containing three to four seeds. Green shelled beans small, flat and of excellent quality.

JACKSON WONDER OR CALICO

66 Days

Vine dark, 12 inch, thick bush with heavy leaf growth. Pods dark, $\frac{3}{4} \times 3$ inches, flat, medium thin. In every way is like the Henderson's Bush except in color of seed. Seed light buff, purple speckled. Heavy yielder.

PEERLESS (U. S. 243)

70 Days

Plants 16 inches, gray-green foliage. Pods similar to Fordhook, seeds about half way in shape and size between Fordhook and Henderson Bush Lima.

BEANS — POLE LIMA VARIETIES**CAROLINA SMALL WHITE OR DWARF SIEVA**

76 Days

Vines vigorous, with many short branches so that they are sometimes grown without poles; very early and productive, bearing short pods, which are thin and curved. Seed white, flat.

CARPINTERIA POLE

88 Days

Vines vigorous, producing an abundance of large, medium green pods 5 to 6 inches long, containing 4 beans of large size.

BEANS — POLE LIMA VARIETIES — Continued

- FLORIDA BUTTER OR SPECKLED POLE** 80 Days
Vine medium heavy. Pod medium dark, 3 to 3¼ inches long, thin, flat. Green shelled beans, pale creamy white color, fine flavor. In the Sieva class with a colored seed. Seed cream, purple speckled, medium small.
- LEONARD'S IMPROVED FLORIDA BUTTER POLE** 80 Days
A distinct variety. Pods large, beans very tender and of excellent quality. Heavy yielders. Seed is more than double the size of Florida Butter, very striking in appearance, creamy white, mottled with purple.
- KING OF THE GARDEN** 88 Days
The old standard market and family sort. The vine begins to produce pods at the foot of the pole and the bearing season continues until frost. Pods large and well filled with beans of mammoth size.
- LARGE WHITE** 88 Days
Very productive. A favorite among the Lima Bean growers for the market. Pods contain 3 to 4 beans, which are large, white and flat.
- WILLOW LEAF POLE** 85 Days
Very similar to Sieva but with narrow, willow-like leaves and thus more resistant to the conditions of hot and dry weather in those sections of the South where it is grown.

BEANS—POLE OR RUNNING VARIETIES

CULTURE. On well enriched soil, set firmly in the ground every 3 or 4 feet each way, poles that are, when set, about 6 feet high. Some time after bush beans are planted, plant six or eight pole beans one inch deep near the base of each stake and later thin to three or four plants to the pole. Thirty pounds of pole beans generously plants an acre and one pound plants one hundred hills. The pole bean bears over a longer period than the bush bean and is generally considered of superior quality but it requires more labor, longer time to mature and is more sensitive to adverse climate and soil conditions. Side dressing with complete commercial fertilizer desirable when first blooms appear.

- BLUE LAKE** 64 Days
Pods are round, slightly curved, tender, fleshy, stringless and fiberless, medium green; used in canning and freezing. Vines are 4 to 5 feet tall. Seeds are entirely white and small oval in shape.
- CREASEBACK, STRIPED OR SCOTIA** 72 Days
A very hardy and productive cornfield Bean. Pods dark green, 6½ to 7 inches long, round straight and creasebacked; slightly stringy, very fleshy, fine grained, attractive and of good quality. Seed light tan, black striped.
- CREASEBACK, WHITE** 63 Days
An extremely early Pole Bean. Vines small to medium and wonderfully productive, bearing pods in clusters of from 4 to 12 and medium in length. An excellent shipper. Seed small oval, white.
- CUT SHORT, RED SPECKLED OR CORN HILL** 73 Days
A fine variety for planting with Corn, 5½ to 6 feet tall; pods 4 inches long, straight, thick, crisp when young. Seed grey, red speckled, small, oval.
- DUTCH CASE KNIFE, EARLY** 65 Days
Vines moderately vigorous, climbing well, and excellent for a corn hill bean. Leaves are large, crumpled; pods 6 to 8 inches long, flat, green in color, becoming creamy white later. Beans broad, kidney shaped and white in color.
- GENUINE CORNFIELD** 71 Days
Pods round, straight to slightly curved, stringless while young, moderately fibrous, fleshy, medium green becoming purple splashed. Seed oval, tan with irregular brown mottling and stripes.

BEANS — POLE OR RUNNING VARIETIES — Continued

- GOLDEN CLUSTER WAX, EARLY** 74 Days
Plants large with heavy foliage; very productive. Pods 7 to 8 inches long, wide, flat, waxy yellow, very meaty and stringless when young. Seed oval-flat, white.
- HORTICULTURAL CRANBERRY — LONDON HORTICULTURAL** 70 Days
Vines moderately vigorous, bearing short, broad, pale green pods, becoming streaked with bright red as they near maturity. Beans large, ovate and splashed with red. Used either green or in the dry state.
- KING MAMMOTH PODDED HORTICULTURAL OR WORCESTER POLE** 75 Days
Vine medium dark, heavy growing pole, leafy. Pod medium dark, 5 inches long, wide, thick. Largest of the horticultural family. Pods can be used as snaps if taken soon enough; best as a green shelled bean. Seed light tan, red speckled, medium large, nearly round.
- IDEAL BLACK POLE** 58 Days
Earliest and most prolific of the green podded pole beans, being a full week earlier than Kentucky Wonder. Pods 5 inches long, round, slightly curved; stringless and borne in clusters of six; very tender, pulpy and excellent in quality. Seeds black.
- MICHAEL-LEONARD'S STRINGLESS KENTUCKY WONDER** 64 Days
This new variety is essentially a strictly stringless and fiberless type of Kentucky Wonder which it resembles strongly. Pods round slightly curved, meaty and strictly stringless and fiberless at all stages. Flavor delicious similar to Kentucky Wonder. Seed is medium brown, long oval shape.
- KENTUCKY WONDER OR OLD HOMESTEAD** 65 Days
Vines vigorous, climbing well, and very productive, bearing its pods in large clusters; blossoms white; pods green. Stringless, 8 to 9 inches long; nearly round when young and very crisp, although at maturity they become irregular and spongy. The dry beans are long, oval, dun-colored.
- KENTUCKY WONDER WHITE SEEDED OR BURGER'S STRINGLESS** 64 Days
Pods 6 to 7 inches long, round, slender and straight; very tender, fleshy and stringless of high quality. Color dark green. Seed oval-flat, white.
- KENTUCKY WONDER WAX** 68 Days
Vine medium dark, heavy growing pole type, heavy leaf growth. Pods fine, wax color, 8 inches long, round when young, curved, very meaty, crisp, stringless when young, and without noticeable fiber. As pods age there is a trace of fiber, slight string, and they become somewhat saddle-backed. Very heavy bearer over a long period of time. Seed reddish brown, medium large, oval-flat.
- LAZY WIFE** 72 Days
Vine medium dark, quite a heavy growing pole type, with a fair leaf development. Pods medium light, 6 inches long, broad, flat, straight, stringless, very little fiber, meaty, crisp and well flavored. Good for snaps, green shell and dry shell. Seed white, medium small, nearly round.
- McCASLAN'S POLE** 65 Days
Vine medium dark, strong growing pole type, with good leaf growth. Pods light, 8 inches long, flat, medium thick, broad, stringless when young, crisp, fiberless and well flavored. Makes a good snap when young, fine green shell and a fair dry shell. Seed white, medium small.
- MISSOURI WONDER OR NOXALL** 66 Days
Vine medium light, strong growing pole type, with good leaf development. Pod light green, 6 inches long, round slightly curved, crisp when young but tough and stringy at all stages. Seed grey, brown speckled, medium small.

BEANS — POLE OR RUNNING VARIETIES — Continued**OREGON GIANT**

71 Days

A variety adapted to and used in Pacific Northwest. Plants sturdy and climb well. Pods are thick, oval, very meaty, splashed with purple. Stringless and fine flavored, seed pinkish light brown with black stripes.

SCARLET RUNNER, FLOWERING

90 Days

Vine very strong growing, dark colored, heavy leaf growth, long runner pole type. Pod dark, 6 inches long, wide, thick, straight, coarse grained at all stages, usable as snaps when very small, excellent green shell. Used mostly as a climbing ornamental vine on account of its purple blossoms. Blossoms freely from mid-summer to freezing. Seed dark purple with pinkish purple blotches.

TENNESSEE WONDER

71 Days

Somewhat similar in habit to Kentucky Wonder but with immensely larger, straighter, smoother and more creasebacked green pods. More suitable as a shell than snap bean. Seed slate-grey, black striped.

YARD LONG OR ASPARAGUS

72 Days

Vine dark green, short runner, pole type, good growth of small pointed leaves. Pod light green, slim, somewhat inclined to saddle-back shape, rounded, 15 to 20 inches long, light string, no fiber, crisp and tender. Seed brown, small, short flat, kidney shaped.

BEET — FOR THE TABLE

CULTURE. As soon as the soil can be worked in spring, sow beet seed in 12- to 18-inch rows for hand cultivation or 18- to 30-inch rows for machine cultivation, dropping 12 seeds to the foot. Cover the beet seed, one-half inch. Later, thin the Beets to 3 to 4 inches apart. Planted April 1st the early varieties should be marketable June 1st or the crop may be advanced several weeks by starting under glass and transplanting to the open, first giving the beet tops a severe pruning. Use 1 ounce of seed to 75 feet of row and 6 pounds to the acre. Beets sown in early July should be ready to store in pits or in sand in the cellar when freezing weather begins. Number of days is from planting to edible root.

BLOOD TURNIP, EARLY IMPROVED

60 Days

An extra selected stock of Blood Turnip having larger, coarser tops and roots than the Detroit Dark Red and requiring a considerably longer time to mature. Excellent for summer and autumn use.

CRIMSON GLOBE, EARLY

58 Days

Tops medium large, nearly all red with a slim upright leaf development. Roots dark red, nearly a perfect globe, usually smooth and clear of side roots. Flesh dark red, faintly zoned, with purplish white.

DETROIT DARK RED

55 Days

An outstanding variety for truckers, produce shippers and canners. Tops medium, dark green tinged with red. Roots globular. Color deep ox-blood red. Flesh dark red with indistinct lighter red zones. Fine quality, sweet and tender.

PERFECTED DETROIT

55 Days

A mid-season variety. Tops tall, green and red. Roots globular, medium smooth, deep red; flesh dark red with somewhat lighter zones; of good quality. Adapted to the uses of market gardeners and canners.

BET — FOR THE TABLE — Continued

- EARLY WONDER** 55 Days
 Roots very uniform, nearly globe-shaped with small top and tap root; skin dark red, flesh deep blood red with little zoning. Popular with market gardeners for early or late planting.
- EGYPTIAN, MICHAEL-LEONARD'S DARK RED** 50 Days
 The best stock of Egyptian Beet on the market today. It is dark red, free from light zones, early and an excellent beet in every way.
- EGYPTIAN, CROSBY'S** 50 Days
 An extra early variety especially adapted for the market gardener and home garden. Roots average 3 inches, of dark red color and almost globular; flesh distinct vermilion, which it retains in cooking. Pleasing sweet flavor. Tops medium.
- EGYPTIAN, EARLY FLAT** 48 Days
 Large, upright, dark red leaves with green tint. Roots a very deep, dark red, flat, thick, sometimes inclined to be rough and irregularly shaped. Usually clean and free of fiber roots. A small tap root. Cut flesh shows a very deep dark color with very faint zoning of slightly lighter red.
- GREEN TOP BUNCHING** 52 Days
 Foliage clean, grayish green that does not turn red or brown in fall. Roots round, smooth, and glossy, slightly flattened when mature; flesh bright blood red. Diameter, 2½ to 3 inches.
- LONG SMOOTH DARK BLOOD** 78 Days
 The standard long, late sort. Roots 8 to 10 inches long, very dark, blood-red flesh; quality fine.
- LUTZ GREEN LEAF** 75 Days
 A medium late variety for home use. Tops small, glossy green, with pink mid-rib. Roots half long, top-shaped; dark, purplish red. Flesh deep blood red with indistinct zones. Good quality and an excellent keeper.

SWISS CHARD

- SWISS CHARD, LUCULLUS** 55 Days
 An improved type of Chard. Of more upright growth than the Silver variety; leaves yellowish green, much crumpled and curled, mid-rib and veins white, stalks thick, broad and flat and as large as rhubarb.
- SWISS CHARD, SILVER** 55 Days
 Light green, blunt spear head leaf on a short stem, slightly lighter stem and vein. Makes a thick, heavy growth for cut-and come-again greens. Grows 18 to 20 inches tall. Leaves usually quite smooth; sometimes slightly savoyed.
- SWISS CHARD, FORDHOOK GIANT OR DARK GREEN WHITE RIB** 55 Days
 Very broad, thick, heavy, short white stem and a large, broad, thick, very much crumpled and savoyed spear shaped leaf, growing to 26 and 28 inches tall. Leaves very glossy and waxy looking; upright growth. Best of all the chards; leaves make the most tender of greens and the broad white stems used as asparagus are excellent.

SWISS CHARD—Continued

SWISS CHARD, RHUBARB

60 Days

Stems and midribs are bright crimson red. Leaves crumpled, dark green with red veins.

BEET—SUGAR

In growing, the sugar beet is treated like the mangel except that only six or eight inches of space is given each beet in the row.

KLEIN WANZLEBEN — For Sugar

90 Days

The variety most used for sugar manufacture on account of high sugar content; is also good for stock feeding. Roots long with thick shoulder, tapered; skin grey-white, flesh solid white.

BEET—MANGEL WURZEL

Plow deep for this crop and in May or June plant six mangel seed to the foot in two or three foot rows, later thinning to a nine inch stand. One ounce sows one hundred feet of row and six pounds an acre. When a light frost has occurred, lift the roots and store in pits or cellars.

GIANT HALF SUGAR ROSE — For Feeding

90 Days

This unites the large size of the mangel with the greater feeding value of the sugar beet. The roots average 10 to 12 inches and the outline is that of a broad, thick wedge, the upper portion of a soft bright pink, shading lighter toward the bottom where the lower portion for about one-third the length is white.

GOLDEN TANKARD

100 Days

Shape cylindrical, color deep rich yellow; flesh yellow circled with white. Unequaled for feeding stock.

IMPROVED MAMMOTH LONG RED

108 Days

The largest and most productive Mangel. Roots 5 inches thick, 15 inches long, tapering to a point. Grows half above the ground. Color light red.

GIANT SLUDSTRUP OR YELLOW INTERMEDIATE

110 Days

A good cropper and of high feeding value. Roots long, oval, reddish yellow; grows half above ground, easily harvested. Flesh white tinged with yellow.

BROCCOLI

GREEN ITALIAN SPROUTING

60 Days

A distinct variety of the sprouting type. It forms a large head consisting of a cluster of bluish-green flower heads. When this central head is removed the plant develops numerous lateral sprouts, each of which produces a small head. These are cut, leaving about 6 inches of the stem, and are tied in bunches for market. Both stems and heads are cooked and served like cauliflower.

BRUSSELS SPROUTS

One of the most delicious garden vegetables. Plant in 3-foot rows, 1½ to 2 feet apart. One ounce will produce about 5,000 plants. Cultivate same as cabbage. Autumn grown sprouts, drilled in May and transplanted in July, generally do the best, as the plants are quite hardy and the buds mellow under frost.

DWARF IMPROVED

75 Days

Grows 18 to 30 inches high, producing compact sprouts 1 to 2 inches in diameter; grayish green in color. Hardy, early.

CABBAGE

CULTURE. Cabbage plants, when properly hardened by gradually being brought to a low temperature and the quantity of water in them diminished, will stand any frost and some considerable freezing. Yet a cabbage plant raised at a high temperature and full of water will be killed by even a light frost. Cabbage can be grown by planting the seed heavily where the crop is to grow and thinning the plants but a better practice is to raise the plants without crowding, in a seed bed, which is not richer than the fields to which the plants go. Transplant, if possible, on a cloudy day, watering the plants if the soil is dry. For early Cabbage, sow seed in hotbeds in February, transplant to cold frames in March and set outside in April or sow seed out-of-doors as soon as the soil can be worked in spring, covering the seed one-third inch deep. All vegetable plants are best when grown without check, so let as much soil adhere to the roots of the plant in transplanting as will hold and set up to the first leaf. At this time the plants should have 4 or 5 pairs of leaves and be 4 to 6 inches high. Set small varieties to be worked by hand as close as 18 inches, while large, late varieties, horse cultivated, need 30 or more inches. If heads are so early as to begin bursting, push the head to one side far enough to tear off the roots on one side. Cabbage grows successfully on a wide variety of soils and experience points to liming, deep plowing and heavy manuring as successful practices. The number of days given is the time required from setting plants to mature heads.

- ALL SEASONS** 88 Days
Of medium season, a good keeper. Heads large, solid, 7 inches deep and of excellent quality. Stands hot weather well.
- CHARLESTON LARGE WAKEFIELD** 72 Days
About a week later than Early Jersey Wakefield and 50% larger.
- CHINESE — CHIHILI** 75 Days
Earliest and most sure heading of the Chinese varieties. Plant of upright growth, producing long, solid, white cylindrical heads, 3 to 4 inches thick, 18 to 20 inches in length. Leaves very broad, smooth, fringed on edge, with broad, white mid-rib. Superior quality.
- CHINESE — MICHIHLI** 70 Days
Outstanding uniformity makes this a great improvement over the former strains of the Chihli type. Foliage dark green; heads 4 inches thick, 18-20 inches tall, tapered near tip; firm, well blanched, crisp and tender.
- CHINESE — WONG BOK** 80 Days
The heads of this variety are shorter and thicker than Pe Tsai, the incurving leaves producing a tighter, more compact head.
- COPENHAGEN MARKET** 65 Days
One of the finest early round-headed cabbages in cultivation. The heads average about four pounds each in weight, are hard and solid with small core. The quality is extra fine and sweet. It is a short stemmed variety, the heads nearly resting on the ground. The leaves are light green, rather small, saucer-shaped and tightly folded, making it possible to set them close together in the field.
- DANISH BALL HEAD** 110 Days
Most widely used and best type of late cabbage; desirable for storage and for shipping. Plant fairly large, sturdy, with short stem. Heads deep, round, very hard; interior decidedly compact. Tender, crisp; flavor good.
- EARLY DWARF FLAT DUTCH** 70 Days
An early Cabbage of good size. Heads are flat and very solid.

CABBAGE — Continued

- EARLY JERSEY WAKEFIELD** 64 Days
 One of the most popular extra early varieties. The plants are compact, erect, with few outer leaves, and withstand cold and unfavorable weather well as they are very hardy. Heads medium size, cone-shaped and solid. Our stock has been very carefully selected.
- EARLY WINNIGSTADT** 80 Days
 Medium early, short stemmed. Heads solid, fine grained, cone-shaped and pointed, the leaves having a peculiar and distinct twist at point of head. Very productive and of excellent quality.
- GLORY OF ENKHUIZEN** 80 Days
 This is an excellent mid-summer variety. Makes a nice large head, has few outer leaves and can be planted close. Very popular with kraut packers and market gardeners.
- GOLDEN ACRE** 65 Days
 A selection from the earliest strain of Copenhagen Market. It is a few days earlier, is a somewhat smaller plant and has a slightly smaller head than the Copenhagen Market. Very solid, fine grained and exceptionally well flavored. It is the best of the first early round heads for early market and shipping use.
- GREEN ACRE** 66 Days
 An attractive strain of Golden Acre. The type and general characteristics are similar, but Green Acre holds its green color longer and is thus of added value to market gardeners and shippers.
- HOUSER FLAT DUTCH** 105 Days
 An extra large, round, hard heading late sort.
- PENN STATE BALL HEAD** 110 Days
 A late variety, excelling in productivity and uniformity. Plants medium with short stem. Heads attractive, flattened globe, extremely hard, 6 to 7 inches deep, weighing 5 to 6 pounds.
- PREMIUM LATE FLAT DUTCH** 102 Days
 This variety of late Cabbage is a standard in all sections for winter use. It makes a large, solid, flat head, which keeps long without bursting and is adapted to a more varied climate than probably any other variety.
- DRUMHEAD SAVOY** 89 Days
 The best winter keeper of the Savoys. Heads late, round, compact and solid; leaves numerous, deep green and coarsely crimped.
- IMPROVED AMERICAN SAVOY** 87 Days
 Closely approaching the cauliflower in delicacy and delicious flavor. The best of all Savoys for general market or home use. It has a short stump, grows to a large size, is compact and solid — a sure header.
- STEIN'S EARLY FLAT DUTCH** 92 Days
 An early and excellent type of Early Flat Dutch with a medium stem. Heads round, flat and solid.
- RED, ROCK MAMMOTH** 105 Days
 The largest heading of any red sort. Heads are hard, of deep red color, quality excellent.

CABBAGE — Continued

RED, DUTCH

Leaves red or purple. Head medium size, round solid, deep red color. Stems of medium length. Good keeper.

CABBAGE—YELLOWS RESISTANT VARIETIES**ALL SEASONS YELLOWS RESISTANT**

92 Days

Yellows resistant strain of All Seasons. Not quite as uniform and coarser in texture.

BUGNER'S

120 Days

A winter Cabbage which has been and still is the most popular late variety around Chicago. It makes very large, somewhat flattened heads which are extra hard and solid. The variety is, furthermore, greatly resistant to "yellows" disease.

GLOBE OR GLORY OF ENKHUIZEN YELLOWS RESISTANT

80 Days

An excellent yellows resistant selection of Glory of Enkhuizen. Heads large, round and solid.

RESISTANT GOLDEN ACRE (Detroit)

65 Days

A Golden Acre type from Denmark into which yellows-resistance has been bred. Medium small, round heads.

JERSEY QUEEN

65 Days

A yellows resistant strain of Jersey Wakefield.

MARION MARKET OR COPENHAGEN MARKET YELLOWS RESISTANT

75 Days

Yellows resistant strain of Copenhagen Market. Larger leaves and more spreading. Larger and later maturing round heads.

RACINE MARKET

64 Days

Large, round uniform heads of Golden Acre type. Will remain in field longer than other early Cabbage without splitting.

RESISTANT DETROIT

68 Days

Introduced as an excellent Yellows Resistant strain of Golden Acre. Very popular for early markets.

WISCONSIN BALLHEAD

100 Days

Heads very hard, smaller but more uniform and smoother than Wisconsin Hollander, short stem, blue-green leaves.

WISCONSIN No. 8 YELLOWS RESISTANT

110 Days

Similar to Danish Ball Head but not as uniform.

RED HOLLAND, Y. R.

100 Days

A red cabbage with medium sized round, uniform heads; excellent for shipping or storing. Yellows Resistant.

CANTALOUPE AND MUSKMELON

CULTURE. For muskmelon follow our cultural directions for cucumber except that where a robust growing variety of muskmelon is grown, a space of as much as six by six feet is sometimes required between hills. One ounce of seed plants fifty hills and three pounds plants an acre. The crop, or the last planting for a succession, should be in June. While not necessary it is advisable to pinch off the branches of muskmelon if a quicker matured or a larger or a better fruit is required. Pick the melon when it parts from the stem without difficulty and store a few days in a cool room. Number of days is from planting to ripe fruit.

- BANANA** 96 Days
Fruits 3 x 14 inches, long slim, tapered, slightly ribbed and tapered to both ends. Yellowish green to yellow as it ripens. Flesh is thick, salmon in color; small seed cavity, and if picked just as it ripens it is very well flavored.
- BENDER'S SURPRISE** 94 Days
Fruits 8 x 7½ inches. It is the largest of the pink fleshed melons of oval shape, early for a melon of this size. The flesh is of exceptionally high quality. It has coarse netting, distinct ribs and the rind is very hard, enabling it to be shipped some distance.
- CRENSHAW** 110 Days
Rind dark green; surface corrugated, not netted. Seed cavity small; flesh thick, sweet and juicy with mild, pleasant flavor.
- EMERALD GEM** 85 Days
Fruits 4½ x 5 inches, globular or slightly flattened, somewhat irregularly ribbed and very slightly netted. It is a very early, yellow fleshed melon of small to medium size, one of the very best for the home garden.
- HACKENSACK, EXTRA EARLY** 82 Days
Medium to large sized, nearly round or somewhat flattened, evenly and deeply ribbed, with very coarse netting. Skin is green, slightly tinged with yellow as the fruits mature. Flesh is green, a little coarse but juicy and sweet.
- HACKENSACK, LARGE OR TURK'S CAP** 90 Days
A very large, green-fleshed melon. The vines are hardy, vigorous and productive. The fruits are nearly round, usually somewhat flattened; ribs are large and of irregular width, densely covered with coarse netting.
- HALE'S BEST, NO. 36** 83 Days
Fruit 5 x 5½ inches, nearly round, very lightly ribbed, finely netted, green shading to light yellow as it ripens. Flesh thick, firm, stringless and very well flavored; not too sweet. Very small seed cavity with tight web of a salmon pink color. An exceptionally fine early strain for long distance shipping purposes.
- HALE'S BEST, JUMBO STRAIN** 83 Days
Fruits oval. 5-6 lbs.; ribbing somewhat prominent, heavily netted. Flesh thick, salmon-orange, sweet and of excellent quality; seed pocket rather large.
- HONEY DEW** 113 Days
The fruits are round and slightly oval, 6 to 8 inches in diameter, and weigh about 6 to 8 pounds. The skin is smooth and when ripe is creamy yellow in color; flesh light emerald green, fine grained and of very sweet, sugary flavor. Rind thin but very firm, and the fruit stand shipping remarkably well.
- HONEY ROCK OR SUGAR ROCK** 85 Days
Fruit 5 x 5½ inches, nearly round, no ribs, coarsely netted, grey-green to light yellow as it ripens. Flesh is very thick, tender, salmon pink in color and very well flavored. Very small seed cavity. This is a new type that has become very popular with home market gardeners.

CANTALOUPE AND MUSKMELON—Continued

- HOODOO OR HEARTS OF GOLD** 90 Days
Fruits 5 to 5½ inches, nearly round, very slightly ribbed, finely netted, light green to light yellow as it ripens. Flesh is very thick, firm and delicious. Very small seed cavity with a tight web. Color a bright yellow shading to pink. Stands shipping very well.
- LAKE CHAMPLAIN** 87 Days
This very early maturing melon produces almost round, medium sized melons, well netted, moderately ribbed, thick fleshed, sweet and melting, of golden yellow color. The plants are hardy, vigorous and very productive.
- MILWAUKEE MARKET** 87 Days
A medium large, early maturing, pink fleshed melon with excellent eating qualities. The ribs are fairly prominent and the netting is very heavy. The shape is slightly oval, the rind extremely hard, making it an excellent shipping variety.
- OHIO SUGAR** 95 Days
Fruit 6 x 6 inches, slightly oval, deeply ribbed, finely netted and light green in color. Flesh is light green, thick, firm, sweet and well flavored; fairly fine grained. Large seed cavity. Good garden type.
- OSAGE OR MILLER'S CREAM** 94 Days
Is of medium size, oval in form and dark green in color, somewhat netted and slightly ribbed. The flesh is extremely and uniformly thick, of firm texture and rich salmon in color, highly flavored and delicious to the rind. Seed cavity very small. It is a remarkable keeper and a good shipping melon.
- PERFECTO, Improved** 92 Days
Fruits 5½ x 6 inches, nearly round, and completely covered with hard grey netting without ribs. Flesh is very thick with extremely small seed cell; deep salmon color; fine grained, juicy and sweet.
- PRIDE OF WISCONSIN** 90 Days
A cross between Honey Rock and Hearts of Gold. Fruits oval, 3¾ lbs.; rind pearly gray, faintly ribbed, with sparse, coarse netting. Orange flesh, solid and thick, with small seed cavity, very sweet and fine flavor.
- ROCKY FORD, IMPROVED** 95 Days
Fruit round, averaging 5 inches, little to no rib, heavily netted, medium light green shading to a dark yellow. Flesh very thick, salmon tinted, solid, fine grained and of exceptionally fine flavor. Very small seed cavity.
- ROCKY FORD, GREEN FLESHED** 95 Days
Almost round in shape, covered with netting and averaging about 5 inches in length; flesh green, very sweet and highly flavored.
- SCHOONS HARD SHELL** 92 Days
Fruits are thick oval with heavy blossom scar which resists cracking, prominent ribbing with abundant coarse netting; skin gray-green becoming yellow at maturity, very hard and tough; flesh very thick, deep salmon-orange, solid, well flavored, excellent quality.
- TIP TOP** 89 Days
This very productive melon is of medium to large size, nearly round, slightly ribbed and fairly well covered with shallow netting. The flesh is deep yellow in color, sweet, juicy and of finest flavor, firm but not hard; edible to the very coating.

CARROT — FOR THE TABLE

CULTURE. The Carrot, whether used raw, fried, boiled or stewed, used alone or combined with other vegetables or meat is not surpassed in nutritious healthfulness by any vegetable. Plant Carrot seed from the time the soil can be worked in the spring till July, in 1- or 2-ft. rows for hand cultivation or in 30-inch rows where a machine tool is used. Use 1 ounce of seed to 100 feet of row, 3 to 4 pounds to the acre, covering one-half inch deep and later thin to a 4-inch stand. To cultivate the rows at an early date, sow Cabbage or Kohl Rabi seed, which germinates quickly, with carrot seed, which germinates slowly. Do not overlook the value of this crop as a stock food. Number of days from planting to roots of bunching size.

CALIFORNIA PEERLESS

70 Days

This carrot is of outstanding quality, very smooth and of medium size with very small core and does not make very much top. The color is a bright red. It will stay in bunching condition for a long while and is a fine carrot to pack and sell in boxes. The crown is oval in shape and the tops do not break off as in other carrots.

CHANTENAY

70 Days

Tops medium sized; necks small; roots tapering slightly but uniformly stump rooted and smooth; color deep orange-red; flesh very crisp and tender. A heavy cropper and is undoubtedly one of the best for both the market and private garden while its great productiveness makes it very desirable as a field sort.

CHANTENAY, RED CORED

70 Days

An outstanding favorite with many people who grow carrots in their gardens. The rich deep reddish-orange color extends clear to the center. The root tapers to a blunt end.



Carrot Seed Field

CARROT—FOR THE TABLE—Continued

LONG OR GREATER CHANTENAY

70 Days

This is a strain of Early Chantenay which resembles the original type in all respects except that it averages $1\frac{1}{2}$ to 2 inches longer.

DANVERS

73 Days

Grown largely on account of its great productiveness and adaptability to all classes of soil. Tops of medium size, coarsely divided. The smooth and handsome roots are deep orange, of medium length, tapering uniformly to a blunt point; flesh sweet, crisp, tender and of a deep orange color.

HUTCHINSON

75 Days

A variety that was developed by selection from the Danvers Half Long. It has slightly darker orange skin, grows an inch or two longer, but differs from the Danvers in that it carries its fullness well down to the end, making it decidedly stump-rooted. A heavy yielder and attractive in appearance.

IMPERATOR

77 Days

Tops medium but strong enough for good bunching. Roots 7 to 8 inches long, have sloping shoulders, are smooth, deep rich orange; tapered to a semi-blunt end. Flesh rich orange color, extending to center of root with indistinct core; fine grained, tender and of fine quality. An excellent variety for market garden and shipping.

IMPROVED LONG ORANGE

88 Days

A heavy cropping sort for garden use, and for stock. Roots tapered to a point; red-orange. Flesh similar in color to exterior, with core of lighter shade.

MORSE'S BUNCHING

77 Days

Tops short; foliage rather coarsely cut and stems medium size and strong. Roots at maturity are $1\frac{1}{4}$ to $1\frac{1}{2}$ by 8 inches in size, almost cylindrical, with rounded shoulders, and are well stumped.

NANTES HALF LONG OR CORELESS

70 Days

Tops of medium size, roots cylindrical, smooth, bright orange; flesh orange, becoming yellow in center but with no distinct core. Excellent for the market or home garden.

OX HEART OR GUERANDE

72 Days

Tops small for the size of the roots, which are comparatively short, but often reach a diameter of 5 inches, terminating abruptly in a small tap root. Flesh bright orange, fine grained and sweet. This variety is especially desirable for soil so hard and stiff that longer rooted sorts would not thrive in it. When young, excellent for table use, and when mature equally good for stock.

TOUCHON

70 Days

Similar to Nantes but a little larger. Small topped, smooth, cylindrical, bright orange, core very small and inconspicuous. Well adapted to canning and freezing.

CARROT — FOR STOCK FEEDING

LARGE ORANGE BELGIAN

90 Days

This is similar to Large White Belgian in growth and form but flesh and skin of the portion growing below the soil are of a pale orange coloring.

LARGE WHITE BELGIAN

90 Days

Grows a third or more above the surface. Roots will average 2 inches in diameter at the shoulder and a foot or more in length. Are easily pulled in harvesting and do not have to be dug out like most long rooted sorts. Flesh and skin pure white, tinged with green in upper portion growing above the soil.

CARDOON

LARGE SOLID

In appearance and growth is like the Globe Artichoke, to which it is closely related, and — like the Artichoke — it is a perennial. Grown for its leaf stalks, which — when blanched — are used in salads or cooked and served like asparagus.

CAULIFLOWER

CULTURE. For very early Cauliflower sow in hotbed in January or February; transplant to flats or cold frames and set out as soon as the ground is warm in the spring, setting 2 to 2½ feet apart each way. One ounce grows 2,500 plants and four to six ounces plant an acre. Cauliflower cannot be expected to mature satisfactorily in hot, dry weather so must have plenty of water especially when the plants are heading. When the head appears, tie the outer leaves over the head or pin these leaves with wood pins or beef skewers so the leaves will shade and blanch the head and then cut the head before it starts to branch. Remember that all the enemies of cabbage emphatically attack Cauliflower and are to be combated in a like manner. For early fall and late Cauliflower, plant in open ground in April, transplanting in June, giving same cultivation you would Cabbage. The number of days given is the time required from setting plants to mature heads.

EARLY SNOWBALL

55 Days

Plants dwarf, with short pale green leaves. Heads medium, firm, compact, solid, pure white, and of finest quality; a dependable header. Well adapted to shipping.

SUPER-SNOWBALL

56 Days

A highly desirable main crop variety, also used for early planting. Starts heading early and uniformly. Heads medium large, compact, very white.

DANISH DRY WEATHER

66 Days

Produces solid, pure white heads considerably larger than Early Snowball, but it is a week later. This variety is especially adapted for growing in dry sections where nearly all other varieties fail to make good heads, but does equally well in all weather.

SNOWDRIFT (White Mountain)

57 Days

Plant of medium height with upstanding, medium green outer leaves. Head slightly larger than Snowball, firm, solid, very white, well protected inner folding leaves. One of the best varieties for shipping long distances.

CELERY

CULTURE. Press celery seed into the ground; do not try to cover it and when seed is kept wet and not above 60 degrees F. germination occurs in 10 to 20 days. Celery needs 4 to 5 months from seed to use so very early Celery should be started in hotbeds after January and when two inches high, transplanted or thinned to a space of two inches. Later trim the tops to produce stocky plants and when five inches high set where plants are to mature, first trimming off one-third of the roots and leaves. Celery seed may be planted out-of-doors in April and treated as outlined above. Given sufficient water, celery can be grown on any good garden soil and one ounce of seed gives about 6,000 plants. When almost grown, Celery must be blanched by the use of boards, earth, paper or other covering. If boards are used, rows can be set as close as thirty inches; if earth blanched, 48 inches or more is better. Set plants six inches apart in the row and press the soil firmly about the roots. With a few stalks in a garden, a tile set over the plant on a wrapping of paper answers the purpose. If earth is used in blanching it should be drawn about the plant to one-third its height and repeated twice a few days apart till leaves only are exposed. Do not cultivate, hill or disturb celery when damp or rust may occur. In hilling with earth, place a peg at end of row with string to it and pass string about each plant so as to prevent earth from falling into the heart. To store, celery should be only partly blanched. Celery matures best in cool, moist weather, so the grower farther South may delay this planting calendar to fit his own market and convenience. Number of days is from sowing seed to edible stage.

FORDHOOK OR EMPEROR

125 Days

Leaf (outer) dark green, (inner) yellowish green, medium large and quite thick, average 18 inches tall. Stalk large and thick, heavy, tender, crisp, very little fiber; blanches to a pale gold heart. Good garden and local market type. A fair winter keeper.

GIANT PASCAL

135 Days

This is a green leaved variety and an excellent sort for fall and winter use. It blanches to a beautiful yellowish-white color, is very solid and crisp and of a fine, nutty flavor.

GOLDEN SELF-BLANCHING, ORIGINAL STRAIN, SELECTED

120 Days

The original strain has a greenish tinted outer leaf and a yellow inner leaf, leaves are medium heavy with a fairly strong rib; grows 15 to 16 inches tall and is fairly compact in growth. Stalk is medium large, solid, very crisp, without fiber, and blanches to a medium deep yellow. It is most excellent for early market and shipping. Has a very fine flavor.

GOLDEN SELF-BLANCHING, TALL TYPE

120 Days

Like the original type but has a slightly slimmer stalk and is 2 inches taller. Looks better when tied in bunches and packs better for shipping.

EASY BLANCHING

130 Days

Outer leaves medium dark green; inner leaves yellowish green. Thick, solid, upright growing, 16 to 18 inches tall. Stalk medium large and solid; blanches very easily and quickly to a pale yellowish white; is crisp and shows little or no fiber and has a good flavor. Good winter keeper.

UTAH PASCAL (Golden Crisp)

126 Days

A green variety recommended for fall use, maturing earlier than Pascal. Stems thick, solid, broad, rounded and of fine quality.

WHITE PLUME SELF-BLANCHING

110 Days

This is the earliest and most easily blanched. The plants grow rapidly and blanch easily during the summer months. Later in the fall the central stalks and leaves are of pure snowy whiteness even without earthing up.

CELERY — Continued

WONDERFUL OR GOLDEN PLUME

115 Days

A selection made from the old type of Golden Self Blanching for a much larger heart or stalk; is a few days earlier. Has all the good points of its parent plus increased size and earliness.

CELERIAC

LARGE SMOOTH PRAGUE

120 Days

Grows 12 to 14 inches tall. Roots are tapered in shape, 2 by 5 inches; usually show considerable side roots. Flesh is pure white. Used as celery flavoring for soups. This is the most commonly used strain.

CHERVIL

CURLED

Greatly superior to the old plain variety, being earlier, more handsome, and having fully as fine fragrance and flavor.

CHICORY

LARGE ROOTED OR COFFEE

120 Days

The dried and prepared roots are used quite extensively as a substitute or adulterant for coffee, and the leaves used as a salad.

RADICHETTA (ASPARAGUS CHICORY)

60 Days

Dandelion looking foliage with young seed stalk similar to spear of Asparagus; both young leaves and seed stalk are used, being tender and of dandelion flavor.

WITLOOF OR FRENCH ENDIVE

140 Days

Grown for its use as a salad, the blanched head resembling Cos Lettuce in appearance. The seed planted in the late spring gives parsnip-like roots by late autumn. The roots are then placed in earth where there is some heat, as in the greenhouse, boiler room, or a warm cellar. The root then throws out the blanched salad head.

COLLARDS

TRUE GEORGIA OR SOUTHERN

80 Days

Plant 2 to 3 feet high, forming a cluster of tender, undulated leaves at the top of its rather long stem; used as "greens" in the south and west.

BUNCOMBE OR CABBAGE

70 Days

A cross between Georgia Collards and Charleston Wakefield Cabbage, bred for the easy growth and hardiness of the Collard and the flavor and heading qualities of the Cabbage. It does not winter-kill with ice and snow and stands hot weather as well. Heads are rounded, not as firm as Cabbage but of delicious flavor.

CORN SALAD

LARGE SEEDED, LARGE LEAVED

This small salad is used during the winter and spring months as a substitute for lettuce and is also cooked and used like spinach. In warm weather the plants will mature in 4 to 6 weeks.

SWEET CORN

CULTURE. Sweet Corn produces best on fertile soil and the land should receive a good complete fertilizer treatment before planting. Do not plant corn in cold ground unless a good seed treatment is used. About the middle of May, plant corn in hills 3 to 3½ feet each way, dropping 4 to 5 seeds to a hill, later thinning to 3 stalks; or plant in 3 or 3½-foot rows, dropping 3 seeds to the foot, later thinning to stand 1 foot apart in the rows. Seed should be covered ½ inch on heavy soil to 1 inch on light, sandy soil. One pound will plant 200 hills or 400 feet of row and 7 to 10 pounds plant an acre. Plant every two weeks up to July 15th for a continuous supply. Early July plantings are delicious in September. Number of days is from germination to roasting ear stage.

HYBRID VARIETIES

New and superior Hybrid varieties are rapidly replacing the open-pollinated types. The performance of Hybrids in comparison to open-pollinated varieties is outstanding. The vigor, uniformity in maturity, disease resistance, quality, resistance to lodging and productivity is outstanding and justifies the popularity and widespread use of Hybrids.

ALPHABEST

65 Days

Ear—9" long, 8 to 10 rows, medium yellow, excellent quality, sweet and tender with well filled tips, long protecting husk. Plant—5½ ft. tall, vigorous, makes good early growth, dark green, drouth resistant. Use—Canning, whole ear pack; market garden and home garden and freezing. A new introduction in the early class. A fine corn for the home gardeners as well as bringing in a good early price for the market gardener.

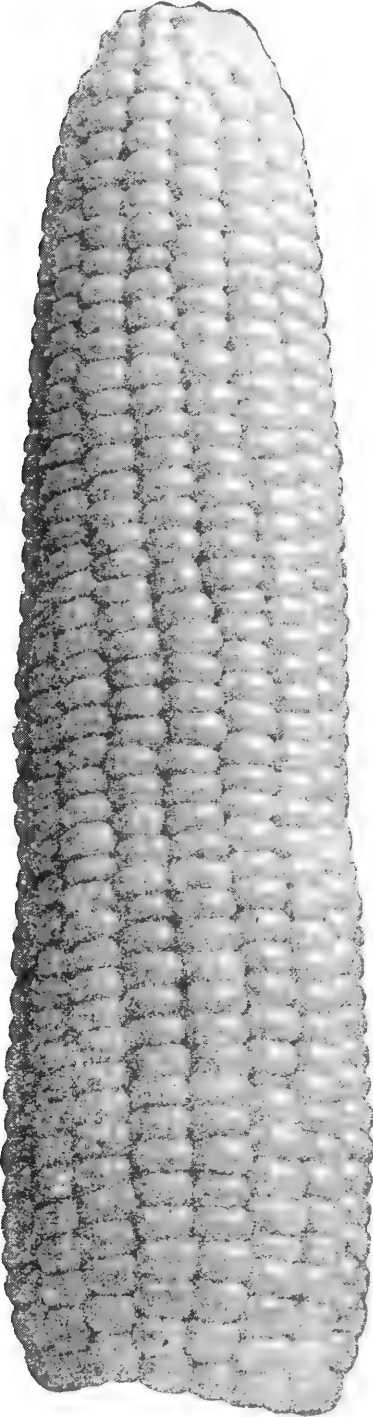
ALPHAGOLD

60 Days

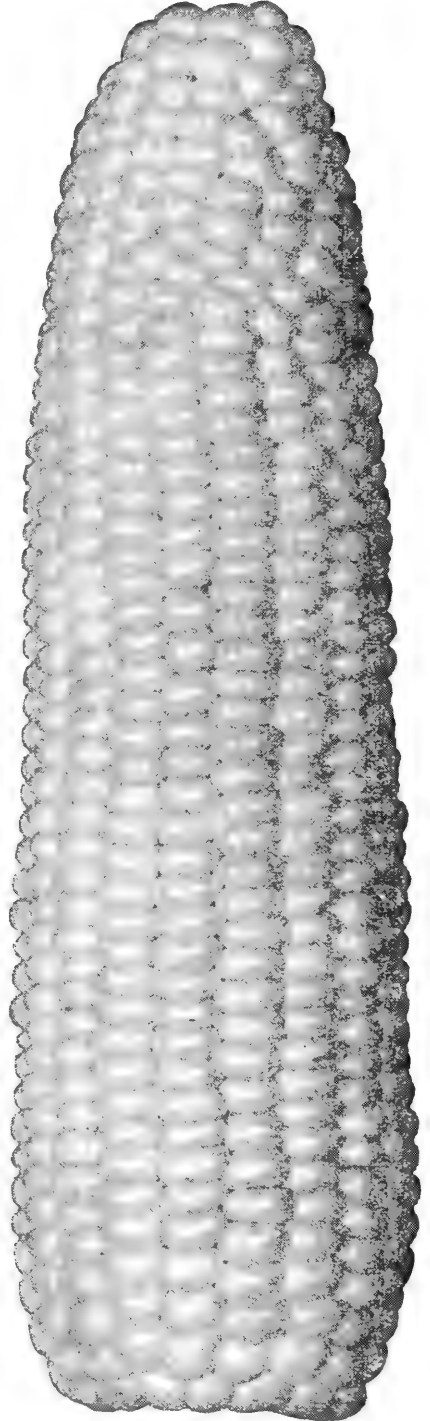
One of the best extra early sweet corns for garden use. This uniform, high yielding, 10 to 12 rowed hybrid closely resembles Golden Bantam but is earlier than most strains now in use. The ears are well covered with a protective husk reducing damage from birds and ear worms so often found in the first sweet corn ready for eating. Plants are about 4½ feet tall, frequently bear two well developed 10 to 12 rowed ears. It fills out exceptionally well at tip of the ear and has much less smut than most early varieties.



Hybrid Sweet Corn Field



Aristogold Bantam
Evergreen



Golden Grain

SWEET CORN — Continued

ALPINE BANTAM

57 Days

Properly planted, this makes the earliest roasting ears available for home gardens. The seed is hard and durable and should be planted as soon as the ground is warm enough to plant peas and other early vegetables as it will withstand rotting better in cold wet soil than any sweet corn we have worked with. Stalks 5 feet tall, ears 6 to 7 inches well filled at tip and 8 to 10 rowed. Flavor good but matures to starch fast so should be used only as the first early variety for first planting.

ARISTOGOLD BANTAM

83 Days

Another one of our winners from the All America Seed Trials and one which is built to stand abuse from the weather. This handsome, fast growing, rich yellow corn yields extra long 12 to 14 rowed ears with deeper kernels than any other Bantam type. Stalks are 8 to 9 feet tall with dark green leaves and husks. The ears are uniform and symmetrical, making exceptional yields even under adverse conditions of drouth or heat because of the deep root system. It is a quality corn, more resistant to ear worm and smut damage and will stand earlier planting in cold, wet soil than other types.

ARISTOGOLD BANTAM EVERGREEN

87 Days

This is the biggest yellow sweet corn which can be classed in the high quality group. Ears are 16 to 18 rowed, 9 to 10 inches long with clean stalks 8 to 9 feet tall. It has yielded as much as ten tons of snapped ears per acre under good conditions and is resistant to ear worm, smut and hot weather the same as Aristogold Bantam. But don't let the size mislead you as this corn is strictly first class in flavor and tenderness, good enough that people from the fancy early yellow north country often take ears back with them to give their friends.

GOLDEN CROSS BANTAM

82 Days

A bright yellow, 12-rowed corn with 8-inch ears borne well up on a sturdy stalk. The quality is fully equal to Golden Bantam in every way, matures six days later and is two to three times as productive. In addition, this corn is very resistant to the bacterial wilt known as Stewart's Disease, which often causes failure with other early yellow sweet corns. Originally introduced by Glenn Smith of Purdue University and is a very popular variety.

GOLDENGRAIN

84 Days

Probably the most spectacular of the yellow sweet corn hybrids. Stalks are 8 feet tall with practically no suckers and bright, dark green leaves. Ears are 8 to 9 inches long with 16 to 18 rows of unusually deep kernels. Ears are borne strongly arched and have excellent husk covering to reduce bird and worm damage. Kernels are narrow and bright gold in color. Another one of our All American champion sweet corns.

GOLDEN STATE

86 Days

Ear—8½" to 9" long, 12 to 14 rows, cylindrical, rich yellow, prolific. Plant—8 ft. tall, dark green, smut resistant. Newest All-America winner from Michael-Leonard. A fine corn for the home and market gardener in the South and deep South. It has a rich golden color that makes it very attractive on the table.

MICHAEL-LEONARD'S HYBRID GOLDEN HUMMER

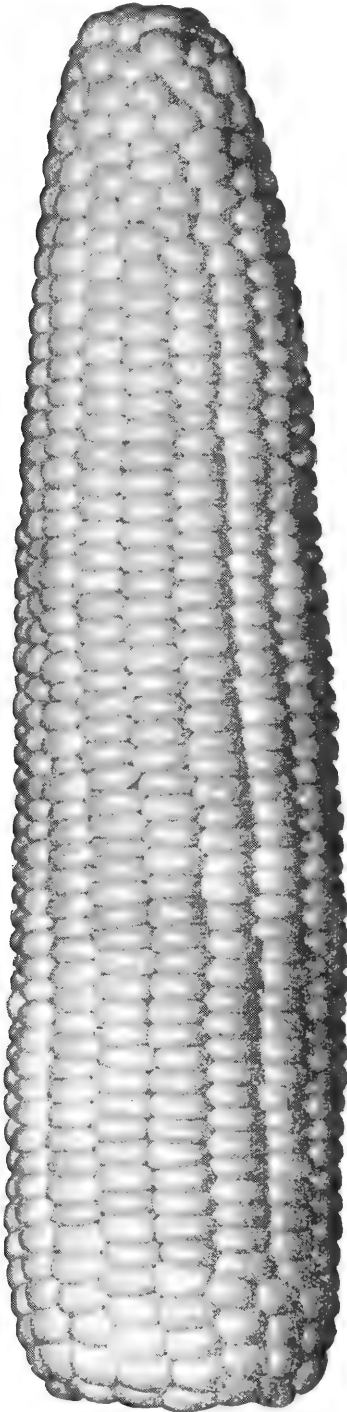
68 Days

Stalks 5 to 6 ft. with showy 12 rowed ears. One of the best early market and garden varieties. The big well filled ears are among the most delicious of the early types. Very hardy and a reliable producer.

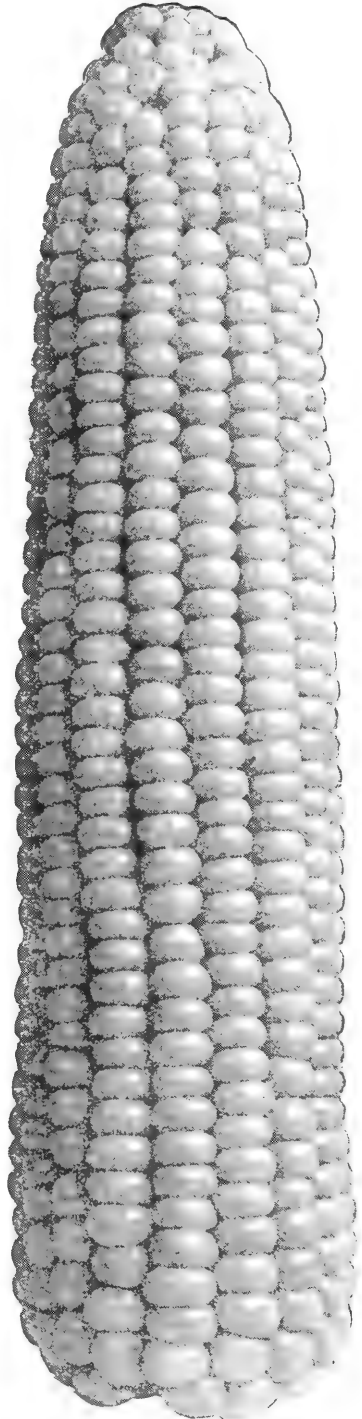
HYBRID STOWELL'S EVERGREEN

95 Days

A big eared, thrifty, high yielding hybrid. Stalks 8 to 9 ft. and ears 16 to 18 rowed. Gives top yields of the best quality late white corn. More uniform ear style than Stowell's Evergreen.



Tendermost



Silver Cross
Bantam

HYBRID SWEET CORN — Continued

- IOANA D.R.** 83 Days
Our D.R. strain of Ioana is about a foot taller and has a slightly longer ear and is more worm resistant than regular Ioana. The ears are also higher off the ground and lend themselves very well to spraying. Excellent market variety for Texas and Florida producers.
- IOCHIEF** 86 Days
Ear—8" to 9" long, 14 to 18 rows, good quality, brilliant yellow, deep kernels. Plant—7 to 7½ ft. tall, few suckers, dark green, drought resistant, good yields. A fine variety for the home garden. Produces large ears on large stalks. The yields are high and the fancy edible period is 85 to 88 days.
- MARCROSS** 76 Days
Stalks short but sturdy, highly resistant to bacterial wilt. Ears long, plump, abruptly tapered at tips; 10-14 rowed, with light cream-yellow, medium-broad kernels of good quality; popular early hybrid.
- SILVER CROSS BANTAM** 82 Days
We knew this corn was good when we introduced it but the sensational success and universal praise it has met with has amazed us. From Oregon to New York, from Minnesota to Texas we have had enthusiastic reports and a rapid increase in popularity on this variety. Essentially it is the snowy white counterpart of Golden Cross Bantam, carrying all the quality, flavor, and tenderness of the fanciest yellow sweet corns into the white class for the first time. In addition it has a fresh corn crispness all its own and maintains this to a fine degree even when canned or frozen. Ears are 12-14 rowed, a little larger and heavier than Golden Cross Bantam. Stalks are 7 to 8 feet tall, clean with broad, dark green leaves, free from excessive suckers. It is one of the better types for ear worm resistance and even in the cotton belt where worms are very bad, damage is generally confined just to the tip. Silver Cross Bantam is rapidly replacing most of the Evergreen and Country Gentlemen wherever growers have had a chance to observe it. Many people prefer it to the fanciest yellow hybrids.
- SILVER CROSS COUNTRY GENTLEMAN** 91 Days
This is a universally dependable producer in the Country Gent class with typical zig zag rows and deep, tender narrow, snowy white kernels. Ears 8 to 9 inches long with excellent flavor and good texture.
- SILVER CROSS EVERGREEN** 88 Days
This hybrid combines the parentage and quality of the white bantams with the size and yield of the Evergreens. Stalk and leaf growth are like the Early Evergreens but the ears have higher sugar content and excellent tenderness. Ears are about 8 inches long, of good diameter and mostly 16 rowed.
- SILVER CROSS NARROW GRAIN** 91 Days
A hybrid representing some distinct improvements over the open pollinated type. It is vastly more uniform, with greater yield, higher sugar content and superior tenderness. The stalk and leaf growth are similar to Evergreen, although earlier in maturity. Ears are 18 to 22 rowed with deep snowy white kernels and well filled tips. Stalks are vigorous and 8 to 9 feet tall.
- SOOBRED** 82 Days
This outstanding corn is one of our winners from the All America Seed Trials. It ranks at the top of the list for tenderness, flavor and productivity. The stalks are 6 to 7½ feet tall, bearing 9 to 10 inch 16 rowed yellow ears. There is no corn of this maturity which can excel Soobred in quality and yield either for garden or canners' use.

HYBRID SWEET CORN — Continued

TENDERBLONDE

82 Days

This variety is mid-way between Golden Cross Bantam and Tendermost in many of its essential characteristics. It combines the deeper cut for which Tendermost is famous with the rich flavor of Golden Cross Bantam. Ears are mostly fourteen rowed with rich yellow, medium narrow kernels. Ears average $8\frac{1}{2}$ inches in length with well filled tips and kernel depth carried out well to the tip. Plants are approximately six feet tall with broad, dark leaves and better drought resistance than Golden Cross.

TENDREFREEZER

82 Days

Ideal for canning or freezing on the ear. Exceptional sweet flavor, narrow kernels, long slender ear mainly 12 row.

TENDERGOLD

79 Days

A very fine corn of outstanding quality introduced by us. Four days earlier than Golden Bantam and generally twice as productive, the attractive 8 to 9-inch, 12-rowed ears commanding a premium on the market. For tenderness and succulence we have never seen its equal, and it holds this fine quality two to three days longer than other corns. Produces heavy crops in areas where Golden Bantam succumbs to bacterial wilt (Stewart's Disease).

TENDERMOST

83 Days

We reserved this name for the best quality yellow sweet corn we have ever produced. From the first day the ears are ready to use until the leaves and husks begin to turn brown you will find it the tenderest corn you have ever had in the garden. It is as near hullless as sweet corn can be grown. The clean 9 inch golden 14 to 16 rowed ears are deliciously sweet and develop a brilliant gold color when cooked. They have plump, well filled tips with deep kernels. Plants and ears are about a foot higher and smut resistance is distinctly better than that of Golden Cross Bantam. Generally considered the best main season corn for canning and freezing.

TOP FLIGHT BANTAM

82 Days

One of our outstanding winners from the All America Seed Trials this handsome 14-16 rowed yellow sweet corn generally produces two well developed ears per stalk. Ears are about 9 inches long, well filled at the tips, crisp, tender, and succulent. Because of its strong tendency for good twin ears it often yields more dozens of marketable ears per acre than any other kind.

TRISTATE

86 Days

Here is the hybrid which produces a higher percentage of perfect ears than any other kind we have had. Uniformly well filled at the tips, the 16 rowed ears have remarkable resistance to ear worms and smut. Plants are very dark green, $8\frac{1}{2}$ to 9 feet tall and are clean and free from suckers. It is one of the best to use in dry seasons.

SWEET CORN — OPEN POLLINATED

The open-pollinated varieties are rapidly being replaced by new and superior Hybrid strains. After each variety you will find the name of a hybrid variety to replace it.

BANTAM EVERGREEN

85 Days

A cross between Golden Bantam and Stowell's Evergreen. Ears 8 inches long, 12- to 14-rowed; grain rather broad and deep of a rich golden yellow color. *Replace with Aristogold Bantam Evergreen or Golden Green.*

SWEET CORN — Continued

- BARDEN'S WONDER BANTAM** 74 Days
Stalk 5 to 6 feet tall, slender, medium dark colored with a fairly heavy, low leaf growth, sparse at the top; ears 8 to 10 inches long, slender, yellow, 8 to 10 rows of broad, medium deep, thick, rich yellow kernels. *Replace with Tendergold.*
- BLACK MEXICAN** 85 Days
Popular for home and market garden use. Ears 7 to 7½ inches, 8-rowed; kernels tender, very sweet, white at eating stage, changing to blue-black at maturity.
- COUNTRY GENTLEMAN** 90 Days
Seed small, round, slim, pointed, shoe peg type; stalk 7 feet, ears 7 to 8 inches, tapered, small, white kernels (not in rows) very closely packed, very deep, slim, round top, pure white, very sweet and well flavored. *Replace with Silver Cross Bantam or Silver Cross Country Gentleman.*
- EARLY MINNESOTA** 83 Days
One of the standard early sorts. Stalk 4½ to 5 feet; ears 8-rowed, 9 to 10 inches long; kernels white. *Replace with Silver Cross Bantam.*
- EARLY EVERGREEN** 83 Days
The ears of this corn grows 8 inches long, are mostly 14 to 18-rowed. It ripens 10 days in advance of Stowell's Evergreen and is equally as good for all purposes. *Replace with Silver Cross Evergreen.*
- EARLY GOLDEN SWEET** 67 Days
Ears 12-rowed, slightly tapering, a little lighter in color than Golden Early Market. *Replace with Hybrid Golden Hummer.*
- STOWELL'S EVERGREEN** 94 Days
Standard main crop variety. It is popular for marketing and for the home garden. Stalks 7 to 8 feet; ears 14- to 18-rowed, 7 to 9 inches long. *Replace with Hybrid Stowell's.*
- GOLDEN BANTAM** 78 Days
Stalks 4 to 5 feet high; ears 6 to 7 inches long with 8 rows; kernels broad, sweet, very tender. *Replace with Soo-Bred.*
- IMPROVED GOLDEN BANTAM** 82 Days
A yellow variety good for home garden. Ears large, 6 to 6½ inches long with 10 to 14 rows; kernels medium, tender and of good flavor. *Replace with Tendermost.*
- GOLDEN EARLY MARKET** 72 Days
Ears 8 to 12 rowed, stalk 4½ ft. Kernels tender and of good flavor.
- GOLDEN GEM** 70 Days
Plants about 4 feet high, ears 8 rowed with deep yellow kernels.
- GOLDEN GIANT** 82 Days
A second early variety, producing ears 7 to 8 inches long, 14-rowed; kernels golden yellow, medium in size and of fair quality. *Replace with Top-flight.*
- MICHAEL-LEONARD'S GOLDEN HUMMER** 60 Days
One of the earliest of the Yellow Sweet Corns for market gardeners as well as home gardeners. Ears 6½ to 7 inches, 12-rowed; kernel golden yellow, medium deep, broad and of excellent flavor. *Replace with Alphagold.*
- GOLDEN SUNSHINE** 70 Days
An early variety of Golden Bantam type. Stalks 4½ to 5 feet high; ears 10- to 12-rowed, 6½ to 7 inches long; kernels large, broad, golden yellow and of good flavor. *Replace with Hybrid Golden Hummer.*

SWEET CORN — Continued

- HOWLING MOB** 85 Days
One of the second early, large eared sorts, very productive, white. Ears 7 to 9 inches long, 12- to 14-rowed. *Replace with Silver Cross Bantam.*
- LEONARD'S EARLY** 60 Days
The stalks are short and stocky, usually producing two large, 12-rowed ears on each stalk. The corn is a waxy white and of sweet flavor. *Replace with Silver Cross Bantam.*
- WHIPPLE'S EARLY YELLOW** 81 Days
While the stalks grow 6 feet or more in height and the 10- to 14-rowed ears are 7 to 8 inches in length this variety matures only three days later than Golden Bantam. *Replace with Aristogold Bantam.*

CORN — ROASTING EAR

- ADAMS EARLY** 82 Days
Stalk 6 to 7 feet tall, with a good leaf growth; ears 7 to 8 inches long, slender, white, 12 to 14 rows of white, smooth, medium deep, medium broad kernels. Not a true sweet corn but used in the south for roasting ears. *Replace with Silver Cross Bantam.*
- TRUCKER'S FAVORITE** 78 Days
A true favorite with the shippers in the south. The ears are 8 to 10 inches long, 14- to 16-rowed, usually two to the stalk; kernels are white. *Replace with Silver Cross Bantam.*

POP CORN

- JAPANESE HULLESS (White or Australian Hulless)** 90 Days
Ears 2½ to 4½ inches long, well filled with deep narrow kernels, which pop pure white, tender and very sweet. Stalk 5 ft. tall.
- SOUTH AMERICAN YELLOW** 110 Days
Ears 7 to 7½ inches 12-16 rowed with large yellow kernels that pop to enormous size without hard centers. Stalk dark green about 7½ ft. tall. Very popular variety.
- MINNHYBRID 250** 85 Days
This hybrid variety is an improvement over Japanese Hulless for yield and popping. Ears 3 to 4 inches long, plump and blunt, kernels are deep pointed with thin skins. Stalks 5 to 6 ft. tall.
- SOUTH AMERICAN HYBRID** 105 Days
Orange yellow kernels somewhat rounded with very high popping expansion. Ears 6 to 8 in. long, 14 to 16 rowed. Vigorous grower, stalk 6 to 7 ft. high.

CRESS

CURLED OR PEPPER GRASS

A small plant with frilled or curled leaves which are well liked when young for garnishing and for giving a warm pungent taste to lettuce. It grows best in cool weather and moist soil.

TRUE WATER

A distinct variety of cress with small, oval leaves. It thrives best when its roots and stems are submerged in water, although a fair growth may be obtained in soil which is kept wet. The seed is usually sown and lightly covered in gravelly, mucky lands along the borders of small, rapid streams.

CUCUMBER—PICKLING VARIETIES

CULTURE. For very early cucumbers sow April 10th in hothed upon pieces of inverted sod so that they can be transplanted without disturbing roots. When the ground is warm transplant into well prepared hills and protect with glass until hardened. For outdoor planting, wait until the ground is warm then sow 10 to 12 seeds in hills 4 to 6 feet apart each way, thinning 3 or 4 plants to a hill after danger from insects is over. Cultivate as long as possible; gather when large enough for use and to keep plants bearing do not allow them to ripen. Number of days is from planting to first pickling.

- CHICAGO PICKLE, B. S.** 57 Days
A variety esteemed above all others by Chicago market gardeners and extensively grown for the large pickling establishments. Fruit medium length, square ended, with large and prominent spines. Color a deep green. It combines all the good qualities of an early Cucumber.
- EARLY CLUSTER, B.S.** 55 Days
Vines vigorous, producing the bulk of the crop near the root and in clusters.
- EARLY FRAME OR SHORT GREEN, B.S.** 56 Days
An excellent sort for table use and for pickling. Fruit straight, handsome, smaller at each end, bright green; flesh tender and crisp and makes fine pickles.
- EVERBEARING, B. S.** 56 Days
Small size, very early and enormously productive, and valuable as a green pickle. It continues to flower and produce fruit until killed by frost.
- BOSTON PICKLING OR GREEN PROLIFIC, B. S.** 58 Days
Vine makes a heavy, rather short runner growth; fruit short, thick, very slightly tapered, blunt ends, very uniform in shape; fully developed fruit 2½ x 6 inches. Medium dark, uniform color. Good pickler.
- MR17** 56 Days
Vine, vigorous, dark green, large leaves. Fruit 6½-7½ inches long by 2½-3 inches in diameter, tapering, well warted. Small seed cavity, black spine. A mosaic resistant pickling cucumber developed at Ohio State University. It is slimmer and darker green than National, very productive.
- NATIONAL PICKLE, B. S.** 54 Days
Early, high yielding variety especially bred for pickling in the small sizes. Fruit straight, symmetrical, blunt-ended, but not chunky.
- SNOW PICKLE, B. S.** 56 Days
A choice pickling variety similar to Chicago Pickle but not so large.
- PRODUCER** 54 Days
A pickling variety with compact plants, **early** and good yielder. Fruits 5½ inches long x 2¼ inches.
- SPOT-ROT RESISTANT NO. 6** 55 Days
Vine vigorous, dark green, productive. Fruit 5½-7 inches by 2½-3 inches thick, dark green, cylindrical, black spine. Developed by Dr. Walker, University of Wisconsin, as spot-rot resistant National type pickle.
- WEST INDIA GHERKIN** 60 Days
A very small, oval, prickley sort, distinct from all others.
- YORKSTATE** 56 Days
Vine vigorous plant, large dark green leaves giving good coverage. Fruit tapered and warted, frosty green color in early stage, longer and more slender than National, black spine. Developed by Dr. Munger, Cornell University. A desirable mosaic resistant pickling variety.

CUCUMBER—SLICING VARIETIES

- A & C, W. S.** 68 Days
Uniform, nearly cylindrical, very dark green, well rounded at ends. Highly desirable for shipping and for market gardens.
- IMPROVED LONG GREEN, B. S.** 68 Days
Makes a heavy, long runner growth. Fruit $2\frac{1}{2}$ x 10 to 12 inches, somewhat tapered, inclined to warts, uniform in shape and size. Color medium dark with light stripe toward blossom end. One of the best of the all-purpose types. One of the most dependable croppers under all conditions of weather and soil types.
- CUBIT w.s.** 60 Days
A new variety of special merit because of its excellent shape and dark green color. Fruits $9\frac{1}{4}$ to $9\frac{1}{2}$ inches long x 2 inches, blunt ended, of smooth crisp texture with small seed cavity. Good slicer.
- EARLIEST OF ALL, W. S.** 60 Days
The earliest of the white spine cucumbers, medium in length, smooth and very symmetrical, while the dark green color is excellent. Its chief use is for long distance shipping; is also adapted for pickling and is grown commercially, to a large extent, in some sections. Size $7\frac{1}{2}$ x $2\frac{1}{2}$ inches.
- EARLY FORTUNE, W. S.** 63 Days
The fruit measures 9 inches long and is slightly tapering. The thick flesh is pure white, firm and unusually crisp with very few seeds. The fruit is of a rich, dark green color which does not fade when shipped to distant markets.
- JAPANESE CLIMBING, B. S.** 60 Days
Distinct climbing sort, used to cover trellises and fences. Fruit weighs 2 pounds; deep green, quite uniform and attractive. The color of ripe fruit is deep russet, traced with netting.
- LEONARD'S SPECIAL DARK GREEN, W. S.** 72 Days
Undoubtedly the finest of the long, large varieties. Fruit averages 14 to 15 inches in length, of very dark green color.
- LONGFELLOW, W. S.** 72 Days
Particularly valuable for home gardens as well as for shipping. Fruit a handsome dark green, retaining the color remarkably long after picking; straight and well filled at ends. Very few seeds.
- MARKETER w.s.** 65 Days
Vine vigorous and productive. Fruits 8 inches long x $2\frac{1}{4}$. Slightly tapered, dark green in color. Popular for early market.
- NIAGARA** 65 Days
Vine vigorous, leaves heavy and rough. Exhibits a high degree of mosaic resistance.
- PALMETTO, W.S.** 67 Days
Developed by W. C. Barnes at Clemson College, S. C., from a cross of Puerto Rico 40 x Cubit. Vine similar to Cubit but more deeply lobed leaves and highly resistant to downy mildew, making this new variety particularly valuable for Fall production in southern areas. Fruits slightly pointed towards ends, with dark green exterior and relatively small seed cavity. Size 8 x $2\frac{1}{4}$ inches.
- STAYS GREEN OR BLACK DIAMOND, W. S.** 60 Days
 $6\frac{1}{2}$ x $2\frac{1}{4}$ inches. A good dark green color. Medium in size and a good shipper.
- STAYS GREEN, LONG STRAIN w.s.** 63 Days
A long strain of Stays Green for fall and early spring planting in the South. Fruits 8 inches long x 2 inches, medium dark green, blunt ends and uniform.

CUCUMBER — SLICING VARIETIES — Continued

- STRAIGHT 8, W. S.** 66 Days
Fruit symmetrical, cylindrical, about 8 x 1½ inches, and well rounded at the ends. Color deep green. Ideal for shipping and home use.
- EARLY IMPROVED WHITE SPINE** 62 Days
One of the best sorts for table use. Vines are vigorous, fruiting early and abundantly; fruit uniformly straight and handsome, dark green with a few white spines; flesh tender and of excellent flavor.
- WHITE WONDER OR ALBINO, W. S.** 62 Days
Heavy, medium long runner type. Fruit 3 x 7 inches, with straight, blunt ends. Color is creamy white. A useful novelty (as it is fairly well flavored) for slicing and for salads.
- WOODRUFF'S HYBRID, W. S. — CLARK SPECIAL** 64 Days
Valuable for market garden and shipping; a main crop sort, prolific and attractive. Fruit 8 to 10 inches long, weighing 2¼ pounds; dark green, fairly uniform with rounded ends. Not a true hybrid.
- HYBRID CUCUMBER — BURPEE'S** 68 Days
A true first generation Hybrid of the white spine type, fruits averaging 8 inches in length and 2½ inches in width. A heavy cropping variety with high resistance to downy mildew and mosaic. Prolific all season long.

DANDELION

IMPROVED LARGE LEAVED

Thick leaves and deep green color make this far superior to the uncultivated plant. It is compact with an upright, regular tuft at the center.

DILL

MAMMOTH

Plant 2 to 2½ feet high, with leaves cut into thread-like segments. Seeds very flat, having strong, bitter flavor. Used for flavoring pickles.

EGG PLANT

CULTURE. Treat the Eggplant like a tender tomato that requires even a longer period to mature. After cabbage plants are out of the hotbed or greenhouse, which is April, sow eggplant, keeping even the night temperature above 70 degrees. One ounce of seed gives 2,000 plants, and 4 ounces plant an acre. Transplant later to pots or to a 3- or 4-inch stand, and when corn is shoe high, put eggplant outside on rich, well-drained land. Set the plants 2 feet apart in 4-ft. rows, shading or watering the plants if it is sunny or dry. Number of days given is time required from setting plants to marketable fruit.

- BLACK BEAUTY** 90 Days
The fruit is a rich, dark purple, large and symmetrical, maturing a little earlier than Improved New York Purple but usually not quite so large. A very desirable sort for the market as the fruit holds its color a long time.
- FLORIDA HIGH BUSH** 94 Days
Plant, upstanding in growth, bears the fruit off the ground. Fruit, elongated and cylindrical, is purple in color. Highly resistant to blight and drought.
- NEW YORK IMPROVED PURPLE SPINELESS** 93 Days
Plant makes a 2-foot growth, rather inclined to spread. Fruit oval, 6 x 8 inches, and tapered some towards top. Good color though not so dark as Black Beauty. It is a very heavy producer of large fruits.

ENDIVE

CULTURE. Endive, or winter lettuce, used as a salad, as greens or garnishing, is usually planted one-fourth inch deep in a seed bed in mid-summer, and when convenient after a month transplanted to stand 1 foot apart in 18-inch rows. When almost grown and about 2 weeks before ready to use, it is blanched by tying the leaves together with soft cord, or the blanching is done by turning a flower pot or tile over each plant, or by blanching with earth, like celery. The blanching removes the green plant's acrid taste. The plant may be, but seldom is, used as an early spring crop. Three to five pounds of seed plant an acre. Number of days is from planting seed to edible stage.

- BROAD LEAF BATAVIAN — ESCAROLE** 90 Days
One of the best varieties for salads. Leaves of upright growth, broad, more or less twisted and waved; bright deep green, with a nearly white mid-rib. Inner leaves form a fair head which blanches a creamy white.
- GREEN CURLED — RUFFEC — MOSS CURLED** 95 Days
Plant 16 to 18 inches in diameter, tufty and full in center; mid-rib an inch broad, white, thick, tender and fleshy; blanches readily. Good fall variety.
- GREEN CURLED PANCALIER** 98 Days
Plants are large, late, coarsely toothed variety similar to Ruffec, but with midrib rose tinted and foliage darker shade of green.
- WHITE CURLED** 100 Days
The divided leaves are of a very light yellowish-green color which blanches almost white.
- FULL HEART BATAVIAN** 88 Days
An improved strain of Broad Leaved Batavian, with larger leaf and broader, thicker head at eating stage; earlier in maturity. The plant is medium large with compact, well-blanched heart of infolded broad leaves, thick and buttery in texture. Excellent for market gardeners and shippers.
- FRENCH ENDIVE.** See Witloof Chicory.

HERBS

In borders and irregular parts of the garden it will prove profitable to grow a few herbs. Their use gives new and unusual flavors, pleasing aromas and perfumes and some medicines that are as serviceable as can be purchased. Exact cultural directions suited to them all is impossible. Give them generally the care given vegetables or flowers. Where the foliage is to be used, cut the young stems on a dry day, wilt in the sun, dry in the shade and either hang up in bunches or store in air-tight glass jars.

- ANISE**
A hardy annual used for medicinal purposes and for seasoning and flavoring.
- BALM**
A perennial used for a medicinal tea, and a beverage of lemon-like flavor.
- BASIL, SWEET**
An annual used for seasoning sauces, soups and meats.
- BORAGE**
A hardy annual grown for bee pasture; also used for flavoring.
- CARAWAY**
In its second year this biennial produces seed for flavoring pastry, etc.
- CATNIP**
Perennial. The leaves are used for seasoning.
- CORIANDER**
An annual grown for the use of its seed in confectionery and liquors.

HERBS — Continued

FENNEL, FLORENCE

An annual grown for the blanched base of its stem, which when cooked has a sweet taste, a delicate odor and somewhat resembles celery.

FENNEL, SWEET OR COMMON

Foliage used as a salad and the seed for flavoring.

HOREHOUND

The leaves of this perennial are used in medicines for coughs and colds.

HYSSOP

A perennial grown for the use of its foliage in medicine.

LAVENDER

A hardy perennial grown for its fragrance.

SWEET MARJORAM

Treated as an annual and the younger foliage used for seasoning.

ROSEMARY

A fragrant perennial used for seasoning and medicinal purposes.

RUE

A hardy perennial to be used with caution medicinally.

SAFFRON

An annual used for seasoning, coloring and making cosmetics.

SAGE

The well known, hardy perennial used for seasoning.

SUMMER SAVORY

The foliage and flowers of this annual used for flavoring and seasoning.

THYME

The leaves of this perennial are used for seasoning and medicinally.

WORMWOOD

Perennial. A plant of fragrant odor but very bitter taste; leaves used as a tonic.

KALE OR BORECOLE

CULTURE. In Virginia, kale planted in late August has some of its plants thinned out and sent to market within sixty days and the cutting then continues until the field is clean in April. Further north, kale is treated like a cabbage; that is, planted early in spring in hotbeds or out-of-doors and it is used in the fall when light frosts have improved it. Kale is sown in two and three-foot drills and then thinned to six to twenty-four inches, according to varieties. One ounce sows generously one hundred yards and four pounds plant an acre.

DWARF BLUE SCOTCH

55 Days

Plant has wide-spreading, finely curled blue-green, plume-like leaves and stands about 14 inches in height.

DWARF CURLED SCOTCH

55 Days

Plant low and compact, but with large, bright, deep green leaves, curled, cut and crimped until the whole plant resembles a bunch of moss. One of the best and most dependable types. When well grown and cooked is one of the most palatable of vegetables. Used as greens.

SIBERIAN OR SPROUTS

65 Days

In this variety the very large, green leaves are comparatively plain in the center but coarsely cut and frilled on the edge. The plant is low but spreading and very hardy.

TALL CURLED SCOTCH

60 Days

About 30 inches tall, with an abundance of dark green leaves, which are densely curled and cut, forming a very beautiful plant. It stands the winter in the middle states without any protection.

KOHL-RABI

CULTURE. Plant in 18 to 24-inch rows as early as the ground can be worked in the spring, thinning out to stand 4 inches apart in the row. Bulbs should be used when they are 2 to 2½ inches in diameter and cooked same as turnips. Sometimes planted in hotbeds and transplanted for very early maturing Kohl-rabi. One-third ounce plants 100 feet and 4 pounds an acre. Number of days given is from planting to edible bulbs.

- EARLY PURPLE VIENNA FORCING** 60 Days
Bluish purple, similar to Early White Vienna Forcing except in color.
- EARLY WHITE VIENNA FORCING** 55 Days
An extra early variety making bulbs 2-2½ inches in 55 to 60 days after seed is sown outdoors. Has very few short leaves. Bulbs are sweet and tender.

LEEK

CULTURE. This mild member of the onion family is used in soups and salads. Sow one ounce to one hundred feet of row and four or five pounds to the acre, one-half inch deep, as early as the soil can be worked in spring. Thin the plants to a stand of four to six inches in twelve to eighteen-inch rows. It is advisable to throw earth to the plant to blanch it, very much as celery is blanched.

LARGE AMERICAN FLAG

Makes large, dark green leaves and medium large bulbs on a pure white stem 1½ to 2 inches by 7 inches. It is very hardy and productive.

LARGE MUSSELBURG

The large variety, often 3 inches in diameter, and becoming very white and tender. A hardy and desirable sort.

MONSTROUS CARENTAN

A favorite market variety; large, thick stem of mild flavor and attractive appearance.

LETTUCE

CULTURE. As Lettuce will stand considerable freezing, it may be seeded or transplanted out-of-doors as soon as the soil can be worked in the spring. For a succession, replant every 3 weeks till within 60 days of freezing weather. The soil cannot be made too rich and the crop must be grown quickly and unchecked to be of superior quality. Lettuce is frequently started under glass, like Cabbage in hotbeds; in February transplanted to cold frames and hardened to be set out-of-doors in early April. In more southern or milder winter climates, Lettuce may be sown in autumn, protected with sash or coarse litter, and in late winter planted, transplanted or thinned and matured where planted. When the crop is matured under glass it requires much ventilation and little heat and beware of too much water in cloudy weather. In the summer's heat, canvas or a slatted half shade and plenty of water is of value. One ounce of seed gives 2,000 plants and 3 pounds plants an acre. In the seedbed drop 25 seeds to the foot and gently rake it in; failure may result from too deep a covering. Mature Lettuce in 12- to 18-inch rows, giving the loose leaf varieties 3 to 8 inches in the row, and Head Lettuce 6 to 12 inches. Number of days given is from sowing seed to marketable crop.

- BIBB, B.S.** 58 Days
A small, early variety of butterhead type, with thick, tender leaves, deep green outside, blanched within to creamy yellow.
- BIG BOSTON, W. S.** 76 Days
Head of medium size, compact, with creamy yellow heart. Leaves smooth, glossy, wavy at edge and slightly tinged with brown. Quality excellent. A popular variety for outdoor culture.
- BLACK SEEDED SIMPSON** 46 Days
Forms large, loose, yellowish-green leaves, crumpled and frilled, exceedingly tender and crisp. Very popular home garden variety as it is very early.

LETTUCE — Continued

- CALIFORNIA CREAM BUTTER, B. S.** 75 Days
Popular with market gardeners and home gardeners. Heads large and globular with golden yellow interior. Leaves large, thick, dark green tinged and spotted with brown.
- CHICKEN, W. S.** 35 Days
A dark green cutting lettuce; butter type, producing the largest supply of leaves of any known lettuce. Grown for poultry and rabbit feed.
- CRISP AS ICE, B. S.** 76 Days
Head medium sized. Leaves thick and crumpled, deep green with bronze cast. Fine variety for home gardens.
- EARLY CURLED SIMPSON, W. S.** 45 Days
Forms a close, compact mass of curly, yellowish-green leaves; early, hardy plant. Leaves are tender, sweet and of excellent quality. An old favorite with home gardeners.
- GRAND RAPIDS, B. S.** 43 Days
An excellent forcing variety as well as one of the best for outdoor planting. Plant erect; leaves medium light green, very curled and fringed. Stands heat and dry weather well.
- GREAT LAKES** 83 Days
A heading variety of the Imperial type developed by the U. S. Dept. of Agriculture and Michigan Experiment Station. Leaves large and well-folded; ribs heavy. Shows considerable resistance to tipburn and ability to head under adverse conditions. For local markets.
- ICEBERG, W. S.** 80 Days
Large curly leaves of bright, light green with a very slight reddish tinge at the edges. The unusual solidity of the heads is insured by the large, white main ribs of the leaves, each of which curves strongly to the center, making it impossible for the leaves to open outward and expose the center which is constantly and thoroughly blanched.
- IMPERIAL NO. 44 B. S.** 82 Days
One of the best of the New York or Iceberg types for use in the East and South. A good header and resistant to tipburn.
- IMPERIAL NO. 847 B. S.** 84 Days
Heads medium large, hard and of good quality. Stands up well in warm weather. Resistant to Tipburn.
- IMPROVED HANSON OR NONPAREIL, W. S.** 78 Days
Plant very large with thick yellowish-green leaves; heads large, firm and cabbage-like with sweet, tender heart. Good for midsummer planting and popular with home gardeners.
- MAY KING, W. S.** 62 Days
Plant this lettuce for the first early head lettuce. It is equally good for outdoor planting or forcing. The outer leaves have a slightly brownish tinge, while the heart is a beautiful yellow, very crisp and tender.
- MIGNONETTE, B. S.** 60 Days
Plant medium small, compact, medium brown with dark greenish tinge. Leaves frilled; head globular and firm; heart almost white. Excellent quality.
- NEW YORK OR WONDERFUL, W. S.** 78 Days
One of the very best of the curled or crisp heading varieties. The head, at first pointed or conical, becomes globular at maturity and is of medium large size, dark green in color and slightly curled on edges. Heads are very hard and well blanched. Quality is excellent, being sweet, yet never buttery in flavor.
- OAK LEAVED** 43 Days
Leaves are smooth but deeply lobed to resemble the leaf of an oak tree. Plant is medium large size, spreading, fairly dark green. Forms an attractive headlike rosette.

LETTUCE — Continued

- PENNLAKE, W.S.** 83 Days
Developed at the Pennsylvania Experiment Station from a cross of Great Lakes x Imperial No. 847. All-America Bronze Medal for 1947. Head compact and well colored, protected from scald by broad wrapper leaves. Less ribby than Great Lakes but equally solid and resistant to tipburn.
- PREMIER GREAT LAKES, W.S.** 75 Days
Developed from a single plant section of Great Lakes at Pennsylvania State College. All-America Bronze Medal for 1947. Head solid, practically round, up to 7" in diameter and two pounds in weight. Slow to bolt and very resistant to tipburn.
- PRIZEHEAD, W. S.** 47 Days
The name is misleading as it is a non-heading variety. Very early, quick growing, making a lot of good eating leaves of excellent flavor. Leaves are light green with very ragged brown edges. A most popular variety with home gardeners.
- ROMAINE OR PARIS WHITE COS, W. S.** 77 Days
The best known and most popular Cos variety in America. It is medium large, medium green, and forms a good, well folded head of fine quality, which blanches readily.
- SALAD BOWL — ALL-AMERICA, 1952** 45 Days
A new green leaf lettuce. Somewhat similar to Oak Leaf but stands the sun better and is slower to bolt, which insures a long harvest. One plant will fill a salad bowl.
- SLOBOLT** 43 Days
U. S. Dept. of Agriculture introduction. Similar in type to Grand Rapids but with unusual resistance to bolting in warm weather.
- WHITE BOSTON OR UNRIVALLED, W. S.** 76 Days
Similar to white seeded Big Boston but with leaves slightly lighter green and free from a brown tint; heart buttery, yellow; of excellent quality. Highly desirable for nearby markets

MUSTARD

CULTURE. Mustard is grown for its seed which is used for flavoring or medicinal purposes or grown for its leaf which is used in salad or cooked like spinach. Sow mustard as soon as the soil can be worked in spring and every three weeks for a succession, or in the South it may be sown in the fall for early spring greens. Cover the seed lightly in twelve to eighteen inch drills. Cut the leaf when not over four inches high. Number of days given is from planting to cutting.

- CHINESE BROAD LEAF** 35 Days
Plant medium large and vigorous; leaves broad, large, oblong and slightly crumpled; medium green; scalloped at edges. Seed reddish brown in color.
- FLORIDA BROAD LEAF** 40 Days
Leaf very large, broad, long oval with a smooth saw-toothed edge and broad white mid-rib; bright green in color. Makes a strong, quick growth, spreading out somewhat more than other smooth types. Holds well in hot weather. Seed dark brown in color.
- SOUTHERN GIANT CURLED** 35 Days
Leaf very wrinkled, blistered and curled at the edges; light yellowish-green in color. Very prolific. Holds fairly well for spring planting but is mainly used in the south as a winter greens crop. Seed dark brown in color.
- LARGE SMOOTH LEAF OR BLOOMSDALE** 35 Days
An excellent variety with very large, green, comparatively smooth leaves borne well above ground. Quick growing, fairly upright when young but becoming somewhat spreading when matured. Preferred by many because it is more easily prepared for the table than the rougher leaved varieties.

MUSTARD — Continued

- WHITE LONDON** 30 Days
A rapid growing, upright plant, which quickly goes to seed. Leaves small, dark green, smooth and deeply cut. The large, light yellow seeds are used largely for ground mustard.
- MUSTARD-SPINACH OR TENDERGREEN** 30 Days
Plants of rapid and vigorous growth with comparatively narrow, spoon-shaped leaves of dark green. It will stand longer than most varieties without sending up seed stalks. Combines the flavor of mustard and spinach. Seed dark brown.

OKRA

CULTURE. The pods of this plant are used in a great number of ways throughout the Southern States, and the plant should be more frequently grown in the North. Plant at corn planting time in rich land, sowing the seed thickly in two to three-foot drills, and thinning to an eight to twelve-inch stand, according to varieties. A generous planting is two ounces to one hundred feet and ten pounds to the acre. Okra seed may be planted six seeds to the hill, two to three feet apart and thinning to two plants to the hill.

- CLEMSON SPINELESS** 55 Days
A very uniform spineless strain of the Perkin's long podded type. Pods rich green, straight ridges. Mature pods are about 7 inches.
- DWARF GREEN** 52 Days
An early dwarf growing sort with dark green, fluted, pointed pods 5 to 7 inches long; quite prolific.
- LONG GREEN** 55 Days
Like Dwarf Green but somewhat taller; stalks 4 to 5 feet tall. Pods are like the dwarf.
- PERKINS' MAMMOTH LONG POD** 57 Days
Stalks 4 to 5 feet tall; treelike growth. Pods 6 to 7 inches, pointed, ribbed and usually slightly curved. Tapered and medium dark green in color. Very productive and medium early. Main canning variety.
- WHITE VELVET** 57 Days
Stalk 5 to 5½ feet tall; rather slender, treelike growth. Pods are 6 to 7 inches long, slim, pointed, somewhat ribbed and light cream colored. Productive and early. Fine garden type.

ONION

CULTURE. As soon as the soil can be worked in spring and not after May 1st, sow onion seed in 12 to 15 inch rows, leaving out every 10th row as a weed alley, if preferred. One ounce of seed plants 150 feet and 4 to 5 pounds plants an acre. Seed should be covered firmly one-fourth inch deep. Quantities of manure had best be applied in the year before the planting and much commercial fertilizer, high in potash, harrowed in immediately before seeding. Begin cultivation as soon as the plant can be seen; cultivate frequently and when convenient thin to a stand of two to four inches.

- EARLY YELLOW GLOBE** 89 Days
Exceptionally good keeper for so early a variety. Bulbs medium large in size, yellow, with clinging skins, solid, uniform and attractive.

ONION — Continued

EBENEZER

110 Days

Used mostly for growing sets. One of the best keeping onions on the market. Does not run to seed readily. Bulbs 2 to 3 inches, deep flat in shape, deep yellow and very firm, with thick skin.

MOUNTAIN DANVERS

100 Days

Bulbs three-quarter globe shape, slightly flattened at the base; dark yellow and medium early. Productive and of good shipping quality.

PRIZETAKER

104 Days

Very productive, large sized onion, especially good for fall marketing. Bulbs globe shaped, light yellow in color, with white flesh of mild flavor. For best results plant this variety in beds and transplant.

YELLOW SWEET SPANISH — RIVERSIDE

105 Days

A large, well shaped onion, weighing from 1 to 3 pounds, unusually mild but still retaining its genuine onion flavor. Planted at the proper time and thoroughly cured it is a good keeper and will ship as well as any other shipping onion. To produce larger size they should be thinned 6 to 8 inches between plants.

YELLOW SWEET SPANISH — UTAH

115 Days

Bulbs; selection from Yellow Sweet Spanish, showing better keeping quality; differs from Yellow Sweet Spanish in having amber skin and smaller neck.

GOLDEN GLOBE — SEMI-BOTTLE ONION

118 Days

Popular for growing globe-shaped sets of excellent keeping quality; very productive. Bulbs strongly oblong-globe, or bottle neck in shape, rich golden yellow; firm and hard.



One of Our Onion Seed Crops

ONION — Continued

- BRIGHAM YELLOW GLOBE** 110 Days
Bulbs medium sized, globe shaped with rounded base, solid, well covered with tight thick skin, flesh creamy white. Excellent storage variety.
- YELLOW GLOBE DANVERS** 116 Days
Bulbs medium large, globe shaped, yellow with white flesh, firm and hard; good keeper.
- YELLOW GLOBE, SOUTHPORT** 116 Days
A large, perfectly shaped globe onion and an excellent one for keeping throughout the winter. A very heavy cropper, a good dark yellow color and handsome in appearance.
- LARGE RED WETHERSFIELD** 104 Days
Bulbs 2 to 2½ inches thick, flat, deep red; flesh pinkish-white and very firm. Used extensively for growing sets.
- RED GLOBE, SOUTHPORT** 115 Days
A perfect globe shape, deep red skin and red flesh tinted white. Skin is thin, tough, close fitting over medium thin layers of firm, fine grained, strongly flavored flesh. Makes a medium large bulb, averaging 2½ to 3 inches in diameter. One of the best winter keepers.
- WHITE EBENEZER** 100 Days
Bulbs semi-flat, pure white, solid, mild flavored, good keeper. Popular variety for growing onion sets.
- WHITE PORTUGAL OR SILVERSKIN** 100 Days
A medium thick, flat shape when mature, averaging 3 inches; white skin and flesh, sometimes green tinted; thin layers of firm, crisp, fine grained flesh, quite mild in flavor. Skin is fairly tight and tough. Stores well for a white onion. Used mainly for growing onion sets and small pickling onions.
- WHITE GLOBE, SOUTHPORT** 112 Days
Bulbs round and of good size; solid, pure white skin, thin and brittle. Good for winter storage. Also used by market gardeners for early bunching.
- WHITE SWEET SPANISH** 112 Days
Bulbs large, globular shape with small neck; pure white. Flesh clear white, firm and mild. Very attractive and a fair keeper.
- CRYSTAL WHITE WAX** 90 Days
This variety is popular in the south where the transplanting method of culture is practiced. A large, beautiful, silvery white skinned variety of handsome, flat shape and of very fine flavor and quality.
- MICHAEL-LEONARD'S NEW BUNCHING ONION**
An excellent non-bulbing variety producing an abundance of sweet and tender bunching onions.
- WHITE LISBON**
A variety grown largely as a bunching onion. When mature the round, white bulbs are about 3 inches in diameter.

ONION — Continued

YELLOW BERMUDA, STRAW COLORED

90 Days

A pale or straw colored onion grown extensively in the Bermudas and southern part of the United States for early shipping to northern markets.

See page 63 for Onion Sets

PARSLEY

CULTURE. Parsley used for garnishing and for seasoning can be planted as soon as the soil can be worked in spring. Cover the slow germinating seed one-fourth inch deep in 12- to 18-inch rows. One-fourth ounce sows 100 feet and 3 to 5 pounds plant an acre. To improve the appearance of the crop, trim the plants with a sickle 2 or 3 times during their growing season and at the approach of winter transplant to cold frames or a sunny window. Parsley may be mulched with coarse litter and wintered for spring use till the new crop begins.

CHAMPION MOSS CURLED

Leaves are a uniform dark green color, very finely cut and so closely curled as to resemble bunches of moss. One of the most useful and decorative sorts; fine for bunching.

DOUBLE CURLED

The standard sort for outdoor culture; also highly prized by market gardeners for the greenhouse.

HAMBURG OR ROOTED

Mostly grown for the thick, fleshy roots. The roots are nearly white in color, growing about 6 inches long and about 2 inches thick around the neck and gradually tapering toward the base. The flesh is white and somewhat dry. Used for flavoring soups, stews, etc.

PLAIN OR SINGLE

Leaves flat, deeply cut but not curled. Often preferred on account of the very dark green color as well as the hardness of the plant and its superiority for flavoring.

PARAMOUNT

A new and improved triple-curved variety with unusually rich dark green foliage tightly curled. Ideally suited for home and market gardens.

PARSNIP

CULTURE. Plant Parsnip seed as early as the soil can be worked in spring and do not cover this slow germinating seed deeper than one-fourth inch. Use 18- to 24-inch rows, thinning the plants to a 4-inch stand. One-half ounce of seed sows 100 feet and 3 to 5 pounds plant an acre. This crop requires the entire season to mature, and as frost improves the roots, they may be left in the ground all winter. Both as to quantities and its feeding values, the Parsnip is a valuable stock feed.

ALL-AMERICA

95 Days

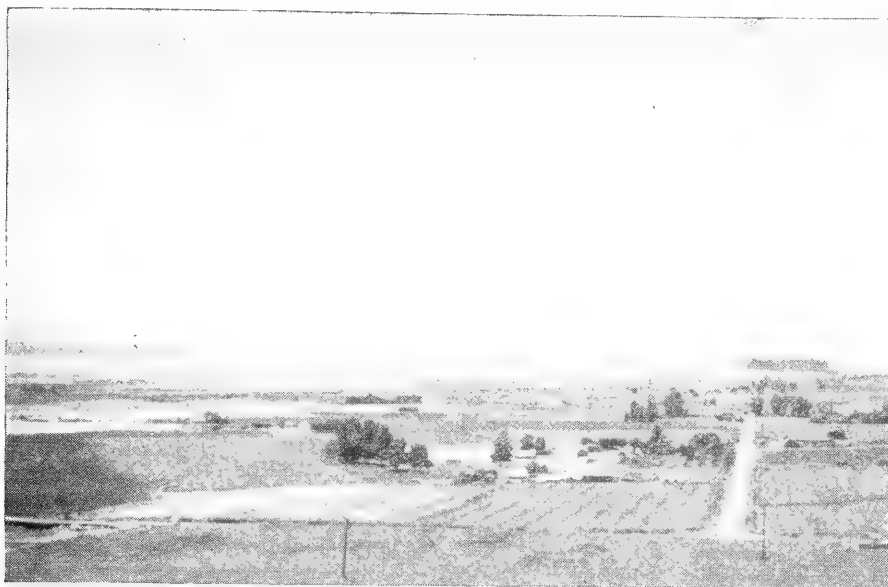
Root large and broad-shouldered, of medium length, fine texture, white color, and with small core; very free from side rootlets.

IMPROVED HOLLOW CROWN (Guernsey)

Roots 12 to 16 inches long, white smooth, tender, sugary and of most excellent flavor. Very hardy and will keep through winter without protection.

WHITE QUEEN

Similar to Improved Hollow Crown. Free from side roots and very white; an excellent market variety.



Seed Production Field in Idaho

PEAS—SMOOTH SEED

CULTURE. All varieties of Peas, regardless of height, may be grown successfully without a trellis or support. As Peas vary in height from 1 to 6 feet, it follows that the distances in the row and apart in the row should vary. Dwarf or half dwarf varieties are best planted in double or companion rows 6 inches apart to support and shade each other in their growth; then leave a space of 18 to 30 inches, according to height of the variety and repeat the double row. The tall varieties that may be given support are planted in a single row, the space between the rows somewhat less than the height of the variety. Work a good complete commercial fertilizer into the soil then drop 10 to 20 dwarf peas to the double row of 6 to 10 tall peas to the foot of row, using 2 pounds to 100 feet and 150 to 180 pounds to the acre. Plant all Peas about 3 inches deep in soil that has been deeply plowed, which gives the Peas the cool, damp climate they prefer. Lightly harrow or rake the soil when the Peas should be breaking through and continue to cultivate until the vine stops the work. All Peas stand some frost and may be planted as soon as the soil may be worked in the spring. Peas should be planted frequently for a succession. The early varieties are planted in August for a late autumn crop. For quality's sake pick Peas before they crowd the pod and pick all pods as rapidly as produced to somewhat extend the plants bearing. As all varieties of Peas lose their characteristics when left without that selection given by expert Seedsmen, it is necessary to go to a reliable source for seed peas.

NOTICE—The number of days given is taken from our trial ground records in Wisconsin. Weather conditions, variations in soil and cultivation, as well as difference in latitude, will make either a longer or shorter period of growth.

ALASKA WILT RESISTANT H.F. 30

52 Days

Our own introduction. This strain is more productive, has better color and flavor than the Alcross strain. Canning test made by Wisconsin Experiment Station during 1937 showed that this strain outyielded the best Alcross strain by 20%, and the canned Peas rated better in color.

AMEER OR CLAUDIT

60 Days

Resembling the Alaska in appearance, 3 feet in height with pale green foliage. Pods 3 inches in length, pointed, dark green in color. Seed blue, dented and medium pitted.

PEAS — SMOOTH SEED — Continued

- FIRST AND BEST OR EXTRA EARLY** 54 Days
Early, productive and hardy with a strong vigorous vine, which is light in color and uniform in growth, 2½ to 3 feet in height and bearing straight pods 2½ to 2¾ inches long, round, light in color and blunt at the ends. Seed round, rather small and white in color.
- LAXTON'S SUPERB OR EARLY BIRD** 60 Days
A hardy early variety, growing 18 to 20 inches in height, with dark green, 4-inch, semi-broad, pointed pods of fair quality. Desirable as a gardener's first crop pea, standing very early planting. Seed dark green, dimpled.
- M-L 33** 55 Days
Vine height 2 to 2½ ft., vigorous growth with sturdy stem with pods of 7 to 9 peas. More tender than Alaska and has a greener hull. Excellent variety for garden run canned peas.
- MAMMOTH PODDED EXTRA EARLY** 60 Days
An early, large podded, productive sort for home and market gardens. Vine 3 feet in height, medium heavy, and deep green in color. Pods 3½ inches long, light to medium green, broad, round and blunt. Contain 6 to 7 peas of fair quality. Seed round, dimpled, cream colored.
- MARROWFAT, WHITE** 78 Days
Vines hardy, strong, vigorous and bearing broad, thick, leathery pods near the top of the vine, which contain peas of a fair quality. Vine 50 to 60 inches in height. Foliage light green in color; pods 3 inches long, blunt and light green in color. Seed large, smooth, white.
- BLACK EYE COW PEAS** 65 Days
Green peas large and attractive; reach full maturity about 15 days later for dried peas.

PEAS—WRINKLED SEED

- ALDERMAN OR DARK PODDED TELEPHONE** 70 Days
A large podded pea of the Telephone type, very robust and vigorous as to vine, which attains a height of 48 inches; foliage medium green. Pods 5 inches long, broad, pointed, dark green in color. Seed green, wrinkled, large.
- AMERICAN WONDER** 57 Days
Vigorous vines with a luxuriant foliage, growing from 12 to 14 inches high. On account of its dwarf habit of growth it is very desirable for private garden use. Pods are light colored, straight, round, about 2½ inches long and blunt at the end. Seed is wrinkled, green, medium in size and square at the ends.
- BLUE BANTAM** 60 Days
An especially dark green strain of Laxtonian.
- CHAMPION OF ENGLAND** 76 Days
Strong and vigorous in growth, 54 to 60 inches in height; foliage medium green. Pods 2½ to 3 inches long, blunt, and medium dark green in color. Seed large, green, very much wrinkled.
- EVERBEARING** 76 Days
Vigorous and branching in habit and growth; height 3 feet. Pods 2¾ to 3 inches long, broad, light colored and blunt. Seed green, wrinkled, large in size.

PEAS — WRINKLED SEED — Continued

FREEZONIAN

62 Days

A uniform Thomas Laxton type. Excellent quality fresh, frozen or canned. Vine 28-30 inches, dark green, vigorous, prolific, resistant to fusarium wilt. Pods dark green, 3½ inches long containing 6-8 medium to dark green large sweet peas.

MC LEAN'S LITTLE GEM

62 Days

Strong and vigorous in growth, producing vines from 22 to 24 inches in height; dark foliage. Pods are almost straight, 2½ to 2¾ inches long, light in color and blunt at the ends. Seed is green, wrinkled and medium in size.

GRADUS OR PROSPERITY

62 Days

A standard, early, large podded variety, very popular with market gardeners. Height 3 feet. Vine and foliage moderately heavy and medium green. Pods medium green, 3¾ inches long, semi-round, straight and pointed, containing 6 to 8 large, very sweet, medium green peas. Moderately productive and of high quality.

HUNDREDFOLD

61 Days

Vines 18 inches tall, dark green, with very attractive large pods; excellent for home garden or shipping.

LAXTON'S PROGRESS

58 Days

Dark green peas, sweet and luscious. The dwarf, vigorous vines average 18 inches in height and carry enormous crops of large, deep bluish-green pods. These measure 4 to 4½ inches long and are tightly packed with 8 to 10 luscious peas.

LAXTONIAN

58 Days

Vines vigorous and productive, growing to a height of 18 inches; foliage dark green. Pods about 4 inches in length, dark green, straight and pointed. Seed light green, large wrinkled, flattened and irregular in shape.

LITTLE MARVEL

60 Days

An extra fine dwarf sweet pea. Pods somewhat larger than Nott's Excelsior. A fine variety for either private or market garden. Height, 16 to 18 inches; foliage and pods very dark green. Pods 3 inches long, nearly round and square ended, containing 7 very dark green peas of high quality. Very productive. Seed light green, medium size, squared, wrinkled.

MORSE'S MARKET

70 Days

Plant medium green, sturdy, somewhat coarse. Pods dark green, single, plump, curved, pointed, contain 7-9 peas. For market gardens and shipping. Seed large.

NOTT'S EXCELSIOR

50 Days

Resembling Gems in habit but more dwarf and uniform in growth. Height 14 to 17 inches with rather light foliage. Pods are light in color, round, about 2½ inches long, blunt at the ends. Seed green, wrinkled, medium in size and square at the ends.

PERFECTION

69 Days

An excellent canners' sort. Vine 30 inches tall, medium dark green, fairly heavy growth. Pods 3 to 4 inches, medium green, slightly curved and blunt. Our strain is mostly twin podded and wilt resistant.

PEAS — WRINKLED SEED — Continued

POTLATCH

70 Days

Strong, vigorous vines of even growth, 24 inches in height, with luxuriant, dark foliage. bearing pods medium green in color, 4 to 4½ inches in length, broad and pointed at the ends. Seed green, wrinkled, large in size.

STRATAGEM

72 Days

A vigorous, hardy and luxuriant vine, bearing large pods which contain peas of excellent quality. A heavy cropper although it has a tendency to sport. Vines 22 inches; foliage dark green; pods 4½ inches long, straight, broad, pointed, dark green in color. Seed very large, green, wrinkled.

SURPRISE WILT RESISTANT

60 Days

The vine, which is 28 to 32 inches tall, medium green foliage and slender stem, produces pods which are 2½ to 3 inches long, straight, light green, plump and blunt, borne singly, mature uniformly; contain 6 to 8 peas. Seed is medium small, finely wrinkled, round, medium green.

DWARF TELEPHONE OR DAISY

70 Days

Vines 20 to 22 inches high with rather coarse foliage, medium light green, bearing pods broad, straight and about 4 inches long, pale green in color and well filled with peas of excellent flavor. Seed pale green, large, wrinkled.

TELEPHONE

70 Days

Same as Alderman.

THOMAS LAXTON, Wilt Resistant

60 Days

A very popular variety. Height 2½ to 3 feet; vine and foliage moderately stout, medium green. Pods medium green, 3½ inches long, straight, nearly round and square ended, containing 7 medium dark green peas of superior quality. Seed large, cream colored, wrinkled.

WISCONSIN EARLY SWEET (Wilt Resistant)

60 Days

Vine 28 to 30 inches; medium green in color, thin stem. Early in maturity. Pods borne singly, light green, 2½ to 3 inches, blunt. Peas small and of good quality. Seed small, wrinkled, green.

WORLD'S RECORD

60 Days

An improved type of Gradus, being slightly earlier, more dwarf, true to type and productive. Height 2 to 2½ feet. Vines moderately stout, medium green. Pods medium green, 4 inches long, very broad, pointed and well filled with 7 to 9 very large, dark green peas of exceptional quality. Seed large, cream and green, wrinkled.

PEAS — EDIBLE POD

DWARF GREY SUGAR

66 Days

The old variety of the edible podded sort and used in no other way. Grows about 2½ feet high and is remarkable for its earliness. Pods are broad, flat and crooked, containing 5 to 6 peas. Seed is brown and round.

MAMMOTH MELTING SUGAR, WHITE SEEDED EDIBLE POD

72 Days

Large edible pods, 4 to 4½ inches long and 1⅛ inches broad. Vine grows to a height of 48 inches. The seed is large and a creamy white in color.

MAMMOTH LUSCIOUS GRAY SEEDED

72 Days

Like Mammoth Melting Sugar except that it is gray seeded and purple blossomed.

PEPPER

CULTURE. The pods of the pepper are used in sauces, salads, soups or as a seasoning and the large mild varieties called mangoes are eaten from the hand or variously stuffed and prepared with cabbage, tomatoes or meat. The pods of green peppers are green until in ripening they turn red or yellow, according to the variety. Start pepper in hotbeds, maintaining a temperature of 70 degrees and in other ways treat like a tomato. Set out-of-doors after frosts in 30-inch rows, giving each plant 18 inches in a row. One ounce of seed gives 2,000 plants and one-quarter pound plants an acre. Number of days given is from setting plants to ripe fruit.

- ANAHEIM CHILI** 80 Days
Plant 2 feet high, medium light green and medium heavy growth. Fruit 1 x 7 inches average, bright red from a deep green, slim, tapered to a point. Quite productive and medium hot in flavor. Largest of the milder chilis. Used as an all purpose type.
- BANANA OR HUNGARIAN YELLOW WAX** 70 Days
Plant 2½ feet high, medium light green, upright and fairly bushy growth. Fruits long, slim, 1½ x 6 to 7 inches, ranging in color from a deep yellow to a bright orange to a bright red as they ripen, and tapering to a point. Very prolific, early, quite thick walled for the type and hot in flavor.
- SWEET BANANA** 65 Days
Plant 20 to 24 inches tall, upright, dark green foliage, heavy. Fruit 6½ to 7½ inches long x 1½ inches. Sweet, medium flesh wall light yellow turning to bright red at maturity.
- BELL OR BULL NOSE, HOT** 60 Days
The earliest of the "bell" type peppers. The ribs are quite pungent, while the rest of the fruit is mild. The medium sized square fruits are deep green when immature and scarlet when ripe.
- BELL OR BULL NOSE, SWEET** 60 Days
Plant 2½ feet high, medium light green, upright, strong growing, bushy. Fruits 3 x 4 inches, squared, usually four lobes, inverted bell shape; flesh quite thick, mild in flavor and is a good garden strain for salads and stuffing.
- CALIFORNIA WONDER** 76 Days
Plant 2½ feet high, medium light green, making a strong, upright growth. Fruits are large, 3½ to 4 x 5 inches, squared, usually four lobes, very thick walled, sweet and mild in flavor. From a deep green to a bright red in color.
- CALWONDER EARLY** 69 Days
Fruits 3 and 4-lobed, upright, very attractive. Smooth, uniform, deep green changing to bright crimson at maturity; thick, sweet and mild. Packs well because of uniformity. Length about 4 inches; diameter at stem 3½ inches.
- CAYENNE—LONG SLIM** 70 Days
Same as Mammoth Long Cayenne except in size; ½ inch in diameter, 4 to 5 inches long.
- CAYENNE—MAMMOTH LONG** 70 Days
A long, slim, pointed pod, bright red in color when ripe, and extremely strong and pungent. Size ¾ to 1 inch in diameter, 5 to 6 inches long.
- CHINESE GIANT** 80 Days
Plant 2½ to 3 feet high, medium light green, strong, bushy growth. Fruit is large, 4 x 5 inches, squared, usually four lobes, deep green to a bright red color. Quite productive with a good thickness of side wall. Sweet and mild in flavor and used for a stuffing type.

PEPPER—Continued

- GOLDEN QUEEN** 80 Days
Stalk 2 feet; medium dark, heavy growth, very bushy. Fruits medium large, 3 x 4 inches, slightly tapered, mostly four lobes, medium thick wall, dark green to a golden yellow when ripe. Mild in flavor.
- HARRIS EARLY GIANT** 65 Days
Stalk 2 feet; medium dark with a rather spare leaf growth. Fruits are medium large, 3 x 4 inches, squared, usually four lobes, medium thick side wall, bright cherry red color. Sweet and mild.
- KING OF THE NORTH** 65 Days
A short season variety with large fruits. The medium thick flesh is dark green at first, turning to deep rich red when ripe. Flavor mild and sweet.
- OSHKOSH** 70 Days
A medium early productive sort, deep glossy green in color turning to canary yellow at maturity. Fruits mild, fairly smooth, broad at base tapering to blunt point. Length 4½ inches; diameter at stem 3½ inches.
- PIMENTO** 75 Days
Plant 2½ feet; medium dark, upright and very bushy. Fruits 2 x 2½ inches, heart shaped, smooth, without lobes or side ridges, deep green to brightest red. Very sweet and mild and a heavy producer. Excellent canning variety.
- RED CHILI** 85 Days
Plants low growing and bushy. Fruits borne upright, very numerous, 2 to 2½ inches long, ¾ inch thick, tapered; waxy pale yellowish-green, becoming rich red; very pungent.
- RUBY GIANT** 75 Days
An excellent, large, mid-season variety for home and market gardens. Plant vigorous, erect, very productive. Fruits slightly tapered, four lobes, deep green changing to bright red; flesh thick, sweet and mild.
- RUBY KING** 70 Days
Plants are about 2½ feet high, vigorous, compact and productive. Fruits are 4 to 4½ inches long and of deep green color when young, bright red when ripe. The flesh is thick and mild flavored. One of the best varieties for mangoes or stuffed peppers.
- SUNNYBROOK OR TOMATO PEPPER** 75 Days
Fruits 2½ to 3 inches in diameter and 2 to 2¼ inches deep from stem to blossom end. The skin is smooth, glossy and of a brilliant scarlet. The flesh is unusually thick, in well developed fruits measuring ½ inch in thickness.
- SWEET MOUNTAIN** 75 Days
Plant 30 inches tall with medium light, upright bushy growth. Fruit medium large, 2½ x 5 inches, squared, slightly tapered, deep green to a very bright red in color, usually 3 or 4 lobes, high side ridge, medium thick side wall. One of the sweetest and mildest peppers.
- WORLD BEATER** 73 Days
Fruits four-lobed, 5 inches long by 3½ inches in diameter; flesh very thick and mild. Exceedingly productive and a good shipper.

PUMPKIN

CULTURE. The finer varieties of pumpkins are used for pies and the coarser ones for stock feeding. While the pumpkin may be grown very much as cucumbers are grown in a garden, they are more frequently planted in the field with corn, where several seeds are dropped in each fourth hill. Planted alone, six to ten seeds are covered one inch deep in hills eight to ten feet apart and thinned to two to four plants to the hill. One ounce plants twenty-five hills and two to four pounds of seed generously plants an acre. Number of days given is from planting to ripe fruit.

CONNECTICUT FIELD**120 Days**

The standard cornfield variety, producing large, orange colored pumpkins which average 25 pounds in weight, round and flat on ends with smooth, hard rind. Flesh is thick, dry and sweet — excellent for canning and stock feeding.

GOLDEN CUSHAW**112 Days**

The skin is golden yellow; vines very prolific; fruits rather small and slender.

GREEN STRIPED CUSHAW**115 Days**

Fruits very large with crooked neck. Color creamy white, irregularly striped or traced with green. Flesh light yellow, very thick, rather coarse but sweet. Very productive.

WHITE CUSHAW**112 Days**

It is similar to the Green Striped strain except somewhat smaller and the skin is pure white; also the neck is shorter than in other Cushaws.

LARGE CHEESE OR KENTUCKY FIELD**120 Days**

Used largely for canning and stock feeding. The fruits are flat, dull orange; flesh yellow, thick and tender.

MAMMOTH POTIRON OR KING OF THE MAMMOTH**120 Days**

The flesh and skin are of a bright golden yellow color, flesh fine grained and of excellent quality. This enormous variety has been grown to weigh 100 pounds.

SMALL SUGAR OR PIE**115 Days**

A rather small but handsome variety. Shape round; skin deep orange colored; flesh fine grained, sweet flavored. Superior for pies.

TENNESSEE SWEET POTATO**110 Days**

Fruits are bell shaped of medium size with white skin slightly mottled with light green stripes, averaging 15 pounds in weight. Flesh is creamy white, very thick, fine grained and sweet.

RADISH

CULTURE. Plant Radishes on a light soil if a choice is possible and every second week for a succession from the time the soil can be worked in spring till the first light frost. Plant in 12 to 18 inch rows, cover the seed one-half inch deep and permit ten radishes to grow to the foot; use 8 to 12 pounds of seed to the acre. Radish seed, which germinates quickly, may be sown with some slow germinating seed that the cultivation of that crop may begin the earlier or the quicker growing radish may be grown between the rows of some slow growing crop that later requires considerable space. Number of days given is from planting to roots of bunching size.

- CHERRY BELLE** 22 Days
A very early short top variety well adapted for greenhouse or hotbed forcing. All-America Selections B.M. 1949. Shape, globular, small uniform, with a very fine root. Color, cherry red of a medium shade.
- CINCINNATI MARKET** 28 Days
Tops short and small; roots 6 to 7 inches long, pointed, bright scarlet; flesh white, crisp and mild.
- COMET** 23 Days
Market and shipping radish. Although tops are short they are slightly heavier than Scarlet Globe. Stands unusually long before becoming pithy. Bunches well. All America Selections S.M. 1936. Shape, short oval, smooth. Color, rich scarlet; very attractive; flesh white, crisp, mild.
- CRIMSON GIANT** 30 Days
Largest of the round reds. Tops medium small, very upright with medium light, short stem. Roots go up to 1½ inches without being pithy, globe shaped, deep red color, rather thick skin. Flesh white, tender and crisp.
- EARLY SCARLET GLOBE** 24 Days
This excellent, bright, rich scarlet colored, globe shaped radish is the finest for forcing as it will bear the heat required for forcing without becoming pithy or losing its excellent flavor. Has a small top and certainly is the variety needed by the gardener who forces for early market. Also an excellent sort for outdoor planting.
- EARLY SCARLET TURNIP** 26 Days
Early variety for forcing or outdoor culture. Tops medium; roots small, turnip shaped, almost round, bright scarlet in color, crisp and tender.
- FRENCH BREAKFAST** 25 Days
Popular home garden and early market variety. Tops medium small; roots 1½ to 2 inches long, thicker towards bottom, scarlet with white tip; flesh white, crisp and of excellent quality.
- HAILSTONE** 24 Days
The earliest white variety. Tops medium large; roots turnip shaped; flesh white, crisp and tender.
- IMPROVED CHARTIER** 34 Days
Decidedly distinct in appearance, the color at the top being crimson running into pink about the middle and from thence downward it is a pure waxy white. Roots 7 to 8 inches long; flesh crisp and tender.
- LONG BRIGHTEST SCARLET WHITE TIPPED** 25 Days
This is the earliest of the long red varieties. Tops medium large; roots 4½ to 5 inches long, tapering to a point; flesh white and crisp.
- LONG SCARLET SHORT TOP** 27 Days
This bright scarlet, small topped sort is about 6 inches long, is uniformly straight, smooth, brittle and crisp, and is a standard and excellent variety for private garden or market use.

RADISH — Continued

- SAXA** 22 Days
Principally a forcing sort, but also used for out-of-doors planting. Tops very small; roots small, spherical, $\frac{7}{8}$ inch in diameter, bright scarlet in color; flesh white, crisp and mild.
- SPARKLER WHITE TIPPED** 26 Days
Similar to Scarlet Turnip White Tipped as to size and time of maturity. The root, however, is more round or ball shaped, and the white extends farther up on radish.
- WHITE ICICLE** 27 Days
Without doubt the finest early white variety and very popular with home gardeners. Tops medium; roots $5\frac{1}{2}$ to 6 inches long, tapering, pure white, very crisp and mild.
- WHITE STRASBURG** 39 Days
Large, showy, half long sort. Roots 5 to 6 inches long, $1\frac{1}{2}$ inches thick at the shoulder, tapering to a point; flesh white, firm and mildly pungent.
- WHITE STUTTGART** 41 Days
Tops medium large; roots top shaped, 3 to $3\frac{1}{2}$ inches long, 3 to 4 inches in diameter, white and mildly pungent. An excellent variety for late summer and can be used for winter storage.
- WHITE TIPPED SCARLET TURNIP** 25 Days
One of the handsomest of the turnip radishes and a great favorite in many large markets for early planting outdoors. Roots slightly flattened on the under side; color very deep scarlet with a white tip; flesh white and of the best quality.

RADISH — WINTER VARIETIES

The winter Radish is sown at late turnip planting time and used in the autumn or stored for winter like the turnip.

- CALIFORNIA MAMMOTH WHITE** 61 Days
Large, heavy tops, light green in color. Roots large, 3 x 10 inches; stump rooted, thickest at the bottom end; small tap root. White skin; white flesh, crisp and hard but rather coarse grained and strongly flavored.
- LONG BLACK SPANISH** 62 Days
One of the best winter varieties. Tops large and heavy; roots 7 to 9 inches long, 2 inches in diameter and tapering to a point; skin black; flesh white, very firm and pungent.
- ROUND BLACK SPANISH** 60 Days
Roots round, sometimes top shaped, 3 to 4 inches in diameter; skin black; flesh white, firm, crisp and highly flavored. An excellent sort for winter as the roots keep a long time.
- ROSE CHINA WINTER** 53 Days
Roots cylindrical or largest at the bottom, tapering abruptly to a small tip; skin very smooth and of a bright rose color; flesh firm, crisp and tender, quite pungent.
- WHITE CHINA OR CELESTIAL** 60 Days
The root is 8 inches long, cylindrical, with beautiful white skin and flesh so white as to attract attention even among the other white varieties. The flesh is very tender and of excellent quality.

RHUBARB

CULTURE. Rhubarb succeeds best in deep soil. The richer its condition and the deeper it is stirred the better. Sow in drills an inch deep and thin out the plants to six inches apart. In the Fall transplant the young plants into very highly manured and deeply stirred soil, setting them 4 to 6 feet apart each way and give a dressing of coarse manure every spring. The stalks should not be plucked until the second year and the plant never allowed to exhaust itself by running to seed.

VICTORIA

Stalks large, rich red in color, very thick and tender. The best variety.

SALSIFY OR VEGETABLE OYSTER

CULTURE. Salsify succeeds best in a light, well enriched soil, which should be stirred to a good depth. Coarse and fresh manure should be avoided as it will surely cause the roots to grow uneven and ill-shaped. Sow early and quite deep, giving the general culture recommended for parsnips. The roots are perfectly hardy and may remain out all winter. Store a quantity for winter use in a pit or cellar in damp earth or sand.

MAMMOTH SANDWICH ISLAND

Roots 7 to 8 inches long, 1 to 1½ inches thick; skin almost white; flesh mild and delicately flavored.

SORREL

CULTURE. Sow in spring in drills 18 inches apart, in a rich soil, and keep the flower stems cut off as they appear. Remains in the ground, needs to be taken up and divided only once in 4 or 5 years. To be cut and cooked precisely like spinach. Also used for soups. Inasmuch as the hot sun tends to increase its acidity a Northern exposure is preferable.

LARGE LEAVED FRENCH

Standard home garden and market sort, producing large, thick, bright green arrow-shaped leaves of mildly acid flavor.

SPINACH

CULTURE. As early as the soil can be worked, sow it one-half inch deep in fourteen-inch rows, using one ounce of seed to one hundred feet, and in the second week will appear a tiny plant with two very narrow leaves that do not resemble the true leaves that follow. Cutting should begin forty-five days from sowing. It is impossible to put spinach on too rich soil, and nitrate of soda is used on it with profit.

AMERICA

A new variety from a cross between Viking and Bloomsdale Long Standing. Leaves dark green, savoyed and thick. Withstands heat better than others of this type and is slower to bolt.

48 Days

GIANT NOBEL THICK LEAF

Plants large, vigorous and slow to run to seed. Very heavy yielder. Leaves medium green, thick and tender. The best thick leaved variety.

42 Days

HEAVY PACK

Plants are large and spreading; leading canning variety because of heavy yield. Leaves very large, broad, arrow shaped with rounded tip, thickest of all large leaved varieties, dark green, partially crumpled.

45 Days

KING OF DENMARK

The best long season spinach, remaining two weeks longer than others before bolting to seed. Plant vigorous and spreading; leaves large, rounded, crumpled and blistered, deep green in color.

44 Days

NEW ZEALAND

This branching plant—a spinach in its use but not in its growth—frost-kills but grows luxuriantly in the summer heat. Plant these large seeds three in a hill, 3 x 2 feet apart or start the plant under glass and transplant.

SPINACH — Continued

- OLD DOMINION (BLIGHT RESISTANT)** 40 Days
A cross between Virginia Blight-Resistant Savoy and King of Denmark. Large, dark green, heavily crumpled leaves. Long standing and resistant to mosaic. Used mostly for an early spring crop.
- PRICKLY WINTER** 43 Days
A very hardy variety and will withstand the severest weather with only a slight protection of leaves or straw. The seed is prickly; leaves triangular, oblong or arrow shaped. It is used extensively for fall sowing.
- SAVOY LEAVED BLOOMSDALE** 39 Days
One of the best to plant in autumn for early spring use. Plant of upright growth with narrow, pointed leaves, which are curled like those of the Savoy Cabbage. It grows quickly to suitable size for use but soon runs to seed.
- SAVOY BLOOMSDALE BLIGHT RESISTANT (VIRGINIA SAVOY)** 39 Days
Used principally in sections where blight occurs. Similar to Savoy Leaved or Bloomsdale but somewhat smoother in leaf and inclined to bolt to seed earlier.
- SAVOY BLOOMSDALE LONG STANDING** 42 Days
Similar to the older type but with a thicker, more round and lighter colored leaf. Very slow to bolt to seed.
- VIKING** 44 Days
This variety is excellent for market gardens and canning. Plant large, spreading, vigorous, long standing and heavily productive. Leaves very large, thick, dark green.
- VIROFLAY OR THICK LEAF** 43 Days
Grows very rapidly forming a cluster of large, very thick, slightly wrinkled leaves of fine color and quality. Recommended for market gardeners.

SQUASH—SUMMER VARIETIES

CULTURE. The directions for the planting of Cucumbers can be followed with slight modifications for Squash or Cymling. Plant the Summer Squash in hills 4 feet apart and use before mature. Plant the Winter Squash in hills 6 to 8 feet apart; handle without bruising and store in a dry, moderately warm place for winter. Plant the seed generously and thin to 2 or 3 plants to a hill. One ounce of seed plants 25 hills and 2 to 4 pounds plants an acre. The Squash is recommended either for the table or the feed lot. Number of days given is from planting to ripe fruit.

- CASERTA** 50 Days
A very early, bush type Coozelle. Very prolific, leaves heavily cut. All America Selection G.M. 1949. Mature fruits nearly cylindrical, but slightly enlarged near blossom end, 15 inches long, 4 to 5 inches in diameter. Color, dull, very dark green striped on a light glossy green. Harvest when young. Flesh, yellowish white, thick, fine, well flavored.
- GIANT SUMMER CROOKNECK** 56 Days
This strain is a great improvement on the old variety of Crookneck. It is larger and better in every way.
- SUMMER CROOKNECK** 50 Days
A standard early and productive summer variety. Fruits about a foot long, moderately warted and of a bright yellow color.
- EARLY WHITE BUSH, SCALLOPED** 55 Days
Also called Cymling and White Patty Pan. It is the most popular of the white summer types of squash. The fruits are rather small, quite flat with ridged or scalloped edges. The vines are extremely prolific and disease resisting. Used when but a few days old they are very tender.

SQUASH — SUMMER VARIETIES — Continued

- EARLY YELLOW BUSH, SCALLOPED** 55 Days
It is similar in all respects to the Early White Bush except in the color of the skin, which is a golden yellow. It is not quite so prolific, nor is it as widely used.
- GIANT STRAIGHTNECK** 55 Days
A distinct improvement on the Crookneck strain as it packs to better advantage for shipping. Popular with market gardeners and shippers. Plant is of bush type; fruits thicknecked, heavily warted, straight, lemon yellow in color; flesh thick, light yellow.
- SWEET POTATO OR DELICATA** 55 Days
Early and very prolific; of oblong shape. Ground color orange-yellow splashed and striped with very dark green. Although of small size the squashes are very solid and heavy while the quality is rich and dry.
- ITALIAN VEGETABLE MARROW** 60 Days
A distinct variety of squash of bush form. Fruit grows to a length of about 20 or more inches, with a diameter of 3 to 4 inches; skin smooth, of a dark green color, marbled with yellow or with paler green. All through Italy, where the squash is grown, the fruits are eaten when quite young, sometimes even before the flower has opened.
- YANKEE HYBRID** 50 Days
Originated by the Conn. Agricultural Experiment Station; a single cross hybrid, resulting from carefully controlled crossing of two inbreds. The Conn. Station has shown that it pays gardeners to use this hybrid where they depend on most of their returns from the earliest market. All America B. M. 1941. Fruit, similar in all respects to Early Prolific Straightneck. Flesh, white, fine texture and flavor.
- BLACK ZUCCHINI** 62 Days
Developed from Italian Marrow. Fruits are cylindrical, long, smooth, dark green-black; flesh greenish white at eating stage and of good flavor. Length about 13 inches; diameter 9 inches.
- ZUCCHINI, SMALL SHORT COCOZELLA** 60 Days
Fruits weigh 3 to 4 pounds, nearly cylindrical, straight. Color medium green mottled with cream-grey and lighter green stripes; flesh very firm and of delicate flavor. Plant is of bush type.

SQUASH — WINTER VARIETIES

- ACORN, DES MOINES OR TABLE QUEEN** 90 Days
A trailing variety producing acorn-shaped fruit with a thin, distinctly ribbed, dark green shell; 6 inches long by 4½ inches in diameter. Flesh light yellow and bakes well.
- JUMBO OR MAMMOTH TABLE QUEEN** 95 Days
Fruits are 7-8 inches long and 5 to 5½ inches in diameter, weighing 2 to 3 lbs. Flesh is medium thick, pale orange, tender, dry, sweet, flavorful; good keeper.
- GOLDEN TABLE QUEEN** 75 Days
An attractive squash, deep orange in color with semi-bush plants, therefore it can be planted same as bush squash. It is uniform and prolific—our only criticism is that the flesh is somewhat thin, but the quality is equal to the green strain. Size, 5x4.

SQUASH — WINTER VARIETIES — Continued

- BANANA, BLUE** 110 Days
Fruits are 18-20 inches long, weigh 10-12 lbs.; skin medium hard and smooth, slate blue-green. Flesh is medium thick, orange-yellow, very fine textured; stores well.
- BANANA, PINK** 105 Days
Similar to regular Banana but exterior deep pink. Fruits average 15 in. in length, 6½ in. diameter, straight, pointed at blossom end, rounded at stem end. Flesh thick with small seed cavity.
- BOSTON MARROW** 100 Days
Particularly valuable for canning. Fruits large, commonly 10 to 12 inches through, almost spherical, usually a trifle flattened at blossom end; skin slightly roughened, rich orange; rind hard and brittle; flesh thick, salmon-yellow.
- BUTTERCUP** 100 Days
A fine new squash of excellent quality, 4½ x 6½ inches in size. The outside color is green with stripes and spots of grey. There is a heart-shaped protuberance at the blossom end. The dry, thick flesh, texture and keeping qualities of this squash are excellent.
- BUTTERNUT** 90 Days
Fruits 8" to 10" long, bulbous at blossom end. Rind thin and tough, creamy yellow in color. Flesh very thick, fine grained, nutty and of excellent quality.
- DELICIOUS** 105 Days
Fruits broad top-shaped, commonly 7 to 8 inches long; skin very dark green, fairly smooth; rind thin but hard; flesh extremely thick, bright yellow, fine grained and dry, without fiber and of highest quality.
- GOLDEN DELICIOUS** 105 Days
Valuable for canners because of the high starch content of its flesh and the bright red-orange color of the exterior. In shape, size and season it is practically the same as the original Delicious.
- HUBBARD** 100 Days
The standard winter squash. Fruits large, heavy and moderately warted, shell dark bronze-green showing more or less light green markings toward blossom end; flesh bright orange-yellow, fine grained, thick and dry.
- BLUE HUBBARD** 110 Days
This excellent squash of the Hubbard type is light blue in color with hard shell and thick, fine grained flesh, which is very tender and by far the best flavored of the winter squashes. This variety is very popular in the east.
- RED OR GOLDEN HUBBARD** 100 Days
This is a very distinct sort of the shape and general character of the Hubbard but a little smaller; color rich orange-red instead of the dark olive-green.
- WARTY HUBBARD** 100 Days
Somewhat larger in size than the well known Hubbard and of equal quality but is more heavily warted and the shell is very dark green, almost black, in color. Our stock of this variety is exceptionally true.
- UCONN** 80 Days
This is the bush form of Acorn or Table Queen. It takes up much less room than the vining type but yields quite as large a crop of fruits equal in size and equally delicious.

TOMATO

CULTURE. This crop responds well to fertilizer and soil should be enriched with complete fertilizer before planting. The Tomato requires one hundred days or more to mature from seed. As Tomatoes are killed by other than light frost, early Tomatoes should be started in hotbeds 2 months before they may be transplanted out-of-doors. Three weeks later these plants may be potted or given a space of 4 by 4 inches in the hotbeds. Before setting in the field, the plants should be gradually exposed to the outside conditions and the quantity of water given them decreased. Transplant on a cloudy day if possible, and water freely. Nitrate of soda may be given each plant at this time with profit. A space of 4 by 4 feet should be given each plant in the field or more for robust varieties, except that where they are carefully pruned and trained, which is unnecessary, they may be planted as close as 2 by 2 feet. One ounce of seed gives 2,000 plants. The number of days given is from setting plants to ripe fruit. Tomatoes may also be seeded direct in April. Drill seed about an inch apart in the row and plant a little Cabbage seed to mark rows for early cultivation. Thin after frost danger.

- BEEFSTEAK OR CRIMSON CUSHION** 90 Days
A wilt resistant, late, main crop variety for home and market garden use. Plant open in habit of growth, heavy, rather light green, vigorous. Fruits large, flat, scarlet, rather smooth.
- BISON** 65 Days
Small, spreading, open growth with few leaves, 2 feet tall. Fruits medium small, 2 inches in diameter, flattened top globe. Bright red color; thin, tender skin, thin side wall, quite large seed cells, very juicy. Fruits set mostly at one time and are bunched around base of vine.
- BONNY BEST—JOHN BAER—CHALK'S EARLY JEWEL** 75 Days
Vines strong and vigorous; fruit deep scarlet, ripening to stem; flesh firm. A productive and very desirable early and main crop variety.
- BOUNTY OR VICTOR** 65 Days
Fruits are scarlet, medium small, smooth, uniformly globular, shallow, small core, cracks under extreme variations of dry and wet weather. Very uniform in ripening. Vines are very small.
- BREAK O' DAY** 71 Days
A wilt resistant tomato that is nearly as early as Earliana and as productive as Marglobe. Its fruits are large, smooth, red and globular, very similar to Marglobe but usually larger. Used whole for salads or stuffed.
- BRIMMER** 91 Days
Similar to Ponderosa but larger, a single specimen often weighing 3 pounds. Fruit is solid and meaty, massive in size, delicious flavor, rich dark red color, and almost seedless.
- DWARF CHAMPION** 87 Days
A purplish pink variety forming a strong, erect, bushy plant 2 feet high. Often sold as a tree tomato. Fruit smooth, medium sized, fairly solid and of good flavor.
- EARLIANA** 65 Days
A very popular early home garden variety. Fruits flattened, medium in size, deep-scarlet red, firm and fairly smooth.
- FIRESTEEL** 65 Days
Vines small to medium. Fruit scarlet red, medium size, smooth, almost globular. Small core very firm and fleshy.
- GARDEN STATE** 84 Days
Developed by Campbell Soup Company from crosses involving Pritchard, Marvel and Pink Topper. Plant vigorous, partially resistant to Fusarium wilt and late blight; fruits slightly globe shape, attractive in color and size, thick-walled and mild flavored.

TOMATO — Continued

- GOLDEN QUEEN** 82 Days
Fruits large and smooth of a beautiful golden yellow, sometimes with a slight blush of red, as smooth and well shaped as the best of the red varieties and of superior flavor.
- GREATER BALTIMORE** 83 Days
Particularly valuable for canning; heavily productive. Fruits deep scarlet-red, large, deep but flat, smooth, very firm and solid.
- GROTHEN'S GLOBE** 73 Days
Early maturing, wilt resistant variety which is popular in some sections for shipping. Similar to Break o' Day, but the fruits are of deeper scarlet and are free from objectionable yellow about the stem end.
- GULF STATE MARKET** 81 Days
The best of the early purple fruited varieties. In season with Early Detroit while fruit is larger, smoother, more globe-shaped, very solid, free from cracking and productive.
- JUBILEE** 72 Days
Fruits are bright, golden orange, deep globular, firm; the orange colored flesh is mild but of definite flavor and really delicious. Makes delicious juice. Ready in about 72 days after plants are set out in the garden.
- JUNE PINK** 67 Days
Vine makes a very scant leaf growth 2 to 2½ feet tall. Fruit averages 3 inches in diameter, slightly flattened tip and bottom with smooth, thin, tough skin and medium thick wall with five large seed cells. Earliest of the pinks.
- LIVINGSTON'S GLOBE** 82 Days
Of beautiful globe shape with quite a percentage of elongated (stem to blossom) fruits, which permits a greater number of slices being taken than with flat fruited sorts. Color a beautiful, glossy rose tinged purple.
- MARGLOBE** 80 Days
Resistant to nail-head rust and fusarium wilt. Large, perfect globe-shaped fruits of a beautiful scarlet color. Its spreading habit of growth enables it to bear in great abundance.
- IMPROVED STONE** 84 Days
Vines vigorous and productive; fruits large, smooth, solid and deep red in color, very heavy. This is a favorite canners' variety.
- NORTON, WILT RESISTANT** 87 Days
Similar to Stone but bred for its resistance to fusarium wilt; possibly a trifle later than Stone.
- OX HEART** 90 Days
One of the largest of all tomatoes. Purple fruits often weigh up to 1½ pounds. Of distinct "ox heart" form, very solid, with few seed cells.
- PAN AMERICA** 73 Days
Vines similar to Marglobe but smaller leaved. Resistant to Fusarium wilt. Fruits bright red, deep globe shape and of medium size.
- PONDEROSA** 87 Days
A purplish-pink tomato of largest size. Vine vigorous and very productive; fruit very solid, fairly smooth and of good quality.
- PRITCHARD OR SCARLET TOPPER** 76 Days
Wilt resistant. Fruits large, smooth, globular, solid with thick walls and cross sections; color deep scarlet. Splendid home and market garden variety; excellent for shipping.

TOMATO—Continued

RUTGERS

72 Days

Introduced by the New Jersey Agricultural Experiment Station. Fruits medium to large, similar in shape to Marglobe but slightly more flattened. Highly recommended as a second early maturing variety for canning and tomato juice.

SAN MARZANO

An Italian variety highly prized for manufacturing into paste and powder. Fruits distinct, $1\frac{1}{4}$ inches broad by $2\frac{1}{2}$ to 3 inches long, flat sided and rounded at ends. Color bright scarlet; flesh thick, interior devoid of juicy pulp, and seeds comparatively few. Heavily productive in the northern states and in California.

SIOUX

70 Days

Developed at Nebraska Experiment Station. Plant relatively open with finely divided leaves. Fruit red, medium sized, almost globular, thick walled and practically free from hard core, juicy with good flavor, ripens uniformly.

STOKESDALE

72 Days

An attractive second early variety. Fruits smooth, almost globe shaped; large pulpy core, solid flesh, free from cracking, good red color. Vines medium sized, coarse foliage which gives fair coverage, medium green, productive.

VALIANT

65 Days

Plant is vigorous, medium in size and open. Fruits large for an early variety, globe shaped and of bright red color. Good yielder.

WISCONSIN No. 55

75 Days

Introduced by the College of Agriculture, University of Wisconsin. Plant vigorous with some resistance to early blight and blossom end rot, open but fairly leafy. Fruits medium large, slightly flattened, of good scarlet color.

YELLOW OR GOLDEN PONDEROSA

90 Days

Vines large and heavy; fruits very large, flat, deep yellow. A fine home garden variety.

HYBRID TOMATO—STOKESCROSS NO. 4

75 Days

A brilliant F2 cross, medium early, bright red and very productive. Of all hybrids in our trial grounds, both F-2 and F-1, this one has been the highest yielding and the best in quality.

TOMATO—SMALL FRUITED VARIETIES

YELLOW HUSK OR GROUND CHERRY

85 Days

Vine makes a spreading open growth, light green in color; fruit is small, $\frac{3}{4}$ inch, round, yellow in color, and is enclosed in a thin, paper-like husk that loosens as fruit ripens. Used for pies and preserves.

RED CHERRY

75 Days

Heavy growth, small leaf, heavy leaf growth, 5-foot vine. Fruits small, $\frac{1}{2}$ to $\frac{3}{4}$ inch, globe shape, bright red. Grows in clusters and is a heavy producer.

RED PLUM

73 Days

A red fruited sort, resembling a plum in shape and size. Used as a novelty and for preserves.

RED PEAR

75 Days

Fruits 2 inches long; pear-formed.

YELLOW PEAR

75 Days

Like the Red Pear in all ways except color, which is a bright yellow.

YELLOW PLUM

75 Days

Like the Red Plum in all ways except color, which is a bright yellow.

TURNIP

CULTURE. While the main crop of Turnips is planted in July, more Turnips should be grown in early spring. Seed may be broadcast on the few soils freed of weeds but it is more advisable to sow in 1- or 2-ft. drills, cover less than one-half inch and thin to stand 6 inches apart in the row. Use 1 ounce of seed to 100 feet of row and 2 pounds to the acre. The Turnip requires one-half more seed when broadcast than in drills and a salad Turnip requires one-half more seed than the Turnip sown as a root crop.

- AMBER GLOBE** 75 Days
One of the best varieties for a field crop for stock. Flesh yellow, fine grained and sweet; color of skin yellow with green top. Hardy, keeps well; a good cropper. Very popular in the south.
- COW HORN OR LONG WHITE** 68 Days
This variety is pure white except for a little shade of green at the top. It is carrot-like in form, growing nearly half out of the ground and slightly crooked.
- EARLY SNOWBALL** 43 Days
Medium large, light green tops. Roots are 3 to 4 inches, perfect globe shape; a fine tap root; pure white colored skin and flesh. Flesh fine grained and sweet. Good table type.
- GOLDEN BALL OR ORANGE JELLY** 60 Days
Undoubtedly one of the most delicate and sweetest yellow fleshed turnips. Not of a large size but firm, hard and of most excellent flavor. Keeps well and is superior as a table variety.
- EXTRA EARLY PURPLE MILAN** 40 Days
Tops medium, upright growing, strap leaved; roots 3 inches, white with purple top, very flat; flesh sweet and crisp. Recommended for early spring planting.
- EXTRA EARLY WHITE MILAN** 40 Days
Tops small and upright; roots 3 inches, pure white, very flat; flesh sweet and crisp. Used for forcing or early spring planting outdoors. Very early.
- POMERANEAN OR LARGE WHITE GLOBE** 75 Days
This is one of the most productive kinds and in good, rich soil roots will frequently grow to 10 pounds in weight. It is of perfect globe shape; skin white and smooth; leaves large and dark green.
- PURPLE TOP STRAP LEAF** 45 Days
Tops medium large, upright, strap leaved. Roots 3 to 4 inches, flat, white with purple top. Flesh white, fine grained and sweet. Early variety.
- PURPLE TOP WHITE GLOBE** 60 Days
An early, perfectly globe-shaped variety of good size and very attractive appearance. The roots are large, white with purple top. The flesh is white, fine grained and tender. They are best for table when about 3 inches in diameter but can be grown much larger for stock feeding. Best variety for market gardeners.
- SEVEN TOP FOR TURNIP GREEN**
Standard, extremely hardy foliage turnip for table and forage use. Root woody and inedible; crown sends up numerous, leafy shoots which are excellent for greens and for stock to graze on.
- SHOGIN OR JAPANESE FOLIAGE**
Very popular in the south. Quick growing. Tops 18 to 20 inches tall, bright green, strap leaved; roots globular, smooth, white and of excellent quality. Louse proof.
- SOUTHERN PRIZE**
Foliage type with tops much like Seven Top and used for same purpose. Makes a large, top-shaped root of poor quality.
- WHITE EGG** 50 Days
Top medium size, upright; roots white, egg-shaped with small tap root, 2½ to 3 inches. Good home garden variety.

TURNIP — Continued

- WHITE FLAT DUTCH, STRAP LEAF** 42 Days
Tops small, light green, strap leaved; roots white, 3 to 4 inches, flat, fine grained and sweet. Excellent for early planting.
- YELLOW ABERDEEN, PURPLE TOP** 75 Days
Very hardy and productive, a good keeper; globe-shaped. Color pale yellow with purple top. Very firm in texture and closely resembling the Rutabaga in good keeping qualities. Good either for table or stock.
- YELLOW GLOBE** 75 Days
Tops large, upright; roots 4 to 5 inches, globe-shaped, pale yellow; flesh firm, pale yellow.

RUTABAGA

CULTURE. Rutabaga, or Swedish Turnip, with their superior keeping qualities, had best be drilled a month earlier than other turnips, given 18 to 30-inch rows and thinned to stand six to twelve inches apart in the row.

- AMERICAN PURPLE TOP, IMPROVED** 90 Days
Tops large, upright; roots 5 to 6 inches, yellow with purple top; flesh pale yellow, fine grained, sweet and tender.
- GOLDEN NECKLESS** 85 Days
Resembles American Purple Top but with medium top and very small neck. Roots flattened globe in shape, yellow with purple top; flesh yellow, firm and of excellent quality.
- MACOMBER** 85 Days
A white-fleshed variety of superior table quality. Roots nearly round, almost neckless, white with greenish purple top. Well adapted to New England.
- MONARCH OR TANKARD** 90 Days
This is a yellow fleshed sort having very large tankard-shaped roots with relatively small necks and tops. Color purplish-crimson above ground, yellow below; flesh fine grained, very solid and of the best flavor.
- SWEET GERMAN** 90 Days
Roots 4 to 5 inches, white with green tinted top, globe-shaped; flesh pure white, fine grained and sweet. Good for table use or stock feed.

WATERMELON

CULTURE. For watermelon, follow our cultural directions for cucumbers, except that it is necessary to give the watermelon a space of eight to ten feet between hills, and thin the plants to two to the hill. One ounce plants twenty-five hills and three pounds of seed plant an acre. Number of days given is from planting to ripe fruit.

- BLACKLEE** 95 Days
Developed by M. N. Walker of the Florida Experiment Station from Leesburg x Hawkesbury. Very resistant to Fusarium wilt. Fruits of Tom Watson type but somewhat thicker and shorter; rind dark green, thin but tough; flesh bright red, of good texture and flavor. Seeds black, medium size. Weight 30 pounds.
- CITRON, RED SEEDED** 95 Days
For preserves and candied fruit. Round green fruits, distinctly marked with irregular stripes. Flesh white, very firm and solid. Not good to eat uncooked.

WATERMELON — Continued

- COLE'S EARLY OR HARRIS EARLY** 80 Days
The best of the extra early sorts. Fruits slightly oval with irregular mottled stripes of light and dark green. Flesh bright red, sweet and tender. A desirable variety where the season is short. It is hardy, productive and the largest of the early kinds.
- CONGO** 90 Days
An Anthracnose resistant variety developed to permit normal development in the Gulf Coast and Southeastern states where Anthracnose frequently kills the vines preventing normal development of the melons. Yields well and has nice marketable fruits. A good shipper, not resistant to wilt and mildew. All America Selection B.M. 1949.
- DIXIE QUEEN** 85 Days
Fruit round or blunt oblong, grey with prominent dark green stripes. Flesh richly colored, firm, sweet and juicy, with very small white seeds. Good shipper.
- DUDE CREEK** 95 Days
Fruits large and cylindrical, rind thin and tender with irregular stripes of dark and pale green. Flesh bright red, sweet and of good quality. Popular in the South for local market and home garden.
- EARLY KANSAS OR RED RUSSIAN** 80 Days
Large fruits, nearly round, bright green with broad wavy stripes of lighter green. Flesh bright red. Thin, tough rind. Brownish seed turning to buff when dry.
- FLORIDA FAVORITE** 88 Days
A very large, long melon, mottled dark green with stripes of lighter shade. Rind thin but firm; flesh very bright, deep red, very sweet, tender and of excellent flavor. Finest flavored melon for home garden.
- FLORIDA GIANT, Black Diamond or Cannon Ball** 95 Days
Fruits dark green, nearly round; flesh firm and red; of excellent quality. Ships well and is one of the best all-purpose varieties. Seed with heavy dark brown flecking on tan ground. Weight about 40 lbs.
- GARRISON** 90 Days
Similar to Dude Creek but slightly smaller, shorter and with white seeds.
- GOLDEN HONEY (Yellow Meated)** 90 Days
The best of the yellow fleshed melons. It is oblong in shape and the average weight is 20 pounds. The rind is dark green with irregular stripes of darker green.
- GYPSY OR GEORGIA RATTLESNAKE** 94 Days
Fruit cylindrical, square at the ends, smooth and distinctly striped and mottled light and dark green. Flesh bright scarlet and very sweet.
- HALBERT HONEY** 85 Days
Fruit long, 12 x 18 inches, slightly tapered, dark green with lighter green veins or net. Flesh rich, bright red, fine grained, sweet and well flavored. Skin is thin and crisp; seed white with black or brown tip and rim. An excellent garden type.
- HAWKESBURY** 85 Days
A wilt resistant shipping variety. Of the Irish Grey type; long and sloping toward either end. Flesh dark pink, of good quality. Seeds brownish black. Weight about 35 lbs.
- HUNGARIAN HONEY** 87 Days
An early sort, fine for northern latitudes; perfectly round with brilliant red flesh.

WATERMELON — Continued

- IRISH GREY** 90 Days
Fruit is long oval, blunt at both ends; light greyish green color. Flesh is bright red, sweet, firm and very well flavored, with few seeds. The skin is thin but quite tough; seed white.
- KING AND QUEEN, WINTER** 85 Days
Skin is light cream with faint stripes of light green. Prolific and of excellent quality. Properly stored it will remain edible for several months. Good shipper.
- KLECKLEY'S SWEETS IMPROVED — WONDER MELON** 86 Days
Unsurpassed for home use or near markets. Fruit medium to large size, oblong, tapering slightly towards the stem end, dark green, often showing fine russeting. Flesh very bright, rich red, exceedingly sweet, crisp and tender. Seed white.
- KLECKLEY'S NO. 6** 90 Days
A wilt resistant variety of high quality, same type as Kleckley's Sweet. Rind thin but tough, flesh free from veins or coarse strings.
- KLONDIKE, IMPROVED BLACK SEEDED** 83 Days
For genuine merit, not surpassed by any other kind. Rind dark green with attractive bright red flesh. Seeds small and black.
- LEESBURG, W.R.** 90 Days
A wilt resistant Kleckley's Sweets developed by the Florida Experiment Station. Fruits similar to Kleckley's Sweets but shorter and blocky ended. Rind dark green, flesh red, fine textured, very sweet. Seed White.
- MISSOURI QUEEN — DIXIE QUEEN, WILT RESISTANT** 85 Days
A disease resistant productive variety developed by the Missouri College of Agriculture. Fruit short, oval, 13 inches long, 10 to 11 inches in diameter. Color whitish light green with dark green stripes. Rind smooth, relatively thin, tough enough for easy handling and good shipping. Flesh rosy red, fiberless, fine grained, sweet. Seed, small white with brown tips.
- MOUNTAIN HOOSIER** 90 Days
Fruits very large, round oval with blunt ends; rind tough, dark green. Flesh bright red and sweet, of fine eating quality. Seeds white, edged with black. Weight 50 pounds.
- NEW HAMSHIRE MIDGET** 65 Days
A midget or icebox tye. Very early and very productive. Fruit 6 inches long by 5½ inches wide, nearly round. Thin rind, tender, light green with dark green mottling and striping.
- NORTHERN SWEET** 75 Days
Fruits small, nearly round, medium green with dark green stripes; rind very thin. Flesh very deep red, crisp, sweet, and of good flavor. Seeds light brown with darker edge. Fruits weigh from 10 to 12 lbs.
- PEERLESS OR ICE CREAM** 84 Days
Fruits short, oblong, medium green, with fine veining; rind thin and tender. Flesh bright red and very sweet; seed white.
- STONE MOUNTAIN** 88 Days
A very large, medium dark green, round melon of excellent quality. Flesh highly colored, very solid, with fewer seeds than most watermelons. It has gained a well deserved popularity in the south where the fruits frequently attain a weight of 60 to 80 pounds. The rind is tough enough to stand handling for nearby markets but will not stand long distance shipping.

WATERMELON — Continued

- STONE MOUNTAIN NO. 5 (Wilt Resistant)** 85 Days
Highly resistant to Fusarium Wilt. Fruit is similar to regular Stone Mountain but runs a little smaller in size. Rind thick, and flesh bright pink. Seeds white spotted with black.
- STRIPED KLONDYKE BLUE RIBBON** 80 Days
Fruits medium sized thick cylinder about 20 lbs., irregular green striped on light green background, rind moderately tough, good home garden variety. Flesh dark red, fine quality, crisp and sweet.
- SWEETHEART** 89 Days
This melon is large, handsome, heavy and productive. The shape is oval and the color mottled light to a very light green. Flesh bright red, solid but tender and very sweet.
- TOM WATSON** 91 Days
A large melon similar in shape and splendid quality to Monte Cristo but averaging larger in size and with a tougher rind, making it especially adapted to shipping. The rind is dark green with distinct, fine veining; flesh is rich red, sweet and tender. One of the best shipping melons.
- WILL ROGERS** 90 Days
A large-round oval melon. Rind dark green, flesh bright red of excellent quality.
- WINONA** 95 Days
Resembles a long type of Florida Giant. Fruits large, short cylindrical, blunt-ended, with tough, dark green rind. Flesh bright red, solid and sweet. Seeds black. Weight 40 pounds.

ONION SETS

We have grown Onion Sets for over 60 years and the knowledge gained in growing, storing, grading and shipping over this length of time assures our customers a superior product.

- EBENEZER**
A yellow variety of great merit. A heavy yielder and good keeping Onion. Does not run to seed readily.
- GOLDEN GLOBE—SEMI-BOTTLE ONION**
A rich, golden yellow variety producing oblong-globe bulbs of excellent keeping quality.
- RED**
Grown from the Red Wethersfield variety and will produce marketable onions several weeks earlier than seed. Also very desirable for green onions.
- WHITE**
Grown from White Portugal or White Ebenezer seed. White sets produce the finest early green onions and no garden should be without them.
- YELLOW BERMUDA**
These sets produce the pale yellow, slightly flattened Onion, with white flesh, at times slightly suffused with pink. For fall planting only.
- CRYSTAL WHITE WAX**
Produces large pure white flattened Onion of mild flavor. For fall planting only.
- YELLOW SHALLOTS OR MULTIPLIERS**
The clumps are divided and they multiply very abundantly. Are grown largely for flavoring.
- WINTER TOP, EGYPTIAN OR PERENNIAL**
These are very hardy; they need no protection during the winter and will continue for many years to yield an abundant supply of green onions without replanting.

REFERENCE TABLES

Quantity of Seeds Requisite to Produce a Given Number of Plants and Sow an Acre

Quantity per Acre	Quantity per Acre
Artichoke, 1 oz. to 500 plants..... 6 oz.	Hemp ½ bu.
Asparagus, 1 oz. to 800 plants..... 4 lbs.	Horse-Radish Roots 10,000 to 15,000
Asparagus Roots 1000 to 7250	Kale, 1 oz. to 5,000 plants..... 4 lbs.
Barley 2 bu.	Kohl-Rabi, 1/3 oz. to 100 ft. of drill..... 4 lbs.
Beans, Dwarf, 1 lb. to 100 ft. of drill... 60 lbs.	Leek, 1 oz. to 100 ft. of drill..... 4 lbs.
Beans, Pole, ½ lb. to 100 hills..... 30 lbs.	Lettuce, ¼ oz. to 100 ft. of drill..... 3 lbs.
Beet, Garden, 1 oz. to 100 ft. of drill... 7 lbs.	Melon, Musk, 1 oz. to 100 hills..... 3 lbs.
Beet, Mangel, 1 oz. to 100 ft. of drill... 5 lbs.	Melon, Water, 4 oz. to 100 hills..... 3 lbs.
Broccoli, 1 oz. to 5000 plants..... 2 oz.	Nasturtium, 2 oz. to 100 ft. of drill..... 15 lbs.
Brussels Sprouts, 1 oz. to 5000 plants... 3 oz.	Okra, 2 oz. to 100 ft. of drill..... 10 lbs.
Buckwheat 1 bu.	Onion Seed, 1/3 oz. to 100 ft. of drill... 4 to 5 lbs.
Cabbage, 1 oz. to 4000 plants..... 2 oz.	Onion Seed for sets..... 40 to 80 lbs.
Carrot, 1 oz. to 100 ft. of drill..... 3 to 4 lbs.	Onion Sets, 1 qt. to 40 ft. of drill..... 8 bu.
Cauliflower, 1 oz. to 2500 plants..... 4 to 6 oz.	Parsnip, ¼ oz. to 100 ft. of drill..... 3 lbs.
Celery, 1 oz. to 6000 plants..... 4 oz.	Parsley, ¼ oz. to 100 ft. of drill..... 3 lbs.
Chicory 4 lbs.	Peas, Garden, 1 lb. to 100 ft. of drill... 1 to 3 bu.
Clover, Alsike and White Dutch..... 6 lbs.	Peas, Field 2 bu.
Clover, Crimson 10 to 15 lbs.	Pepper, 1 oz. to 1500 plants..... 4 oz.
Clover, Large Red and Medium..... 8 to 12 lbs.	Pumpkin, 4 oz. to 100 hills..... 3 to 4 lbs.
Collards, 1 oz. to 5000 plants..... 4 oz.	Radish, 2/3 oz. to 100 ft. of drill..... 8 to 12 lbs.
Corn, Sweet, 1 pound to 200 hills..... 7 to 10 lbs.	Rye 1 ½ bu.
Cress, ¾ oz. to 100 ft. of drill..... 12 lbs.	Salsify, ¾ oz. to 100 ft. of drill..... 8 lbs.
Cucumber, 1 oz. to 100 hills..... 1 to 3 lbs.	Spinach, 1 oz. to 100 ft. of drill... 10 to 15 lbs.
Egg Plant, 1 oz. to 2000 plants..... 4 oz.	Summer Savory ¾ lb.
Endive, 1 oz. to 100 ft. of drill..... 3 to 5 lbs.	Sunflower 8 lbs.
Grass, Blue, Kentucky..... 30 to 40 lbs.	Squash, Summer, 4 oz. to 100 hills..... 2 lbs.
Grass, Hungarian and Millet..... 25 lbs.	Squash, Winter, 8 oz. to 100 hills..... 2 lbs.
Grass, Mixed Lawn..... 100 lbs.	Tomato, 1 oz. to 2000 plants..... 2 oz.
Grass, Red Top, Fancy, Clean..... 8 to 10 lbs.	Tobacco, 1 oz. to 5000 plants..... 2 oz.
Grass, Timothy 10 lbs.	Turnip, 1 oz. to 100 ft. of drill..... 2 lbs.
Grass, Orchard, Perennial Rye and Wood Meadow 2 bu.	Vetch 2 bu.

MEASUREMENT OF AN ACRE

The following will be found useful in arriving at accuracy in estimating the amount of land in different pieces of ground under cultivation: 5 yards wide by 968 yards long contains 1 acre, as do also the following measurements: 10 yards wide by 484 yards long; 20 yards wide by 242 yards long; 40 yards wide by 121 yards long; 70 yards wide by 69½ yards long; 60 feet wide by 726 feet long; 110 feet wide by 396 feet long; 120 feet wide by 363 feet long; 220 feet wide by 198 feet long; 240 feet wide by 181½ feet long, and 440 feet wide by 99 feet long.

NUMBER OF PLANTS OR TREES TO THE ACRE AT GIVEN DISTANCES

Dis. Apart	No. Plants	Dis. Apart	No. Plants	Dis. Apart	No. Plants
12x 1 in.	522,720	30x16 in.	13,068	48x36 in.	3,630
12x 3 in.	174,240	30x20 in.	10,454	48x48 in.	2,723
12x12 in.	43,560	30x24 in.	8,712	60x36 in.	2,901
16x 1 in.	392,040	30x30 in.	6,970	60x48 in.	2,178
18x 1 in.	348,480	36x 3 in.	58,080	60x60 in.	1,743
18x 3 in.	116,160	36x12 in.	14,520	8x 1 ft.	5,445
18x12 in.	29,040	36x18 in.	9,680	8x 3 ft.	1,815
18x18 in.	19,360	36x24 in.	7,260	8x 8 ft.	680
20x 1 in.	313,635	36x36 in.	4,480	10x 1 ft.	4,356
20x20 in.	15,681	42x12 in.	12,446	10x 6 ft.	726
24x 1 in.	261,360	42x24 in.	6,223	10x10 ft.	435
24x18 in.	15,520	42x36 in.	4,148	12x 1 ft.	3,630
24x24 in.	10,890	48x12 in.	10,890	12x 5 ft.	736
30x 1 in.	209,088	48x18 in.	7,790	12x12 ft.	302
30x 6 in.	34,848	48x24 in.	5,445	16x 1 ft.	2,722
30x12 in.	17,424	48x30 in.	4,356	16x16 ft.	170



MICHAEL-LEONARD
QUALITY
SEEDS

*Serving
the Nation*

*Since
1884*

Growers
for
Farm and Garden