

62.69 index

It's New!

It's Miraculous!

It's Sensational!

LIBRARY  
REC'D  
★ MAR 1 - 1954 ★  
U. S. Department of Agriculture



## The New Everbearing Red Raspberry

# OZARK

# Scarlet King

Pick 'em in the spring, summer and fall. Yes, this new miraculous Red Raspberry fruits extremely early—often as early as June 20th. They will continue to bear (except for a few weeks in August) right up until heavy freezing weather—sometimes as late as Thanksgiving.

Each and every plant will produce luscious large size, bright Red Raspberries with an extra fine flavor. You can't imagine how good Raspberries can taste until you eat juicy, sweet OZARK SCARLET KING Raspberries fresh from your own garden. Swell for jam and jelly and extremely good for freezing.

For 58 years, Ben Davis has been in constant search of a better Red Raspberry for the hot Southwest. OZARK SCARLET KING is exactly the plant he desired.

We find it is the best Raspberry for the Midwest and South. Strong upright bushes, free of disease and a heavy producer even in hot and dry localities. If you have never had any success with Raspberries, try OZARK SCARLET KING and be pleasantly surprised.

Plant some of these vigorous, healthy OZARK SCARLET KING plants this year and be well on your way to a fine patch of this wonderful berry. Our supply of these plants is very limited—order early and avoid disappointment.

3 plants for	.....	\$1.15
6 plants for	.....	1.95
12 plants for	.....	3.75
25 plants for	.....	7.25

1954  
Catalog

# *Ozark* NURSERY CO.

## Tahlequah, Okla.

Home of Choice Fruits and Hardy Flowers





**Thornless Boysenberries**

### THORNLESS BOYSENBERRY

A large delicious fruit with a grand advantage in cultivating and picking. Being absolutely free of thorns, it is easy to handle with your bare hands. The bushes are so hardy that they will grow anywhere, producing tremendous large size berries of tempting goodness. Excellent for eating fresh, jellies, jams, preserves, and freezing. Also grand for shipping and marketing. Will make a 6 to 8-ft. growth the first year and produce a heavy crop the second. It pays to plant Ozark's healthy plants.

No. 1 Plants: 6 for \$1.05; 12 for \$1.95; 25 for \$3.75; 50 for \$7.00; 100 for \$11.95; 500 for \$47.50.

Bearing Size Plants: 6 for \$1.85; 12 for \$2.95; 25 for \$5.20.

**Blueberries**



### BLUEBERRIES

Large clusters of luscious Blueberries, the size of Grapes, are far superior to the wild native Huckleberry in flavor. Practically seedless and need no sugar when eaten fresh or frozen—very little when canned. Plants are acid loving—make soil acid by adding peat moss or aluminum sulphate. **PRICES:** 12 to 18-in. Bearing Age, \$1.25 each; 5 for \$5.00.

### OZARK HUCKLEBERRIES

A very delicious little berry that is a native of the Ozark mountain range. Unexcelled for its unique flavor. People familiar with it say there is no other fruit that will compare with it for jams, pies, and fruit cakes. Mother Nature couldn't have made a better berry. A very prolific bearer that will grow practically in any kind of soil. Once set, it will never have to be renewed. **PRICES:** 29c each; 12 for \$1.95.

### LAWTON BLACKBERRIES

A heavy yielding Blackberry that is probably the most widely grown commercial Blackberry. Berries are of enormous size, glossy jet-black, and of sweet pleasing flavor. Very firm and outstanding for their ability to be sent to distant markets remaining in good condition. Always commands highest prices and grand for home planting. Ripens in July. **PRICES:** 6 for 95c; 12 for \$1.79; 25 for \$3.25; 50 for \$6.35; 100 for \$10.95.

Eat **OZARK** Better Flavored

Bear Every Year

### AUSTIN DEWBERRY

A glossy black berry, round, mild, yet rich in flavor. Excellent for jellies and jams. Resembles a Blackberry, being sweet and juicy, but has a unique taste. Ripens in May, continuing on through June. Fine for eating fresh or freezing. A vigorous grower that will grow even without any care.

#### PRICES

6 for .....	\$ 0.95
12 for .....	1.79
25 for .....	3.25
50 for .....	6.35
100 for .....	10.95



### HOUGHTON GOOSEBERRY

The Gooseberry that is first in both size and quality. Berries are of medium size, excellent for cooking and the best for pies. Does better in partial shade.

#### PRICES

Jumbo Plants .....	Each \$0.79	3 for \$2.19	5 for \$3.50
Commercial .....	Each .59	3 for 1.59	5 for 2.50

### RED LAKE CURRANT

A new variety that will do well in our warm climate. Berries are large, clusters are long, and bright glossy red. Makes beautiful and exceptionally fine jelly. Plant in ordinary garden soil but give partial shade and water well.

#### PRICES

Each .....	\$0.59	3 for .....	\$1.59	6 for .....	\$2.50
------------	--------	-------------	--------	-------------	--------

### CUMBERLAND BLACKCAP RASPBERRIES

The most popular Black Raspberry for many years, and by far the most widely planted. The berries are large, jet-black, firm, sweet, and have a fine flavor. Good shipper. An enormous producer and a vigorous grower.

#### PRICES

6 for .....	\$0.95	50 for .....	\$ 6.35
12 for .....	1.79	100 for .....	10.95
25 for .....	3.25	500 for .....	42.50



**Lawton Blackberries**

### SMALL FRUIT SPECIAL

- 12 Thornless Boysenberries
- 6 Cumberland Blackcap Raspberries
- 6 Lawton Blackberries

#### PRICES

- No. 1 Plants, \$3.19
  - 2 Collections, \$6.12
- FREE**—1 Ozark Huckleberry with this selection!



# BERRIES Fresh from Your Own Garden

**Big! • Juicy! • Delicious!**

Imagine a tasty cake covered with luscious Strawberries. Add some whipped cream, and you're ready to eat. Can you think of anything more desirable and especially when they are fresh, home-grown Strawberries? They are not to be compared to mushy, picked over, store-bought Strawberries that have been on the counter 2 or 3 days. Why not pick a spot, doesn't have to be a large one, and start yourself a Strawberry patch. They are fun to grow.

## BLAKEMORE

A tremendous producer of bright red, juicy, highly flavored Strawberries. Grand for preserving, canning, and freezing. Stands drought better than any other known Strawberry and so thrifty that it is easy to develop a full wide row first season. Plant Ozark double inspected plants for best results. **PRICES:** 25 for 79c; 50 for \$1.25; 100 for \$1.95; 500 for \$7.50; 1000 for \$12.00.

## ARMORE

An outstanding new Aroma-Blakemore cross that's certainly doing well with us. Ripens just after Blakemore, lengthening the season for Strawberries. Extra fine for preserves and freezing. Berries are huge, bright red and the best flavor you ever tasted. Try a hundred of the plants and you will be astonished at the size and number of berries you get. **PRICES:** 25 for \$1.00; 50 for \$1.50; 100 for \$2.00; 500 for \$9.50; 1000 for \$17.50.

## GIANT GEM (Everbearing)

A heavy producer of large, firm, bright red Strawberries of high quality. Starts bearing the first year and will bear from early spring until frost. Noted for its ability to grow anywhere Strawberries are grown and would do exceptionally well in your garden.

### PRICES

25 for	.....	\$ 1.25
50 for	.....	1.95
100 for	.....	3.50
500 for	.....	12.00
1000 for	.....	22.50

**Fresh Berries  
6 Months  
of the Year!**



Blakemore



## STREAMLINER (Everbearing)

We have always been in constant search for a better Everbearing Strawberry for the Southwest. After thoroughly testing Streamliner, we find it has everything—enormous size (but never hollow), good color, grand flavor, and is a heavy bearer. Adapted to the Southwest, bears the first year from spring to fall. Be sure to plant some Streamliners this year. **PRICES:** 25 for \$1.25; 50 for \$1.95; 100 for \$3.50; 500 for \$12.00; 1000 for \$22.50.

## RED RICH

(Plant Pat. No. 993)

Have you tasted the new patented Red Rich Strawberry? Wow! What a berry! So rich—so tender—so sweet that you eat them without adding sugar. Yes, Red Rich is a big, sweet, solid red berry through to the core. Starts bearing in June and continues putting on luscious berries until hard frost. One acre of Red Rich produced 4,000 quarts last fall. Truly the greatest Everbearing Strawberry of all time. Supply is limited so order today. **PRICES:** 12 for \$2.95; 25 for \$5.00; 50 for \$8.50; 100 for \$15.00; 250 for \$32.50; 500 for \$55.00.

### SHORTCAKE SPECIAL

Enough for Shortcakes All Summer

25 Streamliner  
50 Giant Gem

**Only \$2.69**  
(\$3.25 Value)

### FREEZER SPECIAL

Freeze 'em and have Strawberries the year around.

**50 Armore**      **100 Blakemore**  
Only \$2.89. (Value \$3.45.)





# OZARK GRAPES

The Most Dependable of All Fruits  
Never Miss a Crop—Easy to Grow

## GRAPE PRICES

JUMBO, 2-Yr., No. 1		SUPER, 1-Yr., No. 1	
Each	\$0.40	Each	\$0.30
5 for	1.75	5 for	1.25
10 for	2.75	10 for	2.15
25 for	5.75	25 for	4.75

Commercial growers write for special prices on large quantities.

## BLUE VARIETIES

- BAILEY.** This large, sweet, juicy-fleshed Grape ripens 2 weeks ahead of Concord when everyone is hungry for a bunch of home-grown Grapes. Ripens evenly and is by far the best Grape for dry sections of Oklahoma, Kansas, and Texas. Will be a good one for your garden.
- CONCORD.** America's old standby and the leader for grape juice. Unusually hardy and superior in withstanding diseases which accounts for regularity in bearing.
- FREDONIA.** A new Grape that we think is the best for the Southwest, and many growers say that it is going to be the leading Grape in America. Bears early, is a very hardy grower, and exceptionally productive. Fruit is large and deliciously flavored with lots of juice. Ripens evenly and will outbear Concord by 50%.

## RED VARIETY

- CATAWBA.** A favorite known far and near for its excellent eating qualities, making it the most popular table Grape. Exceptionally heavy producer of luscious, sweet, delightful Grapes.

## WHITE VARIETY

- NIAGARA.** A clear, almost transparent Grape that has always been the leading white Grape.



## GOLDEN MUSCAT

In our continual search for new and better varieties we bring you this year a California-type Grape that is vigorous and productive right here in the Southwest. A wonderful new golden yellow Grape for home use and roadside markets. Produces large clusters of huge, juicy, sweet Grapes with a rich muscat aroma. For a tasty treat include Golden Muscat in your planting. **PRICES:** Each 89c; 5 for \$4.00.

It will pay  
you to  
plant these

# GARDEN FAVORITES

## HORSERADISH

Large, hardy crowns or cuttings. Easy to grow. Plants can be used at the end of the first season. Plant some this year and grind your own Horseradish. **PRICES:** 25c each; 3 for 45c; 12 for \$1.75.

Horseradish



## SAGE

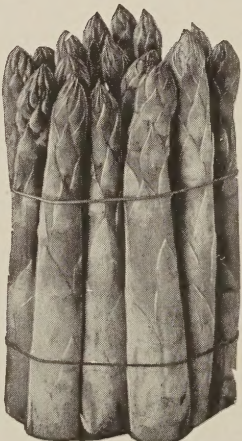
Our plants are first in both size and quality. Large leaves with excellent flavor for seasoning sausage, meat dressing, etc. Produces rapidly and is perfectly hardy. **PRICES:** 39c each; 12 for \$3.95.



Sage

## MARY WASHINGTON ASPARAGUS

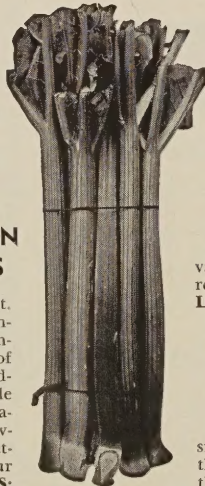
A truly ideal plant. So large, yet so tender. The extra-tender tips are of mouth-watering goodness and delectable flavor. This Asparagus is of the heaviest stock and selected especially for your satisfaction. **PRICES:** Jumbo 2-yr. size, 10c each; 25 for \$2.00.



Mary Washington Asparagus

## VICTORIA RHUBARB

Rhubarb at its finest. This is the supreme variety of the old-fashioned Rhubarb. Early, round growing with mild acid flavor. **PRICES:** Large roots, 25c each; 3 for 45c; 12 for \$1.50.



Victoria Rhubarb

## RED MacDONALD RHUBARB

A tremendous producer of sweet, tender, giant size red Rhubarb. Two or three times larger than regular Rhubarb and stays tender far into the summer. Can only be grown from divisions, which cost more but you get a much better Rhubarb. **PRICES:** 75c each; 3 for \$1.65; 6 for \$3.25.



Ozark's Outstanding Varieties of  
**CHERRIES**  
 Delicious—Bear Young  
 Easy to Grow



Large  
 Montmorency

**SOUR CHERRIES**

- **EARLY RICHMOND.** The earliest of all red Cherries and by far the best variety for the Southwest. The fruit is bright red, juicy and just hangs in clusters, making it easy picking. A strong, healthy grower that often bears the next year after planting. Unsurpassed for pies and jams. Sure bearer.
- **MONTMORENCY.** Montmorency has a reputation that speaks for itself. Large bright red with firm flesh. Bears young, excellent for jams, jellies, and pies. Colors early before ripe—a great advantage in shipping.

**SOUR CHERRY PRICES**

	5 or More 10 or More		
	Each	Each	Each
4 to 5 ft., Jumbo Size .....	\$2.00	\$1.90	\$1.75
3 to 4 ft., Super Size .....	1.75	1.60	1.50
2 to 3 ft., Bargain Size .....	1.25	1.15	1.10

Commercial growers write for special prices on large quantities.

Early Richmond



**Pick Your Own Tree-Ripened Cherries**

Did you ever eat a Cherry Pie made from fresh tree-ripe Cherries? They are better than those you get at the grocery store. Pick a spot and plant a Cherry Tree. It doesn't have to be a large space; you can plant right on your front lawn, as tree is shapely, has good foliage, and beautiful blossoms in spring. Order a Cherry Tree or two today and before you realize, you will be eating juicy tree-ripened Cherries from your own tree.



Black Tartarian

**SWEET CHERRIES**

- **BLACK TARTARIAN.** Large, delicious and purplish black when fully ripe. Very good quality for Sweet Cherry and a regular bearer. Early and exceptionally productive. Fine for eating, pies, canning, and freezing.
- **GOLDEN SWEET.** A heavy producer of golden fruit with a mellow, sweet delectable flavor that is unexcelled. Fine for fancy desserts. Hardest of all Sweet Cherries.
- **COMPASS CHERRY-PLUM.** A cross between a Cherry and a Plum, producing a large dark red Cherry of exceptional quality. Grand for canning and preserving. Bears young and heavily. Ripens in July.

**PRICES ON SWEET CHERRIES AND COMPASS CHERRY-PLUM**

	5 or More 10 or More		
	Each	Each	Each
5 to 7 ft., Jumbo Size .....	\$2.00	\$1.90	\$1.75
4 to 5 ft., Super Size .....	1.75	1.60	1.50
3 to 4 ft., Commercial Size .....	1.35	1.25	1.20
2 to 3 ft., Bargain Size .....	1.25	1.15	1.00

Commercial growers write for special prices on large quantities.

**CHERRY  
 PIE  
 SPECIAL**

Cherry pies from your own trees taste better.

- 1 Early Richmond
- 2 Montmorency

**PRICES**

- 3 Large Jumbo Trees Only **\$5.39**
- 3 Nice 2 to 3-ft. Trees Only **\$3.39**

Compass  
 Cherry







**English Walnut Tree**

Imagine two of these beautiful trees above on your lawn. Wouldn't they be wonderful for your children to play under in the cool shade during hot summer months. Better yet, they would furnish enough English Walnuts each year to pay the taxes on your home over and above the tasty Walnuts your family would eat.

### THOMAS BLACK WALNUT

Our improved grafted Black Walnut is a rapid grower and a heavy producer. It bears young, usually the second year after planting. The nuts are immense size, crack easily, and the kernels come out in halves. Deliciously flavored. Will grow anywhere.

You could easily have 15 to 40 bushels per year from a mature tree right in your own yard, and they sell for \$4.00 or more per bushel. Plant one and increase the value of your property.

	Each	5 or More Each
3 to 4 ft. ....	\$2.75	\$2.50
5 to 6 ft. ....	4.25	3.95

*Wonderful  
for Shade*

# NUT

## HARDY ENGLISH WALNUTS

No doubt you have often eaten English Walnuts which are grown on the West Coast. There is no need to buy shipped-in Walnuts any longer. With our new hardy strain, found where the temperatures drop to much below zero in the Carpathian Mountains of Poland, you can grow them right in your own yard.

Our trees are propagated from a selected tree, which is a direct descendent from the original seed that was sent from the Carpathian Mountains. This selected tree started bearing very young, and bears heavily and regularly. Nuts are thin shell and vary in size from that of the California English Walnut to 3 times its size.

Since the trees are not always fertile, we advise planting of more than 1 tree for perfect pollination and guaranteed success. Trees grow very rapidly and develop into quite large specimens, magnificent for lawns. Often start bearing next year after planting and require practically no care. **PRICES: 4 to 5 ft., \$4.50 each. 3 to 4 ft., \$3.25 each.**



**English Walnuts**

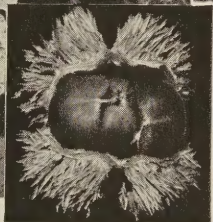
### *Nut* FAMILY SPECIAL

- |                    |                       |
|--------------------|-----------------------|
| 1 English Walnut   | 1 Thomas Black Walnut |
| 1 Chinese Chestnut | 1 Stuart Pecan        |

**PRICES: All 4 heavy, 3 to 4 ft. trees, only \$8.98 (\$11.24 Value).**

## *New Improved* CHINESE CHESTNUTS

A number of years ago blight destroyed our native American Chestnuts. The U. S. Dept. of Agriculture introduced a new type of Chinese Chestnut, after many tests, not only blight resistant but an early bearer of large, good quality nuts. Trees start bearing when very young, often in 2 to 5 years, and grow anywhere Peaches will in America. Fine flavored, sweet nut, larger than American variety, grow to about the size of any Apple tree. **PRICES: 3 to 4 ft., \$1.79.**



**Chinese Chestnut**





# TREES

Always Pay  
Big Profits

## PAPER SHELL PECANS

Pecan trees are among the best for shade trees in the Southwest. Think of one like the one shown on the right in your yard. It would furnish pleasing shade in abundance, and produce over 100 pounds of thin-shelled Pecans each year. The Pecan has also become an essential part of fruit orchards for home use everywhere. Pecan trees succeed in various soils; sandy loam, light clay, or sand and clay. The varieties listed are well tried and recommended. Plant Pecan trees 40 feet apart.



Picture This Pecan Tree in Your Yard

### PECAN TRIAL OFFER

The Perfect Combination of Paper-Shell Pecans

1 Stuart                      1 Success                      1 Schley

All 3 heavy, 3 to 4 ft. trees, only \$6.98 (\$8.25 value)

There is no tree that adds so much to the value of your property as does a paper-shell Pecan.

### PECAN PRICES

	Each	5 or More Each
7 to 8 ft., Jumbo size .....	\$7.50	\$7.25
5 to 6 ft., Super size .....	4.10	3.75
3 to 4 ft., Bargain size .....	2.75	2.50

Commercial growers write for special prices on large quantities.

### STUART

A heavy producing, fast growing variety that originated in Okalahoma and has proven over and over to be the best suited for the Southwest. The nut is large, thin-shelled, and always well-filled. Highly resistant to all diseases and a consistent bearer of supreme quality Pecans. Very profitable variety for commercial or home planting.



Stuart

### SCHLEY

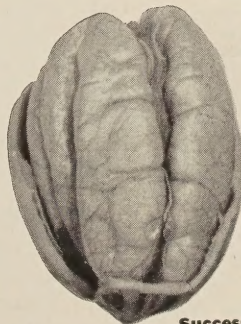
An exceptionally healthy, strong grower, that is a heavy producer. Bears younger than most paper-shell varieties. The shell is thin, easy to crack and the meat is of excellent quality.



Schley

### SUCCESS

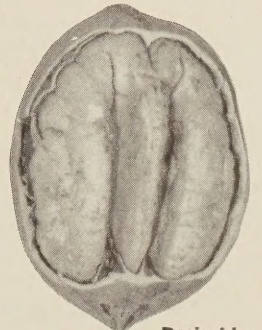
A truly large, plump, thin-shell Pecan that releases its kernel perfectly. Ripens a few days later than Stuart and is highly resistant to disease. Tree vigorous grower and an ideal specimen for yard planting.



Success

### DESIRABLE

A regular and heavy producer of large, round, fat Pecans that bring top market prices. Its flavor is unique and the leader in new varieties. To get the utmost from Desirable, plant on well-drained soil and with Schley for perfect pollination.



Desirable



# Ozark New and Improved

## Bear Young - Heavy Producers -



Heap Big Indian

### A NEW OZARK INTRODUCTION Heap Big Indian

The wonder Peach of Oklahoma and truly a great one started right here in the Cherokee Nation. Ben Davis found this grand Peach as a seedling in an Indian's yard in Tahlequah several years ago. After seeing its immense size and tasting its flavor, he immediately decided that Peach must be propagated. Then a number of years passed while it was in our test orchard before we offered the trees for sale in the nursery. We wanted to see if it had any shortcomings, but after thoroughly testing Heap Big Indian, we found it had absolutely no weakness and was the largest Indian Peach we had ever seen.

#### PRICES

Jumbo Bearing Size	.... \$1.89	3 to 4 ft.	..... \$1.25
4 to 6 ft.	..... 1.49	2 to 3 ft.	..... .89

### TESTED AND PROVEN VARIETIES

When we say tested and proven we mean exactly that. For many years we have had commercial orchards. In these orchards we not only try new varieties but keep testing the old ones. Many leading commercial orchardists depend on us for new and improved, true-to-name varieties. Our trees are exceptionally nice this year but the supply is limited—order early and remember the big trees will give quickest and best results. Plant Peach trees 20 to 24 ft. apart.

#### Prices on Tested and Proven Varieties

	Each	5 or More Each	10 or More Each
Jumbo Bearing Size	.....\$1.49	\$1.40	\$1.30
4 to 6 ft., Super Size	..... 1.15	1.00	.90
3 to 4 ft., Commercial Size	..... .89	.80	.75
2 to 3 ft., Bargain Size	..... .69	.60	.55

Commercial growers write for special prices on large quantities.

➤ **BELLE OF GEORGIA.** By far the most popular and widely planted white Peach. A heavy producer of large, creamy white Peaches with a red blush. The excellent flavor of Belle of Georgia has done much to make it a favorite with commercial and home growers everywhere. We highly recommend this freestone Peach to you.

➤ **CHINESE CLING.** A huge, round, white Peach with a juicy, yet rather firm flesh. Its flavor is unique and far surpasses all other white Peaches for canning or freezing. Each year we have more and more calls for this Peach at our own commercial orchard. No home orchard should be without one.

➤ **EARLY ELBERTA.** A big handsome, bright yellow Peach with red blush that is identical in form with Elberta but ripens about 3 weeks earlier. Has a smooth rich flavor and is a good shipper. A strong grower and good bearer, Freestone.

➤ **ELBERTA.** The sensational money maker of all times. More popular and widely planted than any other Peach. Fills millions of jars every year. You cannot go wrong with Ozark's improved strain of this grand old favorite.

## NEWER VARIETIES

Plant Ozark Newer and Improved Varieties  
for Bigger Profits

### DIXIGEM

Step up your Peach season with this fine new early freestone variety. Ripens several days before Golden Jubilee and shows possibilities of stepping up our yellow Peach season with a good commercial variety. While Dixigem has mostly been fruited in Georgia, we are enthusiastic about its fine color, good size, and remarkable firmness when tree ripe. Holds up well for long shipments and its yellow color with a red blush covering about half of the surface make it sell on any market. Dixigem's excellent flavor makes it a stand-out for eating fresh, canning or freezing. Trees are very vigorous and heavy producers. We strongly recommend this new variety for home orchards as well as for commercial planters.

### FAIRHAVEN

In our constant effort to bring you new and improved varieties of fruits we now offer you Fairhaven. An outstanding new variety developed by Michigan Experiment Station—a cross between J. H. Hale and South Haven. A freestone, self-pollinating variety, ripening about one week before Hale-Haven. Fairhaven trees have shown no weakness with us to date. Vigorous and have an outstanding production record. They have produced well when other varieties have been unproductive—even more frost resistant than the famous Hale-Haven. Fruits of Fairhaven are large, nearly round and mostly bright red cheek. Fruit is firm and ships exceptionally well for an early Peach. Ripens at a time when Peach prices are highest. Get started with Fairhaven this year.

### HALE-HAVEN

A favorite with many and fast becoming a commercial variety. Splendid for canning and can be shipped to distant markets and still remain firm. A heavy producer of large, beautifully colored yellow-fleshed Peaches with a delicious flavor. Extremely hardy. Commands highest prices and will mean profit to you in a home or commercial planting. Freestone.

### OZARK GIANT

A huge Peach—many weighing a pound each. Almost twice the size of Elberta. Ripens about one week after Elberta, lengthening the season for eating fresh, canning, freezing, and bigger profits. Has an exquisite flavor, brilliant red and gold coloring and almost fuzless smooth skin. Ozark Giant will make a big hit in your home orchard.

#### PRICES ON NEWER VARIETIES

	Each	5 or More Each	10 or More Each
Jumbo Bearing Size	.....\$1.69	\$1.50	\$1.40
4 to 6 ft., Super Size	..... 1.49	1.30	1.20
3 to 4 ft., Commercial Size	..... .99	.90	.85
2 to 3 ft., Bargain Size	..... .79	.70	.65

Commercial growers write for special prices on large quantities.



Belle of Georgia



# PEACH VARIETIES

## Orchard Tested and Proven

### A NEW OZARK INTRODUCTION Golden Honey

Another one of Ozark's new and improved fruit sensations. The best and most delicious flavored Peach ever grown. For years Ben Davis has strived to produce a premium Peach, and he feels this is the climax of his career.

In our test orchard, one young tree produced the outstanding number of 20 bushels of these huge, luscious Peaches, and they averaged 50 cents more per bushel than any other variety on the market. We sold \$721.27 worth off one acre of these heavy bearing trees. Without a doubt this excellent producer and shipper is going to be the leading commercial Peach of the future.

Golden Honey is a sweet, rich yellow Peach with rosy red cheeks and yellow flesh that looks extremely beautiful canned in glass jars. Mrs. Davis says: "Golden Honey is the finest and prettiest canning Peach ever canned." After you have eaten one you'll agree that it has the most unique flavor you ever tasted.

This big handful of luscious honey cling is by far more frost resistant than most Peaches. We have had a crop of Golden Honey every time the seedlings have had Peaches on them. Try some and see if you don't agree that Golden Honey is the most wonderful Peach ever grown. **PRICES:** Jumbo bearing size, \$1.89; 4 to 6 ft., \$1.49; 3 to 4 ft., \$1.25; 2 to 3 ft., 89c.



Golden Honey

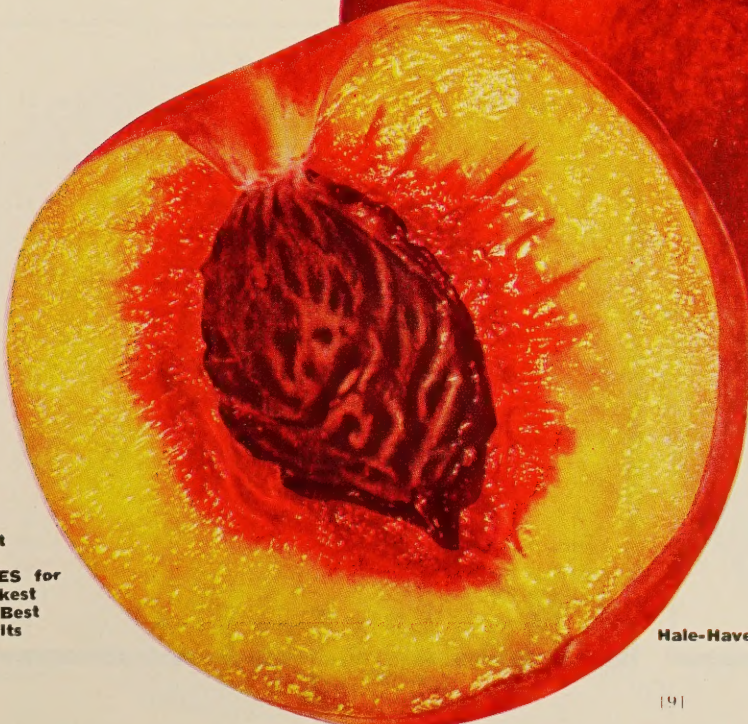
#### Tested and Proven Varieties—Continued

**GOLDEN JUBILEE.** The most popular of all early Peaches. A yellow freestone of good size and excellent quality. Has a fine flavor and is one of the best shippers among the early varieties. A grand Peach for home or commercial planting.

**J. H. HALE.** A giant sized Peach with an enticing flavor and attractive yellow flesh that looks the prettiest canned of any Peach you have ever seen. Very firm meated and stands long shipments. Heavy bearer and a good grower. Why not profit with a Peach that brings highest prices. Freestone.



Fair-Haven



Hale-Haven

### PEACH SPECIAL

A Good Collection for a Home Orchard

- 2 Belle of Georgia
- 2 J. H. Hale
- 3 Elberta
- 1 Chinese Cling
- 1 Hale-Haven
- 1 Ozark Giant
- 10 large Jumbo trees, only \$9.25. (\$14.50 value.)
- 10 good 3 to 4-ft. trees, only \$6.39. (\$9.10 value.)

Fresh tree-ripened Peaches for many weeks. Plenty to can—and some to sell.

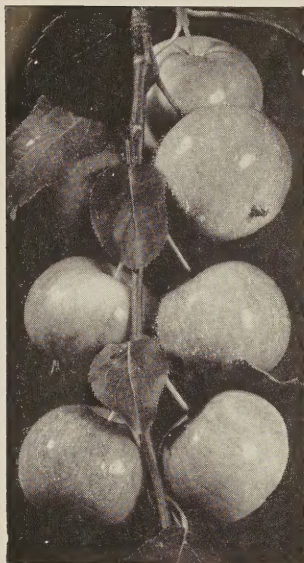


Plant **BIG TREES** for Quickest and Best Results



# Plant OZARK Summer, Fall and Winter

## For Fresh Apples the Year Around



### FLORENCE CRAB APPLES

By far the most valuable of all Crab Apples. A very heavy producer of attractive red with yellow striped Crab Apples of good size. Unexcelled for the quality of its rich, ruby-red jelly, preserves, jams, and pickles of which any housewife would be proud. Pink blooms and ruby-red fruits make it very ornamental for yard planting.

An Apple tree will give you pleasant shade, lovely blossoms in spring, and a crop of Apples, too; so why not plant one in your yard? Our Apple trees are exceptionally fine this year, all are branched, well-rooted trees that will soon start bearing. But remember, the big trees give you quicker and best results. Plant Apple trees 25 to 30 feet apart.

### PRICES ON ALL APPLES EXCEPT OZARK RUBY

	Each	5 or More	10 or More
Jumbo Bearing Size	\$1.50	\$1.40	\$1.25
4 to 6 ft., Super Size	1.30	1.20	1.00
4 to 5 ft., Commercial Size	1.00	.90	.75
3 to 4 ft., Bargain Size	.75	.65	.50

Commercial growers write for special prices on large quantities.

### SUMMER VARIETIES

- ✓ **ANOKA.** Old folks' Apple—generally bears the next year after planting. If you are in a hurry for some fruit, this is the Apple to plant. Yellow with red stripes and a fine flavor. Extremely hardy. Ripens in July, but can be used 3 weeks earlier.
- ✓ **EARLY HARVEST.** A beautiful orange-yellow Apple of medium to large size and fine flavor. Exceptionally good for cooking and is a healthy, heavy bearer. Fruits in June.
- ✓ **LODI.** New, improved, and better Transparent. Large, waxen, yellow Apple of supreme quality and is twice the size of Yellow Transparent. Ripens in June. Outstanding for its shipping ability among early varieties. An exceptionally strong, spreading grower.
- ✓ **RED JUNE.** A remarkable small mellow Apple with fine flavor. It's our earliest red Apple and a good one. Ripens in latter part of June.
- ✓ **YELLOW TRANSPARENT.** Most widely planted early yellow Apple. Ripens in June and is a young, heavy, and steady bearer. Grand for cooking. Fruit is medium size, tender, juicy, and has an excellent flavor.
- ✓ **SUMMER CHAMPION (HOLLAND).** The wonder Apple of the South. Has proved to be a consistent, heavy producer of huge, red, smooth, firm, juicy-fleshed Apples. Its delicious flavor pleases every taste. A good packer and shipper; the best commercial Apple on the market today. Ripens in August. Try some of these strong healthy growing trees and see for yourself what a wonder Apple Summer Champion really is.

### Apple Pie Special

For those who do not have much room—each is the best for its season, our most popular varieties.

- 1 King David
- 1 Lodi
- 1 Mammoth Blacktwig
- 1 Early Harvest
- 1 Winesap

Our best 4 to 6 ft. trees (value \$6.50), only \$4.99.  
Five 2 to 3 ft. trees (value \$3.75), only \$3.10.

### FALL VARIETIES

- ✓ **DOUBLE RED JONATHAN.** The Apple everyone knows and likes. Takes on its brilliant red color two weeks or so before ripening which gives it the advantage of higher market prices and will increase your profits. High quality with juicy, tender flesh. Ripens in August. Fine for cooking and a heavy producer.
- ✓ **DOUBLE RED STAYMAN'S WINESAP.** A large Apple with a mild flavor and excellent quality. Completely red with new improved keeping qualities that are far better than the old Stayman. You can't go wrong with this Apple. Bears heavily.
- ✓ **GRIMES GOLDEN.** A famous spicy Apple that is wonderful for eating fresh and contains just enough acid to make it fine for cooking. Excellent for pies and apple butter. Known as the "Queen of Quality" and probably the best all-around Apple. A grand commercial Apple and the choice for home orchards. If you only have space for one Apple, make it Grimes Golden.
- ✓ **KING DAVID.** A medium size dark red Apple that is a very heavy producer, bearing in September. The fruit is firm, sweet and juicy—does exceedingly well in dry climates similar to western Oklahoma and Texas.

### WINTER VARIETIES

- ✓ **BLACK BEN DAVIS.** This is the hardiest, most vigorous, and prolific Apple of the Ben Davis family. Produces in abundance large, very dark red fruit in October. This grand old favorite makes the commercial grower more money than any other variety. Why not try it? You will like it, too.
- ✓ **DOUBLE RED DELICIOUS.** The red Apple King. Strong producer of large, solid red Apples with a delicious flavor excelled by no other. Fine eating Apple and a consistent bearer. Grown all over the United States.
- ✓ **DELICIOUS, YELLOW.** Famous for its unique quality. This big, beautiful, golden yellow Apple has a luscious flavor that no one can resist. Bears young and heavily. In demand on every market and brings highest prices. The best of the Delicious varieties for the Southwest.
- ✓ **MAMMOTH BLACKTWIG.** Excels Winesap as it is a better grower and produces larger fruit. Has a dark red color, firm flesh, and a mild flavor. An exceptionally good keeper. Ripens in October.
- ✓ **WINESAP. (Improved.)** One of the oldest and most popular Apples. A wonderful eating and cooking Apple. Noted for its keeping qualities. This improved strain has more color, larger size and even longer keeping ability. A heavy and regular producer.

### OZARK RUBY

Another new fruit sensation which we think is the greatest find in Apples for over half a century. Seems to have all the good qualities of Apples without the bad. After thoroughly testing Ozark Ruby, we find it is what every home orchardist needs; what the commercial orchardist has always dreamed about.

Ozark Ruby is a large brilliant red Apple all over with a satin-smooth finish that polishes to a glistening scarlet. Ripens a week before Jonathan when Apple prices are highest. Again last year, we sold Ozark Ruby from our orchard for \$1.60 more per bushel than any other variety. Colors early and hangs on the tree exceptionally well, prolonging the harvesting season for the commercial grower.

Ozark Ruby has proven to be a consistent, heavy producer of luscious, firm, juicy-fleshed Apples with a flavor that pleases even the most particular taste. Grand for eating fresh, extraordinarily good for canning or freezing, and makes the most beautiful red Apple sauce you have ever seen.

A strong, vigorous grower that is self-fertile and has never missed a crop since we started testing it. Our supply of this grand Apple is limited; so order early and please limit your order to not more than ten Ozark Ruby Trees.

### PRICES

	Each
Jumbo Bearing Size	\$1.89
4 to 6 ft.	1.49
3 to 4 ft.	1.25
2 to 3 ft.	.89



# APPLES

Bear Young

●  
Heavy Yielding

●  
Big Thrifty Roots



Double Red Delicious

Lodi

Double Red Stayman

Yellow Transparent

Winesap



Double Red Jonathan

## HOME APPLE SPECIAL

Our most popular varieties bearing in early summer to late in winter. Entire orchard for less than 2 bushels of apples.

- 2 King David
- 1 Yellow Delicious
- 2 Mammoth Blacktwig
- 1 Lodi
- 2 Double Red Jonathan
- 1 Grimes Golden
- 1 Double Red Stayman
- 10 big, 4 to 6 ft. trees (value \$13.00), only \$9.98.
- 10 good, 2 to 3 ft. trees (value \$7.50), only \$5.45.



Grimes Golden



Yellow Delicious

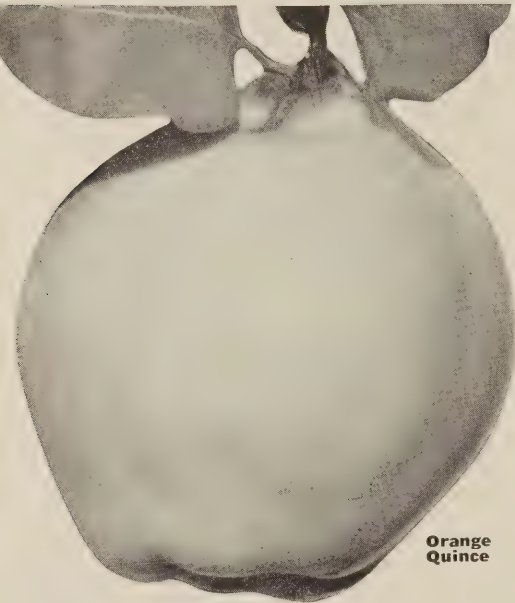


Ozark Ruby

Plant **BIG TREES** for Quickest and Best Results



# GROW and ENJOY YOUR OWN LUSCIOUS TASTY FRUIT



Orange Quince

## Ozark Dwarf ORANGE QUINCE

For Prize-Winning Jelly, Jam and Marmalade

Seldom grows more than 6 to 8 ft. high, but is covered with large pink and silver blossoms every spring. Produces bushels of bright golden yellow fruit, so highly prized for its luscious, tantalizing, zesty flavor. Hardy in all sections and needs no pollination. Will bear the second year. PRICES: 3 to 4 ft., \$1.98; 2 for \$3.79.

## Delightfully Fruiting HICKS' MULBERRY

A beautiful tree producing clusters of large, jet-black, delicious berries which are wonderful for eating fresh, jams and jellies. Fruits continually from May to August. The tree is a very rapid grower, entirely hardy, and easily transplanted. For shade, beauty, attractiveness, and excellent fruit, plant a Mulberry. PRICES: 3 to 4 ft., 98c; 2 for \$1.89.

## Delicious Apricots, Nectarines and Prunes

### APRICOTS

**EARLY GOLDEN.** By far the most thrifty and prolific Apricot grown. We have found it to be better adapted to Oklahoma and the Southwest than any other variety. Has delicious golden yellow flesh, and a tantalizing flavor you cannot resist. Large, tender, juicy, and separates from the small seed easily. If you only have space for one Apricot, plant Early Golden.

**MOORPARK.** The most widely planted commercial variety. A large Apricot with a luscious orange flesh that is tender, juicy and sweet. Supreme quality and an all-purpose fruit.

### NECTARINE

**SURE CROP.** A Plum and Peach cross with the smooth skin of a Plum and a seed like a Peach. Has a beautiful dark red color and an unusually pleasing flavor of both the Plum and Peach. A freestone, bearing after the second year. Splendid for canning, eating, and cooking purposes. No home orchard should be without a Nectarine.

### PURPLE GIANT PRUNE

We think the best of all Prune varieties. Bears second year after planting and ripens earlier than any other Prune variety. Beautiful purple-blue skin with sweet golden flesh. Freestone. At least one Prune should be in every home orchard.

#### ALL APRICOT, NECTARINE and PRUNE PRICES

	Each	5 or More	10 or More
Jumbo Bearing Size	\$2.00	\$1.90	\$1.80
4 to 6 ft., Super Size	1.75	1.60	1.50
3 to 4 ft., Commercial	1.35	1.25	1.20
2 to 3 ft., Bargain Size	1.10	1.00	.90

Commercial growers write for special prices on large quantities.

## Ozark CHOICE PLUMS



**AMERICA.** The large wonder Plum of the Southwest. Extremely attractive for market with its golden yellow color and red cheek. Produces sweet, juicy, solid Plums of high quality. An exceptionally heavy bearer, ripening in July, and seldom misses a crop. Free of rot. Very hardy, large vigorous trees.

**BRUCE.** The South's best red Plum, ripening in June when the market demand is strong. So delicious that it will make your mouth water and it is grand for jellies and jams. A healthy tree that bears young and produces huge fruit. A strong, healthy grower and sure cropper. Its tantalizing flavor makes it tops for eating juicy-ripe off the tree.

**GOLD.** A golden yellow Plum with a luscious flavor that makes pretty jelly. Ripens in July.

**HANSKA.** An Apricot-Plum of high quality and delicious reddish blue fruit. A strong healthy grower and sure cropper. Its tantalizing flavor makes it tops for eating juicy-ripe off the tree.

**OPATA.** Extremely heavy producer of luscious, rich purple Plums. Very good for jelly. Grows anywhere and seldom misses a crop. Exceptionally hardy and vigorous.

**SAPA.** A tremendous producer ripening the last of June, and bearing the first year. A medium sized, purple Plum with rich, dark purple flesh. Excellent flavor, best jelly Plum grown, and bears every year.

#### PRICES ON ALL PLUMS

	Each	5 or More	10 or More
Jumbo Bearing Size	\$1.89	\$1.75	\$1.60
4 to 6 ft., Super Size	1.49	1.40	1.30
3 to 4 ft., Commercial	1.15	1.00	.90
2 to 3 ft., Bargain Size	1.00	.85	.70



# TO HELP SOLVE THOSE GARDENING PROBLEMS

Aids for Healthier Plants, Lovelier Flowers and Better Fruits

For the gardener with fruit trees and berries

## BERRY-SET

Hormone for bigger Raspberries, Blackberries and Strawberries. If you want bigger, sweeter, meatier berries that bear longer, taste better; you'll want to spray them with **Berry-Set**.

Imagine getting berries 50 to 100% bigger! Imagine eating bigger, meatier, more luscious tasting Strawberries with fewer seeds! And you harvest the berries over a longer period of time. Much bigger yields, too.

Just spray plants in blossom stage and you'll get luscious berries like these. 1 oz., (makes 4 gals.) 50c; 3 ozs., (makes 12 gals.) \$1.00.



## DU PONT DORMANT SPRAY OIL

A superior type oil for prefoliage spray on ornamental, fruit and shade trees to control scale insects and overwintering forms of certain other insects. One quart makes 8 gallons of spray for ornamental and shade trees; 12 gallons for fruit trees; 12 gallons for fruit trees; 12 gallons for ornamentals. To insure proper control use before April 1st. 1-quart bottle, \$1.25 each.

## FRUITONE

A powder containing several plant hormones that stops premature drop in fruit and aids in pollination. When sprayed on female Hollies in bloom, the flowers will "set fruit" without the use of pollen and form berries. Hollies and evergreens hold their leaves much better in winter when sprayed with **Fruitone**. 2/5-oz. packet 25c; 2-oz. canister \$1.00.

## NEOCHEM

### PEACH TREE BORER SPRAY

Borers kill more fruit trees every year and up to now the home gardener has been unable to get satisfactory control. **Neochem Borer Killer** will kill the borers in fruit trees, Poplars, Dogwoods, etc., effectively when used according to directions on package. 1-lb. canister 89c.

## DU PONT FRUIT TREE SPRAY

An all-purpose spray that controls insects, fungus, mildew and blight in your fruit, nut and bush crops from bud to harvest. A spray schedule of how much and when to use on Apples, Peaches, etc., is on the container. Ideal for the home orchardist who doesn't want to worry with mixing a dozen different items each time he sprays. Can be used on all trees and fruits. 1-lb. can (makes 13 gals.) \$1.25; 3-lb. bag (makes 39 gals.) \$3.00.



Flower growers need these products

## DU PONT FLORAL DUST

Gardening is easier with a product so safe that it can be used on tenderest blooms for prevention of insects and diseases, yet powerful enough to control the most severe attack. That's why this simple, easy to use chemical control is so effective for all insects and diseases on Roses, perennials, annuals, shrubs, evergreens, etc., throughout the season. May be used as a spray or dust. 8-oz. gun 98c; 1-lb. can \$1.25.



## DU PONT ROSE DUST

This Rose dust contains all the necessary chemicals for the control of black spot, powdery mildew, rust, and other foliage diseases of Roses. Packed in a handy dusting gun container. Just pump and dust your Roses. 8-oz. dust gun 89c.



## DU PONT FERRO F. T. E.

All plants need trace or Micro elements for healthy plant growth. Unless the elements are replaced, many soils continue to decline in productivity, in spite of fertilization with standard fertilizer. Trace element starvation may cause sparse, mottled or discolored growth reducing quality and yield. Now the new scientific development, **F. T. E.**, brings these trace elements to you in easy to use, long lasting form. **F. T. E.** is non-toxic—that means there is no danger in use of excessive amounts. 1-lb. can \$1.00; 5-lb. bag \$2.95.



## DU PONT FAST ACTING SOLUBLE PLANT FOOD

A new spray-on plant food which can be applied to foliage or to the soil. It is a high strength (19-22-16) general purpose fertilizer, readily soluble in water, that quickly stimulates plant growth. Du Pont Urea and trace elements are included in the formula. Will not burn foliage or roots when used as directed. For gardens—lawns—house plants. 6-oz. can (house plant size) 59c; 1 1/2-lb. can (home garden size) \$1.75; 4-lb. bag (large economy size) \$3.25.



## DU PONT SOIL CONDITIONER D

For use in building new lawns or reworking poor lawn areas, in flower beds, vegetable gardens, and around shrubbery. Reduces surface caking, crushing, erosion and increases water absorption. Especially good for clay-type soils. Du Pont Soil Conditioner D is used where depth treatment is desirable and economical. It is a longer lasting method of treatment than the surface application. Just sprinkle the powder on the soil and work in to the depth of a shovel. 8-oz. can 85c; 3-lb. bag \$2.95.



## DU PONT SOIL CONDITIONER W

For the same use as Du Pont Soil Conditioner D but to be used for wet application. Eight oz. size makes 8 gallons, treats 100 square feet. 4-oz. can \$1.25; 8-oz. can \$1.95.



## PEAT MOSS

Mix one-fourth peat moss with soil when planting and you will get better results. It mellowes heavy soils and helps bind sandy soils. Being a pure source of humus, it is needed in most soils. A fine soil conditioner that conserves moisture, keeps down weeds and gives winter protection. 1-peck bag 89c; 3-peck bag \$1.39; 1-lb. bag \$1.59; 16-bu. compressed bale \$6.95.

## SCRAM DOG REPELLENT

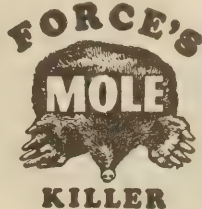
A powder in a handy dusting container used to keep dogs away from shrubs, lawns, porches, etc. The odor does the trick. 8-oz. shaker 89c each.

## NEOCHEM ALUMINUM SULPHATE

For acid loving plants such as Azaleas, Rhododendrons, Blue Hydrangeas, Blueberries and broadleaf evergreens. Water plants twice a month with 1 tablespoon of aluminum sulphate per gallon of water. 1-lb. can 69c; 2-lb. can 89c.

## DU PONT APHID and MITE SPRAY

A new powerful insect killer that controls aphids, red spiders, and many other insects. Designed primarily for killing red spiders on evergreens, but equally as good for hard to kill insects on flowers, ornamentals, fruits, vegetables, and house plants. Complete instructions of when and how much to use are on the container. 1-oz. bottle 59c; 4-oz. bottle \$1.25.

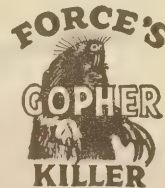


## FORCE'S GOPHER KILLER

Especially formulated, ready-to-use pellets that will eradicate all gophers and have no harmful effect on soil or vegetation. Compounded from the gopher's natural food plus a poison deadly to all gophers. 60 pellets 65c; 175 pellets \$1.15.

## FORCE'S MOLE KILLER

A successful and complete eradication compounded from the mole's natural food and made in pellet form, ready to use. Contains a poison deadly to moles, killing them right where they live, in the ground. Use according to simple instructions on each package. 75 pellets 69c; 185 pellets \$1.15.





# GARDEN AIDS

for Healthier Plants, Lovelier Flowers, and Better Fruits

## Weed killers for every weed problem

### DU PONT AMMATE

Has no equal for eradication of poison ivy. Kills brush and other weeds and aids in rotting stumps. Not for lawns. Easily dissolved in water for use in a sprayer or sprinkling can and is recognized as the chemical product for cleaning out driveways, sidewalks and spots where tough weeds grow. One application usually cleans out worst infestations without hazard to children or pets. 2-lb. bottle \$1.25; 6-lb. bottle \$3.00.



### DU PONT LAWN WEED KILLER

A product that has gained a fine reputation for ridding lawns of dandelions, wild onions, plantain and many other weeds. Can be used any time without injury to grass. 8-oz. can \$1.25.



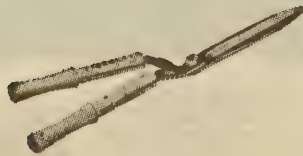
### DU PONT P. C. CRABGRASS KILLER

Excellent for early control of chickweed, but is best in summer and fall when crabgrass takes over. Each bottle contains complete information about lawn care for controlling crabgrass and restoring bare lawn areas where crab grass is killed. 7½-oz. bottle treats 750 to 1,500 square feet. 30-oz. bottle treats up to 6,000 square feet. 7½-oz. bottle, \$1.00; 30-oz. bottle, \$2.95.



## For a cut Above the Average

### CORONA "MIGHTY MIDGET" VINE PRUNER



### CORONA HEDGE SHEAR

Built for rugged, years-on-end use with both blades razor sharp. Provides two-way, keen cutting action, won't chew or mangle foliage. Very streamlined with piston type shock absorber. Without question, the best hedge shear on the market. \$4.75 each.

This "petite" mighty midget is the perfect tool for today's vine and other light pruning. Truly a featherweight (20 ozs.) but a bear for punishment (19½ in. long). Handles are tough seasoned hickory. Exactly the tool for ladies who like to do their own pruning. \$5.25 each.



### CORONA HAND PRUNER

A precision-made tool of the highest quality of its type on the market. Has adjustable blade tension, curved blades and non-slip cutting action. Proclaimed America's finest by all who use it. Especially good for ladies as it fits their hands, 6¾ inches long. \$3.95 each.



### CORONA SLICE CUT CLIPPER

A snappy, streamlined clipper with a super keen blade that cuts tough limbs easy. Pistol-grip shape—rich looking, non-rusting, chrome plated steel, 8 inch length. Pruning is a pleasure with this clipper. \$2.95 each.



### CORONA HEAVY DUTY TREE PRUNER

No job too tough—no job too rugged but what this Corona lopping shear can do it. Of the same streamlined construction including the superior type shock absorber as the Mighty Midget pruner. The best lopping shear on the market today. \$6.75 each.



### CORONA HANDY SHEAR

A sturdy shear widely used by women and unmatched for many home uses such as cutting vegetables, dissecting chickens, etc. Housewives find it has more utility than ordinary scissors. Fine for picking flowers, making bouquets, corsages, and all forms of trimming. 7¾ in. long. \$2.35 each.



### CORONA PROFESSIONAL HAND PRUNER

The same desirable pruner as the Corona Hand Pruner except it is larger. It's heavy duty, scientifically designed, and makes light work of tough pruning tasks. Rubber bumper prevents pinching of the hand and long narrow blades easily gets into those hard to prune places. Replaceable blade, 8 3/16 in. long. \$5.95 each.



# These SWEET - JUICY - FULL FLAVORED FRUITS Can be Grown Easily in Your Garden



Sure Crop Nectarine



Purple Giant Prune

Plant BIG  
TREES for  
Best Results



Bruce Plum



Hicks' Mulberry



Moorpark Apricot



Gold Plum



Sapa Plum



America Plum



# The Best PEAR Varieties

Pears do especially well in sod where they get no cultivation, right in your own yard. They are easy to grow, perfectly hardy and are an ornamental asset to your yard. Some usually bear the second year. Plant some Ozark Improved varieties this year and you can pick delicious Pears before you know it.

## SURE CROP

Another new improved fruit sensation. The only Pear to have all the best qualities of Pears combined into one. For several years we have had it in our test orchard and has proved to be a consistent, heavy producer of huge, yellow, juicy fleshed, amazingly delicious Pears that ripen evenly. Its delightful flavor pleases every taste, and many women have said it is tops for canning and preserving with a small core and no waste. This is not all, it stores well, hauls well, and it is good to eat juicy ripe. Sure Crop starts bearing young and has never completely missed a crop in Tahlequah for 23 years. It blooms with Apples but not all at once. Some blossoms are on the trees after first fruits have set. Each year there has been a strong demand for these Pears on the market. By far more resistant to blight than any other variety. Vigorous grower and more spreading than most Pears. The only weak point Sure Crop has is its crooked shape when small, but it straightens up, and its colorful foliage makes it an ornamental asset to any yard. Try some.

PRICES: Jumbo Bearing Size... \$2.25    3 to 4 ft. .... \$1.50  
 4 to 6 ft. .... 2.00    2 to 3 ft. .... 1.25

**DOUGLAS.** (Sugar Pear.) A handsome Pear of medium size that bears young, heavily and regularly. Immune to frost, very resistant to blight and stands dry weather well. Good market sort.

**GARBER.** The Pear suited for every need. Eating, canning, preserving, winter storage, good shipper, and profit. Its good shape and beautiful yellow color with a red blush make it a demand of the market.

**KIEFFER.** A sure bet for heavy, consistent crops of large, yellow, white-fleshed Pears adapted to all sections. Excellent for cooking, good for winter storage, and very sweet and mellow to eat after being picked for a while. Tree very hardy and amazingly vigorous. Plant Garber with it for pollination.

## PRICES OF ALL PEARS EXCEPT SURE CROP

	Each	5 or More Each	10 or More Each
Jumbo Bearing Size .....	\$2.00	\$1.90	\$1.85
4 to 6 ft., Super Size .....	1.75	1.65	1.50
3 to 4 ft., Commercial Size .....	1.35	1.30	1.20
2 to 3 ft., Bargain Size .....	1.10	1.05	.90

# Space Saving OZARK DWARF FRUIT TREES

Produce Delicious Full Size Fruit • Easy to Pick • Take Little Space

## DWARF APPLE TREES

These attractive small trees require little space, yet often bear the first or second year after transplanting. Highly prized for the small garden where space is limited as they only grow 10 ft. high and can be planted 10 to 12 ft. apart. Although the trees are dwarf in size, they will bear full size fruit in great abundance. Can be planted anywhere you want a flowering tree as they are extremely decorative in spring when in bloom. Our trees are grown on imported malling understock to insure a permanently dwarf tree. Plant some and enjoy picking fresh, luscious fruit from your own trees.

Double Red Delicious  
 Yellow Delicious

### VARIETIES

Yellow Transparent  
 Double Red Jonathan

PRICES: 2-yr., 3 to 4 ft., \$2.95 each; 3 or more, \$2.75 each.



Hansen Bush Cherry

## DWARF PEAR TREES

Bear full-sized, delicious fruit, the same as standard varieties. Often start to bear the year after planting. Ideal for the home garden and growers with limited space. Trees are very ornamental in spring with their abundance of creamy-white fragrant blossoms. Plant as close as 5 ft. apart. They seldom grow more than 6 to 10 ft. tall.

VARIETIES—BARTLETT, SECKEL (Sugar Pear)

2-yr., 3 to 4 ft., \$2.50 each; 3 or more, \$2.25 each.

## DWARF SAPA PLUM

Dwarf, quick bearing, attractive shrub-like plants with meaty plum-like fruits the size of Cherries. Heavy yielding hybrids. Grow into beautiful compact flowering bushes about 4 ft. tall. A fine ornamental shrub with abundance of fruit for eating and cooking. PRICES: 2 to 3 ft. bearing size, 79c each.

## HANSEN'S BUSH CHERRIES

A tremendous producer ripening the last of June, and bearing the first year. A medium sized, purple Plum with rich, dark purple flesh. Excellent flavor, best jelly Plum grown and bears every year. Trees have a dwarf growing habit. PRICES: 3 to 4-ft. trees, \$1.50 each; 3 or more, \$1.35 each.



Dwarf Yellow Delicious



# ENJOY FRESH FRUIT *from* YOUR OWN TREES



**Douglas  
Pear**



**Sure Crop  
Pear  
(3/4 Actual Size)**

## TEXAS EVERBEARING FIGS

(That bear first year.)

Yes, you can have big, soft, fresh, delicious Figs from July to frost the first year with Ozark's everbearing Figs. Figs will grow on most any type soil but thrive best where there is plenty of moisture. Hardy and produces abundant crop over most of the cotton section. They should be protected during the first and second year's growth in the colder areas. While the tops will sometimes be killed back, if this dead wood is pruned away the plant will make new growth and fruit that season. Very sweet and tops for preserves. **PRICE: 18 to 24-in. Bearing Size, 98c each.**



**Texas Everbearing Figs**



**Jap  
Persimmon**

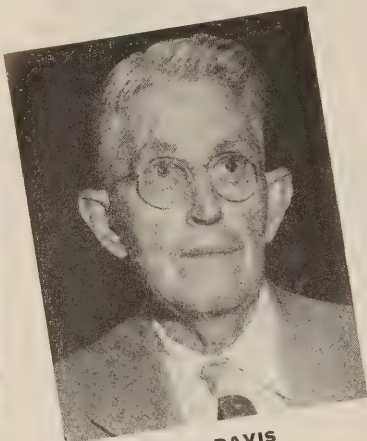
## DELICIOUS JAP PERSIMMONS

Our selected strain is a very hardy variety with a most delicious flavor. The tree is very attractive with large, green waxy leaves similar to a Magnolia, but literally covered with big orange-red Persimmons that hang until soft ripe. In the fall the leaves turn all shades of lovely colors and after the leaves fall you really have a show of beautiful fruit. Frost resistant and can be grown as far north as cotton. If you want a tasty treat, plant some Jap Persimmons. **PRICE: 3 to 4 ft., \$1.79 each.**



# OZARK NURSERIES

*Built on*  
**CUSTOMER CONFIDENCE**



**BEN DAVIS**  
President

Founded Ozark Nursery 58 years ago. Has spent his entire life developing and improving fruits and plants.



**J. EDWARD DAVIS**  
Vice-President

Is general manager and especially close to the production of our nursery stock.



**ALVIN DICKERSON, Jr.**  
Sec.-Treas.

Is sales manager and directs the trained staff of office workers.

## HOW WAS OZARK NURSERIES BUILT?

Through customer confidence. Customers who had faith and confidence in Ben Davis and the organization he built from the very start. Customers found that they could count on what we told them, but what pleased them most was the discovery that what we shipped was generally slightly better than they expected. They began to look to us for extra quality, for reasonable prices, and for improved and new varieties. They were impressed by our ethics and practices—like selling only fruit trees propagated from bearing orchards.

Yes, customers who have bought year after year, knowing by experience that when they order from Ozark Nursery, they order without risk and with assurance of quality and yield. Over 75% of our business comes from these repeat customers. To our customers we say thank you and please continue to count on Ozark Nursery for extra quality and extra value.

## *Ozark's Guarantee*

1. We guarantee our stock to be true to name. If it proves otherwise, we will replace free or refund the amount paid us for it.
2. We guarantee our stock to be first quality and to reach you in good, live, growing condition. Examine it closely on arrival, and, if you are not entirely satisfied, return it at once and we will replace it free or refund your money.
3. Our stock is carefully handled, and under ordinary conditions should grow for you; however, if it does not due to the weather or other conditions, over which we have no control, we will replace at half price the following season. You are to notify us not later than October 1st, 1954, accompanying your report with remittance of one-half original purchase price.

If you are not entirely satisfied, please let us hear from YOU. We want you to be another one of our many satisfied customers.

## TERMS

Our terms are cash with the order, but C.O.D. orders will be shipped if 25% is sent with the order. Due to the high cost of packing, etc., we cannot accept orders for less than \$1.00. All orders f.o.b. Tahlequah unless sent by parcel post. Oklahoma customers please add 2% to cover Oklahoma sales tax.

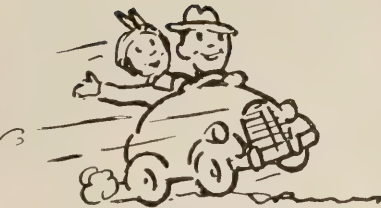
## WE SELL DIRECT— NO SALESMEN

We wish to warn our friends and customers against placing orders with anyone who claims to represent us. We have no salesmen or agents. You save from 75 to 100% in buying direct from the growers. Salesmen are compelled to try making you believe they have better stock because they have to charge you more for their commission. Buy at our low prices where no salesman's commission is added in the cost of the stock.

## SHIPMENTS MADE AT PROPER PLANTING TIME

It is best to place your order as soon as possible after receiving this catalog. A card will be sent to you acknowledging your order and shipment will be made at proper planting time in your area.





**We're Driving to OZARK NURSERIES to Save 20%!**

## DRIVE TO NURSERY AND SAVE!

If you will drive to our storage on U. S. Highway 62, one-and-a-half miles south of Tahlequah, we will gladly give you a 20% discount on all items in this catalog except patented items (Roses) and garden supplies such as rose dust, peat moss, etc., providing you take your purchases away with you in your car. You will also find several items not listed in our catalog at attractive prices. Possibly we could also give you some helpful advice from our 58 years' experience in the nursery and fruit growing business.

## WE GROW OUR OWN STOCK

We have 58 years' experience in growing fruit and hardy nursery stock. It is grown in the foothills of the Ozark Mountains where the soil and climatic conditions are ideal for producing the most vigorous, hardiest, and best rooted trees and plants that can be grown. This is your assurance of only the highest quality when you buy from Ozark Nursery.

## OZARK NURSERY AS NEAR AS YOUR MAIL BOX

Yes, it's an easy chair proposition to buy at Ozark Nursery. Just make yourself comfortable and start at the front of the catalog, go through each page writing your order so you will not miss anything. Drop your order in your mail box. When we receive it, we guarantee to fill your order with the same high quality plants that you would have gotten had you come to the nursery. You have absolutely nothing to worry about and at the proper planting time, the postman will deliver your plants to your mail box. Therefore, you never have to go farther than your mail box to get the extra fine Ozark-grown plants.

Ozark Nursery Co., Plattsburg, Mo.  
Tahlequah, Okla.

Dear Sirs: The trees arrived in fine shape. Thank you for such good roots.

MRS. CLIFTON COREY.

**Our Office and Storage in Tahlequah**

# FREE GIFTS FOR EARLY PLANTERS

The wise planter orders early and for placing his order before the rush of orders, we are giving the valuable gifts (see page 25). Some items in our catalog are in limited supply. By ordering early, we can reserve these items for you as long as they last. Last year we were sold out on many items early; so don't wait until planting time—reserve your needs as soon as you receive this catalog. We will acknowledge your order and ship at proper planting time. First orders will receive first attention.

## ROOTS ARE IMPORTANT

We grow trees and plants by the millions and they go direct to you from our more than 300-acre nursery plant. It is the most fertile red sandy loam in eastern Oklahoma, especially suited for producing strong, healthy, vigorous root systems.

But we not only grow a good root system, we dig them. Ozark Nursery has a large sum invested in a mechanical digger which goes down and really brings out the roots. We challenge anyone to dig more and better roots than we do. After the trees and plants are dug, they are hauled quickly to our big storage and stored in wet shingletoe. Vitality and vigorous growing condition is assured with the care we give our trees and plants.

Many firms buy their trees and plants, and they may be shipped and re-shipped 2 or 3 times before you get them. Avoid getting dried out, devitalized trees and plants. Buy direct from us and get a good start.

## Every Shipment Inspected For Your Protection

No diseased trees or plants are allowed in our nursery. Government inspectors inspect our growing stock several times yearly to be absolutely certain we have no diseased trees and plants. Besides the Government inspections, we inspect each order to make positive you get only first quality; so you can be assured of the best direct-from-the-grower to you. A certificate of Government inspection is furnished to you with every order.

Oklahoma City, Oklahoma.

Ozark Nursery Co., Tahlequah, Oklahoma.

Gentlemen: The nursery stock I ordered from you came in good condition. The Hollies were lovely, and are looking fine—in fact, everything looks nice. Thank you for your prompt delivery.

MRS. J. D. HODGES.

## WE PAY POSTAGE

For your convenience many items in this catalog will be delivered to you postpaid; however, the trees and plants we ship are larger than generally offered in catalogs. Since it is impossible to know the weight and sizes in advance, we use our discretion in determining how to ship. Shipments going by motor freight or express are sent collect (you pay transportation charges).

Some orders will contain stock that must go by express and also some stock which would go by parcel post. In such cases we will send the entire order by express rather than make 2 separate shipments. For this privilege we will include extra stock (our choice) to help pay express charges.

In order to comply with new parcel post rules and regulations, some items will be cut back when sent by parcel post. If you do not want your stock cut back, please state on your order that you desire shipment by express (charges collect).

## FREE! USEFUL PLANTING GUIDE

With every order we will include a complete planting guide. It tells step-by-step methods of proper planting in a clear, simple way so that even if you have never planted anything before, you can do it successfully. It also tells how far apart to plant, prune, water, care for plants over winter, etc.



## WARNING—Fertilizer Kills

Do not put fertilizer in hole while planting. It is a good idea to use a small amount on top of the ground around plants after planting, but use caution. According to our replacement records over-use of fertilizer has caused 95% of all losses. We want your plants to live; so please, for the plant's sake, keep fertilizer out of the hole when planting.

Ozark Nursery Co., Stillwater, Oklahoma.  
Tahlequah, Oklahoma.

Sirs: I wish to thank you for the prompt service you gave my recent order. The Evergreens were the freshest, and best conditioned nursery stock I've ever received from any nursery. I gave them every care in planting, and am sure they will thrive.

GLENN H. BRYANT.

Ozark Nursery Co., Gencoe, Oklahoma.  
Tahlequah, Okla.

Sirs: Received my order of Rose bushes, Strawberries, etc. They are the best I have ever ordered. All wonderfully packed.

MRS. C. M. GILCHRIST.







Mojave



Lowell Thomas

**MOJAVE SPECIAL**  
 1 Each of the Roses Pictured  
 on Page 18.  
 5 Pretty Roses for Only \$10.35  
 Bought separately would cost  
 \$11.75.



Rex Anderson

# All-America Large Western

**CHRYSLER IMPERIAL.** (Pat. 1167.) All-America Winner for 1953 with long tapering buds borne on sturdy, medium long stem. Retains its sparkling lustre even in adverse weather. Hardy grower with dark green, glossy foliage, and worthy of a place in your garden. **PRICES:** Heavy 2-yr., No. 1 plants, \$2.75 each; 3 or more, \$2.40 each. Extra heavy Jumbo selected plants, \$3.25 each.

**CHARLOTTE ARMSTRONG.** (Pat. 455.) Very popular Rose with gorgeous long slender, carmine buds opening into brilliant cerise flowers. All-America Winner for 1941. **PRICES:** Heavy 2-yr., No. 1 plants, \$2.25 each; 3 or more, \$2.00 each. Extra heavy Jumbo selected plants, \$2.75 each.

**FORTY-NINER.** (Pat. 792.) Immensely popular 1949 All-America Winner. Has long pointed buds opening into delightfully fragrant flowers with vivid red inside petals and chrome-yellow outside. Long lasting, strong stems, vigorous. **PRICES:** Heavy 2-yr., No. 1 plants, \$2.25 each; 3 or more, \$2.00 each. Extra heavy Jumbo selected plants, \$2.75 each.

**HELEN TRAUBEL.** (Pat. 1028.) A tall, vigorous, yet bushy plant that blooms constantly. Large perfect buds opening into delightfully fragrant flowers. A truly magnificent 1952 AARS Winner. **PRICES:** Heavy 2-yr., No. 1 plants, \$2.75 each; 3 or more, \$2.40 each. Extra heavy Jumbo selected plants, \$3.25 each.

**PICTURE SPECIAL**  
 1 Each of the Roses  
 Pictured on Pages 18  
 and 19.  
 10 Beauties, Only \$21.15.  
 Bought separately would  
 cost \$24.25.

Chrysler Imperial



Charlotte Armstrong







Forty-Niner



President Eisenhower

# Winners

## Grown Specimens

### All-America Rose Winners

**LOWELL THOMAS.** (Pat. 607.) A tall robust plant with buds tightly furled, opening into large high centered flowers with a delicate fragrance. A 1944 AARS Winner that retains its color well. **PRICE:** Heavy 2-yr., No. 1 plants, \$2.00 each; 3 or more, \$1.75 each. Extra heavy Jumbo selected plants, \$2.50 each.

**MIRANDY.** (Pat. 632.) A dark, velvety Rose and All-America Winner in 1945. Beautiful petals, and a delicious, penetrating fragrance that you will never want to forget. **PRICES:** Heavy 2-yr., No. 1 plants, \$3.00 each; 3 or more, \$2.65 each. Extra heavy Jumbo selected plants, \$3.50 each.

**MOJAVE.** (Pat. 1176.) 1954 All-America Winner with vivid coloring matched only in the burning orange glow of a California desert sunset. Radiant orange highlighted by flame-like tones of scarlet and vermilion. Bush is very vigorous with amazing numbers of beautiful long tapering buds. Sure to be a winner in your garden and the talk of the neighborhood. **PRICE:** Heavy 2-yr., No. 1 plants, \$3.00 each; 3 or more, \$2.65 each. Extra heavy Jumbo selected plants, \$3.50 each.

**PEACE.** (Pat. 591.) The popular and very fragrant AARS Winner in 1946. A vigorous grower with shiny dark green foliage that has won more awards than any other Rose. **PRICE:** Heavy 2-yr., No. 1 plants, \$2.50 each; 3 or more, \$2.20 each. Extra heavy Jumbo selected plants, \$3.00 each.

**PRESIDENT EISENHOWER.** (Pat. AF.) A new Rose introduced this year in honor of our president. The name is fitting for this Rose since it so happily combines in outstanding amount, brilliance, charm and dependability. A much needed, better rich red that is unfading and of lasting beauty. Hardy, upright, bushy, and disease resistant. It is the kind of Rose that is sure to be a prompt success and a classic favorite for a long time to come. **PRICE:** 2-yr., No. 1 plants, \$2.50 each; 3 or more, \$2.20 each. Extra heavy Jumbo selected plants, \$3.00 each.

**REX ANDERSON.** (Pat. 335.) An outstanding exhibition Rose of delicate, lovely ivory-white. Perfectly formed, slow opening, one of the few successful whites. Fully double, of enormous size. **PRICE:** Heavy 2-yr., No. 1 plants, \$1.75 each; 3 or more, \$1.55 each. Extra heavy Jumbo selected plants, \$2.25 each.



Peace



Mirandy



Helen Traubel

**PEACE SPECIAL**  
 1 Each of the  
 Roses Pictured on  
 Page 19.  
 5 Lovely Roses  
 for Only \$10.80.  
 Bought separately would  
 cost \$12.50.



# Ozark's **EVERBLOOMING ROSES**

Heavy Rooted • Big Strong Healthy Specimens • Blooming First Year

## PRICES

HEAVY 2-YR., No. 1 PLANTS

Each 98¢; 5 or more, each 95¢; 10 or more, each 90¢.

EXTRA HEAVY JUMBO SELECTED PLANTS

Each \$1.25; 5 or more, each \$1.15; 10 or more, each \$1.10.

## VARIETIES

**CONDESA DE SASTAGO.** Fiery copper on inside and rich gold outside. Fragrant, beautiful blooms.

**CRIMSON GLORY.** Best and most beautiful dark red Rose. Off patent list first time this year.

**EDITOR McFARLAND.** Long pointed buds, fragrant flower of clear brilliant pink on strong stems.

**FRAU KARL DRUSCHKI.** Perfect, delicate white flowers. Fragrant.

**GOLDEN CHARM.** Perfect blooms of clear soft yellow. Vigorous growers and free flowering.

**JEAN BOSTICK.** Double flowers of rich gold; spicy fragrance. We think the best yellow Rose grown.

**PINK RADIANCE.** Most popular pink Rose grown. Vigorous, free-blooming.

**POINSETTIA.** Double flowers of bright rich scarlet. Rich tea fragrance. Good bloomer.

**PRESIDENT HOOVER.** Flowers of flaming scarlet and yellow in bud, opening to soft creamy yellow with scarlet markings.

**RED RADIANCE.** A highly popular deep red double Rose. Exceptionally hardy.

**TALISMAN.** Exquisitely formed Rose of orange-scarlet and golden yellow. Long stiff stems and richly fragrant.

## OZARK

### 5

### WINNERS

The five outstanding colors in the most selected varieties. Jumbo plants.

- 1 Red Radiance
- 1 Jean Bostick
- 1 Frau Karl Druschki
- 1 Talisman
- 1 Pink Radiance

**Only \$4.79**

(\$5.75 Value)

# 11

## BEAUTIES

One each of the beautiful Roses listed above. All eleven extra heavy Jumbo selected plants.

**Only \$9.98**

(\$12.10 Value)



Poinsettia

President Hoover

Condesa de Sastago

Golden Charm

Editor McFarland

Crimson Glory

**STAR ROSE GARDEN**  
 1 each of the lovely Roses pictured on this page. All 6 extra heavy Jumbo selected plants.  
**Only \$5.49**  
 (\$6.90 Value)



# Ozark's Everblooming **FLORIBUNDA ROSES**

Flourish With a Minimum of Care!

These are the easiest type of Roses to grow and rapidly becoming the most popular. They are ideal for planting along your entrance walk, driveways, in front of Evergreens, in solid beds or in cemeteries. They will bloom in your garden constantly starting in June until frost and will last for many years. Each bush will be completely covered with large clusters of lovely Roses often as many as fifty or more to a single plant. Hardy as any shrub. Bloom first year.

**FASHION.** (Pat. 789.) An exquisitely beautiful AARS Winner in 1950. Buds of oriental red, blooms of luminous pink, overlaid with gold, that then deepen into clear coral with reddish tones. Extra free bloomer and one you'll like. **PRICE:** Heavy 2-yr., No. 1 plants, \$2.00 each; 3 or more, \$1.75 each. Extra heavy Jumbo selected plants, \$2.50 each.

**FLORADORA.** A showy, vigorous Floribunda with a color entirely different in Roses. Scarlet to a spectacular geranium-red. AARS Winner in 1945. **PRICE:** Heavy 2-yr., No. 1 plants, \$1.10 each. Extra heavy Jumbo selected plants, \$1.25 each.

**GOLDILOCKS.** (Pat. 672.) A true, compact Floribunda continuously bursting with golden masses of perfect little buds and many golden petaled, long lasting flowers. The delightful abundance of blooms is a breathtaking sight in a garden. **PRICE:** Heavy 2-yr., No. 1 plants, \$1.50 each; 3 or more, \$1.30 each. Extra heavy Jumbo selected plants, \$2.00 each.

**MA PERKINS.** (Pat. 1143.) The 1953 AARS Winner which introduces still another new color in Floribundas. Besides being the most fragrant Floribunda yet introduced, Ma Perkins is sure to be the most popular. Be among the first to have this outstanding new Floribunda in your town. **PRICE:** Heavy 2-yr., No. 1 plants, \$2.25 each; 3 or more, \$2.00 each. Extra heavy Jumbo selected plants, \$2.75 each.

**RED PINOCCHIO.** (Pat. 812.) The most eye-catching Floribunda of them all. It flowers in immense clusters and blooms from early spring to hard frost. Delightfully fragrant and one you certainly should have in your garden. **PRICE:** Heavy 2-yr., No. 1 plants, \$1.50 each; 3 or more, \$1.30 each. Extra heavy Jumbo selected plants, \$2.00 each.

**SUMMER SNOW.** (Pat. 416.) A white Floribunda with great "drifts" of beautiful large clusters, all as clean as falling snow. Sweet fragrance. Bloom continuously. A "must" for your garden. **PRICE:** Heavy 2-yr., No. 1 plants, \$1.50 each; 3 or more, \$1.30 each. Extra heavy Jumbo selected plants, \$2.00 each.

**RED RIPPLES.** A mass of sparkling red blooms continuously all summer until freezing weather. Buds are perfect. Ideal for mass planting. **PRICE:** Heavy 2-yr., No. 1 plants, \$1.10 each. Extra heavy Jumbo selected plants, \$1.25 each.



Lilibet

**LILIBET.** (P.A.F.). Named in honor of Queen Elizabeth II and chosen AARS Winner in 1954. A very hardy plant producing radiant Roses in clusters of exquisite pink tones. Each little bud is perfect in every detail—ideal for corsages or arrangements. Bushy, compact and disease resistant. Heavy 2-yr., No. 1 plants, \$2.50 each; 3 or more, \$2.20 each. Extra heavy Jumbo selected plants, \$3.00 each.



Goldilocks



Ma Perkins



Red Pinocchio

## FLORIBUNDA GARDEN SPECIAL

Most popular patented ever-blooming varieties. A continuous array of bloom from spring until frost.

1 Fashion                    1 Lilibet  
1 Goldilocks                1 Ma Perkins  
   1 Red Pinocchio

5 Heavy 2-Yr., No. 1 Plants

**Only \$8.55**

Bought separately would cost \$9.75



# CLIMBING ROSES

All 2-Year, No. 1, Field-Grown



Climbing  
White  
American  
Beauty

**CLIMBING TALISMAN.** Climbing ever-blooming form of the beautiful Talisman

Rose. PRICE: Heavy 2-yr., No. 1 plants, \$1.10 each. Extra heavy Jumbo selected plants, \$1.25 each.

**DR. J. H. NICOLAS.** (Pat. 457.) A new everbloomer that produces lovely, fully double deep rose-pink flowers, disease resistant, dark green foliage. PRICE: Heavy 2-yr., No. 1 plants, \$2.00 each; 3 or more, \$1.75 each. Extra heavy Jumbo selected plants, \$2.50 each.

**PAUL'S SCARLET.** When this famous Rose is in full bloom it is a sight that simply stops everyone that passes. It is a mass of blazing scarlet. Blooms in clusters on long stems. Plant Paul's Scarlet on a trellis, porch, or along a fence and have the talk of your neighborhood. PRICE: Heavy 2-yr., No. 1 plants, \$1.10 each. Extra heavy Jumbo selected plants, \$1.25 each.

## CLIMBING PEACE SPECIAL

- 1 Climbing Peace
- 1 Blaze
- 1 Dr. J. H. Nicolas

Our 3 most beautiful climbers, Jumbo plants, only \$4.95. (Value \$6.75.)

**CLIMBING WHITE AMERICAN BEAUTY.** A most striking snow-white Rose with dark, glossy foliage that makes a dazzling sight. For a gorgeous effect plant with Blaze on the same trellis producing the appearance of one climber with both red and white blooms. PRICE: Heavy 2-yr., No. 1 plants, \$1.10 each. Extra heavy Jumbo selected plants, \$1.25 each.



Blaze



Dr. J. H. Nicolas

Polyantha or Baby Roses



## POLYANTHA or Baby Roses

In Bloom Continuously with Masses of Color All Summer

**CECILE BRUNNER.** Sparkling pink blooms in clusters give the appearance of a colorful mound. In bloom continuously until freezing weather. PRICE: Heavy 2-yr., No. 1 plants, \$1.10. Extra heavy Jumbo selected plants, \$1.25.

**GOLDEN SALMON.** Attracts immediate attention in any garden. Use for massed plantings or beds, along walks or drives. PRICE: Heavy 2-yr., No. 1 plants, \$1.10. Extra heavy Jumbo selected plants, \$1.25.

**IDEAL.** An eye-catching Rose with large clusters of brilliant red Roses. Ideal for borders and exceptionally hardy. PRICE: Heavy 2-yr., No. 1 plants, \$1.10. Extra heavy Jumbo selected plants, \$1.25.



# Ozark's Rainbow GLADIOLUS Collection

This collection of striking rainbow colors is sure to please you when they bloom. Not only will you have bouquets for your home, your church, and your friends in a short time, but they will make your garden the talk and envy of your neighborhood. Many of the newer and better varieties are mixed (no choice) in this collection and all bulbs are treated to prevent disease and rot. Packed to reach you in perfect condition.

PRICES			
25 large bulbs .....	\$1.29	25 medium bulbs .....	\$1.10
50 large bulbs .....	2.10	50 medium bulbs .....	1.98
100 large bulbs .....	3.98	100 medium bulbs .....	3.49



Rainbow Gladiolus



President

Yellow King Humbert

City of Portland

Rosemond Cole

## Ozark's Thrilling CANNAS

A bed or border of Cannas in your yard will give a brilliant array of color all summer and fall. Our bulbs are large, extra fine size that will produce more and better flowers. Plant 18 inches apart in late spring and be sure to water during dry weather. Your choice of varieties.

- PRESIDENT.** Red. Dwarf.
- RED KING HUMBERT.** Red foliage.
- CITY OF PORTLAND.** Pink.
- ROSEMOND COLE.** Red flower, gold edge.
- YELLOW KING HUMBERT**
- EUREKA.** White.

PRICE: 15c each; 12 for \$1.50.

### PRESIDENT SPECIAL

Plant a bed of President and have bright red flowers all summer and fall.

**25 for \$2.79**

## Beautiful Fragrant PEONIES

Our Peony roots are good strong, 3 to 5-eye divisions. Hardy anywhere. Fine for Memorial Day. Plant in rich soil so that the eyes are not more than 2 inches below the surface.

**Edulis Superba.** Very fragrant, large, early dark pink. Strong grower that blooms freely.

**Felix Crousse.** Large rich, dazzling. Mid-season. Blooms freely.

**Festiva Maxima.** Early, fragrant, very large, white with crimson markings.

**Karl Rosenfield.** Large, velvety dark crimson, midseason. Blooms freely.

**Mons. Jules Elie.** Early, glossy flesh-pink shading to deeper rose at base. Very fragrant. A sure bloomer.

PRICE: 69c each; 3 for \$1.95; 6 for \$3.60.

Edulis Superba

Festiva Maxima

Felix Crousse

### OZARK Special Peony Collection

Our selection of the best varieties: 1 Red, 1 Pink, 1 White.

All Three for Only **\$1.69**





**Avalon Dahlia**

Strong stems, 3 or 4 ft., each bearing a number of flowers bright pink edged white with small maroon spots. Blooms from late July to September and will come up every year. Very hardy and will bloom this summer. Very scarce and our supply is quite limited. **PRICE: 79c each; 3 for \$1.98.**

**ESTATE LILY (Madonna Lily).** Sometimes called the outdoor Easter Lily. This grand Lily can be grown in your back yard and have the true long trumpet Easter Lily flowers just as delicate, wonderful, and fragrant as \$3.00 to \$5.00 greenhouse grown ones. Plant some this spring and have blooms this summer and each year hereafter. **PRICE: 49c each; 3 for \$1.39.**



**Iris**

### COLORFUL IRIS

These large, gorgeous, orchid-like flowers are rich and exquisite in color. Quite often several shades are in one flower. Pick out a place where you need an attractive low border or bed and plant some this year. Will bloom every year hereafter.

**PRICE: 35c each; 3 for 90c; 12 for \$3.35.**

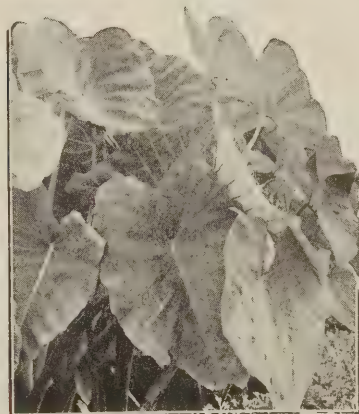
**AUTUMN KING.** Immense violet-blue standards, deep reddish purple falls.

**DAUNTLESS.** Fragrant, large, bronze-red standards, velvety rose-red falls.

**GRAND CANYON.** A lovely blend of plum, copper and gold colors with light form of ruffling.

**INDIAN CHIEF.** Very large, fragrant; suntan tinged lavender and pink standards; velvety crimson falls.

**SNOW WHITE.** Excellent, large pure white.



**Elephant Ear**

### ELEPHANT EAR

Green enormous tropical type leaves grow to be 6 ft. in diameter. Will not wither outside.

**PRICE: 49c each; 3 for \$1.25.**

### FANCY-LEAVED CALADIUM

For continuous foliage display from late spring to frost no other plant equals these. Leaves of many different colors. Easy to grow; thrives in partial, almost full shade. Dig before freezing weather in fall and store like Canna or you can pot them for winter blooms indoors. **PRICE: 49c each; 3 for \$1.25.**

## Grow Prize Dahlias

Of all the late summer and fall flowers, Dahlias are the largest and most beautifully colored. These outstanding varieties we offer have helped make Dahlias so popular in millions of gardens all over America. Give them a little attention and you can grow flowers as large as dinner plates and brilliant as a flashing beacon light.

**AVALON.** Large, clear, canary-yellow flower with long stem.

**GALLANT FOX.** Large, deep crimson-red.

**JANE COWL.** Glistening bronzy buff and old gold blending to deep salmon at center.

**JEAN KERR.** Extremely early, popular white. Vigorous, free blooming, insect resisting.

**JERSEY'S BEAUTY.** Considered the finest Dahlia ever introduced. Lovely pink with a shading of chamois.

**PRICES: 39c each; 3 for \$1.05; 6 for \$1.98.**

### HARDY LILIES

**REGAL.** America's favorite and yet the hardiest of all Lilies grown. Large pearly white trumpets etched with wine; golden throats. Jasmine-like fragrance. Blooms early summer. Sun or partial shade. **PRICE: 35c each; 3 for 79c; 5 for \$1.25.**

**RUBRUM.** The finest and most lovely of all hardy garden Lilies.



**Estate Lily**

### IRIS SPECIAL

A collection of the higher priced Iris varieties where we had too few of a variety to list.

**12 Mixed Colors  
Only 89c**

### TUBEROSE

(Fragrant Mexican)

Graceful waxy white flowers on spikes 30 to 36 inches tall. Excellent for cutting and so superbly fragrant a single spike will perfume a room. Often 20 or more flowers on a single plant and blooms from July to frost. Plant outdoors after danger of frost and handle like Canna.

**PRICE: 11c each; 12 for \$1.00.**







Wisteria

# Ozark HARDY VINES

## GOLDFLAME HONEYSUCKLE

A sensational new everblooming evergreen variety with brilliant rose-red flowers on the outside and gold inside. Blooms first year, every year from June until winter. Will climb as a vine, spread as a ground cover, or can be trimmed to a hedge or a specimen plant. A plant you will be proud to have.

PRICES: 2-year plants, 98c each; 2 for \$1.89.

## EUONYMUS RADICANS COLORATUS

A showy evergreen foliage plant that turns bronze in winter. Wonderful cover for banks, excellent filler among shrubs and will grow on masonry walls when planted near. Plant liberally and start enjoying them this year.

PRICE: 2-year plants, \$1.25 each; 3 for \$3.00.



Euonymus Radicans Coloratus

## WISTERIA

A magnificent vine with long drooping clusters of fragrant, lilac-purple flowers. Our plants are the new improved grafted type that are sure to bloom. Vigorous and ideal for arches, trellises, etc.

PRICE: 2-yr., field-grown, 98c each; 2 for \$1.89.

## BOSTON IVY

Clings to and completely covers without support even the smoothest surface. Can be planted on wood, brick, or stone. Foliage is a pleasing green changing to a thrilling maroon in fall.

PRICE: 98c each; 2 for \$1.89.

## LARGE FLOWERING CLEMATIS

Clematis are the most beautiful and colorful of all flowering vines. On a fence, porch or trellis the flowers are a glorious sight. A location shaded from hot afternoon sun is best. Our plants will bloom this summer.

**CLEMATIS HENRYI.** A large flowering white Clematis so beautiful that no description can do it justice.

**CLEMATIS JACKMANI.** Completely covered all summer with hundreds of lovely purple flowers. The most colorful and attractive of all.

**CLEMATIS MME. ANDRE.** Exquisite velvety red flowers produced profusely.

PRICE: \$1.49 each; 3 for \$3.98.



## Exotic TUBEROUS ROOTED BEGONIAS

No illustration can do justice to the exquisite beauty of these thrilling Tuberous Begonias. They are started from tubers, can be grown easily in the garden or potted and will give you an amazing abundance of blooms. Excellent for shady spots. Colors are brilliant, petals are satiny and blooms are produced over a long season. You will cherish these Begonias more than anything you have planted in years. Our bulbs are choice-selected 1½ to 2-in. bulbs. Include a selection of all colors in your order: Red, Pink, Yellow, Copper and White.

PRICE: 29c each; 5 for \$1.25;  
12 for \$2.50.

**FREE!**  
VALUABLE GIFTS  
for  
ORDERING EARLY

We will give a free gift with every order we ship. The larger the order the better the gift. Since a gift is always more fun when you don't know what it is, we are not saying what our gift will be as we like for it to be a surprise to you. It's our way of saying thank you and trying our best to make you another one of our many satisfied customers.

## Ozark's LAWN TESTED GRASS SEED

After many years' experience and constant experimentation, Ozark Nurseries is able to offer you the best blends of lawn grasses that will thrive under all normal and sub-normal conditions.

### OZARK SUNNY LAWN MIXTURE

A blend meeting our exacting specification of the finest available grasses. If fertilized twice a year, and clipped to not less than 1½ inches, this superior blend will produce a beautiful, almost indestructible turf. Sow at a rate of 5 pounds per 1,000 square feet.

PRICE: 5-lb. bag, \$6.80 each.

### OZARK SHADY LAWN MIXTURE

A similar blend in color and texture to Ozark Sunny. Blend of seeds that will thrive in areas receiving little or no direct sunlight. Will produce superb lawn, provided shaded areas are regularly fertilized and watered at least once a week during dry periods. Sow at a rate of 5 lbs. per 1,000 square feet.

PRICE: 5-lb. bag, \$6.60 each.

### OZARK WINTER LAWN SEED

When sown 10 lbs. per 1,000 square feet Ozark's perennial rye grass will make a beautiful solid carpet of green by itself.

PRICE: 5-lb. bag, \$2.50 each.



For Bushels of  
Blooms Plant



Hardy Carnations



Columbine



Lily-of-the-Valley



Double Hollyhocks



Old-Fashioned Bleeding Heart



Creeping Phlox (Thrift)

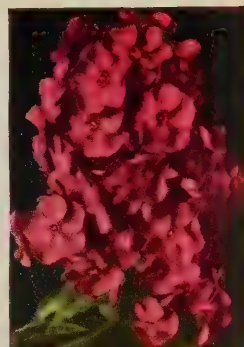
Gold Cushion Mum



Mary Louise



Caroline Vandenberg



Africa

**HARDY PHLOX (1/6 actual size)**

Irene



Salmon Glow



Royal Purple





# Ozark HARDY PERENNIALS

BLOOM FIRST YEAR FROM MAY TILL FROST  
AND MANY YEARS THEREAFTER

You can enjoy thousands of blooms this year from Ozark perennials. They are easy to grow and come up year after year, giving you blooms throughout the spring, summer and fall. All our plants are hardy, well grown plants, shipped to you fresh dug and carefully packed so you receive them in perfect condition.

**Prices on all Perennials unless otherwise noted: 40c each; 3 for \$1.00; 6 for \$1.85; 12 for \$3.50.**

**ALYSSUM (Basket of Gold).** Covered by clusters of bright yellow flowers in May. Grows about 12 inches high. Excellent plant for rockery or border.

**BLEEDING HEART.** Graceful heart-shaped rose-pink flowers in April-May. Thrives in partially shaded places. 2 feet. Extra heavy plants. **PRICES:** 95c each; 3 for \$2.50.

**BABY'S BREATH**—"Bristol Fairy." Large panicles of large perfectly double white flowers produced in profusion all summer. A favorite for bouquets. Very hardy. **PRICE:** 95c each; 3 for \$2.50.

**CARNATIONS, HARDY.** These are the same fine, spicy fragrant flowers you pay a fancy price for at a greenhouse, but hardy. Blooms all summer and we think one of the finest garden plants. Easy to grow. Your choice of the following lovely double colors: Red, Yellow, and White.

**COLUMBINE (AQUILEGIA HYBRIDS).** An outstanding plant that blooms generously each spring. Colors are rich, clear, exquisitely lovely and blend perfectly. Large flowers up to 3 inches across with spurs 4 to 5 inches long. Thrives in ordinary soil but prefers partial shade. Husky plants in the following colors: Blue, Red, Yellow or White.

**CUSHION MUMS.** Often called Million-Mums, but does actually become completely covered with thousands of lovely Mums in August lasting till frost. Blooms first year. Hardy, easy to grow, and multiplies year after year. Your choice of colors: Red, Pink, White, Gold and Bronze.

**DELPHINIUMS, PACIFIC GIANTS.** It is impossible to describe the elegance and beauty of this marvelous new strain of Hybrid Delphiniums. Great stalks bear flower spikes of enormous size, individual flowers are each perfect and exceptionally large. The coloring is beautiful.

**Guinevere.** Light pinkish lavender. **Blue Bird.** Clear medium blue.

**GIANT HIBISCUS (MALLOW MARVELS).** Flowers as big as saucers. Shrub-like perennial 4 feet tall. Blooms in July and August when most other plants have stopped. Pink, Red and White.

**HOLLYHOCKS, DOUBLE.** A fascinating new strain with gorgeous double flowers. Hardy and easy to grow. Colors: Red, Pink, and Yellow.

**LILY-OF-THE-VALLEY.** Delightfully fragrant white flowers. Thrive in shade or full sun. Heavy clumps of 5 to 7 pips.



Mallow Marvels (Hibiscus)



Sweet William



Shasta Daisy

**CREeping PHLOX (Phlox Subulata) (Thrift).** Cherished as much for its refreshing moss-like evergreen foliage as for its masses of flowers that appear in early spring. Showy colors of red, white, and blue. Low, compact, spreading growth.

**HARDY PHLOX.** A truly superb plant with flowers almost 6 times as large as the ones pictured. Our plants are heavy, field-grown plants that will bloom freely for you this summer and many years to come. Grow in full sun or partial shade. Can be divided year after year.

**Africa.** Brilliant carmine-red.

**Caroline Vandenberg.** Beautiful blue.

**Irene.** Soft light red.

**Mary Louise.** Pure snow-white.

**Royal Purple.** The best purple.

**Salmon Glow.** Flame-pink with salmon shading.

**SHASTA DAISY.** Beautiful in the garden and fine for cutting. Large flowers 2 to 3 inches across, petals of white and clear yellow center on long stems. A profuse bloomer. Thrives in ordinary soil.

**PAINTED DAISY.** Bright colored, Daisy-like flowers in gorgeous reds, fine pinks, and pure whites, all mixed to blend beautifully. Bloom profusely in spring and early summer. Long stems fine for cutting.

**SWEET WILLIAM.** No garden is complete without some of these beautiful, prolific bloomers. Dense rounded terminal heads of 20 to 30 flowers. Your choice: Pink, Red or White.



Alyssum

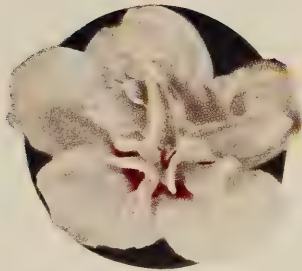


Baby's Breath, "Bristol Fairy"



# HAVE BLOOM from SPRING to FALL

*Warning!*  
Fertilizer Kills.  
See page 17.



**Double White Althea**



**Improved Red Honeysuckle**



**French Hybrid Lilacs**



**Pink Flowering Almond**



**Spirea Anthony Waterer**



**Red Flowering  
Quince**



**Forsythia**



**Lilac Spirea**







Order

Early

for

Valuable

Free

Gifts

See Page 25

Drive to

Ozark

Nursery

and

Save

20%

See Page 17

For Better Nursery Stock

**BUY FROM**

**OZARK NURSERY**

**OZARK NURSERY COMPANY**

Oklahoma's Largest Direct-to-You Nursery

Tahlequah,  
Oklahoma

NAME \_\_\_\_\_

ADDRESS \_\_\_\_\_

CITY-STATE \_\_\_\_\_

PLACE  
STAMP  
HERE

**Your Check Is Good With Us**

Before Sealing, BE SURE Your FULL Name

and Address Is On Your Order to Insure

Prompt Delivery. Have You

Enclosed Money?



# with OZARK'S FLOWERING SHRUBS

**PINK FLOWERING ALMOND.** Another one of spring's early beauties but one of the most outstanding. A small shrub with an abundance of double rose-like flowers, closely set upon twigs, before the leaves appear in early spring. Plant Pink Almond, Red Flowering Quince, and Forsythia together and make your yard the show place in early spring. **PRICE:** 2 to 3 ft., 98c each. 18 to 24 in., 79c each.

**ALTHEA** (Rose of Sharon). Large double flowers and fancy green leaves. Blooms from mid-July to frost. Very popular and considered to be one of the showiest of midsummer flowers. A hardy grower (8 to 10 ft.). Choice of colors: Double Red, Double White, Double Pink, Double Purple. **PRICE:** 2 to 3 ft., 98c each; all 4 colors, \$3.49. 18 to 24 in., 79c each; all 4 colors, \$2.98.

**BUTTERFLY BUSH.** (Summer Lilac.) A showy shrub that blooms profusely and continuously from early summer to frost. Flowers are huge and very fragrant. In winter the tops die down but come up even more vigorously from the roots in spring. Grows to a compact shrub 4 to 5 feet tall. Your choice of the following lovely colors: Pink, Dark Wine, Rich Purple. **PRICE:** Heavy plants, 79c each; 3 colors, \$2.00.

**BEAUTY BUSH.** This charming shrub is magnificent as a specimen, in group plantings or for an untrimmed hedge. In the spring the graceful arching branches are completely covered with lovely pink blossoms, delightfully fragrant. Grows in ordinary soil in sun or part shade. Will be a beauty spot in your yard. **PRICE:** 2 to 3 ft., 98c each. 18 to 24 in., 79c each.

**FORSYTHIA (Golden Bell).** Spring's early beauty. Blooms first in spring and its lovely bright yellow flowers light up the entire yard. Grows 6 to 8 ft. tall and nearly as wide. Will grow anywhere. **PRICE:** 2 to 3 ft., 98c each. 18 to 24 in., 79c each.

**GOLDFLAME HONEYSUCKLE.** A sensational new everblooming, evergreen variety that is certainly what the name Goldflame exemplifies. The brilliant rose-red flowers on the outside with gold inside are borne in profusion which really gives the plant an appearance of a gold flame. Blooms the first year from June until winter. May be grown as a vine or trained as a bush by pruning. **PRICE:** Heavy 2-year plants, 98c each.

**HONEYSUCKLE, RED TARTARIAN (ZABELI).** The finest, most attractive of all Bush Honeysuckle plus a distinctly new color of blooms. Deep red flowers of most exquisite fragrance are followed by brilliant red berries that ripen in midsummer and cling to the bush for several months. Look over your yard and you will find spots where this shrub will help make your home more attractive. **PRICE:** 2 to 3 ft., 98c each. 18 to 24 in., 79c each.

**FRENCH HYBRID LILACS.** The most fragrant and beautiful of all Lilacs. Have bloomed already in the nursery row and will flower for you the next year after planting. Very hardy, grows 6 to 8 ft. and does not sucker like the old-fashioned Lilac. Lovely as a single bush, a mass planting is breathtaking. Your choice of colors: Red, Pink, White, Blue, and Purple. **PRICES:** Heavy plants, \$1.35 each. Any 3 colors, \$3.75. All 5 colors, \$6.00. Extra heavy jumbo plants, \$1.75 each.

**PERSIAN LILAC.** A more profuse bloomer than the common, and does not sprout from roots. Starts blooming many times the first year and grows 6 to 8 feet. Exceptionally vigorous. Plant one near your bedroom window and wake up smelling its pleasing fragrance. **PRICE:** 2 to 3 ft., 98c each. 18 to 24 in., 79c each.

**RED FLOWERING QUINCE (Cydonia Japonica).** This attractive shrub produces loads of brilliant scarlet flowers, charmingly arranged all along stems in early spring. Foliage is green tinged with maroon and very striking. Hardy, strong growers. Blooms first year. **PRICE:** 2 to 3 ft., 98c each. 18 to 24 in., 79c each.

**SPIREA, ANTHONY WATERER.** Our favorite low-growing shrub with lovely rose-red flowers all summer. Makes a neat, dense shrub 2 to 3 ft. tall. Unsurpassed for foundation planting. Will grow anywhere. **PRICE:** Heavy, 98c each. Medium, 79c each.

**SPIREA BILLIARDI (Lilac Spirea).** Rose-colored flowers in large cone-shaped spikes that bloom nearly all summer. Fine for cut flowers and a showy shrub in any landscape. Grows 4 to 5 feet high. Excellent for untrimmed hedge. **PRICE:** 2 to 3 ft., 98c each. 18 to 24 in., 79c each.

**SPIREA THUNBERGI.** One of the first shrubs to bloom in spring. Forms a dense fluffy bush 3 to 5 ft. high that is covered with small white flowers. Foliage is a pleasing shade of light green, changing to autumn to bright red and orange. **PRICE:** 2 to 3 ft., 98c each. 18 to 24 in., 79c each.

**SPIREA VAN HOUTTEI.** One of the most common but still one of the most beautiful of all shrubs. Gleams with glamorous white flowers on graceful, drooping branches in early spring. Also makes a beautiful untrimmed hedge. **PRICE:** 2 to 3 ft., 98c each. 18 to 24 in., 79c each.



Persian Lilac



Butterfly Bush

Beauty Bush





# Ozark's Flowering



**Red Leaf Barberry**



**Hydrangea P. G.**



**Blue Hydrangea**

**Double White Mockorange**



**Red Weigela, Eva Rathke**

**Pink Crape Myrtle**





# Shrubs

## ADD CHARM AND BEAUTY TO YOUR HOME

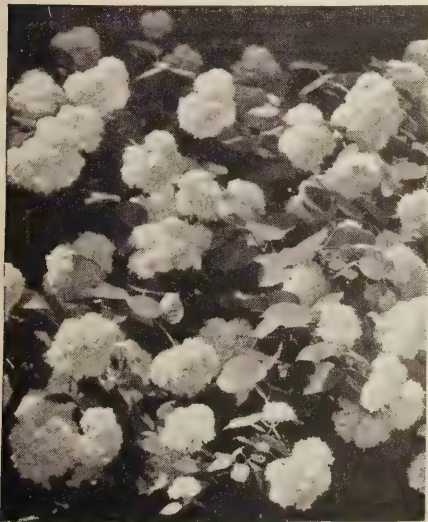
**RED LEAF BARBERRY.** A strikingly brilliant shrub that is very attractive and decorative in any planting. Has lustrous red foliage all summer and is followed by red berries in fall and most of the winter. Plant Red Leaf Barberry in sun to retain good color. Grows 3 to 4 ft. **PRICE:** 18 to 24 in., 98c each. 15 to 18 in., 79c each.

**CRAPE MYRTLE.** Often called the South's most beautiful shrub and can be grown as far north as Kansas City. Very hardy and blooms on new growth similar to Roses; so cut back severely each spring. Will bloom this summer and each year from midsummer to frost. Our new striking colors are much improved over the old strain. Clear colors in Red, Pink, Purple and White. **PRICE:** 2 to 3 ft., 98c each. All 4 colors, \$2.50.

**DEUTZIA, PRIDE OF ROCHESTER.** A showy shrub with many stems rising directly from the roots, arching upward and outwards. In April and May these stems are completely covered with double white bell-shaped flowers tinged with pink. Attractive and always steals the show when in bloom. Very hardy and does well in light shade or sun. **PRICE:** 2 to 3 ft., 98c each. 18 to 24 in., 79c each.

**HYDRANGEA P. G.** The most striking of all shrubs. It produces huge white cone-shaped flowers in August, turning pink, and finally bronze in September. Ideal for cut flowers. Exceptionally hardy. Grows 3 to 4 ft. Blooms first year. **PRICE:** 18 to 24 in., 98c each; 2 for \$1.89.

**HYDRANGEA A. G.** An early blooming shrub that has immense snow-white blooms, very full and round. Perfectly hardy, thrives everywhere, but does better in shady places. Grows from 3 to 4 feet tall and blooms from June until August. **PRICE:** 18 to 24 in., 98c each; 2 for \$1.89.



Hydrangea A. G.

**BLUE HYDRANGEA.** The hardiest of all Hydrangeas. Has immense flower heads 12 to 15 inches in diameter and lasts for many weeks. The flowers are pink in ordinary soil, while in acid soil they are blue. Make soil acid by watering twice a month with 1 tablespoon of aluminum sulphate per gallon of water, or by mixing acid peat moss with soil half and half. **PRICE:** Heavy 2-year plants, \$1.79 each; 2 for \$3.25.

**DOUBLE MOCK ORANGE.** Lovely, large double white flowers in great profusion in May-June and scattering all summer. Deliciously fragrant. Makes a neat, graceful and very beautiful bush. 6 to 8 ft. tall. **PRICE:** 2 to 3 ft., \$1.25 each. 18 to 24 in., 98c each.

**SWEET MOCK ORANGE.** Mother Nature's perfume of the garden. This beautiful, sweet scented shrub blooms heaviest in May and June, but single orange-white blossoms can be seen almost any day during the summer. Fine for foundation and group plantings. **PRICE:** 2 to 3 ft., 98c each. 18 to 24 in., 79c each.

**SNOWBALL.** An old favorite that is still popular and impressive in the spring. Its large, white, snowball-like blossoms almost cover the entire shrub. Strong, heavily rooted plants. **PRICE:** 18 to 24 in., \$1.25 each. 12 to 18 in., 98c each.

**TAMARIX.** An attractive, tall growing shrub with charming feathery green foliage and brilliant pink flowers in May. Can be pruned to any desired height and will grow anywhere. Our selected strain is by far the best. **PRICE:** 2 to 3 ft., 98c each. 18 to 24 in., 79c each.

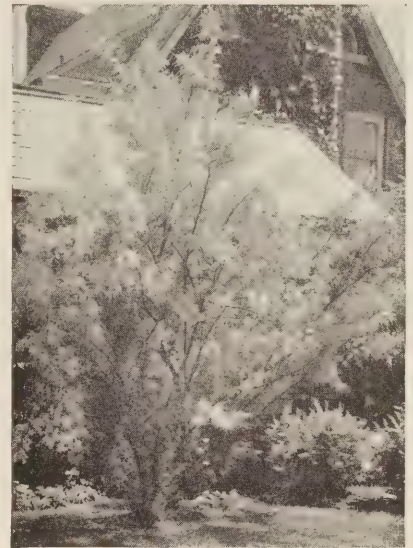
**VITEX (Chaste Tree).** A lovely shrub that will start blooming in early summer and continue till late fall. Flowers are a delightful lavender-blue on long branching spikes. Grows 6 to 8 ft. with big palmate foliage. Fine for hot, wet, or dry location. Not fussy at all. Will suggest a friendly welcome to your lawn. **PRICE:** 18 to 24 in., 79c each.

**WEIGELA ROSEA.** Becomes completely covered with rose-pink trumpet-shaped flowers in April and May. But it is still an ornamental asset to every yard the remainder of the summer with its beautiful green foliage on the graceful arching branches. Weigela Rosea is an attractive shrub from early spring until late fall. **PRICE:** 2 to 3 ft., 98c each. 18 to 24 in., 79c each.

**WEIGELA, EVA RATHKE.** A really outstanding Weigela that will bloom this season. In May and June each and every branch is simply covered from top to bottom with hundreds and hundreds of lovely ruby-red trumpet-shaped flowers. Makes a thrifty, perfectly formed specimen with dark green foliage. Very hardy and can be planted in partial shade or sun. Once you see this shrub, you will want it in your yard. **PRICE:** 2 to 3 ft., \$1.25 each. 18 to 24 in., 98c each.



Vitex



Tamarix



Snowball



# BEAUTIFUL TREES for Bright Foliage • Lovely Flowers •



Allred Plum



Tree Wisteria



White Birch



Crimson King Maple

**HOPA FLOWERING CRAB.** A popular, low-growing, ornamental tree with great masses of fragrant pink flowers in spring followed by maroon foliage. From midsummer on, gleaming clusters of red Crab Apples hang along the branches. Excellent for jelly. Easy to grow and makes a lawn specimen. **PRICE:** 6 to 8 ft., \$2.50 each; 5 to 6 ft., \$1.98 each; 4 to 5 ft., \$1.50 each; 3 to 4 ft., \$1.25 each.

**WHITE BIRCH.** No other tree occupies quite the place in the hearts of garden lovers as this graceful tree does. Its white bark, pendulous branches, delicate green foliage, and deeply cut leaves endear it to all who want a tree both for shade and beauty. **PRICE:** 4 to 5 ft. straight trees, \$2.49 each; 3 to 4-ft. clumps, \$2.98 each.

**JAPANESE FLOWERING CHERRY (Kwanzan).** Completely covered in spring with large double rosy pink flowers. Plantings of these trees in Washington, D. C., made them well-known and loved everywhere. Perfectly hardy and starts blooming a year or two after planting. **PRICE:** 3 to 4 ft., \$2.98 each.

**PINK DOGWOOD.** No tree is more admired or more beautiful than the pink Dogwood. Some years ago we noticed one tree in the nursery row blooming that was far richer, deeper, and darker pink (almost red) than any pink Dogwood we had seen. Immediately we started propagating from this improved tree, and now our trees have a much more brilliant color than trees generally sold. After flowering profusely in spring gorgeous deep green leaves make it attractive till fall when their leaves turn to a glorious scarlet-red. Does best in partial shade and blooms next year after planting. **PRICE:** 30 to 36 in., \$3.98 each; 24 to 30 in., \$3.25 each. **We can also furnish balled and burlapped specimens in 3 to 4 ft., \$9.50 each; 2 to 3 ft., \$7.50 each.**



White Dogwood

**WHITE DOGWOOD.** This is the lovely native white Dogwood that is admired by the many thousands each year who drive to Tahlequah and the Cookson Hills on the Dogwood tour. Our trees are nursery grown, acclimated trees that will give your lawn the same exquisite beauty of the Dogwoods in the Cookson Hills. **PRICE:** 2 to 3 ft., \$1.69 each; 3 to 4 ft., balled and burlapped specimens, \$4.50 each; 2 to 3 ft., balled and burlapped specimens, \$3.50 each.



Redbud



# YOUR HOME

## Easy to Grow

**GOLDEN RAIN.** Exquisitely beautiful, drought resistant tree with brilliant yellow flowers produced in enormous panicles at tips of twigs. A very handsome tree that seldom grows more than 30 feet high. Will stand hot dry winds, and city conditions. **PRICE:** 3 to 4 ft., \$1.98 each.

**PINK MAGNOLIA (Magnolia Soulangiana).** Many people call this Tulip Tree because of its large Tulip-like flower often 8 inches across in early spring before leaves appear. Very hardy, blooms young, and seldom grows more than 20 feet tall. **PRICE:** 18 to 24 in., \$1.98 each; 3 or more, \$1.89 each.

**PURPLE MAGNOLIA (Magnolia Soulangiana Nigra).** Practically the same as Soulangiana except blossoms are rich purple color and tends to bloom again in fall. A very lovely plant for your lawn. **PRICE:** 18 to 24 in., \$1.98 each; 3 or more, \$1.89 each.

**RED MAGNOLIA (Magnolia rustica rubra).** Large flowers similar to Pink Magnolia but of a dark red color and a later bloomer. Very fast grower and most beautiful of all Magnolias. **PRICE:** 18 to 24 in., \$1.98 each; 3 or more, \$1.89 each.

**CRIMSON KING MAPLE.** (Pat. 735.) Truly a captivating king of the ornamental trees with its distinctive, colorful foliage which is a deep maroon-purple from the time it leafs out until the leaves fall. This rich color adds a pleasing contrast to the prevalent greens. Fine for city planting, will live for many generations, becoming more attractive each year. Our trees have a straight stem but will start branching the first summer and you will be delighted with every new leaf, every inch of new growth. Very hardy and easy to grow. **PRICE:** 5 to 6 ft., \$5.95.



Mimosa



Red Magnolia

**MIMOSA.** An unusual tree completely covered with a profusion of fluffy blossoms in summer. The young tree pictured is only 3 years old and already immensely beautiful. Extremely hardy, will grow anywhere. **PRICES:** 6 to 8 ft., \$1.98; 5 to 6 ft., \$1.69; 4 to 5 ft., \$1.25; 2 to 3 ft., 98c.

**DOUBLE FLOWERING PEACH.** A very showy and attractive tree with a mass of Carnation-like double flowers, followed by green glossy foliage. A rapid grower that is sure to be the talk of your neighborhood. Your choice of colors: Red or white. **PRICE:** 6 to 8 ft., \$1.98; 5 to 6 ft., \$1.50; 4 to 5 ft., \$1.25; 3 to 4 ft., 98c.

**RED-LEAF PEACH.** The sensational new Peach with bright red leaves in spring, gradually dulling to a deep maroon toward fall. Deep Rose blossoms and red fruit with a delicate flavor. A pretty tree which also produces fruit. **PRICE:** 6 to 8 ft., \$1.98; 5 to 6 ft., \$1.50; 4 to 5 ft., \$1.25; 3 to 4 ft., 98c.

**ALLRED PLUM.** Not only can you enjoy the beauty of the red foliage on Allred, but the lovely blossoms in spring, and clusters of delicious, juicy, red-meated Plums in early summer. A tree that should be in Paradise and on your lawn. **PRICE:** 5 to 6 ft., \$1.98; 4 to 5 ft., \$1.69; 3 to 4 ft., \$1.25; 2 to 3 ft., 98c.

**SMOKE TREE (Purple Fringe).** A magnificent tree completely covered in June and July with feathery flowers like a cloud of lilac-purple smoke. The green foliage colors beautifully in the fall. Becomes more attractive each succeeding year. Very hardy and seldom grows more than 10 to 12 ft. tall. **PRICE:** 2 to 3 ft., \$1.49 each.



Double Red Flowering Peach

**REDBUD.** A small tree or large shrub completely covered in spring with clusters of beautiful pink blossoms before leafing out. Has handsome heart-shaped leaves. Will grow anywhere. Redbud is Oklahoma's state flower and will decorate your yard, too. **PRICE:** 6 to 8 ft., \$1.98; 5 to 6 ft., \$1.50; 4 to 5 ft., \$1.25; 3 to 4 ft., 98c.

**RUSSIAN OLIVE.** A small tree or large shrub that seldom grows more than 20 ft. Silvery-gray foliage makes it stand out among prevalent green trees. In fall orange berries are coated with silvery scales and are very showy. Certainly a tree that should be on every lawn. **PRICE:** 2 to 3 ft., \$1.25.

**TREE WISTERIA.** Great quantities of charming purplish blue flowers cover the tree in May. Long lived and a lawn specimen. Our plants are grafted; sure to bloom. **PRICE:** Specimen trees, \$3.50 each; 2 for \$6.00.



Pink Magnolia



# For Lasting Comfort Plant **Ozark's Shade Trees**

Hand Pruned and Shaped to Make Individual Specimens



**Moraine Locust**

**CHINESE ELM.** A favorite tree the country over for its comfortable shade. If you want a sturdy and lasting tree in a hurry, this is it. **PRICES:** 10 to 12 ft., \$3.25; 8 to 10 ft., \$2.95; 6 to 8 ft., \$1.95; 4 to 6 ft., \$1.25.

**PUSSY WILLOW.** A small tree with attractive green leaves and soft fur-like buds in early spring. Makes desirable bouquets. Can be trimmed as a tree or shrub. Hardy anywhere. **PRICES:** 6 to 8 ft., \$1.95; 4 to 6 ft., \$1.25; 3 to 4 ft., 95c.

**WISCONSIN WEEPING WILLOW.** Everyone loves a fine old Weeping Willow Tree with its gracefulness, its restfulness, and its gentle branches waving in the breeze. Densely covered with fresh green leaves and beautiful dark green bark. Grows very rapidly. **PRICES:** 8 to 10 ft., \$2.95; 6 to 8 ft., \$1.95; 4 to 6 ft., \$1.25.

**Wisconsin Weeping Willow**



**MORaine LOCUST.** (Pat. No. 836.) Sensational—fast growing shade tree. A vigorous, fast-growing, seedless tree, shaped much like American Elm, but not susceptible to disease. Very clean tree with no ugly, dangerous thorns and no seed pods. The leaves are so fine that when falling they practically disappear into the grass. Its branches arch up and out, giving a wide-spreading vase shape that reaches above a two-story house without obstructing the view or air circulation. Fine foliage makes plenty of cool shade, but lets enough sunlight through for good lawn growth, but not enough for Crab Grass growth. Will thrive in spite of cold, heat, or drought, on all kinds of soil. Bends under strains of wind and ice and rarely breaks or splits. Be first in your neighborhood to have this wonderful tree that everyone is talking about. **PRICE:** 6 to 7 ft., \$7.50 each.

**SILVER MAPLE.** A rapid growing, wide spreading tree with deeply cut foliage, dark green above and silvery white beneath, that changes to a beautiful yellow in fall. **PRICES:** 10 to 12 ft., \$3.25; 8 to 10 ft., \$2.95; 6 to 8 ft., \$1.95; 4 to 6 ft., \$1.25.

**SYCAMORE.** A rapid growing handsome tree with a well-formed head and interesting white bark. Leaves heart-shaped. Straight beautiful grower. **PRICES:** 10 to 12 ft., \$3.25; 8 to 10 ft., \$2.95; 6 to 8 ft., \$1.95; 4 to 6 ft., \$1.25.

**PECAN.** See page 7.

**WALNUT.** See page 6.

**AMERICAN ELM.** A fine old variety that should be in every yard. If given ample growing room, it will furnish comforting shade more than any other tree. Plant one and make your yard cooler with its shade. **PRICES:** 6 to 8 ft., \$1.95; 4 to 6 ft., \$1.25.

**PIN OAK.** A rapid growing tree that has no equal for street and lawn planting. The foliage is rich green, deeply cut, and colors to a glorious coppery red in fall. Must be transplanted with a ball of earth on the roots; therefore, it must be shipped express collect. **PRICES:** 3 to 4 ft. specimens, balled and burlapped, \$5.00 each.

**SWEET GUM.** An immensely popular tree with deeply cut foliage that turns to a brilliant red in autumn. Grows rapidly and very good for lawn planting. Must be transplanted with a ball of earth; consequently, it must be shipped express collect. **PRICE:** 4 to 5 ft. specimens, balled and burlapped, \$5.00 each.



**Lombardy Poplar**

**LOMBARDY POPLAR.** A handsome tree reaching far into the sky. This majestic tree is a favorite among many Americans, and its rapid growth is a leading factor in its favor. Planted in a row, it will provide a cool wall of shade and a fairly sturdy windbreak.

	PRICES	Each	Per 5
4 to 6 ft. ....		\$0.75	\$3.50
6 to 8 ft. ....		1.00	4.50
8 to 10 ft. ....		1.25	5.00

## SUGAR MAPLE

The beautiful, colorful trees seen throughout the Ozark Mountain range in fall are Sugar Maples. Each fall thousands of people drive through the Ozarks just to see the rich scarlet and gold-colored foliage of the Sugar Maples. Although the Sugar Maples are prettiest in fall, they have attractive, dense, dark green foliage in summer. Will grow practically anywhere but are exceptionally good for street and lawn planting. **PRICE:** 10 to 12 ft., \$4.50; 8 to 10 ft., \$3.45; 6 to 8 ft., \$2.95; 4 to 6 ft., \$1.95.

**Sugar Maple**



**Silver Maple**





# Plant HEDGES for Beauty, Seclusion and a Friendly Fence

## UNTRIMMED FLOWERING HEDGES



Amur River Privet

**AMUR RIVER PRIVET (SOUTH).** The very best evergreen hedge. Hardy as far north as Kansas City, and holds its leaves all winter. Can be pruned any time and sheared to any desired shape or height. Makes a dense, compact green fence. Plant 1 foot apart.

	Per 10	Per 25	Per 50	Per 100
12 to 18 in. ....	\$1.20	\$2.90	\$5.75	\$10.50
18 to 24 in. ....	1.75	4.00	7.75	15.00
2 to 3 ft. ....	2.50	5.75	11.50	20.00

**LODENSE PRIVET.** For those who want the most beautiful trimmed hedge but yet do not like to trim it. An evergreen Privet very similar to Amur River South but a compact dwarf grower, making it more costly but much less work. Only needs trimming about one-fifth as often. Also makes a lovely specimen plant. Plant Lodense liberally, have beautiful hedge and sit in the shade while your neighbor trims his ordinary hedge. Will be the envy of the neighborhood. Plant 1 foot apart.

	Per 10	Per 25	Per 50	Per 100
6 to 9 in. ....	\$3.25	\$6.00	\$11.75	\$22.50
9 to 12 in. ....	4.00	7.50	14.50	28.00
12 to 15 in. ....	5.00	9.50	18.50	36.00

**CALIFORNIA PRIVET.** America's most widely planted hedge where the temperature does not go much below zero. Semi-evergreen with thick, dark green foliage. Most beautiful of all the Privets. A rapid grower, can be sheared to any desired height, making a dense compact green wall. Plant 1 foot apart.

	Per 10	Per 25	Per 50	Per 100
12 to 18 in. ....	\$1.20	\$2.90	\$5.75	\$10.50
18 to 24 in. ....	1.75	4.00	7.75	15.00
2 to 3 ft. ....	2.20	5.00	9.50	18.00

**UNTRIMMED FLOWERING HEDGES.** We have numerous flowering shrubs that can be used but suggest for the best effect you use a mixture of different plants. Example: Plant 5 Spirea Van Houttei, 5 Forsythia, and 5 Spirea Billiardii. A mixture of this type will give you 3 colors of flowers in the same hedge. See pages 28 and 31 for varieties. Write for special prices on large quantities.

### Rosa Multiflora Japonica

Fast becoming the most popular living fence, hedge or border. Used extensively as a barrier for all livestock, has small thorns and grows so dense that even the largest bull will not try crossing it. Can be used as a fence at 60% saving over wire. So practical—yet so beautiful. Makes a bushy plant 6 to 8 ft. tall and almost as wide. Can be trimmed to any height or width from 2 to 4 ft., when planted 12 inches apart. Makes a beautiful untrimmed hedge when planted 18 inches apart. White flowers in June followed by fruits which birds like. A most practical hedge for your yard. **PRICES:** 10 to 18 in., 25 for \$2.00; 50 for \$3.50; 100 for \$6.50; 500 for \$30.00; 1000 for \$57.50.



Rosa Multiflora Japonica

## BABY EVERGREENS

AT WHOLESALE PRICES

Plant these sturdy well-rooted baby Evergreens in your garden for 2 or 3 years before transplanting to permanent landscape location. In a few years they will be worth 10 times what you paid us for them. You can also make the growing of Evergreens a profitable hobby. You be the nurseryman and save money. These Baby Evergreens are worth \$1.25 each but we are specially pricing them at only: 75c each; 3 for \$1.80; 10 for \$5.00; 50 for \$24.00.



### EVERGREENS

- Andorra Juniper
- Austrian Pine
- Baker's Arbor-Vitae
- Berckmann's Golden Arbor-Vitae
- Bonita Golden Arbor-Vitae
- Colorado Blue Spruce
- Irish Juniper
- Pfitzer Juniper
- Spiny Greek Juniper

### BROADLEAF EVERGREENS

- Abelia Grandiflora
- Boxwood
- Euonymus Patens
- Euonymus Japonica
- American Holly
- Oregon Holly (Mahonia)
- Magnolia Grandiflora
- Nandina

Special

Baby Evergreen Offer

The best varieties for use in home landscaping.

4 Baker's Arbor-Vitae 4 Pfitzer Juniper 2 Spiny Greek Juniper 2 Nandina	2 Abelia 2 Oregon Holly 2 Andorra Juniper 2 Austrian Pine
--	--

All 20 for Only \$9.50



# Evergreens Add Charm, Beauty and

## IMPORTANT NOTICE

All of our Evergreens are large specimen plants and will have to be shipped by express or motor freight with you paying the shipping charges. We do not ship any evergreens to any points farther away from us than the following: Woodward, Oklahoma; Topeka, Kansas; Kansas City, Missouri; Memphis, Tennessee; Waco, Texas; and Wichita Falls, Texas.



Colorado Blue Spruce



Berckmann's Arbor-Vitae

**AUSTRIAN PINE.** Combine glamour with hardiness. Long needled, dark green foliage that makes a very compact lawn specimen. Grows into a beautiful large, long-lived tree that is hardy practically anywhere. 3 to 4-ft. Specimens, \$10.00 each.

**MUGHO PINE.** A low dwarf Pine which grows in a globe shape. Very good for foundation planting and especially on the north or east exposure. PRICE: 18 to 24-in. Specimen Plants, \$5.49 each.

**COLORADO BLUE SPRUCE.** This is the jewel of all Evergreens. Our trees are nice well-shaped specimens that will make your yard the talk of the neighborhood. Foliage varies from bluish green to silvery blue. Spruce is really a northern tree; so try to plant it where it will have some protection from the hot southwest wind. PRICE: 30 to 36-in. Specimens, \$16.00 each.

**MOERHEIM BLUE SPRUCE.** A grafted variety similar to Colorado Blue Spruce, but much better. Moerheim has a much more blue-white color and holds its color throughout the entire year. PRICE: 30 to 36-in. Specimens, \$37.50.



Andorra Juniper

Irish Juniper



Sneedi Juniper



Cannarti Juniper



Pathfinder Juniper





# Dignity to Your Home

## UPRIGHT COLUMNAR TYPE

For Individual or Foundation Planting

**ARIZONA CYPRESS.** A beautiful and very popular Juniper in the Southwest. Blue-gray foliage that lends something different in your planting. PRICE: 3 to 4 ft., \$9.45; 30 to 36 in., \$7.25.

**BAKER'S ARBOR-VITAE.** A strikingly attractive Evergreen that retains its shape without shearing. Compact pyramidal form and dark green foliage. 4 to 5 ft., \$4.50; 3 to 4 ft., \$3.49; 2 to 3 ft., \$2.98.



Spiny Greek Juniper

## INTERMEDIATE TYPE

Low Growing Upright Types for Foundations

**BERCKMANN'S GOLDEN ARBOR-VITAE.** A dwarfish, compact, globular Arbor-Vitae with a beautiful golden color. Use for an entrance planting, brightening up a foundation or unusual color schemes. PRICES: 30 to 36 in., \$5.00; 24 to 30 in., \$3.98; 18 to 24 in., \$3.49; 15 to 18 in., \$2.98.

**BONITA ARBOR-VITAE.** A low, dwarfish, round growing dark green plant that needs no shearing. Very compact. Valuable for urns, window boxes, cemetery plantings, etc. 24 to 30 in., \$3.98; 18 to 24 in., \$3.49.

**SPINY GREEK JUNIPER.** A very compact cone-shaped Evergreen of dense, spiny, glaucous blue foliage. Prefers dry, sunny location. Ideal for entrance and foundation plantings. 3 to 4 ft., \$5.50; 2 to 3 ft., \$3.98; 18 to 24 in., \$3.49; 15 to 18 in., \$2.98.



Procumbens Juniper

### BLUE HAVEN JUNIPER.

A new Juniper that grows and looks like Cannarti except it has colorful powdery blue foliage. The most beautiful new plant introduced in 20 years. PRICES: 4 to 5 ft., \$11.50; 3 to 4 ft., \$9.45; 30 to 36 in., \$7.25.

**CANNARTI JUNIPER.** A beautiful Evergreen that will furnish a special dark green for your foundation planting, while in winter attractive blue berries add to its charm. PRICES: 4 to 5 ft., \$11.50; 3 to 4 ft., \$9.45; 30 to 36 in., \$7.25.

**CHINESE BLUE COLUMNAR JUNIPER.** Slender, pyramidal; grows symmetrical and narrow, with blue-gray; prickly foliage. Will grow well in almost any soil. Excellent for foundation or specimen. PRICES: 5 to 6 ft., \$11.50; 4 to 5 ft., \$9.45; 3 to 4 ft., \$7.25.

**DUNDEE JUNIPER.** A columnar type with green foliage in summer changing into a beautiful bronze-purple after frost in fall. One of the best plants we grow. PRICES: 4 to 5 ft., \$11.50; 3 to 4 ft., \$9.45; 30 to 36 in., \$7.25.

**IRISH JUNIPER.** An attractive plant growing in a columnar form that needs no shearing. Never too tall or bushy. Deep gray-green foliage. PRICES: 4 to 5 ft., \$4.50; 3 to 4 ft., \$3.49; 30 to 36 in., \$2.98.

**KETELEERI JUNIPER.** A fairly compact, columnar Evergreen that is well proportioned. "Fleshy" green foliage is decorated with distinctive slate colored berries which make it one of the best green Junipers. PRICES: 4 to 5 ft., \$11.50; 3 to 4 ft., \$9.45; 30 to 36 in., \$7.25.

**PATHFINDER JUNIPER.** A compact, upright grower with attractive powdery blue foliage. Gives a beautiful contrast in any landscape and will make your planting the talk of the neighborhood. PRICES: 4 to 5 ft., \$11.50; 3 to 4 ft., \$9.45; 30 to 36 in., \$7.25.

**SILVER RADIANCE JUNIPER.** Silver Radiance truly describes this lovely plant. Foliage is silvery-blue with a maroon cast that gives you a sparkling, glowing effect. Plant Silver Radiance and it will stop all who pass. PRICES: 4 to 5 ft., \$11.50; 3 to 4 ft., \$9.45; 30 to 36 in., \$7.25.

**SNEEDI JUNIPER.** Slender, columnar, grows symmetrical and narrow with blue-gray foliage. Needs very little shearing. One that you will cherish above all others. PRICES: 4 to 5 ft., \$11.50; 3 to 4 ft., \$9.45; 30 to 36 in., \$7.25.

## GLOBE TYPE

For Foundations or Group Plantings

**MUGHO PINE.** See page 36.

**SPINY GREEK JUNIPER.** A spiny Greek sheared into a compact globe-shaped plant. Much used for formal entrances and a plant you will enjoy. PRICES: 18 to 24 in., \$3.79; 15 to 18 in., \$3.25.

## MEDIUM SPREADING TYPES

For Foundation or Group Plantings

**PFITZER JUNIPER.** By far the most popular of the spreading types. Very graceful and particularly beautiful with its feathery blue-green foliage. Hardy, can be planted in shade or sun; in fact, will grow practically anywhere. PRICES: 30 to 36 in., \$6.50; 24 to 30 in., \$5.50; 18 to 24 in., \$4.50; 15 to 18 in., \$3.50.

**HETZE JUNIPER.** Very similar to Pfitzer but has a silver-blue color. 15 to 18 in., \$3.98.

## LOW SPREADING TYPES

For Steps, Banks, Foundations, and Rock Gardens

**ANDORRA JUNIPER.** A comparatively new variety that's really outstanding. Very low and spreading. Beautiful silvery green in the summer, turning an unusual pinkish red throughout the winter. You will like this one. PRICES: 24 to 30 in., \$5.00; 18 to 24 in., \$4.49; 15 to 18 in., \$3.98.

**PROCUMBENS JUNIPER.** Very dwarf spreading type with prickly blue-green foliage. Hardy, most satisfactory plant, and a true creeper. PRICE: 18 to 24 in., \$4.49; 15 to 18 in., \$3.98.



Pfitzer Juniper



Berckmann's Golden Arbor-Vitae

Baker's Arbor-Vitae





# Colorful BROAD -

## For Year Around Beauty • Hardy •

### A NEW LANDSCAPE SERVICE

Since we have no agents (eliminating his commissions means lower prices to you) we will gladly help you with your landscape problems by mail. If you need help, send us a sketch of your lot with outlines of house, walks, drives, etc., along with some pictures of your house at 2 or 3 different angles. Our landscape architect will draw in the plants you need on your sketch. There is no charge for this service when you buy the plants you desire from Ozark. We suggest that you drive to the nursery (where possible) and pick up your evergreens. Not only do we have larger sizes in some varieties listed, but also other varieties that are not listed. We give a 20% discount to cash and carry customers on practically anything they buy.

### BROAD-LEAF EVERGREENS

These Evergreens are unsurpassed for foundation planting since they hold their leaves in winter. Plant them liberally and your home will have a warm natural appearance in winter just as in summer. Each of our plants is a specimen within itself and not to be confused with the small, spindling, baby Evergreens which most mail-order firms offer.

**ABELIA GRANDIFLORA.** A hardy low growing evergreen flowering shrub with glossy dark green leaves contrasting effectively with the red-tinged bark. Blooms profusely all summer with white-tinged pink, bell-shaped blossoms. Grows 3 to 4 ft. tall but can be sheared to any shape. Most beautiful plant in any landscape. Plant several. 24 to 30 in., \$3.65; 18 to 24 in., \$2.98; 12 to 18 in., \$2.49.

**Euonymus Japonica**

**CAMELLIA SASANQUA.** Most popular winter and spring blooming plant in the Southern States. The plant is handsome with its green-tinged red, glossy, all-winter foliage forming a perfect setting for the bright colored blooms. Can be grown as far North as Tulsa, and Oklahoma City with good success. Plant in well-drained soil, in sheltered, partly shaded location. We offer 2 varieties considered finest in their class. **Cleopatra.** Shell-pink. **Maiden Blush.** Cherry-red. 24 to 30 in., \$2.98; 18 to 24 in., \$2.49.

**ENGLISH LAVENDER.** A lovely, low growing plant with narrow silvery-blue leaves that become a rich powder-blue in winter. Grows in the form of a globe. Especially good for accenting borders of shrubbery. No picture can bring out the exquisite beauty of this plant. Plant one in your yard and have the envy of the neighborhood. **PRICE:** 18 to 24 in., \$2.98; 15 to 18 in., \$2.49; 12 to 15 in., \$1.98.

**ELAEAGNUS, BRONZE.** A most versatile shrub for foundation planting, groups, borders and hedges and as specimens. Leaves are large and pointed, dark green above, silvery beneath. Creamy white flowers in fall, followed by yellowish red edible fruit. Grows better in shady locations than any other shrub, and as well in full sun. 15 to 18 in., \$1.98.

**EUONYMUS JAPONICA.** A lustrous, glossy-leaved specimen of the broad-leaf family. An all-purpose plant that is naturally symmetrical but can be trimmed as a hedge or will cling close to a wall. Our most versatile plant. Grows 6 to 8 ft. but can be trimmed to any height. **PRICE:** 24 to 30 in., \$3.49; 18 to 24 in., \$2.98; 12 to 18 in., \$2.49.

**EUONYMUS PATENS.** One of the most attractive Broad-leaf evergreen shrubs. Leaves are a bright green while in fall numerous orange, bitter-sweet berries add to its charm. Luxuriant of growth and naturally symmetrical in shape. Thrives in both sun and shade. Use as a specimen plant, background or hedge —can be trimmed any way desired. 24 to 30 in., \$3.65; 18 to 24 in., \$2.49; 12 to 18 in., \$1.98.



**Cherry Laurel**



**Euonymus Patens**

**Abelia**



**Mahonia (Oregon Holly)**



# LEAVED EVERGREENS

Beautiful • Lasting • Reasonable



American Holly

**AMERICAN HOLLY.** The true native Holly you can see growing wild in our Southern states, but will thrive as far north as Kansas City. Can be pruned as a specimen or grown into a tree. Spiny, glossy green foliage the year around with bright red berries in winter. **PRICE:** 30 to 36 in., \$5.00; 24 to 30 in., \$3.49; 18 to 24 in., \$2.49.

**BURFORDI HOLLY.** A relatively new Holly with us, but we consider it to be the very best Holly. Carries a large, dark green, glossy foliage the year around, with a plentiful supply of big bright red berries in winter. Will grow in either sun or shade and is excellent for foundation plantings. **PRICE:** 24 to 30 in., \$4.98; 18 to 24 in., \$3.98; 12 to 18 in., \$2.98.

**CORNUTA HOLLY.** An especially fine strain of Chinese Holly which has taken many years to produce in quantities, but now it's here for you to enjoy. It is very bushy, has large, spiny, dark green, glossy leaves the year around. In winter it produces clusters of red berries which give a pleasing contrast to the dark green glossy foliage. An absolute "must" for every garden. **PRICE:** 18 to 24 in., \$4.49; 12 to 18 in., \$2.98.

**JAPANESE HOLLY (Crenata Rotundifolia).** A splendid new, dark glossy green Holly with round leaves similar to Boxwood. Especially suited for spaces requiring a low, dwarf plant. Very hardy and is decorated with black berries. 24 to 30 in., \$4.98; 18 to 24 in., \$3.98; 15 to 18 in., \$2.49.

**MAHONIA (Oregon Holly).** Most popular of all Hollies and Broad-leaf Evergreens. It has shiny, large, spiny, metallic looking leaves which turn to a bronzy red in autumn. In spring it produces very attractive yellow flowers followed by blue fruit in June and July. Like thousands of others, you, too, can enjoy this beautiful plant in your yard. **PRICE:** 18 to 24 in., \$4.98; 15 to 18 in., \$3.49; 12 to 15 in., \$2.98.

**YAUPON HOLLY.** Really a native Holly of Texas, but plenty hardy as far North as Kansas City. A very compact plant with small dark green leaves similar to Boxwood. Grows considerably larger than Boxwood and is decorated with large quantities of red berries in winter. Ideal plant for foundation plantings, specimens or as hedges. **PRICE:** 15 to 18 in., \$2.49.

**JASMINE FLORIDA.** A handsome shrub with bright green foliage and masses of yellow bell-shaped flowers from May to November. Usually grows about 3 feet high and 3 ft. wide, making it especially good for foundation and border planting. **PRICE:** 18 to 24 in., \$3.98.

Burfordi Holly



**CHERRY LAUREL.** A handsome Evergreen that can be grown into a tree or pruned as a specimen. Has dark, shiny, green leaves and will become more compact each time you shear it. **PRICE:** 4 to 5 ft., \$8.00; 3 to 4 ft., \$6.00; 2 to 3 ft., \$3.98.

**NANDINA.** Our most interesting plant that changes color with the season. Foliage is bright green in summer turning to vivid red in winter. In spring panicles of white flowers are produced and in fall clusters of brilliant red berries decorate the entire landscape. Grows 3 to 5 ft. but can be pruned to any height. Use under window and mix with other shrubs for year around beauty. **PRICE:** 18 to 24 in., \$3.00; 15 to 18 in., \$2.49; 12 to 15 in., \$1.98.

**PHOTINIA.** A beautiful Evergreen with slightly curled, indented leaves. The new foliage in spring is in contrast of bright colors (mostly red) and grows very compact. Not particular about soil or situation. Can be used many places in the landscape. **PRICE:** 24 to 30 in., \$4.49; 18 to 24 in., \$3.49; 15 to 18 in., \$2.98.

**CRIMSON TIDE PYRACANTHA.** The picturesque new evergreen Pyracantha that is a sensational beauty. It is lower growing than most Pyracantha and in spring bright, bell-like white flowers literally cover the plant, followed by fiery red berries which last well into winter. May be used as a specimen, but is particularly attractive when trained against a wall where the rich deep green foliage acts as a splendid foil for the amazing quantities of berries. A spectacular, yet dignified shrub and one to be prized for your garden. **PRICE:** Gallon cans, \$2.29 each.

**GOLD NUGGET PYRACANTHA (Pyracantha Lalandi).** Gold Nugget is the gem of all Pyracanthas. It puts on a magnificent display of bell-like, snow-white blossoms followed by masses of berries, each berry rich golden in color, against deep green foliage. Gold Nugget is hardy in all sections and will certainly help to make your lawn the show-place of the neighborhood. **PRICE:** Gallon cans, \$1.98 each.

**WAX-LEAF LIGUSTRUM.** The South's most beautiful plant. Has showy, thick, waxy leaves that are dark green on top and light green on the under side. Can be pruned to any shape for specimen plants or beautiful informal hedge. 24 to 30 in., \$3.49; 18 to 24 in., \$2.49; 15 to 18 in., \$1.98.



Nandina



Wax Leaf Ligustrum

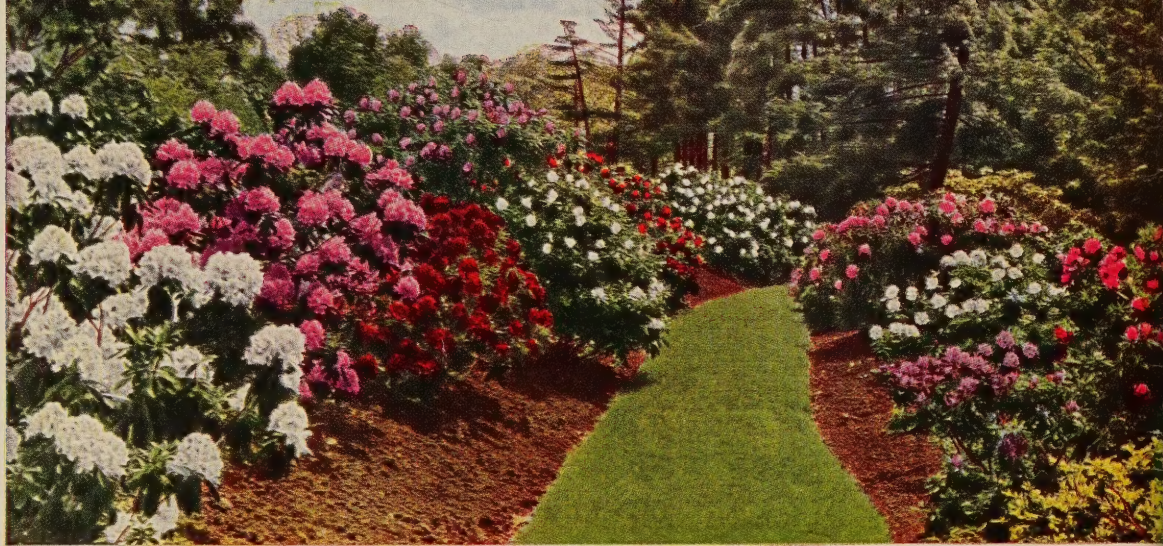
Photinia





# Broad- Leaved Evergreens

*Beautiful  
Throughout  
The Year*



Rhododendrons at Blossom Time in April and May

## OZARK'S HYBRID RHODODENDRONS

An indispensable beauty! These wonderful shrubs are unequalled as evergreen foundation plants for any home. Their gorgeous blossoms are showy and extremely colorful.

Rhododendrons are easy to grow, but must have good loamy acid soil—a rich soil of organic matter. Any gardener can create this soil condition by working peat moss or compost into the soil before planting. Acidify your soil by using 1 tablespoon of Aluminum Sulphate per gallon of water twice a month. Plant in partial shade (protected from extremely hot sun) and cover ground with a moisture-retaining mulch of peat moss up to 2 inches in depth. The most effective plantings are those in masses, combining all colors for contrast and interest. The supply of these wonderful plants is extremely limited. Please order early. Heavy 3-year plants, 12 to 15 in., in the following colors: Crimson-Red, Deep Rosy Pink, Lilac-Purple, and White. **PRICES:** Each, \$4.98; all 4 colors, \$19.00.

## HARDY AZALEAS

Azaleas are, without doubt, the most beautiful flowering plants in the South. We are fortunate in having the very best Kurume varieties which are hardy in all sections of the South and will stand winters much farther north by mulching. They stood 14 degrees below zero here last winter. Azaleas prefer partial shade and acid soil. Should be used on east and north side for best results. Roots are near surface and should be kept cool and damp by using a 2 to 4-inch mulch of acid peat moss. Do not cultivate. Add Aluminum Sulphate each spring, 1 or 2 pounds per plant. An ideal fertilizer is Cottonseed Meal but do not put in hole.

**CORAL BELLS.** Very profuse bloomer of pink bell-shaped flowers. Compact grower. Glossy leaves.

**HINODEGIRI.** Slow, compact grower with fiery red flowers that literally smother the entire plant.

**SALMON BEAUTY.** Large, hose in hose, salmon-pink flowers and light green foliage. Most desirable.

**SNOW.** Good sized flowers of purest white among beautiful glossy leaves. Liked by all.

**PRICES:** 8 to 10 in., \$2.79 each.

**Magnolia Grandiflora**



Azalea Hinodegiri

## MAGNOLIA GRANDIFLORA

The true Southern Magnolia but acclimated to stand as much as 20 degrees below zero. Intensely fragrant large snow-white blooms appear in June against a background of large, glossy, dark green leaves which remain on the tree the year around. Magnolia likes plenty of sunshine and does better when peat moss is worked in around its roots. Our plants are exceptionally nice this year.

PRICES	
4 to 5 ft.	\$7.50
3 to 4 ft.	5.00
2 to 3 ft.	3.98
18 to 24 in.	2.98
12 to 18 in.	1.98

## BOXWOOD

A small attractive plant that grows very slowly. Its dwarfish habit makes it especially useful for window boxes, urns, and foreground of foundation plantings. Foliage is small, glossy and dark green. Very hardy and always holds its foliage in winter. We cannot recommend this grand plant to you too highly. **PRICES:** 15 to 18 in., \$3.98; 12 to 15 in., \$3.25.



Boxwood

