

## **Historic, Archive Document**

Do not assume content reflects current scientific knowledge, policies, or practices.



# RETAIL PRICE LIST

## DWARF AND ESPALIER FRUIT TREES

1953 *Fall and Winter* 1954



*Dwarfs and Espaliers solve the problem  
of limited garden space*

**ORDER NOW**

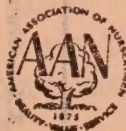
*Transplanting and Shipping Season  
November 1 to March  
Depending on location*

All claims of whatsoever nature,  
must be made within 10 days after  
receipt of stock. Positively no  
claims will be recognized unless  
made in the time limit specified  
and in writing.

## U. S. Espalier Nursery Co.

Sigward Edstrom, proprietor  
**SHERWOOD, OREGON**

Members:  
American Association of Nurserymen  
Oregon Association of Nurserymen  
The American Pomological Society



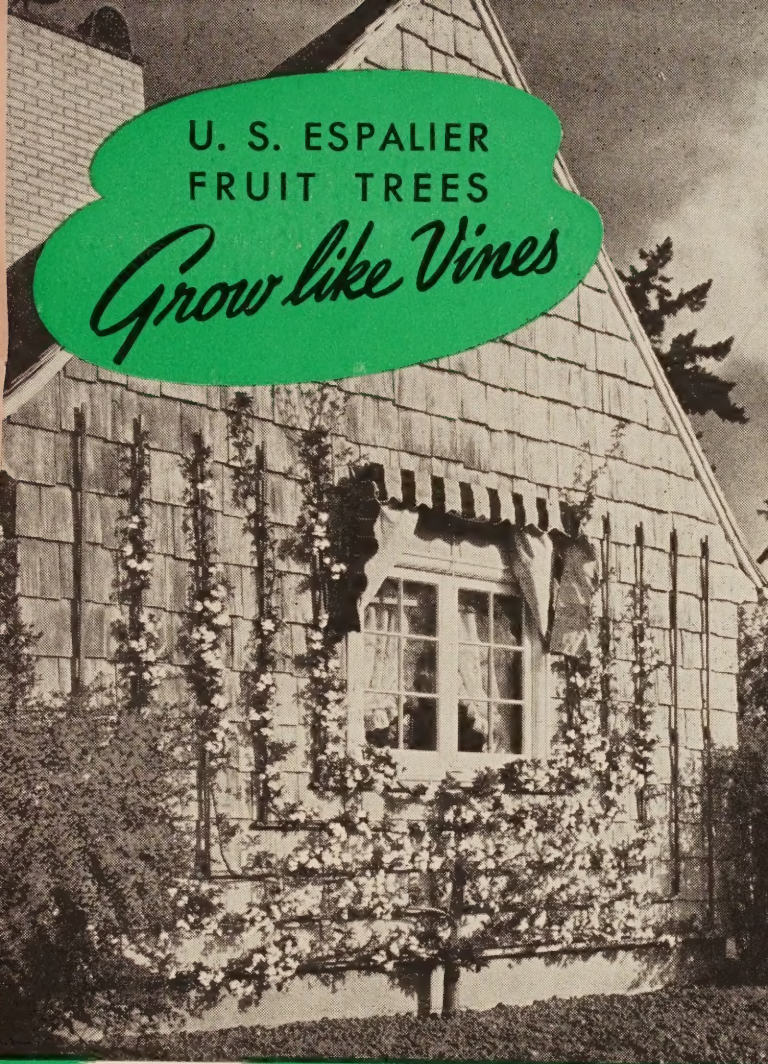
# VARIETIES

STYLES AVAILABLE MARKED ✓ (Others in too small quantities to quote.)

	HORZ'NT'L CORDON				VERTICAL CORDON					DWARFS			
	A	B	C	D	E	F	G	H	J				
	One Tier	Two Tier	Three Tier	Four Tier	One Arm	Two Arm	Three Arm	Four Arm	Five Arm	3/8"-1/2" Trunk	1/2"-5/8" Trunk	5/8"-1" Trunk	1" and up
<b>ALMONDS</b>													
I.X.L.—Nuts are large and symmetrical; shell soft, smooth; kernel large and well filled.													
NE PLUS ULTRA—An excellent type; good producer; pollenizer; nuts medium to large; flavor good.													
<b>APPLES</b>													
BEVERLY HILLS—Cross of Melba and Early McIntosh. Fruit has white flesh, skin pale yellow with red stripes and splashed with red, quality very good. Well suited for Southern California coastal climate. Early Summer.													
CORTLAND—An attractive red, darkly and obscurely striped apple with white flesh, slow to discolor on exposure to air, very good for cooking, dessert or market. Annual bearer. Late.													
EARLY CRIMSON—This apple ripens a week ahead of Yellow Transparent. Good eating and cooking. Fruit is brilliant red. Early.													
GOLDEN RENETTE—A large golden-yellow apple, with a rich flavor. October.													
GRAVENSTEIN—A large attractive orange-yellow apple overlaid with stripes of red. August.													
KING—A large apple of beautiful red on a yellow background, crisp flesh, juicy and a good keeper. Late.													
LODI—Looks similar to Yellow Transparent, but is larger, does not grow mealy as quickly, keeps better, ripens a little later. Early.													
NORTHERN SPY—One of the finest apples with large fruit of thin skin and pale yellow ground-color nearly concealed with bright red. Late.													
RED DELICIOUS—A red striped, long pointed apple of fine flavor and bouquet. October-November.													
RED GRAVENSTEIN—A deep red Gravenstein apple with excellent quality. Fall.													
RED JONATHAN—One of the finest winter apples; skin is bright red, thin and smooth. Flesh is crisp, juicy and a pleasant sub-acid flavor. Highly valued as a table and cooking apple. November.													
RED STAYMAN—An offspring from the Winesap—although the fruit is larger. Late.													
WHITNEY CRAB APPLE—This crabapple has all the good qualities of the best crabapples. Fruit is large, uniform in size and shape, skin is light yellow shaded and striped with red. August.													
YELLOW DELICIOUS—Large golden-yellow fruit. Flesh crisp and juicy, of very fine texture. Hardy grower, prolific bearer. September.													
YELLOW TRANSPARENT—A very early medium large, pale yellow apple. Abundant bearer. August.													
<b>APRICOTS</b>													
BLENHEIM—Large, oval. Yellow, rich and juicy. Regular and prolific bearer. August.													
PERFECTION—New. Extra large fruit. Flesh firm, juicy with rich flavor. July-August.													
ROYAL—Flesh is deep orange with red cheek; rich and sweet flavor; medium size; good bearer. August.													
TILTON—Fruit large size; rich apricot color; flavor of highest quality; bears very heavy. August.													
WENATCHEE MOORPARK—Very large size; skin orange with red cheek; flesh firm; juicy; good flavor. July-August.													
<b>CHERRIES, Sour (SEMI-DWARF)</b>													
MONTMORENCY—Large; red, tender flesh; mildly acid. One of best canning varieties. Late June.													
<b>CHERRIES, Sweet (SEMI-DWARF)</b>													
BING—Large fruit, black; very fine. July.													
LAMBERT—Very large fruit, dark-red. Flavor sweet, or very mild sub-acid, aromatic, rich. July.													
ROYAL ANN—(Napoleon Bigarreau) pale yellow with bright red cheek, flesh very firm, juicy and sweet. One of the best for canning. July.													
<b>NECTARINES</b>													
BOSTON—Medium; deep yellow with a bright blush and deep mottlings of red; flesh yellow without any red at stone; sweet; freestone.													
QUETTA—A new variety; flesh yellow and highly colored; very hardy.													
<b>PEACHES</b>													
EARLY CRAWFORD—Large, roundish bright yellow with red cheek; flesh yellow, juicy and sweet. August-September.													
ELBERTA—Large size, freestone, bright color, yellow flesh. September.													
GOLDEN JUBILEE—A new yellow freestone ripening ahead of the Rochester; firm, rich in sugar, delightfully fragrant. July to August.													
HALE HAVEN—A new variety of outstanding merit. Fruit fine grained, firm, rich, golden fleshed freestone. Bears very heavily. Ripens two weeks ahead of Elberta.													
J. H. HALE—Very large; globular; deep yellow overlaid red. Very solid flesh. September.													
RED HAVEN—One of the earliest freestones, ripening about 10 days ahead of Golden Jubilee. Bright red color with creamy yellow background; smooth skin; heavy bearer. July to August.													
ROCHESTER—Yellow freestone, good size, very sweet and fine flavor. August.													
WHITE HALE—Skin pale yellow, marbled with dark red; flesh white, juicy, melting, rich. August.													
<b>PEARS</b>													
BARTLETT—Large size, with beautiful blush next to sun. Very juicy and high flavored. Strong grower. Very popular. August-September.													
BOSC—A high quality variety with a distinctive long neck, fruit large, yellow and extra sweet. Excellent for both cooking and eating. October-November.													
CLAPP'S FAVORITE—Bright yellow with red cheek. Rich flavor. Sweet and refreshing. Flesh melting, very pleasant flavor. September.													
COMICE—Large; crimson cheek; melting; perfumed; flesh luscious. October-November.													
D'ANJOU—Large; buttery, melting, vinous flavor. November-December.													
FLEMISH BEAUTY—Fine looking large fruit, juicy. Strong grower and good bearer. September-October.													
HARDY—An early fall pear, large lemon-yellow over-spread with cinnamon russet. Very juicy and sweet. September.													
TONGERN—Large, golden brown dotted with soft red of extraordinary beauty. Fruit ripens in early fall and is juicy and highly flavored. September.													
WINTER NELIS—A delicious winter pear of medium size; flesh yellowish white; very juicy when ripe. December.													
<b>PLUMS</b>													
BURBANK—Beautiful dark red with delicate bloom. Flesh rich yellow. Small stone. Fine quality. August.													
CLIMAX—Beautiful, cherry red; yellow-golden meat; delicious flavor; large, heart-shaped. July.													
ITALIAN PRUNE—A fine late prune. Oval, purple fruit. Juicy and very productive. Delicious. September.													
PEACH PLUM—Fruit large and one of earliest to ripen; regular, roundish; skin red; flesh greenish-yellow; tinged with red at maturity; rich flavor. July.													
PLUMCOT—A cross between the plum and apricot. Purple-red fruit with solid blood-red flesh; sub-acid flavor. August.													
SANTA ROSA—Large; purplish crimson; flesh yellow, mottled crimson. July-August.													
SATSUMA—Very large; well flavored with blood red flesh; skin red; small pit; good for canning. July.													
SHIRO—Egg-shaped; medium size, smooth, bright yellow. Very productive. August.													

U. S. ESPALIER  
FRUIT TREES

*Grow like Vines*



...and Provide  
*Delicious Fruit*  
for Your Table



# Fruit and Beauty in a Small Space

**B**EAUTIFY your home with an "orchard" growing on vines! U.S. Espalier Fruit Trees grow in artistic vinelike patterns against any wall, trellis or fence. They yield an abundance of delicious fruit that is often larger and richer than fruit from regular trees. Developed in Switzerland where garden space is limited, these unique trees are now available in America and add a distinctive touch of beauty to any home or garden.

## *Espalier Trees Provide Blossoms In Spring, Fruit In Autumn*

The variety of designs into which Espaliers can be trained is almost unlimited. T-shapes, U-shapes, palmettes, candelabra, horizontal and vertical cordons, pyramids and many other interesting designs can be worked out to fit any space in your yard. Trained around windows, planted against a fence or as a hedge, U. S. Espalier Fruit Trees add new beauty to your home with their gorgeous blossoms, abundant foliage and ripening fruit.

## *Espalier Trees Need Minimum Space And Care*

An Espalier tree needs no more space or care than a rose bush. Genuine U. S. Espalier Fruit Trees are propagated from true dwarf roots and scions which limit their size and growth. They come from the nursery ready-trained, with complete instructions for planting and care.

## *Genuine Dwarf Trees*

**D**WARF trees are grown from the same stock as our espaliered trees, and have most of their advantages. They require very little space—only one-fourth as much as an ordinary tree. Yet they yield an abundance of delicious fruit.

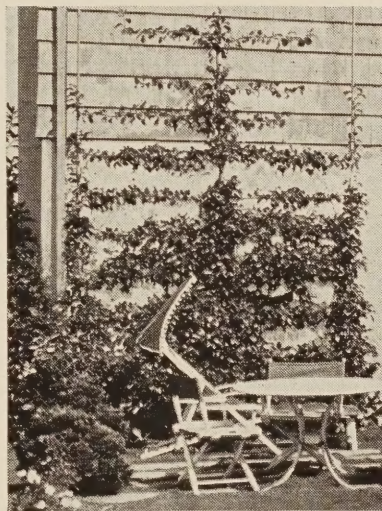
When fully grown, the maximum height of dwarf trees is not over 10 feet, and by proper pruning they can be kept down to six feet. This makes it easy to prune and spray them, and the fruit, which is of true variety, is within reach for easy picking.



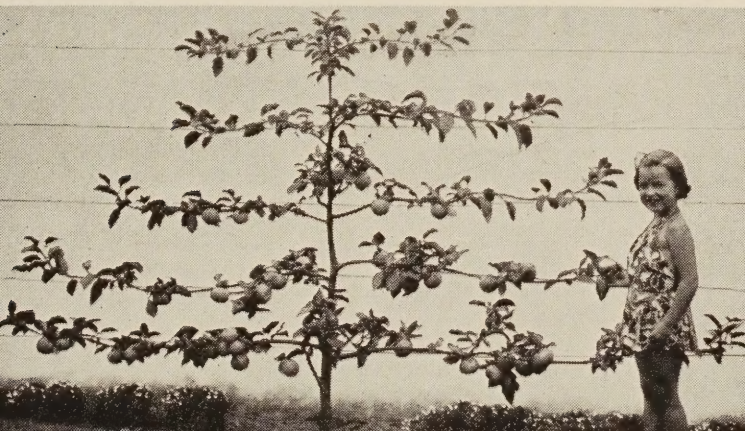
*Above:* Eight-year-old Espalier pear trees planted against a garage. Note heavy crop of large pears.



*Right:* This Espalier tree turned a blank wall space into a beautiful addition to this outdoor living room.



*Below:* Six-year-old Espalier apple tree planted as a background in this yard. Tree is less than five feet tall. Note the large apples.



# 40 VARIETIES of FRUIT

## from which to Choose

---

### *Apples*

Allington Pepping  
Baldwin  
Golden Renette  
Gravenstein  
King David  
McIntosh  
Red Astrachan  
Red Delicious  
Spitzenberg  
Winter Banana  
Yellow Delicious  
Yellow Transparent

### *Pears*

Bartlett  
Bosc  
Clapp's Favorite  
Comice  
D'Anjou  
Flemish Beauty  
Gellert  
Tongern  
William's

### *Plums and Prunes*

Beauty  
Climax  
Forest Rose  
Italian Prune  
Monarch  
Shiro  
Victoria

### *Cherries*

Bing  
Lambert  
Ostheimer Weichsel  
Royal Anne

### *Peaches*

Crawford  
Elberta  
Hale  
Rochester  
Slappy  
Strawberry

### *Apricots*

Blenheim  
Perfection

**U. S. ESPALIER NURSERY CO., Portland 1, Oregon**

---

AUTHORIZED DISTRIBUTOR



# **Fruit and Beauty In a Small Space**

Beautify your home with an "orchard" growing on vines! U.S. Espalier Fruit Trees grow in artistic vinelike patterns against any wall, trellis or fence. They yield an abundance of delicious fruit that is often larger and richer than fruit from regular trees. Developed in Switzerland where garden space is limited, these unique trees are now available in America and add a distinctive touch of beauty to any home or garden.

## **Espalier Trees Provide Blossoms In Spring, Fruit In Autumn**

The variety of designs into which Espaliers can be trained is almost unlimited. T-shapes, U-shapes, palmettes, candelabra, horizontal and vertical cordons, pyramids and many other interesting designs can be worked out to fit any space in your yard. Trained around windows, planted against a fence or as a hedge, U.S. Espalier Fruit Trees add new beauty to your home with their gorgeous blossoms, abundant foliage and ripening fruit.

## **Espalier Trees Need Minimum Space and Care**

An Espalier tree needs no more space or care than a rose bush. Genuine U.S. Espalier Fruit Trees are propagated from true dwarf roots which limit their size and growth. They come from the nursery ready-trained, with complete instructions for planting and care.

# Espalier Trellis-Trained F

## HORIZONTAL CORDONS

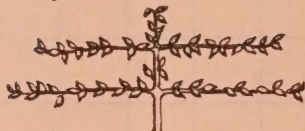
(T-Shaped)

### Style A



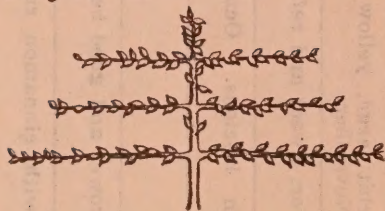
**ONE-TIER.** Spread (width between extreme shoots of lower tier) 4 to 8 feet. Height: 2 to 3 feet.

### Style B



**TWO-TIER.** Spread: 4-9 feet. Height: 3-4 feet.

### Style C



**THREE-TIER.** Spread 6 to 10 feet. Height 4 to 5 feet.

### Style D

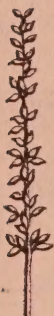
**FOUR-TIER.** Spread: 7-10 feet. Height: 4-6 feet.

	<b>A</b> 1-Tier	<b>B</b> 2-Tier	<b>C</b> 3-Tier	<b>D</b> 4-Tier
Apples Apricots Cherries Nectarines Peaches Pears Plums	<b>\$5.50</b>	<b>\$7.00</b>	<b>\$10.00</b>	<b>\$12.00</b>

# Fruit Trees Grow Like Vines and

## VERTICAL CORDONS

(Palmettes)



### Style E

SINGLE-CORDON, 5-7 feet high.

For pollinizers ..... \$5.00

### Style F

DOUBLE-CORDON, 4-6 years, (U-Shape) ... \$6.00

### Style G

THREE-CORDON, 5-7 feet high ..... \$8.00

### Style H

FOUR-CORDON, 5-7 feet high ..... \$10.00

### Style J

FIVE-CORDON, 5-7 feet high ..... \$12.00

Prices same for all varieties in  
vertical cordons.

# Produce Delicious Fruit

## ✓ DWARF FRUIT TREES

### WELL BRANCHED

3/8" - 1/2" trunk .....	\$2.50
1/2" - 5/8" trunk .....	3.50
5/8" - 1" trunk .....	4.00
1" and up trunk .....	\$5.00 and up

Dwarf trees are grown from the same stock as our espaliered trees, and have most of their advantages. They require very little space — only one-fourth as much as an ordinary tree, yet they yield an abundance of delicious fruit.

When fully grown, the maximum height of dwarf trees is not over 10 feet, and by proper pruning they can be kept down to six feet. This makes it easy to prune and spray, and the fruit, which is of true variety, is within reach for easy picking.

## Terms

Cash should be forwarded prior to shipments; C.O.D. shipments, 50% in advance.

ALL PRICES F.O.B. SHERWOOD, OREGON

Packing and crating at cost.

Varieties and styles available shown on reverse side.

We accept all orders subject to crop conditions, and on condition that the same shall be void should injury befall our stock from hail, frost, or other causes beyond our control.

U. S. ESPALIER NURSERY CO.