

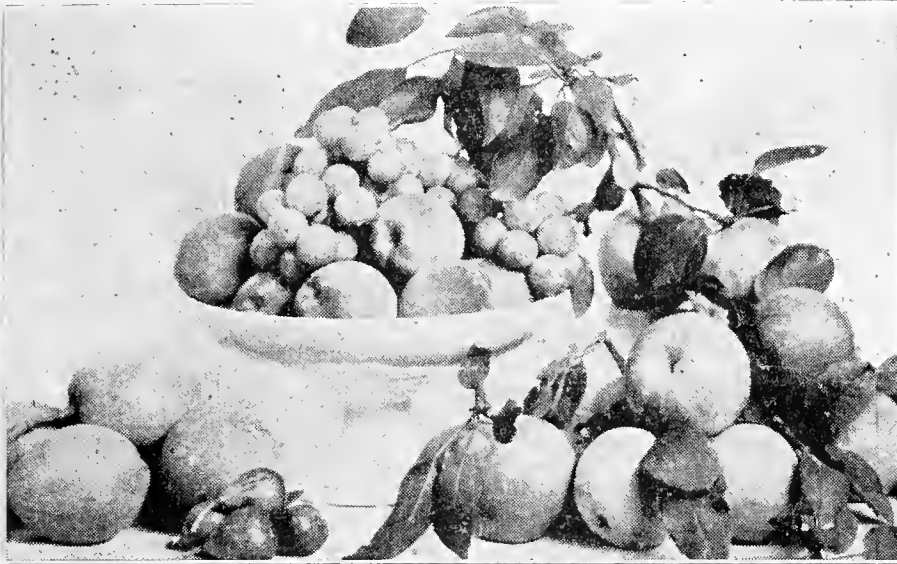
Historic, Archive Document

Do not assume content reflects current scientific knowledge, policies, or practices.

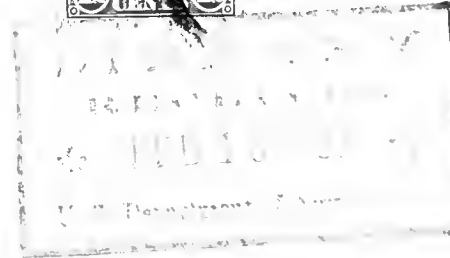
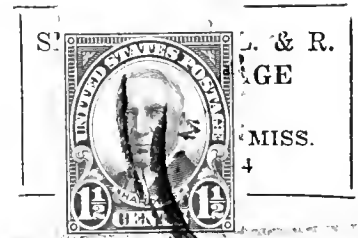
6345
c1007-
27-1

PIGFORD NURSERIES

Lumberton, Mississippi



A Variety of Choice Fruits Grown In a Home Orchard



U. S. DEPARTMENT OF AGRICULTURE,

WASHINGTON, D. C.

BUREAU OF PLANT INDUSTRY
Fruit and Vegetable Crops and Diseases

o p o 8-3591

M. R. N

Postmaster: If unable to deliver to addressee please
deliver to anyone interested in nursery stock.

Pigford Nurseries, Lumberton, Miss.



BEAUTIFYING AND IMPROVING THE HOME GROUNDS

Take advantage of our **FREE PARCEL POST DELIVERY SERVICE** on light weight trees and plants that can be shipped by mail. By us paying the postage at this end our customers are saved the expense of the postal delivery and also the C. O. D. postal fee of 12 cents.

This is a grand opportunity for everyone to make new plantings, re-arrange and fill in vacant spots; to set new varieties and make changes in general.

All stock too large and heavy to be shipped by mail will be shipped express collect or in some instances freight collect.

There has never been more thought and attention given to **HOME BUILDING** and **BEAUTFICATION** than at the present time.

Practically everyone who owns a **HOME** is making every effort to make it more comfortable and attractive. Setting out trees and evergreen plants accomplishes this easily, cheaply and quickly.

A little money, time and energy spent in setting our fruit and nut trees for orchards, evergreen and flowering shrubs for the yard yields more happiness, pleasure and profit than any other way it could possibly be spent. Our Nursery stock is very reasonably priced.

The best time to set out fruit and nut trees, roses and flowering shrubs is during the winter months after the foliage has shedded.

The best time to set out evergreen plants is any time during the fall, winter and spring months if plants are dug with a ball of dirt and kept watered plentifully.

Evergreen trees and plants can be set during the winter months without a ball of dirt provided the roots are **NEVER** allowed to become dry.

Our aim is to be fair, square and honest, and it is our sincere desire to **ALWAYS** give customers full value for their money. Should an error occur it is unintentional and we shall be glad to correct it.

OUR TREES AND PLANTS ARE FREE OF DISEASE—A certificate of inspection of the Mississippi State Entomologist accompanies each bundle of trees. **ALL INSPECTION LAWS OF OTHER STATES ARE COMPLIED WITH.**

OUR SHIPPING FACILITIES are good, having the Southern railroad running through Lumberton. We have local and long distance telephone and telegraph service, also bus lines.

SUBSTITUTIONS—If out of the varieties fruit trees ordered, we will send the ones we know to be equal or superior unless instructed not to substitute.

NO EXTRA CHARGE FOR PACKING OR DRAYAGE—Our trees are carefully tagged, tied, roots packed in damp material and wrapped free of charge.

CLAIMS—If by any possibility errors should occur, they will be promptly rectified, if claim is made **UPON RECEIPT OF TREES.** We will not be liable for more than purchase price of stock.

GUARANTEE—We guarantee our trees to be well grown, properly handled, packed and shipped according to instruction.

We do not guarantee trees or plants to live because we have no control over the handling of them after they leave our hands.

HOW TO SET OUT TREES AND PLANTS

Immediately upon receipt of stock open bundle and if dry immerse roots in water for a few hours. Dig hole large enough to set roots without bending. Spread roots out and set about two inches deeper than they naturally grow. Pack good top soil around roots firmly, do not bend. Pour in sufficient water. Let settle. Finish filling hole. Leave trench around, add more water, soak in. Water when necessary. If plants are balled **LEAVE THE BURLAP ON.** Set as above.

NEVER PUT COMMERCIAL FERTILIZER IN HOLE. It may be applied on top of ground and hoed or watered in.

Do not let rich manure come in contact with roots.

ROSES

Our **ROSES** are very fine 2 year field grown budded stock of the very est selected monthly blooming varieties for the South.

Our plants are healthy, thrifty with good root system and should bloom early next spring.

Set out several plants now while you can get the **VERY** best plants delivered free.

Price postpaid, 40c each; 6 for \$2.00; 12 for \$3.50.

RED

ETOILE de HOLLANDE—Deep bright velvety red, pointed buds.

E. G. HILL—Bright dazzling red, long stems, ruffled edges.

RED RADIANCE—Grand, well known carmen red, hardy, free bloomer under any and all conditions.

PINK

BRIARCLIFF—Brilliant rose pink, long beautiful buds, fine cut flower.

COLUMBIA—Lovely bright pink, long buds, ruffled edges, very fine.

PINK RADIANCE—One of the hardiest and prettiest soft pink; long stems.

MULTICOLORED

TALISMAN—Beautiful pointed buds, ruffled edges, bright red, old gold and yellow.

YELLOW

SUNBURST—Long pointed buds, fine deep orange yellow, very fragrant.

LUXEMBURG—Long beautiful buds, rich yellow, pink stripe.

JOHANNA HILL—Very large, rich yellow buds, fine cut flower.

WHITE

WHITE AMERICAN BEAUTY—Well known, large blooms, very hardy.

KAISERIN AUGUSTA VICTORIA—Pure white, profuse bloomer, very fragrant.

POLYANTHIA

CECILE BRUNER—SWEETHEART—Lovely, dainty, light pink blooms.

IDEAL CHOICE—Masses scarlet red blooms.

CLIMBERS

CL. RED RADIANCE—Same fine variety as bush.

CL. TALISMAN—Same fine variety as bush.

CL. PINK TALISMAN—Same fine variety as bush.

CL. KAISERIN AUG. VICTORIA—Same fine variety as bush.

CL. LUXENBURG—Same as bush.



BROADLEAF EVERGREENS

NR means "naked roots" which are packed in damp moss and wax paper. BB means balled and burlapped.



Broadleaf and Tropical Plants on Our Grounds

ABELIA GRANDIFLORA—From May until frost the graceful arching branches are covered with clusters of tubular white flowers tinged with pink; leaves small glossy green, turning to a metallic sheen in winter; as specimens, hedges, mass planting. Price postpaid, NR, 1½ to 2 ft., 35c; 3 for \$1.00; BB, express collect, 2½ to 3 ft., 50c; 3½ to 4½, 75c.

JAPANESE BOXWOOD—A good hardy, dwarf, compact boxwood, for borders, formal plantings, boxes, etc. Can be kept sheared any desired shape or size. Price postpaid, NR, 8 to 10 inches, 35c; 3 for \$1.00; express collect, BB, 15 to 18 inches, 90 cents.

BUXUS SEMPERVIRENS (tree boxwood)—Slow growth, leaves long, shiny, pointed. Price postpaid, NR, 10 to 12 inches, 50c.

BUXUS SUFFRUTICOSA—(True dwarf boxwood)—Leaves small, slightly round, dark, glossy green. Very slow, compact growth. Price postpaid, NR, 7 to 9 inches, 40c; 3 for \$1.10.

CAMELLIA JAPONICA—Well known evergreen shrub; large dark glossy green leaves; bush grows to height of 15 to 20 feet, and covered during winter and spring with large double blooms. We have red, pink, white and variegated. Price postpaid, NR, 10 to 12 inches 60c; express collect, 15 to 18 inches branched, BB, \$1.00 each; 18 to 24 inches, \$2.50; 30 to 36 inches, \$3.50.

CAMELLIA SASANQUA—Similar to Camellia Japonica faster grower and blooms in October and November. Leaves dark green, long. We have double white resembles carnations; bush literally covered with blooms before freezing weather. Also Rosea which is a very large pink-like Cherokee rose. Price postpaid, NR, 12 to 15 inches, 35c; 3 for \$1.00; express collect, 1½ to 2 ft., with buds, \$1.25 each; 2½ to 3 ft., with many buds, \$1.75.

GARDENIA FLORIDUS—Improved strain Cape Jasmine; foliage glossy, dark green; blooms large, waxy, fragrant. Price postpaid, NR, 15 to 18 inches, 35c; 3 for \$1.00; express collect, BB, 2½ to 3 ft., 75c; heavy, \$1.00; larger \$1.50.

DWARF GARDENIA—Spreading about 1 ft. high, fragrant blooms size one-half dollar. Price postpaid, NR, 8 to 10 inches, 40c; 15 to 18 inches, postpaid, 75c.

AMERICAN HOLLY—Well known native evergreen tree; red berries. Price, express collect, BB, 3 ft., \$1.00; 4 to 5 ft., \$1.50.

JAPANESE HOLLY—Small, compact, slow growing evergreen bush; resembles boxwood; very hardy and good. Price, express collect, BB, 2 to 2½ ft., \$1.25.

CHINESE HOLLY—Very rich, glossy dark green holly-like leaves, makes small bushy tree; fine. Price, express collect, BB, 2½ to 3 ft., \$1.50; 3 to 4 ft., \$2.00.

HOLLY AUGUSTIFOLIA—(CASSINA)—Leaves narrow, 2 to 3 ins. long. Bears deep red berries very young and most profusely. Price, express collect, BB, 3 to 4½ ft., with berries, \$1.25.

EVERGREEN BARBERRY—Long, spiny, glossy green leaves, compact graceful shrub. Price, postpaid, NR, 2 to 2½ ft., 75c.

ENGLISH IVY—One of the best ground or stone covers; clings; fine for shady locations; rich dark green leaves. Price, postpaid, NR, 35c each; 3 for \$1.00.

PRIMROSE JASMINE—An evergreen trailing plant that may be kept pruned in bush form, making a gorgeous mass; yellow blossoms in early spring, thrifty, beautiful. Price, postpaid, NR, 2 to 2½ ft., 40c; express collect, BB, 3 to 3½ ft., 60c; 4 to 5 ft., 75c.

HUMILE JASMINE—Fine, small leaved evergreen trailing shrub, small yellow flowers. Price, 2½ to 3 ft., 50c each; BB, express collect.

EUONYMUS JAPONICUM—Hardy, upright, waxy green leaves, red berries. Price, express collect, BB, 2½ to 3 ft., 75c each.

ELEAGNUS PUNGENS—Broad, bronzy, green leaves, underside white; a pleasing contrast. Price, express collect, BB, 2½ to 3 ft., \$1.25; 3 to 4 ft., \$1.75.

VARIEGATED ELEAGNUS—Same as above except about half of leaves are rich yellow. Fine for color in planting. Price, express collect, BB, 2½ to 3 ft., \$1.25.

CHERRY LAUREL—Beautiful, hardy, useful; prune to bush or tree size. Foliage rich green; white flowers in spring, blue berries in fall. We have a choice lot of bushy, well formed plants. Useful for backgrounds. Price, postpaid, 1½ to 2 ft., NR, 35c; 3 for \$1.00; express collect, BB, 3½ to 4 ft., \$1.00; 4½ to 5 ft., \$1.50.

LIGUSTRUM JAPONICUM—Rapid, tall, growing several feet in one season. Leaves dark green, large and broad. Price, postpaid, NR, 2 to 2½ ft., 35c; express collect, BB, 3 to 3½ ft., branched, 60c; 4 to 5 ft., BB, 85c; 5 to 6 ft., BB, \$1.50.

LIGUSTRUM LUCIDUM—GENUINE WAXLEAF—We have carefully selected the very best big thick waxy leaved plants and propagated from them. Do not confuse our genuine waxleaf with small leaved seedling stock so often seen. This variety ligustrum is by far the most useful and satisfactory of all evergreens in South. Perfectly hardy, vigorous the year round; graceful, compact, can be pruned to any size and thickness. Blooms freely of white flowers followed by blue-black berries.

Excellent for foundation planting as well as specimen, mass and hedge planting. This variety is NOT attacked by white fly or any other insect—no disease.

Very few plantings ever have enough of this evergreen. Price, postpaid, 1½ to 2 ft., NR, 35c each; express collect, BB, 2½ to 3 ft., 60c; 3 to 3½ ft., 75c; 4 to 5 ft., \$1.25; 5 to 6 ft., \$1.50; larger, \$2.50.

MAGNOLIA FUSCATA—Old time favorite. Leaves thick, bronzy green. White fragrant blooms. Price, postpaid, NR, 15 to 18 ins., 75c; BB, express collect, 2 to 2½ ft., \$1.25 each.

MAGNOLIA GRANDIFLORA—Very choice evergreen tree. Miss.'s State flower. Grows to 40 ft. Large thick waxy green leaves. Large white fragrant blooms in spring. Many of our trees branched from near bottom. Price, express collect, BB, 2½ to 3 ft., \$1.00; 3½ to 4 ft., \$1.50; 5 to 6 ft. \$2.00.

NANDINA DOMMESTICA—Foliage different shades of green during the summer, turning to rich red during winter; plant loaded with red berries during winter. As it gets older, many shoots are sent up from the ground making a mass of plants. Price, postpaid, NR, 10 to 12 inches, 35c; 3 for \$1.00; 12 to 15 inches, 50c each; express collect, BB, 15 to 18 inches, 85c; 2 to 2½ ft., 2 or more stems \$1.25; 2½ to 3 ft., \$1.50; 3 to 4 ft., \$2.00.

RAPHIOLEPSIS INDICA—Low, slow growing; oblong, thick, dark green leaves; hardy, white blooms; blue berries. We have used them with Japanese Yews at our front entrance. Price postpaid, NR, 15 to 18 inches, 40c; express collect, BB, 1½ to 2 ft., \$1.00.

PHOTINIA SERRULATA—Large holly-like leaves, red when young, green when mature. Price postpaid, NR, 15 to 18 inches, 40c; express collect, BB, 2½ to 3 ft., \$1.00.

PHOTINIA GLABRA—New leaves red, looks from a distance like red blooms. Price, express collect, BB, 1½ ft., \$1.00.

JAPANESE YEW—This is by far the best and most satisfactory evergreen for formal foundation planting. It can be set against a house or other plants and not get thin or unsightly. Grows upright to center stem; can be pruned to any desired shape and size. Leaves 2½ to 3 inches long, about ½-inch wide, dark, rich green. Absolutely hardy. Does well in sun and shade. Berries in fall. Price postpaid, NR, 18 to 20 inches, branched, 75c; express collect, BB, 2½ to 3 ft., \$1.00; 3½ to 4 ft., \$1.50; 4 to 5 ft. \$2.00.

PITTOSPORUM TOBIA—Rich, glossy green leaves; white fragrant blooms; for specimen and hedge. Price postpaid, NR, 15 to 18 inches, 35c; 3 for \$1.00.

PYRACANTHA LALANDII—Tall growing, leaves long, narrow; loaded from August 1st throughout the winter with clusters of orange-red berries. Price postpaid, NR, 15 to 18 inches 50c; express collect, BB, 3 to 3½ ft., \$1.25; 4 to 5 ft., \$1.50.

VIBURNUM TINUS—(Laurestinus)—Hardy, thrifty. Leaves small; blooms in January; pink, white. Price, 2 to 3 ft. \$1.00; express collect, BB, 4 to 5 ft., \$2.00.

SWEET OLIVE—Old time garden favorite. Small white blooms, extremely fragrant. Price postpaid, 15 to 18 inches, 75c.

YAUPON—

Native, hardy, evergreen holly, small foliage, compact, bushy, red berries during winter, produced in great profusion. Price postpaid, NR, 15 to 18 inches, 75c; express collect, BB, 3 to 2½ ft., \$1.25; 2½ to 3 ft. \$1.75



ALL PLANTS and trees listed NR means naked roots; that is, they will be dug with plenty root system, puddled and packed in damp moss. The varieties and sizes listed as NR live just as well and can be shipped by parcel post. All stock listed as BB means dug with a ball of dirt. These cannot be sent by mail and will go by express or freight collect.

CONIFEROUS EVERGREENS

BAKER'S COMPACT PYRAMIDALIS ARBOR VITAE—Best tall dark green, compact arbor vitae; perfectly hardy; foliage stays rich green all year. Price postpaid, NR, 2 ft., 75c; express collect, BB, 2½ ft., \$1.00; 3 to 3½ ft., \$1.50; 4 to 5 ft., \$2.00.



Evergreens on Our Lawn

BERCKMAN'S GOLDEN ARBOR VITAE—Best slow growing Golden Arbor Vitae; compact, slow growth, conical shape; hardy. Price postpaid, NR, 12 to 15 inches, 75c; express collect, BB, 1½ to 2 ft., \$1.25; 2½ ft., \$1.50; 3 ft., \$2.50; 4 ft., \$4.00.

BONITA ARBOR VITAE—Best slow growing, compact dark green arbor vitae. Foliage dark green all the year; hardy. Price postpaid, NR, 15 to 18 inches, 75c; express collect, BB, 1½ to 2 ft., \$1.25; 2½ ft., \$1.50; 3 ft., \$2.50.

COMPACTA ARBOR VITAE—Globe shaped. We have very choice stock of this beautiful variety. The foliage is soft green; growth hardy. Price postpaid, NR, 15 to 18 inches, 75c; express collect, BB, 2 to 2½ ft., \$1.25; 2½ to 3 ft., \$1.75; 3 to 4 ft., \$2.50.

TALL COMPACTA ARBOR VITAE—Same as above except grows tall. Price, BB, express collect, 2½ to 3 ft., \$1.25; 3 to 4½ ft., \$1.75.

CEDRUS DEODARA—Beautiful, graceful. "Spruce of the South." Grows rapidly; foliage feathery blue green; lower branches sweep gracefully. "Nature's Christmas Tree". Price postpaid, NR, 15 to 18 inches, 75c; express collect, BB, 2¼ to 3 ft., \$1.25; 3¼ to 4 ft., \$1.75; 4½ to 5 ft., \$2.50; 5 to 6 ft., \$3.50; 6 to 8 ft., \$4.50.

JUNIPER CHINENSIS PYRAMIDALIS—Best tall compact, hardy, blue sheen. Price postpaid, NR, 1¼ to 2 ft., 75c; express collect, BB, 3 to 4 ft., \$1.25; 5 to 7 ft., \$2.50.

JUNIPER CONFERTA—Spreading, height 1 to 1½ ft. Used for rock gardens, terraces, etc., hardy bluish green color. Price, BB, express collect, 3 to 4 ft. spread, \$2.00.

PFITZER JUNIPER—Low, spreading type; foliage rich blue green all year; ardy, useful for planting in front of other shrubs, as well as for terraces and corners. Price postpaid, NR, about 15 inch spread, 75c; express collect, BB, 1½ to 2 ft. spread, \$1.25; 2 to 2½ ft., \$1.50; 3 to 3½ ft., \$2.50; 3½ to 4 ft., \$3.00.

JUNIPER SYLVESTER—Tall, rapid growing, rich, green loose foliage. Price, BB, express collect, 2½ to 3 ft., \$1.00; 3 to 4 ft., \$1.50.

GREEK JUNIPER—Medium size growth, conical shape, blue foliage. Easily kept sheared. Price postpaid, NR, 12 to 15 inches, 75c; express collect, BB, 1½ to 2 ft., \$1.25; 2 to 2½ ft., \$1.75; 2½ to 3 ft., \$2.50.

VARIEGATED GREEK JUNIPER—Same as Greek except there are many splotches of rich cream foliage in with the green. Showy. Price postpaid, NR, 15 inches, 75c; express collect, BB, 1½ to 2 ft., \$1.25; 2½ ft., \$1.50; 2½ to 3 ft., \$2.00.

RETINOSPORA ERICODES—Rich dark blue-green, soft, feathery compact foliage; rapid upright grower. Price postpaid, NR, 18 inches, 75c; express collect, BB, 2 ft., \$1.00.

LONG LEAF PINE—We have many calls for this pine. These small plants live well and cost little. Price postpaid, NR, 8 to 10 inches, 25c each; 5 for \$1.00; express collect, BB, 1 to 2 ft., \$1.00.

PALMS, BULBS, ETC.

Set out a few tropical plants and see how much it improves the appearance of your Southern planting.

SABOL PALM—One of the hardiest, thriftiest and prettiest tall growing palms; height 30 feet. Stands temperature around zero. Has large fan shaped leaves. Price postpaid, NR, 1 ft., 50c; 1½ ft., 75c; BB, express collect, 2 to 3 ft., \$2.00; 3 to 4 ft., \$4.00; 4 to 5 ft., \$5.00.

COCOS AUSTRALIAN PALM—Stand zero temperature, spreading type with large blue-gray leaves. Best low growing. Price, NR, postpaid, 75c; BB, express collect, 2½ to 3 ft., \$2.00.

YUCCA—SPANISH DAGGER—Upright, long narrow dark green leaved Yucca, 15 feet; large clusters of white blooms in early spring. Gives a tropical touch to the planting. Price postpaid, 2 to 2½ ft., 75c; 3 to 4 ft., \$1.00, express collect.

CACTUS MEXICAN—Hardy, grows rapidly. Fine for dry locations, also does well in shade. Grand for urns in sun. Price postpaid, 35c; 3 for \$1.00.

BANANA—A clump growing on the grounds is admired. Cold kills top in winter. Bank roots with dirt, will come out in spring. Price per bulb, \$1.00.

BAMBOO—We have 2 kinds viz: small green leaved and the striped cane variety. Both good hardy sorts and make fine specimens or hedge. Price postpaid, small clumps, 50c; large clumps, 75c, express collect.

PAMPAS GRASS—This variety grass makes attractive specimen plants on the lawn; rapid grower, foliage rich blue-green; big plume-like white blooms. Price postpaid, medium clumps, 75c; large, express collect, \$1.00; extra large, \$1.50.

JAPANESE GRASS—Dark rich green leaves about ¼-inch wide, 10 inches long. Makes a solid mat. Grand ground cover under trees where nothing else will grow. Used so much in New Orleans. Does not become a pest. Good for bordering. Price postpaid, 15 for \$1.00; 100 for \$5.00.

ROSA MONTANA—Very fine vine, beautiful foliage, long panicles, pink blooms in great clusters. Price postpaid, 1 plant 25c.

ENGLISH IVY—Best evergreen ground, rock and stone cover; rich dark green foliage all year. Does well in shade. Price postpaid, well rooted plants, 25c; 5 for \$1.00.

CONFEDERATE JASMINE—Lovely small dark glossy leaved evergreen vine, fine ground and stone cover. Price postpaid, 25c each; 5 for \$1.00.

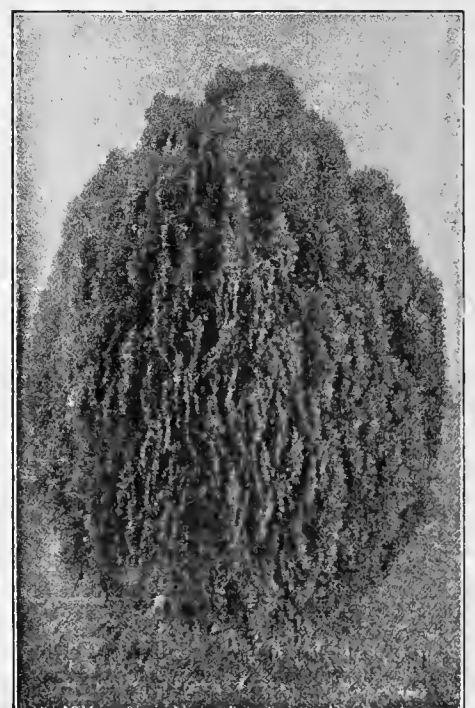
WISTERIA—Vigorous vine, long panicles chinese blue. Price postpaid, 2 years, 2½ to 3 ft., 50c.

WHITE WISTERIA—Price postpaid, 50c.

SCARLET TRUMPET HONEYSUCKLE VINE—Rapid growing vine, bright red trumpet flowers borne in clusters; blooms freely. Price postpaid, 2 ft., 30c.

HALL'S HONEYSUCKLE VINE—Almost evergreen in this section. Blooms are yellow and white, fragrant. Price postpaid, 25c; 5 for \$1.00.

AMERICAN BITTERSWEET—Vine covered in fall with red berries in great profusion. Price postpaid 35c.



Berckman's Golden Arbor Vitae

DECIDUOUS SHADE TREES AND SHRUBS

AMERICAN RED BUD—(JUDAS TREE)—Every home should have one or more trees. Small tree with large heart shaped leaves; great masses rosy-red flowers borne close along the stems in early spring before leaves appear. Price postpaid, 3 to 4 ft., 40c; express collect, 4 to 5 ft., 60c; 6 to 8 ft., branched, 90c.



Row of Cedrus Deodara Leading to Our Nursery

CUCUMBER TREE—(Magnolia Acuminata)—Grand native deciduous tree. Large leaves 10 to 15 inches across and from 15 to 30 inches long. Very large fragrant magnolia-like blooms early in spring. Price postpaid, 2 to 3 ft., 50c.

WHITE FLOWERING DOGWOOD—Native of this section and thrives on most all soils. Tree covered in spring with large white flowers followed by red berries. Price postpaid, 3 to 3½ ft., 50c each; 5 for \$1.75; 12 for \$3.75; 4 to 5 ft., 75c.

RED FLOWERING DOGWOOD—Same as white except has rosy-red flowers, very choice. Price postpaid, 2 to 3 ft., \$1.00 each.

RED DOUBLE FLOWERING PEACH—Our stock is very fine budded trees. A beautiful sight in spring, being literally covered with blooms. Price postpaid, 3 to 4 ft., 75c.

WHITE DOUBLE FLOWERING PEACH—Same price as red.

MIMOSA—Makes one of the prettiest low trees (20 ft.). The leaves are dark velvety green, shaped like fern. Pink blooms. Price postpaid, 3 to 4 ft., 60c; express collect, 6 ft., 80c.

LOMBARDY POPLAR—Rapid grower, tall, stately, holding its branches close and upright. Large, well branched. Price postpaid, 3 to 4 ft., 45c.

WEeping WILLOW—Our trees have been staked. Price postpaid, 4 to 5 ft., 75c.

NATIVE CRABAPPLE—Loaded in spring with fragrant pink blooms. Price postpaid, 3 ft., 40c; 3 for \$1.00.

PARSLEY HAW—Native small tree covered in spring with dainty white flowers followed by red berries in winter. Price postpaid, 3 to 4 ft., 40c; 3 for \$1.00.

AMERICAN ELM—Hardy, rapid growing, tall, stately. Price postpaid, 3 to 4 ft., 50c; 5 to 6 ft., 75c express collect.

CHINESE ELM—Fine leaf, many branched, medium size tree. Price postpaid, 3 to 4 ft., 50c; 5 to 6 ft., 75c, express collect.

TEXAS UMBRELLA CHINA—Makes the quickest and densest shade of any tree known. Price, 2 to 3 ft., 35c; 4 to 5 ft., 75c.

ALTHEA—ROSE OF SHARON—There is not a more useful and beautiful deciduous ornamental shrub; blooms all summer; demands little attention, endures the dry hot summer. Colors, single white; single purple; double red; white with red throat. Price postpaid, 2½ to 3 ft., 35c; 3 for \$1.00.

JAPANESE BARBERRY—Small bush, fine foliage, red berries in winter, used for hedges and massing. Price postpaid, 15 to 18 inches, 35c.

BUTTERFLY BUSH (BUDDLEIA)—Rapid growing, graceful shrub, with light green foliage; covered summer with long spikes of lilac blooms. Price postpaid, 2 to 2½ ft., 35c; large, 50c.

CALYCANTHUS (SWEET SHRUB)—Price, 18 to 24 inches, 35c.

CYDONIA (FLOWERING QUINCE)—Crimson red flowers early in spring before leaves put out. Price postpaid, 2 to 2½ ft., 35c.

CREPE MYRTLE—Fine old shrub loaded from early summer to late fall with large panicles of beautiful flowers. Pink, lavender, white and watermelon red. Price postpaid, 2 to 2½ ft., 35c each; 3 for \$1.00; 3 to 4 ft., 50c; 4 to 5 ft. 75c.

GOLDEN BELL—(FORSYTHIA)—Before leaves appear branches become studded with bright yellow blossoms. Price postpaid, 2½ to 3 ft., 35c; 3 for \$1.00.

PERSIAN LILAC—Our grafted plants bloom the first year, one or more times, being literally loaded with heavy trusses of fragrant blooms. Price postpaid, 2½ to 3 ft., 50c; 4 to 5 ft., 75c.

MOCK ORANGE—Vigorous, hardy, blooms in April, profuse sprays of white flowers, yellow centers. Price postpaid, 2 to 3 ft., 35c.

EVERBLOOMING MOCK ORANGE—(Virginal)—Fine, large fragrant, semi-double white flowers. Blooms intermittently all summer. Price postpaid, 2½ to 3 ft., 45c.

SPIREA PRUNIFOLIA—Branches covered in spring with double flowers. Price postpaid, 2 to 3 ft., 35c; 3 for \$1.00. Large, 3 to 4 ft., 50c.

SPIREA BILLARDI—Medium growing, free bloomer of spikelike pink flowers. Good. Price postpaid, 35c.

SPIREA VAN HOUTTEI—Most popular, graceful, profusion of single white flowers. Price postpaid, 2 to 3 ft., 35c; 3 for \$1.00.

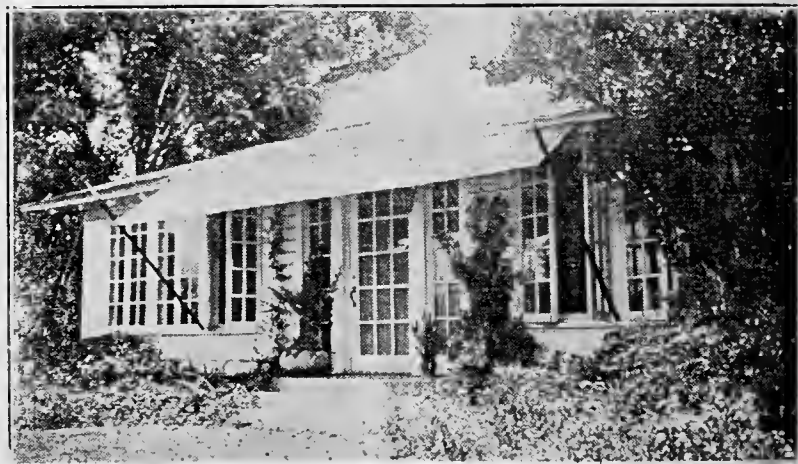
SPIREA ANTHONY WATERER—Large corymbs crimson flowers. Price postpaid, 1½ to 2 ft., 35c.

SPIREA THUNBERGH—Medium size bush, small fine foliage, loaded early in spring with small daisy-like white blooms. Price, 2 to 3 ft., 35c; 3 for \$1.00.

WEIGELA CANDIDA—Fine shrub loaded with bell shaped white blooms. Price postpaid, 2 to 3 ft., 35c.

WEIGELA ROSEA—Same as above except pink blooms.

AMOR RIVER PRIVETT SOUTH—By far the best privett for our Southern climate and soils where it is practically an evergreen. Can be trimmed to any desired shape. Price, 2½ to 3 ft., branched, 10 for \$1.00; express collect, 100 for \$7.00.



PECANS

PECAN TREES ARE A LIFE TIME INVESTMENT

It is a beautiful sight to see thousands and thousands of papershell pecan trees—especially in South Miss. bending and many breaking with their heavy load of rich nuts.

At least several papershell pecan trees should be planted about every "Home Grounds". The trees are invaluable for landscaping effect as well as furnishing shade for the grounds. Trees form the framework for landscaping grounds around which designs of shrubbery walks and pools are formed. There is nothing more fascinating than gathering large fine nuts and storing them away to be eaten and enjoyed around the fireside on cold bleak days of winter. Many, many recipes call for the nuts in candies, salads, cakes, etc.

We grow our pecan trees from wood gotten directly from our heavy bearing trees here in our orchard. By doing this we know exactly what kind of nuts our Nursery trees should bear. There are NO BETTER trees to be had than we offer regardless of how much more is asked for them.

Buy your pecan trees DIRECT from a reliable Nurseryman to be sure of getting true varieties.

STUART—The VERY BEST variety of Papershell Pecan for all purposes and for all locations. The tree is hardy, grows off promptly, practically immune to attacks of insects or disease; bears early, regularly, holds the nuts under different weather conditions and responds to good treatment. The nut is large, averaging 40 to 50 per pound; plump, bright, delicious flavor, rich, oily, shell thin, cracks easily in hand. Were it necessary to have only one variety we would certainly choose THIS ONE.

SUCCESS—The next best variety. Comes into bearing early and bears heavy crops; nuts large, ovate shape; kernel plump, heavy rich, and a delicious walnut flavor; shell thin, cracks easily. In some sections this variety does extra fine.

PRICES BEST PAPERSHELL PECAN TREES

Size	Each	10
3 to 4 feet, express collect	\$.90	\$ 8.00
4 to 5 feet, express collect	1.00	9.00
6 to 7 feet, express collect	1.35	12.00
7 to 8 feet, express collect	1.50	13.50
Large, express collect	2.50	22.50
Extra Large, fine for yards	3.00	27.50

WALNUTS

JAPANESE WALNUTS—Bears second or third year and often produces in one season 1 to 1½ bushels per tree. Nuts borne in long clusters, very rich, delicious, shell medium hard; cracks easily. Very fine. Price postpaid, 3 to 4 ft., 65c; express collect, 5 to 6 ft., 80c; 7 ft., \$1.00.

BLACK WALNUT—Well known. Price, 2½ to 3 ft., 50c.

JAPANESE PERSIMMON

TANE-NASHI is the very best all purpose variety. Fruit large pointed, skin very smooth, bright yellow, changing to almost red when fully ripe, flesh yellow. Practically seedless, very fine flavor. 2½ to 3 ft., each 60c postpaid.

PLUMS

ABUNDANCE—Japanese Variety—Very large, bluish red skin, yellow meat, very sweet and delicious. Price postpaid, 5 ft., 75c.

RED JUNE—Large red, juicy, flesh yellow, sweet, hardy, prolific.

Price postpaid, 3 to 4 ft., 40c; 4½ to 5 ft., 60c.

FIGS

CELESTE—Best for home use; hardy, prolific, blue, very sweet. Be sure to have one or more trees. Price postpaid, 2 to 3 feet, 40c each; 3 for \$1.00. Because fig trees live better, advise setting near fence or house so roots are not disturbed.



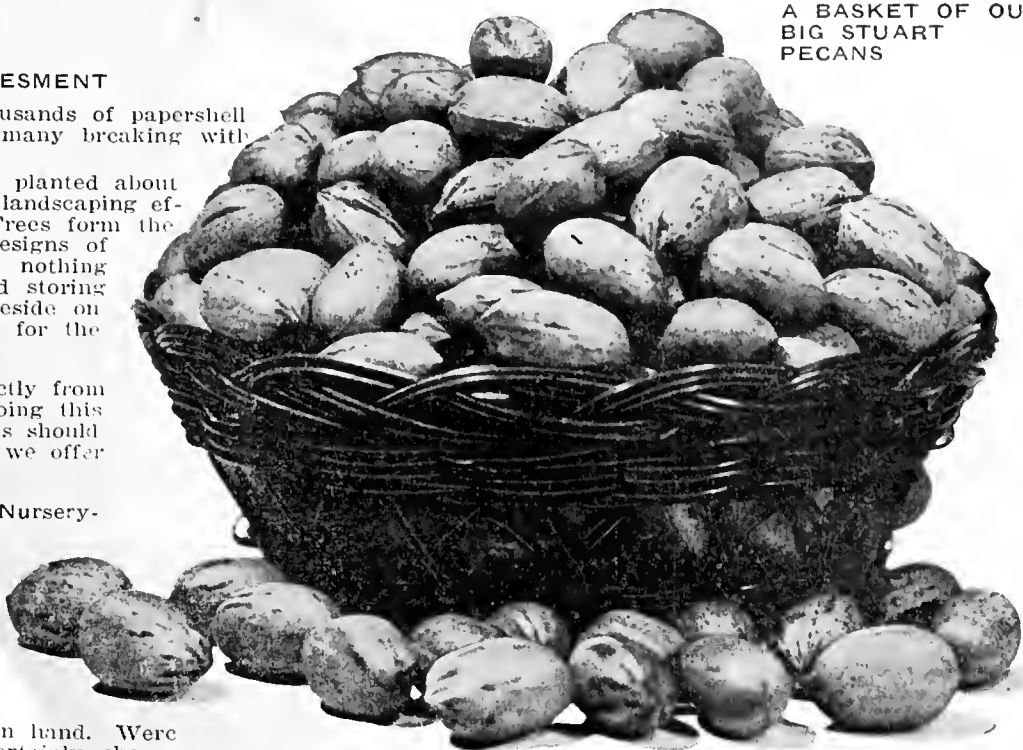
BLUEBERRIES

BLUE BERRIES—Shrub grows to 12 ft., very fine, bears every year heavily. Berries blue, sweet, tender, one half size of grape, in great clusters; ripens along for couple of months. Advise 3 or more bushes for every home. Price postpaid, 2 to 3 ft., 2 years, 50c; 10 for \$4.00. Heavy bearing, 3 years, 75c.

YOUNGBERRIES

YOUNGBERRY PLANTS—Size, shape and flavor of raspberry, very prolific, bears early, usually first year if set in early winter. Price postpaid, 12 for 75c.

A BASKET OF OUR BIG STUART PECANS



GRAPES

It only takes a few grape and scuppernong vines set out in the rear of the home to make enough fruit to furnish all one family can eat, also plenty for making jelly, wines, juices, etc.

CONCORD—Best blue-black grapes for jellies, wines, etc., very juicy, sweet, hardy, early bearer.

NIAGARA—Best light cream colored, very sweet, juicy, early. Price postpaid, 20c; 10 for \$1.75.

SCUPPERNONG—Large bronze colored when ripe; very sweet, juicy, heavy bearer, hardy. Price postpaid, 2 years, 35c each; 3 for \$1.00.

PEACHES

Fertilize, cultivate, spray and ENJOY FINE FRUIT FRESH from YOUR trees.

There is a great scarcity of peach tree stock, however, we have a very fine block of trees which should grow off and soon bear fine fruit. Set out a few trees each year and have fresh fruit from your own trees. It is so much more delicious. We list the best proven varieties which ripen along from May to August. Set out two or more trees of each variety.

BE SURE to buy our large EXTRA CHOICE peach trees which come into bearing soon. The fruit several times pays the little extra cost in size trees.

MAYFLOWER—Very early, semi-cling. Ripen here in May.

EARLY ROSE—Semi-cling, juicy, fine. June.

J. H. HALE—Very large, yellow, with red cheek, freestone. June.

RED BIRD—Red to seed, fine, called Early Indian. June.

HILEY—Red, showy, good seller, best early freestone. July.

EARLY ELBERTA—Same as Elberta except ripens two weeks earlier. June and July.

ELBERTA—Large, freestone, meat yellow, red blush. July.

HEATH CLING—White flesh, sweet, juicy, cling. August.

Price postpaid, 2 to 3 ft., 25c each; 5 for \$1.10; 10 for \$2.00.

3 to 4 ft., 35c each; 5 for \$1.50; 10 for \$2.75.
4 to 5 ft., 50c each; 5 for \$2.25; 10 for \$4.25, express collect.
5 to 7 ft., well branched, 75c each, 5 for \$3.50; 10 for \$7.50, express collect. Very choice.

APPLES

You can have fine apples fresh from your orchard from June through September by setting out two or more trees of Red June, Early Harvest, Delicious and Stayman Winesap. Not only for eating, canning, making jellies, etc., but sell to local markets which are glad to get them at an attractive price.

RED JUNE—Very fine, prolific, red juicy, ripens late June.

EARLY HARVEST—Yellow, prolific, June.

HORSE—Old time favorite, large, yellow.

RED DELICIOUS—Large, red, fine, July.

STAYMAN WINESAP—Prolific, large, red, fine, September. Price postpaid, 3½ to 4 ft., 40c; 4 to 5 ft., 60c.

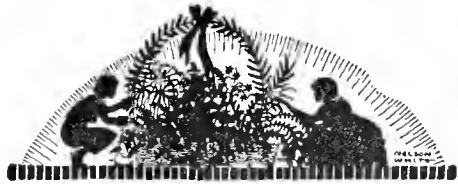
PEARS

There has been a fine crop of the Pineapple Pears this season which has brought splendid prices and sold readily. Our pears are a very large variety which yellow up beautifully, and as several salesmen said, sold twice as quickly as pears purchased from most other growers. BE SURE TO BUY PIGFORD'S PINEAPPLE PEAR TREES!

PINEAPPLE—"Blightless"—Very hardy, early, heavy bearer; large juicy fruit, yellow when ripe, good shipper. Every home should have one or more. The best preserving variety for the lower South. Price postpaid, 4½ to 5 ft., 60c; 10 for \$5.50.

Price express collect, 6 to 7 ft., 70c; 10 for \$6.50.

Large, 2-year-size, properly headed, \$1.00; 10 for \$9.00. Extra large, properly headed, 3 years, very fine, \$1.50.



SPECIAL DOLLAR OFFERINGS!

Take Advantage of Our **FREE** Parcel
Post Delivery Service—See Inside.

6 **GENUINE WAXLEAF LIGUSTRUM**—1½ ft.,
postpaid for only \$1.00.

5 **CRIMSON CREPE MYRTLE**—1½ ft., post-
paid, for only \$1.00.

6 **GARDENIA FLORIDUS**—Best variety, 12 to
15 inches, postpaid for only \$1.00.

4 **CHOICE NANDINA**—8 to 10 inches, post-
paid, for only \$1.00.

5 **LIGUSTRUM JAPONICUM**—1½ to 2 ft.,
postpaid, for only \$1.00.

SEE DESCRIPTION AND PRICE LIST—INSIDE

An assortment of **FRUITS** and **NUTS** such as shown in
above picture should be grown on practically every country and
many town homes.

