

*C. Ed Sweeney*

LIBRARY  
RECEIVED  
★ APR 6 - 1954  
U. S. Department of Agriculture



**NURSERY**

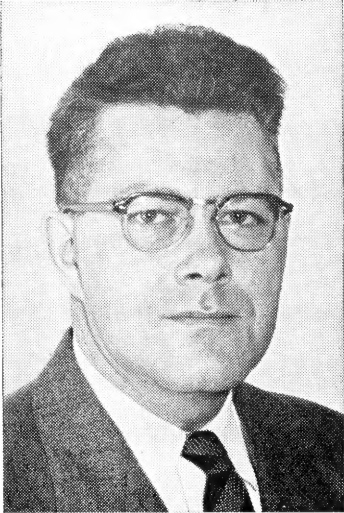
LONG LAKE, MINNESOTA



**YOUR 1954  
PLANTING GUIDE**

*a  
guide  
to the best  
hardy plants  
and landscape service*

**HENNEPIN COUNTY'S LARGEST NURSERY**  
AT LONG LAKE, MINNESOTA



**C. ED SWEENEY**  
Proprietor

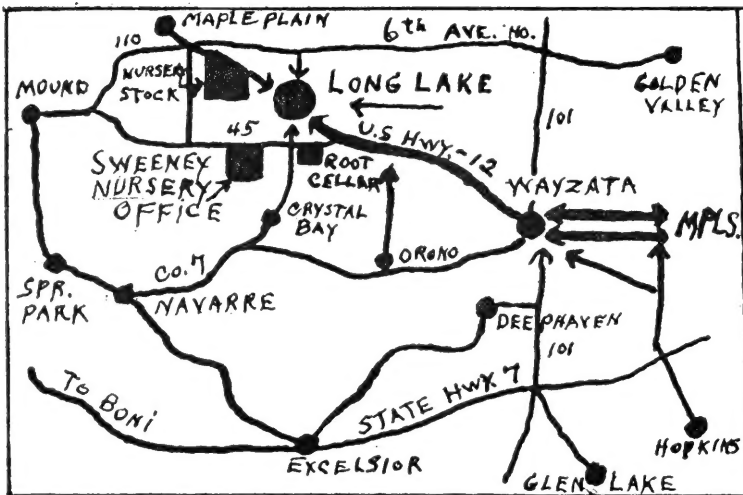
## C. ED SWEENEY

FOR YOUR LANDSCAPING AND NURSERY STOCK . . . you can depend on C. Ed Sweeney. For a complete selection of acclimated stock, distinctive design and expert workmanship you have only to drive U. S. Highway 12 to Long Lake to reach Hennepin county's largest nursery. Here at C. Ed Sweeney Nursery you'll find only the best of stock, here you'll have field selection of ever-greens, here you'll find modern storage facilities, here you'll find skilled personnel happy to help you with your problem, no matter how large or small.

Mr. Sweeney's horticultural career began in 1932 with The Daniels Nursery. After several years in all production and landscape departments he took over the entire management of their landscape activities — designing and supervising the development of many of the county's show places. In 1948 he set up his own business and today many of his first customers are his best customers, frequently consulting him on the care and further beautification of the finely landscaped grounds that he created for them.

His long experience and record of outstanding landscape developments are assurance for the prospective planter that Mr. Sweeney can give just the right combination of design, stock and workmanship needed for developments of outstanding and lasting beauty.

### *To Find C. Ed Sweeney Nursery*



In The Lake Minnetonka Area

Hennepin County's Largest Nursery

**WE'RE AT  
LONG LAKE**

which is  
12 miles west  
of Minneapolis  
via State Highway No. 12

**MAIN OFFICE  
and  
STORAGE  
CELLAR**

Just So. of Long Lake  
on Co. Highway No. 45

For your  
every nursery and  
landscape need  
**"COME SEE US!"**

Or  
**PHONE US AT  
Greenwood 3-8466**

or  
**Greenwood 3-8736**



Informality and  
Formality Combined  
In a Charming  
Outdoor Retreat

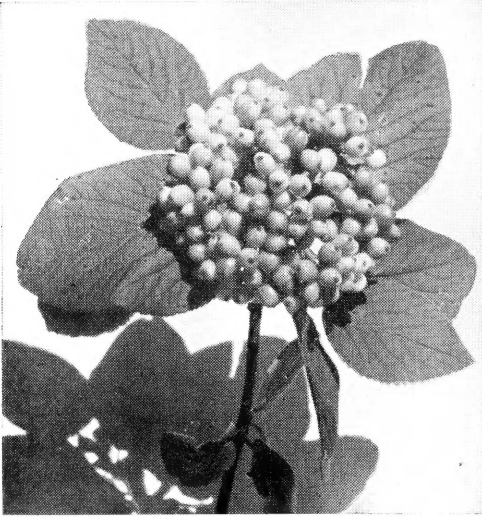
## *You'll Like Doing Business With The C. Ed Sweeney Nursery*

We like to feel that we are "different"—at least we've tried to be. We grow only those varieties of plants which we feel will give a full measure of satisfaction to our customers. We endeavor to grow, in so far as we can, all of the nursery stock that we sell. We pride ourselves on the fine stock we produce and are pleased and proud to show it to our customers.

In the field of landscape planting and services we have at all times maintained a high standard of professional work—resulting in developments that have given lasting satisfaction to our clients.

It is our endeavor to have our sales effort just the kind we'd like to have directed towards ourselves — a helpful and accurate presentation of facts and advantages entirely free from "high pressure," misrepresentation or other unpleasant or unethical approach. You will like to do business with us and you will want to "come again."

So we think we're different! If you've had experience with certain other nurseries, or "so-called" nurseries and some of the "foot in the door type" of nursery stock salesmen, you'll really enjoy getting acquainted with us. We've spent many, many years developing our present high standing in the business.



WAYFARING TREE

**ALMOND (Pink Flowering)**—4 to 5 ft. Twigs completely covered with roselike, pink flowers in early spring. One of the most charming of early flowering shrubs. 18-24 in. \$1.50; 2-3 ft. \$1.75; 3-4 ft. \$2.00.

**ARROWWOOD**—8 to 10 ft. An attractive shrub with rich green foliage turning to rich purple and red in the fall. Greenish white flowers followed by blue berries. Does well in moist soil. 18-24 in. \$1.00; 2-3 ft. \$1.50; 3-4 ft. \$2.00; 4-5 ft. \$3.00.

**BARBERRY (Japanese, Thunbergi)**—Low, compact growing shrub much used for border or hedge plant or for group plantings. Stands shearing well, bright crimson-scarlet berries in autumn add color all winter. 12-18 in. \$0.75; 18-24 in. \$1.00; 2-3 ft. \$1.40.

**BARBERRY (Red Leaved)**—2 feet. First foliage a warm bronzy red; the heat of the summer intensifying its red brilliancy. A sunny exposure is necessary to bring out and retain its full red color. 12-18 in. \$1.10; 18-24 in. \$1.50; 2-3 ft. \$1.75.

**BUCKTHORN (Common)** — 12 feet. Hardy vigorous shrub with lustrous leaves and black berries. Desirable for groups and for hedges. Stands shearing well. 18-24 in. \$.50; 2-3 ft. \$.60; 3-4 ft. \$1.00; 4-5 ft. \$1.25.

## Shrubs

Shrubs offer an economical and versatile medium in painting your landscape picture. You'll find our list gives you a very wide variety of heights, foliage color, season and color of bloom. What ever your problem, accent or screening, we can help you. We'll be happy to assist you in making a selection to fit your needs. Varieties below are just a partial list of the shrubs we have available. You will find the complete list on page 8.

**BUCKTHORN (Frangulea)**—6-7 ft. Finer leaves than the Common Buckthorn. Glossy deep green. Produces red berries in the fall. An excellent border shrub. 3-4 ft. \$1.50; 4-5 ft. \$1.75.

**CARAGANA (Siberian Pea Tree)**—10-12 ft. Extremely hardy. Strong thrifty grower. Blossoms are pealike and a lovely canary yellow coming forth in small clusters in late spring. 18-24 in. \$.50; 2-3 ft. \$.75; 3-4 ft. \$1.00; 4-5 ft. \$1.50.

**CHERRY, CISTENA (Red Leaf Cherry)**—5 to 6 ft. The finest of our medium sized shrubs of strong reddish or purple color throughout the growing season. In early spring it is covered with masses of white plum-like blossoms. 2-3 ft. \$2.00; 3-4 ft. \$2.75; 4-5 ft. \$3.25.

**CORALBERRY (Red Snowberry)** — 3-4 ft. A slender branching upright shrub, valuable for planting in shady places. Red to purple berries in late summer and fall. Entirely hardy and grows where other plants fail. 18-24 in. \$.75; 2-3 ft. \$1.00; 3-4 ft. \$1.25.

**COTONEASTER (Acutifolia)**—6 ft. One of our best medium-sized shrubs. Dense growing with ornamental, dark, glossy green leaves. Very desirable for foundation plantings. Black berries throughout fall and winter. 18-24 in. \$.90; 2-3 ft. \$1.25; 3-4 ft. \$1.75; 4-5 ft. \$2.00.

**CRANBERRY (High Bush)** — 8-10 ft. White flowers in June. During fall and winter the bush is literally loaded with bright red fruit, resembling small cranberries. O.K. for jelly. 18-24 in. \$1.00; 2-3 ft. \$1.50; 3-4 ft. \$2.00.

**CURRENT (Alpine)** — 3-4 ft. Dwarf shrub. Dense growth. Fine, dark green leaves. The best of our plants for low or medium height sheared hedges. 9-12 in. \$.85; 12-18 in. \$1.00.

**DOGWOOD — Gouchaulti (Golden Twig Varigated)** — 5-6 ft. A striking new shrub similar to the elegantissima, but with twigs of vivid yellow or golden color. New and interesting. 18-24 in. \$1.50; 2-3 ft. \$2.00; 3-4 ft. \$2.50.

**DOGWOOD Red Twigged Varigated-Leaved (Elegantissima)**—5-6 ft. Highly decorative because of its white striped green leaves and red bark. Its white flowers in spring are also interesting. An outstanding shrub wherever used. 2-3 ft. \$2.00; 3-4 ft. \$2.50.

**ELDER (Golden-Leaf)**—6-7 ft. The gorgeous, golden beauty of this splendid hardy shrub makes a wonderful background and effective screen. Its golden beauty responds to a sunny place. 2-3 ft. \$1.25; 3-4 ft. \$1.50; 4-5 ft. \$1.75; 5-6 ft. \$2.00.

**EUONYMUS ALATUS (Winged Burning Bush or Spindlewood)**—5-6 ft. Of Japanese character. Has winglike bark. Brilliant scarlet foliage and red berries in fall. A truly beautiful shrub. 18-24 in. \$2.50; 2-3 ft. \$3.00.

**FORSYTHIA (Golden Bell)**—An attractive shrub with wealth of brilliant yellow flowers appearing before the leaves. Does well in partial shade as well as in the open. Should have some winter protection in exposed places. 2-3 ft. \$1.25; 3-4 ft. \$1.50.

**HOLLY (Ilex Verticillata; Winterberry)** —6-8 ft. The best of the hardy holly varieties. A compact, slow growing shrub. High quality, glossy bright green foliage. Brilliant red holly berries in fall, persisting on into winter. 18-24 in. \$1.75; 2-3 ft. \$2.25.

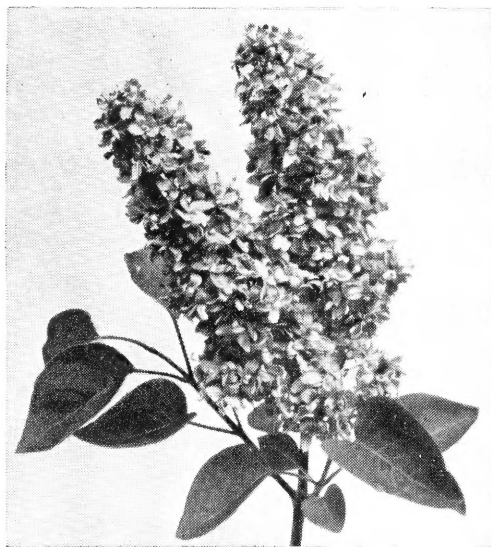
**HONEYSUCKLE (Dwarf)**—3-5 ft. A new compact type of honeysuckle. More desirable as a full, bushy foliage mass in foundation and border plantings, than for its bloom. 12-18 in. \$1.00.

**HONEYSUCKLE (Morrows)**—5-6 ft. A distinctive type. Semi-spreading drooping branches, cream flowers in June, followed by brilliant yellow fruits. Foliage grayish-green hue, pubescent. A charming color variation in the border planting. 3-4 ft. \$1.50; 4-5 ft. \$2.00.

**HONEYSUCKLE (Zabelli)**—8-10 ft. The best of the red flowered honeysuckles. An upright grower but more compact and bushy and less leggy than the Tartarian honeysuckle. Flowers freely, with large brilliant blooms. 18-24 in. \$.75; 2-3 ft. \$1.25; 3-4 ft. \$1.50.

**HYDRANGEA (Hills of Snow)**—3-4 ft. Blooms in June. The flowers are large, snow white, and produced in abundance. Valuable also because it comes when blooms are scarce, just after the abundance of blossoms in spring. A fine shrub for shady locations. 12-18 in. \$.75; 18-24 in. \$1.25; 2-3 ft. \$1.75.

**HYDRANGEA (Pee Gee)** — 3-4 ft. A beautiful shrub with leaves of bright, glossy green; flowers borne in huge panicles from 8 to 12 inches long, light pink. Blooms in August and September. The blooms are very lasting and may be cut for winter bouquets. 12-18 in. \$.75; 18-24 in. \$1.25; 2-3 ft. \$1.75; 3-4 ft. \$2.25.



FRENCH LILAC

#### FRENCH LILAC VARIETIES

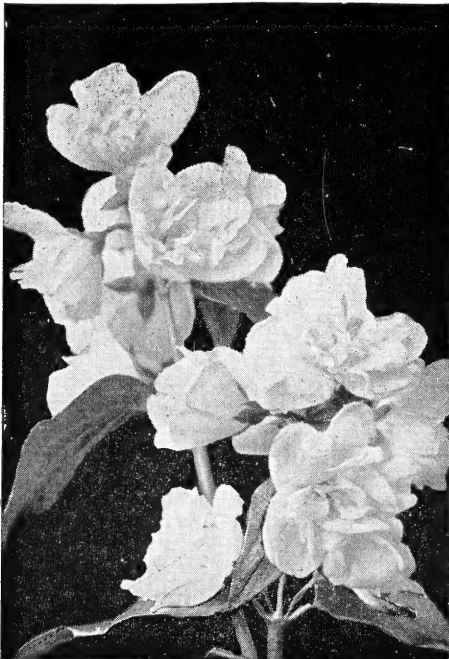
- Berryer—Double—Clear Mauve
- Chas. Jolly—Double—Bright Crimson
- Chataney—Double—White
- Congo—Single—Wine Red
- Ludwig Spaeth—Single—Deep Red
- Pres. Carnot—Double—Rosy Lavender
- Pres. Grevy—Double—Soft Blue

**JUNEBERRY**—6 to 7 ft. One of the earliest plants to bloom in the spring. Early in the summer the edible blueberry-like berries turn red and then deep blue. A most attractive and useful shrub. 18-24 in. \$1.00; 2-3 ft. \$1.50.

**LILAC (Persian and Rothomagensis)**—6-8 ft. Slender growth, fine leaves and many branchings. Does not sucker like the common varieties. Purple flowers in large panicles early in the season. 18-24 in. \$.85; 2-3 ft. \$1.50; 3-4 ft. \$1.75.

**LILAC (Villosa)**—10 ft. Late flowering, bushy, upright growth. Rich dark foliage, pinkish lilac flowers. A desirable hardy shrub, ornamental both in and out of flower. 2-3 ft. \$1.50; 3-4 ft. \$1.75; 4-5 ft. \$2.50.

**FRENCH LILACS**—6-8 ft. The bush is a little smaller than the common lilac, but there is no comparison in the flowers. The flower stalks of the hybrids are much larger than the common lilac. It is not uncommon to see flower spikes 15 inches long. All of our varieties are hardy, free flowering sorts, which will prove highly satisfactory. 18-24 in. \$1.50; 2-3 ft. \$2.50; 3-4 ft. \$3.50; 4-5 ft. \$4.50.



**MOCK ORANGE VIRGINAL**

**MOCK ORANGE (Snowflake)** — Plant Pat. No. 538. This new Double Mock Orange is truly outstanding. Every blossom intensely double. Exceptionally sweet scented, glistening white, large flowering, profuse bloomer, symmetrically formed and gracefully branched, neat, beautiful foliage, rugged, fast growing, and exceptionally hardy. 2-3 ft. \$1.50; 3-4 ft. \$2.00.

**MAPLE (Ginnala)**—8-10 ft. A dwarf shrubby tree with handsome, finely cut leaves. Attractive clusters of winged seed pods. Leaves turn to a brilliant shade of crimson in the fall. 18-24 in. \$1.00; 2-3 ft. \$1.50; 3-4 ft. \$1.75; 4-5 ft. \$2.25.

**MOCK ORANGE Golden (Aurea)**—5-6 ft. A medium dwarf, compact shrub with bright golden foliage. Colors best in full sun. 12-18 in. \$1.75.

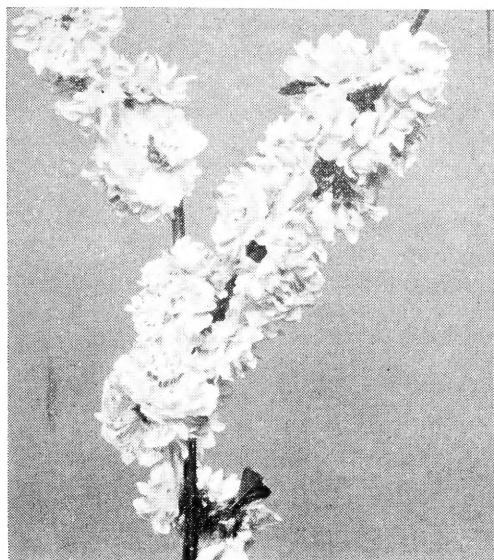
**MOCK ORANGE (Avalanche)**—5-6 ft. A medium sized, full and bushy shrub. Flowers very freely with large fragrant blooms that are borne in great profusion. 18-24 in. \$1.25; 2-3 ft. \$1.50; 3-4 ft. \$2.00.

**MOCK ORANGE (Lemoine)**—4-5 ft. A showy and free blooming variety with slender arching branches. Flowers small creamy white and fragrant. 18-24 in. \$.85; 2-3 ft. \$1.25; 3-4 ft. \$1.75.

**MOCK ORANGE (Virginal)**—6-7 ft. A magnificent Mock Orange. It has large petals, double crested white flowers, five to seven in a cluster, sweet scented and a long blooming season. This shrub should be in every planting. 18-24 in. \$1.25; 2-3 ft. \$1.50; 3-4 ft. \$2.00.

**NANNY-BERRY**—A tall shrub or large tree with large lustrous leaves. Clusters of creamy white flowers are followed by black juicy berries. 18-24 in. \$1.00.

**OLIVE (Russian)**—10-12 ft. While this plant really is a smaller tree, yet when it is kept pruned rather severely, it forms a most attractive shrub. Its foliage is silvery-hued,—striking contrast to the green of other shrubs and trees. 18-24 in. \$.75; 2-3 ft. \$1.00; 3-4 ft. \$1.25; 4-5 ft. \$1.50.



DOUBLE FLOWERING PLUM

**PLUM (Double Flowering or Rose Tree of China)**—6-7 ft. A choice medium sized shrub with flowers resembling those of the Flowering Almond. The delicate, very double rose-like flowers are borne in profusion just as the leaves are starting to unfold. 18-24 in. \$1.50; 2-3 ft. \$2.00; 3-4 ft. \$2.75.

**PLUM (Newport)** — 10-12 ft. The best red-leaved small tree for the north. Its reddish-purple leaves and slow growth make its use very desirable where color effect and refinement are wanted amongst the other shrubs. 2-3 ft. \$2.00; 3-4 ft. \$2.75; 4-5 ft. \$3.25.

**POTENTILLA FRUITICOSA (Cinquefoil)**—2 to 3 ft. A graceful compact shrub with dense fernlike foliage. Studied with golden yellow buttercup-like flowers from early June to October. A splendid low-growing shrub for foreground planting. 18-24 in. \$1.00.

**PRIVET-GOLDEN (Ibota Vicari)**—3-6 ft. A new, hardy variety, with golden leaves, providing a wealth of interesting color contrasts from early spring to late fall. Beautiful as an individual shrub or a sheared hedge. 18-24 in. \$1.00.

**PRIVET—Polish.** 3-5 ft. Generally considered to be the hardiest of the privets, and the best of the green foliaged types for planting here. Makes a very tight, compact hedge and can be kept at very low or medium heights. Plant about one foot apart for hedges. 18-24 in. 90c each.

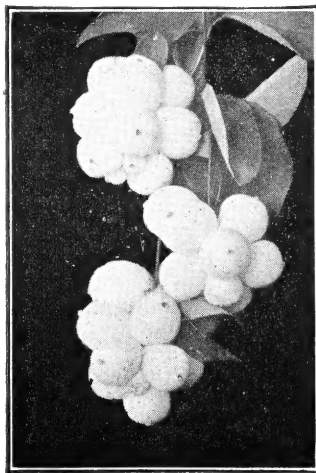
**SPIREA ANTHONY WATERER**—2-3 ft. A very popular low growing bush, constantly in bloom all summer. Flower clusters large, flat topped and of deep rose color. The leaves are frequently variegated yellow and red. 9-12 in. \$.60; 12-18 in. \$1.00; 18-24 in. \$1.50.

**SPIREA ARGUTA (Snow Garland)**—4-5 ft. White flowers completely cover the twigs before the leaves appear in the spring. Attractive soft feathery foliage. One of the first shrubs to bloom in the spring. Splendid in a foundation planting. 18-24 in. \$.85; 2-3 ft. \$1.25; 3-4 ft. \$1.75.

**SPIREA FROEBELI** — 2-3 ft. A low bushy shrub of the Anthony Waterer type, but more sturdy in habit. Canes distinctly reddish; young foliage tinged red. Flowers rose color. Brilliantly colored in autumn. 12-18 in. \$.60; 18-24 in. \$1.00; 2-3 ft. \$1.25.

**SPIREA OPULIFOLIA NANA (Dwarf Ninebark)**—4-5 ft. A low growing shrub. Dwarf and compact in form, dense in growth. White flowers followed by small reddish seed pods in June. 18-24 in. \$1.00; 2-3 ft. \$1.25; 3-4 ft. \$1.75.

**SPIREA OPULIFOLIA AUREA (Golden Spirea)**—6-8 ft. A full branched bushy golden leaved shrub. Upright, hardy, and splendid for giving a delightful touch of golden color in the shrub border. Numerous clusters of white flowers are followed by reddish seed pods which give the effect of red berries, making a pleasing contrast with the golden tinged foliage. 2-3 ft. \$1.50; 3-4 ft. \$1.75; 4-5 ft. \$2.00.



SNOWBERRY

**TAMARIX (Salt Cedar)**—6-7 ft. Will grow on any soil and under any conditions. Has feathery, silvery-gray green foliage, with long panicles of deep pink flowers. A distinctive type of shrub. 18-24 in. \$1.25; 2-3 ft. \$1.50; 3-4 ft. \$1.75.

**WAYFARING BUSH**—8-10 ft. One of the most desirable of our shrubs. The leaves are thick, deep green above and lighter below with silvery pubescence. Flat clusters of creamy white flowers in

May or June are followed in midsummer by clusters of bright red berries changing to black. 18-24 in. \$1.00; 2-3 ft. \$1.50; 3-4 ft. \$2.00.

**WEIGELIA (Bristol Ruby and Rosea)**—5-6 ft. Of spreading habit, with more or less pendulous branches and clusters of bell-shaped flowers. Showy in spring and early summer. Thrives in moist soil. Needs winter protection if planted in exposed places. 2-3 ft. \$1.25; 3-4 ft. \$1.50.

*Shrubs - Grouped According to Use Factors*

**SHRUBS GROUPED ACCORDING TO ULTIMATE HEIGHT.**

**2-3 Feet**

- Barberry in variety
- Caragana, Pygmaea
- Alpine Currant
- Matrimony Vine
- Potentilla
- Spirea Anthony Waterer
- Spirea Arguta

**3-5 Feet**

- Pink Almond
- Siberian Almond
- Cherry, Hanson's Bush
- Coralberry
- Dwarf Honeysuckle
- Hydrangea, Pee Gee
- Hydrangea, Hills of Snow
- Golden Mock Orange
- Mock Orange Lemoines
- Privet, Golden
- Roses in Variety
- Snowberry
- Spirea Arguta
- Fragrant Sumac

**5-8 Feet**

- Frangula Buckthorn
- Cistena Cherry
- Dogwood in Variety
- Cotoneaster
- Yellow Flowering Currant
- Elder in Variety
- Winged Euonymus
- Common Euonymus
- Forsythia
- Holly
- Morrows Honeysuckle
- French Lilac
- Persian Lilac
- Rothomagensis Lilac
- Mock Orange, Avalanche
- Mock Orange, Coronarius
- Mock Orange, Virginal
- Double Flowering Plum

- Spirea Billardi
- Spirea Ash Leaf
- Spirea Ninebark Nana
- Spirea Van Houtte
- Cut Leaf Sumac
- Tamarix
- Weigela

**8 Feet and Up**

- Arrowwood
- Blackhaw
- Buckthorn, Common
- Buffalo Berry
- Caragana Arborescens
- Nanking Cherry
- High Bush Cranberry
- Zabelli Honeysuckle
- Tartarian Honeysuckle
- Juneberry
- Purple Lilac
- White Lilac
- Villosa Lilac
- Ginnala Maple
- Nanny Berry
- Mock Orange, Grandiflora
- Mock Orange, Snowflake
- Russian Olive
- Newport Plum
- Snowball
- Golden Spirea
- Spirea, Ninebark
- Wayfaring Tree

- Honeysuckle in Variety
- Juneberry
- Matrimony Vine
- Nanking Cherry
- Nanny-Berry
- Roses in Variety
- Sand Cherry
- Snowberry
- Spirea, Golden
- Sumac
- Wayfaring Bush

**SHRUBS THAT ENDURE SHADE**

- Arrowwood
- Beauty Bush
- Blackhaw
- Currant in Variety
- Frangula Buckthorn
- Dogwood in Variety
- Japanese Barberry
- Coral Berry
- High Bush Cranberry
- Elder in Variety
- Euonymus Winged
- Honeysuckle in Variety
- Hydrangea Hills of Snow
- Nanny-Berry
- Mock Orange in Variety
- Snowball
- Snowberry
- Spirea, Sorbifolia
- Wayfaring Bush

**SHRUBS OF OUTSTANDING FOLIAGE COLOR**

- Red Leaf Barberry
- Buffalo Berry
- Cistina Cherry
- Variiegated Dogwood—Golden
- Variiegated Dogwood—Red
- Golden Elder
- Mock Orange, Golden
- Newport Plum
- Golden Privet
- Russian Olive
- Tamarix
- Golden Spirea

**BERRIED SHRUBS**

- Arrow-Wood
- Barberry
- Blackhaw
- Buckthorn
- Buffalo Berry
- Coralberry
- Cotoneaster
- High Bush Cranberry
- Yellow Flowering Currant
- Dogwood
- Elder in Variety
- Euonymus Common
- Euonymus Winged

**HEDGING SHRUBS**

**Living, Lasting Fences**

The proper use of hedges adds immeasurably to the attractiveness of one's home grounds.

In this group we offer fine, strong plants, suitable for starting live fences. These are well grown, strong rooted hedging size specimens which will give quick results.

**HEDGING SHRUBS—PRICES PER 100**

	9-12"	12-18"	18-24"	2-3'	3-4'	4-5'
Barberry, Japanese .....	\$40.00	\$50.00	\$50.00	\$.....	\$.....	\$.....
Barberry, Red Leaved.....	40.00	50.00	65.00	.....	.....	.....
Buckthorn, Common .....	.....	30.00	35.00	45.00	50.00	60.00
Caragana, Arb. ....	.....	.....	25.00	30.00	.....	.....
Cherry, Hansen Bush.....	.....	.....	40.00	50.00	60.00	.....
Cotoneaster .....	.....	.....	55.00	65.00	75.00	.....
Currant, Alpine .....	45.00	(12-15", \$55)	(15-18", \$70)	.....	.....	.....
Elder, Cut leaf.....	.....	.....	.....	50.00	60.00	.....
Honeysuckle, Zabeli .....	.....	.....	50.00	.....	.....	.....
Privet, Polish .....	.....	.....	25.00	.....	.....	.....
Spirea, Anthony Waterer..	40.00	50.00	.....	.....	.....	.....
Spirea, Frobeli .....	.....	.....	40.00	.....	.....	.....
Spirea, Billardi .....	.....	.....	.....	40.00	50.00	60.00



## Hardy Vines

For that "lived in" look make wide use of vines. Let them break the monotony of stucco and dress up your fences. They will give you a splash of color where needed. We offer you several outstanding varieties.

**BITTERSWEET** — The conspicuous red and orange fruits are attractive on the vine and, when dried, are used as indoor bouquets. Plant three or more vines to insure pollination. 1 yr. \$.75; 2 yr. \$1.00; 3 yr. \$1.25.

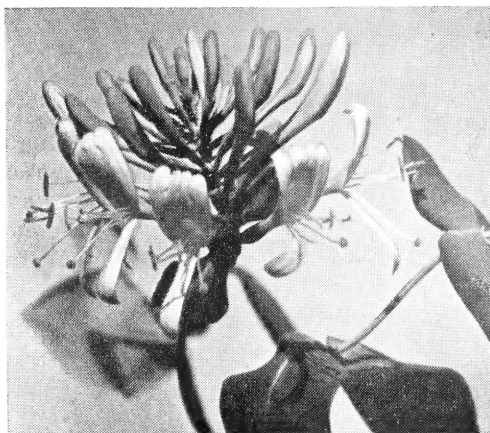
**CLEMATIS MME. EDOUARD ANDRE**—Manner of growth similar to Jackmani. Its striking velvety red flowers, about the same size as Jackmani, are produced profusely. **Strong Potted Plants \$1.75 each.**

**CLEMATIS HENRYI**—A profuse bearer of enormous white flowers. Similar to Jackmani in manner of growth. **Strong Potted Plants \$1.75 each.**

**CLEMATIS PRESIDENT** — Similar to Clematis Jackmani in manner of growth and color of bloom, but the flowers are much larger—truly magnificent! One of the finest and largest of the clematis hybrids. **Strong potted plants \$1.75 each.**

**CLEMATIS PANICULATA (Sweet Autumn Clematis)** — Flowers small, star shaped and creamy white. A luxurious grower, profuse bloomer and possessing fine foliage. Very fragrant. **Strong Potted Plants \$1.75 each.**

**CLEMATIS JACKMANI**—The most popular of the large flowering clematis hybrids. A strong grower and produces a mass of intense violet-purple flowers



**GOLD FLAME HONEYSUCKLE**

four to six inches in diameter, from July until October. **Strong Potted Plants \$1.75 each.**

**HONEYSUCKLE—Gold Flame Heckrottii**—The most profuse bloomer of our climbing honeysuckle. Flowers large, reddish purples outside with strong yellow throat. 2 yr. \$1.25; 3 yr. \$1.50.

**HONEYSUCKLE — Scarlet Trumpet** — A splendid variety with interesting twining method of growth. Brilliant yellow throated scarlet flowers. Long blooming period. 2 yr. \$1.00; 3 yr. \$1.25.

**IVY — Boston** — Clings to rough surfaces. Small leaves; refined grower; brilliant fall color. The best "wall-clinging" vine. 2 yr. \$1.25; 3 yr. \$1.50.

**IVY — Engelmanni** — The best hardy vine for brick, concrete or stucco surface. Much smaller foliage and thicker than the common variety of Creeper. Red fall foliage. 2 yr. \$1.00.

## DOES LANDSCAPING PAY?

**Real Estate Men Agree That It Does!**

Recently one of the leading national magazines queried a large number of real estate men as to the value that well landscaped grounds adds to a residence property. Their estimates varied from 10% to as much as 50%, averaging between 10 and 15% added value. Among the many favorable comments this one reflects the generally expressed opinion: "GOOD LANDSCAPING IS SO IMPORTANT THAT IT CANNOT BE MEASURED IN DOLLARS AND CENTS, AND IS ALMOST ESSENTIAL IN THE SALABILITY OF A HOME!"



HANSA

## Eskimo Roses

### The Hardest Everbloomers

The Rugosa Rose Hybrids, or Eskimo Roses as they are often called because of their extreme hardiness, are the best for growing throughout the Northwest as they are not only perpetual bloomers, most attractive in bloom and foliage appearance, and highly fragrant but are thoroughly hardy throughout our upper midwest.

They should be used freely in ornamental borders along with other shrubs. No winter protection is necessary. We offer below the outstanding varieties.

### Rugosa Hybrid Roses

Strong 2 yr. No. 1 Plants \$1.50 each

**AGNES** — Large, fragrant, semi-double, yellow flowers tinted with orange and coppery rose. Very hardy and makes a 6 ft. bush with blooms intermittently from June to September.

**BELLE POITEVINE** — A beautifully formed, vigorous rose of attractive foliage. A free and continuous bloomer of large, double bright pink flowers borne in clusters.

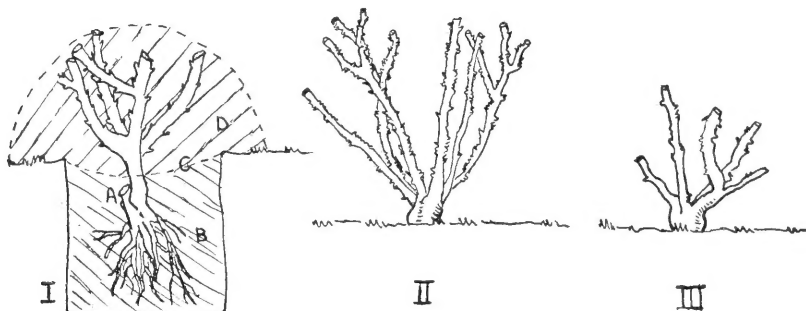
**GROOTENDORST-SUPREME** — Bright crimson. A new variety of unusual merit commonly called "The Baby Rambler Rugosa Rose." Because of its iron-clad hardiness it may be used in shrub borders. With its continuous production of clusters of bright crimson bloom, it stands out strikingly from early summer

until frost. An improvement over the old F. J. Grootendorst.

**GROOTENDORST-PINK** — Similar to the Red Grootendorst in form and manner of growth. The double, clustered flowers are a delicate shell pink.

**HANSA**—Deep red. One of the hardest, most dependable and most all around satisfactory of the red roses. The large, double red flowers have an attractive violet tinge, and are produced in great abundance from early summer to late fall.

**SIR THOMAS LIPTON** — Snow white blooms, double and fragrant, and arranged in clusters. In form it closely resembles the Hansa, and like that variety is excellent for hedges. Thrives in the coldest places. Especially pretty in half open bud.



### PLANTING AND PRUNING ROSES

#### I—Planting Roses.

- A. Set so point of "bud attachment" is two inches or more below ground.
- B. Roots well spread and planted in rich black soil.
- C. Soil depressions for water pocket.
- D. Tops cut back heavily and soil or peat mounded over tops.

#### II—Pruning older, established TENDER ROSE. Not cut back enough.

#### III—Pruned correctly.

# Beautiful Roses

## The Queen Of All Flowers

The rose is unquestionably the most popular of all flowering plants. Its fragrant blooms with varying form and color are unsurpassed by other plants.

Our roses are grown especially to meet the rugged climatic conditions of the Northwest. They are hardy, field grown, of the largest two-year-old grade, full of vigor and life, ready to bloom for you just a few weeks after planting.

Roses should be pruned back heavily when planted. The success of their growth the first year depends largely on the pruning given them at this time.



## Hybrid Teas and Perpetuals

2 Year No. 1, \$1.50 except as noted

### RED

**CHRYSLER IMPERIAL (Pat.)** — AARS 1953.

Free blooming, vivid crimson red. \$2.75.

**CRIMSON GLORY**—Deep velvety crimson.

**GRENOBLE**—Long stemmed, scarlet crimson.

**NOCTURNE (Pat.)**—AARS 1948. Bright cardinal red,—dark crimson shading. \$2.00.

**MIRANDY (Pat.)**—AARS 1945. Rich dark red, with black shadings. \$2.25.

**POINSETTIA**—A very free bloomer of bright scarlet flowers.

**RED RADIANCE**—A fine older variety, bright rosy red.

### PINK

**THE DOCTOR**—Fragrant. Silvery pink.

**K. T. MARSHALL (Pat.)**—AARS 1944. Glowing pink of rare beauty. \$1.75.

**PINK RADIANCE**—Large rose, pink,—fragrant.

### YELLOW

**GOLDEN DAWN** — Sunflower-yellow, flushed with old rose.

**JOHANNA HILL**—Golden yellow. Fragrant.

**LOWELL THOMAS (Pat.)**—AARS 1944. Very double; canary yellow. \$2.00.

**PEACE (Pat.)**—AARS 1946. Canary-yellow buds, opening to pink edged cream petals. Very large. \$2.50.

### WHITE

**FRAU KARL DRUSCHKI**—Large, pure white.

**K. A. VIKTORIA**—Snowy white, very double.

**McGREY'S IVORY** — Large, creamy white. Fragrant.

**SLEIGH BELLS (Pat.)**—White, fragrant, prolific bloomer. \$2.00.

### TWO TONE

**COUNTESS de SASTAGO** — Coppery pink to golden.

**FORTY NINER (Pat.)**—Chrome-yellow outside with inside of vivid Orient-red. \$2.50.

**MOJAVE (Pat.)**—AARS 1954. Thrilling blend of salmon, apricot and orange. \$3.00.

**TALISMAN** — Glowing golden-yellow, stained with copper-yellow.

**TALLYHO (Pat.)**—AARS 1949. Very large. Rich crimson opening to delightful pink. \$2.00.

## Floribunda Roses

2 yr. No. 1, \$1.50 each, except as noted

**EUTIN (Red Top)**—Large clusters, deep red, very double.

**FASHION (Pat.)**—AARS 1950. Luminous coral, overlaid with gold. \$2.00.

**FLORADORA**—AARS 1945. Striking scarlet and geranium red.

**GOLDBLOCKS (Pat.)** — Rich golden yellow. Beautiful. \$1.50.

**LAFAYETTE IMPROVED** — Large flowers of bright cherry-crimson.

**LILIBET (Pat.)**—AARS 1954. Delicate light rose to soft dawn pink. \$2.50.

**MA PERKINS (Pat.)**—AARS 1953. Red suffused with yellow, aging to pink. \$2.25.

**RED PINOCCHIO (Pat.)** — Masses of 3½ in. flowers. Rich carmine, deepening as blooms open. \$1.50.

**SUMMER SNOW (Pat.)**—White, large clusters, like mounds of snow. \$1.50.

## Climbing Roses

2 Year No. 1, \$1.50 each

**BLAZE**—Scarlet crimson. Recurrent bloomer.

**DR. VAN FLEET**—Flesh pink, long stems.

**DOROTHY PERKINS**—Shell pink in clusters.

**EXCELSA**—Intense scarlet clusters.

**GARDENIA**—Yellow buds, creamy yellow flowers.

**NEW DAWN**—Apple blossom pink, old-rose fragrance. Everblooming.

## The Bush Roses

**HARRISON'S YELLOW**—The old favorite, early yellow rose favorite of "Grandmother's Garden." Unexcelled in the shrub border. 2-3 ft.; \$2.00 each.

## NEW! NEW! NEW!

Now Flowering Shrub Borders by the Foot!

We have designed and packaged (complete with planting plan and instructions) shrub borders for the budget conscious planter.

For backyard privacy, summer long beauty and foliage contrasts you just can't surpass the informal border. And a design that shows you just where to plant each plant to guarantee the proper effect. Ask us about them when you come out.



**WHITE BIRCH CLUMP**

**GREEN ASH**—A very hardy native tree of tall, straight, clean growth habit with round head and dense foliage. Foliage turns bright yellow in early fall. Prices same as Am. Elm.

**BASSWOOD (American Linden)** — A hardy rapid growing tree of large size, forming a broad, round top. Large oval leaves, dark green above, light green below. Small, creamy white, highly scented flowers. 5-6 ft. \$3.00; 6-8 ft. \$4.00; 8-10 ft. \$5.50; 1¼-1½ in. \$7.50; 1½-2 in. \$9.00 2-2½ in. \$11.00.

**CUT LEAF WEEPING BIRCH**—One of the most admired of all lawn trees. Its leaves are finely and deeply cut and its branches long, slender and drooping. Possesses the same attractive white bark as the White Birch. 5-6 ft. \$4.50; 6-8 ft. \$6.00; 8-10 ft. \$7.00; 1¼-1½ in. \$8.50; 1½-2 in. \$9.50.

**WHITE BIRCH**—A beautiful, graceful, upright growing tree of medium size famed for its striking white bark. Effective when planted singly or in groups. Clusters of three or four planted in one clump will give the most desirable and most naturalistic effect. 5-6 ft. \$2.25; 6-8 ft. \$3.50; 8-10 ft. \$4.50; 1¼-1½ in. \$5.50; 1½-2 in. \$7.50; 2-2½ in. \$9.50.

## Shade Trees

Shade trees are a long time investment so should be selected with the utmost care. While the hardwood trees are not fast growers they definitely make the best permanent trees. Good trees are scarce. We have one of the finest and largest assortments in this area. Better drive out and make your own selections!

### ALMEY CRAB

#### The New, The Finest Crimson Flowering Crab

A sensational, new, fiery crimson flowering crab with blooms almost as big as a dollar. A touch of white at the petal base gives the bloom the appearance of a white, five pointed star surrounded by crimson. From a distance the star effect is not apparent and the tree gives the effect of a magnificent mass of crimson. Flowers very early in it's life.

The ALMEY tree is a vigorous grower, quickly reaching it's mature size of 14 to 16 feet. The tree is moderately compact and graceful in form. In late summer and fall they are loaded with small scarlet fruits which persist on the trees into late fall or winter—a real treat for the birds. **Strong 4-5 ft. trees only \$3.50 each.**

### ✓ ELEYI CRAB

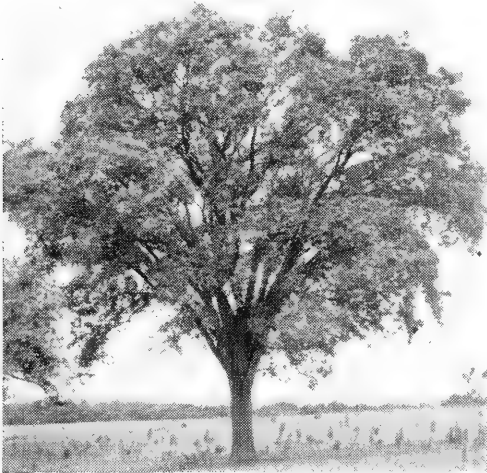
#### The Wonderful New Pink Flowering Crab

A relatively new and improved member of the attractive family of colorful, flowering ornamental crabs. Makes a slightly larger tree than most members of the group. Very shapely and symmetrical. In early spring the foliage takes on an attractive reddish color which, in it's early stages, forms an attractive and colorful background for the large, bright pink blossoms. ELEYI's showy red fruit adds an interesting touch of attractiveness in late summer and fall. **Strong 4-5 ft. trees only \$2.75 each.**

**BECHTEL'S CRAB** — A beautifully formed small tree famed for its beautiful rose-like, pink blossoms of spring. Suitable to use in border plantings or as a lawn specimen. **2-3 ft. \$2.00; 3-4 ft. \$2.50; 4-5 ft. \$3.50; 5-6 ft. \$5.00.**

✓ **HOPA CRAB**—The most popular and attractive of the highly colored spring flowering crabs. In May the tree is covered with a mass of pink flowers. A delightful tree for a restricted area. **3-4 ft. \$2.00; 4-5 ft. \$2.50; 5-6 ft. \$3.00; 6-8 ft. \$4.**

✓ **RED SILVER CRAB**—A valuable new addition to the small ornamental trees of the Northwest. Early spring flowers are deeper and more brilliant in hue than Hopa, but not quite as large. Foliage has a distinctly reddish color, overcast with silvery pubescence. **Prices same as Hopa.**



**AMERICAN ELM**

**AMERICAN ELM** — The most popular and widely used shade tree in the Northwest. It is unexcelled for shade, street, and lawn plantings. A rapid grower and very long lived, attaining tremendous size as time goes on. **5-6 ft. \$1.50; 6-8 ft. \$2.00; 8-10 ft. \$4.50; 1¼-1½ in. \$5.50; 1½-2 in. \$7.00; 2-2½ in. \$9.00; 2½-3 in. \$13.50.**

**HACKBERRY**—A splendid hardy large native tree. Vigorous and healthy, it thrives in all types of soil. Makes a very tall upright tree with strong horizontal branches. The profuse loads of small bluish berries are very popular with our birds. **Prices same as Am. Elm.**

**HAWTHORNE**—Small thorny tree with horizontal branching — kin to native

Thornapple. Showy, white flowers followed by small red apple-like fruit. **4-5 ft. \$3.00; 5-6 ft. \$3.50.**

**HORSE CHESTNUT**—One of our finest and most decorative large shade trees. The enormous, showy flowers of early spring are followed in the fall by clusters of chestnut-like nuts. **4-5 ft. \$3.00; 5-6 ft. \$3.50.**

**MORaine LOCUST**—(Patent No. 836). An outstanding new plant introduction that is thornless and seedless. Resistant to insects and diseases. Absence of seed pods and the quick crumbling of the leaves, makes this tree ideal from the garden maintenance standpoint. A fast grower, round headed when young, but tall and vase shaped when older. **5-6 ft. \$5.00; 6-7 ft. \$7.50.**

**THORNLESS LOCUST**—A valuable tree of dainty, lacy foliage and attractive flowers followed by pods larger than those of the Common Locust. Free from thorns. **Prices same as Am. Elm.**

**CRIMSON KING MAPLE**—A new improved variety similar to Schwedler's Maple in size and growth habits, but instead of having crimson leaves only in the spring, this outstanding variety carries a brilliant crimson color thru out the growing season. **5-6 ft. \$6.00; 6-8 ft. \$7.50.**

**SCHWEDLER'S MAPLE** — A beautiful and colorful shade tree, famed for its beautiful red foliage in spring. As the leaves open up in the spring they take on a bright purplish or crimson color which later turns to a deep rich green frequently retaining a dark purplish tinge in the veining. **5-6 ft. \$5.50; 6-8 ft. \$7.00; 8-10 ft. \$9.50; 1¼-1½ in. \$12.50; 1½-2 in. \$18.00; 2-2½ in. \$25.00.**

**SILVER MAPLE (Soft Maple)**—A hardy quick growing shade tree of real value. Eventual size somewhat similar to American Elm, but the head is more rounded. **Prices same as American Elm.**

For those who "CAN WAIT" we can supply smaller, younger stock in some shade trees and shrubs. They will save you \$\$\$\$. We always sell out early on these so it's wise to order early.



HARD MAPLE

**HARD MAPLE (Sugar Maple)**—One of our most desirable shade and ornamental trees. A symmetrical tree of great beauty and deep rich green coloring, producing a very dense shade. The most beautiful fall colored foliage of any of our shade trees. 6-8 ft. \$5.50; 8-10 ft. \$7.50; 1¼-1½ in. \$10.50; 1½-2 in. \$15.50; 2-2½ in. \$20.00.

**MOUNTAIN ASH**—A most widely used and popular of the small lawn trees. Its large white flowers of spring are followed by clusters of orange berries which cling to the tree throughout the winter. Graceful, spreading branches and small compound leaves. 5-6 ft. \$3.00; 6-8 ft. \$3.50; 8-10 ft. \$5.00; 1¼-1½ in. \$6.00; 1½-2 in. \$7.50.

**BOLLEANA POPLAR**—The most desirable of all the slender, upright growing trees. Its definitely columnar form and glossy green leaves, with downy white undersides, have made it extremely popular wherever a strong vertical effect is desired in the landscape. Bark is smooth and greenish gray. 4-5 ft. \$1.50; 5-6 ft. \$2.00; 6-8 ft. \$2.75; 8-10 ft. \$3.50.

**LOMBARDY POPLAR**—The most widely used of the slender, vertical, accent trees. Hardy and very quick growing. Moderately short lived. Unsurpassed for a rapid, full growing tree of vertical upright accent type. 4-5 ft. \$.75; 5-6 ft. \$1.00; 6-8 ft. \$1.50; 8-10 ft. \$2.00; 1¼-1½ in. \$2.50; 1½-2 in. \$3.00.

**BLACK WALNUT**—A splendid, hardy, native tree of fairly rapid growth, large size, with a beautiful spreading, rounded head. In fall it bears large crops of the familiar black walnut — a delicious edible nut. 3-4 ft. \$1.50; 4-5 ft. \$1.75; 5-6 ft. \$2.00; 6-8 ft. \$3.00; 8-10 ft. \$4.00; 1¼-1½ in. \$5.00.

**GOLDEN WILLOW** — The largest and fastest growing of the better willows. The young wood takes on a beautiful golden hue with the first warm days of late winter and early spring. Not a desirable lawn tree. 5-6 ft. \$1.00; 6-8 ft. \$1.75; 8-10 ft. \$2.50.

**NIOBE WEeping WILLOW**—The best of the Weeping Willows. A clean type of tree, free from most of the litter of broken branches and other trash so common in some willows. A graceful weeping tree with long, slender, hanging, swaying branches. 4-5 ft. \$1.25; 5-6 ft. \$1.75; 6-8 ft. \$2.75; 8-10 ft. \$4.00.



NIOBE WEeping WILLOW



## Evergreens

For year around beauty, plant evergreens. We offer you a field selection in many varieties of hardy evergreens. We offer you a "from growing field to you" service. Drive out and let us show you our selection. Make your selection from our thousands of specimen trees.

### The Arborvitae

**AMERICAN**—The most popular of the larger growing varieties. It can be trimmed to secure compact trees or allowed to grow naturally. Dependable under any average conditions of soil and care. A beautiful, deep green tree of soft, thick foliage texture. 24-30 in. \$4.50; 30-36 in. \$5.50; 3-4 ft. \$8.00; 4-5 ft. \$12.00; 5-6 ft. \$17.00.

**GLOBE**—A dwarf, bushy evergreen that naturally forms itself into a ball-like form. Very compact. Keeps its shape without trimming. Splendid for foundation plantings, tub plantings or low borders. 15-18 in. \$5.50; 18-24 in. \$6.50.

**PYRAMIDAL** — The most compact and erect of the species, forming a solid pyramid of green that retains its slender shape without shearing. However, it may be made more compact and kept at any desired height by trimming. The most generally satisfactory and widely used of all pyramidal types of trees. 18-24 in. \$4.00; 24-30 in. \$5.00; 30-36 in. \$6.50; 3-4 ft. \$9.00; 4-5 ft. \$14.00; 5-6 ft. \$19.00

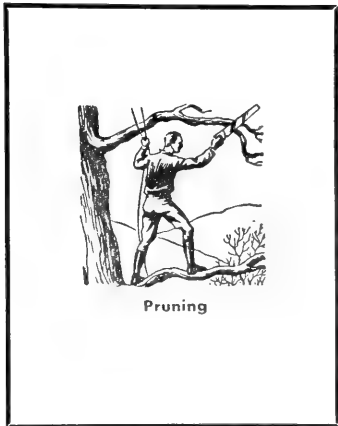
**SIBERIAN** — A compact, dense, and bushy plant. Conical in outline. Foliage a rich dark almost bluish-green. The hardiest of the Arborvitae. With its distinctive size, form and foliage texture fills a place in the landscape that no other evergreen does. 15-18 in. \$5.50; 18-24 in. \$7.00; 24-30 in. \$9.50; 30-36 in. \$12.00.

### The Firs

**BALSAM**—The native balsam found in northern Minnesota. The foliage is dark green above and silvery beneath. A rapid grower. Endures moderate shade and moist conditions. 2-3 ft. \$6.00; 3-4 ft. \$7.50; 4-5 ft. \$12.50; 5-6 ft. \$16.00.

**CONCOLOR**—The most beautiful of the firs. Its needles are long, green and blue above and silver below. 3-4 ft. \$10.00; 4-5 ft. \$15.00; 5-6 ft. \$20.00.

**DOUGLAS** — A rapidly growing, large, symmetrical tree. Deep green to bluish-green foliage of pleasing softness. The hardiest and most widely used of the firs. Does equally well in full sun or partial shade. 2-3 ft. \$8.00; 3-4 ft. \$10.00; 4-5 ft. \$15.00; 5-6 ft. \$20.00.



Pruning

### COMPLETE TREE SERVICE

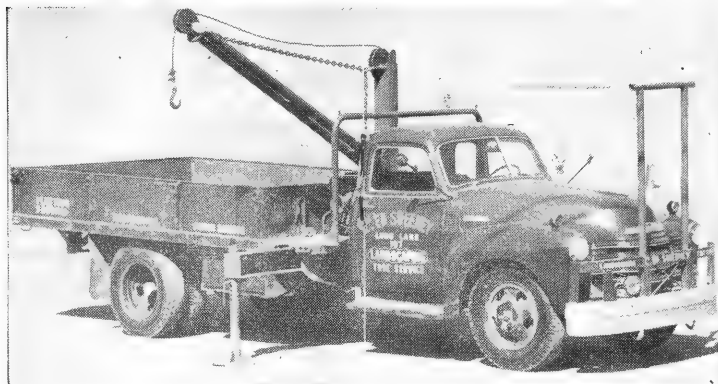
- PRUNING
- CABLING
- SURGERY
- FERTILIZING
- TREE REMOVAL
- CHAIN SAWING

### WE ARE HEADQUARTERS FOR HOME GROWN HARDY FRUIT PLANTS



- APPLES
- PEARS
- PLUMS
- CHERRIES
- GRAPES
- BERRIES
- PERENNIAL VEGETABLES

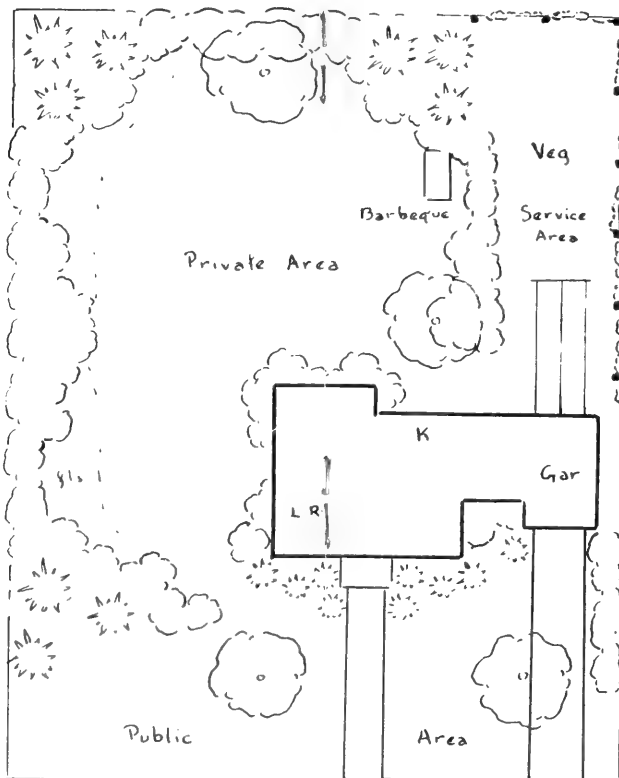
### Most Efficient Large Tree and Stump Moving Equipment



### LIKE THE PERFECT JEWEL THE PERFECT LANDSCAPING HAS MANY FACETS!

With our distinctive design, our quality materials and expert workmanship YOU ARE ASSURED OF THE BEST.  
MAY WE ESTIMATE YOUR NEEDS?

Mail us the attached card for free consultation.



WE PLANT BY PLAN

### SWEENEY SERVICES

- SEASONAL MAINTENANCE
- LAWN RENOVATION
- DRIVEWAYS & MATERIALS
- STORM DRAINS
- TREE SERVICE



### EXPERT STONE SERVICE

We specialize in the installation of DRY STONE

- WALLS
- STEPS
- WALKS
- PATIOS

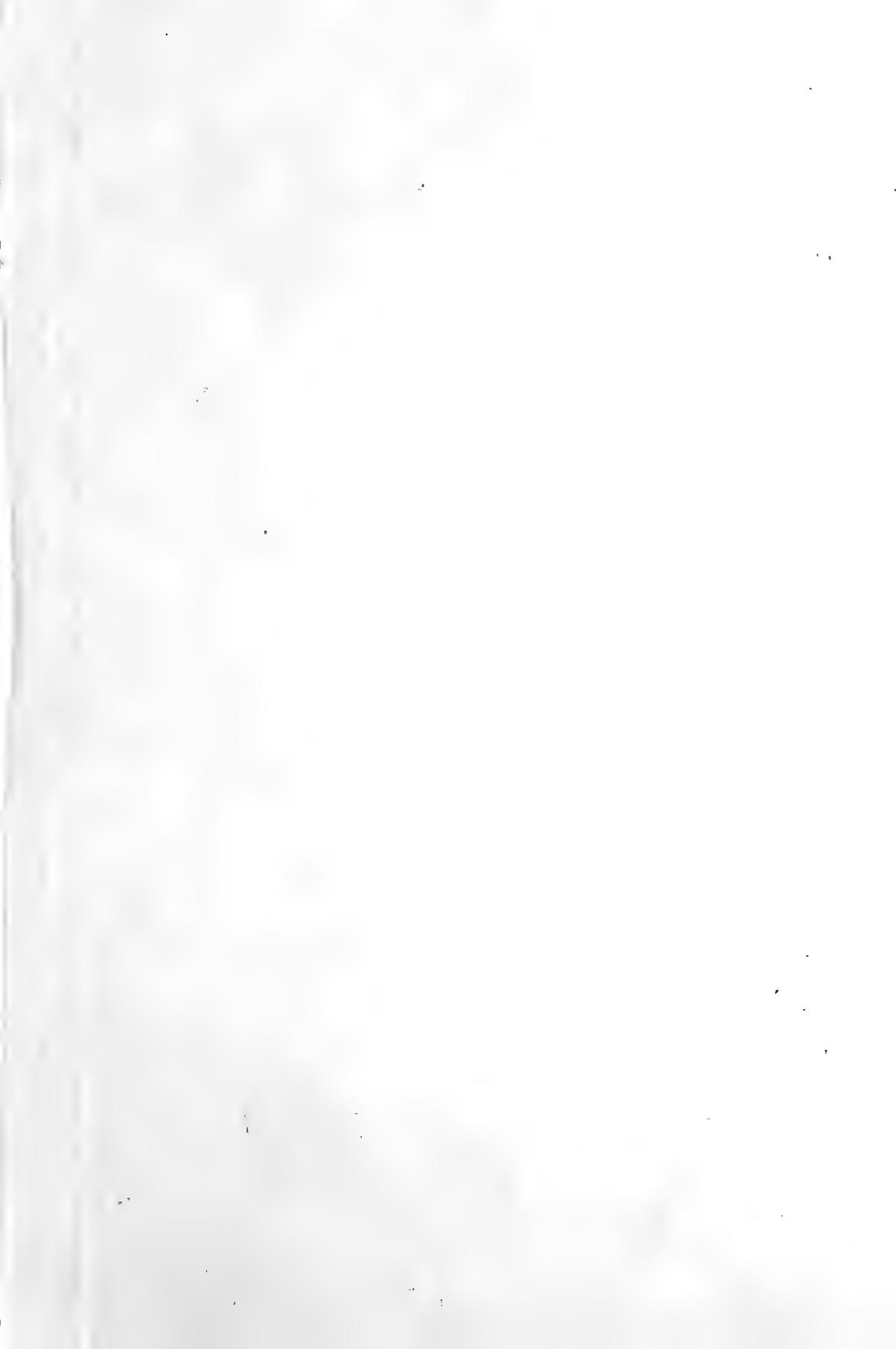
### WE SPECIALIZE IN HOME GROWN NURSERY STOCK

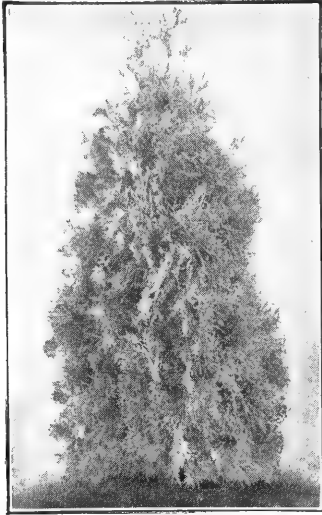
Direct from the Field to You

- EVERGREENS
- SHADE TREES
- SHRUBS
- HEDGES
- VINES
- ROSES
- PERENNIALS
- ANNUALS









PYRAMIDAL ARBORVITAE

## The Spreading Junipers

Prices on **SPREADING JUNIPERS**: 15-18 in. \$5.50; 18-24 in. \$7.00; 24-30 in. \$8.50; 30-36 in. \$11.00; 3-4 ft. \$15.00.

**ANDORRA**—One of the lowest, ground cover types. Silver green in summer, purplish bronze in spring and late fall.

**CANADIAN**—Semi-upright, spreading. Very hardy and fast growing.

**GOLDEN CANADIAN**—Similar to the Canadian, but not as large in size. Tips take on a golden yellow color.

**PFITZER**—A graceful, broad low type with sweeping fronds of bluish green. Strong tips give a definite horizontal effect.

**SAVINS**—The most popular low foundation evergreen. More compact and deeper green than Pfitzer, and slightly more upright.

## The Upright Junipers

**RED CEDAR**—The most widely used of the upright accent Junipers—but not necessarily the best. A native plant of extreme hardiness. In fall it loses its green color and takes on a reddish-brown tinge which persists until new growth starts in the spring. 24-30 in. \$5.00; 30-36 in. \$6.00; 3-4 ft. \$9.00; 4-5 ft. \$12.00.

## Grafted Upright Junipers

Prices on **UPRIGHT JUNIPERS**: 18-24 in. \$6.50; 24-30 in. \$7.75; 30-36 in. 9.00; 3-4 ft. \$12.25.

**CANAERTI**—A strong rich green upright, with numerous blue berries. Pronounced horizontal tips give an interesting effect.

**DUNDEE**—The most symmetrical and compactly self-forming of the upright Junipers. Characteristically solid and well filled out to the ground. The color is silvery green. One of the hardiest and most generally satisfactory of the grafted junipers.

**SILVER JUNIPERS**—We have several different varieties of the grafted Silvers. These trees are compact in form, and vary from light to silver in hue.

## The Dwarf Pines

**MUGHO**—A low and compact form of dwarf pine. They can be sheared and kept low or allowed to grow larger. Exceedingly hardy. Deep green foliage with candlelike new growths. 15-18 in. \$6.50; 18-24 in. \$8.00; 24-30 in. \$10.00; 30-36 in. \$12.00; 3-4 ft. \$14.00.

## The Upright Pines

Prices on **UPRIGHT PINES**: 24-30 in. \$6.50; 30-36 in. \$8.50; 3-4 ft. \$11.50; 4-5 ft. \$16.00; 5-6 ft. \$22.00; 6-7 ft. \$30.00.

**AUSTRIAN**—Commonly considered to be the best of the large growing pine trees for landscape purposes. The needles are straight, slender and 4 to 5 inches in length. Deep, rich green in color. The tree is very symmetrical in form and a rapid grower.

**NORWAY**—Minnesota State Tree. A fast growing, open type of pine. Characteristic reddish bark. Best used in background or group plantings and for naturalizing in miniature pine groves.

**PONDEROSA**—Somewhat more open and less symmetrical than the Austrian pine but nevertheless a highly desirable tree. Produces a rugged effect in the landscape. Very long needles. A fast grower.

**SCOTCH**—One of the hardiest and fastest growing of the pines. Shorter needled than Austrian or Ponderosa, much more open, less regular and sometimes appears "windblown" in effect.

**WHITE**—The native White Pine of our Northern Minnesota woods. Needles very soft. Because of its rapid growth and lighter side branching it gives a more open effect than most of the other large growing pines.



COLORADO BLUE SPRUCE

## The Spruces

**BLACK HILLS SPRUCE**—One of the hardiest and finest of all spruces—symmetrical, compact and bushy in growth. The foliage varying from a green to bluish-green tint makes the trees always striking for their bright, fresh color. Needles are somewhat shorter and much softer than those of the Colorado Spruce. One of the finest Spruces for landscape purposes. 18-24 in. \$4.50; 24-30 in. \$6.50; 30-36 in. \$8.50; 3-4 ft. \$10.50; 4-5 ft. \$16.00; 5-6 ft. \$22.00.

**COLORADO BLUE SPRUCE**—The most popular Spruce for planters of the northern states. Its brilliant blue-green color,

neat, compact form and symmetrical habit of growth, makes it invaluable in landscape work. The glory of the Blue Spruce is in its intense steel-blue foliage. 24-30 in. \$9.50; 30-36 in. \$12.00; 3-3½ ft. \$14.00; 3½-4 ft. \$16.00; 4-4½ ft. \$19.00; 4½-5 ft. \$23.00; 5-6 ft. \$30.00; 6-7 ft. \$40.00.

**COLORADO GREEN SPRUCE**—A very fine tree. Similar to Colorado Blue Spruce in all its respects except in color. The foliage is a rich, glossy, deep green and is well adapted to planting in groups with Colorado Blues for color contrast. 24-30 in. \$6.50; 30-36 in. \$8.50; 3-4 ft. \$10.50; 4-5 ft. \$16.00; 5-6 ft. \$22.00.

**NORWAY SPRUCE**—The fastest growing of the Spruce. Heavy masses of deep green foliage. For quick growth there is probably no evergreen their equal. 24-30 in. \$5.00; 30-36 in. \$7.00; 3-4 ft. \$9.00; 4-5 ft. \$15.00; 5-6 ft. \$20.00.

## The Yews

**TAXUS CUSPIDATA CAPITATA**—This variety of Japanese Yew develops a single stem growing in an upright, symmetrical branched form. Good for very shady locations. 15-18 in. \$10.00; 18-24 in. \$12.00; 24-30 in. \$15.00.

**TAXUS CUSPIDATA** — Low spreading type of Yew. Excellent for low foundation plantings where heavy shade precludes the use of other low evergreens. 18-24 in. \$12.00; 24-30 in. \$15.00; 30-36 in. \$22.00.

## How to Plant Evergreens



Dig hole considerably larger than the ball.

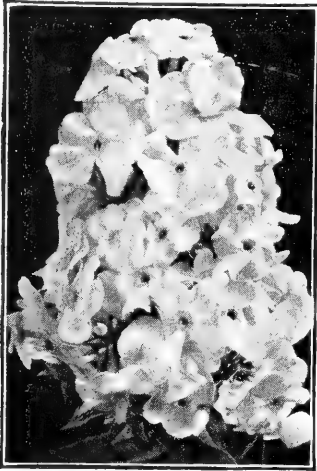
Have good soil under and around ball.

Plant ball 1 inch deeper than it grew.

Leave shallow basin for watering.

Water thoroughly and frequently.

Handle the ball with utmost care.



Headquarters  
for  
Quantity  
and  
Quality  
in  
*Perennials*

A PARTIAL LIST  
OF OUR

*Hardy  
Perennials*

**WE OFFER YOU:**

A wide selection of hardy, field grown and potted perennials that will give you the quick effectiveness that you want in your garden.

Potted plants for your convenience, large hardy plants—with no transplanting shock—and you get ALL the roots.

The benefit of Mr. Sweeney's long and wide experience in developing outstanding perennial gardens. Correct design of a flower bed is an art in itself—an art that combines a wide knowledge of the plants themselves together with a thorough understanding of color harmonies, season of bloom, heights and other factors that make up the component parts of a truly beautiful garden that will blend into and enhance your entire landscape development.

Our carefully selected and blended ingredients are mixed to make the finest of potting soils. This means that you are assured of a better plant and a root development that will keep it a better plant.

**MR. SWEENEY'S LONG EXPERIENCE IN DESIGNING OUTSTANDING GARDENS ON SHOW PLACES IN THE MINNETONKA AREA IS PROOF POSITIVE THAT HE CAN BRING TO YOUR HOME GROUNDS JUST THE "DREAM GARDEN" THAT YOU HAVE LONGED FOR.**

**WHY NOT LET MR. SWEENEY PERSONALLY DESIGN AND LAY OUT YOUR OWN FLOWER GARDEN?**

*Annuals*

**FOR ADDED COLOR IN YOUR PERENNIAL  
FLOWER GARDEN**

In addition to our complete assortment of hardy, outdoor-wintering perennials and other plants, we are prepared to supply you with a complete line of the better varieties of annuals.

For continuous bloom and added life and color you'll find our sturdy annual flowering plants just what you need.

And for the vegetable garden we'll have the top varieties of Tomatoes, Cabbage, Peppers and other vegetable plants to furnish you with summer and fall budget saving products.

- Alyssum—Basket of Gold
- Anchusa—Dwarf
- Anemone—Pasque Flower
- Aquelegia—Hybrids
- Artemisia—Silver King
- Astilbe
- Baptisia—False Indigo
- Bleeding Heart—Dwarf
- Bleeding Heart
- Campanula—Harebell
- Campanula Persicifolia
- Centaurea Montana
- Cerastium Tomentosum
- Chrysanthemums—Hardy
- Coreopsis
- Delphinium—Hybrids
- Dianthus—Carnation
- Dianthus—Clove Pink
- Dictamnus—Gas Plant
- Fall Asters—In variety
- Ferns—Hardy
- Flax—Perennial Blue
- Forget-Me-Not
- Funkia—Dwarf
- Funkia—Large White
- Gaillardia
- Gypsophila—Bristol Fairy
- Gypsophila—Dwarf
- Hemerocallis—Day Lily
- Heuchera—Coral Bell
- Iberis—Candy Tuft
- Iris—In variety
- Liatris—Blazing Star
- Lily of the Valley
- Lily—Regale
- Lily—Coral
- Lychnis—Maltese Cross
- Lythrum—Mordens Pink
- Monarda—Bee Balm
- Oenothera—Eve. Primrose
- Penstemon Barbatus
- Peony—In variety
- Phlox—Dwarf
- Phlox—Fall
- Physostegia Virginica
- Platycodon—Balloon Flower
- Polemonium—Jacobs Ladder
- Poppy—Oriental
- Pyrethrum—Painted Daisy
- Ranunculus—Up. Buttercup
- Ranunculus—Creep. Buttercup
- Rudbeckia Purpurea
- Saponaria—Soapwort
- Scabiosa Caucasia
- Spirea Filipendula
- Statice—Sea Lavender
- Trollius—Globe Flower
- Vinca Minor—Periwinkle

Shop at  
*Our Garden Shop*

**POTTED PLANTS**

Roses—Shrubs—Vines—Trees, etc.

**PERENNIALS**

BIG 2 AND 3 YEAR PLANTS

For Quick Effect

**SMALLER POTS**

For the Budget Buyer



Some  
Garden Shop  
Specials

**TUBEROUS BEGONIAS**

8 different varieties and colors. Strong roots.

**DAHLIAS**

10 splendid, large flowered varieties—full range of colors.

**GLADIOLI**

8 outstanding named varieties and our Rainbow Mixture.

**CANNAS**

5 named varieties in 5 different shades.

**TUBEROSES**

Delightful waxy, white flowers, blooming in July and August. Very fragrant.

**Headquarters for****THE GARDENER'S EVERY NEED AND GADGET****PEST CONTROLS**

Insecticides — Fungicides — Herbicides

Dusters — Sprayers

**LAWN SEEDS**

Scott's — Golf — Sweeney's Own Mixture

The marvelous, new MERION Blue Grass

**FERTILIZERS**

Golf — Scott's — Vigoro — Milorganite, etc.

Dry and Liquid Applicators

**GARDEN SEEDS**

A complete assortment of Flower and Vegetable seeds.

**PLUS**

**HAND TOOLS, SUPPLIES, MATERIALS AND GADGETS OF ALL SORTS TO MAKE YOUR GARDENING EASIER AND MORE SUCCESSFUL.**



## Hardy Apples

We feel that we know apples from every standpoint. Not only have we had extensive experience in the propagating and growing of the young trees, but we have also had many years of experience in commercial apple orchard production and marketing. We can give you invaluable assistance in the selection of your varieties, whether your needs are one or one hundred.

Of the many varieties grown in Minnesota and adjacent territory we have narrowed our list to those we feel are the outstanding ones for this territory. May we have the pleasure of assisting you in your selection?

### APPLE PRICES

2 year, Extra Large.....\$1.75 each  
2 year, Large.....\$1.50 each  
"Can't Waiters".....\$3.00 to \$10 each

### Beacon

**An Early All-Red Eating Apple That Tops the Early Fall Market**

The leader among all early fall varieties for the middle west. **Trees**—Vigorous, productive, hardy. **Season** — Late Duchess. Keeps 1 month after picking, without cold storage. **Fruit**—Highly colored, all red. Better eating quality than Duchess and an excellent cooking apple.

### Red Duchess

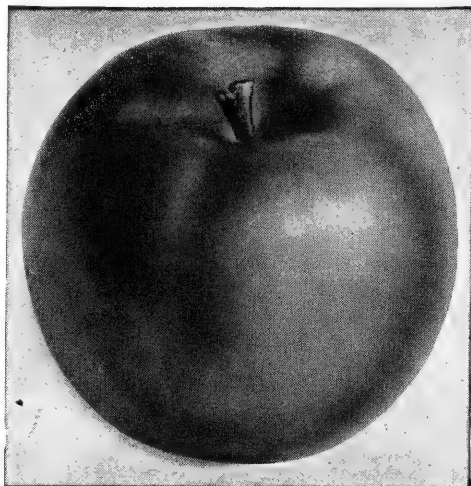
**Best of the Older Early Apples**

A bud sport of the old duchess. It possesses all of the good qualities of the older variety and in addition that all important, price commanding quality of high red color. It comes when red apples are scarce—and always sells at top market prices. We know of no better real early "summer" apple for general commercial or home growing in this section of the country.

### Fireside

**The New "Northern Delicious"**

We consider FIRESIDE to be the one Highest Quality Apple for Minnesota. The tree is vigorous, highly productive, and a regular annual producer of large crops. The fruit is large, colored a beautiful red, clings well to the tree, and keeps all winter. Its flavor is rich, subacid, almost sweet, with a crisp, firm juicy flesh.



### Minjon

**The "Minnesota Jonathan"**

The reddest, red apple of the Wealthy season. It clings to the tree until picked. It has an excellent flavor and quality. As the name implies it is so closely similar to the Jonathan that it is commonly called the "Minnesota Jonathan," and its name, "Minjon" is so derived.

### Minnesota No. 790

**The Northwest's Best Baking Apple**

A big, new apple with a rich, solid red color. Has been proven to be the best baking apple we can grow in Minnesota. An excellent quality, crisp, attractive dessert apple that is an excellent winter keeper.

### Northwest Greening

**The One Best Winter Greening**

The best and longest keeping of the greenings. A splendidly formed, bright green fruit. Should be in every orchard for, even in ordinary storage, they keep well all winter and in a good vegetable cellar sometimes on into the summer. Unexcelled for pies and baking.

### Haralson

**The Most Widely Planted Hardy, Red, Winter Apple**

Because it was one of the earlier Minnesota introductions, and because it has proven itself so valuable it is now one of our most extensively planted varieties. Very hardy . . . extremely productive . . . bears, and heavily, at a very young

age . . . red . . . good size . . . sticks to the tree until picked . . . good in quality for dessert purposes, and an excellent cooker.

### √ McIntosh

#### Quality Supreme

One of the finest apples grown. Because of its brilliant deep red color, delicate flavor, crisp snow-white flesh, and distinctly pleasant aroma, it is considered by many to be the finest dessert apple of its season.

### √ Prairie Spy

#### Hardy, Red, High Quality Winter Apple

Prairie Spy has many of the fine characteristics of that famous old apple of the East, The Northern Spy. Large red apple with quality equal to any late winter variety regardless of where grown. The fruit is large, attractive red, exceptionally high quality, long keeper, clings to the tree until picked. A true winter apple.

### √ Redwell

#### The New "Winter Wealthy"

Similar to the Wealthy in appearance—but so, so much better in most respects that it is in a class by itself. A beautiful red in color, a regular fruiter, uniform in size, excellent in quality, clings to the tree through harvest. One of the very best of our new varieties. Season late—usually harvested in mid-October.

### √ Victory

#### The New "Minnesota McIntosh"

Victory not only possesses the famed aromatic flavor of the McIntosh, but surpasses it in these respects—Better Color, Firmer Flesh, Higher Quality, Superior Cooker, a Week Later, Keeps Month Longer, Sticks to Tree, Handles Better. Truly Victory is one of Minnesota's finest apples.

### √ Wealthy

#### Minnesota's Most Famous Apple

The old favorite fall apple of corn and pumpkin time! Probably no eating apple is more popular and more loved than Wealthy. Wealthy's appetizing red appearance, its crisp, white, juicy flesh and sprightly flavor have endeared it to many.

## THE CRAB APPLES

### √ Chestnut

#### The New Super Crab

Chestnut's Points of Superiority: Hardy throughout Minnesota . . . Highly productive . . . Season—past Whitney . . . Keeps 2 to 3 months. . . Good red color. . . Delicious, nut-like flavor. . . Good for sauce and pickling. . . Large—about 2 inches across. . . Disease resistant.

### √ Dolgo Crab

Dolgo is generally conceded to be the most beautiful of all apple trees. It is heavily laden with large white flowers at blossom time, and later the brilliant red fruit is borne freely in beautiful rope-like clusters, among dense foliage of vivid, dark green. Far superior to other crabs for jellies, producing a transparent bright red jelly of high quality. Will jell even when dead ripe.

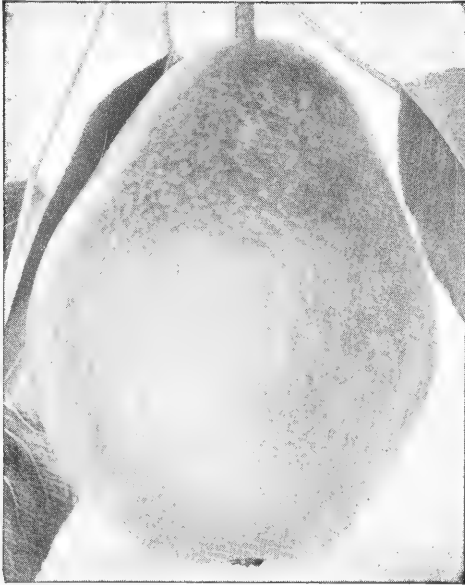
### √ Whitney Crab

A large crab, generally considered the nicest eating of all crabs. Large in size for a crab, well colored, with crisp flesh and a delightful flavor. A hardy, strong, very upright grower.

## "VEST POCKET ORCHARD" APPLE TREES

### HARDY NORTHERN GROWN — EARLY BEARING — THREE TO EIGHT VARIETIES ON ONE TREE

Limited space? The "Vest Pocket Orchard" apple tree is the answer to your problem. These trees are far more than a novelty! They are a completely practical method of growing several varieties of apples on one tree. By a careful, precise process of grafting, we have developed trees which will bear three to eight varieties each. We have used only the best varieties such as Beacon, Minjon, Fireside, Wealthy, Dolgo, Prairie Spy and Daniels Red Duchess. Besides the completely practical side of these trees, you'll have a lot of fun with them. Supply is limited. Order early!



PARKER PEAR

### ↓ Bantam

A very early, prolific producer of small pears. Deliciously sweet. Although the fruit is small, they bear so heavily (and so young, too) that they "bushel up" as well as the larger varieties. Excellent as a dessert fruit, for canning, and for pickling. Self pollinizing. **Strong, 2 year trees: Large size \$1.65 each; Extra Large \$2.00 each.**

## Hardy Pears

Pears are almost a must in your fruit tree planting. We list the four Minnesota pears which we consider best. The Bantam, Parker and Patten fill out the season nicely from early to late. They give you fine quality fruit that compares favorably with "shipped in" fruit. You will find them as easy to grow as apples and just as safe in adapted sections. Bantam bears at a younger age than the others.

### ↓ Mendel

A fine quality, late ripening pear. A vigorous grower and heavy producer. Has been grown in Minnesota for about fifty years. Fruit is large, of fine quality, sweet and juicy and keeps into November. **"Can't Waiters" at from \$5.00 to \$10.00 each.**

### ↓ Parker

Probably the finest of any pear we can grow here. Fruit is large, and yellow with a pink blush. The quality is of the best with tender, almost melting, flesh. A Minnesota Fruit Breeding Farm introduction of which they are justifiably proud. Mid-season. **2 year trees \$1.65 each; Big "Can't Waiter" trees \$7.50 to \$10.00 each.**

### ↓ Patten

A large, late pear of very good quality. Originated in Iowa but has proven sufficiently hardy for our area. Another fine variety for the wise planter who wants to grow his own pears. **2 year trees \$1.65 each.**

## "Can't Waiters"

(For the Man who's in a hurry and Can't Wait)

Are you in a hurry to have your trees bear? If so, the C. Ed Sweeney Nursery offers you the "Can't Waiter" Fruit Trees. These trees are developed by taking the regular planting size trees and transplanting them to grow on for three, four or more years.

With this additional growing time the trees gain greatly in productive maturity, in caliber, in height, and in branch and root development. Many of them have already born fruit right in the nursery row. With the transplanting and extra care we have given them they transplant as successfully and as safely as do younger trees.

Our "Can't Waiters" are available in practically all the varieties we list elsewhere in the regular sizes. They are priced at only \$3.00 to \$10.00 each, with a few in larger sizes.

For those who are really in a hurry, we suggest that the "Can't Waiters" be balled and burlaped—just like an evergreen. This is well worth the slight additional cost as transplanting shock is reduced to a minimum and you get a producing tree much sooner.

### DO YOU WANT TO DIG YOUR OWN "CAN'T WAITERS?" ↓ APPLES, PEARS, PLUM AND CHERRIES

For those who want to have the fun of selecting and digging their own "Can't Waiters" we've got a real deal! **YOU CAN DIG YOUR OWN — YOUR PICK OF THE FIELDS — FOR ONLY \$6.00 EACH.** Be sure to bring your own spades, and burlap or other adequate material for protecting the roots from drying out until you get them home. They should be dug early in the spring—before they start to leaf out — or late in the fall when dormant. Naturally, there is no guarantee on these self-dug trees.





NORTH STAR CHERRY

## Hardy Cherries

The splendid cherries we list below have adequately proven their desirability for both and commercial growing. With an assortment of these one can have the finest of cherries for eating and canning. They are fully hardy in our entire area.

The new NORTH STAR cherry is the finest pie cherry that can be wisely planted here. "You'll be sorry" if you pass it up!

### HARDY HYBRID CHERRIES

✓ **OKA**—A tremendous yielder of large round cherries fully one inch in diameter. Dark red outside with a juicy, purple meat inside. Wonderfully sweet. The best of all the purple fleshed cherries.

✓ **OPATA**—An enormous producer of good sized cherries. Dark colored outside, green fleshed and juicy inside.

✓ **SAPA**—Another excellent Cherry-plum hybrid with purple flesh and juice. Sapa is somewhat larger than Oka and has more of its plum parent characteristics. Bears at a very early age and is usually an annual bearer.

✓ **COMPASS**—While this fine old variety is not the equal of the above cherries in quality it is a most acceptable and popular fruit for canning. **It is one of the best pollinizers known for these other cherries and should be included in all plantings.**

### CHERRY HYBRID PRICES

Bearing Age .....	\$2.00 each
2 year, Large.....	\$1.65 each
"Can't Waiters".....	\$5.00 each

### Thoughts on Hardiness

Yes, we have no banana trees! In fact we just don't handle items that are not considered perfectly hardy for our territory. Sure, we could sell varieties that are borderline as to hardiness but we believe that Mr. Average Homeowner does not wish to invest time nor money in experimentation. You can rely on our varieties!

### THE NEW

## North Star Cherry

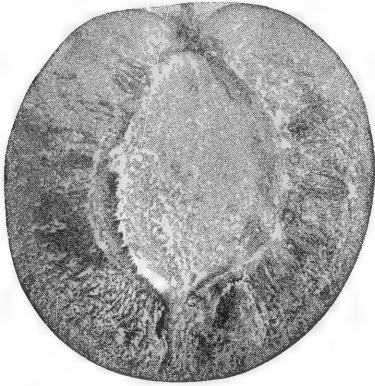
A Large, Lucious, Real  
Pie Cherry

This marvelous new pie cherry was introduced just three years ago by the Minnesota State Fruit Breeding Farm. It promises to be hardy throughout a large part of Minnesota, much farther north than any really good pie cherry could be grown prior to its origination.

The fruit is large, ripens a glistening mahogany-red and is tender and juicy with a very fine flavor. The pit is small and easily removed. They ripen early in July and remain on the tree in good condition for about two weeks.

The NORTH STAR tree is small but very productive, and is highly resistant to most diseases. The blossoms are self fertile, so a lone tree will fruit successfully. Because of it's small size and self fertility it is an ideal tree for planting on properties of limited areas.

For rich, juicy, top quality "home grown cherry pies" be sure to plant one or more NORTH STAR trees this spring. Large size, early bearing trees only \$3.75 each, 3 for \$10.00.



### PLUM PRICES

2 year, Extra Large.....\$2.00 each  
 2 year, Large.....\$1.65 each  
 "Can't Waiters".....\$5.00 to \$8.00 each

✓ **EMBER**—Midseason, to late. The longest keeper of them all. Skin yellowish with attractive red blush, high quality and heavy bearer. One of the best.

✓ **PIPESTONE**—One of the most recent introductions of the State Fruit Breeding Farm—it is rated by experts as one of the best of them all. Of good, red color it is one of the largest plums, early in season, high in quality, and a very heavy producer. An excellent canner.

## LATHAM

### The Country's Greatest RED RASPBERRY

✓ **LATHAM** is unquestionably the most popular and most widely grown of all red raspberries at the present time. They are one of the easiest fruits to grow, and yields of from 200 to 400 crates per acre are not uncommon. A small space in the garden will not only provide an abundance of one of nature's finest fruits, but it will really help you to cut down the grocery bill.

**LATHAM** is "tops" for the home garden or for the commercial grower. It is of high quality, large (frequently an inch across), productive and hardy. It is a good shipper, a good canner, and always brings top market prices. **Strong No. 1 plants 12 for \$2.45; 25 for \$4.50; 50 for \$8.50; 100 for \$14.00.**

## Quality Plums

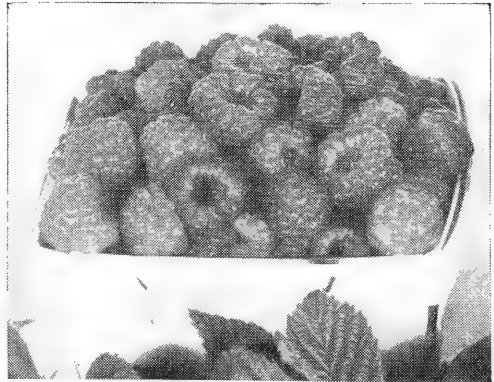
Yes, large delicious plums for canning and eating fresh are now a reality in Minnesota. The recent developments of Government Experimental stations have given us varieties that bear a high quality fruit. By selecting early, medium and late varieties you can extend your enjoyment of the fresh fruit up to eight weeks. Let us help you in this selection.

We know you'll like the following list of plums.

✓ **SUPERIOR**—Mid-season. Largest of the Minnesota varieties. In flavor, good red color, texture, size and productivity it has proven itself worthy of its name—**Superior**. One of the finest of all the plums.

✓ **UNDERWOOD**—The earliest and one of the best of them all. Large, rich red skin and firm juicy golden flesh. Excellent quality. Available only in "Large" size.

✓ **TOKA (Pollinizer)**—One of the most popular of the South Dakota introductions. A hardy, prolific and vigorous grower. Fruit of large size and splendid quality. Good cooking and canning plum. A regular, heavy fruiter. **Necessary as a pollinizer for the other varieties.**



### VISIT OUR ONE STOP GARDEN SHOP

HERE YOU'LL FIND READY TO GO  
 Potted Perennials, Annuals and Vegetable  
 Plants—Evergreens, Shrubs, Roses, etc.  
 Garden Books—Garden Tools  
 Flower, Vegetable and Lawn Seeds  
 Pruning Tools—Rodent Traps  
 Rain-gages  
 Fertilizers—Leading Brands  
 Pest Control Materials  
 Sprayers—Dusters—Etc.—Etc.—Etc.

"Just the best and just the best for you"

# Strawberries

## STRAWBERRY PRICES:

Junebearing	25	50	100	250
✓ Dunlap .....	\$1.10	\$1.80	\$2.90	\$6.00
✓ Premier .....	1.10	1.80	2.90	6.00
Everbearing				
✓ Gem .....	1.80	3.00	4.75	9.50
✓ Superfection ..	2.25	3.75	5.50	11.00

## Junebearing Varieties

Junebearers produce one crop each year—in June. Plants set out this spring will produce their first crop next year.

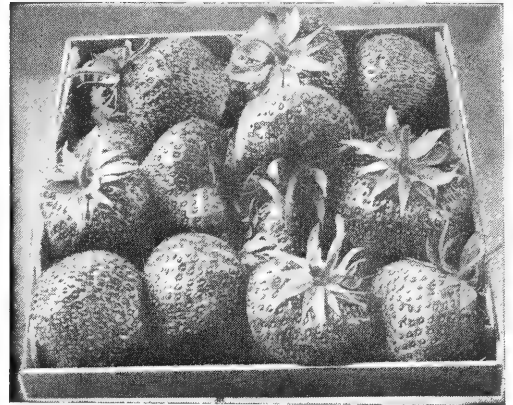
**DUNLAP**—The “old faithful” of the Junebearing varieties. For many years this has been the best known and most widely grown strawberry variety.

**PREMIER**—Aptly described as the one strawberry without a fault. Although nearly a week earlier than the old Dunlap and other Midseason varieties, it maintains a heavy production over a long period. The firm, bright red berries maintain their large size well throughout the season. An excellent canner. The most popular early and mid-season berry.

---

## INDIAN SUMMER The Best Everbearing RED RASPBERRY

✓ **INDIAN SUMMER** is a proven success, both as a summer fruiter and as an everbearer in the fall. After a heavy crop along with other summer fruiters it's second crop starts in September and continues till heavy frosts in the fall. Berries are large, sweet, firm and with few seeds. The plant is a husky grower, hardy, and resistant to most diseases. Bears midseason to late fall. **Strong No. 1 plants 12 for \$2.45; 25 for \$4.50; 50 for \$8.50; 100 for \$14.00.**



## Everbearing Varieties

These varieties bear two crops a year. Plant this spring—pick this summer and fall until hard freezes kill all blossoms.

You'll get back the price paid for plants, and most important, a big profit in the first year besides. You'll harvest another fine crop the following June and fall—two crops in one year.

**GEM**—Probably the most widely used and most generally planted of the older everbearers. Highly productive—a good plant maker, hardy, with large, bright red fruits slightly tart and of excellent quality. An ideal all-round berry for the Home Garden or the commercial grower.

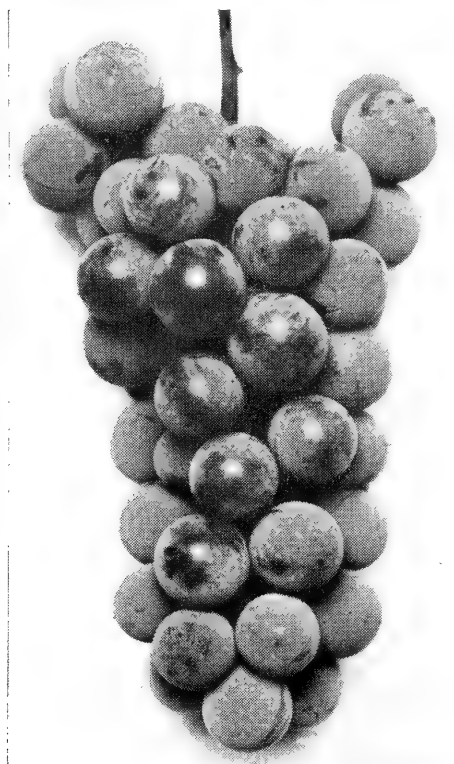
**SUPERFECTION** — One of the newest and best Everbearers. Those who have tested **Superfection** thoroughly since its recent introduction, believe that it will prove to be one of the best, if not the very best, of our everbearers. Berries are large, roundish, a deep red in color and deliciously sweet in flavor. The fruits are very firm, making it a good handling and shipping berry. It's worth trying!

---

## HAVE FUN EAT HEALTH SAVE DOLLARS

More and more people are discovering that there is fun and economy in growing their own fruit and vegetables. Fresh out of the garden they taste better too! Our wide experience can help you make a selection that is just right for you.

## Hardy Grapes



BLUE JAY GRAPE

	1-4	5-9	10-up
<b>GRAPE PRICES</b>	each	each	each
Beta, 2 year.....	\$.50	\$.45	\$.40
Concord, 2 year.....	.50	.45	.40
Blue Jay, 2 year.....	1.00	.95	.90
Moonbeam, 2 year....	1.00	.95	.90
Red Amber, 2 year..	1.00	.95	.90

**CONCORD**—The most popular and widely grown of the blue table grapes. It is the standard of comparison for all other varieties.

**BLUE JAY (Minn. No. 69)**—Probably the best of the blue, hardy grapes introduced by the Minnesota State Fruit Breeding Farm. A vigorous grower and heavy producer of large, high quality grapes. The bunches are compact and of medium size. Recommended for all part of Minnesota. Plant with other varieties for pollination.

**MOONBEAM (Minn. No. 66)**—Another splendid Minnesota Station creation. A hardy, high quality "white" grape of great value. A vigorous grower. Fruit is large, skin tender, and flavor sweet, mild and pleasant.

**RED AMBER**—Minnesota Fruit Breeding Farm's best red grape. One of the sweetest and most highly flavored of the hardy varieties. Fruit is medium size, amber red in color, attractive and very good for eating or culinary use.

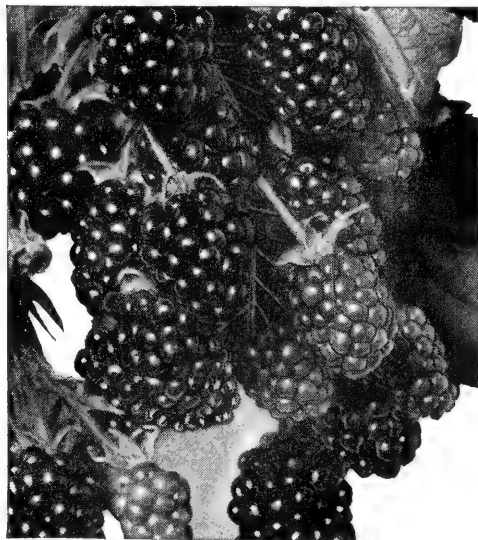
**BETA**—About half way between the Concord and the wild grape in both size and quality and is a very heavy producer. A great favorite for jellies and wines.

### Cumberland Black Raspberry

Generally conceded to be the best of the "Black Caps." A vigorous grower and heavy yielder of large, juicy berries of the highest quality. Has stood the test of time. Most widely planted of all black raspberries. We offer strong plants at 12 for \$2.45; 25 for \$4.50; 50 for \$8.50; 100 for \$14.00.

### Alfred Blackberry

The extreme popularity of this splendid blackberry is well deserved for it is not only the hardiest of the better blackberries but it is the best in quality. Plants are vigorous and very productive. Probably the best for home and commercial plantings in the North. 12 for \$2.45; 25 for \$4.50; 50 for \$8.50; 100 for \$14.00.



ALFRED

## RED LAKE CURRANT

The Country's Finest Red Currant

This splendid currant is another triumph for the great Minnesota State Fruit Breeding Farm. University authorities and growers throughout the country agree that this is the finest red currant yet introduced. Wherever it has been tried it has met with instant favor—rapidly superseding older varieties in both home and commercial plantings.

Ripens early mid-season and holds on the bush for a long time without "shelling" or shriveling so it can be marketed when prices are highest. Always brings top prices.

Red Lake Prices	1-4 each	5-9 each	10-up each
2 year .....	\$0.60	\$0.50	\$0.40
3 year .....	.70	.60	.55

## PIXWELL GOOSEBERRY

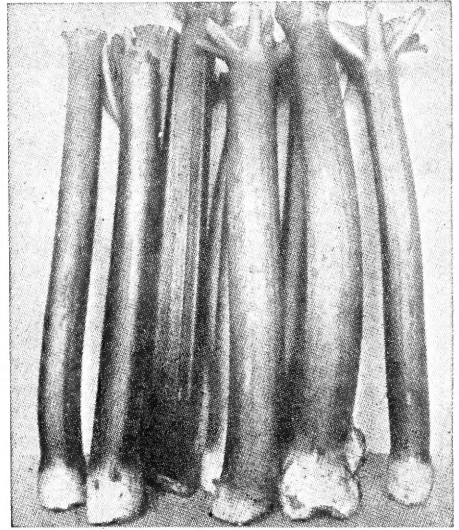
A marvelous new gooseberry developed at the North Dakota Experiment Station.

We consider this the best of all gooseberries now available for general planting. It is an extremely easy variety to pick as the thorns are rather soft and not troublesome, and the berries hang on slender stems below the twigs. Hardy, a vigorous grower, and one of the heaviest yielding gooseberries we have ever seen.

The berries are large, light green, ripening to a pinkish color. **2 year plants 90c each; 5 for \$4.00; 10 for \$7.00.**

## MARY WASHINGTON

This Giant Asparagus, the result of years and years of plant breeding work done by the United States Department of Agriculture, is everywhere admitted to be the finest asparagus grown. Mary Washington seems to be the ideal asparagus as it is rust-resistant and surpasses all other varieties in yield and quality. Its enormous tender shoots of vivid dark green retain their tenderness and do not branch until well above cutting height. **Strong 2 yr. plants 12 for \$1.25; 25 for \$2.00; 50 for \$3.00; 100 for \$4.75.**

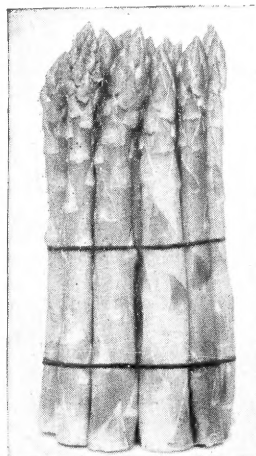


## THE NEW CHIPMAN'S CANADA RED RHUBARB

A new introduction from Canada, this variety is unquestionably the most beautifully colored, all red stem of any rhubarbs now grown. Stems are dark red way to the center and carry the color up into the leaf veins. Makes a beautiful, deep red sauce of sweet, mild flavor. Stocks very limited. **Strong divisions \$1.00 each; 2 for \$1.90; 5 for \$4.50.**

## MacDONALD RHUBARB

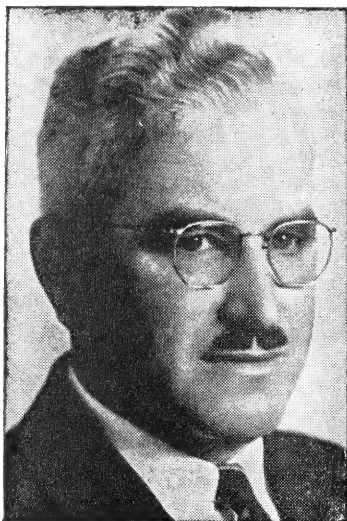
The finest of the large stalked, high quality rhubarb. The planter who wants a rhubarb of high quality—good red color and heavy yield of large stalks, will find nothing better than MacDonald. **Strong divisions 75c each; 2 for \$1.45; 5 for \$3.50.**



**YOUR EARLIEST SPRING GARDEN REWARDS**

**High Vitamin Lusciousness**

Permanently yours from a Mary Washington Asparagus bed. Easy to grow!



FRANC P. DANIELS, Sr., B.S.A.

## *At Your Service*

Your horticultural help and advice can only be as good as the men behind it. We take pride in our personnel whose combined years of experience in the horticultural and landscape fields will equal a century and more.

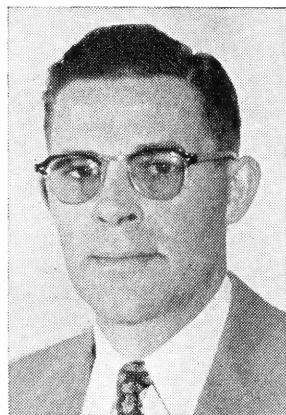
Of course Franc P. Daniels, Sr. needs no introduction to the vast majority of you. His over forty years experience as a leading nurseryman and horticulturist in this territory and his some twenty years as University instructor make him highly qualified to help you with your horticultural problems. He has also authored that popular book, "HORSE SENSE HORTICULTURE."

We are happy to have Mr. Daniels with us in a consultant and supervisory capacity. He is ready to help you with your selection and planting problems.

We make many calls at the homes of clients because very often there are problems that must be seen to be understood. This service is available to you free by returning the card in the center of this catalog or by giving us a phone call.

Mr. Krotzer handles many of your calls for Landscape help at your home besides helping with sales here at the nursery.

The wide agricultural and horticultural experience of our personnel means know-how that is very valuable in guiding you in your problems. Mr. Krotzer is no exception and you will find him well qualified to give you valuable guidance with your landscape planning. Let him help you.



CLARENCE KROTZER  
Landscape Department  
and Sales

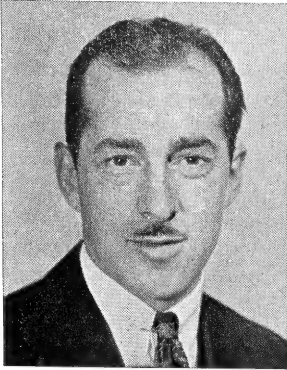
## *An Invitation to Get Acquainted*

By far the greatest volume of our business is done here at the nursery. We like it that way and those who have come to know us like it that way.

When you compare, consider these factors: Experienced personnel; modern storage facilities for that just right, tip top condition; locally grown stock; wide selection! Yes, we offer you those things, plus our Garden Shop where you can select the best in insecticides and garden helps.

So come out and compare. We are within easy driving distance of all of Hennepin county and surrounding territory. Just take U. S. Highway 12 to Long Lake.

We are open for business all week days, and on Saturdays and Sundays during the Spring and Fall planting season.



**EDWIN H. CRONK**  
Production and  
Packing Manager

Like all modern businesses we have the increasing complexities of record keeping. And, of course, the office is always the focal point for our many activities. Here is where your orders are processed, your phone calls answered.

You are welcome to call us any time for planting advice.

Many of you have met Mr. Baker at the office. Besides managing the office and book work he can help you make the selection of plants that are right for you.

The quality and character of the plants you buy is governed, not only by our rich soils, but equally important is the personal attention from the growing fields to you.

Our friends from former years have met Eddie Cronk at our modern refrigerated storage and packing basement. He has helped many of you with your selections and shown you the proper way to prune your plants. His work goes on the year around supervising the production, digging and storage of our quality plants. His many years of experience is your guarantee of satisfaction. We are proud to introduce you to Eddie.



**JOSEPH W. BAKER**  
Office Manager  
and Sales

## Ordering from C. ED SWEENEY NURSERY

(—and that's the best way to get the best Nursery Stock)

### How To Order

Ordering from C. Ed Sweeney Nursery is easy! Best of all is to come over to the nursery where you can make your selections with our help—or you can conveniently order by phone or letter and, if you need help in arranging your plantings, one of our landscape experts will be glad to call at your home and assist you in your planning and ordering.

### Delivery

For those who cannot take their stock with them we maintain a free delivery service in Minneapolis, its suburbs and the Minnetonka area. If orders are to be shipped, small packages can go by Parcel Post, but larger ones should go by express. For Parcel Post shipments please add 20% for postage and packing. Express shipments are sent express charges collect but 10% should be added for special packing for express shipments.

### Planting Service

We invite those who wish to have their stock planted to avail themselves of the services of our skilled horticulturists. We can furnish these expert workmen in the Twin City area at the following rates: Evergreens at 40 percent of the cost of the stock, and other stock at 60 percent of the cost of the stock, except hedges which will be planted at 45 cents per foot. For the clients' protection our workmen are fully covered by Workmen's Compensation Insurance.

The  
C. ED SWEENEY  
NURSERY  
LONG LAKE,  
MINNESOTA

SEC. 34.66 P.L.&R.  
U. S. POSTAGE  
PAID  
Permit No. 2  
Long Lake, Minn.

U.S. DEPT OF AGRICULTURE  
LIBRARY  
WASHINGTON, 25, D.C.

---

*C. Ed Sweeney*

FOR TOP QUALITY IN  
LANDSCAPE MATERIALS AND SERVICES

Sod and Sodding

Rock Walls and Walks

Driveway Materials

Grading

Commercial Fertilizer

Excavating

Black Dirt — Manure — Clay

---

**HOME GROWN  
NURSERY STOCK**  
DISTINCTIVE DESIGN  
EXPERT WORKMANSHIP



PHONES: GREENWOOD 3-8466 and GREENWOOD 3-8736