

Historic, archived document

Do not assume content reflects current scientific knowledge, policies, or practices.

6-3-67

1130-100

FEB 8 1937

U. S. Department of Agriculture



Talisman

The most magnificently colored Rose ever produced. Extraordinary effects unfold as soon as the sepals divide. The rare urn-shaped bud is gold outside with brownish red center. When fully opened, a happy blending of distinctive colors. Has won more medals than any other Rose. Exceptionally hardy and a wonderful bloomer.

Price 75¢ each
3 for \$2.00
10 for \$6.00

The

FINGER LAKES NURSERIES, Inc.

In the Heart of the Beautiful Finger Lakes

ANNUAL CATALOG

Featuring:

- ROSES
- EVERGREENS
- PERENNIALS
- ROCK GARDEN PLANTS
- SHRUBS
- FRUITS
- VINES & HEDGES

404 Washington St.
Geneva, N. Y.



CHINESE CINNAMON VINE

25c each POSTPAID 5 for \$1.00

NO, LOVER of beauty should miss planting the Chinese Cinnamon Vine. Words cannot describe the delicious fragrance of this creation, direct from China, the Land of Wonders. They have a charm unknown to any other Climber. Their lovely, heart-shaped leaves and gorgeous blossoms of dainty white, sweet-scented flowers make them a perfect "Bower of Beauty." Will quickly climb 30 ft. or more. No insects blight or disease of any kind ever trouble them—no Winter harms. Hardy anywhere.



FERTILIS

**YOUR HOUSE PLANTS
WILL BE FRESH
GREEN AND LOVELY**

by feeding them on Fertilis, the new improved fertilizer tablets. Fertilis doubles the life of cut flowers and keeps your Ferns and Potted Plants healthy and beautiful. These little tablets feed the plants and produce an abundance of bloom and healthy colors. Directions on each package.

PRICE Box of 50 Tablets 25c **POSTPAID**
 Tins of 1000 " \$2.00

FREE OFFERS

Take Your Choice

Include with your order (FREE) your choice of any stock offered in our catalogue as follows:

With a \$ 5.00 order, stock to the value of \$.50 (*free*)
With a 7.50 order, stock to the value of .75 (*free*)
With a 10.00 order, stock to the value of 1.00 (*free*)
With a 15.00 order, stock to the value of 1.50 (*free*)
With a 20.00 order, stock to the value of 2.00 (*free*)
With a 25.00 order, stock to the value of 2.50 (*free*)
With a 50.00 order, stock to the value of 5.00 (*free*)
With a 100.00 order, stock to the value of 10.00 (*free*)

These FREE Offers are in addition to the 3% Cash Discount as explained on page 2A of our catalogue.

FREE! PRIZE COLLECTION OF
GLADIOLI BULBS **FREE!**
READ FREE OFFER BELOW

Send us the names and addresses of bona fide HOME OWNERS in your town and we will mail them copy of our catalogue. In return for this service we will send you FREE, our gorgeous PRIZE COLLECTION of blooming size GLADIOLI BULBS; will bloom first year. Send only names of persons having gardens or lawns.

*For 30 names and addresses—12 Bulbs sent FREE
For 50 names and addresses—25 Bulbs sent FREE*

FINGER LAKES NURSERIES

404 Washington Street
GENEVA, N. Y.

This—Your Year of Bargains

NEVER before in the history of our nursery business, has it been possible to offer such wonderful bargains, as we have been able to do this season.

The unequalled low prices, cataloged in this book, do not refer in any way to Nursery Stock that is not positively No. 1 Quality.

The wonderful growing season in the Finger Lakes Region, has averaged the highest in many years and with the enormous quantity of this fine stock, we have decided to sell it at prices, in many instances below actual cost to grow it.

So do not fail to take advantage of this opportunity this year to buy this first class material at a cost that is really a great bargain.

CASH DISCOUNTS FOR EARLY ORDERS

{ **10%** discount on cash orders received within ten days after receipt of this catalog. **5%** discount on cash orders received before April 1st. }

*Orders shipped C.O.D., if one-fourth cash accompanies order—no discount on C.O.D. orders.
Discount must be taken when order is placed.*

1 **TERMS.** Cash with order or shipment may be sent C. O. D. when one-quarter of the amount is sent with order. Send check, money order or bank draft. Money sent in the mail is at owner's risk.

2 **SUBSTITUTION.** In case we are out of a variety or size called for, we reserve the right to substitute another similar variety of equal merit, or another size or grade of an equal value, unless the words "NO SUBSTITUTING" are written on the order, in which case we will fill the order as far as we can and return the balance of the money.

3 **TRANSPORTATION CHARGES.** We do not prepay, except where noted by mail. All express and freight shipments are forwarded charges collect.

4 **WE GUARANTEE OUR STOCK** to be true-to-name. To be of quality represented. To be free from vermin and disease. To reach you in good condition. If shipment arrives otherwise, we expect customers to notify us immediately. Claims of any kind must be made within five days after receipt of stock.

*Homes
that satisfy
the heart's
desire*



FINGER LAKES NURSERIES, Inc., Geneva, N. Y.



Air Controlled Storage . . . where millions of Finger Lakes plants and trees are kept in dormant condition

For Smart
Landscaping

Climbing Roses

Trellis · Porch Walls
Pillar or Arbor

Roses are beyond description. Their utter loveliness of form, texture, fragrance, and color cannot help but make them the most popular and best loved of all flowers. Finger Lakes Roses are strong plants, grown out of doors, well rooted and in every way desirable for home culture. Order now, it's your opportunity to enjoy a glorious garden of Nature's best, at surprisingly low prices. *Finger Lakes Guarantee all Roses True to Name.*

FINGER LAKES ARBOR GROUP

- 1 Paul's Scarlet (red).
- 1 Gardenia (yellow).
- 1 Veilchenblau (blue).
- 1 Christine Wright (pink).

All 4 for \$1.00
Postpaid

The Finest Ever Grown

25¢ each
5 for \$1.00; 25 for \$3.98

The Best Reds

CLIMBING AMERICAN BEAUTY.

Clusters of rich rose to carmine. Beautiful until snow-fall.

EXCELSA. Radiant blood-red clusters.

FLOWER OF FAIRFIELD. A truly dependable red climbing rose. Very hardy.

PAUL'S SCARLET CLIMBER. Vivid scarlet flowers which hold their color for a long season. They bloom in great profusion.

The Best Pinks

CHRISTINE WRIGHT. Bright dazzling pink.

DR. W. VAN FLEET. Its beautiful clustered buds open into large, shapely flowers of shell-pink.

DOROTHY PERKINS. Beautiful clear shell-pink blooms in large clusters, prettily crinkled petals.

MARY WALLACE (New). Semi-double, clear rose-pink, salmon base. Blooms all season.

TAUSENDSCHON. Superb, double clusters of varying colors of pink, white and rose.

LADY GAY. The everblooming Dorothy Perkins.

THE Best White

SILVER MOON. Semi-double 4 to 5 in., pure white flowers. Thick clusters of yellow stamens.

SURPRISE PACKAGES

Only \$1.19
Postpaid

(A regular \$5 value)

Here's a bargain for Finger Lakes Customers, while they last. This package contains 3 Rose Bushes, 5 Shrubs, 10 Perennials, all absolutely first grade in every respect. No seedling stock in this offer. We will give 1000 of these packages out at this price, but positively no more. First come, first served. (No discount.)

BLAZE

the Sensational New Climbing

EVERBLOOMING ROSE

The first patented Everblooming Climber

EXTRA HARDY

Blooms from June to frost

\$2.00 each

\$20.00 per dozen

Novelty Climbers

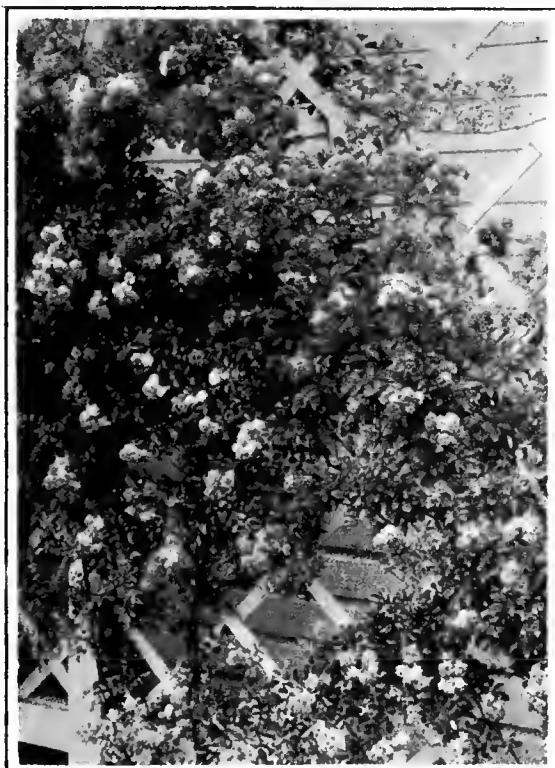
BLUE ROSE (Veilchenblau). Here's something entirely different from any other Rose in cultivation. The flowers are borne on loose clusters and are a delightful shade of blue. Will cover a large porch in a single season. 50c each; 10 for \$3.98.

GARDENIA. A yellow climber, opening to creamy flowers with rich yellow centers. Hardy anywhere. 50c each; 10 for \$3.98.

AVIATEUR BLERIOT. Saffron-yellow flowers, emitting an unusual Magnolia fragrance. 50c each; 10 for \$3.98.



PAUL'S SCARLET CLIMBER
Beautiful Blood Red Roses

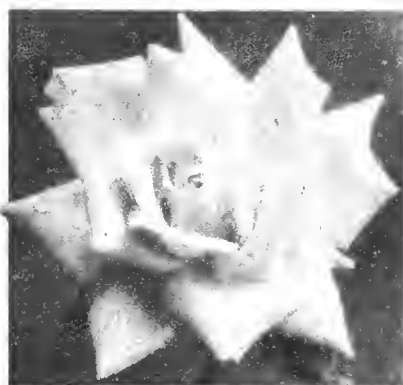


EXCELSA CLIMBER
B. L. LeFevre, Hurstbourne Rd., Rochester, N. Y., says, "Two years ago, I planted your Climbing Rose Excelsa. It's a gorgeous specimen. Here's a photo."

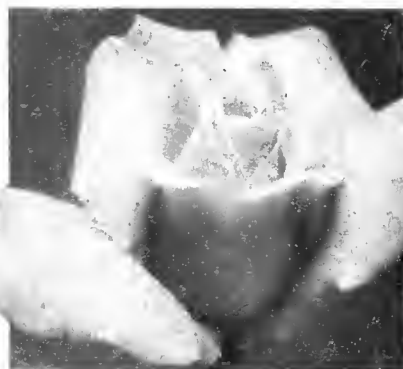


DOROTHY PERKINS CLIMBER
Crinkled Shell-Pink Flower

Finger Lakes Famous Everblooming Roses



MRS. HENRY BOWLES
The most beautiful pink grown



E. G. HILL
Massive blossom velvety maroon



TALISMAN, Multicolor Rose,
red coppery, orange



PRES. HOOVER
Maroon, Orange-Gold. It's Beautiful

We are highly honored to have the privilege of offering American and European finest grade Roses. The most inspiring and magnificent grade and varieties. Mr. Dwyer, with a lifetime experience as our Rosian, knows Roses and their habits. He says, "Here is my selection of the 30 best and most satisfactory Roses, for beauty, shape and hardiness." They may cost a few cents more, but what a "whale of a difference." 2 year outdoor grown (not pot or bench grown plants) but strong, well rooted Roses, ready to "take hold" quickly in your garden, and guaranteed True to Name.

Price for Grade A Only: 65¢ each; 10 for \$5.00; 25 for \$10.00

Briarcliff. Handsome flowers of brilliant rose-pink on long strong stems.

Chas. K. Douglas. A flaming scarlet flushed with velvety crimson. Pine form.

Columbia. Vivid peach-pink, throughout entire season. Very perfumed.

Duchess of Wellington. Pronounced saffron-yellow blooms on long stems. Pointed buds.

Etoile de France. Massive, cup-shaped flower of clear red or velvety crimson.

Frau Karl Druschki. Handsome extra large, pointed buds. The ideal white.

George Ahrends. Generally conceded to be one of the most beautiful pink Roses in the world.

Hoosier Beauty. Glowing crimson-scarlet, marvelously formed and of unbounded fragrance.

Gruss an Teplitz. Intensely fragrant, very dark, velvety scarlet.

Juliet. Rich rosy red, suffused with outside petals of old gold.

Kaiserin Augusta Victoria. Translucent white with a drop of lemon in center.

Killarney. Brilliant, sparkling shell-pink of a most exquisite shade.

Lady Ashtown. Beautiful blooms of solid pink tinting to yellow at their base.

Lady Hillington. Rich apricot-yellow, shaded to orange.

Mme. Alexandre Dreux. Captivating deep yellow, splashed with orange. Flowers never fade.

Mme. Butterfly. Bright pink intensified with apricot and gold.

Mrs. Aaron Ward. Golden buff, opening to a silvery pink.

Ophelia. Lovely creamy white blooms tinted flesh.

Radiance. A marvelous Rose of clear red, with no trace of any other color.

Rev. F. Page Roberts. A glorious blend of beautiful tints from carmine to lemon, through orange. Lovely bronze foliage, becoming deep holly-green.

Souv. de Claudius Pernet. Clear, shining yellow, absolutely free from any orange shading.

Souv. de Georges Pernet. A cheerful succession of reddish pinks, oriental red buds, opening to a lovely deep pink — the whole made brilliant by a golden sheen.

Sunburst. Superb orange-copper with deep orange center.

Willowmere. Magnificent brilliant pink flowers, suffused with golden tint.

White Killarney. An ideal perfectly shaped White Rose.



Enjoy a well planted Rose Garden. Finger Lakes Roses will bloom from June till Fall. It pays to buy quality.

Rose Dream Garden	
4 SUPER-GRADE ROSES	
1 each of above . . .	\$2.50
2 each of above . . .	\$4.75

Novelty — Newer Creations and Patented Roses That Excel

The most recent products of Rose Hybriders at Home and Abroad. The plants are tried outdoors in our trial gardens, where they get no special care and are subject to all the conditions of Western New York climate. Every Rose is carefully labelled and selected for name of variety, strong vigorous root system and dependability.

PRICE, EXCEPT AS NOTED,
75¢ each; 3 for \$2.00; 10 for \$6.00

Dame Edith Helen. A solid pink rose without any shading, delightfully perfumed.

E. G. Hill. Massive blooms of deep maroon, velvety inside.

Mrs. Henry Bowles. A fine clear pink rose; a delightful shade.

President Hoover. A glorious combination of maroon, orange and gold.

Talisman. Magnificent urn-shaped buds open to an extraordinary combination of rose, orange and copper red.

Mrs. Pierre du Pont. A very new and lovelier deep yellow rose. Will not fade in any weather. A good bloomer. Only a very limited supply of this new variety.

Countess Vandal. (Pat. No. 38) Long pointed buds. Distinctive shadings of coppery bronze, suffused with soft gold. A sensation in the Rose bed at the Century of Progress in Chicago. Price \$1.50 each; \$15.00 dozen.

Golden Climber. (Pat. No. 28) This Rose is the 1934 sensation featured in the leading Horticultural publication. This spectabalis climber stays put in sub-zero temperature. Its glossy foliage and red thorns are ornamental even out of bloom. A truly golden yellow climber. Price \$2.00 each; \$20.00 dozen.

Mary Hart. (Pat. No. 8)
A most unique red rose of maroon red opening to well formed blossoms of velvety blood red with an overglow of amber.

A perfect cutting rose. Price \$1.50 each; \$15.00 dozen.

Souvenir. (Pat. No. 25)
Rich deep golden yellow blooms of fragrant flowers. Outstanding gold medal winner for 1932 rose shows. Price \$1.00 each; \$10.00 dozen.



RADIANCE — A decided Red




MRS. PIERRE DU PONT
Golden Yellow,
winner of gold medal



DAME EDITH HELEN
Color Solid Pink



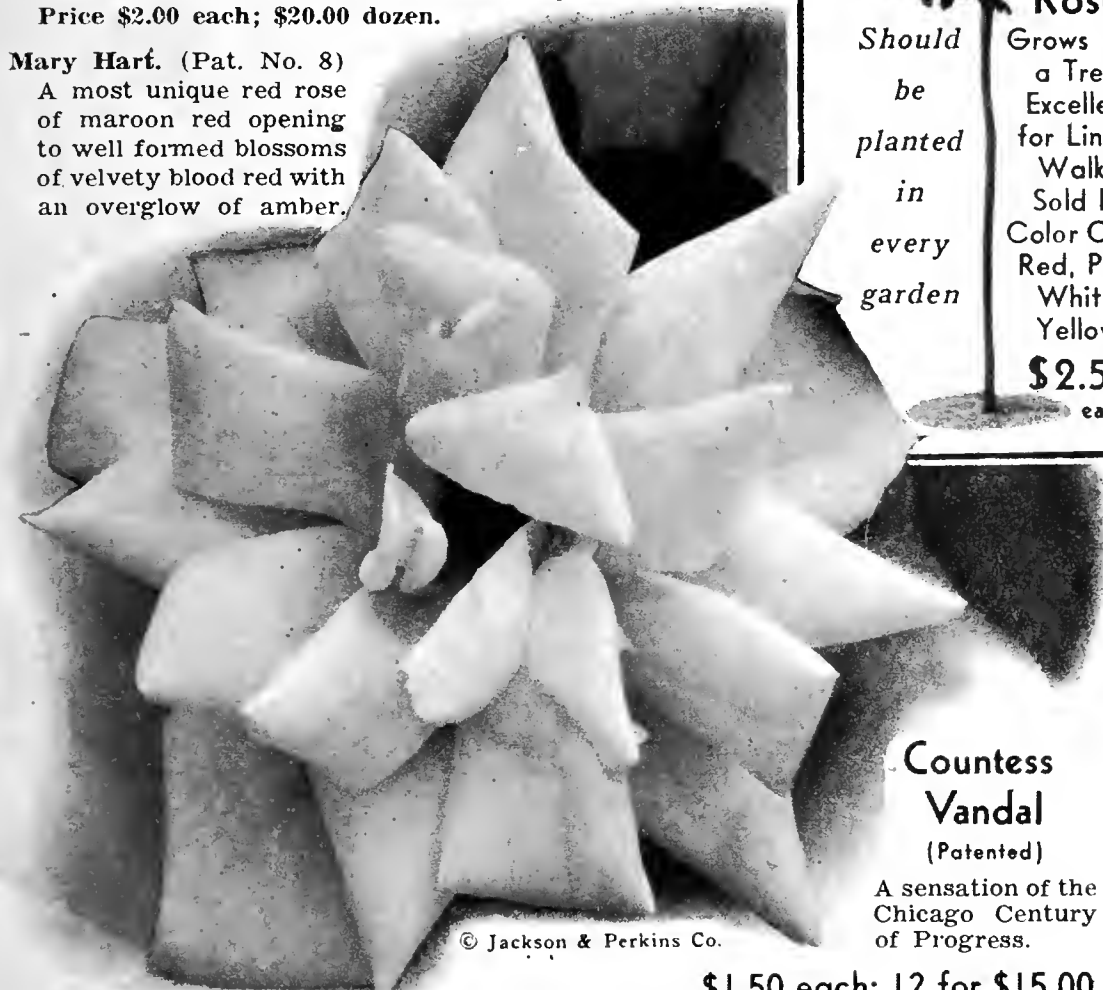
REV. F. PAGE ROBERTS
A Multicolor.
Carmine, Lemon, Orange



**Tree
Roses**

Should
be
planted
in
every
garden

Grows Like
a Tree.
Excellent
for Lining
Walks.
Sold by
Color Only.
Red, Pink,
White,
Yellow.
\$2.50
each



**Countess
Vandal**
(Patented)

A sensation of the
Chicago Century
of Progress.

\$1.50 each; 12 for \$15.00

© Jackson & Perkins Co.

Rose Bouquet Garden

4 SELECTED A GRADE

1 each of above . . \$2.50

2 each of above . . \$4.75

Hybrid Perpetual Roses

Always
Dependable

Each subsequent season after planting they should be cut back to 6 or 8 buds before growth starts in the spring. Blaims are apt to be sacrificed if too much foliage is permitted to grow.

2-year, field-grown plants

50¢ each; 3 for \$1.00; 10 for \$3.00, postpaid

- AMERICAN BEAUTY.** Brilliant pink to red, heavily clothed with foliage
- BARON DE BONSTETTIN.** Dark, velvety crimson.
- CLIO.** Satiny flesh, with pink center. Cup-shaped.
- FRAU KARL DRUSCHKI.** A perfect double, pure white Rose.
- GENERAL JACQUEMINOT.** Brilliant scarlet crimson — blazes like a bonfire.
- GEORGE AHRENDTS.** A delicate pink; the pink Frau Karl Druschki.
- GLOIRE LYONNAISE.** Rich creamy white, opening to a pale shade of salmon.
- HUGH DICKSON.** Intense crimson. Good size, fine form.
- J. B. CLARK.** Deep scarlet overlaid with a beautiful crimson.
- MAGNA CHARTA.** Beautiful rosy pink. An excellent forcing Rose.
- MRS. JOHN LAING.** Clear, bright, shining pink; exquisitely shaded.
- M. P. WILDER.** Bright crimson scarlet.
- PERSIAN YELLOW.** Golden yellow.
- PAUL NEYRON.** A rich, ruddy pink. "Color spot" of the fall.
- ULRICH BRUNNER.** An exquisite cherry red.



GEO. AHRENDTS
A typical Perpetual Rose type. Does well in severe climate. A glorious pink.

FINGER LAKES ROSE QUARTETTE

1 F. K. DRUSCHKI (white) 1 PAUL NEYRON (pink)
1 M. P. WILDER (red) 1 PERSIAN YELLOW

All 4 for only \$1.25, postpaid

OUR BEAUTIFUL ROSA RUGOSA The Hardest of All Roses

F. J. GROOTENDORST
New Everblooming Red Rugosa Rose
50¢ each; 10 for \$3.98

The most beautiful of the Rugosa Rases. Foliage of the true Rugosa Type, always healthy, clean and attractive, free from mildew. Plants of vigorous but compact growth, ultimately reaching 4 to 5 feet in height. Flowers in clusters, double, with edges beautifully fringed,

so that each cluster of bloom resembles a bunch of red carnations. Blaims continuously from early summer until fall. Extremely hardy, thrives everywhere.

Very effective as single specimens, or in foundation plantings to give color contrast throughout the season, and especially valuable for landscape work for mass and hedge planting.

Rugosa Pink and Rugosa White, 50¢ each; 10 for \$3.98.

CORNUS RUBRA (Red Flowering Dogwood)

2 to 3 ft. B. & B., \$2.00 each

An attractive lawn tree with handsome red flowers. Very formal in shape. An extremely low price for this beautiful specimen.

Our 1934 Rugosa Hedge Collection

3 Hansa
3 Sir Thomas Lipton
1 F. J. Grootendorst

These 7 Popular Rugosa Roses — thrifty, 1-year, well rooted plants — (worth all of \$3.50).

Our New Low
Bargain Price \$2.25

MAGNOLIA SOULANGEANA

2 to 3 ft., \$2.75 each

The finest of all Magnolias. Its cap-shaped blossoms are from 3 to 5 inches across, white with rosy-violet, opening its massive, glossy foliage appears.

Polyantha Roses

Very Attractive—Continuous Bloomers

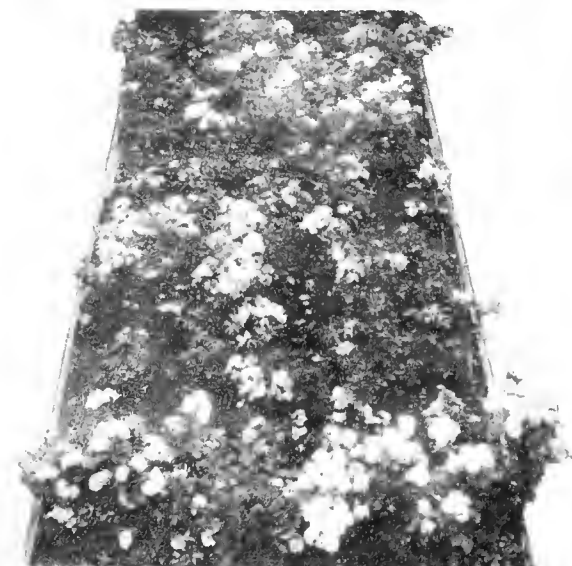
In constant bloom from June to November. Never before sold at this price.

Illuminate your garden with Polyantha Roses, the only genuine Everblooming Rose. Planted as a border around Evergreens, it's a gorgeous sight all summer. Very popular for window boxes, lily pools and fountains, and ideal for bedding or along your driveway.

2 year, No. 1:
35¢ each; 10 for \$3.00



F. J. GROOTENDORST
Excellent Hardy Hedge, Border or Shrubbery Rose Bush.



POLYANTHA — Dwarf growing Roses. Excellent for borders and driveways. Blooms all summer.

Rock Gardens Are The Vogue

A
FINGER LAKES
SPECIAL

Your family will enjoy one of these picturesque Garden adornments. Beautiful miniature plants, gracefully popping out of the Rocks. Distinctive in foliage and flowers.

Our Rock Garden specialist recommends the varieties as most adaptable for the small garden. They're so inexpensive.

ROCK GARDEN PLANTS

THE CREAM OF THE LIST

25c each 5 for \$1.10 (except as noted)

- ARABIS ALPINA — Masses of single white flowers. Fragrant.
 ANEMONE PULSATILLA — Dwarf reddish purple flowers.
 AJUGA (Bugleweed) — Blue. Ideal for shady locations.
 ACHILLEA TOMENTOSUM — Dwarf yellow.
 ARMERIA LAUCHEANA — Rosy red. Blooms from spring until late fall.
 BELLIS PERENNIS — Red, pink, white.
 CERASTIUM TOMENTOSUM (Snow in Summer) — Creeping white masses. 6 inches.
 DORONICUM — Bright yellow, daisy-like flowers. May and June. 1 foot.
 DICTAMNUS — Large spikes. Red and white. June and July.
 DIANTHUS DELTOIDES — Bright red. April and May. 8 inches.
 FORGET-ME-NOT (Mysotis) — A fine old-fashioned blue form, blooming all spring and summer. Requires plenty of shade. Dwarf.
 GRAPE HYACINTHS — White drooping branches.
 GEUM, LADY STRATHALEN — Yellow.
 GEUM, MRS. BRADSHAW — Red.
 HEUCHERA (Coral Bells) — Graceful spikes. June to September. Pink, white and red.
 IRIS DWARF JAPANESE — Assorted.
 IBERIS (Candytuft) — A desirable dwarf plant which is completely hidden by its white flowers. Very good for edging. April and May.
 IRIS PUMILA — Deep blue, dwarf.
 IRIS CRESTATA — Amethyst blue. 3 inches. May.
 LOTUS CORNICULATA — Yellow.
 LYCHNIS — Brilliant scarlet flowers. July and August.
 MONARDA — Blazing scarlet flowers on erect stems. July to September.
 PHLOX SUBULATA — Masses of bloom in early spring with pretty moss-like foliage.
 SEDUM ACRE — Bright yellow.
 SEDUM ALBUM — White, waxy foliage.
 SEDUM GLAUCUM — Excellent for borders. White.
 SEDUM OBTUSATUM — Golden yellow bronze, foliage.
 SEDUM SPECTABILE — Brilliant red.
 SEDUM STOLONIFERUM — Light pink.
 SEMPERVIVUM ARCHNOIDEUM — Bright red.
 SEMPERVIVUM ARENARIUM — Small brownish rosettes.
 SEMPERVIVUM GLOBIFERUM — Pale yellow.
 SEMPERVIVUM TECTORUM (Hen and Chickens) — Greenish brown flowers.
 VERONICA ANTHYSTINA — Blue. June and July.
 VERONICA REPENS — Light blue. May and June.
 VERONICA LONGIFOLIA — Blue. July to September.
 VERONICA REPESTRIS — Blue. Early June.
 VIOLA ROSINA — Pink.
 VINCA MYRTLE (Trailing Myrtle) — A trailing Evergreen plant



SEDUM ALBUM



VIOLA ROSINA



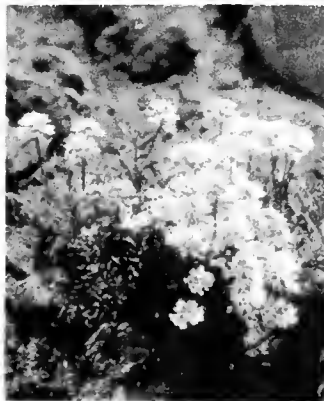
DIANTHUS DELTOIDES



PHLOX SUBULATA



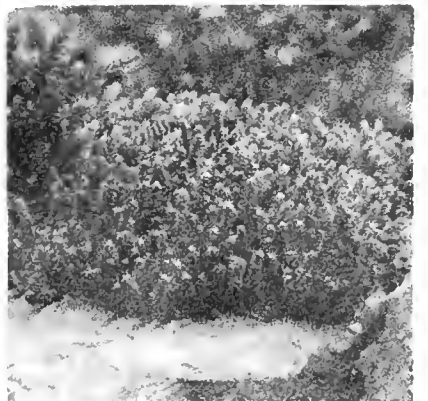
SEMPERVIVUM TECTORUM
(Hen and Chickens)



IBERIS (Candytuft)



MYSOTIS (Forget-Me-Not)



SEDUM ACRE



This beautiful little Rock Garden surely will find a place in your garden to add to its beauty.

TRY 'EM ALL
ROCK PLANTS

24 Popular Rock Garden Plants

3 each of the above \$ 4.75
as illustrated . . .

AN IDEAL COLLECTION FOR THE BEGINNER

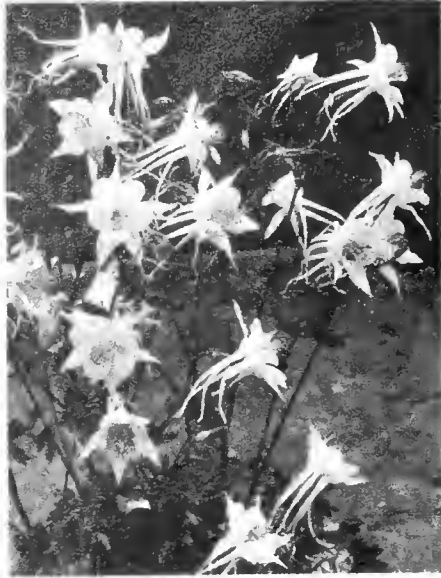
What a life this would be, if there were no beauty to brighten the eye

Practical Perennials

SPECIAL DISCOUNT FOR QUICK ORDERS See page .

Price, 20¢ each; 6 for \$1.00

(Except as Noted)



New! LONG SPUR **Aquilegia**
50¢ each; 10 for \$3.50

The new Aquilegia that everybody is talking about. We have only a limited supply of this new variety, that flower lovers will want. Pink, Yellow, Blue and Red.



CHRYSANTHEMUM — Assorted colors
20¢ each; 6 for \$1.00

ACHILLEA (The Pearl). White. June and July. Fine for cutting. 1 to 2 feet.

AQUILEGIA (Columbine). Distinct, deeply cut foliage and beautiful pendant-shaped flowers in a bright array of colors. May and June. 2 to 3 feet.

ASTILBE. Handsome feathery foliage and compound panicles of flowers. 6 inches long. White or pink. June and July. 2 to 3 feet.

ACONITUM (Monkshood). Bold spikes of hood-shaped flowers. Blooms summer till late fall. Excellent for cutting. 1 to 2 feet.

BLEEDING HEART (Dicentra). Rosy red, heart-shaped flowers. May to July. 2 to 3 feet. 50¢ each; 10 for \$4.25.

CHRYSANTHEMUMS, Assorted. These hardy flowers will give a riot of colors through September, October and November. Colors, bronze, red, pink, white and yellow; 2 to 3 feet.

CARNATIONS (Dianthus). Hardy and assorted colors.

CAMPANULA (Bellflower). Medium pink.

COREOPSIS. Golden yellow. June until frost. Excellent for cutting. 1 to 2 feet.

CENTUREA. Yellow. Excellent for borders.

CANDYTUFT (Iberis). A desirable dwarf plant which is completely hidden by its white flowers. Very good for edging. April and May.

CANTERBURY BELL. Bell-shaped flowers in shades of pink, purple, and white. June and July. 2 to 3 feet.

DELPHINIUM (Larkspur). Tall stately flowers in beautiful shades of blue. June until frost. 3 to 4 feet. A few Regal Lilies planted among Delphiniums makes a beautiful showing.

DELPHINIUM WHITE. 50¢ each; 10 for \$4.25.

DIGITALIS (Foxglove). Stately handsome spikes of tubular flowers in all colors. June and July. 2 to 3 feet above foliage.

DIANTHUS (Hardy Pinks). Beautiful pink, red and white flowers with fringed petals and a lovely spring penetrating perfume. Good border plant. May and June. 1 foot.

EULALIA (Ornamental Grasses). Handsome foliage plants with long ribbon-like leaves. Forms a splendid contrast to other plants, and when planted in groups, the effect is that of a fountain.

GYPSOPHILA (Baby's Breath). Graceful tiny white flowers in fairy-like clusters. July to September. 2 to 3 feet.

GAILLARDIA. Daisy-like flowers with orange petals with a beautiful reddish brown center. Blooms profusely. May until November. 1½ to 2 feet.

HOLLYHOCKS. Colossal spikes of dazzling colors, white, pink, red, maroon and yellow produce bold and dazzling effects. August to September. 4 to 6 feet.

LIATRIS. Long, narrow spikes of rich purple flowers which last a long time. Very showy. July and August. 3 to 4 feet.

LUPINES. Massive spikes 3 feet, blue, white and pink, in June and July.

MALLOW, GIANT FLOWERING (Hibiscus). Large, showy, waxy-like red and pink flowers, 6 inches across. July to September.

MONARDA. Blazing, scarlet flowers on erect stems, stately and striking. June to September. 2 to 4 feet.

ORIENTAL POPPY. Massive glowing scarlet flowers on hairy-like erect stems. July and August. 2 to 3 feet.

PYRETHRUM (Painted Daisy). The aristocrat of the Daisy family; elegantly borne on long stems, in a variety of pleasing color combinations.

PENSTEMON (Turtle Head). Long spikes of bright scarlet flowers. June to August. 3 feet.

PRIMROSE (Primula). Low growing plants which open in June in shades of purple, red and yellow.

PERENNIAL COLLECTION

12 Assorted Plants, \$1.85

- | | | |
|-----------------|--------------|------------------|
| 1—Shasta Daisy | 5—Delphinium | 9—Penstemon |
| 2—Aconitum | 6—Gaillardia | 10—Pyrethrum |
| 3—Chrysanthemum | 7—Eulalia | 11—Sweet William |
| 4—Aquilegia | 8—Dianthus | 12—Delphinium |

24 Assorted Plants, \$3.50



A riot of color in the garden and cut flowers for the Home for only \$1.85 (Double Collection \$3.50)

For American Gardens

RECOMMENDED BY
FINGER LAKES

Landscape Architects buy direct from Grower. We ship nothing but quality Nursery stock that satisfies.

SIESTA DAISY. Pure white, fine for cutting. Blooms all summer. 2 feet.

STACHYS. Deep rich purple flowers on long stems. June and July. 1 to 2 feet.

SWEET WILLIAM (Dianthus barbatus). Fine, fragrant border plants. June. 18 inches.

TRITOMA (Redhot Poker). Cone-shaped spikes of orange-scarlet flowers produced on stems 3 feet high. July to September.

TROLLIUS (Globoseflower). Yellow. May and June. 2 to 3 feet. 35¢ each; 3 for \$1.00.

German Iris (Fleur-de-lis)

Price, 10¢ each; 12 for \$1.00

The Better and Newer Varieties

AMBASSADEUR. Lavender and bronze.
HONORABILIS. Golden-yellow and mahogany.
L. A. WILLIAMSON. Deep velvet red.
MOTHER OF PEARL. Lovely white.
PRINCESS BEATRICE. Soft lavender.
QUEEN OF MAY. Rosy lilac.
QUEEN CATERINA. Lavender blue.
QUAKER LADY. Lavender, shaded yellow.

RAINBOW IRIS ASSORTMENT

15 for \$1.00

(All Colors and Shades)

JAPANESE IRIS, ASSORTED

15¢ each; 12 for \$1.00

Phlox

3 for 60¢; 12 for \$2.00

ATHIS. Salmon pink.
BEACON. Cherry red.
ECLAUEUR. Violet red.
GEN. VON HINTZ. Brilliant red.
JULES SANDEW. Watermelon pink.
KING OF PURPLE. Solid purple.
MRS. JENKINS. Ideal white.
PANTHEON. Salmon rose.
R. P. STRUTHERS. Rosy carmine.
RHINELANDER. Salmon pink.
RICHARD WALLACE. Bowers pink.
THOR. Salmon pink (large).

ASSORTED PHLOX

3 for 50¢; 12 for \$1.85

Tall and Stately GLADIOLUS

BARON HULOT. Velvety purple-violet.
GOLDEN WEST. Orange-red with yellow.

PEACE. An alluring white, orchid sheen.

MRS. FRANCIS KING. Rich flame-red.
MRS. F. PENDLETON. Delicate salmon-pink.

ALICE TIPLADY. A beautiful saffron.

SCHWABEN. Clear canary-yellow.

ASHES OF ROSES. A lovely rose-pink.

CRIMSON GLOW. Rich dark red.

AMERICA. A pale rose-lavender.

BLUE ISLE. Light blue, tinted dark blue.

PURPLE GLORY. Glowing American Beauty.

12 SELECT GLADIOLI

(1 each of the above varieties)

for \$1.35, postpaid

Dazzling Gladiolus Mixture

Very best varieties. Colors ranging from light dainty tints to deep, rich shades.
Large bulbs, 1 inch and up; 25 for 75¢; 50 for \$1.25; 100 for \$2.25, postpaid.

Lilies Fit For A Queen's Garden

Price, 35¢ each; 6 for \$2.00

(Except as Noted)

MADONNA LILY (Candidum). Glistening, pure white and very fragrant. Blooms profusely in June and July.

AURATUM LILY (Goldenband). Very large, delicate ivory-white, thickly dotted with rich, chocolate spots.

LILY OF THE VALLEY. Fragrant and popular for massing near shrubs or along shaded borders. Price, 12 for \$1.00.

REGAL LILY. White flowers, suffused with pink and a beautiful glow of canary-yellow at center, entrancing Jasmine odor.

RUBRUM. White, with ruby-red spots. Grows 3 to 4 feet tall.



GLADIOLAS

For a wide range of color combination, the stately "Glads" challenge them all.

Peonies of Magic Color and Huge Size

Named Varieties of Peonies.
A Dependable and
Choice List.

Price, except as noted,

50¢ each;

10 for \$3.98

NAMED VARIETIES:

75¢ each; 3 for \$2.00

DUCHESS DE NEMOURS.

White petals, lemon center.

EDULIS SUPERBA. Rose-pink.

FESTIVA MAXIMA. Ideal white.

FELIX CROUSSE. Reliable red. 75¢ each.

KARL ROSENFELD. Reliable dark red.

HUMEI. Cherry pink, tipped silver.

MONS. JULES ELIE. Peerless pink. 75¢ each.

QUEEN VICTORIA. White, cream center.



PEONIES in the garden command attention. Their large bomb-shaped flowers are always a welcome sight.

The Permanent Glory of Evergreens

We're very proud of our Evergreens this season. Every Evergreen we list is dependable and grown from dependable seed. We have gone to considerable expense in our Nursery in transplanting, shearing and root pruning these Evergreens. You can't depend on results in transplanting Evergreens unless they are properly cared for in the Nursery. Beware of hillside collected Evergreens.

Arbor Vitae (Thuja)

- THUYA OCCIDENTALIS (Am Arbor Vitae).** Beautiful soft lacy foliage of a shiny deep green color. Bushy at bottom and tapering to top.
- 2 to 3 ft. \$.85 each; 10 for \$ 7.50
 - 3 to 4 ft. 1.00 each; 10 for 8.50
 - 5 to 6 ft. 1.50 each; 10 for 12.00
 - 6 to 8 ft. 2.00 each; 10 for 17.50
 - 8 to 10 ft. 3.00 each; 10 for 25.00
- THUYA OCCIDENTALIS DOUGLASSI AUREA (Douglas Golden Arbor Vitae).** A unique Evergreen with foliage of a decidedly golden color.
- 3 to 4 ft. \$2.50 each
- THUYA OCCIDENTALIS PYRAMIDALIS (Pyramidal Arbor Vitae).** A fine pyramidal Evergreen with fern-like branchlets of a lovely dark green.

- 2 to 3 ft. \$2.00 each
- 3 to 3½ ft. 2.50 each
- 3½ to 4 ft. 3.50 each

THUYA OCCIDENTALIS GLOBOSA WOODWARD (Globe Arbor Vitae). Forms a natural globe without trimming. An excellent Dwarf variety.

- 12 in. Spread \$1.35 each
- 15 in. Spread 1.65 each
- 18 in. Spread 2.25 each

THUYA OCCIDENTALIS LUTEA (Geo. Peabody Arbor Vitae). A distinct bright golden type, slender in habit.

- 2 ft. Specimens \$1.65 each
- 3 ft. Specimens 3.00 each

THUYA OCCIDENTALIS WAREANA (Siberian Arbor Vitae). Conical in outline, covered with dark green foliage, deeply crested. Popular for Foundation Planting and used frequently for hedges.

- 2 ft. Specimens \$1.50 each
- 3 ft. Specimens 2.50 each

Firs

ABIES CONCOLOR (White Fir). Foliage varies from a soft sea-green to a deep blue. Very hardy and ornamental.

- 1 to 1½ ft. \$2.00 each
- 2 to 3 ft. 6.00 each

ABIES BALSAMEA (Balsam Fir). A beautiful, quick growing Evergreen of pyramidal growth, with dark green shiny foliage above, silvery beneath. Very famous for its pungent odor.

- 6 to 8 in. 35c each; 10 for \$2.98
- 2 to 3 ft. \$2.50 each
- 3 to 4 ft. 3.00 each

Hemlock

TSUGA CANADENSIS (Canada Hemlock). Its long branches droop gracefully to the ground and branches bend, willingly to the breeze. Tree is conical, tapering evenly from a broad base.

- 3 ft. Specimens \$3.75 each
- 4 ft. Specimens 5.50 each

Junipers

JUNIPER CHINENSIS (Chinese Juniper). Forms a compact pyramidal tree, with bright green or glaucous, prickly needles.

- 1 to 1½ ft. 50c each; 10 for \$4.50
- 2 to 3 ft. \$2.85 each
- 3 to 4 ft. 3.50 each

JUNIPER PFITZERIANA (Pfitzer Juniper). This low spreading evergreen with fan-shaped branches and beautiful bluish green foliage.

- 1½ to 2 ft. \$1.25 each
- 2 to 3 ft. 2.00 each
- 3 to 3½ ft. 3.00 each

JUNIPER CHINENSIS PYRAMIDALIS BLUE (Columnar Blue Juniper). An extremely narrow pyramidal shaped tree with all leaves needle-shaped.

- 3 ft. Specimens \$3.50 each

JUNIPER CHINENSIS SARGENTI GREEN (Sargent Juniper Green). Forms a low dense mat of wide spreading branches.

- 1½ to 2 ft. \$2.75 each
- 2 to 2½ ft. 3.50 each

JUNIPER CHINENSIS SARGENTI BLUE (Sargent Juniper Blue). Similar to green form, except color, which is an attractive bluish cast.

- 1½ to 2 ft. \$2.75 each
- 2 to 2½ ft. 3.50 each

JUNIPER COMMUNIS DEPRESSA (Prostrate Juniper). A rather low spreading plant, extending along the surface of the ground, open to a distance of six or seven feet in every direction.

- 1½ to 2 ft. \$2.00 each
- 2½ to 3 ft. 3.00 each

Entrance Planting

Especially Priced \$5.00

- 2 American Arbor Vitae, 3 to 4 feet.
- 2 Pfitzer Juniper, 2 to 3-foot spread.



A well chosen foundation planting of twelve Evergreens in four well selected varieties.
1. Four Pyramidal Arbor Vitae. 2. Two Savin Junipers. 3. Two Mugho Pines.
4. Two Savin Junipers. 5. Two Pfitzer's Junipers.

IDEAL FOUNDATION PLANTING

12 DEPENDABLE CHOICE EVERGREENS
For Only \$21.50



SIBERIAN
ARBOR
VITAE



IRISH
JUNIPER



SAVIN
JUNIPER

THESE THREE SPECIMEN EVERGREENS ARE ACTUAL PHOTOGRAPHS TAKEN AT OUR NURSERY BEFORE SHIPPING

Now Everyone Can Have Evergreens

JUNIPERUS COMMUNIS DEPRESSA PLUMOSA (Andorra Juniper). As soon as frost comes in the fall, it takes on an unusually attractive rich purple-bronze color. In spring and summer, the foliage is a rich bright green. A rapid growing Dwarf Juniper.
 8 to 10 in. Size 50c each
 2 ft. Specimens \$2.00 each

JUNIPER COMMUNIS HIBERNICA (Irish Juniper). An old favorite for ornamental planting. Foliage glaucous green.
 2 to 2½ ft. \$1.50 each
 2½ to 3 ft. 2.00 each
 3 to 3½ ft. 2.50 each
 3½ to 4 ft. 3.50 each

JUNIPER EXCELSA STRICTA (Spiny Greek Juniper). This beautiful variety forms a dense, narrow, conical head, tapering gradually from the ground to a sharp terminal point. Well adapted for Foundation Plantings, or Rock Gardens.
 1 to 1½ ft. Specimens \$2.00 each
 1½ to 2 ft. Specimens 3.00 each

JUNIPER HORIZONTALIS DOUGLASSI (Waukegan Juniper). An interesting creeping Juniper, growing close to the ground, not over 6 or 8 inches high, but spreading out in all directions, changing to a rich purple in fall. Ideal for Rockeries.
 1 to 1½ ft. Spread \$2.00 each
 2½ to 3 ft. Spread 3.00 each

JUNIPER SABINA (Savin Juniper). A low, many branches Evergreen with spreading branches much ramified and abundantly clothed with foliage.
 1½ to 2 ft. \$1.25 each
 2 to 3 ft. 2.00 each
 3 to 3½ ft. 3.00 each

JUNIPER VIRGINIANA GLAUCA (Silver Red-cedar). Very attractive throughout the entire year with its unusual silvery blue color. At maturity the size runs from 15 to 20 feet.
 2 to 2½ ft. \$3.00 each
 3 to 4 ft. 4.00 each

Pines

PINUS MUGHO (Mugho Pine). The leading Dwarf Evergreen. Numerous stems branch out close to the ground, spreading horizontally and then turning upward. Free from all pests and grows anywhere.
 10 x 10 in. Spread \$.89 each
 12 x 12 in. Spread 1.25 each
 15 x 15 in. Spread 2.00 each
 18 x 18 in. Spread 3.00 each

PINUS NEGIA (Austrian Pine). Its fine deep green foliage, and compact grower, makes this Pine a great favorite. Needles are two in a sheath, a rapid grower.
 1½ to 2 ft. \$ 1.25 each
 2 to 2½ ft. 2.00 each
 3 to 3½ ft. 3.00 each
 4 to 5 ft. 5.00 each
 8 to 10 ft. 12.00 each

TAXUS CUSPIDATA (Japanese Yew). Its typical, waxy, shiny, green foliage and its slow growth, makes this Yew especially desirable for Foundation Planting, formal gardens and rockeries.
 1 to 1½ ft. \$2.00 each

Spruces

PICEA EXCELSA (Norway Spruce). A tall, picturesque and graceful Evergreen with heavy masses of deep green foliage. A rapid grower. One of the best inexpensive Evergreens, you can plant.

1 to 2 ft. \$.39 each; 10 for \$2.98
 2 to 3 ft.49 each; 10 for 3.50
 3 to 4 ft.75 each; 10 for 5.00
 4 to 5 ft. 1.00 each; 6 for 5.00

PICEA CANADENSIS (White Spruce). A very shapely Evergreen with distinctive blue-green foliage. A compact, upright grower of pyramidal form.
 1½ to 2 ft. Specimens \$1.00 each
 2 to 3 ft. Specimens 1.35 each

PICEA CANADENSIS ALBERTIANA (Black Hills Spruce). Symmetrical, compact and bushy growth. The foliage varies from green to a bluish tint.
 1½ to 2 ft. \$1.50 each

PICEA PUNGENS GLAUCA (Colorado Blue Spruce). A perfectly shaped Evergreen with an abundance of heavy foliage of a rich glistening blue.
 12 to 15 in. \$ 1.50 each
 1½ to 2 ft. 2.50 each
 3 to 4 ft. 5.00 each
 5 to 6 ft. 10.00 each
 6 to 8 ft. 15.00 each

PICEA PUNGENS (Colorado Green Spruce). Similar to the Colorado Blue, but heavily clothed in a rich shade of green.
 3 to 4 ft. Specimens \$3.00 each
 5 to 6 ft. Specimens 5.00 each

Pachysandra Terminalis (Japanese Spurge)

A broad-leaved Evergreen plant growing 6 to 8 inches high, forming a mat-like growth formed by planting several plants close together. It helps Evergreens to conserve moisture, by furnishing a natural forest condition 6 to 8 in. Plants, 5 for \$1.00; 25 for \$3.50

Planting Suggestions FOUNDATION OR GROUP PLANTING

TALL GROWING EVERGREENS — American Arbor Vitae, Red Cedars, Pyramidal Arbor Vitae, Siberian Arbor Vitae, Chinese Juniper
LOW GROWING SORTS — Mugho Pine, Globosa Arbor Vitae, Andorra Juniper, Spiny Greek Juniper, Dwarf Japanese Yew.

ROCK GARDENS

Sargents Juniper, Spiny Greek Juniper, Waukegan Juniper, Globosa Arbor Vitae, Norway Spruce, Mugho Pine.
WINDOW BOX PLANTING — Pyramidal Arbor Vitae, Norway Spruce.
TUB PLANTING — Pyramidal or Globosa Arbor Vitae.



4 Pyramidal Arbor Vitae. 6 Dwarf Japanese Yew. 2 Pfitzer's Juniper.
 2 Globosa Arbor Vitae.

De Luxe Foundation Planting

14 GORGEOUS EVERGREENS

for only \$16.50

(Regular \$25.00 value)

This planting will transform your Home, into a haven of beauty. It gives the Home an exclusive air and adds greatly to property value. Where can your money buy more?



MUGHO PINE



GLOBOSA ARBOR VITAE



AMERICAN ARBOR VITAE

THESE THREE SPECIMEN EVERGREENS ARE ACTUAL PHOTOGRAPHS TAKEN AT OUR NURSERY BEFORE SHIPPING

Flowering Shrubs in a Wonderful Variety

And Ornamental Shrubs of Foliage Flowers



SPIREA VAN HOUTTE



SNOWBERRY



HYDRANGEA P. G.



BUTTERFLY BUSH



DEUTZIA PRIDE OF ROCHESTER



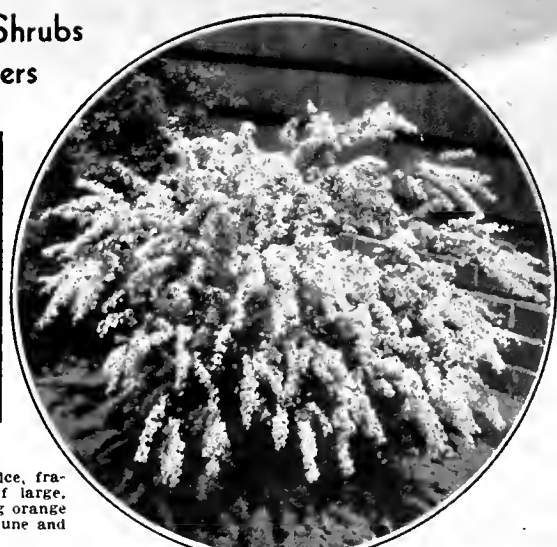
FORSYTHIA



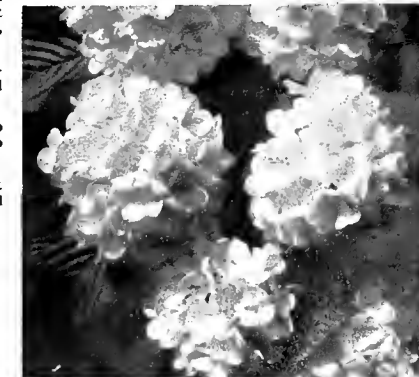
SYRINGA (MOCK ORANGE)



ALTHEA ROSE OF SHARON



SPIREA THUNBERGII



SNOWBALL



SPIREA A. WATERER



DEUTZIA GRACILIS

Prices
2 to 3-ft. Shrubs
Except as otherwise noted
35¢ each
3 for **\$1.00**
1-ft. Shrubs:
5 for \$1.00
25 for 3.98

These shrubs are the most popular and effective varieties to transform your back yard into a charming and restful outdoor living room, the very shrubs that screen the bareness of your home's foundation will lend charm to the front entrance and provide pretty borders and accent corners to the yard.

SPECIAL DISCOUNTS

10% Discount on all Cash Orders received within ten days after receipt of catalog.
5% Discount on all Cash Orders received before March 15th.

CORALBERRY (Indian Currant) (*Symphoricarpos Vulgaris*). Fine foliage, slender, gracefully bending branches with dainty pink blooms in June and July—followed by small red berries in thick clusters along the branches, which hang all winter. It will thrive in dry barren soil or dense shade. Grows 3 to 4 feet.

Caragana Arborescens

2 to 3 feet above ground
75¢ each; 3 for \$2.00

Here's a beautiful shrub that will greatly enhance your home grounds. Its compound bright green foliage and numerous clusters of bright yellow flowers are handsome in late spring. Perfectly hardy anywhere. Ultimate height 10 to 12 feet.

CORNUS ALBA SIBIRICA (Red Bark Dogwood). Its bright red bark and blue berries makes a beautiful winter effect. Creamy white flowers in May and June. A rapid grower. Ultimate height 8 feet.

CORNUS ELEGANTISSIMA (Variegated Leaf Dogwood). Valuable for its colored bark, greenish white flowers in May and June, followed by black berries in fall. Beautifully variegated foliage. Grows 5 to 8 feet. 85¢ each; 3 for \$2.35.

CRANBERRY, HIGH BUSH (*Viburnum Opulus*). Creamy white flower heads in May and June, followed by clusters of scarlet-red berries that are edible and hang well into winter.

DEUTZIA GRACILIS. A dwarf variety with dainty, fragrant pure white flowers in May and June. The branches, slender and graceful, grow so thick that the shrub is a compact mass remaining beautiful after the blossoms are gone. Does well in shade. Ultimate height 2 to 3 feet.

DEUTZIA LEMOINE. Semi-dwarf variety with spreading branches, light green leaves and handsome clusters of cone-shaped white flowers in June. Ultimate height 3 to 4 feet.

FORSYTHIA or GOLDEN BELL (Fortunei). Their bright golden masses of glittering yellow appear in April, before any foliage, and are welcome harbingers of spring. Ultimate height 5 to 7 feet.

GOLDEN ELDER. This golden leaved shrub is a pleasing contrast among shrubs of green foliage. Flat-topped cymes of white flowers in early summer. 6 to 8 feet.

HYDRANGEA PEE GEE (*Paniculata Grandiflora*). During the hot summer months this shrub is covered with great pyramidal panicles, while on opening and assuming rose and bronze tints on the sunny

side, and drooping gracefully from their own weight. Excellent for winter decoration. Grows 5 to 7 feet. 1½ to 2-foot plants.

HONEYSUCKLE, TARTARIAN. A very rapid grower. Makes a wonderful showing the first year. In May and June it is very conspicuous with a mass of thickly spangled fragrant pink flowers and lively green foliage. Ultimate height 8 to 10 feet.

HONEYSUCKLE, MORROWI. A Japanese shrub with pure white flowers changing to a yellow tone in May and June, followed by a multitude of bright red berries, which hang well until winter. Ultimate height 4 to 6 feet.

KERRIA JAPONICA. Slender, green branches and pretty, closely serrate leaves. The double flowers are deep orange-yellow and are produced in profusion throughout the summer. 1½ to 2 feet. 50¢ each; 3 for \$1.35.

PHOTINIA VILLOSA (Christmas Berry). A charming and unique ornamental, liberally set with small corymbs of white flowers in June. Later the foliage is a most gorgeous red; the bird-proof berries carry the same scarlet gleam through the winter. This should be in every landscape. Excellent for winter decoration. Grows about 8 feet. 6 to 8 feet, \$1.50 each.

SPIREA VAN HOUTTE. See page 14.

SPIREA ANTHONY WATERER. A beautiful low-growing shrub with showy crimson flowers in flat clusters. If blossoms are cut as they fade, it will bloom continuously from June until frost. An excellent border shrub for foundation plantings. Ultimate height 2 to 3 feet.

SPIREA AUREA (Golden). Green foliage, bordered with rich, golden yellow. In June covered with conspicuous white flowers. Ultimate height 5 to 7 feet.

SPIREA RICHMENSIS. Has dense spikes of rose-pink flowers that crown sparsely twigged, erect branches. For shrubbery groups, border plantings and moist places. July to September. 5 to 6 feet.

SPIREA THUNBERGII. Forms a dense, fluffy bush. Its feathery foliage is a pleasing shade of yellowish green, changing in autumn to bright red and orange. Pure white flowers in early spring. 3 to 5 feet.

SNOWBALL (*Viburnum*). The large, rounded balls of snow-white flowers in May and June on drooping branches make this a most attractive shrub. Grows 6 to 8 feet.

SNOWBERRY (*Racemosus*). Has dainty, pink flowers in June and July which in August form waxy white berries about the size of cherries. They hang nearly all winter. Will succeed in dense shade and sunlight as well. Grows 3 to 5 feet.

SUMAC. An ideal shrub for breaking monotony among other shrubs. Its large decorative greenish yellow blooms in June are followed by reddish brown fruits and brilliant red foliage, which lights up the landscape and commands attention. Deeply cut fern-like foliage. Grows to a height of 8 to 10 feet.

FREE

With every \$5.00 Cash Order, your choice of 6 beautiful assorted Delphiniums and Chrysanthemums.

FREE

With every \$10.00 Cash Order, a Lindsay Slicer, with Cocobolo handle and stainless steel made right here by The Geneva Cutlery Co.; or your choice of \$1.00 worth of any stock listed in this catalog.

SYRINGA (Mock Orange). A choice, fragrant shrub, with a wealth of large, creamy white flowers resembling orange blossoms. Blooms in May and June and intermittently until fall.

SYRINGA VIRGINALIS. A magnificent new variety. Its rose-shaped double flowers are the largest, handsomest, and most sweetly fragrant of any known variety. Medium tall, compact habit and good foliage. 2 to 3-foot plants, 50¢ each; 3 for \$1.35.

WEIGELA ROSEA. Remarkably showy, trumpet-shaped flowers of brilliant pink in June and July. Grows 4 to 6 feet.

WEIGELA, EVA RATHKE. Attractive, deep carmine flowers. A continual bloomer. 1½ to 2 feet.

WEIGELA, VARIEGATED LEAF. In contrast with rose colored flowers, the finely variegated foliage is gorgeous. Grows 2 to 4 feet. 1 to 1½ feet. 65¢ each; 3 for \$1.75.

1934 "Thrift" SHRUB PLANTING

15 "Best" Flowering Shrubs (A regular \$6 value)

\$2.25

- 2 FORSYTHIA
 - 2 HONEYSUCKLE, PINK
 - 5 SPIREA
 - 2 HYDRANGEA ARBORESCENS
 - 2 SYRINGA
 - 2 WEIGELA ROSEA
- This group will give continuous bloom—April to October.

The Magnificent BEAUTY BUSH

(*Kolkwitzia Amabilis*)

Its arching branches are covered in spring with clusters of tubular flowers, borne in such profusion that the bush is one cloud of delicate pink. 2 ft.

50¢ each
3 for \$1.35

GET YOUR ORDER IN EARLY FOR BETTER SELECTION AND BIGGER DISCOUNT — See Page 2

Finger Lakes Hardy Flowering Shrubs That Excel

Snowhill Hydrangea Special (Arborescens)

1½ to 2 ft. plants 25c each; 6 for \$1.00; 25 for \$2.50
 2 to 3 ft. plants 35c each; 4 for 1.00; 25 for 4.98
 3 to 4 ft. plants 50c each; 3 for 1.25; 25 for 8.00

A really marvelous shrub that blooms from July to October and always the pride of the planting. Its immense blooms resembling the Snowball (but much larger) are conspicuously white and imposing, properly named "Hills of Snow." When planted alternately with the Pee Gee, it forms a most conspicuous and decorative hedge or foundation planting. Should be well pruned in March before the shoots appear.

Great Spirea Van Houttei Special (While They Last)

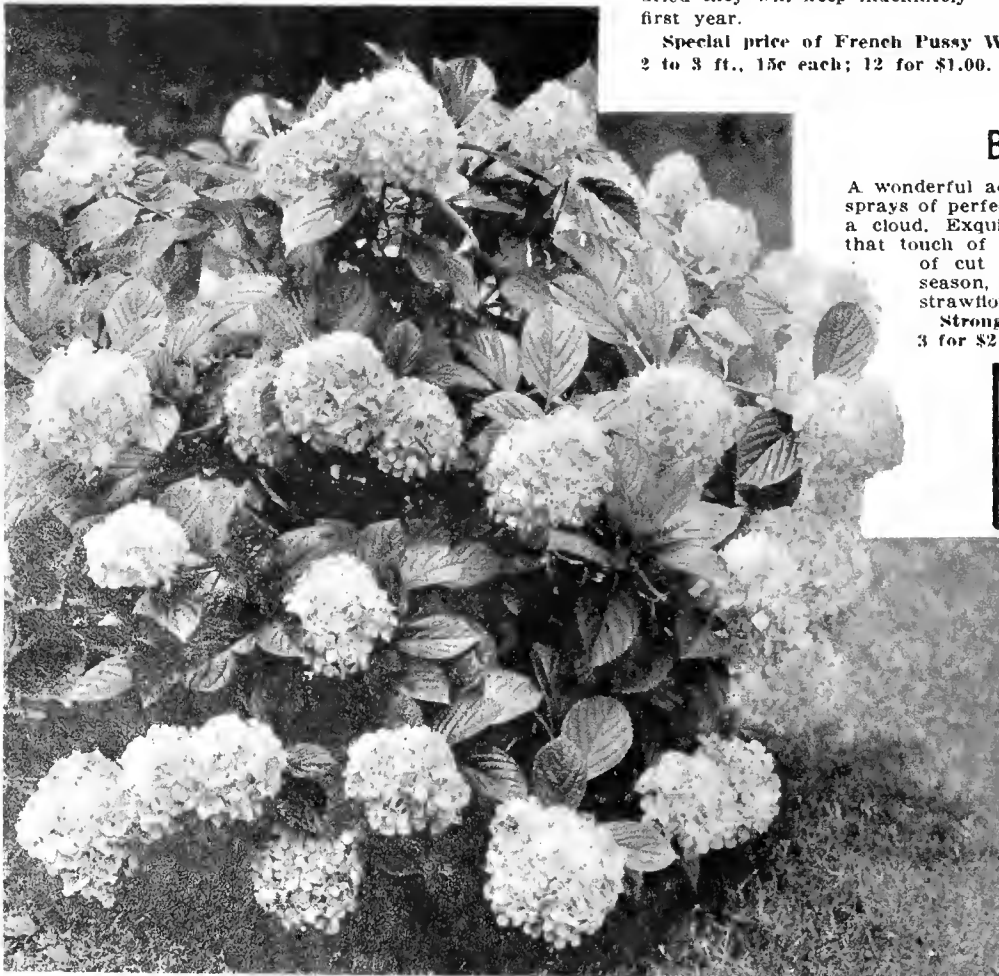
1½ to 2 ft. plants 10c each; 12 for \$1.00; 100 for \$ 5.00
 2 to 3 ft. plants 15c each; 10 for 1.00; 100 for 7.00
 3 to 4 ft. plants 25c each; 6 for 1.00; 100 for 10.00

What an improvement in appearance and also in dollars and cents, a few Spirea will add to any property. Very soon after planting it blooms in riotous extravagance and its beautiful maidenhair foliage on slender, drooping branches is a very pleasing picture throughout the entire season. In May and June, it is covered with a perfect cascade of dainty white flowers, crowded thickly along slender branches, bending to the ground in perfect curves, greatly resembling a fountain of snow. It is so popular that we sell more of this than any other shrub we grow. Only because we grow them in such quantities can we make such a price.

Foundation Planting

A foundation planting of the "Hills of Snow" Hydrangea with the Dwarf Red Spirea (Anthony Waterer) in front is a gorgeous sight from June until frost. They are two of the finest shrubs for all-season bloom.

25 Hydrangea "Hills of Snow"
 15 Dwarf Red Spirea (A. W.)
SPECIAL — NOW \$2.98



SPECIAL SNOWHILL HYDRANGEA

How effective this foundation planting. Inexpensive of first cost but soon becomes a distinct asset to the appearance and value of the home.

New French Pussy Willows

The only outdoor shrub grown from which you can cut bouquets during the winter months.

A select and improved new type of Pussy Willow, perfectly hardy anywhere in the United States. The branches of this cultivated variety are being used by florists in cities for winter decorations and are bringing high prices. They are very fragrant. Very large buds — a promise of springtime — bouquets in winter — when dried they will keep indefinitely — blooms the first year.

Special price of French Pussy Willow plants 2 to 3 ft., 15c each; 12 for \$1.00.



New French Pussy Willow

Bristol Fairy Gypsophila

A wonderful advance over the old-fashioned Gypsophila, with misty sprays of perfectly double, pure white flowers like stars seen through a cloud. Exquisite for mixing with larger, bolder flowers, adding that touch of elegance and grace so desirable in the arrangement of cut flowers. Easy to grow, perfectly hardy, blooms all season, and the flowers last for many weeks, drying like strawflowers.

Strong, grafted plants from 3-inch pots, 75c each; 3 for \$2.00.

Ailanthus (TREE OF HEAVEN)

Grows very tall, hence its name
\$1.25 each

Get Your Order in Early

For Better Selection and
 Bigger Discount

10% Discount on cash orders received within ten days after receipt of this catalog.

5% Discount on cash orders received before March 15.

Orders shipped C. O. D. if one-fourth cash accompanies order — no discount on C. O. D. orders.

Finger Lakes Ornamental Vines and Hedging

Plant our fast-growing Vines for shade and beauty. Often called the frills on Mother Nature's dress, our fine thrifty Vines are a necessity for good landscaping.

Ornamental Vines

Add beauty and charm to the porch, fence, arbor and pergola and unattractive bare walls.

American Ivy (Virginia Creeper). A very fast and vigorous grower. A fine, rich green in summer, changing to vivid hues of crimson in fall. **50c each; 3 for \$1.25.**

Boston Ivy (Ampelopsis Veitchi). Beautiful, three-lobed leaves, overlapping, and forms a tapestry of rare charm. The only vine that will cling to brick or cement wall. A fast grower. **50c each; 3 for \$1.25.**

Evergreen Bittersweet (Euonymus radicans). Handsome, glossy foliage. Its clusters of orange-yellow capsules cling to the vine throughout the winter months, and make a charming house decoration. **50c each; 3 for \$1.25.**

POLYGONUM AUBERTI The Delightful Silver Lace Vine 75c each; 3 for \$2.00

This new creation is a very rapid climber, averaging 20 feet in a season. Will clamber gracefully up a trellis, over a tree trunk, a wall, a porch, an arch, or upon any support which necessity or fancy may devise. A well grown specimen is a cloud of lacy, misty white, shot with tints of cream and pale rose of most exquisite effect. Blooms all summer.

Clematis Jackmani. Large, velvety purple flowers. **\$1.00 each; 3 for \$2.50.**

Clematis, Mme. E. Andre. Medium flowers of a striking dark red color. **\$1.00 each; 3 for \$2.50.**

Clematis Paniculata. In August this becomes a mass of dainty white, starlike flowers with an alluring and penetrating fragrance. **50c each; 3 for \$1.35.**

Dutchman's Pipe (Birthwort). Has large, heart-shaped leaves, with peculiar brownish flowers that resemble a miniature pipe. **75c each; 3 for \$2.00.**

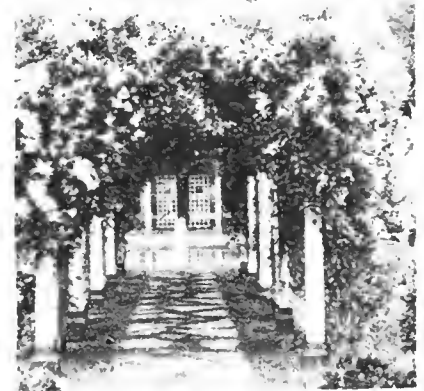
Honeysuckle, Hall's Japan. From June till September this vine is covered with handsome blossoms which open and turn to a striking yellow. Deliciously fragrant. **25c each; 5 for \$1.00.**

Wisteria. Purple grafted to insure early bloom—the only kind that can be depended on to bloom. Has long, pendulous clusters of pea-shaped flowers. Blooms in May and June. **50c each; 3 for \$1.35.**

Wisteria White. Very unusual. These too are the grafted variety. **75c each; 3 for \$2.00.**



HONEYSUCKLE
Delightfully fragrant



POLYGONUM AUBERTI
A unique Lace Vine



BRONZE RED BARBERRY
Adds color to the Garden

Flowering Vines

Hedge Plants — Super Quality That Insures Satisfaction

JAPAN BARBERRY (Thunbergi). This graceful shrub with glossy foliage will grow anywhere. Its brilliant red berries cling through most of the winter. It makes a graceful and pleasing hedge if allowed to grow in its natural form or it can be sheared to any desired height or shape.
1 ft. plants 25 for \$3.50; 100 for \$12.00
2 ft. plants 25 for 5.00; 100 for 17.00

RED-LEAVED BARBERRY. A snappy colored shrub of unusual brilliancy, that is red the entire season. It's a beauty. You'll like it. Plant in a sunny location.
1 ft. plants: 35c each; 10 for \$3.00.

CALIFORNIA PRIVET. This universal favorite can be sheared to any height or shape. Has no thorns or suckers. Almost evergreen.
1 ft. plants 25 for \$1.75; 100 for \$5.00
2 ft. plants 25 for 2.75; 100 for 8.00

AMOR RIVER PRIVET. Very similar to the California Privet, but much hardier. Will stand the coldest winters anywhere. For a thornless hedge, in a section where the California will freeze down we recommend the Amor River Privet.
1 ft. plants 25 for \$1.75; 100 for \$5.00
2 ft. plants 25 for 2.75; 100 for 8.00



BARBERRY HEDGE — Red Berries in Winter
A beautiful green hedge turning red in fall



SPIREA VAN HOUTTE HEDGE
Plant one shrub for each 2 feet of space

ORNAMENTAL *for* Lawn & Street Planting and SHADE TREES

American Elm

6 to 8 ft.: \$1.00 ea.; 3 for \$2.50
8 to 10 ft.: 1.50 ea.; 3 for 3.85
10 to 12 ft.: 2.50 ea.; 3 for 6.75
Special 3 to 4 in. caliper, \$5 each

Magnificent and stately, it is easily distinguished by its wide, weeping top and pendulous branches. Very hardy and a rapid grower. Our Elms are unusually fine this season.

Chinese Elm

6 to 8 ft. \$2.00 each; 3 for \$5.00

A new variety of Elm direct from China; quite similar to the American in appearance, but much more rapid in growth, often growing 20 feet in five years.

Ash Leaf Maple

6 to 8 ft. \$.85 each; 3 for \$2.00
8 to 10 ft. 1.00 each; 3 for 2.50
10 to 12 ft. 1.50 each; 3 for 4.00

A fine rapid growing variety with handsome, light green foliage and spreading habit; succeeds in many places where other varieties do not thrive.

Norway Maple

5- 6 ft. above ground, \$1.00 ea.; 3 for \$ 2.50
8-10 ft. above ground, 2.50 ea.; 10 for 20.00
10-12 ft. above ground, 3.50 ea.; 10 for 30.00

Special, 14-16 ft., 5-in. caliper, \$8.00 each

This handsome tree with spreading branches, characteristically, has the most perfect shaped, round, compact head. It makes a fairly rapid growth and readily adapts itself to different soils and is an extremely well developed and picturesque tree at maturity.

Silver Maple

6 to 8 ft., 75c ea.; 2 for \$1.35; 10 for \$ 5.00
8 to 10 ft. \$1.00 each; 10 for 8.50
10 to 12 ft. 1.25 each; 10 for 10.00

If a quick growing tree for shade or street planting is desired, we recommend the Silver Maple. Its graceful branches, beautiful foliage, with silvery sheen beneath, make it a wonderful lawn tree and ideal for park and street planting. Grows 35 to 50 feet.

Red Foliaged Maples

SCHWEDLERI

6 to 8 ft., \$3.50 each

A beautiful variety. The new leaves are red or purplish, later turning to dark, rich purplish green, making it a most effective tree for specimen or avenue planting, to lend a note of color contrast.

JAPANESE BLOOD-LEAF

1 ft. trees, \$3.50 each; 2 ft. trees, \$10.00 each
Rounded dwarf trees, seldom maturing to over 10 feet, densely furnished to the ground with indented leaves of unrivaled brilliancy and charm. Supply limited.

Oriental Plane

10 to 12 ft., \$3.50 each

A large symmetrical tree of rapid growth, beautiful in winter as well as summer. The bark is creamy white, mottled by darker blotches of

older bark which peels off, giving the tree a beautiful winter aspect. Grows rapidly and is very majestic in appearance.

Carolina Poplar

6 to 8 ft. 50c each; 10 for \$4.25
8 to 10 ft. 75c each; 10 for 6.50

A pyramidal tree of rapid growth with glossy leaves. Valuable for quick growth. Do not plant close to drains.

Lombardy Poplar

A rapid growing and picturesque Tree

6 to 8 ft., 75c ea.; 2 for \$1.35; 10 for \$ 5.00
8 to 10 ft. \$1.00 each; 10 for 7.50
10 to 12 ft. 1.50 each; 10 for 12.50

Tall, slender and columnar in form, the Lombardy Poplar is unexcelled for artistic effects. Ideal for Hedges, where tall, vertical and rigid effects are sought; for skyline effects on tall banks or terraces; for emphasis or contrast in many corners of your yard. It has a place no other tree can fill. A rapid and hardy grower.

Thorn

PAUL'S DOUBLE SCARLET

3 to 4 ft., \$2.25 each

Flowers bright carmine-red. Superior to any of its kind. Very fine for small grounds. Fruit very ornamental. Will thrive in any soil.

Teas' Weeping Mulberry

2-year heads:

\$1.00 each; 3 for \$2.50

One of the most graceful and hardy weeping trees in existence. Forms a perfect shaped head, with long, slender and willowy branches of dark green foliage, drooping fountain-like to the ground. Grows 8 to 10 feet tall.

Weeping Willow

6 to 8 feet above ground:

\$1.00 each; 3 for \$2.50

Special, 8 to 10 ft., \$2.50 each

A magnificent weeping tree with soothing olive-green, graceful branches, drooping almost to the ground in great billows. This familiar weeping tree is a fine specimen on a spacious lawn or drooping gracefully over the water's edge. Grows 30 to 40 feet tall.



THE MAJESTIC LOMBARDY
POPLAR



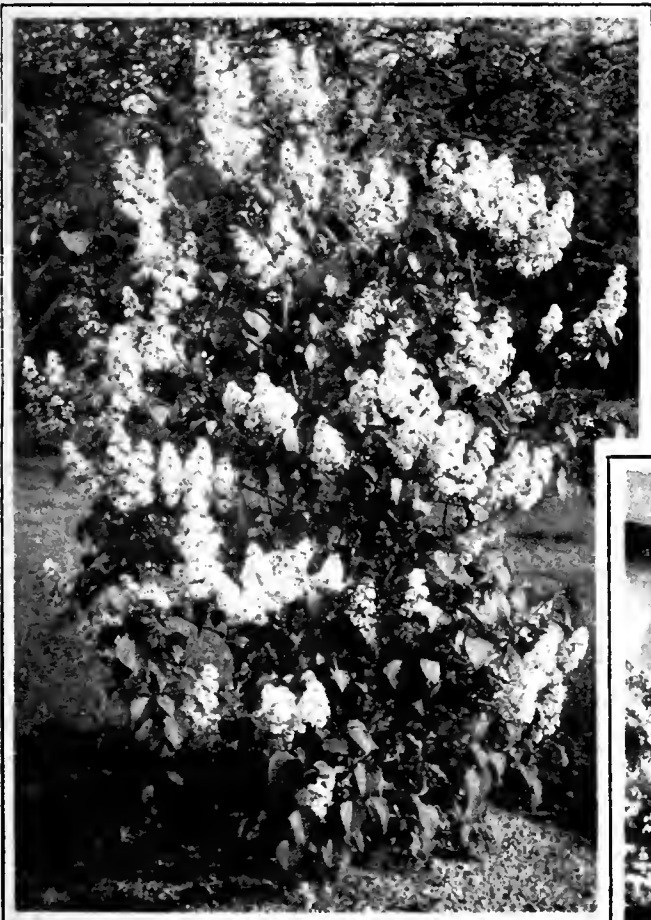
NORWAY MAPLE
A very shapely tree



WEeping MULBERRY
A truly fountain-like tree

Outstanding Beauties

Gorgeous Flowering Small Trees,
With a Touch of The Orient.



FRENCH HYBRID LILACS

85¢ each; 3 for \$2.25

These recent introductions are marvels of beauty and elegance. A very distinctive mingling of exquisite shade and blendings. A truly gorgeous spectacle.

Rose Tree of China

(Prunus triloba)

3-4 ft. trees, 75¢ each; 3 for \$2.00

Very early in spring, before its leaves appear, the whole tree is decked in a fleecy cloud of very double, light pink blossoms. Its effect on a still leafless landscape is magnificent. The rose-like blossoms make fine cut flowers. No lawn is so small that room cannot be found for at least one of these trees. Very symmetrical, hardy and easily grown.



BECHTEL'S FLG CRAB

The Glory of Our National Capitol

\$1.00 each

2 for \$1.85

3-4 ft. Specimens

A wonderful bargain. This Flowering Crab, attaining a height of 10 to 12 feet, is one of the finest decorations your home grounds can have. In May this beautiful tree is literally covered with double pink blooms of delicious fragrance which greatly resemble roses.

Flowering Almond

2-year, 2-foot plants:

50¢ each; 3 for \$1.35

In May before the leaves appear this beautiful shrub with double red blossoms resembling roses completely covers the branches with a cloud of bloom. Ultimate height 4 to 5 feet.

Japanese Flowering Quince

2-foot plants:

65¢ each; 3 for \$1.75

In May this shrub is especially brilliant with dazzling scarlet flowers. Its deep green, glossy foliage and fragrant blooms make this a very decorative shrub throughout the season; it will make a gorgeous hedge along your driveway or property line. Grows 3 to 4 feet, but may be sheared to any height.

1-ft. plants: 4 for \$1.00; 10 for \$1.98.



FLOWERY ALMOND



JAPANESE QUINCE

Fruit Trees for City and

No Better At Any Price

Our nurseries are located in the most favorable sections of the country for growing the best fruit trees that can be produced at any price. Soil and climatic conditions are perfectly ideal for producing a good fibrous root system, straight bodies and well balanced tops.

GROWERS OF DEPENDABLE FRUIT TREES FOR OVER HALF A CENTURY

PRICE OF ALL FRUIT TREES

Including Apple, Pear, Plum, Cherry, Peach, Quince and Apricot. Big, 3 and 4-year trees, 5 feet above ground.

50¢ each; 5 for \$1.98
Mailing Size, 5 for \$1.00

TRY 'EM ALL

Apple Orchard

- | | |
|----------------|------------------|
| 1 Baldwin | 4 Gravenstein |
| 2 Delicious | 5 R. I. Greening |
| 3 Yellow Trans | 6 No Spy |

SIX BIG TREES \$2.25

DELICIOUS APPLE

Summer Apples

RED ASTRACHAN. The very best early, red summer Apple. Excellent for cooking and eating out of hand. Fruit tender, juicy, crisp and sub-acid flavor. Very hardy and bears the fourth year. Ripens in July.

SWEET BOUGH. Large, pale yellow. Sweet and juicy. August.

YELLOW TRANSPARENT. Good size. Pale yellow. August.

Autumn Apples

DUCHESS OF OLDENBURG. Red striped. Large. September.

GRAVENSTEIN. Streaked and splashed red over yellow. September.

Winter Apples

BALDWIN. Large, deep red, good keeper. November.

BEN DAVIS. Red and yellow. January.

CORTLAND. A new variety developed by the New York State Experimental Station. A beautiful large red apple with an excellent flavor. A good keeper. November.

DELICIOUS. A truly delicious apple with a distinctive flavor. Conical shaped, beautifully striped red and yellow.

McINTOSH. A reliable red winter apple with tender white flesh and excellent flavor. October.

NORTHERN SPY. Bright red. Very popular and dependable. November.

R. I. GREENING. Greenish yellow. Good flavor. December.

STAYMAN'S WINESAP. Delicious spicy flavor — striped red. December.

Standard Pears

BARTLETT. The well-known variety, delicious flavor. September.

CLAPP'S FAVORITE. Very large, yellow tinted crimson and russet. August.

KIEFFER. Golden yellow, tinged red. October.

SECKEL. A smaller size pear with a juicy rich flavor, making it desirable for pickling and preserving. October.

FREE With every \$5.00 Cash Order, your choice of 6 beautiful assorted Delphiniums and Chrysanthemums.

FREE With every \$10.00 Cash Order, a Lindsay Slicer, with Cocobolo handle and stainless. Steel made right here by The Geneva Cutlery Co.; or your choice of \$1.00 worth of any stock listed in this catalog.

BARTLETT PEAR

FINGER LAKES TREES ARE ANNUALLY INSPECTED BY OFFICIAL NEW YORK STATE INSPECTORS

Suburban Homes

Enjoy Home-Grown
Fresh Fruits

Plum Trees

ABUNDANCE. Dark, red mottled plum. Good flavor. August.
GERMAN PRUNE. Large, dark blue, rich flavor.
REINE CLAUDE. A delicious yellowish green plum. Good size. September.
WICKSON. Very large. Maroon-red. September.

Sweet Cherry Trees

BLACK TARTARIAN. Large. Black. June.
NAPOLEON BIG (Oxheart). Pale yellow with red cheek. Very large and delicious.
WINDSOR. Deep red. July.

Sour Cherry Trees

EARLY RICHMOND. Dark red. June.

MONTMORENCY SPECIAL

10 for \$1.98; 25 for \$3.98

Peach Trees

ROCHESTER. Yellow with red cheek. Freestone. Early September.
CRAWFORD EARLY. Large yellow. Freestone. Middle September.
ELBERTA. Large, yellow and red. Freestone. Late September.
J. H. HALE. Extra large. Yellow. Freestone. Late September.

Quince Trees

Nothing finer for Jellies, Preserves, and Canning.

ORANGE. Excellent flavor. Large. October.

Apricot Trees

BUDD. Hardy and productive. July.
MOOR PARK. Large. August.



ELBERTA PEACH

TRY-'EM-ALL

Peach Orchard

Big 3 and 4-year Trees

2 Rochester 2 Elberta
 1 J. H. Hale 1 Crawford

SIX BIG TREES \$2.10



BURBANK PLUM

THE LITTLE HOME ORCHARD

Small Space
 Little Cost
 Big Results

1 DELICIOUS APPLE
 1 DWARF PEAR
 1 SOUR CHERRY
 1 SWEET CHERRY
 1 QUINCE

All Trees 4 to 5 feet
 OUR BARGAIN PRICE
 for the 5 trees.
 By express not prepaid. . . . \$2.50

JUMBO The Big Fruit Trees

Early-to-Bear

APPLE, PEAR, CHERRY and QUINCE

\$3.00 each; 10 for \$25.00

Here is your opportunity to secure "Jumbo" fruit trees for this spring. No waiting for the little "Fruit Tree Whips" to develop. Now you can get strong 5-year trees that are truly fine specimens.

Grown in the famous Fruit Belt of Ontario County, where winters are severe, it would be strange indeed if these wonderful big trees would not transplant and take hold readily in new locations.

OLD-FASHIONED BLUEBERRIES

NURSERY GROWN PLANTS — THEY BEAR THE FIRST OR SECOND SEASON

Price, \$1.00 each; 3 for \$2.75; 10 for \$7.50

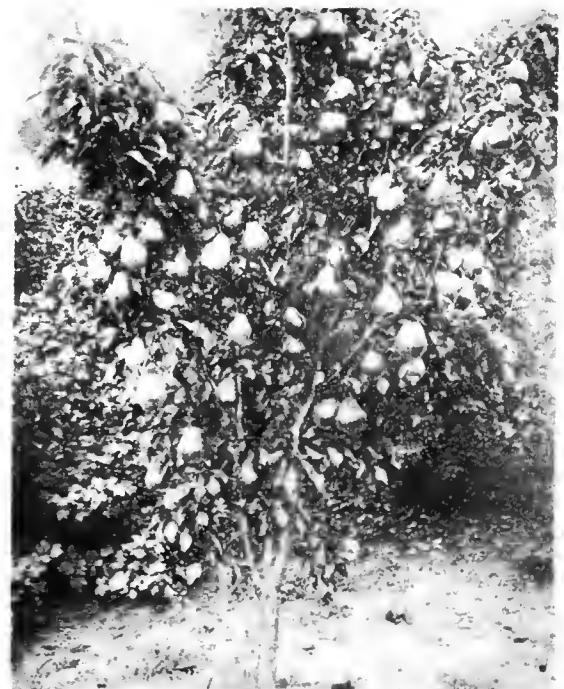
EASY TO GROW — HARDY ANYWHERE

Blueberry pie, blueberries in cream, blueberry preserves. The thought of these makes the mouth water and yet they are within your reach in an ever-increasing quantity. The Blueberry is in a class by itself with its delicious melting flesh, full of creamy juice and a delicate wild twang all its own.

In autumn the foliage of the Blueberry is more brilliant than any other shrub and their red twigs brighten up the winter landscape.

Each plant has been transplanted in the nursery, insuring good root system and will be dug with a ball of earth attached to roots.

Plant Blueberries where there is good sunlight, about 4 feet apart. pruning is necessary. Water well the first year for best results.



JUMBO PEAR TREE

Finger Lakes Dependable Fruit Trees

COMMERCIAL FRUIT GROWERS

If you are going to plant 100 or more fruit trees you want the very best stock you can get and buy at the right price.

Situated as we are in the very heart of the five Finger Lakes, our proximity to Lake Ontario, our climate or great variation, and our most exacting methods of budding, propagating and grading, produces a quality of trees and plants that will transplant and grow anywhere, with ordinary care. Good root system and healthy, sturdy trees and trueness of variety, have made an enviable reputation for Finger Lakes' trees.

We are within walking distance of the New York State Agricultural Station and are in constant touch with development of new varieties and expert horticultural methods and information.

Call on us any time you are in this locality and we will gladly show you our extensive frost-proof plant, which enables us to pack and ship throughout the entire year, and deliver to your territory at the proper and best time for planting. Visitors are always welcome to our nurseries. Our ample acreage enables us to plant each crop in the soil best adapted to it.

Plant Dependable Fruit Trees—Avoid Disappointment

2-YEAR HEAVILY ROOTED — WELL DEVELOPED BODIES

We Do Not Require Outside Help to Name and Certify Our Trees —

We Depend on Our Own Experience of 50 Years

Standard Apples

2-yr., 5 to 7 ft. 25 for \$8.50; 100 for \$30.00
 2-yr., 4 to 5 ft. 25 for 7.50; 100 for 25.00
 2-yr., 3 to 4 ft. 25 for 5.00; 100 for 17.00

SUMMER. Early Harvest, Red Astrachan, Yellow Transparent.

AUTUMN. Duchess of Oldenburg, Gravenstein, Wealthy.

WINTER. Baldwin, Ben Davis, Cortland, Delicious, Jonathan, King, McIntosh, Northern Spy, N. W. Greening, R. I. Greening, Stayman's Winesap, Stark, Rome Beauty, Wealthy, Winter Banana.

Standard Pears

2-yr., 5 to 7 ft. 25 for \$8.50; 100 for \$30.00
 2-yr., 4 to 5 ft. 25 for 7.50; 100 for 25.00
 2-yr., 3 to 4 ft. 25 for 5.00; 100 for 17.00

Bartlett, Clapp's Favorite, Duchess, Kelfer, Seckel, Worden Seckel.

Dwarf Pear Trees

Larger Fruit — Small Space — Bear Young — Easily Picked

75c each; 3 for \$2.00;
 10 for \$6.00

Dwarf Fruit Trees are very desirable where space is limited. Can be planted about 6 or 8 feet apart and will bear 4 to 6 bushels per tree. With care they will commence to bear the second year. The trees never grow over 8 feet high.

PEARS

Bartlett Clapp's Favorite
 Beurre d'Anjou Seckel
 Duchess d'Angouleme

Sweet Cherries

25 for \$10.00; 100 for \$35.00
 Black Tartarian, Gov. Wood, Napoleon Biggareau, Windsor.

MONTMORENCY, SOUR CHERRY The Money Maker

2 and 3-year grade, 25 for \$4.98; 100 for \$15.00
 2 and 3-year grade, 25 for 3.98; 100 for 12.50

Plum Trees

2-yr., 5 to 6 ft. 25 for \$12.00; 100 for \$35.00
 2-yr., 4 to 5 ft. 25 for 8.75; 100 for 30.00
 Lombard, Reine Claude, Abundance, Burbank, Red June, Wickson.

GERMAN PRUNE

4 to 5 ft. 50c each; 10 for \$4.50
 3 to 4 ft. 45c each; 10 for 4.00

Peach Trees

1-yr., 4 to 5 ft. 25 for \$7.50; 100 for \$25.00
 1-yr., 3 to 4 ft. 25 for 6.25; 100 for 20.00
 Rochester, Champlon, Crawford's Early, Crawford's Late, Elberta, J. H. Hale.



One of our fresh dug Apple Trees. Note the strong roots and healthy vigorous growth.

Nut Trees

Black Walnut. Rapid grower. Rich, fine flavored nuts. 4 to 5 ft., 75c each.
Butternut. Large, longish nuts. 4 to 5 ft., 75c each.
English Walnuts. Large crops of thin-shelled, delicious nuts. 3 to 4 ft., \$1.00 each.



Apple and Cherry Trees growing in Nursery Row. The severe weather in western New York, where these trees are propagated, is your assurance of strong healthy specimens, that will take hold quickly when transplanted in new location.

SURPRISE PACKAGES

Only \$1.19 Postpaid
 (A regular \$5.00 value)

Here's a bargain for Finger Lakes Customers, while they last. This package contains 3 Rose Bushes, 5 Shrubs, 10 Perennials, all absolutely first grade in every respect. No seedling stock in this offer. We will give 1000 of these packages out at this price, but positively no more. First come, first served.



List Your Order on Reverse Side

Do not worry if stock does not always come as soon as you may expect. Remember, it is to our advantage as much as yours to have the trees reach you in time for safe planting.

GUARANTEE We guarantee the safe arrival of all stock in good condition. Notify us promptly if stock arrives in a damaged condition or any shortages or errors of any kind, and we will make prompt adjustment. If any of the Finger Lakes Nurseries' trees or plants, prove untrue to label, we will, upon satisfactory proof, replace free of charge, or refund the purchase price. It is therefore agreed that we are not liable for any more than the amount actually paid.

One Price for All

In view of the fact that the business of the Finger Lakes Nurseries comes from a wide range of territory and all buy from the same price list, it naturally follows that if transportation charges were prepaid on all orders, that those in distant states would be getting a price concession in that

their orders would net less than those in New York and nearby states. Therefore in fairness to all, shipments are sent collect.

Add 10% to order for Parcel Post, unless on items marked "postpaid." Insurance extra.

Parcel Post

If ordered Parcel Post, and postage is not included with order, we will send order, postage C. O. D. If in our judgment it is advisable to send express,

because of size or nature of shipment, we reserve the right to route express. We cannot be responsible for Parcel Post shipments, unless insured.

FERTILIS TABLETS

*Keep Your Ferns and Potted Plants
Healthy and Beautiful*

These little tablets feed the roots, thereby producing an abundance of bloom and healthy colors. Fertilis comes in two convenient size containers. **IN PACKAGES OF 50 TABLETS for 25c; or TINS of 1000 TABLETS for \$2.00.** Simple directions for use will be found in each package.

GRANULATED PEAT MOSS

\$3.50 per bale

VIGORO

5-lb. bag 50¢ each; 25-lb. bag \$1.75;
100-lb. bag \$5.00

Finger Lakes Superfine Grass Seed

50¢ per lb. 5 lbs. for \$2.00

Pin your faith on Finger Lakes Grass Seed. It costs no more; results guaranteed.

J-O Plant Spray

KILLS PLANT INSECTS

Does not injure or destroy foliage. Kills rose bugs, aster beetles, aphids (plant lice), caterpillars, slugs, inch worms, potato and cabbage worms, and many other insects. To produce beautiful roses, spray before and after they open.

Price, 25¢ per Box

(One Box makes 6 quarts of Spray)

HAND DUST GUN. Simple, efficient and easy to use in applying any dust. Price, \$1.25.

AUTO SPRAY. Efficient and durable. It sprays continuously. \$1.35 postpaid.

Finger Lakes Table and Canning "Berries"

Early-to-Bear Raspberries

10 for \$1.00; 25 for \$2.00; 100 for \$5.00

BLACK RASPBERRIES

Cumberland. An early season, high quality berry.
Plum Farmer. Thick meated. Ripens early.

PURPLE RASPBERRIES

Columbian. For canning purposes the best Raspberry in cultivation.

RED RASPBERRIES

The Giant New June. Mammoth in size, rich in flavor, sweet and very juicy.

Improved Cuthbert (Queen of the Market). Season medium to late.

St. Regis. This everbearing red Raspberry bears the first season.

Latham. Bright red; extra large berries.

Blackberries

EARLY-TO-BEAR PLANTS

Price of strong, 2-year plants:

10 for \$1.00; 25 for \$2.00; 100 for \$5.85

Blowers. Enormously productive. A single plant produced over 2000 berries. Ripens about middle of July and bears about two months.

Snyder. Medium size. Plants hardy, healthy and vigorous.

Erie. The mammoth Blackberry. An extremely large, handsome and well flavored berry. The fruit is exceedingly sweet.

GOOSEBERRIES. Two-year, heavily rooted, price now, 5 for \$1.00; 25 for \$4.50; 100 for \$15.00.

CURRENTS. Two-year, heavily rooted, price now, 5 for \$1.00; 25 for \$3.00; 100 for \$8.00.

ASPARAGUS. 20 for \$1.00; \$2.50 per 100.

RHUBARB. 5 for \$1.00; 25 for \$3.50; \$10.00 per 100.

GRAPE VINES EASY TO GROW LUSCIOUS AND APPETIZING.

BLUE GRAPES

Concord. Luscious and large. Grows anywhere and bears abundantly.

Moore's Early. Ripens ahead of Concord. Large fruit.

Worden. Large bunches, almost black; thin skinned.

WHITE GRAPES

Moore's Diamond. Yellowish tinge, juicy and free from pulp. Very early.

Niagara. The leading white Grape. Fruit very large; good flavor.

RED GRAPES

Agawam. Early. Berries large. Sweet and sprightly.

Catawba. Very early. Luscious. Fruit large.

Salem. Berries large, sweet. Ripens September.

Table Aristocrats Fancy Strawberries

EARLY-TO-BEAR PLANTS

10 for \$1.00; 100 for \$5.00

All varieties listed are perfect-flowering

JUNE-BEARING VARIETIES

Big Joe. Large, brilliant red. Early.

Brandywine. Large crimson berries. Mid-season.

Gibson. Extra large, dark glossy red. Mid-season.

Glen Mary. Medium size, bright deep red. Mid-season.

Senator Dunlap. Berries glossy red and good size. Early.

Gandy. Handsome deep red. Late.

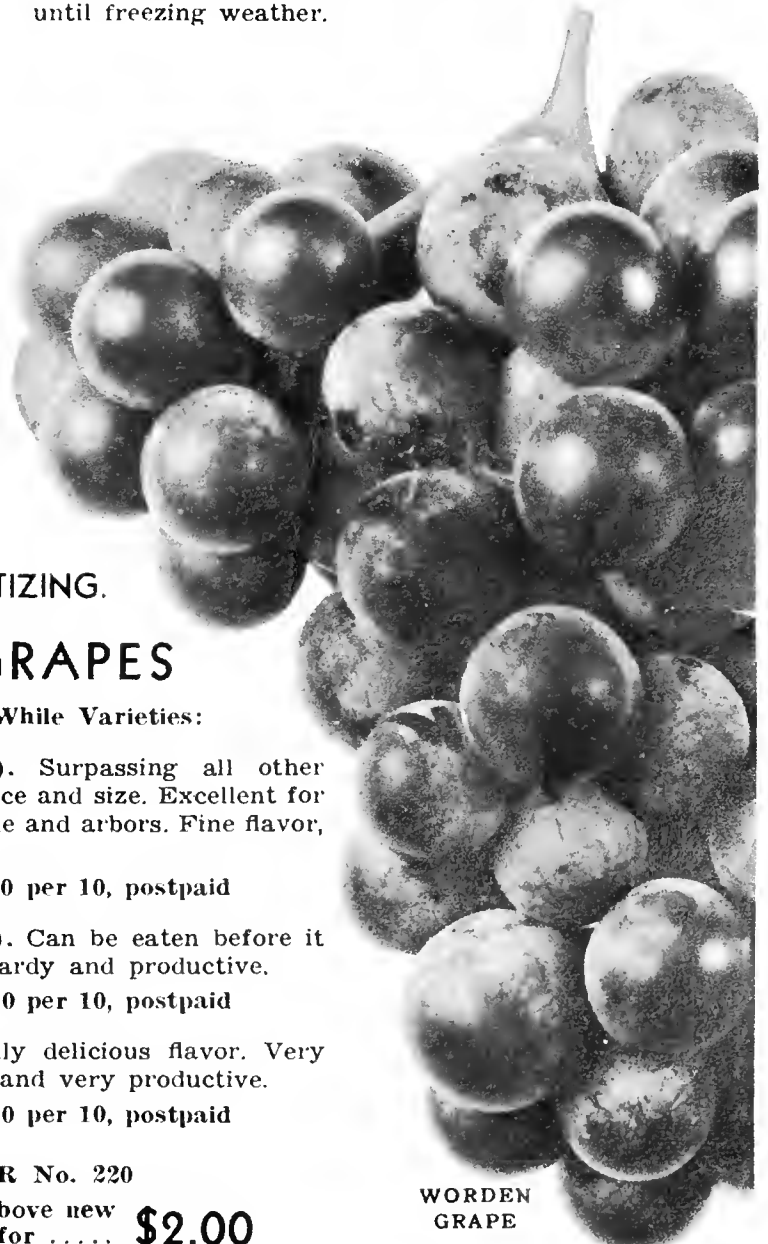
Wm. Belt. Extra large; brilliant glossy red. Mid-season.

EVERBEARERS

6 for \$1.00; 100 for \$10.00

Mastodon. A strong and reliable cropper. Its fall pickings are very profitable and are very productive from only a few plants.

Progressive. The June yield is so heavy that it is a profitable variety at this time, and in the fall it yields freely until freezing weather.



WORDEN GRAPE

NEW GRAPES

3 Really Worth While Varieties:

MAMMOTH (Black). Surpassing all other grapes in appearance and size. Excellent for table use, jelly, wine and arbors. Fine flavor, very hardy.

75c each; \$6.00 per 10, postpaid

PORTLAND (White). Can be eaten before it is fully ripened. Hardy and productive.

75c each; \$6.00 per 10, postpaid

CACO (Red). A truly delicious flavor. Very hardy, large fruit and very productive.

75c each; \$6.00 per 10, postpaid

OFFER No. 220

1 each of the above new sorts, postpaid for \$2.00



CATALPA BUNGEI

Umbrella Trees

5 feet above ground:

2 for \$1.35; 4 for \$2.50

(Regular \$1.50 each value)

10 for only \$5.00

These fine big Umbrella Trees will add many dollars to the value of your property. Plant them in pairs before your entrance, along your driveway, in the Outdoor Living Room. They make the home "stand out."

We have the finest selection of Catalpas in the country. You can't beat this offer for price and quality.

Only because we GROW them in such quantities can we make such a price. It's your opportunity. Order RIGHT NOW.

6 to 8 ft. Catalpas:

\$1.00 each; \$1.75 per pair; 10 pairs for \$15.00

Red-Leaved Tree

PRUNUS PISSARDI

They will set the lawn aglow with gorgeous colorings

4-ft. Trees for Only \$1.00 each

(2 for \$1.85)

While most red-leaved trees are quite costly, here is one that we place within reach of all; no other retains its lovely colorings like Prunus Pissardi. In May this tree is covered with a gorgeous mass of pink blossoms. Can you imagine anything more beautiful? The contrast is gorgeous on a green lawn or among shrubbery. Ultimate height 8 to 10 feet.

THE FINGER LAKES NURSERIES, Inc.
GENEVA, N. Y.