

Index

62, 19

# WIGHT NURSERIES



## WHOLESALE PRICE LIST Fall 1954

# Wight



## NURSERIES

CAIRO, GEORGIA • SINCE 1887

**"WIGHT GROWN MEANS GROWN RIGHT"**

# PECANS

VARIETIES: Stuart, Schley, Mahan, Desirable,  
Farley, Curtis

	Ea. per 10	Ea. per 100	Ea. per 1000
2 to 3 feet .....	\$1.15	\$1.00	\$ .85
3 to 4 feet .....	1.25	1.10	.90
4 to 5 feet .....	1.40	1.25	1.10
5 to 6 feet .....	1.55	1.40	1.25
6 to 7 feet .....	1.75	1.60	1.45
7 to 8 feet .....	1.90	1.75	1.60
8 to 10 feet .....	2.25	2.00	1.85

# FRUITS

## CITRUS FRUITS

	10	100
Owari Satsuma, 1 yr. buds .....	\$ 9.95	85.00
Owari Satsuma, 2 yr. buds .....	12.50	115.00
Kumquats, Nagami and Meiwa Grapefruit, Duncan Meyer Lemon		

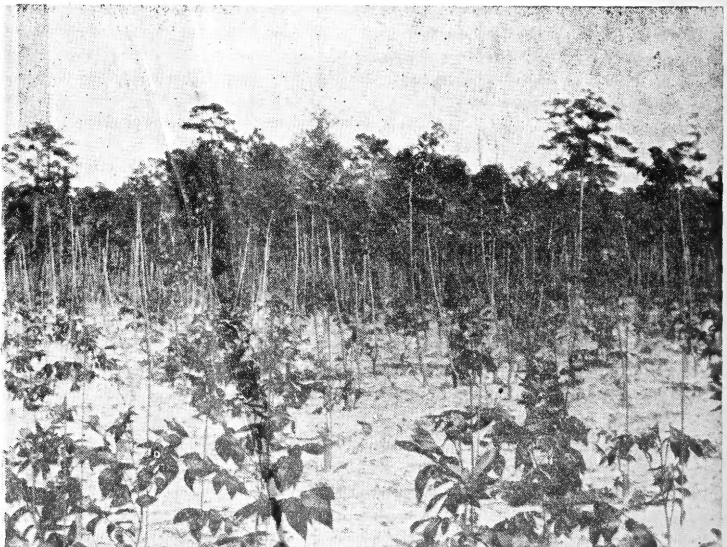
1 year buds .....	15.00	125.00
2 year buds .....	20.00	175.00

Citrus tree prices are bare root. For B&B plants, fob your truck at the nursery, add 50c per plant.

## PEARS, Baldwin, Orient, Pineapple.

	10	100
3 to 4 ft. whips .....	\$ 5.50	\$50.00
4 to 5 ft. whips .....	6.50	60.00
5 to 6 ft. whips .....	7.50	70.00
5 to 6 ft., branched .....	10.00	90.00

(Below — 2 yr. budded pecan trees)



# WIGHT INTRODUCES

the new dwarf

## SUWANNEE RIVER LIGUSTRUM



Specimen Suwannee River 2 years in the field.

### SUWANNEE RIVER HAS EVERYTHING!

- low spreading habit . . .
- compact, dark green foliage . . .
- flowers but little or no berries . . .
- freedom from white fly . . .
- little pruning requirements . . .
- lack of fussiness about soils . . .
- ease of transplanting . . .
- high resistance to nematode . . .



Digging and loading in a 2 yr. block of Suwannee River.

## Essential facts about Suwannee River.

A hybrid, the parents being *Ligustrum Coriaceum* and Wax *Ligustrum*.

Foliage a deep lustrous green, smaller than wax, and slightly twisted. Internodes short. Leaves opposite, with each set of leaves coming out at a 90 degree angle from those immediately above and below it. Very compact.

An easy plant to grow. Not fussy as to soil requirements. Has not been attacked by white fly, and appears highly resistant to nematode.

Hardy wherever Wax *Ligustrum* is hardy.

Slow enough to use around the modern low, rambling home, yet fast enough to make you some money. Excellent for low hedges.

Patent applied for. Minimum prices have been established at wholesale, public institution, and retail levels, to protect you from unfair competition.

A good margin of profit for dealers. Be the first to offer Suwannee River in your community.



Foundation planting of Suwannee River around an office building.

# SUWANNEE RIVER LIGUSTRUM MINIMUM PRICES

Graded by height or spread, which-ever is greater.

	WHOLESALE			PUBLIC INSTITUTIONS	
	each 10 to 49	each 50 to 499	each 500 or more	each 10 to 49	each 50 or more
12 to 18 inch B&B .....	\$1.85	\$1.65	\$1.50	\$2.80	\$2.60
18 to 24 inch B&B .....	2.25	2.00	1.85	3.40	3.20
24 to 30 inch B&B .....	2.50	2.15	2.00	3.80	3.55
30 to 36 inch B&B .....	3.50	3.00	2.75	5.20	4.40
<b>Container Grown</b>					
1 gallon .....	\$1.50	\$1.25	\$1.10	\$2.40	\$2.00
3 gallon .....	2.50	2.25	2.00	4.00	3.50

## RETAIL

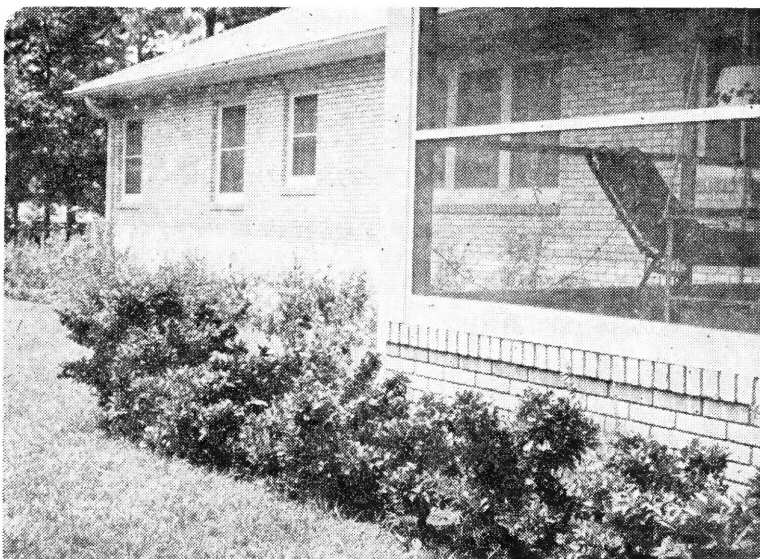
	each 1 to 9	each 10 to 49	each 50 or more
12 to 18 inch B&B .....	\$3.75	\$3.50	\$3.25
18 to 24 inch B&B .....	4.50	4.25	3.95
24 to 30 inch B&B .....	4.95	4.75	4.45
30 to 36 inch B&B .....	6.95	6.50	5.95
<b>Container Grown</b>			
1 gallon .....	\$3.50	\$3.00	\$2.50
3 gallon .....	4.95	4.75	4.45

**WHOLESALE** prices are quoted to established nurseries and licensed dealers who are purchasing for resale. Prices are F.O.B. origin and packing charged at cost.

**PUBLIC INSTITUTIONS** are defined as public or semi public bodies, buying in quantity for their own use and not for resale, such as cemeteries, universities and colleges, city, state, and federal government agencies, etc. Where delivered price is requested any packing and shipping charges should be added.

**RETAIL** prices are to the buying public.

To protect you and your customers, each Suwannee River Ligustrum plant will carry this tag!



Suwannee River Ligustrum will stay low around this screened porch.



A Field of *Illex Rotundifolia*

## Broadleaf Evergreens

<b>ABELIA GRANDIFLORA</b>		
GRADE	10	100
12 to 18 inch, C. T. bare root .....	\$ 3.00	25.00
18 to 24 inch, bare root .....	6.00	50.00
2 to 3 feet B&B .....	17.50	150.00
<b>BANANA SHRUB (<i>Michelia Fuscata</i>)</b>		
18 to 24 inch, B&B .....	20.00	175.00
2 to 3 feet, B&B .....	30.00	
<b>BUXUS HARLANDI</b>		
6 to 8 inch, C. T., bed grown .....		20.00
6 to 8 inch, field grown, bare root ..	6.00	40.00
8 to 12 inch, field grown, bare root ..	7.50	60.00
<b>CLEYERA JAPONICA</b>		
18 to 24 inch, C.T. B&B .....	20.00	175.00
2 to 3 feet, B&B .....	25.00	225.00
<b>ELEAGNUS FRUITLANDI</b>		
18 to 24 in, B&B .....	15.00	100.00
<b>GARDENIA FLORIDA</b>		
<b>GARDENIA FORTUNEI</b>		
<b>GARDENIA MYSTERY</b>		
12 to 18 inch, field grown, B&B .....	7.50	60.00
18 to 24 inch, field grown, B&B .....	10.00	75.00
2 to 3 feet, field grown, B&B .....	15.00	125.00
<b>GARDENIA RADICANS</b>		
12 to 18 inch, field grown, B&B .....	10.00	75.00
18 to 24 inch, B&B .....	15.00	125.00
<b>LIGUSTRUM, WAX LEAF</b>		
12 to 18 inch, field grown, bare root ..	6.00	50.00
18 to 24 inch, field grown, B&B .....	12.50	100.00
2 to 3 feet, B&B .....	17.50	150.00
3 to 4 feet, B&B .....	25.00	225.00
4 to 5 feet, B&B .....	30.00	250.00
<b>MAGNOLIA GRANDIFLORA</b>		
2 to 3 feet, B&B .....	30.00	250.00
3 to 4 feet, B&B .....	40.00	350.00
4 to 5 feet, B&B .....	50.00	450.00
<b>OSMANTHUS FRAGRANS (Tea Olive)</b>		
12 to 18 inch, B&B .....	15.00	125.00
<b>NERIUM (Oleander)</b>		
Single Pink; Cardinal		
2 to 3 feet, bare root .....	12.50	75.00
3 to 4 feet, bare root .....	15.00	125.00

**PHOTINIA GLABRA**

2 to 3 feet, B&B .....	17.50	150.00
3 to 4 feet, B&B .....	25.00	200.00

**PHOTINIA SERRULATA**

12 to 18 inch, field grown, B&B .....	12.50	100.00
18 to 24 inch, field grown, B&B .....	15.00	125.00
2 to 3 feet, field grown, B&B .....	25.00	200.00
3 to 4 feet, field grown, B&B .....	30.00	250.00

**PITTOSPORUM TOBIRA**

12 to 18 inch, field grown, B&B .....	15.00	125.00
18 to 24 inch, field grown, B&B .....	20.00	175.00
2 to 3 feet, field grown, B&B .....	30.00	250.00

**VIBURNUM JAPONICUM**

2 to 3 feet, B&B .....	12.50	100.00
3 to 4 feet, B&B .....	17.50	150.00

Below—One Year Abelia Grandiflora



**ILEX (Holly)**

**I. Cornuta Burfordi**

**I. Cornuta**

12 to 18 inch, B&B .....	15.00	125.00
18 to 24 inch, B&B .....	20.00	175.00
2 to 3 feet, B&B .....	25.00	275.00
3 to 4 feet, heavy B&B .....	30.00	275.00

**I. Crenata Convexa (Bullata)**

8 to 12 inch, field grown, B&B .....	9.00	75.00
12 to 18 inch, field grown, B&B .....	15.00	125.00
18 to 24 inch, field grown, B&B .....	25.00	200.00

**I. Crenata Rotundifolia**

8 to 12 inch, B&B .....	10.00	85.00
12 to 18 inch, B&B .....	17.50	150.00
18 to 24 inch, B&B .....	22.50	175.00
2 to 3 feet, B&B .....	30.00	250.00

**I. Opaca East Palatka**

2 to 3 feet, B&B .....	25.00	225.00
3 to 4 feet, B&B .....	30.00	275.00

**LIGUSTRUM SUWANNEE RIVER—See page 3-5**

**LIGUSTRUM, TALL GROWING**

2 to 3 feet, bare root .....	5.00	40.00
3 to 4 feet, bare root .....	6.00	50.00
4 to 5 feet, bare root .....	10.00	90.00

B&B, double above prices

# FIELD GROWN CAMELLIA JAPONICA

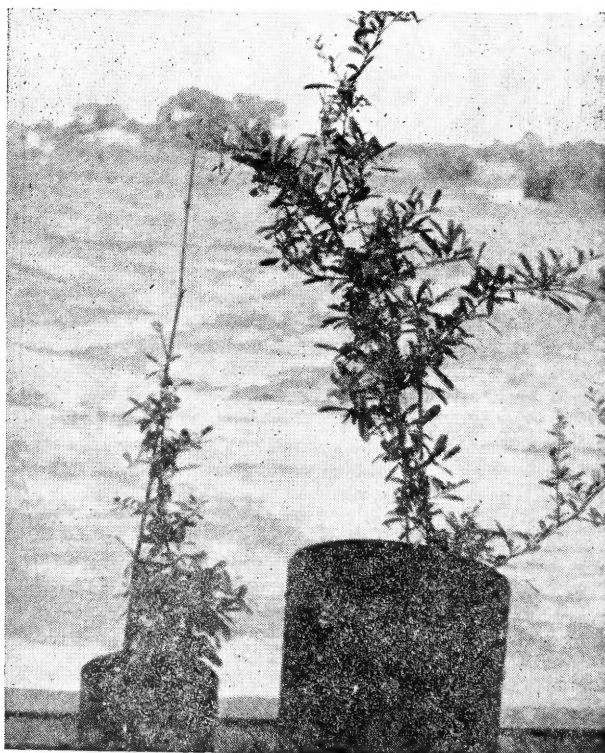
These Camellias have been grown, since liners, in full sun under irrigation. In most grades, especially 12 to 18 inch and up, they are much heavier and much more compact than similar grades grown in slat houses. Full sun tends to make Camellias branch early, and grow bushy. They are not to be compared with slat house plants.

\*Figures after variety denote the size or sizes available in that particular variety.

## Rare and Unusual

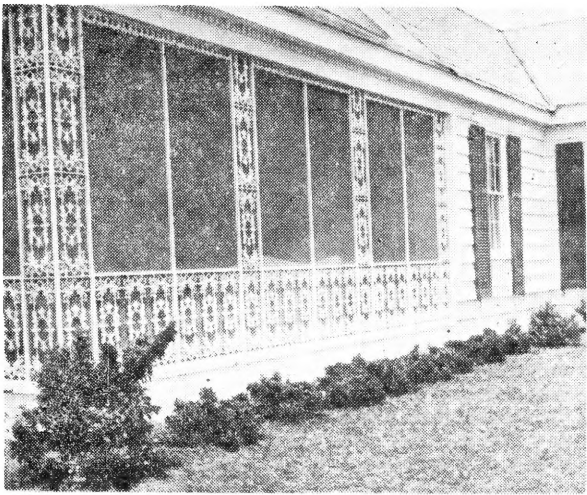
**VARIETIES:** Angels Blush 8"-24", Bessie McArthur 12"-24", Debutante 8"-30", Duchess of Northumberland 8"-18", Elizabeth Boardman 8"-18", Frizzle White 8"-24", Gigantea 8"-18", Imura 12"-24", Lady Clare 8"-24", Lady Hume's Blush 12"-24", Lady Mary Cromartie 8"-24", Lady Van Sittart 8"-24", Lallarook 8"-24", Margaret Higdon 8"-18", Martha Brice 8"-24", Mathotiana 8"-24", Mathotiana Variegated 8"-24", Monjisu 8"-18", Morning Glow 8"-24", Mrs. Chas. Simons 8"-24", Pink Star 8"-18", Rosea Superba 8"-24", White Empress 8"-24", White Giant 8"-18".

GRADE	Each	Each
	Bare Root	B&B
8 to 12 inch	\$1.00	\$1.25
12 to 18 inch	1.25	1.50
18 to 24 inch	2.00	2.50
24 to 30 inch		3.50



One gal. and 3 gal. size *Pyracantha Formosana*.





Suwannee River is ideal where a low foundation plant is needed such as here. See page 3-5.

## Standard Camellias FIELD GROWN

VARIETIES: Alba Plena 8"-24", Altheaflora 8"-24", Augusta Wilson 8"-24", Cameo Pink 8"-24", Christine Lee 8"-24", Elegans 8"-24", Enrico Bettoni 8"-24", Gov. Mouton 8"-24", Herme 8"-24", Jarvis Red 8"-24", Jessica 8"-30", Kimberley 8"-12", Latifolia 8"-24", Monarch 8"-24," Pink Perfection 8"-24", Pope Pius 8"-24", Prof. Sargent 8"-24", Rose Emry 8"-24", Sarah Frost 8"-3', Semi Double Blush 8"-24", Victor Emanuel 8"-24".

GRADE	Bare Root Each	B&B Each
8 to 12 inch .....	.50	.75
12 to 18 inch .....	.60	.85
18 to 24 inch, well branched .....		1.80
24 to 30 inch, Specimens .....		3.00

## Camellia Sasanqua FIELD GROWN

VARIETIES: Apple Blossom 12"-4', Cleopatra 12"-24", Ocean Springs Red 12"-24," Rosea 12"-36," Ryomen Beni 12"-24", Setsugekka 12"-4', Snow on the Mountain 12"-36", White Queen 12"-24", White and Lavender 12"-24."

GRADE	Each Bare Root	Each B&B
12 to 18 inch .....	\$0.40	\$0.65
18 to 24 inch .....	.75	1.00
24 to 30 inch .....	1.00	1.25
30 to 36 inch .....		2.00
3 to 4 feet .....		3.00

# CONTAINER

# GRO



1 gal.                      2 gal.                      egg can                      5 gal.  
Camellias in containers as shown.

## Standard Varieties

### STANDARD CAMELLIAS

	Prices (Unless otherwise noted)			
	1 Gal. can	2 Gal. can	Egg can	5 Gal. can
Alba Plena .....	\$1.10	\$1.60	\$2.25	\$2.75
Alba Superba .....	1.25	1.75		
Altheaflora .....	x			
Cameo Pink .....		x		x
Christine Lee .....		x		x
Col. Firey .....	x			
Elegans (Chandler's) .....	x	x		x
Governor Mouton .....	x	x		x
H. A. Downing .....		x		
Herme .....	x	x		x
Jarvis Red .....	x			
Jessica .....		x		
Latifolia .....	x	x		x
Monarch .....				
(Honor of America) .....	x			x
Pink Perfection .....	x	x		x
Pope Pius .....	x	x		
Prof. C. S. Sargent .....	x	x		
Sarah Frost .....	x	x		
Semi Double Blush .....	x	x		
Triphosa .....		x		
Tutcheria Spectabilis .....	x			
Victor Emanuel .....	x			
Camellia Japonica, Mixed .....	.90			

## Rare Varieties

### RARE CAMELLIA JAPONICAS

	Prices (Unless otherwise noted)			
	1 Gal. can	2 Gal. can	Egg can	5 Gal. can
Adolph Audusson .....	\$1.25	\$1.75	\$2.50	\$2.95
Bessie McArthur .....		x		
Daikagura, Variegated .....	x	x		
Daikagura Pink .....	x			
Debutante .....	x	x	x	

# DOWN CAMELLIAS

	Prices (Unless otherwise noted)			
	1 Gal. can \$1.25	2 Gal. can \$1.75	Egg can \$2.50	5 Gal. can \$2.95
Fred Sanders	x			x
Frizzle White	x	x		x
Gigantea	x			x
Glorie de Nantes (Wight's)		x		
Goshoguruma		x		
Hacu Racuten	x			
High Hat	x			
Imura	x			
J. J. Pringle Smith				x
Kenny	x			
Lady Clare	x	x		x
Lady Clare Variegated	x			x
Lady Hume's Blush	x	x		
Lady Jane Grey	x			
Lady Vansittart	x			
Lallarook	x	x		x
La Reine, Variegated		x		
Louise Oneta	x			
Magnoliaeflora		\$2.50		
Martha Brice	x	x		x
Mary Charlotte	x			
Mathotiana	x	x	x	
Mathotiana Variegated	x	x	x	x
Morning Glow	x			
Mrs. Chas. Simons		x		
Nagasaki (Mikenjaku)	x	x		
Nellie Cohen		x		
Pink Herme	x	x		
Pink Star	x	x		x
Queen Bessie				x
Rev. John Bennett	x			
Rev. John G. Drayton	x			
Robert E. Lee				x
Rosea Superba	x	x	x	
Smiling Beauty	x	x		
Wacissa	x			
White Empress	x			
White Giant	x			
White Queen	x			
Yobeko Dori	x			

## Camellia Sasanqua

	PRICES	
	1 Gal. can	2 Gal. can
Apple Blossom	\$ .75	\$1.25
Cleopatra	.75	
Crimson Velvetti	.75	
Dawn	.75	
Floribunda	.75	
Hino de Gumo	1.25	
Hiodoshi	.75	
Oleifera	1.25	
Rosea	.75	
Ryomen Beni	.60	
Setsugekka	.75	
Shino Nome	.60	
Shishigashira	1.25	
Showa No Sakae	1.25	
Snow on the Mountain	.75	
Taimei Nashiki	.60	
Totenko	.60	
White and Lavender	1.25	

# Top Quality Container Grown Evergreens

## BROADLEAF EVERGREENS

	1 Gal. can	2 Gal. can	Egg can	5 Gal. can
Abelia Grandiflora .....	\$0.60			
Azaleas, Kurume* .....	.45			
Coral Bells, Hinodigiri, Snow				
Azalea Elegans .....		.60		
Buxus Harlandi* .....	.35			
Cinnamomum Camphora (Camphor) .....	.60		\$2.00	
Cleyera Japonica .....	.60			
Eleagnus Fruitlandi .....	.60			
Eurya Japonica .....	.60			
Fatshedera Lizei .....	.75			
Fatsia Japonica .....	.75			
Feijoa Sellowiana .....	.60			
Gardenia Florida .....	.45			
Gardenia Fortunei .....	.45			
Gardenia Mystery .....	.45			
Gardenia Radicans .....	.45			
Ilex Cornuta .....	.75			
Ilex Cornuta Burfordi .....	.75		2.25	
Ilex Crenata .....	.75			
Ilex Cren. Bullata (Convexa) .....	.60			
Ilex Crenata Rotundifolia .....	.75	\$1.25	2.25	
Ilex Crenata Spreading .....	.75			
Ilex Crenata Latifolia .....	.75			
Ilex Helleri .....	.75			
Ilex Opaca Darby .....	.75			
Ilex Opaca Howardi .....	1.00			
Ilex Opaca East Palatka .....	.85			\$2.50
Ilex Mycophyllum .....	1.00			
Ilex Vomitoria .....	.60			
Illicium Anisatum .....	.75	1.50		
Laurocerasus Caroliniana (Cherry Laurel) .....	.45	1.00		1.60
Lauropetalum Chinensis .....	.75			
Ligustrum Suwannee River .....	1.50	(See special price list)		
(Patent applied for)				
Ligustrum Wax .....	.60			
Michelia Fuscata (Banana Shrub) .....	.75			
Myrica Cerifera .....		1.25		
Nandina .....	.60			
Oleander, Cardinal .....	.60			
Oleander, Single Pink .....	.60			
Osmanthus Fragrans .....	.75			
Osmanthus Fortunei Aurea .....	.75			
Photinia Glabra .....	.60			
Photinia Serrulata .....	.60			
Pittosporum Tobira .....	.60			
Pyracantha Upright Red (Bakers) .....	.75			

\*6" Nurserycan. Holds about 3 qts. soil. Azaleas and Buxus only in these cans.

	1 Gal. can	2 Gal. can	Egg can	5 Gal. can
Pyracantha Formosana	.75		1.75	1.75
Pyracantha Rosedale		1.25		
Pyracantha Wonderberry	.75			
Thea Bohea	.45			
Viburnum Odoratissimum	.60			1.75

**CITRUS**

↓ Citrus Trifoliata	\$0.45			
Kumquats	.75			
Assorted Citrus (Grapefruit, Satsumas, Lemons)			\$2.50	

**ORNAMENTAL TREES**

Dogwood (Cornus Florida)	.75			
↓ Loquat	.75		1.75	
Magnolia Grandiflora	.60			
Magnolia Nigra	1.25			
Magnolia Soulangeana	1.25			

**FLOWERING SHRUBS**

Serissa Faetida	.45			
-----------------	-----	--	--	--

**VINES**

Confederate Jessamine	.75	2.50		
Yellow Jessamine 2 yr.	1.00			
Yellow Jessamine 1 yr.	.75			
Fig Vine	1.00			
Lonicera Purpurea	.75			

**CONIFEROUS EVERGREENS**

Arizona Cypress	.60			
Arizona Cypress Grafts	1.00			
Berckman's Golden Arborvitae	.75			
Cedrus Deodara		\$1.25		
Cunninghamia, Blue	.60			
Juniperus Chin. Sylvestris	.60			
Juniperus Pfitzeriana	.75			
Pinus Caribaea (Slash Pine)	.60			1.75
Podocarpus Sinensis	.60			1.75



Ilex Rotundifolia in gallons.



(Above — Azaleas in the field)

INDICA

**AZALEAS** FIELD GROWN

**GROUP 1 Varieties:**

Pres. Clay 8-24", Formosa 8-24", Elegans 8-24",  
Vitatta Fortunei 8-24".

(Figures after the variety name indicate the size or sizes available in that variety.)

Our Azaleas are not lath house grown, but field grown, under irrigation. They are considerably more compact and heavier branched than are lath house grown plants. They are also tougher, and will stand up better under heel ground conditions than will slat house grown plants.

All Azaleas are quoted balled but not burlapped.

GRADE	10	100
8 to 12 inch.....	\$ 4.50	\$ 30.00
12 to 15 inch.....	5.50	40.00
15 to 18 inch.....	7.25	60.00
18 to 24 inch.....	10.00	90.00

**GROUP 2 VARIETIES,**

Fielder's White 8-18", Fisher Pink 8-15", Dixie 8-24", George Franc 8-18", George L. Taber 8-18", Glory of Sunninghill 8-18", Lawsal 8-15", Macrantha 8-15", Pride of Dorking 8-18", Pride of Mobile 8-18", Swan 8-18", Vervaene 8-15".

GRADE	10	100
6 to 9 inch.....	\$ 4.50	\$ 30.00
9 to 12 inch.....	5.50	40.00
12 to 15 inch.....	7.25	60.00
15 to 18 inch.....	10.00	80.00

**SOUTHERN CHARM.** The new Pink Formosa.  
Very good.

GRADE	10	100
8 to 12 inch.....	\$ 6.00	\$ 50.00
12 to 15 inch.....	8.50	75.00
15 to 18 inch.....	12.50	100.00
18 to 24 inch.....	15.00	125.00

# DWARF AZALEAS FIELD GROWN

**KURUMES.** Coral Bells 6-15", Daybreak 6-15", Flame 6-15", Hinodigiri 6-15", Snow 6-15".

**PERICATS.** Jersey Belle 6-15", Madam Pericat 6-12", Sweetheart Supreme 6-15".

GRADE	10	100
6 to 8 inch.....	\$ 6.00	\$ 50.00
8 to 10 inch.....	8.00	70.00
10 to 12 inch.....	9.00	80.00
12 to 15 inch.....	12.50	100.00

## Coniferous Evergreens FIELD GROWN

### BAKER'S ARBORVITAE

GRADE	10	100
18 to 24 inch, B&B.....	\$12.50	\$100.00

### BERCKMAN'S GOLDEN ARBORVITAE

12 to 18 inch, field grown, B&B.....	12.50	100.00
18 to 24 inch, field grown, B&B.....	17.50	150.00

### CEDRUS DEODARA

2 to 3 feet, B&B.....	20.00	150.00
3 to 4 feet, B&B.....	25.00	200.00
4 to 5 feet, B&B.....	30.00	250.00

### JUNIPER, PFITZER. (Jun. Pfitzeriana)

18 to 24 inch, field grown, B&B.....	17.50	150.00
2 to 3 feet, field grown, B&B.....	22.50	200.00

### JUNIPER, SYLVESTRIS (Jun. Chin. Sylvestris)

12 to 18 inch, B&B.....	10.00	100.00
18 to 24 inch, B&B.....	17.50	150.00
2 to 3 feet, B&B.....	20.00	175.00
3 to 4 feet, B&B.....	22.50	200.00

### PINE, SLASH (Pinus Caribaea)

See container grown plants.

### PODOCARPUS SINENSIS

12 to 18 inch, B&B.....	17.50	150.00
18 to 24 inch, B&B.....	22.50	200.00
2 to 3 feet, B&B.....	30.00	250.00
3 to 4 feet, B&B.....	35.00	300.00

# ROSES

GEORGIA  
GROWN



Peace Roses at Wight's

**STANDARD VARIETIES:** Crimson Glory, Eclipse, Editor McFarland, Etoile de Holland, Kaiserin Augusta Viktoria, Lady Banksia, Pink Radiance, Red Radiance, Paul's Scarlet Climber, White American Beauty.

	10	100
2 yr. No. 1 .....	\$4.50	\$40.00

**PATENTED VARIETIES:** (These patented varieties of plants are being handled under license from the patent owner.)

NAME	Plant Patent Number	each 1-9	each 10-19	each 20-99	each 100-249	each 250 up
Charlotte Armstrong, H. T. ....	455	\$1.40	\$1.25	\$1.12½	\$1.05	\$0.95
Fashion, Floribunda .....	789	1.25	1.10	1.00	.95	.85
Forty Niner, H. T. ....	792	1.60	1.40	1.25	1.20	1.10
Geranium Red, Floribunda ....	811	1.15	1.00	.87½	.80	.75
Helen Traubel, H. T. ....	1028	1.60	1.40	1.25	1.20	1.10
Ma Perkins, Floribunda .....	1143	1.25	1.10	1.00	.95	.85
McGredy's Sunset, H. T. ....	317	1.15	1.00	.87½	.80	.75
Mirandy, H. T. ....	632	1.40	1.25	1.12½	1.05	.95
Mojave .....	1176	1.75	1.50	1.37½	1.30	1.20
Nocturne, H. T. ....	713	1.25	1.10	1.00	.95	.85
Peace, H. T. ....	591	1.60	1.40	1.25	1.20	1.10
<b>Climbing</b> Peace <i>Cl.</i> .....	932	1.25	1.10	1.00	.95	.85
Red Pinocchio, Floribunda .....	812	1.00	.90	.75	.70	.65



# Flowering Shrubs and Trees

	10	100
<b>CREPE MYRTLE</b>		
1 yr. bare root.....	\$3.50	\$25.00
2 yr. bare root.....	5.00	45.00

## DOGWOOD (Cornus Florida)

2 to 3 feet, field grown, bare root....	12.50	100.00
3 to 4 feet, field grown, bare root....	15.00	125.00
4 to 5 feet, field grown, B&B.....	40.00	350.00

For B&B, add 50c per plant to bare root prices.

## MAGNOLIA, JAPANESE

### M. Soulangeana

2 to 3 feet, B&B.....	20.00	150.00
3 to 4 feet, B&B.....	25.00	225.00
4 to 5 feet, B&B.....	35.00	300.00
5 to 6 feet, B&B.....	40.00	350.00

### M. Sou. Alba Superba

18 to 24 inch, B&B.....	15.00	
2 to 3 feet, B&B.....	20.00	150.00
3 to 4 feet, B&B.....	25.00	225.00

### M. Sou. Nigra

18 to 24 inch, B&B.....	20.00	
2 to 3 feet, B&B.....	25.00	

### M. Stellata, Pink. (Pink Star Magnolia)

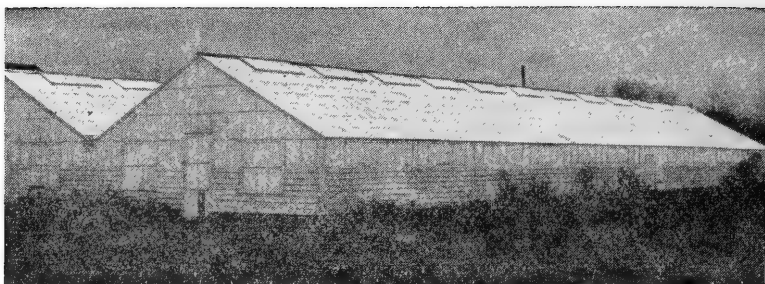
18 to 24 inch, B&B.....	30.00	
-------------------------	-------	--

## POMEGRANITE, FLOWERING

2 to 3 feet, bare root.....	10.00	75.00
-----------------------------	-------	-------

## QUINCE, FLOWERING. Red

2 to 3 feet, bare root.....	10.00	75.00
-----------------------------	-------	-------

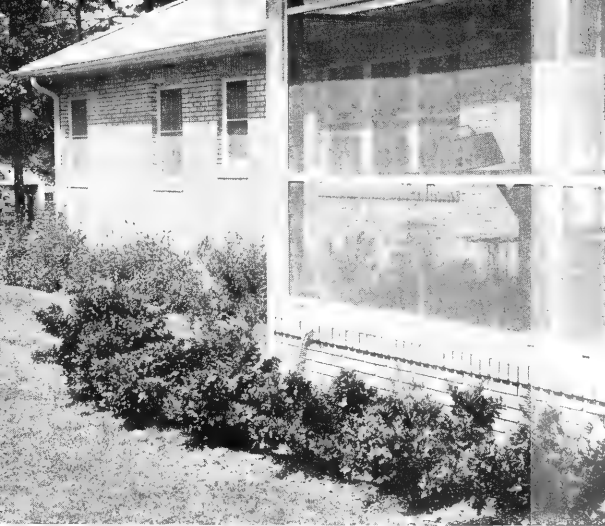


Propagating Houses

## MEMORANDUM

## INDEX

	<b>PAGE</b>
Azaleas .....	11, 13, 14
Camellias (container grown) .....	9, 10
Camellia japonica .....	7-10
Camellias (field grown) .....	7, 8
Camellia sasanqua .....	8, 10
Evergreens (broadleaf) .....	5, 6, 11, 12
Evergreens (coniferous) .....	12, 14
Fruits .....	1, 12
Ligustrum .....	2-4, 6
Pecans .....	1
Roses .....	15
Shrubs (flowering) .....	12, 16
Terms .....	18
Trees (flowering) .....	12, 16
Vines .....	12

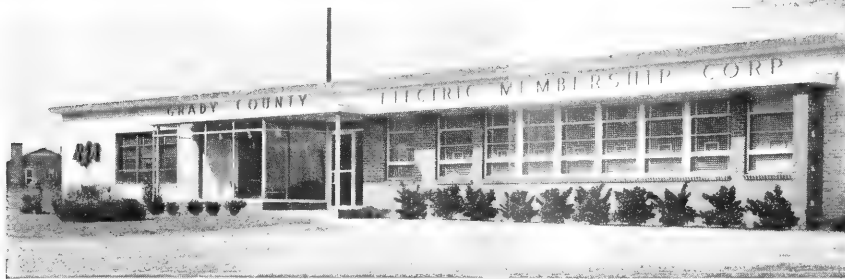


*Slow enough for the modern low, rambling home  
... Fast enough to make you money!*



No problem to keep this porch light and airy with Suwannee River as the foundation planting!

No danger of Suwannee River growing too fast and hiding this beautiful iron grille.



Suwannee River has a definite place in landscaping the modern industrial building.

## MINIMUM PRICES

### SUWANNEE RIVER LIGUSTRUM

Plant Patent Applied For

GRADED BY HEIGHT OR SPREAD, WHICHEVER IS GREATER

	WHOLESALE			PUBLIC INSTITUTIONS		RETAIL		
	each	each	each	each	each	each	each	each
12 to 18 in., B&B.....	\$1 85	\$1 65	\$1 50	\$2 80	\$2 60	\$3 75	\$3 50	\$3 25
18 to 24 in., B&B.....	2 25	2 00	1 85	3 40	3 20	4 50	4 25	3 95
24 to 30 in., B&B.....	2 50	2 15	2 00	3 80	3 55	4 95	4 75	4 45
30 to 36 in., B&B.....	3 50	3 00	2 75	5 20	4 40	6 95	6 50	5 95
Container Grown								
1 gal.....	\$1 50	\$1 25	\$1 10	\$2 40	\$2 00	\$3 50	\$3 00	\$2 50
3 gal.....	2 50	2 25	2 00	4 00	3 50	4 95	4 75	4 45

**WHOLESALE** prices are quoted to established nurseries and licensed dealers who are purchasing for resale. Prices are F.O.B. origin and packing charged at cost.

**PUBLIC INSTITUTIONS** are defined as public or semi-public bodies, buying in quantity for their own use and not for resale, such as cemeteries, universities and colleges, city, state and federal government agencies, etc. Where delivered price is requested, any packing and shipping charges should be added.

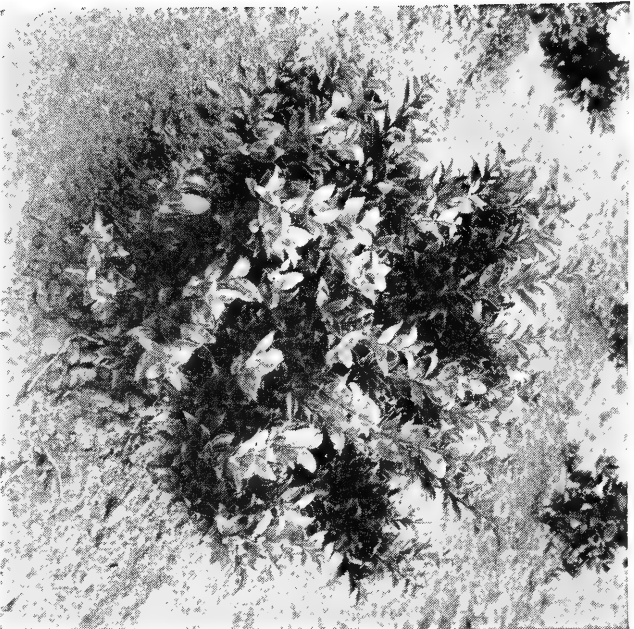
**RETAIL** prices are to the buying public.

## Essential Facts about SUWANNEE RIVER LIGUSTRUM

- A hybrid, the parents being Ligustrum Coriaceum and Wax Ligustrum.
- Foliage a deep lustrous green, smaller than Wax, and slightly twisted. Internodes short. Leaves opposite, with each set of leaves coming out at a 90-degree angle from those immediately above and below it. Very compact.
- An easy plant to grow. Not fussy as to soil requirements. Has not been attacked by white fly and appears highly resistant to nematode.
- Hardy wherever Wax Ligustrum is hardy.
- Slow enough to use around the foundation of the modern house, yet fast enough to make you some money. Excellent for low hedges.
- Patent applied for. Minimum prices have been established at the wholesale, public institution and retail levels, to protect you from cut-throat competition.
- A good margin of profit for dealers. Be the first to offer Suwannee River Ligustrum in your community.

**WIGHT NURSERIES • Since 1887 • CAIRO, GEORGIA**

*"Wight grown means grown right"*



Suwannee River's glossy green foliage completely hides the woody stems so prominent on other Ligustrums.

## Your Customers will like its

- low spreading habit
- compact, dark green foliage
- flowers but no berries
- freedom from white fly
- little pruning requirements
- lack of fussiness about soils
- ease of transplanting . . . .

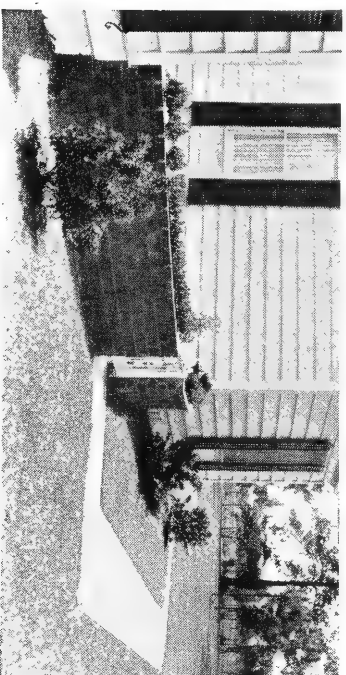
**SUWANNEE RIVER HAS EVERYTHING!**

*Available from*

## WIGHT NURSERIES

and the following LICENSED GROWERS:

- BLOOMINGDALE NURSERIES**  
BLOOMINGDALE, GEORGIA
- CARTWRIGHT NURSERIES**  
COLLIERVILLE, TENNESSEE
- EVERGREEN ACRES, INC.**  
RT. 2, MIDDLETOWN, DELAWARE
- GLEN ST. MARY NURSERIES CO.**  
GLEN ST. MARY, FLORIDA
- SEMME'S NURSERIES**  
SEMME'S, ALABAMA
- VERHALEN NURSERY CO.**  
SCOTTSVILLE, TEXAS



Suwannee River as accent plants outside the patio.

**Wight NURSERIES**



CAIRO, GEORGIA • SINCE 1887  
"WIGHT GROWN MEANS GROWN RIGHT"



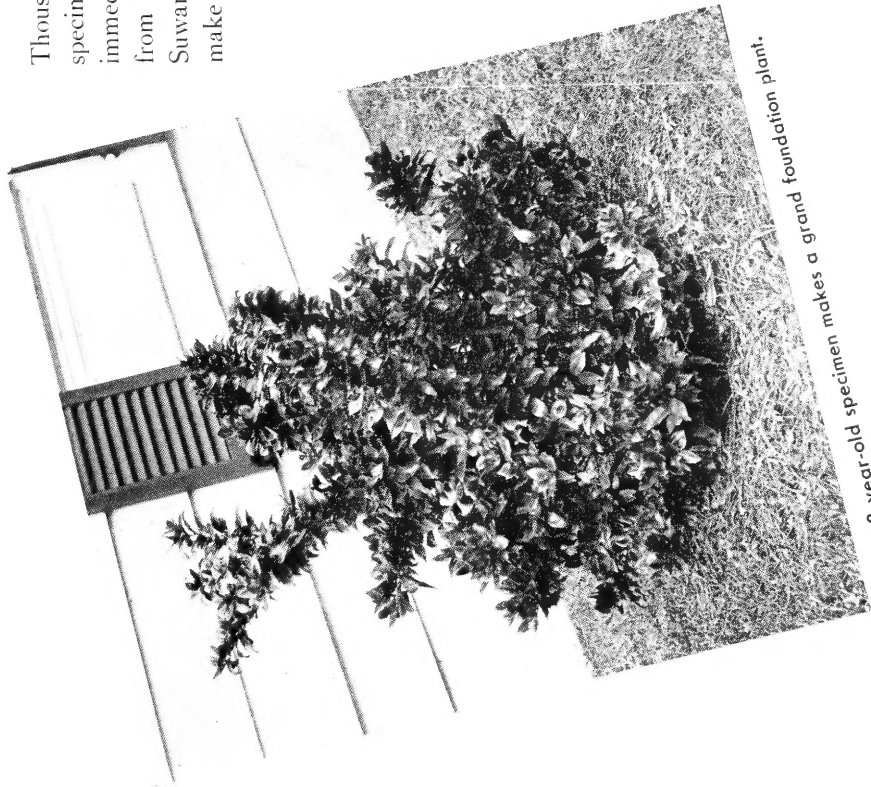
Plant Patent applied for  
 FEB 1 - 1955  
 U.S. New  
 U.S. Dept. of Agriculture

## SUWANNEE RIVER LIGUSTRUM

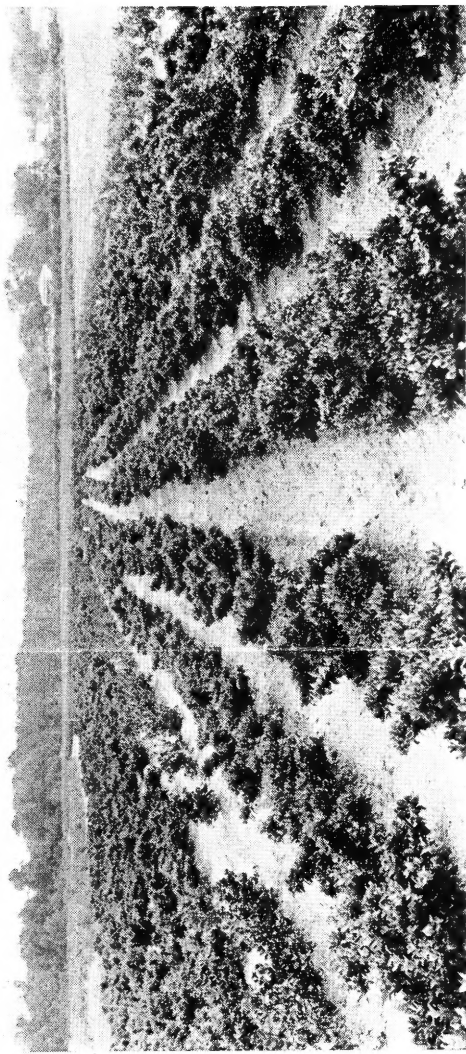
*A Winner for You!*

*Be the first in your community to offer  
Savannee River Ligustrum to your customers*

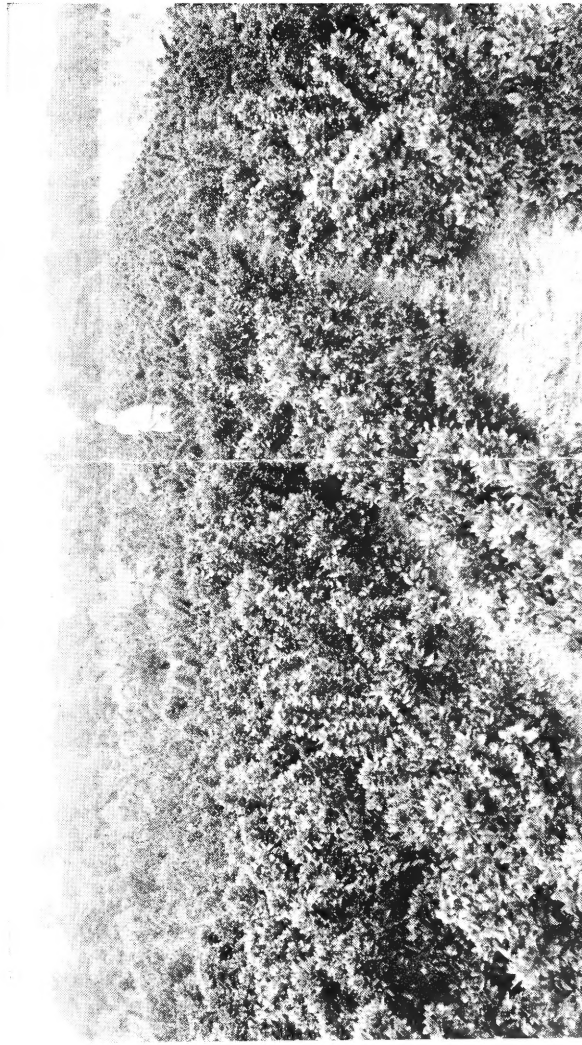
Thousands of beautiful specimens ready for immediate delivery from Wight Nurseries. Savannee River will make you money!



*This 3-year-old specimen makes a grand foundation plant.*



*Savannee River Ligustrum 2 years in the field. Note the marked spreading habit. Natural growth. Three-year Savannee River. Mostly 24 to 30-in. and 30 to 36-in. grades.*





# Fish While You Wait

**BUY A BUSH  
AND  
BOAT A BASS!**



This irrigation lake supplies not only water for irrigation, but is well-stocked with Bream and Bass.

**You're cordially invited to try your luck. Many of our customers bring along their fishing tackle, and while we dig and load their orders, they spend the time fishing.**



## **TERMS OF SALE**

**TERMS:** Cash, unless credit arrangements are made before shipment.

**GUARANTEE:** We guarantee our stock to be well grown, true to name, and properly packed. In no case shall our liability exceed the original invoice value. Our responsibility ceases on delivery to the transportation company.

**SHIPPING:** Please give full shipping instructions with each order; otherwise we shall use our best judgment.

**PACKING CHARGES** at cost will be added to these prices except bare root stock, which is packed free when cash accompanies order.

All prices are f.o.b. Cairo, Georgia.

This list cancels previous quotations and is subject to change without notice.

## LONG DISTANCE TELEPHONES

### RESIDENCES:

John B. Hinson, Cairo 2-4812.

John B. Wight, Cairo 2-4813.

### OFFICE:

Cairo 2-0032.

Home of the new  
dwarf "Suwannee  
River Ligustrum."

# Wight



## NURSERIES

CAIRO, GEORGIA • SINCE 1887

"WIGHT GROWN MEANS GROWN RIGHT"