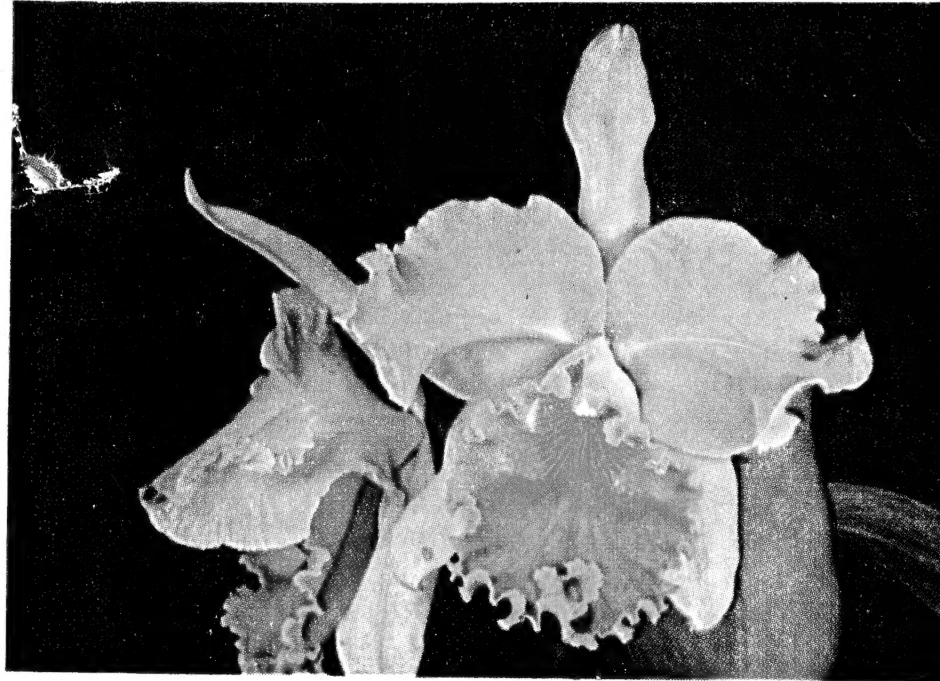


SP 115
Z9A45
R

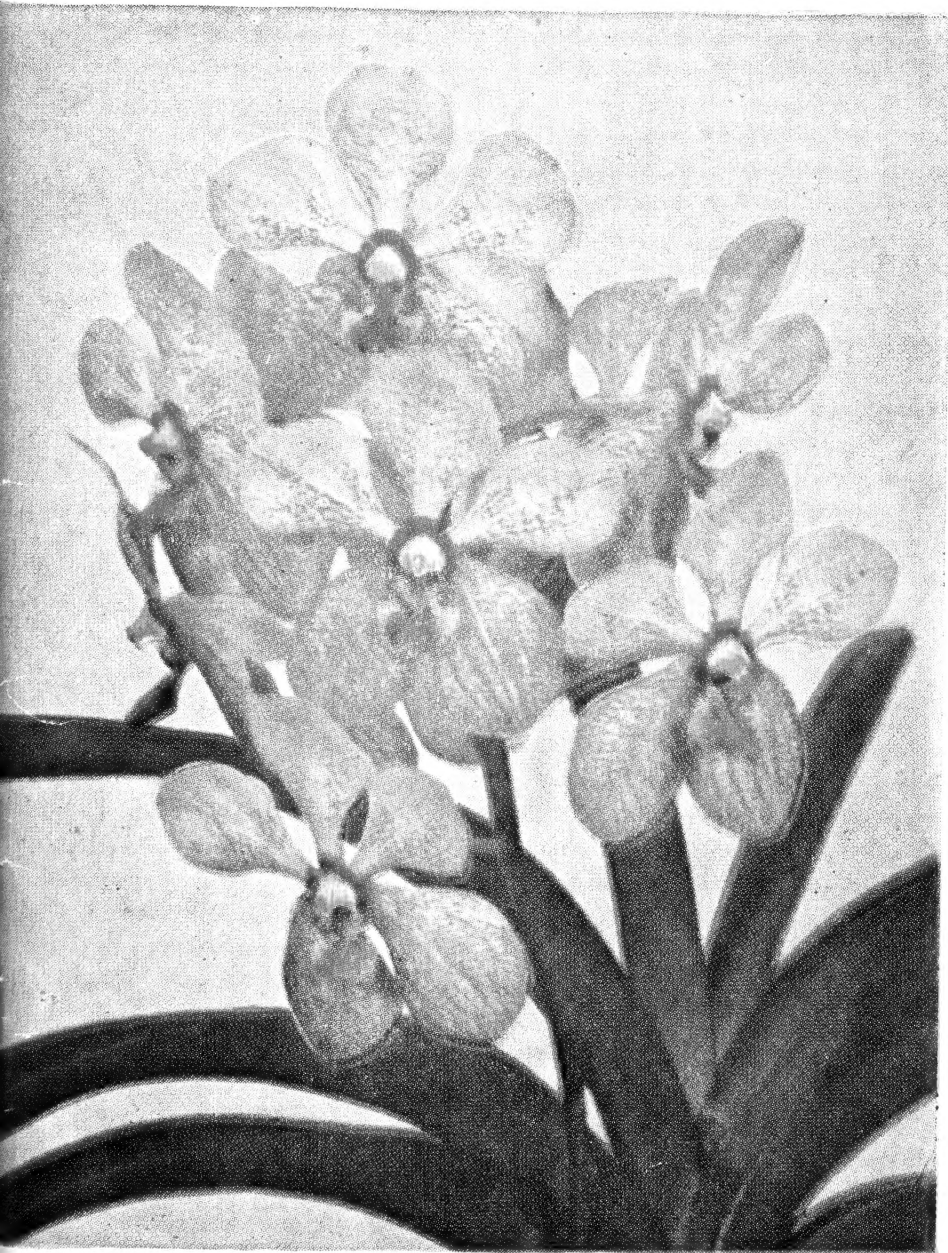
ORCHIDS

Reb/Rar



BLC. SANFORD VAR. BOYNTON AM-AOS

LIBRARY
RECEIVED
★ JUN 6 - 1955 ★
U. S. Department of Agriculture

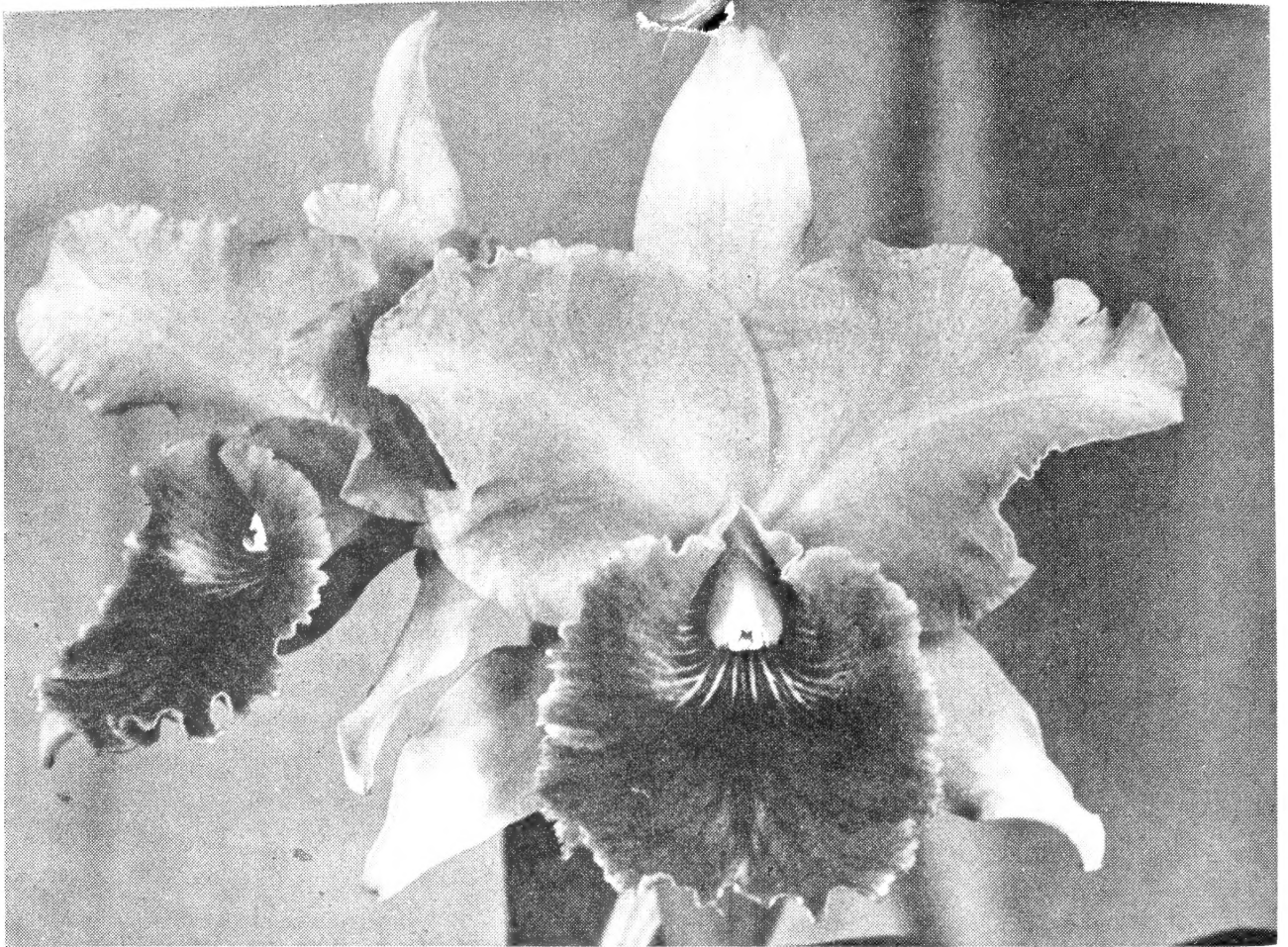


VANDA MANILA

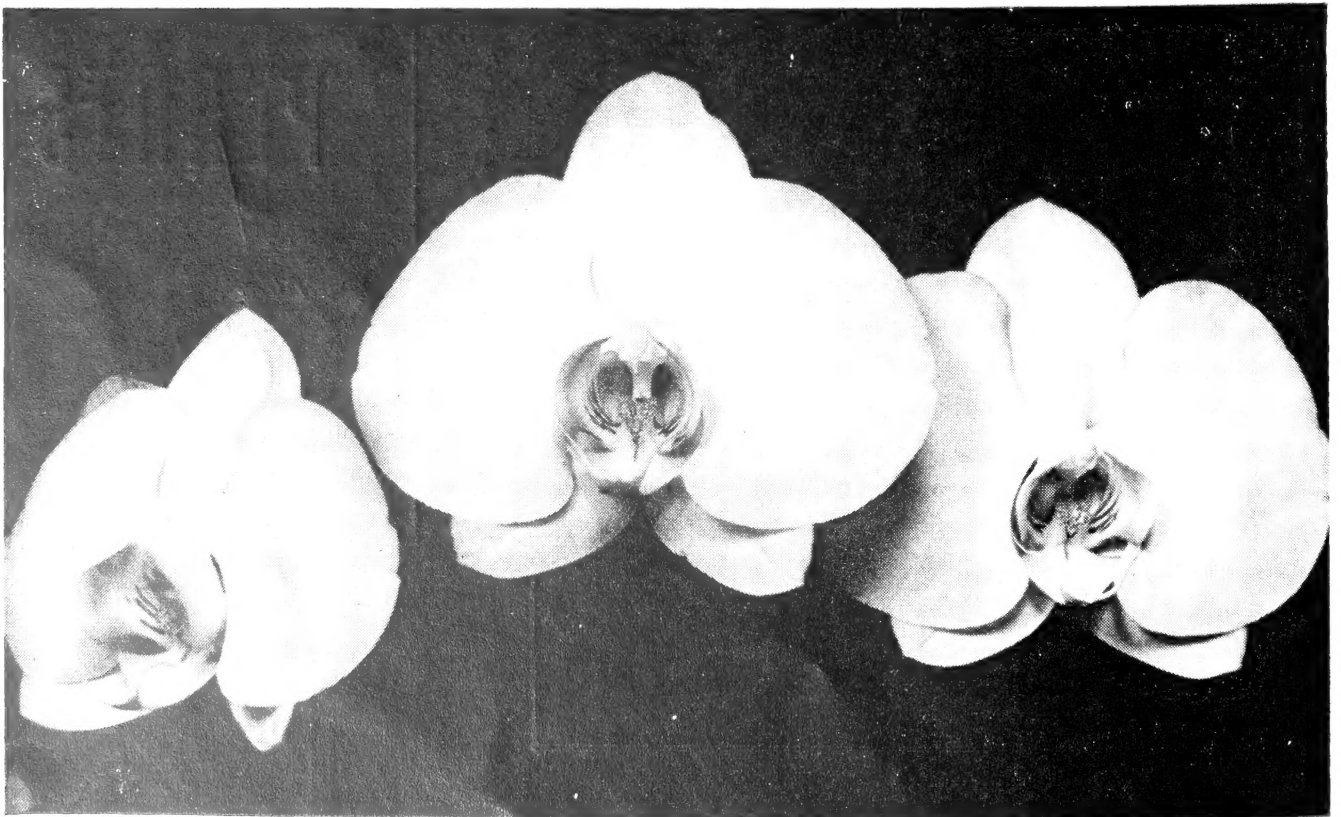
TROPICAL
FOLIAGE
PLANTS

1955

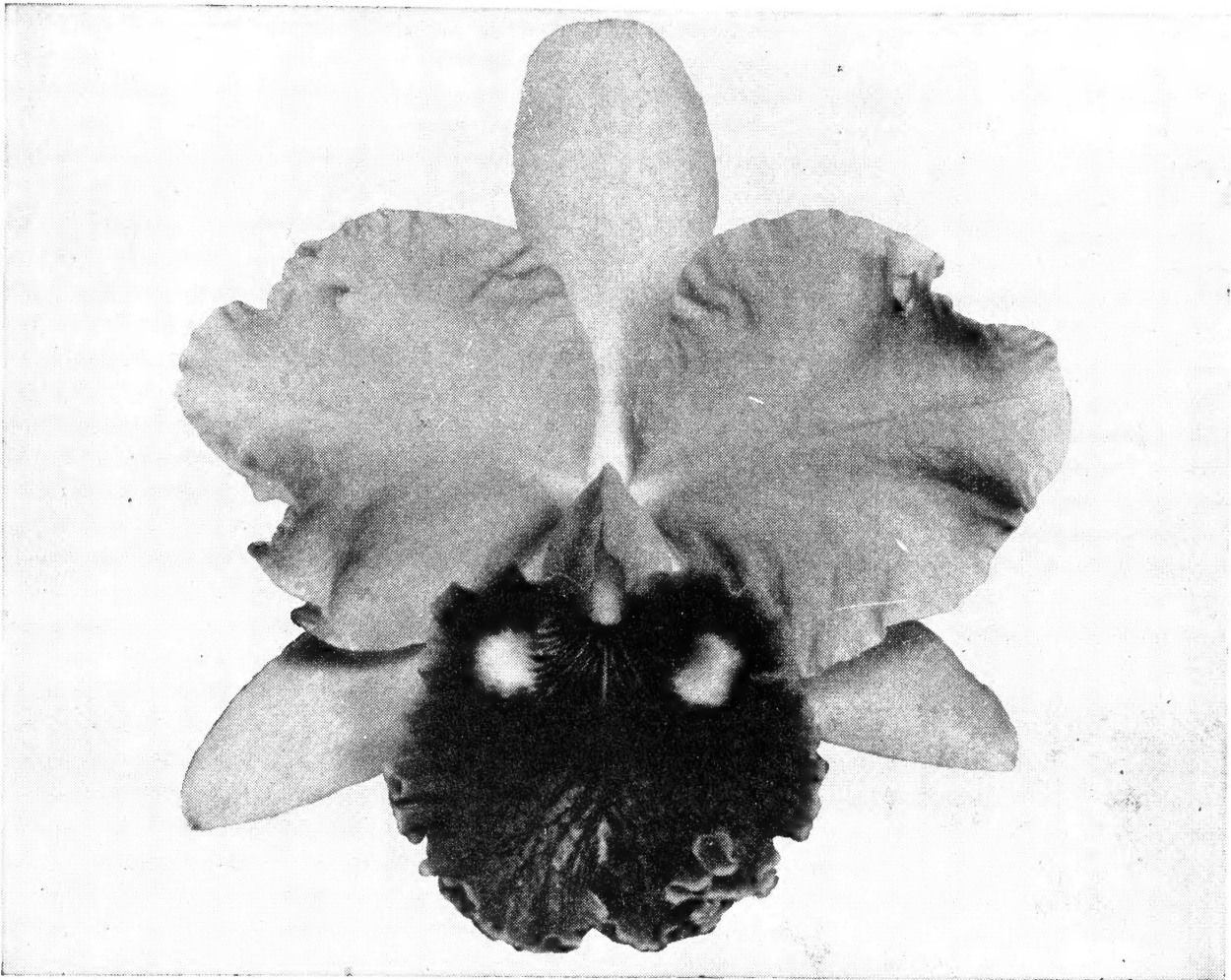
ALBERTS & MERKEL BROS., INC.



#764 Lc. MIAMI
(First Flowering)



PHALAENOPSIS DORIS VAR. REBECCA AM-AOS



NO. 763 Lc. WILDINE
(First Flowering)

Our time tested Lc. Helen Wilmer var. Superba has come through again. These first seedlings are superior in form, color, and texture. See seedling list No. 763, 767, 768, 776.

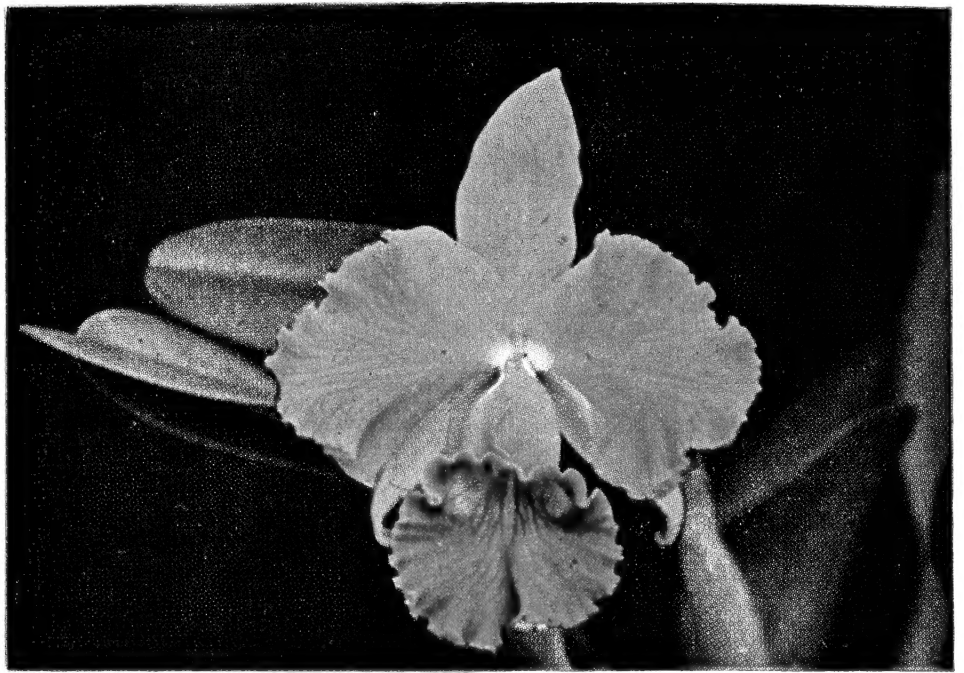
CATTLEYA HYBRID SEEDLINGS

The following fine hybrid seedlings represent crosses made with outstanding parents, and are the result of many years of experience in hybridizing. Some of the parent plants are shown in the illustrations, and it is expected that the seedlings will be as fine or finer. We do not sell our stud plants. Some of the following crosses are also available in flowering size, as listed under Mature Cattleya Hybrids, pages 18-19. Those listed below are as yet unflowered. For the time estimated until blooming, see table on page 7.

- 219 CATTLEYA A. J. RUCK (Selfed) (C. Tityus x C. Carmen)**—Various. Very dark maroon flowers, fine texture and form.
 4"—6.50 4½"—7.50 5"—10.00
- 462 C. ETHEL BISHOP X C. HELEN P. DANE**—Fine, late fall-flowering white.
 4½"—10.00 5"—12.50-15.00 5½"—15.00-20.00
 6"—22.50-25.00
- 483 C. EMILE GESCHICK ALBA (C. Helen P. Dane x Beebe)**—November-December. Pure white.
 4½"—10.00-12.00 5"—12.50-15.00 5½"—15.00-20.00
- 629 C. SOHMA (C. Empress Frederick x C. Mossiae)**. Spring lavender. Free-flowering. Easy grower.
 5"—7.50-10.00-12.50 5½"—12.50-15.00

Lc. HELEN WILMER
Var. Superba

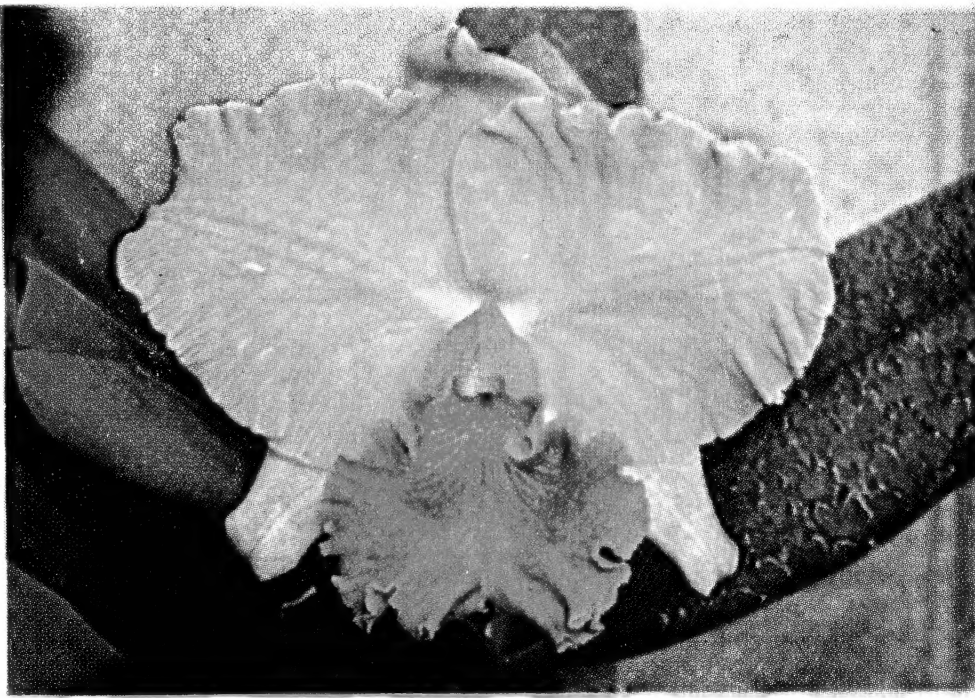
Parent #763, 767,
768, 776



C. HOPE DILLON ALBA
Parent #782

Lc. HYPERION
Var. Mandarin
Parent #765

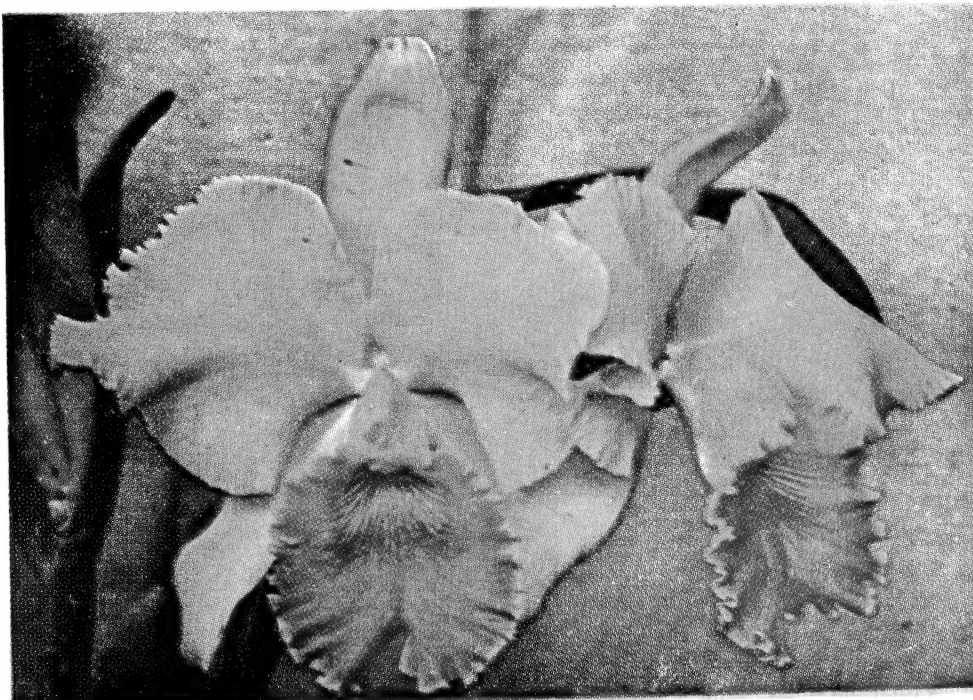




#765 Lc. MOTT H. PARTIN
Var. Majestic
(First Flowering)



Lc. MIAMI
Var. Glory
Parent #764,
790, 1038



#767 Lc. WILMOSA
Var. Gulfstream
(First Flowering)

763—Lc. **WILDINE** (Lc. **Geraldine Thompson var. Maxima** x Lc. **Helen Wilmer var. Superba**)—December-March. Lc. Geraldine Thompson var. Maxima (Lc. Jacquinetta x C. Trianae). Free-flowering—large—vigorous—November thru December—clear lavender with dark, ruffled, broad lip. Lc. Helen Wilmer var. Superba (Lc. General Maude x Lc. Wellsiana). Helen Wilmer has been described as the ideal orchid. Our Wilmer is one of the finest. Rich color—short trumpet—deeper maroon lip with gold areas. **See photo page 3.**

See also mature plant, page 18.

First flowering seedlings have been excellent.

4½" —12.50 5" —15.00-20.00 6" —22.50-25.00

764 **Lc. MIAMI** (Lc. **Miami var. Glory** x Lc. **Miami var. magnifica**). A glorious hybrid of the Fall Season (September through December). Lc. Miami (Lc. Runah x Lc. Sargon). Two of the finest varieties of this famous cross were used in this mating. The uniform quality of the Miami hybrids has given excellent results. Lc. Miami var. Silver Bowl received an F.C.C. and best Flower of Show at the Third International Orchid Show at Miami 1947. Flowers are large and heavy textured—Flower colors are dark with butter yellow eyes in throat and broad, ruffled lips. Plants are vigorous and free flowering. Habit of double growth spreads flowering season over many months. See picture pages 2 and 5.

Many seedlings have been exhibition quality.

5" —25.00 6" —35.00-50.00

765 **Lc. MOTT H. PARTIN** (C. **Enid var. Magnifica** x Lc. **Hyperion var. Mandarin**)—December-March. This cross has made another fine mid-winter bloomer. C. Enid var. Magnifica has an unusual richness of color. It is a proven parent. Lc. Hyperion var. Mandarin (Lc. General Maude var. Victory x C. Leda) has excellent form and texture with uniform color and dark lip. The latter flowers in February. The results have been most desirable. The flowers are of excellent quality. See also mature plant list, page 19. See photo pages 4-5.

5" —12.50-15.00 5½" —17.50-20.00 6" 22.50-25.00

766 **Blc. SANFORD** (Lc. **Cantara** x Blc. **Francis Lamb**)—Winter-Spring. Lc. Cantara (Lc. Sargon x Lc. Valencia) is an outstanding modern hybrid similar to Lc. Miami, blooming fall to winter. Blc. Francis Lamb is an exceptional Brasso of good form and color which flowers winter to spring. See also mature prices. A seedling of this cross won an Award of Merit at the 1955 St. Petersburg Orchid Show. See color plate **front** cover.

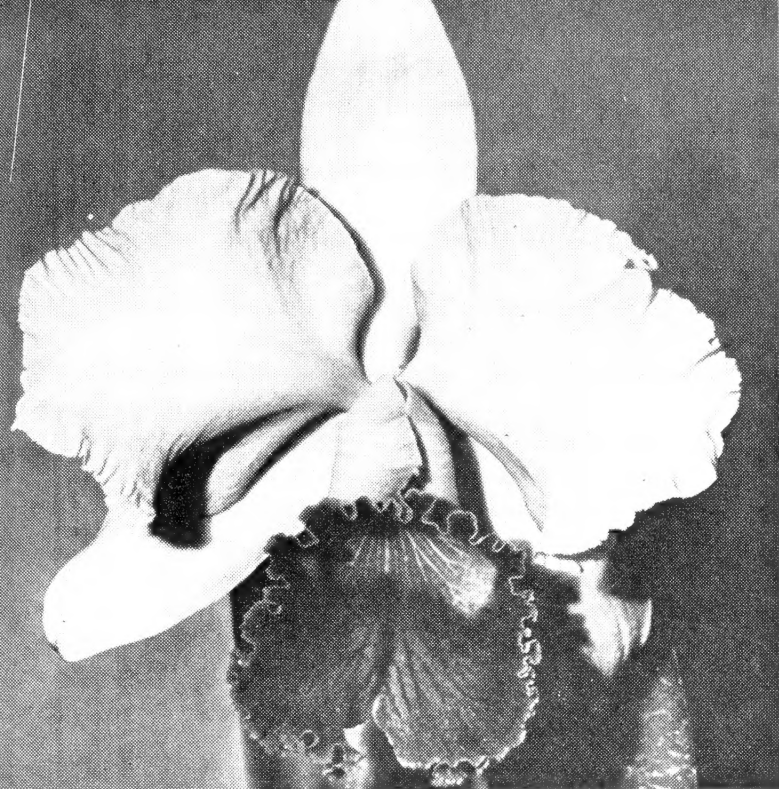
4½" —15.00 5" —20.00-30.00

767—Lc. **WILMOSA** (C. **Monmoss var. Mandarin** x Lc. **Helen Wilmer var. Superba**)
A March-flowering hybrid of remarkable parents. March is the most difficult month in which to produce fine hybrid flowers. C. Monmoss var. Mandarin (C. Monarch var. Colossus x C. Mossiae var. Alberts) was selected from several hundred plants for this mating. It has flowered during March for many years in succession. Flowers are well formed with exceedingly broad petals of dark lavender and heavy dark fluted lip. Lc. Helen Wilmer var. Superba is described under Cross #763. Seedlings flowered have been superb. See color photo page 5.

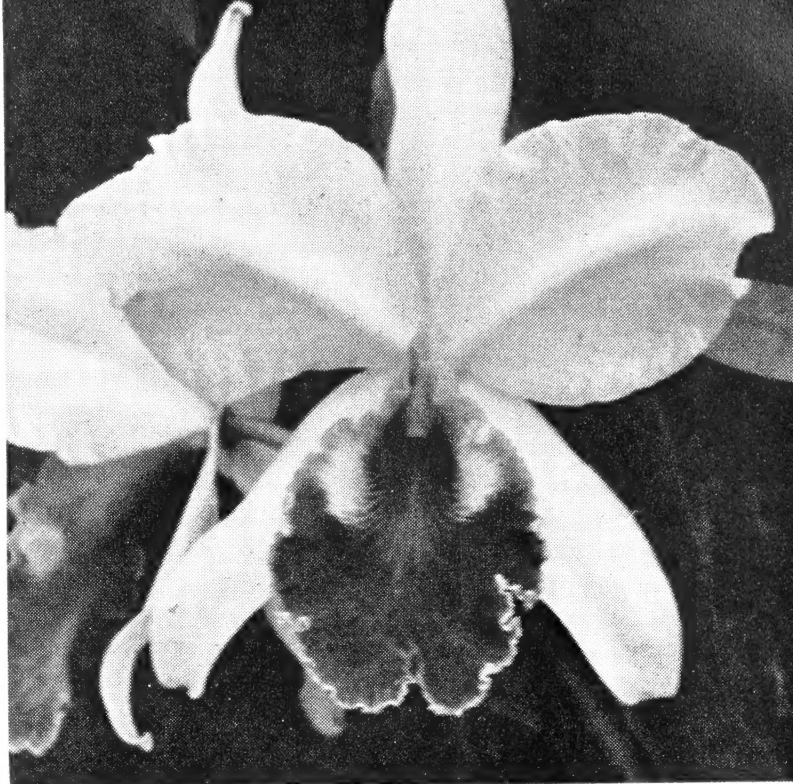
4½" —12.50 5" —15.00 5½" —17.50-25.00

768 **Blc. FLEUR de LIS** (Lc. **Helen Wilmer var. Superba** x Bc. **Imperialis var. Crown**)—January-March. Bc. Imperialis var. Crown is a definite March-flowering hybrid with finest Brasso characteristics. The large bright ruby lip is ruffled with a white edge and the deep yellow eyes in throat set off the beauty of this gorgeous hybrid. Sepals and petals are broad and erect of lavender color. Seedlings flowered have been superb. This is our hybrid which we listed as Blc. Gov. Dan McCarty. See photo page 7.

3½" —7.50 4" —10.00 4½" —12.50 5" —15.00-20.00



#768 Bc. FLEUR DE LIS
(First Flowering)



C. LORANORE ALBA
Parent #777, 987

776 Lc. ROBERTA OFF (C. Enid var Mandarin x Lc. Helen Wilmer var. Superba)—Winter-Spring. This remarkable Enid—one of the finest and darkest—crossed with our fine Wilmer. This cross has produced form, color and floriferousness with strong growth. Especially recommended. Seedlings flowered have been superb.

3½" —7.50 4" —10.00 4½" —12.50 5" —15.00 5½" —17.50-25.00

777 C. JUNE DELIGHT (C. Hardyana alba x C. Loranore alba)—June. A fine dependable June flowering white with purple lip. Desirable and useful—Both parents have good constitution and are free-flowering. See photo above.

3" —5.00 3½" —7.50 4" —10.00

781 Bc. IVY MERKEL (Bc. Imperialis x Lc. Florida) Late fall and winter. A Bras-solaeliocattleya cross to flower from Thanksgiving until after Valentine's Day. Both parents have broad sepals and petals with heavy texture. The flowered seedlings have been large and of rich color with gold areas on the lip.

3½" —7.50 4" —10.00 4½" —12.50 5" —15.00-20.00

782 C. MONA WILLIAMS (C. Hope Dillon alba x C. Priscilla alba var. Snowwhite)—Spring and early summer. The Hope Dillon is free-flowering—clear white with rich, dark lip, yellow areas. The Priscilla we consider the best variety of that hybrid having exceptional form—white with dark lip. See photo page 4.

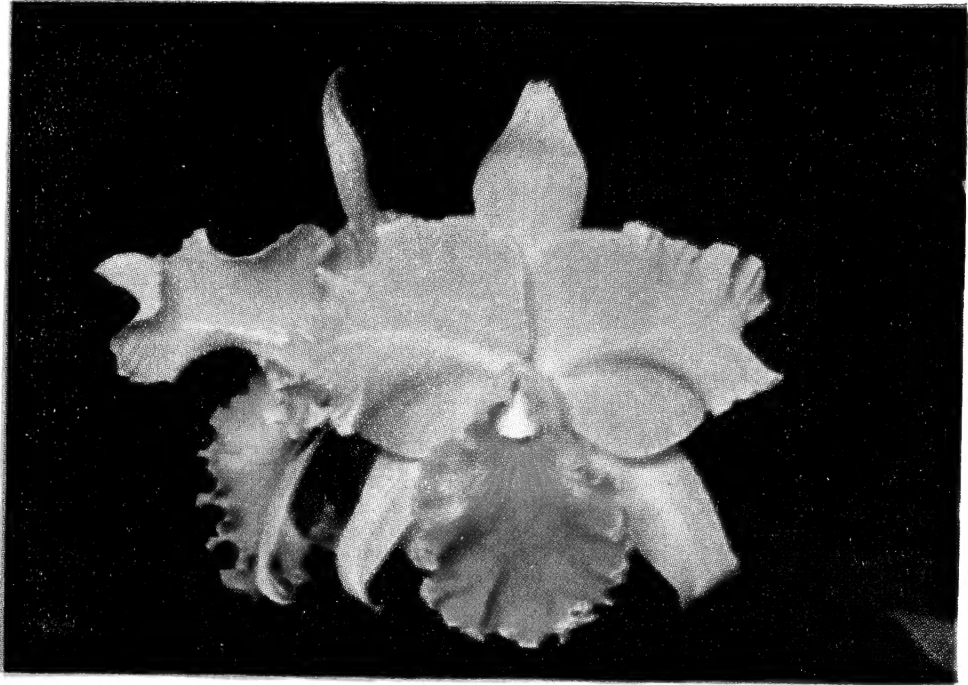
4" —10.00

TIME REQUIRED FOR SEEDLINGS TO FLOWER

The rate of growth depends on the care given. However, under proper conditions, we estimate the following length of time until seedlings reach flowering size:

1¾" —3½ to 4½ years
2¼" —3 to 4 years
2½" —2½ to 3½ years
3" —2 to 3 years

3½" —1½ to 2½ years
4" —1 to 2½ years
5" —flowering size or will flower next growth.



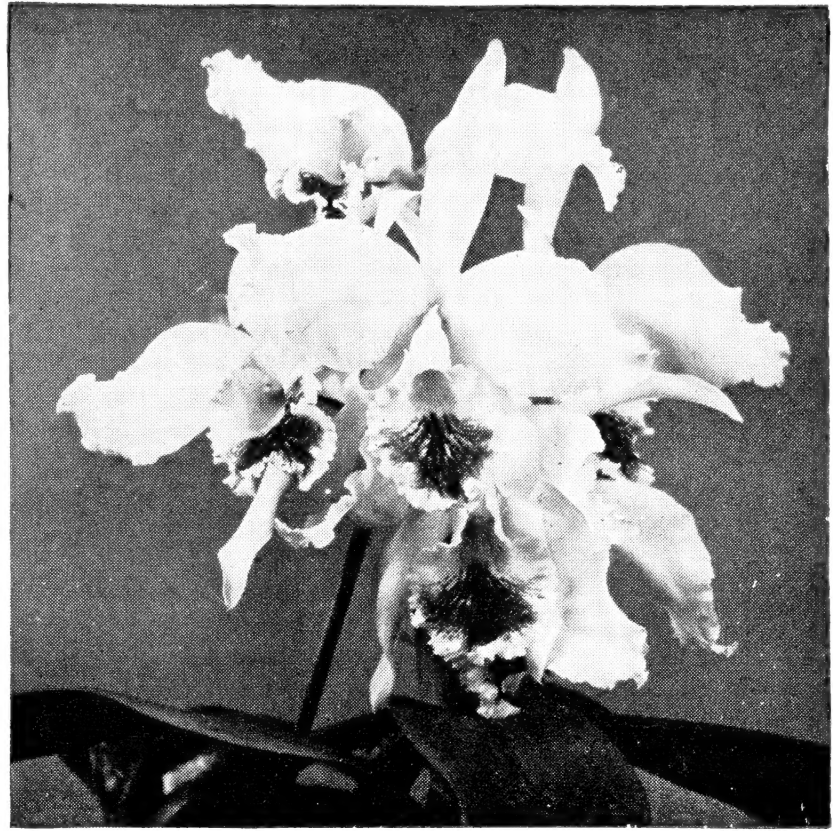
Lc. FLORIDA VAR. ANN



#833 C. ENID ALBA VAR. BRUNO, AM-AOS

C. LABIATA
Var. Charlesworthii A.M.

Parent No. 783, 991, 989



783 Lc. ANITA YOUNG (C. Labiata var. Charlesworthii AM x Lc. Cynthia var. Grandis)—September-November. A white-colored-lip cross to flower at a period when this type is generally scarce. C. Labiata var. Charlesworthii A.M. has clear white sepals and petals with a red lip. Free-flowering. Excellent grower. Lc. Cynthia var. Grandis is a superb, heavy-textured white-colored-lip of superior character. This cross has proven light-controllable for Christmas. See PHOTO ABOVE.

4"—10.00 4½"—12.50 5"—15.00 6"—20.00-25.00

786 Lc. ALICE SHEPHARD (Lc. Florida var. Sunset x C. Mossiae, fine variety)—A very free flowering Spring hybrid cropping in March and April for Easter. A good dark color far superior to regular C. Mossiae.

3½"—7.50 4"—10.00 4½"—12.50 5"—15.00-20.00

787 Lc. EVA NOBLE (C. Ballantineana var. Alberts x Lc. Florida)—Fall. Lc. Florida is one of the finest fall hybrids ever flowered. Flowers are large with very dark sepals and petals with a velvet ruby lip. It should have the characteristic of making two growths a year which will flower separately and thereby spread the season from August thru December. Texture of the flowers is superb. This combined with C. Ballantineana var. Alberts has made a superior fall hybrid.

3½"—7.50 4½"—12.50 5"—15.00-20.00

790 Lc. ANN ALBERTS (C. Ballantineana var. Alberts x Lc. Miami var. Glory)—Fall. Lc. Miami var. Glory is another glorious hybrid of the richest hue and equals the Lc. Florida. This cross has the same excellent qualities of No. 787. These two crosses will replace the average fall hybrids that are so plentiful at this time of year with a superior quality that will always have demand. First flowering seedlings have been superb. See photo page 5.

3"—5.00 3½"—7.50 4"—10.00 4½"—12.50

793 Lc. MARY NOBLE (C. Enid #250 x Lc. Miami)—Various. Another of our very fine Enids—fine color, shape and an unusually large frilled lip, like Brasso-cattleya. A very richly colored Miami was used. Large, fine shape and very heavy texture that distinguishes all our Lc. Miami. This is producing prolific bloomers. Seedlings are fast growers. Fine rich colors.

3½"—7.50 4"—10.00-12.50 5"—15.00-20.00

796 Lc. BRUNO ALBERTS (Lc. Canhamiana var. Splendens x Lc. Florida var. Gold Star)—This cross is similar to #917, but a different Canhamiana was used. Dark lavender. Very free-flowering.

3"—5.00-7.50 4"—10.00-12.50 5"—15.00-20.00

- 797 **Lc. EMMIE LIVINGSTON (C. Clotho x Lc. Miami var. Silver Bowl, FCC-AOS)**—Fall-Winter. This Clotho made with C. Enid x C. Trianae var. Uplands is very fine, large, robust growing, winter-flowering, rich in color, heavy texture. The Lc. Miami is one of the finest of a group that has yielded from 85 to 90% exhibition-type flowers. Variety Silver Bowl is a consistent winter bloomer. This hybrid has flowered around the Christmas holidays. Some will scatter thru the fall and winter.
 3½"—7.50 4"—10.00 4½"—12.50 5"—15.00-20.00
- 799 **Lc. SYMPHONY (Lc. Florida x Lc. Frank J. Lind)**—Fall and winter. Lc. Florida is very much like Lc. Miami with almost the same exceptional qualities. Lind is a very fine hybrid, its main attribute being a perfectly round shape and dark color. It is not free-flowering, but combined with this robust and free-flowering Lc. Florida, this latter dominant parent has produced an ideal flowering result.
 3"—7.50 4"—12.50-15.00
- 807 **Lc. LUMINOSA (Laelia Tenebrosa var. Charlesworthii AM x C. Dowiana var. Aurea)**—Summer and Fall. This outstanding Laelia Tenebrosa, in our collection since 1918, flowering every year, is probably the finest variety ever found, receiving an A.M. from the Royal Horticultural Society of England years ago. Long-lasting unusually heavy-texture and in shape far superior to the type—dark bronze. This re-make of Lc. Luminosa has given a very fine bronze. This Tenebrosa always flowers late winter to spring.
 2½"—3.00 3"—7.50 4"—10.00
- 809 **Lc. MARY NOBLE (C. Enid var. G. West x Lc. Miami)**—Various. Whenever a very fine Enid is used the results almost invariably are good provided the other parent is a tested breeder. We have several Enid stud plants, out of over a thousand Enids, that produce fine results. Influenced mainly by the dominant pollen parent and noteworthy for the abundance of fine flowers produced at various seasons—many winter. Seedlings are producing fine colors.
 3"—5.00 3½"—7.50 4"—10.00-12.50 5"—15.00-20.00
- 810 **Lc. EMMIE LIVINGSTON (C. Clotho var. Rosea x Lc. Miami var. Silver Bowl FCC-AOS)**—Fall thru Winter. The same cross as No. 797. This cross gives such excellent promise that we repeated it with another Clotho. Clear, rosy color with very fine shape—very dark lip—yellow eyes—heavy texture.
 3"—5.00 3½"—7.50 4"—10.00-12.50 5"—15.00-20.00
- 812 **Blc. WAGNETTE (Blc. Nanette alba x C. Mossiae Wageneri)**—Various. The Blc. Nanette used in this and the following hybrids is, in our opinion, the outstanding white Brassocattleya, and of more vigorous constitution and free-flowering than most Bc's. Past results indicate that Blc. Nanette **does not invariably produce pure white** offsprings—some will be lavender and pastels—some with good colored lips and some all white. Quality and size has always been very good. Crossed with a fine white Mossiae, we anticipate superior results. All of these Nanette crosses should be very fine, the object being to prolong the flowering period into various seasons.
 5"—15.00 6"—20.00-25.00-30.00
- 814 **Blc. NANETTE ALBA x C. ELLA MAY SUTTON**—Various. Similar to 812. Generally fall to winter. White—Lavender—White colored lip.
 4"—10.00 4½"—12.50 5"—15.00 6"—20.00-25.00-30.00
 Selected Pastel or White colored lip 35.00-50.00
- 817 **Blc. DAWN ANGELA x C. TRIANAE, A. C. BURRAGE**—Fall and winter, Unusually fine shape, large flowers, varying tones of light to dark lavender.
 3½"—7.50 4½"—10.00-12.50
 5"—15.00 6"—20.00-25.00-30.00
- 821 **Blc. KATHLEEN KOCK (Blc. Nanette alba x C. Barbara Dane var. Perfection)**—Fall. This Barbara Dane is the parent of the marvelous Joyce Hannington. Crossed with Blc. Nanette, the results may confidently be expected to be superior. White—Lavender—White colored lip.
 3½"—7.50 4"—10.00 4½"—12.50 5"—15.00-20.00

- 823 Blc. DOROTHY JONES (Blc Nanette alba x C. White Empress, FCC.)**—Winter and spring. The same Nanette but crossed to flower winter to early spring.
4"—10.00 4½"—12.50 5"—15.00 6"—20.00-25.00-30.00
Selected pastel and white colored lip 35.00-50.00
- 824 Lc. ERNEST B. DANE X C. TITRIANAE.**—Winter. The former is a cross of Lc. Cassandra F.C.C. with Lc. Erica var. Model F.C.C. Very fine form, rich color and heavy texture distinguish this parent. The Erica is well known for its fine shape and color. Titrianae is a glorified, free-flowering Trianae. This hybrid should be of exhibition quality.
3½"—7.50 4"—10.00
- 826 Lc. CLARA SCHREIVER (C. Raphaelaurea x Lc. Jane Dane)**—Fall and winter. This cross has yielded very superior white sepals and petals with a rich colored labellum and gold areas in the throat.
3½"—7.50 4"—10.00-12.50 5"—15.00-20.00
- 827 Lc. ROZILLA (C. Mossiae var. Lyncroft x Lc. Edna Richter)**—Spring. This cross is like a glorious Trimos. Lavender. Flowered seedlings have been excellent.
4"—10.00 4½"—12.50 5"—15.00 5½"—18.00 6"—20.00-25.00
- 829** Same as 827. See above.
- 830 C. TRIMOS (C. Trianae var. Broadview x C. Mossiae var. Capt. Enoch)**—Spring. Lavender.
4½"—10.00 5"—12.50-15.00
- 833 C. ENID ALBA (C. Mossiae Reineckiana Young's var. x C. Gigas F.M.B.)**—Winter. A white colored lip cross made from proven parents. This cross has been widely sought after by all orchid growers for winter flowering (Jan. thru April). The first flowering offspring have taken many prizes at orchid shows. See also mature price list. See color picture page 8.
5"—10.00-12.50-15.00 5½"—15.00-20.00 6"—20.00-25.00
- 834 C. ALICE PEARCE (C. Mossiae Reineckiana Young's var. x Princess Royal alba)**—Spring. White-colored-lip.
5"—12.50-15.00 5½"—15.00-20.00
- 835 C. ALESIA (C. Mossiae Reineckiana Young's var. x C. Dionysius alba)**—Spring. White-colored-lip.
5"—12.50-15.00 5½"—15.00-20.00
- 836 C. HOSHANG (C. Intertexta var. Juliette x C. Trianae var. Broomhills)**—Winter and spring. A white hybrid to flower from Christmas to Easter.
5"—12.50-15.00 5½"—15.00-20.00
- 911 Lc. YULETIDE (C. Clotho (119 strain) x Lc. Florida)**—Fall thru winter. Similar to #810. Florida is unusually dark, heavy-textured and long lasting. A fine Clotho was used to fix the flowering to the Christmas season.
3"—5.00 4"—10.00 4½"—12.50
- 918 Lc. CHARLES MOTT (Lc. Florida x Lc. Momus AM.)**—Fall. A cross of two well-known parents that will give a superior fall hybrid of good growing characteristics. The flowers should be dark and heavy-textured.
3½"—7.50 4"—10.00 5"—15.00-20.00
- 919 Lc. AUTUMN SYMPHONY (Lc. Medon x Lc. Cardinal)**—Various. Lc. Medon is a fine bronze. Lc. Cardinal is a dark henna color. Both are unusual. We anticipate a fine rich bronze or a dark lavender. See photo page 73.
3"—6.50 3½"—8.50
- 920 C. TANGO (C. Ruby x Cattleya A. J. Ruck)**—Spring and summer. C. Ruby has the darkest maroon sepals and petals and labellum one could imagine. It has flowered with us twice a year in December and July for seven years. The parentage is unknown as it was raised in a batch of seedlings from which the label was lost. We have crossed this with the very dark A. J. Ruck. The flowering season could vary, but should be predominantly late spring and early summer. See photos page 15.
3"—5.00 3½"—7.50

- 921 **C. KATHLEEN (C. Snowsong #8 x C. Lady Joan var. Model)**—Fall to winter. C. Snowsong #8 is one of those gems of the albino crosses that gives extremely heavy texture and free-flowering characteristics seldom seen in white. As high as 8 and 10 flowers to a spray averaging 4 to 5 inches across. Flowers have deep yellow eyes with snow-white glistening sepals and petals. The C. Lady Joan var. Model is a fine shaped flower taken from this well-known Christmas-flowering white. The combination should give medium-sized white flowers of heavy texture with a freedom of bloom and a good season.
3"—5.00 4"—10.00 5"—15.00-20.00
- 932 **C. EDITH BARRUS (C. Princess x C. Ruby)**—Fall and winter. C. Princess is a large, bold flower of heavy texture that flowers regularly during December. Color is uniform lavender and solid in sepals and petals while the labellum is deep rose and ruffled. Combined with C. Ruby (described in #920) should give a fine dark flower at a desirable season. **See photo page 15.**
2½"—3.00 3"—5.00 4"—7.50-10.00 5"—12.50-15.00
- 933 **Lc. SALLY BAKER (Lc. Florida x Lc. Broadicea var. "The Queen")**—Fall. This cross should yield the large, heavy-textured, dark maroon-purple flowers that command first attention.
3"—5.00 4"—10.00 5"—15.00-20.00
- 940 **Lc. DIXIE (Lc. Florida var. Royal x Lc. Miami var. Silver Bowl FCC-AOS)**—September-December. See #797 for description of Lc Miami var. Silver Bowl. Lc. Florida has extremely dark sepals and petals, bright maroon lip and fine form.
3½"—7.50 4"—10.00
- 950 **L. PURPURATA VAR. ORCHID KNOLL X C. ENID ALBA VAR. MILDRED**—Spring. White with colored lip. This cross is a combination of 3 famous breeders: L. P. var. Orchid Knoll; Mossiae Rein. Young's var.; Gigas F.M.B. Some will be tinted lavender on sepals and petals. It should make a cross superior to even the best Canhams and give a more scattered flowering season. These seedlings are robust growers and as all the parents are the most productive of all the species they will be very free-flowering.
3½"—7.50 4"—10.00 4½"—12.50 5"—15.00
5½"—18.00 6"—20.00-25.00
- 951 **Lc. EMBER (C. Ruby x Lc. Florida var. Nugget)**—Fall. See picture and description of C. Ruby under # 920. This Lc. Florida had extremely large golden areas deep in the throat of the labellum. **See photo page 15.**
3½"—7.50 4"—10.00 5"—15.00
- 967 **Lc. ACQUITANIA (Lc. Britannia alba x C. Enid alba var. Mildred)**—Various. Both parents are of exceptional quality, very free-flowering, and have fine shape with broad petals. The sepals and petals are a glistening white and the lips dark purple.
3"—5.00 3½"—7.50 4"—10.00
- 971 **C. MARY MOTT (C. Edithiae var. Alberts x C. Oenone alba var. Easter Gem)**—Spring. Medium-sized white. Multiple annual growths. Free-flowering.
3"—5.00 3½"—7.50 4"—10.00
- 973 **C. SNOW PRINCE (C. Edithiae var. Alberts x C. Cameo var. Easter)**—Spring. This Edithiae (tetraploid) is one of the best white breeders. The progeny of this plant are invariably strong growers and break and flower freely. A fine Easter white is anticipated.
3"—5.00 3½"—7.50
- 978 **C. ESTELLE ALBA (C. Cowaniae x C. Edithiae var. Alberts)**—May to July. Similar to #973 but expected to flower later.
3"—5.00 3½"—7.50 4"—10.00
- 981 **C. ENID ALBA (C. Mossiae Reineckiana Young's var. x C. Gigas F.M.B.)**—Winter. Same as #833. **See photo page 8.**
3"—5.00 3½"—7.50 4"—10.00 4½"—12.50
- 982 **C. MONMOSS VAR. MANDARIN X Lc. WILBOROUGH VAR. HELEN FCC-AOS**—February-March. Exceptional shape. Dark lavender with maroon lip.
3"—5.00 4"—10.00



Bc. CLARA ALBERTS
Parents #988, 1033

- 986 **W. WARNERI VAR. ARDENHOLM X C. DUPREANA**—May, June. This cross will produce many dark flowers at a desirable period. This variety of Warneri is a proven stud plant and the Dupreana produces fine, dark flowers with red velvet lips.
3"—5.00
- 987 **C. LORANORE ALBA X C. MOSSIAE REINECKIANA, YOUNG'S VARIETY.** A late spring white-colored lip that should be gorgeous. See photo page 7.
3½"—7.50 4"—10.00
- 988 **Lc. FLORIDA VAR. COMPACTA X Bc. CLARA ALBERTS VAR. ROTUNDA**—Fall. Two very fine varieties, rich dark colored, round shape, robust-growing, and free-flowering. We expect this cross to have large flowers of round shape and exceptionally large, frilled lips of intense color.
2½"—4.00 3"—6.00 3"—10.00
- 989 **C. LABIATA VAR. CHARLESWORTHII AM X C. ENID ALBA VAR. MILDRED**—Fall, winter. This Labiata is a fine white variety with a purple area on the lip. Desirable also for its unusually free-flowering and robust-growing characteristics. Crossed with our fine Enid alba we are confident that we have attained a remarkably fine cross. This parentage should give a controllable hybrid. Normal flowering would be fall to winter. See photo page 9.
4"—10.00
- 999 **Lc. ALICE SHEPHARD (Lc. Florida var. San Jose x C. Mossiae var. Mandarin)**—Fall and winter. Lc. Florida var. San Jose is a very rich-colored flower with ruby ruffled lip and golden yellow eyes in throat. Fine texture and form. The C. Mossiae var. Mandarin has been pronounced superb by all who have seen it in flower. Deep-colored lavender sepals and petals with very dark ruffled lip. The flower is very erect and the top sepal is perfectly straight (unusual in Mossiae). Texture and form are of exhibition quality.
2½"—3.00 3"—5.00

- 1000 **Lc. LOIS PARTIN (Lc. Jacquinetta var. Fort x Lc. Florida var. Alberts)**—Fall and winter. Lc. Jacquinetta var. Fort is a famous breeder of fine offspring. It seems to impart rich coloring and a freedom of flowering on each growth no matter when growth is made. Thus its offspring have given flowers around the seasons. Lc. Florida var. Alberts has excellent form, texture and dark ruby or maroon lips and sepals and petals of glowing maroon-purple. Both are tops as growers.
 $2\frac{1}{2}''$ —3.00 $3''$ —5.00 $3\frac{1}{2}''$ —7.50
- 1001 **Lc. O'DELL MORGAN (Lc. Sarasota x Lc. Jacquinetta var. Helena)**—Fall, winter. When mature, should bloom on each new growth. A free, easy grower. Freedom of bloom, should have an abundance of flowers.
 $2\frac{1}{2}''$ —3.00 $3''$ —5.00 $3\frac{1}{2}''$ —7.50
- 1027 **(Lc. REX HARLEQUIN X C. KING GEORGE) X Lc. CARDINAL** — Various. First parent had yellow sepals and petals with ruby lip. See picture of Lc. Cardinal. Page 73.
 $2\frac{1}{2}''$ —4.00
- 1030 **Lc. AENEID (C. Fabianid x Lc. Britannia alba)**—Various. Lc. Aeneid is a remake of an excellent white colored lip cross that has predominantly ruby lip and yellow eyes. Very free-growing and free-flowering. Can bloom at any season. #1022 is the same cross.
 $2\frac{1}{4}''$ —2.00 $2\frac{1}{2}''$ —3.00
- 1033 **Lc. MIAMI VAR. JANET X Bc. CLARA ALBERTS**—Fall. Lc. Miami var. Janet, one of finest Miamis, with solid color in sepals and petals almost matching ruby lip. Bc. Clara Alberts one of finest of fall Brassos. Large, bold flowers. This will certainly be an outstanding fall Brassolaeliocattleya hybrid. See photo page 13.
 $1\frac{3}{4}''$ —2.00
- 1037 **C. CAMEO X Bc. NANETTE ALBA**—Winter-spring. Cattelya Cameo flowers at Easter and Nanette in fall. Some will come lavender and pastel shades while some should be white.
 $2\frac{1}{4}''$ —2.00
- 1038 **C. HEATHERWOOD X Lc. MIAMI VAR. GLORY**—Fall. C. Heatherwood flowers in late August. This particular plant used had extremely heavy texture. Miami var. Glory has proven a superb breeder. See photo page 5.
 $1\frac{3}{4}''$ —1.50
- 1044 **Lc. WILBOROUGH FCC AOS X C. TITRIANAE VAR MANDARIN FCC AOS**—December-February. Another Christmas flowering hybrid that should be had to beat for color, quality and timing. See photo page 17.
 $2\frac{1}{2}''$ —5.00
- 1054 **C. BEMBRIDGE ALBA X C. ENID ALBA VAR SUPERBA.** A mid-winter white with colored lip that will have freedom of flowering with a darker lip than Enid alba.
 $2\frac{1}{2}''$ —3.00
- 1087 **Lc. LUSANDA X Lc. CARDINAL**—Various. A cross that will produce vivid art shades. Flowers of medium size. See photo page 73.
 $2\frac{1}{2}''$ —4.00
- 1088 **Lc. LUSANDA VAR. BRONZE KING X Lc. CARDINAL**—Various. Similar to #1087 but with a different Lc. Lusanda.
 $1\frac{3}{4}''$ —2.00
- 2008 **Lc. LUSANDA VAR. STRAW X Lc. CARDINAL.**—Same as 1087 and 1088 only a different Lusanda was used.
 $1\frac{3}{4}''$ —2.00
- 2010 **Bc. LYRANDA X Slc. ROMONA**—Fall and winter. A yellow crossed with a Sophro red. A great riot of color mixtures can be expected from this hybrid.
 $1\frac{3}{4}''$ —3.00
- 2012 **Lc. DINARD X (C. Remy Cholet x Fabia) x C. Titrianae var. Noel** — Both parents have fine dark color with yellow eyes in throat. The labellum of both parents is very frilled with dark crimson color.
 $1\frac{3}{4}''$ —1.50

2013 L. TENEBROSA VAR. CHARLESWORTHII AM-RHS X Lc. HENRIETTA J. DANE VAR. GOLD DUST—This should make a most outstanding hybrid with many yellows and some bronzes. These seedlings will not have spade lips as no C. Bicolor has been used in the previous parentage.

1 3/4"—3.00

2021 Lc. HENRIETTA J. DANE VAR. JOAN X Lc. LUMINOSA AUREA. Both are fine yellows that will not give spade lips. Both parents have ruby labellums. This hybrid should make a rare Spring flowering yellow of distinction.

1 3/4"—3.00

2023 C. TITRIANAE VAR. MANDARIN FCC-AOS X C. TRIANAE VAR. GRAND MONARCH FCC RHS—This will make a fine late Fall flowering hybrid to come in around Christmas and New Years. See photograph page 17.

1 3/4"—2.00

2024 Lc. JANE DANE X C. MOSSIAE REINECKIANA YOUNG'S VAR.—Should be a good Spring white with colored lip.

1 3/4"—2.00



C. RUBY

Parent #920, 932, 951



#728 Lc. NELLIE COHEN
 (Lc. Canhamiana var. Alberts X C. Ballantineana)
 See page 20

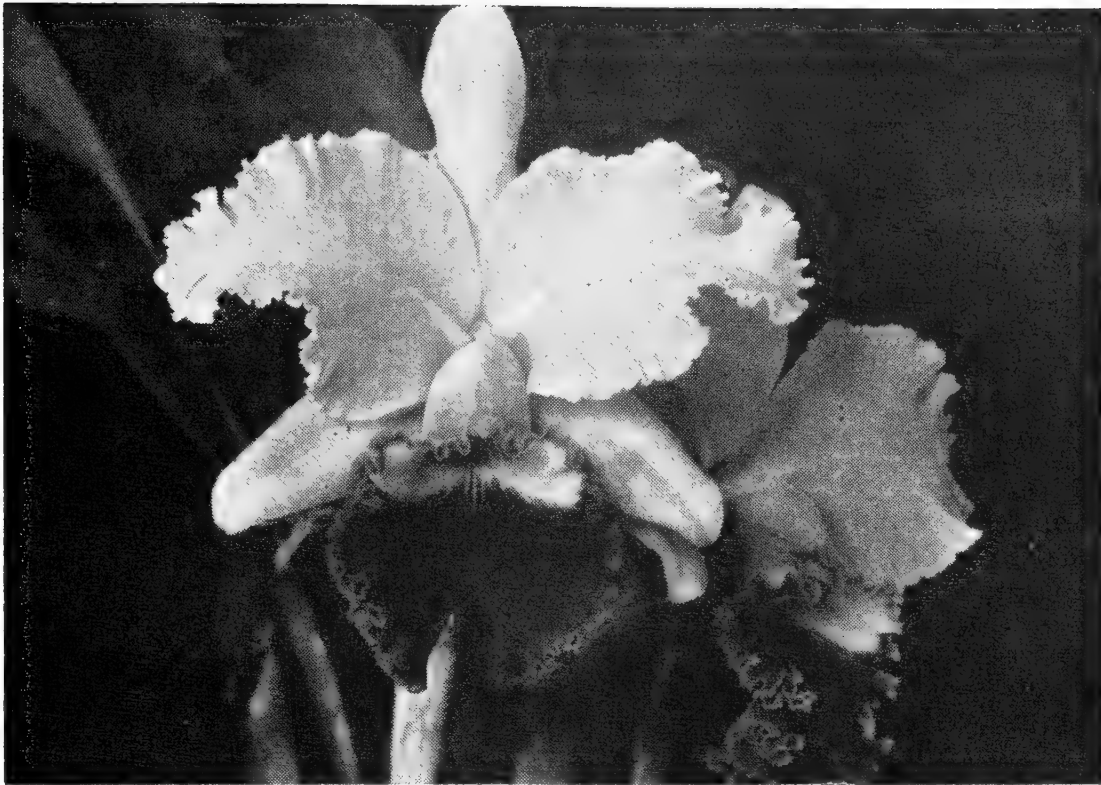
Lc. CANHAMIANA, ALBERTS' VARIETY

The plant of Lc. Canhamiana, Alberts' variety is unusually robust, bears large flowers every spring, medium dark lavender with a very large, intensely dark lip. Alberts' variety is not to be confused with our previous strain of Lc. Canhamiana alba.

In 1920 we grew about 2000 plants of Lc. Canhamiana from seed. At that time they were considered above average, but lacked shape that would meet present-day requirements. Anticipating this, we chose seven of the most outstanding plants, all of which were large and of good shape with fine flowers similar to the glorious dark flowers of fall hybrids. Out of the seven, six proved absolutely worthless for breeding, and the seedlings were discarded upon maturity. However, the seventh plant yielded such excellent results that it was tested again on three different crosses and again the results were outstanding. This particular parent is Lc. Canhamiana, Alberts' variety. The record for flowers, so far, is 28 blossoms on one Lc. Nellie Cohen in a 7" pot, one of the above crosses.

In recent years we have used Lc. Canhamiana, Alberts' variety as a parent breeder. Regardless of the other parents used, the offspring flower late March, April and May. They are robust growers and free-flowering upon maturity. The results are the finest of the modern spring flowering hybrids.

- 917 Lc. BRUNO ALBERTS (Lc. Florida var. Gold Star x Lc. Canhamiana Alberts' variety)
 3½"—7.50 4"—12.50
- 975 Lc. MEM. H. A. TRACY (C. Hardyana Alberts' variety x Lc. Canhamiana Alberts' variety)
 3½"—7.50
- 990 Lc. SWANEE RIVER (Lc. Miami var. Louis XV x Lc. Canhamiana Alberts variety).
 3½"—7.50 4"—12.50



C. TITRIANAE VAR. MANDARIN FCC-AOS

Parent # 1044-1046-2023

- 992 Lc. SWANEE RIVER (Lc. Miami var. Superba x Lc. Canhamiana Alberts variety).
 2½" —4.00 each, 3 or more 3.75 each
 3½" —7.50
- 993 Lc. SWANEE RIVER (Lc. Miami var. Anton x Lc. Canhamiana Alberts variety).
 2½" —4.00 each, 3 or more 3.75 each
 3½" —7.50
- 1012 Lc. CANHAMIANA ALBERTS VARIETY X C. TITRIANAE VAR. COMET.
 2½" —4.00 each, 3 or more 3.75 each
- 1016 C. DUPREANA VAR. GLORIANA X Lc. CANHAMIANA ALBERTS VARIETY.
 1¾" —2.50 each, 3 or more 2.25 each
 2½" —4.00 each, 3 or more 3.75 each
- 1046 C. TITRIANAE VAR. MANDARIN F.C.C.-A.O.S. X Lc. CANHAMIANA ALBERTS VARIETY
 1¾" —2.50 each, 3 or more 2.25 each
 2½" —4.00 each, 3 or more 3.75 each
- 1093 Lc. MOLOCH X Lc. CANHAMIANA ALBERTS VARIETY
 1¾" —2.50 each, 3 or more 2.25 each
- 2015 Lc. CANHAMIANA ALBERTS VARIETY X Lc. FRANK J. LIND VAR. BOYNTON
 1¾" —2.50 each, 3 or more 2.25 each
- 2018 Lc. CANHAMIANA ALBERTS VARIETY X Lc. PRINCESS MARGARET JEWEL'S VARIETY—A better cross would be hard to make.
 1¾" —2.50

SPECIAL OFFER

One flowering size lavender Cattleya (large corsage flowers) plant with buds \$8.95 postpaid U.S.A. Not available 3 weeks before Christmas, Easter or Mother's Day.

MATURE CATTLEYA HYBRIDS

Note: All of the following plants are flowering size. The price is determined by the number of bulbs and the size of the plant, and the number of sheaths. Plants will be sent in sheath when ordered just prior to flowering time. We do not quote mature plants by pot sizes as we think this is misleading due to the different growth habits of the varieties. For instance, a plant with long rhizomes might have only 4 bulbs in a 5-inch pot where a plant with short rhizomes might have 6 bulbs in the same size pot. **Minimum price is for 4-5 bulb plant.** We have additional varieties not listed. Write us if there is something special you want. See also the Connoisseur's List, Page 19.

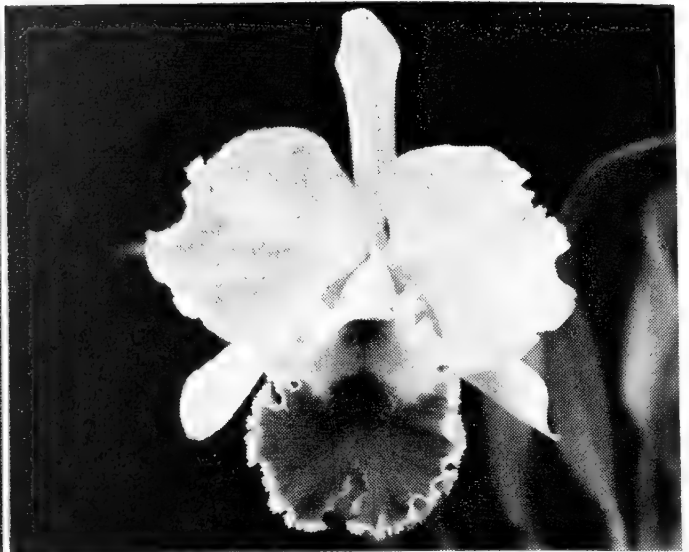
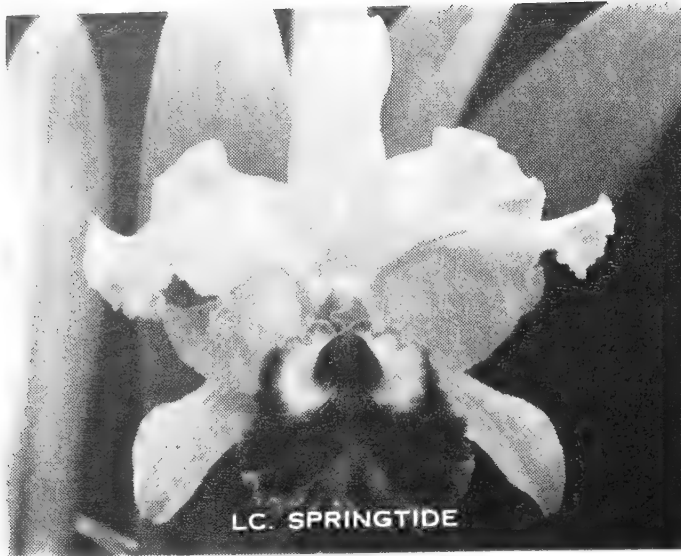
- 22 **C. MARCELIANA (C. Ballantineaea x C. Trianae)**—October-December. Fine form, closed throat, dark purple lip, light lavender sepals and petals. A fine free-flowering Cattleya cross made by Mr. Alberts to lengthen the season of Ballantineana.
12.50 — 15.00 — 18.00 — 20.00
- 25 **C. BALLANTINEANA VAR. ALBERTS (C. Trianae var. Edgar Knight x C. Gigas)**—September-November. Deep purple throat, rosy-lavender sepals and petals. Free-flowering.
12.50 — 15.00 — 18.00 — 20.00
- 90 **C. MONMOSS (C. Monarch x C. Mossiae)**. Lavender—Spring
7.50 — 10.00 — 12.50
- 98 **C. ARDMORE (C. Enid x C. Mossiae)**—Spring. Lavender.
10.00 — 12.50 — 15.00
- 100 **Lc. CANHAMIANA ALBA (ALBERTS STRAIN) (L. Purpurata var. Orchidknoll x C. Mossiae Reineckiana Young's var.)**—May-June. Limited number. Conceded to be one of the finest strains of this famous white-colored-lip cross.
25.00
- 212 **Lc. BRITANNIA ALBA (Lc. Canhamiana Alba x C. Gigas F.M.B.)**—Fall to spring. An outstanding white colored lip strain of Mr. Alberts'. Sepals and petals satin white. Lip very dark often with white ruffle.
12.50 — 15.00 — 20.00 — 30.00 — 35.00
- 489 **C EUCHARIS ALBA (C. Cowaniae x C. Mossiae Wageneri)**—Spring white.
12.50—15.00—20.00
- 600 **Lc. RED VELVET**. July-August. Beautiful large flowers with reddish lip. Robust grower.
12.50 — 15.00 — 20.00 — 25.00
- 707 **Lc. MOLOSS (Lc. Moloch x C. Mossiae)**—Spring. Lavender.
10.00 — 12.50 — 15.00
- 724 **Bc. IMPERIAL (Bc. Imperialis x C. Hardyana)**—late fall to early spring. Large flowers, deep sepals and petals with crimson Brasso lip.
10.00—12.50—15.00—20.00—25.00—30.00
- 727 **C. CAMEO ALBA (C. Cybele alba x C. Mossiae Wageneri)**—Easter. A fine white of vigorous character.
15.00—20.00—25.00—30.00—35.00—40.00
- 758 **C. NIMBUS ALBA (C. Cybele x C. Cowaniae)** a Spring flowering pure white with yellow throat. Good size flowers and texture.
12.50—15.00—17.50—20.00—25.00
- 763 **Lc. WILDINE (Lc. Geraldine Thompson var. Maxima x Lc. Helen Wilmer var. Superba.)** See description page 6. See photo pages 3-4. Following are flowering size. Colors are rich.—November thru March.
5"—20.00-30.00 5½"—25.00-40.00 6"—27.50-50.00

- 765 Lc. MOTT H. PARTIN (C. Enid var. Magnifica x Lc. Hyperion var. Mandarin.)** December-March. See description page 6 and photo pages 4 and 5. Following are flowering size. Fine form.
5"—20.00-30.00 5½"—25.00-40.00 6"—27.50-50.00
- 766 Blc. SANFORD (Lc. Cantara x Blc. Francis Lamb.)** Winter-spring. See description page 6. Outstanding dark colors. Received Award of Merit at Jan. 1955 St. Petersburg Orchid Show. See color plate on front cover.
5"—20.00-30.00 5½"—25.00-40.00 6"—27.50-50.00
- 800 C. OENONE ALBA (C. Mossiae Wageneri x C. Labiata alba var. Rogersi)**—Spring and summer. This cross was made from two extremely fine plants. The C. Mossiae var. Wageneri was picked from several hundred seedlings raised from crossing two fine types. The Labiata alba is probably the finest one in existence. It gives this cross unusual keeping qualities. Flowers have been left on the plant for 6 weeks without spotting or deteriorating. Seedlings have the same keeping qualities as the parent. Flowers are medium size with 2 or 3 stem. They are extremely prolific bloomers.
7.50 — 10.00 — 12.50 — 15.00 — 20.00
- 801 Lc. ROCHELLE (C. Mossiae var. Rochelle x Lc. Kismet)**—This is an ideal spring flowering cross. Improved over straight C. Mossiae. Lc. Kismet has the background of General Maude which has made so many fine hybrids.
7.50 — 10.00 — 12.50 — 15.00
- 833 C. ENID ALBA**—January-March. A favorite white-colored lip. Easy grower. Free flowering. See color plate page 8.
10.00 — 15.00 — 18.00 — 22.50
- Lc. MOSSADIN (Lc. Mossiae x Lc. Katadin)**—Spring. Lavender.
10.00 — 12.50 — 15.00
- Lc. JACQUINETTA (C. Empress Frederick x Lc. Lustre)**—Fall. Lavender, with some having splashes of darker color on the "wing tips."
10.00 — 12.50 — 15.00
- Lc. GERALDINE THOMPSON (Lc. Jacquinetta x C. Trianae)**—Fall. Lavender.
12.50 — 15.00 — 18.00 — 22.50

MATURE CATTLEYA HYBRIDS

For the Connoisseur

- 443 Lc. RICHLEAU (Lc. Hilary FCC RHS x Lc. Ishtar FCC RHS)**—Very dark.
3-4 bulbs—25.00-35.00
- 308 Lc. MEM. ERNEST B. DANE (Lc. Cassandra FCC x Lc. Hilary, FCC)**—Very dark.
3-4 bulbs—25.00-35.00
- 567 Blc. ESTORY (Blc. Nestor x Lc. Hilary FCC RHS)**—large flowering Brasso (FALL) from dark to medium lavender.
5½"—18.00-25.00 6"—27.50-35.00
- 594 Blc. DAWN GLOW (Blc. Dawn Angela x Lc. Hilary FCC RHS)**—a very dark FALL hybrid with excellent parents.
5½"—20.00-25.00 6"—30.00-40.00 7"—50.00
- 603 Lc. HAMILTON MASON (C. Maggie Raphael x Lc. Ishtar FCC-RHS)**—Flowers of this cross have been show quality—dark Fall hybrid.
5½"—20.00-25.00 6"—30.00-40.00 7"—50.00



Bc. CLIFTONII VAR. MAGNIFICA FCC-RHS

Bc. CLIFTONII VAR. MAGNIFICA, FCC-RHS—Spring. See picture above. These plants are actual divisions of the Cliftonii which won the FCC from the RHS in England many years ago, and is still considered one of the finest spring Brassocattleya crosses.

4-5 bulbs—35.00 6-8 bulbs—50.00

Bc. IMPERIALIS (Bc. Cliftonii var. Magnifica x C. Mossiae, fine var.)—Very similar in appearance to Cliftonii. Spring.

4-5 bulbs—25.00 5-6 bulbs—35.00-40.00

Lc. SPRINGTIDE (Lc. Red Oak x C. Dupreana). One of the darkest spring and early summer hybrids. See picture above.

4-5 bulbs—25.00 6-8 bulbs—35.00

C. PERCIVALIANA VAR. ALBERTS—Nov.-Dec.

4-5 bulbs—25.00 5-6 bulbs—35.00-40.00

C. GIGAS ALBA F.M.B. (white colored lip)

4-5 bulbs—50.00

604 Blc. GRANDEUR (Blc. Henry Stock x Lc. Ishtar FCC RHS)—All the name implies—dark Fall hybrid.

5½"—20.00-25.00 6"—30.00-40.00 7"—50.00

620 Blc. LYMAN C. HALL (Lc. Ernest B. Dane x Bc. Princes Patricia)—Both perfect parents. From dark to medium, fall hybrid. Some will flower thru Winter.

4"—15.00

717 Lc. MEM. H. A. TRACY (Lc. Canhamiana Alberts var. X. C. Hardyana)—April-May.

1 lead plant, 3-4 bulbs—20.00 With sheath—25.00

2 lead plant, 5-7 bulbs—30.00 With sheath—40.00

728 Lc. NELLIE COHEN (Lc. Canhamiana Alberts Var. x C. Ballantineana Alberts var.) April-May. See photo page 16.

1 lead plant, 3-4 bulbs—20.00 With sheath—25.00

2 lead plant, 5-7 bulbs—30.00 With sheath—40.00

735 C. BRUNO ALBERTS (C. Souvenir of Louis Sander x C. Joan Manda)—Free flowering, white with gold throat. Large flowers. Vigorous grower. Nov.-Jan.

4-5 bulbs—25.00 5-6 bulbs—35.00 6-8 bulbs—50.00

SPECIAL ★ PLANTS SELECTED WHEN IN FLOWER ★

We have many other fine varieties not listed. Write us if there are special hybrids you wish. We also offer plants selected in flower, priced at \$5, \$7.50 and \$10 per bulb. No less than 3 front bulbs will constitute a plant. We prefer to establish this division for 3 months before shipping. Please state color preference. **Please note that we do not sell back bulbs.**

Bargain Collections

FLOWERING SIZE PLANTS

These collections are of outstanding value and are especially recommended for beginners. All plants are flowering size, some in bud or sheath, and are good hybrids of our choice. Will be selected for flowering in different seasons of the year. **All plants established in clay pots.** Individual prices per plant range from \$7.50 to \$25 each. All plants named varieties.

COLLECTION #1 — 4 plants (minimum value \$40)..... \$25.00

- 2 lavender Cattleya hybrids
- 1 white-colored-lip Cattleya hybrid
- 1 Spray Orchid

COLLECTION #2 — 6 plants (minimum value \$75)..... \$50.00

- 4 different lavender Cattleya hybrids
- 1 white or white-colored-lip Cattleya hybrid
- 1 Spray Orchid

COLLECTION #3 — 10 plants (minimum value \$100)..... \$75.00

- 6 different lavender Cattleya hybrids
- 2 white colored lip Cattleya hybrids
- 1 pure white Cattleya hybrid
- 1 Spray Orchid

COLLECTION # 4—3 Cypripediums (minimum value \$32.50) \$25.00

- 1 yellow or brown
- 1 green
- 1 reddish bronze or purple

SEEDLINGS

Here is an economical way to build up your collection with fine hybrids. Our time-tested seedlings are now flowering and taking prizes in orchid shows. Our quality is unsurpassed. These are selected from the stock listed in this catalog and are all named and guaranteed to give satisfaction.

Hybrid Seedling Collection # 5 \$25 postpaid Cont. USA

- 6 hybrid seedlings 3" pots. (Value \$30 plus packing and postage).

Flowering Size Seedling Collection No. 6 \$16.50 postpaid Cont. USA

- 2 fine hybrid Cattleyas in 4" pots to flower on next growth. Regular \$10 each, **Two for \$16.50** including packing and postage. Our selection.
- 1 lavender, 1 white-colored-lip.

COMBINATION COLLECTION #7..... \$27.50

- 2 mature hybrid Cattleyas lavender
- 2 unflowered seedlings in 4" pots to bloom on next growth (1 lavender, 1 white-colored-lip)
- Our selection. Value \$35. Sent railway express, charges collect.

CYPRIPEDIUMS

Lady Slipper Orchids



SELENIPEDIUMS



C. MAUDIAE VAR. MAGNIFICIA FCC-RHS

The mottled leaf Cypripediums are generally considered warm growing types. However, we have now proven that many of the so called cool types (plain green leaves) if hybrids with at least one parent of the warm type present will grow well in a warm climate. All of the Cypripediums listed herewith have been grown for at least 10 years in climates like Florida. Cypripediums are happy companions with Cattleyas or Phalaenopsis as well as other genera. They like to be grown moist as do Phalaenopsis and with about the same light conditions. A slight drying out between waterings is beneficial but be sure to water when osmunda appears to be drying out. We find the light brown wooly osmunda makes an excellent potting media—dusting with bone meal has proven beneficial—pot less firm than cattleyas with the fiber vertical. Syringe plants during summer with fine mist under leaves and on staging. Be sure plants do not have water in crowns at nite fall—especially when buds are setting as they will rot. Keep humidity between 60 and 65% if possible. Nite temperatures of 60 to 65 with day temperatures 70 to 80. Higher day temperatures in summer are not harmful if humidity is high. Cypripediums quoted are all flowering size in 4 to 6 inch pots. Please give at least one alternate choice with each selection.

- C. ATHOL HOUSE.** Pouch brownish yellow—petals greenish brown and spotted 17.50-20.00
- C. AUREM VIRGINALIS.** Yellow and brown, white dorsal..... 7.50-15.00
- C. AUROBE.** Brown and yellow. Dorsal white with red streak..... 7.50-15.00
- C. CALLOSUM-SANDERAE.** Green and white..... 12.50-15.00
- C. CARDINAL MERCIER AM RHS** (Lathamianum x ?) dorsal purplish red—
petals and pouch red..... 25.00

- C. **DERVISH** (Bordube "Eau de Nil" x Grace Darling) dorsal green with large white margin—pouch and petals greenish yellow with brown overtone. 15.00—17.50—20.00—25.00
- C. **ETTYI VAR. QUEEN OF ITALY**—a medium sized white flower, single division 20.00
- C. **FRAU IDA BRANDT** (Io Grande x Youngianum) free-flowering—often two flowers per stem, easy grower—mottled leaf—purple and white fls..... 15.00—20.00
- C. **GARIBALDI** (Bronzino x Earl of Tankerville)—Dorsal spotted with green, base has white margin—pouch and sepals red..... 7.50-10.00
- C. **GOULTENIANUM ALBUM** (Callosum sanderae x Curtisii Sanderae) same color and size as C. Maudiae Mag. except petals are pointed downwards..... 15.00
- C. **GOWERIANUM VAR. SUPERBENS** (Curtisii x Lawrenceanum)..... 10.00
- C. **HARRISIANUM SUPERBUM VAR. G.S. BALL FCC**
Dorsal sepal is mahogany red with white margin. Sepals and petals maghogany red, very beautiful flower single division 30.00
- C. **INGRESS** (Atlantic x Leemanii Ducis) 17.50
- C. **LAWRENCEANUM** (Species)—mottled leaf—dorsal green at base with background veined in purple—pouch purple, brown and green 10.00 to 12.50
- C. **LAWRENCEANUM VAR. HYEANUM**—one of the famous rare parents of Cyp. Maudiae. The Albino form. Same coloring as Maudiae, single division 75.00
- C. **MADILON** (Delenati x Mem. J. H. Walker)..... 12.50
- C. **MAUDIAE VAR. MAGNIFICUM FCC-RHS** (Callosum var. Sanderae x Lawrenceanum var. Hyeanam). One of the finest of the mottled leaf warm house Cyps. Dorsal beautiful white background with Nile green veins, pouch and petals green. Often flowers twice a year 12.50—15.00—18.00
- C. **MADAME BARLEY**. Red-brown pouch. White, red and green striped dorsal...7.50
- C. **MME. MARTINET** (Delenatii x Callosum sanderae) beautiful shell pink. new 17.50
- C. **NITENS**. Yellow and brown. Heavily spotted dorsal..... 7.50—15.00
- C. **NOBLESSE** (Cardinal Mercier x Nesta) white dorsal with purple spots, petals and pouch brown mahogany with yellow cast..... 18.00—30.00
- C. **NOEL HARDY** (Nirvana x Nitens-Leeanum) dorsal white spotted large flower—yellow—green—brown..... 20.00—25.00
- C. **OAKES AMES** (Ciliolare x Rothschildianum) an old favorite flower purple veins and white background..... 12.50
- C. **ORION**—very unique flower with spots in bar formation of chocolate maroon. Base color of flower white, single division..... 15.00
- C. **P. B. HAYWORTH**—highly mottled leaf..... 7.50—10.00
- C. **SULLY** (Columbus x L'syer) excellent colored flower—long stem..... 20.00
- C. **VIRIDISSIMUM**. Yellow-green. White margin on dorsal . . . 7.50—10.00—15.00

SELENIPEDIUMS (Paphiopedilums)

Selenipediums are similar to Cypripediums but each long stem has several buds which open in succession. The color combinations are wonderful: greenish-white, bronzy green, rose, brown-purple. They flower in spring and summer. Grow in deep shade and keep moist at all times. Pot with brown osmunda and charcoal. Will tolerate much warmer temperatures than Cypripediums. We offer fine hybrids from which identifications have been lost at reasonable prices.

5"—6.00 6"—7.50-10.00 6½"—12.50

VANDAS

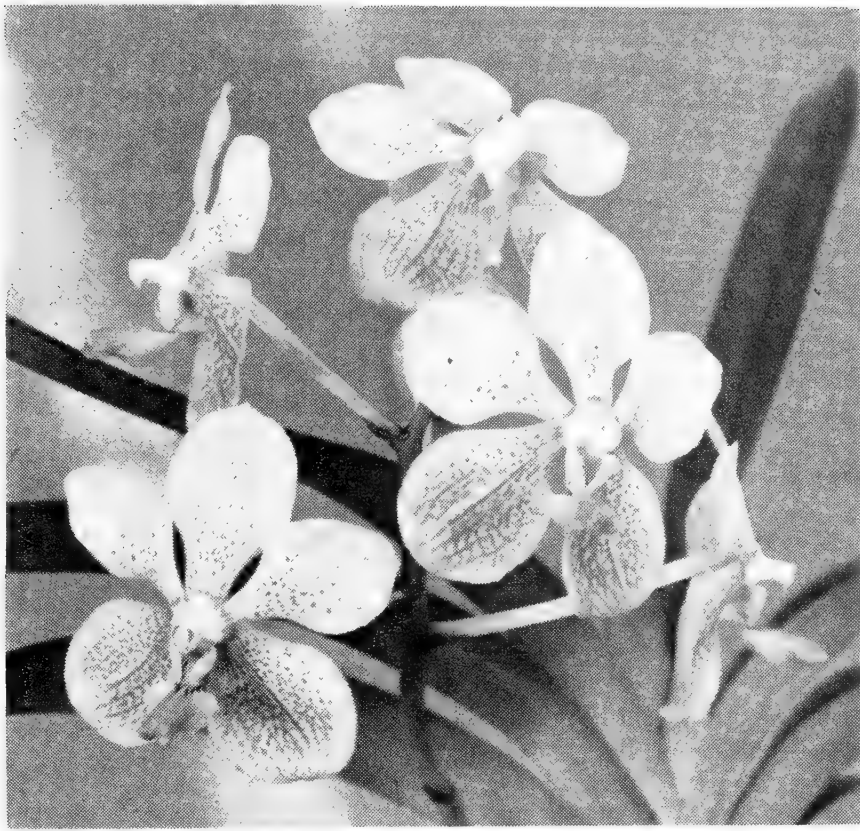
This is the famous Vanda Sanderiana var. Terry which has won an Award of Merit from both the American Orchid Society and the Honolulu Orchid Society. It has multiple flowering characteristics blooming more than once a year. This plant has been used in breeding some of the Vandas listed below, and all have proved to have the outstanding characteristics of the parent plant.



V. SANDERIANA VAR. TERRY—AM-AOS

STRAPLEAF VANDAS

- V88 AHINAHINA (V. Suavis x V. Frank Scudder). Blue
3"—4.00 6"—5.00-7.50-10.00-12.50-15.00
- V1733 V. ALEX KAMAHELE (Amonea x Rothschildiana)—A fine blue color
4"—7.50-10.00
- V108 V. BOSCHI x V. DEAREI, Ivory background with amethyst spots. Flowers size
V114 of Dearei. Very fine color designs.
Flowering size 5.00—7.50—10.00—12.50—15.00
- V222 V. JOANIE (V. Boschi x Rothschildiana). Pink and blue, some with amethyst
spots. Very free flowering:..... 1 3/4"—1.50
- V. BURGEFFII (V. Suavis x V. Sanderiana var. Terry AM-HOS)—Russett-pink
spotted flowers. SEE PHOTO PAGE 27.
Flowering size..... 12.50-15.00-20.00-25.00-30.00-35.00
- V220 V. BURGEFFII (not made with V. Sanderiana var. Terry)
1 3/4"—1.50
- V1983 V. CAROL CARLISLE X V. SANDERIANA.—Sunset shades of pink.
4"—7.50 5"—10.00 6"—15.00-20.00
- V76 V. CHIMEY WALKER (V. Flammerole x V. Sanderiana)—Solid blue with pink
V302 cast. Flowering size 10.00-12.50-15.00



VANDA ELLEN NOA

V. CORINNE (V. Manila x V. Dearei)—Flowers are yellow, rust and brown. Sepals and petals flat like Manila. A fine new hybrid named for Robert Warne's daughter-in-law.

Flowering size 12.50—15.00—22.50—25.00

V. DEAREI Rare fine yellow species.

Offshoots potted **20.00**

Flowering size **30.00—40.00**

V182 V. DEAREI X V. CLARA SHIPMAN FISHER—Yellow with red spotting
1 3/4" —1.50

V67 V. DEAREI X V. ROTHSCHILDIANA—Cream to pale blue.
Flowering size **5.00—7.50—10.00—12.50—15.00**

V215 V. ELLEN NOA (V. Sanderiana x V. Dearei)—A really fine strapleaf hybrid. The flowers are large and round with colors of yellow, cream, buff and a few brownish tints. Considered one of the best of the primary hybrids.
1 3/4" —1.50 Flowering size 15.00—20.00—25.00—35.00—40.00

V34 V. GERTRUDE MIYAMOTO (V. Mem. G. Tanaka x V. Sanderiana)—Yellow to tan.
Flowering size—**10.00—12.50—15.00**

V95—V. GILBERT TRIBOULET (V. Tricolor x V. Sumutrana)—Blue—Brown
Flowering size—**10.00—12.50—15.00**

V219 V. GILBERT TRIBOULET X V. ELLEN NOA—Blue to buff
1 3/4" —1.50

V105 V121, V1689, V1895 V. HELEN PAOA (V Emily Notley x V. Sanderiana)—
Tan—Yellow—Brown
1 3/4" —1.50 3" —5.00 5" —10.00
Flowering size—**5.00—7.50—10.00—12.50—15.00**

V1605 V. HENRIETTA HO (V. Sanderiana X V. Sumutrana)—Excellent colors and shape. Large flowers of yellow—brown to buff—red.
5" —15.00 6" —20.00

- V303 V. HONOLII (V. Herziana x V. Sanderiana)—3" flowers. Grey—blue, pink
V210 1 3/4"—1.50
Flowering size—5.00—7.50—10.00—12.50—15.00
- V35 V. JANET TAGAWA (V. Kalihi Beauty x V. Luzonica)—Flowers 2-2 1/2".
V117 White background with rose violet markings. Prolific.
Flowering size—5.00—7.50—10.00—12.50—15.00
- V106 V. KALIHI BEAUTY X V. BURGEFFII—Pink
Flowering size—10.00—12.50—15.00
- V80 V. KALIHI BEAUTY X V. FRANK SCUDDER—Blue
V98 Flowering size—5.00—7.50—10.00—12.50—15.00
- V119 V. KALIHI BEAUTY X V. SANDERIANA—Pink
1 3/4"—1.50
Flowering size—5.00—7.50—10.00—12.50—15.00
- V1866 V. KILOHANA (V. Manila x V. Rothschildiana)—Blue, rose, mauve to dark pink.
Good shape
3"—5.00 4"—7.50 5"—12.50-15.00
- V72 V. KUPPERI (V. Sanderiana x V. Lamellata)—Yellow background with brown
spots. Medium size flowers.
5.00—7.50—10.00—12.50—15.00
- V58 V. LOKE X V. ROTHSCHILDIANA—Pink to pale blue
V96 5.00—7.50—10.00—12.50—15.00
- V54 V. LUZONICA—White with red spots.
5.00—7.50—10.00—12.50—15.00
- V. MANILA (V. Luzonica x V. Sanderiana)—Lovely pink flowers with some
darker maroon spots. Well grown plants, flower year round. Heavy pro-
duction of flowers. See color plate front cover.
Flowering size—15.00—20.00—25.00—30.00
Selected strains—50.00—75.00
- V1976 V. MANILA. See photo page 27.
3"—5.00 5"—12.50-15.00
- V214 V. MANILA ED ROWALD'S VAR. X V. HERZIANA—Fine pink to blue
1 3/4"—1.50
- *V. MANILA X INSIGNIS. A new hybrid of promise. Pink crossed with a
russet brown.
Flowering size—12.50—15.00—20.00
- V1845 V. MANILA X TATZERI—Excellent pink flower with amethyst spots.
Flowering size—6"—15.00
- V328 V. MANILA X V. TRICOLOR VAR. PLANILABRIS—Red brown spotting on pink
base.
1 3/4"—1.50
- V1575 V. MARY FOSTER X ELLEN NOA—Red to bronze yellow flowers.
Flowering size—5"—10.00 6"—12.50—15.00
- V. MEM. T. IWASAKI VAR. PURPUREA (V. Tricolor var. Purpurea x V Dearei)
Mahogany colored flowers of very heavy texture. The V. Tricolor used here
is an unusual red-brown color.
Flowering size—30.00—35.00—40.00
- V. MERRILLII. A species from the Philippines which is a mahogany color with
a perfumed soap fragrance.
Flowering size—15.00—22.50
- V1952 V. OHUOHU (V. Sanderiana x Clara S. Fisher) A famous cross, large flowers
V1808 of buff to reddish brown over a pink background.
3"—5.00 5"—12.50—15.00



VANDA BURGEFFI



VANDA MANILA

V57 V. PROFUSION (V. *Suavis* x V. *Rothschildiana*) Large pastel blue flowers.

V74 Flowering size—5.00—7.50—10.00—12.50—15.00

V. ROTHSCILDIANA (V. *Coerulea* x V. *Sanderiana*). The finest blue strap-leaf hybrid today. Well-grown plants will flower the year round. Flowers are large, from 3" to 7" across, flat and round. Excellent keeper. Supply limited.

3"—5.00

Flowering size—35.00—40.00—50.00 Selected—75.00 and up

V. SANDAMO (V. *Sanderiana* x V. *Amoena*). A fine blue.

Flowering size—6"—20.00-25.00

V. SANDERIANA. Raised from seed, third generation progeny and selection. Lavender to maroon.

5"—15.00

V2111 V. SANDERIANA X V. TRISHER. Deep pink to red, some brown.

3"—5.00

V. SUAVIS. White background, spotted amethyst, rose-purple lip. Fragrant.

Flowering size—12.50

V. TRICOLOR. Yellow background with red-brown markings, magenta purple lip.

Flowering size—12.50

V. TRICOLOR VAR. PLANILABRIS. Very fine variant with nearly solid russet-brown and some white background.

Flowering size—25.00

***V. VENUS** (V. Paki x V. Sanderiana var. Terry AM-HOS). A new hybrid of greenish-yellow segments showing brown tessellations. The lip is longer than Sanderiana and bright crimson.

Seedlings—**12.50—15.00**

Flowering size—**25.00—30.00**

***V. VIRGINIA BIEHL** (V. Merrillii x V. Sumutrana). A lovely new brown-mahogany flowered hybrid. Larger flowers than Merrillii.

Seedlings—**15.00**

Flowering size—**25.00**

V. WAIKIKI (V. Boschi x V. Sanderiana). An excellent flower of pink and red with yellow to cream-white background.

Flowering size—**5"—15.00 6"—20.00**

V596 V. WETTSETINII (V. Burgeffii x V. Coerulea). Blue to pink.

V115 3" community pots—**10.00**

1 3/4"—1.50 6"—5.00-7.50-10.00-12.50-15.00

CULTURE OF STRAPLEAF VANDAS. The above Vandas can be grown with Cattleyas under the same or higher light conditions and temperatures. They are heavy feeders and should be fed regularly in summer every 7 to 14 days and in winter every 14 to 21 days. Use a liquid fertilizer, Ortho-Gro fish emulsion, or give alternate feedings of these two. Do not be afraid to use large baskets or pots so aerial roots will have a chance to get a toehold in the container. Do not pot hard. Use plenty of charcoal and small amounts of osmunda. Vandas like plenty of air and syringing with water. We recommend hanging up Vandas. Watch for the appearance of bud spikes in the leaf axils and place a tiny pebble or matchstick at base of leaf to drain off water that might collect around buds.

CULTURE OF TERETE VANDAS. These plants require full sunlight to flower well. They are grown as hedges in Florida, the Gulf states, and the tropics. In the north, hang near glass or outdoors in summer sun. Keep wet during growing season and spray with water daily. The hybrids (Joaquim and Ruby) flower several times a year and the species (Teres) has a definite time of bloom. Vanda flowers last a long time, keeping fresh for several weeks. Some keep flowering for about 3 months.

SEMI-TERETE VANDAS

V. KOBBER KANE (V. Miss Joaquim x V. Spathulata). Clear yellow flowers the size of a quarter.

Flowering size—**\$7.50**

***V. DOROTHY WARNE** (V. Suavis x V. Hookeriana). Flowers of good texture. Creamy white with rose-carmine spots. Very free flowering.

Flowering size 12-15" tall—**7.50—10.00—12.50**

VANDA PETAMBURAN (V. Foetida x V. Miss an Duin). Flowers flat, 3-3 1/2" wide. Bright magnolia purple sepals and petals, dark lip with darker spots, yellow throat. New.

Potted cuttings 12-18" tall—**10.00**

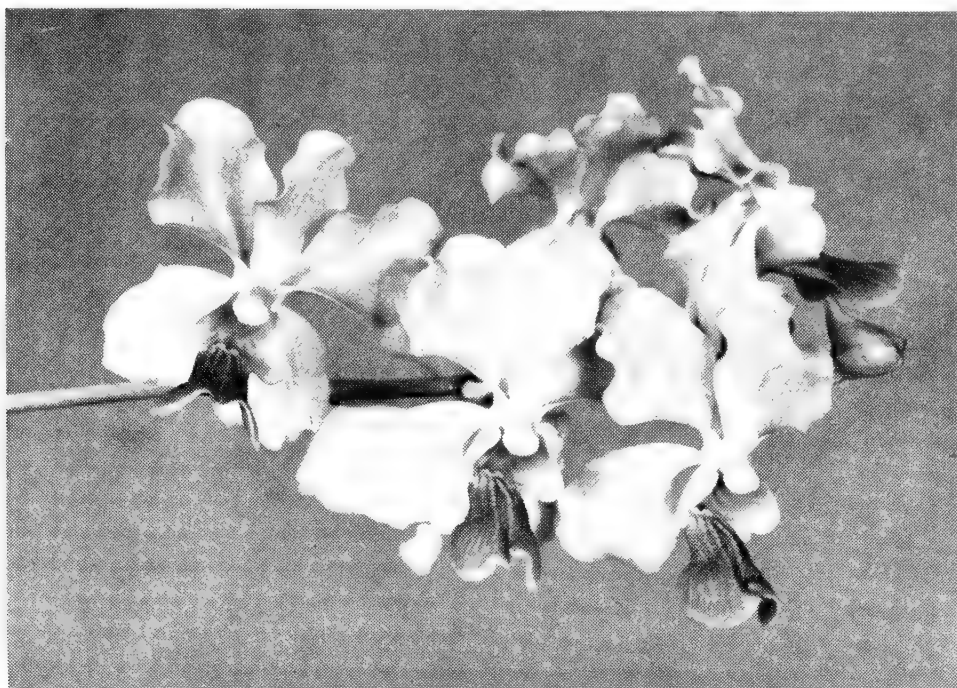
***V. PRINCESS ELIZABETH** (V. Sanderiana var. Terry AM-HOS x Hookeriana). Recent flowering of this cross has proven it to be one of the finest semi-teretes yet to flower. The sepals and petals are dark lavender, the lip a dark maroon.

Flowering size planted on totems—**15.00—20.00—25.00**

#**297 V. MARK MITCHELL** (Vanda Ruby x V. Miss Joaquim var. Judith). The Vanda Miss Joaquim var. Judith was selected from first generation seedlings of V. Miss Joaquim. It has unusual dark coloring in sepals, petals and lip and large size. The V. Ruby (V. Tricolor x V. Hookeriana) has fine rich color. First flowerings have been fine. See photo page 29.

3"—\$4.50 4" on stake—\$7.50

*Warne crosses.



#297 VANDA MARK MITCHELL
(Semi-Terete)

TERETE VANDAS

***V. COOPERI** (*V. Hookeriana* x *V. Miss Joaquim*). Three-fourths of this cross flowered with a plain colored lip and one-fourth flowered with a spotted lip. Plants offered are all the spotted lip as they are more attractive and distinctive.
Flowering size 12-15", 4" pot staked—**\$2.00**

V. MISS JOAQUIM (*V. Teres* x *V. Hookeriana*). The flower made famous by Hawaii for leis and corsages. Flowers throughout the year. 6-10 flowers per spike which open in succession and last a long time.

Rooted tip cuttings, potted, cypress stake, 12-15" high—**\$1.00**

Potted, mounted on cork or tree fern totem 12-15"—**\$1.50**

Potted, mounted on cork or tree fern totem 15-18"—**\$2.50**

Special: Rooted cuttings 12-15" unpotted 12 for **\$9**, 6 for **\$5**

V. MISS JOAQUIM VAR. ANDERSONII (*V. Teres* var. *Andersonii* x *V. Hookeriana*).
Darker color than Miss Joaquim.

Flowering size—12-15", 4" pot staked—**\$3.50**

V. MISS JOAQUIM VAR. CINDERELLA (*V. Teres* var. *Gigantea* x *Hookeriana*). Holds a larger number of open flowers on a spray at once.

Flowering size 12-15", 4" pot staked—**\$3**

V. MISS JOAQUIM VAR. ROSE MARIE. White sepals and petals, pink lip.
Flowering size 12-15", 4" pot, staked, flr. size—**\$1.00**

V. TERES VAR. ANDERSONII. A species similar to *V. Miss Joaquim* but larger flowers 3" to 4" wide. Flowers April-June. Pale rose-purple sepals and petals, bright rosy-magenta lip, heavily veined throat striped with orange and spotted with crimson.

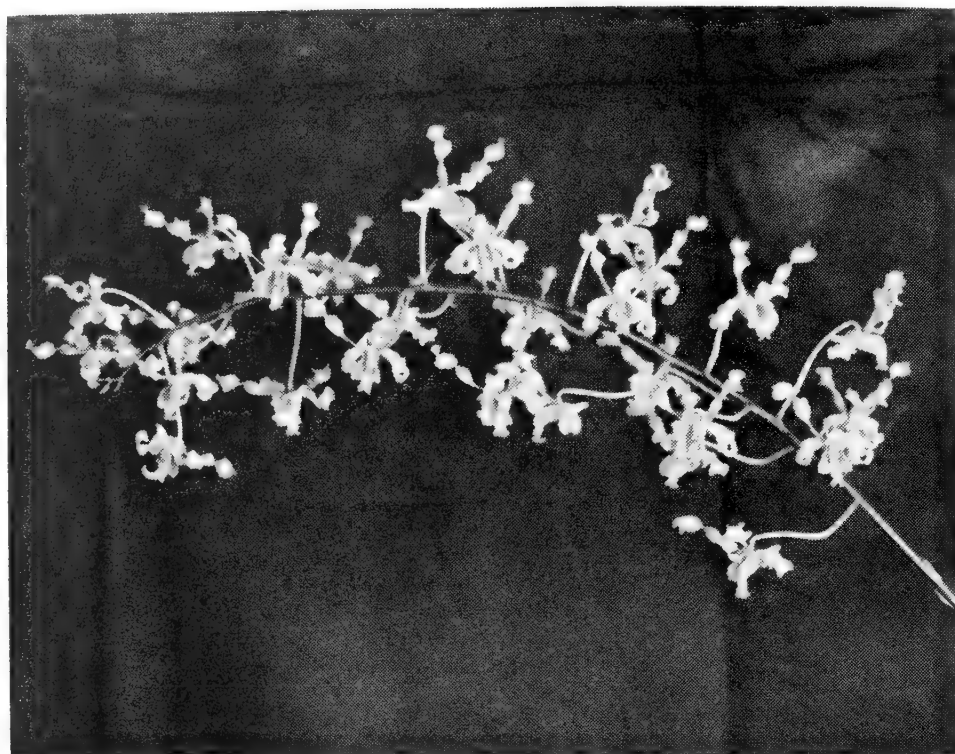
Flowering size—12-15", 4" pot staked—**\$3**

AERIDOVANDA MUNDYI (*Aerides Vandarium* x *V. Teres*). One of the first hybrids raised between *Aerides* and *Vanda*. Received an AM in 1920 in England. See photographs and history in *English Orchid Review*, March 1953, page 43. Free-flowering. Flowers nearly white with lavender tinge. Grow in full sun.

Flowering size 12-15" staked in 4" pots—**\$3.50**

(Blooms with less light than other teretes, and is recommended for northern climates.)

DENDROBIUM
UNDULATUM
X
442nd INFANTRY
(Evergreen)



DENDROBIUMS Cane Orchids

A truly great genus spread over the Old World of India, Burma, Malaya, Java, Philippines and Australia. They produce cane-like pseudobulbs varying in height from a few inches to several feet. The deciduous type (such as *D. Nobile*) produces flowers singly or in groups of 2 to 6 from the joints of the canes. The evergreen species (as *D. Phalaenopsis*) produce flowers in racemes of from 6 to 12 flowers.

The climate of the Dendrobium regions is warm and humid during the summer and cooler and drier in the winter. This makes them quite adaptable to greenhouse growing in northern temperate zones and outdoors in Florida, the Gulf states and southern California. Water frequently during the summer and feed every 2 weeks with liquid Orchid fertilizer. Rest during late fall and early winter by withholding water but syringing sufficiently to keep the canes from shriveling. After resting an increase of water will bring plants into flower. Hang near glass while resting. Dendrobiums may be grown hanging year round. Should be potted in small pots. Do not bury the canes in osmunda. Dendrobiums have a wide range of color: pure white, lavender, crimson, yellow, and orange. This flowering season can be extended throughout the year by having different varieties.

EVERGREEN DENDROBIUM SEEDLINGS

These Dendrobiums can stand full, tropical sun, and need strong light to grow freely. They are rapid growers and some get quite tall. Give an abundance of water and feed regularly when growing. Decrease water and food when growth is finished but do not dry off severally. Many spikes per plant, many flowers per spike and all colors of rainbow.

1560 **D. KAM IV (100th Battalion X Phalaenopsis var. Mauna Kea).** Large flowers, lavender flush with backgrounds of yellow, apricots and salmon.

3"—5.00 3½"—6.50

1600 **D. TANKI (Kukui x Tokai).** Unusual bronze shade of lavender.

3½"—6.50



DENDROBIUM NOBILE



EVERGREEN DENDROBIUM

- 1635 **D. GRACE GOO** (Gouldii x Shibata). One of finest new hybrids—deep yellow with dark chocolate tipping.
3½"—6.50
- 1637 **D. CLARENCE TANI** (Helen Bromley x Gouldii). Large size golden yellow.
3"—5.00 4"—8.00
- 1644 **D. YELLOW GOLD** (D. Taurus x 100th Battalion). Mostly yellow with a few bronze.
3"—5.00 4"—8.00
- 1664 **D. GLOW WORM** (D. Taurus x D. Shibata). Yellows and deep bronze reds.
4"—8.00
- 1665 **D. WAIMEA** (D. Shibata x D. 442 Infantry). Deep lavender to lavender bronze.
3½"—6.50
- 1670 **D. 100th BATTALION X D. T. KODAMA**. Deep lavender to bronze.
3"—5.00
- 1676 **D. BEACHCOMBER** (D. T. Kodama x D. Gouldii). Yellow to yellow bronze.
2026 2½"—3.50 3"—5.00 3½"—7.00 4"—8.00 5"—12.50
- 1738 **D. CAESAR** (D. Phalaenopsis x D. Stratiotes). Large flowers — pale pastel to dark lavender.
3"—5.00
- 1787 **D. CURLEYTOP** (D. Undulatum x Janice Tanaka). Yellow to green combinations.
3½"—6.50 4"—8.00
- 1794 **D. McNEILL** (D. Shibata x D. Janice Tanaka). Yellow to green combinations.
4"—8.00
- 1815 **D. TAURINUM X D. JANICE TANAKA**. Deep bronze purple.
3"—5.00
- 1817 **D. EARL M. SUYAMA** (D. Strattokia x D. Janice Tanaka). Green and yellow
All flushed purple.
4"—8.00
- 1822 **D. T. KODAMA X D. JANICE TANAKA**. Peach to pale yellow.
4"—8.00
- 1846 **D. T. KODAMA X STRATIOTES**. Yellow to green.
3½"—6.50
- 2003 **D. T. SHIOI X D. JANICE TANAKA**. Very dark bronze to yellow.
3"—5.00
- 2006 **D. T. SHIOI X D. T. KODAMA**. Deep lavender bronze to yellow.
2038 3"—5.00

- 2018 **D. SANDER'S CRIMSON X D. SHIOI.** Dark lavender purple to lavender with Taurinum form.
3½"—6.50
- 2025 **D. OWEN (D. Sander's Crimson x D. Undulatum).** Ranks as one of the top crosses — has wide range of color, lavender to bronze flush to red.
3"—5.00
- 2045 **D. PHALAENOPSIS X D. T. KODAMA.** Reds to purple.
3"—5.00
- 2058 **D. SANDY (D. Sander's Crimson x D. Taurus).** Lovely dark lavender and bronze colors.
3"—5.00
- 2061 **D. T. KODAMA X D. OWEN.** Bronze-red to yellow and dark lavender.
2½"—3.50 3"—5.00 3½"—7.00
- 2064 **D. HELEN BROMLEY X D. TAURINUM.** Very dark lavender with Taurinum form.
3"—5.00
- 2076 **D. LESTER McCOY X D. GOULDII.** Flower is yellow with chocolate tipping on sepals and petals.
3"—5.00
- 2077 **D. BLUE BOY X D. TAURINUM.** Very dark lavender purple.
3"—5.00
- 2099 **D. HAWAII X D. MADAM POMPADOUR.** Very large dark lavender.
3"—4.00

D. NOBILE TYPES

LAVENDER FLOWERS

D. NOBILE—This is a beautiful spring-flowering orchid from Burma. It has been a favorite in orchid collections since the early 1800's. The flowers are lavender with deep purple eyes. Flowers 2-3" across. Flowers January thru April. Keep plants cool and dry during late fall and early winter, then begin watering again in January to start buds. Delay watering on different plants for a succession of flowers. See photo page 31.

Offsets (potted)—3.00-4.00

Flowering size—5.00—7.50—10.00—15.00

NOBILE TYPE HYBRIDS

Offsets potted of selected fine Nobile type flowers. Some are named, others are not. Most will flower in one year. (Merlin-Ronele-Etc.)

5.00—7.50—10.00—15.00

YELLOW FLOWERS

D. ARUNDEL—(D. Aureum x D. Ceylon). Exquisite yellow.

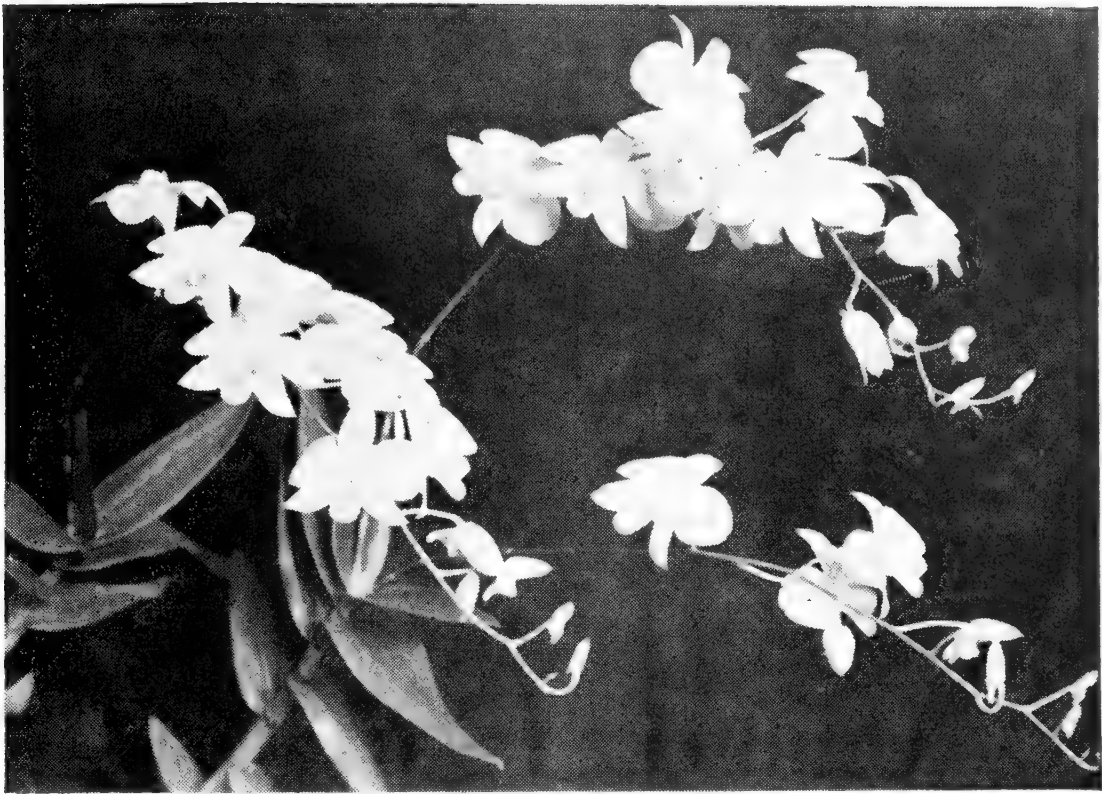
Flowering size—10.00—15.00 (Canes 8-15" tall)

D. MOSCHATUM VAR. CUPREM (Calceolaria). Flowers are bright apricot-yellow with the lip darker orange and 2 maroon spots near the base. A rare color in orchids. Racemes of 7 to 15 flowers which last 7-10 days. Canes 4 to 5 feet tall. April thru July.

Flowering size—5.00—7.50—10.00 Offsets (potted)—2.00

D. THWAITSIAE VEITCHII X D. AUREUM. Yellow.

10.00—15.00



DENDROBIUM PHALAEOPSIS

DENDROBIUM PHALAEOPSIS

283-284 **D. LADY NUI** (D. Phalaenopsis Dixon's Dark x Diamond Head Beauty). The darkest of two strains of superb deep crimson color in sepals, petals and lip. A few flowered last fall with solid dark crimson purple throughout the flowers. Some will be darker than others. This is our hybrid which we listed as Dendrobium Boynton last year.

Flowering size 3"—7.50—10.00—15.00

285-286 **D. PHALAEOPSIS VAR. JO-ANNE X D. PHALAEOPSIS VAR. ROSELAWN.** Fall-blooming spray orchids. Longest lasting of all Dendrobium flowers (2-3 months). These 2 parents have the largest flowers of any D. Phalaenopsis. Colors will be lavender and beautifully two-toned.

Flowering size 3"—5.00—7.50—10.00

DEN. PHALAEOPSIS SCHRODERIANUM. Very dark Dixon type royal purple, 8th generation selfed.

1 3/4"—1.50

D. PHALAEOPSIS ALBA BEDFORD'S VAR. F.C.C. (Selfed). A fine pure white strain, long-lasting, which has been sought by collectors. Pure white flowers. September-November.

Flowering size 2 1/2" pots, canes 6-8"—7.50—10.00

D362 **D. SCHRODERIANUM ALBA X D. MAUNA KEA.** A fine white cross with some showing a tinted blush of pink in lip.

2 1/4"—3.00

399 **D. PHALAEOPSIS ALBA BEDFORD'S VAR. FCC X D. BIGIBBUM ALBA.** D. Bigibbum alba is an albino from a selfed lavender parent. D. Phal. alba Bedford's var. FCC is a proven white breeder. Will flower near white and light lavender.

1 3/4"—2.00

D. WAIALUA (Lois Anderson x Den. Phalaenopsis). A hybrid of proven quality — dark color and good shape.

2 1/4"—3.00



EPIDENDRUM ATROPURPUREUM



ONCIDIUM STIPITATUM

SPRAY ORCHIDS

BRASSIA CAUDATA. Up to 12 flowers per spike, light green spotted with dark brown. Flowers, late summer to fall.

Blooming size—5.00 In spike—7.50

BRASSIA MACULATA. Six to 12 flowers, greenish yellow, spotted brown, sepals 3 inches long, petals shorter—a spider orchid. Blooms early summer. See photo.

Flowering size—5.00—6.50 In spike—7.50—10.00

BRASSAVOLA CORDATA. More flowers in clusters than Nodosa, but individual flowers are smaller and chartreuse in color. Flowers late summer and fall.

Flowering size—5.00—6.50 In spike—7.50

BRASSAVOLA NODOSA (Lady of the Night). Greenish white flowers. Blooms in the fall. Fragrant at night.

Blooming size—3.00—4.00 In spike—5.00

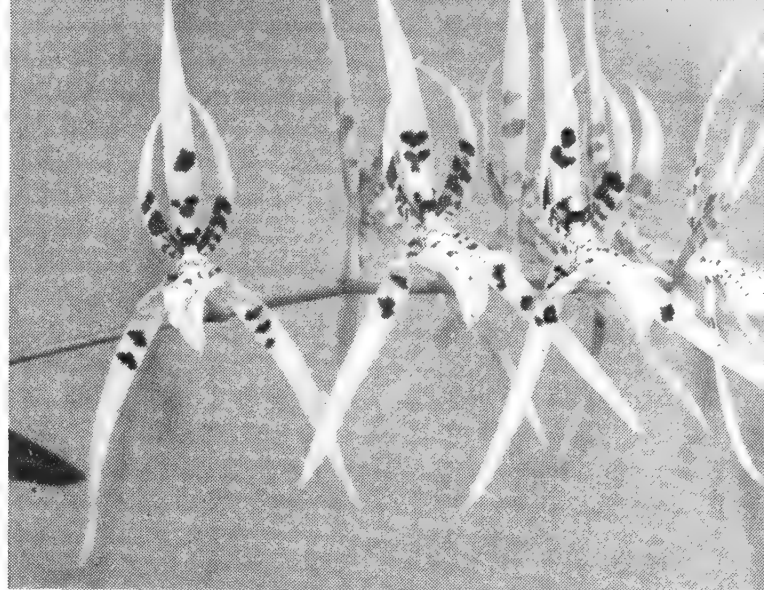
EPIDENDRUM ATROPURPUREUM has fragrant flowers that generally last for 6 weeks, flowering March thru May. Has grey sepals and petals. Variety Randii has a white and rose lip. Variety Roseum has two-toned rose lip. Plants not labeled as to variety. Flowers 2-3 inches wide, 5 to 12 flowers per spike. See photo.

Medium plants—4.00—5.00—6.50 In spike—7.50

EPIDENDRUM FRAGRANS. Very fragrant—greenish-white flowers, bars of purple in lip. 4"—5.00—6.50 In spike—7.50

PHALAENOPSIS—See Page 72

CYCNOCHES (Swan Orchids)—See Page 73



BRASSIA MACULATA

← **ONCIDIUM AMPILATIUM VAR. MAJUS**
 "Liuvia de Oro" Rain of Gold

ONCIDIUM AMPLIATUM VAR. MAJUS. Large, bright yellow flowers produced in abundance on long branching spikes that may be 3 to 5 feet long. March-May. Feed during growing season. See photo.

Flowering size—5.00—7.00—10.00—12.50

In spike—7.50—10.00—15.00

ONCIDIUM SPLENDIDUM. The "dancing lady" orchids named because of the bouffant yellow skirts. Brown-spotted sepals and petals. Many flowers on tall erect spikes December-February. Long lasting. Water weekly when growing. Water only once a month in fall when resting before blooming.

Flowering size—5.00—6.50 In spike—7.50

ONCIDIUM ANISFERUM. Pseudobulbs flat ovals like angel-fish. Long yellow spikes. Bright canary yellow spotted-red-brown. Rare.

Flowering size—6.50 In spike—7.50

ONCIDIUM PANAMAENSIS. Similar to *O. sphacelatum*. Yellow.

Flowering size 4"—5.00—6.50 In spike—7.50

ONCIDIUM LANCEANUM. Large yellow flowers spotted with brown spots 18-30" tall. Blooms in summer. Do not let water stand in axils of leaves.

Flowering size 4"—6.50 In spike—7.50

435 **O. LANCEANUM X O. SPLENDIDUM.**

1 3/4"—2.00

ONCIDIUM STIPITATUM. Long cigar-shaped pseudobulbs. Flowers yellow "dancing ladies" each about size of a nickel. Compact on spike. Rare. See photo.

3 1/2"—5.00—6.50 In spike—7.50

COLOR SLIDES

We have collections of 35 mm. Kodachrome transparency slides on orchids and tropical foliage plants which we shall be glad to loan to orchid societies or garden clubs for programs if you will pay return postage charges. Allow two or three months for scheduling.



TRICHOPILIA SUAVIS



HAEMARIA DISCOLOR VAR. DAWSONIANUS
(Jewel Orchid)

TRICHOPILIA SUAVIS. Creamy white flowers with large ruffled lips, spotted with purple. Grow with Cattleyas. Water well when growing May-November. Flowers in spring.

Flowering size—5.00—6.50 In spike—7.50

HAEMARIA DISCOLOR (Anoectochilus Discolor). Old World ground orchid grown for its gorgeous foliage of dark velvety reddish-green. Veins are coppery red. Flowers are white, blooms in January and February. Grow in equal parts of cut osmunda and sphagnum moss with some finely crushed pot sherds and pieces of charcoal, few rubbed oak leaves. Use small pots, plants may go dormant in winter and loose leaves. Warm loving 60-65 at nite in winter, grow in shade, free of drafts. See photo above.

Very rare; single division plants—18.00

TOM THUMB ONCIDIUMS

ONCIDIUM IRIDIFOLIUM (Pusilium). A fine rare dwarf species without pseudo-bulbs. Leafed growths are fan shaped. Height of plant 3". Large lip pale yellow, spotted with bright red. Summer.

4.50

ONCIDIUM PULCHELLUM. Flower scapes slender and branched 12-18" high. Flowers white, flushed with rose. The lip is large, size of quarter, with yellowish spot in front of the crest. Summer blooming.

Flowering size—3.50

O. TRIQUETRUM. Flowers less than an inch wide, purple, green and white.

Flowering size—3.50

O. TETRAPETALUM. Plants 3-6" high. Dainty yellow and brown flowers.

Flowering size—3.50

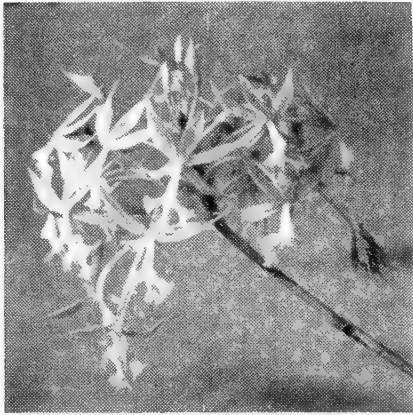
(NOTE: Other Tom Thumb orchids available from our list of Rare Botanical Orchids on page 37.)

WONDER WINDOW GREENHOUSE

WE HAVE DESIGNED A SMALL GREENHOUSE TO FIT IN THE LOWER SASH OF DOUBLE HUNG WINDOWS IN SIZES OF 24" to 48". It extends out from the window sill 24". It is made of solid mahogany with a marine plywood bottom. Two galvanized metal trays for water and latticed rack to hold plants. Priced from \$65. to \$100. F.O.B. Jacksonville, Florida. Send for details.

FLORIDA REED-STEM EPIDENDRUM HYBRIDS

These Epidendrums have beautifully colored flowers and are very easy to grow. Plant in brown osmunda with plenty of crocks for drainage in small pots so the roots will be crowded. Put in an airy place with as much sun as possible. Hang outdoors in summer. Spray foliage daily. Water the osmunda twice a week when growing and once a week when resting in winter.



**EPIDENDRUM
RADICANS**

Colors: pink, fuschia, orange, lavender, yellow, red.
Sold mixed colors only.

Single Stem plants, potted—1.50
Aerial Offsets 1.00 each; 12 for 9.00.
Postpaid USA for 12 only.

EPIDENDRUM RADICANS. Bright red-orange 1/2 inch flowers in clusters during spring and summer. Plants may grow 4-5 feet tall eventually, but begin flowering at about 1 foot. Grow in bright sun, spray daily, and provide stake or fence for support.

Single Stem plants, potted—1.00
4-5 cuttings per pot—3.00
Aerial Offsets 75c each—12 for 6.00
(Postpaid in USA) 12 only

RARE BOTANICAL ORCHIDS

We offer unusual orchids that once belonged in the greatest private orchid collection in this country. These are collector's items for growers who appreciate rare and different orchids. Flowers of fascinating colors, sizes and shapes are included.

The plants are labeled as to genus, not as to species. Plants must be of our selection, but if you state preference as to genera, we will do our best. Please indicate your first and second choices. We will select for you as many different kinds of orchids as the number of plants you order (no two alike). These are offered at very low prices because identifications are not complete. You may be able to identify the varieties as they bloom by comparing flowers with descriptions in orchid books.

The following genera are available: (*indicates Tom-Thumb orchids.)

- *Bulbophyllum
- *Cirrhopetalum
- Coelogyne
- *Dendrochilum
- Epidendrum
- Eria
- *Maxillaria
- *Pholidota
- *Physosiphon
- Platyclinis
- *Pleurothallis
- Polystachya
- Restrepia
- *Stellis

Prices: 4.00 each; 3 for 11.00

Note: We have a few other species orchids from time to time. If you want certain plants, write us for quotations.

QUANTITY DISCOUNTS ON ORCHID PLANTS

The following discounts on orchid plants are the only discounts we give, regardless of whether purchaser is amateur or commercial grower. Discount does not apply to a few rare items or selected plants which are priced as low as possible. Send order for confirmation before sending money.

\$50.00 to \$249.00.....	10%
\$250.00 to \$499.00.....	15%
\$500.00 to \$999.00.....	20%
\$1,000.00 and over.....	30%

TERRESTRIAL ORCHIDS (Grown in Soil)



TERRESTRIAL ORCHIDS
(Grown in Soil)

PHAIUS GRANDIFOLIUS (THE NUN ORCHID)

A charming evergreen terrestrial orchid from Asia. Easy to grow as a houseplant. Flowers February thru April. Many flowers per spike. Flowers 2½ to 3 inches wide. White on back, brown on front. Lip veined with purple. Wonderful for corsages or as decorative plant.

Grow in rich composted soil plus 1 tablespoon of bonemeal or superphosphate to 6" pot. After new growth is 6" high feed weekly with liquid fertilizer until fall. Repeat after flowering. Keep damp in summer, and put pots outdoors in shade while warm.

Flowering size—7.50

Unflowered, to flower in 1 year—5.00

ALBERTS & MERKEL BROS., Inc.

Orchid Nurseries

ROUTE 6, BOX 77
SOUTH JACKSONVILLE 7, FLA.

SHIP VIA:

- EXPRESS COLLECT
- EXPRESS PREPAID
- PARCEL POST PREPAID
- AIR MAIL PARCEL POST PREPAID

ORDER SHEET FOR SUPPLIES

ORDER NO.
DATE ORDER RECEIVED
DATE ANSWERED
ORDER CONFIRMED
APPROX. DATE SHIPMENT
ORDER COMPLETE
BACK ORDER
PAYMENT RECEIVED
PLEASE DO NOT WRITE IN SPACE ABOVE

DATE _____

SHIP TO _____
(PRINT AND PREFIX MR., MRS., OR MISS)

R.F.D. NO. _____
P. O. BOX _____

STREET _____

POST OFFICE _____ ZONE _____

STATE _____

EXPRESS ADDRESS _____
GIVE ONLY IF DIFFERENT FROM P. O.

ALL PRICES include postage unless stated. On heavy items we will bill you for postage after shipping, as it varies with the distance.

QUAN.	DESCRIPTION	WGT.	UNIT PRICE	TOTAL DOLLARS CENTS	
	FERTILIZERS Dilute according to directions on package.				
	Ortho-Gro (fish emulsion). Pint \$1.40; quart \$2.10				
	Wilson's Orchid Fertilizer, 3/4 lb. \$1.35				
	Orchid Hy-Gro, 14 oz. \$1.65				
	Orchid Vitaponex, 14 oz. \$1.35				
	Orchid Vitaponex, 5 lbs. \$5.00				
	INSECTICIDES AND FUNGICIDES				
	D-X Aero Spray Bomb, \$1.60				
	Super-Cide, pint \$2.15				

(CONTINUED ON REVERSE SIDE)

TOTAL SHIPPING WEIGHT

AMT. FOR SUPPLIES

TOTAL BR'T. FROM OTHER SIDE

SHIPPING CHARGES

AMOUNT DUE

REFUND

TOTAL

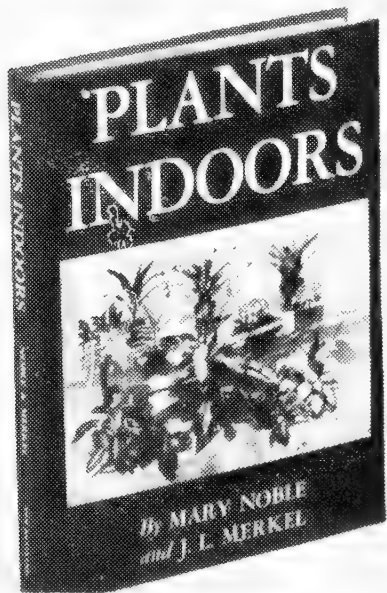
- SEND ADDITIONAL ORDER BLANKS
- CHECK OR MONEY ORDER ENCLOSED

SIGNATURE _____

TERMS: CASH WITH ORDER. THANK YOU.

BOOKS ON ORCHIDS AND FOLIAGE PLANTS

We highly recommend these books to provide information. Order from us. The prices are postpaid in Continental USA. Florida residents add 3% sales tax.

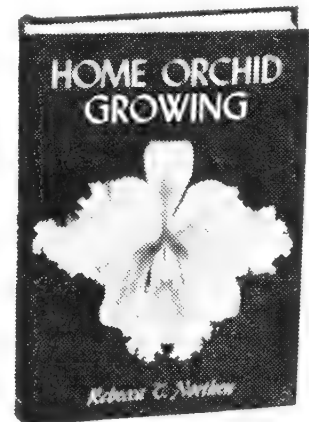


PLANTS INDOORS

By Mary Noble and J. L. Merkel

\$6.95

Describes and pictures many foliage and flowering houseplants. Shows you how to choose and use plants for interior decoration. Over 200 beautiful photos, two in color.



HOME ORCHID GROWING

By Rebecca T. Northen

\$6.50

An excellent book for advanced growers. Many color and black and white photos.



CORSAGE CRAFT

By Glad Reusch and Mary Noble

\$3.75

How to make corsages from greenhouse and garden flowers. Seventeen photos and over 100 how-to sketches.

YOU CAN GROW ORCHIDS

By Mary Noble

\$1.98

A book for inexperienced orchid growers and beginners. How to care for your plants, the kinds to buy, propagation, housing, pest control, and making corsages. Many color and black and white photos and line drawings. 144 pages. Kromekote cover.



CULTURAL HANDBOOK OF BROMELIADS

By The Bromeliad Society.....**1.60**

SUPPLIES FOR ORCHIDS AND TROPICAL PLANTS

All prices include postage in USA, unless specified. Heavy items will be sent cheapest way, and we will bill you for transportation.

We recommend for both orchids and foliage plants feedings of liquid Orchid Fertilizer alternated with feedings of Ortho-Gro. Dilute each kind according to directions on package. Adequate light is necessary so plants can use the food.

FERTILIZERS

ORCHID VITAPONEX: A formula developed especially for orchids. The high potash content induces better flowering and stronger cell growth. Also excellent for foliage plants.



14 oz. \$1.35; 5 lbs. \$5 postpaid
10 lbs. \$8; 25 lb. Drum \$20. Both plus postage.

WILSON'S ORCHID FERTILIZER

3/4 lb. bag \$1.35 postpaid
Case of 12 bags, \$11.50 plus postage
25 lb. Drum \$20 plus postage



ORTHO-GRO (fish emulsion)
Pint \$1.40 Quart \$2.10 postpaid
Gallon \$4.95 plus postage

ORCHID HY-GRO

14 oz. \$1.65 postpaid

INSECTICIDES & FUNGICIDES

Follow instructions on package or as specified below

D-X AERO-SPRAY BOMB. For aphids, thrips, spider mites, mealy bugs, white flies.

\$1.60 postpaid

MALATION for soft scales and many insects. **4 oz. \$1.30 postpaid**

ORTHO-CIDE for fungus and black rot. (Use 1 tsp. to 1 qt. water).

1/2 lb. \$1.85 postpaid



SUPER-CIDE

Sure and efficient control for Orchid Scales, Thrips, Dendrobium Weevils, the Orchid Plant Bug, Red Spider and practically all other insects attacking Orchids. Dilute SUPER-CIDE with 100 parts of water only.

Pint \$2.15 Postpaid
Gal. \$9.75 Plus Postage
5 Gals. \$48.00
Plus Postage

SLUG-O

Safeguard for seedlings and orchid flowers — remember one petal damaged makes the entire flower worthless. Snails and slugs are attracted to SLUG-O from a considerable distance, they eat it and die on the spot.

1 lb. \$1.90 Postpaid
4 lbs. \$3.95
Plus Postage
24 lbs. \$22.00
Plus Postage

ANTI-DAMP

A staple among orchidists to (1) wash the agar when removing seedlings from flasks, (2) drench community pots before seedlings are planted, (3) to control leaf spotting diseases or bacterial wilt on adult plants.

Pint \$1.90 Postpaid
Qt. \$2.40 Plus Postage
Gal. \$7.85 Plus Postage



OSMUNDA

Hobby Bag (for 2-3 plants) \$2 Postpaid

Bale (dark and light brown mixed). \$12.50 plus express charges

Mostex (Sphagnum moss) \$1.25 postpaid



PLASTIC LABELS

Slip-on 1/2"x5", \$1.25 per 100 postpaid

Slip-on 5/8"x7", \$1.75 per 100 postpaid

ACTUAL SIZE 5/8"x4"

Orchid Pot Label—as above 5/8"x4" or 3/4"x4", \$1.30 per 100 postpaid

Available in white, green, red, blue, yellow, orange.

Waterproof Pencil 20c

HANDY PACKAGE: 45 Slip-on Labels, 10 Pot Labels in assorted colors,
1 Waterproof Pencil—\$1.25 postpaid

ALUMINUM POTTING STICKS

3 sizes, \$2.25, \$3.25, \$4.00 postpaid

NOTE: Florida residents add 3% sales tax on all supplies except osmunda.
No tax on plants



BILLBERGIA X FANTASIA



NEOREGELIA HYBRID



AECHMEA FASCIATA



FOSTER'S FAVORITE



CRYPTANTHUS LACERDAE



VRIESIA MARIE



AECHMEA X MAGINA



BILLBERGIA AMOENA VAR. VIRIDIS



VRIESIA SPLENDENS

BROMELIADS

The Bromeliads are among the most adaptable of all houseplants because they hold water between their leaves and don't suffer from dry indoor conditions. Will grow in light or shade. Plants are very modern in form and gorgeous in color. They are highly decorative even when not in flower.

When mature, a flower spike of unusual shape and color rises from the center of the plant and may last for several months. After flowering the main plant eventually dies, but suckers are produced to replace it.

Bromeliads may be grown in osmunda fiber. All will grow in leafmold, sharp sand, and peat. Keep center filled with water, spray foliage occasionally, and water at roots at least once a week. Feed monthly with Liquid Orchid Fertilizer or Ortho-Gro. Asterisk (*) indicates new variety.

Bromeliad collectors are invited to join the Bromeliad Society at \$3.50 per year including the bulletin. Miss Victoria Padilla, 647 S. Saltair Ave., Los Angeles, is Secretary. **See book list for cultural handbook on Bromeliads.**

AECHMEA HYBRID "FOSTER'S FAVORITE". Striking, highly polished, wine-red leaves with green at base. Deep blue flowers in winter. Flower spike develops blue berries which last for months. Easily grown. (See photograph.)
3"—1.00 4"—2.50 5" flowering size—3.50-4.50

AECHMEA FASCIATA (The Urn Plant). The leaves are sea-green striated with frosty white. Edges toothed. The flower spike comes in late summer from center of urn with pink bracts interspersed with French blue flowers that turn purple and rose. The flowers last 3-5 months. (See photograph).
4"—3.50-4.50

***AECHMEA X MAGINALI (A. Miniata discolor x Fulgens discolor).** A lovely new hybrid with maroon color underside of leaves and applegreen on top side. Flowers in May and June on erect spike. The bracts are salmon-red and flowers brilliant blue very striking combinations. Fruit is a round orange-brown berry lasting into fall. See photo.
4"—5.00—7.50—10.00

***AECHMEA X ROYAL WINE (A. Miniata Discolor x A. Victoriaeana Discolor).** A royal introduction of startling contrasts. Underside of leaves are brilliant burgundy wine color. Top side of leaves are apple green. Flower spike pendant with brilliant blue flowers. Berries are blue and long lasting. See photo.
4"—5.00—7.50—10.00

***AECHMEA SCHULTESIANA.** Strawberry color with green coming thru. A truly remarkable fruit of white and blue berries which lasts for several months.
4"—5.00—7.50

***BILLBERGIA X FANTASIA.** A fantastic new hybrid introduction. Cream colored markings on light green background. Much improved saundersi. See photo.
4"—6.50—8.00—10.00

***BILLBERGIA AMOENA VIRIDIS.** A beautiful tubular shaped bromeliad. Background is a strawberry color with irregular cream markings. Upright green flower with delicate pink bracts. See photo.
4"—5.00—7.50—10.00

***BILLBERGIA HORRIDA X B. EUPHEMIA.** A graceful Grecian urn shape. Background is dull strawberry with horizontal bands of silver-grey. See photo.
4"—5.00—7.50—10.00

CRYPTANTHUS BIVITTATUS (Rosea-Picta). A spectacular, star-shaped, prostrate plant with decided stripes and a salmon-rose color. Very attractive to liven up a table in the home.
3"—75c

CRYPTANTHUS BROMELOIDES VAR. TRICOLOR. Multicolor rainbow foliage. Very Choice.

4"—5.00—7.50

CRYPTANTHUS FOSTERIANUS. New species. (See photo page 45.) Center Cryptanthus plant.)

4"—5.00—7.50—10.00

CRYPTANTHUS FOSTERIANUS HYBRIDS. Similar to parent. (See photo page 45).

4"—2.00—2.50—3.00

CRYPTANTHUS HYBRIDS. No two alike. (See photograph page 45).

4"—2.00—2.50—3.00

CRYPTANTHUS LACERDAE (Silver Star). This is a distinctly new star in plant oddities. The leaf is an emerald-green with a frosty band of white down the center. Being introduced for the first time. (See photograph page 42.)

3"—1.00

NEOREGELIA HYBRID (Painted Fingernail). Green leaves of this rosette-type plant are tipped with red. Blue flowers, generally appearing in spring, remain low in the cup. Can serve as a natural vase when not in flower. (See photograph.)

4"—small plants (6"-8" high)—2.00-3.00 (postpaid cont. U.S.A. 2.98)

5"—specimen—4.50-6.50

NEOREGELIA CAROLINAE. Beautiful bright pink and lime green foliage. Rare.

4"—5.00-7.50

NIDULARIUM AMAZONICA HYBRID. Apple green top surface, dubonnet underside. Very attractive. New.

4"—3.00-4.00

VRIESEA CARINATA HYBRID MARIE (Painted Feather). Solid green leaves. Flat feather-shaped spike of bright red and yellow bracts, keeps fresh for 6 months in winter. An exciting houseplant. (See photo page 42.)

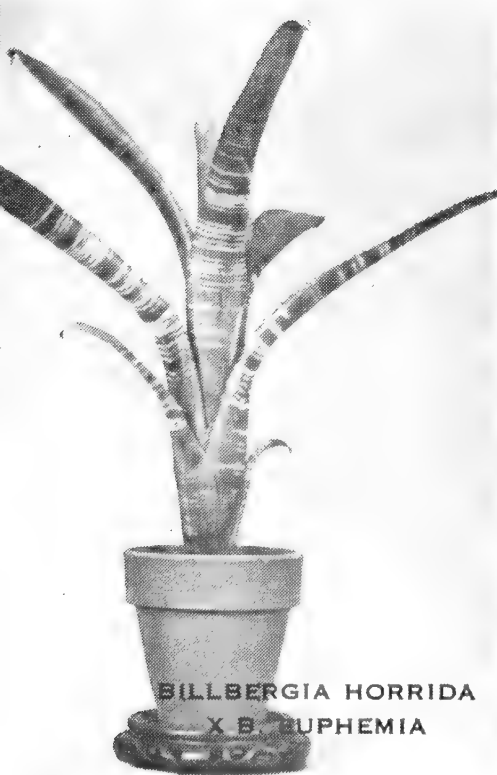
4"—Flowering size—7.50

Plants in flower (Nov.-March)—Postpaid Cont. U.S.A. 8.95

VRIESEA SPLENDENS (Flaming Sword). A beautiful green plant with mahogany stripes. Flower spike tall, flat, and brilliant orange. Spectacular. Rare. (See photograph.) Plant does not die after flowering. Blooms year after year from same plant.

Flowering size—12.50—15.00

To flower in 1 year—10.00



PHILODENDRONS

Philodendrons are perfect plants for indoor decoration because of their attractive foliage and their durability. They can stand the dry conditions of today's buildings, and will grow with or without much daylight.

We are extremely proud to introduce the new Self-Heading Philodendrons. These plants do not climb, but radiate their growth from a central crown. They are suitable for indoors as the more familiar vining types, but generally more useful because they do not need supports. We are listing several new varieties and expect to name others later this year. * indicates new variety.

Culture: Keep moderately moist. Give at least one good soaking per week and water intermediately if necessary. Mulch with peat or sphagnum to slow drying out. Wash foliage once a month with damp cloth. Feed with liquid fertilizer monthly. We recommend alternate feedings of Ortho-Grow and Wilson's Orchid Fertilizer.

SELF-HEADING PHILODENDRONS

***PHILODENDRON AURICULATUM.** A compact grower of graceful, gorgeous shape. New. See photo below.

4"—3.00 5"—5.00

PHILODENDRON BIPINNATIFIDUM. Resembles *P. Dubium* but leaves are twice as large and deeply notched. Very tropical design. See photograph.

6"—5.00-7.50 8"—10.00-12.50 10"—15.00-20.00

***PHILODENDRON CANNIFOLIUM.** A rare plant. First time offered. A very striking aroid that is ideal for interior decoration. Slow growing, will last for years. See photograph. (Formerly spelled *Cannaefolium*.)

5"—5.00—6.00

PHILODENDRON CARSONIANUM. Maroon-backed leaves, scalloped edges. Rare.

Medium size—7.50

PHILODENDRON EICHLERI. King of the self-heading philodendrons. Large elephant ear with scalloped edge. See photo page 46.

Medium size—25.00





PHILODENDRON EICHLERI



PHILODENDRON LYNETTE



PHILODENDRON
MELINONI



PHILODENDRON EVANSI (Speciosum x Selloum). A choice new specimen for the real modern look. A semi-self-heading type with slight pink color on underside of new growth. Similar in habit to P. Eichleri and looks like it.

4"—4.00 6"—6.00-7.50 See Photo of P. Eichleri page 46

PHILODENDRON FOSTERIANUM (P. Species #1 x P. Bipinnatifidum). A new hybrid. See photo. Heavy webbed leaves on long stems. Will produce as many as 25 per plant. Very rugged. Most effective where large plant is wanted. See photo.

6"—5.00-7.50 8"—10.00-12.00 10"—15.00-20.00

PHILODENDRON LYNETTE. A fine addition to the self-heading type. Similar in habit to P. Wendlandi except leaves are crinkled horizontal. See Photo.

4"—3.00 5"—5.00

PHILODENDRON MacNEILIANUM (P. Species #1 x P. Selloum). An attractive cold-resistant hybrid. See photo page 46.

4"—3.00 6"—5.00-7.50

PHILODENDRON MELINONI. Very rare. Offered for the first time. Compact grower, will attain much wider spread. Ideal accent plant. See photograph page 46.

4"—3.50 5"—6.00

PHILODENDRON SELLOUM. A popular Brazilian species. Cold-resistant and can stand slightly below freezing. Large, notched leaves. See photograph page 49.

5"—5.00-6.00 8"—7.50-10.00 10"—12.50-15.00

PHILODENDRON UNDULATUM. Large wavy, heart-shaped leaves on long stems.

6"—5.00 8"—7.50-10.00

PHILODENDRON WEND-IMBE (Wendlandi x Imbe). New hybrid. A semi-self-heading type with slight pink color on underside of new growth. Similar in habit to P. Orlando. See photo below.

5"—4.00-5.00

PHILODENDRON WENDLANDI. An ideal houseplant. See photo. Broad spatula-shaped leaves coming from central crown. Does not climb. Durable. Grows beautifully indoors in light or shade. See photo page 49.

4"—2.50-3.50 5"—3.50-5.00 6"—7.50-10.00

PHILODENDRON RED BACK WENDLANDI. Same habit as regular P. Wendlandi except this variety has deep maroon color on back of leaf and has heavier texture.

4"—5.00

PHILODENDRON WEND-IMBE

PHILODENDRON BIPINNATIFIDUM





PHILODENDRON FRIEDRICHSTAHLI

PHILODENDRON WARSCEWICZII - GOLDEN SELLOUM.

A self-heading extravaganza that stops the parade of philodendrons.

4"—25.00—Limited. On order only.

PHILODENDRON WENDLANDI X LACINEATUM.

A new semi-self-heading habit of swirling heavy texture leaves. Mature leaves may have white spotting near midrib as does Lacineatum on mature leaves.

4"—3.00

PHILODENDRON WENDLANDI X QUERCIFOLIUM.

An other new semi-self-heading hybrid. Graceful habit.

4"—3.00

PHILODENDRON WENDLANDI X GIGANTEUM.

This will make a real addition to hybrid philodendrons.

5"—6.00

PHILODENDRON HASTATUM X P. WENDLANDI.

Very similar in habit and form to P. Orlando.

4"—3.00-4.00 5"—5.00-6.00

**Vine Type
PHILODENDRONS**

We offer many new and unusual varieties of the more familiar vine-type Philodendrons. These plants need a support or totem. We recommend tree-fern, cork, or Sphagnum totem poles. Durable plants, excellent for indoor use, and very decorative.

PHILODENDRON ANDREANUM (Black Gold).

The queen of Philodendrons from Colombia. The handsome arrow-shaped leaves are velvet iridescent with yellow veins. Best grown on Totems. Well grown specimens will attain leaves 10 inches wide and 3 feet long. Grow moist and warm, feed at least once a month.

5"-6" pots on 24" Totem.

5"—3 to 5 leaves—6.00-7.50

6"—6 to 8 leaves—10.00-12.50

Rooted cuttings (3 leaves)—3.50

PHILODENDRON ANDREANUM VAR. MELANOCHRY-

SUM (Black Gold.) Same color, texture and shape as Andreanum. Leaves half as large. More resistant to cold. 5"-6" pots on 24" totem. (See photo.)

5"—3 to 5 leaves—6.00-7.50

6"—6 to 8 leaves—10.00-12.50

Rooted cuttings (3 leaves)—3.50

PHILODENDRON ANDREANUM HYBRID.

Cross was made between P. ANDREANUM X P. WENDLANDI. So far the resulting seedlings have same habit as P. Andreanum. Leaves look more velvety and are heavier textured than P. Andreanum.

3"—3.50



PHILODENDRON SQUAMIFERUM



PHILODENDRON MANDIANUM



PHILODENDRON IMBE



PHILODENDRON SELLOUM



PHILODENDRON WENDLANDI



PHILODENDRON WENDLANDI



PHILODENDRON PANDURAEFORME

PHILODENDRON COLOMBIA. New species. Heart-shaped elephant-ear type leaf. Heavy texture. See photo.

4"—3.00 5"—5.00

PHILODENDRON CORDATUM. A very rugged trailing or climbing vine that may be grown in soil, moss or water. Considered the best of all house plants even under adverse conditions. Large plants with three vines to the pot. See photograph.

3"—.60, 3 for 1.50

4"—1.50, 3 for 4.00

PHILODENDRON CORDATUM VARIEGATUM. Green and white variety of this favorite, dependable houseplant. New.

3"—1.25

PHILODENDRON CRASSINERVUM. Grotesque strap-shaped leaves on long joints. New.

4"—3.00

PHILODENDRON CRUENTUM (Redleaf). One of the most startling colored leaf Philodendrons of the new introductions. The back of the leaf is a clear red mahogany while the top surface is clear green. (See photograph).

4"—2.50, 3 for 7.00

PHILODENDRON FRIEDRICHSTAHLI (Monstera Friedrichstahli). Dark green leaves with multiple holes. Compact growth gives solid green effect. (See photo.)

6"—6.50 10"—10.00-12.50

PHILODENDRON GUTTIFERYUM. See Photo. Makes a column-like effect on a totem pole. Small 4-6" dark green, glossy leaves. An accent plant, grows tall and narrow. New.

24" Totem—5.00 30" Totem—7.50

PHILODENDRON HASTATUM. A favorite. Has large glossy dark jade leaves. A fine totem subject. (See photograph.)

4"—1.50 5"—2.50, 3 for 7.00

24" Totem 7.50

PHILODENDRON HASTATUM VAR. VARIETGATA. Spectacular yellow and green foliage. New and rare. Limited supply. See photo.

4"—5.00 5"—7.50-10.00

PHILODENDRON IMBE. Similar to P. HASTATUM in leaf pattern but the underside of leaf is dark maroon in color. Leaves are heavy as Chamois skin. (See photograph.)

5"—3.00, 3 for 8.00

PHILODENDRON LACINEATUM. New. See photo.

5"—3.00

PHILODENDRON SQUAMIFERUM X LACINEATUM. The sensation of this year's new crop of Philodendron hybrids. Much heavier texture than either parent. Maturing leaves are showing creamy-white areas near mid-rib of leaves. See photo.

4"—3.50

Greenhouses at Mandarin on the St. Johns River



**PHILODENDRON
CRUENTUM**



PHILODENDRON PITTIERI



**PHILODENDRON
HASTATUM**



**PHILODENDRON
GUTTIFERYUM**



**PHILODENDRON
COLOMBIA**



PHILODENDRON LACINEATUM



**PHILODENDRON
X P. LACINEATUM**



PHILODENDRON PERTUSUM (MONSTERA DELICIOSA)



PHILODENDRON MAMEI. Beautiful variegated green and grey heavily veined leaf. Pink stems.

4"—5.00

PHILODENDRON MANDIANUM. This very attractive satin green heart-shaped foliage plant is one of the most attractive of the newer hybrid Philodendrons. The growing tip and stem is of a reddish hue which contrasts beautifully with darker green matured leaves. (See photograph.)

4"—1.50 5"—2.50-3.50

24" Totem 7.50

PHILODENDRON PANDURAEFORME. Here is a truly exotic foliage plant with no two leaves alike. The irregular-shaped leaves of olive green will hold your attention. Unsurpassed for interior decoration. New and rare. See photo.

4"—1.50 5"—2.50-3.50 24" Totem 7.50



PHILODENDRON PERTUSUM. The most popular Philodendron after P. Cordatum. It is often confused with Monstera Delicosa because the leaf patterns are similar. Pertusum does not have trunk or leaves as large as Monstera and leaves are not as perforated. Stands up well under any conditions. See photo.

5"—3.00—4.00

6"—4.00—5.00

MONSTERA DELICIOSA (Swiss Cheese Plant). (See photo.)

6" pot size 5.00-6.00

8" pot size 7.50 to 10.00

PHILODENDRON PITTIERI. A new introduction. Texture of leaf is extremely glossy and heavy. A pleasing solid apple green. Beautiful on cork totems. It will tolerate dry conditions very well. (See photograph.)

4"—1.50

5" on totem—3.50—4.50

PHILODENDRON QUERCIFOLIUM. Like oak leaves.

4"—5.00

PHILODENDRON SQUAMIFERUM. A really exotic plant of spectacular leaf design from French Guiana. Sometimes referred to as anchor leaf. It is shaped like a Malayan Kris. The petiole or stem is covered with a red pubescence (hairs). Limited. (See photo.)

4"—(3 to 5 leaves)—2.50

5"—(5 to 6 leaves)—4.00

6"—(6 to 8 leaves)—7.50

PHILODENDRON VERRUCOSUM. Exotic multicolor satin sheen. Maroon undersides. The handsomest of all Philodendrons. See photograph.

Rooted cuttings (2-3 leaves)—3.50

5" totem (3-5 leaves) — 5.00-7.50



AGLAONEMA MARANTIFOLIUM
TRICOLOR



PHILODENDRON SODIROI. This is a gem of the smaller heart-shaped leaf type. The coloring is a combination of slate grey with darker olive green areas which gives a silvery mottled effect in shades of green. Stem is a red color. Excellent for the smaller pottery containers and planters in the home or can be planted under orchid benches in the greenhouse for ground cover to help maintain humidity. (See photo.)

3"—.85c 3 for 2.50 small leaves only
6" totem 3.50—4.50
Request large or small leaf.

PHILODENDRON COMBINATIONS. We have combination plantings of assorted Philodendrons and tropical vines that are handsome specimens. Established on totems in wooden tubs, 24 and 30 inches tall.

7.50 10.00 12.00 15.00 →

DECORATIVE FOLIAGE PLANTS

ADIANTUM WRIGHTII (Maidenhair Fern). Considered one of the finest maidenhair ferns in cultivation.

4"—2.00 5"—3.00, 3 for 7.50

AESCHYNANTHUS LOBBIANS (Trichosporum Pulchrum).

Leaves shiny dark green, flowers scarlet with a dark purple cup-like base. Vine.

3"—1.50

AGLAONEMA MARANTIFOLIUM TRICOLOR. Attractive foliage with feather design and leaf petioles are pink, fruit bright red berry. See photo.

4"—7.50

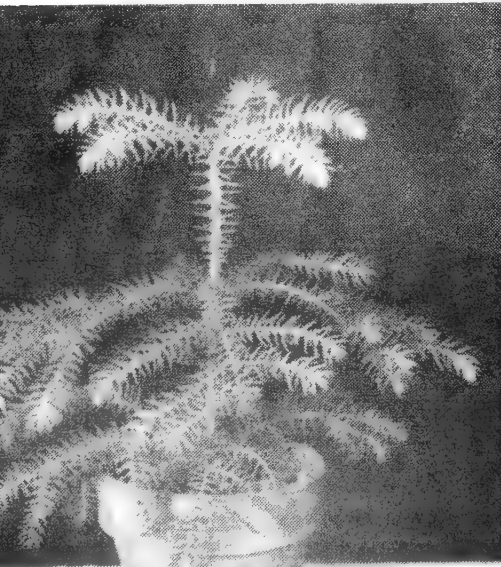
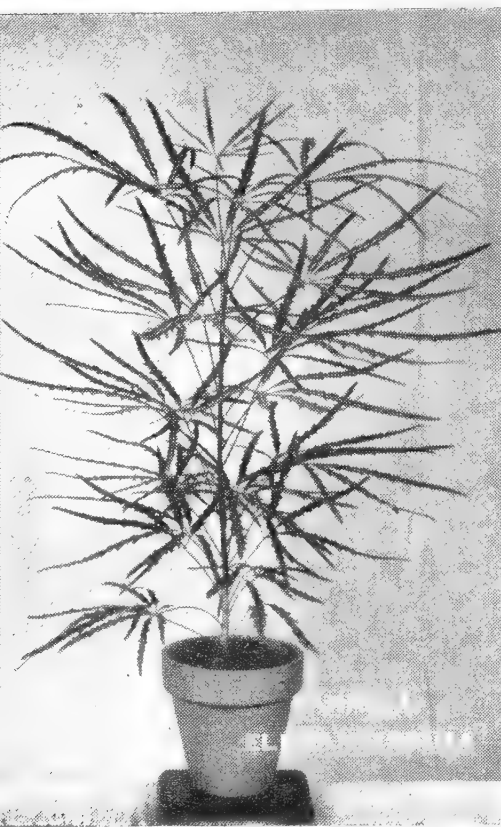
AGLAONEMA OBLONGIFOLIA CURTISII. A rare Chinese Evergreen — large eventually, but very slow growing. A silver spreading design on a bluish-green background.

4"—25.00 →





ALSOPHILA AUSTRALIS



ARAUCARIA EXCELSIS

AGLAONEMA PICTUM. Unusual form of Chinese Evergreen. Gray and white. Easy to grow. See photo.

3"—2.00

AGLAONEMA ROBELINII. See Schismatoglottis. See photo.

4"—2.00 5"—3.00 3 for 7.50

AGLAONEMA TREUBI. Narrow pointed leaf with light green background and creamy-green variegation. See photo.

3"—5.00

ALSOPHILA AUSTRALIS (Tree Fern). Spectacular. Has long been a conservatory favorite. Fronds form a trunk as plant ages. Keep moist and feed well. See photo.

5"—3.50, 3 for 9.00

APHELANDRA CHAMISSONIANA. Erect growing with broad white band in middle of leaf. Flowers are bright yellow and bracts are same. Handsome as foliage or flowering plant. See photo.

4"—2.50

ARALIA BALFOURIANA. Erect plant. Attractive round leaves edged with white.

3"—.60, 3 for 1.50

ARALIA ELEGANTISSIMA. Dark, lacy leaves. Grows tall and narrow. Extremely decorative against light background. See photo.

4"—4.00 5"—6.50

ARAUCARIA EXCELSIS (Norfolk Island Pine). Compact tiered, star-shaped branches. Used for miniature trees. See photo.

5"—5.00 6"—7.50

ARDESIA CRENULATA. Lovely Evergreen, compact shrub. Red berries at Christmas time.

4"—1.50

ASPENIUM NIDUS (Bird-Nest-Fern). Evergreen fronds, sturdy texture. Easy to grow. Keep moist. See photo page 63.

4"—2.50 5"—3.50

COCHLIOSTEMA JACOBIANUM. Rare South American epiphyte. Grows well in osmunda or leaf mold. Grow moist with perfect drainage. Blue flowers delicately sweet scented in September. Large grower. See photo.

5"—10.00



APHELANDRA CHAMISSONIANA



AGLAONEMA TREUBI

CALADIUM ARGYRITES. A miniature round green leaf with white spots.

3"—1.00

CALADIUM CHANGJUR. A new species from Java, small heart-shaped leaves on white stems, also white streaks along veins. Leaf background light to dark green.

4"—2.00

CALADIUM E. O. ORPET. Red silk lance leaves.

4"—1.50

CALADIUM HYBRID. Lance-leaved with variegation streaks of white, green and red.

4"—1.50

COLLINIA ELEGANS. Dwarf palm. Wonderful for indoors. Can grow in shade, grows slowly. See photo. Plants offered 8-10" tall.

3"—75c; 3 for 2.00

4"—5.00

CALATHEAS. Small, decorative plants that grow in shade. Keep moist and warm always. Often identified as Marantas. See photos. Cannot ship in cold weather.

4"—2.00, 3 for 5.50 5"—3.00, 3 for 8.00

CALATHEA LIETZEI. Light green feather design in center of leaf. Purple underside.

CALATHEA LOUISA. Satiny, wavy leaves marked grey.

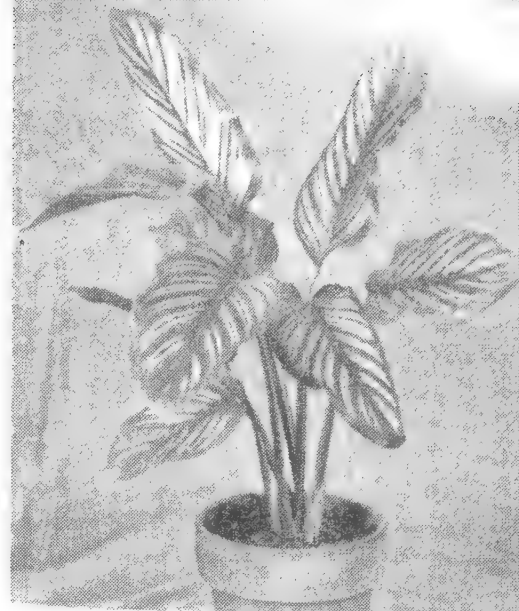
CALATHEA VANDENHECKEI. Satiny surface marked with white like a skunk. Wine red underneath.

CALATHEA INSIGNIS. Small plant with narrow, light green leaves spotted with olive-green patches. Dark maroon underside. Spectacular. See photo.

4"—5.00

CALATHEA ORNATA VAR. ROSEA LINEATA. A striking leaf with parallel pink or white stripes set at an angle to the midrib. Purple underneath.

4"—2.00 No quantity discount.



CALATHEA ORNATA
VAR. ROSEA LINEATA



CALATHEA LOUISA



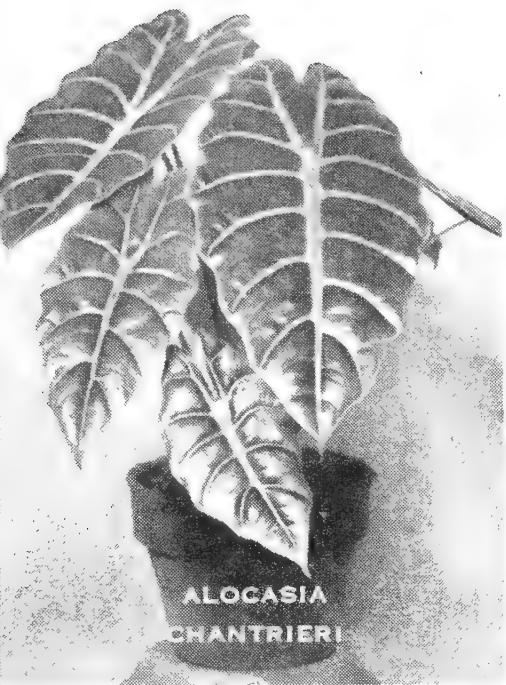
CALATHEA INSIGNIS



CALATHEA VANDENHECKEI



CALATHEA LIETZEI



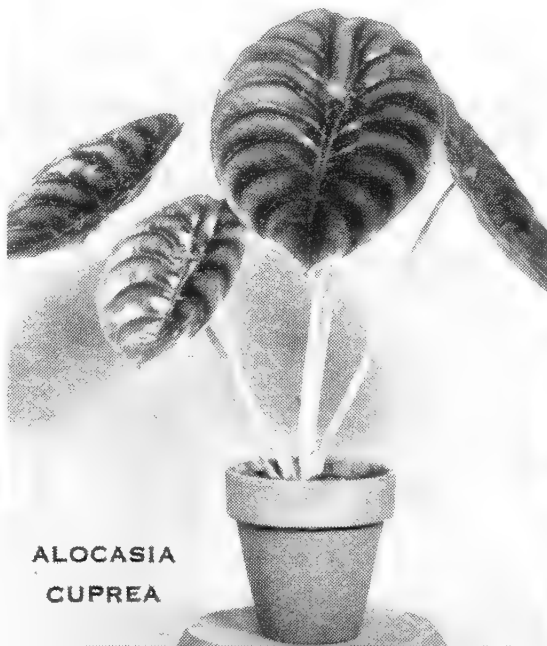
**ALOCASIA
CHANTRIERI**



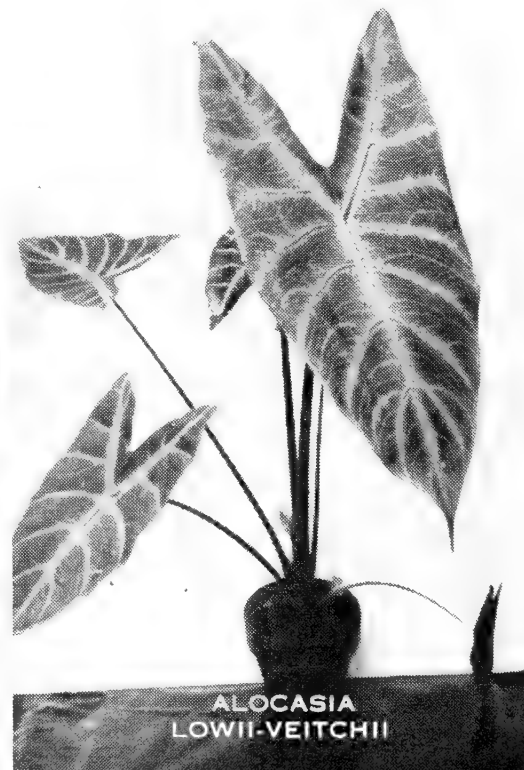
**ALOCASIA
AMAZONICA**



ALOCASIA JOHNSTONII



**ALOCASIA
CUPREA**



**ALOCASIA
LOWII-VEITCHII**

ALOCASIAS

ALOCASIAS — We are introducing the exotic Alocasias from tropical Asia. They have heart-shaped leaves in gorgeous patterns. Grow from tubers in sphagnum or peat moss mixed with charcoal or turkey granite. Keep moist all the time and warm (70-80° in day and 60-65° at night). Feed monthly with liquid fertilizer. Cannot ship in cold weather. See photos.

Price: 5.00 7.50 10.00

ALOCASIA AMAZONICA (A Sanderiana x A. Lowii Grandis). Handsome, white veined leaf. Hybrid vigor makes it a good grower. See photo.

ALOCASIA CHANTRIERI (A Cuprea x A. Sanderiana). Dark green with pearl grey veins. Back of leaf coppery purple.

ALOCASIA CUPREA. Most compact species. Heavy, wavy leaves. Maroon-purple back, dark shining green front, prominent veins. Leaves 6-10".

ALOCASIA JOHNSTONII (Cyrtosperma Johnstonii). Leaves are beautifully marked with red veins. Leaf stalk has upward pointing spines. See photo.

One size only—10.00

ALOCASIA LONGILOBA. Pointed ears on leaf. Bluish-green, veined.

ALOCASIA LONGILOBA X A. SANDERIANA CLONE No. 1. All propagated from a selected type. Leaves have fine milky-way pattern on purplish green leaf.

One size only—7.50

ALOCASIA LOWII GRANDIS. Deep metallic brownish-green, grey-green veins. No \$5 size.

ALOCASIA LOWII GRANDIS X A. WATSONIANA. An exceptional hybrid.

One size only—15.00

ALOCASIA LOWII VEITCHII. Handsome. Milky-way pattern. No \$5 size.

ALOCASIA SANDERIANA. Leathery green, purple beneath. Shiny. White veins. Outstanding.

ALOCASIA SEDENII (A. Cuprea x A. Lowii Grandis). Hybrid of two of the finest species. Olive-green with silvery cast, purple beneath.

ALOCASIA THIBOUTIANA. Handsome, cool creamy-white leaf. See photo. No \$5 size.

ALOCASIA WATSONIANA. Queen of the Alocasias. See photo. Limited.

1 size only—15.00

ALOCASIA WAVERIANA. A dark purple lance leaf with waved edges.

One size only—10.00

ALOCASIA ZEBRINA. Rare, mottled stems.

One size only—15.00

FICUS DECORA. A very handsome F. *Elastica* type, but with more oval leaf. New foliage in sunlight is a dark red color.

6"—5.00-7.50 8"—10.00-12.50

FICUS DOESCHERI. Improved variety of variegated rubber. Oval yellow and green leaves. See photo.

5"—2.50 6"—4.00

FICUS PANDURATA—FIDDLE-LEAF RUBBER. Keep wet at roots or lower leaves may drop. Handsome large-leaf plant for bold effect. See photo.

5"—(18-24")—4.00—5.00

6"—(24-30")—7.50

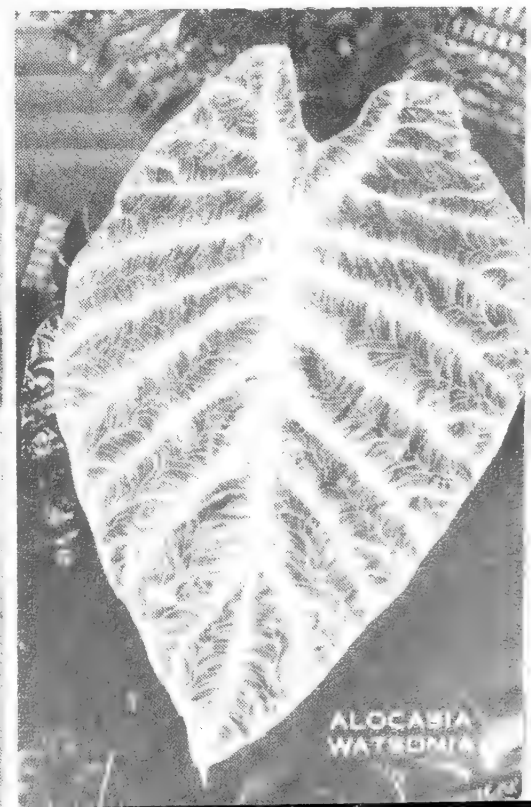
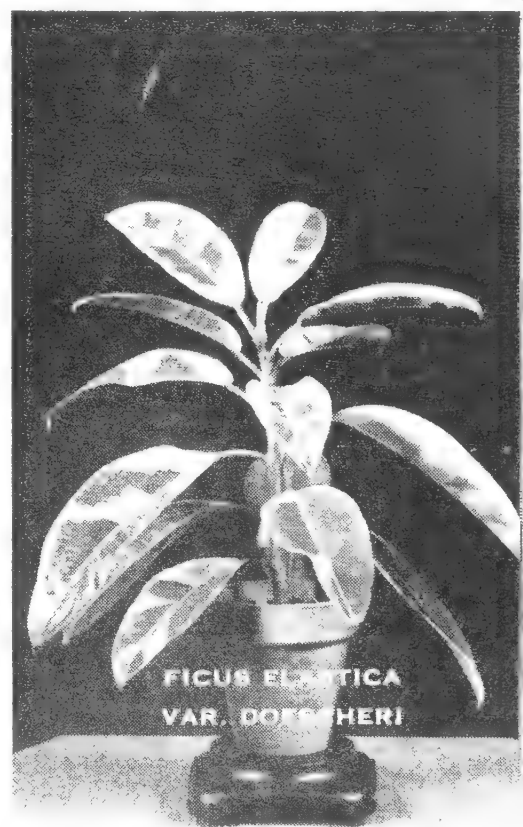
8"—(36-42")—10.00—12.50

FICUS RADICANS VARIEGATA. Small creeping vine, cream markings.

3"—75c

HOYA CARNOSA VARIEGATA. Variegated wax plant. Unusual flowers.

3"—75c





ANTHURIUM SPECIES



ANTHURIUM SUB-SIGNATUM

ANTHURIUMS

ANTHURIUMS. Grow in leafmold, osmunda or sphagnum moss. Keep damp. Cover aerial roots with sphagnum. Feed monthly with liquid fertilizer. Minimum 60° at night.



ANTHURIUM ANDREANUM

ANTHURIUM ANDREANUM. Brilliant patent-leather flowers of red, white, coral or pink. Last for weeks. Plain foliage. See photo.

5"—5.00 6"—6.00—7.50

Selected white or very dark red—5"—10.00
6"—12.00-15.00

Unflowered seedlings (color unknown) —
3"—1.50 4"—2.50—3.50

ANTHURIUM CARIBBEAN. A solid green heart-shaped leaf of very heavy texture. Stands a great deal of cold.

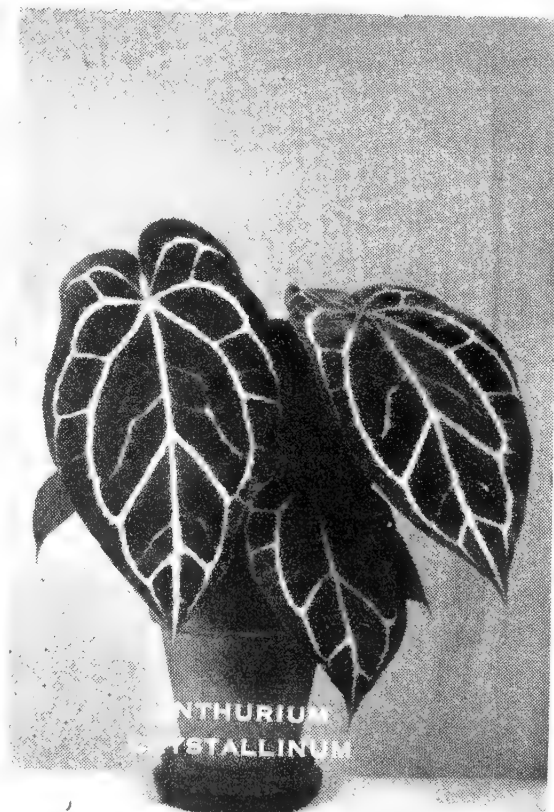
4"—2.50 5"—3.50 6"—5.00

ANTHURIUM CRYSTALLINUM. Velvety-shaped leaves with glistening silver veins. Inconspicuous flowers. See photo.

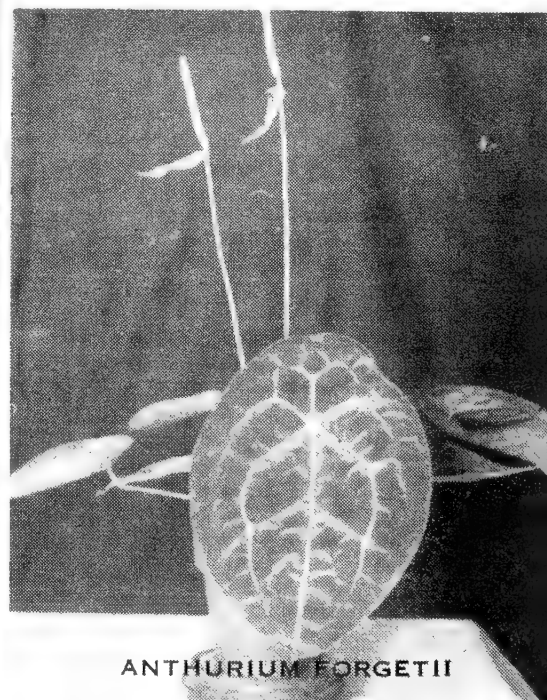
3"—1.50 4"—3.50 6"—5.00



ANTHURIUM WAROCQUEANUM



ANTHURIUM CRYSTALLINUM



ANTHURIUM FORGETII

ANTHURIUM FORGETTII. Like Crystallinum but oval leaves. See photo.

4"—3.50 5"—5.00

ANTHURIUM KALBREYERI. Unusual green leaf pattern.

5"—5.00

ANTHURIUM PODOPHYLLUM. Called "lace tablecloth pattern."

5"—5.00 Limited

ANTHURIUM SCANDENS. Climbing variety. White berries when mature.

4"—2.50-3.50

ANTHURIUM SPECIES No. 1. A real exotic. See photo.

5"—5.00

ANTHURIUM VEITCHII. Rare, wrinkled leaf.

4" 6-15" tall—20.00

ANTHURIUM WAROCQUEANUM. Extremely long velvety leaf with pale green veins. Rare. See photo.

4" (3-4 leaves)—3.50

4" (6-8 leaves)—5.00

5"—7.50—10.00

ANTHURIUM SUBSIGNATUM (Wrightii). A cow-face leaf, fascinating design. See photograph.

5"—4.00-5.00

DRACAENA BAUSEI. White band down middle of leaf, margins green. See photo.

4"—2.00 5"—3.50 6"—5.00

DRACAENA GODSEFFIANA. Branching. Rich dark green leaves densely marked with creamy white spots, very hardy houseplant.

3"—.75; 3 for 2.00 4"—1.50; 3 for 4.00

DRACAENA GOLDIEANA. One of the rarest Dracaenas known. Never plentiful even in native Africa. Gorgeous design. Silver green cross bands on green background. See photo.

4"—15.00

DRACAENA (Hybrid Ti from Hawaii). Highly colored in fall. Grow in light location to maintain color.

4" seedlings (10-18" tall, bushy)—2.50

DRACAENA SANDERIANA. Shiny leaves edged with cream.

3"—.75; 3 for 2.00 4"—1.50

DRACAENA TERMINALIS VAR. EUGENE ANDRE (Cordylone Terminalis). Hawaiian Ti Plant. Broad green leaves that turn red for Christmas if grown in enough light.

4"—2.50 5"—3.50—5.00

DRACAENA WARNECKI. Fine white with green stripe down center. Opposite to D. Bausei.

5"—3.50 6"—5.00

MARANTA LEUCONEURA MASSANGEANA. A charming low growing plant. A pearl-grey green background with silver feather design down midrib of leaf. See photo.

3"—1.50



DRACAENA GOLDIEANA



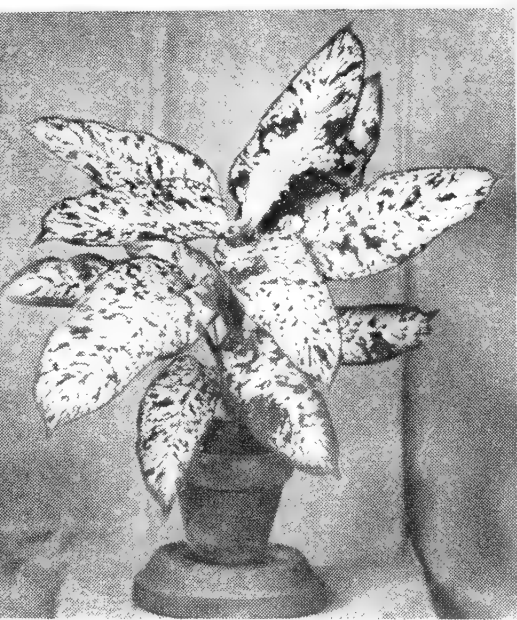
DRACAENA BAUSEI



MARANTA LEUCONEURA MASSANGEANA



DIFFENBACHIAS. TOP, L. TO R.: *D. Memoria-Corsii*, *D. Amoena*, *D. Rudolph Roehrs*; middle, *D. Bausei*, *D. Roehrs Superba*, *D. Picta*; bottom, *D. Oerstedii* var. *variegata*, *D. Splendens*



DIEFFENBACHIA ARVIDA



DIEFFENBACHIA HOFFMANII

DIEFFENBACHIA. One of the most spectacular houseplants. Large leaves, beautiful markings. Grow in light or shade. Water thoroughly once a week. See photo.

DIEFFENBACHIA ARVIDA. An unusual white leaf pattern. See photo.

Limited. 4"—7.50

DIEFFENBACHIA AMOENA. Similar to *D. Picta* but larger, heavier leaf. Very tough plant. New. 5"—3.00-4.00 6"—5.00-6.00

DIEFFENBACHIA BARRANQUINIANA. Bright green spotted white. 4"—4.00

DIEFFENBACHIA BOWMANNII. Chartreuse mottling. Rare. See photo. 4"—4.00

DIEFFENBACHIA HOFFMANI. Rare. Striking white leaf pattern. See photo. 4"—5.00

DIEFFENBACHIA JENMANII. Unusual white streaks. See photo. 4"—4.00

DIEFFENBACHIA LEONII. Two-tone chartreuse and Nile green. See photo. 4"—4.00

DIEFFENBACHIA LEOPOLDII. This is a grand dark green velvet leaf with crinkled segments and a vivid white mid-rib. See photo. 4"—5.00



DIEFFENBACHIA
JENMANII — LEOPOLDII
LEONII — BOWMANNII

DIEFFENBACHIA MEMORIA-CORSII. See photo.
 4"—5.00

DIEFFENBACHIA OERSTEDII. Rich dark green leaf.
 New.
 4"—2.00 5"—3.00

DIEFFENBACHIA OERSTEDII VARIEGATA. Dark green
 leaf with white mid-rib. New. See photo.
 4"—2.50 5"—4.00

DIEFFENBACHIA PICTA. White spots, green back-
 ground. Most familiar variety. See photo.
 4"—2.00; 3 for 5.50 5"—3.00

DIEFFENBACHIA RUDOLPH ROEHRIS. Creamy-white
 leaves with dark green veins. See photo.
 4"—2.00; 3 for 5.50 5"—3.00

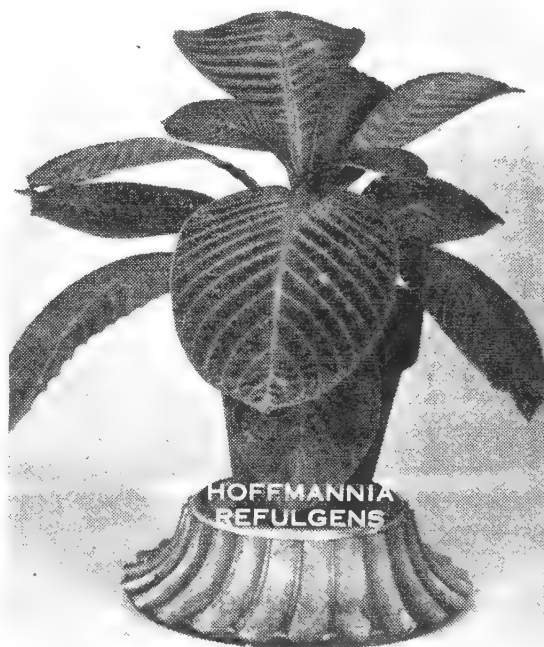
DIEFFENBACHIA ROEHRIS SUPERBA. More white than
 Picta. New.
 4"—3.00 5"—4.00

DIEFFENBACHIA SPLENDENS. Velvety-green, small
 white dots. Different. See photo.
 4"—4.00

DICHORISANDRA MOSAICA UNDATA (or *Geogenan-
 thus undatus*). "Seersucker Plant". Crinkled
 green and black leaves, purple undersides and
 stems. Low growing for coffee table use.
 3"—1.50 (postpaid Cont. U.S.A. 2.98)

HOFFMANNIA GHIESBRECHTI. Upright habit, fine
 velvet bronze foliage, red underneath in quilted
 pattern. See photo.
 4"—2.50

HOFFMANNIA REFULGENS. "Quilted Taffeta Plant".
 Rich silky crinkled foliage, edged with magenta.
 Old rose beneath. See photo.
 4"—3.00 5"—4.00





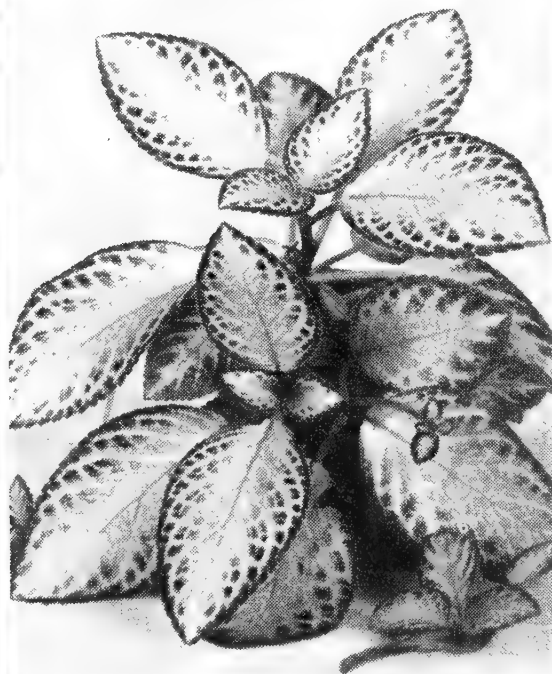
EPISCIA DIANTHIFLORA



NAUTILOCALYX LYNCHII



EPISCIA LILACINA
VAR. FANNY HAAGE



EPISCIA TESSELLATA

EPISCIAS

EPISCIAS. Kin to African Violets, grown like them. Startling foliage. Make many new plants on runners. Keep moist all the time. At least 60° at night. Feed monthly with Wilson's Orchid Fertilizer. Plant in peatmoss, leafmold, and sharp sand, with granite gravel (turkey grit) for drainage. Grow in shade. Lovely for hanging baskets. Cannot ship in cold weather.

EPISCIA ACAJOU. Silver leaf, very handsome. See photo. New.

3"—1.00

EPISCIA CHOCOLATE SOLDIER. Dark brown pattern. New.

3"—1.00

EPISCIA COCCINEA (Fulgida). Brownish hairy leaves, silvery veins. Exotic. Red flowers.

3"—1.00

EPISCIA CUPREATA. Hairy copper leaves. Red flowers.

3"—1.00

EPISCIA CUPREATA VAR. VIRIDIFOLIA. Plain bright green leaves, red flowers. Best bloomer.

3"—1.00

EPISCIA CUPREATA VAR. SILVER SHEEN. Bright silver with darker margins. Red flowers.

3"—1.00

EPISCIA DIANTHIFLORA. A new species with white flowers resembling carnation pinks. Very faint purple spotting base of throat. See photo.

3"—2.00

EPISCIA EMERALD GEM. All green. New.

3"—1.00

EPISCIA FROSTY. White leaf. New.

3"—1.00

EPISCIA LILACINA. Medium, bronzy leaves, large blue flowers.

3"—1.00

EPISCIA LILACINA VAR. FANNY HAAGE. Attractive silvery-green leaves, blue flowers. New. See photo.

3"—1.00

EPISCIA SPLENDENS. Silvery green leaves, darker at margins. Scarlet flowers. See photo.

3"—.75

NAUtileCALYX BULLATUS (Episcia Tessellata). Upright, large glossy, quilted leaves. Yellow flowers. See photo.

3"—1.50

NAUtileCALYX LYNCHII. Growth habit as Nautilocalyx Bullatus, leaves are a bright dark maroon; flowers creamy. See photo.

3"—2.00

FITTONIA ARGYRONEURA. "Nerve plant." Nile green leaf, many white veins. Creeping vine. Small. Keep moist. See photo.

4"—1.25; 3 for 3.00

FITTONIA VERSCHAFFELTII. Similar to Argyroneura but with red veins. Keep moist. Ground cover.

3"—1.00

FITTONIA VERSCHAFFELTII VAR. PEARCEI. Similar to Verschaffeltii but with larger bright green leaves with light bright carmine veins. Ground cover, keep moist. See photo.

3"—1.50

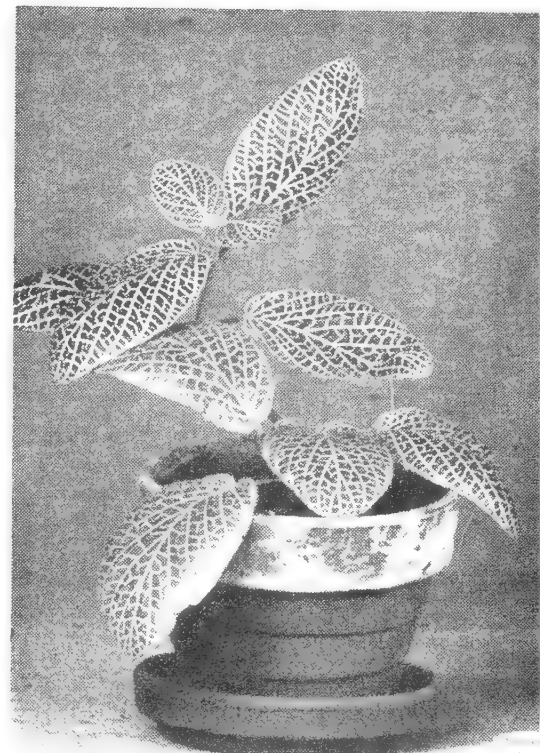
GEOGENANTHUS. See Dichorisandra.

PILEA CADIEREI, "ALUMINUM PLANT" New green leaves with large silver spots. See photo.

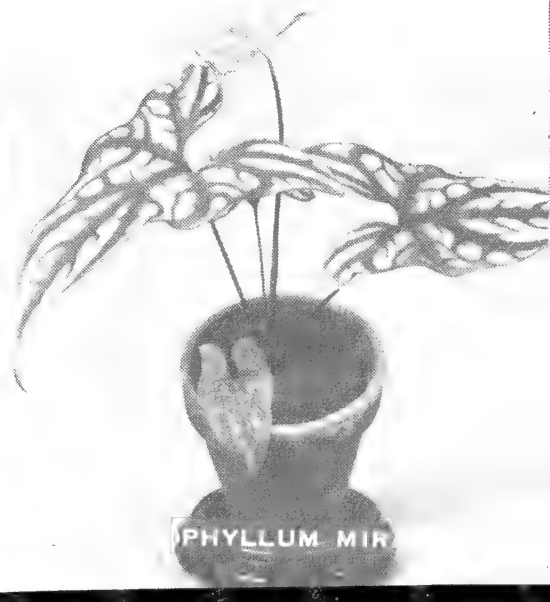
3"—75c 4"—2.00

RHEKTOPHYLLUM MIRABILE. Variegated green and white leaves 8-12" long. Rare. See photo.

7.50



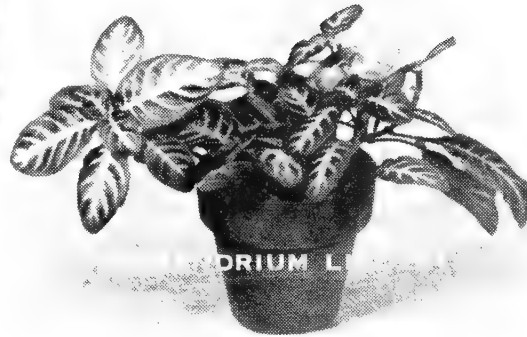
FITTONIA ARGYRONEURA



RHEKTOPHYLLUM MIRABILE



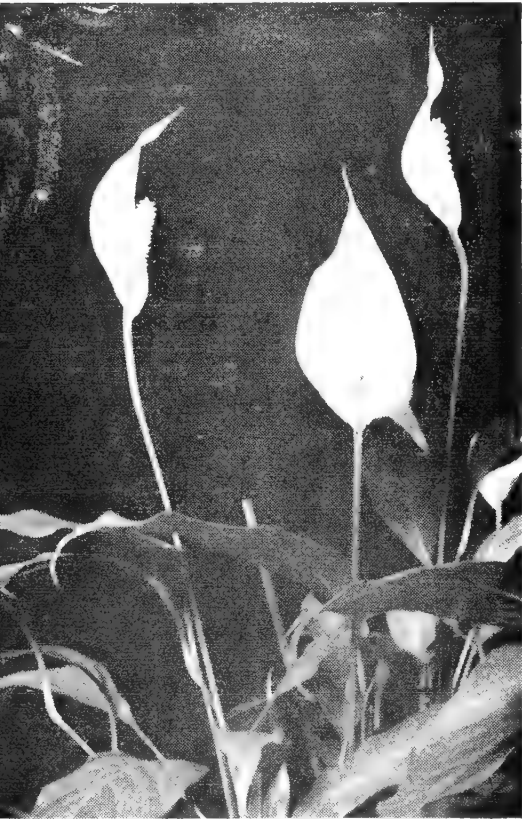
PEPEROMIA HEDERAFOLIA



STENANDRIUM LINDENII



SPATHIPHYLLUM FLORIBUNDUM



S. CANDIDUM

PELLIONIA DAVEAUANA. Leaves have light green area along mid-rib, bronze edges. Fine creeper or hanging basket. See photo.

3"—75c 3 for 2.00

PELLIONIA PULCHRA. Small vine with purplish leaves and black veins. Purple stems. Keep moist. See photo.

3"—75c 3 for 2.00

PEPEROMIA HEDERIFOLIA. An attractive bright silver foliage with purple cast near center of leaf. New. See photo.

3"—1.00

SPATHIPHYLLUM CANNIFOLIUM. Pale green leaves. Large white fragrant flowers. Rare.

4"—3.00

SPATHIPHYLLUM CANDIDUM. Glossy green foliage. Beautiful white flowers in spring. Easy to grow indoors. Likes shade. Feed with Wilson's Orchid Fertilizer. See photo.

5"—3.00 6"—4.00—5.00

SPATHIPHYLLUM FLORIBUNDUM. Dwarf habit. Small white spathe. See photo.

4"—4.00

STENANDRIUM LINDENI. Trailing plant—broad chartreuse veins on a black-green background. Flowers small bright yellow. See photo.

3"—2.00



SCINDAPSIS PICTUS ARGYRAEUS



PELLIONIA DAVEAUANA



PELLIONIA PULCHRA

POTHO AUREUS VAR. SILVER MOON. Vine with distinctive variegated leaves in marble pattern.

3"—.75; 3 for 2.00

RHAPHIDOPHORA CELATOCALIS (Shingle Plant). Unequalled sided rounded leaves, mature leaves are cut or perforated. Grow on wall or totem. Grow as Philodendron. See photo.

Rooted cuttings—4.00 Totem—6.00-7.50

RHAPHIDOPHORA SPECIES (Shingle Plant). Smaller leaves than Celatocalis and darker green color. See photo.

Rooted cuttings—4.00 Totem—6.00-7.50

SANSEVIERIA COMPACTA. Short, compact plant. Dark green, yellow margin.

3"—.60; 3 for 1.50

SANSEVIERIA EHRENBERGII. Steel-blue, channeled leaved edged with white. Fan-like pattern. A cast-iron plant. Grows anywhere. See photo.

3"—2.50 4"—3.50

SANSEVIERIA GOLDIEANA. A variant of *S. Laurenti* with much darker golden yellow bands on margin of leaves. Released after 20 years of propagation from a single plant.

4"—3.00

SANSEVIERIA HAHNII. Compact, low-growing. For dish gardens.

3"—.60; 3 for 1.50

4"—.85; 3 for 2.25

SANSEVIERIA NELSONII. Tall, very dark green pointed leaves. Durable. See photo.

3"—.60; 3 for 1.50 4"—2.00

SCINDAPSUS PICTUS ARGYRAEUS (Pothos Argyraeus). A neat climber with iridescent dark green leaves and silver spotting. See photo.

3"—1.00

SCHISMATOGLOTTIS (Aglaonema Robelinii). Large upright handsome houseplant. Grows under adverse conditions. See photo.

4"—2.00; 3 for 5.50 5"—3.00; 3 for 8.00

6"—5.00

SYNGONIUM WENDLANDI. Small dish garden plant green arrow shaped leaves centered with silver.

3"—.75

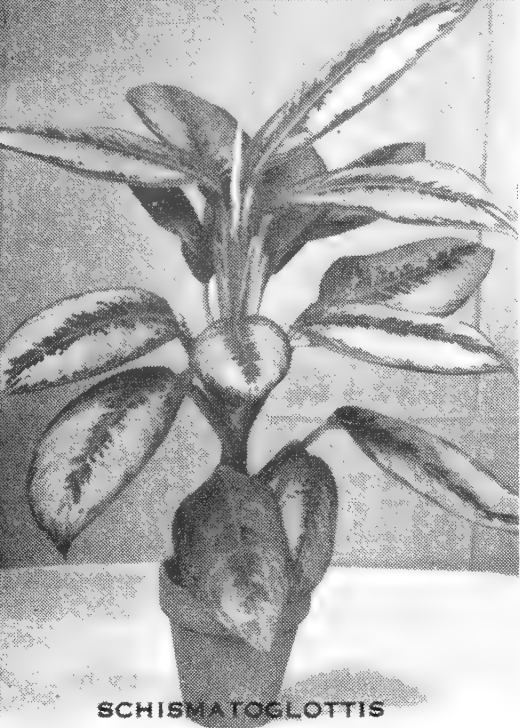
MUSA SUMATRANA. A banana with maroon variegated foliage, inedible fruit.

6"—5.00

MUSA CAVENDISHII. Dwarf lady finger banana. Delicious fruit.

6"—4.00





SCHISMATOGLOTTIS



TRADESCANTIA REGINAE

PLATYCIERIUM

ELK'S HORN OR STAG'S HORN FERN

PLATYCIERIUMS are considered the most extraordinary of all ferns. The fertile frond is forked with stag's horn like divisions. The sterile frond grows flat, is bright green and turns brown with age. A new fresh green sterile frond grows over the brown one. They are true epiphytic ferns, grow best on raft, baskets or shallow pans. We fasten plants to a cypress raft using sphagnum moss and dairy manure around their roots. Platyceriums require moderately warm temperatures, 60° at night, but will stand much colder nights and very warm day temperatures. Plants grow in strong light or shade. SOAK plants with water when dry. Feed liquid fertilizers monthly.

PLATYCIERIUM BIFURCATUM (P. Alcornae). See photo.

Small—7.50 Medium—12.50

Large—17.50—25.00

PLATYCIERIUM AETHIOPICUM. See photo.

17.50

PLATYCIERIUM HILLII. Limited. See photo.

17.50

PLATYCIERIUM LEMOINEI. See photo.

17.50

TACCA CRISTATA (the "bat plant"). Weird black flowers with long tendrils. Gorgeous ribbed foliage. A true exotic. Plants to flower in one year. See photo.

4"—3.00

TRADESCANTIA REGINAE. Erect plant, purplish-crimson leaf centers, silver at edges, purple underneath. See photo.

3"—1.00

XANTHOSOMA LINDENII VAR. MAGNIFICA. Handsome tropical aroid, prominent white veins. Grow as for alocasis. See photo.

4"—4.00 5"—7.50



XANTHOSOMA
LINDENII
MAGNIFICA



PLATYCERIUM LEMOINEI



PLATYCERIUM HILLII



PLATYCERIUM AETHIOPICUM



PLATYCERIUM BIFURCATUM



RARE CROTONS

NEW CROTONS

- ** **APPLAUSE.** Semi-oak large leaf, very compact, yellow and green on new growth maturing to blush pink. — **10.00**
- ** **BRAVO.** Semi-oak leaf—deep pink to rose—very compact. — **10.00**
- * **CARIBBEAN STAR.** Elliptical medium size, heavily veined, orange red center with green to dark black areas. — **5.00**
- * **ELIZABETH CUTLER.** A very fine new pastel pink. — **7.50**
- ** **FASCINATION.** Semi-oak leaf, compact—old rose. — **10.00**
- * **JUNGLE QUEEN.** Obvate leaf, red veined, red, pink and maroon blotches. — **5.00**
- ** **NEMBULA.** Elliptical large leaf, heavily veined light pink. — **10.00**
- * **PRESIDENT TRUMAN.** New irregular leaf, blotches of red with green and maroon background. — **5.00**
- * **SIBYL GRIFFIN.** Very fine, very large semi-oak. Deep pink. — **5.00**
- ** **SOUTHERN CROSS.** Oak leaf — pink to maroon. — **10.00**
- * **NEW** — ** **NEW INTRODUCTION**

AMERICAN ORCHID SOCIETY

We suggest that anyone interested in growing orchids become a member of the American Orchid Society in order to receive the monthly Bulletin. Membership is \$7.00 per year, which includes subscription to the Bulletin. Make checks payable to the American Orchid Society, Inc., and send to Gordon Dillon, Executive Secretary, Botanical Museum, Cambridge 38, Massachusetts.

CROTON HYBRIDS

- AMERICA**—very large broad oak leaf, red veined, dark maroon to purple. Striking.
CAMEO—delicate pink, semi-oak.
CAROL-ANN CONRAD—large, broad, irregular. Maroon background, heavily veined red.
CHARLES RUTHERFORD—large modified oak leaf, red midrib, maroon-purple background, red patches.
COLONEL BULLOCK—semi-oak, large leaf. Dark pink blotches.
COLUMBIANA—elliptic brilliant carmine, purple and green.
CONFUCIUS—large, broad waved leaf, multiple colors: yellow, red, pink, maroon, green.
DAISY O—elliptical, medium size, good deep red.
DREER No 7—oak leaf medium size, red to pink irregular pattern. Compact growth.
DR. STEWART—large broad leaf, red, blotched pink.
GENERAL MARSHALL—linear and waved leaf, red midrib and spotted red on maroon.
GLORIOSA—broad large leaf, blotches of red on purple and maroon. Very beautiful and hardy.
HARVEST MOON—broad leaf, yellow midrib, green dominant, white veins.
IRENE KINGSLEY—medium oak leaf, blotches red and maroon.
KENTUCKY—irregular leaf, red veined, blotched red on purple. Large foliage.
LIBERTY—jagged oak leaf, red margin, red veins, maroon blotches.
L. M. RUTHERFORD—large semi-oak leaf, consistent pink color.
MARTHA FRANCIS—large, hardy. Similar to Dr. Stewart.
MONARCH—very large broad irregular leaf, brilliant red — maroon to purple.
MOSAICA—pastel pink.
MOUNT FLORIN—yellow vein, green leaf. Very compact, medium size.
MRS. FERDINAND KOEHL—one of the best of the older oak leaves.
POLYCHROME—best croton for growing in shade. Large leaf, pastel pink.
STOPLIGHT—narrow irregular leaf, green and yellow with red.
STRAWBERRY—strawberry red, medium size foliage.
REEDII No. I—large, elliptical leaf, pink veins, fast grower.
REEDII No. II—large, elliptical leaf, very hardy, pink veins.
VICTORY—semi-oak, highly colored pink, medium grower, medium size.

CULTURE: New growth is green, but colors up as it matures. Needs some sunlight. Keep moist, soak soil well at least once a week. Set pot in saucer of sand and keep moist. Best temperature, 60° minimum at night, higher in daytime. Sponge foliage with water once a month. For rapid growth feed monthly with liquid fertilizer and Ortho-Gro alternately.

PRICE: 4" and 5" pots—3.50 to 5.00
CHOICE HIGHLY COLORED HYBRIDS NOT LABELED
4" and 5" pots, 1.50, 2.50 and 3.50

GLORIOSA LILY

GLORIOSA ROTHSCHILDIANA (Red Climbing Lily). A splendid low climber, easy to grow; it does well in sun or partial shade. Grows 2-8 feet high, producing gorgeous Lily-like flowers which open a bright yellow and red, but change to a deep scarlet. Plant tuber horizontally 2½ to 3 inches deep, being careful not to break the new shoot at the end of the tuber. Fertilize once a month after new growth breaks thru soil (liquid fertilizer) Use regular potting soil for foliage plants. After flowering vines die down and tubers rest for 2-3 months. They will start to grow again of their own accord. Simply water and fertilize when new growth appears. Postpaid prices.

Giant TUBERS—\$1.50 each 4 for \$5.00 6 for \$7.50

SAINTPAULIAS (AFRICAN VIOLETS)

BLUE

- **BERNICE**—extra large light blue DOUBLE, St. Louis convention sensation
3"—2.00 4"—3.00
- **BLUE PEAK.** Full DOUBLE Geneva type, pin-white edge, very outstanding flower.
3"—2.00 4"—3.00
- MARTHA GIRL.** Fine blue free flowering, white center of leaf.
3"—1.50 4"—2.50
- MERKEL'S GIANT BLUE.** Large flowers, free flowering and good grower.
3"—1.50 4"—2.50

LAVENDER AND VIOLET SHADES

- **LACY LAVENDER.** Full DOUBLE lacy flower, compact, exceptional.
3"—1.75 4"—2.75
- ORCHID GIRL.** DOUBLE flowers violet purple, girl foliage.
3"—1.50 4"—2.50
- *RUFFLED QUEEN.** Sensational, pinking shear edge to flowers, dark burgundy.
3"—1.75 4"—2.75
- **QUEEN'S CUSHION.** Large full DOUBLE dark purplish orchid flowers.
3"—2.00 4"—3.00
- **VELVET QUEEN.** Ruffled edge, orchid color flowers, Ruffled Queen seedling.
3"—1.75 4"—2.75

PURPLE

- **GIANT PURPLE MONARCH.** Sport of Purple Knight, largest flowers (2½") known.
3"—1.75 4"—2.75
- MENTOR BOY.** Free flowering, still a favorite after 22 years.
3"—1.50 4"—2.50
- PURPLE KNIGHT.** Very large flowered favorite.
3"—1.50 4"—2.50
- PURPLE PRINCE.** Very large flowered favorite.
3"—1.50 4"—2.50

PINK

- DOUBLE PINK VICTORY.** All the name implies. READY AUGUST 1st.
4" only—3.50
- PINK ATTRACTION.** Exceptional fine pink with rosy eye, Nile green foliage.
3"—1.75 4"—2.75
- PINK CHEER.** Clear dark pink flowers above foliage, free.
3"—1.75 4"—2.75
- PINK DELIGHT.** Shell pink flowers, free flowering.
3"—1.50 4"—2.50

WHITE

- **DOUBLE WHITE MADONNA.** Award winner; large DOUBLE, girl foliage.
3"—2.00 4"—3.00
- **WHITE PRIDE.** Very large DOUBLE white, outstanding at St. Louis show.
3"—2.00 4"—3.00
- SNOW GIRL.** Clear satin white flowers, compact green foliage.
3"—1.50 4"—2.50
- SNOW PRINCE.** Improved. Very large single satin white flowers.
3"—1.75 4"—2.75

SAINTPAULIAS (AFRICAN VIOLETS)

RED

- CALIFORNIA DARK PLUM.** A really dark flower, intensity of color unsurpassed.
 3"—1.50 4"—2.50
- ****CRUSADER.** DOUBLE red flower, dark green plain foliage.
 3"—2.00 4"—3.00
- RED KING.** Favorite burgundy wine, exceptionally free flowering.
 3"—1.50 4"—2.50
- RED MENTOR BOY.** A fine counterpart to Purple Mentor Boy.
 3"—1.50 4"—2.50
- ***RED MENTOR GIANT.** Large flowering red, free and good grower.
 3"—1.75 4"—2.75
- ****RED WING.** Large rose red flower, entirely new.
 3"—2.00 4"—3.00

VARIEGATED AND NOVELTIES

- ****BRIDESMAID.** Large DOUBLE light blue and white variegated flowers.
 3"—1.75 4"—2.75
- ****TWILIGHT.** Two-tones blue and white flowers, very different.
 3"—1.75 4"—2.75
- ****WINTERGREEN.** Striking variegated white and green foliage, DOUBLE blue and white flowers.
 3"—2.00 4"—3.00
- ****WINTRY NITE.** Striking variegated white and green foliage, DOUBLE medium blue flowers.
 3"—2.00 4"—3.00
- ****NEWEST INTRODUCTION.**
- ***RECENT INTRODUCTION,** last two or three years.

HOW TO GROW HOUSE PLANTS

The African Violets and foliage plants listed in this catalog are all excellent house-plants. They have been selected as varieties that withstand the shade and warmth of normal homes. They supply a natural humidity to the home that is needed for people's health, especially in heated buildings.

Watering: Leave plant in red clay pot which holds moisture and place clay pot inside of decorative ceramic pot if desired. Or place pot on saucer or tray of damp sand. To water, fill sink with water and submerge pots until soil stops bubbling. Use room temperature water.

Light: African Violets like an east or southern window. Plants receive adequate light near any window. Some as Philodendron and Chinese Evergreen tolerate deep shade for long periods.

Temperature: Most houseplants prefer a minimum of 55-60 at night, with daytime 10-15 degrees warmer. Some can stand it colder, and these are recommended for office buildings if heat goes off at night. Special requirements indicated in listings.

Fertilizing: Most plants benefit from feeding with mild liquid fertilizer especially during spring and summer. Do not over-feed. Follow directions. We recommend liquid Orchid Fertilizer and Ortho-Gro. See page 40.

Spraying: Inspect foliage, especially lower sides of leaves, for insects, and sponge off with warm soapy water. Do not wash hairy leaves such as African Violets or Episcias.

Potting Soil: Our plants are delivered potted in correct soil unless shipper requests shipping out of pots. We recommend using any good garden loam (1/3) with equal parts pulverized peatmoss and sharp builder's sand.

PHALAENOPSIS (Moth Orchids)



#228 PHALAENOPSIS PINK HAWAII

PINK PHALAENOPSIS

These pink Phalaenopsis have proved to have outstanding form, which is difficult to obtain in Phalaenopsis. Note overlapping sepals and petals in photo above.

- 228 **P. PINK HAWAII** (Pink Glory x Hawaii). Pink
- 232 **P. GLORIANA** (Schilleriana x Pink Glory.) Dark pink.
 5" flowering size—10.00-12.00 In bud (Nov.-Jan.)—12.50—15.00
 6" flowering size—10.00-12.00 In bud (Nov.-Jan.)—15.00-17.50-25.00
- P. ROTHSCHILDIANA.** Large blush flowers. Heavy production.
 flowering size—10.00—12.50—15.00

WHITE PHALAENOPSIS

- 318 **P. CHIEFTAN** (Doris # AB x La Canada var. Orchidhall). Beautiful, exhibition shape. Many are overlapping.
 6"—15.00—20.00—25.00
- 320 **P. CHIEFTAN** (Doris var. Rebecca AM-AOS x La Canada var. Martha).
 See photo page 2.
 6"—15.00—25.00



GREEN SWAN ORCHID
(*Cycnoches Chlorochilon*)

The unusual flowers of this orchid are 4-5 inches in width, a beautiful **chartreuse green color**, and fragrant.

We will ship *Cycnoches* August 1 to December 1. They flower October-December.

Growth begins in February. Report when new leaf growth is 2-3 inches tall and when roots 1/2 inch long. Use fresh damp osmunda. Spray lightly daily until roots become well established in the fiber. Then thoroughly soak once a week and water more often if plant becomes dry. During summer feed every 2-3 weeks. We recommend using liquid Orchid Fertilizer and Ortho-Gro (fish emulsion) for alternate feedings.

Start to reduce amount of water in September. After flower spike appears, keep plant slightly damp. This orchid is deciduous. Leaves will turn yellow and drop off before, during or after flowering. Sometimes plants produce a second flower spike in a season.

Inspect undersides of leaves for red spider and mealybug, and spray with water and Wilson's Super-Cide or malathion. If old bulb deteriorates or becomes soft, cut it off so rot will not spread to new growth.

Flowering size—5.00—7.50—10.00—12.50



Lc. CARDINAL
Parent #919, 1027, 1087, 2008

HOW TO GROW ORCHIDS

We are often asked if it is feasible to grow orchids in the home. This question may occur to any plant lover cultivating geraniums or African violets on a window ledge in the home. We try to explain this so that you may form your own answer.

To begin with, orchid plants are not frail, delicate or sensitive. They are, in fact, very tough, rugged plants.

You need not be afraid of orchids. They are just as easy to grow as many more common houseplants. Of course, if you have a small greenhouse, it is easier to provide the ideal conditions, but many people grow orchids in their homes.

Certain conditions for culture are essential and must be observed.

Location: Preferably an eastern exposure. Southern is good but requires more shading. In summer (June through August), most plants can have full sunlight until 9:30 a. m. If the exposure is southern, use light shading, such as gauze or cheese-cloths, between 9:30 a.m. and 4:00 p.m. on sunny summer days. In winter, full light generally will not burn the foliage.

Watering: In winter, spray on sunny morning, or when compost is dry. In summer, spray on sunny mornings and again in mid-afternoon if very warm (over 80). Allow plants to dry out between waterings, summer or winter. Remember that spraying means sprinkling lightly; watering means soaking thoroughly. Let your schedule for watering be determined by the dryness of the compost. This schedule may vary from every 4 to every 12 days. The more frequent schedule is necessary during long dry spells in summer, or if there is excessive artificial heating in winter. The less frequent schedule is followed when natural humidity slows up the drying of the compost. This happens during rainy or cloudy spells. When buds start to open, cut down water. Spray only compost every 3 or 4 days; avoid wetting flowers.

When plant has finished flowering, repot in next size pot if the plant has no more room for new growths. Allow plant to rest about 10 days before resuming regular spraying and watering schedule.

Provide circulation of air without sudden drafts. Maintain a minimum temperature of 55-60° at night and 70° during the day. Higher daytime temperatures will do no harm. During warm, humid weather hang plants out of doors in semi-shady location. Orchids like fresh air if it is warm.

A Wardian case (a glass box fitted with an automatic heating unit and a tray of water) is recommended for maintaining greater uniformity of temperature and humidity.

We recommend alternate feedings of liquid orchid fertilizer and Ortho-Gro (fish emulsion) every 2 weeks when plants are in active growth.

New orchid growers can profit by joining the American Orchid Society. Membership includes a subscription to the Bulletin. (See page 68.)

About the cost of the plants: They may now be purchased at very reasonable prices. We recommend and list standard varieties for the beginner for trial. (See **"Collections" on page 21**). A single flowering size Cattleya plant or a Phalaenopsis plant in bud may be had for \$8.95 postpaid U.S.A. Phalaenopsis can be shipped with flower spike only from November through January. See page 17.

The above information is intended for general culture of orchids in the home and especially for the Cattleya and allied genera, such as Lc. (Laeliocattleya), Bc. (Brassocattleya) and Blc. (Brassolaeliocattleya). Any special cultural information for other types is given under the individual listings.

ORDER NOW!

Detach this page, fill in this side and mail it to:

TEXAS GREENHOUSE CO.

1500 W. ROSEDALE

FORT WORTH, TEXAS

GENTLEMEN: Please send me the following:

NUMBER		TOTAL
_____	CLEARVUE GREENHOUSE (S) @ 249.50 each	_____
_____	Redwood Benches @ 20.00 each	_____
_____	Automatic Ventilator(s) @ 31.00 each (one for each ventilator)	_____
_____	Sidewall Shelves @ 2.50 each	_____
Please prime my Greenhouse with two coats of white paint (add 20.00)		_____
TOTAL: One half of which is included with this order.		_____
Balance is due on delivery		\$ _____

Name _____
(PLEASE PRINT)

Address _____

City _____ State _____

All prices are F.O.B. Fort Worth, Texas, and are subject to change without notice. Shipments are made by freight, collect, unless otherwise specified. We are not responsible for freight rates quoted. All payments are to be made at Fort Worth, Tarrant County, Texas.

MARY NOBLE - Fla. rep.

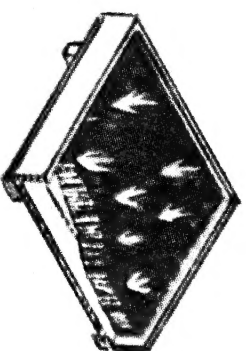
3003 Riverside Avenue

Jacksonville, Florida

CLEARVUE ACCESSORIES

REDWOOD BENCHES

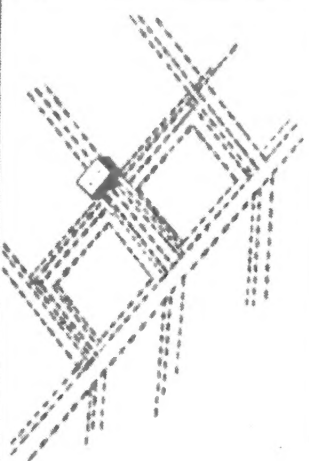
Benches are 1 inch dressed redwood 6 inches deep fastened with galvanized bench brackets. Bottoms are 1 inch by 6 inch rough redwood cut to fit without screws. Each bench 2 feet wide and 10 feet long is made to fit Clearvue Greenhouse . . . \$20.00



AUTOMATIC

ROOF VENTILATOR

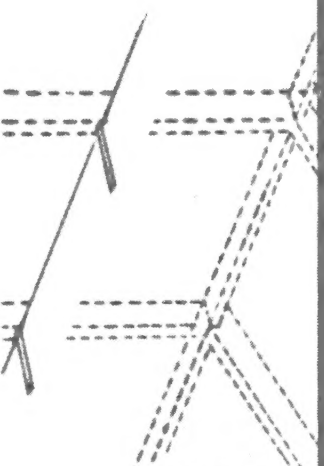
Electric operator thermostatically controlled gives automatic ventilation. One operator controls one roof vent . . . \$31.00.



SHELVES

Sidewall shelves 10 inches wide and 10 feet long of 1 inch redwood. Each shelf with supports.

\$2.50



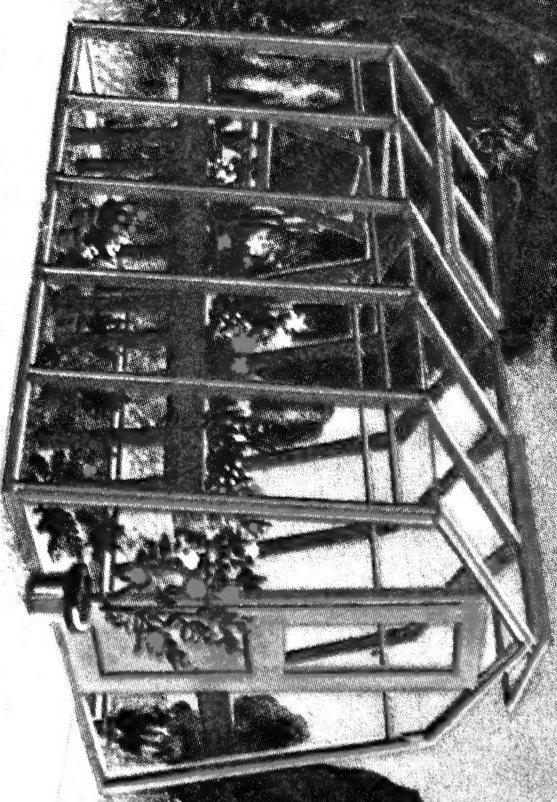
You may have your Clearvue Greenhouse primed with two coats of white paint or natural redwood finish. Please specify . . . add \$20.00.

Other greenhouse equipment such as: heaters, seed flats, shading slats, sprinkling nozzles, soil heating cable, and interesting books to make your gardening more pleasurable are available at nominal cost. Write for prices.

TEXAS GREENHOUSE CO.

1500 W. ROSEDALE - FORT WORTH, TEXAS

THE NEW
CLEARVUE
GREENHOUSE
THE ANSWER TO YOUR DREAMS



A Complete Package Greenhouse

\$249⁵⁰

TEXAS GREENHOUSE CO.

1500 W. ROSEDALE - FORT WORTH, TEXAS

MANUFACTURER OF PREFABRICATED SECTIONAL GREENHOUSES

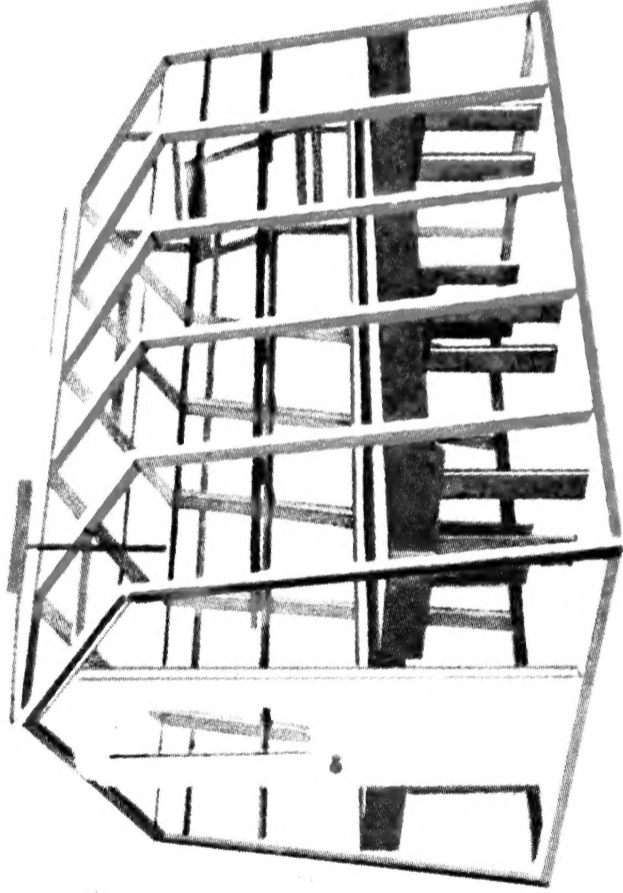
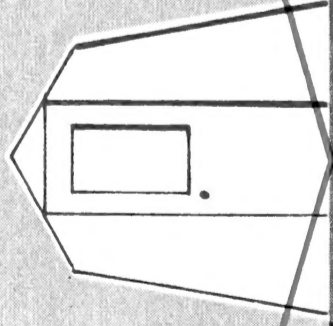
YOU'LL REALLY ENJOY GARDENING WITH A GREENHOUSE OF YOUR OWN!

Now—at surprisingly low cost—you can get more enjoyment from your gardening hobby YEAR 'ROUND. This new "Clearvue" Greenhouse is an extraordinary bargain. It furnishes large growing area, will give you years of excellent service, with the price only \$249.50 for a real greenhouse.

"CLEARVUE FEATURES"

The "Clearvue" glass to the ground makes available the space under the benches thereby doubling the growing area usually found in the ordinary greenhouse. With the bench space, ground space under the benches and additional sidewall shelves it is possible to have up to one hundred square feet of growing area in this greenhouse. Where else can you find so much for so little?

GLASS TO THE GROUND GIVES MORE GROWING AREA



DRY GLAZING OF PANES

Glass is held in place by aluminum glazing mould. This eliminates the use of putty and saves time in erection. The aluminum glazing mould gives a weather-tight house with bright neat appearance. Any single glass may be replaced without disturbing adjoining panes.

EASY TO ERECT

The complete packaged unit includes all necessary parts and clearly illustrated instructions for the erection of this greenhouse. Precision-cut glass, redwood framework and aluminum glazing make it possible to assemble this greenhouse with wrench, screwdriver and hammer.

HIGHEST QUALITY MATERIALS

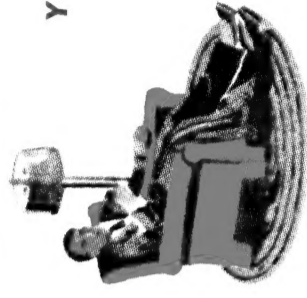
All wood parts of the "Clearvue" Greenhouse are made of durable redwood, precision-cut, ready for painting and erection. Glass is double strength. Metal parts are of aluminum or galvanized iron.

NO FOUNDATION NECESSARY

The "Clearvue" Greenhouse is erected on four-inch by four-inch rot-resistant redwood base which may be staked to the ground. It may rest on any leveled area, thereby saving foundation costs. This greenhouse can be moved to different spots in your garden. A concrete runner or concrete blocks at ground level may be used as a foundation, if desired.

ADJUSTABLE VENTILATION

Two roof vents and one large end vent are included in your "Clearvue" Greenhouse at no additional cost. Proper ventilation is assured at the growing level without harmful cross drafts. Placement of the ventilators allows entrance of abundant fresh air without chilling plants. Manual operators are furnished for each vent.



YOUR DREAMS CAN COME TRUE!

Order your "Clearvue" Greenhouse today. Use the handy order blank on the back of this page. You can now afford the luxury of this inexpensive package unit. Give your plants what they want

and begin now to enjoy your indoor garden — your glass garden. The "Clearvue" Greenhouse is made in only one size, 7 feet 9 inches wide and 10 feet 6 inches long. If you desire a larger greenhouse, please write for our *Ezyrected* Greenhouse catalog.

TEXAS GREENHOUSE CO.
1500 W. ROSEDALE - FORT WORTH, TEXAS

INSTRUCTIONS FOR ORDERING

Please use enclosed green order sheet to send in your order. Do not send money first time. We may be out of plants you want. We will check items you wish and sizes, will confirm your order, and return green sheet to you so you can see exactly what plants we have for you. Then please send green sheet to us with check or money order for the exact total due. This system avoids unnecessary correspondence for you and extra bookkeeping for us. Packing charges are made at cost.

Minimum Orchid Order \$5.00 Minimum Foliage Order \$2.00. We reserve the right to limit quantities sold. Discounts allowed on orchids are given on page 37.

Shipping: We recommend shipping by railway express, transportation charges collect. Parcel post is more economical for small orders. We will estimate the postage when confirming your order. Parcel post shipments cannot be insured against frost damage, **only against breakage. If damage occurs, file claim immediately with express company or postmaster.** Our responsibility ends when package is accepted by carrier.

Foreign Shipments: We have fulfilled necessary plant regulations to make shipments outside of the U. S. Send your permit with order. Hawaiian orders require a permit for orchid but not foliage plants. Check with your local authorities and inform us of any unusual requirements for shipping plants into your country. Foreign shipments cannot be insured regardless of method of transportation. We recommend foreign payments in postal money orders.

ALBERTS & MERKEL BROS., Inc.

Route 6, Box 77, Jacksonville 7, Florida, U.S.A.

Cable Address • ALMER, Jacksonville, Florida

The cost of this catalog is 25c. Free to members of Orchid Societies. Write us if you are not on our mailing list.

INDEX

ORCHIDS

Cattleya hybrids, mature	18-20
Cattleya hybrid seedlings.....	3-17
Collections	21
Culture	74
Cycnoches (swan orchid)	73
Cypripediums and Selenipediums	22-23
Dendrobiums	30-33
Discount	37
Phalaenopsis	37-72
Spray orchids	34-37
Terrestrial orchids	38
Vandas	24-29

TROPICAL PLANTS

African Violets	70-71
Bromeliads	42-44
Culture	71
Crotons	68-69
Foliage Plants	53-69
Gloriosa Lily	69
Philodendrons	45-53
Books	39
Fertilizers, Insecticide, Supplies	40-41

ALBERTS & MERKEL BROS., Inc.

ORCHID NURSERIES

Hybridizers and Growers of Fine Orchids for over 40 years



KODACHROME BY JEAN MERKEL

Lc. MIAMI VAR. SILVER BOWL

F. C. C. A. O. S.

We invite you to visit our nurseries at Mandarin and Boynton Beach, Florida. Mandarin is 13 miles south of Jacksonville. Take state highway No. 13 to Mandarin Super Market, turn right 1 mile. Boynton Beach is 13 miles south of West Palm Beach. Our Nursery is on U. S. 1 one mile south of Howard Johnson's on east side of highway.

ALBERTS & MERKEL BROS., INC.

Main Office

RT. 6, BOX 77

JACKSONVILLE 7, FLORIDA

Telephone: Mandarin 9-2111

Branch Office

P. O. BOX 537

BOYNTON BEACH, FLORIDA

Telephone: 2071

Address all correspondence to Main Office