

Barnes Bros. Nursery Co.

*invites you
to its Preview of
Hardy Plants for
your 1955 Garden*



Ref/Bar



The Grandiflora
Queen Elizabeth
Plant Patent 1259

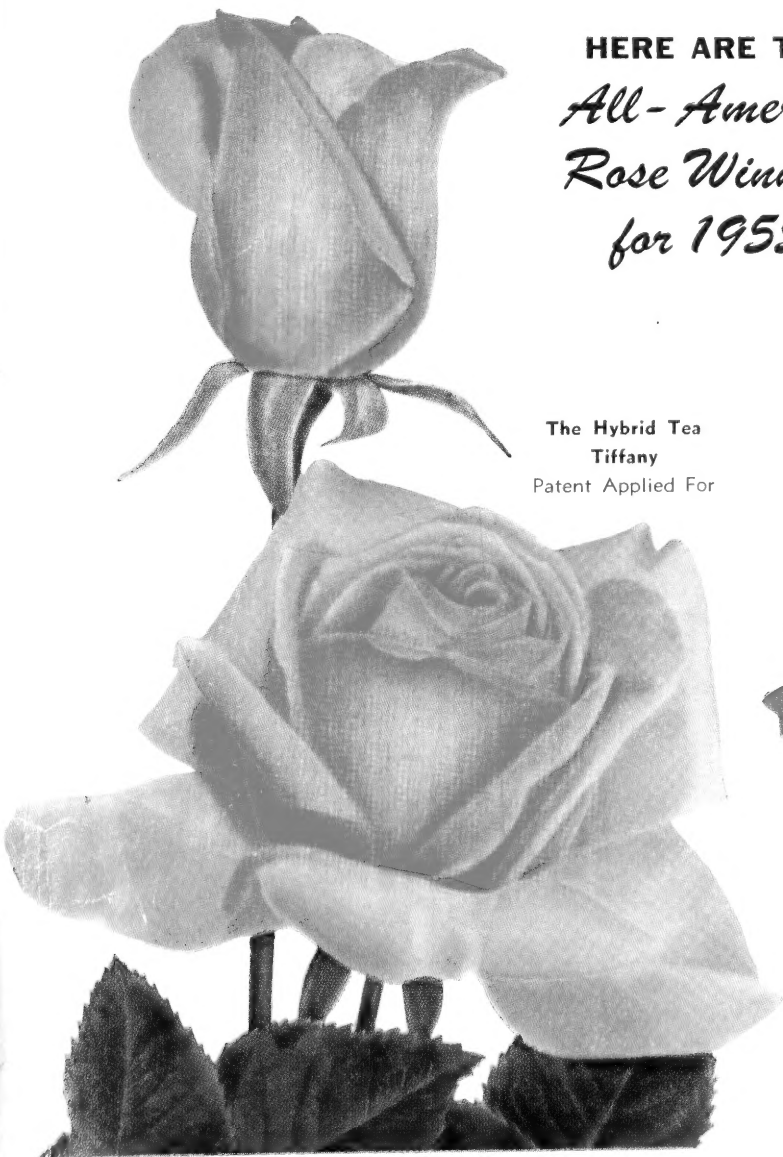


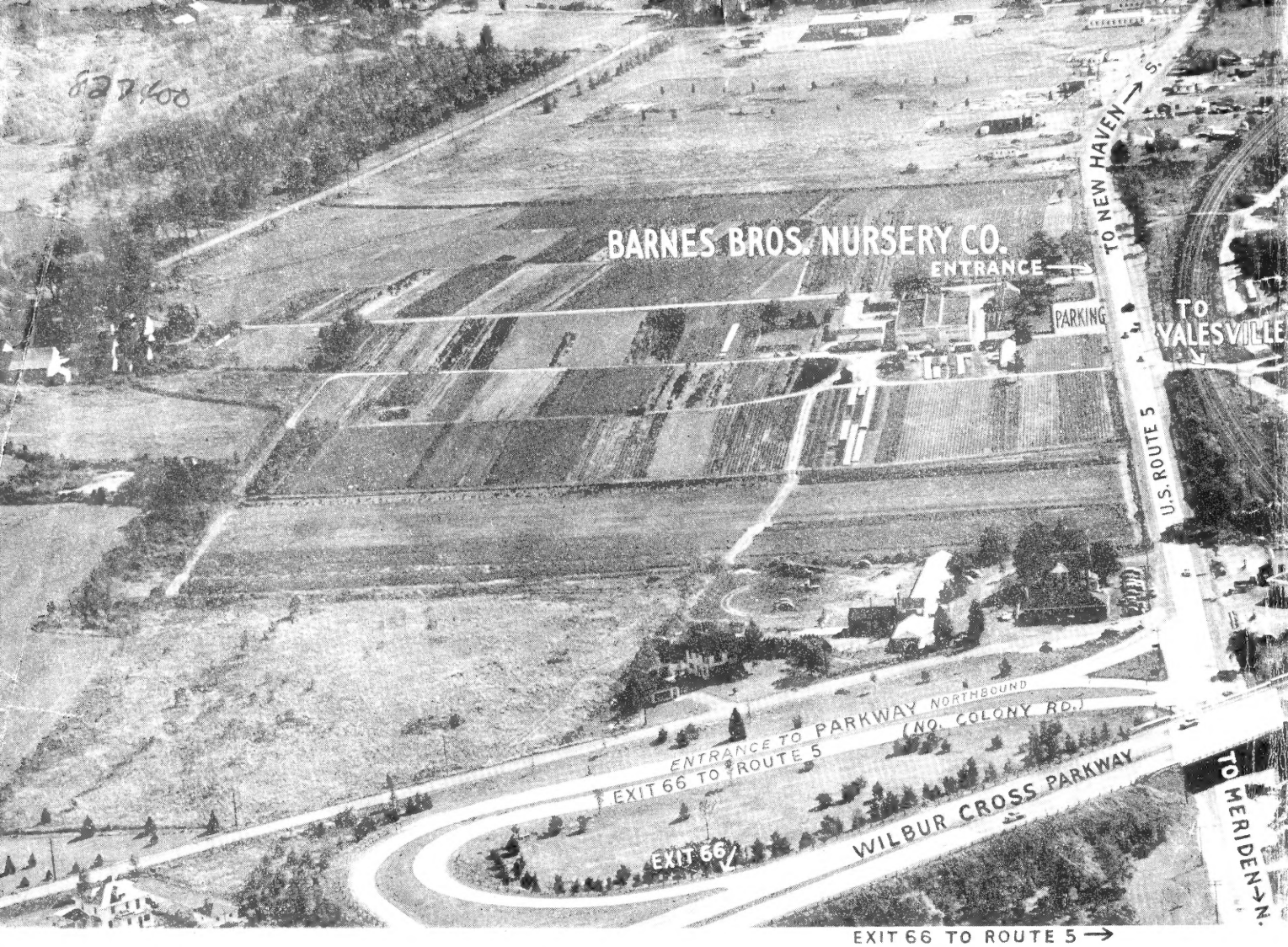
HERE ARE THE
*All-America
Rose Winners
for 1955*

The Floribunda
Jiminy Cricket
Patent Applied For



The Hybrid Tea
Tiffany
Patent Applied For





Please Read Before Ordering

Terms—Net cash. We will ship orders C.O.D. providing 25% of the total amount is sent with order. Prices subject to sales taxes in effect at time of sale.

Mail Orders—Small orders can be sent by mail if you include 10% of the catalog price to cover postage and special packing. (Minimum charge 40c.) Overpayments are refunded. All trees over 4 feet tall will be sent by express.

Plants requiring a ball of earth or those too large for economical shipment by common carrier are marked * in the catalog and are offered for local sales only.

Size of orders: Owing to high costs incident to packing and handling, we cannot accept mail orders amounting to less than \$3.00.

Telephone Orders—Call us at Wallingford COLony 9-4226 and your order can be ready for you to pick up or any order over \$3.00 can be delivered if you live within our delivery area.

Nursery Sales—You may select your plants at our nursery sales grounds. Experienced helpers will assist you and many plants can be taken home in your car. For your convenience, this nursery is open on Sundays during April and May from 9 a.m. to 5 p.m., State regulations permitting.

Transportation Conditions—All goods, unless otherwise specified, are sold F.O.B. our nursery and travel at purchaser's risk and expense. Where a customer lives within approximately 25 miles of our nursery, we can deliver orders of \$3.00 and over without charge on such days as we have trucks in that particular section. We cannot deliver on specific days or at particular hours.

Non-Warranty—(1) If any nursery stock shall prove untrue to the label under which it is sold, provided notice and proper proof thereof are

furnished by the purchaser to the seller, the seller shall, at the option of the purchaser either refill that portion of the order which was mislabeled, by any other delivery of stock, or refund the purchase price; but in any case we are not to be held responsible for a sum greater than the original selling price of such stock. (2) All sales or agreements of sale are made subject to shortage of nursery stock, fire, frost, floods, drought, or other causes beyond the control of the seller.

Guarantee—We guarantee our plants to be of first quality and if any dormant woody plants, purchased from us this Spring at regular prices, having been properly planted and cared for, should fail to grow, notify us not later than July 1st, 1955, and we will replace the stock. A sales slip or copy of your order MUST accompany any claim for replacement of plants purchased on a "Cash and Carry" basis.

Order Early—Place your order early. Many popular varieties are sold out each year before the season is half over. We will ship at best planting time for your locality.

Inspection—Our nurseries are regularly and thoroughly inspected by the Connecticut Experiment Station and found apparently free from injurious insects and diseases.

Location—We are located on the east side of the North Colony Road, Route 5, three miles south of Meriden, two miles north of Wallingford, Connecticut. Motorists on Wilbur Cross Parkway use Meriden-Wallingford Exit No. 66. Nursery 200 yards south.

Connecticut Residents please add 3% sales tax on all items except fruit trees and other food-bearing plants; Asparagus, Rhubarb, Grape, and Berry plants.

Member:
American
Association
of Nurserymen



Member:
Connecticut
Association
of Nurserymen



Phone: Wallingford: COLony 9-4226

Prices in this catalog apply to Spring, 1955, sales only. After a Summer's growing season, changes occur in the varieties and sizes available.

We recommend to our customers *Popular Gardening*, the all-garden magazine published monthly. *Popular Gardening* contains valuable help for amateur gardeners. Convenient coupon offering a special introductory price to new subscribers is enclosed.

Barnes Outstanding Roses for 1955

PATENTED HYBRID TEA ROSES

-  **Charlotte Armstrong** (Plant Patent 455). Beautiful, long, pointed buds. Large, cerise flowers. Plant is vigorous and blooms freely. A favorite from coast to coast. \$2.25 each, 3 for \$6.00.
-  **Chrysler Imperial** (Plant Patent 1167). Big, full, fragrant flowers of glowing crimson red. \$2.50 each, 3 for \$6.60.
- Dean Collins** (Plant Patent 1279). Very double, fragrant claret-rose flowers over glossy green foliage. \$2.50 each, 3 for \$6.60.
-  **Forty-Niner** (Plant Patent 792). A dazzling combination of chrome yellow and Chinese red colors these large, well formed flowers vividly until the petals drop. Vigorous. \$2.50 each, 3 for \$6.60.
-  **Helen Traubel** (Plant Patent 1028). Pink and apricot blend. Large, long, slender buds. Very large flowers. \$2.50 each, 3 for \$6.60.
-  **Lowell Thomas** (Plant Patent 595). Large, pure yellow flowers. Good, sturdy plants. One of the best. \$2.00 each, 3 for \$5.25.
-  **Mirandy** (Plant Patent 632). Huge, full blooms of velvety maroon-red. Fragrant. \$2.25 each, 3 for \$6.00.
-  **Mojave** (Plant Patent 1176). Glowing rich orange-apricot. Big, fragrant, long lasting flowers. \$2.75 each, 3 for \$7.20.
- New Yorker** (Plant Patent 823). Clear, bright red, unfading and fragrant. Velvety petals. Tall, free-blooming plants. \$2.00 each, 3 for \$5.25.
-  **Peace** (Plant Patent 591). Soft yellow, blended with pink and cream at petal edges. Extra double and large. A much loved Rose. \$2.50 each, 3 for \$6.60.
- Rex Anderson** (Plant Patent 335). Ivory white, perfectly formed and fully double blooms. Free flowering and vigorous. \$1.75 each, 3 for \$4.65.
-  **San Fernando** (Plant Patent 785). Intense, dazzling red. Long lasting, unfading and fragrant. \$1.75 each, 3 for \$4.65.
-  **Tiffany** (Patent Applied for). A warm, clear pink with a glowing golden yellow shading at the base of the petals. Vigorous plants, well furnished with dark green, disease resistant foliage. "All America" selection for 1955. \$3.00 each, 3 for \$7.95.

CLIMBING ROSES

- Blaze**. Bright red. Hardy and dependable. \$1.35 each, 3 for \$3.90.
- Climbing Crimson Glory** (Plant Patent 736). Beautiful, dark red flowers. Winter protection is necessary where temperatures drop to zero. \$2.50 each, 3 for \$6.60.
- Climbing Goldilocks** (Plant Patent 1090). Climbing form of the beautiful golden yellow Floribunda Rose and as free flowering. Vigorous and hardy. \$2.50 each, 3 for \$6.60.
- Climbing Mrs. E. P. Thom**. Buds of clear canary yellow open to fully double, perfectly formed, fragrant flowers of the same color. Vigorous and free flowering. \$1.35 each, 3 for \$3.90.
- Climbing Peace** (Plant Patent 932). This type of Peace makes a splendid, large-flowered Pillar Rose. Protect in winter. \$2.00 each, 3 for \$5.25.
- Climbing Summer Snow** (Plant Patent 400). Clusters of glacier white flowers from June to frost. Dependably hardy. \$2.00 each, 3 for \$5.25.
- Climbing Talisman**. This makes a splendid Pillar type Rose. Blooms all season with red and gold, double flowers. Sturdy. \$1.35 each, 3 for \$3.90.
- Dorothy Perkins**. An old favorite Climbing or Rambling Rose. Light pink flowers in large clusters. \$1.35 each, 3 for \$3.90.
- Doublons** (Plant Patent 152). Fast and tall growing. Large yellow flowers are freely produced over a long season. Hardy. \$2.00 each, 3 for \$5.25.
- Dr. J. H. Nicolas** (Plant Patent 457). Huge, double, clear pink, fragrant flowers. Strong grower. \$2.00 each, 3 for \$5.25.
- Inspiration** (Patented). Flowers have the same clear, sparkling pink tones found in the fine old Hybrid Tea, Pink Radiance. Very hardy and reliable, blooming from June through October. \$2.25 each, 3 for \$6.00.
- Mary Wallace**. Large, bright pink, satiny petaled and semi-double flowers. Strong grower. \$1.35 each, 3 for \$3.90.
- New Dawn**. Hardy, everblooming Climber with large flowers of delicate Apple blossom pink. Vigorous. \$1.35 each, 3 for \$3.90.
- Paul's Scarlet**. Large, double, intensely red flowers are produced abundantly in June. An old favorite. \$1.35 each, 3 for \$3.90.
- White Dawn**. Hardy, everblooming, pure white, double, pillar type Climbing Rose. It also makes a good ground Rambler. \$1.35 each, 3 for \$3.90.







Connecticut Customers Please Add 3% Sales Tax

STANDARD HYBRID TEA ROSES

- Autumn**. Lovely burnt orange, bronzy red and russet with yellow shadings lighting the flower. Dark, glossy green foliage.
- Countess Vandal**. (In color on page 5). Vigorous and dependable.
- Crimson Glory**. Dark red. Large, fragrant flowers throughout the season.
- Eclipse**. Distinctive, long, streamlined buds of clear yellow open to large, perfectly formed, spicily fragrant flowers. Dark glossy foliage. Vigorous.
- McGredy's Ivory**. Ivory white buds open into big, snow white flowers. Moderately fragrant. Vigorous, disease-resistant and a prolific bloomer.
- Mrs. P. S. DuPont**. Deep golden yellow flowers are produced freely.
- Pink Dawn**. Clear pink, fully double and fragrant. Free blooming.
- Poinsettia**. Flowers of a bright rich scarlet produced freely all season.
- President Herbert Hoover**. A popular, time tested combination of red and yellow. A vigorous, free blooming plant.
- The Doctor**. Immense, long-pointed buds of sparkling pink, gradually opening to great flowers, 5 to 6 in. across. Fragrance intense.


\$1.35 each, 3 for \$3.90

FLORIBUNDA ROSES

- Sturdy, hardy, everblooming bush Roses, growing from 1½ to 3 feet tall.
- Betty Prior** (Plant Patent 340). Sprays of single flowers, clear pink within and deeper outside. Blossoms persistently. \$1.50 each, 3 for \$3.90.
- Dagmar Spaeth**. Large clusters of pure white flowers are produced freely all Summer. \$1.50 each, 3 for \$3.90.
-  **Fashion** (Plant Patent 789). Beautiful, soft, yet bright, orange pink shadings color these semi-double flowers. \$2.00 each, 3 for \$5.25.
-  **Floradora**. Brilliant orange red, Camellia-like flowers. Free flowering, sturdy and tall growing. One of the finest and showiest of the Floribundas. \$1.50 each, 3 for \$3.90.
- Goldilocks** (Plant Patent 672). Golden yellow, about 3 in. across. Blooms profusely. Grows about 2 ft. tall. \$1.50 each, 3 for \$3.90.
- Irene of Denmark** (Plant Patent 889). Buds and open blooms have the true "sweetheart" form. Both are frosty white. \$1.75 each, 3 for \$4.65.
-  **Jimmy Cricket** (Plant Patent Applied for). A sparkling new color in Floribundas, a bright apricot orange, is the big feature of this 1955 All America Winner (see front cover). An endless succession of color on 2 to 3 ft. bushes. \$2.50 each, 3 for \$6.60.
-  **Lilibet** (Plant Patent 1209). Clusters of small, nicely formed Roses of delicate pink. Grows about 2½ ft. tall. \$2.00 each, 3 for \$5.25.
-  **Ma Perkins** (Plant Patent 1143). Coral and shell pink, warm and glowing tones. Honeysweet. Flowers of generous size all season. \$2.00 each, 3 for \$5.25.
- Masquerade** (Plant Patent 975). A cavalcade of fiesta colors: yellow, red pink and lemon, all at the same time. \$2.00 each, 3 for \$5.25.
- Pinkie** (Plant Patent 712). Deep, glossy green foliage is a perfect setting for large clusters of fragrant, pink flowers. \$1.75 each, 3 for \$4.65.
- Pinocchio** (Plant Patent 484). Salmon-pink, flushed with gold. Prolific and continuous in flowering. \$1.50 each, 3 for \$3.90.
- Red Pinocchio** (Plant Patent 812). Large and deep red. Free flowering, bushy and vigorous, hardy and tall. \$1.50 each, 3 for \$3.90.
- Rose Elfe**. A vigorous and continuous bloomer. Beautiful, Gardenia-like flowers of silvery rose pink. \$1.50 each, 3 for \$3.90.
-  **Vogue** (Plant Patent 926). Bright rose coral flowers, measuring 3 or more inches across, of excellent form. Free blooming. Thrifty grower to about 1½ ft. \$2.00 each, 3 for \$5.25.
- World's Fair** (Plant Patent 362). Large, velvety dark red. Semi-double, in large clusters. Plant grows to 2 to 2½ ft. tall. \$1.50 each, 3 for \$3.90.

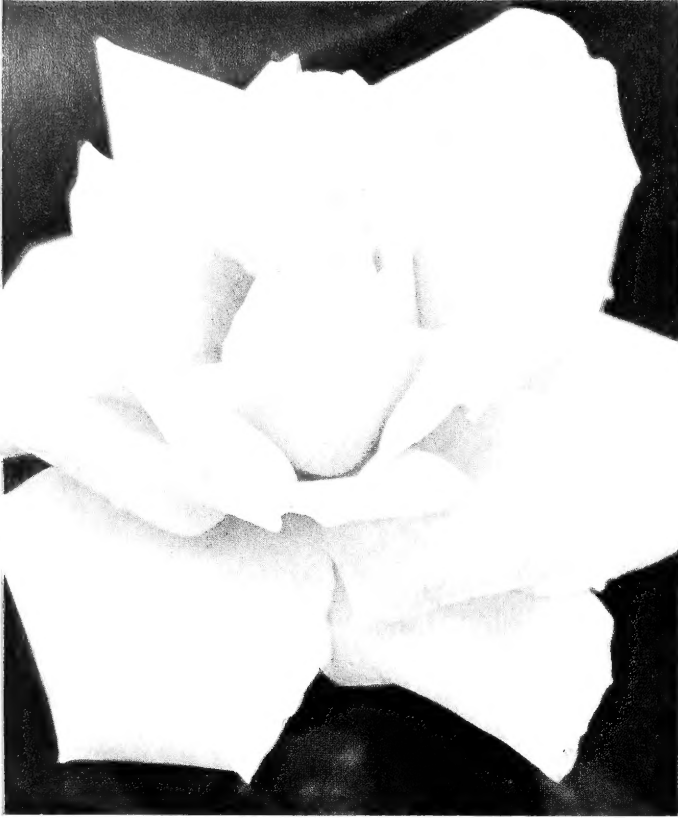
THE NEW GRANDIFLORA ROSES

This new class combines the flower quality of Hybrid Teas with the vigorous growth of the Floribundas. Persistently everblooming.

-  **Queen Elizabeth** (Plant Patent 1259). See front cover. Grows 4 ft. \$3.00 each, 3 for \$7.50.
- Buccaneer** (Plant Patent 1119). Tapering buds of clear golden yellow open to cup-shaped fragrant flowers. \$2.75 each, 3 for \$7.20.
- Carrousel** (Plant Patent 1066). Fine unfading dark red flowers freely produced on a 3 ft. bush. \$2.00 each, 3 for \$5.25.

SHRUB AND GROUND COVER ROSES ARE LISTED ON PAGE 11

Crimson Glory
\$1.35 each



Rex
Anderson
(above)
\$1.75 each



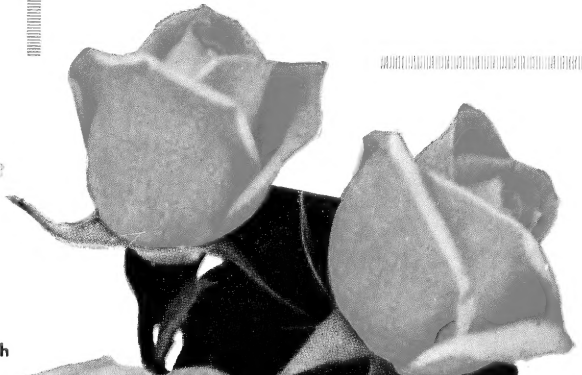
Peace
(right)
\$2.50 each

Blaze
(below)
\$1.35 each



Barnes

No other class of plants comes as close to being a universal favorite as Roses. Beloved for their fragrance, color, ease of growth and multitude of uses, they are among the oldest of cultivated plants. Growers in their constant efforts to improve any or all of their qualities are continually adding a multitude of varieties.



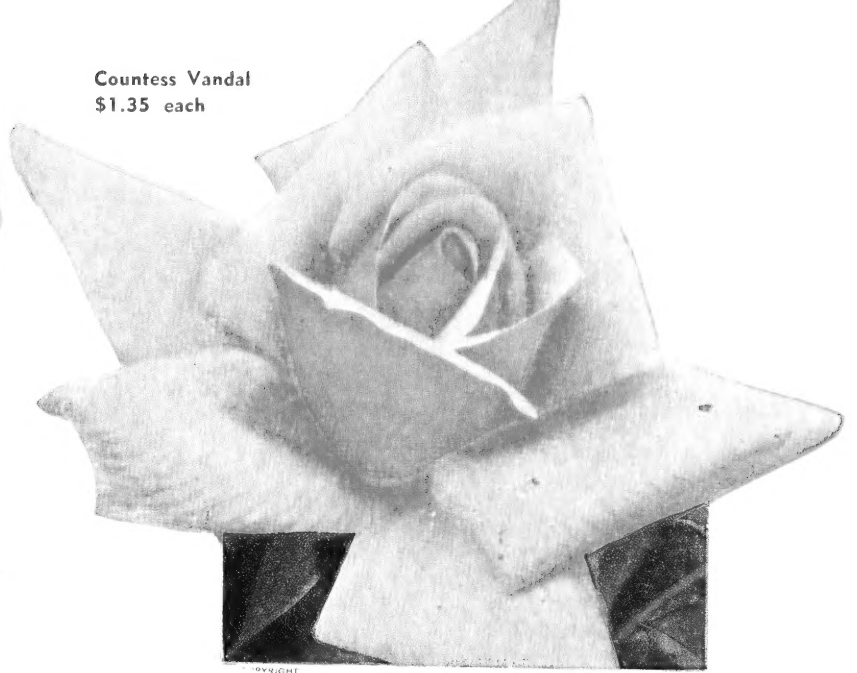
Fashion
(right)
\$2.00 each





Forty-Niner
\$2.50 each
(Floribunda)

Countess Vandal
\$1.35 each



FAVORITES FOR '55

This can be bewildering to you as a home gardener. For this reason we select each year those which we know are best for New England gardens . . . the newest All America Selections and those older varieties which time has proven are beautiful, productive and above all hardy. On this page are shown several of these 1955 Barnes Roses. These and our other selections, described on the preceding page, are among the very best for your New England garden. Choose them with confidence and order early as several kinds are available in limited quantities.



Mojave
\$2.75 each

Masquerade
\$2.00 each



Goldilocks
\$1.50 each
(Floribunda)



Barnes Hardy Flowering Shrubs

Quick growing, inexpensive and permanent, these Flowering Shrubs are adaptable to many uses. To define boundaries . . . as a screen for privacy or to hide an unsightly view . . . as a low cost foundation planting or as individual specimens, they are invaluable. To help you select those best adapted to your needs, we include the blooming time and, immediately after the name, the approximate ultimate height.

All of our shrubs are carefully grown, have generous tops and vigorous root systems and are not to be compared with the "bargain" plants offered by mail order houses and door-to-door salesmen. Each is backed by our 65 years experience in the nursery business. Varieties marked * are offered for sale only at our nursery or within our truck delivery area.

GLOSSY ABELIA

Abelia grandiflora. 2-3 ft. Valued for its excellent half-evergreen, glossy foliage which becomes rich bronze to purple in the Fall and for its clusters of pink and white flowers that appear during a greater part of Summer. A dense plant suitable for use in front of evergreen foundation plantings or as a low hedge. Not hardy North. 18-24 in., \$3.25 each.

SHADBLOW

Amelanchier canadensis. 25 ft. Tree-like with white flowers early in Spring. Blue berries, which birds love, follow. This hardy, native plant thrives in acid soil, in shady woodland and moist places and makes a splendid little tree for a low house. 2-3 ft., \$1.50 each.

RED CHOKEBERRY

Aronia arbutifolia brilliantissima. 6-8 ft. The crimson Fall foliage and abundant clusters of bright red fruits, which last well into the Winter, glorify a dependable native shrub. Small white flowers in May. Stands shady or wet places and may be used well at the shore, in cities, as a border or in a hedge. Birds like the fruit. 2-3 ft., \$1.50 each.

MENTOR BARBERRY

Berberis mentorensis (Mentor Barberry). 7 ft. A semi-evergreen barberry with clusters of yellow flowers followed by deep red fruits. Its narrow, upright growth makes it suitable to use in a constricted space. 15-18 in., \$1.25 each, \$9.00 for 10.

BARBERRY (See **Hedging Plants** on page 18).

SWEETSHRUB

Calycanthus. 6-9 ft. Double, reddish brown flowers in May; makes a neat shrub suitable for a lightly shaded spot. Likes rich, moist soil. 2-3 ft., \$1.25 each.

BUTTERFLYBUSH

Buddleia alternifolia (Fountain Butterflybush). 10 ft. Long, arching branches covered with lilac flowers make this ample shrub a fountain of delicate loveliness in early June. Grows well on dry or sandy soils. Flowers on previous season's growth. 2 yr., 90c. each.

Orange-eye Butterflybush. 6 ft. The ends of the gracefully arched branches are covered with flowers from August to late Fall. Splendid as a background for an herbaceous border. Prune close to the ground each Spring. Hill extra soil about the base of the stems each Fall for Winter protection. Available in any of the varieties listed below.

Dubonnet. Deep wine-red. No. 1, 90c. each.
Fascinating. Soft orchid-pink. No. 1, 90c. each.

Ile de France. Purple. No. 1, 90c. each.
White. No. 1, 90c. each.

BEAUTYBERRY

Callicarpa dichotoma. 4 ft. A dainty shrub with clusters of shiny, lavender berries in the Fall. Small, pink flowers. Should be pruned and protected as Orange-eye Butterflybushes are. 2-3 ft., 90c. each.

SUMMERSWEET

Clethra alnifolia. 6-9 ft. This good hardy native shrub deserves wider use. The flowers are white, fragrant, small but solidly packed on 4 to 6 in. spikes in late July. It likes shady, damp places with acid soil, is good to grow on banks and does extremely well along the shore. 2-3 ft., \$1.50 each.

BLUE MIST

Caryopteris clandonensis. 3-4 ft. Intense, blue flowers in many stalked clusters. Valuable as the only August flowering shrub of its color. 2 yr., \$1.50 each.

SHRUB DOGWOOD (Cornel)

These are excellent, very hardy shrubs. Small, white flowers are in clusters; berries, white to blue, are liked by birds; they are worth planting for stem color alone. They will stand shade, wet soils, city or shore conditions and hold banks well. The young wood is brightest, so prune out old stems and keep new growth coming.

Red-branched Cornel (Cornus alba sibirica). 6-8 ft. Blazing red stems make a vivid spot of color in the Winter. 2-3 ft., 90c. each.

Variegated Cornel (Cornus alba argenteo-marginata). One of the choicest of the variegated shrubs. A medium-sized bush, its leaves dark green, edged with white. 2-3 ft., \$1.50 each.

Goldentwig Cornel (Cornus stolonifera lutea). 6-8 ft. Bright yellow twigs make a striking contrast with above. 2-3 ft., 90c. each.

SMOKEBUSH

Cotinus coggygia. 15 ft. Tall, tree-like favorite. Its fluffy flowering and fruiting parts look like clouds of smoke. 2-3 ft., \$2.00 each.

C. coggygia rubrifolia. 15 ft. A variety of the above with deep purple-red foliage throughout the season. 2 ft., \$2.50 each.

COTONEASTER

***Cotoneaster divaricata.** 6 ft. Spreading, arching branches give this shrub an unusually fine form. In early Fall, many red berries glisten along the branches. Foliage turns dark red. 3-3½ ft., B&B, \$5.00 each.

***C. horizontalis (Rock Cotoneaster).** 3 ft. A dwarf spreading shrub whose branches grow in a unique horizontal manner. Leaves are small and glossy green; the abundance of small red fruits in early Fall makes a handsome garden picture. Superb as a bank covering in a sunny place. 9-12 in., \$2.75 each.

FLOWERING QUINCE

Cydonia japonica. 6 ft. Scarlet flowers in early May. Selected upright type. Makes an effective thorny barrier. An oldtime favorite. 18-24 in., \$1.00 each.

DEUTZIA

Deutzia gracilis (Slender Deutzia). 3 ft. Splendid, low-mounded shrub, a mass of white flowers in May. 15-18 in., \$1.25 each.

D. Pride of Rochester. 8 ft. Tall and upright. Flowers are white with pinkish tinge, double, in June. 2-3 ft., 90c. each.

EUONYMUS

(See also **EVERGREENS** on page 13)

Euonymus alata (Winged Spindle Tree). 9 ft. A big, compact bush with splendid dark foliage which turns a handsome, bright scarlet in Autumn. 2-3 ft., \$1.50 each.

E. alata compacta (Dwarf Euonymus). 5 ft. A handsome, low-growing shrub with brilliant Fall foliage. Corky twigs. Fine for foundation plantings and makes superb, easily maintained hedges. 15-18 in., \$1.50 each.

FORSYTHIA

Forsythia ovata (Early Forsythia). 8 ft. First Forsythia to bloom, also one of the hardiest. Will bloom where flower buds of other Forsythias are Winter injured. 2-3 ft., 90c. each.

F. Lynwood Gold. A stunning new form of Forsythia. It is erect, growing about 5 to 7 ft. tall. Golden yellow flowers are massed along the branches. The individual flowers are extra large, providing an extraordinary Spring show. 2-3 ft., \$1.50 each.

F. spectabilis. 9 ft. Rich golden bells. Upright. 2-3 ft., 90c. each, \$7.50 per bundle of 10.

Azaleas

***Azalea amoena.** Dwarf semi-evergreen with rich magenta-red flowers, frequently double (hose-in-hose), in mid-May. This is the hardest of the red evergreen types, but needs protection north of this area. 10-12 in., \$2.75 each.

***A. Ghent Hybrids.** 3-5 ft. This is a beautiful and hardy shrub group which flowers in early June.

***Bouquet de Flore.** Single. Bright salmon pink with yellow blotch. Late. 15-18 in., \$5.00 each.

***Coccinea speciosa.** Single flowers as close to red as any Azalea we list. 15-18 in., \$5.00 each.

***Daviesi.** Single. White with yellow blotch. Fragrant. Midseason. 18-24 in., \$5.00 each.

***Gloria Mundi.** Single fire-red flowers with upper petals a vivid orange. 15-18 in., \$5.00 each.

*Other Ghent varieties in limited quantities.

***A. hinodagiri.** Dwarf with bright rose red, single flowers. Requires Winter protection. Semi-evergreen. 10-12 in., \$2.75 each.

***A. kaempferi (Torch Azalea) Hybrids.** 5 ft. Bright and showy flowers. Plant where there is some shade. 15-18 in., \$5.00 each.

***Fedora.** Vivid pink flowers in large clusters; hardy.

***Othello.** Brilliant orange red. Hardy to Boston.

***A. kosterianum (Mollis Hybrid Azalea).** 5 ft. Large flowers, mixed shades of bright red, yellow or orange in late May.

***Mollis Hybrids.** From seedlings. Mixed colors. 15-18 in., \$4.00 each. (See also **Junior Aristocrats**, page 19.)

***Mollis Hybrids.** Junior-sized plants. Young, bushy and heavily budded. Orange-red and pink. 12 in., \$2.95 each.

***Directeur Moerlands.** Golden yellow. 18-24 in., \$5.00 each.

***Koster's Brilliant.** Bright coppery flame color. 15-18 in., \$5.00 each.

***A. mucronatum (Korean Azalea).** 6 ft. Just as Forsythia comes into bloom, the frilled, pale rosy purple flowers of this hardy Azalea appear. Their colors make a beautiful combination when planted together. 2½-3 ft., \$6.00 each. (See also **Junior Aristocrats**, page 19.)

***A. Wilhelmina Vuyk.** Ivory white. This is a good hardy white Azalea. Upright habit. 10-12 in., \$3.75 each; 12-15 in., \$5.00 each.

***A. yedoense yodogowa (Yodogowa Azalea).** Double, fragrant, light rose-purple flowers. The double form of the following variety. 15-18 in., \$4.00 each.

***A. yedoense poukhanensis.** 5 ft. Large, single, fragrant, light purple flowers appear in mid-May. The plant is broad and low; ideal to place in the foreground of borders, evergreen or deciduous. It may grow 5 ft. high, but is usually lower. 15-18 in., \$4.00 each.

(*Available only at the nursery or for local truck deliveries)

ALTHEA, or ROSE-OF-SHARON

Hibiscus syriacus. 15 ft. These tall, oriental shrubs bloom in late Summer and Fall when few shrubs are in flower. They thrive near the shore and are good for city plantings. Stiffly upright in habit. Give an extra amount of water during the first Summer and protect during the first Winter by hilling extra soil about the base of the plant. Pink, Red, White; all double; state color. 2-3 ft., 90c. each.

H. coelestis. Large single blue flowers, dwarfier than above. 18-24 in., 90c. each.

H. Woodbridge. Produces very large, wide open, flaring flowers of a fine, clear rose-pink. The best and most brilliant of this color. Free blooming. 2-3 ft., \$1.50 each.

HYDRANGEA

Hydrangea arborescens grandiflora (*Hills of Snow*). 4 ft. Large, rounded clusters of white flowers from June to September. May be cut back each Spring. 2 yr., \$1.00 each.

H. Domotoi (*Blue Hydrangea*). Dwarf. Hardest Blue Hydrangea available, but too tender to be left outdoors without adequate protection. Cover stems with soil to a depth of 12 in. or store in frostproof cellar, replanting in the Spring. Flowers are pink in alkaline soils, blue in acid soils. 2 yr., \$2.00 each.

H. paniculata grandiflora (*Peege Hydrangea*). 10 ft. Large pyramids of white, pink tinged flowers. August-October. Makes a large, tall plant if not pruned. 2-3 ft., \$1.00 each.

HYPERICUM

Hypericum, Hidcote. Bright yellow, cup-shaped flowers, about 2 in. across, from June to Fall. It is a low, twiggy plant, about 2 ft. tall and may freeze to the ground in a cold Winter without damage. 2 yr., \$1.50 each.

KERRIA

Kerria japonica pleniflora. 4-6 ft. Bright yellow, double flowers in May. Bright green twigs. An old favorite. 2-3 ft., \$1.50 each.

BEAUTYBUSH

Kolkwitzia amabilis. 10 ft. Graceful shrub with pink flowers in June. Fine glossy foliage. Needs no special care. 2-3 ft., \$1.00 each.

HONEYSUCKLE

Lonicera tatarica rosea. 8 ft. Beautiful strain of Bush Honeysuckle with rose colored flowers in late Spring; scarlet fruits; hardy and vigorous; attractive dark foliage. 2-3 ft., 90c. each, \$7.50 per bundle of 10.

MOCKORANGE

Philadelphus, Atlas. Immense, pure white, single flowers, measuring 2 in. and over across. A good, upright hardy shrub that will make a stupendous display in June. 2-3 ft., \$1.00 each.

P. coronarius. 8 ft. Creamy white, single and fragrant flowers in May. 2-3 ft., 90c. each.

P. virginialis. 8 ft. Bears quantities of fragrant, semi-double white flowers in June, with recurring bloom late in the Summer and Fall. 2-3 ft., \$1.00 each.

FLOWERING ALMOND

Prunus glandulosa. 4 ft. Its arching branches are covered with dainty pink rosettes in May. 18-24 in., \$1.25 each.

PURPLELEAF SAND CHERRY

Prunus cistena. 5-6 ft. Reddish foliage, white flowers in May followed by blackish-purple edible Cherries in the Fall. 2-3 ft., \$2.00 each.

FLOWERING PEACH

Prunus persica. For beautiful large flowers in May. Ordinarily the Peach is considered a tree, but to obtain more flowers, we suggest pruning the plants severely immediately after flowering. On the new growth so forced, the flowers for the following year are formed. Keep the new growth vigorous. Magnificent flowers can be produced but the plant will not be as attractive at other times of the year. Pink and Red, about 4 ft. tall, \$1.75 each.

Lilacs

PURPLE LILAC (*Syringa vulgaris*). 15-20 ft. The old-fashioned, single purple Lilac. 2-3 ft., \$1.25 each.

CHINESE LILAC (*Syringa chinensis*). 10-15 ft. Fragrant violet flowers in May and June. Flowers freely when young. Makes a broad, billowy and graceful shrub. 2-3 ft., \$1.25 each.

Hybrid Lilac Varieties

Charles Joly. Double. Dark red-purple. Fragrant. Usually flowers when a young plant. 2-3 ft.

Ellen Willmott. Double. Beautiful large, white pyramids of flowers. Late. 2-3 ft.

Firmament. Splendid, new single blue, both bright and light. Large clusters. 2-3 ft., \$3.00 each.

Ludwig Spaeth. Single. Deep purple. 18-24 in.

Katherine Havemeyer. Double. Lavender pink. Large, showy flowers in huge trusses. 2-3 ft.

Lucie Baltet. The most popular of the "pink" Hybrid Lilacs. Single, fragrant flowers in medium to large clusters. 2-3 ft.

Michel Buchner. Double. Bluish lilac. 2-3 ft.

Mrs. Edward Harding. Double. Red-purple. 2-3 ft.

Prices of above varieties: \$2.00 each, except Firmament

SPECIAL COLLECTION:

5 plants of above, alike or assorted kinds, \$9.00, except Firmament

In planting Lilacs, set the plants deeper than they were in the nursery. Better flowers may be obtained if the seed pods are removed each season immediately after flowering. Lilacs tend to produce shoots from the base. Permit only those needed for renewal stems to grow.

(Available only at the nursery or for local truck deliveries)

POLYGONUM

Polygonum Reynowtria. Here is a plant especially suited for a ground cover in sunny places. It increases by underground runners. Foliage is light green and turns red in the Fall. Light pink sprays of flowers come in late Summer. 75c. each, \$6.00 for 10.

FIRETHORN

Pyracantha coccinea Ialandi. 6 ft. Where this plant is hardy and grows well, its bright orange fruits make it a showy spectacle in the Fall and Winter. It must be used with discretion for it is not ordinarily hardy north of the Connecticut shore line. Lustrous foliage and dense growth add to its Summer beauty. Suitable to use in a foundation planting or to train against a warm wall. It is thorny and will stand city conditions. 5 in. pot plants, \$2.50 each.

JETBEAD

Rhodotypos scandens. 6 ft. A neat shrub with white flowers in May and June; shiny black berries; grows in shade and difficult places. 2-3 ft., \$1.25 each.

SPIRAEA

Spiraea Anthony Waterer. 3 ft. An old favorite with flat clusters of rosy-red flowers all Summer. Good to plant at shore places. 15-18 in., \$1.00 each.

S. prunifolia (*Bridal Veil*). 8 ft. Rosettes of pure white flowers in May. Lustrous foliage. 2-3 ft., \$1.00 each.

S. thunbergi. 5 ft. Tiny leaves and flowers give a soft, feathery effect. April blooming. 2-3 ft., 90c. each.

S. vanhouttei (*Vanhoutte Spirea*). 6 ft. In late May and June its arching branches are white with masses of flowers. 2-3 ft., 90c. each, \$7.50 per bundle of 10.

SYMPHORICARPOS

These two small, hardy native shrubs are fine textured and do not mind the shade and city conditions. Birds like the berries.

Symphoricarpos albus (*Snowberry*). 6 ft. White berries in late Summer and Fall. 2-3 ft., 90c. each, \$7.50 per bundle of 10.

S. orbiculatus (*Coralberry*). 3-5 ft. Small clustered coral-red berries in Fall. It spreads readily and is good to use on banks. 2-3 ft., 90c. each, \$7.50 per bundle of 10.

TAMARIX

Small pink, feathery flowers and tiny leaves give an unusually light and airy effect. These do well on fairly dry soil and are excellent for shore plantings.

Tamarix africana. Upright and tall. Blooms in late Spring. 2-3 ft., 90c. each.

T. odessana. 6 ft. Gray-green foliage, pink flowers in late Summer. Prune in early Spring. A fine, small shrub. 2-3 ft., 90c. each.

T. Summer Glow. 8 ft. The beautiful silvery blue-green foliage is like a veil. A sharp and delightful contrast is made with the rose-pink flowers which appear throughout the Summer. All Tamarix are good at the seashore. 2 yr., \$1.50 each.

VIBURNUM

Viburnum carlesii (*Carles Viburnum*). 6 ft. Wonderfully fragrant, pinkish white flowers, April-May. Makes a broad round bush. Its spicy sweetness is delightful in any garden. 18-24 in., \$5.00 each.

V. dilatatum (*Linden Viburnum*). 9 ft. A splendid, compact shrub with large white flower clusters in early June. Good foliage and fine russet-red color in Autumn. 2-3 ft., \$1.50 each.

V. opulus nanum. 2 ft. Dwarf and bushy. It makes a fine, compact, low specimen or hedge without extra care. It is hardy, enjoys light shade and will stand many difficult conditions. 2 yr., 90c. each, 10 for \$7.50.

V. tomentosum (*Doublefile Viburnum*). 9 ft. Splendid, dense shrub marked with horizontal branching. In May creamy white flowers perch on the upper sides of the branches; bright red fruits follow. Shiny green foliage turns dark red in the Fall. 2-3 ft., \$1.50 each.

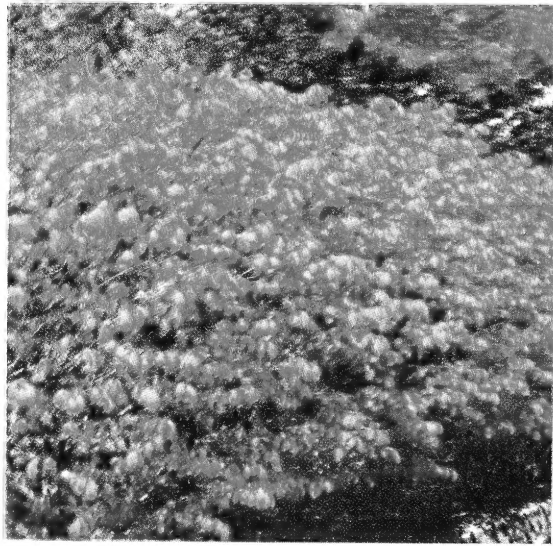
WEIGELA

Weigela hendersonii. 8 ft. Large rose-pink flowers. Vigorous and splendid. May. 2-3 ft., 90c. each.

W. vaniceki. 6 ft. Deep rosy red flowers in May and June and again in the late Summer and Fall. Hardy, upright grower. Splendid foliage. 2-3 ft., \$1.25 each.

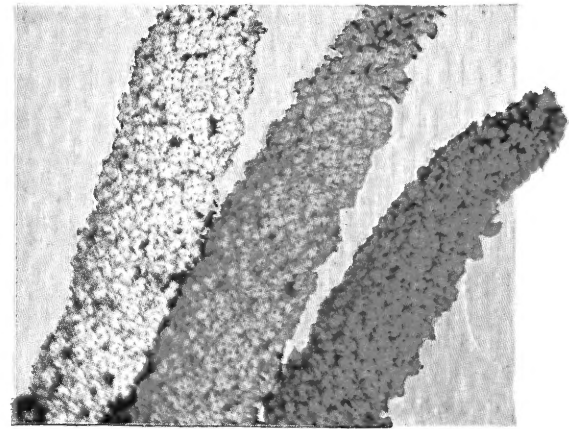
W. variegata (*Variiegated Weigela*). 6 ft. Leaves bordered with gold. Flowers light pink. 2-3 ft., \$1.50 each.

Connecticut customers please add 3% sales tax



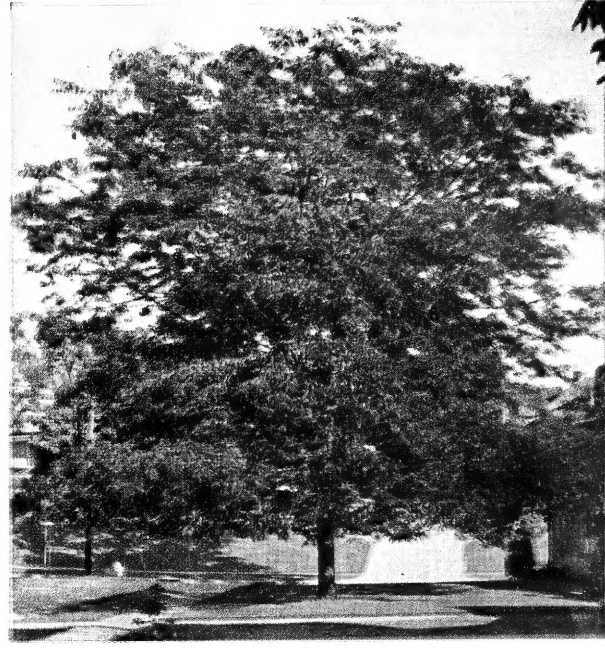
Colorful Shrubs

A thoughtful selection of shrubs will provide inexpensive color to the home grounds from March to late Fall. Starting clockwise above the plants pictured are: Burning Bush (October-November), Beauty Bush (May-June), Butterfly Bush (August-September), Forsythia (March-April), Fragrant Viburnum (May), Hybrid Lilacs (May).



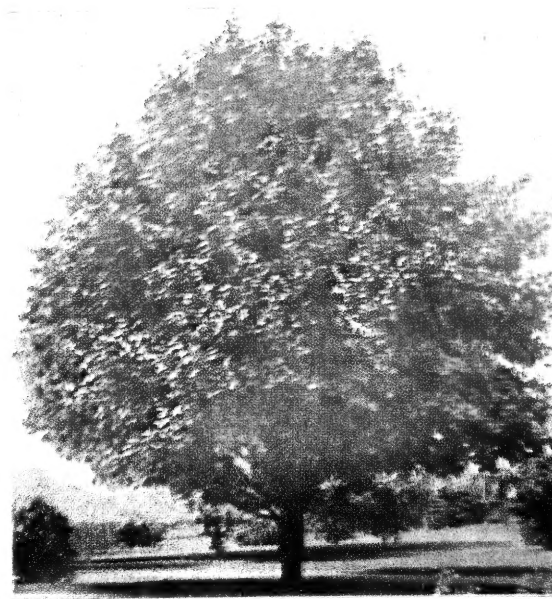
These and many others are described on the preceding pages





8 POPULAR TREES *at Barnes*

The trees shown in this sampler provide beauty as well as shade. They are described on the next page. Clockwise starting above, they are: Double Flowering Cherry, Moraine Locust, Crimson King Maple, Pink and White Flowering Dogwood, Flowering Crab (see back cover and page 19), and White Birch. Insert is Mountain Ash.



Flowering and Shade Trees

In addition to the beauty and finish which trees give to the house, they also provide year round "air conditioning." The cool of the Summer shade is succeeded by the warmth of the Winter sun after the leaves have fallen. In our list are selected those which are not only attractive but also those which are as free from pests and diseases as possible. The ultimate heights appearing after the names will help you select those best suited to your own home. The prices are quoted for nursery grown, properly transplanted trees with vigorous root systems to assure you success.

Trees will be shipped by railway express. All items marked * are offered for sale only at our nursery or within local truck delivery zone

Connecticut customers please add 3% sales tax

MAPLES

SILVER MAPLE (*Acer dasycarpum*). 100 ft. Rapid growth quickly matures this tall, broad and gracefully branched Maple. Its chief fault is its brittleness. 8-10 ft., \$4.50 each.

***BLOODLEAF JAPANESE MAPLE** (*Acer palmatum atropurpureum*). Even though this variety can grow to a 20 ft. tree of interesting, irregular growth, it is more often used as a large specimen shrub. The deep red-purple foliage holds its color throughout the season on grafted plants such as those we offer. 15-18 in., \$7.50 each.

CRIMSON KING MAPLE (Plant Pat. 735). A form of Norway Maple with dark red foliage in Spring, Summer and Autumn. 6-7 ft. whips, \$5.00 each.

NORWAY MAPLE (*Acer platanoides*). 80 ft. The most popular tree for street planting. A rounded, compact head and large leaves give dense shade. 6-8 ft., \$6.00 each.

***SUGAR MAPLE** (*Acer saccharum*). 80 ft. A favorite shade tree. Oval in form, this native Maple, with brilliant red, orange and yellow Fall color, is one of the finest shade trees. 10-12 ft. high. 1 1/4 to 2 in. diameter, \$15.00 each; 2-2 1/2 in., \$20.00 each.

BIRCHES

WHITE BIRCH CLUMPS (*Betula alba*). Silvery white birches grown so you may have a cluster of these beautiful trees: 2 or 3 stems on one root. 4-5 ft. tall, \$3.95 each.

CUTLEAF WHITE BIRCH (*Betula alba laciniata*). 40 ft. This white barked, graceful tree is one of the most beautiful to plant on a lawn. Leaves are light green and finely cut. Plant in early Spring. 6-8 ft., \$5.00 each; 8-10 ft., \$7.50 each.

PAPER BIRCH (*Betula papyrifera*). These are the lovely and graceful white birch trees of our northern woods. The characteristic white bark is not evident while the trees are small. Plant in groups for a naturalistic effect. Plant in Spring. 5-6 ft., \$4.00 each, \$10.80 for 3; 6-8 ft., \$5.00 each, \$13.50 for 3; 8-10 ft., \$7.50 each, \$20.00 for 3.

MAGNOLIAS

SAUCER MAGNOLIA (*Magnolia soulangeana*). 20 ft. The exotic lawn tree with huge pink and white flowers in early May. Big bold leaves. 2-3 ft., \$6.00 each.

BLACK SAUCER MAGNOLIA (*Magnolia soulangeana nigra*). This form has red-purple flowers. 2-3 ft., \$6.00 each.

STAR MAGNOLIA (*Magnolia stellata*). 20 ft. Makes a dandy specimen shrub, as it branches densely and low. Wonderfully fragrant flowers appear early, usually in April; they are 3 in. across with numerous white petals. Foliage is dark, narrow and turns bronzy in Autumn. 18-24 in., \$6.00 each.

RED BUD (*Cercis canadensis*). 20 ft. A small, shrubby tree. In Spring before the leaves unfold it bears masses of rose pink flowers. It presents an unusually delicate effect with an evergreen background. 4-5 ft., \$2.00 each.

CHINESE CHESTNUT. See **Fruit Section**, page 15.

DOGWOODS

FLOWERING DOGWOOD (*Cornus florida*). A favorite small tree with lovely white flowers and bright Autumn color. Native, hardy and beautiful. Plant in Spring. 3-4 ft., \$4.50 each; 4-5 ft., \$7.00 each.

PINK FLOWERING DOGWOOD (*Cornus florida rubra*). A form of above with deep pink flowers, dwarfier and less hardy. 2-3 ft., \$6.00 each; 3-4 ft., \$8.00 each.

***JAPANESE DOGWOOD** (*Cornus kousa*). 20 ft. This oriental counterpart of our native flowering Dogwood will make a splendid flowering and small shade tree for the home grounds. Flowers come in mid-June. For a desirable and different tree, try this. 3-4 ft., B&B, \$6.00 each.

THORNS

WASHINGTON THORN (*Crataegus phaenopyrum*). 30 ft. A Hawthorn with year around interest and because of its moderate size, excellent for the lawn of a small house. There is a profusion of white flowers in May. Foliage is good, lustrous and turns orange in the Fall. Bright red fruits last into Winter. The tree is thorny, densely branched and makes excellent hedges. Hardy. 5-6 ft., \$5.00 each.

PAUL'S SCARLET THORN (*Crataegus oxyacantha pauli*). 25 ft. Tall and slender tree with double, rose-red flowers which come in late May. 5-6 ft., \$5.00 each.

MORaine LOCUST (Plant Pat. 836). Splendid, fast growing shade tree. Lacy foliage that allows grass to grow beneath it. No thorns or seed pods. A clean and hardy lawn tree, adapted to cities and other difficult places. Vase shaped when young, broadening with maturity. 6-7 ft. whips, \$6.00 each.

GOLDEN CHAIN TREE (*Laburnum vossii*). 15 ft. Slender tree with long, drooping clusters of bright yellow flowers in the Spring. A protected spot is recommended in Connecticut. Not hardy north. 4-5 ft. branched, \$5.00 each.

FLOWERING CRABAPPLE TREES. See pages 19 and 20.

SOURWOOD (*Oxydendrum arboreum*). 35 ft. A graceful, pyramidal tree with handsome, lustrous foliage which turns brilliant scarlet in the Fall. White flowers bloom in July and are in short drooping racemes. The fruits, in the same form, are sand color and last well into the Winter. Plant in a sunny place. 6-8 ft., B&B, \$8.00 each.

LONDON PLANETREE (*Platanus acerifolia*). 80 ft. This will make a tall, wide shade tree with large, Maple-like leaves. Resistant to disease and insects, fast growing, enduring adverse city and shore conditions, it is much used for urban planting where very big trees will fit. Flaking bark gives a grayish white, mottled effect. 8-10 ft., \$8.00 each.

LOMBARDY POPLAR (*Populus nigra italica*). A narrow, upright, columnar tree valued for this characteristic shape and for its quick growth. Foliage turns brilliant yellow in the Fall. 5-6 ft., 90c. each, 10 for \$7.50.

FLOWERING CHERRY (*Prunus, Kwanzan*). Large, double, deep pink flowers in Spring. The tree is upright and vigorous in growth. It is one of the most reliable of the beautiful flowering Cherries. 4-5 ft., \$4.50 each; 5-6 ft., \$6.50 each.

FLOWERING CHERRY (*Prunus, Shirotai* or *Mt. Fuji*). 25 ft. Pure white, double, fragrant flowers in large clusters. Considered the best double white oriental Cherry. 4-5 ft., \$4.50 each.

FLOWERING PEACH. See **Shrubs**, page 7.

PURPLELEAF PLUM (*Prunus, Thundercloud*). This is a small, upright growing tree with dainty, pale pink flowers and dark red-purple foliage which stays dark throughout the Summer. 4-5 ft., \$2.75 each.

***PIN OAK** (*Quercus palustris*). 60 ft. This splendid tree is well adapted to lawn and street planting because of its symmetrical habit, rapid growth and fine foliage. Sharply pyramidal when young, widening with age. Plant in early Spring. 8-10 ft., 1 1/2 in. diameter, \$12.00 each; 1 1/2-1 3/4 in., \$15.00 each.

WEeping WILLOW (*Salix babylonica*). 40 ft. Long, pendulous branches droop gracefully to the ground. The trees create exquisite effects beside waterways but will thrive also in drier locations. 5-6 ft., \$2.50 each; 6-8 ft., \$3.50 each.

FRENCH PUSSY WILLOW (*Salix*). This tall shrub is planted for its large, silvery-pink and furry catkins which appear on the first warm days of early Spring or late Winter. Stems are long and willowy and may be easily forced indoors. 2-3 ft., \$1.00 each.

MOUNTAIN ASH (*Sorbus aucuparia*). 25 ft. An attractive, hardy tree for lawns, especially admired for its clusters of orange-scarlet berries from July until Winter. Birds like the fruit. 5-6 ft., \$4.50 each; 6-8 ft., \$6.00 each.

TREE WISTERIA. A beautiful spectacle in May when this wide spreading low tree is a mound of drooping clusters of purple-blue flowers, 3-4 ft. tall. Grafted from flowering wood to bear soon. \$8.00 each.



SUGAR MAPLE

CHAMAECYPARIS - Falsecypress

Golden Thread Falsecypress (*Chamaecyparis pisifera filifera aurea*). Very slow growing. Bright yellow, pendulous foliage. 18-24 in., \$4.00 each.

Plume Falsecypress (*Chamaecyparis pisifera plumosa*). Delicate, feathery yellow green foliage. Useful to add color and texture to the foundation planting. 18-24 in., \$4.75 each.

Gold-tipped Plume Falsecypress (*Chamaecyparis pisifera plumosa aurea*). Similar to the above but foliage tips are golden green. 18-24 in., \$3.00 each.

JUNIPERUS - Juniper

Pfitzer Juniper (*Juniperus chinensis pfitzeriana compacta*). Low, broad, flat-topped evergreen with gray green, plume-like branches. Will stand some shade. 15-18 in., \$4.00 each; 18-24 in., \$4.75 each.

Andorra Juniper (*Juniperus chinensis depressa plumosa*). A splendid, low spreading Juniper whose steely blue foliage turns a rich bronze purple throughout the Winter. 15-18 in., \$3.50 each; 18-24 in., \$4.50 each; 2-2½ ft., \$5.50 each.

PICEA - Spruce

Dwarf Alberta Spruce (*Picea glauca conica*). The most distinctive of all Spruces. Dense pyramid with blue green foliage. Its dwarf habit and slow, compact growth make it the only Spruce suitable for use in the foundation planting. A true gem for your garden. 18-24 in., \$9.50 each.

Serbian Spruce (*Picea omorika*). Narrow pyramid of splendid dark green. 4-5 ft., \$9.00 each.

Blue Spruce (Grafted). We have these in a variety of sizes. Prices range from \$12.00 to \$30.00 each depending upon size.

TAXUS - Yew

Spreading Yew (*Taxus cuspidata*). Rapid growing and wide spreading, if not trimmed. Splendid dark green. 12-15 in., \$3.95 each; 18-24 in., \$7.50 each.

Upright Yew (*Taxus cuspidata capitata*). A majestic upright form; superb for specimens, hedges or in groups. Keep trimmed. 18-24 in., \$6.00 each; 2-2½ ft., \$7.50 each; 2½-3 ft., \$9.00 each; 3-3½ ft., \$12.00 each.

Column Yew (*Taxus cuspidata columnaris*). A tall, narrow type. 2-3 ft., \$6.50 each; 3-3½ ft., \$7.50 each.

The Indispensable Evergreens

The needled evergreens comprise the most useful and versatile class of plants we sell. Ideal for foundation plantings, they also include kinds which make excellent year round screening hedges, low borders and wonderful lawn specimens. The colors range through blue, gray and yellow green to the deep dark green richness of the hybrid Yews. Heavy or light shearing will maintain them at any desired height in either formal or informal shapes. Our sales people will help you select the varieties best suited for your purposes.

NOTE: We handle all evergreens B&B, that is with a ball of soil on the roots. Therefore, we cannot ship them beyond our regular delivery area. During the Spring season, a wide selection of varieties and sizes will be on display in our lath house ready for you to take home and plant. When you purchase, ask for a copy of our helpful, 16-page booklet "How to Plant."

Dwarf Yew (*Taxus cuspidata nana*). Stubby leaves and branches. Makes a rounded cushion. Slow growing, but keep awkward branches sheared. 15-18 in., \$7.50 each; 18-24 in., \$9.00 each; 2-2½ ft., \$12.00 each.

Hatfield Yew (*Taxus media hatfieldii*). An excellent upright Yew holding its form well, with a minimum of trimming. 18-24 in., \$6.00 each; 2-2½ ft., \$7.50 each.

Hicks Yew (*Taxus media hicksii*). Narrow and upright when young but broadens into a wide pyramid. Heavy green foliage. Superb for hedges and upright accents in the foundation planting. 18-24 in., \$6.00 each; 2-2½ ft., \$7.50 each; 2½-3 ft., \$9.00 each; 3-3½ ft., \$12.00 each.

Hicks Yew for Hedging. Inexpensive transplants just right to start a beautiful hedge. 10-12 in., \$1.50 each (\$1.25 each in quantities of 10 or more plants).

TSUGA - Hemlock

Canada Hemlock (*Tsuga canadensis*). A graceful tree, unexcelled for tall hedges, massing or as specimens. Trimming makes it more compact. A rapid grower, shade tolerant and very hardy. 18-24 in., \$4.00 each; 2-2½ ft., \$5.50 each; 2½-3 ft., \$6.50 each; 3-4 ft., \$7.50 each; 4-5 ft., \$10.00 each; 5-6 ft., \$14.00 each.

THUJA - Arborvitae

Globe Arborvitae (*Thuja occidentalis globosa*). Dwarf, slow growing globe. 15-18 in., \$2.50 each; 18-24 in., \$3.50 each; 2-2½ ft., \$4.50 each.

Goldtipped Arborvitae (*T. occidentalis lutea*). New growth a bright yellow. 3-4 ft., \$6.50 each.

Dark American Arborvitae (*T. occidentalis nigra*). Deep green. Fine, compact form. 2-2½ ft., \$3.95 each; 2½-3 ft., \$4.50 each; 3-4 ft., \$5.50 each.

Pyramidal Arborvitae (*T. occidentalis pyramidalis*). Very hardy and vigorous. Deep green in color. Either this or the variety listed immediately above makes a fine, quick growing screening hedge. 18-24 in., \$2.95 each.

Siberian Arborvitae (*T. occidentalis wareana*). Robust sort, forming a broad, symmetrical cone. 3-4 ft., \$5.50 each.

Dwarf Golden Oriental Arborvitae (*T. orientalis aurea nana*). Slender oval, with golden green foliage. Give a protected spot. Often called "Biota." 2-2½ ft., \$4.75 each.

Connecticut customers please add 3% sales tax

EVERGREENS FOR HEDGES AND MASS PLANTINGS

Small sizes of several of these varieties as well as Azaleas are listed on page 19 under the heading of Junior Aristocrats.

.....

Shrub and Ground Cover Roses

Frau Karl Druschki (Hybrid Perpetual). One of the oldest and most popular white shrub Roses. Sturdy stems to 6 ft. carry giant white Roses touched with pink. \$1.35 each, 3 for \$3.90.

Harrison's Yellow. The oldtime yellow dooryard Rose. Semi-double flowers nestle thickly among the lacy foliage. Rock hardy and dependable. \$1.35 each, 3 for \$3.90.

Father Hugo Rose (*Rosa hugonis*). Another yellow shrub Rose growing to 6 or 7 ft. high. A shapely bush with arching branches covered with single, yellow flowers in May. \$1.35 each, 3 for \$3.90.

Max Graf Rose. Splendid as a ground cover for sunny banks. Its foliage is handsome and glossy. In June, there are large, single flowers of bright pink. Hardy, tough and disease resistant. Plant 3 ft. apart. \$1.35 each, 3 for \$3.90.

RUGOSAS FOR THE SEASHORE. Very hardy and trouble free. Wonderful for a living fence, in the mixed shrub border or as everblooming specimens. Grow well at the seashore or in poor soil where other Roses fail.

Grootendorst. Double, bright red, fringed flowers in large clusters throughout the season. Grows 4 to 5 ft. tall. \$1.35 each, 3 for \$3.90.

Pink Grootendorst. Similar to above but with pink flowers like small Carnations. \$1.35 each, 3 for \$3.90.

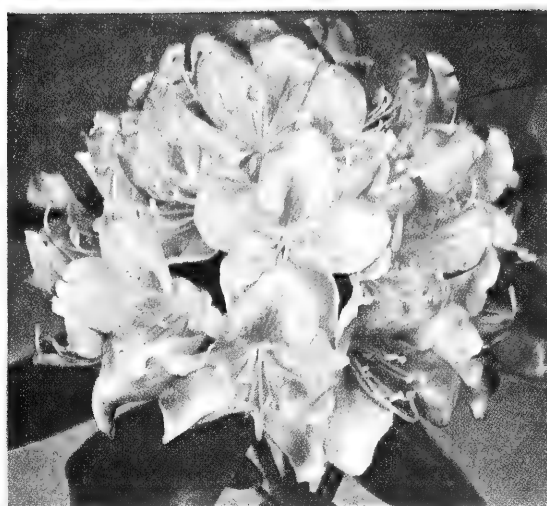
.....



CANADA HEMLOCK



ROSEUM ELEGANS RHODODENDRON



CATAWBA RHODODENDRON

Barnes Evergreens

RHODODENDRONS

A specialty with us for many years, we now have one of the widest selections in New England. From this collection, we recommend the following species and named hybrids to you.

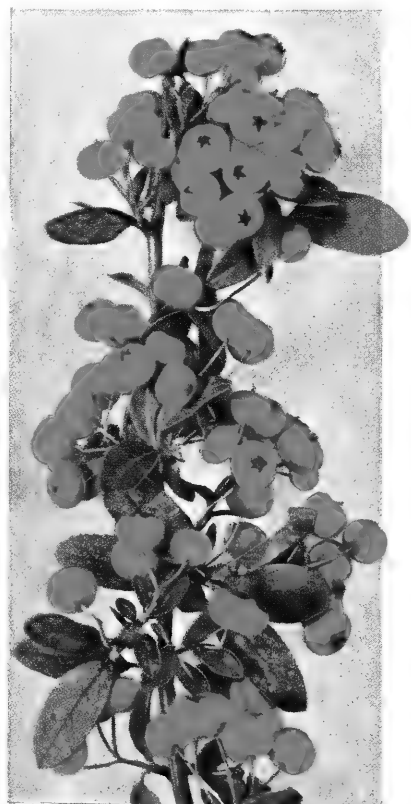
Carolina Rhododendron. 6 ft. The smaller foliage and different flowering season (May) make it an ideal companion for the other Rhododendrons in this list. Pale pink flowers on a rounded, compact bush. 12-18 in., \$5.50 each.

***Catawba Rhododendron.** 6 ft. Beautiful, large flowers, red in bud, orchid pink when open. June. 12-18 in., \$4.95 each.

***Catawba Grandiflorum.** Large clusters of purplish rose flowers in midseason. Hardy and vigorous and free flowering. 15-18 in., \$6.50 each.

***Roseum Elegans.** A splendid, compact plant, with handsome foliage and rose, lilac-tinted flowers. 12-15 in. \$5.00 each, 15-18 in. \$6.00 each, 18-24 in. \$7.50 each.

FIRETHORN (Pyracantha)



Red Hybrid Rhododendrons with Drooping Leucothoe

Smaller sizes of Rhododendron Species are listed on page 19 under Junior Aristocrats

NAMED HYBRID RHODODENDRONS

The following are grafted plants from selected named varieties to give you the very best for your garden.

Red Hybrid Rhododendrons. It should be remembered that no Rhododendron is ever red in the sense that Blaze rose is red but are on the crimson shades. The following seven varieties are among the best reds which have proven hardy in this area: Caractacus, Charles Dickens, Dr. H. C. Dresselhuys, E. S. Rand, Ignatius Sargent, Kettledrum and Van Weerden Poelman. Your choice. \$7.50 each.

White Hybrid Rhododendrons. The pink-toned buds on these two white varieties open to pure white: Gomer Waterer and Cunningham's White. \$7.50 each.

Pink Hybrid Rhododendrons. In addition to the species Carolina and Catawba and its forms, we have English Roseum which has rich deep rose colored flowers with green throat markings. The best of its color in this area. \$7.50 each.

If you are interested in some variety not listed, we invite your inquiry as we have several other named varieties in quantities insufficient for cataloging

Most Evergreens including those on these two pages are shallow rooted and in order to grow well and flower bountifully need root protection against the Summer sun. This is provided in two ways. At planting time a generous amount of moisture holding peat moss should be thoroughly mixed with the planting soil. A three to four inch surface mulch of peat moss after planting plus a Spring feeding with Acid Plant Food completes the program and assures healthy, beautiful, productive plants.

*All items marked * are for sale only at the nursery sales grounds or within local truck delivery zone*



MOUNTAIN LAUREL



SPREADING YEW (See page 11)

↓
**AZALEA
MOLLIS**

for year round beauty

***ROSE DAPHNE** (*Daphne cneorum*). 6 in. Low and spreading shrub with small gray-green leaves. Rose pink flowers, with their strong carnation-like fragrance, bloom abundantly in May. Roots like a cool moist location. 9-12 in., \$2.75 each.

EVERGREEN BITTERSWEET (*Euonymus fortunei vegeta*). Rounded green leaves and orange fruits in Autumn. A hardy self-clinging vine or low shrub, if no walls are nearby. 2 yr., \$1.50 each.

CHRISTMAS ROSE (*Helleborus niger*). 8 in. White flowers, often touched with pink, are held above leathery decorative evergreen leaves. Should be grown in a sheltered semi-shaded location. For this area, we recommend native grown Christmas Roses planted in the Spring. Clumps in pots, \$1.50 each.

***JAPANESE HOLLY** (*Ilex crenata*). Tall and upright with lustrous dark evergreen leaves, black berries. Splendid for hedges, foundation or screen plantings. 18-24 in., \$6.50 each.

***BOXLEAF HOLLY** (*Ilex crenata convexa*). 4 ft. Dwarf, growing broader than high. Small leaves, curved, dark and very shiny. This makes an excellent plant to use in the north instead of Boxwood. 15-18 in., \$5.50 each; 18-24 in., \$6.50 each.

***KALMIA LATIFOLIA** (*Mountain Laurel*). Large clusters of flowers, shading from white to pink, bloom in June. This popular and practical native evergreen shrub is one of the best for woodland and garden foundation plantings. Will grow tall but may be kept low. 18-24 in., \$4.00 each.

Other colorful plants to add interest to the evergreen planting during the Summer months include **Abelia** (page 6), **Redleaf Barberry**, **Japanese Barberry** (see page 18) and **Tuberous Begonias** (page 19)

All items marked * are offered for sale only at the nursery sales grounds or within local truck delivery area

EVERGREEN GROUND COVERS

These useful plants serve two purposes. As a green mat under the evergreens, they add considerable beauty. In addition, as an excellent protection against baking of the Midsummer sun, they promote the growth of flower buds for the following year on the plants listed above.

WINTERCREEPER (*Euonymus fortunei*). Evergreen vine which clings readily to walls and makes a good ground cover. 2 yr., \$1.25 each.

ENGLISH IVY (*Hedera helix baltica*). One of the best evergreen vines for walls, also a superb ground cover. This form is hardier than the regular English Ivy. 50c. each, \$4.50 for 10.

PACHISTIMA canbyi. 12 in. Low evergreen shrub with narrow shiny dark green leaves. Makes a good ground cover, border or edging

plant in acid soil and shade. 2 yr. plants, 75c. each, \$6.75 for 10.

JAPANESE SPURGE (*Pachysandra terminalis*). For a dense evergreen ground cover in places too shady for grass. Grows by underground stems and makes a thick green carpet, about 9 in. high. 1 yr., \$1.00 for 10, \$8.00 for 100.
MYRTLE (*Vinca Minor*). A superb ground cover with shiny dark green leaves and lilac-blue flowers in Spring. Does well in sun or shade. Good for holding banks. \$2.00 for 10, \$15.00 for 100.

HEMLOCK (See page 11) →



Standard Fruit Trees

APPLE TREES

- ↘ **Baldwin.** Favorite Winter Apple for all uses. Large bright red, crisp and juicy.
- ↘ **Cortland.** Large dark red, white fleshed McIntosh type. A popular kind for home and orchard planting. Ripens in October.
- ↘ **Delicious.** Large solid dark red. High quality. Splendid keeper. Fine Winter eating Apple.
- ↘ **Early McIntosh.** August ripening. Like McIntosh in texture, flavor and appearance.
- ↘ **Galbraith Baldwin.** A new, all red form of the favorite hard tasty Baldwin.
- ↘ **Gallia Beauty.** A new bright red form of Rome Beauty. A prolific and early bearer of late keeping Winter Apples.
- ↘ **Macoun.** A late McIntosh. Dark red, white flesh with a superb flavor. Popular Winter Apple.
- ↘ **McIntosh Red.** Dark red, white juicy flesh. A favorite in northeastern orchards. September.
- ↘ **Red Spy.** Red form of the splendid Northern Spy. Winter.
- ↘ **Rhode Island Greening.** Large yellow-green highly-flavored, keeps late. An unexcelled Winter cooking Apple.
- ↘ **Roxbury Russet.** Yellow green overspread with russet. An old favorite which keeps well.
- ↘ **Yellow Delicious.** Splendid eating Apple for late Fall and Winter. Bears young and heavily.

2-YEAR APPLE TREES

11/16 in. and up, 5-7 ft.

Each 1 to 10	Each 10 to 50	Each 50 to 100	Each 100 or more
\$1.75	\$1.50	\$1.20	\$0.95
9/16—11/16 in., 4-6 ft.			
\$1.50	\$1.25	\$1.00	\$0.80

(In bundles of 10 or more of a kind)

SUITABLE DISTANCES FOR PLANTING

Apples, Standard.....	30 to 40 feet
Apples, Full Dwarf.....	8 to 10 feet
Apples, Semi-Dwarf.....	20 to 25 feet
Pears, Standard.....	18 to 20 feet
Pears, Dwarf.....	10 feet
Peaches.....	16 to 18 feet
Cherries, Sweet.....	16 to 20 feet
Cherries, Sour.....	15 to 18 feet
Plums.....	16 to 20 feet
Quinces.....	10 to 12 feet
Grapes.....	8 to 10 feet
Currants.....	3 to 4 feet
Raspberries, Red.....	3 to 4 feet
Raspberries, Black.....	4 to 5 feet
Blackberries.....	4 to 6 feet
Strawberries, Rows.....	1 by 3½ feet
Strawberries, in Beds.....	1½ by 1½ feet
Asparagus, in Beds.....	1 by 1½ feet
Asparagus, in Field.....	1 by 4 feet

PEAR TREES

- Prices of Pears: 2 yr., 11/16 in. diameter, 5-6 ft. high, \$2.00 each, \$17.50 per bundle 10 of one kind, \$125.00 per 100**
- ↘ **Bartlett.** Most popular Pear for home and market use; fine quality, rich flavor. Ripens in September.
 - ↘ **Beurre Bosc.** Very large, deep yellow, overspread with russet. Unsurpassed in quality and flavor. October and November.
 - ↘ **Clapp's Favorite.** Large, red blushed; good quality; the earliest Pear. Ripens in late August.
 - ↘ **Seckel.** Small, round, russet Pears. Sweet and of finest quality. Trees productive and hardy. October.
- Note:* Beurre Bosc and Seckel need pollination. Bartlett is good for this purpose.

CHERRY TREES

- Cherries are probably the most difficult of all fruit trees to transplant and establish. Because this is so, these trees are sold on a non-guarantee basis only.
- ↘ **Black Tartarian.** Sweet. Purplish black with splendid flavor. Tree vigorous and productive. A favorite.
 - ↘ **Napoleon.** Large, light yellow with red cheek. Juicy and sweet. Early.
 - ↘ **Montmorency.** Sour. Large, light red. Mid-season. Tree comes into bearing young. Productive.
 - ↘ **Schmidt's.** Very large, dark Cherry. Sweet, rich flavor. Vigorous grower. Hardy. Late.
- Cherry prices: 11/16 in. diameter, \$2.75 each**

Dwarf Fruit Trees

SEMI-DWARF APPLE TREES

These grow about 15 feet tall and begin to bear three or four years after planting under average conditions. Budded on Malling II and/or Malling VII rootstocks. For descriptions of varieties, see Apple Trees.

2 year, \$3.00 each, \$27.50 per bundle of 10 of a kind

- | | |
|--------------------------|------------------------|
| Delicious | Red Gravenstein |
| Galbraith Baldwin | Roxbury Russet |
| Macoun | Red Spy |
| McIntosh | |

FULL DWARF APPLE TREES

These are grown on Malling IX rootstocks. The trees grow about 9 to 10 feet tall, and usually bear the second year after transplanting. These little trees are shallow rooted and should be staked.

2 year, \$3.00 each, \$27.50 per bundle of 10 of one kind

- | | | |
|------------------------|--------------------------|-----------------|
| Delicious | Galbraith Baldwin | McIntosh |
| Red Gravenstein | Red Spy | |

QUINCE

- ↘ **Orange.** Bright golden yellow. Large rounded fruits with splendid flavor. Fine for preserves and jelly. October. Trees are dwarf and bear when young. 2 year, \$2.00 each.

PEACH TREES

Ripening periods stated are for average conditions in Connecticut.

9/16 in. diameter, 4-5 ft. high, \$1.50 each, \$12.50 per bundle of 10 of one kind, \$80.00 per 100

- ↘ **Belle of Georgia.** An old reliable white fleshed Peach. Red cheeks. Ripens in late August.
- ↘ **Elberta.** The standard commercial Peach. Large yellow with red cheek. Freestone. Ripens in early September.
- ↘ **Golden Jubilee.** Large yellow, red blushed. Fine flavor. Freestone. Mid-August. Popular for homes and orchards.
- ↘ **Hale Haven.** Large round yellow Peach of excellent quality. High color. Freestone. Ripens after Golden Jubilee and before Elberta. Heavy bearer. Recommend for freezing.
- ↘ **J. H. Hale.** Very large yellow with red cheek. Freestone. Ripens early September; fine quality and flavor. This variety needs another variety for pollination.
- ↘ **Red Haven.** An excellent early yellow Peach. Skin smooth and a bright red. Freestone. Flesh firm, sweet and delicious. Trees hardy, vigorous and productive.

PLUM TREES

- ↘ **Abundance.** Red cheeks, yellow flesh. Juicy. August.
- ↘ **Burbank.** Amber suffused with red. Late Summer.
- ↘ **Santa Rosa.** Large, dark red Plums. Flesh is red, juicy and of good quality. Will pollenize Burbank or Abundance.
- ↘ **Stanley.** Purple Prune. Sweet yellow flesh.

2 year, 11/16 in. diameter, \$2.00 each, \$17.50 per bundle of 10 of one variety

TAKE LITTLE SPACE. EASY TO SPRAY, PRUNE AND HARVEST

DWARF PEAR TREES

These are budded on Quince rootstocks and will grow about 10 feet tall, usually bearing the second year after transplanting.

2 year trees, \$3.00 each, \$27.50 per bundle of 10 of one kind

- | | |
|--|-------------------------|
| Bartlett | Clapp's Favorite |
| Duchesse d'Angouleme. Very large greenish yellow, sometimes a little russeted, juicy and of the finest flavor. Productive. October to December. | |

DWARF PEACH TREES

Imagine a little Peach tree, 9 feet tall, heavily loaded with luscious ripe fruit. Budded on Prunus tomentosa roots.

2 year trees, \$3.00 each

- | | | |
|-----------------------|-------------------|----------------|
| Golden Jubilee | Hale Haven | Elberta |
|-----------------------|-------------------|----------------|

APRICOTS

2 year, 9/16 in. diameter, \$2.00 each

- ↘ **Henderson.** Large, yellow blushed with red. Sweet juicy flesh, free from the stone. This variety originated in Geneva, N. Y.
- ↘ **Moorpark.** Orange yellow, sweet, juicy. Ripens in August. This is one of the hardiest Apricots.

RED RASPBERRIES

- ↙ **Indian Summer.** A splendid everbearing red Raspberry. Delicious flavor. Grand kind for home gardens; heavy crops in June with second crop in the Fall. Selected 1 yr. plants.
- ↙ **Latham.** Bright red, large, round and firm. Plants are strong, hardy, disease resistant; yield heavily. The leading red Raspberry. Selected 1 yr. plants.
- ↙ **Taylor.** Berries are large, conic, bright red, firm of excellent quality and ripen just ahead of Latham. Plants are tall and vigorous.

**Above varieties: 10 of one kind, \$2.00
25 of one kind, \$4.00
100 of one kind, \$12.00**

- ↙ **September.** A new Summer and Fall fruiting red Raspberry. Berries are bright red, large and of good quality. In early September the second crop begins and continues until frost ends it. 10 for \$3.00, 25 for \$6.25.

BLACK AND PURPLE RASPBERRIES

- ↙ **Cumberland.** A fine black Raspberry. Hardy, productive, dependable and disease resistant.
- ↙ **Morrison.** New. Extra large, glossy berries, a little later than Cumberland. Sturdy, disease resistant and a heavy bearer.
- ↙ **Sodus.** Rich, dark wine purple berries of excellent quality and flavor. Large and firm. Bears very heavy crops.

**Above varieties: 10 of one kind, \$2.00
25 of one kind, \$4.00
100 of one kind, \$12.00**

Planting note for Black and Red Raspberries

Be sure to cut the canes back within a few inches of the ground immediately after planting in the Spring.

Giant Hybrid Blueberries

This year we are adding several newer, more productive varieties with larger fruits to the older varieties which have proven of value. All of them not only produce wonderfully large, plump and tender berries of delicious flavor but are also of year round value as ornamentals. The Spring flowers followed by the attractive blue of the ripening fruits are climaxed in the Fall by a grand display of scarlet foliage. In the Winter the new branches are colorful red and green. They reach a height of about 6 feet and combine well in the mixed shrubbery border or make an excellent border for vegetable and flower beds.

Planted in a well drained soil, rich in peat or other vegetative matter, they will grow in productiveness with each succeeding year. An occasional Winter pruning to remove the old canes and an early Spring application of acid plant food are beneficial. More than one variety should be planted to insure cross pollination and fruit production.

WE OFFER THE FOLLOWING VARIETIES OF FRUITING AGE:

Strong, transplanted, 3 year plants, 18-24 in. high. \$1.75 each, 3 for \$4.50, 6 for \$9.00, 12 for \$15.00

- ↙ **Atlantic.** Late. Large berries in grape-like clusters. Rich spicy flavor. One of the best.
- ↙ **Burlington.** Midseason-late. Highly productive of large rich blue, tasty berries. New and good.

Small Fruits and Plants



EBONY KING BLACKBERRY

- ↙ **Ebony King.** A sensational, new, hardy, upright Blackberry. Berries are large, jet black and delicious. Ripen in July. 1 yr. plants: 10 for \$3.00, 25 for \$6.25.

GRAPES

- ↙ **Caco.** Red. Midseason
 - ↙ **Concord.** Blue. Midseason
 - ↙ **Fredonia.** Black. Early
 - ↙ **Niagara.** White. Midseason
 - ↙ **Sheridan.** Blue. Late
- 2 yr., No. 1—50c. each, 10 of one kind, \$4.00**
- ↙ **Seneca.** Sweet white Grape of the California type, ripening in early September. Vine is vigorous and productive. A delicious Grape for desserts. \$1.00 each.

ASPARAGUS

Garden Fresh Asparagus Tastes Better

Mary Washington. Rust resistant. Recognized as a leading variety. Asparagus will grow in any garden soil but to produce the largest, most tender stalks the soil must be rich and well fertilized. Strong 2 yr. roots, 25 for \$1.75, 50 for \$3.00, 100 for \$5.00.

RED RHUBARB

An Early Spring Delicacy

MacDonald. Considered the finest of the new red Rhubarbs. Excellent quality and flavor, less tart than older kinds. Hardy, of Canadian origin and quick to grow. 75c. each, 3 for \$2.00.



NEW PATENTED EVERBEARING STRAWBERRY

(Plant Patent 993)

A sensational, everbearing Strawberry. Firm deep red sweet berries are prized for freezing and preserving as the rich color, flavor and firmness are kept well. Yields abundantly. 25 for \$5.00, 50 for \$8.50, 100 for \$15.00.

Note: Strawberries must be planted early for success. We will have Red-Rich and several other popular varieties which have proved productive here in New England for cash and carry sales at Barnes Barn during the last three weeks of April. All mail orders for Red-Rich must be sent to us before April 1st.

CHINESE CHESTNUT

Tall (50-60 feet at maturity), sturdy, fast growing and blight resistant trees. Splendid for shade as well as for large sweet nuts. As cross fertilization is required for nut production, plant two or more trees. Provide a sunny place with rich deep soil. These trees are about as hardy as Peach. 2 yr. seedlings. 2-3 ft., \$1.50 each, 2 for \$2.75.

CARE OF NURSERY STOCK ON ARRIVAL

If not ready to plant the stock the day it arrives, or if you have more than you can plant within a few hours, it should at once be heeled in. Select a well-drained spot, dig a trench about 18 inches deep, sloping on one side. Spread out the trees in the trench, each variety by itself. Be sure that the labels are carefully kept with each bundle. Lean them against the sloping side and sift fine dirt in among the roots, making sure that the earth will come in contact with every root; fill the trench partly full, and press firmly with the feet. Fill up level with the top of the ground and press again with the feet, covering with loose dirt. If there are too many trees for one trench, in covering the roots in the first, a second trench can be dug, and the operation repeated as often as necessary.

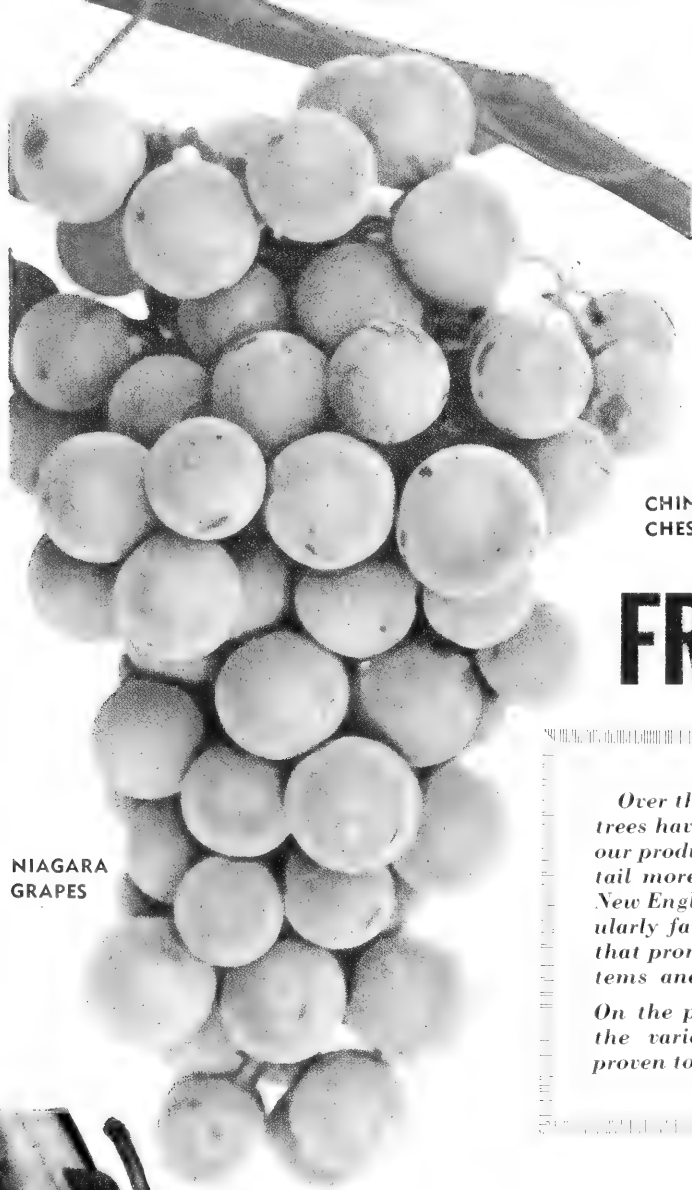
STATEMENT OF INSPECTION FOR TRUENESS-TO-NAME

Amherst, Mass.
July 20, 1954

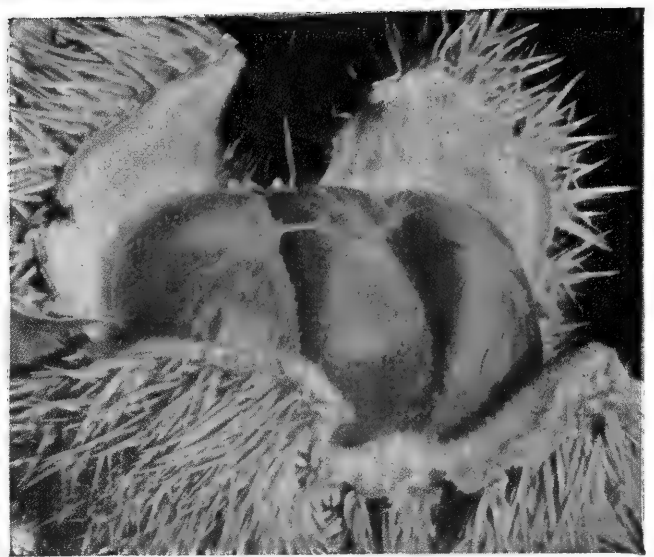
To Whom It May Concern:

All of the salable apple varieties propagated and now growing at Barnes Brothers Nursery Company, Yalesville, Connecticut, have been examined by the Massachusetts Trueness-to-name Inspection Service. To the best of our knowledge, these trees are true to name as they now stand in the nursery row.

Massachusetts Trueness-to-name
Inspection Service



NIAGARA
GRAPES



CHINESE
CHESTNUT

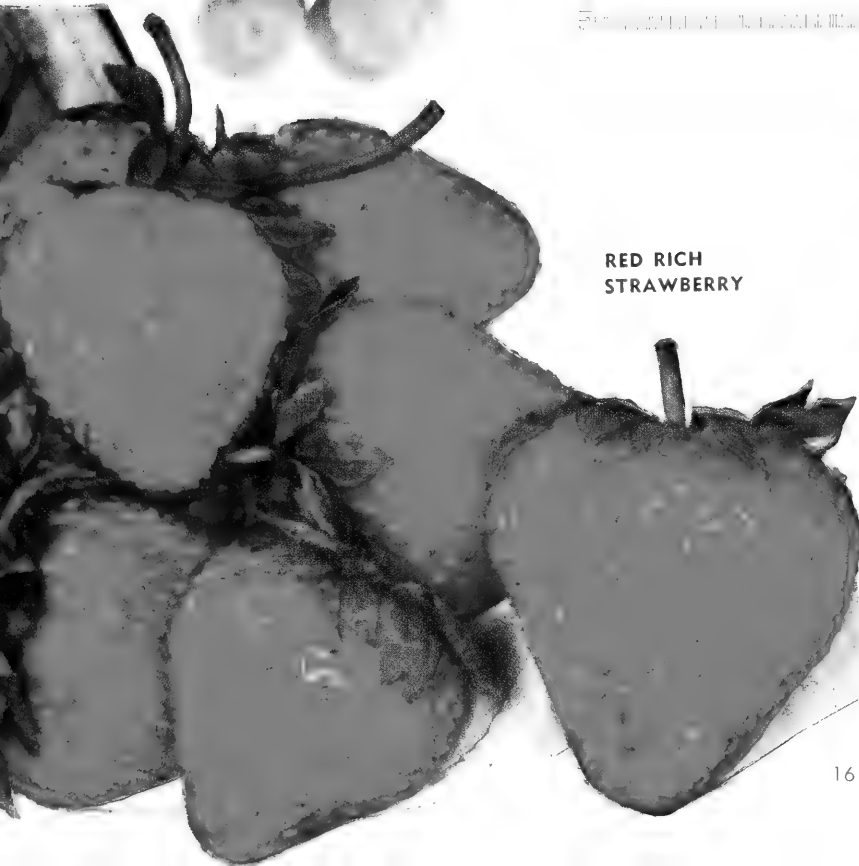
FRUIT *a Barnes's Specialty*

Over the past 60 or more years fruit trees have been an important part of our production. Indeed, today we retail more fruit trees than any other New England nursery. We are particularly favored with rich, friable soil that promotes generous full root systems and vigorous productive tops.

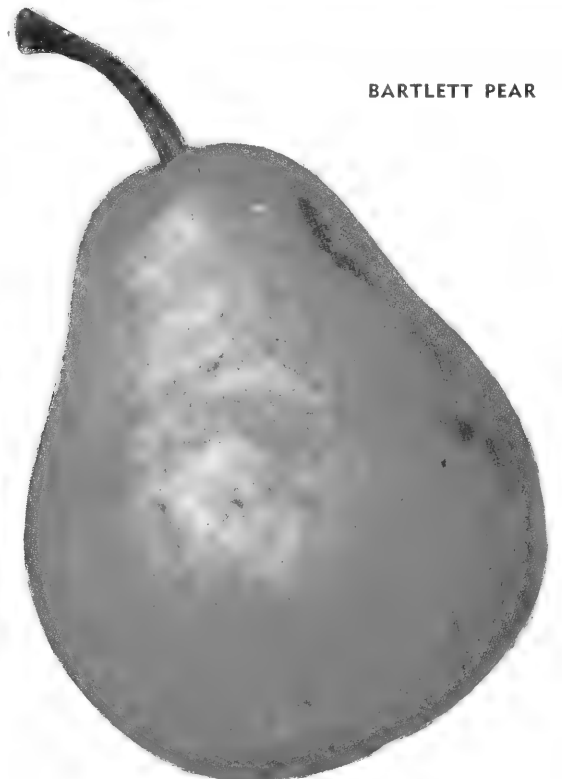
On the preceding two pages, we list the varieties of fruit which have proven to be best adapted to our Con-

necticut growing conditions. This is important to you, for many varieties which do well in other fruit growing areas will not grow as well or be as productive here. This is the reason why our fruit list shows very few changes from year to year. Untested novelties will have no place in our catalog.

For the past several years we have been watching with interest several



RED RICH
STRAWBERRY



BARTLETT PEAR



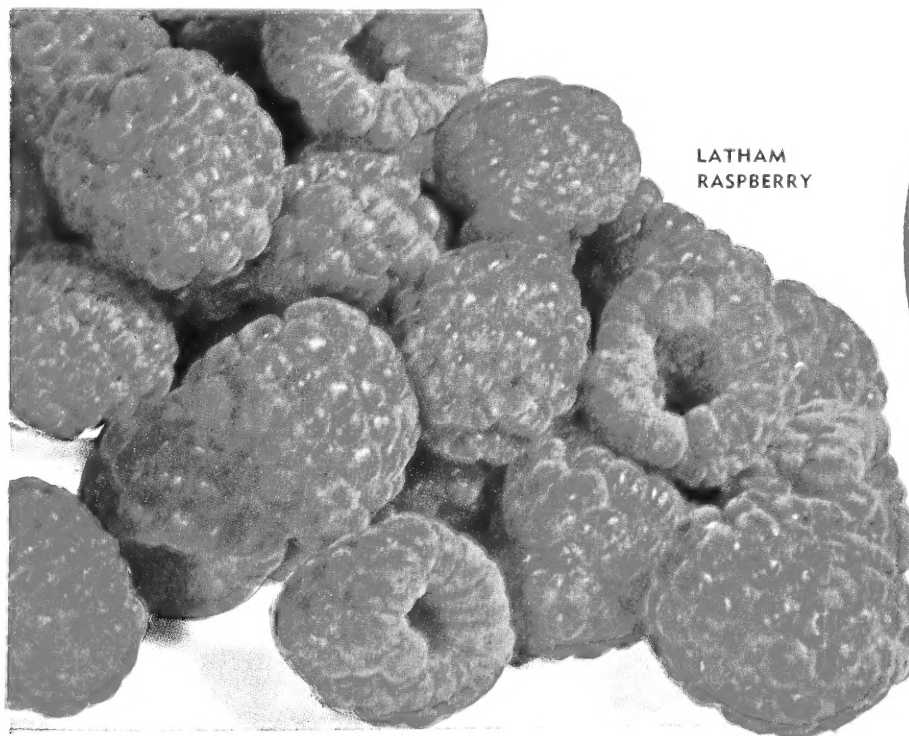
**ELBERTA
PEACH**

of the newer cultivated Blueberries. From these we are listing for the first time three new varieties which have larger berries or are more productive than some of those first introduced. We commend them to you.

While we have ample supplies of most of the fruits we list, we suggest early planting to take full advantage of this season's growing. We will select only the finest plants to fill your mail order or if you can, plan to visit the fruit section of Barnes Barn and see for yourself the quality that can only come from years of "Know How."



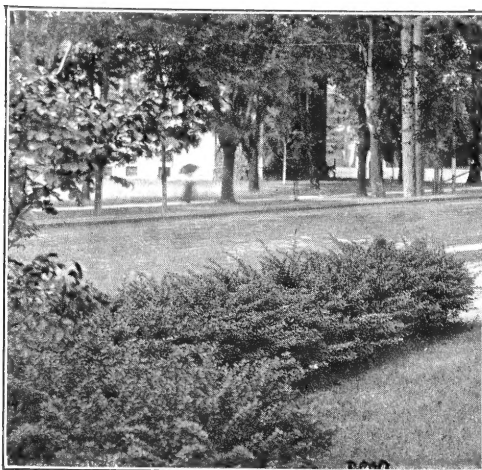
**WEYMOUTH
BLUEBERRY**



**LATHAM
RASPBERRY**



**DELICIOUS
APPLE**



Red Leaf Barberry

Hedges

To help you select the variety best suited to your needs, we indicate the range of heights at which each kind may be maintained directly after the name.

ARALIA (*Acanthopanax sieboldianus*). 4 to 9 ft. Aralia makes a superb, thorny barrier with gracefully arched, spiny branches and bright green foliage. It thrives under most difficult conditions and does well in shade. 12-18 in., \$3.00 for 10, \$12.50 for 50 plants.

GREEN BARBERRY (*Berberis thunbergi*). 2 to 4 ft. Beautiful, familiar, ever useful. Red berries. Makes a thick, thorny barrier under adverse conditions. 3 yr., 12-18 in., \$4.00 for 10, \$30.00 for 100; 18-24 in., \$6.00 for 10, \$45.00 for 100; 2 yr. seedlings, 12-18 in., \$2.50 for 10, \$20.00 for 100.

RED BARBERRY (*Berberis thunbergi atropurpurea*). 2 to 4 ft. Dark red leaves throughout the season. Be sure to plant in a sunny place. 3 yr., 12-18 in., 60c each, \$4.50 for 10; 18-24 in., 75c. each, \$6.50 for 10.

CLEMATIS—Named Hybrids:

Jackmani. Large purple flowers, 4 to 5 in. across, are freely produced all Summer on this colorful attractive and well known vine. Flowers on current season's growth. \$1.75 each.

Lawsoniana henryi. An excellent large (6 in.) white flowered variety. \$1.75 each.

Nelly Moser. Unusual because of the two-toned flower which is pale mauve with a reddish band down the center of each petal. \$1.75 each.

Ramona. Large lavender blue single flowers in Summer. \$1.75 each.

Ville de Lyon. Red purple flowers in late Summer on current year's growth. Hardest of these hybrids. \$1.75 each.

LONICERA heckrottii (*Goldflame Honeysuckle*). Rose coral trumpets lined with gold. Blooms from May until frost and can be trained as a shrub, hedge, vine or ground cover. \$1.00 each.

L. japonica halliana (*Hall's Japanese Honeysuckle*). An old favorite for its fragrance and dark, semi-evergreen leaves. Yellow and white flowers. 50c. each, 3 for \$1.35. 10 for \$4.00.

POLYGONUM auberti (*Silver Lace Vine*). This is a rapid growing vine for a dense screen in sun or shade. It has masses of foamy white flowers in late Summer. Hardy. \$1.00 each.

WISTERIA sinensis. Drooping clusters of lavender flowers in May. Grows rapidly. \$1.00 each.

LONICERA japonica halliana (*Hall's Honeysuckle*—See Vines above). Semi-evergreen. Rapid growing, vigorous, covering a large area quickly. Needs restraint.

PACHISTIMA canbyi (See page 13). Evergreen. A bushy little plant growing about 10 to 12 in. high with smaller foliage than most ground covers. Spreads by runners and forms a thick carpet in sunny or shaded spots. Needs "humusy" soil to do its best.

PACHYSANDRA terminalis (See page 13). Evergreen. One of the finest for the shade. Spreads rapidly by underground rootstalks. A wonderful ground cover for the Spring bulb beds.

POLYGONUM reynowtria (See page 7). Deciduous. Does well on those difficult sunny banks. Will grow in relatively poor soil.

RAMBLER ROSES (See page 3) such as Dorothy Perkins and Max Graf.

VINCA minor (See page 13). Evergreen. One of the lowest growing. Excellent in the shade, will do well in the sun provided the soil is "humusy" and has some moisture.

CALIFORNIA PRIVET. 3 to 15 ft. Famous for its bright green foliage which stays green until late Fall. Not reliably hardy north of Connecticut.

IBOLIVIA PRIVET. 3 to 12 ft. Upright, bushy Privet that will stand cold Winters. Splendid for high screens and formal hedges.

Privet Prices

	10 to 50 plants	50 or more
12-18 in., heavy plants.	15c. each	12c. each
18-24 in.	20c. each	16c. each
2-3 ft.	25c. each	20c. each

The following shrubs (described on pages 6 and 7) also make excellent hedging material either alone or intermingled: Tartarian Honeysuckle, Vanhoutte Spirea, Snowberry, Red-branched and Goldentwig Dogwoods, Flowering Quince, Euonymus alata and its dwarf form, Forsythia, Hills of Snow Hydrangea, Lilac, all of the Spiraeas, and on page 3, Floribunda and Grandiflora Roses. Rugosa and Shrub Roses on page 11 are also useful for this purpose.

Among the evergreens (page 11) are many excellent hedging plants for year round effectiveness. Included are Yews, Hemlocks and Arborvitae as well as the following broadleaved evergreens (page 13), Japanese Holly, Boxleaf Holly and Pachistima.

Shrubs for Living Fences

These splendid shrubs, planted 18 to 24 inches apart, will make grand hedges. Hardy dependable, easily cared for; informal, practical, useful and beautiful.

ARALIA (*Acanthopanax sieboldianus*).

TARTARIAN HONEYSUCKLE (*Lonicera tartarica*).

VANHOUTTE SPIREA (*Spiraea vanhouttei*).

SNOWBERRY (*Symphoricarpos racemosus*).

Special Grade for Hedging: 2-year, 12-18 in. plants, \$3.00 for 10, \$12.50 for 50 of one kind

HICKS YEW (*Taxus media hicksii*). For beautiful evergreen hedges. 6 year transplants, 10-12 in. high, \$1.50 each (\$1.25 each in quantity of 10 or more plants).

Evergreen Vines

EUONYMUS fortunei, **E. fortunei vegeta**, **Hedera helix baltica**. See page 13.

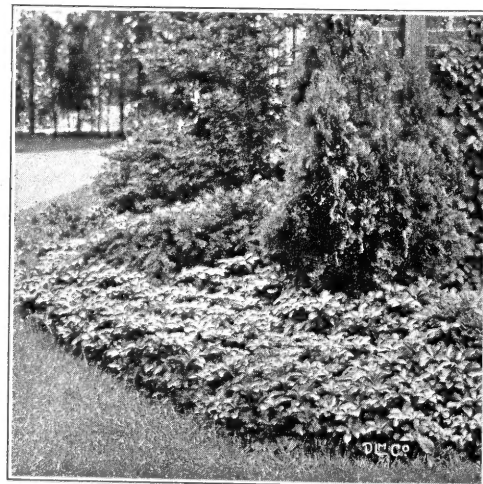
Ground Covers

The plants classified under the above heading are low, dense and rapid in growth. Varieties can be selected which will grow in the shade, on the slopes of a bank difficult to mow, as a Summer protection for roots of evergreens, to grow on a dry sterile bank, as an underplanting for the rose bed, or as a planting in narrow strips along driveways or walks. In every case they greatly improve the appearance and in most cases they reduce the work of gardening. These plants are listed elsewhere in the catalog and the page numbers refer to such listings.

COTONEASTER (See page 12). Deciduous with persistent red berries. A low spreading shrub for sunny places. Will do well in relatively poor soils.

EUONYMUS fortunei and varieties (See page 13). Evergreen. An attractive mat for shaded spots where it will also climb if there is an opportunity.

HEDERA helix baltica (*Baltic Ivy*—See Vines above). Evergreen. One of the finest for shade. Also a climber. The hardy variety.



Pachysandra

Flowering Crabs FOR BEAUTY FOR SHADE

The virtues of these trees are enumerated on the back page and one variety, *Almey*, is pictured there. Few, if any, plants that we offer give so much for so little. All are hardy. All are easy to grow.

↙ **Almey.** A beautiful new variety, with large, fire-red flowers, starred white at each center. Scarlet fruits make excellent Winter food for birds. Hardy. Grows about 20 ft. tall. 5-6 ft., \$3.50 each.

Carmine Crab (*Malus atrosanguinea*). Brilliant carmine rose flowers. Makes a broad and spreading tree; one of the showiest in flower. 5-6 ft., \$3.50 each.

↘ **Dolgo Crab.** White flowers and large, bright red Apples which make superb jelly. A double purpose tree. 4-6 ft., \$2.50 each.

Dorothea. A new and delightful semi-double variety with crimson to tyrian rose flowers followed by bright yellow fruits. Resembles Bechtel's Crab but unlike that variety is not subject to cedar rust. 2 yr., \$3.50 each.

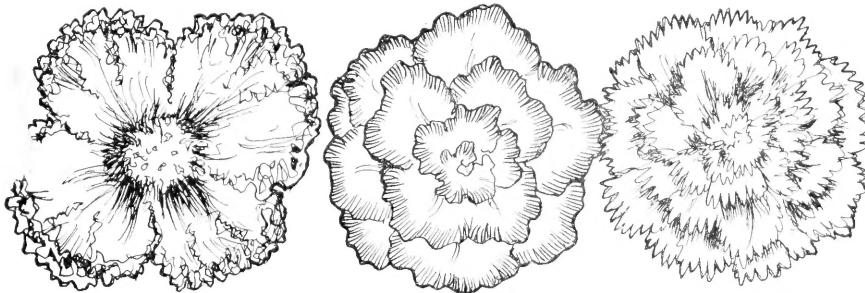
↘ **Eley Crab** (*Malus purpurea eleyi*). Wine-red flowers and fruits; splendid and showy; fruits suitable for making jelly. 5-6 ft., \$2.50 each.

↘ **Hopa Crab.** Large, rose-colored flowers; shiny orange and red fruits which make good jelly. 5-6 ft., \$2.50 each.

Katherine. 20 ft. Large, double, light pink to white, mid-May. Very small red fruits. More open habit of growth. 4-6 ft., \$3.50 each.

Prince Georges. Light pink, double flowers, about 2 in. across. Late. Tree grows upright and rather dense to 25 ft. Flowers resemble the Bechtel's Crab but the tree seems to be more disease resistant. 3-4 ft., \$3.50 each.

Redbud Crab (*Malus zumi calocarpa*). Red buds, white flowers, brilliant clusters of small red fruits lasting into Winter. 4-6 ft., \$2.50 each.



SINGLE FRILLED

PICOTEE

CARNATION FLOWERED

NOW—have all-summer color in the shade!

Barnes Tuberous Begonias are rare gems providing Summer long color in that difficult shaded spot. Giant flowers 4 to 6 inches across in a gorgeous array of colors are borne in an unceasing display of loveliness above some of the handsomest foliage you'll have in your Summer garden. While they may be started directly in the garden after danger of frost is past, we recommend that you start them in the house, if possible, to give you the longest period of bloom. Complete growing directions are furnished with each purchase—telling you how to start them, the Summer care and how to store them for a continuing May to frost display in the years ahead.

FANCY-FLOWERED KINDS

Single Frilled. Single, frilled, giant sized flowers with the color richly accented by the bright yellow center. Your choice of pink, orange, red, yellow, white and mixed.

Picotee. Crisp, light pastel background colors on each petal are bordered with a rich deep harmonizing color. Sold in mixed colors only—every one a gem.

Carnation Flowered. Fully double flowers with notched edges, for all the world like a great Carnation. Your choice of salmon, pink, white, red, yellow or orange.

The above varieties:

5 for \$2.00, 10 for \$4.00, 25 for \$9.00

BARNES BABY BEGONIAS

(Multiflora)

A valuable addition to the Tuberous Begonia family. The compact 10-inch plants bear multitudes of smaller flowers in the same range of colors. Flowers are borne in clusters over the elegant, dainty foliage. Mixed colors in a complete range. 10 for \$2.25.

OUR COMPETITIVE VARIETIES

These are the older familiar Camellia-flowered types. 1½-2 inch bulbs. White, pink, yellow, scarlet, orange and mixed. Planting instructions included. 25c. each, 5 for \$1.00, 25 for \$3.75.

INDEX

Evergreens, Broadleaf.....	12, 13 and 19
Evergreens, Needled.....	11 and 19
Fruits, Small.....	15, 16 and 17
Fruit Trees.....	14, 16 and 17
Ground Covers.....	18
Hedging.....	18
Roses.....	1, 3, 4, 5 and 11
Shrubs.....	6, 7 and 8
Trees.....	9, 10, 19 and 20
Tuberous Begonias.....	19
Vines.....	18

★

JUNIOR ARISTOCRATS

Many of our best varieties of plants are slow growing and larger sizes are prohibitively high priced for mass plantings or for use as hedges. Several of these are offered here in "Budget" sizes to supply this need. If you want some of these little plants with a big future, we advise early ordering.

AZALEA mollis. Orange-red and pink. Bushy plants with flower buds. About 12 in. tall. \$2.95 each.

A. mucronulatum. The earliest of all Azaleas to flower. Orchid colored flowers. Transplants, 8-10 in. high, 3 for \$3.90.

MOUNTAIN LAUREL (*Kalmia latifolia*). The familiar pink and white-flowered evergreen. 8-10 in. transplants, \$1.25 each, 10 for \$10.00.

JAPANESE ANDROMEDA (*Pieris japonica*). Perhaps the most decorative foliage of any broadleaf evergreen is found on this plant. White "Lily-of-the-valley" flowers in earliest Spring. Foundation planting material. 8-10 in., \$2.95 each.

CATAWBA RHODODENDRON. Various shades of pink and orchid. Evergreen. 8-10 in. tall, \$1.50 each, \$12.50 for 10.

ROSE BAY RHODODENDRON (*Rhododendron maximum*). The largest and the latest of all evergreen Rhododendrons to flower. Pink and white. 8-10 in. transplants, \$1.25 each, \$10.00 for 10.

UPRIGHT YEWE (*Hicks*). Wonderful for evergreen hedging; to edge a patio or use in the foundation planting. 10-12 in. tall, \$1.50 each, \$12.50 for 10.

SPREADING YEWE. Has the same uses as the above variety but grows more horizontally. A compact form. Bushy plants, 6-10 in., \$2.00 each, \$18.00 for 10.

All of the above plants are nursery grown.

★

Speaking of holidays—a Barnes gift certificate is an excellent way to take care of a special occasion for a gardening friend or to give as a house warming present to those new home owners on your list. You may select the plants you want to give or make out the gift certificate for a specified amount. Give us your name and address and the name and address of the recipient. We will send it either to them, or to you on any particular date you name.

★

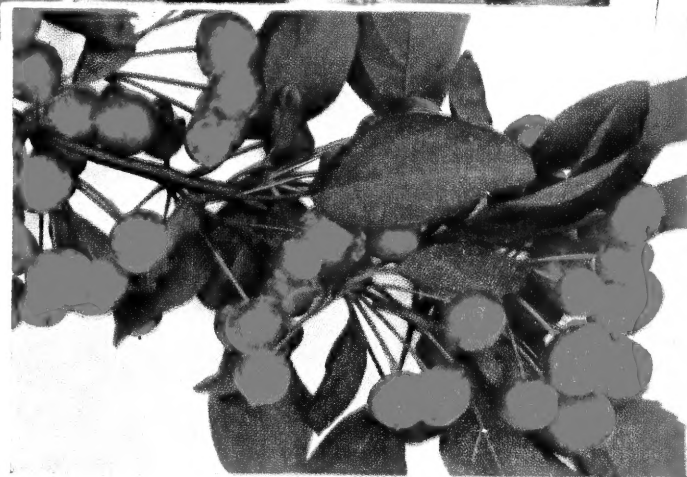
BARNES BARN

Now that you've seen our preview of Spring, we extend to you a further invitation to visit us at the familiar Barnes Barn and the nearby Lath House on Route 5 just off the Wilbur Cross Parkway Exit 66. Here you will find many plants not listed in the catalog, a complete range of fertilizers, soil conditioners, lawn care products, and, as usual, competent, trained personnel to give you advice and help you select what you need to make your home grounds livable and beautiful.

Notice of our Spring opening (about mid-March) will be announced together with the hours in the garden sections of Connecticut newspapers.



ALMEY FLOWERING CRAB AND FRUITS



Consider THE FLOWERING CRABS

The Flowering Crabs as a group are about the most ornamental of our New England flowering and fruiting trees. They are highly valued for their profuse, often fragrant, flowers which heavily clothe the tree just before the Lilacs bloom. The colors range from rose red, as in the variety Almey pictured above, through a gamut of pinks to pure white. There are singles, semi-doubles, and doubles. The ornamental color of the Fall fruiting, too, is important without being "messy," as the fruits hang into the early Winter and are dispersed into the soil before Spring. As a permanent lawn umbrella, they are excellent for their low, broad spreading and dense shade. The roots will not compete with the grass for food and water and good thick turf can be grown right up to the tree. Combine all these plant virtues with rock hardness and you have the trees we describe and price on the reverse of this page.

The Barnes Brothers Nursery Company

Route U. S. 5, South of Wilbur Cross Parkway (Exit 66)

Telephone: Wallingford: Colony 9-4226

YALESVILLE, CONN.