

62,39 Index *

LIBRARY
RECEIVED
★ MAR 9 1955 ★
U. S. Department of Agriculture

1905

Our

1915

50th

1925

Anniversary

1935

1945

1955

Nurserymen

**Landscape
Contractors**

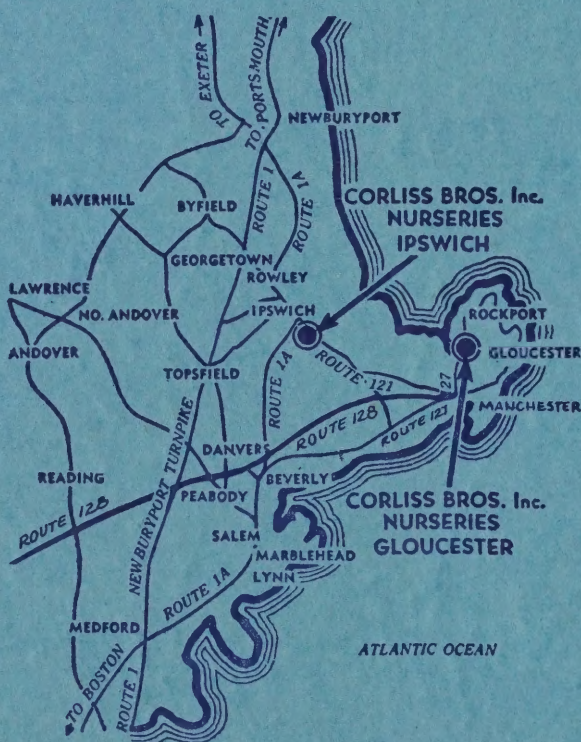
Carliss Bros.
INC.

Gloucester
Mass.

How to Locate Our Nurseries

Our Gloucester Nurseries are located just off new Route 128 on Route 127 in the Riverdale section of Gloucester.

Our Ipswich Nurseries are located off Route 1A, Ipswich, on Route 121, which is the main road between Ipswich and Gloucester.



SEE US AT EITHER ADDRESS

Reynard Street
GLOUCESTER, MASS.
Telephone 513

Essex Road
IPSWICH, MASS.
Telephone 319



MAIN OFFICE

Located at the Nursery, Reynard St., Gloucester, just off Route 127, in the Riverdale section, about a mile from the new Route 128 traffic circle. Telephone Gloucester 513.

Here are the

- Company's Bookkeeping and Credit Department
- Landscape Department, with drafting room, soil testing laboratory and operating equipment
- Research Department
- Advertising, catalog, and publicity department
- Retail and Wholesale Perennial Department
- Growing and Propagating Greenhouses and heated frames
- Two hundred ton warehouses stocked with fertilizers, insecticides, weed killers and other garden needs
- Bluestone Flagging Warehouse

Here also are

"MUMLAND", one of New England's most colorful scenes in early fall (see page 46).

The HOME of our famous hardy strain of LYONDEL HYBRID DELPHINIUM.

For LANDSCAPE and GARDENING advice,
Call Gloucester 513

OUR NURSERY and GARDEN CENTER at IPSWICH

We're proud of our beautiful Ipswich Nursery and Garden Center, located on Route 121, Ipswich, Mass.

Plenty of parking space — Visitors always welcome

Personal selection of your needs is easy and convenient . . . assistance cheerfully given.

For complete information, see page 6

Stop in and shop at either of our Nurseries — on Reynard St., in Riverdale, Gloucester, or Essex Road, Route 121 just off Route 1A, in Ipswich

Make Shopping at Corliss's a "GROWING" Habit!

OUR LANDSCAPE

Includes **Planning -**

PLANNING – WITHOUT CHARGE

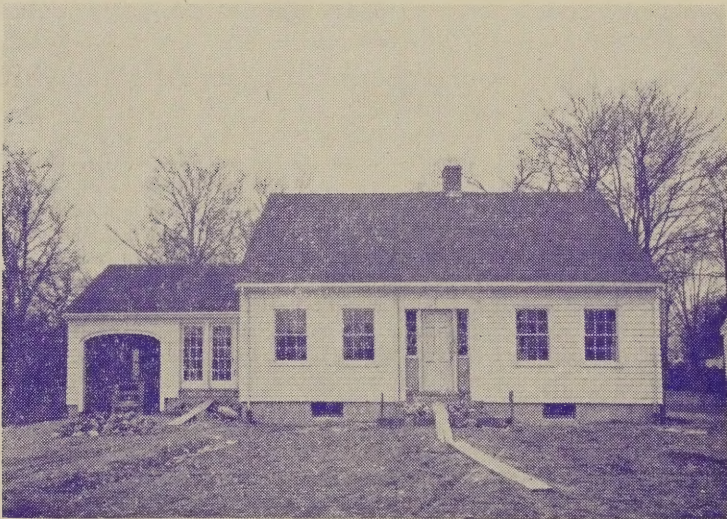
Our sales representative will gladly call at your request to look over your property. He will offer helpful suggestions, present you with progressive ideas, fully describe the suitable varieties of Evergreens, Trees, Shrubs, Vines, Roses, etc. that would be in harmony with your home.

If you are interested in doing your own planting, we can help you with a simple sketch to make your planting easy.

PLANTING

is easy when you know how, but it is the KNOW-HOW that makes a Landscape Planting successful.

Years of experience qualify us to cope with any landscape planting problems, big or small, that your yard or estate may present. Years of careful study of soil and climatic conditions make our services more valuable.



Proper Landscaping is one

APE SERVICE

Planting - Construction

LANDSCAPE CONSTRUCTION

with us, embraces many features so important to the usefulness and beauty of the home grounds.

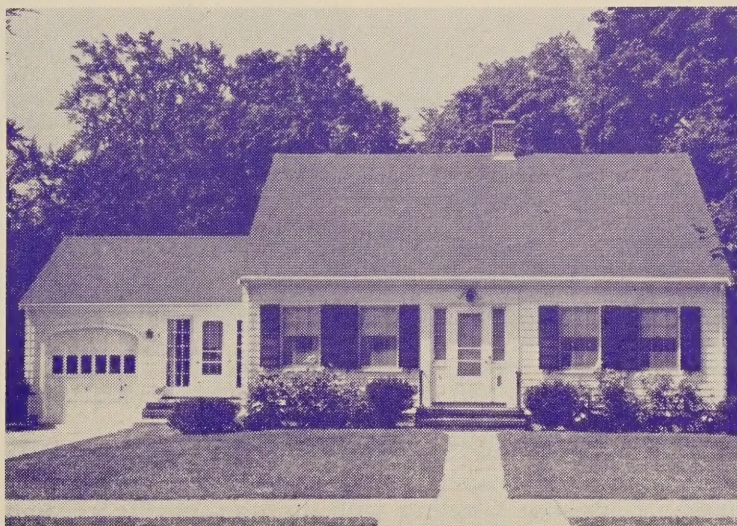
Good construction is most essential if lasting results are to be obtained. This applies to the preparation of lawns, flower beds, rose gardens or any area where planting is to take place.

Also, good base construction is very important where flagstone patios, hot top roads and walks, pasture stone walls or out-of-doors living areas are to be built.

OUR men are covered by insurance.

FOR FREE ESTIMATES

on any type of landscape development, cheerfully given on the home grounds, CALL OUR LANDSCAPE DEPARTMENT, GLOUCESTER 513.



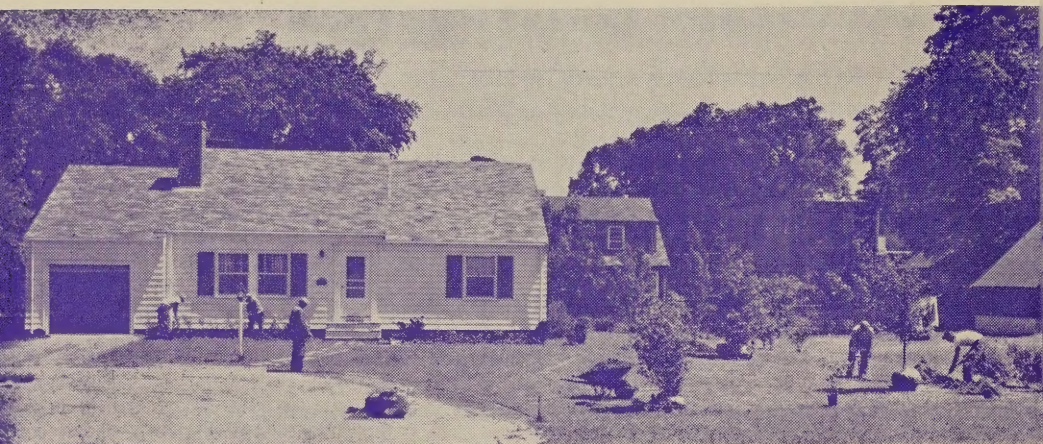
of your Best Investments.

Now!

SUCCESSFUL SUMMER PLANTING

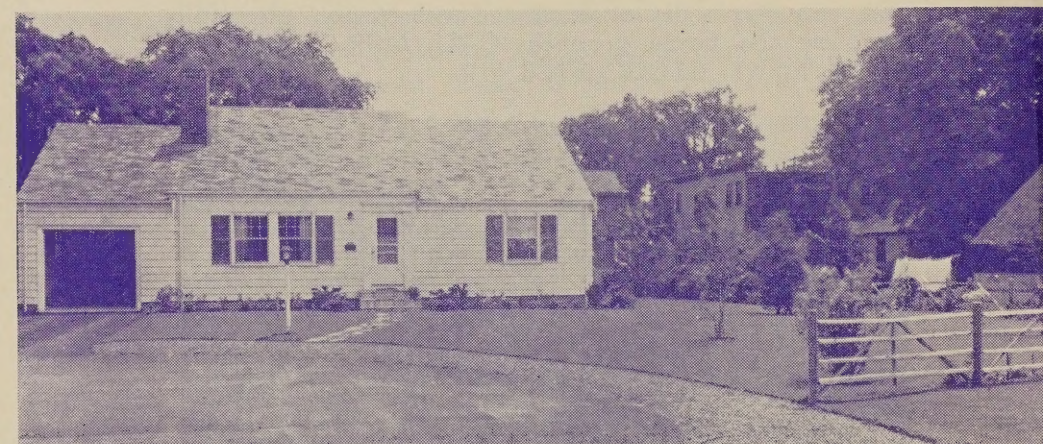
Of EVERGREENS, TREES and SHRUBS with the
New plastic spray, WILT-PRUF

By digging the plants with a ball of earth and plastic-coating, it is possible to safely transplant trees and shrubs in full leaf, with complete success, thus extending the planting season into June, July and August.



Landscaping by Corliss Bros. Inc.

ACTUAL PLANTING July 7, 1953, in 90 degree heat!



Result! One year later, July 7, 1954, every tree and shrub continuing normal, healthy growth — Not a single loss!

Sure! You can plant in July when it's hot and dry! This photo shows our men planting trees and shrubs conditioned for summer planting with the new plastic coating.

You, too, can add color, charm and value to your property. Let us help you give your home a radiant new individuality.

Estimates Willingly Given — No Charge

Call Gloucester 513

Industrial
BEAUTIFICATION
is
GOOD BUSINESS



Landscaped by Corliss Bros. Inc.

BOMAC LABORATORIES, INC. A winner in the first national "PLANT AMERICA" Industrial Landscaping Contest.

INDUSTRIAL BEAUTIFICATION is one way to contribute to the American way of living . . . An asset to any community . . . Good for the morale of the employee . . . Good for public relations and publicity . . . A deep satisfaction to the employer.

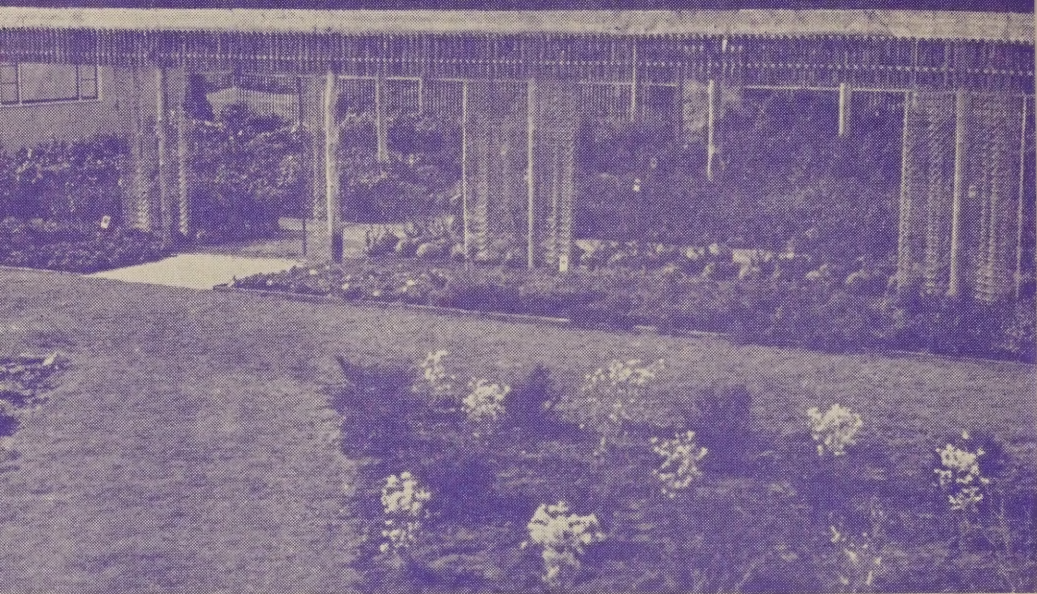
Have you an **INDUSTRIAL BEAUTIFICATION PROBLEM?**
May we help you?

Call our Landscape Dept., Gloucester 513
for **FREE ESTIMATES**

CORLISS BROS. INC.

Landscape Contractors and Nurserymen

CORLISS GARDEN CENTER



Our New **GARDEN CENTER**

at our IPSWICH NURSERIES

An easy and convenient way for you to shop!

Quality Stock at Attractive Prices!

Featuring

Evergreens . . . Rhododendrons . . . Mountain Laurel . . . Evergreen Euonymus . . . those sensational Hybrid Blueberries . . . Azaleas . . . and other Nursery Stock . . . freshly dug from our fields.

A Complete Nursery Service with Fertilizers . . . Grass Seeds Insecticides . . . Garden Hose . . . Fertilizer Spreaders . . . Power Mowers . . . other Garden needs.

Potted Roses . . . Potted Rose Daphne . . . Potted Vines . . . Potted Perennials . . . Annual Seedlings.

FOR SUMMER PLANTING

All the nursery stock in our Garden Center will be conditioned with the new plant plastic coating for **SAFE, EASY** and **ECONOMICAL** planting during hot weather.

GARDEN CENTER HOURS

From April 3 through October 2 — 7 days a week

Weekdays — 8 a.m. to 6 p.m.

Sundays — 10 a.m. to 6 p.m.

From October 2 to October 31 — 7 days a week

Weekdays — 8 a.m. to 5 p.m.

Sundays — 10 a.m. to 5 p.m.

Our nurseries are open from 7 a.m. to 5 p.m.
every weekday

Evergreens

Only the Evergreens are Left After the
Autumn Leaves Flare and Fall

There are no more beautiful things in nature than well-grown, well-cared-for evergreens. They are cool-looking in summer and cozy-looking in winter. There is no end to their uses. Well-grown specimen plants increase in beauty with the years.

EVERGREENS ARE DUG, BALLED AND BURLAPPED (B&B) at prices quoted.

*Suitable for foundation plantings

†Adapted to partial shade

‡Berried shrubs

Note.—Figures after the names give approximate heights reached under favorable conditions.

ABIES, Fir	Each	Ten
Concolor (White Fir). 70 ft. Beautiful, stately. Foliage green to silver-blue.		
3-4 ft.	9.50	
4-5 ft.	13.50	

ARBOR-VITAE. See *Thuja*

CHAMAECYPARIS, False Cypress

**Pisifera plumosa* (Plume Cypress). 30 ft. Beautiful; dense conical habit; feathery branches that respond to shearing.

18-24 in.	4.00
2-2½ ft.	4.75
2½-3 ft.	6.00

Other sizes. Prices on request.

FIR. See *Abies*.

HEMLOCK. See *Tsuga*.

JUNIPERUS, Juniper

**Chinensis Pfitzeriana* (Pfitzer Juniper). 8 ft. A dwarf, fan-shaped evergreen with grayish green foliage.

18-24 in.	7.00	65.00
2-2½ ft.	8.00	75.00
2½-3 ft.	10.00	
3-3½ ft.	12.00	
3½-4 ft.	14.00	
4-5 ft.	17.50	

Other sizes. Prices on application.

**Communis depressa plumosa* (Andorra Plumed Spreading Juniper). 5 ft. This new addition to the ground-covering evergreens is valuable for its compact growth and handsome green foliage, changing to an attractive purple during the winter.

15-18 in.	4.50
18-24 in.	5.50
2-2½ ft.	6.50

**Excelsa stricta* (Greek Juniper) 8 ft. Narrow, dense tree of erect growth having silvery foliage. Very ornamental.

18-24 in.	4.50
2-2½ ft.	5.50
2½-3 ft.	6.50

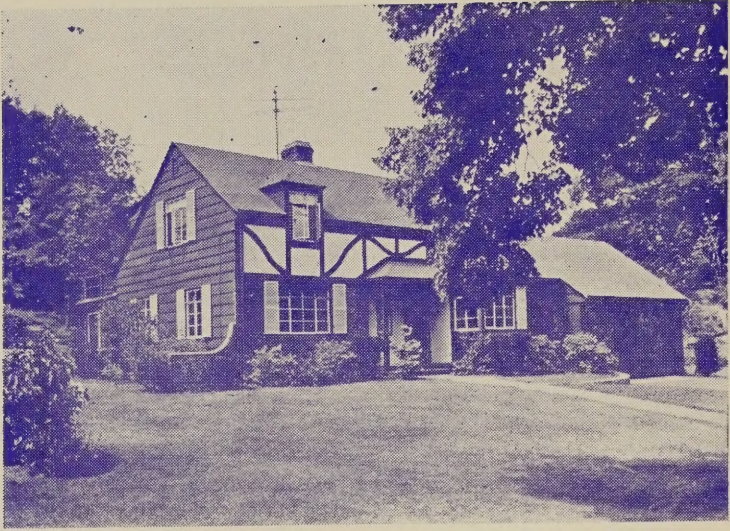
PICEA, Spruce

Glauca canadensis (American White Spruce). 85 ft. A very hardy and shapely evergreen with dense silvery foliage. Slow growing. Valuable for windbreaks or as individuals.

2-2½ ft.	4.50	42.50
2½-3 ft.	5.50	52.50
3-4 ft.	7.00	

Larger sizes, prices on request.

Five or more plants of the same variety and size
at ten rate; 25 or more at 100 rate.



Landscaped by Corliss Bros. Inc.

This is a GOOD EXAMPLE of what Landscaping can do for YOUR HOME.

PICEA, Spruce — Continued

Each Ten

***Glauca conica** (Dwarf Alberta Spruce). 6 ft. Rare, dwarf, dense, symmetrical. Exceedingly slow-growing; narrow and conical in form.

12-15 in.	5.00	47.50
15-18 in.	7.00	67.50
18-24 in.	9.00	

***Glauca Hetzi** (Hetz Blue Juniper). 8 ft. A spreading type, similar to Pfitzer Juniper, except more vigorous, with feathery bluish-green needles.

18-24 in.	6.50	62.50
2-2½ ft.	7.50	70.00
2½-3 ft.	9.50	
3-3½ ft.	11.50	

Pungens glauca (Colorado Blue Spruce). 60 ft. These trees, with their beautiful steel-blue foliage, prove attractive.

2-2½ ft.	7.00	
---------------	------	--

Other sizes and specimens. Prices on application.

PINUS, Pine

***Mugo compacta** (Dwarf Mountain Pine). 6 ft. spread. A lower and more compact form of the Mugho Pine.

15-18 in.	5.00	
18-24 in.	6.00	57.50
2-2½ ft.	7.50	70.00
2½-3 ft.	9.00	
3-3½ ft.	11.50	
5-6 ft.	23.50	225.00
6-7 ft.	28.50	275.00

Other sizes. Prices on request.

Nigra (austriaca) (Austrian Pine). 60 ft. A rapid growing, very hardy pine of broad, spreading habit. Fine for seashore planting.

2-3 ft.	6.50	
3-4 ft.	9.50	

OVERSIZED EVERGREENS

Catalog space does not permit us to list the many large, oversized, beautiful evergreens in which we specialize. When you need material of this kind for immediate effect, ask us for quotations.

Five or more plants of the same variety and size at ten rate; 25 or more at 100 rate.



CORLISS BROS.

INCORPORATED

PINUS, Pine—Continued

Each Ten

Resinosa (Red Pine). 70 ft. A very hardy, ornamental, broad, open pyramidal pine of vigorous, rapid growth with stout spreading branches. Long, glossy dark green foliage.

2-3 ft.	5.50
3-4 ft.	7.50

Strobus (White Pine). 100 ft. One of the most picturesque of our native evergreens. Long, flexible, light green, pendulous needles.

Many fine specimens — prices on application.

Thunbergi (Japanese Black Pine). 40-50 ft. An outstanding tree for planting near salt water and bleak situations. Graceful, wide-spreading with broad, irregular head; bright green needles. Faster growing than Austrian Pine, but somewhat shorter.

2-3 ft.	6.50
--------------	------

RETINOSPORA. See *Chamaecyparis*.

SPRUCE. See *Picea*.

TAXUS, Yew

*†§**Cuspidata** (Spreading Japanese Yew). 10 ft. A compact, spreading variety. Dark green foliage. Bright red berries in fall. Very attractive.

15-18 in.	5.50	52.50
18-24 in.	7.50	72.50
2-2½ ft.	9.50	92.50
2½-3 ft.	13.00	
3-3½ ft.	16.50	

Larger sizes. Prices on application.

*†§**Cuspidata capitata** (Upright Japanese Yew). 25 ft. This upright, pyramidal form is considered one of the best and most beautiful of the yews. It will grow in shade and holds its rich, dark green color well all through the winter. Valuable for hedges; stands shearing well. Red berries in fall.

18-24 in.	7.00
2-2½ ft.	9.50
2½-3 ft.	12.00
3-3½ ft.	16.50
3½-4 ft.	21.50

Larger sizes. Prices on application.

*†§**Cuspidata densiformis.** A more compact, improved form of *cuspidata*, with heavier and more dense, dark green foliage.

15-18 in.	6.00
18-24 in.	7.50

*†§**Cuspidata Hunnewelliana** (Hunnewell Yew) Resembles *cuspidata*, but of slenderer habit. Clear green foliage, masked in winter by a bronzy cast. Rapidly supplanting *cuspidata* in popularity as it can be used either as a spreader or medium upright plant.

15-18 in.	6.00
----------------	------

*†§**Cuspidata nana** (Spreading Form) (Dwarf Japanese Yew). 4 ft. Valuable on account of its deep green foliage and extreme hardiness. Red berries in fall.

15-18 in.	6.50
18-24 in.	9.50
2-2½ ft.	13.50
2½-3 ft.	18.00

Larger sizes. Prices on application.

Five or more plants of the same variety and size
at ten rate: 25 or more at 100 rate.



CORLISS BROS.

INCORPORATED

TAXUS, Yew — Continued

Each Ten

*†§**Cuspidata nana erecta** (Upright Dwarf Yew) 6-8 ft. This is an upright form of *Taxus nana*. More desirable because of its more dwarf and compact growth.
18-24 in. 9.00

*†§**Media Hatfieldi** (Hatfield's Yew), 8 ft. Especially compact vase-shaped evergreen with dark green foliage. Considered one of the best of the *Taxus* hybrids. Excellent for hedges. Red berries in the fall.
15-18 in. 5.50 52.50
18-24 in. 7.00 65.00
2-2½ ft. 9.00 85.00
2½-3 ft. 12.50
Larger sizes. Prices on application.

†§**Media Hicksi** (Hicks' Yew), 10 ft. Erect, columnar growth similar to Irish Yew, but quite hardy. Red berries in fall.
15-18 in. 4.50 42.50
18-24 in. 6.50 62.50
2-2½ ft. 8.00
Larger sizes. Prices on request.

THUYA, Arbor-Vitae

***Occidentalis Boothi** (Booth Globe Arbor-Vitae), 3 ft. Dense, dark green foliage. One of the best globe types.
15-18 in. 3.25 30.00
18-24 in. 4.25 40.00
2-2½ ft. 5.25

***Occidentalis nigra** (American Arbor-Vitae), 40 ft. A useful, upright, flat-leaved dark green evergreen.
2-2½ ft. 4.00 37.50
2½-3 ft. 5.00 47.50
3-4 ft. 6.00 55.00
4-5 ft. 8.00 75.00
Larger sizes. Prices on application.

***Occidentalis pyramidalis** (Pyramidal Arbor-Vitae), 25 ft. Very columnar type. Glossy dark green foliage. One of the finest.
18-24 in. 3.75 35.00
2-2½ ft. 4.50 40.00
2½-3 ft. 5.50 50.00
3-4 ft. 6.50 60.00
4-5 ft. 8.50
5-6 ft. 10.50
6-7 ft. 13.50
Larger sizes. Prices on application.

***Occidentalis wareana** (Siberian Arbor-Vitae), 15 ft. A hardy, dense bush having gray-green foliage.
18-24 in. 3.75
2-2½ ft. 4.50
3-4 ft. 7.50

TSUGA, Hemlock

†**Canadensis** (Canadian Hemlock), 75 ft. Finest of North American evergreens. A medium-sized, broadly pyramidal tree of dense growth and rich green foliage.
2-2½ ft. 6.50
2½-3 ft. 7.50
3-4 ft. 9.50
Larger specimens. Prices on application.

†**Caroliniana** (Carolina Hemlock) 50 ft. Very graceful evergreen with dense, dark foliage. Very choice.
2-2½ ft. 6.00
2½-3 ft. 7.00

YEW. See *Taxus*.

Evergreen Shrubs

These are a group of both small and large shrubs, with firm, hard leaves which are retained over winter. Most of them bloom beautifully, and some of them are most showy, while others are very fragrant.

EVERGREENS ARE DUG, BALLED, AND BURLAPPED (B&B) at prices quoted.

*Suitable for foundation plantings.

†Adapted to partial shade.

§Berried shrubs.

ARCTOSTAPHYLOS, Bearberry	Each	Ten
* Uva-ursi , 1½ ft. An excellent, native, ground cover for poor and sandy soils. White flowers tinged pink in May and June. Brilliant red berries persistent in fall and early winter.		
9-12 in. potted90	8.50

BUXUS, Boxwood		
* Sempervirens Welleri (Weller's Hardy Northern Box). A splendid new dwarf Boxwood with shiny oval foliage. Excellent for quick hedges that may be trimmed and kept low and dense to any size of dwarf hedge form or edging. Does well in poor soils, sun or shade.		
12-15 in. container grown	3.50	32.50

DAPHNE		
* Cneorum (Rose Daphne). 1 ft. Dwarf evergreen shrub having delightfully fragrant rose-pink flowers in May.		
7-9 in.	2.25	21.50
9-12 in.	2.75	26.50
12-15 in.	3.50	32.50

EUONYMUS, Euonymus		
*† Fortunei radicans (Winter Creeper). 15 ft. A creeping vine having small, dull green leaves with whitish veins. Under foliage bronze.		
12-15 in. container-grown	1.50	
15-18 in. container-grown	1.90	
*†§ Fortunei vegetus (Big-leaf Winter Creeper) 5 ft. Trailing evergreen shrub with large veined leaves. Abundance of orange-scarlet berries in the fall.		
15-18 in.	2.25	
18-24 in.	2.75	

SEEDLING No. 706 — See page 12

FIRETHORN. See *Pyracantha*.

HEDERA

*†**Helix baltica** (Hardy English Ivy). 15 ft. This graceful shiny-leaved evergreen plant is excellent as a self-clinging vine as well as a splendid ground cover that will take dense shade. Perfectly hardy.

	Ea.	per 10	per 100
3-in. pot plants75	7.00	60.00

HOLLY. See *Ilex*.

CORLISS GIFT CERTIFICATES

We are prepared to issue Gift Certificates, redeemable by us. This certificate will bear the recipient's name and yours as donor. A "living" gift makes a very acceptable Christmas, Anniversary, Birthday, or Mother's Day gift.

Five or more plants of the same variety and size at ten rate; 25 or more at 100 rate.



CORLISS BROS.
INCORPORATED

It's NEW! It's WONDERFUL!

***EUONYMUS SEEDLING No. 706**

A GREAT NEW BROADLEAF EVERGREEN

Priced for everyone's Pocketbook . . .

Production on a large scale makes this possible.

This new plant has everything . . .

- ★ Grows well in sun or shade
- ★ Beautiful, compact, ornamental shrub
 - ★ Excellent for hedges — lends itself to shearing
 - ★ Withstands exceptionally low temperatures
 - ★ Endures droughty conditions
 - ★ Adaptable to most soils

This beautiful broadleaf Evergreen shrub is a cross between radicans and vegetus, selected from an excellent strain of seedlings. Although the leaves are not shaped like vegetus, they are large, more pointed and very shiny.

	Each	Ten
15-18 in.	4.00	35.00
18-24 in.	4.95	44.50
2-2½ ft.	5.90	
2½-3 ft.	7.25	
3-3½ ft.	11.50	

These plants are 2½-3 years old and show the wonderful root system that predominates in all the Corliss Euonymus.



Five or more plants of the same variety and size
at ten rate; 25 or more at 100 rate.



CORLISS BROS.

INCORPORATED

ILEX, Holly

Each Ten

*†**Crenata convexa** (bullata) (Convex Box Holly). 4 ft. The best evergreen substitute for Boxwood in the North. Small, shiny, dark green boxwood-like leaves densely covering the twigs; good for rock gardens and other low plantings. Grows well in sun and shade; hardy.

15-18 in.	5.50	52.50
18-24 in.	7.50	72.50
2-2½ ft.	10.50	

*§**Glabra** (Inkberry). 2-5 ft. One of the best lesser known native shrubs, with handsome, shiny, evergreen leaves. The shining black berries ripen in Sept. and remain until late spring.

15-18 in.	4.00
18-24 in.	5.50

KALMIA, Kalmia

*†**Latifolia** (Mountain Laurel). 10 ft. Leaves rich glossy green. An abundance of pinkish white blooms in June.

15-18 in.	4.75
18-24 in.	6.00
2-2½ ft.	7.50
2½-3 ft.	9.50

LEUCOTHOE

*†**Catesbaei** (Drooping Leucothoe). 4 ft. A rather open-growing plant with fine white flowers borne on long, pendulous racemes. The leaves are glossy green in summer and assume a purplish red tint in late fall.

15-18 in.	4.75
18-24 in.	5.75
2-2½ ft.	7.50

MOUNTAIN LAUREL. See Kalmia.

PACHYSANDRA, Pachysandra

*†**Terminalis** (Japanese Spurge). 1 ft. A valuable evergreen ground cover, with white flowers in May.

	10	100	1000
3-in. pot plants	3.50	32.50	300.00

PIERIS, Andromeda

Each Ten

*†**Floribunda** (Mountain Andromeda). 6 ft. A compact shrub with dark masses of evergreen foliage, overhung with large panicles of Lily-of-the-Valley-like flowers in May.

15-18 in.	5.50
18-24 in.	7.50

*†**Japonica** (Japanese Andromeda). 10 ft. Ornamental evergreen with shiny, green leaves and white flowers in May.

15-18 in.	5.00
18-24 in.	6.50
2-2½ ft.	9.00
2½-3 ft.	11.50

PYRACANTHA, Firethorn

*†§**Coccinea Lalandi** (Laland Firethorn). A most remarkable fruiting evergreen shrub with small dark green leaves. Bears attractive large trusses of white flowers during the late spring followed by an abundance of brilliant orange-scarlet berries which remain late into the winter. An excellent plant for foundation planting where soil is dry. The plants can be trimmed to fit any position. Prefers a warm, well-drained location.

15-18 in. container-grown	3.50
18-24 in container-grown	4.50

Five or more plants of the same variety and size at ten rate; 25 or more at 100 rate.



CORLISS BROS.

INCORPORATED

RHODODENDRON

Each Ten

*†**Carolinianum** (Carolina Rhododendron). 6 ft. A very hardy plant with narrow, dark green leaves covered with pale rose-purple, bell-shaped flowers in May.

15-18 in.	6.00
18-24 in.	7.50
2-2½ ft.	9.50

*†**Catawbiense** (Catawba Rhododendron). 8 ft. Compact-growing bush with broad, roundish leaves. Bell-shaped flowers of pale pink to a rich lavender in June.

15-18 in.	6.00	57.50
18-24 in.	7.50	72.50
2-2½ ft.	9.50	
2½-3 ft.	11.50	

*†**Catawbiense alba**. This is a clear white selection from the native Rhododendron catawbiense with excellent dwarf and compact habit of growth.

18-24 in.	10.00
2-2½ ft.	14.50

*†**Catawbiense compactum** (Compact Catawba Rhododendron). 6 ft. Dense, compact, dwarf variety with same foliage and flowering characteristics as Catawbiense. Excellent in front of taller varieties.

15-18 in.	6.50
18-24 in.	8.00

HYBRID RHODODENDRONS

These are one of the finest broad-leaved Evergreens. They create unforgettable spots of color in late spring, and are very useful in partial shade. Average height 8-12 ft.

*†**Ignatius Sargent**. Enormous flowers of a very bright rosy crimson which creates a spectacular sight against the heavy rich foliage. This variety grows rapidly and is the spreading type. May.

18-24 in.	10.00
----------------	-------

*†**Lee's Dark Purple**. A slower growing variety than most, with deep rich purple flowers in late season.

18-24 in.	10.00
2-2½ ft.	14.50

VINCA, Hardy Myrtle

Minor Bowles' Variety. 6 in. A trailing evergreen plant with broad and rich glossy green foliage and rich blue flowers in spring. Used extensively for carpeting the ground under shrubs, trees, etc.

	Each	10	100	1000
Field-grown plants	\$.45	\$4.00	\$35.00	\$300.00

Ground Covering Plants

Just as their name implies, the following plants are suitable for covering the ground under trees and other places where grass won't grow. Although primarily foliage plants, some have blooms. Some have roots that spread and send up new top growth, some spread by sending out trailers that take root, and others merely grow more or less prostrate, spreading out as they enlarge to cover a greater area of ground each year.

- Arctostaphylos Uva-ursi**. (Bearberry). See page 11.
- Convallaria majalis** (Lily-of-the-Valley). See page 49.
- Euonymus** (Evergreen Euonymus). See page 11, 12.
- Hedera helix baltica** (English Ivy). See page 11.
- Lonicera halliana** (Honeysuckle). See page 31.
- Pachysandra terminalis** (Spurge). See page 13.
- Vinca minor** (Hardy Myrtle). See page 14.

Five or more plants of the same variety and size at ten rate; 25 or more at 100 rate.

Deciduous Trees

FOR SHADE, FLOWERS, FOLIAGE, BERRIES

Among the vast number of beautiful Deciduous Trees that shed their foliage in the fall are those suitable for planting along roadsides, as screens, for shade, etc. Many of these bear beautiful flowers and colorful fruits.

SPECIAL PRICES ON QUANTITY

‡Adapted to partial shade.

§Berried trees.

Note:—Figures after the names give approximate heights reached by the trees and shrubs under favorable conditions.

TREES B&B (Balled and Burlapped)

Unless otherwise marked "B&B" (Balled and Burlapped), trees are dug bare rooted when dormant. Should balling and burlapping be desired on trees not marked "B&B," an extra charge will be made.

Heights given with caliper measurements are general average and are approximate only. Where no caliper is given, the height is the governing measurement.

After the regular bare-root digging season is passed, this material must be dug with a ball and, since considerable time, labor, and soil are involved, balling and burlapping will be charged. Prices quoted on request.

ACER, Maple

Each Ten

Palmatum atropurpureum (Japanese Red-leaved Maple) 25 ft. Small, ornamental tree with magnificent purple-red foliage, gracefully lacinated. A handsome specimen on the lawn.

2-3 ft. B&B	8.50
3-4 ft. B&B	12.00
4-5 ft. B&B	17.50

Platanoides (Norway Maple). 50 ft. Large, handsome, spreading tree with heavy, green foliage of great substance. Yellow autumn foliage.

8-10 ft., 1¼-1½ in. caliper	10.00
10-12 ft., 1¾-2 in. caliper	16.50
12-14 ft., 2-2½ in. caliper	20.00
14-16 ft., 2½-3 in. caliper	25.50

Larger specimens. Prices on application.

Saccharum (Sugar Maple). 75 ft. One of the finest shade trees for lawn or street planting. Clear, straight growth and well-developed heads. Red and yellow autumn foliage.

8-10 ft., 1-1¼ in. caliper	9.50
10-12 ft., 1¼-1½ in. caliper	12.50

Larger specimens. Prices on request.

NEW CRIMSON KING MAPLE

Plant Pat. No. 735

(*Acer schwedleri nigra*. 50-60 ft.)

This beautiful new Maple is of the Norway Maple family and has all of its fine characteristics PLUS very attractive deep crimson-purple foliage continuously from spring right up until the leaves fall in Autumn. You'll want to be ONE OF THE FIRST to own a new CRIMSON KING MAPLE.

6-8 ft., 1-1¼ in. caliper	9.00
---------------------------------	------

Five or more plants of the same variety and size at ten rate; 25 or more at 100 rate.



CORLISS BROS.

INCORPORATED

BETULA, Birch

Each Ten

Papyrifera (Paper or Canoe Birch) 60 ft. A very desirable tree with large, handsome leaves. As this tree develops, the bark becomes white. Yellow autumn leaves.

Spring Planting Only.

6-8 ft. B&B 8.50
Larger specimens. Prices on Application.

BIRCH. See Betula

CERCIDIPHYLLUM, Katsura Tree

Japonicum. 30 ft. Very desirable ornamental tree with rather dense pyramidal habit. Heart-shaped pink leaves when unfolding, rich medium green in summer, and brilliant orange-scarlet in autumn.

6-8 ft. B&B 10.00
Larger specimens. Prices on Application.

CRAB, FLOWERING. See Malus.

CORNUS, Dogwood

†§**Florida** (White-flowering Dogwood). 25 ft. A tree type producing showy white flowers in May and brilliant red foliage and red berries in the fall.

Spring Planting Only

3-4 ft. B&B 5.50
4-5 ft., B&B 7.00
5-6 ft. B&B 9.00

†§**Florida rubra** (Pink-flowering Dogwood). 20 ft. One of the finest flowering trees. Massed with rose-colored flowers in early spring, followed by red berries.

Spring Planting Only

3-4 ft. B&B 9.00
4-5 ft. B&B 13.50
5-6 ft. B&B 18.00

†§**Light pink variety of above.**

4-5 ft. B&B 12.50
5-6 ft. B&B 15.50

†§**Kousa** (Korean Dogwood). 15-20 ft. The Oriental sister of our native Flowering Dogwood. A small tree with big white flowers in June, followed by large attractive red fruit. Handsome purplish foliage in autumn.

Spring Planting Only

4-5 ft., B&B 7.50
5-6 ft., B&B 9.50
6-8 ft., B&B 13.50

Many fine specimens. Prices on application.

CRATAEGUS, Hawthorn

§**Oxyacantha alba** (White Hawthorne). 15 ft. A native variety bearing white blossoms in May, succeeded by clusters of bright scarlet fruit.

6-8 ft., B&B 10.00
8-10 ft., 1¾-2 in. caliper B&B 17.50
10-12 ft., 2½-3 in. caliper B&B 25.00

Specimens. Prices on application.

DOGWOOD. See Cornus.

ELM. See Ulmus.

Five or more plants of the same variety and size
at ten rate; 25 or more at 100 rate.



Photo Courtesy of Edward H. Scanlon & Associates

Corliss's Compressor-Root-Pruned Lindens Beautify Cleveland Streets

GLEDITSIA, Locust **Each Ten**

Triacanthos var. Moraine. (Moraine Locust, Pat. #836).

The new, fast-growing, shade tree which experts predict will replace the American Elm as the most graceful shade tree. It is vase-shaped like the Elm, and adaptable to a wide variety of soils. This Honeylocust, with lacy, luxuriant, dark green foliage, is hardy, clean and tidy without seeds or pods, and thornless.

8-10 ft., 1-1¼ in. caliper 12.50

HAWTHORN. See *Crataegus*.

LINDEN. See *Tilia*.

LIRIODENDRON, Tuliptree

Tulipifera. 150 ft. Tall, rapid growing tree with large greenish-yellow tulip-like flowers and dark glossy green foliage turns yellow in fall. Prefers deep, rich, moist soil.

Spring Planting Only.

5-6 ft. 7.00

6-8 ft. 9.00

LOCUST. See *Gleditsia*.

WINTER MOVING OF BIG TREES

We strongly recommend the winter moving of large trees which can be done very economically at this time of year.

We are fully equipped to do this job complete.

CALL US FOR FREE ESTIMATES.

Five or more plants of the same variety and size at ten rate; 25 or more at 100 rate.



MAGNOLIA

Each Ten

Soulangeana (Saucer Magnolia). 20 ft. One of our showiest and most picturesque trees with lustrous foliage and slightly fragrant, cup-shaped flowers, purple-pink outside and creamy white within, in April and May.

Spring Planting Only

3-4 ft., B&B	9.50
4-5 ft., B&B	12.50

Malus - The Flowering Crab Apples

We have specialized for years in growing the best varieties of America's No. 1 Ornamental Tree.

Now we have the largest number of varieties to choose from in New England — many of the old favorites, as well as all the best of the new ones. This spring, our flowering display of these Ornamental Crab-apple Trees should be a sight worth seeing. You are cordially invited to visit our nurseries for this May Flower Show. Bring your camera.

✓ **§Almey.** (Almey Crabapple). From a distance, the tree looks like a "mass of flames" for the large, glistening, fiery crimson blooms crowd the branches to the tips. The fruits are small, oval, maroon, and hang on into the winter season. Almey can be the sensation of your neighborhood.

5-6 ft.	8.50	80.00
6-8 ft.	11.50	110.00

✓ **§Arnoldiana** (Arnold Crabapple). 12 ft. One of the best crabs, dark green foliage and low pendulous soft pink flowers opening to almost pure white. Conspicuous yellow fruit.

4-5 ft.	4.50	42.50
5-6 ft.	5.50	

✓ **§Dolgo.** (Dolgo Crabapple) 15 ft. This shapely, neat, upright tree is a solid mass of large white blooms in spring followed by a profusion of large, brilliant red fruit that makes it a wonderful ornamental sight, and flavorful, rich red jelly. Green foliage.

5-6 ft.	7.50
--------------	------

✓ **§Eleyi** (Eley Crab). 18 ft. One of the best red-foliaged Crabs. Large clusters of purplish red flowers in June, followed by showy purple-red fruit.

5-6 ft.	5.50	52.50
6-8 ft.	8.00	75.00

Larger specimens. Prices on application.

✓ **§Flame.** A new and charming variety of erect growth and hardiness. Large single pink to white flowers in spring; bright red fruit from Aug. to Nov.

5-6 ft.	7.50	72.50
6-8 ft.	10.00	

✓ **§Floribunda** (Japanese Flowering Crab). 15 ft. A glorious display of rosy pink buds opening to white flowers in abundance, appearing with the leaves in May. In autumn, this tree produces yellow fruit which turns a very showy rosy red. Attractive foliage.

4-5 ft.	4.50
--------------	------

Five or more plants of the same variety and size at ten rate; 25 or more at 100 rate.



CORLISS BROS.

INCORPORATED

§**Floribunda atrosanguinea** (Carmine Crab) 12-15 ft.
Handsomely shaped lawn tree with a wealth of single
brilliant red flowers in late May, followed by red fruit.

5-6 ft.	5.50	
--------------	------	--

√ §**Hopa**. 20 ft. Considered the most beautiful pink flow-
ering Crab; reddish-purple foliage; large single, deep
pink blooms, followed by quantities of small reddish
fleshed fruit which makes good jelly.

5-6 ft.	5.50	
6-8 ft.	8.00	75.00

§**Hupehensis** (theifera) (Tea Crab). 20 ft. A very showy
erect tree literally covered with clusters of rosy-red
flowers in late May, changing to blush-white when
fully opened, followed by yellow fruit.

4-5 ft.	4.50	
5-6 ft.	5.50	52.50

§**Katherine**. 12-15 ft. A beautiful small tree with large,
double, pale pink flowers changing to pure white, fol-
lowed by small yellow fruits with reddish blush.

5-6 ft.	8.50	
6-8 ft.	11.50	

§**Purpurea aldenhamensis** (Aldenham Crabapple) 8-10 ft.
A striking variety with single and semi-double deep
purple flowers and good sized brownish-purple fruit.
The lovely foliage is purple at first, later turning
bronze.

5-6 ft.	7.50	70.00
6-8 ft.	10.00	95.00

√ §**Red Silver**. 30 ft. A remarkable new variety, red from
top to bottom in bark, flower and leaf. The silver
refers to the delicate silver on under side of leaves.
Reddest blossoms of any variety we've seen. Very
hardy.

5-6 ft.	7.50	
--------------	------	--

§**Sargenti** (Sargent Crab). 8 ft. A handsome specimen
covered with clear white flowers in May. Small dark
red fruit and brilliant orange-yellow foliage in the fall.
Large specimens. Prices on application.

√ §**White**. 18 ft. An excellent, shapely, upright variety
covered with large, single, pure white blooms, and
green foliage. Red fruits, which attract the birds,
hang on a long time.

4-5 ft.	4.50	42.50
5-6 ft.	5.50	52.50

MAPLE. See Acer.

MT. ASH. See Sorbus.

OAK. See Quercus.

PLUM, Flowering. See Prunus

PRUNUS, Flowering Plum

§**Cerasifera blireiana** (Blireiana Plum) 12 ft. A splendid,
neat, tree with rather upright branches on which are
borne salmon-pink rosettes in great profusion in early
spring. Rich purple foliage.

5-6 ft.	6.50	60.00
6-8 ft.	9.50	90.00

**REMEMBER—Nursery stock without landscape
advice is often like medicine without a doctor.**

Five or more plants of the same variety and size
at ten rate; 25 or more at 100 rate.



This picture demonstrates the systematic **CORLISS COMPRESSOR-ROOT-PRUNING** operation. Hundreds of trees are scientifically root pruned and fed on schedule each year to give them strong powerful root systems.

The planting of large trees gives immediate beauty and shade.

Catalog space does not permit us to list the hundreds of oversized, beautiful trees in which we specialize. If you are interested in large trees, ask us for our list.

QUERCUS, Oak

Each Ten

Palustris (Pin Oak). 60-80 ft. A rapid growing, majestic tree of broad pyramidal form with slightly drooping branches and finely divided dark green leaves, which turn brilliant red and yellow in the fall.

Large specimens. Prices on application.

SALIX, Willow

Niobe (Golden Weeping Willow). 40 ft. This beautiful tree is attractive at all seasons with its golden branches weeping to the ground.

6-8 ft. 4.50

Larger sizes. Prices on application.

SORBUS, Mountain Ash

Aucuparia (European Mt. Ash). 50 ft. This tree has fernlike foliage and from mid-summer through to fall bears large clusters of scarlet berries.

6-8 ft. 6.00 55.00

8-10 ft., 1-1¼ in. caliper 7.50 70.00

Larger sizes. Prices on application.

TILIA, Linden

Cordata (Little Leaf European Linden). 70 ft. A stately tree, and one of the most attractive and fast growing shade trees for lawn, park, or avenue planting.

6-8 ft. 7.50

Larger sizes and Specimens. Prices on application.

Pyramyphyllos pyramidalis (Pyramidal Linden). 40 to 50 ft. A very desirable compact form, decidedly pyramidal in growth, reminding one of a Lombardy Poplar, with ascending branches. May be used effectively in a very narrow space, or as a screen or sentinel tree.

6-8 ft. 7.00

Larger sizes. Prices on application.

TULIPTREE, See Liriodendron

ULMUS, Elm

Americana (American Elm). 80 ft. Large, stately, fan-shaped tree. Bright yellow foliage in fall.

Large trees and specimens. Prices on request.

WILLOW. See Salix.

Five or more plants of the same variety and size at ten rate; 25 or more at 100 rate.

Deciduous Shrubs

FOR FLOWERS, FOLIAGE, BERRIES

Any true lover of nature will find a world of joy and happiness watching the striking and fascinating changes in flowering shrubs throughout the season. They are a delight from the first mild spring day, when the buds begin to swell, until late in autumn, when the leaves are resplendent in their festive colors and brilliant berries.

We are only able here to acquaint the reader with a very small portion of this wealth of beauty. Generous planting of shrubs around the home will repay in beauty and pleasure many times over the small investment required.

SHRUBS B&B (Balled and Burlapped)

Unless otherwise marked "B&B" (Balled and Burlapped), shrubs are dug bare rooted when dormant. Should balling and burlapping be desired on shrubs not marked "B&B," an extra charge will be made at the following rates.

After the regular bare-root digging season is passed, this material must be dug with a ball, and since considerable time, labor and soil are involved, balling and burlapping will be charged at these rates.

18-24 in.	\$.35
2-3 ft.45
3-4 ft.70
4-5 ft.90
5-6 ft.	1.25

Larger sizes — prices quoted on request.

EXPLANATION SYMBOLS

*Suitable for foundation plantings.

†Adapted to partial shade.

§Berried shrubs.

Note:—Figures after the names give approximate heights reached by the trees and shrubs under favorable conditions.

	Each	Ten
ACANTHOPANAX, Aralia		
*† Pentaphylla (Five-leaf Aralia). 10 ft. A tall-growing shrub with stout, prickly stems and bright green, glossy foliage that turns yellow in fall.		
2-3 ft.	1.25	
3-4 ft.	1.60	
ALTHEA. See Hibiscus syriacus, Rose of Sharon		
ARONIA, Chokeberry		
*§ Arbutifolia Brilliantissima. (Brilliant Chokeberry). 6 ft. White or flushed pink flowers in May; clusters of bright orange-scarlet berries that persist into winter. Brilliant crimson foliage in Autumn.		
2-3 ft.	1.35	
AZALEA. They breathe of distant lands		
*† Amoena Coccinea (Red Amoena Azalea) 4 ft. One of the hardiest Azaleas with attractive, brilliant, red flowers. Very popular. Foliage turns bronze in fall.		
10-12 in., B&B	3.50	32.50
*† Arborescens (Sweet Azalea). 5 ft. The very fragrant flowers, which are white tinged with pink, appear in June and July.		
15-18 in., B&B	4.00	
18-24 in., B&B	5.00	
*† Calendulacea (Flame Azalea). 6 ft. A most beautiful shrub, bearing profusion of pale yellow to fiery red flowers in May and June. Very showy.		
18-24 in., B&B	5.50	
2-2½ ft., B&B	7.00	
2½-3 ft., B&B	8.00	

Five or more plants of the same variety and size at ten rate; 25 or more at 100 rate.



CORLISS BROS.

INCORPORATED

AZALEA—Continued

Each Ten

- *†**Kaempferi** (Torch Azalea) 5 ft. A very desirable shrub with glorious sprays of brilliant orange-red to coral-pink flowers in April and May.
- | | | |
|----------------------|------|-------|
| 15-18 in., B&B | 5.00 | 47.50 |
| 18-24 in., B&B | 6.50 | |
| 2-2½ ft., B&B | 8.00 | |
- *†**Kaempferi Fedora**. The great profusion of large, salmon-rose flowers make this a popular variety. Very hardy. Retains much of its foliage during winter.
- | | | |
|----------------------|------|--|
| 15-18 in., B&B | 5.50 | |
|----------------------|------|--|
- *†**Mollis Hybrid Red**. (Red Chinese Azalea). 5 ft. A mass of large, red bell-shaped flowers on a low, compact shrub, in May and June.
- | | | |
|----------------------|------|-------|
| 15-18 in., B&B | 5.50 | 52.50 |
|----------------------|------|-------|
- *†**Mollis Koster's Brilliant**. Large glowing orange-red flowers in May and June.
- | | | |
|----------------------|------|-------|
| 15-18 in., B&B | 5.50 | 52.50 |
|----------------------|------|-------|
- *†**Mollis Queen Emma**. One of the most desired varieties because of its large, individual, deep apricot-yellow flowers grouped in big clusters. May and June.
- | | | |
|----------------------|------|-------|
| 15-18 in., B&B | 5.50 | 52.50 |
|----------------------|------|-------|
- *†**Mucronulata** (Mongolian Azalea) 6-8 ft. First to flower, in mid-April; bearing delicate rose-lavender flowers that make an attractive display.
- | | | |
|---------------------|------|--|
| 2-2½ ft., B&B | 7.50 | |
|---------------------|------|--|
- *†**Poukhanensis** (Korean Azalea). 4 ft. Fragrant and beautiful orchid flowers appear before leaves in April or early May.
- | | | |
|----------------------|------|--|
| 15-18 in., B&B | 5.50 | |
| 18-24 in., B&B | 6.50 | |
- *†**Vaseyi** (Pinkshell Azalea) 6 ft. One of the very best ornamentals. Delicate white, pink or deep rose flowers appear in April or May before the foliage.
- | | | |
|----------------------|------|--|
| 18-24 in., B&B | 5.50 | |
| 2-2½ ft., B&B | 6.50 | |

BARBERRY. See Berberis.

BAYBERRY. See Myrica.

BEAUTY BUSH. See Kolkwitzia.

BERBERIS, Barberry

*§**Thunbergi** (Japanese Barberry). 5 ft. A slow-growing green-leaved shrub followed by bright red foliage and red fruit in the fall.

	Each	Ten	100
15-18 in.60	5.50	52.50
18-24 in.75	7.00	67.50
2-2½ ft.	1.00		

*§**Thunbergi atropurpurea** (Red-leaved Japanese Barberry). 5 ft. Of the same habit as the preceding except that the foliage is bronze-red throughout the summer.

	Each	Ten
15-18 in.	1.10	10.00
18-24 in.	1.35	12.50
2-2½ ft.	1.60	
2½-3 ft.	2.00	19.00
3-4 ft.	2.75	25.00

BLUEBERRY. See Vaccinium; also Fruits.

Five or more plants of the same variety and size at ten rate; 25 or more at 100 rate.



CORLISS BROS.

INCORPORATED

BUDDLEIA, Butterfly Bush

Each Ten

The graceful, long rounded spikes of sweetly fragrant flowers, like lilacs, produced from July to Sept. are a great attraction for butterflies. The attractive, rich green foliage has a silvery sheen underneath. The shrubs, average in height from 5-6 ft., die back to the ground in winter and grow back to their average height during the spring season.

- ***Charming** — lovely pink variety
2 yr., container-grown 1.75
- ***Ile De France** — rose-purple, suffused violet
2 yr., container-grown 1.75
- ***White Cloud** — glistening snowwhite
2 yr., container-grown 1.75

Looking for something different?

Try this wonderful

SUMMER FLOWERING BLUE SHRUB!

CARYOPTERIS BLUE MIST

Commonly called Bluebeard or Blue Spirea, this charming low-growing shrub is covered with clusters of plummy powdery-blue fringed flowers from Aug. until fall frosts, and is perfectly hardy. Suitable as a low shrub or at home in a perennial garden. Height 3 ft.

2 yr., container-grown **Each** 1.65

CHOKEBERRY. See Aronia.

CLETHRA

- ***Alnifolia** (Sweet Pepper). 7 ft. A dainty native shrub, bearing spikes of creamy white, fragrant flowers. July to September and golden leaves in autumn.
2-3 ft. 1.50
3-4 ft. 1.90

CORNUS. Dogwood

- ***Alba sibirica** (Red-branched Dogwood) 8-10 ft. Branches are bright red, stout and erect. Clusters of yellow-white flowers in late June, followed by blue-white berries.
2-3 ft. 1.25
3-4 ft. 1.60
- †**Florida** (Shrub type). (White-flowering Dogwood). 25 ft. A shrub type, producing showy white flowers in May and brilliant red berries and dark red leaves in the fall.
3-4 ft., B&B 4.50
4-5 ft., B&B 6.00
Larger specimens. Prices on request.
- †**Mas** (Cornelian Cherry). 15 ft. A handsome shrub-like tree which bears yellow flowers in late March or early April before the leaves. Immense quantities of scarlet fruit make a stunning display in autumn.
Large specimens — ask for sizes and prices
- ***Paniculata** (Gray Dogwood). 15 ft. Clusters of white flowers in May and June are followed in autumn by white berries.
2-3 ft. 1.35

Five or more plants of the same variety and size at ten rate; 25 or more at 100 rate.



CORLISS BROS.

INCORPORATED

COTONEASTER. Cotoneaster

Each Ten

- *§**Adpressa praecox** (Prostrate Cotoneaster) 1½ ft. A very attractive dwarf shrub with handsome, glistening, dark green foliage and masses of bright orange-red berries in fall.
- | | | |
|----------------------|------|-------|
| 18-24 in., B&B | 6.00 | 55.00 |
|----------------------|------|-------|
- *§**Divaricata** (Spreading Cotoneaster) 6 ft. A handsome, upright shrub with slender spreading branches and masses of bright scarlet fruits well into winter.
- | | | |
|-----------------------|------|-------|
| 2½-3 ft. potted | 3.25 | 30.00 |
| 3-4 ft. potted | 4.50 | 42.50 |
- *§**Horizontalis** (Rock Cotoneaster) 3 ft. Low, horizontal branched shrub. Glossy foliage. Pinkish white blooms in spring, followed by bright red fruit. Semi-evergreen.
- | | | |
|--------------------------------|------|--|
| 9-12 in. container-grown | 2.00 | |
|--------------------------------|------|--|

CYDONIA, Quince

- ***Japonica rubra** (Red-flowering Quince). 5 ft. Early bloomer. Deep red flowers in May, followed by yellow fruit. Glossy green foliage. A specimen shrub.
- | | | |
|----------------|------|-------|
| 18-24 in. | 1.50 | 13.50 |
| 2-2½ ft. | 1.75 | |

DEUTZIA

- ***Gracilis** (Slender Deutzia). 3 ft. White flowers and green foliage on arched branches. May, June.
- | | | |
|----------------|------|--|
| 15-18 in. | 1.35 | |
| 18-24 in. | 1.85 | |
- ***Lemoinei** (Lemoine's Deutzia). 5 ft. Early blooming, vigorous shrub with sprays of pure white flowers in May.
- | | | |
|----------------|------|--|
| 18-24 in. | 1.50 | |
|----------------|------|--|

DOGWOOD. See Cornus.

ELAEAGNUS

- Angustifolia** (Russian Olive) 20 ft. Fragrant, yellow flowers followed by orange-yellow berries enhance its silvery-gray leaves and branches. Excellent for mass planting and seashore planting.
- | | | |
|--------------|------|--|
| 4-5 ft. | 3.00 | |
| 5-6 ft. | 4.50 | |

EUONYMUS, Euonymus

- *†§**Alatus** (Winged Euonymus, Burning Bush). 8-10 ft. Shrub of compact habit. Small leaves on cork-barked branches, yellowish flowers in May and June. Brilliant red fruit and foliage in autumn.
- | | | |
|--------------|------|-------|
| 2-3 ft. | 3.00 | 28.50 |
| 3-4 ft. | 4.00 | 38.50 |
- *†§**Alatus compactus** (Dwarf Winged Euonymus or Burning Bush). 6 ft. A very choice, dwarf, compact variety which is unquestionably one of the best deciduous shrubs for growing in the shade. For a low, wide hedge, this variety has no equal. Brilliant red foliage in autumn. Bears red berries.
- | | | |
|----------------|------|-------|
| 18-24 in. | 2.50 | 24.00 |
| 2-2½ ft. | 3.00 | 29.00 |
- †§**Europaeus** (European Euonymus). 10-15 ft. A tall, slender variety with deep green foliage which colors to a bronze-red in autumn; pink berries in fall.
- | | | |
|--------------|------|--|
| 3-4 ft. | 1.75 | |
| 4-5 ft. | 2.25 | |

Five or more plants of the same variety and size at ten rate; 25 or more at 100 rate.



CORLISS BROS. INCORPORATED

FORSYTHIA, Golden Bell

Each Ten

****Intermedia spectabilis*** (Showy Border Forsythia). 8 ft. Rich yellow flowers in April and May before the leaves appear.

3-4 ft.	1.50	13.00
4-5 ft.	1.90	17.00

****Spring Glory***. The loveliest of the Golden Bells. Large, pale yellow flowers completely cover the branches in far great masses than the common forsythia.

3-4 ft.	1.90
4-5 ft.	2.50

****Suspensa fortunei*** (Fortune Golden Bell). 8 ft. More erect habit with arching branches covered with a profusion of rich yellow flowers in April followed by broad deep leaves which are often three-parted.

3-4 ft.	1.50
4-5 ft.	1.90
5-6 ft.	2.50

★ NEW DWARF FORSYTHIA

A new shrub that develops into a broad, low, compact shrub, maturing at about 6 ft. Excellent for low hedge.

2-2½ ft.	1.75
2½-3 ft.	2.25
3-3½ ft.	2.85
3½-4 ft.	3.50

HALESIA, Silverbell

Tetraptera (Great Silverbell) 20-25 ft. A shrub-like tree with myriads of lovely little drooping white bells in May; handsome large bright green leaves turning yellow in fall.

2-3 ft.	1.35	12.50
--------------	------	-------

HIBISCUS syriacus, Rose of Sharon — Shrub Althea. A summer flowering favorite, tall narrow shrub or small tree. Large showy flowers from July or Aug. to frost; gives color when most other shrubs have finished blooming.

Spring Planting Only.

Ardens. Double Bluish purple

Anemonaeiflorus — Double Pink

Lady Stanley — Double White

3-4 ft.	2.00
--------------	------

HIBISCUS moscheutos

NEW GIANT HYBRID ROSE MALLOWS



A beautiful new strain of hardy giant mallows. The heavy petaled flowers resembling giant hollyhocks measure 8-10 inches in diameter. A far cry from the old seedling types. July, Aug. 3-4 ft.

Poinsettia. A deep red self.

Pure White. Large pure white with crimson throat.

Radiation. Clear pink with darker center.

Strong 3 yr., container-grown	2.50	23.50
-------------------------------------	------	-------

Five or more plants of the same variety and size at ten rate; 25 or more at 100 rate.



CORLISS BROS.

INCORPORATED

HONEYSUCKLE. See *Lonicera*. Each Ten

HYDRANGEA, Hydrangea

***Paniculata grandiflora** (Pee Gee Hydrangea). 10 ft. Large conical heads of white flowers in July and August, becoming pink and red with age.

2-3 ft.	1.35	
3-4 ft.	1.75	

HYPERICUM, St. John's Wort

Hidcote. 1½-2 ft. A hardy, shapely, dwarf shrub that bears large golden flowers at the end of every new shoot. Dense foliage; flowers freely from early summer till frost.

Container-grown plants available mid-late June. 2.50 each.

ILEX

*†**Verticillata** (Common Winterberry). 6 ft. Ornamental shrub with decorative scarlet berries and attractive green foliage. One male shrub should be planted to two female plants for berry-bearing.

2-3 ft.	1.25	11.50
3-4 ft.	1.75	

Berry-bearing plants, 25c extra.
Larger specimens. Prices on application.

KOLKOWITZIA, Beauty Bush from Korea.

***Amabilis.** 8 ft. Sprays of graceful green foliage completely covered with delicate pink flowers in May, June.

2-3 ft.	1.65	14.50
3-4 ft.	2.25	
4-5 ft.	3.00	
5-6 ft.	4.50	

LIGUSTRUM, Privet

†**Ibolium** (Ibolium Privet). 8 ft. A new hardy variety. Foliage rich glossy green. Semi-evergreen.

	Each	10	100
2-3 ft.	\$.45	4.00	35.00
3-4 ft.55	4.90	40.00
4-5 ft.75	6.50	

LILAC. See *Syringa*.

LONICERA, Honeysuckle

Each Ten

†**Tatarica rosea** (Pink Honeysuckle). 10 ft. A graceful bush which bears a profusion of pink flowers in June, followed by red berries.

2-3 ft.	1.25	
3-4 ft.	1.60	

†**Tatarica Zabeli** (True Red Honeysuckle). 8-10 ft. Considered the best of the red-flowered bush honeysuckles. Vivid red flowers in May, followed by bright red berries in early fall.

3-4 ft.	1.85	17.50
4-5 ft.	2.25	

NATIVE SHRUBS AND PLANTS

We can furnish any of the native trees, shrubs, plants or ferns that grow in this vicinity. Large tracts of wood and pasture land are at our disposal, from which we can obtain any of these native plants.

Five or more plants of the same variety and size
at ten rate; 25 or more at 100 rate.



CORLISS BROS.

INCORPORATED

MOCK ORANGE. See Philadelphia.

MYRICA, Bayberry

- ***Caroliniensis** (Northern Bayberry) 5 ft. A low-spreading shrub with fragrant foliage and much admired white waxy berries.

15-18 in.	2.75	26.50
18-24 in.	3.25	31.50

PHILADELPHUS, Mock Orange

- ***Atlas.** This giant-flowered Mockorange is covered with pure white blooms as large as those of Dogwoods in May and June.

3-4 ft.	2.50	
--------------	------	--
- ***Coronarius** (Sweet Mock Orange). 10 ft. An upright shrub bearing a profusion of white flowers in May and June. Very popular. Fragrant.

3-4 ft.	1.50	13.50
4-5 ft.	1.95	17.50
5-6 ft.	2.85	
- ***Minnesota Snowflake** (Plant Pat. No. 538) 8 ft. The large, very double, pure white flowers in June and July are more fragrant than coronarius. A symmetrical bush with graceful branches of neat, beautiful foliage.

3-4 ft.	2.00	
--------------	------	--
- ***Virginalis** (Hybrid). 8 ft. A handsome new shrub which covers itself with large, creamy white, semi-double flowers in June.

3-4 ft.	2.00	19.00
4-5 ft.	2.50	

PRIVET. See Ligustrum.

QUINCE. See Cydonia.

RHAMNUS, Buckthorn

- †**Carthartica** (Common Buckthorn). 12 ft. Heavy shrub with spiny branches, lustrous green leaves, and small black fruit.

3-4 ft.	1.45	13.50
4-5 ft.	1.85	17.50

ROSE. See pages 37-42.

ROSA

- ***Hugonis** (Golden Rose of China). 6 ft. Delicate, single yellow flowers in long, arching sprays in May. The best single yellow rose for shrub use. The plant is perfectly hardy.

18-24 in., container-grown	1.75	16.50
2-3 ft., container-grown	2.25	21.00
3-4 ft., container-grown	2.75	26.00
- ***Rugosa** (common pink). 6 ft. Large single flowers of pink or rose. Blooms early. Excellent seashore variety. Beautiful red berries in the fall.

18-24 in.	1.35	12.50
2-3 ft.	1.65	15.50
- ***Rugosa alba** (common white). 6 ft. Large, single, white flowers, early blooming. Fine for seashore planting. Red berries in the fall.

18-24 in.	1.50	
2-3 ft.	1.75	

SILVERBELL. See Halesia

SNOWBALL. See Viburnum.

Five or more plants of the same variety and size
at ten rate; 25 or more at 100 rate.



CORLISS BROS.

INCORPORATED

SORBUS, Mountain Ash

Each Ten

***Tianshanica** (Turkestan Mt. Ash). 12-15 ft. A very rare, small shrubby tree with handsome dark green lustrous leaves and brilliant red fruit in large clusters from mid-summer to fall.

3-4 ft.	6.00
4-5 ft.	7.50
5-6 ft.	9.50

SPIRAEA, Spirea

***Bumalda (Anthony Waterer)**. 3 ft. Semi-dwarf type, free blooming, compact shrub, flowers bright crimson in June and July.

18-24 in.	1.40	13.00
----------------	------	-------

***Japonica callosa alba** (White Japanese Spirea). 3 ft. Similar to Anthony Waterer, except flowers are white.

18-24 in.	1.35
----------------	------

***Van Houttei** (Van Houtte Spirea). 8 ft. The finest of all the Spiraea. Bunches of white flowers in May and June.

2-3 ft.	1.25	11.50
3-4 ft.	1.65	15.50

SYRINGA, Lilac

***Vulgaris** (Common Purple Lilac). 15 ft. The best known and most extensively used Lilac. Fragrant flowers in May and June.

2-3 ft.	1.65	14.50
3-4 ft.	2.15	20.00
4-5 ft.	3.00	

Larger specimens. Prices on request.

***Vulgaris alba** (Common White Lilac). 15 ft.

Same as above with white flowers.

2-3 ft.	1.75	16.50
3-4 ft.	2.35	
4-5 ft.	3.25	

Larger specimens. Prices on request.

Syringa - Lilacs

The CHOICEST of the new FRENCH HYBRIDS

They are very much superior to the common Lilacs because of their fragrance, large flowers, and range of color, from white to richest purple in single and double forms. We have made a careful selection of those considered the finest of the best older varieties and the newest introductions to date. May and June. 12-15 ft.

Each Ten

Belle de Nancy. Double, satiny, lilac-pink.

3-4 ft. B&B	4.50	43.00
4-5 ft. B&B	6.00	

Charles Joly. Double, dark purple-red.

3-4 ft. B&B	4.50
4-5 ft. B&B	6.00

Ellen Willmott. Double, snow-white

3-4 ft., B&B	4.50
--------------------	------

Ludwig Spaeth. Single, dark reddish-purple.

3-4 ft., B&B	4.50	43.00
4-5 ft. B&B	6.00	

Michel Buckner. Double, pale lilac.

3-4 ft., B&B	4.50	43.00
4-5 ft. B&B	6.00	
5-6 ft. B&B	7.50	

Five or more plants of the same variety and size at ten rate; 25 or more at 100 rate.



The **SIMPLICITY** and **COLOR** of a **BEAUTIFUL PLANTING** enhances the charm of this ranch-type home.

SYRINGA-LILACS—Continued		Each	Ten
Mme. Antoine Buckner. Double, mauve-pink.			
3-4 ft., B&B		4.50	43.00
4-5 ft., B&B		6.00	57.50
Mme. F. Morel. New, large, single deep purple flushed mauve-pink.			
3-4 ft. B&B		4.50	
4-5 ft. B&B		6.00	
Paul Hariot. Double, deep purple			
3-4 ft., B&B		4.50	
Pres. Fallieres. Double, lilac			
3-4 ft., B&B		4.50	
Pres. Grevy. Double, light lavender-blue.			
3-4 ft. B&B		4.50	
4-5 ft. B&B		6.00	
6-8 ft. B&B		10.00	
Pres. Lincoln. Single, deep Wedgewood-blue.			
3-4 ft., B&B		4.50	43.00
4-5 ft., B&B		6.00	57.50
5-6 ft., B&B		7.50	72.50
6-8 ft. B&B		10.00	

We have many large sizes and specimen plants of the various Hybrid Lilacs. We will gladly quote on request.

VACCINIUM, Blueberry

- ✓ †§**Corymbosum** (Highbush Blueberry). 15 ft. A handsome shrub bearing pinkish white flowers in May followed by blue-black berries of excellent flavor. Brilliant colored foliage in fall.
 - 3-4 ft. 3.50
 - 4-5 ft. 4.50
 - 5-6 ft. 5.50
- Larger sizes. Prices on request.

VACCINIUM HYBRIDS. See Blueberries, page 36.

VIBURNUM.

- ✓ *†§**Americanum** (American Cranberry). 10 ft. A handsome decorative and ornamental red-berried shrub of open growth. White flowers in May and June. Red and yellow fall foliage.
- 3-4 ft. 1.75 16.50
- 4-5 ft. 2.10
- ***Carlesi** (Fragrant Viburnum). 5 ft. Compact shrub of medium height, with pretty pink and white flowers in May, resembling the arbutus in form and fragrance.
- 18-24 in., B&B Own roots 4.50 43.50
- 2-2½ ft., B&B Own roots 5.50

Five or more plants of the same variety and size at ten rate; 25 or more at 100 rate.



CORLISS BROS.

INCORPORATED

VIBURNUM

Each Ten

- ***\$Dentatum** (Arrow-wood). 10 ft. Native shrub with glossy green foliage. White flowers in May and June. Berries crimson turning to blue.
- | | | |
|--------------|------|-------|
| 2-3 ft. | 1.25 | 11.50 |
| 3-4 ft. | 1.50 | |
| 5-6 ft. | 2.50 | |
- ***JUDDI**. 9 ft. This hybrid of Carlesi is a stronger grower with more prolific, very fragrant flowers that show more pink than Carlesi. This variety should not be overlooked.
- | | | |
|----------------------|------|--|
| 18-24 in., B&B | 4.50 | |
|----------------------|------|--|
- ***Opulus sterile** (Common Snowball). 10 ft. Well-known shrub, producing large snow-ball-like flowers in May. Reddish autumn foliage.
- | | | |
|--------------|------|--|
| 2-3 ft. | 1.50 | |
| 3-4 ft. | 2.00 | |
- Larger sizes. Prices on request.

WEIGELA

- ***Rosea** (Pink Weigela). 8 ft. A symmetrical bush of medium size. Rose flowers in June.
- | | | |
|--------------|------|--|
| 2-3 ft. | 1.35 | |
| 3-4 ft. | 1.75 | |

THAT GREAT NEW EVERBLOOMING RED WEIGELA

Vaniceki (Improved Eva Rathke) 6 ft. Hardy and vigorous with a profusion of garnet-crimson flowers in June, and then sparingly throughout the summer. Reddish yellow autumn foliage.

2-3 ft.	1.50	13.50
3-4 ft.	2.00	18.50
4-5 ft.	2.75	

WINTERBERRY. See Ilex.

Hedge Plants

A living fence, made from growing plants, attractive with their green leaves and formally trained or arched branches, is a part of the grounds and garden, and is surely more ornamental than an artificial fence. A hedge is permanent. Once planted, only occasional trimming or shearing is required.

- Acanthopanax** (Aralia). See page 21.
Berberis (Japanese). See page 22.
Buxus (Boxwood). See page 11.
Clethra (Sweet Pepper). See page 23.
EUONYMUS No. 706 — See page 12.
Euonymus alatus Compactus (Dwarf Winged Euonymus). See page 24.
Forsythia. See page 25.
Ilex (Holly). See pages 13 and 26.
Ligustrum ibolium (Hardy Privet). See page 26
Rosa rugosa (common). See page 27.
Spiraea Van Houttei — See page 28.
Syringa (white and purple lilacs). See page 28.
Taxus Hicksi, Hatfield and capitata. See pages 9 and 10.
Thuja occidentalis nigra (American Arbor-Vitae). See page 10.
Tsuga canadensis (Canadian Hemlock). See page 10.

Vines

FOR COMFORTING SHADE and GORGEOUS BEAUTY

†Adapted to partial shade.

§Berried vines.

NOTE.—Figures after the names give approximate heights reached under favorable conditions.

AMPELOPSIS

Each Ten

†§**Heterophylla** (Porcelain Ampelopsis). 30 ft. A vigorous vine with deeply lobed green leaves striped with white. Clusters of very attractive blue, lilac, and white berries in late summer and fall.

3 yr. container-grown 2.50 24.00

§**Quinquefolia** (Virginia Creeper). 35 ft. High-climbing vine of rapid growth. Foliage rich crimson in autumn. Blue berries.

2 yr. No. 1 dormant 1.00 9.00

2 yr. No. 1 container-grown 1.40 13.00

†§**Tricuspidata Veitchi** (Boston Ivy). 40 ft. A clinging vine densely covered with glossy green foliage. Blue berries in the fall.

2 yr. container-grown 1.50 14.50

CLEMATIS

Paniculata (Sweet Autumn Clematis). 25 ft. Very fragrant pure white flowers in profusion in August and September. Yellow foliage in autumn.

2 yr. container-grown 1.50 14.50

EUONYMUS. See pages 11 and 12.

HYDRANGEA

†**Petiolaris** (Climbing Hydrangea) 50 ft. The large, fragrant, white flowers in July are showy from a distance. Broad, handsome, dark green foliage. Excellent for stone walls and masonry.

2 yr. container-grown 2.50 24.00

IVY. See Ampelopsis and *Hedera helix baltica*, page 11.

LONICERA, Honeysuckle

†§**Halliana** (Hall's Honeysuckle). 20 ft. Semi-evergreen vine. Fragrant pure white changing to yellow flowers from June to August.

	Each	Ten	Hundred
2 yr. No. 1	\$.70	6.00	50.00
2 yr. No. 1 container-grown	1.25	11.50	

Heckrotti (Goldflame). 15-20 ft. A marvelous new Honeysuckle. Fragrant and lovely two-toned flowers, bright flame-pink outside and creamy gold within, are produced in abundance from June until freezing weather. Glossy dark foliage adds to its charm. May be trimmed to make an excellent shrub.

	Each	Ten
2 yr. No. 1 container-grown	1.75	16.50
4 yr. No. 1 container-grown	2.50	23.50

POLYGONUM

†**Auberti** (Silver Lace Vine). 25-30 ft. Very rapid grower with small light green leaves and large feathery sprays of fragrant white flowers. August to October.

2 yr. container-grown 1.50 14.00

WISTERIA

Sinensis (Chinese Wisteria). 40 ft. Hardy, fast-growing climber. Long racemes of pea-shaped lavender flowers in May and June.

2 yr. container-grown 2.25 21.50

It is **ESSENTIAL** to use **PEAT** and **HUMUS**, as well as **FERTILIZER**, when planting; see pages 62, 63, 64.

Standard Fruit Trees

OUR FRUIT TREES AND VINES ARE CAREFULLY PRUNED, SHAPED, AND SPRAYED IN OUR NURSERIES.

Catalog space does not allow us to list the sizes and prices of each of these trees, but we'd be very glad to quote on size and variety you desire on standard fruit trees.

APPLES

5-6 ft. — \$4.50; 6-8 ft. — \$8.00 each
BALDWIN — CORTLAND — McINTOSH — RED DELICIOUS

We can supply various size trees from 8 ft. to 20 ft. trees with large calipers, prices on request.

↓ Anoka — ↓ Baldwin — ↓ Gravenstein — ↓ Kendall
↓ McIntosh — ↓ Red Delicious
↓ Yellow Delicious — ↓ Yellow Transparent

PEACHES

4-5 ft., \$1.50 each

- ↓ **Champion.** Handsome, creamy white Peach with red cheeks. Superior flavor. Mid-August.
- ↓ **Early Elberta.** Very large, juicy, yellow fruit.
- ↓ **Golden Jubilee.** Best early free stone Peach. Sweet; golden yellow skin; early August.

We have a few oversized Champion and Golden Jubilee Peach Trees — Ask us for sizes and prices.

PEARS

4-5 ft. \$3.50

5-6 ft., \$4.50

6-8 ft., \$6.50

Larger Sizes. Prices on request.

- ↓ **Bartlett.** An old favorite, noted for its large juicy fruit. Mid-season.
- ↓ **Clapp's Favorite.** One of the very best of the early Pears. Very good eating. Early.

Suggested Planting Distances of Fruits:

	Feet Apart
Apple Trees	30
Dwarf Apple and Pear Trees	12
Peach Trees	15
Pear Trees	15
Grape Vines	8
Hybrid Blueberry Bushes	5
Bush Cherries	6

QUALITY as well as PRICE should be considered when buying Nursery Stock. Our stock is acclimated and freshly dug.

New

DWARF FRUIT TREES

THAT BEAR FULL SIZE FRUIT

Dwarf Fruit Trees are the Delight of the Small Home Owner because:

1. Delicious for eating, canning and freezing.
2. Start producing fruit within a couple years.
3. Fruit as large as standard.
4. Small investment that increases each year.
5. Easy to pick on the trees.
6. Easy to prune and spray.
7. Extremely attractive during early spring with gorgeous flowers.
8. Matured height about 8 ft.
9. Can be planted 10-15 ft. apart.
10. Ideal for planting in limited space.

For best results, plant 2 or more varieties for pollination.

REMEMBER — foliage and flowers are attractive for landscape plantings and fruit is top quality for eating.

NEW DWARF APPLES

Our trees are grown on Malling No. 9 root stock which assures you the most dwarf and the hardiest plants.

	Each
3-4 ft. $\frac{9}{16}$ - $1\frac{1}{8}$ in. caliper	\$3.50
4-5 ft. $1\frac{1}{8}$ -1 in. caliper	6.00

Larger trees, prices on request.

Varieties: Baldwin, Cortland, Double Red Delicious, Early McIntosh, Gravenstein.

NEW DWARF PEARS

	Each
3-4 ft.	3.50

Varieties: Dwarf Bartlett, Clapps Favorite, Seckel, — see description of standard varieties.

HARDY NUT TREES

NEW HYBRID SWEET CHINESE CHESTNUT

HARDY, BLIGHT RESISTANT — EARLY BEARER. The fruit is fully as delicious as the native Chestnut and slightly larger. Have the thrill of roasting Chestnuts from your own trees over an open fire! Not only do these trees produce large, delicious full-flavored Chestnuts at an early age, but their beautiful rounded, spreading branches rapidly develop into a lovely tree to grace any home lawn.

The trees we offer are just ready to come into bearing. Plant 2 for best results. The QUANTITY IS LIMITED, SO BETTER ORDER YOURS EARLY.


4-5 ft.	7.50
--------------	------

CORLISS GIFT CERTIFICATES

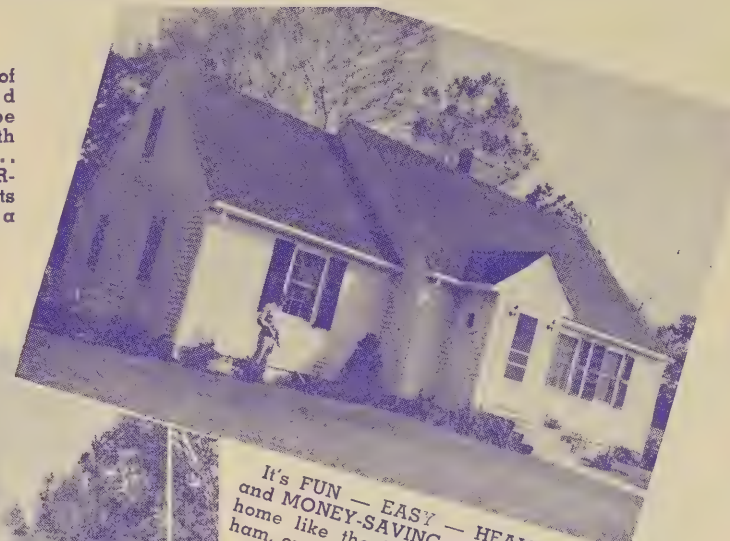
We are prepared to issue Gift Certificates, redeemable by us. This certificate will bear the recipient's name and yours as donor. A "living" gift makes a very acceptable Christmas, Anniversary, Birthday, or Mother's Day gift.

You, too, can "Plant It Yourself"

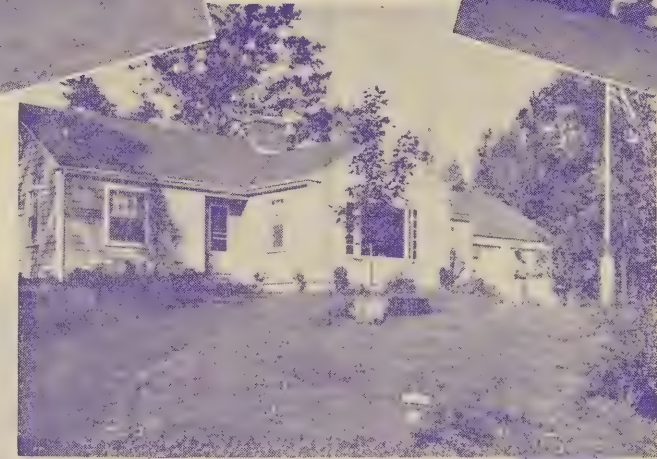
Planting Your Own Home need not be hard to do or expensive. HOME-OWNERS EVERYWHERE are finding PLANTING IT YOURSELF easy — fun — healthful — and money saving with the value and beauty of their property increased.



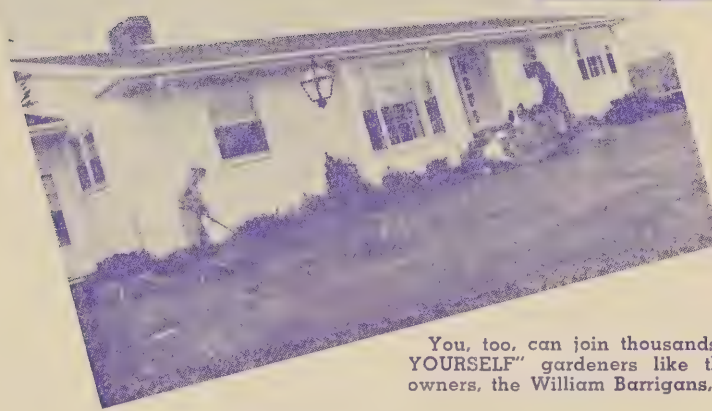
Take advantage of Corliss's experienced personnel who will be glad to assist you with any planting problem... and don't forget CORLISS'S have the plants to make your "house a home".




Like Many Home-Owners Everywhere, the Bruce Andersons of Wenham are PLANTING THEIR OWN HOME on a "DO IT YOURSELF" Program.



It's FUN — EASY — HEALTHFUL — and MONEY-SAVING to plant your own home like the Robert Axtells of Wenham, on a "DO IT YOURSELF" program.



The Donald Keyzers of Hamilton are ardent garden enthusiasts. They, too, get a lot of fun and enjoyment out of doing their own landscaping.



You, too, can join thousands of "DO IT YOURSELF" gardeners like these home-owners, the William Barrigans, Gloucester.

The Roy Wolfskills of Hamilton PLANTED THEIR OWN HOME GROUNDS on the "DO IT YOURSELF" plan.

PLANTING DESIGN and MATERIALS WERE SUPPLIED BY CORLISS BROS. INC.

HAVE FUN! SAVE MONEY! "Plant It Yourself"

Giant Hybrid BLUEBERRIES THAT ANYONE CAN GROW!

- ★ DELICIOUS BERRIES!
- ★ BEAUTIFUL SHRUBS IN BLOOM!
- ★ RICH GREEN FOLIAGE IN SUMMER!
- ★ BRILLIANT RED LEAVES IN AUTUMN!



NEWEST VARIETIES

- ✓ DIXIE, 7 ft. Largest berries. Mid-July.
- ✓ JERSEY, 7 ft. Superb quality. Late July.
- ✓ JUNE, 5-6 ft. Bears after Weymouth. July.
- ✓ PEMBERTON, 7 ft. Large dark blue. Late July.
- ✓ STANLEY, 7 ft. Delicious, light blue. Mid-July.
- ✓ WEYMOUTH, 7 ft. Earliest bearer — July.

15-18 in. B&B	1.65
18-24 in. B&B	1.90
2-2½ ft. B&B	2.40
2½-3 ft. B&B	3.00
3-3½ ft. B&B	3.75

Every one of our bushes offered for sale, bore heavily last year.

Between June 1st and Sept. 1st, while the bushes are fruiting, they require extra care in handling. Therefore, a charge of 50¢ extra per bush is necessary.

All our plants are freshly dug with a ball of earth (B&B) which insures safe transplanting.

Balled and Burlapped plants, such as we offer, give you TWICE the VALUE of bare root plants.

Cultural Directions for Blueberries *Easy to Plant*

Plant 3 or more varieties for perfect pollinization. Set 5x5 ft. apart. Mix in liberal quantities of Corliss #2 mixture especially prepared for Blueberries (2 lbs. per 1 ft. of height) when planting.

Keep well watered at all times unless you have them planted in a spot where natural moisture abounds.

Small Fruits

ASPARAGUS

Mary Washington. The best popular variety; heavy yielding; rust-resistant; hardy; rich flavored and tender.
\$6.00 per 100; \$3.55 per 50; \$1.90 per 25

BLUEBERRY HYBRIDS

See page 32

GRAPE VINES

- ↘ **Caco.** Large, sweet wine-red fruit in compact bunches. **Strong, 2 yr., No. 1 dormant, 75¢ each; container-grown \$1.35.**
- ↘ **Concord.** Most widely known. Large clusters of glossy black fruit. **Strong, 2 yr., No. 1 dormant, 75¢ each; container-grown \$1.35.**
- ↘ **Seneca.** New and outstanding. large white berries, sweet and juicy, in abundance. **Strong, 2 yr., No. 1 dormant 90¢ each; container-grown \$1.50.**
- ↘ **Steuben.** A very hardy, new variety. Huge, long, slender clusters of blue-black fruit with delicious, sweet flavor. Ripens a few days before Concord, but keeps well until Christmas. **Strong, 2 yr., No. 1 dormant \$1.00 each; container-grown \$1.60 each.**

RASPBERRIES

- ↘ **Latham.** Most popular, all-purpose Raspberry with large, juicy rich red fruit that clings to stem several days after fully ripe in early July. **Strong transplants — \$20 per 100; \$11 per 50; \$6.00 per 25; \$2.45 per 10.**

STRAWBERRIES

- ↘ **Catskill (Midseason).** Yields very heavy crops of large, firm, glossy dark red fruit. **Field grown plants, \$5.50 per 100; \$3.25 per 50; \$1.75 per 25**
- ↘ **Pemier (Howard 17) (Early).** Bears, over long season, a tremendous crop of bright scarlet-red berries of excellent flavor. **Field grown plants, \$5.50 per 100; \$3.25 per 50; \$1.75 per 25.**
- ↘ **Streamliner — Everbearing.** "Sweet as honey" jumbo sized berries borne in profusion from July until Nov. **Field grown plants, \$6.50 per 100; \$3.65 per 50; \$2.00 per 25.**
- ↘ **Red Rich (Plant Pat. No. 993) Everbearing.** So Big. So Rich. So Red. So Vigorous. So Sweet. Bears from summer to fall. **Field grown plants, \$15 per 100; \$8.50 per 50; \$5 per 25.**

BEST FERTILIZERS for Plant Nourishment

Let us provide you with the proper planting materials. See pages 60, 61, 62, 63.

Selected Roses

Suited to this Climate

WE RECOMMEND POTTED ROSES

Already Planted and in Good Growing Condition
Ready for Transplanting from June 1st on

As our Potted Roses are not ready to be set into your garden until June 1st, we advise that you **place your order early** so we may reserve for you the varieties you wish.

\$1.75 each; \$19.80 per doz. unless otherwise noted.

This modern way of selling roses eliminates all danger of their not starting or dying after being planted in your garden, due to improper handling and planting. When you purchase **POTTED ROSES**, they are already planted properly in specially prepared, fertilized soil to insure rapid, permanent growth and bloom.

Our **POTTED ROSES** may be transplanted successfully in your garden any time during the growing season by simply setting the plant, **pot and all**, into a properly fertilized bed or location without disturbing the soil or root system.



Everblooming Hybrid Teas

Charlotte Armstrong. (Pat. No. 455) One of the top 10 varieties. Magnificent open blooms of vivid cerise on long stems, semi-glossy deep green leaves, slightly fragrant. **\$2.75 each; \$31.20 per dozen.**

Christopher Stone. 2½ ft. This rose of dazzling scarlet-crimson is noted for its alluring Damask fragrance and almost continuous bloom.

Countess Vandal 2 ft. Extra long, pointed buds open to reveal lovely coppery-pink and gold flowers of artistic beauty. Rich fragrance.

Crimson Glory. 2 ft. A tremendous, fascinating rose. Vigorous, free-flowering, compact bushes, well-formed, deep velvety crimson flowers. Rich fragrance.

OUR ROSES ARE SELECTED

varieties, **SAFEST** and **BEST** for **NORTH SHORE GARDENS!** When you order from a glorified color catalog, do you know whether those roses are suited to our climatic conditions?

\$1.75 each; \$19.80 per doz., unless otherwise noted.
Any six Roses at dozen rate.



CORLISS BROS.
INCORPORATED

THEY'RE WORTH IT

Systematic spraying of roses every two weeks after they come into full leaf, will prevent disease, black-spot, mildew and plant lice. Your reward is in clean foliage and beautiful blooms. We recommend TRIOGEN, see page 59.

ROSES—Continued

- Eclipse.** 2½ ft. The "streamlined" buds are ornamented with narrow branching sepals which contrast harmoniously with the golden yellow of the petals. Spicy fragrance.
- Golden Dawn.** 2 ft. A splendid, large, double lemon-yellow rose, splashed with crimson. The well-formed blooms are sweetly scented. Vigorous and free flowering.
- Helen Traubel.** Pat. No. 1028. 3-5 ft. This All-America Rose Selection displays superior qualities with pleasing fragrance. Color varies with the weather — sometimes a light, sparkling pink, more often a luminous apricot. Very vigorous grower; **\$3.00 each; \$34.20 per doz.**
- McGredy's Ivory.** Lovely large flowers of soft, delicate, creamy white merging into yellow at the base. Moderately fragrant, and disease resistant.
- McGredy's Sunset** (Pat. No. 317). A world favorite. Medium sized flowers with outside petals of buttercup-yellow, tipped orange; inside chrome-yellow flushed with scarlet as they expand; freely borne on strong stems, fragrant. **\$2.25 each; \$25.20 per doz.**
- Mme. Joseph Perraud.** 2½ ft. A Gold Medal Winner and popular all over the country. Long-pointed, sunset yellow buds opening to pastel buff flowers; very fragrant.
- Mrs. E. P. Thom.** 2 ft. An outstanding favorite. The good-sized buds are long and develop into full, double, very shapely flowers of a rich deep lemon yellow. Fragrant.
- Mrs. Pierre S. duPont.** An outstanding yellow rose. Long-pointed buds of reddish gold opening to a semi-double, fragrant flower of deep golden yellow.
- Mrs. Sam McGredy.** 2½ ft. One of the most beautiful roses. Long-pointed buds and large attractive blooms of copper orange-scarlet, with deep red shadings on outside of petals. Moderately fragrant.
- New Yorker** (Pat. No. 823) 3-4 ft. A tremendous, delightfully fragrant, clear red Rose, unfading while in full bloom. Very vigorous and upright growing. **\$2.50 each; \$28.20 per doz.**

THE ALL-AMERICAN WINNER

PEACE (Pat. No. 591). A Peace Rose in your garden will be the center of interest all summer. Enormous open flowers of softest yellow edged and suffused with pink are freshly sweet. Stems and foliage are unusually good. **\$3.00 each; \$34.20 per doz.**

Picture. Heavily petaled, long lasting, mildly fragrant flowers of lovely pink with rich salmon undertones on strong vigorous plants that produce continuously.

\$1.75 each; \$19.80 per doz., unless otherwise noted.
Any six Roses at dozen rate.



CORLISS BROS. INCORPORATED

ROSES, Everblooming Hybrid Teas—Continued

Pink Dawn. 3 ft. Entrancing deep pink buds opening to fully double, lovely clear pink blooms tinted with orange at the base of the petals. Sweetly fragrant.

Poinsettia. 3 ft. The name is descriptive of the rose. Brilliant scarlet blooms closely resemble the color and form of a Poinsettia flower. Rich fragrance.

President Herbert Hoover. 3 ft. A rose of world prominence. Flaming scarlet and yellow buds opening to large, soft, creamy yellow flowers with scarlet markings; rich fragrance. One of the most satisfactory garden roses.

Snowbird. Large, fragrant flowers of pure white produced freely on a vigorous bushy plant.

Sutter's Gold. (Pat. No. 885) Quantities of fragrant flowers of beautiful yellow, richly shaded with orange and red on free branching, strong vigorous plant. One of the top 10 AARS. **\$2.75** each; **\$31.20** per doz.

SUZON LOTTHE, Pat. No. 934

This rose certainly has appeal. Peach colored buds open to pearly pink-and-white blooms of camellia-like form, richly, gloriously fragrant. **\$2.50** each; **\$28.20** per doz.

Talisman. 2 ft. The universal favorite. Variable flowers ranging from rich scarlet and gold to deep rose and pale yellow; very fragrant. Excellent flowers for cutting.

The Doctor. This magnificent Rose will be greatly sought after when better known. Large, exquisite, silver-pink flowers with a fragrance so intense that it can be detected many yards away.

Floribunda Roses

Unlike all other roses, Floribundas are vigorous, growing 2 to 3 ft. high with masses of attractive flowers throughout the season. They bear perfect blossoms of Hybrid Tea size, carried in thick clusters reminiscent of the old-time Polyanthas. Being perfectly hardy, they need not be replaced each season.

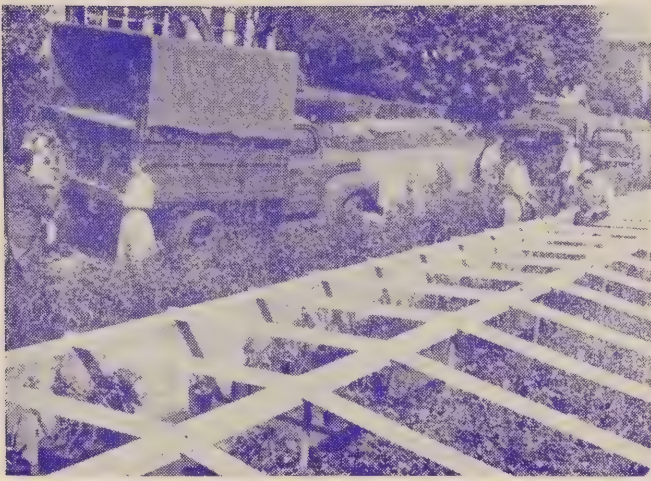
Betty Prior (Plant Patent No. 340). A rose that "steals the show." Blooms of lively red, turning delicate shell-pink, resembling the delicate red dogwood blossoms in shape and size. Spicy fragrance. **\$2.00** each; **\$22.20** per doz.

CARROUSEL, Pat. No. 1066

New, unfading garnet, red buds and blooms of Hybrid Tea form, frequently singly on long stems, on a vigorous, upright plant. Fragrant. **\$2.50** each; **\$28.20** per doz.

Donald Prior (Plant Patent No. 377). One of the brightest Floribundas. Clusters of bright, deep scarlet-red flowers with damask fragrance are borne continually from spring until frost. **\$2.00** each; **\$22.20** per doz.

\$1.75 each; **\$19.80** per doz., unless otherwise noted.
Any six Roses at dozen rate.



Potted roses, in Full Leaf and Ready To Bloom, Being Carefully Selected for Delivery.

ROSES, Floribunda—Continued

Dagmar Spaeth. Considered one of the best white floribundas and a good bedding rose. Large trusses of pure white flowers produced freely all summer.

Fashion, (Pat. No. 789). All America winner with lovely bright coral-pink flowers suffused with gold and delightful fragrance. **\$2.50 each; \$28.20 per doz.**

Goldilocks (Plant Pat. No. 672). 2½ ft. Best yellow Floribunda; abundant bloomer. Buds shaped like Hybrid Teas open to very double rich golden yellow blooms with wild rose fragrance. **\$2.00 each; \$22.20 per doz.**

Irene of Denmark, (Pat. No. 889). New. The best white floribunda. 2-2½ ft. Buds and opening blooms have exquisite, true "sweetheart" form. The large, full blooms of clean frosty-white are produced early in the season on vigorous bushy plants with an abundance of small, neat foliage. **\$2.25 each; \$25.20 per doz.**

JIMINY CRICKET

1955 All-America Award Winner (Pat. Applied For)
The masses of tangerine-red buds that open to clear coral-pink blooms and shiny green foliage on upright, 4 ft. bushes, make it ideal for hedges. **\$3.00 each; \$34.20 per doz.**

Ma Perkins, (Pat. No. 1143). New All American Rose Winner. 2 ft. Buds of bright coral slowly open to glowing coral-shell-pink lighted with gold at the base of each bloom. MA PERKINS is one of the most fragrant Floribundas created and will be a joy from late spring to freezing weather in fall. **\$2.50 each; \$28.20 per doz.**

Marionette, (Pat. No. 569) Dainty creamy yellow fragrant "sweetheart" buds change gracefully to white beautifully formed blooms. **\$2.00 each; \$22.20 per doz.**

Orange Triumph. Enormous clusters of lovely double salmon-red flowers, combined with rich glossy foliage make this one of the most outstanding roses in our Ipswich Rose Garden.

Pinocchio (Pat. No. 484). 20-24 in. Exquisite pointed buds develop into long lasting 2-inch flowers of salmon flushed gold at the base; exotic fragrance. Disease-resistant and extremely hardy. **\$2.00 each; \$22.20 per doz.**

Red Pinocchio. (Plant Pat. 812). Full clusters of rich fragrant velvety scarlet unfading fragrant blooms. **\$2.00 each; \$22.20 per doz.**

Vogue, (Pat. No. 926). All-America Rose Selection. 2½-3 ft. Delightfully fragrant, brilliant, cherry-coral blooms in immense clusters produced all summer. **\$2.50 each; \$28.20 per doz.**

World's Fair (Plant Patent No. 362). An All America Rose Selection. Prolific bloomer. Large clusters of perfumed velvety blackish scarlet flowers. **\$2.00 each; \$22.20 per doz.**



CORLISS BROS.
INCORPORATED

Hardy Climbing Roses

Perhaps there is no one group of plants that is so useful and beautiful in so many different ways as the Climbing Roses.

ALOHA. Pat. No. 948

An Everblooming climber with very large fragrant flowers of strong, rich rose-pink with soft silvery pink inside of petals in long stemmed clusters. After first peak of June glory, Aloha continues to bloom frequently during entire season. **\$3.00 each; \$34.20 per doz.**

American Pillar. A rampant grower with glossy foliage. Bears huge trusses of 2-inch, single, dazzling scarlet rose flowers with large white centers and golden yellow stamens, sweetly fragrant. Blooms in mid-June.

Blaze Improved. An entirely new strain of Blaze. Clusters of vivid scarlet flowers are very generous in June and as the plants become established, it produces more and more through to Sept.

Chevy Chase (Pat. No. 443). The finest of Rambler Roses. Clusters of mildly fragrant, rich crimson blooms and beautiful mildew-resistant foliage. The numerous canes will cover a large area. **\$2.25 each; \$25.20 per doz.**

Climbing Crimson Glory. The magnificent Crimson Glory in the form of a Climber. The same rich crimson, huge perfectly formed blooms of fascinating fragrance and vigorous producer. **Winter protection must be given these plants. \$3.00 each; \$34.20 per doz.**

Climbing Goldilocks (Pat. No. 1090). This glorious ever-blooming Climbing Rose is loaded with big clusters of golden blooms almost continuously all summer. It will grow 8 to 10 feet in one year, and will bloom the first year it is planted. **\$3.00 each; \$34.20 per doz.**

Climbing Peace. Pat. No. 932. A glorious climber bearing the same lovely blooms as the Hybrid Tea "Peace." Because of its "Hybrid Tea" parentage, it **requires Winter protection**, but will generously repay for the extra care. **\$2.50 each; \$28.20 per doz.**

Elegance. A magnificent display of fragrant yellow flowers which are large and perfect form. The inner petals are spectrum-yellow and the outer ones shade to creamy white. Disease-resistant, lustrous dark green foliage. **\$2.25 each; \$25.20 per doz.**

Mary Wallace. A Pillar Rose with large, glossy foliage, blooming with great freedom about the middle of June. Flowers very large, semi-double, of bright, clear rose-pink with salmon base.

New Dawn (Everblooming Dr. W. Van Fleet) The first everblooming hardy Climber. Light pink flowers continually from early summer until frost. Shiny foliage.

Paul's Scarlet Climber. A popular Climbing Rose of moderate vigor, highly prized for its clusters of medium-sized, vivid scarlet flowers in June and early July, remaining in good condition for a long period.

White Dawn. This new, hardy, everblooming climbing Rose produces hundreds of pure white, double blooms resembling gardenias. **\$2.00 each; \$22.20 per doz.**

\$1.75 each; \$19.80 per doz., unless otherwise noted.
Any six Roses at dozen rate.

Hardy Perennials

We offer here a selection of leading new and outstanding perennial novelties, grown and propagated at our own nurseries, where the climate is humid in the summer, cold, with bitter winds, in the winter.

The material we offer is strong, field-grown stock with the exception of some varieties which transplant better from pots.

Note.—Figures after the description and blooming dates represent the approximate height reached by the perennials under favorable conditions.

***SUITABLE AS ROCK GARDEN PLANTS, ALSO**

PRICES OF PERENNIALS

Unless otherwise noted, the price of Perennials is 50¢ each; \$1.40 per 3 of one variety; \$5.00 per dozen.

Six or more plants of one variety will be sold at the dozen rate. Twelve plants of different kinds, such as twelve different varieties of Phlox, will not be sold at the dozen rate, but at the each rate. The dozen rate applies only when six or more plants of ONE VARIETY or COLOR are ordered.

ASTILBE, Garden Spirea

Fanal. Exquisite, feathery sprays of lively red plumes in May and June. Likes plenty of moisture, good rich soil, semi-shade or sun, but prefers shady, damp position. 2 ft. Pot plants, 60c each; \$1.60 per 3; \$6.00 per doz.

Sensational --- New

SUMMER FLOWERING CHRYSANTHEMUMS

No other Chrysanthemums compare with these new ones, offered here, for earliness of bloom, starting in early August, continuing until the very heavy frost in late fall takes their blooms! They are abundant producers and perfectly hardy as far north as Maine.

THE ORIGINAL SUMMER FLOWERING MUMS:

Dean Kay Improved. Large double rose-pink blooms, also good for cutting. 2-2½ ft. Pot plants.

Dean Ladd. Large double reddish bronze flowers which might be called a "bronze." 2-2½ ft. Pot plants.

My Lady. Wonderful delicate orange-yellow flowers, large and fully double, fine for cutting. 2-2½ ft. Pot plants.

Now!

Successful Summer Planting

Of EVERGREENS, TREES and SHRUBS with the New plastic spray, WILT-PRUF

By digging the plants with a ball of earth and plastic-coating, it is possible to safely transplant trees and shrubs in full leaf, with complete success, thus extending the planting season into June, July and August.

See Pages 4 and 6

OUR NEW "MILITARY"

Legionnaire and Amvet

Honoring Our Veteran Men and Women



- ★ FLOWERS from August to Heavy Freezes
- ★ EXCELLENT FOR CUTTING
- ★ LARGE DOUBLE BLOOMS

- ★ NICE LONG STEMS
- ★ HEIGHT 2½-3 FT.
- ★ FROST RESISTANT

These mums withstood very droughty summers, torrential rain

You'll love **LEGIONNAIRE** (top) for its generous display of gay, sparkling yellow flowers with a golden heart, and beautiful dark green foliage, borne on vigorous plants.

AMVET (bottom) will enchant everyone for its superb pure white double flowers with delicate yellow inner rays and gold center, and healthy dark green foliage on well shaped plants.

* * *

Prices: Legionnaire and Amvet

\$.65 each; \$1.70 per 3; \$6.50 per 12

Special — 1 Each

INTRODUCTIONS

OUR "GENERALS"



- ★ DISEASE RESISTANT
- ★ LAVISH PRODUCERS
- ★ EXTREMELY HARDY
- ★ COMPACT BUSHY PLANTS
- ★ RICH DARK FOLIAGE
- ★ VIGOROUS & STURDY

ins and severe winters on the rugged coast of Massachusetts.

GENERAL MARSHALL'S ray florets, as shown at the top, are a rich harmony of deep old rose, purple and gold with light buff reverse, making the petals appear edged with gold.

GENERAL MACARTHUR (lower left) produces a deluge of glowing coppery-red flowers.

GENERAL BRADLEY (lower right) displays an exquisite blending of apricot, seashell-pink and buff.

Prices: The Generals

55¢ each; \$1.50 per 3; \$5.50 per dozen

(five mums) \$2.45

VISIT

CORLISS'S MUM-LAND

THIS FALL!



An awe-inspiring RIOT OF COLOR at our Gloucester Nursery in Riverdale last fall.

YOU'LL FIND, in our nearly 2½ acres of Chrysanthemums at the Gloucester Nursery . . .

Our new "MILITARY" originations that are sweeping the country

UNIVERSITY OF NEW HAMPSHIRE varieties

UNIVERSITY OF MINNESOTA introductions

UNIVERSITY OF NEBRASKA originations

UNIVERSITY OF CHICAGO presentations

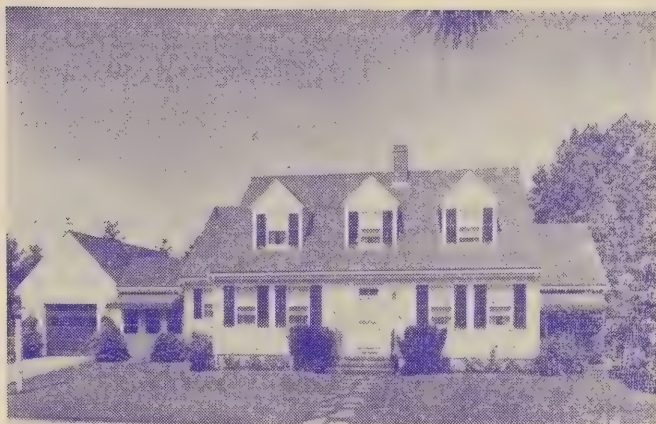
UNITED STATES DEPT. OF AGRICULTURE selections

The Popular Cushion Mums

Many, many other fine mums.

In a normal season some of these varieties start to bloom in early August; others later in the month; followed by September blooming species.

It is our constant endeavor to keep abreast with the best and earliest blooming chrysanthemums because of early frosts affecting the Korean and late blooming kinds. Continued test work on new varieties enables us to offer our customers what we want most in a Mum . . . Hardiness . . . Early and continued flowering . . . Ruggedness of plant growth . . . Attractiveness and abundance of bloom.



Landscaped by Corliss Bros. Inc.

Create additional beauty for YOUR HOME with Effective Landscaping.

UNIVERSITY OF MINNESOTA VARIETIES:

Aurora. Masses of large, bright red, semi-double flowers becoming lighter with age, on low compact plants. Mid-Aug. 18 in. Pot plants.

Butterball. Double, dark lemon-chrome ball-like flowers in Mid-Aug. at its best in mid-Sept. 2 ft. Pot plants.

Chippewa. Magnificent flowers with incurved petals of rich aster-purple in large clusters. Early Sept. 2-2½ ft. Pot plants.

Dee Dee Ahrens. This plant produces a multiple of double pure white flowers on long stiff slender stems. Aug. 2-2½ ft. Pot plants,

Dr. Longley. Non-fading, bright pink flowers fully double and very large, wonderful for cutting, are freely produced from late Aug. till heavy frost. 2 ft. Pot plants.

Glacier. Extra large, pure white flowers of lovely shape are produced in loose clusters sparingly in Aug., by early Sept. the whole top of the plant becomes a mass of white. 2 ft. Pot plants.

Maroon 'n Gold. Blooms are large, full, maroon-red above and golden on the under side. Aug. through fall. 18-24 in. Pot plants.

Moonlight. Large, double white flowers with centers of pale yellow to ivory produced in large sprays. Early Sept. 15-18 in. Pot Plants.

Redgold. Double bright scarlet and gold flowers resemble pompom dahlias, Mid-Aug. 2-2½ ft. Pot plants.

Violet. Very full, double deep pansy-purple flowers. Aug. 20-24 in. Pot plants,

UNIVERSITY OF CHICAGO MUMS:

Calendula. Large, deep chrome yellow double flowers are freely produced from early Sept. on. 2 ft. Pot plants.

Candlelight. Very lovely and graceful, double, creamy-white flowers, freely produced from late Sept. on. 1½-2 ft. Pot plants.

Charles Nye. Multitudes of double dome-shaped shining, rich, buttercup-yellow flowers in long stemmed clusters. Late Sept. on. 2-2½ ft. Pot plants.

Courageous. Large, very double, dark-ruby-red blooms on stocky upright plants produced freely from late Sept. on. 2 ft. Pot plants.

Defiance. Fully double, twilled petals of bright golden-yellow. Plant of outstanding strong, upright growth. Flowers from mid-Sept. on. 2 ft. Pot plants.

Unless otherwise noted, all plants on this page are 50c each; \$1.40 per 3 of one variety; \$5.00 per doz. of one variety. (Six or more plants of one variety at dozen rate.)



CORLISS BROS. INCORPORATED

Harbinger. The glorious color of fall maples is in these fully double incurved flowers of bronze, tipped light red. Aug. 20-24 in. Pot plants.

Heatherbloom. A delightful, double heather-pink, center shaded rose-red with gold topping. Early Sept. 18-24 in. Pot plants.

Lee Powell. An unusual blend of Chinese-yellow and old-gold. Very large, showy, rather flat, but fully double flowers from late Sept. on. 2½ ft. Pot plants.

Magnificent. Exceptionally large, double flowers of rosy-red, overcast with a bright copper, on long stems, ideal for cutting. Late Sept. 2 ft. Pot plants.

Olive Longland. Large, double flowers of exquisite soft apricot-gold and salmon tones. Sept. 2 ft. Pot plants

Robert Brydon. Fully double, deep garnet-red flowers on dense, bushy cushion-type plants. Late Aug. on 18 in. Pot plants.

Tribute. Highly recommended, large, fully double flowers of bright daphne-red, maturing to daphne-pink. Late Sept. 2 ft. Pot plants.

UNIVERSITY OF NEBRASKA MUMS:

Araphoe. Huge, rich, red flowers, petals long and strap-like, produced in 3-5 bloom clusters. Extremely frost-resistant and hardy. Mid-Sept. on. 3 ft. Pot plants.

Cody. The flowers are semi-double, orchid with white center Compact plants, "Cushion" type. July to heavy frosts. 12-15 in. Pot plants.

Leshara. Very frost tolerant, double flowers of rich mulberry-red, shading to a softer red with lovely old-rose overtones, on heavily branched husky plants. Early Sept. on. 2½ ft. Pot plants.

Osceola. Large, fully double flowers of brilliant yellow that show coppery tints. Early Aug. to sharp freezes. 2½-3 ft. Pot plants.

ENTIRELY NEW—CARNATION-FLOWERED MUMS

1953 — University of Nebraska Introductions

These new mums represent a major "break" in flower form of hardy mums—such as you have never seen before. The flowers are very double, each petal notched and lacinated at the tip, resembling the florist's carnations, and wonderful for cutting. They start blooming in August and continue until severe frosts.

Pathfinder. The clear, bright, yellow, non-fading flowers are long-lasting on the plant. 2 ft.

Plainsman. The very double blooms are deep rusty-bronze, fading to lighter yellow-bronze at high temperatures. 2 ft.

Pot plants, 60¢ each; \$1.60 per 3; \$6.00 per doz.

Unless otherwise noted, all plants on this page are 50¢ each; \$1.40 per 3 of one variety; \$5.00 per doz. of one variety. (Six or more plants of one variety at dozen rate.)



Landscaped by Corliss Bros. Inc.

The owners of this lovely place take great pride and pleasure in this secluded garden. A refreshing, colorful atmosphere is provided by evergreens, small shrubs, roses and annual flowering plants.

Pearl Parkinson. Large flowers with loosely twisted petals are golden yellow flushed red during high temperatures, but brilliant red with shadings of yellow in lower fall temperatures. Plant of upright, compact growth with dense deep green foliage. Early Aug. flowering until frost. 20-25 in. Pot plants.

W. P. Snyder. Excellent cut flowers of fully double apricot-bronze in clusters on very compact plants from early Aug. to hard freezes. 2-2½ ft. Pot plants.

White Cloud. Three to six clusters of double, pure white flowers that show lemon toward center of flower on strong stems. Mid-Aug. until hard freezes. 2½-3 ft. Pot plants.

UNIVERSITY OF NEW HAMPSHIRE MUMS:

These new Chrysanthemums uphold our New England tradition for their rugged and sturdy characters. They are good growers and fine producers.

Nashua. Fine sprays of fully double reddish-bronze pompon flowers. Low bushy plant. Mid-Sept. 18-24 in. Pot plants.

Sunapee. Fully double, rich, golden, ball-shaped pompon flowers from mid to late September on. 2-2½ ft. Pot plants.

U. S. DEPT. OF AGRICULTURE ORIGINATIONS:

Developed primarily for use in the Northern & Northwestern States. They are later blooming than the preceding varieties, but the flowers are of good substance and make excellent cut flowers.

Dainty Lady. Very large, double flowers with outer petals of pure white, inner petals clear yellow, produced in good clusters from Sept. on. 18-24 in. Pot plants.

CORLISS GIFT CERTIFICATES

We are prepared to issue Gift Certificates, redeemable by us. This certificate will bear the recipient's name and yours as donor. A "living" gift makes a very acceptable Christmas, Anniversary, Birthday, or Mother's Day gift.

Unless otherwise noted, all plants on this page are 50¢ each; \$1.40 per 3 of one variety; \$5.00 per doz. of one variety. (Six or more plants of one variety at dozen rate.)



CORLISS BROS. INCORPORATED

Golden Cheer. Real double, golden yellow flowers on unusually long strong stems with large flower clusters. The exciting thing about this variety is that the blooms seem frost proof. Even after a severe freeze when all the other mums are gone, these flowers are still unblemished. Late Sept. to heavy frosts. 2½-3 ft. Pot plants.

Grandeur. Large, double white flowers with edges of petals very delightfully tinged with pink are produced from late Sept. to heavy frosts. 18-24 in. Pot plants.

Royal Gem. Very full, large double flowers of unusually deep garnet-red, incurved cupped petals. Heavy, clean foliage; compact bushy plants. Sept. to heavy freeze. 18 in. Pot plants.

OTHER VARIETIES OF CHRYSANTHEMUMS

Avalanche. Beautifully formed, large, double, fluffy-white blooms, lightly creamed in the center in massive sprays from Sept. 20 on. 1½-2 ft. Pot plants.

Cecil Beed. One of the best early pink varieties. Large, double flowers of deep pink with tips of petals trimmed gold, produced abundantly from early Sept. on. 2-2½ ft. Pot plants.

Orchid Helen. Sturdy, double, orchid-pink flowers of unusual beauty on dwarf plants from early Sept. on. 18 in. Pot plants.

Pomponette. New and outstanding. Pompons in masses of bright Tyrolean yellow overcast gently with golden bronze. This mum has great eye appeal, good cutting qualities and sturdy growth. Mid-Sept. to frost. 1½ ft. Pot plants.

The CUSHION MUMS

An extremely popular type of Hardy Chrysanthemums that form a dense compact mound with most varieties about 15-18 inches high and more in width. A normal plant will produce hundreds or more blooms during the fall.

Champion Cushion. Flowers open to deep reddish-bronze, changing to lighter bronze as they mature.

Major Cushion. A trim, neat plant with choice salmon-pink flowers.

Red Cushion. This choice variety is a mass of really bright red.

White Cushion. Masses of delicate blush buds open to lovely white flowers.

Yellow Supreme Cushion. New. A soft but most appealing shade of yellow.

CONVALLARIA, Lily-of-the-Valley

***Majalis.** Sprays of small, fragrant, bell-shaped flowers of waxy texture. May, June. 8 in.

Unless otherwise noted, all plants on this page are 50¢ each; \$1.40 per 3 of one variety; \$5.00 per doz. of one variety. (Six or more plants of one variety at dozen rate.)



CORLISS BROS.
INCORPORATED

THE DELPHINIUM *of TOMORROW* **LYONDEL GIANT HYBRIDS**



STATELY
MAJESTIC
COLORFUL
MASSIVE SPIKES

A new strain especially selected for their large size, double, semi-double and single flowers and beautiful colors, ranging from pale blues to deep purple. June to September. 4-5 ft. Mixed colors only. 75c each; **\$2.00** per 3; **\$7.50** per doz.

We should SHOUT about these LYONDEL HYBRID DELPHINIUM! They withstand very droughty seasons and survive severe winters immeasurably. ENJOY THE BEST — BY TEST!

GYPSOPHILA, Baby's Breath

Bristol Fairy. Tiny double flowers of purest white, on airy sprays that are wonderful mixed with other cut flowers. June and July. 3 ft. Pot plants, 60c each; **\$1.60** per 3; **\$6.00** per doz.

HEMEROCALLIS HYBRIDS, Day Lily

Coraline. New. Gigantic trumpet-shaped blooms of lovely shrimp-pink. Blooms freely in July and Aug. 3-4 ft. **\$1.50** each; **\$3.95** per 3; **\$15.00** per doz.

Hyperion. One of the very finest. Flowers are citron-yellow and exceptionally large. July, August. 3-4 ft. 55¢ each; **\$1.50** per 3; **\$5.00** per doz.

Unless otherwise noted, all plants on this page are 50¢ each; \$1.40 per 3 of one variety; \$5.00 per doz. of one variety. (Six or more plants of one variety at dozen rate.)



CORLISS BROS. INCORPORATED

HEMEROCALLIS HYBRIDS, Day Lily — Continued

Matador. A bright, rich, mahogany flower with deep velvety flush. Good branching, tall variety. July, Aug. 3½-4 ft. **\$1.00** each; **\$2.75** per 3; **\$10.00** per doz.

Morocco Red. New. Velvety Morocco-red, evenly placed on the petals and sepals extending to the heart of the flower, leaving just a bit of orange showing in the cup. July, Aug. 2-2½ ft. **\$1.35** each; **\$3.75** per 3; **\$13.50** per doz.

Ophir. Considered one of the best two yet produced. Beautiful golden yellow flowers on strong stems. July 3-4 ft.

Persian Princess. An impressive day lily of deep velvety-red with a purple cast. July, Aug. 3-3½ ft. **\$1.00** each; **\$2.75** per 3; **\$10.00** per doz.

Pink Charm. Large blooms of dusky rose-pink shading to rose-red in June, and sometimes again in the Fall. 3-3½ ft. **\$1.00** each; **\$2.75** per 3; **\$10.00** per doz.

HIBISCUS, Rose Mallow. See shrubs, page

IBERIS — Perennial Candytuft.

***Snowflake.** Large cushions with an abundance of wonderful, pure white flowerheads. Evergreen foliage. May. 8-10 in. Pot plants.

IRIS

Elizabeth Huntington. Lovely, large flowered, transparent solid blue with ruffled edges. June. 18 in. **65¢** each; **\$1.70** per 3; **\$6.50** per doz.

POTTED GARDEN LILIES

We offer Potted Lilies, because they are easier to handle, with less chance of loss. They may be planted at any time during the season without injury to the plant.

Regale. (Royal Lily). Enormous white flowers, shaded pink or purple with a canary-yellow center. July 2-3 ft. **\$1.15** each; **\$3.30** per 3; **\$11.50** per doz.

Speciosum Rubrum (Pink Speciosum) Large, recurving rich carmine-pink, dotted with crimson, margined white. Aug., Sept. 2½-3 ft. **\$1.45** each; **\$3.85** per 3; **\$14.50** per doz.

OENOTHERA, Evening Primrose

Illumination. Compact healthy plants burst into masses of brilliant yellow flowers which harmonize with its reddish brown leathery foliage from June to frost. 2 ft. Pot plants.

Unless otherwise noted, all plants on this page are 50¢ each; \$1.40 per 3 of one variety; \$5.00 per doz. of one variety. (Six or more plants of one variety at dozen rate.)



CORLISS BROS.
INCORPORATED

POLYANTHUS, Primrose

***Colossal Strain Mixed** (Rainbow Primroses). This extraordinary strain produces flowers of unusual shades and wide range of colors, from almost black, dark velvety red, flame red, copper, gold, cream, to white; from apple-blossom pink through clear pink to rose burgundy and violet, apricot, lavender and two-toned pastels in large tall clusters. Very hardy. May and June. 6-10 in. Pot plants, **55c** each; **\$1.50** per 3; **\$5.50** per doz.

VIOLA

***Giant Jersey Gem.** A plant of dwarf, compact habit. The flowers are of a pure rich purple. May to Nov. 6-8 in.

Unless otherwise noted, all plants on this page are 50c each; \$1.40 per 3 of one variety; \$5.00 per doz. of one variety. (Six or more plants of one variety at dozen rate.)

Now!

Successful Summer Planting

Of EVERGREENS, TREES and SHRUBS with the
New plastic spray, WILT-PRUF

By digging the plants with a ball of earth and Wilt-Prufing, it is possible to safely transplant trees and shrubs in full leaf, with complete success, thus extending the planting season into June, July and August.

See Pages 4 and 6

Genuine

Imported

**HOLLAND
BULBS**

**TULIPS
HYACINTHS
DAFFODILS
CROCUS
ETC.**

FOR PLANTING THIS FALL

We will have a full line of these lovely flowering Bulbs from the first of September on.

OUR BULBS are TOP SIZE and will bloom next spring! We have made CHOICE SELECTIONS from the best standard and new varieties.

Circular with prices will be sent you on request in early September. If you wish to plan your garden earlier, stop in and we'd be glad to tell you what we will have to offer in varieties.



Annual Seedlings

GREENHOUSE GROWN

These **BEAUTIFUL FLOWERING PLANTS** will keep the garden gay throughout the summer and fall and give an abundance of blooms for house and table decorations. We raise many thousands of **ANNUAL SEEDLINGS** of the popular varieties, all of which are transplanted stock, **GREENHOUSE GROWN**.

PRICES

Most of these plants will be ready any time after May 20th. All Annual Seedlings, **75c per doz. box; \$2.75 per box of 50**, except as otherwise noted.
50c deposit on large box, which is returnable

*Suggested cut flower varieties.

AGERATUM

Blue Boy. Compact, deep blue, 4-6 in.
Blue Perfection. Dark blue. 15-18 in.

ALYSSUM

Royal Carpet. Very dwarf, violet-purple. 3 in.
Violet Queen. Very compact bright violet. 4-6 in.
White Carpet Extra fine, uniform white. 4-6 in.

*ASTER. 2-3 ft.

Early Beauty. Shell-pink.
Ball's Early White.
Heart of France. Deep ruby.
Royal Purple.
Semple's Azure-Blue.
Mixed Colors.

"PRINCESS" ASTERS

Large double flowers with golden crested and quilled centers. August on. 2 ft.
Princess Bonnie. Soft salmon and gold.
Princess Marsha. Scarlet and gold.

*BACHELOR'S BUTTON, 2-3 ft.

Blue

*CALENDULA. 1½-2 ft.

Lemon King. Lemon-yellow.
Orange King. Orange.

*CARNATIONS. 18-24 in. (New).

Mixed Colors Only.

CELOSIA. 1½-2 ft. (New)

Pampas Plume. (Feathered Cockscomb). Feathery plumes of gold, copper and sunset colors. Useful for bedding and cut. **\$.85 per doz. box; \$3.15 per 50 box.**

*CHRYSANTHEMUMS. 1½-2 ft.

Mixed Colors Only. White, Yellow, Copper.

We do not pack Annuals for shipment
Truck delivery in Essex County only



CORLISS BROS.

INCORPORATED

CLEOME (Spider Plant). 4 ft.

Helen Campbell. (New). Pure white flowers. **\$.85** per doz. box; **\$3.15** per 50 box.

Pink Queen. Bright salmon-pink flowers.

*COSMOS, Giant flowering. 4-6 ft.

Pink. **Mixed.**

White.

*DIANTHUS. 15-18 in.

Geisha Girl. Mixed colors only.

*GAILLARDIA. 1½-2 ft.

Indian Chief. Bronze-red.

Double, Mixed.

LOBELIA. 4-6 in.

Cambridge Blue. Light blue.

Crystal Palace. Deep blue.

*MARIGOLD, African

Guinea Gold. Orange-yellow. 2-3 ft.

Lemon Queen. Lemon-yellow. 2-3 ft.

Mammoth Mum. Light sulphur-yellow. 2-3 ft.

Orange Prince. Orange. 2-3 ft.

Yellow Supreme. Yellow Guinea Gold. 2-3 ft.

*MARIGOLD, French

Melody. Bright orange crested. 12-15 in.

Rusty Red. (New). Striking rust-red, double. 1½-2 ft.

Spry. Orange crested center, maroon outer petals. 9 in.

Yellow Pygmy. Canary yellow. 6 in.

NICOTIANA

Red. 1½-2 ft.

White. 2-3 ft.

PETUNIA

Balcony Blue. Dark blue-purple. 1½ ft.

Celestial Rose Bright rose. 8 in.

Comanche. Improved Fire Chief. Deep scarlet-crimson, 10-12 in. **85¢** per doz. box; **\$3.15** per box of 50.

Elk's Pride. Dwarf; deep velvety purple. 10-12 in.

Fire Chief. Brilliant glowing scarlet-red. 1 ft.

Glow. Carmine-rose, white throat. 8-10 in.

Heavenly Blue. Silver blue. 1 ft.

Popcorn. (New). Really dwarf; large pure white. 6-10 in. **85¢** per doz. box; **\$3.15** per 50 box.

Rosy Morn. Soft light pink with white throat. 12-15 in.

Silver Medal. Rich salmon-pink. 12 in. **85c** per doz; **\$3.15** per box of 50.

Snowball. Pure white. 15-18 in.

Velvet Ball. Velvety blood-red. 8 in.

White Queen. Dwarf, compact white. 10-12 in.

PHLOX Drummondi, Dwarf. 8-10 in.

Cecily Strain. Mixed colors.

All Annual Seedlings, 75c per doz. box; \$2.75 per box of 50, except as otherwise noted. 50c deposit on large box, which is returnable

We do not pack Annuals for shipment
Truck delivery in Essex County only



CORLISS BROS. INCORPORATED

PORTULACA. 6 in.

Single and Double, Mixed. 85c per dozen; \$3.15 per box of 50.

*SALPIGLOSSIS

Mixed Colors 2-2½ ft.

SALVIA

Blue Royal (*farancia*). Bright blue. 2-2½ ft.

Bonfire, Scarlet. 2-2½ ft.

Skyrocket. Early, dwarf scarlet. 10-12 in.

*SCABIOSA. 2-3 ft.

Blue Cockade. Deep azure-blue.

Mixed colors.

*SNAPDRAGON, Semi-dwarf. 15-18 in.

Gloria. Rich, deep pink.

Golden Queen. Bright golden yellow.

Kirkwood Beauty. Glowing bronze and pink

Velvet Beauty. Deep crimson-red.

Mixed Colors.

*SNAPDRAGON, Tall. 2-3 ft.

Alaska. Pure white.

Canary Bird. Golden yellow.

Crimson King. Rich, dazzling crimson.

Rosalie. Orange, shaded pink.

Mixed Colors.

*STOCK (Imperial Giant Double). 1½-2 ft

Lavender.

Pink.

White.

Mixed.

VERBENA. 8-12 in.

Mixed colors.

ZINNIAS

Peppermint Stick. 2 ft. Very pleasing combinations such as red, white, yellow, pink, orange, and purple shades. 60-70% striped.

Persian Carpet. 15-18 in. The flowers, like small dahlias, in rich wide range of oriental colors are tipped with a contrasting color.

Blaze. New All-American Selection. 3 ft. Fiery mandarin-red and scarlet-orange in the Giant Cactus type. \$1.00 per doz. box; \$3.50 per 50 box.

All annual Seedlings, 75c per doz. box; \$2.75 per box of 50, except as otherwise noted. 50c deposit on large box, which is returnable

We do not pack Annuals for shipment
Truck delivery in Essex County only



CORLISS BROS.
INCORPORATED.

***ZINNIA, Dahlia-flowered. 2-3 ft.**

Canary Bird. Bright golden yellow.
Crimson Giant. Crimson.
Exquisite. Pink.
Oriole. Orange and gold.
Polar Bear. Pure white.
Scarlet Flame. Bright scarlet and orange.
Mixed Colors.
Mixed Pastel Colors.

***ZINNIA, California Giant.**

Cherry Queen. Mammoth, vivid cherry-rose. \$.85 per doz. box; **\$3.15** per 50 box.

***ZINNIA, Lilliput. 1½-2 ft.**

Canary. Yellow.
Salmon-Rose. Pink.
Scarlet Gem. Scarlet.
Mixed Colors.

All annual Seedlings, 75c per doz. box; **\$2.75** per box of 50, except as otherwise noted.
50c deposit on large box, which is returnable

TOMATO PLANTS

65c per doz. box

Bonny Best. Very early. A Tomato of excellent quality.

Master Marglobe. Certified for rust, blight, and disease. Delicious fine red.

Sunray. Firm, smooth, best large yellow of mild delicious flavor.

GIANT PANSIES

The finest and largest Pansy in existence. The plants are of a compact habit and their flowers are borne on stiff stems. The colors are rich and all that can be desired. 60c per basket of 6 plants; **\$1.00** per doz; **\$7.50** per 100.

Plants for Window Boxes and Borders

BEDDING PLANT SECTION

We specialize in a fine variety of popular and practical plants suitable for window boxes, borders, and gardens, a finishing touch to any floral planting, with continual bloom all through the season.

AGERATUM, 8-10 in.

Irvington Beauty. Compact plants. An excellent shade of deep blue. 2½-in pot plants, 25c each; **\$2.50** per doz.

BEGONIAS, TUBEROUS-ROOTED. 12-15 in.

Camellia, Double. Crimson, pink, yellow, orange, white, salmon. For moist, shady places. Large pot plants, **\$1.00** each; **\$10.00** per doz.



CORLISS BROS. INCORPORATED

DAILIA, 1½-2 ft.

Unwin's Dwarf Hybrids (New). Early-flowering, miniature, semi-double blooms in a wide range of colors. 3½-in pot plants, 50c each; \$5.00 per dozen.

GERANIUMS, 1½ ft.

Mme. Lawrence. Light pink.

Poitevine Improved. Salmon-pink.

Ricard Improved. Bright vermillion.

Springfield White. Fine pure white.

All Geraniums, 3½-in. pot plants, 60c each; \$7.00 per dozen.

HELIOTROPE

Sweet-scented. Old-fashioned blue. 15-18 in. 3-in. pot plants, 40¢ each; \$4.50 per dozen.

LANTANA, 9-12 in.

Sensation. Orchid. One of the best.

Golden King. Orange-yellow. An excellent plant.

Radiation. Red. Very showy.

Tethys. Light yellow.

All Lantanas, 3-in. pot plants, 40¢ each; \$4.50 per doz.

LOBELIA, 4-6 in.

Cambridge Blue. Large light blue flowers. 2½-in pot plants, 20c each; \$2.00 per doz.

Crystal Palace. Compact, bushy plants with deep blue flowers, 2½-in. pot plants, 20c each; \$2.00 per dozen.

MESEMBRYANTHEMUM, Rock Pink

Bright pink flowers. Does well in dry, sunny locations. Grows 6 to 9 inches high. \$1.25 per doz. box; \$4.50 per 50

PETUNIAS

Glamour Girl. Magnificent flowers of beautiful Victoria-violet. Habit of growth is neat, compact, and uniform. A prolific bloomer and a valuable addition to the annual garden. 10-12 in. 3-in. pot plants, 35c each; \$3.50 per dozen.

VERBENA, 1 ft.

Mayflower. Prostrate plant covered with a profusion of rose-pink flowers throughout the season. 3 in. pot plants, 40¢ each; \$4.50 per doz.

Annual Vines

Annual Vines are a necessary addition to any window box or urn. The trailing effect produces a finishing touch that can be obtained in no other way.

IPOMOEAE, Morning Glory

Heavenly Blue. Immense clear azure-blue blooms. One of the best and most striking annual climbers. 6-8 ft. 2½-in. pot plants, 20c each; \$2.00 per dozen.

VINCA

Variegated foliage. Popular in window boxes, urns, and baskets. 3 ft. 3½-in. pot plants, 50c each; \$5.50 per doz.

Insecticides, Fungicides,

ORTHO MULTI-PURPOSE INSECTICIDES AND FUNGICIDES

BOTANO GARDEN DUST. Contains Captan, Lindane, Methoxychlor, Ziram. For control Aphid, Beetles, Earwigs, Wireworms; Blackspot, Rust, Mildew. **8 oz. duster, \$1.00**

ISOTOX GARDEN SPRAY. Contains Lindane, Malathion & DDD. For contact, stomach poisoning and vapor action to kill Aphid, Red Spider, Beetles, Earwigs, Ants, Grubs, etc. **4 oz. bottles, \$1.00; 8 oz. bottles, \$1.85.**

ORTHOcide GARDEN FUNGICIDE. Contains 50% Captan. For control Black Spot on Roses, Powdery Mildew, Seed Rot and Damp-Off. **1/2 lb. canister, \$1.50.**

ORTHO HOME ORCHARD SPRAY. Contains Ferbam, DDT, DDD, Lindane and Aramite. For control insects and diseases on fruits and berries. **1/2 lb. canisters \$1.00.**

ORTHO ROSE DUST. Contains Captan, DDT, Lindane, Ferbam and Sulphur. For control of Aphid, Beetles, Rose Weevil; Black Spot, Mildew, Leaf Spot and Rust. **8 oz. dusters, \$1.00.**

'BLACK LEAF 40'. A concentrated solution of Nicotine Sulphate for sucking insects. 1 oz. bottle, **39c**; 5 oz. bottle **\$1.19**; 1 lb. bottle, **\$2.69.**

CHLORDANE DUST. 5%. Very powerful, best known insecticide to date, for ants, wire worms, chinch bugs, Japanese beetles and sour bugs. 4-lb. shaker top Canister, **\$1.35.**

END O' PEST. A dry powder for chewing insects, sucking insects and fungus diseases. Applicator Gun (Complete) **89c**; cartridge refills **65c.**

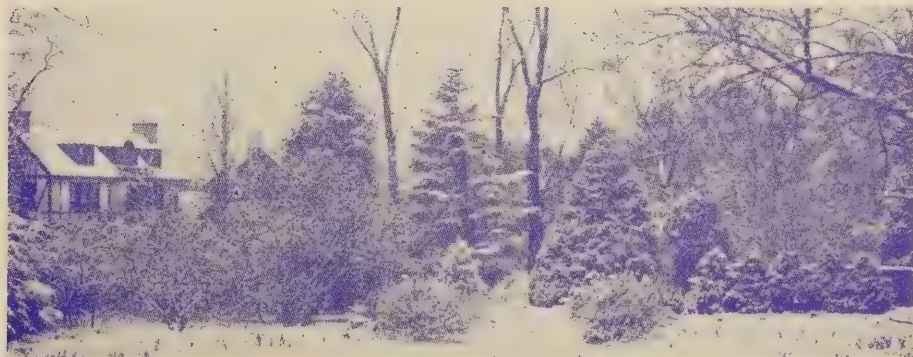
HEXATE. A new liquid spray for outside use. This is one of the most effective sprays, which produces a gas, for killing red spider on Arborvitae, Spruces, etc. Must be used with caution. 6-oz. bottles, **\$2.00.**

TRIOGEN. The outstanding Rose spray. Controls every insect pest and disease that attacks Roses, if regularly and carefully used.

Kit A for 12-20 roses	\$ 2.35
Kit B for 50-80 roses	6.00
Kit C for 100-160 roses	9.00
Kit D for 400-600 roses	30.00

IN WINTER

The use of WILT-PRUF does away with unsightly, and costly, burlap or wooden protectors. Being colorless, it brings out the natural beauty of the evergreens and leaves them clean! fresh! and bright!



WILT-PRUF } CONCENTRATE — \$9.90 per gallon
 } READY-TO-USE — \$3.00 per gallon

Ask For Free Literature



Landscaped by Corliss Bros. Inc.

For a Lovely Lawn Select **SCOTTS**

Scotts LAWN SEED. Top quality blend of all perennial grasses that makes the deluxe lawn in full sun or moderate shade. Triple cleaning and rigid laboratory control assure 99.91% wee-free quality.

1 lb. **\$1.85**; 2½ lbs. **\$4.50**; 5 lbs. **\$8.85**; 25 lbs. **\$42.50**

Scotts "SPECIAL" SEED. Selected blend of quick growing grasses. Recommended for the poorer and drier soils or wherever more rugged turf is required. Thrives in shade as well as in full sun with ordinary care.

1 lb. **\$1.35**; 5 lbs. **\$6.65**; 25 lbs. **\$32.50**; 100 lbs. **\$122.00**

Scotts CLOVER. Available separately since clover is not included in Scott blends. This is finest quality high germinating seed.

Small box, 2000 sq. ft. **\$.95**; Large box, 5000 sq. ft. **\$1.95**

HAVEN GRASS SEED contains good proportion of hardy grasses. Gives a pleasing stand of grass in a short time and at moderate cost.

1 lb. **\$.85**; 5 lbs. **\$3.95**; 25 lbs. **\$18.85**

Scotts SPREADERS. These practical carts make possible quick, accurate feeding, seeding, weeding and SCUTLING. They'll pay for themselves in savings in material. All of sturdy steel construction, rubber tired.

Junior Spreader **\$7.95**; No. 25 Medium size **\$12.85**;

No. 65 Suburban lawn **\$19.50**; No. 100 Professional **\$44.50**

TURF BUILDER. The complete grass food to keep lawns healthy, vigorous and sparkling green. No offensive odor before or after use. Feeds 100 sq. ft. for less than a dime. Turf Builder is the most effective and most economical since you need less than half as much.

5 lbs. **\$.89**; 10 lbs. **\$1.35**; 25 lbs. **\$2.50**; 50 lbs. **\$3.95**; 100 lbs. **\$7.85**

4-XD WEED CONTROL. Clean, granular compound of 2, 4-D easily broadcast by hand or spreader. Quickly cleans out Dandelions, Plantain, Buckhorn, and other broadleaved weeds without harm to lawn grasses.

Box 500 sq. ft. **\$.49**; Box 2500 sq. ft. **\$1.75**;

Bag 11,000 sq. ft. **\$4.85**; 10 bags 2½ acres **\$39.50**

Scotts WAND for spot weeding, including can "Touch" (4-XD), enough to knock out more than 200 weeds, **\$1.89**. Refill cans Touch **69¢**.

WEED & FEED. Unique combination of chemicals that simultaneously (1) kills broadleaved weeds via the action of 2, 4-D and (2) feeds grass to greater health and beauty. Excellent for restoring run down lawns.

Box 500 sq. ft. **\$1.00**; Box 2500 sq. ft. **\$2.95**

Bag 11,000 sq. ft. **\$11.75**; 10 Bags 2½ acres **\$99.50**

SCUTL has three important control actions for lawns. Destroys crab-grass, Controls fungus diseases, and seedling sprouts of most weeds.

Box 125 sq. ft. **\$.79**; Box 500 sq. ft. **\$2.75**

Bag 1250 sq. ft. **\$5.45**; Bag 2500 sq. ft. **\$9.95**

Feed LAWNS, GARDENS
the way EXPERTS do!



The nation's finest lawns and gardens are fed with AGRICO Special-purpose Plant Foods. Each contains the proper ingredients—both organic* and inorganic—that the various plant groups need.

AGRICO Plant Foods go further, do a better job. They cost no more—usually less—than a general-purpose fertilizer. Try the AGRICO way this season.



*Organic derived from AGRINITE, the 100% Organic Plant Food.

AGRICO
The Nation's Leading Fertilizer

THE COMPLETE PLANT FOOD

	100 lbs.	50 lbs.	25 lbs.	10 lbs.
For Gardens	\$4.75	\$2.45	\$1.80	\$.95
For Lawns, Trees & Shrubs	5.25	2.70	1.85	.95
For Broadleaf Evergreens	6.00	3.15	2.25	1.20
Rose Food	10.00	5.15	2.85	1.30

Special prices on large quantities

AGRINITE

ALL — ORGANIC PLANT FOOD

80 lbs.	50 lbs.	25 lbs.
\$5.20	\$3.45	\$1.95



Special prices on large quantities

We are Eastern Essex County Distributors
for Agrico and Agrinite

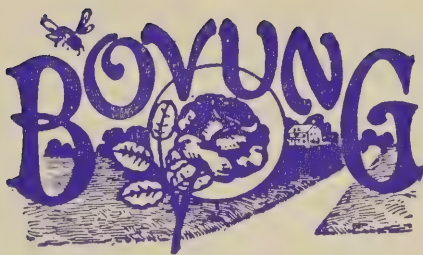
BONEMEAL (with 2% Nitrogen) Fine ground for lawns, gardens, shrubs, trees. Provides excellent nourishment over a long period. 25 lbs. \$2.70, 50 lbs. \$4.35; 100 lbs. \$6.90.

LIME (Agricultural). Corrects soil acidity. Most plants, with the exception of broad-leaved evergreens, thrive best in a neutral soil. 100-lb. bags, \$1.25; ton \$22.50

ROCK PHOSPHATE. Builds up long lasting soil fertility while its teammate, Superphosphate, gives fast nourishment to the current crop. 100 lbs. \$2.35.

SUPERPHOSPHATE. Increases root system and production. Our Essex County soils lack phosphate. 100-lb. bags, \$2.50.

TURF BUILDER. See page 60.



FOR
LUXURIOUS
LAWNS,
FLOWERS,
TREES, AND
SHRUBS

- *Plain, dried cow manure from high protein fed cows.
- *Contains all the organic values of the best manure.
- *Supplies plant food that becomes available as the plants need it.
- *Clean and convenient to handle.
- *The natural plant food for lawns, flowers, house plants, shrubs, trees and vegetables.
- *Absolutely free of live weed seeds.



5 lbs.	\$.60
10 lbs.	1.05
25 lbs.	1.65
50 lbs.	2.95
100 lbs.	5.70
1/2 ton	51.00
1 ton	97.00

We are North Shore Distributors
for this fine product

ENERGIZED *Hyper-Humus* NATURE'S SOIL BUILDER



HYPER-HUMUS is now ENERGIZED for greater efficiency. Depend on it for healthy plant growth and more production. Remember, this is real humus, not peat moss.

HYPER-HUMUS comes to you in moisture-sealed, easy-to-handle bags to preserve all the life-giving vitality of HYPER-HUMUS for long periods.

25-lb. bag	\$ 1.55
50-lb. bag	2.50
100 lbs. (2-50-lb. bags)	4.25
1000 lbs.	35.00
2000 lbs.	65.00

Price in bulk, in tons, and in carload lots on application.

VIGORO. Complete plant food for lawns and gardens.

10 lbs., **95¢**; 25 lbs., **\$1.70**; 50 lbs., **\$2.60**.

Golden Vigoro — New complete lawn food that won't burn when used as recommended — 1 to 3 lbs. per 100 sq. ft. 50 lb. bags, **\$3.75**.

**The PEAT That's
EASY
TO
SPREAD**



**BACTI-VATED®
BRAND
MICHIGAN PEAT**

Spreads more evenly; use a spreader or by hand. Soaks up water quickly. Build new lawns—top dress old ones—with "bacti-uated" Michigan Peat. Your soil needs "natural organic" (humus). Use on lawns, roses, flowers, shrubs, azaleas, African Violets, and pot plants. **IMPROVES ALL SOILS PERMANENTLY** because it's **HIGH NITROGEN!** In 5 size bags . . . never baled. Order today

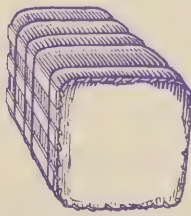
- 100 lbs. (5 cu. ft.)
\$4.49
- 50 lbs. (2 bu.)
\$2.49
- 25 lbs. (1 bu.)
\$1.69
- Peck
89¢

We are exclusive Eastern Essex County Distributors for Michigan Peat

**Best Obtainable Baled
Garden Peat Moss**

Fine-Ground for Garden Use.
Excellent for Mulching.

1/2 bale	\$ 3.00
Large Bale	5.50
10 bales	52.50
25 bales	125.00



One bale covers: 250 square feet 1 inch deep.
125 square feet 2 inches deep.
80 square feet 3 inches deep.

WARNING!

Our Essex County SOILS are so badly DEPLETED of FOOD VALUES that CONDITIONS are really **serious**.

The Government will help the farmer. The INDIVIDUAL must HELP himself.

If each HOME OWNER will have the **SOIL TESTED** and ACT before planting a lawn, garden, flowers, trees, or shrubs, GREAT PROGRESS can be made toward bringing SOILS back to GOOD FERTILITY.

EACH will be contributing his or her part in building up the BASIC WEALTH of our country and assure BETTER PROSPECTS for future growth. CORLISS BROS. INC. maintain a testing laboratory for your convenience. A nominal fee of **\$2.50** per test brings you a complete report with recommendations suited to your INDIVIDUAL PROBLEM.

**DON'T GUESS — KNOW WHAT TO BUY
SAVE MONEY — GET RESULTS**

Phone us — write us — visit us.

A MAGIC **SOD** CARPET . . .

**From our Nursery . . .
to a Private Home**



The above picture shows the sod cutting operation in our nursery using the latest in equipment. Our weed-free sod is grown from high quality **SCOTT SEED**, on tested, fertilized soil.



This picture, taken a few days later, shows the very same sod completely laid at a home in Marblehead.

LAWNS constructed of our **NURSERY GROWN SOD** give these decided advantages . . .

Saves SEVERAL YEARS over Seeded Lawns

Ready for IMMEDIATE USE — to walk on, play on, and enjoy

Enhances the BEAUTY of **YOUR PROPERTY** at once.

Lengths, 1 ft. by 4 ft.:

Up to 100 sq. ft. at 25¢ per square foot
100 to 500 sq. ft. at 23¢ per square foot
500 to 5000 sq. ft. at 22¢ per square foot
5000 sq. ft. and up at 20¢ per square foot

f.o.b. Ipswich

Landscape MATERIALS

PENNSYLVANIA BLUE STONE

CUT RANDOM RECTANGULAR

Best for

TERRACES — PATHS — WALKS

STEPPING STONES

Not slippery when wet

1 inch thick	\$.65 per sq. ft.
1½ inch thick90 per sq. ft.
2 inch thick	1.15 per sq. ft.
2½ inch thick	1.35 per sq. ft.

F. O. B. the Gloucester Nursery

We always carry, in our stone sheds at Gloucester, between 75 and 100 tons of beautiful Pennsylvania Blue Stone Flagging.



A splendid example of what can be done with our Blue Stone Flagging.

LOAM — SUB-SOIL — SAND
FILL — ROAD GRAVEL
WALL AND DRAIN STONE
CRUSHED STONE (various sizes)
CRUSHED STONE DUST

Ask for prices

Big Tree

CARE — MOVING

has been an important part of our
business for nearly 50 years



*This photograph shows one of our COMPRESSOR
ROOT-PRUNED TREES being unloaded from the mover
in mid-summer (note the foliage).*

MOVING — PLANTING . . .

Whether big or small, you want that tree properly planted. Trust this difficult job to us — we grow them ourselves!

CABLING — BRACING . . .

Injury to a tree should be attended to immediately. At those times when service must be prompt to save a valuable tree, rely on us.

FEEDING . . .

Aid your trees to combat insects and diseases by having our men feed them, using scientific fertilizing methods.

PRUNING . . .

A necessity for better health . . . for appearance . . . to protect your landscape investment.

REMOVING . . .

Trees in bad condition are hazardous to people, and to remove as well. Our technicians have had years of experience in this difficult work.

We use **MOTORIZED EQUIPMENT** for efficiency —

Chain saws — power winches — compressors
tree movers and tractors

ESTIMATES WILLINGLY GIVEN

Phone Gloucester 513 today



Planting Directions

BALLED and BURLAPPED MATERIAL:

Dig holes 18" larger than diameter of ball and 6" deeper than the depth of the ball. Save top-soil, discard sub-soil. Mix, at least 3 times, prescribed amounts of assembled fertilizer with saved top-soil or new loam for proper blending. Spade enough of soil-fertilizer mixture into bottom of hole to insure ball being set at original plant depth as indicated by different bark color. Fill in hole around ball half full. Tamp well. Cut strings and burlap flush with filled-in soil. Fill hole with water and allow to soak in. Complete filling hole with mixture, leaving top saucer-shaped to catch moisture. Water weekly.

BARE ROOT MATERIAL:

The diameter of the hole should be dug at least 2 feet larger than root spread, and 12" deeper than depth of roots. Save top-soil, discard sub-soil. Spade enough of soil-fertilizer mixture into bottom of hole to insure plant being set at original depth as indicated by different bark color. Trim broken root ends. Set plant in hole and fill hole half full of mixture, shaking plant up and down several times to work soil around roots. Tamp well. Fill hole with water. After water has soaked in, complete filling in, leaving surface saucer-shaped to catch water. Stake all trees over 2" caliper, using wires run through rubber hose to avoid chafing. Water weekly.

Suggested Amounts of Organic Mixtures:

- EVERGREENS**—5 lbs. Corliss #1 mixture per ft. of height or spread.
EVERGREEN HEDGES—2 lbs. Corliss #1 mixture per foot of height per plant
EVERGREEN SHRUBS—3 lbs. Corliss #2 mixture per foot of height. (Euonymus—3 lbs. #3 Mix per ft.)
DECIDUOUS TREES—5 lbs. Corliss #1 mixture per foot of height.
DECIDUOUS SHRUBS—2 lbs. Corliss #1 mixture per foot of height (Azaleas, Ilex, Blueberry—2 lbs. Corliss #2 mixture per ft. of height).
DECIDUOUS HEDGES—1 lb. Corliss #1 mixture per foot of height per plant.
VINES—3 lbs. Corliss #1 mixture per plant.
FRUIT TREES—see Deciduous trees.
ROSES—5 lbs. Corliss #3 mixture per plant.
PERENNIALS and ANNUALS—100 lbs. Corliss #3 mixture spaded into each 100 square feet.
BULBS—10 lbs. Corliss #4 mixture per 100 bulbs.

	#1 and #3 mixture	#2 mixture	#4 mixture
5 lbs.	\$.80	\$.70	\$.85
10 lbs.	1.30	1.25	1.40
25 lbs.	2.45	2.35	2.70
50 lbs.	3.85	3.60	4.35
100 lbs.	6.25	5.75	6.90
1000 lbs.	59.50	55.00	65.00
2000 lbs.	113.00	105.00	125.00

IT PAYS!

For best garden results, have your soil tested. We are equipped to do your soil testing quickly at a small fee. See page 63.

TERMS AND CONDITIONS OF SALE

We accept all orders upon condition that they shall be void should injury befall the stock from frost, fire, hailstorms, or other causes over which we have no control.

We endeavor to keep varieties true to name, and will replace any stock not true, but we do not, in any way, guarantee the success of the grower, inasmuch as we cannot control Nature and the conditions affecting the successful growing of Plants and Nursery Stock, such as unfavorable weather, soil, moisture, planting, cultivation, insects, improper planting and the like, we cannot and will not give any warranty, express or implied, as to description, quality, productiveness, or any other variation of any Nursery Stock or Plants we sell, and we will not be in any way responsible for the crop. Every order for such goods will be executed on these conditions only. Employees are forbidden to give warranties or guarantees.

In event of untrue stock, our liability must be limited to invoice value at time of shipment.

PRICES AND RATES SUBJECT TO CHANGE WITHOUT NOTICE.

TERMS OF PAYMENT

Cash or satisfactory references must accompany all orders from purchasers unknown to us. To customers whose responsibility is known to us, all bills are due net 30 days from date of shipment. All stock is priced F.O.B. Gloucester and Ipswich, Mass.

SHIPPING DIRECTIONS

Please state clearly how you want your shipment made, whether by freight, express, or truck. We reserve the right to change shipping instructions when we consider it best, without assuming responsibility. Boxing and packing will be charged at actual cost on all tree and shrub orders shipped by freight or express.

Our responsibility ends on delivery of stock in good order to the forwarding company. When losses occur, claims should at once be made on the transportation company by the consignee. Complaints must be made in writing to our office within ten days after receipt of the goods.

WE DO NOT MAKE C.O.D. SHIPMENTS

LOCAL FREE DELIVERY ZONE

Beverly Farms, Essex, Gloucester, Hamilton, Ipswich, Manchester, Prides, Rockport, and Wenham.

We are equipped to make truck delivery beyond this FREE DELIVERY ZONE, within a 50-mile radius, at cost, based on size or order and distance, which in most cases is not greater than the combined cost of packing, freight or express. This is a very satisfactory method, as plants are delivered fresh to you.

MEMBERS:

Massachusetts Nurserymen's Association
New England Nurserymen's Association
American Association of Nurserymen



INDEX

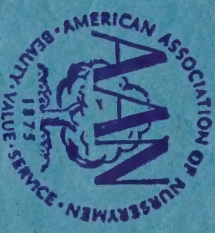
- | | | |
|-----------------------------------------------------------------------------------------------------------------------------------------------------------------------------------------------------------------------------------------------------------------------------------------------------------------------------------------------------------------------------------------------------------------------------------------------------------------------------------------------------------------------------------------------------------------------------------------------------------------------------------------------------------------------------------------------------------------------------------------------------------------------------------------------------------------------------------------------------------------------------------------------------------------------------------------------------------------------------------------|-----------------------------------------------------------------------------------------------------------------------------------------------------------------------------------------------------------------------------------------------------------------------------------------------------------------------------------------------------------------------------------------------------------------------------------------------------------------------------------------------------------------------------------------------------------------------------------------------------------------------------------------------------------------------------------------------------------------------------------------------------------------------------------------------------------------------------------------------------------------------------------------|---------------------------------------------------------------------------------------------------------------------------------------------------------------------------------------------------------------------------------------------------------------------------------------------------------------------------------------------------------------------------------------------------------------------------------------------------------------------------------------------------------------------------------------------------------------------------------------------------------------------------------------------------------------------------------------------------------------------------------------------------------------------------------------------------------------------------------------------------------------------------------------------------------------------------------------------------------------------------------------------------------------------|
| <p>Abies 7
 Acanthopanax 21
 Acer 15
 Ageratum 54, 57
 Agrico 61
 Agrinite 61
 Alyssum 54
 Althea 25
 Ampelopsis 31
 Andromeda 13
 Annual Seedlings.. 54
 Annual Vines 58
 Apples 32, 33
 Aralia 21
 Arbor-Vitae 10
 Arctostaphylos ... 11
 Aronia 21
 Arrow-wood 30
 Asparagus 37
 Asters 54
 Astilbe 43
 Azalea 21, 22</p> | <p>Gaillardia 55
 Geraniums 53
 Gleditsia 17
 Golden Bell 25
 Grape Vines 37
 Ground Covers ... 14
 Gypsophila 51</p> <p>Halesia 25
 Hawthorn 16
 Hedera 11
 Hedge Plants 30
 Heliotrope 58
 Hemerocallis ... 51, 52
 Hemlock 10
 Hibiscus 25
 Holly 13
 Honeysuckle ... 26, 31
 Hydrangea ... 25, 31
 Hyper-Humus 62
 Hypericum 25</p> | <p>Picea 7, 8
 Pieris 13
 Pine 8, 9
 Pinus 8, 9
 Plum 19
 Polyanthus 53
 Polygonum 31
 Portulaca 56
 Primrose 53
 Privet 26
 Prunus 19
 Pyracantha 13</p> <p>Quercus 20
 Quince,
 Flowering 24</p> <p>Raspberries 37
 Rhamnus 27
 Rhododendrons ... 14
 Rock Pink 58
 Rock Plants 43
 Rosa 27
 Rose of Sharon .. 25
 Roses 33 to 43
 Russian Olive 24</p> |
| <p>Baby's Breath 51
 Bachelor's Button.. 54
 Barberry 22
 Bayberry 27
 Bearberry 11
 Beauty Bush 26
 Bedding Plants 57, 58
 Begonias 57
 Berberis 22
 Betula 16
 Birch 16
 Blueberries 29, 36
 Bluestone 65
 Bone-Meal 61
 Bovung 62
 Boxwood 11
 Buckthorn 27
 Buddleia 23
 Bulbs 53
 Burning Bush 24
 Butterfly Bush 23
 Buxus 11</p> | <p>Iberis 52
 Ilex 13, 26
 Inkberry 13
 Insecticides 59, 60
 Ipomoea 58
 Iris 52
 Ivy 11, 31</p> <p>Juniper 7
 Juniperus 7</p> <p>Kalmia 13
 Katsura Tree 16
 Kolkwitzia 26</p> | <p>Salix 20
 Salpiglossis 56
 Salvia 56
 Scabiosa 56</p> <p>Shrubs,
 Deciduous 21
 Evergreen ... 11</p> <p>Silver Lace Vine.. 31
 Silverbell 25
 Snapdragon 56
 Snowball 30
 Sod 64
 Sorbus 20, 23
 Spiraea 23, 44
 Spreaders 60
 Spruce 7, 8
 Spurge, Japanese 14
 Stock 56
 Strawberries 37
 Superphosphate ... 61
 Sweet Pepper 23
 Syringa 28, 29</p> |
| <p>Calendula 54
 Candytuft 52
 Carnation 54
 Caryopteris 23
 Celosia 54
 Cercidiphyllum ... 16
 Chamaecyparis ... 7
 Cherry Flowering.. 21
 Chestnut 33
 Chokeberry 20
 Chrysanthemums
 43, 51, 54</p> | <p>Landscaping 2, 3, 4, 5
 Landscape Materials
 65, 66</p> <p>Lantana 58
 Lawn Seed 60
 Leucothoe 13
 Ligustrum 26
 Lilac 28, 29
 Lilium 52
 Lily-of-the-Valley 50
 Lime 61
 Linden 20
 Liriodendron 17
 Lobelia 55, 58
 Locust, Honey 17
 Lonicera 26, 31</p> | <p>Taxus 9, 10
 Thuja 10
 Tilia 20
 Tomato Plants 57
 Tree Care 66
 Trees, Deciduous .. 15
 Trees, Evergreen.. 7
 Tsuga 10
 Tuliptree 17
 Turf Builder 60</p> <p>Ulmus 20</p> |
| <p>Clematis 31
 Clethra 23
 Cleome 55
 Convallaria 50
 Cornus 16, 23
 Cosmos 55
 Cotoneaster 24
 Crab, Flowering 13, 19
 Cranberry Amer'n 29
 Crataegus 16
 Cydonia 24
 Cypress 7</p> | <p>Mesembryan-
 themum 58
 Mock Orange 27
 Morning Glory ... 58
 Mt. Ash 20
 Mountain Laurel .. 13
 Myrica 27
 Myrtle 14</p> <p>Nicotiana 55</p> <p>Oak 20
 Oenothera 52</p> | <p>Vaccinium 29, 36
 Verbena 56, 58
 Viburnum 29, 30
 Vigoro 62
 Vinca 14, 58
 Vines 31, 58
 Viola 53
 Virginia Creeper. 31</p> |
| <p>Dahlia 58
 Daphne 11
 Day Lily 51, 52
 Delphinium 51
 Deutzia 24
 Dianthus 55
 Dogwood 16, 23</p> | <p>Pachysandra 13
 Pansies 57
 Peaches 32
 Pears 32, 33
 Peat Moss 63
 Perennials 44 to 54
 Petunias 55, 58
 Philadelphus 27
 Phlox 55
 Phosphate Rock .. 61</p> | <p>Weed-Killers 60
 Weigela 30
 Willow 20
 Winterberry 26
 Winter Creeper .. 11
 Wisteria 31</p> <p>Yew 9, 10</p> <p>Zinnia 56, 57</p> |
| <p>Elaeagnus 24
 Elm 20
 Euonymus .. 11, 12, 24
 Evergreens 7, 11</p> | <p>Fertilizers 61, 62
 Fir 7
 Firethorn 13
 Forsythia 25
 Fruits 32, 33, 36, 37
 Fungicides 59</p> | |



RETURN POSTAGE GUARANTEED BY
CORLISS BROS.
 INCORPORATED
 REYNARD ST., GLOUCESTER, MASS.

U. S. POSTAGE
PAID
 Gloucester, Mass.
 Permit No. 27

Sec. 34.66, P.L. & R.



Plant America!

RETURN POSTAGE GUARANTEED

POSTMASTER: If undeliverable for any reason, notify sender, stating reason, on Form 3547, postage for which is guaranteed.

U. S. DEPARTMENT OF AGRICULTURE

LIBRARY
 WASHINGTON 25, D. C.

OFFICIAL BUSINESS

PRINTED MATTER

PENALTY FOR PRIVATE USE TO AVOID
 PAYMENT OF POSTAGE, \$300
 (GPO)

Library, U. S. Dept. of Agriculture,
 WASHINGTON 25, D. C.