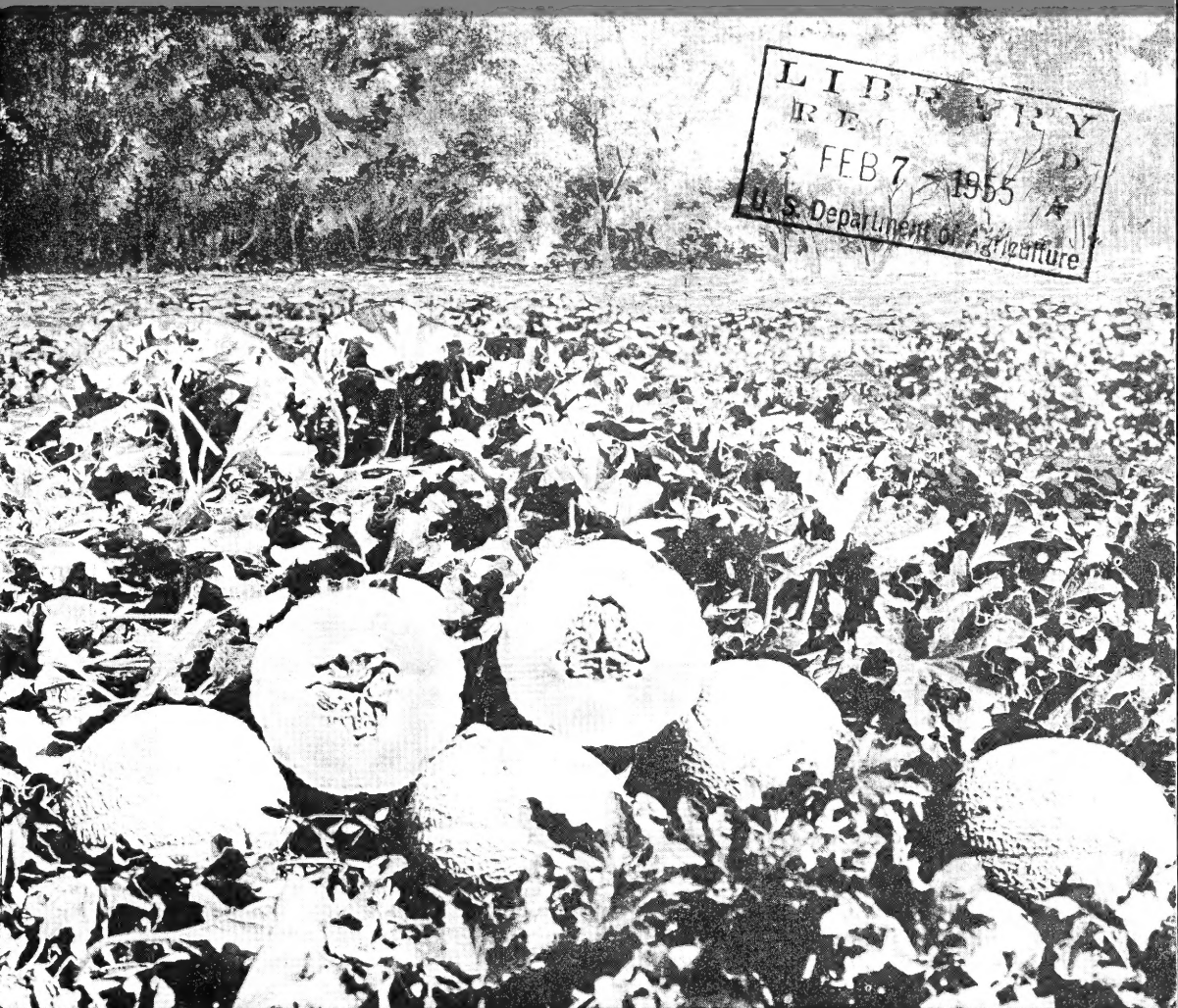


Garwood SEEDS

QUALITY

Market Growers Catalog - 1955



LIBRARY
RECEIVED
FEB 7 1955
U. S. Department of Agriculture

SOME MIGHTY FINE QUEEN OF COLORADO MELONS

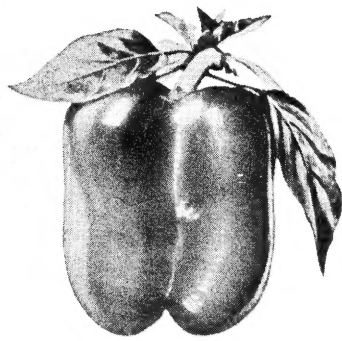
H. D. Garwood Seed Company

"THE HOME OF THE CANTALOUPE"

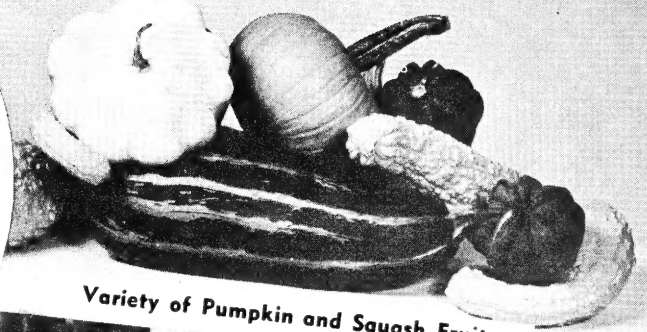
ROCKY FORD



COLORADO

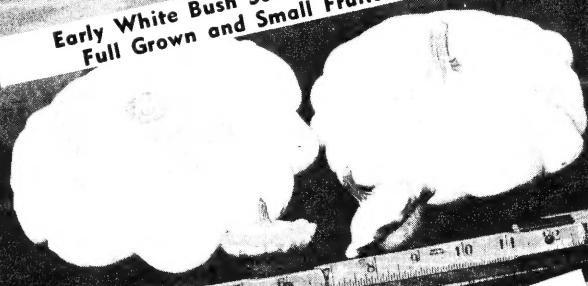


California Wonder Pepper



Variety of Pumpkin and Squash Fruits

Early White Bush Scallop Squash
Full Grown and Small Fruits



Bender's Surprise Muskmelon

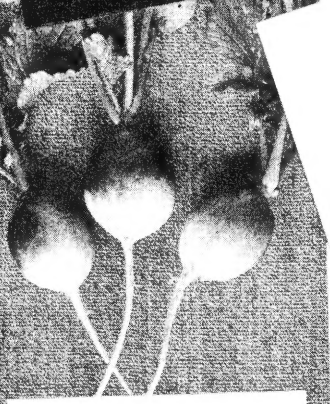
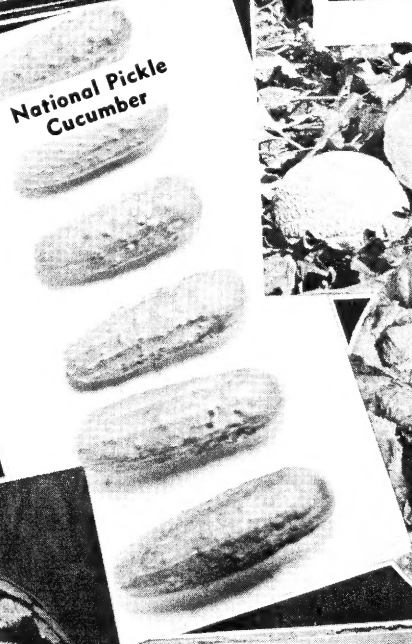
Queen of Colorado
Muskmelon



Lettuce
Imperial No. 847



National Pickle
Cucumber



Radish—White Tip



Watermelon Dixie Queen



Honey Rock Muskmelon

THERE'S A REASON

*Why Many Commercial
Gardeners Have Been Planting*

Garwood's Quality Seeds

For Over 50 Years



SEEDS, grown under irrigation here in Colorado's Arkansas Valley, are shipped to every large commercial area the world over. Wherever you get your **VINE SEEDS**, chances are they were grown in the Rocky Ford District, "The Home of the Cantaloupe."

THE NAME GARWOOD has been connected with **QUALITY SEEDS** for over half a century. **GARWOOD'S QUALITY SEEDS** are known and used—wherever vegetables are produced commercially.

WE ARE PROUD of our record. Each year we strive to grow **BETTER SEEDS** for **BETTER GROWERS**. We select and reselect our stocks so that we truly believe that

THERE ARE NO BETTER SEEDS THAN GARWOOD'S.

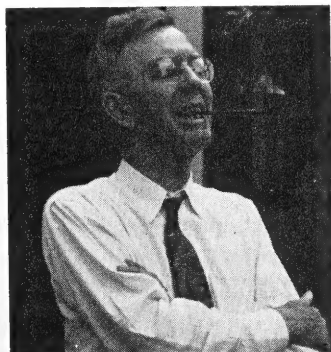
MANY OF OUR CUSTOMERS feel the same way, for they come back year after year for their seeds. Mrs. Rogers of Iowa writes "We have used your seeds for several years and are very well pleased with them. Thank you."

IF YOU haven't used Garwood's Quality Seeds, why not give them a trial? Plant them alongside of the stocks that you have been using. It will convince you that

Garwood's Quality Seeds Produce Quality Crops

Our sincere best wishes for the coming season.

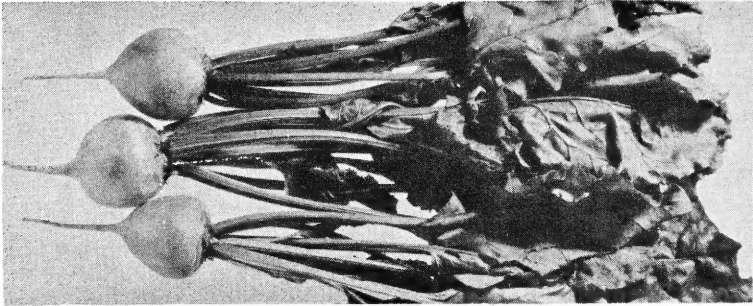
H. D. GARWOOD SEED COMPANY
ROCKY FORD, COLORADO



Fred S. Guelf

FRED S. GUELF, Owner

Beet



Perfected Detroit

PERFECTED DETROIT, Dark Red—58 days. An outstanding variety for canning and market. Our stock is very uniform as to size of tops, shape and size of roots. Tops small, slender, erect; roots globe shaped, symmetrical with white collar and tap root; interior very uniform in color with zones barely discernible, flesh seemingly a solid ball of red meat; remains tender and of highest quality until fully grown.

Prices Prepaid: Oz. 15c; ¼ lb. 45c; 1 lb. \$1.40; 5 lbs. \$6.50; 10 lbs. \$12.00

SELECT EARLY WONDER—53 days. Valuable to truckers and shippers as a first early variety; much used for fall planting. Tops medium small, erect; roots semi-globular, blood red, with small tap root. Flesh a beautiful red, slightly zoned with lighter shade.

Prices Prepaid: Oz. 15c; ¼ lb. 45c; 1 lb. \$1.40; 5 lbs. \$6.50; 10 lbs. \$12.00

CROSBY'S EGYPTIAN—55 days. A splendid home and market sort. Tops medium sized, roots flat-globe shaped with small tap root; very dark purplish-red. Flesh deep purplish-red zoned with a lighter shade; crisp and tender. Our stock is very select.

Prices Prepaid: Oz. 15c; ¼ lb. 45c; 1 lb. \$1.40; 5 lbs. \$6.50; 10 lbs. \$12.00

GREEN TOP BUNCHING—52 days. An extremely attractive early bunching beet. Tops are medium sized and erect, foliage greyish-green and does not turn red or brown late in the season. Roots round, smooth and glossy. Flesh finer grained and less fibrous than most bunching beets.

Prices Prepaid: Oz. 15c; ¼ lb. 45c; 1 lb. \$1.40; 5 lbs. \$6.50; 10 lbs. \$12.00

Swiss Chard

FRENCH DARK GREEN, Large Ribbed—55 days. A favorite among many gardeners because of its broad, thick, meaty midribs which are used like asparagus. Leaves almost smooth and dark green. Stem thick, broad and white.

Prices Prepaid: Oz. 15c; ¼ lb. 45c; 1 lb. \$1.35; 5 lbs. \$6.25; 10 lbs. \$11.50

LUCULLUS—55 days. Fine for home or market use. Stems and midribs are light green, broad and thick; leaves light green, fleshy, crumpled and attractive; excellent greens.

Prices Prepaid: Oz. 15c; ¼ lb. 45c; 1 lb. \$1.35; 5 lbs. \$6.25; 10 lbs. \$11.50

Broccoli

ITALIAN GREEN SPROUTING (Calabrese)—65 days. The outstanding variety for the trade. Our strain is tall, erect, with a central head and numerous side shoots. When the central head is cut, the side sprouts shoot out small clusters which continue to furnish edible heads for a long season. Adapted to freezing preservation.

Prices Prepaid: Oz. 30c; ¼ lb. 95c; 1 lb. \$3.00; 5 lbs. \$13.75; 10 lbs. \$25.00

Cabbage



COPENHAGEN MARKET, Extra Select—66 days. Distinctly and uniformly early. Splendid for early market and shipment; proving valuable as an early kraut variety. Plants small, compact, allowing very close planting; stems short; heads uniformly round; firm; become 6-7 inches in diameter, weigh 3½-4 lbs. Interior clear white and of excellent quality. Our stock is very select, and will give perfect satisfaction.

Prices Prepaid: Oz. 35c; ¼ lb. \$1.00; 1 lb. \$3.00; 5 lbs. \$13.75

Select Copenhagen Market Cabbage

SPECIAL GOLDEN ACRE—64 days. The earliest round headed cabbage; especially valuable for early market and shipping. Plants very small and compact; stems short; heads are uniformly round; firm, commonly 6 inches in diameter and weigh 3 pounds. Similar to the Copenhagen Market but is several days earlier and heads are smaller.

Prices Prepaid: Oz. 35c; ¼ lb. \$1.00; 1 lb. \$3.00; 5 lbs. \$13.75

GOLDEN ACRE RESISTANT (Resistant Detroit)—64 days. Similar to Golden Acre except slightly larger plant growth and not quite as uniform, as is typical of all yellows—resistant strains. Has earliness and is desirable for planting on yellows infested soil. Plants medium small, suitable for close planting, medium light green. Heads 6 to 6½ inches, round, solid, interior white and of good quality.

Prices Prepaid: Oz. 40c; ¼ lb. \$1.35; 1 lb. \$4.00; 5 lbs. \$18.75

GLORY OF ENKHUIZEN—76 days. Very popular for home or market garden, particularly valuable for kraut. Heads very large; globular; 8-9 inches in diameter; firm; commonly weigh 6-8 pounds; stem medium short; sure header and good keeper.

Prices Prepaid: Oz. 35c; ¼ lb. \$1.00; 1 lb. \$3.00; 5 lbs. \$13.75

MAMMOTH RED ROCK—90 days. The best of the large red cabbages. Our stock is very select. Heads round to slightly flattened globe shape; commonly 7 inches in diameter and weigh about 7 pounds; very hard, deep purplish-red.

Prices Prepaid: Oz. 35c; ¼ lb. \$1.00; 1 lb. \$3.00; 5 lbs. \$13.75

HOLLANDER BALLHEAD—100 days. Our stock of this variety is decidedly the best of the late varieties. Heads become firm while still rather small, reach good marketable size in 100 days, but continue to enlarge, becoming mature in about 120 days. Plants medium small, allowing close planting; short stemmed; erect and compact; very hardy. Heads spherical; 6½-7 inches in diameter, weight 6-7 pounds; remarkably firm and solid, of excellent quality and a perfect keeper in storage until late spring.

Prices Prepaid: Oz. 35c; ¼ lb. \$1.00; 1 lb. \$3.00; 5 lbs. \$13.75

Cauliflower

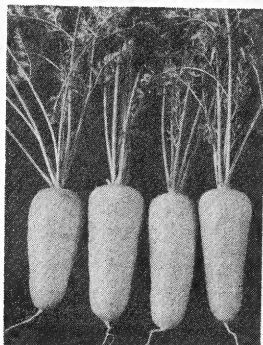
SNOWBALL "X" SPECIAL—60 days. This strain is best adapted for use under a wide range of conditions and is generally considered the most satisfactory for main crop for fall harvest. Plants are large and erect with ample foliage for head coverage. Leaves long, rather straight and medium bright green color. Produces some heads in about 55 days but a characteristic of the variety is its tendency to mature heads more gradually than the Super-Snowball strains. The heads are large, smooth, very deep, firm and pure white. Quality is unexcelled.

Prices Prepaid: Pkt. 25c; ¼ Oz. 50c; 1 Oz. \$1.50; ¼ lb. \$5.00; 1 lb. \$15.00

SNOWBALL "Y" SELECT—65 days. A selection similar to Snowball "X" but more vigorous and later maturing. Plants large, leaves numerous, fairly erect, medium green. Heads uniform in size and maturity; large, smooth, heavy. Because of its vigor, this strain has proven very reliable under adverse growing conditions.

Prices Prepaid: Pkt. 25c; ¼ Oz. 60c; 1 Oz. \$1.85; ¼ lb. \$6.25; 1 lb. \$18.50

Carrot



Chantenay, Red Cored

CHANTENAY, RED CORED—70 days. This is a distinct improvement over the old type Chantenay, especially in color, texture, and quality of flesh and has been accepted with much enthusiasm by canners and market growers. Fine for quick freezing. Roots deep reddish-orange; 5½-6 inches long, 2¼ inches thick at the shoulder, tapered, stump-rooted; core reddish-orange, almost the same color as the flesh and so inconspicuous as to make the term coreless very appropriate; flesh fine grained and tender; of sweet, delicate flavor.

Prices Prepaid: Oz. 20c; ¼ lb. 65c; 1 lb. \$2.00; 5 lbs. \$9.50; 10 lbs. \$18.00

DANVERS, IMPROVED RED CORED—75 days. A refined, short top Danvers. Roots 6-7 inches long, about 2 inches in diameter at the shoulder, tapering to a half stump. Smooth exterior and of excellent color. Flesh tender, sweet and of fine flavor. Core small and the same dark red color as the rest of the flesh. Especially adapted to use by market gardeners both for bunching and as a basket carrot.

Prices Prepaid: Oz. 20c; ¼ lb. 65c; 1 lb. \$2.00; 5 lbs. \$9.50; 10 lbs. \$18.00

IMPERATOR—77 days. Popular bunching variety for shipping in the South and California, and should be used more in the East and Middle West to compete with shipped-in produce. Roots 8 inches long, 1¾ to 2¼ inches across the shoulder. Cylindrical in shape and usually well stump-rooted at maturity. Color a deep orange.

Prices Prepaid: Oz. 20c; ¼ lb. 65c; 1 lb. \$2.00; 5 lbs. \$9.50; 10 lbs. \$18.00

STREAMLINER—79 days. An ideal bunching carrot for shippers and market trade. Tops short, rather sparse, dark green and strong. Roots long, slender, nearly cylindrical; at maturity 8-9 inches long, 1¼-1½ inches at shoulder. Color very deep orange, small core, uniformly red.

Prices Prepaid: Oz. 20c; ¼ lb. 65c; 1 lb. \$2.00; 5 lbs. \$9.50; 10 lbs. \$18.00

Celery

We have selected the very best stocks of Celery for market use.

GOLDEN PLUME or WONDERFUL—85 days. An improved strain, bred to fill the need for a taller, longer stemmed Golden Plume. Retains earliness and ease of blanching of the original strain but is more compact in form, straighter, and better "shingled"; much better adapted to standard crate. Heavy producer. Normally 24-26 inches tall with stems 7½ to 8½ inches long and full hearted.

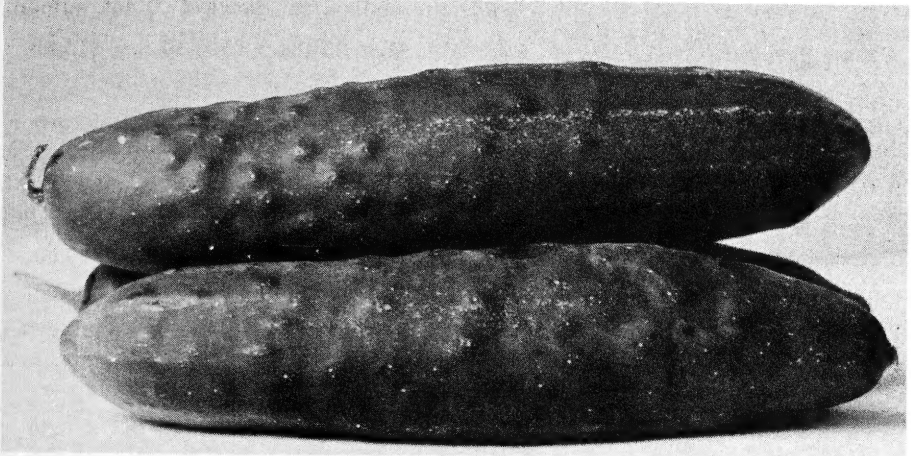
Prices Prepaid: Pkt. 25c; Oz. 90c; ¼ lb. \$2.90; 1 lb. \$8.70; 5 lbs. \$38.50

UTAH PASCAL NO. 15—125 days. An excellent strain of Green midseason celery. It is easier to blanch than Utah or Emperor. Height 26 to 28 inches, stems 9-10 inches long; very heavy, rounded with narrow channel, slightly tapered from base to first joint. Stems numerous, forming compact head and hastening blanching of inner stems and hearts. Crystal smoothness and appearance when thoroughly blanched.

Prices Prepaid: Pkt. 25c; Oz. 90c; ¼ lb. \$2.90; 1 lb. \$8.70; 5 lbs. \$38.50

Cucumber

**CUCUMBER SEED for PICKLE PACKER and SHIPPER IS OUR SPECIALTY
THERE IS NO BETTER SEED THAN GARWOOD'S**



A. & C. or ACE—67 days. A fine dark green slicing variety that has become very popular with the shippers. Its outstanding value is the very dark green color, which it holds longer than most other varieties. The dark color is carried well around the blossom end of the fruits, the light stripes being almost entirely eliminated. Fruits average about 10 inches long by $2\frac{1}{4}$ inches in diameter; straight and cylindrical. Vines robust and heavy yielders.

Prices Prepaid: Oz. 20c; $\frac{1}{4}$ lb. 65c; 1 lb. \$2.00; 5 lbs. \$9.25; 10 lbs. \$17.00

COLORADO—67 days. This variety is a real moneymaker for the market grower. A very dark green color carried well around the blossom end and not inclined to have light color stripes. Fruits about 10 inches long, straight and symmetrical. Vines are vigorous and heavy yielders. A perfect packer and shipper.

Prices Prepaid: Oz. 20c; $\frac{1}{4}$ lb. 65c; 1 lb. \$2.00; 5 lbs. \$9.25; 10 lbs. \$17.00

CUBIT—67 days. A new variety that appears well adapted to fresh market use. Its dark green color and shape makes a very attractive appearance. Fruits are 10 inches long, $2\frac{1}{4}$ inches in diameter, cylindrical, rounded ends, very dark green with indistinct starring on the blossom end.

Prices Prepaid: Oz. 20c; $\frac{1}{4}$ lb. 65c; 1 lb. \$2.00; 5 lbs. \$9.25; 10 lbs. \$17.00

EARLIEST OF ALL—62 days. Very extensively used as a pickling sort in the South. As a slicer it is unexcelled. Dark green colored, very uniform and square ended. About 7 inches long it is a fine early market sort.

Prices Prepaid: Oz. 20c; $\frac{1}{4}$ lb. 65c; 1 lb. \$2.00; 5 lbs. \$9.25; 10 lbs. \$17.00

EARLY FORTUNE IMPROVED or TAXPAYER—60 days. Our stock of this variety is much more uniform and darker than the older strains. Fruits dark green, tapering abruptly at the stem end, 8 to 9 inches long by $2\frac{1}{2}$ inches in diameter.

Prices Prepaid: Oz. 20c; $\frac{1}{4}$ lb. 65c; 1 lb. \$1.85; 5 lbs. \$8.50; 10 lbs. \$15.50

LONGFELLOW—72 days. Well named on account of its long, slender, handsome appearance. Dark green, straight, uniform. 12 to 14 inches long by $2\frac{1}{2}$ inches in diameter. Brings top market price. Also used for hothouse growing.

Prices Prepaid: Oz. 20c; $\frac{1}{4}$ lb. 65c; 1 lb. \$1.85; 5 lbs. \$8.50; 10 lbs. \$15.50

Cucumber

LONG GREEN IMPROVED—68 days. An old favorite; long, slender, somewhat warty and tapering toward the stem end; 12 to 14 inches long by 3 inches in diameter. A very dark green which holds up well on the market. Black spined.

Prices Prepaid: Oz. 20c; ¼ lb. 65c; 1 lb. \$1.85; 5 lbs. \$8.50; 10 lbs. \$15.50

MARKETER — 65 days. A new, heavy yielding variety much on the order of Straight Eight. Holds its dark green color well. Stands heat better than most varieties. In size and shape it is very similar to Straight Eight, but will out-yield that variety on account of the exceptionally large number of female blooms per plant.

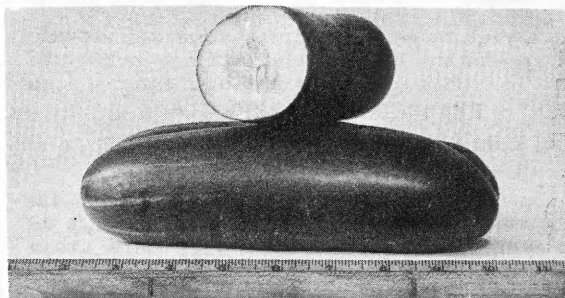
Prices Prepaid: Oz. 20c; ¼ lb. 65c; 1 lb. \$2.00; 5 lbs. \$9.25; 10 lbs. \$17.00

NATIONAL PICKLE—56 days. A black spined variety much used by pickle packers for the production of small pickles. Vines are small but heavy producers. Fruits are straight, 6½ by 2½ inches, full ended and very symmetrical.

Prices Prepaid: Oz. 20c; ¼ lb. 65c; 1 lb. \$1.85; 5 lbs. \$8.50; 10 lbs. \$15.50

STAYS GREEN, LONG STRAIN—60 days. A strictly modern strain of that old southern favorite. We have bred for better length and color. A rich, deep green, very symmetrical and square ended. 8 to 10 inches long by 2¼ inches thick.

Prices Prepaid: Oz. 20c; ¼ lb. 65c; 1 lb. \$2.00; 5 lbs. \$9.25; 10 lbs. \$17.00



STRAIGHT EIGHT — 65 days. An excellent new variety that has become a favorite with many shippers. Fruits are very symmetrical, almost cylindrical, with well rounded ends; deep, rich green color, 8 inches long; 2 inches in diameter. Indistinct starring on blossom end.

Prices Prepaid: Oz. 20c; ¼ lb. 65c; 1 lb. \$2.00; 5 lbs. \$9.25; 10 lbs. \$17.00

WEST INDIA GHERKIN or BURR — 60 days. Distinct from other varieties, grown only for pickles. Fruits are small, oval, 2 inches long by 1 inch in diameter, covered with spines. Light green colored. Seeds very small.

Prices Prepaid: Oz. 25c; ¼ lb. 85c; 1 lb. \$2.50; 5 lbs. \$11.75; 10 lbs. \$22.00

EARLY SURECROP HYBRID—58 days. All-American selection. An amazing new Hybrid with marked resistance to Mosaic and Downy Mildew. Fruits slender, blunt ends, 8½ inches long, 2½ inches in diameter. Holds dark green color well. Flesh crisp, white and with small seed cavity. Fine for greenhouse, market or home use.

Prices Prepaid: Pkt. 50c; Oz. \$3.50; ¼ lb. \$11.00; ½ lb. \$17.75; 1 lb. \$35.00

Egg Plant

BLACK BEAUTY—80 days. The most popular variety and the kind grown most extensively by market gardeners. The fruits are large, handsome and of a deep rich dark purple color. The plants are very robust and prolific, bearing 4 to 6 large fruits on each bush. Our stock is early, ripening large crops before frost.

Prices Prepaid: Pkt. 25c; Oz. 85c; $\frac{1}{4}$ lb. \$2.75; 1 lb. \$8.00; 5 lbs. \$35.00

Endive

FULL HEART BATAVIAN—90 days. Distinctly improved form of Broad Leaved Batavian or Escarolle. Plants medium large with very deep, full, compact, well-blanching heart of infolded broad leaves that are of thick buttery texture.

Prices Prepaid: Oz. 15c; $\frac{1}{4}$ lb. 45c; 1 lb. \$1.50; 5 lbs. \$6.50

GREEN CURLED—95 days. A variety with deeply cut leaf margins. The leaves are large, finely cut and curled. Blanches well at heart in summer and late fall. Becomes about 15 inches across and very popular for market use.

Prices Prepaid: Oz. 15c; $\frac{1}{4}$ lb. 45c; 1 lb. \$1.50; 5 lbs. \$6.50

Kale

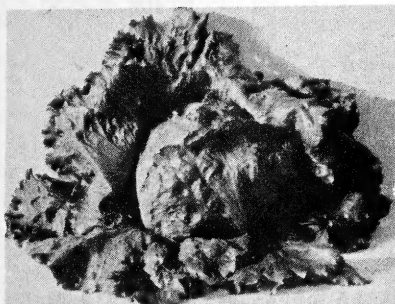
SPECIAL BLUE SCOTCH DWARF—55 days. We have an excellent and very even stock of this low growing, spreading variety, which is the one most commonly grown. The leaves are large, finely curled, of a deep bluish-green color and of excellent quality.

Prices Prepaid: Oz. 25c; $\frac{1}{4}$ lb. 75c; 1 lb. \$2.25; 5 lbs. \$10.00; 10 lbs. \$17.50

Lettuce

HEADING VARIETIES

Our lettuce is produced by the most outstanding grower in the United States, in fact it is the standard of excellence wherever commercial lettuce is grown. We are sure that our stocks will compare favorably with any that you have ever grown.



GREAT LAKES—83 days. All-America Winner. This new Iceberg type lettuce, developed at Michigan State College, will produce large, solid heads in midsummer heat without bolting to seed. Quite resistant to tipburn. Plants are large and vigorous. Heads large and extremely hard. Leaves dark green, very attractively fringed and blistered, they wrap tightly over the head making a very solid head of unusual crispness. Give this fine head lettuce a trial.

Prices Prepaid: Pkt. 25c; Oz. 40c;
 $\frac{1}{4}$ lb. \$1.40; 1 lb. \$4.00; 5 lbs. \$18.75

PREMIER GREAT LAKES—80 days. A less leafy strain of Great Lakes developed at Penn State College, receiving All America Award, and a 3-5 days earlier. Leaves are smoother, margins plainer and lighter green. Heads large, firm, uniform and slightly ribbed.

Prices Prepaid: Pkt. 25c; Oz. 40c; $\frac{1}{4}$ lb. \$1.40; 1 lb. \$4.00; 5 lbs. \$18.75

Lettuce

IMPERIAL NO. 152—81 days. A dependable header and fine shipper for early fall planting in California and Arizona. Resistant to brown blight. Heads medium sized, attractive, round, solid with well-folded leaves; outer leaves spreading, medium light green.

Prices Prepaid: Oz. 35c; $\frac{1}{4}$ lb. \$1.00; 1 lb. \$3.00; 5 lbs. \$14.25; 10 lbs. \$27.50

IMPERIAL NO. 847—83 days. Very popular in the East and South as a market garden and shipping variety. Resistant to brown blight. Crisp heading plants of medium size. Leaves smooth, thick, medium light green. Heads round, well formed, firm, low seed stalk.

Prices Prepaid: Oz. 35c; $\frac{1}{4}$ lb. \$1.00; 1 lb. \$3.00; 5 lbs. \$14.25; 10 lbs. \$27.50

PENNLAKE—80 days. A cross between Imperial 847 and Great Lakes. Medium to small heads with dark green outer leaves, well folded, slightly crumpled. Interior crisp and firm. Resists tip-burn. Fine for early spring or late summer.

Prices Prepaid: Oz. 40c; $\frac{1}{4}$ lb. \$1.30; 1 lb. \$4.00; 5 lbs. \$18.75; 10 lbs. \$35.00

NON-HEADING OR LOOSE LEAF VARIETIES

GRAND RAPIDS FORCING—35 days. Ours is an improved strain of this popular variety. There is no better forcing variety among the curled leaves sorts. Early, hardy, disease resistant; plants large, upright, compact and handsome. Color bright green, leaves large, broad edges, much waved and frilled, tender and sweet.

Prices Prepaid: Oz. 20c; $\frac{1}{4}$ lb. 65c; 1 lb. \$1.90; 5 lbs. \$8.75; 10 lbs. \$16.50

BLACK SEED SIMPSON—35 days. Early, dependable and widely grown in home and market gardens. Plants large, attractive, compact, with broad, frilled light green leaves that are of fine crisp texture and splendid quality. The best leaf variety for general purposes.

Prices Prepaid: Oz. 20c; $\frac{1}{4}$ lb. 65c; 1 lb. \$1.90; 5 lbs. \$8.75; 10 lbs. \$16.50

Mustard

SOUTHERN GIANT CURLED—40 days. A long standing variety, very hardy and the most popular for greens. Leaves large and wide, bright green and very curly on the edges. The plant, although slightly spreading, is quite upright in growth. Does not bolt to seed as quickly as most varieties.

Prices Prepaid: Oz. 15c; $\frac{1}{4}$ lb. 40c; 1 lb. \$1.20; 5 lbs. \$5.50; 10 lbs. \$10.00

TENDER GREEN or MUSTARD SPINACH—45 days. A valuable, heavy productive addition to the list of "greens" for home or market garden and for shipping. Rapidly produces a large rosette of thick, tender, dark green leaves that are smooth, glossy, and not lobed; very slow to produce seed stalks.

Prices Prepaid: Oz. 15c; $\frac{1}{4}$ lb. 40c; 1 lb. \$1.20; 5 lbs. \$5.50; 10 lbs. \$10.00

Cantaloupe

We Specialize in producing Quality Cantaloupe Seed for the large Commercial Growers. Ask for quantity prices.

ARIZONA NUGGET—92 days. A very fine quality cantaloupe which was originated at Yuma, Arizona, for shipment to Eastern markets. Vines are very vigorous and productive. The melons are heavily netted but show a slight rib. Flesh is a deep salmon color, fine grained, very firm and with a small seed cavity. Measuring 5½ inches by 5 inches they pack 12 to 15 to the flat crate.

Prices Prepaid: Oz. 20c; ¼ lb. 60c; 1 lb. \$2.00; 5 lbs. \$8.80; 10 lbs. \$16.00

ARIZONA NO. 13—82 days. Developed by the University of Arizona. It combines the desirable eating qualities of Perfecto with the firm-fleshed, shipping qualities of Mildew Resistant No. 45. A small melon, generally running to the standard 45 in size. Mostly globe shaped with no rib or stripe. The rind is thin, tough and fairly dark green. Flesh is bright orange to salmon in color, thick, juicy and very sweet with high sugar content and a wonderful flavor. It can be picked on a full slip and stand up under long shipment.

Prices Prepaid: Oz. 20c; ¼ lb. 60c; 1 lb. \$2.00; 5 lbs. \$8.80; 10 lbs. \$16.00

EDEN GEM—90 days. The original Rocky Ford cantaloupe. Vines are rust resistant and very prolific. Fruits 5½ inches long by 5 inches in diameter, or nearly round, uniform in size. Flesh thick, firm and green, with small gold lined seed cavity; fine grained, sweet and of excellent quality.

Prices Prepaid: Oz. 20c; ¼ lb. 60c; 1 lb. \$2.00; 5 lbs. \$8.80; 10 lbs. \$16.00



Hearts of Gold Improved

HEARTS OF GOLD IMPROVED—90 days. A mighty fine cantaloupe and a great favorite in Indiana and Michigan market sections. The outstanding features of this cantaloupe is its beautiful appearance and wonderful eating qualities. The flesh is deep golden color, fine flavor, sweet, spicy and fine grained. Oblong in shape, well netted except for a narrow stripe between shallow ribs. Packs 12 to the jumbo flat and will ship moderate distances.

Prices Prepaid: Oz. 20c; ¼ lb. 60c; 1 lb. \$2.00; 5 lbs. \$8.80; 10 lbs. \$16.00

NEW IDEAL—85 days. The vines of the New Ideal are of medium growth but very vigorous and healthy. A very prolific producer with the first set unusually heavy. In size these melons run mostly jumbo 12's to the flat crate. They are very uniform in size and oval in shape, covered with a solid, well developed netting. The flesh is similar to the Perfected Perfecto; small seed cavity, a very deep orange-salmon color, thick meat, very firm and fine grained.

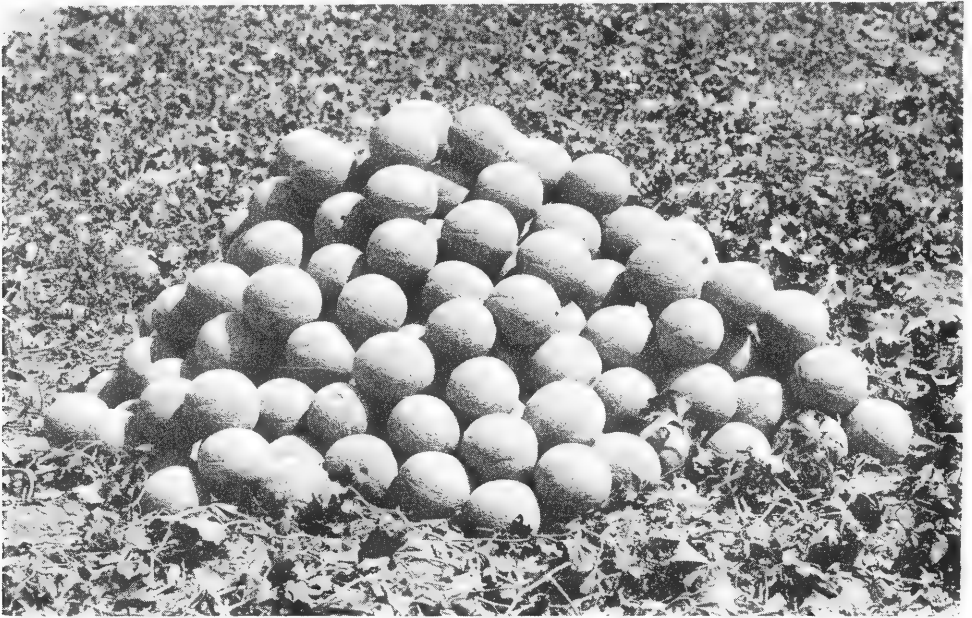
Prices Prepaid: Oz. 25c; ¼ lb. 60c; 1 lb. \$2.00; 5 lbs. \$8.80; 10 lbs. \$16.00

Cantaloupe

HALE'S BEST STRAINS

HALE'S BEST, JUMBO—85 days. This Jumbo selection is so large that they are more adapted for roadside sale than for crating. They will average about 4½ pounds and would pack 9 or less to the jumbo flat crate. A very uniform type having a distinct stripe running from the stem to blossom end. Measuring 6½ by 6 inches they are well netted between the distinct sutures, with practically no ribs. The flesh is thick, deep salmon, sweet flavored and of the finest eating qualities.

Prices Prepaid: Oz. 25c; ¼ lb. 60c; 1 lb. \$2.00; 5 lbs. \$8.80; 10 lbs. \$16.00



A pile of HALE'S BEST ready for seeding—note the uniformity

HALE'S BEST NO. 36—85 days. Since introduction this variety has continued to be one of the leading strains for the market grower. So uniform in size and shape, measuring 5½ by 6 inches and packing 12 to the jumbo flat crate, there is no loss from off sizes. Very solidly netted, no ribs, and little if any sutures. The flesh is deep, very fine grained, rich, spicy and a deep salmon color. An excellent, uniform strain of Hale's Best for any requirement.

Prices Prepaid: Oz. 25c; ¼ lb. 60c; 1 lb. \$2.00; 5 lbs. \$8.80; 10 lbs. \$16.00

HALE'S BEST NO. 936—85 days. Selected from the No. 36 this melon is the most uniform of all the Hale's Best strains. While many firms list this variety under various names I have yet to see a better Hale's Best strain than our No. 936. Our planting stocks are taken from the very earliest of the crown-set melons, from heavy producing plants. The melons are then selected for their uniformity in size, shape, netting and interior qualities. In this way I am able to keep this strain up to the standard that I have set for a **PERFECT HALE'S BEST**. Slightly larger than the No. 36 the No. 936 carries a perfect net; has no sectors and runs to even Jumbo sizes. The vines are very hardy and vigorous, producing a crop of perfectly uniform melons. Measuring 6 by 5½ inches they will pack 12 melons to the jumbo crate. The flesh is a rich salmon, very thick and with a very small seed cavity. One of the principal characteristics of the No 936 is its uniformity, and high percentage of salable melons.

Prices Prepaid: Oz. 25c; ¼ lb. 60c; 1 lb. \$2.00; 5 lbs. \$8.80; 10 lbs. \$16.00

Cantaloupe



PERFECTED PERFECTO — 90 days. Since we introduced this high quality melon, back in 1933, we have continued to keep it the finest eating melon on the market. It should be spaced further apart than most cantaloupes on account of its extra strong, vigorous growth. It is highly resistant to disease and rust. The Perfected Perfecto is nearly round in shape, measuring 6 by 5½ inches, and packs 12 to 15 to the jumbo flat crate. The netting is very fine and closely laced, entirely covering the melon. Flesh is very thick, rich orange-salmon color and edible to the rind. The seed cavity is very small and the seeds are tightly packed.

Prices Prepaid: Oz. 25c; ¼ lb. 60c; 1 lb. \$2.00; 5 lbs. \$8.80; 10 lbs. \$16.00

PURDUE NO. 44—88 days. A Hale's Best selection introduced by Purdue University to obtain a top quality shipping cantaloupe with resistance to alternaria leaf spot. Alternaria Leaf Spot is a cantaloupe disease that causes the plants to fire at the center of the hill, losing most of the leaves by the time the fruits are matured. Not resistant to bacterial wilt however. The melons are very uniform in size, no pronounced ribs, heavy uniform netting. Size of the melons same as Hale's Best No. 936. We consider this melon one of the best of the Hale's Best type yet introduced. Better try some this year.

Prices Prepaid: Oz. 25c; ¼ lb. 60c; 1 lb. \$2.00; 5 lbs. \$8.80; 10 lbs. \$16.00

TEXAS RESISTANT NO. 1—85 days. A new cantaloupe resistant to downy mildew and aphids. Developed at Winter Haven, Texas by Texas Agricultural Experiment Station. A Hale's Best type, the vines are stout, vigorous, medium size, leaves are thick and unlike its Hale's Best parent. Fruits 5½ inches long, 5 inches in diameter; moderately netted. Flesh firm, rich salmon color with sweet, spicy flavor.

Prices Prepaid: Oz. 20c; ¼ lb. 60c; 1 lb. \$2.00; 5 lbs. \$8.80; 10 lbs. \$16.00

POLLOCK NO. 10-25—90 days. Fruits nearly round, 5½ by 5 in., no ribs, solid heavy net; flesh deep salmon, thick, fine texture, juicy, rich flavored. Very uniform.

Prices Prepaid: Oz. 20c; ¼ lb. 60c; 1 lb. \$2.00; 5 lbs. \$8.80; 10 lbs. \$16.00

ROCKY FORD, Green Flesh (Netted Gem)—90 days. Fruits 5½ by 5 in. Flesh green, fine grained, excellent distinct flavor. Heavy netted. Rust resistant. Prolific.

Prices Prepaid: Oz. 20c; ¼ lb. 60c; 1 lb. \$2.00; 5 lbs. \$8.80; 10 lbs. \$16.00

Cantaloupe

Powdery Mildew Resistant Strains

RESISTANT D-2—88 days. This new Mildew Resistant strain was developed from the No. 45, for use in the Imperial Valley. It is immune to some forms of mildew that had attacked other varieties. The D-2 is a heavy yielder and produces melons slightly larger than the No. 45. The net is heavier and rougher than most of the other strains. The flesh is deep salmon, the eating and shipping qualities are excellent—as are all other mildew resistant strains.

Prices Prepaid: Oz. 25c; $\frac{1}{4}$ lb. 60c; 1 lb. \$2.00; 5 lbs. \$8.80; 10 lbs. \$16.00

RESISTANT NO. 5—88 days. Many large shippers have hailed the No. 5 as the most outstanding shipping melon. It was developed from the No. 45 and shows more resistance to certain types of mildew. The sugar content is very high and in appearance it is much like its Hale's Best parent. On account of its high sugar content it should be picked on about a three-quarter slip, if it is to be shipped long distances. For local market it will stand being picked full slip. In appearance it is very similar to the other Mildew Resistant strains, except that the netting is more flat and finer lined, showing considerable suture.

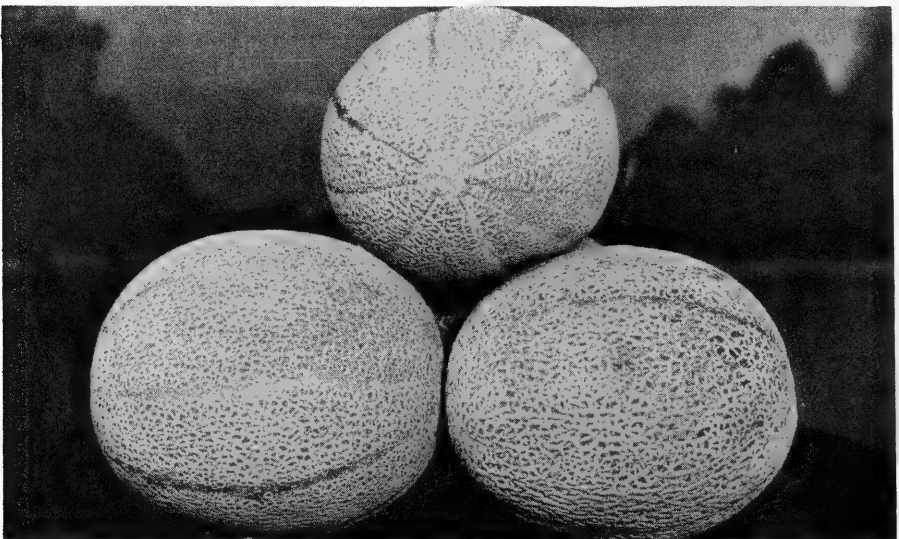
Prices Prepaid: Oz. 25c; $\frac{1}{4}$ lb. 60c; 1 lb. \$2.00; 5 lbs. \$8.80; 10 lbs. \$16.00

RESISTANT NO. 8—88 days. This melon is popular everywhere because of its size, prolificness and hardiness. The quality is good and will stand rough shipping. Having a fine exterior appearance the No. 8 does not run uniform in size, a feature that recommends it to the market grower. Well netted with thick, sweet, firm salmon flesh and a small seed cavity. The No. 8 will produce you a heavy crop of large, quality melons; average 7 by 6 $\frac{1}{2}$ inches in size.

Prices Prepaid: Oz. 25c; $\frac{1}{4}$ lb. 60c; 1 lb. \$2.00; 5 lbs. \$8.80; 10 lbs. \$16.00

RESISTANT NO. 45—88 days. With the single exception of the Hale's Best strains the No. 45 is no doubt the most widely planted strain of cantaloupes. Our strain of No. 45 is slightly oblong, well netted and with very solid flesh. Picked vine ripened, or full slip, it can be shipped long distances without any breakdown of the solid, firm flesh. The flesh color is a deep salmon, sweet flavored and firmer than most other varieties. The seed cavity is compact and well filled. The vines are vigorous and prolific, producing melons 6 $\frac{1}{2}$ by 6 inches—12 pack jumbo size. Commercial shippers will find the No. 45 an ideal melon for their purposes.

Prices Prepaid: Oz. 25c; $\frac{1}{4}$ lb. 60c; 1 lb. \$2.00; 5 lbs. \$8.80; 10 lbs. \$16.00



Muskmelon

BANANA—96 days. A long, tapering banana shaped melon. Desirable as a late maturing variety in the South. It is quite hardy and a vigorous grower. Learn the art of picking at just the right stage. Fruits 20 inches long and 4½ inches in diameter, tapering at both ends, smooth light yellow skin when matured, deliciously flavored and pink fleshed.

Prices Prepaid: Oz. 20c; ¼ lb. 55c; 1 lb. \$1.75; 5 lbs. \$7.70; 10 lbs. \$14.00

BENDER'S SURPRISE—90 days. Our own special strain of this very popular muskmelon. The fruits are oblong with full rounded ends, measuring 8 by 7 inches and weighing about 7 pounds. The skin is hard, greyish-yellow in color, distinctly ribbed with a coarse netting. The flesh is deep, bright salmon and of a delicious flavor.

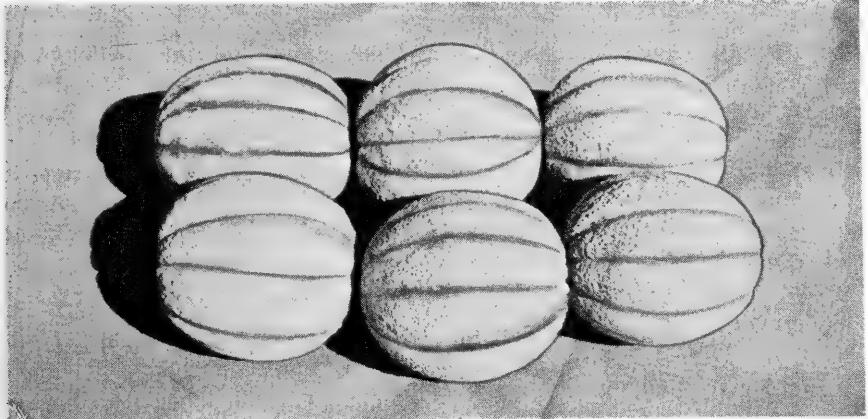
Prices Prepaid: Oz. 20c; ¼ lb. 55c; 1 lb. \$1.75; 5 lbs. \$7.70; 10 lbs. \$14.00

DELICIOUS—83 days. Similar to the Bender's Surprise muskmelon but much earlier and richer flavored. Fruits 5½ pounds, 6½ by 6 inches, coarse netting and prominent ribs. Rind is hard and creamy-green at maturity. Flesh is thick, bright salmon colored, very sweet and a delicious flavor.

Prices Prepaid: Oz. 20c; ¼ lb. 55c; 1 lb. \$1.75; 5 lbs. \$7.70; 10 lbs. \$14.00

HONEY ROCK or SUGAR ROCK—85 days. Winner of a Gold Medal, All-America Selections. This melon continues to be a favorite in the central states. A good shipper for short distances. Rind is tough, hard and brittle, with a very coarse, irregular net; grey-green in color it turns a golden-yellow when ripe. Flesh is medium thick, deep salmon, juicy and of excellent flavor. Medium in size it weighs about 3½ pounds and measures 6 by 5½ inches.

Prices Prepaid: Oz. 20c; ¼ lb. 55c; 1 lb. \$1.75; 5 lbs. \$7.70; 10 lbs. \$14.00



Some Nice Iroquois Melons

IROQUOIS—87 days. An improved variety developed at Cornell University, it combines resistance to fusarium wilt with high quality, yielding ability and good appearance. Fruits are 7 inches long by 6 inches in diameter; skin grey-green, hard rind, prominent ribs, good netting. Flesh thick, deep salmon color, fine texture, small seed cavity, flavor sweet-musky, and of excellent quality.

Prices Prepaid: Oz. 25c; ¼ lb. 60c; 1 lb. \$2.00; 5 lbs. \$8.80; 10 lbs. \$16.00

Muskmelon

PRIDE OF WISCONSIN—85 days. This fine muskmelon was developed from a cross of Honey Rock and Hearts of Gold. It combines the tough, hard rind of the Honey Rock with the depth of flesh of Hearts of Gold. Will stand shipping moderate distances. The rind is hard, slate colored and covered with a very distinct coarse, irregular, loosely laced grey netting. The flesh is very thick, firm, orange colored and of wonderful quality. The seed cavity is small and the seeds closely packed. Weighing about 4¾ pounds it will measure 6½ by 6 inches.

Prices Prepaid: Oz. 20c; ¼ lb. 60c; 1 lb. \$2.00; 5 lbs. \$8.80; 10 lbs. \$16.00



QUEEN OF COLORADO—88 days. All-America trials gave this melon Honorable Mention Award. A development from Pride of Wisconsin it is mostly oval in shape. Weighs about 5 pounds and measures 7 by 6½ inches. The rind is very hard, pearl-gray in color, with a most distinctive, coarse, loosely laced grey netting and is slightly ribbed. The flesh is very thick and solid, of a bright orange color with a small seed cavity; of superior eating qualities. A good shipper for short distances it is fast becoming a favorite in the East and Central states. You will make no mistake in trying this fine addition to the Muskmelon family, your trade will enjoy the luscious flavor. Our seed is hand-cut from superior melons.

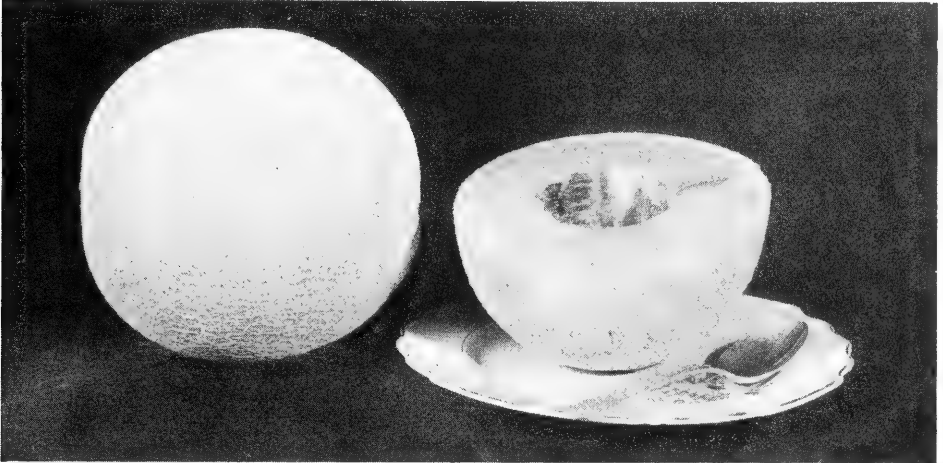
Prices Prepaid: Oz. 20c; ¼ lb. 60c; 1 lb. \$2.00; 5 lbs. \$8.80; 10 lbs. \$16.00

SCHOON'S HARDSHELL or NEW YORKER—A new and exceptionally fine-flavored muskmelon of the Bender type, maturing in 90 days. Especially valuable for its extra hard shell as it will stand up better than most muskmelons for shipping. Of a large size, weighing 6 to 7 pounds and measuring 8 by 7 inches, deeply ribbed it is covered, except on its distinct stripes, with a hard, greyish-yellow, rope like netting. When mature the rind is a beautiful golden-yellow. The flesh is medium grained, thick, a rich red-salmon color and of excellent flavor.

Prices Prepaid: Oz. 20c; ¼ lb. 60c; 1 lb. \$2.00; 5 lbs. \$8.80; 10 lbs. \$16.00

White Melons

So many White Skinned melons, of the Honeydew type, have been introduced the past few years that shippers have designated this class as "White Melons."



GOLDEN GLOBE—92 days. The finest of the white-skinned, orange fleshed melons. Nearly round in shape with a thin, tough rind covered with a slight, lightly traced netting. When fully ripe the rind is a beautiful golden color. The seed cavity is small, and the thick flesh is orange colored and edible to the rind. Vines are hardy and vigorous, yielding heavily over a long period. Picked on a full slip they will stand up several days, makes a good shipper. Excellent flavored it commands premium prices and repeat sales.

Prices Prepaid: Oz. 20c; $\frac{1}{4}$ lb. 60c; 1 lb. \$2.00; 5 lbs. \$8.80; 10 lbs. \$16.00

GOLDEN HONEYMOON or **GOLDEN RIND HONEYDEW**—92 days.. Earlier than the regular Honeydew it withstands heat better. Flesh is very thick, juicy, sweet and of a light emerald-green color; very similar to the regular Honeydew. The rind turns golden-yellow when about two-thirds grown, making a very attractive appearance. Of excellent quality.

Prices Prepaid: Oz. 20c; $\frac{1}{4}$ lb. 60c; 1 lb. \$2.00; 5 lbs. \$8.80; 10 lbs. \$16.00

CASABA GOLDEN BEAUTY—115 days. Grown extensively in California for local and shipping trade. Requires arid conditions for most satisfactory growth. Fruits are large and round, 6 to 8 inches in diameter. Tough, wrinkled skin of golden yellow. Flesh white, thick, juicy and very sweet. A good keeper.

Prices Prepaid: Oz. 25c; $\frac{1}{4}$ lb. 80c; 1 lb. \$2.50; 5 lbs. \$11.00; 10 lbs. \$20.00

HONEYDEW—GREEN FLESHED (Antibes)—112 days. The standard commercial Honeydew. Of African origin it requires a long growing season. Our strain is the smooth globe type preferred by the leading shippers. Measuring $7\frac{1}{2}$ by 7 inches the rind is hard and smooth with no netting or warts. Rind is creamy-white which changes to a slight golden tint when ripe. Flesh is light emerald-green, very thick, juicy and sweet.

Prices Prepaid: Oz. 20c; $\frac{1}{4}$ lb. 60c; 1 lb. \$2.00; 5 lbs. \$8.80; 10 lbs. \$16.00

MELO-GLOW or **WEAVER'S SPECIAL**—92 days. A white skin melon with a golden tint when ripe. Globe in shape, slightly netted, packs 12 to the flat crate. Flesh is a rich orange color with small seed cavity. Fine flavored. A good shipper and will stand several days after being picked on a full slip.

Prices Prepaid: Oz. 20c; $\frac{1}{4}$ lb. 60c; 1 lb. \$2.00; 5 lbs. \$8.80; 10 lbs. \$16.00

Watermelon

OUR SELECT STOCKS OF WATERMELON SEED ARE NORTHERN GROWN

BLACKLEE—90 days. A new Fusarium Wilt strain developed at Florida Experiment Station, also known as Black Seed Kleckley. Long oval, very symmetrical, fine texture, slightly crisp, very sweet with a delicate, distinctive flavor. Flesh a brilliant red, rind very hard and tough. Good shipper and keeper. Seeds black.

Prices Prepaid: Oz. 25c; $\frac{1}{4}$ lb. 80c; 1 lb. \$2.50; 5 lbs. \$11.00; 10 lbs. \$20.00

BLACK DIAMOND or **FLORIDA GIANT**—90 days. Very popular in the Central West and South. Makes a very vigorous vine growth, does not sunburn easily and is an excellent shipper. Fruits large oval, commonly 50 pounds. Very dark green with bluish bloom rind. Flesh bright red, sweet delicate flavor. Seeds dark mottled black.

Prices Prepaid: Oz. 25c; $\frac{1}{4}$ lb. 80c; 1 lb. \$2.50; 5 lbs. \$11.00; 10 lbs. \$20.00

NEW HAMPSHIRE MIDGET—75 days. A small, very early and productive "icebox" type melon. Diameter 6 inches, rind thin, light mottled green. Flesh medium red of good quality. Seeds black.

Prices Prepaid: Oz. 30c; $\frac{1}{4}$ lb. 90c; 1 lb. \$3.00; 5 lbs. \$13.20; 10 lbs. \$24.00

CONGO—90 days. A new Anthracnose Resistant variety developed at the Regional Vegetable Breeding Laboratory U.S.D.A., Charleston, S. C., formerly known as 46-40 and released last year. This is a large, semi-long type melon, resembling the Garrison variety generally in size and shape. It is a striped melon but the stripes are much darker than Garrison and is easily distinguished from that variety. Sizes up to 60 pounds are not uncommon. It is mostly free of the gourd-necks found in Garrison. Sugar content is high, about 12 percent. A very tough rind and firm flesh makes it a fine shipper. Quality excellent. Seeds are slightly smaller than Garrison, of very light tan with side pattern of darker tan. You will not go wrong in planting come of this fine melon. Supply of seeds is limited this season.

Prices Prepaid: Oz. 30c; $\frac{1}{4}$ lb. 90c; 1 lb. \$3.00; 5 lbs. \$13.20; 10 lbs. \$24.00.



The New Congo Melon.

Watermelon

OUR QUALITY WATERMELON SEED GOES TO EVERY IMPORTANT
WATERMELON SHIPPING SECTION



Dixie Queen

DIXIE QUEEN—85 days. A very attractive, large round melon which has made a hit wherever it has been grown. Its striking appearance commands instant attention, its flavor and quality bring repeat business from consumers. The fruits are almost round, measuring 15 by 12½ inches; rind is tough, a light green color veined with darker green. The flesh is a rich scarlet, stringless and very sweet. The seeds are small and white. A good yielder and shipper. Ordinarily weighs about 35 pounds but it does attain as high as 50 pounds. If you don't know the Dixie Queen better try a few now.

Prices Prepaid: Oz. 20c; ¼ lb. 60c; 1 lb. \$2.00; 5 lbs. \$8.80; 10 lbs. \$16.00

DIXIE QUEEN WILT RESISTANT—85 days. In every way an improvement over the regular strain. It is not only resistant to wilt but more vigorous, melons are larger in size; more uniform in shape, color and size. Flesh a richer red, more luscious and sweeter.

Prices Prepaid: Oz. 25c; ¼ lb. 80c; 1 lb. \$2.50; 5 lbs. \$11.00; 10 lbs. \$20.00

EARLY KANSAS—80 days. The earliest large, round shipping melon and very popular in the Middle West. It is also called "Indiana Red" and many other names. Usual size is 15 by 13 inches, weight 30 to 40 pounds, though it will attain as high as 60 pounds. The rind is tough, light green with broad bands of wavy stripes. Flesh is bright red, fine texture and excellent quality. Seeds are red, changing to buff when dried.

Prices Prepaid: Oz. 20c; ¼ lb. 60c; 1 lb. \$2.00; 5 lbs. \$8.80; 10 lbs. \$16.00

FLORIDA GIANT or CANNONBALL—See **BLACK DIAMOND** for description and prices. Our improved strain of this melon.

HONEY (The New Ice Box Size) — 77 days. A relatively new type for the consumer's use. Fruits are commonly 8x10 inches, a beautiful deep green color, medium thick rind, distinct vivid scarlet flesh. Deliciously sweet flavor and fine quality. Seeds black A good shipper, try it, you'll like it.

Prices Prepaid: Oz. 25c; ¼ lb. 75c; 1 lb. \$2.25; 5 lbs. \$9.90; 10 lbs. \$18.00

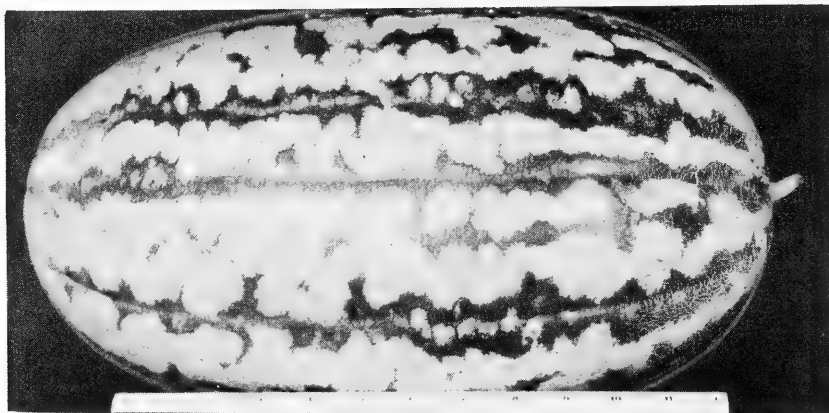
Watermelon

HAWKESBURY, Grey Shipper—87 days. Wilt Resistant. Large oblong, light greyish-green with slight veining, tough rind; flesh dark red, very sweet, fine textured. Seeds brownish black. A fine shipper. Weight 35-40 pounds.

Prices Prepaid: Oz. 20c; $\frac{1}{4}$ lb. 60c; 1 lb. \$2.00; 5 lbs. \$8.80; 10 lbs. \$16.00

KLONDIKE, BLACK SEEDED—80 days. Originated in California, where it is known as the "University Strain" and is very popular as a market sort. It weighs 18 to 25 pounds, measures 14 by 10 inches. Fruits are oblong with shallow ribs running lengthwise, tapers toward the blossom end. The color is a pure green. Flesh is a blood red to the rind, sweet and melting. Seeds are small and black.

Prices Prepaid: Oz. 25c; $\frac{1}{4}$ lb. 80c; 1 lb. \$2.50; 5 lbs. \$11.00; 10 lbs. \$20.00



Blue Ribbon Striped Klondike

KLONDIKE BLUE RIBBON, Striped—80 days. A Wilt Resistant strain developed by the University of California at Davis, California. Fruits cylindrical with oval ends, weighs about 20 pounds, irregularly green striped on light green background, rind moderately tough. Flesh deep rich red, crisp and lusciously sweet. Seeds black and white mixed.

Prices Prepaid: Oz. 25c; $\frac{1}{4}$ lb. 80c; 1 lb. \$2.50; 5 lbs. \$11.00; 10 lbs. \$20.00

KLONDIKE R-7—80 days. A Fusarium Wilt Resistant green Klondike developed by the California College of Agriculture; retaining all the desirable Klondike qualities. The vines are vigorous and prolific. The rind is thin but tougher than the original strains. Flesh solid, deep red, fine texture with high sugar content. Weighs 25 pounds and measures 14 by 10 inches. Seeds are small and vary in color from tan to black.

Prices Prepaid: Oz. 25c; $\frac{1}{4}$ lb. 75c; 1 lb. \$2.25; 5 lbs. \$9.90; 10 lbs. \$18.00

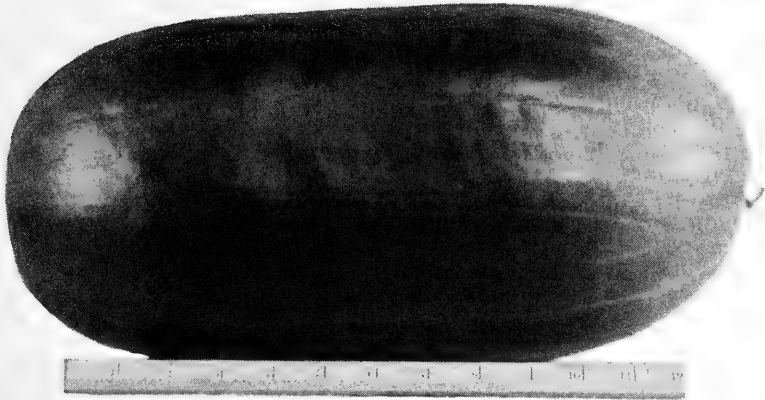
KLECKLEY SWEET—85 days. Very popular for home market or short hauling, will stand shipment up to 200 miles but not recommended for longer distances. Melons are oblong, very dark green and about the same diameter at both ends. Rind is thin but not as brittle as some strains. Flesh light red, very sweet and melting. Weighs 35 pounds, measures 24 by 12 inches. Seeds white and few in number.

Prices Prepaid: Oz. 25c; $\frac{1}{4}$ lb. 75c; 1 lb. \$2.25; 5 lbs. \$9.90; 10 lbs. \$18.00.

KLECKLEY NO. 6—88 days. A Fusarium Wilt Resistant variety of the same type as the Kleckley Sweet and with as high a sugar content. Vines are vigorous and prolific. Rind is thin but tough. Seeds are white.

Prices Prepaid: Oz. 25c; $\frac{1}{4}$ lb. 75c; 1 lb. \$2.25; 5 lbs. \$9.90; 10 lbs. \$18.00.

Watermelon



Wondermelon

CUT-RED WATSON—90 days. Markets calling for a really good, large melon of the Watson type will find it here. Without a white heart the flesh is very fine grained, deep red, entirely stringless and very sweet. The rind is tough and of a darker green than the older strains of Tom Watson. Weighing 40 pounds, measuring about 22 by 12 inches. The seeds are brown.

Prices Prepaid: Oz. 25c; ¼ lb. 75c; 1 lb. \$2.25; 5 lbs. \$9.90; 10 lbs. \$18.00.

WONDERMELON—85 days. A greatly improved strain of Kleckley Sweet and of larger size. This melon is long and cylindrical, 28 by 14 inches, weight about 40 pounds, very dark green in color with creases running lengthwise. Rind is hard and will carry well for some distance. Flesh bright red, very solid and stringless, fine-flavored with few white seeds.

Prices Prepaid: Oz. 25c; ¼ lb. 75c; 1 lb. \$2.25; 5 lbs. \$9.90; 10 lbs. \$18.00.

WINTER QUEEN, BLACK SEED—90 days. Grown largely for winter use. The fruits are small, nearly round, greenish-white with faint, irregular pale green stripes. Rind is tough and rubbery. Flesh is deep red, crisp, firm and of good quality. Weight 14 pounds, measuring 9½ by 9 inches. Seeds are small and black. A good keeper and shipper.

Prices Prepaid: Oz. 20c; ¼ lb. 60c; 1 lb. \$2.00; 5 lbs. \$8.80; 10 lbs. \$16.00

CHARLESTON GRAY—85 days. A new long gray melon with well matched sides and blunt ends. Highly resistant to Anthracnose, Fusarium Wilt and Sunburn. Very productive, good size, uniform shape, thin hard rind. Flesh deep red, very sweet, fine textured with no coarse fibers. Average weight 25-35 lbs., some will weigh 50 lbs. Excellent shipper. Seeds stripped black. Our seed is Northern Grown from introducer's original stock. Bred, and released this year, by U.S.D.A. Laboratory at Charleston, S.C. as No. 51-27. Crop very short this year.

Prices Prepaid: Pkt. 25c; oz. 75c; ¼ lb. \$2.50; 1 lb. \$7.50

Okra

CLEMSON SPINELESS—60 days. Originated at Clemson University, won All-America Silver Medal in 1939. Remarkably uniform; 3½ to 4 feet tall; highly productive; pods rich green, straight, moderately ridged and of high quality. Similar to Perkin's Mammoth, but spineless.

Prices Prepaid: Oz. 10c; ¼ lb. 35c; 1 lb. \$1.00; 5 lbs. \$4.40; 10 lbs. \$8.00

Onion

The Rocky Ford district is one of the important onion producing sections of the U. S. Because of the importance of onions to this section, great care is given to the strain of seed used. Our seed bulbs are selected with great care; for uniform size, color and keeping ability. Many of the onions grown here are harvested and stored in September and not taken out until February or March. They must be good keepers to hold that long. We use $1\frac{3}{4}$ to $2\frac{1}{2}$ lbs. of seed to the acre under irrigation.

Y-42 HYBRID, YELLOW SWEET SPANISH type onion maturing about 10 days earlier than the standard strains. Bulbs are globe shaped, with good tight necks, deep straw-colored skins, white flesh and mild flavored. Produces a heavy yield of large, uniform and attractive onions. Reports from various State College trials state that it was "Best of it's class" for yield, appearance and quality. We suggest that you give this fine onion a trial planting. Our seed supply is very limited this season.

Prices Prepaid: Pkt. 25c; oz. \$1.00; $\frac{1}{4}$ lb. \$3.00; 1 lb. \$10.00.



UTAH, YELLOW SWEET SPANISH—110 days. The bulbs are large and globe shaped, having 4 or 5 heavy golden-brown outside skins. The flesh is white and of a mild pleasant flavor. The superiority of our strain is its deep color, excellent keeping ability, thick skin, uniformity and trueness to type. Top growth is very vigorous and more resistant to thrip than most other strains.

Prices Prepaid: Pkt. 25c; Oz. 50c; $\frac{1}{4}$ lb. \$1.35; 1 lb. \$4.25; 5 lbs. \$20.00

COLORADO NO. 6 YELLOW SWEET SPANISH—115 days. Developed by Colorado Agricultural Experiment Station. Very deep, almost bronze color. Outer skins thick, carries color through the several outer layers. Globe shape, $3\frac{1}{2}$ to 4 inches diameter. Flesh white.

Prices Prepaid: Pkt. 25c; Oz. 60c; $\frac{1}{4}$ lb. \$2.00; 1 lb. \$6.00; 5 lbs. \$27.50

JUMBO WHITE SWEET SPANISH—110 days. Our new strain of this variety fills the demand from the large grower and shipper for a very large White Sweet Spanish onion that yields along with the Yellow Sweet Spanish. This is truly an outstanding strain. The bulbs will average $3\frac{1}{2}$ to 4 inches, very uniform globe shaped, attractive pure white color; small necks that cure down well; flesh white, fine grained, of excellent quality and mild flavored. More thrip resistant than many strains.

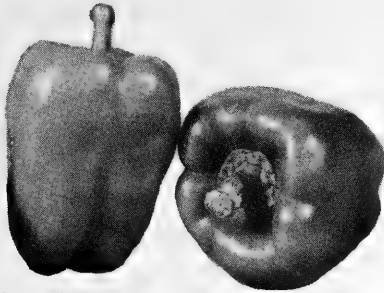
Prices Prepaid: Pkt. 25c; Oz. 50c; $\frac{1}{4}$ lb. \$1.65; 1 lb. \$5.00; 5 lbs. \$22.00

WHITE SWEET SPANISH-IMPROVED—110 days. A large strain that is popular with Rocky Ford growers on account of its fine appearance, heavy yield and storage ability. Skins are paper-white; bulbs make $2\frac{3}{4}$ to $3\frac{1}{4}$ inches.

Prices Prepaid: Pkt. 25c; oz. 50c; $\frac{1}{4}$ lb. \$1.50; 1 lb. \$5.00; 5 lbs. \$22.00

Pepper

We are very particular about our Pepper Seed. Our stocks are all from line bred strains, seed taken from uniform plants and not from the usual factory by-product. A trial will convince you that our Pepper Seed is the best that can be produced.



Our California Wonder Pepper

ANAHEIM CHILI (Hot)—80 days. Popular for home and market gardens. Grown extensively for drying and canning. Fruits 6-8 inches long, about an inch through; tapered; deep green becoming rich scarlet; mildly pungent. Plants 20-24 inches tall, hardy, vigorous, upright, fairly large leaves, very productive.

Prices Prepaid: Pkt. 25c; oz. 65c; $\frac{1}{4}$ lb. \$2.00; 1 lb. \$7.00; 5 lbs. \$30.00

CALIFORNIA WONDER (Sweet)—72 days. A very select strain of this well known variety. This is the standard of excellence in sweet peppers; much used by market growers and shippers. Plants thrifty, upright, heavily productive over a long season. Fruits handsome, very large, very smooth and regular; commonly $4\frac{1}{2}$ inches long and $3\frac{1}{2}$ -4 inches through; deep green, becoming bright crimson; flesh extremely thick and firm, sweet throughout and of a distinct flavor. Our stock is definitely superior.

Prices Prepaid: Pkt. 25c; oz. 65c; $\frac{1}{4}$ lb. \$2.00; 1 lb. \$7.00; 5 lbs. \$30.00.

CHINESE GIANT (Sweet)—80 days. The largest sweet pepper. Fruits $4\frac{1}{2}$ -5 inches long and of equal diameter; roundish, blunt at ends; somewhat crumpled; deep green, becoming bright scarlet-red; mild and sweet throughout.

Prices Prepaid: Pkt. 25c; oz. 65c; $\frac{1}{4}$ lb. \$2.00; 1 lb. \$7.00; 5 lbs. \$30.00.

FLORAL GEM (Hot)—75 days. Heavily productive, early and pungent. Fruits $1\frac{1}{2}$ to 2 inches long, $\frac{3}{4}$ to 1 inch thick; bluntly conical; waxy green turning to deep scarlet.

Prices Prepaid: Pkt. 25c; oz. 85c; $\frac{1}{4}$ lb. \$2.15; 1 lb. \$7.50; 5 lbs. \$33.00.

HUNGARIAN YELLOW WAX (Hot)—60 days. Very early; used for home market and canning. Flesh thick and pungent. Fruits 6-7 inches long; 2 inches thick, tapered; smooth; waxy light yellow, becomes bright red at maturity.

Prices Prepaid: Pkt. 25c; oz. 65c; $\frac{1}{4}$ lb. \$2.00; 1 lb. \$7.00; 5 lbs. \$30.00

JALAPENO CHILI (Hot)—72 days. Popular in Mexico and the Southwest for pickling and seasoning. Plants large and productive, foliage quite small. Fruits 3 inches long, 1 inch through shoulder, tapering to a blunt rounded point; dark green, turning red at maturity.

Prices Prepaid: Pkt. 25c; oz. 85c; $\frac{1}{4}$ lb. \$2.15; 1 lb. \$7.50; 5 lbs. \$33.00

MEXICAN CHILI—Chili Pasilla (Hot)—82 days. Fruits 3 to 4 inches long, $2\frac{1}{2}$ to 3 inches in diameter at shoulder, cone shaped. Very pungent. Color light green turning to a deep red at maturity. Used for making chili powder.

Prices Prepaid: Pkt. 25c; Oz. 85c; $\frac{1}{4}$ lb. \$2.15; 1 lb. \$7.50; 5 lbs. \$33.00

SPECIAL WORLDBEATER (Sweet)—70 days. A standard, early shipping pepper, very popular in the South. Our strain of this variety is outstanding. Fruits are large, oblong, commonly 5 inches long and $3\frac{1}{2}$ inches in diameter; deep green, becoming bright deep red at maturity; flesh thick and sweet. Plants about 30 inches tall, upright, vigorous and highly productive.

Prices Prepaid: Pkt. 25c; oz. 65c; $\frac{1}{4}$ lb. \$2.00; 1 lb. \$7.00; 5 lbs. \$30.00

Parsley

EVERGREEN—70 days. Strong growing with large, dense, dark green foliage. Compound leaves or fronds; leaflets rather coarsely cut but closely curled. Definitely more frost resistant than other varieties. Very uniform. Well adapted to market garden and home use.

Prices Prepaid: Oz. 15c; ¼ lb. 50c; 1 lb. \$1.50; 5 lbs. \$7.00; 10 lbs. \$13.00

EXTRA TRIPLE CURLED—75 days. Plant compact, leaves dark green and so finely cut and closely curled as to resemble tufts of moss.

Prices Prepaid: Oz. 15c; ¼ lb. 50c; 1 lb. \$1.50; 5 lbs. \$7.00; 10 lbs. \$13.00

Parsnip

SPECIAL LONG SMOOTH—130 days. A greatly improved variety of Parsnip. Slightly longer than the older strains. Roots very smooth, evenly tapered and of a light, attractive color. Should prove very acceptable to growers who prefer a type without too broad a shoulder and less abrupt taper than the older strains. Hardy and a good keeper. The whitest in color and does not discolor as quickly out of the ground as most other varieties.

Prices Prepaid: Oz. 15c; ¼ lb. 50c; 1 lb. \$1.50; 5 lbs. \$7.00; 10 lbs. \$13.00

Pumpkin



EARLY CHEYENNE PIE — 85 days. An early prolific inbred from Small Sugar, developed at U. S. Horticultural Field Station, Cheyenne, Wyo. It is the finest quality winter pie or baking variety developed to date. It stands adverse weather well, particularly cold. The fruits measure 5 to 7 inches across, 2 to 4 inches deep. Vining type.

Prices Prepaid: Oz. 20c; ¼ lb. 60c; 1 lb. \$1.70; 5 lbs. \$8.00; 10 lbs. \$15.00

CUSHAW, GREEN STRIPED—115 days. A favorite sort in Central and Southern states. Fine for pies and baking as well as for stock feeding. Fruits crook-necked, weight 10 to 12 pounds; length 18 inches; diameter of bowl 10 inches. Rind hard, thin, smooth, whitish green with darker green stripes. Flesh thick, medium coarse, cream colored. Well known and liked.

Prices Prepaid: Oz. 20c; ¼ lb. 60c; 1 lb. \$1.70; 5 lbs. \$8.00; 10 lbs. \$15.00

KING OF MAMMOTH—120 days. The largest of the pumpkins, often weighing 60 to 90 pounds. Fruits globular, slightly ribbed. Skin light yellow to mottled orange, sometimes slightly netted. Flesh thick, solid, coarse, but of excellent quality. Yields heavily. Much used for stock feed and exhibition. Makes good pies.

Prices Prepaid: Oz. 20c; ¼ lb. 60c; 1 lb. \$1.70; 5 lbs. \$8.00; 10 lbs. \$15.00

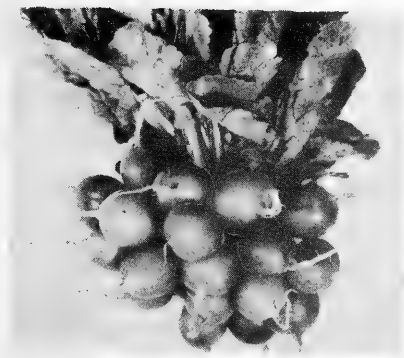
LARGE CHEESE—108 days. Fruits round, flattened at ends; diameter 12 inches and about half as thick; weight about 10 pounds, slightly ribbed, cream colored skin. Flesh extremely thick, salmon-yellow. Of excellent quality and much desired by canners and for market.

Prices Prepaid: Oz. 20c; ¼ lb. 60c; 1 lb. \$1.70; 5 lbs. \$8.00; 10 lbs. \$15.00

SMALL SUGAR—102 days. The small sweet pumpkin most desired for pies and shipping. Very prolific and a good keeper. Fruits 8 inches deep and 10 inches in diameter, weight about 6 pounds; round, but flattened at the ends; orange-yellow, sweetly flavored, of excellent quality.

Prices Prepaid: Oz. 20c; ¼ lb. 60c; 1 lb. \$1.70; 5 lbs. \$8.00; 10 lbs. \$15.00

Radish



Early Scarlet Globe, Short Top

Our Radish stocks are unequalled by any others to be had from American or European sources. Tons of stock seed are grown each year from roots which are pulled, hand-selected by skillful workers and replanted for seed production in carefully isolated fields. This is why our stocks are superior in earliness, uniformity and quality. We have indicated the number of days required under favorable conditions to produce roots of satisfactory bunching size.

EARLY SCARLET GLOBE, Short Top—23 days. Our strain of this standard very early sort is superior and is equally valuable for out of doors culture and for forcing. Tops small, ideal for bunching. Roots slightly elongated (so called "broad-olive"); $1\frac{1}{4}$ inches long when ideal for use; slender, well defined tap root; uniform rich bright scarlet; flesh white, crisp and of excellent quality.

Prices Prepaid: Oz. 15c; $\frac{1}{4}$ lb. 40c; 1 lb. \$1.25; 5 lbs. \$5.40; 10 lbs. \$10.00

EARLY SCARLET GLOBE, Medium Top—23 days. An excellent strain for general home and market garden. Especially desirable for use out of doors under normal conditions. Color rich bright scarlet; flesh white, mild and crisp. Very popular with shippers.

Prices Prepaid: Oz. 15c; $\frac{1}{4}$ lb. 40c; 1 lb. \$1.25; 5 lbs. \$5.40; 10 lbs. \$10.00

CRIMSON GIANT—29 days. A superior home and market garden sort. Tops medium small. Roots spherical to slightly top-shaped; deep scarlet; the largest of the early turnip-rooted radishes; commonly attain diameter of $1\frac{1}{2}$ inches before becoming pithy; of excellent quality.

Prices Prepaid: Oz. 15c; $\frac{1}{4}$ lb. 40c; 1 lb. \$1.25; 5 lbs. \$5.40; 10 lbs. \$10.00

FRENCH BREAKFAST—25 days. Home and market variety; also suitable for forcing. Tops small. Roots oblong, blunt, about $1\frac{1}{2}$ inches long; $\frac{5}{8}$ inch through; rich scarlet with white bottom; flesh white and crisp.

Prices Prepaid: Oz. 15c; $\frac{1}{4}$ lb. 40c; 1 lb. \$1.25; 5 lbs. \$5.40; 10 lbs. \$10.00

ICICLE—27 days. The best early white variety. Particularly popular in home and market gardens. Tops small. Roots long, tapered; very white throughout; brittle as ice; of splendid quality until 5-6 inches long and $\frac{1}{2}$ inch thick or larger; mild and of splendid flavor. Superior to Lady Finger or White Vienna.

Prices Prepaid: Oz. 15c; $\frac{1}{4}$ lb. 40c; 1 lb. \$1.25; 5 lbs. \$5.40; 10 lbs. \$10.00

SCARLET TURNIP, WHITE TIPPED (Sparkler)—25 days. Handsome, popular variety of outstanding quality; much used in home and market gardens. Tops small, roots deep turnip shape, almost globular, with slender tap root; bright scarlet (rosy carmine) with well defined white area about the tip; remain crisp and of splendid quality until $1\frac{1}{4}$ inches in diameter or greater.

Prices Prepaid: Oz. 15c; $\frac{1}{4}$ lb. 40c; 1 lb. \$1.25; 5 lbs. \$5.40; 10 lbs. \$10.00

Squash

SUMMER or BUSH TYPES

EARLY SUMMER CROOKNECK (Golden)—50 days. Very early and prolific. Southern planters will find our stock very uniform as to size and color. Fruits are well warty and become 10 inches long and 3½ inches through the bowl at maturity. Necks are well curved, skin a bright orange-yellow. Bush type.

Prices Prepaid: Oz. 20c; ¼ lb. 60c; 1 lb. \$1.80; 5 lbs. \$8.50; 10 lbs. \$16.00

EARLY WHITE BUSH SCALLOP (Patty Pan)—53 days. The standard Summer Scalloped Squash for shippers and market growers. Vines are bush type, mature fruits 3 inches thick, 8 inches in diameter, round, flattened, smooth with scalloped edges, weight 2½ pounds. Color when young is bright green, changing to pure white when mature. Our stock is very uniform and you will like it.

Prices Prepaid: Oz. 20c; ¼ lb. 60c; 1 lb. \$1.80; 5 lbs. \$8.50; 10 lbs. \$16.00



ITALIAN VARIETIES

COCOZELLE—65 days. The most popular Italian variety with southern shippers and market growers. Very prolific bush plants. Fruits weigh 4 pounds at maturity, 15 to 20 inches long, and 4½ inches through the thickest part, cylindrical, straight and smooth. Color dark green with faint light green stripes changing to yellow. Flesh firm and greenish white. Marketed when fruits are very young.

Prices Prepaid: Oz. 20c; ¼ lb. 60c; 1 lb. \$1.80; 5 lbs. \$8.50; 10 lbs. \$16.00

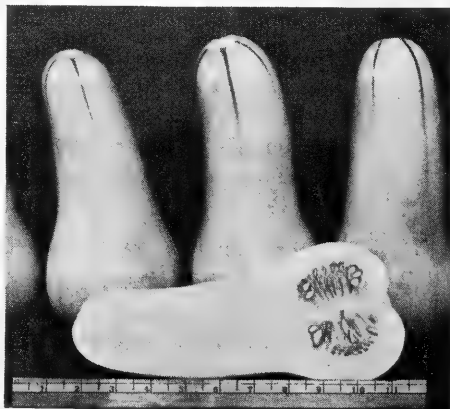
ZUCCHINI, BLACK—62 days. We recommend this popular Italian variety to our trade as being exceptionally true to type for this sort. Plant is bushy in growth. Fruits at maturity are 12 to 15 inches long, 5 inches in diameter, cylindrical, long, smooth, dark green-black. Flesh greenish-white and of good flavor.

Prices Prepaid: Oz. 20c; ¼ lb. 60c; 1 lb. \$1.80; 5 lbs. \$8.50; 10 lbs. \$16.00

AUTUMN or WINTER TYPES

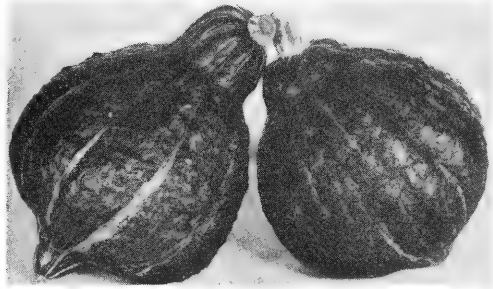
BUTTERNUT—95 days. Delicious for pies and excellent either baked or boiled. Matures early and is a good keeper. Fruits 10-12 inches long with neck about 4 inches in diameter which is solid flesh; small seed cavity is located in the lower bowl-shaped end. Skin light creamy-brown; flesh yellow; fine grained and of excellent quality. Very popular in New England States.

Prices Prepaid: Oz. 30c; ¼ lb. 90c; 1 lb. \$2.50; 5 lbs. \$12.00; 10 lbs. \$22.00



AUTUMN or WINTER TYPES

HUBBARD, BLUE — 110 days. Desirable for its high quality and claimed by some growers to be the best of all Hubbards for a fine edible product. Fruits 15 inches long and 10 inches in diameter, being large round with a neck at both ends. Rind blue-grey, colored, hard, thick, coarsely warted with slight ribbing. Flesh is thick, orange-yellow, fine textured, and of fine sweet flavor.



Prices Prepaid: Oz. 20c; $\frac{1}{4}$ lb. 60c; 1 lb. \$2.00; 5 lbs. \$9.50; 10 lbs. \$18.00

HUBBARD, CHICAGO WARTED—110 days. Similar to Improved Hubbard, except larger in size and more thickly covered with warts. Vine is a heavy producer of beautiful specimens which are particularly desirable for market use. Fruits 14 inches long and 10 inches in diameter; weight around 15 pounds; globular in shape and pointed at both ends; shell, thick and hard, surface thickly warted, bronze green in color at maturity. Flesh orange-yellow, very thick, dry, fine grained and of excellent sweet flavor.

Prices Prepaid: Oz. 20c; $\frac{1}{4}$ lb. 60c; 1 lb. \$2.00; 5 lbs. \$9.50; 10 lbs. \$18.00

HUBBARD, GOLDEN—100 days. Similar to Improved Hubbard except smaller in size, golden in color, earlier, and produces more fruits. It is a splendid home and truck garden type and is highly favored by canners. Excellent keeper as a winter squash. Recommended as being adapted for freezing preservation. Fruits 11 inches long and 8 inches in diameter, pointed at both ends; shell hard and tough, somewhat warted, orange-red in color, with cream colored stripes near the blossom end. Flesh deep yellowish-orange, thick, dry, fine grained and of excellent quality and flavor.

Prices Prepaid: Oz. 20c; $\frac{1}{4}$ lb. 60c; 1 lb. \$2.00; 5 lbs. \$9.50; 10 lbs. \$18.00

HUBBARD, IMPROVED—105 days. The leading winter squash. The standard sort for home, market garden, and shipping. Its keeping qualities are unsurpassed and edible qualities most delicious. Fruits 12 inches long and 9 inches in diameter; weight about 12 pounds; globular in shape and tapered at both ends; shell thick and hard, surface moderately roughened, deep green colored, turning bronze-green at maturity. Flesh orange-yellow, very thick, dry, fine grained, of excellent sweet flavor.

Prices Prepaid: Oz. 20c; $\frac{1}{4}$ lb. 60c; 1 lb. \$2.00; 5 lbs. \$9.50; 10 lbs. \$18.00

TABLE QUEEN (Acorn or Des Moines)—58 days. A small individual sized squash very desirable for market trade. Vines trailing; fruits acorn shaped, ribbed, smooth, thin-shelled, dark green. Flesh light yellow, bakes dry and sweet.

Prices Prepaid: Oz. 20c; $\frac{1}{4}$ lb. 60c; 1 lb. \$1.80; 5 lbs. \$8.50; 10 lbs. \$16.00

Tomato

We offer a few varieties of the most select strains of Tomato Seed for the market grower. Our stocks are produced by one of the most outstanding growers of Tomato Seed in the United States. There is none superior to our stocks.



Our Select Marglobe

BONNY BEST SPECIAL—70 days. Unexcelled as a general purpose tomato; very valuable for forcing under glass and as a canning and shipping variety in the North. An excellent general purpose tomato. Vines medium height, foliage medium green. Fruits attractive deep scarlet-red, oblate to nearly round, medium size, smooth, solid, of high quality, tarty flavor.

Prices Prepaid: Pkt. 25c; Oz. 80c; $\frac{1}{4}$ lb. \$2.25; 1 lb. \$7.00; 5 lbs. \$32.50

BOUNTY—62 days. An early dwarf vine variety bears good yield of well shaped, smooth, bright red fruits of pleasing flavor. Fruits medium size, slightly flattened globe shape. A good shipper. Sets fruits better than most varieties in hot weather.

Prices Prepaid: Pkt. 25c; Oz. 80c; $\frac{1}{4}$ lb. \$2.25; 1 lb. \$7.00; 5 lbs. \$32.50

BREAK O'DAY—68 days. A very select strain of this first early variety, used by truckers and shippers on account of its wilt resistance, earliness, and absence of growth cracks. Foliage rather light, open and spreading, early, hardy, and very prolific. Fruits globe-shaped, smooth, large, fleshy, of good quality, color light scarlet.

Prices Prepaid: Pkt. 25c; Oz. 80c; $\frac{1}{4}$ lb. \$2.25; 1 lb. \$7.00; 5 lbs. \$32.50

CANNER'S JEWEL—75 days. Developed for canner trade; for juice and slicing it is unexcelled. Yields an abundance of large, very smooth, deep red fruits averaging 6-7 ounces. Skin thick and peels well. Flesh firm with thick walls. Nearly globe shape, only slightly flattened. Its deep red color is carried clear through the tomato.

Prices Prepaid: Pkt. 25c; Oz. 80c; $\frac{1}{4}$ lb. \$2.25; 1 lb. \$7.00; 5 lbs. \$32.50

SPECIAL EARLIANA—64 days. Widely grown on account of its extreme earliness. Our strain is the most smooth and uniform we have ever seen. Vines medium to small but vigorous, open and spreading. Fruits bright scarlet, medium size, nearly globe shape, thick skinned, borne in clusters.

Prices Prepaid: Pkt. 25c; Oz. \$1.00; $\frac{1}{4}$ lb. \$3.00; 1 lb. \$9.00; 5 lbs. \$42.50

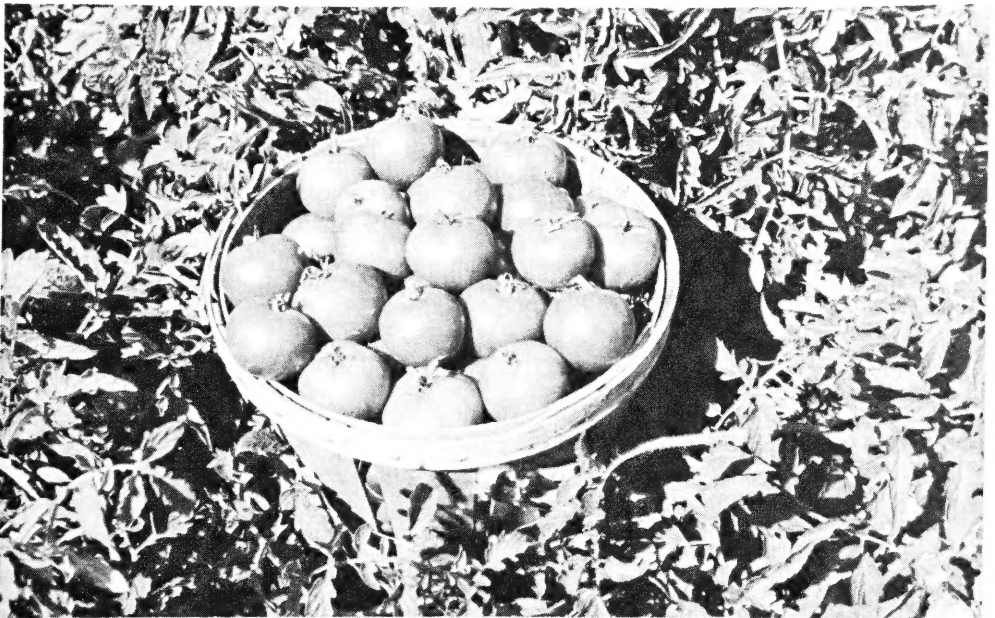
Tomato

SELECT MARGLOBE—75 days. Resistant to wilt and nailhead rust, a highly developed strain for the shipping trade. Vines vigorous, medium green, heavy foliage protecting the fruits from the sun. Fruits deep globe shape, uniform, smooth, thick flesh walls with small seed cavity, very solid, deep scarlet, ripens fully around the stem. Quality is excellent.

Prices Prepaid: Pkt. 25c; Oz. 80c; $\frac{1}{4}$ lb. \$2.25; 1 lb. \$7.00; 5 lbs. \$32.50

IMPROVED PEARSON—80 days. A fine variety in the main crop class, primarily for canning but also valuable as a shipper. Vigorous plants with ample foliage to protect the fruits, which are medium large, semi-globe and of good red color. Its tough skin makes it valuable to both the canner and shipper.

Prices Prepaid: Pkt. 25c; Oz. \$1.00; $\frac{1}{4}$ lb. \$3.00; 1 lb. \$10.00; 5 lbs. \$47.50



RUTGERS NO. 8—80 days. A special selection from this recent introduction. Unsurpassed for market, canning and juice. Vines are strong, compact growth, widely adapted, protects fruit well, and very prolific. Fruits bright deep scarlet color ripening from inside out, globe-shaped, fleshy, firm, of excellent quality.

Prices Prepaid: Pkt. 25c; Oz. 80c; $\frac{1}{4}$ lb. \$2.25; 1 lb. \$7.00; 5 lbs. \$32.50

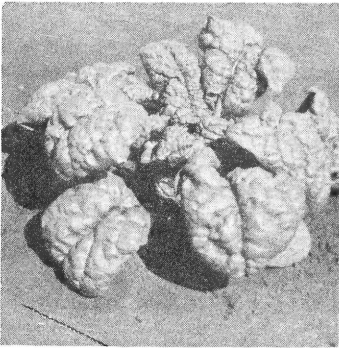
SELECT WILT-RESISTANT STONE—85 days. A selection from U.S.D.A. development. Excellent as a late or main crop for canning or shipping. Vines medium large, heavily productive on wilt-infested soil. Fruits rich red, large, oval, solid, smooth, of excellent quality.

Prices Prepaid: Pkt. 25c; Oz. 80c; $\frac{1}{4}$ lb. \$2.25; 1 lb. \$7.00; 5 lbs. \$32.50

YELLOW PEAR—75 days. Popular as a preserving variety. Tall vine growth, bears large clusters of small pear-shaped, golden-colored fruits.

Prices Prepaid: Pkt. 25c; oz. \$1.00; $\frac{1}{4}$ lb. \$3.50.

Spinach



**Select Bloomsdale
Long Standing**

Leaves are large, broad, rounded, arrow-shaped with rounded tip, firm, tender, thick, curled in early stages, smooth and slightly crumpled at maturity, rich bright green in color, of excellent quality.

Prices Prepaid: Oz. 10c; ¼ lb. 30c; 1 lb. 80c; 5 lbs. \$3.50; 10 lbs. \$6.50

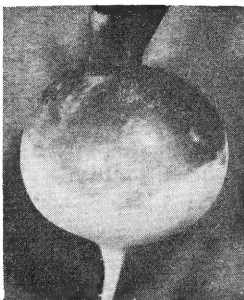
PRICKLY SEEDED DARK GREEN—45 days. A splendid canning and processing sort with very attractive green color. Fine for fall planting to stand over winter. Plants very large, rather open but not flat. Very hardy and vigorous. Leaves large, broad, arrow-shaped; fine quality, thick and most attractive dark green color.

Prices Prepaid: Oz. 10c; ¼ lb. 25c; 1 lb. 60c; 5 lbs. \$2.65; 10 lbs. \$5.00

NEW ZEALAND—65 days. Distinct from other kinds of spinach and particularly valuable for growing in hot weather. Plants very large and spreading; leaves numerous, small, triangular, thick, deep green. The tender leafy shoots are gathered repeatedly. Stands dry weather well. Seeds large and nut-like.

Prices Prepaid: Oz. 10c; ¼ lb. 35c; 1 lb. \$1.00; 5 lbs. \$4.50; 10 lbs. \$8.50

Turnip



**Reselect Purple Top
White Globe**

PURPLE TOP WHITE GLOBE, Reselect — 55 days. Our special strain of this variety is almost perfect for uniformity. Medium large, dark green tops, erect, compact and cut leaved. Roots develop to 5-6 inches in diameter, uniform, smooth, globe shaped, with the rich purplish-red upper part of the root sharply defined from the lower pure white portion. Flesh very white, fine textured and of delicate sweet flavor.

**Prices Prepaid: Oz. 15c; ¼ lb. 40c; 1 lb. \$1.15;
5 lbs. \$5.50; 10 lbs. \$10.00**

Rutabaga

AMERICAN PURPLE TOP—85 days. Our strain is noted for its short neck, fine grain, smoothness and sweet flavor. The globe-shaped roots are deep buff in color with purple top; flesh very tender, crisp, fine textured and light yellow in color.

Prices Prepaid: Oz. 15c; ¼ lb. 40c; 1 lb. \$1.15; 5 lbs. \$5.50; 10 lbs. \$10.00

Important Ordering Suggestions

By carefully following these suggestions many

mistakes may be avoided . . .

and we can render the most prompt service

ORDER BLANK AND ENVELOPE are enclosed for your convenience. Please fill out the blank spaces at the top, printing your name and address and giving full shipping instructions, especially your EXPRESS OFFICE if different from your Postoffice. Keep a copy of your order.

TRANSPORTATION, unless otherwise stated, is paid by us on all seeds quoted herein to any point in the United States. For FOREIGN SHIPMENTS add 10c per pound to catalog prices.

TERMS OF SALE are Cash With Order. Postage stamps may be sent for amounts under \$1.00, otherwise send Bank Draft or Money Order. Cash should be well wrapped and sent Registered Mail. We will ship C.O.D. when 25% of the purchase price accompanies the order.

C.O.D. SHIPMENTS—It is more convenient, and less costly, to remit with your order. The Post Office and Transportation Companies charge you a Collection Fee and a Money Order Fee for remitting the collection to us.

ALL PRICES in this catalog are subject to change without notice and stock being unsold on receipt of order.

SALES TAX. Some states have adopted a Sales Tax, which does not as yet affect seed shipment from one state to another. In the future, should there be a tax imposed on interstate shipments the tax will be added to the amount of the order.

LARGE ORDERS. Institutions, Commercial Growers and others wishing larger quantities than we quote in this catalog, are requested to send us a list of their requirements. We will be glad to quote our lowest prices.

OUR GUARANTEE. We use every effort to have our seeds pure and reliable, but conditions often arise preventing the best of seeds from giving perfect satisfaction. Some may be sown too shallow or too deep, in ground too wet or too dry. Insects above or below the ground may attack them. Cold, wet ground will cause the seeds to decay. For this reason it is impossible for us to guarantee seeds under all conditions. Therefore we, in common with all responsible seedsmen, sell our seeds subject to the following Condition of Sale adopted by the American Seed Trade Association.

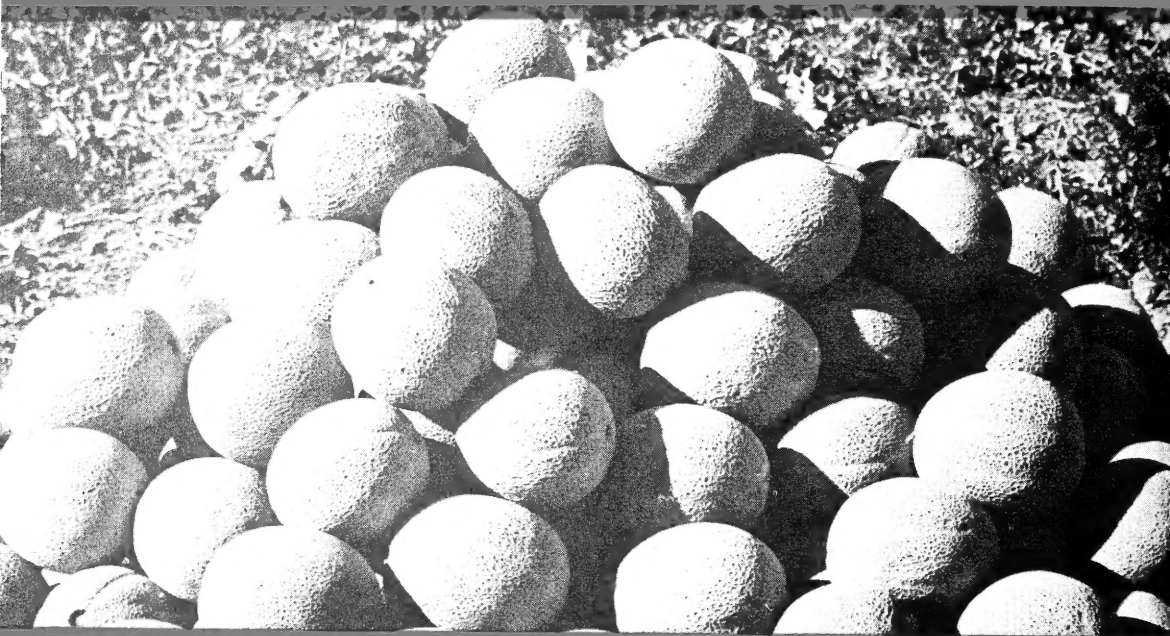
H. D. GARWOOD SEED COMPANY warrants, to the extent of the purchase price, that Seeds or Bulbs sold are as described on the container, within recognized tolerances. Seller gives no other or further warranty, express or implied.

WE ARE MEMBERS of "The American Seed Trade Association" and Associate Members of "Southern Seedsmen's Association."

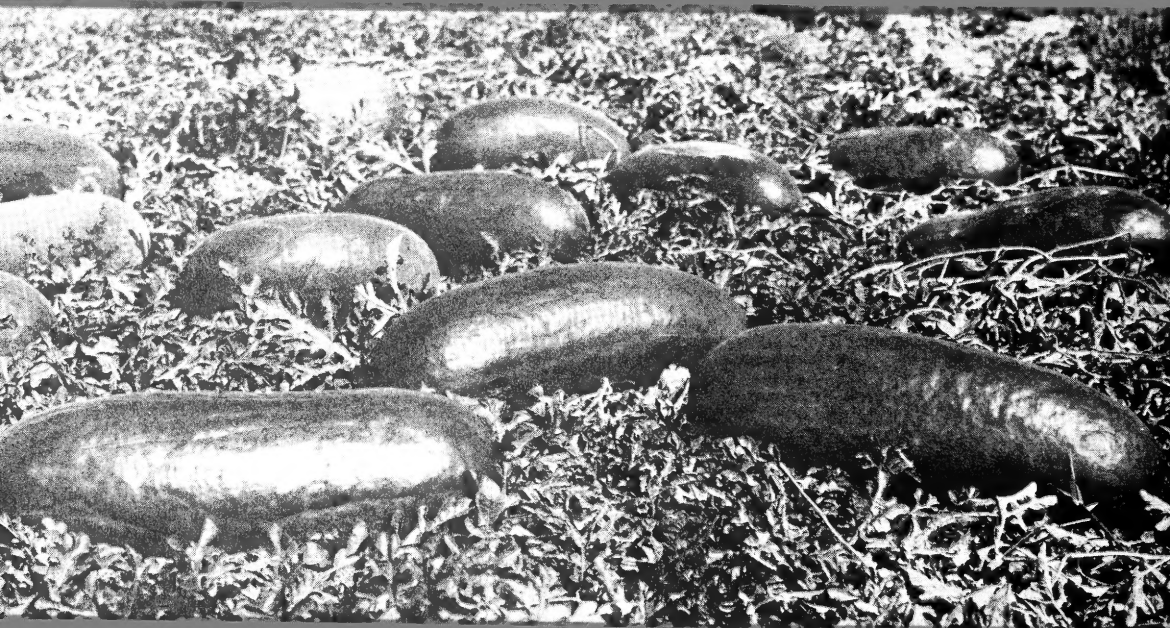
H. D. GARWOOD SEED COMPANY
ROCKY FORD, COLORADO

Garwood **SEEDS** FOR 1955

QUALITY



HALES BEST SEED FIELD



A FIELD OF GARWOOD'S MELONS

H. D. Garwood Seed Company

"THE HOME OF THE CANTALOUPE"

ROCKY FORD



COLORADO