

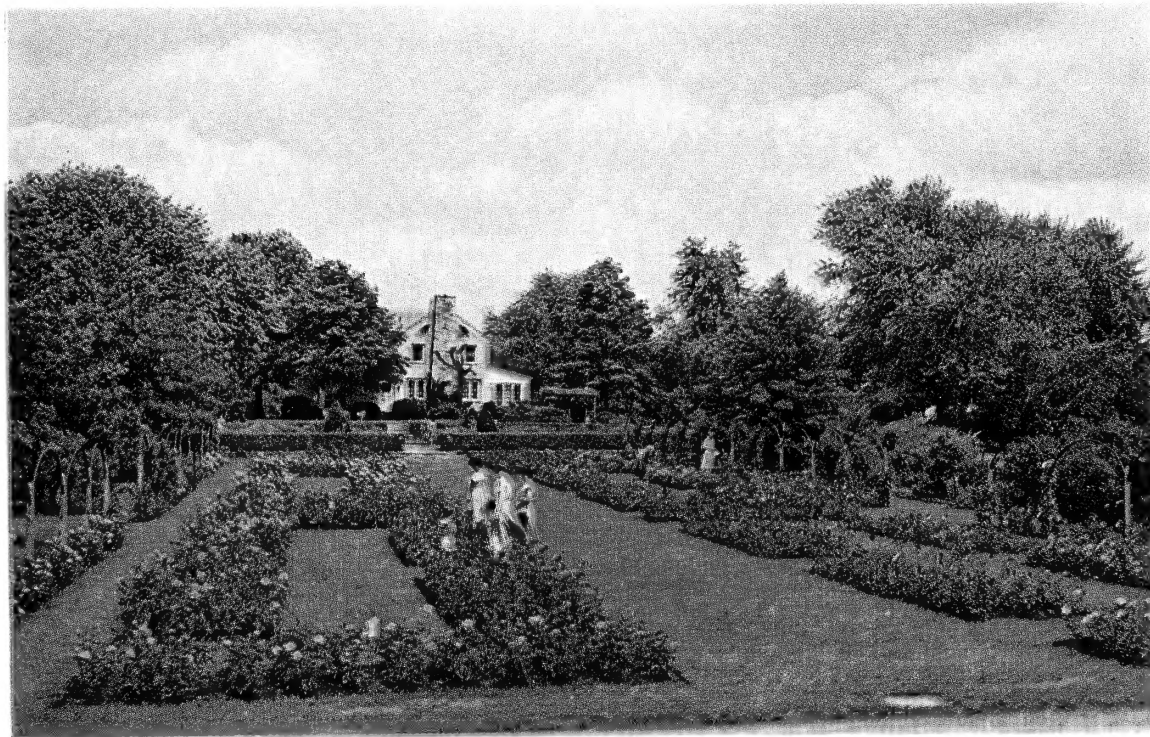
62,25  
**HILLSDALE LANDSCAPE COMPANY**

7800 N. Shadeland Avenue (Road 100)

**INDIANAPOLIS 20, INDIANA**

R. R. 13, Box 185

B Roadway 5495



HILLSDALE ROSE GARDEN

**1955 ROSE FOLDER**

FROM

**THE LARGEST ROSE GARDENS IN INDIANA**

RETURN POSTAGE  
GUARANTEED

**BULK RATE**

U. S. POSTAGE  
**PAID**  
INDIANAPOLIS, IND.  
Permit No. 751



Library  
U. S. Dept. of Agricul.  
Washington 25, D. C.

# "HILLSDALE ROSES

*Are Always Better and They Cost No More"*

Roses from Hillsdale are carefully selected, No. 1 field-grown plants—the best on the horticultural market. Each variety has been tested in our own gardens. This assures you of receiving hardy, vigorous plants, which will have beautiful blooms in abundance from varieties well adapted to this section of the Middle West.

Undoubtedly of great benefit to the Rose buyer is the potted plant, which enables us to offer our Roses already growing and blooming. This new way of selling them eliminates all danger of the plants being retarded in your garden and insures the buyer of exactly the variety desired.

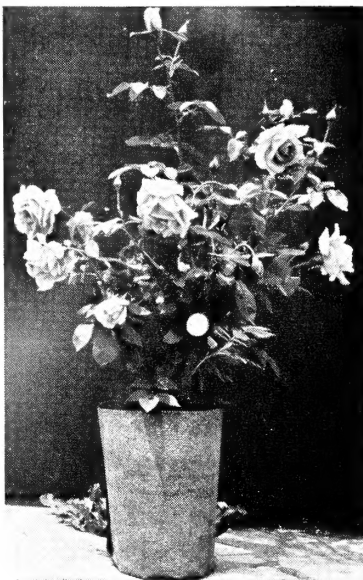
These plants are growing in pots filled with a specially prepared soil, properly fertilized to insure rapid and permanent growth and bloom. Hillsdale Roses can be planted in your garden at any time during the growing season without showing even the slightest wilt of foliage, buds or blooms.

## DIRECTIONS FOR RE-PLANTING POTTED ROSES

The re-planting of Hillsdale Potted Roses is very simple indeed. The pots are slit and carefully peeled off from the soil. The ball of earth is then set in the bed so that it comes about  $\frac{1}{2}$  inch lower than the finished level of the beds. Be sure that the graft union at the neck of the roots is 1 inch below the surface. Always press the soil firmly around the roots of any kind of plant. This is done to force the air space out of the soil around the roots. After this, watering to soak the soil thoroughly is all that is necessary.

## PLANTING INSTRUCTIONS FOR DORMANT PLANTS

Keep the roots moist all the time before planting. Spread out the roots so they do not crowd; cover them with good soil and firm the earth about them, eliminating all air pockets. Plant 15 to 18 inches apart, where there is sunshine at least half of the day. Mound soil about 10 inches high immediately after planting to keep the moisture in the branches.



OUR POTTED PLANT



## SPECIAL DISCOUNT

A QUANTITY CASH & CARRY DISCOUNT of 10% will be given on all orders for 12 or more Potted Roses purchased at one time.

PRICES AND DISCOUNTS listed in this folder supersede all previous lists.

## PLEASE NOTE

All prices quoted are for POTTED PLANTS at our Nursery.

An extra charge for the labor will be made when we do the planting.

OUT-OF-TOWN ORDERS FOR POTTED ROSES: All Potted Roses must be crated when shipment is made out of town. Minimum crating charge is \$2.00. Quantity orders are crated in separate lots of 6 Roses (or less), at \$2.00 per lot, or portion thereof.

DORMANT PLANTS: A wide variety of Roses and other dormant or root-wrapped plants in season are available from March 15 to May 1, in our self-serve SUPERMARKET GARDEN STORE.

DORMANT ROSE PRICES: Cash and Carry prices will be NET, at 50c less per plant than rates herein shown for the Potted Plants.

# HILLSDALE STANDARD ROSES

The price on the Potted Roses listed below are \$1.85 each

## HARDY CLIMBERS

These are old and new Hardy Climbers and Pillar Roses, which seldom need any winter protection. They will bring hundreds of blooms to your garden during June, covering fences and trellises.

**Blaze.** Blazing scarlet pillar Rose. Grows luxuriantly. Hardy and dependable; recurrent bloom.

**City of York.** Creamy white with wild-Rose fragrance. Solid mass of 3-inch blooms in May and June.

**Cl. American Beauty.** Blooms large and fragrant; deep pink, shaded soft carmine.

**Doubloons.** Best all-purpose yellow climber. Blooms in great profusion for a long period in June. Large golden flowers; spicy scent.

**Mary Wallace.** Profusion of large, clear deep pink blooms.

**New Dawn.** The best everblooming climber. Apple-blossom-pink with old-Rose fragrance.

**Paul's Lemon Pillar.** Magnificent, double, lemon-yellow blooms.

**Paul's Scarlet Climber.** Oceans of bright scarlet flowers.

**Royal Scarlet.** Deeper red than Paul's Scarlet.

**Silver Moon.** Creamy white flowers with golden anthers.

**White Dawn.** Blooms double, fragrant, white. Vigorous. Recurrent bloom.

## HYBRID TEA CLIMBERS

Climbing form of the bush Hybrid Teas. They are not as hardy as the other climbers and will require slight protection during winter months. After the first peak of June flowers, Hybrid Tea Climbers continue to bloom frequently during the entire season.

**Cl. Etoile de Hollande.** Double, bright red blooms. One of the best climbers.

**Cl. Mrs. P. S. du Pont.** Double, deep yellow.

**Cl. Pink Radiance.** Bright pink. Same qualities as the bush Radiance.

**Cl. Red Radiance.** Well-formed blooms of a clear, even shade of red.

**Cl. Red Talisman.** Bud long-pointed; flower large, double, fragrant, deep cerise-red with yellow at base.

**Cl. Talisman.** The same fine vari-colored blooms as in the Hybrid Tea.

## RUGOSAS, HYBRID PERPETUALS and MISCELLANEOUS ROSES

This group includes the Shrub, Wild Species and Hybrid varieties, useful in landscape work for the shrub border. These Roses are hardy in the coldest regions and require little attention except pruning to keep them in balance.

**F. J. Grootendorst.** Small, bright red flowers in clusters. Everblooming.

**Frau Karl Druschki.** Snow-white, immense blooms; pointed buds. Vigorous. One of the old favorites.

**Gloire des Mousseaux.** Most authorities claim this is the finest Moss Rose. The pink flower is a jewel worthy of its unusual foliage setting. Vigorous.

**Hansa.** Double reddish flowers of large size.

**Harison's Yellow.** Semi-double, moderately fragrant, bright yellow.

**Hugonis.** The Rose of China. Light yellow flowers borne profusely along the branches. Very hardy; blooms early.

**La Neige.** Moss Rose of medium size; double, pure white. Fragrant.

**Old Red Moss.** Very prolific. Large, deep carmine flowers; heavily mossed.

**Pink Grootendorst.** Charming pink variety of Grootendorst. Everblooming

**Rosa omeiensis pteracantha.** A queer shrub Rose with dainty, four-petaled, small white spring bloom. Embellished with lacy, fern-like foliage. Very unusual.



# HILLSDALE STANDARD ROSES

## EVERBLOOMING HYBRID TEA ROSES

The price on the following potted plants is \$1.85 each

**Autumn.** Fall colors of striking orange-yellow, streaked with red. Double.  
**Bright Wings.** Bud long-pointed, rosy orange; large, double, cupped, orange-centered blooms shading to pink. Strong stems.  
**Caledonia.** White, full-petaled blooms.  
**Christopher Stone.** A very fine velvety scarlet-red. Blooms freely.  
**Condesa de Sastago.** Popular two-tone Rose, coppery pink inside and rich gold on reverse.  
**Countess Vandal.** An exquisite blend of copper, bronze and pink suffused with gold. Buds and blooms unsurpassed in shapeliness.  
**Crimson Glory.** High-centered, very double blooms of deep crimson. Fragrant and free blooming. Vigorous. One of the best reds.  
**Duquesa de Penaranda.** Unusual combinations of apricot, orange and pink. Vigorous plant with beautiful glossy foliage.  
**Eclipse.** Bud long-pointed, deep gold. Yellow flowers on long, strong stems. Foliage leathery. Vigorous.  
**Edith Nellie Perkins.** Light cerise-pink suffused with gold.  
**Editor McFarland.** A double brilliant pink with fine fragrance.  
**Etoile de Hollande.** Lovely fragrance. Velvety dark red blooms in quantity.  
**Golden Dawn.** Sunflower-yellow shaded with old-rose.  
**Golden Rapture.** Exquisite buds. Double, rich yellow blooms.  
**K. A. Victoria.** A favorite white. Good in both bud and bloom; fragrant.  
**Los Angeles.** Lovely combination of flame-pink, coral and gold.

**McGredy's Ivory.** Beautiful creamy white blooms with exceptional fragrance.  
**McGredy's Yellow.** Double, buttercup-yellow flowers in profusion. The best light yellow.  
**Mrs. Chas. Bell.** Delicate shell-pink. Prolific bloomer.  
**Mrs. E. P. Thom.** Pure yellow of excellent form.  
**Mrs. P. S. du Pont.** Double; deep yellow with spicy fragrance.  
**Nigger Boy.** The name tells the story. Very dark red.  
**Night.** Very deep crimson, almost black.  
**Picture.** Warm salmon-pink, splendidly formed flowers.  
**Pink Dawn.** Sweetly scented; beautiful in bud and bloom. Rose-pink.  
**Pink Radiance.** Hardy, vigorous, prolific.  
**Poinsettia.** Brilliant scarlet color. Free blooming.  
**Pres. Herbert Hoover.** Everyone likes this Rose. Cerise-pink, flame-scarlet, yellow.  
**Red Radiance.** Can't beat the Radiances for durability and profusion of bloom.  
**Rose Marie.** Satiny rose-pink; well shaped.  
**Soeur Therese.** Blooms continuously. Golden yellow, shaded carmine.  
**Talisman.** Double, high-centered, fragrant. Golden yellow and copper-red flowers on long stems. Rich green foliage. Vigorous.  
**Texas Centennial.** Long-pointed bud; well-formed, double, brick-red flower with lighter center. Vigorous and upright.

Modern Hybrid Tea Roses represent the height of the hybridizer's art. They are among the most popular flowers in the world, both for garden decoration and for cutting. The blooms range from single to very double forms, through all the shades of pink, red, orange and yellow. They deserve a special place in every home garden, whether it be informal or formal in type, and will reward the grower with glorious fragrant blooms all summer long. The varieties listed here have been carefully chosen for our locality.

## EVERBLOOMING POLYANTHA and FLORIBUNDA ROSES

The price on the following potted plants is \$1.85 each

**Baby Chateau.** Blackish crimson buds; flower large, double, fragrant, velvety red.  
**Eutin.** Lovely double, deep red flowers on mildew-resistant plants.  
**Floradora.** Flower very double, scarlet-red to orange. Upright, bushy; leathery foliage.  
**Improved Lafayette.** Bright cherry-crimson flowers in abundance on a tall, vigorous bush. Disease resistant.

**Pink Gruss an Aachen.** Deep salmon-rose sport of Gruss an Aachen.  
**Rochester.** Orange-carmine buds open into perfect blooms of cream and yellow flushed with pink. Free blooming.  
**Rosenelfe.** Bud long-pointed; flower large, double, high-centered, clear pink. Very vigorous and bushy.

Polyantha means "many flowers," and the characteristic of the type is great clusters of bloom. Floribundas increase the size and improve the volume of the blooms, giving a wider usefulness to the type for both landscape and garden effects.

## SUB-ZERO EVERBLOOMING HYBRID TEAS

The price on the following potted plants is \$2.25 each

**Break o'Day.** Orange to apricot, large, very double flowers. Very vigorous. Free bloomer and delightfully inspiring.  
**Curly Pink.** Many large, two-toned pink blooms in clusters on a single stem. Over 50 gracefully recurled petals.

**Queen o' the Lakes.** Graceful, brilliant and elegant. Double, deep red, velvety blooms; truly the crimson queen of flowers.  
**Shades of Autumn.** An abundant and joyous expression of bicolored beauty.  
**V for Victory.** Most beautiful. Large, very double, yellow, fragrant blooms. Holds color and blooms constantly in ideal form.

Roses in this group are of a new race from hardier species that bloom all summer. They are of greater sturdiness and vigor and will live longer and will survive sub-zero winters.

## SUB-ZERO HARDY CLIMBERS

The specifically quoted prices are for potted plants

**Cl. Break o'Day.** Everblooming. Lovely double, orange to apricot flowers. \$2.50.  
**Golden Pyramid.** Large, cadmium-yellow blooms. Most vigorous of all. \$2.25.

**Orange Everglow.** Everblooming. Dazzling coppery orange. Fragrant. \$2.50.

Sub-Zero Hardy Climbers are a new race from the hardest species of climbers. They live longer and will survive sub-zero winters.

## MINIATURE ROSES

The price on the following potted plants is \$1.75 each

**Bo-Peep.** Candelabra-like, pink sprays. Height 10 inches.  
**Midget.** Tiny, perfect buds and flowers of deep rose. Height 9 inches.  
**Oakington Ruby.** Deep carmine buds; double, rich ruby-crimson flowers less than an inch across when fully opened. Height 12 inches. Free flowering from May to November. Will grow in any soil. Protect in winter.  
**Pixie.** The world's smallest double white Rose. Height 8 inches.

**Red Imp.** Double, deep rich crimson; almost star shaped. Height 10 inches.  
**Rosa Rouletti.** Perfect little double rose-pink flowers 1½ inches across. Easy to grow; vigorous and hardy. Height 4 to 6 inches.  
**Sweet Fairy.** Bright apple-blossom-pink; true Rose fragrance. Height 10 inches.  
**Tom Thumb.** Intense rich crimson. Height 9 inches.

These unique little Roses are winter-hardy and easy to grow. Plant them as an edging, in the rock garden, by doorsteps or in window-boxes,

# HILLSDALE NEW and PATENTED ROSES

The specifically quoted prices below are for potted plants

## NEW EVERBLOOMING and PATENTED HYBRID TEA ROSES

- Applause.** Large, fragrant, light red, double. Prolific bloomer. \$2.50.
- \***Capistrano.** 1950 A.A.R.S. winner. Deep glowing rose-pink. Large buds and flowers on extra-long, strong stems. \$2.50.
- Charles Mallerin.** One of the loveliest rich dark red Roses, almost black. Very fragrant. Strong grower. \$2.95.
- \***Charlotte Armstrong.** A.A.R.S. Award for 1941. Very double blooms of sparkling cerise. Perfectly formed, blood-red buds. \$2.75.
- \***Chrysler Imperial.** A.A.R.S. winner in 1953. A red, red Rose. Long-lasting blooms. \$2.95.
- Detroit.** A Rose vibrant with color. Soft velvety buds of rich carmine-red. High-centered, deep red blooms 5½ inches across. \$2.95.
- \***Diamond Jubilee.** A.A.R.S. winner in 1948. Should be in every garden. Long-lasting blooms of buff-orange appear almost continuously. \$2.50.
- \***Forty-niner.** A.A.R.S. Award in 1949. Inside petals are vivid Orient-red; outside are straw-yellow. \$2.95.
- \***Fred Howard.** A.A.R.S. Award for 1952. Long, rich yellow buds tipped with delicate penciling of light pink. Strong, hardy; blooms early to late. \$2.95.
- Golden Masterpiece.** Enormous, fragrant, golden yellow flowers with high centers. Glossy foliage. \$3.25.
- Golden Scepter.** A new golden yellow with 5½-inch blooms. \$2.50.
- \***Helen Traubel.** A.A.R.S. Award for 1952. Pink to apricot. Vigorous. \$2.95.
- \***Horace McFarland.** A.A.R.S. Award in 1945. Upright, vigorous grower. Deep apricot buds; buff-salmon blooms. Spicy scent. \$2.50.
- Huntsman.** New bicolor Rose from England. Red with yellow reverse. Free, profuse bloomer from spring until frost. Tea fragrance. \$2.50.
- \***Katherine T. Marshall.** A.A.R.S. Award for 1944. Sparkling warm pink. Large, cupped blooms. \$2.25.
- \***Lowell Thomas.** A.A.R.S. Award for 1944. Clear canary-yellow. \$2.50.
- Mardi Gras.** Gay dark red buds unfold into 5-inch blooms of intense red, which lasts well. Free bloomer. Old-Rose fragrance. \$2.95.
- \***Mary Margaret McBride.** A.A.R.S. Award for 1943. Deep salmon-pink suffused with gold. Strong grower. \$2.25.
- McGreedy's Sunset.** Chrome-yellow flushed with scarlet. Fragrant. \$2.25.
- \***Mirandy.** A.A.R.S. Award for 1945. Fragrant and very hardy. Blooms continuously. One of the best maroon-reds. \$2.75.
- \***Mission Bells.** A.A.R.S. winner in 1950. Deep glowing salmon buds opening to a clear shrimp-pink. Large, high-centered flowers. \$2.50.
- Mme. Henri Guillot.** Urn-shaped buds. Watermelon to raspberry-pink. \$2.50.
- \***Mojave.** A.A.R.S. winner in 1954. Finest glowing orange-colored Rose, shot with flame-like tones of scarlet and vermillion. Long-stemmed; vigorous. \$3.25.
- Neige Parfum.** Cream-tinted buds open into snow-white Roses with breath-taking lemon-verbena fragrance. \$2.25.
- New Yorker.** Perfect blooms of a clear unchanging red. Heavy bloomer. \$2.50.
- \***Nocturne.** A.A.R.S. Award for 1948. Bright cardinal-red shaded darker. \$2.50.
- Pageant.** Golden yellow bud; deep clear coral-pink blooms with gold reverse. Raspberry scent. Hardy, vigorous and disease-resistant. \$2.95.
- \***Peace.** A.A.R.S. Award for 1946. The favorite exhibition Rose. Immense and very double. Ever-changing blends of pink, yellow and white. \$2.95.
- Pedralbes.** Large, creamy white, opening to pure white with a yellow center. Airy fragrance. \$2.25.
- President Eisenhower.** Large, fragrant, rose-red blooms on strong stems. Continuous bloom. Upright, bushy, 3-foot plants. \$2.95.
- Rex Anderson.** Ivory-white, perfectly formed, large and very double. \$2.25.
- Rose of Freedom.** Sixty to 70 petals make this one of the most double of all Roses. Beautiful currant-red. \$2.50.
- \***Rubaiyat.** A.A.R.S. winner for 1947. Brilliant red blooms in profusion. Old-Rose fragrance. \$2.25.
- \***San Fernando.** A.A.R.S. winner in 1948. Warm currant-red, changing to bright glowing scarlet. Fragrant. \$2.25.
- Serenade.** Exquisite burnt-orange bud opens slowly into a 5-inch, brilliant coral-orange bloom. \$2.25.
- Show Girl.** Undoubtedly the largest and most perfect buds in Rosedom. One of the finest pink Roses for cutting; long-lasting. Vigorous. \$2.50.
- Signora.** Orange-apricot turning to apricot suffused yellow. Blooms double and fragrant. Very vigorous. \$2.25.
- Sleigh Bells.** A white Rose that really blooms. Large, ovoid buds. \$2.50.
- Sun Valley.** Outstanding new golden yellow Rose with delicate fragrance. \$2.95.
- \***Sutter's Gold.** A.A.R.S. winner in 1950. Beautiful yellow flowers, richly shaded with orange and red; high-centered. Captivating fragrance. \$2.75.
- \***Taffeta.** A.A.R.S. Award for 1948. Carmine-rose bud opening to begonia-rose with yellow reverse. Very shapely blooms. \$2.50.
- \***Tallyho.** A.A.R.S. Award in 1949. Buds of deep cardinal-red. Blooms have face of unique and delightful pink with crimson reverse. \$2.50.
- \***Tiffany.** A.A.R.S. Award for 1955. Long-pointed, phlox-pink buds with golden yellow shading at base. Double and high-centered. \$3.45.
- Valiant.** Bold red buds open into high-centered, luminous crimson blooms up to 5 or 6 inches across. \$2.25.
- Volcano.** Large, cherry-red bloom. Strong and bushy. Fragrant. \$2.25.
- White Swan.** Choicest white. Long-pointed, graceful buds of alabaster-white; dazzling pure white blooms up to 4 inches across. Tall and vigorous; disease-resistant foliage. \$2.75.
- Will Rogers.** Double, velvety crimson-maroon. Blooms well. Sturdy. \$2.25.
- Zulu Queen.** One of the "blackest" of all red Roses. Rich and velvety. Vigorous and hardy. \$2.95.

## NEW EVERBLOOMING and PATENTED FLORIBUNDAS

- Betty Prior.** Face of petals shell-pink, reverse dark carmine. Vigorous. \$2.00.
- Baby Blaze.** Captivating dark red buds; rich velvety cherry-red blooms in large clusters of 10 to 25 on a shoot. Vigorous; prolific. \$2.75.
- Chatter.** A continuous display of bright crimson clusters of bloom. \$2.00.
- Crimson Rosette.** Deep red; a border Rose. Easy grower; long lasting. \$2.25.
- Donald Prior.** Bright scarlet shaded with crimson. \$2.00.
- \***Fashion.** A.A.R.S. winner for 1950. A new creation and color. Oriental red buds open to sparkling coral-pink, suffused with gold. \$2.50.
- Garnette.** Red "sweetheart" flowers, long lasting and ideal for corsages. Crinkled holly-like foliage. Only 18 inches tall. \$2.25.
- Geranium Red.** Large, camellia-type blooms red-geranium color. \$2.25.
- Glacier.** Snow-white blooms measure 4½ inches across, borne singly or in clusters. Hardy, vigorous plant. \$2.50.
- Goldilocks.** The best yellow Floribunda. Golden yellow; long lasting. \$2.00.
- Independence.** Brilliant red with orange-scarlet center and redder cast on reverse. Old-fashioned Tea Rose fragrance. Excellent grower. \$2.50.
- \***Jimmy Cricket.** A.A.R.S. Award for 1955. Tangerine-red buds open to coral-orange and then turn pink-coral. Pleasing fragrance. Vigorous; glossy foliage. Ideal for hedges. \$2.95.
- \***Lilibet.** A.A.R.S. winner for 1954. Light rose-pink in bud turns to soft dawn-pink in full bloom. Sturdy; mildew-resistant foliage. Blooms throughout season; 2 to 3 feet tall. (Named for a Princess who became a Queen.) \$2.50.
- \***Ma Perkins.** A.A.R.S. winner for 1953. Sparkling coral-pink clusters, suffused with yellow. Cup-shaped blooms. Vigorous and bushy. \$2.50.
- Pink Bountiful.** Soft pink; perfectly formed buds and blooms. \$2.00.
- Pink Garnette.** Glowing rose-pink flowers borne in clusters. Long lasting. \$2.25.
- Pink Rosette.** Many-petaled, peach-pink open flowers. Bushy and cute. \$2.25.
- \***Pinkie.** A.A.R.S. Award for 1948. Perfect little pink buds opening to 2-inch blooms. \$2.25.
- Pinocchio.** Buds pointed, salmon flushed with gold, opening to soft pink. Continuous blooms. \$2.00.
- Pinocchio, Red.** Rich velvety dark red; fragrant. Free blooming. \$2.00.
- Pinocchio, White.** Masses of white bloom. Disease resistant. \$2.00.
- Siren.** Brand-new, brilliant fiery scarlet, ruffled flowers. The brightest, reddest Rose possible! Flowers keep their form and color. Bronze-toned foliage. \$2.75.
- Summer Snow.** Large white clusters like mounds of snow. Fragrant. \$2.00.
- \***Vogue.** A.A.R.S. for 1952. Unique brilliant cherry-coral. Vigorous. \$2.50.
- \***World's Fair.** A.A.R.S. winner for 1940. Clusters of velvety scarlet. \$2.00.

## PATENTED GRANDIFLORAS

- Buccaneer.** The brightest yellow Rose. Urn-shaped buds; double flowers, long lasting and non-fading. Upright, very tall and vigorous. \$3.25.
- Carrousel.** Continuous, glowing mass of large, double, deep rich red flowers, regardless of the weather. Tall growing and mildew resistant. \$2.50.

This new Rose classification combines several essential characteristics of both Hybrid Tea and Floribunda Roses. The varieties grow relatively tall and are free flowering, often in clusters but with individual stems long enough for cutting. Flowers run larger in size than average Floribundas but not necessarily as large as Hybrid Teas.

## CLIMBERS—NEW, HYBRID TEA, PATENTED

- Aloha.** Deep coral-pink. Double blooms up to 5 inches across. Frequently blooms all during summer. Needs slight winter protection. \$2.95.
- Blossomtime.** Camellia-pink; best everblooming climber; hardy. \$2.95.
- Cl. Charlotte Armstrong.** Sturdy climber. Sparkling cerise. \$3.45.
- Cl. Crimson Glory.** Deep crimson. Frequently blooms during entire season, after peak of bloom in June. Requires winter protection. \$2.95.
- Cl. Goldilocks.** Golden yellow everblooming climber. \$2.95.
- Cl. Peace.** Varied pink and yellow. Often repeats. Protection needed. \$2.50.
- Cl. Pinocchio.** Rich salmon, sweetheart flowers; fruity fragrance. \$2.95.
- Cl. Summer Snow.** Attractive white flowers, repeating all summer and fall. \$2.50.
- Coral Dawn.** Everblooming pillar Rose of rich coral-pink. \$2.95.
- Dream Girl.** Coral-pink everblooming hardy climbing pillar Rose. Spicy fragrance. \$2.75.
- Dr. J. H. Nicolas.** Everblooming. Double, rose-pink flowers of large size. Rich fragrance. Pillar Rose. \$2.50.
- \***High Noon.** A.A.R.S. Award for 1948. Lemon-yellow, tinted with red. A pillar Rose. Frequently blooms all during summer. \$2.95.
- Inspiration.** Same sparkling tones as Pink Radiance. Successive crops follow from June on through October. Hardy; fragrant. \$2.75.
- King Midas.** Large, double, golden yellow. Blooms in June. \$2.50.
- Parade.** Everblooming climber with masses of red flowers singly and in clusters throughout season. Spicy fragrance. Semi-shade or in full sunlight. \$2.95.
- Pink Cloud.** Rich clean pink climber. Blooms from spring to late summer. \$2.95.

\*"A. A. R. S." means All-America Rose Selections, Inc. Each year new Roses are planted in various gardens throughout the country, and these are tested under the most exacting conditions. The All-America Rose Selections, Inc. judges them and chooses the outstanding winners for the year. Therefore, you may buy with confidence those Roses marked "A. A. R. S."

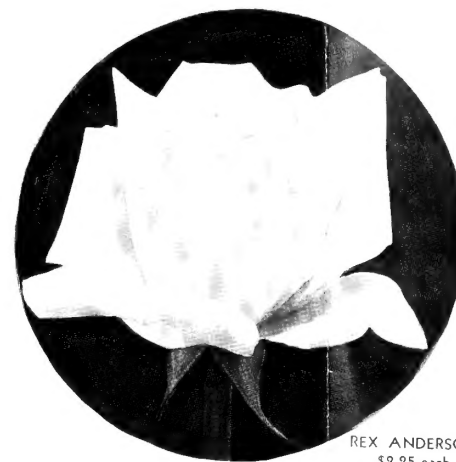


HILLSDALE GARDENS INVITE YOU TO THE 1955 ROSE FESTIVAL ON JUNE 4 AND 5

# "HILLSDALE ROSES

*Are Always Better  
and They Cost no More"*

**PLEASE NOTE**  
At Hillsdale you can find again  
this year all the **NEWEST** and **BEST**  
Roses Grown in the United States.



QUEEN ELIZABETH -  
THE FIRST GRANDIFLORA  
A. A. R. S. Award for 1955  
\$3.45 each  
Plant Patent No. 1259



CONDESA DE SASTAGO  
\$1.85 each



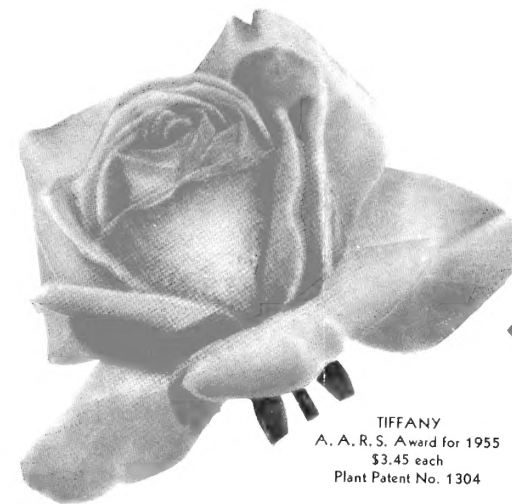
GOLDEN MASTERPIECE  
\$3.25 each  
Plant Patent No. 1284



PEACE  
A. A. R. S. Award for 1946  
\$2.95 each  
Plant Pat. No. 591



MIRANDY  
A. A. R. S. Award for 1945  
\$2.75 each  
Plant Patent No. 632



TIFFANY  
A. A. R. S. Award for 1955  
\$3.45 each  
Plant Patent No. 1304



HELEN TRAUBEL. A. A. R. S. Award for 1952  
\$2.95 each. Plant Pat. No. 1028



MOJAVE. \$3.25 each  
A. A. R. S. Award for 1954  
Plant Patent No. 1176



CHARLOTTE ARMSTRONG  
\$2.75 each  
A. A. R. S. Award for 1941  
Plant Patent No. 455

Shop the Modern Way for ROSE FOOD, ROSE  
SPRAYS and DUSTS and for a full line of Garden  
Supplies in the HILLSDALE SUPERMARKET

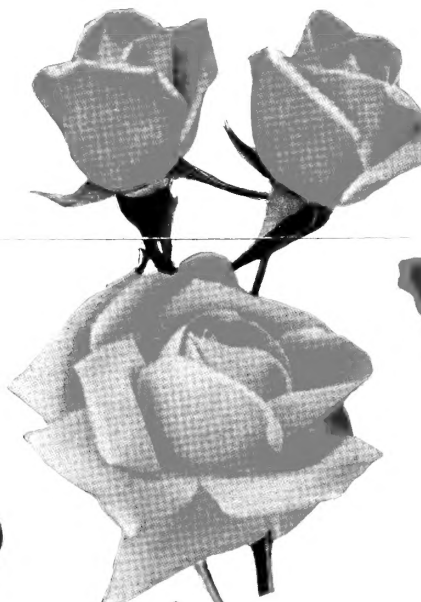
Why not visit our Gardens and see these Roses  
blooming before you make your selection?



NEW YORKER. \$2.50 each  
Plant Pat. No. 823



CRIMSON GLORY  
\$1.85 each



FLORIBUNDA, FASHION \$2.50 each  
Top A. A. R. S. Award for 1950  
Plant Pat. No. 789



FLORIBUNDA, JIMINY CRICKET \$2.95 each  
A. A. R. S. Award for 1955  
Plant Pat. Applied for



SUTTER'S GOLD  
A. A. R. S. Award for 1950  
\$2.75 each  
Plant Patent No. 885



CHRYSLER IMPERIAL  
A. A. R. S. Award for 1953  
\$2.95 each  
Plant Patent No. 1167

## Complete Landscape Service

Broad-Leaf Evergreen  
Shrubs and Vines, Ever-  
greens, Climbing Vines  
and Ground Covers, Shade  
Trees (Large and Small), Orna-  
mental Trees, Flowering  
Shrubs, Fruit Trees and  
Small Fruits, Perennials  
and Dutch Bulbs.



CLIMBING GOLDILOCKS. \$2.95 each  
Plant Patent No. 1090



Plant America!



FLORIBUNDA, WORLD'S FAIR. \$2.00 each  
A. A. R. S. Award for 1940. Plant Pat. No. 362



FLORIBUNDA, LILIBET. \$2.50 each  
A. A. R. S. Award for 1954. Plant Pat. No. 1209



FLORIBUNDA, RED PINOCCHIO  
\$2.00 each. Plant Pat. No. 812



CLIMBER, BLAZE. \$1.85 each

## Hillsdale Supermarket Garden Store Specialties

Dormant Root-Wrapped  
Roses, Shrubs, Plants and  
Small Trees (Shade, Ornamen-  
tal and Fruit) in Season. Pack-  
aged Fertilizers, Insecti-  
cides, Fungicides, Peat  
Moss, Grass Seed and  
Garden Supplies.

# *An Invitation to Hillsdale Gardens*

You are cordially invited to visit Hillsdale Gardens at any time. Our Rose Gardens are located at Hillsdale Nurseries,  $\frac{1}{4}$  mile south of Castleton, Indiana, and 8 miles northeast of Indianapolis on Road 100. To reach us by motor from Indianapolis, take Fall Creek Boulevard, North Drive, at the intersection of State Road 37 and Keystone Avenue; proceed to Millersville and continue on the boulevard to intersection with Shadeland Avenue or Road 100; turn to left on Shadeland and continue  $1\frac{1}{2}$  miles to Hillsdale Nurseries. Or a second route is: take the Nobleville Road (Road 37) to the junction of Road 100 at Allisonville; turn right (that is, east) on Road 100 and proceed 2 miles through Castleton to Hillsdale Nurseries. Or take any through street north out of Indianapolis to Road 100 and turn east on Road 100 to Nursery. From the eastern section of Indianapolis, take any through street east to Road 100 (Shadeland Avenue) and follow Road 100 (Shadeland) north to Nursery. If you cannot visit us, call us for any information you need about Roses. Telephone: Broadway 5495.



Procession of the Rose Queen and her escorts through Hillsdale Gardens at our Fifth Annual Rose Festival

## **HILLSDALE ANNUAL ROSE FESTIVAL**

This year on June 4 and 5, when the Roses are in full bloom, our large display gardens will be formally open to the public at our Fifteenth Annual Rose Festival. Our new Rose garden with over 3,000 Hybrid Teas, Climbers and Floribunda Roses now blooming in their second and third year, will be a beautiful sight to behold. We have added all the newer and best introductions and now have the finest and largest Rose garden in this section of the country. Many of the All-America Rose Selections of the past several years will be on display. Last year over 60,000 people visited our gardens during Rose Festival week. Enlarged parking facilities close to the garden will make it possible for us to accommodate an even larger attendance this year.