

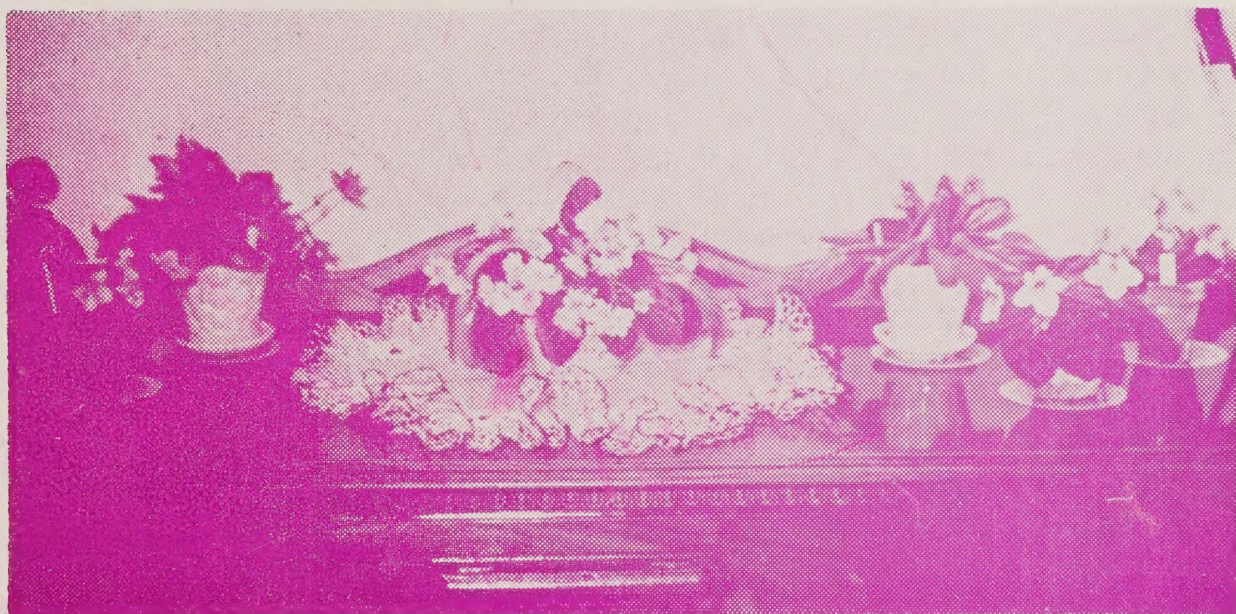
62.71

Ra

HOBBY LIST

SPRING 1955

*Let*  
**OPPEN'S**  
*make you happy with beautiful*  
**AFRICAN VIOLETS**



**OPPEN'S GREENHOUSE**

4330 Auburn Rd.

Salem, Oregon

Phone 4-1933



*We Specialize*

*We Hybridize*

Commercial Member: African Violet Society of America

Dealers--Write for TRADE list

The **AFRICAN VIOLET** is still the most popular of house plants. With a little care they can be kept in bloom all through the year. We grow them in a wide variety of blossom colors and foliage variations.

### INSTRUCTIONS FOR ORDERING

Please print your name and full address including City and State. Please be sure to inclose check or money order as we do not send C.O.D.

Canadian and Philippine customers must obtain an import permit from your Department of Agriculture and forward this to us. Postage is at your cost on all orders for Violets that go out of the U.S.A.

We send all retail orders in the U.S.A. by mail—Special Handling—and we pay the postage. If the order is for less than \$5.00, please send 50c for handling. Special Delivery is 50c additional.

WHOLESALE—We have a special wholesale price for the Hobbyist who buys 12 or more plants at one time. These may be assorted and each plant should be figured at its list wholesale price. Wholesale orders are always sent by Express and you pay the express charges on arrival.

As the Express company will guarantee safe arrival, we are able to ship wholesale orders all through the year. We use a winter pack in cold weather.

We are usually able to send retail orders to our Pacific Coast customers at any time by mail. If you live in a cold district we will fill your retail orders as soon as weather permits.

Please list a few substitutes. We seldom substitute and will not do so if you so request.

Plants are mostly in bud or bloom when shipped. They are in 2¼" pots. This size recovers quickly from shipping shock.

All varieties may be combined to make up a wholesale order. Be sure to figure each one at its correct price.

**All our plants are State Inspected and may be shipped to any part of the U.S.A.**

**We have Special Inspection for plants sent to other countries.**

### SOME OF OUR CUSTOMERS TELL US . . .

"I wrote you some time ago telling you how nicely the Violets came through. I have ordered from many places, but your Violets are the nicest I have ever come in contact with." —Mrs. F. W., Nebraska.

"The African Violets arrived in rather good condition yesterday." —Cuba.  
Every leaf as fresh as if it had been picked this morning." —Mrs. F. W., Manila, P. I.

"Violets come in splendid condition and were among the nicest I have received from anywhere." —Minnesota.

"My last shipment arrived and are growing fine." —California.

"Leaves arrived in perfect condition even though Chicago temperature was 10 above zero." —Mrs. Wm. E. K., Illinois.

The following varieties are originations of MRS. EDWIN ANDERSON of LANSING, MICHIGAN, and are all registered varieties. Official color chart colors. Properly grown they make good exhibition plants to help you get those ribbons at the shows.

**CRESTED PLATO-BLUE SPRUCE**—Large purple flowers, two-tone leaves, \$2.00.

**CRESTED PLATO RUTH YOARS**—Large V, 2 (purple) flowers, dark center. 5 to 12 on a stem. Good bloomer, \$2.00.

**CRESTED PLATO-OLD SMOKY**—Large V, 2 blossoms slightly ruffled edge, \$2.

**CRESTED PLATO-CLIMAX**—1½" blossoms; color blue-violet 3, \$2.00.

**CRESTED PLATO-ANTIQUÉ MARBLE**, 1½" blossoms, color violet 4. Slightly ruffled and slightly cupped, rather long petals. Deeply lobed upright foliage, \$2.00.

**CRESTED PLATO-DRIFTWOOD**—Symmetrical plant, large violet blossoms, \$2.

**CRESTED WEEPING ANGEL**—Violet-blue 3, flowers on long stems, \$2.00.

**CRESTED WEEPING-LORNA DOONE**—Large blue-violet 4, blossoms 8 to 12 per stem, \$2.00.

**DR. FREDERICK SWARTZ**—Blue-violet 3, blossoms, slightly ruffled, 10 to 15 per stem, good bloomer, \$2.00.

**PINK HONEYSUCKLE**—Large violet-red 5, (pink) blossoms with darker center; six or more on short stems held well above the foliage, \$2.00.

— A L S O —

**GRANGER'S Double Pink "BOUNTIFUL"**—Mailed separately about May 1, \$3.

— A L S O —

#### Introducing OUR following NEW Varieties

**ELSIE**—Rose pink with orchid markings, a grotei hybrid, \$2.00.

**FLIRTATION**—Blue blossoms with darker center. Strawberry foliage, \$1.75.

**4-D**—Fully double blue 4, slightly ruffled petals, beautiful strawberry foliage. A Grotei hybrid, \$1.75.

**GENIVERE**—Light blue blossom with dark center. Grotei hybrid, \$1.75.

**NINETEEN**—Bi-color orchid blossom, dark flexible foliage, \$1.50.

**MOTH BLUE**—Blue blossom on compact girl foliage, \$2.00.

**PRIMA DONNA**—Full double red-purple blossoms on compact girl foliage, \$2.

**VIOLET GEM**—Large violet 2, blossoms on medium dark foliage, \$1.75.

**WONDER BEAUTY**—Large bi-color blossoms, \$2.00.

**OLIVE**—Fully double shaded light to medium blue blossoms on beautiful dark olive green foliage, leaves have light olive green veining on top; light underside with red veining; red stems; leaves are thin and flexible but not droopy; makes a beautiful single crown plant, in or out of bloom; short supply, \$2.50.

When ordering above varieties with wholesale orders you may deduct 25c each to take care of shipping costs. Leaves 50c each, \$5.00 per dozen.

**Retail** The following varieties: Plants \$1.75 each; Leaves 50c each; \$5 per doz.

**Wholesale** 12 or more at \$1.25 each. Assorted, one or more to the variety.

**ARISTOCRAT**—Bi-color blossoms on nice girl foliage.

**APPEALING**—Orchid bi-color blossom on supreme foliage.

**MORIE BLUE BUTTERFLY**—Blue blossoms having darker blue streaks.

**SIR LANCELOT AMAZON**—Large deeply colored blossoms on amazon foliage.

**WINTRY NITE**—Variegated foliage. Double, blue blossoms.

**Retail** The following varieties: Plants \$1.50 each; Leaves 35c ea.; \$3.50 per doz.

**Wholesale** 12 or more at \$1.00 each. Assorted.

**ALL AGLOW**—Deep pink on girl foliage.

**THE BRIDE**—Large double white with blue markings.

**BRIDESMAID**—Large double blue and white variegated blossoms.

**BLUE BELL**—Large double blue blossoms on good foliage.

**CAROL'S TREASURE**—Red single to full double blossoms on same plant; large bloom.

**EDITH CAVELLE**—Mauve-lavender and pearl blossoms. Ruffled foliage.

**EVENING STAR**—Large bi-color blossoms on heavy foliage.

**DIXIE BELLE**—Large orchid bloom on very compact old lace type leaf.

**GENEVA BEAUTY**—Deep blue-purple blossom with white edge that does not fade.

**INDIAN SQUAW**—Red flowers on very dark girl foliage. A good red.

**MARILYN'S ORCHID**—Amethyst-orchid blossom. Semi double. Very nice.

**NELLIE GIRL**—Soft rose blossoms. Very good girl foliage.

**PINK WONDER**—Pat.-Large round pink blossoms with dark eye.

**PURPLE GEM**—Very large round blossoms of Norseman color. Dark green foliage.

**PURPLE DANCER**—Ruffled purple blossom on wavy foliage.

**PERRIWINKLE GIRL**—Light blue blossoms on good girl foliage.

**RED SWEET PEA GIRL**—Red sweet pea bloom on good girl foliage. Excellent.

**RED APPLE**—Large wine red blossoms on DuPont foliage.

**RED DANCER**—Wavy red blossoms on good foliage.

**RED MAID**—Double red blossoms on girl foliage.

**RUFFLED QUEEN**—Heavily fringed blue-burgundy blossoms on DuPont foliage.

**REVELATION**—(Tonkadale) Double red-lavender blossoms. Plain foliage.

**HI LOA COBALT**—(Tonkadale) Fringed cobalt bloom, wavy dark elongated leaf.

**RUFFLED TREASURE**—Ruffled pastel blossoms on wavy foliage.

**VIOLET DANCER**—Wavy violet blossoms on slightly ruffled foliage.

**WHITE MADONNA**—Nice, large double white blossoms on girl foliage. A winner.

**WINTERGREEN**—Variegated foliage. Var. blue and white blossoms. Double.

**Retail** The following varieties: Plants \$1.25 each; Leaves 35c ea.; \$3.50 per doz.

**Wholesale** 12 or more plants at 75c each. Assorted.

- BRIDAL WREATH**—Excellent light blue blossoms with white edge. Plain foliage.
- BLUE WARRIOR**—Blue violet flowers. Dark flat shiny quilted leaves with red backs.
- CLOUDY SKY**—Light pink blossoms on plain foliage.
- CONFEDERATE GRAY**—Light blue-gray flowers. Plain foliage.
- CALICO QUEEN**—Variegated chartreuse foliage. Large light blue blossoms.
- CLEMENTINE**—Frilled white blossoms on ruffled foliage.
- DREAM GIRL**—Cut leaf girl foliage. White and blue flowers.
- DOUBLE RASPBERRY**—Double cineraria bi-color blossoms. Plain foliage. Good bloomer.
- DOUBLE JUBILEE**—Deep garnet shade blossoms. Plain foliage. Good bloomer.
- GIANT PURPLE**—Double purple blossoms on plain foliage.
- GENEVA DAUGHTER**—Light blue white edged flowers on girl foliage.
- GENEVA PRINCESS**—Dark blue white edged blossoms on girl foliage.
- HER MAJESTY**—Large double orchid blossoms on girl foliage.
- HILDEGARDE**—A frilly rose-orchid blossom on rich green ruffled foliage.
- IVORY QUEEN**—Ivory-white blossoms on girl foliage.
- MOON RIPPLES**—Dark blue double frilled flowers, some white edge. Ruffled foliage.
- OAK LEAF**—Large medium blue ruffled blossoms on dark oak leaf foliage.
- GYPSY PINK**—Large pink blossoms on girl foliage.
- PANDORA**—Large blue blossoms on girl foliage.
- PINK DREAM**—Shell pink blossoms.
- PEACHES & CREAM**—Round glistening blossoms on bronze foliage.
- PINK CHEER**—Good deep pink on dark foliage.
- PORTLAND ROSE**—Rose color blossoms. Different.
- PURPLE GARDENIS**—Double purple blossoms. Plain foliage.
- QUEENS ROYAL**—Large double deep blue blossoms on dark girl foliage.
- RED PRINCESS**—Wine red flowers.
- RED GENEVA GIRL**—White edged red blossoms on girl foliage.
- SILVER LINING**—Light blue ruffled flowers with white edge. Ruffled foliage.
- SILVER MOON**—Large round white blossoms on plain foliage. Good bloomer.
- SILVER SPOON**—Large orchid blossom on spooned foliage.
- SNOW LINE**—Double red-lavender blossoms with white edge. Ruffled foliage.
- SILVER CLOUD**—Shiny foliage. Fluffy white and blue blossoms.
- SHOW PINK**—Very large pink blossoms on heavy upright foliage.
- UNCLE BOB**—Very nice large pink blossoms on plain foliage.
- VIOLET LACE**—Violet blossoms. Bronze girl foliage.
- WHITE PRIZE**—Large white blossoms. Very prolific.
- WHITE BUTTERFLY**—Large white blossoms on plain foliage.
- YELLOW BROWN GIRL**—Blossoms are slightly cream in center. Nearest to yellow.

**Retail** The following varieties: Plants \$1 each; Leaves 25c each; \$2.50 per doz.

**Wholesale** 12 or more plants at 60c each, Assorted.

**BLACK FRINGE**—Deep purple bloom with ruffled edge; dark green wavy foliage.

**DOUBLE LACE**—Fully double fringed white blossoms; wavy, serrated foliage.

**DOUBLE ORCHID GIRL**—Two-tone orchid blossoms, girl foliage.

**DOLLY DIMPLE**—Miniature; small blue blossoms on dainty round girl leaves.

**EVENING SUNSET**—Light blue blossoms with two upper petals overcast with pink.

**FRILLED BLUE DELIGHT**—White flowers with blue frilled edge; light green rippled foliage.

**GORGEOUS BLUE WONDER**—Large blue flowers overcast with white; heavy bloomer.

**GYPSY ALMA GIRL**—Orchid-BiColor blossoms on bronze girl foliage.

**GLORY**—Double white and blue flowers.

**HOLLY**—Black-green wavy foliage; blue blossoms.

**LINDGARDE**—Orchid Bi-Color blossoms on good girl foliage.

**MULBERRY GIRL**—Mulberry Bi-Color blossoms; bronze green girl foliage.

**MINUET GIRL**—Light blue blossom clouded with white; good girl foliage.

**MAYBE**—Large white blossoms, some with odd shaped blue markings.

**ORCHID SUNSET - DOUBLE**—Flowers garnet orchid, darker tones at tips; dark green foliage.

**ORCHID WONDER**—Large orchid bicolor blossoms.

**PAINTED BOY**—Flowers white with blue edge; plain foliage.

**PAINTED GIRL**—White blossoms with orchid edge; girl foliage.

**PUGET PEARL**—Light rose pink blossoms.

**RED LADY**—Girl foliage; red blossoms.

**RED DOGWOOD**—Red flowers with white tip on each petal.

**SNOW CLOUD**—Large white flowers with some color.

**STAR GIRL**—Blue and white striped blossoms; girl leaves.

**SNOW PRINCE**—Large white blossoms on plain foliage.

**SUNSET LANE**—Medium green foliage; large pale violet flowers.

**TED'S TREASURE**—Medium light blue blossoms on oak leaf foliage.

**WESTERN SUNSET**—Orchid blossoms on girl foliage.

### *Beginner's Special*

12 African Violet plants. All different and selected by us from about 300 varieties—our choice—for \$6.00 prepaid. State colors preferred, if any. These are all good healthy plants in 2¼" pots.



*Visitors are always welcome et. . .*

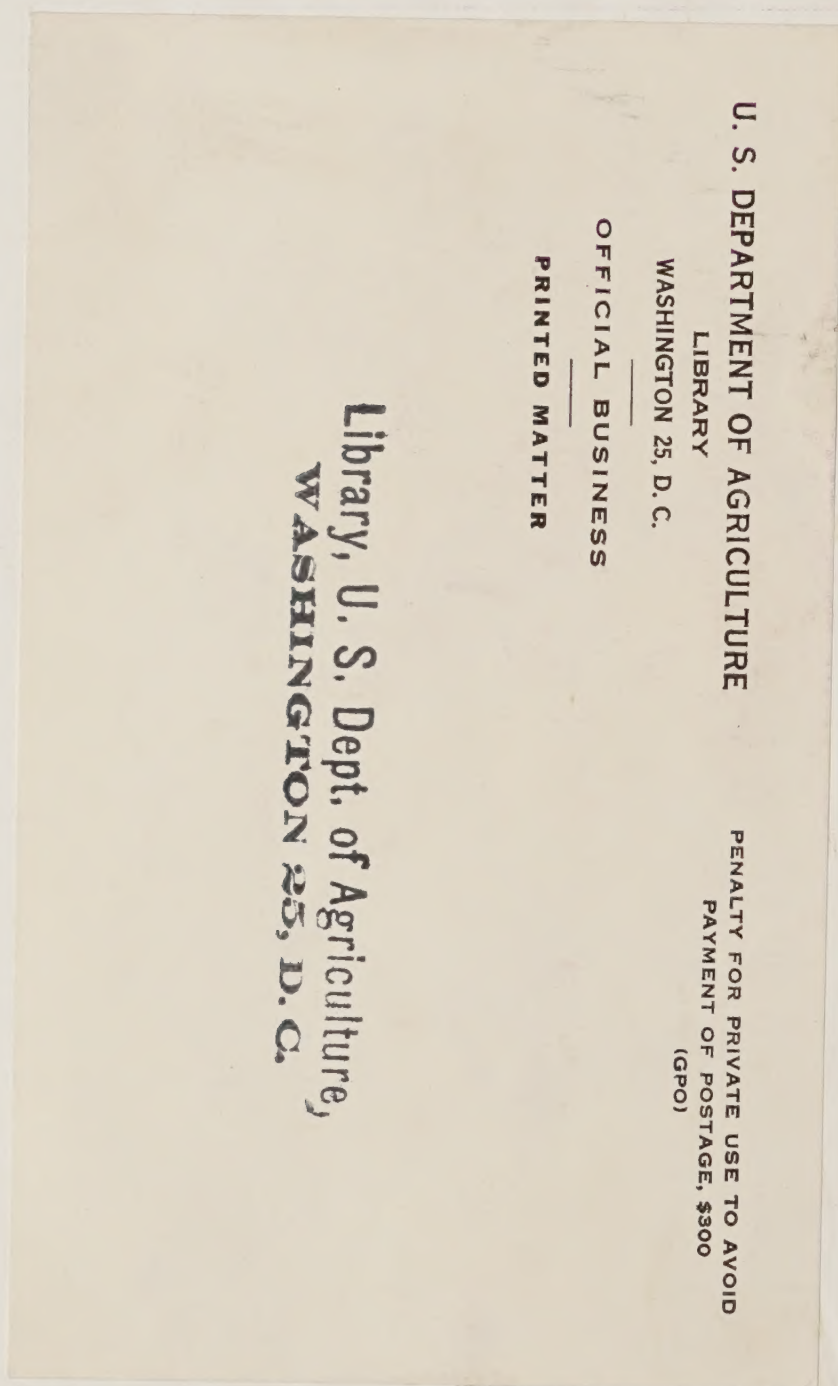
## **OPPEN'S GREENHOUSE**

4330 Auburn Rd.

Salem, Oregon

Phone 4-1933

*Let us make you happy with  
Beautiful African Violets!*



**Dealers--Write for TRADE list.**