

62.5-1  
JOHN SCHEEPERS, Inc.

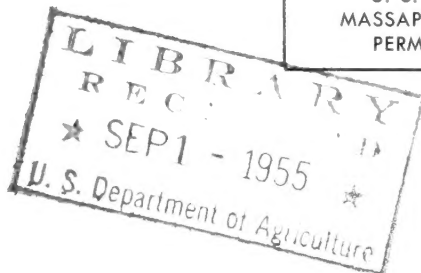
Flower Bulb Specialists

37 WALL STREET  
NEW YORK 5, N. Y.

BULK RATE

**PAID**

U. S. POSTAGE  
MASSEPEQUA, N. Y.  
PERMIT No. 63



Beauty From Bulbs !

SUPPLEMENT:

IRISES  
PEONIES  
AUTUMN CROCUS  
COLCHICUMS  
STERNBERGIAS

United States Dept. Agriculture  
Library  
Washington 25, D. C.



# TALL BEARDED IRIS

(June Flowering)

Increase Garden Beauty --  
Reduce labor costs

The culture of the Bearded Irises offers no difficulties. But because they will grow under arid conditions, will survive in shade, and bravely assume the part, too often thrust upon them, of rescuing from desolation some garden region where little else will consent to grow, these willing plants are, more often than not, treated with scant consideration and denied the opportunity to develop the full measure of their beauty and nobility. Even so they pluckily grow and blossom; but give them their desire—abundant sunshine, good soil rich in lime and devoid of fresh manure, intelligent watering during dry seasons, particularly when the buds are forming—and the reward in multiplicity of flowers, in their improved color and size and texture, in the sturdy increase of the clumps, will astonish many a one who is under the impression that he is familiar with the manifold charms of color, the perfection of form of these most enchanting flowers.

We have given much careful study to the great number of varieties usually listed. We have noted the many similarities existing, and have finally selected what we would consider a Master List, consisting of the most desirable varieties, so that you may plant all of the following in your garden without danger of regret.

All appear on the list of 100 best, published by the American Iris Society. Dykes Medal winners received the highest award of the society which is made each year.

**ORDER NOW FOR DELIVERY  
PLANTING TIME SOON.**

Our prices are based upon selection, of course, of extra strong plants.



Iris—Goddess of the Rainbow.

**CHINA MAID.** Pink blend. Standards and falls pink at the center with edging of golden bronze for a lovely effect. Well proportioned flowers that are placed well on branching stems. \$.75 each; \$2.00 for 3. Height, 46 inches.

**GOLDBEATER.** Chrome yellow. Bright deep yellow without any other shading. A fine variety and beautiful in bud formation as well. Flowers are well spaced on fine branching stalks. Height, 36 inches. \$1.00 each; \$2.75 for 3.

**GRAND CANYON.** Blend of plum, copper and gold. The slightly ruffled blooms are a blending of plum with copper sheen; copper gold at the haft and a golden beard. Good stalks. Height, 40 inches. \$1.00 each; \$2.75 for 3.

**GREAT LAKES.** Light blue. Dykes Medal Winner in 1942 and still at the top of the list for a clear light blue variety, the beard is almost white. The standards are well domed and the falls are flaring for a delightful effect, pleasing fragrance. Height, 42 inches. \$.75 each; \$2.00 for 3.

**GUDRUN.** White. A very popular variety and deservedly so. Strong blooms of heavy texture pure white softly dusted with gold in the throat. Extra fine variety. Height, 33 inches. \$.75 each; \$2.00 for 3.

**MISSOURI.** Porcelain blue. Dykes Medal winner. A giant flower of clear porcelain blue. Well formed standards and flaring falls. Extra fine. Height, 37 inches. \$.75 each; \$2.00 for 3.

**MULBERRY ROSE.** Rose-purple. Deep radiant mulberry rose, showing a shade of brown. The beard is heavy bronze. Large flowers of fine form. Height, 40 inches. \$1.00 each; \$2.75 for 3.

**OLA KALA.** Orange-yellow. Dykes Medal winner. The large ruffled flowers have standards that are closely held and the falls are semi-flaring. The brilliant orange-yellow blooms are of fine substance and are weather proof. Well branched stalks. Height, 38 inches. \$1.00 each; \$2.75 for 3.

**PRAIRIE SUNSET.** Blend of pink, gold and apricot. Dykes Medal winner. Iridescent colorings of pink, apricot, peach and rose with a sprinkling of gold shining through. Very beautiful. Height, 38 inches. \$1.00 each; \$2.75 for 3.

**SABLE.** Dark blue-purple. Dark blue-purple with a lustrous silky sheen, the color is enhanced by the dark violet beard. A dark beauty. Height, 36 inches. \$1.00 each; \$2.75 for 3.

**SHINING WATERS.** Light blue. Clear light blue with a bright orange beard. Well branched, a beautiful iris. Height, 44 inches. \$.75 each; \$2.00 for 3.

**SIERRA BLUE.** Medium blue. Very beautiful medium blue flower. Standards are well shaped and the falls are broad and very long. Dykes Medal winner. Height, 42 inches. \$.75 each; \$2.00 for 3.

**SNOW FLURRY.** Snow white. This is a beautiful variety that is ruffled and frilled. In the bud stage there is a blue tinge, then when the flower unfurls it is a delightful icy snow white. Very fine. Height, 43 inches. \$1.25 each; \$3.50 for 3.

**SOLID MAHOGANY.** Deep reddish brown. Darkest of the red varieties. The color effect is brownish mahogany. Extra fine variety. Height, 38 inches. \$1.25 each; \$3.50 for 3.

**SPUN GOLD.** Golden yellow. Dykes Medal winner. It is very close to a pure gold color; petals of finest texture. Beautiful. Height, 38 inches. \$1.00 each; \$2.75 for 3.

**THE RED DOUGLAS.** Dark red. Delightful deep red-purple, gigantic flowers, bright orange beard with a flush of brown at the haft. Dykes Medal winner. Height, 40 inches. \$1.25 each; \$3.50 for 3.

**VIOLET SYMPHONY.** Violet. Very beautiful iris of true violet with a slight bronze flush at the haft. Very large blooms that are perfectly formed. Height, 40 inches. \$1.25 each; \$3.50 for 3.

**WABASH.** Bicolor white and purple. Dykes Medal winner. Slightly ruffled white standards; the falls are purple and are delightfully edged white, orange beard. A very beautiful color combination. Height, 38 inches. \$.75 each; \$2.00 for 3.

## SPECIAL COLLECTIONS

No. 1

Consisting of one extra selected root each of the above 18 extra fine varieties. Total 18 Extra Selected Roots.

List Price—\$17.25

**SPECIAL PRICE—\$16.50**

No. 1A

Same as collection Number 1 only 3 each of the 18 varieties. Total 54 Extra Selected Roots.

List Price—\$47.25

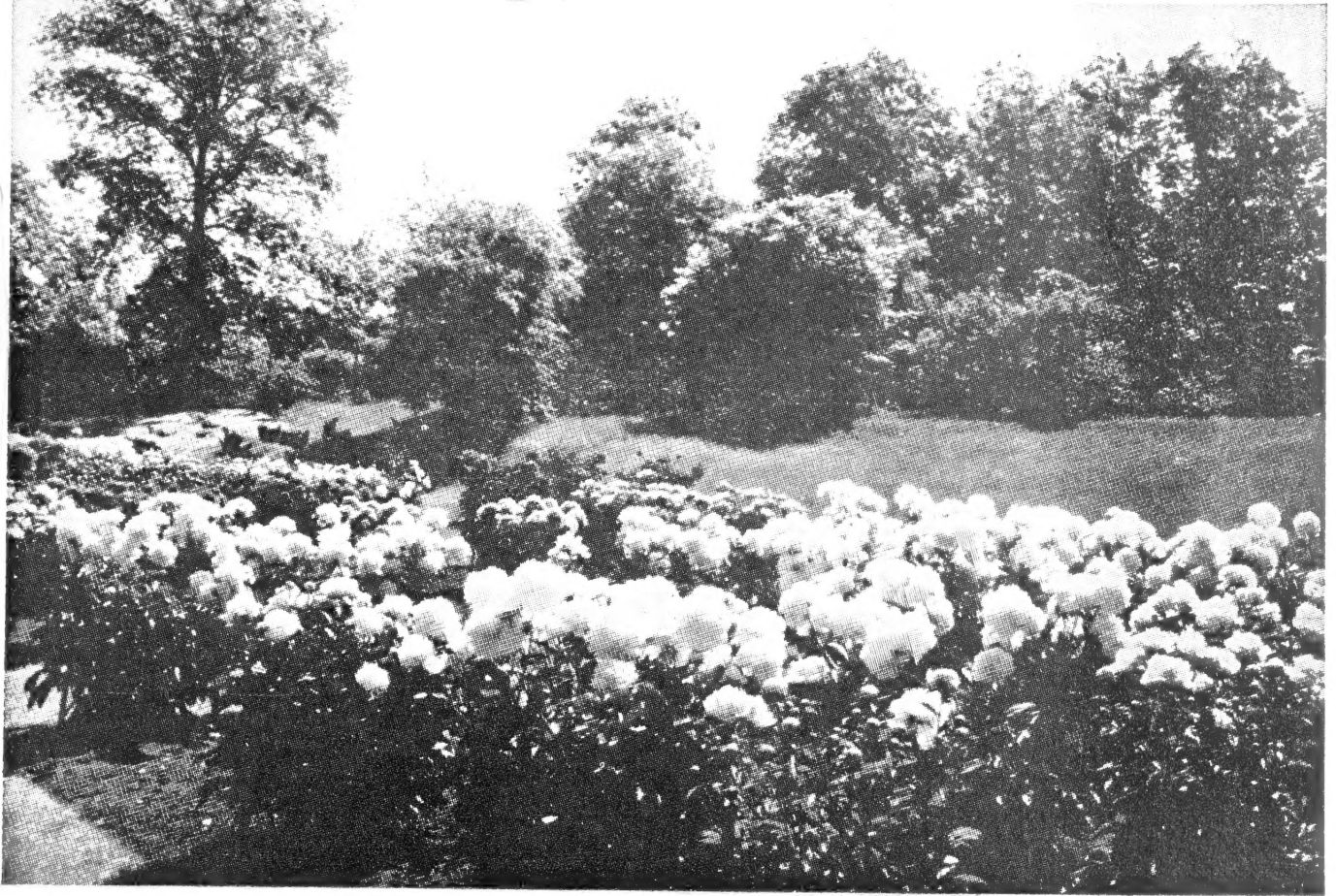
**SPECIAL PRICE—\$42.50**

For Iris Kaempferi and Dutch Iris — see our 1955  
Fall Edition of "Beauty from Bulbs" recently mailed to you.

## AUTUMN-FLOWERING BULBS TO BRIGHTEN YOUR FALL GARDEN

Crocus, Colchicum and Sternbergia bulbs planted in August and September will flower in a few weeks and continue through October. It will be a permanent planting as they naturalize and will flower each Fall thereafter in increasing beauty.





*Delightfully Fragrant*

# Hardy Peonies

*Increase Garden Beauty —  
Reduce labor costs*

Peonies are possibly the most permanent of our herbaceous plants and of easiest culture. They will thrive satisfactorily in any good garden soil. Cover the eyes of the roots with one inch of soil and plant in full sun. Give the areas where Peonies are planted a top dressing of well rotted cow manure or chicken manure just before winter weather sets in and you will have exhibition quality plants each season from our superior quality stock. When properly fed they may be left undisturbed for 10 years and more and will increase in beauty with each season's growth. Keep well cultivated for finest results.

Long Lists of Peonies are confusing. We have therefore selected a Master List of Peonies, consisting of highest rated varieties. You may therefore make your selections with assurance of having the finest.

When planning a Peony border make sure that you select Early, Mid-Season and Late varieties for your planting—then you may enjoy the delightful fragrant Peonies over a long period of time.

## DOUBLE PEONIES

*(Highest Quality Stock)*

**ADOLPHE ROSSEAU.** Early. Large flowers of deep garnet-red. One of the very finest Peonies. Fragrant. Extra heavy clumps. Each, \$1.50.

**ALICE HARDING.** Mid-Season. Flowers of refined form and texture, with delicate coloring and sweet fragrance. Creamy white, with soft pink guard petals which are flushed darker on the reverse. Very pretty. Extra heavy clumps. Each, \$2.75.

**BARONESS SCHROEDER.** Late, Mid-Season. Large double, flesh white to soft pink, with a delicate rose fragrance. Extra heavy clumps. Each, \$1.75.

**FESTIVA MAXIMA.** Early. Large flowers of pure milky white with a few crimson flecks in the center. A perfect peony. Sweet fragrance. Extra heavy clumps. Each, \$1.75.

**KATHERINE HAVEMEYER.** Late. A very large, exquisitely fragrant flower of light rose, tinted old gold. Extra heavy clumps. Each, \$3.75.

**LE CYGNE.** Early. One of the very finest and fully justifying this distinction. Very large, ivory white, without the slightest trace of any other color. Exquisitely fragrant. Perfect rose type with a perfect flower to every stem. Extra heavy clumps. Each, \$3.00.

**MME. JULES DESSERT.** Late, Mid-Season. A wonderful peony. Large flowers of delicate flesh pink, shading to a creamy white, with a golden glow at the center. Extra heavy clumps. Each, \$1.75.

**MARTHA BULLOCK.** Late. A mammoth flower, often measuring 12 inches in diameter. A silvery shell pink, deepening at the center to a deep rose pink. Fine rose fragrance. Extra heavy clumps. Each, \$3.00.

**MONS. JULES ELIE.** Mid-Season. This is the largest and most striking of the pink peonies. A gigantic flower of perfect crown type, the center like a large Exhibition chrysanthemum with large prominent guard petals. Delightfully fragrant. Extra heavy clumps. Each, \$2.50.

**MRS. A. M. BRAND.** Late. One of the highest-rated varieties. A most remarkable peony, received a Gold Medal for its superior merit. Very large flowers of perfect rose form, pure white and exquisitely fragrant. Extra heavy clumps. Each, \$3.00.

**MYRTLE GENTRY.** Late. A beautiful and refined flower of rosy white, suffused with tints of flesh and crimson. Delightfully fragrant. Extra heavy clumps. Each, \$3.00.

**SHIRLEY TEMPLE.** Early. New variety that is considered one of the finest of the early flowered kinds. The very large blooms open blush pink and change to pure white. Strong grower and delightfully fragrant. Extra heavy clumps. Each, \$6.00.

**SOLANGE.** Late. One of the highest rated varieties. Of a very unusual shading of creamy white with golden-brownish lights. Perfect rose type. No other peony like it. Extra heavy clumps. Each, \$2.00.

**SOUVENIR DE LOUIS BIGOT.** Late Mid-Season. One of the most distinct of all the pink varieties. Very large, fragrant, rose-type flowers with fringed petals of bright Bengal rose, slightly tinged carmine at the base, changing later to salmon pink with a silvery reflex. Extra heavy clumps. Each, \$2.00.

**WALTER FAXON.** Mid-Season. One of the finest of all peonies. Soft coral pink, shaded lighter at the ends of the petals and a deeper rose pink at the base. Delightfully fragrant. Extra heavy clumps. Each, \$2.00.

## SINGLE AND ORIENTAL PEONIES

*(Highest Quality Stock)*

**ANTWERPEN.** Enormous flowers of carmine pink with the petals in a double row, surrounding a beautiful center of golden yellow for a very charming effect. A wonderful flower. Award of Merit in Holland. Extra heavy clumps. Each, \$1.75.

**MIKADO.** One of the best of the bright red Oriental peonies. A magnificent landscape variety. The crimson guards surround a center of chamois faced crimson. Extra heavy clumps. Each, \$2.50.

**RIGOLOTO.** Very outstanding and draws immediate attention in the garden. Deep garnet red with the center a lighter shade of red tinted pink; prettily tufted in the center. Extra heavy clumps. Each, \$3.75.

**SNOW WHEEL.** One of the most beautiful of all. Very large flowers of pure white with a pure yellow center. Petals of heavy substance and long lasting. Extra heavy clumps. Each, \$3.75.

**TOKIO.** A beautiful large flower, with guards of rose pink, and a pink, yellow and buff center. Very attractive. Extra heavy clumps. Each, \$2.00.

### SPECIAL COLLECTION HARDY DOUBLE PEONIES

Consisting of one extra heavy clump each of the 15 exhibition varieties listed. Total, 15 Extra Heavy Clumps.

Catalog Price, \$37.50

**SPECIAL COLLECTION  
PRICE \$35.00**

### SPECIAL COLLECTION SINGLE AND ORIENTAL PEONIES

Consisting of one extra heavy clump each of the 5 exhibition varieties listed. Total 5 Extra Heavy Clumps.

Catalog Price \$13.25

**SPECIAL COLLECTION  
PRICE \$12.50**

*For Peony companion flowers—Eremuri—Hemerocallis, etc.—See 1955 Fall Edition of "Beauty from Bulbs" recently mailed to you.*

**AUTUMN FLOWERING CROCUSES —**

**SPECIOSUS**—bright violet-blue

**SPECIOSUS ALBUS**—pure white

**ZONATUS**—rosy lilac

Any of the above at \$2.50 for 25; \$8.50 per 100.

**FINEST MIXTURE**—all colors

\$2.25 for 25; \$7.00 per 100; \$15.00 per 250.

**STERNBERGIA LUTEA**—the Yellow Fall Crocus

\$3.25 for 10; \$7.75 for 25; \$30.00 per 100.

**COLCHICUMS**—flowers are very large, 5 times that of the crocus—excellent for naturalizing and cutting too.

**Autumnale Album**—pure white

\$3.25 for 10; \$7.75 for 25.

**Autumnale Major**—rosy purple

\$4.00 for 10; \$9.50 for 25.

**The Giant**—pure lilac

\$4.75 for 10; \$11.50 for 25.

**Special Mixture**—all colors

\$3.25 for 10; \$7.75 for 25; \$30.00 per 100.

*Place your order now—We will ship at proper planting time with full cultural directions.*

*All make ideal gifts—We will package and ship as such—enclosing gift card.*

*For Spring Flowering Crocuses, See page 27, "Beauty From Bulbs"*

*1955 Fall edition, recently mailed to you.*

**JOHN SCHEEPERS, INC.**

*Flower Bulb Specialists*

**37 WALL STREET, NEW YORK 5, N. Y.**

# MAIL THIS ORDER CARD TODAY

Date.....

JOHN SCHEEPERS, Inc.  
37 Wall Street  
New York 5, N. Y.

Gentlemen: Kindly ship the following:

## PEONIES—Double

.....Adolphe Rosseau  
.....Alice Harding  
.....Baroness Schroeder  
.....Festiva Maxima  
.....Katherine Havemeyer  
.....Le Cygne  
.....Mme. Jules Dessert  
.....Martha Bullock  
.....Mons. Jules Elie  
.....Mrs. A. M. Brand  
.....Myrtle Gentry  
.....Shirley Temple  
.....Solange  
.....Souvenir de Louis Bigot  
.....Walter Faxon  
.....Special Collections  
@ \$35.00

## PEONIES—Single

.....Antwerpen  
.....Mikado  
.....Rigoloto  
.....Snow Wheel  
.....Tokio  
.....Special Collections  
@ \$12.50

## TALL BEARDED IRIS

.....China Maid  
.....Goldbeater  
.....Grand Canyon  
.....Great Lakes  
.....Gudrun  
.....Missouri

## TALL BEARDED IRIS—Cont.

.....Mulberry Rose  
.....Ola Kala  
.....Prairie Sunset  
.....Sable  
.....Shining Waters  
.....Sierra Blue  
.....Snow Flurry  
.....Solid Mahogany  
.....Spun Gold  
.....The Red Douglas  
.....Violet Symphony  
.....Wabash  
.....Special Collection  
No. 1  
@ \$16.50  
.....Special Collection  
No. 1A  
@ \$42.50

## AUTUMN FLOWERING CROCUSES

.....Speciosus  
.....Speciosus Albus  
.....Zonatus  
.....Finest Mixture

## COLCHICUMS

.....Autumnale Album  
.....Autumnale Major  
.....The Giant  
.....Special Mixture

## STERNBERGIA—

**Yellow Fall Crocus**  
.....Sternbergia Lutea

(We will bill you after shipment is made.)

Name.....

Address.....

City.....State.....

Postage  
Will be Paid  
by  
Addressee

No  
Postage Stamp  
Necessary  
if Mailed in the  
United States

BUSINESS REPLY CARD

First Class Permit No. 47266, Sec. 34.9 P. L. & R., New York, N. Y.

JOHN SCHEEPERS, Inc.

*Flower Bulb Specialists*

37 Wall Street

New York 5, N. Y.



COLCHICUMS—flowers are very large, 5 times that of the  
crocus—excellent for naturalizing and cutting too

— AUTUMN FLOWERING CROCUSES —