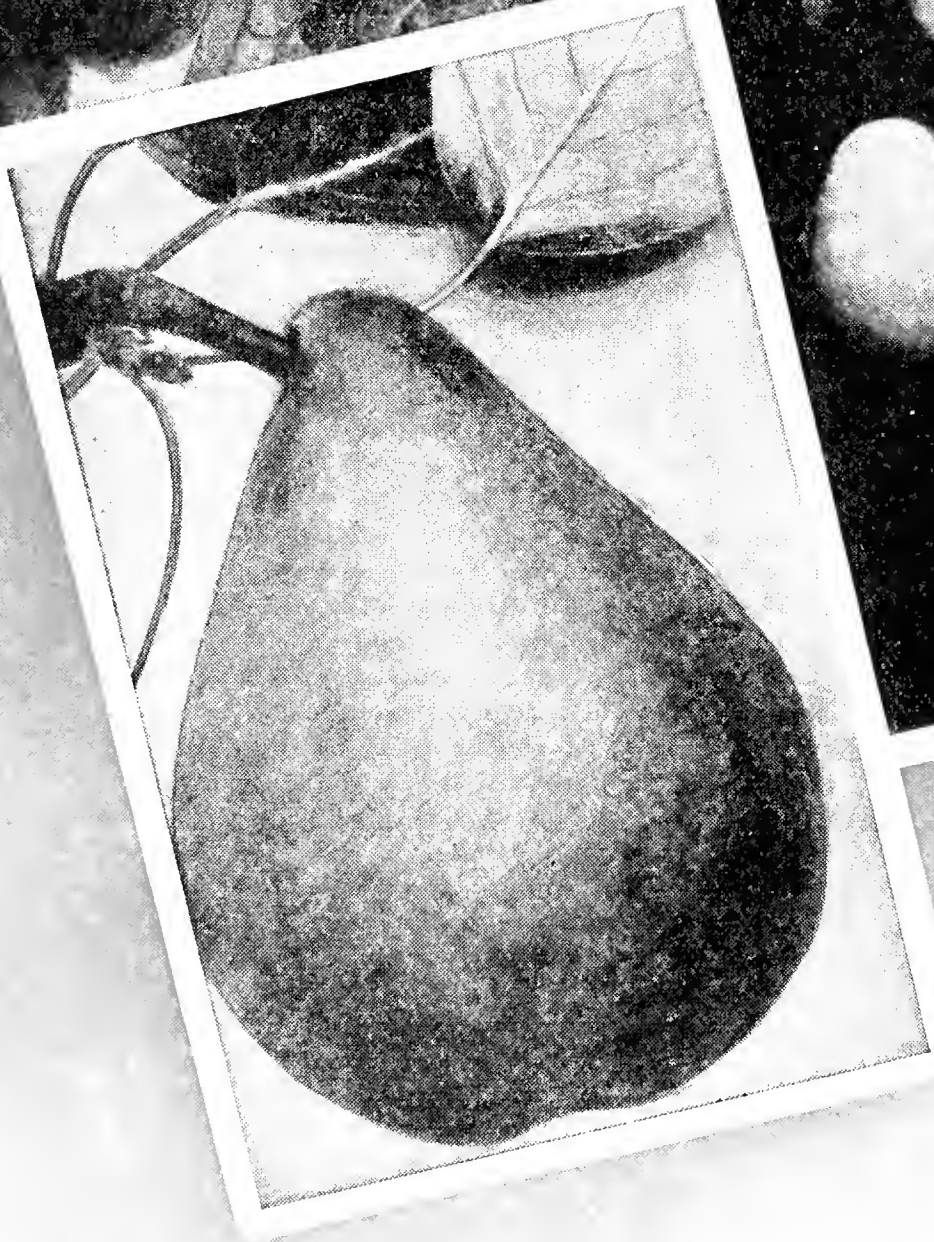
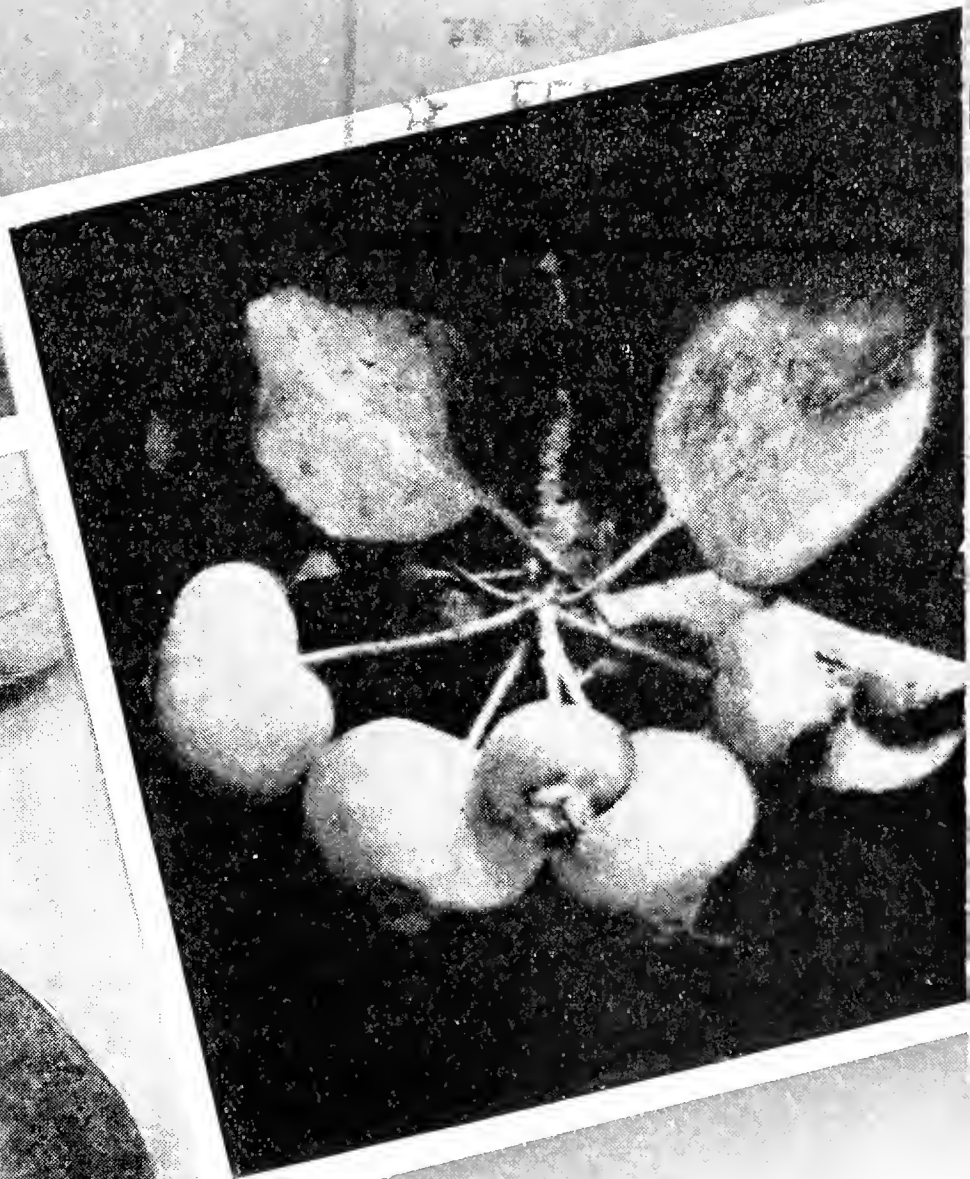


Historic, archived document

Do not assume content reflects current scientific knowledge, policies, or practices.

American

SEEDS AND PLANTS



AMERICAN SEED AND PLANT CO.
QUINCY ILLINOIS



American Quality Baby Chicks

We have a connection with one of the outstanding hatcheries of the Middle West with whom we have dealt for many years and we know that every statement in regard to culling and testing is carried out to the letter. A special inspector surveys every flock, handles every bird, examining them for egg production according to the approved system and B. W. D. Antigen blood test each and every one. These inspectors remove and take away with them, every fowl not standing this examination or passing the blood test so there is no danger of them again getting back into the flocks. Years of this sort of flock culling and careful breeding has built up and made possible the wonderful quality of our chicks.

\$1,000 CASH PRIZES

We have qualified with the **American Poultry Journal, Chicago, Illinois, whereby purchasers of our baby chicks are entitled to enter their special contest in which they are distributing \$1000 cash in prizes. Why not try for some of this money?**

QUALITY PAYS

It is not what we say nor the price that you pay but the eggs your hens lay next fall and winter that determines whether they pay. **AMERICAN CHICKS DO PAY.** The secret of extra profit lies mostly in having birds that will lay large eggs and plenty of them in the fall and winter when egg prices are high. It is only after years of careful culling and building up of the flocks that our hatchery is in a position to assure big, fluffy chicks with real quality bred into them. Our own experience teaches us there is no substitute for quality.

years of careful culling and building up of the flocks that our hatchery is in a position to assure big, fluffy chicks with real quality bred into them. Our own experience teaches us there is no substitute for quality.

PRAISE AMERICAN CHICKS

One year we received an order for baby chicks from Yukon, Pa. The chicks were so fine and did so well that before the season was over, we filled six separate orders from that one Post Office. The quality of our chicks is outstanding and is our best advertisement.

"The chicks we received from you last spring are very satisfactory. They are just beginning to lay."
—Lillian Hutter, Ohio.

Mrs. John Motyka, Wisconsin, saw the baby chicks ordered by her neighbor and immediately sent in her order as she was well pleased with the quality.

"I want to tell you my chicks are doing wonderful. I haven't lost any and they are such nice big ones and we have a lot of pullets from the 200 we bought from you."
—Mrs. James Post, New York.

"I ordered White Minorca chicks from you May 10. They are growing fine; have only lost one chick so far."
—Mrs. Karl Stohr, Mich.

ORDER EARLY—DELIVERED AT ANY TIME DESIRED 100% Live Delivery Guaranteed PRICES

BREED	25	50	100	300	500
S. C. White Leghorns.....	\$2.25	\$ 4.00	\$ 7.00	\$20.50	\$34.00
Buff or Brown Leghorns.....					
S. C. R. I. Reds.....	2.50	4.25	7.50	22.00	36.50
Buff, Barred and Wh. Rocks.....					
White Wyandottes.....					
Anconas.....	2.75	4.50	8.00	23.50	40.00
White and Buff Minorcas.....					
Buff and Wh. Orpingtons.....					
Blue Andalusians.....					
Black Australorps.....					
White and Buff Australorps.....					
Brahmas.....					
White and Black Giants.....					
S. S. Hamburgs.....	3.50	6.50	12.00	36.00	60.00
New Hampshire Reds.....					
Partridge Rocks.....					
Columbian Rocks.....					
Speckled Sussex.....					
S. L. Wyandottes.....					
Columbian Wyandottes.....					
Dark Cornish.....	4.25	8.00	15.00	45.00	75.00
White Langshans.....					
Black Orpingtons.....					
W. F. Black Spanish.....					
Buttercups.....	5.50	10.50	20.00	60.00	100.00
Red Leghorns.....					
S. C. or R. C. Bl. Minorcas.....					
Buff Wyandottes.....					

As extra health protection with **AMERICAN CHICKS**, every bird in breeding flocks has been blood tested by the Stained Antigen Method for B.W.D. (Pullorum Disease). Any bird showing reaction to this test is immediately removed. Here, you see how blood testing work is carried out. They first puncture the vein that is easily seen under the wing.



A drop of blood from this vein is then transferred to a testing cabinet where any trace of B.W.D. is at once apparent.

Postage paid to all points between Denver, Colo., and Pittsburgh, Pa. East of Pittsburgh and West of Denver, add 1/2c per chick to cover extra cost of delivery.

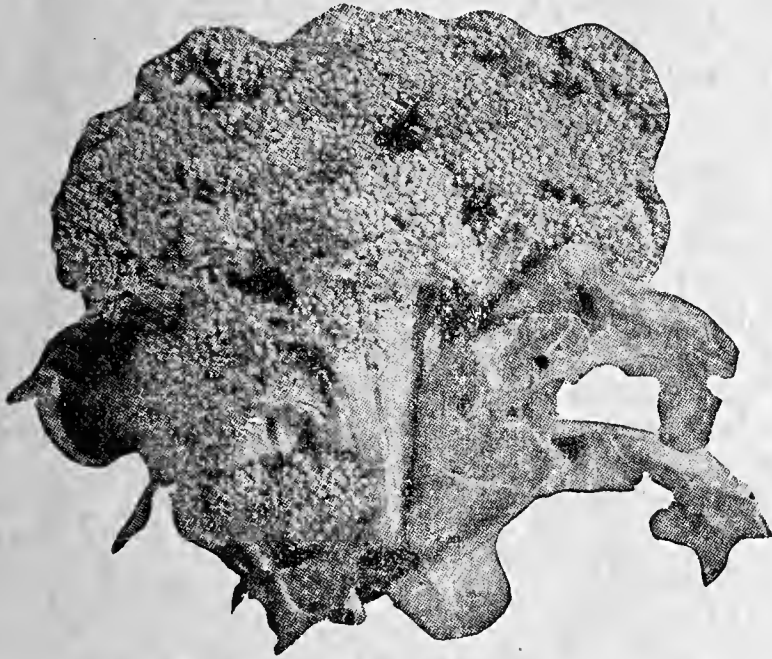
TERMS—Cash with order, or, if you prefer, send 1c per chick cash with order and we will send C.O.D. for the balance. These prices are really very low considering present conditions, and we are sure we will not be able to take care of all orders unless you send in promptly and as far in advance as possible.



EARLY SPROUTING BROCCOLI

Italian Early Sprouting Calabrese Broccoli

A delicious variety which resembles cauliflower, but is of much more delicate flavor, having the combined flavor of cauliflower and asparagus. It is grown about the same as cabbage. Simply sow the seed in the open ground in the spring and transplant the



plants when large enough. The heads or sprouts when ready to use are deep green. After the central head is removed, the plant produces numerous branch heads which are fully as desirable as the first heads produced. A continuous supply may be had for a long time from a few plants. While the sprouting type of Broccoli is of recent introduction, it is rapidly gaining in favor, and is a very profitable crop which finds ready sale at good prices in city markets. We have taken pains to secure seed of the very best strain. Pkt. 10c—3 Pkts. 25c, Postpaid



CELERY ASPARAGUS

Or Ivory White Sea Kale

Celery Asparagus or Ivory White Sea Kale is a delicious perennial vegetable which is cultivated somewhat like asparagus, and is very easily grown. It is ready for use earlier in the spring than asparagus, and combines the flavor of asparagus with that of celery. Its blanched stalks are cooked like asparagus and the leaves are used as greens. Owing to its extraordinary merit, it is worthy of general cultivation.

Pkt. 10c—3 Pkts. 25c, Postpaid

KOHL-RABI

Early White Vienna Kohl-Rabi
(Turnip Rooted Cabbage)

The Kohl-Rabi belongs to the Cabbage family. It does not make a head, but the stalk forms a turnip-shaped swelling just above the surface of the earth. These balls when the size of an egg make a very excellent vegetable. May be cooked either like cauliflower or turnip, resembling cauliflower in flavor. They are in season during June, July or August, or at periods when turnips are not good, and succeed in dry weather when turnips are fibrous and hot. For a continuous supply sow every two weeks up to the middle of July. **EARLY WHITE VIENNA** is the best variety of Kohl-Rabi; very select, extra-early strain; ready for the table in 60 days from seed. Flesh firm, but cooks very tender; sweet and delicious. No garden complete without it.

Pkt. 10c—3 Pkts. 25c, Postpaid

SWISS CHARD

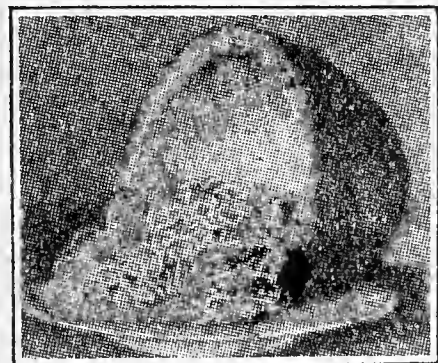


GIANT LUCULLUS—Grown extensively for its large, juicy tender leaves and leaf stalks. The leaves grow to a length of 2 to 2½ feet, and the stalks are nearly as thick and broad as rhubarb and never get tough. By picking off the large outside leaves, as wanted, more leaves continue to grow and keep right on growing until killed by severe frost in the fall. The whole leaf can be used for greens, or the leaf stalks can be cooked like asparagus. Also extensively used as green food for poultry.

Pkt. 10c—3 Pkts. 25c, Postpaid

VEGETABLE SPAGHETTI

New Vegetable from Persia, Spaghetti on a Vine in Nature's Own Package



This delicious new vegetable from Persia thrives in all climates and in any ordinary garden soil. Each plant produces from six to ten beautiful bright yellow, oblong fruits about 8 to 10 inches long. Each fruit is filled with a delicious spaghetti-like pulp. When fully ripe, the whole fruit (without cutting or peeling) should be cooked 20 minutes in boiling water; then cut it in half. A dishful of this delicious vegetable spaghetti comes out of each fruit. Season with salt, pepper and butter and serve hot. Can also be served hot with catsup or tomato sauce or served cold, as a salad, with mayonnaise or French dressing. This remarkable vegetable is one of the most valuable and useful of recent introductions, and should be grown in every garden.

Pkt. 10c—3 Pkts. 25c, Postpaid

KENTUCKY WONDER BEAN

This Bean is one of the finest green pole beans that has ever been placed on the market. The pods are nine to ten inches long and so well filled and thick fleshed that they are nearly round. It is entirely stringless, cooks tender, and is deliciously flavored. Kentucky Wonder Beans are a real everbearer, and if the pods are picked off as they ripen, it will continue to bear right through the season until killed by the fall frosts. It will bear a fine crop without being poled, but when poles or brush are used, it is much easier to harvest.

Pkt. 10c—3 Pkts. 25c, Postpaid



THE CHESTNUT BEAN

This wonderful Bean looks like a gigantic pea. When boiled, it has a flavor like boiled chestnuts; one of the most delicious beans grown. Grows in the form of a tall bush and is completely covered with pods. For soup and turkey stuffing it cannot be surpassed. It is a Spanish Bean, and is known as the "Garbanzo". We have but a limited amount of seed to offer, so can supply same in packets only. **Pkt. 10c—3 Pkts. 25c, Postpaid**

GIGANTIC "GUINEA" BEAN

The New Guinea Butter Vine is a wonderful vegetable; extensively advertised as the Gigantic Guinea "Bean". Grows to enormous size, one fruit often weighs 15 pounds, and is from four to five feet long. Delicious eating and of fine flavor. Will grow anywhere.

Pkt. 10c—3 Pkts. 25c



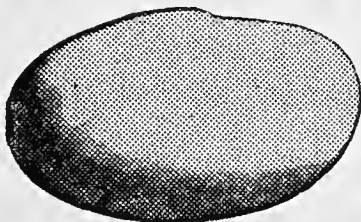
GIGANTIC TASMANIA BEAN

The Gigantic Tasmania Bean will astonish you with its size, and win you with its genuine goodness. The flesh is very tender and of delightful piquant flavor. This bean grows to an enormous size, single fruits weighing as much as 18 pounds. It should be eaten when about 6 pounds in weight if you want it at its best. It is easy to grow and is almost entirely free from disease and insects. Wonderfully prolific, much easier to grow than a squash, and is very productive. It may be grown on a trellis similar to pole beans. It can be prepared for the table in many ways, and when either fried, baked or boiled, it is most delicious in flavor.

Pkt. 10c—3 Pkts. 25c, Postpaid



GIANT AZTEC BEAN



The Giant Aztec is a real bean; looks like a field or navy bean except that it is 8 times as large. 18 or 20

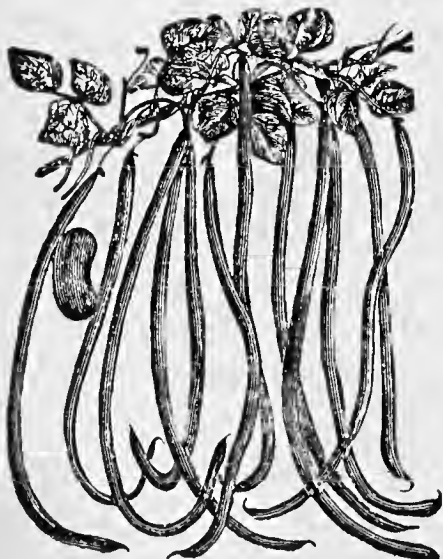
Giant Aztec beans usually weigh an ounce, while it takes from 160 to 170 of the common field beans to weigh an ounce. It is

The above illustration was reproduced from an actual photograph, to show the comparative size of the Giant Aztec Bean with that of the common field or navy bean.

a bush bean; will stand more drought than most varieties—very hardy—and probably the most productive bean grown. The quality of the Giant Aztec Bean is unexcelled both as a green and dry shell bean.

Pkt. 10c.—3 Pkts. 25c.

YARD LONG BEAN



This is an excellent variety, as well as being an interesting curiosity. The vines are rampant growers and produce an enormous crop of long, slender round pods which are of excellent quality for snap beans. The round pods grow from 2 to 4 feet in length, having the thickness of a lead pencil. Tender and of fine flavor.

Pkt. 10c—3 Pkts. 25c

COFFEE—One Cent per Pound

Grow your own coffee at an expense of less than one cent per pound. The Domestic Coffee Berry makes a delicious, nourishing drink, to take the place of injurious coffee. It is a pure



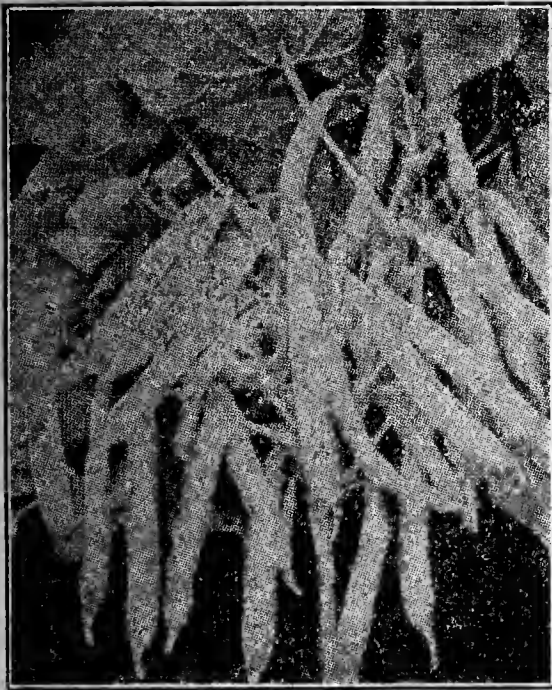
food drink that gives health and strength to young and old. The best coffee substitute ever discovered, and thousands pronounce it as good or better than the best coffee. It has the rich, deep brown color of old Java. One of the easiest grown and most productive of all plants. It is an early variety of soy beans; can be successfully grown in any climate, and is sure to ripen even in the extreme North. As easily grown as corn or beans, and does well on all soils. Thousands suffer untold injury from store coffee. Better grow some of the domestic Coffee Berry this year and save your health and money. Prepared like any other Coffee. Full directions with every packet.

Pkt. 10c—3 Pkts. 25c, Postpaid

BEETS

DETROIT DARK RED—The leading main crop variety. Roots may be used early in the season when only part grown. Flesh is fine grained, tender, sweet. Retains its best quality and freedom from woodiness until beets attain their full size. Splendid for canning.

Pkt. 10c—3 Pkts. 25c, Postpaid



Golden Wax

IMPROVED GOLDEN WAX BEAN

Undoubtedly one of the best wax beans for the home garden. Rust-proof, an improvement of the old style Golden Wax. Pod is semi-round, yellow, of good quality, and it has no string. Ready for picking 47 days from planting. **Pkt. 10c—7 oz. 20c—14 oz. 35c, Postpaid**

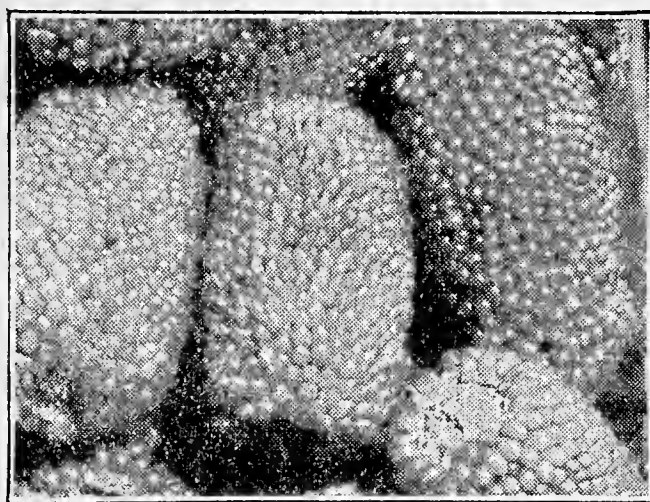
BUSH LIMA BEANS

BURPEE'S IMPROVED BUSH—The largest of all Bush Limas, bearing pods almost equal in size to those of the large Pole Limas. Pods 5 to 6 inches long by 1-1/4 inches wide, and the full size beans are of luscious flavor. **Pkt. 10c—7 oz. 25c—14 oz. 45c, Postpaid**

POLE LIMA BEANS

KING OF THE GARDEN—A vigorous grower, requiring but two vines to each pole. Begins flowering early, at the bottom of the pole, producing a continuous bloom and fruitage throughout the season. Pods are large and beans are of excellent quality, well-formed and mammoth in size. **Pkt. 10c—7 oz. 25c—14 oz. 45c, Postpaid**

POP CORN



HOPI INDIAN BEAN

This Bean has been grown by the Hopi Indians of Northern Arizona from prehistoric times under strictly dry farm conditions and crude farm practices. In trying these out, we find them to be a very fine eating bean. A small crop was grown in 1933 and the growers claim that they produced more heavily than any bean we have. They are semi-vining, long rooted, drought-resistant beans, and should be placed in rows 30 or 40 inches apart. They require the full Summer season and should be harvested before frost. They have the true large lima flavor and the Indians claim they are strongly anti-acid, in this being very much different from the usual Navy and Pinto beans, and can be eaten with benefit by the people who cannot digest most beans. The great productivity of this bean under general climate conditions should make it very popular with gardeners and we suggest that you try out a supply this year.

Pkt. 10c—3 Pkts. 25c—7 oz. 30c—14 oz. 50c, Postpaid



1,200 to One Bean—A Gigantic Wonder. Over 200 pods have been grown on a single plant—all well filled, producing over 1,200 beans from one bean.

Strong, erect plants, bearing pods well up from the ground. Order now as supply is limited.

Pkt. 10c—3 Pkts. 25c, Postpaid

AUSTRALIAN HULLESS—Also known to some sections as Japanese Rice, Tom Thumb, or Bumble Bee. A heavy yielder of attractive little short ears, nearly as thick as long. Its crowning merit is its popping quality, fine flavor and absence of hull or shell. **Pkt. 10c—7 oz. 25c, Postpaid**

BLACK BEAUTY—Ripens earlier than any other variety, yet the ears are large in size and the yield is as heavy as that of any of the later sorts. Pops large and is the finest flavored variety of Pop Corn. Although the kernels are black, they show up nice and white when popped. **Pkt. 10c—7 oz. 25c, Postpaid**



AFRICAN GIANT POPCORN

Special Bred Disease-Free Seed Pop Corn

Extra large, smooth grains. Some of them as large as one-inch in diameter after popping. Pops with a loud bang. The minute it starts to pop, it sounds like a battle. Rich, cream-colored grains. Tender and delicious. **Pkt. 10c, Postpaid**

Big 7 oz. package (enough to raise all the seed you need for next year) **25c, Postpaid. 3 lbs. \$1.00, Prepaid**

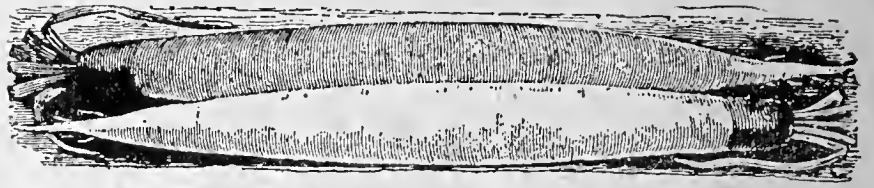
RED POP CORN

Here is a novelty pop corn that will please both you and the children. The ears are medium size and give quite a heavy yield over many other varieties of pop corn. The kernels are bright red but they show nice and big and white when popped with the finest flavor imaginable. **Pkt. 10c—7 oz. 25c—3 lbs. \$1.00, Postpaid**



Lightning Express

SALSIFY—Or Vegetable Oyster



The Salsify is one of the most delicious and nutritious of vegetables, and should be more generally cultivated for use in winter, when the supply of really good vegetables is so limited. It has a grassy top and a long, white, tapering root, nearly resembling a small parsnip. It closely assimilates to the taste and flavor of the oyster, when properly cooked, and is a good substitute for it; very wholesome and nutritious. The roots are either boiled and mashed or made into fritters, in which form they are delicious. The roots are perfectly hardy, and may remain out all winter, but should be dug early in the spring, as they deteriorate rapidly after growth commences. Store a quantity for winter use in a pit or cellar in damp earth or sand. This variety is large and strong growing with long, smooth, white, tapering roots, and is less liable to branch out than the other sorts. It is invaluable for market gardeners' use.

Pkt. 10c—3 Pkts. 25c, Postpaid

Lightning Express Cabbage

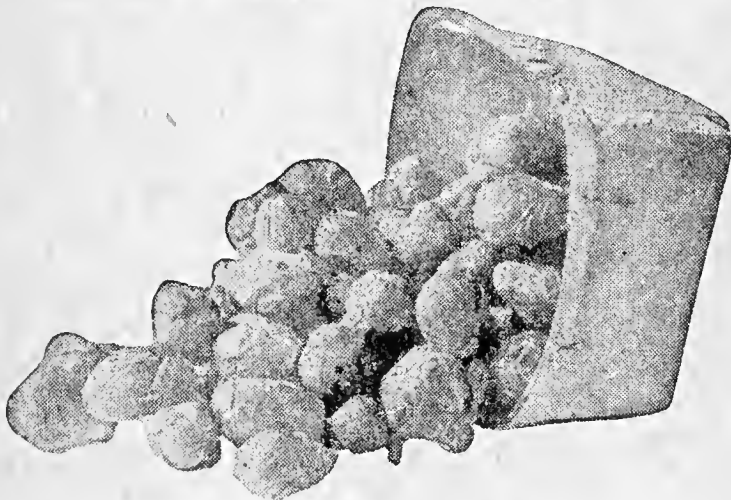
The Earliest Cabbage in Cultivation

Our Lightning Express is ready for use in 65 to 70 days from sowing—ten days earlier than Jersey Wakefield. Good fair trials of varieties offered by other seed houses as "the earliest grown" have proved that they are from four to ten days later than our Lightning Express.

LIGHTNING EXPRESS is positively the earliest cabbage in cultivation. The heads are pointed, of good size, a little smaller than Jersey Wakefield, always sure to head, solid and firm, and always in demand on the market, bringing high prices on account of their extreme earliness. Very hardy, permitting earliest planting. There are but few outer leaves, and plants may therefore be set closely together. As many as 14,000 heads can be grown on one acre of ground, and will bring a larger profit per acre than later and heavier varieties.

Pkt. 10c—3 Pkts. 25c, Postpaid

BRUSSELS SPROUTS



Improved Half-Dwarf Brussels Sprouts is a variety of the Cabbage family, possessing the peculiarity of bearing upon its stem or stalk from 50 to 100 small, compact round heads, each measuring from 1 to 2 inches in diameter. These heads are cut off when formed and are usually marketed in quart berry boxes. The plants are very hardy, are not injured but improved by hard frosts, and are left in the garden or field during the early winter until wanted. May be had in fine condition until about Christmas time in the North, and in the South may be had from November to March. These miniature Cabbages may be boiled like Cabbage or cooked in cream like cauliflower. They are the most delicious and delicately flavored of the Cabbage family.

Pkt. 10c—3 Pkts. 25c, Postpaid

MAMMOTH RED ROCK

By far the best, largest and hardiest heading red cabbage in cultivation; very uniform in size, weight, solidity and deep red color. The heads grow to weigh ten or twelve pounds.

Pkt. 10c—3 Pkts. 25c, Postpaid

PREMIUM LATE FLAT DUTCH

This variety of late cabbage is standard in all sections for winter use. It makes a large solid head, which keeps long without bursting, and is adapted to a more varied climate than probably any other variety.

Pkt. 10c—3 Pkts. 25c, Postpaid

COPENHAGEN MARKET

One of the finest early round-headed cabbages in cultivation. It is desirable on account of the remarkable characteristics of maturing the heads all at the same time, enabling the grower to gather his crop with less expense and permitting the cleaning of the land at the first cutting. The heads average about ten pounds each in weight, are hard and solid with small core. The quality is extra fine and sweet. It is a short-stemmed variety, the heads nearly resting on the ground. The leaves are light green, rather small, saucer-shaped and tightly folded, making it possible to set them close together in the field.

Pkt. 10c—3 Pkts. 25c, Postpaid

JUMBO CABBAGE

The largest cabbage grown; 20 to 30 pounds each. Heads flat, rounded at top; very solid; sure to head; excellent keeper. The quality, for slicing, for kraut and for general table use is unsurpassed. Pkt. 10c—3 Pkts. 25c

EARLY DWARF FLAT DUTCH

It is a large cropper and a dependable header. Short stemmed variety. Belongs to the second earliest. Matures in about 110 days. Grows compact and upright. Leaves few and short. Flat, round, solid heads, which are very large for size of plant.

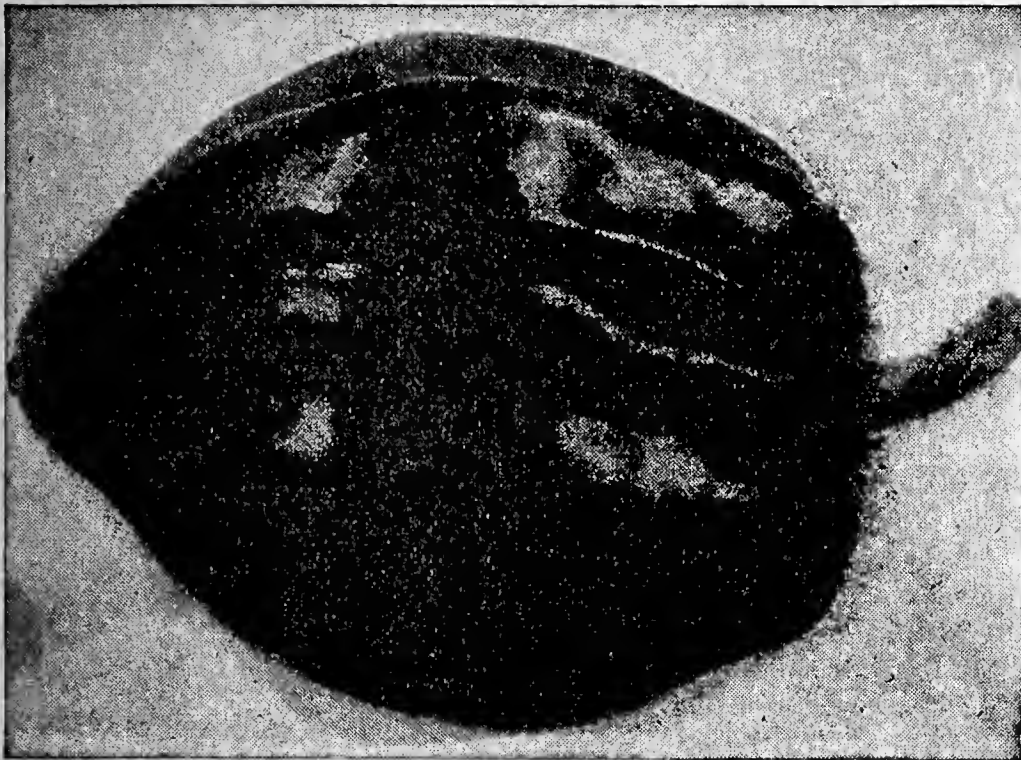
Pkt. 10c—3 Pkts. 25c, Postpaid

CHINESE CELERY CABBAGE

A most delicious vegetable which combines the rich celery flavor with that of the cabbage. Can be cooked or eaten like celery. Makes as good salad as the finest head lettuce. The mid-ribs can be cooked like asparagus, and, for cold slaw, no cabbage compares with it—One of the most delicious vegetables yet introduced, and bound to become one of the most popular.



Pkt. 10c—3 Pkts. 25c



Acorn Squash

Surely a Squash fit for a Queen's taste. Cut in half and baked for 20 minutes, it will give you a delicious meal you long remember—and if you like pie, try one made from Acorn Squash. You will be pleased not only with the quality of this Squash, but you will get so many from each seed planted, the vines being so vigorous and productive. The fruits are a nice size to handle, 6 to 7 inches long and 4 to 5 inches in diameter. The meat is exceptionally dry and mealy and of a fine flavor. The shell is thin, but hard and smooth, and they keep as well as the Hubbard, although they ripen earlier. The color is dark green, almost black, with sometimes a blotch of red at pointed end. This fine Squash has rapidly come into favor in many markets, being preferred to the large sorts—while for the home market, it is ideal.

Pkt. 10c—3 Pkts. 25c

SWEET POTATO PUMPKIN

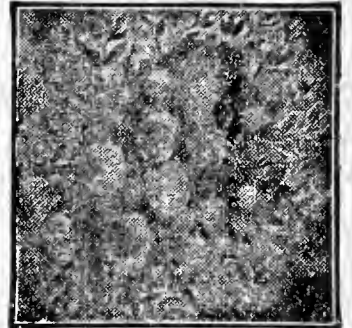
Tennessee Sweet Potato is an excellent sort which, when cooked, resembles a sweet potato in flavor, but is of more delicious taste. It is pear-shaped and slightly ribbed. The color is creamy white, sometimes striped with green. Flesh is fine grained and very dry. Fine when cooked like sweet potatoes, and nothing superior for making pies and custards. Matures in 95 days, is hardy and productive, and keeps perfectly sound until late in the spring.

Pkt. 10c—3 Pkts. 25c, Postpaid

WONDER BUSH CHERRY

These bushes grow about 18 inches high—and bear heavy crops of the best flavored fruit you ever tasted. Although many use the fruit raw, all claim it makes better pie than tree cherries. The Wonder Cherry, sometimes called Ground Cherry, will bear eight weeks after planting the seed.

Pkt. 10c—3 Pkts. 25c



ORNAMENTAL GOURDS

Calabash Pipe—Dishcloth—Nest Egg—
Pear-Shaped—Powderhorn—Sugar Trough

A fine mixture of rare, useful, and ornamental varieties.

Pkt. 10c—3 Pkts. 25c, Postpaid



JUMBO PUMPKIN

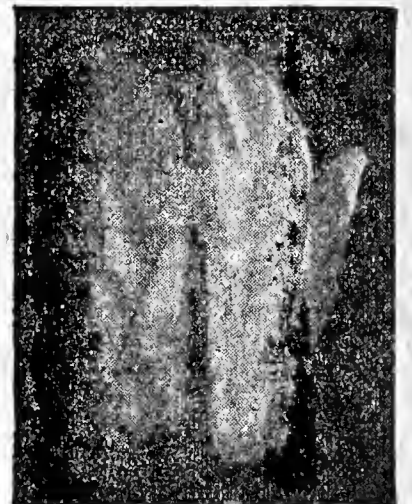
Often weighs 100 to 300 lbs. Always a prize winner at exhibitions. A good pie Pumpkin, splendid keeper, and valuable for feeding purposes.

Pkt. 10c—3 Pkts. 25c, Postpaid

WITLOOF CHICORY

Witloof is a delicious winter vegetable. It makes one of the finest of all salads, is very fine served with French dressing and eaten like lettuce, and is also excellent boiled. Plant seed in May or June in open ground, and in fall, dig roots, cutting off leaves, and store in soil in a cool place until wanted for forcing. About a month before wanted, the roots should be planted in boxes of earth, in cool, dark place in cellar. If not grown in a dark place, it should be banked up like celery, as it is the blanched stalks that are used. Coming as it does in the middle of the winter, it is bound to become popular as it becomes better known.

Pkt. 10c—3 Pkts. 25c, Postpaid



BANANA SQUASH

A new winter squash of excellent merit and very popular with the public.

Pkt. 10c—3 Pkts. 25c, Postpaid

SNAKE CUCUMBER

Like its name, this curious cucumber resembles nothing so much as a long, green snake. It is often 6 feet in length and is a distinct novelty variety. Seed should be planted early to obtain best results. Excellent for pickling and slicing.

Pkt. 10c—3 Pkts. 25c



The New and Odd—Also the Old Favorites

WHITE WONDER CUCUMBER



Color of White Wonder is beautiful pure white. Remarkably uniform in shape and size, averaging 8 inches long by 2-1/2 inches thick. Begins to bear early in the season and continues until fall. Flavor is pleasing and flesh firm and crisp. Fine sliced or in salads—Its smooth, clear surface makes the White Wonder an ideal pickle. Aside from the excellent quality of the fruits, White Wonder bears a great quantity of them. A packet of seed will furnish you cucumbers in abundance. **Pkt. 10c—3 Pkts. 25c**

STAYSGREEN

The greenest of the Long White Spine Cucumbers. About seven inches long; excellent shape and quality. Begins bearing very early, and picking period extends over a long time. A favorite for the home gardens.

Pkt. 10c—3 Pkts. 25c



CHINA LONG CUCUMBER



This is a remarkable new long green cucumber from China, with fruits from 20 inches to 2 feet in length, and only 2 to 3 inches in diameter. The skin is deep green and nearly smooth, the spines being few and small. There is nothing equal to China Long for crispness except possibly some of the hothouse varieties; flesh solid and of the very best quality for slicing. The nearest seedless of any variety we have ever tried. Nearly as early as the shorter varieties; vines strong, vigorous, healthy and productive. A most desirable variety for the home garden, and is sure to be a popular market sort as soon as it becomes better known. **Pkt. 10c—3 Pkts. 25c.**

Splendid for Garden and Market

Chicago of Westerfield Pickling—Very prolific variety, containing all the qualities desired by those who raise cucumbers for commercial pickles. Used exclusively by all the large pickling houses. **Pkt. 10c—3 Pkts. 25c, Postpaid**

Improved Long Green—Most widely cultivated sort; unsurpassed for general use. The cucumbers average 10 inches long when fully developed, and are fine for slicing. The smaller fruits make excellent pickles.

Pkt. 10c—3 Pkts. 25c, Postpaid

Early White Spine—One of the best sorts for table use. The vines are vigorous, fruiting early and abundantly. The fruits are uniformly straight, dark green, fairly well covered with white spines, and when mature are usually about 7 inches in length. The flesh is crisp, tender and of excellent quality.

Pkt. 10c—3 Pkts. 25c, Postpaid

CLIMBING CUCUMBER

A wonderful Cucumber from Japan. Vines extra strong, vigorous and great climbers, producing surprising amounts of superior fruit on poles, fences, side of house, etc. Three times the usual crop from the given area can be grown from this variety. A good sort of plant to save garden space. Fruits of large size, nice green color, and fine for slicing and pickling—Sets fruit constantly throughout the season.

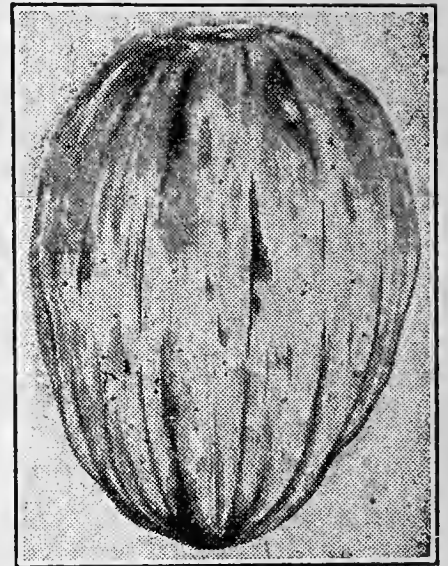


Pkt. 10c—3 Pkts. 25c

LEMON CUCUMBER

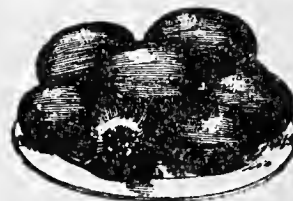
A real cucumber, similar in size, shape and color to a lemon. It has a flavor that is sweeter and somewhat different than other cucumbers. They are highly esteemed for pickling, either green or ripe, and for slicing just as the fruits are turning yellow. Will yield four times as many cucumbers as any other variety.

Pkt. 10c—3 Pkts. 25c



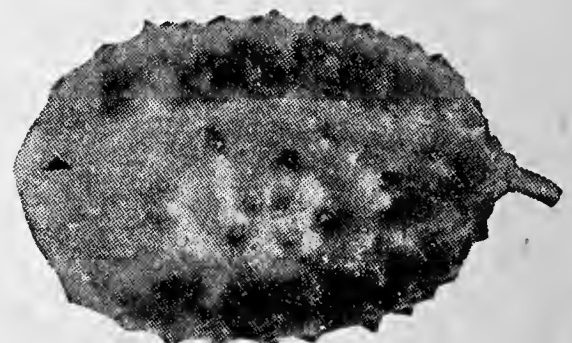
VINE PEACH

Ripe fruit in 80 days after seed is planted. This wonderful Vegetable Peach is the most beautiful of all vegetables. They resemble oranges in color shape and size and grow on vines like melons. They present a beautiful and tempting appearance when canned and make delicious preserves and pickles; fine for pies. There is nothing like them. Extremely early; of the easiest culture, and very prolific.



Pkt. 10c—3 Pkts. 25c

WEST INDIA GHERKIN



Small, oval-shaped, prickly fruit—used exclusively for pickling. Very prolific.

Pkt. 10c—3 Pkts. 25c

A FINE VARIETY OF PEAS

AMERICAN DROUGHT-PROOF PEA

Laughs at Drought, Smiles at Rain

American Drought-Proof will do well under a wider range of weather and soil conditions than any other variety. It will grow a crop during the driest, hottest summer months at a time any other variety would be a failure. In the hot, dry localities of the West, this variety will grow a large crop without irrigation and without a single drop of rain falling upon it from seed time to harvest. For midsummer or late summer planting this is the variety to plant. If it rains and the soil is kept moist, this variety will produce as large a crop as any variety we know of; if it doesn't rain, and it gets hot and dry, you will get a crop anyway. The handsome round pods are well filled with from 7 to 10 peas in a pod; quality excellent, sweet and tender, even when the peas are large. Vines grow 2 feet high, and require no support. This is the Pea that will do its best in the North, South, East or West. Don't fail to give it a trial. **Pkt. 10c—7 oz. 30c—14 oz. 50c, Postpaid**



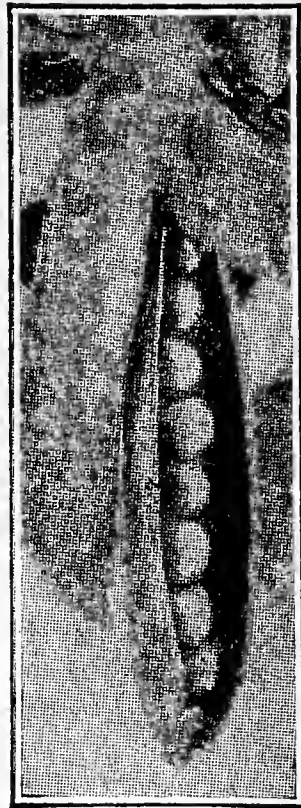
Lima Peas

LIMA PEAS

Or Frost-Proof Bean

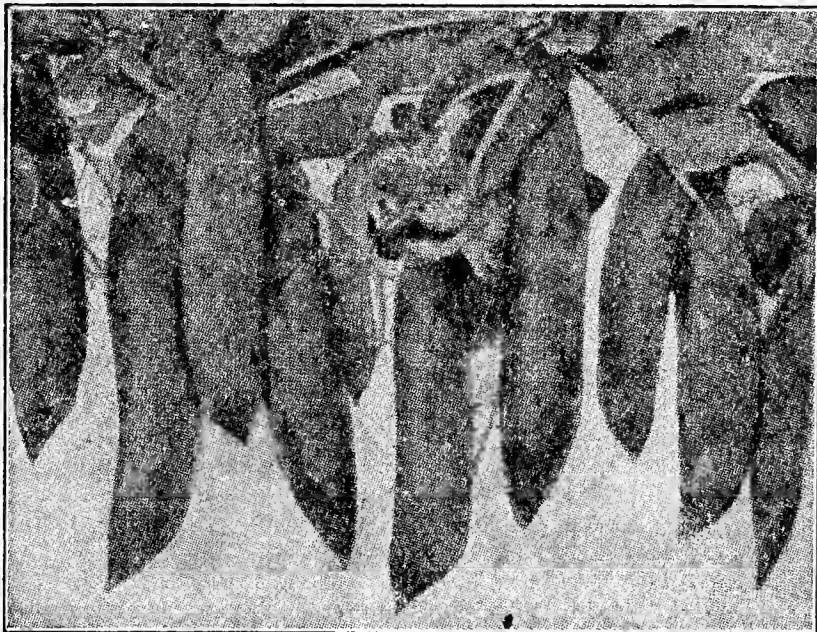
The Lima Pea or Frost-Proof Bean is highly esteemed in Europe, and is known there as the Broad Bean. They are not sensitive to cold, so should be planted as early in the spring as possible. The beans are as large as the largest Lima, and nearly the same shape. The flavor is more like peas than beans. Used like the Lima Bean; delicious either cooked fresh or as a winter shell bean. Wonderfully productive.

Pkt. 10c—3 Pkts. 25c, Postpaid



AMERICAN WONDER

The earliest of the dwarf wrinkle varieties. The vines are about 9 to 12 inches high and produce a good crop of well filled pods of medium size, about 2-5/8 to 2-3/4 inches long, containing five to eight large peas which are exceedingly sweet, tender, and well flavored. Seed medium size, generally flattened, wrinkled and pale green. **Pkt. 10c—7 oz. 30c—14 oz. 50c, Postpaid**



American Wonder

STRAWBERRY GUAVA

Delicious, Sweet and Spicy



Strawberry Guava

This is a luscious, tropical fruit which makes a useful as well as a charming and beautiful house plant. It bears both flowers and fruit at the same time. The flowers are pure white and delightfully fragrant. The fruit is about the size of a walnut, of a beautiful reddish color, and of delicious, sweet and spicy flavor. Fine for eating out of hand, and unsurpassed for making jelly. These

plants are usually grown from seed and begin to bloom and bear fruit while quite small. **Pkt. 10c—3 Pkts. 25c, Postpaid**

FREE CATALOG

This unusual Catalog will be sent FREE to anyone for the asking. Tell your friends about it, or better still, send us a list with post office addresses of your friends and we will send them a copy.

EGG PLANT

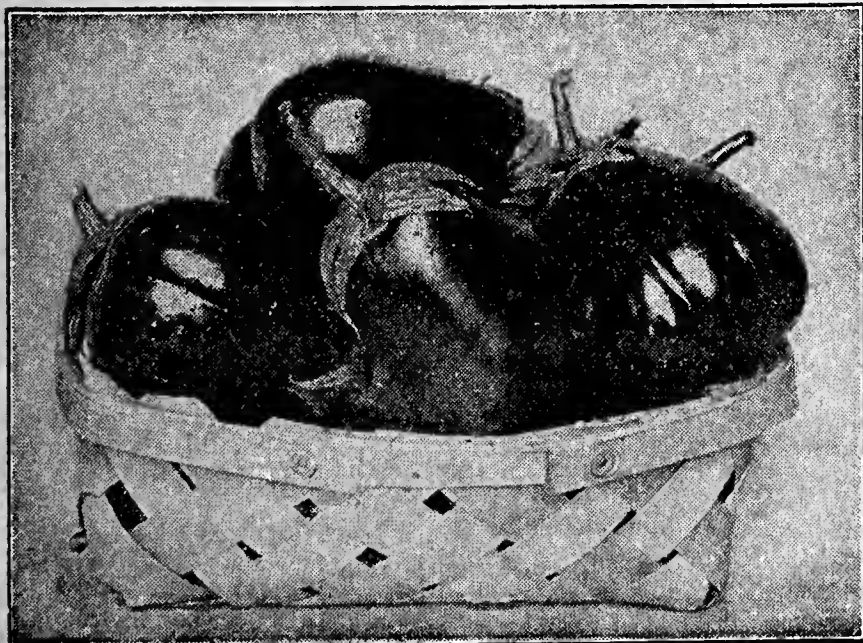
Egg Plants are as easily grown as tomatoes. Black Beauty is the finest variety and the earliest of all large fruited Egg Plants. The fruits grow to an enormous size and are ready to use ten days to two weeks ahead of other varieties. The plants grow into a compact and robust bush and are laden with the mammoth fruits. Under favorable conditions, they bear continuously until frost. The fruits are of most attractive form; the skin is a rich, lustrous, purplish black. Very productive; entirely free from spines or thorns.

Pkt. 10c—3 Pkts. 25c

PARSNIPS

Improved Hollow Crown—A great cropper and considered the best for cultivation. The roots are long, smooth, tender, and very sugary.

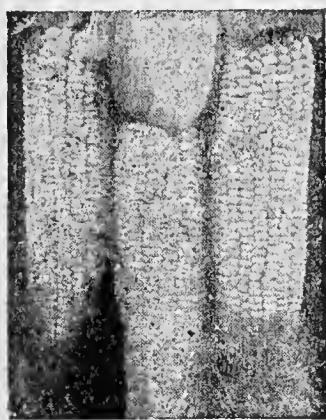
Pkt. 10c—3 Pkts. 25c, Postpaid



Black Beauty Egg Plant

BARDEN'S WONDER BANTAM SWEET CORN

This matchless Sweet Corn is a cross between Golden Bantam and Early Wonder, the result of which is a Bantam Sweet Corn



with all the qualities and sweetness of the old reliable Golden Bantam, but with larger ears set up higher on the stalk. Ears 8 to 10 inches long, filled with 8 rows of broad, rich, golden yellow kernels. Stalk 5 to 6 feet high. Critical market and home gardeners and canners have long been looking for a Bantam Sweet Corn with these improved qualities. One of the big canning companies reports that Barden's Wonder Bantam produces one-third more tonnage per acre than any other Bantam Corn they have ever

grown, and will consider using no other in the future. Tests each year have proved it to be as early as Golden Bantam and much more vigorous and productive.

Pkt. 10c—7 oz. 25c—14 oz. 45c, Prepaid

BLACK MEXICAN SWEET CORN

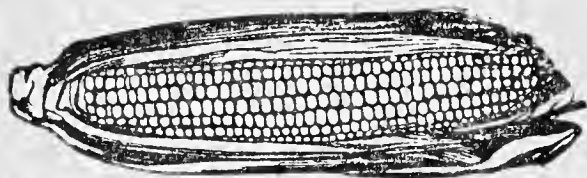
This is one of the richest flavored, sweetest, and tenderest sweet corns. To many of those who know it, no other variety can take its place. The ears are 8 to 9 inches in length, and are ready for the table in 85 to 90 days. The ripe seed is bluish black, but when in table condition the kernels are pearly white. It is a most desirable second early variety for the home garden.

Pkt. 10c—7 oz. 25c—14 oz. 45c, Prepaid

COUNTRY GENTLEMAN

This variety is often called the shoe-peg corn, owing to the arrangement of the crowded kernels. It is nearly as sweet as Golden Bantam. It remains tender longer than most sorts. Ears average 9 inches in length; the cob is small and very closely packed with slender, pure white kernels. It arrives at full perfection just in time to succeed the earlier varieties.

Pkt. 10c—7 oz. 25c—14 oz. 45c, Postpaid



AMERICAN GOLDEN GIANT

The best of the golden grain sweet corns. The sweetest and most tender and juicy of any variety that we have tried. Stocks grow about 5 feet high producing in 60 to 65 days. Each stock produces two and sometimes three good ears 7 to 8 inches long with generally 14 to 16 rows of long, deep kernels of deep orange color. The husk is heavy affording end protection from worms and birds. Pkt. 10c—7 oz. 25c—14 oz. 45c, Prepaid

LETTUCE

NEW YORK HEAD LETTUCE—Also known as Wonderful. Desirable not only as a garden variety for summer use, but is very much used as a fall and winter market sort. The plant is very large but compact and tight heading. Pkt. 10c—3 Pkts. 25c, Postpaid

BLACK SEEDED SIMPSON—Best known and probably the most largely planted of any variety. Leaves are large, light green, quite crimped throughout; firm texture and good quality. Pkt. 10c—3 Pkts. 25c, Postpaid

PRIZE HEAD—(Seed White.) A large clustering, nonheading lettuce. Most easily grown variety in cultivation. Leaves are crimped, bright green tinged with brownish red, very tender and sweet. Pkt. 10c—3 Pkts. 25c, Postpaid

PEPPERS Chinese Giant

Most gigantic of all Giant Peppers. A fine mild red pepper of enormous size, magnificent appearance, and brilliant, glossy scarlet color. The flesh is mild and unusually thick.

Pkt. 10c—3 Pkts. 25c, Postpaid

LONG RED CAYENNE

(125 days.) A well-known medium early variety, having a slender, twisted and pointed pod about four inches long. Color deep green when fruit is young; when ripe, of a bright red color. Extremely strong and pungent.

Pkt. 10c—3 Pkts. 25c, Postpaid

PIMENTO PEPPER

It is so smooth and uniform in shape that the skin can be easily slipped off after burning over a hot fire a few seconds, or by boiling a few minutes in hot water. It can also be pared like an apple by using a sharp knife. The green peppers can be pared best in this way. In quality, it is very delicious and entirely free from pungency; in color, when ripe, it is a beautiful green. It is much sought and grown by canners for pickles and pulp.

Pkt. 10c—3 Pkts. 25c, Postpaid

PARSLEY

MOSS CURLED—Very finely curled variety of dark green color. One ounce will sow 100 feet of drill.

Pkt. 10c—3 Pkts. 25c, Postpaid

OKRA OR GUMBO

WHITE VELVET—The plants are about 3½ feet high, early maturing and very productive. The pods are white, long, smooth and are tender until nearly full size. Pkt. 10c—3 Pkts. 25c, Postpaid

TURNIPS

PURPLE TOP WHITE GLOBE—The popular variety for general planting. One of the handsomest and most salable turnips. Flesh pure white and best flavored of all turnips raw or cooked. The skin is white, with a purple top.

Oz. 10c—3 Oz. 25c, Postpaid

NORTHERN GROWN PEANUTS



Just as good Peanuts can be grown in the Northern States as in the South, provided you plant Improved American. Everyone should plant at least a few for the children. This is the finest variety grown and is very productive. The pods are remarkably solid and well filled with nuts of the very finest quality. Boys, here is a chance for you. Think of growing peanuts in your garden and having plenty of them to eat. Shell nuts carefully so as not to break inside skin, and plant as soon as ground becomes warm, about 2 inches deep, in rows 3 feet apart, and from 8 to 10 inches apart in the row.

Pkt. 10c—3 Pkts. 25c—Postpaid

THE LARGEST TOMATO GROWN



COLOSSAL

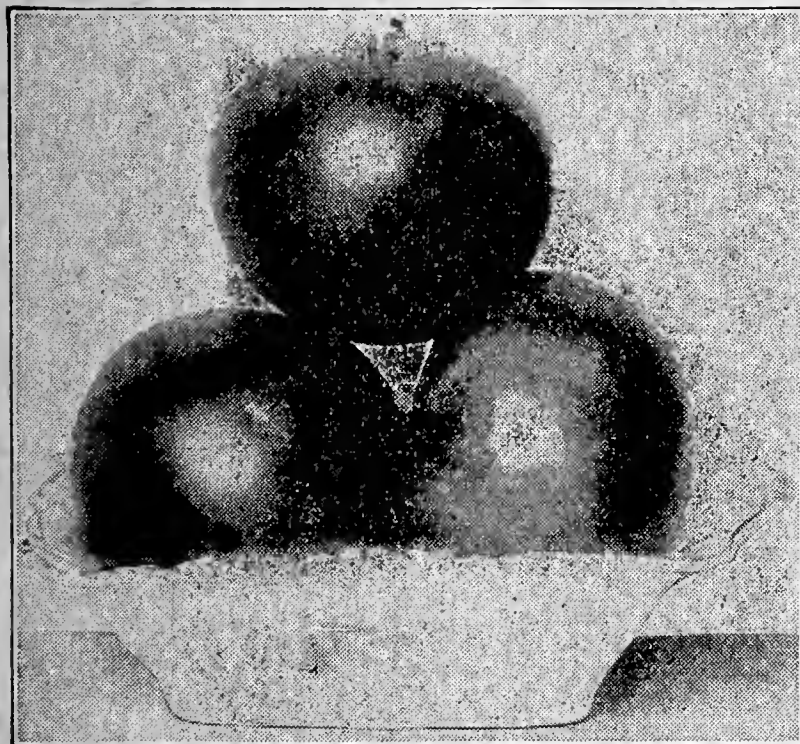
This is the largest of all Tomatoes, being even larger than the famous Ponderosa. Many planters in different parts of the country have grown Colossal Tomatoes weighing over 3 lbs., and some more than 4 lbs. Not only does the Colossal produce giant fruits but it produces them in abundance. One planter in Illinois raised over a ton of Tomatoes from 186 plants. The very thick, meaty flesh, few seeds, and mild flavor combine to give the Colossal a quality on a par with its immense size. Unsurpassed for slicing or canning.

**Pkt. 20c — 3 Pkts. 50c,
Postpaid**

BREAK-O-DAY TOMATOES

The Earliest, Disease Resistant, Globe Shaped, Scarlet Fruited, Meaty Tomato Yet Introduced

We are pleased to be able to supply our customers with seed of this wonderful Tomato, which is the result of the most recent and scientific research in tomato growing by Dr. Fred J. Pritchard of the U. S. Department of Agriculture. Break-O-Day is a hybrid from Marglobe and other earlier varieties. It ripens as early as Earliana, about two weeks earlier than Marglobe. The foliage is similar to that of the Earliana. The fruits are of the Marglobe type, deep globe shaped, solid, meaty, with but few seeds, and of a beautiful scarlet color. No acid; just



full of delicious sweet, beautiful red meat. Break-O-Day not only starts bearing early, but is an abundant yielder throughout the entire season. We can highly recommend Break-O-Day to market growers, home gardeners and canners.

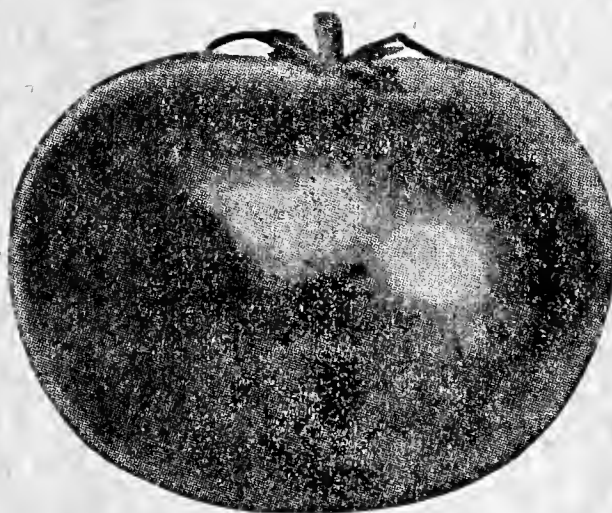
Pkt. 10c—3 Pkts. 25c, Postpaid

GIANT OXHEART TOMATOES

Oxheart is a giant among tomatoes. It is smooth, thick, tender and almost seedless; frequently showing two inches thick without a seed cavity. Three pound specimens are quite common. A pink tomato with a delicious mild flavor that every lover of fruit likes. For quality, it is unexcelled and, as it becomes better known, it is sure to be one of the most popular tomatoes yet introduced.

Pkt. 15c—2 Pkts. 25c, Postpaid

MARGLOBE



This New Tomato is the result of the efforts of Dr. F. Pritchard of the United States Department of Agriculture, who has succeeded in producing a perfectly globe-shaped tomato of the most beautiful red color. It bears an abundant crop of good-sized fruit which ripens well up to the stem. It is a second early sort and has proven to be disease resistant in the section where tomato diseases are most prevalent. **Pkt. 10c—3 Pkts. 25c, Postpaid**

EARLIANA

Coming into the market before any other sort, it commands top prices. The fruits are solid, uniform in shape, and of bright red color. The tomatoes are produced in clusters and generally can be gathered in about three weeks from the time the first fruits ripen. They are of good flavor and contain few seeds.

Pkt. 10c—3 Pkts. 25c, Postpaid

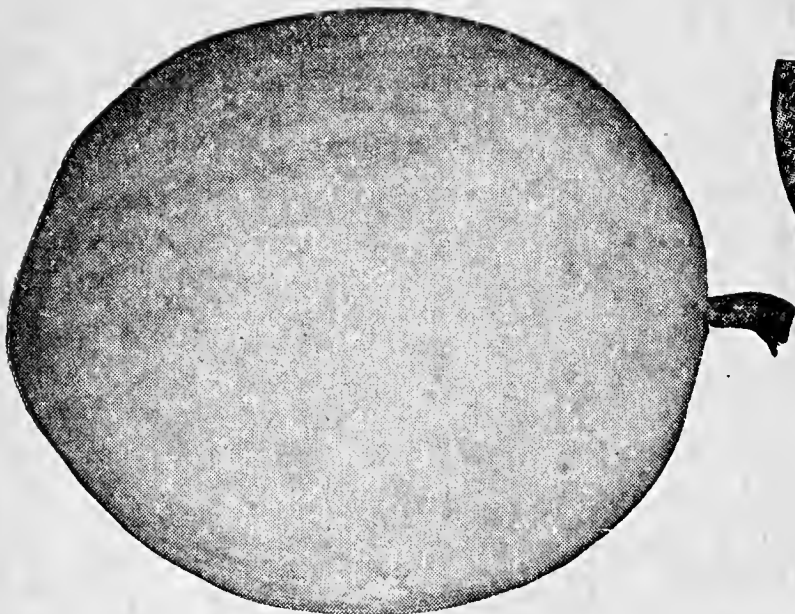
YELLOW PEAR

A small tomato growing in clusters, bright yellow in color and pear-shaped. An excellent variety for preserving. **Pkt. 10c—3 Pkts. 25c, Postpaid.**

BONNY BEST

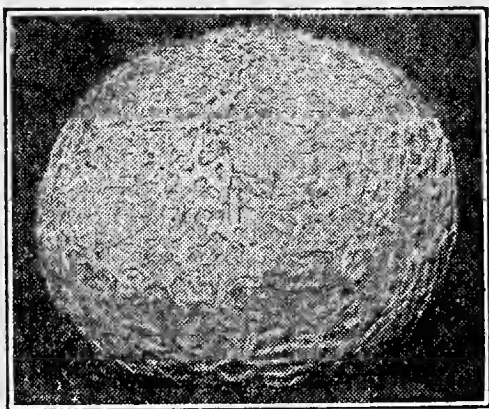
The fruits of this desirable early sort are most attractive in shape and color. The crop ripens more uniformly than any other early scarlet fruited sort, and is of superior solidity and interior color. Vines are vigorous and produce a good crop of exceptionally round deep fruits. One of the best for gardeners whose trade demands fruits of beautiful shape and color. **Pkt. 10c—3 Pkts. 25c, Postpaid.**

"HONEY DEW"
The Famous Melon



This is a cross between the Rocky Ford Cantaloupe and a South Sea Island Casaba. It has retained all the best qualities of both and is better than either. The melon is nearly white, turning to lemon-yellow when ripening, and the average size is a little larger than that of a coconut. The flesh is light green, the juiciest and sweetest Muskmelon, and luscious in flavor. The rind is hard. It is good as soon as picked off the vine and will keep good for months if kept in a cool, dry place. It is, therefore a good shipper and a most splendid fruit to grow for the market. In the city markets, the Honey Dew sells at higher prices than any other melon. As a local melon, it advertises itself. The first one eaten creates a desire for more. Plant it in your home garden. It will afford you more pleasure than any other vegetable you have. Ripe fruits in 90 to 120 days, depending upon the season. Full-grown fruits that do not ripen on the vines before the fall frosts can be picked and will ripen in storage. Pkt. 10c—3 Pkts. 25c, Postpaid

SUGAR ROCK
The Million Dollar Melon



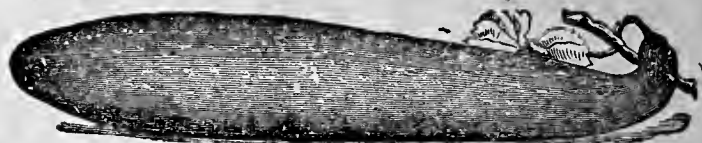
A new melon which, for the last four years, has proved to be the most profitable market variety in the melon-growing districts of Michigan, Indiana, and Ohio, and is sure to become a leader throughout both the Eastern and Western States. Sugar Rock will stand shipping and handling better than any other high-grade melon and, due to its striking appearance and superior flavor and quality, it is rapidly becoming a favorite, commanding the highest prices in city markets. It is one of the most productive varieties grown. Five to seven perfect fruits, and often more, are produced on one vine. The rind is so tough and the flesh so firm that they can be allowed to ripen on the vine and then shipped long distances and arrive in perfect condition. It is not of the Rocky Ford type. It averages a little larger and is earlier, maturing its fruits in about 85 days. The fruits are slightly oval—nearly round—and are overlaid with a heavy gray netting. This heavy netting and tough rind is what makes them stand handling and shipping so well. Sugar Rock has deep orange flesh. It is wonderfully sweet and delicious. Pkt. 10c—3 Pkts. 25c, Postpaid

HALE'S BEST



Decidedly the earliest of the Rocky Ford type of shipping melons, and a most popular and profitable sort. Melons average as large as any of this class and have a sweet, sugary salmon flesh. Pkt. 10c—3 Pkts. 25c, Postpaid

BANANA MUSKMELON



Surpasses all other melons in its delicious fragrance. The flesh (the melon being nearly solid) is of rich salmon, of the best quality, and very sweet and melting. It is very prolific. Grows from 18 to 36 inches in length, and looks almost like an overgrown banana. Pkt. 10c—3 Pkts. 25c

TIP TOP

A wonderfully fine melon and one of the most productive. Its appearance on the market is very attractive—sells on sight. The fruits are of large size, nearly round, evenly ribbed and moderately netted. Flesh rich, deep salmon, firm but not hard, and edible to the outside coating. The testimony of those who plant Tip Top is that every melon produced is a good one—sweet, spicy, juicy and of finest flavor. Ripe fruit in 90 days. Pkt. 10c—3 Pkts. 25c, Postpaid

HEARTS OF GOLD

Owing to its superior quality, Hearts of Gold has taken first place in nearly all localities where it has been introduced. It is a good shipper, and just the right size to be served in halves. Average weight $1\frac{1}{2}$ to $1\frac{3}{4}$ lbs. Flesh deep orange, extremely thick, fine grained, of the best quality and very sweet and melting. It is a money-maker for market gardeners and few, if any, are its equal for the home garden. It is a marvel of productiveness. Ripe fruits in 75 days. Pkt. 10c—3 Pkts. 25c, Postpaid

GARDEN HUCKLEBERRY

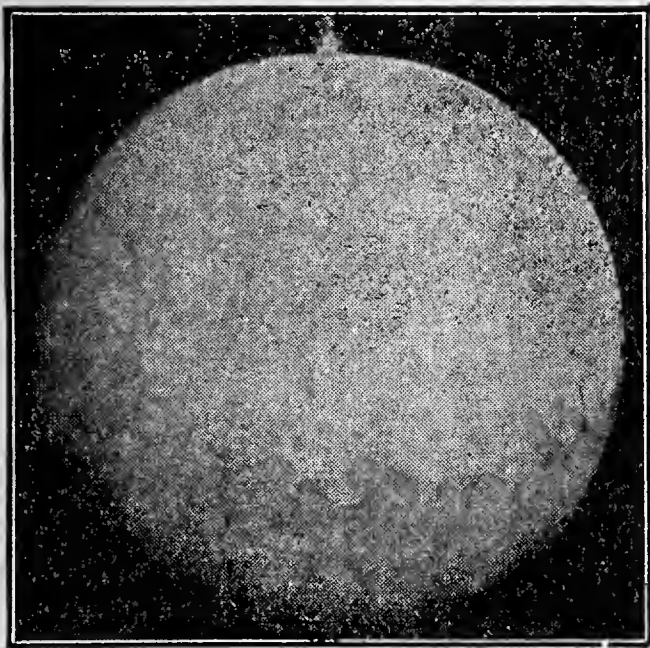
The Garden Huckleberry produces from seed the first year. A new fruit that cannot be excelled for pies and preserves. Very prolific, yielding an immense crop of fruit. It is an annual and must be planted each year from seed. Grows and thrives in all climates and on all kinds of soil. The fruits grow larger than the common Huckleberry or Blueberry. If cooked with apples, lemon, or anything sour, they make the finest jelly. You will be delighted and astonished with this easily grown, wonderful novelty.



Pkt. 10c—3 Pkts. 25c, Postpaid

SOME UNUSUAL WATERMELONS

WINTER WATERMELON



A home-grown melon for your Thanksgiving dinner. It is not a citron or a freak, but a very prolific, long-keeping true watermelon. Flesh red, extremely firm, very brittle and deliciously sweet. Fruits taken from the field before killing frosts and stored in a cool place will keep long into the late fall and early winter and retain their delicious sweetness and flavor. Pkt. 10c—3 Pkts. 25c, Postpaid

PEERLESS, OR ICE CREAM



The Earliest Large, Long Watermelon

Peerless is the earliest large, long Watermelon. Our strain of this wonderful melon ripens very early. For the Central and Northern States, we consider this the best general cropper for the home market; has too thin a rind for shipping unless packed in straw. Fruits larger than Halbert Honey or Kleckley's Sweet and ten days earlier; rind light green, mottled and veined; flesh bright scarlet, solid to the center, tender, sweet, melting and delicious. Few, if any, surpass it for quality and productiveness. Pkt. 10c—3 Pkts. 25c

GOLDEN HONEY

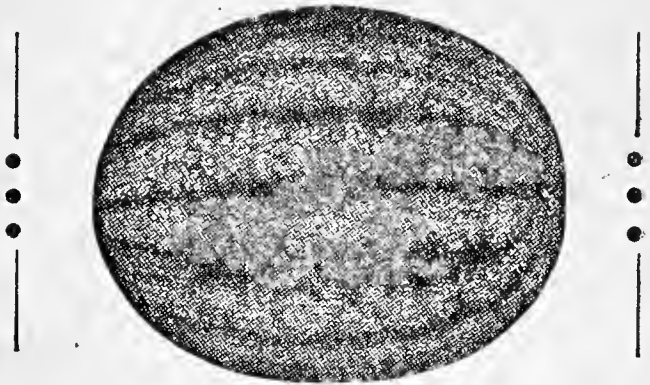
A Delicious Yellow-Fleshed Watermelon

Flesh of rich golden color, firm, crisp and glistening, sweet as honey and fairly melts in your mouth. No hard core or stringiness. An early melon, averaging about 20 lbs. each, and very few seeds. Pkt. 10c—3 Pkts. 25c, Postpaid

GEORGIA RATTLESNAKE

One of the finest melons ever grown; a splendid keeper, excellent shipper. Sometimes called Striped Gypsy. A very large melon of good shipping qualities. Shape oblong, striped, and mottled with various shades of green. Flesh bright red. Flavor sweet and first-class. Rind not thick. Pkt. 10c—3 for 25c, Postpaid

MAMMOTH PRIZE WATERMELON



Mammoth Prize or Improved Triumph is the largest Watermelon grown. Many grow to from 100 to 150 lbs. On one vine, five melons were grown that weighed 152, 151, 149 $\frac{1}{4}$, 148 $\frac{3}{4}$, and 147 lbs., the five weighing a total of 748 lbs. The seed we offer is extra select, and should produce fine, sweet, juicy melons of excellent quality and enormous size. Pkt. 10c—3 Pkts. 25c

KLECKLEY'S SWEET OR MONTE CRISTO

One of the earliest, best and sweetest-flavored melons in cultivation. On account of its thin rind, it will not stand shipment to distant markets, but it is the best that can be grown for the home and nearby markets. The skin is dark green. It is of symmetrical oblong shape, well rounded on both ends. The flesh is scarlet, firm, solid, and of delightful flavor. Pkt. 10c—3 Pkts. 25c, Postpaid

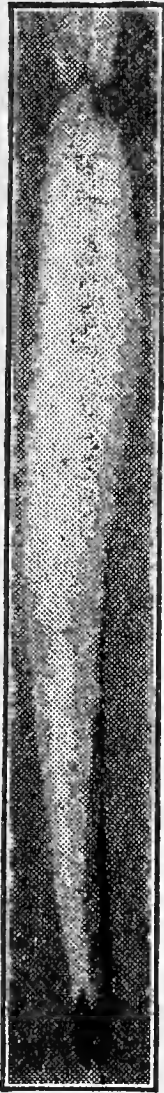
STONEMOUNTAIN WATERMELON

A very large, medium dark green, round melon of excellent quality. Flesh highly colored, very solid, with fewer seeds than most varieties. The fruits frequently attain a weight of 60 to 80 pounds. The rind is tough enough to stand handling for nearby markets, but will not stand long distance shipping. We have found this somewhat earlier than other large varieties. It produces an abundant crop and can be grown successfully farther north than many of the large, long varieties. Pkt. 10c—3 Pkts. 25c, Postpaid

NEW CLIMBING WATERMELON



A superb variety that may be trained and tied to trellis, etc. Melons about size of large coconuts; crimson flesh of the highest quality; rich and sweet. Fruit ripens for a long period, unlike other sorts which ripen their fruit mostly at one time. An ideal melon for the small garden. Pkt. 10c—3 Pkts. 25c



ICICLE

ICICLE RADISH

The best long white Radish—mild and sweet. A favorite with market gardeners and for the home garden.

Pkt. 10c—3 Pkts. 25c, Postpaid

SAXA RADISH

The Earliest Radish Grown

We have found this new Radish to be earlier than any of the other so-called earliest sorts. The best extra early variety for forcing, and for growing in the open ground it has no superior. From the time of seed sowing to the table in 16 to 18 days, and under ideal conditions are fit to pull in 15 days. It is round, bright scarlet in color, and has a very small top and taproot. Flesh pure white, crisp, brittle, mild and juicy. The saxa is one of the slowest to shoot to seed.

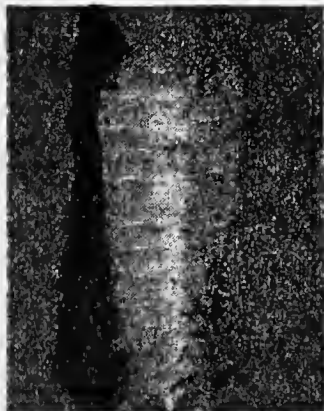
Pkt. 10c—3 Pkts. 25c, Postpaid

JAPANESE GIANT RADISH

This is the great Sakurijima Radish from Japan. Largest radish grown, often attaining the enormous weight of 15 pounds, and sometimes 20 or 30 pounds. It is not only a curiosity, but a radish of extraordinary quality. The flesh is solid, firm and brittle, and of most excellent flavor; can be eaten all summer long and also be kept through the winter. Will thrive in any soil or climate. Pkt. 10c—3 Pkts. 25c



NEW CORELESS CARROT



A new rapid growing early variety of superior flavor; tender and without any woody heart or core. Roots are half-long, blunt-pointed, and grow to a medium size; are very smooth, and of a deep orange-red color. Highly recommended for market or home use when either young or full grown.

Pkt. 10c—3 Pkts. 25c, Postpaid

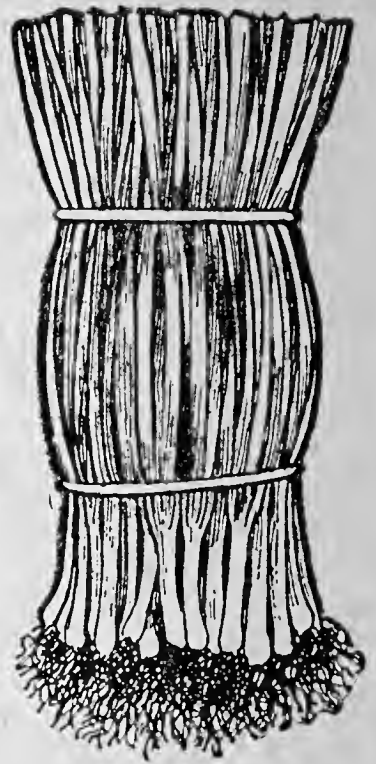
OX HEART—The best of the short carrots in color, flavor and shape. Tops comparatively small. Roots about 4½ inches long, very thick, ending abruptly in a small taproot. Flesh bright orange, fine grained and sweet. Pkt. 10c—3 Pkts. 25c, Postpaid

DANVER'S HALF LONG—A variety that is adapted to all soils, and is enormously productive, often yielding more than the large field carrots and is much easier harvested on heavy ground. Five to six inches in length; flesh very tender and sweet and a rich orange color; finely grained and free from woody fibre. Ready for use in 70 days. Pkt. 10c—3 Pkts. 25c, Postpaid

JAPANESE LONG-BUNCHING ONION

A valuable introduction from Japan which, on account of its merit, is sure to meet with popular favor for young green onions. It forms no bulb, but produces a long white tender root as shown by the illustration. Superior to any other hardy bunching onion in that it remains always tender and mild, and owing to quality and fine appearance, it makes an attractive bunch that sells at an advanced price over other varieties. Our Japanese grower informs us that in Japan this onion is often blanched 24 inches. With this variety, you can have bunching onions of the very best quality all through the summer. No garden is complete without a row of these onions. A money-maker for market gardeners.

Pkt. 15c—2 Pkts. 25c—5 Pkts. 50c, Prepaid



EBENEZER

The Extra Early, Long Keeping, Mild Onion

One of the mildest flavored onions grown. The flesh is white, firm and of a very delicate flavor. The onions are quite similar to Yellow Globe Danvers in shape but much larger in size, yellow skinned and have very small tops and mature early. Many people who know this onion will have no other kind for their own table. In the localities where it has been grown, the onions of this variety command much higher prices than other kinds. Those who want a nice mild onion, either for large onions or bottom sets, would do well to try the Ebenezer. Sets are grown the same as large onions, except that the seed is sown thickly—one pound of seed to each 100 feet of drill. These sets, if planted early in the spring, will produce ripe onions in July, at which time they will bring a high price. Sets of this variety rarely produce seed stalks as other kinds do. The Ebenezer is such a good keeper that even those ripening in July will keep sound and hard through the fall and all winter. Don't fail to plant some Ebenezer onion seed this season, sowing some for large onions and some for sets. Pkt. 10c—3 Pkts. 25c, Prepaid

TURNIP ROOTED CELERY

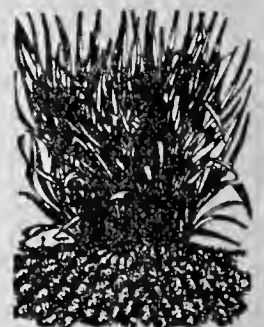


A popular vegetable in Europe. Instead of producing long leaf stalks like ordinary celery, it has a turnip-like root with the true celery flavor and is greatly liked by nearly all who have tried it. Excellent for salads and flavoring, or cooked like parsnips, turnips or oyster plant. Pkt. 10c—3 Pkts. 25c

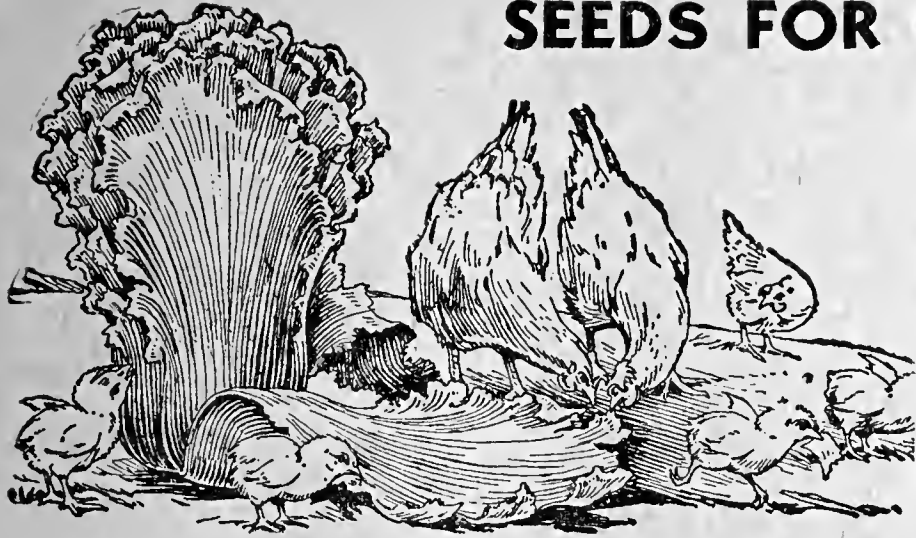
GROUND ALMOND

A delicious nut with a flavor resembling the coconut or almond. The meat is clear white, covered with a thin shell or skin of brown; grows close to the surface, very prolific, a single nut yielding 200 to 300 nuts in a hill. Does well in any soil. Planted in the spring the same as potatoes.

Pkt. 10c—3 Pkts. 25c



SEEDS FOR POULTRYMEN



Cut Your Feed Bill One-Half, Increase Egg Production

POULTRY CABBAGE—Is a wonderful green feed for poultry and has been known to yield 3 tons in a space 40 by 60 feet. You can't beat this for low priced feed. One-half pound of seed will grow enough greens to feed about 1,000 hens for four months; 3 pounds to an acre for 6,000 hens for four months. Poultry Cabbage is a rapid grower. In the Northern States, the seed may be sown any time from early spring until the middle of July. In the South, seed may be sown throughout the entire year. Pkt. 10c—3 Pkts. 25c—Oz. 35c—1/4 lb. \$1.00—1 lb. \$3.00, Postpaid

MAMMOTH RUSSIAN SUNFLOWER—Sunflower Seed is an excellent poultry feed at all times, and especially during the molting season. Single heads often measure 12 to 22 inches in diameter and contain an immense quantity of seed. Pkt. 10c—1/4 lb. 25c—1 lb. 60c, Postpaid

CHISHA, OR CHICKEN LETTUCE—You have, no doubt, read in the poultry journals that lettuce is an excellent feed for chickens. In the Chisha Lettuce you will find a feed that yields as much or more than other green feeds. It is economical to grow this strain, for when cut it resumes its growth rapidly and can be cut again and again; or the leaves can be pulled off each stem like the Jersey Kale. The yield is extremely heavy. Chisha, or Chicken Lettuce, does not make a head, but sends up a stout stalk, 3 to 4 feet high, and just loaded with leaves. Pkt. 10c—3 Pkts. 25c—Oz. 35c—1/4 lb. \$1.00—1 lb. \$3.00, Postpaid

FETERITA

Government introduced from Africa, equals corn for poultry feed, and is much more drought resistant, often producing 30 bushels an acre when corn completely fails. Produces without rain after growth starts. Pkt. 10c—7 Oz. 45c—2-1/2 lbs. \$1.20—5 lbs. \$2.00, Prepaid

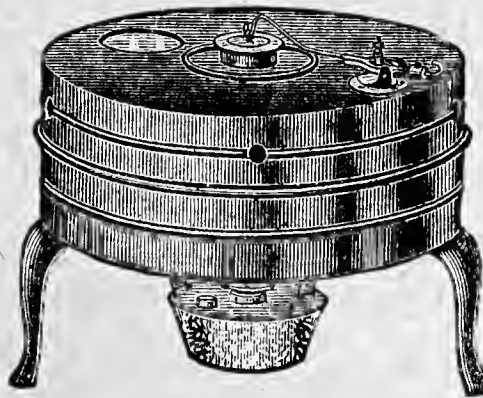
POULTRY BEET—MANGEL WURZEL—Furnishes a tremendous yield per acre and makes an excellent green feed for poultry during the winter months and always increases egg production. Mangel Wurzels are excellent food for cattle and keep them in perfect physical condition and increase the flow of milk. Only a little garden space will be required for growing enough to last all winter, and they are very productive. Stored in a cellar or any cool place, they will keep until spring. Pkt. 10c—3 Pkts. 25c—1/4 lb. 35c—1 lb. \$1.00, Postpaid

JAPANESE GIANT RADISH

This is the great Sakurijima Radish—from Japan. Largest radish grown, often attaining the enormous weight of fifteen pounds, and sometimes twenty or thirty pounds. It is not only a curiosity, but a radish of extraordinary quality. The flesh is solid, firm and brittle, and of most excellent flavor; can be eaten all summer long and also be kept through the winter. Will thrive in any soil or climate.

Pkt. 10c—3 Pkts. 25c—Oz. 35c—1/4 lb. \$1.00—1 lb. \$3.00, Postpaid

American Baby Grand Incubator, \$6.25—Prepaid



Simple and easy to operate. Greatly improved. Equipped with heat and moisture regulator. Glass window in top allows you to see thermometer and moisture cup. All metal construction. Felt insulation. Fine for hatching eggs from pens or small flocks. Used by large and small poultrymen everywhere. Furnished complete with Lamp, Moisture Cup, Heat Regulator, Thermometer, and instructions for operating. Handy Removable Top for turning and airing eggs. Can be shipped by parcel post, freight or express. 50 egg size. Weight 15 pounds. **Prepaid \$6.25.**

Baby Grand Electric Incubator, 50 egg capacity, complete with regulator, cord and socket. Ready for operation. **Prepaid \$7.50.**

GARDEN PLANTS

We are adding a few garden plants to our list this year. These prices are prepaid. They will not be shipped until logical time for planting in your locality.

CABBAGE—Varieties—Charleston Wakefield, Golden Acre and Late Flat Dutch. Frost-proof plants through March, April and May. 100—60c, 200—\$1.00, 500—\$2.25, 1000—\$4.00, Prepaid

SWEET POTATO—Varieties—Nancy Hall, Porto Rico, Yellow Jersey, Red Bermuda. 100—60c, 200—\$1.00, 500—\$2.25, 1000—\$3.50, Prepaid

TOMATO—Varieties—Shumway's Sensation (extra large), Ponderosa (large red), Oxheart (extra large pink), Marglobe (bright scarlet, globe-shaped), Beefsteak (extra large). 100—\$1.00, 500—\$4.50, Prepaid

Plants ready to move about April 25 packed in bunches of 50 and plainly marked. In orders for 100 or more, customers may select more than one variety as long as they are in bunches of 50. Practically all plants grown in southern Illinois.



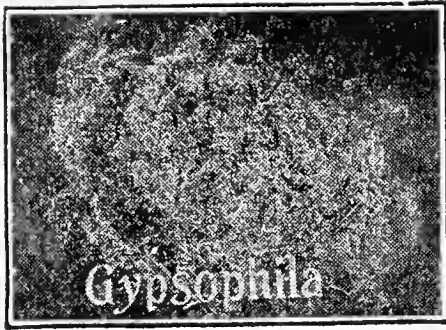
Nonpoisonous Rat and Mouse Killer

"BLACK CAT" is harmless to Man, Domestic Animals, Baby Chicks, Poultry, Dogs or Cats, but Kills Rats and Mice Quickly. May be safely used around the home, barn, poultry house, warehouse, or any rat or mouse infested building. Can be mixed with butter, ground meat, corn meal or other food, and the rats and mice will eat it readily. Drives them outdoors to die. Send for a package today.

50c Package, Postpaid

Hardy Perennial

This gorgeous array of color stirs the den flowers grow each year



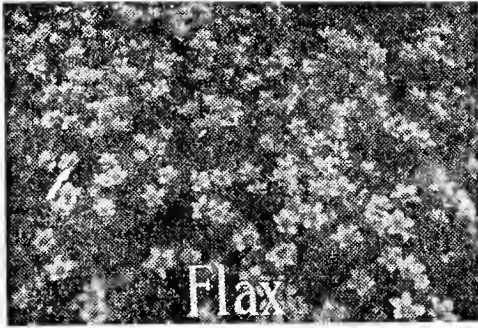
Gypsophila

GYPSOPHILA—A light and graceful cut flower, compatible with all others no matter of what shape or color; masses of minute double white flowers.

**SAVE AT THESE LOW PRICES
ALL PLANTS ON THIS PAGE**

**3 Plants for only 68¢ Prepaid.
Alike or Assorted**
We Ship 2 yr. old Plants only

25c each



Flax

BLUE FLOWERING FLAX (*Linum Perenne*)—Fine blue flowers on graceful, arching stems each spring.



China Pink

CHINA PINK—The fragrant, old-fashioned, pink, garden Carnation, that blooms all summer.



Evening Primrose

GIANT EVENING PRIMROSE (*Oenothera Missouriensis*)—The largest and best Primrose. Beautiful golden flowers in May and June followed by ornamental winged pods. All should have this fine plant.



Golden Glow

GOLDEN GLOW — Large, double, yellow flowers. Excellent for cutting and fine background perennial.



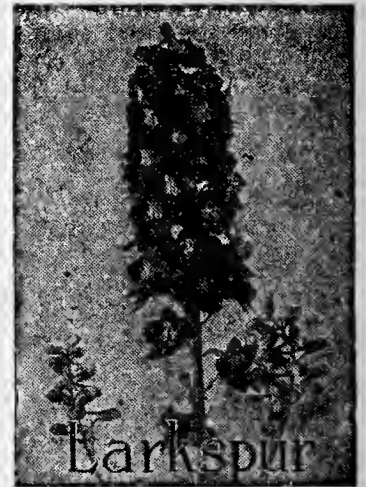
Sedum

SEDUM — Brilliantissima—Striking red flower clusters. Succeeds in any soil.



Funkia Fortunei

FUNKIA FORTUNEI—Gorgeous blooms and foliage. Succeeds well in shade or sun.



Larkspur

LARKSPUR — Free-blooming, prize-winning, hybrid strain. Valuable addition to all gardens.



Sweet William

SWEET WILLIAM — An old favorite. Finest varieties, selected strain. Three colors, Red, pink, white.



Fox Glove

FOX GLOVE—An exquisite perennial to decorate your garden. Assorted hybrid colors.



Liatris

LIATRIS — Blazing Star—Charming, rose-purple flower spikes. Excellent for bouquets.



Rocky Mountain Sage

ROCKY MOUNTAIN SAGE — Azure-blue flowers on long spikes and beautiful silvery foliage. An old favorite.

Garden Flowers

hearts of all flower lovers. All hardy garden flowers without replanting or seeding

SAVE AT THESE LOW PRICES
ALL PLANTS ON THIS PAGE

5 Plants for only 98¢ Prepaid.
Alike or Assorted

22c each

We Ship 2 yr. old Plants only.



Japanese Bell Flower
JAPANESE BELL-FLOWER—Platyedon—A valuable garden flower with balloon-shaped, deep opalescent blue, wax-like flowers opening into perfect stars. Blooms from July till frost. A plant all should have.



We offer a new type of **Shasta Daisy**, larger white flowers with yellow centers. In bloom for Memorial Day. Much superior to the old type.



Chamomile—Anthemis or Hardy Marguerite—Bright yellow flowers all season. Fine for cut flowers.



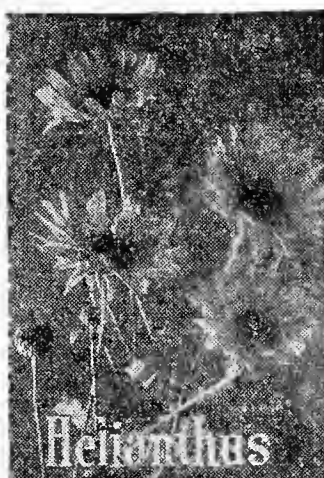
Aster
THE BEST HARDY ASTERS—Fashion decrees a return of Hardy Asters, Michaelmas Daisies—the flowers that inspired great poets and renowned artists. Enjoy them at substantial savings.



False Dragon Head—Select, free-blooming, dwarf type. Vivid, bright, rose-colored flower spikes.



Giant Cone-Flower—Pinkish-lavender petals and glossy, black cone.



Helianthus—Charming clusters of bright golden flowers in August when blossoms are scarce.



Yellow Day Lily—A select, dwarf, golden variety, sold at much higher prices by competitors.



Rudbeckia Newmani—Yellow flowers, deep waxy purple center. Fine cut flower.



Oswego Tea—A fine garden favorite. Enjoy the deep maroon flowers all summer.



Hardy Hibiscus—White, pink, red, and combination colors. Largest flowering perennial.



Pearl—Glorious small, white, button flowers. Fine for mixed bouquets. Ever-blooming.

SHRUBS

We Pay Postage



SPIREA A. WATERER

ANTHONY WATERER—A compact low-growing shrub with dense foliage and bright pink flowers throughout the season. Used extensively for border and foundation plantings. 10 to 12 inch plants. **2 for 69c**

RHUS COTINUS

Purple Fringe or Smoke Tree—An enhancing tree-like shrub; enveloped in mid-summer with showy masses of purplish misty flowers resembling beautiful clouds of drifting smoke. Attractive brilliant scarlet and golden autumn foliage. A hardy recognized garden beauty. First time offered at this amazing low price. **2 for 79c.**



VIB. LANTANA

WAYFARING SNOWBALL

Viburnum Lantana—This hardy shrub is especially suitable for dry locations and limestone soil. The large, flat, white flower clusters are followed by glowing red fruits which change to dark blue. The distinct, handsome, bluish-grey foliage gives Viburnum Lantana an aristocratic appearance in all shrub plantings—**3 for 98c.**

SALIX CAPRAE

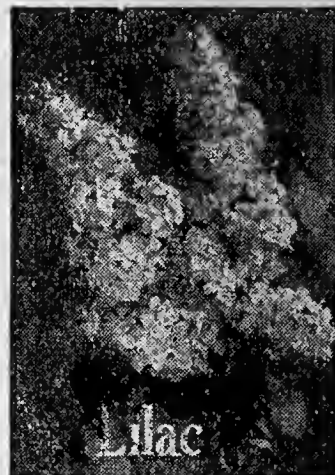
Pussy Willow—A delightful promise of springtime. This cultivated variety is a sensation wherever it unfolds its large silvery pink catkins. Excellent for winter bouquets as well as a fine tall shrub for your garden. **SPECIAL PRICES—2 for 79c.**

CALYCANTHUS FLORIDUS

Sweet Scented Shrub—A unique shrub attaining a height of six feet, clothing its straight, strong, reddish-brown branches with large glossy leaves, from the axils of which spring odd, double, spicily fragrant flowers of chocolate-red. 18 to 24 in. plants, **2 for 59c.**



ALTHEA



Lilac

BUTTERFLY BUSH

Commonly called **Summer Lilac**—a beautiful shrub with long, lilac-colored flowers. Dies down in winter but makes quick growth in spring. Sweet scented and very popular. Blooms all summer. Attracts butterflies. Strong blooming size plants, **2 for 69c.**

VIOLET INDIGO BUSH

A beautiful tall growing shrub with graceful foliage and small, brilliant, dark, violet-purple flowers on dense upright spikes. 18 inch plants, **2 for 61c.**

HEDGES

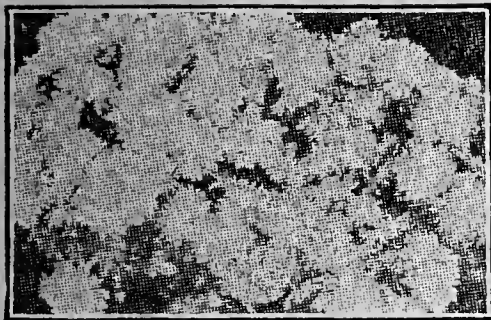
Althea Hedging—These free-flowering shrubs make wonderful hedges and once known will be planted more often. They can be kept trimmed quite low or can be allowed to grow tall as a screen. A hedge of them in bloom with all colors of flowers is a wonderful sight. 2 yr., 15 to 18 inch hedging plants, **10 for \$1.00; 25 for \$2.00; 100 for \$6.50.**

Hardy Privet—The hardiest of all hedge plants. Beautiful upright growth and makes a compact hedge. Will hold its foliage until the middle of October or later. 12 to 18 inch plants. **10 for 98c; 25 for \$2.50; 100 for \$7.50.**

Green Barberry Hedge—Specially priced hedging size plants. **10 for \$1.20; 25 for \$2.50; 50 for \$4.50; 100 for \$7.50.**

Caragana Hedge—Hardest shrub or small tree known. Planted almost exclusively in Canada for windbreaks and hedges. Stands trimming. This tree is covered with dainty yellow sweet-pea shaped flowers in early spring. 12 to 15 inch plants. **10 for 98c; 25 for \$2.00; 100 for \$6.50.**

Spirea Van Houttei Hedge—Commonly called Bridal Wreath. The flowers are in flat clusters usually an inch or more across produced on spreading, pendulant branches. Plants a mass of white when in full bloom. **10 for \$1.20; 25 for \$2.50; 50 for \$4.50; 100 for \$7.50.**



NEW PINK CUSHION MUM

Covered with hundreds of blooms the first year. A solid mass of beautiful double lilac-pink flowers from August till late fall. The first pink Chrysanthemum to bloom. Often one year plants have from 500 to 800 blooms. Blooming size pot plants, 3 for \$1.00.

ROSE OF SHARON

Althea—Bright green leaves and great abundance of variously colored flowers make it very effective when planted as a hedge. Blue-purple to violet-red, flesh color and white. 18 to 24 in. 3 year old plants.

Single Mixed. 5 for \$1.00.

Grafted Double—Red, White, and Pink. Alike or assorted. 3 for \$1.00.

COPPER BLADDER-SENNA

Colutea Arborescens—Attractive, apricot-orange, sweet pea-like flowers during summer, followed by large, reddish brown, decorative pods in fall. 18 to 24 in. field grown plants, 2 for 61c.

NEW PINK VERONICA

Veronica Elegans—The only pink Veronica. Beautiful spikes of lovely pink flowers produced abundantly every year. A perennial that stirs the hearts of all admirers. 2 year clumps, 30c each; 3 for 90c.

CREeping POPPY

Callirhoe Poppy—Delightful. Bright, rosy crimson blooms from early summer until frost. A plant you will enjoy in your garden. 2 year plants, 25c each; 3 for 69c; 5 for 98c.

CARNATION CRIMSON KING

A new hardy double Carnation equal to those grown in the greenhouses, yet withstands a winter temperature 20 below zero without protection. Flowers are a rich crimson-red and of spicy fragrance. Very easily grown. Enjoy these gorgeous flowers this summer. Strong plants. 2 for 98c.



Carnation
Crimson King

New and Rare Plant

Blackberry Lily or Spotted Leopard Flower

Pardanthus Chinensis—The elegant flowers are a lovely combination of old gold, bronze, and copper suffused with distinct red dots. They are followed by glistening clusters of black seeds resembling blackberries. Is very hardy and will grow in any soil. A garden favorite all should have. 45c each; 3 for 98c.



SPECIAL ONE CENT SALE



RED BRANCHED DOGWOOD

A profusion of white flowers in June and July. Handsome dark green, glossy foliage and attractive red stems with striking blue berries each fall. Excellent for birds. 18 to 24 in., 2-yr. field grown plants. 2 for 95c; 4 for 96c.

BLUE RUSSIAN LILAC

A dense, bushy, upright lilac that blooms a month to six weeks later than other common varieties. Large leathery leaves and beautiful blue-lilac flowers; free flowering. Does not spread as common lilac. 2-yr. 15 to 18 in. plants only 60c each; 2 for 61c.

HARDY SWEET PEAS

The vines come up each year from the roots and bloom all season. Flowers are pink. Heavy 2-yr. plants, 2 for 75c; 4 for 76c.

SILVER LEAF OLIVE

A wonderful plant that adapts itself for any purpose and grows well in all soils and climates. Gorgeous silver foliage; compact habit of growth with ornamental olive-like fruits in large clusters each fall. Withstands 30 below zero. 18 to 24 in. field grown plants, 65c each; 2 for 66c.

BUDDLEIA ILE DE FRANCE

A new French Buddleia superior to the old varieties. The outstanding qualities are the rich purple color and large size of the flower spikes. Our plants will fill your garden with bloom this summer. 80c each; 2 for 81c.

SCARLET BEAUTY BERRY

Lonicera Maacki Podocarpa—A new garden aristocrat. Excellent for border or screen; foundation and group plantings. It has beautiful dark green shiny foliage and the branches are covered with thousands of magnificent fiery-scarlet berries in the late fall. Specially priced 18 to 24 in. plants 75c each; 2 for 76c.

HARDY ORNAMENTAL VINES



Bittersweet

Ampelopsis—Hardy Ivy—Used extensively on brick or stone houses. Grows very rapidly. Glossy green leaves which stay on almost all winter and turn to a brilliant orange-scarlet in the fall. 2-year plants, 2 for 59c.

Wistaria—Purple—Very fast growing. Blooms quite young. Makes a magnificent sight with its drooping clusters of purplish pea-shaped flowers often a foot or more long. 2 for 79c.

Honeysuckle—Halleana—A quick growing evergreen vine with fragrant flowers of white and yellow. 2 for 69c.

Bittersweet—Celastrus Scandens—Valuable for its berries which are used for interior decoration throughout the winter. Used to cover unsightly fences or stone walls. 18 to 24 in. plants, 2 for 69c.

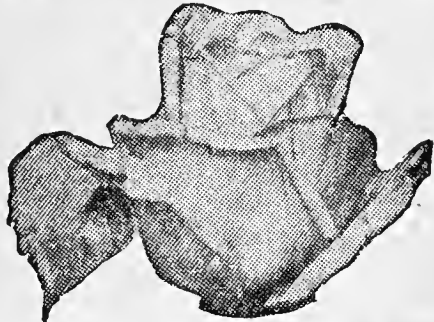
Dutchman's Pipe—Aristolochia Tomentosa—A vigorous growing vine producing in abundance a purplish blossom much resembling a pipe. 2-yr plants, 2 for 59c.



Wistaria

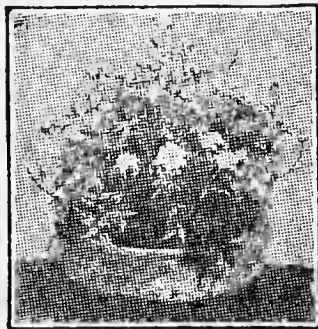
**THE FAMOUS
BLUE ROSE
Vielchenblau**

A new German novelty Rose of a beautiful violet-blue color, as its name implies. The buds open in a reddish-violet color, quickly changing to amethyst and steel blue. A truly beautiful rose that should be planted by every rose lover.



A strong, rapid grower with good roots and strong upright canes. The blooms are produced in immense panicles giving the flowers a very full and double bloom. The leaves are a rich glossy green, and strong stems hold the flowers upright. It is very hardy and disease-resistant, and will be a welcome addition to your rose garden.

Medium plants, 50c each—3 for \$1.25
Large size plants, 75c each—3 for \$2.00



**TINIEST ROSE IN THE
WORLD**

The most outstanding novelty in the rose world. Blooms continuously throughout the summer. A tiny pink and very fragrant flower. Nothing equal to it for border, rock garden or house culture. Plants 35c each—4 for \$1.00, Postpaid.

**THE GORGEOUS
CLIMBING SUNBURST**



**A New Climber of
Astounding Beauty**

An unusual climber of great beauty. Its large, rich, copper-yellow flowers are very double and of immense size. Foliage large and extremely vigorous, and bears continuously throughout the season. Without question the finest climber developed in recent years.

Medium plants, 50c each—3 for \$1.25
Large plants, 75c each—3 for \$2.00

**FAIRY OR BABY ROSE
Roses from Seed the First Year**

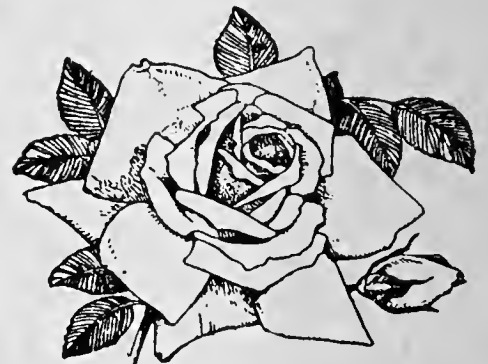


One of the most unique and novel pot flowers grown. The only genuine dwarf house Rose, blooming in four or five months after sowing the seed—giving about equal proportions of single, semi-double and double flowers, borne in clusters and contain all the tints and colors of cultivated Roses. Plants from seed sown in February in the house may be had in bloom in June, and should bloom continuously month after month. **Pkt. 15c—2 Pkts. 25c**

PLEASE—If you get more than one of these catalogs, please pass it on to your neighbor.

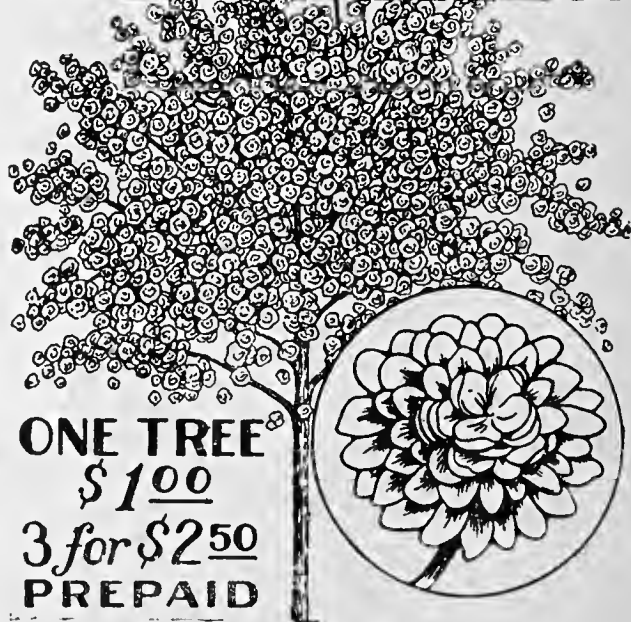


THE GREEN ROSE (*Rosa semperflorans viridiflora*)—There are so few people who have heard of a Green Rose that it is a distinct novelty, so you will be proud to grow and exhibit it to your friends. There is no doubt about its color; it is real green. The blossoms are produced abundantly and almost continuously from early Spring until freezing. The bush is a low, vigorous grower, about two feet high, and not very thorny. If you want something different be sure to try this one. 1 yr. 60c—2 yr. \$1.25



WINTER GEM—(Blooms indoor all winter long)—Blooms in profusion; the blossoms borne on long graceful stems are of large size and a lovely crimson-pink color. The buds are perfect in form, and the open flower full and double. It is a Tea Rose of remarkable strength and vigorous growth—one plant will produce more good roses in a year than any other Tea Rose grown. It flowers all the time and nothing but killing it outright will check it. 1 yr. 60c—2 yr. \$1.25, Prepaid

ROSE TREE



ONE TREE \$1.00
3 for \$2.50
PREPAID

THE ROSE TREE OF CHINA (*Prunus triloba*) is the most beautiful and showy of all small trees. It begins to bloom before the leaves appear in the spring, being literally covered with very double rose-like pink flowers. As an ornament from early spring until late fall, it has few equals. This symmetrically formed, graceful little tree grows usually to a height of but 8 feet, and is attractive as a specimen or when planted in groups of shrub border. It is hardy and easily grown, and no lawn is so small that room cannot be found for at least one of these wonderful trees. Many who have seen it declare it to be the most beautiful tree they have ever seen. The rose-like blossoms make fine cut flowers.

Hardy Everblooming HYBRID-TEA ROSES

These roses are the result of crossing the tender everblooming Tea Roses with the hardy Hybrid Perpetuals or "June Roses". These roses are hardy and of vigorous growth, and should be given winter protection in the Northern States. They have the size of flower and exquisite fragrance of the "June Rose", combined with the constant blooming qualities, delicate tints and rich bright colors of the "Tea" or Monthly Blooming Roses. Both our one-year- and two-year-old plants, set out in the spring, will bloom the same year. The two-year-old plants should have an abundance of roses.

CALEDONIA—Alabaster white, long stem, free bloomer.

COLUMBIA—Deep peach pink, deepening into a glowing pink. Magnificent blossoms, often measuring six inches across; fragrance beyond description; almost thornless.

FRANCIS SCOTT KEY—Rich glowing scarlet with darker shadings; nothing finer.

GRUSS AN TEPLITZ—This is one of the most useful of all roses for the lawn, succeeding under the most ordinary conditions. Grows freely to a height of 4 or 5 feet; hardy in all sections; vivid, dazzling, fiery crimson; sweetly fragrant; and is in bloom all the time.

LA CHAMPAGNE—Flame pink, tinged with red and shading to a rich yellow at the base.

OPHELIA—Brilliant salmon-flesh shaded with rose, with a heart of glowing peach pink.

RED RADIANCE—A magnificent shade of cerise-red; does not fade.

PRICES: 1-yr. plants 35c each; 3 for \$1.00, Prepaid. 2-yr. plants 75c each; 3 for \$2.00, Prepaid.

RADIANCE—Carmine-rose with opal and coppery reflections.

PRES. HOOVER—Cerise, pink, scarlet and yellow.

WHITE KILLARNEY—Pure white fine, form.

TALISMAN—Bright red, old gold and yellow.

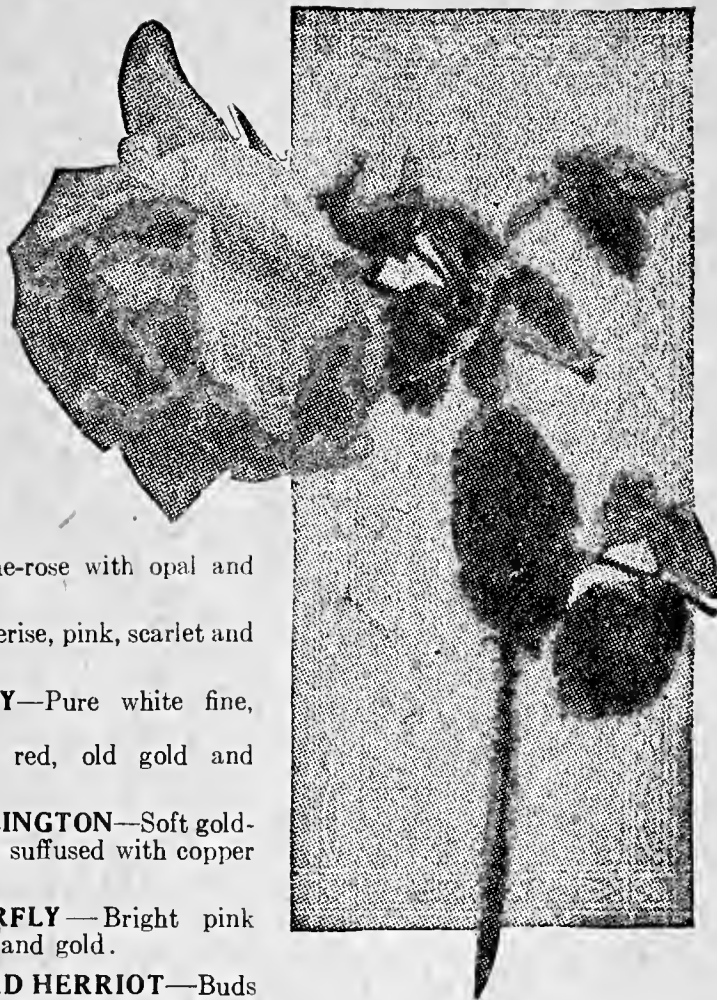
DUCHESS OF WELLINGTON—Soft golden yellow, veined and suffused with copper and red.

MADAME BUTTERFLY—Bright pink suffused with apricot and gold.

MADAME EDQUARD HERRIOT—Buds vivid orange-scarlet, opening to large flowers of light copper-red, paling to strawberry-pink with age.

MRS. AARON WARD—Coppery orange in the bud, developing to golden-orange in the open flower.

JOANNA HILL—Large bright yellow buds opening into full flower of creamy yellow. Produced on long stems. A fine cut flower variety.



RAMBLER ROSES

The Ramblers are a class of Climbing Roses of vigorous habit which produce their flowers in clusters. While the individual blossoms are not large, the immense clusters are borne in great profusion, and make a gorgeous showing. You surely have a place for some of this class of Climbing Roses. You can use them on porches, arbors, arches, pergolas, clothes posts, fences, and old stumps of trees. Hardy everywhere.

CLIMBING AMERICAN BEAUTY—A sturdy, vigorous grower, absolutely hardy; throwing strong flowering canes in one season which are covered with dark, glossy foliage that is immune to disease and insects. The roses are 3 to 4 inches in diameter, are produced on individual stems, vivid rosy-crimson in color, and with the same delicious fragrance as the old American Beauty.

PRICES: 1-yr. plants 35c each; 3 for \$1.00, Prepaid. 2-yr. plants 75c each; 3 for \$2.00, Prepaid.

RED DOROTHY PERKINS (Excelsa)—The most popular red rambler; large clusters of rich scarlet.

GARDENIA—A grand variety, quite similar to the old Crimson Rambler, with the exception of color. Rich yellow flowers, borne in large clusters; blooms profusely, and is as hardy as an oak.

60c » » FIVE CLIMBING ROSES « « 60c

Five small size plants of Climbing Roses, each a different kind, our selection of varieties. Each plant will be labeled as to variety and all five delivered by parcel post, postpaid, for only 60c.

TAUSENDSCHOEN



A climbing rose which produces on the same plant so many different colored flowers that it is impossible to describe the variations, hence the fitting name, "Thousand Beauties". Blooms profusely during June and July. The colors run from bright rose and carmine, with white and yellow tints showing. 1-yr. plants 35c each; 3 for \$1.00, Prepaid

NEW BLACK ROSE

(Ami Quinard)

A new variety. The deep velvety amaranth red is almost true black and the blooms are larger, prettier and more abundant. Large size, 2-yr.-old plants, \$1.25 each, Prepaid



CHINESE LANTERN PLANT



The Chinese Lantern Plant (*Physalis Franchetti*) is a hardy, perennial variety of Ornamental Winter Cherry which forms dense bushes about two feet high. It is grown for its very attractive balloonlike pods which turn very bright red and resemble Chinese paper lanterns. May be easily dried for Winter bouquets and decorations—being very fine at Christmas—retaining its color and shape all during the winter.

The Chinese Lantern Plant is easily grown on any ordinary garden soil, and is unusually striking in the garden. A money-maker for florists and others who have a cut-flower trade; and a real enjoyable and fascinating plant to grow.

Pkt. 10c—3 Pkts. 25c

EVERLASTINGS

To meet the growing demand for winter bouquets, we have added to our line more varieties of Everlastings, or more commonly called Straw Flowers. We are making these up in a splendid collection of seeds which should give you wonderful bouquets for next winter. We are including *Acrolinum*, which is a white and pink flower about one inch in diameter, with petals strawy to the touch, but of silken appearance. Plants 18 inches tall. Seahally, a pretty plant with thistle-like heads of flowers of a steel blue. The Everlasting *Celosia*, which is a lilac pink, borne in elongated heads, carried on long, substantial stems. We are offering a special mixture of these Everlasting flowers and give a liberal size package for 15c—2 Pkts. 25c



BLUE LILY OF THE NILE

A splendid ornamental plant with bright evergreen foliage spreading 3 or 4 feet surmounted with spikes of bright blue flowers which remain in bloom for a long period. It is a most desirable tub plant for porch or lawn. Should be wintered in the cellar or greenhouse. Seed, 15c Pkt.—2 Pkts. 25c, Postpaid



SHOO-FLY PLANT

It is said that flies will not stay in a room where it is grown if they can conveniently escape. What it is about it that repulses them is not clear, as the plants and flowers have no odor. It is a beautiful flowering plant, and blooms in a short time (60 days) from seed. It is a profuse bloomer in pots both summer and winter, the blossoms being large, cup-shaped and of a lovely light blue color with white center.

Pkt. 10c—3 Pkts. 25c



MIMOSA (Sensitive Plant)

The plant is most interesting. When subjected to a strong draft, or touched, the leaves fold up and droop. After a short period of rest, they regain their original position. The flowers are small, and carried on the ends of the stems; they form ball-shaped, feathery heads of a light rose color.

Pkt. 10c—3 Pkts. 25c, Postpaid



DOUBLE SWEET-SCENTED NASTURTIUM

Golden Gleam. This Double Sweet-Scented Nasturtium was introduced last year, and proved to be the finest thing in Nasturtiums ever offered.

The plants form vigorous, large bushes, and when fully developed send out short runners about 18 inches in length. The neatly formed plants are covered with a mass of large, golden-yellow, semi-double flowers 2-1/2 to 3 inches across. Pkt. 10c—3 Pkts. 25c, Prepaid



MIXED PETUNIAS

This mixture contains a good range of brilliant and impressive colors and these hardy plants retain a continuance of blooms until frost. Their blazing array of color makes any display an object of admiration and beauty when stocked with these vigorous and profuse growers.

Pkt. 10c—3 Pkts. 25c, Postpaid

HARD TIMES FLOWER GARDEN

Hundreds of varieties of pretty flowers at practically no cost. Unsightly or bare spots in the yard, along the fences, on embankments, etc., can be transformed into a delightful, attractive flower garden. This flower seed mixture is especially prepared from a select list of hundreds of sorts—the colors and varieties being carefully proportioned to produce a constant and varied bloom the whole season. In no other manner can so many different varieties be obtained at so small a cost.

Pkt. 10c—3 Pkts. 25c



PERENNIAL FLOWER SEEDS

Every garden should contain a good assortment of perennial plants, as they remain in the ground year after year and require very little care. An easy and inexpensive way of obtaining them is to send for our Perennial Flower Seeds. Package of 25 varieties.

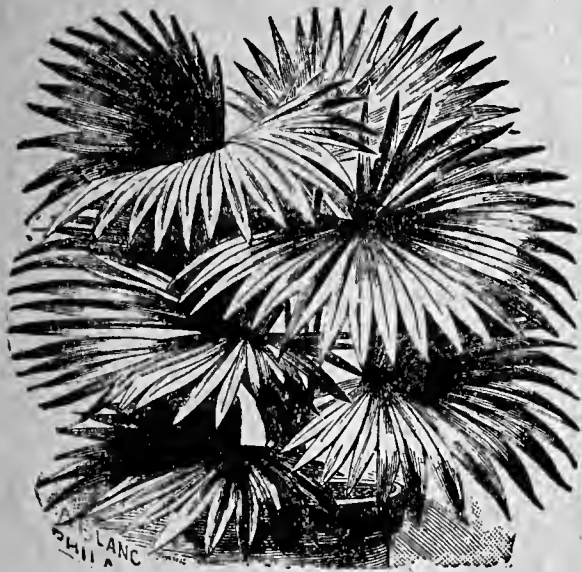
Pkt. 10c—3 Pkts. 25c

ORIENTAL FLOWER GARDEN Japanese and Chinese Novelties

This is a special collection of Japanese and Chinese flower seeds; curious, showy and most handsome varieties, entirely adapted to our climate. It is from Japan that we obtain many of our most beautiful flowers, and many of our rarest, most curious, effective and showy varieties come from China. This Oriental Flower Garden contains a large assortment of varieties, all put up in one package. It would be expensive to buy them all in separate packets. Full directions for planting are sent with each package. This fine Oriental seed assortment will please you.

Pkt. 10c—3 Pkts. 25c

GIANT FAN-LEAVED PALM



The finest of all Palms, and easily grown from seed. Elegant fan-shaped leaves of a rich, dark green—beautifully fringed with long, thread-like filaments along the segments of the leaves. The plant is a compact grower, well adapted to pot culture, and succeeds in any situation. Needs no petting; stands dust and dry air; lack of sunshine does not bother it. Very ornamental at all stages of growth, and the most satisfactory Palm ever offered. Seed, 25c Pkt.

CACTUS SEEDS



Cactus make most interesting house plants, extremely odd and curious, and many have gorgeous and beautiful blossoms sweet scented, and blooming profusely. These odd-est of all plants grow in many shapes and sizes, are easily grown, thrive and bloom with very little care, and endure the heat and dryness of the ordinary living room. Much pleasure may be derived in growing them from seed. Everyone is delighted and surprised at the odd appearance of a Cactus just sprouting. If you desire a fine collection of rare varieties, sow the seed in pots or boxes in a warm room in moist sand, and the seed will grow quickly. We have fresh seed of a mixture of 10 choice varieties. Pkt. 10c—3 Pkts. 25c

GROW YOUR TOBACCO In Your Own Back Yard

Tobacco can be successfully grown in all parts of the United States, even in the far North. Cut down your expenses by growing your own, and you will have a good supply of pure, unadulterated natural leaf that has not been "doped" or "doctored" up by the manufacturer. Directions for growing are sent with each packet of seed.

Pkt. 10c—3 Pkts. 25c, Postpaid



Airplane Lily

Recurved, graceful foliage which makes a handsome pot plant—also useful for vases. Leaves are dark green, beautifully marked with broad stripes and bands of a creamy white color. Bears large spikes of white flowers.

Pkt. 25c

JERUSALEM CHERRY

A very showy house plant, loaded with ornamental "cherries" which turn to glossy scarlet when ripe. Fine for Thanksgiving and Christmas decoration. The bright cherries—which are not edible—will hang on the plant all winter; foliage always green and very ornamental.

Pkt. 10c—3 Pkts. 25c



MONKEY FLOWER

Tender, little, half-hardy perennial which does best as a house plant. Oddly shaped flowers of yellow, red, pink, and orange; all tigered and spotted. Named Monkey Flower from the resemblance of the corolla to a mask or face. Blooms the first season if seed is sown early. Very attractive plant. Will do well planted out in a moist, shady situation. Pkt. 10c—3 Pkts. 25c



MOONFLOWER

A rapid climber, reaching a height of 20 to 30 feet; foliage very dense. Every evening and on cloudy days the vines are covered with immense sweet-scented, pink and white flowers, many measuring six inches across. Pkt. 10c—3 Pkts. 25c, Postpaid

GIANT ZANZIBAR PALM MOSQUITO PLANT

This is the wonderful plant you have been seeking to beautify your lawn. It often grows 14 feet high, the enormous leaves measure 4 feet across. It presents a pyramid of tropical looking foliage which grows big in 4 to 6 weeks. A rare, showy and interesting plant for the lawn.

Pkt. 10c—3 Pkts. 25c,
Postpaid

Note: Some folks plant this Giant at some distance from their porch or house, claiming that it draws the mosquitoes away.



JAPANESE WATER FLOWER



Superb mystic creations—imported direct from Japan. A real mystery. Blooms instantly. No waiting. No earth required. Just drop marvels in glass with water. The flower and buds unfold instantly—in three seconds. As if by magic, you have a water flower. Blooms guaranteed to last for months.

Six Water Flowers of different color, and three Resurrection plants, all for 25c, Postpaid.

GIANT OSTRICH FEATHER ASTERS



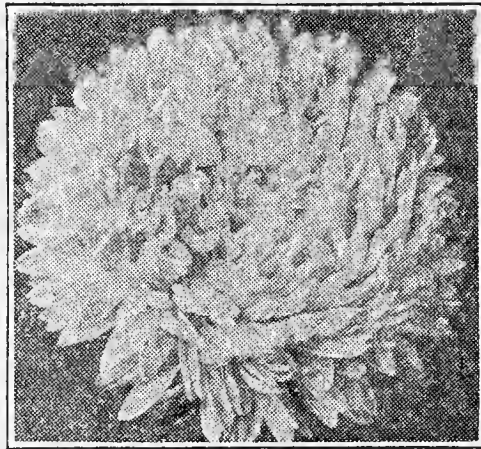
We are now offering improved strain of Giant Ostrich Feather, and consider it the finest of all Asters. The plants are about 2½ feet high, robust in growth, and branch freely, and are loaded with magnificent feathery, full, fluffy flowers par excellence. We offer the following colors: crimson, brilliant rose, pink, light blue, dark blue, pure white, pale yellow, or mixed colors.

Pkt. 15c—2 Pkts. 25c, Postpaid

HEART OF FRANCE

The best pure red Aster ever introduced. All others have somber shades of blue or too much yellow in the color pigments. Heart of France opens red as the purest ruby, deepens with age, and retains its remarkable beauty to the very end. The petals appear strikingly changeable, showing now a glow and sheen quite unique, now a soft warm velvety texture. In any light, natural or artificial, Heart of France is startlingly beautiful and will command instant admiration. The flowers are large and full, with never a trace of hollow center.

Pkt. 15c—2 Pkts. 25c



MEXICAN FIRE PLANT (Annual Poinsettia)



A variety of Poinsettia which grows quickly to a height of 2½ to 3 feet from seed sown in the open during May. About the middle of summer, the top central leaves turn to rich orange-scarlet, similar to the famous greenhouse variety of Poinsettia which is so popular about Christmas time. A blaze of glory throughout the summer and fall. Can also be grown as a house plant.

Pkt. 10c—3 Pkts. 25c

TULIP TREE

A rapid-growing tree of unusual beauty. Flowers appear in June and resemble large tulips. Beautiful, glossy leaves which, in fall, turn to brightest yellow. Makes a wonderful specimen tree for any lawn. Young trees that will grow rapidly, 2 to 3 feet high.

60c Each—3 for \$1.50, Postpaid

"DOGZOFF"



If you are bothered with dogs, cats, or rabbits, "Dogzoff" is the spray you need. It is a most efficient animal repellent and one spraying will last from three to four weeks. Not poisonous to plants and will not injure animals. Not offensive to humans. Its use is guaranteed to keep these animals from any place where they are not wanted.

"Dogzoff" is applied with any small insect sprayer and one application usually does the work.

"Dogzoff" will save its cost many times over around the garden and home.

Price for Season's Supply, 60c, Prepaid

SWEET WILLIAM



15 to 18 inches. May and June. Almost too well known to need description. Splendid for massing in the border. **Pkt. 10c—3 Pkts. 25c, Postpaid.**

COLEUS



Rainbow Hybrid Coleus are beautiful and showy bedding and house plants. Large heart-shaped leaves, many of them are handsomely crimped, toothed and frilled; beautifully variegated and with color combinations that are remarkably rich.

Pkt. 20c

HARDY PHLOX



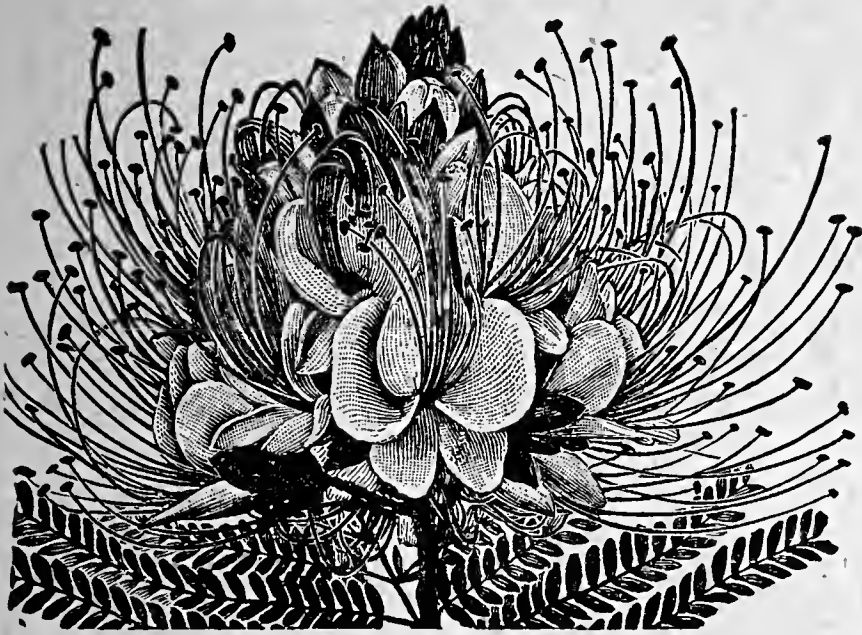
Because of the bright, showy colors and their long blooming period, the hardy Phlox are counted among the most highly prized perennials. Enormous heads of brilliant flowers produced on strong erect stems. They average 2 to 3 feet in height and bloom from June to October. A select mixture of all colors. **Pkt. 15c—2 Pkts. 25c**

HELIOTROPE



These are universal favorites on account of their delightful fragrance. Flowers equally well as bedding plants in summer, or as pot plants during the winter. Flowers of great size and ranging in shade from dark blue to lilac. **Pkt. 15c**

BIRD OF PARADISE



(Poinciana Gilliesi)

The color of the flower is a rich golden yellow. It measures 2-1/4 inches across and is produced in very large trusses. The most beautiful part of the flower is the long incurved stamens and pistils which are spread out in fan-like form and are of bright crimson color. The color is also highly decorative. It should be grown as a house plant, except in the warmer parts of the South, where it is hardy. If the seeds are started early, it will produce blooms in great profusion the first year.

Pkt. 10c—3 Pkts. 25c

GIANT ZINNIA



This type, latest development in Zinnias, bears flowers of mammoth size; in form like a perfect decorative Dahlia. Plant is a strong grower and flower stems are long and stiff. This remarkable variety includes a complete range of delicate, bright and rich colors from white, yellow, lavender and rose to orange, scarlet and crimson. A wonderful cut flower.

Pkt. 10c—3 Pkts. 25c

AMERICAN LAWN SEED

This grass is used more than any other. It is composed of six of the finest turf grasses, such as Fescue, Bents, etc. This is used extensively on tennis courts, school grounds, golf fairways, in parks, and on large and small lawns and terraces. It makes a good turf the first season and can be walked on without injury to the young grass. This grass will remain green almost the year 'round and will thrive anywhere except on the extreme South Coast. For Fall sowing in the South on Bermuda grass sod, this is very successful. Sow one pound to each 400 feet of lawn space. Price: 1 to 5 lbs., 60c per lb.—5 to 25 lbs., 55c per lb. Delivered Prices.

SNOW ON THE MOUNTAIN



One of the finest foliage plants for outdoor planting. Foliage attractively veined and is margined with white, 2 feet. Excellent for beds and borders.

Pkt. 10c—3 Pkts. 25c, Postpaid

GIANT PANSY

Giant-sized flower of most striking character, each petal being conspicuously curled or waved, giving them the effect of a double flower.

The colors are mainly rich dark shades, bordered, blotched, or marked in the ray-like veinings with contrasting colors.

Bloom freely and continuously as long as weather remains cool.

Pkt. 20c—3 Pkts. 50c



Japanese Umbrella Palm

Not a true palm, but handsome ornamental palm-like plant. Grows in water or soil. Indispensable for aquariums, fountains or pools.

Pkt. 10c

Send some names and addresses of your friends with your order.

Angel's Trumpet

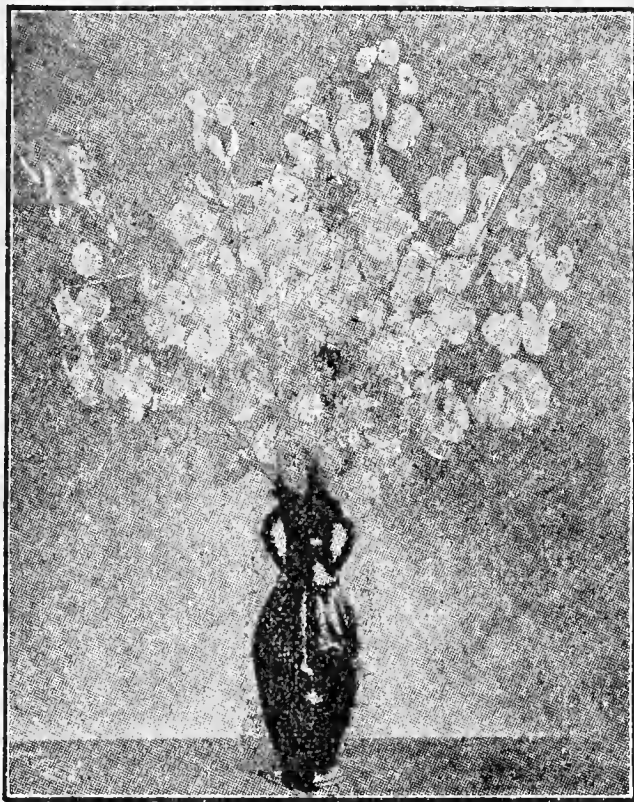
Large tropical leaves with trumpet-shaped flowers—pure white and as fragrant as jasmine. Blooms indoors in winter, and in the garden in the summer.

Pkt. 20c



PLEASE — If you get more than one of these catalogs, please pass it on to your neighbor.

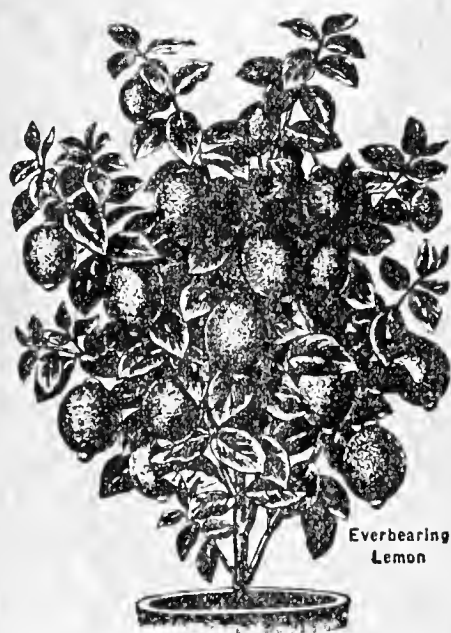
CHINESE MONEY PLANT



A beautiful, hardy biennial, about 2 feet in height, which is known in the different provinces of China as the silver, satin or money plant, and in Europe as St. Peter's Penny. Flowers are violet-purple, white and dark crimson, followed by the silvery seed pods that present a beautiful and rather curious appearance. When dried, the stems, which are loaded with these glistening seed pouches, will last indefinitely and are exquisite for winter bouquets and other decorative purposes. **Pkt. 15c—2 Pkts. 25c**

DWARF ORANGE

A fine pot plant, with glossy leaves, fragrant waxy-white blossoms, and an abundance of delicious little Oranges that will hang on the plants for six months after they are ripe. While it will grow 3 to 4 feet high and branch freely, it is not an uncommon thing to see little 5- to 6-inch plants full of bloom and even bearing one or two Oranges. Plants, **60c each—3 for \$1.50, Postpaid**



Everbearing Lemon

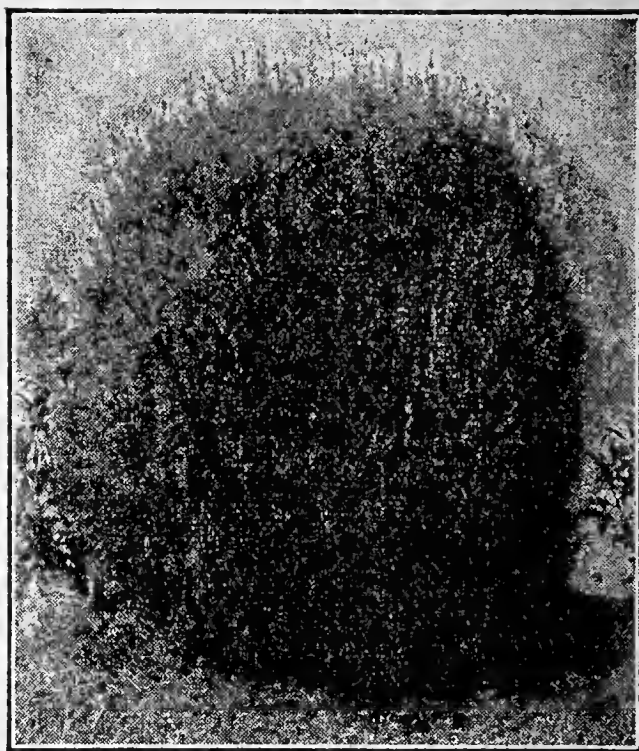
Everbearing Lemon

A true everbearing Lemon that can be as easily grown in a pot as a Geranium and which produces fruit weighing from one to three pounds each. These enormous fruits are borne on plants one to two feet high growing in pots; bear continually; delicious for lemonade and culinary purposes. Flowers are as fragrant as orange blossoms which they resemble. Plants, **60c each—3 for \$1.50, Postpaid**

IMPORTANT NOTICE

Owing to quarantines, we do not ship Orange or Lemon plants to Alabama, Arizona, California, Florida, Georgia, Louisiana, Mississippi and Texas.

KOCHIA (Burning Bush)



Very handsome, symmetrical plants, forming beautiful ornamental shrubs, and growing 3 feet tall in three months. Wherever a quick-growing annual hedge is wanted there is nothing better than Kochia. Turns to a gorgeous carmine in fall.

Pkt. 10c—3 Pkts. 25c, Postpaid

ELECTRIC LIGHT PLANT Or Giant Spider Plant

A remarkable curiosity, which grows to the height of about 4 feet, and is covered with large spikes of flowers 6 to 8 inches long, produced in lovely shades, white and pink at base and rose to bright red and purple at top of flower, resembling clusters of brilliant and many-colored electric lights. Grows readily from seed. Showy and ornamental. A curious and unusual plant, so lovely that everyone will admire it. Seed sown in the open ground in May will flower in July, and continue in flower uninterrupted until frost.

Pkt. 10c—3 Pkts. 25c



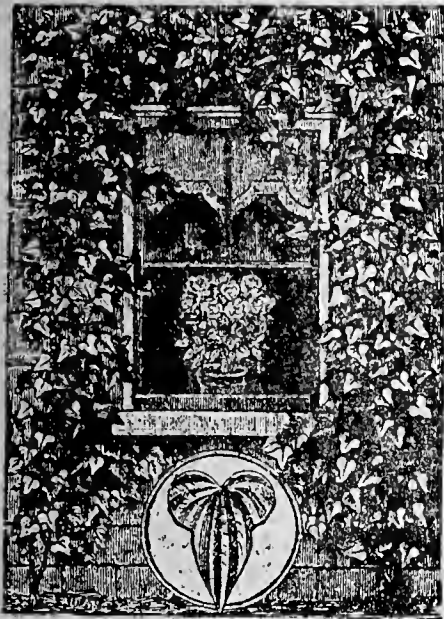
CHINESE FRAGRANT FERN

A beautiful tropical-looking ornamental foliage plant—very delicate and lace-like. Blooms profusely, and both flower and foliage are deliciously fragrant. Sprays of the foliage kept in a room or trunk will impart the most wonderful sweet perfume for a year or more. No bouquet or vase is complete without this fragrant flowering fern. Every packet of seed should produce 20 or more lovely ferns. Do not miss these perfumed beauties.

Pkt. 10c—3 Pkts. 25c, Postpaid



CHINESE CINNAMON VINE



The Cinnamon Vine is one of the most satisfactory climbers. Its handsome foliage and fragrant, cinnamon-scented blossoms commend it to every lover of flowers. It is tuberous-rooted and, once planted, will grow a lifetime. It is perfectly hardy, thrives on all soils, in sun or shade, wet or dry. No insects or blight ever trouble. Will quickly surround your windows, arbors and porches with a mass of vines, and profusion of small white flowers. While the Cinnamon Vine is grown mainly for its beauty and fragrant blossoms, the tubers are edible, being most delicious when baked like sweet potatoes. For windows, plant two on each side. For porches, walks, etc., plant 8 inches or a foot apart, covering 2 inches. Furnish twine support for the vines. Choice tubers—15c each—2 for 25c—6 for 60c—12 for \$1.00—30 for \$2.00, Postpaid

DECORATION DAY DAISY

Very similar to the popular Shasta Daisy except that instead of blooming in the late summer and fall, it is in full bloom by Decoration Day. Pkt. 10c—3 Pkts. 25c, Postpaid

CIGAR PLANT



A charming compact house plant, literally covered with scarlet tubular flowers throughout the year. Simple culture. Pkt. 10c—3 Pkts. 25c



FLOWERING TOBACCO

Fine for bedding, or for planting as a background in borders for lower growing plants. Sow the seed indoors in a box filled with fine sandy soil, and barely cover them from view. Splendid pure white Bouvardia-like flowers on long terminal tubes. It blooms very freely all during July and August and makes a magnificent show. Pkt. 10c—3 Pkts. 25c, Postpaid

JOB'S TEARS

A pretty, ornamental grass, with broad, corn-like leaves and hard shining seeds of peculiar appearance, giving the plant its name.

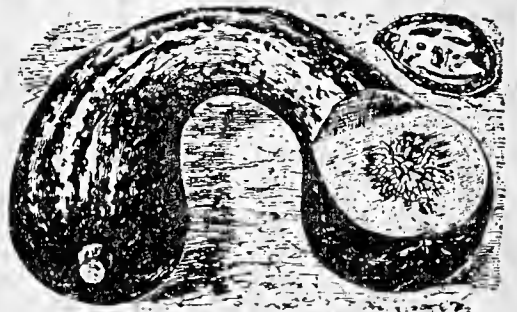
The seed is frequently used as an old-fashioned remedy for sore throat, goiter, and teething babies. They are strung on a linen thread and worn around the neck as a chain. Pkt. 10c—3 Pkts. 25c, Postpaid



JAPANESE PIE

A high quality pumpkin of Japanese origin. The flesh is very thick, of a rich salmon color, fine grained, dry and sweet. Seed cavity small. Of medium size, early, very productive and a good keeper. Highly desirable as a pie or cooking pumpkin. The seeds are distinct in appearance, being curiously sculptured in the same manner as Japanese letters.

Pkt. 10c—3 Pkts. 25c, Postpaid



GIANT SUMMER CROOKNECK

Largest and one of the earliest of the crookneck summer squashes. Vines of bush habit, large and more vigorous than Summer Crookneck.

Fruits when mature are very large, often 1½ to 2 feet long, with exceedingly warted surface. The color is deep yellow. Its large size and attractive color make it a great favorite with market gardeners.

Pkt. 10c—3 Pkts. 25c, Postpaid

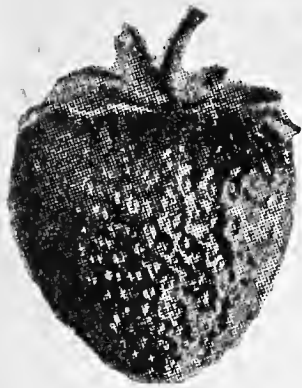


HYBRIDIZED POTATO SEED



Seed from the Seed Balls—Headquarters Stock

Your fortune may be in one of them. They are as easy to grow as tomatoes. Millions never saw a Potato Seed Ball. Thousands have tried in vain to get the seed. Now is your opportunity. This unrivaled seed will produce an endless variety of new kinds. It is from these that all valuable new varieties of potatoes are produced. Growing new and distinct Seeding Potatoes from the Seed-Ball Seed is intensely interesting. They will be the greatest curiosity of your garden. This seed will positively produce innumerable new kinds, colors, shapes, sizes and qualities. The product will astonish you. Some may be of immense value and bring you a golden harvest. Every farmer, gardener and bright boy should plant a few packets. You may be one of the lucky ones. Full directions on every packet. Pkt. 15c—2 Pkts. 25c, Postpaid



STRAWBERRIES FOR EVERY HOME

MASTODON

The Mastodon is without doubt the biggest and best strawberry that we have ever seen, and would be a prize even if only a Spring bearer, and when you add that it is a true everbearer, it sure is a world beater. The fruit is a big, dark red, solid, highly flavored, and is a perfect shipping berry. It is claimed that the berries are of such a mammoth size it requires only 9 berries to a layer, 18 berries to a quart.

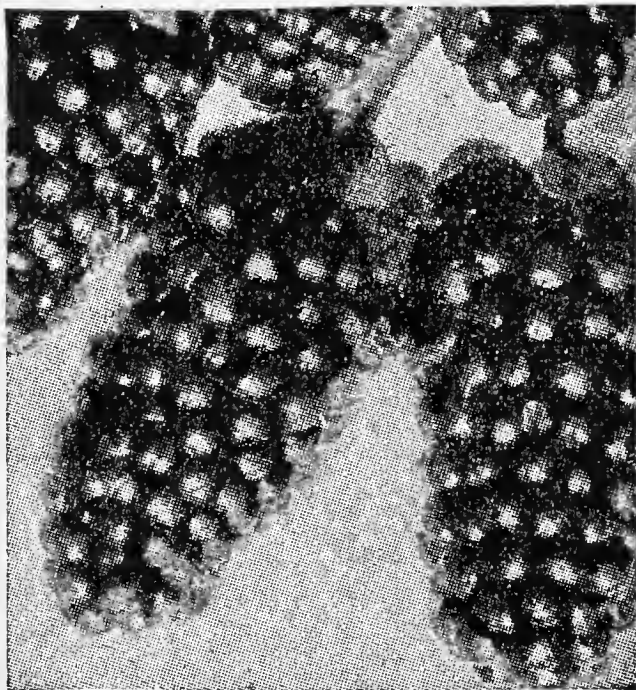
Variety	25	50	100	250
Mastodon.....	\$0.80	\$1.40	\$2.50	\$5.00
Gem Everbearing.....				
Dorsett65	1.15	1.75	3.50
Fairfax				
Blakemore.....				
Premier.....				
Catskill.....	.60	1.10	1.70	3.25
Aroma.....				
Sen. Dunlap.....				

REMEMBER, THESE ARE DELIVERED PRICES. Many strawberry growers quote lower prices but you pay the postage or express charges with the result that you often pay more than you anticipated.

FAIRFAX and DORSETT are two new strawberries introduced and developed by the U. S. Department of Agriculture. The varieties are very productive and have large fine berries. They start bearing very early in the spring and the fruit is of rich flavor and fine quality.

These inspected, disease-free, northern grown plants are especially suited either for the Northern or Southern states.

THE MAMMOTH WONDERBERRY



A large Dewberry that produces unusually large fruit. The plants we send are extra large with strong canes and heavy roots. We know of no other berry fruit that attains the size of this berry, which often is 1½ inches in length, and sometimes 2 inches in circumference. Excellent for eating fresh and has no equal for canning or pies. Very hardy and of rapid growth. The vines will grow from 5 to 8 feet in a season. It can be left to run on the ground, but for better fruit and ease of picking it should be trellised. It grows larger and stronger each year and will show remarkable results if fertilized. In the spring, the vines are loaded with large white blossoms that show beautifully against the dark green foliage. The fruit ripens in July and any surplus you wish to sell will bring a big price on the market. We will send you strong, well-rooted plants and we guarantee them to reach you in good condition.

6 for 70c—12 for \$1.25—25 for \$2.25,
Prepaid

TREE STRAWBERRY

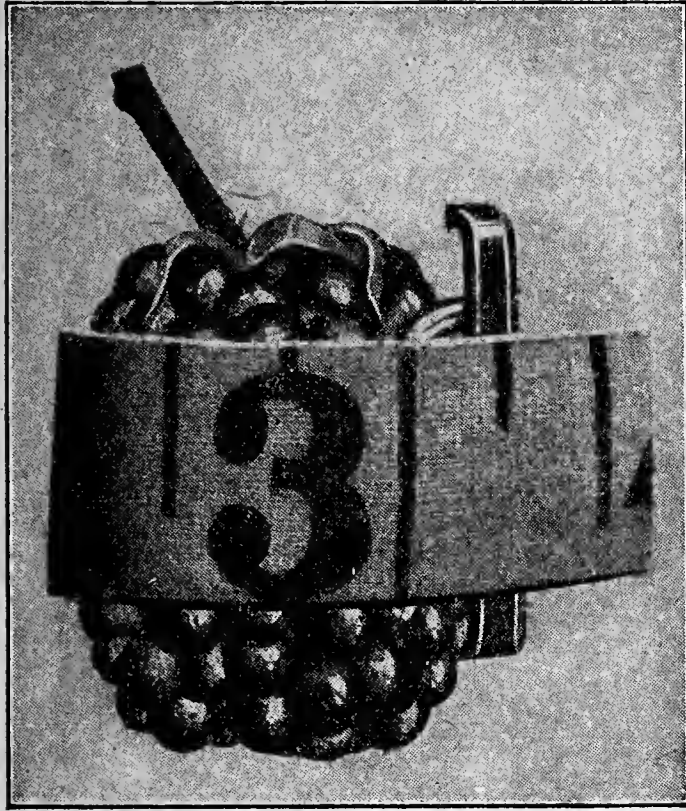


The Tree Strawberry, or Strawberry-Raspberry, as it is sometimes called, is one of the largest and most beautiful of all berries.

A new plant in habit and growth and form of fruit. It puts up numerous strong, branching shoots about 2 feet high, wonderfully beautiful, both foliage and blossom. Bears beautiful, large, ruby red fruit, the bright red berries showing a striking contrast to the large white blossoms. This bush, with its glossy green leaves, makes a very ornamental plant. The canes shoot up in the spring, blossoming and bearing in early summer. They endure cold climate, getting larger and better every year, giving many extra plants. Order now, as the stock is limited.

3 for 60c—8 for \$1.25—12 for \$1.75—25 for \$3.25,
Prepaid

BIG MONEY-MAKER



LUCRETIA DEWBERRY

Lucretia Dewberries are bringing big money. They ripen a week or ten days ahead of common blackberries, the bulk of the crop harvested before other blackberries start to ripen, so sell at very high prices.

The Dewberry belongs to the blackberry family, and the Lucretia is the best of them all. The large berries are incomparably better than any blackberry grown; of unequalled excellence; sweet and luscious throughout, and of glossy black color. They are very productive, and most profitable of all fruit crops to grow. The Lucretia has received the highest endorsement and highest praise from the best horticulturists in the country. Its trailing habit renders it less liable to winter-kill. Propagates from the tips, like black raspberries; does not spread or sucker.

6 for 70c—12 for \$1.25—25 for \$2.25
50 for \$4.00—100 for \$7.00, Prepaid

GOLDEN QUEEN RASPBERRY (Yellow)

A beautiful, large, golden yellow raspberry. Many prefer this variety to any of the red or black sorts, owing to its sugary sweetness and unsurpassed flavor. Should be in every garden, its beauty and high quality placing it at the head for table use. The canes are hardy, of strongest growth, and very productive.

3 for 75c—12 for \$2.25—25 for \$4.00, Prepaid



BALSAM PEAR Ornamental Vine with Edible Fruits

A very ornamental and curious climbing vine, with glossy green foliage. Pear-shaped ornamental fruits known to Chinese as La-Kwa, and used extensively in China as a food for human consumption. Usually prepared for the table by boiling the fruits before they are ripe. Give it a trial, both as an ornament and as an addition to your list of edible fruits.

Pkt. 10c—3 Pkts. 25c

GROW FIGS IN THE NORTH

Our Dwarf Fig is particularly adapted to pot culture. As a pot or tub plant, it is extremely valuable either indoors or outdoors, and is an abundant bearer of the most delicious fruit. It will winter safely in an ordinary cellar, or it can be allowed to harden off with a few fall frosts and then be brought indoors for growing during the winter. Our Dwarf Fig is a variety which fruits on the young wood, that is, wood of the current year's growth, which makes it a most desirable variety where the tops are likely to be frozen back, for if the top is frozen, it can be cut to the ground, and when it begins growing it will produce fruit on the new wood. It is for pot or tub culture that we particularly recommend this Fig, but when grown in the open ground it will develop a crop of fruit farther north than is true of other varieties. Plants bear the first year they are set and abundantly each year thereafter. The fruit is very sweet and delicious; of good size; with flesh that is firm and meaty, and of very fine quality for making preserves, jams, canning, drying, or to eat in the fresh state.



Dwarf Fig Fruits Reduced in Size

Choice Plants, 90c each—3 for \$2.50, Prepaid

ICEBERG, OR WHITE BLACKBERRY

It is not merely a curiosity, for in addition to being a real novelty, it is a berry of extraordinary quality. These shining cream-white berries, when mixed with jet-black ones, make a most attractive dish. The bushes are good strong growers and very productive. For best results this variety should be planted near other blackberries.

3 for 60c—12 for \$1.75, Prepaid

LATHAM RASPBERRY A Big Money-Maker

The Latham is conceded to be the best late red raspberry. It has more points of merit and has come into general planting more rapidly than any other raspberry ever introduced. It is vigorous in growth; withstands the winters in Canada without covering; and is exceptionally free from mosaic and other diseases. The large berries, some running over an inch in diameter, and the deep red color make it most attractive,

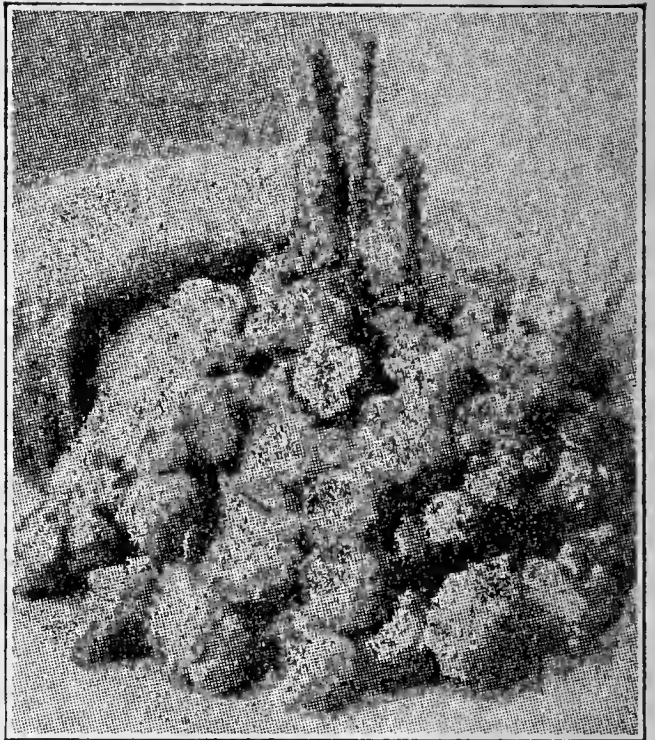


and it is the most productive variety grown. Growers are beginning to realize that no other late red raspberry will make them so much money, so surely and quickly, as the Latham. One nine-acre field of Latham in Minnesota produced an average of \$1,000 per acre each year for five years, and similar reports are coming from all sections of the country.

6 for 70c—12 for \$1.25—25 for \$2.25—
50 for \$4.00—100 for \$7.00,
Delivered Prepaid

GIRASOL —THE LAZY MAN'S SPUD

If someone were to discover a plant "Sport" or if some plant breeder could cross sunflowers or corn with potatoes to get a plant, the tops of which would make silage and, at the same time, produce valuable tubers that would outyield potatoes two or three to one, under similar soil and moisture conditions, we would hail the result as a wonderful discovery. Girasol will do all this and more and yet, it is not NEW for it has been raised in Europe for centuries under another name. France alone produced 1,686,030 long tons in 1928, so our Consul at Paris writes. We call this crop Girasol because the name under which it sometimes passes is the same as another vegetable entirely different which is confusing. The scientific name is Helianthus Tuberosus; it is related to both artichokes and sunflowers; it is a native of America, not Jerusalem or elsewhere. Girasol tubers will outyield potatoes two or three to one under similar conditions. Yields of 10 to 20 tons per acre are common. Girasol tops are about a third or half the diameter of sunflower stalks but usually two or three feet taller and yield 10 to 22 tons silage per acre. Girasol is not injured by freezing. The whole or a part of the crop of tubers may be harvested in the Fall or the Spring following. Girasol is propagated by tubers only, not from roots and joints like quack grass and thistles so it cannot become a serious pest if followed with pasture, hay meadow or good cultivated crops.



A Single Hill of "Girasol"

WONDERFUL HOG FOOD

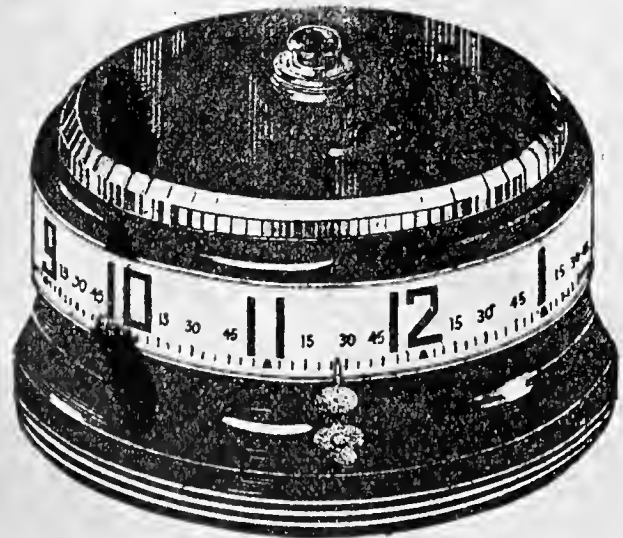
All stock and poultry like Girasol tubers, but perhaps the most profitable use would be as hog feed, the hogs doing their own harvesting with no expense. Trials along this line have yielded 744 pounds pork gain per acre; this might be considered NET PROFIT. The silage crop would be more than enough to cover cost of seed, land rental and cultivation expenses. Adding gain to balance, the ration would of course help. Every farm should have from one-fourth to one acre of Girasol so that they could turn the hogs on it in the fall. It is a big money-maker for hogs.

Girasol may be eaten raw or cooked, but the inulin in Girasol that replaces starch in most other vegetables need not be cooked to bring out its food value. This crop will grow on most any kind of soil but the richer the better of course, but it will do better on poor soil than most any other crop. Single tubers often weigh more than a pound but the average is smaller and more irregular shape than potatoes. Small tubers, or large ones cut small, do not seem to decrease the crop as is the case with potatoes. Choice seed tubers: **3 for 40c—6 for 60c—12 for \$1.00—25 for \$1.75—50 for \$3.25—100 for \$6.00, Delivered to you Prepaid.**

ROTARY CLOCK SPECIAL

The World's Newest Timepiece

A rotary clock that is the very latest thing out. The hour and the minute hand combine into one point which stands still; the face of the clock goes around. We have never seen anything like it before. It comes in beautiful colors. It is a guaranteed timekeeper.



BE THE FIRST in your neighborhood to get one of these outstanding clocks. Everybody will be astonished and delighted on seeing it and you will be very proud of it.

SPECIAL OFFER

This clock was made to sell for \$5.00 each but we have bought a large supply and to each of our customers who orders \$2.50 worth of seeds or plants, or both, we will make a special offer of one of these clocks for only \$1.49, Prepaid.

Why not start that berry patch or try some Proso, Girasol, Dasheen or some of the other wonderful things we have to offer in our catalog. Anything in the book can be applied on this special offer. Simply order \$2.50 worth of seeds and plants from this catalog, pin this special coupon to your order with \$1.49 and it will be accepted in full payment of this clock, which will be sent to you prepaid.

THE DASHEEN » » Is the Potato's Only Rival

A delicious vegetable. The large tuberous roots of which are used like potatoes, the blanched stems like asparagus, and the foliage used for greens.

The Tubers sometimes reach a weight of more than 6 pounds each. One hill often produces 6 pounds or more of tubers, and in rare instances 20 to 26 pounds of Dasheens have been taken from a single hill.

The Dasheen can be used in almost any way that Irish Potatoes or Sweet Potatoes can be used. They are excellent when baked, boiled, fried, creamed, stuffed, meat-filled or scalloped, and for Saratoga Dasheen chips and fritters they are delicious.

In growing Dasheens, there seems to be no disease or insect enemy to contend with. No dreaded bugs to be poisoned; no rot, scab, blight, mildew, or other trouble.

The "Country Gentleman" published the following regarding it:

"Not only does the Dasheen promise well as a market crop once the enemy generally has recognized its merits, but in the meantime, it is capable of furnishing food for home consumption. Its food value is higher than the potato, and about 50 per cent more protein and 50 per cent more starch. The flavor of the Dasheen is decidedly richer and more tempting than that of the potato.

Land that is too wet for ordinary crops can be used to advantage in growing Dasheens. They can be grown on lands that are subject to short overflows that would ruin most other crops, thus making more land available for food crops that is now considered worthless.

Choice Seed Tubers: 3 for 40c—6 for 75c—12 for \$1.25—25 for \$2.00—50 for \$3.75—100 for \$7.00, Delivered to you Prepaid



A 5-Pound Dasheen Tuber

KUDZU » » The Great Forage Crop

KUDZU is a wonderful perennial legume. It outyields alfalfa on poor land; succeeds on land too poor for alfalfa; and does not have to be fertilized or limed. While it is perfectly hardy in the Northern States, the South is where it thrives to perfection, and it is there that it is a most profitable crop. It is adapted to every class of well-drained soils, and will succeed on practically any land not water-soaked and not a desert. It enriches poor soil more rapidly and more permanently than it can be improved in any other way, and will transform nonproductive, barren hillsides into a main resource of the farm.

KUDZU contains more protein than wheat bran—as high as 19.82 per cent and averaging 17.43 per cent. A remarkable feature is that although the hay is richer than alfalfa, yet it is not injurious to horses and perfectly safe for all stock, when fed either green or dry. Does not cause sickness of animals even when overfed; when fed to cows, it will produce more milk and richer milk than any other one feed; and makes a good, permanent pasture.

KUDZU can be harvested when weather conditions are unfavorable for other hays, and will yield a fine quality of hay, often when continued showers and dampness would mean ruin to any other legume hay. It cures the quickest of any known hay, and the leaves do not drop off. Instances are known where four cuttings of hay, averaging 2½ tons per cutting and making a total yield of 10 tons per acre in a single season, have been made.

KUDZU should be given cultivation the first season. A full crop of corn or a good crop of potatoes, or any other similar crop, may be raised on the same land the first year, so the farmer does not lose the use of the land. After the first year, no cultivation is needed, as the plants will cover the ground the next season and take root at the joints, growing so rapidly as to choke out all other plants (even such pests as Johnson and Bermuda grasses) yet it is an easy matter to get rid of Kudzu if desired, for it has a peculiar habit of neither blooming nor bearing seed under field culture, and the plants will only sprout from the crowns and can be killed by cutting off these crowns with a disc plow in hot, dry weather. When the crowns of Kudzu roots are cut off and exposed to sunshine for half a day or so, they are killed, and the roots decay. Another method to eradicate Kudzu, in case one desires to put a field back to intertilled crops, is to plow late in the fall and plant the following spring to corn, beans, potatoes, or any other crop that can be given careful cultivation. Pkt. 15c—2 Pkts. 25c—10 Pkts. \$1.00



One farmer who has given Kudzu a good trial says: "In my 35 years' experience in farming in different states, I have never seen a hay that has cured so quickly, held its leaves so well, or kept its color so perfectly under various conditions as Kudzu does. It does not require lime, as is the case with alfalfa and some other legumes. It does not require a rich soil; fertilizing is not only unnecessary, but unprofitable."

MORNING GLORIES

Giant Imperial Japanese



One of the most valuable and popular climbers introduced in years. This vastly improved strain of mammoth-flowered Morning Glories is most justly celebrated the world over for the wondrous beauty of both flowers and foliage. Magnificent in size of bloom—4 to 6 inches across. The great variety of rich and delicate colors, tints and markings is wonderful and almost incredible. Our mixture of seed of these magnificent Giant-Flowered Japanese Morning Glories is superb.

Pkt. 10c—3 Pkts. 25c, Postpaid

PORTULACA OR MOSS ROSE

These are sometimes called, "The Sun Plant". Single Giant Flowered. One of the showiest low annuals, of easy culture, thriving best in light loam or sandy soil and in a sunny situation. Fine for massing in beds, edgings or rock-work, and frequently used to sow broadcast over sunny banks, etc. Flowers in mixture of the richest colors. Pkt. 10c—3 Pkts. 25c



FEATHER FERN

The Feather or Sprenger Fern is a variety of Asparagus Fern with long, drooping branches—Fine for suspended baskets, window boxes, etc. Pkt. 10c—3 Pkts. 25c



AMERICAN LARKSPUR

(Annual Delphinium)

The Larkspur makes a very handsome bed and their bright colors are very effective when interspersed with other flowers or shrubbery. It is one of the best known of the old-fashioned flowers and, in recent years, a wonderful improvement has been made in the size and color of the blossoms and the general habits of the plants. Seed sown in the open ground the last week in April should produce flowering plants by the first of July and give a continuous succession of flowers from then until fall. This continued profuse blossoming is not excelled by any other flower. We give a splendid mixture showing the double flowered including some of each color so as to make a wonderful display.

Pkt. 10c—3 Pkts. 25c, Postpaid

BUTTERFLY FLOWER

(Schizanthus)



One of the daintiest flowers imaginable; especially fine for bordering beds of taller flowers, and as pot plants for the house in late winter and early spring. Seed sown in the spring will produce plants that bloom in a few weeks, and with such loads of charming blooms as to obscure the delicate fern-like foliage. The plants will quickly grow into compact, rounded bushes about 2 feet tall. The butterfly-like flowers range in color from pure white through shades of cream and pink to crimson and mauve. Pkt. 10c—3 Pkts. 25c

SILK OAK TREE

A magnificent plant for decorative purposes, of rapid growth, fully cut foliage, and rivaling a rare Fern. Called "Silk Oak" on account of its beautiful foliage.

Pkt. 10c—3 Pkts. 25c



KILL DANDELIONS

Amazing new way to eradicate dandelions and other ugly lawn weeds. Kills roots completely for all time. Beautiful lawn thereafter. Wonderfully quick, easy method—merely touch the dandelion with our special No-Stoop Applicator and the entire plant DIES, dries up and blows away. Starts turning weed black within one hour after application.

No digging, no pulling, no stooping . . . Dan-D-Lion Killer Kemical in the special No-Stoop Applicator does all the work! Complete satisfaction guaranteed or your money back.



SPECIAL "GET-ACQUAINTED OUTFIT"
 No-Stoop Applicator . . . \$1.25
 Killer Kemical (enough to kill 1500 weeds) . . . 1.05
 Regular Cost . . . \$2.30
LIMITED OFFER, Complete, ONLY \$1.95



KILLER KEMICAL (Without Applicator)

1/2 gallon can . . . \$1.45
 1 gallon can . . . 2.35
 5 gallon can . . . 9.85
 Also Available in 10, 30 and 55 Gallon Drums

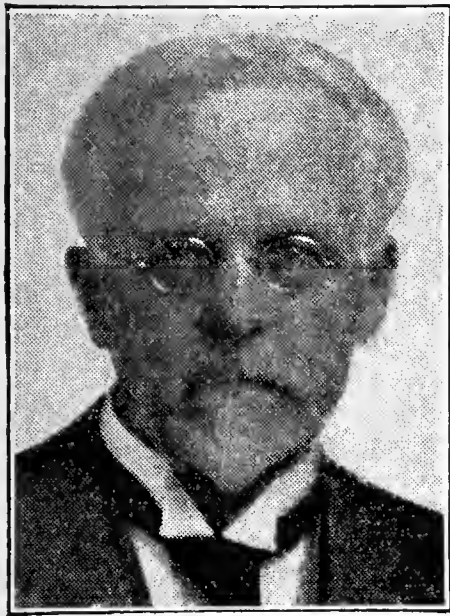
Prices F. O. B. Chicago

SCARLET RUNNER BEAN

A favorite, old-fashioned Climber. One of the few beans that are both ornamental and useful. It grows to a height of 10 to 12 feet, and is covered from July until heavy frost with clusters of beautiful scarlet flowers.

Pkt. 10c—3 Pkts. 25c, Postpaid





DR. N. E. HANSEN
Who has been improving these
Bush Cherries for nearly
40 years.

American Bush Cherries

The New, Quick-Bearing Cherry—So Easy
to Grow, So Sure to Produce

**HIGHLY PRODUCTIVE—GOOD
FLAVOR—HARDY EVERYWHERE**

American Bush Cherries are the result of nearly 40
years of untiring selection work by the great plant
wizard, Prof. N. E. Hansen of South Dakota
State College



Will stand 30 degrees
below zero.

This new fruit is a new development in fruit culture that is gradually changing the method of cherry fruit production throughout the northwest, because of the immense amount of choice quality fruit that can be produced on such small trees on such a very small area of ground.

The fruit which is of large size, good flavor and quality to eat fresh also makes the most wonderful rich flavored, dark purple-red jam of high flavor. The juice makes splendid jelly as well as a not to be forgotten cordial that won't keep long.

Though the fruit of this new cherry much resembles a plum in size and shape, it comes massed in clusters and at times almost completely covers the limbs. The tree itself grows in a sort of dwarf bush-like shape rarely getting over four or five feet tall, branching and bearing from the ground up, usually bearing the year after

planting, though often even the year they are set out and annually thereafter. This dwarf stature is of fine value for planting in the garden as it does not take up near the room of an ordinary cherry tree, yet often bears more. They should be planted two to four feet apart in rows four to six feet apart, twelve to twenty-five or more in every home garden.

In landscape planting, these Bush Cherries are also desirable as they are of striking ornamental value and their dwarf bushy nature is of great aid in foundation planting work, or they may be planted close enough together for a low fruiting hedge on the lawn or in the garden. The foliage which is a beautiful silvery green, turns to a rich red and gold color in fall and adds a very desirable touch to any landscape planting. The profuse masses of large fragrant white flowers in the spring, which completely cover the branches, are a glorious sight.

Plant These American Bush Cherries Because:

- 1—They are so easy to grow and are perfectly hardy everywhere.
- 2—Are good to eat fresh, and make delicious preserves.
- 3—Bear from the ground up, early, heavy, and annually.
- 4—Are dwarf growing, bushy and take up little room.
- 5—Excellent for hedges and ornamental shrubs.

HARDY CHINESE DATE

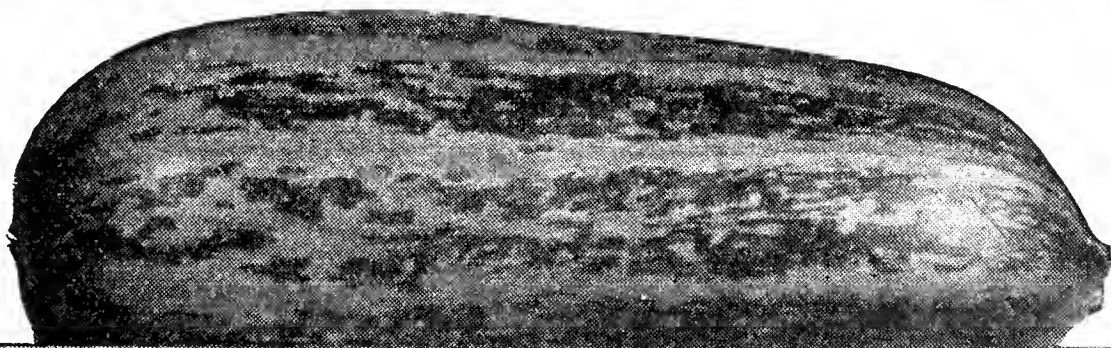
The Chinese Date (Jujube or Zizyphus) is a fruit from the high interior of China, which, we are sure, will prove to be one of the most valuable for our country. It is adapted to a wide range of territory and all kinds of soil. It is quite hardy, the United States Department of Agriculture bulletins reporting that it has withstood temperatures of 22 degrees below zero without injury.

The tree is a heavy and constant bearer and commences to bear at an early age, four-year-old trees having produced 150 pounds of fruit. It blooms very late in the spring, avoiding all danger from spring frosts. The fruit is one to two inches long, and chocolate colored. It is delicious when eaten fresh or cured like dates, and is excellent for preserves and jam. Cooked in a sugar syrup and allowed to dry, it becomes a most tasty and palatable confection which we believe will eventually rival the date as a commercial product. Because of its productiveness and its highly nutritious and delicious fruit, capable of being used in many ways, it is sure to be a valuable addition to the orchards and gardens. Every home should have one or more trees. It likes a clean back yard where it is not cultivated, but will grow anywhere. We have but a limited supply of these trees and, as long as they last, will deliver them by parcel post, postpaid, at \$1.25 each.



**FRUITS IN
ONE YEAR!**
EXTRA SPECIAL ! ! !
Large Two-Year-Old
BUSH CHERRIES
» Ready to bear this year «

Prices, Postpaid
50c Each; 3 for \$1.25;
6 for \$2.25; 12 for \$4.00



Cocozelle, Italian Vegetable Marrow or Summer Asparagus

COCOZELLE (Italian Marrow or Summer Asparagus) is one of the most delicious additions to the Squash family. For piquancy of flavor, tenderness and general palatability it has few equals. This plant does not make a vine, but grows in the form of a compact bush, and 5 or 6 hills is sufficient for a large family. The oblong green fruits should be picked when not more than 4 to 6 inches long. If the fruits are allowed to grow larger they lose their delicacy of flavor, and when one fruit is allowed to mature, it checks the formation of any more fruit on the plant. The fruits form and grow rapidly and may be picked almost everyday until frost. If planted early, it will fruit from the latter part of June until October. Can be cooked like Asparagus or Squash, and most excellent when prepared like French fried potatoes.

Pkt. 10c—3 Pkts. 25c, Postpaid

PROSO—THE WONDER EGG AND MEAT PRODUCING GRAIN for POULTRY

Here is a new Poultry Grain which owes its origin to Russia, that enables you to raise your own feed. If you only have a small plot of ground, you can raise an enormous crop. Proso is unlike anything you have ever seen in this country. It grows more rapidly and matures quicker than other grains. It reaches a height of three to four feet, stools and branches, making fifteen to twenty-five heads instead of one. That is why it yields such enormous crops from such unbelievably small plots of ground. The Sarasota County Tribune, May 5, 1931, of Sarasota, Florida, says: "Our test plots of Proso have drawn visitors from many miles around."

Fowls Prefer It to Other Feeds

Prof. Hansen says of Proso: "When it is hulled and cooked for the table, the Russians call it Kasha, and it is used extensively in European Russia, Siberia, Turkestan, Mongolia, and other parts of Asia. This is specially valuable grain. For feeding stock, poultry, etc., it is equal to, or better than wheat."

It is also used in those countries for flour and making into bread. In Russia, one buys Proso bread just as you buy wheat bread here. It is extremely palatable, and fowls prefer it to any other grain. In our experimental plant, the fowls leave all other grains once they have tasted Proso. Try it yourself. Put a handful of Proso in your mash feeder and watch how the birds do not touch the mash so long as any Proso remains.

Wonder Egg and Meat Producer for Chickens, Ducks and Geese

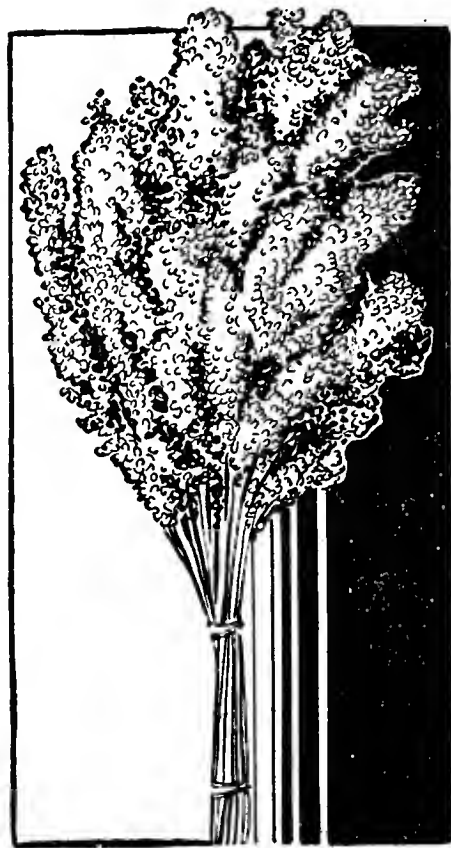
Proso makes a splendid mash when ground alone. When feeding with corn or oats the ratio should be four parts Proso to one part other grain. It may be fed in bundles as the kernels are readily scratched out of the heads, or it may be fed as clean grain from the thresher. Produces more eggs and meat per bushel than ordinary grains.

Fine for Hogs, Cattle and Sheep

Grows Anywhere—May Be Planted Late

Although a native of Russia, Proso does better, grows faster and matures quicker in our climate. During the fifteen years since it was first introduced in this country it has become acclimated so that it now grows here just as well as our native crops. It may be planted any time after corn planting time up to the middle of July.

Proso may be planted in high, dry soil that is not suitable for other grains. It is especially valuable as a summer "catch crop"—something that may be planted on land which has had an early crop removed, or ground that has been drowned out and not in shape to work until late in the season.



The above illustration shows a stalk of Proso grain heads. Notice how hardy and bushy this plant is. It grew to a height of 3 1/2 feet, stooled and branched, producing 21 heads, on one of which were 1185 grains. One authority tells us that a half-pound of seed should produce 5 to 10 bushels of grain.

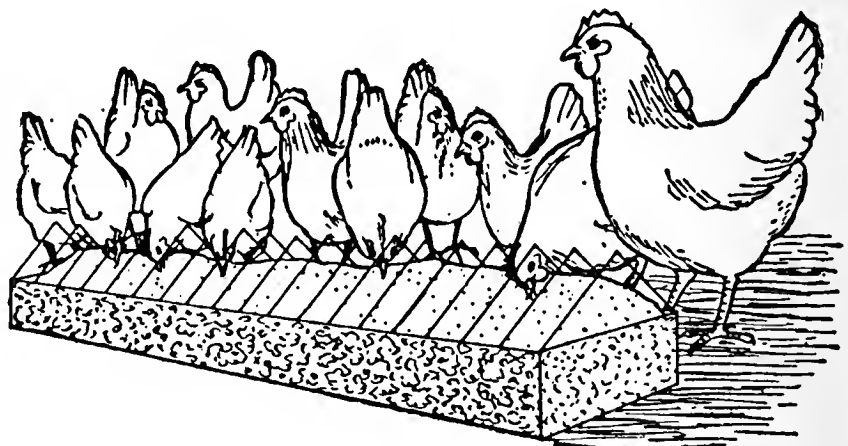
BUY PROSO SEED AT THESE SPECIAL LOW PRICES

There has never been enough Proso produced in this country for commercial use. We have plenty of seed for our customers who wish to get a start of Proso, but we urge that you get your order in at once so you can be sure of securing your supply.

7 oz. Package prepaid anywhere in U. S.	\$0.45
2-1/2 Pounds	1.20
5 Pounds (one acre sowed in drills)	2.00
12-1/2 Pounds (one acre sowed broadcast)	4.00
25 Pounds	7.00

Delivered Prepaid to All Points Between Denver Colo., and Pittsburgh, Pa.

East of Pittsburgh and West of Denver Add 3c per lb.



**INCREASE EGG PRODUCTION
GREAT FOR SCRATCH FEED
GROWS ANYWHERE**

**HEAVY MEAT PRODUCER
EASY TO THRESH
MAY BE PLANTED LATE**

Write for Special Prices in 100 Pound Lots.