

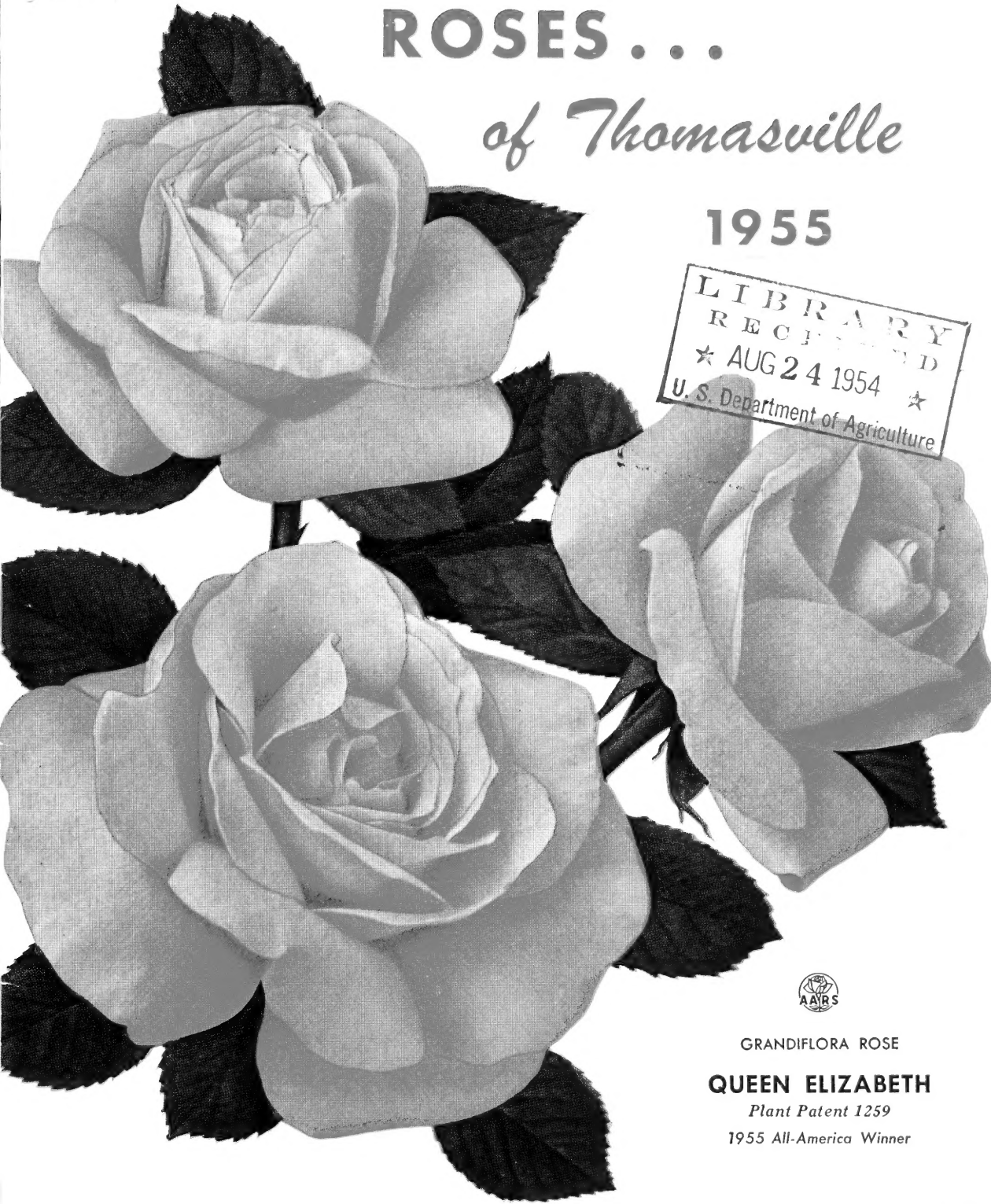
62.19

ROSES . . .

of Thomasville

1955

LIBRARY
 RECEIVED
 ☆ AUG 24 1954 ☆
 U. S. Department of Agriculture



GRANDIFLORA ROSE

QUEEN ELIZABETH

Plant Patent 1259

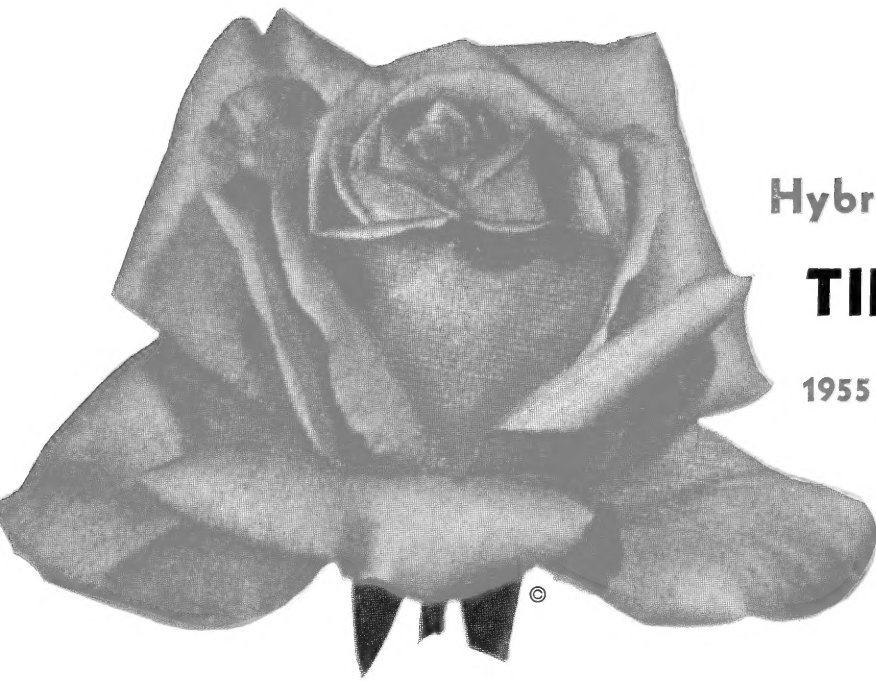
1955 All-America Winner

Azaleas • Camellias • Magnolias

THOMASVILLE NURSERIES, INC.

"Home of Roses"

THOMASVILLE, GEORGIA



New

Hybrid Tea Rose

TIFFANY

**1955 All-America
Winner**



TERMS OF BUSINESS . . .

Location. Office, trial grounds and sales yard at intersection of Boston road and Boulevard, east at city limits. The Thomasville-Boston road is a link of U. S. Highway No. 84. Office telephone, Thomasville 56-W.

Invitation to Visitors. Visitors are welcome at our nursery every day in the year, and there is no obligation to purchase. See Roses in gardens of Sam Hjort and Paul Hjort and in our fields late April through October, and Camellias at nursery grounds November through February.

Substitution. Except for certain special offers so designated, we do not substitute unless so authorized. It is well, however, as the season advances, for customer to state whether we may be permitted to make any substitutions.

Claims. If by any possibility errors should occur, they will be promptly rectified, but please make claim within 10 days after receipt of goods.

Guarantee. We guarantee all plants to be up to grade, properly dug and packed, and shipped according to instructions. Most people who pay their good money for plants set them carefully and tend them properly. Instructions for planting and care will accompany every shipment. We do not make a blanket guarantee that our plants will live. Considering the large volume of shipments we make, especially of Roses, claims have been very few. We will adjust any reasonable claim.

Order Early. Whether you want plants shipped in October or as late as March, we strongly advise ordering early. By so doing you make sure of having your order filled complete with the best materials.

Address all communications and make remittances payable to Thomasville Nurseries, Inc., P. O. Drawer 328, Thomasville, Ga.

Visitors Please Note

We wish to serve everyone in turn. At the height of the season sometimes many cars are at the nursery at one time. In order that salesmen may know who is "next" please give your name at the office upon arrival. The ladies in the office will then see that you are served in turn and as quickly as possible consistent with adequate and courteous attention to all.



WE ARE MEMBERS OF

*All-America Camellia Selections
American Association of Nurserymen
Southern Nurserymen's Association
Georgia Nurserymen's Association
Florida Nurserymen's and Growers' Association*

*All-America Rose Selections
American Camellia Society
American Rose Society
Georgia Rose Society*





Section of the Main Rose Field, May 1954. Block of Queen Elizabeth in the foreground

Visitors have been charmed by the great display of top-quality Rose plants blooming in our fields the past season, including many of the new and patented varieties. We may not have enough 2-year Rose plants to sell the entire season, but those we ship this year are of the finest quality. The Rose shipping season begins November 1 and continues through March. Regardless of when you will plant, we urge that you order early.

Roses will thrive in most good garden soils that are well drained. Dig holes at least 18 inches in depth and width, and use well-rotted cow manure or peat moss. Set the plants just deep enough to leave the bud union above the ground. Pack well and water thoroughly. In the spring use a balanced fertilizer.

Roses must be dusted or sprayed to keep down fungous diseases and insects. Rose dusts should contain copper-sulphur to control fungous diseases, with insecticide added.

THOMASVILLE NURSERIES

INCORPORATED

By Sam. C. Hjort, *President*

THOMASVILLE, GEORGIA



CHRYSLER IMPERIAL
All-America Winner
1953

THE YEARS WITH ROSES 1898-1954

A Personal Message

from

Sam. C. Hjort

The Rose plants we offer this season are some of the finest we have ever grown, and we are glad that many people have come by to see them blooming in our fields and in the garden. We pledge ourselves to exercise care in selecting, digging and packing Roses for shipment. The Hjorts have always loved Roses and have a very keen desire to see their customers succeed with them.

It has been a great blessing, personally speaking, to have lived my life with Roses, and never to have known a day without them since the very early years of my father's Rose nursery of mostly Teas, Noisettes and Hybrid Perpetuals. Always I have viewed the Rose as one of God's greatest gifts to humanity.

As Archibald Rutledge so beautifully points out in his wonderful little book, "Life's Extras," the Creator provides us not only with the necessities of life, such as food, air and shelter, but with abundant extras, such as music, perfumes, flowers, the majesty of mountains, the glory of a sunset. This leads the author to the conclusion, which those who love Roses surely share, that "God not only loves us and wants us to be good, but to be happy."

Like other Rose growers I have not attained perfection, but I have grown so many varieties successfully in my garden at Thomasville, and they have been such a joy, that always as a grower of Rose plants to sell I have had a great desire to see people succeed with Roses. I have prepared a new sheet of Planting Instructions, which also includes suggestions for care, and one of these will go with every shipment. If you are not planting Roses this season but would like a copy of Planting Instructions, it will be sent without charge if you will enclose stamp for mailing.

Each succeeding year brings new thrills with Roses. Remembering the hybridizer is ever seeking perfection, we revel in the beauty of the newer Hybrid Teas, come spring and flower-show time. A new "Grandiflora" class is opened, with the new Queen Elizabeth, first to win the AARS award in that group—such a lovely and vigorous Rose! The Floribundas, with new and superior varieties available, become ever more fascinating. And in the fall the Teas are in their glory.

Last winter, during a serious illness, I found myself reflecting that while it would be with regret that I leave a devoted family and delightful Roses, yet at 61 I have had a life filled with the beauty of many things, including charming Roses and the friendship of fine people who love Roses. And now, harder than ever—and all the Hjorts and associates join with me—I am trying to give you the best possible product, and help you toward growing Roses well.

If you have the opportunity, there is yet time this season to come to Thomasville and enjoy a profusion of September and October Rose bloom, and you are always welcome to visit our garden and fields.

Sam. C. Hjort

HYBRID TEA *Roses*



© ECLIPSE

These are the Roses one chooses for the elegant bud and handsome open flower, for cutting and for exhibition. A single bud for a vase, or an armload for a basket! The range of color is widest in the Hybrid Teas, and the greatest efforts of the hybridizers to produce more perfect flowers, stems, foliage and growth have been concentrated on this group, giving such marvelous varieties as Peace, Charlotte Armstrong, Chrysler Imperial and Mojave.

Hybrid Teas will continue to be our pride and joy as Roses for vases and for the flower shows.

Better Times. Cerise-red; pointed buds on long, stiff stems. Fine for cutting. \$1.25.

Blanche Mallerin. Plant Patent 594. Pure white; well-shaped buds open into large flowers. Perhaps the best of the new whites. \$2.00.

Briarcliff. Rose-pink; large, double, fragrant. Stiff stems; good growth. \$1.25.

Charles Mallerin. Plant Patent 933. Tops in the very darkest of red Hybrid Tea Roses. Very double flowers on good stems. \$2.50.

Charlotte Armstrong. Plant Patent 455. A truly great Rose, second only to Peace in national popularity. Buds long-pointed, carmine-red; open flower cerise. Long stems; vigorous growth. Should be in every collection of Hybrid Tea Roses. \$2.25.

Christopher Stone. Vivid scarlet; large and fragrant. For color this Rose is tops; growth and flowering are good. \$1.25.

Chrysler Imperial. Plant Patent 1167. All-America Winner for 1953; perhaps the finest dark red Rose to date. Vivid crimson with darker overtones; large, very double, spicy fragrance. Compact, sturdy growth. \$2.50.

Countess Vandal. Coppery salmon-pink; long-pointed buds and large, high-centered flowers on stiff stems. Vigorous; outstanding. A favorite at Thomasville, where many varieties are grown. \$1.50.

Crimson Glory. All that the name implies. Deep crimson-red; very double; highly fragrant. Growth vigorous; bloom constant. In a popularity contest the country over, it stood with Peace and Charlotte Armstrong to comprise the top three. \$1.50.

Dainty Bess. Large, single, wild-rose-pink flowers in clusters. Bush vigorous; continuous bloomer. One of the loveliest of all Roses. \$1.50.

Eclipse. Long, streamlined buds of deep yellow. Vigorous and thrifty, with abundant foliage. \$1.50.

Editor McFarland. Deep pink; comparable to Radiance in growth and blooming. Very strong. \$1.25.

Etoile de Hollande. Brilliant crimson. Large, fairly double, fragrant blooms on long stems. Vigorous; continuous bloomer. The most generally successful and satisfactory of non-patented dark red Roses. \$1.25.

Forty-niner. Plant Patent 792. One of the most brilliant and attractive of bicolor Roses. Velvety Oriental-red, with chrome-yellow reverse, the yellow being most evident in the bud. \$2.50.

Golden Dawn. Bud is sunflower-yellow, flushed with old-rose; flower very double and fragrant, borne on stiff stem. A vigorous bush with abundant foliage. Fine for the Lower South. \$1.25.

Helen Traubel. Plant Patent 1028. All-America Winner for 1952. Beautiful pink Rose named for the first lady of American opera, who is known all over the world for her magnificent voice and skillful performance in Wagnerian roles. Long, tapered buds; large flower. Color varies with the weather; sometimes it is a lively, light pink, often it is a salmon-pink or apricot. Very vigorous growth. \$2.50.

Kaiserin Auguste Viktoria. White, with slight lemon tint at center. Beautiful bud and fairly large, double flower on good stem. The most generally satisfactory of white Hybrid Tea Roses. \$1.25.



CHARLOTTE ARMSTRONG
All-America Winner 1941

Hybrid Tea Roses

Katherine T. Marshall. Plant Patent 607. Clear, glowing pink buds, slightly salmon, and large, double flowers on long, stiff stems. One of the Top Ten Roses of America, and greatly valued in the South for its superb and dependable qualities. \$1.75.

Korovo. Large, double, medium pink flower on a vigorous bush. Heavy bloomer. Anyone will like this Rose. \$1.25.

La France. The original Hybrid Tea Rose, still treasured by many Southern gardeners for its fine qualities of repeating bloom, strong growth and beautiful, light pink flowers. \$1.50.

Light Editor McFarland. One of the very finest and most dependable of Roses for the South. A sport of Editor McFarland discovered in our fields by Peter W. Hjort. Exactly like the parent, except that it is a light pink color, considered by many to be more beautiful than the original variety. This Rose does exceptionally well in Florida and the Lower South. \$1.25.

Lowell Thomas. Plant Patent 595. Deep golden yellow in spring and fall; lighter in summer. High, cupped center and large, open flower. It is a favorite in many parts of America. Grows well at Thomasville. \$2.00.

Max Krause. Golden yellow; large, Radiance-like blooms on a vigorous bush. \$1.50.

McGredy's Sunset. Plant Patent 317. Deep golden yellow, tinged orange; opens clear yellow. Large, heat-resistant flower; strong stem. Heavy foliage on a vigorous plant. At Thomasville regarded as one of the most satisfactory yellow Roses. \$1.75.

Mirandy. Plant Patent 632. Very large, double, dark garnet-red; highly fragrant. Upright and vigorous in growth. Usually produces one flower to a stem, eliminating disbudding, and always producing specimen blooms. At Thomasville, where many varieties have been tried, it is a favorite dark red. \$2.25.



MIRANDY
All-America Winner 1945

Mission Bells. Plant Patent 923. All-America Winner for 1950, and one of the most vigorous and rewarding of Roses. Deep shrimp-pink buds, opening to large, salmon-pink flowers. Strong, branched growth, constantly in bloom. Anyone who can grow Roses at all can grow Mission Bells. For its many good points it deserves a place in every garden. \$2.00.

Mojave. Plant Patent 1176. All-America Winner for 1954. Completely new color combination of blended salmon, apricot and orange. As always, these colors are deeper in cool weather. Plant is upright and vigorous in growth, with individually stemmed, handsome buds and open flowers. Another of Charlotte Armstrong's famous family of quality Roses. \$2.75.

Mrs. Charles Bell. Sport of Radiance, and identical with parent in vigorous growth, freedom of bloom and size of flower. Always dependable, always satisfactory, and easily the best of its color, shell-pink, for the South. \$1.25.

Nocturne. Plant Patent 713. Deep cardinal-red; long-pointed buds and large flowers on stiff stems, usually one perfect flower to a stem. Most vigorous of dark reds at Thomasville. In a close race with Mirandy and Crimson Glory, Nocturne is first in popularity in the Southeast. \$2.00.

Peace. Plant Patent 591. World's No. 1 Rose. Winner of all top national awards in America, France, England and other countries, and blue ribbons and sweepstakes in shows everywhere. Peace is a strong grower, with large, handsome foliage and produces very large, very double and lasting flowers of soft yellow, flushed and tinged pink. An exquisite Rose. \$2.50.



HELEN TRAUBEL
All-America Winner 1952

1955 All-America Group

Queen Elizabeth. Grandiflora.

Tiffany. Hybrid Tea.

Jiminy Cricket. Floribunda.

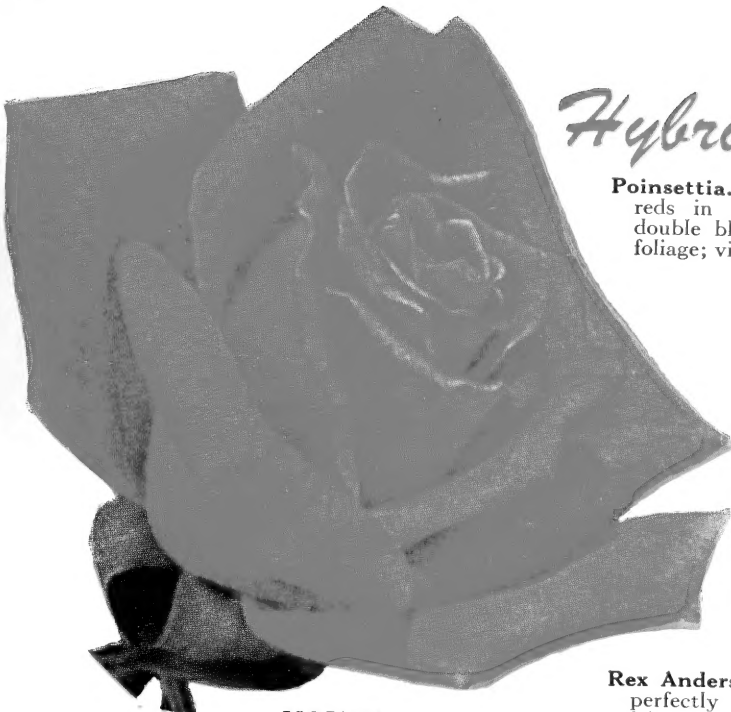
(Regular value \$8.50)

SPECIAL, one each, \$7.50

Three of each for \$22.50

ASK FOR OFFER NO. AA

Hybrid Tea Roses



MOJAVE
All-America Winner 1954

Poinsettia. Distinctively different from other reds in color and foliage. Poinsettia-scarlet, double blooms, borne on strong stems. Large foliage; vigorous bush. \$1.50.

President Herbert Hoover. Flame-pink, scarlet and yellow; long-pointed buds on heavy, stiff stems. A good Rose, honoring a sound and patriotic American. \$1.25.

Radiance. The great, dependable favorite of the South. Carmine-pink blooms on strong stems. A vigorous, free bloomer over a long season. It may be a lazy gardener's Rose, but everyone loves it for its admirable qualities. \$1.25.

Red Radiance. Easily the most generally planted red Rose in the South for like its parent Radiance it is practically perfect in size, stem, growth, freedom of bloom and persistency. \$1.25.

Rex Anderson. Plant Patent 335. Ivory-white, perfectly formed, slow-opening, large flower. May be grown to enormous size by disbudding. \$1.75.

Rubaiyat. Plant Patent 758. Here is a large Rose fully as vigorous as Radiance. Large, cerise-red buds, opening to rose-red flowers. The strong bush produces many fine flowers on strong stems; large foliage. Has become a great favorite. \$1.75.

Soeur Therese. Long-pointed, chrome-yellow buds, opening to daffodil-like flowers. A favorite in many localities. \$1.25.

Sutter's Gold. Plant Patent 885. Beautiful long-pointed buds richly shaded orange and red, opening into yellow flowers. Fairly vigorous in growth; free bloomer. One of the four 1950 All-America Winners. \$2.25.

Suzon Lotthe. Plant Patent 934. Almost a Pink Peace! Not quite as large, but spring blooms are fascinating. Lovely pearl-pink to peach-pink buds and large, "Peace-form" flowers. \$2.00.

Join the AMERICAN ROSE SOCIETY AND THE GEORGIA ROSE SOCIETY

Rose lovers everywhere will find membership in the American Rose Society most helpful and interesting. For \$4.50 yearly dues one receives every spring a beautiful illustrated Annual, the monthly American Rose Magazine, each issue full of interesting material, use of the lending library and personal help on Rose problems. We also invite you, wherever you live, to join the Georgia Rose Society, which issues a bi-monthly News Letter, several mimeographed sheets of timely Rose information.

For \$5.00 you will receive membership in both the American Rose Society and the Georgia Rose Society. Remittance should be mailed to Georgia Rose Society, Box 328, Thomasville, Ga. We receive no commissions. Only because these are non-profit organizations is it possible to give so much for \$5.00.

Three Perennial Favorites

Charlotte Armstrong. Carmine.

Peace. Yellow, tinged pink.

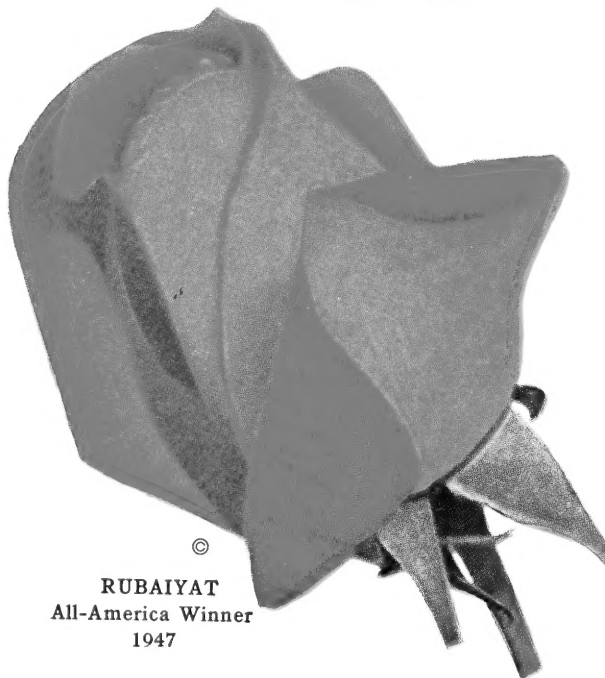
Mirandy. Garnet-red.

(Regular Value \$7.00)

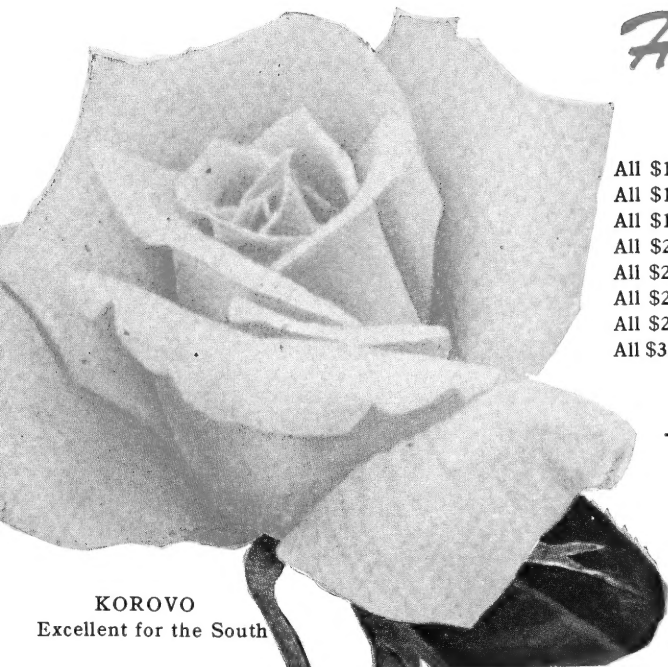
SPECIAL, one each, \$6.25

Three of each for \$18.60

ASK FOR OFFER NO. H-2



©
RUBAIYAT
All-America Winner
1947



KOROVO
Excellent for the South

Hybrid Tea Roses

Prices of Hybrid Tea Roses

- All \$1.25 Roses are 3 for \$3.15, 6 for \$6.00, 12 for \$11.00
- All \$1.50 Roses are 3 for \$3.90, 6 for \$7.80, 12 for \$15.60
- All \$1.75 Roses are 3 for \$4.65, 6 for \$9.30, 12 for \$18.60
- All \$2.00 Roses are 3 for \$5.25, 6 for \$10.50, 12 for \$21.00
- All \$2.25 Roses are 3 for \$6.00, 6 for \$12.00, 12 for \$24.00
- All \$2.50 Roses are 3 for \$6.60, 6 for \$13.20, 12 for \$26.40
- All \$2.75 Roses are 3 for \$7.20, 6 for \$14.40, 12 for \$28.80
- All \$3.00 Roses are 3 for \$7.95, 6 for \$15.90.

All Rose plants shipped postpaid.

BIG VALUE Non-Patented Roses

Editor McFarland. Deep pink.
Mrs. Charles Bell. Light pink.
Etoile de Hollande. Dark red.
Radiance. Carmine-pink.
Red Radiance. Light red.

(Regular Value \$6.25)

SPECIAL, one each, \$5.00

Three of each for \$14.00

ASK FOR OFFER NO. H-3

Talisman. Brilliant red and gold buds, opening to orange-yellow flowers, gradually changing to light yellow, tinged pink. \$1.25.

Tiffany. Plant Patent Applied for. All-America Winner for 1955. A strikingly beautiful warm pink Rose, shading to yellow at the base. Lovely, long-pointed buds, opening into large, double flowers that last well; produced on strong, stiff stems. The bush is of vigorous growth; the bloom is plentiful. Favorable reports from tests here and the entire Southeast show that it is dependable. We highly recommend this Rose and believe that Tiffany has come to stay a long, long time. \$3.00.

The Doctor. Sparkling pink, pointed bud; large, rose-pink flower. Does not grow fast first year; afterward is large, thrifty and outstanding. For those who can exercise a little patience and give it a little extra care it usually becomes a most charming and appreciated pink Rose. \$1.50.

Yellow Talisman. Buds golden yellow, long pointed; flowers somewhat lighter. Very successfully grown at Thomasville. Bush is vigorous, superior to its parent. \$1.25.

While ours is a very extensive Rose listing and the plants are excellent quality, some varieties are in limited supply. In ordering, especially as the season advances, it is well to permit substitutions, to be made from similar varieties.



MISSION BELLS
All-America Winner 1950

Three Top Favorites

Chrysler Imperial. Deep red.

Peace. Yellow, tinged pink.

Tiffany. Newest rose-pink.

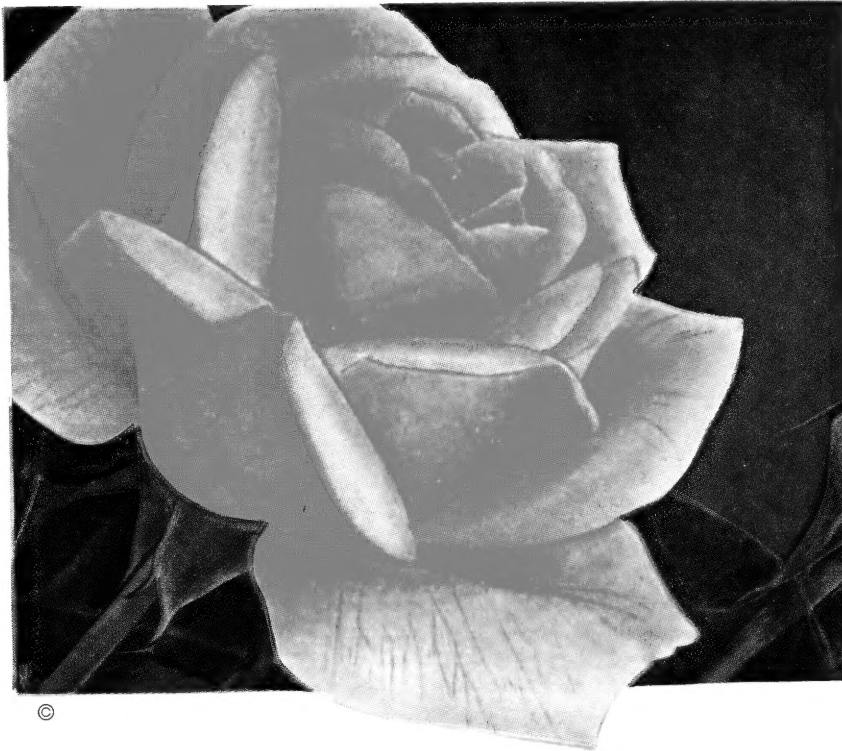
(Regular value \$8.00)

SPECIAL, one each, \$7.10

Three of each for \$21.15

ASK FOR OFFER NO. H-5

Hybrid Tea Roses



World's No. 1
Rose
PEACE

Thomasville Favorite Patented Roses

Charlotte Armstrong. Carmine.
Mirandy. Dark red.
Katherine T. Marshall. Pink.
Peace. Yellow, tinged pink.
Rex Anderson. White.

(Regular Value \$10.50)

SPECIAL, one each, \$9.35

Three of each for \$27.90

ASK FOR OFFER NO. H-1

Thomasville Favorite Non-Patented Roses

Countess Vandal. Salmon-pink.
Crimson Glory. Dark red.
Eclipse. Yellow.
K. A. Viktoria. White.

(Regular Value \$6.00)

SPECIAL, one each, \$5.00

Three of each for \$14.50

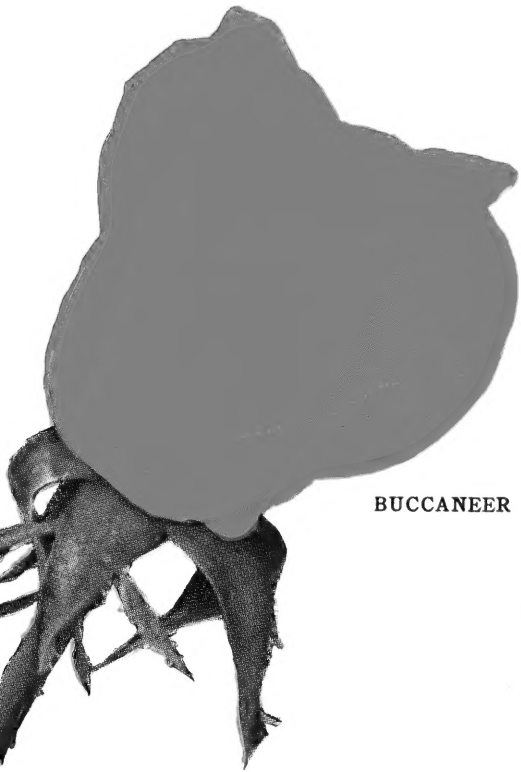
ASK FOR OFFER NO. H-4

See Top Quality Roses Here

FROM APRIL TO OCTOBER our Rose fields are a colorful sight. We grow the best. Come to see them.



NOCTURNE
All-America
Winner 1948



Grandiflora ROSES

Rosarians have created a brand-new class, Grandiflora, for a very lovely, vigorous and versatile group of Roses. The Grandifloras combine several characteristics of both Hybrid Tea and Floribunda. They are tall, free-flowering plants which produce sometimes clustered blooms, sometimes single specimens, on long stems fine for cutting. Flower size falls between the Hybrid Tea and Floribunda; flower and bud form are similar to the Hybrid Tea class.

Queen Elizabeth is the first Grandiflora to win the All-America award, since this new class was only created within the past year. Happily, this new Rose is a most worthy one with which to make a beginning.

BUCCANEER

PRICES ON GRANDIFLORA ROSES

All \$2.00 Roses are 3 for \$5.25, 6 for \$10.50

All \$2.75 Roses are 3 for \$7.20, 6 for \$14.40

All \$3.00 Roses are 3 for \$7.95, 6 for \$15.90

All Rose plants shipped postpaid.

Buccaneer. Plant Patent 1119. Brilliant and non-fading yellow, without a tinge of other color. Holds color well throughout hottest summer weather. Vigorous Grandiflora bush; long stems; pointed buds and good open flowers. One of Herbert Swim's finest creations, and if the Grandiflora class had been created in 1952, when it was first recognized in this variety, not large enough for Hybrid Tea, not small enough for Floribunda, it would have won the All-America award so many believe it well deserves. \$2.75.

Carrousel. Plant Patent 1066. One of the showiest and most satisfactory of dark red Roses to date. Very vigorous in growth; branching and free-flowering. Large blooms for a cluster variety; some blooms on single stems; color is non-fading. Carrousel thrives in many sections of America; often does remarkably well under adverse conditions. \$2.00.

Queen Elizabeth. Plant Patent 1259. All-America Winner for 1955. A very lovely Rose, honoring a very lovely lady! This pure pink Rose, shown in color on the front cover of our catalog, is one of the finest varieties ever introduced in America. Not every All-America winner in the past has thrived in the South, but this one is well nigh perfection. In test gardens in all the Southern states it has shown excellent growth and flowering qualities. Queen Elizabeth is a charming color, a blending of carmine-rose with dawn-pink. It is a profuse bloomer and of the most vigorous growth. It is a development of the noted hybridizer, Dr. Walter Lammerts, who calls it his finest creation, which is putting it strongly, for he has given us such other splendid roses as Charlotte Armstrong and Chrysler Imperial. Everyone will love Queen Elizabeth! \$3.00.

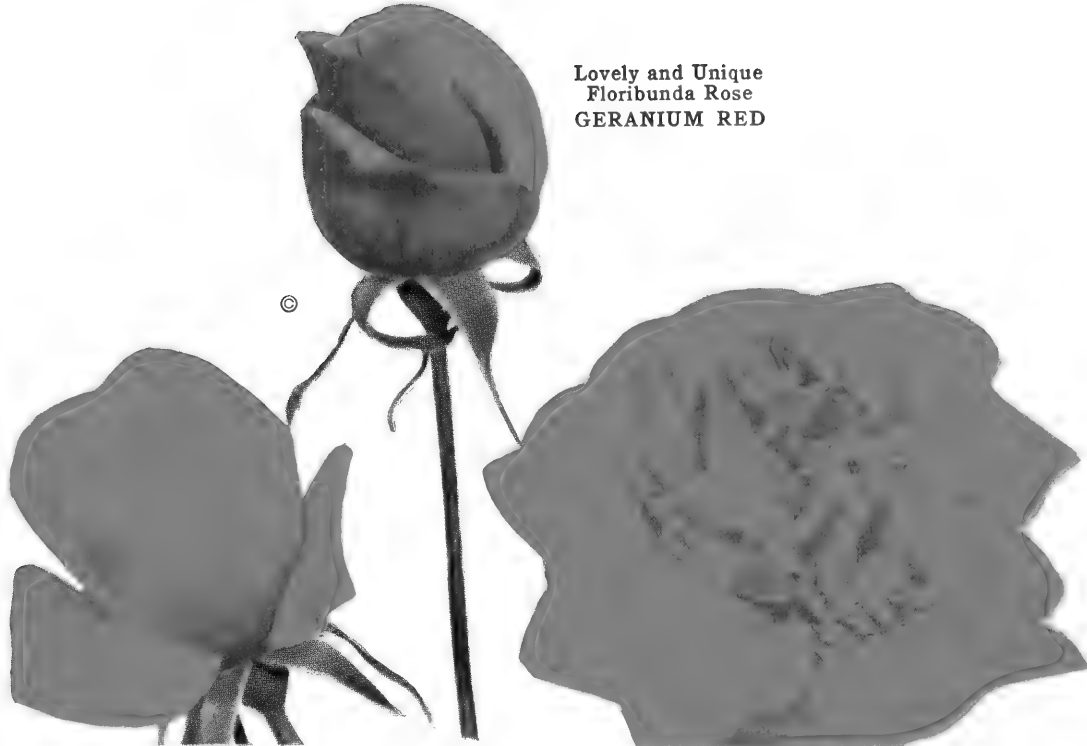


CARROUSEL

Vigorous, Floriferous, Showy Grandiflora

THOMASVILLE NURSERIES

Lovely and Unique
Floribunda Rose
GERANIUM RED

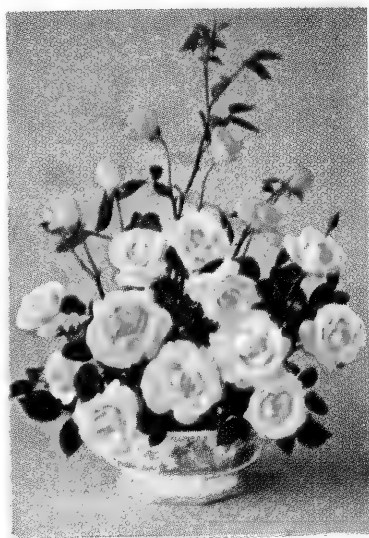


Floribunda ROSES

Revolution and color riot in the Rose world came a few years ago with the advent of the Floribunda. This completely delightful cross of Dwarf Polyantha and Hybrid Tea Roses brought a whole new era of ideas for landscaping to people who want Roses in profusion. When it was discovered that Floribundas are lovely and long lasting as cut flowers, their popularity rose rapidly.

There is unbounding charm in these semi-baby Roses as borders, center plantings and low fill-in groups where a dash of color is needed to start the spring in high spirit. Amazingly enough, Floribundas repeat their glorious bloom throughout the summer and fall, further endearing themselves to gardeners and Rose lovers.

A bonus feature of the Floribunda is the small, perfectly shaped buds that are actually gems to cut for corsages and small arrangements. Slightly open, one cluster is a whole bouquet. Floribundas are truly fascinating, and they never fail to arouse interest and comment.



© MA PERKINS
All-America Winner 1953

THOMASVILLE, GEORGIA

Baby Blaze. Patent applied for. A brand-new Floribunda well named. Has appearance of being a prolific bush form of the climber Blaze. \$2.25.

Cecile Brunner. The "Sweetheart Rose." One of the treasures of old Southern gardens, just as valued today as in the past. It is a Tea-Polyantha that develops into a large, vigorous bush, producing an abundance of very small, double, light pink blooms in clusters over a long season. \$1.50.

Crimson Rosette. Plant Patent 901. Coiled "rosette" shape; deep red, very double flowers in clusters on stiff stems. As a bedding variety it is superb, but it has much merit as a long-lasting cut flower. This variety is something new and charming in Floribundas, and worthy of a place in any garden. \$1.75.

Dagmar Spath. Pure white flowers. Free flowering, producing masses of bloom with golden stamens. An ideal bedding Rose of medium height. \$1.25.

Donald Prior. Plant Patent 377. A perfect Crimson Glory deep red color, producing great masses of bloom over a long season, right on through the hottest summer weather. Very vigorous. A great favorite in the Lower South, and rightly so, for it is always showy and easy to grow. \$1.50.

Else Poulsen. One of the older Floribundas, but widely grown because it is a most satisfactory performer. The semi-double, bright rose-pink flowers are carried on erect, strong plants. Good for a hedge or as a bedding variety; also good for cutting. \$1.25.



PINK ROSETTE

Embers. Plant Patent 1178. A new Floribunda of glowing, fiery red color, aptly named Embers. Blooms adequately, although not in masses. Moderately spreading in growth habit, making an attractive bush. A different and worthy addition to the Floribunda group. \$2.25.

Fashion. Plant Patent 789. Buds Oriental-red, opening to a luminous pink, overlaid with gold, becoming coral with age. The bush is vigorous and branching in habit, and blooms all through the Rose season. All the praise continually heaped on this Rose is well deserved; its popularity increases and it is a favorite wherever grown. \$2.00.

Prices of Floribunda Roses

All \$1.25 Roses are 3 for \$3.15, 6 for \$6.00, 12 for \$11.00
 All \$1.50 Roses are 3 for \$3.90, 6 for \$7.80, 12 for \$15.00
 All \$1.75 Roses are 3 for \$4.65, 6 for \$9.30, 12 for \$18.00
 All \$2.00 Roses are 3 for \$5.25, 6 for \$10.50, 12 for \$20.00
 All \$2.25 Roses are 3 for \$6.00, 6 for \$12.00, 12 for \$24.00
 All \$2.50 Roses are 3 for \$6.60, 6 for \$13.20, 12 for \$26.40
 All \$2.75 Roses are 3 for \$7.20, 6 for \$14.40, 12 for \$28.80
 All \$3.00 Roses are 3 for \$7.95, 6 for \$15.90.

All Rose plants shipped postpaid.

Newest Floribundas

1954-55 varieties

Independence. Orange-scarlet.

Lilibet. Rose-pink.

Jiminy Cricket. Tangerine.

(Regular value \$6.50)

SPECIAL, one each, \$5.75

Three of each for \$17.10

ASK FOR OFFER NO. F-2

FLORIBUNDA ROSES

Floradora. Constantly in bloom and an entirely new shade in Roses—a brilliant cinnabar-red, as arresting under artificial light as in the garden. Floradora blooms are always eye-catchers; everyone stops to admire them. As a cut flower it is exceptionally long lasting. Floradora should be in every Floribunda garden. \$1.25.

Frensham. Deep crimson-red flowers of medium size, borne in typical Floribunda clusters. Very compact and branching growth, making it an excellent border, hedge or bedding variety. Sturdy in growth and constant in bloom. \$1.25.

Geranium Red. Plant Patent 811. Here is the most unusual and most admired red Floribunda at Thomasville. In color it is all the name implies, and the flowers are somewhat larger than most varieties of this group. The camellia-like flowers are a vivid, bright, geranium-like red, and no picture does it full credit. The bush is a strong one, flowering from spring till late fall in the South. As a bedding Rose and as a cut-flower variety, this distinctively different Floribunda has been much admired by all who have seen it. \$1.75.

Goldilocks. Plant Patent 672. Easily the best yellow Floribunda to date. Aptly named, this variety produces masses of perfect, small, golden blooms. The buds are miniatures of Hybrid Tea perfection, opening into fully double flowers. The bush is of strong and compact growth. Stems are strong and flowers fine for cutting. \$1.50.

Improved Lafayette. Large; semi-double; cherry-red. Very strong grower and profuse bloomer over a long season. Ideal for borders or group plantings where Floribundas are most effective. \$1.25.



INDEPENDENCE

THOMASVILLE NURSERIES

FLORIBUNDA ROSES

Independence. Plant Patent 1036. A brilliant and satisfactory new Floribunda. Double flowers, mostly in clusters, are large in size for a Floribunda, and are of the most vivid orange-scarlet color, which holds well in hottest sun. \$2.00.

Jiminy Cricket. Plant Patent Applied for. 1955 All-America Winner. A most brilliant and striking Floribunda produced in great profusion on a vigorous bush. Vivid tangerine-orange color in bud, changing to coral or vermilion as it opens, and finishing a shade of pink-coral. The flowers have the appearance of a deep and intensified Fashion, and the glossy foliage adds to its attractiveness. In our test garden and fields it has been the most admired Floribunda—quite a tribute, for there are a number of other fascinating Floribundas. The sparkling Jiminy Cricket is a worthy companion to such lovely varieties as Fashion and Ma Perkins. \$2.50.

Lilibet. Plant Patent 1209. 1954 All-America Winner. Lilibet is a very lovely new Floribunda, honoring Queen Elizabeth of Britain with the name she was called as a child. Lilibet is a lively shade of bright pink, bearing perfectly shaped baby buds, many on single stems to cut for small arrangements and corsages. Beautiful in bud, it is exquisite when the flower opens, showing an attractive center of reddish stamens. A bushy plant, vigorous in growth, free flowering all the Rose season. \$2.00.

Ma Perkins. Plant Patent 1143. 1953 All-America Winner. Most charming in color and form. Buds are coral with tinges of red and a touch of yellow at the base; open flowers are lovely coral-shell-pink. Compact and vigorous. A worthy companion of Fashion and Vogue. \$2.00.



RED PINOCCHIO

©

Pinkie. Plant Patent 712. A very lovely little Rose of perfect Sweetheart size and form. Deep pink, opening lighter. A most profuse bloomer, repeating over a long season. An All-America Winner of 1948. \$1.75.

Pink Rosette. Plant Patent 902. A new and lovely form in Floribundas. Beautiful rosette-shaped, small, double flowers borne in large clusters on a small, compact, healthy bush. Flowers are long lasting and very fine for corsages. \$1.75.

Pinocchio. Plant Patent 484. Pink, suffused salmon; small, double flowers in clusters. Strong, compact, floriferous bush. \$1.50.

Poulsen's Bedder. Clear, bright pink petals, slightly ruffled. Somewhat tall for a Floribunda, constant and profuse in bloom; very effective as a hedge or bedding variety. \$1.50.

Red Pinocchio. Plant Patent 812. Very double, very dark red flowers borne in large clusters on a medium-sized, compact bush. Excellent for hedge and border use. A great bloomer in hottest weather, and a very satisfactory Floribunda everywhere it is grown. \$1.50.

Red Ripples. Brilliant scarlet in both bud and open flower; wavy petals; large clusters profusely borne on an upright, vigorous bush. \$1.25.

Snowflake. Small, semi-double, ivory-white flowers produced freely on very vigorous, bushy, Tea-Polyantha plants. Very disease resistant. \$1.50.



POULSEN'S BEDDER

The Fashion Group

Fashion. Coral-salmon.

Jiminy Cricket. Tangerine-orange.

Ma Perkins. Coral-shell-pink.

(Regular value \$6.50)

SPECIAL, one each, \$5.75

Three of each for \$17.10

ASK FOR OFFER NO. F-1



© **FASHION**
All-America Winner 1950

Southern Favorite Floribundas

Six Fine Patented Varieties

- Fashion.** Showy coral-salmon.
- Geranium Red.** Geranium-like red.
- Goldilocks.** Golden yellow.
- Lilibet.** Rose-pink.
- Red Pinocchio.** Darkest red.
- Summer Snow.** White.

(Regular value \$10.25)

SPECIAL, one each, \$9.00

Three of each for \$26.85

ASK FOR OFFER NO. F-4

Standard Floribunda Special

Non-Patented Varieties

- Else Poulsen.** Rose-pink.
- Red Ripples.** Scarlet.
- Floradora.** Cinnabar-red.
- Improved Lafayette.** Cherry-red.
- Dagmar Spath.** Pure white.

(Regular value \$6.25)

SPECIAL, one each, \$5.50

Three of each for \$15.00

ASK FOR OFFER NO. F-5

FLORIBUNDA ROSES

Summer Snow. Plant Patent 416. A most prolific Floribunda giving great clusters of pure white blooms throughout the Rose season. Low, compact habit of growth. \$1.50.

Vogue. Plant Patent 926. A new and lovely Floribunda. Small, Hybrid-Tea-like buds of deep rose, flushed salmon, opening into graceful, high-centered, somewhat lighter flowers. We would call the color half-way between that of Fashion and Floradora. A 1952 All-America Winner. \$2.00.

Four Special Floribundas

- Crimson Rosette.** Deep red.
- Goldilocks.** Gold-yellow.
- Pink Rosette.** Rose-pink.
- Summer Snow.** White.

(Regular value \$6.50)

SPECIAL, one each, \$5.75

Three of each for \$17.10

ASK FOR OFFER NO. F-3

While ours is a very extensive Rose listing and the plants are excellent quality, some varieties are in limited supply. In ordering, especially as the season advances, it is well to permit substitutions, to be made from similar varieties.



©

VOGUE • 1952 ALL-AMERICA WINNER

Climbing Roses

Explanation of Symbols: CT, Climbing Tea; CHT, Climbing Hybrid Tea; N, Noisette (practically a climbing Tea); LC, Large Climbers which mostly bloom profusely in spring; CB, Climbing Bourbon (similar to Tea); CFI, Climbing Floribunda.

Alister Stella Gray. N. Pale yellow, orange center. Fairly double flowers borne in clusters; fragrant. Vigorous. \$1.25.

City of York. LC. Semi-double; pure white with golden stamens. Dark, glossy foliage. Awarded Gold Medal of the American Rose Society. \$1.50.

Cl. Cecile Brunner. CFI. A strong climbing form of the favorite "Sweetheart Rose." Bears a great profusion of tiniest, double flowers in clusters. Abundant foliage; constant bloom. A climbing Rose of exceptional merit. \$1.50.

Cl. Countess Vandal. CHT. Excellent climbing form of the popular bush variety. \$1.50.

Cl. Crimson Glory. CHT. Plant Patent 736. Extremely vigorous climber, blooming well throughout the entire Rose season. Rich crimson-red; very double and fragrant. The most praised of all red climbers in many grown at Thomasville. \$2.50.

Cl. Dainty Bess. CHT. Vigorous climbing form of the lovely single-flowered wild-Rose-colored variety. \$1.50.

Cl. Devoniensis. CT. White, faintly tinged pink; large, double. Abundant foliage, strong growth, recurrent bloom. A great favorite where it is known. \$1.50.

Cl. Else Poulsen. CFI. Showy and profuse sport of the ever-popular bush variety. This colorful Rose is one that has come into rapid popularity. \$1.25.

Cl. Etoile de Hollande. CHT. Dependable climbing form of the well-known bush variety. \$1.25.

Cl. Goldilocks. CFI. Plant Patent 1090. Vigorous and prolific sport of the popular Floribunda, this climber with a profusion of double yellow flowers in clusters is very beautiful and effective. \$2.50.

Cl. Kaiserin Auguste Viktoria. CHT. Strong free-flowering sport of the bush variety. \$1.50.

Cl. Killarney. CHT. Sport of bush Pink Killarney. Vigorous and prolific over the entire Rose season. A great favorite in the Southeast. \$1.25.

Cl. Louis Philippe. CC. Sport of the fine old bush variety; deep red. Foliage small and glossy. \$1.50.

Cl. Maman Cochet. CT. A fine climbing Rose, a sport of the old bush Maman Cochet, producing many double, medium pink blooms on very vigorous, long canes. \$1.50.

Cl. Marie van Houtte. CT. Strong Climbing Tea Rose, a sport of the bush variety, producing many creamy yellow blooms, tinged with pink; sometimes lavender tints in the fall. \$1.50.

Cl. Mrs. Charles Bell. CHT. A strong sport of the favorite bush variety. \$1.25.

Cl. Peace. CHT. Plant Patent 932. One of the finest of all climbers. Vigorous; constant bloomer. Large, perfect flowers like bush variety; fine for cutting. \$2.00.

Cl. Perle des Jardins. CT. A vigorous climber, similar to Marechal Niel but grows off more quickly. \$1.50.

Cl. Snowbird. CT. Valuable climbing sport of the superb Tea Rose Snowbird; white, tinged lemon, flowers on good stems. Growth very vigorous. \$1.50.

Cl. Souv. de la Malmaison. CB. Charming light pink, very double flowers; fragrant. An extremely vigorous and dependable climber developed from the famous bush variety. \$1.50.

Cl. Summer Snow. CFI. Plant Patent 400. This prolific Rose fills the need for a white climber with plentiful foliage and abundant and repeating bloom. \$2.00.

Cl. Talisman. CHT. A vigorous sport of the bush Talisman; identical in color and form with its parent. Those who may not have done well with the bush variety should try the climber; it is very strong and dependable. \$1.25.

Cloth of Gold (Chromatella). N. A very rare, vigorous old Noisette. Will climb 30 feet or more. Fairly deep yellow, fragrant; repeats in bloom. \$1.50.

Dr. W. Van Fleet. LC. Flesh-pink; double. Profuse spring bloomer with glossy foliage. One of the most beautiful of Roses. \$1.25.

Elie Beauvillain. CT. Two-tone, pink and yellow. One of the showiest and most profuse bloomers of all climbers; a favorite where known. \$1.50.

Guinee. CHT. Very large and double; deep red. Extremely strong bush, with abundant spring bloom and some flowering the rest of the season. A very striking and handsome variety. \$1.50.

Lamarque. N. Pure white with lemon center; medium size, double and fragrant. A rank grower, producing intermittent bloom over a long season. Because of its excellent qualities, this old Rose, given us by Marechal of France in 1830, has continued to this day to be a great favorite in the South where it is extensively grown. \$1.50.

Marechal Niel. N. Favorite of all old climbers in the Lower South. Bud large, full, pointed; flower large, full, double, fragrant. The golden yellow flowers are borne singly, or sometimes in clusters, on fair stems. Ample foliage; good growth. \$1.50.

Mermaid. HBC. Very large, perfectly single, lemon-yellow, Cherokee-like bloom, produced in clusters on a very thrifty plant. Many places in the South do not have this Rose, but where it is grown, as at Jacksonville, Fla., and Thomasville, Ga., it is one of the most admired of all Roses in early spring. \$1.50.

Mme. Gregoire Staechelin. LC. A lovely and satisfactory climbing Rose developed from crossing Frau Karl Druschki and Chateau de Clos Vougeot. Delicate pink flowers in profuse clusters in spring. A favorite wherever known. \$1.25.

New Dawn. LC. An everblooming form of the lovely light pink Dr. Van Fleet. \$1.50.

Paul's Scarlet Climber. LC. Brilliant scarlet, semi-double flowers in large, heavy clusters. A profuse bloomer, always reliable. A great favorite wherever Roses are grown. \$1.00.



© CL. CRIMSON GLORY

Climbing Roses

Pillar of Gold. N. A charming two-color variety, deep pink with yellow base. Double flowers borne in profusion; abundant foliage. An old variety still greatly prized at such places as Tallahassee and Thomasville. \$1.50.

Reine Marie Henriette. CT. Cherry-red; large; double; fragrant. Growth vigorous; profuse bloomer; repeats. An old Southern favorite we are glad to bring back. \$1.50.

Reve d'Or. N. Buff-yellow; medium size; fragrant. Foliage rich green, extending to base of plant. A great favorite at Thomasville. \$1.50.

Silver Moon. LC. Very large; single; pure white with golden stamens. Very strong grower and abundant spring bloomer. A truly magnificent Rose for the South. \$1.25.

Solfaterre. N. Our favorite of all the fine, dependable Noisette group of climbers for the South. Lovely lemon-yellow blooms, double and fragrant, borne abundantly in repeating surges throughout a long season. Very vigorous and easy to grow, Solfaterre is tops in climbing Roses for the South. \$1.50.

Prices of Climbing Roses

All \$1.00 Climbing Roses are 3 for \$2.50, 6 for \$4.75, 12 for \$9.00

All \$1.25 Climbing Roses are 3 for \$3.15, 6 for \$6.00, 12 for \$11.00

All \$1.50 Climbing Roses are 3 for \$3.90, 6 for \$7.50, 12 for \$13.20

All \$1.75 Climbing Roses are 3 for \$4.50. No further discount.

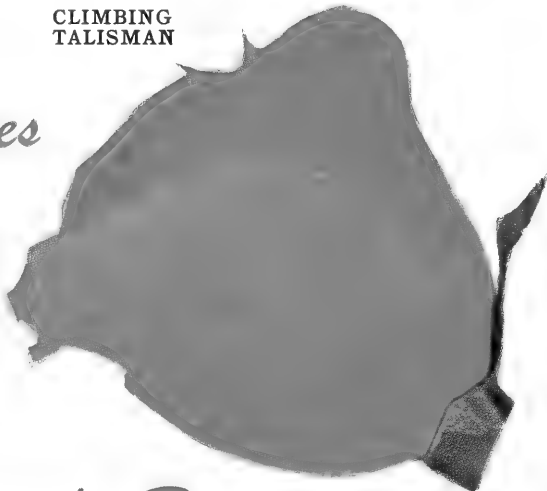
All \$2.00 Climbing Roses are 3 for \$5.25. No further discount.

All \$2.50 Climbing Roses are 3 for \$6.60. No further discount.

All \$2.75 Climbing Roses are 3 for \$7.20. No further discount.

All Roses are shipped prepaid

CLIMBING
TALISMAN



Hybrid Perpetual Roses

Frau Karl Druschki (White American Beauty).

This is the one pure paper-white Rose without a tinge of pink or lemon. Very large and double. In the Southeast repeats in blooming.

General Jacqueminot. Bud scarlet-crimson; flower large, clear red; very fragrant. The vigorous old "Jack Rose" deserves a place in every Southern garden.

Paul Neyron. Greatest of all pink Hybrid Perpetuals. Immense, cup-like bud; perfect, well-formed flower. A grand old Hybrid Perpetual.

All Hybrid Perpetual Roses, \$1.50 each, 3 for \$3.90, 6 for \$7.50, 12 for \$13.20

DWARF Polyantha Roses

These are commonly called "Baby Roses" and are excellent for borders, hedges or any place where a small and compact Rose is used.

Chatillon Rose. Small, double, rose-pink flowers borne profusely over a long season.

In limited supply we have other Polyanthas, and invite correspondence.

All Dwarf Polyantha Roses are \$1.25 each, 3 for \$3.15, 6 for \$6.00, 12 for \$11.00

Golden Salmon Superior. All that the name implies, and a unique color in Roses.

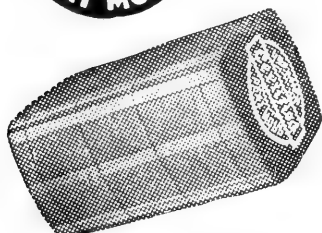
Sparkler. Very dark red sport of Golden Salmon. Very profuse bloomer all the Rose season.

See the Thomasville Rose Show Friday, April 22, 1955



DRY PREMIER PEAT MOSS IN BAGS AND BALES

The great soil-building value of Peat Moss has long been recognized. Dry Peat is light in weight and transportation costs are low. The most successful gardeners everywhere use it in setting Azaleas, Camellias, Roses and other plants. Premier Peat is capable of absorbing 18 times its weight in water. We highly recommend it.



1-bus. Bag \$1.00

3-bus. Bag \$2.50

Handy Bale \$4.00

Large Bale \$6.00



SNOWFLAKE

Scarce Roses of Great Merit

In the back-yard garden of Misses Annie and Julia Wright is an old Tea Rose, Bon Silene, planted by the grandmother of those ladies 90 years ago! It has persisted with the minimum of care. Recently, Mrs. M. G. Nicholson told the Georgia Rose Society she has on the grounds of her residence at Athens a number of old Tea Roses ranging in age from 35 to 50 years, and that she has never sprayed or dusted these varieties one time. It is Roses such as these that show ours is a section ideally suited to growing Tea Roses, including climbing forms and the closely related Noisettes.

Most nursery catalogs do not offer Tea Roses, nor such other kinds ideally suited to Southern gardens as the Banksias, the Cherokees and Hybrid Perpetuals. Rather, most growers offer you Radiance, Paul's Scarlet and a few others, with which we have no quarrel. While admittedly some of the new Hybrid Tea Roses are outstanding, many of those shown in glowing colors will hardly justify the extravagant descriptions.

We agree that there is a fascination about the NEW. And our gardens should have new varieties. But, lest failure dampen our enthusiasm, let's plant more of the Roses that are time-tested and dependable. If today the old Tea Rose William R. Smith were a NEW variety, it would be featured in catalogs and advertisements throughout the land. Yet the flower is more double, more fragrant and more lasting than many of the Hybrid Teas we consider standard varieties. And this old Tea will be living when many other Roses have passed on.

"If a thing is old," said Capt. Eddie Rickenbacker in an address several years ago, "it is a sign it was fit to survive. The guarantee of continuity is quality. . . . Old-fashioned hospitality, old-fashioned politeness, old-fashioned honor in business had qualities of survival."

Tea and related Old Roses have survived because they were fit to survive.

After fifty-seven years, we have come to believe that often there is little merit in the new, and to love Old Roses like old friends. And, speaking of "old," let us quote these lines from Mrs. Keays' "Conversation at a Garden Club":

"What do you call old?"

"Old Roses are those of type and class

Used in good gardens of the past."

"But when did the past end?"

Too Many Varieties?

"Are there too many varieties? Have you propagated every Old Rose you could lay your hand on?" Certainly not. We are not growing old varieties simply because they are "old." According to Richardson Wright in his "The Story of Gardening," there appeared three hundred China Roses, five hundred Bourbons, three hundred and fifty Noisettes, three hundred Hybrid Perpetuals and fifteen hundred Teas!

So the list in this catalog is relatively very short. Perhaps it does not contain *all* the best of the Old Roses, but we are listing the finest of those we have seen.

BARONESS HENRIETTE SNOY



HJORT'S *Old-Fashioned* Tea Roses



DUCHESS DE BRABANT

While ours is a very extensive Rose listing and the plants are excellent quality, some varieties are in limited supply. In ordering, especially as the season advances, it is well to permit substitutions, to be made from similar varieties.

Savannah, Ga.: "My Tea roses Mrs. B. R. Cant and William R. Smith, which I purchased five years ago, are over 3 feet in width. They are such a joy and require so little care."—Miss E. D.

Cut-Flower Favorites

Large-Flowered Teas

Baroness Henriette Snoy. Peach-pink.
 Mme. Lambard. Carmine.
 Mrs. B. R. Cant. Red.
 Mrs. Dudley Cross. Two-tone.
 White Maman Cochet.
 William R. Smith. Light pink.

(Regular Value \$7.50)

SPECIAL, one each . \$6.50

Three of each for \$18.00

ASK FOR OFFER NO. T-1

This group of Roses is perfectly adapted to the hot, moist summers of the Lower South, including Florida, and soils that are sandy, although the Teas grow all over the entire South in any good Rose soil.

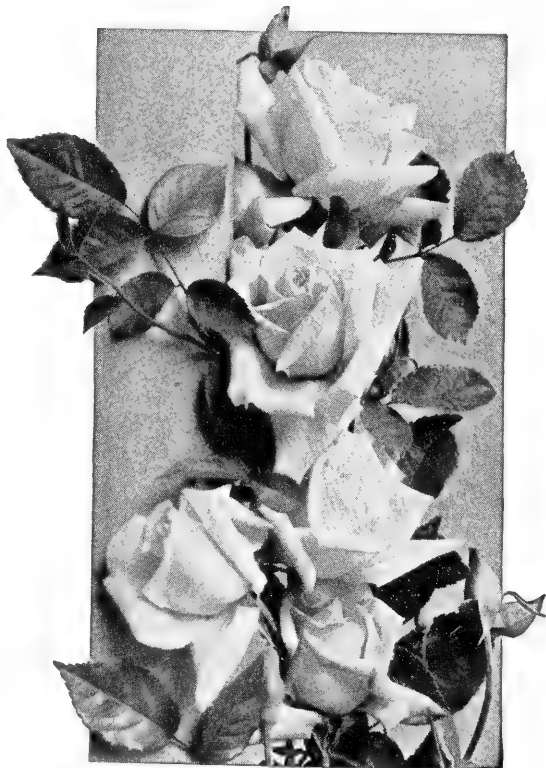
Tea Roses were brought to Europe from China's gardens in the late 1700's. In northern Europe they were not well received, but in southern France they found conditions of climate and soil suitable and rapidly gained favor. Soon they were brought to America. They did not thrive in the North, but once planted in the South, especially along the Gulf and coastal areas, became immensely popular and outlived other classes of Roses.

Most Teas are not considered cut-flower varieties, but some produce large flowers on stiff stems. The best of these are Baroness Henriette Snoy, William R. Smith, Maman Cochet, Mrs. Dudley Cross and Mme. Lambard. A lot of the others are much better than generally believed. The pink varieties are the favorites in the Teas, for while the reds grow vigorously it is admitted none of them have color comparable to Crimson Glory and Etoile de Hollande, nor are there yellows like Eclipse and Soeur Therese—they are lighter. One does not plant Teas for flowers like Peace and Chrysler Imperial, but for profusion of bloom, ease of growth and length of life.

If you are not so sure you can grow good Roses by all means start with the Teas. You will love them for their dependable qualities. And really, they are beautiful!

All Tea Roses are \$1.50 each, 3 for \$3.90,
 6 for \$7.50, 12 for \$13.20, by Parcel Post, prepaid

Ocala, Fla.: "I was told I couldn't grow roses, but the Marie van Houtte and Mme. Lambard bushes grow like weeds."—Mrs. A. C. D.



MAMAN COCHET

THOMASVILLE NURSERIES

HJORT'S *Old-Fashioned* TEA ROSES

Baroness Henriette Snoy is a new member of the Old-Fashioned Tea group, and one of the most beautiful and satisfactory of Roses for Southern gardens. The lovely, pointed buds and large, double, well-formed flowers are peach-pink, shaded cream, and are freely produced on vigorous stems. The bush is spreading and vigorous, with abundant, heavy foliage, most resistant to blackspot. We are the first firm in America to offer this Rose, and many who have seen it in our gardens and fields agree that it is the finest of the Teas, which is saying much, for there are other choice ones.

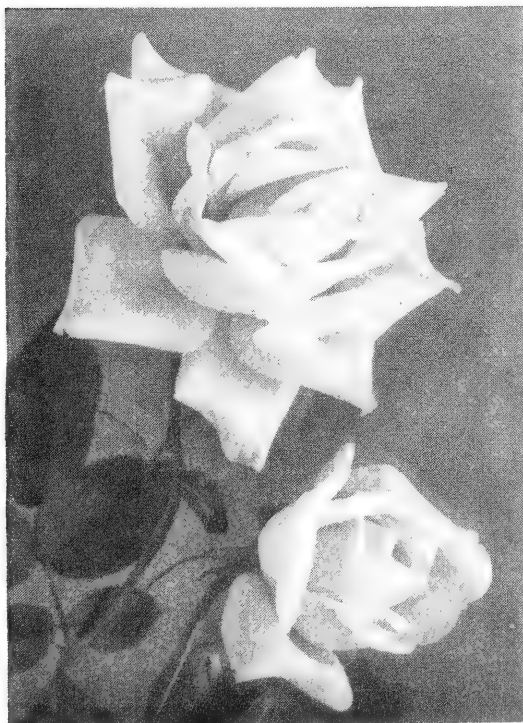
Cecile Brunner. The "Sweetheart Rose." One of the treasures of Old South gardens, just as valued today as in the past. A Tea-Polyantha hybrid, also classed as a Floribunda, which develops into a large, vigorous bush producing an abundance of small, double, light pink blooms in clusters over the entire Rose season.

Devoniensis. The Magnolia Rose. A lovely Rose that was a great favorite a generation ago, and for which we have had many inquiries since we began offering more Tea varieties. Lovely white, flushed pink flowers borne freely on a vigorous bush.

Duchesse de Brabant. Soft shell-pink. Bud short, globular; open, cupped flower. Growth vigorous and hardy. This dependable old Tea continues to be a great favorite.

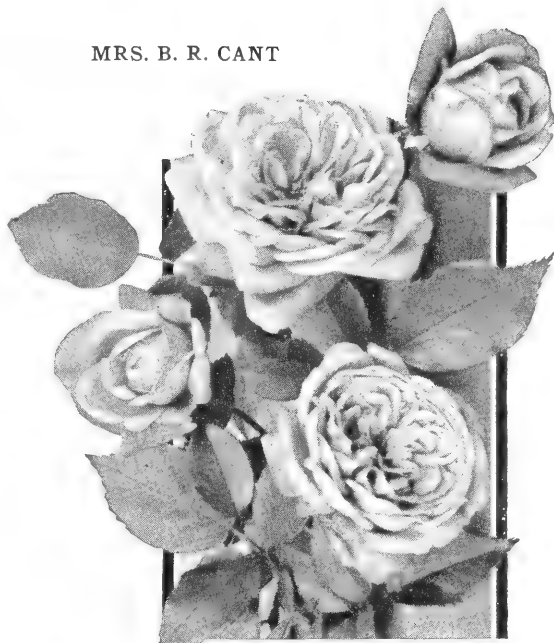
Etoile de Lyon. Deep saffron-yellow; large, very double and fragrant. Considered by many to be the finest of the Teas of yellow shading. We are glad we have enough of this variety to offer it this season.

Freiherr von Marschall. Carmine-red; double. Vigorous and constant. A fine old Tea Rose, sometimes called the Double Papa Gontier. A wonderful grower and bloomer; especially good for fall flowering.



MRS. DUDLEY CROSS

MRS. B. R. CANT



Gruss an Teplitz. This old Hybrid China Rose has some Tea blood in it, and we place it in this group. Dark, velvety scarlet; spicy fragrance. Bush very strong and prolific; flowers fairly double on rather short stems. A fine Rose for hedges.

Lady Hillingdon. Deepest yellow of all Tea varieties. Bud long pointed; flower semi-double, fragrant. Bushy growth; bronze foliage. A favorite Tea Rose.

La France. While this is called the original Hybrid Tea Rose, it has the lasting, dependable qualities of the full-blooded Tea. Silvery pink, reverse bright pink. Vigorous; profuse; recurrent. Introduced in 1867 by Guillot of France, this old variety is world-famous and is still grown by many admirers.

TEA ROSE SUBSTITUTIONS. In Special Offers of Tea Roses only, "Cut Flower Favorites" and "Yesterday's Favorites," we reserve the right to substitute similar varieties for any sold out as the season advances.

Charleston, S. C.: "A generation ago we grew Tea Roses here and now we are coming back to them."—Mrs. A. M. M.

Yesterday's Favorites

Lovely, Vigorous, Prolific Today

Duchesse de Brabant. Shell-pink.

Lady Hillingdon. Yellow.

Marie van Houtte. Canary, tipped pink.

Maman Cochet. Clear silvery pink.

Safrano. Saffron-yellow.

White Maman Cochet.

(Regular Value \$7.50)

SPECIAL, one each . \$6.50

Three of each for \$18.00

ASK FOR OFFER NO. T-2

HJORT'S *Old-Fashioned* TEA ROSES



SNOWBIRD

Louis Philippe. (China.) This is a most unusual Rose of deep red color. Foliage dark and glossy. Compact and vigorous in growth, it is used extensively as a hedge Rose and blooms profusely over a long season. In fact, in mild seasons it blooms throughout the winter in Florida and Gulf Coast areas.

Maman Cochet. Clear silvery pink. Long-pointed bud and large, fragrant flower. This variety does not grow off so rapidly as such Teas as Mrs. Dudley Cross and Mme. Lambard but eventually makes fully as large a bush. One of the best cut-flower Teas.

Marie van Houtte. Canary-yellow; petals tipped pink. In fall or during a mild winter the flowers show an enchanting lavender cast not seen in any other Rose. Foliage is dark and abundant; growth vigorous and compact. A very lovely and rewarding Tea Rose.

Mme. Lambard. This Rose is one of the great favorites of those who have Tea varieties. In the spring it is carmine-pink, shaded salmon, a little lighter in summer. In fall it is almost red, when it is in its glory. A rank grower and profuse bloomer over a long season that extends into cool weather. A generation ago it was the leader of the Tea Rose group, and today there are many who still think it is the best.

Mme. Melanie Soupert. Salmon-yellow, shaded pink; very large and very double. Vigorous bush with stiff stems. How we wish we had a dark pink or red of the same globular form.

Mrs. B. R. Cant. Deep rose to light red; large, double flowers. Vigorous and profuse; bush is one of the largest of all varieties. One of the best of Tea Roses, it is a great favorite in many places in the South, such as New Orleans, Mobile, Florida and the Carolinas. Ranks right along with William R. Smith, Baroness Henriette Snoy and Mrs. Dudley Cross, and ought to be in every Tea Rose collection.

Mrs. Dudley Cross. Most vigorous of the yellow Tea Roses. Canary-yellow, long, Cochet-like buds, opening light yellow and gradually developing tints of pink—a fascinating combination. This rank-growing, showy and completely satisfactory Tea Rose should start any Tea collection.

Mrs. Dunlop Best. The most satisfactory and rewarding new Tea Rose since Baroness Henriette Snoy. Saffron-yellow with apricot shadings. Bud long pointed; flower large, double, fragrant. Perhaps Mrs. Dunlop Best is best described as a glorified Safrano, being larger and deeper in color. A good cut-flower Tea, much admired by those who have seen Tea Roses in our gardens and fields the past few years.

Mrs. Herbert Stevens. Long-pointed, white bud slightly tinged pink opens into a pure paper-white flower, fairly large and double. Typical strong Tea growth and free bloom.

Safrano. Saffron-yellow. Very vigorous bush and free bloomer. A very old, dependable Tea, appreciated where known.

Snowbird. Bud long pointed; flower double, fragrant, white with creamy center. Foliage leathery and, like other Teas, highly resistant to blackspot. Many consider it the finest white Tea Rose.

Being an "old" variety is nothing against a plant. Rather, the old varieties that remain in favor occupy a unique position, for they stay with us strictly on merit.



SOUV. DE LA MALMAISON

THOMASVILLE NURSERIES

St. Petersburg, Fla.: "I heard Uncle Pasco on the radio recommend your Tea roses and mine have done well."—Mrs. I. G. N.

HJORT'S *Old-Fashioned* TEA ROSES

Snowflake (Marie Lambert). Small, semi-double, pure white blooms borne profusely in clusters over a long season, on a vigorous bush. It can well be used with colored Floribunda Roses. Greatly prized at Thomasville.

Souv. de la Malmaison. (Bourbon.) Very large, double flower; creamy flesh-pink with rosy center; highly fragrant. A famous old Rose, dating back to 1843, still lovely and still satisfactory. Small wonder it has witnessed the demise of thousands and thousands of other Roses and still lives! In it are combined the qualities we expect in a Rose.

White Maman Cochet. Sport of Maman Cochet. Long-pointed, white buds, tinged pink, opening into large, double, fragrant flowers. Since its introduction in 1896 it has steadily maintained its position as the leading and best white Tea Rose. While some Teas are not rated as cut-flower Roses, this one is, and should be in every garden of Tea varieties.

William R. Smith. Here is the finest cut-flower variety of all the Teas. Large, double, long-lasting flowers of blush-pink color, on long, stiff stems. Foliage large, rich green, leathery. Always a favorite; always satisfactory.

TEA ROSE GRADING

and An Invitation to Visitors

While a few Tea Rose varieties, notably Mme. Lambert and Mrs. Dudley Cross, in two years usually make plants that equal the grade of most hybrid teas and floribundas, some other varieties do not. But eventually all the Tea Rose varieties will grow into the largest bushes and be the longest lived.

Therefore, let us respectfully state that not all Tea Rose varieties can be supplied in a grade that is strictly No. 1 by hybrid tea standards. Some will be No. 1½ grade. (The fine old Tea Rose plants admired in our garden by so many people were all grown from smallest plants that we wouldn't ship anybody.) We will ship No. 1 plants in every variety possible; the balance will be good No. 1½. Especially in Florida and the Lower South, a little patience with Tea Roses will pay great dividends; they will be the largest bushes the second or third year.

Tea Roses, while lovely in the spring and fair in the summer, are in their glory in the fall, when the blooms are largest and the colors intensified. September and October are the best months to see Tea Roses at Thomasville, and we urge those who can do so to visit Thomasville some time in the fall, when Teas and other Roses produce their most brilliant bloom.

In limited supply we have a number of additional Old-Fashioned Teas and other varieties. Write us if there is an old variety you want; often we have it.

More Roses of Yesterday and Today

If there are some of these gems you don't find in our catalog, send 50c to Mr. Will Tillotson, Rose Specialist, Brown Valley Road, Watsonville, Calif., for his very charming and distinctive catalog.

While we have the largest collection of Old-Fashioned Tea and Noisette Roses in America, Mr. Tillotson has a lot of other old, rare and unusual Roses, as well as new ones. We have no stock in his business and we do not owe him any money, but we want to tell our friends where Moss, Gallica, Rugosa, Centifolia and others may be obtained.

The Thomasville Rose Show

April 22, 1955

Rose time in the Deep South is celebrated annually through the staging of the Thomasville Rose Show, the most spectacular flower show in the Southeast, by the Thomasville Garden Club, assisted by the Chamber of Commerce and other civic groups. There will be tours of famous Southern plantations, the Rose Shows and special exhibits at the Veterans Domiciliary and the Rose Show dances.

The 1955 show will be one of great beauty, size and merit. If you miss seeing the Thomasville Rose Show, you miss a delightful experience. All Thomasville welcomes you!



TEA
ROSE
WILLIAM
R. SMITH



VILLE DE NANTES. Dark and Light Strains

CAMELLIAS *for Lower South Gardens*

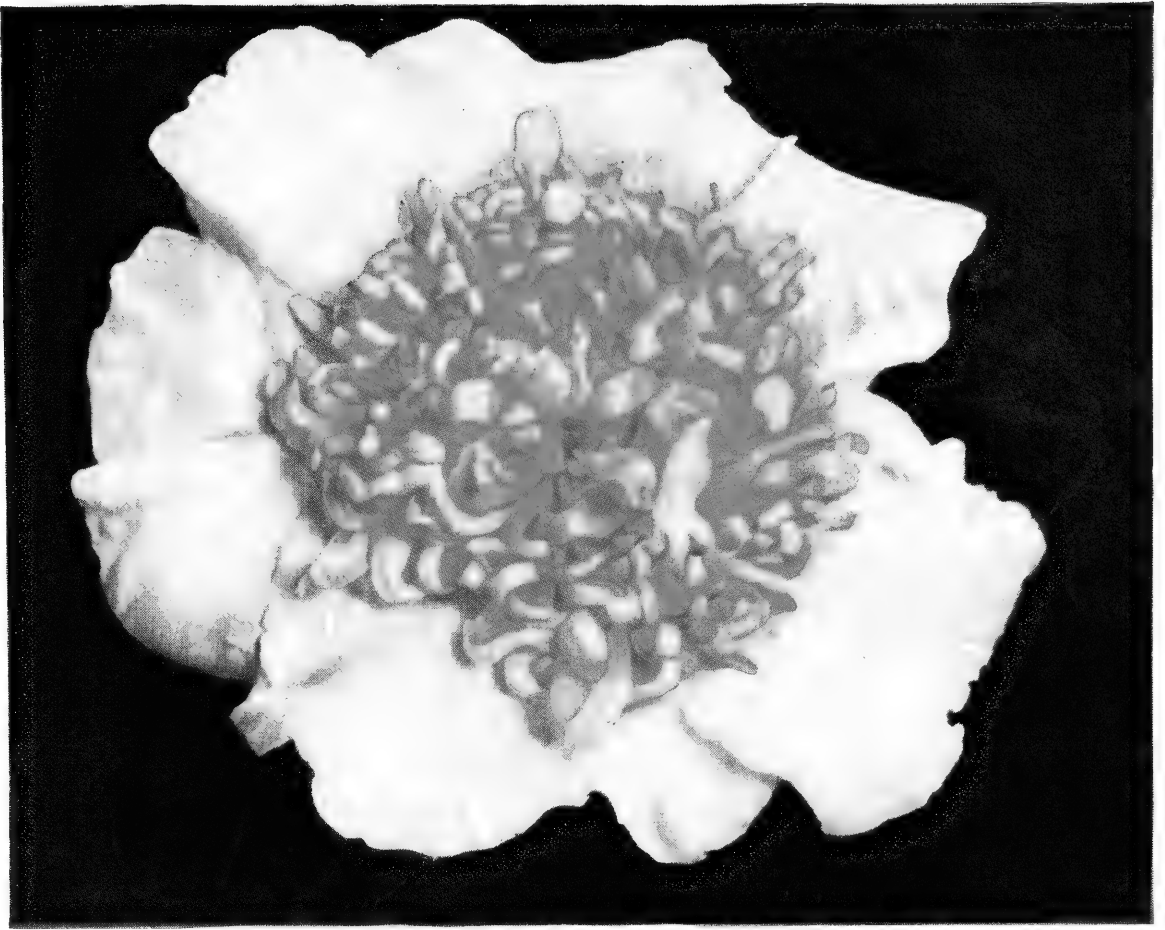
Nothing brings such charm and distinction to gardens of the Gulf and Coastal section of the Southland as Camellias. They are at home in an area approximately from Charleston, through Augusta, Macon, Columbus, Montgomery, Meridian, Vicksburg, and New Orleans to the coast. With extra care, lovely Camellias may be grown above these limits. But the area designated is where these charming winter-flowering trees are at their best, and where they give a thrilling display in midwinter. Camellias and azaleas are a necessity if we are to keep our gardens of the Lower South distinctive.

Design in the garden is rightly regarded as of primary importance, and the kinds of plants used in securing a desired effect are a secondary consideration. But if this pleasing design can be carried out with extra-fine and out-of-the-ordinary plants, then gardens of unusual beauty result. Such plants are the azaleas and Camellias, and gardens in which they are used are immediately lifted out of the commonplace. These shrubs take the place of good evergreen and deciduous shrubs and fill the garden with a glory that is unsurpassed in the winter and early spring.

For many years we have given special attention to the growing of winter and early spring-flowering material, and particularly to Camellias in the past decade. Our Camellias are above the average in quality; practically all we offer this season were grown in fields and woodland beds. You will like these Camellia plants!

JOIN THE AMERICAN CAMELLIA SOCIETY

Annual Membership dues are \$5.00, for which you will receive the instructive Annual issued by the Society, as well as the American Camellia Quarterly. Address American Camellia Society, Box 2398, University Station, Gainesville, Fla.



FRANK GIBSON

New Thomasville Camellia

• FRANK GIBSON •

Yellow is a color long sought in Camellias, and the new Frank Gibson has more of it than any variety to date. For charm and distinctiveness, Frank Gibson is acclaimed the most outstanding new Camellia in years. There is a single row of large, pure paper-white outer petals and a striking center of petaloids, often two sizes, most of which have a gold band, giving it an almost solid yellow center. There are no stamens in the original, select Frank Gibson Camellia. It has been called the one and only "triploid" Camellia, with three sizes of petals.

Camellia Frank Gibson is vigorous and compact in growth, and the foliage is unique—dark green and rather pointed. It blooms early, beginning the last week in October, and is very hardy, having withstood the severe cold of the winter of 1950-51 along with the most resistant. The plant was raised as a seedling by Mrs. F. L. Gibson, Thomasville, Ga., and named in honor of her late husband, one of Thomasville's leading businessmen, whose hobby was gardening and for whom the Camellia was always the favorite flower. A seedling found under a Mrs. F. L. Gibson bush, it is believed to be a cross of Elegans (Chandler) X Mrs. F. L. Gibson.

2-yr., grafted, 2 to 3 ft., compact, \$25.00; 18 to 24 in., compact, \$20.00; 12 to 18 in., well branched, \$15.00; 1-yr., \$10.00. All these grafted plants are field grown, on heavy stocks, and well above the average in quality.



Camellia
BRYAN WRIGHT

*Three
Lovely*
CAMELLIAS
From
Thomasville



Camellia
BEATRIX HOYT



Camellia
BETTY SHEFFIELD

Lovely THOMASVILLE CAMELLIAS

Beatrix Hoyt (*Listed last season as Ecstasy*). A delightful new Camellia, raised as a seedling by Miss Beatrix Hoyt of Thomasville, who has also given us the Bryan Wright. Very beautiful, light rose-pink, with one compact ring of long golden stamens in center. Begins blooming very early and continues over a long season; the flowers last a long time on the bush before dropping. Upright in growth; foliage medium in size. All plants are select, well-shaped, field-grown, grafted specimens. 2-yr. grafts, 18 to 24 in., \$15.00; 12 to 18 in., \$12.00; 8 to 12 in., \$8.00; 1-yr. grafts, \$6.00.

Betty Sheffield. One of the most charming of Camellias introduced in recent years. Raised as a seedling by Mrs. A. B. Sheffield, long chairman of the Park & Tree Commission of Quitman, Ga., and active in garden club affairs, and named in her honor. Large, very regular, semi-double, pure paper-white with few red and pink splotches or stripes. The flower is of exquisite form, with petals slightly waved; golden stamens are mostly in center, but some are interspersed in petals. The bush is a strong, vigorous grower, and the foliage is large and dark green. Betty Sheffield is superior to many other Camellias of its type. It has become a great favorite with those who have it, and many consider it the finest of our introductions. All our plants of this variety are compact, shapely, field-grown specimens, way above the average in quality of Camellias generally offered. Available in grafted plants, all sizes of Group A, at prices shown on page 27.

Bryan Wright. The popularity of this Camellia grows. Those who have it are delighted with it, and the large specimen plants in bloom in our Woodland were greatly admired by visitors last winter. Bryan Wright is a lovely, very light pink Camellia, in color half way between Lady Hume's Blush and Pink Perfection. It is a fairly early bloomer, and the first flowers are often formal; later they are almost double peony form, and at the end of the season they open and show a few very golden stamens interspersed in the petals. At all stages the flowers are lovely. Select, well-shaped, grafted, field-grown plants in all sizes of Group A, at prices shown on page 27.

Fragrance. A distinctly fragrant new Camellia japonica from Moultrie, originated as a seedling by Mrs. H. Curtis Murphy. Flowers are of medium size, complete double, showing a few short stamens. The color is deep pink to light red. Foliage is fairly large, medium green. Those who saw this Camellia in bloom here and at Moultrie the past several seasons could hardly believe a double-flowering variety could possess such distinct odor. Of the many, many Camellias we have tested and seen in other gardens, it has the most fragrance. Compact, field-grown specimens, on 5 to 8-year stocks. 2-yr. grafts, 12 to 18 in., \$12.00; 8 to 12 in., \$8.00; 1-yr. grafts, \$6.00.

Pearl Maxwell. Here is a very lovely new regularly imbricated (formal double) Camellia that we believe has come to stay a long, long time. It supplies the need for a large formal flower of light pink color; many blooms of it measured 5½ inches across. It has none of the defects of streaking or folding back like Otome and several others. While not as heavy as the Mathotianas, it is not far behind in size, and for exquisite, soft color it is quite superior to other varieties of its form. Pearl Maxwell is a seedling of the vigorous Enrico Bettoni and like the parent is a vigorous grower and late bloomer, fine for extending the flowering season. This outstanding Camellia was raised from a seed by Mrs. C. O. Maxwell, Cairo, Ga. and named in her honor. Several years ago she showed blooms at the Cairo and Thomasville Camellia shows which were greatly admired, and led us to seek propagating rights. Available in compact, top-quality, field-grown, grafted plants, all sizes of Group A, at prices shown on page 27.

Selma Shelander. An exceptionally large, semi-double white Camellia, owned by Mrs. A. N. Shelander, Brunswick, Ga., on which we have propagation rights. Offered this season for the first time. Much like Lotus in size and form, but the bush is much more resistant to cold. Distinctive long, pointed foliage makes it an attractive bush. All plants we offer are field grown, grafted on stock 6 to 8 years old. 2-yr. grafts, \$15.00; 1-yr. grafts, \$7.50.

In Camellias this season we are offering only sturdy, field-grown plants, the quality of which is far superior to the usual run of shade-grown or canned plants in general circulation. People usually get what they pay for. We invite everyone who possibly can do so to come to the nursery and see the fine quality of our Camellias.



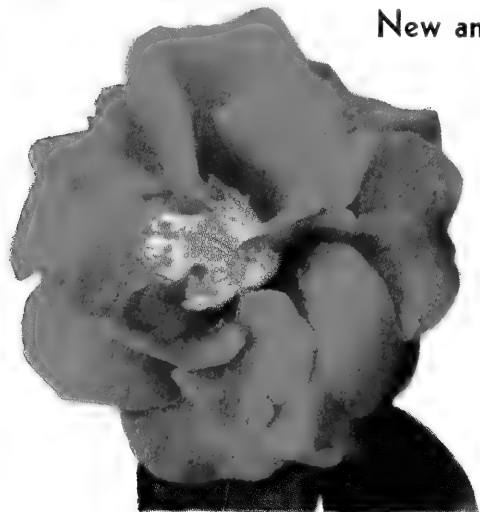
MRS. F. L. GIBSON



MARTHA BRICE

GROUP A CAMELLIAS • *Grafted Plants*

New and Rare Varieties



ADOLPHE AUDUSSON

Adolphe Audusson. Generally considered the finest of semi-double red Camellias. Very dark red with golden stamens. Heavy, dark green foliage. A "must" for every Camellia garden. Grafted, all sizes.

Adolphe Audusson, Variegated. Large, semi-double; very dark red, marbled white. Ours is a superior strain, lighter than most. Very choice. Grafted, all sizes.

Beau Harp. One of the finest of all Camellias. Rose-red; very large; peony form. Vigorous, upright growth. Grafted, all sizes.

Beau Harp, Variegated (Dr. John Bell). Worthy sport of the above, considered by many to be even more showy and attractive than the parent. Grafted, all sizes.

Betty Sheffield. See page 25 for description. Grafted plants, all sizes.

Black Dragon. Large; irregular double; very dark red. Has the appearance of an almost black Woodville Red. Grafted, all sizes.

Black Dragon, Variegated. Sport of the solid dark red variety, this one is peppered with white dots, making it a very showy bloom. Grafted, 1 yr.

Bryan Wright. See page 25 for description. Grafted plants, all sizes.

Dave Strother. The Camellia that would worthily honor the eminent authority and collector, Mr. D. C. Strother of Ft. Valley, is yet to be produced. But this Dave Strother variety fits in well for the time being. It is of blush-peach-pink color; large; semi-anemone form; vigorous, upright growth. 2-yr. grafted, 18 to 24 in., 2 to 3 ft.

Donckelari. Large; semi-double; red and white. Very hardy. Ours is the old, true-to-name Donckelari. Grafted, all sizes.

Dr. Tinsley. A fine newer Camellia. Soft, light rose-pink, with distinctive lighter center, making it very different from other varieties. Grafted, all sizes.

Edwin H. Folk. Lustrous, bright red. A very large, loosely constructed semi-double that is one of the very finest of all. No garden claiming the best should be without it. Grafted, all sizes.

Elizabeth Boardman. Medium size; semi-double; pure white with golden stamens. Compact bush. One of the really fine whites. Grafted, 8 to 12 in. to 18 to 24 in.

Elizabeth Lebey. Rose-pink; large; hemispherical peony form. Vigorous, pendulous growth; mid-season. One of the loveliest varieties in recent years, worthy of a place in any garden, and a great favorite with all who have it. Grafted, 1 yr.

Emmett Pflingstl. Sport of the newer Camellia Joseph Pflingstl, and considered by many to be superior to the parent, which is claiming much. Emmett Pflingstl is like the parent, except that the beautiful flowers are spotted and splotted with white. Grafted, all sizes.

Fred Sander (Fimbriata Superba). Medium size; semi-double; distinct saw-edge; deep red. Grafted, all sizes.

Frizzle White. Very large; pure white; semi-double to loose peony form. A superior Camellia deserving a better name. Grafted, all sizes.

Haku-rakuten (Refugee). Large; semi-double; pure white, with long, showy stamens. Grafted, all sizes.

Hana Fuki. Single to semi-double; soft shell-pink; golden stamens. A delightful flower. Grafted, 8 to 12 in. to 18 to 24 in.

High Hat. Lovely, light pink sport of Daikagura. Like parent, blooms very early. Grafted, 8 to 12 in. to 15 to 18 in.

Joseph Pflingstl. Large, 5 to 6 inches across, incomplete double; scarlet-red. Outer petals waved, becoming fluted toward center where some stand like rabbit ears, surrounding golden stamens. A few flowers are full, formal double. Has long season of bloom. An outstanding new Camellia. Grafted, all sizes.

Joshua Youtz. Finest new white Camellia. Large; irregular double; pure white. Like other Daikaguras, blooms very early. Grafted, all sizes.

Kenny (Glen). Very large; irregular double; deep pink and white variegated. Upright growth, heavy wood, large foliage. Has the appearance of being an extra-fine Lady Jane Grey, but a more reliable and perfect bloomer. Very choice. Grafted, 12 to 15 in. to 18 to 24 in.

Lady Kay. Peony form sport of Dark Strain Ville de Nantes; a most interesting flower, with every petal well serrated. In great favor with those who have it, especially those who grow Ville de Nantes well. Grafted, 1 yr.



DONCKELARI

THOMASVILLE NURSERIES

Gainesville, Fla.: "Frank Gibsons were beautiful all over the Southeast, according to reports received this year. My Betty Sheffield has bloomed, and it is a honey!"—S. P. H.

GROUP A CAMELLIAS, Grafted Plants, continued

Light Gigantea. An almost solid white form of Gigantea, with a few showy splashes of red. Our light strain of Gigantea is very lovely and superior. Grafted, all sizes.

Mme. Chiang Kai-shek. Might well be called the "Pink Donckelari," although its habit of growth is far more vigorous. One of the loveliest and most satisfactory of pink, semi-double Camellias. Grafted, all sizes.

Pride of Descanso. Very large; semi-double; pure white. One of the famous "S" varieties. Grafted, all sizes.

St. Andre. One of the finest varieties we have been able to offer. This very large, semi-double to anemone form is a rich crimson-red. Grafted, 1 yr., on heavy stocks.

Thelma Dale. Very large; incomplete double with petal sizes intermixed; rose-pink. Very choice. Grafted, all sizes.

Victory White. Large; sometimes semi-double, sometimes irregular double (peony form); pure white. Grafted, 18 to 24 in.

Ville de Nantes, Dark Strain. This is the original variety, with darker flowers and more serrated petals. Grafted, all sizes.

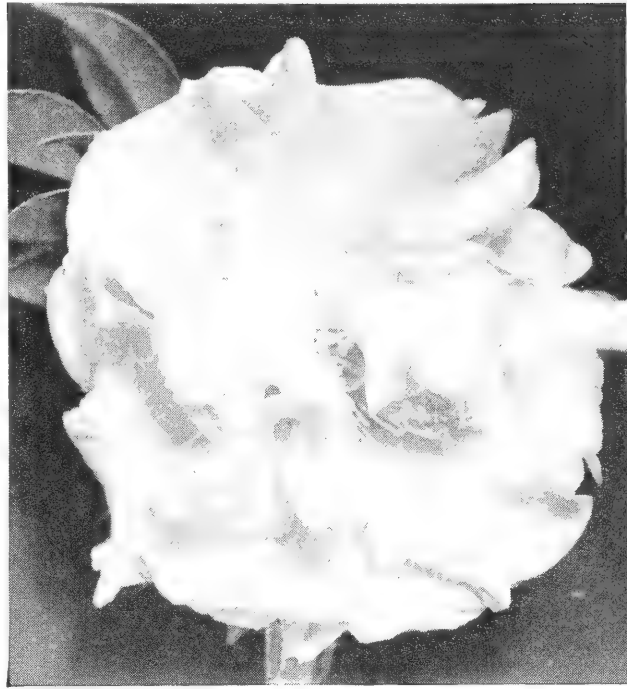
Ville de Nantes, Light Strain. All these plants were grown from flowers that were mostly white. All graftwood was carefully selected. Ville de Nantes is called the world's No. 1 Camellia. The flower is extra large, semi-double, most blooms white with red markings, occasional solid red or near red bloom. Grafted plants, all sizes.

White Daikagura. See Joshua Youtz.

White Empress. Very large; pure white, golden stamens. In popularity it is the leading semi-double Camellia. Grafted, all sizes.

White Queen. Very large; semi-double; pure white. Looks like a giant form of Snowdrift. Late bloomer. Grafted, all sizes.

Pass Christian, Miss.: "The shipment of Camellias came in this afternoon . . . all the holes were ready and they were planted without delay. The plants are beauties, and I am most appreciative of them and the care you used in crating them."—B. Y. M.



WHITE DAIKAGURA (Joshua Youtz)

Fred Beaty, whose special hobby is growing Camellias and who has one of Moultrie's largest and loveliest collections, yesterday was exhibiting a very lovely and exotic blossom. With single pure white outer petals, the camellia's large center, a cluster of petaloids shaped like a chrysanthemum, is golden yellow. The camellia, a Frank Gibson, is said to be nearest to a yellow yet propagated.—*Moultrie Observer*, Nov. 21, 1953.

COMPACT, FIELD-GROWN, TOP-QUALITY CAMELLIAS

Practically all of our Group A Camellias are superior, field-grown plants.

PRICES OF GROUP A CAMELLIAS Except as noted

GRAFTED PLANTS		Each
8 to 12 in., field grown, 1 yr. only, B&B.	\$7 50
12 to 15 in., field grown, 1 yr. and 2 yr., B&B.	8 50
15 to 18 in., field grown, 2 yr., B&B.	10 00
18 to 24 in., field grown, 2 yr. and 3 yr., medium, B&B.	12 50
18 to 24 in., field grown, 2 yr. and 3 yr., specimen, B&B.	15 00
OWN-ROOT PLANTS		
12 to 15 in., bed grown, branched.	\$5 00
15 to 18 in., field grown, B&B.	7 50
18 to 24 in., field grown, medium, B&B.	10 00
18 to 24 in., field grown, specimen, B&B.	12 50
2 to 2½ ft., field grown, specimen, B&B.	15 00
2½ to 3 ft., field grown, specimen, B&B.	17 50

In limited supply we have many other fine Camellia varieties, and we invite correspondence. Or better, come to the nursery and see them.

RELIANCE AZALEA AND CAMELLIA SPECIAL FERTILIZER

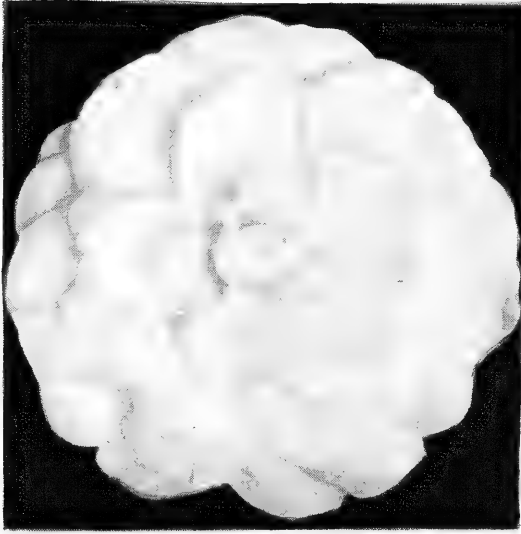
For maximum growth, bloom, and general well-being, it is necessary to feed your plants properly. Unfortunately for the Azalea and Camellia grower, most commercial fertilizers are made neutral by the use of limestone, and are not suitable for acid-loving plants.

To meet this need we keep in stock Reliance Azalea and Camellia Special, a commercial fertilizer which is acid, easy to apply, and has no objectionable odor. It supplies a balanced and complete food for these plants. With your purchases you will receive a little booklet giving much information on the planting and care of Azaleas and Camellias.

Prices of Reliance Azalea and Camellia Special Fertilizer: 25 lbs. \$1.75, 50 lbs. \$2.75, 100 lbs. \$5.00, f.o.b. Thomasville, Ga.

GROUP B CAMELLIAS

Mostly Grafted



ALBA PLENA

- Alba Plena.** The acme of perfection in double, imbricated whites. Pure white, wax-like. Very early flowering. Own-root, all sizes.
- Angel's Blush.** Loveliest of miniature Camellias. Very small, double; a chaste and beautiful light pink, having the appearance of a tiny Pink Perfection. Grafted, all sizes.
- Aunt Jetty.** A solid red form of Gov. Mouton. Incomplete double; large outer petals with petaloids in center; very dark red. Exceptionally hardy, and always a favorite where known. Own-root, 18 to 24 in. to 2 to 3 ft.
- Bessie McArthur.** Large; semi-double; deep pink to light red. Large foliage; compact growth. One of the most cold-resistant of all Camellias. Grafted, 12 to 15 in.
- C. M. Wilson.** Sport of Elegans (Chandler), and exactly like its parent in every particular except color of the flower, which is a very lovely, clear light pink. New Camellias may come and go, but here is one that will stay. Grafted, all sizes. Own-root, 15 to 18 in. to 2 to 3 ft.
- Comte de Nesselrode.** Large; semi-double with petals intermixed; light pink, spotted and striped deep pink. Sometimes called a glorified Herme, but is superior in flower, foliage and growth. An old but very fine variety; name lost for years. Has created much interest at flower shows where it appeared under various local names. At Thomasville it is always attractive. Grafted, 8 to 12 in. to 18 to 24 in.
- Daikagura.** Finest of the very early Camellias. At Thomasville it almost invariably commences blooming in September and continues through Christmas. Large; irregular double; deep pink. Always lovely, always satisfactory. All sizes.

... Another truly outstanding early blooming camellia which the writer recently saw blooming at the Thomasville Nurseries—the beautiful Frank Gibson. Pictures of this flower do not do it justice, giving it the appearance of merely an interesting novelty. The flowers are very large. The center of this beautiful camellia resembles an especially fine chrysanthemum framed with huge, porcelain-white petals. The golden yellow center does not receive its color from stamens. Each of the clustered petaloids is edged with yellow!—Ivan J. Mitchell, Orlando, Fla., writing in *Tropical Home & Gardening*.

Daikagura, Variegated. Sport of the solid pink Daikagura, with habit of growth, size of bloom, and earliness the same.

Debutante. Easily the most popular of large pink Camellias. Every bloom is perfect, of incomplete double formation with petal sizes intermixed. Foliage is large and deeply serrated. Fast, symmetrical growth. Begins blooming early and continues over a long season. Own-root, all sizes.

Duchess of Sutherland. Large; semi-double; pure white with occasional showy pink stripe. Very fine. Large, light green foliage; compact growth. Own-root, 18 to 24 in. to 2 to 3 ft.

Elegans (Chandler). The standard of perfection in Camellias. An old variety but here to stay; always hardy, always satisfactory. Large; incomplete double; large outer petals, petaloids in center; deep pink with white splotches, occasionally a solid pink flower. Sets flower buds while small. Own-root, all sizes.

Flame. Large; semi-double, almost single; flamed with golden stamens. Growth upright and fast. A flower of distinctive color, always admired. Very satisfactory. Grafted, 8 to 12 in. to 18 to 24 in.

Flame, Variegated. Sport of the solid red Camellia, and possessing all the excellent qualities of the parent. In variegated Camellias, this one is among those of outstanding merit. Grafted, 8 to 12 in. to 15 to 18 in.

Gigantea. Very large; semi-double, sometimes incomplete double with petal sizes intermixed white with red splotches. Heavy foliage. Own-root, all sizes.

Hishi Kairito. A very lovely miniature Camellia. Light rose-pink, star-like flower. 2-yr. grafted, 15 to 18 in., 1-yr. grafted.

Lady Clare (Empress). Very large; semi-double, almost single; deep rose-pink. Large foliage; compact, rounded bush. One of the hardiest of Camellias, always attractive and dependable. Own-root, all sizes.

Covington, La.: "Just a few lines to tell you that Frank Gibson has been blooming beautifully for us and has caused a great deal of comment and admiration."—Mrs. J. K.



DEBUTANTE

THOMASVILLE NURSERIES

GROUP B CAMELLIAS, continued

Mostly Grafted



ELEGANS (Chandler)



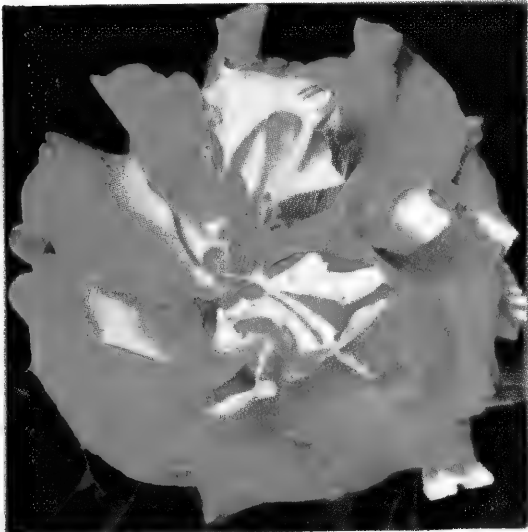
MATHOTIANA RUBRA

Lady Jane Grey (Eugene Lize). Very large; irregular double (peony form); deep pink with white marbling. Small, compact-growing bush with foliage similar to Donckelari. Long popular in the Thomasville area. Own-root, all sizes.

Lallarook (Il Tramonto; Laurel Leaf). Largest of all double, imbricated Camellias. Clear, satiny pink, marbled and spotted white; sometimes solid pink flowers appear on the same bush. Occasional flowers are tiered, like Candidissima in form. Upright growth; long, pointed, glossy leaves. A great favorite. Own-root, all sizes.

Lindsay Neill. A fine Camellia from Columbus, and one of the most sought-after of rare varieties. Large, semi-double; dark red, splotted white, with an occasional solid red flower. Grafted, all sizes.

Magnoliaeflora. Medium size; single; delicate, light pink. Well named. One of the loveliest of Camellias; should be in every collection. Very hardy for a light-colored variety. Grafted, 8 to 12 in. to 18 to 24 in. Own-root, 15 to 18 in. to 18 to 24 in.



DAIKAGURA

Martha Brice. Large, semi-double; light lavender-pink, a color not found in other Camellias. Compact growth; very large, light green foliage. A splendid Camellia from Quitman, Ga. Own-root, all sizes.

Mathotiana Rosea. Very large; double imbricated; sometimes shows a few stamens in center at end of season; deep pink. This Mathotiana sport is the largest of all pink double-flowering Camellias. Makes a fine bush with heavy foliage; always satisfactory. Grafted, all sizes. Own-root, 15 to 18 in. to 2 to 3 ft.

Mathotiana Rubra. The finest of all double, dark red Camellias. Huge flowers; complete double, incomplete imbricated. Late in season the flowers usually show a few short, golden stamens in center. Foliage is large; bush compact and uniform in growth. A "must" in every Camellia collection. It is impossible to have too many Mathotianas as long as one has room to grow them. Own-root, all sizes.

Mathotiana, Variegated. Sport of the above, formerly incorrectly called C. M. Hovey. Has every one of its parent's excellent qualities and should be extensively planted throughout the entire area where Camellias are grown. Own-root, all sizes.

Mrs. Charles Cobb. Large; incomplete double with petal sizes intermixed; very dark red. Bush compact and vigorous. Own-root, 18 to 24 in.

Rev. John Bennett. Very large; semi-double, almost single; compact ring of long, golden stamens in center of flower. Genuinely salmon-pink in color. Long, narrow, distinct foliage. Very choice. Own-root, 18 to 24 in., specimen.

Rose Dawn. Large; complete, imbricated double; rose-pink. Often called the Pink Alba Plena. Very select. Own-root, 15 to 18 in. to 2 to 3 ft.

September Morn. Medium size; semi-double; white, flushed pink. Very early bloomer, usually beginning early in September. Grafted, all sizes.

Snowdrift. One of the most genuinely lovely of Camellias and perhaps the hardest white. Perfectly formed, regular, semi-double; pure white flowers, with beautiful golden stamens. Bush of compact, symmetrical growth. Own-root, all sizes.

Milledgeville, Ga.: "My Camellia Debutante is the talk of the town, the blooms large and perfect. You should see some of the beautifully landscaped places you planted years ago."—Mrs. M. S. R.

GROUP B CAMELLIAS, continued

Mostly Grafted

Triphosa. Largest of all single Camellias. Pure paper-white without a tinge of other coloring. Very large petals, and one compact ring of long, golden stamens in center of flower. Own-root, all sizes.

Victor Emmanuel. Finest late-flowering red Camellia with stamens. Large; semi-double; deep red. One of the most striking of fancy Camellias. Makes a compact, shapely bush producing many large and perfectly formed flowers. Very satisfactory. Own-root, all sizes.

Virgin's Blush. Loveliest light pink, semi-double Camellia. Fastest grower of new, choice varieties; large exhibition blooms. Created quite a sensation at flower shows the past year. Own-root, 15 to 18 in. to 2 to 3 ft.

White Empress. Very large; pure white, golden stamens. In popularity it is the leading semi-double Camellia. Grafted, all sizes. Own-root, 15 to 18 in. to 2 to 3 ft.

White Giant. Fastest growing of large white Camellias. Giant flowers; pure white with golden stamens. Large foliage; upright, compact growth. Grafted, 12 to 15 in. to 18 to 24 in.

Woodville Red. Very large; incomplete double; cherry-red. One of the showiest of Camellias. A great exhibition variety. Grafted, all sizes.

PRICES OF GROUP B CAMELLIAS. Except as Noted

GRAFTED PLANTS		Each
8 to 12 in., field grown, 1 yr. only, B&B.....		\$5 00
12 to 15 in., field grown, 1 yr. and 2 yr., B&B.....		7 50
15 to 18 in., field grown, 1 yr. and 2 yr., B&B.....		10 00
18 to 24 in., field grown, 2 yr., medium, B&B.....		12 50
18 to 24 in., field grown, 2 yr. and 3 yr., specimen, B&B.....		15 00
2 to 3 ft.....		17 50

OWN-ROOT PLANTS

12 to 15 in., bed grown, branched, B&B.....	3 00
15 to 18 in., field grown, medium B&B.....	5 00
18 to 24 in., field grown, medium, B&B.....	7 50
18 to 24 in., field grown, specimen, B&B.....	10 00
2 to 3 ft.....	15 00

Plants as Gifts

Roses, Camellias, etc., make delightful gifts to send at Christmas, on birthdays or any special occasions. Such gifts are lasting and become more beautiful as time goes along. Send us your card, or authorize us to write your name on a special one, and we will place in an envelope, attach to the plant, and ship according to your instructions. If you wish, we will forward transportation prepaid and bill you with the actual cost. Please send such orders as far in advance of shipping date as possible. The supplying of gift plants for our customers has become one of our specialties.



WOODVILLE RED



CAMELLIA SASANQUA, SNOW-ON-THE-MOUNTAIN

GROUP C CAMELLIAS

In this group are many of the older and well-known varieties. Many of them, such as Pink Perfection, Herme and Prof. Sargent, are excellent varieties, here to stay. Like our Camellias of Groups A and B, our Group C Camellias are shapely, field-grown plants, mostly set with flower buds. The varieties include:

Carnation (Christmas Glory), C. M. Hovey (Col. Firey), Elizabeth, Gloire de Nantes, Gov. Mouton, Herme Variegated, Herme Solid Pink, Jarvis Red, Monarch, Mrs. F. L. Gibson, Pink Perfection, Prince Eugene Napoleon (Pope Pius IX), Prof. Sargent, Rena Campbell (Variabilis), Sarah Frost, Snowdrift and others.

Being an "old" variety is nothing against a plant. Rather, the old varieties that remain in favor occupy a unique position, for they stay with us strictly on merit.

GRADING OF GROUP C CAMELLIAS
 We can't divide our Camellias into many groups. So, in grading, we grade closely on such as Monarch but liberally on others like Carnation.

PRICES OF GROUP C CAMELLIAS

	Each	12
OWN-ROOT PLANTS		
15 to 18 in., bed grown, branched, B&B.....	\$2 50	\$25 00
18 to 24 in., bed grown, branched, B&B.....	3 50	35 00
18 to 24 in., field grown, compact, B&B.....	5 00	50 00
2 to 3 ft., field grown, compact, B&B.....	7 50	

VISIT THE THOMASVILLE CAMELLIA SHOW

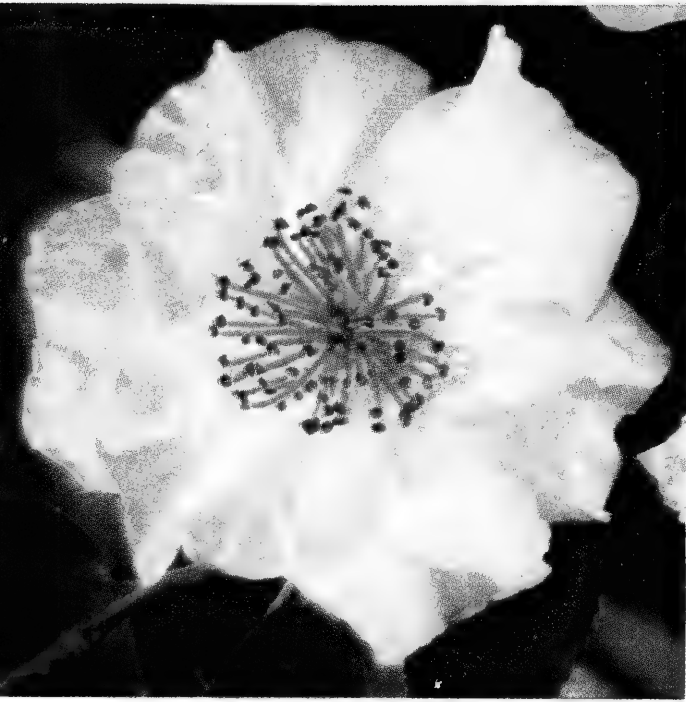
Date to be announced

The Thomasville Show is always one of the largest and most beautiful. Come and see a wonderful assortment of lovely Camellia varieties!

TROPICAL HOMES and GARDENING

is an excellent gardening magazine for all Florida and the extreme lower South. We have no financial interest and receive no commissions but endorse it for its merits. Subscription, \$3.00 per year, \$5.00 for 2 years. Remit to: Tropical Gardening Publishing Co., Box 804, Coral Gables 34, Fla.

CAMELLIA SASANQUA



OLEIFERA. One of the loveliest Sasanquas.

Cleopatra. Large, deep pink flowers; semi-double with crinkled petals. Foliage thick and glossy; bush of very compact, shapely growth.

Dawn. Semi-double; flesh-pink; wavy petals. Extremely hardy.

Daydream. Quite large, single to semi-double white flowers, borne on a very vigorous bush, with dark green foliage. Instead of using ligustrum or some other common evergreen for a border or hedge, why not pay a little more and use this very good Sasanqua?

Hinodegumo. One of the most beautiful of all Sasanquas. Blush-pink with deeper edges; semi-double. Good foliage; strong bush.

Oleifera. A delightful light pink Sasanqua. Very large flowers; crinkled petals, white, tipped rose. Very fast grower.

The colorful and fast-growing Sasanquas are finally coming into favor in the South, as they so richly deserve. Easy to grow, effective in landscape uses, as border, hedge or specimen plants, they present a brilliant show from September to February. At Thomasville their heaviest season of bloom comes in the months of November and December. Sasanquas, while thriving anywhere that *Camellia japonicas* are grown, are more cold resistant and have a wider range of adaptability.

Apple Blossom. An extra-early-flowering Sasanqua, usually the first to flower with us. Flowers fairly large; single; white, tinged pink. Fast-growing bush.

Beni Kantsubaki (Shishigashira). Rose-red to crimson; fairly double; very profuse. Bush is slower grower than most Sasanquas, but compact of growth; foliage very dark. This is an excellent Sasanqua, one of the most cheerful and colorful of fall-blooming Camellias. 12 to 18 in. \$2.50; 18 to 24 in., \$3.50 each.

Pink Snow. Pink form of the double white Snow-on-the-Mountain Sasanqua. Beautiful, light rose-pink color, deeper than the single-flowering varieties. Like its parent, this variety grows into a shapely and compact bush.

Rosea. Medium, single, deep pink flowers in great profusion. Fast grower; free bloomer.

Setsugekka. Very large; semi-double; white with faint pink tinge; ruffled edges. Has more fragrance than most Camellias. A very lovely and very worthwhile Sasanqua.

Showa-no-Sakae (Usu Beni). A very beautiful new Sasanqua. Large, soft pink blooms, almost as double as Snow-on-the-Mountain. Upright, vigorous bush with good foliage.

Snow-on-the-Mountain. The large, double, white flowers resemble a carnation and are borne in such profusion as to literally cover the entire plant. Compact and rounded in growth.

PRICES OF CAMELLIA SASANQUA

(Except BENI-KANTSUBAKI)

	Each	12
18 to 24 in., branched	\$2 00	\$20 00
18 to 24 in., specimen	2 50	25 00
2 to 2½ ft., branched	3 00	30 00
2 to 2½ ft., specimen	3 50	35 00

Specimen plants one year older, pruned and compact. Limited stock of larger sizes available in some varieties.

SEE THE THOMASVILLE CAMELLIA SHOW

See the Thomasville Camellia Show in January, date to be announced. At the same time our large collection of Camellias will be in bloom at our main nursery; visitors always welcome, without obligation to purchase.



INDICA AZALEAS USED EFFECTIVELY IN BORDER PLANTING

GROUP I AZALEA INDICA

The faster-growing varieties of *Azalea indica*, generally characterized by large leaves, hairy underneath, and large flowers.

PRICES OF GROUP I AZALEA INDICA

	Each	12
8 to 12 in., bare root.....	\$0 75	\$7 50
12 to 15 in., bare root.....	1 00	10 00
15 to 18 in., B&B.....	1 50	15 00
18 to 24 in., B&B.....	2 50	25 00
2 to 3 ft., B&B.....	3 50	35 00

Alba. Large; single; white. Tall; late.

Croemina. Finest of all extra-early-flowering Azaleas. Very large flower of light pink. Very compact in growth and profuse in blooming.

Elegans. Light, clear pink; makes a large, fast-growing, symmetrical bush. More than any other variety, this makes Thomasville lovely in the spring. Early.

Formosa. Long called the greatest of Indica Azaleas. Large, purplish pink flowers. Bush grows tall and shapely. Dark green foliage. Easy to grow; late bloomer.

George L. Taber. Finest of variegated Azaleas; shows so little variegation that it is almost a blush-pink. Very large flower; blooms late. Symmetrical, bushy growth. Always admired, always satisfactory.

Judge Solomon. A beautiful deep pink sport of Formosa. Flowers, foliage, vigor, habit of growth and flowering season identical with Formosa. Color is deep pink without a trace of purple; we think it easily the finest of the Formosa sports. Now we offer it at the lower prices of the Elegans-Formosa group for the first time.

Lawsal. Bright salmon-pink. Tall, bushy grower; late flowering. We highly recommend Lawsal as one of the hardiest and most satisfactory of Indica Azaleas.

President Clayes (Flame). Flame-red, a delightful color through a woodland or fronting a dark background. Tall; compact; fast grower; early.

Pride of Mobile. Deep watermelon-pink; large flower; late. Long a Southern favorite.

Vittata Fortunei. Picturesque, open-growing Azalea. White with lavender stripes and splotches. Earliest bloomer; sometimes has large crop of bloom in late fall, with some recurring bloom in winter or spring.

GROUP II AZALEA INDICA

Mostly medium growers, generally more compact and of less rapid growth than Group I. Very profuse and showy. Choice, compact plants.

PRICES OF GROUP II AZALEA INDICA

	Each	12
6 to 8 in., bare root.....	\$0 75	\$7 50
8 to 12 in., bare root.....	1 00	10 00
12 to 15 in., B&B.....	1 50	15 00
15 to 18 in., B&B.....	2 00	20 00
18 to 24 in., B&B.....	3 00	30 00

Dixie. This salmon-red is one of the finest Indica Azaleas. Midseason. Hardy and satisfactory.

Duc de Rohan. Medium size; salmon-pink; very early. A great favorite in Florida.

Fielder's White. Long considered the best of all early white Indica Azaleas for its large, pure white, exquisitely formed flowers and profuse blooming habit, early and midseason. We especially recommend this Azalea. We always felt more whites should be planted.

George Franc. Very large flower; rose-pink with deeper center. One of the earliest and most beautiful of Indica Azaleas. Very spreading in growth. 12 to 15 in., 15 to 18 in.

Mrs. G. G. Gerbing. A lovely new white sport of George L. Taber, with very large blooms, large foliage and compact habit of growth identical with its parent. Blooms late, giving a needed white to bloom in the season of Formosa and Pride of Mobile. We regard this strikingly handsome new Azalea as easily the finest white variety to date.

White Fortunei. Pure white sport of Vittata Fortunei. Fills a very worthwhile place as a profuse, extra-early white Azalea.

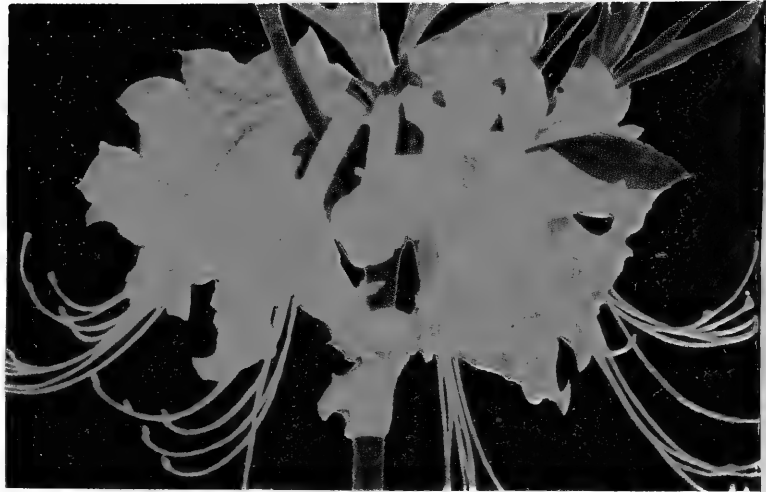
SPECIMEN AZALEA PLANTS

Many of our Azaleas are grown in the field, in full sun, making the stockiest, shapely plants. Others grown in woodland beds are well spaced to produce superior plants. Since Indica Azaleas make tall plants with wide spread, we suggest buying fewer plants, but larger sizes and specimen grade. If you want some really nice Azaleas, and are willing to pay a little more for them, we can serve you well.

●

Miscellaneous TREES and SHRUBS

●



AZALEA AUSTRINA

Azalea austrina (Native Yellow Azalea). This beautiful Azalea is found in Northwestern Florida to Central Georgia. All we offer this year are the best shades of yellow, the finest types of this species. 18 to 24 in., \$3.00; 2 to 3 ft., \$5.00 each.

Cornus florida (Native Dogwood). Small native tree with spreading top; profusion of white flowers, followed by scarlet fruits; fall foliage brilliantly colored. Our Dogwoods are field grown, with straight trunks and branched tops. Shipped with bare roots in moist sphagnum moss. 2 to 3 ft., \$2.00; 3 to 4 ft., \$3.00; 4 to 6 ft., \$5.00 each.

Ilex opaca Howardi (Native Tree Holly). Foliage very dark and glossy; berries bright red. Of all strains of native Holly, Howard is regarded as the finest in the South. 3 to 4 ft., balled and burlapped, \$7.50; 4 to 5 ft., balled and burlapped, \$10.00 each.

Magnolia grandiflora (Native Southern Magnolia). The great native Magnolia is the South's finest evergreen tree; forest specimens often reach a height of 80 feet. Our strain is more dwarf in growth, but foliage and flowers are very large. These trees can be safely transplanted without soil; we ship bare roots, packed in sphagnum moss. 2 to 3 ft., \$3.00; 3 to 4 ft., \$5.00; 4 to 6 ft., \$7.50 each.

Osmanthus fragrans (Tea or Sweet Olive). Large shrub or small tree, with small, creamy white, highly fragrant blooms over a very long season. Every Southern garden should have one or more. 18 to 24 in., balled and burlapped, \$2.50; 2 to 3 ft., balled and burlapped, \$3.50; 3 to 4 ft., balled and burlapped, \$5.00 each.

Prunus Mume (Flowering Apricot). The first flowering tree to bloom after Christmas. Large shrub or small tree, spreading in growth, with a profusion of small double flowers covering the branches in January and February. Two colors: rose-pink and pure white. 2 to 3 ft., bare roots, \$3.50; 3 to 4 ft., bare roots, \$5.00 each.

Prunus persica (Flowering Peach). Beautiful, double flowers borne profusely in early spring, just ahead of the dogwood season. Three varieties: red, pink, white. These may be dug without soil, shipped bare roots, packed well in moist sphagnum moss. 2 to 3 ft., \$1.00; 3 to 4 ft., \$1.50; 4 to 5 ft., \$2.50 each.

Pyracantha formosana (Red Hawthorn). One of the most valuable of all evergreens for the South. In the spring the large shrub or small tree, with its many branches and compact growth, is a profusion of attractive white bloom, followed by berries which are red, maturing by November and holding on the plants throughout the winter. Sometimes hard to transplant from open ground, we grow these now in containers. Plants in 1-gallon can, \$1.00 to \$1.50 each.

In limited supply we have other trees and shrubs and invite correspondence. All prices in this catalog are for plants only; the purchaser pays transportation, except that roses are priced delivered. While plants without soil are packed light and transportation costs are not excessive, we frankly do not urge customers at a long distance to buy from us balled and burlapped plants, such as hollies and magnolias, unless willing to pay the rather high express charges in order to obtain desired varieties that may not be obtainable elsewhere. We want all the business we can get, but we don't want our customers to feel burned up with heavy transportation bills on balled and burlapped stock. In the South Georgia and North Florida area we make occasional deliveries by truck, saving the customer delivery charges. We invite those who can possibly do so to come to the nursery, select your plants and take them with you or have us deliver by first truck.

HJORT'S KURUME AZALEAS

The Kurumes, natives of Japan, fully one thousand miles farther north than the native habitat of the Indica varieties, are by far the hardest Azaleas, and in the Lower South have stood perfectly the freezes which damaged more tender kinds. The Kurume Azaleas, contrary to popular belief, are not all dwarf growers. There are medium and tall kinds, and the widest assortment of color. We have developed a large stock of these dependable Azaleas, and our prices are lower than these plants can usually be bought for, while the quality is the best. Our plants, from smallest to largest, are shapely and well set with buds. All varieties have evergreen foliage.

PRICES OF KURUME AZALEAS

	Each	12	100
6 to 8 in.....	\$0 75	\$7 50	\$60 00
8 to 10 in.....	1 00	10 00	80 00
10 to 12 in.....	1 50	15 00	120 00
12 to 15 in.	2 00	20 00	
15 to 18 in.	2 50	25 00	
18 to 24 in.	3 50	35 00	

6 or more plants at 12 rate; 50 or more at 100 rate
Larger specimen plants \$5.00 to \$50.00 each

The double varieties are marked thus; all other varieties are single.

Bridesmaid. Glowing salmon-pink; small glossy foliage. Midseason. 10 to 12 in.

***Cherry Blossom.** A favorite of the tall growers; very light pink. Somewhat late in flowering. 8 to 10 in., 12 to 15 in.

***Christmas Cheer.** Brilliant bright red; the small foliage is very dark green and compact. The earliest of the red Kurumes. Medium. 8 to 10 in., 10 to 12 in.

***Coral Bells.** Beautiful shell-pink, shading somewhat deeper at center; free flowering and dainty. The dwarfest of the dwarfs; ultimate height 4 feet. Early. 8 to 10 in., 10 to 12 in.

Gardenia Supreme. A white Pericat Hybrid Azalea of typical Pericat form. Late flowering; fine to extend the Kurume-Pericat flowering season. All sizes.

***Hexe.** Large, deep red flowers. Late bloomer. 8 to 10 in.

Hinodegiri. Brilliant scarlet; foliage rounded and deep green. A midseason bloomer, coming into flower just before Christmas Cheer has finished. Medium. 8 to 10 in., 10 to 12 in.

Hoo. Single white flowers with pink edges. One of the fastest growing Kurumes. 10 to 12 in.

***Mme. Pericat.** Hose-in-hose; large, light pink flower. Late bloomer, fast grower and very showy.

Peach Blow. A fine Kurume with flowers of light peach-blossom-pink. One of the fastest of the Kurumes. Tall; midseason. All sizes.

***Pink Pearl.** Light pink, produced in dense clusters. Tall; midseason. All sizes.

***Salmon Beauty.** Large; salmon-pink. Free flowering. Midseason. All sizes.

Salmon Queen. This salmon-colored Kurume Azalea is one of the best of the single-flowering kinds. Medium; midseason. 8 to 10 in., 12 to 15 in.

***Snow.** The best of the white Kurumes. Medium; midseason. All sizes.

***Sweetheart Supreme.** One of the loveliest of double-flowering Azaleas; light rose-pink. All sizes.

Oriental MAGNOLIAS

Oriental Magnolias are rapidly increasing in popularity in the South, being one of the showiest and most satisfactory of large shrubs or small trees. We are glad to be able to offer a collection of varieties such as few growers have developed. All balled and burlapped specimens.

Cordata. The yellow Magnolia. A native but extremely rare variety. Ours are grafted on Oriental Magnolia stocks, to make a more dwarf and desirable tree. Flowers medium size, canary-yellow in color, produced very late in season. 2 to 3 ft., \$7.50; 3 to 4 ft., \$10.00 each.

Denudata Elongata. Seedling of Denudata or Conspicua. Flowers slightly larger than parent; mostly pure white to lemon-white, but occasionally showing a faint tinge of purplish pink at base. 3 to 4 ft., \$10.00; 4 to 6 ft., \$15.00 each.

Denudata Purpliana. Translucent reddish purple. Very large. Different and distinctive. 3 to 4 ft., \$7.50; 4 to 6 ft., \$10.00 each.

Rustica Rubra. Very large, cup-shaped, purplish red flower. One of the most beautiful Magnolias. Late. 2 to 3 ft., \$5.00; 3 to 4 ft., \$7.50 each.

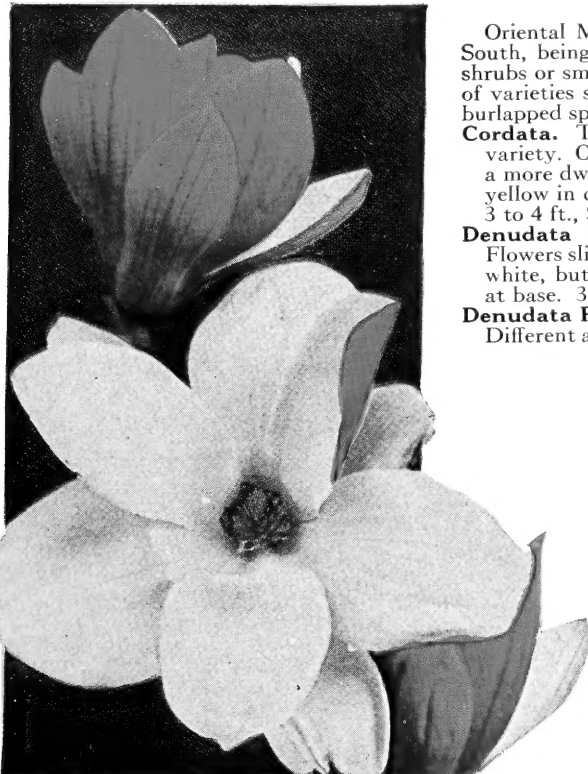
Soulangeana. Most popular variety in the United States, long prized for its beautiful, cup-like form, light pink color and extreme earliness of bloom. 2 to 3 ft., \$3.50; 3 to 4 ft., \$5.00 each.

Soulangeana alba superba. Lovely very light pink; early. A rare and very charming variety. 2 to 3 ft., \$5.00; 3 to 4 ft., \$7.50 each.

Soulangeana Alexandrina. A hybrid that is more vigorous than the well-known Soulangeana. Flower larger, with 9 petals; most blooms are deep purplish pink, lighter inside. 2 to 3 ft., \$5.00; 3 to 4 ft., \$7.50; 4 to 6 ft., \$10.00 each.

Soulangeana Lennei. Possibly largest of all Magnolias. Large, cup-shaped, deep purple flower. Late bloomer. 2 to 3 ft., \$5.00; 3 to 4 ft., \$7.50; 4 to 6 ft., \$10.00 each.

Stellata (Star Magnolia). Dwarf variety, seldom reaching a height of more than 10 feet. Produces numerous, waterlily-like flowers in early spring. 18 to 24 in., \$5.00; 2 to 3 ft., \$7.50 each.



MAGNOLIA SOULANGEANA ALEXANDRINA

Floribundas . . are Fascinating

The popularity of this versatile class of Roses is sweeping the country and is built on fine qualities, including vigorous habit of growth, constancy and profusion of bloom, and loveliness and long-lasting character of flower.

On pages 11 to 14 of this booklet are included a fine assortment of Floribunda varieties well adapted to the South, including the Coastal areas and Florida. Goldilocks, shown here, is easily the leading yellow Floribunda and a worthy companion to such varieties as Fashion, Ma Perkins and Red Pinocchio.



©

GOLDILOCKS



1955 All-America Winner

**Floribunda
Rose**

JIMINY CRICKET

(Plant Patent Applied For)

For those who want Roses in abundance and in a wide range of color, we heartily recommend the Floribundas. Jiminy Cricket is a fine new member of this group, the result of crossing two favorite Southern Floribundas, Geranium Red and Goldilocks.

Jiminy Cricket is tangerine-orange in bud; it changes to coral or vermilion as it opens, and finishes as a shade of pink-coral. The foliage is glossy, and the blooms have a pleasing old Rose fragrance.

**THOMASVILLE
NURSERIES, Inc.**

"Home of Roses"

THOMASVILLE • GEORGIA

PRINTED
IN
U.S.A.