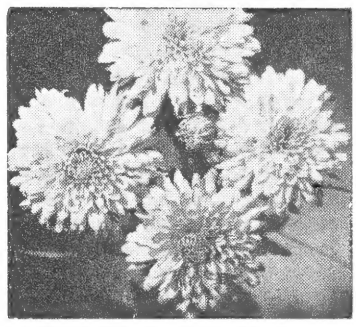


62.25

Per

LIBRARY
RECEIVED
★ FEB 9 - 1955 ★
U. S. Department of Agriculture



GARDEN MUMS FOR '55



**Picturesque Ivies
Perennials and House Plants**



TERRACE VIEW GARDENS

Grafton Longden, Jr.

GREENCASTLE, INDIANA



FREE PLANTS with all orders of \$5.00 or more!
The larger the order—the more plants. You are sure to be pleased.
We will select types of plants similar to those in your order.

INFORMATION, TERMS, ETC.

GENERAL TERMS—Cash with Order. We pay delivery charges on all orders of \$2.50 or more, to any point in the United States, unless otherwise stated in catalog. **ON ORDERS OF LESS THAN \$2.50, PLEASE INCLUDE 35c TO COVER COSTS OF POSTAGE, PACKING AND HANDLING.**

METHOD OF SHIPPING—All plants are carefully wrapped and packed. Shipment is made the best way. Most orders are sent by Parcel Post. Either **Special Handling** or **Special Delivery** may save a delay of one to several days. If either service is desired, please include remittance to cover and mark order thus. On orders of less than \$5.00, the charges are usually 25c for **Special Handling** and 45c for **Special Delivery**. Extra large orders are generally sent by Prepaid Express. If you are unable to receive orders by Express, please advise when placing your order.

WE DO NOT SUBSTITUTE WITHOUT PERMISSION. If we may substitute, please indicate on order and give second choice if possible.

GUARANTEE—We Guarantee Satisfaction—If your order reaches you in poor condition, please advise at once, and if possible, a replacement will be sent to you. If not, your money will be refunded. Should there be a mistake in your order, advise promptly, we will do our best to correct it. No claims will be given consideration if made more than 10 days after receipt of your package. **When requesting adjustments, please include your original Order Blank.**

ALL PLANTS LISTED IN THIS CATALOG ARE YOUNG POTTED PLANTS, IN A HEALTHY GROWING CONDITION, AND ARE SHIPPED TO YOU IN THE SOIL IN WHICH THEY WERE GROWN, UNLESS STATED OTHERWISE.

Because of the many conditions affecting plant growth, we will make no warranty, express or implied, as to the productiveness of plants, bulbs or seeds listed herein, and we will in no case be liable for more than the original purchase price.

We Watch weather conditions and do not ship during periods of extreme weather.

ALL ORDERS PROMPTLY ACKNOWLEDGED if shipment cannot be made within the next few days.

AN INVITATION: You are most welcome at our greenhouses at all times. Hours during the Spring months are 7:30 a.m. to 6 p.m. every day except Sunday. The rest of the year, except during July and August, the hours are 8:00 a.m. to 5:00 p.m. every day except Sunday, although we will make Sunday appointments. We are closed Wednesday afternoons during July and August.

We are located on the east edge of Greencastle on the Indianapolis Road, or can be reached by taking Y Road off U. S. 40 just west of Stilesville. Phone 585-R.

TERRACE VIEW GARDENS: Grafton Longden, Jr., Greencastle, Indiana

PLANT MARVEL
"feed as you water"

The Best and Safest Fertilizer to Use on African Violets or Any Other House Plant. Shipped Postpaid Only with an Order for Plants.

Complete Directions and Aluminum Measuring Spoon with each Package.

(If ordered alone add the following postage)

Trial Size Package (makes 50 quarts).....\$.35 plus .05 postage
½ pound Can (makes 125 gallons).....\$.75 plus .25 postage
1 pound Can (makes 250 gallons).....\$1.25 plus .30 postage

I - B O M B

Insecticide spray that controls aphids, red spider, mites, thrips, white fly and mealy bugs. Fine for use on any house plant. Harmless, safe, and easily used in the home—just press the button. Safe on African Violets. Also fine for outside plants.

\$1.59 plus 15c postage

K A P S U L A T E

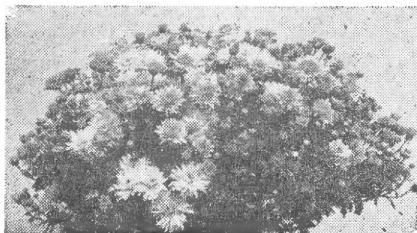
(Sodium Selenate in CAPSULES)

Easy to use for control of all insects on African Violets and flowering and pot plants. One Capsule lasts 3 to 4 months.

Box of 24—\$1.00 Plus 10c postage if ordered alone.

HARDY CHRYSANTHEMUMS

Hardy Garden Chrysanthemums are easy to grow. All plants listed here are healthy young potted plants which will bloom for you this fall. We give the approximate period for blooming. Star-red varieties were most popular in our display this past season. A culture sheet is sent with each order.



D—Double
SD—Semi-Double
S—Single

E—Early blooming (before Sept. 15).
M—Blooming Sept. 15 to Sept. 30.
L—Blooming early October.

NEW 1955 INTRODUCTIONS

RC-192 CHIPPA RED—(Bristol '55) D-E. Brilliant heartwarming Turkey red to maroon flowers. Sport of Chippewa. Lovely fluffy sprays of blossoms. **\$1.00 each.**

BC-193 FOOTBALL BRONZE—(Lehman '55) D-E. Early large flowering bronze; incurved petals. Plant is strong and upright. **75c each.**

RC-194 KIOWA—(U. of Nebr. '55) D-L. Fully double brilliant orange red pompons on strong healthy plants. Flowers so numerous as to hide the foliage at peak of bloom. **75c each.**

PC-195 LADY'S CHOICE—(Lehman '55) D-M. Large 4-inch flowers of ivory pink with a bronze overtone. A truly pastel color. Magnificent plant habit. **75c each.**

YC-196 MURIEL RICE—(Lehman '55) D-M. Large fully double 4 inch flowers of light buttercup yellow aging to deep cream. A truly great chrysanthemum. **\$1.00 each.**

RC-197 NEW MARJORIE MILLS — (Bristol '55) D-E. Well rounded 2½-inch blooms of rich ruby red. One of the earliest double reds; 18-24 inch bush. **\$1.00 each.**

YC-198 NORTH PLATTE—(U. of Nebr. '55) D-E. Large fully double yellow flowers with orange shading. A hardy cross between a greenhouse variety and an outdoor variety. First flowers are borne singly on the stems with later flowers 2-4 on a stem. Long season of bloom. **75c each.**

YC-199 REAL GOLD—(Lehman '55) D-M. Firm 3½ inch pure deep gold flowers. A true gold color different from any other yellow. **\$1.00 each.**

YC-200 SPELLBINDER—(Bristol '55) D-M. Huge fluffy blossoms of liquidly smooth canary to butter yellow with slightly recurved petals. Fine for cutting. **\$1.00 each.**

* **YC-182 ADMIRATION**—(New) D-M. A delightful blend of bright peach, salmon fawn. Exquisitely double 3-inch flowers of lovely new color in heavy sprays. **75c each.**

* **BC-35 AGLOW**—(Lehman '54) D-M. A brilliant pompon of pure orange peel orange. Quilled petals add to its charm. **75c each.**

WC-48 ALABASTER—(English) D-M. Excellent large early white, slightly incurved. **45c each.**

* **PC-54 ALERT**—D-E. Exceptionally fine large early deep purple. **45c each.**

PC-62 ALLEGRO—D-L. Glowing shrimp pink with coppery salmon sheen. **45c each.**

* **PC-49 ALEX CUMMING**—D-L. Opens pure cerise and matures to delightful rose. Bold and beautiful. Petals incurved at center, recurved when open. **75c each.**

* **BC-185 APACHE**—(New) D-M. Orient red to dark brilliant firecracker red with golden overcast. Outstanding weather resistant flowers 4 to 5 inches in diameter with quilled petals. **75c each.**

BC-71 APRICOT GLOW—D-E. Glowing apricot bronze; early flowering cushion. **45c each.**

BC-1 ARAPAHOE—D-E. Large red flowers with bronze reverse. Individual petals long and staplike, slightly wavy. Very frost tolerant. **60c each.**

WC-164 AVALANCHE—D-E. A favorite large creamy white. Fine for cutting. **40c each.**

PC-47 AZTEC GOLD—D-L. Large frost resistant clear bright yellow flowers. **50c each.**

BC-146 BEACON—D-M. Fully double 4 inch flowers of coral apricot shading to flaming nasturtium orange at center. Tall and fine for cutting. **50c each.**

PC-8 BETTY—SD-L. Superbly formed flowers of vivacious salmon pink. **50c each.**

RC-103 BLACK VELVET—D-L. Very dark red velvet pompons. **40c each.**

PC-147 BLUSHWHITE (Spoon)—L. Large, pert and crisp, chalk white flowers underlaid with soft lavender. Tube and spoon equal in length. **60c each.**

YC-126 BOWL O' GOLD—(New) D-E. Large brilliant canary yellow pompon flowers covering a low growing plant. Superb cushion. **75c each.**

RC-100 BURGUNDY—D-M. Glowing wine red on strong stems; good cut flower. **40c each.**

YC-172 BUTTERBALL—D-E. Early butter yellow cushion. **45c each.**

RC-150 CARDINAL SPOON—E. An early cardinal red and gold spoon with straw yellow tubes. **45c each.**

YC-104 CATHERINE COLLINS—D-E. Very early yellow button. **40c each.**

PC-19 CECELIA—D-M. Large mounds of soft deep peony purple flowers. **50c each.**

YC-9 CHARLES NYE—D-M. Large ball shaped flowers of rich buttercup yellow. **45c each.**

PC-57 CHARM SPOON—M. Opens lovely red, fading gradually to rich dusty rose. **40c each.**

YC-121 CHIQUITA—D-M. Compact deep lemon yellow button pompon. **50c each.**

PC-137 CHORALE—D-E. Pretty pink flowers with interesting faintly green and yellow centers. **45c each.**

BC-173 COPPER CUSHION—D-M. Lovely coppery salmon flowers. **45c each.**

RC-80 COURAGEOUS—D-M. Shining dark ruby-red, large double flowers. **50c each.**

RC-45 CUTIE—D-L. Tiny bright red button. **40c each.**

***RC-69 DARK RED GOLD—D-M.** Very pleasing early dark ruby red pompon of cushion habit. **40c each.**

PC-13 DR. L. E. LONGLEY—D-E. Fully double, bright rose-pink. Very good. **55c each.**

WC-127 DRIFTED SNOW—D-M. A mound of large snow white flowers shaded cream at center. **45c each.**

RC-53 EARLY CRIMSON—D-E. Large rich flowers of bright crimson. **60c each.**

YC-10 EARLY GOLD—D-E. Very early cushion. Bright golden yellow pompons. **50c each.**

PC-27 EARLY WONDER—D-M. Large soft pink pompon with lavender tint. **50c each.**

***PC-55 EVANGELINE—D-M.** A stunning addition to the large flowered cacti types. Full 4 inch double flowers. Its tender pink to deep flesh delicacy will appeal. **75c each.**

YC-115 EVENING SUN—S-E. Nice light yellow bronze daisies produced in profusion. **45c each.**

PC-184 FASCINATION—(New) D-M. Bountiful large 4 inch flowers of silvery lavender pink with occasional blooms of pure white. Best in cool weather. **60c each.**

BC-21 FIESTA—D-L. Flamboyant and flaming pompons, almost orange. Radiant. **45c each.**

SC-135 FIRE ENGINE—S-M. Bright, dark cardinal red with orange reverse. Petals open somewhat spoon shaped. Outstanding. **60c each.**

BC-189 FLAMBOYANT—(Bristol '54) D-E. Tangerine scarlet overlaid orange, gradually flaming into orange scarlet. Double 3-inch non-fading blossoms; ideal cutting material. **75c each.**

PC-58 FUCHSIA SPOON—L. A bold prolific flower of sparkling fuchsia-rose. **40c each.**

RC-133 GARNET SPOON—L. Tall upright red spoons with purple tubes and yellow center. **60c each.**

YC-130 GOLD SPOON—L. Large flowers of gold shading to yellow on a dwarf plant. **60c each.**

***YC-178 GOLDEN HOURS—D-E.** Very early and popular deep lemon chrome. **40c each.**

YC-142 GOLDEN MOUND—D-E. Excellent golden cushion. Dark green foliage. **50c each.**

***BC-52 GOLDEN SUNSET—D-M.** Very large flowers of burnished copper with flame red centers. A lovely blend. **50c each.**

YC-66 HARBOR LIGHTS—D-M. Sulphur yellow with cream white tints. Extra fine. **45c each.**

PC-87 HEATHERBLOOM—D-E. Very double heather pink; center shaded rose red with gold tipping. Quilled. **40c each.**

SC-79 HEBE—S-M. Multitudes of light pink daisies. **40c each.**

BC-50 HOLIDAY—D-M. Large bright golden bronze with bronze center. **60c each.**

YC-124 HONEYCOMB—D-L. Hosey yellow button pompons. Very popular cushion. **45c each.**

BC-32 HUNTSMAN—D-L. Vivid bright scarlet orange overlaid with bronze tints. One of the best. **60c each.**

WC-28 IVORY SPOON—L. Dainty ivory white spoon shaped flowers. **45c each.**

****PC-170 JOAN HELEN—SD-E.** It's really beautiful. A mass of glittering crimson purple flowers with yellow centers; cushion. Rated tops in popularity in our fields. **50c each.**

PC-11 JOYBRINGER—D-L. Outstanding dwarf and spreading salmon rose. **60c each.**

YC-12 JUDITH ANDERSON—D-M. Free flowering golden yellow button pompon. **40c each.**

RC-99 JUBILEE—(New) D-L. Plant all aglow for weeks with crimson red pompons which mellow to deep clear red; cushion; **60c each.**

BC-17 KATHLEEN LEHMAN—D-M. Brightest orange gold deepening to red gold at center. Exciting bronze shades. **50c each.**

YC-110 KING MIDAS—D-M. Large bright golden yellow flowers. **40c each.**

SC-44 KRISTINE—S-L. Large and lovely deep rose pink daisy; cushion. **45c each.**

YC-15 LEE POWELL—D-M. Large fluffy flowers of Chinese yellow with a slight orange tinge at center. Lovely. **60c each.**

***RC-2 LESHARA—D-E.** Fully double mulberry red pompons which are long lasting and frost tolerant. **60c each.**

PC-33 MAGENTA SPOON—L. Flowers of excellent spoon form with silvery lilac tubes and deep rose purple spoons. **40c each.**

PC-111 MAGNIFICENT—D-L. Glorious 4 inch flowers of plum red to rosy cardinal with coppery cast. **40c each.**

***RC-94 MAHOGANY CUSHION—D-M.** A fine cushion of jasper red shading to mahogany. **45c each.**

PC-139 MALINDA BROWN—D-M. A magnificent clear self lavender-pink; petals strongly incurved and twisted. **50c each.**

***PC-16 MASQUERADE—D-L.** Masses of one inch silvery rose balls with deeper centers until maturity. Very fine. **50c each.**

***YC-29 MING—D-M.** Beautiful Chinese yellow flowers deepening to rich orange yellow. **60c each.**

***RC-183 MISCHIEF—S-L.** A piquant little gamin. Hundreds of tiny sparkling flowers of beet root purple to deep amaranth and deep rose red, with a bright yellow center, completely smother the plant. **75c each.**

WC-149 MONOGRAM—S-M. Lovely pure white daisy with broad petals. 18 inches. **40c each.**

PC-140 MYRTLE WALGREEN—D-M. Rich amaranth purple underlaid with silvery lilac, aging to clear mallow purple. Excels Chippewa. **50c each.**

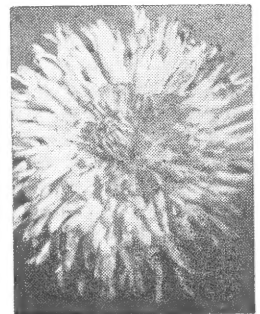
PC-167 NECTAR—D-M. Very large orchid lavender flower with bright center. Excellent cutter. **40c each.**

YC-68 OLD GOLD—D-M. Pompons of deep rich old gold. **40c each.**

PC-67 OLIVE LONGLAND—D-M. Large apricot toned salmon pink flowers. **40c each.**

YC-89 ORANGE QUEEN—D-L. (English) Large rich golden yellow flowers with orange cast. **40c each.**

PC-177 ORCHID HELEN—D-M. Orchid pink flowers of unusual beauty; cushion. **50c each.**



- PC-78 ORCHID SPOON**—L. Lovely orchid pink spoon. **40c each.**
- BC-114 OVERLEY**—(U.S.D.A. '53) D-M. Lustrous coppery bronze blooms; cushion. **50c each.**
- WC-84 PAPER WHITE**—D-M. Extra pure white flowers on dwarf plant. Excellent textured wide, flat petals. **50c each.**
- YC-162 PATHFINDER**—D-E. Non-fading bright clear yellow flowers with notched and lacinated petals. Makes beautiful low hedge because of uniform growth. **65c each.**
- ***PC-72 PATRICIA LEHMAN**—D-M. Fluffy sparkling geranium pink flowers with peach center. **65c each.**
- WC-52 PEPITA**—D-M. Compact eggshell-white button flowers with cream center; cushion. **45c each.**
- PC-180 PINK GLORYMUM**—D-M. Multitudes of pure pink flowers produced on bushy plants; cushion. **55c each.**
- PC-123 PINK OPAL**—D-M. Pale Persian rose overlaid with cream tints. Large extremely delicate and refined flowers. **55c each.**
- PC-186 PINK QUILL**—(New) D-M. A large full centered spidery quill. Outer petals flesh to shell pink with deeper center. Beautiful. **75c each.**
- PC-93 PINK RADIANCE**—D-M. Multitudes of luminous pink blossoms on rugged plants. **40c each.**
- BC-163 PLAINSMAN**—(New) Very double rusty bronze flowers with yellow flushes. Notched and lacinated petals. **65c each.**
- WC-65 POLAR ICE**—D-E. Glistening blue white flowers. **40c each.**
- WC-14 POWDER PUFF**—D-M. Cream white pompon; dwarf cushion. **40c each.**
- YC-129 PUMPKIN SPOON**—Densely branched plant. Persimmon orange flowers aging to yellow. **50c each.**
- RC-6 RED ELF**—SD-E. Clean bright red flowers; dwarf cushion. **45c each.**
- ***RC-38 RED GLOW**—D-M. Dark glowing red pompons in abundance. **40c each.**
- ***RC-46 RED VELVET**—D-L. Fine velvety crimson flowers. **40c each.**
- SC-56 RHEINGOLD**—S-L. Large showy burnt orange daisy flowers. **45c each.**
- PC-151 ROSE SPOON**—Rose pink spoons on long pink tubes. Charming. **40c each.**
- PC-54 ROSITA**—D-L. Compact light Persian rose button flowers; cushion. **45c each.**
- ***RC-136 ROUGE CUSHION**—D-M. Intense firecracker red flowers shading to rosy bronze with bright yellow center. Rated 2nd in popularity in our fields; cushion. **50c each.**
- PC-131 ROYAL ROBE**—D-M. Superbly colored flowers of beet root purple with bluish sheen reflecting from the center. **60c each.**
- ***PC-3 SALUTE**—D-M. Colorful bright purple flowers; low growing. **40c each.**
- YC-4 SEPTEMBER SUNSHINE**—D-E. Fluffy deep yellow pompons; free blooming. **40c each.**
- WC-145 SHALIMAR**—D-M. Masses of large cream white flowers with sulphur yellow centers. **50c each.**
- ***PC-81 SILVER PINK**—D-E. Silvery lavender-pink pompons cover this old favorite. **40c each.**
- WC-165 SNOWFALL**—D-L. Pure white flowers slightly cream at center; cushion. **45c each.**
- PC-43 SPELLBOUND**—D-L. Delicate silvery rose pompons on sturdy plants. **60c each.**
- WC-118 SPINDRIFT**—D-L. Large 3 inch flowers are most appealing pure white with cream center; slightly quilled cacti type. **75c each.**
- PC-105 SYMPHONY**—D-L. Indescribable blend of coppery pink and soft lavender. **40c each.**
- YC-187 TALISMAN**—D-M. A button pompon of soft apricot and yellow overlaid with lavender rose—the color of a Talisman rose. **50c each.**
- BC-31 TANGERINE**—D-M. Flaming Spanish orange to grenadine red. Different. **40c each.**
- ***YC-188 TRANQUILITY** — D-M. Mounds of breath taking flowers of moonlight primrose tones passing to lemon canary suffusion in center. **75c each.**
- SC-36 TUSSORE**—S-M. Exceptionally fine orchid-pink daisy flowers. **45c each.**
- PC-144 VARIEGATED CUSHION**—D-L. An eye catcher of light lavender pink pompons with deep rose red center. **45c each.**

PC-134 VIOLET—D-E. Full purple flowers with good color and substance. **45c each.**

***PC-39 VIOLET GLORYMUM**—D-E. A mound of striking soft purple flowers on a heavy branching plant; dwarf cushion. **60c each.**

YC-191 VISION—(Bristol '54) D-L. A soft harmony of pearl and ivory with just a hint of fawn overglow. A lovely creation and a definite color thrill. **\$1.00 each.**

BC-26 W. P. SNYDER—D-L. Large apricot bronze flowers on bushy plant; cushion. **40c each.**

***WC-24 WHITE CLOUD**—D-E. Pure white flowers with buds and undeveloped petals showing lemon. One of the finest whites we know and a choice cut flower. Lovely from early September until hard freeze. **45c each.**

WC-181 WHITE GLORYMUM—(New) D-M. Pure white flowers on uniform and nice bushy plants. Bears multitudes of beautiful ragged edged flowers. **75c each.**

WC-109 WHITE SPOON—Long narrow white tubes and spoons with creamy center. **40c each.**

***WC-76 WHITE WONDER**—D-M. White ball pompons cover the plant; tall. **40c each.**

YC-7 YELLOW AVALANCHE—D-M. Large fluffy flowers of enthralling soft yellow are greatly loved. **45c each.**

YC-1 YELLOW BLANKET—D-M. Very free flowering clear yellow button pompon; tops for cutting. **45c each.**

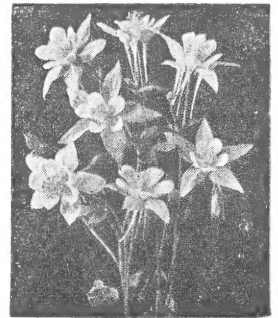
YC-34 YELLOW SPOON—L. Bright clear golden yellow tubes and spoons. **40c each.**

PERENNIALS

AQUILEGIA—COLUMBINE

PA-1 McKana's Giant—'55 All America Bronze Medal Winner. Sensational new strain of Columbine with extremely large graceful bloom and extra long spurs. Mixed colors.

30c each; 6 for \$1.65; 12 for \$3.00



THERMOPSIS CAROLINIANA PT-1 CAROLINIAN LUPINE OF GARDEN LITERATURE

Tall yellow pea shaped flowers on lupine like spikes about 4 feet high. It is perfect for a spot of color in the perennial garden or border in June after the Iris are gone. Established clumps that are 4 to 5 years old will send up many spikes of flowers which are fine for arranging with blue flowers. A must-have background plant for the garden. We offer sturdy field grown roots which will bloom some this year and well next.

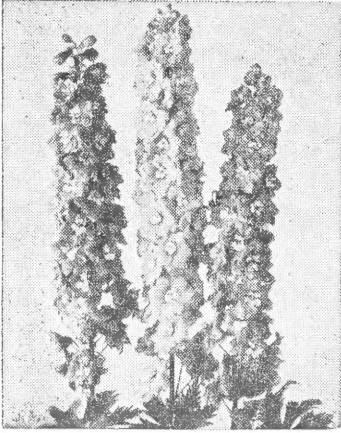
35c each; 3 for \$1.00

BALLOON FLOWER (PLATYCODON GRANDIFLORUM)

Buds resemble small blown up balloons, opening into star-shaped bells of fine quality and texture. These showy and delightful flowers with their clusters of bloom should be in all perennial borders. This plant, with lots of flowers from June to October, will stand more abuse than many and still put on a bright show. Grows to 2 feet and is fine for cutting.

PP-1 Single Blue; PP-2 Single Shell Pink; PP-3 Double White; PP-4 Double Blue.
40c each; 3 for \$1.10

DELPHINIUMS



They will bloom the first year if proper care is given.

WREXHAM or HOLLYHOCK STRAIN — Mixed colors with extra large tapering spikes.

30c each; 6 for \$1.70; 12 for \$3.00

Varieties listed below are GIANT PACIFIC HYBRIDS, outstanding and mildew resisting.

PD-1 BLACK KNIGHT—Deep midnight violet. The darkest of them all.

PD-2 SUMMER SKIES—Light blue with an attractively contrasting white bee.

PD-3 KING ARTHUR—Exceptionally large royal violet flowers with prominent white bee.

PD-4 BLUE BIRD—Clearest of medium blues with a dark bee.

PD-5 GALAHAD—The finest pure white Delphinium. Large double flowers on long closely set spikes.

PD-6 GUINEVERE—Light pinkish lavender with a white bee.

30c each; 6 for \$1.70; 12 for \$3.00

PD-7 ASTOLAT (Pink Delphinium)—The flowers vary in shade from pale blush through all the shades of lilac pink to deep raspberry rose, with large fawn black or brown bees for contrast.

35c each; 3 for \$1.00

SPECIAL OFFER SP-1—One each of the 8 Types of Delphinium for \$2.25.

PYRETHRUM

(PAINTED DAISY)

PP-1. Showy daisy-like flowers in shades of rose, pink, and red are produced in May and June. They are wonderful as cut flowers and the fern like foliage makes the plants attractive even when they are not in bloom. Grow them in rich soil in a fairly sunny location.

30c each; 6 for \$1.65; 12 for \$3.00

G Y P S O P H I L A

(BABY'S BREATH)

PG-1 BRISTOL FAIRY—Sensational double flowering Baby's Breath. Large white florets in airy panicles make it ideal for cutting. Blooms almost all summer from early June until frost. True grafted double flowering variety which will bloom heavily the first year.

60c each; 3 for \$1.50

PG-2 FLAMINGO—New pink double. Flowers all summer. Opens blush pink and deepens.

75c each; 3 for \$2.00

BLEEDING HEART

(DICENTRA SPECTABILIS)

PB-1. True old fashioned variety with lovely pink sprays like your Grandmother knew. Blooms in May or June and does well in either semi-shade or sun. Large 3 to 5 eye clumps.

75c each; 3 for \$2.00

TRITOMA Red Hot Poker

Large attractive spikes of red or orange red flowers from late summer until frost. They will grow two to three feet tall.

30c each; 6 for \$1.65

SHASTA DAISY

MOUNT SHASTA—Beautiful pure white high crested, fully double, daisy blooms on erect 24-inch stems. Blooms all summer.

60c each; 3 for \$1.50

DAHLIAS

We are offering here three Dahlias that have been outstanding the past few years. We have a long list of old stand-bys, and newer ones, too, that we can offer at the lowest retail price. If interested, drop us a card and receive one of our lists.

BD-3 ARTHUR GODFREY—(A-FD) Huge oriental red. Suffused gold late in season. An all time great. Considered largest formal Dahlia grown. **\$1.50 each.**

BD-29 INDIAN GIANT—(II-DA) Described as Mars orange, a huge flower, always attracts attention and produces when other giants fail. **85c each.**

BD-30 QUINN'S TIDAL WAVE—(I-DA) Yellow Australian importation. An exhibition flower considered by some the largest yellow; a good grower. **\$1.50 each.**

LARGE FLOWERING CANNAS

CB-4 CITY OF PORTLAND—Non-fading deep pink; green foliage. Dwarf. 3 feet.

CB-3 THE PRESIDENT—Heavy blooming with flaming scarlet flowers; rich green foliage. The best red Canna. Dwarf. 3 feet.

CB-2 KING HUMBERT—Rich scarlet blooms and handsome bronze foliage. 4 feet.

CB-1 KING MIDAS—Bright lemon yellow flowers dotted red; deep green foliage. 3 feet.

30c each; 6 for \$1.60; 10 for \$2.50

TUBEROUS ROOTED BEGONIAS

BT-11. Highly prized as pot plants for house culture during spring and early summer or to put in the garden in a semi-shady location where they will produce a continuous display of flowers until late fall. Start bulbs in pots in sandy loose soil with the top of the bulb level with the soil line. In fall dry up and store over winter in damp peat moss. We offer the following colors: Red, Pink, Yellow, White, Salmon or Mixed.

35c each; 3 for \$1.00 (Large Size Bulbs)

GLOXINIAS

Magnificent pot plant for summer and winter blooming with showy large open inverted bell shaped flowers borne above the velvety green foliage. Culture sheet sent with order.

BG-1 FIRE KING—Fire red.

BG-3 ETOILE DE FEU—Pure scarlet.

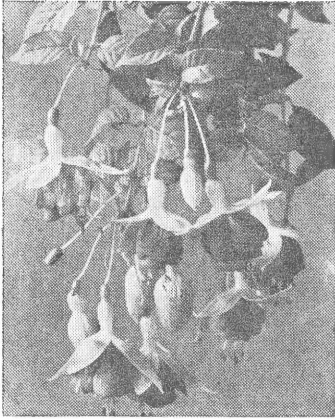
BG-2 VIOLACEA—Violet blue.

BG-4 TIGRINA—Spotted and netted.

Top Size Bulbs—40c each; 4 for \$1.45

FUCHSIAS

(Upright Growing unless stated otherwise)



HF-9 ANITA—Exceptionally large double blooms of violet with splashes of blending red. Turkey red sepals. Trailer.

HF-10 BERNEDETTE—Medium size double, deep blue corolla with pale rose sepals.

HF-11 CARDINAL—Single flowers in a beautiful shade of dark wine red with dark red sepals.

HF-12 CHINA DOLL—Large double white flowers with red sepals.

HF-13 DIAMANT—Large loosely formed white flowers streaked with carmine, with bright scarlet sepals.

HF-14 MISS PRIM—Semi-double flowers of deep imperial purple shading lighter at base; recurving carmine sepals. Small and bushy.

HF-15 MISSION BELLS—Large single flowers of deep purple with red sepals.

HF-16 RUFUS—Single turkey red flowers; fast grower and free blooming.

HF-17 SPRINGTIME—Large double milky white flowers, pink veined at base with bright red upturned sepals. Trailer or hanging basket subject.

HF-18 TREASURE—Double pale orchid corolla with neyon rose sepals. One of the best.

HF-19 SHARON—Semi-double flowers rose Bengal, splashed geranium. Palest scarlet sepals. Semi-trailing.

HF-8 WINSTON CHURCHILL—A superior double of deep violet on a free blooming compact plant.

35c each; 5 for \$1.60

SP-2—SPECIAL OFFER—One each of the above Fuchsias for \$3.70.

Fuchsia Books

“HOW TO GROW FUCHSIAS” by Frances Howard

FB-1. An 80 page illustrated book containing all the information needed for the amateur or commercial grower to produce and care for excellent Fuchsias.

\$1.50 each plus 10c postage if ordered alone.

FB-2. Six page leaflet **“Fuchsias for the Window Garden”** sent FREE with all orders for 4 or more Fuchsias; otherwise 25c each.

Asparagus Plumosa

(LACE FERN)

AP-1. The fine feathery foliage of this fern like plant is very attractive and makes a nice plant which is easy to grow in the home.

25c each

Coleus

FC-1. Everyone loves the bright colors of the Coleus. The beautiful colored leaves of this plant will brighten up any sunny window. For best results temperature should not fall below 60 degrees F. at any time. Our Coleus contain the brightest available colors.

20c each; 10 plants (no two alike) \$1.75; 50 plants for \$7.50

See Fall '54 Folder for Additional African Violets, Episcias and Other Gesneriaceae.

SAINTPAULIA—AFRICAN VIOLET

(HEALTHY PLANTS AND ARE SHIPPED IN EITHER 2¼ OR 3 INCH POTS)

BLUE MOON—Large blue flowers, rich and bright. Glossy dark green foliage; an easy grower. **\$1.50 each.**

BRIGHT MORNING—Lovely large flowers of bright lavender with upper two petals deepened to orchid at the very tip; girl foliage. **\$1.50 each.**

BRONZE DOUBLE ORCHID—Very deep velvety wine orchid flowers. Extremely dark holly foliage. **\$2.00 each.**

BRUSSEL SPROUTS—A novelty with large half-closed green balls showing tints of purple. Lovely foliage. **\$1.50 each.**

CALIFORNIA DARK PLUM—Very deep wine flowers. One of the best reds. **\$1.75 each.**

DOUBLE ROSE—Double white with rose tinge. Some are suffused rose throughout. **\$1.75 each.**

GIRL AT DAWN—Compact plants with large red purple flowers; girl foliage. **\$1.50 each.**

HOOSIER QUEEN — Deep red-wine double flowers. Oak leaf foliage. (Dibel-Longden introduction) First time available. **\$2.50 each.**

WHITE MADONNA—Large, truly pure white, double blooms held well above dark green girl foliage. Finest double white. **\$2.50 each.**

PEACH BLOSSOM—Flowers are a blend of pink and white similar in color to a peach blossom; girl foliage. **\$2.00 each.**

PINK CHEER—Fine deep pure pink flowers borne in clusters. Lovely dark quilted foliage and a constant bloomer. **\$2.00 each.**

PINK WONDER—(Patented) A symmetrical plant with large bright pink flowers with deep pink eyes; somewhat rounded, lightly green leaves. **\$2.00 each.**

PURPLE LACE—Richest royal purple flowers are fluted; scalloped green foliage. Outstanding. **\$2.00 each.**

QUEEN'S CUSHION—Large double, deep red-purple flowers held above lovely dark green foliage. **\$2.00 each.**

ROSE AND WHITE—Large variable flowers of rose with white centers. **\$1.50 each.**

RUFFLED QUEEN—Heavily ruffled and fringed mulberry rose flowers. Beautiful. **\$2.50 each.**

SILVER LINING—Unusual double of light blue edged snowy white. **\$2.25 each.**

SIR LANCELOT—A lovely bicolor with the two upper petals a velvety purple, the three lower ones tipped with the same—A purple associated with cattleya orchids. **\$1.50 each.**

SNOW PRINCE—The best pure white single with large waxy white flowers growing well above the apple green foliage. **\$1.50 each.**

THE BRIDE—Sparkling large double white and deep blue colored flowers; lovely green foliage. Large flowers which open fully. **\$2.00 each.**

YELLOW BROWN GIRL—Novelty with brownish white flowers. **\$1.50 each.**

E P I S C I A (Flame Violets)

VIOLET HANGING BASKET SUBJECT—NOT TRUE AFRICAN VIOLETS

GE-8 E. MRS. FANNY HAAGE—Most beautiful large brown leaves with wide patch of emerald green in center and blue flowers. **\$1.50 each.**

GE-7 E. LILACINA—Large hairy bronze leaves; blue flowers. **\$1.50 each.**

GE-5 E. SPLENDENS—Silver bars on large emerald green leaves. **\$1.50 each.**

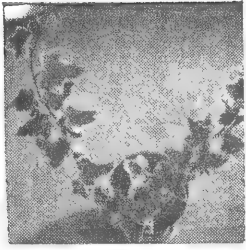
GE-4 E. CUPREATA SILVER SHEEN—Bright silver leaves with brown margins. **\$1.50 each.**

GE-2 E. FULGIDA (formerly Coccinea)—Rich bronze foliage with pronounced emerald green veins. **\$1.50 each.**

GE-1 E. CUPREATA VIRIDIFOLIA—Smooth and glossy Nile green leaves. Best bloomer. **\$1.50 each.**

PLEASE ENCLOSE 25c SPECIAL HANDLING FEE ON ALL VIOLET ORDERS.

IVIES



Glacier



Green Crown



Gold Dust

(SEE FALL '54 FOLDER FOR ADDITIONAL IVIES AND PEPEROMIAS)

IV-32 SOLEDAD GHOST TREE IVY—A NEW unusual bush or tree Ivy of real character with large leathery and glossy, highly variegated green and cream leaves. Interesting blooms. Very out of the ordinary. Large plants from 3 and 4 inch pots. **\$2.00 each.**

IV-30 ERECTA IVY—An odd upright growing Ivy with stiff triangular leaves arranged in two opposite rows up the stem. **50c each.**

IV-14 BIG LEAF VARIEGATED IVY—The large leaves of this Ivy are very attractive with a light green center surrounded by a wide band of cream. **40c each.**

IV-17 CURLILOCKS—Self branching with leaves which are crested, waved, or crimped. Young growing tips are tinged red and curliness increased when grown in full sun. **40c each.**

IV-22 GERANIUM IVY—New! Large oval dark green leaves are deeply curled and crested on outer edges reminding one of a geranium leaf. Different. **50c each.**

IV-2 GLACIER IVY—Very colorful vine for house. Dainty small leaves which are light green in center with wide white bands around margins. **40c each.**

IV-5 GOLD DUST—Leaves are deep green speckled with yellow giving the appearance of having been sprinkled with gold dust. **40c each; 3 for \$1.10.**

IV-25 GREEN CROWN—New! An extremely free branching Ivy with luxurious close growing leaves. A pot crowned with this miniature leaved Ivy is indeed attractive. Our own introduction. **45c each.**

IV-3 HAHN'S IVY—A very useful, slow growing plant with glossy green leaves. It grows well in the shade, making it especially adapted for a house plant. **30c each.**

IV-18 HAHN'S VARIEGATED IVY—A fast growing, small leaved white edged Ivy which is light green in center. Not as highly variegated as Glacier but vines out rapidly and is not fussy. **40c each.**

IV-10 JUBILEE IVY—A dwarf self-branching plant with closely set, tiny light green leaves with white bands on margins. **45c each.**

IV-8 PARSLEY IVY—Lovely parsley green wavy leaves with crimped edges. **40c each.**

IV-21 PIXIE IVY—A fine miniature self branching Ivy; five sharp, deeply pointed lobes. **45c each.**

IV-12 SNOWFLAKE—Leaves of the Hahn shape except smaller. Leaves splashed with white, giving the appearance of being covered with snow. Our popular introduction. **50c each.**

IV-16 SWEETHEART IVY—Interesting deep green truly heart shaped leaves. Very rugged easy grower. **40c each.**

IV-11 TELECURL IVY—Small deep green tight curly leaves on a very free branching plant. A favorite. **40c each.**

IV-20 TRITON IVY—New! Each leaf has 3 narrow pronged lobes with center prong twice as long as outer ones. It is upright and self branching with open, airy, needle pointed leaves. **50c each.**

IV-31 WILLIAMSANA—Delightfully curled and frilled medium sized light green leaves have uneven wide white bands around the margins. One of the finest variegated Ivies. **50c each.**

SP-3—SPECIAL OFFER—CREAM OF THE CROP IVY COLLECTION
One Each of the 18 Listed Ivies. A \$9.35 Value for \$8.00

CV-1 GRAPE IVY—*Cissus Rhombifolia*—Although this is not a true Ivy, it is one of the toughest vines for the house, especially in those homes in which the air is quite hot and dry. Three glossy, toothed and pointed leaflets make the leaf. **30c each.**

CV-2 CISSUS DISCOLOR—This tender plant with its intense coloring of velvety green flushed rose with silver blotches is exquisite. It is a vining plant with red stems and rose on underside of leaves. **75c each.**

CV-3 CISSUS ANTARCTICA (Kangaroo Vine)—Another rugged vine with simple leathery notched leaves on wiry red stems. Valuable like the Grape Ivy for certain home conditions. **35c each.**



P. Pulchella

PEPEROMIAS

P-14 P. GLABELLA VARIEGATA—NEW! Dainty free branching plant with small oval pointed light green leaves, highly variegated cream white, on bright red stem. In a class by itself. **\$1.00 each.**

P-12 P. 'SILVER MOUND'—NEW! An elegant plant having silvery gray, heart shaped, crinkled leaves with distinct veins. A mound of beauty. **\$1.00 each.**

P-13 P. 'ROYAL GOLD'—Gold edging on semi-trailing green leaves; very nice. **50c each.**

P-9 P. PULCHELLA—Small bushy plant densely covered with tiny green leaves, red underneath, on red stems. **50c each.**

P-1 P. SANDERSI (Watermelon Begonia)—Thick heart shaped leaves, with silver stripes running between the veins, give appearance of miniature striped watermelon. **40c each.**

P-7 P. FOSTERIANA—A wiry trailing species with closely set leaves of dark olive marked with light veins. **60c each.**



P. sandersi



HOYA (Wax Plant)

HC-3 HOYA CARNOSA—A vining house plant with thick waxy deep green leaves. **75c each.**

HC-1 HOYA CARNOSA VARIEGATA—Thick green waxy leaves edged with cream and an occasional tinge of pink in the leaves. **75c each.**

HC-2 HOYA CARNOSA EXOTICA—Golden cream and white leaf blades edged green. **75c each.**

SP-4—SPECIAL HOYA OFFER

One Each of the Three Kinds for \$2.00

Philodendron

PH-1 PHILODENDRON CORDATUM—Graceful vines with glossy, heart shaped, green leaves. **35c each.**

PH-3 PHILODENDRON MICAN (Red Leaf Philodendron)—A small vining plant with distinctive heart shaped iridescent leaves which are red-bronze on top and red-green underneath. Gives a velvety appearance and is very choice. **75c each.**

PH-5 PHILODENDRON DUBIUM—Beautiful large deeply and irregularly cut green leaves; handsome. Out of 4-inch pot. **\$2.50 each.**

PH-4 PHILODENDRON PANDURIFORME (Fiddle Leaf Philodendron)—Truly exotic with large fiddle shaped leaves of deep olive green; popular. Out of 3-inch pot. **\$2.50 each.**

Scindapsus (Pothos)

PH-6 SCINDAPSUS (POTHOS) AUREUS—Green leaves irregularly blotched with cream or yellow markings. **40c each.**

PH-7 SCINDAPSUS (POTHOS) AUREUS 'MARBLE QUEEN' — Lovely creamy leaves with green markings. A beautiful slow growing plant. **80c each.**

PH-8 SCINDAPSUS PICTUS 'ARGYEU'—(New!) Small oval satiny green leaves beautifully marked with silver dots. **80c each.**

Pellionia

PL-1 PELLIONIA PULCHRA (Rainbow Vine)—A small creeper with purple stems and marbled leaves with many black veins. **50c each.**

Diffenbachias

D. PICTA—A fine house plant with large green leaves spotted white. Plants sent are 10-15 inches tall. **\$1.75 each.**

D. RUDOLPH ROEHRS—Spectacular house plant with creamy white leaves and dark green veins. Plants sent are 10-15 inches tall. **\$2.00 each.**

Pileas

HP-1 PANAMIGAS—Pilea Involucrata—Quilted dark green leaves with greenish Ming pod shaped blooms. known as South American Friendship Plant. **50c each.**

HP-2 ALUMINUM PLANT—Pilea Cadierei—A newcomer for window gardeners which is a native of Indo-China. It is a small upright grower with broad green leaves, beautifully barred with silver. **50c each.**

Rhoeo Discolor

RH-1 (MOSES IN THE CRADLE) An unusual house plant with wide upright leaves which are green on top and red underneath. Small white flowers are borne in groups surrounded by boat-like bracts in the base of the leaves. Very colorful. **75c each.**

ORDER BLANK

Terrace View Gardens

GRAFTON LONGDEN, JR.

Greencastle, Indiana

ORDER NO. _____ DATE _____, 195_____

SHIP TO _____ **HOW SHIP**

STREET _____ Parcel Post _____

R.F.D. _____ BOX _____ Express _____

POST OFFICE _____ ZONE _____ Amount Enclosed _____

STATE _____ Money Order \$ _____

SHIP ON OR ABOUT _____ Check \$ _____

Stamps \$ _____

TERMS—Cash With Order. Money order or bank drafts are preferred. Currency by registered mail is safe. As results from plants and bulbs are dependent on climatic and other conditions, we will not be responsible for more than price paid.

Please Add Five Cents to Personal Checks to Cover Bank Charge.
Use Order Number as well as Name.

Quan.	Cat. No.	Item	Price	
			Each	Total
Total of Items Ordered on This Side				

Please Give Substitution Instructions on Other Side.

IF YOUR ORDER AMOUNTS TO LESS THAN \$2.50, INCLUDE 35c FOR POSTAGE, PACKING AND HANDLING CHARGES

Quan.	Cat. No.	Amount Brought Forward			
TOTAL AMOUNT ENCLOSED					

We Do Not Substitute Without Permission.

May We Substitute? Yes_____ No_____

GUARANTEE—We Guarantee Satisfaction. If your order arrives in poor condition, let us know and we will replace it free of charge, or refund your money. **Please include this Order Blank with correspondence regarding adjustments.**

() Check here for additional Order Blanks.

Names and addresses of others who would like to receive our catalog.

ZONAL GERANIUMS

YOUNG WELL-ROOTED POTTED PLANTS READY TO START BLOOMING

BETTER TIMES—Large deep red flowers freely produced.

AVALON RED—NEW! Fine strong growing brilliant scarlet red.

OLYMPIC RED—Free flowering bright scarlet.

SNOWBALL—Large snow white.

IRVINGTON BEAUTY—Deep salmon rose flowers on a bushy plant.

APPLE BLOSSOM—Large light pink flowers with white center.

SALMON IDEAL—Deep salmon apricot.

ENCHANTRESS FIAT—Light shrimp pink flowers with lighter edges.

35c each; 10 for \$3.25

FIRE CHIEF—NEW! Strong growing brilliant bright red zonal Geranium.

GAIETY—New! Fine deep rose pink sport of Better Times. Zonal Geranium.

CHARLES TURNER—Ivy Leaf Geranium—Large free flowering soft rose pink.

INTENSITY—Ivy Leaf Geranium—Outstanding bright red.

MRS. BANKS—Ivy Leaf Geranium—Free blooming white with a slight bluish cast.

ROSE SCENTED GERANIUMS

LEMON SCENTED GERANIUMS

MINT SCENTED GERANIUMS

45c each; 3 for \$1.20

ZONAL GERANIUM SEEDS—20c per Packet

LANTANAS

AL-1 GOLDEN KING—Bright golden yellow flowers borne in profusion.

AL-2 SCHMIDT—Yellow shading to fiery orange; one of the most popular and best.

AL-3 SOUTHERN—A very dwarf shrimp pink which is an extra good bloomer.

AL-4 CRAIGH—Large deep pink flowers.

AL-5 SCHULZ—An excellent grower and bloomer in the garden with mature flowers of deep red.

AL-6 WEEPING—Lavender flowers on long slender stems. Excellent for hanging baskets, porch boxes and urns; also fine for a ground cover in the garden.

25c each; 5 for \$1.15; 10 for \$2.00

BILLBERGIA NUTANS—A Bromeliad having tall narrow stiff grass-like foliage with flowers of blue-edged green petals, conspicuous golden stamens and striking pink bracts. Decidedly out of the ordinary. Plants are shipped from 3-inch pots. \$1.00 each.

SA-1 SAXIFRAGA SARMENTOSA (Strawberry Begonia)—Many runners are produced, each carrying one or more plantlets. Leaves are green above with striking white veins, and reddish below. 30c each.

Pot Rim Protectors

A molded rubber rim which slips over the rim of the pot and makes a tight seal. It is easily removed for reuse and may be cut to any size needed as two pieces or more may be used together. Fine for keeping leaves away from pot and preventing damage to petiole. 3 ft. for 25c; 4 to 19 ft. at 8c per ft.; 20 ft. or more at 7½c per ft. (Shipped in pieces of various lengths.)

Supplies



—IDEAL GROWING MEDIUM—

Traps and Stores Air and Water releasing them as needed to bring about strong root systems.

IDEAL FOR STARTING AFRICAN VIOLETS AND SEEDS

4 quart bag—75c; ½ bushel bag—\$1.40

Plant Labels

Mark your plants with these plain wooden labels which are smooth surfaced for ease of writing and pointed for sticking in the soil.

4 inch—20c per dozen; \$1.00 per 100

6 inch—25c per dozen; \$1.50 per 100

Plastic Trellis

Nice for Ivies or other trailing plants. Comes in red, green, and yellow. Pictured in Hoya illustration. (Sold in assorted colors only.)

25c each

TERRACE VIEW GARDENS

GRAFTON LONGDEN, JR.

Greencastle, Indiana

Return Postage Guaranteed

Sec. 34.66, P. L. & R.

U. S. POSTAGE

P A I D

Permit No. 59

Greencastle, Indiana

LIBRARY, U. S. DEPT. OF AGRICULTURE
WASHINGTON 25, D. C. 554