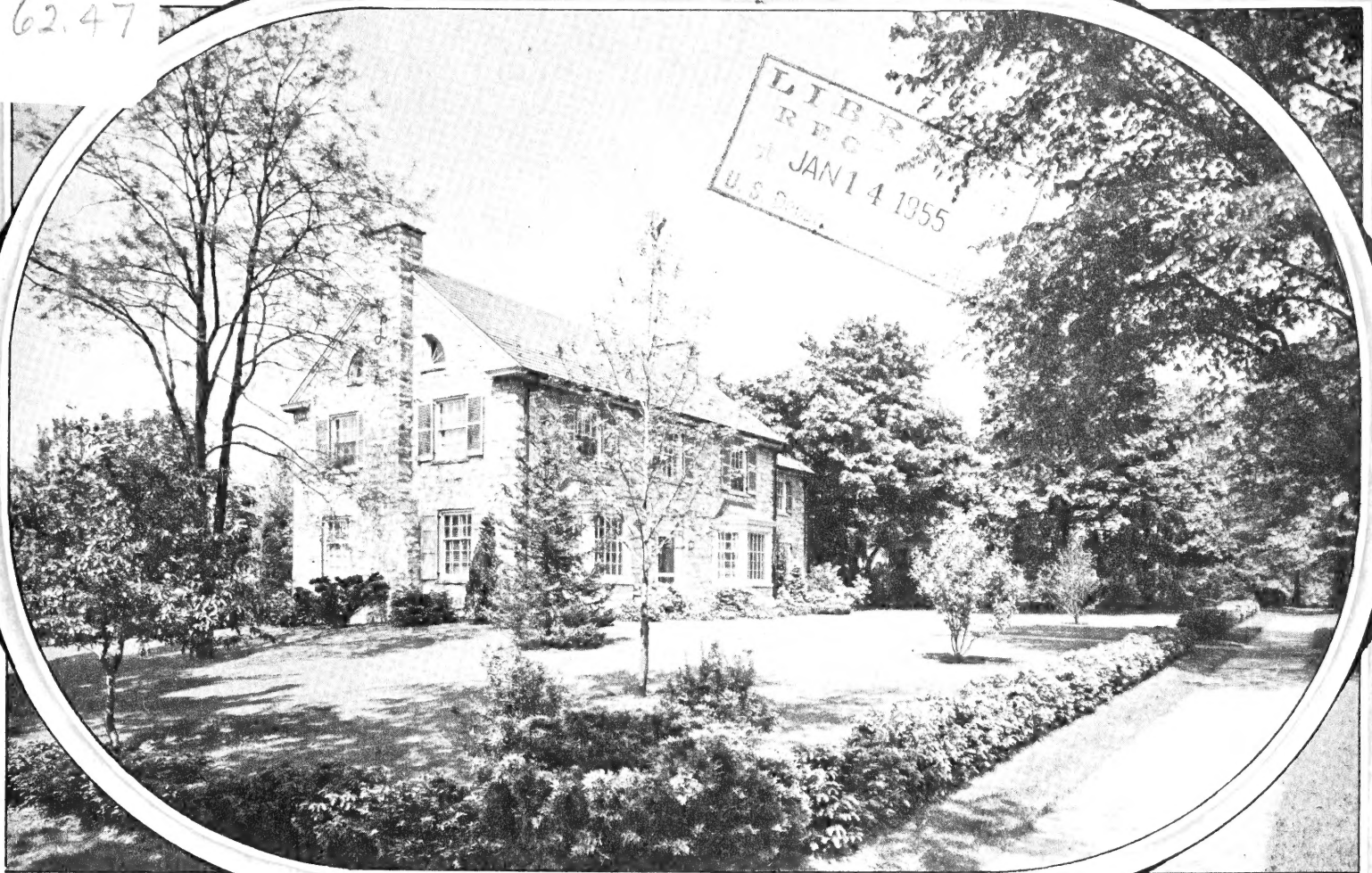


LIBRARY
REC'D
JAN 14 1955
U.S. DEPT. OF AGRICULTURE



SARCOXIE NURSERIES PEONY FIELDS



WILD BROS. NURSERY COMPANY
Sarcoxie • Missouri

Spring, 1955



81 Years

Devoted to
Specialized Horticulture
IN THE BEAUTIFUL OZARKS

★
SARCOXIE NURSERIES
PEONY FIELDS

WILD BROS. NURSERY CO.
Sarcoxie, Missouri



DALE E. WILD
1955

... Delivery ... Our Guarantee ...

PRICES LISTED ARE PREPAID, except larger evergreens and shade trees, which are indicated as not prepaid in catalog. Prices in this catalog cancel all previous prices published.

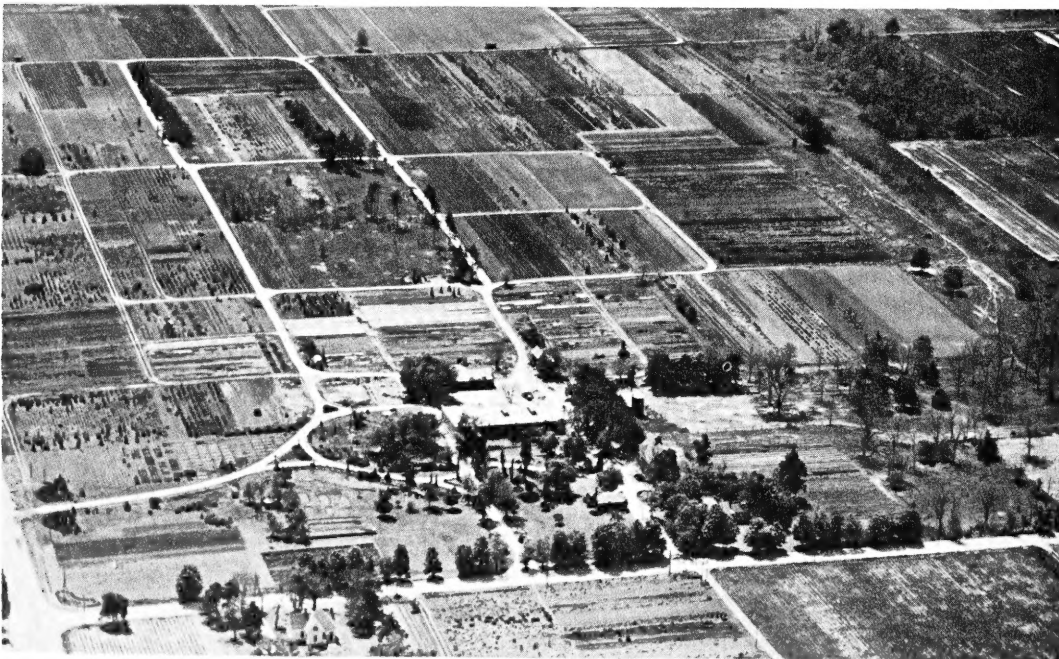
IT'S EASY TO ORDER FROM SARCOXIE NURSERIES CATALOG. No zones or postage to figure, nothing to add except sales tax of 2%, which applies to Missouri customers only. Should your order consist of larger evergreens or shade trees, these will be sent Express or Truck Freight as you direct, transportation charges to be collected upon delivery.

SUBSTITUTION. When we are out of a particular variety ordered, frequently we can substitute another very similar to complete your order. Substitute will be of equal or better value and correctly labeled. If substitution is not satisfactory check square on order indicating "No Substitute."

We offer only first grade stock and guarantee every plant we ship to be of first quality, sturdy and free from disease and to reach you in good growing condition.

We exercise care and diligence to have our varieties true to label and sell all our stock with the express guarantee that we will, on proper proof, replace any that may prove otherwise, or refund the amount paid for the same.

In the case of loss, assuming the plants have been promptly and properly planted and watered as conditions require, we will replace at **one-half** the original purchase price, if reported by **July 1st following purchase** and your report accompanied with your remittance in the amount of one-half the original purchase price. If stock to be replaced was originally sent you prepaid your replacement will be prepaid, if by express or freight, replacements will be sent transportation charges collect. All orders shipped with certificate of inspection.



Aerial view of our main growing grounds, display gardens and packing house.

MODERN FACILITIES—

We maintain our own irrigation and cold storage facilities. Our stock is grown under the most modern nursery methods. The plants you buy are packed fresh; full of life, and guaranteed to reach you in good condition.



YOU ARE INVITED to visit our nursery, our large gardens, and our packing plant. Bring your family, also your camera, if you wish. We always welcome visitors.

Rollins Sealing

NAME.....
 R. F. D. or ST
 P. O.
 STATE.....

PLACE
 STAMP
 HERE



THE SARCOXIE NURSERIES

WILD BROS. NURSERY CO.

SARCOXIE, MO.

The plants you have just ordered have been grown by the most modern methods. They will be packed in rooms in which the temperature and humidity are controlled. They will be received fresh. Most plants are of our own growing and supplied directly from our fields. They are selected plants of the nursery row.

We have grown these plants with care from the time they were propagated. Unpack promptly upon arrival. Plant carefully and water as conditions require. They will reward you for your efforts with flowers, fruits and foliage. Thank you.

To insure prompt reply to questions please write them on a separate sheet and enclose with order.

F O L D H E R E

REMITTANCES should be made by Post Office Money Order, Express Money Order, Bank Draft, or by Personal Check. When mailing currency or coins seal and register the letter. Wrap coins securely in strong paper to prevent slipping and enclose in this blank.

NOTICE

WE EXERCISE GREAT CARE AND DILIGENCE TO HAVE OUR VARIETIES TRUE TO LABEL, AND SELL ALL OUR STOCK WITH THE EXPRESS GUARANTEE THAT WE WILL, ON PROPER PROOF, REPLACE ANY THAT MAY PROVE OTHERWISE, OR REFUND THE AMOUNT PAID FOR SAME.

ORDER BLANK

Since 1875
"In the Beautiful Ozarks"



You are guaranteed your money's worth from Sarcoxie Nurseries. All plants have been inspected and certified by State and Federal agents. All plants are graded according to the standards set up by the American Association of Nurserymen of which we have long been a member.

DALE E. WILD

DATE..... 19.....

NAME.....

PLEASE PRINT

STREET OR ROUTE.....

POST OFFICE..... STATE.....

EXPRESS or FREIGHT
 STATION IF DIFFERENT.....

Orders Will Be Shipped at the proper planting time following the receipt of your order. If wanted on a specific date, please advise.

Shall We Substitute if sold out of a variety? Yes No

QUANTITY	VARIETY (Name of Plant)	SIZE	PRICE	
			Dollars	Cents

EVERYTHING'S PREPAID EXCEPT LARGE EVERGREENS AND SHADE TREES

THESE WILL BE SHIPPED TRUCK FREIGHT OR EXPRESS, TRANSPORTATION COLLECT. SOMETIMES WE SHIP PREPAID ITEMS "EXPRESS PREPAID." If not satisfactory, please advise.

MISSOURI CUSTOMERS ONLY
 ADD 2% SALES TAX

TOTAL AMOUNT ENCLOSED

PLEASE WRITE LETTERS ON A SEPARATE SHEET

California Grown

ROSES

2 YEAR [No. 1

Very Best Grade, Bloom First Year

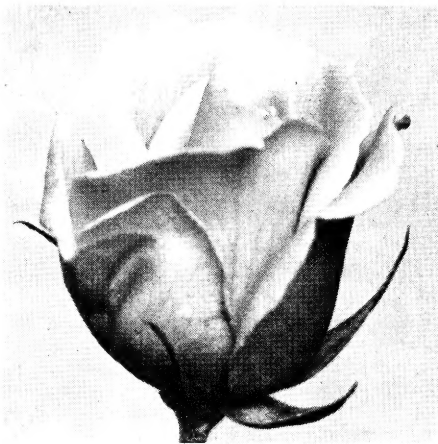
Not to be confused with No. 1½ grade which is also a 2-year Rose but not the best grade—and usually sold for less.

ROSE PRICES PREPAID

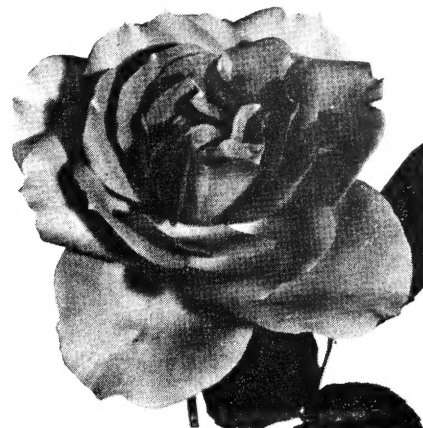
Any 10 or more, \$1.10 each;

Any 5 to 9, \$1.15 each;

Any 3 for \$3.50; Each \$1.25.



PRES. H. HOOVER



ETOILE DE HOLLANDE

HYBRID TEA ROSES . . Not Patented

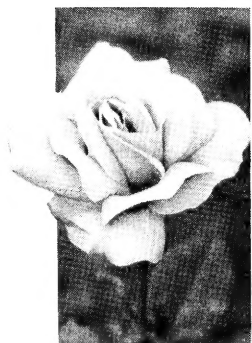
For Spring Delivery



GRENOBLE



CRIMSON GLORY



EDITOR McFARLAND

CALEDONIA. Pure white, large, very double, long lasting. Good for cutting.

CONDESA DE SASTAGO. Golden buds striped red; fragrant. Blooms freely.

CHRISTOPHER STONE. A large brilliant scarlet overlaid with crimson. Long pointed buds; very fragrant; foliage dark green.

CRIMSON GLORY. A large, vivid crimson with overtones and a glowing, oxblood red. For years a best seller patented rose, now offered at standard prices.

DUQUESA DE PENARANDA. Large, long, pointed buds of apricot-orange; tea fragrance.

EDITOR McFARLAND. Brilliant pink, shapely buds; long lasting. Vigorous; good cut flower. Fragrant.

E. G. HILL. Deep fadeless scarlet; large and fragrant. Vigorous grower; profuse bloomer.

ETOILE DE HOLLANDE. Large, fragrant, deep velvety red blooms freely produced. Very popular.

GOLDEN DAWN. Large, pointed buds of bright yellow, outside tinged red. Good double flower. Fragrant.

GOLDEN RAPTURE. Long lasting, pure yellow, pointed buds on long, strong stems. Fragrant.

GRENOBLE. Scarlet - crimson, beautifully shaped flowers on long stems.

KAISERIN AUGUSTE VIKTORIA. Soft, white, slightly tinged lemon-yellow. Exquisitely formed flowers.

MRS. CHARLES BELL. Shell pink sport of Radiance; sweetly fragrant. Strong grower; free bloomer.

MRS. PIERRE S. DuPONT. Deep golden yellow, heavy spicy fragrance. Blooms freely.

PICTURE. Very double, high centered, slightly fragrant, velvety clear rose-pink. Foliage glossy, dark. Vigorous.

PINK DAWN. Carmine-pink, long, pointed buds; old rose fragrance. Keeps well.

PINK RADIANCE. Cameo pink, large, fragrant and prolific all season.

POINSETTIA. Flowers of bright rich scarlet. Rich in fragrance; good bloomer; semi-double.

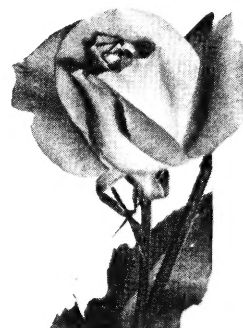
PRES. HERBERT HOOVER. Two-tone bright yellow shaded to cerise-pink and flame-scarlet.

RED RADIANCE. Fine rich red; blooms constantly and abundantly. Easy to grow.

SISTER THERESE. Rich daffodil yellow, outer petals sometimes marked carmine. One of the most beautiful buds; fragrant.

TALISMAN. Two-tone, shading from deep yellow to bright apricot-red. Free bloomer.

THE DOCTOR. Sparkling pink buds, pointed, very large. An excellent pink.



TALISMAN



CALEDONIA



GOLDEN RAPTURE

BUSH ROSES - RUGOSA

A class of roses often forgotten with the many new roses on the market, however they still have an important place in the landscape due to the massiveness and abundance of bloom. One of the most hardy, these roses of the Rugosa type are excellent when used as hedges, in mass plantings or as an accent plant in landscape arrangements.

GROOTENDORST. Everblooming shrub rose, with large clusters of double bright red flowers all summer. Edges of petals serrated. Grows 4 to 5 ft. Used as a shrub, in hedges or as individual plants in foundation plantings.

GROOTENDORST PINK. Similar to Grootendorst, except the flowers are in clusters of double clear pink.

AUSTRIAN COPPER. One of the most striking colors imaginable. Flowers are single, intense copper-red. Reverse of petals bright golden yellow. Grows 2 to 3 ft. with the spread of about the same. Flowers 3 inches across borne in profusion, and blooms for a long period in the spring.

Patented Everblooming Roses

For Spring Delivery Only

Patented Bush Roses (HYBRID TEA)

Charlotte Armstrong (Pat. No. 455). 1941 All American Award. Long streamlined carmine buds and glorious open flowers of spectrum red. **Each \$2.25; 3 or more \$2.00 each.**

Chrysler Imperial (Pat. applied for). 1953 Award winner. A large vivid crimson with overtones and a glowing oxblood red. Excellent plant and foliage. **Each \$2.50; 3 or more \$2.20 each.**

Forty-Niner (Pat. No. 792). Its contrastingly, brilliantly hued bi-colors are startling. Inside orient-red, outside chrome-yellow. A.A.R.S. 1949. **Each \$2.50; 3 or more \$2.20 each.**

Helen Traubel (Pat. applied for). 1952 A.A.R.S. award winner. Named after concert artist. Light sparkling pink to a luminous apricot. Unusually large buds. Beautiful in bud or open flower. **Each \$2.50; 3 or more \$2.20 each.**

Lowell Thomas (Pat. No. 595). Clear canary yellow, long pointed buds on strong stems. Vigorous, compact and bushy. **Each \$2.00; 3 or more \$1.75 each.**

Mirandy (Pat. No. 692). A hugh red rose, very dark and richly perfumed, first place in A.A.R.S. selections for 1945. **Each \$2.25; 3 or more \$2.00 each.**

Mojave (Pat. No. 1176). Pronounced Mo-hav-ee. The 1954 ALL-AMERICA WINNER. Named for California's famous desert, and rich in the colorings of a typical desert sunset. It is a glorious blend of salmon, apricot and orange, produced by a sturdy plant that should be a top performer in any garden. **Each \$2.75; 3 or more \$2.40 each.**

New Yorker (Pat. No. 823). Brilliant red with long lasting color. Sturdy, upright and vigorous. Large flowers on long stems. **Each \$2.00; 3 or more \$1.75 each.**

Peace (Pat. No. 591). Considered the best of new rose creations. Buds golden-yellow, petals edged pink, as the flower opens the gold changes to ivory or white. A.A.R.S. award 1946. **Each \$2.50; 3 or more \$2.20 each.**

Rex Anderson (Pat. No. 335). An exhibition rose of delicate, lovely ivory white. Enormous double flowers perfectly formed. **Each \$1.75; 3 or more \$1.55 each.**

Show Girl (Pat. No. 646). Bud long-pointed, flower large, very fragrant, deep pink, with long stems from a vigorous plant. **Each \$2.00; 3 or more \$1.75 each.**

Tiffany (Pat. applied for). Long, pointed deep pink buds with golden yellow shadings at base of petals. The flowers open to perfectly formed double high-centered blooms of a pleasing shade of pink, with petals of heavy texture. Outstanding fragrance. Vigorous growth, long stems, dark green foliage. A.A.R.S. winner for 1955. **Each \$3.00; 3 or more \$2.65 each.**

Patented Grandiflora Roses

The first roses of a new class. Tall plants with large flowers in clusters. Stems long enough for cutting, and practically thornless. Flowers larger than the average floribunda, with Hybrid Tea standard for bud and flower form.

Carousel (Pat. 1966). Could easily be classed as a Hybrid Tea, except that the flowers appear in clusters so free blooming that it is classed with the grandifloras. Produces a continuous mass of glowing deep red flowers regardless of weather. Tall growing, upright and mildew resistant. **Each \$2.00; 3 or more \$1.75 each.**

Queen Elizabeth (Pat. applied for). First grandiflora rose. Pure pink blooms set off by glossy, deep green foliage. Flowers on long stems, almost thornless; ideal for cutting. A remarkable example of modern rose breeding. All-America award winner 1955. **Each \$3.00; 3 or more \$2.65 each.**

Patented Floribunda Roses

Also called Baby bush roses. They produce clusters of rambler-like flowers on bushes seldom over 18 to 24 inches high and produce large clusters all summer.

Fashion (Pat. No. 789). Brilliant coral flowers overlaid with gold opening with waxy graceful petals. Large clusters. A.A.R.S. award 1950. **Each \$2.00; 3 or more \$1.75 each.**

Goldilocks (Pat. No. 672). Rich golden-yellow buds oval in shape. Long lasting, hardy and vigorous. **Each \$1.50; 3 or more \$1.30 each.**

Jiminy Cricket (Pat. applied for). Tangerine red buds opening to coral-orange and finishing to a pink-coral. Pleasing old rose fragrance, glossy foliage bronze in the early stages. Vigorous upright growth, prolific blooming habit qualifies it as a specimen or for borders. **Each \$2.50; 3 or more \$2.20.** A.A.R.S. award 1955.

Lilibet (Pat. applied for). ALL-AMERICA WINNER 1954. Named to honor the beautiful princess who has become Queen Elizabeth II of England, this dainty floribunda of clear pink blossoms and compact dark green foliage deserves a prominent place in all rose gardens. The plant is a good grower. Disease resistant. **Each \$2.00; 3 or more \$1.75 each.**

Pinocchio (Pat. No. 484). Very thrifty grower producing many pointed buds of salmon flushed gold, opening to miniature roses. **Each \$1.50; 3 or more \$1.30 each.**

Red Pinocchio (Pat. No. 812). Deep satiny carmine buds—inside bright carmine, very fragrant. **Each \$1.50; 3 or more \$1.30 each.**

Summer Snow (Pat. No. 416). One of the most prolific of floribundas with great "drifts" of large white clusters like mounds of snow. Fragrant. **Each \$1.50; 3 or more \$1.30 each.**

World's Fair (Pat. No. 362). Produces large flowers of velvety blackish-scarlet flowers with glowing yellow stamens. **Each \$1.50; 3 or more \$1.30 each.**

Patented Climbing Roses

EVERBLOOMING

Climbing Crimson Glory. Climbing form of the outstanding hybrid-tea bush rose of the same name. **Each \$2.50; 3 or more \$2.20 each.**

Climbing Goldilocks (Pat. No. 1090). A truly everblooming climber of rich golden yellow, blooming in large clusters. Beautiful buds resembling miniature hybrid teas. **Each \$2.50; 3 or more \$2.20 each.**

Climbing Peace (Pat. App.). Truly a gem for the garden. A climbing form of the new Peace rose. Everblooming, vigorous and fragrant. **Each \$2.00; 3 or more \$1.75 each.**

Dr. J. H. Nicolas (Pat. No. 457). Vigorous plant, dark green foliage, double deep rose-pink flowers, 5 to 6 inches across. One of the best everblooming climbers. **Each \$2.00; 3 or more \$1.75 each.**

SPECIAL ALL AMERICA COLLECTION \$7.45

All-America Rose Award Winners for 1955

- 1 Jiminy Cricket. All-America floribunda.
- 1 Tiffany. All-America hybrid tea.
- 1 Queen Elizabeth. All-America grandiflora.

Would cost \$8.50 if purchased separately.
All 3 Award Winners for 1955 for only \$7.45.

ROSES, Continued—*Hardy Climbers and Floribundas*

SPRING DELIVERY ONLY

NOT PATENTED

Hardy Climbing Roses

\$1.25 each; any 3 for \$3.50. Prepaid.

During their season these give more flowers and a greater display than any other roses grown. Is the porch sunny and bare? Climbing roses provide both shade and beauty. Is there an arbor you wish to beautify? Use roses. Have you an unsightly fence? Ramblers make the prettiest fence imaginable. Have you a view you wish to screen? A trellis with roses will make your screen a thing of beauty. Is there a rough or stony slope you wish to beautify? Cover it with ramblers. Do you want an arched entrance to the rose garden? What can be more appropriate or give so much for so little invested?

Climbing American Beauty. Beautiful buds and large flowers on good stems. Almost the same rich color and fragrance as bush American Beauty. Rich red to crimson.

Doubloons. One of the very best yellow climbers. Large golden yellow semi-pointed buds nested in glossy green foliage. Never before offered at standard prices.

Dr. W. Van Fleet. Delicate flesh pink, the center deepening into rosy flesh. Pointed buds resembling hybrid teas, open into semi-double cut flowers borne singly.

Golden Climber. Large, open, sunflower yellow. Buds long pointed. Foliage glossy. Noted for its vigorous growth and hardiness.

Mary Wallace. One of the best pink climbers. Pretty buds opening into charming, semi-double cut flowers, often 4 in. across, very bright, clear rose pink.

Paul's Scarlet. Vivid scarlet shaded crimson, intensified by the yellow stamens; flowers of good size, semi-double, in clusters of three to fifteen. Brilliant scarlet, well retained.

Silver Moon. Creamy buds; beautiful, semi-double, very large white flowers, often 3 to 4 inches across, a cluster of golden stamens in the center; midseason; foliage rich, dark green.

Everblooming Climbers

\$1.35 each; any 3 for \$3.75. Prepaid.

Blaze. A hardy vigorous climbing rose similar to Paul's Scarlet. Recurrent bloomer with flowers of scarlet-crimson.

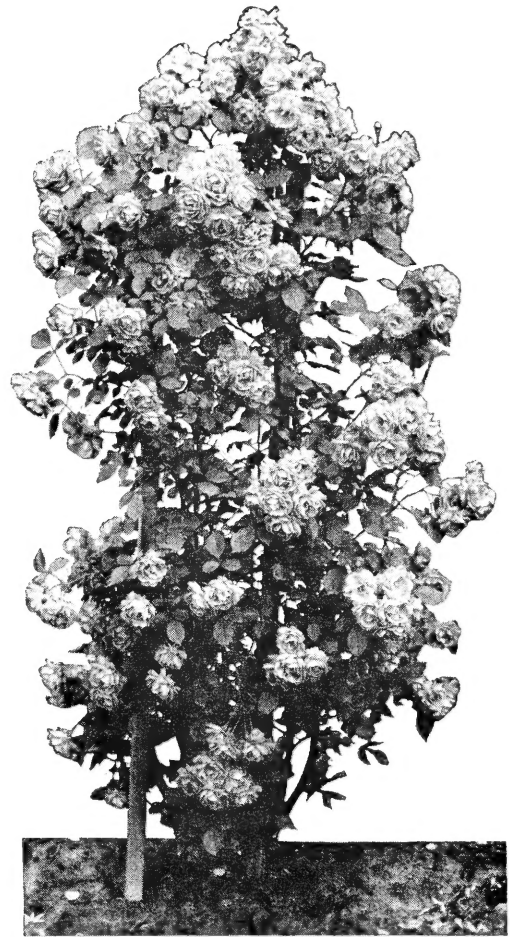
K. A. Victoria. A climbing form of the popular white K. A. Victoria rose.

Pink Radiance. A climbing form of the popular Pink Radiance rose.

Pres. Hoover. A climbing form of the two-tone bush rose.

Talisman. A climbing form of the popular bush rose.

With the exception of Blaze the everblooming rose varieties are not generally as hardy as the May blooming kinds and should have some winter protection.



During May Climbers give a greater display than any other roses.



Floribunda Roses.

Floribunda and Polyantha Roses

\$1.25 each; 3 for \$3.50; 5 or more at \$1.15 each. Prepaid.

These rather dwarf roses will give a spectacular show from spring until fall. Excellent as border plants, in groups, or used as a low hedge.

Cecil Brunner (Sweetheart). Often called sweetheart rose. Tiny buds perfectly formed, and produced in loose sprays. Delicate pink, decidedly fragrant.

Else Poulsen. A dependable large flowering Floribunda; bright rose-pink flowers 2¼ inches across in large clusters from early summer to late fall.

Eutin. Beautiful glowing carmine red, bud pointed, flower cupped. Tremendous clusters of flowers on strong stems. Vigorous.

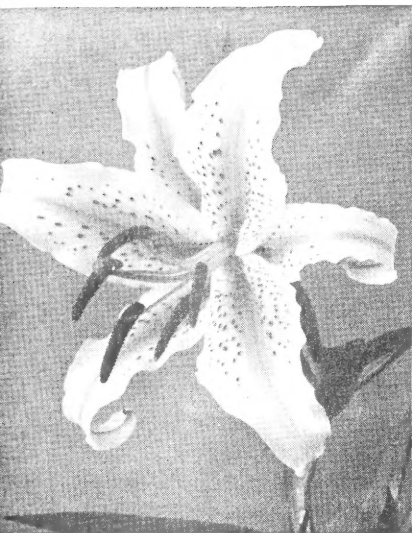
Floradora. Scarlet to geranium red, perfect double flowers resembling a small camellia, vigorous; one of the best.

Golden Salmon. Blooms continuously, like Gloria Mundi this variety is a gay color. Golden salmon as the name implies.

Ideal. All summer long its dark scarlet blooms like Ramblers are produced freely in large clusters on plants about 18 in. high.

Improved Lafayette. Very good. Produces large clusters of bright cherry-crimson flowers. A most popular baby rose which blooms all summer.

Orange Triumph. Salmon red with orange shadings. Blooms in enormous clusters and due to its uniformity of size and continual bloom it makes one of the favored varieties for borders.



Auratum or Gold Banded Lily

RUBRUM LILY

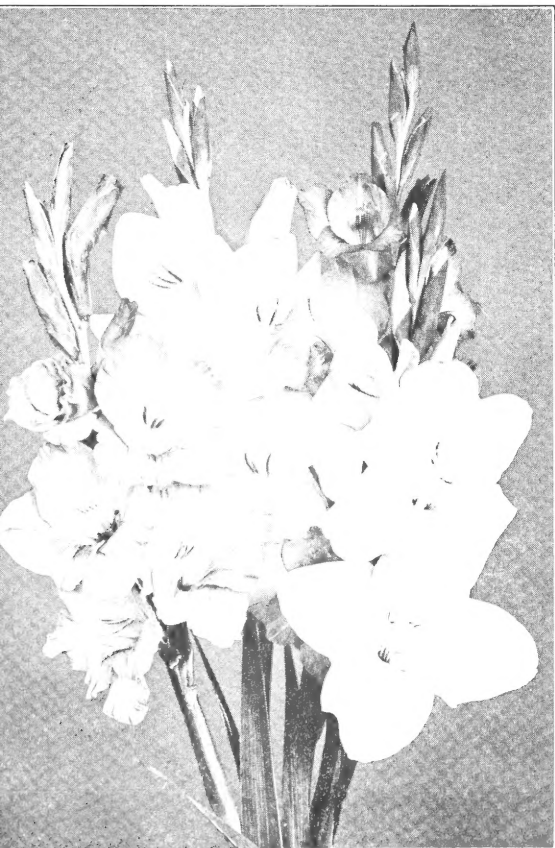
The most beautiful, deliciously fragrant lily of them all. Ruby carmine with white margin, blotched deep ruby. Large blooming size bulbs.

70c each; 3 for \$2.00; 6 for \$3.00

UMBELLATUM LILY (Flame Lily)

A very free flowering lily of easy culture. Produces large orange-red flowers in clusters on 24-inch stems.

Large size, 40c each; 3 for \$1.00.



Gladiolus

HARDY LILIES

FOR SPRING PLANTING

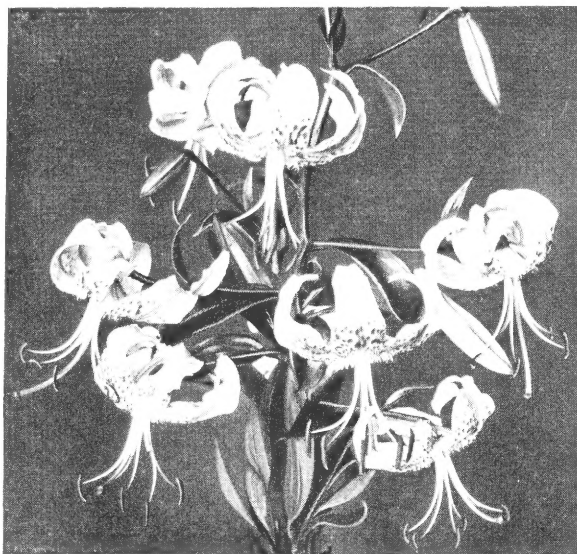
To Bloom This Summer

BULBS ON THIS PAGE—PREPAID

AURATUM or GOLD BANDED LILY

These large fragrant waxy white flowers are dotted with small crimson spots. Each petal has a center stripe of gold. Blooms July to September.

75c each; 3 for \$1.75; 6 for \$2.95.



Rubrum (Speciosum) Lily

Gladiolus

Large blooming size bulbs, 1 1/4 to 2 in. across.

Plant after danger of frost, 6 inches deep and 8 inches apart. Bloom first year.

Beacon. A beautiful ruffled flower of brilliant vermilion-scarlet with light yellow throat. Large, straight spikes.

Blue Beauty. The blue glad. A medium blue darker at the edges. Excellent.

Elizabeth the Queen. A beautiful ruffled soft lavender. Really a queen among the large glads.

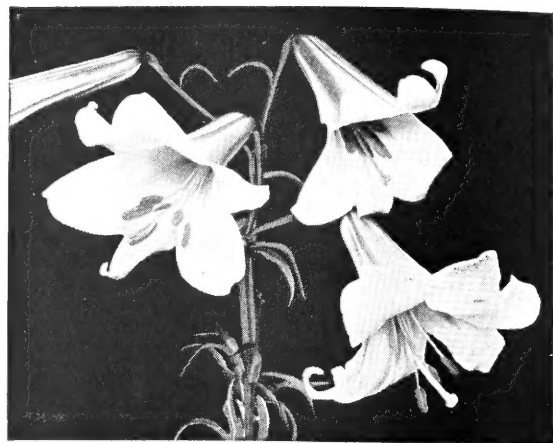
Ethel Cave Cole. A choice pure light shell pink. Immense flowers on a heavy spike, often 8 or more flowers open at one time.

Snow Princess. The finest large white. Heavy spikes and very large blossoms.

Stoptlight. Called the perfect red. This new variety has proved so popular we offer only the one red variety. Tall, straight spikes with glistening red ruffled flowers of immense size.

15c each; 3 of a kind, 30c; 6 of a kind, 50c;
12 of a kind, 90c; 25 of a kind, \$1.50.
One each of above 6, not labeled, 50c.

EXHIBITION MIXED GLADIOLUS
A brilliant assortment of good varieties, mixed colors, large bulbs.
25 for \$1.25; 50 for \$2.25; 100 for \$3.75.



Regal Lily

REGAL LILY

Inside white with yellow throat, outside pink. Very hardy. Fragrant.

Large size, 40c each; 3 for \$1.00;
6 for \$1.85; 12 for \$3.50.

TUBEROSE

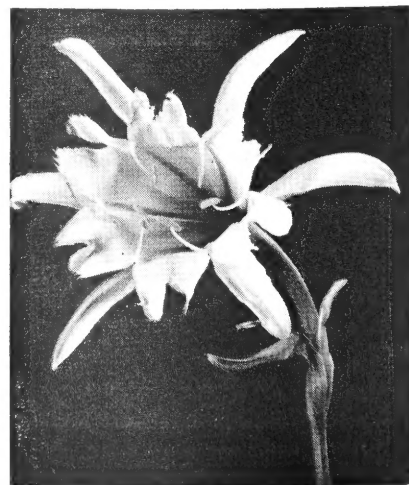
Produces very fragrant waxy white flowers on stems 30 to 36 inches tall. Blooms from July till frost.

3 for 35c; 6 for 60c; 12 for \$1.00.

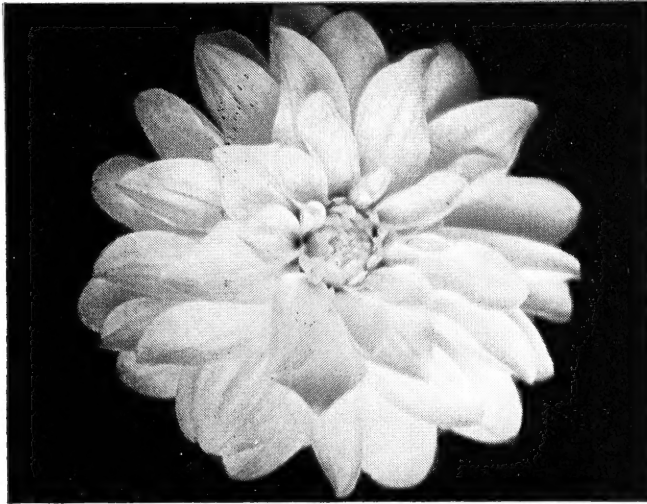
Tuberous Rooted BEGONIAS
These large flowering begonias are packaged in an attractive box, the flowers pictured in full color. Just the thing for a gift to a gardening friend and a "must" for that shady spot in your own garden. They may be started indoors for early blooming or planted outside after danger of frost in the spring. Complete instructions on the package.
One each of 6 colors—no two alike;
Box of 6 bulbs, prepaid.....\$1.50

ISMENE (Peruvian Daffodil)

One of the best summer-flowering bulbs. Clusters of large, fragrant pearly-white flowers, resembling the Amaryllis. Excellent in flower arrangements. New, different, and easy to grow. 50 each; 3 for \$1.35; 6 for \$2.50.



Ismene, Peruvian Daffodil



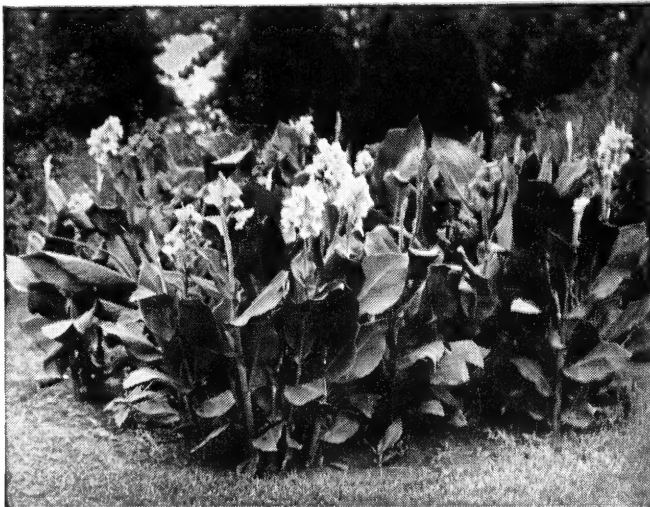
LARGE DECORATIVE DAHLIAS, for Autumn flowers

Easily grown and give an abundance of flowers in early autumn. The decorative type have large, broad petals in rather flat heads. Special care and disbudding will increase the size of the flowers. Not hardy; must be stored over winter.

- Avalon.** Sparkling large yellow.
- Francis Lorocco.** Bright sulphur yellow.
- Gallant Fox.** Excellent brilliant red.
- Golden Eclipse.** Golden yellow, center tinted buff.
- Mrs. I de Ver Warner.** Bright lilac rose.
- Jersey Beauty.** Large luminous coral pink.
- Rose Glory.** Rose pink.
- White King.** Excellent pure white.

50c each; 3 for \$1.35; 6 for \$2.50; 12 for \$4.25; your selection; All Dahlias are prepaid.

CANNAS, bloom June till frost



City of Portland. Deep pink; green foliage; grows 3½ ft. high.

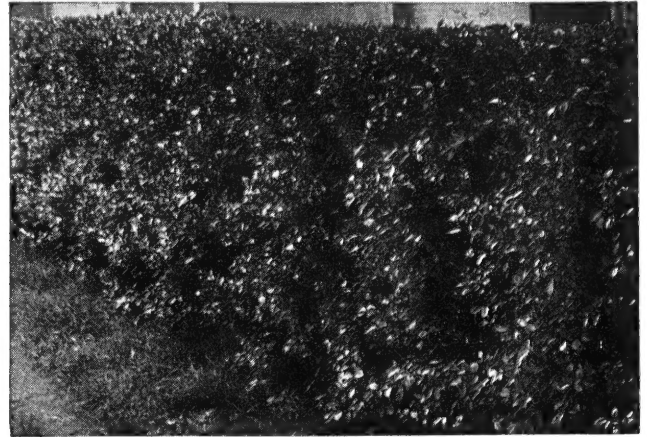
King Humbert. Large trusses of large, bright orange-scarlet flowers; bronze foliage; blooms freely; fine; grows 4 to 5 ft.

President. Rich, glowing scarlet; large flowers on strong stalks; green foliage; blooms freely; grows 4 ft.; stands heat well.

Yellow King Humbert. Large; rich yellow dotted red, occasionally a scarlet or scarlet-striped flower; green foliage.

Prices of Cannas—your selection, prepaid: 3 for 60c; 6 for \$1.00; 12 for \$1.80; 25 for \$3.50. All Cannas are prepaid.

Privet the Living Fence



Plant 10 to 12 inches apart. Prune back to within 6 to 8 inches of the ground to make them branch low and thickly. The second spring, if not sufficiently thick, again prune back, a little higher. After that prune to keep the hedge the height and width desired, usually about three times a year. Avoid severe pruning after the middle of August.

Privet, Amur River North; Ligustrum amurense. A rapid growing Privet of upright habit, taking the place of California as it is reliably hardy here. Very fragrant small white flowers like tiny lilacs in late May, followed by black berries; seldom blooms when pruned as a hedge.

2 Year Plants, Prepaid		25 for	50 for	100 for
12 to 18 in., 2 canes	\$3.75	\$ 6.50	\$12.00
12 to 18 in., 3 to 4 canes	4.75	8.50	15.00
18 to 24 in., 2 canes	5.75	10.00	18.50
18 to 24 in., 3 to 4 canes	6.75	12.50	22.00

Privet, Evergreen, Chinese No. 6. This new privet, introduced by us, is practically evergreen, holding its leaves all winter, and has proved perfectly hardy in our section. Densely foliated with small leaves, it makes an excellent sheared hedge or untrimmed screen where all-year privacy is desired. 6 to 8 feet.

	Prepaid	25 for	50 for	100 for
12 to 18 in.....	\$6.50	\$12.00	\$20.00	
18 to 24 in.....	7.50	14.50	27.50	

Privet, GRODENSE. A NEW privet, compact and somewhat dwarf in habit. By shearing it forms one of the most compact and beautiful hedges grown. Is naturally of bushy habit rather than upright. When grown untrimmed it grows 4 to 5 ft. tall, with about the same spread. Hardy; was developed from a Northern strain.

	Prepaid	25 for	50 for	100 for
12 to 18 in.....	\$6.50	\$12.00	\$20.00	
18 to 24 in.....	7.50	14.50	27.50	

Multiflora Rose for Hedges

THE NEW LIVING FENCE

Rose multiflora. This thorny rose has proved itself as a worthy plant for hedging. Is a solution for high cost farm fencing—grows into a useful fence in two years, has ornamental flowers and fruits. Excellent wild-life cover; repels livestock and does not require trimming. Space 18 to 24 inches apart in row. Grows 6 to 8 feet high.

Jumbo—Estate Grade. 18-24 inch heavy plants grown especially for those wishing immediate hedging effect.

Town and Country Grade—15-18 inch plants, the size recommended for general farm and residential screens and for fencing. 300 or more take the 1000 rate.

Conservation Grade—12-15 inch 1 year plants for farm fencing and conservation plantings.

	Prepaid	25 for	50 for	100 for	500 for
Jumbo-Estate Grade	\$3.50	\$5.50	\$10.50	\$45.00
Town and Country Grade	2.00	3.50	6.75	28.50
Conservation Grade	1.65	2.75	5.00	22.50

SARCOXIE NURSERIES

Shade Trees Beautify the Lawn

SHADE TREES SHIPPED EXPRESS OR TRUCK FREIGHT, TRANSPORTATION COLLECT, UNLESS OTHERWISE NOTED.

A broad open space of well kept lawn is the first essential of good landscape design, the base against which all else is viewed. Yet it is incomplete without trees to shield the house from the direct heat of the sun, and for ornament. Without trees as a background so the topmost branches extend above and break the roof lines, and a few toward the ends to frame the view, the house appears lost in space. Once established, nothing will increase in value and give such good results with so little attention as shade trees.



European White Birch

ASH, MOUNTAIN

A fine ornamental tree of pyramidal growth, with graceful feathery foliage. Showy clusters of white flowers in spring followed by dazzling scarlet berries in fall. A wonderful autumn tree.

6 to 8 ft., not prepaid.....\$4.95 each

BUCKEYE, SCARLET

Rare and unusual. Of exceptional value in the landscape. Early in the spring it produces scarlet flowers in candle-like spikes. Foliage like the Ohio Buckeye. Dwarf, grows 8 to 12 feet. Produces nut-like fruit resembling chestnut; this fruit is not edible. Blooms young and profusely.

12 to 15 in., prepaid.....\$1.50 each
18 to 24 in., prepaid..... 2.25 each
2 to 3 ft., prepaid..... 3.50 each

BIRCH, EUROPEAN WHITE

A beautiful, graceful tree of peculiar charm; slender branches, the ends drooping with age, bark chalky white; leaves rather small, triangular, bright light green, yellow in autumn. Single standards, tree form.

3 to 4 ft., prepaid.....\$1.75 each
4 to 5 ft., not prepaid..... 2.50 each
5 to 6 ft., not prepaid..... 2.75 each
6 to 8 ft., not prepaid..... 3.95 each

BIRCH, CLUSTER OR CLUMP

Grows in a beautiful clump of three or more trunks on one root system. Bark turns chalky white with age. Fall foliage a beautiful yellow. Grows 25 to 30 feet high.

5 to 6 ft. clumps. Spring delivery. Not prepaid.....\$4.75 each

BIRCH, CUT LEAF WEEPING

Deeply cut leaves on graceful, drooping branches; silvery white bark. Most effective as a specimen lawn tree or in a group planting. Grows 30 to 40 feet.

6 to 7 ft. Spring delivery. Not prepaid.....\$4.95 each

DOGWOOD, RED FLOWERING

Beautiful and unusual in late April. Flowers like those of the White Flowering, but a deep pink to light red. Foliage and berries like those of the white form.

2 to 2½ ft. roots in moss, prepaid.....\$3.50 each
2½ to 3 ft. roots in moss, prepaid..... 4.50 each
3 to 4 ft. roots in moss, prepaid..... 6.50 each

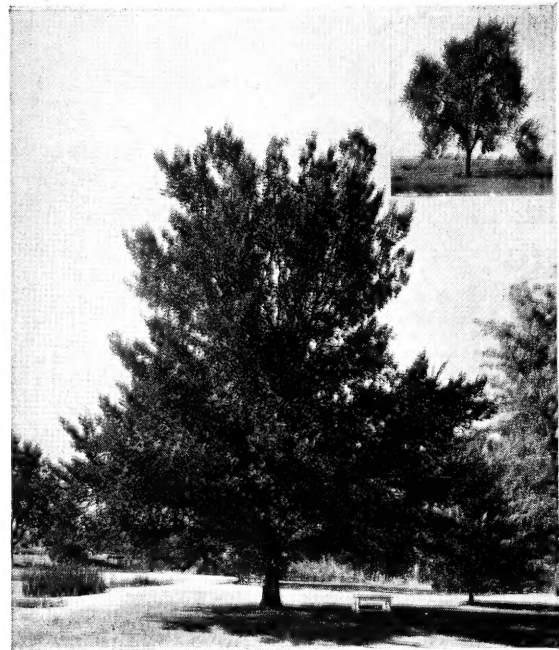
DOGWOOD, WHITE FLOWERING

A large shrub or small tree, usually attaining 15 to 20 feet. Valuable for specimens or naturalistic plantings in sun or partial shade. Lovely single white flowers in early spring. Water dogwood well during summer.

2 to 3 ft. roots in moss, prepaid.....\$1.75 each
3 to 4 ft. roots in moss, prepaid..... 2.75 each

THE SENSATIONAL NEW

Elm Coolshade



Undoubtedly the most beautiful Elm we have ever seen. It is a most practical all-purpose shade tree. Unlike the American Elm, it does not have large lateral limbs that are dangerous when overhanging the residence. It may be planted close to the house without worry.

IT'S TOUGH—does not break in the wind and under the burden of ice and snow like the ordinary Elm.

IT'S BEAUTIFUL—forms a compact tree, somewhat resembling the Hard Maple in form. (Insert is Chinese Elm.)

IT'S HARDY—like all Chinese Elm, it is hardy and drought resistant. Apparently it is not subject to the Dutch Elm disease or Phloem necrosis, which affects the American Elm.

IT'S CLEAN—does not shed leaves early and cause an unsightly lawn—holds its leaves late into the fall.

IT'S RAPID IN GROWTH—not quite so rapid as ordinary Chinese Elm, however produces an abundance of deep green foliage affording a complete shade—a "COOLSHADE"—and a truly beautiful shade tree.

WE SINCERELY RECOMMEND THIS AS THE BEST ELM WE HAVE EVER KNOWN. Grows 35 to 50 feet high.

4 to 5 ft., prepaid	\$ 2.50 each
5 to 6 ft., not prepaid	3.00 each
6 to 8 ft., not prepaid	4.50 each
8 to 10 ft., not prepaid	6.50 each
10 to 12 ft., not prepaid	12.50 each

ELM, CHINESE

Of very rapid growth, with slender branches and leaves smaller than those of the American Elm. The leaves appear very early in the spring and remain till late fall. Especially adapted for arid regions and for quick results.

5 to 6 ft., not prepaid	\$1.75 each
6 to 8 ft., not prepaid	2.25 each
8 to 10 ft., not prepaid	3.50 each
10 to 12 ft. heavy, not prepaid.....	5.00 each

GOLDEN CHAIN TREE, LABURNUM

One of the rarest and most beautiful trees. In the spring long graceful clusters of golden flowers hang from the tree in sprays 12 to 18 inches long. Truly a specimen that will attract attention as far as it can be seen. Not hardy north of central Iowa.

5 to 6 ft. Spring delivery. Not prepaid.....\$3.75 each

SHADE TREES CONTINUED ON NEXT PAGE

SARCOXIE SHADE TREES—Continued

GOLDEN RAIN TREE, KOELREUTERIA

An excellent tree, both useful for shade, and very ornamental. Hardy throughout the greater part of the U. S. and grows well in most any soil. Large upright clusters of tiny golden flowers are produced in abundance, and last for a long period during the spring. Brown bladder-like pods follow the flowers and are also very ornamental. Grows 30 to 35 feet; a rapid grower.

3 to 4 ft., prepaid.....	\$1.95 each
4 to 5 ft., prepaid.....	2.65 each

FLOWERING CRAB, BECHTEL'S

Produces pink flowers very similar to small roses in the early spring. Compact in growth, rather dwarf. 10 to 12 feet.

3 to 4 ft., not prepaid.....	\$2.25 each
4 to 5 ft., not prepaid.....	3.50 each

FLOWERING CRAB, HOPA

Literally covered with carmine-rose flowers 1 1/4 to 1 1/2 in. across in latter April. Twigs, new leaves and fruit are red. The most popular flowering crab. 12 to 15 feet.

3 to 4 ft., prepaid.....	\$1.50 each
4 to 5 ft., not prepaid.....	2.25 each
5 to 6 ft., not prepaid.....	2.75 each
6 to 7 ft., not prepaid.....	3.50 each

LINDEN, AMERICAN

A beautiful well shaped rapid growing shade tree with glossy leaves. Fragrant yellow flowers are produced in early spring.

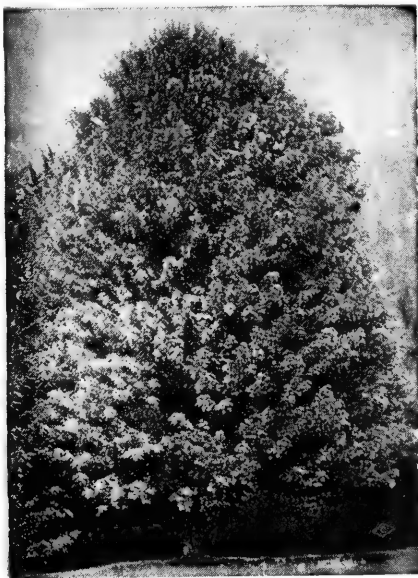
5 to 6 ft.....	\$ 3.00 each
----------------	--------------

MAPLE, CRIMSON KING

NEW—Plant Patent No. 735.

A dazzling new Maple that remains RED ALL SUMMER. Apart from its brilliant foliage, the tree has the same good shape and habits of its parent the Norway Maple. Grows 35 to 40 feet. The fine trees supplied are one year tops on three year old roots. They will begin sending out their branches the first summer, covered with large crimson leaves.

5 to 6 ft., not prepaid. Spring only.....	\$5.50 each
---	-------------



Sugar or Hard Maple has beautiful autumn foliage.

MAPLE, SUGAR, or HARD

Unquestionably one of our most beautiful long-lived trees; large, stately, with a dense, symmetrical crown; deeply rooted, allowing grass to grow about the trunk; leaves three to five pointed, deep green, in autumn yellow, orange and scarlet. Transplanting may change the autumn color as it is affected by soil and climatic conditions.

5 to 6 ft., not prepaid.....	\$ 3.25 each
6 to 8 ft., not prepaid.....	4.50 each
8 to 10 ft., not prepaid.....	6.75 each
10 to 12 ft., not prepaid.....	10.00 each

MAPLE, SILVER or SOFT

A fast growing well known tree that is rapid in growth and has beautiful dark green leaves, silvery underneath. Good dry weather tree; disease resistant.

5 to 6 ft., not prepaid.....	\$2.00 each
6 to 8 ft., not prepaid.....	2.75 each

MAPLE, NORWAY

Similar to hard or Sugar Maple, but more of a globe-shaped tree, fall color golden yellow.

6 to 8 ft., not prepaid. Spring only.....	\$5.25 each
---	-------------

MAPLE, SCHWEIDLER

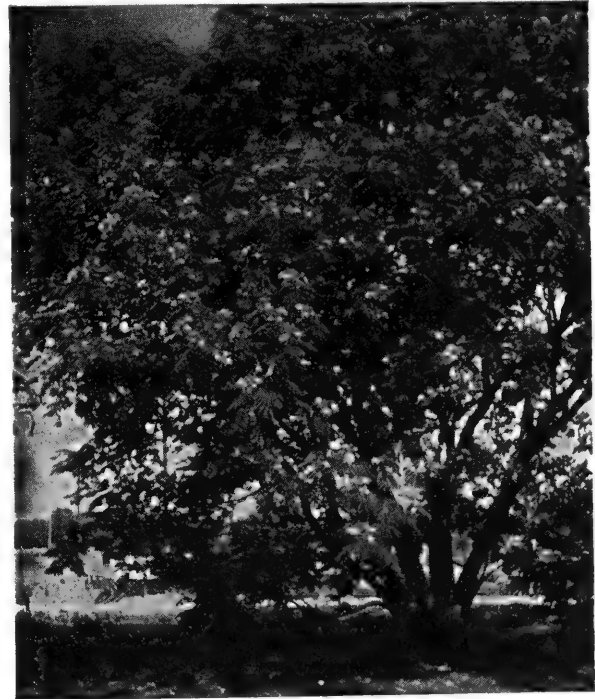
No tree can equal its splash of brilliant red in the spring. Gradually the leaves change to bronzy-green in summer, and turn golden yellow in fall.

6 to 8 ft., not prepaid. Spring only.....	\$6.50 each
---	-------------

MIMOSA, CHINESE SILK TREE

This unusual rapid growing Asiatic tree produces a tropical effect. Its spreading branches form a low flat topped crown of tiny fern-like feathery foliage and fragrant showy Acacia-like flowers with long silky stamens at the tips of the branches from mid-June to September. Grows 25 to 35 feet. Hardy throughout the Western and Central United States and as far east as Boston.

2 to 3 ft., prepaid.....	\$1.25 each
3 to 4 ft., not prepaid.....	1.50 each
4 to 5 ft., not prepaid.....	2.00 each
5 to 6 ft., not prepaid.....	2.75 each



Large Mimosa at Sarcoxie Nurseries.

PEACH, DOUBLE RED FLOWERING

Blooms the very first year planted. Produces a beautiful specimen tree 12 to 18 feet, covered each spring with double red blossoms. Truly a tree that heralds the breath and beauty of spring.

2 to 3 ft., prepaid.....	\$1.00 each
3 to 4 ft., prepaid.....	1.50 each
4 to 5 ft., prepaid.....	2.25 each

PLUM, PURPLE LEAF

The beautiful bronze-red foliage of this tree is held during the summer, adding much to the landscape. An ornamental tree producing pink flowers in the spring followed by purple-red fruit. Grows 8 to 12 feet.

3 to 4 ft., prepaid.....	\$2.25 each
--------------------------	-------------

SWEET GUM

A stately tree, very symmetrical, with glossy foliage turning brilliant autumn shades in the fall. The young branches are covered with corky bark.

3 to 4 ft., balled in earth, not prepaid.....	\$ 3.00 each
4 to 5 ft., balled in earth, not prepaid.....	4.50 each
5 to 6 ft., balled in earth, not prepaid.....	5.75 each
6 to 8 ft., balled in earth, not prepaid.....	10.00 each

TULIP TREE

A rapid growing tall stately tree with large glossy leaves and beautiful small tulip-shaped flowers. Of green-orange turning yellow. Foliage yellow in fall.

5 to 6 ft., balled in earth, not prepaid.....	\$5.50 each
---	-------------

SHADE TREES—Continued

OAK, PIN; PIN OAK

One of the most handsome Oaks with its spreading, decidedly horizontal to ascending branches, the lower somewhat drooping with age, sometimes almost to the ground, with a symmetrical pyramidal head, oval with age. Leaves glossy green, in autumn deep scarlet. Excellent for landscape and street.

5 to 6 ft., balled in earth, not prepaid.....\$ 6.00 each
6 to 8 ft., balled in earth, not prepaid..... 10.00 each

POPLAR, LOMBARDY

Tall and columnar; rapid growth; useful as an accent tree and to screen objectionable views.

3 to 4 ft., prepaid..\$0.50 each
10 for, prepaid.... 4.50
4 to 5 ft., not p.p. .70 each
5 to 6 ft., not p.p. .85 each
6 to 8 ft., not p.p. 1.10 each



Lombardy Poplar

RED BUD

Outstanding in April with its rose-pink, pea-shaped flowers clustered thickly among the leafless branches.

2 to 3 ft., prepaid..\$1.25 each
3 to 4 ft., not p.p. 1.50 each
4 to 5 ft., not p.p. 2.00 each

WEeping WILLOW

See illustration below. A picturesque tree especially adapted to use in the background planting or by a pool, rockery, or for some seclusion in the garden, as the long, drooping branches will weep to the ground. Rapid in growth.

5 to 6 ft., not prepaid.....\$1.50 each
6 to 8 ft., not prepaid..... 2.50 each

WILLOW, PUSSY

A shrub or small tree, its furry catkins appearing before the leaves; easily grown.

3 to 4 ft., prepaid.....\$1.25 each



Weeping Willow

Nut Trees

CHINESE CHESTNUT

Blight resistant. Remember not many years ago when sweet Chestnuts could be gathered for home use? Then came a Chestnut blight that spread all over the U. S., killing the trees in nearly every section. We now have a Chinese variety producing large sweet nuts and it is resistant to blight. Bears young, is hardy and a rapid grower. Often bears the third year. Trees furnished are two-year plants.

3 to 4 ft., prepaid.....\$2.50 each
4 to 5 ft., not prepaid..... 3.25 each

PECAN STEWART PAPER SHELL



Hardest of all paper-shell varieties. Makes an excellent shade tree, is exceptionally tough. A profitable tree to add to your property.

3 to 4 ft.....\$3.25 each
Prepaid

THOMAS BLACK WALNUT

An improved walnut of giant size that bears very young, often the second year after planting. This grafted tree grows rapidly, and makes an excellent shade tree as well as being valuable as a nut producer. It is considered the best of the walnuts and produces full meated nuts which attain a size of 2 to 2½ inches through after hulling.

2 to 3 ft., prepaid.....\$3.25 each
3 to 4 ft., not prepaid..... 3.25 each

ORNAMENTAL TREE OFFER

FIVE SPOT SPECIAL

1 Red Flowering Dogwood, 2-2½ ft.

1 White Flowering Dogwood, 2-3 ft.

1 Double Red Flowering Peach, 3-4 ft.

Above 3 plants catalog value, \$6.75

Prepaid for ONLY..... **\$5.00**

Sent Roots Wrapped in Moss.

SPECIAL OFFER for Naturalizing

1 Hopa Flowering Crab 2 to 3 ft.

1 Red Bud, 2 to 3 ft.

1 White Flowering Dogwood, 2 to 3 ft.

Above 3 plants, catalog value\$4.25

Prepaid for ONLY..... **\$3.95**

Sent Roots Wrapped in Moss.



DID YOU FORGET TO PLANT BULBS DURING THE FALL?



If you did it is not too late to have a good display this coming spring. SEND FOR OUR FOLDER OF IMPORTED BULBS. We carry a good stock until late February. Late planting of bulbs will produce good results, however the blossoms the first season are usually produced on shorter stems.

Sarcoxie Nurseries Hardy Flowering Shrubs

ARE PREPAID TO YOUR DOOR

Flowering shrubs add much to the beauty of your home grounds at a low cost

Abelia—See Broadleaf Evergreens

Almond, Double Flowering Pink; *Prunus glandulosa plena*.

One of the most showy shrubs in early April, with its many double pink flowers about an inch across, clustered thickly along the slender branches before the leaves are developed; grows 2 to 4 ft. high; prune after blooming.

18 to 24 in.....\$0.95 each; 3 for \$2.75
2 to 3 ft.....1.10 each; 3 for 3.00

Althea; Rose of Sharon

Hollyhock-like flowers in late summer to fall; upright habit, attaining 10-15 feet; easily grown. Colors: Double Pink, Double Red, Double White.

18 to 24 in.....\$0.75 each; 3 for \$2.10
2 to 3 ft......95 each; 3 for 2.70

Barberry, Japanese or Thunberg's; Green

Dwarf, dense, compact, spreading habit; graceful spiny branches; dwarf leaves coloring brilliantly in autumn; scarlet berries $\frac{3}{8}$ -inch long in October and later; excellent for foundation planting and hedges.

12 to 15 in.....\$0.50 each; 3 for \$1.25
15 to 18 in......70 each; 3 for 1.95
18 to 24 in......85 each; 3 for 2.40

Barberry, Red-Leaved Japanese or Red Thunberg's

Berberis Thunbergi atropurpurea

A very showy shrub for lending all-summer color to the border, with its rich, lustrous metallic or bronzy red foliage, if planted in full sun; becomes green in shade; scarlet berries in fall and winter; holds its leaves later in autumn than the green-leaved Japanese. Does not produce wheat rust.

12 to 15 in.....\$0.75 each; 10 for \$6.00
15 to 18 in......80 each; 3 for 2.25
18 to 24 in......95 each; 3 for 2.70

Beautybush; *Kolkwitzia amabilis*

Lovely weigela-like pink blossoms cover the arching branches in the spring. Is truly a bush of beauty. Grows 8 to 10 feet high. Plant as a specimen or in a group planting. Delightfully fragrant.

12 to 18 in.....\$0.75 each
18 to 24 in......90 each
2 to 3 ft.....1.25 each

Butterfly Bush (Summer Lilac)

Covered from summer till fall with fragrant flowers resembling Lilacs; grows 4 to 6 feet high; may be kept lower by pruning. Mound in winter the same as you protect everblooming Roses.

Pink, Variety Charming. Lavender tinged pink, the pink more noticeable in the sun.

Wine Red, Variety Dubonnet. Rich carmine-purple, similar to the French wine Dubonnet.

Purple, Variety Royal Red. (Patented.) A Butterfly Bush of true royal color. Its immense trusses of brilliant purple-red flowers withstand summer's heat and bloom over a long period.



Butterfly Bush

PRICES OF ABOVE BUTTERFLY BUSHES

2-year plants, 85¢ each;
any 3 for \$2.25.

Cranberry Bush; *Viburnum opulus*

The parent of the Common Snowball, and like it in growth, but the white flowers are in flat clusters in May. The center flowers, which produce the berries, are small, with an outer ring of showy flowers like the individual flowers of the Snowball. The bright scarlet cranberry-like fruits, $\frac{3}{8}$ in. long, color in early August., remaining well into winter when not eaten by the birds. Endures partial shade; attains 8 to 12 ft.; prune, if necessary, after blooming.

18 to 24 in.....\$1.25 each; 3 for \$3.50
2 to 3 ft.....1.50 each; 3 for 3.95

Crape Myrtle

Watermelon red. Crepe-like deep pink to red flowers borne in profusion early summer to fall. Plants should be cut back before planting—we do this before we ship unless you object.

18 to 24 in.....\$0.75 each; 3 for \$2.10
2 to 3 ft.....1.00 each; 3 for 2.75

Desmodium, Purple Bush Clover

Graceful arching branches covered in late summer with rose-purple, small pea-shaped flowers.

2 yr. plants.....\$1.15 each; 3 for \$3.00

Deutzia gracilis

Better known as slender Deutzia. 2 to 3 feet. A graceful, dwarf shrub which covers its arching branches with small racemes of white flowers in early spring. Does well in sun or shade.

15 to 18 in.....\$0.95 each

Deutzia Pride of Rochester

Covered in latter May with dainty, double, tassel-like flowers in a setting of deep green foliage in upright clusters 4 to 6 in. long, white, outer petals tinted rose; upright, vigorous, growing 6 to 8 ft. high, in any well drained garden soil; prune after blooming.

2 to 3 ft.....\$0.95 each; 3 for \$2.75



Forsythia (Golden Bell)

Forsythia, Lynwood Gold (NEW)

Brand new on the market is this fine new Forsythia from Ireland. Will stand adverse weather conditions that would ruin other Forsythia flowers in early spring. The flowers completely cover the branches, and are large, and bright golden-yellow. Excellent as a cut-flower. Grows 6 to 7 feet.

2 to 3 ft.....\$1.75 each

Forsythia spectabilis

The most common forsythia (Golden Bell) which has for so many years heralded the coming of spring. The golden flowers blooming before the leaves are grown, often in March. An excellent shrub for use in shrub groups or borders, and is perfect when combined with Japan Quince which produces its bright red flowers at about the same time.

18 to 24 in.....\$0.75 each; 3 for \$2.10
2 to 3 ft.....1.00 each; 3 for 2.75

Forsythia Spring Glory

Another New Forsythia. One of the loveliest of the pale yellow varieties. This Forsythia produces such an abundance of flowers and the color is so striking that it will produce the most brilliant and cheerful spot in your spring garden. The pale yellow is preferred by many who see it.

2 to 3 ft.....\$1.25 each; 3 for \$3.50

SARCOXIE FLOWERING SHRUBS—Contd.

Honeysuckle, Zabeli—NEW DEEP RED

A marvelous new improvement producing a well formed bush and an abundance of beautiful red flowers followed with brilliant red fruit. 6 to 7 ft. Excellent.

18 to 24 in.....\$1.00 each; 3 for \$2.85
2 to 3 ft..... 1.25 each; 3 for 3.50

Mock Orange, Minnesota Snowflake. NEW.

A new patented variety with double pure white flowers. Very fragrant and in large snow-flake clusters. Vigorous and hardy. Plant retains their dark green leaves close to the ground, and are therefore excellent for screen, hedge or specimen. This variety, we think, is due to become very popular because of its vigor and large double blossoms. If you are interested in something new, something exceptionally nice, we suggest you try this plant.

2 to 3 ft., Plant Patent No. 538.....\$1.80 each

Mock Orange, Virginal (Philadelphus)

Large semi-double delightfully fragrant white flowers 1½ to 2½ inches across; moderately tall; frequently flowers intermittently through summer and fall. Excellent for cutting, as flowers hold up well. Sun or partial shade.

18 to 24 in.....\$1.00 each; 3 for \$2.85
2 to 3 ft..... 1.20 each; 3 for 3.25

Hydrangea Hills of Snow

Well named for its profusion of snow-white flowers in large, somewhat globular clusters, beginning in June; suitable for full sun and partial shade.

12-18 in., \$0.85 each; 3 for \$2.25
18-24 in., \$1.00 each; 3 for \$2.85

Hydrangea Nikko Blue. The most beautiful Blue Hydrangea. Hardy—has withstood temperatures to 20 below zero. Tops die down, but with a little mulch protection will grow 2 to 4 feet each season, producing luxuriant foliage and great masses of blue flowers. Plant in moist shaded area, acidify soil with two table-spoons aluminum sulphate to one gallon of water each spring.

Each \$1.90.....3 for \$5.00

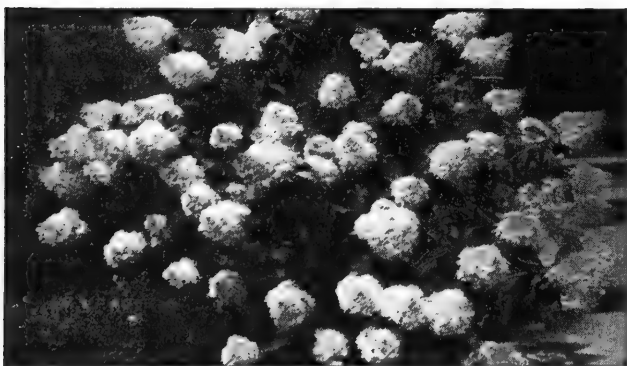
Hypericum Sun Gold

(Patented.) Waxy golden flowers all summer on a low growing shrub of glossy foliage. Flowers 2 to 3 inches across. Grows 3 feet.

2 yr.\$2.50 each; 2 for \$4.00

Hydrangea paniculata grandiflora. Flowers in great cone-shaped clusters, white assuming rose tints, in profusion in August and September; attain 5 to 7 feet; plant in full sun.

15 to 18 in.....\$0.85 each; 3 for \$2.25
18 to 24 in..... 1.00 each; 3 for 2.85



Hydrangea paniculata grandiflora (Pee Gee)



Lilac, French Hybrid. Bloom young, often first year.

FRENCH HYBRID LILAC

The loveliest of all lilacs, these grafted varieties are available in many colors, in the large flowering singles, or the magnificent double flowering ones. Bloom young. Compact, medium tall.

Chas. Joly. Bright purplish red to wine red. Large fragrant semi-double.

Charles X. Purplish-red, becoming lilac as the flower ages; while not the largest it is one of the most reliable free bloomers and makes an excellent display; single.

Edmond Bossier. Deep purplish-red; single; fragrant; large.

Ellen Willmott. Buds seafoam yellow, turning white. Large double florets. Medium in height.

Katherine Havemeyer. Violet-pink aging lavender-blue; double; large; fragrant; long compact clusters.

Madame Lemoine. The best double pure white.

Ludwig Spaeth. Single, crimson-purple; one of the darkest; rather dwarf.

Pascal. Single, dusty lavender pink; very early and showy. Rather tall; delightfully fragrant.

President Grevey. Large double blue lilac. Opens bluish lilac, soon fading to a near blue color. Excellent.

Volcan. Red tinged purple, becoming deep ruby-purple; large florets; rather long clusters; fragrant; single; excellent.

PRICES OF ABOVE LILACS

12 to 18 in.....\$1.10 each; any 3 for \$3.00
18 to 24 in..... 1.50 each; any 3 for 4.25

PERSIAN LILAC

Lilac, Persian Purple. Single; about 3 to 5 days later than ordinary lilac. Flowers lilac pink; very profuse bloomer. Excellent for hedges or background planting. Grows 6 to 8 feet.

18 to 24 in.....\$1.00 each; 3 for \$2.75
2 to 3 ft..... 1.25 each; 3 for 3.50

HUNGARIAN LILAC

A shrub of real merit. Blooms 10 days to two weeks after other lilac varieties are gone, producing large trusses of single lilac-violet flowers; excellent for cutting. Due to its rapid, dense growth it is an excellent shrub for group planting or hedges; beautiful as a specimen. Grows 6 to 8 feet.

18 to 24 in.....\$1.10 each; 3 for \$3.00
2 to 3 ft..... 1.35 each; 3 for 3.75

SARCOXIE FLOWERING SHRUBS—Contd.

Olive, Russian

Eleagnus angustifolia. Usually grown as a tall shrub, this plant is frequently regarded as a small tree. Grows normally about 15 feet high, and the height can be held down easily by pruning. Tiny narrow bell-shaped flowers are produced in early spring, and are very fragrant. Following the flowers are the olive-shaped fruit 1/2-inch long. Used principally for the beautiful silvery foliage and grotesque habit of the tree. Excellent as a windbreak and drought resistant, it may be used on farms where watering would be impractical. Also this plant is a good specimen plant for landscaping or as a background.

2 to 3 ft. Hedging Grade—5 for \$1.25; 10 for \$2.00; 25 for \$4.35.
2 to 3 ft. Shrub form.....\$1.10 each; 3 for \$3.00.

Quince, Japan or Flowering; *Cydonia japonica*

Beautiful in latter March, sometimes February, just as the leaves begin to unfold with its five-petaled flowers 1 to 1 1/2 in. across in clusters of two to six, a fiery scarlet so brilliant it is also called Burning Bush. Its dense foliage is glossy dark green, in autumn bronzy-red. Fruit yellowish-green, 1 1/2 to 2 in. across, not edible, its fragrance retained when dried. Usual height 3 to 6 ft.; branches thorny; young plants somewhat irregular in growth becoming attractive with age. Plant in sun. Prune after blooming. See illustration next page.

18 to 24 in.....\$0.95 each; 3 for \$2.75
2 to 3 ft..... 1.25 each; 3 for 3.25

Snowball, Common; *Viburnum opulus sterile*

The name brings to mind the old bush in grandmother's garden, laden with snow-white flowers in globular clusters 3 to 4 in. across in early May. Leaves maple-like, 2 to 4 in. long, bronzy-red in autumn. Grows 6 to 8 ft. high. Succeeds in sun or partial shade. Prune after blooming. See illustration below.

18 to 24 in.....\$1.35 each; 3 for \$3.75
2 to 3 ft..... 1.65 each; 3 for 4.75



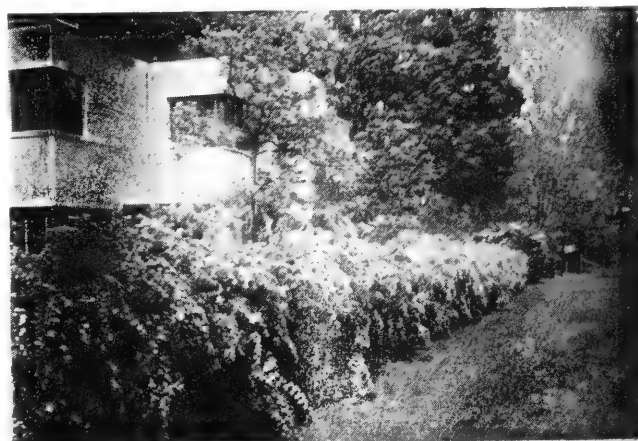
Snowball

For INDEX...

See Page 27

THE SPIREAS

Justly popular for their hardiness, thriftiness, profusion of bloom, graceful habit, neat foliage, and general freedom from serious insects and diseases. The early blooming *Spireas*, after the bush attains good size, should have some old wood removed to the ground each year immediately after blooming. Prune late, blooms in early spring before growth starts. When neglected for years it may be necessary to prune almost the entire plant to the ground in early spring. They succeed in any moderately moist lawn soil of average fertility.



Spirea Van Houttei—Excellent as a shrub or hedge.

Spirea Anthony Waterer

Crimson flowers in flat clusters in late May and at intervals until fall; grows 3 feet high.

12 to 15 in.....\$0.75 each; 3 for \$1.95
15 to 18 in..... .95 each; 3 for 2.65
18 to 24 in..... 1.25 each; 3 for 3.50

Spirea Blue Mist

Covered with powdery blue-fringed flowers. From midsummer till frost, this graceful shrub with silvery foliage is an excellent addition to any planting. Grows 2 to 3 feet high and about as broad.

2-yr. plants\$1.10 each; 3 for \$3.00

Spirea Froebeli

Similar to *Anthony Waterer* but with broader, darker leaves, and about 4 feet tall.

15 to 18 in.....\$0.60 each; 3 for \$1.50
18 to 24 in..... .80 each; 3 for 2.25
24 to 30 in..... .95 each; 3 for 2.65

Spirea prunifolia; True Bridalwreath *Spirea*

Produces long sprays of beautiful double white flowers in early May. This *spirea* differs from *Van Houtte*, being double flowered rather than single, and also is a little more upright in habit, and has orange to red autumn foliage. Grows 6 to 7 ft. in height.

18 to 24 in.....\$0.85 each; 3 for \$2.40
2 to 3 ft..... 1.15 each; 3 for 3.25

Spirea Thunbergi; *Thunberg's Spirea*

Its graceful spreading and arching branches 3 to 5 ft. high are clothed with many small, pure white five-petaled flowers 3/8 in. across in clusters of three to six in March, before the leaves are developed; leaves very narrow, 1 to 1 3/4 in. long, light green. The fine feathery foliage makes *Thunbergi* suitable for nearby plantings where shrubs of coarse texture would be out of place. Better if pruned some each year after blooming.

18 to 24 in.....\$0.85 each; 3 for \$2.40
2 to 3 ft..... 1.15 each; 3 for 3.25

Spirea Van Houttei; *Van Houtte's Bridal Wreath*

A fountain of white in late April and May, its arching branches covered with clusters of small five-petaled flowers one-third in. across; the graceful drooping habit and neat dense foliage, 3/4 to 1 3/4 in. long, make it attractive throughout the season; excellent for grouping, as a background for lower shrubs, a foreground for taller shrubs, a screen, or as a specimen plant. Each spring, after blooming, prune some of the old canes to the ground. Grows 6 to 7 ft. high.

12 to 18 in.....\$0.40 each; 3 for \$1.00; 10 for \$2.95
18 to 24 in..... .60 each; 3 for 1.50; 10 for 4.50
2 to 3 ft..... .75 each; 3 for 2.00; 10 for 6.00
3 to 4 ft..... 1.25 each; 3 for 3.50; 10 for 10.00

SARCOXIE FLOWERING SHRUBS—Contd.

Smoke Tree, Purple Fringe

In July and August this large shrub is covered with feathery flowers like a cloud of lilac-purple smoke. Beautiful green foliage. Hardy from the Gulf of Mexico to Central Iowa. Grows 8 to 10 feet.

18 to 24 in.....\$1.25 each; 3 for \$3.50
2 to 3 ft..... 1.50 each; 3 for 4.00

Tamarix; Tamarisk

While grown mainly for their delicate feathery foliage, in general effect like Asparagus, the tiny flowers make the bush a cloud of pink. Prune severely each spring to maintain a continuous supply of new wood and to keep the plant bushy and the height desired. It attains 4 to 15 ft. according to variety. Plant lower growing shrubs in front of the taller Tamarix.

Tamarix Hispida rubra. Grows 5 to 6 feet high with feathery green foliage and long plumes of tiny flowers of bright pink, almost red. Prune severely each year.

18 to 24 in.....\$0.75 each; 3 for \$2.15
2 to 3 ft..... .95 each; 3 for 2.65

Vitex; New Chaste Tree. Its long spikes of small, rather deep lavender blue flowers at the ends of the branches in July and at intervals till fall, somewhat resemble those of the Butterfly Bush. It makes a distinctive, rather large shrub of graceful, open airy habit, with five-fingered leaves, dark green above, grayish beneath, with an aromatic pungent odor. Not yet in general use, but desirable in the shrub border for contrast.

2 to 3 ft.....\$1.25 each; 3 for \$3.45

Weigela, Cardinal Shrub (Vanicek Weigela)

An exceptionally hardy shrub, thriving in the North as well as in the Southern and Central states. The rose-red trumpet-shaped flowers literally cover the branches in the spring, and the plant continues to bloom during summer and fall. Blooms first season.

15 to 18 in.....\$1.45 each; 3 for \$2.65
18 to 34 in..... 1.75 each; 3 for 3.75

Weigela, Bristol Ruby. NEW.

Plant patent No. 492. This new outstanding Weigela is hardier and more vigorous than any of the red Weigelas. Soft ruby red to crimson. Grows 6 to 7 feet. Sun or partial shade.

18 to 24 in.....\$2.00 each; 3 for \$5.75
2 to 3 ft..... 2.50 each; 3 for 7.00

Weigela Eva Rathke. Brilliant carmine-red flowers in May and to a limited extent at intervals during summer; grows about 4 ft. high; succeeds in partial shade. Prune after blooming, otherwise the bush is inclined to become straggly.

18 to 24 in.....\$1.25 each; 2 for \$2.25

Weigela Rosea. Distinctly red buds opening rose-pink outside, lighter within; blooms freely.

18 to 24 in.....\$0.90 each; 3 for \$2.50
2 to 3 ft..... 1.15 each; 3 for 3.25

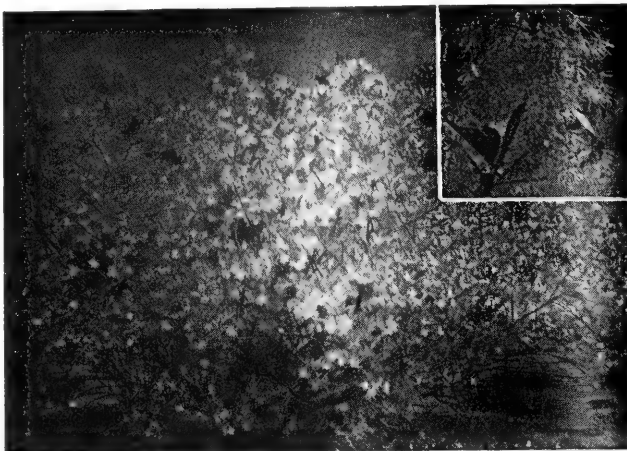


Weigela

White Fringe; Old Man's Beard

A fine shrub producing fringe-like snow white flowers in the spring. Delightfully fragrant. The flowers perfume the entire garden and are excellent when cut for bouquets. Grow 6 to 10 ft. tall.

18 to 24 in.....\$2.00 each 2 to 3 ft.....\$2.50 each



White Fringe—Old Man's Beard

Viburnum Carlesii; Fragrant Pink Snowball

An excellent specimen shrub, covered in spring with small pink snowball-shaped flowers about 2 inches across and so fragrant they perfume the whole garden. These flowers are so dainty that they may be worn as boutonniere or corsage. Grow 5 to 6 feet, full sun or partial shade.

18 to 24 in.....\$2.50 each



SARCOXIE NURSERIES
PEONY FIELDS

SPECIAL SHRUB OFFER

For those who wish something NEW and different for their garden, we offer the following fine shrubs:

- 1 Hypericum Sungold (patented), 2 yr.
- 1 Blue Hydrangea, 2 yr.
- 1 Forsythia Spring Glory, 2 to 3 ft.

A \$5.65 Catalog Value

ONLY \$4.35 PREPAID

WHEN ORDERING—Be sure to read our Guarantee on Page 3. Missouri customers please add 2% Sales Tax.

SARCOXIE NURSERIES *Broadleaf Evergreens*

Ideal For Combination With Evergreen Groups Or Planted As A Specimen

B&B INDICATES DUG WITH A BALL OF EARTH AND ARE NOT PRICED PREPAID

Abelia Grandiflora

White to light pink; fragrant flowers like small weigela from early summer till fall. Small glossy dark evergreen foliage. Grows 4 to 6 ft.

15 to 18 in., roots in moss \$1.50 ea. ppd.
18 to 24 in. B&B.....\$3.00 each

Barberry Julianae

The best of evergreen barberries, holding its green leaves on golden stems all winter. Thorny.

12 to 15 in. B&B.....\$2.50 each
15 to 18 in. B&B..... 3.50 each

Mahonia Aquifolium (Oregon Hollygrape)

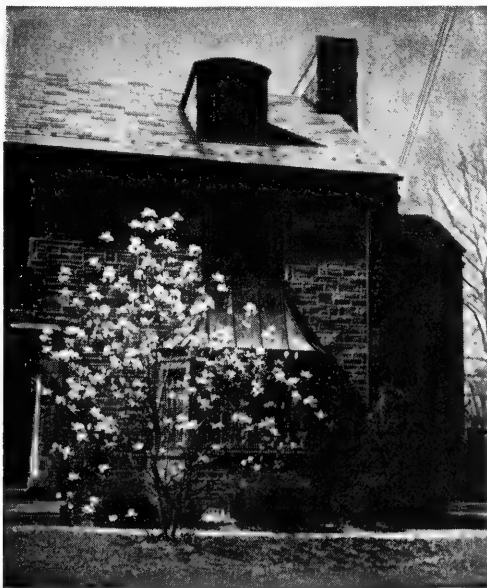
One of the most handsome broadleaf evergreens with the shiny, metallic Holly-like leaves. Dark, glossy green during summer, becoming purplish bronze to red in autumn. Yellow flowers in summer, followed by purple berries in the fall. Grows 3 to 6 feet.

12 to 15 in. B&B.....\$2.50 each
15 to 18 in. B&B..... 3.50 each
18 to 24 in. B&B..... 4.50 each

Nandina

An erect shrub with bamboo-like stems producing bright red berries in clusters which are at their best during the Christmas season. Foliage color dark green to scarlet fall and winter. Grows 3 to 4 ft.

12 to 15 in. roots in moss \$1.75 each, prepaid
15 to 18 in. B&B.....\$2.50 each
18 to 24 in. B&B..... 3.25 each
2 to 2½ ft. B&B..... 3.75 each



Magnolia Soulangeana. Blooms before the leaves appear in the spring. This variety is not evergreen.

Pyracantha Lalandi (Scarlet Firethorn).

A picturesque, upright, thorny shrub with Box-like, evergreen foliage. Has white flowers followed with fiery orange-red fruits, lasting well into the winter. Used as specimen shrubs or trained against a wall.

15 to 18 in. canned.....\$1.75 each
18 to 24 in. B&B..... 3.25 each
2 to 2½ ft. B&B..... 4.25 each



Evergreen Magnolia Grandiflora

MAGNOLIAS

Magnolia glauca. Sweet Bay Magnolia.

A large semi-evergreen shrub, with glossy dark green foliage, is more hardy than the evergreen magnolia of the South, and produces smaller pure white fragrant flowers.

3 to 4 ft. B&B.....\$7.50 each

Magnolia Grandiflora.

The true Magnolia of the South, holding its glossy evergreen leaves throughout the winter. Large, white flowers in summer. Hardy as far North as Kansas City, Missouri.

2 to 3 ft. B&B.....\$5.00 each
3 to 4 ft. B&B..... 6.00 each

Magnolia Nigra

Sometimes called summer Magnolia. Very hardy, producing purple blossoms early spring to fall. Not evergreen.

2 to 3 ft. B&B.....\$6.00 each
3 to 4 ft. B&B..... 7.50 each

Magnolia Soulangeana

This beautiful plant is truly a specimen. Produces large, Tulip-like blossoms early in the spring before the leaves appear. Blossoms pink outside, white inside; hardy.

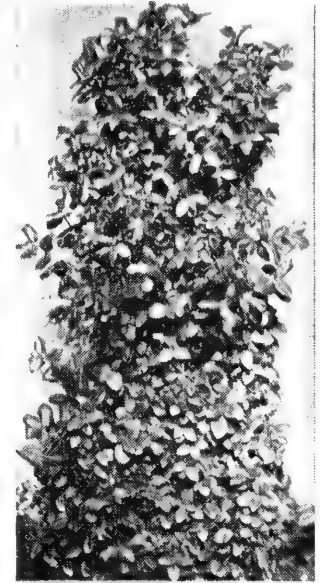
2 to 3 ft B&B.....\$6.00 each
3 to 4 ft. B&B..... 7.50 each

EUONYMUS

Euonymus patens

Frequently this shrub is referred to as Evergreen Bittersweet shrub due to the bittersweet-like orange berries that are produced in clusters. Foliage is glossy green, and persistent, remaining on the plant until late February and soon afterward is replaced by new foliage. Semi-evergreen.

15 to 18 in. B&B.....\$2.50 each
18 to 24 in. B&B..... 3.00 each



Euonymus, Upright Radicans (Above).

We sincerely recommend this as one of the best dark green leaved evergreen shrubs. It holds its foliage throughout the winter and is just as happy in the shade as in the sun. Beautiful as a specimen or in foundation groupings. Perfectly hardy. Grows 3 to 3½ feet. Excellent when used as a hedge, see below.

15 to 18 in., roots in moss, \$2.50 each, prepaid.

15 to 18 in. B&B.....\$2.95 each
18 to 24 in. B&B..... 3.95 each
2 to 2½ ft. B&B..... 4.95 each
2½ to 3 ft. B&B..... 6.50 each

only 40¢ a foot

New **HEDGE STAYS GREEN**
ALL YEAR LONG

UPRIGHT EUONYMUS RADICANS

Strong and hardy, thrives in sun or shade. Will make big growth first year. For graceful individual shrubs or fine thick hedge, 10 plants make 10 feet of hedge. Attractive!



AS SHIPPED

10 2-year plants **\$4.00**
FOR ONLY POSTPAID

SARCOXIE NURSERIES

They Are Specimens Everyone

Evergreens Shipped by Express or Truck
Line Are Not Prepaid Except Where Noted

Evergreens Are Easy to Plant

Grown with plenty of room, our evergreens are compact, well developed trees of their size and variety. They have been transplanted and root pruned to develop a good root system. They are liberally graded and, except mail sizes, are dug with a ball of earth wrapped in burlap, termed "balled and burlapped" or B&B. Planting Instructions furnished.



Berckman's Golden Arborvitae



Mugho Pine is naturally globular in form.



Juniper, Irish

Arborvitae

That flat lacy foliage of the Arborvitae is familiar to everyone. Best adapted for the Central and Southern states are the Oriental types listed below. Their foliage varies in variety from bright green to yellowish green and golden. The color is well maintained during winter.

Arborvitae, Berckman's; *Thuja orientalis aurea nana*

A perfect gem; superb, somewhat ovate shape; compact, dwarf habit, slowly growing about 7 ft. high; new spring and early summer growth gold suffused with green, in winter. Green to bronze green; valuable for cemetery, lawn and landscape; admired by all lovers of formal evergreens.

10 to 12 in., roots in moss, prepaid.....	\$1.50 each; 2 for \$2.50
15 to 18 in. B&B.....	\$3.50 each
18 to 24 in. B&B.....	4.50 each
2 to 2½ ft. B&B.....	5.00 each
2½ to 3 ft. B&B.....	6.00 each
3 to 4 ft. B&B.....	7.50 each

Arborvitae, Bonita

Broadly conical with rounded top; compact dwarf habit growing about 4 ft. high; rich green.

15 to 18 in. B&B.....	\$3.25 each
18 to 24 in. B&B.....	4.00 each

Arborvitae Brewer's Hybrid—Upright Bonita

A beautiful dark green arborvitae, more upright than Bonita and more conical. Foliage dense and uniform. Very useful where Excelsa is too large and Bonita too small. New.

2 to 2½ ft. B&B.....	\$4.50 each
----------------------	-------------

Arborvitae, Excelsa; *Thuja orientalis excelsa*

Orientalis type; deep green foliage; flattened upright branches; somewhat oval form, attaining about 7 to 8 ft.

2½ to 3 ft. B&B.....	\$4.00 each
3 to 4 ft. B&B.....	5.00 each

Arborvitae Goldspire. *Thuja orientalis conspicua*

A rather tall growing arborvitae, used chiefly for a specimen plant, or for corner plantings on large homes or in background groupings. Foliage is brighter golden than Berckman Arborvitae. The new growth is a creamy white, particularly attractive in the spring.

2 to 3 ft. B&B.....	\$5.00 each
3 to 4 ft. B&B.....	6.50 each

Junipers

Juniper, Andorra

A very low spreading juniper with blue-green foliage. In winter the foliage has a very attractive live purplish cast.

15 to 18 in. B&B.....	\$3.50 each
18 to 24 in. B&B.....	4.50 each

Juniper, Blue or Silver; *Juniperus virginiana glauca*

One of the most popular bluish junipers; young growth silvery, becoming beautiful bluish-green, affording color contrast in the landscape; fairly rapid growth; broadly conical with long slender branches producing a graceful effect; grows 15 to 20 ft. high; may be kept lower and dense by pruning.

2 to 3 ft. B&B.....	\$ 6.75 each
3½ to 4 ft. B&B.....	8.50 each
4 to 5 ft. B&B.....	10.00 each

Juniper, Cannart; *Juniperus virginiana cannarti*

Broadly pyramidal; medium sized, reaching 15 to 20 ft.; by pruning may be kept lower and dense; untrimmed, the growth is more or less open but pleasing; foliage deep green, heavily tufted; silvery-blue berries in late July or August.

2 to 3 ft. B&B.....	\$ 6.75 each
3 to 4 ft. B&B.....	8.50 each
4 to 5 ft. B&B.....	10.00 each

Juniper, Dundee; Dundee Juniper

A beautiful compact pyramidal tree with bluish green foliage, in winter turning plum color. Is excellent used in contrast with bright greens.

2 to 3 ft. B&B.....	\$ 6.75 each
3 to 4 ft. B&B.....	8.50 each
4 to 5 ft. B&B.....	10.00 each

Juniper, Henry's

This form of Virginia Juniper retains its green color all winter; forms a dense, almost columnar tree; by shearing may be grown 12 to 15 ft. high with a base of 3 ft. or less.

2½ to 3 ft. B&B.....	\$ 6.75 each
3 to 4 ft. B&B.....	8.50 each
4 to 5 ft. B&B.....	10.00 each

BEAUTIFUL EVERGREENS

Dug With a Ball of Earth Wrapped in Burlap

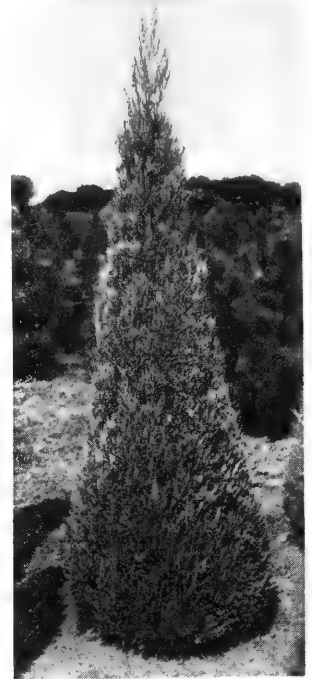


Austrian Pine

QUALITY EVERGREENS
Every Evergreen has been transplanted to increase the root system and sheared for compactness.



Pfitzer Juniper thrives in almost every location.



Juniper Silver Moon

Juniper, Irish; *Juniperus communis hibernica*

Its finely-cut bluish-green foliage is attractive and its form in pleasing contrast with the globe and bush evergreens; a dense slender, conical tree with numerous upright branches closely surrounding the body; becomes about 8 ft. high and can be kept to a diameter of 18 to 24 in. by pruning.

- 12 to 15 in., roots in moss, prepaid.....\$1.50 each; 2 for \$2.50
- 18 to 24 in. B&B..... 3.25 each
- 2 to 2½ ft. B&B..... 3.75 each
- 2½ to 3 ft. B&B..... 4.25 each
- 3 to 4 ft. B&B..... 5.00 each

Juniper, Keteleer's; *Juniperus virginiana Keteleeri*

A comparatively new variety of the Virginiana Juniper, with bright green foliage; of fairly rapid, upright growth and useful in sun or partial shade.

- 3 to 4 ft. B&B.....\$8.00 each
- 4 to 5 ft. B&B..... 9.75 each

Juniper, Pfitzer; *Juniperus chinensis Pfitzeriana*

Wide spreading horizontal branches forming a broad, irregular, low tree; foliage light olive-green; fine; thrives in almost every location.

- 12 to 15 in., roots in moss, prepaid.....\$1.00 each; 2 for \$1.85
- 15 to 18 in. B&B.\$3.75 each 18 to 24 in. B&B.\$4.50 each
- 24 to 30 in. B&B.. 5.50 each 30 to 36 in. B&B.. 7.25 each

Juniper, Pfitzer Upright

Trained upright in habit, this Pfitzer juniper may be used in places where height is desired rather than spread. Grows 4 to 4½ ft.

- 24 to 30 in. B&B.....\$6.50 each
- 30 to 36 in. B&B..... 7.50 each

Juniper, Pfitzer Silver

- A pfitzer juniper with silvery blue foliage.
- 15 to 18 in. B&B.....\$3.75 each
- 18 to 24 in. B&B..... 4.75 each

Juniper, Savin; *Juniperus sabina*

Its numerous branches spread at an angle of about 45 degrees. Does not get tall with age as the weight of the branches keep them low. Foliage color deep green. Best in full sun.

- 18 to 24 in. B&B.....\$4.50 each

- Juniper, Silver Moon; *Juniperus Scopulorum, Silver Moon***
A bluish-silver type of Colorado or Scopulorum Juniper; very pyramidal habit. Finely cut soft foliage.
- 2½ to 3 ft. B&B.....\$6.75 each
- 3 to 3½ ft. B&B..... 8.50 each

Juniper, Spiny Greek; *Juniperus excelsa stricta*

Dense and narrowly conical, tapering gradually from the ground to a sharp point. Spiny grayish green, glaucous foliage. It reaches a height of about 10 ft. but grows slowly so may be used in plantings where a small tree is desired and changed to another location before it becomes too large.

- 15 to 18 in. B&B.....\$3.25 each
- 18 to 24 in. B&B..... 4.00 each
- 24 to 30 in. B&B..... 4.75 each

Pines

Pine, Austrian

A rapid growing tree of good form. A broad pyramidal tree, vigorous in growth, with long, dark green needles. One of the best pines for specimen or group plantings, especially good for windy exposures. Grows eventually 40 to 50 feet. See illustration above.

- 2 to 3 ft. B&B.....\$6.50 each
- 3 to 4 ft. B&B..... 8.25 each

Pine, Mugho

A many-stemmed, low branched, dwarf dense tree. The new growth resembles candles on the tree. 3 to 5 ft.

- 12 to 15 in. B&B.....\$3.50 each
- 15 to 18 in. B&B..... 4.50 each
- 18 to 24 in. B&B..... 5.50 each

Pine, White.

A systematical pyramidal tree with regular whorls of horizontal branches; needles in 5's, soft bluish-green.

- 2 to 3 ft. B&B.....\$6.50 each
- 3 to 4 ft. B&B..... 8.25 each

Holly

Holly, American

Frequently called Christmas Holly due to the bright red berries that are at their best during the Christmas season. The Holly lends a cheerful note to the landscape during the winter months, and is one of the finest specimen plants of the evergreen group. Grows 20 to 30 feet, is very hardy. Plant one male and one female plant to insure proper fertilization for berry production.

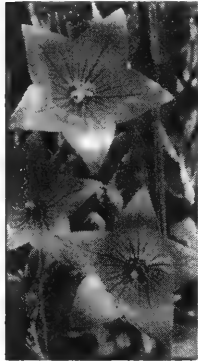
- 3 to 4 ft. B&B Female (berried)\$15.00 each
- 3 to 4 ft. B&B Male (non-berried) 9.00 each
- 4 to 5 ft. B&B Female (berried) 17.50 each
- 4 to 5 ft. B&B Male (non-berried)..... 12.50 each

Perennials FOR SPRING AND SUMMER BEAUTY

Are Strong Field-Grown Plants - - - All Sent Prepaid

ASTER, Stoke's Blue Cornflower. This blue Aster-like flower blooms all summer. Flowers 4 inches across on stems 12 to 18 inches. Very hardy. 45c each; 3 for \$1.25; \$4.00 per doz.

BABY'S BREATH, Gypsophila Bristol Fairy. One of the best flowers for producing an airy, graceful effect in the garden or in vases of cut flowers. This flower may be dried for winter use by cutting just before fully open and dried hanging tips downward. Loose clusters of small white flowers on 18 to 24 inch stems. Heavy grafted plants, 95c each; 2 for \$1.85.



Balloon Flower

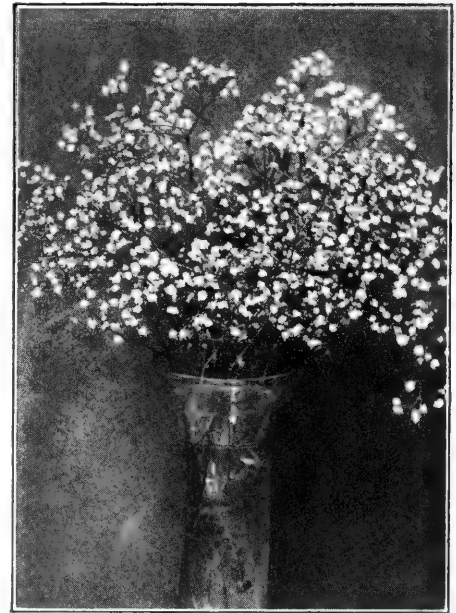
BALLOON FLOWER, Chinese Bell-Flower or Platycodon. So named from the odd balloon-like buds which open into five pointed bell-shaped blue flowers 2½ to 3 inches across at the tips of the branches on stems 1½ to 2 feet tall. Blooms latter June and at intervals during the summer. 40c each; 3 for \$1.00; \$3.50 per doz.

BLEEDING HEART. An old-time favorite, rich in sentiment and association. Heart-shaped rose-carmine flowers with protruding inner petals, drooping on stems 1½ to 2 feet high, carried well above the foliage, in latter April. 75c each; 2 for \$1.45.

BLANKET FLOWER, Gaillardia. Gaudy and bright as a Navajo blanket, this daisy-like flower 2½ to 3 inches across defies heat, cold weather and drought, and blooms from latter May until frost. 40c each; 3 for \$1.00; \$3.50 per doz.



Daisies in Sarcoxie Nurseries Gardens.



Baby's Breath, Gypsophila

COLUMBINE, Mrs. Scott Elliott Strain. Dainty long-spurred flowers in pastel shades bloom in late April and early May. Mixed colors. 40c each; 3 for \$1.00; \$3.50 per doz.

CANTERBURY BELLS. Spikes of bell-shaped flowers 2 in. long on stems 2 to 3 ft. high. Give a grand display in May and June. 40c each; 3 for \$1.00; \$3.50 per doz.

DAISY, EARLY ELDER. Early white daisies with yellow centers. Flowers 2 to 2½ in. across on stems 20 to 30 in. tall. 35c each; 3 for 90c; \$2.50 per doz.

DAISY, SHASTA ALASKA. One of the best Shasta Daisies. Large white flowers 3 to 3½ in. across in latter June and July. 40c each; 3 for \$1.00; \$3.50 per doz.

DELPHINIUM, IMPROVED LIGHT BLUE. A delightful blue of the skies. Larger, taller, and more vigorous than the common variety. 40c each; 3 for \$1.00; \$3.50 per doz.

DELPHINIUM, IMPROVED DARK BLUE. A darker blue variety. Both light and dark blue are excellent cut flowers. 40c each; 3 for \$1.00; \$3.50 per doz.

Hardy Garden Chrysanthemums

55c each, 3 for \$1.35; \$4.75 per doz.

CHRYSANTHEMUMS. Hardy "Mums."

Every garden needs "mums" to extend the blooming season into autumn. When frost creeps into the air Mums are the only flowers that continue blooming.

We offer the following outstanding varieties:

Betty. Lovely apple-blossom pink, very double flowers on stocky stems. Grows 2 feet. Blooms late Sept.

Charles Nye. Large fully double pompon of rich buttercup yellow. 2 feet. Mid-Sept.

Huntsman. New. Vividly brilliant scarlet orange overcast with bronze. Flowers in abundance 3 inches across; late Sept. Grows 30 inches.

Olive Longland. Pink to autumn shades. Large, early, flowers borne on strong stems.

Red Velvet. Most popular red. 3 inches. Double. Oct. 5

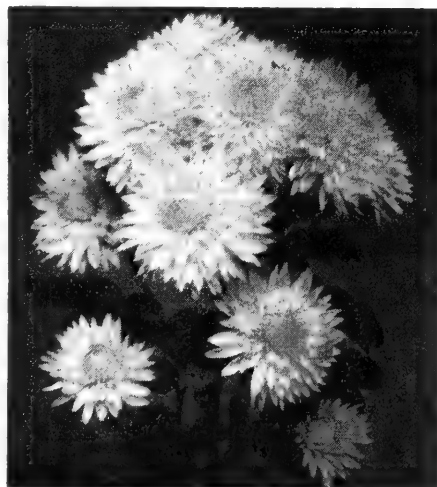
September Sunshine. A September beauty in bright yellow. Large. A good producer and excellent cut flower.

White Wonder. White pompon. Supreme. Perfect ball-shaped blooms. Cream to white. Heavy sprays. Wonderful for cutting. Late Sept.

For Cushion Chrysanthemums see next page.

Nothing surpasses "Mums" for a Wealth of Color Each Fall.

Plant for Cut-Flowers, also Landscape Beauty.



Hardy Flowers, continued

CUSHION CHRYSANTHEMUMS

Bronze Cushion. Beautiful coppery bronze.

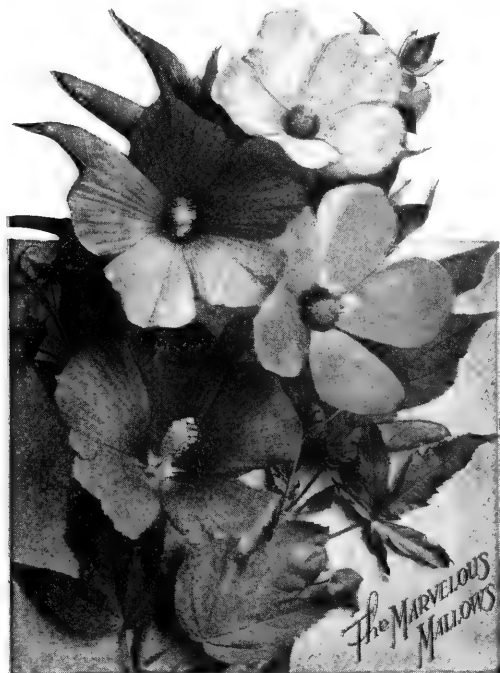
Pink Cushion. Greatly improved pink cushion.

Red Cushion. Bright red.

White Cushion. Snowy white.

Yellow Cushion. Bright golden yellow.

Prices of above Chrysanthemums: 55c each; 3 for \$1.35;
12 for \$4.75.



Mallow, Giant Flowering Hibiscus

Flowers often 6 inches across and they come along continuously from July to October. The shrub like-growth reaches 4½ to 5 ft. high. Mixed colors only; 45c each; 3 for \$1.25; 6 for \$2.25.

Hardy Phlox

Easily grown, these popular garden queens provide a wealth of color and fragrance for a long season.

40c each; 3 for \$1.00; 6 for \$1.85; \$3.50 per doz.

Assorted varieties if you wish.

Africa. Brilliant carmine red with blood red eye.

Blue Boy. Nearest blue of all Phlox. A beautiful color and free bloomer.

Daily Sketch. Light salmon-pink, faint carmine eye.

Dixie. Bright orchid pink; very hardy.

Firebrand. Brilliant cerise, vermilion and orange.

July Glow. Vivid purple-red.

Lillian. Exquisite cameo pink; large; blooms freely; early

Mary Louise. Pure white; very large; medium height.

P. D. Williams. Bright pink, deeper eye; large.

R. P. Struthers. Cherry red, darker eye; tall.

Salmon Glow. Pink shaded salmon.

San Antonio. Vivid brilliant carmine shaded prune red.

Spittfire. Brilliant orange-scarlet.

CREEPING or DWARF PHLOX

Phlox Sublata Alba. White flowering Moss Phlox. A mat of somewhat moss-like leaves, covered in early spring with white flowers. Grows 4 to 6 inches. 40c each; 3 for \$1.00.

Phlox Sublata. Rose red. Same habit of growth as the above dwarf white except the flowers are bright rose-red color. 40c each; 3 for \$1.00.



Double Hollyhock

DOUBLE HOLLYHOCK

In the following gay colors:

Newport Pink

Scarlet

Yellow and White

40c each

3 for \$1.00

\$3.50 per doz.

Sedum; Stonecrop

Sedum spectabile Brilliant; Showy Stonecrop. The rosy-red starry flowers ½ in. across are produced freely in large flat-topped clusters on 18 in. stems in latter September and early October. Leaves light bluish-green, thick, broad, 3 in. long. 40c each; 3 for \$1.00; \$3.50 per doz.

Sweet William

Gorgeous in mid-May with flat clusters of decidedly fragrant flowers on stems 12 to 20 inches high; pure white, shades of pink, red, almost black and violet, the clusters often 4 inches across with 20 to 30 florets which do not all bloom at once so they last a long time. Mixed colors. 40c each; 3 for \$1.00; \$3.50 per doz.

Violet, Royal Robe. Large, open out flat like a pansy; very fragrant, fragrance detectable many yards away. Deep violet to royal purple; fine. 25c each; 3 for 70c; \$2.50 per doz.

Heemerocallis-Daylilies

DAYLILY PRICES PREPAID

Allure. A light canary self. Flower is medium large and of graceful form. Creates accent when planted near deeper yellows. Night blooming. 50c each; 3 for \$1.20.

Beauteau. Medium large chrome; wide open yellow flowers and many of them. 60c each; 3 for \$1.20.

Cinderella. Petals copper red, sepals lemon yellow; blooms late afternoon, remaining open all night and into the heat of the following day. Different. Blooms July. 28 inches in height. 60c each; 3 for \$1.50.

Delightful Duet. Bicolor, red and yellow; a delightful combination of sunset colors. 28 inches. July. 60c each; 3 for \$1.50.

Dolly Varden. Open full flower of Chinese coral-pink with lines of rose on petals and sepals blended into a creamy yellow throat. 75c each; 3 for \$2.00.

Gloria. Medium size orange flowers on much branched stems. June. 50c each; 3 for \$1.20.

Liebstrraum. Petals brick-rose, a lemon throat and midrib to tip of each petal. Sepals lemon with a narrow brick-rose line at either edge running almost to tips. Does well in semi-shade. 75c each; 3 for \$2.00.

Middendorffii. Rich orange yellow; very fragrant. Early to midseason. 50c each; 3 for \$1.20.

Mikado. Large flower on rich orange with deep mahogany red throat. 3 feet. June and July. 60 each; 3 for \$1.50.

Orpheus. A slight buff-yellow. Contrasts nicely with surrounding varieties. A favorite among garden visitors. 60c each; 3 for \$1.50.

Purple Waters. Strong wine purple, full open flowers, long season of blooms. 36 inches. \$1.00 each; 3 for \$2.50.

Rajah. Mahogany red, shading to orange throat; delicate fragrance; very large; blooms profusely. One of the best of this color. 48 inches. July-August. 60 each; 3 for \$1.50.



DOUBLE WHITE

Canari. Guards barely tinted flesh, center sulphur-white, becoming pure white; large, fragrant; bomb; late midseason; tall. \$1.00 each; 3 for \$2.50.

Crown of Gold. (8.1) Snowy white, reflecting golden stamens and lighting up the flower; center petals flecked and edged carmine; large; semi-rose type; fragrant; late; upright, vigorous with strong stems. \$1.00 each; 3 for \$2.50.

Duchess de Nemours. (8.1) Superb ivory-white, greenish markings toward center, becoming pure white; beautiful in bud; medium to large; crown type; medium early; strong; vigorous; good stems; blooms freely. \$1.00 each; 3 for \$2.50.

Duke of Wellington. (7.8) Broad white guards; center very full, sulphur white, becoming pure white; fragrant; bomb type; late; blooms freely; vigorous; long, strong stems; very large. \$1.00 each, 3 for \$2.50.

Elsa Sass. (9.46) Full double, lovely white, veiled pink; stems stiff and strong; rose type. \$3.00 each.

Festiva Maxima. (9.3) Large; pure paper white, some center petals flecked purplish carmine; early; rose type; very fragrant; very long, heavy stems. \$1.00 each; 3 for \$2.50.

Kelway's Glorious. (9.56) White. There is a creamy diffusion in the depth of the flower, and occasionally there will be a few crimson edges on center petals. Free flowering with strong stems. A peony that is much sought after. \$2.00 each; 3 for \$4.50.

Le Cygne. (9.42) Large, globular, semi-rose type; pure white; delightfully fragrant; erect; medium tall; stiff stems; midseason. \$2.00 each; 3 for \$5.00.

Lillian Wild. First certificate award winner 1950 American Peony Society Show. Lovely delicate, flesh pink, becoming pure white; very large, compact rose type. Late. Originated and introduced by us. \$2.00 each; 3 for \$5.00.

Mme. de Verneville. Very fine, large compact flowers literally packed with petals; broad white guards; center slightly bluish, becoming pure white, flecked carmine; delightfully fragrant; bomb type; early; vigorous; medium height; good stems. \$1.00 each 3 for \$2.00.

Marie Jacquin. (8.3) Semi-double white with a cluster of yellow stamens in the center. Often called the Water Lily Peony. \$1.50 each.

Mrs. Edward Harding. (9.3) White. Illuminated by many golden stamens hidden under the petals. Free flowering with still stems and excellent foliage. Has had a great deal of publicity due to the fact that it was originally introduced at \$100.00 per division. \$1.00 each; 3 for \$2.50.

Plymouth. (9.20) White. Opening flesh. Substance extra, and one of the surest of all late doubles to open. A most valuable variety. You can always depend on its flowers lasting long and they are superb for cutting as well. \$2.00 each.

DELICATE LIGHT PINK—DOUBLE

Baroness Schroeder. (9.0) Large, delicate flesh, becoming white; globular, compact, rose type flowers; fragrant; midseason; blooms freely. \$1.00 each; 3 for \$2.50.

Hans P. Sass. (9.19) Shell pink, deep in center; late. \$1.50 each.

Marguerite Gerard. Large; light, hydrangea pink, becoming almost white; fragrant; semi-rose type; late. \$1.00 each; 3 for \$2.50.

SARCOXIE PEONIES

From the World's Peony Center

Easily Grown—Hardy as the Oak

ALL PEONIES ARE PREPAID

Hardy as the Oak, Peonies are easily grown. We furnish good strong 3 to 5 eye divisions, the finest plants from the nursery row. Our plants listed are blooming size standard divisions. Should you want larger size, we can supply plants of 6 to 10 eyes at double the printed price. Peonies may be planted from mid-August to April.

Minuet. (9.19) Very large; rose type; light pink; stiff stems; vigorous; late. \$2.00 each; 3 for \$4.50.

Mme. Ducl. Very large, very double perfectly formed; globular bloom, the center petals as beautifully incurved as in a Chrysanthemum. Bright, silvery pink; fragrant; bomb type; midseason to late; vigorous; blooms freely. \$1.00 each; 3 for \$2.50.

Mons. Jules Elie. (9.2) Immense, globular, very full, bomb type flowers on strong stems; glossy, flesh pink, shading to deeper rose at base; very fragrant; early midseason; blooms freely. \$1.00 each; 3 for \$2.50.

Myrtle Gentry. (9.06) A beautiful, late, light pink, fading to nearly pure white with age; A perfect rose form flower, tints of flesh and salmon show throughout the petals; good grower. \$2.00 each; 3 for \$4.50.

Queen Emma. A very large, very full, fragrant; bright light pink, rose type flower; midseason to late; blooms freely; compact grower; the flowers keep and ship well. \$1.00 each; 3 for \$2.50.

Reine Hortense. (8.7) Large, hydrangea pink, minutely splashed on a white background, center flecked crimson; fragrant, semi-rose type; tall; midseason. \$1.00 each; 3 for \$2.50.

Sarah Bernhardt. (9.0) Apple-blossom pink, the petals tipped white; compact, semi-rose type; fragrant; late midseason. \$1.00 each; 3 for \$2.50.

Therese. (9.8) Very large, rich, satiny pink, center becoming lilac-white; compact; rose type; very fragrant; midseason; medium tall. \$1.00 each.

Venus. (8.3) Very large; hydrangea pink; fragrant; crown type; midseason; tall; blooms freely. \$1.00 each; 3 for \$2.50.

MEDIUM BRIGHT TO DARK PINK—DOUBLE

Duc de Cazes. Broad, carmine-red guards, center deep rose, crown type; midseason; medium size, but blooms freely. \$1.00 each; 3 for \$2.50.

Duchesse D'Orleans. Large, carmine-pink guards, center soft pink and salmon, becoming amber-yellow; medium to large; bomb type; fragrant; midseason; strong; vigorous very tall; blooms freely. \$1.00 each; 3 for \$2.50.

Edulis Superba. Beautiful bright, rose pink; very fragrant; large, good form; early, crown type; strong; vigorous; blooms freely. \$1.00 each; 3 for \$2.50.

Modeste Guerin. Lively, very bright, deep pink, with a purplish cast; very fragrant; bomb type; excellent form; midseason; upright habit; blooms freely. 90c each 3 for \$2.00.

Ozark Beauty. Exquisite radiant pink of compact rose type. Late, free bloomer on heavy stems. Originated by us and received honorable mention, as one of the new introductions of the 1950 American Peony Society Show. \$1.25 each; 3 for \$3.00.

Walter Faxon. (9.3) Uniform, bright rose, deepening toward center; medium size; globular, semi-rose type; extra fine; midseason. \$1.00 each; 3 for \$2.50.

RED, BRIGHT AND DARK—DOUBLE

Choice Red. Correctly named, a "choice" among the reds. Very double dark red flowers on tall, straight stems. Excellent for garden or cut flower use. \$1.00 each; 3 for \$2.50.

Felix Crousse. (8.4) Brilliant, rich, even dazzling ruby red; large; globular; solidly and compactly built; bomb type; midseason; fragrant; vigorous; blooms freely; fine. \$1.00 each; 3 for \$2.50.

PEONIES, Continued

Fontenelle. Medium to dark red on nice stems. Makes a fine cut flower variety. **\$1.00 each.**

Kansas. Bright red held high on one of the strongest stems in the field. The foliage is clean and dark green and the plant has always been healthy. The flower is full double with a few hidden stamens. American Home Medal Winner. Won best flower of 1950, National Peony Show. **\$8.00 each; 3 for \$21.00.**

Karl Rosenfield. (8.8) Rich, velvety crimson; very tall, compact grower of stately habit. Late. **\$1.00 each; 3 for \$2.50.**

Lord Kitchener. Early, bright to deep red, outer petals having rather waxy sheen; very double flowers produced on heavy stems of good length. **\$1.00 each; 3 for \$2.50.**

Mary Brand. M. D. Red. A large rose type bloom of dark, clear crimson showing a very brilliant sheen with very few yellow stamens buried in the collar. **\$1.00 each; 3 for \$2.50.**

Mons. Martin Cahuzac. Dark purple garnet with black reflex. One of the darkest peonies offered. Globular, semi-rose type. Strong grower, free bloomer; dark green foliage with red stems. Fine. **\$2.00 each.**

Officinalis Rubra. (8.6) Vivid crimson; large round bloom. **\$1.50 each; 3 for \$3.50.**

Philippe Rivoire (9.2) Early midseason; very dark crimson with blackish sheen; double; medium height. **\$2.00 each; 3 for \$5.00.**

Masterpiece. Large; intense brilliant cerise; semi-rose type; fragrant; midseason. **\$1.00 each.**

Red Rocket. Bright red; very large bomb type. A free bloomer on tall stems. **\$1.00 each; 3 for \$2.50.**

Sarcoxie. A lustrous dark, rich red; broad guards, center petals narrow; tall; thrifty; long stems. **\$2.00 each; 3 for \$4.50.**

The Mighty Mo. Fully double with a rich, lively, velvety red color. The flower grows on long stems and is a wonderful keeper. It has many yellow stamens. Winner of the American Home Achievement Medal at the 1950 National Show. **\$2.00 each; 3 for \$4.50.**

YELLOW OR NEAR YELLOW—DOUBLE

J. C. Legg. Large bomb type flower with a lovely yellow cast when first open. The flower reminds one of a large mum with every other petal in the bomb, yellow in color when first open. It is a heavy bloomer and has attracted considerable attention. Collar around the bomb is white. **\$2.00 each; 3 for \$4.50.**

Laura Dessert. The flower is round, a rose type with guard petals creamy white, enclosing a domelike center of pure canary yellow. An upright grower, holding blossoms erect for good landscape value. Like all yellows, it must be developed inside to preserve its color. **\$1.00 each; 3 for \$2.50.**

Primivere. (8.6) One of the best of the older yellow varieties. Guard petals are a creamy white, enclosing a central ball of sulphur yellow. Cut in the bud, and open inside to get the true color. **\$1.50 each; 3 for \$3.50.**

WE GROW MANY VARIETIES OF PEONIES AND IRIS NOT LISTED IN THIS FOLDER. Write us for special varieties, no doubt we can supply.



A field of Peonies in bloom at Sarcoxie Nurseries.

Japanese Peonies

Of Oriental origin, these Peonies are always exciting to grow, their brilliant guard petals nestling the center of staminodes ranging from chamois to yellow and buff. Exquisite fragrance.

Battle Flag. A very deep, glowing red. Staminodes same color with golden reverse. Unusual. **\$1.50 each; 3 for \$3.50.**

Dr. Jekyl. A late brilliant dark red with center flushed distinctly lighter. **\$1.00 each.**

Goblin. Bright red, center petaloids tipped and streaked. Gay and delightful garden variety. **\$1.50 each.**

Iwo. An interesting pink Jap peony. Staminodes yellow suffused with pink, carpels tipped white. Excellent. **\$2.00 each.**

Mikado (8.6) One of the best with crimson guards surrounding a center of chamois. **\$1.00 each.**

Mrs. Wilder Bancroft (9.08) Brilliant dark red with red staminodes tipped yellow. We consider this one of the best early Japs. **\$2.00 each.**

Neon. Midseason, unusual radiating rose pink guards, bright yellow stamens. **\$3.00 each.**

Nippon Beauty (9.27) Rich deep red with some yellow edges on center petals; strong growing. **\$1.50 each.**

Nippon Splendor (9.06) Dark red Jap, extra fine, yellow edges on center petaloids. Midseason; tall, stiff stems. **\$2.00 each.**

Red Emperor. Large bright red with a full center. Truly a color sensation for the garden. **\$1.50 each.**

Red Star. Tall, deep brilliant red with red stamens tipped gold. An exceptional value for the price. **\$1.50 each.**

Single Peonies

SINGLE RED, WHITE or PINK. **\$1.00 each; 3 for \$2.50.**

Krinkled White (Brand, 1928) (9.04) A large flower with great broad pure white petals like krinkle crepe paper. A continuous prize winner and good cut flower. **Each \$2.50; 3 for \$6.00.**

Peony Collection "A"

Five good named varieties early to late, assorted colors individually labeled. Double flowering varieties.

This **\$5.00** value
All 5 plants prepaid for only **\$3.95**

Peony Collection "B"

Ten good named varieties, early to late, assorted colors individually labeled. Double flowering varieties.

This **\$10.00** value
All 10 plants prepaid for only **\$7.50**

Red, White and Pink "C"

Three of the most popular double Peonies.

- 1 Felix Crousse—Brilliant rich red.
- 1 Festiva Maxima—Large white, red markings.
- 1 Edulis Superba—Beautiful bright deep pink.

This **\$3.00** value
All 3 prepaid for only **\$2.50**

Pennant Brand Mixed Peonies

This is not a cheap lot of undesirable varieties, but a really good mixture of named Peonies, the leading commercial varieties predominating. Grown mixed. **5 for \$3.00; 10 for \$5.00; 25 for \$10.00.**



SARCOXIE NURSERIES IRIS

GROWN IN THE FERTILE SOILS OF THE BEAUTIFUL OZARK
FOOTHILLS

Plant lots of Iris for their grand and royal colors, their beauty of form and texture. Mass them at the borders of the lawn or among shrubbery. Excellent when planted along walks or drives.

Iris Prices Are Prepaid

Aleppo Plain. (J. Sass, 1943) 36 in. A yellow plicata, cream ground heavily dotted and sanded on edge, forming an edge of pansy purple. Large. 75c each; 3 for \$2.00.

Arab Chief. Rich, burnt orange, almost henna tone. 75c each; 3 for \$2.00.

Autumn King. Standards violet-blue, falls deep reddish-purple; large; vigorous; blooms in May and a lighter crop in the fall. 60c each; 3 for \$1.50.

Azure Skies. A ruffled self of pale lavender-blue, whose firm, domed standards and almost horizon tall falls are accented by a white beard. 60c each; 3 for \$1.50.

Blue Rhythm. New soft medium blue with a silvery tone. 75c each; 3 for \$2.00.

Blue Shimmer. Shimmering white, dotted and dappled with the clearest tones of blue. 75c each; 3 for \$2.00.

Bryce Canyon. A distinctive and warm shade of henna-copper; very large flower on 3 ft. stems. \$1.00 each; 3 for \$2.50.

Casa Morena. Glowing deep rich coppery brown. Large flower; solid self. \$1.00 each; 3 for \$2.50.

Cascade Splendor. Blend of pink, apricot and tan; ruffled in both standards and falls; sturdy stalks. \$2.00 each; 3 for \$4.50.

Cherie. (Hall, 1947). 34 in. Flamingo pink self with large ruffled blooms. Tangerine beard. Vigorous and good plant maker. Dykes medal 1951. \$5.00 each.

China Maid. (Milliken, 1936) 36 in. An excellent Iris in shades of pink with a slight trace of copper and lilac smoothly blended. An Iris of large and high quality. 60c each; 3 for \$1.50.

Dauntless. (Connell, 1929) 40 in. Large; standards bronze-red; falls velvety rose-red; fragrant; tall; fine. 60c each; 3 for \$1.50.

Daybreak. (Kleinsorge, 1941) 36 in. Huge golden pink, with slight undertones of copper; closed standards and falls that are semi-flaring; well branched; tall. \$1.00 each; 3 for \$2.50.

Desert Song. (Fay, 1946) 40 in. Large, cream colored blooms with broad standards and rounded flaring falls. \$1.50 each; 3 for \$3.50.

Dream Castle. (Cook, 1943) 38 in. Orchid pink self, with broad segments of bright, clear tones. The lemon tint at the base of the beard emphasizes the pink effect. \$1.50 each.

Elmohr. Very rich, red-violet; large flowers; free blooming on tall stems. \$1.00 each; 3 for \$2.50.

Fantasy. (D. Hall, 1947) 30 in. Lovely ruffled flower of rose and orchid toned pink, with tangerine red beard. \$5.00 each.

Frieda Mohr. Large lilac-rose; standards ruffled; fragrant; tall. 60c each; 3 for \$1.50.

Garden Magic. (Grinter, 1936) 38 in. A rich, vivid, glowing red; good form; blooms late. 60c each; 3 for \$1.50.

Golden Eagle. (D. Hall, 1941) 38 in. Huge, smoothly finished yellow. A wonderful breeders' Iris for producing smooth pinks and orchids; many with tangerine beards. 60c each; 3 for \$1.50.

Golden Fleece. (J. Sass, 1940) 36 in. Lemon colored with creamy falls, edged gold; wholly unlike any other yellow Iris. Ruffled, tall and good grower. 60c each; 3 for \$1.50.

Gold Sovereign. (Whiting, 1950) 32 in. A clear, sparkling orange-yellow. A most unusual Iris that has attracted much attention. \$3.50 each.

Grand Canyon. A blending of deep canyon colors; plum, copper and gold, with a light form of ruffling. 75c each; 3 for \$2.00.

Great Lakes. Pure, clear blue with almost white beard. 75c each; 3 for \$2.00.

Helen McGregor. Huge labelia violet self. Beautiful under artificial light or indoors. \$2.00 each; 3 for \$4.50.

Jake. Large. Standards ruffled glistening pure white falls glistening white edged yellow at extreme base; fine; fragrant; tall; well and low branched; blooms freely. 60c each; 3 for \$1.50.

Lady Mohr. Standards oyster white, huge and slightly fluted, with strong mid-ribs; falls pale chartreuse of greenish yellow; dark patch surrounding the beard. \$1.00 each; 3 for \$2.50.

Matterhorn. Very large; glistening pure white; fragrant; tall; strong; well branched. 60c each; 3 for \$1.50.

Melanie. (Hill, 1941) 40 in. Fine orchid pink, close to true pink; large; midseason. 60c each; 3 for \$1.50.

Minnie Colquitt. (H. P. Sass, 1942) 35 in. This really fine plicata of pearly white is peppered with a striking bluish-wine stippled border. \$1.00 each; 3 for \$2.50.

Moab. Unusual and lovely hybrid of blended rose, brown and lavender tones. Slight veining and signal patch. \$3.00 each.

Morning Splendor. Fine, very large; standards deep lavender-violet; falls velvety reddish-purple, fragrant. 60c each; 3 for \$1.50.

Morocco Rose. (Loomis, 1937) 36 in. Pink-rose self with a soft yellow glow at the heart; bright gold beard. 60c each; 3 for \$1.50.

Mulberry Rose. (Schreiner, 1941) 40 in. Deep, radiant rose self, showing a brown shade; beard is a heavy bronze; large; tall. 75c each; 3 for \$2.00.

New Snow. (Fay, 1946) 38 in. Large, ruffled, pure white flowers as white as new snow. Bright yellow beard. \$2.00 each; 3 for \$4.50.

Nylon. (Whiting, 1940) 36 in. A smooth light caramel blend with large blooms of ruffled form. 60c each; 3 for \$1.50.

Ola Kala. Very dark yellow self; medium large, ruffled flowers on 36-inch well branched stem. \$1.00 each; 3 for \$2.50.

Painted Desert. Very tall, almost 4 ft., a mingling of brown and violet. 75c each; 3 for \$1.80.

Peg Dabagh. Clear, blue violet flowers on tall 50-inch stalks; vigorous; early. \$3.00 each; 3 for \$7.50.

Pink Cameo. (Fay, 1946) 36 in. One of the finest pinks with a softness and finish seldom seen. The absence of other colorings makes it truly a beautiful pink. \$1.50 each; 3 for \$3.50.

Pink Formal. (Muhlestein, 1949) 38 in. All the good points seem to have been combined in this beautiful, lightly ruffled pink. One of the finest varieties. \$6.00 each.

Pink Sensation. (D. Hall, 1948) 33 in. Truly a sensation in pink Iris. The color is devoid of any influence of lilac or salmon, and is our favorite of the new pinks. \$7.50 each.

Sable. A uniform shade of blue-black-violet with blue beard; large flower on tall stalks. 75c each; 3 for \$2.00.

Shannopin. (Pillow, 1940) 40 in. A stunning Iris close to a cream and rose amoena. Ruffled, creamy white standards with bright rose falls. 75c each; 3 for \$2.00.

Sharkskin. A warm, white Iris of near perfection. The falls are flaring and inside the throat there is a glistening yellow flush. Well proportioned blooms and well branched stalks. 60c each; 3 for \$1.50.

Solid Mahogany. (J. Sass, 1944) 38 in. One of the darkest mahogany reds; large flowers of good substance. \$1.00 each; 3 for \$2.50.

Sonrisa. Coppery pink with yellow undertone, having a metallic finish. 75c each; 3 for \$2.00.

Spanish Peaks. (Loomis, 1947) 38 in. A beautifully finished, new white that is all white, even to the beard. Large; splendid. \$2.00 each.

Spindrift. (Loomis, 1944) 36 in. Translucent sea shell or coral pink, with fiery, tangerine beard. \$1.00 each; 3 for \$2.50.

Stardom. Rapturous salmon shading to apricot buff. Bright orange beard; extremely vigorous. 60c each; 3 for \$1.50.

Tea Rose. Tea rose and buff shadings; mellow pink with a coppery shading, giving an effect of a copper pink. 60c each; 3 for \$1.50.

Three Oaks. (Whiting, 1943) 38 in. Glowing rose pink blend; deep, rich mellow pink with overlay of rosy copper; large; long flowering period. \$1.00 each; 3 for \$2.50.

Twilight Sky. (Fay, 1949) 35 in. Large, pink flowers of flaring form. A red beard accentuates the color of this splendid variety. \$2.00 each; 3 for \$4.50.

Wabash. Clean white standards and bright purple falls; large, on well branched stalks. 60c each; 3 for \$1.50.

White City. (Murrell, 1939) 40 in. Immense flower of icy white with deeper blue flush at the heart. Dykes Medal in England, 1940. 60c each; 3 for \$1.50.

DWARF IRIS

The earliest blooming Iris—excellent for borders and in the rockery. 40c each; 3 for \$1.00; 10 for \$2.50.

Dwarf Blue, Dwarf Yellow, Dwarf Purple, Dwarf White.

SIBERIAN IRIS

A fine Iris for rock gardens, border planting or mass planting. Flowers resembling Japan Iris but smaller, borne on wiry stems 12 to 18 inches. Foliage narrow and blade-like. 40c each; 3 for \$1.00; 10 for \$2.50.

Siberian Blue, Siberian White.

SARCOXIE, MISSOURI

THE SARCOXIE NURSERIES

WILD BROS. NURSERY CO.

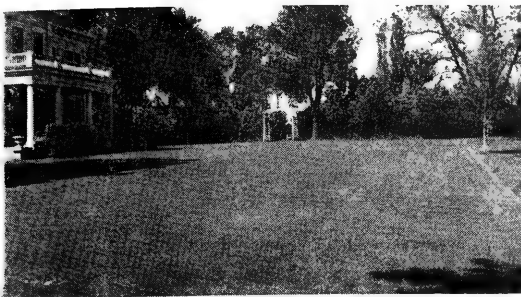
Sarcoxie Nurseries Special Offers

Special Blend Grass Seed

A special blend of lawn seed adapted to sunny or shady exposures. This blend consists of high quality seed mixed in the proper proportions to give you the best lawn possible, and the seed is chemically treated to insure good germination and growth. Mixture consists of Kentucky Blue Grass, Perennial Rye Grass, Poa Trivialis, fancy Red Top and Highland Bent grass. Packaged in sturdy boxes with full instructions for lawn preparation and seeding. Seed supplied is weed free, treated with effective fungicide to prevent attack by disease and with a growth Hormone to insure a thick heavy stand of grass.

1 pound box PREPAID.....\$1.35
 3 pound box PREPAID..... 3.30
 5 pound box PREPAID.....\$ 5.45
 10 pound box PREPAID..... 10.00

These PREPAID prices are less than average store shelf prices for weed-free chemically treated seed of this high quality.

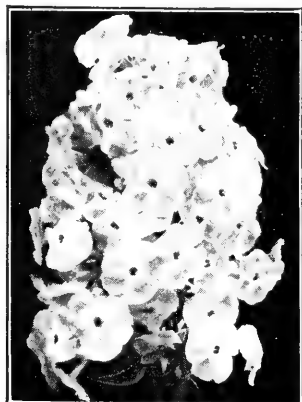


Proper soil preparation and good seed results in beautiful velvet-green lawns.

Hardy Phlox Assortment

8 of the Best Varieties Assorted Colors Our Selection

ALL 8 PREPAID for only \$2.25



Hollyhocks

For a Colorful Background

7 Plants, All Double Mixed Colors

HOLLYHOCK SPECIAL

ALL 7 PREPAID for only \$1.95

Polyantha Rose Special

Baby Ideal. Truly an ideal baby rose for a border or to be used outlining walkways. The dark scarlet roses are produced in immense compact bunches. Dwarf; grows 12 to 18 inches.

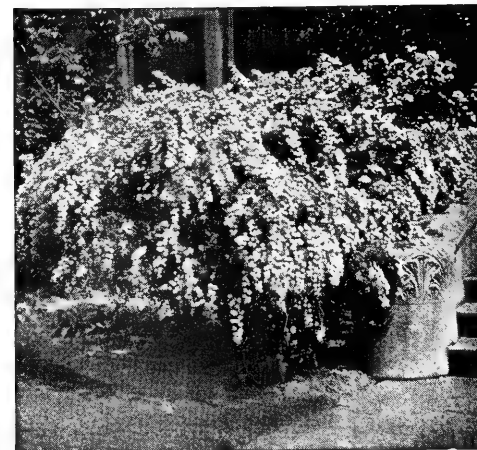
5 for \$5.25; 10 for \$9.75; 25 for \$22.25. Above prices prepaid to your door.

Spirea Special

SPIREA VAN HOUTTEI FOR HEDGING
 Beautiful fountains of white flowers in May.
 Plant 30 to 48 in. apart in row.
 12 to 18 inch Plants
 25 for only \$7.95. Prepaid.



Everblooming Baby Ideal Rose.



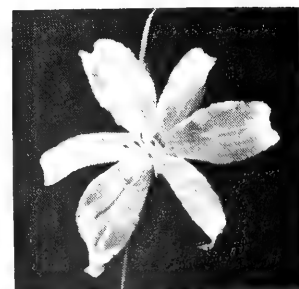
Home Vegetable Garden Special

25 ASPARAGUS, 2-YR. PLANTS
 Mary Washington
 6 RHUBARB, Large Whole Plants
 Victoria
 6 HORSERADISH, Whole Plants
 ALL 37 PLANTS, PREPAID, \$3.95.

Daylily Special

A good selection of color—early to late bloomer.

Allure. Canary yellow. Early and midseason.
Beauteau. Large chrome yellow. Midseason.
Delightful Duet. Red and yellow bi-color. Late.
Double Flava. Double yellow. Midseason.
Gloria. Bright orange. Early and midseason.
Margaret Perry. Brilliant orange-scarlet. Late.
Purple Waters. Purple. Long blooming season.
Rajah. Mahogany-red. Midseason to late.

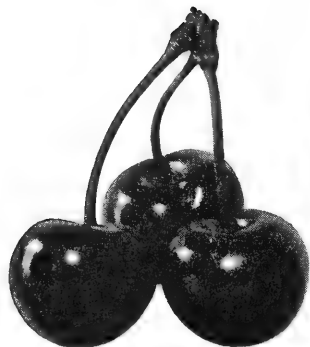


Daylilies—for spring, summer, fall flowers.

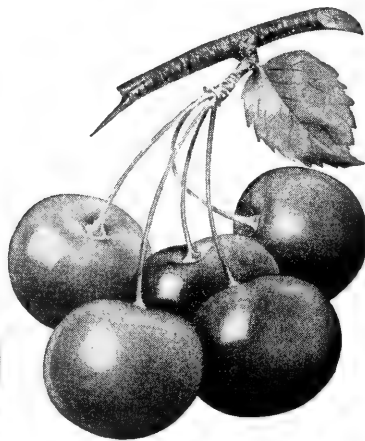
CATALOG VALUE \$5.00 **Yours for \$3.50** ALL 8 PLANTS LABELED

Fruit Trees for the Home Orchard, All Prepaid

HAVE ALL THE FRUIT YOU WANT, TREE RIPENED AND FRESH FROM YOUR OWN TREES.
MONEY DOES GROW ON TREES WHEN YOU GROW YOUR OWN FRUIT.



Montmorency



Early Richmond

Cherries for Quick Results

Cherries give quick results, often coming into bearing the fourth year. On good, well drained soil they are successful. On wet soil they are short-lived. Plant 18 to 20 feet apart. There is always a market for Cherries if you have more than you need for home use.

Price of Cherry Trees

3 to 4 ft., 9 to 11/16 in. caliper.....Each \$1.60; 3 for \$4.50

↪ **Early Richmond** (May Cherry). Medium size but very productive; round; bright red, darker when fully ripe; very juicy, sprightly acid; latter May-June; hardy; profitable.

↪ **Montmorency**. A week or ten days later than Early Richmond; rather large; dark rich red; juicy, pleasant acid; excellent quality; vigorous; hardy; productive; succeeds everywhere.

Plum Trees



Easily grown; bear in spite of neglect, yet respond liberally to good care. Plant 20 to 24 feet apart.

4 to 5 ft., 9 to 11/16 in. caliper.....Each \$1.85; 3 for \$5.25

↪ **Abundance**. Brilliant cherry red in color and has firm, sweet juicy flesh. Ripens in early August. A heavy producer.

↪ **Burbank**. Large purplish red fruit with very sweet amber flesh. Ripens early August. Plant with another variety to insure pollination. One of Burbank's best.

Peach Trees



Peaches come into bearing younger than any other tree fruit, under favorable conditions, giving a crop the third year, and yields are larger as the trees grow older. A few trees won't cost as much as you may pay for peaches in one year, and none are as delicious as those freshly picked when ripened on the tree. The man who has

room for a commercial orchard, and will cultivate, prune and take care of the trees, peaches offer great opportunities for great profits. A sandy loam or gravelly soil is best, but the peach adapts itself to almost any well drained soil.

Prices of Peach

4 to 5 ft., 9 to 11/16 in. caliper.....Each \$1.50; 3 for \$4.25

↪ **Belle of Georgia**. Very large; white, red cheek; flesh white, firm, juicy, good; freestone; mid-August; productive.

↪ **Champion**. Large; white, red cheek; freestone; flesh white, sweet, juicy, rich; early August. One of the hardiest peaches.

↪ **Elberta**. Very large; yellow, crimson cheek; flesh yellow, firm, juicy, good; freestone; mid-August; productive.

↪ **Early Elberta**. Freestone. Ripens a week ahead of Elberta. An excellent smooth skinned early peach.

↪ **Golden Jubilee**. A new large early peach; freestone; yellow flesh and has a distinct blush; fine quality. Highly recommended by leading authorities.

↪ **Hale Haven**. Large; yellow; freestone of high quality, ripening about ten days or two weeks ahead of Elberta.

↪ **Indian Blood**. A fine flavored old fashioned red meated cling. Beautiful when canned or preserved.

↪ **J. H. Hale**. Large; yellow with red cheek; fine grained; a little earlier and more round than Elberta.

↪ **Heath Cling**. Large white clingstone with tender, juicy flesh. Ripens rather late. Excellent for canning, pickling or preserving. Late, seldom gets frosted.

Pear Trees

The quality is improved if gathered when full size and beginning to color but yet firm and ripened in a cool dark room.

Prices of Pears

4 to 5 ft., 9 to 11/16 in. caliper.....Each \$1.75; 3 for \$4.75.

↪ **Bartlett**. Large, waxy yellow with red blush; juicy, fine grained, rich, good quality; latter August; bears young.

↪ **Douglas**. Golden yellow, flushed with pink, tender, juicy, excellent flavor; resistant to blight; bears young.

↪ **Lincoln**. Large, yellow, quality good; resistant to blight; bears young; very hardy.

↪ **Seckel**. Because of its sweetness it is called Sugar Pear. Small to medium in size, delicious flavor. Good producer.

↪ **Gold**. Golden yellow with red cheek, this tasty plum should not be overlooked where a firm golden fruit is desired. Late July.

↪ **Stanley Prune**. Beautiful purple-blue skin with sweet golden flesh. A freestone that ripens early. A good canner or table fruit.

Thornless Boysenberries

A sensational new fruit—a cross combining the delicious flavors of Loganberry, Blackberry and Raspberry. Large fruit 1½ to 2 in. long; bears young.

5 for \$1.15; 10 for \$1.95; 25 for \$3.75; 50 or more at \$12.00 per 100, prepaid.

Blackberries

↘ **Early Harvest.** Medium size, but juicy and sweet. Our earliest variety. Same price as Eldorado.

↘ **Eldorado.** Medium to large; jet black; midseason; productive.

10 for \$1.65; 25 for \$3.50; 50 for \$5.50, prepaid.

Raspberries

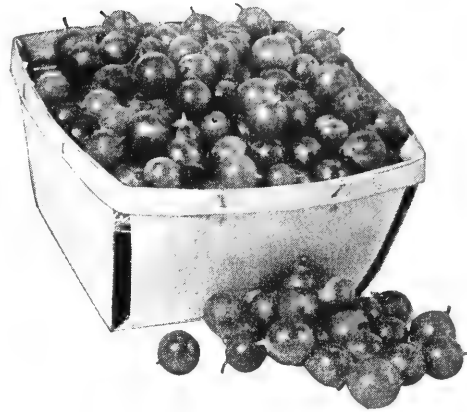
↘ **Cumberland.** One of the best Blackcaps. Large; firm; of excellent quality. Early to midseason.

10 for \$1.75; 25 for \$3.25; 50 for \$6.00, prepaid.

↘ **Latham.** Large; brilliant red. Good quality and flavor.

10 for \$2.00; 25 for \$4.00; 50 for \$7.50, prepaid.

Gooseberries—Prepaid



↘ **Pixwell**
Gooseberries

Best for most sections. A good producer, is resistant to rust. Plant in semi-shade or on a northern exposure.

Each\$0.70
3 for 1.95
5 for 3.00

Grape Vines Prepaid

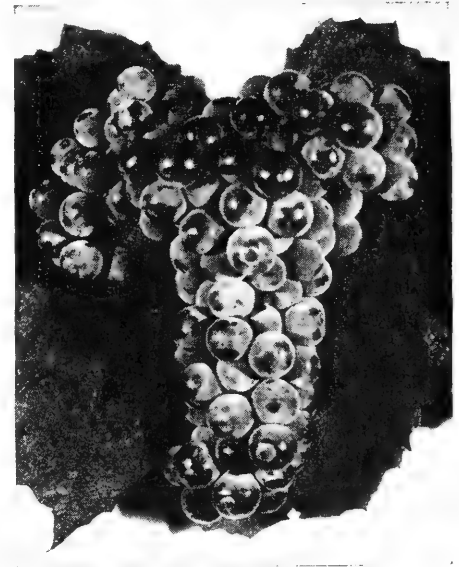
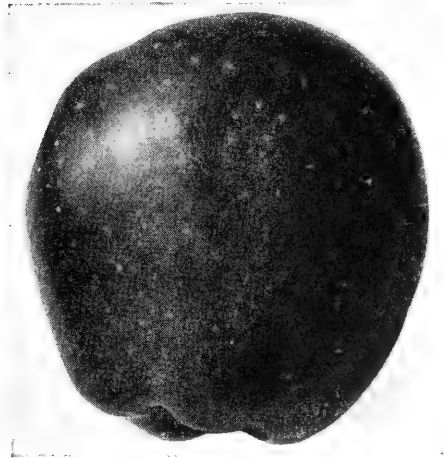
↘ **Concord.** The most popular large black sweet grape. A good commercial variety.

↘ **Fredonia.** Large, very black, of good flavor, and bear early. A favorite in Missouri.

↘ **Moore's Early.** Comes into production two weeks ahead of Concord. Large, productive.

↘ **Niagara.** Greenish white to pale yellow. Very sweet and productive.

Prices of above 2 Yr. No. 1 Grapes				
	Each	5 at	10 at	25 at
Concord\$0.40	\$0.28	\$0.25	\$0.20
Fredonia45	.40	.35	.30
Moore's Ey.45	.40	.35	.30
Niagara50	.45	.40	.35



Apple Trees—Prepaid

4 to 5 ft., 9 to 11/16 in. caliper.....Each \$1.50; 3 for \$4.25

↘ **Grimes Golden.** Beautiful yellow. Fine quality and aroma. Excellent table apple. An old timer, but one of the best.

↘ **Dark Red Jonathan.** Colors a dark red earlier than the regular Jonathan. Fine quality; juicy; a good keeper.

↘ **Red Delicious.** Colors early and is red all over. This excellent large apple is firm; juicy, and full flavored.

↘ **Wealthy.** A bright red striped late summer apple. Very hardy, bears young. A very dependable popular variety.

↘ **Whitney Crab (Crabapple).** Large fruited, excellent flavored crabapple. Perfect for pickling, jelly or apple butter.

↘ **Winesap.** Bears young. This juicy, firm apple is a favorite for a table apple, pies, or for canning.

↘ **Yellow Delicious.** A firm golden yellow apple, large, wonderful flavor. Bears young and is a good keeper.

↘ **Yellow Transparent.** Bears in mid-June. Fruit yellowish-white, fine grained and juicy. Summer cooking apple.

Currants for Jelly—Prepaid

If you like home-made jelly, plant Currants, 3x4 ft. In the Central States they should have partial shade or a northern slope.

↘ **Red, 2 yr. No. 1.....60c each; 3 for \$1.50; 6 for \$2.50**

Asparagus—Prepaid

Mary Washington. Large; productive; resistant to rust; an excellent variety.

2 yr. heavy\$1.00 per 10; \$2.00 per 25; \$6.00 per 100
1 yr.70 per 10; 1.25 per 25; 3.45 per 100

Rhubarb—Prepaid

Victoria. A giant red stalked variety with delicate flavor, mildly acid. Early and tender.

Large whole plants.....3 for 90c; 6 for \$1.50; 12 for \$2.75

MacDonald. A new, bright red rhubarb of high quality. The best variety where soil is good and moisture can be maintained. Stays tender far into the summer. Does not seed.

Divisions.....85c each; 3 for \$2.35; 6 for \$4.25

Horseradish—Prepaid

Snappy Bohemian variety, crisp and full flavored, but not bitter. Crown plants make usable roots first year.

Crown plants3 for 50c; 7 for \$1.00

5-in-1 APPLE TREE

5-in-1 Apple Trees provide a whole orchard on one tree, with red and yellow fruit, early and late, on the same tree.

On Yellow Delicious tree are the following varieties:
Grimes Golden, Red Delicious, Red Stayman,
Red Jonathan and Yellow Transparent.

Each \$3.50, Prepaid

HARDY VINES - *Natures Drapery* add charm and beauty to your home grounds

ALL VINES PREPAID

Vines can turn that unsightly fence or wall into a beauty spot—also excellent for converting an open portion of the lawn into a private outdoor room. Vines grow rapidly and are always an addition to the landscape.

Bittersweet, American. A high climbing vine; orange-yellow seed pods reveal bright red seed along the branches in autumn; thrives in sun or partial shade; twining. Two plants are needed to produce berries.

2 yr. No. 1.....80c each; 2 for \$1.50, prepaid

Clematis paniculata; Japanese Clematis. Thousands of fragrant pure white four-petaled starry flowers 1-1½ in. across in September; twining by leaf stems.

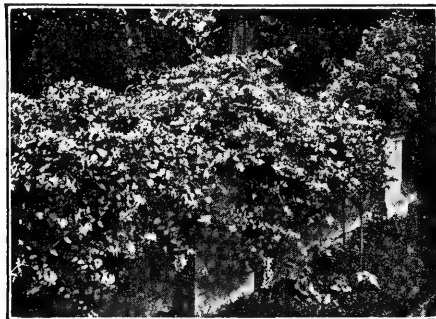
2 yr. No. 1.....\$1.00 each; 2 for \$1.85, prepaid

Honeysuckle, Goldflame. A compact twining vine blooming almost all summer; flowers in clusters, deep rose outside, yellow inside; fragrant after nightfall.

2 yr. No. 1.....\$1.00 each; 3 for \$2.75, prepaid

Ivy, English. Evergreen waxy leaves; excellent where persistent foliage is desired. Plant on north of building or in shaded areas. Does not do well in full sun.

2 yr. No. 1.....\$0.90 each; 2 for \$1.75, prepaid



Hall Japanese Honeysuckle, excellent for covering walls.

Honeysuckle, Hall Japanese. Flowers very fragrant, white becoming yellow, in June and at intervals to fall; twining; growth rapid.

2 yr. No. 1.....60c each



Wall covered with Boston Ivy.

Ivy, Boston. A graceful vine, excellent for smoothly and closely covering a wall of wood, brick or stone. Leaves three lobed, bright green turning orange to scarlet in the fall.

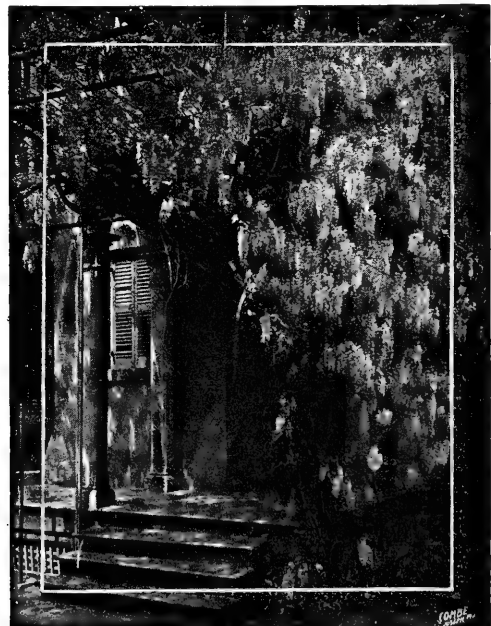
2 yr. No. 1.....\$0.90 each; 3 for \$1.75, prepaid



Silver Lace Vine

Silver Lace Vine. Easy to grow, this rapid growing vine is ideal for covering porch, pergola, fence or soil banks. Foliage glossy green. Thousands of lacy white flowers from mid-season to fall. Grows 10 to 12 feet a year.

2 yr. plants.....90c each; 2 for \$1.75, prepaid



Wisteria, Chinese

Wisteria, Chinese Blue. Clusters of violet-blue flowers, longer than those of the American and not quite so thick on the cluster.

Grafted plants.....\$1.50, prepaid

THIS FLAP IS GUMMED, READY TO SEAL

**FOLD AND
SEAL**

NO ENVELOPE NECESSARY

b
ark
Ball
Rea

**Be sure your name and address are written plainly
on the other side of this blank.**

LET US HELP YOU WITH YOUR LANDSCAPE PROBLEMS

We maintain a **COMPLETE LANDSCAPE SERVICE**—
from drawing the plans to delivering and planting the plant material.

A Well Planned Home Is a Home of Distinction

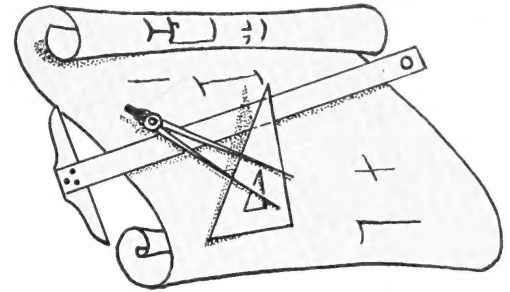


Making Measurements and Drawing Plans

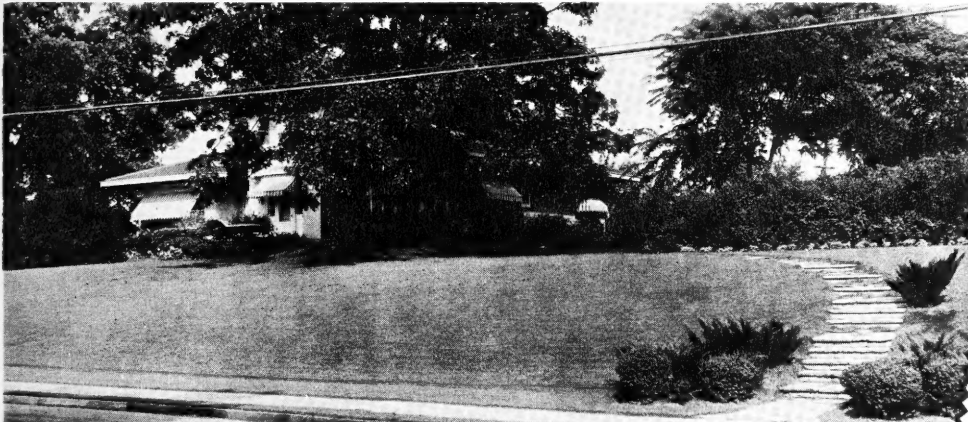
Within a radius of 75 miles we will be glad to have our Landscape representative call and go over your problems. Measurements can then be made, the plans drawn and submitted for your approval. For this service we make a charge of \$10.00 for an ordinary size lot. This amount is credited on your order at the rate of 10% of the plant material purchased. For instance, if your order amounts to \$100.00, your plan has cost you nothing. Estimates gladly made without charge.

For larger properties and special problems, costs are made accordingly.

Properties located over 75 miles distant, ask for prices.



You will be surprised at the saving that can be made and the beauty attained by having your property planned systematically by a Landscape Specialist.



Landscaping makes the home grounds more inviting, more livable.

LET US HELP YOU RELAX in Your Own GARDEN
★
Gardening Is Fun.
★
It is a Profitable Investment.

I N D E X

Abelia	15	Dahlia	7	Landscape Information.....	27	Quince, Japan.....	13
Althea	11	Daisties	18	Lilac	12	Raspberries	25
Apples	25	Daylilies	19	Lilies	6	Redbud	10
Arborvitae	16	Delphinium	18	Magnolias	15	Rhubarb	25
Ash	8	Desmodium	11	Mahonia	15	Roses	3-4-5
Asparagus	25	Deutzia	11	Mallow (Hibiscus).....	19	Rose of Sharon.....	11
Baby's Breath.....	18	Dogwood	8	Maple	9	Russian Olive.....	13
Barberry (Bergeris).....	11-15	Elm	8	Mimosa	9	Sedum	19
Balloon Flower	18	Euonymus	15	Mock Orange.....	12	Shade Trees.....	8-9-10
Beautybush	11	Evergreens	16-17	Multiflora Rose	7	Shrubs	11-12-13-14
Birch (Betula).....	8	Forsythia	11	Nandina	15	Silver Lace Vine.....	26
Bittersweet	26	Gaillardia	18	Nut Tree	10	Snowball	13
Blackberries	25	Gladiolus	6	Oak, Pin	10	Special Offers.....	10-14-23
Blanket Flower	18	Golden Chain Tree	8	Oregon Holly	15	Spirea	13
Bleeding Heart.....	18	Golden Rain Tree.....	9	Peach	24	Stonecrop (Sedum).....	19
Boysenberry	25	Gooseberries	25	Pear	24	Strawberries	28
Buckeye, Scarlet.....	8	Grapes	25	Pecan	10	Sweet Gum	9
Buddleia (Butterfly Bush).....	11	Grass Seed	23	Peonies	20-21	Sweet William	19
Cannas	7	Hemerocallis (Day Lily).....	19	Perennials	18-23	Syringa (Lilac).....	12
Cherry	24	Holly	17	Philadelphus (Mock Orange).....	12	Tamarix	14
Chestnut	10	Hollyhock	19	Phlox	19	Tuberose	6
Chrysanthemums	18	Honeysuckle	12-26	Pin Oak	10	Viburnum Carlesi.....	14
Clematis	26	Horseradish	25	Pine (Pinus).....	17	Vines	26
Columbine	18	Hydrangea	12	Platyocodon (Balloon Flower).....	18	Vitex	14
Crab, Ornamental.....	9	Hibiscus (Mallows).....	19	Plum	24	Walnut	10
Crabapple	25	Iris	22	Poplar (Populus).....	10	Weigela	14
Cranberry Bush.....	11	Ivy	26	Privet	7	White Fringe	14
Crape Myrtle.....	11	Juniper, varieties.....	16-17	Pyracantha	15	Willow	10
Currants, Fruiting.....	25	Kolkwitzia	11			Wisteria	26

COMBE PRINTING CO., Horticultural Printers, St. Joseph, Mo.



*Our 81st
Year*

Librarian
U. S. Dept. of Agriculture
Washington 25, D. C.

Form 3547 requested
Forwarding postage guaranteed

Sarcxie Nurseries

BERRY PLANTS ARE EASY TO GROW

TWICE INSPECTED BY MO. STATE DEPT. OF AGRI.

For Spring Shipment Only

RED RICH

(Plant Patent No. 993)

A new variety of everbearing Strawberry which is truly a "taste thrill." Beautiful large rich red berries with unusual sweetness and flavor. Bears mid-season to frost.

12 for \$2.95; 25 for \$5.00; 50 for \$8.50;
100 for \$15.00; 200 for \$26.00, prepaid.



ARMORE

One of the most beautiful and tasty June bearing Strawberries we have known. A very large honey-sweet solid fruit, excellent for table use, freezing, for preserving and canning, or for a commercial shipper. This new Aroma-Blakemore cross released by the Univ. of Missouri, ripens later than Blakemore and lasts through the Aroma season.

25 for \$1.50; 50 for \$2.50; 100 for \$3.65; 250 for \$8.00;
500 for \$14.25; 1000 for \$22.50



STRAWBERRIES

STRAWBERRY PLANTS ARE GROWN UNDER IRRIGATION AT SARCOXIE

No other fruit gives such quick results as Strawberries. Planted one spring, they give a full crop the next, and with proper care a patch lasts several years. Plant 2 feet apart in the row, the rows 3 1/2 to 4 feet apart; planted 2x4 feet requires 5,400 per acre. These plants are well rooted, properly cleaned and carefully packed. All varieties listed are perfect flowered and will bear alone.

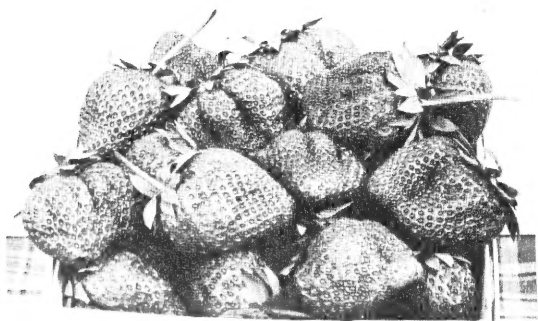
- AROMA. A heavy bearer and the leading commercial variety in this section. Very large, conical, glossy red. Firm; ships well; begins midseason and continues late.
- BLAKEMORE. Originated by the United States Department of Agriculture. Bright light red; medium size and good quality. Firm, ships and keeps well; valuable commercially. Jells easily; early. Grown from yellows-free plants.
- BRUNE'S MARVEL. A new everbearing variety from the North. Fruit medium size, rather long. Extra good quality and prolific. A heavy producer.
- DORSETT. Early; rich bright red; large and firm. Good quality.
- GIANT GEM. Large; attractive light red; tart, but a flavor usually well liked. Productive; everbearing.
- PREMIER. Early; attractive color; good size and quality. Productive.
- SENATOR DUNLAP. Dark glossy red; resembling Warfield and of the same rich, juicy flavor; medium size. Midseason; bears heavily and ships well; succeeds almost everywhere.
- STREAMLINER. A new everbearer highly acclaimed in all sections of the country.
- SUPERFECTION. One of the top everbearing varieties; large, bright red, ripens all over.

PRICES OF JUNE BEARING STRAWBERRIES

	25	50	100	250	500	1000
Aroma	\$1.15	\$1.85	\$2.85	\$5.75	\$9.25	\$17.50
Blakemore	1.15	1.85	2.85	5.75	9.25	17.50
Dorsett	1.15	1.85	2.85	5.75	9.25	17.50
Premier	1.15	1.85	2.85	5.75	9.25	17.50
Senator Dunlap	1.15	1.85	2.85	5.75	9.25	17.50

EVERBEARING (Bear the First Summer and Fall)

Brune's Marvel	\$1.95	\$3.25	\$5.75	\$9.70	\$15.25	\$28.00
Giant Gem	1.65	2.50	3.95	8.75	14.95	26.00
Streamliner	1.65	2.50	3.95	8.75	14.95	26.00
Superfection	1.65	2.50	3.95	8.75	14.95	29.50



ARMORE STRAWBERRY

An Ideal Commercial and Locker Freezer Variety.

STRAWBERRY PLANTS ARE SENT PREPAID—SPRING DELIVERY