

YOU'RE WAY AHEAD

with BAGLEY SEED

with BAGLEY SEED

6283
Bagley
2-1955

RSB15
29B257

49th
International
COTTON
RECORD
EXHIBIT D
NOV 23 1955
U. S. Department of Agriculture

of
J. G. Webb

1. They have many years of research and dependable breeding experience behind them.

Farmers Know

2. They are grown, harvested, ginned, processed, and handled better.
3. They grow you plants that have more vigor, vitality and producing ability.

To
Great
Profits

It Pays To Plant

4. They are more drought and storm resistant.
5. They mature early and are easily harvested with machinery.

On Your Farm

Bagley Seed

6. They give you bigger crop yields and greater profits.

Plant
Bagley Seed

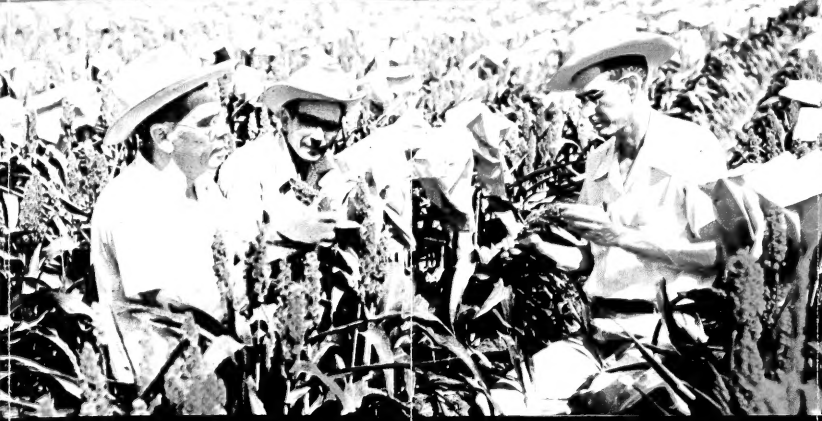
"Nobility of the Maize crop"

"Majesty of the Corn crop"

"Royalty of the Cotton crop"



BY THE BALE OR BY THE BUSHEL-BAGLEY SEED ARE BEST



An Expert Five Man Team

100 Years of Combined Maize, Corn and Cotton Know How
That's the family total of years of experience behind dependable BAGLEY BETTER-BRED SEED

D. R. BAGLEY
Breeding & Processing

W. W. BAGLEY, JR.
Office & Research

W. W. BAGLEY, SR.
FOUNDER, BREEDER AND GROWER

C. C. BAGLEY
Production & Breeding

T. D. BAGLEY
Sales & Distribution



Each bag of Bagley Better-Bred Seed is backed by the guarantee of more than 100 man-years of sound, scientific breeding work. The four great cottons being produced on the Bagley Breeding Farms this season are tops in field performance. The eight Bagley Hybrids represent the finest corn bred in Bagley history. The three wonderful strains of Bagley Gold-Tex Maize are the Cream of the Crop and you can depend on all of these Bagley Seed giving you better than ever results.

PERSONAL ATTENTION

W. W. Bagley and his four sons personally supervise and direct all phases of the field work so necessary to obtain the top quality and rugged resistance in Bagley Better Seed. Shipping you quality seed means something to us. We are in the business to stay, and satisfied customers are our best advertisement. When you invest in Bagley Pedigreed Seed you can be sure of getting seed that have been properly bred, grown, ginned, processed, and handled. Visitors are always welcome.

"Our Sole Aim Is To Help You Make More Money From Your Crops"

Plant Better Seed and Make Bigger Profits





**HERE'S YOUR
BEST BUY IN
SEED**

**BAGLEY
COTTON
SEED**

**BAGLEY
GOLD-TEX
MAIZE**

**BAGLEY
SEED
CORN**

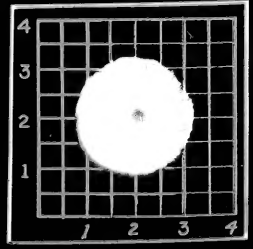
**4 GREAT
STRAINS**

Texas-bred to suit Your land



Long
Fruiting
Branches
Increase Production

Long
Hard
Uniform
Strong
Staple



**Bagley
64 MASTER STRAIN**

Newest Regular Bagley Type

This newest of the Bagley Master Strain Cottons was developed from a cross of our 793 Master Strain and some other very prolific strains which gives added vigor for greater yields. Bagley 64 Master Cotton has been isolated, tested, compared and re-tested for many years in the Bagley Genetic Gardens and increase progeny plots. It has passed these rigid tests with exceptional success. Suited to any and all cotton growing soils, Bagley 64 Master grows off fast, fruits quickly, and has pyramidal type strong, sturdy stalk with lengthy, short-jointed fruiting branches, and light foliage. It has a majority of 5-lock drooping bolls that are easily picked, and a deep penetrating root system that makes it a real drought resister. With 50 to 60 bolls per pound seed cotton, IT IS STORM RESISTANT AND HIGH IN VARIETAL PURITY. Bagley 64 Master Cotton is a heavy producer, gives a gin turnout of 38% to 40%, and has an excellent quality staple of 31/32-inch to 1 1/32-inch, according to soil and season. You'll enjoy growing this new, different, better cotton! Only a limited quantity of this seed is available this season because of the limited foundation seed stock, so it is advisable to send in your order early.

Bagley B-17 ROYAL ROWDEN

Newest best yielding Rowden type

B-17 Royal Rowden is new and different. It is fast becoming known as the cotton that is adaptable to most soils and climates suited to cotton growing. It is very prolific and fast fruiting, often making from 15% to 25% more per acre than ordinary cotton. B-17 has an upright pyramidal stalk with well-spaced, short-jointed fruiting branches that produce big, fluffy bolls which open nicely and are picked easily. 50 to 60 bolls make a pound of seed cotton. This cotton grows off extra fast, sets fruit rapidly, and opens early. The foliage is reduced to a minimum, affording less harborage for insects and allowing crop to mature quicker. The good tap and lateral rooting system increases yield ability. The lint turnout runs from 37% to 40%, dependent on land and season. A hard, strong, uniform staple 31/32-inch to 1 1/16-inch results, according to soil and season. Bagley B-17 Royal Rowden has uniform, medium to large size seed with well-filled, healthy kernels that give good germination. DROUGHT RESISTANT—STORM RESISTANT—WILT RESISTANT.

Bagley 793 MASTER STRAIN

Regular Bagley Strain

Our 793 Master Strain is a well-balanced, high yielding cotton that gives excellent performances in the field, at the gin and on the market. Backed by more than 30 years of good, sound breeding work, it is very prolific, fast fruiting and often produces from 10% to 25% more than ordinary cotton. The upright, strong, sturdy stalks produce a strong, hard, uniform 15/16-inch to 1 full inch staple and a gin lint turnout of 39% to 41%, dependent on soil and season. Lengthy, short-jointed fruiting branches bear a majority of big, round, uniform five-lock bolls with a slight point. Well-shaped bur makes it easy to pick. 50 to 60 bolls make a pound of seed cotton. 793 grows fast, fruits excessively and matures early. The medium foliage is adequate for proper boll protection during ordinary dry, hot summers. Its deep, penetrating tap roots and fine lateral rooting system often insure crops in dry seasons when ordinary cottons fail. Has medium-size, uniform, high-quality seed that gives good germination. This cotton is highly STORM RESISTANT, DROUGHT RESISTANT and has a HIGH VARIETAL PURITY.

Bagley SELECT DELTAPINE

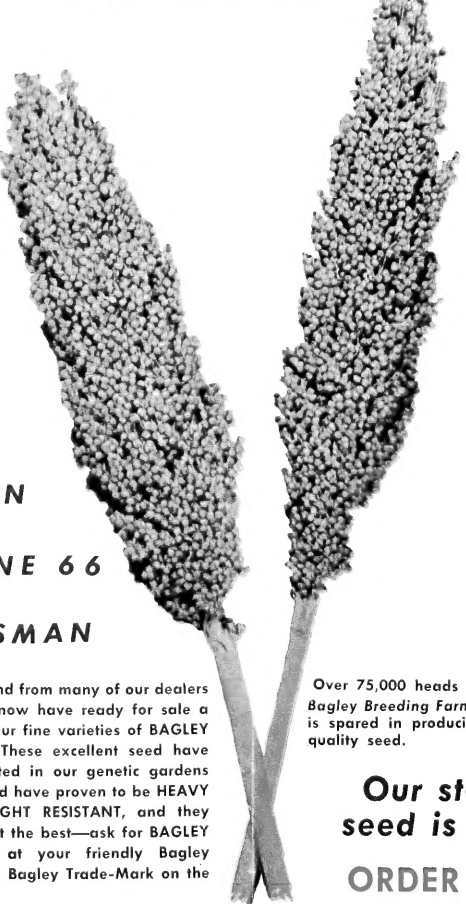
Heavy Producing Deltapine

Our Bagley Select Deltapine Cotton is an exceptionally heavy yielder being very well suited to bottom land or rich, flat, level land but it also gives good results on upland and is adapted to almost any kind of cotton growing soil. It grows rapidly, sets fruit quickly, matures and opens early. Foliage is very light, making it more insect resistant. It has an upright, sturdy stalk with well-spaced, lengthy, short-jointed fruiting branches which produce medium bolls that open well and pick clean. About 70 to 80 bolls make a pound of seed cotton. It is a heavy fruiter and under favorable conditions increases production of 10% to 25%. It is often 41% dependent on soil and season and has a good uniform staple of 1 inch to 1 1/16 inch according to soil and season. It has a fine rooting system. Seed are small to medium with well-filled kernels. Supply of this seed is very limited, so order early!

**ANNOUNCING
Newest
Improved
Varieties Of
BAGLEY
GOLD-TEX
MAIZE**

STATE CERTIFIED

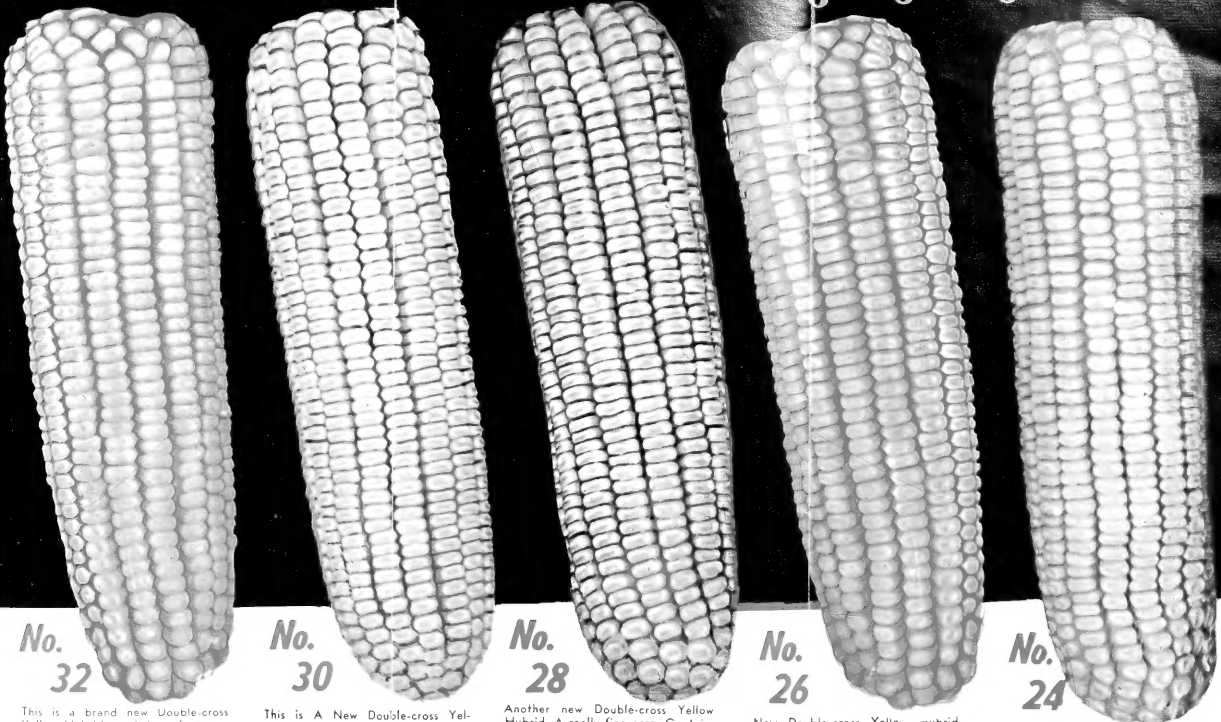
BRED TO MAKE YOU MORE MAIZE DOLLARS



**MARTIN
REDBINE 66
PLAINSMAN**

By popular demand from many of our dealers and customers we now have ready for sale a limited amount of our fine varieties of BAGLEY GOLD-TEX MAIZE. These excellent seed have been bred and tested in our genetic gardens for several years and have proven to be HEAVY PRODUCERS, DROUGHT RESISTANT, and they MATURE EARLY. Get the best—ask for BAGLEY GOLD-TEX MAIZE at your friendly Bagley Dealer. Look for the Bagley Trade-Mark on the bag.

**INCREASE YOUR CORN YIELD 20% TO 35% ...
WITH THESE Newest Bagley Hybrids**



No. 32

This is a brand new Double-cross Yellow Hybrid consisting of a combination of four outstanding inbred lines—(MS303x203) (127CxB18T). Well adapted to the various types of corn growing lands and under average normal conditions increased yields up to 35% or more over ordinary corns can often be obtained—Produces nice ears of deep golden grain, has good shuck cover and sturdy stalk with excellent root system—Matures early and is drought resistant—Plant some of this along with your other favorite numbers.

No. 30

This is A New Double-cross Yellow Hybrid giving an excellent performance in the field. It has a grand pedigree of four great inbred strains—173D x 203 by 325 x 303. Widely adapted to all types of corn growing soils and gives increased yields ranging up to 35% and often more over ordinary corns. Has nice, large ears with deep golden grain. This corn has good root system, stout stalk that stands up well, and is highly resistant to root lodging. Early maturing. Be sure to plant some of this number the coming season.

No. 28

Another new Double-cross Yellow Hybrid. A really fine corn. Contains Yellow Surcropper inbreds making it similar to Texas No. 8. Has wide range of adaptability and will give heavy yields in all corn-growing areas of the state. Produce large ears and large grain of good yellow color. Matures early. Has fine shuck protection and is therefore more resistant to earworms and weevils. Drought resistant heavy stalk and fine root system. Increases yields 20% to 35% over ordinary corns. Get some of this good new Hybrid!

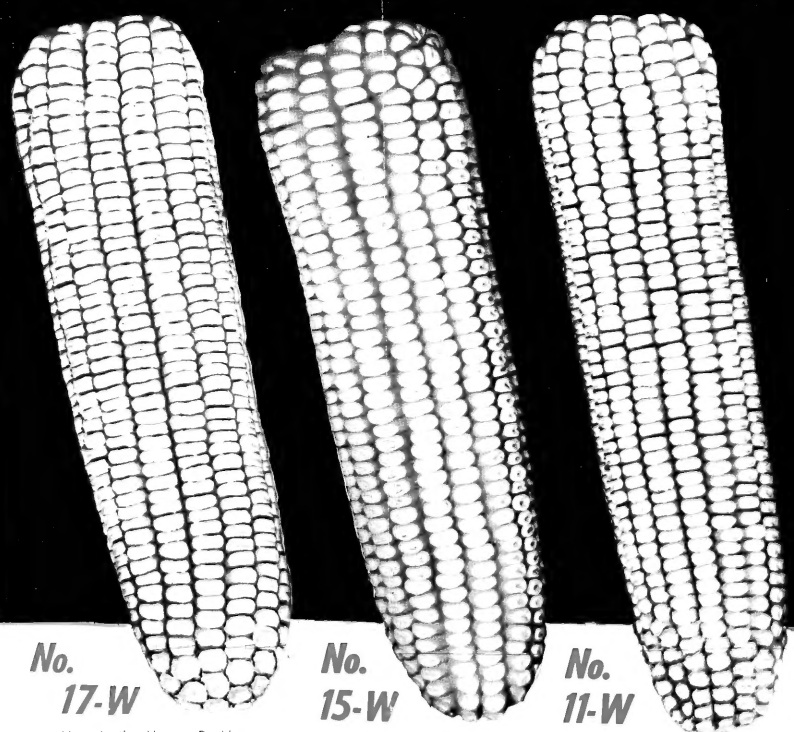
No. 26

New Double-cross Yellow hybrid. An outstanding corn. All four inbred strains developed from native Texas varieties. A very good yielder—makes 20% to 35% more—matures early. Being one of the earliest of the Texas Hybrids. Nice size ears with yellow dent type large grains of yellow color. Similar to No. 18. Good shuck cover—more insect resistant. Strong sturdy stalk and excellent root system. Drought resistant. Adapted to all corn-growing regions of the state. Try this number—you'll like it!

No. 24

A Double-cross Yellow Hybrid. Nice ears with good shuck protection making it insect resistant. Makes 20% to 35% more than ordinary corns. Good size grains that are medium hard and of good color. Stout, vigorous stalk with strong root system—resistant to lodging—matures early Well adapted to southern corn-growing areas. High yielding—DROUGHT RESISTANT. An excellent corn that gives good results on all types of corn-growing soils. Growers like it—plant some.

PLANT BAGLEY HYBRIDS



No. 17-W

Here is the Newest Double-cross White Hybrid composed of four fine inbred strains (61Mx585) (K55xK64). A quick maturing exceptionally drought resistant corn—especially adapted to the drier areas of the State but does well on all corn growing soils. Good root system, stands well and has stout, sturdy stalk. Nice size ear with large flat grains well set on cob. Makes heavy yields up to 35% more than ordinary corns under normal conditions. Be sure and get some of this brand new White for your next planting.

No. 15-W

The New Double-cross Texas White Hybrid—combination of four outstanding inbreds. It is more resistant to root lodging and has less stalk breakage. Makes heavy yields (up to 35% more) with large percent of 2 ears per stalk. Matures early. Medium ear with medium soft grain. Widely adapted. Drought resistant. Try this new white—it's a good corn!

No. 11-W

A fine Double-cross White Hybrid, giving excellent results. Makes 20% to 35% more than ordinary varieties. Heavy producer—early maturing. Medium ear with fine shuck cover—insect resistant. Soft, white grains well set on cob. Grows fast—good root system and sturdy vigorous stalk. Widely adapted to all corn-growing soils. Drought resistant. If you plant white corn you will be pleased with this number.

**Our stock of
seed is limited.
ORDER EARLY!**

It Pays To Plant Seed Of Recognized Quality

W. W. BAGLEY & SONS

State Registered Plant Breeders

MARTINDALE, TEXAS

Tops In Field Performance



Bagley
GOLD-TEX
MAIZE



Bagley
PEDIGREED
COTTON
SEED



Bagley
TEXAS HYBRID
SEED
CORN

USE THIS CONVENIENT ORDER FORM TODAY!

ORDER BLANK

W. W. BAGLEY & SONS
MARTINDALE, TEXAS

Please enter my order for the following Newest Improved Bagley Pedigreed Planting Seed, freight prepaid, in accordance with your standard terms and conditions.

- Bu. Bagley's 793 Master Strain
- Bu. Bagley's 64 Master Strain
- Bu. Bagley's B-17 Royal Rowden
- Bu. Bagley's Select Delapine

at \$ _____
per bu.

- HOW SHALL WE SHIP? (Mark X in proper square):
- Parcel Post
 - Motor Truck
 - Rail Freight
 - Rail Express

One bushel or less shipped either by Parcel Post or Railway Express. Two bushels or more shipped by Railway Freight or Motor Truck Line (your preference).

Name of Truck Line _____

Ship Seed on or about _____

- Bu. Bagley's Hybrid Seed Corn No. 24
- Bu. Bagley's Hybrid Seed Corn No. 26
- Bu. Bagley's Hybrid Seed Corn No. 28
- Bu. Bagley's Hybrid Seed Corn No. 30
- Bu. Bagley's Hybrid Seed Corn No. 32
- Bu. Bagley's Hybrid Seed Corn No. 17-W
- Bu. Bagley's Hybrid Seed Corn No. 15-W
- Bu. Bagley's Hybrid Seed Corn No. 11-W

at \$ _____
per bu.

Name _____

P. O. Address _____ Box No. _____

R. F. D. _____

Railway Station _____
Check or Money Order enclosed, \$ _____
Draw through _____ Bank _____

Lbs. Bagley's Gold-Tex Martin Maize

Lbs. Bagley's Gold-Tex Redline 66 Maize

Lbs. Bagley's Gold-Tex Plainsman Maize

at \$ _____
cwt.

Location of Bank (Town) _____

Terms: Cash payable on shipping date.

Purchaser _____

SEED STOCKS ARE VERY LIMITED

DEMAND IS HEAVY

**ORDER YOUR
SEED EARLY**

**A Bagley
Pedigreed
Seed**
*For Every
Type of Soil
and Climate*

See what **BAGLEY HYBRIDS** will do for you