

62.01

1956

ac

BARRIOS

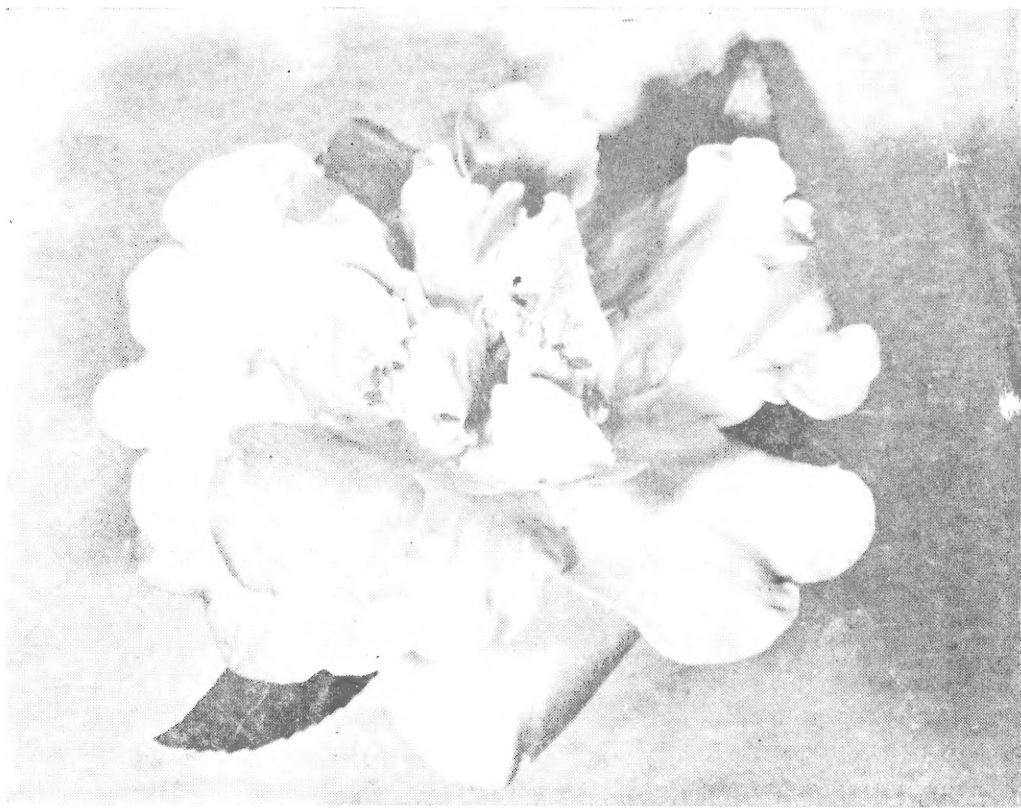
Nursery

Featuring New Sasanquas

SEMMES, ALABAMA

(AMERICA'S AZALEA & CAMELLIA CENTER)

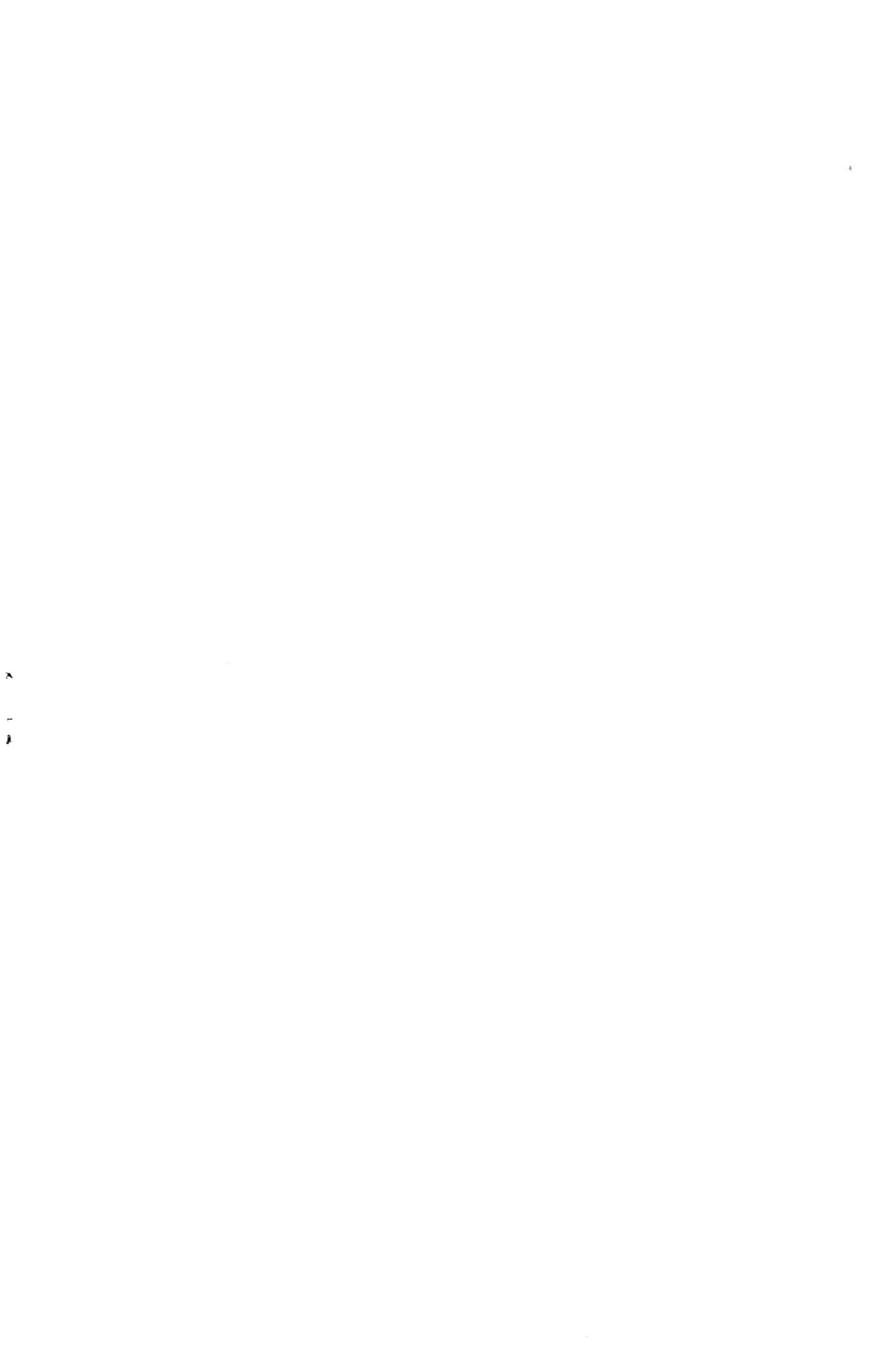
LIBRARY
RECORDED
★ FEB 16 1956 ★
U. S. Department of Agriculture



CAMELLIA SASANQUA
"PINK SNOW"

PLANT AMERICA!
WE'RE ALL PART OF THIS PROGRAM - - DO YOUR PART
IMPROVES YOUR HOME, YOUR CITY, YOUR STATE, YOUR COUNTRY
YOUR PRIDE—YOUR COMFORT

FIRST CLASS



— DON'T COMPARE PRICES —
— COMPARE PLANTS —

Small plants are an investment. More can be bought with less money. They grow into value and into a "kind" of friendship. Wanting and tending them is an ease of mind . . . a pleasure. And caring for plants leads to different thinking . . . beautiful thinking! An escape from pressing daily routine! Genuine relaxation! It is a wonderful feeling to see the good response a plant gives to your special care. You feel you have done something worthwhile. Yes, you have added joy to your life, beauty to the landscape and to the sight of others, and done your part to "PLANT AMERICA".

Did you ever seek solitude among plants at twilight? . . . The change of day into night or night into day . . . Rewarding with peace of mind which is sealed in by looking upward in prayer of thanks for all that has been received.

Some competitive offers may appear in "trick" wording and lower price (usually lower in quality) just to make a sale. But one who is in business also for the pleasure it brings accepts your order in deep appreciation and gives it personal attention. Each buyer is not just a customer but a friend at heart.

THANKS! FRIENDS, for all that has been received.

CONDITIONS OF SALE

"C.O.D." orders add cost and inconvenience to you and to us. Some businesses stress C.O.D. to induce buying. We ask that remittance accompany your order to facilitate handling which helps toward prompt delivery. By keeping our costs down we can give you a better return. Should there be a delay in delivery of your plants consideration should be given to weather conditions which prevents shipping and "stacks" orders.

All orders are accepted subject to availability of stock and to seasonal and other conditions beyond our control.

We guarantee our plants true to name. Should any stock prove untrue to variety name under which it is sold we hold ourselves in readiness, on proper proof, to replace such plants. We shall in no case be liable for any sum greater than the amount originally received for the plants.

Claim for incorrect fulfillment of order must be made promptly on receipt of stock. We will not entertain claims after goods have been once accepted or when report is not made within ten days after arrival of stock. We will be reasonable about any claim or complaint.

REFERENCE: Any plant nursery in and around Semmes, Alabama—The Merchants National Bank of Mobile, Alabama.

BARRIOS NURSERY
Semmes, Alabama

The *Camellia sasanqua* is considered hardier than the large-flowering species, *Camellia japonica*. Too, most varieties bloom as early as September in profusion depending on growing and weather conditions, and location. Their behavior, planted outside, beyond the Camellia Belt has amazed Camellia growers. The habit of growth of the *sasanqua* is in many forms allowing their use as specimens, for espalier, bonsai, hanging baskets, rock gardens, ground cover and pot culture. There are many varieties. The following are the newest and ones proved best. Their greatest beauty of flower is not seen in just one blossom, but, like an azalea, when blooming profusely.

CAMELLIA SASANQUA (Listed alphabetically)

GROUP I

Agnes O. Solomon Light pink, loose, semi-double to peony form. Profuse bloomer frequently having several perfect blossoms on one small stem.

Crimson Tide One of the earliest to bloom and profusely throughout a long blooming period. A glowing red; more of true red than any other *sasanqua*. Growth is fast, compact. Dark foliage. Doing well beyond the Camellia belt.

Hiryu We consider it the hardest of all Camellias. Rightly, a variety of *Comellia Vernalis*. Rose form, double. Deep crimson. Loose, slender growth. Buds heavily. Variegation may occur.

Ocean Springs Single to semidouble. Base of petals pure white, margin roughed red. Occasionally,

dog-eared petals projecting from the center. Pollen a vivid yellow.

Pink Lassie We're the first to offer this to the public. Flower buds similar to rose buds. Medium pink. Flower, 3 to 3½ inches. 50 or more petals. Formation similar to the ever-popular Mine-no-yuki. Early.

Shinonome Soft, light rose pink. Large single. Flowers, 3 to 5 inches, have an unusual glitter. Upright growth. Light green foliage.

Tanya A collector's item. Flowers are small, deep rose pink. Deeper shade of pink along margin of petals. Low growing. One of the best for prostrate training, low hedge or foreground planting. Small, beautiful foliage.

Any 3 for \$5.00

All 7 for \$10.00

Habit of growth makes it difficult to offer these scarce varieties in one size. Most will be 12 to 18 inches. Metal label with each plant. Planting information.

GROUP II

Choji-Guruma Anemoneform, rose pink. Upright. New growth a striking red to purplish.

Gulf Glory Single, large, 3½ to 4 inches in diameter. Pure white.

Hino De Gumo Large, semi-double white margined pink. Petals crimped. Handsome deep green foliage. Sturdy. Profuse.

Jean May In great demand. Shade of pink softer and lovelier than the *Camellia Debutante*. Large, double. Beautiful foliage. This variety has caused many folks to investigate the beauty of *sasanquas*.

Ko Gyoku Most refer to it as "Little Gem". Complete double white to faint pink. Dense, erect growth. Interestingly different.

Narumi Gata One of the earliest to bloom. Large, round, deep pink petals with a white base. Blooms over a long period. Exciting!

Papaver Bell-shaped flower, opens like a poppy. Soft pink, large flower, eight petals.

Pink Snow Another "Top Notcher"! Light pink with an orchid glow. Opens with bud center. Double. Heart-shaped petals. Regardless of

where it is planted in the open the growth inclines to the West. It can be sheared into a beautiful specimen of any shape.

Ryomen Beni Medium clear pink. Single, 3 inches in diameter by one inch in depth . . . Cup shaped. Petals creped and crinkled on top edges. Vigorous, upright growth. Striking foliage.

Shichifukujin A rapid grower. Rich pink semi-double flowers in abundance. A favorite in the landscape.

Shishigashira Also known as Beni Kantsubaki. Dwarf grower. Flower of medium size, semi-double to double. Opens with bud center. About 30 petals. Wanted for rock gardens, patios, low plantings and pot culture.

Showa No Sakae Also known as Usu Beni. One of the very best. Sea-

shell pink often mottled white. Rose form double. Blooms heavily.

Singing River Plant growth and foliage identical with the characteristics of the parent plant, Cleopatra. Early, heavy-flowering, pink and white.

Splendor... One of the most profuse in blooming. Very large flowers with 10 petals of delicate soft pink shading light toward the base.

Totenko Darkest green foliage of all sasanquas remaining so the year 'round. Clusters deep pink blossoms down the stems. Large single.

Velvety Crimson red with velvety tone. 6 to 7 petals. Early.

Versicolor White center edged lavender with soft pink in between. Medium, single.

2 year plants, branched, or 12 to 18 inches.
5 for \$6.00 10 for \$10.00 25 for \$22.50

We pay packing and shipping costs when cash with order. A metal label with each plant. Also planting information. All plants shipped bare-root.

GROUP III

Cleopatra Excellent for screens, hedges or individual specimens. Flowers, deep pink, semi-double to loose peony. Deep green foliage.

Crimson Bride Crimson Red single. Fast grower, upright.

Dawn Large, semi-double, ivory-white to flesh pink blossoms. Rich, dark green foliage; some variegated. Very hardy. Another variety of *Camellia Vernalis*.

Daydream Glossy, deep green, round foliage. Fast, upright grower. The foliage has sold many of this variety. And it has very large white, ruffled flowers with a touch of pink.

Floribunda A blooming idiot! Its profusion of pink and white blos-

soms are of indescribable grandeur. Seeing it in bloom would stir your desire for several.

Maiden Blush Delicate pink, single flowers. Rapid grower.

Mine No Yuki The "Grandma Moses" of sasanquas. " - - as it lives its beauty grows - -" A favorite for many a year. Its common name "Snow on the Mountain" is fitting. Double white of various formations.

Setsugekka A showy number. Large white semi-double blossoms with faint pink markings. Profuse. Vivid green foliage.

Texas Star Columnar in growth. Attractive foliage. Light pink, medium, single.

2 year plants or 12 to 18 inches—5 for \$3.00 10 for \$5.00 25 for \$10.00

You may order any amount. Special prices in lots of 50 or more. Planting information. All plants shipped bare-root. If our list of varieties does not include ones you are interested in getting please let us know. We have other varieties. SEE SASANQUA GRAFTS, NEXT PAGE.

FIELD GRAFTS — HEAVILY BRANCHED CAMELLIA SASANQUA

<p>Agnes O. Solomon * **</p> <p>Cherie *</p> <p>Cotton Candy * ** ***</p> <p>Crimson Tide ** ***</p> <p>Hiryu **</p> <p>Hiryu-Nishiki ** ***</p>	<p>Jean May * ** ***</p> <p>Pink Snow ** ***</p> <p>Sanko Nishiki ** ***</p> <p>Shino Nome ** ***</p> <p>Shishigashira ** ***</p> <p>Showa No Sakae ** ***</p>
--	--

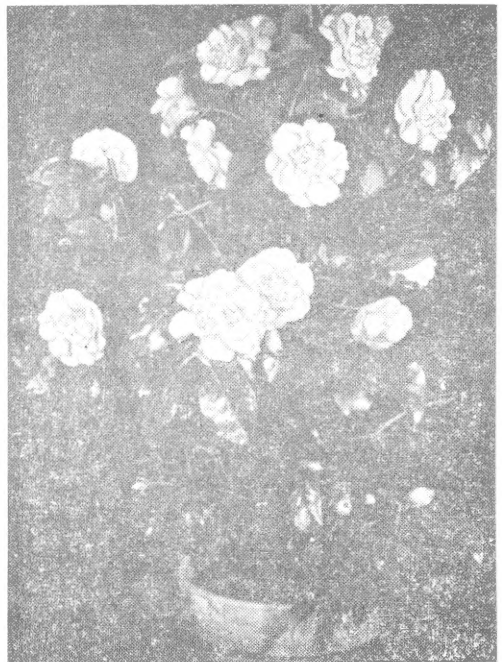
* 12 to 18" 1 yr.	\$ 6.50
** 18 to 24" 2 yr.	7.50
*** 2 to 3' 3 yr.	10.00

Above prices, F.O.B. Nursery, Semmes, Alabama

CAMELLIA JAPONICA

You can enjoy such beauty with this specie in the garden or in the greenhouse. Being winter-blooming, better results can be obtained from controlled temperatures. Even on the Gulf Coast where thousands are grown outdoors many fanciers have greenhouse protection to enhance greater beauty with the beloved Camellia. This specie is the kind used by florist for corsages, and so forth.

Blooming Period—This is denoted by "E" (Early—Oct. to Jan. 1st); "M" (Mid-season—Jan. 1st to Mar.); "L" (Late—Mar. and later). This information, however, must always be considered as approximate, and based upon average conditions in the southern part of the United States. The blooming period is affected by variable weather conditions, the amount of rainfall, the latitude and variation in temperature in any given year.



YOU CAN DEVELOP SUCH BEAUTY WITH THE
CAMELLIAS LISTED BELOW.

GROUP I

- | | |
|---|--|
| <p>Bessie McArthur Clear pink. Large semi-double with large petals. L.</p> <p>Big Beauty White blotched and dashed pink. Semi-double to peony form.—M-L.</p> <p>Blush Hibiscus White with blush pink at center. Very large, semi-double.—M.</p> <p>Daisy Banks Large, semi-double, white. Vigorous, spreading growth.—M-L.</p> <p>Elizabeth Arden Soft pink and white striped rose pink, and sporting solid pink. Formal double to semi-double.—M.</p> | <p>Judge Barrett Red. Very large, semi-double to loose peony form.—M-L.</p> <p>Lady Charlotte Clear, pale pink. Large, semi-double.—M.</p> <p>Lady De Vere Shell pink. Medium to large, semi-double.—M.</p> <p>Lotus White. Very large semi-double of Water Lily form to loose peony form.—M.</p> <p>Morning Glow White. Large, formal double. Yellowish cast.—E-M.</p> <p>Prima Donna Large, semi-double. Bright pink.—M-L.</p> |
|---|--|

—BARRIOS NURSERY, Semmes, Alabama—

Princess Bachinachi Dark red marbled white. Formal double.—L.

Rosea Superba Deep pink. Very large, rose form to formal double.—M.

Royal White White. Very large, variform. Semi-double, rose form, formal.—L.

September Morn White. Large, formal double to peony form.—E.

Shiro Botan White. Large formal double to peony form.—M.

Surprise Pale pink striped deeper

pink. Rose form double.—M.

Victory White White. Large, semi peony form.—M.

White Empress White. Very large, semi-double with fluted petals.—E-M.

White King Large semi-double with large, thick petals.—M.

Williams Middleton Dark Red veined lighter red. Large, semi-double.—M-L.

Woodville Red Deep strawberry red. Very large peony form.—M.

2 year plants or 12 to 18 inches—Any 5 for \$6.00 10 for \$10.00

GROUP II

Abundance White. Medium, peony form.—M.

Alba Plena White. Large, formal double.—E.

Cardinal Richelieu Rose red. Large, irregular semi-double to loose peony form.—M-L.

Christine Lee Rose pink. Large, semi-double.—M.

David Gerbing Deep pink. Large, semi-double.—M-L.

Dearie Mealing White marked pink. Large, flat semi-double.—M.

Debutante Light pink. Large, full peony form.—E-M.

Duchess of Sutherland White, sometimes with pink stripe on one petal. Large, semi-double.—M-L.

Duncan Bell Blood red. Large to very large, anemone form.—M.

Eleanor Hagood Pale pink. Medium to large, formal double.—L.

Empress Deep pink. Very large, semi-double.—E-M.

Florence Stratton White with some petals solid pink. Large formal to rose form double with cupped inner petals.—M.

Frizzle White White. Large semi-double with wavy, crinkled petals.—M.

General Washington White with some petals lined pink. Rose form

double.—M.

Gigantea Red marbled white. Very large, semi-double.—M.

Governor Richard W. Leche Deep rose pink lightly lined rose. Semi-double, with long, narrow petals.—L.

H. A. Downing Rose red veined blood red. Large, semi-double.—M.

Haku Rakuten White. Semi-peony form with curved and fluted petals.—M.

Kumasaka Rose pink. Large, rose form double to peony form.—M-L.

Lady Van Sittart White striped rose pink. Large, semi-double.—M.

Margaret Higdon Rose red, sometimes showing white-margined petals. Semi-double.—M.

Mathotiana Scarlet. Very large, rose form double.—M-L.

Mathotiana Variegated Some as above but with white spots.—M-L.

Monsieur Paugam White. Large, irregular peony form.—M.

Mrs. Chas. Cobb Dark red. Large, semi-double to loose peony form.—M-L.

Purity White. Medium large, rose form to formal double.—M-L.

Rev. Jno. Bennett Salmon pink Very large, semi-double.—M-L.

Rosea Plena Rose pink with dark veins. Formal double.—M.

Rose Dawn Deep rose pink. Formal to rose form double.—M.

Smiling Beauty Delicate pink. Medium large, semi-double.—M.

SNOWDRIFT White. Medium large, semi-double.—M.

Tina Gilliard Pink. Large, semi-double with wavy petals.—M.

Victor Emmanuel Deep salmon red. Large, semi-double to peony form.—L.

White Queen White. Large semi-double with pointed petals.—E-M.

William Penn Dark purple red marbled white. Full peony form.—M.

2 year plants or 12 to 18 inches—Any 5 for \$5.00 10 for \$8.00

GROUP III

Aspasia Cherry rose red. Large, formal double.—M.

Campbelli Dark red. Large, rose form to formal double.—L.

Chandleri Deep rose pink and white. Large anemone form.—M-L.

Derbiana Red. Large, semi-double.—M-L.

Duchess De Rohan Salmon pink. Medium large, peony form.—M-L.

Fanny Bolis Soft rose red. Medium large, semi-double.—M.

Gloire De Nantes Rose pink. Large, semi-double.—E-M.

Herme Pink petals with irregular white border and streaked deep pink. Large, semi-double.—M.

Herme No. 2 Mottled white.—M.

Herme No. 3 White, striped pink.—M.

Herme No. 4 Two-tone pink & White.—M.

Hibiscus Rose pink. Large single.—M.

Jarvis Red Turkey red. Medium semi-double.—M.

Mihata Deep crimson red. Very large, single with waxy petals.—M.

Pink Perfection Shell pink. Medium, formal double.—E-L.

Pope Pius IX Dark red. Large, formal double.—M.

Professor Charles S. Sargent Dark red. Medium, full peony form.—M.

2 year plants or 12 to 18 inches—Any 5 for \$4.00 10 for \$6.00

A metal label with each plant. Planting information. We pay packing and shipping costs on all Camellia japonica shipped bare-root.

CAMELLIA JAPONICA GRAFTS

Group I

Varieties below are not described to conserve space. Collectors and fanciers usually know their description before they are marketed.

Beauvoir
Dr. Peter Nyce
E. B. Davis
Elizabeth Le Bey
Emmet Barnes
Edwin H. Folk
Ethel Davis

Frances Mc Lanahan
Helen K
Jessie Katz
J. J. Whitfield
Joshua E. Youtz
J. S. Bradford
Lady Kay

Lena Jackson
Louisiana Purchase
Mathotiana Supreme
Mattie O'Reilly
Max Goodley
Princess Elizabeth
Princess Murat
Scented Treasure

1 one-gallon containers. 12 to 18 inches. On sasanqua understock
1 for \$6.00 3 for \$16.50 6 for \$30.00 (Prices F.O.B., Semmes, Ala.)

—BARRIOS NURSERY, Semmes, Alabama—

CAMELLIA JAPONICA GRAFTS

Group II

Are-Jishi Var. Black Dragon B - 34 Bobby Guillott Bryan Wright Charlotte Bradford Cho Cho San	Compte De Nesslerode Dorothy Parker Dr. Tinsley Frank Gibson Hazel Herrin High Hat Magnoliaeflora	Margaret Jack Mary Bethea Mrs. Freeman Weiss Pearl Maxwell Red Ball Thelma Dale Ville De Nantes
---	---	---

In one-gallon containers. 12 to 18 inches. On sasanqua understock
 1 for \$5.00 3 for \$13.50 6 for \$24.00 (Prices F.O.B. Semmes, Ala.)

Other varieties in field-grafts are available. Your inquiry will be appreciated.

ORIENTAL MAGNOLIAS

These exotic magnolias are adding beauty to most every State in the Union. The large flowers appear in profusion before the leaves. The following varieties are the most wanted. **ATTENTION, NORTHERN BUYERS:** Place order not later than February, at which time warm weather induces growth. The magnolias can be stored in the cellar or cool place in the house till planting time.

<p>Alba Superba Similar to soulangeana but larger and almost white.</p> <p>Alexandrina Petals are dark purplish pink on the outside and white inside.</p> <p>Nigra The "black" magnolia. A deep purple.</p>	<p>Rustica Rubra Large, cup-shaped. Deep, purplish red.</p> <p>Soulangeana The "saucer" magnolia. White petals with deep pink base.</p> <p>Stellata Known as "star" magnolia. White, narrow petals, tinged light pink.</p>
--	---

2 year plants. Shipped bare-root. We pay packing and shipping costs.

1 1/2 to 2 feet	4 for \$5.00	10 for \$ 9.00
2 to 3 feet	4 for \$6.00	10 for \$12.50

AZALEAS

There are hundreds of varieties of Azaleas. The varieties we are offering are the most in demand due to hardiness, beauty and profuse blooming. The Kurume or "dwarf" azaleas are the hardier.

KURUME OR DWARF AZALEAS

Christmas Cheer (Red) Coral Bells (Coral pink) Gardenia Supreme (White) Hiawatha (Dark red) Hinodegiri (Crimson) Hino Crimson (Crimson red)	La Reine (Red) Pink Pearl (Pastel pink) Salmon Beauty (Salmon pink) Snow (White) Twilight (White & blush pink) Hexe (Vivid red)
--	--

INDICA AZALEAS

LARGE-GROWING

LARGE-FLOWERED

Daphne Salmon (Salmon pink) Elegans (Bright pink) Fielder's White (Large white) Formosa (Purple)	Geo. L. Taber (Pink & white) Indica Alba (Hardest white) Judge Solomon (Glowing pink) Pride of Mobile (Watermelon pink)
---	--

These azaleas are well-branched—2 yr. plants. Available any amount of each

variety for delivery now through June, 1956. Place order now for "early" planting and to avoid shortage. No order less than \$3.00. The azaleas are shipped Express Collect or Parcel Post Collect—in other words, you pay shipping cost upon arrival but cash with order. No C.O.D.'s.

25c each	25 for \$5.00 (20c each)	50 for \$9.00 18c each)	100 for \$17.00 (17c each)
----------	-----------------------------	----------------------------	-------------------------------

MISCELLANEOUS

Abelia	12-15"	Jasminum Floridum	8-12"
Buxus Harlandi	6-8"	Ligustrum Coriaceum	8-12"
Buxus Sempervirens	6-8"	Ligustrum Compactum	8-12"
Cherry Laurel	8-12"	Live Oak	8-12"
Cleyera Japonica	8-12"	Loquat	8-12"
Double Bridal Wreath	8-12"	Magnolia Grandiflora	8-12"
Elaeagnus Pungens	8-12"	Magnolia Fuscata	8-12"
Elaeagnus Fruitlandi	8-12"	Nandina Domestica	8-12"
Gardenia Florida	12-18"	Photinia Glabra	8-12"
Gardenia Mystery	12-18"	Photinia Serrulata	8-12"
Gardenia Radicans	6-8"	Pfitzer Juniper	8-12"
Ilex Bullata	6-8"	Sweet Olive (white)	8-12"
Ilex Rotoundifolia	8-12"	Sweet Olive (yellow)	8-12"
Ilex Burfordi	8-12"	Viburnum Burkwoodi	8-12"
Ilex C. Foemina	8-12"	Viburnum Odoratissimum	8-12"
Japanese Yew	8-12"	Viburnum Tinus	8-12"
Jasminum Primulinum	8-12"	Viburnum Macrophyllum	8-12"

"Miscellaneous" plants are 35c each. A 10% discount on order of \$10.00 or more. No order for less than \$3.00. We pay packing and shipping costs.

FACTS are worth repeating. Plants can be killed with kindness or through neglect. Too, Nature can be blamed or praised. . . . Don't blame her too much.

The price for quality is not expensive, it's a bargain.

The more we learn or understand about something the more and greater joy we derive. Publications you will receive from the following organizations, upon subscription, will reward you with lots that you would like to know about Camellias, and of the happiness many are gaining with them. Your subscription will lend to greater publications.

THE AMERICAN
CAMELLIA SOCIETY
Gainesville, Fla.

THE CAMELLIAN
P. O. Box 715
Columbia, S. C.

THE CAMELLIA REVIEW
706 S. Fair Oaks
Pasadena 2, Calif.

AND . . . JOIN YOUR LOCAL CAMELLIA CLUB.

—BARRIOS NURSERY, Semmes, Alabama—

BARRIOS Nursery

Featuring New Saranquas

SEMMEES, ALABAMA

the Center of the

Azalea and Camellia

Industry of America

U. S. DEPARTMENT OF AGRICULTURE

LIBRARY

WASHINGTON 25, D. C.

OFFICIAL BUSINESS

PRINTED MATTER

PENALTY FOR PRIVATE USE TO AVOID

PAYMENT OF POSTAGE, \$300

(GPO)

Library, U. S. Dept. of Agriculture
WASHINGTON 25, D. C.

Bibl.



POSTMASTER: If not delivered, please return.
Return postage guaranteed.

FIRST CLASS