


62.39

# CORLISS BROS.


INC.

**EMERALD LEADER**

EUONYMUS CORLISSI  
Plant Patent 881




A sexual reproduction of this patented plant without license is prohibited.




**EMERALD CHARM**

EUONYMUS COLUMNAR  
Plant Patent 1079




A sexual reproduction of this patented plant without license is prohibited.




**EMERALD CUSHION**

EUONYMUS DWARFSHRUB  
Plant Patent 1112




A sexual reproduction of this patented plant without license is prohibited.




**EMERALD PRIDE**

EUONYMUS TRUESHRUB  
Plant Patent 1073



A sexual reproduction of this patented plant without license is prohibited.



1  
9  
5  
6

**NURSERYMEN**  
**LANDSCAPE CONTRACTORS**

# How to Locate Our Nurseries

Our Gloucester Nurseries are located about  $\frac{1}{2}$  mile beyond new Route 128 on Route 127 in the Riverdale section of Gloucester.

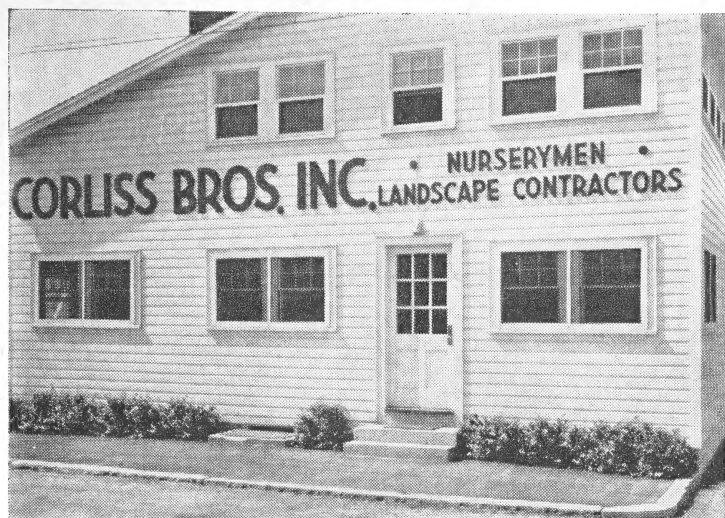
Our Ipswich Nurseries are located off Route 1A, Ipswich, on Route 121, which is the main road between Ipswich and Gloucester.



SEE US AT EITHER ADDRESS

Reynard Street  
GLOUCESTER, MASS.  
Telephone 513

Essex Road  
IPSWICH, MASS.  
Telephone 319



The Planting is *Euonymus Emerald Pride*  
**MAIN OFFICE**

Located at the Nursery, Reynard St., Gloucester, just off Route 127, in the Riverdale section, about a mile from the new Route 128 traffic circle. Telephone Gloucester 513.

Here are the

Landscape Department, with drafting room, soil testing laboratory and operating equipment

Company's Bookkeeping and Credit Department

Advertising, catalog, and Publicity Department

Research and Plant Breeding Department

Growing and Propagating Greenhouses and heated frames

Two hundred ton warehouses stocked with fertilizers, insecticides, weed killers and other garden needs

Bluestone Flagging Warehouse

The HOME of our famous hardy strain of LYONDEL HYBRID DELPHINIUM.

For LANDSCAPE and GARDENING advice,  
Call Gloucester 513

**CORLISS GARDEN CENTER and NURSERY at IPSWICH**  
We're proud of our beautiful Ipswich Nursery and Garden Center, located on Route 121, Ipswich, Mass.

Plenty of parking space — Visitors always welcome

Personal selection of your needs is easy and convenient . . . assistance cheerfully given.

For complete information, see page 8.

Stop in and shop at either of our Nurseries — on Reynard St., in Riverdale, Gloucester, or Essex Road, Route 121 just off Route 1A, in Ipswich

Make Shopping at Corliss's a "GROWING" Habit!

# OUR LANDSCAPE

*Includes* **Planning -**

## **PLANNING — WITHOUT CHARGE**

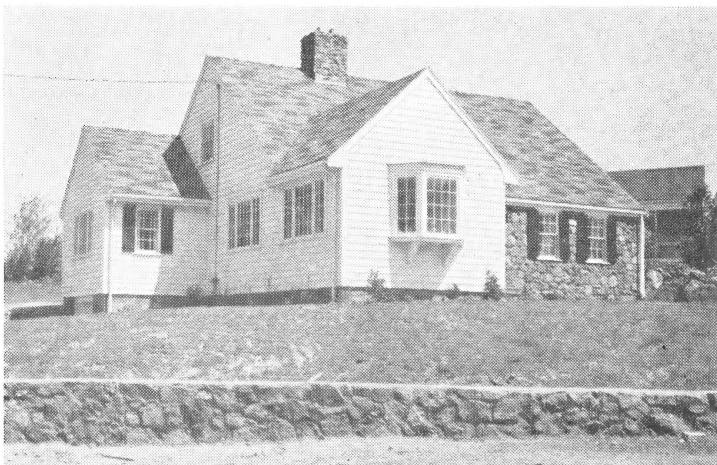
Our sales representative will gladly call at your request to look over your property. He will offer helpful suggestions, present you with progressive ideas, fully describe the suitable varieties of Evergreens, Trees, Shrubs, Vines, Roses, etc. that would be in harmony with your home.

If you are interested in doing your own planting, we can help you with a simple plan to make your planting easy.

## **PLANTING**

is easy when you know how, but it is the KNOW-HOW that makes a Landscape Planting successful.

Years of experience qualify us to cope with any landscape planting problems, big or small, that your yard or estate may present. Years of careful study of soil and climatic conditions make our services more valuable.



**Proper Landscaping is one**



# **APE SERVICE**

## **Planting - Construction**

### **LANDSCAPE CONSTRUCTION**

with us, embraces many features so important to the usefulness and beauty of the home grounds.

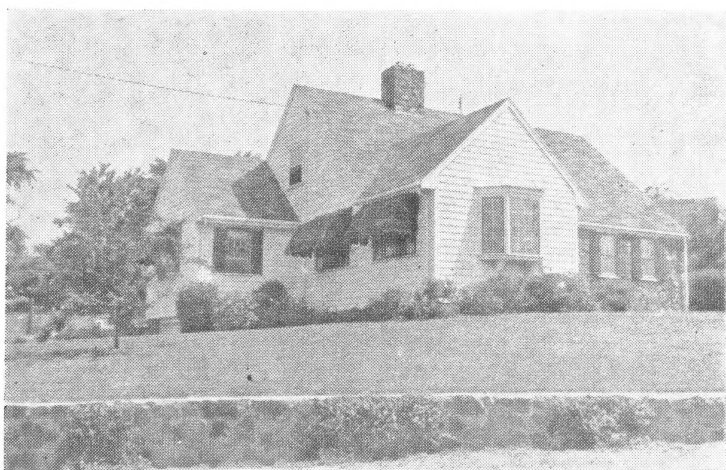
Good construction is most essential if lasting results are to be obtained. This applies to the preparation of lawns, flower beds, rose gardens or any area where planting is to take place.

Also, good base construction is very important where flagstone patios, hot top roads and walks, pasture stone walls or out-of-doors living areas are to be built.

OUR men are covered by insurance.

### **FOR FREE ESTIMATES**

on any type of landscape development, cheerfully given on the home grounds, CALL OUR LANDSCAPE DEPARTMENT, GLOUCESTER 513.



**of your Best Investments.**

# Now!

## SUCCESSFUL SUMMER PLANTING

Of EVERGREENS, TREES and SHRUBS with the  
New plastic spray, WILT-PRUF

By digging the plants with a ball of earth and plastic-coating, it is possible to safely transplant trees and shrubs in full leaf, with complete success, thus extending the planting season into June, July and August.



Sure! You can plant in the summer when it's hot and dry! Transplanting success in the summer is evidenced by the landscaping around the North Shore Dental Hospital, pictured above. The evergreens, trees and shrubs were safely transplanted during June and continued normal, healthy growth.

See the dwarf narrow hedge in the wall pockets of the steps to the entrance? That is our new patented broadleaf *Euonymus* EMERALD CHARM!

Corliss Bros. Inc. have done many summer plantings around new houses, and revamped old plantings. Some in 90 degree heat very successfully. If you have a newly completed house and the grounds are still bare, you don't have to eat dust all summer — planting is possible and safe. Trees and shrubs properly planted, filter dust, temper the climate. Good lawns make summer living cooler, absorb glare.

You, too, can add color, charm and value to your property. Let us help you give it a radiant new individuality.

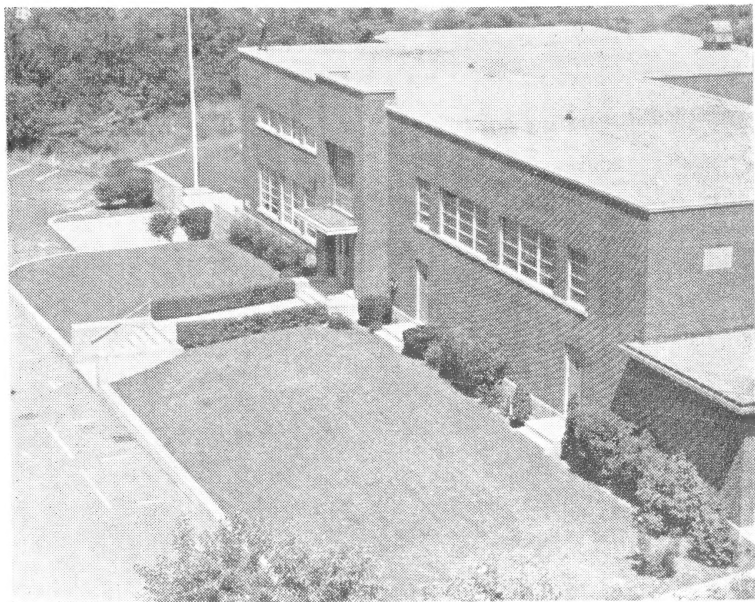
Call CORLISS BROS. INC. — Gloucester 513

# School

## BEAUTIFICATION

*means*

## COMMUNITY BETTERMENT



The beautiful planting around the East Gloucester Elementary School was executed by the Parent-Teacher Association members, with suggestions from Corliss Bros. Inc., who supplied the material.

This is a splendid example of a community's way of contributing to the American way of living . . . An asset to any city . . . Good for the morale of the children . . . Good for public relations . . . A deep satisfaction to the Association.

A project of this kind, be it for school, park, church, or municipal building encourages and builds civic pride, and beautifies the city. It leads to cleaner streets, healthier conditions, increased property value, encouragement of new industries, a better place in which to live; and there is a profound sense of satisfaction of community achievement, a realization of how pleasantly communities can be improved with organized planting activities.

There are many ways to PLANT AMERICA and make a city beautiful. A number of cities permit cash donations to provide one or more trees for beautification and climatic control. Many of the mature trees in the East were planted on home properties by newly-married couples moving into new homes — the trees being a living symbol of their love. Another custom is to plant a tree on the home property for each child, in order that each may have a tree of their very own, to watch grow — or if a fruit tree, to add delicious food. This has educational value, too — they protect their own and others. Great sentiment and value are attached to such trees by the entire family.

HELP PLANT YOUR COMMUNITY FOR A  
"BEAUTIFUL AMERICA"

### **CORLISS BROS. INC.**

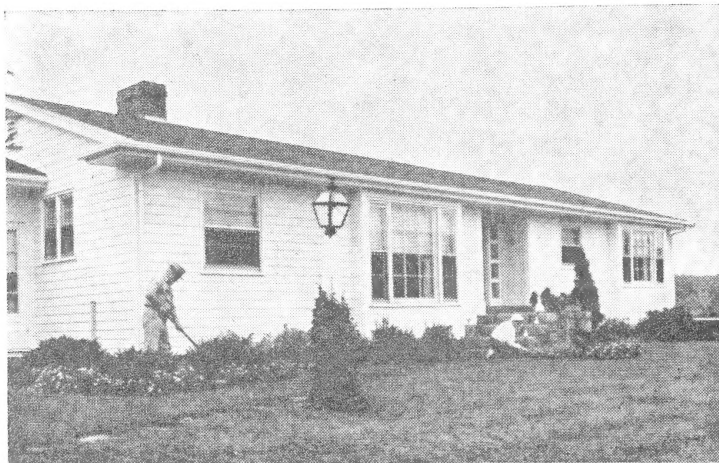
Landscape Contractors and Nurserymen

# You, too, can "Plant It Yourself"

## FIRST YOU PLAN . . .

Planting Your Own Home need not be hard to do or expensive. HOME-OWNERS EVERYWHERE are finding PLANTING IT YOURSELF easy — fun — healthful — and money saving with the value and beauty of their property increased.

## PLANTING DESIGN and MATERIALS



You, too, can join thousands of "PLANT IT YOURSELF" gardeners like these homeowners, the William Barrigans, Gloucester.



The Donald Keyzers of Hamilton are ardent garden enthusiasts. They, too, get a lot of fun and enjoyment out of doing their own landscaping.

Come in to our new "PLANT IT YOURSELF OFFICE" at our Ipswich Nursery and talk over your landscape problem. If you wish a plan to "Plant it Yourself", bring in a picture and the measurements of your home. One of our landscape planners will be glad to assist you in creating a lovely landscape setting for your home. There is **NO CHARGE** for planting advice or a simple plan.

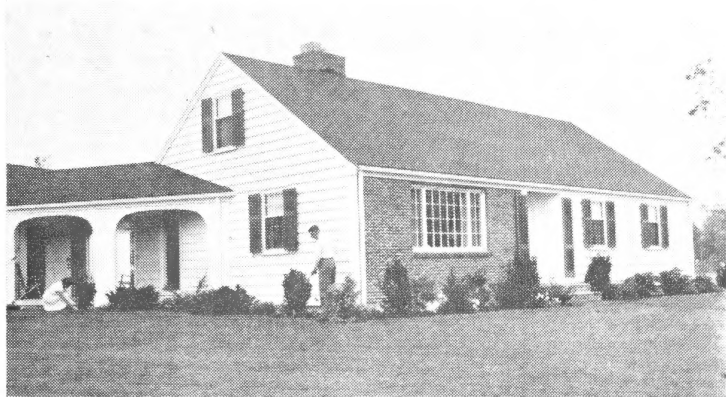
# HAVE FUN! SAVE MONEY!

# ant It Yourself"

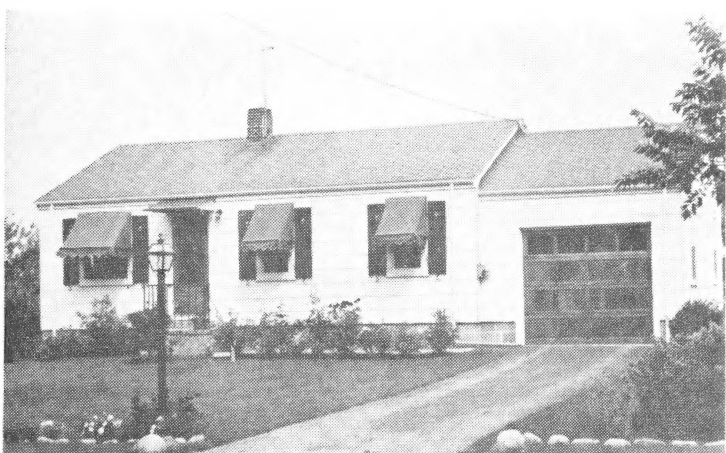
## . THEN YOU PLANT

Take advantage of Corliss's experienced personnel who will be glad to assist you with any planting problem . . . and don't forget CORLISS'S have the plants to make your "house a home".

**WERE SUPPLIED BY CORLISS BROS, INC.**



The Roy Wolfskills of Hamilton PLANTED THEIR OWN HOME GROUNDS on the "PLANT IT YOURSELF" plan.



Like many homeowners everywhere, the Richard Perrys of Essex are PLANTING THEIR OWN HOME on a "PLANT IT YOURSELF" Program.

CORLISS GARDEN CENTER at Ipswich is a growing, interesting and beautiful place to visit and shop. It's full of exciting new plants, the best of stock and materials, ideas, suggestions and help. Our prices are consistent with good quality.

Make Shopping at Corliss' a "Growing" Habit!

# HEY! "Plant It Yourself"





## **at our Ipswich Nurseries**

**ENTIRELY REVAMPED AND MODERNIZED FOR  
YOUR GARDENING PLEASURE.**

**An easy and convenient way for you to shop!  
Quality Stock at Attractive Prices!**

### **FEATURING . . .**

Evergreens . . . Rose Daphne . . . Evergreen Euonymus . . .  
Mountain Laurel . . . Rhododendrons . . . Ornamental and fruit trees  
. . . Flowering shrubs . . . Azaleas . . . Vines . . . and other nursery  
stock . . . freshly dug from our fields.

Potted Roses . . . Perennials . . . Annual Seedlings

### **CONTAINER-GROWN PLANTS**

A complete Nursery Service with Fertilizers . . . Grass Seeds . . .  
Insecticides . . . Garden Hose . . . Fertilizer Spreaders . . . Power  
Mowers . . . and other Garden Needs.

### **FOR SUMMER PLANTING**

All the nursery stock in our Garden Center will be conditioned with the new plant plastic coating for **SAFE, EASY,** and **ECONOMICAL** planting during hot weather.

### **GARDEN CENTER HOURS**

**From April 1 to November — 7 days a week**

**Weekdays — 8 a.m. to 6 p.m.**

**Sundays — 9 a.m. to 6 p.m.**

**Our nurseries are open from 7 a.m. to 5 p.m.  
every weekday.**

# Evergreens

Only the Evergreens are Left After the  
Autumn Leaves Flare and Fall

There are no more beautiful things in nature than well-grown, well-cared-for evergreens. They are cool-looking in summer and cozy-looking in winter. There is no end to their uses. Well-grown specimen plants increase in beauty with the years.

**EVERGREENS ARE DUG, BALLED AND BURLAPPED (B&B) at prices quoted.**

\*Suitable for foundation plantings

†Adapted to partial shade

§Berried shrubs

**Note.**—Figures after the names give approximate heights reached under favorable conditions.

ABIES, Fir	Each	Ten
<b>Concolor</b> (White Fir). 70 ft. Beautiful, stately. Foliage green to silver-blue.		
3-4 ft. ....	12.00	
4-5 ft. ....		16.00

**ARBOR-VITAE.** See Thuya.

**CHAMAECYPARIS, False Cypress**

\***Pisifera plumosa** (Plume Cypress). 30 ft. Beautiful; dense conical habit; feathery branches that respond to shearing.

18-24 in. ....	4.00	
2-2½ ft. ....	4.95	
2½-3 ft. ....	6.00	
3-4 ft. ....	7.50	

Other sizes. Prices on request.

**FIR.** See Abies.

**HEMLOCK.** See Tsuga.

**JUNIPERUS, Juniper**

\***Chinensis Pfitzeriana** (Pfitzer Juniper). 8 ft. A dwarf, fan-shaped evergreen with grayish green foliage.

18-24 in. ....	7.00	65.00
2-2½ ft. ....	8.50	80.00
2½-3 ft. ....	10.50	100.00
3-3½ ft. ....	12.50	
3½-4 ft. ....	14.50	

Other sizes. Prices on request.

\***Chinensis Pfitzeriana Compacta** (Nelson's Blue Variety).

An improved variety of Juniper Chinensis Pfitzeriana. Glaucous blue-gray foliage, much heavier than the regular Pfitzer. Grows broader than high—fills in well to the center with a single shearing each year—develops foliage close to the ground level.

15-18 in. ....	7.50	
----------------	------	--

\***Communis depressa plumosa** (Andorra Plumed Spreading Juniper). 5 ft. This new addition to the ground-covering evergreens is valuable for its compact growth and handsome green foliage, changing to an attractive purple during the winter.

15-18 in. ....	4.75	45.00
18-24 in. ....	6.00	57.50
2-2½ ft. ....	7.50	

\***Excelsa stricta** (Greek Juniper) 8 ft. Narrow, dense tree of erect growth having silvery foliage. Very ornamental.

15-18 in. ....	3.75	
18-24 in. ....	4.75	
2-2½ ft. ....	9.50	92.50

Five or more plants of the same variety and size  
at ten rate; 25 or more at 100 rate.





# CORLISS BROS. INCORPORATED.

## JUNIPERUS, Juniper — Continued

	Each	Ten
* <b>Glauca Hetzi</b> (Hetz Blue Juniper). 8 ft. A spreading type, similar to Pfitzer Juniper, except more vigorous, with feathery bluish-green needles.		
18-24 in. ....	6.50	62.50
2-2½ ft. ....	7.50	72.50
2½-3 ft. ....	9.50	92.50

## PICEA, Spruce

\***Excelsa Nidiformis** (Birdnest Spruce) 3 ft. A grotesque, very slow growing, dwarf type with dense nest-like mass of branchlets where the leading shoot should be. Grows wider than tall. An interesting subject for rock gardens and other plantings requiring broad dwarf specimens.

12-15 in. ....	4.50
15-18 in. ....	6.00

**Glauca canadensis** (American White Spruce). 85 ft. A very hardy and shapely evergreen with dense silvery foliage. Slow growing. Valuable for windbreaks or as individuals.

2-2½ ft. ....	4.50	42.50
2½-3 ft. ....	5.50	52.50
3-4 ft. ....	7.50	72.50

Larger sizes, prices on request.

\***Glauca conica** (Dwarf Alberta Spruce). 6 ft. Rare, dwarf, dense, symmetrical. Exceedingly slow-growing; narrow and conical in form.

15-18 in., container-grown .....	7.00
18-24 in. ....	8.50

**Pungens glauca** (Colorado Blue Spruce). 60 ft. These trees, with their beautiful steel-blue foliage, prove attractive.

2-2½ ft. ....	7.00
---------------	------

Other sizes and specimens. Prices on request.

**Pungens Moerheimi** (Moerheim Blue Spruce) 40 ft. Similar in color to *Glauca* but more dense and narrow growth; somewhat slower growing.

4-5 ft. ....	20.00
5-6 ft. ....	25.00
6-7 ft. ....	32.50

## PINUS, Pine

\***Mugo compacta** (Dwarf Mountain Pine). 6 ft. spread. A lower and more compact form of the Mugho Pine.

15-18 in. ....	5.00	47.50
18-24 in. ....	6.75	65.00
2-2½ ft. ....	8.00	75.00
2½-3 ft. ....	9.50	90.00

Other sizes. Prices on request.

**Nigra (austriaca)** (Austrian Pine). 60 ft. A rapid growing, very hardy pine of broad, spreading habit. Fine for seashore planting.

2½-3 ft. ....	7.50
3-3½ ft. ....	10.50

### OVERSIZED EVERGREENS

Catalog space does not permit us to list the many large, oversized, beautiful evergreens in which we specialize. When you need material of this kind for immediate effect, ask us for quotations.

Five or more plants of the same variety and size  
at ten rate; 25 or more at 100 rate.



# CORLISS BROS.

INCORPORATED

## PINUS, Pine—Continued

Each Ten

**Resinosa** (Red Pine). 70 ft. A very hardy, ornamental, broad, open pyramidal pine of vigorous, rapid growth with stout spreading branches. Long, glossy dark green foliage.

2-3 ft. ....	5.50	
3-3½ ft. ....	7.00	
3½-4 ft. ....	8.50	

**Strobus** (White Pine). 100 ft. One of the most picturesque of our native evergreens. Long, flexible, light green, pendulous needles.

Many fine specimens — prices on request.

**Thunbergi** (Japanese Black Pine). 40-50 ft. An outstanding tree for planting near salt water and bleak situations. Graceful, wide-spreading with broad, irregular head; bright green needles. Faster growing than Austrian Pine, but somewhat shorter.

2½-3 ft. ....	7.50	
3-3½ ft. ....	12.00	
3½-4 ft. ....	14.00	

**RETINOSPORA.** See *Chamaecyparis*.

**SPRUCE.** See *Picea*.

## TAXUS, Yew

\*†§**Cuspidata** (Spreading Japanese Yew). 10 ft. A compact, spreading variety. Dark green foliage. Bright red berries in fall. Very attractive.

15-18 in. ....	5.50	52.50
18-24 in. ....	7.50	72.50
2-2½ ft. ....	9.50	92.50
2½-3 ft. ....	13.50	132.50
3-3½ ft. ....	17.50	

Larger sizes. Prices on request.

\*†§**Cuspidata capitata** (Upright Japanese Yew). 25 ft.

This upright, pyramidal form is considered one of the best and most beautiful of the yews. It will grow in shade and holds its rich, dark green color well all through the winter. Valuable for hedges; stands shearing well. Red berries in fall.

18-24 in. ....	7.50	
2-2½ ft. ....	9.50	90.00
2½-3 ft. ....	12.00	115.00
3-3½ ft. ....	17.50	170.00
3½-4 ft. ....	22.50	
4-5 ft. ....	31.00	

Larger sizes. Prices on request.

\*†§**Cuspidata Hunnewelliana** (Hunnewell Yew) Resembles *cuspidata*, but of slenderer habit. Clear green foliage, masked in winter by a bronzy cast. Rapidly supplanting *cuspidata* in popularity as it can be used either as a spreader or medium upright plant.

15-18 in. ....	6.00	
18-24 in. ....	7.50	72.50

\*†§**Cuspidata nana** (Spreading Form) (Dwarf Japanese Yew). 4 ft. Valuable on account of its deep green foliage and extreme hardiness. Red berries in fall.

15-18 in. ....	6.50	62.50
18-24 in. ....	9.50	92.50
2-2½ ft. ....	13.50	132.50
2½-3 ft. ....	18.00	

Larger sizes. Prices on request.

Five or more plants of the same variety and size  
at ten rate; 25 or more at 100 rate.



# CORLISS BROS.

INCORPORATED

## TAXUS, Yew — Continued

Each Ten

\*†§**Media Hatfieldi** (Hatfield's Yew). 8 ft. Especially compact vase-shaped evergreen with dark green foliage. Considered one of the best of the Taxus hybrids. Excellent for hedges. Red berries in the fall.

15-18 in. ....	5.75	52.50
18-24 in. ....	7.50	70.00
2-2½ ft. ....	10.00	95.00
2½-3 ft. ....	15.00	145.00
3-3½ ft. ....	20.00	195.00

Larger sizes. Prices on request.

†§**Media Hicksi** (Hicks' Yew). 10 ft. Erect, columnar growth similar to Irish Yew, but quite hardy. Red berries in fall.

15-18 in. ....	4.50	42.50
18-24 in. ....	6.50	62.50
2-2½ ft. ....	8.50	80.00
2½-3 ft. ....	11.50	110.00
3-3½ ft. ....	14.50	140.00
3½-4 ft. ....	18.00	

## THUYA, Arbor-Vitae

\***Occidentalis Boothi** (Booth Globe Arbor-Vitae). 3 ft. Dense, dark green foliage. One of the best globe types.

15-18 in. ....	3.50	32.50
18-24 in. ....	4.50	42.50

\***Occidentalis nigra** (American Arbor-Vitae). 40 ft. A useful, upright, flat-leaved dark green evergreen.

2-2½ ft. ....	4.25	40.00
2½-3 ft. ....	5.00	47.50
3-4 ft. ....	6.00	57.50
4-5 ft. ....	8.00	75.00
5-6 ft. ....	10.50	

\***Occidentalis pyramidalis** (Pyramidal Arbor-Vitae). 25 ft. Very columnar type. Glossy dark green foliage. One of the finest.

2-2½ ft. ....	4.50	
2½-3 ft. ....	5.50	50.00
3-4 ft. ....	6.50	60.00
4-5 ft. ....	8.50	80.00
5-6 ft. ....	10.50	
6-7 ft. ....	13.50	

\***Occidentalis wareana** (Siberian Arbor-Vitae). 15 ft. A hardy, dense bush having gray-green foliage.

18-24 in. ....	3.75	
2-2½ ft. ....	4.50	
2½-3 ft. ....	5.75	
3-4 ft. ....	7.75	
4-5 ft. ....	10.00	

## TSUGA, Hemlock

†**Canadensis** (Canadian Hemlock). 75 ft. Finest of North American evergreens. A medium-sized, broadly pyramidal tree of dense growth and rich green foliage.

2½-3 ft. ....	8.00	
3-4 ft. ....	10.00	

Larger specimens. Prices on request.

†**Caroliniana** (Carolina Hemlock) 50 ft. Very graceful evergreen with dense, dark foliage. Very choice.

2½-3 ft. ....	7.50	
---------------	------	--

## YEW. See Taxus.

Five or more plants of the same variety and size at ten rate; 25 or more at 100 rate.

# Evergreen Shrubs

These are a group of both small and large shrubs, with firm, hard leaves which are retained over winter. Most of them bloom beautifully, and some of them are most showy, while others are very fragrant.

**EVERGREENS ARE DUG, BALLED, AND BURLAPPED (B&B) at prices quoted.**

\*Suitable for foundation plantings.

†Adapted to partial shade.

§Berried shrubs.

<b>ARCTOSTAPHYLOS, Bearberry</b>	<b>Each</b>	<b>Ten</b>
*Uva-ursi. 1½ ft. An excellent, native, ground cover for poor and sandy soils. White flowers tinged pink in May and June. Brilliant red berries persistent in fall and early winter.		
9-12 in. potted .....	.90	8.50

<b>BUXUS, Boxwood</b>		
*Sempervirens Welleri (Weller's Hardy Northern Box). A splendid new dwarf Boxwood with shiny oval foliage. Excellent for quick hedges that may be trimmed and kept low and dense to any size of dwarf hedge form or edging. Does well in poor soils, sun or shade.		
12-15 in container grown .....	3.50	32.50

<b>DAPHNE</b>		
*Cneorum (Rose Daphne). 1 ft. Dwarf evergreen shrub having delightfully fragrant rose-pink flowers in May.		
7-9 in .....	2.25	21.50
9-12 in. ....	2.75	26.50
12-15 in. ....	3.50	32.50

<b>EUONYMUS, Euonymus</b>		
*†Fortunei radicans (Winter Creeper). 15 ft. A creeping vine having small, dull green leaves with whitish veins. Under foliage bronze.		
15-18 in. ....	2.00	
*†§Fortunei vegetus (Big-leaf Winter Creeper) 5 ft. Trailing evergreen shrub with large veined leaves. Abundance of orange-scarlet berries in the fall.		
15-18 in. ....	2.25	21.50
18-24 in. ....	2.75	26.50

**NEW CORLISS PATENTED VARIETIES, See Center Pages.**

**FIRETHORN.** See Pyracantha.

**HEDERA**

*†Helix baltica (Hardy English Ivy). 15 ft. This graceful shiny-leaved evergreen plant is excellent as a settling vine as well as a splendid ground cover that will take dense shade. Perfectly hardy.			
	<b>Ea.</b>	<b>per 10</b>	<b>per 100</b>
3-in pot plants .....	.75	7.00	65.00

**HOLLY.** See Ilex.

**ILEX, Holly**

*†Crenata convexa (bullata) (Convex Box Holly). 4 ft. Small, shiny, dark green boxwood-like leaves densely covering the twigs; good for rock gardens and other low plantings. Grows well in sun and shade.		
15-18 in. ....	5.50	
18-24 in. ....	7.50	
2-2½ ft. ....	10.50	
*§Glabra Compacta (Inkberry) 3-4 ft. One of the best lesser known native shrubs with handsome, shiny, evergreen leaves, and shining black berries that ripen in September and remain until late spring.		
12-15 in. ....	4.50	
15-18 in. ....	5.50	

**Five or more plants of the same variety and size at ten rate; 25 or more at 100 rate.**



# CORLISS BROS.

INCORPORATED

KALMIA, <i>Kalmia</i>	Each	Ten
*† <i>Latifolia</i> (Mountain Laurel). 10 ft. Leaves rich glossy green. An abundance of pinkish white blooms in June		
15-18 in. ....	5.25	
18-24 in. ....	6.50	
2-2½ ft. ....	8.00	

## LEUCOTHOE

*† <i>Catesbaei</i> (Drooping Leucothoe). 4 ft. A rather open-growing plant with fine white flowers borne on long, pendulous racemes. The leaves are glossy green in summer and assume a purplish red tint in late fall.		
15-18 in. ....	4.75	
18-24 in. ....	5.75	
2-2½ ft. ....	7.50	

## MOUNTAIN LAUREL. See *Kalmia*.

## PACHYSANDRA, *Pachysandra*

*† <i>Terminalis</i> (Japanese Spurge). 1 ft. A valuable evergreen ground cover, with white flowers in May.			
	10	100	1000
3-in. pot plants .....	3.50	32.50	300.00

## PIERIS, *Andromeda*

*† <i>Floribunda</i> (Mountain <i>Andromeda</i> ). 6 ft. A compact shrub with dark masses of evergreen foliage, overhung with large panicles of Lily-of-the-Valley-like flowers in May.		
15-18 in. ....	6.00	
18-24 in. ....	8.00	
*† <i>Japonica</i> (Japanese <i>Andromeda</i> ). 10 ft. Ornamental evergreen with shiny, green leaves and white flowers in May.		
15-18 in. ....	5.50	
18-24 in. ....	7.00	
2-2½ ft. ....	9.50	

## PYRACANTHA, *Firethorn*

*†§ <i>Coccinea Lalandi</i> (Laland <i>Firethorn</i> ). A most remarkable fruiting evergreen shrub with small dark green leaves. Bears attractive large trusses of white flowers during the late spring followed by an abundance of brilliant orange-scarlet berries which remain late into the winter. Prefers a warm, well-drained location.		
12-15 in. container-grown .....	3.00	
15-18 in. container-grown .....	3.50	

## RHODODENDRON

*† <i>Carolinianum</i> (Carolina <i>Rhododendron</i> ). 6 ft. A very hardy plant with narrow, dark green leaves covered with clear pink bell-shaped flowers in May.		
15-18 in. ....	6.00	
18-24 in. ....	7.50	
*† <i>Catawbiense</i> (Catawba <i>Rhododendron</i> ). 8 ft. Compact-growing bush with broad, roundish leaves. Bell-shaped flowers of pale pink to a rich lavender in June.		
15-18 in. ....	6.00	57.50
18-24 in. ....	7.50	72.50
2-2½ ft. ....	9.50	
2½-3 ft. ....	12.50	
*† <i>Catawbiense alba</i> . This is a clear white selection from the native <i>Rhododendron catawbiense</i> with excellent dwarf and compact habit of growth.		
18-24 in. ....	10.00	
2½-3 ft. ....	18.50	

Five or more plants of the same variety and size at ten rate; 25 or more at 100 rate.



# CORLISS BROS.

INCORPORATED

**RHODODENDRON** — Continued

	Each	Ten
*† <b>Catawbiense Grandiflorum.</b> 10-12 ft. Lavender - pink, bell-shaped flowers borne profusely in June on compact growing bush with broad leaves.		
18-24 in. ....	7.50	
2-2½ ft. ....		9.50

## HYBRID RHODODENDRONS

These are one of the finest broad-leaved Evergreens. They create unforgettable spots of color in late spring, and are very useful in partial shade. Average height 8-12 ft.

\***Caractacus.** A late blooming variety with fine rich purple-crimson flowers accented by handsome dark green foliage. May.

18-24 in. ....	12.00
----------------	-------

\*†**Catawbiense Hybrid Seedlings.** These plants are grown from seeds of an exceptionally fine collection of catawbiense hybrids that vary in color: including lavender, pinks, reds, purple and white.

15-18 in. ....	6.00
18-24 in. ....	7.50

\***Dr. Dresselhuys.** Huge, rich, deep red flowers which make an unusually attractive setting against the rich glossy green foliage. Robust. May.

18-24 in. ....	12.00
2-2½ ft. ....	17.50

\*†**Ignatius Sargent.** Enormous flowers of a very bright rosy crimson which creates a spectacular sight against the heavy rich foliage. This variety grows rapidly and is the spreading type. May.

18-24 in. ....	10.00
2-2½ ft. ....	15.50

\*†**Lee's Dark Purple.** A slower growing variety than most, with deep rich purple flowers in late season.

2-2½ ft. ....	14.50
2½-3 ft. ....	18.50

## VINCA, Hardy Myrtle

**Minor Bowles' Variety.** 6 in. A trailing evergreen plant with broad and rich glossy green foliage and rich blue flowers in spring. Used extensively for carpeting the ground under shrubs, trees, etc.

	Each	10	100	1000
Field-grown plants .....	\$.45	\$4.00	\$35.00	\$300.00

## Ground Covering Plants

Just as their name implies, the following plants are suitable for covering the ground under trees and other places where grass won't grow. Although primarily foliage plants, some have blooms. Some have roots that spread and send up new top growth, some spread by sending out trailers that take root, and others merely grow more or less prostrate, spreading out as they enlarge to cover a greater area of ground each year.

**Ajuga Rainbow** (Bugle) See page 47.

**Arctostaphylos Uva-ursi.** (Bearberry) See page 13.

**Convallaria majalis** (Lily-of-the-Valley). See page 51.

**Euonymus** (Evergreen Euonymus). See pages 13, 34, 35.

**Hedera helix baltica** (English Ivy). See page 13.

**Lonicera halliana** (Honeysuckle). See page 36.

**Pachysandra terminalis** (Spurge). See page 14.

**Vinca minor** (Hardy Myrtle). See page 15.

Five or more plants of the same variety and size at ten rate; 25 or more at 100 rate.

*Introducing . . .*

## **CONTAINER-GROWN PLANTS**



### **A New Modern Method of Growing Nursery Stock**

Plants grown in containers, designed for safe, efficient removal, give you many additional benefits over bareroot, and balled and burlapped stock some of which are:

Elimination of root-shock and subsequent wilting by giving you **ALL** of the root system.

A planting season limited only by frozen ground.

Extra convenience in handling and carrying the plants you buy.

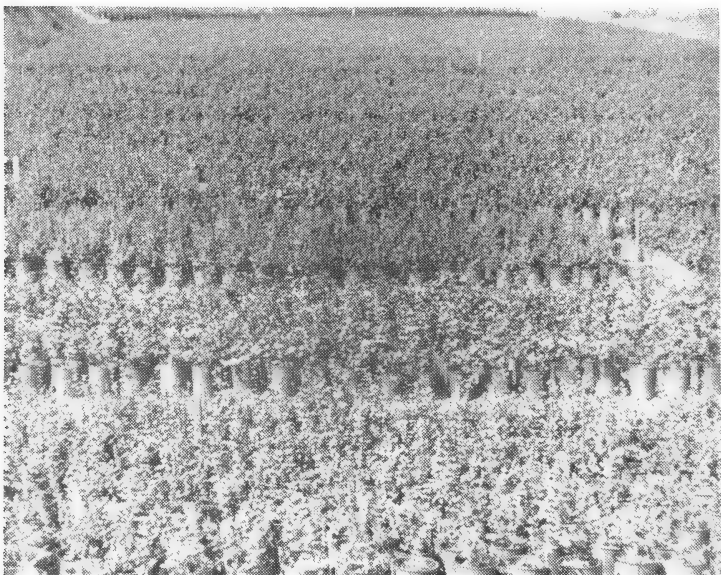
This is consistent with our policy of giving you — the customer — the most value for your money.

This modern method of growing and selling **CONTAINER-GROWN NURSERY STOCK** assures healthier plants, better growth, and a complete root system. There is little or no loss in transplanting "canned" plants. As easy to buy as a loaf of bread — neat and simple to plant. Or, they can be safely kept in their containers if immediate planting isn't possible.

Saves you time in buying — in planting — and gives you protection on your purchases.

All container-grown plants purchased will be loosened in their containers for you before leaving the nursery for easy transplanting upon arrival home.

An excellent assortment of container-grown plants, ready to carry home or for delivery, are available for immediate selection in our Garden Center.



Portion of our 80,000 container-grown plant area.



# Deciduous Trees

## FOR SHADE, FLOWERS, FOLIAGE, BERRIES

Among the vast number of beautiful Deciduous Trees that shed their foliage in the fall are those suitable for planting along roadsides, as screens, for shade, etc. Many of these bear beautiful flowers and colorful fruits.

### SPECIAL PRICES ON QUANTITY

†Adapted to partial shade.

§Berried trees.

**Note:**—Figures after the names give approximate heights reached by the trees and shrubs under favorable conditions.

### TREES B&B (Balled and Burlapped)

Unless otherwise marked "B&B" (Balled and Burlapped), trees are dug bare rooted when dormant. Should balling and burlapping be desired on trees not marked "B&B," an extra charge will be made.

Heights given with caliper measurements are general average and are approximate only. Where no caliper is given, the height is the governing measurement.

After the regular bare-root digging season is passed, this material must be dug with a ball and, since considerable time, labor, and soil are involved, balling and burlapping will be charged. Prices quoted on request.

### ACER

Each Ten

**Platanoides** (Norway Maple). 50 ft. Large, handsome, spreading tree with heavy, green foliage of great substance. Yellow autumn foliage.

8-10 ft., 1 $\frac{1}{4}$ -1 $\frac{1}{2}$  in. caliper ..... 10.00

10-12 ft., 1 $\frac{3}{4}$ -2 in. caliper ..... 16.50

Larger specimens. Prices on request.

**Saccharum** (Sugar Maple). 75 ft. One of the finest shade trees for lawn or street planting. Clear, straight growth and well-developed heads. Red and yellow autumn foliage.

8-10 ft., 1-1 $\frac{1}{4}$  in. caliper ..... 9.50

10-12 ft., 1 $\frac{1}{4}$ -1 $\frac{1}{2}$  in. caliper ..... 12.50

12-14 ft., 1 $\frac{1}{2}$ -1 $\frac{3}{4}$  in. caliper ..... 15.50

Larger specimens. Prices on request.

### NEW CRIMSON KING MAPLE

Plant Pat. No. 735

(*Acer schwedleri nigra*. 50-60 ft.)

This beautiful new Maple is of the Norway Maple family and has all of its fine characteristics PLUS very attractive deep crimson-purple foliage continuously from spring right up until the leaves fall in Autumn. You'll want to be ONE OF THE FIRST to own a new CRIMSON KING MAPLE.

8-10 ft., 1-1 $\frac{1}{4}$  in. caliper ..... 12.00

10-12 ft., 1 $\frac{1}{2}$ -1 $\frac{3}{4}$  in. caliper ..... 21.00

### BETULA, Birch

**Papyrifera** (Paper or Canoe Birch) 60 ft. A very desirable tree with large, handsome leaves. As this tree develops, the bark becomes white. Yellow autumn leaves.

**Spring Planting Only.**

6-8 ft. B&B ..... 8.50

Larger specimens. Prices on request.

Five or more plants of the same variety and size at ten rate; 25 or more at 100 rate.



# CORLISS BROS.

INCORPORATED

**BIRCH.** See *Betula*

**CERCIDIPHYLLUM, Katsura Tree**                      **Each**      **Ten**

**Japonicum.** 30 ft. Very desirable ornamental tree with rather dense pyramidal habit. Heart-shaped pink leaves when unfolding, rich medium green in summer, and brilliant orange-scarlet in autumn.

Large specimens. Prices on request.

**CRAB, FLOWERING.** See *Malus*.

**CORNUS, Dogwood**

†§**Florida** (White-flowering Dogwood). 25 ft. A tree type producing showy white flowers in May and brilliant red foliage and red berries in the fall.

**Spring Planting Only**

4-5 ft., B&B .....	7.00
5-6 ft., B&B .....	9.00
6-8 ft., B&B .....	12.00

†§**Florida rubra** (Pink-flowering Dogwood). 20 ft. One of the finest flowering trees. Massed with rose-colored flowers in early spring, followed by red berries.

**Spring Planting Only**

3-4 ft., B&B .....	9.50
4-5 ft., B&B .....	13.50
5-6 ft., B&B .....	18.00
6-8 ft., B&B .....	27.50

†§**Kousa** (Korean Dogwood). 15-20 ft. The Oriental sister of our native Flowering Dogwood. A small tree with big white flowers in June, followed by large attractive red fruit. Handsome purplish foliage in autumn.

**Spring Planting Only**

4-5 ft., B&B .....	7.50
5-6 ft., B&B .....	9.50
6-8 ft., B&B .....	13.50
8-10 ft., B&B .....	21.50

Many fine specimens. Prices on request.

**CRATAEGUS, Hawthorn**

§**Cordata** (Washington Thorn) 20-25 ft. One of the finest of our native thorns. White flowers in May are followed by clusters of shining red berries which last through late winter. Handsome dark green leaves turn to brilliant orange and scarlet in autumn.

5-6 ft., B&B .....	8.00
6-8 ft., B&B .....	11.00

§**Oxyacantha alba** (White Hawthorne). 15 ft. A native variety bearing white blossoms in May, succeeded by clusters of bright scarlet fruit.

Specimens. Prices on request.

**DOGWOOD.** See *Cornus*.

**ELM.** See *Ulmus*.

**GLEDITSIA, Locust**

**Triacanthos Inermis** (Thornless Honey-locust) 60-70 ft. An excellent, thornless, rapid-growing lawn, street, or park tree with heavy dark green foliage. Requires no staking, and free from diseases and insects. Leaves remain late in season.

6-8 ft. ....	7.50
8-10 ft. ....	10.50
8-10 ft., 1¼-1½ in. caliper .....	13.50

**Five or more plants of the same variety and size at ten rate; 25 or more at 100 rate.**

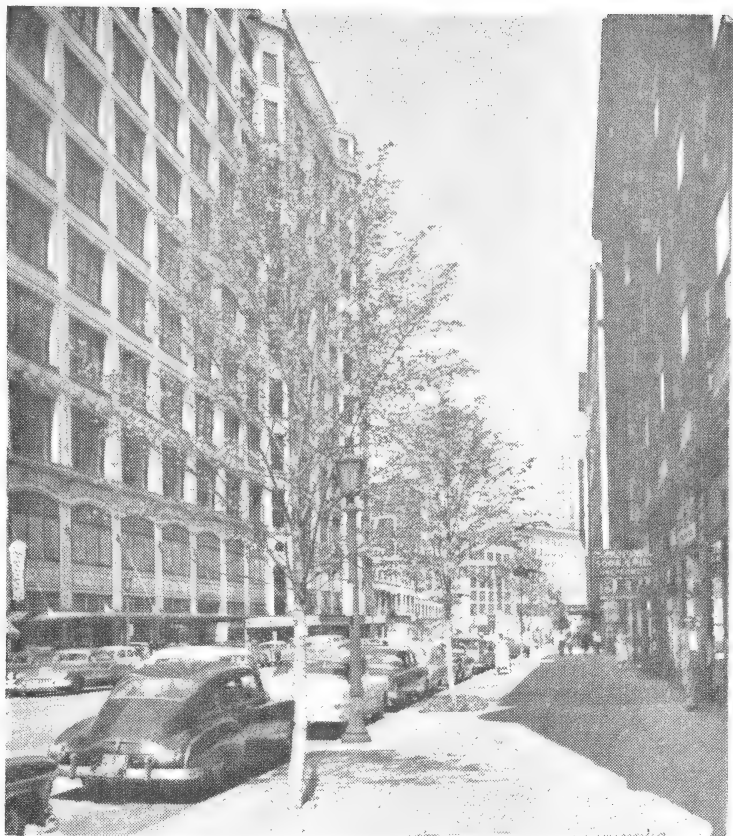


Photo Courtesy of Edward H. Scanlon & Associates

**Corliss's Compressor-Root-Pruned Lindens Beautify Cleveland Streets**

**GLEDITSIA**—Continued **Each Ten**  
**Triacanthos var. Moraine.** (Moraine Locust, Pat. #836).

The new, fast-growing, shade tree which experts predict will replace the American Elm as the most graceful shade tree. It is vase-shaped like the Elm, and adaptable to a wide variety of soils. This Honeylocust, with lacy, luxuriant, dark green foliage, is hardy, clean and tidy without seeds or pods, and thornless.

8-10 ft., 1-1¼ in. caliper .....	12.50
10-12 ft., 1-1¼ in. caliper .....	14.50

**HAWTHORN.** See *Crataegus*.

**LINDEN.** See *Tilia*.

**LIRIODENDRON, Tuliptree**

**Tulifera.** 150 ft. Tall, rapid growing tree with large greenish-yellow tulip-like flowers and dark glossy green foliage turns yellow in fall. Prefers deep, rich, moist soil.

**Spring Planting Only.**

5-6 ft., B&B .....	10.50
6-8 ft., B&B .....	13.50

**LOCUST.** See *Gleditsia*.

**WINTER MOVING OF BIG TREES**

We strongly recommend the winter moving of large trees which can be done very economically at this time of year.

We are fully equipped to do this job complete.

**CALL US FOR FREE ESTIMATES.**

Five or more plants of the same variety and size  
at ten rate; 25 or more at 100 rate.



**MAGNOLIA**

Each      Ten

**Soulangeana** (Saucer Magnolia). 20 ft. One of our showiest and most picturesque trees with lustrous foliage and slightly fragrant, cup-shaped flowers, purple-pink outside and creamy white within, in April and May.

**Spring Planting Only**

3-4 ft., B&B .....	9.50	
4-5 ft., B&B .....	13.50	
5-6 ft., B&B .....	18.50	

**Malus - The Flowering Crab Apples**

We have specialized for years in growing the best varieties of America's No. 1 Ornamental Tree.

Now we have the largest number of varieties to choose from in New England — many of the old favorites, as well as all the best of the new ones. This spring, our flowering display of these Ornamental Crab-apple Trees should be a sight worth seeing. You are cordially invited to visit our nurseries for this May Flower Show. Bring your camera.

↘ **Almey.** (Almey Crabapple). From a distance, the tree looks like a "mass of flames" for the large, glistening, fiery crimson blooms crowd the branches to the tips. The fruits are small, oval, maroon, and hang on into the winter season. Almey can be the sensation of your neighborhood.

5-6 ft. ....	8.50	80.00
6-8 ft. ....	11.50	110.00

↘ **Arnoldiana** (Arnold Crabapple). 12 ft. One of the best crabs, dark green foliage and low pendulous soft pink flowers opening to almost pure white. Conspicuous yellow fruit.

5-6 ft. ....	6.00	
--------------	------	--

↘ **Atrosanguinea** (Carmine Crab) 12-15 ft. Handsomely shaped lawn tree with a wealth of single brilliant red flowers in late May, followed by red fruit.

5-6 ft. ....	6.00	
6-8 ft. ....	8.50	

↘ **Dolgo.** (Dolgo Crabapple) 15 ft. This shapely, neat, upright tree is a solid mass of large white blooms in spring followed by a profusion of large, brilliant red fruit that makes it a wonderful ornamental sight, and flavorful, rich red jelly. Green foliage.

5-6 ft. ....	8.00	
6-8 ft. ....	10.50	

↘ **Eleyi** (Eley Crab). 18 ft. One of the best red-foliaged Crabs. Large clusters of purplish red flowers in June, followed by showy purple-red fruit.

5-6 ft. ....	6.00	
6-8 ft. ....	8.50	80.00

Larger specimens. Prices on request.

↘ **Flame.** A new and charming variety of erect growth and hardiness. Large single pink to white flowers in spring; bright red fruit from Aug. to Nov.

5-6 ft. ....	8.00	
6-8 ft. ....	10.50	

↘ **Floribunda** (Japanese Flowering Crab). 15 ft. A glorious display of rosy pink buds opening to white flowers in abundance, appearing with the leaves in May. In autumn, this tree produces yellow fruit which turns a very showy rosy red. Attractive foliage.

4-5 ft. ....	5.00	
--------------	------	--



# CORLISS BROS.

INCORPORATED

✓ §**Hopa**. 20 ft. Considered the most beautiful pink flowering Crab; reddish-purple foliage; large single, deep pink blooms, followed by quantities of small reddish fleshed fruit which makes good jelly.

5-6 ft. ....	6.00
6-8 ft. ....	8.50

§**Hupehensis** (theifera) (Tea Crab). 20 ft. A very showy erect tree literally covered with clusters of rosy-red flowers in late May, changing to blush-white when fully opened, followed by yellow fruit.

5-6 ft. ....	6.00
6-8 ft. ....	8.50

§**Katherine**. 12-15 ft. A beautiful small tree with large, double, pale pink flowers changing to pure white, followed by small yellow fruits with reddish blush.

5-6 ft. ....	8.50
6-8 ft. ....	11.50

§**Prince Georges**. 25 ft. A new Bechtel Hybrid, more disease resistant, more double flowers and better foliage. Double light pink blooms in late May, upright, dense, slow growing.

4-5 ft. ....	7.00
5-6 ft. ....	9.00

§**Purpurea aldenhamensis** (Aldenham Crabapple) 8-10 ft. A striking variety with single and semi-double deep purple flowers and good sized brownish-purple fruit. The lovely foliage is purple at first, later turning bronze.

6-8 ft. ....	10.50	100.00
--------------	-------	--------

✓ §**Red Silver**. 30 ft. A remarkable new variety, red from top to bottom in bark, flower and leaf. The silver refers to the delicate silver on under side of leaves. Reddest blossoms of any variety we've seen. Very hardy.

5-6 ft. ....	8.00
6-8 ft. ....	10.50

§**Sargenti** (Sargent Crab). 8 ft. A handsome specimen covered with clear white flowers in May. Small dark red fruit and brilliant orange-yellow foliage in the fall. Large specimens. Prices on request.

✓ §**White**. 18 ft. An excellent, shapely, upright variety covered with large, single, pure white blooms, and green foliage. Red fruits, which attract the birds, hang on a long time.

4-5 ft. ....	5.00
5-6 ft. ....	6.00

**MAPLE**. See Acer.  
**MT. ASH**. See Sorbus.  
**OAK**. See Quercus.

**PLUM, Flowering**. See Prunus

**PRUNUS, Flowering Plum**

§**Cerasifera bireiana** (Blireiana Plum) 12 ft. A splendid, neat, tree with rather upright branches on which are borne salmon-pink rosettes in great profusion in early spring. Rich purple foliage.

5-6 ft. ....	6.50	
6-8 ft. ....	9.50	90.00
8-10 ft., 1½-1¾ in. caliper	12.50	

---

**REMEMBER—Nursery stock without landscape advice is often like medicine without a doctor.**

---

Five or more plants of the same variety and size at ten rate; 25 or more at 100 rate.



This picture demonstrates the systematic **CORLISS COMPRESSOR-ROOT-PRUNING** operation. Hundreds of trees are scientifically root pruned and fed on schedule each year to give them strong powerful root systems.

The planting of large trees gives immediate beauty and shade.

Catalog space does not permit us to list the hundreds of oversized, beautiful trees in which we specialize. If you are interested in large trees, ask us for our list.

#### **QUERCUS, Oak**

Each Ten

**Palustris** (Pin Oak). 60-80 ft. A rapid growing, majestic tree of broad pyramidal form with slightly drooping branches and finely divided dark green leaves, which turn brilliant red and yellow in the fall.

8-10 ft., 1¼-1½ in. caliper ..... 15.50

Larger specimens. Prices on request.

#### **SALIX, Willow**

**Niobe** (Golden Weeping Willow). 40 ft. This beautiful tree is attractive at all seasons with its golden branches weeping to the ground.

6-8 ft. .... 4.50

8-10 ft., 1-1¼ in. caliper ..... 7.50

Larger sizes. Prices on request.

#### **SORBUS, Mountain Ash**

**Æucuparia** (European Mt. Ash). 50 ft. This tree has fernlike foliage and from mid-summer through to fall bears large clusters of scarlet berries.

6-8 ft. .... 6.00 57.50

8-10 ft., 1-1¼ in. caliper ..... 7.50

10-12 ft., 1¼-1½ in. caliper ..... 12.50

Larger sizes. Prices on request.

#### **TILIA, Linden**

**Cordata** (Little Leaf European Linden). 70 ft. A stately tree, and one of the most attractive and fast growing shade trees for lawn, park, or avenue planting.

8-10 ft., 1-1¼ in. caliper ..... 10.00

Larger sizes and specimens. Prices on request.

**Platyphyllos pyramidalis** (Pyramidal Linden). 40 to 50 ft. A very desirable compact form, decidedly pyramidal in growth, reminding one of a Lombardy Poplar, with ascending branches. May be used effectively in a very narrow space, or as a screen or sentinel tree.

6-8 ft. .... 7.50

Larger specimens. Prices on request.

**TULIPTREE**, See Liriodendron

#### **ULMUS, Elm**

**Americana** (American Elm). 80 ft. Large, stately, fan-shaped tree. Bright yellow foliage in fall.

Larger trees and specimens. Prices on request.

**WILLOW**. See Salix.

Five or more plants of the same variety and size at ten rate; 25 or more at 100 rate.

# Deciduous Shrubs

## FOR FLOWERS, FOLIAGE, BERRIES

Any true lover of nature will find a world of joy and happiness watching the striking and fascinating changes in flowering shrubs throughout the season. They are a delight from the first mild spring day, when the buds begin to swell, until late in autumn, when the leaves are resplendent in their festive colors and brilliant berries.

We are only able here to acquaint the reader with a very small portion of this wealth of beauty. Generous planting of shrubs around the home will repay in beauty and pleasure many times over the small investment required.

### SHRUBS B&B (Balled and Burlapped)

Unless otherwise marked "B&B" (Balled and Burlapped), shrubs are dug bare rooted when dormant. Should balling and burlapping be desired on shrubs not marked "B&B," an extra charge will be made at the following rates.

After the regular bare-root digging season is passed, this material must be dug with a ball, and since considerable time, labor and soil are involved, balling and burlapping will be charged at these rates.

18-24 in. ....	\$ .35
2-3 ft. ....	.45
3-4 ft. ....	.70
4-5 ft. ....	.90
5-6 ft. ....	1.25

Larger sizes — prices quoted on request.

### EXPLANATION SYMBOLS

\*Suitable for foundation plantings.

†Adapted to partial shade.

§Berried shrubs.

**Note:**—Figures after the names give approximate heights reached by the trees and shrubs under favorable conditions.

### ACANTHOPANAX, Aralia

Each Ten

\*†**Pentaphylla** (Five-leaf Aralia). 10 ft. A tall-growing shrub with stout, prickly stems and bright green, glossy foliage that turns yellow in fall.

2-3 ft. ....	1.40
3-4 ft. ....	1.75

### ALTHEA. See Hibiscus syriacus, Rose of Sharon

### ARONIA, Chokeberry

↙\*§**Arbutifolia Brilliantissima**. (Brilliant Chokeberry). 6 ft. White or flushed pink flowers in May; clusters of bright orange-scarlet berries that persist into winter. Brilliant crimson foliage in Autumn.

2-3 ft. ....	1.50
3-4 ft. ....	1.85

### AZALEA. They breathe of distant lands

\*†**Amoena Coccinea** (Red Amoena Azalea) 4 ft. One of the hardiest Azaleas with attractive, brilliant, red flowers. Very popular. Foliage turns bronze in fall.

12-15 in., B&B .....	4.45
----------------------	------

\*†**Arborescens** (Sweet Azalea). 5 ft. The very fragrant flowers, which are white tinged with pink, appear in June and July.

15-18 in., B&B .....	4.25
18-24 in., B&B .....	5.50

\*†**Calendulacea** (Flame Azalea). 6 ft. A most beautiful shrub, bearing profusion of pale yellow to fiery red flowers in May and June. Very showy.

18-24 in., B&B .....	5.50
2-2½ ft., B&B .....	7.00
2½-3 ft., B&B .....	8.00

Five or more plants of the same variety and size at ten rate; 25 or more at 100 rate.





# CORLISS BROS.

INCORPORATED

## AZALEA—Continued

	Each	Ten
*† <b>Kaempferi</b> (Torch Azalea) 5 ft. A very desirable shrub with glorious sprays of brilliant orange-red to coral-pink flowers in April and May.		
15-18 in., B&B .....	5.50	52.50
18-24 in., B&B .....	7.00	67.50
2-2½ ft., B&B .....	9.00	
*† <b>Kaempferi Fedora</b> . The great profusion of large, salmon-rose flowers make this a popular variety. Very hardy. Retains much of its foliage during winter.		
15-18 in., B&B .....	6.00	
18-24 in., B&B .....	8.00	
*† <b>Mollis Hybrid Red</b> . (Red Chinese Azalea). 5 ft. A mass of large, red bell-shaped flowers on a low, compact shrub, in May and June.		
15-18 in., B&B .....	5.50	
18-24 in., B&B .....	7.00	
*† <b>Mollis Koster's Brilliant</b> . Large glowing orange-red flowers in May and June.		
15-18 in., B&B .....	5.50	
18-24 in., B&B .....	7.00	
*† <b>Mollis Queen Emma</b> . One of the most desired varieties because of its large, individual, deep apricot-yellow flowers grouped in big clusters. May and June.		
15-18 in., B&B .....	5.50	
*† <b>Poukhanensis</b> (Korean Azalea). 4 ft. Fragrant and beautiful orchid flowers appear before leaves in April or early May.		
15-18 in., B&B .....	5.50	52.50
18-24 in., B&B .....	6.50	62.50
*† <b>Vaseyi</b> (Pinkshell Azalea) 6 ft. One of the very best ornamentals. Delicate white, pink or deep rose flowers appear in April or May before the foliage.		
18-24 in., B&B .....	5.50	
2-2½ ft., B&B .....	6.50	
*† <b>Vuykiana Palestrina</b> . Hardy, tall, white flowers 2-2½ inches across; late mid-season blooming.		
15-18 in., B&B .....	6.00	57.50
18-24 in., B&B .....	8.00	

**BARBERRY.** See Berberis.

**BAYBERRY.** See Myrica.

**BEAUTY BUSH.** See Kolkwitzia.

## BERBERIS, Barberry

\*§**Thunbergi** (Japanese Barberry). 5 ft. A slow-growing green-leaved shrub followed by bright red foliage and red fruit in the fall.

	Each	Ten	100
15-18 in. ....	.60	5.50	52.50
18-24 in. ....	.75	7.00	

\*§**Thunbergi atropurpurea** (Red-leaved Japanese Barberry). 5 ft. Of the same habit as the preceding except that the foliage is bronze-red throughout the summer.

	Each	Ten
15-18 in. ....	1.10	
18-24 in. ....	1.35	12.50
2-2½ ft. ....	1.60	
2½-3 ft. ....	2.00	
3-4 ft. ....	2.75	

**Five or more plants of the same variety and size at ten rate; 25 or more at 100 rate.**



# CORLISS BROS.

INCORPORATED

**BERBERIS**—Continued

	Each	Ten
* <b>Sthunbergi Globosa</b> , Pat. #189 (Globe Barberry) 3 ft. Compact, dense, natural globe-shaped shrubs with green leaves with bright red berries in the fall.		
2-2½ ft. ....	2.90	
2½-3 ft. ....		3.45

↳ **BLUEBERRY**. See *Vaccinium*; also Fruits.

**BUDDLEIA. Butterfly Bush**

The graceful, long rounded spikes of sweetly fragrant flowers, like lilacs, produced from July to Sept. are a great attraction for butterflies. The attractive, rich green foliage has a silvery sheen underneath. The shrubs, average in height from 5-6 ft., die back to the ground in winter and grow back to their average height during the spring season.

* <b>Charming</b> — lovely pink variety. (Ready after May 10).		
2 yr., container-grown .....	1.75	16.50
* <b>Ile De France</b> — rose-purple, suffused violet (Ready after May 10).		
2 yr., container-grown .....	1.75	16.50
* <b>White Cloud</b> — glistening snowwhite		
2 yr., container-grown .....	1.75	16.50

**Looking for something different?**

**Try this wonderful**

**SUMMER FLOWERING BLUE SHRUB!**  
**CARYOPTERIS BLUE MIST**

Commonly called Bluebeard or Blue Spirea, this charming low-growing shrub is covered with clusters of plummy powdery-blue fringed flowers from Aug. until fall frosts, and is perfectly hardy. Suitable as a low shrub or at home in a perennial garden. Height 3 ft.

	Each	10
2 yr., container-grown .....	1.85	17.50
3 yr., container-grown .....	2.50	22.50

↳ **CHOKEBERRY**. See *Aronia*.

**CLETHRA**

\*†**Alnifolia** (Sweet Pepper). 7 ft. A dainty native shrub, bearing spikes of creamy white, fragrant flowers. July to September and golden leaves in autumn.

2-3 ft. ....	1.50	14.00
3-4 ft. ....	1.90	18.00

**CORNUS. Dogwood**

\*†**Alba sibirica** (Red-branched Dogwood) 8-10 ft. Branches are bright red, stout and erect. Clusters of yellow-white flowers in late June, followed by blue-white berries.

3-4 ft. ....	1.65
--------------	------

†**Florida** (Shrub type). (White-flowering Dogwood). 25 ft. A shrub type, producing showy white flowers in May and brilliant red berries and dark red leaves in the fall.

3-4 ft., B&B .....	5.00
4-5 ft., B&B .....	6.00
5-6 ft., B&B .....	8.00

Larger specimens. Prices on request.

Five or more plants of the same variety and size  
at ten rate; 25 or more at 100 rate.



# CORLISS BROS. INCORPORATED

## CORNUS—Continued

Each Ten

†**Mas** (Cornelian Cherry). 15 ft. A handsome shrub-like tree which bears yellow flowers in late March or early April before the leaves. Immense quantities of scarlet fruit make a stunning display in autumn.

Large specimens — ask for sizes and prices

\*†**Paniculata** (Gray Dogwood). 15 ft. Clusters of white flowers in May and June are followed in autumn by white berries.

2-3 ft. ....	1.45	13.50
3-4 ft. ....	1.75	

## COTONEASTER, Cotoneaster

\***Adpressa praecox** (Prostrate Cotoneaster) 1½ ft. A very attractive dwarf shrub with handsome, glistening, dark green foliage and masses of bright orange-red berries in fall.

15-18 in., container-grown .....	4.00	
----------------------------------	------	--

\***Apiculata** (Cranberry Cotoneaster) 5 ft. A very desirable, medium-sized shrub with pink blooms in June, followed by showy red fruit.

12-15 in., container-grown .....	3.50	32.50
----------------------------------	------	-------

\***Divaricata** (Spreading Cotoneaster) 6 ft. A handsome, upright shrub with slender spreading branches and masses of bright scarlet fruits well into winter.

2-2½ ft., container-grown .....	3.25	31.00
2½-3 ft., container-grown .....	3.75	36.00
3-3½ ft., container-grown .....	4.75	

\***Horizontalis** (Rock Cotoneaster) 3 ft. Low, horizontal branched shrub. Glossy foliage. Pinkish white blooms in spring, followed by bright red fruit. Semi-evergreen.

12-15 in., container-grown .....	3.00	
----------------------------------	------	--

## CYDONIA, Quince

\***Japonica** (Japanese Quince) 5 ft. A early bloomer. Orange-scarlet flowers in May, followed by yellow fruit. Glossy green foliage.

18-24 in. ....	1.40	
2-2½ ft. ....	1.60	

\***Japonica rubra** (Red-flowering Quince). 5 ft. Early bloomer. Deep red flowers in May, followed by yellow fruit. Glossy green foliage. A specimen shrub.

18-24 in. ....	1.60	15.50
2-2½ ft. ....	1.85	18.00
2½-3 ft. ....	2.25	
3-4 ft. ....	2.75	

## HYBRID VARIETIES

6-8 ft. These are outstanding among the first shrubs to bloom in the spring. The size of their blooms, as well as the quantity, is almost unbelievable. The foliage that follows the flowers is glossy dark green.

**Pink Princess.** Lovely bright pink.

2-2½ ft. ....	2.50	
2½-3 ft. ....	3.00	

**Pink White**

2-2½ ft. ....	2.50	
2½-3 ft. ....	3.00	
3-4 ft. ....	3.75	

Five or more plants of the same variety and size at ten rate; 25 or more at 100 rate.



**DEUTZIA**

Each Ten

- \***Gracilis** (Slender Deutzia). 3 ft. White flowers and green foliage on arched branches. May, June.  
15-18 in. .... 1.35
- \***Lemoinei** (Lemoine's Deutzia). 5 ft. Early blooming, vigorous shrub with sprays of pure white flowers in May.  
18-24 in. .... 1.60

**DOGWOOD.** See Cornus.

**ELAEAGNUS**

- Angustifolia** (Russian Olive) 20 ft. Fragrant, yellow flowers followed by orange-yellow berries enhance its silvery-gray leaves and branches. Excellent for mass planting and seashore planting.  
4-5 ft. .... 3.00  
5-6 ft. .... 4.50  
6-8 ft. .... 6.00

**ENKIANTHUS**

- Campanulatus** (Redvein Enkianthus) 12-20 ft. Delicate bell-shaped flowers in pendulous clusters are pale yellow, veined rosy-red in mid-May. Brilliant red autumn foliage.  
18-24 in., B&B ..... 4.50  
2-2½ ft., B&B ..... 5.50

**EUONYMUS, Euonymus**

- \*†§**Alatus** (Winged Euonymus, Burning Bush). 8-10 ft. Shrub of compact habit. Small leaves on cork-barked branches, yellowish flowers in May and June. Brilliant red fruit and foliage in autumn.  
2-3 ft. .... 3.00 29.00  
3-4 ft. .... 4.00 39.00
- \*†§**Alatus compactus** (Dwarf Winged Euonymus or Burning Bush). 6 ft. A very choice, dwarf, compact variety which is unquestionably one of the best deciduous shrubs for growing in the shade. For a low, wide hedge, this variety has no equal. Brilliant red foliage in autumn. Bears red berries.  
2-2½ ft. .... 3.50 34.00  
2½-3 ft. .... 4.25 41.50
- †§**Europaeus** (European Euonymus). 10-15 ft. A tall, slender variety with deep green foliage which colors to a bronze-red in autumn; pink berries in fall.  
3-4 ft. .... 1.75  
4-5 ft. .... 2.25  
5-6 ft. .... 3.75

**FORSYTHIA, Golden Bell**

- \***Intermedia spectabilis** (Showy Border Forsythia). 8 ft. Rich yellow flowers in April and May before the leaves appear.  
3-4 ft. .... 1.65  
4-5 ft. .... 2.00
- \***Spring Glory.** The loveliest of the Golden Bells. Large, pale yellow flowers completely cover the branches in far great masses than the common forsythia.  
3-4 ft. .... 1.90
- \***Suspensa fortunei** (Fortune Golden Bell). 8 ft. More erect habit with arching branches covered with a profusion of rich yellow flowers in April followed by broad deep leaves which are often three-parted.  
3-4 ft. .... 1.60  
4-5 ft. .... 2.00  
5-6 ft. .... 2.65

Five or more plants of the same variety and size at ten rate; 25 or more at 100 rate.



# CORLISS BROS. INCORPORATED

## ★ NEW DWARF FORSYTHIA

A new shrub that develops into a broad, low, compact shrub, maturing at about 6 ft. Excellent for low hedge.

	Each	Ten
2-2½ ft. ....	1.90	
2½-3 ft. ....	2.40	

**HIBISCUS syriacus, Rose of Sharon — Shrub Althea.** A summer flowering favorite, tall narrow shrub or small tree. Large showy flowers from July or Aug. to frost; gives color when most other shrubs have finished blooming.

### HIBISCUS moscheutos

### NEW GIANT HYBRID ROSE MALLOWS



A beautiful new strain of hardy giant mallows. The heavy petaled flowers resembling giant hollyhocks measure 8-10 inches in diameter. A far cry from the old seedling types. July, Aug. 3-4 ft.

**Poinsettia.** A deep red self.  
**Pure White.** Large pure white with crimson throat.  
**Radiation.** Clear pink with darker center.

Strong 2 yr., container-grown ... 2.50 23.50

**ARDENS.** Double Bluish purple.

18-24 in., container-grown ..... 2.00

**ANEMONAEFLORUS.** Double pink.

18-24 in., container-grown ..... 2.00

2-2½ ft., container-grown ..... 2.40

2½-3 ft., container-grown ..... 2.75

**LADY STANLEY.** Double White.

18-24 in., container-grown ..... 2.00

2-2½ ft., container-grown ..... 2.40

2½-3 ft., container-grown ..... 2.75

**LUCY.** Double red.

18-24 in., container-grown ..... 2.00

2-2½ ft., container-grown ..... 2.40

2½-3 ft., container-grown ..... 2.75

**HONEYSUCKLE.** See Lonicera.

**HYDRANGEA, Hydrangea**

\***Arborescens Grandiflora** (Snow Hill Hydrangea) 6 ft. Semi-dwarf shrub having large clusters of snow-white flowers from June to September.

2-3 ft. .... 1.50

3-4 ft. .... 1.85

\***Paniculata grandiflora** (Pee Gee Hydrangea). 10 ft. Large conical heads of white flowers in July and August, becoming pink and red with age.

2-3 ft. .... 1.45

3-4 ft. .... 1.90

Five or more plants of the same variety and size at ten rate; 25 or more at 100 rate.



# CORLISS BROS.

INCORPORATED

## HYPERICUM, St. John's Wort Each Ten

**Hidcote.** 1½-2 ft. A hardy, shapely, dwarf shrub that bears large golden flowers at the end of every new shoot. Dense foliage; flowers freely from early summer till frost.

2 yr. container-grown ..... 2.50 23.50

## ILEX

\*†§**Verticillata** (Common Winterberry). 6 ft. Ornamental shrub with decorative scarlet berries and attractive green foliage. One male shrub should be planted to two female plants for berry-bearing.

2-3 ft. .... 1.40 13.00

3-4 ft. .... 1.90

4-5 ft. .... 2.40

**Berry-bearing plants, 25c extra.**

Larger specimens. Prices on request.

## KOLKWITZIA, Beauty Bush from Korea.

\***Amabilis.** 8 ft. Sprays of graceful green foliage completely covered with delicate pink flowers in May, June.

2-3 ft. .... 1.75 16.00

3-4 ft. .... 2.40 22.50

4-5 ft. .... 3.25 31.00

5-6 ft. .... 4.75

## LIGUSTRUM, Privet

†**Ibodium** (Ibodium Privet). 8 ft. A new hardy variety. Foliage rich glossy green. Semi-evergreen. Makes excellent hedges.

	Each	10	100
2-3 ft. ....	\$ .45	4.00	35.00
3-4 ft. ....	.55	4.90	40.00

†**Ibodium Shrubs.** An excellent semi-evergreen shrub with foliage of rich glossy green. These have been grown especially for use as single shrubs instead of hedge plants.

3-4 ft. .... 1.60 15.00

4-5 ft. .... 1.95

## LILAC. See Syringa.

## LONICERA, Honeysuckle Each Ten

†§**Tatarica rosea** (Pink Honeysuckle). 10 ft. A graceful bush which bears a profusion of pink flowers in June, followed by red berries.

2-3 ft. .... 1.35

3-4 ft. .... 1.75 16.50

4-5 ft. .... 2.10

†§**Tatarica Zabeli** (True Red Honeysuckle). 8-10 ft. Considered the best of the red-flowered bush honeysuckles. Vivid red flowers in May, followed by bright red berries in early fall.

3-4 ft. .... 1.50

4-5 ft. .... 1.85

## MOCK ORANGE. See Philadelphus.

### NATIVE SHRUBS AND PLANTS

We can furnish any of the native trees, shrubs, plants or ferns that grow in this vicinity. Large tracts of wood and pasture land are at our disposal, from which we can obtain any of these native plants.

Five or more plants of the same variety and size at ten rate; 25 or more at 100 rate.



# CORLISS BROS.

INCORPORATED

## MYRICA, Bayberry

\***Caroliniensis** (Northern Bayberry) 5 ft. A low-spreading shrub with fragrant foliage and much admired white waxy berries.

15-18 in., B&B .....	2.85
18-24 in., B&B .....	3.40

## PHILADELPHUS, Mock Orange

\***Atlas**. This giant-flowered Mockorange is covered with pure white blooms as large as those of Dogwoods in May and June.

3-4 ft. ....	2.50
4-5 ft. ....	3.00

\***Coronarius** (Sweet Mock Orange). 10 ft. An upright shrub bearing a profusion of white flowers in May and June. Very popular. Fragrant.

3-4 ft. ....	1.65	15.00
4-5 ft. ....	2.10	
5-6 ft. ....	3.00	

\***Minnesota Snowflake** (Plant Pat. No. 538) 8 ft. The large, very double, pure white flowers in June and July are more fragrant than coronarius. A symmetrical bush with graceful branches of neat, beautiful foliage.

3-4 ft. ....	2.00
4-5 ft. ....	2.50

\***Virginalis** (Hybrid). 8 ft. A handsome new shrub which covers itself with large, creamy white, semi-double flowers in June.

2-3 ft. ....	1.65	15.50
3-4 ft. ....	2.00	

**PRIVET**. See Ligustrum.

**QUINCE**. See Cydonia.

## RHAMNUS, Buckthorn

†**Cathartica** (Common Buckthorn). 12 ft. Heavy shrub with spiny branches, lustrous green leaves, and small black fruit.

3-4 ft. ....	1.65
4-5 ft. ....	2.10
5-6 ft. ....	2.75

**ROSE**. See pages 37-42.

## ROSA

\***Hugonis** (Golden Rose of China). 6 ft. Delicate, single yellow flowers in long, arching sprays in May. The best single yellow rose for shrub use. The plant is perfectly hardy.

18-24 in., container-grown .....	2.25	21.50
2-2½ ft., container-grown .....	2.50	24.00
2½-3 ft., container-grown .....	2.75	26.50
3-3½ ft., container-grown .....	3.25	

\***Rugosa** (common pink). 6 ft. Large single flowers of pink or rose. Blooms early. Excellent seashore variety. Beautiful red berries in the fall.

18-24 in. ....	1.45	13.50
2-3 ft. ....	1.75	16.50

\***Rugosa alba** (common white). 6 ft. Large, single, white flowers, early blooming. Fine for seashore planting. Red berries in the fall.

18-24 in. ....	1.60	15.00
2-3 ft. ....	2.00	

**SNOWBALL**. See Viburnum.

Five or more plants of the same variety and size  
at ten rate; 25 or more at 100 rate.





# CORLISS BROS.

INCORPORATED

## SORBUS, Mountain Ash

Each Ten

**†Tianshanica** (Turkestan Mt. Ash). 12-15 ft. A very rare, small shrubby tree with handsome dark green lustrous leaves and brilliant red fruit in large clusters from mid-summer to fall.

3-4 ft. ....	6.00
4-5 ft. ....	7.50
5-6 ft. ....	9.50

## SPIRAEA, Spirea

**\*Bumalda** (Anthony Waterer). 3 ft. Semi-dwarf type, free blooming, compact shrub, flowers bright crimson in June and July.

18-24 in. ....	1.50
2-2½ ft. ....	1.85

**\*Van Houttei** (Van Houtte Spirea). 8 ft. The finest of all the Spireas. Bunches of white flowers in May and June.

2-3 ft. ....	1.35	12.50
3-4 ft. ....	1.75	16.50
4-5 ft. ....	2.15	

## SYRINGA, Lilac

**\*Vulgaris** (Common Purple Lilac). 15 ft. The best known and most extensively used Lilac. Fragrant flowers in May and June.

2-3 ft. ....	1.65	15.50
3-4 ft. ....	2.15	20.50
4-5 ft. ....	3.00	
5-6 ft. ....	4.00	

Larger specimens. Prices on request.

**\*Vulgaris alba** (Common White Lilac). 15 ft.

Same as above with white flowers.

2-3 ft. ....	1.75	16.50
3-4 ft. ....	2.35	22.50

Larger specimens. Prices on request.

## Syringa - Lilacs

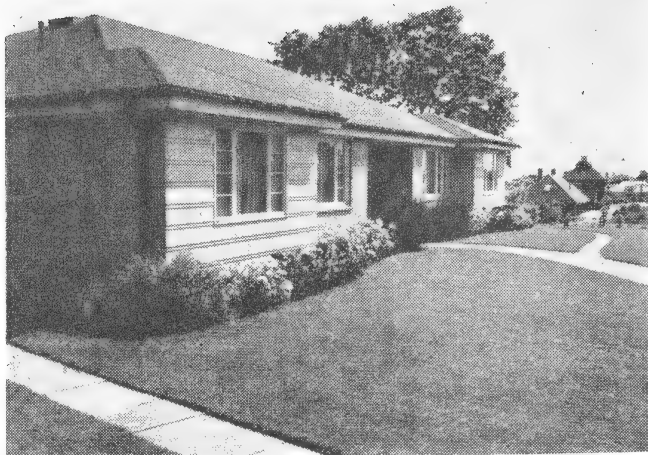
### The CHOICEST of the new FRENCH HYBRIDS

They are very much superior to the common Lilacs because of their fragrance, large flowers, and range of color, from white to richest purple in single and double forms. We have made a careful selection of those considered the finest of the best older varieties and the newest introductions to date. May and June. 12-15 ft.

Each Ten

<b>Belle de Nancy.</b> Double, satiny, lilac-pink.	
3-4 ft., B&B .....	4.50
<b>Charles Joly.</b> Double, dark purple-red.	
3-4 ft., B&B .....	4.50
4-5 ft., B&B .....	6.50
<b>Ellen Willmott.</b> Double, snow-white	
3-4 ft., B&B .....	4.50
<b>Ludwig Spaeth.</b> Single, dark reddish-purple.	
3-4 ft., B&B .....	4.50
4-5 ft., B&B .....	6.50
<b>Michel Buckner.</b> Double, pale lilac.	
3-4 ft., B&B .....	4.50
4-5 ft., B&B .....	6.50

Five or more plants of the same variety and size at ten rate; 25 or more at 100 rate.



The **SIMPLICITY** and **COLOR** of a **BEAUTIFUL PLANTING** enhances the charm of this ranch-type home.

**SYRINGA-LILACS**—Continued

	Each	Ten
<b>Mme. Antoine Buckner.</b> Double, mauve-pink.		
3-4 ft., B&B .....	4.50	
4-5 ft., B&B .....	6.50	
5-6 ft., B&B .....	8.50	
<b>Mme. F. Morel.</b> New, large, single deep purple flushed mauve-pink.		
3-4 ft., B&B .....	4.50	
4-5 ft., B&B .....	6.50	
5-6 ft., B&B .....	8.50	
<b>Paul Heriot.</b> Double, deep purple		
3-4 ft., B&B .....	4.50	
4-5 ft., B&B .....	6.50	
<b>Paul Thirion.</b> Double, magenta.		
3-4 ft., B&B .....	4.50	
<b>Pres. Fallieres.</b> Double, lilac		
3-4 ft., B&B .....	4.50	
<b>Pres. Grevy.</b> Double, light lavender-blue.		
3-4 ft., B&B .....	4.50	
4-5 ft., B&B .....	6.50	
<b>Pres. Lincoln.</b> Single, deep Wedgewood-blue.		
4-5 ft., B&B .....	6.50	
5-6 ft., B&B .....	8.50	
6-8 ft., B&B .....	11.00	

**VACCINIUM, Blueberry**

↳ †§**Corymbosum** (Highbush Blueberry). 15 ft. A handsome shrub bearing pinkish white flowers in May followed by blue-black berries of excellent flavor. Brilliant colored foliage in fall.

4-5 ft., B&B .....	4.95
5-6 ft., B&B .....	6.95
6-8 ft., B&B .....	8.95

Larger sizes. Prices on request.

**VACCINIUM HYBRIDS.** See Blueberries, page 36.

**VIBURNUM.**

↳ \*†§**Americanum** (American Cranberry). 10 ft. A handsome decorative and ornamental red-berried shrub of open growth. White flowers in May and June. Red and yellow fall foliage.

3-4 ft. ....	1.90
4-5 ft. ....	2.35

°**Carlesi** (Fragrant Viburnum). 5 ft. Compact shrub of medium height, with pretty pink and white flowers in May, resembling the arbutus in form and fragrance.

18-24 in., B&B Own roots .....	4.50	44.00
2-2½ ft., B&B Own roots .....	5.75	56.50
2½-3 ft., B&B Own roots .....	6.75	

**Five or more plants of the same variety and size at ten rate; 25 or more at 100 rate.**



# CORLISS BROS.

INCORPORATED

## VIBURNUM

	Each	Ten
*† <b>Sdentatum</b> (Arrow-wood). 10 ft. Native shrub with glossy green foliage. White flowers in May and June. Berries crimson turning to blue.		
2-3 ft. ....	1.35	12.50
3-4 ft. ....	1.75	
4-5 ft. ....	2.15	
* <b>JUDDI</b> . 9 ft. This hybrid of Carlesi is a stronger grower with more prolific, very fragrant flowers that show more pink than Carlesi. This variety should not be overlooked.		
18-24 in., B&B .....	4.50	
2-2½ ft., B&B .....	5.75	
2½-3 ft., B&B .....	6.75	
* <b>Opulus sterile</b> (Common Snowball). 10 ft. Well-known shrub, producing large snow-ball-like flowers in May. Reddish autumn foliage.		
2-3 ft. ....	1.65	
3-4 ft. ....	2.00	
Larger sizes. Prices on request.		

## WEIGELA

* <b>Rosea</b> (Pink Weigela). 8 ft. A symmetrical bush of medium size. Rose flowers in June.		
2-3 ft. ....	1.45	13.50
3-4 ft. ....	1.90	
4-5 ft. ....	2.35	
5-6 ft. ....	3.00	

### THAT GREAT NEW EVERBLOOMING RED WEIGELA

**Vaniceki** (Improved Eva Rathke) 6 ft. Hardy and vigorous with a profusion of garnet-crimson flowers in June, and then sparingly throughout the summer. Reddish yellow autumn foliage.

2-3 ft. ....	1.65	15.50
3-4 ft. ....	2.15	20.00

**WINTERBERRY.** See Ilex.

## Hedge Plants

A living fence, made from growing plants, attractive with their green leaves and formally trained or arched branches, is a part of the grounds and garden, and is surely more ornamental than an artificial fence. A hedge is permanent. Once planted, only occasional trimming or shearing is required.

**Acanthopanax** (Aralia). See page 23.

**Berberis** (Japanese). See page 24.

**Buxus** (Boxwood). See page 13.

**Clethra** (Sweet Pepper). See page 25.

**EUONYMUS.** See pages 34 and 35.

**Euonymus alatus Compactus** (Dwarf Winged Euonymus). See page 27.

**Forsythia.** See page 27.

**Ilex** (Holly). See page 29.

**Ligustrum ibolium** (Hardy Privet). See page 29.

**Rosa rugosa** (common). See page 30.

**Spiraea Van Houttei.** See page 31.

**Syringa** (white and purple lilacs). See page 31.

**Taxus Hicksi, Hatfield and capitata.** See pages 11 and 12.

**Thuja occidentalis nigra** (American Arbor-Vitae). See page 12.

**Tsuga canadensis** (Canadian Hemlock). See page 12.

# NEW—HARDY—VERSATILE

## EUONYMUS

EUONYMUS — pronounced U-ON-E-MUS

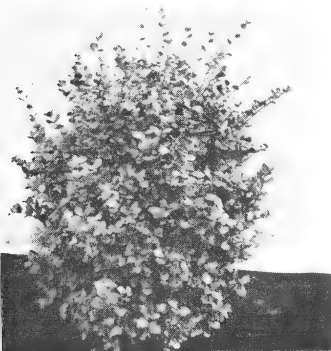
### *Broadleaf Evergreen Shrubs*

The most Wonderful, Useful shrubs yet introduced . . . Four distinctively different types . . . for formal and informal plantings . . . Grows in sun or shade. **TRULY SENSATIONAL!**

- Green all year — Does not climb
- Fine for sun or shade — Compact and dense
- Transplants easily — Resistant to dog damage
- Lustrous green foliage — Attractive



ORNAMENTAL SHRUBS  
FOUNDATION PLANTS  
FACING DOWN PLANTS  
HEDGE PLANTS



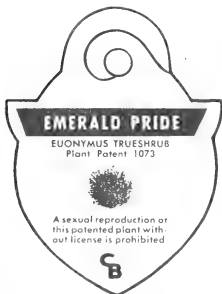
#### EMERALD LEADER

(Pat. No. 881) Berried Ovoid form.  
Height 4-5 ft. — Spread 2½ ft.  
*Sorry—not available this season.*

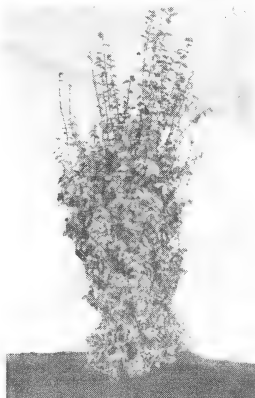


#### EMERALD CUSHION

(Pat. No. 1112) Low dwarf shrub. Height 18 inches.  
Spread 3 ft.



Not genuine without this tag.



#### EMERALD CHARM

(Pat. No. 1079) Narrow, columnar shape. Height 4-5 ft.  
Spread 18 inches.



#### EMERALD PRIDE

(Pat. No. 1073) Compact bush type.  
Height 4 ft. — Spread 3½ ft.

High disease resistance—drought endurance  
—low temperature adaptability.



Requires no staking and little shearing or shaping.

**EACH VARIETY IS OUTSTANDING**  
*for* **MODERN LANDSCAPE DESIGN**

PRICES	
B & B	
Each Variety	
12-15 in. . . . .	\$3.75
15-18 in. . . . .	4.65
18-24 in. . . . .	5.95
2-2½ ft. . . . .	7.15
2½-3 ft. . . . .	8.95



As a focal point in the foundation planting, Corliss Euonymus (Emerald Pride shown here) complements the large Yew in the background.



Useful as a hedge, Corliss Euonymus can be easily sheared to be a fine low and narrow ornamental garden feature.



# Vines

## FOR COMFORTING SHADE and GORGEOUS BEAUTY

†Adapted to partial shade.  
§Berried vines.

NOTE.—Figures after the names give approximate heights reached under favorable conditions.

### AMPELOPSIS

Each Ten

†§**Heterophylla** (Porcelain Ampelopsis). 30 ft. A vigorous vine with deeply lobed green leaves striped with white. Clusters of very attractive blue, lilac, and white berries in late summer and fall. (Ready June 1st).  
2 yr. container-grown ..... 1.85  
3 yr. container-grown ..... 2.50

§**Quinquefolia** (Virginia Creeper). 35 ft. High-climbing vine of rapid growth. Foliage rich crimson in autumn. Blue berries. (Ready June 1st).  
2 yr. container-grown ..... 1.50

†§**Tricuspidata Veitchi** (Boston Ivy). 40 ft. A clinging vine densely covered with glossy green foliage. Blue berries in the fall. (Ready June 1st).  
2 yr. container-grown ..... 1.65

### CLEMATIS

**Paniculata** (Sweet Autumn Clematis). 25 ft. Very fragrant pure white flowers in profusion in August and September. Yellow foliage in autumn. (Ready June 1st)  
2 yr. container-grown ..... 1.65

**EUONYMUS.** See page 13.

### HYDRANGEA

†**Petiolearis** (Climbing Hydrangea) 50 ft. The large, fragrant, white flowers in July are showy from a distance. Broad, handsome, dark green foliage. Excellent for stone walls and masonry.  
3 yr. container-grown ..... 3.00

**IVY.** See Ampelopsis, and *Hedera helix baltica*, page 13.

### LONICERA, Honeysuckle

†§**Halliana** (Hall's Honeysuckle). 20 ft. Semi-evergreen vine. Fragrant pure white changing to yellow flowers from June to August.  
Each Ten Hundred  
2 yr. .... \$ .70 6.00 50.00  
2 yr. container-grown ..... 1.25 11.50  
(Ready June 1st)

†**Halliana Improved.** Stronger grower than above, with purplish-green leaves.  
2 yr. container-grown ..... 1.50

**Heckrotti** (Goldflame). 15-20 ft. A marvelous new Honeysuckle. Fragrant and lovely two-toned flowers, bright flame-pink outside and creamy gold within, are produced in abundance from June until freezing weather. Glossy dark foliage adds to its charm. May be trimmed to make an excellent shrub.

Each Ten  
3 yr. container-grown ..... 1.90 18.00  
3 yr. heavy container-grown ..... 2.40 23.00

### POLYGONUM

†**Auberti** (Silver Lace Vine). 25-30 ft. Very rapid grower with small light green leaves and large feathery sprays of fragrant white flowers. August to October. (Ready June 1st).  
2 yr. container-grown ..... 1.65

### WISTERIA

**Sinensis** (Chinese Wisteria). 40 ft. Hardy, fast-growing climber. Long racemes of pea-shaped lavender flowers in May and June. (Ready June 1st).  
2 yr. container-grown ..... 2.25

# Standard Fruit Trees

OUR FRUIT TREES AND VINES ARE CAREFULLY PRUNED, SHAPED, AND SPRAYED IN OUR NURSERIES.

Catalog space does not allow us to list the sizes and prices of each of these trees, but we'd be very glad to quote on size and variety you desire on standard fruit trees.

## APPLES

5-6 ft. — \$4.50; 6-8 ft. — \$8.00 each  
BALDWIN — CORTLAND — McINTOSH — RED DELICIOUS

We can supply various size trees from 8 ft. to 20 ft. trees with large calipers, prices on request.

- ↘ Anoka — ↘ Baldwin — ↘ Gravenstein — ↘ Kendall
- ↘ McIntosh — ↘ Red Astrachan — ↘ Red Delicious
- ↘ Yellow Delicious — ↘ Yellow Transparent

---

## PEACHES

2 yr. #1 — \$1.65

- ↘ **Champion.** Handsome, creamy white Peach with red cheeks. Superior flavor. Mid-August.
- ↘ **Early Elberta.** Very large, juicy, yellow fruit.
- ↘ **Golden Jubilee.** Best early free stone Peach. Sweet; golden yellow skin; early August.

We have a few oversized Champion and Golden Jubilee Peach Trees — Ask us for sizes and prices.

---

## PEARS

4-5 ft. \$3.50

5-6 ft., \$4.50

6-8 ft., \$6.50

Large sizes. Price on request.

- ↘ **Bartlett.** An old favorite, noted for 'ts large juicy fruit. Mid-season.
- ↘ **Clapp's Favorite.** One of the very best of the early Pears. Very good eating. Early. 6-8 ft. size available only.

### Suggested Planting Distances of Fruits:

	Feet Apart
Apple Trees .....	30
Dwarf Apple and Pear Trees .....	12
Peach Trees .....	15
Pear Trees .....	15
Grape Vines .....	8
Hybrid Blueberry Bushes .....	5

QUALITY as well as PRICE should be considered when buying Nursery Stock. Our stock is acclimated and freshly dug.

New

# DWARF FRUIT TREES

## THAT BEAR FULL SIZE FRUIT

Dwarf Fruit Trees are the Delight of the Small Home Owner because:

1. Delicious for eating, canning and freezing.
2. Start producing fruit within a couple years.
3. Fruit as large as standard.
4. Small investment that increases each year.
5. Easy to pick on the trees.
6. Easy to prune and spray.
7. Extremely attractive during early spring with gorgeous flowers.
8. Matured height about 8 ft.
9. Can be planted 10-15 ft. apart.
10. Ideal for planting in limited space.

For best results, plant 2 or more varieties for pollination.

REMEMBER — foliage and flowers are attractive for landscape plantings and fruit is top quality for eating.

## NEW DWARF APPLES

Our trees are grown on Malling No. 9 root stock which assures you the most dwarf and the hardiest plants.

	Each
3-4 ft. $\frac{9}{8}$ - $\frac{11}{8}$ in. caliper .....	\$3.50
4-5 ft. $\frac{11}{8}$ -1 in. caliper .....	6.00
Larger trees, prices on request.	

Varieties: Baldwin, Cortland, Double Red Delicious, Early McIntosh, Gravenstein, Yellow Delicious.

## NEW DWARF PEARS

	Each
3-4 ft., $\frac{7}{8}$ - $\frac{11}{8}$ in. caliper .....	3.50

Varieties: Dwarf Bartlett, Clapps Favorite, Max Red Bartlett, Seckel. — see description of standard varieties.

## HARDY NUT TREES

### NEW HYBRID SWEET CHINESE CHESTNUT

HARDY, BLIGHT RESISTANT — EARLY BEARER. The fruit is fully as delicious as the native Chestnut and slightly larger. Have the thrill of roasting Chestnuts from your own trees over an open fire! Not only do these trees produce large, delicious full-flavored Chestnuts at an early age, but their beautiful rounded, spreading branches rapidly develop into a lovely tree to grace any home lawn.

The trees we offer are just ready to come into bearing. Plant 2 for best results. The QUANTITY IS LIMITED, SO BETTER ORDER YOURS EARLY.

4-5 ft. ....	7.50
5-6 ft. ....	9.00

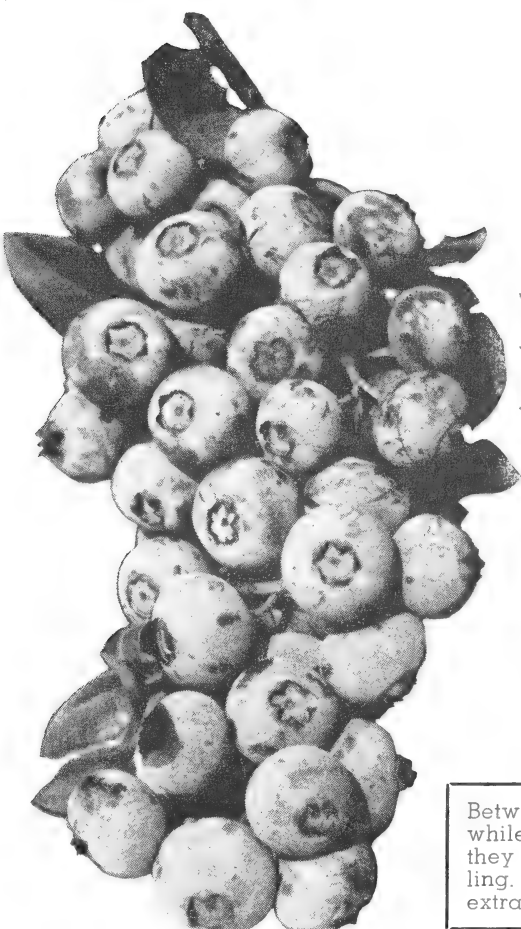
### CORLISS GIFT CERTIFICATES

We are prepared to issue Gift Certificates, redeemable by us. This certificate will bear the recipient's name and yours as donor. A "living" gift makes a very acceptable Christmas, Anniversary, Birthday, or Mother's Day gift. See page 41.



# Giant Hybrid BLUEBERRIES THAT ANYONE CAN GROW!

- ★ DELICIOUS BERRIES!
- ★ BEAUTIFUL SHRUBS IN BLOOM!
- ★ RICH GREEN FOLIAGE IN SUMMER!
- ★ BRILLIANT RED LEAVES IN AUTUMN!



## NEWEST VARIETIES

- ↘ DIXIE, 7 ft. Largest berries. Mid-July.
- ↘ JERSEY, 7 ft. Superb quality. Late July.
- ↘ JUNE, 5-6 ft. Bears after Weymouth. July.
- ↘ PEMBERTON, 7 ft. Large dark blue. Late July.
- ↘ STANLEY, 7 ft. Delicious, light blue. Mid-July.
- ↘ WEYMOUTH, 7 ft. Earliest bearer — July.

15-18 in. B&B .....	1.65
18-24 in. B&B .....	1.90
2-2½ ft. B&B .....	2.40
2½-3 ft. B&B .....	3.00
3-3½ ft. B&B .....	3.75

Every one of our bushes offered for sale, bore heavily last year.

Between June 1st and Sept. 1st, while the bushes are fruiting, they require extra care in handling. Therefore, a charge of 50¢ extra per bush is necessary.

All our plants are freshly dug with a ball of earth (B&B) which insures safe transplanting.  
Balled and Burlapped plants, such as we offer, give you TWICE the VALUE of bare root plants.

### Cultural Directions for Blueberries

*Easy to Plant*

Plant 3 or more varieties for perfect pollinization. Set 5x5 ft. apart. Mix in liberal quantities of Corliss #2 mixture especially prepared for Blueberries (2 lbs. per 1 ft. of height) when planting.

Keep well watered at all times unless you have them planted in a spot where natural moisture abounds.

# Small Fruits

## ASPARAGUS

**Mary Washington.** The best popular variety; heavy yielding; rust-resistant; hardy; rich flavored and tender.

\$6.00 per 100; \$3.55 per 50; \$1.90 per 25

## BLUEBERRY HYBRIDS

See page 39

## GRAPE VINES

- ✓ **Caco.** Large, sweet wine-red fruit in compact bunches. **Strong, 2 yr., No. 1 dormant, 75¢ each;** container-grown \$1.35.
- ✓ **Concord.** Most widely known. Large clusters of glossy black fruit. **Strong, 2 yr., No. 1 dormant, 75¢ each;** container-grown \$1.35; 3 yr. container-grown, \$2.00.
- ✓ **Seneca.** New and outstanding. large white berries, sweet and juicy, in abundance. **Strong, 2 yr., No. 1 dormant 90¢ each;** container-grown \$1.50.
- ✓ **Steuben.** A very hardy, new variety. Huge, long, slender clusters of blue-black fruit with delicious, sweet flavor. Ripens a few days before Concord, but keeps well until Christmas. **Strong, 2 yr., No. 1 dormant \$1.00 each;** container-grown \$1.65 each.

## RASPBERRIES

- ✓ **Latham.** Most popular, all-purpose Raspberry with large, juicy rich red fruit that clings to stem several days after fully ripe in early July. **Strong transplants — \$20 per 100; \$11 per 50; \$6.00 per 25; \$2.45 per 10.**

## STRAWBERRIES

- ✓ **Catskill (Midseason).** Yields very heavy crops of large, firm, glossy dark red fruit. **Field grown plants, \$5.50 per 100; \$3.00 per 50; \$1.65 per 25.**
- ✓ **Premier (Howard 17) (Early).** Bears, over long season, a tremendous crop of bright scarlet-red berries of excellent flavor. **Field grown plants, \$5.50 per 100; \$3.00 per 50; \$1.65 per 25.**
- ✓ **Streamliner — Everbearing.** "Sweet as honey" jumbo sized berries borne in profusion from July until Nov. **Field grown plants, \$5.50 per 100; \$3.65 per 50; \$2.00 per 25.**

## BEST FERTILIZERS for Plant Nourishment

Let us provide you with the proper planting materials. See pages 60, 61, 62, 67.



# GIFT CERTIFICATE

No. 500

To: \_\_\_\_\_  
From: \_\_\_\_\_  
For Nursery Stock Valued at: \_\_\_\_\_ Dollars

Redeemable at CORLISS BROS. INC., Essex Road, Ipswich, or Reynard Street, Gloucester, Mass.

Date: \_\_\_\_\_

Authorized Signature

## The Smartest Gift is a "Living" Gift

M		C		F
O	A	H	B	A
T	N	R	I	T
H	N	I	R	H
E	I	S	T	E
R	V	T	H	R
.	E	M	D	'
S	R	A	A	S
	S	S	Y	
	A			
D	R			D
A	Y			A
Y				Y



Roses



Vines



Evergreens



Flowering Trees



Shrubs

A "Living" Gift will be received with enthusiasm and remain a cherished reminder of your love and thoughtfulness for years.

"Living" Gifts like Evergreens, Trees, Shrubs and Roses will grow and GROW and GROW in beauty and value each year.



BE DELIGHTED WITH WHAT YOU CARRY HOME!

MAKE SHOPPING AT CORLISS' A "GROWING" HABIT

# Selected Roses

## Suited to this Climate

### WE RECOMMEND POTTED ROSES

Already Planted and in Good Growing Condition

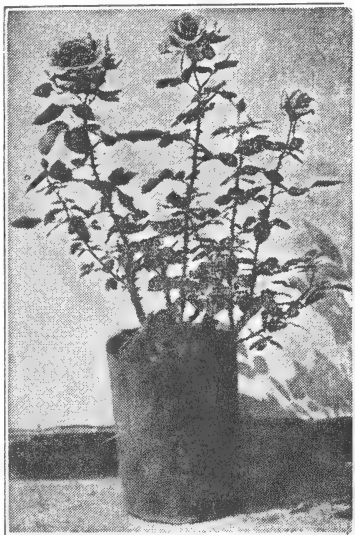
Ready for Transplanting from June 1st on

As our Potted Roses are not ready to be set into your garden until late May or the first of June, we advise that you **place your order early** so we may reserve for you the varieties you wish.

**\$1.85 each, unless otherwise priced. Any 6 or more Roses purchased at one time, 15¢ off price each Rose.**

This modern way of selling roses eliminates all danger of their not starting or dying after being planted in your garden, due to improper handling and planting. When you purchase **POTTED ROSES**, they are already planted properly in specially prepared, fertilized soil to insure rapid, permanent growth and bloom.

Our **POTTED ROSES** may be transplanted successfully in your garden any time during the growing season by simply setting the plant, **pot and all**, into a properly fertilized bed or location without disturbing the soil or root system.



## Everblooming Hybrid Teas

**Charlotte Armstrong.** (Pat. No. 455) One of the top 10 varieties. Magnificent open blooms of vivid cerise on long stems, semi-glossy deep green leaves, slightly fragrant. **\$2.50 each.**

**Christopher Stone.** 2½ ft. This rose of dazzling scarlet-crimson is noted for its alluring Damask fragrance and almost continuous bloom.

**Countess Vandal** 2 ft. Extra long, pointed buds open to reveal lovely coppery-pink and gold flowers of artistic beauty. Rich fragrance.

**Crimson Glory.** 2 ft. A tremendous, fascinating rose. Vigorous, free-flowering, compact bushes, well-formed, deep velvety crimson flowers. Rich fragrance.

**Eclipse.** 2½ ft. The "streamlined" buds and narrow branching sepals contrast harmoniously with the golden yellow of the petals. Spicy fragrance.

### OUR ROSES ARE SELECTED

varieties, **SAFEST** and **BEST** for **NORTH SHORE GARDENS!** When you order from a glorified color catalog, do you know whether those roses are suited to our climatic conditions?

**\$1.85 each, unless otherwise priced. Any 6 or more Roses purchased at one time, 15¢ off price each Rose.**



**CORLISS BROS.**  
INCORPORATED

**ROSES**—Continued

**Golden Dawn.** 2 ft. A splendid, large, double lemon-yellow rose, splashed with crimson. The well-formed blooms are sweetly scented. Vigorous and free flowering.

**Helen Traubel,** Pat. No. 1028. 3-5 ft. This All-America Rose Selection displays superior qualities with pleasing fragrance. Color varies with the weather — sometimes a light, sparkling pink, more often a luminous apricot. Very vigorous grower; **\$3.00 each.**

**McGredy's Ivory.** Lovely large flowers of soft, delicate, creamy white merging into yellow at the base. Moderately fragrant, and disease resistant.

**McGredy's Sunset** (Pat. No. 317). A world favorite. Medium sized flowers with outside petals of buttercup-yellow, tipped orange; inside chrome-yellow flushed with scarlet as they expand: fragrant. **\$2.25 each.**

**Mme. Joseph Perraud.** 2½ ft. A Gold Medal Winner and popular all over the country. Long-pointed, sunset yellow buds opening to pastel buff flowers; very fragrant.

**Mrs. E. P. Thom.** 2 ft. An outstanding favorite. The good-sized buds are long and develop into full, double, very shapely flowers of a rich deep lemon yellow. Fragrant.

**Mrs. Pierre S. duPont.** An outstanding yellow rose. Long-pointed buds of reddish gold opening to a semi-double, fragrant flower of deep golden yellow.

**Mrs. Sam McGredy.** 2½ ft. One of the most beautiful roses. Long-pointed buds and large attractive blooms of copper orange-scarlet, with deep red shadings on outside of petals. Moderately fragrant.

**New Yorker** (Pat. No. 823) 3-4 ft. A tremendous, delightfully fragrant, clear red Rose, unfading while in full bloom. Very vigorous and upright growing. **\$2.50 each.**

**THE ALL-AMERICAN WINNER**

**PEACE** (Pat. No. 591). A Peace Rose in your garden will be the center of interest all summer. Enormous open flowers of softest yellow edged and suffused with pink are freshly sweet. Stems and foliage are unusually good. **\$3.00 each.**

**Picture.** Heavily petaled, long lasting, mildly fragrant flowers of lovely pink with rich salmon undertones on strong vigorous plants that produce continuously.

**Pink Dawn.** 3 ft. Entrancing deep pink buds opening to fully double, lovely clear pink blooms tinted with orange at the base of the petals. Sweetly fragrant.

**Poinsettia.** 3 ft. The name is descriptive of the rose. Brilliant scarlet blooms closely resemble the color and form of a Poinsettia flower. Rich fragrance.

**President Herbert Hoover.** 3 ft. A rose of world prominence. Flaming scarlet and yellow buds opening to large, soft, yellow flowers with scarlet markings; rich fragrance.

**Snowbird.** Large, fragrant flowers of pure white produced freely on a vigorous bushy plant.

---

It is **ESSENTIAL** to use **PEAT** and **HUMUS**, as well as **FERTILIZER**, when planting; see pages 60, 61, 62 and 67.

---

**\$1.85 each, unless otherwise priced. Any 6 or more Roses purchased at one time, 15¢ off price each Rose.**



**CORLISS BROS.**  
INCORPORATED

### ROSES, Everblooming Hybrid Teas—Continued

**Sutter's Gold.** (Pat. No. 885) Quantities of fragrant flowers of beautiful yellow, richly shaded with orange and red on free branching, strong vigorous plant. One of the top 10 AARS. **\$2.75** each.

**Suzon Lotthe.** (Pat. No. 934) This rose certainly has appeal. Peach colored buds open to pearly pink and white blooms of camellia-like form, richly, gloriously fragrant. **\$2.50** each.

**Talisman.** 2 ft. The universal favorite. Variable flowers ranging from rich scarlet and gold to deep rose and pale yellow; very fragrant. Excellent flowers for cutting.

**The Doctor.** This magnificent Rose will be greatly sought after when better known. Large, exquisite, silver-pink flowers with intense fragrance.

---

## Floribunda Roses

Unlike all other roses, Floribundas are vigorous, growing 2 to 3 ft. high with masses of attractive flowers throughout the season. They bear perfect blossoms of Hybrid Tea size, carried in thick clusters reminiscent of the old-time Polyanthas. Being perfectly hardy, they need not be replaced each season.

**Betty Prior** (Plant Patent No. 340). A rose that "steals the show." Blooms of lively red and shell-pink resemble the delicate red dogwood blossoms in shape and size. Spicy fragrance. **\$2.00** each.

**Carrousel** (Pat. No. 1066) New, unfading garnet, red buds and blooms of Hybrid Tea form, frequently singly on long stems, on a vigorous, upright plant. Fragrant. **\$2.50** each.

### CIRCUS, Pat. No. 1382

The only 1956 All America Rose Winner, and the first multi-colored floribunda. 18-24 in. Clusters of bright red and yellow buds open to fragrant blooms in changing colors of orange, clear yellow, buff and pink finishing bright red. Handsome dark green foliage. **\$3.00** each.

**Dagmar Spaeth.** Considered one of the best white floribundas and a good bedding rose. Large trusses of pure white flowers produced freely all summer.

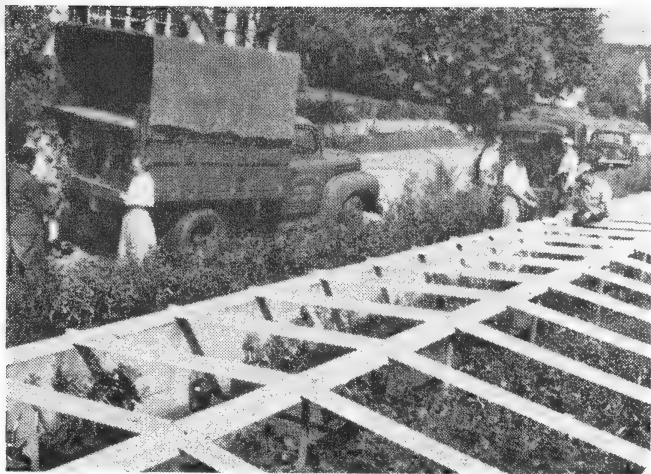
**Donald Prior** (Plant Patent No. 377). One of the brightest Floribundas. Clusters of bright, deep scarlet-red flowers with damask fragrance are borne continually from spring until frost. **\$2.00** each.

**Fashion.** (Pat. No. 789). All America winner with lovely bright coral-pink flowers suffused with gold and delightful fragrance. **\$2.50** each.

**Floradora.** Enticing orange-scarlet blooms are carried in sprays on tall, slender vigorous plants. The fully opened double flower resembles a perfect little camellia.

---

**\$1.85** each, unless otherwise priced. Any 6 or more Roses purchased at one time, 15¢ off price each Rose.



**Potted Roses. In Full Leaf and Ready To Bloom, Being Carefully Selected for Delivery.**

**ROSES, Floribunda—Continued**

**Goldilocks** (Plant Pat. No. 672). 2½ ft. Best yellow Floribunda; abundant bloomer. Buds shaped like Hybrid Teas open to very double rich golden yellow blooms with wild rose fragrance. **\$2.00 each.**

**Irene of Denmark** (Pat. No. 889). 2-2½ ft. New. The best white floribunda. Buds and opening blooms have exquisite, true "sweetheart" form. Full blooms of clean frosty-white are produced on vigorous bushy plants with an abundance of small, neat foliage. **\$2.25 each.**

**Liminy Cricket** (Pat. Applied For). 1955 All-America Award Winner. The masses of tangerine-red buds that open to clear coral-pink blooms and shiny green foliage on upright, 4 ft. bushes, make it ideal for hedges. **\$2.75 each.**

**Ma Perkins** (Pat. No. 1143). A.A.R.S. Winner. 2 ft. Buds of bright coral open to glowing coral-shell-pink lighted with gold at the base of each bloom. One of the most fragrant Floribundas created and a joy from late spring to freezing weather in fall. **\$2.50 each.**

**Marionette.** (Pat. No. 569) Dainty creamy yellow fragrant "sweetheart" buds change gracefully to white beautifully formed blooms. **\$2.00 each.**

**Orange Triumph.** Enormous clusters of lovely double salmon-red flowers, combined with rich glossy foliage make this one of the most outstanding roses in our Ipswich Rose Garden.

**Pinocchio** (Pat. No. 484). 20-24 in. Exquisite pointed buds develop into long lasting 2-inch flowers of salmon flushed gold at the base; exotic fragrance. Disease-resistant and extremely hardy. **\$2.00 each.**

**Red Pinocchio.** (Plant Pat. 812). Full clusters of rich fragrant velvety scarlet blooms. **\$2.00 each.**

**SPARTAN, Pat. No. 1357**

Scores of burnt-orange buds open to Hybrid Tea shaped blooms of reddish-coral, with sweet fragrance. Very robust and hardy. **\$3.25 each.**

**Vogue.** (Pat. No. 926). All-America Rose Selection. 2½-3 ft. Delightfully fragrant, brilliant, cherry-coral blooms in immense clusters produced all summer. **\$2.50 each.**

**World's Fair** (Plant Patent No. 362). An All America Rose Selection. Prolific bloomer. Large clusters of perfumed velvety blackish scarlet flowers. **\$2.00 each.**

**\$1.85 each, unless otherwise priced. Any 6 or more Roses purchased at one time, 15¢ off price each Rose.**



**CORLISS BROS.**  
INCORPORATED

## Hardy Climbing Roses

Perhaps there is no one group of plants that is so useful and beautiful in so many different ways as the Climbing Roses.

**Aloha** (Pat. No. 948). An everblooming climber with very large fragrant flowers of strong, rich rose-pink with soft silvery pink inside of petals in long stemmed clusters. After first peak of June glory, Aloha continues to bloom frequently during entire season. **\$2.50 each.**

**Blaze Improved.** An entirely new strain of Blaze. Clusters of vivid scarlet flowers are very generous in June and as the plants become established, it produces more and more through to Sept.

**Chevy Chase** (Pat. No. 443). The finest of Rambler Roses. Clusters of mildly fragrant, rich crimson blooms and beautiful mildew-resistant foliage. The numerous canes will cover a large area. **\$2.25 each.**

**Climbing Crimson Glory.** The magnificent Crimson Glory in the form of a Climber. The same rich crimson, huge perfectly formed blooms of fascinating fragrance and vigorous producer. **Winter protection must be given these plants. \$3.00 each.**

**Climbing Goldilocks** (Pat. No. 1090). This glorious everblooming Climbing Rose is loaded with big clusters of golden blooms almost continuously all summer. It will grow 8 to 10 feet in one year, and will bloom the first year it is planted. **\$3.00 each.**

**Climbing Peace.** Pat. No. 932. A glorious climber bearing the same lovely blooms as the Hybrid Tea "Peace." Because of its "Hybrid Tea" parentage, it **requires Winter protection**, but will generously repay for the extra care. **\$2.50 each.**

**Elegance.** A magnificent display of large, fragrant, yellow flowers. The inner petals are spectrum-yellow and the outer ones shade to creamy white. Disease-resistant, lustrous dark green foliage. **\$2.25 each.**

**New Dawn** (Everblooming Dr. W. Van Fleet) The first everblooming hardy Climber. Light pink flowers continually from early summer until frost. Shiny foliage.

**Paul's Scarlet Climber.** A popular Climbing Rose of moderate vigor, highly prized for its clusters of medium-sized, vivid scarlet flowers in June and early July, remaining in good condition for a long period.

**White Dawn.** This new, hardy, everblooming climbing Rose produces hundreds of pure white, double blooms resembling gardenias. **\$2.00 each.**

### THEY'RE WORTH IT

Systematic spraying of roses every two weeks after they come into full leaf, will prevent disease, black-spot, mildew and plant lice. Your reward is in clean foliage and beautiful blooms. We recommend TRIOGEN, see page 63.

**\$1.85 each, unless otherwise priced. Any 6 or more Roses purchased at one time, 15¢ off price each Rose.**



# Hardy Perennials

**Note.**—Figures after the description and blooming dates represent the approximate height reached by the perennials under favorable conditions.

\*SUITABLE AS ROCK GARDEN PLANTS, ALSO

## PRICES OF PERENNIALS

Unless otherwise noted, the price of Perennials is 50¢ each; \$1.40 per 3 of one variety; \$5.00 per dozen.

Six or more plants of one variety will be sold at the dozen rate. Twelve plants of different kinds, such as twelve different varieties of Chrysanthemums will not be sold at the dozen rate, but at the each rate, the dozen rate applies only when six or more plants of ONE VARIETY or COLOR are ordered.

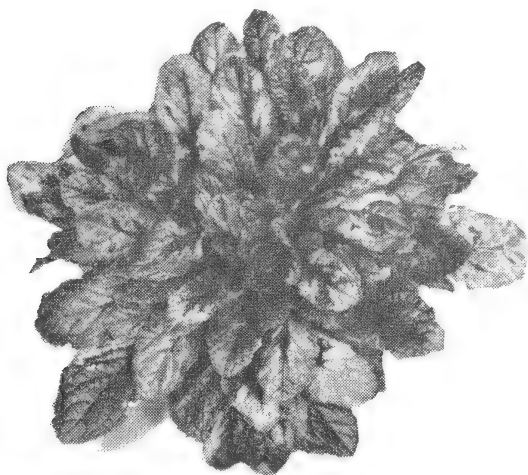
**NEW**

## AJUGA RAINBOW

**NEW**

Patent Pending

Now — An Ajuga With A Personality!



A fine new hardy plant that is wonderful for shade or sun. The early spring leaves, arranged like rosettes, are dark bronzy-green. In July, they start to change to metallic purplish-red and become mottled with rainbow colors of cream, pale yellow, pale green, very pale pink to dark pink, brick red, and even bronze. These colors will change with the season and amount of sun the plants receive.

The plant is low, dense and compact.

Its usefulness as a specimen plant, for edging a border, walk or driveway, and as a ground cover makes it very attractive.

AJUGA RAINBOW makes a beautiful carpet under trees where grass won't grow.

Adding to its attractiveness are clear blue florets on spikes about 6 inches high that appear in May or June.

The plant is easy to grow, resistant to pests and diseases. Pot plants, \$1.00 each; 3 for \$2.75; \$10.00 per dozen.

# OUR NEW "MILITARY"

## *Legionnaire and Amvet*

Honoring Our Veteran Men and Women



- ★ FLOWERS from August to Heavy Freezes
- ★ EXCELLENT FOR CUTTING
- ★ LARGE DOUBLE BLOOMS
- ★ NICE LONG STEMS
- ★ HEIGHT 2½-3 FT.
- ★ FROST RESISTANT

*These mums withstood very droughty summers, torrential rain*

You'll love **LEGIONNAIRE** (top) for its generous display of gay, sparkling yellow flowers with a golden heart, and beautiful dark green foliage, borne on vigorous plants.

**AMVET** (bottom) will enchant everyone for its superb pure white double flowers with delicate yellow inner rays and gold center, and healthy dark green foliage on well shaped plants.

\* \* \*

Prices: Legionnaire and Amvet

\$.60 each; \$1.60 per 3; \$6.00 per 12

Special — 1 Each

# INTRODUCTIONS

## OUR "GENERALS"



- ★ DISEASE RESISTANT
- ★ LAVISH PRODUCERS
- ★ EXTREMELY HARDY
- ★ COMPACT BUSHY PLANTS
- ★ RICH DARK FOLIAGE
- ★ VIGOROUS & STURDY

*ins and severe winters on the rugged coast of Massachusetts.*

**GENERAL MARSHALL'S** ray florets, as shown at the top, are a rich harmony of deep old rose, purple and gold with light buff reverse, making the petals appear edged with gold.

**GENERAL MACARTHUR** (lower left) produces a deluge of glowing coppery-red flowers.

**GENERAL BRADLEY** (lower right) displays an exquisite blending of apricot, seashell-pink and buff.

### Prices: The Generals

55¢ each; \$1.50 per 3; \$5.50 per dozen

(five mums) \$2.35



**CORLISS BROS.**  
INCORPORATED

## SUMMER FLOWERING CHRYSANTHEMUMS

No other Chrysanthemums compare with these new ones, offered here, for earliness of bloom, starting in early August, continuing until the very heavy frost in late fall takes their blooms! They are abundant producers and perfectly hardy as far north as Maine.

**Aurora.** Masses of large, bright red, semi-double flowers becoming lighter with age, on low compact plants. Mid-Aug. 18 in. Pot Plants.

**Avalanche.** Beautifully formed, large, double, fluffy-white blooms, lightly creamed in the center in massive sprays from Sept. 20 on. 1½-2 ft. Pot plants.

**Butterball.** Double, dark lemon-chrome ball-like flowers in mid-Aug. at its best in mid-Sept. 2 ft. Pot plants.

**Cecil Beed.** One of the best early pink varieties. Large, double flowers of deep pink with tips of petals trimmed gold, produced abundantly from early Sept. on. 2-2½ ft. Pot plants.

**Chippewa.** Magnificent flowers with incurved petals of rich aster-purple in large clusters. Early Sept. 2-2½ ft. Pot plants.

## CUSHION MUMS

An extremely popular type of Hardy Chrysanthemums that form a dense compact mound with most varieties about 15-18 inches high and more in width. A normal plant will produce hundreds or more blooms during the fall.

**Champion Cushion.** Flowers open to deep reddish-bronze, changing to lighter bronze as they mature.

**Major Cushion.** A trim, neat plant with choice salmon-pink flowers.

**Red Cushion.** This choice variety is a mass of really bright red.

**White Cushion.** Masses of delicate blush buds open to lovely white flowers.

**Yellow Supreme Cushion.** Soft appealing yellow flowers.

**Dee Dee Ahrens.** This plant produces a multiple of double pure white flowers on long stiff slender stems. Aug. 2-2½ ft. Pot plants.

**Defiance.** Fully double, twilled petals of bright golden-yellow. Plant of outstanding strong, upright growth. Flowers from mid-Sept. on. 2 ft. Pot plants.

**Dr. Longley.** Non-fading, bright pink flowers fully double and very large, wonderful for cutting, are freely produced from late Aug. till heavy frost. 2 ft. Pot plants.

**Golden Cheer.** Real double, golden yellow leaves on unusually long strong stems with large flower clusters. The exciting thing about this variety is that the blooms seem frost proof. Even after a severe freeze when all the other mums are gone, these flowers are still unblemished. Late Sept. to heavy frosts. 2½-3 ft. Pot plants.

**Maroon 'n Gold.** Blooms are large, full, maroon-red above and golden on the under side. Aug. through fall. 18-24 in. Pot plants.

**OUR MILITARY MUMS**  
The Generals, Amvet, Legionnaire.  
See Color Pages 48 and 49.

Unless otherwise noted, all plants on this page are 50¢ each; \$1.40 per 3 of one variety; \$5.00 per doz. of one variety. (Six or more plants of one variety at dozen rate.)



**CORLISS BROS.**  
INCORPORATED

**CHRYSANTHEMUMS** — Continued

**My Lady.** Wonderful delicate orange-yellow flowers, large and fully double, fine for cutting. 2-2½ ft. Pot plants.

**Olive Longland.** Large, double flowers of exquisite soft apricot-gold and salmon tones. Sept. 2 ft. Pot plants

**Osceola.** Large, fully double flowers of brilliant yellow that show coppery tints. Early Aug. to sharp freezes. 2½-3 ft. Pot plants.

**Pearl Parkinson.** Large flowers with loosely twisted petals are golden yellow flushed red during high temperatures, but brilliant red in lower fall temperatures. Early Aug. flowering until frost. 20-25 in. Pot plants.

**Redgold.** Double bright scarlet and gold flowers resemble pompom dahlias, Mid-Aug. 2-2½ ft. Pot plants.

**Tribute.** Highly recommended, large, fully double flowers of bright daphne-red, maturing to daphne-pink. Late Sept. 2 ft. Pot plants.

**Violet.** Very full, double deep pansy-purple flowers Aug. 20-24 in. Pot plants,

**W. P. Snyder.** Excellent cut flowers of fully double apricot-bronze in clusters on very compact plants from early Aug. to hard freezes. 2-2½ ft. Pot plants.

**White Cloud.** Clusters of double, pure white flowers that show lemon toward center of flower. Mid-Aug. until hard freezes. 2½-3 ft. Pot plants.



Landscaped by Corliss Bros. Inc.

*The owners of this lovely place take great pride and pleasure in this secluded garden.*

*A refreshing, colorful atmosphere is provided by evergreens, small shrubs, roses and annual flowering plants.*

**CONVALLARIA, Lily-of-the-Valley**

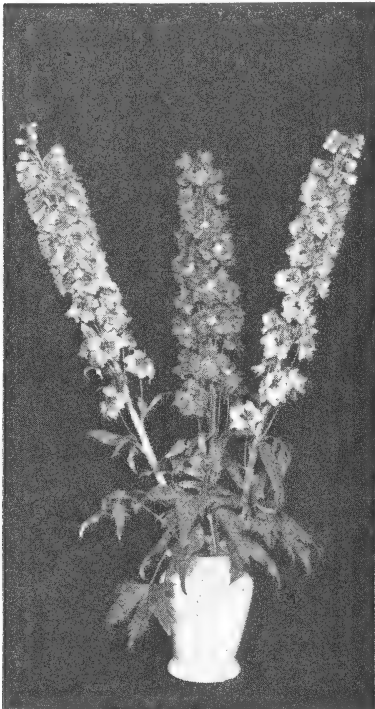
\***Majalis.** Sprays of small, fragrant, bell-shaped flowers of waxy texture. May, June. 8 in.

Unless otherwise noted, all plants on this page are 50¢ each; \$1.40 per 3 of one variety; \$5.00 per doz. of one variety. (Six or more plants of one variety at dozen rate.)



**CORLISS BROS.**  
INCORPORATED

## **THE DELPHINIUM** *of* **TOMORROW** **LYONDEL GIANT HYBRIDS**



**STATELY**  
**MAJESTIC**  
**COLORFUL**  
**MASSIVE SPIKES**

A new strain especially selected for their large size, double, semi-double and single flowers and beautiful colors, ranging from pale blues to deep purple. June to September. 4-5 ft. Mixed colors only. **75c** each; **\$2.00** per 3; **\$7.50** per doz.

We should SHOUT about these LYONDEL HYBRID DELPHINIUM! They withstand very droughty seasons and survive severe winters immeasurably. ENJOY THE BEST — BY TEST!

### **GYPSOPHILA, Baby's Breath**

**Bristol Fairy.** Tiny double flowers of purest white, on airy sprays that are wonderful mixed with other cut flowers. June and July. 3 ft. Pot plants, **60c** each; **\$1.60** per 3; **\$6.00** per doz.

### **HEMEROCALLIS HYBRIDS, Day Lily**

**Coraline.** New. Gigantic trumpet-shaped blooms of lovely shrimp-pink. Blooms freely in July and Aug. 3-4 ft. **\$1.50** each; **\$3.95** per 3; **\$15.00** per doz.

**Hyperion.** One of the very finest. Flowers are citron-yellow and exceptionally large. July, August. 3-4 ft. **55¢** each; **\$1.50** per 3; **\$5.00** per doz.

**Morocco Red.** New. Velvety Morocco-red, evenly placed on the petals and sepals extending to the heart of the flower, leaving just a bit of orange showing in the cup. July, Aug. 2-2½ ft. **\$1.35** each; **\$3.75** per 3; **\$13.50** per doz.

Unless otherwise noted, all plants on this page are **50¢** each; **\$1.40** per 3 of one variety; **\$5.00** per doz. of one variety. (Six or more plants of one variety at dozen rate.)



# CORLISS BROS. INCORPORATED

## HEMEROCALLIS HYBRIDS, Day Lily — Continued

**Ophir.** Considered one of the best two yet produced. Beautiful golden yellow flowers on strong stems. July 3-4 ft. **50¢** each; **\$1.40** per 3; **\$5.00** per doz.

**Persian Princess.** An impressive day lily of deep velvety-red with a purple cast. July, Aug. 3-3½ ft. **\$1.00** each; **\$2.75** per 3; **\$10.00** per doz.

**Pink Charm.** Large blooms of dusky rose-pink shading to rose-red in June, and sometimes again in the Fall. 3-3½ ft. **\$1.00** each; **\$2.75** per 3; **\$10.00** per doz.

**HIBISCUS, Rose Mallow.** See shrubs, page 28.

### POTTED GARDEN LILIES

We offer Potted Lilies, because they are easier to handle, with less chance of loss. They may be planted at any time during the season without injury to the plant.

**Regale.** (Royal Lily). Enormous white flowers, shaded pink or purple with a canary-yellow center. July 2-3 ft. **\$1.25** each; **\$3.45** per 3; **\$12.50** per doz.

**Speciosum Rubrum** (Pink Speciosum) Large, recurving rich carmine-pink, dotted with crimson, margined white. Aug., Sept. 2½-3 ft. **\$1.60** each; **\$4.30** per 3; **\$16.00** per doz.

## POLYANTHUS, Primrose

**\*Colossal Strain Mixed** (Rainbow Primroses). This extraordinary strain produces flowers of unusual shades and wide range of colors, from almost black, dark velvety red, flame red, copper, gold, cream, to white; from apple-blossom pink through clear pink to rose burgundy and violet, apricot, lavender and two-toned pastels in large tall clusters. Very hardy. May and June. 6-10 in. Pot plants, **55c** each; **\$1.50** per 3; **\$5.50** per doz.

*Imported*

# HOLLAND BULBS

TULIPS  
HYACINTHS  
DAFFODILS  
CROCUS  
ETC.



## FOR PLANTING THIS FALL

We will have a full line of these lovely flowering Bulbs from the first of September on.

OUR BULBS are TOP SIZE and will bloom next spring! We have made CHOICE SELECTIONS from the best standard and new varieties.

Circular with prices will be sent you on request in early September. If you wish to plan your garden earlier, stop in and we'd be glad to tell you what we will have to offer in varieties.

# Annual Seedlings

## GREENHOUSE GROWN

These **BEAUTIFUL FLOWERING PLANTS** will keep the garden gay throughout the summer and fall and give an abundance of blooms for house and table decorations. We raise many thousands of **ANNUAL SEEDLINGS** of the popular varieties, all of which are transplanted stock, **GREENHOUSE GROWN**.

---

## PRICES

Most of these plants will be ready any time after May 20th. All Annual Seedlings, **75¢ per doz. box**; unless priced otherwise.

---

**\*Suggested cut flower varieties.**

### AGERATUM

**Blue Boy.** Compact, deep blue, 4-6 in.  
**Blue Perfection.** Dark blue. 15-18 in.

### ALYSSUM

**Royal Carpet.** Very dwarf, violet-purple. 3 in.  
**White Carpet** Extra fine, uniform white. 4-6 in.

**\*ASTER.** Early, doubles 2-3 ft.

**Azure Blue.**  
**Heart of France.** Deep ruby.  
**Royal Purple.**  
**Shell Pink.**  
**White.**  
**Mixed Colors.**

### "PRINCESS" ASTERS

Large double flowers with golden crested and quilled centers. August on. 2 ft.

**Princess Bonnie.** Soft salmon and gold.  
**Princess Marsha.** Scarlet and gold.

**\*BACHELOR'S BUTTON.** 2-3 ft.

**Blue**

**\*CALENDULA.** 1½-2 ft.

**Lemon King.** Lemon-yellow.  
**Orange King.** Orange.

**\*CARNATIONS.** 18-24 in. (New).

**Mixed Colors Only.**

**CELOSIA.** 1½-2 ft. (New)

**Pampas Plume.** (Feathered Cockscomb). Feathery plumes of gold, copper and sunset colors. Useful for bedding and cut. **\$.85** per doz. box.

**\*CHRYSANTHEMUMS.** 1½-2 ft.

**Mixed Colors Only. White, Yellow, Copper.**

---

We do not pack Annuals for shipment  
Truck delivery in Essex County only





**CORLISS BROS.**  
INCORPORATED

**CLEOME (Spider Plant). 4 ft.**

**Helen Campbell.** (New). Pure white flowers. **\$.85** per doz. box.

**Pink Queen.** Bright salmon-pink flowers.

**\*COSMOS, Giant flowering. 4-6 ft.**

**Pink. Mixed.**  
**White.**

**\*DIANTHUS. 15-18 in.**

**Geisha Girl.** Mixed colors only.

**\*GAILLARDIA. 1½-2 ft.**

**Indian Chief.** Bronze-red.  
**Double, Mixed.**

**LOBELIA. 4-6 in.**

**Cambridge Blue.** Light blue.  
**Crystal Palace.** Deep blue.

**\*MARIGOLD, African**

**Guinea Gold.** Orange-yellow. 2-3 ft.  
**Lemon Queen.** Lemon-yellow, 2-3 ft.  
**Mammoth Mum.** Light sulphur-yellow. 2-3 ft.  
**Orange Prince.** Orange. 2-3 ft.  
**Yellow Supreme.** Yellow Guinea Gold. 2-3 ft.

**\*MARIGOLD, French**

**Lemon Drop.** Earliest, Bright yellow. 9 in.  
**Melody.** Bright orange crested. 12-15 in.  
**Rusty Red.** (New). Striking rust-red, double. 1½-2 ft.  
**Spry.** Orange crested center, maroon outer petals. 9 in.

**NICOTIANA**

**White.** 2-3 ft.

**PETUNIA**

**Balcony Blue.** Dark blue-purple. 1½ ft.  
**Celestial Rose** Bright rose. 8 in.  
**Comanche.** Improved Fire Chief. Deep scarlet-crimson, 10-12 in. **85¢** per doz. box.  
**Elk's Pride.** Dwarf; deep velvety purple. 10-12 in.  
**Fire Chief.** Brilliant glowing scarlet-red. 1 ft.  
**Glow.** Carmine-rose, white throat. 8-10 in.  
**Heavenly Blue.** Silver blue. 1 ft.  
**Popcorn.** (New). Really dwarf; large pure white. 6-10 in. **85¢** per doz. box.  
**Rosy Morn.** Soft light pink with white throat. 12-15 in.  
**Silver Medal.** Rich salmon-pink. 12 in. **85¢** per doz. box.  
**Snowball.** Pure white. 15-18 in.  
**Velvet Ball.** Velvety blood-red. 8 in.  
**White Queen.** Dwarf, compact white. 10-12 in.

**PHLOX Drummondii, Dwarf. 8-10 in.**

Mixed colors.

**All Annual Seedlings, 75¢ per doz. box;  
unless priced otherwise.**

**We do not pack Annuals for shipment  
Truck delivery in Essex County only**



**CORLISS BROS.**  
INCORPORATED

**PORTULACA. 6 in.**

Single and Double. Mixed. 85¢ per dozen.

**\*SALPIGLOSSIS**

Mixed Colors 2-2½ ft.

**SALVIA**

**Blue Royal (faranacia).** Bright blue. 2-2½ ft.

**Bonfire, Scarlet.** 2-2½ ft.

**Fireball.** Early, dwarf scarlet. 10-12 in.

**\*SCABIOSA. 2-3 ft.**

**Blue Cockade.** Deep azure-blue.

**Mixed colors.**

**\*SNAPDRAGON, Semi-dwarf. 15-18 in.**

**Gloria.** Rich, deep pink.

**Golden Queen.** Bright golden yellow.

**Kirkwood Beauty.** Glowing bronze and pink

**Velvet Beauty.** Deep crimson-red.

**Mixed Colors.**

**\*SNAPDRAGON, Tall. 2-3 ft.**

**Alaska.** Pure white.

**Canary Bird.** Golden yellow.

**Crimson King.** Rich, dazzling crimson.

**Rosalie.** Orange, shaded pink.

**Mixed Colors.**

**\*STOCK (Imperial Giant Double). 1½-2 ft.**

**Mixed.**

**VERBENA. 8-12 in.**

**Mixed colors.**

**\*ZINNIAS**

**Peppermint Stick.** 2 ft. Very pleasing combinations such as red, white, yellow, pink, orange, and purple shades. 60-70% striped.

**Persian Carpet.** 15-18 in. The flowers, like small dahlias, in rich wide range of oriental colors are tipped with a contrasting color.

**Blaze.** New All-American Selection. 3 ft. Fiery mandarin-red and scarlet-orange in the Giant Cactus type. 85¢ per doz. box.

**Cherry Queen.** (Calif. Giant). Mammoth vivid, cherry-rose. 85¢ per doz. box.

**All Annual Seedlings, 75¢ per doz. doz;  
unless priced otherwise.**

**We do not pack Annuals for shipment  
Truck delivery in Essex County only**



**CORLISS BROS.**  
INCORPORATED

**\*ZINNIA, Dahlia-flowered. 2-3 ft.**

**Canary Bird.** Bright golden yellow.  
**Crimson Giant.** Crimson.  
**Exquisite.** Pink.  
**Oriole.** Orange and gold.  
**Polar Bear.** Pure white.  
**Scarlet Flame.** Bright scarlet and orange.  
**Mixed Colors.**  
**Mixed Pastel Colors.**

**\*ZINNIA, Lilliput. 1½-2 ft.**

**Canary.** Yellow.  
**Salmon-Rose.** Pink.  
**Scarlet Gem.** Scarlet.  
**Mixed Colors.**

All Annual Seedlings, 75¢ per doz. box;  
unless priced otherwise.

## **TOMATO PLANTS**

65c per doz. box

- Bonny Best.** Very early. A Tomato of excellent quality.
- Master Marglobe.** Certified for rust, blight, and disease. Delicious fine red.
- Sunray.** Firm, smooth, best large yellow of mild delicious flavor.

## **GIANT PANSIES**

The finest and largest Pansy in existence. The plants are of a compact habit and their flowers are borne on stiff stems. The colors are rich and all that can be desired. 60¢ per basket of 6 plants; \$1.00 per doz.

## **Plants for Window Boxes and Borders**

### **BEDDING PLANT SECTION**

We specialize in a fine variety of popular and practical plants suitable for window boxes, borders, and gardens, a finishing touch to any floral planting, with continual bloom all through the season.

**AGERATUM, 8-10 in.**

**Irvington Beauty.** Compact plants. An excellent shade of deep blue. 2½-in pot plants, 25c each; \$2.50 per doz.

**BEGONIAS, TUBEROUS-ROOTED. 12-15 in.**

**Camellia, Double.** Crimson, pink, yellow, orange, white, salmon. For moist, shady places. Large pot plants, \$1.00 each; \$10.00 per doz.

**COLEUS. 12-15 in.**

**Rainbow Mixed.** Grows in sun or shade. Tones and shades of rich red, yellow, copper, and pink. Uniform habit. 3 in. pot plants, 40¢ each; \$4.50 per doz.



**CORLISS BROS.**  
INCORPORATED

**DAHLIA, 1½-2 ft.**

**Unwin's Dwarf Hybrids (New).** Early-flowering, miniature, semi-double blooms in a wide range of colors 3½-in pot plants, 50c each; \$5.00 per dozen.

**GERANIUMS, 1½ ft.**

**Mme. Lawrence.** Light pink.

**Poitevine Improved.** Salmon-pink.

**Ricard Improved.** Bright vermillion.

**Springfield White.** Fine pure white.

All Geraniums, 3½-in. pot plants, 75¢ each; \$7.50 per dozen.

**HELIOTROPE**

**Sweet-scented.** Old-fashioned blue. 15-18 in. 3-in. pot plants, 40¢ each; \$4.50 per dozen.

**LANTANA, 9-12 in.**

**Golden King.** Orange-yellow. An excellent plant.

**Radiation.** Red. Very showy.

**Tethys.** Light yellow.

All Lantanas, 3-in. pot plants, 40¢ each; \$4.50 per doz.

**LOBELIA, 4-6 in.**

**Cambridge Blue.** Large light blue flowers. 2½-in pot plants, 20c each; \$2.00 per doz.

**Crystal Palace.** Compact, bushy plants with deep blue flowers, 2½-in. pot plants, 20c each; \$2.00 per dozen.

**MESEMBRYANTHEMUM, Rock Pink**

Bright pink flowers. Does well in dry, sunny locations. Grows 6 to 9 inches high. \$1.25 per doz. box.

**PETUNIAS**

**VERBENA, 1 ft.**

**Mayflower.** Prostrate plant covered with a profusion of rose-pink flowers throughout the season. 3 in. pot plants, 40¢ each; \$4.50 per doz.

---

## Annual Vines

Annual Vines are a necessary addition to any window box or urn. The trailing effect produces a finishing touch that can be obtained in no other way.

**IPOMOEA, Morning Glory**

**Heavenly Blue.** Immense clear azure-blue blooms. One of the best and most striking annual climbers. 6-8 ft. 2½-in. pot plants, 20c each; \$2.00 per dozen.

**VINCA**

Variegated foliage. Popular in window boxes, urns, and baskets. 3 ft. 3½-in. pot plants, 50c each; \$5.50 per doz.



Landscaped by Corliss Bros. Inc.

## NOW . . . SCOTTS SEED . . . for every lawn

**Scotts DELUXE BLEND.** Leader in quality performance for almost half a century — all perennial grasses, 99.91% weedfree. Costs less per lawn because you need so little.

1 lb. **\$1.65**; 5 lbs. **\$7.95**; 25 lbs. **\$38.75**

**Scotts SPECIAL BLEND.** Grows into sturdy, handsome turf even where soil is not so good. Free from coarse grasses and annual kinds.

1 lb. **\$1.25**; 5 lbs. **\$5.95**; 25 lbs. **\$29.50**

**Scotts UTILITY BLEND.** Produces the "can take it" lawn. Rugged wear-resistant grasses of broader texture which withstand heat and drought. Quality seed with a purpose.

1 lb. **\$.95**; 5 lbs. **\$4.75**; 25 lbs. **\$23.50**

**Scotts SPREADERS.** These practical carts make possible quick, accurate feeding, seeding, weeding and SCUTL-ING. They'll pay for themselves in savings in material. All of sturdy steel construction, rubber tired.

Junior Spreader **\$7.95**; No. 25 Medium size **\$12.85**;

No. 65 Suburban lawn **\$19.50**; No. 100 Professional **\$44.50**

**TURF BUILDER.** The complete grass food to keep lawns healthy, vigorous and sparkling green. No offensive odor before or after use. Feeds 100 sq. ft. for less than a dime.

5 lbs. **\$.89**; 10 lbs. **\$1.35**; 25 lbs. **\$2.50**; 50 lbs. **\$3.95**; 100 lbs. **\$7.85**

**ORGANIC PLANT FOOD.** Excellent for those who prefer organic feeding of lawns, roses, shrubs, flower and vegetable gardens. All natural organic — no synthetics or chemicals.

50 lbs. **\$3.95**; 100 lbs. **\$7.85**; 500 lbs. **\$35.00**

**4-XD WEED CONTROL.** Clean, granular compound of 2, 4-D easily broadcast by hand or spreader. Quickly cleans out Dandelions, Plantain, Buckhorn, and other broadleaved weeds without harm to lawn grasses.

Box 500 sq. ft. **\$.49**; Box 2500 sq. ft. **\$1.75**;

Bag 11,000 sq. ft. **\$4.85**; 10 bags 2½ acres **\$39.50**

**Scotts WAND** for spot weeding, including can "Touch" (4-XD), enough to knock out more than 200 weeds, **\$1.89**. Refill cans Touch **69¢**.

**WEED & FEED.** Unique combination of chemicals that simultaneously (1) kills broadleaved weeds via the action of 2, 4-D and (2) feeds grass to greater health and beauty. Excellent for restoring run down lawns.

Box 500 sq. ft. **\$1.00**; Box 2500 sq. ft. **\$2.95**

Bag 11,000 sq. ft. **\$11.75**; 10 Bags 2½ acres **\$99.50**

**SCUTL** has three important control actions for lawns. Destroys crab-grass Controls fungus diseases, and seedling sprouts of most weeds.

Bag 1250 sq. ft. **\$5.45**; Bag 2500 sq. ft. **\$9.95**

# Feed LAWNS, GARDENS the way EXPERTS do!



The nation's finest lawns and gardens are fed with AGRICO Special-purpose Plant Foods. Each contains the proper ingredients—both organic\* and inorganic—that the various plant groups need.

AGRICO Plant Foods go further, do a better job. They cost no more—usually less—than a general-purpose fertilizer. Try the AGRICO way this season.



\*Organic derived from AGRINITE, the 100% Organic Plant Food.

## AGRICO

The Nation's Leading Fertilizer

### The complete plant food

	100 lbs.	50 lbs.	25 lbs.	10 lbs.
For Gardens	\$5.20	\$2.65	\$1.75	\$1.10
For Lawns, Trees & Shrubs	5.70	2.90	1.85	1.10
For Broadleaf Evergreens	6.55	3.35	2.10	1.25
Rose Food	10.50	5.35	3.00	1.50

Special prices on large quantities

## AGRINITE

ALL — ORGANIC PLANT FOOD

80 lbs.	50 lbs.	25 lbs.
\$5.20	\$3.45	\$1.95

Special prices on large quantities

We are Eastern Essex County Distributors for Agrico and Agrinite



**BONEMEAL** (with 2% Nitrogen) Fine ground for lawns, gardens, shrubs, trees. Provides excellent nourishment over a long period. 25 lbs. \$2.70, 50 lbs. \$4.35; 100 lbs. \$6.90.

**LIME** (Agricultural). Corrects soil acidity. Most plants, with the exception of broad-leaved evergreens, thrive best in a neutral soil. 100-lb. bags, \$1.25; ton \$22.50

**ROCK PHOSPHATE.** Builds up long lasting soil fertility while its teammate, Superphosphate, gives fast nourishment to the current crop. 100 lbs. \$2.50.

**SUPERPHOSPHATE.** Increases root system and production. Our Essex County soils lack phosphate. 100-lb. bags, \$2.50.

**TURF BUILDER.** See page 59.



**FOR LUXURIOUS LAWNS,  
FLOWERS, TREES,  
AND SHRUBS**

- \*Plain, dried cow manure from high protein fed cows.
  - \*Contains all the organic values of the best manure.
  - \*Supplies plant food that becomes available as the plants need it.
- Clean and convenient to handle.
- \*The natural plant food for lawns, flowers, house plants, shrubs, trees and vegetables.
  - \*Absolutely free of live weed seeds.

5 lbs. ....	\$.60
10 lbs. ....	1.05
25 lbs. ....	1.65
50 lbs. ....	2.95
100 lbs. ....	5.70
1/2 ton .....	51.00
1 ton .....	97.00

We are North Shore Distributors  
for this fine product

**PUT MILLIONS OF TINY GARDENERS  
TO WORK IN YOUR SOIL!**

**CHOOSE THE RIGHT HYPER-HUMUS PRODUCT  
FOR YOUR PARTICULAR SOIL NEED!**

**● HYPER-PEAT 7**

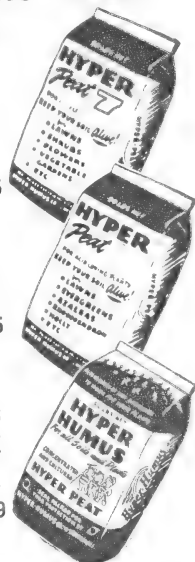
Hyper-Peat 7 provides a formula slightly below neutral to keep the pH constantly stabilized. Perfect for most flower and vegetable gardens; a low cost highly efficient LIVING soil conditioner. 25 lb. bags \$1.39; 50 lb. bags \$2.25

**● HYPER-PEAT**

For all acid loving plants like lawn grass, evergreens, azaleas, holly, etc. Provides the living material to form a slightly acid soil environment to make these special plants thrive luxuriously. 25 lb. bags \$1.39; 50 lb. bags \$2.25

**● HYPER-HUMUS**

For over 40 years the RELIABLE durable nature-cured soil conditioner for both sandy and heavy clay soils. Hyper-Humus can make Top-soil out of Subsoil. Outlasts the average type of humus 3 times; contains growth hormones, vitamins B & G, and millions of tiny organisms that keep your soil healthy and ALIVE. 25 lb. bags \$1.69; 50 lb. bags \$2.89



**VIGORO.** Complete plant food for lawns and gardens. 10 lbs., \$1.10  
25 lbs., \$1.85; 50 lbs. \$2.90.

**Golden Vigoro** — New complete lawn food that won't burn when used as recommended — 1 to 3 lbs. per 100 sq. ft. 50 lb. bags, \$3.75.

**The PEAT That's  
EASY  
TO  
SPREAD**



**BACTI-VATED®  
BRAND  
MICHIGAN PEAT**

Spreads more evenly; use a spreader or by hand. Soaks up water quickly. Build new lawns—top dress old ones—with "bacti-uated" Michigan Peat. Your soil needs "natural organic" (humus). Use on lawns, roses, flowers, shrubs, azaleas, African Violets, and pot plants. **IMPROVES ALL SOILS PERMANENTLY** because it's **HIGH NITROGEN!** In 5 size bags... never baled. Order today

100 lbs. (5 cu. ft.)

\$4.49

50 lbs. (2 bu.)

\$2.49

25 lbs. (1 bu.)

\$1.69

Peck

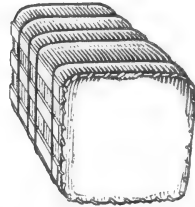
89¢

**We are exclusive Eastern Essex County Distributors  
for Michigan Peat**

**Best Obtainable Baled  
Garden Peat Moss**

Fine-Ground for Garden Use.  
Excellent for Mulching.

1/2 bale .....	\$ 3.00
Large Bale .....	5.50
10 bales .....	52.50
25 bales .....	125.00



**One bale covers:** 250 square feet 1 inch deep.  
125 square feet 2 inches deep.  
80 square feet 3 inches deep.

**WARNING!**

Our Essex County SOILS are so badly DEPLETED of FOOD VALUES that CONDITIONS are really **serious**.

The Government will help the farmer. The INDIVIDUAL must HELP himself.

If each HOME OWNER will have the **SOIL TESTED** and ACT before planting a lawn, garden, flowers, trees, or shrubs, GREAT PROGRESS can be made toward bringing SOILS back to GOOD FERTILITY.

EACH will be contributing his or her part in building up the BASIC WEALTH of our country and assure BETTER PROSPECTS for future growth. CORLISS BROS. INC. maintain a testing laboratory for your convenience. A nominal fee of **\$2.50** per test brings you a complete report with recommendations suited to your INDIVIDUAL PROBLEM.

**DON'T GUESS — KNOW WHAT TO BUY  
SAVE MONEY — GET RESULTS**

Phone us — write us — visit us.



# Insecticides, Fungicides,

**BOTANO DELUXE GARDEN DUST.** Contains Captan, Lindane, Methoxychlor, Ziram. For control Aphid, Beetles, earwigs, Wireworms; Blackspot, Rust, Mildew. **8 oz. duster, \$1.00; 1 lb. refills, \$1.25.**

**ISOTOX GARDEN SPRAY.** Contains Lindane, Malathion & DDD. For contact, stomach poisoning and vapor action to kill Aphid, Red Spider, Beetles, Earwigs, Ants, Grubs, etc. **4 oz. bottles, \$1.00; 8 oz. bottles, \$1.85.**

**ORTHOXIDE GARDEN FUNGICIDE.** Contains 50% Captan. For control Black Spot on Roses, Powdery Mildew, Seed Rot and Damp-Off. **1/2 lb. canister, \$1.25.**

**ORTHO HOME ORCHARD SPRAY.** Contains Ferbam, DDT, DDD, Lindane and Aramite. For control insects and diseases on fruits and berries. **1/2 lb. canisters \$1.00.**

**ORTHO ROSE DUST.** Contains Captan, DDT, Lindane, Ferbam and Sulpher. For control of Aphid, Beetles, Rose Weevil; Black Spot, Mildew, Leaf Spot and Rust. **8 oz. dusters, \$1.00.**

**ORTHOX SPRAY.** Contains 26% Calcium Polysulfides plus other actives. Controls Powdery Mildew, Blackspot, Rust, Red Spider Mites, and certain dormant diseases. **Pint bottles \$1.00.**

**'BLACK LEAF 40'.** A concentrated solution of Nicotine Sulphat for sucking insects. 1 oz. bottle, **49¢; 5 oz. bottle, \$1.39.**

**CHLORDANE DUST.** 5%. Very powerful, best known insecticide to date, for ants, wire worms, chinch bugs, Japanese beetles and sour bugs. 4-lb. shaker can, **\$1.60.**

**END O' PEST.** A dry powder for chewing insects, sucking insects and fungus diseases. Applicator Gun (Complete) **98¢; cartridge refills 75¢.**

**TRIOGEN.** The outstanding Rose spray. Controls every insect pest and disease that attacks Roses, if regularly and carefully used.

Kit A for 12-20 roses .....	\$ 2.35
Kit B for 50-80 roses .....	6.00
Kit C for 100-160 roses .....	9.00

## IN WINTER

The use of **WILT-PRUF** does away with unsightly, and costly, burlap or wooden protectors. Being colorless, it brings out the natural beauty of the evergreens and leaves them clean! fresh! and bright!



**WILT-PRUF** } **CONCENTRATE — \$10.00 per gallon**  
 } **READY-TO-USE — \$ 3.50 per gallon**

Ask For Free Literature

# di-met CRAB GRASS KILLER

Di-Met selectively kills crab grass and many of its seeds in the soil without injury to turf. One application destroys 2" plants; usually only two are necessary for branched plants. Low in toxicity, Di-Met requires no poison label. Available in liquid or powder form, it can be applied with watering can, hose syphoning devices and sprayers.

**di-met LIQUID** (Measuring spoon included)

Small can (5000 sq. ft.) .....	\$ 3.50
Medium can (10,000 sq. ft.) .....	6.00
Large can (40,000 sq. ft.) .....	20.00

**di-met POWDER** (Completely water soluble). Packaged in individual envelopes to assure proper mix. Eliminates measuring!

Trial Size (400 sq. ft.) .....	.39
Home Size (4000 sq. ft.) .....	2.95

**di-met WA** (Wetting Agent, specially compounded for use with di-met Crab Grass Killer. Produces faster visible injury and quicker kill.

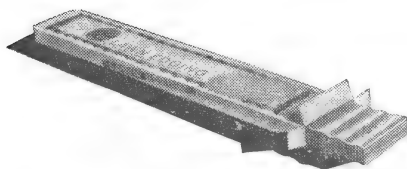
8 oz. ....	1.00
------------	------

**Tat WEEDETTE.** A powerful 2, 4-D Weed Killer, compounded to use for simultaneous weed and crab grass control without injury to good lawn grasses.

8 oz. ....	1.35
Quart .....	4.00

## EVERY HOME-OWNER NEEDS NO-SEE Grass Barrier Cuts Lawn Work in Half

PACKAGE OF 40 FT. — \$4.98



Solves many annoying lawn problems. Eliminates grass trimming and edging around trees, flower beds and shrubs; along hedges, fences and driveways. Easy to install; just drive down to soil level. Comes in easy-to-handle two-foot sections, four inches deep. Key together in any length. Corrugated and galvanized. Box of 40 ft. \$4.98.

# Landscape MATERIALS

## PENNSYLVANIA BLUE STONE

CUT RANDOM RECTANGULAR

Best for

TERRACES — PATHS — WALKS — STEPPING STONES

Not slippery when wet

1 inch thick .....	\$ .65 per sq. ft.
1½ inch thick .....	.90 per sq. ft.
2 inch thick .....	1.15 per sq. ft.
2½ inch thick .....	1.35 per sq. ft.

F. O. B. the Gloucester Nursery

We always carry, in our stone sheds at Gloucester, between 75 and 100 tons of beautiful Pennsylvania Blue Stone Flagging.

## A MAGIC SOD CARPET . . .

From our Nursery . . . to a Private Home



The above picture shows the sod cutting operation in our nursery using the latest in equipment. Our weed-free sod is grown from high quality SCOTT SEED, on tested, fertilized soil.

LAWNS constructed of our NURSERY GROWN SOD gives these decided advantages . . .

Saves SEVERAL YEARS over Seeded Lawns

Ready for IMMEDIATE USE — to walk on, play on, and enjoy

Enhance the BEAUTY of YOUR PROPERTY at once.

Lengths, 1 ft. by 4 ft.:

Up to 100 sq. ft.	at 25¢ per square foot
100 to 500 sq. ft.	at 23¢ per square foot
500 to 5000 sq. ft.	at 22¢ per square foot
5000 sq. ft. and up	at 20¢ per square foot

f.o.b. Ipswich

LOAM — SUB-SOIL — SAND — FILL  
ROAD GRAVEL — WALL AND DRAIN STONE  
CRUSHED STONE (various sizes) — STONE DUST

Ask for prices

# Big Tree

## CARE — MOVING

has been an important part of our  
business for nearly 50 years



*This photograph shows one of our COMPRESSOR  
ROOT-PRUNED TREES being unloaded from the mover  
in mid-summer (note the foliage).*

### **MOVING — PLANTING . . .**

Whether big or small, you want that tree properly planted. Trust this difficult job to us — we grow them ourselves!

### **CABLING — BRACING . . .**

Injury to a tree should be attended to immediately. At those times when service must be prompt to save a valuable tree, rely on us.

### **FEEDING . . .**

Aid your trees to combat insects and diseases by having our men feed them, using scientific fertilizing methods.

### **PRUNING . . .**

A necessity for better health . . . for appearance . . . to protect your landscape investment.

### **REMOVING . . .**

Trees in bad condition are hazardous to people, and to remove as well. Our technicians have had years of experience in this difficult work.

We use **MOTORIZED EQUIPMENT** for efficiency —

Chain saws — power winches — compressors  
tree movers and tractors

**ESTIMATES WILLINGLY GIVEN**

Phone Gloucester 513 today



## Planting Directions

### BALLED and BURLAPPED MATERIAL:

Dig holes 18" larger than diameter of ball and 6" deeper than the depth of the ball. Save top-soil, discard sub-soil. Mix, at least 3 times, prescribed amounts of assembled fertilizer with saved top-soil or new loam for proper blending. Spade enough of soil-fertilizer mixture into bottom of hole to insure ball being set at original plant depth as indicated by different bark color. Fill in hole around ball half full. Tamp well. Cut strings and burlap flush with filled-in soil. Fill hole with water and allow to soak in. Complete filling hole with mixture, leaving top saucer-shaped to catch moisture. Water weekly.

### BARE ROOT MATERIAL:

The diameter of the hole should be dug at least 2 feet larger than root spread, and 12" deeper than depth of roots. Save top-soil, discard sub-soil. Spade enough of soil-fertilizer mixture into bottom of hole to insure plant being set at original depth as indicated by different bark color. Trim broken root ends. Set plant in hole and fill hole half full of mixture, shaking plant up and down several times to work soil around roots. Tamp well. Fill hole with water. After water has soaked in, complete filling in, leaving surface saucer-shaped to catch water. Stake all trees over 2" caliper, using wires run through rubber hose to avoid chafing. Water weekly.

### Suggested Amounts of Organic Mixtures:

- EVERGREENS**—5 lbs. Corliss #3 Improved mixture per ft. of height or spread.  
**EVERGREEN PLANTS**—2 lbs. Corliss #3 Improved mixture per foot of height per plant  
**EVERGREEN SHRUBS**—3 lbs. Corliss #2 mixture per foot of height. (Euonymus—3 lbs. #3 Improved Mix per ft.)  
**DECIDUOUS TREES**—5 lbs. Corliss #3 Improved mixture per foot of height.  
**DECIDUOUS SHRUBS**—2 lbs. Corliss #No. 3 Improved mixture per foot of height (Azaleas, Ilex, Blueberry—2 lbs. Corliss #2 mixture per ft. of height)  
**DECIDUOUS HEDGES**—1 lb. Corliss #3 Improved mixture per foot of height per plant.  
**VINES**—3 lbs. Corliss #3 Improved mixture per plant.  
**FRUIT TREES**—see Deciduous trees.  
**ROSES**—5 lbs. Corliss #3 Improved mixture per plant.  
**PERENNIALS and ANNUALS**—100 lbs. Corliss #3 Improved mixture spaded into each 100 square feet.

Corliss #1 and #3 Mixtures have been discontinued. Corliss #3 Improved Mixture has taken their place. This was made possible by improving the formula with new ingredients. It is now an all organic fertilizer.

	#3 Improved mixture	#2 mixture
5 lbs. ....	\$ .80	\$ .70
10 lbs. ....	1.30	1.25
25 lbs. ....	2.45	2.35
50 lbs. ....	3.85	3.60
100 lbs. ....	6.25	5.75
1000 lbs. ....	59.50	55.00
2000 lbs. ....	113.00	105.00

## TERMS AND CONDITIONS OF SALE

We accept all orders upon condition that they shall be void should injury befall the stock from frost, fire, hailstones, or other causes over which we have no control.

We endeavor to keep varieties true to name, and will replace any stock not true, but we do not, in any way, guarantee the success of the grower, inasmuch as we cannot control nature and the conditions affecting the successful growing of Plants and Nursery Stock, such as unfavorable weather, soil, moisture, planting, cultivation, insects, improper planting and the like. We cannot and will not give any warranty, express or implied, as to description, quality, productiveness, or any other variation of any Nursery Stock or Plants we sell, and we will not be in any way responsible for the crop. Every order for such goods will be executed on these conditions only. Employees are forbidden to give warranties or guarantees.

In event of untrue stock, our liability must be limited to invoice value at time of shipment.

### PRICES AND RATES SUBJECT TO CHANGE WITHOUT CHANGE.

### TERMS OF PAYMENT

Cash or satisfactory references must accompany all orders from purchasers unknown to us. To customers whose responsibility is known to us, all bills are due net 30 day from date of shipment. All stock is priced F.O.B. Gloucester and Ipswich, Mass.

### SHIPPING DIRECTIONS

Please state clearly how you want your shipment made, whether by freight, express, or truck. We reserve the right to change shipping instructions when we consider it best without assuming responsibility. Boxing and packing will be charged at actual cost on all tree and shrub orders shipped by freight or express.

Our responsibility ends on delivery of stock in good order to the forwarding company. When losses occur, claims should at once be made on the transportation company by the consignee. Complaints must be made in writing to our office within ten days after receipt of the goods.

### WE DO NOT MAKE C.O.D. SHIPMENTS

### LOCAL FREE DELIVERY ZONE

**Beverly Farms, Essex, Gloucester, Hamilton, Ipswich, Manchester, Prides, Rockport, and Wenham.**

Weekly, and sometimes more frequent during the spring and fall planting seasons, deliveries are made to **Beverly, Danvers, Lynnfield, Marblehead, Newburyport, Peabody, Salem, Swampscott, and Topsfield** and the delivery charge, based on size or order, is very reasonable; minimum charge is 50¢.

We can arrange delivery beyond this territory, based on size of order and distance, at cost, which in most cases is not greater than the combined cost of packing, freight or express. This is a very satisfactory method, as plants are delivered fresh to you.

Please—We must have you order a few days before the scheduled delivery. This not only gives us more time to select better stock, but it does insure delivery on schedule.

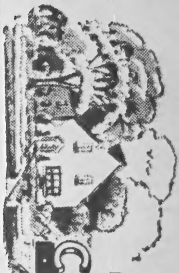
### MEMBERS:

Massachusetts Nurserymen's Association  
New England Nurserymen's Association  
American Association of Nurserymen



# INDEX

Abies .....	9	Firethorn .....	14	Petunias .....	55
Acanthopanax .....	23	Forsythia .....	27	Philadelphus .....	30
Acer .....	17	Fruits.. 37, 38, 39, 40		Phlox .....	55
Ageratum .....	54, 57	Fungicides .....	63	Phosphate Rock .....	60
Agrico .....	60			Picea .....	10
Agrinite .....	60			Pieris .....	14
Alyssum .....	54	Gaillardia .....	55	Pine .....	10
Ajuga .....	47	Geraniums .....	58	Pinus .....	10
Althea .....	28	Gift Certificate .....	41	Plum .....	21
Ampelopsis .....	36	Gleditsia .....	18, 19	Polyanthus .....	53
Andromeda .....	14	Golden Bell .....	27	Polygonum .....	36
Annual Seedlings..	54	Grape Vines .....	40	Portulaca .....	56
Annual Vines .....	58	Ground Covers .....	15	Primrose .....	58
Apples .....	37, 38	Gypsophilia .....	52	Privet .....	29
Aralia .....	23			Prunus .....	21
Arbor-Vitae .....	12			Pyracantha .....	14
Arctostaphylos .....	13	Hawthorn .....	18		
Aronia .....	23	Hedera .....	13	Quercus .....	22
Arrow-wood .....	32	Hedge Plants .....	33	Quince,	
Asparagus .....	40	Heliotrope .....	58	Flowering .....	26
Asters .....	54	Hemerocallis ..	52, 53		
Azalea .....	23, 24	Hemlock .....	12		
		Hibiscus .....	28		
Baby's Breath .....	52	Holly .....	13	Raspberries .....	40
Bachelor's Button..	54	Honeysuckle ..	29, 36	Rhamnus .....	30
Barberry .....	24	Hydrangea .....	28, 36	Rhododendrons ..	14
Bayberry .....	30	Hyper-Humus .....	61	Rock Pink .....	58
Bearberry .....	13	Hypericum .....	29	Rosa .....	30
Beauty Bush .....	29			Rose of Sharon ..	28
Bedding Plants 57,	58	Ilex .....	13, 29	Roses .....	42 to 46
Begonias .....	57	Inkberry .....	13	Russian Olive .....	27
Berberis .....	24	Insecticides .....	63, 64		
Betula .....	17	Ipomoea .....	58	Salix .....	22
Birch .....	17	Ivy .....	13, 36	Salpiglossis .....	56
Blueberries .....	32, 39			Salvia .....	56
Bluestone .....	65	Juniper .....	9	Scabiosa .....	56
Bone-Meal .....	60	Juniperus .....	9	Shrubs,	
Bovung .....	61			Deciduous .....	23
Boxwood .....	13	Kalmia .....	14	Evergreen .....	13
Buckthorn .....	30	Katsura Tree .....	18	Silver Lace Vine ..	35
Buddleia .....	26	Kolkwitzia .....	29	Snapdragon .....	56
Bulbs .....	53			Snowball .....	24
Burning Bush .....	24			Sod .....	65
Butterfly Bush .....	25			Sorbus .....	22, 31
Buxus .....	13			Spiraea .....	31
				Spreaders .....	59
Calendula .....	54	Landscaping .....	2, 7	Spruce .....	10
Carnation .....	54	Landscape Materials		Spurge, Japanese ..	14
Caryopteris .....	25	Lantana .....	58	Stock .....	56
Celosia .....	54	Lawn Seed .....	59	Strawberries .....	40
Cercidiphyllum .....	18	Leucothoe .....	14	Superphosphate ..	60
Chamaecyparis .....	9	Ligustrum .....	29	Sweet Pepper .....	25
Cherry Flowering..	26	Lilac .....	31, 32	Syringa .....	31, 32
Chestnut .....	38	Lilium .....	53		
Chokeberry .....	23	Lily-of-the-Valley..	51	Taxus .....	11, 12
Chrysanthemums		Lime .....	60	Thuya .....	12
48, 49, 50, 54		Linden .....	22	Tilia .....	22
Clematis .....	36	Liriodendron .....	19	Tomato Plants .....	57
Clethra .....	25	Lobelia .....	55, 58	Tree Care .....	57
Cleome .....	55	Locust, Honey ..	18, 19	Trees, Deciduous ..	16
Coleus .....	57	Lonicera .....	29, 36	Trees, Evergreen ..	9
Convallaria .....	54			Tsuga .....	12
Cornus .....	18, 25			Tuliptree .....	14
Cosmos .....	55			Turf Builder .....	59
Cotoneaster .....	26	Magnolia .....	20		
Crab, Flowering 20,	21	Mallow .....	28	Ulmus .....	22
Cranberry Amer'n	32	Malus .....	20, 21		
Crataegus .....	18	Maple .....	17		
Cydonia .....	26	Marigold .....	55		
Cypress .....	9	Mesembryan-		Vaccinium .....	32, 39
		themum .....	58	Verbena .....	56, 58
		Mock Orange .....	30	Viburnum .....	32, 33
Dahlia .....	58	Morning Glory ..	58	Vigoro .....	61
Daphne .....	13	Mt. Ash .....	22, 31	Vinca .....	15, 58
Day Lily .....	52, 53	Mountain Laurel ..	14	Vines .....	36, 53
Delphinium .....	52	Myrica .....	30	Virginia Creeper ..	36
Deutzia .....	27	Myrtle .....	15		
Dianthus .....	55				
Dogwood .....	18, 25				
		Nicotiana .....	55	Weed-Killers .....	59, 64
				Weigela .....	38
Elaeagnus .....	27			Willow .....	22
Elm .....	22	Oak .....	22	Winterberry .....	28
Enkianthus .....	27			Winter Creeper .....	13
Euonymus		Pachysandra .....	14	Wisteria .....	36
13, 27, 34, 35		Pansies .....	57		
Evergreens .....	9, 16	Peaches .....	37	Yew .....	11, 12
		Pears .....	37, 38		
Fertilizers.. 59, 62,	67	Peat Moss .....	62	Zinnia .....	56, 57
Fir .....	9	Perennials ..	47 to 53		



RETURN POSTAGE GUARANTEED BY

**CORLISS BROS.**  
INCORPORATED

REYNARD ST., GLOUCESTER, MASS.



*Plant America!*

**RETURN POSTAGE GUARANTEED**

Postmaster: If undeliverable for any reason, notify sender, stating reason, on Form 3547, postage for which is guaranteed.

**U. S. DEPARTMENT OF AGRICULTURE**

LIBRARY

WASHINGTON 25, D. C.

OFFICIAL BUSINESS

PRINTED MATTER

PENALTY FOR PRIVATE USE TO AVOID  
PAYMENT OF POSTAGE, \$300  
(GPO)

Library, U. S. Dept. of Agriculture  
WASHINGTON 25, D. C.

Right

**U. S. POSTAGE  
PAID**

Gloucester, Mass.

Permit No. 27

Bulk