

62.43

LIBRARY RECEIVED  
★ MAR 9 - 1956 ★  
U. S. Department of Agriculture

*Acres of Beauty* CLOSE TO HOME



# **CUTTING'S NURSERY**

Telephone Byron 2711 • Byron, Minnesota

• SPRING 1956 •

# This Catalog Is Sent to You . . .

- **To Assist** you in making selections of the trees, shrubs, evergreens and plants that will be most suitable for improving your lawn, orchard, garden, windbreak or flower border . . . .
- **To Express** our thanks to our many customers who have given us their business during the past years . . . .
- **And to Invite** every home owner to come to us with their problems in garden making, landscaping, or planting of orchards and windbreaks. We have had much experience in these lines and believe we can help you to decide what and how to plant.

The map on our cover illustrates how close you are to our nursery. We have been serving this area for **over 50 years** and invite you to come and join the many satisfied customers. Being the only nursery in this area, we have endeavored to supply you with all the varieties that will grow here and of a quality that is the best. By growing the stock here, we are able to give it our close attention and produce better rooted, more shapely, uniform plants from which you can make your selections.

Again, we invite you to come to the nursery and select your own plants from stock growing in our fields, which will then be freshly dug and will be sure of growing for you. We make frequent deliveries to nearby towns—everyday to Rochester—and can usually arrange to deliver any order that you cannot carry with you.

For your convenience we will be open during the spring planting season on Sunday afternoons from 1:00 p.m. to 5:00 p.m.

PLEASE DO NOT EXPECT DIGGING DONE ON SUNDAY

## CUTTING'S NURSERY

RALPH L. CUTTING, MGR.

Telephone—Byron 2711

# Plant Evergreens for Year-Round Beauty

Evergreens are our most important group of trees; they grow naturally in our northern soil and climate. For groups on the lawn, as a background to the garden or in plantings by the doorway and around the house foundation the Evergreens will delight you in all seasons with their cheerful green color. We will be pleased to help you select suitable varieties for your grounds.

The only really satisfactory way to buy evergreens is to come to the nursery, make your selection, and take them home with you.

**Prices Include Digging Evergreens With Ball and Burlap**

## ARBORVITAE

### PYRAMIDAL ARBORVITAE—

The most compact and erect of the species, forming a solid pyramid of green that retains its slender shape without shearing. However, it may be made more compact and kept at any desired height by shearing. Useful for entrance and corner plantings. **2-2½ ft., \$5.50; 2½-3 ft., \$6.50; 3½-4 ft., \$8.75.**

### SIBERIAN ARBORVITAE—

A compact, dense, bushy plant. Conical in outline. Foliage a rich dark almost bluish green. The hardiest of the Arborvitae and with its distinctive size, form and foliage texture fills a place in the landscape that no other evergreen does. **15-18 inch, \$6.50; 18-24 inch, \$8.00.**

### GLOBE ARBORVITAE—

A dwarf, bushy evergreen that naturally forms itself into a ball-like form. Bushy and compact. Keeps its shape without trimming. Splendid for foundation plantings. One of the best all-around semi-formal dwarfs. **18-24 inch, \$7.00.**

## WHITE PINE

A medium to fast grower with long soft green needles that have a silvery strip down the center of the needle. Very valuable for masses, specimens and screens. **2-3 ft., \$4.00; 3-4 ft., \$6.00.**

### AUSTRIAN PINE—

A decorative, vigorous and tall growing tree. Long, slender, dark green needles. Its rapid growth and highly ornamental foliage makes it very desirable wherever a tall evergreen on the lawn is wanted. **18-24 inch, \$5.00; 2-3 ft., \$6.50.**

### MUGHO PINE—

Very popular compact and dwarf-growing evergreen. Unexcelled for planting about the foundation lines. In the spring the new growth resembles miniature candles at the end of each branch. **15-18 inch spread \$7.00; 18-24 inch spread \$8.00.**



*Plant some evergreens and shrubs to add to the beauty of your home.*

## JUNIPERS

### KOSTER JUNIPER—

Low spreading variety with arching branches. Bluish-green. Very hardy. 15-18 inches, \$5.00; 18-24 inch, \$7.00; 24-30 inch, \$8.00.

### SAVIN JUNIPER—

Another of the most popular low foundation evergreens. More compact and a richer green than the Pfitzers. While growing in an upright spreading, horizontal manner the tips are more heavily branched so that the plant seems more compact and without the horizontal tip effect achieved by the Pfitzer. Very hardy. 15-18 inch, \$5.00.

### ANDORRA JUNIPER—

A low growing spreading dwarf evergreen of real merit. Its rich silvery green of summer turns a beautiful purplish bronze in fall. As the sap starts to move in the spring, this color intensifies and becomes truly striking. With the coming of the new growth its more sombre green hue is resumed for the rest of the summer months. 15-18 inch, \$5.00; 18-24 inch, \$7.00; 24-30 inch, \$8.00.

### PFITZER JUNIPER—

A graceful, broad, low evergreen with sweeping fronds of grayish or bluish-green foliage. The strong tips give a definite horizontal line to its effect. Very hardy, standing full sun and also does well in semi-shaded locations. 15-18 inch, \$5.00; 18-24 inch, \$7.00.

### GOLDEN PFITZER JUNIPER—

Golden type of Pfitzer with bright yellow foliage on new growth. 18-24 inch, \$7.00.

### DUNDEE JUNIPERS (Upright)—

This outstanding Juniper is upright growing, is bluish-gray in the spring and summer and changes to a plum-like color in fall and winter. Without doubt the most satisfactory of all the upright junipers. 2-2½ ft., \$6.50; 3-3½ ft., \$7.50.

### CANNARTI JUNIPER (Upright)—

Extremely rich dark green color which is held throughout the year. Trimming produces a compact shapely specimen of the pyramidal type. 3-3½ ft., \$11.00.

### PATHFINDER JUNIPER (Upright)—

It is believed that this evergreen has the most beautiful silvery blue coloring of all the varieties of the true Silver Juniper. The habit of growth is upright, with a somewhat broader and more bushy base than is found in other varieties of the true Silver. The tips of the branches are of fine texture and tend to be upright in habit. 24-30 inch, \$5.50; 30-36 inch, \$6.50.

## CONCOLOR FIR

One of the most beautiful evergreens, many trees having a decided bluish color. Is best used as a specimen on the lawn. 2-3 ft., \$6.00; 3-4 ft., \$8.00.

## BLACK HILLS SPRUCE

One of the hardiest and finest of all spruces—symmetrical, compact and bushy in growth. The foliage varying from a green to bluish-green tint makes the trees always striking for their bright, fresh color. One of the finest spruces for landscape purposes. 18-24 inch, \$4.00; 2-3 ft., \$6.00; 3-4 ft., \$8.00.

### COLORADO BLUE SPRUCE—

Selected for blue color and perfect shape. 2-3 ft., \$10.00.

## BALSAM FIR

The only fir native to Minnesota. Has shiny, bright green foliage. Pyramidal in form and is useful in mixed plantings of evergreens as it is a very beautiful evergreen. 2-3 ft., \$4.00; 3-4 ft., \$6.00.

---

## Watering Evergreens

Nearly all the loss in newly planted evergreens is caused by lack of sufficient water. A thorough soaking with water twice a week during the first year is usually all that is required. There must be a depression around each tree so the water will not run off, and it should be a definite job of some member of the family to do the watering on a certain day of each week.

## YEW

### DWARF YEW—

A hardy dwarf, slow-growing evergreen. Foliage is very heavy and of a waxy, shiny green color. Will thrive in dense shade. **12-15 inch, \$6.00; 15-18 inch, \$7.00; 18-24 inch, \$8.00.**

### SPREADING YEW—

Usually grows about as tall as broad and does best if grown where it is not exposed to full sunlight. Foliage is dark, shiny green. **12-15 inch, \$6.00; 18-24 inch, \$8.00.**

### UPRIGHT YEW—

The upright, pyramidal form of this variety. A compact Yew of dark green foliage, that does best if grown where it is not exposed to full sunlight. **12-15 inch, \$5.00; 15-18 inch, \$6.00.**

### INTERMEDIA YEW—

A very good variety for the deep shaded location. The waxy, shiny green foliage will liven up that shady spot. Habit of growth is between the spreading and pyramid varieties. **15-18 inch, \$6.00; 18-24 inch, \$8.00.**

## PACHYSANDRA TERMINALIS

### (Spurge)

A ground cover plant 6 to 8 inches high, forming broad mats of bright, glossy green foliage. This plant will grow in shady locations and is the only plant to grow under evergreens. **\$5.00 per dozen.**

## WE DO NOT SHIP EVERGREENS

Because of the excessive cost of packing evergreens for shipment, and the shortage of expert help for such work, we cannot ship any evergreens. You may call for them at the nursery, or we will deliver them at your home in Rochester.

## CARE OF EVERGREENS

There is nothing that adds so much to the beauty of the city home or farm as a planting of evergreens, but you cannot just plant them and let them shift for themselves.

If a dormant tree or shrub is alive when you receive it from the nursery it is almost certain to live if carefully planted, but an evergreen is different. It may be freshly dug and have plenty of roots but it is covered with foliage and must have plenty of water to replace that evaporated from the foliage. Of course everyone gives it plenty of water when planting but that is not enough. It is usually sufficient if it has a thorough soaking once a week during the first summer.

Have a depression around each tree so that when you water it the water will not all run away but will soak down to where the roots are.

Don't omit a watering because there has been a shower—it takes a heavy rain to soak a foot into the ground. When an evergreen looks as if it is sick, it is already dead.

Evergreen, especially Arbor Vitae, are very convenient "watering posts" for dogs but all you need is to put some 16 inch wire fencing around them. But do it now and not after the damage is done.

And there is the Red Spider which begins to work when it gets hot and dry. When they begin to suck the juice, the evergreens will have a grayish cast, or you can easily tell if they are present by holding a sheet of white paper under a twig and tapping the twig.

The Red Spiders are almost invisible and look like specks of dust but are always moving. A dose of cold water will check them and some Dusting Sulphur will kill them.



*These Yews are well adapted to this north exposure and as they are slow growing or may be easily trimmed, will not get too large in any planter.*

# Hardy Ornamental Shrubs

People are appreciating more the permanent value and beauty of shrubs. The charm and grace they lend to the home grounds is invaluable, and if judicious selection is made, it is possible to have a continuous succession of bloom from early in April to the days when frost again nips the flowers of the very latest blooms.

Shrubs cover such a wide range of size, form and color that you can find some variety adapted to each location or use. The two outstanding uses of shrubs are: to soften the stiff, straight lines and angles of the house; and to hide any undesirable view such as a bare wall, an old building, or the untidy backyard of your careless neighbor.

## SYRINGA OR MOCK ORANGE

### MINNESOTA SNOWFLAKE—

An outstanding introduction, every blossom a very double pure white, and when fully open several layers of petals are in display. The season of flowering is late June and early July. The large, dark green leaves have a robust texture, and unlike other Mock Oranges, the foliage extends over the lower branches. The shrub is thoroughly hardy, extremely vigorous and long-lived. It is useful for screen, tall border and specimen plantings. Minnesota Snowflake is undoubtedly the most valuable shrub introduction of recent years. 2-3 ft., \$1.50; 3-4 ft., \$2.00.

### LEMOINE—

A showy, free blooming variety with slender twiggy and slightly arching branches. Flowers are creamy white, fragrant, smaller size than most of the varieties but because of their profuse blooming habit are most effective at blossom time. 2-3 ft., \$1.00; 3-4 ft., \$1.25.

### VIRGINAL—

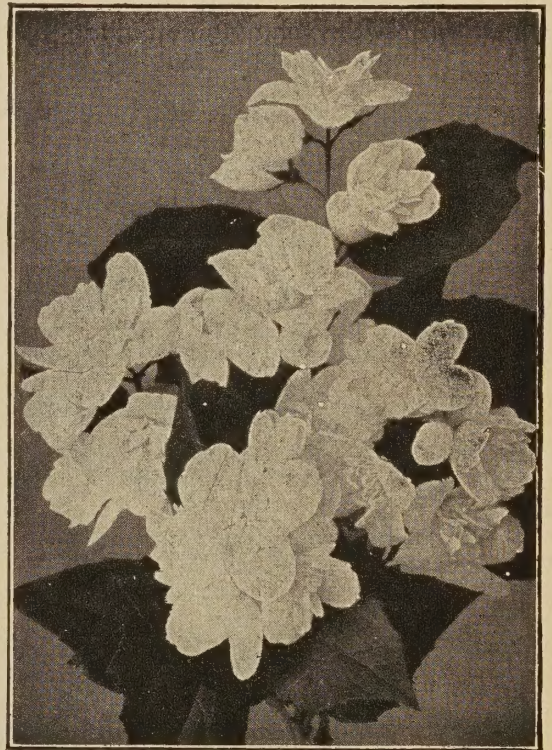
One of the finest of the improved Mock Oranges. Flowers are very large with large petals and double crested. Usually borne in clusters of 5 to 7. Sweet scented and long blooming. We consider this to be one of the very best blooming shrubs we can grow in Minnesota. Will bloom the first season. 2-3 ft., \$1.00; 3-4 ft., \$1.25.

### GOLDEN MOCK ORANGE—

Bright golden yellow leaves make this dwarf shrub valuable to color shrub groups. Cheerful and attractive all through the summer. 15-18 inch, \$1.75; 18-24 inch, \$2.00; 2-3 ft., \$2.50.

### GRANDIFLORA—

An upright, rapid growing shrub, well adapted for background planting. Has large single white flowers in June. 3-4 ft., \$1.00; 4-5 ft., \$1.25.



Mock Orange

### GOLD DROP POTENTILLA—

Forms a compact dwarf shrub about 2½ ft. high. Densely covered with small fern-like leaves and studded with intensely brilliant golden yellow flowers all summer. 18-24 inch, \$1.50.

### COTONEASTER, RED BERRIED—

Noted for its red berries in fall, has smooth green leaves with white underneath, useful as a specimen or in groups. 2-3 ft., \$1.50.

## DOGWOOD

### SIBERIAN RED TWIGGED—

Good for border plantings where the smooth slender bright red branches make a pleasing contrast with snow and evergreens. Small white blooms early in summer, succeeded by a fall crop of ornamental berries. 2-3 ft., 75c; 3-4 ft., \$1.00; 4-5 ft., \$1.25.

## CORALBERRY

A low, slender branching shrub valuable for planting in shady places and for covering steep slopes. Its beauty lies in the masses of coral berries that ripen in the fall and usually adhere all winter. 18-24 inch, 85c; 2-3 ft., \$1.00; 3-4 ft., \$1.25.

### ↓ CISTENA CHERRY

### PURPLE LEAVED SANDCHERRY—

Grows 3 to 4 feet high, spreading about the same. Foliage of a rich dark red which makes a valuable contrast in shrub plantings. 3-4 ft., \$2.50.

## Planting Nursery Stock

Most nursery stock can be planted in either spring or fall with equal success. Spring planting starts as early as the ground is in good "working" condition. Stock may be planted as long as it is dormant, but the earlier it goes in the better. Evergreens must be planted before any new growth starts.

Fall planting of evergreens starts in early August and continues until freeze-up but the fall planting of shubbery and other deciduous stock does not usually start until early October, or as soon as the plants become dormant.

Bare roots of plants must be protected at all times from undue exposure to sun and wind, as even a small amount of "drying out" will definitely impair the chances of the plant making a satisfactory growth. The hole for planting should be larger than the spread of the roots and only the best black topsoil should be used around its roots. It is safest not to use any manure in the hole, although pulverized peat mixed with the soil may be highly beneficial. The roots should be well spread, the soil worked carefully around them (avoiding air pockets) and then well firmed by tramping or by "water packing" with a running hose.

## FORSYTHIA OVATA

Has ascending branches which arch gracefully. Flowers are pale primrose-yellow, making a beautiful sight in April before the leaves are out. Should be pruned directly after blooming to make compact bushes. If branches are cut in late winter and placed in water they will bloom in the house. 3-4 ft., \$1.25.

### ↓ BUFFALO BERRY

An attractive silvery shrub, bearing masses of brilliant red berries in late summer and fall. A handsome ornamental up to 12 feet tall. 2-3 ft., \$1.25.

## COMMON SMOKETREE

(*Rhus cotinus*)

Bears huge, plumy masses of green or purple flower stems in August and September. Grows 10 to 12 feet high. 2-3 ft., \$1.75.

## CARAGANA

### SIBERIAN PEA TREE—

Extremely hardy. Blossoms are pea-like and yellow in color, coming forth in small clusters in late spring. Fine for border or group planting. Does well in shade. 2-3 ft., 75c; 3-4 ft., \$1.00.

## DWARF ARCTIC WILLOW

A new dwarf shrub with beautiful silvery blue-green, feathery foliage that makes a welcome introduction of new color. It does well in dry or wet soil, in sun or partial shade. If left untrimmed it makes a compact dwarf shrub of about 3 to 4 feet or trimmed it makes a fine low hedge. 15-18 inch, 50c.

## HYDRANGEA

### P. G. —

This is the variety which blooms in August, the large cone-shaped heads of bloom being white at first then changing to pink. To secure that wonderful show of bloom which you often see, they should have a good soil, plenty of moisture and be protected from the hot south winds. An ideal location is on the north side of the house and beyond the range of the roots and shade of large trees. Severe pruning in spring will insure much larger bloom. 2-3 ft. plants that will bloom this year, \$1.25.

### HILLS OF SNOW—

Large flat clusters of white blooms from June to September. May be used in either border or foundation plantings. Stands shade very well. Stems should be cut back to a few inches above the ground during the dormant season. 2-3 ft., \$1.00.

## SPIREA

### ANTHONY WATERER—

Brilliant rosy carmine flowers. Blooms all summer. Always blooms the first season. Is very useful for planting in front of larger shrubs. Grows 2 feet high. **15-18 inch, 75c.**

### SPIREA FROEBELI—

Similar to Anthony Waterer, but a foot taller, with broader and darker leaves, which are a beautiful salmony bronze red in spring, reverting to similar shade in fall. Has reddish pink flowers in dense corymbs during July and August. **18-24 inch, \$1.00; 24-30 inch, \$1.25.**

### CARYOPTERIS, BLUE MIST (Hardy

#### Blue Spirea)—

We have plenty of blooming shrubs during the early season through late May, June and July. But when fall comes, as a rule, the shrubs are bare of bloom.

So it seems nice to find a late blooming shrub that is covered through August until killing frost with delicate lacelike blue flowers. A low-growing, perfectly rounded shrub that reaches a height of about 2 feet. **Nice 2 year plants, 85c.**

### THUNBERGI—

May. One of the finest spring blooming, small shrubs. The flowers are pure white and are borne along the entire length of the branches. Bending them down in graceful curves. Foliage narrow and willow-like and turns to pleasing shades of orange scarlet in autumn. **18-24 inch bushy, 75c; 2-3 ft., \$1.00; 3-4 ft., \$1.25.**

### SPIREA SORBIFOLIA—

A very shade-tolerant shrub with fern-like leaves. White flowers appearing in large upright clusters in June-July. Does well on the north side of buildings attaining a height of 4 to 5 feet. **2-3 ft., 75c; 3-4 ft., \$1.00.**

### ARGUTA, SNOW GARLAND—

The earliest Spirea to bloom, the bush becomes a mass of snowy garlands before the leaves appear. Grows 4 to 5 feet high. **18-24 inch bushy, 75c; 2-3 ft., \$1.00; 3-4 ft., \$1.25.**

## SPIREA VAN HOUTTE

### (Bridal Wreath)

Perhaps the most popular of all the Spireas and has been the most planted. It is of upright though pendulous growth with a foliage of rich green which assumes pleasing autumnal coloring. Very graceful and ornamental even when out of bloom. When covered with its dense clusters of pure white flowers, the branches are weighted down nearly to the ground and the whole bush presents a mass of the most beautiful rich white. A beautiful shrub either for single lawn specimens or in groups. Grows 5 to 6 feet high.

	Each	25
2-3 ft., 3 year .....	\$ .50	\$10.00
3-4 ft., 3 or 4 year .....	.75	15.00
Large landscape size .....	1.00	20.00

## FLOWERING CRABS

### HOPA—

The most strikingly beautiful and graceful ornamental Crab suited to Northern climates. The buds are a **blood-red**, followed by a mass of fragrant, deep, **rose colored** blossoms. The single flowers appear early and continue long on the tree. The foliage is first a **reddish purple**, then a **bright rich green**. The small, red-fleshed fruit makes delicious jelly. **5-6 ft., \$2.85.**

### RED SILVER—

The maroon-red and silver leaves of this tree add a splash of color to any planting. Under side of leaves are a delicate silver. A very colorful crab with its red flowers, leaves and fruit. **6-8 ft., \$2.25.**

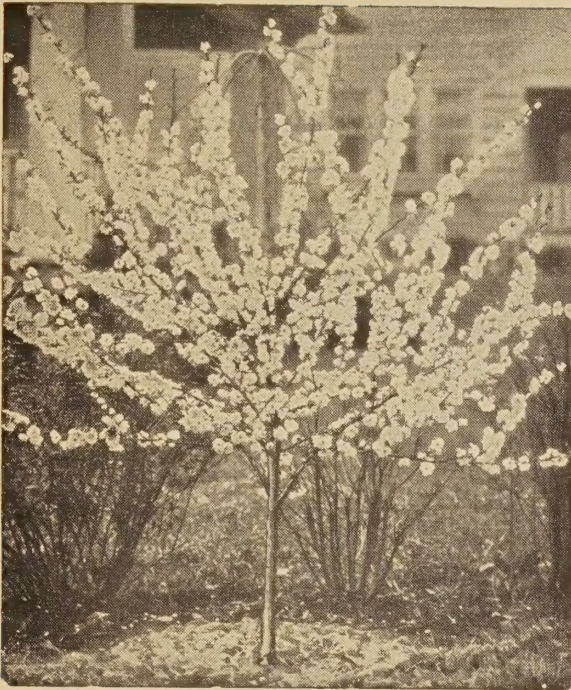
### ALMEY (Rosybloom)—

Has large blossoms of unfading glistening red with white markings at base of each petal giving effect of a 5-sided star. When in bloom, this strong, healthy tree, from a distance looks like a mass of flame. **5-6 ft., \$3.45.**

### STRATHMORE—

We like Strathmore for its foliage as well as for its habit of growth; which is narrow and upright resembling the popular. The leaves remain reddish all summer and turn strikingly red and scarlet in autumn. The flowers resemble those of Hopa but are somewhat darker. **4-5 ft., \$3.00.**





*Flowering Plum*

**FLOWERING PLUM**

6 to 7 feet. The earliest flowering hardy shrub of deep pink. Double blossoms appear in great profusion before the leaves, completely covering the branches with what appear like pink roses. A beautiful sight. 3-4 ft., \$2.50.

**ARROWWOOD**

8-10 feet. An attractive shrub with peculiar dentate leaves, bright green foliage turning to rich purple and red in the fall. White flowers followed by small blue-black berries that are relished by the birds. Does well in shade. 2-3 ft., \$1.35.

**PINK FLOWERING ALMOND**

A very double pink flowering shrub, in bloom before leaves appear in spring. Growth dwarf and bushy, compact, with slender branches. Fine plants to use in grouping or for lawn. 2-3 ft., \$1.50.

**ALPINE CURRANT**

One of the best shrubs for very shady locations. A dwarf shrub of dense growth with fine dark green leaves. Unexcelled for a low hedge. 12-15 inch, 75c; 15-18 inch, \$1.00; 18-24 inch, \$1.25.

**ZABELI HONEYSUCKLE**

This vigorous, upright Honeysuckle has attractive red flowers, followed by bright red berries in late summer to autumn. It is hardy and does well in shade. It is a rapid grower and is unexcelled for a tall screen or as a snow-break. Grows quite rapidly, to 8 or 10 feet in height.

**BUSHY THREE YEAR PLANTS:**

	Each	25
2-3 ft. ....	\$ .75	\$15.00
3-4 ft. ....	1.00	20.00
4-5 ft. ....	1.25	25.00

**NEW DWARF HONEYSUCKLE**

**CLAVEY'S DWARF HONEYSUCKLE—**

Here is what you have been looking for—a new true-dwarf shrub for landscaping your ranch style home. Very bushy and compact with small yellow flowers and red berries. 18-24 inch, \$1.25.

**EUONYMUS**

**WINGED-BARK BURNING BUSH—**

This outstanding shrub is one of the very best we have. Bright yellow flowers in Spring, followed by clusters of brilliant red berries, which hang until mid-Winter. Leaves turn to beautiful crimson-scarlet in the Fall. Attains a height of 8 to 10 feet. 2-3 ft., \$2.75.

**DWARF BURNING BUSH—**

The same qualities as the above shrub, except a dwarf growing shrub, just the thing for the new rambler homes and under windows to add color to the foundation planting. Thrives in shade. 18-24 inch, \$2.35.

**JUNEBERRY**

A very early blooming shrub, growing about four feet high. White flowers are followed by edible blue berries resembling huckleberries which ripen in late June. Birds are very fond of these berries. 2-3 ft., 75c.

**JAPANESE FLOWERING QUINCE**

An early blooming shrub, covered with clusters of orange-scarlet flowers, growing about three to four feet high. Bushy, dense dark shiny foliage. 18-24 inch, 75c.

## LILACS

### FRENCH HYBRID LILAC SEEDLING—

These are seedlings of the beautiful French Hybrid Lilacs with all the various colors. These are very bushy shrubs; just the thing for that screen of mixed color of Lilac beauty. **Assorted colors. 2-3 ft., \$1.00; 12 for \$11.00.**

### PERSIAN LILAC—

A decided improvement over the common Lilac. A shrub with slender, arching branches, attaining a height of 8 to 10 feet. The foliage is small, the flowers bright purple. Blooms in May and June. A much more profuse bloomer than the common and does not sprout from the roots. **2-3 ft., \$1.00; 3-4 ft., \$1.25; 12 for \$14.00.**

## FRENCH LILACS

### CHARLES JOLY—

Double. Purple-red. One of the best double dark reds. Bush medium both in size and height, limbs growing very upright. Rather large blooms, held erect well above the foliage, very striking. **18-24 inch, \$1.50; 2-3 ft., \$2.00.**

### PRES. GREVY—

Double. Light blue. Immense panicles; very double and symmetrical. A clear soft, delicate blue. One of the older sorts and still one of the most desirable. **2-3 ft., \$2.00.**

### PRES. CARNOT—

Double. Orchid pink. This Lilac bears enormous trusses of fully double, rosy lavender blossoms. The individual flowers are a beautiful late pink shade when fully matured. **2-3 ft., \$2.00; 3-4 ft., \$3.00.**

### PRES. LINCOLN—

Single. Light blue. This distinctive single Lilac comes as close to a true, blue color as any other variety known. It produces a heavy blossom and is best known for its unusual color. **2-3 ft., \$2.00; 3-4 ft., \$3.00.**

## COMMON SNOWBALL

Handsome white flowers are produced in great globular clusters. Has long been one of the most popular and showy varieties on our lists. **2-3 ft., \$1.50.**

## DWARF NINEBARK

One of the newer shrubs and is very desirable as a low massing shrub and makes a hardy dense hedge of low to medium height. **2-3 ft., \$1.00.**

## RUSSIAN OLIVE

10 to 12 feet. Its foliage is of a remarkable silver hue, showing up in striking contrast to the green of other shrubs and trees. Has fragrant yellow flowers. Very hardy. **18-24 inch, 50c; 2-3 ft., 75c.**

## SNOWBERRY

A valuable shrub in group plantings. Conspicuous because of the masses of snow white berries produced in September and remaining on the bushes into the winter months. Height 4 to 5 feet. Pink flowers in July. **18-24 inch, 85c; 2-3 ft., \$1.00; 3-4 ft., \$1.25.**

## TAMARIX (Hispidā)

Fine foliage producing a fernlike effect. Attains a height of 6 to 8 feet. Pink flowers in July and August. **2-3 ft., \$1.00.**

## BARBERRY

### THUNBERGI—

This low, spreading shrub is useful in foundation plantings, borders and hedges. The bright green leaves take on a splendid autumn coloring of gold and scarlet. The twiggy branches are set with small, sharp thorns and in spring are covered with small yellow flowers succeeded by brilliant scarlet berries. **12-15 inch, 50c; 15-18 inch, 60c; 18-24 inch, 75c.**

### RED-LEAVED—

Has rich, bright red foliage in spring that remains so during the summer if in full sun. Is unusually beautiful in fall with bronze and yellow of the foliage and abundant scarlet berries that persist through the winter. **15-18 inch, \$1.00; 18-24 inch, \$1.25.**

**Nursery is not open Sunday forenoons.**

# Shade and Ornamental Trees

For shade, shelter and lasting beauty about your home

## The Long-time Favorites for Lawn and Street Planting

1. To provide *shade* in the desired locations on the lawn and near buildings, at different times of the day.
2. To *frame* the home and its views.
3. To provide a *background* for gardens and buildings.
4. To *screen* undesirable views.
5. To *protect* from cold winter winds.
6. To provide *color* in flower, foliage or fruit.

### AMERICAN ELM—

America's noblest and most popular shade tree, large and spreading, combining strength and grace. One of the best lawn and boulevard trees—majestic, hardy, permanent. The prices are for well shaped specimen trees. The measurement in inches means the diameter of the tree just above the ground. **6-8 ft., \$2.00; 8-10 ft., \$4.00; 1½-1¾ inch caliper, \$5.00; 1¾-2 inch caliper, \$7.00; 2-2½ inch caliper, \$9.00.**

### BIRCH, Cut-Leaf Weeping—

We have always considered this one of the most graceful as well as among the most beautiful of all ornamental trees. It seems to fit in anywhere it is planted, and after it is once established its owner seems to love it as no other tree. A beautiful upright growing tree with long, slender, gracefully weeping branches. The leaves are delicately cut, the bark a brownish green at first gradually turning to a pure glistening white. **6-8 ft., \$5.00; 8-10 ft., \$7.00; 1½-2 inch, \$10.00.**

### GREEN ASH—

The hardiest of all the native trees. Useful for parks and streets, or for lawn planting. Shapely and handsome. **6-8 ft., \$2.00; 8-10 ft., \$4.00; 10-12 ft., \$5.00; 1¾-2 inch, \$6.00; 2-2½ inch, \$9.00.**

### MAPLE, Crimson King—

(Plant Patent No. 735.) This beautiful ornamental is a form of the Schwedler Maple that was selected in Europe for its brilliant crimson leaves. The color is retained throughout the summer. **6-7 ft. whips, \$6.00; 7-8 ft. whips, \$7.00.**

### MAPLE, Silver or Soft—

A good appearance and rapid growth make this tree very popular where an immediate effect is required. **6-8 ft., \$2.00; 8-10 ft., \$3.50; 1½-2 inch caliper, \$6.00; 2-2½ inch, \$8.00.**

### MAPLE, Hard or Sugar—

This is one of the most beautiful of shade or boulevard trees. It is stately in all seasons, but truly gorgeous in fall when its dense leaves are brilliant yellow, orange and scarlet. For beauty and permanence Hard Maple cannot be surpassed. **\$4.00 to \$12.00.**

### MAPLE NORWAY—

A handsome lawn and shade tree forming a perfect rounded head of broad, dark green leaves. Not as tall growing as the other maples. **8-10 ft., \$7.00.**

### SCHWEDLER'S MAPLE—

One of our most beautiful and colorful shade trees, famed for its beautiful red foliage in spring. As the leaves open up in the spring they take on a bright purplish or crimson color which later turns to a deep rich green frequently retaining a dark purplish tinge in the veining. **8-10 ft., \$7.00.**

**HACKBERRY—**

One of the fine trees for shade or boulevard planting. It grows quite rapidly, to a uniform shape. It is extremely hardy and develops strong crotches. An interesting tree as a specimen or in a background planting. **5-6 ft., \$1.50; 6-8 ft., \$1.75; 8-10 ft., \$3.00; 1-1½ inch caliper, \$5.00; 1½-2 inch caliper, \$7.00; 2-2½ inch caliper, \$9.00.**

**WHITE BIRCH—**

A beautiful, graceful, upright growing tree of medium size, famed for its striking white bark. Effective when planted singly or in groups. Clusters of three or four planted in one clump will give the most desirable and most naturalistic effect. **6-8 ft., \$3.75; 3 for \$11.00.**

**Clump Birch of 3 or more stems,  
6-7 ft., \$6.50.**

**MORaine LOCUST—**

(Plant Patent No. 836.) New seedless and thornless variety. Is a round headed tree when young but tall and vase-shaped when older. May be used as a graceful accent for informal lawn borders or background plantings, as a stately specimen shade tree or as a frame for a scenic vista. Hardy, fast growing and resistant to disease and insect damage. Needs very little care. The shape of the tree and the laciness of its compound leaves let sunlight filter through to encourage lawn grasses. **6-7 ft. whips, \$6.50.**

**MOUNTAIN ASH**

The combination of foliage and clustered fruits make this a very beautiful lawn tree. Bright red berries, white flowers. Used as specimen on the lawn or as an accent in the border. Grows 30 feet high. **5-6 ft., \$3.00; 7-8 ft., \$4.00; 1-1½ inch caliper, \$5.50.**



*Lombardy Poplars. Used as a screen between back yards.*

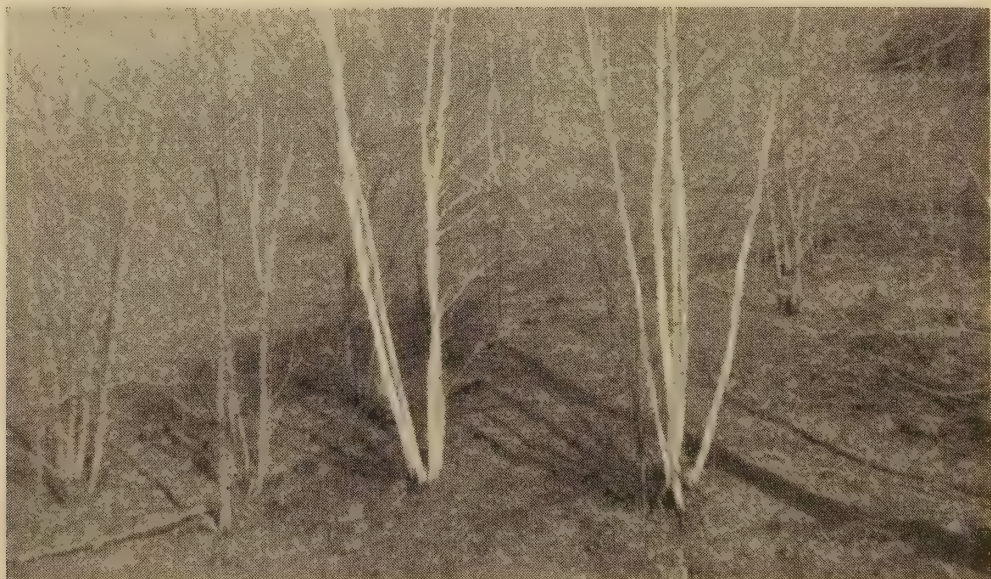
**LOMBARDY POPLAR—**

Tall, stately landscape tree for **accent points, quick screens, backgrounds and driveways.** Very picturesque and very useful. Has glossy leaves that **shimmer** in the sunlight. Branches grow close to trunk and upright to form a tall, slim column. Fast-growing and hardy.

	5 or more	
	Each	Each
5- 6 ft. ....	\$1.00	\$ .75
6- 8 ft. ....	1.25	1.00
8-10 ft. ....	1.75	1.50
10-12 ft. ....	2.00	1.75

**NIOBE WEEPING WILLOW—**

The golden Weeping Willow, the most beautiful in that species. Splendid as a lawn tree, for planting near pools or along the banks of streams. A graceful weeping tree with rich golden bark on trunk and along the long slender weeping branches. Hardest of all the Weeping Willows. Very beautiful in the winter because of its rich yellow bark, which makes it very conspicuous. Hardy here in Minnesota. **8-10 ft., \$2.25.**



*White Birch, as nature grows them. Many home grounds would be made more attractive by planting a clump of Birch.*

## Windbreak Trees

These evergreens have been transplanted several times, are grown with plenty of room and are well rooted.

They will not be taken from the ground until you come to get them and if any of them do not live it will be because you have not given them proper care so we are making these low prices on them with the understanding that we **do not replace any that may die.**

### BLACK HILLS SPRUCE—

#### PRICE EACH—BARE ROOT

	1	10	25	50 or more
18-24 inch .....	\$2.00	\$1.75	\$1.50	\$1.25
2-3 ft. ....	2.50	2.25	2.00	1.75

If planting an evergreen windbreak, prepare the ground as you would for corn, keep the roots of the evergreens wet from the time they are dug until they are planted, water them as you plant them, give them as thorough cultivation as you do your corn, and if we have an average rainfall you will not need to water them.

### DECIDUOUS TREES—

		100
Golden Willow .....	4-5 ft.	\$ 9.00
Golden Willow .....	3-4 ft.	8.00
Golden Willow .....	2-3 ft.	6.00
Laurel Leaf Willow .....	4-5 ft.	13.00
Laurel Leaf Willow .....	3-4 ft.	11.00
Laurel Leaf Willow .....	2-3 ft.	9.00
Norway Poplar .....	3-4 ft.	9.00
Lombardy Poplar .....	3-4 ft.	9.00

## Peat For Lawns and Gardens

Peat Humus mixed with sandy soil enables it to retain moisture, or if incorporated into a heavy clay soil will prevent it from becoming too sticky when wet or from baking brick-like during dry weather. A mulching on the surface holds the moisture in the soil and prevents injury to the roots from drought or severe freezing.

We have Peat Humus in the granulated form at **75c a bushel.**

## Climbing Vines

### CLEMATIS, JACKMANII—

Flowers, when fully expanded, are 4 to 6 inches in diameter, intense violet-purple, with a rich, velvety appearance distinctly veined. It blooms continually from July until cut off by frost. **Potted plants, that will bloom the first season, \$1.25 each.**

**Extra Heavy Plants, Ball & Burlap, \$2.00.**

**THESE PLANTS ARE NOT MAILABLE**

### BITTERSWEET—

Native climber, with handsome, glossy foliage. The flowers are not conspicuous, but the chief glory of the vine consists of the large clusters of beautiful, orange-crimson fruits, in quaint yellow husks, retained all winter. Bright in effect, its graceful sprays of berries are charming for winter house-decorations, and are used for draping doorways, mantels, and pictures. **2 year, \$1.00.**

### BOSTON IVY—

Used generally to cover walls, its fine shoots extending to the roofs of tall buildings. In the fall the leaves assume the most gorgeous and varied tints. The young leaves are quite distinct from those which are of older growth. The vine can be made to cling even to wood. The young plants require some covering in winter for a year or more. Not altogether hardy in Minnesota. **2 year, \$1.00.**

### ENGELMAN'S IVY—

This variety is a rapid grower, has beautiful dark green foliage, and in the fall gives a beautiful autumn effect, the leaves changing to almost crimson. It is used to great advantage on churches and large buildings of all kinds, to soften the hard stone and brick effects. **2 year, \$1.00.**

### SCARLET TRUMPET HONEYSUCKLE—

Hardest and most generally used variety. This bears during the summer clusters of scarlet, tubular flowers and is one of the freest and best varieties. Handsome in foliage and fruit. **2 year, \$1.00.**

### GOLDFLAME HONEYSUCKLE—

The large flame-coral trumpets lined with gold, fragrant after nightfall, appear in immense showy clusters the same year the plant is set out. Reaching its full glory of bloom in early summer, it nevertheless flowers abundantly from May until frost. The dark, blue-green foliage is attractive in itself and makes a perfect background for the brilliance of the flowers. Hardy in all parts of the country. Allowed to grow naturally. Goldflame will climb a trellis or spread as a ground cover; if pruned it becomes a striking specimen shrub. **2 year, \$1.00.**

## HYBRID TEA ROSES

### CHRISTOPHER STONE—

Vivid scarlet, free blooming, fragrant.

### CRIMSON GLORY—

Well known deep velvety crimson of merit.

### GARNETTE—

Comparatively new variety producing petite red sweetheart roses.

### ALAIN—

Bright carmine-red blooms come in clusters all over the densely branching plants; a good clear lasting color. Semi-double, with large, bright golden centers.

### NUMA FAY—

Large, well-shaped buds of pale orange-salmon shading to pale pink edges. Open flowers are pale salmon-pink.

### ECLIPSE—

Long streamlined bud, rich gold without shading.

### MRS. E. P. THORM—

Large, well-shaped, bright canary yellow.

### K. A. VIKTORIA—

Popular, snowy white, double.

### ENA HARKNESS—

Famous English award winner producing crimson-scarlet blooms. Holds color well.

### PICTURE—

Velvety-clear rose-pink with undertone of salmon. Very double.

### SOEUR THERESE—

Double blooms of rich yellow. Vigorous.

### PRES. HERBERT HOOVER—

Beautifully colored buds and blooms of yellow with pink and flame tints.

### McGREDY'S IVORY—

Large, well shaped, creamy-white; fragrant.

### F. K. DRUSCHKI—

Large pure white.

### CONDESA DE SASTAGO—

Deep coppery-pink inside, golden-yellow reverse, double.

## FLORIBUNDA ROSES

### POULSEN'S BEDDER—

Strong upright plant producing masses of big, slightly ruffled blooms of clear rich pink. Long lasting.

### FLORADORA—

Scarlet and geranium red floribunda producing double 25 petaled flowers.

**Prices of Hybrid Tea and Floribunda Roses—Started and Growing in Cloverset Pots, Sure to Bloom This Season—\$1.75 each.**

# Roses

## HARDY BUSH ROSES

### HARRISON YELLOW—

Is perhaps the best known and most common June bloomer. 5 to 6 feet tall, it is a perfect mass of bright yellow, double roses, 1 to 2 inches across, for several weeks in June.

### F. J. GROOTENDORST—

The beautiful effect of the many clusters of small, bright red Roses is familiar to many. Blooms almost continually. Compact, bushy growth.

### HANSA—

A large double, deep red Rose of pleasing fragrance. Foliage rich dark green. Bush is very hardy and is a splendid ornamental shrub. **Strong 2 yr. plants of the above varieties, \$1.25.**

## CLIMBING ROSES

### PAUL'S SCARLET CLIMBER—

The brightest and purest red of all the pillar roses. Vivid scarlet, shaded crimson, semi-double flowers in clusters, that retain their color till they fall. A vigorous grower with a profusion of blooms that remain for a long season. **2 yr., \$1.25.**

### BLAZE—

Hardy, vigorous climbing rose; recurrent bloomer, Scarlet Crimson flower. **2 yr. plants, \$1.25.**

# Fertilizer

## GRAS-GROER 8-8-6

A completely balanced plant food for lawns, shrubbery, flowers and trees. Contains more nitrogen than most fertilizers. **50 lbs. \$2.50; 100 lbs., \$4.75.**

## CASH AND CARRY

We are always glad to have our customers come to the nursery and make their own selections. It does not usually take long to assemble your order and we can pack most any ordinary order so you can carry it on your car. Our working hours: 7 a.m. until dark.

We make frequent deliveries to nearby towns—every day to Rochester—and can usually arrange to deliver any order that you cannot carry with you.

# Patented Roses

We supply these roses in potted, growing plants  
sure to bloom for you this season.

**RED HYBRID TEAS**

Chrysler Imperial .....	\$2.65
New Yorker .....	2.35
Nocturne .....	2.35

**PINK HYBRID TEAS**

Helen Traubel .....	\$2.65
Show Girl .....	2.35

**YELLOW HYBRID TEAS**

Mojave .....	\$2.75
Peace .....	2.65
Lowell Thomas .....	2.35

**WHITE HYBRID TEAS**

Sleigh Bells .....	\$2.35
--------------------	--------

**FLORIBUNDAS**

Independence—Red .....	\$2.25
World's Fair—Red .....	2.00
Jiminy Cricket—Red .....	2.50
Vogue—Cherry, Coral .....	2.35
Goldilocks—Yellow .....	2.00
Spartan—Burnt Orange .....	2.75
Circus—Multi Color .....	2.65

## Hedges—Beautiful As They Serve

Hedges give a finish that nothing else can give and serve as a fence as well. Whether it is used as a living wall of green, neatly trimmed and kept within bounds, or as a free growing row of shrubs which screen out unsightly views, there is nothing quite so satisfactory as a hedge. When little space is available, the hedge makes an ideal boundary planting. The hedge is decorative the year around and will add much to your lawn.

We are growing only the varieties of hedge plants that have been found to be very satisfactory for this territory.

**BUCKTHORN**

This not only makes a very ornamental hedge but is the best variety for protection as the branches are stiff and makes a stout hedge of any height from 2 to 10 feet. Our plants have been transplanted and twice cut back making them much superior to the seedling plants sold by some nurseries at a lower price. Plant 12 inches apart.

	10	100
3-4 ft., three or more stems .....	\$4.50	\$40.00

**ALPINE CURRANT**

Absolutely hardy, free from disease and insect pests, bright green foliage which remains on the plants until late in fall. Grows very bushy and is best variety for ornamental hedge from one to three feet in height. Plant fifteen inches apart.

	10	50
12-15 inch .....	\$ 7.00	\$30.00
15-18 inch .....	10.00	45.00
18-24 inch .....	12.50	60.00

**SPIREA VAN HOUTTE**

Often used as a sheared hedge but is especially adapted for use as a screen or snowbreak, planting them from 2 to 4 feet apart and allowing them to grow to their natural height of six to seven feet. 2-3 ft., \$10.00 per 25; 3-4 ft., \$15.00 per 25.

**HONEYSUCKLE**

**ZABELI RED—**

Sometimes used as sheared hedge, 4 to 6 feet high, but is unexcelled for a tall screen or border, growing 10 to 15 feet high.

	25	100
18-24 inch .....	\$ 8.00	\$24.00
2-3 ft. ....	10.00	35.00
3-4 ft. ....	20.00	
4-5 ft. ....	25.00	

**THUNBERG'S BARBERRY**

A graceful shrub becoming very beautiful in fall with its yellow and red leaves and red berries. Its dense growth and sharp briars make it a good hedge plant for protection from trespassers. Plant 12 to 18 inches apart.

	10	100
15-18 inch transplants .....	\$4.50	\$40.00
18-24 inch transplants .....	6.00	55.00

# Delicious Fruits

FOR YARD OR GARDEN

*Know the joy of harvesting your own fruit from your own place.  
Fruits are easy to grow.*

The planting of fruit trees and berry bushes in the home yard is a practical and worthwhile investment. The fruit trees not only give desirable shade, but further repay the planter for their modest cost by their beautiful masses of spring flowers and their yield of fruit. Years of experience in growing fruit in Minnesota permits us to recommend the following varieties as reliable and sturdy sorts for our Northern conditions. We welcome your inquiries as to fruit culture and care.

## Plums

## Currants

### UNDERWOOD—

The Underwood is valuable because of its large, early fruit and annual bearing. It is the earliest of the large Plums, attaining a size of 1¾ inches in diameter. Fruit is attractive red with splendid quality, small pit.

### SUPERIOR—

One of the very largest and very best of the Jumbo Plums originated by the Minnesota State Fruit Breeding Farm. The tree bears early and is a regular and heavy cropper. The fruit is very large, firm fleshed, beautiful red color and delicious quality to eat out of hand. Superior is one of the better Plums for home or for market.

### POLLENIZERS FOR MINNESOTA PLUMS—

It is necessary to plant one or two pollenizing Plums with any of the Minnesota hybrids in order to get good yields. It has been found that the Minnesota hybrids do not fertilize one another and we recommend the following varieties which will effectively pollenate the standard varieties.

### SOUTH DAKOTA POLLENIZER—

The best Plum pollenizer for our Minnesota hybrids. Sweet and tasty, it is a valuable addition to the home planting.

#### Prices of all Plum Trees

5-7 ft. ....\$1.90 each; 3 for \$5.40

### RED LAKE—

Originated recently at the Minnesota State Fruit Breeding Farm—finest of all Red Currants. The berry is unusually large in size and of superior quality; the clusters are long and filled out to the top, with stems sufficiently long to make picking easy. Berries are a clear light red and the quality excellent. The bush is vigorous, upright, and productive. Ripens early mid-season, but holds on over a long period so it can be used or marketed as desired. **2 yr. plants, 50c; 3 for \$1.30.**

## Gooseberries

### PIXWELL—

One of Professor Yeager's wonderful productions. A cross between a native wild selection and a high quality cultivated sort. The berries are very large. The plants are rapid growing and vigorous. A heavy bearer. Fruit on long stems and bushes sparse in thorns, hence they are easy to pick.

#### Gooseberry Prices

	1	3	6
2 yr. plants .....	\$ .85	\$2.40	\$4.20

## Replace Agreement

Any evergreens, except windbreak evergreens, that do not live through the first summer will be replaced at one-half price. All other trees, shrubs or perennial plants that do not live through the first summer will be replaced free of charge.



## 2 Great New Pie Cherries

### NORTHSTAR and METEOR — A PERFECT PAIR

Ripening about 2 weeks apart, you will have tree fresh cherries over a very long season. Plant some of each this spring—you'll have the best pie cherries that can be grown.

#### METEOR CHERRY—

Minnesota's new pie cherry, introduced by the University of Minnesota Fruit Breeding Farm. Tree is a strong vigorous upright grower, unusually large leaves which are resistant to leaf spot. The fruit is large to very large. Color clear light red, skin thin. The flavor is very good. Stone small and free.

#### NORTHSTAR CHERRY—

A cross between Serbian pie cherry and the regular English Morella which makes for one of the hardiest cherries, as well as a relatively small tree. Fruit is dark red at maturity, skin is medium tender, flesh is juicy, tender and meaty. The stone is small and free.

#### Prices of Northstar and Meteor Cherries—

4-5 ft., \$2.25 each; one of each variety \$4.00.

## Strawberries

Strawberries should always be planted in the spring, the earlier the better.

### EVERBEARING

The Everbearing varieties will bear the first season from August until hard freezing weather. Blossoms should be pinched off until the middle of July so plants may become established.

#### STREAMLINER—

The berries are large and a red color so bright they glisten as though varnished. Many think they are the sweetest of all Everbearers. It will bear this summer, starting 60 to 90 days after planting and continue until freezing. Next year it will produce a heavy spring crop and then besides you will get fruit during the summer and fall. It is such a vigorous grower that in rich soils it makes a lot of new plants. 12 plants, 90c; 25, \$1.75; 50, \$3.00; 100, \$5.50.

#### EVERMORE—

This was originated by the Minnesota Fruit Breeding Farm.

Big, luscious berries of fine flavor and good color — perfect for serving fresh, in shortcake, or for quick freezing. Plants are self-pollenizing and heavy yielding. 12 plants, 90c; 25, \$1.75; 50, \$3.00; 100, \$5.50.

#### RED RICH—Plant Patent No. 993—

This variety is highly recommended for its quality, size, productivity and plant-producing ability. Potted growing plants, 12, \$3.50; 25, \$7.00; 50, \$12.00; 100, \$20.00. These plants are not available.

### JUNE BEARING

#### DUNLAP—

June bearing. Mid-season. An old favorite. One of the best known and most widely grown strawberries in the north and eastern half of the United States. 25 plants, \$1.00; 50, \$1.50; 100, \$2.50; 200, \$4.50.

#### PREMIER—

Perhaps the most popular June bearer at the present time. Ripens very early, productive and hardy, also a fair to good plant maker. Berries bright red, fairly firm, of good quality. 25 plants, \$1.10; 50, \$1.75; 100, \$3.00; 200, \$5.00.

#### MINNESOTA—

Developed by the Minnesota Fruit Breeding Farm. One of the outstanding varieties; ripening one to two weeks earlier than most June bearing varieties. Their uniform size and long bearing of fine flavor and excellent quality make them a big favorite. You will like the Minnesota. Very hardy. 25 plants, \$1.10; 50, \$1.75; 100, \$3.00.

#### ROBINSON—

Ripens about ten days later than Premier and besides its other good points it is the largest strawberry known. 25 plants, \$1.10; 50, \$1.75; 100, \$3.00.

#### ARROWHEAD—

Very firm, extremely hardy, highest quality, very large, heavy bearer, good plant maker. 25 plants, \$1.10; 50, \$1.75; 100, \$3.00.

# Apples

## PRICES OF APPLE TREES

	Each	5	10
5-7 ft. ....	\$1.85	\$8.75	\$16.50

### ORIOLE—

When August rolls around do you crave a nice juicy apple? Then Oriole is for you. The earliest high quality apple we know. Good for pies, too. For that first apple, crisp, juicy Oriole is it. Very hardy.

### YELLOW TRANSPARENT—

Ripens about August 1st. Flesh juicy, tender and of fine flavor.

### DUCHESS—

A vigorous growing, hardy tree and heavy bearer. Fruit is large, greenish yellow, striped with red. The standard early apple for the northwest.

### BEACON—

The new Beacon is a fall apple, ripening with or a few days later than Duchess, and will keep for a month after harvest even without cold storage facilities. It is a highly colored, all-red variety—better eating than Duchess and is an excellent cooking apple. The tree is vigorous, productive, and very hardy. **The early season, the uniform size and shape, the high color and quality,** together with the keeping and handling quality so different from most early apples, makes Beacon the outstanding early apple for home or for market.

### WEALTHY—

The leading commercial variety for fall. In any orchard in this part of the country you will find Wealthy as the main variety. It is a great bearer, excellent for eating fresh or cooking. Fine grained and juicy. Ripens in September and is the best known and best liked of all fall varieties.

### LAKELAND—

This introduction from the Minnesota Fruit Breeding Farm is a **very regular annual bearer** and the fruit clings until solid red. It ripens immediately after Wealthy but keeps a little longer. The dessert quality is good, and it is excellent for cooking.

### MINJON—

An Apple closely resembling Jonathan in size, color and form. It is very hardy, very productive and ripens soon after Wealthy. Good eating and cooking quality. Rapidly becoming popular for commercial planting.

### McINTOSH—

Fruit above medium size, yellow covered with crimson, flesh snow white, crisp, very tender, aromatic and sub-acid. October to January.

### PRAIRIE SPY—

Prairie Spy is a big red apple with some green on it. An apple of the finest quality that will keep through the winter in an ordinary cellar. The tree is hardy here, a heavy bearer, and should be included in every home orchard and is undoubtedly one of the best varieties for the commercial orchard.

### FIRESIDE—

It has a richness of flavor and a mildness in acidity that will appeal to the many people who prefer highly flavored, non-tart fruits of the Delicious type. Fireside produces a strongly branched, large and free growing tree which gives evidence of being a consistent annual bearer. The fruit is large, averaging three inches or more in diameter. The color is a very bright, attractive medium red, lightly striped and splashed with a darker red. The flavor is a mild sub-acid, very rich and pleasant. The quality is unexcelled for dessert purposes. Season from November to April.

### NORTHWESTERN GREENING—

Fruit very large, and handsome; turning yellow as it matures. This apple is in good demand as a cooking apple in late winter and spring. A good commercial variety in the southeast third of Minnesota. Season December to March.

### MALINDA—

One of the hardiest, heaviest bearing longest keeping apples than can be grown here. The flesh is yellowish-white, firm, juicy and with a sweet after-taste.

### HARALSON—

**Its size, shape and color are just right for an ideal commercial Apple.** The tree is extremely vigorous, productive and hardy. The branches spring at wide angles from the central trunk and are very strong in the crotches. **The fruit will keep in an ordinary cellar throughout the winter** without artificial refrigeration. An early, heavy bearer. The fruit hangs well to the tree until matured, is a deep red and the flesh is firm. Is a leading market variety and keeps all winter. Is an all purpose apple and is excellent for pies.

### WHITNEY CRAB—

A large, red, mild flavored Crab, excellent for eating, canning, and pickles. Perfectly hardy, never blights and is a heavy cropper.

### DOLGO CRAB—

The best for jelly. Fruit is oblong, of real beauty and peculiar lemon-acid in flavor. Entirely different from any other crab apple and far superior for jellies, producing a transparent bright red jelly of high quality. The fruit is distinctly beautiful, borne in great profusion. Dolgo is a beautiful lawn tree, in addition to producing fruit of superior quality. It is a striking thing to see the masses of red fruit clustered along the branches.

# Raspberries



*Latham Raspberry*

Raspberries are at their best in the north central states. Plant your own and forget about the expense and difficulty of buying them on the market. They may be set out in the spring or fall. The plants should be 3 feet apart in the row and at a distance of 6 to 7 feet between rows. Raspberries produce big yields and sure profits.

## LATHAM—

Latham is the leading commercial and home variety. It is vigorous, easy to grow, a heavy producer, and hardy enough to stand sub-zero winters. The fruit is very large, dark red and firm; picks easily, keeps and ships well. Delicious eaten fresh, in sauce, jam, pies or shortcake. It has the qualities that make it the leading Red Raspberry of the day. **2 yr. No. 1 plants, 12 for \$2.50, 25 for \$3.85, 50 for \$7.00, 100 for \$12.00.**

### —EXTRA HEAVY PLANTS—

12 for \$2.75; 25 for \$4.75; 50 for \$8.50;  
100 for \$15.00.

## CUMBERLAND (BLACK)—

This is the most popular of the Black Raspberries. Fruit is large, firm and of good quality. **Tips, 12 for \$2.00, 25 for \$3.85, 50 for \$7.00, 100 for \$12.00.**

## OUR GUARANTEE

We guarantee our nursery stock to be true to name; if anything proves otherwise, we will replace it free with the genuine or refund the amount you paid for it.

**We Recommend VIGORO, the Complete Plant Food, to All Home Gardeners!**

## Grapes

### RED AMBER—

This is undoubtedly one of the best of the recent introductions of the Minnesota State Fruit Breeding Farm. A very fine, large, red Grape of exceptionally high quality. Perfectly hardy and need not be covered.

### BLUE JAY—

This grape has very compact, large clusters of berries, about the same size as Concord. They are dull black and covered with a bluish bloom. When first colored and apparently ripe, they are rather acid, but if allowed to remain on the vine for 10 to 14 days longer, they become mild and pleasing in flavor. Also good for making juice or jelly. This needs to be planted near some other variety that will furnish pollen.

### MOONBEAM—

This "white" Grape with a mild and sweet flavor is borne in medium sized clusters, but the berries are large. It is an excellent ornamental variety because the clean, attractive leaves are dark green above and silvery beneath. **Prices of Blue Jay, Red Amber and Moonbeam Grapes, 2 yr., 70c; 3 for \$1.85.**

### BETA GRAPE—

A heavy, annual bearer, hardy as the wild grape. Medium size black fruit of extra good quality for juice and jelly, and ripens so early that it can be grown far north. The Beta withstands our severe northern winters without protection. They may be grown on fences, over a building, or in a windmill tower and should bear heavily every year.

### FREDONIA—

The new outstanding, early black Grape. Fredonia is the earliest good black Grape. The vine is vigorous and productive and ripens its fruit 3 weeks earlier than Concord. Fruit is large, sweet and of good quality. **Prices of Beta and Fredonia grapes, 2 yr., 50c; 6 for \$2.50.**

## Rhubarb

Rhubarb is the cheapest pie and sauce material you can grow, and is also useful for jam, marmalade and juice.

If planted in a fertile soil you can cut large stalks the first summer. **Prices, 50c each; or two of each variety for \$1.80.**

### CHAPMAN'S CANADA RED—

Very sweet, tender, of fine flavor, with extra-large stalks, bright red all the way through, the red color extending even to the mid-rib of the leaf. Does not lose its bright color in cooking, and both sauce and pies are an appetizing cherry-red color.

### RUBY RED—

Another new Red Rhubarb introduced from Canada. The stalks are intensely red as the name implies—even the inside of the stalk is red. Rhubarb sauce made from Ruby is as red as strawberry sauce. The skin is so tender it can be cooked with the stalk.

## Asparagus

Asparagus produces more food than anything else you can grow in the same space—you can cut it every day from late April to the 20th of June. It is very easy to prepare for eating and nearly everyone is very fond of it. And frozen asparagus is as good as the fresh. We have learned to grow asparagus plants that are much superior to any we have seen from other nurseries. This year we have a good supply of three year old plants. **Plant the roots in deep rich soil, the crowns about four inches below the surface.** Use plenty of manure and keep out the quack grass and a patch will last many years.

Plant 12 roots for each member of the family.

### WASHINGTON ASPARAGUS—

	12	25	50	100
One year roots .....	\$ .80	\$1.40	\$2.50	\$4.00
Two year roots .....	1.10	2.00	3.50	5.50
Three year roots .....	1.50	2.75		



# Hardy Perennials

Perennials are becoming more and more popular with the increase in gardening. No home grounds are now completely planted without a border of these continuously blooming plants. If you plan carefully you can have flowers all year. For your selection there is listed here a wide variety of those dependable, hardy plants, that once established, assure you of a succession of blooms without the constant trouble of replanting.

**Prices of perennials, except as noted:  
40c each; 12 for \$4.00.**

## FALL BLOOMING ASTERS

### ADORABLE—

Best true pink hardy aster. Habit and growth are similar to Harrington Pink but color is slightly deeper salmon pink. **45c.**

### MOUNT EVEREST—

The finest and best white aster. It forms very tall, well-shaped pointed pyramids with an abundance of lateral growths, which flower right down to the ground. Makes wonderful bouquets as cut flowers. **45c.**

### BLUE GEM—

Large, lovely flowers of blue with a yellow center, best blue in cultivation. September until frost. 3 to 4 feet. **45c.**

### BEECHWOOD CHALLENGER—

This variety is in our opinion the closest to red we have been able to come so far in Hardy Asters. It is free-flowering, of medium height, and brilliant crimson-red color. Planted together with Mount Everest the contrast is striking. **45c.**

## COLUMBINE

Delicate flowers in many colors. Long spurred. June and July. 24 inches.

## CORAL BELLS

Low-growing, tufted, plants which bear a profusion of dainty coral-red flowers on long, slender stems. Blooms nearly all summer.

## GYPSOPHILA

### BRISTOL FAIRY—

A double Baby Breath of great vigor, producing large panicles of flowers and blooming more or less continuously all summer, if first blooms are cut. **75c.**

### ROSY VEIL—

A new dwarf pink double-flowering Gypsophila. Established plants reach a height of 2 feet and bloom in summer and fall. They start blooming 2 weeks earlier than the tall double Gypsophila and continue later in the season. Fit perfectly in the garden and are fine for cutting. **75c.**

## GAILLARDIA

Gay blooms with reddish-brown centers and yellow, daisy-like petals ringed with red. June to November. 18 to 24 inches. Fine for cutting.

## LYTHRUM

### PURPLE LOOSESTRIFE MORDENA—

This is a new Lythrum brought out by the Canadian Experimental Farm at Morden, Manitoba. We think it the best of all the Lythrum and a great improvement over the old types. Long upright growing stems just covered their length with little deep bright rose-pink flowers. This is a good one. Showy plants for moist, shady borders, and watersides. A very useful cut flower blooms nearly all summer. **Blooming size plants, 50c.**

## PYRETHRUM ROSEUM

### PAINTED DAISY—

Beautiful daisies of pink and red cover the plant in June. 2 feet.

## LILIES

### REGAL—

The large, trumpet-shaped flowers are snowy white, with a pure yellow center, while the exterior of the petals is slightly tinged pink. It is a strong grower, attaining the height of three or four feet. The flowers are beautiful, possessing a delightful fragrance. **Large bulbs, 30c.**

### ELEGANS—

The fiery-red blooms of this lily are borne in large clusters on medium height, stocky stems. Blooms profusely in June and July and is very hardy. **Large blooming size bulbs, 30c each.**

### DOUBLE TIGER—

Five feet. Produces an abundance of orange-scarlet flowers in August. Very hardy and vigorous. **Large bulbs, 30c each.**

### CORAL LILY—

2 feet. The brilliant coral-red flowers are borne in clusters of 5-15 on slender stems. Fine for rock garden or border. **Bulbs, 25c each.**

## Peonies

A few choice plants of Peonies will fill your garden with color and fragrance from late May through June. Even the rose cannot excel in beauty and charm the flowers of the modern Peony. Here, under our northern conditions, it is peer of all flowers in combining so well the qualities of absolute hardiness, great color variation, size, beauty and fragrance of bloom.

### BARONESS SCHROEDER—

Light pink tint, opening to pure white. Globe shaped. Late. \$1.00.

### EDULIS SUPERBA—

Bright mauve pink. Early. \$1.00.

### FELIX CROUSSE—

Brilliant red. Large globular flowers. Fragrant. \$1.00.

### FESTIVA MAXIMA—

Early and very large. White, with center flaked crimson. Splendid in every way. \$1.00.

### KARL ROSEFIELD—

Rich, glowing crimson. Immense, solid flower. Superb variety. Midseason. \$1.00.

### SARAH BERNHARDT—

Apple blossom pink, silver-tipped. Midseason. Fragrance. \$1.00.

## PLATYCODON

### BALLOON FLOWER—

Large, showy, balloon-shaped buds which open to star-shaped flowers. June to September.

## FERNS

### OSTRICH PLUME FERNS—

Fine for that shady corner. 25c each; \$2.50 per 12.

## BLEEDING HEART

### DIELYTRA SPECTABILIS—

Blooms May to June. Height 3 feet. Flowers pink and white, heart-shaped. 75c.

### D. EXIMIA—

Plumy Bleeding Heart. Finely cut, fern-like foliage with showy rose-colored flowers. Blooms all summer. Stands partial shade. Height, 18 inches. 75c.

## DELPHINIUM

### BELLADONNA—

The freest and most continuous blooming of all, never being out of flowers from the end of June until cut down by hard frost. The clear turquoise-blue of its flowers is not equalled for delicacy and beauty by any other flower.

### D. BELLAMOSA—

A free-blooming, dark blue type.

### BLACKMORE—LANGDON STRAIN—

A famous English strain. All the clear shades of blue, with bees of contrasting colors.

## Perennial Phlox

Field grown plants, 40c each;  
12 for \$4.00

### SUBULATA (CREEPING PHLOX)—

Blooms in May, when whole plant is a vivid mass of lavender-pink. Very bushy.

### AFRICA—

Brilliant carmine-red with a deep blood-red eye.

### RIJNSTROOM—

Lively shade of rose-pink, very large.

### R. P. STRUTHERS—

Tall. A bright rosy carmine with claret eye.

### PAINTED LADY—

Soft, silvery shaded salmon, bright-red eye. Large individual flowers. Free flowering.

### MARY LOUISE—

A good grower of medium height with clean foliage. Produces pure glistening snow-white heads of unusually large size, the individual flowers being twice as large as other white varieties.

### STARLIGHT—

A comparatively new Phlox. Deep violet fading to lilac, with a large, star-shaped white center. A good tall Phlox.

### BRIDESMAID—

White with crimson eye.

### ENCHANTRESS—

Bright salmon pink. Dark eye.

### SALMON GLOW—

Large florets of deep salmon.

## COREOPSIS

Large brilliant yellow flowers. Stems long, graceful. Blooms all summer. 2 feet.

## SHASTA DAISY

### ALASKA—

In July and August bears a great profusion of immense, gleaming white blooms, excellent for cutting. 18-24 inch.

### MOUNT SHASTA (Double)—

The pure white flowers are completely double and produced freely from June to October. They are of excellent lasting quality. The stems are about 18 inches high, very stiff, holding the heavy double pure white blooms upright. Excellent for the border as well as for cutting. 50c each.

PRICES OF PERENNIALS, unless noted  
otherwise, 40c each; 12 for \$4.00.

# Cutting's Quality Started Plants

## For Your Vegetable Garden

### NEW HYBRID TOMATO PLANTS—

In our tomato trial garden we find the hybrid varieties far superior to the standard kinds in quality, size and yield.

Bright red fruits, smooth, globular and free from cracks and blemishes. The walls are thick and interiors firm and meaty.

Faribo "E"—Early. Fordhook—Early. Burpee—Midseason. Clinton—Midseason. Big Boy—Midseason.

Hybrid Tomato Plants in Baskets  
(12 to Basket)  
12 for 75c

Plants in Pots  
15c each; 8 for \$1.00

### STANDARD TOMATO VARIETIES—

Break O'Day — Early. Firesteel — Early. Valiant—Early. Marglobe—Midseason. Rutgers—Midseason.

#### PLANTS IN FLATS

45c doz.; 100 for \$3.00

Plants in Pots  
10c each; 12 for \$1.00

	12	100
Cauliflower .....	\$ .50	\$
Early Cabbage .....	.40	3.00
Late Cabbage .....	.35	2.50
Celery .....	.40	
Egg Plant .....	.50	
Ground Cherry .....	.50	
Pepper, Sweet .....	.60	

If you want the above plants shipped by mail, please add 25% of the size of your order to pay for postage and wrapping.

## For Your Flower Garden

### Transplanted In Flats

	12	100
Alyssum .....	\$ .50	
Ageratum .....	.60	
Asters .....	.50	
Cleome .....	.60	
Pansies .....	.75	
Marigolds .....	\$ .50	
Snapdragons .....	.50	
Salvia .....	.60	
Zinnias .....	.50	

	Doz.	100
Petunias .....	\$ .50	\$3.25
Red, pink, white, purple, salmon, mixed.		

Petunias, Hybrids .....	.75
Silver Medal, medium salmon rose	
Brilliancy, cerise rose	
Fire Dance, scarlet with yellow throat	
Mixed	

### POTTED PLANTS

For Your Window Box,  
Porch Planter and Garden

Ageratum .....	\$ .15
Coleus .....	.15
Dwarf Dahlia .....	.10
Dracena .....	.90
Geranium .....	.75
Begonia, Small flowered .....	.35
Begonia, Tuberosa, large flowered, double .....	.75
Daisy, Yellow, white, small size .....	.15
Large size .....	.60
Petunia, Double .....	.25
Petunia, Ruffled .....	.25
Vinca Vine .....	.65
Asparagus Fern .....	.35

We fill cemetery vases for  
Memorial Day.

Nursery is not open Sunday forenoons.

## Landscape Service

If your home needs some trees, shrubs and evergreens and you do not know what to plant or how to arrange it, we want you to feel free to ask us to give you the benefit of our many years of experience in planning and planting home grounds. We will be glad to go to your home and assist you with your problems about foundation plantings, "out-door living rooms," and hedges.

We will tell you what you need and you will find that our prices are very reasonable and our stock of the highest grade. This service is free and places you under no obligation.

# Garden Chrysanthemums

## AUTUMN BEAUTY—

Immense, 4-inch flowers of bright mahogany shaded maroon, underlaid with gold. Very early.

## AUTUMN SONG—

Large wine-rose shading to carmine.

## CECIL BEED—

Splendid early, full double, deep lavender-pink. Very dependable and free flowering.

## CHARLES NYE—

Large fully-double, rounded flowers of rich buttercup yellow and firm substance.

## CHIPPEWA—

Very showy, giant 4 inch aster-like blooms from early September 'till frost.

## DRIFTED SNOW—

Snow white flowers with a slight yellow tint at center.

## DR. LONGLEY—

Very early, full double, bright rose-pink.

## EARLY HARVEST—

A mass of glowing mahogany-orange flowers. One of the very best early Mums and far superior to any cushion variety.

## GOLDEN HOURS—

The best popular early, deep lemon chrome.

## GOLDEN MOUND—

Excellent golden-yellow cushion.

## ORCHID HELEN—

Sturdy orchid-pink of unusual beauty and vigor.

## TRIBUTE—

Large, fully double flower opening bright daphne-red and maturing to daphne-pink.

## VIOLET—

Dr. Longley's newest purple. Full double dahlia-like bloom of good color and substance.

Above Varieties, 30c each, 4 for \$1.00.

## FOLDING BERRY BOXES

125 quart boxes, packed in one 16 qt. crate .....	\$ 2.50
500 quart boxes, packed in four 16 qt. crates .....	9.00
1000 quart boxes, packed in eight 16 qt. crates .....	17.50
200 pint boxes, packed in one 16 qt. crate .....	3.50
1000 pint boxes, packed in five 16 qt. crates .....	15.25

F.O.B. Byron

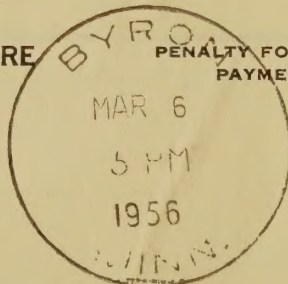
## CUTTING'S RELIABLE LAWN SEED

We mix our own lawn seed, using a formula developed as a result of experiments by the lawn specialist at University Farm, supplemented by our experience in making lawns in Minnesota.

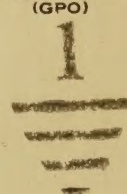
Our mixture contains Kentucky Blue Grass, Red Top, Perennial Rye Grass and White Clover. Use one pound to 250 square feet.

**CUTTING'S NURSERY is eight miles west of Rochester, on Highway 14.**

U. S. DEPARTMENT OF AGRICULTURE  
LIBRARY  
WASHINGTON 25, D. C.  
OFFICIAL BUSINESS  
PRINTED MATTER



PENALTY FOR PRIVATE USE TO AVOID  
PAYMENT OF POSTAGE, \$300  
(GPO)



Library, U. S. Dept. of Agriculture,  
WASHINGTON 25, D. C.