

62.41

ll

NORTH AMERICAN GLADS

FOR NORTH AMERICAN GARDENS

The Finest in the World

FOR 1956



LIBRARY
REC
★ FEB 20 1956 ★
U. S. Department of Agriculture

SALMON QUEEN

BRUCE COLLINS

8844 River Road

Utica, Michigan

FOREWORD

The summer of 1955 will long be remembered as the hottest, and driest season ever. In my area, we encountered 27 days during July alone, when the temperatures hit 95 degrees in the shade, which meant 220 degrees in the open field, and I tested it with a thermometer, and with a thermometer registering only 120 degrees, the heat broke the glass each day. You can well imagine what this did to plant life.

Irrigation was used, but only after the sun went down, and while it helped there is still nothing to compare with an occasional good rainfall. Some bloom was excellent, others did not perform up to par, making it an extremely difficult season to evaluate seedlings. However, many of the recent introductions performed very good, in spite of this most trying season.

In Whites: **Snow Clad** still leads the list, and is presently considered by most judges, the finest white glad in commerce. **Sierra Snow** would be second and old reliable **Florence Nightingale** third. **Whitecliffe**, **Mother Fischer** and **Angels Serenade** gave good performance also.

Whites with throat markings, which did especially well, would be **White Tower**, **White Sails** and **Barretts Beauty**.

Creams: Best performers for me, were the newie **Stalwart**, and **French Vanilla**. Older excellent performers are **Daybreak**, **Tahoe**, **Lilibet** and **Winona**.

Yellows: Still not much to beat **Forsythia**, **Gold Bond**, **Golden Diana**, **Sceptre**, **Ming Yellow** and **Golden Boy**. With these, you should be able to win at any show.

Reds: **Howard J. Warr** and **David Warr** lead the list, with **Red Mill**, **Royal Mounted**, and **Harrisburger** following closely. The new **Red Ryder** is a grand new one worthy of your consideration.

Pinks: **Loretta** and **Pink Harmony** lead the list, followed closely by **Palomar**, **Dorothy Margaret**, **Edith Warr**, **Pink Elegance**, **Salmon Queen** and **Rose Lustre**. A new one, **Coronation** should head the list when better known, a real knockout.

Rose: From the dark rose shades, such as **Burma**, **Roselyn**, **Great Day**, up through the medium rose, **Margery**, **Rose Queen**, **Rosannah**, **Avenger**, and **Elmer's Rose**, to the light rose, **Lori Dee**, and **Rosita**, we have perhaps the finest range of excellent glads in the entire category. Standouts for me were **Margery**, **Lori Dee**, **Great Day** and **Roselyn**.

Lavender: Old reliable, early **Henrietta** still hard to beat. **Orchid Mist**, **Bridal Orchid**, **Valda**, etc., are all fine.

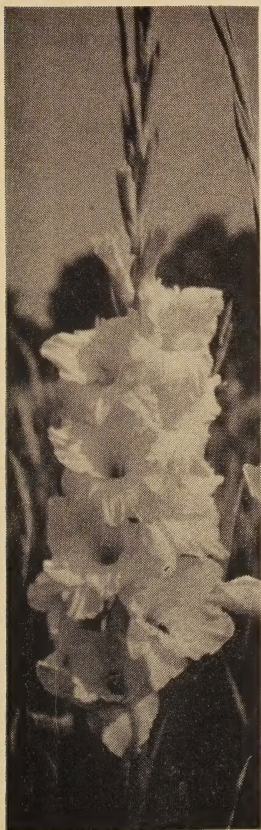
Orange: **Orange Flame** still leading the list, followed by **Mandalay**, **Forest Fire**, etc.

Blues: We are still looking for that real blue, but with **Crater Lake**, **Violet Charm**, **Hylda Prabel**, **Blueberry** and **Sailor Boy**, we have a pretty fine lot to choose from. The new **Blue Peter** is blue rather than **Violet**.

Bufs: Show me something better and easier to grow than **Peach Glow**. **Wax Canary** perhaps the finest exhibition buff.

Smokies: **Stormy Weather** still heads the list.

Purples: **Wonder Boy**, **King David**, **The Rajah** and **Sterling** are still tops.



ROSE QUEEN



BALMORAL

1956 Introductions

From J. W. Harris, Sarnia, Ontario:

BOUDOIR (542) A huge clean, clear, medium pink, with light cream throat. Grows 66" easily, with a 30" flowerhead, carrying 20 buds with 6 to 7 open, and 8 in color. Individual florets measure 6½" across, with extra heavy texture, ruffled, stands heat and drouth, perfect for either commercial or exhibition.

HEIDI (210) The perfect ruffled yellow miniature, with no throat marks. Grows 36", with 19 buds, carrying 8 open, balance in color and easily the best clear yellow miniature I have ever seen.

Because of the pricing of the All America Selections, we are pricing these two within range of everyone:

Any size corm \$1.00, 3 for \$2.50, 6 for \$4.75, with Blbts. at 10 for \$1.00.

From John Bastian, Grants Pass, Oregon:

RED RYDER (450) The finest medium brilliant red glad I have seen. Has won two awards of merit, scoring 87 at two major shows. Grows 56" with a 24" flowerhead, carrying 19 buds, which will open 8 with 8 in color. Ruffled, and heavy textured, and a perfect commercial red.

Also priced within reach of everyone, at \$1.00 each, 3 for \$2.50, 6 for \$4.75 with Blbts. at 10 for \$1.00.

From Mr. Murray, courtesy Sydney Mode, Vankleek Hill, Ont.:

CORONATION (440) Has been easily the finest pink gladiolus in my field on test for 3 seasons. We have tried to get stock for introduction but it was not sufficient until this season. Strong healthy grower, a pure, clear medium pink, with cream throat, ruffled and needle-pointed. Grows 50", with a 25" flowerhead, carrying 19 buds, which will open 7 with 8 in color. Silver Medal in 1951 and Gold Medal in 1952, at the Canadian Test Gardens, also Meritorious Award by NAGC for highest scoring glad in Canadian Test Grounds, scoring 92. Winner in seedling class at 1955 Canadian International Show.

Priced: L \$3.00, M \$2.00, S \$1.00; with 10 Blbts. for \$3.00 with the purchase of a bulb.

From Walter White, St. Therese, Quebec:

PARAGON (410) A clean clear light yellow sport of **IVY ROBERTSON**. Grows exactly the same as **IVY** but is clear yellow. Tall, straight, and excellent health.

Priced: L \$3.00, M \$2.00, S \$1.00, Blbts. 10 for \$3.00.

BLUE PETER (478) A very tall growing dark blue. Grows about 56", with a 25" flowerhead, carrying up to 25 buds with 8 open, and 10 in color. This is a deep blue, not a violet, and for that reason marks quite an advance in blue breeding. Best blue seedling, and champion seedling at 1955 Canadian Gladiolus Show, and several awards of merit.

Priced: Any size bulb \$5.00, 1 bulb and 10 Blbts. for \$10.00.

General Bulb List

- ACE OF SPADES** (454) The ace of black reds
Opens 6 nicely ruffled 5" florets on long flower-
heads. Sensational and very popular.
L .25; M 2 for .30; S 4 for .30; Blbts. 25 for .50
- ALLAH** (491) Huge, rich smoky or AOC. Ruffled
and needlepointed. Tall with 20" flowerheads and
8 open. A beauty.
L .75; M .50; S .25; Blbts. 10 for .75
- ANGEL'S SERENADE** (406) Intensely ruffled and
heavily textured pale cream. A thrilling 1955 in-
troduction by the originator of **Elizabeth the Queen**.
Good height with 22" head and 8 open.
L \$1.50; M \$1.00; S .50; Blbts. 2 for .25
- AVENGER** (452) Very deep, glistening rose red. Has
a pleasing and unusual inverted cream U in the
throat. Grows tall with 5" velvety florets and up
to 9 open on good stems.
L \$2.00; M \$1.50; S \$1.00; Blbts. 4 for \$1.00
- AYLMER GLORY** (460) Ruffled lavender with a rose
tint. Quite tall with 20" head and up to 8 open.
One of the finer commercial glads.
L .25; M .20; S 6 for .50; Blbts. Pkg. .25
- BALMORAL** (466) Ruffled and fluted rosy lavender
with creamy white throat. Tall with long flower-
heads and 8 open. An easy grower and good propa-
gator. A finer 1954 introduction.
L \$1.00; M .60; S .40; Blbts. 4 for .25
- BARRETT'S BEAUTY** (401) Intensely ruffled white
with purple lined throat. Long heads with 8 open
in good placement. A fine basket glad.
L .35; M .25; S .20; Blbts. 10 for .50
- BLACK CHERRY** (554) A giant black red with up
to 9 huge florets open. About 19 buds. A grand
show glad and a good bulb maker.
L .35; M .25; S .15; No Blbts.
- BLUEBERRY** (478) A tall, nicely ruffled medium
blue; almost self color with about 19 buds and 8
open. A good bulb maker.
L .75; M .50; S .35; Blbts. 10 for \$1.00
- BONNIE BRAE** (440) A beautiful blush pink. Plants
are tall, straight and have good placement. Excel-
lent commercial and good show glad.
L .25; M .20; S 6 for \$1.00; Blbts. Pkg. .15
- BRIDAL ORCHID** (566) A giant light lavender has
been a sensational show glad. Vigorous and robust.
Opens to 10 6" florets of 24 buds.
L .25; M .20; S 6 for .50; Blbts. Pkg. .25
- BURMA** (564) Lovely ruffled deep rose. Up to 8 large
wide open florets with the balance of the spike in
color. One of the best.
L 2 for .25; M 4 for .30; S 5 for .20; Blbts. Pkg. .25
- COCKADE** (371) Deep rose purple with creamy yel-
low throat and small crimson blotch. Average
height and 8 open on 24" head. No burn.
L \$1.00; M .75; S .50; Blbts. 4 for .25

- CRATER LAKE** (478) Large, deep violet blue with cream throat feather. Tall, with 20 buds and 8 open. Good texture and health.
L .75; M .50; S .25; Blbts. 10 for .75
- CUPID** (300) Waxy, ruffled white 3½" florets with 14 to 15 buds. A wonderful variety for arrangements.
L 2 for .25; M 4 for .30; S 5 for .20; Blbts. Pkg. .25
- DAVID WARR** (436) Ruffled orange scarlet, early and a rapid propagator. Popular for commercial or exhibition purposes. Don't miss this.
L .50; M .35; S .25; Blbts. 10 for .50
- DAYBREAK** (516) Beautiful cream and buff combination. Tall, with 22" head and 8 open. An outstanding commercial variety.
L .25; M .20; S 6 for .50; Blbts. Pkg. .25
- DIXIE ROSE** (464) Deep, velvety purplish rose. Tall, with long flowerheads and 7 or more open. A favorite early variety.
L .30; M .20; S 3 for .30; Blbts. 20 for .25
- DOLLY VARDEN** (533) Huge deep salmon with large, attractive cream throat. Opens 9 or more on husky spikes. A great exhibition glad.
L .20; M 2 for .30; S 2 for .20; Blbts. Pkg. .25
- DOROTHY MARGARET** (442) Ruffled medium pink with cream throat. Very tall. 8 open A grand commercial variety. Salable spikes from bulblets.
L .25; M .20; S 6 for .50; Blbts. Pkg. .25
- ELMER'S ROSE** (462) Heavily ruffled medium deep rose. Good texture. An excellent propagator and rated highly.
L 2 for .25; M 4 for .30; S 5 for .20
- EMBERGLOW** (430) Clear, medium light salmon. No throat markings. Very heavily ruffled. Tall, with 20 buds on 24" head. 8 or more open. This glad has 2 "A" ratings in NAGC Trials.
L \$1.50; M \$1.00; S .50; Blbts. 2 for .25
- EVENING STAR** (500) Intensely ruffled and frilled pure white with leathery texture. Tall with long heads and 8 or more 6" blooms open.
L .75; M .50; S .25; Blbts. 10 for .75
- FLORENCE NIGHTINGALE** (400) The top ranking general purpose white. Many times a Show Champion. Now being grown by the million for cutting.
L 2 for .25; M 4 for .30; S 5 for .20; Blbts. Pkg. .25
- FOREST FIRE** (420) Light orange with yellow throat. A tall, robust glad with 8 well placed bloom open. Fine for basket work or exhibition.
L \$1.00; M .75; S .25; Blbts. 10 for .75
- FORSYTHIA** (512) A giant chartreuse yellow with heavy texture. Ruffled and fluted. Tall, with long flowerheads of 20 buds and 8 open.
L .35; M .25; S 2 for .25; Blbts. 10 for .35
- FRASER** (432) Deep, heavily ruffled salmon with deeper throat. Tall, with 8 open on 22" flowerhead. A grand commercial or exhibition glad.
L .20; M .15; S 6 for .50; Blbts. Pkg. .25

FRENCH VANILLA (406) A grand medium deep cream, self color. Florets are heavily ruffled with 8 wide open on tall plants of 21 buds. A strong grower and excellent propagator. Try this "ice cream" beauty.

L \$2.00; M \$1.50; S \$1.00; Blbts. 4 for \$1.00

FRONTIER (530) A clear light salmon pink with a creamy throat, florets ruffled and heavy textured, a very excellent glad in every way.

L .75; M .50; S .25; Blbts. 10 for .50

GLORY (401) A lovely ruffled white with a small strawberry blotch, florets of heavy texture well-placed and attached on strong tall stems.

L .25; M .15; S .10; Blbts. 20 for .25

GOLD (412) A beautiful self-colored deep yellow, lovely well attached florets on tall strong stems, a very promising new variety.

L .20; M 2 for .25; S 3 for .25; Blbts. 20 for .25

GOLD BANK (410) An outstanding 1953 release, a beautiful medium yellow, heavily ruffled and needle-pointed, an early bloomer of excellent spikes.

L .25; M .20; S .15; Blbts. 10 for .20

GOLD BOND (510) A very tall strong growing clear light yellow, another very popular 1953 introduction.

L .50; M .35; S 2 for .30; Blbts. 10 for .50



LORI DEE



STALWART

GOLDEN BOY (312) A bright canary yellow, not large but produces ideal exhibition spikes, a very vigorous grower that already has a wonderful show record.

L \$1.00; M .75; S .50; Blbts. 5 for .25

GOLDEN DIANA (412) The new deep yellow which made such a hit, a beautiful rich clear color, good spikes on stems of moderate height.

L .50; M .35; S .25; Blbts. 10 for .25

GRACE DARLING (460) Very lovely light rose shading to a cream throat. Makes fine spikes in a color that will thrill you.

L 2 for .25; M 2 for .15; S 2 for .10; Blbts. Pkg. .50

GREAT DAY (466) A glorified **Elmer's Rose**, slightly deeper rose, heavy ruffled and needle pointed, grows 56" with a 24" flowerhead, 8 open.

L .75; M .50; S .25; Blbts. 20 for \$1.00

HARRIET (370) Lively, deep ruffled purple. Tall, and will open 7-8 4" bloom. Possibly the best in size and color. Numerous awards.

L .50; M .35; S .25; Blbts. 8 for .25

HARRISBURGER (552) The sensational red of 1953 introduction, a magnificent clear cherry red which produces grand blooms, very highly rated in trial gardens.

L .50; M .35; S .25; Blbts. 8 for .25c

HENRIETTA (467) A very early bloomer, lavender with a deep rose lavender throat blotch, excellent blooms on erect stems, one of the best early varieties.

L .25; M .20; S 2 for .30; Blbts. Pkg. .25

HOWARD J. WARR (552) Intensely brilliant deep cherry red. Grows tall with long flowerhead and 8 open. Heavily ruffled with extra heavy texture. This tops **Harrisburger** in my book. Don't miss it.

L \$2.00; M \$1.50; S \$1.00; Blbts. 5 for \$1.00

HYLDA PRABEL (477) Lovely light violet blue with slight cream throat and violet dart. Has a 22" flowerhead and 8 wide open florets. Opens from tight bud and stands heat and drought.

L \$2.00; M \$1.50; S \$1.00; Blbts. 4 for \$1.00

INTRIGUE (410) An exciting very deep cream, with light yellow center. Florets are frilled, fluted and recurved. Grows tall and carries 18 buds with 10 open. Firm attachment and heavy texture.

L \$1.50; M \$1.00; S .75; Blbts. 5 for .75

IVY ROBERTSON (440) Very tall growing cream with rose overcast. Has won as the tallest show spike. Grand spikes from bulblets.

L and M, 10 for .60; Blbts. Pkg. .25

JINNI MARIE (432) Heavily ruffled salmon pink with deeper throat. Opens to 10 florets on long spikes. Good propagator. Makes fine growth from bulblets.

L .20; M .15; S .10; Blbts. 25 for \$1.00; 100 for \$3.00

JITTERBUG (436) As lively as the name implies. Brilliant heavily ruffled scarlet with needlepointed petals. Tall. 24" head. 8 open.

L .25; M .20; S .15; Blbts. 25 for \$1.00

KAREN (465) A sensational 1952 release, a beautiful exhibition glad and a healthy easy grower. A magenta rose with a large yellow blotch, one we highly recommend.

L .75; M .50; S .30; Blbts. 10 for .50

KING DAVID (570) The super purple. Outstanding grower from bulblet to bulb. Robust, opening 10 heavily ruffled large, attractive florets.

L 2 for .30; M 2 for .20; S 4 for .25; Blbts. Pkg. .25

KING SIZE (531) Clear medium salmon in a jumbo size: immense well-proportioned exhibition spikes, already many wins to its credit.

L .50; M .35; S .25; Blbts. 10 for .50

LAVENDER LADY (379) Fine deep lavender purple with a trace of violet and a large cream throat. A beautiful blend of colors. Tall, with 8 open.

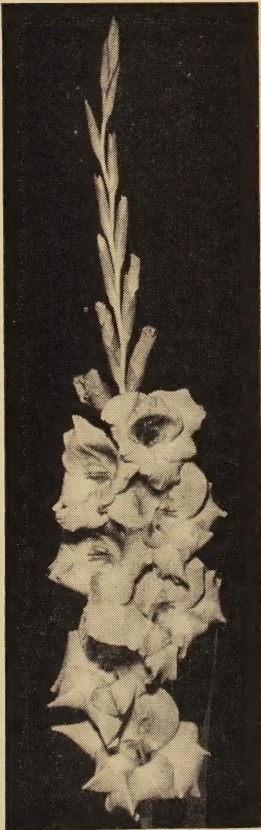
L .35; M .25; S .15; Blbts. 10 for .35

LAVENDER AND GOLD (366) Fine, early yellow throated lavender. Tall and wiry. A grand arrangement glad.

L 2 for .25; M 5 for .35; S 5 for .20; Blbts. Pkg. .25

LEAH GORHAM (450) Attractive light red, light throat. Tall strong plants with long heads. A good commercial and exhibition glad.

L .25; M .20; S .15; Blbts. Pkg. .25



HYLDA PRABEL



GOLD BANK

LILA WALLACE (464) Exquisite, medium sized velvety cerise rose. It will open 8 on an 18 bud spike and blooms readily from bulblets.

L 2 for .25; M 5 for .35; S 5 for .20; Blbts. Pkg. .25

LILLIBET (406) A new cream 1954 release very similar in color to Leif Ericson but not as large. Very good for the 400 class. A lovely glad indeed.

L \$1.50; M .75; S .25; Blbts. 6 for \$1.00

LORD ELGIN (452) A deep, heavily ruffled red with tough texture and good placement. A fine commercial variety.

L .30; M .20; S .15; Blbts. Pkg. .25

LORETTA (342) A masterpiece in clear flesh pink. Tall, straight, formal spikes and early. Unquestionably the finest glad in 342 class.

L \$1.00; M .75; S .50; Blbts. 10 for \$1.00

LORI DEE (460) The sensation in the light pinks. A 60" plant with 20 buds and up to 10 open. A very healthy, robust variety, grand for either exhibition or commercial use.

L \$1.00; M .75; S .50; Blbts. 10 for \$1.00

LYNEE HILL (462) A dandy rose purple with silver edged petals. Opens 7 or more. A very unusual color. Try it for sure.

L .30; M .20; S .15; Blbts. 20 for .50

MANDALAY (520) Immense florets of medium salmon orange with large cream throat, heavy textured, good facing and spacing.

L \$1.00; M .75; S .50; Blbts. 10 for \$1.00

MARDI GRAS (460) White with rose edging and flecking like a vivid intense Corona. Very flashy and already popular with many fans.

L .75; M .50; S .25; Blbts. 6 for .25

MARGERY (462)—Bright cerise rose with a deeper rose throat, a most beautiful and distinctive color. An excellent grower. Ideal plant habits.

L .50; M .35 S .25; Blbts. 10 for .50

MING YELLOW (412) An outstanding new commercial yellow; its attractive shade of a deep yellow self will make it very popular. A strong healthy grower.

L \$1.00; M .75; S .50; Blbts. 10 for \$1.00

MOTHER FISCHER (400) An outstanding white of 1951 introduction, a very vigorous healthy grower that should be in every collection.

L 2 for .30; 2 for .20; S 5 for .25; Blbts. Pkg. .25

ORANGE FLAME (420) Brilliant flame orange with clear yellow throat. Our best commercial and a strong exhibition glad. An early robust variety of good height. L \$1.00; M .75; S .50; Blbts. 10 for \$1.00

ORCHID MIST (467) Heavily ruffled deep rose lavender with lighter throat and distinctive lavender blotch. A grand cut-flower and very prolific.

L .20; M 3 for .25; S 6 for .25; Blbts. Pkg. .25

PALOMAR (442) A rival for Spic & Span for commercial use. A show winner also. Medium deep pink with big creamy white center. Tall, with up to 10 open. Very prolific and healthy.

L .75; M .50; S .25; Blbts. 10 for .75

PEACH GLOW (416) Tall, large orange buff with long flowerheads and heavy texture. A great show winner and a beautiful commercial glad.

L .20; M .15; S 2 for .20; Blbts. 25 for .15

PINK CHIFFON (440) Ruffled, lovely clear light orchid toned pink. Good texture and attachment. Outstanding.

L .25; M .20; S 2 for .30; Blbts. Pkg. .25

PINK CLASSIC (540) Heavily ruffled huge light pink overlaid deeper with lighter throat. Very fine.

L 2 for .35; M 2 for .25; S 4 for .30
Blbts. Pkg. .25

PINK DIAMOND (440) Very popular ruffled light pink producing fine exhibition spikes. One of the finest new ones.

L .50; M .35; S .25; Blbts. 10 for .50

PINK ELEGANCE (450) Lovely, ruffled and extra heavy textured LaFrance pink. One of the finest 1955 introductions. Winner of AHA medal at Quebec in 1954. Many other wins to its credit.

L \$2.00; M \$1.50; S \$1.00; Blbts. 3 for .50

PINK HARMONY (540) Early, marvelous pure pink with cream blotch. Tall, strong and vigorous. Long flowerheads. Grand in every way.

L \$1.00; M .75; S .50; Blbts. 5 for .50



AVENGER



SCEPTRE

- PRAIRIE SUNSET** (532) A huge salmon with a deeper throat, florets heavily ruffled on a very ruffled flowerhead, a very healthy vigorous variety.
L .20; M .15; Blbts. 25 for .25
- PRINCESS** (466) Fine rose lavender, deeper and taller than Elizabeth the Queen. This makes stunning exhibition spikes.
L .50; M .35; S .25; Blbts. 10 for .30
- PROSPECTOR** (410) Beautiful ruffled medium yellow with orange yellow throat. 8 to 10 florets open on a straight spike. Already won high awards.
L .60; M .40; S .25; Blbts. 10 for .50
- RED MILL** (452) A bright scarlet red with dark red markings, capable of producing exhibition blooms. Long flowerhead with many open.
L .75; M .50; S .25; Blbts. 10 for .75
- REVELATION** (436) A tall, large scarlet with deeper throat and many open. Excellent straight spikes. A promising all-purpose glad.
L .75; M .50; S .25; Blbts. 10 for .50
- RHETT BUTLER** (336) Bright flaming orange scarlet. Positively the earliest red. A valuable early cut-flower. A good propagator.
L 2 for .25; M 5 for .35; S 5 for .20
Blbts. Pkg. .25
- ROSANNAH** (563) A very tall, all-purpose, ruffled medium rose with long heads and 10 open. Fine bloom from all size bulbs. An enormous propagator and very healthy.
L .50; M .35; S .25; Blbts. 10 for .40
- ROSE GIRL** (360) Light rose with deeper rose center. Good height with 3½" florets and up to 8 open. Lovely indeed.
L .35; M .25; S 2 for .25; Blbts. 10 for .35
- ROSE LUSTRE** (532) Very tall rosy deep salmon with deeper blotch. Long heads with many open. Perfect facing and strong attachment on straight stems.
L \$1.50; M \$1.00; S .60; Blbts. 5 for .50
- ROSE QUEEN** (562) Ruffled lavender rose of heavy texture. Long heads and fine facing and spacing. A grand all-purpose glad. Recommended.
L \$1.00; M .75; S .50; Blbts. 5 for .50
- ROSELYN** (464) A beautiful ruffled deep rose of heavy texture, opens 8 well attached florets in excellent formal placement. Early, vigorous and healthy, one of the best.
L .35; M .25; S 2 for .30; Blbts. 10 for .25
- ROSIE O'GRADY** (462) A flashy medium rose, best described as a glorified Coutts Orchid, tall straight grower on willowy stems, should be an ideal basket glad.
L .75; M .50; S .25; Blbts. 10 for .75
- ROSITA** (563) A grand new rose, produces massive exhibition blooms, easy grower, excellent habits and one of the very best glads today.
L .40; M .30; S .20; Blbts. 10 for .25

ROYAL FLUSH (552) The sensational exhibition red. Tall and straight with long flowerheads and 6" florets. Will open 10 mammoth florets.

L .75; M .50; S .35; Blbts. 10 for .50

ROYAL MOUNTED (452) Nicely ruffled bright red with attractive brilliance. Tall, with 24" head and 8 open. One of the best 1955 introductions.

L \$2.00; M \$1.50; S \$1.00; Blbts. 5 for \$1.00

ROYAL TREAT (452) A deep blood red Burma seedling with velvety sheen and leathery texture. Tall and heavily ruffled.

L .25; M .15; S 3 for .25; Blbts. 25 for .15

SABLE (370) A ruffled purple "Burma" in the 300 size. Heavy texture. Average height with 8 or more open.

L .95; M .45; S .20; Blbts. 10 for .75

SAILOR BOY (476) Wavy medium blue with yellow center and blue spear. Tall, with a good flowerhead and 6 open. Excellent health.

L \$1.50; M \$1.00; S .50; Blbts. 2 for .25

SALMAN'S SENSATION (578) The best deep blue introduction. Opens 10 well attached florets on tall erect stems. Very highly rated.

L .50; M .35; S .25; Blbts. 10 for .25



PINK HARMONY



SIERRA SNOW

- SALMON QUEEN** (532) Tall, ruffled giant salmon with cream throat and many open. Grand champion at Montreal in 1954. Don't miss it.
L \$2.00; M \$1.50; S \$1.00; Blbts. 3 for .50
- SCEPTRE** (410) Medium self yellow. An exceedingly strong grower with heads of 36 inches. Many top awards to its credit already. Grand commercial prospects.
L \$1.50; M \$1.00; S .50; Blbts. 2 for .25
- SHIRLEY IRENE** (460) A popular soft rose with picotee edging. Tall, with about 8 open. It resembles Corona in color. Healthy and prolific.
L 2 for .25; M 3 for .25; S 6 for .25; Blbts. Pkg. .25
- SIERRA SNOW** (400) A new white, exceedingly tall, healthy robust grower, opening 10 to 12 florets of heavy texture and ruffling. Won highest exhibition honors.
L .20; M 2 for .25; S 3 for .25; Blbts. 20 for .25
- SNOWCLAD** (500) Sensational new white released in 1953 and best white in our field this season, pure white with a small cream blotch; very tall grower.
L .75; M .50; S .25; Blbts. 10 for .65
- STALWART** (506) Giant ruffled deep cream of heavy texture. Very tall with 28" head and 8 open. Erect foliage. Strong stems. One of the finest.
L \$2.00; M \$1.50; S \$1.00; Blbts. 4 for \$1.00
- STERLING** (469) A new color break. Phlox or lavender purple with rose throat mark. Average height. A grand all-purpose glad.
L 2 for .25; M 3 for .25; S 6 for .25
Blbts. Pkg. .25
- STORMY WEATHER** (480) The most popular smoky and a great show glad. A blending of lavender, rose and grey. Tall, with many open.
L 2 for .25; M 3 for .25; S 6 for .25
Blbts. Pkg. .25
- SUNDOWN** (532) Huge orange toned salmon with deep orange blotch. Produces immense exhibition blooms that dominate this class. Don't miss this variety.
L \$1.25; M .75; S .50; Blbts. 4 for .50
- SUNSET GOLD** (421) A light apricot orange with rose throat mark, a beautiful color, excellent spikes on tall erect stems. One of Australia's best releases.
L .25; M .20; S .15; Blbts. 20 for .25
- SWEETEST MAID** (430) About the most exotic glad in the garden. Heavily ruffled pure pink with deeper throat. Good height with 8 open.
L \$2.00; M \$1.50; S \$1.00; Blbts. 10 for \$2.00
- TAHOE** (406) Tall, straight and sturdy pure cream with fine placement. A sure-fire commercial glad.
L 3 for .25; M 4 for .25; S 6 for .25
Blbts. Pkg. .25
- THE CLOWN** (397) The first of the Raggedy Ann series. Unique and unusual. Cream with oddly placed brown blotches. Good height and 8 open. Try it.
L \$2.00; M \$1.50; S \$1.00; Blbts. .25 each

THE RAJAH (570) Very popular ruffled rich red purple. A tall, strong grower with heavy texture. 6 or more open.

L 2 for .30; M 2 for .20; S 4 for .25; Blbts. 40 for .25

TRULY FAIR (464) A very early "American Beauty" red. Very tall and nicely ruffled. Long flowerheads with 8 or more open.

L .50; M .35; S .25; Blbts. 10 for .25

VALDA (566) A truly lovely lavender rose. An easy grower with straight spikes on long flowerheads and 8 or more open.

L .25; M .20; S 3 for .20; Blbts. 10 for .25

VANITY FAIR (517) Tall growing ruffled blush pink with buff overlay. Long heads with many open. A beautiful glad for all purposes.

L .25; M .20; S 2 for .20; Blbts. 10 for .25

VIOLET CHARM (476) A grand light violet blue with cream throat and violet arrow. Strong, straight spikes. A great exhibition glad.

L .30; M 2 for .30; S 2 for .20; Blbts. 10 for .25

WAX CANARY (530) Light orange salmon with yellow lip petals. Petals are heavily ruffled, of strong substance and waxy texture. Very pretty.

L \$1.00; M .75; S .50; Bulbets 2 for .25, 10 for \$1.00

WEDDING DAY (...) Exotic, pure cup-shaped ruffled and fluted white. A masterpiece for use in wedding bouquets, makeup work and corsages.

L .25; M .20; S 3 for .25; Blbts. 10 for .25

WEDGEWOOD (366) Waxy, ruffled light lavender with cream throat. A very popular and artistic all-purpose variety.

L 2 for .25; M 4 for .30; S 5 for .20
Blbts. Pkg. .25

WHISTLESTOP (462) A grand medium rose of 1953 release, excellent habits and ideal blooms, bound to become very popular.

L .75; M .50; S .25; Blbts. 10 for .25

WHITECLIFFE (501) A mammoth pure white, well attached formal placed huge attractive florets, a tall stately grower, a very fine variety.

L .20; M .15; Blbts. 20 for .25

WHITE TOWER (501) An outstanding new blotched white, a sensational tall stately grower, florets pure white with a deep pink blotch, a leading favorite.

L .25; M .20; S .15; Blbts. 10 for .25

WILDFIRE (436) A very brilliant ruffled flame red, an attractive glad, a moderate grower and an early bloomer.

L .25; M .20; S .10; Blbts. 15 for .25

WINONA (406) A very ruffled cream with cerise throat darts. Our first variety to bloom, an excellent florist and basket variety which has won scores of ribbons.

L 2 for .25; M 3 for .25; S 6 for .25
Blbts. 50 for .25

WONDER BOY (470) The sensational new purple, a rich dark purple of very fine substance, produces magnificent exhibition blooms; one we highly recommend.

L .75; M .50; S .25; Blbts. 5 for .25

Small and Miniature Glads

ALECIA (200) A lovely round-flowered snow white; one of our favorite small glads. Stamens are creamy white also.

L .75; M .50; S .25; Bulblets 4 for .25, 10 for .50

ARIA (244) Charming deep pink with light throat. Opens 8 3" florets on tall 20-bud spikes.

L 2 for .20; M 4 for .30; S 5 for .20
Blbts. Pkg. .25

BABY BETTY (240) A taller and more refined Little Sweetheart. A very nice light pink.

L 2 for .20; M 4 for .30; S 5 for .20
Blbts. Pkg. .25

BONNIE PRINCE (262) About the prettiest small variety to date in the rose shades. Medium rose with slightly deeper markings.

L \$1.00, M .75; S .50; Bulblets 3 for .30, 10 for .75

BO PEEP (231) Ruffled rich buffy salmon, with beautiful Gloxinia throat. Beautiful and popular.

L 2 for .25; M 3 for .25; S 5 for .25
Blbts. Pkg. .25

EXQUISITE MIDGET (140) The smallest pink glad I have seen. Clean apple blossom pink $\frac{3}{4}$ to 1". Grows 16" tall with 8 buds and 4 open. Lovely for corsages.

L .25; M .20; S .15; No Bulblets

FADDIST (243) Medium pink with brilliant red throat markings. Very choice for corsages.

L 2 for .20; M 4 for .30; S 5 for .20
Blbts. Pkg. .25

GAILY CLAD (211) Another eye-catcher. This one is more of a chartreuse yellow with a darker red throat blotch. Very good.

L .35; M .25; S 2 for .25; Blbts. 10 for .25, 100 for 2.00

GREMLIN (251) Salmon scarlet or light red with attractive throat marks. A semi-face-up type.

L .25; M .20; S .15; Blbts. 20 for .25

LITTLE GOLD (220) A magnificent ruffled golden miniature of excellent substance, a sensational introduction.

L 2 for .25; M 4 for .30; S 5 for .20
Blbts. Pkg. .25

NADIA (231) Bright salmon upper petals and lower petals. Opens 6-8 with 15 buds.

L 2 for .20; M 4 for .30; S 5 for .20
Blbts. Pkg. .25

ORANGE BUTTERFLY (222) An old "stand-by" orange that makes tall wiry spikes with 8-10 open.

L 2 for .20; M 4 for .30; S 5 for .20
Blbts. Pkg. .25

PINOCCHIO (290) A novelty blend of orange, pink and yellow. Heavily ruffled and very choice.

L 2 for .25; M 3 for .30; S 4 for .25
Blbts. Pkg. .25

PIROUETTE (232) A tiny ruffled salmon, produces excellent decorative spikes, very easy grower and rapid propagator.

L .25; M .20; S .15; Blbts. 20 for .25

QUEEN OF BREMEN (268) Delightful lavender pink with light throat Grand for arrangements.

L 2 for .20; M 4 for .30; S 5 for .20
Blbts. Pkg. .25

SILVERSIDES (262) Bright deep rose with silvery reflexes. A graceful spike with unique color.

L 2 for .20; M 4 for .30; S 5 for .20
Blbts. Pkg. .25

STARLET (200) One of our favorites. Opens 5-6 airy white 3" bloom on tally wiry stems.

L 2 for .20; M 4 for .30; S 5 for .20
Blbts. Pkg. .25

TWINKLES (232) Ruffled scarlet with yellow throat. Tall, attractive and very popular.

L .20; M 2 for .30; S 3 for .25
Blbts. Pkg. .25

WHITE BUTTERFLY (200) White with soft cream throat. A dandy cut-flower and early.

L 2 for .20; M 4 for .30; S 5 for .20
Blbts. Pkg. .25

WHITE LACE (200) Immaculate snowy white with ivory throat. Waxy, and heavily frilled.

L 2 for .25; M 3 for .25; S 5 for .25
Blbts. Pkg. .25

WILL SCARLET (236) An "old timer" but still one of best true miniature scarlets.

L 2 for .20; M 4 for .30; S 5 for .20
Blbts. Pkg. .25

YELLOW BIRD (212) Undoubtedly the finest deep yellow miniature. Tall, with 8 open, straight, wiry spikes.

L 2 for .35; M 2 for .25; S 5 for .30
Blbts. Pkg. .25

Gosling's Dragons, Doubles and Decoratives

CRYSTRAUM: An ethreal lavender, tinted white of double parentage, useful in breeding for doubles. On occasion it doubles its florets.

L .35; M .25; S .20; Blbts. 10 for .50

DINOSAUR: This is variable, ranging from sprawling blossoms like **Grey Dragon**, to spurred double florets, color always in bright orangy pink.

L .35; M .25; S .15; Blbts. 10 for .35

FAIRY DRAGON: This dragon is the key to the fairyland of new shapes, forms and types of dragons. Usually it bears fine needle spurred cupped florets in lavender pink, but occasionally it produces creased and fluted petals.

L .20; M .15; S .10; Blbts. 10 for .25

GLORY DRAGON: A spurred sport of **Salman's Glory** with the same color and beauty. Tall, vigorous and a splendid seed setter.

L .75; M .50; S .25; Blbts. 10 for \$1.00

GREY DRAGON: Orchid type, with sprawling florets, folded and spurred, in lavender grey smoke. The oddest floret you ever saw, especially interesting in floral work.

L .25; M .20; S .15; Blbts. 10 for .25

MANYPETALS: A deep **Burma Rose** double. Tall, strong stems with 12 to 14 open. The multitude of petals are twisted and lacinated profusely. Large bulblets often bloom. Stock is limited so order early.

L \$3.00; M \$2.00; S \$1.00; Blbts. 4 for \$1.00

MOTHER DRAGON: A lightly spurred, long headed salmon pink "face-up," with ability to produce good seed. This, and **Fairy Dragon**, are the most satisfactory seed producers. Extremely limited stock.

L \$1.00; M .75; S .50; Blbts. 10 for \$1.00

MULTIPETAL: From Arthur Koerner's original stock. A many petalled double of dragon parentage, it produces a high percentage of doubles, when bred on to seed bearing dragons.

L .25; M .20; S .15; Blbts. 10 for .25

PETALS OF EIGHT: A short-headed yellow, usually having two extra petals per floret, giving it a peculiar density. Not a dragon.

L .25; M .20; S .15; Blbts. 10 for .25

PINK SPURS: An odd taller Dragon, with mottled spurred buds, which open to coral pink cups, facing up. A weird and haunting beauty.

L .25; M .20; S .15; Blbts. 10 for .25

RELUCTANT DRAGON: Next to **White Dragon**, this one is the most beautiful of the dragons. A beautifully ruffled and spurred "face-up," in salmon, with a yellow throat. Nice long flowerhead, 15 to 18 buds, holding 5 to 7 open. Another real gem in a novelty. Hybridizers please note. Limited stock.
L \$1.00; M .75; S .50; Blbts. 10 for \$1.00

ROSE ORCHID: Technically a glad, but more like an orchid. It carries 8 to 10 heavily lacinated, spurred and interlocking florets. Very unusual and a lovely corsage maker.
L \$1.50; M \$1.00; S .75; Blbts. 10 for \$1.50

SHAGGY DRAGON: A large bright salmon double. Not as double as **Carniola** or **Multipetal**, having 12 to 15 petals in cupped "face-ups."
L .25; M .20; S .15; Blbts. 10 for .25

The FAIRY GIANT: The giant of Dragons. 6 to 8 huge, hooded lavender florets with spurred petals and about 6 extruded, bristling buds above in perfect form. The florescence is huge and massive the plant should be staked.
L \$3.00; M \$2.00 S \$1.00; Blbts. 4 for \$1.00

TRUE PURPLE: A blue purple breeder of great value to the hybridizer looking for good blues. Makes good seeds, which grow to large seedlings in one season, giving a high percentage of healthy near blues. Another gem for you hybridizers.
L .50; M .35; S .25; Blbts. 20 for \$1.00

WHITE DRAGON: Globular creased and crinkled florets of heavy texture, in ivory white, with a pink dot in throat. Complex spurs on this clustered bloom, make it appear double, and a rare delight for arrangers.
L \$1.00; M .75; S .50; Blbts. 10 for \$1.00

Fragrant Varieties

By O. E. SPENCER

DARK FRAGRANCE (454) A grand ruffled maroon, carrying 19 buds, with 6 open, 5" florets. This is positively the first dark red fragrant glad. A really great discovery.

L \$2.00; M \$1.25; S .75; Blbts. 10 for \$2.00

PINK FRAGRANCE (340) Similar to **This Is It** in growth, form and fragrance, but a clear light pink with lighter throat. 4½" florets with 6 open on a 19-bud spike.

L \$1.00; M .60; S .40; Blbts. .15 each or 10 for \$1.00

PROGRESS (364) Ruffled rose red of medium height with 8 open on a 17-bud spike. It carries a definite rose fragrance.

L .75; M .50; S .25; Blbts. .15 or 10 for \$1.00

RED SCENT (436) A sister of **Dark Fragrance**. A brilliant scarlet which would be a fine glad without fragrance. 17 to 19 buds, with 6 open. Heavily ruffled. Excellent fragrance. Our first good red fragrant.

L \$2.00; M \$1.25; S .75; Blbts. 10 for \$2.00

SACHET (300) Ruffled pure white with medium sized florets that carry a nice persistent fragrance. It blooms nicely from any size bulbs.

L .50; M .30; S .20; Blbts. 10 for .50

SWEETIE (251) A new fragrant glad in a showy light red with a big white throat. 3" florets that are nicely ruffled. Will open 6 on a 14-16 bud spike. Dainty spikes from small bulbs that make lovely arrangements.

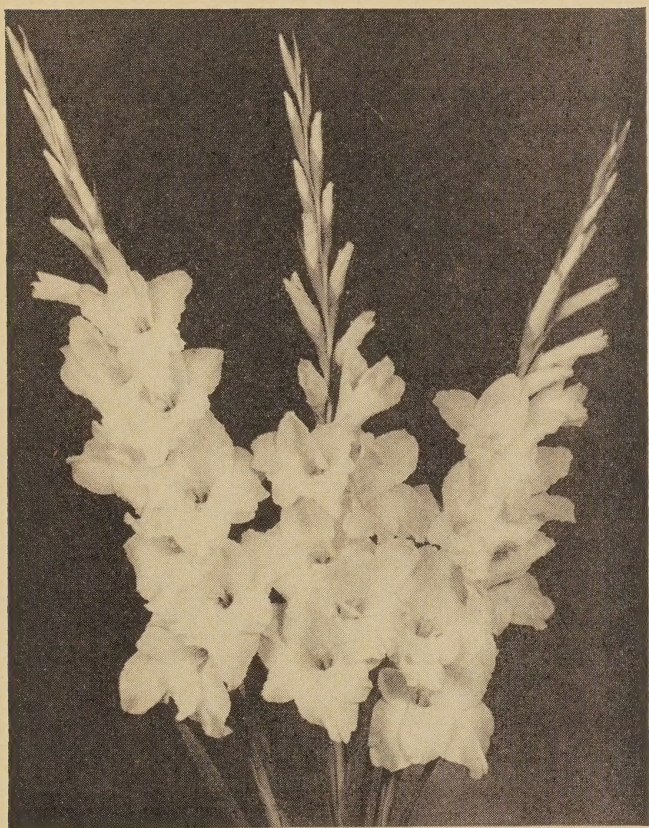
L \$1.00; M .60; S .40; Blbts. .15 each or 10 for \$1.00

THISISIT (432) Nice clean deep salmon with about six 4½" florets open. The fragrance is noticeable in newly opened florets; and when cut and opened inside.

L.20; M 2 for .25; S 3 for .25; Blbts. Pkg. .25

YELLOW ROSE (432) This is believed to be the most fragrant variety to date. A very fine variety aside from its fragrance for it opens 6 or more 5" nicely ruffled blooms on a tall straight stem.

L .75; M .50; S .25; Blbts. 10 for .75

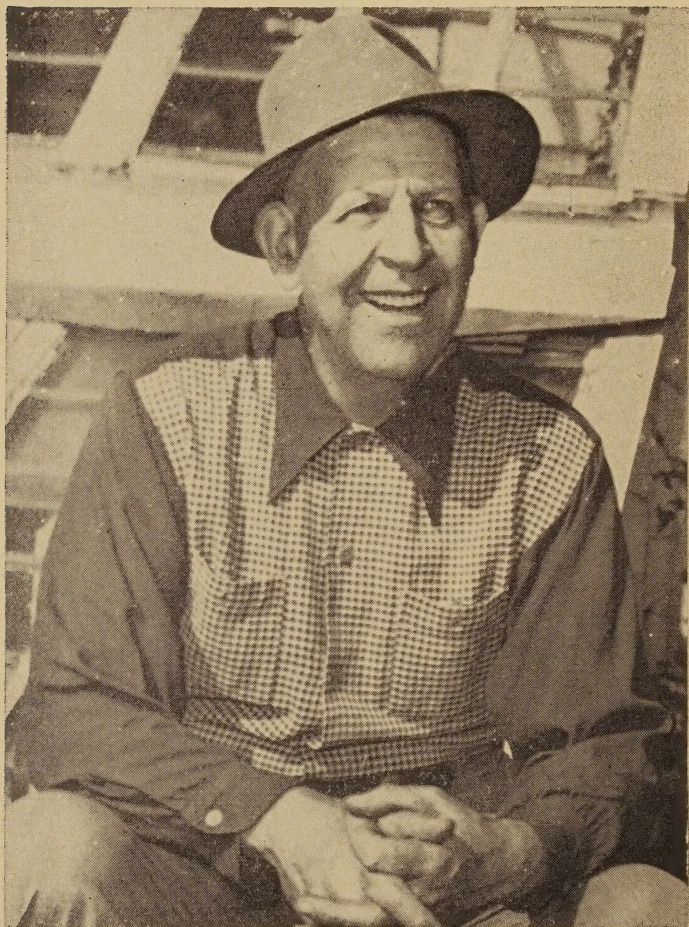


SNOW CLAD

North American Glads

LET'S GROW MORE IN 1956

Our Garden Gate Is Always Open



A Candid Shot of the Old Boy, Himself. So when he talks about 40 years of growing glads, you will know he isn't kidding—

BRUCE COLLINS

8844 River Road

Utica, Michigan

Your Handy Gladiolus Order Form

ORDERED FROM

BRUCE COLLINS

UTICA, MICHIGAN

Date

Name—
Mr., Mrs., or Miss

Street or R.F.D. No.

Post Office State

Express Office When?
(If different from Post Office)

Check M. O. \$

NOTE: Order accepted by Bruce Collins subject to stock, and subject to being filled in numerical sequence.

Qty.	Size	Variety Name	Rate	Amount
1.				
2.				
3.				
4.				
5.				
6.				
7.				
8.				
9.				
10.				
11.				
12.				
13.				
14.				
15.				
16.				
17.				
18.				

Qty.	Size	Variety Name	Rate	Amount
19.				
20.				
21.				
22.				
23.				
24.				
25.				
26.				
27.				
28.				
29.				
30.				
31.				
32.				
33.				
34.				
35.				
36.				
37.				
38.				
39.				
40.				
41.				
42.				
43.				
44.				
45.				
46.				
47.				
48.				

TOTAL

NOTE: Bruce Collins will refund the purchase price on any order found unsatisfactory upon receipt, and promptly returned; but no guarantee of growth or satisfaction is given; responsibility for crop is denied.