

FIELD PLANT FARM

LIBRARY
K...
★ FEB 23 1956
U. S. Department of Agriculture



1956

Phone Ulysses 7-0034

Farms Barnsboro

P.O. Sewell, New Jersey

TO OUR FRIENDS AND CUSTOMERS

Our 42nd. anniversary in plant growing. And we want our friends and customers to know that we will continue to do our best to keep our advertisement. Satisfaction is the best Seller, our main thought when filling your orders. Many of you we thank for your past patronage.

We hope to continue serving you and new customers may be assured of the same reliable service.

Very truly yours

FIELD PLANT FARM

INSTRUCTIONS

TIME TO ORDER *As soon as possible after receiving this catalogue. That is particularly so with berry plants. We can reserve the variety you want and ship as early in the spring as it is possible for you to prepare the ground for them. This is the first important step toward a successful berry patch. When planting in the early spring you are certain of getting a good stand without watering and nursing them along, which is often required later in the season when it becomes hot and dry.*

ALL OUR PLANTS ARE FRESHLY DUG: Packed in light ventilated crates, with plenty of damp moss and shipped promptly, guaranteed to reach you in good condition. Should they arrive in poor condition which might happen through delay in transit or some cause beyond our control, accept the plants and have your Express Agent or Postman make note of same. Advise us at once date of arrival and we will make good all just claims, when made on receipt of goods.

GUARANTEE

We guarantee our stock to be true to name and free from disease. We use every precaution to keep it so (and have been successful in our attempt.) Should our order arrive incorrect due to any error of ours we will gladly make replacement or refund providing you notify us upon receipt of same. In no case will we be responsible for any greater amount than the purchase price of stock.

PAYMENT should be made to the Field Plant Farm by Money Order, Bank Draft or Personal Check. However we will reserve your order for a deposit of one fourth of the total amount. The balance can be paid before shipment or will ship balance C. O. D.

STATE OF NEW JERSEY DEPARTMENT OF AGRICULTURE TRENTON

No 495

Trenton, N.J.

September 9 1955

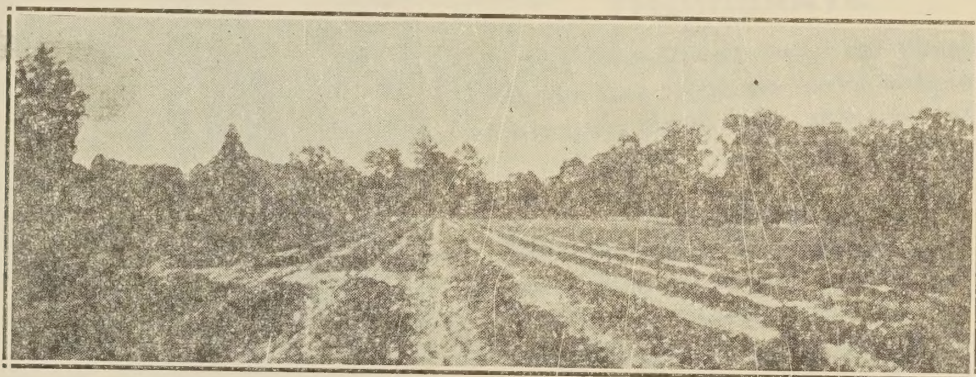
THIS IS TO CERTIFY that we have this 30th. day of August, 1955, in accordance with the provisions of Title 2, Chapter 7 of the Revised Statutes of the State of New Jersey, as amended by Charter 111, P. L. 1941 caused to be inspected by a duly appointed inspector the nursery stock growing in the Field Plant nursery of K. & E. Field proprietor, at Barnsboro, in Gloucester County, New Jersey, and have found same apparently free from San Jose scale, and other dangerously injurious insect pest and destructive plant diseases.

This certificate expires Sept. 1st, 1956, and covers only stock in nursery when examined.

HARRY B. WEISS Chief, Bureau of plant Industry. **W. H. ALLEN** Secretary of Agriculture.

Take Notice

STRAWBERRY PLANTS are in fair supply this year. It will be advisable to make a second choice when ordering as it will save both you and I time if we should be out of one variety that you order. All our berry plants have been inspected for the red Stele disease by the New Jersey Department of Agriculture. We will ship berry plants until May 20th.



A field of our STRAWBERRY PLANTS

VARIETIES of STRAWBERRIES

✓ **AMBROSIA:** Late. Considered by many to be the largest, latest and best strawberry introduced. The berries are very large, semi-pointed, rich red in color and delicious flavor. Ripens 3 weeks later than Premier. Fruit stems are very rigid holding fruit up from the ground which helps to keep it clean.

✓ **SPARKLE:** Midseason. It makes a good plant bed of medium size plants with dark green foliage, very disease resistant and has a long picking season. The berries are medium to large in size and a glossy bright red in color, with real green calyx. Very good for the quick freeze.

✓ **BLAKEMORE:** Early. A good early variety that has been thoroughly tested. It is a vigorous grower, making plenty of good strong plants. Berries are larger than the average extra early variety, bright red in color, good flavor and a firm flesh, making it a good commercial berry.

✓ **PATHFINDER:** The result of a cross between Premier and Aberdeen, very vigorous in plant growth, making a sufficient number of plants for a good fruiting bed, also very resistant to plant diseases. Will produce a large crop of fruit medium to large in size, uniformly smooth and regular in shape, good flavor and moderately firm flesh.

✓ **PREMIER;** (or Howard No. 17) Early. This is one variety sold under either name. Size medium to large, good color and a firm berry, plants are vigorous making good beds and more resistant to frost than other varieties, you can not go wrong on them.

✓ **SUCCESS:** Medium Early. An old reliable that we still recommend for the home garden. It makes good strong plants and plenty of them to form a good fruiting bed. The fruit is extra large, excellent flavor and has a long picking season, in fact all any one could desire in a home berry or near by market. It is not a good shipper.

✓ **FAIRPEAKE:** Late. A cross between Fairfax and Chesapeake, excellent flavor, plants are vigorous, resistant to disease, makes moderate number of plants. Berries medium to large, rich red with dark green caps, good and sweet.

STRAWBERRY PLANTS

FAIRFAX

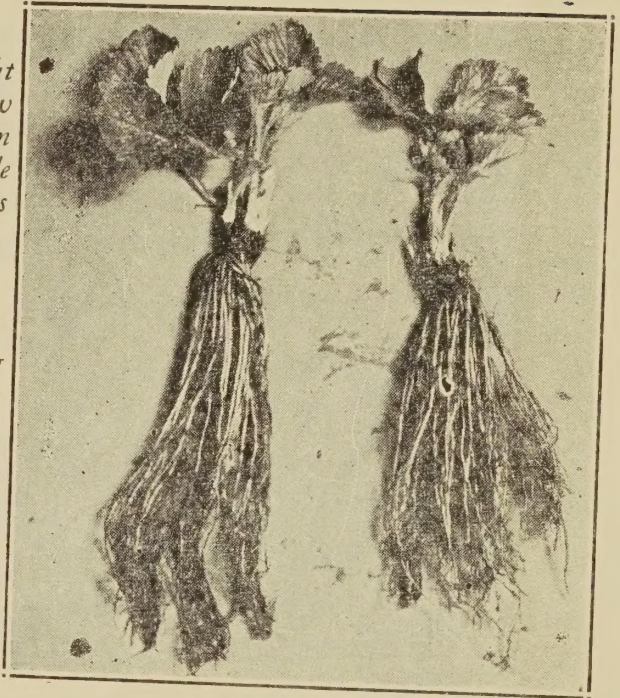
The fruit is large, rich red in color with bright green caps, best of flavor. It starts picking a few days after the Premier. It is exceptionally firm and stands distant shipping well, also desirable for the home garden or the road side market as it has the appearance and quality.

STARBRIGHT

The plants are vigorous and healthy with strong crown. The berries are large, hold well through the fruiting season, with bright glossy red color. Very firm and high quality late berry.

CATSKILL

A midseason variety popular with many growers. It makes plenty of good strong plants, a heavy producer of large berries of good quality, light red in color, with a large green calix making it very attractive and sells well in the market.



FAIRFAX PLANTS

DORSETT

This berry has become a favorite with many growers. It ripens with Premier, makes a vigorous growth of foliage, not as large a plant as the Fairfax but makes them more freely often requiring thinning and spacing.

The fruit is large bright glossy red in color, good flavor and a firm texture, making it a good all around berry for the market or the home garden.

ABERDEEN

This variety outyields all others under favorable conditions. The fruit averages large throughout the season, a bright shiny red in color, uniform in size and shape and has a beautiful green calix that adds much to its appearance.

GANDY. Per. Late—The latest of all summer varieties, plants strong and vigorous, berries extremely large and extra firm and good color. Not considered the best table berry but being extra fancy and a good shipper it is a profitable commercial variety.

LUPTON. Per. Late—This berry originated in South Jersey and has become very popular, it makes extra large plants and a sufficient number to form a good fruiting bed. It is a handsome berry of excellent quality and we can recommend it, either for commercial planting or the home garden.

BIG JOE. Per. Mid-Season—An extra large berry, coloring all over alike, the texture is one of the best, giving it excellent shipping qualities, making it a favorite with many growers.

WM. BELT. Per. Midseason—The best yet of its season. Plants vigorous and prolific, fruit, medium to large, the best of all flavors, most perfect in shape, brilliant glossy red and ripens all over alike.

STRAWBERRY PLANTS

31

ROBINSON

A midseason variety, also known as Scarlet Beauty, berries are medium to large, firm and a bright red in color with green calix. It makes a good fruiting bed and pick about one week after Premier.

TEMPLE

The berries are large, blunt cone shape, smooth, uniform and have large attractive caps. The foliage is quite tall and resistant to the leaf scorch disease. It makes a good bed and picks almost as early as the Blakemore.

FAIRLAND

A good midseason variety. It is highly productive, picking a few days after the Premier. The berry is firm, red and compares with Premier in size. The plants are vigorous and it makes a good fruiting bed.



Bunch of MASTODON Plants

Everbearing Varieties

The everbearing has many advantages over the summer varieties. If planted in the spring they will produce a crop of fruit in the late summer and fall of the same year they are planted. The buds should be removed until the last of July so they will become thoroughly rooted before bearing.

They will produce fruit until freezing weather and you will have your fruiting bed for another year.

Another great advantage is, if you have a late freeze the everbearing will produce another set of bloom, you pick your crop of berries just a little later than usual.

MASTODON

We believe this variety to still be the leader in everbearing strawberries, very vigorous plant growth making a limited number of exceptionally large plants. The fruit is large, of good quality and attractive in appearance. The one variety that will grow most anywhere.

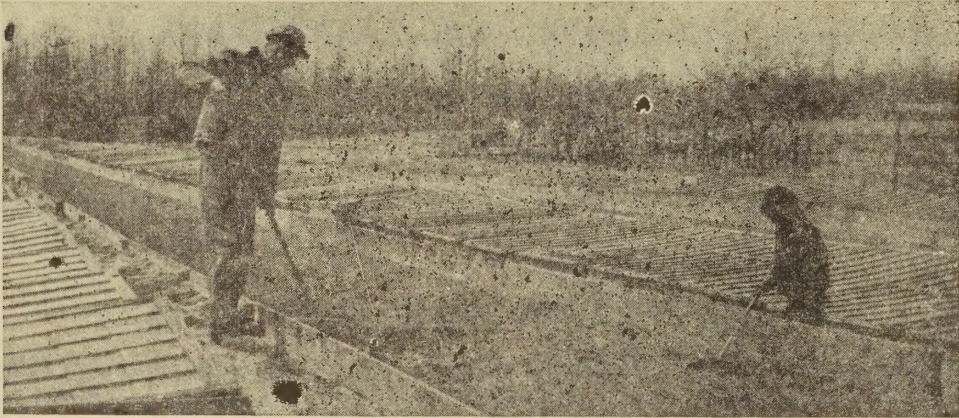
GEM

This everbearing variety has become very popular. The plant is medium in size and a vigorous grower. It is very productive, fruit medium to large, light red in color and very firm in texture holding up well.

STREAMLINER

This variety continues to enjoy great popularity. Berries are large bright red, of excellent quality. They do not set plants as freely as other varieties.

VEGETABLE PLANTS



PREPARING COLDFRAMES

CABBAGE

Yellow Resistant Strains

We are offering the best that can be produced in cabbage plants, using seed of the yellow resistant strains. The disease has spread continuously over the country. In fact so severe in some sections that cabbage growing had been discontinued, until intensive investigation had revealed the fact that this disease could be controlled. Today they are growing the finest kind of cabbage crops on the same land, by using this seed from yellow resistant strains.

For best results, use our plants grown from the original seed of the yellow resistant strains. Jersey Queen, Wis. Golden Acre, Marion Market, Globe, Wis. All Seasons, Wis. Ballhead. Hollander 8, Red Hollander. Flat Dutch and Savoy.

Early Cabbage Plants

The first lot of cabbage plants we have to offer are the drilled plants from the coldframes which are usually ready by the 20th. of April. We will have Jersey Queen, Golden Acre and Marion Market.

Field Grown Cabbage

Cabbage seed is sown in the open field in the month of March. These plants will be ready to ship in early May. We make continuous sowings to have a good supply on hand throughout the season. You will notice a lower price on the field grown plants as the cost of producing them is less when growing them in the open field.

TOMATO

Early Tomato Plants

Our first supply of tomato plants will be the transplanted plants from the coldframes, which are ready after May 5th. The next are the drilled plants from the coldframes. They are ready about May 15th. at a much lower rate. We will have the following varieties in the coldframes. Valient, Rutgers, Marglobe and Stokesdale.

Field Grown Tomato Plants

The main crop of tomato plants is sown in the open field. They are drilled thin so as to make good strong plants about eight to ten inches high. They will be ready about June first. We will make several sowings to keep a good supply on hand through the entire season.

You will notice that the price is lower on these plants owing to the lower cost of producing them in the open field.

We will grow the following varieties. John Baer, Marglobe, Garden State, Rutgers, Stokesdale, Red Plum and Yellow Egg.

Broccoli, Brussel Sprouts, Lettuce and Beet Plants

Our first supply of these vegetable plants are the drilled plants from the coldframes. They are ready after the middle of April. After the middle of May we can fill orders from the field grown plants at a lower rate. We will grow the following varieties. Lettuce: Big Boston, Romaine, New York and Iceberg. Beet: Early Egyptian and Detroit Dark Red. Brussel Sprouts: Long Island Imp. Broccoli: Calabrese Imp.

Cauliflower

The first lot we will have to offer will be the drilled plants from the coldframes. They are ready about the middle of April. After the middle of May we can fill orders from the field grown plants. We will grow Early Snowball and Dwarf Erfurt.

Sweet Potato

We will have a good supply of Sweet Potatoe plants and will be prepared to fill orders any time after the first week of May. We will grow the following varieties. Upriver and Kelly which are yellow, Jersey Red and Yams.

Egg Plant

Egg Plant are more difficult to grow than other plants. It requires much more care and extra warmth to grow them. In fact they should not be set in the ground until the weather becomes quite pleasant. Varieties: Black Beauty and Florida High Bush.

Pepper

Pepper plants are grown in coldframes only, as field grown plants would be entirely too late to be of any use. The transplanted pepper plants will be ready by May 15th. and the drilled plants by May 25th. at a much lower rate. Varieties: Ruby King, Ruby Giant, World Beater, California Wonder, Yolo, Cheese Pepper, Long Hot and Cherry Hot.

PREPAID Price List of Strawberry and Vegetable Plants
Two hundred plants of one item at half the five hundred rate

Strawberry Plants	25	100	500	1000	5000
<i>Blakemore</i>	\$1.25	\$3.10	\$10.50	\$16.50	\$80.00
<i>Success</i>	1.45	3.50	12.00	18.50	87.50
<i>Premier</i>	1.45	3.50	12.00	18.50	87.50
<i>Catskill</i>	1.45	3.75	12.70	19.00	90.00
<i>Dorsett</i>	1.45	3.75	12.40	18.75	88.00
<i>Fairfax</i>	1.45	3.75	12.40	18.75	88.00
<i>Aberdeen</i>	1.30	3.25	11.50	18.50	85.00
<i>W m. Belt</i>	1.30	3.25	11.50	18.50	87.50
<i>Ambrosia</i>	1.30	3.25	11.50	18.50	87.50
<i>Robinson</i>	1.30	3.20	11.00	18.00	80.00
<i>Big Joe</i>	1.45	3.75	12.70	19.00	90.00
<i>Lupton</i>	1.30	3.25	11.50	18.00	80.00
<i>Pathfinder</i>	1.30	3.25	11.50	18.50	87.00
<i>Gandy</i>	1.30	3.25	11.50	17.50	75.00
<i>Sparkle</i>	1.40	3.75	12.50	19.50	90.00
<i>Fairpeake</i>	1.45	3.75	12.50	19.50	90.00
<i>Temple</i>	1.40	3.75	12.50	19.50	90.00
<i>Starbright</i>	1.50	3.80	13.70	20.50	97.50
<i>Fairland</i>	1.40	3.75	12.50	19.50	90.00
<i>Gem E. B.</i>	2.50	6.45	20.00		
<i>Mastodon E. B.</i>	2.50	6.45	20.00		
<i>Streamliner E. B.</i>	2.50	6.45	20.00		

Vegetable Plants

Cabbage

<i>April coldframe drilled</i>	.70	1.90	4.00	6.00	29.00
<i>After May 10th. field grown</i>	.60	1.50	3.25	4.75	20.00

Cauliflower

<i>April coldframe drilled</i>	.75	2.00	5.00	7.50	35.00
<i>After May 10th. field grown</i>	.60	1.75	4.25	7.00	32.50

Pepper

<i>After May 25th. coldframe drilled</i>	.75	2.00	4.50	7.50	35.00
<i>Transplanted</i>	1.25	3.10	13.50		

Tomato

<i>After May 15th. coldframe drilled</i>	.75	2.00	4.50	7.00	32.50
<i>After May 5th. Transplanted</i>	1.25	3.10	13.50		
<i>After June 1st field grown</i>	.65	1.75	3.75	5.00	23.75

Egg Plant

<i>After June 1st. coldframe drilled</i>	.75	2.00	5.00	8.00	37.50
<i>After May 20th. Transplanted</i>	1.25	3.10	13.50		

Broccoli, Lettuce, Brussel Sprouts and Beet Plants

<i>April coldframe drilled</i>	.65	1.85	4.00	5.70	27.50
<i>After May 10th. field grown</i>	.55	1.45	3.25	4.50	20.50

Sweet Potato

<i>After May 10th.</i>	.75	1.75	4.50	7.00	32.50
------------------------	-----	------	------	------	-------

*We will have Kale and Collard plants after June 10th. priced the same as cabbage.
 Field grown tomato plants \$4.00; Cabbage plants \$2.75 per 1000 at the farm.*

ASPARAGUS

Our Roots Are Grown From High Grade Seed



Heavy Crown Asparagus Roots

Asparagus beds last for a number of years, the profit during those years depends on the foundation of the bed.

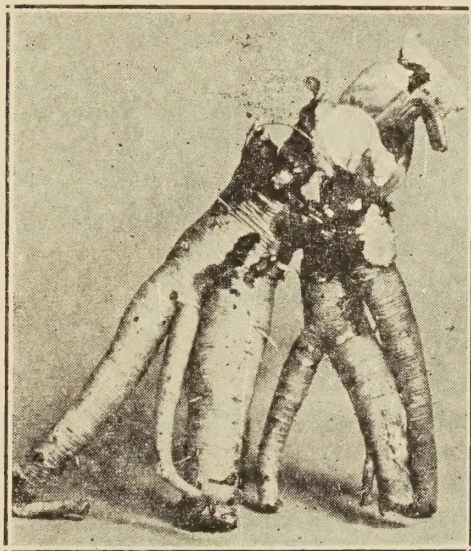
The whole secret is good thrifty roots from the best seed obtainable. What we have to offer is a select strain of Martha Washington which produces a large stalk more resistant to rust than others and cuts more colossal grass than any other variety including other Washington strains.

ASPARAGUS NEEDS NO TRENCH

*by J. A. Eliot, Fairmont, Califon N.J.
Price 25 cents.*

Asparagus Roots Transportation Prepaid

	25	50	100	500	1000	5000
1yr. No. 1 Roots	\$1.30	\$2.00	\$3.00	\$9.00	\$17.00	\$77.50
2yr. No. 1 Roots	1.60	2.50	3.75	10.50	19.50	90.00



Thrifty Rhubarb Roots

We have a little booklet (how to plant) free just ask for it when ordering.

RHUBARB

This is one of the earliest crops of the season, it is easily grown. A bed will last for a number of years.

We will have two varieties this year, the red Goliath and Victoria. The Goliath is the deepest red, our supply of roots is good this year, the 1yr. will run from 5/8 to 1 inch. 2 yr. 1 to 1 1/2 inches. 3yr. 1 1/2 inches up at crown.

Rhubarb Roots Transportation Prepaid

	6	12	25	50	100	500
1yr. No. 1 Roots	\$1.00	\$1.75	\$3.25	\$5.50	\$9.50	\$40.00
2yr. No. 1 Roots	1.75	2.75	5.00	9.00	16.00	65.00
3yr. No. 1 Roots	2.50	4.25	7.50	12.50	20.00	90.00

Horseradish Roots

One of the easiest crops to grow

Horseradish grows well in any soil. If planted in the early spring it will make large roots, ready to dig in the early fall. Horseradish can be dug any time that the ground is not frozen, or left until spring and will keep increasing in size throughout the winter.

We are growing the Maliner Kren variety which is superior to all others. It should be planted in a three foot row about twenty inches apart in the row. They are very rampant in habit of growth, outyielding all others and a pure white when grated.

We have a good supply of exceptionally nice roots six to eight inches long.

Horseradish Roots Transportation Prepaid

12	25	50	100	500	1000	5000
\$0.75	\$1.40	\$1.95	\$3.50	\$12.50	\$22.00	\$105.00

After November 1st. we will have roots for grating, write for prices. To keep these roots bury them in the soil, or put in your root cellar.

Raspberries

We have a fair supply of raspberries

✓ **ST. REGIS:** Red. One of the oldest in everbearing raspberries. Ripens with the earliest, flesh firm and meaty, a good old standby.

✓ **INDIAN SUMMER:** Red. The best in everbearing raspberries. It has excellent flavor, bears heavy crops of large berries, strong upright canes that do not freeze as quick as some other varieties.

✓ **LATHAM:** Red. One of the strongest and most vigorous growers, yielding good crops of large berries. Recommended for the home garden or commercial market.

✓ **CUMBERLAND:** Black. The standard of the black raspberries. The fruit is large and attractive, firm and excellent flavor. Recommended for the home garden and distant shipping.

Raspberries Transportation Prepaid

	6	12	25	50	100
Red	\$2.25	\$3.00	\$5.00	\$8.75	\$16.00
Black	2.00	2.75	4.75	7.50	13.50

GLADIOLUS; Flowering Size Bulbs

RED CHARM; Dark Red

SNOW PRINCESS; White.

BURMA; Rose.

ALADDIN; Giant Pink.

ALGONQUIN; Light Red.

ELIZ. QUEEN; Lavender.

SPOTLIGHT; Yellow-Red Spot.

EXCELLANCE; Salmon-Red.

PURPLE SUPREME; Purple.

PINK RADIANCE; Pink.

GLADIOLUS Bulbs Transportation Prepaid

12	25	50	100
\$1.25	\$2.25	\$4.00	\$7.50

Blackberries

9

✓ **ELDERADO:** *The most popular of all blackberries. It is a strong upright grower. The fruit is large, a jet black when ripe and excellent flavor.*

DEWBERRY: **LUCRETIA.** *The most popular and we believe to be the choice of the Dewberries. Priced the same as Blackberries.*

Blackberries and Dewberries Transportation Prepaid

6 \$1.25 12 \$2.25 25 \$3.50 50 \$6.00 100 \$10.00

Currants

✓ **PERFECTION:** *The most popular in red Currants. The plants are vigorous and very prolific. The fruit is large bright red in color and a delicious flavor.*

✓ **RED CROSS:** *Another widely known variety. It is a strong grower of large bunches of bright red berries. The flavor is good and they hang on the bush a long time.*

2yr. Currant Bushes Transportation Prepaid

1 \$0.60 3 \$1.45 6 \$2.50 12 \$4.50 25 \$8.50

GOOSEBERRIES

✓ **DOWNING:** *Most popular in Gooseberries. Making a large bush. The berries are extra large, pale green in color and a good flavor.*

✓ **RED JACKET:** *Claimed to be one of the finest. The berries are large, deep red in color when ripe and the best of flavor. The choice of the red varieties.*

Gooseberries Transportation prepaid

1 \$0.80 3 \$2.25 6 \$4.00 12 \$7.50

GRAPE VINES

✓ **CONCORD:** *Black. The oldest and most popular variety. It is planted more extensively than any other grape on the market and needs no further introduction.*

✓ **NIAGRA:** *White. The most popular in white grapes. It is a strong grower making handsome bunches of fruit with excellent flavor and ripens with Concord.*

✓ **CACO:** *Red. The best red grape on the market. Caco has a flavor approaching the European Muscat rather than the foxiness of our native grapes.*

2yr. Grape Vines Transportation Prepaid

1 \$0.55 3 \$1.50 6 \$2.75 12 \$4.75 25 \$8.50

DAHLIA'S

1 each six varieties. Large exhibition dahlia's. \$3.00 Postpaid

VEGETABLE SEED

Instructions For Ordering

These prices are subject to change without notice. You may purchase half of the pound at half the pound price. Five pound of one item at the ten pound rate. All seed orders of \$2.00 or more are prepaid except at the hundred pound rate. All over ten pound of one item at the hundred pound rate.

This seed has been recently tested for its germination. The FIELD PLANT FARM gives no warranty expressed or implied, as to description, productiveness, quality or any other matter of any seed we sell and will not be responsible for the crop.

Beans Green Podded

<i>Bruntiful</i>	<i>Giant Stringless</i>	<i>Tendergreen</i>
<i>Black Valentine</i>		<i>Kentucky Wonder pole</i>
1 lb. \$0.60	ten lb. @.46	100 lb. @.31

Beans Yellow Podded

<i>Imp. Golden Wax</i>	<i>Pencil Pod Black Wax</i>	<i>Sure Crop Stringless</i>
	<i>Dwarf Horticulture. Crimson splotched pod.</i>	
1 lb. \$0.65	ten lb. @.50	100 lb. @.43

Beans Lima

<i>Fordhook Bush</i>	<i>Burpee's Imp. Bush</i>	<i>Henderson Bush</i>
	<i>King Of The Garden. most popular pole lima.</i>	
1 lb. \$0.65	ten lb. @.50	100 lb. @.42

Beets

<i>Early Wonder</i>	<i>Crosby Egyptian</i>	<i>Detriot Dark Red</i>
oz. \$0.25	$\frac{1}{4}$ lb. .55 1 lb. 1.55	ten lb. @1.40

Mangles

<i>Mammoth Long Red</i>	<i>Danish Sludstrub</i>	
oz. \$0.20	$\frac{1}{4}$ lb. .40 1 lb. 1.15	ten lb. @1.05

Cabbage

<i>Alhead Select</i>	<i>Marion Market</i>	<i>Flatch Dutch</i>
<i>Wis. Ballhead</i>	<i>Jersey Queen</i>	<i>Copenhagen</i>
<i>Wis. Allseasons</i>	<i>Drumhead Savoy</i>	<i>Golden Acre</i>
oz. \$0.55	$\frac{1}{4}$ lb. 1.65 1 lb. 5.00	

Cauliflower

<i>Early Snowball</i>	<i>Dwarf Erfurt</i>	
pkt. \$0.35	oz. 2.75 $\frac{1}{4}$ lb. 8.00	1 lb. 25.00

Carrots

<i>Danvers Half Long</i>	<i>Imp. Long Orange</i>	<i>Chantenay</i>
oz. \$0.35	$\frac{1}{4}$ lb. .85 1 lb. 2.50	

Broccoli

<i>Calabrese. Italian green sprouting.</i>		
	oz. \$0.50	$\frac{1}{4}$ lb. 1.35 1 lb. 4.00

VEGETABLE SEED

Cucumber

<i>A and C</i>	<i>Early Fortune</i>	<i>Imp. Long Green</i>
<i>Jersey Pickling</i>	<i>Arlington White Spine</i>	<i>Cubit</i>
oz. \$0.35	$\frac{1}{4}$ lb. .85	1 lb. 2.45
		ten lb. @2.20

Swiss Chard

<i>Fordhook Giant.</i>	<i>White Silver.</i>	oz. \$0.20
		$\frac{1}{4}$ lb. .40
		1 lb. 1.35

Sweet Corn

<i>Golden Bantam</i>	<i>Bantam Evergreen</i>	<i>Stowells Evergreen</i>
<i>Golden Sunshine</i>	<i>Country Gentleman</i>	<i>Early Evergreen</i>
	1 lb. \$0.55	ten lb. @.45
		100 lb. @.34
<i>Golden Cross Bantam</i>	<i>Marcross Hybrid</i>	<i>Kingcross</i>
	1 lb. \$0.70	ten lb. @.55
		100 lb. @.49

Endive

<i>Broad Leaf Batavian</i>	<i>Green Curled</i>	oz. \$0.35
Kohl Rabi	<i>Early White Vienna</i>	$\frac{1}{4}$ lb. .80
		1 lb. 2.50
		oz. \$0.45
		$\frac{1}{4}$ lb. 1.30
		1 lb. 3.95

Pop Corn

<i>Golden Queen</i>	<i>White Rice</i>	1 lb. \$0.45
Fennel	<i>Dwarf Florence</i>	ten lb. @.40
		oz. \$0.40
		$\frac{1}{4}$ lb. 1.00
		1 lb. 3.00

Kale

<i>Dwarf Blue Scotch Curled</i>		oz. \$0.35
		$\frac{1}{4}$ lb. .90
		1 lb. 2.50

Lettuce

<i>Big Boston</i>	<i>New York 515</i>	<i>Imperial 847</i>
<i>Iceberg</i>	<i>Old Fashion Loose Leaf</i>	<i>Black seeded Simpson</i>
	oz. \$0.35	$\frac{1}{4}$ lb. 1.00
		1 lb. 3.50

Musk Mellon

<i>Hales Best</i>	<i>Honey Rock</i>	<i>Hearts Of Gold</i>
<i>Fordhook Imp.</i>	<i>Jenny Lynn</i>	<i>Pride Of Wisconsin</i>
	oz. \$0.45	$\frac{1}{4}$ lb. 1.30
		1 lb. 3.00
		ten lb. @2.75

Onion Seed

<i>Yellow Globe Danvers</i>	<i>Prizetaker</i>	<i>Southport White Globe</i>
oz. \$0.50	$\frac{1}{4}$ lb. 1.40	1 lb. 4.00
		ten lb. @3.90

Parsley

<i>Moss Curled</i>	<i>Hamburg Rooted</i>	oz. \$0.35
		$\frac{1}{4}$ lb. .65
		1 lb. 1.90

Onion Sets

<i>Yellow.</i>	<i>White (plant March, April.)</i>	1 lb. \$0.40
Okra	<i>Dwarf Green Long Pod</i>	ten lb. @.30
		bu. 4.95
		oz. \$0.20
		$\frac{1}{4}$ lb. .45
		1 lb. 1.10

VEGETABLE SEED

Parsnip *Hollow Crown* oz. \$0.30 ¼ lb. .55 1 lb. 1.55

Peas

<i>Prince Edward</i>	<i>Gradus</i>	<i>Tom Laxton</i>
<i>Dwarf Gray Sugar</i>	<i>Laxtonian</i>	<i>American Wonder</i>
<i>Alaska or Earliest</i>		<i>Telephone</i>
1 lb. \$0.55	ten lb. @.45	100 lb. @.37

Pumpkin

<i>Large Flat Cheese</i>		<i>King of the Mammoth or Jumbo</i>
oz. \$0.30	¼ lb. .65	1 lb. 1.75 ten lb. @1.60

Radish

<i>Scarlet Globe</i>	<i>White Icicle</i>	<i>China Rose (winter)</i>
<i>French Breakfast</i>	<i>Long Bright Red</i>	<i>Black Spanish (winter)</i>
oz. \$0.25	¼ lb. .40	1 lb. 1.10 ten lb. @1.00

Winter Squash

<i>Boston Marrow</i>	<i>Blue Hubbard</i>	<i>Red or Golden Hubbard</i>
<i>Imp. Green Hubbard</i>	<i>Butternut</i>	<i>Table Queen</i>
oz. \$0.30	¼ lb. .80	1 lb. 2.70 ten lb. 2.55

Summer Squash

<i>Early Summer Straightneck</i>	<i>Early White Bush</i>	<i>Long Green Cocozella</i>
oz. \$0.30	¼ lb. .80	1 lb. 2.60 ten lb. @2.35

Spinach

<i>Virginia Savoy</i>		<i>Bloomsdale Reselected</i>
¼ lb. \$0.30	1 lb. .70	ten lb. @.55
<i>New Zealand or Dry Weather</i>	oz. \$0.25	¼ lb. .40 1 lb. 1.00

Tomato

<i>Valient</i>	<i>Marglobe</i>	<i>Garden State</i>
<i>Stokesdale</i>	<i>John Baer</i>	<i>Rutgers</i>
oz. \$0.85	¼ lb. 2.45	1 lb. 6.00

Turnip

<i>Purple Top White Globe</i>	<i>Golden Ball</i>	<i>Aberdeen Yellow (purple Top)</i>
	<i>American Purple Top</i>	<i>Ruta Baga</i>
oz. \$0.20	¼ lb. .45	1 lb. 1.10 ten lb. @.90

Water Mellon

<i>Stone Mountain</i>	<i>Tom Watson</i>	<i>Dixie Queen</i>
<i>Imp. Kleckley Sweet</i>	<i>New Hampshire</i>	<i>Preserving Citron</i>
oz. \$0.35	¼ lb. .80	1 lb. 2.60 ten lb. @2.15

