

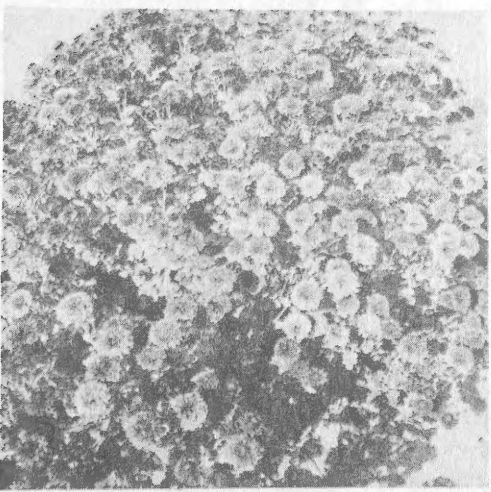
62.51

Ch

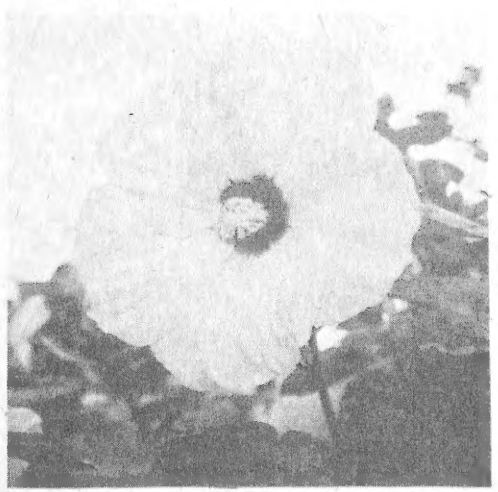
Fleming's Flower Fields
Lincoln, Nebr.

LIBRARY
RECEIVED
★ FEB 28 1956
U. S. Department of Agriculture

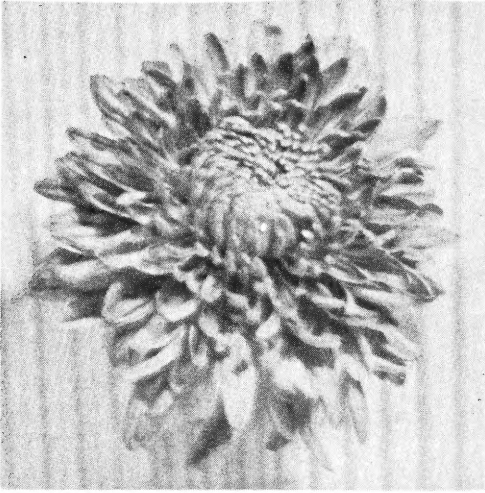
“Modern Mums for 1956”



Klowa



Bright Eye



FLEMING'S FIREBIRD

1956

To Our Friends and Customers

This year is our tenth in the mail order field. During those years it has been our constant aim to provide our customers with the finest new Chrysanthemums each year, hence our lists have borne the words "Modern Mums" from the start. This year's catalogue is the most comprehensive to date, offering 120 "Mums" and many other choice hardy perennials. Seven fine 1956 introductions, three of them being Fleming Exclusives, are listed this year. Included also are 42 other varieties that are new to our list, 29 of which are but a year old. A new feature this year is the "Exhibition Mum" section which offers some superb new sorts for the fanciers of large flowered Chrysanthemums. We wish to direct special attention to the hardy Asters which have become irreplaceable in our gardens. They are indeed colorful in the early fall both before and during the "Mum" season.

Once again, a cordial invitation is extended to visitors from mid-April until killing frosts in the Autumn. In addition to the many fine named sorts you will see myriads of new seedling Asters, Chrysanthemums, Dianthus, Hibiscus and Pentstemon seedlings resulting from our hybridization programs.

We wish to thank our many customers and friends most sincerely for their continued patronage and interest. We pledge our best efforts on your behalf to warrant this continued loyalty.

Sincerely

The Flemings

New Mums for 1956

AMETHYSTINE - An extremely free flowering variety with fully double, iridescent, bright rose-purple flowers. Bushy 24" plants covered with 2½ - 3½" flowers in late Sept. Foliage is a very attractive dark shiny green shade. The rich glowing color of the flowers brought about the suggestion from a group of visitors that it be called "Fluorescent". 75¢ each.

FLEMING'S FIREBIRD - Solid, fully double three inch flowers of a bright fiery red-bronze shade with rusty bronze reverse cover attractive 15-18" upright plants from early Fall on. One of the outstanding features of this variety is its ability to bloom early regardless of weather conditions. During the years it was under trial it never failed to bloom fully prior to heavy frosts thus making it an extremely desirable sort for regions with early, unpredictable frost dates. 75¢ each.

SNOW SCEPTRE - Solid pure white ball-shaped 1½ to 2" pompons are produced in attractive long stemmed sprays on sturdily upright 30" plants. A variety which we believe to be outstanding, having the flower and stem quality of greenhouse poms. It blooms October 1st, giving loads of flowers for bouquets from that time on. 75¢ each.

ADORABLE - An early double large flowered salmon pink which the Mum expert Mr. Charles Nye considers to be the pinkest of all garden

Mums. Very free flowering from September 15th on.

75¢ each.

CRIMSON GLORY - Clusters of rich 3-3¼ flowers on upright plants. A fine cut flower sort having blooms which are the color of the popular Crimson Glory Rose. Blooms from early September until freezing weather. 75¢ each.

PURPLE WATERS - Husky 24-30" plants with deep green foliage bearing an avalanche of 2½-4" double deep purple flowers. The best early purple to date. Sept. 18th.

75¢ each.

WHITE MASQUERADE

(Ladygo) - A sport of the very popular button mum, Masquerade. Perfectly formed mounds 20" tall which are completely covered with tightly knit one inch buttons of pure glistening white. Blooms early in October.

75¢ each.

1955 Introductions

AMETHYST ANEMONE

(Fleming) - Large purple blooms at first appear to be fully double, however shortly the several rows of broad ray petals open wide to reveal a full crested lavender Anemone center with occasional bronze tints. Flowers are produced in heavy clusters on 24" plants from October 8th until killing freezes.

75¢ each.

A COLLECTION OF OUTSTANDING 1956 INTRODUCTIONS
- One each of Adorable, Crimson Glory, Snow Sceptre, Amethystine, and Purple Waters. A \$3,75 value for \$3.25.

AMETHYST CUSHION

(Bristol-Fleming) - An excellent new purple cushion. Compact 12-15" mound-like plants with double Amethyst purple flowers from mid-September until killing frosts. 75¢ each.

ANCASTER BURGUNDY

(Emberly) - Bushy 16" plants bearing masses of medium sized double flowers of bright burgundy-rose. Flowers are of Cactus Dahlia type with twisted pointed petals.

60¢ each.

BUTTERSCOTCH (Kraus) -

See Exhibition Mum section.

CHIPPA RED (Bristol) -

A new sport of Chippewa, being bright-turkey red to maroon. Plants 24-30" high. Early Sept. 60¢ each.

EARLY KATHLEEN (Lehman)

The coppery bronze fully double flowers are identical to Kathleen Lehman in color but are larger and 2-3 weeks earlier. Excellent cut flower.

60¢ each.

FROSTY (Dunham) - Excellent new white cushion. See Cushion section.

FOOTBALL BRONZE

(Lehman) - Big incurved bronze. See Exhibition section.

GEORGE LUXTON (Lehman) -

Huge stiff petalled blooms of a beautiful soft bronze hue on stiff upright plants. Early to mid-season. 60¢ each.

GOLD STAR (Conard-Pyle) -

See cushion section.

JOYOUS (Bristol) -

A super-cushion. Perfectly formed 18-22" mounds covered with double bright pink flowers. A

leader in popularity here last year. Sept. 20th. 60¢ each.

KIOWA (Uni. of Nebr.) - Long stemmed heavy clusters of bright orange-red pompons are produced in profusion beginning in late September on plants 30" high and 24" across. The foliage is especially beautiful, being a very attractive dark rich green. One of the finest cut flower Mums to appear on the scene in recent years. Flowers are very frost tolerant, withstanding temperatures as low as 25 degrees with very little damage. 60¢ each.

LADY'S CHOICE (Lehman)

Fully double 4" flowers of a pastel blend of ivory and light pink with very soft bronze overtones. Fine in arrangements with purple Asters. Sept. 26th. 60¢ each.

MAROON STAR (Conard-Pyle)

- See Cushion section.

MOONLIGHT STAR (Conard-Pyle) -

See Cushion section.

MOHAVE GOLD (Kraus) - See Exhibition section.

MURIEL RICE (Lehman) - See Exhibition section.

NEW MARJORIE MILLS (Bristol) -

Another "Super Cushion", being somewhat taller than most cushions. Plants of neat mounded habit, 18-24" high are covered with rich ruby red flowers. Sept. 20th.

NORTH PLATTE (Uni. of

Nebr.) - Massive, very double 3-5" flowers in clusters of 3 to 5 of an attractive bright orange shade are borne on husky 30" plants from Sept. 20th on. As flowers age the petals show spoon tips, which character adds new interest.

60¢ each.

A COLLECTION OF SOPHOMORES (1955 Introductions) - One each of Ancaster, Burgundy, Kiowa, Lady's Choice, North Platte, New Marjorie Mills and Pumpkin Pom. A \$3.60 value for \$3.00 ppd.

PUMPKIN POM (Fleming) - A bright orange pompon. See Pompon section.

REAL GOLD (Lehman) - Fully double 3-3½" flowers of firm substance of a truly deep golden yellow which is richer than other yellow to date. Husky 26" plants. Sept. 20th. 75¢ each.

REFLECTION (Lehman) - A very free flowering sort with double flowers of deep rosy lavender. 24" plants. Late Sept. 60¢ each.

ROSETONE (Kraus) - See Exhibition section.

SALMON BEAUTY (Emberly) - Long stemmed large semi-double to double flowers of a brilliant salmon-orange which glistens in the sunlight. Sept. 20th. 60¢ each.

SHOW GIRL (Dunham) - See Exhibition Mum section.

SMILES (Dunham) - Countless bright yellow button pompons cover 12-15" mounds. A very vigorous growing sort blooming from Oct. 1st on. 60¢ each.

SONNY (De Petris) - Clusters of bright salmon-pink button pompons on stiffly upright 28" plants. October 1st. 60¢ each.

SPELLBINDER (Briston) - A truly great newcomer having tremendous potential. Large shaggy flowers of bright yellow on long stems. One of the most outstanding introductions in recent years. Late Sept. bloomer. 75¢ each.

STAR FROST (Conard-Pyle) - See Cushion Mum section.

EXHIBITION MUMS FOR THE GARDEN

The introduction some years ago of the "English" mums to American gardeners has caused a steadily increasing demand for large flowered sorts. The varieties listed below are largely the result of work done by leading hybridists in this country and are truly outstanding. Flowers which measure 4-5" across when grown normally will rival greenhouse grown sorts when disbudded.

APACHE (Kraus) - Large cactus-Dahlia like flowers of glowing oriental or tomato red. Late Sept. 20-24 plants. 50¢ each.

APPLE BLOSSOM - Large incurved blooms of a lovely shell pink shade. A prize winner as a disbud. Late Sept. 60¢ each.

BUTTERSCOTCH (Kraus, 1955) - Huge, fully double blossoms incurving in center, reflexing at outside of

a deep golden amber to amber yellow shade. Late Sept. 65¢ each.

CORSAGE (Dunham, 1954) - Large reflexed blooms of a beautiful deep rose pink shade. Early October. 65¢ each.

CRIMSON MAGIC (Dunham, 1954) Deep reflexing blooms of dark velvety crimson on strong upright plants. Mid-October. 65¢ each.

SIX SUPER MUMS - One each of Apache, Apple Blossom, Golden Sceptre, Muriel Rice, Romance and Superlative. A \$3.55 value for \$3.00.

EVANGELINE (Emberly) -
Very large Cactus-flowered
blooms of a soft pure sweet-
heart pink. Early October.
60¢ each.

FOOTBALL BRONZE
(Lehman, 1955) - Perfectly
formed incurving flowers of
a rich bronze which resemble
greenhouse grown "Football"
mums in form. Strong, up-
right plants. Late Sept.
60¢ each.

GOLDEN SCEPTRE - Another
"Football" incurved mum for
the garden. Rich golden yel-
low flowers on upright 30"
plants. Early to Mid-Oct.
60¢ each.

INNOCENCE (Dunham) - Large
stiff petaled blooms of pure
chalk white on heavy plants.
Mid-October. 55¢ each.

MOHAVE GOLD (Kraus, 1955) -
Reflexed 4½" blooms of bright
golden bronze on sturdy 24-
30" plants. Very showy. Late
Sept. 65¢ each.

MURIEL RICE (Lehman, 1955)
- Immense fully double stiff
petaled blooms of light prim-

rose yellow with occasional
lavendar tints. Late Sept.
60¢ each.

PRAIRIE SUNSET (Dunham,
1954) - A most unusual sort
having distinctively rolled
and twisted petals. Color is
amber-bronze. Early Octo-
ber flowering. 65¢ each.

ROMANCE (Dunham, 1954) -
Very double reflexed 6"
blooms of warm pink with
salmon shadings. Early Oc-
tober. 65¢ each.

ROSETONE (Kraus, 1955) -
Lovely lavendar-rose flow-
ers which are incurved at the
center and reflexing on out-
side. Sturdy plants. Late
Sept. 65¢ each.

SHOWGIRL (Dunham, 1955) -
Huge flowers of deep purple
with silvery reverse. Rolled
cactus-like petals. Early Oc-
tober. 75¢ each.

SUPERLATIVE
(Perfectly formed, heavy tex-
tured pure white incurved
flowers. The best exhibition
white. Early October.
60¢ each.

A QUARTET OF GIANTS - One each of Football Bronze,
Innocence, Evangeline and Rosetone. A \$2.35 value for \$2.10.

University of Nebraska Mums

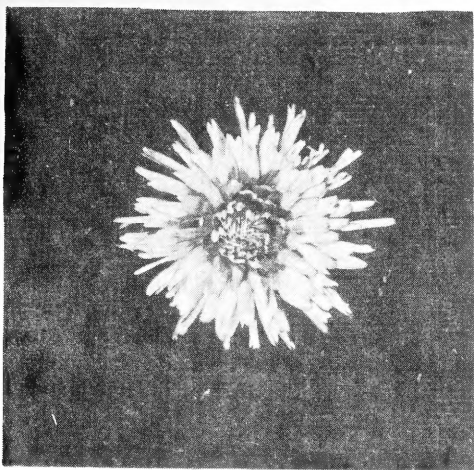
These mums, produced by Mr. Glenn Viehmeyer of the Agr. Exp. Station at North Platte, Nebr. have been widely acclaimed by discriminating gardeners in all parts of the country. We are sure they will please you.

CODY - Flat topped, 10-12"
plants spreading to 40"
across are covered with two
inch flowers from late Sum-
mer on. Color varies from
swan white with rosy lavendar
edges during hot weather to a
glistening violet in cool
weather. 50¢ each.

KIOWA (1955) - Long stemmed
clusters of bright orange-red
pompons are abundantly pro-
duced on sturdy 30" plants

from late Sept. on. (See com-
plete description in "1955 In-
troductions" section)
60¢ each.

LESHARA - Heavy branched
30" plants loaded with sprays
of flowers from early Sept.
on. The color is mulberry
red with old rose overtones.
Flowers withstand tempera-
tures as low as 25 degrees
with only an occasional dam-
aged petal. 50¢ each.



Pathfinder Mum

NORTH PLATTE (1955) - Heavy textured 3-5" flowers of an attractive bright orange shade are borne on strong 2 ft. plants from Sept. 20th onward. (See 1955 introductions for more complete description) 60¢ each.

OSCEOLA - Long stemmed clusters of 3" double bright yellow flowers beginning in early Sept. With the approach of cool weather the flowers take on coppery hues. 30" plants. 50¢ each.

FIVE FAVORITE NEBRASKA MUMS - One each of Kiowa, Leshara, Pathfinder, Osceola and North Platte for \$2.35. (A \$2.75 value).

PATHFINDER - The first of a new race of mums called "Carnation-flowered" because of their notched and deeply serrated petals. The very double bright yellow 2½-3" flowers are borne in clusters on attractive hedge-like plants 22-30" high and 20-24" across. A cross-country favorite blooming from Sept. 20th on. 55¢ each.

PLAINSMAN - Another "Carnation-flowered" Mum. Myriads of high centered very double flowers of deep rusty bronze-red shading to buff-bronze. Early Sept. Very frost tolerant. 55¢ each.

TECUMSEH - Attractive compact 12-15" mounds covered with flowers of erythrite red

to buff bronze shades. Visitors favorite. Early Sept. 50¢ each.

W. P. SNYDER - One of the most brilliantly colored garden mums. Clusters of tightly double bright coppery apricot flowers. A superb early cut flower variety. 50¢ each.

WHITE CLOUD - Acclaimed by mum fanciers across the country as the finest early white cut flower and garden variety. Fully double 3-5" flowers of pure white with creamy centers are produced in profusion on 28-36" plants. Flowers withstand 29 degrees without significant damage. Much more winter hardy than Avalanche. Late August. 50¢ each.

TEN UNIVERSITY OF NEBRASKA MUMS - One each of the above varieties sent postpaid for \$4.50 (A \$5.30 list value).

Double Decoratives

ALERT (Becker) - Three inch fully double flowers of a rich, unfading purple. One of the best early ones. Sept. 15th. 22" plants. 50¢ each.

ANCASTER BRONZE

(Emberly) - Large double shining salmon-bronze flowers on upright 24" plants. Early October. 60¢ each.

ANCASTER CRIMSON

(Emberly) - Beautiful large velvety crimson duplex blooms. An excellent long stemmed mid-season cut flower. 50¢ each.

ANDREW (Becker) One of the most beautiful mums, being a perpetual favorite with our visitors. Husky 22" plants with clusters of 3" ball shaped blooms of a soft red with ashes of roses overtones. Early October. 50¢ each.

APACHE (Kraus) - Fully double 4-5" quilled Cactus flowers of oriental red on bushy 20" plants. Sept. 20th. Truly outstanding. 50¢ each.

ARISTOCRAT (Bristol) - Stately two foot plants bearing clusters of 3½" flowers of deep cerise overcast claret. Late Sept. 50¢ each.

BETTY (Conard-Pyle) - A favorite variety. True rose pink

without mauve tones. 26" plants blooming October 1st. 50¢ each.

CANARY (Martin's Yellow)

A light yellow sport of the incomparable Martin's White. Incurved 3-5" fully double flowers cover bushy 16" plants. Excellent for low borders or as potted plant. Early Sept. 50¢ each.

CROWN JEWEL (Kraus) - A truly red early Mum. Clusters of fully double rich crimson red flowers with ruby reflections. Sept. 25th. 50¢ each.

CROWNING GLORY (Lehman)

One of the finest in our plantings last fall. Husky 3 ft. plants with long stemmed clusters of fully double 3-4" flowers of coral-apricot shading to nasturtium-orange. Mid-Sept. 55¢ each.

DR. LONGLEY (Uni. of Minn.)

An outstanding favorite for its early blooming ability. Large Aster-like lavender pink flowers on long stiff stems. Early Sept. 50¢ each.

EARLY JEANETTE (Emberly)

One of the top mums from Canada. 2½-4" double flowers of bright burgundy rose with quilled or Cactus-Dahlia petals. Husky 24-30" plants. Mid-Sept. on. 55¢ each.

A COLLECTION OF CANADIAN GIANTS - One each of Ancaster Bronze, Ancaster Burgundy, Ancaster Gypsy, Early Jeanette and Evangeline. A \$2.80 value for \$2.40.

ELAINE (Floralane, 1954)
Sturdy 28" plants bearing massive 3-4" fully double orchid lavender flowers on fine stems for cutting. Late Sept. 55¢ each.

FASCINATION (Bristol) - Huge 4" flowers of silvery lavender-pink shading to silvery white are often borne singly on sturdy 30" plants. Oct. 1st. 50¢ each.

FLAMBOYANT (Bristol) - An outstanding newcomer which is ablaze with the colors of Huntsman and Carnival. Clusters of 3" fully double blooms of glowing tangerine scarlet overlaid orange and with gold reverse. Sept. 15th. Bushy 20-24" plants.

55¢ each.

GLOW WORM (Bristol) - Bushy 18-24" plants loaded with 2" semi-double tangerine scarlet to warm bronze red blooms. Early Sept.

50¢ each.

GOLDSMITH (Floralane) - A favorite here with huge fully double shaggy bright golden

yellow flowers. Four inch flowers on husky upright 30" plants. Late Sept.

60¢ each.

MARTIN'S WHITE (Martin) - Compact, bushy 16" plants are covered with immense (3-5") fully double incurving white flowers from Sept. 8th on. Superb for potting or edging mum bed. 50¢ each.

OLD LAVENDAR (Lehman) - A much improved large flowered lavender which replaces Lavendar Lady, being larger, brighter colored and earlier flowering as well. Massive fully double blooms. Oct. 1st.

60¢ each.

A COLLECTION OF LAVENDAR AND PURPLE MUMS - One each of Aristocrat, Early Jeanette, Fascination, Old Lavendar, Purple Waters and Reflection. A \$3.55 value for \$3.05 ppd.

OLIVE LONGLAND (Kraus) - A popular pastel colored sort. Three inch blooms of apricot shaded with salmon pink from Sept. 25th on. 50¢ each.

PATRICIA LEHMAN (Kraus) - Large double incurving flowers of a sparkling Geranium pink with peach center. Fine for cutting. Late Sept.

50¢ each.

PEACH QUEEN (Floralane) - Tall plants with large peach pink flowers. Good cutflower. October 10th. 60¢ each.

PINK SURPRISE (Rosebud) - Quilled "Cactus" flowers of a clear rich pink. Bushy 24" plants. Blooms Sept. 20th.

50¢ each.

REVERENCE (Kraus) - Extremely large fully double light chamois yellow blooms borne individually on long stems. Mixes well with purple annual Asters in bouquets. Early Sept. 55¢ each.

ROYAL ROBE (Kraus) - A fine mid-season bloomer with fully double flowers of glowing beet root purple on strong 30" plants. Oct. 1st. 50¢ each.

SUCCESS (Conard-Pyle) - A superb cut flower with large (3-4") double blooms of a rich deep non-fading crimson. Early October. 50¢ each.

VISION (Bristol, 1954) - Large flowers of a delicate blend of ivory and pearl suffused lightly with fawn. Upright 30" plants. Early Oct. 55¢ each.

AN ALL SEASON COLLECTION OF RED MUMS - One each of Andrew, Crown Jewel, Early Crimson, Leshara and Success. A \$2.50 value for \$2.10.

CUSHION MUMS

The Cushion Mums are unequaled in the fall for almost any spot where a compact, low splash of color is wanted. Use them freely - we feel sure that you will love them.

AMETHYST CUSHION

(Bristol-Fleming, 1955) - Compact 12-15" mound-like plants covered with double amethyst purple blooms from mid-September until hard freezes. 75¢ each.

BROWNIE (Dunham) - Symmetrical mounds 8-12" tall and two feet across completely covered with orange buff ball-like pompons with orange-bronze eyes. Late Sept. 60¢ each.

CODY (Uni. of Nebr.) - Compact 10-12" plants loaded with blooms from late summer on which vary from swan white with lavender edges in hot weather to a dazzling violet shade in cool late fall weather. 50¢ each.

COPPER 'N' GOLD

(Donaldson-Fleming, 1954) - Attractive close-knit 10-12" plants which spread up to 3 ft. across and are covered with hundreds of flowers from early season until frosts. The buds are a glowing orange golden yellow with darker centers. The approach of cool weather causes flowers to assume copper hues. 60¢ each.

COQUETTE (Dunham) - Attractive 12-15" plants loaded with bright rose pink flowers from mid-Sept. on. Very popular with our visitors last fall. 55¢ each.

FROSTY (Dunham, 1955) - A splendid new white pompon cushion. Compact mounds with masses of blooms on short stems. Blush white buds open to 2" pure white pompons when mature. Sept. 20th.

FUCHSIA FAIRY (Herr) - Twelve inch plants loaded with cute one inch blooms of a sparkling fuchsia shade. One of the most frost and freeze tolerant of Mums. 50¢ each.

GLADNESS (Kraus) - Low, much branched plants with fully double 2" flowers of a clear China rose shade. One of the best early cushions. 50¢ each.

GOLD STAR (Conard-Pyle, 1955) - Broad, compact plants which are a mass of rich golden yellow flowers from Oct. 1st on. 60¢ each.

JANET (Ladygo) - Globular 15" plants which are completely covered with 3" double flowers of a lovely apricot-salmon blend. A real hit with our visitors in early September. 50¢ each.

LIPSTICK (Dunham) - The finest really red cushion we have grown. Compact 12-15" globes with bright crimson-red blooms. Late Sept. 55¢ each.

MAPLE MOUND (Fleming, 1954) - Another superb cushion with perfectly formed mounds up to 12" high and 36" across are loaded with flowers from Sept. 20th on. The color is a difficult one to describe, being an iridescent blend of cerise, bronze, apricot, orange and yellow - the colors seen on Maple trees in the fall. 55¢ each.

ORCHID HELEN (Becker) - Bushy low plants with fully double orchid lavender-pink flowers in early Sept. One of the most dependable early bloomers. 50¢ each.

MAROON STAR (Conard-Pyle, 1955) - Trim rounded plants with deep true maroon-red flowers. Oct. 1st. 60¢ each.
MOONLIGHT STAR (Conard-Pyle, 1955) - One of the largest flowered cushions we have seen. Three inch flowers with yellow centers shading to soft moonlight-yellow at outer edges of petals. 75¢ each.

ROUGE CUSHION (Lehman) - Nicely shaped plants with brilliant unfading red flowers. Attractive dark green foliage. Sept. 20th. 50¢ each.
SALUTE (Martin) - Bushy plants covered with double purple flowers in early Sept. A very showy early bloomer. 50¢ each.

CUSHION COLLECTION No. 1 - One each Cody, Gladness, Janet, Salute and Tecumseh. A \$2.50 value for \$2.10.

SMILES (Dunham, 1955) - Myriads of bright yellow buttons cover perfect mound-like 12-15" plants from Oct. 1st on. 65¢ each.

STAR FROST (Conard-Pyle, 1955) - Large double two-toned flowers, deep rose at center, light pearl pink at outside of flower. Quantity very limited. \$1.00 each.

STAR GLORY (Conard-Pyle) - Flowers are starry 4" pur-

ple-red, semi-double daisies which completely hide the 12-15" foliage mounds. One of the showiest of cushions. Late Sept. 50¢ each.

VARIEGATED CUSHION (Becker) - An unusual sort with flowers which are two-toned in two ways. The basic color is rosy lavender, the center of petals and center of flowers are deeper colored. Bushy 15" plants. 50¢ each.

CUSHION COLLECTION No. 2 - One each of Coquette, Copper 'n' Gold, Lipstick, Maple Mound and Star Glory. A \$2.70 value for \$2.30.

THE CUTE BUTTON MUMS

BRIGHT EYE - A newcomer from England. Low bushy plants with golden yellow buttons having orange-red centers. An excellent variety for the border or for potting. Early October. 50¢ each.

CHIQUITA (Kraus) - The finest bright yellow button. Attractive bushy 22" plants loaded with flowers in late Sept. 50¢ each.

HONEYCOMB (Yoder) - Fine yellow buttons with coppery overtones. Formal, bushy 24" plants. Excellent late Sept. cut flower. 50¢ each.

MARIONETTE (Yoder) - Clusters of bright coppery apricot buttons on long stiff stems for cuttings. 28" plants. Late Sept. 50¢ each.

MASQUERADE (Bristol) - Trim, compact 18" plants loaded with ball-shaped flowers of silvery lavender-rose with deeper centers. A real cutie and a favorite everywhere. Oct. 1st. 50¢ each.

SONNY (De Petris, 1955) - Clusters of salmon pink button pompons on stiffly erect 28" plants. Oct. 1st. 60¢ each.

BUTTON COLLECTION - One each of Bright Eye, Marionette, Honeycomb and Sunny. A \$2.10 value for \$1.85.

A COLLECTION OF BUTTONS AND POMPONS - One each of Bright Eye, Early Crimson, Masquerade, Honeycomb and Ostosa. A \$2.55 value of \$2.15.

NOVELTY MUMS

PURPLE SPOON (Lehman, 1955) - The earliest blooming spoon. Large flowers with tubes and spoon tips of soft purple. Sept. 20th.
60¢ each.

SALMON RAYONANTE - One of a group of Mums having exotic oriental flowers with long slender pointed tubular petals resembling those of the "Spider" Mums. This one is a luscious salmon pink shade. October 20th. 50¢ each.

WHITE RAYONANTE - Like the above in form. White with creamy center. 50¢ each.

YELLOW RAYONANTE
Clear golden yellow form. Late October. 50¢ each.

AMETHYST ANEMONE (Fleming, 1955) - The finest "Anemone-flowered" purple Mum for the garden to date. See 1955 introductions.
75¢ each.

FASCINATION (Dunham) - The best early flowering quilled sort which in some catalogues is listed as Pink Quill. Very large spidery flowers of a delightful shell pink with salmon shadings at center. Bushy 2 ft. plants flowering from late Sept. on.
75¢ each.

PINK SPINNER (Becker) - An attractive hardy quilled sort. Double blooms with tubular rosy lavender petals which are interestingly whorled at the center. Truly unique. Sept. 20th. 55¢ each.

MODERN POMPONS

AGLOW (Lehman) - Sturdy, bushy 30" planted loaded with clusters of quilled orange pompons. One of our favorites for cutting. Mid-Sept.
55¢ each.

ANCASTER GYPSY (Emberly) - A fine new seedling of Bright Eye. Medium sized tightly double orange bronze pomps with darker centers in long stemmed sprays. Fine for cutting. Very freeze tolerant. October 1st. 50¢ each.

CHARLES NYE (Kraus) - A perpetual favorite for cutting. Large fully double buttercup yellow pomps. Sept. 25th.
50¢ each.

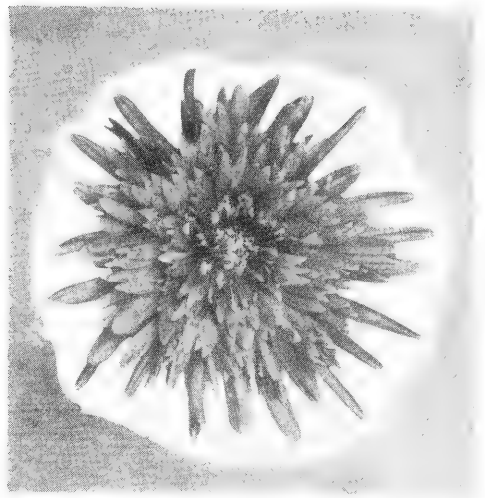
DELIGHT (Lehman) - Clusters of perfectly formed double golden yellow flowers. Excellent early Sept. cut flower.
50¢ each.

EARLY CRIMSON (Lehman) - Stately, upright plants with fully double bright crimson-red flowers. Early cut flower. Mid-Sept. 50¢ each.

JEWELTONE (Kraus) - Ball shaped 2" flowers of a beautiful glowing Phlox pink shade. A strikingly lovely shade. Sept. 20th. 55¢ each.

JUBILEE (Bristol) - Stocky 18" plants with frost resistant deep crimson pompons. Fine border or cut flower sort. October 1st. 50¢ each.

LIMELIGHT (Floralane) - Large informal pompons of soft yellow with deeper centers. A fine vigorous newcomer. Sept. 20th. 50¢ each.



Plainsman Mum

POMPON COLLECTION No. 1 - One each of Ancaster Gypsy, Early Crimson, Jeweltone, Ostosa and Yellow Ermine for \$2.25 (a \$2.65 value).

MY LOVE (Becker) - Ball shaped pompon, white edged with purple. Purple color suffuses through most of flower in cool weather. An excellent long stemmed early October cut flower. 50¢ each.

OSTOSA (De Petris) - Solid, pure white medium large pompons covering vigorous semi-dwarf bushy plants. A fine variety for potting or borders. Late Sept. 55¢ each.

PUMPKIN POM (Fleming) - A prolific producer of cut flowers. Extremely frost tolerant 2-3" fully double flowers of a glistening pumpkin-orange shade. Strong, upright 26-30" plants. Early October. 60¢ each.

SARASOTA (De Petris) - Medium sized solid pompons of bright golden yellow on long stems. One of the best for cutting. Early October. 50¢ each.

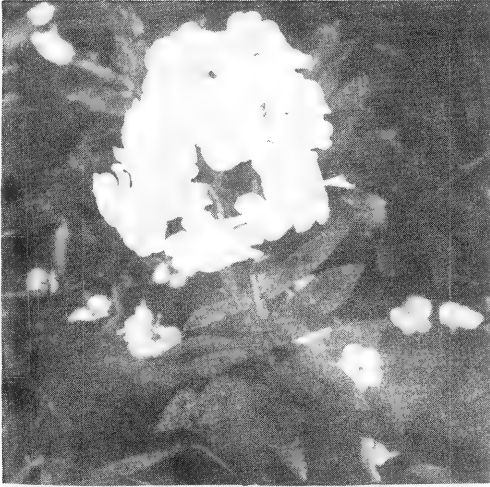
SHALIMAR (Kraus) - Clusters of informal pure white pompons of husky 24" plants. Sept. 20th. 50¢ each.

WHITE TOWER (Becker) - A superb white pompon. Sprays of perfect ball-shaped blooms on long sturdy stems. Plant form is much better than that of White Wonder. Sept. 20th. 50¢ each.

YELLOW ERMINE (Floralane) - A vigorous growing sort producing many long stemmed sprays of lemon yellow 2-3" soft ball shaped flowers. Late Sept. 50¢ each.

POMPON COLLECTION No. 2 - One each of Early Crimson, Pumpkin Pom, White Tower and Yellow Ermine for \$1.80 (a \$2.10 value).

New Perennials for 1956



Phlox Snow Smoke

ASTER TAPESTRY - Large semi-double flowers of a lovely pastel pink shade on upright 30" plants. A newcomer recently imported from Europe. 75¢ each.

HELIANTHEMUM SNOW BALL - A rare new variety from England. Compact shrubby dark evergreen plants with cute double pure white miniature rose-like flowers. Excellent for rock gardens, edgings or as ground cover. \$1.00 each.

IBERIS CHRISTMAS SNOW - A new hardy Candytuft which blooms as freely during the

fall months as it does in the spring. Attractive evergreen bushlets about 12" high abundantly topped with clusters of pure white flowers.

75¢ each.

PENTSTEMON REGALITY - An excellent new summer flowering hybrid Pentstemon which we created by crossing the popular varieties Rose Elf and Garnet. Upright 18-24" plants with spikes of flowers similar in size and form to those of Garnet (Gloxinia-like) but of a rich purple-red shade midway between Pansy Violet and Hollyhock. Blooms are produced almost continuously from June until killing frosts. 75¢ each.

PHLOX NIVALIS MRS. J. HERBERT ALEXANDER - The largest flowered dwarf Phlox to date. Blossoms measuring up to an inch across of a clear pink shade with distinct garnet red eyes are produced in profusion on semi-upright 6-8" plants. This new variety blooms later than others in the spring and again in the fall, thus extending the blooming period for this fine group of plants. \$1.00 each.

Hardy Asters

A splendid plant group which is becoming increasingly popular for the modern varieties listed below are tremendously improved over the older sorts. We earnestly suggest that you try some.

FRIKARTI JUNGFRAU - A splendid recently introduced form of this summer flowering Aster with darker flowers than the famous variety

Wonder of Staffa. Large rich blue daisy-like flowers 2-2½" across from late June until frosts. 65¢ each.

RED STAR (New, 1955) - A fine addition to the "New England" Aster group and a good companion for the justly famous Harrington's Pink. Large clusters of semi-double deep carmine rose blooms on long stiff stems. 60¢ each.

ALASKA - Upright, nicely branched 30" plants loaded with white flowers. 50¢ each.

AQUILLA - Cone shaped, upright 24-30" plants with light blue flowers. 50¢ each.

BLANDIE - Very free flowering new variety from England. Semi-double large pure white flowers. 50¢ each.

CLARITY (New, 1954) - The finest new white. Semi-double to double blooms. Strong 24-30" plants. 55¢ each.

ERMA - Rounded 15-18" plants covered with semi-double light orchid purple flowers. 50¢ each.

ERNEST BALLARD (New, 1954) - Large carmine-crimson buds opening to smoky mulberry flowers 2-2½" across. 55¢ each.

EVENTIDE (New, 1954) - Huge, almost double deep gentian blue-purple flowers on nicely shaped 30" plants. A leader in popularity with our visitors. 50¢ each.

JEAN - Bright blue flowers, attractive 18" plants. 50¢ each.

PLENTY - Very large semi-double light blue flowers. 50¢ each.

RADAR (Bristol, 1955) - A splendid new variety with flowers a bit brighter in color and slightly larger than those of Winston Churchill. 60¢ each.

AN ALL COLOR ASTER COLLECTION - One each of Clarity, Eventide, Plenty, The Cardinal, Winston Churchill and Yolanda. A \$3.05 value for \$2.60.

THE CARDINAL - A very showy sort with large reddish-violet flowers. 50¢ each.

WINSTON CHURCHILL - Compact 18-24" plants with flow-

ers of an exciting currant red shade. 50¢ each.

YOLANDA - Semi-double 2" flowers of a soft rose pink shade. 24-30" upright plants. 50¢ each.

ALL PURPOSE ASTER COLLECTION - Both tall and dwarf sorts. One each of Blandie, Eventide, Erma, Persian Rose and Winston Churchill. A \$2.55 value for \$2.15.

NEW DWARF ASTERS

CAMEO (New, 1954) - Shapely 15" plants bearing a profusion of opalescent pink flowers. 55¢ each.

CANTERBURY CARPET (New, 1954) - Semi-procumbent 8-12" plants covered with Canterbury blue flowers. 55¢ each.

D. M. HARRISON - Compact 15" mounds smothered with light pink flowers. 50¢ each.

PACIFIC AMARANTH - 12" mounds covered with amarant violet flowers. 50¢ each.

PERSIAN ROSE (New, 1954) - Nicely shaped, sturdy 12-15" plants with bright persian rose flowers. 55¢ each.

VIOLET CARPET - Masses of violet blue flowers on 10-15" plants. 50¢ each.

DWARF ASTER COLLECTION - One each of Canterbury Carpet, D. M. Harrison, Erma, Persian Rose and Violet Carpet. A \$2.60 value for \$2.20.

Selected Hardy Perennials

AJUGA REPTANS RUBRA - One of the best ground cover plants. Attractive dark green foliage suffused with red. Blue flowers in early spring. 50¢ each.

ANCHUSA MYOSTIFLORA - A truly glorified perennial forget-me-not. Airy clusters of blue flowers on 12" stems in April and May. 50¢ each.

ANEMONE JAPONICA RUBRA - Long stemmed sprays of red semi-double blooms from Sept. on. The Japanese Anemones are among the finest fall bloomers for garden beauty and cutting. 50¢ each.

ANEMONE JAPONICA SEPTEMBER SPRITE - An attractive miniature form with 12" plants and silvery rose flowers. 50¢ each.



Tritoma White Giant

ARTEMISIA SILVER MOUND - A beautiful compact mound 4" tall and up to 2 ft. across of finely divided silvery foliage. One of the most striking foliage plants we know of. 50¢ each.

BUDDLEIAS (Butterfly Bushes or Summer Lilacs)

Few summer and fall flowering plants can compete with Buddleias in the production of color for the garden and bouquets.

CHARMING - Long sprays of lovely lavender-pink flowers. 50¢ each.

IMPERIAL PURPLE - Broad spikes of rich royal purple. 50¢ each.

ORCHID BEAUTY - Spires of clear orchid-lavender blooms. 50¢ each.

WHITE CLOUD - Hundreds of spikes of pure white flowers with bright yellow centers. 50¢ each.

One each of the above four, a \$2.00 value, for \$1.70.

CAMPANULAS (Bellflowers)

CARPATICA BLUE CARPET - Compact cushions of deep green foliage loaded with deep blue bells from June until October. 50¢ each.

CARPATICA WHITE CARPET - A very new pure white form of the above. Excellent as edging along flower beds or in the rock garden. 55¢ each.

PERSICIFOLIA BLUE GARDENIA (Peach-leaved bell flower) - Large double Gardenia-like flowers of deep blue-purple on stiff 30" stems during July and August. 60¢ each.

PERSICIFOLIA WHITE PEARL - A superb double white Peach Bell. Fine cut flower for summer bouquets. 60¢ each.

CARNATION KISS OF FIRE (New) - Attractive upright 12-15" plants with double firey scarlet flowers. 60¢ each.

CARYOPTERIS BLUE MIST (Spirea Blue Mist) - Myriads of clusters of lovely powder blue flowers on long stems are produced from August until late fall. Bushy 24-30" plants which become shrubby in mild climates. 50¢ each.

BEATRIX - Clear double pink flowers in clusters on stiff 12" stems from June until fall. 50¢ each.

FURST BISMARCK - A rarely offered variety similar to Beatrix except that flowers are rose-red in color. 55¢ each.

SILVER MINE - Pure double white flowers. Another fine everbloomer. 50¢ each.

DIANTHUS

One each of the above three Dianthus plus one Carnation Kiss of Fire. A \$2.15 value for \$1.90.

GAILLARDIA ATTRACTION (New, 1955) - A very attractive new large flowered sort with butterscotch yellow flowers flushed red at the center. 60¢ each.

GAILLARDIA THE WARRIOR (New) - Large ruby red daisies overlaid mahogany. An excellent summer cut flower. 50¢ each.

HELENIUM CHIPPERSFIELD ORANGE - One of the showiest summer perennials. Bushy 3 ft. plants with copper and gold daisies. 50¢ each.

HELIANTHEMUM LEMON BALL - Double lemon yellow form of the valuable "Sun Rose". Dwarf shrubby evergreen plants. 50¢ each.

HELIANTHUS LODDON GOLD - Enormous Dahlia-like fully double, heavy textured flowers of a bright golden yellow are abundantly produced on 3 to 5 ft. plants from July until late Sept. 50¢ each.

HELIOPSIS GOLD GREEN-HEART - Large semi-double to double golden yellow daisies with greenish centers on opening. Summer flowering. 50¢ each.

HEUCHERA QUEEN OF HEARTS - The best of the Coral Bells. Flowers of bright coral red carried gracefully on stiff narrow stems. 60¢ each.

HIBISCUS (Giant Mallow)

The varieties listed below are much better than the commonly listed seed grown sorts. Quantities are again limited this year.

ALEXANDER'S RED - Flowers 7-9" across of bright rose red on 5-6 ft. plants.

65¢ each.

BRIGHT EYES (Fleming, 1955) - Large glistening white with broad over-lapping petals and striking crimson red to purple-red eyes. Flowers measure 7 to 10 inches across.

\$1.00

DAHLIA TOWN ORCHID (Alexander) - Large white blooms with orchid-red eyes and veins radiating outward from center. Very unusual.

65¢ each.

MRS. J. HERBERT ALEXANDER - Huge flowers (7-9" across) of pure white with crimson centers.

PEPPERMINT STICK (Fleming, 1955) - Large white flowers delicately overlaid with dark red eyes. Rose flush on edges of petals varies with the weather, being more pronounced on cool days.

\$1.50 each.

HOSTA VARIEGATA - One of the most popular foliage plants for accent plantings or edging. Plantain-like leaves with light yellow to white variegation. Spikes of blue flowers in July and August.

LYCHNIS VISCARIA ZULU (New) - Clumps of dark green foliage with short stems of flowers of a glorious deep red shade. A rarely offered variety of this fine summer flowering perennial.

60¢ each.

LYTHRUM (Loosestrife)

Colorful, stately border plants which provide color almost continuously during the summer months.

DROPMORE PURPLE - Long spikes of fuchsia purple flowers.

50¢ each.

MORDEN GLEAM (New, 1954) - Bushy 24-30" plants with spires of bright carmine-rose flowers.

50¢ each.

MORDEN PINK - Masses of Phlox pink flowers on graceful long stems.

50¢ each.

MORDEN ROSE (New, 1955) - Attractive bushy plants with spikes of rich rose red flowers.

60¢ each.

PROLIFIC - A lovely new variety with persian rose flower spikes.

50¢ each.

ROBERT - One of the best. Compact bushy 18" plants with spikes of bright fuchsia-rose flowers.

50¢ each.

LYTHRUM COLLECTION - One each of Dropmore Purple, Morden Gleam, Morden Rose and Robert. A \$2.10 value for \$1.85.

MONARDA CROFTWAY PINK
- The lovely new clear pink Bergamont. A very showy mid-summer garden plant. 50¢ each.

MONARDIA DAHLIATOWN ORCHID - An unusual shade-a rich reddish violet. 50¢ each.

PENTSTEMON BARBATUS ROSE ELF - Graceful 2 to 3 ft. stems of tubular bell-like rose pink flowers from June on. 50¢ each.
PENTSTEMON GARNET - Bushy 18-24" plants with spikes of glowing garnet-red Gloxinia-shaped blooms. Needs winter protection in cold regions. 50¢ each.

PHLOX DECUSSATA (Summer Flowering Phlox)

The summer Phlox are too well known to need further comment except to point out that the varieties listed below are the finest new sorts.

BRIGADIER - Large carmine-red florets. A recent English import. 50¢ each.

ELIZABETH ARDEN - Very large "pips" of a delicate pink shade with red eyes. 50¢ each.

POLKADOT - White softly suffused with pink striking fuchsia colored eyes. 50¢ each.

PURPLE HEART - Very large florets of deep purple with darker centers. 50¢ each.

SIR JOHN FALSTAFF - Exceptionally large flower heads with very large florets of a rich luminous pink shade. 55¢ each.

SNOWSMOKE (New, 1955) - A semi-dwarf grower with extra large pure white flowers. 60¢ each.

PHLOX COLLECTION - One each of Brigadier, Polkadot, Purple Heart and Sir John Falstaff. A \$2.05 value for \$1.75.

PHLOX NIVALIS ALEXANDER'S SURPRISE - Bright clear rose pink flowers with red eyes which are double the size of ordinary creeping Phlox. Bushy 6-8" plants. Blooms in May and again in the fall. 60¢ each.

PLATYCODON BRISTOL BLUSH - A very fine recently introduced double Ballon Flower. Double Gardenia-

like flowers of light blush pink. These plants are not seed grown and thus are true. Supply limited. \$1.00 each.

PLUMBAGO LARPENTAE - One of the finest late summer and fall flowering perennials. Dwarf spreading plants 6-8" high covered with flowers of brightest blue shade imaginable. 50¢ each.

HARDY PRIMROSES (Harbingers of Spring)

For shady spots under trees or in shade of buildings, Primroses are ideal.

POLYANTHUS PRIMROSES -

A commercial strain of this most frequently and easily grown type of Primroses. Strong plants in mixed color range which includes reds, yellows, copper, orange, white, apricot, rose, etc. Strong Plants 45¢ each, 3 for \$1.20, 6 for \$2.25.

POLYANTHUS COLOSSAL -

Large umbels of flowers on 8" stems. Individual flowers measure 1¼ to 2" across. The mixture includes selfs and bi-colored sorts in yellow, red, copper, apricot, purple, blue, white, brownish-red tones and others. Heavy plants 55¢ each, 3 for \$1.45, 6 for \$2.75.

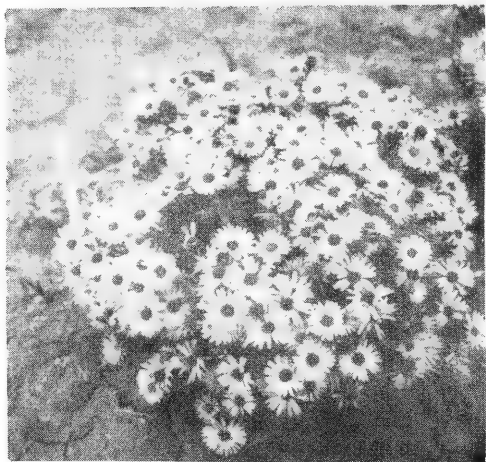
SHASTA DAISIES

AGLAYA - A very beautiful double Shasta Daisy with fringed, lace-like petals resembling a shaggy annual Aster in form. 60¢ each.

MAJESTIC - Very large flowers with double row of overlapping petals and small yellow center on long stiff stems. Truly a superior sort in the garden and as a cut flower. 55¢ each.

MAY QUEEN - The best Memorial Day daisy. Countless long stemmed, white daisies from May 20th until late June. 50¢ each.

PYRETHRUM CRIMSON GIANT - The largest crimson Painted Daisy. Duplex flowers with broad velvety red petals. 60¢ each.



Hardy Aster Persian Rose

MOUNT SHASTA - A double "Anemone-flowered" sort with a high full crested center atop a double row of broad overlapping guard petals. This is one of the large daisies of this type used by florists very effectively in summer arrangements.

55¢ each.

STOKESIA SILVER MOON - A grand new white form of Stoke's Aster. 12-16" plants with large blooms resembling giant China Asters in form. 50¢ each.

WHITE DAISY COLLECTION - One each of the above four, a \$2.20 value for \$1.85.

ALL SEASON DAISY COLLECTION - A splendid all color, all season collection for those who love the Daisy flower form. One each of Aster Frikarti Jungfrau, Daisy Mae Queen, Gaillardia The Warrior, Heliopsis Gold Greenheart and Daisy Majestic. \$2.70 value for \$2.35.

TRITOMA (Red Hot Poker)

One of the showiest and most useful of summer flowering perennial groups. Recent hybridization has produced the hardier sorts which are listed below.

ALCAZAR - A deeper orange-red than most Tritomas.

50¢ each.

GOLDMINE - Large spikes of golden yellow.

50¢ each.

SPRINGTIME - A most striking sort as the upper part of flower spike is coral red while base is ivory. Blooms earlier than most varieties.

60¢ each.

VANILLA - A dainty sort with smaller flower heads than the foregoing on stiff, thin 24" stems. Color is pale yellow.

50¢ each.

WHITE GIANT - A very lovely cut flower. Tall 3 ft. stems bearing spires of ivory white flowers.

50¢ each.

TRITOMA COLLECTION - One each of Alcazar, Goldmine, Springtime and White Giant. A \$2.10 value for \$1.85.

VERONICAS

One of the most useful plant groups which is destined for even greater popularity since the introduction of the new pink varieties.

BARCAROLE (New, Fall 1954) - Compact grower with spikes to 10" tall of bright pink flowers.

60¢ each.

BLUE CHAMPION - Tall spikes of bright blue flowers.

50¢ each.

ICICLE - Attractive spikes of pure white flowers in summer months.

50¢ each.

MINUET (New, 1955) - Attractive grey green foliage

mounds with spikes of pure rose pink flowers to 18" high.

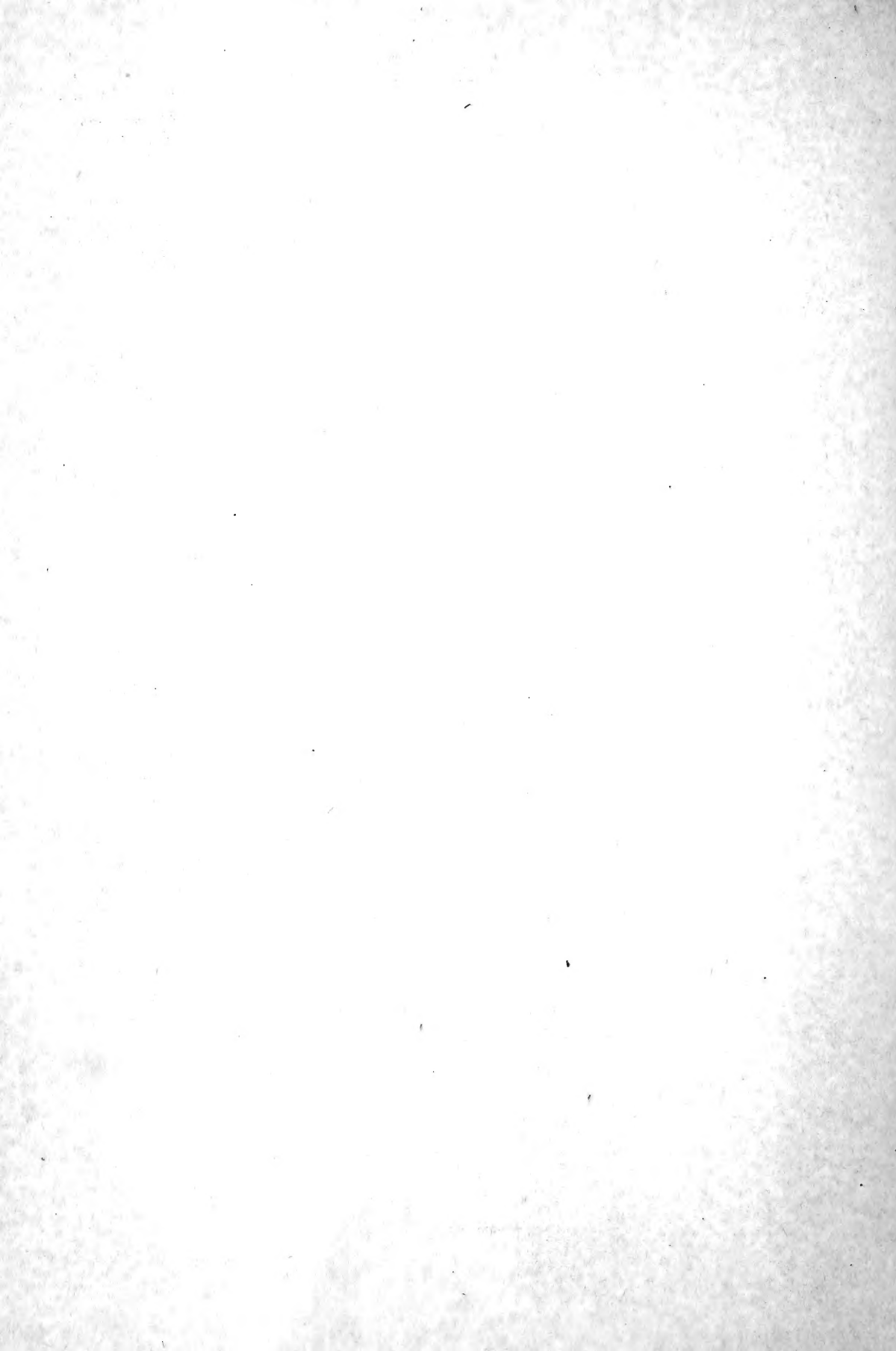
PAVANNE (New, Fall 1954) - Lovely spires of bright pink-violet blooms 15-18" high.

SUNNY BORDER BLUE - Outstanding new semi-dwarf type with spikes of deep blue flowers. 18" high. Everblooming from June on.

VERONICA COLLECTION - One each of Blue Champion, Icicle, Minuet and Sunny Border Blue. A \$2.10 value for \$1.85.

COLLECTION OF LOW GROWING PERENNIALS - One each of Ajuga reptans rubra, Campanula Blue Carpet, Helianthemum Lemon Ball, Plumbago larpentae, Phlox nivalis Alexander's Surprise and Viola Yellow Vixen. A \$3.10 value for \$2.55.

ALL SEASON CUT PERENNIAL COLLECTION - One each of Buddleia Charming, Gaillardia The Warrior, Heliopsis Gold Greenheart, Daisy Mt. Shasta, Pentstemon Regality and Tritoma White Giant. A \$3.25 value for \$2.70.



Quantity Discounts

The following prices apply when three or more of a single variety are purchased. Prices on 12 or more will be furnished on request.

Each Price	Per 3	Each Price	Per 3
\$.50	\$1.25	\$.65	\$1.75
\$.55	\$1.40	\$.75	\$2.00
\$.60	\$1.50		

COLORED SLIDES

We have several sets of 100 each of Kodachrome, Ektachrome, and Ansco Color 35m.m. slides of "Modern Mums" and other perennials, as Hardy Hibiscus, veronicas, hardy asters, etc. Sets are revised each year--include the fine Uni. of Nebraska mums of 1950 thru 1955 as well as the best from Bristol Nurseries, Lehman, Dr. Kraus, Becker, our introductions and many others. There are field scenes as well as close ups of plants and flowers.

These sets are available for use by garden clubs and other groups at no cost except for return postage.

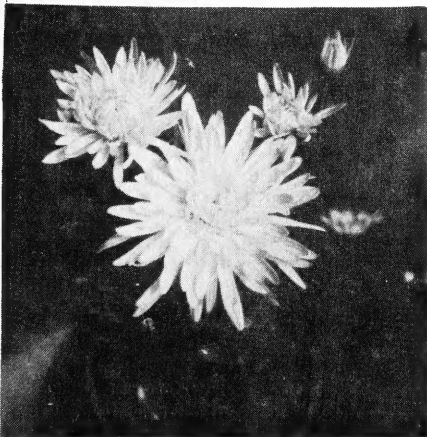
Please make requests for slides well in advance of desired showing date to avoid disappointment. Projector and screen to be supplied by each group using slides.

TERMS OF SALE

1. Cash with order please, no C.O.D. orders will be accepted.
2. Orders for \$3.00 or more will be prepaid. Those for lesser amounts should be accompanied by an additional 25¢ to help defray transportation costs.

Disclaimer

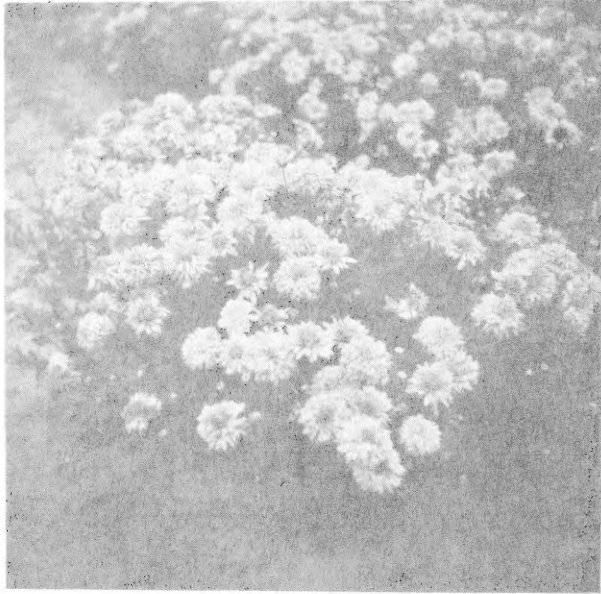
We guarantee safe arrival of plants. Reports concerning shipments received in bad order must be made within 10 days of receipt of plants. Later reports cannot be honored. It is further agreed that our responsibility regarding untruthfulness to name is limited to replacement or refund of purchase price only.



WHITE MUM

“Modern Mums.. for 1956”

TENTH EDITION



North Platte, University of Nebraska, 1955

FLEMING'S FLOWER FIELDS

3100 Leighton Ave.

Lincoln, Nebr.