

BULBS and PLANTS

IN A WIDE SELECTION OF CHOICE VARIETIES

TERMS AND CONDITIONS OF SALE

Prices are all f.o.b. Benton Harbor, Michigan, or point of shipment. 3% discount for cash with order, 2% ten days to customers of established credit; net thirty days. No charge for containers.

Shipment will be made by express unless instructed to the contrary. If delivery by parcel post is desired, add 10% to order. Excess postage will be refunded. If amount should be insufficient, you will be billed for shortage and may remit after arrival of shipment.

We guarantee our bulbs and plants to be true-to-name, and cheerfully replace or refund for any that prove otherwise. If stock is not satisfactory when received, return same at once and your money will be promptly refunded. Owing to conditions beyond our control, we cannot be in any way responsible for the crop. Complaints cannot be entertained unless made within ten days after receipt of goods.

In case we are sold out of a variety or size, we shall supply nearest size or a variety equally as good or better UNLESS YOU ADVISE OTHERWISE.

Colored illustrations will be furnished upon request with bulbs ordered for counter trade.

WHERE TO FIND IT:

	Page
Acidanthera	3
Begonias	1 and 7
Bletilla	3
Caladium	3
Canna	7
Calla	7
Chrysanthemums	7
Dahlia	6, 7
Galtonia	7
Gladiolus	2, 3
Ismene	7
Lilies	3
Packaged items	4, 5
Perennials	8
Summer Hyacinth	7
Tigridia	7
Tuberoses	7
Zephyranthes	7

Wholesale Price List

SPRING 1956

GLADIOLUS • DAHLIAS

MISCELLANEOUS SPRING BULBS

PERENNIALS

A. M. GROOTENDORST

WHOLESALE GROWER

Mail Address: P. O. Box 123

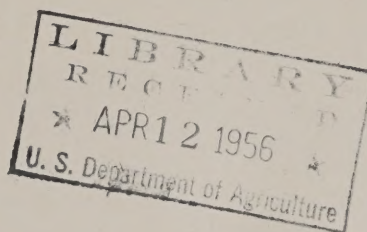
BENTON HARBOR :: MICHIGAN

Home Farm and Office Located on U. S. 12

Three Miles East of Benton Harbor

Phones: Office WALnut 5-2535—Res.: WALnut 5-2466

RETURN POSTAGE GUARANTEED—REPORT on Form 3547



BULK MAILING
Benton Harbor, Mich.
Permit No. 1

Librarian
U.S. Department of Agriculture
Washington 25. D.C.

THE GLORIOUS BEGONIAS

Double Camellia Flowered

Greater gain in popularity has been made by these exquisite large Camellia-like Begonias than by any other flower.

One each of six different fascinating colors are especially selected for this rich-looking beautifully illustrated gift box.

Each box is filled with granulated peat moss which will keep tubers in perfect saleable condition for weeks and weeks—to be added to soil at planting time.

To add to the appeal of your display an 11" by 9" full color display card with SIX Begonia flowers will be furnished with each order.

These double quick sellers are put up with fancy TOP sized bulbs, over 2" diam.—6 Begonias per box—24 boxes per case, for only ...\$24.00

One-half case for trial (12 boxes) for 12.50
Sells easily and quickly for \$2.00 each.

A LOWER PRICED UNIT TO RETAIL AT \$1.50 EACH:

Six 1½" to 2" diam. bulbs per box, 24 boxes per case, for\$18.00

One-half case (12 boxes) for only 9.50

See page 7 for our listing of Begonias in separate colors.



Size 9" x 4" x 1 3/4"

Michigan Grown **GLADIOLUS BULBS**

For Outside Planting—Counter Sales or Mail Order Trade

In buying direct from the grower, you have the assurance of quality bulbs grown especially for the wholesale trade from young, vigorous stock. You are assured of high-crowned true-to-name bulbs, accurately graded, hand selected; clean and healthy—thrips free. These bulbs cannot fail to produce top grade flowers.

First size bulbs sell best over the counter. The second size is generally used for commercial cut-flower production. With irrigation, the third size will produce a very satisfactory flower.

If not familiar with the varieties listed, we recommend our Collections A, B, C or D, which we feature as an introductory offer to new customers.

If bulbs are ordered for counter trade, colored illustrations, planting instructions and newspaper mats will be furnished upon request.

Delivery can be made any time from Dec. 1st to May 15th; and you may be assured that every effort will be made to handle your order efficiently, promptly and to your entire satisfaction.

Dust with DDT for protection against insects. To prevent thrips infestation, we recommend dusting with 5% DDT once a week, starting when the plants are 6 inches high, until the flower spikes appear. Wettable DDT sprays may be used. Follow manufacturer's recommendations.

In view of limited quantity available of certain varieties, we may be sold out upon receipt of your order. If so, we shall supply the nearest size or variety, equally as good or better, **UNLESS YOU ADVISE OTHERWISE.**



PRICE PER 1000 *100 of a Kind at the 1000 rate. Less than 100, add 10% Minimum quantity, 25 of a Kind*

	No. 1 1 1/2" up	No. 2 1 1/4"-1 1/2"	No. 3 1"-1 1/4"
Bagdad. Smoky old rose shade, large flowers	\$22.00	\$15.00
Bit O' Heaven. Rich orange. Very tall	22.00	14.00
Bloemfontein. Soft shade of salmon, with yellow blotch	28.00	20.00
Blue Beauty. Medium blue; darker at edge	26.00
Buckeye Bronze. Clear rosy bronze color, with slightly ruffled flowers	35.00	26.00	18.00
Burma. Deep rose-red. Heavily ruffled	32.00	25.00	15.00
Col. W. C. Atkinson. A deep lavender. Strong, stiff stem. Most desirable	35.00	26.00	18.00
Columbia. Creamy white, rose picotee edge	60.00	50.00	40.00
Elizabeth the Queen. Soft rose-lavender, ruffled	28.00	22.00	14.00
Ethel Cave Cole. Pure light pink, large and choice	30.00	22.00	15.00
Firebird. Earliest bright red	35.00	26.00	18.00
Florence Nightingale. A very fine white, slightly on creamy side. Throat shades to deep cream or light yellow	30.00	18.00
Friendship. Soft light pink, cream throat. Good cut flower. Early	32.00	26.00
Harry Hopkins. Lovely burgundy color with purple shadings	30.00	22.00	15.00
Hawkeye Red. Bright red with a darker blotch	30.00	22.00	15.00
Jo Wagenaar. Deep carmine-red	32.00	24.00
King David. Large deep purple, garnet flush on lower petals. Ruffled	60.00	50.00
Lady Jane. Clear glistening cream, ruffled	25.00	18.00	12.00
Lavender Lace. Heavily ruffled, pleasing shade of lavender	40.00	32.00	24.00
Lavender Prince. A beautiful deep lavender	30.00	22.00	15.00
Leeuwenhorst. Outstanding large light pink	30.00	22.00	15.00
Leif Ericsson. Very tall creamy white. Outstanding	35.00	28.00	22.00
Maid of Orleans. Perfect creamy white. Early	26.00
Mansoer. Glistening blood-red with velvety texture	30.00	22.00
Margaret Beaton. Pure snow-white, red blotch	25.00	18.00	12.00
Margaret Fulton. Clear rich dark salmon	25.00	18.00	12.00
Morning Kiss. Tall growing white; lilac shading in throat	30.00
Noweta Rose. A tall beautiful lavender-rose	40.00	32.00	25.00
Oklahoma. Superb smoky lilac with a buff throat. Ruffled	40.00	30.00

	No. 1 1 1/2" up	No. 2 1 1/4"-1 1/2"	No. 3 1"-1 1/4"
Phantom Beauty. Soft shade of shell-pink	\$32.00	\$18.00
Picardy. Sensational shrimp-pink	28.00	14.00
Purple Supreme. Tall bright purple. Large flowers	32.00	22.00	14.00
Rosa Van Lima. Light pink, penciled throat; early	28.00
Rose Charm. Attractive rose with a cream throat. Good cut flower. Early	32.00	26.00	18.00
Salman's Glory. Large creamy white, red blotch	28.00	22.00
Sans Souci. Large and tall. Rich scarlet; good cut flower	35.00	28.00
Snow Princess. Milky white, light cream throat	25.00	18.00	12.00
Spic and Span. Tall ruffled deep pink, with salmon shadings	35.00	28.00	20.00
Stoplight. Beautiful large glistening deep red	30.00	22.00
Valeria. Popular distinctive light red	32.00
White Gold. Very large light cream blending to a golden throat	28.00
Yellow Herald. Amber-yellow with carmine in throat	30.00	22.00	15.00
Exhibition Mixed. Choice varieties	24.00	18.00	12.00

	No. 1	No. 2
Illustrated Boxes. (Illustrated on page 5.) Each box contains 1 each of 12 choice varieties (order in units of 40)	\$40.00	\$32.00 per 100
Illustrated Bags. (Illustrated on page 5.) Each bag contains 25 choice mixed bulbs. 20 bags No. 1 per case; 25 bags No. 2 per case	65.00	50.00 per 100

"ALL-AMERICA" GLADIOLUS SELECTION

The exciting new All-America Award Winning Glads:

ROYAL STEWART. (Plant Patent No. 1339.) Clear light red florets, slightly ruffled.

APPLEBLOSSOM. (Patent Pending.) Snowy white with a faint touch of cream in the throat and rose-pink at the edges of the petals.

Large size bulbs (1 1/4 in. up), each 50c.
(Minimum 6 of a kind.)

GLADIOLUS COLLECTIONS

COLLECTION A

100 each of 20 different varieties of our selection, in a wide range of colors, correctly labeled and carefully packed.
 2000 large, first size bulbs, 1 1/2" and up, for only \$54.00
 Same collection in 2nd size, 1 1/4"-1 1/2", only 40.00
 Same collection in 3rd size, 1"-1 1/4" for only 28.00
 Less 5% discount for more than one Collection of a size.

COLLECTION B

100 each of 10 different varieties of our selection, a representative collection of the best commercial varieties, correctly labeled and carefully packed.
 1000 large, first size bulbs, 1 1/2" and up, for only \$27.00
 Same Collection in 2nd size, 1 1/4"-1 1/2", for only 20.00
 Same collection in 3rd size, 1"-1 1/4" for only 14.00
 Less 5% discount for more than one Collection of a size.

COLLECTION C

50 each of 10 selected varieties, our choice, different colors, correctly labeled, carefully packed.
 500 large, first size bulbs, 1 1/2" and up, for only \$15.00
 Same collection in 2nd size, 1 1/4"-1 1/2", for only 11.00
 Same collection in 3rd size, 1"-1 1/4", for only 8.00

COLLECTION D

100 each of 5 choice varieties, our selection, correctly labeled and carefully packed.
 500 large, first size bulbs, 1 1/2" and up, for only \$14.00
 Same collection in 2nd size, 1 1/4"-1 1/2", for only 10.00
 Same collection in 3rd size, 1"-1 1/4", for only 7.50

LILIUM

(Hardy Lilies)

Doz. 100

6 of a kind at dozen rate; 25 at 100 rate.

Auratum. (Gold Banded Lily). Large flowering. White with gold band on each petal. Blooms in August.		
9"-10" circumference	\$4.50	\$30.00
8"-9" circumference	3.75	25.00
Henryi (The Golden Speciosum). Beautiful orange. August flowering. Tall grower.		
9"-10" circumference	3.75	25.00
8"-9" circumference	3.00	20.00
7"-8" circumference	2.40	16.00
Maxwill. Tall red. Blooms in July. Blooming size	2.50	18.00
Philippinense Formosanum. Pure white. Blooms August-September.		
5"-6" circumference	3.60	24.00
4"-5" circumference	3.00	20.00
Regale (Regal Lily). White, shading to yellow in the center. Fragrant; very hardy. Blooms in July.		
10"-11" circumference	4.50	30.00
9"-10" circumference	3.75	25.00
8"-9" circumference	3.00	20.00
7"-8" circumference	2.40	16.00
6"-7" circumference	1.80	12.00
5"-6" circumference	1.20	8.00
Speciosum Rubrum Magnificum. Rich ruby-carmine, margined white. Blooms August-September.		
10"-11" circumference. Per case (100) \$33.00	5.25	35.00
9"-10" circumference. Per case (140) \$40.00	4.50	30.00
7"-8" circumference. Per case (250) \$45.00	3.00	20.00
Superbum (American Turkscap Lily). Crimson-orange. Blooms in July.		
First size	2.40	16.00
Second size	1.50	10.00
Tigrinum (Single Tiger Lily). Orange-red, spotted purple. Blooms in August.		
7" circumference and up	3.20	22.00
6"-7" circumference	2.70	18.00
5"-6" circumference	2.00	14.00
Tigrinum flore-pleno (Double Tiger Lily)		
Double form of Single Tiger Lily. Blooms in August.		
6"-7" circumference	2.70	18.00
5"-6" circumference	2.00	14.00
Umbellatum, Orange Triumph. Bright orange, good forcer, long lasting. Blooms in June-July.		
6"-8" circumference	2.70	18.00

NEW HYBRID LILIES

(Originator's Stock)

Doz.

Enchantment. Most beautiful new hybrid Lily. Many large, cup-shaped, upright flowers of intense, blazing Nasturtium-red. Late June, early July flowering; unusually long-lasting	\$4.00
Mid-Century Hybrids. A vigorous strain of upright flowering species, cup-shaped flowers. Colors vary from true golden yellow through shades of orange to mahogany-red. Vigorous, hardy	4.00
Valencia. June flowering, hardy hybrid Lilies of rich golden yellow hues. Large outward-facing flowers of great substance. Plant among perennials or in groups in the border	4.00
Special Trial Collection 6 each of the above 3 new Lilies for	\$6.00.

MISCELLANEOUS BULBS

Minimum quantity, 6 of a kind at dozen rate; 25 of a kind at 100 rate; 250 at 1000 rate.

Acidanthera

(Fragrant Abyssinian Gladiolus)

Doz. 100

Bicolor Murielae. The white flowers with purple blotch have a distinctive fragrance. Easily grown, produces bulblets like Gladiolus and is a good propagator (Per 1000, \$30.00.) .. \$0.75 \$4.00

Bletilla (Hardy Orchid)

Hyacinthina. 6 to 8 dainty orchid colored flowers on a stem about 12 to 15 inches tall. Easily forced\$3.50 25.00

Caladiums

Caladium esculentum (Elephant's Ear).		
9"-11" circumference	2.70	18.00
7"-9" circumference	1.80	12.00
Fancy Leaved Caladium. Rich ornamental leaves, marbled, veined and striped with white, pink and dark red. In separate named varieties or a Rainbow Mixture of all colors. Color picture available.		
2 1/2" and up diam.	3.75	25.00
2"-2 1/2" diam.	3.00	20.00
1 1/2"-2" diam.	2.20	15.00

Calla (Richardia)

Doz. 100

Alba Maculata. Small white Calla, with spotted leaves.		
2" diam. and up	\$2.40	\$16.00
1 1/2"-2" diam.	1.80	12.00
Elliotiana. Large yellow. 2"-2 1/2" diam.	2.40	16.00
1 3/4"-2" diam.	1.80	12.00
Ethel Roosevelt. Ivory-white.		
2 1/2" diam. and up	3.00	20.00
2"-2 1/2" diam.	2.40	16.00
1 1/2"-2" diam.	1.80	12.00

Ismene

Calathina (Peruvian Daffodil). White, sweet-scented flowers. Amaryllis-like foliage.		
2 1/2" diam. and up	3.50	25.00
2"-2 1/2" diam.	3.00	20.00
1 3/4"-2" diam.	2.40	16.00

Zephyranthes

Ajax (Zephyr Lily). Light yellow; blooms in August 1.00 6.00

Tigridia

(Shell Flower of Mexico)

A mixture of beautiful colors and shades.
 First size 1.00 6.00

Tuberoses

Single Mexican. 4"-6" circumference	\$7.00	\$65.00
3"-4" circumference	5.00	45.00
Double, Dwarf Pearl. 4"-6" circumference	7.00	65.00
3"-4" circumference	5.00	45.00

Hyacinthus (Galtonia)

Candicans. Summer flowering Hyacinth.	100	1000
2"-2 1/2" diam.	\$4.00	\$32.00
1 3/4"-2" diam.	3.50	28.00
1 1/2"-1 3/4" diam.	3.00	24.00
1 1/4"-1 1/2" diam.	2.50	20.00

FAST SELLING, HIGHEST QUALITY "SURE TO BLOOM" PACKAGED BULBS AND PLANTS

A selection of proven, fast-selling packaged items—each attractively pictured in eye-appealing full color. Offering YOU these advantages:

- Greater customer satisfaction
- Guaranteed to grow and bloom under ordinary conditions
- Quick turnover with bigger profits
- Best quality
- Continuing vigor
- Easily handled
- Space saving
- More sales appeal
- Planting directions for each item
- Newspaper mats upon request



SUPERB CACTUS DAHLIA COLLECTION

In Display Case as Illustrated

Size of case 19"x15½".
Over-all height 22".

These six varieties of exotic Cactus Dahlias are selected from the finest introductions; rich colors—long stems—best keeping quality as a cut flower; in white, lavender, clear pink, deep red, russet and scarlet.

This "BEST OF ALL" collection of 25 each of 6 finest Cactus Dahlia varieties, (each tuber individually packed in a polyethylene bag) shipped in a complete display case for only\$36.00

Suggested retail price: \$0.49 each
3 for 1.39
6 for 2.75

Refills, any variety, 25c each (minimum 10 of a kind)

PACKAGED POMPON and MINIATURE DAHLIAS

These have a particular appeal to the gardener for their neat habit of growth—abundance of flowers—ease of use in flower arrangements—brilliant colors and hues.

Your garden-minded customers can not resist its appeal.

Six different colored varieties are packed in this exquisite gift box. Each tuber separately enclosed in a polyethylene bag to assure the peak of freshness at planting time.



Size 8"x5½"x2"

Packed 20 boxes per case for only \$16.00.

One-half case (10 boxes) for only \$8.50.

Suggested retail price: \$1.50 each.

SPECIAL COMBINATION TRIAL OFFER
Are you skeptical about selling packaged merchandise?
In order to give you the opportunity to try this modern method of merchandising, we offer this low cost combination of packaged bulbs.

One-half case 20 Gladiolus boxes, 12 bulbs No. 1 size	Value \$ 8.00
One-half case 10 DELUXE Gladiolus boxes, 25 bulbs No. 1 size	Value 7.50
One-half case 10 Large Flowering Dahlia boxes	Value 10.50
One-half case 10 Pompon and Miniature Dahlia boxes	Value 8.50
One-half case 12 Begonia boxes 2" up. (See page 1)	Value 12.50
Regular price	\$47.00
Special Combination price	\$44.00

All packaged bulbs are of the same dependable quality as offered in bulk.

GIANT PRIZE-WINNING DAHLIA DISPLAY CASE

25 EACH OF SIX CHOICE VARIETIES



This attractive display case has 6 compartments. Each division contains 25 giant flowering Dahlia tubers, six different colors: red, white, pink, yellow, lavender and autumn shade, as shown on display panel. Each tuber individually packed in polyethylene bag for long-lasting vigor.

Size of case, 19"x15½".
Over-all height, 22".

This display case with 150 choice Dahlias for only \$30.00.

Suggested retail price:
\$0.39 each
6 for\$2.00

FILL-INS any color 20c each (minimum 10 of a color)

PACKAGED DAHLIA TUBERS



Size 10"x7½"x2"

A beautiful "self selling" colorful box of 6 Magnificent Large Flowering Dahlias—each a different color. All individually packed in polyethylene for enduring freshness. The most popular Large Flowering Dahlias are selected for this offer. Complete planting directions on each box.

Packed 20 boxes per case, for only\$20.00
One-half case (10 boxes), for only 10.50

Suggested retail price: \$2.00 each

HARDY PHLOX

THE MOST POPULAR PERENNIAL

An assortment of 16 different colorful packages—3 plants per package.

A beautiful full color wrapper illustrates the variety in each package. Three large field-grown, undivided roots are wrapped in damp sphagnum moss and moisture proof paper. These are inserted in a colorful container allowing each package to stand upright. Complete planting directions on each package.

Price: 45c per package. Not less than 6 of a number, please.



THESE EXCITING NEW HYBRID DAYLILIES

When your customer spots the beautiful colored pictures on this new display case and on each package, the urge to buy will be well-nigh irresistible.

One large, SURE-TO-BLOOM, field-grown, HYBRID DAYLILY per package. Wrapped in damp sphagnum moss for long lasting freshness.

The display case contains 6 each of these six wonderfully different kinds:

- | | | |
|----------|--------------|---------------|
| Gold | Copper | Luscious Pink |
| Dark Red | Lemon-Yellow | Deep Rose |

36 individually wrapped plants in all, for only \$10.00

Suggested Retail Price:

\$0.60 each 3 for \$1.65 6 for \$3.00

Refills can be ordered by number appearing on each illustration for \$3.25 per dozen (not less than 6 of a number, please).

Your choice of one each of three different colors per package:

- A one red
one white
one pink
- B one purple
one lavender
one red
- C one red
one white
one purple

Your choice of "three-alike" plants per package:

	Number		Number
Bright red	50	Rosy Blue	323
Light red	537	Purple	216
Rose-red	317	Lavender	51
Salmon-scarlet	312	Blush-white	627
Deep pink	309	White, red eye	39
Light pink	316	Pure white	311
Blue	310		

To retail at \$1.00 per package (3 plants). Display card and window poster with each order.

PLANT NOW!

Sure-to-Bloom
HARDY PHLOX
Easy To Grow
COLORFUL
Fragrant



SPECIAL PHLOX DISPLAY CASE

36 packages are attractively arranged in this "eye catching", colorful case.

Your choice or ours of 6 packages each of any six of above assortment.

Complete case, ready for display, with 36 packages (108 plants) for only \$16.50.

Refills available at 45c each (not less than 6 of a number please).

ALL DIFFERENT, NO TWO ALIKE

DOZEN GLADIOLUS BULBS

A fancy gift box, in full color, containing a dozen Gladiolus bulbs—each one different—one each of twelve distinct, beautiful colors, selected for best effect. A rare treat for every flower lover, with complete planting directions on each package.

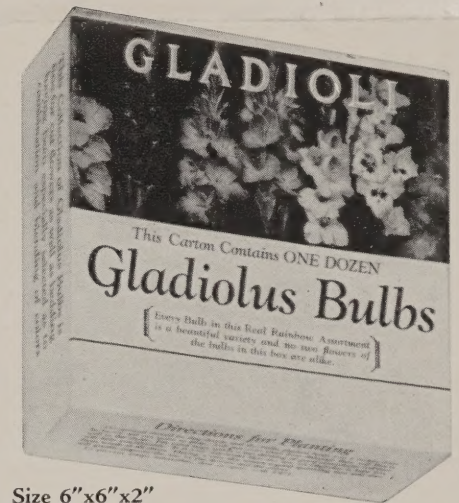
Your Choice of Two Grades:

Fancy, 1½" diam. and up, packed 40 boxes per case, \$16.00.

Suggested Retail Price: 75c each; 3 for \$2.00.

Second size, 1¼" to 1½" diam., packed 40 boxes per case, \$12.80.

Suggested Retail Price: 65c each; 3 for \$1.75.



Size 6"x6"x2"

ECONOMY BAG OF 25 LARGE FLOWERING GLADIOLUS BULBS

This Rainbow mixture is carefully selected for proper color blending and highly recommended for garden display as well as for cut flowers. A beautiful picture and complete planting directions on each unit.

Fancy, first-sized bulbs, measuring 1½" diam. and over, 25 bulbs per bag, packed 20 bags per case, for \$13.00.

Suggested retail price: \$1.19 per bag; 2 for \$2.25

Second sized bulbs, 1¼" to 1½" diam., packed 25 bags of 25 bulbs (625 bulbs in all) per case, \$12.50.

Suggested retail price: \$1.00 per bag; 3 for \$2.50



DELUXE GLADIOLUS BOX

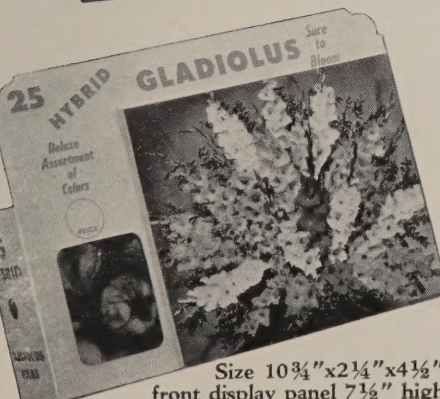
Here is a box which we believe is the ideal package for those who desire to offer the finest color collection in Gladiolus.

A most colorful package offered for counter trade, containing a deluxe assortment of large flowering Gladiolus. The bulbs are visible through a window, for customer's inspection.

Box is well vented to keep the bulbs in perfect condition. Complete planting instructions are shown on the reverse side of the box.

This package, containing an assortment of 25 large, healthy bulbs, attractively displayed, should sell itself!
Price per case (20 boxes)\$15.00

Suggested retail price, \$1.49.



Size 10¾"x2¼"x4½", front display panel 7½" high.

Large Flowering DAHLIAS

6 of a kind at dozen rate; 25 of a kind at 100 rate

Dec.—Decorative. C—Cactus. SC—Semi-Cactus. Ball—Ball or show type.

In view of limited quantity available of certain varieties, we may be sold out upon receipt of your order. If so, we shall supply the nearest variety equally as good or better UNLESS YOU ADVISE OTHERWISE.

	Doz.	100		Doz.	100
A. D. Livoni. (Ball.) Popular pink; profuse bloomer	\$1.80	\$12.00	Sagamore. (Dec.) Apricot-buff	\$3.75	\$25.00
Arthur Godfrey. (Dec.) Flame-red with orange-buff shadings	5.00	35.00	Sanhican's Monarch. (Dec.) Beautiful bright rose-red, with lighter edges; good propagator	2.70	18.00
Avalon. (Dec.) Beautiful clear yellow	1.80	12.00	Scarlet Leader. (SC.) Finest scarlet cut-flower variety	4.50	30.00
Blue Horizon. (Dec.) French violet with blue cast	3.00	20.00	Sherwood's Peach. (Dec.) Large; rich peach with light gold, autumn and apricot shadings	3.75	25.00
Blue Rose. (Dec.) Beautiful soft luminous lavender-pink	4.50	30.00	Silver Meteor. (Dec.) Lavender with silver shading	3.75	25.00
Brother Justinus. (S.C.) Orange-yellow, free flowering; fine cut flower	4.50	30.00	Snowdrift. (Dec.) Pure crisp white. Formal	3.75	25.00
Carl G. Dahl. (Dec.) Amber with golden sheen	3.75	25.00	Son of Satan. (C.) Very large, bright scarlet; fine for cutting	5.00	35.00
Casper Ludwig's Memory. (C.) Dark velvety red; fine cut flower	3.75	25.00	The Cardinal. (C.) Bright cardinal-red; large flower	3.75	25.00
Clara Carder. (Dec.) Cyclamen-pink	3.00	20.00	The Commodore. (Dec.) Bright lemon-yellow	1.80	12.00
Commando. (Dec.) Excellent deep lavender	2.70	18.00	The Real Glory. (Dec.) Excellent white crisp formal	4.50	30.00
D Day. (Dec.) Outstanding medium sized pure pink; fine for cutting	3.00	20.00	Thomas A. Edison. (Dec.) Gorgeous deep royal purple	4.50	30.00
Deep Velvet. (Dec.) Deep carmine, overlaid with oxblood-red	3.75	25.00	Virginia Rute. (S.C.) Deep velvety maroon; long stems	4.50	30.00
Delwood Glorious. (Dec.) A large watermelon-pink	4.50	30.00	Mixed Colors and Types	1.80	12.00
Exquisite. (Dec.) White with lavender blend	2.70	18.00			
Figaro. (C.) Bright yellow, striped red. (Sport of Son of Satan)	4.50	30.00			
Five Star General. (Dec.) Large; light amaranth-pink with soft yellow tips	4.50	30.00			
General Eisenhower. (C.) Deep scarlet-red; gorgeous and large cut flower	3.75	25.00			
Golden Leader. (Dec.) Excellent golden yellow	3.75	25.00			
Golden Treasure. (Dec.) Fine, golden autumn shade; perfect for cutting	3.75	25.00			
House of Orange. (Dec.) Attractive, pure orange of good substance. Early and free flowering novelty	5.25	35.00			
Imperial Pink. (Dec.) Large, extra fine pink	3.00	20.00			
Jane Cowl. (Dec.) Bronzy buff and old gold. Superb	3.75	25.00			
Jean Kerr. (Ball.) Medium sized white. Popular cut flower	2.20	15.00			
J. Marion. (Ball.) Deep red, extra large	2.70	18.00			
Leah Pearl. (Dec.) Blend of shell-pink and cream	2.70	18.00			
Marie. (Dec.) Light rose-pink, with yellow reflex	3.00	20.00			
Michigan White. (SC.) Perfectly shaped white flowers on long strong stems	3.75	25.00			
Mother Ballego. (C.) A medium sized warm red; profuse flowering and fine for cutting	4.50	30.00			
Mrs. C. D. Anderson. (Ball.) Large, deep rose-red	2.70	18.00			
Mrs. Geo. Le Boutillier. (Dec.) Large carmine-red	3.00	20.00			
Mrs. Hester Pape. (Dec.) Huge reddish purple; tall	6.00	40.00			
Mrs. I. De Ver Warner. (Dec.) Favorite orchid-lavender for garden use	2.70	18.00			
Nicky K. (SC.) Brilliant scarlet; medium height	4.50	30.00			
Oakleigh Champion. (C.) Burnt orange and soft pink; lemon shadings at base	6.00	40.00			
Pearl Harbor. (Dec.) Large lavender, variegated with purple	3.75	25.00			
Red Jersey's Beauty. (Dec.) Excellent commercial red	3.00	20.00			
Red and White. (Dec.) Red with white border	4.50	30.00			
Rose Glory. (Dec.) Lovely deep rose-lavender	3.00	20.00			
Rosy Dawn. (Ball.) Light blend of rose-red and yellow	3.00	20.00			
Rosy Morn. (Dec.) Early rose-pink, blooms till late frost	4.50	30.00			
Royal Pennant. (Dec.) Royal purple, extra large	3.00	20.00			
Rudolph Motznik. (Dec.) Blend of lavender and pink	6.00	40.00			

SPECIAL LARGE-FLOWERED DAHLIA COLLECTION

Six each of six popular varieties, our selection, separately labeled and carefully packed, 36 sound, healthy tubers for only \$5.00.

SPECIAL CACTUS NOVELTY COLLECTION

A collection of superior Cactus Dahlia varieties, selected both for cut flower as well as exhibition purposes. The varieties are packed separately; each tuber named and wrapped in polyethylene. This will preserve the tubers while on display.

6 each of 6 varieties for\$10.50 (Value \$11.25)
12 each of 6 varieties for 20.00 (Value 22.50)

Colored illustration furnished upon request.

POMPON and MINIATURE DAHLIAS

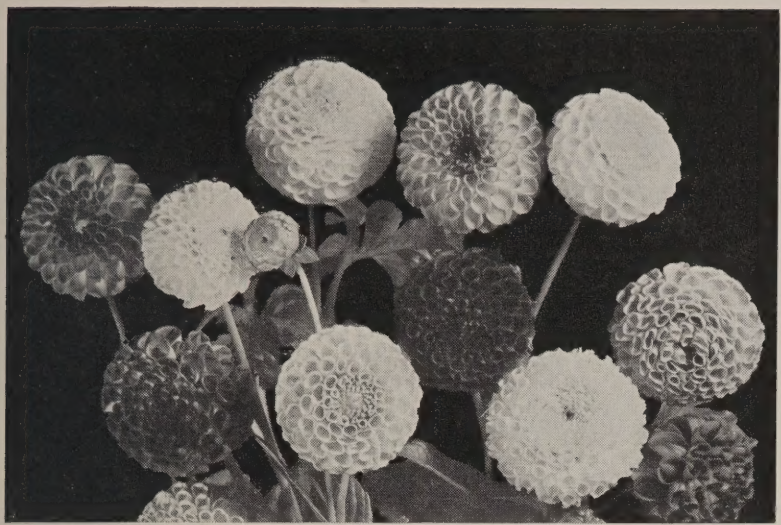
(Min.)—Miniature type (3" to 4" diameter).

All other varieties are Pompons

	Doz.	100
Challenge. Red with white tips	\$2.20	\$15.00
Edith Mueller. Gold and orange-red	2.20	15.00
Fairy. (Min.) Blend of lavender and buff	2.20	15.00
Gruss Aus Wien. Red with white markings	1.80	12.00
Ike. (Min.) Blood-red; profuse bloomer	2.20	15.00
Joe Fette. Pure white	2.20	15.00
Little Buddy. (Min.) Bright canary-yellow; ball type	3.00	20.00
McKay's Purity. Very fine white	2.20	15.00
Mary Munns. Fine pure lavender	2.20	15.00
Morning Mist. White overlaid with rosy lavender	2.20	15.00
Red Head. (Min.) Orange-scarlet	2.20	15.00
Rothrout. Fine bright red	2.20	15.00
Snowclad. Fine pure white; good stems	2.70	18.00
Snow Princess. (Min.) Single white, yellow center	3.00	20.00
Sylvia. (Min.) Fine scarlet-red; free flowering	2.20	15.00
White Fawn. (Min.) Waxy white 3" blooms; popular cut flower	1.80	12.00
Yellow Gem. Finest deep yellow	2.20	15.00
Pompon and Miniature Mixture	1.80	12.00

HARDY CHRYSANTHEMUMS

Large, Field-Grown Clumps



POMPON DAHLIAS

PRICE:
 \$20.00 per 100 (minimum 25 of a kind)
 3.00 per doz. (minimum 6 of a kind)

Type of Flower
 D—double
 SD—semi-double
 P—pompon

Blooming Time
 VE—very early
 E—early
 MS—midseason

Special POMPON and MINIATURE Collection

Six each of six varieties of Pompon and Miniature Dahlias of our selection, 36 tubers in all—separately labeled, for only \$5.00.

DWARF BEDDING DAHLIAS

This interesting group of Dahlias has remarkable value for garden planting and home decoration. The plants form compact bushes, seldom more than 2 feet high. They begin blooming when a foot high and flower continuously from early summer until frost. We offer an excellent mixture of single, semi-double and double types in dazzling colors.
 \$1.20 per doz.; \$8.00 per 100; \$75.00 per 1000.

BEGONIAS, Tuberos Rooted

DOUBLE CAMELLIA-FLOWERED

Minimum quantity, 6 of a kind at dozen rate; 25 of a kind at 100 rate. Select strain of the best colors. Belgium grown.

Red Scarlet	Pink Salmon	Orange Copper	Yellow White	Doz.	100
2" and up diam.				\$2.40	\$16.00
1 1/2"-2" diam.				1.80	12.00

American Grown Begonias. A superior strain of Double Camellia-Flowered in the following colors:

Red	Pink	Orange	Yellow	Doz.	100
Salmon	White	Apricot	White	\$3.00	\$20.00

CANNAS

Strong Dormant Roots

- *City of Portland. Large, beautiful pink flower. Green foliage. Medium height.
- *Red King Humbert. Large light red flower. Bronze foliage. Tall.
- *Richard Wallace. Large solid yellow flower. Green foliage. Dwarf.
- Yellow King Humbert. Large yellow flower variegated with red spots. Green foliage. Medium height.

All Above Cannas (Minimum 25 of a kind)\$7.00

* Color pictures available.

	Type	Av. Ht.	Season
Alabaster. Large white, yellow center	D	22"	E
Algonquin. Pure bright yellow	D	18"	VE
Allegro. Shrimp-pink with coppery salmon undertone	D	25"	E
Barbara Small. Deep lavender-pink	D	24"	VE
Betty. New rose-pink	D	30"	MS
Border Purple. Beautiful rich purple	D	18"	E
Burgundy. Rich wine-red. Grand cut flower	D	30"	E
Caliph. Deep ox-blood-red	D	30"	E
Candlelight. Creamy white with yellow center	D	18"	VE
Chas. Nye. Fine deep golden yellow; free flowering	P	24"	E
Chiquita. Deep lemon-yellow	P	18"	E
Chris Columbus. Fine white with cream center	D	22"	E
Crusader. Ox-blood-red	D	24"	E
Early Age. Yellow and bronze autumn shade	D	15"	MS
Fred F. Rockwell. Blazing blend of orange and burnt scarlet	D	24"	E
Gold Standard. Golden deep yellow	D	26"	MS
Golden Sunrise. Deep lemon-chrome, slightly incurved	D	24"	E
Huntsman. Vivid bright scarlet, overlaid with orange-bronze	D	30"	MS
Inspiration. Bronze with golden reflex	D	26"	E
Leda. Large heliotrope-pink	D	28"	MS
Marvel. Fine tall yellow	D	24"	E
Mischief. Purple with yellow eye, button type; free flowering	D	20"	E
Mrs. P. S. Dupont. Soft peach, tinted with salmon-bronze	D	26"	MS
Olive Longland. Apricot and salmon tint; large flowers	D	24"	E
Orchid Helen. Large, pink-orchid flowers; free flowering	D	18"	VE
Pathfinder. Clear yellow	D	20"	E
Pepita. Compact, pure white flowers with cream center	P	22"	E
Plainsman. Large deep scarlet	D	20"	E
Red Velvet. Velvety red flowers	D	24"	MS
R. R. Cox. Vivid burnt orange	P	23"	MS
Reverie. Light pink, deeper center	D	24"	E
September Cloud. Ivory-white, primrose center	D	20"	E
Sequoia. Pleasing mellow amber or light tan shade	SD	24"	E
Snowdrift. Good white with cream center	D	20"	E
Splurge. Lavender-rose, button type	D	16"	MS
Tangerine. Bright copper-orange shade; large flowering	D	18"	VE
White Wonder. Beautiful white, supreme cut flower	P	30"	E
Wren. Light orange with shades of copper	P	20"	E
Yellow Jewell. Ball-shaped, yellow flowers; bronze undertone	P	18"	MS
Yellow Spoon. Brilliant clear yellow	D	30"	MS

CUSHION TYPE CHRYSANTHEMUMS

Bronze Cushion. Light bronze	D	12"	VE
Cocheco. Deep lavender	D	10"	E
Major Cushion. Bright salmon-pink; non-fading	D	15"	E
Pink Cushion. Soft rose-pink	D	12"	VE
Santa Claus. (Red Cushion). Crimson	D	16"	VE
White Cushion. Pure white	D	12"	E
Yellow Fairy. Fine clear yellow	P	16"	E
Yellow Supreme. Bright sulphur-yellow	D	12"	VE

SPECIAL CHRYSANTHEMUM COLLECTION

6 each of 6 selected varieties of our choice, correctly labeled and carefully packed. 36 nice strong, field-grown clumps for only \$8.00.

PERENNIALS

ALL ITEMS LISTED BELOW:

6 of a kind at dozen date; 25 of a kind at 100 rate.

Artemisia (Sage Brush or Wormwood) Doz. 100
 A beautiful silver foliage plant, presenting a frosty appearance. Grows about 2 feet tall. Should be planted in full sun with the tips of the runners above ground level. The foliage makes an attractive background for arrangements of cut flowers.
Silver King. Silver foliage. Field-grown clumps.....\$1.80 \$12.00

Daisy (*Chrysanthemum Maximum*)
 Very easy to grow. These plants like a humus-rich soil, plenty of moisture, and should be lifted and divided every 2 or 3 years.
Aglaya. A frilly type white Daisy. Bloom about 3½ in. across on an 18-in. stem. Good for cut-flower or garden display.. 3.00 20.00
Improved Esther Read. Larger than Esther Read. Double white, about 4 inches across with long sturdy stems. Constant bloomer, vigorous and hardy 7.50 45.00
Mount Shasta. A fine, fully double white Daisy, 3 to 4-inch flowers on long sturdy stems, provide a fine cut flower over a long blooming period. A healthy and vigorous plant.... 1.80 12.00

Dicentra (Available until April 1, only)
 Plant in medium to rich soil, eyes about 1 inch below surface. Mulch in areas where severe frost is to be expected. Lift and divide every 3 or 4 years.
Eximia. (Cut-Leaved Bleeding Heart.) A fine border plant, growing about 10-12 inches tall, with pink flowers, and a fine lacy foliage.
 First size 2.20 15.00
 Second size 1.50 10.00
Spectabilis (Old-Fashioned Bleeding Heart). Graceful pink flowers, on long stems, grows 24 to 30 inches tall, and develops large clumps.
 Large size. 5-8 eyes 6.00 40.00
 Medium size. 3-5 eyes 4.50 30.00

Gypsophila (Baby's Breath)
 Prefer a well-drained and lighter soil somewhat on the "sweet" side. Plant in sunny location 2½-3 feet apart; mulch during winter. These plants are especially valuable for cut-flower arrangements.
Bristol Fairy. Double white, superb for cutting..... 5.00 35.00

Liatris (Kansas Gay Feather)
 A sturdy and very hardy plant which will thrive in almost any type of soil with reasonable drainage. Plant with the eyes about 1-2 inches below the surface. Lift and divide every 3-4 years.
Pycnostachya. Tall rich purple. A wonderful cut flower. Early blooming 1.20 8.00
Pycnostachya Alba. White Kansas Gay Feather..... 2.20 15.00
Scariosa, September Glory. Heavier and bushier spike than Pycnostachya. September flowering 2.20 15.00
Scariosa, Silver Tip. Soft lavender with silver tip, same habits as September Glory, but earlier flowering..... 1.50 10.00

Tritoma (Red Hot Poker)

These plants produce fine cut flowers and bloom over a long period of time, which makes it an excellent garden perennial. They prefer a soil with good drainage and should be "hilled up" and well mulched over winter. Lift and divide about every 3-4 years. Plant with crown 1 to 2 inches below the surface.

	Doz.	100
Alcazar. Soft rose-red	\$2.40	\$16.00
Golden Stream. Bright pure yellow	2.40	16.00
Goldmine. Soft amber tinted gold	1.80	12.00
Mayor De Vlugt. Pure yellow	2.40	16.00
Pfitzeri. Rich orange-scarlet	1.80	12.00
Primrose Beauty. Delightful primrose-yellow	1.80	12.00
Robustus. Heavy spike; red top, pale yellow base	1.80	12.00
Skyrocket. Pale yellow with slight red top	2.40	16.00
Vanilla. Small clear yellow	1.80	12.00
White Giant. 3-foot stems, bearing blooms of ivory-white	2.40	16.00

Hemerocallis

(Lemon or Day Lily) 6 at dozen rate; 25 at 100 rate.

	Doz.	100
Apricot. Apricot-orange, blooms May-June. Fragrant	\$3.00	\$20.00
August Orange. Small rich orange blooms	6.00	40.00
Autumn Red. Good, rich velvety red, golden yellow center ...	6.00	40.00
Bagdad. Rich coppery red and brown. Large flowers ..	3.00	20.00
Baronet. Rich red, toning to an orange throat	3.00	20.00
Blanche Hooker. Earliest and best red, throat shaded orange..	9.00	60.00
Boutonniere. Orange with rosy peach blend	3.00	20.00
Caballero. Bi-color; vermilion petals, yellow sepals and throat..	4.50	30.00
Chengtu. Coppery red and carmine	4.50	30.00
Dauntless. Pale yellow with a light blotch on each petal	3.75	25.00
Elfin. Clear orange. Good sized flowers. Dwarf. Very early..	4.50	30.00
Evening Cheer. Bright clear yellow. Blooms late Sept. and Oct.	6.00	40.00
Fantasia. Pale red tints over greenish yellow	4.50	30.00
George Yeld. Large canary-yellow, brushed red	3.00	20.00
Georgia. Pastel or pale buff with delicate rose tints	10.00	65.00
Goldeni. Deep golden broad-petaled flowers	3.00	20.00
Golden West. Bright yellow, deep yellow throat	5.00	35.00
Gypsy. Light orange	2.70	18.00
Hesperus. Lemon-yellow, large flowers, excellent substance ..	6.00	40.00
Honey Redhead. Bright red, set off by a yellow border	4.50	30.00
Hyperion. Canary-yellow. Large waxy flowers	4.50	30.00
Imperator. Large orange-red	3.00	20.00
Linda. Golden yellow, base with red eye. Ruffled	3.00	20.00
Manchu. Apricot-orange, throat greenish yellow	7.50	50.00
Mikado. Deep orange, maroon blotch	2.20	15.00
Ming. Almost uniformly orange. Large flowers	6.00	40.00
Minuet. (Nesmith.) Blend of frosty pink, shaded deeper rose	9.00	60.00
Ophir. Large golden yellow. Free flowering	3.00	20.00
Patricia. Pale yellow with greenish throat	4.50	30.00
Port. Bright deep red	6.00	40.00
Purple Waters. Recurved rosy wine-red	4.50	30.00
Rajah. Brilliant orange, overlaid with reddish brown	3.75	25.00
Red Knight. Yellow throat; scarlet-red shades. Late July ...	7.50	50.00
Sachem. Rich deep red with yellow-orange throat	4.50	30.00
Samson. Buff-yellow, flushed cadmium, broad petals. Large ..	6.00	40.00
Sunny West. Immense soft canary-yellow	4.50	30.00
Sweetbriar. Deep rose. Blooms early July	7.50	50.00
Theron. Deep red, twisted petals, yellow-orange throat	4.50	30.00
Splendid Mixture. For a long blooming season	2.20	15.00

Hemerocallis Collection To popularize the better varieties of Day Lilies, we offer the following special collections:
 6 each of 10 varieties of our selection, properly labeled and carefully packed, for only\$10.00
 6 each of 5 varieties, our selection, for only 5.00

SPECIAL TRITOMA TRIAL COLLECTION
 A "get acquainted" offer of 6 each of six Tritoma varieties of our selection, properly labeled and carefully packed.
 36 large field-grown plants for only\$5.00

PACKAGED HEMEROCALLIS
 Are Offered on Page 5