

62.57

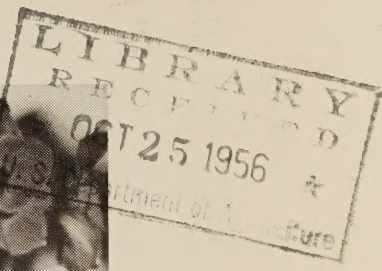


Bw

FALL 1956

1957 EARLY WINTER

IMPORTED HYBRID HIPPEASTRUM
AMARYLLIS BULBS



SALMON JOY

MARIA GORETTI

AMERICAN FASHION

JOHNSON BROS.

Flower Bulb Importers

P. O. Box 463

Bound Brook, N. J.

After January 1957 direct communications to
Box 74 Barnegat, N. J.

Director Foster E. Mohrhardt,
U.S. Dept. of Agriculture
Library
Washington 25, D.C.

Return postage guaranteed
if addressee unlocated



A PERSONAL MESSAGE TO YOU

We thank GOD for the privilege of once more being in a position to offer you these spectacular and majestic flowering bulbs which you will find listed on the following pages.

It is very gratifying to us to know that our customers have been afforded a great deal of pleasure thru the past years from our sincere efforts to supply them with top grade and size bulbs of these gorgeous flowering AMARYLLIS.

Many are the obstacles that confront us in obtaining and distributing these bulbs such as unfavorable weather in country of origin, dock strikes on arrival of bulbs sometimes and subzero weather at the time we receive your valued orders to ship.

We trust that you will consider these things in the event that you do not receive your bulbs as quick as you expect in some instances.

Please order early, not only so that we can ship ahead of the low temperature weather but so that you are more certain of obtaining the varieties you desire. With the exception of a few varieties which lose their live roots quickly your early orders will assure bulbs with plump live roots reaching you in good order.



Our daily prayer — LORD make us a blessing to someone to-day and use us we pray for honor and glory for THEE alone, Amen.

PINK VARIETIES

SELMA — Van Meeuwen — perfect salmon pink 8" to 9" blossoms on very tall stems truly an exhibition variety each	\$6.00
SWEET SEVENTEEN — Warmenhoven — rich salmon pink 8" blossoms on medium tall scapes	each \$6.00
SALMONETTE — Warmenhoven — another excellent salmon pink 8" blossoms on medium tall scapes	each \$6.00
BOUQUET — Ludwig — striking begonia pink 8" blossoms on medium tall scapes	each \$7.00
DELILAH — Ludwig — another fine begonia pink 8" blossoms on medium tall stems	each \$7.50
LOVE'S DESIRE — Ludwig — outstanding coral pink 8½" blossoms medium tall scapes	each \$9.00
MORNING STAR — Ludwig — a begonia pink with white star in throat 8" blossoms on tall stems	each \$6.00
PINK FAVORITE — Ludwig—rosy pink 9" blossoms tall scapes, well liked	each \$8.50
PINK PERFECTION — Ludwig — carmine pink 8" blossoms, medium tall stems	each \$8.50
PINKSTERFLOWER — Ludwig — azalea pink 8" blossoms, me- dium tall scapes	each \$6.50
APPLE-BLOSSOM — Ludwig — white with dawn pink 8" blossoms, medium tall stems	each \$10.00

RED VARIETIES

GONDIBAR — Van Meeuwen — rich dark red 8" blossoms, me- dium tall stems	each \$7.00
GIANT GOLIATH — Van Meeuwen — outstanding red 8" blossoms, medium tall scapes	each \$6.00
GARIBALDI — Van Meeuwen — deep scarlet 8" blossoms, me- dium tall stems	each \$5.50
RED EMPEROR — Van Meeuwen — shimmering gorgeous medium red 8" blossoms on medium tall scapes	each \$6.00
TRISTAN — Van Meeuwen — exhibition class, deeper red than RED MASTER on tall stems	each \$7.00
RED STAR — Van Meeuwen — another excellent medium red 8" on tall scapes	each \$5.50
MARYON — Van Meeuwen — majestic blood red 8" blossoms, medium tall stems	each \$6.00
LUCIFER — Van Meeuwen — spectacular deep orange red 9" blossoms on very tall scapes, exhibition	each \$6.50
QUEEN SUPERIORA — Van Meeuwen — another blood red beauty 8" on medium tall stems	each \$6.50

RED MASTER — Warmenhoven — one of the best dark reds 10" blooms on medium tall stems — exhibition	each \$7.00
RED MAJESTY — Warmenhoven — new last season 8½" red flat blooms on medium tall scapes	each \$10.00
ROYAL RUBY — Warmenhoven — light red very flat 8" blooms on medium tall scapes new last season	each \$10.00
BEACON — Warmenhoven — deep salmon with white banded petals on 10" blooms medium tall scapes	each \$9.75
CHEROKEE — Warmenhoven — lustrous metallic red 10" blooms on medium tall stems this and BEACON are exhibi- tion varieties	each \$9.75
AMERICAN FASHION — Ludwig — rich rose red 8" blooms on medium tall scapes	each \$7.00
CHAMPION'S REWARD — Ludwig — sharp oriental red 9" blooms on medium tall scapes an eyecatcher	each \$10.00
DAINTINESS — Ludwig — porcelain rose 7½" blooms on me- dium tall stems, a dainty beauty	each \$9.75
CRIMSON BEAUTY — Ludwig — an unusual crimson 8" bloom on medium tall scapes with semblence of star in throat	each \$9.00
DIAMOND — Ludwig — an excellent geranium red 9" blooms on stems better than 24" an exhibition variety	each \$10.00
DORIS LILIAN — Ludwig — gorgeous perfect 7½" very flat blooms of outstanding carmine rose on medium tall 28" stems, one of the best	each \$8.00
LUDWIG'S MASTERPIECE—Ludwig — dark Dutch vermilion 8" blooms on tall scapes	each \$10.00
LUDWIG'S SPLENDOR — Ludwig — another rich vermilion with an auburn glow 8" blooms on tall scapes	each \$10.00
MARGARET ROSE — Ludwig — a shrimp red manderin rose 8½" blooms on medium tall scapes	each \$7.00
SIREN — Ludwig — exquisite dainty salmon rose 8½" blooms on medium tall scapes, an exhibition var.	each \$8.00
SALMON JOY — Ludwig — unusual salmon scarlet 9" blooms on tall stems, a dream	each \$5.50
WYNDHAM HAYWARD — Ludwig — ranking with the best a dark oriental red 8½" blooms on tall scapes	each \$7.50

TWO TONE AND MIXED COLOR VARIETIES

CANDY CANE — Ludwig — magnificent bright red petals white edged 9" blooms on tall scapes, quite striking	each \$10.00
KIND of STRIPES — Warmenhoven — white striped red 5" blooms on two foot scapes often three scapes	each \$5.00
VIOLETTA — Warmenhoven — a beauty in red with violet hue 8" blooms on two foot stems	each \$5.50

- SUPERBA** — Van Meeuwen — rich red with purplish hue 8” blooms on tall scapes each \$7.00
- ROSE QUEEN**—Van Meeuwen — deep pink with white center 8” blooms on tall stems each \$5.50



White Giant Daintiness, Queen of Whites.

WHITE VARIETIES

- WHITE GIANT** — Ludwig — another glistening pure white 8” blooms on medium tall scapes each \$5.50
- NIVALIS** — Ludwig — round flat 8” blooms of pure white on medium tall scapes each \$5.00
- LUDWIG’S DAZZLER** — Ludwig — dazzling white perfectly shaped 8½” blooms on medium tall stems each \$6.50
- MARIA GORETTI** — Ludwig — slightly ruffled pure white 8” blooms on medium tall scapes each \$5.00
- ALBINO**—Van Meeuwen — lustrous flat pure white 8” blooms on tall scapes each \$5.50
- QUEEN of the WHITES** — Warmenhoven — waxy pure white with recurved petal tips 9” blooms on medium tall stems, often three stems to a bulb, a beauty each \$6.50

FOR THE FIRST TIME

**WE OFFER UNNAMED CLONES OF TOP GRADE
28CM SIZE BULBS OF WARMENHOVEN STRAIN**

in separate colors dark red, salmon or white priced at \$3.00 each or one of each color total of three bulbs \$8.00 six bulbs \$15.00.

Very choice stock economically priced — limited quantity — order early.

BOOKLET ON CULTURAL CARE OF IMPORTED AMARYLLIS

Our original paper bound copies of this helpful booklet available at 50c per copy.

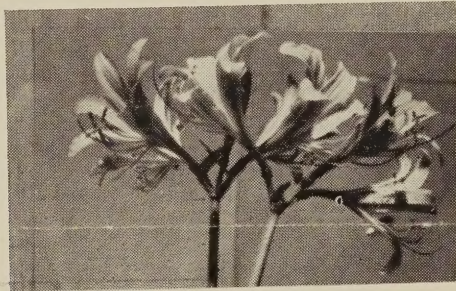
At the time of this writing we are feasting our eyes on about 1000 stems (6000 blooms) of the exquisite pink LYCORIS SQUAMIGERA planted out on our Barnegat, N. J. place for display. What a sight to the eyes and one of GODS countless blessings to the soul.

AGAIN WE OFFER

LYCORIS MEMBERS OF THE AMARYLLIS FAMILY
FROM JAPAN

**LYCORIS MEMBERS of the AMARYLLIS FAMILY
FROM JAPAN**

LYCORIS squamigera, hardy Amaryllis halli often called the "MAGIC LILY of JAPAN" produce scented pale pink slightly tinged with lavender blooms on stems 24" tall in August.



Magic Lily

Foliage follows thru winter and spring dying off early June when bulb rests. Flower stems appear suddenly and alone (no foliage) therefore it is advisable to plant petunias or a similar plant in front of lycoris to detract from the naked flower stems.

6" circumference bulbs \$4.00 dozen.

7" circumference bulbs \$4.50 dozen.

LYCORIS RADIATA, the red spider lily produces delicate rich red blooms in September on 15" tall stems. This variety and L. Squamigera are hardy outdoors in the north, available at all times. Blooming size bulbs \$3.00 dozen.



LYCORIS AUREA, beautiful golden spider lily blooms late

September or early October on stems to 18". This variety and the two varieties following are suited to outdoor growing from Richmond, Va. south and across the gulf states and on the west coast. Areas other than these they can be pot grown to do well in a cool greenhouse or indoors.

Blooming size bulbs \$5.00 dozen.

LYCORIS SANGUINEA, exquisite salmon pink blooms in late August and early September on short stems to 10".

Blooming size bulbs \$3.50 dozen.

LYCORIS RADIATA alba, the ivory white spider lily very rare and scarce. Real treat in the latter part of September of a number of blooms atop a 15" stem.

Blooming size bulbs 6 for \$3.50 dozen \$6.50.

All Lycoris varieties available at all times unless temporarily sold out of blooming size bulbs.

T E R M S

All orders accepted subject to availability of bulbs ordered. Occasionally due to conditions beyond our control and from selling out of specific varieties we are unable to supply named varieties ordered.

In this event we will substitute with the nearest desired variety unless advised to the contrary.

We usually have a second shipment of bulbs from LUDWIG only after the season starts so that any of their strain which is desired and that we have sold out of at the time your order reaches us can be obtained in this later shipment which arrives in January early.

While we pack our bulbs exceptionally well we will not ship an order if to our knowledge there exists a subzero condition where the bulbs are destined for until after the condition has modified.

Payment in a form convenient to you is required with each order. We guarantee safe delivery of bulbs to you unless you have such parcel post delivery that would require parcel to be exposed too long in low temperatures, rain or snow such as is the case with rural route deliveries.

While we guarantee bulbs to be true to strain, variety and size and to bloom the first season we beseech you to exercise patience since in many cases bulbs will flower normally to their full extent the second season after becoming well established the first season, however, in many other cases bulbs will do their best the first season specially if purchased early with ample live roots still intact.

Approximate earliest shipping date of Dutch hybrid Amaryllis late November early December.

The following photo is one of a very small part of the collection of these amazing Amaryllis owned and maintained by our very good friend and customer Mr. Edgar H. Wuest of New Jersey an avid Amaryllis lover.



Rear — LUDWIG'S SPLENDOR — PRINCE of ORANGE —
and PRIVATE strain reading left to right.
Front — STRIPED BEAUTY — CRIMSON BEAUTY
and ROYAL RUBY.

Mr. Wuest has one of the largest if not the largest private collection of imported named hybrid Amaryllis hippeastrum bulbs that we know of.

A true lover of these spectacular blooms and their bulbs and possessing more than his share of patience, tolerance and consideration all of which are necessary to obtain wholesome relaxation and pleasure to counteract the wearing pace of business in these hectic days.

Such attributes can naturally be expected from a person who truly enjoys the things of GOD.