

SALE

62, +/ Index*

R. M. KELLOGG

BULBS and PLANTS

RAINBOW BARGAIN

LIBRARY
RECEIVED
AUG 28 1956
Department of Agriculture



COLLECTION NO. 6

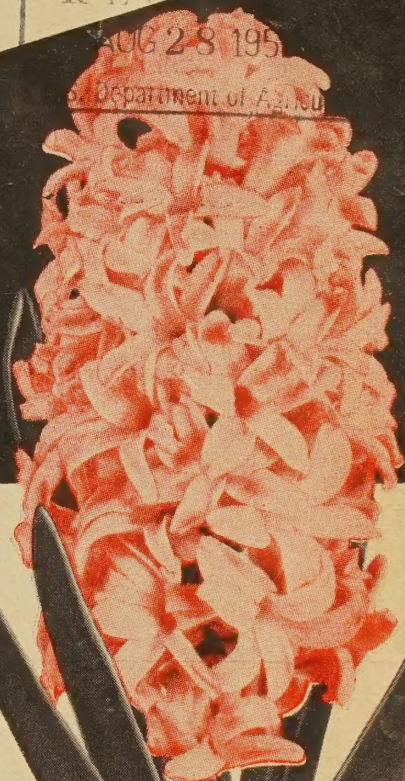
25 Bulbs, a Rainbow collection of fine Tulips consisting of 2 each of the 10 varieties on page 2, plus 1 each of the Peony Flowering Tulips, plus 1 new Darwin "Kellogg's Glory." All varieties labeled. Regular price \$4.25. (You save \$1.30.)

Sale Price now only **\$2.95**

New DARWIN TULIP "Kellogg's Glory"

Kellogg's are proud to be the first to introduce this new Hybrid Darwin Tulip to its customers. This new Tulip was introduced in the Netherlands and named in honor of our company. "Kellogg's Glory" is a huge beautiful scarlet red with a yellow based flower on a long strong stem of about 25 to 30 inches. The flower has very strong substance and the large blooms have a pure Darwin form. Besides being an outstanding novelty in the garden, it is also excellent for forcing in pots and can be in bloom right in your living room toward the end of February. Large 12 cm. and up bulbs, \$1.00 each; 3 for \$2.75; 6 for \$5.00.

All Items in this Catalog POSTPAID Unless Otherwise Noted



FORCING Giant Hyacinth Bulbs with GLASS

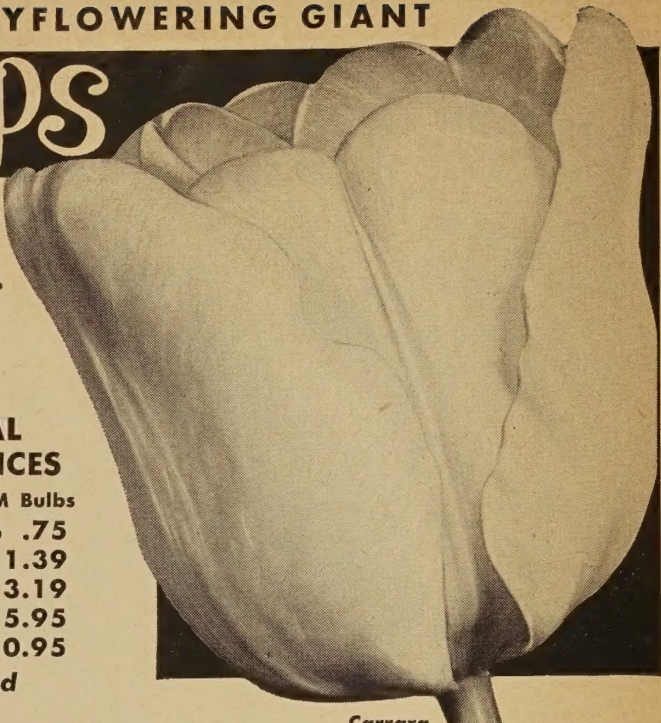
Have you ever grown a gorgeous, big, richly scented Hyacinth indoors in winter? If not, you will be delighted to see how easy it is to do. You will need one of our exhibition-size bulbs and a Hyacinth glass. Before placing the bulb on the Hyacinth glass the rootbase and rootplate must be cleaned, so that all remains of the old rootplate and old roots are removed. When glass and bulb are clean, place the bulb in the top of the glass and fill the glass with clean, cool water until the rootbase is touched. The glass is then to be placed in a cool, dark room until the top-growth is 4" above the bulb. Preferred temperature not over 50° F. When 4" top-growth has been made, the glass may be taken to a window in a warm room and if necessary, some water can be added; never change the water completely. If the air in the room is very dry, it may help to moisten the flowerbuds once a day with a wad of cotton dipped in cool water. Every day you can see it swell — then the color will show — and in a little while you will have a glorious big flower spike.

- Hyacinth Colors Available: Bright Pink, Yellow, Salmon Pink, Rose Crimson, Pure White, Indigo Blue.
- 1 Bulb with crystal glass.....\$.98
 - 3 Bulbs with 3 crystal glasses.....\$2.85
 - 6 Bulbs with 6 crystal glasses.....\$5.39
 - 1 Bulb with sapphire or tangerine glass.....\$1.49
 - 3 Bulbs with 3 sapphire or tangerine glasses..\$4.29
 - 6 Bulbs with 6 sapphire or tangerine glasses..\$8.39



MILLIONS CHOOSE THESE KELLOGG MAYFLOWERING GIANT

POPULAR Tulips



For Springtime

Beauty . .

Plant this
Fall.

SPECIAL SALE PRICES

Size 11/12 CM Bulbs

5 for \$.75

10 for 1.39

25 for 3.19

50 for 5.95

100 for 10.95

Postpaid

Queen of Night

Carrara

PRINCESS ELIZABETH. Satiny rose-pink with delicate shadings of fuchsia and topaz. Silver white base, with delicate blue halo. Amazingly beautiful, delicately colored. Height 28 inches.

QUEEN OF NIGHT. Finest of all "Black Tulips." Rich deep maroon purple of especially beautiful tone. Large flowers on tall, stiff stems. Always attracts attention. Height 25 inches.

OSSI OSWALDA. Opens creamy white, tinged rose, but color changes from day to day, being pure rose when mature. The flower is huge, of beautiful form and long lasting; tall, straight stem. Height 25 inches.

CARRARA. Most popular of all the giant white tulips. Erect pure white flowers with yellow anthers. Large globular flowers are borne on strong stems. Highly recommended for bedding. Height 25 inches.

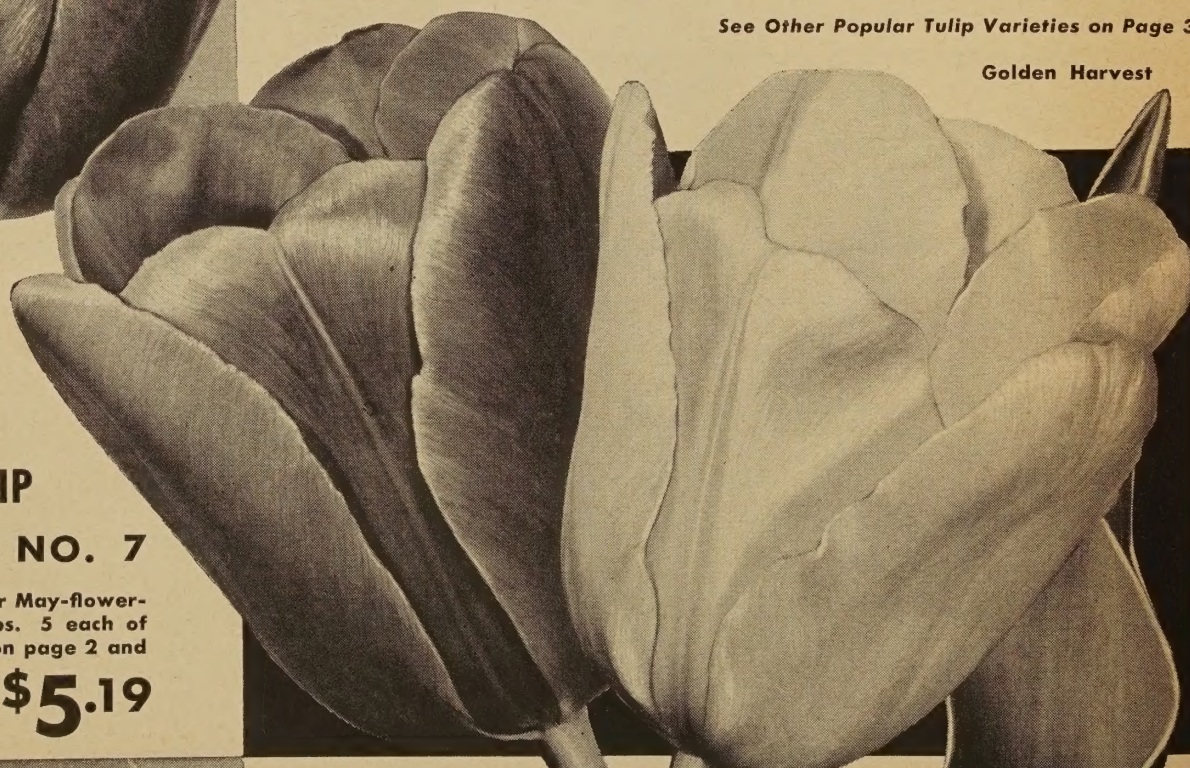
YELLOW EMPEROR. The flowers are a deep golden yellow. The large, handsome flowers are carried on tall, strong stems. It has excellent lasting qualities. Truly a beauty. Height 25 inches.

DORRIE OVERALL. Dark petunia violet, with mauve edge. Interesting form when open, graceful reflecting petals. A marvelous exhibition variety. Very showy and beautiful. Height 28 inches.

Dorrie Overall GOLDEN HARVEST. A splendid butter-yellow Tulip of great substance. There is a pale green shading through the flower making it one of the finest Cottage Tulips. Holds its color very well. Height 25 inches.

See Other Popular Tulip Varieties on Page 3.

Golden Harvest



BIG TEN POPULAR TULIP

COLLECTION NO. 7

50 TULIPS, all color May-flowering Giant Tulips. 5 each of the ten varieties listed on page 2 and bottom of page 3.

SALE PRICE
Only

\$5.19

Yellow Emperor

RED EMPEROR

WORLD'S LARGEST TULIP

This is the most popular tulip in existence. One of the largest and earliest of all tulips. Color is a dazzling vermilion scarlet-red with black and yellow base. The blooms open to 9 inches across and are carried on strong stems about 15 inches in height. Plant them by the hundreds for spectacular effects. Massed in beds, grouped in the garden, or wherever they have been planted they create unusual excitement. **5 for 98c; 10 for \$1.89; 25 for \$4.49; 50 for \$8.49; 100 for \$15.95.**



Red Emperor



Prince Carnival

PRINCE CARNIVAL

New Early Tulip

An authentic early American favorite of brilliant golden yellow with rich red flames darting up from the base. It has no equal as a bedder, for the stem is strong and the red center of the big, fleshy petals shows very conspicuously against the broad, vivid yellow edges. Blooms weeks earlier than Darwins! Plant with Darwins for a month or more of Tulip pleasure. An outstanding variety in any garden. Height 15 inches.

PRICES: 5 for 98c; 10 for \$1.89; 25 for \$4.49; 50 for \$8.49; 100 for \$15.95.

COLLECTION NO. 9

15 TULIP BULBS, 5 each of Red Emperor and Prince Carnival plus 5 new "Kellogg's Glory." A regular \$5.96 value (you save \$1.01). **Only \$4.95**

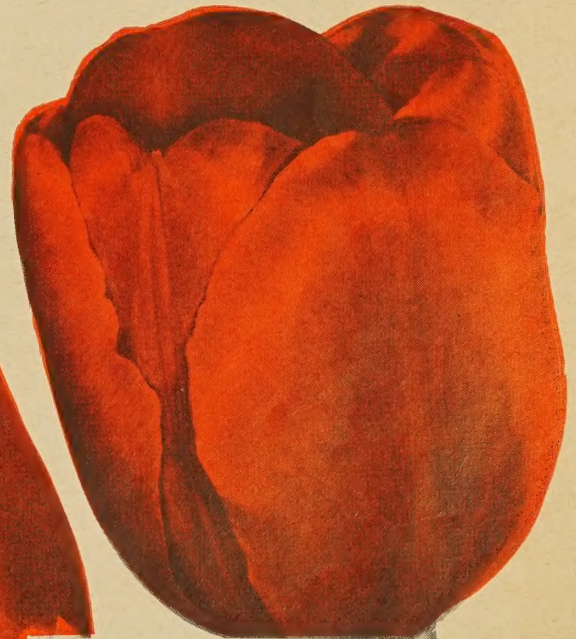
Kellogg Mayflowering Giant Popular Tulips Continued:

THE PEACH. A magnificent peach colored variety with large, pure white center. The large flower is carried on a stiff stem. An early variety of great charm and beauty; long lasting. Highly recommended. Height 25 inches.

LINCOLNSHIRE. Amazingly brilliant shade of vermilion red with a yellow base, has other fine qualities in keeping with its bold color; huge blooms, elegant form. A most distinctive and beautiful Tulip. Height 25 inches.

PRIDE OF HAARLEM. Brilliant cerise-red with blue base. Very large Tulips on tall, strong stems. Vigorous growth; sweetly scented. Height 26 inches.

Prices On Top of Page 2.



COLLECTION NO. 8

100 TULIP BULBS, our choice of varieties and colors.

Only \$9.95

These Lovely Novelty Tulips Belong in Every Garden

Peony-Flowered TULIPS

(DOUBLE LATE)

Be sure to plant some of these beautiful Double Flowering and Parrot Tulips in your garden for an enchantingly rich effect next Spring. All varieties on this page have been selected as the outstanding Tulips available.

5 for \$.75	25 for \$3.19
10 for 1.39	50 for 5.95
100 for \$10.95	

EROS. Very large flowers of warm pink with an occasional reddish streak; white center. Round, flat when full open. One of the best doubles and will certainly command attention when flowering.

LIVINGSTONE. Huge flowers of dazzling cherry-red. Blooms have so many petals that it is almost unbelievable. Very strong and sturdy with long blooming season. One of the best doubled as the flower has fine substance.

MT. TACOMA. A magnificent giant double tulip of pure white with silver and creamy yellow markings on most petals; yellow base. Very strong and sturdy with long blooming season. Beautiful and long lasting.

NIZZA. A very handsome fully double tulip of bright, glowing yellow with very striking crimson red marks up and down through the petals. A magnificent variety of enormous size and very valuable for garden decoration.



Eros
Peony-Flowered
Tulip

ENCHANTINGLY BEAUTIFUL

Parrot TULIPS

5 for \$.95	25 for \$4.19
10 for 1.79	50 for 7.95
100 for \$14.95	

BLUE PARROT. A glorious flower of rosy lavender, though not a true blue; base is blue inside. Very large deeply fringed flowers. The unusual flower is large and carried on a strong erect 24-inch stem. A rare novelty. A fine variety for garden use and very showy when used as a cut flower. Long lasting.

BLACK PARROT. Rare, black-flowering Parrot Tulip; a sport of the famous La Tulipe Noire. A flower of remarkable size, colored deep velvety maroon, almost black. Fine substance. This is truly an outstanding and unusual variety. Height 26 inches.

RED CHAMPION. A huge flower of bright crimson with slight shadings of rosy red. Blooms are carried on strong and stiff stems. A variety that has made a remarkable hit. A strong grower. A fine variety for garden use or for cutting. Height 24 inches.

SUNSHINE. Huge flowers of clear golden yellow deeply lacerated and cut, sometimes a slight marking of green enhances the beauty. Blooms are of excellent substance and are carried on stiff stems about 20 inches tall. Very bright and gay.

ORANGE FAVORITE. A flower of remarkable size, colored glistening deep orange, shaded rose, inside deep orange-scarlet with yellow base feathered with light green. Flowers are sweet scented and very showy.



Red Champion
Parrot Tulip

COLLECTION NO. 10

50 TULIP BULBS, 5 each of all 9 varieties on this page, plus 5 Red Emperor. Truly a colorful Tulip garden of magnificent shades of red, blue, yellow, white, pink and two tones. **Only \$6.49**

COLLECTION NO. 11

50 TULIPS, our choice of varieties listed above, all colors.

Now Only **\$5.49**

HYACINTHS

For Outdoor Bedding

The great popularity of Hyacinths is due, in part, to their earliness. They are among the first flowers to appear in the Spring. Added to this, their bright, crystal clear colors, their beauty of form, and delightful fragrance makes them a "must" in every garden. Plant them 4 inches deep—in clusters—along borders—or in solid beds. Wherever planted their scent will permeate your garden, their beauty steal your heart. Try a few in pots, too. They force easily. We have selected the best varieties in each color.

CITY OF HAARLEM. One of the best yellows. Beautiful large, well-formed trusses of pale yellow bells. Of fine form and substance. An excellent variety.

LADY DERBY. Very pleasing shade of clear, bright salmon pink, bearing perfect broad spikes on strong erect stems. Early and fine for forcing and bedding.

LA VICTOIRE. Brilliant, shiny carmine-red with large, well-filled spikes. One of the very finest red varieties for bedding and forcing. It retains its superb color to the end. A splendid bedder where brilliant color is required.

L'INNOCENCE. The most satisfactory all-around pure white. Produces large, compact trusses on strong stem with large bells of great substance. Does well anywhere.

KING OF THE BLUES. A rich indigo-blue. The large deep blue bells of perfect form are carried on stiff stems. One of the best in its color.

QUEEN OF THE PINKS. Bright pink with long, compact spikes of large bells on strong stems. Of excellent form and substance. Recommended for bedding.



L'INNOCENCE

Any of the above, 5 for \$1.09; 10 for \$2.09; 25 for \$4.95; 50 for \$9.49; 100 for \$17.95.

Large garden size bulbs, size 15-16 cm.

HYACINTH SPECIAL OFFER NO. 12

25 HYACINTHS, an early spring garden of matchless beauty — all colors. Bulbs 15-16 cm. **\$3.95**

Our choice only

HYACINTH SPECIAL OFFER NO. 13

12 HYACINTHS, 2 each of the above 6 beautiful Hyacinths. All colors. **Only \$2.19**

WHY YOU SHOULD BUY FROM R. M. KELLOGG COMPANY

When you purchase from Kelloggs, you are dealing with a nursery who has been dealing in only first class stock for 87 years. We are constantly striving to find new and better varieties of bulbs and plants to make America a more beautiful country. Our nursery was founded in 1869 by R. M. Kellogg, whose name we are still proud to carry, and soon became the world's largest grower of Strawberry plants, shipping all over the world. In 1915 Kelloggs introduced the Premier Strawberry, which became the country's leading Strawberry, and though many have been introduced since, we still grow and ship twice as many Premier as all others combined.

In 1935, the first Azaleamum (R) was introduced and exhibited at the World's Fair in Chicago by the R. M. Kellogg Company. Since that time we have grown and shipped millions of these beautiful flowers to every state in the nation, and also to Alaska, Hawaii, Puerto Rico, Mexico, Holland, Belgium and England, and each year the demand gets greater. Mr. Prushek, our hybridizer, grows from 5,000 to 6,000 new seedlings each year and from this large planting, these

seedlings are so closely screened for top notch Azaleamums (R) that we choose only from one to five new plants to introduce each year. Actually, we grow these new introductions here at the nursery two years to make sure they are hardy, before offering them for sale. Azaleamums are a registered trade marked plant grown only by Kelloggs and cannot be purchased from anyone else unless licensed to do so by us. Likewise all propagation rights of plants are reserved by the R. M. Kellogg Company.

Now we have a new Darwin Hybrid Tulip, "Kellogg's Glory", named for our company by one of the leading bulb growers in Lisse, Holland. This tulip is destined to become one of the leading tulips of our time, with its magnificent scarlet-red with a yellow base flower on a very strong stem growing 25 to 30 inches in height.

Our trial grounds are full of new Azaleamums, Roses, Carnations, Strawberry Plants and numerous other plants which we hope we will be able to offer you soon. Be sure to watch our catalogs for these new and exciting introductions.

Kellogg's GIANT

We Suggest These Ten Top

The 10 top varieties, easiest to grow, most prolific, of all the spring flowers, Daffodils require little or no care, naturalize or multiply rapidly, and are truly breath-taking in their beauty. Of the hundreds of varieties available, we have selected the "10 Top Favorites", varieties, that have been proving themselves most popular in their color and class.

SPRING GLORY - Trumpet

A very fine bi-color, or two-tone trumpet. Well formed white perianth, clear yellow trumpet. The flowers are held well above the fine foliage; strong growing and always free blooming. Outstanding in every way both in the garden and as a flower for cutting.

5 for \$1.09; 10 for \$2.09; 25 for \$4.95;
50 for \$9.49; 100 for \$17.95.

FORTUNE - Large-Cupped

Broad, creamy, deep yellow perianth of very solid texture, crown of great size and elegant form, opening at mouth and beautifully frilled, of a soft glowing orange. Tall stem, elegant flower of great substance. Perfect form, early, and a strong grower. A fine all-around variety. One of the most popular varieties.

5 for \$1.09; 10 for \$2.09; 25 for \$4.95;
50 for \$9.49; 100 for \$17.95.

GERANIUM - Poetaz

An outstanding Poetaz type. Tall stems carry 4 to 5 flowers. The pure white perianth is round and flat, often more than 2½ inches across, the cup is very brilliant scarlet-orange. A fine flower for cutting as well as for garden planting.

5 for 95c; 10 for \$1.79; 25 for \$4.19;
50 for \$7.95; 100 for \$14.95.



Fortune

Cheer-fulness

CHEERFULNESS - Poetaz

This exquisite double Poetaz resembles a gardenia in form of flower and is one of the loveliest of all the double Narcissus. The bloom is made up of a creamy white perianth and a mass of cream-colored petals among which a few short yellow petals are intermingled. Fully double. Deliciously fragrant flowers in clusters of 3 or 4 are carried on heavy 10 to 12-inch stems.

5 for 95c; 10 for \$1.79; 25 for \$4.19;
50 for \$7.95; 100 for \$14.95.

MOUNT HOOD - Trumpet

A magnificent pure white Daffodil. The flower is of excellent form, with pure ivory-white petals and large creamy white trumpet which changes to pure white when in full bloom. Heavily flanged at mouth. It is strong in stem and flower has fine substance. It flowers freely, looks good in the garden, and makes a fine cutting flower.

Each 30c; 5 for \$1.39; 10 for \$2.69;
25 for \$6.49; 50 for \$11.95.

DAFFODIL COLLECTION NO. 14

10 TOP FAVORITE DAFFODILS, 1 each of the 10 varieties listed. One of the finest collections of Daffodils ever assembled. Only **\$1.98**

Mount Hood



DAFFODILS

Favorites For Your Garden

KING ALFRED Giant Yellow Trumpet

WORLD'S MOST
POPULAR DAFFODIL

A king among the fine varieties. A magnificent daffodil of a rich, lustrous golden yellow throughout. The expended trumpet measures 2½ inches in diameter, the perianth proportionately large, and segments gracefully twisted and frilled. Extremely vigorous habit. Tall, large, and long-stemmed. The most popular and most widely used variety for forcing. One of the best daffodils of great substance and of long lasting qualities both outdoors and when cut. They multiply with amazing rapidity, doubling in number each year. Another reason for their popularity is that they harmonize with all other flowers. One of the earliest to bloom, it is easily forced, very dependable. Every garden, large or small, should have a planting of this splendid flower to add a splash of color to the spring garden. Also very good as a cut flower. This remarkably beautiful variety is destined to remain at the head of its class for some time to come.

5 for 95c; 10 for \$1.79; 25 for \$4.19;
50 for \$7.95; 100 for \$14.95.

DAFFODIL COLLECTION NO. 15

50 DAFFODILS, a bargain collection of
Naturalizing Daffodils — all colors
included — our selection. Only **\$7.95**

Mrs. R. O. Backhouse



King Alfred

TEXAS-Double

A spectacular, large fully double flower of yellow intermixed with orange-scarlet. Flower of perfect form and carriage. The large and heavy blooms are carried on upright stems. Excellent for growing in pots, a good forcer and lovely in the garden. Early and free flowering habit.

Each 30c; 5 for \$1.39; 10 for \$2.69;
25 for \$6.49; 50 for \$11.95.

INGLESCOMBE-Double

One of the best doubles, producing a large flower of a clear lemon yellow. An exquisitely beautiful flower of fine quality and form. It is a vigorous grower and much praised for cutting and strongly recommended for outdoor planting. Very fine for corsages as it resembles a Carnation. Early flowering and long lasting.

Each 30c; 5 for \$1.39; 10 for \$2.69;
25 for \$6.49; 50 for \$11.95.

SCARLET ELEGANCE - Short-cupped

One of the first to bloom in the garden. Noted for its deeply colored, deep orange-red cup, perianth brilliant yellow. A fine example of the short-cupped type. Flowers are held on tall, strong stems; a good grower and a free increaser. Very fine for cutting and for outdoor planting. Long lasting.

5 for \$1.09; 10 for \$2.09; 25 for \$4.95;
50 for \$9.49; 100 for \$17.95.

MRS. R. O. BACKHOUSE - Trumpet

This is the famous "pink daffodil." While many new pink crosses have appeared, this long cupped favorite retains its popularity, and is, in our opinion, still the best of all the pinks. This delicately beautiful Daffodil has an informal ivory-white perianth and is beautifully proportioned. It has a deeply fringed trumpet which opens citron-yellow, changing to apricot pink making it an exceptional beauty. Delicately beautiful but of exceptional substance; long lasting, and blooms early. Belongs in every collection.

Each 30c; 5 for \$1.39; 10 for \$2.69;
25 for \$6.49; 50 for \$11.95.

Crocus

HARBINGERS of Spring

Earliest Flowering of All Spring Bulbs

Colorful CROCUS

These colorful flowers are the first to bloom in spring. Each plant produces a profusion of very large flowers throughout the season. Their sheer beauty and brilliant coloring make them a favorite of everyone. Once planted they come up year after year and will take care of themselves. We offer your choice of the following attractive colors: Blue, Striped, Purple, Yellow, White. Top-size bulbs, 5 for \$.65; 10 for \$1.19; 20 for \$2.19; 40 for \$3.98; 80 for \$7.19.

MUSCARI (Grape Hyacinth)

EARLY GIANT. Small spikes of rich deep blue with white edge. One of the most charming of spring-flowering subjects which blooms during daffodil-time in April. Spicy fragrance. Increases year after year.

10 for 89c; 20 for \$1.59; 40 for \$2.79; 80 for \$4.79.

SCILLA Sibirica (Blue Squills)

Extremely hardy and adaptable to situations in either sun or shade. Small, drooping starry-blue flowers are borne on 4 to 6-inch stems appearing in March and April. Spicy fragrance. Invaluable for edgings or for massing in flower beds and borders. Plant bulbs 2 in. deep. 10 for 89c; 20 for \$1.59; 40 for \$2.79; 80 for \$4.79.

CHIONODOXA

GLORY-OF-THE-SNOW. Beautiful early-flowering bulbous plants for mass planting. Blooms are like little blue stars with white throat, borne several to a stem. Set bulbs 3 inches deep. Very hardy. 10 for 89c; 20 for \$1.59; 40 for \$2.79; 80 for \$4.79.

SNOWDROPS

Blooms very early — often before snow is gone. Tiny white bell-shaped flowers. Especially effective in mass plantings. Snowdrops require very little care. 10 for \$1.19; 20 for \$2.19; 40 for \$3.98; 80 for \$7.19.



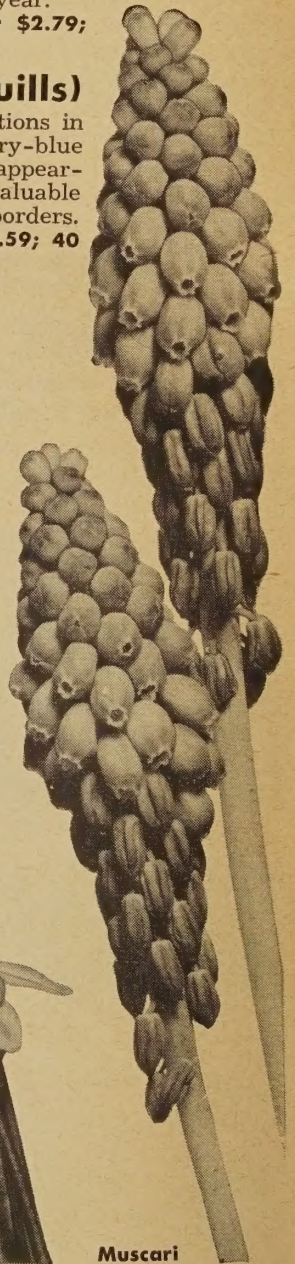
Chionodoxa



Snowdrops



Scilla



Muscari

DUTCH IRIS

A low growing bulbous Iris which increases rapidly year after year making it effective in the flower garden, in beds and groups. These blooms bear a striking resemblance to an Orchid. The flowers are large, carried on strong stems which make them excellent for cutting, stand a lot of handling and last even longer when put in water. The colors are most fascinating, ranging from white through yellow, to blue to violet and deep purple. For best effect, plant the bulbs 4 to 5 inches deep in early October, in groups of about a dozen. Give them a sunny spot that is well drained, and mulch lightly after the ground freezes. **Mixed Colors.**

50 for \$1.98; 100 for \$3.49; 500 for \$14.95; 1000 for \$24.95.



Dutch Iris

COLLECTION NO. 16

100 HARBINGERS OF SPRING BULBS, this collection includes Crocus, Muscari, Scilla Sibirica, Snowdrops, Chionodoxa and Dutch Iris. Truly a mixture of gorgeous early blooming bulbs for **\$3.95** only

The Stately **LILIES**

No other plants possess as many charms as Lilies. Available in such a variety of shapes and rich colors, they are stately in form and of such delicious fragrance, they will always stand out prominently in your garden. One of the most desirable of all flowers. Plant them in groups or as a border.

Lilies need good, well-drained garden soil. A sunny location is desirable, the base of the plant should be somewhat shaded.

← **LILIUM SPECIOSUM RUBRUM**

Delicate waxy flowers of deep pink flushed red and shading lighter at the edges. Four to eight blooms are borne on each sturdy 3 to 4 ft. stem. Plant 9 inches deep in full sun in early fall. Blooms August and September. An excellent Lily for the late summer garden.

65c each; 3 for \$1.79; 6 for \$3.29; 12 for \$5.95.



Regal Lily

MAGIC LILY

← (Lycoris)

Long, strap-shaped leaves come in spring and disappear in early summer, to be followed in August by clusters of soft pink, lily-like fragrant flowers. Set the bulbs outdoors, 4 inches deep, in early fall. Plant low-growing perennials or annuals to help conceal the bare stems. Perfectly hardy.

\$1.35 each; 3 for \$3.89;

6 for \$7.49; 12 for \$13.95.



COLLECTION NO. 17

14 BULBS, 2 each of Rubrum, Madonna, Regal and Magic Lilies, plus 6 Paper White Narcissus. Stately garden of fascinating lilies.

Only **\$5.95**

LILIUM REGAL

(Regal Lily)

The large fragrant trumpets have a sulphur-yellow throat and rose-purple streaks on the outside. It grows 3 to 5 feet high, blooms in July, is perfectly hardy, and flourishes under varied conditions. They are delicately scented and produce freely. Highly recommended for planting in the hardy Perennial borders.

Each 65c; 3 for \$1.79; 6 for \$3.29;

12 for \$5.95.

LILIUM CANDIDUM

(Madonna Lily)

Exquisite pure white, fragrant flowers borne in June on stout stems 3 to 4 feet high. They are of easy culture, growing in almost any soil and location. Plant 2 to 3 inches deep in late summer. It will be the loveliest spot in your garden during late June and early July.

Each 65c; 3 for \$1.79; 6 for \$3.29;

12 for \$5.95.



Madonna Lily

PAPER-WHITE NARCISSUS

These are to be grown indoors in pebbles and water. The large, pure white blooms are borne in clusters and are highly prized for their beauty, fragrance, and the ease with which they can be grown. Place the bulbs in a shallow dish with pebbles to hold them in position. Half cover them with water and keep in a cool dark place for about ten days before bringing them into a warm light room.

5 for 98c; 10 for \$1.89; 20 for \$3.59; 40 for \$6.79.



Paper-White Narcissus

JAPANESE IRIS

The Most Showy of All Iris Species

BETTY F. HOLMES. A huge early single; well-formed and nicely proportioned. The large size blooms are of a most striking white. An outstanding variety.

HIAWATHA. Vividly brilliant and effective. A charming red of pleasing form and large size.

JEANETTE PERRY. A huge dainty single white with lightly veined petunia-violet falls. Rather dwarf.

MARGARET S. HENDRIKSON. Magnificent double to triple flowers of medium blue. One of the largest and finest medium blue tones.

REINE HELENE. A very handsome deep, rich blue-purple self, of uniform color throughout. Very popular.

ROSE ANNA. A good double that is rosy-lavender sharply veined deep purple. Large flower of velvety substance.

Any of the above, 2 for \$1.19; 4 for \$2.19;
6 for \$2.98; 12 for \$4.98.



Spring Blooming IRIS

World's Finest Tall Bearded Iris

CALIFORNIA GOLD. One of the finest deep yellow Iris. Simply superb for its brilliance and purity of color and perfection of form and finish. The flowers are large and free flowering.

CHERIO. Ruby-red falls and soft rose-red standards with yellow sheen. Hardy and free blooming.

CLARA NOYES. Standards are soft yellow flushed red; fall deeper red. Tall, perfectly branched and it flowers over a long season.

GUDRUN. Very large, heavily-textured warm white with golden beard. Undoubtedly the largest and most massive of all Iris.

HYPATIA. The most intense blue; the pure blue color is uniform. Beautifully formed and amply branched.

NENE. Immense blooms of delicate lilac with the falls a rich deep rose. A perfect huge bloom of heavy substance, and a long-lasting variety.

PINK SATIN. The largest, tallest and most exquisitely colored among the pink Iris; a rich satiny pink of unmatched beauty.

ROYAL COACH. A bright yellow plicata with edge of petals nicely bordered and dotted brown. Immediately attracts attention.

Any of the above, 2 for 98c; 4 for \$1.79;
6 for \$2.39; 12 for \$3.98.

SPECIAL IRIS COLLECTION NO. 18

15 SPRING BLOOMING
IRIS. Our selection of
varieties listed at the left.

Only **\$3.98**

MINIATURE JUNE BLOOMING IRIS

These miniature Iris are excellent flowers for beds and borders. They bloom in April and May. Grow about 6 inches tall. Add a wonderful touch of color and beauty to your lawn or garden. Choice of colors: **Blackbird**, Dark Violet; **Blue Queen**, Light Blue; **Fauntleroy**, White, Purple and Yellow; **Pigwigen**, White; **Rose Mist**, Soft Mauve-Pink; **Snowcap**, White; **Sonny**, Yellow.

Any of the above, 4 for \$.98; 8 for \$1.79; 12 for \$2.49.

Blooms in the Spring and Again in Fall Fall Blooming IRIS

Dwarf Varieties

AUTUMN QUEEN. This is a reliable spring and fall bloomer. A pure snow-white. A striking flower on strong stalk.

LIEUT De CHAVAGNAC. A new everblooming, fragrant, violet-colored variety.

TAMPA. A beautiful flower of rich wine-red. Very outstanding.

Any of the above, 2 for \$.98; 4 for \$1.79;
6 for \$2.39; 12 for \$3.98.

Intermediate Varieties

BLACK MAGIC. Rich blackish violet. Flowers are produced in abundance.

DORCAS HUTCHESON. Pansy-violet self. Fall bloomer. A splendid grower.

SOUTHLAND. Deep lemon-chrome. Dependable fall repeater.

ULTRA. Dark and light blue. One of the best in this color class.

Any of the above, 2 for \$1.19; 4 for \$2.19;
6 for \$2.98; 12 for \$4.98.



Huge Oriental POPPIES

Most Magnificent of all Poppies

Oriental Poppies are the royal representatives of this popular family. Nothing equals the dazzling colors of these giant Poppies during their period of bloom in May and June. Whether planted singly or in groups their large flowers and freedom of bloom render them the most conspicuous subjects of the garden. Plants grow 3 to 3½ feet in height. Almost any kind of soil suits them, but they do best in well drained, deep, rich loam. Set plants out in the early fall. Give them water occasionally during dry spells in the early part of the season.

SALMON GLOW. A fine double salmon-orange color. The flowers are exceptionally large, fully 8 inches across. Spoken of as one of the most beautiful double salmon-orange Poppies. Strong, upright growing. A variety well worth adding to your collection.

CHERIO. Pink petals with dark red splashes of color in the cup. Here is a charming poppy that is really a worth-while addition to your garden.

Either of the above, \$.98 each; 2 for \$1.79;
6 for \$4.98; 12 for \$8.79.



Wurtembergia

HELEN ELIZABETH. Deeply crinkled petals of clear, unshaded salmon-pink without any splotches of other color. Considered by many as the best pink. It is a rugged grower.

MRS. PERRY. Medium sized flowers of a light salmon color. A very fine variety. An old favorite and one of the best "Pink Poppies."

NEW PERFECTION. Delicate seashell-pink with feathery black stamens. Crisp heavily fluted petals of heavy substance. You will like it for its coloring and fine habit.

RIDGEWOOD BEAUTY. Fluffy pink flowers with inky black stamens. You'll want to add this fine color to your collection.

WURTEMBERGIA. Flaming scarlet with very glossy black blotches. A striking flower of great size and substance. An old favorite.

Any of the above, 2 for \$1.39; 4 for \$2.69;
6 for \$3.89; 12 for \$6.59.



Salmon
Glow

COLLECTION NO. 19

7 POPPIES, our choice of the varieties listed on this page.

SALE PRICE **\$4.19**



Sarah Bernhardt

SARAH BERNHARDT

Very large, perfectly formed appleblossom-pink flowers of semi-rose type. Flowers are compact and very fragrant carried on tall, graceful stems. Very free flowering in midseason. This is the ideal pink cut flower Peony. A splendid performer in every garden.

\$1.50 each; 3 for \$4.29; 6 for \$8.39; 12 for \$14.95.

REINE HORTENSE

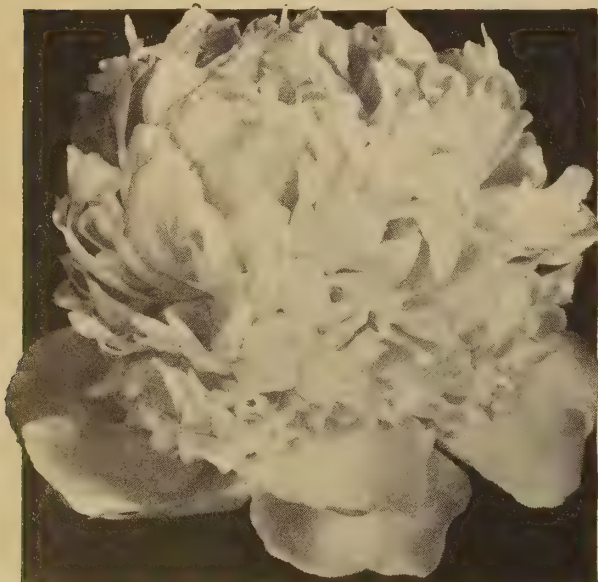
A uniform Hydrangea-pink, with guard and center petals marked crimson. This is a variety that gives universal satisfaction and is both a show and garden variety. The plant is tall with long, stiff stems. The flowers are slightly fragrant. A midseason variety.

\$1.50 each; 3 for \$4.29; 6 for \$8.39; 12 for \$14.95.

FESTIVA MAXIMA

Paper-white with crimson markings in center. Very large and full rose type. A tall, strong grower, very profuse bloomer. Early. A very distinct color; desirable as a cut flower, a garden variety and as a show flower.

\$1.50 each; 3 for \$4.29; 6 for \$8.39; 12 for \$14.95.



Mons. Jules Elie

Matchless PEONIES

Most Popular Garden Flower In

Peonies make a beautiful show in your garden in late May and early June. Peonies are an ideal flower to plant where you want a large showy place in your yard or garden, they are easy to grow, requiring very little care. Peonies are ideal cut flowers for Memorial Day and for June weddings.

MONS JULES ELIE

An immense self-colored flesh-pink shading to a trifle darker at the base of the petals. Prominent broad guard petals enclose an immense ball of incurved petals of the same color, all covered with an intense silvery sheen. The plant is medium tall with strong stems and light green foliage. An early bloomer with pleasing fragrance. A very free bloomer. This flower is admired by all.

\$1.50 each; 3 for \$4.29; 6 for \$8.39; 12 for \$14.95.

FRANCISE WILLARD

An exquisite blush-white, with an occasional carmine touch, changing to pure white. The blooms are large, the foliage light green, and most beautiful. Habits perfect, stems strong. Listed among the world's twenty most beautiful Peonies. A reliable bloomer, as well as a splendid variety for cutting.

\$1.50 each; 3 for \$4.29; 6 for \$8.39; 12 for \$14.95.

KARL ROSENFELD

A very large flower; globular in shape and of semi-rose type. A brilliant red and a very striking variety, coming into bloom early midseason. Very distinct in form and habits, ranks among the top varieties. Extremely vigorous grower, tall and free flowering. As an early red it has no equal.

\$1.50 each; 3 for \$4.29; 6 for \$8.39; 12 for \$14.95.

KELWAY'S GLORIOUS

Buds slightly tinted pink, opening to large blossoms of iridescent white. The exquisite blooms are carried on tall, stiff stems; bush strong growing and very free flowering. The flowers are slightly fragrant. Late midseason. This is undoubtedly one of the finest Peonies.

\$1.50 each; 3 for \$4.29; 6 for \$8.39; 12 for \$14.95.

COLLECTION NO. 20

5 PEONIES, 1 each of 5 different varieties and colors (our choice) labeled for only **\$4.98**



A Field of Our Peonies in Bloom.

at Lowest Prices in Years
Grandma's Day, Equally So Today

LE CYGNE

(New Variety.) Very large, perfectly formed flower, freely produced; cream-white with a touch of green at the heart. One of the earliest and finest of all white Peonies. Truly a beautiful white in any garden particularly when planted with Therese and Philippe Rivoire. This lovely white stands out above everything else in your Peony garden. Late midseason variety.

\$5.00 each 3 for \$13.95 6 for \$25.95

PHILIPPE RIVOIRE

(New Variety.) Very large and fragrant flowers of rich, dark crimson. Blooms are beautifully formed and color is uniform throughout. A fine show flower and is absolutely void of stamens. A dark crimson color that is becoming increasingly popular each year. Comes into bloom late midseason. An excellent flower for June blooming.

\$5.00 each \$3 for \$13.95 6 for \$25.95



Therese



Philippe Rivoire

THERESE

(New variety.) Considered to be the best off-pink available in the Peony family. Therese blooms mid-season with large, showy soft pink flowers. Be sure to add this one to your collection of LeCygne; white, and Philippe Rivoire; crimson, in your Peony Garden.

\$3.00 each 3 for \$8.49 6 for \$13.95

INSPECTOR LAVERGNE

Very large flowers of light red are produced freely. It comes into bloom midseason. The plant has excellent foliage and strong stiff stems. An excellent cut variety; long-lasting.

\$1.50 each; 3 for \$4.29; 6 for \$8.39; 12 for \$14.95.

OFFICINALIS RUBRA

Rich, clear red, very free flowering and flowers are of perfect form on graceful stems. It comes into bloom early. Excellent foliage; flowers are borne on strong stiff stems. One of the largest, handsomest and best cutting varieties available.

\$1.50 each; 3 for \$4.29; 6 for \$8.39; 12 for \$14.95.



COLLECTION NO. 21
12 PEONIES, 1 each of the varieties listed on these two pages plus 3 new varieties for only
\$19.95

COLLECTION NO. 22
3 PEONIES, 1 each of three different colors (our selection)
Special Sale Price \$2.95

HARDY PHLOX

The Backbone of Your Garden

These beautiful hardy border plants are the most effective and useful plants in the garden during the late summer and early fall. Their brilliant colors will give the utmost enjoyment for years to come. This outstanding collection should be in *your* garden!

BLUETTE. Rich, light purple florets. The florets are large and grow in fine big clusters. Clean, healthy foliage, blooms over a long season and flowers are long lasting. Very showy and is conspicuous for its size and striking color.

AETNA. Tall growing variety producing large flower heads of deep scarlet. The individual flowers are large and are carried in good size trusses. A rugged grower and free bloomer.

BRIGHT EYES. Florets are unusually large and amazingly brilliant, possibly the largest of any Phlox. The color is bright red with a dark eye. Conspicuous for its size and color, making a fine show in the garden.

BORDER GEM. Large trusses of brilliant deep purple. One of the showiest of Phlox in this color range. A very compact grower with large individual florets that are exceptionally long lasting. Rather tall, fine for the back of the border.

FLASH. One of the very best reds. Well shaped flower heads composed of large florets. A good grower with clean foliage and a prolific bloomer. Very vigorous.

LILIAN. Large florets of very pale salmon, very pure and lovely. A good grower with clean foliage and a prolific bloomer. Of medium height.

WORLD PEACE. Pure white flower heads of unusually large size. Unquestionably one of the best white Phlox. A good grower with clean foliage. Very free flowering.

DAILY SKETCH. Extra-large trusses and large individual florets. Light salmon-pink with crimson-rose eye. From a short distance, it looks like a splendid rose-colored Phlox. A rugged plant about 3 feet tall.

Any of the above, \$.60 each; 3 for \$1.65;
6 for \$2.95; 12 for \$4.95.



Will Provide Majestic Masses of Brilliant Color in Your Garden All Summer Long

SIR JOHN FALSTAFF. A giant among Phlox. Color is a rich luminous salmon-pink, one of the loveliest in the garden. A really massive flower truss on a robust plant 24 to 36 inches tall.

PURPLE HEART. The color is a brilliant shade of deep blue-purple intensified by a darker center given sparkle by the dainty cream colored anthers. Individual flowers are large and are carried on good size trusses.

SAN ANTONIO. Immense heads of deep, non-fading blood-red. Always a good color, dominant in any planting. Large flower heads on a strong plant. Unusually prolific in bloom. Grows 2½ to 3 feet tall.

LEO SCHLAGATER. Brilliant scarlet blooms that seem to glow with fire. Among the very top varieties in its color. Of splendid habit, growing 3 feet tall and blooming early. Fine rich heads of bloom.

C. VANDENBERG. True lavender-blue without any magenta shades. Large individual florets. A rugged grower and free bloomer. Rich dark green foliage, of medium height.

POLKA DOT. White with red eye, a compelling color combination. Well shaped flower heads composed of large florets. Good strong stems. Vigorous grower. Always a very desirable variety.

HAUPTMANN KOEHL. Dark blood-red, holding its color well right through the heat of summer, a decided advantage in most areas. Large clusters of bloom on tall, strong stems. Grows about 2½ feet high.

CHIEFTAIN. The individual flowers are large and are carried in good size trusses. The color is deep crimson. Strong growing and early blooming. A real asset to any garden.

ETHEL PRITCHARD. Clear, pale lavender-blue color. The florets are of an especially delicate texture, to match the soft color. A medium-tall plant, blooming in mid-season. Robust and rugged in growth.

STARLIGHT. Rich violet color with a distinct white star in the center. Clean, healthy foliage. Long bloomer and the flowers are long-lasting. Especially effective when planted with the white Phlox World Peace.

Any of the above, \$.60 each; 3 for \$1.65;
6 for \$2.95; 12 for \$4.95.



Our splendid
Phlox are
truly the
queens of the
garden.

COLLECTION NO. 23

**18 PHLOX, 1 each of
all varieties listed
on these two pages, ex-
cept Creeping Phlox.**

**Special Sale \$6.95
Price Only**

COLLECTION NO. 24

**10 PHLOX, all colors,
our selection of
varieties.**

**Special Sale \$3.95
Price Only**

Dwarf Creeping Phlox - A Carpet of Color



PHLOX SUBULATA. An early spring flowering perennial with moss-like evergreen foliage. Masses of bloom completely cover the foliage in April and May. Just the plant you have been looking for to cover that unsightly spot. Also excellent for rockery and borders. A choice small plant to add a splash of color to shady places in border foreground or for carpeting the ground or covering bare spots. **Your choice of colors: Pink, Blue, White.**

**3 for \$1.29; 6 for \$2.39;
12 for \$3.95.**

Plant *Kellogg's* Large 2-Year

All These Perennials Will Bloom the 1st Year



Armeria

ARMERIA, Sea Pink

Bright rosy red blooms in May and June. Very free flowering. Evergreen foliage. Three to six inches in height. 69c each; 3 for \$1.89; 6 for \$3.59; 12 for \$6.59.

SCABIOSA, Blue Bonnet

Stems 18 to 20 inches tall topped by charming flowers of blue. Bloom from June to September. Excellent for border planting and for cut flowers. 49c each; 3 for \$1.29; 6 for \$2.39; 12 for \$4.39.



Scabiosa

ANTHEMIS, Tinctoria

Bold, upright stems with clear yellow flowers. Flowers are long lasting and bloom throughout the entire summer. Very colorful and very desirable for a mixed border. 49c each; 3 for \$1.29; 6 for \$2.39; 12 for \$4.39.

DIANTHUS, Plumaris

Bright colored blooms are produced continually from May until November. Ideal for bedding, borders or rockery. Delightfully fragrant. Very free flowering. 49c each; 3 for \$1.29; 6 for \$2.39; 12 for \$4.39.

GYPSOPHILA, Paniculata

Dense, spreading bush reaching a height of 3 feet. Tiny white blossoms completely hide the plant from July until frost. Fine ornamental foliage. 49c each; 3 for \$1.29; 6 for \$2.39; 12 for \$4.39.

VERONICA, Incanna

Handsome blue flowers in July through September. Spikes are compactly covered with beautiful flowers. The foliage is clean and plant is of bushy habit. 49c each; 3 for \$1.29; 6 for \$2.39; 12 for \$4.39.

MYRTLE, Vinca Minor

A trailing evergreen plant used extensively for ground covers. Grows where it is too shady for grass or other plants. Plant 4 to 6 inches apart. 6 for \$1.55; 12 for \$2.85; 25 for \$5.45; 100 for \$19.55.

GAILLARDIA, Goblin

Plants grow 12 to 15 inches high with large, deep-red and gold blooms. Foliage almost disappears under masses of flowers when in bloom from June until November. 49c each; 3 for \$1.29; 6 for \$2.39; 12 for \$4.39.



Dianthus — Highland Queen



Veronica



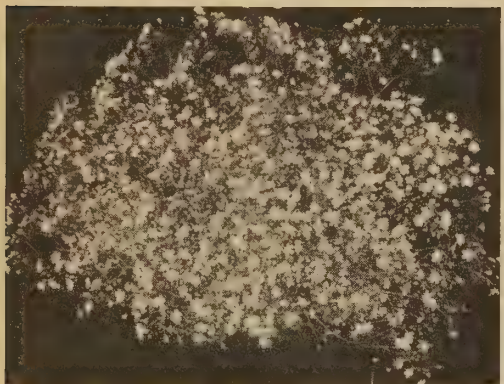
Vinca Minor



Gaillardia



Anthemis



Gypsophila



BAPTISIA

Sturdy plants often reaching the height of 3 feet. The pea-shaped flowers are closely spaced on three to four-foot spikes with deep-green cut foliage and indigo-blue, yellow, or white flowers. The flowers are good for cutting and the period of bloom is from spring to midsummer. The blossoms are followed by short, plump pods that become black. Very attractive for background plants. 49c each; 3 for \$1.29; 6 for \$2.39; 12 for \$4.39.

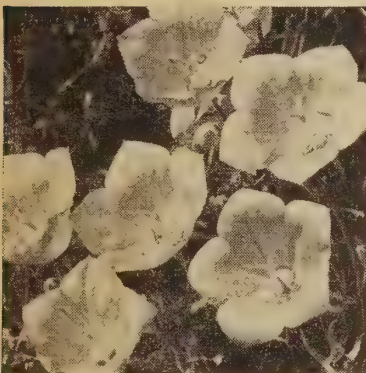
Field-Grown PERENNIALS



Alyssum Saxatile



Iberis (Candytuft)



Campanula Carpatica



Coreopsis



Anemone

Highest Quality Hardy Plants

ALYSSUM, Saxatile

Large clusters of bright yellow flowers. Grows 10 to 12 inches tall making it an excellent plant for the rockery or borders. One of the showiest spring flowers. An excellent early plant to use with Tulips. **49c each; 3 for \$1.29; 6 for \$2.39; 12 for \$4.39.**

AQUILEGIA, Columbine

A magnificent strain of Columbines. Heavy blooming type with large flowers and extremely long spurs. Colors cover all shades of lavender, purple, red, white, yellow, blue and pink. Very striking in the perennial border and excellent for cutting. **69c each; 3 for \$1.89; 6 for \$3.59; 12 for \$6.59.**

IBERIS, Candytuft

Sempervirens. White flowers completely cover the dark green foliage in spring. Does well in light shade, therefore making an excellent ground cover. May also be used for edging to parks or walks. **69c each; 3 for \$1.89; 6 for \$3.59; 12 for \$6.59.**

STATICE, Latifolia

Immense flower heads, often 1½ feet high and 2 feet across, of purplish blue flowers appear in July and August. These flowers, if cut and dried, stay in perfect condition for months. Unexcelled for filler in floral arrangements; valuable for the rockery. **49c each; 3 for \$1.29; 6 for \$2.39; 12 for \$4.39.**

CAMPANULA, Carpatica

Clear blue flowers, growing in compact tufts not exceeding 8 inches high; are held on wiry stems. Begins blooming in June and continues until October. This always popular plant makes a showy display wherever grown. **69c each; 3 for \$1.89; 6 for \$3.59; 12 for \$6.59.**

COREOPSIS, Double Sunburst

Double flowers of superb gold color. Easy to grow, produces flowers in profusion throughout the summer. Very useful and attractive for borders and cutting. **49c each; 3 for \$1.29; 6 for \$2.39; 12 for \$4.39.**

CATANANCHE, Caerula Major

Deep blue blooms borne on long, strong stems. Produces great masses of flowers during July, August and September. Profuse bloomer. Excellent cut flower. **49c each; 3 for \$1.29; 6 for \$2.39; 12 for \$4.39.**

ANEMONE, Pulsatilla

Violet or purple flowers during April and May. Plants grow 9 to 12 inches tall making them excellent for planting in the rockery or border. Very free flowering. **49c each; 3 for \$1.29; 6 for \$2.39; 12 for \$4.39.**

NEPETA, Mussini

In early summer, plants are covered with dozens of 12 to 15-inch stems which bear small, fragrant lavender-blue flowers. Ornamental silvery gray-green foliage. Its growth is compact and low-spreading. **49c each; 3 for \$1.29; 6 for \$2.39; 12 for \$4.39.**



Aquilegia, Long-Spurred



Statice



Catananche



Nepeta

SHRUBS TO BEAUTIFY YOUR

FLOWERING QUINCE

(*Cydonia Japonica*) Brilliant red flowers cover the spiny branches in early spring. Grows 5 to 6 feet in height. The small, greenish yellow fruits are inedible. It is excellent for cutting, the flowers are long lasting. A splendid plant for the foreground of the shrub border. **2-3 ft. shrubs, \$1.29 each; 3 for \$3.69; 6 for \$7.29; 12 for \$13.95.**

SPIREA, Van Houttei

Graceful arching branches loaded with tiny white blossoms in early spring. Makes a fine informal hedge or attractive in groups or singly in the border where its early bloom blends beautifully with the other spring flowering bulbs. May be trimmed as desired. Hardy. **2-3 ft. shrubs, \$1.29 each; 3 for \$3.69; 6 for \$7.29; 12 for \$13.95.**

HYDRANGEA P. G.

Tall, stately shrub 4 feet in height bearing huge, cone-shaped blooms of pinkish-white which deepen to rose in the fall. When cut, they last for weeks. Delicately fragrant. Foliage is handsome, rich green adding greatly to the attractiveness of this shrub. Blooms August and September. **2-3 ft. shrubs, \$1.29 each; 3 for \$3.69; 6 for \$7.29; 12 for \$13.95.**

DEUTZIA

Pride of Rochester. This is one of the prettiest and most graceful of all the Deutzias. The plant, which often grows 8 feet in height, bears large clusters of double, pink blooms on sturdy stems in July. A profuse bloomer. Foliage is almost completely covered under the superabundance of the blooms. **2-3 ft. shrubs, \$1.29 each; 3 for \$3.69; 6 for \$7.29; 12 for \$13.95.**

PINK TARTARIAN HONEYSUCKLE

Immense, showy clusters of trumpet-shaped buds and blooms of bright pink followed by red berries in fall. The 8 to 10 foot bushes grow upright with somewhat spreading branches. Flowers are borne freely in May and June. Bright green foliage. Very fragrant and hardy. **2-3 ft. shrubs, \$1.29 each; 3 for \$3.69; 6 for \$7.29; 12 for \$13.95.**

AMERICAN BITTERSWEET

Very vigorous and easy to grow. The leaves are dark glossy green turning bright yellow in fall. In autumn, big showy clusters of crimson fruit with orange-yellow coat cover the vine. Bittersweet is very decorative, providing shade and privacy and also useful for covering an unsightly view. Attractive in all seasons. **2-3 ft. shrubs, \$1.29 each; 3 for \$3.69; 6 for \$7.29; 12 for \$13.95.**

RED BARBERRY

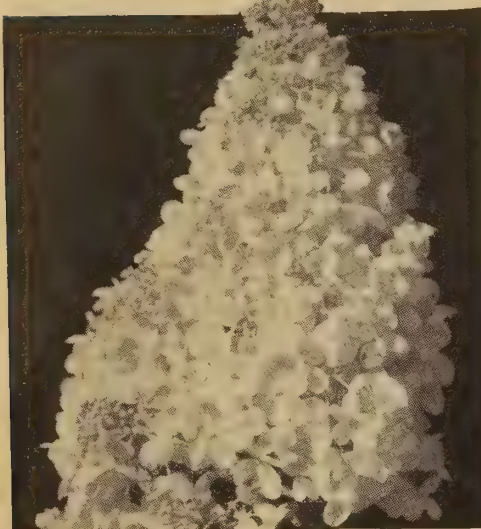
Valued for its bright foliage all season long. Beautiful red-colored leaves appear in spring, becoming more brilliant and gorgeous in summer, changing to vivid orange-scarlet in autumn. Brilliant scarlet berries all winter. Plant in full sun for best coloring in all seasons. **2-3 ft. shrubs, \$1.29 each; 3 for \$3.69; 6 for \$7.29; 12 for \$13.95.**

PUSSY WILLOW

Beautiful, tall shrub for screening or background planting. Large catkins of silver-pink, 1 to 2 inches long, appear in early spring or can be placed in water in January or February to unfold indoors. Ultimate height 10 feet. Cut back 6 inches to promote long, vigorous new canes. **2-3 ft. shrubs, \$1.29 each; 3 for \$3.69; 6 for \$7.29; 12 for \$13.95.**



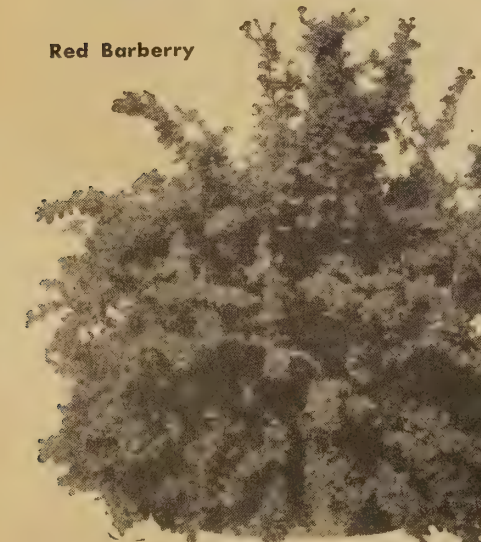
Flowering Quince



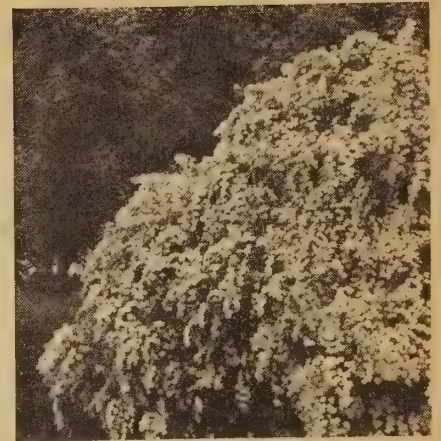
Hydrangea, P.G.



Pink Tartarian Honeysuckle



Red Barberry



Spirea Van Houttei



Deutzia



American Bittersweet



HOME AND LAST FOR MANY YEARS

Amur River North PRIVET HEDGE

Makes an excellent hedge or quick-growing screen. Easiest of all Privets to grow. A tall, upright grower with lustrous, dark green foliage with clusters of white flowers, followed by berries. Attractive in all seasons. May be trimmed to any desired shape or height at any time during the summer. Leave untrimmed for foundation and screen plantings. Very hardy. Set bushes 9 to 12 inches apart.

12-18 in., 10 for \$2.95; 50 for \$13.50;
100 for \$25.00.



Blue Leaf Arctic Willow



Mock Orange



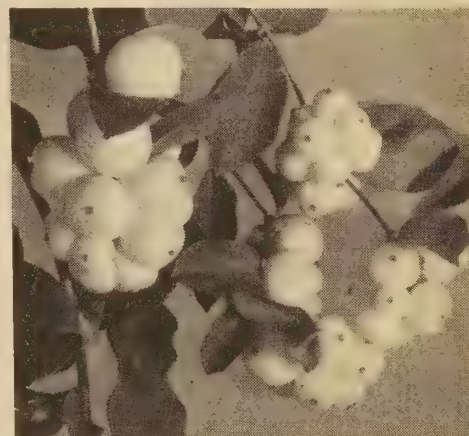
Fireberry

ARCTIC WILLOW

A good hedge plant for northern sections. Actually discovered growing in the Arctic circle. Shrubby habit, may be pruned to any shape but grows to about 3 feet if left to itself. Soft bluish foliage. 18-24 in., \$1.29 each; 3 for \$3.69; 6 for \$7.29; 12 for \$13.95.

WHITE SNOWBERRY

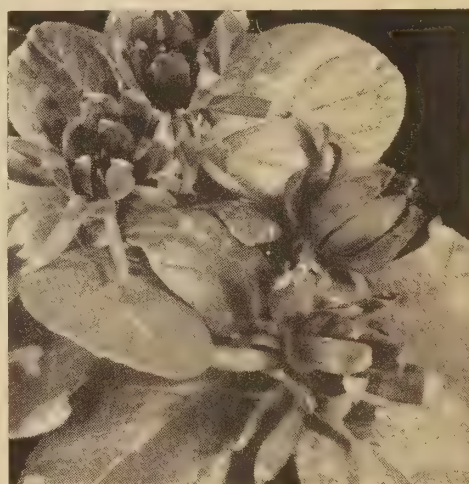
Pink flowers bloom during June followed by large clusters of attractive, waxy white berries. Berries remain on the shrub throughout most of the winter. Lustrous green foliage. Grows to medium height. 2-3 ft., \$1.29 each; 3 for \$3.69; 6 for \$7.29; 12 for \$13.95.



White Snowberry

MOCK ORANGE

Philadelphus Virginialis. Blooms beautifully. Large, double white flowers in June; sweet fragrance. Grows 8 to 10 feet tall. Dark green foliage. Hardy and dependable. Fine for foundation and in group plantings. 2-3 ft., \$1.29 each; 3 for \$3.69; 6 for \$7.29; 12 for \$13.95.



Sweet Shrub

SWEET SHRUB

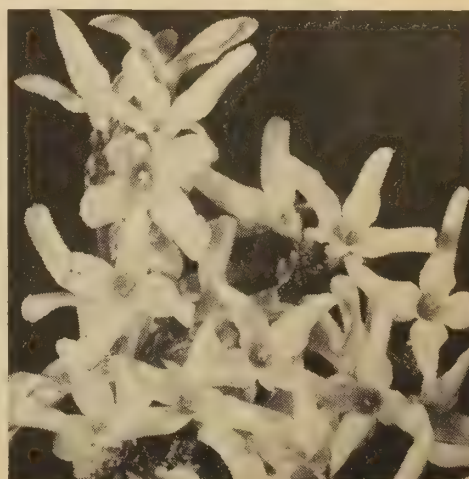
Calycanthus Floridus. Large, brownish flowers, which are extremely fragrant. Flowers are produced in June. Reaches a height of 8 feet. A dense, hardy bush with glossy foliage. Odd looking pods develop later, which are filled with brown, aromatic seeds. 2-3 ft., \$1.29 each; 3 for \$3.69; 6 for \$7.29; 12 for \$13.95.

FIREBERRY

Attractive green leaves, silvery on the underside, turning red in autumn. Fiery red berries in fall and winter, following white flowers in May. Very hardy, growing about 6 feet tall. An attractive densely branched shrub dependable in almost any soil. 2-3 ft., \$1.29 each; 3 for \$3.69; 6 for \$7.29; 12 for \$13.95.

FORSYTHIA

Spectabilis. One of the earliest flowering shrubs. Bright golden yellow blossoms cover every branch and twig before leaves appear. A vigorous shrub, growing 8 to 10 feet tall. Very hardy and easy to grow. Thrives in sun or part shade. 2-3 ft., \$1.29 each; 3 for \$3.69; 6 for \$7.29; 12 for \$13.95.



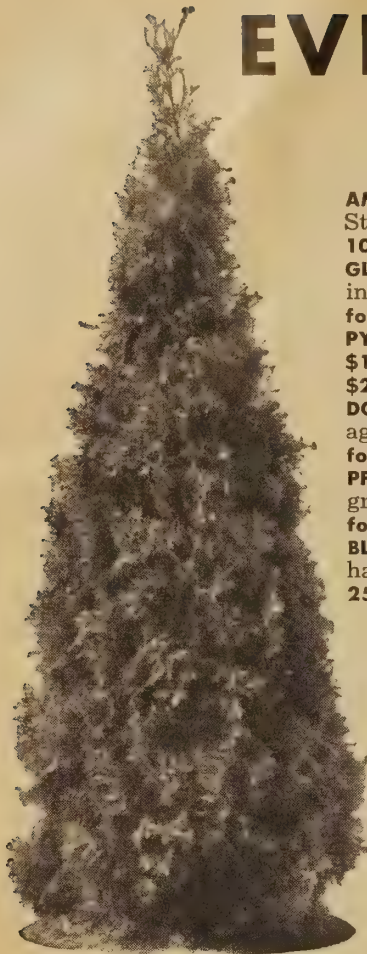
Forsythia, Spectabilis

EVERGREEN SALE

HIGHEST QUALITY
MAIL ORDER SIZE

EVERGREEN TRANSPLANTS — Watch 'em Grow!

9 to 12 in., 4 to 6 yrs. old. All Prices Ppd.



Pyramidal Arborvitae

AMERICAN ARBORVITAE. Tall, dark green tree. Stands trimming well. 95c each; 3 for \$2.49; 10 for \$6.59; 25 for \$14.95.

GLOBE ARBORVITAE, Dwarf. For foundation planting, etc. \$1.39 each; 3 for 3.39; 10 for \$9.69; 25 for \$21.95.

PYRAMIDAL ARBORVITAE. Tall, narrow, rich green. \$1.39 each; 3 for \$3.39; 10 for \$9.69; 25 for \$21.95.

DOUGLAS FIR. Rapid grower. Soft, fragrant foliage. \$1.19 each; 3 for \$2.89; 10 for \$6.95; 25 for \$14.95.

PFITZERS JUNIPER. Horizontal, spreading, grayish green. Very hardy. \$1.49 each; 3 for \$3.59; 10 for \$10.79; 25 for \$23.95.

BLACK HILLS SPRUCE. Compact and bushy. Very hardy. \$1.19 each; 3 for \$2.89; 10 for \$6.95; 25 for \$14.95.

PLUMY JUNIPER. Attractive drooping growth. \$1.39 each; 3 for \$3.39; 10 for \$9.69; 25 for \$21.95.

SCOTCH PINE. Straight, rugged grower. Picturesque. 95c each; 3 for \$2.49; 10 for \$6.59; 25 for \$14.95.

COLORADO BLUE SPRUCE. Gray-blue; very ornamental. \$1.39 each; 3 for \$3.39; 10 for \$9.69; 25 for \$21.95.

NORWAY SPRUCE. Tall, dark green; drooping branches. Robust. 95c each; 3 for \$2.49; 10 for \$6.59; 25 for \$14.95.

SPREADING JAPANESE YEW. Compact, dark spreading. Hardy. \$1.59 each; 3 for \$3.89; 10 for \$11.95; 25 for \$24.95.

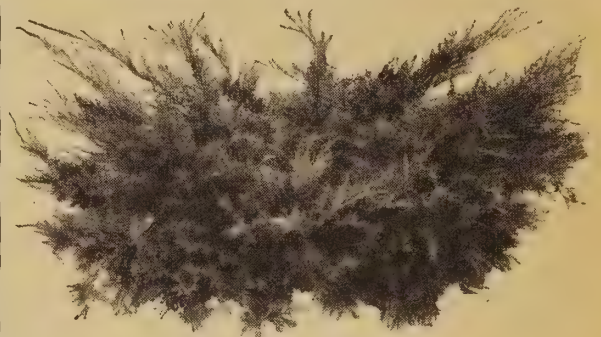
UPRIGHT JAPANESE YEW. Dark green; new growth light. \$1.59 each; 3 for \$3.89; 10 for \$11.95; 25 for \$24.95.

TRANSPLANT COLLECTION No. 25

2 American Arborvitae 2 Scotch Pine
2 Norway Spruce 2 Douglas Fir
2 Colorado Blue Spruce

6 to 10 in., 4-yr. transplants

10 in all postpaid for \$2.85



Pfitzer's Juniper

DOORWAY COLLECTION NO. 26

2 Pyramidal Arborvitae. 12 to 15 in.
2 Pfitzer Juniper. 9 to 12 in.
2 Globe Arborvitae. 6 to 8 in.

6 in all postpaid for \$5.95

EVERGREEN SEEDLINGS — Special Price

3 to 6 in., 2 yrs. old. All Prices Ppd.

AMERICAN ARBORVITAE. Tall, dark green tree. 10 for \$1.59; 25 for \$2.79; 50 for \$4.59; 100 for \$7.95.

BALSAM FIR. Very fragrant; pyramidal. 10 for \$1.59; 25 for \$2.79; 50 for \$4.59; 100 for \$7.95.

VIRGINIANA JUNIPERUS (Red Cedar). Bluish berries. 10 for \$1.95; 25 for \$3.79; 50 for \$5.95; 100 for \$9.95.

AUSTRIAN PINE. A good city tree. 10 for \$1.95; 25 for \$3.79; 50 for \$5.95; 100 for \$9.95.

MUGHO PINE. Dwarf and Hardy. 10 for \$1.95; 25 for \$3.79; 50 for \$5.95; 100 for \$9.95.

SCOTCH PINE. Straight, rugged grower. Picturesque. 10 for \$1.59; 25 for \$2.79; 50 for 4.59; 100 for \$7.95.

BLACK HILLS SPRUCE. Compact and bushy. Very hardy. 10 for \$1.59; 25 for \$2.79; 50 for \$4.59; 100 for \$7.95.

COLORADO BLUE SPRUCE. Gray-blue; very ornamental. 10 for \$1.95; 25 for \$3.79; 50 for \$5.95; 100 for \$9.95.

NORWAY SPRUCE. Tall, dark green; drooping branches. Robust. 10 for \$1.59; 25 for \$2.79; 50 for \$4.59; 100 for 7.95.

MULTIFLORA ROSE HEDGE

A natural living fence. The plants are very hardy; grow rapidly, and in just a few years makes a dense hedge. Requires no pruning, trimming or clipping. Height 8 feet. Blooms every year. 10 for \$1.79; 25 for \$3.29; 50 for \$5.59; 100 for \$8.95; 500 for \$36.95; 1000 for \$59.95, postpaid.

Seedling Collection No. 27

10 Colorado Blue Spruce
10 Arborvitae 10 Red-Cedar
10 Scotch Pine 10 Norway Spruce
3 to 6-in., 2-yr. seedlings

50 in all for \$3.85 postpaid

Colorado Blue Spruce



Upright Yew

EVERGREEN HEDGE

AMERICAN ARBORVITAE. Slow growing pyramidal trees extensively used for hedges, screens, and shelters. The leaves, roughly fan-shaped, have a fragrant odor and grow compactly. They are attractive in all stages. 9 to 12-in. plants, 10 for \$6.59; 25 for \$14.95; 100 for \$38.95.



High-Quality BERRY PLANTS

For Heavy Yield, Bigger Profit & Better Eating

BLACK RASPBERRIES

CUMBERLAND. Large, firm, round, glistening black berries filled with rich flavor. Ripens midsummer and bears through the late season. Hardy, will thrive anywhere.

LOGAN. An extra early ripener. Berries have good flavor and firm quality. Good for garden as well as commercial purposes.

MORRISON. Late ripening variety. Berries are large and less seedy than others. Very firm yet juicy and deliciously flavored.

	5	10	25	50	100	500
2 yr. No. 1 Plants....	\$1.39	\$2.49	\$5.49	\$9.49	\$15.95	\$65.95

New EVERBEARING BLACK RASPBERRY

BLACK MAGIC. A superior new everbearing blackcap that bears its first crop in midsummer and bears another full crop in fall. Fruit is large, glossy black with a tangy sweet flavor. Plants are healthy, vigorous growing and every berry matures. An excellent berry for home gardens and a profitable commercial variety. For berries all season long, try a planting of this superior new everbearing Blackcap — Black Magic.

3 for \$2.95	6 for \$5.00	12 for \$8.50
--------------	--------------	---------------

Best RED RASPBERRY Varieties

INDIAN SUMMER. The earliest Red Raspberry. Unusual thimble-shaped berries of appetizing red color, borne in large, loose cluster. Keep well on bush and after picking. Berries are full flavored, sweet and delicious. Hardy.

LATHAM. Attractive deep red berries, uniformly round and unusually large. Plants are hardy, thrifty growers and bear enormous crops. Excellent for canning and freezing. Latham has long been the leading commercial variety.

SUNRIS—. Non-crumbling berries of deep red, round and very large. Berries are juicy, and very deliciously flavored. Extra fine quality. Ideal for every purpose. Early. A profitable commercial variety as well as the home garden.

	5	10	25	50	100	500
2 yr. No. 1 Plants....	\$1.49	\$2.69	\$5.95	\$10.49	\$17.95	\$74.95

PURPLE RASPBERRY

SODUS. The leading purple Raspberry. Berries are large, firm and do not crumble. Flavor is mild, sugary and delicious. Excellent for pies and a very attractive berry for desserts. Plants are very vigorous, hardy and highly productive. Drought resistant. Yields a good crop every year.

2 Yr. No. 1 Plants						
5	10	25	50	100	500	
\$1.39	\$2.49	\$5.49	\$9.49	\$15.95	\$64.95	



Latham



High-Producing Concord Grape

Hardy GRAPE VINES

CONCORD. Large, compact clusters of big, juicy, tender berries. Flavor is honey-sweet. A leading dark blue Grape. Keeps a long time on the vines and after harvesting. Yields big crops every year. Fine for shipping, canning and for winery. Vine is vigorous and very productive. Usually bears the second year after planting.

2 Yr. No. 1 Plants			
Each	3	6	10
\$.60	\$1.50	\$2.85	\$5.55
25	50	100	
\$10.25	\$16.95	\$31.95	



Sodus Purplecap

KELLOGG'S

Genuine Premier

STRAWBERRY PLANTS

The BEST of them All!

Kellogg's Premier is without a doubt the best Strawberry ever grown. We introduced it in 1915, and since then, it has spread like wildfire to every part of the United States and Canada, and many parts of the world where Strawberries are grown. Now by far the largest selling Strawberry variety.



Premier - The Twelve-Point Variety

Kellogg's Premier has more good points than any other variety. Its twelve good points are listed in detail below.

- | | | |
|---|--|--|
| <p>1. Extra Early — No worthwhile variety fruits earlier. High prices — more profit.</p> <p>2. Resists Frost — Very essential with an early variety. Frost hardly touches Kellogg's Premier.</p> <p>3. Fruits Long — Nearly as late as most other varieties. Berries hold up well throughout the season.</p> | <p>4. Extra Large — Size attracts attention, buyers; big profits.</p> <p>5. Well Shaped — See picture.</p> <p>6. Solid — One of the best market varieties. Ships well for long distances.</p> <p>7. Healthy — Seldom touched with disease. Foliage is tough, dark green, glistening and leathery.</p> <p>8. Beautifully colored — Red clear through. Buyer's delight.</p> | <p>9. Best for Preserving and Freezing — Retains shape and color.</p> <p>10. Easy to Grow — Withstands drought, excess moisture, does well under all conditions.</p> <p>11. Bi-Sexual — Does not require mating.</p> <p>12. Delicious — A fine table berry. Makes customers come back again and again — profits for you.</p> |
|---|--|--|

25 for \$1.45

100 for \$3.60

500 for \$12.40

50 for \$2.25

250 for \$7.95

1000 for \$19.85

NOTE

We cannot ship Strawberry Plants until after October 15th — due to their growing condition.

COMMERCIAL GROWERS—Write for special price list for quantities larger than 5,000.



Catskill

Plant KELLOGG'S STRAWBERRY Plants

FOR EATING — CANNING — FREEZING and PROFIT

- ↳ **ARMORE.** Big, juicy berries with good color and very delicious flavor. Berries are of excellent quality and hold up well in shipping. Fine for canning and freezing. Plants are heavy producers.
- ↳ **TEMPLE.** Large firm, bright red berries with good sweet taste. Has fine quality and good size. Early and a good shipper. An exceptionally strong plant. Resistant to red stele disease.
- ↳ **SPARKLE.** Sparkling, glossy red berries of good shape and medium size. Very vigorous, productive plants. A heavy bearer late in the season. Quality is excellent.
- ↳ **SENATOR DUNLAP.** Bright, rich red berries of good quality. A very strong, high-yielding plant. Medium sized berries of sweet, delicious flavor. Excellent for canning.
- ↳ **FAIRFAX.** Firm, ruby-red berries that turn dark purplish when fully ripe. Sturdy plants bearing a fairly heavy crop. Non-acid, distinctive taste. Excellent for market.

- ↳ **FAIRLAND.** Firm, big bright red berries early in the season. Makes plenty of healthy plants. Very productive. Starts to yield about 4 to 6 days later than Premier. Almost immune to red stele.
- ↳ **CATSKILL.** Berries are extra large and the flavor extra fine, mild and sweet. Brilliant red, with fresh green cap. Very vigorous, healthy and productive plants. Best for freezing.
- ↳ **ROBINSON.** Extra-large, bright shiny red berries. Quality and firmness are very good, making it a fine shipping variety. Bears heavily over a long period of time. Wonderful for canning.
- ↳ **VERMILLION.** Well-formed, medium to large berries, smooth and very glossy. Attractive dark red color. A very vigorous, prolific plant. Bears early and lasts about two weeks.
- ↳ **DORSETT.** An excellent variety that resembles Premier, but berries are large and brighter in color. Its quality is extra fine. This makes it excellent for the home garden and market.
- ↳ **BLAKEMORE.** This has been called the "Premier of the South." The berries are medium to large in size and are firm and of good bright red color. Very vigorous grower.

STRAWBERRY PRICES — ALL THE ABOVE VARIETIES

25 for \$1.45	50 for \$ 2.25	100 for \$ 3.60	All postpaid
250 for \$7.95	500 for \$12.40	1,000 for \$19.85	

Strawberries and other Small Fruits Cannot be Shipped Before October 15th

EVERBEARING STRAWBERRIES—Fresh Berries All Summer

- ↳ **GEM.** This is a standard Everbearer, healthy, vigorous, productive plants. Berries are large in size, of light red color. Delicious flavor. A moneymaker that has stood the test of time.
- ↳ **SUPERFECTION.** Bears almost continuously after planting. Berries are slightly round, firm in texture, making a good shipper. Excellent flavor. Does well under most conditions.
- ↳ **STREAMLINER.** Large, attractive berries are borne in spring as well as fall. Berries are large, well-shaped and well colored. Very hardy and prolific. Does well in any soil.
- ↳ **MINNESOTA No. 1166.** Does especially well in the North. Berries are firm, dark red and of excellent flavor. Ships well. Its hardiness and fruitfulness under adverse conditions are remarkable.

PRICES FOR EVERBEARING STRAWBERRIES

25 for \$2.10	50 for \$3.15	100 for \$5.25	500 for \$19.90
---------------	---------------	----------------	-----------------

PYRAMID GARDEN

Attractive Pyramid Garden Bed requires $\frac{1}{3}$ space of regular berry patch. Easy to care for. Holds 50 plants; enough to supply the average family with delicious berries all season. The 5-inch bands are made of tough aluminum alloy; will not rust or corrode. Easy to erect; instructions with each order. **Pyramid Garden \$9.95 — with 50 Red Rich Plants, \$18.45 — with 50 Superfection Plants, \$12.95.**

RED RICH

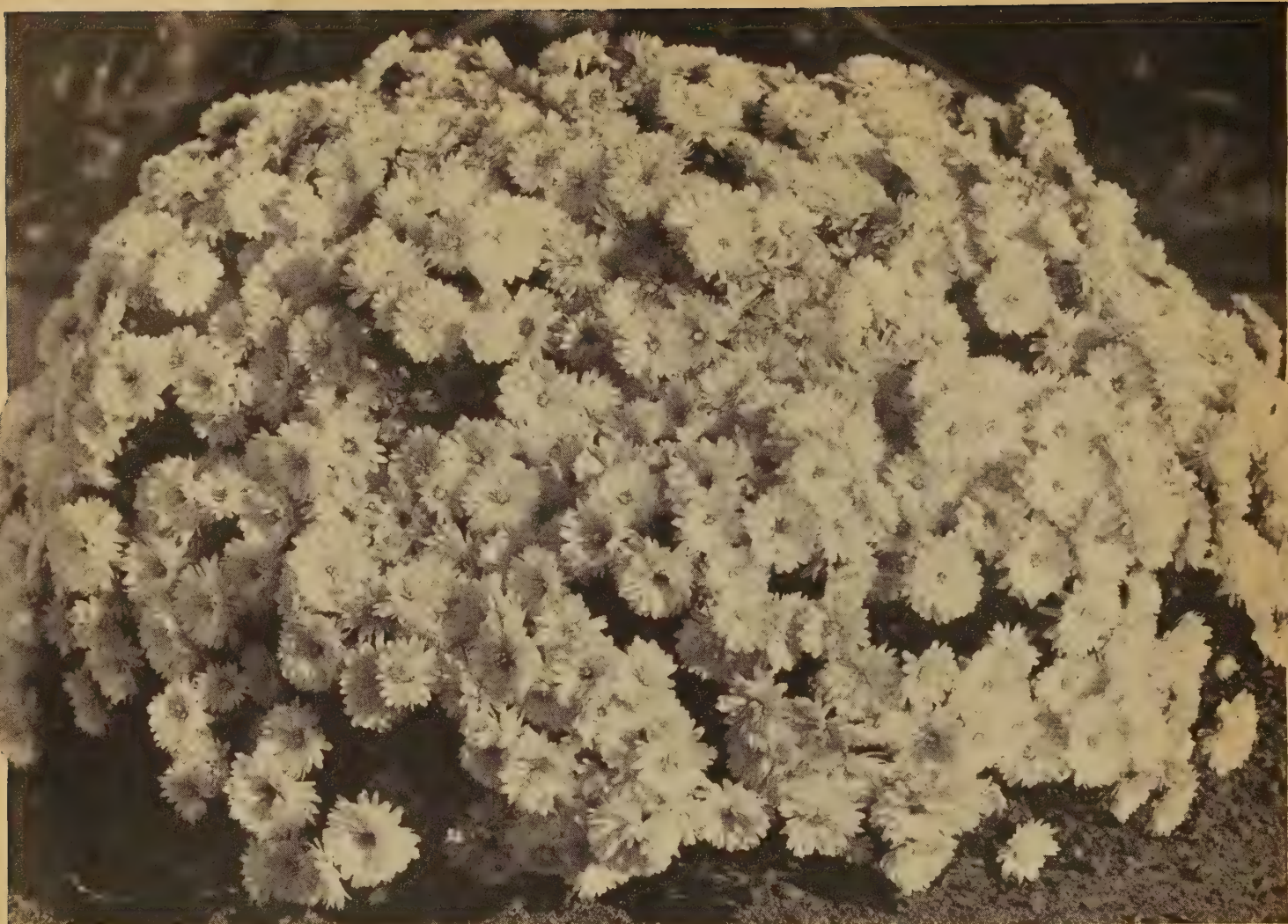
The Finest of All Everbearers

A new Everbearing Strawberry that has all the superior qualities you have been looking for! Berries are large, bright red, roundish in shape with an unsurpassed flavor. The deep red color runs through the whole berry. It keeps and ships well. Red Rich produces berries in June; continues right through summer into fall. One of the strongest growing plants. Very high yielding and an excellent plant maker.

12 for \$2.95; 25 for \$5.00;
50 for \$8.50; 100 for \$15.00.



Pyramid Strawberry Garden



KELLOGG'S *Azaleamums* Trademark

A Bushel of Beauty From Every Plant!

JACK-O-LANTERN. The rich autumn tones of Jack-O-Lantern blend wonderfully with other Azaleamums in your garden; especially Snow Fairy, both varieties are excellent for cutting. Grows 18 inches high.

PRINCESS. Words can hardly describe the beauty of this plant when in full bloom, for it is just a mound of rich mauve-pink flowers shading to rust, the blooms completely cover the bush from the ground up. The plant is so beautiful when in full flower that you can't help thinking of a lovely princess' bonnet, it is so well shaped. It grows 10 to 12 inches high — one of the lowest growing of all Azaleamums.

BLAZING RED. (Pat. 1177). A winner on every count. It blooms and blooms and never gives up until hard frost arrives. Rich flashing, blazing red color. The plant grows 12 to 14 inches in height and 15 to 18 inches in width.

PINK DREAM. This Azaleamum could never have been named anything other than Pink Dream, because of the soft silvery pink blooms. It has a soft, velvety texture, and the center is touched with yellow. Very beautiful contrasting colors. 12 in. high.

NUGGET. A very low plant that produces mounds of lemon-yellow flowers. Not affected by hot weather, but blooms early and lasts until severe winter. Produces 400 to 600 blooms the first year. Excellent as a border plant.

HONEY CHILE. (Pat. 871.) Magnolia-purple, giving it the effect of dark pink. Withstands early frost without damage. Its profuse flowering and winter hardiness will make this variety very popular.

SWEETHEART. Dark glowing pink. Perfection of form and vibrant, rich color have made Sweetheart a consistent winner. Particularly noted is the great profusion of flowers and their brilliant coloring. One of the best.

WILL-O-THE-WISP. An elusive and delicate tone like candle flame, with soft lavender shading. Blend wonderfully with other Azaleamums and give an effect you will be proud of. Hardy and delightful in every way. Most appealing.

TAM-O-SHANTER. Something entirely unique in Azaleamums — the first real orange color! Very hardy and vigorous. Blooms from August until frost. Add color and life to your garden in those last days before winter — plant Tam-O-Shanter.

SUMMER SUNSET. (Pat. 561.) The open flowers vary in shade from beautiful rich apricot to light orange, and as the season advances take on shades of buff or fawn, which gradually change to a suffusion of deep rose or coral, underlaid with traces of mauve or orchid. The buds are rich red just before opening.

Prices on any of the above, \$1.00 each; 3 for \$2.85; 6 for \$5.40; 12 for \$9.95, postpaid.

AZALEAMUM COLLECTION NO. 28

10 AZALEAMUMS, 1 each of the 10 beauties listed on this page.

All 10 for
only

\$7.95

Postpaid

AZALEAMUM COLLECTION NO. 29

24 AZALEAMUMS, 1 each of the 23 varieties listed on these three pages plus one new 1956 introduction "FIESTA RED". Regular \$1.50 per plant. All 24 plants

for only **\$18.50**
Postpaid

Azaleamums

Trademark

In All The World No Other Plant Like It

Taller Growing Azaleamums

WINSOME WITCH. Beautiful royal pink that is simply irresistible. Vigorous grower and blooms profusely until frost. Very showy.

SNOW FAIRY. Beautiful pure white blooms. The petals have feathery edges which give a nice fluffy effect. A plant in full bloom is a veritable snowbank.

SUMMER GOLD. Another old-timer that has been in heavy demand, because of its brilliant gold-colored flowers. Grows about 15 in. high and 20 in. across.

CARNATION QUEEN. The blooms are of a rose-pink, deeper at the edges and paling to lighter tones toward the golden center. Very full.

CARNATION ROSE. (Pat. 660) Daphne-red to Tyrian-pink. Very double. Petals are notched at tip, like a carnation. Bears hundreds of blooms.

WITCHES GOLD. Extra fine flowers of a rich golden yellow, clear and bright. A plant, when in bloom, makes a large showy spot in the garden.

RED WITCH. Deep glowing burgundy-red. The blooms are so plentiful that they actually overlap on the plant. Blooms early and continues until frost.

MAIDEN'S DREAM. Rich, beautiful peach. A perfectly formed mound of blooms 18 to 24 inches tall. Blooms early and continues until frost.

Prices on any of the above, \$1.00 each; 3 for \$2.85; 6 for \$5.40; 12 for \$9.95, postpaid.

Lovely Anemone Azaleamums

QUEEN ANNE. A very striking white flower with yellow center. The petals are very frilly. A perfect companion for the other Queens. Sturdy as can be and full of blooms until frost.

QUEEN VICTORIA. A rich wine-red color that is reminiscent of the Victorian era. The flowers are single to semi-double, with a large center. Compact, free flowering plants.

QUEEN ELIZABETH. Rich pink, shading to lavender as the weather becomes cooler. A semi-double, flat flower with long petals. Hardy and very free flowering.

QUEEN MARY. Words can hardly describe this beautiful new all-yellow Anemone. Warm lemon-yellow flowers, approximately 2 inches across, are borne with the greatest freedom.

POT-OF-GOLD. A new 1956 introduction. A full gold center, with gold petals. Here in the nursery we have marveled at the many, many attractive flowers this plant produces. Ideal for floral arrangements.

Prices on any of the above, \$1.00 each; 3 for \$2.85; 6 for \$5.40; 12 for \$9.95, postpaid.

KELLOGG'S AZALEAMUM SPRAY

Azaleamums are strong, hardy plants . . . healthy too, but they are subject to attacks by insects and fungus like other plants. Be on the safe side and spray regularly with KELLOGG'S AZALEAMUM SPRAY, a special formula developed by our experts. Compounded of Lindane, Rotenone and Ferbam, it assures your plants of maximum health all in one easy application. Just 4 ounces is enough to spray six Azaleamums all season. Complete directions for use given on each package. Get big, healthy, sparkling blooms. KELLOGG'S AZALEAMUM SPRAY provides the most complete protection from destructive insect and diseases . . . all in one package.

4 oz. unit.....\$1.25
8 oz. unit..... 2.00
12 oz. unit..... 2.75

KELLOGG'S AZALEAMUM FOOD

Azaleamums are the prize flowers of your garden. Feed them with exactly the kind of nourishment they need. This specially prepared, highly concentrated formula is easily and completely soluble in water. So easily prepared for use. Just one tablespoon of KELLOGG'S AZALEAMUM FOOD dissolved in a gallon of water is enough to feed six Azaleamum plants for a week; 12 ounces will nourish six plants all season. Complete directions for use given on each package. Be assured of strong, healthy plants and more blooms by using KELLOGG'S AZALEAMUM FOOD.

12 oz. unit.....\$1.25
24 oz. unit..... 2.00
36 oz. unit..... 2.75

COMBINATION OFFER:

1 Unit K. A. Spray & 1 Unit K. A. Food only \$2.00

COLLECTION NO. 30
8 AZALEAMUMS, 1 each
of the varieties listed under "Taller Growing Azaleamums."
Only **\$6.45** postpaid

COLLECTION NO. 31
18 AZALEAMUMS, 1 each
of the 8 Taller Growing Azaleamums plus 1 each of the varieties on the opposite page — 18 in all
Only **\$13.95** Postpaid

COLLECTION NO. 32
5 ANEMONE AZALEAMUMS (R), 1 each
of the 5 varieties listed for only **\$4.49** postpaid





DWARF LEMON

Unique, waxy-white flowers cover the plant several times a year, followed by fruits of excellent quality. The fruits are huge 5 to 6 inches long and often weigh a pound or more. They attain a height of one or two feet.

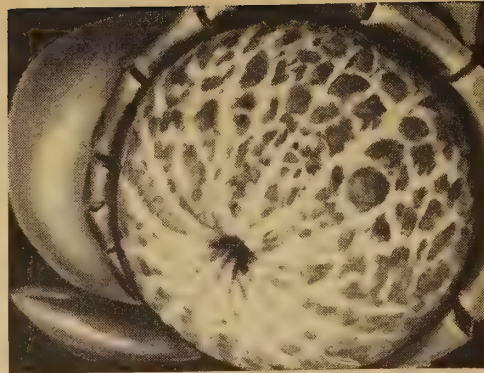
\$1.00 each; 3 for \$2.85; 6 for \$5.40; 12 for \$9.95.



DWARF ORANGE

A fine pot plant with attractive glossy green foliage and fragrant, waxy white blossoms tinged with pink. Fruit is about one-fourth of the size of ordinary oranges. Highly interesting.

\$1.00 each; 3 for \$2.85; 6 for \$5.40; 12 for \$9.95.



DWARF TANGERINE

Easy to grow, glorious glossy-green leaves, and fruit that is of a brilliant color. Dainty, fragrant blossoms appear on this attractive house plant year around.

\$1.00 each; 3 for \$2.85; 6 for \$5.40; 12 for \$9.95.

COLLECTION NO. 33

1 Each of the three Citrus plants offered here for only

\$2.75



Miniature Roses

STAPELIA

(Starfish). A branching succulent plant from Africa, somewhat resembling a Cactus. Produces star-shaped flowers nearly 2" across, spotted yellow and brown. A very attractive plant and a great curiosity.

\$1.00 each; 3 for \$2.85; 6 for \$5.40; 12 for \$9.95.

REX BEGONIA

(Not illustrated.) A plant grown entirely for the beauty of its foliage. The variegated leaves are striped, veined and ruffled giving a charming effect equalled by no other house plant.

\$1.00 each; 3 for \$2.85; 6 for \$5.40; 12 for \$9.95.



Stapelia

MINIATURE ROSES—For the House & Garden

Perfect for a Sunny Window Location

CINDERELLA. Cream white sometimes tinged cameo-pink. Double, extra fine Hybrid tea-like form. Thornless. To 10 inches high. Very free flowering.

PIXIE. The world's smallest double white rose. It shows pink shadings in cool weather. Very popular. To 8 inches high. Fully double with 40 or more tiny petals.

RED IMP. Deep, rich crimson very double, almost star shaped flowers. To 10 inches high. A permanent dwarf variety with exquisite tiny foliage and flowers.

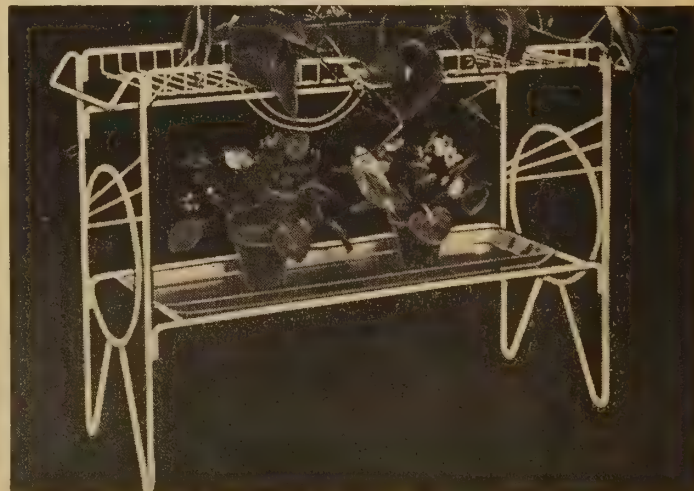
SWEET FAIRY. The first Miniature with true Rose fragrance. Dainty, dark pink buds open to charming, very double one-inch blooms of apple-blossom pink. To 10 inches high.

TOM THUMB. Deep crimson buds grow lighter as blooms open into well-formed, perfect tiny Roses, later disclosing a white eye in the heart of each flower. Beautifully formed, perfect tiny Roses. To 9 in. high.

\$1.29 each; 3 for \$3.69; 6 for \$7.29; 12 for \$13.95.

MINIATURE ROSE COLLECTION NO. 34

5 MINIATURE ROSES, 1 each of all 5 varieties listed — truly a beautiful collection of Roses. A \$6.10 value for only \$4.95



TWO-SHELF TABLE NO. 752

A dual purpose table with standard shelf on top with aluminum African Violet water tray below. 1 3/8" guard rail on back and front of top shelf. 30 in. x 10 in. x 24 in.

No. 752A. White enamel. **\$4.75 each; 2 for \$9.00**

No. 752B. Black wrought-iron finish. **\$4.75 each; 2 for \$9.00.**

26

For handling and postage add 75c each.



DATE PALM

This attractive Pigmy Date Palm reaches a height of from two to three feet high. It is very desirable from the ornamental standpoint. In addition it will produce edible fruit right in your own living room.

**\$1.00 each; 3 for \$2.85;
6 for \$5.40; 12 for \$9.95.**



GARDENIA

Waxy-white flowers and rich, green foliage is a combination unmatched for adding charm to your home. Their delicate beauty and sweet fragrance will be enjoyed all winter.

**\$1.00 each; 3 for \$2.85;
6 for \$5.40; 12 for \$9.95.**



CHRISTMAS CACTUS

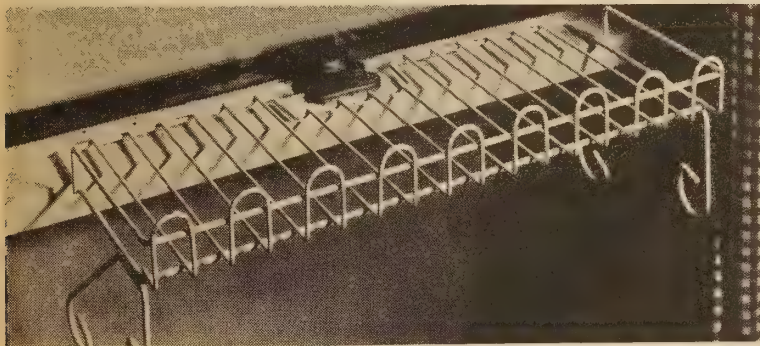
Most popular of all flowering Cactus. Large showy blooms. Will do well under most adverse conditions, and will bloom profusely year after year. Must have a sunny window to bloom. Increase in size every year.

**\$1.00 each; 3 for \$2.85;
6 for \$5.40; 12 for \$9.95.**

WALL PLANTER BRACKET

The most practical and decorative wall planter bracket on the market. Its hardened steel core coated with a heavy layer of smooth-as-velvet plastic cannot rust, will last a lifetime. This unique flower pot holder is available in white, black, green or Chinese red presenting a striking contrast with walls of any color. These wall brackets are adjustable to handle various size pots from a 2-inch pot up to and including a 5-inch pot. Pots are not included. Hung one way, it makes an attractive display of vine-type plants; reversed, it effectively shows off stalk-type plants. **89c per pair, Postpaid.** Please specify color desired.

House Plants and Planters Make Perfect Christmas Gifts



**All Items
except Tables
and Shelves
are Postpaid.**

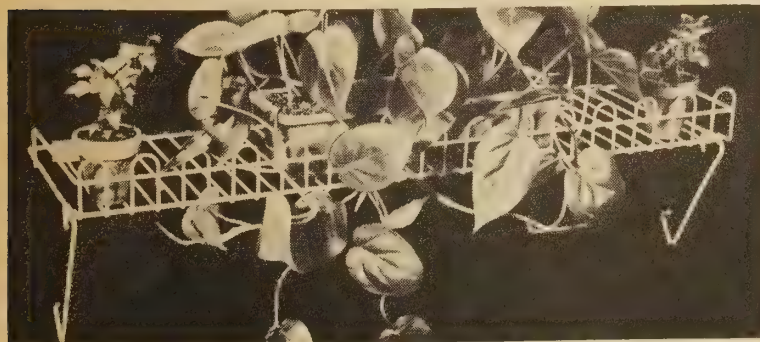


Wall Planter Bracket

POPULAR PLANT SHELF NO. 718

Fits both lower sills and middle sashes without any special attachments. Recessed center slips easily between upper and lower sash and around lock. Guard rail on front and sides. Size 18 x 8½ inches.

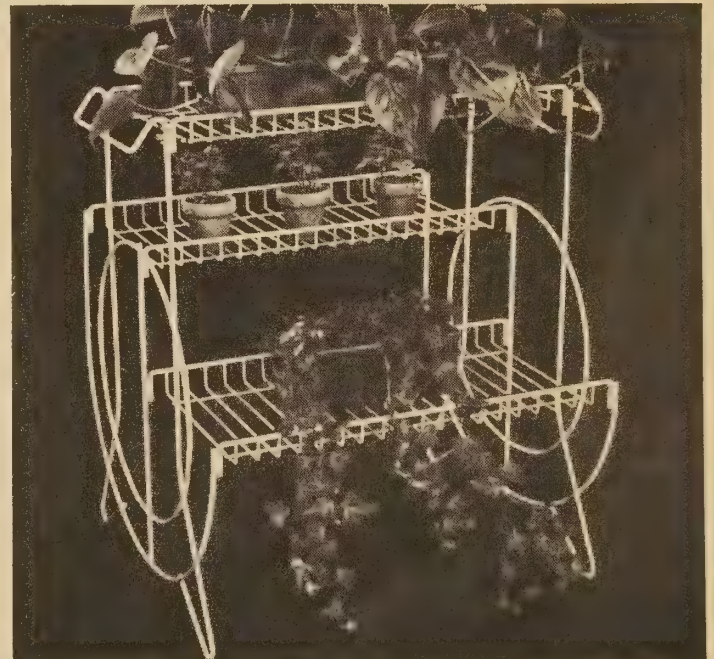
No. 718A. White enamel finish. **\$2.50 each.**
No. 718B. Black enamel finish. **\$2.50 each.**
For Postage and handling add **50c each.**



GIANT PLANT SHELVES

Get more space with this sturdy steel self-mounting indoor shelf. Simply hang it on the window sash. Also good for porches and plain wall use.

No. 730. Size 30 x 10 inches. Specify black or white **\$2.75.**
No. 720. Size 24 x 10 inches. Specify black or white **\$2.50.**
For Postage and handling add **50c each.**



THREE SHELF TABLE

Shelves are offset to provide head room for tall plants. Six sq. ft. of shelf.

No. 753A. White enamel **No. 753B.** Black Wrought-Iron. Size 24 x 20 x 26 inches. **\$8.95 each; 2 for \$17.00.**
No. 754A. White enamel. **No. 754B.** Black Wrought-Iron. Size 30 x 20 x 26 inches. **\$9.95 each; 2 for \$18.00.**
For Postage and handling add **\$1.00 each.**

AFRICAN VIOLETS

DOUBLE VARIETIES

ORCHID SUNSET. Large double flowers of a rich orchid color. The leaves are a dark green; very handsome.

DOUBLE LADY. Very double flowers that are a striking shade of blue. Neat growing habit. Extra fine.

FLUFFY LADY. Huge double flowers that are a sparkling white. Blossoms are carried in a profusion of dark green foliage.

\$1.00 each; 3 for \$2.75

LARGE FLOWERING SINGLE VARIETIES

PINK CHEER. Whole bouquets of waxy-pink blossoms are surrounded by clean cut, neat, green foliage. No other like it. Easy to grow — lots of flowers.

SNOW PRINCE. Absolutely pure white flowers that are full and round. Flowers are held high on strong stems. Loads of flowers. Tailored foliage, graceful and neat growing habits.

PURPLE KNIGHT. A very superior dark purple. All good habits; easy to bloom with giant sized flowers and strong stems. Wonderful show plant!

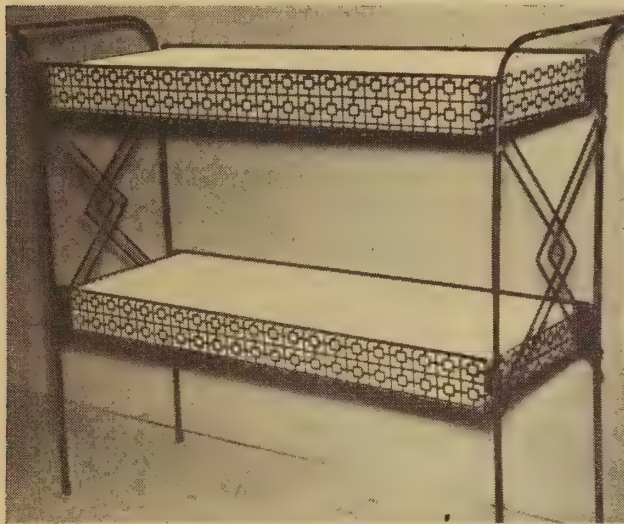
RED KING. Rich burgundy wine flowers against velvety foliage of darkest green. Neat growing habit and easy to grow. Eight or more buds and flowers per stalk. Good sized flowers. Very aristocratic!

\$1.00 each; 4 for \$3.50



OLD GLORY COLLECTION NO. 35
3 AFRICAN VIOLETS. 1 Red, 1 White, and 1 Blue.
\$2.75 Postpaid
BARGAIN PRICE

Black and White SELF-WATERING AFRICAN VIOLET STAND



Latest black open design with white removable water proof trays that enable plants to drink for days. Rubber tipped legs. Perfect for African Violets. **No. 243.** Size 30 x 10 x 26 in. **\$9.45** each. Postage **\$1.00.**

Only Plants and Offers are Postpaid—All other items have shipping and handling costs added.

WALL & WINDOW BASKET

Hanging basket that reverses as a wall or window shelf. Clears window lock. 6 x 20 shelf space. **No. 221.** Wrought Iron Black Finish. **No. 222.** Enameled White. Size 1 1/4 x 8 1/4 x 20 in. **\$2.50** each. Postage **50c.**



"Speedy Fill" BIRD FEEDERS

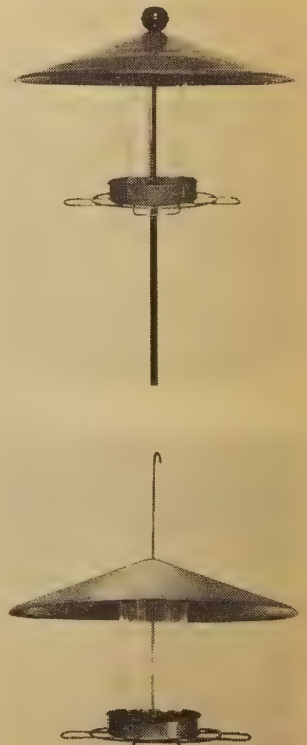
So simple to fill! Just raise hood and pour feed into hopper. Made of steel and plastic. Autumn-brown finish.

STEEL POST FEEDER

Can be placed anywhere in a garden. Push post about a foot into the ground. 6-ft. solid steel post. Very easy to set up. Hood 14 3/4 in. across. Holds 1 1/2 to 2 lbs. **\$5.95.** Postage **50c.**

HANG-UP FEEDER

This feeder, with its large hood, may help solve the squirrel problem by hanging it far enough away from tree trunk. Hood 14 3/4 in. across. Holds 1 1/2 to 2 lbs. **\$3.95.** For handling and postage **add 50c.**



COLLECTION NO. 36

1-African Violet Shelf. No. 221, Black or No. 222, White.

1-No. 2901 Planter Assortment. See page 26.

Plus 3 African Violets, your choice of varieties.

\$6.98 Postpaid

D-X AERO SPRAY

Keep your house plants healthy and beautiful with D-X Aero Spray. This low-pressure aerosol sprayer makes it easy to kill aphids, spider mites, thrips, mealy bugs, white fly and other insects. Just press the lever — and spray! No fuss — no muss! Contains pyrethrum, rotenone and piperonyl cyclonene. 10-oz. spray can **\$1.50**; 2 for **\$2.85.** Postage **add 15c and 23c.**



D-X Aero Spray

COLLECTION NO. 37

Your Choice of 12 House Plants plus 1 can of D-X Aero spray, a \$13.50 value for a Bargain Price **\$8.95** Postpaid



BEEFSTEAK BEGONIA

A low spreading Begonia, with circular leaves, red beneath and dark glossy green above. Dainty coral-red flowers.

\$1.00 each; 3 for \$2.85; 6 for \$5.40; 12 for \$9.95.



WATERMELON BEGONIA

Leaves thick and waxy-like, are distinctly variegated white and green. Appear to be powdered with frosted silver.

\$1.00 each; 3 for \$2.85; 6 for \$5.40; 12 for \$9.95.

← WAX PLANT

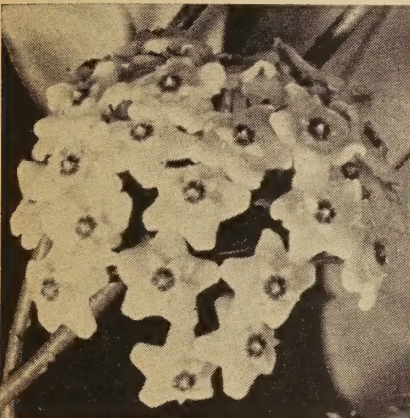
Umbels of fragrant, waxy-white flowers with pink centers, produced in succession. Shining succulent, dark green foliage.

\$1.00 each; 3 for \$2.85; 6 for \$5.40; 12 for \$9.95.

JASMINE

The foliage is a deep green color; produces richly fragrant blooms. Their fragrance is most noticeable at night.

\$1.00 each; 3 for \$2.85; 6 for \$5.40; 12 for \$9.95.



BIRD-OF-PARADISE

Strelitzia Reginae. Festooned with reds, yellows, blues, and oranges rivaling the jungle bird of the same name and exotic nature. Its flower seems alive and ready to speak, and its broad, tropical foliage is charmingly decorative. **\$1.50 each; 3 for \$3.85.**

COBRA ORCHID

One of the most fascinating plants known to man. The plant has no leaves, the stalks are twisted and funnel shape, small at the bottom, growing larger with a rounded hood at the top from which hang two crimson and green appendages which have the appearance of feelers or whiskers. This amazing Orchid catches flies and eats raw meats. If kept in an insect free room, it is advisable to feed it raw meat once or twice weekly. **\$1.95 each; 3 for \$5.00.**



(These two items are not included in the special plant and accessories offers.)

SPECIAL NOTICE

Be sure and shop our bargain collections in this catalog.

All prices are postpaid unless otherwise noted.

PLANTERS — Sub-Irrigated and Wick Types

Made of plastic, in five colors: red, canary yellow, almond green, pink and turquoise. **HYDRO-WICK PLANTER.** Rot proof fibre glass wicks for uniform distribution of moisture, correct number of drainage holes for proper irrigation.

FLOWER POT AND SUB-IRRIGATED PLANTER. Sub-irrigated planters are really practical closed bottom containers. Perforated plastic plates offset from base of pot provide positive drainage for best plant growth.

No. 300. Bird Cage Planter. Specify color: Black, White, Pink. \$2.95 plus 50c handling and postage.

No. 301. Size, 4½ in. x 3⅞ in. Specify color. 2 for 98c, postpaid.

No. 302. Size, 5½ in. x 3⅞ in. Specify color. 2 for \$1.29, postpaid.

No. 801. Size, 5½ in. long x 3½ in. wide x 3½ high. Specify color. 2 for 98c, Ppd.

No. 103. Size, 7 in. x 4 in. x 3½ in. high. Specify color. 2 for \$1.29, postpaid.

No. 1001. Size, 4⅞ in. x 4⅞ in. x 4½ in. high. Specify color. 2 for \$1.29, postpaid.

No. 701. Size, 3¾ in. x 3½ in. high. Specify color. 2 for 79c, postpaid.

No. 702. 4¾ in. x 4¼ in. high. Specify color. 2 for \$1.29, postpaid.

No. 901. Size, 5⅜ in. x 4⅞ in. high. Specify color. 2 for \$1.49, postpaid.

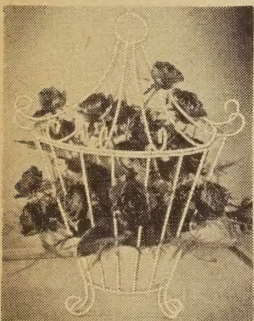
No. 101. Size, 4½ in. x 4½ in. x 3½ in. high. Specify color. 2 for \$1.29, postpaid.

No. 102. Size, 5½ in. x 5½ in. x 4 in. high. Specify color. 2 for \$1.49, postpaid.

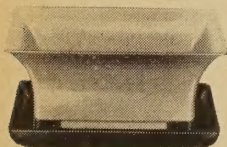
No. 507-7. Submerged Planter. Specify color. 4 for \$1.75, postpaid.

No. 401. 3¾ in. x 3½ in. Specify color. 6 for \$1.45, postpaid.

No. 402. 4¾ in. x 4½ in. Specify color. 6 for \$1.20, postpaid.



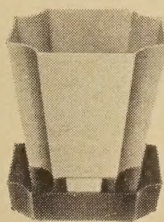
300 — Bird Cage Planter



103



801



1001



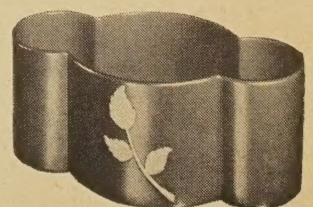
701-702



901



401-402



507-7



301-302



101-102

Ornamental Trees

Add Beauty & Value to Your Home

LOMBARDY POPLAR

This is one of the fastest growing, upright, most beautiful of all shade trees grown. Ideal for wind breaks and fence lines. It is rapid growing and has bright pale green leaves and branches down to the ground. It makes a beautiful formal effect on account of its columnar form. 4 to 5 ft. 98c each; 3 for \$2.69; 6 for \$4.79; 12 for \$8.39.



Lombardy Poplar

RED BUD

(*Cercis Canadensis*) Also known as Judas-trees, and it has lavender-pink rather than red flowers. They pop out of the bark early in spring before the leaves appear. When in bloom, every branch and twig is covered with thousands of the lavender-pink blossoms. The tree grows 20 to 30 feet high. Most attractive in all seasons. \$1.15 each; 3 for \$3.29; 6 for \$5.95; 12 for \$10.95.



Red Bud

SILVER MAPLE

A fast growing shade tree that thrives on all kinds of soils. Finely cut leaves are bright green on top and silvery underneath. Leaves turn gold in autumn. Reaches a height of approximately 60 feet making a large, shapely, graceful head. Tree is long-lived; very valuable for lawn planting. \$1.98 each; 3 for \$5.70; 6 for \$10.95; 12 for \$19.95.

SMOKE TREE

(*Rhus Cotinus*.) Large, loose panicles of flowers with spreading hairs give a smoky effect. Blooms in early summer. Handsome foliage which turns to red, yellow and brown in Fall. It likes plenty of sunshine and light, well drained soil. Reaches a height of fifteen feet. \$1.49 each; 3 for \$4.29; 6 for \$8.39; 12 for \$15.95.



Smoke Tree

WEeping WILLOW

(*Salix Blanda*.) A hardy, strong, fast growing Willow with handsome weeping foliage. Tree has wide-spreading head and long, pendulous branchlets. Dark bark. A very desirable tree for use as a quick-growing ornamental on the lawn or for quickly blocking out undesirable views or buildings. Does well in moist soil and when once established, grows as much as four or five feet in one season. Reaches a height of about 30 feet. 4 to 5 ft., \$1.98 each; 3 for \$5.70; 6 for \$10.95; 12 for \$19.95.

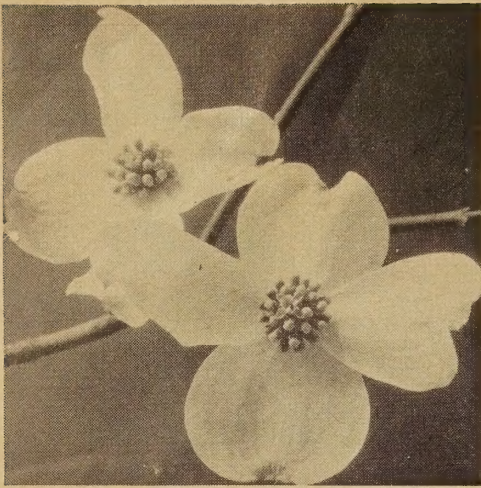
POINSETTIAS

Now we offer you the opportunity to grow Poinsettias right in your home. Nice sturdy healthy plants grown in our own Greenhouse. These plants will do well in your home when kept in a South window with room temperature around 70°. Keep out of drafts. We cannot guarantee time of bloom. Colors red, white, pink. State color wanted.



Poinsettia Plant

2 inch pot size, \$1.00 each; 3 for \$2.85; 6 for \$5.40; 12 for \$9.95.
3 inch pot size, \$1.59 each; 3 for \$4.65; 6 for \$8.95; 12 for \$16.95.



WHITE DOGWOOD

One of the outstanding native trees of the United States. At opening, the flowers give a creamy yellow effect which, after a few days, changes to pure white. When in bloom, the tree is literally a cloud; the foliage is almost hidden. Blooms early in spring followed by red fruit. Attractive foliage which turns red in fall. A good specimen in bloom is a magnificent sight in spring. \$1.49 each; 3 for \$4.29; 6 for \$8.39; 12 for \$15.95.



Silver Maple



Weeping Willow

BE SURE AND SHOP OUR BARGAIN COLLECTIONS IN THIS CATALOG



Kellogg's Famous Rock-Garden Collections

We ship only the finest plants for rock garden.

COLLECTION 39
10 top-quality plants, assorted (less than 35c each)

\$3.49

COLLECTION 40
20 top-quality plants, assorted (less than 31c each)

\$6.19

COLLECTION 41
50 top-quality plants, assorted (less than 26c each)

\$12.95

COLLECTION 42
100 top-quality plants, assorted (less than 22c each)

\$21.95

Above is a picture of Kellogg's famous Rock Garden, certainly a showplace around Three Rivers. The above collections are full of assorted plants that will make your rock garden the envy of your neighborhood. All plants are top grade Perennials which will grow year after year, producing flowers for you all summer. All varieties are ideally suited for rock garden planting. Long blooming period and a brilliant spread of color.

We are proud to display the "Shield of Quality" symbol of the National Mail Order Nurseryman's Association. Always buy where you see the Shield of Quality and you can be assured that you will receive fair and honest treatment from your mail order nurseryman.

Member of:

NATIONAL MAIL ORDER NURSERYMAN'S ASSOCIATION
AMERICAN ASSOCIATION OF NURSERYMEN
MICHIGAN ASSOCIATION OF NURSERYMEN
ILLINOIS ASSOCIATION OF NURSERYMEN
NATIONAL ASSOCIATION OF PLANT PATENT OWNERS



MULTIFLORA ROSE HEDGE

The Living Fence

Multiflora Rose Hedges are becoming increasingly popular for soil conservation and for the conservation of wild life. We highly recommend this hedge for field planting instead of fences where you prefer dense growth. This hedge will also have small flowers in the Spring of the year and is very attractive as well as useful. **Size 9-12 inch. 10 for \$1.79; 25 for \$3.29; 50 for \$5.59; 100 for \$8.95; 500 for \$36.95; 1000 for \$59.95, postpaid.**



SPECIAL CHRISTMAS TREE PLANTING

We offer you this excellent Christmas Tree collection of **White Spruce, Scotch Pine and Norway Spruce** which are exceptionally popular for Christmas Tree planting. These trees are four years old, 5-10 inches high. In a few years these trees will be worth many times what you paid for them. We are happy to offer you these trees in quantity lots at bargain prices. **100 for \$14.95; 500 for \$69.95; 1000 for \$129.95.**



R. M. KELLOGG CO.
Three Rivers, Michigan

Postmaster: If undeliverable for any reason, notify sender stating reason, on Form 3547, Postage for which is guaranteed.

Bulk Rate
U. S. POSTAGE
PAID
Permit No. 4
Three Rivers, Mich.

LIBRARY OF AGRICULTURE
U.S. DEPT. OF AGRICULTURE
WASHINGTON 25 D