

62.11

YOUR GARDEN BOOK



for 1956



MILE HIGH SEED CO.

GRAND JUNCTION, COLORADO

HOW TO ORDER: Always write or better still, print your name, postoffice, state, and express office plainly, and, if possible use the order sheet. Always carry out the price of each item.

The map will help you locate your parcel post zone.

Make all money orders or checks payable to Mile High Seed Co. There is no Colorado sales tax on garden seed.

All offerings are subject to prior sale and to price changes without notice. Bags and packing are furnished without charge.

Freight, Truck or Express charges can be paid on delivery and larger orders at quantity "not prepaid" prices are usually shipped by one of these. Parcel Post is best for 50 pounds or less. We pay transportation on items marked "postpaid".

PARCEL POST: If your order is to be delivered by parcel post please total the pounds of NOT PREPAID items and add 1 pound for packing. Do not include weight of postpaid items. See map for your zone.

Pounds	1 and 2 zones	3 zone	4 zone	5 zone
1	\$0.23	\$0.23	\$0.24	\$0.26
2	.27	.29	.31	.30
3	.31	.34	.38	.45
4	.35	.39	.45	.54
5	.39	.44	.52	.63
6	.43	.49	.59	.73
7	.47	.54	.66	.82
8	.51	.60	.73	.91
9	.55	.65	.80	1.00
10	.59	.70	.87	1.10
11	.63	.75	.93	1.19
12	.67	.80	1.00	1.28
13	.71	.85	1.07	1.37
14	.75	.90	1.14	1.47
15	.79	.96	1.21	1.56
16	.83	1.01	1.28	1.65
17	.87	1.06	1.35	1.74
18	.91	1.11	1.42	1.84
19	.95	1.16	1.49	1.93
20	.99	1.21	1.56	2.02
21	1.02	1.26	1.62	2.11
22	1.06	1.32	1.69	2.21
23	1.10	1.37	1.76	2.30
24	1.14	1.42	1.83	2.39
25	1.18	1.47	1.90	2.48
26	1.22	1.52	1.97	2.58
27	1.26	1.57	2.04	2.67
28	1.30	1.63	2.11	2.76
29	1.34	1.68	2.18	2.85
30	1.38	1.73	2.25	2.95
31	1.42	1.78	2.31	3.04
32	1.46	1.83	2.38	3.13
33	1.50	1.88	2.45	3.22
34	1.54	1.93	2.52	3.32
35	1.58	1.99	2.59	3.41
36	1.62	2.04	2.66	3.50
37	1.66	2.09	2.73	3.59
38	1.70	2.14	2.80	3.69
39	1.74	2.19	2.87	3.78
40	1.78	2.24	2.94	3.87



IF you want to purchase quantities you will save by ordering at Not Post Paid prices and adding postage or ship by freight or express, collect.

ALLOW enough for postage. If you send too much we will refund the overage.

ASPARAGUS

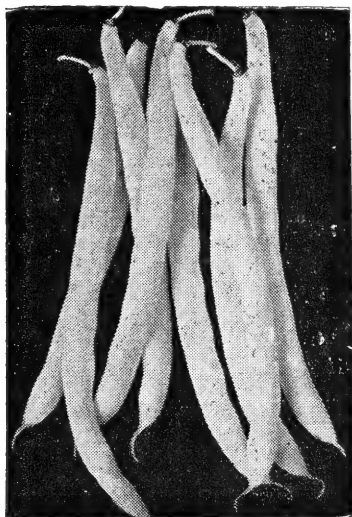
254 Mary Washington. The largest, most desired variety of asparagus. Is of the rust-resistant type and very productive.

Pkt. 10c; oz. 25c; ¼ lb. 75c; Lb. \$2.25. Postpaid.

BEANS

Our beans have been carefully hand picked and will reach you clean. 1 lb. to 200 ft. of row, 35-40 lbs. per acre.

264 Contender. (50 days) Vigorous plants resistant to common bean Mosaic. Pods thick, oval and stringless. A very good early variety.



281 Brittle Wax

268 Tendergreen New Stringless. (53 days) Green pod, plants medium, heavy producer, beautiful dark green straight pods, round, meaty. This is our choice of all green pod beans.

281 Round Pod Kidney Wax or Brittle Wax. (52 days) A bean of superb quality for all purposes and wonderfully productive. Finest for canning because it is entirely stringless. Round pods, medium vine.

286 Pencil Pod Black Wax. (54 days) Stringless, thick, meaty pods, averaging 6 in. long. Seeds black. A very good bean.

275 Wade. (55 days) Developed in 1952, resistant to diseases. Medium large plant with smooth medium green pods about 6 inches long. Good quality and stringless.

298 Oregon Giant or King Pole. (69 days) Vigorous dark green vines produce a good crop. Beans are stringless when young, fleshy but tender and are a waxy medium green color.

316 Burpee's Improved Bush Lima Beans. (76 days) Beans white with greenish tinge. Plants large, erect, very productive.

317 Fordhook Bush Lima Beans. (76 days) Large vigorous plants, beans thick and of excellent quality.

314 King of the Garden Pole Lima. (93 days) Most popular pole lima. Large pods, flat beans.

320 Henderson's Bush. (67 days) Baby Lima or Butter Bean.

Pkt. 10c; ¼ lb. 25c; ½ lb. 40c; 1 lb. 70c. Postpaid.

Not Postpaid: (1 lb. 45c); (Up to 10 lbs. 40c lb.); (Over 10 lbs. 35c lb.)

266 Burpee or Landreth Stringless. (50 days.) An improved Burpee, large pods, tender and stringless, one of the best home garden beans.

295 Kentucky Wonder Pole Bean. (65 days.) Strong climber, hardy and very prolific over a long season, bearing until frost.

Pkt. 10c; ¼ lb. 20c; ½ lb. 35c; 1 lb. 65c. Postpaid.

Not Postpaid: (1 lb. 40c); (Up to 10 lbs. 38c lb.); (Over 10 lbs. 32c lb.)

Market Gardeners who buy quantities . . . send us a list of the varieties and quantities of the seeds you will want. We shall be glad to quote you quantity rates.

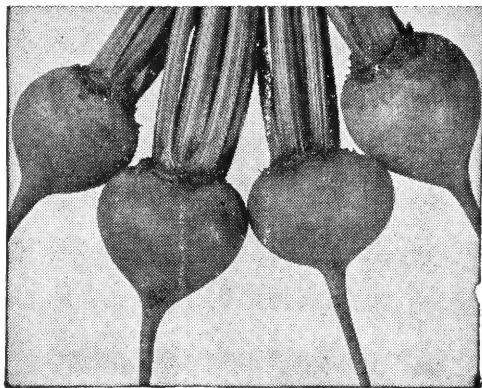
BEETS

Beets may be planted as early as condition of the soil will permit, 1 inch deep, rows 16 inches apart. Plant them thick and thin out, using young plants for beet greens.

- 324 **Early Wonder or Early Model.** (52 days.) A selection from Crosby's. A little smaller and earlier, better quality beet.
- 327 **Detroit Dark Red.** (58 days.) An old-time standard for home and market garden, shipping and canning.

- 328 **Improved Early Blood Turnip.**
(65 days.) A medium early variety, good for summer or winter.

- 334 **Perfected Detroit or Cannerrs Type.**
(57 days) Dark blood red. The best quality and flavor. Grows to medium size.



Perfected Detroit

Pkt. 10c; oz. 20c; ¼ lb. 50c; Lb. \$1.50. Postpaid.

BROCCOLI

- 348 **Green Sprouting.** It is of branching growth with tender, loosely formed, delicious green heads. Cultivated and used like cauliflower.

Pkt. 10c; ½ oz. 15c; oz. 25c; ¼ lb. 80c. Postpaid.

CABBAGE



Our cabbage seed is the result of years of careful selection. Contains vitamins A, B and C, when used cooked or raw. Ounce to 2,000 plants.

- 365 **Golden Acre.** (63 days.) The best early cabbage. Small round heads are solid and very good quality.

- 352 **Copenhagen Market.** (66 days.) One of the best early round heads. Large, solid, fine grained and fine flavored.

- 355 **Glory of Enkhuiszen.** (83 days.) Some larger and a little later than Copenhagen, used for kraut.

- 358 **Stein's Early Flat Dutch.** (95 days) Heads are large, flat and of fine quality. Valued for its ability to resist heat.

- 356 **Early Jersey Wakefield.** (62 days.) Cone-shaped; sweetest flavor. Home garden favorite. Very early.

- 371 **Premium Late Flat Dutch.** (110 days.) A justly popular variety extensively cultivated for market and family use. Heads large, round, flattened and very firm. Very hardy, fine for kraut purposes.

- 377 **Perfection Drumhead, Savoy.** (100 days.) Solid heads, with crumpled leaves. Short to medium stem.

- 374 **Mammoth Red Rock.** (105 days.) Deep red leaves.

- 376 **Chinese Cabbage (Chihli)** (75 days.) For salads or cooking.

Pkt. 10c; ½ oz. 20c; oz. 30c; ¼ lb. 75c; lb. 2.05. Postpaid

- 373 **Ballhead, Short Stem.** (110 days.) The peak of perfection in a late cabbage. Surpasses all others in size, productivity and hard, tight heads. Excellent type for growing winter storage cabbage in the higher altitudes.

Pkt. 10c; ½ oz. 25c; 1 oz. 45c; ¼ lb. \$1.15;
½ lb. \$2.10; lb. \$3.20; postpaid.

BRUSSELS SPROUTS

- 351 **Long Island Improved.** Choice, compact variety. Sprouts like small cabbages form on stalk of plant; more delicate flavor than cabbage.

Pkt. 10c; $\frac{1}{2}$ oz. 25c; oz. 45c; 2 ozs. 80c. Postpaid.

CAULIFLOWER

Our seed has established a wonderful reputation. A favorite delicacy; a money-making crop. 1 oz. to 2,000 to 3,000 plants.

- 424 **Danish Snowball.** Suitable for high altitudes. (57 days). Our extra fine selection for early pure white heads, size, uniformity and freedom from blemishes. We recommend it for your shipping crop or home use. The best in quality.

Pkt. 20c; $\frac{1}{16}$ oz. 25c; $\frac{1}{4}$ oz. 70c; $\frac{1}{2}$ oz. \$1.10; oz. \$1.75
 $\frac{1}{4}$ lb. \$5.00; lb. \$15.00. Postpaid.

- 423 **Early Snowball.** (54 days) A good commercial and shipping strain. Pkt. 10c; $\frac{1}{4}$ oz. 50c; oz. \$1.35; $\frac{1}{4}$ lb. \$4.00; lb. \$12.00; postpaid.



388 Red Cored Chantenay

CARROTS

Raw carrots contain vitamins A, B and C. An oz. of seed plants 150 ft. Cover seed $\frac{1}{2}$ inch or less.

- 388 **Improved Red - Cored Chantenay.** (70 days) Orange-red, very tender and of finest flavor; indistinct core; good keeper and shipper.

- 386 **Imperator.** (77 days.) Uniformly tapered to a semi-blunt end. A fine carrot. Good for bunching.

- 384 **Danvers Half Long.** (75 days.) A heavy yielding general crop variety.

- 385 **Nantes.** Half long, nearly coreless. Bright orange, very small core.

Above Carrots priced: Pkt. 10c; oz. 25c;
 $\frac{1}{4}$ lb. 75c; Lb. \$2.25. Postpaid.

STOCK CARROTS

- 389 **Large White Belgian.** (95 days) For feeding stock. An enormous yielder. Roots about 11 inches long; 3 in. across.
- 391 **Yellow Belgian.** (95 days.) Very large and a heavy yielder, light orange color, relished by all livestock.

Oz. 15c; $\frac{1}{4}$ lb. 65c; lb. \$1.85; postpaid.

CELERY

Should be planted in houseboxes or hotbeds about March 15th; winter celery about April 15th. Winter celery can be transplanted in the open ground as late as June 15th.

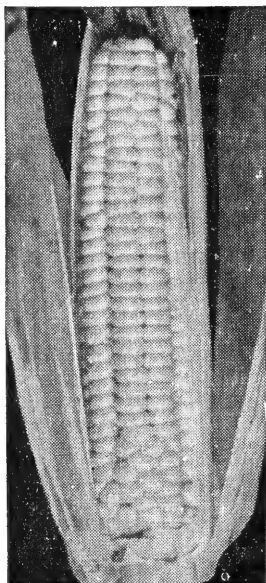
- 433 **Giant Pascal.** (140 days.) Good type fall celery.

All above priced: Pkt. 10c; $\frac{1}{2}$ oz. 35c; oz. 60c; $\frac{1}{4}$ lb. \$1.75.

- 434 **Utah, or Golden Crisp.** (130 days.) Winter celery. Round, thick, solid stems; very mild, nutty flavor.

Pkt. 10c; $\frac{1}{2}$ oz. 45c; oz. 70c; $\frac{1}{4}$ lb. 1.90. Postpaid

- 431 **Giant Colorado Pascal.** Dwarf Strain—developed especially for the shipping trade. Dwarf stalky growth, free from soft spongy stalks. Blanches easily to a creamy white; for early market. Also the very best for winter trenching. This is the celery that has made Colorado famous; thousands of shipments go out each season as Christmas gifts. Pkts. 20c; $\frac{1}{2}$ oz. \$1.60; oz. \$3. Postpaid.



SWEET CORN

You get the sweetest corn fresh from your own garden.

439—Golden Sunshine. (67 days) The same flavor and color as Golden Bantam, but earlier. Ears are also larger, being 12-rowed instead of 8.

445 Golden Bantam. (75 days) Still a big seller. Everyone knows this popular variety.

446 Improved Golden Bantam. (78 days) Larger and deeper kernels than Golden Bantam. Fine flavor.

444 Spanish Gold

444 Spanish Gold. (65 days) The best of the real earlies. Good sized ears; finest quality.

447 Oregon Evergreen. (90 days) An earlier cross of Stowells; in our opinion a little better. Strong, firm husks prevent worm damage to a large degree.

Priced: Pkt. 10c; $\frac{1}{4}$ lb. 20c; $\frac{1}{2}$ lb. 35c; Lb. 65c. Postpaid

Not Postpaid: (1 lb. 40c); (Upt to 10 lb. 35c lb.)

453 EXTRA EARLY GOLDEN MIDGET (60 days) Grow this variety where your season is too short for most varieties of sweet corn. Plants grow about 3 feet tall, suckering heavily and producing an ear of corn on most of the suckers. Ears 4 to $4\frac{1}{2}$ inches long with 8 rows of medium yellow corn of excellent quality and flavor.

Pkt. 15c; $\frac{1}{4}$ lb. 25c; $\frac{1}{2}$ lb. 45c; 1 lb. 75c. Postpaid.

HYBRID SWEET CORN

Far superior to open pollinated sweet corn. Husk wraps higher and tighter on ear, less worm damage. Ears more uniform, better yielder, fine flavor, sturdy stalks and roots.

Hybrid seed not true to type the second year.

440 Tendergold. (78 days) Top cross, stalks medium, deep kernels, beautiful golden color; 10 to 12 rows.

442 Golden Cross Bantam. (82 days) Has all the advantages of the Hybrid; sturdy, healthy stalks, ears 10 to 14-rowed; very uniform in plant and ear.

443 Spancross. (68 days) Medium-size ears, 6 to 7 inches long beautiful yellow, sturdy stalks, extremely early.

452 HYBRID STOWELLS EVERGREEN. (93 days). Ears 8 to 9 in. long, 16 to 20 rows straight snowy white kernels, good flavor and quality. Many plants have 2 ears, excellent husk cover.

Pkt. 15c; $\frac{1}{4}$ lb. 25c; $\frac{1}{2}$ lb. 45c; 1 lb. 75c. Postpaid

Not Postpaid: (1 lb. 50c); (Up to 10 lbs. 45c lb.); (Over 10 lbs. 43c lb.)

POP CORN

One ounce to 65 feet of row; 4 to 6 pounds per acre.

456 Creamy Crisp, or South American. Grains are creamy yellow, large, crisp and delicious.

457 Japanese Hulless, or Australian Hulless. Pops white. Stalk dwarf; ears short; with pointed kernels. Widely used.

Pop Corn prices: Pkt. 10c; $\frac{1}{2}$ lb. 35c; lb. 60c

EGG PLANT

492 Black Beauty. (85 days) Fruits uniform, blocky, dark purple color. Plants dwarf. Culture: One ounce to 1,500 plants. $\frac{1}{4}$ lb. per acre. Start the plants in boxes or hotbed.

Egg Plant prices: Pkt. 10c; $\frac{1}{2}$ oz 55c; oz. 95c;

$\frac{1}{4}$ lb. \$2.95. Postpaid.

HYBRID POP CORN

458 Iopop No. 5. This is a white hulless variety, has a little larger kernel than the regular White Hulless, but still possesses the tenderness of the White Hulless. Expands very well when popped. An early variety.

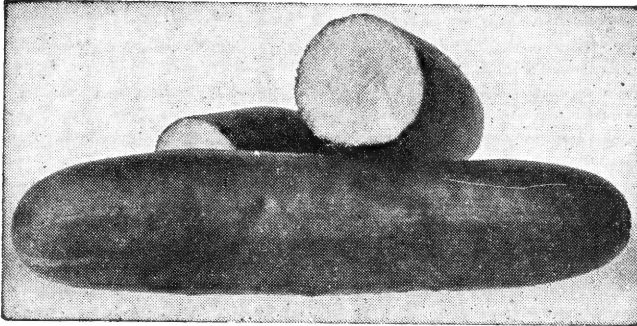
Pkt. 10c; $\frac{1}{4}$ lb. 30c; $\frac{1}{2}$ lb. 55c; 1 lb. \$1.30; postpaid.

CUCUMBERS

White Spines are the best for slicing, shipping or market garden. Black Spines for pickling. An ounce plants about 100 feet of row.

475 Cubit. A new variety used for pickling or slicing. Heavy yielding, uniform size. Dark green. 7 to 8 inches long.

Packet 10c; 1 oz. 25c; $\frac{1}{4}$ lb. 60c



477 Improved Long Green.

(68 days.)

The standard home garden, slicing and pickling type. Prolific, hardy and disease resistant. Beautiful long cucumbers.

473 Colorado

473 Colorado. (68 days.) Real quality. We believe our strain of this variety is the finest slicing and shipping cucumber you can buy. It's the deepest of green, with the purest white and the finest flavored flesh of any we grow. Size $2\frac{1}{4}$ by 10 inches; free from white stripping, well rounded full ends.

470 Early Fortune. (63 days.) Very attractive slicing and shipping variety. Early, productive and disease resistant.

Above priced: Pkt. 10c; Oz. 25c; $\frac{1}{4}$ lb. 75c; lb. \$1.80. Postpaid

465 Chicago Pickling, Westerfield. (60 days.) Very uniform type. Grows large enough to use for dill pickles.

464 Boston Pickling. (55 days.) Early and productive. Short, fairly smooth cucumbers of very symmetrical shape.

463 West India Gherkin. (60 days.) A very prolific, small fruited variety, used exclusively for pickling.

489 Lemon Cucumber. (70 days.) Small fruits similar in shape and color to the lemon.

Pickling Cucumbers: Pkt. 10c; oz. 20c; $\frac{1}{4}$ lb. 55c; lb. \$1.70. Postpaid.

480 Early Hybrid Slicer. (64 days.) A superior quality slicer. Average $2\frac{1}{2}$ x10 inches. Small seed cavity, medium dark-green, thin light green stripes at blossom end.

Pkt. 10c; oz. 30c; $\frac{1}{4}$ lb. 80c; $\frac{1}{2}$ lb. \$1.45.

ENDIVE

Sow in drills, 1 ounce to about 30 feet. Used in place of lettuce for salads.

494 Green Curled Winter. Very tasty. Fine cut leaves.

495 Broad Leaved Batavian or Escarolle. Large, broad leaf easily blanched. Used for soups and salads.

496 Deep Heart Fringed. New type, full hearts, fine leaves. Blanches to clear, creamy yellow.

Pkt. 10c; oz. 15c; $\frac{1}{4}$ lb. 55c. Postpaid

HERBS

506 Dill. Leaves and seed heads are used for flavoring pickles.

Pkt. 10c; oz. 15c; $\frac{1}{4}$ lb. 55c. Postpaid.

508 Chives. Delicate mild onion flavored seasoning. Pkts. 10c.

512 Sage.—Used as seasoning. Broad leaf variety. Pkt. 10c.

LETTUCE

Lettuce should be planted in rows 18 to 24 inches apart. Leaf varieties can be planted quite thick; the heading varieties require less seed and should be thinned to one plant every 10 to 14 inches.



537 Great Lakes

537 Great Lakes. . . . (All American winner 82 days. We believe Great Lakes is the surest to head of any of the newer varieties and also surpasses many of the old varieties. Especially valuable as a market variety. Withstands heat and heads under a wide range of conditions. Heads are a crisp dark green, extremely solid with fine flavor and texture.

Pkt. 10c; ½ oz. 25c;
1 oz. 45c; ¼ lb. \$1.35;
½ lb. \$2.25; 1 lb. \$3.80.
Postpaid.

535 Imperial 817. (86 days.) Black seeded. Blight resistant, also resistant to heat; quite sure to head under unfavorable conditions; heads large and sweet; good keeper.

536 Imperial 44. (82 days.) Sure header, even in hot weather; blight resistant; heads medium large, compact.

544 New York No. 12. (82 days.) An old standard head lettuce with large crisp, dark green, heavily curled heads. Hearts are tightly folded and will blanch to a silvery white.

541 Mountain Iceberg Head. (81 days.) Immense heads having closely folded leaves. Inner portion blanches readily and is always tops in flavor. We believe this lettuce to be a better quality and flavor than Great Lakes.

Prices on above heading varieties: Pkt. 10c; oz. 30c;
¼ lb. \$1.00; ½ lb. \$1.90; lb. \$2.95; postpaid.

538 Mignonette. (65 days.) Heads are medium small, compact and hard; outer leaves have brownish cast, heavily crumpled. Interior is good quality and almost white.

539 Improved Hanson. (80 days.) The most reliable variety for general planting; stands hot weather better than any other type. Sure heading.

540 May King. (65 days.) Quickly forms fine hard heads, resembling small cabbages. Hardy, will bear transplanting.

529 Early Curled Simpson. Silesia Early Curled. (46 days.) The old-time curly lettuce, and still very popular. A quick growing, hardy variety. It forms a tight bunch of leaves.

528 Black Seeded Simpson. (46 days.) Very tender and of excellent flavor. A good leaf lettuce.

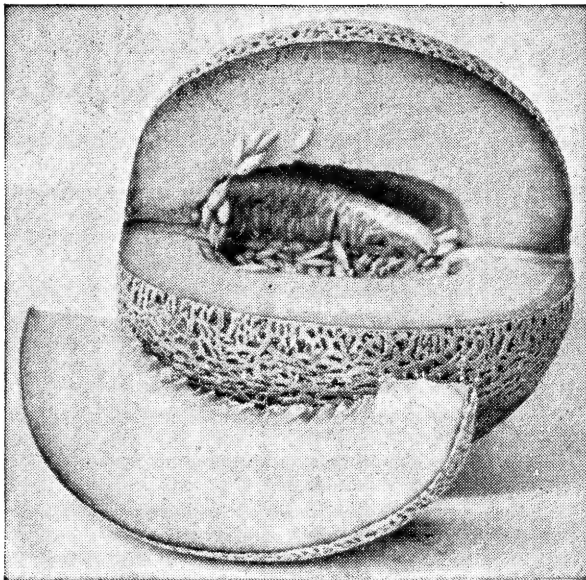
530 Early Prize Head. (50 days.) A home garden favorite. Not a head lettuce, but makes a large and distinct bunch of leaves at the heart. Leaves are reddish bronze at tips.

527 Improved Grand Rapids. (46 days.) Well adapted for early spring planting or greenhouse forcing. Does not form a head.

Prices: Pkt. 10c; oz. 20c; ¼ lb. 65c; lb. \$1.95. Postpaid.

MUSKMELONS AND CANTALOUPE

- 407 **Honey Dew Gold Rind.** (100 days.) Earlier than regular Honey Dew, same fine quality and thick flesh but ripens with a golden yellow rind.
- 405 **Honey Dew.** (110 days.) Not a cantaloupe, but more a fall or winter melon. The flesh is emerald green, very thick, melting and fine grain.
- 409 **Heart of Gold.** (90 days.) Has very thick, sweet flesh, a beautiful golden salmon color. Good size, oval shape, fairly distinct ribs and heavy netting.
- 413 **Rocky Ford.** (85 days.) Rust resistant and the finest green-fleshed selection from the Rocky Ford type. Very good home garden melon but will not stand shipping.
- 415 **Banana.** (100 days.) Long, tapered slightly at both ends, averages 4x18 inches. Well flavored thick pink flesh. Skin is smooth and yellow when ripe.
- 398 **"H. B."—Hales Best.** (88 days.) Remarkably early shipping variety, excellent quality. Melons are oval in shape, 8 inches long by 4½ inches in diameter, heavy netting.
- 399 **Hale's Best No. 36.** (82 days.) Very prolific; perfectly netted, with a pink flesh showing a slight tinge of red. One of the best varieties in use. A first early variety.
- 402 **Honey Rock or Sugar Rock.** (87 days.) Delicious flavor; nearly round; coarse netting, deep salmon meat.



H. B. No. 45

397 **H. B. No. 45.** (85 days.) Powdery Mildew resistant Melon. True Hales Best type, rich salmon flesh, small seed cavity, heavily netted, faint strip. Picked on full slip, will remain in edible condition longer than other varieties.

Prices on Cantaloupes:

Pkt.	-----	10c
Oz.	-----	25c
¼ lb.	-----	75c
½ lb.	-----	\$1.20

Postpaid.

MANGELS

Yields as high as 20 tons per acre. Fine for stock or poultry in winter as a substitute for green feed. 1 oz. to 100 ft. of row; 5 to 6 pounds per acre.

- 339 **Danish Sludstrup.** (105 days.) Especially recommended to dairymen. Grows mostly above ground and is easily harvested. Reddish yellow. Introduced by Danish government; extra good quality and yield.
- 342 **Long Red.** (110 days.) Immense crops; flesh white, shaded red. Very long mangel. Yields up to 40 tons, mostly above ground; excellent keeper.

All priced: oz. 10c; ¼ lb. 35c; lb. \$1.05; 5 lbs. \$3.75. Postpaid

PEANUTS

Plant in rows 3 feet apart, about 10 inches apart in row. Do best in light, sandy loam soil. Cover the roots or new shoots as they appear.

- 644 **Large Virginia.** Heavy producer, large quality nuts. Most popular large peanut grown.

½ lb. 55c; lb. 90c; 5 lbs. \$3.85. Postpaid.

KOHL-RABI

522 **Early White Vienna.** (60 days.) Extremely early, with distinctly small tops; bulbs medium size, very light green or nearly white and of the best quality.

Pkt. 10c; ½ oz. 20c; oz. 35c. Postpaid.

MUSTARD FOR GREENS

Grows in almost any kind of soil. Does best in cool weather; sow early and follow by sowings at ten-day intervals.

547 **Giant Southern Curled.** Large long oval medium thick leaves are tender and mild.

550 **Chinese Broad Leaf.** Leaves are very large and broad.

Pkt. 10c; oz. 15c; ¼ lb. 40c; 1 lb. \$1.20. Postpaid.

TENDERGREEN

or Mustard Spinach

551 A new variety of greens producing large dark green leaves having small ribs. Ready to use in 21 to 25 days from sowing. Will produce several crops a year.

Pkt. 10c; 1 oz. 15c; ¼ lb. 45c; 1 lb. \$1.45. Postpaid.

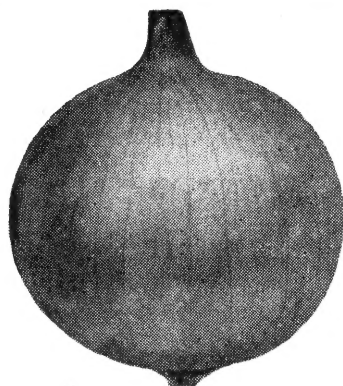
ONION SEED—Mountain Grown

Culture. One ounce to 200 feet of drill; 3 to 6 pounds per acre. Soil for onions should be well drained, rich sandy loam, well fertilized. Sow the seed thinly in drill ½ inch deep.

554 **Mountain Danvers.** (108 days.) The earliest and best keeping yellow globe onion. Our Mountain Danvers is a slightly flattened glob. The onions are thin-necked and solid. The skin is a darker color than the Yellow Globe Danvers and the Mountain Danvers mature earlier.

Above prices: Pkt. 10c; oz. 40c; ¼ lb. \$1.05; ½ lb. \$1.85;

1 lb. \$3.15. Postpaid.



559 **Mountain Sweet Spanish.** (115 days.) The finest and best keeping of the Sweet Spanish types. The onions are large globes and yield an enormous crop of fine flavored bulbs. Mountain Sweet Spanish is in a class by itself for shipping or storage. Special high altitude strain. Our seed is produced from selected Bulbs.

Pkt. 10c; oz. 50c; ¼ lb. \$1.45;
½ lb. \$2.35; 1 lb. \$4.15;
Postpaid.

569 **White Lisbon.** Best for early green onions. This onion makes long white onions for bunching, slow to form bulbs.

568 **Early White Queen.** (90 days.) The little round, white onion used for pickling. Extremely early, firm flesh and mild flavor.

566 **Crystal White Wax.** (95 days.) Pure white, early extremely mild and sweet. Crystal Wax is also grown from plants.

Above prices: Pkt. 10c; oz. 50c; ¼ lb. \$1.45; ½ lb. \$2.25;

1 lb. \$4.15. Postpaid.

575 **White Sweet Spanish, Mountain Grown.** This excellent onion has all the good features of the Mountain Sweet Spanish; the pure white skin makes it even more attractive. Matures in about the same period of time.

Pkt. 10c; oz. 50c; ¼ lb. \$1.45; 1 lb. \$4.15; Postpaid.

OKRA or GUMBO

Pods are used when young and tender for soups, stews, etc. Dry for winter use. Ounce sows 75 feet of row.

- 553 **Clemsons Spineless.** (55 days) Green pods. Very prolific.
Prices: Pkt. 10c; oz. 15c; ¼ lb. 45c; ½ lb. 80c

PARSNIPS

- 583 **Hollow Crown.** (135 days.) Medium long roots, broad shoulder gradually tapering downward.
- 584 **All American.** (130 days.) On appearance alone this selection is superior to others. Has a small core with fine grained, tender and sweet flesh. Very few side roots.

Prices: Pkt. 10c; oz. 20c; ¼ lb. 55c; ½ lb. \$1.00; lb. \$1.50.

All Parsnips Postpaid.

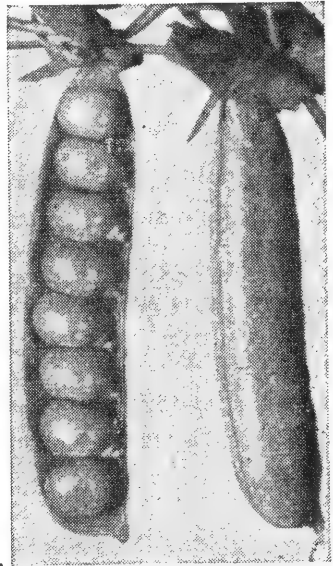
GARDEN PEAS

- 597 **LAXTON'S PROGRESS**
 (64 days.) 100% Resistant to
Fusarium Wilt.

The leading early large pod variety for market and home garden. Large, uniform dark green pods 4½ inches long, have 7 to 9 peas of excellent flavor. Vines are dwarf, 15 to 18 inches high and very sturdy.

**Pkt. 10c; ¼ lb. 20c; ½ lb. 35c;
 1 lb. 65c. Postpaid.**

**Not Prepaid: (1 lb. 45c); (up to
 10 lbs. 40c lb.), (over 10 lbs. 32c)**



- 585 **Alaska.** (60 days.) The earliest of all garden peas. Light green vines, 2½ feet high. Pods 2½ inches long.
- 590 **American Wonder.** (62 days.) One of the earliest wrinkled varieties. Vines only grow about 10 inches high. Pods about 3 inches long, 7 to 8 sweet, fine flavored peas. Very prolific.
- 589 **Little Marvel.** (63 days.) Remains in prime picking condition a week longer than many. Vines 18 inches high.
- 608 **Dwarf Telephone.** (75 days.) A dwarf strain of the popular Telephone.
- 600 **Dwarf Giant Pod.** (75 days.) Resembles Stratagem, but 4 to 5 days earlier, unequalled in pod size and exceptional in quality. Pods green, plump, curve at tip; contains 8 to 10 large, succulent peas.
- 601 **Alderman.** (78 days.) Pods contain 9 extra large, medium green peas of finest quality. Tall vines.
- 602 **Bliss Everbearing.** (76 days.) Exceedingly productive and continuous to bear for a long season.
- 591 **Gradah.** (65 days.) Used principally for freezing and home gardens. Pods 4 inches long, dark green, have 8 or more peas of excellent quality and flavor. Vines are vigorous light green and grow about 30 inches high. A heavy yielder.

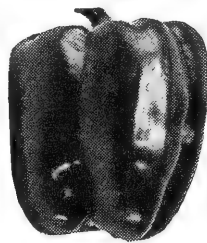
Pkt. 10c; ¼ lb. 20c; ½ lb. 35c; Lb. 60c. Postpaid.

**Not Postpaid: (1 lb. 40c); (Up to 10 lbs. 35c lb.);
 (Over 10 lbs. 30c lb..)**

PEPPERS

One ounce to about 1,500 plants. Start in housebox or hotbed. Plant hot varieties away from sweet varieties to prevent mixing.

- 615 Harris Early Giant** (65 days.) The earliest sweet variety that we know of. Dwarf plant is productive and fruit is large, slightly tapered.
- 624 Sunny Brook.** (75 days.) The tomato shaped fruit, 2 inches deep and 3 inches across is sweet and mild. Plants are sturdy and produce heavy crops.
- 619 Perfection Pimento.** (75 days.) Fruits are heart shaped, thick flesh is sweet and mild. Excellent for canning. Plants large, erect and prolific.
- 617 California Wonder—Improved Strain.** (75 days.) The best market variety produced to date. Plant is vigorous and prolific. Fruit is mostly four lobed and almost square (4x4 inches.) Thick flesh is sweet and mild.
- 622 Chinese Giant.** (80 days.) Largest of the sweet peppers. Fruit is square ended and slightly crumpled. Plants short and stocky.



California Wonder

Above Peppers: Pkt. 10c; $\frac{1}{4}$ oz. 25c; oz. 75c;
 $\frac{1}{4}$ lb. \$1.80. Postpaid.

HOT PEPPERS

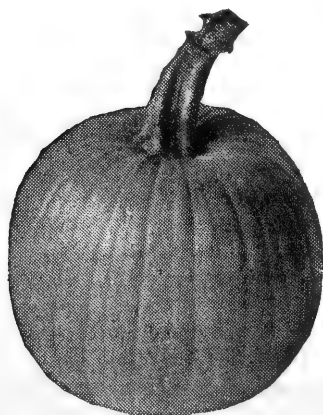
- 623 Large Mexican Chili.** (85 days.) Large thick-meated; dark red pods. For making chili.
- 620 Tobasco Pickler.** (92 days.) A fine hot pickling pepper. Orange-scarlet color, extremely hot, $1\frac{1}{2}$ inches long, $\frac{3}{8}$ inch thick. Plants are large and spreading, bearing heavily.
- 628 Hungarian Wax.** (65 days.) Peppers 2 inches across and 6 to 8 inches long. Fruit is first green, changing to yellow, then to red when ripe. Very mild, and some are all sweet.
- 629 Anaheim Chili.** (80 days) Fruits $1\frac{1}{2}$ inches across, 6 to 8 inches long. Very thick flesh, red when ripe.

Hot Peppers are priced: Pkt. 10c; $\frac{1}{4}$ oz. 25c; 1 oz. 75c. Postpaid.

PUMPKIN

3 pounds per acre, or 1 pound with corn.

- 640 Connecticut Field or Big Tom.** (120 days.) The common variety raised for stock feed. Also used for canning. Very prolific and fruits average 15 inches in diameter.



Small Sugar

- 634 Small Sugar or Boston Pie.** (118 days.) Early, round, deep orange yellow; weight approximately 4 lbs. Unexcelled quality. Cooks dry and mealy, a fine pumpkin for pies or canning. Very prolific.

- 637 King of the Mammoths.** (120 days.) Large cornfield variety; produces a heavy tonnage. Flesh thick but rather coarse. Very large.

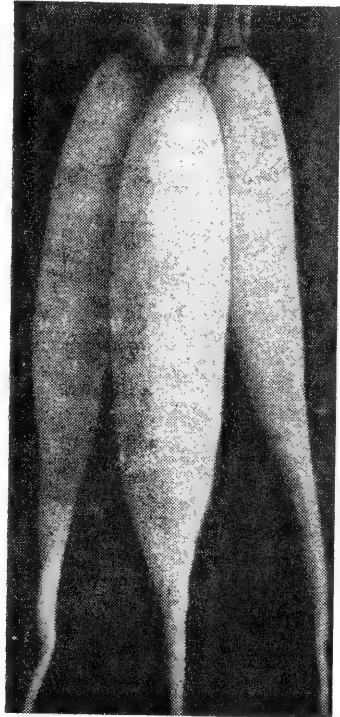
Pkt. 10c; 1 oz. 20c; $\frac{1}{4}$ lb. 65c;

$\frac{1}{2}$ lb. 90c; 1 lb. \$1.60

RADISH

Ounce to about 300 feet of row.

- 647 **Cavalier.** (22 days.) Extremely early; good quality, small, oval, bright scarlet roots.
- 648 **Early Scarlet Turnip.** (27 days.) Excellent quality round, red radish, with crisp, tender flesh.
- 650 **Early Scarlet Turnip White Tip.** (27 days.) Similar to the Early Scarlet Turnip but has white tip. Select strain.
- 652 **Early Scarlet Globe.** (26 days.) Recommended for your main sowing. Right behind Cavalier. Stays crisp, solid and tender for another week's growth. Small tops.
- 658 **Improved White Icicle.** (30 days) One of the best sellers; 6 inches long, pure white skin and flesh, snappy as an icicle. Very attractive bunched for market.
- 649 **Sparkler White Tip.** (28 days.) Popular with market gardeners. Roots round, smooth, dull scarlet-red, one-third white at bottom; flesh white, crisp, and tender.
- 651 **French Breakfast.** (27 days.) Rose scarlet with white tip. Olive shape, nearly 2 inches long.
- 657 **Long Scarlet Short Top.** (30 days.) About 6 inches long, straight, smooth. Popular long red.
- 653 **Crimson Giant.** (30 days.) Crimson Giant is similar to Scarlet Globe, but much larger, remains in edible condition still longer.

**White Icicle**

Radishes: Pkt. 10c; oz. 15c; $\frac{1}{4}$ lb. 40c; $\frac{1}{2}$ lb. 70c;
1 lb. \$1.20. Postpaid.

Late Maturing and Winter Radishes

Much larger; winter radishes store much like other vegetables.

- 668 **China Rose Winter.** (54 days.) Rose-color skin, white flesh. Solid and free from strings.
- 669 **White Chinese Winter.** (62 days.) Smooth, white skin.
- 671 **Round Black Spanish.** (58 days.) White flesh, black skin. The best keeper of all the winter radishes.

Pkt. 10c; oz. 15c; $\frac{1}{4}$ lb. 45c; $\frac{1}{2}$ lb. 80c. Postpaid.

PARSLEY

- 579 **Champion Moss Curled.** Well curled. Best for garnishing.

Pkt. 10c; oz. 20c; $\frac{1}{4}$ lb. 55c. Postpaid.

RHUBARB

- 673 **Victoria.** A main crop variety with upstanding thick red stalks of excellent quality. Pkt. 10c.

SALSIFY OR OYSTER PLANT

- 675 Used in soups or may be fried.

Prices: Pkt. 10c; oz. 40c; $\frac{1}{4}$ lb. \$1.25. Postpaid

SUMMER SQUASH

Ounce to 15-40 hills, varying with seed; 3-4 lbs. per acre.

- 686 **White Bush Scallop, Patty Pan.** (56 days.) Flat and scalloped. White skin and light green flesh. Bush plants.
- 688 **Yellow Golden Crookneck.** (56 days.) Warty, orange-colored skin and flesh; crooked-over neck; bush type vine.
- 704 **Early Prolific Straightneck.** (55 days.) Heavy yielder of creamy yellow fruit. Edible from the time they are about 5 inches long. Due to the straightneck of this variety it is easier to prepare and market.
- 703 **Black Zucchini.** (60 days.) Italian vegetable, usable from the time it is three or four days old, when it is commonly creamed like asparagus, boiled or fried. Green-black fruits.

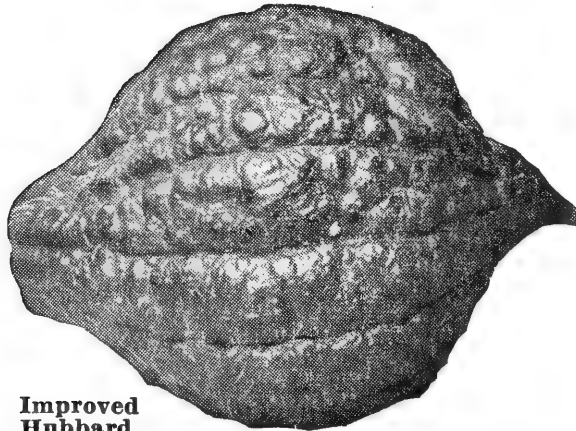
SMALL TABLE SQUASH

- 705 **Table Queen.** (100 days.) Deeply creased, heart shaped. This squash keeps well in storage; a fine flavored small table squash for baking.

Small Table and Summer Squash Prices:

Pkt. 10c; oz. 20c; ¼ lb. 55c; ½ lb. 90c; 1 lb. \$1.65. Postpaid.

WINTER SQUASH



**Improved
Hubbard**

691 **Improved Hubbard.** (115 days.) Deep green, one of the best keepers. Fine grained, thick flesh.

690 **Delicious.** (105 days.) Heart shaped small Hubbard, about 7 lbs. of the very best quality.

687 **Banana.** (115 days.) As its name implies, long and slender. Skin is greenish gray; thick, rich flavor.

- 694 **Butternut.** (102 days.) Flesh is dry, sweet, fine grained, of excellent quality. Squash weigh 3 to 4 lbs., are 8 to 10 in. long, bulbous on blossom end and seeds are all in this end. Tough cream yellow rind. Keeps well when mature.

Winter Squash Prices:

Pkt. 10c; 1 oz. 20c; ¼ lb. 75c; ½ lb. \$1.35; 1 lb. \$2.10. Postpaid.

YOU CAN RAISE SQUASH

Dust with **SABADILLA**—See Page 20

STRAWBERRY FREEZER COLLECTION

Two Supurb Strawberries. 50 Jumbo and 50 Paymaster. June bearing varieties. Both varieties rate "High" at University Freezer Tests, both heavy yielding. Plant this superb collection for a longer fresh berry season or freezer season.

100 Plants—\$5.95 Postpaid. Order as many collections as you need

MORE BERRIES ON PAGE 15

GLADIOLUS BULBS ON Pages 24 and 25

RUTABAGAS

- 748 **Improved American Purple Top.** (90 days.) A hardy productive variety; roots are large, with a very small tap root. Color bright yellow with a purple top.

Pkt. 10c; oz. 15c; ¼ lb. 35c; ½ lb. 65c; lb. \$1.20. Postpaid.

SPINACH

- 680 **Spinach Dark Green Bloomsdale.** (42 days.) Distinguished by its very deep green color. Popular with long distance shippers as it retains a fresh appearance at markets.

- 684 **King of Denmark.** (45 days.) Produces a thick, round clump of crumpled leaves, dark green, tender and delicious. Stands a long time without seeding.

- 677 **Long Standing Bloomsdale.** (45 days.) Stands two weeks longer than Bloomsdale before going to seed.

- 682 **Giant Nobel Thick Leaf.** (48 days.) Smooth leaved and therefore good for canning, as it washes clean easily.

Prices on above Spinach: Pkt. 10c; oz. 20c; ¼ lb. 30c;
½ lb. 55c; 1 lb. 90c; 2 lbs. \$1.60. Postpaid.

- 678 **New Zealand.** (60 days.) Distinct everbearing tall type, bearing a fine crop even in hot weather. Can be cut again and again. Soak seed in tepid water 12 hours before planting. Pkt. 10c; oz. 20c; ¼ lb. 65c. Postpaid.

SWISS CHARD

- 337 **Lucullus.** (50 days.) Excellent for greens especially in the summer as hot weather does not effect it.

Pkt. 10c; oz. 20c; ¼ lb. 40c; ½ lb. 70c; 1 lb. \$1.15. Postpaid.

TURNIPS

Ounce to about 150 ft. of row. Sow spring or fall.

- 738 **Extra Early Purple Top Milan.** (45 days.) Flat; fine quality.

- 735 **Purple Top White Globe.** (63 days.) Handsome, good quality general crop turnip. Nearly round, white with purple top.

- 733 **Early Snowball.** (47 days.) Early small round white, exceptionally good for early spring planting.

- 743 **Golden Ball.** (65 days.) Nearly round, very tender and sweet, grows to large size, well adapted for spring or fall planting.

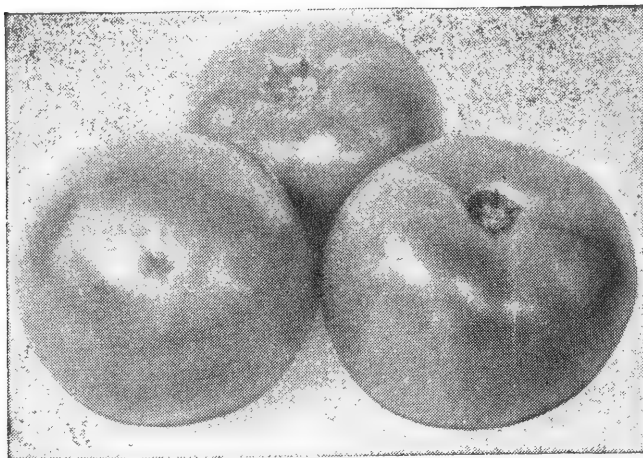
- 742 **White Egg.** (57 days.) Oval or eggshaped roots, 2½ inches across, 3 inches deep, with white skin and flesh.

Turnip prices: Pkt. 10c; oz. 15c; ¼ lb. 35c; ½ lb. 65c;
1 lb. \$1.10. Postpaid.

- 790 **Wonderberry.** A wonderful, prolific plant of the tomato family. Very hardy; when once established the bushes will come up each year from odd seeds dropped on the ground. When ripe the berries are almost an inch in diameter, of shining black color. Fruit is non-edible until fully ripe, but when ripe is wonderful for pies, preserves and jam. A very heavy yielder, the plants being loaded with these berries. Requires no special care or cultivation.

Pkt. 10c; ½ oz. 25c; oz. 40c. Postpaid.

TOMATOES



709 K-STONE (78 days) One of the better new varieties for commercial and home canning. The tomatoes are smooth, semi globe in shape. It's excellent flavor and quality also make it a good tomato to slice for table use. This is the tomato that is used in this area for commercial canning.

Pkt. 10c; ¼ oz. 50c; ½ oz. 90c; 1 oz. \$1.60.

708 Pritchard. Colorado Select. (76 days.) First-quality, second early red; wilt resistant. Medium size, round, smooth and solid; excellent flavor. Excellent shipper; picked white or pink, it ripens to a beautiful red.

710 Bonny Best. (74 days.) Splendid second-early; medium size red.

720 Selected Marglobe. (80 days.) Rust and wilt resisting; good red globe; small seed cavities, firm flesh. Good shipper and canner. One of the heaviest mid-season yielders.

727 Rutgers. (83 days.) Similar to Marglobe. Desirable for market gardeners, for canning or for juice. Ripens from inside out. Wilt resistant. Very good green wrap shipper.

713 Earliana. (69 days.) Very popular, early, smooth, bright red, of good size. Excellent for early markets.

715 June Pink. (69 days.) A pink Earliana, very popular as a shipper. Vine open and fairly small.

730 Yellow Pear. (80 days.) For pickles or preserving.

**This Group Priced: Pkt. 10c; ¼ oz. 25c; ½ oz. 40c;
1 oz. 65c; ¼ lb. \$1.80.**

712 Draper or Mile High Beefsteak. (80 days.) A bright red beefsteak type tomato which is exceptionally meaty yet has juice enough for canning. Very nonacid but has a good tomato flavor. People unable to eat ordinary tomatoes on account of acid can eat Jumbo. A heavy producer.

714 Golden Jubilee. (80 days.) Thick meaty flesh, small seed cells and few seeds. Mild, but definite flavor and very free of acidity. Fruits are smooth and deep globular in shape.

726 Bison. (60 days.) Vine and growing habits much the same as Ruby Gem, cold resistant.

728 Oxbart. (100 days.) Late heart-shaped pink; sweet, mild and very meaty. Tomatoes often weigh 2 to 3 pounds each..

This Group: Pkt. 10c; ¼ oz. 25c; ½ oz. 40c; 1 oz. 70c; 1 oz. \$1.25

ALL TOMATO PRICES POSTPAID.

WATERMELON

- 760 **Striped Klondike.** (85 days.) Light green with dark green striped, very sweet, rind tough. Can be shipped. Excellent home garden melon.
- 763 **Improved Dark Seeded Klondike.** (85 days.) Larger than original Klondike; cylindrical, tapering to blossom end; slightly ribbed; small seeds; ships moderate distances. Bright red flesh, finest quality.
- 751 **Northern Sweet.** (75 days.) Will mature at higher altitudes where a short season melon is needed. Melon is nearly round and weighs about 12 to 15 lbs. Dark green rind with trace of lighter striping, has red flesh of good quality.
- 754 **Early Kansas.** (80 days.) A popular shipping variety with a thin but tough rind. Flesh is stringless, fine texture, red and very sweet. Fruits large nearly round. Weighs 20 to 30 lbs. Rind is bright green with lighter stripes.
- 755 **Ice Box (New Hampshire Midget)** A home type watermelon seldom weighing more than 10 lbs. Thin rind, good quality sweet red flesh, small dark seeds.
- 765 **King and Queen Winter.** (90 days.) Round nearly white melon with red flesh. Will keep 2 or 3 months when properly stored. 15 lbs.
- 770 **Black Seeded Cannonball or Angelino.** (90 days.) The dark green rind may show slight ribbing. Melon is practically round with bright red flesh and solid heart. Fine grained and sweet, few large black seeds. Weigh 25 lbs.
- 772 **Dixie Queen.** Semi-round, rind is light and dark green striped. Flesh is bright red, crisp, free from fibre. One of the sweetest—Desirable for market or home gardens.
- 753 **Stone Mountain or Dixie Bell.** (90 days.) Large oval almost round melons often weight 50 lbs. Have tough rind, grey-green in color with distinct veining. Flesh is bright crimson, crisp and sweet.
- 758 **Kleckley's Sweet.** (85 days.) Immensely popular. Sweet rich flavor; bright red, solid flesh. Rind too thin for shipping.
- 761 **Tom Watson.** (95 days.) Old, but still a leader. Dark red flesh; deep green rind; thin but tough. About 40 lbs.

Watermelons are priced: Pkt. 10c; oz. 20c; ¼ lb. 65c;
½ lb. \$1.10; 1 lb. \$1.95. Postpaid.

STRAWBERRY PLANTS

THE OUTSTANDING EVERBEARER

AMAZING NEW RED RICH

THE WONDER STRAWBERRY

Honey Sweet and Red Clear Through



TRADE MARK

Plant Pat. No. 993

University of Illinois says Red Rich the best out of 29 varieties tested. Gives you luscious honey sweet strawberries all summer long, clear up to freezing. Tops for freezing and they are red clear through. Huge plants and berries. These huge plants are used for flower bed borders in many places. Follow space system planting instructions carefully and get up to a pint per plant the first year. 25 plants per person is plenty.

12 Plants \$2.95; 25 for \$5.00; 50 for \$8.50; 100 for \$15.00

Everbearing-Superfection. Large honey sweet fruit. Large plants produce an abundance of berries all season. A pint of berries per plant is not unusual.

Plants—25 for \$2.45; 50 for \$3.95; 100 for \$5.95; 250 for \$11.75

June bearing—Jumbo (Midseason). It's a beautiful dark red berry with a fine sweet strawberry taste. University freezing tests rate Jumbo "High". One of the heaviest yielding strawberries known.

Plants—25 for \$2.50; 50 for \$3.95; 100 for \$6.50; 250 for \$13.50

VEGETABLE PLANTS

Mountain Grown, Transplanted Plants. Sturdy and Hardy.

We Guarantee Delivery of Plants to the
Second Zone Only.

Shipping plants beyond Second Zone not recommended. Express is better than parcel post for large quantities. Express charges are not prepaid. Include plants with your seed order; and specify date you wish plants shipped. We will try to ship them on that date.

WE DO NOT SHIP PLANTS C. O. D.

For description and maturity, turn to Seed Pages.	Postpaid			NOT
	Doz.	50	100	P ^r paid 100
CABBAGE, Early. Ready April 1st to May 19th. Copenhagen Market, Early Jersey Wakefield, Golden Acre, Early Flat Dutch, Mt. Ballhead-----	\$ 60	\$1.60	\$3.00	\$1.95
CAULIFLOWER, Early. Ready April 1st to May 19th. Special High Altitude Danish Snowball, Early Snowball-----	.65	1.70	3.00	2.25
EGGPLANT. Ready May 1st to June 15th. Black Beauty -----	.60	1.60	3.00	1.95
PEPPER. Ready May 1st to June 15th. California Wonder, Chinese Giant, Perfection, Harris Early Sweet, Sunnybrook, Mexican Chili -----	.60	1.60	3.00	1.95
TOMATO. Ready May 1st to June 15th. Ruby Gem, Delicious, Bonny Best, Earliana, Marglobe, Oxheart, June Pink, Pritchard, Rutgers, Smooth Jumbo, Yellow Pear, Bison -----	.70	1.90	3.65	2.40
CABBAGE, Late. Ready June 1st to June 20. Copenhagen Market, Mountain Ballhead. -----	.55	1.35	2.45	1.50
CAULIFLOWER, Late. Ready June 1st to June 20th. Special High Altitude Danish Snowball, Early Snowball-----	.60	1.50	2.75	1.75

ORDER TRANSPLANTONE—WHEN YOU ORDER PLANTS

TRANSPLANTONE

REDUCES LOSS IN TRANSPLANTING

When plants are moved or transplanted, many of the feeder roots are broken. The plant usually stops growing until it repairs or replaces these roots. Transplantone helps grow new roots.

GENERAL DIRECTIONS—For seedlings or soft-tissued plants, use a teaspoonful of TRANSPLANTONE with ten gal. of water.

1/2 oz. -----	\$.25	} Postpaid
3 oz. -----	1.10	

ACME 6% CHLORDANE DUST

Controls Grasshoppers, Ants, Lawn Moths, Cutworms, Grubs and many other Insects. Excellent for control of Cockroaches, Ants, Crickets and other types of insects in the house.

	Postpaid	Not Postpaid
1 Lb. Sifter Cans -----	\$.90	\$.65
4 Lb. Bags -----	\$2.00	\$1.65

ACME GARDEN GUARD

A non-injurious Dust, safe to use on edible portions of vegetables. Controls many types of sucking and chewing insects, especially effective on Beans, Cabbage and Cauliflower.

	Postpaid	Not-Postpaid
1 Lb. Sifter Cans-----	\$.75	\$.50
4 Lb. Bags -----	\$1.65	\$1.25

ACME DIMITE

Red Spiders and other mites often ruin Evergreens, Roses and other plant and fruit crops. These tiny forms almost invisible with the naked eye, reproduce in unbelievable numbers to ruin your plants. Dimite kills mites quickly and gives protection for several weeks.

	Postpaid	Not-Postpaid
2 Oz. Bottle, makes 8 gal.-----	\$.80	\$.69
8 Oz. Bottle, makes 32 gal.-----	\$2.00	\$1.89

ONION SETS

When planted will produce good green or table onions much earlier than if grown from seed. If allowed to remain in the ground will yield fine large onions for household use.

	Postpaid		Not Prepaid
	1 Lb.	4 Lbs.	4 Lbs.
Yellow Danvers -----	55c	\$1.60	\$1.25
White Globe -----	55c	1.60	1.25

For Larger Quantities See Yellow Price List

ASPARAGUS ROOTS

Mary Washington—Paradise
Your Choice of Variety

Large field-grown roots with excellent root system.

12 for 60c; 50 for \$1.75; 100 for \$3.25. Postpaid.

Write for Prices on Larger Quantities

RHUBARB ROOTS

Strawberry Rhubarb. Finest, sweetest flavor of all, large red skinned stalks. We ship good sized roots with live sprouts.

3 for 70c; 12 for \$2.10. Postpaid.

GARLIC

Grown from bulbs only; divide bulbs in planting.

¼ lb. 40c; ½ lb. 75c; 1 lb. \$1.25. Postpaid..

Prices on Hotkaps and Hotents Are Not Prepaid Except as Noted



Germaco
Hotkaps
New Method of
Plant Protection

An individual hothouse for each plant. One man can set 2000 to 3000 per day. Get your crop to market 20 days earlier. Hotkaps protect your young plants from sun, wind, frost and insects.

Package of 25 Hotkaps and Setter-----	\$1.20	} Postpaid
Package of 100 Hotkaps and Setter-----	3.45	
Package of 250 Hotkaps and Setter-----	6.40	

500 Hotkaps Only—Shipping Wt. 17 lbs.-----	\$10.00	} Not Prepaid
1000 Hotkaps Only—Shipping wt. 33 lbs.-----	\$18.20	

Write for Prices on Larger Quantities

HOTKAP SETTERS

Fiber Setters-----	35c	Steel Setters-----	\$2.20	Postpaid.
--------------------	-----	--------------------	--------	-----------

WHITE CEDAR WOOD LABELS

Label your plants and seed rows.

Pointed labels 5-8 inches wide and 6 inches long.

Wired Tree Labels, 5-8 inches wide, 3½ inches long.

Labels Priced:

20c Dozen — 80c Per 100

Postpaid.

MOON SIGN BOOK

TO PLANT BY THE MOON

256 Pages of Valuable Information

The Moon Sign Book gives practical instructions concerning planetary influence on planting and harvesting, the result of more than 40 years of research, by Llewellyn George.

Many use the Moon Book successfully each year because it shows WHAT to plant and the approximate dates WHEN to plant in order to work in harmony with the best influences of Nature. Simplified tables for immediate daily use.

\$1.35 Postpaid.

BETTER PASTURES FEED MORE CATTLE

THE FOLLOWING GRASSES FOR HAY OR PASTURE

REED'S CANARY GRASS—A perennial grass that will thrive in marshy places, stands under water for weeks without injury, yields enormous tonnage of hay with feed value equal to wheat bran. Sow any time before June 26th at the rate of 10 to 12 pounds per acre, broadcast. It forms a sod rapidly through the spreading of underground roots. Makes your lowlands grow profitable crops.

PERENNIAL RYE GRASS—A very valuable variety for permanent pasture. Succeeds well on almost any soil, but is particularly adapted to moderately moist or irrigated lands. Sow 20 to 30 pounds per acre in spring.

BROME GRASS (Bromus Inermis)—Yields enormous crops of splendid hay, and affords early and abundant pasture.

MEADOW FESCUE, or ENGLISH BLUE GRASS—Of great value for permanent pasture and for hay. Does best on irrigated land.

PERMANENT PASTURE MIXTURE—We highly recommend the following ratio for a well balanced permanent pasture mixture: 25% Orchard Grass; 30% Brome Grass; 20% Perennial Rye Grass; 17% Meadow Fescue and 8% Yellow Blossom Sweet Clover. Sow 25 to 30 pounds per acre. Sow broadcast, cover lightly and keep wet until well started.

ORCHARD GRASS—Often sown with Alfalfa to give a stronger and better hay. It will stand drought or will do well in the shade. Orchard Grass gives a heavy tonnage in permanent pasture, furnishes the first green bite in the spring and the last in the fall.

INTERMEDIATE WHEATGRASS—A sod forming grass introduced from U. S. D. A. It is more drought resistant than smooth brome. The plants start in early spring and are relished by all livestock.

TIMOTHY—Of hay grasses, Timothy leads all. Thrives on clay or heavy loams, wet or boggy soils, or in mountainous districts. At higher elevations where fewer grasses and clovers are adaptable, Timothy is the most important hay and pasture crop. Alone, sow 12 pounds to the acre, or with clover, 10 pounds Timothy and 6 pounds clover.

RED TOP—A valuable grass for moist soils. It makes a good permanent stand and is well adapted to pastures. It has been grown very successfully even on alkali and bottom land where many other grasses have failed. It is used also as a lawn grass as it makes a fine stem and good turf. Sow 15-25 pounds per acre.

SUDAN GRASS—One of the best catch crops to plant when late seeding is necessary. Can be cut every six weeks until frost. Frost kills it entirely. A real drought resister, renewing its growth immediately when rain comes. An enormous hay yielder and the hay can be fed in unlimited quantities without any danger to stock.

SEE INCLOSED PRICE SHEET FOR PRICES ON ALL THE ABOVE AND OTHER VARIETIES AND KINDS OF SEED

If the above grasses or mixtures are not suited to your needs please write us describing your soil and climatic conditions—perhaps we can help you. Special mixtures will be made to suit you.

Quality is protected on all these seeds by the MILE HIGH Brand. Perhaps you are familiar with our High Altitude Grown Seeds and know the results that can be expected from them.



CYCLONE SEED SOWER

The finest hand seeder known. Throws seed directly and evenly on the land. Can be set to sow any amount desired. Sows alfalfa, clover, grass or small grains very satisfactorily.

Price each, \$4.40 Postpaid.

LOWEALTH HYBRID CORN

Treated With SPUN FILM To Increase Germination.

- **Drouth Resistant—Wind Resistant.** Straight strong stalks, with roots that sink down deep, make lowealth one of the most drouth and wind resistant of all hybrids.
- **Easy Picking,** by hand or machine. That means less labor cost, less time in the field.
- **Disease Resistance—**Gives you more profitable corn.

We Stock 3 Lowealth Hybrids—All Yellow Dent Type

S Matures in about 90 Days

A - Matures in about 100 Days

A-Q Matures in about 110 Days

It is important to order the corn to fit your season as near as possible. For more yield plant as late a variety as you can that will fully ripen.

Small Lot Prices—Any Variety

1 Pound	-----	.60	} Small Lots POSTPAID
2 Pounds	-----	.95	
5 Pounds	-----	\$1.85	
10 Pounds	-----	\$3.20	

A-Q	-----	\$10.40 Per Bushel—56 Lbs.	} Not Prepaid
S or A	-----	\$11.20 Per Bushel—56 Lbs.	

Large Flat Grade

WEED KILLERS

2, 4-D and 2, 4, 5-T

	1 Gal.	5 Gal. Cans
DED WEED 40— 4 lbs. per gallon, Amine Salt-----	\$ 3.95	\$18.75
DED WEED M E 5— 3½ lbs. per gal., Isopropyl Ester-----	3.95	18.75
DED WEED 50-50 BRUSH KIL— 2 lbs. 2, 4-D and 2 lbs. 2, 4, 5-T per gallon----	7.10	35.00
WEEDONE CONCENTRATE 48— 3 lbs. 2, 4-D Ethyl Ester per gal.-----	3.74	17.60
WEED AR 64— 4 lbs. 2, 4-D AmineSalt per gal.-----	4.00	19.20
ACP GRASS KILLER (T C A 90%) 90% Sodium Trichloroacetate -----	10 lbs. \$ 5.40	50 lbs. 23.50

TREAT FENCE POSTS

PERMAGARD NO. 10

A preservative for treating fence posts or other wood that is put into the ground.

Permagardd controls rotting and worm damage. Posts will stay solid much longer.

1 Gal. makes 11 Gallons of ready to use material.

1 Gallon	-----	\$ 3.50
5 Gallons	-----	14.75



MILE HIGH SEED CO.

Field Seed Price List

ALL ITEMS SUBJECT TO MARKET CHANGE

If Delayed in Ordering, Send for NEW PRICE LIST



"Mile High Brand"
This Brand Is Your
Protection When You
Buy "Mile High" Seed

"Mile High Brand"
Compare This Grade
With Other
Extra Fancy Grades.

All prices are quoted F. O. B. Grand Junction, Colorado, and transportation charges must be allowed unless shipped by collect freight or express to your station. Bags are weighed in on all items without extra charge.

The Mile High Seed Company gives no warranty, expressed or implied, as to productiveness of any seeds, bulbs or plants it sells and will not be responsible for the crop. Our liability, in all instances, is limited to the purchase price of the seed.

When Ordering Small Lots of Seed Add 2c a Pound to the 100 pound price to cover the cost of Extra Sacking.

ALFALFA

	Price Per 100 Lbs.
COLORADO GROWN	
COMMON	\$26.00
COMMON (Special Lot)	23.00
BALTIC	27.00
RANGER	29.00
LADAK	29.00
LADAK (Certified)	31.00
RANGER (Certified)	34.00

CLOVER

YELLOW BLOSSOM	\$17.00
STANDARD (Mainly White)	20.00
HUBAN (Annual)	21.00
RED CLOVER	42.00
ALSIKE	42.00

CLOVER

	Prices	
	1 to 9 lbs.	10 lbs. up
LADINO (Certified)	\$1.00	\$.90
STRAWBERRY	1.00	.90
WHITE DUTCH	1.20	1.10
BIRDSFOOT TREFOIL (Broad Leaf)	.80	.70

Price Per
100 Lbs.

TIMOTHY and 30% ALSIKE CLOVER	\$29.00
TIMOTHY and 20% ALSIKE CLOVER	28.00

LAWN GRASS

(See Page 21 for Description)

	Prices	
	1 to 9 lbs.	10 lbs. up
KENTUCKY BLUE (Standard Grade)	\$1.00	\$1.00
LAWN GRASS MIXTURE	1.00	1.00
ENGLISH BLUE	.50	.40
PERENNIAL RYE	.40	.30
BERMUDA	1.10	1.00
ASTORIA BENT	1.90	1.75
SHADY LAWN MIXTURE	1.00	1.00
MERION BLUE GRASS	5.25	5.00
70% MERION MIXTURE	4.25	4.00
PEAK LAWN MIXTURE	.90	.80

UTAH PASTURE MIXTURE

25% SMOOTH GROME GRASS	} 100 Lbs. \$45.00
20% TALL OAT GRASS	
15% ORCHARD GRASS	
10% RED CLOVER	
10% LADINO CLOVER	
15% RANGER ALFALFA	

PERMANENT PASTURE MIXTURE

25% ORCHARD GRASS	} 100 Lbs. \$30.00
30% SMOOTH BROME GRASS	
20% PERENNIAL RYE GRASS	
17% MEADOW FESCUE GRASS	
8% YELLOW BLOSSOM CLOVER	

This Same Grass Mixture Without Clover
100 Lbs. \$31.00

OATS

All Barley, Oats and Wheat Treated

	Price Per 100 Lbs.
COLORADO NO. 37	\$ 4.00

SPRING WHEAT

THATCHER	5.00
DICKLOW	5.00

SPRING BARLEY

TREBI (Regular Beards)	3.85
------------------------	------

PEAS

FIELD PEAS	\$ 6.50
------------	---------

VETCH

HAIRY VETCH	\$24.00
FALL RYE	3.85

RED TOP

Complete Plant Food

Minerals—	
Organic Matter—	
Trace Elements—	
EASY TO USE—LONG-LASTING	
Will not burn when used as directed	
50-Lb. Bags	\$ 2.95
2 for	5.75

CYCLONE SEEDERS

\$4.40 — Postpaid
Parts also available.

WEST SLOPE PASTURE MIXTURE

32% SMOOTH BROME GRASS	} 100 Lbs. \$33.00
28% ORCHARD GRASS	
24% MEADOW FESCUE	
12% ALFALFA	
4% LADINO CLOVER	

PASTURE GRASSES

	Price Per 100 Lbs.
BROME (Smooth)	\$28.00
BROME (Lincoln Type)	31.00
ORCHARD	35.00
MEADOW FESCUE	26.00
TALL FESCUE	22.00
TIMOTHY	22.00
PERENNIAL RYE	22.00
REED'S CANARY	40.00
TALL WHEAT	30.00
CRESTED WHEAT	40.00
TALL OAT	65.00
INTERMEDIATE WHEAT	85.00
WESTERN WHEAT	65.00

FORAGE SEEDS

SORGO (Atlas Type)	\$12.00
HEGARI	9.00
SUGAR CANE (Black Amber)	11.00
NORGHUM	11.00

MILLETS

HOG	\$ 5.00
-----	---------

SUDAN

SWEET	\$10.00
STANDARD	9.00

RAPE

DWARF ESSEX	\$25.00
-------------	---------



FUNK'S G. HYBRID CORN

5 STAR PERFORMANCE

★ **Fast Starting** ★ **Standability**

★ **Insect** ★ **Disease** ★ **Drouth Resistance**

Hybrid Corn is like automobiles. Good Hybrids are
made better every year throught research.

In Funks G-Hybrid research and proving plots at hundreds of locations throughout the United States and Canada, trained corn breeders and practical farmers each year check up on the performance and yields of Funk's G-Hybrids and experimental hybrids.

Treated To Increase Germination

	Per Bushel	
G-50, Maturity 118 days-----	11.50	} Not Prepaid
G-95, Maturity 122 days-----	11.50	
G-91, Maturity 127 days-----	11.50	

G-50 Highly Recommended for Insilage—The Stalks
Carry a High Sugar Content.

Medium Flat Grade

SMALL LOTS (Any Variety)

1 Pound -----	\$.60	} Postpaid Prices
2 Pounds -----	.95	
5 Pounds -----	1.85	
10 Pounds -----	3.20	

ORTHO CONTAX

A general Weed Killer for the control of annual weeds. Controls Dodder in alfalfa. Also used for defoliation spraying of alfalfa and red clover for seed harvest, also used for defoliation of potatoes before digging.

Complete directions on each package for dilution for different uses.

1 Gal.-----\$11.85

**TREAT CORN FOR CONTROL OF WORMS THAT
EFFECT GERMINATION AND STAND.**

ISOTOX 25 POWDER—1 lb. can \$2.30

2 oz. Can-----49c — Treats 1 Bushel Corn

4 oz. Can-----95c — Treats 2 Bushel Corn

1 lb. treats 4 bushels of corn.

Use on other seeds also.

ORTHO SPRAYS

ISOTAX—(1.6 lbs. Lindane) 1 gal treats 10 acres

1 Gallon -----\$14.59 Each

GAMTOX—(10 percent Benylene Hex) Wettable Powder

5 lb. Bag. -----2.25 Each

MALATHION — 50 Percent SPRAY

4 oz. -----	\$1.00	16 oz. -----	2.95
8 oz. -----	1.85	1 gallon -----	13.20

DE LAVAL SEPARATORS

Table or Floor Models

Hand or Electric Operated.

MILKING MACHINES, conventional pipeline type or combine types that take the milk direct from cow to can.

Service and Parts

(Above prices Not Prepaid except as noted and subject to market change.)

“MILE HIGH” PEAK OF QUALITY WESTERN COLORADO GROWN HARDY STRAINS ALFALFA AND CLOVER

LADAK. A wilt-resistant variety, is slow to start in the spring, but it resists drought and produces a good yield of hay. Leafy and of high feeding value, and will hold a stand longer than other varieties.

COMMON. Deep-rooted, excellent for hay; but must have a deep soil. Therefore, if you do not have over two and a half feet of good soil to water, shale, or gravel, we suggest that you use Grimm.

RANGER ALFALFA—Ranger is the most wilt resistant alfalfa available, it yields slightly less than Grimm, but is very cold resistant and recovers quickly from cutting.

BIRDSFOOT TREFOIL CLOVER—Withstands moderate alkali and wide fluctuations of moisture. Produces very palatable and nutritious forage. As far as has been determined to date it DOES NOT bloat or scoure stock. It is very necessary to treat Trefoil with nitragin.

STRAWBERRY CLOVER. Western Colorado grown seed. It thrives on wet, seepy soil, even though there is a lot of alkali. Best suited for pasture; spreads from root and seed—a perennial plant. Requires 3 lbs. of seed per acre. For best results, sow in rows with garden seed planter, if possible.

MEDIUM RED CLOVER. A biennial plant; fine for hay and pasture; good producer of nitrogen. Excellant soil builder.

HUBAM SWEET CLOVER. An annual rapid growth, coarse and fibery; develops rapidly and produces seed the first year; for soil building or cover crop.

YELLOW BLOSSOM SWEET CLOVER. A biennial for hay and pasture; also a very good cover crop and soil builder.

WHITE BLOSSOM SWEET CLOVER. A biennial coarser than Yellow Blossom; a good cover crop; not as good for hay or pasture.

LADINO CLOVER. A long-lived perennial. Its growth is large and luxuriant. When the leaf growth has been grazed off, new leaves develop quickly, complete recovery occurring in 17 to 28 days. It is strictly a crop for irrigation. Sow in fall or spring at the rate of 4 to 6 pounds per acre.

ALSIKE CLOVER. Especially valuable for growing with timothy in high altitudes. Hardy and withstands wet ground.

LEGUME - AID

ADVANTAGES—

LEGUME-AID is so fine, so smooth in texture, it does not clog the drill . . . yet it contains enough moisture, protected by the exclusive use of a moisture-retaining “inner” Pliofilm bag, that it may be applied to the seed with or without the use of water. It is this convenience and many other advantages that makes LEGUME-AID so popular with the farmer.

- HIGHEST QUALITY AT BOTTOM PRICES
- STAYS FRESHER LONGER
- SMOOTH—FREE FLOWING
- MAY BE USED WITH OR WITHOUT WATER
- CLINGS TO SEED—COATS THOROUGHLY

The Potency of Every Application is Assured

VARIETY	Unit Size	Amt. of Seed Treated	Postpaid Retail Price
ALFALFA-CLOVER: Sweet Clover, Bur, Red, White, Crimson Alsike, Subterranean and Ladino Clover	1-Bu.	60-lbs.	.55
PEAS - VETCH: Austrian Winter Peas, Vetches, Garden, Sweet and Canning Peas	100-lbs.	100-120 lbs.	.50
LADINO CLOVER:	10 lb. pkt	10-lbs.	.25
MARKET GARDENER: Combination, Peas and Beans	Beans Peas	60-lbs. each	.55
GARDEN PACKET: Garden Peas, Beans and Sweet Peas	5-lbs.	Up to 5-lbs.	.15

LEGUME-AID does not “lump”—it flows freely. Even passes through a fine screen mesh.

Yes Sir . . . It's Your Inoculant

ORTHO SPRAY ITEMS

IMPROVED ISOTOX—A fine insect spray for flowers, shrubs, trees and vegetables.

	Not Postpaid	Postpaid
4 oz. -----	\$1.00	\$1.25
8 oz. -----	1.75	2.00
16 oz. -----	2.95	3.20

HOME ORCHARD SPRAY—Insect and disease control on fruit trees and berries.

	Not Postpaid	Postpaid
½ Lb. -----	\$1.00	\$1.25
1 Lb. -----	1.75	2.00

ROSE DUST—Multi purpose dust for all flowers, controls insects and disease.

	Not Postpaid	Postpaid
8 oz. Pump -----	\$1.00	\$1.25
1 Lb. Refill -----	1.25	1.50

BUGGETTA PELLETS—Pelleted baits for control of snails, slugs and cut worms.

	Not Postpaid	Postpaid
12 oz. -----	\$.35	\$.55
2 Lbs. -----	.75	1.10
5 Lbs. -----	1.65	2.00

VEGETABLE DUST—Multi purpose dust for all vegetables, safe to use as directed for insects and disease.

	Not Postpaid	Postpaid
8 oz. Pump -----	\$1.00	\$1.25
1 Lb. Refill -----	1.25	1.50

RAT-B-GON—Kills mice and other rodents, contains warfarin.

	Not Postpaid	Postpaid
1 Lb. -----	\$1.00	\$1.25

SPRAY-ETTE—Garden hose sprayer, no pumping required, attach to garden hose for pressure.

	Not Postpaid	Postpaid
	\$2.95	\$3.30



DOG REPELLENT

SCRAM Dog Repellent. A special powder used to keep dogs away from shrubs, flowers, lawns, store fronts, porches, etc. Easy to use. Does not harm animals.

8 Oz. Shaker-----75c. Postpaid

STERLING MULTI-GARDEN DUST

Triple-acting insecticide and fungicide for control of Ants, Fleas, Beetles, Aphis, Caterpillars and other insect pests, as well as certain fungous diseases. Packaged in sizes for your particular need and convenience.

10 oz. Duster Type Gun-----	Each	\$1.00	}	Postpaid
1 Lb. Bags -----	Each	.70		
4 Lb. Bags -----	Each	1.60		

STERLING CHLORDANE DUST No. 100

Recommended for the control of many insects, such as lygus, stink bugs, hornworms and particularly for grasshoppers, alfalfa weevil and ants.

10 oz. Pump Gun -----	Each	\$1.00	}	Postpaid
4 Lb. Bags -----	Each	1.40		

STERLING SABADILLA DUST No. 80

By using Sabadilla Dust to control squash bugs, you can again raise squash. Like any other dust, thorough application is important.

1 Lb. Bags -----	Each	\$. 70	}	Postpaid
4 Lb. Bags -----	Each	1.60		

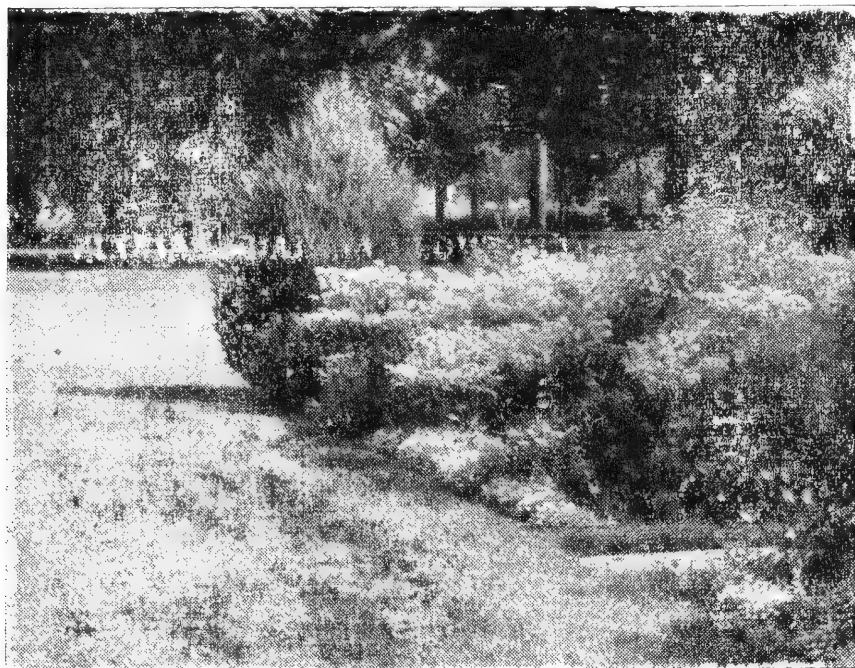
Prices Subject to Market Change.

Write us if interested in other items or larger quantities.

EEZY WEAR GARDEN GLOVES

Made of imported leather processed to make it pliable as kid and washable. An ideal glove for men and women gardeners. Will outwear cotton gloves. Sizes: 7, 8, 9 and 10.

Price \$1.60 a pair. Postpaid.



Plant Mile High Lawn Grasses!

KENTUCKY BLUE GRASS. The most desirable grass for a beautiful lawn. The leaves are narrow and deep green in color. It forms a close turf, is slightly creeping and quite hardy. It is recommended alone or in mixtures.

½ Lb. 75c; 1 Lb. \$1.30; 2 Lbs. \$2.50; 5 Lbs. \$5.50. Postpaid.

MERION BLUE GRASS. The Newest Turf Grass. Similar to Kentucky Blue, but makes a much better lawn. Is more disease resistant, stands drought better and holds a greener color all year long. While the price per pound may seem high, 1 pound will cover about 400 to 500 square feet and reseeding or repairing is usually not necessary. May be sown alone, but in our area a mixture of about 70% Merion with other grasses may be preferred.

½ Lb. \$2.75; 1 Lb. \$5.30; 2 Lbs. \$10.50; 5 Lbs. \$25.50. Postpaid.

WHITE DUTCH CLOVER. (*Trifolium Repens*). Is a small, close growing, dwarf clover, used extensively in making lawns. It is a rapid grower of spreading habits and can be cut very close to the ground without injury to the plant. It starts regrowing at once after cutting. Very useful in lawn mixtures.

½ Lb. 85c; 1 Lb. \$1.45; 2 Lbs. \$2.80; 5 Lbs. \$6.25. Postpaid.

ENGLISH BLUE GRASS. Is recommended for lawn use alone or with other grasses. Especially adapted where soil is poor or where lawn is to be used hard for play ground purposes.

½ Lb. 50c; 1 Lb. 80c; 2 Lbs. \$1.30; 5 Lbs. \$2.50. Postpaid.

PERENNIAL RYE GRASS. A tufted, short-lived perennial. It does not form root-stalks or stolons and does not form a compact sod. It grows rapidly, making a quick covering and is used in lawn grass mixtures with Kentucky Blue Grass and Red Top.

½ Lb. 45c; 1 Lb. 70c; 2 Lbs. \$1.10; 5 Lbs. \$2.00. Postpaid.

MILE HIGH LAWN GRASS MIXTURE. The best mixture to plant for the average lawn. Mile High Lawn Mixture is made up of permanent grasses that will start quickly and that make a good lawn the first year. All fine grasses also contains a good supply of White Dutch Clover. For that good lawn plant Mile High Lawn Grass Mixture.

½ Lb. 75c; 1 Lb. \$1.30; 2 Lbs. \$2.50; 5 Lbs. \$5.50. Postpaid.

PEAK OR PLAYGROUND LAWN MIXTURE. This blend of grasses has proven very satisfactory where you must have a hardy lawn or where your soil is poor. Comes up quickly and will stand lots of wear. All of the grasses in this mixture are perennials and there is NO TIMOTHY in any of our mixtures.

½ Lb. 70c; 1 Lb. \$1.20; 2 Lbs. \$2.10; 5 Lbs. \$4.50. Postpaid.

SPECIAL SHADY MIXTURE. A mixture of grasses that are known to stand shade from trees or buildings better than ordinary grasses. We have spared no expense to make this the best shady lawn mixture possible. It does not contain any clover.

½ Lb. 75c; 1 Lb. \$1.30; 2 Lbs. \$2.50; 5 Lbs. \$5.50. Postpaid.

NO ANNUAL GRASSES USED IN ANY OF OUR MIXTURES.

For Other Grasses and Larger Quantities See
Price Sheet or Write.

If You Have Special Lawn Problems Ask Us to
Help You.

3 VEES BIRD PRODUCTS

- Balanced Bird Seed. 11 choice seeds. 12 oz. package 39c
 - Sanitary Bird Gravel. With charcoal. 28 oz. package 15c.
 - Song Food. A perfect conditioner containing yeast, cod liver oil and other vitamins. 3½ oz. bottle 35c.
 - Bird Life Ball. With bell. 15c.
 - Moulting Food. Compounded to supply the elements necessary to body health building. 3 oz. bottle 35c.
 - Parakeet Seed. Special mixture. 14 oz. package 35c.
 - Parakeet Gravel. Larger than Canary gravel. 28 oz. 15c.
 - Parakeet Ade Food. 35c.
 - Keet Sticks. Large millet heads. 19c.
 - Birdies Dress-Up and Blood Tonic. An aid to promote growth of feathers. 20 tablets, 25c.
 - Cuttle Bone. Large piece. 10c.
 - Cage Brackets. For hanging cages from walls or window casings. 25c Each.
- NOT POSTPAID**
(See Postage Guide Inside Front Cover)



POULTRY LEG BANDS

We Have the Best Colored Leg Bands
Made of Pyralin.

All Leg Bands Are Postpaid

SIZE—

SINGLE COIL

<p>4 Baby Chick</p> <p>5 Baby Chick</p> <p>6 Baby Chick or Pigeon</p> <p>7 Bantam or Growing Chick</p> <p>9 Leghorn</p> <p>11 Rocks, Reds, Large Leghorn</p> <p>12 Jersey Giants and large breeds</p> <p>14 Turkey and Geese</p>	<p>PRICES:</p> <p>Bunch of 50 for 40c</p> <p>Less Than Bunch Lots 2c Each.</p>	}	<p>Colors:</p> <p>Red</p> <p>Blue</p> <p>Green</p> <p>Pink</p> <p>Yellow</p> <p>White</p> <p>Specify first and second choice of colors.</p>
	<p>Bunch of 50-----</p> <p>Less than Bunch, 2c Each.</p>		<p>50c</p>
	<p>Bunch of 50-----</p> <p>Less than Bunch, 2c Each.</p>		<p>55c</p>
	<p>Bunch of 50-----</p> <p>Less than Bunch, 2c Each.</p>		<p>80c</p>

DON SUNG

Supplements Rations Deficient in Essential Minerals and Vitamins
ACCEPT THIS TRIAL OFFER

We say: Give Don Sung to your hens. If they don't hand you back your money to your entire satisfaction—we will.

Separate 15 hens from your flock, and use Don Sung in their feed, for 30 days. (The 50 cent package of Don Sung—the trial GUARANTEED size—handles this test.)

50c Size—(This is the Trial Money-back size and is sufficient for 15 hens for 30 days.)

\$1 Size—(3 times the 50c size.)

\$5 Size—(3 pounds or 6 times the \$1 size.)

AVICOL

Drinking Water Antiseptic

60 Tablet size-----50c

180 Tablet size-----\$1.00

All Postpaid.

SEE INSIDE FRONT COVER FOR PARCEL POST RATES

DAHLIA BULBS

These Dahlia bulbs are good strong, healthy tubers with good crowns. **LARGE FLOWERING FORMAL and INFORMAL DECORATIVE TYPES.**

- CHAUTAUGUA SALUTE**—Large Wavy Petals of Glistening White.
DUTCH PURPLE—Early Purple flowers usually over 8 inches.
HERBERT LEWIS—Rugged, Golder Yellow, profuse blooms.
PASADENA—Lavender Pink, very graceful formation.
SAGAMORE BEAUTY—8 inch Pink and Cream, profuse bloomer.
SEPTEMBER—Magnificent Orange Gold, scarlet shadings.

50c EACH

1 each of above 6 varieties \$2.70. Postpaid.

CACTUS DAHLIAS

EVERYONE A PRIZE WINNER

These intrigring beauties with their spiked petals and excellent keeping qualities are rapidly becoming the favorites of many Dahlia fanciers. Their grace and beauty is unexcelled by any other flower. These varieties are superb cactus Dahlias.

- AMBER STAR**—8 inch Pure Amber—Oregon's 1953 Sweepstakes winner.
CASPER LUDWIGS MEMORY—8 inch Deep Blood Red, Blue Ribbon winner.
FAITHFUL—10 inch to 12 inch, excellent Pure White blooms.
KINSUI—10 inch to 12 inch, a good shade of Yellow, very shaggy.
MISS SAN DIEGO—8 inch Coral Pink, profuse bloomer, short plant.
RIESENWUNDER—8 inch to 10 inch Carmine Pink with yellow heart.

EACH 65c

1 each of above 6 varieties \$3.30

PRIZE RESULTS—
WITH VEGETABLES
and FLOWERS



PLANTABBS

Get amazing results, INDOORS and OUTDOORS, by using PLANTABBS on all your plants. These highly concentrated TABLETS are chock-full of the essential food elements, plus VITAMIN B1. Follow directions in package. Helps even poor soil grow lovely flowers and more vegetables.

The Larger Sizes
Save You Money

Box 10 Tablets	-----	\$.10
Box 30 Tablets	-----	.25
Box 75 Tablets	-----	.50
Box 200 Tablets	-----	1.00
Box 1000 Tablets	-----	3.50

Postpaid
With Other
Orders Only

No. 30
120 Cubic Inch
Package
60c Postpaid
39c Not. Prepaid

No. 50
240 Cubic Inch
Package
95c Postpaid
69c Not Prepaid

BLACK MAGIC

PLANTER MIX

African Violets, Philodendrons, all house plants thrive in these organic materials. No chemicals, no soil, no drainage is needed. Avoids corrosion in metal planters. Use as is. Just moisten and plant. Guaranteed analysis.



"House Plant Perfection"

Mile High Special GLADIOLA MIXTURE

Bulbs used in our Mile High Special Mixture are not first size but they are flowering size and top quality from choice varieties. They will make flowers of the largest size though they may take a few days longer to bloom than large bulbs. The crop of bulbs harvested from these will be equal size to those harvested from large bulbs.

This collection includes more than 20 varieties.

25 Bulbs 30c 50 Bulbs \$1.50 100 Bulbs \$2.95 Postpaid
No less than 25 Bulbs sold in this collection.

GLADIOLI

All Large Flowering Varieties
Chosen for Good Color and Lots of Blooms

Prices on Gladioli Bulbs Are Postpaid.

Plant groups of Gladiolus bulbs every two weeks from about April 15 to July 1 for bright masses of garden color—plenty of cut flowers all summer. Plant bulbs 4 to 6 inches deep and 6 inches apart. Dig bulbs in fall, allow to dry, then store in dry, cool place. Protect from frost. Water by trench method.

RED SHADES

HARMAU—Good Size early Red.
MANSOER—Blood Red, velvety black shading.
RED CHARM—A beautiful Deep Bright Red.
SANS SOUCI—Tall brilliant Scarlet, white striping.

PINK SHADES

BENARES—Tall Deep Pink with carmine throat.
BEAUTY'S BLUSH—Delicate shade of Blush Pink.
FRIENDSHIP—Early ruffled Deep Pink.
PHANTOM BEAUTY—One of the better new light Pinks.

YELLOW SHADES

GENE—Light uniform ruffled Yellow.
HOPMAN'S GLORY—Tall, light Sunflower Yellow.
MOTHER KADEL—Excellent bright Waxey Yellow.
YELLOW HEROLD—Tall early light Yellow.

ROSE SHADES

EARLY ROSE—Very early deep Salmon to Rose shading.
GENERAL EISENHOWER—Very large deep Cerise Rose.
HIGH FINANCE—Huge Smokey Rose, tall grower.
MODERN TIMES—Deep shade of American Beauty Rose.

WHITE SHADES

CORONA—Fine White with lavender halo.
FLORENCE NIGHTINGALE—New fine Creamy White.
MORNING KISS—Tall White, rosy shaded.

MISCELLANEOUS SHADES

BIT O'HEAVEN—A sharp Golden Orange shade.
DONNA—Tall very ruffled Apricot.
IRAQ—Tall smokey Lavender, spot in throat.
PURPLE SUPREME—One of the best good Purples.
SHERWOOD—Lightly ruffled Reddish Purple blooms.

ABOVE NAMED VARIETIES ALL NO. 1 CHOICE BULBS

Late in the season we may have to substitute. Please give us permission to do this.

Above Named Varieties	1 Each of Above 24 Varieties
3 for 30c—12 for 95c	\$1.75
50 for \$3.25	100 for \$6.00

NUMBER 1 QUALITY CHOICE MIXED BULBS

This mixture is made up of many varieties blended together to give you a gorgeous array of colors from the lightest shades to the deepest of reds and blues.

Prices on Mixed Glads:

(85 cents per dozen)

(50 Bulbs, \$3.00)

(100 Bulbs, \$5.50)

ALL GLAD BULBS POSTPAID

GLADIOLUS

IMPORTED VARIETIES FROM HOLLAND

Several Newer Varieties In This List

All large flowering varieties, well suited for growing in this country, produce long spikes of beautiful flowers.

- ACCA LAURENTIA**—Orange Red, yellow blotch in throat.
- ALFRED NOBEL**—Outstanding large Salmon Rose, with blotch.
- AUTUMN GLORY**—Extra large flowers of soft delicate Pink.
- GRATIA**—Light Blue, purple blotch, dark feathering.
- HAN VAN MEEGEREN**—A very good Canary Yellow.
- JO WAGENAAR**—Carmine Red, white stripe in throat.
- JUNE BELLS**—Beautiful Clear White.
- MABEL VIOLET**—Largest Violet, white stripes.
- MARSHAL MONTGOMERY**—Blood Red, velvety garnet red glow
- MEMORIAL DAY**—Light Peony Purple, shading to Rose.
- NORTHERN QUEEN**—Large Salmon, lighter throat.
- PACTOLUS**—Fine Salmon, striking red markings.
- PALET**—Flowers Scarlet, edged red, purple blotched throat.
- POPPY DAY**—Poppy Red flowers with white stripes.
- PUCCINI**—Rare shade of Lilac Purple.
- SILHOUET**—Lilac, slightly feathered clear Red
- SPOTLIGHT**—Canary Yellow with carmine blotches.
- VANGUARD**—Amber White, lilac shaded red blotch.

ALL LARGE TOP SIZE BULBS

Price—Your Choice of

4 Bulbs—50c

8 Bulbs—90c

1 Each of 18 Varieties \$1.75 Postpaid

HARDY PERENNIAL PHLOX

PHLOX COLLECTION A—1 Each, 6 Fine Varieties

- CAROLINE VANDENBERG**—Large Lilac B'ue.
- DAILY SKETCH**—Brilliant Salmon Pink, darker eye.
- FLASH**—Orange Scarlet with darker eye.
- MARY LOUISE**—Glistening Snow White Heads.
- RUBY LEE**—Large Plum Purple.
- SPITFIRE**—Flowers Salmon Orange, crimson eye.

ALL SIX—\$2.45 POSTPAID

PHLOX COLLECTION B—1 Each, 6 Better Varieties

- BRIGADIER**—Brilliant Orange Red.
- ELIZABETH ARDEN**—Soft Lilac Pink.
- PURPLE KROME**—Deep Chrome Purple.
- SAN ANTONIO**—Vivid Carmine, shaded plume.
- SIR JOHN FALSTAFF**—Extra large bright Salmon Pink.
- WORLD PEACE**—Large Pure White.

ALL SIX—\$3.00 POSTPAID

BOTH COLLECTIONS — 12 PLANTS

POSTPAID FOR ONLY \$4.75

Germaco

TWIST-EMS

help you support plants
quickly, neatly,
permanently!



Say "good-bye" to unsightly twine and raffia, to needless work with shears. TWIST-EMS—strong dark-green "invisible tapes" with wire reinforcing—protect stems, permanently support annuals, perennials, vines, shrubs and vegetables. Grand for flower arrangement.

- Box of 50, 8 inch size.....20c
- Box of 100, 8 inch size.....30c
- Box of 100, 16 inch size.....60c

POSTPAID

PARCEL POST GUIDE AND RATES ON INSIDE COVER

FLOWERS

CULTURE

A good sandy loam soil supplemented with well rotted manure and a small portion of commercial fertilizer is the ideal soil for flowers. Flowers will always do better if watered from a small trench dug along the sides of the plant.

DO NOT LET THE GROUND DRY OUT OR CRUST.

The following symbols are used in connection with each item:

- A—Annuals:** The plants live and bloom one season only.
B—Biennial: The plants live two seasons, often blooming the first year when planted early.
P—Perennial: The plants usually live from year to year.
H—Hardy: Plants that are easily grown and resist average seasonal extremes of temperature.
H-H—Half-hardy.
T—Tender.

Approximate height of each plant is also given.

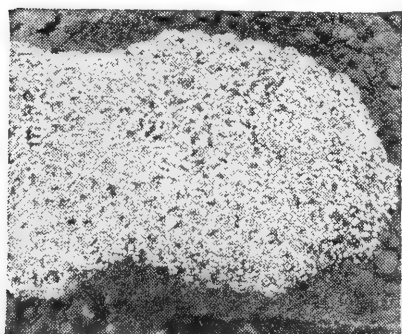
FLOWERS BEST ADAPTED TO VARIOUS USES

For Cut Flowers	Carnation	Verbena
Antirrhinum (Snap Dragon)	Centaurea	For Partial Shade
Aster	Petunia	Balsam
Calendula	Stock	Campanula
Candytuft	Sweet Peas	Clarkia
Carnation	Sweet William	Columbine
Sweet Sultan	For Window Boxes	Godetia
Clarkia	Geranium	Pansy
Columbine	Morning Glory	Sweet William
Cosmos	Nasturtium	For Withstanding Drought
Gypsophila	Petunia	Candytuft
Marigold	Phlox	Cosmos
Nasturtium	Verbena	Four O'Clock
Shasta Daisy	For Rock Gardens	Hollyhock
Stock	Alyssum	Petunia
Sweet Peas	Columbine	Portulacca
Zinnia	Carnation	Verbena
For Fragrance	Campanula	Zinnia
Alyssum	Candytuft	For Climbing
Candytuft	Gypsophila	Cypress Vine
	Phlox	Morning Glory
	Portulacca	

We offer on the following pages a list of worthwhile flowers that are grown from seed. You will enjoy a flower garden. Plant one.

ALYSSUM

- 822 **Little Gem.** (HA) Small white flowers completely cover the dwarf compact plants, which grow only 4 to 5 inches tall. Wonderful for edgings. **Pkt. 10c.**
- 823 **Gold Dust.** (P-12 In.) Brilliant golden yellow flowers borne so profusely as to hide the plants. **Pkt. 10c.**



825 Snow Cloth

824 **Alyssum Violet Queen.** (HA 4-In.) Edging plant with a color peculiarly its own, being of a very pretty violet tint much deeper in color than the Alyssum Lilac Carpet offered previously, does not fade in hot weather. Has the usual honey-like odor of the white variety. **Pkt. 10c**

825 **Snow Cloth.** The pure white flowers are so freely produced on dwarf plants as to give the impression of a white carpet. A favorite variety for edging. While plants seldom grow over 2 to 3 inches in height, they spread considerably. **Pkt. 10c.**

ASTERS

IF YOU should have any trouble raising Asters—**TRY OUR WILT RESISTANT STRAINS.** Perhaps your soil is infested with aster wilt.

All Asters Listed Below Are Wilt Resistant Strains.

NEW POWDERPUFFS NEW

830 Powderpuffs are tailor made for home gardens because the plant type is entirely different from other asters. Imagine a ribbon of these beautiful flowers, blooms 3 to 3½ inches across, and so many of them the foliage literally cannot be seen. Plants 24 inches high. Many colors mixed. **Pkt. 15c.**

EARLY GIANTS

The finest large flowered heavy stemmed asters yet developed. Flowers are of the large Giants of California type. Plants 1½ feet tall, with strong, heavy stems. Come into flower four to six weeks earlier than Giants of California.

833 Light Blue.

835 Rose Marie. Rich rose.

Above Packets, 15c.

IMPROVED GIANT CREGO

(HA; 2 ft.) Very large, fully double flowers, 4 to 5 in. across, with long ribbon-like petals gracefully curled and twisted, giving them a lovely fluffy appearance. The plants are strong growing of branching habit. Long stemmed; fine for cutting.

839 Crimson.

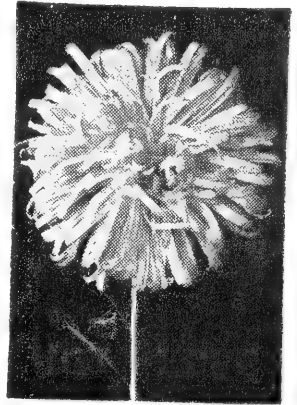
842 White.

840 Shell Pink.

843 Purple.

841 Light Blue.

Above Packets 10c

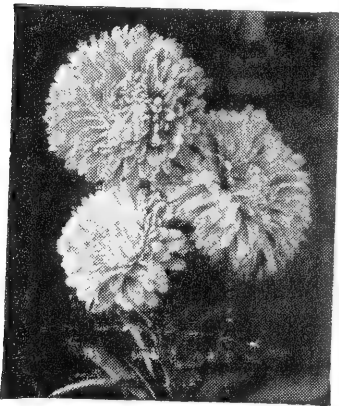


842 Crego White

847 Mixed. Packets 10c; ⅓ oz. 25c; ¼ oz. 40c.

SINGLE ASTERS

868 Aster Rainbow Mixture. (HA 24-in.) A new strain of single asters producing large flowers of all the colors of the rainbow, except yellow, including many tones of blue and violet, rose and crimson, but without flesh pinks or white. Sturdy, upright growth. **Pkt. 10c.**



854 Queen of the Market, Aster

MIXED ASTERS

865 All Double Varieties Mixed. Wilt resistant. (H. A.)

Pkt. 10c; ⅓ oz. 15c; ¼ oz. 25c

QUEEN OF THE MARKET

(H. A. 20 in.) The earliest aster producing a profusion of fine blooms in early August. Plant of branching habit.

852 Crimson.

853 Purple.

854 Blush Pink.

855 Lavender.

858 Mixed

Above Packets 10c

AFRICAN DAISY

807 (H. A. 12-In.) Showy annuals. Fine daisy-like blooms. Good for rock gardens, edgings and cutting. **Mixed. Pkt. 10c.**

AGERATUM (HA 8-In.)

815 Purple Perfection. Attractive border plant. **Pkt. 10c**

816 Midget Blue. Dwarf compact rich blue. **Pkt. 10c. ⅓**

AMARANTHUS

829 JOSEPH'S COAT. (A-3 ft.) Deep scarlet foliage, prettily variegated yellow, bronze and green. A very striking garden plant.

Pkt. 10c; ⅓ oz. 20c

BACHELOR'S BUTTON (HA 2-Ft.)

The true old fashioned Bachelor's Buttons in new shades and colors.

- 878 **Red Boy.** Deep glowing red. Pkt. 10c.
 879 **Blue Boy.** True cornflower blue. Pkt. 10c.
 880 **Finest Mixed.** Special strains. Pkt. 10c; ¼ oz. 25c.

BALSAM

- 889 **Camellia Flowered.** Mixed. (HA 18 In.) Double flowers set thickly along the stems. Blooms throughout the summer and early fall. Pkt. 10c.

SCARLET RUNNER BEAN

- 895 Tall climber, large scarlet blooms. (HA 8-ft.) Pkt. 15c.

**CALENDULA**

(H A; 18 in.) Keep the flowers cut for continuous blooming. Make a late sowing in early July for flowers in cool weather; they stand light frosts.

- 927 **Florists' Special Mixture.** Large flowered, long stemmed varieties. Pkt. 10c.

CALENDULA**CALIFORNIA POPPIES**

(A; 12-15 in.) Plants of low spreading growth with finely cut silvery foliage. Do well in any well drained, loose soil and sunny position. Blooms early and continues until frost.

- 932 **Aurantaca.** Bright orange. The true California Poppy. Pkt. 10c.
 937 **Brilliant Mixed.** All the brightest colors. Pkt. 10c.

CACTUS FROM SEED

- 902 **Mixed Varieties.** Choice assortment of the most attractive, easily and quickly grown cacti. Interesting pot plants. Pkt. 15c.

CANTERBURY BELLS (B—2 Ft.)

- 951 **Cup and Saucer.** Mixed colors. These Canterbury Bells are biennials, that is, from seed sown one year, the plants will bloom the following year, and the plant then dies. To keep up a yearly display they should be sown annually. Pkt. 15c.

CARNATION (P—20 In.)

- 955 **Finest Mixed.** This popular hardy Carnation blooms five months from sowing and continues throughout the season. Chabauds, Giant double strain. Pkt. 15c.

CASTOR OIL BEAN—RICINUS (A—4 to 10 Ft.)

- 956 **Mixed.** A wonderful assortment of finest varieties with large leaves in green, red and bronze. Pkt. 15c.

CANDYTUFT (H A—1 Ft.)

- 948 **Annual Varieties.** Good mixed. For beds, borders, edgings, rock gardens and cutting. Comes into flower quickly. For a continuous display, make several sowings 2 to 3 weeks apart. Pkt. 10c.

CLARKIA (H A—2 Ft.)

- 960 The lovely Clarkias are effective in the garden or as cut flowers. Produce great spikes of double and semi-double flowers in the daintiest colors. Pkt. 10c.

COCKSCOMB (A)

- 963 **NEW—Golden Fleece.** This plumed cockscomb will stand any amount of hot weather. Germinates easily and fast. Will cut and come again until frost. Many huge golden plums on long cutting stems. 30 inch plants. **Pkt. 15c.**
- 964 **Dwarf Mixed.** 8 to 10 inches. Nice for edgings, borders or pots. Easily dried for winter use. **Pkt. 10c.**

COLEUS (A—2 Ft.)

- 967 Beautiful foliage plants for pots indoors or flower beds and window boxes outside. Leaves have more color when planted in full sun. **Packets 20c.**

COLUMBINE (P—18 In.)

Beautiful spring-blooming plants of graceful, airy habit. They succeed in sun or half-shade and in any rich soil.



977 **Early Flowering Mammoth Mixed**

- 968 **Rocky Mountain Blue.** Colorado State Flower. **Packet 15c.**

- 969 **Dobbies Imperial Hybrid.** Finest mixed. **Packet 20c.**

COSMOS (H A—4 Ft.)

While the early varieties begin blooming in July, the Cosmos reaches the height of its beauty in the autumn.

- 972 **Early Klondyke. Orange Flare.** pure, vivid orange blooms. **Pkt. 10c.**

- 976 **Early Double Crested.** Form a perfect bush, massed with blooms of good size on long stem. **Pkt. 10c.**

- 977 **Early Flowering Mammoth Mixed.** All colors. **Pkt. 10c.**

Sensation, New Early Giant Strain

Early flowering, blooming in about 8 weeks from sowing. The flowers are very large, 4 to 5 inches across, with heavy fluted petals. Height about 4 feet. By disbudding, enormous flowers can be obtained.

- 973 **Dazzler.** Very rich, deep amaranth crimson. **Pkt. 10c.**

DAHLIA SEED (P—3 Ft.)

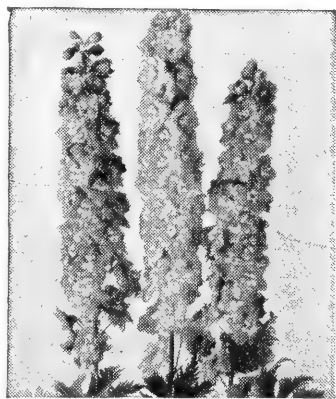
It is easy, most interesting and fascinating to grow dahlias from seed and enjoy the surprise of new colors and forms. If the seed is started early, plants will bloom the same season.

- 980 **Double Fine Mixed.** **Pkt. 15c.**

DELPHINIUM (P—4-6 Ft.)

Modern hybrid Delphiniums have become the dominant flowers in the perennial border of late June. If the bloom is cut down to the ground a second flowering spike is produced.

- 984 **Single Mixed.** Medium tall hybrids. **Pkt. 10c.**



Dreer's DeLuxe Hybrids

- 986 **Pacific Hybrid Mixed.** A blend of all the different named series of giant Pacific hybrids. Vigorous growing and free blooming. **Pkt. 20c.**

FORGET-ME-NOT (A—18 In.)

- 997 **Amabile Blue.** Will bloom from May until frost and prefer cool, moist loam and half-shade. For beds, borders and rock gardens. **Packet, 10c.**



995 Four O'Clock

FOUR O'CLOCK (H A—20 In.)

995 All colors, Mixed. Showy summer and fall blooming plants that do well everywhere.

Pkt. 10c.

GERANIUM

1004 Flowerland Strain. Mixed. These grow readily from seed the first year and produce blooming plants the same summer.

Pkt. 25c.

GODETIA (A—12 In.)

1007 Dwarf Single. Exquisite mixed. Bushy plants with masses of large, colorful blooms during the summer and fall; suited for beds, borders and cutting. Thrive best in cool, moist, half-shady situation. A very showy plant.

Pkt. 10c.

ORNAMENTAL GOURDS (A—10 Ft.)

1008 Large and small sorts, mixed. Gourd fruits make attractive decorations at harvest festivals. Bird houses, dippers, bowls and toys are made of others.

Pkt. 15c.

GYPSOPHILA—BABY'S BREATH

Graceful plants of light fairy-like growth. Much in demand for cutting and combining with other flowers for bouquets and vases. Use dry in winter bouquets.

1010 London Market Improved. White, extremely large flowers. Annual, 1½ ft. Pkt. 10c.

1011 Carminea. Deep rose. (Annual, 1½ ft.) Pkt. 10c.

1012 Paniculata, Single White. (Perennial, 3½ ft.) Pkt. 10c.

HEARTS AND HONEY VINE**3 Magic Color Changes Each Day**

1014—The flowers open a brilliant orange, with prominent yellow centers. By noon the color changes to a reddish pink with centers somewhat lighter. In late afternoon the flowers become rose pink with white centers. An easily grown vine, vigorous fern like foliage producing 1½ inch flowers.

Packets 20c.

HOLLYHOCKS (H P—5-8 Ft.)

1022 Double flowers. Exquisite mixture. Pkt. 10c.

**LARKSPUR
GIANT IMPERIAL**

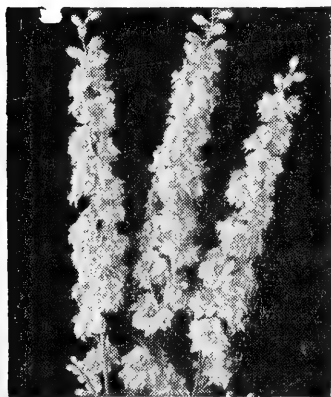
(A—4 ft.) These Larkspurs are ideal for cutting, as the flower stems branch. Double flowers are compactly placed on the long upright stems.

1034 Blue Spire. Deep violet.

1033 Carmine King.

1035 Mixed.

Above Packets 10c.



Larkspur
Giant Imperial

LANTANA

1027 Hybrid Mixed (A-18 in.)—Beautiful clusters of many colored flowers that bloom all summer. Make splendid flower beds. **Pkt. 10c.**

LINUM (A—24 In.)

1037 Crimson Flax. Brilliantly colored summer annuals, glowing crimson-rose. **Pkt. 10c.**

LOBELIA (H A—4 In.)

1038 Crystal Palace. Highly desirable for edgings, ribbon bedding and garden decoration as well as for pot culture. Dark blue flowers, bronze foliage. **Pkt. 15c.**

LYCHNIS

1044 Maltese Cross (A-2 ft.) Flowers are fiery scarlet, each blossom forms a Maltese Cross. Sow seed early. **Pkt. 10c.**

MARIGOLD (H A)

A wealth of color in late summer and fall, unequalled by any other flower. Easy to grow in ordinary garden loam and a sunny location.

1047 Tall Varieties. Mixed. (3 ft.)
Pkt. 10c; 1/8 oz. 20c; 1/4 oz. 30.

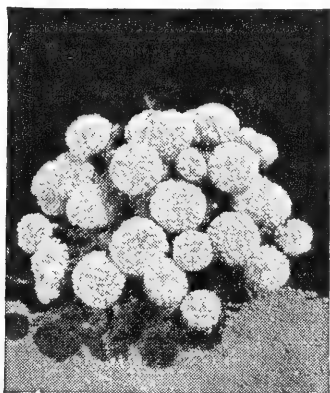
1048 Mission Giant Yellowstone. Large, double, incurved chrysanthemum-like, clear golden yellow flowers, 2 1/2 in. across freely borne on 2 ft. vigorous growing plants from late summer until frost.
Pkt. 15c.



1049 Sunset Giant. Rich mixture, (3 ft.)
A grand tall type. **Pkt. 15c.**

1049 Sunset Giants

1050 Pot O' Gold. A mass of intense dazzling gold on compact growing plants. The 4 to 4 1/2 inch flowers of the gigantic formation are freely borne on 12-to-15 inch plants, 100 per cent double; a garden favorite for showiness, fragrance and exceptional size. **Pkt. 10c.**



1050 Pot O' Gold

1054 Dwarf Varieties. Mixed.
(1 1/2 ft.) **Pkt. 10c; 1/8 oz. 20c.**

1056 Spotlight. Rich yellow blooms, bordered mahogany red. 2 in. across, very early flowering. **Pkt. 10c.**

1057 Harmony Hybrids. New strains in the popular crested center type. 12-to-14 inch plants with 1 3/4 inch flowers in striking color combinations. 100 per cent double. **Pkt. 10c.**

1058 Melody. Excellent rich orange blooms cover the 12-to-14 inch plants. Very double flowers. **Pkt. 10c.**

MEXICAN FIRE BUSH (HA—2 Ft.)

1065 Symmetrical over plants, resembling an ornamental evergreen. Fine for hedges. Turns carmine in fall. **Pkt. 10c.**

MOONFLOWER VINE (A—15 Ft.)

1069 Covered with large flowers every morning and on cloudy days. Finest mixed. **Pkt. 15c.**

POWDER CHAPERONE



A household blessing for the dog owner. Keeps dogs off furniture and rugs. Sprinkle lightly on objects to be protected. Does not injure finest fabrics.

	Not Postpaid	Postpaid
1 oz. Size-----	\$.49	\$.65
3 oz. Size -----	1.00	1.15

MORNING GLORIES (A—15 Ft.)

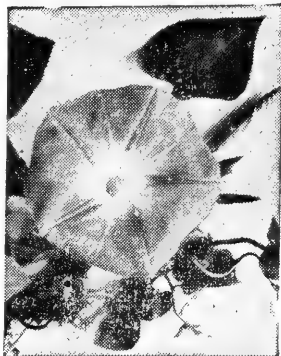
Easily raised, quick growing climbers succeeding in any soil and location. Fine for trellises, arbors, porches and poles. Free and continuous blooming.

1072 White Magic. Very early blooming, exceptionally free flowering, large fleecy white flowers, blending to cream deep in the throat, making a heavy cascade of flowers on fence or trellis. Of the Clark's early type. **Pkt. 15c.**

1073 Double Rose Marie. Double, deep rose flowers. Early and free-blooming. **Pkt. 15c.**

1074 Clarke's Earliest Heavenly Blue Morning Glory. Sky blue, shading cream yellow in throat. **Pkt. 10c.**

1075 Scarlet O'Hara. Flowers are a carnelian red, self color about 3½ inches across. Stays open longer than other sorts. Foliage is quite distinct, each leaf having one large and two small side lobes. **Pkt. 10c**



1074 Heavenly Blue

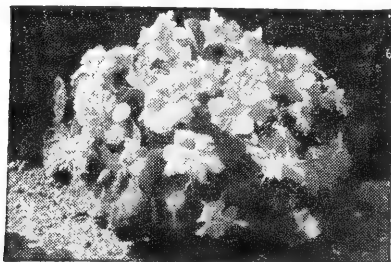
1078 Blue Star (All American Winner) Exquisite sky blue flowers with deeper colored midribs which form an attractive star. Large blooms are 4 to 5 inches across. **Packet 10c.**

1079 Extra Fine Mixed. **Pkt. 10c.**

NASTURTIUM (H A)

Nasturtiums will really grow on soils incapable of supporting any other plants and are most useful on dry, sandy soil.

1098 Mahogany Gem. The darkest colored nasturtium we have ever seen. The velvet, brilliant flowers are rich, deep mahogany and very large. Gem Nasturtiums are the dwarfest that grow. **Pkt. 10c.**



1100 Gem or Globe Dwarf Double. More compact than Gleam types. Same fragrant double flowers. **Pkt. 10c; oz. 25c.**

1086 Scarlet Gleam Sweet scented double. **Pkt. 10c; oz. 25c.**

1100 Globe Dwarf Double

1085 Golden Gleam. Sweet scented double. **Pkt. 10c; oz. 25c.**

1090 Gleam Hybrid. Mixed colors. **Pkt. 10c; oz. 25c; ¼ lb. 75c.**

1094 Dwarf Single. Mixed colors **Pkt. 10c; oz. 25c; ¼ lb. 75c.**

1095 Tall or Climbing. **Pkt. 10c; oz. 20c; ¼ lb. 70c.**

PANSIES (H A—6 In.)

Our Pansy seeds are selected from plants of outstanding size and bloom.

Keep flowers picked during the summer and you will get a nice lot of flowers again in the fall. For earliest blooms start seeds indoors.

Some of our customers have wanted a Pansy bed all one color. Here are some good ones. The 3 following varieties are all large flowering Swiss Giant type.

1110 Penglow. Shades of rich Wine Red shading to black in the center.

1111 Berna. Dark Violet Blue, almost purple.

1113 Reingold. A rich Yellow with the three lower petals having dark, almost black blotches.

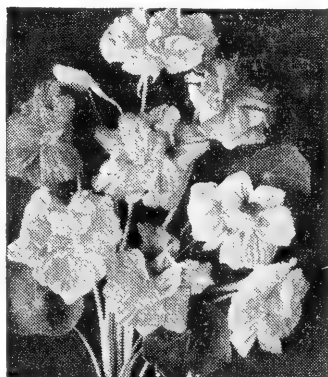
Above Pansy Packets 15c each. Postpaid.

1109 Giant Exhibition Strain. Super Swiss mixture. **Pkt. 25c.**

1112 Choice Flowering. Finest mixed. **Pkt. 10c.**

NEW PANSY FELIX

1107. Good sized ruffled flowers. Unusual rich colors including pastel and two-tone shades. Each flower marked with dark whisker like penciling and color effect is indeed striking. **Packets 25c.**



1090 Nasturtium Gleam Hybrids

NEMOPHILA—BABY BLUE EYES (A)

1102 Quick grower; early bloomer. Charming for edgings and rock garden. 6 to 8 in. Pkt. 10c.

NEMESIA (A—1 Ft.)

1104 Large Flowering Mixed. These showy plants are used for edgings and rock gardens. Come in a wide range of color. Pkt. 10c.

PETUNIA (H A)

In dry season or wet, the petunia is the most adaptable, long flowering and colorful of the garden annuals.

1114 Red King. Glowing shade of very dark crimson, brilliant and intense in colors. Pkt. 10c.

1115 Elks Pride. Bright deep violet purple. Large flowering smooth edged lobes overlap well. Pkt. 20c.

1116 Flaming Velvet. Deep velvet crimson with a luster of scarlet. Best of this color class. Pkt. 10c.

1118 Howard's Star. Reddish purple, white star. Pkt. 10c.

1119 Viola cea. Deep violet. Pkt. 10c.

1120 Heavenly Blue. Blooms are a rich light blue and cover the compact plants. Pkt. 10c.



1121 Radiance. Rich cerise-rose with enough underlying salmon to intensify its brilliance; all in lovely contrast to the brown veined golden yellow throat.

Pkts. 10c.

1127 Ruffled Monsters. Half dwarf type of erect and robust habit. The flowers are very large ruffled with open shallow throats. The colors are mostly the desirable red and dark shades, richly marked.

Large Flowered Mixed

Pkt. 30c.

1124 Large Flowered Mixed.—A mixture of outstanding large flowered varieties. Pkt. 15c.

1128—Miniature Mixed. These petunias grow about 6 inches tall and form perfect ball shaped mounds. Blooms grow about 2 inches across. Wonderful for borders and edgings. Pkt. 15c.

1130 Single bedding varieties. Mixed. Pkt. 10c.

PHLOX (H A—12 In.)

One of the easiest grown annuals. No other flower can surpass their brilliant colorings. Fine for bedding, borders.

1133 Art Shades. Very large flowered new strain, all with large light eyes. Pkt. 10c.

1135 Star or Fringed. Very brilliant most unusual flowers have fantastically fringed and pointed petals. Mixed colors. Pkt. 10c.

1138 Finest Mixed. From named varieties. Pkt. 10c.

PINKS (H A—12 In.)

Brilliantly colored flowers for beds, borders, rockeries.

1142 Laciniatus. Double mixed. Double, fringed and lacinated flowers. Pkt. 10c.

1143 Single Mixed. Pkt. 10c.

PINKS (P—15 In.)

1141 Clove or Grass Pinks. The old fashioned Garden Pink. Double and single flowers. Mixed colors. Pkt. 10c.

PAINTED DAISY—May-June (P—18 In.)

1171 Giant Single Mixed. They are wonderful for cutting. The fern like foliage plants are beautiful even when not in bloom. Pkt. 10c.

PORTULACA—MOSS ROSE (H A)

Forms a beautiful floral carpet, about 6 in. high. Plant in sunny place. Will grow in almost any soil.

1168 Single. Flowers mixed colors. Pkt. 10c.

1169 Double and Semi-double mixed. Pkt. 20c.

POPPIES—PERENNIAL

The colorful beauty of perennial poppies assures them a place in every garden. They are of easy culture, plant in slightly moist but well-drained soil, and in full sun. The seed is best sown where the plants are to bloom. Poppies for cut flowers should be treated to make the blooms last longer. After cutting, stems should be burned or dipped in hot water.



1147 Giant Art Shades

1147 Sunbeam Hybrids. This mixture is outstanding. Flowers are beautifully fluted and soft textured in lovely pastel shades of apricot, cream, gold, pink, white and shades of rose. Plants have strong wiry stems up to 30 inches tall and bloom heavily. **Pkt. 15c.**

1148 Iceland Poppy. Single mixed. (15 in.) **Pkt. 10c.**

1157 Oriental Mixed. (3 ft.) **Pkt. 10c**

POPPIES—ANNUAL

Sow them early—since they defy frost—and where they are to bloom, as they dislike transplanting.

1160 Single Shirley. Finest mixed. (2 ft.) **Pkt. 10c.**

1161 Double Begonia Flowered Sweet Briar is a delightful shade to deep rose pink. **Pkt. 10c.**

1162 Double Begonia Flowered Mixed. Flowers resemble the double tuberous-rooted Begonia in shape. **Pkt. 10c.**

ROCK GARDEN MIXTURES

1175 Annual Finest Mixed. **Pkt. 10c.**

SAPONARIA VACCARI (A 2 Ft.)

1176 Saponaria. Vaccari Rose. Graceful sprays of glistening pink flowers produced in greatets profusion. **Pkt. 10c.**

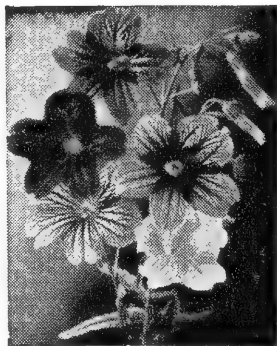
SALPIGLOSSIS (A—30 In.)

1179 One of the easiest of annuals to grow. the Salpiglossis is rich in deep color tones rare in the floral world. Sow in full sun in fairly rich soil as early as possible, and preferably in the place where it is to grow, to avoid transplanting. **Mixed Colors. Pkt. 10c.**

SALVIA—SCARLET SAGE

(H A; 24 In.)

1180 The Scarlet Sage is one of the most brilliant bedding plants; blooms from early summer until frost. Popular for beds, borders, edgings and pot culture, may be used for cutting. Should be started inside. **Pkt. 10c.**



1179 Salpiglossis

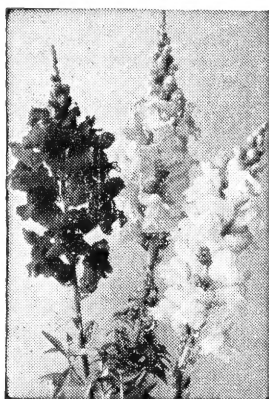
SCABIOSA—MOURNING BRIDE (A—3 Ft.)

1183 Blue Moon. Giant Imperial type. Rich dark lavender blue flowers, broad wavy petals. Blooms all summer. Excellent cut flower. **Pkt. 10c.**

1185 Giant Flowered Hybrids Mixed. Does well in different kinds of soil. Blooms from midsummer until frost if flowers are not allowed to go to seed. Lasts well and is one of the nicest flowers for cutting. Large flowers, unusual colors, ball shaped. **Pkt. 10c.**

SHASTA DAISY (P; 2½ Ft.)

1187 Shasta Daisy Conqueror. Flowers very large, pure white, stems 2½ ft. Suitable for borders and cut flowers, doing best in moist, well-drained locations. Extremely hardy; easy to grow. **Pkt. 10c.**

SNAPDRAGON—Rust Resistant Strains (2½ Ft.)

Of easiest culture, succeeding in full sun or semi-shade. The gorgeous flowers are freely produced for several months. Always plant rust-proof strains. Seeds germinate better; plants are more vigorous, the foliage clean, flowers large and of fine color and the flowering season prolonged.

1199 Super Majestic. Finest Mixed. Pkt., 10c.

SNAPDRAGON**1199 Mixed Snapdragon****New Giant Ruffled Tetra-Snaps**

1196. A new race of Snapdragons having strong stems with more flowers open at one time; the flowers are larger and ruffled. The most satisfactory snap for outdoor planting. Our mixture has many colors, bi-colors and veined flowers.

Packet 15. Postpaid.

SNOW ON THE MOUNTAIN (H A; 3 Ft.)

1200 Colorful foliage plants which add beauty to the tall border. Fine for foundation plantings and groups, doing best in a sunny location. Easily grown. Bright green leaves veined and attractively margined white; topmost leaves almost all white. Pkt. 10c.

STOCKS, ANNUAL

Heavy spikes of fine, double, fragrant flowers, in a wide range of soft and distinct shades. Fine for bedding, borders and cutting. Start seeds early indoors. Do best in rich, well-limed soil or not acid soil.

1205 Early Giant Imperial. Mixed. (26 in.) Plants of branching habit, double flowers, very fragrant. Pkt. 10c.

1207 Dwarf Ten Weeks. Mixed colors. About 12-in. high. Pkt. 10c.



1205 Giant Imperial

SWEET WILLIAM (B—1½ Ft.)

Old garden favorites with large, showy flower-heads composed of numerous good-sized individual blooms

1240 Single. Finest mixed. Pkt. 10c.

1241 Double. Finest mixed. Pkt. 10c.

SWEET SULTAN (A—2½ Ft.)

1237 Giant Sweet Sultan. All colors mixed. Most desirable for garden decoration and cutting. They bloom freely for many weeks during the summer; succeed best in rich, well-drained soil. The large, long-stemmed, sweet-scented flowers are exquisitely fringed and most graceful in appearance. Plants do well in full sun. Pkt. 10c.

PERENNIAL SWEET PEAS

1235 Very decorative climbing vines of the Pea family for growing on fences, trellis, etc., and for cutting. Blooms all summer if seed pods are removed. Finest mixed. Pkt. 10c.

SWEET PEAS (H A)

Plant as early as possible for best results.

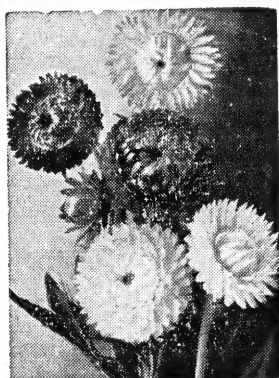
1230 Giant Spencer Mixed. Many varieties. Pkt. 10c; 1 oz. 20c.

1228 Unrivalled Fantasy Mixed. Made up of the choice large flowering Spencer varieties that are heavily veined and mottled. Pkt. 10c; oz. 25c.

EARLY FLOWERING SPENCER SWEET PEAS

1234 These are exceptionally large flowered and long stemmed for the early flowering type finest mixed. Pkt. 10c; oz. 35c.

CUTHBERTSON SWEET PEAS—ON OUTSIDE BACK COVER.



989 Helichrysum

STRAW FLOWERS

(H A—2½ Ft.)

Straw Flowers should be cut before the centers open, and be hung upside down in a cool, dark place to dry.

989 **Helichrysum**. Large compact flowers. A very nice blend of colors for winter bouquets. Pkt. 10c.

990 **Everlasting Flowers**. All varieties mixed. Pkt. 10c.

STOCKS

1203 **Evening Scented**. (A-15 in.) Purplish lilac flowers have a delightful fragrance in the evening and early morning. Blooms most all summer. Pkt. 10c.

TITHONIA

1243 **TORCH**—They grow 3 to 4 feet tall and are covered with orange scarlet flowers. Stands summer heat and is disease resistant. Luxuriant green foliage, good for cutting. Pkt. 15c.

TORENIA

1244 **Tourniere**—Wishbone flower. Compact plants are covered with many light blue, blotched dark blue flowers with yellow throats. Pkt. 15c.

VERBENA (H A—8 In.)

These are colorful annuals for some sunny spot in the border. In bloom continuously. They make gay bouquets for table decorations. Do not sow the seed outdoors until the soil gets warm. The following Verbenas are all the newer hybrid varieties.

1246 **Lavender Glory**. A true lavender with a medium-sized creamy white eye. It is also distinctly fragrant.

1247 **Rose Glow**. A solid deep rose red.

1251 **Crimson Glow**. A pure glowing crimson.

1250 **Hybrid Varieties Mixed**.

Verbenas Packets, 10c.

NEW—DWARF COMPACT VEBENA

1248 **Sparkle**. A neat dwarf tightly formed compact plant that grows about 10 inches tall and 12 inches across. Blooms are a bright scarlet red greatly intensified by a large white eye, the clusters of blooms are made up of 40 to 50 large size florets. Packet 20c.

VIOLA (P—6 In.)

1254 Smaller than pansies but have a longer blooming season. Blooms first year from seed. Mixed. Packets, 10c.

VINCA ROSEA (Periwinkle) (B)

1255 Ornamental free-blooming plants, with dark laurel-like foliage and handsome pink and white flowers. Seed germinates slowly but if sown early plants will bloom the first summer. They can be taken up in the fall, potted, and kept in bloom for the winter. (1 ft.) Mixed. Pkt. 10c.

VISCARA (A 1 Ft.)

1256 **Choice Mixed**. Very showy and effective garden annual, producing freely throughout the summer large single flowers in red, white and blue shades. Very bright and effective for beds and useful for cutting. Pkt. 10c.

WALLFLOWER (A—15 In.)

1257 Lovely sweet-scented flowers. Unusual colors, always admired. Finest mixed. Pkt. 10c.

HYBRID ZINNIA

1292 **Burpee Giant Hybrid Zinnias**. Their glistening beauty, stem length and keeping quality makes them one of the most popular of all cut flowers. Strong free blooming plants. Blooms 5 in. and more across with lots of variations and new bright colors. They are entirely free from the stiffness often associated with other zinnias. All colors mixed.

(Pkt. 15c)

NEW ZINNIA—PEPPERMINT STICK

Unlike Any Zinnia on the Market Today

1294 Plants some taller than the pumila type, bear medium size flowers. Peppermint Stick produces about 70% striped flowers, the basic colors are red, yellow, pink, orange and purple with contrasting stripes.

Don't miss these for something new in Zinnias.

Packet 10c

ZINNIAS—DAHLIA FLOWERED (H A; 3 Ft.)

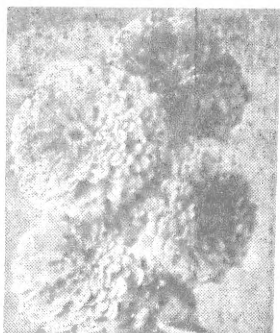
The broad petals are closely imbricated, sometimes seemingly almost to be piped one upon the other; the flowers often 4 inches in depth and 6 inches in diameter, resembling Show Dahlias.

- 1258 Meteor. The Darkest of Reds.
- 1261 Polar Bear. Large creamy white.
- 1262 Dream. Deep rosy lavender.
- 1263 Eldorado. Salmon shading to apricot.
- 1264 Purple Prince. Deep purple.
- 1265 Canary Bird. Rich canary yellow.
- 1266 Scarlet Flame. Large bright scarlet.
- 1267 Luminosa. Bright deep pink.

Above Packets 10c

1270 Mixed. Many varieties.

Pkts. 10c; ¼ oz. 25c; ½ oz. 35c; 1 oz. 60c.

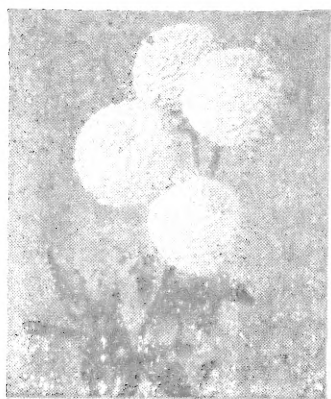


1270 Dahlia Flowered Mixed

SCABOSIA FLOWERED

1275 Plants 2½ ft. On a single corona of outside petals stands a semi-globular crown with a large number of small florets giving a most interesting effect, similar in form to the flowers of the Scabiosa. Mixed colors. Pkt. 10c; ¼ oz. 30c.

LILLIPUTS



The small pompon-like flowers of Lilliput Zinnias are exquisite and most appealing. Plants are dwarf bushy and very branching; 12 to 18 inches tall, and literally covered with double blooms, 1 to 1½ inches across. Nice as edgings to other plants or taller growing zinnias.

- 1277 Crimson Gem. Bright crimson
- 1279 Purple Gem. Bright purple
- 1280 Rosebud. Rose pink
- 1283 Black Ruby. Blackish red

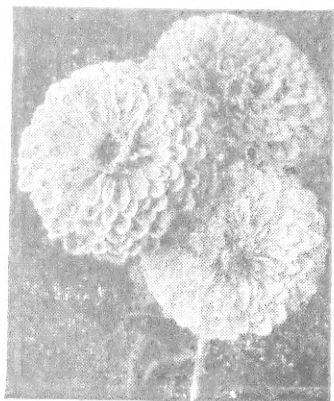
1286 Finest Mixed. From named varieties.

1280 Lilliput Rosebud

Pkts. 10c; ⅓ oz. 15c; ¼ oz. 25c; ½ oz. 40c; 1 oz. 60c.

SUPER CROWN O'GOLD PASTEL TINTS

1274 This is the very finest large flowered Zinnia introduction since the original Dahlia Flowered. Flowers are large and showy, 5 to 5½ inches in diameter. Strictly a mixture of all pastel tints. All of the flowers carry the characteristic Crown O'Gold markings, that is, each petal of the flower is overlaid at the base with a deep golden yellow while carrying out the individual flower color at the tip. Flowers are borne profusely throughout the season.



Packet 10c

¼ oz. 30c; ½ oz. 45c

1274 Super Crown O'Gold

High Altitude Grown Garden - Flower and Field - Seeds

CUTHBERTSON SWEET PEAS

Heat-Resistant

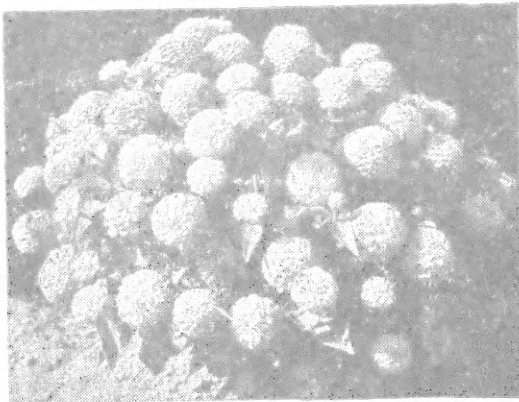
A new Sweet Pea that withstands hot weather and continues to bloom long after other varieties have died. Plants are vigorous and produce an abundance of large long stemmed flowers in clear bright colors. Cuthbertson Sweet Peas are especially good where other varieties fail due to hot weather. About 10 days earlier than regular Spencers.

- 1314 **BILLY.** Light Carmine, darker shading.
- 1316 **CATHERINE.** Clear Cerise Rose.
- 1320 **DANNY.** Bright Navy Blue.
- 1322 **EVELYN.** Salmon Pink, shading Cream.
- 1324 **JANET.** Remarkably good White.
- 1326 **KENNETH.** A real good Crimson.
- 1327 **MARION.** Deep Cream but not yellow.
- 1330 **TOMMY.** Most pleasing Clear Blue.

Above: Packets 10c; $\frac{1}{2}$ oz. 20c; 1 oz. 35c.

- 1335 Many Colors Mixed.

Packet 10c; $\frac{1}{2}$ oz. 20c; 1 oz. 30c;
2 ozs. 55c; 4 ozs. \$1.00.



TOM THUMB ZINNIA

Plants 4''-6'' high, compact, covered with well formed flowers of the Lilliput type. Colors range through the red, orange, yellow, pink, rose and other pastel shades. Excellent for pot plant and border use.

1290 Finest Mixture. Packet 10c; $\frac{1}{8}$ oz. 20c; $\frac{1}{4}$ oz. 35c.

**See Yellow Order Blank
for FREE Seeds**

STRAWBERRY PLANTS—PAGE 12 AND 15

QUALITY FIRST--ALWAYS