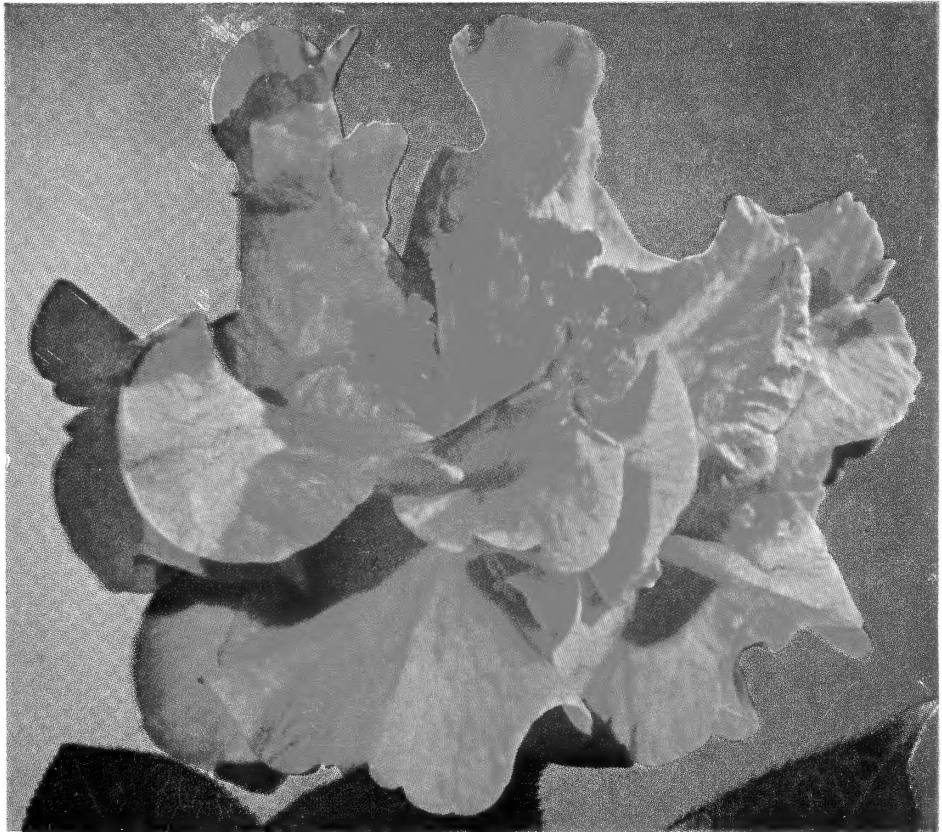


62.09

LIBRARY  
REC  
\* OCT 5 - 1955  
U. S. Department of Agriculture

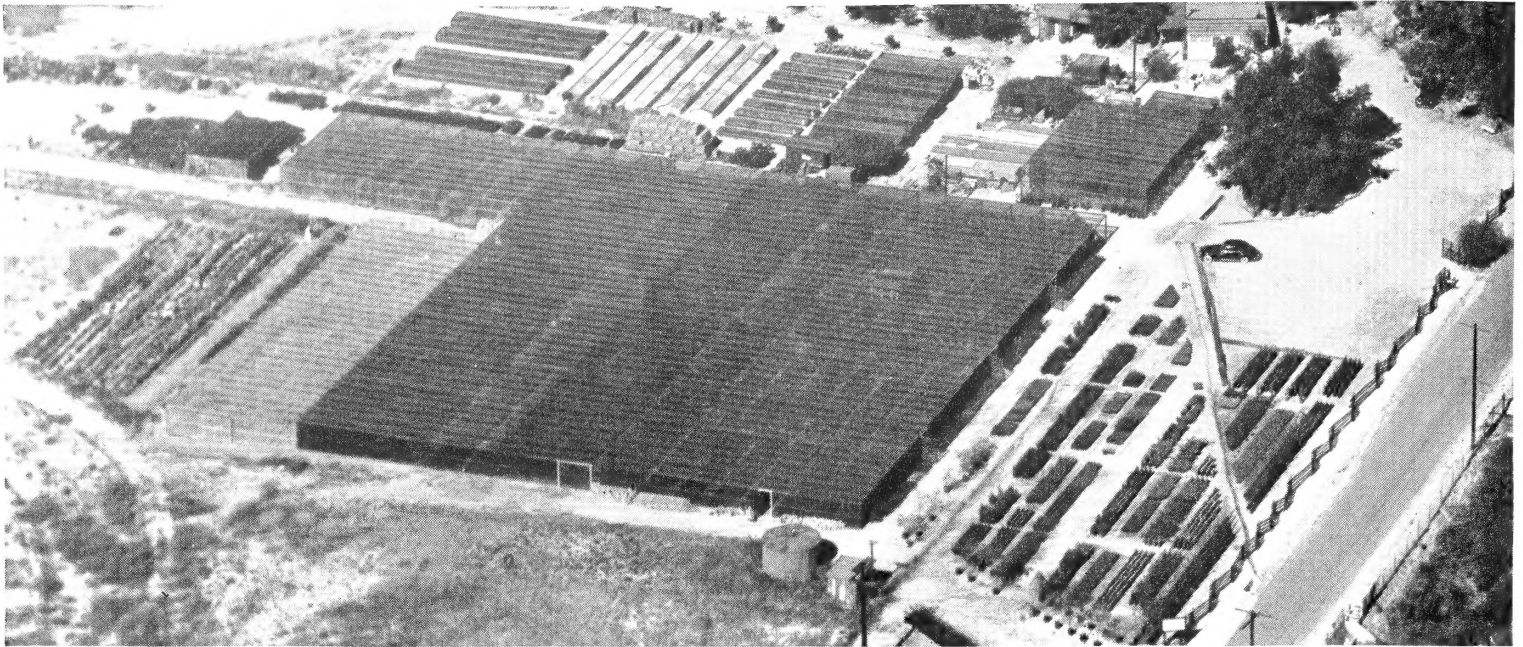


Camellia reticulata CRIMSON ROBE  
See Page 19

*Nuccio's*  
*Nurseries*

CAMELLIAS FOR 1956

Page 27



AERIAL VIEW OF NUCCIO'S NURSERIES

## WELCOME VISITORS!

Most of our customers come to us through the United States mail, but we enjoy having visitors stop in to see us, and we cordially invite you to do so whenever you can. We are open daily **except Wednesday**, and business hours are from 8:00 to 5:00. During the period from June 1 through September 15 we are also closed on Sundays.

## TERMS OF SALE

Please send your remittance with your order. California customers add 3% sales tax to the total. Prices in this catalog are subject to change without notice, and are all F.O.B. Altadena, California. Please specify the way you wish to have us make shipment (parcel post, express, motor freight, railroad freight or air freight). When no instructions are given we will ship via Railway Express. We make no crating charge on orders over \$20.00, but **if your order amounts to less than \$20.00, please add \$1.00 for the first plant and 25c for each additional plant ordered** in order to cover crating costs.

## GUARANTEE

We guarantee all plants to be true to name, to be well grown, and properly packed for shipment. Shortages, damages or losses should be reported to the transportation agency immediately on arrival, and if you will notify us, we will give you all the assistance we can. At no time will we be responsible for more than the purchase price.

## PLEASE READ BEFORE ORDERING

All of our Camellias are container grown (1-gal., 3-gal., 5-gal. and 6-gal.) and will be shipped in their containers. Handled this way Camellias can be shipped and planted every month of the year.

We propagate over 650 varieties of Camellias, many of which are too rare to be in the catalog list. Information desired on varieties not listed will be supplied on request.

We also have large, specimen plants of many varieties, and we will quote prices for these on request.

Notice to residents of the states of Alabama, Florida, Louisiana, Mississippi, North Carolina, South Carolina and Tennessee. All shipments of Camellias into these states will be bare-rooted, reballed in peat moss, burlapped and wrapped in waterproof paper. We are experienced in shipping bare-rooted Camellias and have found the above method so successful that we are giving the same guarantee we give our container grown Camellias. We have successfully shipped bare-rooted Camellias all months of the year, but for best results we advise shipment from mid-September through May.

## NEW VARIETIES

Our breeding and testing program evaluates each year literally hundreds of new varieties of camellias, both of our own and other breeders' origin. To our already very large list of varieties we have added 17 more this year, dropping some which have become displaced by superior new strains.

# *How to Grow Fine Camellias*

### Where and How to Plant

Even though Camellias can and are being successfully grown in full sun, the best exposure is filtered shade (trees, lath, etc.), morning, or afternoon sun. If planting a Camellia in full sun, it should be done in the winter months in order to allow the plant to become acclimated before summer heat.

Dig a hole at least twice as deep and twice as big around as the size of the container or ball of the plant. Add  $\frac{1}{3}$  peat moss or leaf mold to soil taken from hole and mix thoroughly. If soil is heavy (clay or adobe) use at least 50% peat moss or leaf mold. Fill the hole with sufficient amount of mixed soil so that after firming, the top of the plant ball will set at least one inch above the surrounding area. **NEVER PLANT TOO DEEP.** After setting plant in hole, fill with the mixed soil and pack firmly. Make a basin around the plant and give it a thorough watering to settle soil. Place about one inch of peat moss in basin for mulch.

### Watering

Do not allow plants to become dry, and more important, never keep soil soggy wet. Either condition can cause buds to drop or loss of plant. Always bear in mind that a Camellia likes to be kept reasonably moist, but also requires good drainage.

### Fertilizing

Camellias should be fertilized during the summer growing months, starting as early as March and not later than August. Three feedings in this period are sufficient, i.e., April, June and August. Space feedings at least 30 days apart. Any of the better known acid fertilizers may be used, preferably cottonseed meal. For amount follow directions on package. **NEVER OVER-FERTILIZE.**

# NUCCIO'S *Supreme Quality* CAMELLIAS

VARIETY	SIZES			
	12"-18"	18"-24"	24"-30"	30"-36"
<b>ADOLPHE AUDUSSON VAR</b> (Special) — Heavily mottled white form of Adolphe Audusson. M.	\$4.00*	\$5.00*	\$7.50*	\$10.00*
<b>AN-FLO-LEE</b> —Very large, dark red peony to anemone form. Vigorous, upright growth. M.	6.00*	....	....	....
<b>ANN MILLER</b> —New. Large, semi-double to double, pale pink. Vigorous, compact growth. M-L.	5.00*	6.50*	....	....
<b>APPLE BLOSSOM</b> (Saluenensis)—Single pink and white. Small. Vigorous, open growth. E-M.	2.00	3.00	....	....
<b>ARRABELLA</b> — Orange-red. Resembles Reticulata in form. Large, semi-double. Upright, compact growth. M.	4.00*	5.00*	7.50*	10.00*
<b>BEAU HARP</b> —Very large, irregular semi-double, brilliant rose-red. Vigorous, upright growth. E-M.	4.00*	5.00*	7.50*	10.00*
<b>BERENICE BODDY</b> (U.S. Pat. No. 605)—Light pink with deeper pink under petals, shading to a blush center. Medium-large, semi-double. Vigorous, loose growth. M.	2.50	3.50	6.00	7.50
<b>BETTY McCASKILL</b> (Maliflora)—Small semi-double to full double pale pink, margined rose-pink. Vigorous, slender, upright growth with small foliage. M-L.	6.00*	....	....	....
<b>BETTY SHEFFIELD</b> —Large white, variegated red and pink, semi-double to loose peony form. Medium, compact growth. M.	6.00*	....	....	....
<b>BETTY THEISEN</b> —A beautiful large, loose, semi-double, pale pink shading to deeper pink in center. Medium, bushy growth. M-L.	4.00*	5.00*	7.50*	10.00*
<b>BIG BEAUTY</b> —White, blotched and spotted with pink. Large, semi-double to loose peony form. Vigorous, bushy growth. M-L.	4.00*	5.00*	7.50*	10.00*
<b>BLUSH PLENA</b> —Beautiful new sport of Alba Plena. Flowers are blush-pink when first open, fading to white after several days. Foliage, growing habit and blooming season same as Alba Plena.	7.50*	....	....	....
<b>BRIDE'S BOUQUET</b> (Harvey Short Seedling)—A very large white semi-double with fluted and notched petals. Medium, open growth. Extremely long blooming season. M-L.	5.00*	7.50*	10.00*	12.50*

## SPECIAL BONUS OFFER

When our customers send us a nice order we like to show our appreciation by shipping extra camellias. But so many times we are uncertain what to send because the variety we select may be one already a part of your collection. So we are making this special bonus offer in order to give you an opportunity to select the extra plants yourself. There are no restrictions on varieties—you may choose any kind in this catalog according to the following schedule:

If your order amounts to **\$20.00** or more, select any \$2.50 camellia free of additional charge.

If your order amounts to **\$40.00** or more, select any camellias totaling \$5.00 in value.

If your order amounts to **\$60.00** or more, select any camellias totaling \$7.50 in value.

If your order amounts to **\$80.00** or more, select any camellias totaling \$10.00 in value.

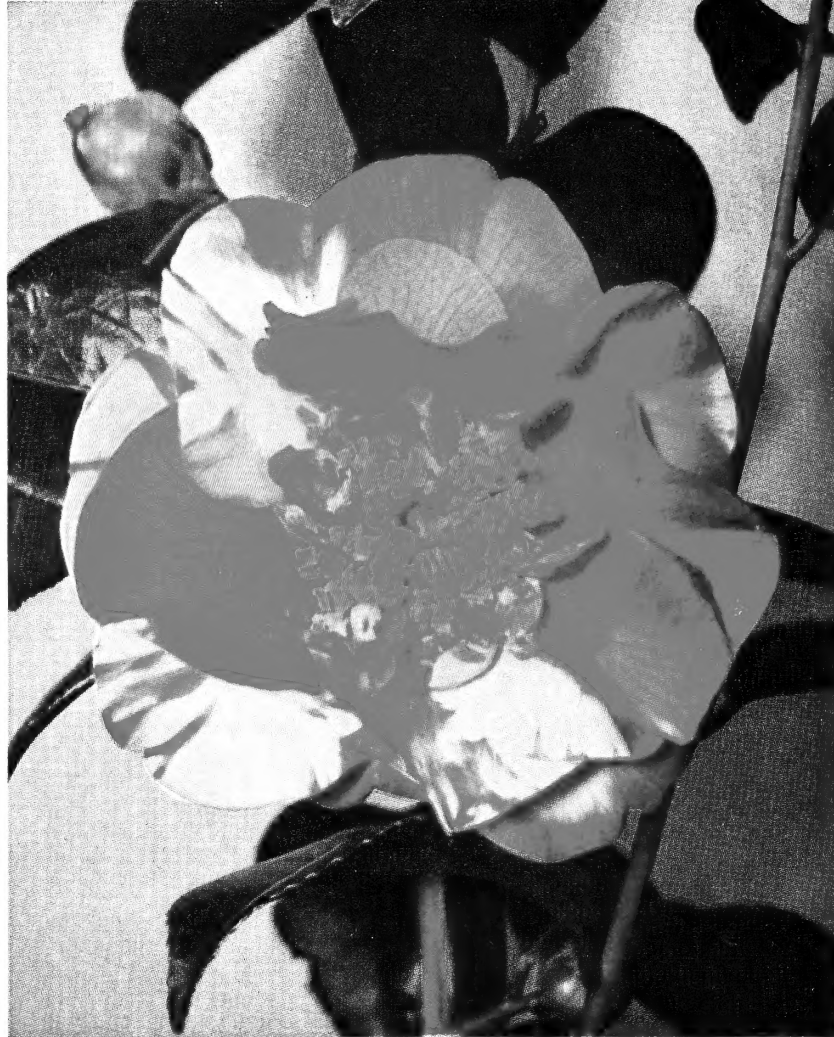
Larger orders earn bonus plants according to the same ratio

VARIETY	SIZES			
	12"-18"	18"-24"	24"-30"	30"-36"
<b>CAROLYN TUTTLE</b> —New. Rose-opal, full peony flower similar to Debutante in form, but deeper in color. Sturdy, long-lasting blooms ranging in size from 3½ to 4 inches and larger. Glossy, crinkled, pointed foliage; sturdy, compact, upright plants. M.	\$7.50*	\$ . . .	\$12.50*	\$ . . . .
<b>CATHERINE McCOWN</b> —Light pink. Sport of Eleanor McCown. Loose, upright growth. M.	5.00*	6.50*	....	.....
<b>CHARLOTTE BRADFORD</b> —A beautiful silvery pink, variegated white sport of Thelma Dale. M.	6.00*	....	....	.....
<b>CHO-CHO-SAN</b> —New. Pale pink, golden stamens. Large, semi-double. Slow, upright, compact growth. M.	4.00*	5.00*	7.50*	.....
<b>CHOYO-NO-NISHIKI</b> —Large, semi-double variegated. Vividly striped rose-red on pink background. Slow, compact growth. E-M.	5.00*	....	....	.....
<b>CLARA GREEN</b> —A very lovely, large anemone form. Brilliant rose-pink. Upright, compact growth. M.	4.00*	5.00*	7.50*	.....
<b>CLARA G. MYRICK</b> —Medium to large formal to rose form double, deep rose pink. Medium, compact growth. M.	6.00*	....	....	.....
<b>C. M. WILSON</b> —New. Pale pink sport of Chandleri Elegans. Outstanding. Medium, spreading growth. E-M.	2.50	3.50	7.50*	10.00*
<b>COLLETTII</b> (Colletti Maculata)—Brilliant dark red, blotched with white. Medium, peony form. Slow, bushy growth. E-M.	4.00*	5.00*	7.50*	.....
<b>CONFLAGRATION</b> —Fire-red. Large, semi-double. Vigorous, slender, upright growth. M-L.	4.00*	5.00*	7.50*	10.00*
<b>CONRAD HILTON</b> —Another wonderful addition to the already famous "Daik" family is this new egg shell white sport of High Hat. Extremely early. Slow, compact growth. E-L.	7.50*	10.00*	12.50*	15.00*
<b>CORNUS FLORA</b> —Medium single, light pink, shaded deeper pink. Resembles Pink Dogwood. Medium, upright, compact growth. M.	4.00*	5.00*	7.50*	.....
<b>CORONATION</b> (McCaskill)—White. Very large semi-double with beautiful crown of stamens and petaloids. Vigorous, open, spreading growth. M.	10.00*	12.50*	....	.....
<b>DAINTY</b> —Blush-white, striped with pink. Heavily fringed petals. Semi-double. Sport of Tricolor Sieboldi. Upright, compact. M-L.	4.00*	....	....	.....
<b>DAITAIRIN</b> —Light rose pink.. Very large single with mass of blush-white petaloids in center. Vigorous, upright growth. E-M.	4.00*	5.00*	7.50*	.....
<b>DAVE STROTHER</b> —Beautiful, large blush pink, loose anemone to peony form. Vigorous, upright growth. M-L.	5.00*	....	....	.....
<b>DESSA THOMPSON</b> —New. Medium to large, white, full peony form, extremely early. Compact, upright growth. E-L.	5.00*	6.50*	....	.....
<b>DONATION</b> —The finest of the Saluenensis x Japonica hybrids. Deep pink, large semi-double. Prolific bloomer. Medium, upright growth. M.	10.00*	....	....	.....
<b>DONCKELARI</b> —Same as Donckelari (Southern) with the exception that our parent plant blooms heavily marbled white. M.	4.00*	5.00*	7.50*	10.00*
<b>DR. H. G. MEALING</b> —A very large blood-red semi-double. Vigorous, open growth. L.	6.00*	....	....	.....

VARIETY	SIZES			
	12"-18"	18"-24"	24"-30"	30"-36"
<b>DR. JOHN D. BELL</b> —Dark red, heavily variegated white form of Beau Harp. Vigorous. Upright growth. E-M.	\$6.00*	\$7.50*	\$ . . .	\$ . . . .
<b>DR. TINSLEY</b> —New. Large, flesh pink, semi-double to peony. Outstanding. Upright, compact growth. M.	6.00*	7.50*	10.00*	.....
<b>DRAMA GIRL</b> —This outstanding new camellia was developed by "Doc" Miller of San Diego. Its very large blossoms, 5½"-6½", are large petaled, semi-double, deep salmon rose pink with prominent stamens. Vigorous, upright open growth, with extremely large, dark green foliage. Blooming season from December through April.	12.50*	.....	.....	.....
<b>ECLATANTE</b> —Deep pink, large, semi-double. Vigorous, upright, compact growth. M.	7.50*	.....	.....	.....
<b>EDDIE G. WHEELER</b> —Very large light pink, semi-double, with prominent stamens. Medium, upright growth. M.	6.00*	.....	.....	.....
<b>EDITH LINTON</b> —Beautiful pink, shading to silvery pink, sport of Jean Lyne. Large, semi-double to peony form. Medium, compact growth. M.	\$7.50*	.....	.....	.....
<b>EDWIN FOLK</b> —New. Bright red. Very large, loose semi-double. Medium, upright growth. M-L.	4.00*	5.00*	7.50*	10.00*
<b>ELEANOR HAGOOD</b> —Pale pink. Medium, formal very double. Vigorous, upright, bushy growth. L.	4.00*	5.00*	7.50*	10.00*
<b>ELEANOR HAGOOD VAR.</b> —Pale pink, mottled with white. Medium, formal very double. Vigorous, upright, bushy growth. L.	4.00*	.....	.....	.....
<b>ELIZABETH LE BEY</b> —This outstanding new camellia is a must in every collection. The rich pink blossoms are very large, hemispherical, semi-double to loose peony form. Vigorous, pendulous growth.	6.00*	7.50*	12.50*	.....
<b>EMMA</b> —Large, light pink. Rose form to peony form. Very lovely. Slow, spreading growth. M.	4.00*	5.00*	7.50*	10.00*
<b>EMMETT BARNES</b> —Finest of the whites. Very large semi-double to loose peony form. Vigorous, compact growth with large, dark green foliage. E.	7.50*	.....	.....	.....
<b>EMMETT PFINGSTL</b> —Beautiful red and white variegated form of Joseph Pfingstl. An excellent camellia. Vigorous, upright growth. E-M.	7.50*	.....	.....	.....
<b>ETHEL DAVIS</b> —Large, loose peony form. Beautiful, clear pink. Vigorous, upright growth. Outstanding. M.	7.50*	.....	15.00*	.....
<b>EUGENE LIZZIE (Lady Jane Gray)</b> —Rose-pink, marbled with white. Large, semi-double to peony form. Slow, compact growth. M-L.	4.00*	5.00*	7.50*	.....
<b>FIRST FLUSH (Hybrid Saluenensis x Japonica)</b> —Small, single, delicate pink. Profuse bloomer. Valuable as landscape material. Vigorous, open, upright growth. M.	5.00*	6.50*	7.50*	10.00*
<b>FLAME VAR.</b> —Flame-red, mottled with white. Variegated form of Flame.	4.00*	5.00*	7.50*	.....
<b>FLAMINGO</b> —Beautiful, large, light pink. Single to semi-double. Vigorous, upright growth. M.	4.00*	5.00*	7.50*	10.00*



CAROLYN TUTTLE, See Page 4



REG RAGLAND, See Page 14

**VARIETY**

**FLOWERWOOD** (U.S. Pat. No. 1074)—Flower form and color identical to Mathotiana but all petals are sharply fimbriated. Outstanding. Vigorous, bushy growth. M-L.

**FRANCES McLANAHAN**—Soft pink sport of Lady Vansittart with lighter pink toward center of petals. Vigorous, upright, compact. Excellent. M.

**FRANK GIBSON**—This outstanding new camellia, with its striking color and unusual form, has caused much comment wherever shown. A large, anemone form, consisting of a single row of white petals and a center of numerous golden petaloids and stamens. Medium, bushy growth. E-M.

**FRENCH IMPERATOR**—Very large full peony form. Extremely dark red. Medium, upright, open growth. M.

**FROSTY MORN** (Harvey Short)—A very large white anemone to peony form with beautiful long, narrow, slightly twisted foliage. Medium, open, upright growth. M-L.

**GLEN 40**—Deep orange-red. Large, full formal double. Slow, compact growth. M-L.

**GLEN 40 VAR.**—Deep orange-red, mottled with white. Slow, compact growth. M-L.

**HAKU RAKUTEN**—White. Large, semi-double to peony form. Medium, upright growth. M.

**HANA FUKI**—Light pink. Very large cup shaped, semi-double. Medium, compact growth. M.

**SIZES**

	12"-18"	18"-24"	24"-30"	30"-36"
	\$4.00*	\$5.00*	\$7.50*	\$10.00*
	7.50*	....	....	.....
	4.00*	5.00*	7.50*	10.00*
	4.00*	....	....	.....
	7.50*	10.00*	12.50*	.....
	2.50	5.00*	7.50*	10.00*
	4.00*	....	....	.....
	4.00*	5.00*	....	.....
	4.00*	5.00*	7.50*	10.00*

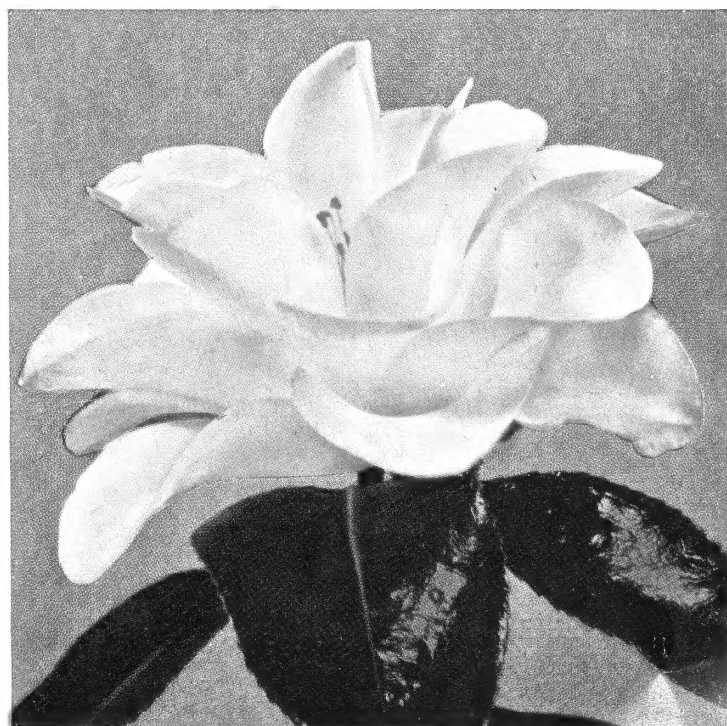
**VARIETY**

**SIZES**

	12"-18"	18"-24"	24"-30"	30"-36"
<b>HELEN K</b> —Medium to large peony form, with unusual color toning of pale pink center to deeper lavender pink toward edges. Vigorous, compact growth. E-M.	6.00*	....	....	....
<b>HISHI-KARAITO</b> —Small, bell-shaped, semi-double. Delicate pink. Slow, compact growth. M.	5.00*	....	....	....
<b>IWANE (F. G. #2)</b> —Brilliant red, heavily blotched with white. Large, semi-double. Slow, compact growth. M.	5.00*	6.50*	10.00*	.. . .
<b>JAMES ALLAN</b> —Fire-red. Very large, semi-double, medium growth. M.	4.00*	5.00*	....	....
<b>JAMES ALLAN VAR.</b> —Fire-red, mottled with white. Medium, open growth. M.	4.00*	5.00*	7.50*	....
<b>J. C. WILLIAMS (Hybrid Saluenensis x Japonica)</b> —An outstanding new hybrid. Medium sized, light pink, profuse bloomer. Extremely long blooming season. Medium, bushy growth. M-L.	7.50*	....	....	....
<b>JESSIE KATZ (U.S. Pat. No. 1107)</b> —An outstanding new variety with large, wavy petals. Semi-double, watermelon pink. We are the exclusive West Coast propagators of this fine new camellia. Medium, bushy growth. M-L.	7.50*	10.00*	12.50*	....
<b>J. J. PRINGLE SMITH VAR.</b> —Dark red, heavily marbled with white. Very large, semi-double. Slow, compact growth. M-L.	2.50	3.50	7.50*	....
<b>JOSEPH PFINGSTL (Pat. No. 927)</b> —A very large dark red, varying in form from semi-double to full formal. Extremely hardy and vigorous growth with long blooming season. October to April. E-L.	7.50*	....	....	....
<b>JOSHUA A. YOUTZ (White Daikagura)</b> —This outstanding camellia was introduced by our nursery in 1950. Its blossoms, which are pure white, fully peony form double, are larger than its parent, the Daikagura. Its foliage, growing habit and early blooms are like its parent, making this variety a truly outstanding camellia. E-L.	2.50	3.50	7.50*	10.00*



DONCKELARI, See Page 4



MAGNOLIAFLORA, See Page 8

\* An asterisk after the prices denotes grafted plants

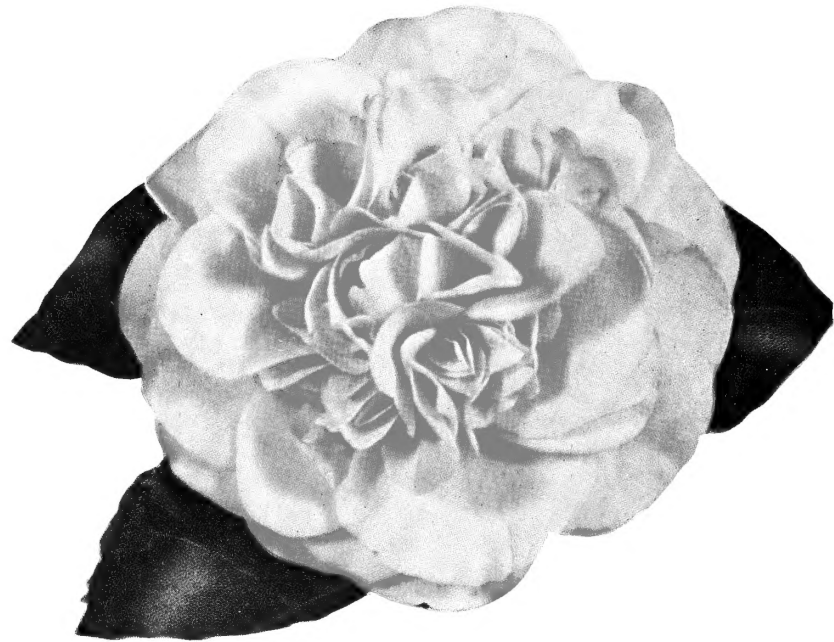
VARIETY	SIZES			
	12"-18"	18"-24"	24"-30"	30"-36"
<b>KATHERINE NUCCIO</b> (N #104)—A 3 to 3½ inch double formal, rose form, consisting of 60-65 large petals. Brilliant rose-red, with edges of petals cupped inward. Foliage, dark green, medium, slightly twisted. Compact growth.	\$2.50	\$3.50	\$7.50*	\$10.00*
<b>KENNY</b> —Deep rose-pink, blotched white. Large, semi-double to peony form. Slow, compact growth. L.	4.00*	....	....	....
<b>KERLEREC</b> —A very beautiful salmon-pink, medium-large peony to anemone form. Medium, bushy, upright growth. E-M.	7.50*	....	....	....
<b>KIMBERLEY</b> —Carmine with red stamens. Medium, single. Profuse bloomer. Vigorous, upright, compact growth. M.	2.50	3.50	6.00	....
<b>KING LEAR</b> —Cherry-red, marbled with white. Variegated form of Finlandia. Vigorous, compact growth. M.	2.50	3.50	7.50*	10.00*
<b>LADY KAY</b> —Fimbriated peony form sport of Ville de Nantes, with growing and blooming season same as parent. Red, mottled white.	6.00*	....	....	....
<b>LADY LUCILLE</b> —Very large, full double to peony. Creamy white. Medium, bushy upright. L.	4.00*	5.00*	7.50*	10.00*
<b>LADY SADIE</b> —White. Large, semi-double with fluted petals that intermix with golden stamens. Medium, upright growth. M.	2.50	3.50	7.50	10.00*
<b>LAWRENCE WALKER</b> —Brilliant red. Very large, loose peony form. Upright growth. M.	4.00*	5.00*	7.50*	....
<b>LENA JACKSON</b> —New. Large, blush pink. Formal to semi-double. Medium, slender, upright growth. M.	4.00*	5.00*	7.50*	10.00*
<b>LETITIA SCHRADER</b> —Dark, bright red. Very large peony form. Medium compact growth. M.	4.00*	5.00*	7.50*	10.00*
<b>LOUISE McCLAY VAR.</b> —Deep pink blotched with white. Medium, upright, compact growth. M.	4.00*	5.00*	7.50*	10.00*
<b>MAGNOLIAFLORA</b> —Still one of the best of the pale pink semi-doubles. Its very compact, upright growth makes it a handsome shrub. M.	4.00*	5.00*	7.50*	10.00*
<b>MAGNOLIA QUEEN</b> —White with an occasional rose-red blotch and a few light pink stripes. Large, irregular semi-double with flat blossoms. Medium, bushy growth. L.	4.00*	5.00*	7.50*	10.00*
<b>MARGARET WALKER</b> —A beautiful variegated camellia. White, striped with pink. Large, semi-double to rose form double. Medium, upright growth. M-L.	4.00*	....	....	....
<b>MARGUERITE TOURJE</b> —Excellent new sport of Masquerade, having the same growing habit and blooming season as its parent. Blossoms are large, semi-double to loose anemone form. Light fuchsia pink with petals bordered with white. M-L.	10.00*	....	....	....
<b>MARIE GRIFFIN</b> —Beautiful blush pink sport of Finlandia. Much lighter than the Finlandia sport, Monte Carlo. Medium, bushy, compact. M.	7.50*	10.00*	....	....
<b>MARJORIE MAGNIFICENT</b> —Pale pink, semi-double to peony form. Medium, compact growth. E-M.	4.00*	5.00*	7.50*	10.00*
<b>MARY CHARLOTTE</b> —Pale pink. Medium to large anemone form. Vigorous, upright, compact. M.	2.50	3.50	7.50*	10.00*



VARIETY	SIZES			
	12"-18"	18"-24"	24"-30"	30"-36"
<b>MASTERPIECE</b> —This new seedling, developed by Harvey Short, has proven to be a real "Masterpiece." Its 4½ to 5 inch, pure white, rose form blossoms are deep petaled, cup shaped and 3 inches deep. Foliage unusually large with open, vigorous growth, makes this camellia a very handsome shrub as well as a beautiful flower. E-M.	\$4.00*	\$5.00*	\$7.50*	\$10.00*
<b>MASQUERADE</b> (N #404)—Frank Williams Award Winner 1952. A very large semi-double to loose anemone form. White with an occasional fuchsia pink or rose pink marking. Foliage, long, dark green with habit of growth spreading yet very compact. M-L.	2.50	3.50	7.50*	.....
<b>MATHOTIANA SUPREME</b> —This sport of Mathotiana is the same color and has the same growing habits as its parent, but its large, semi-double blossoms has stamens interspersed among curled or ruffled center petals.	7.50*	....	15.00*	.....
<b>MATTIE O'REILLY</b> —Very large, semi-double to peony form with stamens intermixed with rabbit-eared petals. Beautiful shade of coral rose pink. Slow, compact, upright growth. E-M.	7.50*	10.00*	....	.....
<b>MAX GOODLEY</b> —New. Very large, pale pink, irregular semi-double. Vigorous, open, upright growth. M-L.	5.00*	6.50*	....	.....
<b>MOLLIE MOORE DAVIS</b> —A very beautiful, large, deep rose-pink sport of Big Beauty. Outstanding. Vigorous, bushy growth. M-L.	4.00*	5.00*	7.50*	10.00*
<b>MONTE CARLO</b> —Beautiful light pink sport of Finlandia. Outstanding. M.	6.00*	7.50*	10.00*	.....
<b>MORNING GLOW</b> —White. Large. formal double imbricated. Vigorous, upright, compact growth. E-M.	2.50	3.50	7.50*	10.00*
<b>MRS. BALDWIN WOOD</b> —White with vivid pink stripe on one or more petals. Large, irregular semi-double to rose form. Medium, upright, loose growth. M.	4.00*	5.00*	7.50*	.....
<b>MRS. BERTHA HARMS</b> —A very large semi-double. Ivory white with blush pink cast. Medium, upright, open growth. M-L.	5.00*	....	....	.....
<b>MRS. CLARK</b> —A very beautiful light pink to white, large peony. Medium, compact growth. M.	6.00*	7.50*	10.00*	.....
<b>MRS. FREEMAN WEISS</b> —Pink, occasionally mottled with white. Large, semi-double with wavy petals. Vigorous, upright, compact. M.	4.00*	5.00*	7.50*	10.00*
<b>MRS. NELLIE EASTMAN</b> —New. Flesh pink, speckled and striped with deep rose. Medium large, full peony form. Very beautiful. Medium, upright, compact. M.	5.00*	6.50*	....	.....
<b>MRS. SHEPHERDSON</b> —A large white striped with pink. Anemone form. Medium, upright, bushy growth. M.	4.00*	5.00*	7.50*	.....
<b>MY DARLING</b> —Beautiful, small soft pink. Single. Resembles a poppy. Vigorous, upright, compact. M.	4.00*	....	....	.....
<b>NINA AVERY</b> —New. Pale pink. Medium to large; semi-double to peony form. Vigorous, upright, compact. M.	7.50*	....	....	.....
<b>ONIJI</b> —Deep pink marbled with white. Very large semi-double. Variegated form of Lady Clare. Vigorous, bushy growth. E-M.	4.00*	5.00*	7.50*	.....
<b>PAULETTE GODDARD</b> —Red. Very large, semi-double to loose peony form. Vigorous, upright, open growth. M-L.	4.00*	5.00*	....	.....
<b>PEARL MAXWELL</b> —A beautiful, large formal double. Soft pink. A glorified Pink Perfection. Vigorous, compact growth. M-L.	4.00*	5.00*	7.50*	10.00*
<b>PIERATES PRIDE</b> —New. Large, dark pink anemone form. Vigorous, loose, upright growth. M.	7.50*	....	....	.....



JOSHUA YOUTZ (White Daikagura), See Page 7



DEBUTANTE, See Page 12

**VARIETY**

**SIZES**

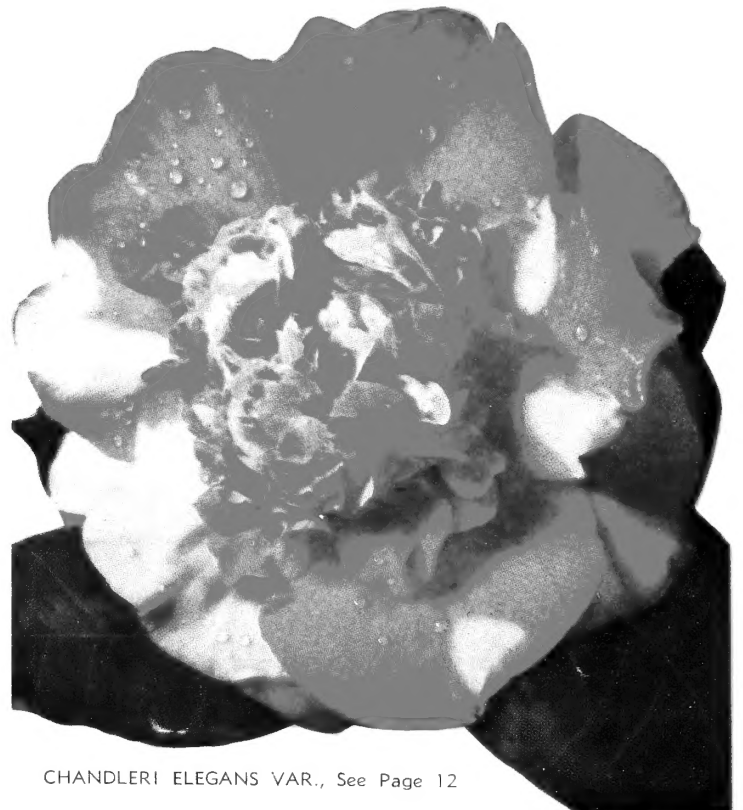
	12"-18"	18"-24"	24"-30"	30"-36"
7.50*	.....	.....	.....	.....
4.00*	5.00*	.....	.....	.....

**PINK CLOUDS** (Harvey Short)—Cream pink, marked deeper pink, changing to light lavender pink as flower ages. Very large anemone form. Vigorous, bushy growth. M.

**PINK DUCHESS OF SUTHERLAND**—Clear pink sport of Duchess of Sutherland. Upright, spreading growth. M.



FINLANDIA VAR.  
See Page 12



CHANDLERI ELEGANS VAR., See Page 12



LADY KAY  
See Page 8



MATHOTIANA (Julia Drayton), See Page 12

**VARIETY**

**PINK SHADOWS**—Another outstanding new camellia developed by Harvey Short. A beautiful, large, semi-double with fimbriated petals. Deep salmon pink with shadows of deeper pink. Medium, upright, compact. E-M.

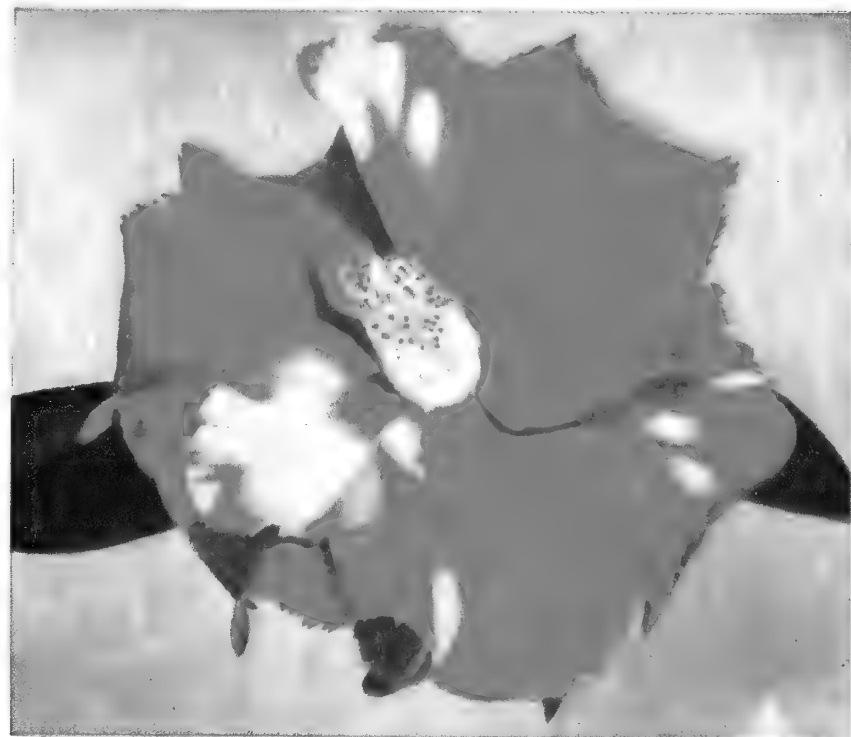
**PRIDE OF DESCANSO**—White. Very large, semi-double to loose peony form. Vigorous, loose, spreading growth. M-L.

**PRINCE FREDERICK WILLIAM**—Large, light pink, formal double of outstanding beauty. Australian import. Upright, bushy. M-L.

	SIZES			
	12"-18"	18"-24"	24"-30"	30"-36"
PINK SHADOWS	5.00*	..	8.50*	.....
PRIDE OF DESCANSO	4.00*	5.00*	7.50*	10.00*
PRINCE FREDERICK WILLIAM	7.50*	.....	.....	.....



C. M. HOVEY (Colonel Firey)  
See Page 12



VILLE DE NANTES VAR., See Page 16

\* An asterisk after the prices denotes grafted plants

# GREAT FAVORITES OF

Even though we and other camellia growers throughout the world are constantly testing and developing new and finer varieties, the following lists, on these two pages, continue through the years to compete and remain popular because of their unsurpassed beauty and quality.

## GROUP I

12"-18" .....	\$2.00
18"-24" .....	3.00
24"-30" .....	5.50
30"-36" .....	6.50

- ANITA**—Light pink, striped carmine. Medium to large, semi-double. Tall, compact growth. M. 12"-18" only.
- ARAJISHI** (Aloha)—Salmon-red to deep crimson-red. Very early bloomer. Large peony form. Vigorous, upright, open growth. E.
- BELLA ROMANA**—Light pink, striped crimson. Medium-large, double. Medium, bushy growth. M.
- BLOOD OF CHINA**—Deep salmon-red. Large, semi-double to loose peony form. Vigorous, upright, compact. L.
- CHANDLERI ELEGANS PINK** (Francine)—Rose-pink. Large anemone form. Medium, spreading growth. E-M.
- CHANDLERI ELEGANS VAR.**—Rose-pink mottled with white. Large anemone form. Medium, spreading growth. E-M.
- C. M. HOVEY** (Col. Firey)—Brilliant, deep red. Large, full double, imbricated. Medium, loose, upright growth. L.
- COVINA**—Rose-red. Medium, semi-double. Excellent landscape variety. Medium, bushy growth. M.
- DAIKAGURA RED**—Bright rose-pink. Large peony form. Slow, compact growth. E-L.
- DAIKAGURA VAR.**—Bright rose-pink, splotched with white. Large, loose peony form. Slow, compact growth. E-L.
- DEBUTANTE**—Soft pink. Large, full peony form. Vigorous, loose, upright growth. E-M.
- ELENA NOBILE**—Bright flame-red. Medium, formal double, showing stamens when fully opened. Medium, upright, compact growth. L.
- EMPEROR OF RUSSIA**—Scarlet. Large, double to peony form. Slow, compact growth. M.
- EMPEROR OF RUSSIA VAR.**—Variegated form of Emperor of Russia. Scarlet, spotted with white. Slow, compact growth. M.
- FINLANDIA**—White. Large, semi-double with fluted petals. Medium, bushy, compact. M.
- FINLANDIA VAR.**—White, streaked and speckled red form of Finlandia. Medium, bushy, compact. M.
- HERME** (Jordan's Pride)—Pink with white border, streaked rose-pink. Large, semi-double. Vigorous, open, upright. M.
- HIGH HAT**—Pale pink sport of Daikagura. Slow, compact growth. E-L.
- IMPERATOR**—Light red. Large, full peony form. Vigorous, bushy growth. E.
- KUMASAKA**—Rose-pink. Large, full double. Upright and compact growth. M-L.
- LADY CLARE**—Rose-pink. Very large semi-double. Prominent golden stamens. Vigorous, bushy growth. E-M.
- LALLAROOK** (Laurel Leaf)—Pink, marbled with white. Large, full double imbricated. Medium, upright, compact. M-L.
- MATHOTIANA** (Julia Drayton)—Crimson-red. Very large, full double imbricated, showing stamens when fully opened. Vigorous, bushy growth. M-L.
- MEREDITH LAKE**—Pale lavender-pink. Medium, semi-double. Vigorous, bushy growth. M. 12"-18", 18"-24", 24"-30" only.
- MME. HOVEY**—Pink, fading to lighter pink at center. Medium to large, formal double. Medium, upright, compact. M.
- MRS. MARIE KEATING**—Light pink. Medium large, semi-double to peony form. Vigorous, compact, upright. M.
- MRS. TINGLEY**—Light silvery-pink. Medium to large, formal double imbricated. Medium, compact. M-L.
- NAGASAKI**—Rose-pink marbled with white. Very large, semi-double. Medium, spreading growth. M. 12"-18", 18"-24", 24"-30" only.
- PAX**—White. Large, flat formal double. Medium, upright, compact. M-L.
- PINK BALL**—Soft pink. Medium large, full peony form. Vigorous, compact, upright. M.
- PINK PERFECTION**—Shell pink. Medium, formal double. Medium, bushy, upright. E-L.
- PINK STAR**—Rose-pink. Large, irregular semi-double. Slow, compact, upright. M. 12"-18", 18"-24", 24"-30" only.
- POPE PIUS IX**—Rich orange-red. Large formal double imbricated. Medium, compact, upright. M.

# YESTERDAY AND TOMORROW

**PRINCESS BACIOCCHI**—Deep rose-red. Large semi-double to semi-peony form. Vigorous, bushy growth. M.

**PROF. C. S. SARGENT**—Dark red. Medium, full peony form. Vigorous, bushy, upright. M.

**PURITY**—White. Medium, formal double showing stamens when fully opened. Vigorous, upright. L.

**ROSEA SUPERBA**—Rose-pink. Very large, rose form double. Vigorous, compact growth. M-L.

## GROUP II

12"-18".....	\$2.50
18"-24".....	3.50
24"-30".....	6.00
30"-36".....	7.50

**ADOLPHE AUDUSSON**—Large semi-double, deep red. Upright, compact growth. M.

**ALBA PLENA**—Large white, formal double. Medium, bushy growth. E-M.

**CALIFORNIA**—Very large rose-red semi-double. Medium, upright, compact. M.

**DONCKELARI** (Southern)—Very large semi-double red sometimes marbled white. Slow, bushy growth. M. 12"-18", 18"-24", 24"-30" only.

**DOROTHY MAC**—Medium, white, anemone form. Medium, bushy growth. M. 12"-18", 18"-24" only.

**DUNCAN BELL**—Brilliant red. Very large anemone form. Vigorous, upright, open growth. M.

**ELEANOR OF FAIROAKS**—Ruby-red, marbled with white. Large, semi-double to peony form. Variegated Vedrine. Vigorous, upright, spreading growth. E-M.

**FIMBRIATA**—Resembles Alba Plena with the exception of the petals which are beautifully fringed. Medium, bushy growth. E-M.

**FLAME**—Flame-red. Very large semi-double. Large petals. Medium, upright growth. M.

**FRED SANDER**—Crimson-red. Medium, semi-double with curled and heavily fimbriated petals. Vigorous, upright, compact growth. M-L.

**FRIZZLE WHITE**—White. Very large, semi-double, with wavy petals intermixed with stamens. Vigorous, bushy growth. M.

**GEN. DWIGHT EISENHOWER**—Deep red, large peony to anemone form. Vigorous, upright compact growth. M-L.

**GEN. GEORGE PATTON**—Bright pink. Large, formal double showing stamens. Vigorous, upright, open growth. M-L.

**GIGANTEA** (Emperor Wilhelm)—Brilliant red, marbled with white. Very large semi-double to peony form. Vigorous, upright, open growth. M.

**GOSHOGURUMA**—Deep orange-red occasionally spotted with white. Large semi-double to peony form. Medium, upright, compact. M. 12"-18", 18"-24", 24"-30" only.

**GOV. EARL WARREN**—Deep, rich pink. Very large, semi-double. Vigorous, bushy, spreading growth. M.

**LADY CHARLOTTE**—Clear light pink with lighter pink veins. Large, semi-double. Vigorous, upright, compact growth. M.

**LOTUS**—White. Very large semi-double. Prominent stamens. Vigorous, upright, open growth. M.

**MARGARET HIGDON**—Large, semi-double, rose-red. Vigorous, upright, compact. M.

**MARGARETE HERTRICH**—White. Medium large, formal double. Vigorous, compact, upright. M.

**MARION MITCHELL**—Beautiful, large, semi-double, scarlet-red with occasional petaloids intermixed with stamens. Medium, compact, upright growth. M.

**MARTHA BRICE**—Light pink. Large, semi-double to loose peony form. Medium, bushy, spreading. M.

**MME. HAHN**—Bright salmon pink. Large, semi-double to peony form. Vigorous, upright growth. M.

**MT. SHASTA**—White. Large, full peony form. Upright, compact growth. M-L.

**MRS. CHARLES COBB**—Dark coppery red. Large, semi-double to loose peony form. Vigorous, upright. E-M.

**ROSEA PLENA**—Rose pink with dark veins. Large, rose form double. Vigorous, compact, upright. E-M.

**SEN. DUNCAN U. FLETCHER**—Rose-red. Large semi-double to peony form. Medium, upright, compact. M-L.

**SWEETI VERA**—Flesh pink, mottled white with deeper pink speckles. Large, peony form. Vigorous, spreading growth. M.

**VEDRINE** (Ruby Glow)—Ruby-red. Large, semi-double to peony form. Vigorous, upright. E-M.

VARIETY

	SIZES			
	12"-18"	18"-24"	24"-30"	30"-36"
<b>PRIMAVERA</b> (N #105)—A 3½-4 inch full double formal, with a high center, consisting of 55-60 petals. Pure white. Some blossoms show a small petaloid center when fully opened. It is one of the few late blooming varieties that produces good blossoms in the late season. A profuse bloomer with dark green, medium size foliage.	2.50	3.50	7.50*	10.00*
<b>PRINCE OF ORANGE</b> (Crusader)—Deep red. Very large semi-peony form to rose form double. Vigorous, compact growth. M.	4.00*	5.00*	7.50*	10.00*
<b>PRINCESS LAVENDER</b> —Unusual shade of lavender pink. Large, semi-double. Medium, upright growth. E-M.	7.50*	....	....	.....
<b>REG RAGLAND</b> (Margaret Hertrich Award 1954)—This outstanding new seedling developed by Bill Woodroof is a very large red to red and white full semi-double with smaller upright center petals. Vigorous, compact, upright growth. M-L.	12.50*	....	....	.....
<b>RISING SUN</b> —Vivid crimson with red stamens tipped with yellow anthers. Medium-large, single. Medium, bushy, upright. M.	4.00*	5.00*	7.50*	10.00*
<b>R. L. WHEELER</b> (U.S. Pat. No. 1137)—A great new camellia that has won more awards than any other. A very large, semi-double to full peony; rose-red with extremely large foliage. (Propagating rights obtained from Central Georgia Nurseries.) E-M.	10.00*	....	....	.....
<b>ROOSEVELT BLUES</b> —Purplish-red. Large, semi-double to peony form. Vigorous, loose, upright. M.	3.50*	....	....	.....
<b>ROOSEVELT BLUES VAR.</b> —Purplish-red blotched with white. Vigorous, loose, upright. M.	3.50*	....	....	.....



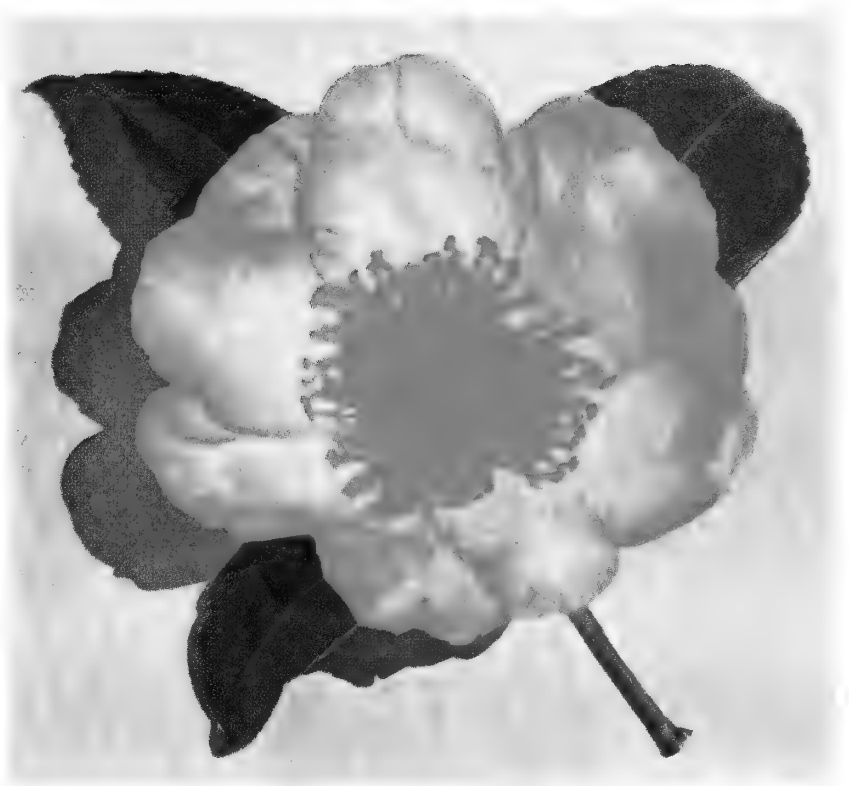
GIGANTEA (Emperor Wilhelm), See Page 13



THOMAS PITTS, See Page 16



C. SASANQUA, JEAN MAY, See Page 17



C. SASANQUA, HANA JIMAN, See Page 17

**VARIETY**

**SIZES**

	12"-18"	18"-24"	24"-30"	30"-36"
<b>ROSEA SUPERBA VAR.</b> —Very large, rose form double. Rose-pink, marbled white. Vigorous, bushy, compact growth. M-L.	\$4.00*	\$5.00*	\$7.50*	\$ . . . .
<b>RUTH ROYER</b> —Pink, heavily marked white sport of Duchess of Sutherland. Vigorous, upright, spreading growth. M.	7.50*	. . . .	. . . .	. . . .
<b>SCENTED TREASURE</b> —This fine new seedling, developed by Harvey Short, is a 3 to 4 inch full double, peony form. Deep cherry-red blossoms that have the spicy fragrance of English Pinks. Profuse and extremely early season of bloom. Medium, upright, compact. E-M.	4.00*	5.00*	7.50*	10.00*
<b>SHIN AKEBONO</b> —Pale pink. Large, single to semi-double. Medium, loose, spreading growth. E-M.	4.00*	5.00*	7.50*	10.00*
<b>SHIRO CHAN</b> —This new variety is destined to become America's favorite white anemone form camellia. Developed by Domoto's Nursery, this beautiful white sport of C. M. Wilson shows an occasional blush pink at the base of the petaloids. Same habit of growth and blooming season as its parent.	12.50*	. . . .	17.50*	. . . .
<b>SIERRA SPRING</b> —Bright pink heavily mottled with white. Large, semi-double. Vigorous, upright growth. M.	4.00*	5.00*	7.50*	10.00*
<b>SMILING BEAUTY</b> —Delicate pink. Medium-large, semi-double. Medium, upright, compact. M.	4.00*	5.00*	7.50*	. . . .
<b>S. PETER NYCE</b> —New. A beautiful predominantly white sport of Nagasaki. Winner of Best Flower Award in Southern California Camellia Society Show 1952. Slow, spreading, bushy growth. M.	7.50*	. . . .	. . . .	. . . .
<b>SPRING SONNET</b> —New. Outstanding pale pink sport of Herme. Growth and blooming season same as parent.	7.50*	10.00*	. . . .	. . . .

\* An asterisk after the prices denotes grafted plants

VARIETY	SIZES			
	12"-18"	18"-24"	24"-30"	30"-36"
<b>ST. ANDRE</b> —Brilliant red. Very large, semi-double to anemone form. Medium, compact, broad growth. M-L.	4.00*	5.00*	7.50*	10.00*
<b>SWEET DELIGHT</b> —Rose-pink. Semi-double to peony form. Fragrant, vigorous, loose, upright growth. M.	4.00*	....	....	.....
<b>TALLAHASSEE GIRL</b> —Large, semi-double to loose peony form. Very soft pink. Vigorous, upright growth. E-M.	4.00*	5.00*	7.50*	.....
<b>TE DEUM</b> (Dr. Shepherd)—Dark red. Very large, from semi-double to full peony to formal double. Medium, open growth. M-L.	4.00*	5.00*	7.50*	10.00*
<b>THELMA DALE</b> —Silvery-pink. Large, semi-double to rose form double. (Sport of Mrs. Baldwin Wood.) M.	4.00*	5.00*	7.50*	10.00*
<b>THOMAS D. PITTS</b> (N #144)—A new white formal double that we are proud to offer. This camellia, along with its full white blossoms, has beautiful, deep green foliage, and vigorous, bushy, upright growth. Blooms heavily from midseason to late.	4.00	5.00	7.50	10.00
<b>TINSIE</b> —Bright red outer guard petals with white peony center. Vigorous, open, upright growth. M.	4.00*	....	....	.....
<b>TOKI-NO-HAGASANE</b> (Bessie Morse Bellingrath)—White with faint blush of pink. Large, semi-double. Extremely slow, compact growth. L.	2.50	3.50	7.50	.....
<b>T. S. CLOWER, JR.</b> —A beautiful new white, striped pink, large, rose form double. Vigorous, loose, upright growth. M.	5.00*	6.00*	7.50*	10.00*
<b>VASHTI</b> —One of the best midseason to late blooming camellias. Medium size, rose form to full double. White blotched and striped pink. Medium, compact, upright growth. M-L.	4.00*	5.00*	7.50*	.....
<b>VICTORY WHITE</b> —White. Large, semi-double peony form. Vigorous, upright, open growth. M.	2.50	3.50	6.00	7.50
<b>VILLE DE NANTES VAR</b> —Dark red, blotched with white. Large, irregular semi-double with edges of petals fimbriated. Slow, bushy growth. M.	4.00	5.00	7.50*	10.00*
<b>VIRGIN'S BLUSH</b> —Blush white. Medium, semi-double to peony form. Vigorous, upright, open growth. M.	2.50	3.50	7.50*	10.00*
<b>WARRIOR</b> (N #107)—A 4-4½ inch semi-double to full peony form, brilliant, dark red with golden stamens. Approximately 25 large, round, wavy guard petals with golden stamens and small petals intermixed in center of flower. Foliage, light green, medium size. An upright grower. Blooms early to mid-season.	4.00	5.00	....	.....
<b>WHITE EMPRESS</b> —White. Very large, irregular semi-double. Vigorous, upright growth. E-M.	4.00*	5.00*	7.50*	10.00*
<b>WHITE GIANT</b> —White. Very large, semi-double. Vigorous, compact, upright growth. M.	4.00*	5.00*	....	.....
<b>WILDWOOD</b> —Very large, light orchid pink, semi-double to peony form with heavy veining. Upright, compact growth. M-L.	7.50*	....	....	.....
<b>YOHEI HAKU</b> —White to creamy white, often tinted blush pink. Large, spreading growth. E-L.	2.50	3.50	....	.....
<b>YVONNE TYSON</b> —A new large, salmon pink, large anemone form. Medium, compact growth. M-L.	7.50*	10.00*	....	.....



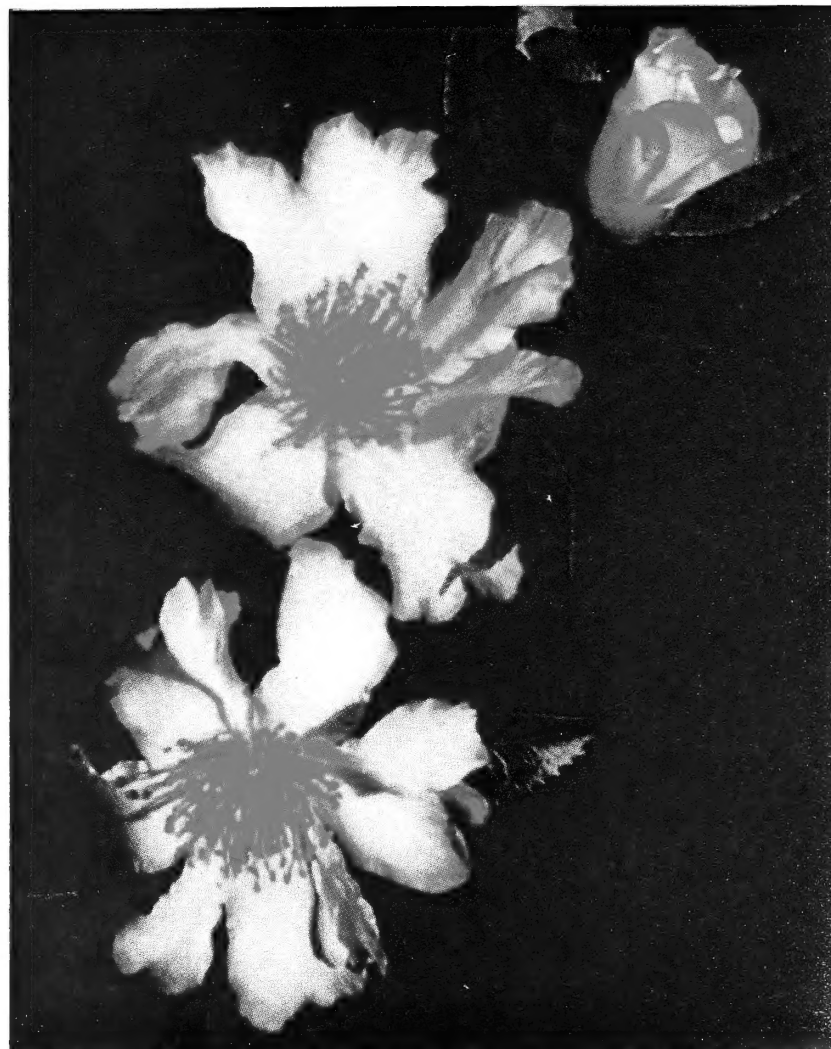
# SASANQUA CAMELLIAS

In the past few years the Sasanqua has at last been gaining the added popularity it rightfully deserves. Its hardiness, early and profusion of bloom (September to January), small, dark evergreen foliage make it a valuable addition to our landscape. Sasanquas thrive in full sun or a partially shaded area and may be used as hedges, ground covers, vines or specimens. Care and culture of the Sasanqua is identical to that of the Japonica.

VARIETY	SIZES			
	12"-18"	18"-24"	24"-30"	30"-36"
<b>AUSTRALIAN HIRYO</b> —This fine variety, imported from Australia by William E. Wylam, is a large, brilliant rose-red, semi-double, with excellent texture and substance. Upright, compact growth.	\$5.00*	\$ . . .	\$ . . .	\$ . . . .
<b>CHARMER</b> —New. Single white, edge salmon pink. Large. Upright open growth.	4.00	5.00	7.50	. . . .
<b>CHOJI-GURUMA</b> —Full anemone form, rose-pink with lighter pink petaloids. Upright growth.	2.50	3.50	6.50	7.50
<b>CLEOPATRA</b> —Rose-pink. Semi-double to peony type. Very compact.	2.50	3.50	. . . .	. . . .
<b>DAWN</b> —Beautiful single to semi-double, ivory white with blush pink at the margins of petals. Upright and compact growth.	2.50	3.50	6.50	. . . .
<b>FLORIBUNDA</b> —Single white, edged lavender pink. Vigorous, upright and compact.	2.50	3.50	. . . .	. . . .
<b>FUKUZUTSUMI</b> —Large, irregular semi-double white, shaded rose. Unusually fragrant. Vigorous, upright growth. Australian import by William E. Wylam.	5.00*	. . . .	. . . .	. . . .
<b>GIN-NO-SAE</b> —Small, creamy white, full anemone form. Spreading growth.	4.00*	5.00*	7.50*	. . . .
<b>HANA JIMAN</b> —Large single white, tipped with pink. Fluted petals. Vigorous, upright and compact.	2.50	3.50	6.50	7.50
<b>HINODEGUMA</b> —Large, single white with pink edge. Vigorous, upright, bushy growth.	2.50	3.50	6.50	7.50
<b>HINODE-NO-UMI</b> —New. Very beautiful. Large, flat single. Deep crimson. Profuse bloomer. Upright, compact.	5.00*	. . . .	. . . .	. . . .
<b>HIODOSHI</b> —Single crimson, beautifully marbled white. Compact, slow grower.	4.00*	5.00*	. . . .	. . . .
<b>HIRYU</b> —Deep crimson-red. Double. Vigorous, upright compact growth.	4.00*	5.00*	. . . .	. . . .
<b>HIRYU-NISHIKI</b> —Variegated red and white form of Hiryu.	4.00*	. . . .	. . . .	. . . .
<b>HUGH EVANS</b> —Profuse bloomer. Single pink. Vigorous, upright and compact.	2.50	3.50	6.50	7.50
<b>JEAN MAY</b> —This outstanding new Sasanqua will soon become the favorite of all because of its glossy foliage and compact, upright habit of growth. Large, shell pink, double blossoms. Excellent.	4.00*	5.00*	7.50*	10.00*
<b>KO-GYOKU</b> (Little Gem)—Small, full formal double, white with edges of petals slightly marked with pink. Upright, compact.	4.00*	5.00*	7.50*	. . . .
<b>LAVENDER QUEEN</b> —Large, single, lavender-pink. Vigorous, loose, spreading growth.	2.50	3.50	6.50	7.50
<b>MOMOZONO NISHIKI</b> —Single, pale pink, shading to rose-red border. Vigorous, upright, bushy growth.	2.50	3.50	6.50	7.50
<b>NARUMIGATA</b> —Single white, shaded with pink. Very large. Compact, vigorous, upright.	4.00*	5.00*	7.50*	10.00*



C. SASANQUA, HIRYU, See Page 17



C. SASANQUA, CHARMER, See Page 17  
—Courtesy McCaskill Gardens

**VARIETY**

	<b>SIZES</b>			
	12"-18"	18"-24"	24"-30"	30"-36"
<b>NODAMI USHIRO</b> —Large, deep pink, semi-double. Vigorous, compact growth.	4.00*	5.00*	7.50*	10.00*
<b>OCEAN SPRINGS</b> —A large single white with petals edged with crimson. Very beautiful. Medium, bushy growth.	4.00*	5.00*	7.50*	10.00*
<b>PAPAVER</b> —Large, single, bell shaped. Soft pink. Slender, upright growth.	4.00*	....	....	....
<b>PINK SNOW</b> —A clear, light pink anemone with vigorous, low spreading growth. New.	5.00*	....	....	....
<b>ROSY MIST</b> —Large, single, delicate soft pink. Spreading growth.	4.00*	....	....	....
<b>SETSUGEKKA</b> —A large single to semi-double white with ruffled petals that are slightly marked with pink at edges. Vigorous, upright.	4.00*	5.00*	7.50*	10.00*
<b>SHISHI GASHIRA</b> —Double, bright rose-red. Slow, low and compact.	4.00*	....	....	....
<b>SHISHIFUKUJIN</b> —Very large, clear, soft pink. Single to semi-double. Upright, bushy growth.	4.00*	5.00*	7.50*	10.00*
<b>SHOWA-NO-SAKAE</b> —Semi-double to peony. Soft pink. Slow, low and compact. 30"-36"—\$7.50.	2.50	3.50	6.50	7.50
<b>SNOWFLAKE</b> —Beautiful, flat, large-petaled single white, with large, deep green foliage. Vigorous, upright, bushy.	2.50	3.50	6.50	....

VARIETY	SIZES			
	12"-18"	18"-24"	24"-30"	
<b>TAIMI-NISHIKI</b> —Single, pale pink mottled white. Open, vigorous growth.	4.00*	5.00*	7.50*	.....
<b>WHITE DOVES</b> (Mine-no-Yuki)—White, semi-double to loose peony form. Vigorous, spreading grower.	2.50	3.50	6.50	.....
<b>WHITE QUEEN</b> —Large, single white with showy stamens. Open, upright growth.	4.00*	5.00*	7.50*	.. .
<b>YAE ARARE</b> —Beautiful, large single white with petals tipped pink. Vigorous, bushy, upright growth.	2.50	3.50	6.50	7.50

## RETICULATA CAMELLIAS

The following Yunnan Province Reticulata Camellias have caused great comment and interest wherever shown. Their beautiful blooms and open, graceful habit of growth make them distinct and unsurpassed in the world of camellias. All are still in very limited quantity.

**BUTTERFLY WINGS**—6 inch rose-pink blossoms, with large, wavy petals. Slender, open growth. M-L.

12"-18" grafts \$10.00; 24"-30" grafts \$20.00

**CHANGS TEMPLE**—Extremely large, brilliant pink, variegated semi-double. Vigorous, compact growth. M-L.

12"-18" grafts \$10.00; 24"-30" grafts \$20.00

**CHRYSANTHEMUM PETAL**—Full double, imbricated pink, about 4 inches in diameter, with each petal fluted. Slender, open growth. M.

12"-18" grafts \$7.50; 24"-30" grafts \$15.00

**CORNELIAN**—Very large, deep rose, heavily marbled with white, semi-double, with wavy petals, and small petaloids in center. Medium, bushy growth. M-L.

12"-18" grafts \$10.00

**CRIMSON ROBE**—Very large, semi-double, carmine red. Petals are crepe textured, wavy and crinkled. Large foliage. Vigorous, upright, bushy. M-L.

12"-18" grafts \$10.00; 24"-30" grafts \$20.00

**LION HEAD**—Very large, semi-double, deep red, with each petal heavily variegated white. Vigorous, compact growth. M-L.

12"-18" grafts \$10.00; 24"-30" grafts \$20.00

**NOBLE PEARL**—A 6-inch semi-double flower, with large, beautifully textured petals, deep red. Slow, compact growth. L.

12"-18" grafts \$10.00; 18"-24" grafts \$20.00

**OSMANTHUS LEAF**—Medium size, rose-form double of unusual orchid-pink color. Small foliage. Vigorous, slender, open growth. M-L.

12"-18" grafts \$7.50; 24"-30" grafts \$15.00

**PAGODA**—Light red flowers, similar in form to Purple Gown, but more double, though small in diameter. Medium, compact growth. M-L.

12"-18" grafts \$10.00; 24"-30" grafts \$20.00

**PROFESSOR TSAI**—Large, rose-pink, semi-double with loose petal arrangement. Open, spreading growth. M-L.

12"-18" grafts \$7.50; 24"-30" grafts \$15.00

**PURPLE GOWN**—A 5 to 7 inch formal to peony form, deep purple-red with white variegation. Beautiful. Slow, compact growth. M-L.

12"-18" grafts \$10.00; 18"-24" grafts \$20.00

**SHOT SILK**—Brilliant pink, semi-double flowers, with loose, wavy petals informally arranged. Vigorous, upright, compact growth. M-L.

12"-18" grafts \$7.50; 24"-30" grafts \$15.00

**TAKEIYEH** (Large Osmanthus Leaf)—Medium large, vivid orchid-pink, with wavy petaloids intermixed with stamens. Medium, compact growth. M-L.

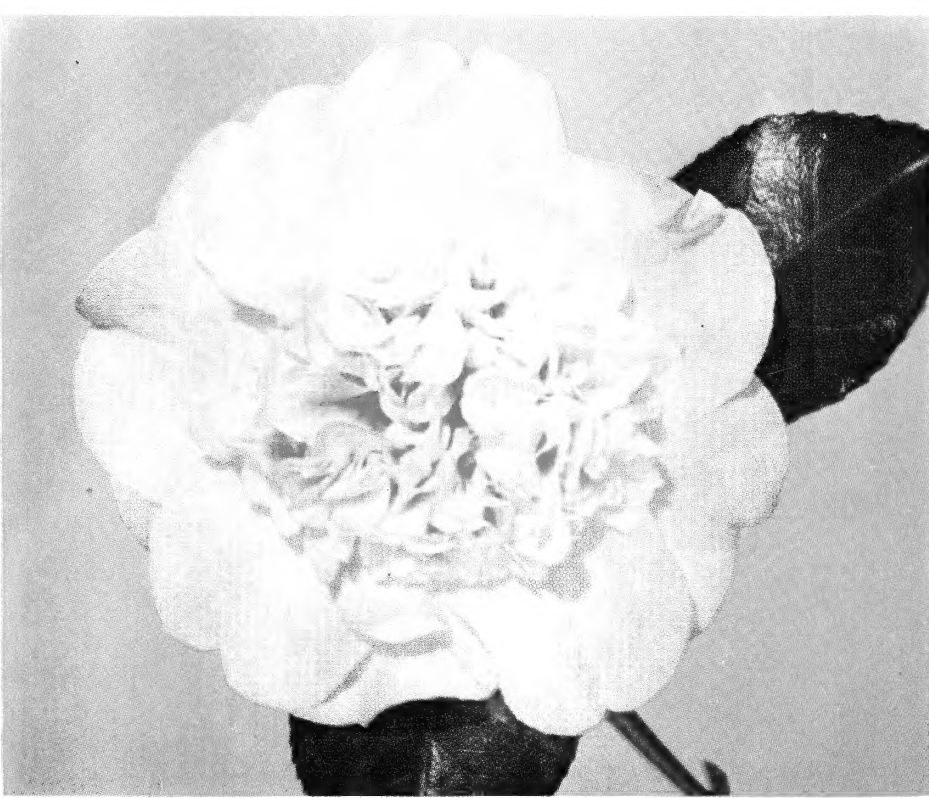
12"-18" grafts \$15.00

**TALI QUEEN**—Deep pink, lightly variegated with white; 6 inches or more in diameter. Large, heavily textured petals. Slow, compact growth. L.

12"-18" grafts \$10.00; 18"-24" grafts \$20.00

**WILLOW WAND**—Large, orchid-pink, formal double blossoms opening to semi-double, with wavy petals. Vigorous upright growth. M-L.

12"-18" grafts \$10.00; 24"-30" grafts \$20.00



SHIRO CHAN, See Page 15



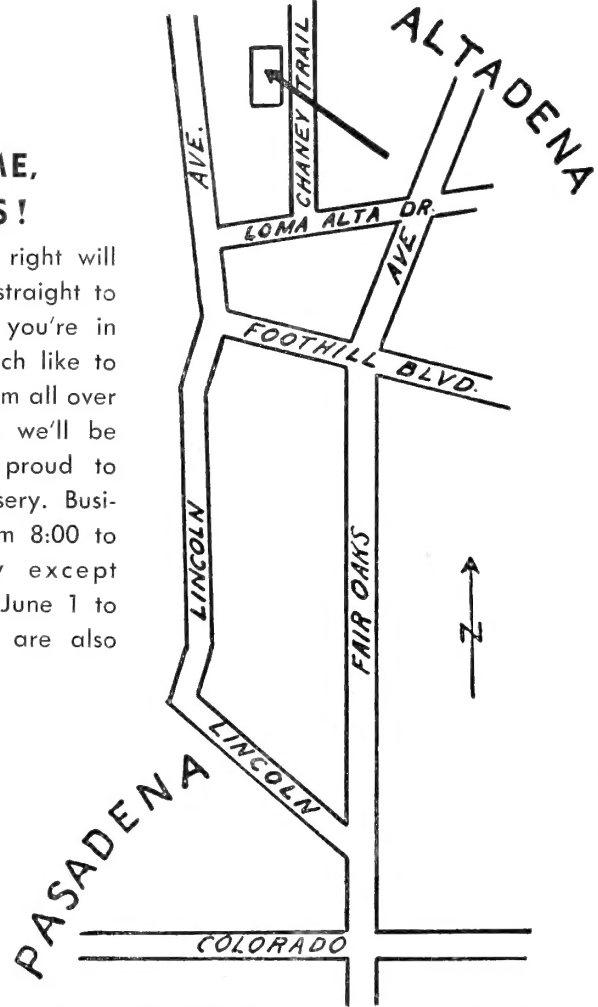
C. M. WILSON  
See Page 4



ADOLPHE AUDUSSON VAR., See Page 3

## WELCOME, FRIENDS!

The map at the right will help you to drive straight to our nursery when you're in town. We very much like to meet our friends from all over camellia-land, and we'll be most happy and proud to show you our nursery. Business hours are from 8:00 to 5:00 every day except Wednesday. From June 1 to September 15 we are also closed on Sundays.



3555 Chaney Trail, Altadena, California

Telephone: SYcamore 4-3383

POSTMASTER: Form 3547 Requested.

Library  
U.S. Dept. of Agriculture  
Washington 25, D.C.

