

62.69

# Dwarf Fruit Trees

These attractive small trees require little space, yet often bear the first or second year after transplanting. Ideal for the small garden as they grow only 10 feet high, and can be planted 10 to 12 feet apart. Although the trees are dwarf in size, they will bear normal sized fruit in great abundance. Our trees are grown on imported Malling understock to insure a permanently dwarf tree. See inside catalog for complete description of varieties.



## DWARF APPLE

Ozark's Dwarf Apples are hardy and productive. Plant several varieties of different ripening dates and have mouth-watering apples all season long. Your choice of varieties.

- Double Red Delicious
- Double Red Jonathan
- Yellow Delicious
- Yellow Transparent

PRICES: 2 Yr. 3 to 4 ft. tree, \$2.95 each. 3 trees or more, \$2.75 each.



## SPRING 1956 CATALOG



## DWARF PEACH

Throw away your ladders! Stand on the ground and pick bushels of peaches. Bears second year planted. Takes a small space in your yard. Heavy producer. Your choice of varieties.

- Belle of Georgia
- Elberta
- Chinese Cling
- Hale Haven

PRICES: 2 Yr., 3 to 4 ft. tree, \$2.95 each. 3 trees or more, \$2.75 each.

# now! YOU CAN HAVE A COMPLETE DWARF ORCHARD

### BARGAIN NO. 1

- 1 Apple, Double Red Delicious
- 1 Peach, Belle of Georgia
- 1 Pear, Bartlett
- 1 Cherry, Meteor

For Only

## \$9.50

If bought separately, would cost \$11.35

## DWARF PEAR

Bear full-sized, delicious fruit, the same as standard varieties. Often start to bear the year after planting. Ideal for the home garden and growers with limited space. Your choice of varieties: Bartlett, Kieffer, Clapp's Favorite.

PRICES: 2 Yr. 3 to 4 ft. tree, \$2.50 each. 3 trees or more, \$2.25 each.

## DWARF CHERRY

A fine ornamental tree. Choose the Meteor for a light red, thin-skinned, large fruited cherry, or the Bush Cherry for small bushes with excellent flavored fruit.

METEOR — 2 Yr. 3 to 4 ft. trees, \$2.95 each. 3 trees or more, \$2.75 each.

HANSEN BUSH CHERRY — 3 to 4 ft. Jumbo size, \$1.25 each. 2 to 3 ft. Bearing size, \$.98 each.

# DWARF FRUIT TREES

Dwarf fruit trees will grow successfully in very little space, but these healthy trees will produce as much normal sized fruit per acre as regular trees. Their commercial value is recommended by some leading Agricultural Colleges. Enjoy these easy-to-pick fruits in your own yard without delay. Complete descriptions of varieties listed follow this page under separate headings.



**Dwarf Apple**

## DWARF APPLE

Ozark's Dwarf Apples are hardy and productive. Plant several varieties of different ripening dates and have mouth-watering apples all season long. Your choice of varieties.

Double Red Delicious  
Double Red Jonathan  
Yellow Delicious  
Yellow Transparent

PRICES: 2-Yr. 3 to 4 ft. tree, \$2.95 each. 3 trees or more, \$2.75 each.

## DWARF PEAR

Plant as close as 5 feet apart. They seldom grow more than 6 to 10 feet tall. Bear full-sized, delicious fruit, the same as standard varieties. Often bear the year after planting. Varieties: Bartlett, Kieffer, Clapp's Favorite.

PRICES: 2-Yr. 3 to 4 ft. tree, \$2.50 each. 3 trees or more, \$2.25 each.

## DWARF PLUM

Enjoy beautiful blossoms and delicious fruit on the space-savers. For the first time this year, we are offering the most popular varieties on our special dwarfing understock. Your choice of varieties:

Bruce, America, Sapa

PRICES: \$2.95 each, 3 trees or more, \$2.75 each.



**Dwarf Pear**



**Dwarf Plum**



## METEOR, NEW DWARF CHERRY

The newest and best dwarf sour cherry. The fruit is large, light red. Stone is small and free. Be the first in your neighborhood to have this prized tree.

PRICES: \$2.95 each, 3 trees or more \$2.75 each.

## HANSEN BUSH CHERRY

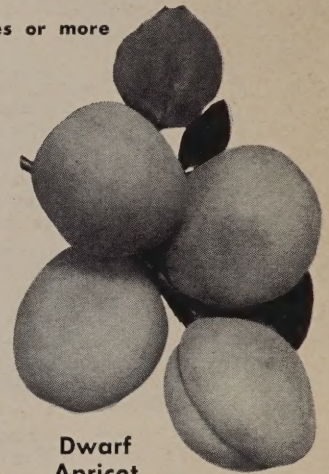
Shrub like bush cherry that produces many blooms and fruit.

PRICES: 3 to 4 ft. Jumbo size, \$1.25. 2 to 3 ft. Bearing size, \$.98.

## DWARF APRICOT

Another first with us this year, offered in the valuable Early Golden variety. Your dwarf tree needs are not complete without one of these.

PRICES: \$2.95 each, 3 trees or more, \$2.75.



**Dwarf Apricot**

## DWARF PEACH

Our dwarf peaches will bear for years and years as this special rootstock is very long-lived. Bears second year planted, takes a small space in your yard. Heavy producers. Your choice of varieties:

Belle of Georgia  
Elberta  
Chinese Cling  
Hale Haven

PRICES: 2-Yr., 3 to 4 ft. tree, \$2.95 each. 3 trees or more, \$2.75 each.



**Dwarf Peach**

## OZARK'S GUARANTEE

1. We guarantee our stock to be true to name. If it proves otherwise, we will replace free or refund the amount paid us for it.
2. We guarantee our stock to be first quality and to reach you in good live, growing condition. Examine it closely on arrival, and, if you are not entirely satisfied, return it at once and we will replace it free or refund your money.
3. Our stock is carefully handled, and under ordinary conditions should grow for you; however if it does not, due to conditions over which you have no control, we will replace at one-half of the catalog price the following season. You are to notify us not later than October 1st following purchase, accompanying your report with remittance of one-half of catalog price.

If you are not entirely satisfied, please let us hear from YOU. We want you to be another one of our many satisfied customers.

## WE PAY POSTAGE

For your convenience many items in this catalog will be delivered to you postpaid; however, the trees and plants we ship are larger than generally offered in catalogs. Since it is impossible to know the weight and sizes in advance, we use our discretion in determining how to ship. Shipments going by motor freight or express are sent collect (you pay transportation charges).

Some orders will contain stock that must go by express and also some stock which would go by parcel post. In such cases we will send the entire order by express rather than make two separate shipments. For this privilege we will include extra stock (our choice) to help pay express charges.

In order to comply with new parcel post rules and regulations, some items will be pruned back when sent by parcel post. If you do not want your stock pruned back, please state on your order that you desire shipment by express (charges collect).

# Ozark New and Improved PEACH TREES

## Orchard Tested and Proven

When we say tested and proven we mean exactly that. For many years we have had commercial orchards. In these orchards we not only try new varieties but keep testing the old ones. Many leading commercial orchardists depend on us for new and improved, true-to-name varieties. Our trees are exceptionally nice this year but the supply is limited — order early and remember the big trees will give quickest and best results. Plant Peach trees 20 to 24 feet apart.

### PRICES ON ALL PEACHES

(Except Golden Honey and Heap Big Indian)

	Each	5 or More Each	10 or More Each
Jumbo Bearing Size.....	\$1.65	\$1.50	\$1.35
4 to 6 ft., Super Size .....	1.30	1.20	1.00
3 to 4 ft., Commercial Size .....	1.00	.90	.75
2 to 3 ft., Bargain Size .....	.79	.65	.50

Commercial orchardists write for special prices on large quantities.

**BELLE OF GEORGIA.** By far the most popular and widely planted white Peach. A heavy producer of large, creamy white Peaches with a red blush. We highly recommend this freestone Peach that ripens around July 30th.

**CHINESE CLING.** A huge, round, white Peach with a juicy, yet rather firm flesh. Its flavor is unique and far surpasses all other white Peaches for canning or freezing. Ripens about July 25th.

**EARLY ELBERTA.** A big, handsome, bright yellow Peach with red blush that is identical in form with Elberta but ripens about three weeks earlier. Has a smooth, rich flavor and is a good shipper. A strong grower and good bearer. Freestone.

**ELBERTA.** The sensational money maker of all times. More popular and widely planted than any other Peach. Fills millions of jars every year. You cannot go wrong with Ozark's improved strain of this grand old favorite. Freestone, ripening about August 5th.

**FAIRHAVEN.** A freestone, self-pollinating variety ripening about one week before Hale-Haven. Fairhaven has produced well when other varieties have been unproductive — even more frost resistant than the famous Hale-Haven. Fairhaven is large, nearly round and mostly red cheek. Fruit is firm and ships exceptionally well. Ripens at a time when Peach prices are highest.

**GOLDEN JUBILEE.** The most popular of all early Peaches. A yellow freestone of good size and excellent quality. Has a fine flavor and is one of the best shippers among the early varieties. Ripens about July 15th.

**HALE-HAVEN.** Rapidly becoming the leading home as well as commercial Peach. Splendid for canning and can be shipped to distant markets and still remain firm. A heavy producer of large, beautifully colored yellow-fleshed Peaches with a delicious flavor. Extremely hardy. Freestone, ripening July 20th.

**J. H. HALE.** A giant sized Peach with an enticing flavor and attractive yellow flesh that looks the prettiest canned of any Peach you have ever seen. Very firm meated and stands long shipments. Heavy bearer and a good grower. Freestone, ripening August 1st.

**OZARK GIANT.** A huge Peach — many weighing a pound each. Almost twice the size of Elberta. Ripens about one week after Elberta, lengthening the season for eating fresh, canning, freezing, and bigger profits. Has an exquisite flavor, brilliant red and gold coloring and almost fuzzless, smooth skin.

### NEOCHEM PEACH TREE BORER SPRAY

Borers kill more fruit trees every year, and up to now the home gardener has been unable to get satisfactory control. Neochem Borer Killer will kill the borers in fruit trees, Poplars, Dogwoods, etc., effectively when used according to directions on package. 1-lb. canister 89c.

### BARGAIN NO. 3

- 1 Elberta
- 1 Ozark Giant
- 1 Heap Big Indian
- 1 Belle of Georgia

An ideal selection for those with limited space.

Our finest 4 to 6 ft. trees, only.....\$4.69  
Nice 2 to 3 ft. trees, only..... 2.49

**Our Most Popular Varieties**



Hale Haven

### New Wonder Peach-HEAP BIG INDIAN

The wonder Peach of Oklahoma, and truly a great one started right here in the Cherokee Nation. Ben Davis found this grand Peach as a seedling in an Indian's yard in Tahlequah several years ago. After seeing its immense size and tasting its flavor, he immediately decided this Peach must be propagated. Then a number of years passed while it was in our test orchard before we offered the trees for sale in the nursery. We wanted to see if it had any shortcomings, but after thoroughly testing Heap Big Indian, we found it had absolutely no weakness and was the largest Indian Peach we had ever seen. Wonderful for Peach pickles. Ripens about August 1st.

**PRICES:** Jumbo Bearing Size, \$1.98; 4-6 ft., \$1.69; 3-4 ft., \$1.25; 2-3 ft., 98c.

### BARGAIN NO. 2

- 2 Belle of Georgia
- 3 Elberta
- 1 Hale-Haven
- 2 J. H. Hale
- 1 Chinese Cling
- 1 Dixigem

10 Large 4 to 6 ft. Trees, only \$9.25 (Value \$13.00)

10 Good 2 to 3 ft. Trees, only \$4.98 (Value \$ 7.90)

Fresh tree-ripened Peaches for many weeks. Plenty to can and some to sell.

### New Introduction-GOLDEN HONEY

For years Ben Davis has strived to produce a premium Peach, and he feels this is the climax of his career. In our test orchard, one young tree produced the outstanding number of 20 bushels of these huge, luscious Peaches and they averaged 50 cents more per bushel than any other variety on the market. We sold \$721.27 worth off one acre of these heavy bearing trees.

Golden Honey is a sweet, rich yellow Peach with rosy red cheeks and yellow flesh that looks extremely beautiful canned in glass jars. Mrs. Davis says: "Golden Honey is the finest and prettiest canning Peach ever canned." After you have eaten one you'll agree that it has the most unique flavor you ever tasted. This big handful of luscious honey cling is by far more frost resistant than most Peaches. Try some and see if you don't agree that Golden Honey is the most wonderful Peach ever grown.

**PRICES:** Jumbo Bearing Size....\$1.98      4 to 6 ft.....\$1.69  
3 to 4 ft..... 1.25      2 to 3 ft..... .98

# Plant SUMMER, FALL & WINTER APPLES

## HOME APPLE SPECIAL BARGAIN NO. 4

Our most popular varieties, bearing in early summer to late winter. Entire orchard for less than the cost of two bushels of Apples.

- |   |                   |
|---|-------------------|
| 1 Yellow Delicious                                    | 2 Double Red      |
| 1 Lodi  | Stayman           |
| 2 Double Red  | 2 Summer Champion |
| Jonathan  | 1 Double Red      |
| 1 Grimes Golden                                       | Delicious         |
| 10 big, 4 to 6 ft. trees (value \$13.00) only \$9.98. |                   |
| 10 good, 2 to 3 ft. trees (value \$7.90) only \$4.98. |                   |

## For Fresh Apples The Year Around

An Apple tree will give you pleasant shade, lovely blossoms in spring, and a crop of Apples, too: so why not plant one in your yard? Our Apple trees are exceptionally fine this year, all are branched, well-rooted trees that will soon start bearing. But remember, the big trees give you quickest and best results. Plant Apple trees 25 to 30 feet apart.

### PRICES ON ALL APPLES EXCEPT OZARK RUBY

	Each	5 or More Each	10 or More Each
Jumbo Bearing Size .....	\$1.65	\$1.50	\$1.35
4 to 6 ft., Super Size .....	1.30	1.20	1.00
3 to 4 ft., Commercial Size .....	1.00	.90	.75
2 to 3 ft., Bargain Size .....	.79	.65	.50

Commercial growers write for special prices on large quantities.

## SUMMER APPLE VARIETIES

Ozark Ruby

**EARLY HARVEST.** A tremendous producer of medium to large, beautiful orange-yellow Apples. Tender, juicy flesh with a luscious flavor. Fine for eating fresh and exceptionally good for cooking. A healthy tree that fruits in June.

**LODI.** A greatly improved Yellow Transparent with almost twice the size. Fruit is tender, juicy and richly flavored, making it perfect for eating fresh, pies, cobbles, jelly and apple butter. Ripens in June when you are anxious for early Apples. A rich yellow, firm Apple that sells and ships well. Outstandingly strong, spreading grower.

**RED JUNE.** Our earliest red Apple and a good one. Ripens in June when you really want a fresh, juicy Apple. Fruit is medium sized with a remarkable flavor. A tasty Apple that should be in every home planting. Especially good for cooking.

**YELLOW TRANSPARENT.** Most widely planted early yellow Apple. Ripens in June and is a young, heavy, and steady bearer. Grand for cooking. Fruit is medium sized, tender, juicy, and has an excellent flavor.

**SUMMER CHAMPION (HOLLAND).** The wonder Apple of the South. Has proved to be a consistent, heavy producer of huge, red, smooth, firm, juicy-fleshed Apples. Its delicious flavor pleases every taste. A good packer and shipper; the best commercial Apple on the market today. Ripens in August. Try some of these strong, healthy growing trees and see for yourself what a wonder

Jonathan Apple Summer Champion really is.

## FALL APPLE VARIETIES

**DOUBLE RED JONATHAN.** A bright red Apple of excellent quality and tender, juicy spicy-rich flavor. Grand for eating fresh, but yet contains enough acid to make it fine for cooking. Very productive and bears young. Ripens in August.

**DOUBLE RED STAYMAN WINESAP.** A glossy, fiery, all-over-red Apple that makes tasty eating right off the tree and keeps crisp and juicy all winter long. Prize cooks value it for mouth-watering pies, cobbles just oozing with juice, tangy apple butter, and crystal clear jelly. Also grand for sparkling, zingy cider. Bears enormous crops and starts fruiting young. Ripens in October.

**GRIMES GOLDEN.** A famous spicy Apple that is wonderful for eating fresh and contains just enough acid to make it fine for cooking. Excellent for pies and apple butter. Known as the "Queen of Quality" and probably the best all-around Apple. A grand commercial Apple and the choice for home orchards.

Dbl. Red Delicious

## Ruby Red CRAB APPLE

**(FLORENCE)** By far the most valuable of all Crab Apples. A very heavy producer of good size. Unexcelled for the quality of its rich, ruby-red jelly, preserves, jams, and pickles of which any housewife would be proud. Pink blooms and ruby-red fruits make it very ornamental for yard planting.

PRICE: Same as any other Apples.

## BARGAIN NO. 5 APPLE PIE SPECIAL

Our most popular varieties for those with limited space. A full season of tree ripe apples.

- |                        |                             |
|------------------------|-----------------------------|
| 1 Early Harvest (June) | 1 Summer Champion (August)  |
| 1 Lodi (Late June)     | 1 Dbl. Red Jonathan (Sept.) |
| 1 Winesap (Late Sept.) |                             |

Our Best 4 to 6 ft. trees (Value \$6.50), only \$4.99

Fine 2 to 3 ft. trees (Value \$3.95), only \$3.10



Yellow Delicious

# WINTER APPLE VARIETIES

**DOUBLE RED DELICIOUS.** The red Apple that is superior to all others for quality. Deemed the Red Apple King from coast to coast. Has never been equalled for magnificent color, mammoth size, crackle-crisp flesh, and deeply exciting sugar 'n spice flavor. A consistent and heavy producer all over the United States. Ripens in September.

**YELLOW DELICIOUS.** Famous for its unique quality. This big, beautiful golden yellow Apple has a luscious flavor that no one can resist. Bears young and heavily. In demand on every market and brings highest prices. The best of the Delicious varieties for the Southwest.

**WINESAP (IMPROVED).** One of the oldest and most popular Apples. A wonderful eating and cooking Apple. Noted for its keeping qualities. This improved strain has more rich red color, larger size and even longer keeping ability. A heavy and regular producer.

**Plant Big Trees For Quickest and Best Results**

## Ozark Ruby — New Summer Apple

Another new fruit sensation which we think is the greatest find in Apples for over half a century. Ozark Ruby is a large brilliant red Apple all over with a satin-smooth finish that polishes to a glistening scarlet. Ripens a week before Jonathan when Apple prices are highest. Colors early and hangs on the tree exceptionally well, prolonging the harvesting season for the commercial grower.

Ozark Ruby has proven to be a consistent, heavy producer of luscious, firm, juicy-fleshed Apples with a flavor that pleases even the most particular taste. Grand for eating fresh, extraordinarily good for canning or freezing, and makes the most beautiful red Apple sauce you have ever seen.

A strong, vigorous grower that is self-fertile. Our supply of this grand apple is limited; so order early.

**PRICES: Jumbo Bearing Size** .....\$1.98, each

4 to 6 ft. ....	1.69, each
3 to 4 ft. ....	1.25, each
2 to 3 ft. ....	1.00, each

# Ozark's CHOICE PLUMS

**AMERICA.** The large wonder Plum of the Southwest. Extremely attractive for market with its golden yellow color and red cheek. Produces sweet, juicy, solid Plums of high quality. An exceptionally heavy bearer, ripening in July, and seldom misses a crop. Free of rot. Very hardy, large, vigorous trees.

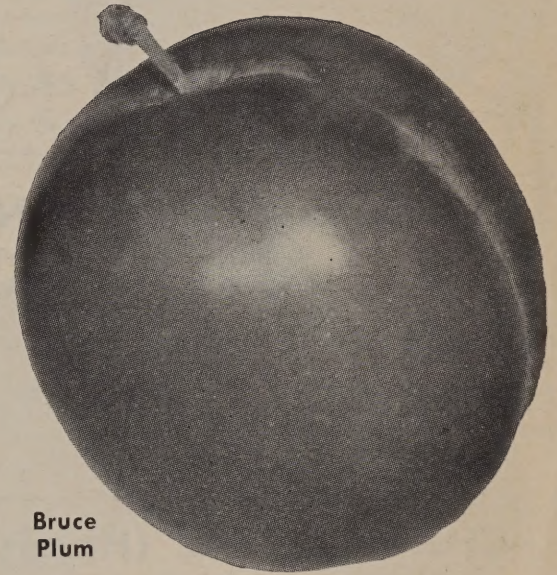
**BRUCE.** The South's best red Plum, ripening in June when you are really hungry for a big, fresh, juicy-ripe Plum. So delicious that it will make your mouth water and it is grand for jellies and jams. A healthy tree that bears young and produces huge fruit. Strong, healthy grower and a sure cropper. Its tantalizing flavor makes it tops for eating juicy-ripe off the tree.

**DAMSON.** Extremely heavy producer of rich, dark blue, juicy-ripe Plums. Grows anywhere and seldom misses a crop. Exceptionally hardy and vigorous. Ripens in August.

**GOLD.** A golden yellow Plum with a luscious flavor that makes pretty jelly. Ripens in July.

**HANSKA.** An Apricot-Plum of high quality and delicious reddish blue fruit. A strong, healthy grower and sure cropper. Its tantalizing flavor makes it tops for eating juicy-ripe off the tree.

**SAPA.** A tremendous producer, ripening the last of June, and bearing the first year. A medium sized, purple Plum with rich, dark purple flesh. Excellent flavor, best jelly Plum grown, and bears every year.



Bruce Plum

### PRICES ON ALL PLUMS

	Each	5 or More Each	10 or More Each
Jumbo Bearing Size .....	\$1.89	\$1.75	\$1.60
4 to 6 ft., Super Size .....	1.49	1.40	1.30
3 to 4 ft., Commercial Size ..	1.15	1.00	.90
2 to 3 ft., Bargain Size .....	1.00	.85	.70

Commercial growers write for special prices on large quantities.

## The Most Sensational Fruit of a Decade HOWARD'S MIRACLE

The introduction of this grand, new fruit, marks a new era in the advancement of fine fruits for the table. The tantalizing flavor, the great size, the firm amber flesh, combined with the red and yellow color, places "HOWARD'S MIRACLE" in a class by itself.

Those fortunate enough to have eaten this fruit offer various comments as to its flavor. Some say the taste is like Pineapple, others compare the taste to a Peach, Plum and Nectarine combined.

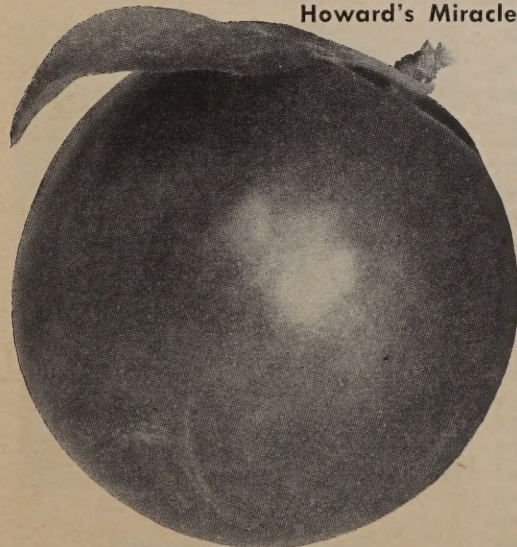
The skin is thin while the meat is Nectarine-like in quality. Although "HOWARD'S MIRACLE" is extra large, averaging 2½ to 2¾ inches, the seed is only miniature.

Plant one or more of these fast growing quick bearing trees and harvest fruit the second year. Bears through June and July. Very Hardy.

**PRICES: Jumbo Bearing Size** .....\$2.95 Each

4 to 6 ft. ....	2.50 Each
3 to 4 ft. ....	2.00 Each

Howard's Miracle



## PURPLE GIANT PRUNE

We think the best of all Prune varieties. Bears second year after planting and ripens earlier than any other Prune variety. Beautiful purple-blue skin with sweet golden flesh. Freestone. At least one Prune should be in every home orchard.

## Ozark's HARDY APRICOTS

**EARLY GOLDEN.** By far the most thrifty and prolific Apricot grown. We have found it to be better adapted to Oklahoma and the Southwest than any other variety. Has delicious golden yellow flesh, and a tantalizing flavor you cannot resist. Large, tender, juicy, separates from the small seed easily. If you have space for only one Apricot, plant Early Golden.

**MOORPARK.** The most widely planted commercial variety. A large Apricot with a luscious orange flesh that is tender, juicy and sweet. Supreme quality and an all-purpose fruit.

**APRICOT and PRUNE PRICES**

	Each	5 or More Each	10 or More Each
Jumbo Bearing Size .....	\$2.00	\$1.90	\$1.80
4 to 6 ft., Super Size .....	1.75	1.60	1.50
3 to 4 ft., Commercial Size .....	1.35	1.25	1.20
2 to 3 ft., Bargain Size .....	1.00	.90	.85

# The Best PEAR Varieties

**Sure  
Crop  
Pear**

Pears do especially well in sod where they get no cultivation, right in your own yard. They are easy to grow, perfectly hardy and are an ornamental asset to your yard. Some usually bear the second year. Plant some Ozark Improved varieties this year and you can pick delicious Pears before you know it.

↘ **DOUGLAS (Sugar Pear).** A handsome Pear of medium size that generally bears the first year. Fruits heavily every year. Immune to frost, very resistant to blight and stands dry weather well. A Pear that should be in your planting.

↘ **GARBER.** The pear suited for every need. Eating, canning, preserving, Winter storage, good shipper, and profitmaker. Its good shape and beautiful yellow color with a red blush make it a demand of the market.

↘ **KIEFFER.** A sure bet for heavy, consistent crops of large, yellow, white-fleshed Pears adapted to all sections. Excellent for cooking, good for winter storage and very sweet and mellow to eat after being picked for a while. Tree very hardy and amazingly vigorous. Plant Garber with it for pollination.

## PRICES OF ALL PEARS EXCEPT SURE CROP

	Each	5 or More Each	10 or More Each
<b>Jumbo Bearing Size</b> .....	<b>\$2.00</b>	<b>\$1.90</b>	<b>\$1.85</b>
<b>4 to 6 ft., Super Size</b> .....	<b>1.75</b>	<b>1.65</b>	<b>1.50</b>
<b>3 to 4 ft., Commercial Size</b> .....	<b>1.35</b>	<b>1.30</b>	<b>1.20</b>
<b>2 to 3 ft., Bargain Size</b> .....	<b>1.10</b>	<b>1.05</b>	<b>.90</b>

Commercial growers write for special prices on large quantities.

## TEXAS EVERBEARING FIG

(That Bears First Year)

Yes, you can have big, soft, fresh, delicious Figs from July to frost the first year with Ozark's everbearing Figs. Figs will grow on most any type soil but thrive best where there is plenty of moisture. Hardy and produces abundant crop over most of the cotton section. They should be protected during the first and second year's growth in the colder areas. While the tops will sometimes be killed back, if this dead wood is pruned away the plant will make new growth and fruit that season. Very sweet and tops for preserves.

**PRICES: 18 to 24 in. Bearing Size** .....\$0.98 each  
**2 to 3 ft. Jumbo Size** ..... 1.25 each

## CHINESE DATE (Hardy Jujube)

An entirely different fruit from the far East, about one to two inches long and chocolate colored. Very delicious when eaten fresh but really becomes a tasty treat in preserves and jams. Once you have tasted the preserves on hot biscuits, they will become a "must" for your breakfast.

The tree is a heavy and consistent producer and starts fruiting at an early age, four-year-old trees having produced one hundred and fifty pounds of fruit. It blooms very late in the spring, avoiding all danger from spring frosts. Every home should have one or more trees. It prefers a back yard where it will not be cultivated, but will grow anywhere.

**PRICE: 2 to 3 ft.** .....\$1.98 each

## SURE CROP PEAR

Another new improved fruit sensation. The only Pear to have all the best qualities of Pears combined into one. For several years we have had it in our test orchard and it has proved to be a consistent, heavy producer of huge, yellow, juicy fleshed, amazingly delicious Pears that ripen evenly. Its delightful flavor pleases every taste, and many women have said it is tops for canning and preserving with a small core and no waste. This is not all, it stores well, hauls well, and it is good to eat juicy ripe. Sure Crop starts bearing young and has never completely missed a crop in Tahlequah for 24 years. It blooms with Apples but not all at once. Some blossoms are on the trees after first fruits have set. Each year there has been a strong demand for these Pears on the market. By far more resistant to blight than any other variety. Vigorous grower and more spreading than most Pears. The only weak point Sure Crop has is its crooked shape when small, but it straightens up and its colorful foliage makes it an ornamental asset to any yard. Try some.

**PRICES: Jumbo Bearing Size**.....\$2.25   **3 to 4 ft.**.....\$1.50  
**4 to 6 ft.**..... 2.00   **2 to 3 ft.**..... 1.25

## JAPANESE PERSIMMONS

A very hardy variety with a most delicious flavor. The tree is very attractive with large, green, waxy leaves similar to a Magnolia, but literally covered with big orange-red Persimmons that hang until soft ripe. In the fall the leaves turn all shades of lovely colors. If you want a tasty treat, plant some Jap Persimmons.

**PRICES: 4 to 5 ft.**.....\$1.79

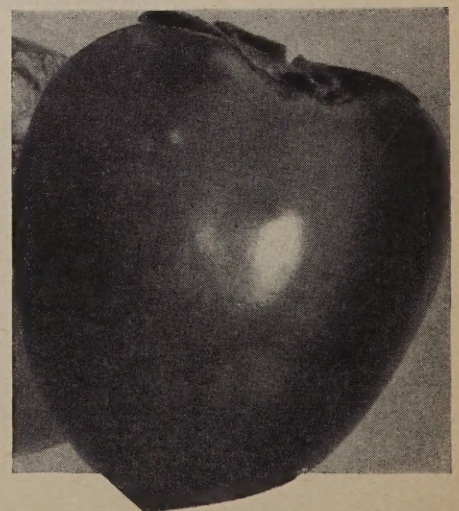
## HARDY NECTARINE

↘ **SURE CROP.** A Plum and Peach cross with the smooth skin of a Plum and a seed like a Peach. Has a beautiful dark red color and an unusually pleasing flavor of both the Plum and Peach. A freestone, bearing after the second year. Splendid for canning, eating, and cooking purposes. No home orchard should be without a Nectarine.

**PRICES: Jumbo** .....\$2.00   **4 to 6 ft.**.....\$1.75  
**3 to 4 ft.**..... 1.35   **2 to 3 ft.**..... 1.00



Everbearing Fig



Japanese Persimmon

Montmorency  
Sour Cherry

# OZARK'S CHERRIES

**SOUR CHERRIES — Delicious, Bear Young**

↘ **EARLY RICHMOND.** The earliest of all red Cherries and by far the best variety for the South-west. The fruit is bright red, juicy and just hangs in clusters, making it easy picking. A strong, healthy grower that often bears the next year after planting. Unsurpassed for pies and jams. Sure producer.

↘ **MONTMORENCY.** Montmorency has a reputation that speaks for itself. Large, bright red, with firm flesh. Bears young, excellent for jams, jellies, and pies. Colors early before ripe — a great advantage in shipping.

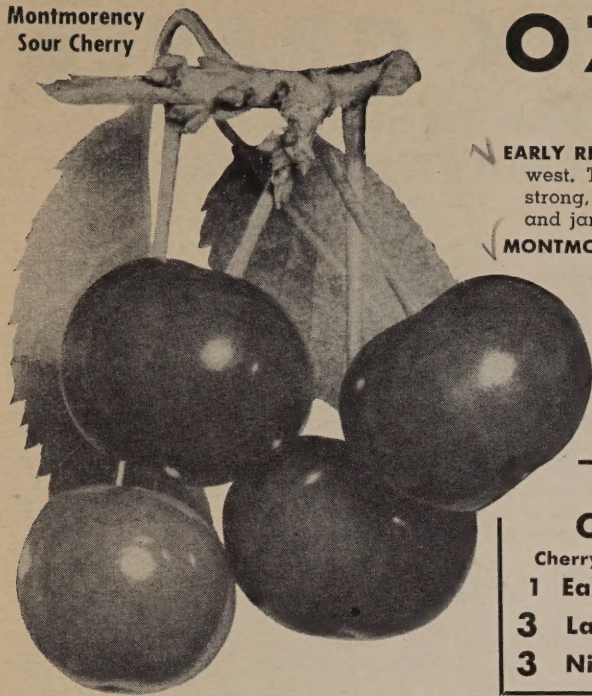
SOUR CHERRY PRICES	Each	5 or More Each	10 or More Each
4 to 5 ft., Jumbo Size .....	\$2.00	\$1.90	\$1.75
3 to 4 ft., Super Size .....	1.75	1.60	1.50
2 to 3 ft., Bargain Size .....	1.25	1.15	1.10

Commercial growers write for special prices on large quantities.

## BARGAIN NO. 6 CHERRY PIE SPECIAL

Cherry pies from your own trees taste better.

- 1 Early Richmond    2 Montmorency
- 3 Large Jumbo Trees, only \$5.39
- 3 Nice 2-3 ft. Trees, only \$3.39



Bing Sweet Cherry

## SWEET CHERRIES — Easy to Grow

↘ **BLACK TARTARIAN.** Large delicious and purplish black when fully ripe. Very good quality and a regular bearer. Early and exceptionally productive. Fine for eating, pies, canning and freezing.

↘ **BING.** The most delicious dark red, Sweet Cherry. Very large, firm, meaty and sweet. High quality; midseason. Fine for eating, pies, canning, and freezing.

↘ **GOLDEN SWEET.** A heavy producer of golden fruit with a mellow, sweet, delectable flavor that is unexcelled. Fine for fancy desserts. Hardest of all Sweet Cherries.

↘ **COMPASS CHERRY-PLUM.** A cross between a Cherry and a Plum, producing a large dark red Cherry of exceptional quality. Grand for canning and preserving. Bears young and heavily. Ripens in July.

### PRICES ON SWEET CHERRIES AND COMPASS CHERRY-PLUM

	Each	5 or More Each	10 or More Each
5 to 7 ft., Jumbo Size .....	\$2.00	\$1.90	\$1.75
4 to 5 ft., Super Size .....	1.75	1.60	1.50
3 to 4 ft., Commercial Size .....	1.35	1.25	1.20
2 to 3 ft., Bargain Size .....	1.25	1.15	1.00

Commercial growers write for special prices on large quantities.

# Ozark's Nursery Stock Famous For 60 Years

## How Was OZARK NURSERIES Built?

Through customer confidence. Customers who had faith and confidence in Ben Davis and the organization he built from the very start. Customers found that they could count on what we told them, but what pleased them most was the discovery that what we shipped was generally slightly better than they expected. They began to look to us for extra quality, for reasonable prices, and for improved and new varieties. They were impressed by our ethics and practices — like selling only fruit trees propagated from bearing orchards.

Yes, customers who have bought year after year, knowing by experience that when they order from Ozark Nursery, they order without risk and with assurance of quality and yield. Over 75% of our business comes from these repeat customers. To our customers we say, thank you and please continue to count on Ozark Nursery for extra quality and extra value.

## THE PLANTS WE GROW

We grow trees and plants by the millions and they go direct to you from our more than 800-acre nursery and orchard plant. It is the most fertile red sandy loam in eastern Oklahoma, especially suited for producing strong, healthy, vigorous root systems.

But we not only grow a good root system, we dig them. Ozark Nursery has a large sum invested in a mechanical digger which goes down and really brings out the roots. We challenge anyone to dig more and better roots than we do. After the trees and plants are dug, they are hauled quickly to our big storage and stored in wet shingle-tee. Vitality and vigorous growing condition is assured with the care we give our trees and plants.

Many firms buy their trees and plants, and they may be shipped and reshipped two or three times before you get them. Avoid getting dried out, devitalized trees and plants. Buy direct from us and get a good start.

## Every Shipment Inspected For Your Protection

No diseased trees or plants are allowed in our nursery. Government inspectors inspect our growing stock several times yearly to be absolutely certain we have no diseased trees and plants. Besides the Government inspections, we inspect each order to make positive you get only first quality; so you can be assured of the best direct-from-grower to you. A certificate of Government inspection is furnished to you with every order.

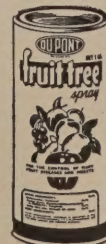
## TERMS

You may pay cash with the order or use Ozark's Easy Payment Plan outlined on the order blank. C.O.D. orders will be shipped for 25% down. Due to increasing cost of packing, etc. orders for less than \$3.00 are subject to a 50c handling charge. All orders f.o.b. Tahlequah unless it can be sent Parcel Post. Oklahoma Customers add 2% sales tax.

## SHIPMENTS MADE AT PROPER PLANTING TIME

It is best to place your order as soon as possible after receiving this catalog. A card will be sent to you acknowledging your order and shipment will be made at proper planting time in your area.

## DU PONT FRUIT TREE SPRAY



An all-purpose spray that controls insects, fungus, mildew and blight in your fruit, nut and bush crops from bud to harvest. A spray schedule of how much and when to use on Apples, Peaches, etc., is on the container. Ideal for the home orchardist who doesn't want to worry with mixing a dozen different items each time he sprays. Can be used on all trees and fruits. 1-lb. can (makes 13 gals.) \$1.39; 3-lb. bag (makes 39 gals.) \$3.00.

# OZARK GRAPES

The Most Dependable of all Fruits  
Never Miss a Crop — Easy to Grow



## GRAPE PRICES

Jumbo, 2-Yr., No. 1		Super, 1-Yr., No. 1	
Each .....	\$0.40	Each .....	\$0.30
5 for .....	1.75	5 for .....	1.25
10 for .....	2.75	10 for .....	2.15
25 for .....	5.75	25 for .....	4.75

Commercial growers write for special prices on large quantities.

**FREDONIA (Blue).** This large, sweet, juicy-fleshed Grape ripens two weeks ahead of Concord when everyone is hungry for a bunch of home-grown Grapes. Ripens evenly, will outbear Concord by 50 per cent and is by far the best Grape for dry sections of Oklahoma, Kansas and Texas. Deliciously flavored with lots of juice and makes the best Grape jelly you ever tasted.

**CONCORD (Blue).** America's old standby and the leader for grape juice. Unusually hardy and superior in withstanding diseases which accounts for regularity in bearing. To really appreciate this grand Grape, you need some hot biscuits covered with delicious Concord Grape jelly. Wow! Food for a King. Plant Concord this year, and have your Grape jelly from good home grown Grapes.

**CATAWBA (Red).** A favorite known far and near for its excellent eating qualities, making it the most popular table Grape. Exceptionally heavy producer of luscious, sweet, delightful Grapes.

**NIAGARA (White).** A clear, almost transparent Grape that has always been the leading white Grape. Ripens same time as Concord.

## NEW THOMPSON SEEDLESS GRAPE

A sweet seedless white grape, known the nation over as one of the finest of table grapes. Now for the price you would pay for only a few bunches of these grapes in a store, you can enjoy delicious home-grown grapes year after year. Plant some on your back fence.

PRICES: each 69c, 5 plants for \$2.98.

## BARGAIN No. 7 RED, WHITE AND BLUE SPECIAL

1 Catawba  
1 Niagara  
1 Concord  
2 Fredonia  
5 Grapes, 2 Yr. No. 1  
Vines,  
Only **\$1.69**  
(Regular \$2.00 Value)

## MARY WASHINGTON ASPARAGUS

Have fresh Asparagus, delicious and tender, from your own garden with this grand variety, developed by the U. S. Department of Agriculture. It is rust-resistant and the best variety for home or market. It is earlier, stalks are larger, more tender, and more productive. Our plants are extra heavy, strong, vigorous, and selected especially for your satisfaction.

PRICES: Jumbo, 2-Yr. Size, 10c each; 25 for \$2.00; 50 for \$3.60; 100 for \$6.10; 500 for \$18.50; 1,000 for \$33.00.

## OZARK'S RHUBARB

**VICTORIA RHUBARB (Pie Plant).** Rhubarb at its finest. Once planted lasts a lifetime, coming up year after year without special care or attention. Victoria is a pink-stalked variety, early, tender with a mild acid flavor.

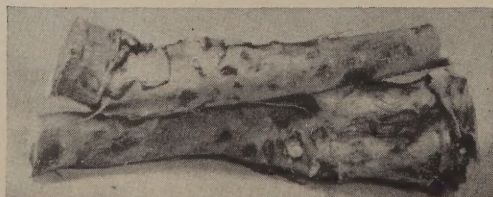
PRICES: Large Roots, 25c each; 3 for 50c; 6 for 95c; 12 for \$1.75.

**CHIPMAN'S RED RHUBARB.** A tremendous producer of sweet, tender, giant size red Rhubarb. Two or three times larger than regular Rhubarb and stays tender far into the summer. Can only be grown from divisions, which cost more but you get a much better Rhubarb.

PRICES: 75c each; 3 for \$1.95; 6 for \$3.45.

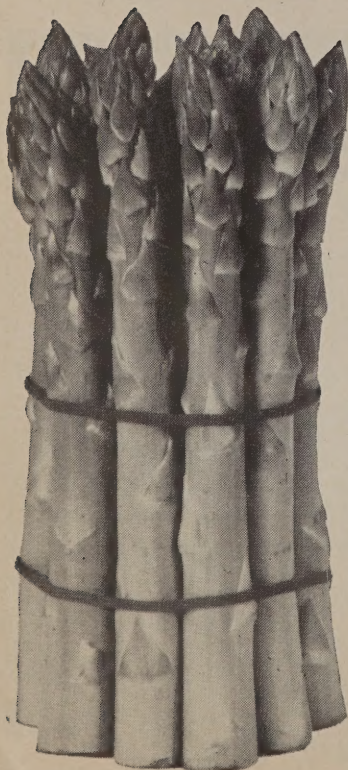
## HORSERADISH

Large, hardy crowns or cuttings. Easy to grow. Plants can be used at the end of the first season. Plant some this year and grind your own Horseradish. PRICES: 25c each; 3 for 45c; 12 for \$1.75.



## SAGE

Our plants are first in both size and quality. Large leaves with excellent flavor for seasoning sausage, meat dressing, etc. Produces rapidly and is perfectly hardy. PRICES: 39c each; 12 for \$3.95.





# OZARK BERRIES

You Can Have Fresh Berries From Your Own Garden

## THORNLESS BOYSENBERRY

A large delicious fruit with a grand advantage in cultivating and picking. Being absolutely free of thorns, it is easy to handle with your bare hands. The bushes are so hardy that they will grow anywhere, producing tremendous large size berries of tempting goodness. Excellent for eating fresh, jellies, jams, preserves, and freezing. Also grand for shipping and marketing. Will make a 6- to 8-foot growth the first year and produce a heavy crop the second. It pays to plant Ozark's healthy plants.

PRICES: 6 for \$1.05; 12 for \$1.95; 50 for \$7.00; 100 for \$11.95; 500 for \$47.50.

## LAWTON BLACKBERRIES

A heavy yielding Blackberry that is probably the most widely grown commercial Blackberry. Berries are of enormous size, glossy jet-black, and of sweet pleasing flavor. Very firm and outstanding for their ability to be sent to distant markets, remaining in good condition. Always command highest prices and grand for home planting. Ripens in July. PRICES: 6 for 95c; 12 for \$1.79; 25 for \$3.25; 50 for \$6.00; 100 for \$10.90.

## PIXWELL GOOSEBERRIES

Introduced by the U. S. Department of Agriculture and has the advantage of standing the hot, dry weather so much better than it succeeds 500 miles further south and west. Berries are medium size, excellent for cooking and best for pies.

PRICES: Jumbo Plants ....79c each; 3 for \$2.19; 5 for \$3.50  
Commercial .....59c each; 3 for 1.59; 5 for 2.50

## OZARK HUCKLEBERRIES

A very delicious little berry that is a native of the Ozark mountain range. Unexcelled for its unique flavor. People familiar with it say there is no other fruit that will compare with it for jams, pies, and fruit cakes. Mother Nature couldn't have made a better berry. A very prolific bearer that will grow in practically any kind of soil. Once set, it will never have to be renewed.

PRICES: 29c each. 12 plants for \$1.95.

## BLUEBERRIES

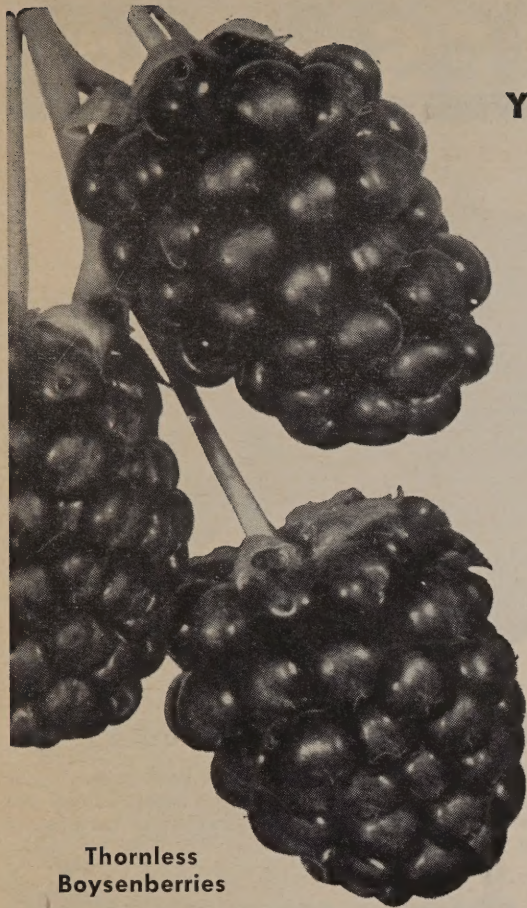
Large clusters of luscious Blueberries, the size of Grapes, are far superior to the wild native Huckleberry in flavor. Practically seedless and need no sugar when eaten fresh or frozen — very little when canned. Plants are acid loving — make soil acid by adding peat moss or aluminum sulphate.

PRICES: 12 to 18 inch, Bearing Age, \$1.25 each. 5 plants for \$5.00.

## CUMBERLAND BLACKCAP RASPBERRIES

The most popular Black Raspberry for many years, and by far the most widely planted. The berries are large, jet-black, firm, sweet, and have a fine flavor. Good shipper. An enormous producer and a vigorous grower.

PRICES: 6 for 95c, 12 for \$1.79; 25 for \$3.25; 50 for \$6.00; 100 for \$10.90.



Thornless  
Boysenberries

## AUSTIN DEWBERRIES

A glossy black berry; round, mild, yet rich in flavor. Excellent for jellies and jams. Resembles a Blackberry, being sweet and juicy, but has a unique taste. Ripens in May, continuing on through June. Fine for eating fresh or freezing. A vigorous grower that will grow even without any care.

PRICES: 6 for 95c; 12 for \$1.79; 25 for \$3.25; 50 for \$6.00; 100 for \$10.90.

## LUCRETIA DEWBERRY

Don't be without these sweet prolific market berries. The large coreless fruit is borne on the hardiest of vines. This tempting berry is milder and ripens earlier than the Blackberry. Enjoy your own garden fresh Lucretia Dewberries with sugar and cream.

PRICES: 6 for \$1.15; 12 for \$1.98; 25 for \$3.75; 50 for \$7.00.



Dewberry

## Ozark SCARLET KING RASPBERRY

Pick 'em in the spring, summer and fall. Yes, this new, miraculous Red Raspberry fruits extremely early — often as early as June 20th. They will continue to bear fruit (except for a few weeks in August) right up until heavy freezing weather — sometimes as late as Thanksgiving.

Each and every plant will produce luscious, large size, bright Red Raspberries with an extra fine flavor. You can't imagine how good Raspberries can taste until you eat juicy, sweet OZARK SCARLET KING Raspberries fresh from your own garden. Swell for jam and jelly and extremely good for freezing.

For 58 years, Ben Davis has been in constant search of a better Red Raspberry for the hot Southwest. OZARK SCARLET KING is exactly the plant he desired.

We find it is the best Raspberry for Midwest and South. Strong, upright bushes, free of disease and a heavy producer even in hot and dry localities. If you have never had any success with Raspberries, try OZARK SCARLET KING and be pleasantly surprised.

Plant these vigorous, healthy OZARK SCARLET KING plants this year and be well on your way to a fine patch of this wonderful berry. Supply very limited — order early and avoid disappointment.

PRICES: 3 plants for \$1.15; 6 plants for \$1.95; 12 plants for \$3.75; 25 plants for \$7.25.



## BARGAIN No. 8

- 12 Thornless Boysenberries
- 6 Cumberland Blackcap Raspberries
- 6 Lawton Blackberries

### PRICES

No. 1 Plants...\$3.19  
2 Collections .... 6.12

FREE! 1 Ozark Huckleberry with each selection.

WONDERFUL  
FOR SHADE

# NUT TREES

ALWAYS PAY  
BIG PROFITS

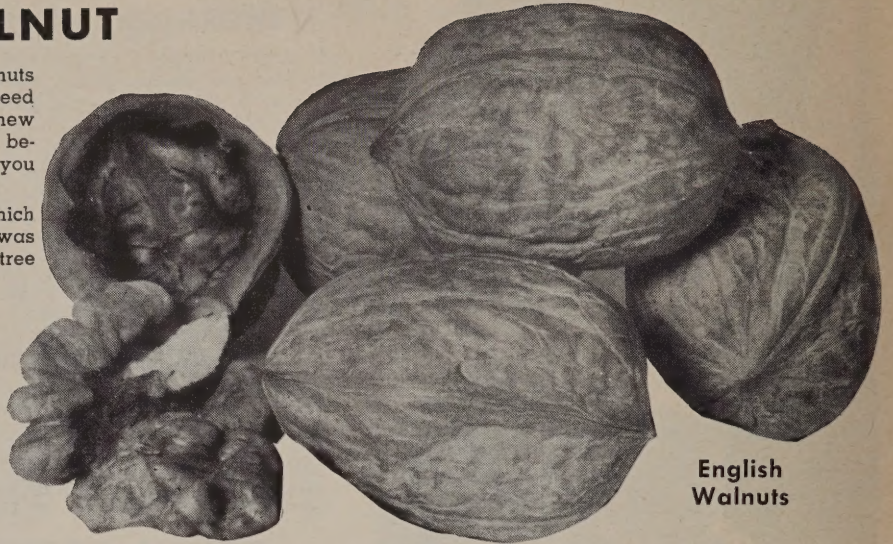
## HARDY ENGLISH WALNUT

No doubt you have often eaten English Walnuts which are grown on the West Coast. There is no need to buy shipped-in Walnuts any longer. With our new strain, found where the temperatures drop to much below zero in the Carpathian Mountains of Poland, you can grow them right in your own yard.

Our trees are propagated from a selected tree, which is a direct descendent from the original seed that was sent from the Carpathian Mountains. This selected tree started bearing very young, and bears heavily and regularly. Nuts are thin shelled and vary in size from that of the California English Walnut to three times its size.

Since the trees are not always fertile, we advise planting more than one tree for perfect pollination and guaranteed success. Trees grow very rapidly and develop into quite large specimens, magnificent for lawns. Often start bearing next year after planting and require practically no care.

PRICES: 3 to 4 ft., \$4.50 each; 2 to 3 ft., \$3.25 each.



English  
Walnuts

Hazelnuts



## HAZELNUT (Filbert)

Round, sweet kernels, easily removed from thin shell and delicious for many uses. Plants are ornamental with deep green foliage and compact, bushy habit of growth. A group of three makes an effective corner planting in your yard.

PRICES: 2 to 3 ft., \$1.25 each; 3 for \$3.25.

## DU PONT DORMANT SPRAY OIL

A superior type oil for prefoliage spray on ornamental, fruit and shade trees to control scale insects and overwintering forms of certain other insects. One can makes 8 gallons for ornamentals. To insure proper control, use before April 1st.

PRICE: 32 oz. can \$1.39 each.



## BARGAIN No. 9

### NUT TREE SPECIAL

- 1 English Walnut 2 to 3 ft.
- 1 Chinese Chestnut 3 to 4 ft.
- 1 Stuart Pecan 3 to 4 ft.
- 1 Hardy Almond 3 to 4 ft.

All four heavy producing trees  
for Only

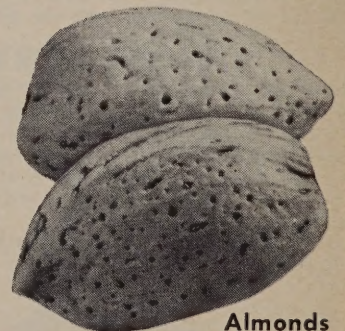
**\$7.98**

(A regular \$9.74 Value)

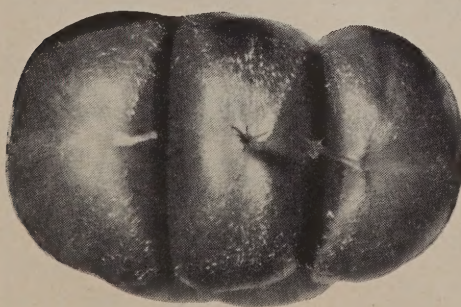
## Ozark's HARDY ALMOND

These new improved trees provide beauty in spring as well as a large crop of delicious Almonds. These trees are extremely hardy, being grown in the north. They can be grown anywhere Peach trees can be grown. They produce huge crops of top quality, nutritious nuts as soon as a year after planting. Ozark's Hardy Almonds are rapid growing, young bearing, nut trees. Used extensively by commercial bakers and confectioners and will be prized by you too, especially when they are off your own trees. Grow your own Almonds this year and enjoy the beauty of this ornamental and useful tree. For best results plant two trees.

PRICES: 3 to 4 ft. trees \$1.95; 4 to 5 ft. trees \$2.50.



Almonds

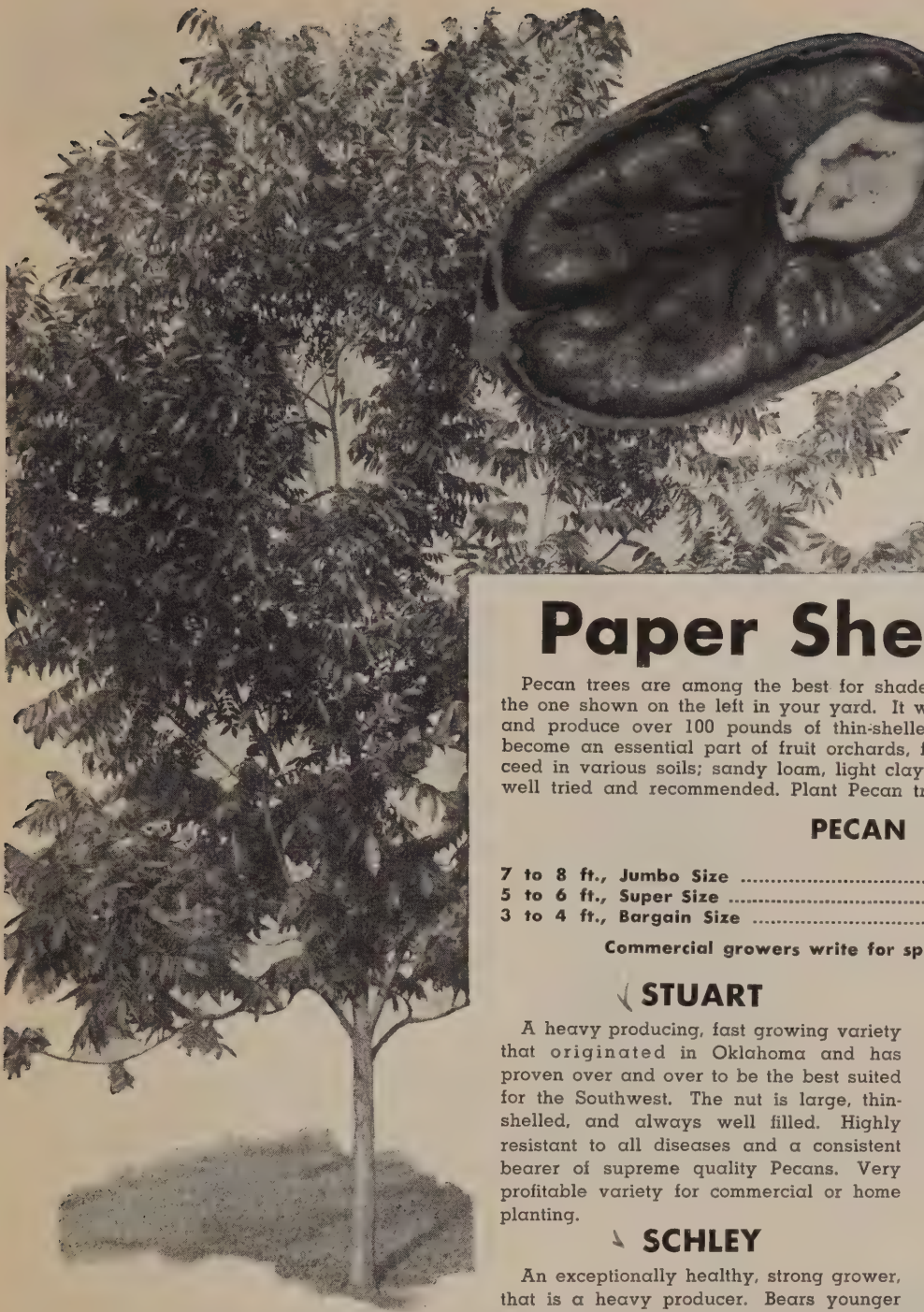


Chinese Chestnuts

## New Improved CHINESE CHESTNUT

A number of years ago blight destroyed our native American Chestnut. After many tests, the U. S. Department of Agriculture introduced a new type of Chinese Chestnut not only blight resistant, but an early bearer of large, good-quality nuts. Trees start bearing when very young, often in two to five years, and grow anywhere Peaches will in America. Fine flavored, sweet nuts, larger than American variety. Trees grow to about the size of an apple tree. They provide good shade and are very decorative as a lawn tree. Will grow in any well-drained soil with very little care once they are set out. Plant two trees for best results.

PRICES: 3 to 4 ft. trees \$1.79 each.



**PECAN  
TRIAL OFFER  
BARGAIN No. 10**

**The Perfect  
Combination of  
Paper-Shell Pecans**

- 1 Stuart**
- 1 Success**
- 1 Schley**

**All 3 heavy, 3 to 4 ft. trees,  
only \$6.98**

(**\$8.25 value**).

There is no tree that adds so much to the value of your property as does a paper-shell Pecan.

# Paper Shell PECANS

Pecan trees are among the best for shade trees in the Southwest. Think of one like the one shown on the left in your yard. It would furnish pleasing shade in abundance, and produce over 100 pounds of thin-shelled Pecans each year. The Pecan has also become an essential part of fruit orchards, for home use everywhere. Pecan trees succeed in various soils; sandy loam, light clay, or sand and clay. The varieties listed are well tried and recommended. Plant Pecan trees 40 feet apart.

## PECAN PRICES

	Each	5 or More Each
7 to 8 ft., Jumbo Size .....	\$7.50	\$7.25
5 to 6 ft., Super Size .....	4.10	3.75
3 to 4 ft., Bargain Size .....	2.75	2.50

Commercial growers write for special prices on large quantities.

### STUART

A heavy producing, fast growing variety that originated in Oklahoma and has proven over and over to be the best suited for the Southwest. The nut is large, thin-shelled, and always well filled. Highly resistant to all diseases and a consistent bearer of supreme quality Pecans. Very profitable variety for commercial or home planting.

### SCHLEY

An exceptionally healthy, strong grower, that is a heavy producer. Bears younger than most paper-shell varieties. The shell is thin, easy to crack and the meat is of excellent quality.

### SUCCESS

A truly large, plump, thin-shelled Pecan that releases its kernel perfectly. Ripens a few days later than Stuart and is highly resistant to disease. Tree is vigorous grower and an ideal specimen for yard planting.

### DESIRABLE

A regular and heavy producer of large, round, fat Pecans that bring top market prices. Its flavor is unique and the leader in new varieties. To get the utmost from Desirable, plant on well-drained soil and with Schley for perfect pollination.

**Nut trees can help  
pay your taxes**

## THOMAS BLACK WALNUT

Our improved grafted Black Walnut is a rapid grower and a heavy producer. It bears young, usually the second year after planting. The nuts are immense size, crack easily, and the kernels come out in halves. Deliciously flavored. Will grow anywhere.

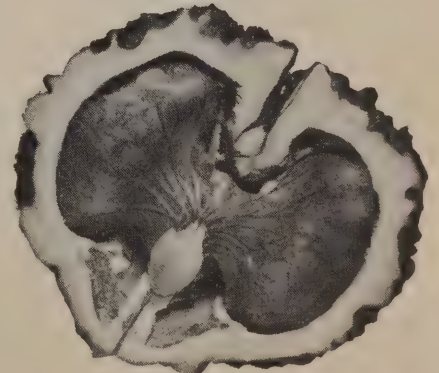
You could easily have 15 to 40 bushels per year from a mature tree right in your own yard, and they sell for \$4.00 or more per bushel. Plant one and increase the value of your property.

**PRICES: 2 to 3 ft., \$3.00 each; 3 to 4 ft., \$3.95 each; 4 to 5 ft., \$4.50 each.**

## BUTTERNUT (White Walnut)

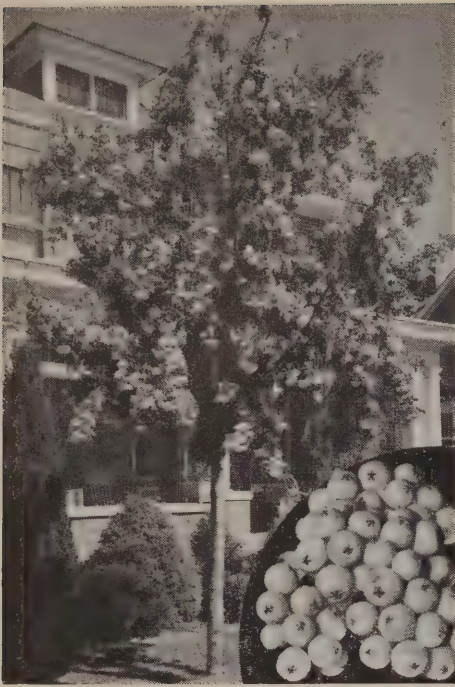
The nuts are large, long and nutritious. Much sought for eating fresh and to use in baked goods, desserts and confections. Trees are lofty and spreading with a tropical appearance. Plant two for best results.

**PRICES: 3 to 4 ft., \$1.69 each; 3 for \$4.50.**



Thomas Black Walnut

# Ozark's SHADE TREES



Mountain Ash

## MOUNTAIN ASH

The graceful fine foliage and symmetrical round head of this tree make it well suited to specimen planting. The attractive panicles of white flowers and bunched red berries give it a place in every yard. Order this rapid grower now as supply is limited.

PRICE: 4 to 5 ft. branched tree, \$2.98 each.

## CRIMSON KING MAPLE

(Patent No. 735)

Truly a captivating king of the ornamental trees with its distinctive, colorful foliage which is a deep maroon-purple from the time it leafs out until the leaves fall. This rich color adds a pleasing contrast to the prevalent greens. Fine for city planting, will live for many generations, becoming more attractive each year. Our trees have a straight stem but will start branching the first summer and you will be delighted with every new leaf, every inch of new growth. Very hardy and easy to grow.

PRICES: 5 to 6 ft., \$5.95.



Crimson King Maple

## CLUMP BIRCH

No other tree occupies quite the place in the hearts of garden lovers as this graceful tree does. Its white bark, pendulous branches, delicate green foliage, and deeply cut leaves endear it to all who want a tree both for shade and beauty.

PRICES: 3 to 4 ft., clumps of 3, \$2.98 each; 4 to 5 ft., clumps of 3, \$3.95 each.

## RIVER BIRCH

A beautiful tree with torn and jagged bark that will give your yard an attractive naturalistic look. Numerous slender branches furnish pleasing shade, and grass will grow right up to the trunk. Keep well watered during dry summer months.

PRICES: 8 to 10 ft., \$3.95; 6 to 8 ft., \$2.95; 5 to 6 ft., \$1.95.

## CUT LEAF WEEPING BIRCH

Words can't describe the beauty and gracefulness of this tree. A large specimen of this small leaf tree grows by our nursery and is a thing of real beauty. Visitors who see this tree growing here say they simply must have one like it. You will say the same

PRICES: 5 to 6 ft. tree, \$3.75 each; 6 to 8 ft. tree, \$4.95 each.



River Birch

## SUGAR MAPLE

The beautiful, colorful trees seen throughout the Ozark Mountain range in fall are Sugar Maples. Each fall thousands of people drive through the Ozarks just to see the rich scarlet and gold colored foliage of the Sugar Maples. Although the Sugar Maples are prettiest in fall, they have attractive, dense, dark green foliage in summer. Will grow practically anywhere but are exceptionally good for street and lawn planting.

PRICES: 10 to 12 ft., \$4.95; 8 to 10 ft., \$3.95; 6 to 8 ft., \$2.95; 4 to 6 ft., \$1.95.

## SILVER MAPLE

A rapid growing, wide spreading tree with deeply cut foliage, dark green above and silvery white beneath, that changes to a beautiful yellow in fall.

PRICES: 10 to 12 ft., \$3.95; 8 to 10 ft., \$2.95; 6 to 8 ft., \$1.95; 4 to 6 ft., \$1.25.

## SYCAMORE

A rapid growing, handsome tree with a well formed head and interesting white bark. Leaves are heartshaped. Straight, beautiful grower.

PRICES: 10 to 12 ft., \$3.95; 8 to 10 ft., \$2.95; 6 to 8 ft., \$1.95; 4 to 6 ft., \$1.25.



Sycamore



Cut Leaf Weeping Birch



Sugar Maple

# Give Lasting Comfort

## MIMOSA — Exquisite Foliage & Blossoms

An unusual tree with soft lacy foliage that is completely covered with fluffy pink blossoms in summer. Rapid grower, the tree pictured here is only 3 years old. Extremely hardy, will grow in any soil. This popular tree is wanted by all who have seen its beauty. Often called Chinese Silk Tree. Don't be disappointed by a short supply, order today.

**PRICES:** 6 to 8 ft. \$2.50 each; 5 to 6 ft. \$1.98; 4 to 5 ft. \$1.69; 2 to 3 ft. 98c each.



Mimosa Tree in Bloom



Moraine Locust

## MORAINÉ LOCUST

(Patent No. 846) Sensational, fast growing shade tree. A vigorous, rapid growing, seedless tree, shaped much like American Elm, but not susceptible to disease. Very clean tree with no ugly, dangerous thorns and no seed pods. The leaves are so fine that when falling they practically disappear into the grass. Its branches arch up and out, giving a wide-spreading vase shape that reaches above a two-story house without obstructing the view or air circulation. Fine foliage makes plenty of cool shade, but lets enough sunshine through for good lawn growth, but not enough for crab grass growth. Will thrive in spite of cold, heat, or drought, on all kinds of soil. Bends under strains of wind and ice and rarely breaks or splits. Be first in your neighborhood to have this wonderful tree that everyone is talking about.

**PRICE:** 6 to 7 ft., \$6.00 each.

## LOMBARDY POPLAR

A handsome tree reaching far into the sky. This majestic tree is a favorite among many Americans, and its rapid growth is a leading factor in its favor. Planted in a row, it will provide a cool wall of shade and a fairly sturdy windbreak.

	PRICES:	
	Each	Per 5 Each
4 to 6 ft.....	\$0.75	\$0.65
6 to 8 ft.....	1.10	.90
8 to 10 ft.....	1.45	1.20

## SWEET GUM

An immensely popular tree with deeply cut foliage that turns to brilliant red in autumn. Grows rapidly and very good for lawn planting. Must be transplanted with a ball of earth; consequently, it must be shipped express collect.

**PRICES:** Balled and Burlapped Specimens, 5 to 6 ft., \$6.50; 4 to 5 ft., \$5.00.

## PIN OAK

A rapid growing tree that has no equal for street and lawn planting. The foliage is rich green, deeply cut and colors to a glorious coppery red in fall. Must be transplanted with a ball of earth on the roots, therefore, it must be shipped express collect.

**PRICES:** Balled and Burlapped Specimens, 6 to 8 ft., \$9.00; 5 to 6 ft., \$6.50; 4 to 5 ft., \$5.00.

## WEeping WILLOW

Everyone loves a fine old Weeping Willow tree with its gracefulness. Its restfulness, and its gentle branches waving in the breeze. Densely covered with fresh green leaves and beautiful dark green bark. Grows very rapidly.

**PRICES:** 5 to 6 ft., \$1.95; 4 to 5 ft., \$1.25; 3 to 4 ft., 98c.

## CHINESE ELM

A favorite tree the country over for its comfortable shade. If you want a sturdy and lasting tree in a hurry, this is it.

**PRICES:** 10 to 12 ft., \$3.95; 8 to 10 ft., \$2.95; 6 to 8 ft., \$1.95; 4 to 6 ft., \$1.25.

## NEW HYBRID ELM

Here is a tree you have been dreaming of. A cross between Chinese and American Elms, it combines the best qualities of both to produce the outstanding tree of the nursery industry. An extremely fast grower, yet is very hardy, resists root-rot and Dutch Elm Disease. Large leaves cast a shade in early stages of growth. No waiting for shade when these trees are planted. Be the first in your neighborhood to own a Hybrid Elm from Ozark's Growing Field.

**PRICES:** 4 to 5 ft., \$2.49; 5 to 6 ft., \$2.98; 6 to 8 ft., \$3.25.



Wisconsin Weeping Willow



Hybrid Elm



Lombardy Poplar



Pin Oak

# BEAUTIFUL TREES FOR YOUR HOME

## Ozark's FLOWERING DOGWOODS



Pink Dogwood



Magnolia Soulangeana

**GOLDEN RAIN.** Exquisitely beautiful, drought resistant tree with brilliant yellow flowers produced in enormous panicles at tips of twigs. A very handsome tree that seldom grows more than 30 feet high. Will stand hot, dry winds, and city conditions.

**PRICES:** 3 to 4 ft., \$1.98; 2 to 3 ft., \$1.69.

**ALLRED PLUM.** Not only can you enjoy the beauty of the red foliage on Allred, but the lovely red blossoms in spring, and clusters of red-skinned delicious, juicy, red-meat Plums in early summer. A tree that should be in Paradise and on your lawn.

**PRICES:** 5 to 6 ft., \$2.50; 4 to 5 ft., \$1.98; 3 to 4 ft., \$1.69; 2 to 3 ft., \$1.25.



**SMOKE TREE (Purple Fringe).** A magnificent tree completely covered in June and July with feathery flowers like a cloud of lilac-purple smoke. The green foliage colors beautifully in the fall. Becomes more attractive each succeeding year. Very hardy and seldom grows more than 10 to 12 feet tall.

**PRICES:** 2 to 3 ft., \$1.49 each.

**PINK DOGWOOD.** Some years ago we noticed one tree in the nursery row that was far richer, deeper and darker pink (almost red), than any Pink Dogwood we had seen. Immediately we started propagating from this improved tree, and now our trees have a much more brilliant color than trees generally sold. After flowering profusely in Spring, gorgeous deep green leaves turn to a glorious scarlet-red in the fall. Does best in partial shade and blooms next year after planting. **PRICES:** 30 to 36 inch, \$3.25; 24 to 30 inch, \$2.98. We can furnish balled and burlapped specimens in 5 to 6 ft., \$11.50; 4 to 5 ft., \$9.50; 3 to 4 ft., \$7.50.

**PINK MAGNOLIA (Magnolia Soulangeana).** Many people call this Tulip Tree because of its large Tulip-like flower, often 8 inches across, in early spring before leaves appear. Very hardy, blooms young, and seldom grows more than 20 feet tall.

**PRICES:** 18 to 24 in., \$1.98 each; 2 to 3 ft., Balled and Burlapped Specimen, \$5.49.

**RED MAGNOLIA (Magnolia rustica rubra).** Large flowers similar to Pink Magnolia but of a dark red color and a later bloomer. Very fast grower and most beautiful of all Magnolias.

**PRICES:** 18 to 24 in., \$1.98; 2 to 3 ft., Balled and Burlapped Specimen, \$5.49.

**PURPLE MAGNOLIA (Magnolia Soulangeana Nigra).** Practically the same as Soulangeana except blossoms are rich purple color and tends to bloom again in fall. A very lovely plant for your lawn.

**PRICES:** 18 to 24 in., \$1.98; 2 to 3 ft., Balled and Burlapped Specimen, \$5.49.

**JAPANESE FLOWERING CHERRIES (Kwanzan).** Completely covered in spring with large, double, rosy pink flowers. Plantings of these trees in Washington, D. C., made them well known and loved everywhere. Perfectly hardy and starts blooming a year or two after planting.

**PRICES:** 3 to 4 ft., \$2.98.



**REDBUD.** A small tree or large shrub, completely covered in spring with clusters of beautiful pink blossoms before leafing out. Has handsome heart-shaped leaves. Will grow anywhere. Redbud is Oklahoma's state flower and will decorate your own yard, too.

**PRICES:** 6 to 8 ft., \$2.50; 5 to 6 ft., \$1.98; 4 to 5 ft., \$1.50; 3 to 4 ft., \$1.25.

**WHITE DOGWOOD.** This is the lovely native White Dogwood that is admired by the many thousands each year who drive to Tahlequah and the Cookson Hills on the Dogwood Tour. Our trees are nursery grown, acclimated trees that will give your lawn the same exquisite beauty of the Dogwoods in the Cookson Hills. **PRICES:** 2 to 3 ft., \$1.69. We can also furnish balled and burlapped specimens in—5 to 6 ft., \$6.50; 4 to 5 ft., \$4.95; 3 to 4 ft., \$3.95.

**HOPA FLOWERING CRAB.** Beautiful in bloom, beautiful in foliage, beautiful in fruit. It is completely covered with fragrant, bright pink flowers in spring. While from mid-summer on, gleaming clusters of red Crab Apples, hang along the branches. The fruit makes excellent jelly. In the spring the foliage is a rich maroon. Perfectly hardy, easy to grow, thriving in any soil. Makes a lawn specimen.

**PRICES:** 6 to 8 ft., \$2.95; 5 to 6 ft., \$2.50; 4 to 5 ft., \$1.98; 3 to 4 ft., \$1.25.

**DOUBLE FLOWERING PEACH.** A very showy and attractive tree with a mass of Carnation-like double flowers, followed by green, glossy foliage. A rapid grower that is sure to be the talk of your neighborhood. Your choice of colors: Red or White.

**PRICES:** 5 to 6 ft., \$1.98; 4 to 5 ft., \$1.50; 3 to 4 ft., \$1.25; 2 to 3 ft., 98c.

**RUSSIAN OLIVE.** A small tree or large shrub that seldom grows more than 20 feet. Silvery gray foliage makes it stand out among prevalent green trees. In fall orange berries are coated with silvery scales and are very showy. Certainly a tree that should be on every lawn.

**PRICE:** 2 to 3 ft., \$1.25.

**RED-LEAF PEACH.** The sensational new Peach with bright red leaves in the spring, gradually dulling to a deep maroon toward fall. Deep rose blossoms and red fruit with a delicate flavor. A pretty tree which also produces fruit.

**PRICES:** 5 to 6 ft., \$1.98; 4 to 5 ft., \$1.50; 3 to 4 ft., \$1.25; 2 to 3 ft., 98c.



**TREE WISTERIA.** A lovelier sight can not be imagined than a Tree Wisteria in bloom. The purplish blue flowers are produced by the hundreds and completely cover the tree during May, transforming it into a thing of sheer beauty. On the lawn they develop into beautiful specimens and live for generations, increasing in beauty and dignity each successive season. The plants we offer are specimens and have bloomed already in the nursery row.

**PRICES:** Specimen Trees, \$3.98 each; 2 for \$6.50.

# Ozark's LANDSCAPE SERVICE

The first and most important step in planting your home is to start with a carefully balanced, detailed planting plan to exactly fit your individual grounds, using the proper choice of hardy plant materials, placed to the best advantage. The development of this plan will create the picture you wish to attain and prevent many planting disappointments and a needless expenditure of your money. We have specialized in this service for many years.

All you do is write for our sketch paper and fill in the necessary information it calls for. Upon receipt of your sketch paper and a deposit of \$7.50 our Landscape Architect will draw in the plants that you need around your home. Your deposit is returned to you on your first purchase of \$50.00 or more. If you desire, you may bring the information to the nursery and receive this service in person. Plans must be received before March 1st to receive prompt service.

If you have a particular problem or one that requires that the Landscape Architect call at your home, please write for complete details.



## BROAD-LEAVED EVERGREENS

These Evergreens are unsurpassed for foundation planting since they hold their leaves in winter. Plant them liberally and your home will have a warm natural appearance in winter just as in summer. Each of our plants is a specimen within itself and not to be confused with the small, spindling, baby Evergreens which most mail-order firms offer. We suggest that you drive to the nursery (where possible) and pick up your Evergreens. Not only do we have larger sizes in some varieties listed but also other varieties that are not listed.



### HARDY EVERGREEN AZALEAS

Azaleas are, without doubt, the most beautiful flowering plants in the South. We are fortunate in having the very best Kurume and Japanese varieties, which are hardy in all sections of the South and will stand winters much farther north by mulching. They have stood as much as 14 degrees below zero here in Tahlequah, without any damage. Azaleas prefer partial shade and acid soil. Should be planted on east and north side for best results. Roots are near surface and should be kept cool and damp by using a two- to four-inch mulch of Peat Moss. Do not cultivate. Add aluminum sulphate to make soil acid, one tablespoon to one gallon of water and water twice a month per plant. An ideal fertilizer is cottonseed meal but do not put in hole when planting.

### KURUME AZALEAS

This group is more dwarf in their habit of growth, very beautiful in groups or for planter boxes.

**CORAL BELLS.** Very profuse bloomer of pink, bell-shaped flowers. Compact grower. Glossy leaves.

**HINODEGIRI.** Slow, compact grower with fiery red flowers that literally smother the entire plant.

**LAVENDER QUEEN.** Large, light lavender flowers with white stamens. Leaves large and dark.

**SALMON BEAUTY.** Large, hose in hose, salmon-pink flowers and light green foliage. Most desirable.

**SNOW.** Good sized flowers of purest white among beautiful glossy leaves. Liked by all.

PRICE: 8 to 10 in., \$1.98 each.

### NEOCHEM ALUMINUM SULPHATE

For acid loving plants such as Azaleas, Rhododendrons, Blue Hydrangeas, Blueberries and broadleaf evergreens. Water plants twice a month with 1 tablespoon of aluminum sulphate per gallon of water. 1-lb. can 69c; 2-lb. can 89c.



Abelia

**ABELIA GRANDIFLORA.** A hardy, low growing evergreen flowering shrub with glossy dark green leaves contrasting effectively with red-tinged bark. Blooms profusely all summer with white-tinged pink, bell-shaped blossoms. Grows 3 to 4 feet tall but can be sheared to any shape. Most beautiful plant in any landscape. Plant several.

PRICES: 24 to 30 in., \$3.65; 18 to 24 in., \$2.98; 12 to 18 in., \$1.98.

**BOXWOOD.** A small, attractive plant that grows very slowly. Its dwarfish habit makes it especially useful for window boxes, urns, and foreground of foundation plantings. Foliage is small, glossy and dark green. Very hardy and always holds its foliage in winter. We cannot recommend this ground plant to you too highly.

PRICES: 15 to 18 in., \$3.25; 12 to 15 in., \$2.98.



Boxwood

# BROAD-LEAVED EVERGREENS

Hardy — Beautiful — Lasting



Camellia Sasanqua



**MAGNOLIA GRANDIFLORA.** The true Southern Magnolia but acclimated to stand as much as 20 degrees below zero. Intensely fragrant, large, snow-white blooms appear in June against a background of large, glossy, dark green leaves which remain on the tree the year around. Magnolia likes plenty of sunshine and does better when peat moss is worked around its roots. Our plants are exceptionally nice this year. **PRICES:** 4 to 5 ft., \$7.50; 3 to 4 ft., \$5.00; 2 to 3 ft., \$3.98; 18 to 24 in., \$2.98; 12 to 18 in., \$1.98.



Wax-Leaf Ligustrum

**EUONYMUS PATENS.** One of the most attractive broad-leaf evergreen shrubs. Leaves are a bright green while in fall numerous orange, Bittersweet berries add to its charm. Luxuriant of growth and naturally symmetrical in shape. Thrives in both sun and shade. Use as a specimen plant, background or hedge — can be trimmed any way desired.

**PRICES:** 24 to 30 in., \$3.65; 18 to 24 in., \$2.98; 12 to 18 in., \$1.98.

**CAMELLIA SASANQUA (Cleopatra).** Most popular winter and spring blooming plant in the southern states. The plant is handsome with its green-tinged red, glossy, all-winter foliage forming a perfect setting for the bright colored blooms. Can be grown as far north as Tulsa, and Oklahoma City, with good success. Plant in well drained soil, in sheltered, partly shaded location. The Cleopatra is considered the hardiest in this class and is pink in color. **PRICES:** 24 to 30 in., \$3.49; 18 to 24 in., \$2.98.

**WAX-LEAF LIGUSTRUM.** The South's most beautiful plant. Has showy, thick, waxy leaves that are dark green on top and light green on the under side. Can be pruned to any shape for specimen plants or beautiful informal hedge. **PRICES:** 24 to 30 in., \$4.98; 18 to 24 in., \$3.49; 15 to 18 in., \$1.98.

**ENGLISH LAVENDER.** A lovely, low growing plant with narrow silvery blue leaves that become a rich powder-blue in winter. Grows in the form of a globe. Especially good for accenting borders of shrubbery. No picture can bring out the exquisite beauty of this plant. Plant one in your yard and have the envy of the neighborhood. **PRICES:** 18 to 24 in., \$2.98; 15 to 18 in., \$2.49; 12 to 15 in., \$1.98.

**ELAEAGNUS FRUITLANDI.** A most versatile shrub for foundation planting, groups, borders and hedges and as specimens. Leaves are large and pointed, dark green above, silvery beneath. Creamy white flowers in fall, followed by yellowish red, edible fruit. Grows better in shady locations than any other shrub, and as well in full sun. **PRICES:** 12 to 18 in., \$2.98; 18 to 24 in., \$3.49.

**NANDINA.** Our most interesting plant that changes color with the season. Foliage is bright green in summer turning to vivid red in winter. In spring, panicles of white flowers are produced and in fall clusters of brilliant red berries decorate the entire landscape. Grows 3 to 5 feet, but can be pruned to any height. Use under window and mix with other shrubs for year around beauty.

**PRICES:** 18 to 24 in., \$3.00; 15 to 18 in., \$2.49; 12 to 15 in., \$1.98.

**PURPUREA HONEYSUCKLE.** A comparatively new plant that retains its purple leaves the year around. Flowers are pink and white and very fragrant. Widely used in planter boxes where it gives a pleasing effect. Can be sheared into hedges or specimens for border planting. Strong, vigorous growers.

**PRICES:** 18 to 24 in., \$2.98; 15 to 18 in., \$2.29.

**CHERRY LAUREL.** A handsome Evergreen that can be grown into a tree or pruned as a specimen. Has dark, shiny green leaves and will become more compact each time you shear it.

**PRICES:** 4 to 5 ft., \$5.95; 3 to 4 ft., \$4.98; 2 to 3 ft., \$2.98.

**EUONYMUS JAPONICA.** A lustrous, glossy-leaved specimen of the broad-leaf family. An all-purpose plant that is naturally symmetrical but can be trimmed as a hedge or will cling close to a wall. Our most versatile plant. Grows 6 to 8 feet but can be trimmed to any height. **PRICES:** 24 to 30 in., \$3.49; 18 to 24 in., \$2.98; 12 to 18 in., \$1.98.



Euonymus Japonica



Nandina



Cherry Laurel





Photinia

**CRIMSON TIDE PYRACANTHA.** The picturesque new Evergreen Pyracantha that is a sensational beauty. It is lower growing than most Pyracanthas and in spring bright, bell-like white flowers literally cover the plant, followed by fiery red berries which last well into winter. May be used as a specimen, but is particularly attractive when trained against a wall where the rich deep green foliage acts as a splendid foil for the amazing quantities of berries. A spectacular, yet dignified shrub and one to be prized for your garden. **PRICE: Gallon Cans, \$2.29.**

**GOLD NUGGET PYRACANTHA (*Pyracantha Lalandi*).** Gold Nugget is the gem of all Pyracanthas. It puts on a magnificent display of bell-like, snow-white blossoms followed by masses of berries, each berry rich golden in color, against deep green foliage. Gold Nugget is hardy in all sections and will certainly help to make your lawn the show place of the neighborhood. **PRICE: Gallon Cans, \$1.98.**

**PHOTINIA.** A beautiful Evergreen with slightly curled, indented leaves. The new foliage in spring is in contrast of bright colors (mostly red) and grows very compact. Not particular about soil or situation. Can be used many places in the landscape. **PRICES: 24 to 30 in., \$4.98; 18 to 24 in., \$3.98; 15 to 18 in., \$2.98.**



Gold Nugget Pyracantha

## HARDY HOLLIES — For Year Around Beauty!

**AMERICAN HOLLY.** The true native Holly you can see growing wild in our southern states, but will thrive as far north as Kansas City. Can be pruned as a specimen or grown into a tree. Spiny, glossy green foliage the year around with bright red berries in winter. **PRICES: 3 to 4 ft., \$5.95; 2 to 3 ft., \$3.49; 18 to 24 in., \$2.98.**

**CORNUTA HOLLY.** An especially fine strain of Chinese Holly which has taken many years to produce in quantities, but now it's here for you to enjoy. It is very bushy, has large, spiny, dark green, glossy leaves the year around. In winter it produces clusters of red berries which give a pleasing contrast to the dark green, glossy foliage. An absolute "must" for every garden. **PRICES: 12 to 18 in., \$2.98.**

**JAPANESE HOLLY (*Crenata Rotundifolia*).** A splendid new, dark glossy green Holly with round leaves similar to Boxwood. Especially suited for spaces requiring a low, dwarf plant. Very hardy and is decorated with black berries. **PRICES: 24 to 30 in., \$4.98; 18 to 24 in., \$3.98; 15 to 18 in., \$2.49.**

**YAUPON HOLLY.** Really a native Holly of Texas, but plenty hardy as far north as Kansas City. A very compact plant with small, dark green leaves similar to Boxwood. Grows considerably larger than Boxwood and is decorated with large quantities of red berries in winter. Ideal plant for foundation plantings, specimens, or as hedges. **PRICES: 15 to 18 in., \$2.49.**

**BURFORDI HOLLY.** We consider this Holly to be the very best. It carries the beautiful green foliage the year around, with a plentiful supply of big bright red berries in winter. Will grow in either sun or shade and is excellent for foundation plantings. **PRICES: 24 to 30 in., \$4.98; 18 to 24 in., \$3.98; 12 to 18 in., \$2.98.**



Yaupon Holly

### Important Notice

All of our Evergreens are large specimen plants and will have to be shipped by express or motor freight with you paying the shipping charges.



American Holly

**BULLATA HOLLY.** The most beautiful small "accent" plant ever introduced. It is very bushy, has shiny dark green, Boxwood-like foliage somewhat convex and it grows about 4 feet high and 3 feet across. The glossy leaves are so thick that the twigs are invisible. Blends beautifully with other Evergreens and for small hedges it is a jewel. Does well in light shade or full sun and is equally happy on alkaline or acid soil, and last but not least, it is hardy. **PRICES: 15 to 18 in., \$3.49; 12 to 18 in., \$2.98.**

**EAST PALATKA HOLLY.** One of the most promising of Hollies tried in our nurseries. If you want a Holly that is sure to have berries every year, then this is your Holly. It has faster growth than other Hollies and the small leaves allow the cluster of red berries to show through in the Fall and Winter. No Holly surpasses this variety in the amount of berries borne and the regularity of bearing. **PRICES: 18 to 24 in., \$3.98 each; 24 to 30 in., \$4.98 each.**



Burfordi Holly

# Evergreens Add Charm, Beauty and UPRIGHT COLUMNAR TYPE

For Individual, Corner, and Foundation Planting

**ARIZONA CYPRESS.** A beautiful and very popular plant in the Southwest. Blue-gray foliage that lends something different in your planting.  
PRICES: 4 to 5 ft., \$10.25; 3 to 4 ft., \$8.50; 30 to 36 in., \$7.00.

**BAKER'S ARBOR-VITAE.** A striking, attractive Evergreen that retains its shape without shearing. Compact, pyramidal form and dark green foliage.  
PRICES: 4 to 5 ft., \$4.50; 3 to 4 ft., \$3.49; 2 to 3 ft., \$2.98.

**BLUE HAVEN JUNIPER.** A new Juniper that grows and looks like Can-narti except it has colorful powdery blue foliage. The most beautiful new plant introduced in 20 years.  
PRICES: 4 to 5 ft., \$10.25; 3 to 4 ft., \$8.50; 30 to 36 in., \$7.00.

**CANNARTI JUNIPER.** A beautiful Evergreen that will furnish a special dark green for your foundation planting. While in winter attractive blue berries add to its charm.  
PRICES: 5 to 6 ft., \$13.75; 4 to 5 ft., \$10.25; 3 to 4 ft., \$8.50; 30 to 36 in., \$7.00.

**CHINESE BLUE COLUMNAR JUNIPER.** Slender, pyramidal; grows symmetrical and narrow, with blue-gray, prickly foliage. Will grow well in almost any soil. Excellent for foundation or specimen.  
PRICES: 4 to 5 ft., \$10.25; 3 to 4 ft., \$8.50; 30 to 36 in., \$7.00.

**DUNDEE JUNIPER.** A columnar type with green foliage in summer changing into a beautiful bronze-purple after frost in fall. One of the best plants we grow.  
PRICES: 4 to 5 ft., \$10.25; 3 to 4 ft., \$8.50; 30 to 36 in., \$7.00.

**EXCELSA ARBOR-VITAE.** An improved upright Arbor-Vitae with finer pressed foliage which maintains its beautiful dark green color in winter without discoloration. The hardiest of all upright Arbor-Vitae.  
PRICES: 4 to 5 ft., \$5.50; 3 to 4 ft., \$4.50; 30 to 36 in., \$3.25.

**IRISH JUNIPER.** An attractive plant growing in a columnar form that needs no shearing. Never too tall or bushy. Deep gray-green foliage.  
PRICES: 4 to 5 ft., \$4.50; 3 to 4 ft., \$3.49; 30 to 36 in., \$2.98.

**KETELEERI JUNIPER.** A fairly compact, columnar Evergreen that is well proportioned. "Fleshy" green foliage is decorated with distinctive slate colored berries which make it one of the best green Junipers.  
PRICES: 4 to 5 ft., \$10.25; 3 to 4 ft., \$8.50; 30 to 36 in., \$7.00.

**SNEEDI JUNIPER.** Slender, columnar, grows symmetrical and narrow with blue-gray foliage. Needs very little shearing. One that you will cherish above all others.  
PRICES: 4 to 5 ft., \$10.25; 3 to 4 ft., \$8.50; 30 to 36 in., \$7.00.



Arizona Cypress



Pathfinder Juniper

**PATHFINDER JUNIPER.** A compact, upright grower with attractive powdery blue foliage. Gives a beautiful contrast in any landscape and will make your planting the talk of the neighborhood.  
PRICES: 4 to 5 ft., \$10.25; 3 to 4 ft., \$8.50; 30 to 36 in., \$7.00.

**SILVER RADIANCE JUNIPER.** Silver Radiance truly describes this lovely plant. Foliage is silvery blue with a maroon cast that gives you a sparkling, glowing effect. Silver Radiance will stop all who pass.  
PRICES: 4 to 5 ft., \$10.25; 3 to 4 ft., \$8.50; 30 to 36 in., \$7.00.

## INTERMEDIATE TYPE — Low Growing, Upright Type

**BERCKMANN'S GOLDEN ARBOR-VITAE.** A dwarfish, compact, globular Arbor-Vitae with a beautiful golden color. Use for an entrance planting, brightening up a foundation or unusual color schemes. PRICES: 2 to 3 ft., \$3.98; 18 to 24 in., \$3.49; 15 to 18 in., \$2.98.

**BONITA ARBOR-VITAE.** A low dwarfish, round growing dark green plant that needs no shearing. Very compact. Valuable for urns, window boxes, cemetery plantings, etc. PRICES: 24 to 30 in., \$3.98; 18 to 24 in., \$3.49.

**SPINY GREEK JUNIPER.** A very compact, cone-shaped Evergreen of dense, spiny, glaucous blue foliage. Prefers dry, sunny location. Ideal for entrance and foundation plantings. PRICES: 3 to 4 ft., \$5.49; 2 to 3 ft., \$3.98; 18 to 24 in., \$3.49; 15 to 18 in., \$2.98.



Golden Arbor-Vitae



Spiny Greek Juniper



Blue Haven Juniper



Irish Juniper

# Dignity to Your Home

## MEDIUM SPREADING TYPE

For Foundation or Group Plantings

**PFITZER JUNIPER.** By far the most popular of the spreading types. Very graceful and particularly beautiful with its feathery blue-green foliage. Hardy, can be planted in shade or sun; in fact, will grow practically anywhere.

**PRICES:** 30 to 36 in., \$6.50; 24 to 30 in., \$5.50; 18 to 24 in., \$4.50; 15 to 18 in., \$3.50; 12 to 15 in., \$1.98.

**HETZI JUNIPER.** Very similar to Pfitzer but has a silver-blue color. **PRICES:** 18 to 24 in., \$4.98; 15 to 18 in., \$3.98.

## LOW SPREADING TYPE

For Steps, Banks, Foundations and Rock Gardens

**ANDORRA JUNIPER.** A comparatively new variety that's really outstanding. Very low and spreading. Beautiful silvery green in the summer, turning an unusual pinkish red throughout the winter. You will like this one. **PRICES:** 24 to 30 in., \$5.00; 18 to 24 in., \$4.49; 15 to 18 in., \$3.98.

**PROCUMBENS JUNIPER.** Very dwarf spreading type with prickly blue-green foliage. Hardy, most satisfactory plant, and a true creeper. **PRICES:** 18 to 24 in., \$4.49; 15 to 18 in., \$3.98.

**TAMARIX JUNIPER.** A low spreading Juniper with blue-green foliage which does not fade in winter. Excellent for rock gardens, terraces, graves, and ground covers. Very hardy. **PRICES:** 18 to 24 in., \$4.49; 15 to 18 in., \$3.98.



Pfitzer Juniper

**DOORWAY COLLECTION**

All the evergreen shrubs you need for a beautiful entrance planting.

2 Pfitzer Juniper. 12-15 in.  
2 Irish Juniper. 30-36 in.  
2 Mugho Pine. 18-24 in.

All six large specimen plants that make a showing right now . . . Bought separately would cost **\$16.98** \$20.90.

## Important Notice

All of our Evergreens are large specimen plants and will have to be shipped by express or motor freight with you paying the shipping charges.



Austrian Pine



Mugho Pine

## Ozark's HARDY PINES

**AUSTRIAN PINE.** Combine glamour with hardiness. Long-needed, dark green foliage that makes a very compact lawn specimen. Grows into a beautiful large, long-lived tree that is hardy practically anywhere. **PRICES:** 4 to 5 ft., \$12.50; 3 to 4 ft., \$10.00.

**MUGHO PINE.** A low, dwarf Pine which grows in a globe shape. Very good for foundation planting and especially on the north or east exposure. **PRICES:** 18 to 24 in., Specimen Plants, \$5.49.

# BABY EVERGREENS

## AT WHOLESALE PRICES

Plant these sturdy well rooted Baby Evergreens in your garden for 2 or 3 years before transplanting to permanent landscape location. In a few years they will be worth 10 times what you paid us for them. You can also make the growing of Evergreens a profitable hobby. You be the nurseryman and save money. These Baby Evergreens are worth \$1.25 each but we are specially pricing them at only: 75c each; 3 for \$1.80; 10 for \$5.00; 50 for \$24.00.

### EVERGREENS

Andorra Juniper  
Austrian Pine  
Baker's Arbor-Vitae  
Golden Arbor-Vitae  
Bonita Arbor-Vitae  
Colorado Blue Spruce  
Irish Juniper  
Pfitzer Juniper  
Spiny Greek Juniper

### BROADLEAF EVERGREENS

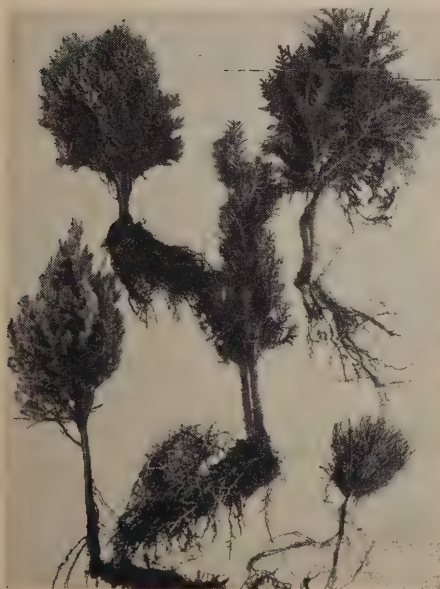
Abelia grandiflora  
Boxwood  
Euonymus patens  
Euonymus japonica  
American Holly  
Oregon Holly (Mahonia)  
Magnolia grandiflora  
Nandina

### BABY EVERGREEN OFFER

The best varieties for use in home landscaping.

4 Baker's Arbor-Vitae  
4 Pfitzer Juniper  
2 Spiny Greek Juniper  
2 Nandina  
2 Abelia  
2 Oregon Holly  
2 Andorra Juniper  
2 Austrian Pine

All 20 for Only **\$9.50**



# Ozark's Flowering Shrubs



Crape Myrtle

**CRAP MYRTLE.** Often called the South's most beautiful shrub and can be grown as far north as Kansas City. Very hardy and blooms on new growth similar to Roses; so cut back severely each spring. Will bloom this summer and each year from mid-summer to frost. Our new striking colors are much improved over the old strain. Clear colors in Red, Pink, Purple and White.  
**PRICES:** 2 to 3 ft., 98c each; 18 to 24 in., 79c.

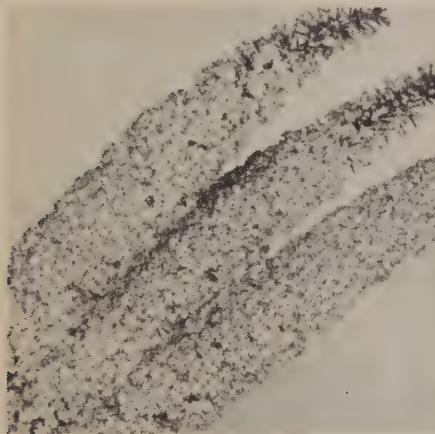


Spirea, Van Houttei

**SPIREA ANTHONY WATERER.** Our favorite low growing shrub with lovely rose-red flowers arranged in flat clusters all Summer. Makes a neat, dense shrub 2 to 3 ft. tall. Unsurpassed for foundation planting. Will grow anywhere.  
**PRICES:** Heavy, 98c each; Medium 79c each.

**SPIREA BILLIARDI (Lilac Spirea).** Rose colored flowers in large cone-shaped spikes that bloom nearly all summer. Fine for cut flowers and a showy shrub in any landscape. Grows 4 to 5 feet high. Excellent for untrimmed hedge.  
**PRICES:** 2 to 3 ft., 98c each; 18 to 24 in., 79c each.

**SPIREA, DWARF WHITE (Spirea Callosa Alba).** Grows and looks very similar to Spirea Anthony Waterer, except it is completely covered in spring with sparkling white flowers. Something new and unusual that is really worth while.  
**PRICES:** Heavy, \$1.25 each; medium, 98c each.



Butterfly Bush

**SPIREA VAN HOUTTEI.** One of the most common but still one of the most beautiful of all shrubs. Covered with glamorous, tiny pure-white flowers on graceful drooping branches in early spring. Also makes a beautiful untrimmed hedge.  
**PRICES:** 2 to 3 ft., 98c each. 18 to 24 inch, 79c each.

**BLUE MIST SPIREA.** Fills the need for an attractive low growing shrub. The powder blue flowers give it a misty appearing bloom from August until frost. Narrow silvery green foliage add to the appearance. Cut off old tops every spring for best results.  
**PRICES:** No. 1 Plants, 98c each.

**BUTTERFLY BUSH (Summer Lilac).** A showy shrub that blooms profusely and continuously from early summer to frost. Flowers are huge and very fragrant. In winter the tops die down but come up even more vigorously from the roots in spring. Grows to a compact shrub 4 to 5 feet tall. Your choice of the following lovely colors: Pink, Purple, Red, White.  
**PRICES:** Heavy plants, 79c each; 4 colors, \$2.75.

**RED LEAF BARBERRY.** A strikingly brilliant shrub that is very attractive and decorative in any planting. Has lustrous red foliage all summer and is followed by red berries in fall and most of the winter. Plant Red Leaf Barberry in sun to retain good color. Grows 3 to 4 feet high.  
**PRICE:** 18 to 24 in., 98c each; 15 to 18 in., 79c each.



Red Leaf Barberry

**HONEYSUCKLE ZABELI (Red Bush Honeysuckle).** The finest, most attractive of all Bush Honeysuckles plus a distinctly new color of bloom. Deep red flowers of most exquisite fragrance are followed by brilliant red berries that ripen in mid-summer and cling to the bush for several months. Look over your yard and you will find spots where this shrub will help make your home more attractive.  
**PRICES:** 2 to 3 ft., 98c each; 18 to 24 in., 79c each.

**CALYCANTHUS (Sweet Shrub).** Known to many as the Carolina Allspice. Deliciously fragrant chocolate-red flowers are produced in June. Then odd looking pods develop later which are filled with brown, aromatic seeds. Glossy corrugated foliage adds to its unusual charm. Grows 4 to 6 feet tall and will endure shade.  
**PRICES:** 2 to 3 ft., \$1.25 each; 18 to 24 in., 98c each.

**ALTHEA (Rose of Sharon).** Large, double flowers and fancy green leaves. Blooms from mid-July to frost. Very popular and considered to be one of the showiest of midsummer flowers. A hardy grower (8 to 10 ft.). Choice of colors: Double Red, Double White, Double Pink, Double Purple.  
**PRICES:** 2 to 3 ft., 98c each; all four colors, \$3.49; 18 to 24 in., 79c each; all four colors, \$2.98.



Honeysuckle



Calycanthus



Althea

# Add Beauty to Your Home

**CARDINAL SHRUB (Weigela Vaniceki).** When the Cardinal Shrub was introduced it was so unusual, so outstanding, so spectacular, that everyone who saw it absolutely had to have a Cardinal Shrub in his own yard. It is hardy throughout the United States and blooms the first year. Produces in abundance, large red trumpet-shaped flowers in spring, summer and fall. We wish you could see them blooming in our fields—truly a joy to see. Certainly a plant that deserves a place in your yard.

**PRICES: 2 to 3 ft., \$1.49 each; 18 to 24 in., \$1.25 each.**

**PINK WEIGELA (Weigela Rosea).** Becomes completely covered with rose-pink, trumpet-shaped flowers in April and May. But it is still an ornamental asset to every yard the remainder of the summer with its beautiful green foliage on the graceful arching branches. Weigela Rosea is an attractive shrub from early spring until late fall.

**PRICES: 2 to 3 ft., \$1.25 each; 18 to 24 in., 98c each.**

**GOLDDROP WEIGELA (Weigela Variegated).** An attractive new shrub with handsome green leaves, but the true beauty comes from the golden white edges around the leaves. To add to this beauty are pink, trumpet-shaped flowers in June, giving it the appearance of glowing gold. Be first to thrill your entire neighborhood with this new plant.

**PRICES: 2 to 3 ft., \$1.49 each; 18 to 24 in., \$1.25 each.**

**RED WEIGELA (Weigela Eva Rathke).** A really outstanding Weigela that will bloom this season. In May and June each and every branch is simply covered from top to bottom with hundreds and hundreds of lovely ruby-red trumpet-shaped flowers. Makes a thrifty, perfectly formed specimen with dark green foliage. Very hardy and can be planted in partial shade or sun. Once you see this shrub, you will want it in your yard.

**PRICES: 2 to 3 ft., \$1.25 each; 18 to 24 in., 98c each.**

**SNOWBALL.** An old favorite that is still popular and impressive in the spring. Its large, white, snowball-like blossoms almost cover the entire shrub. Strong, heavily rooted plants.

**PRICES: 18 to 24 in., \$1.50 each; 12 to 18 in., \$1.25 each.**

**GOLDEN PRIVET (Ligustrum Vicari).** Here is something new in the dwarf ornamental foliage groups. The compact shrub is a mass of golden yellow leaves all season. Very hardy and can be kept trimmed to any desired height. Excellent for planter boxes, side walk borders, or individual specimens. Grown in full sun they will add a splash of color to any landscaping. Set among other shrubs and plant with Barberry, too.

**PRICES: each 98c, 5 plants or more, 89c each.**

**HYDRANGEA P. G.** The most striking of all shrubs. It produces huge white, cone-shaped flowers in August, turning pink, and finally bronze in September. Ideal for cut flowers. Exceptionally hardy. Grows 3 to 4 ft. Blooms first year.

**PRICES: 2 to 3 ft., \$1.25 each; 18 to 24 in., 98c each.**

**HYDRANGEA A. G.** An early blooming shrub that has immense snow-white blooms, very full and round. Perfectly hardy, thrives everywhere, but does better in shady places. Grows from 3 to 4 ft. tall and blooms from June until August.

**PRICES: 2 to 3 ft., \$1.25 each; 18 to 24 in., 98c.**

**BLUE HYDRANGEA.** The hardiest of all Hydrangeas. Has immense flower heads 12 to 15 inches in diameter and lasts for many weeks. The flowers are pink in ordinary soil, while in acid soil they are blue. Make soil acid by watering twice a month with 1 tablespoon of aluminium sulphate per gallon of water, or by mixing acid peat moss with soil half and half.

**PRICES: Heavy, 2-yr. plants, \$1.69 each. Medium, 2-yr. plants, \$1.35 each.**

**FORSYTHIA (Golden Bell).** Spring's early beauty. Blooms first in spring and its lovely bright yellow flowers light up the entire yard. Grows 6 to 8 feet tall and nearly as wide. Will grow anywhere.

**PRICES: 2 to 3 ft., 98c each; 18 to 24 in., 79c each.**

**LYNWOOD GOLD FORSYTHIA.** A fine new Forsythia only recently brought over from Ireland. It has a pleasing deep yellow colored flower that is borne profusely on the branches from top to bottom. Cut some limbs to flower indoors during the Winter. Here is the finest of additions to your flowering shrub bed.

**PRICES: 18 to 24 inches, \$1.25; 2 to 3 feet, \$1.50.**

**DEUTZIA LEMOINEI.** A new hybrid Deutzia with a desirable graceful habit. It is a mass of white flowers in May. The thickly clustered blossoms are very showy. A low growing habit makes this shrub easy to use in your borders. Seldom reaches four feet.

**PRICES: 12 to 18 inches, 98c each. 18 to 24 inches, \$1.25 each.**

**DWARF WHITE DEUTZIA (Deutzia Gracilis).** A charming little "must" for every garden that seldom grows more than 2 or 3 feet high. The plant makes a fountain-like bush, attractive at all times of the year. In May it is covered with an astonishing profusion of delicate snowy white flowers. It does well in light shade and is well adapted for low edging to walks or paths, excellent in clumps in the foreground of other shrubbery.

**PRICES: 15 to 18 in., \$1.25 each; 12 to 15 in., 98c each.**

**DWARF PINK DEUTZIA (Deutzia Gracilis Rosea).** A very bright and cheerful dwarf shrub that seldom grows more than 3 feet. In May there is a superabundance of delicate pink flowers in clusters covering the entire plant. Beautiful throughout the year with narrow foliage in gracefully drooping branches. Especially good for plantings along walks, drives and foreground of other shrubbery. Does equally well in sun or light shade.

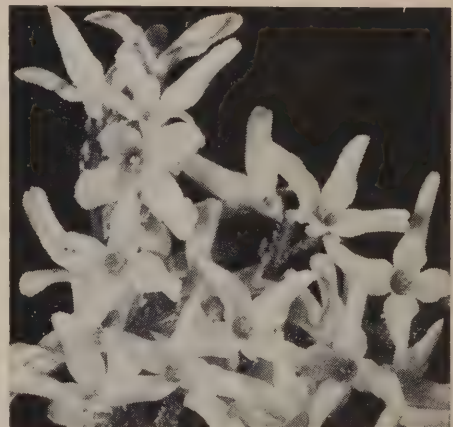
**PRICES: 15 to 18 in., \$1.50 each; 12 to 15 in., \$1.25 each.**



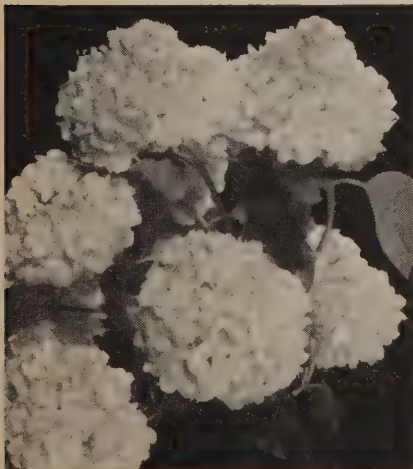
Hydrangea, P.G.



Blue Hydrangea



Forsythia Lynwood Gold



Snowball



Red Weigela



Deutzia Lemoinei

# Ozark's Flowering Shrubs



Persian Lilac

**PERSIAN LILACS.** A more profuse bloomer of large clusters of blue flowers than the common, and does not sprout from roots. Starts blooming the first year and grows 6 to 8 feet high. Exceptionally vigorous. Plant one near your bedroom window and wake up smelling its pleasing fragrance.

**PRICES:** 2 to 3 feet, 98c each; 18 to 24 inch 79c each.

**HYBRID FRENCH LILACS.** The most fragrant and beautiful of all Lilacs. Have bloomed already in the nursery row and will flower for you the next year after planting. Very hardy, grows 6 to 8 feet and does not sucker like the old-fashioned Lilac. Lovely as a single bush, a mass planting is breathtaking. Your choice of colors: Red, Pink, White, Blue, and Purple.

**PRICES:** Heavy plants \$1.35 each; Any 3 colors, \$3.75, All 5 colors, \$6.00, Extra Heavy Jumbo plants, \$1.75 each.

**BEAUTY BUSH.** This charming shrub is magnificent as a specimen, in group plantings or for an untrimmed hedge. In the spring the graceful arching branches are completely covered with lovely pink blossoms, delightfully fragrant. Grows in ordinary soil in sun or part shade. Will be a beauty spot in your yard.

**PRICES:** 2 to 3 ft., \$1.25 each; 18 to 24 in., 98c each.

**RED FLOWERING QUINCE (Cydonia Japonica).** This attractive shrub produces loads of brilliant scarlet flowers, charmingly arranged all along stems in early spring, before foliage appears. Foliage is green tinged with maroon and very striking. Hardy, strong grower. Blooms first year.

**PRICES:** 2 to 3 feet, \$1.25 each. 18 to 24 in., 98c each.

**KERRIA JAPONICA FLORAPLENA (Globe Flower).** Truly year around beauty. Often called the Globe Flower since the lovely double golden flowers have a ball-like shape similar to button Chrysanthemums. The plant grows vigorously and attains a maximum height of 4 to 5 ft. It is bushy in habit with many bright green stems, attractive all winter. Give it a sunny location in front of other shrubbery and its golden yellow blooms all summer will be a pleasure. The flowers last well in water and are excellent for cutting.

**PRICES:** 18 to 24 in., \$1.50 each; 12 to 18 in., \$1.25 each.

**VITEX (Chaste Tree).** A lovely shrub that will start blooming in early summer and continue till late fall. Flowers a delightful lavender-blue on long branching spikes. Grows 6 to 8 feet with big palmate foliage. Fine for hot, wet, or dry location. Not fussy at all. Will suggest a friendly welcome to your lawn.

**PRICES:** 2 to 3 ft., \$1.25 each; 18 to 24 in., 98c each.

**EUONYMUS ALTUS COMPACTUS (Burning Bush).** This beautiful shrub changes colors with the seasons. Yellow flowers in Spring are followed by red berries. Green leaves turn coppery red in Fall. An unusual corky bark makes this shrub a marvel even in Winter. Successful in any climate. Reserve a place for some of these colorful plants in your yard.

**PRICE:** 12 to 18 inches, \$1.65 each.

**PINK FLOWERING ALMOND.** Another one of Spring's early beauties but one of the most outstanding. A small shrub with an abundance of double Rose-like pink flowers closely set upon twigs, before the leaves appear in early Spring. Plant Pink Almond, Red Flowering Quince, and Forsythia together and make your yard the show place in early Spring.

**PRICE:** 2 to 3 ft. \$1.25 each; 18 to 24 inches 98c each.

**DOUBLE MOCK ORANGE.** Lovely, large, double, white flowers in great profusion in May-June and through the summer. Deliciously fragrant. Makes a neat, graceful and very beautiful bush. 6 to 8 ft. tall.

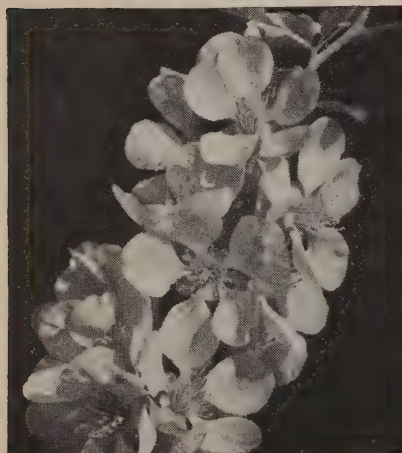
**PRICES:** 2 to 3 ft., \$1.25 each; 18 to 24 in., 98c each.

**SWEET MOCK ORANGE.** Mother Nature's perfume of the garden. This beautiful, sweet scented shrub blooms heaviest in May and June, but single orange-white blossoms can be seen almost any day during the summer. Fine for foundation and group plantings.

**PRICES:** 2 to 3 ft., 98c each; 18 to 24 in., 79c each.



Beauty Bush



Red Flowering Quince



Vitex



Double Mock Orange



Kerria



Pink Flowering Almond

# Ozark's Beautiful HEDGES

**AMUR RIVER PRIVET (South).** The very best evergreen hedge. Hardy as far north as Kansas City, and holds its leaves all winter. Can be pruned any time and sheared to any desired shape or height. Makes a dense, compact green fence. Plant 1 ft. apart.

PRICES:	Per 10	Per 25	Per 50	Per 100
12 to 18 in.....	\$1.20	\$2.90	\$5.75	\$10.50
18 to 24 in.....	1.75	4.00	7.75	15.00
2 to 3 ft.....	2.50	5.75	11.50	20.00

**CALIFORNIA PRIVET.** America's most widely planted hedge where the temperature does not go much below zero. Semi-evergreen, with thick, dark green foliage. Most beautiful of all the Privets. A rapid grower, can be sheared to any desired height, making a dense, compact green wall. Plant 1 ft. apart.

PRICES:	Per 10	Per 25	Per 50	Per 100
12 to 18 in.....	\$1.20	\$2.90	\$5.75	\$10.50
18 to 24 in.....	1.75	4.00	7.75	15.00
2 to 3 ft.....	2.20	5.00	9.50	18.00

**UNTRIMMED FLOWERING HEDGES.** We have numerous flowering shrubs that can be used but suggest for the best effect you use a mixture of different plants. Example: Plant 5 Spirea Van Houttei, 5 Forsythia, and 5 Spirea Billardi. A mixture of this type will give you three colors of flowers in the same hedge. See page 20, 21, and 22 for varieties. Write for special prices on large quantities.

**LODENSE PRIVET.** For those who want the most beautiful trimmed hedge but yet do not like to trim it. An evergreen Privet very similar to Amur River South but a compact, dwarf grower, making it more costly but much less work. Only needs trimming about one-fifth as often. Also makes a lovely specimen plant. Plant Lodense liberally, have beautiful hedge and sit in the shade while your neighbor trims his ordinary hedge. Will be the envy of the neighborhood. Plant 1 foot apart.

PRICES:	Per 10	Per 25	Per 50	Per 100
6 to 9 in.....	\$3.25	\$6.00	\$11.75	\$22.50
9 to 12 in.....	4.00	7.50	14.50	28.00
12 to 15 in.....	5.00	9.50	18.50	36.00



## ← Rosa Multiflora Japonica

Fast becoming the most popular living fence, hedge or border. Used extensively as a barrier for all livestock. Has small thorns and grows so dense that even the largest bull will not try crossing it. Can be used as a fence at 60% saving over wire. So practical—yet so beautiful. Makes a bushy plant 6 to 8 feet tall and almost as wide. Can be trimmed to any height or width from 2 to 4 feet when planted 12 inches apart. Makes a beautiful untrimmed hedge when planted 18 inches apart. White flowers in June followed by fruits which birds like. A most practical hedge for your yard. **PRICES: 10 to 18 in., 25 for \$2.00; 50 for \$3.50; 100 for \$6.50; 500 for \$30.00; 1,000 for \$57.50.**



**WISTERIA.** A magnificent vine with long, drooping clusters of fragrant, lilac-purple flowers. Our plants are the new improved, grafted type that are sure to bloom. Vigorous and ideal for arches, trellises, etc. **PRICES: 2-year, field-grown, 98c each; 2 for \$1.89.**

# Ozark's HARDY VINES

**GOLDFLAME HONEYSUCKLE.** A sensational new everblooming variety with brilliant rose-red flowers on the outside and gold inside. Blooms first year, every year from June until winter. Will climb as a vine, spread as a ground cover, or can be trimmed to a hedge or a specimen plant. A plant you will be proud to have.

**PRICES: 2-year plants, 98c each; 2 for \$1.89.**

**EUONYMUS RADICANS COLORATUS.** A showy evergreen foliage plant that turns bronze in winter. Wonderful cover for banks, excellent filler among shrubs and will grow on masonry walls when planted near. Plant liberally and start enjoying them this year.

**PRICE: 2-year plants, \$1.25 each; 3 for \$3.00.**

**ENGLISH IVY.** Beautiful dark green evergreen leaf. Clings to masonry. Must be planted on north or east where protected from hot sun. **PRICE: 69c each; 3 for \$1.98.**

**BOSTON IVY.** Clings to and completely covers without support even the smoothest surface. Can be planted on wood, brick or stone. Foliage is a pleasing green changing to a thrilling maroon in fall. **PRICE: 98c each; 2 for \$1.89.**

**PACHYSANDRA TERMINALIS.** A trailing ground cover with beautiful waxy green leaves that stay green all winter. Very valuable for densely shaded areas. Only plant that will grow beneath pine trees. Plants make a dense growth and spread rapidly. Used as low hedge on walks and drives. Excellent for steep slopes.

**PRICES: 39c each, 10 plants for \$2.49.**

## Large Flowering CLEMATIS

Clematis are the most beautiful and colorful of all flowering vines. On a fence, porch or trellis the flowers are a glorious sight. A location shaded from hot afternoon sun is best. Our plants will bloom this summer.

**CLEMATIS HENRYI.** A large flowering white Clematis so beautiful that no description can do it justice.

**CLEMATIS JACKMANI.** Completely covered all summer with hundreds of lovely purple flowers. The most colorful and attractive of all.

**CLEMATIS MME. ANDRE.** Exquisite velvety red flowers produced profusely.

**PRICES: Above Three Clematis, \$1.49 each; 3 for \$3.98.**



Clematis Jackmani

## PEAT MOSS

Mix one-fourth peat moss with soil when planting and you will get better results. It mellows heavy soils and helps bind sandy soils. Being a pure source of humus, it is needed in most soils. A fine soil conditioner that conserves moisture, keeps down weeds and gives Winter protection.

**PRICES: 1 peck bag, \$0.98; 25 lb. bag, \$1.89; 50 lb. bag, \$2.69; 100 lb. bag, \$4.79.**



## LAWN GRASS SEED

**BERMUDA SEED, EXTRA-FANCY HULLED.** A package with a high percentage of pure bermuda seed for the hardest of lawns. This seed is hulled for faster germination, requires much less water to get it started. Do not confuse with cheaper mixtures of bermuda with a smaller percentage of pure seed. **PRICES: (1 lb. plants 750 sq. feet.) 2 lbs. for \$1.98; 5 lbs. for \$4.50.**

## SCRAM DOG REPELLENT

A powder in a handy dusting container used to keep dogs away from shrubs, lawns, porches, etc. The odor does the trick. **8-oz. shaker 89c each.**

# Plant **HARDY PERENNIALS**

PRICES ON ALL PERENNIALS UNLESS OTHERWISE NOTED:

45c each; 3 for \$1.10; 6 for \$1.98; 12 for \$3.98

## HARDY PHLOX

A truly superb plant with flowers almost 3 times as large as the ones pictured. Our plants are heavy, field-grown plants that will bloom freely for you this summer and many years to come. Grow in full sun or partial shade. Can be divided year after year. Varieties:

**Africa.** Brilliant carmine-red.

**Caroline Vandenberg.** Beautiful blue.

**Mary Louise.** Pure snow-white.

**Royal Purple.** The best purple.

**Irene.** Soft light red.

**Salmon Glow.** Flame-pink with salmon shading.



Hardy Phlox

## CREEPING PHLOX

(*Phlox Subulata*) (**Thrift**). Cherished as much for its refreshing moss-like evergreen foliage as for its masses of flowers that appear in early spring. Showy colors of red, white and blue. Low, compact.



Creeping Phlox

## CUSHION MUMS

Often called Million Mums, but does actually become completely covered with thousands of lovely Mums in August lasting until frost. Blooms first year. Hardy, easy to grow, and multiplies year after year. Your choice of colors: Red, Pink, White, Gold and Bronze.

## GIANT HIBISCUS

(**Mallow Marvels**). Flowers as big as saucers. Shrub-like perennial 4 feet tall. Blooms in July and August. Pink, Red and White.

## TRITOMAS

(**Red Hot Poker**). Brilliant glowing orange-red flowers on graceful stems nearly 3 feet tall. Plant resembles Yucca and blooms in August and September.

## WHITE YUCCA

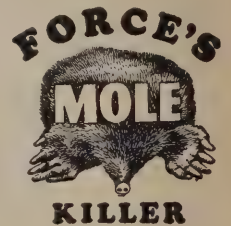
A very beautiful plant with delightfully creamy white flowers on long stems in June. Entirely hardy and a plant you will cherish more each year.

## FORCE'S GOPHER KILLER

Especially formulated, ready-to-use pellets that will eradicate all gophers and have no harmful effect on soil or vegetation. Compounded from the gopher's natural food plus a poison deadly to all gophers. **60 pellets 65c; 175 pellets \$1.15.**

## FORCE'S MOLE KILLER

A successful and complete eradication compounded from the mole's natural food and made in pellet form, ready to use. Contains a poison deadly to moles, killing them right where they live, in the ground. Use according to simple instructions on each package. **75 pellets 69c; 185 pellets \$1.15.**



Cushion Mums

## SHASTA DAISY

Beautiful in the garden and fine for cutting. Large flowers 2 to 3 inches across, petals of white and clear yellow center on long stems. A profuse bloomer. Thrives in ordinary soil.

## ESTER REED DAISY

Here is a fine all double daisy. It has the same cut flower qualities as Shasta daisy only has the solid white center. The best for flower arrangements. The daisies are a must for your dry-weather garden locations. **PRICES: 65c each; 3 or more, 60c each.**



Ester Reed Daisy



Shasta Daisy



# For Bushels of Gorgeous Blooms

PRICES ON ALL PERENNIALS UNLESS OTHERWISE NOTED:

45c each; 3 for \$1.10; 6 for \$1.98; 12 for \$3.98

## BLEEDING HEART

Graceful weeping stems are covered with many heart shaped rose-pink flowers in April and May. Fine delicate looking foliage add much to this unusual plant. Grows 2 feet tall in partially shaded places. **PRICES:** 95c each, 3 plants for \$2.50.

## SWEET WILLIAMS

Dense rounded flower heads formed by 20 to 30 flowers on an 18 inch stem make this a must for your garden. Foliage is short heavy textured green. Your choice of colors: Pink, Red, or White.

## PERENNIAL SWEET PEAS

Favorite of flower lovers. Delightful flowers in July, August. Marvelous for porches, trailing over banks, coves, trellis and fences. Flowers are larger than annual Sweet Peas. Your choice of Pink, Red and White.



Bleeding Heart

## LILY OF THE VALLEY

Delightfully fragrant white flowers shaped like tiny bells. Many flower clusters on each flower stem which are backed up by a lovely lily foliage. Thrives in shade or full sun. Heavy clumps of 5 to 7 pips.

## DOUBLE HOLLYHOCKS

A fascinating new strain with gorgeous flowers. No plant is hardier or easier to grow. Tall flower stalks sometimes reach 5 to 6 feet. A good background plant. Colors: Red, Pink, and Yellow.

## SCARLET ORIENTAL POPPIES

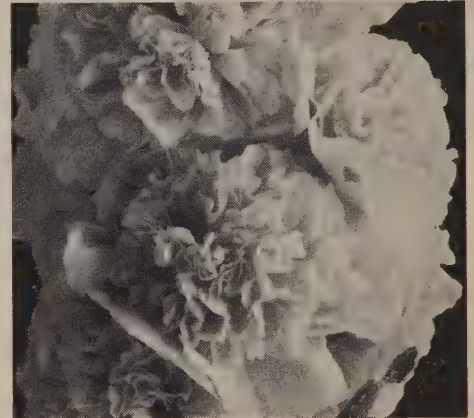
A lovely plant that can be planted from early Fall to Spring. This variety is a brilliant scarlet of large size.



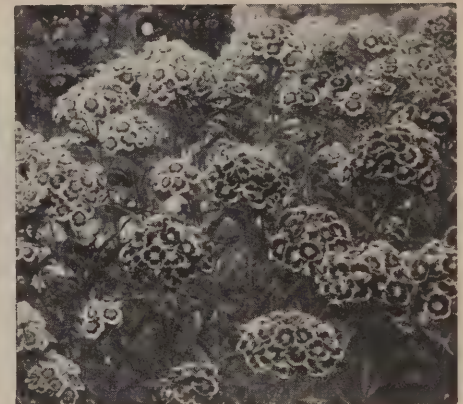
Sweet Peas



Lilies of the Valley



Double Hollyhocks



Sweet Williams



Gardenia Fortunei

## Lovely, Fragrant GARDENIA FORTUNEI

The thick dark green glossy foliage surrounding the snow-white blossoms of the familiar Gardenia make it a prize addition to your home. Grow it in pots in Winter, in the yard in Summer and enjoy its exotic beauty all year inside or out. Unequaled for its rich perfume. For landscape beauty, for home bouquets, for party corsages — plant OZARK GARDENIA FORTUNEI.

**PRICES:** Lovely 1 yr. blooming size plant, 98c each. Huge 18-24" balled and burlapped specimens, \$2.50 each.

## FREE! USEFUL PLANTING GUIDE

With every order we will include a complete planting guide. It tells step-by-step methods of proper planting in a clear, simple way so that even if you have never planted anything before, you can do it successfully. It also tells how far apart to plant, prune, water, care for plants over winter, etc.



## WARNING — Fertilizer Kills

Do not put fertilizer in hole while planting. It is a good idea to use a small amount on top of the ground around plants after planting, but use caution. According to our replacement records over-use of fertilizer has caused 95% of all losses. We want your plants to live; so please, for the plant's sake, keep fertilizer out of the hole when planting.



# Grow Prize Dahlias

Of all the late summer and fall flowers, Dahlias are the largest and most beautifully colored. These outstanding varieties we offer have helped make Dahlias so popular in millions of gardens all over America. Give them a little attention and you can grow flowers as large as dinner plates and brilliant as a flashing beacon light.

**AVALON.** Large, clear, canary-yellow flower with long stem.

**GALLANT FOX.** Large, deep crimson-red.

**JANE COWL.** Glistening bronzy buff and old gold blending to deep salmon at center.

**JEAN KERR.** Extremely early, popular white. Vigorous, free blooming, insect resisting.

**JERSEY'S BEAUTY.** Considered the finest Dahlia ever introduced. Lovely pink.

**PRICES:** 39c each; 3 for \$1.05; 6 for \$1.98.

## TUBEROUS BEGONIAS

No illustration can do justice to the exquisite beauty of these thrilling Tuberos Begonias. They are started from tubers, can be grown easily in the garden or potted and will give you an amazing abundance of blooms. Excellent for shady spots. Colors are brilliant, petals are satiny and blooms are produced over a long season. You will cherish these Begonias more than anything you have planted in years. Our bulbs are choice, selected 1½- to 2-inch bulbs. Include a selection of all colors in your order: Red, Pink, Yellow, Copper and White.

**PRICES:** 29c each; 5 for \$1.25; 12 for \$2.50.



Tuberous Begonia

**REGAL.** America's favorite and yet the hardiest of all Lilies grown. Large, pearly white trumpets etched with wine; golden throats. Jasmine-like fragrance. Blooms early summer. Sun or partial shade. **PRICES:** 35c each; 3 for 79c; 5 for \$1.25.

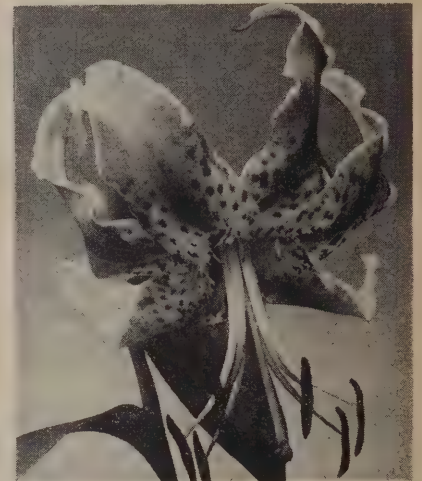
**RUBRUM.** The finest and most lovely of all hardy garden Lilies. Strong stems, 3 or 4 feet, each bearing a number of flowers bright pink edged white with small maroon spots. Blooms from late July to September and will come up every year. Very hardy and will bloom this summer. Very scarce and our supply is quite limited. **PRICES:** 79c each; 3 for \$1.98.

**ESTATE LILY (Madonna Lily).** Sometimes called the outdoor Easter Lily. This grand Lily can be grown in your back yard and have the true long trumpet Easter Lily flowers just as delicate, wonderful, and fragrant as \$3.00 to \$5.00 greenhouse grown ones. Plant some this spring and have blooms this summer and each year hereafter. **PRICES:** 49c each; 3 for \$1.39.

**TIGER LILY.** Brilliant orange-red Lily flowers with blackish dots. This interesting and easy to grow Lily is always a welcome sight in your garden. **PRICES:** Each 49c; 3 for \$1.39.

**CORAL LILY (Tennifolium).** The most brilliant waxy-red Lily offered. Many

flowers are borne on each tall plant. Extremely hardy, will grow in the poorest of soils. **PRICES:** Each 35c; 3 for 79c; 5 for \$1.25.



Rubrum Lily



Tiger Lily



## ELEPHANT EAR

Green, enormous tropical type leaves grow to be 6 feet in diameter. Will not wither outside. **PRICES:** 3 for \$1.25.

## FANCY-LEAVED CALADIUM

For continuous foliage display from late Spring to frost, no other plant equals these. Leaves of many different colors. Easy to grow; thrives in partial almost full shade. Dig before freezing weather in fall and store like Cannas or you can pot them for winter color indoors. **PRICES:** 49c each; 3 for \$1.25.

## TUBEROSE

(Fragrant Mexican)

Graceful, waxy white flowers on spikes 30 to 36 inches tall. Excellent for cutting and so superbly fragrant a single spike will perfume a room. Often 20 or more flowers on a single plant and blooms from July to frost. Plant outdoors after danger of frost and handle like Cannas.

**PRICES:** 12c each; 12 for \$1.10.

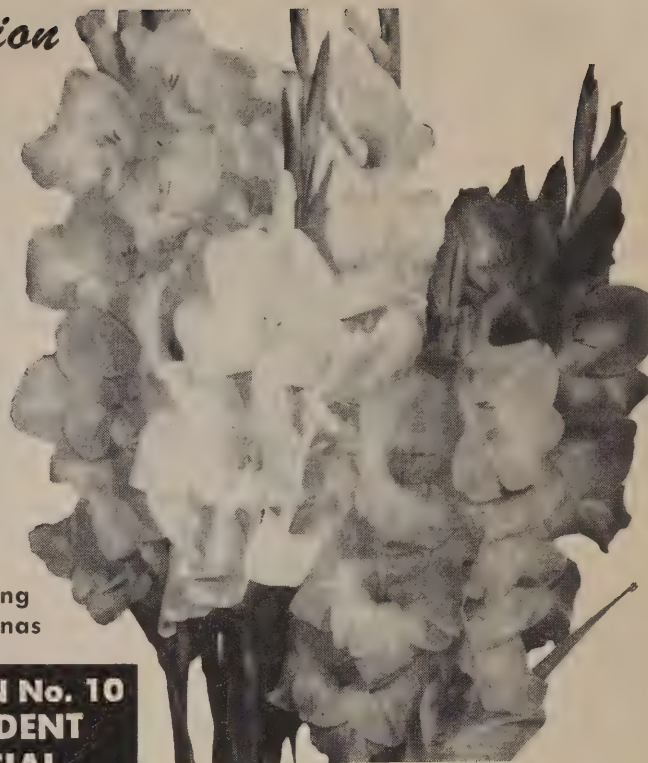


# Rainbow GLADIOLUS Collection

This collection of striking rainbow colors is sure to please you when they bloom. Not only will you have bouquets for your home, your church, and your friends in a short time, but they will make your garden the talk and envy of your neighborhood. Many of the newer and better varieties are mixed (no choice) in this collection and all bulbs are treated to prevent disease and rot. Packed to reach you in perfect condition.

### PRICES:

25 large bulbs.....	\$1.29	25 medium bulbs....	\$1.10
50 large bulbs.....	2.10	50 medium bulbs....	1.98
100 large bulbs.....	3.98	100 medium bulbs....	3.49



←Yellow King  
Humbert Cannas

### BARGAIN No. 10 PRESIDENT SPECIAL

Plant a bed of President and have bright red flowers all summer and fall.

**25 for \$2.98**

### BARGAIN No. 11 OZARK Special Peony Collection

Our selection of the best varieties:

1 Red 1 Pink 1 White  
All Three **\$1.98**  
for Only



## Thrilling CANNAS

A bed or border of Cannas in your yard will give a brilliant array of color all summer and fall. Our bulbs are large, extra fine size that will produce more and better flowers. Plant 18 inches apart in late spring and be sure to water during dry weather. Your choice of varieties.

- PRESIDENT. Red. Dwarf.
- RED KING HUMBERT. Red foliage.
- CITY OF PORTLAND. Pink.
- ROSEMOND COLE. Red flower, gold edge.
- YELLOW KING HUMBERT.
- WYOMING. Orange.

PRICES: 15c each; 12 for \$1.50.

## Beautiful Fragrant PEONIES

Our Peony roots are good, strong, 3- to 5-eye divisions. Hardy anywhere. Fine for Memorial Day. Plant in rich soil so that the eyes are not more than 2 inches below the surface.

**EDULIS SUPERBA.** Very fragrant, large, early dark pink. Strong grower that blooms freely.

**FELIX CROUSSE.** Large, rich, dazzling. Midseason. Blooms freely.

**FESTIVA MAXIMA.** Early, fragrant, very large, white with crimson markings.

**KARL ROSENFELD.** Large, velvety dark crimson; midseason. Blooms freely.

**MONS. JULES ELIE.** Early, glossy flesh-pink shading to deeper rose at base. Very fragrant. A sure bloomer.

PRICES: 79c each; 3 for \$2.25; 6 for \$3.98.



### DU PONT FAST ACTING SOLUBLE PLANT FOOD

A new spray-on plant food which can be applied to foliage or to the soil. It is a high strength (19-22-16) general purpose fertilizer, readily soluble in water, that quickly stimulates plant growth. Du Pont Urea and trace elements are included in the formula. Will not burn foliage or roots when used as directed. For gardens—lawns—house plants. 6-oz. can (house plant size) 69c; 1 1/2-lb. can (home garden size) \$1.95; 4-lb. bag (large economy size) \$3.50.



# All-America Winners

## Large California Grown Specimens



Chrysler  
Imperial Rose

**CHRYSLER IMPERIAL.** (Pat. 1167) All-American Winner for 1953. Long, tapering buds of crimson opening to vivid red blooms are borne on sturdy, medium long stems. Retains its sparkling luster even in adverse weather. Hardy grower with dark green, glossy foliage; worthy of a place in your garden.

**PRICES:** Heavy 2 Yr. No. 1 plants, \$2.50 each; 3 or more \$2.20 each. Extra Heavy Jumbo selected plants, \$3.00 each.

**CHARLOTTE ARMSTRONG.** (Pat. 455). Very popular Rose with gorgeous long, slender, carmine buds opening into brilliant cerise flowers. All-America Winner for 1941. A Winner because of its beautiful shape and extreme length of bud with a high center. In great demand.

**PRICES:** Heavy 2-Yr. No. 1 plants \$2.00 each; 3 or more \$1.75 each. Extra Heavy Jumbo selected plants, \$2.50 each.

**FORTY-NINER.** (Pat. 792). Immensely popular 1949 All-America Winner. Has long, pointed buds opening into delightfully fragrant flowers with vivid red inside petals and chrome-yellow outside. Long lasting, strong stems, vigorous.

**PRICES:** Heavy 2-Yr. No. 1 plants \$2.25 each. 3 or more \$2.00 each. Extra Heavy Jumbo selected plants, \$2.75 each.

**MIRANDY.** (Pat. 632). A dark, velvety red Rose and All-America Winner in 1945. Beautiful petals and a delicious, penetrating fragrance that you will never want to forget. The flower displays amazing beauty of form and has excellent lasting qualities.

**PRICES:** Heavy 2-Yr. No. 1 Plants, \$2.00 each, 3 or more \$1.75 each. Extra Heavy Jumbo selected plants \$2.50 each.

**MOJAVE.** (Pat. 1176). 1954 All-America Winner with vivid coloring matched only in the burning orange glow of a California desert sunset. Radiant orange highlighted by flame-like tones of scarlet and vermilion. Bush is very vigorous with amazing numbers of beautiful long tapering buds. Sure to be a winner in your garden.

**PRICES:** Heavy 2-Yr. No. 1 plants, \$2.75 each; 3 or more, \$2.40 each. Extra Heavy Jumbo selected plants, \$3.25 each.

**ALL AMERICAN WINNER SPECIAL**  
 1 Each of the Hybrid Tea class roses on this page (No Grandifloras)  
**8 AARS Winners . . . . . Only \$16.25**  
 Bought separately would cost \$18.50



Peace Rose

**PEACE.** (Pat. 591.) The popular and very fragrant AARS Winner in 1946. A vigorous grower with shiny dark green foliage that has won more awards than any other Rose. Vivid yellow with rose tipped petals, enormous sized blooms.

**PRICES:** Heavy 2 Yr. No. 1 plants, \$2.50 each; 3 or more, \$2.20 each. Extra Heavy Jumbo selected plants, \$3.00 each.

**HELEN TRAUBEL.** AARS Winner in 1952 (Pat. No. 1028). A blend of warm pink and luminous apricot. The bright orange undertone makes the combination a rich one. Long tapering buds with beige centers. Big flowers with abundant spicy fragrance.

**PRICES:** Heavy 2 Yr. No. 1 plants, \$2.50 each; 3 or more, \$2.20 each. Extra Heavy Jumbo plants, \$3.00 each.

**NOCTURNE.** All American Winner 1948. Perfectly formed buds of a velvety dark red. The best red rose for all areas. (Patent No. 713.)

**PRICES:** Heavy 2 Yr. No. 1 plants, \$2.00 each. Extra-Heavy Jumbo plants, \$2.50 each.

### NEW GRANDIFLORA ROSES

**QUEEN ELIZABETH.** (Patent No. 1259.) A 1955 All American Winner. Clear glowing bloom of soft carmine-rose and dawn-pink majestically set off by deep green, glossy foliage. Very fragrant. Almost thornless and beautiful as a cut flower. A new color in a new class of roses. Flowers are borne singly and in clusters.

**PRICES:** Heavy 2 Yr. No. 1 plants, \$2.75; 3 plants or more, \$2.40 each. Extra-Heavy Jumbo selected plants, \$3.25 each.

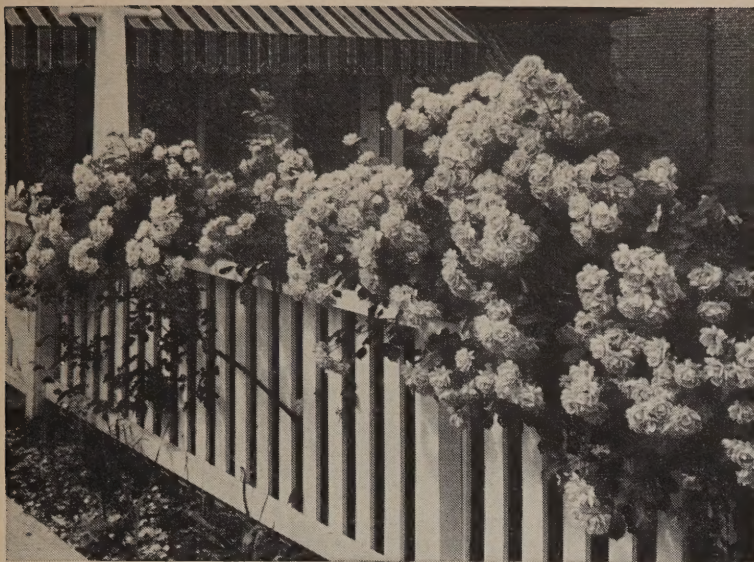
**BUCCANEER.** (Patent No. 1119.) A rich non-fading yellow. Perfect streamlined buds for cutting. Flowers and fragrance of a Hybrid Tea but free blooming like a floribunda.

**PRICES:** Heavy 2 Yr. No. 1 plants, \$2.50 each; 3 plants or more, \$2.20 each. Extra Heavy Jumbo plants, \$3.00 each.

**CARROUSEL.** (Patent No. 1066.) A true Grandiflora class rose with a free blooming tall growing plant. Glossy mildew resistant foliage. Large double deep red. Flowers come in clusters and singly.

**PRICES:** Heavy 2 Yr. No. 1 plants, \$2.00 each; 3 or more plants, \$1.75 each. Extra-Heavy Jumbo plants, \$2.25 each.

**GRANDIFLORA SPECIAL**  
 1 Of Each Of These Three Wonderful Grandiflora Roses ..... Only **\$6.35**  
 (If Bought Separately would cost \$7.25)



# CLIMBING ROSES

## Hardy California Grown

**BLAZE (Improved Paul's Scarlet).** A brilliant blood-red Rose that surpasses all other Roses for beauty. Blooms in clusters, long blooming season and very double. This is the rose that makes such a show on everyone's fence.

**PRICES: 2 Yr. No. 1 Plants, \$1.25 each. Extra Heavy Jumbo selected plants, \$1.50 each.**

**CLIMBING CRIMSON GLORY.** (Pat. 736). Exactly the same lovely deep crimson flowers, the same rich fragrance, as the bush Rose. But here is the climbing form. Blooms all through the season and will bloom this summer and fall.

**PRICES: Heavy 2-Yr. No. 1 plants, \$2.50 each; 3 or more, \$2.20 each. Extra Heavy Jumbo selected plants, \$3.00 each.**

**CLIMBING PEACE.** (Patent 932). Climbing everblooming form of the famous Peace that is so popular. Huge flowers of a creamy yellow are edged with soft pink that soon spreads over most of the petals. Blooms first season planted.

**PRICES: 2 Yr. No. 1 plants, \$2.00 each. 3 or more plants \$1.75 each. Extra Heavy Jumbo selected plants, \$2.50 each.**

**PAUL'S SCARLET.** When this famous Rose is in full bloom it is a sight that simply stops everyone that passes. It is a mass of blazing scarlet. Blooms in clusters on long stems. Plant Paul's Scarlet on a trellis, porch, or along a fence and have the talk of your neighborhood.

**PRICES: Heavy 2-Yr. No. 1 plants, \$1.25 each. Extra Heavy Jumbo selected plants, \$1.50 each.**

**CLIMBING GOLD RUSH.** A free blooming large golden yellow Rose that produces from Spring till frost. Vigorous grower with good foliage. Buds are good for cutting.

**PRICES: Heavy 2 Yr. No. 1, \$1.25. Extra Heavy Jumbo selected plants, \$1.50 each.**

**DR. J. H. NICOLAS.** (Pat. 457). A new ever-bloomer that produces lovely, fully double, deep rose-pink flowers. Vigorous grower, disease resistant, dark green foliage.

**PRICES: Heavy 2-Yr. No. 1 plants, \$2.00 each; 3 or more, \$1.75 each. Extra Heavy Jumbo selected plants, \$2.50 each.**

**CLIMBING ETOILE DE HOLLANDE.** Produces choice red buds with long stems. Top quality bloom for cutting. Beautiful foliage and a strong grower. Very fragrant.

**PRICES: Heavy 2 Yr. No. 1 Plants, \$1.25 each. Extra Heavy Jumbo Plants, \$1.50 each.**

**CLIMBING WHITE AMERICAN BEAUTY.** A most striking snow-white Rose with dark, glossy foliage that makes a dazzling sight. For a gorgeous effect plant with Blaze on the same trellis, producing the appearance of one climber with both red and white blooms.

**PRICES: Heavy 2-Yr. No. 1 plants, \$1.25 each. Extra Heavy Jumbo selected plants, \$1.50 each.**



**CLIMBING TALISMAN.** Put back on our list due to popular demand. Same wonderful bloom as Talisman Bush Rose, only a strong growing climber.

**PRICES: Heavy 2-Yr. No. 1, \$1.25 each. Extra Heavy Jumbo Plant, \$1.50 each.**

### Red & White Special

Alternate these beautiful climbers on a fence and have the show place of the neighborhood.

- 1 Paul's Scarlet
- 1 Climbing White American Beauty

**PRICES:**

2 Heavy 2-Yr. No. 1 plants.....\$1.98  
3 of the above collections.....\$5.79

### Climbing Peace Special

- 1 Climbing Crimson Glory
- 1 Climbing Peace
- 1 Climbing Dr. J. H. Nicolas

Our Three Most Beautiful Climbers, Jumbo Plants Only **\$5.70**  
(Bought Separately would Cost \$6.50)

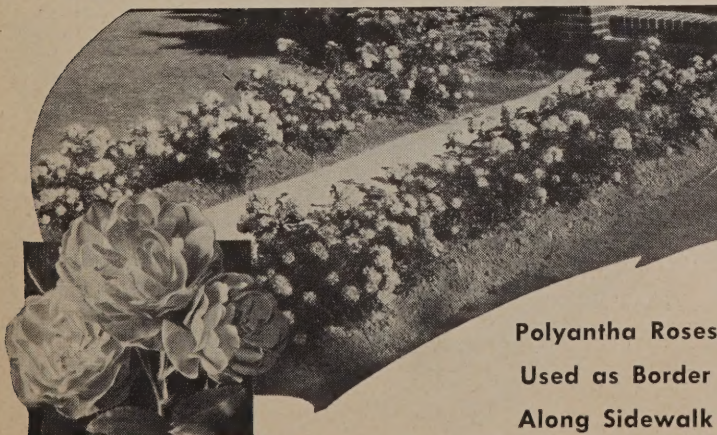
## POLYANTHA or Baby Roses

### In Bloom Continuously All Summer!

**PRICES: Heavy 2-Yr. No. 1 Plants, \$1.25 each. Extra Heavy Jumbo Selected plants, \$1.50 each.**

**GOLDEN SALMON.** Countless clusters of rich-salmon colored miniature roses attract immediate attention in any garden. Use for mass plantings or borders along walks or drives. These prized plants bloom constantly from early Spring until frost.

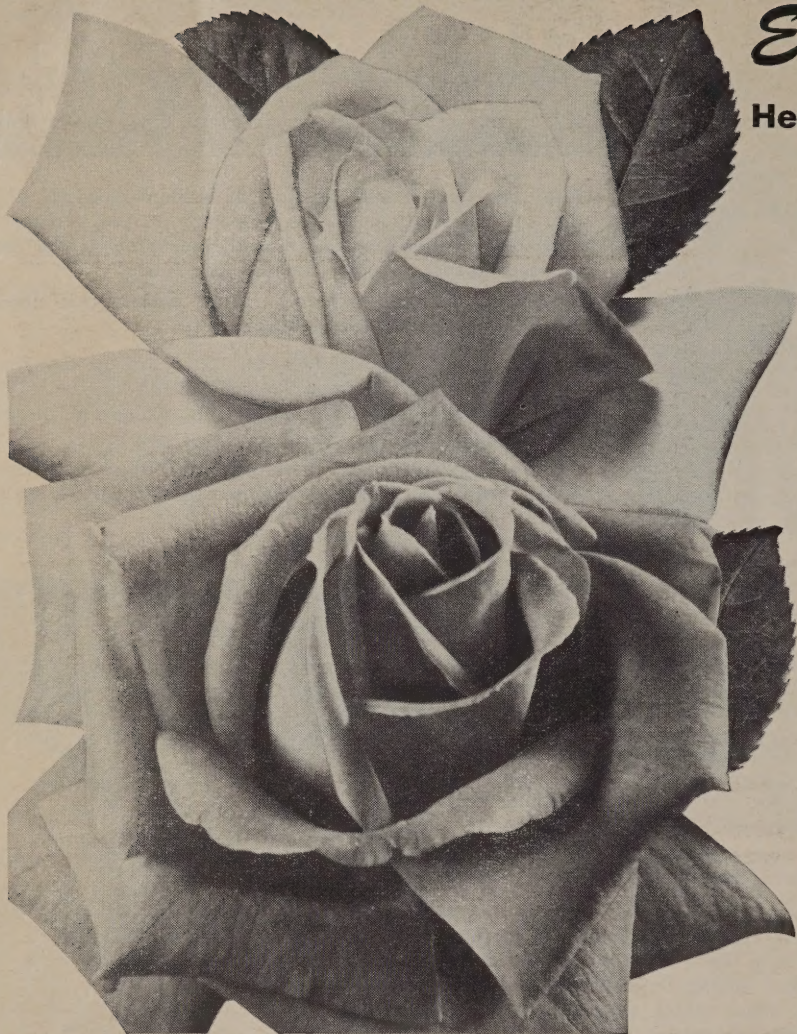
**IDEAL.** Another eye-catching rose with large clusters of brilliant red roses. Ideal for borders. These are the hardiest of rose bushes, and will bloom all Summer long regardless of the heat. Don't be without these dependable roses in your garden.



Polyantha Roses  
Used as Border  
Along Sidewalk

# Everblooming ROSES

Heavy Rooted . . . California Grown



## PRICES:

Heavy, 2-yr., No. 1 plants: Each \$1.25; 5 or more \$1.15 each; 10 or more \$1.10 each.

Extra Heavy Jumbo Selected Plants; Each \$1.50; 5 or more \$1.35 each; 10 or more \$1.25 each.

**CONDESA DE SASTAGO.** A fiery copper on the inside and rich gold outside. Fragrant beautiful bloom on long stems. Tough leathery foliage makes this a hardy rose.

**CRIMSON GLORY.** The best velvety red rose we offer. It is now off the patent list and you can enjoy this beautiful rose at no extra cost. Perfectly formed buds.

**ECLIPSE.** Perfect blooms of clear soft yellow borne on a long stem. The buds are extremely long. Vigorous grower and free flowering. Also off patent list now.

**EDITOR McFARLAND.** A clear bright pink Rose noted for long lasting buds. Healthy bushes combine to make this a must for your rose garden.

**FRAU KARL DRUSCHKI.** In all our search for a better white rose, we still pick this one for perfect buds and delicate white flowers. A fragrant rose borne on extremely healthy bushes.

**McGREY'S IVORY.** The largest most double white Rose we've seen. Every bud is packed with petals which stay on a long time. All this on a strong bush with dark glossy foliage.

**PINK RADIANCE.** Most popular pink rose grown. No bush can match the Radiance for hardiness and free blooming habits. A large very double flower.

**PRESIDENT HOOVER.** A striking cerise and gold combination. Strong bush that contains many long, sturdy stems. Healthy foliage.

## 12 BEAUTIES SPECIAL

One Each of the Beautiful Roses listed on this Page

1 Dozen Heavy 2 Yr. No. 1 Plants....Only **\$10.98**

(Bought Separately would cost \$15.00)

## OZARK 5 WINNERS

The Five Outstanding Colors of Our Most Popular Varieties.

Heavy 2 Yr. No. 1 Plants

1 Yellow Condesa 1 Editor McFarland  
1 Talisman 1 Frau Karl Druschki  
1 Crimson Glory

Only **\$4.79**

(Bought Separately would cost \$7.25)

## STAR ROSE GARDEN

1 Condesa de Sastago 1 Eclipse  
1 Red Radiance 1 Pink Radiance  
1 Texas Centennial

5 Lovely, Heavy 2 Yr. No. 1 Plants.....Only **\$4.69**

(Bought Separately would cost \$7.25)

**RED RADIANCE.** A highly popular deep red, double rose. Exceptionally hardy bushes. If you have room for only a few roses, make sure one is Red Radiance.

**TALISMAN.** Exquisitely formed rose of orange-scarlet and golden-yellow. Long stiff stems and richly fragrant. An old Rose, still tops in popularity.

**TEXAS CENTENNIAL.** Double flowers of bright vermilion-red; rich tea fragrance, good bloomer.

**YELLOW CONDESSA.** Double flowers of rich gold; spicy fragrance. We think the best yellow Rose grown.

Strong Healthy Specimens



## DU PONT ROSE DUST



This Rose dust contains all the necessary chemicals for the control of black spot, powdery mildew, rust, and other foliage diseases of Roses. Packed in a handy dusting gun container. Just pump and dust your Roses.

8-oz. dust gun 89c.

# Colorful Everblooming FLORIBUNDA ROSES

These are the easiest type of roses to grow and are rapidly becoming the most popular. Ideal for walks or borders. Blooms constantly from June until frost.

**CIRCUS.** All America Winner for 1956. The first multicolored floribunda in AAR'S History. Each perfect little bud of bright yellow and red opens to fragrant long lasting blooms in big clusters. The colors change through tones of orange, clear-yellow, buff and pink with a final flourish of bright red. Limited supply, so order early.

**PRICES:** Heavy 2 Yr. No. 1 Plants, \$2.50 ea.; 3 plants or more, \$2.20 ea. Extra Heavy Jumbo, \$3.00 each.

**FASHION.** AARS Winner in 1950. Buds of oriental red. Blooms of luminous pink, overlaid with gold, that deepens to coral with reddish tones. Extremely free bloomer and very popular.

**PRICES:** Heavy 2 Yr. No. 1 Plants, \$2.00 ea.; 3 plants or more, \$1.75 ea. Extra Heavy Jumbo selected plants, \$2.50 each.

**GOLDLOCKS.** Continuous bursting of golden buds and many golden petaled long-lasting flowers. A breath-taking sight in your garden.

**PRICES:** Heavy 2 Yr. No. 1 Plants, \$1.50 ea.; 3 or more plants, \$1.20 ea. Extra Heavy Jumbo selected plants, \$2.00 each.

**RED PINOCCHIO.** Deep Wine-red flower in large clusters are borne on a short sturdy plant. Most popular of all floribundas.

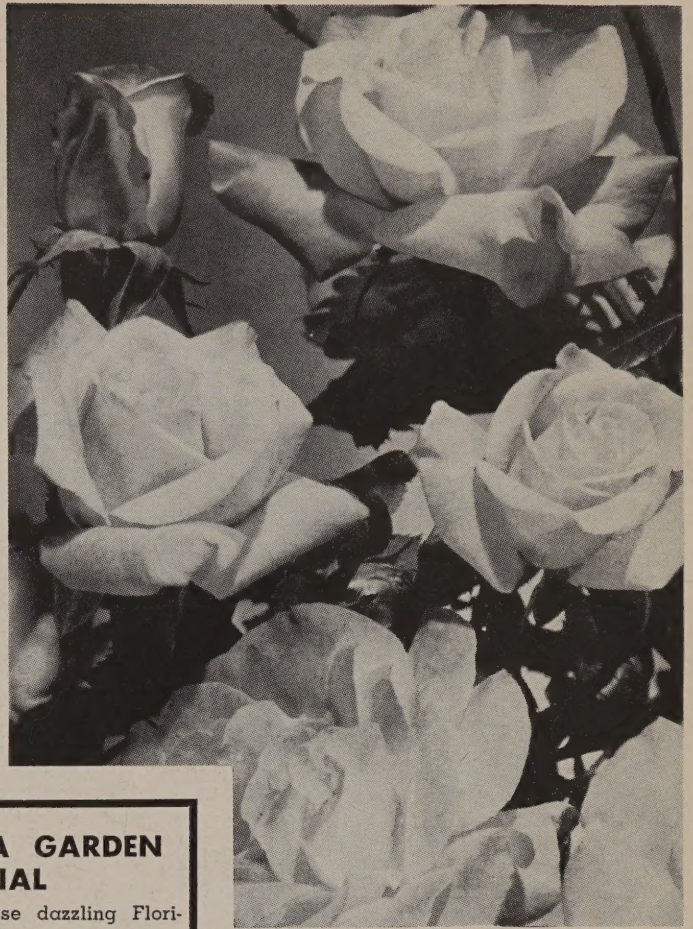
**PRICES:** Heavy 2 Yr. No. 1 Plants, \$1.50 ea.; 3 or more plants, \$1.20 ea. Extra Heavy Jumbo plants, \$1.75 each.

**JIMINY CRICKET.** AARS Winner for 1955. Tangerine red buds, opening to coral orange blooms. Pleasing old rose fragrance. Upright grower with glossy foliage.

**PRICES:** Heavy 2 Yr. No. 1 Plants, \$2.25 ea.; 3 or more plants, \$2.00 ea. Extra Heavy Jumbo Plants, \$2.75 each.

**WHITE PINOCCHIO.** Great drifts of beautiful large clusters of white rose buds, all as clear as falling snow. Blooms continuously.

**PRICES:** Heavy 2 Yr. No. 1 Plants, \$1.50 each; 3 or more plants, \$1.20. Extra Heavy Jumbo plants, \$2.00 each.



Circus

**FLORIBUNDA GARDEN  
SPECIAL**

One of each of these dazzling Floribunda Roses on this page—

**6** Heavy, 2 Yr. No. 1  
Plants, Only **\$9.85**

Bought Separately would cost \$11.25



Red Pinocchio



Fashion



Blakemore

# Ozark's STRAWBERRIES

Best for Delightful Eating!

Imagine a tasty cake covered with luscious Strawberries. Add some whipped cream, and you're ready to eat. Can you think of anything more desirable and especially when they are fresh home-grown Strawberries? They are not to be compared to mushy, picked-over, store-bought Strawberries that have been on the counter two or three days. Why not pick a spot, doesn't have to be a large one, and start yourself a Strawberry patch. They are fun to grow.

## BLAKEMORE

A tremendous producer of bright red, juicy, highly flavored Strawberries. Grand for preserving, canning and freezing. Stands drought better than any other known Strawberry and so thrifty that it is easy to develop a full wide row first season. Plant Ozark double inspected plants for the best results.

PRICES: 25 for 98c; 50 for \$1.50; 100 for \$2.25; 500 for \$7.50; 1,000 for \$12.00.

## STREAMLINER (Everbearing)

We have always been in constant search for a better Everbearing Strawberry for the Southwest. After thoroughly testing Streamliner, we find it has everything — enormous size (but never hollow), good color, grand flavor, and a heavy bearer. Adapted to the Southwest, bears the first year from spring to fall. Be sure to plant some Streamliner this year.

PRICES: 25 for \$1.50; 50 for \$2.50; 100 for \$3.95; 500 for \$15.00; 1,000 for \$25.00.

## RED RICH

(Plant Pat. No. 993)

Have you tasted the new patented Red Rich Strawberry? Wow! What a berry! So rich — so tender — so sweet that you eat them without adding sugar. Yes, Red Rich is a big, sweet, solid red berry through to the core. Starts bearing in June and continues putting on luscious berries until hard frost. One acre of Red Rich produced 4,000 quarts last fall. The greatest Everbearing Strawberry of all time. Supply is limited — so order today.

PRICES: 12 for \$2.95; 25 for \$5.00; 50 for \$8.50; 100 for \$15.00; 250 for \$32.50; 500 for \$55.00.

## GIANT GEM (Everbearing)

A heavy producer of large, firm, bright red Strawberries of high quality. Starts bearing the first year and will bear from early spring until frost. Noted for its ability to grow anywhere Strawberries are grown and would do exceptionally well in your garden.

PRICES: 25 for \$1.35; 50 for \$2.25; 100 for \$3.85; 500 for \$13.50; 1,000 for \$23.50.

## NEW 20TH CENTURY STRAWBERRY (Everbearing)

Here is the strawberry you have been waiting for. Unbelievably large berries that are a deep red color all over. A flavor as sweet as honey that stays in even after freezing. Will grow in almost any soil and begin production 60 days after planting. You don't wait for these to get into production, you eat them all year long.

PRICES: 25 for \$2.15; 50 for \$3.95; 100 for \$7.00; 500 for \$30.00.

## ARMORE

An outstanding new Aroma-Blakemore cross that's certainly doing well with us. Ripens just after Blakemore, lengthening the season for Strawberries. Extra fine for preserves and freezing. Berries are huge, bright red and the best flavor you ever tasted. Try a hundred of the plants, and you will be astonished at the size and number of berries you get.

PRICES: 25 for \$1.00; 50 for \$1.75; 100 for \$2.45; 500 for \$9.50; 1,000 for \$17.50.

## FREEZER SPECIAL

Freeze 'em and have Strawberries the year around.

50 Armore  
100 Blakemore

Only \$3.19

(Value \$4.00)

DEPARTMENT OF AGRICULTURE  
LIBRARY  
WASHINGTON 25, D. C.  
OFFICIAL BUSINESS  
PRINTED MATTER

Library, U. S. Dept. of Agriculture,  
WASHINGTON 25, D. C.

Bibl.

